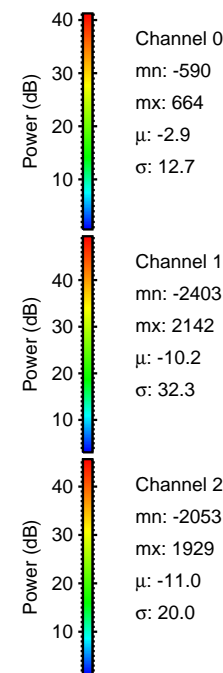
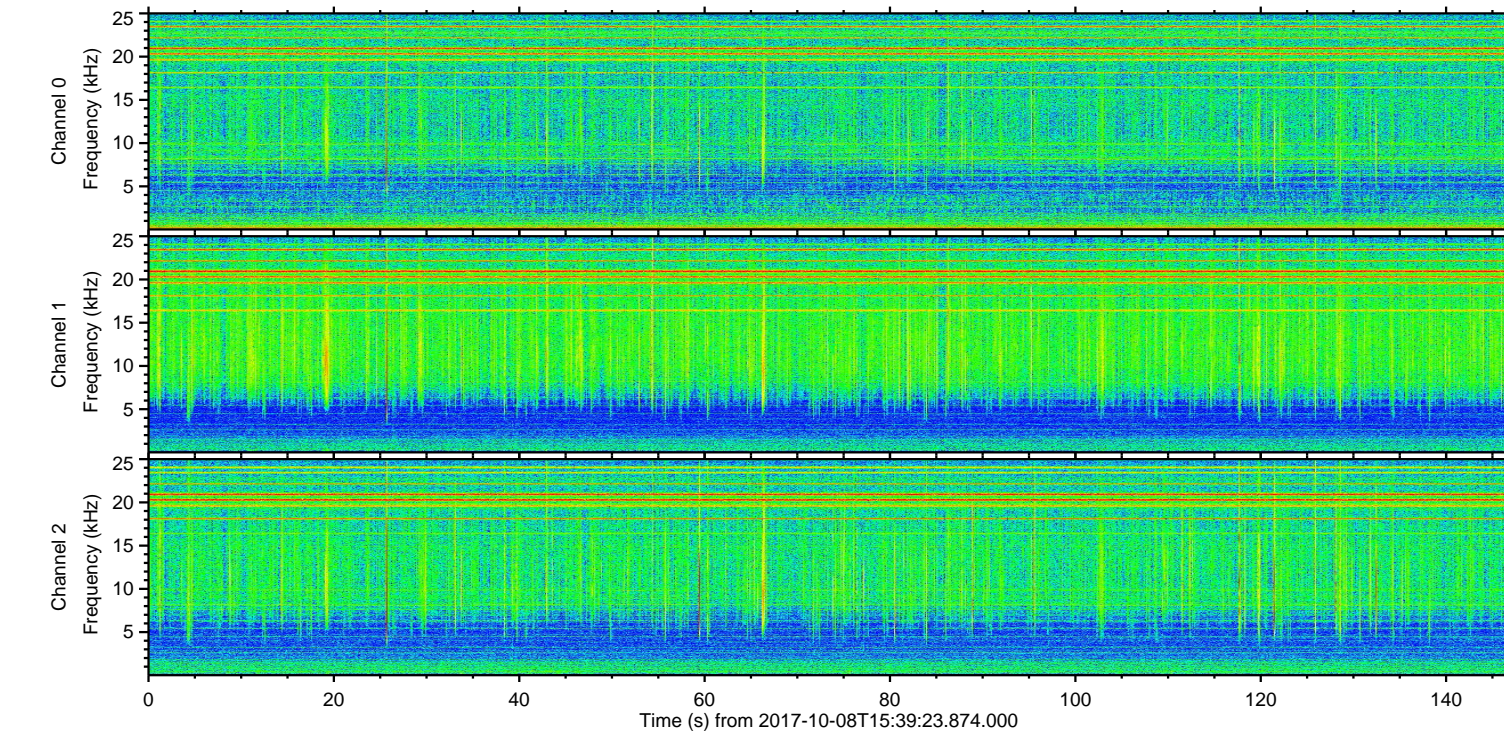
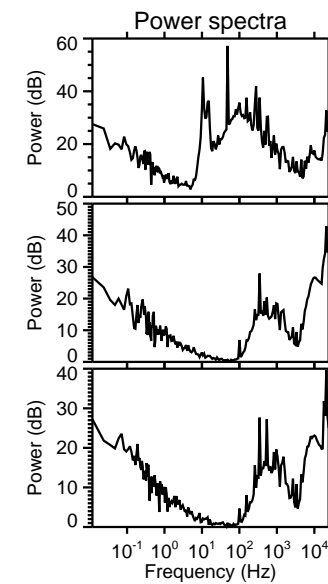
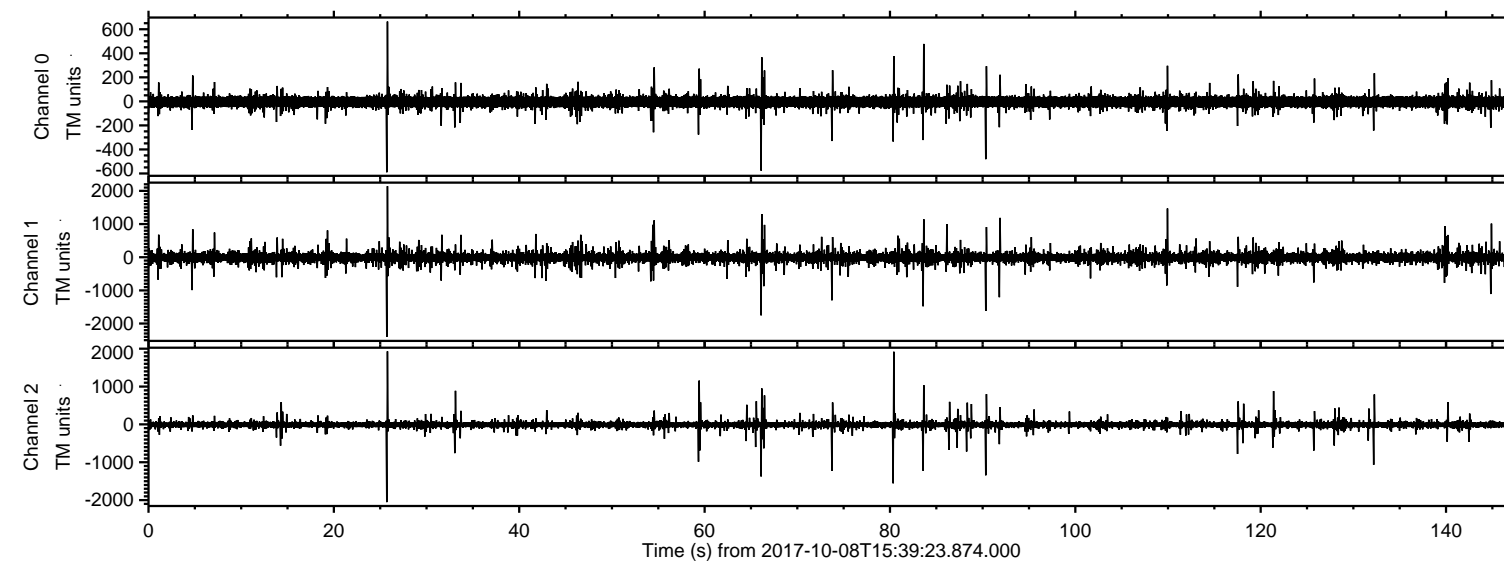


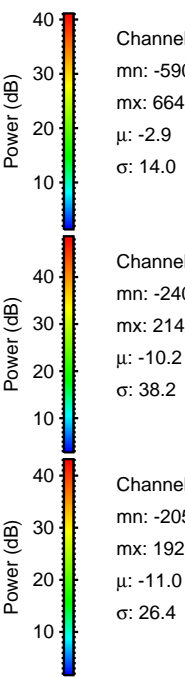
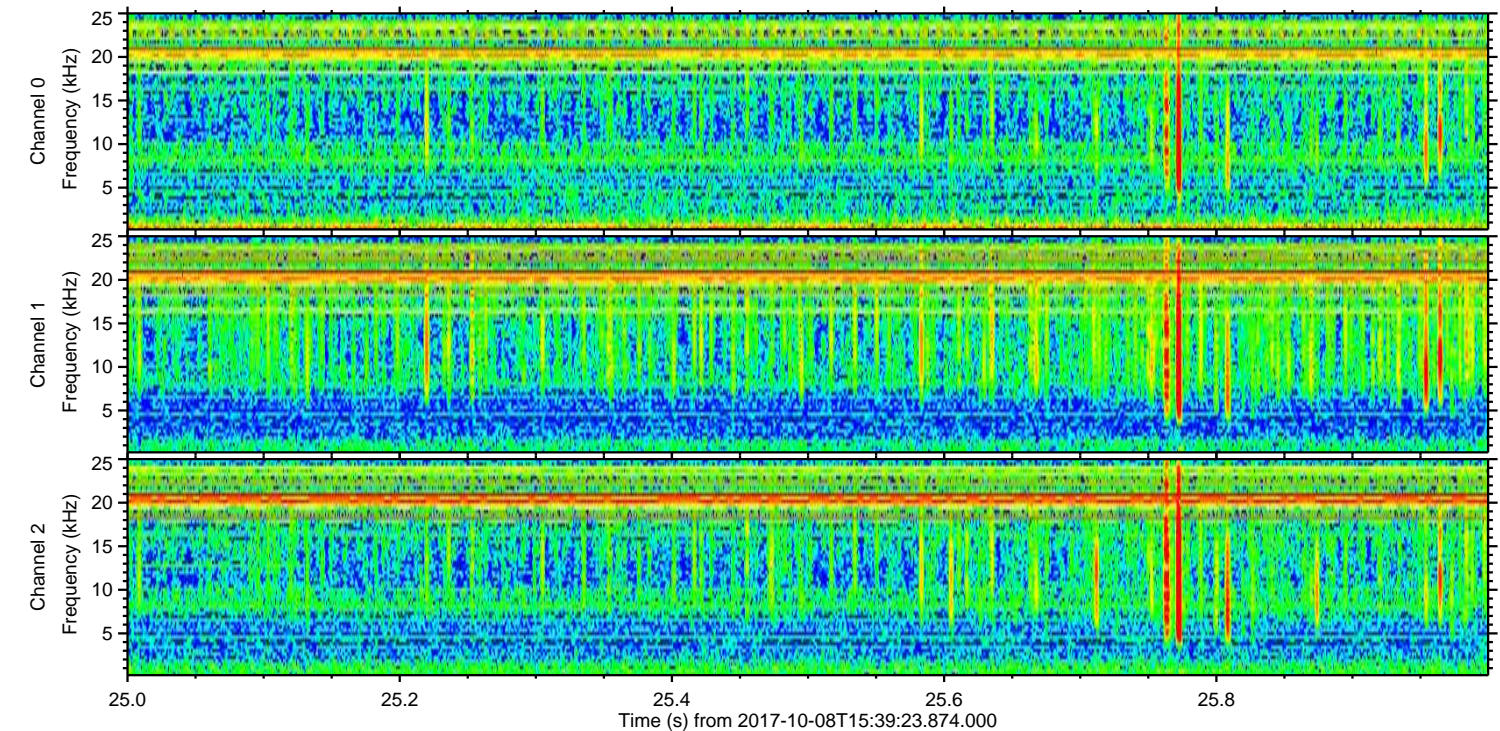
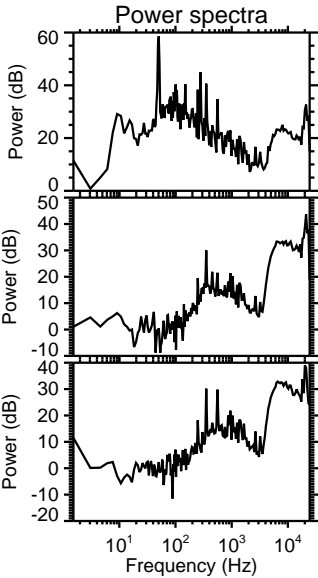
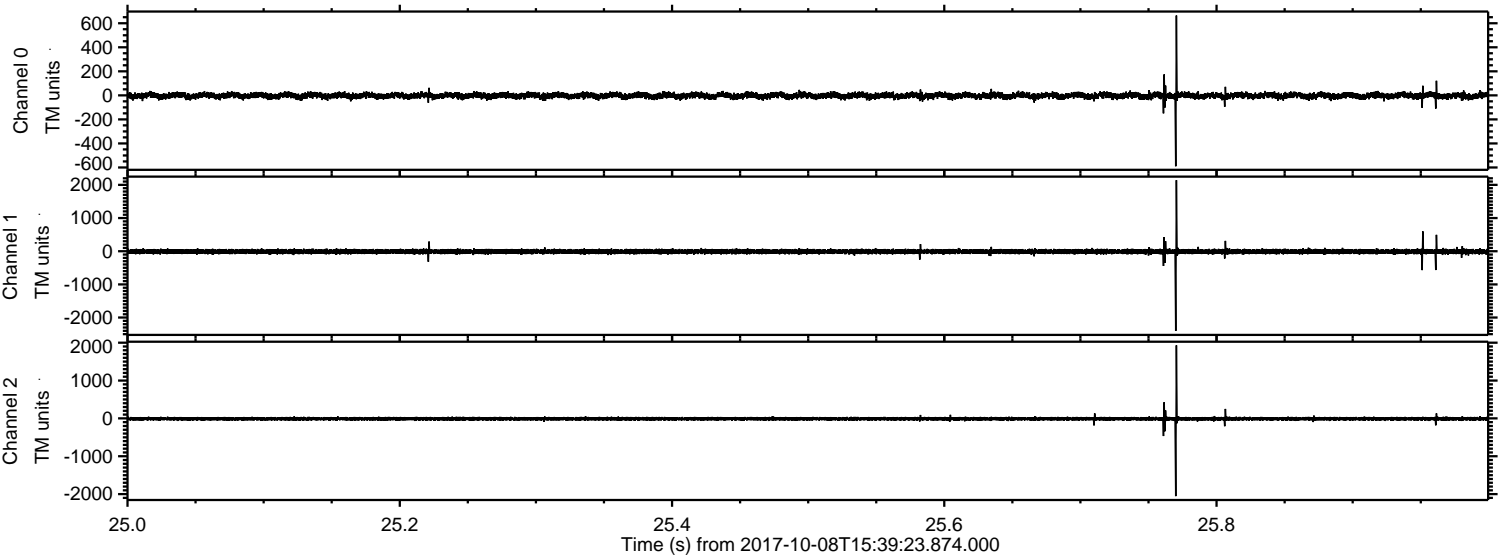
ELMAVAN 3D WAVEFORMS (Measured data sampled at 50 kHz) 51000 packets of 144 samples from 2017-10-08T15:39:23.874.000.

Processed Sun Oct 8 17:47:47 2017 by ELM ver.2012-10-06 from 001__elm20171008_153922__dat00.bin

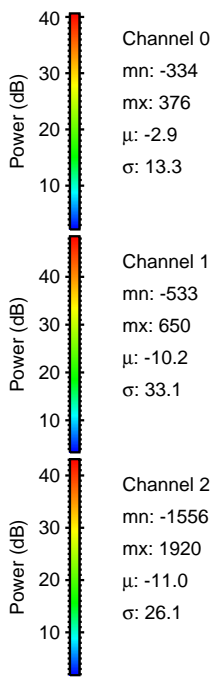
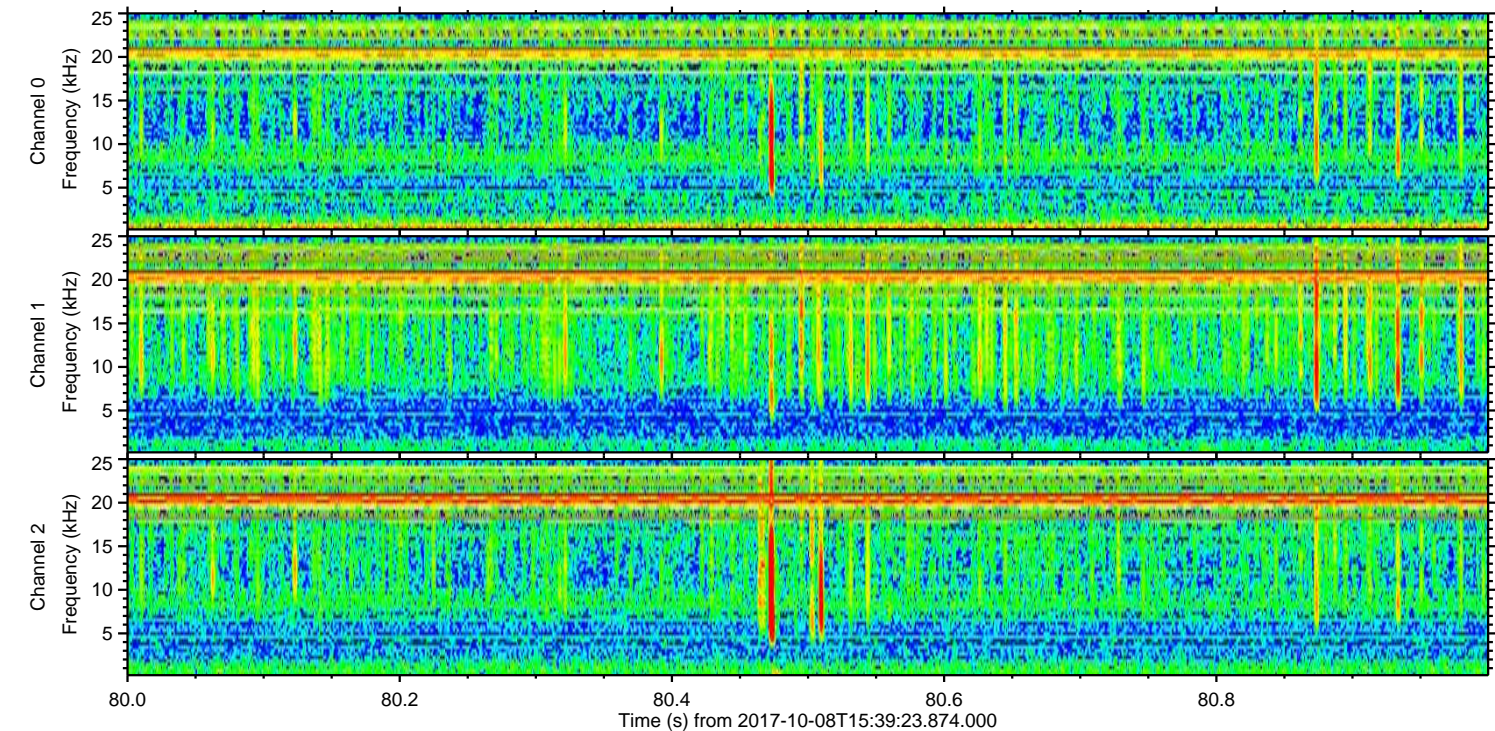
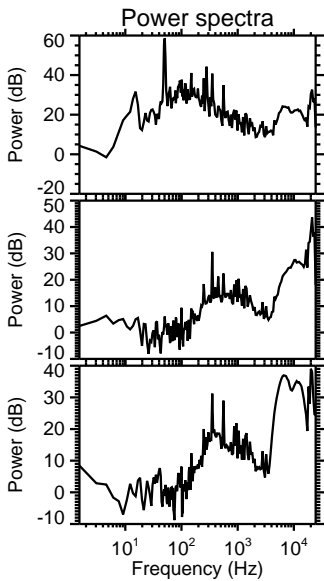
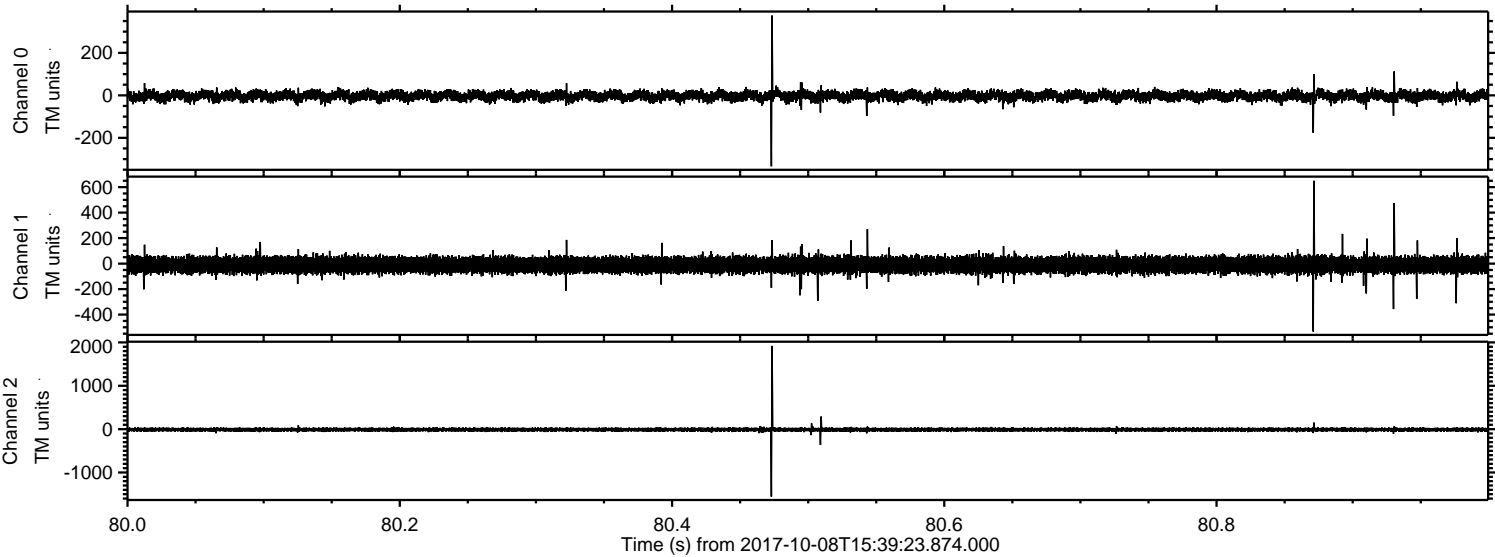


ELMAVAN 3D WAVEFORMS (Measured data sampled at 50 kHz) 51000 packets of 144 samples from 2017-10-08T15:39:23.874.000. Part 26/147

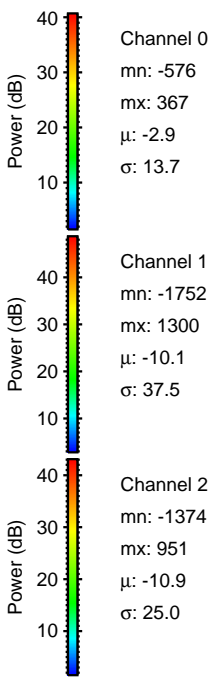
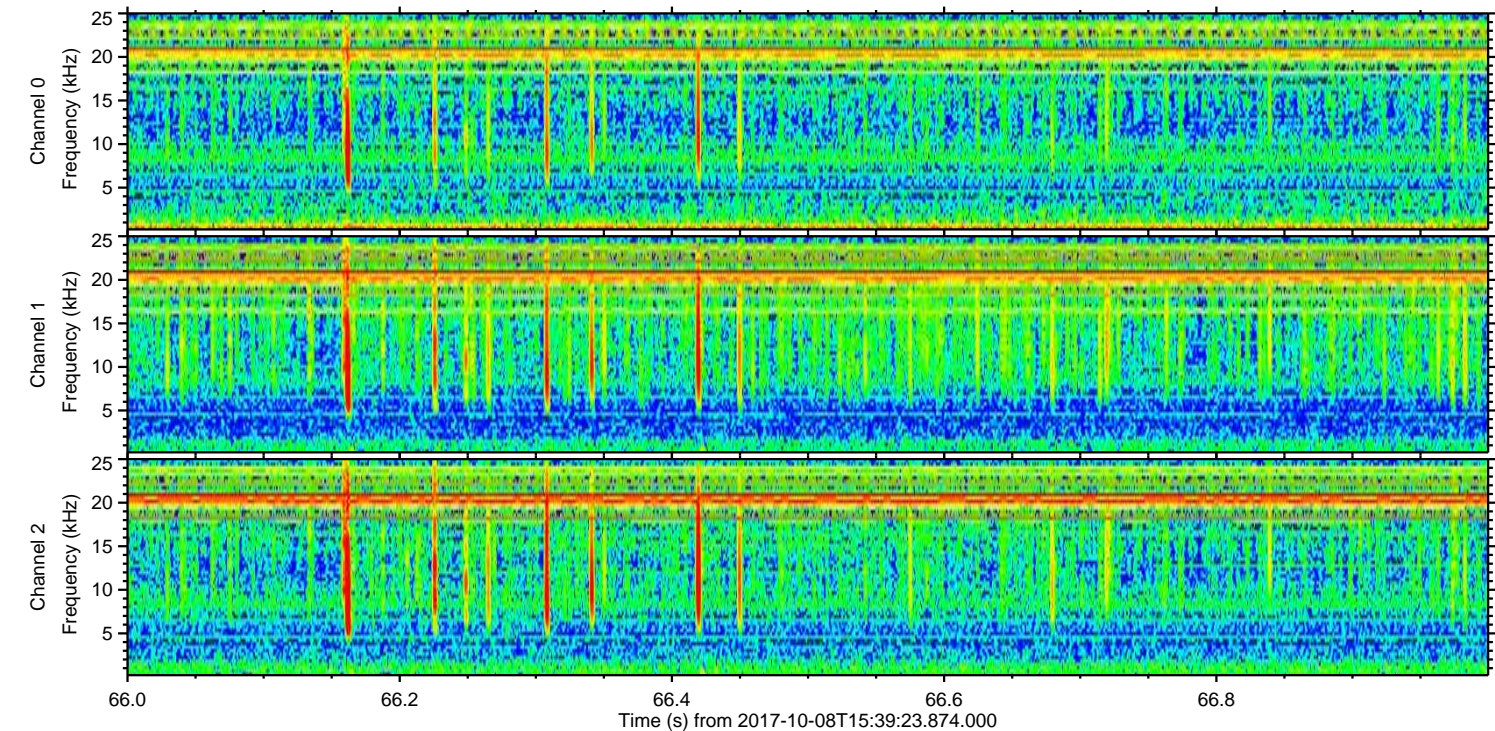
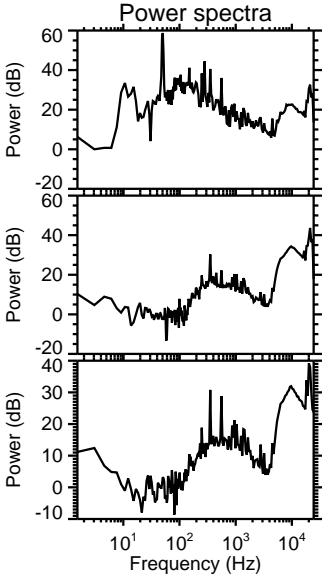
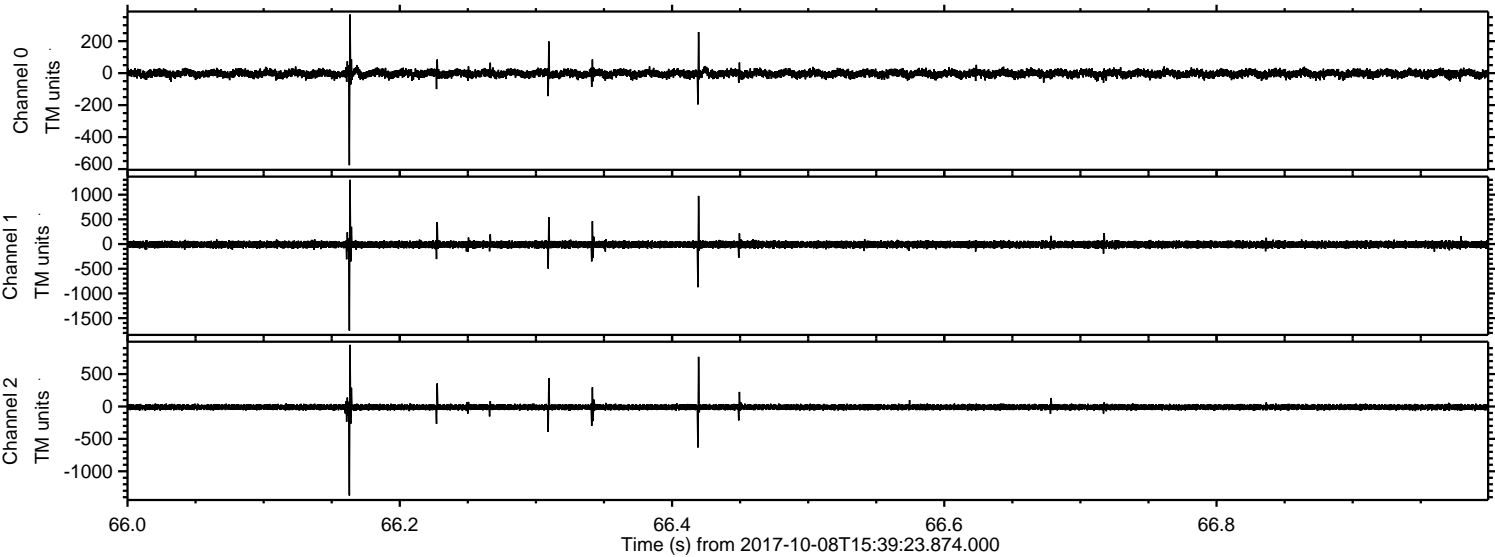
Processed Sun Oct 8 17:47:53 2017 by ELM ver.2012-10-06 from 001__elm20171008_153922__dat00.bin



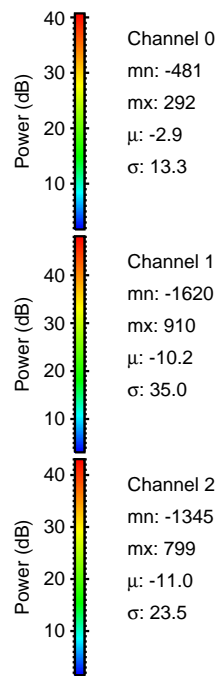
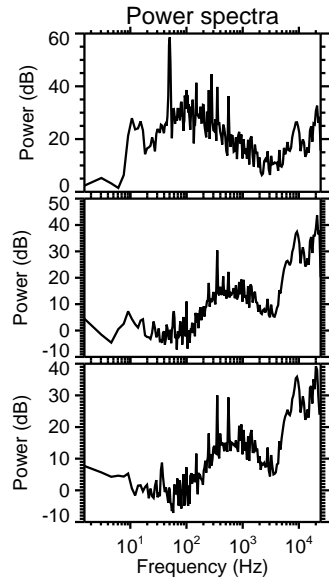
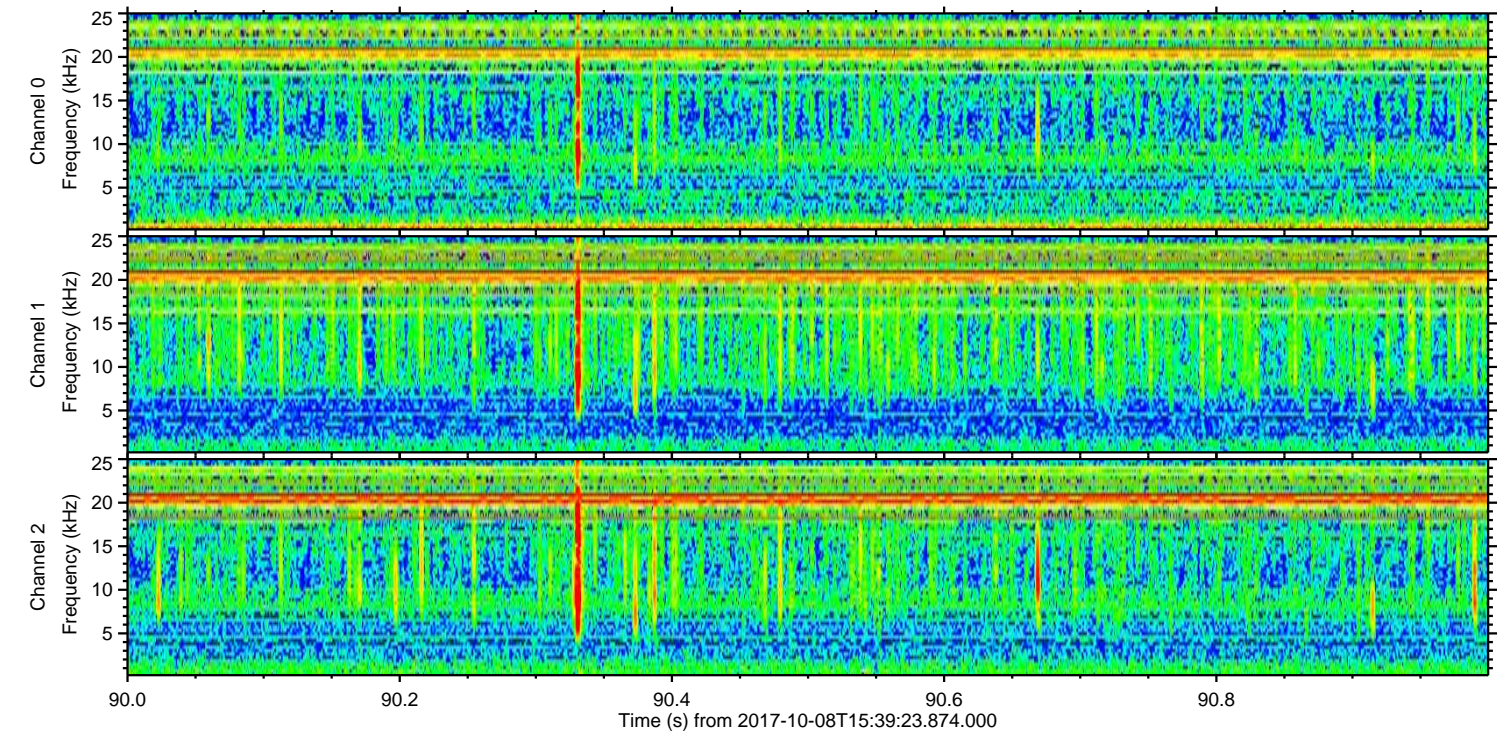
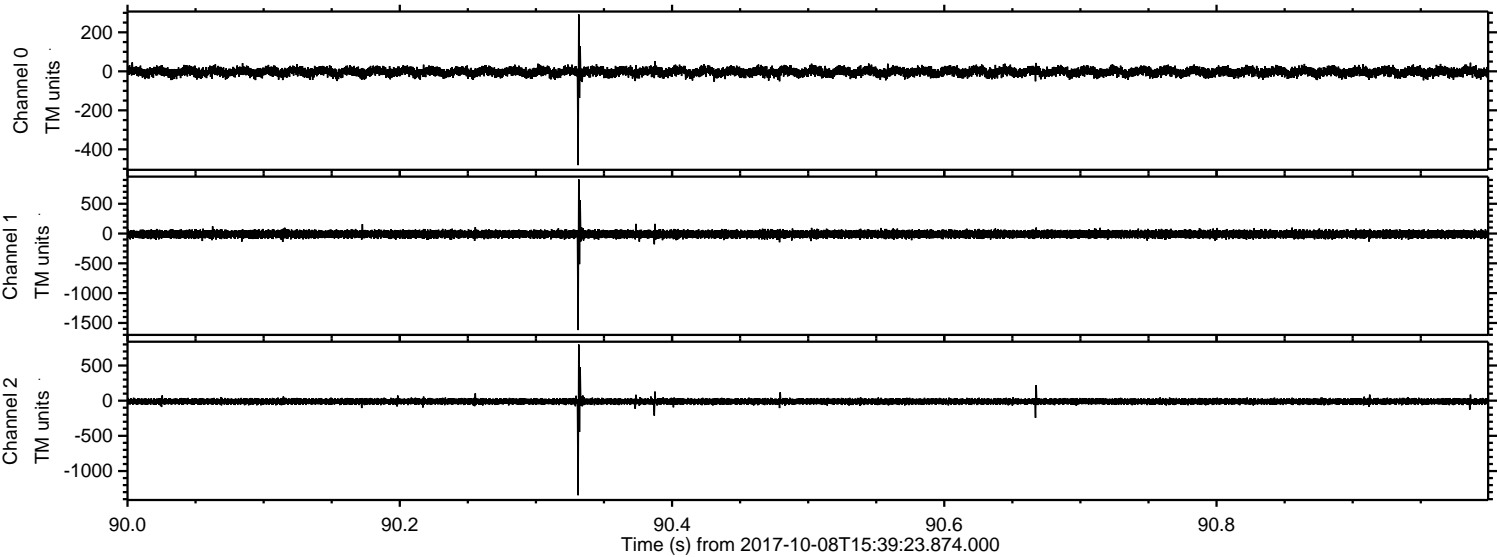
Processed Sun Oct 8 17:47:54 2017 by ELM ver.2012-10-06 from 001__elm20171008_153922__dat00.bin



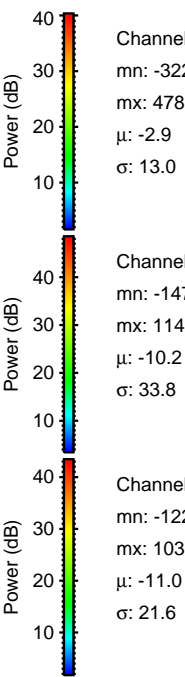
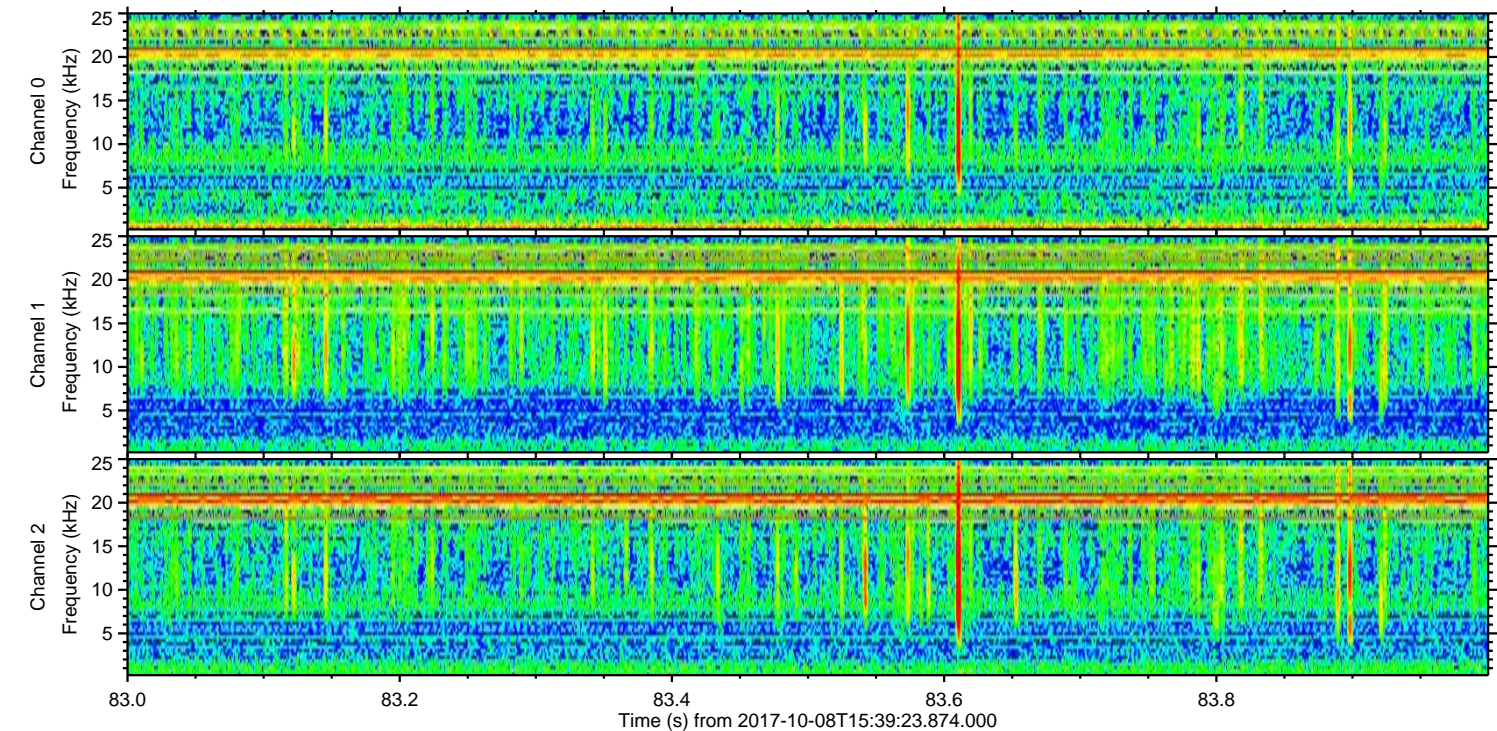
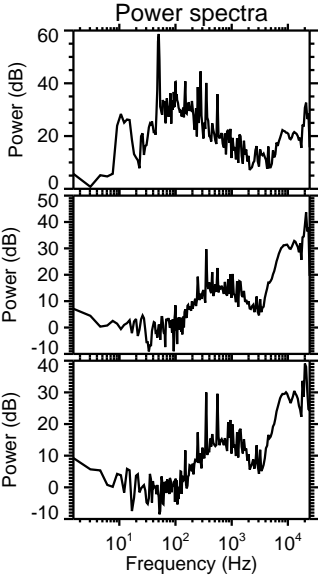
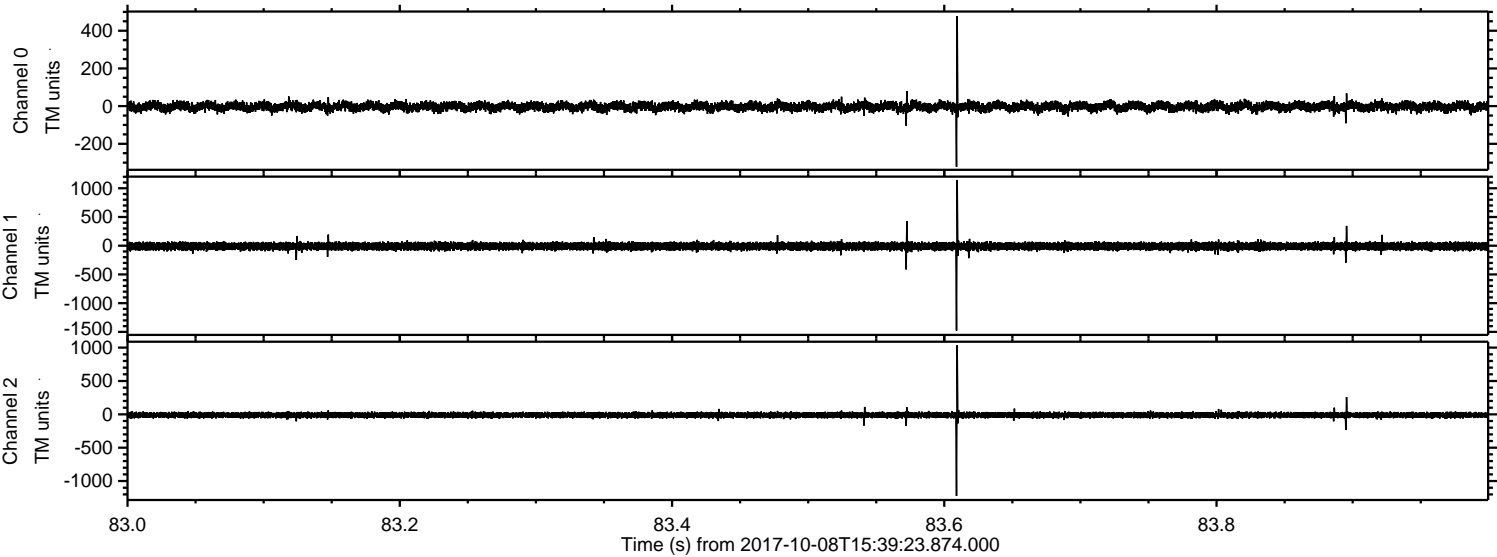
Processed Sun Oct 8 17:47:54 2017 by ELM ver.2012-10-06 from 001__elm20171008_153922__dat00.bin



Processed Sun Oct 8 17:47:55 2017 by ELM ver.2012-10-06 from 001__elm20171008_153922__dat00.bin

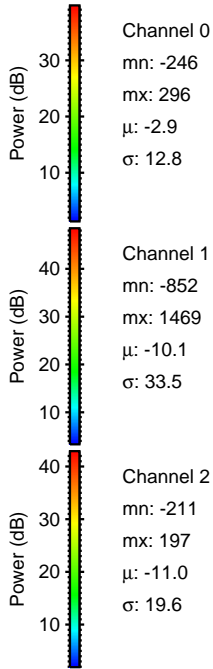
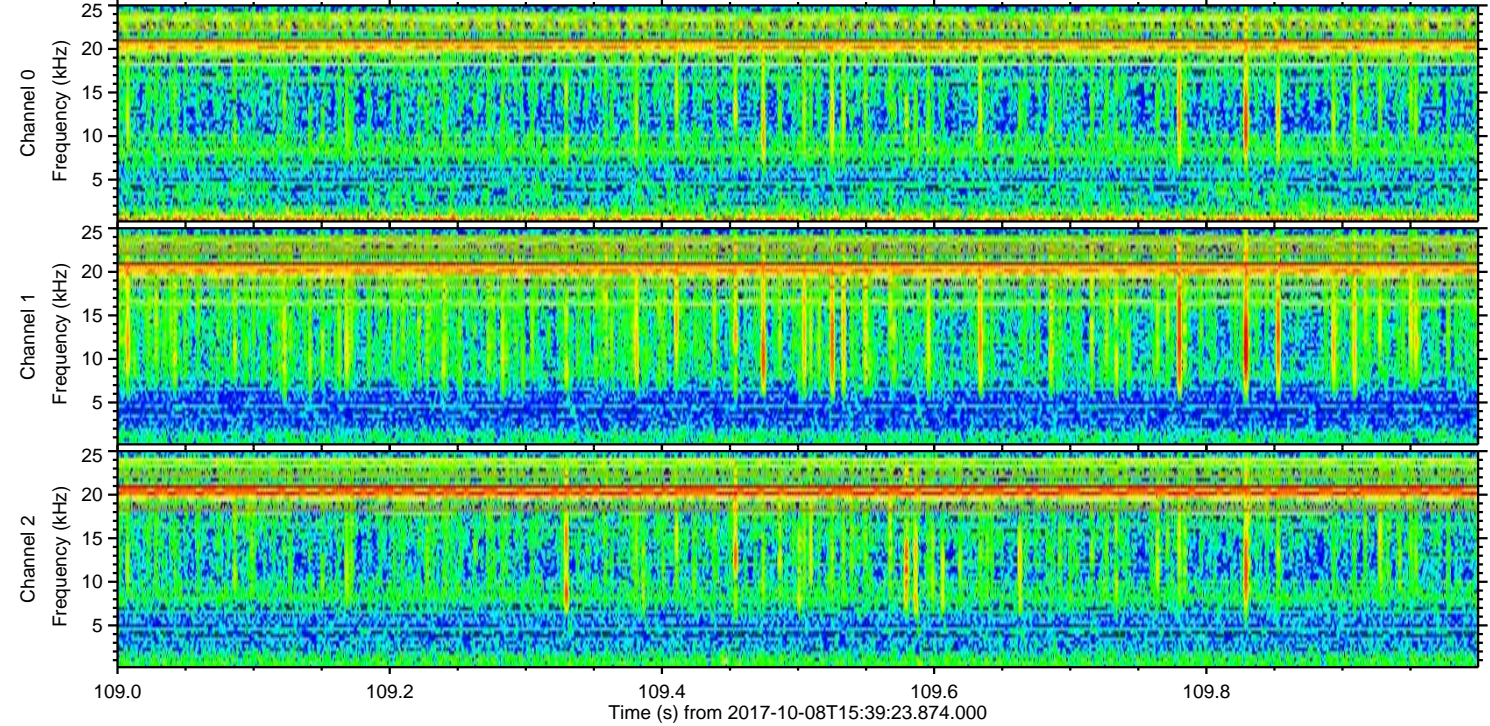
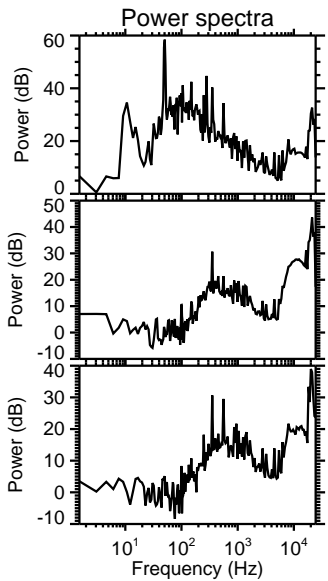
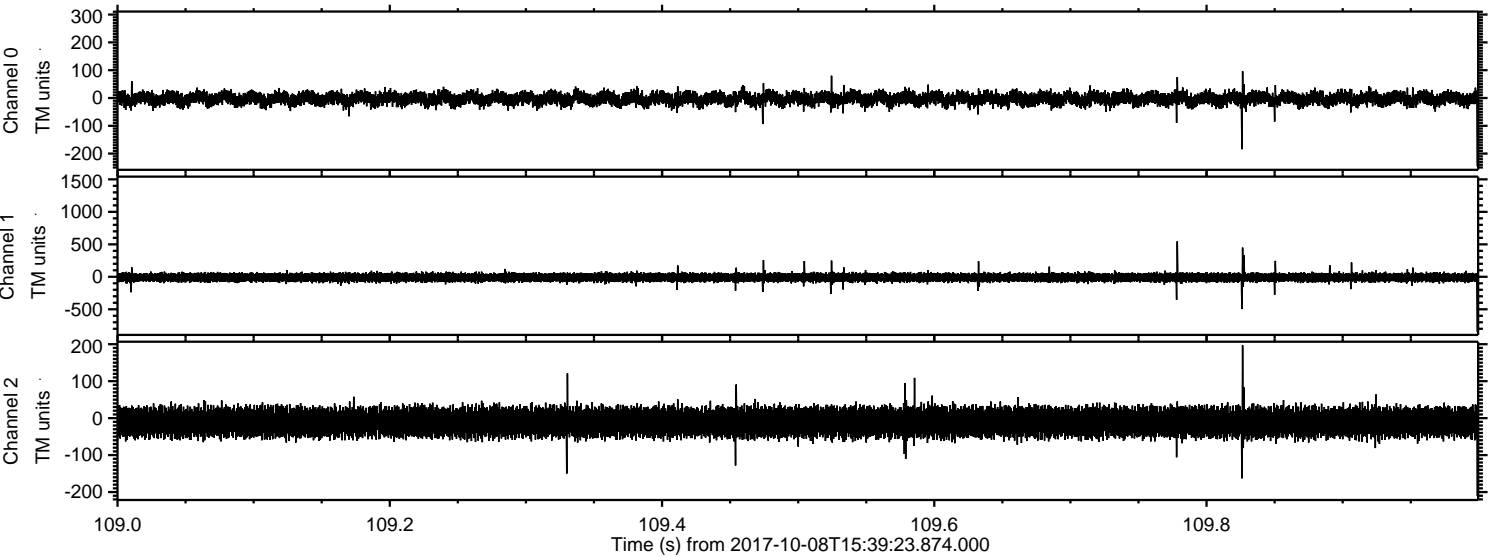


Processed Sun Oct 8 17:47:56 2017 by ELM ver.2012-10-06 from 001__elm20171008_153922__dat00.bin



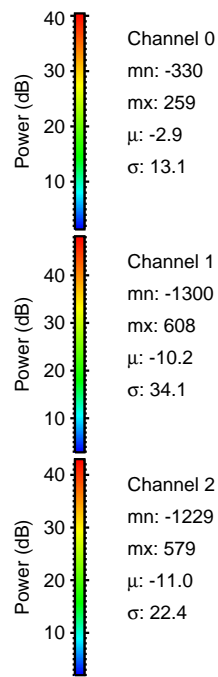
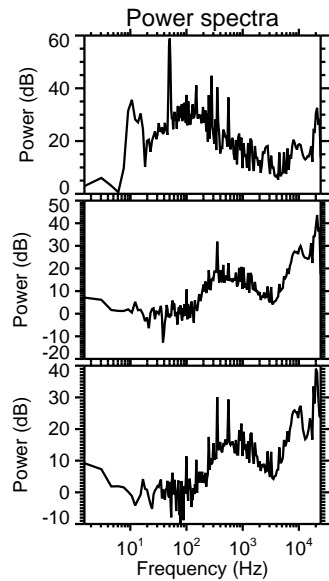
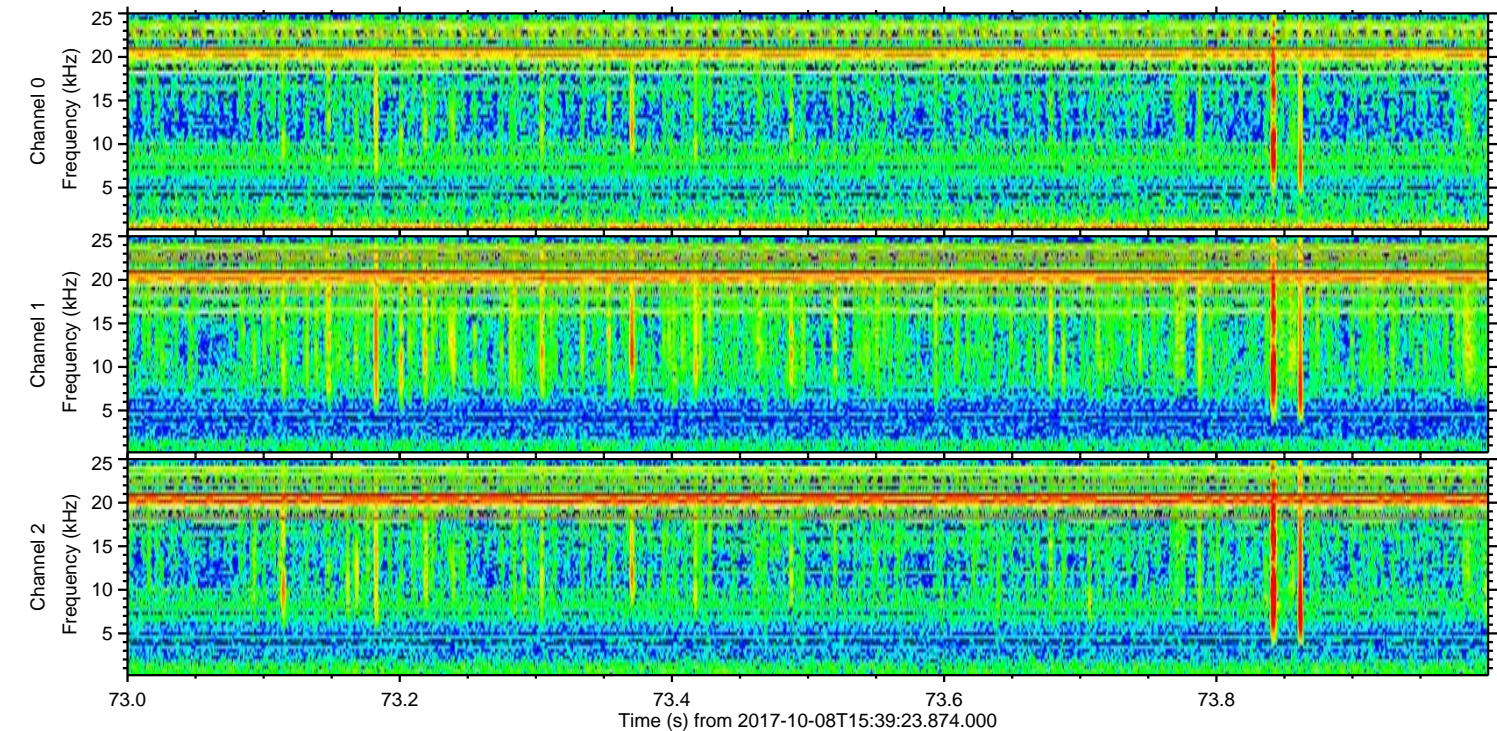
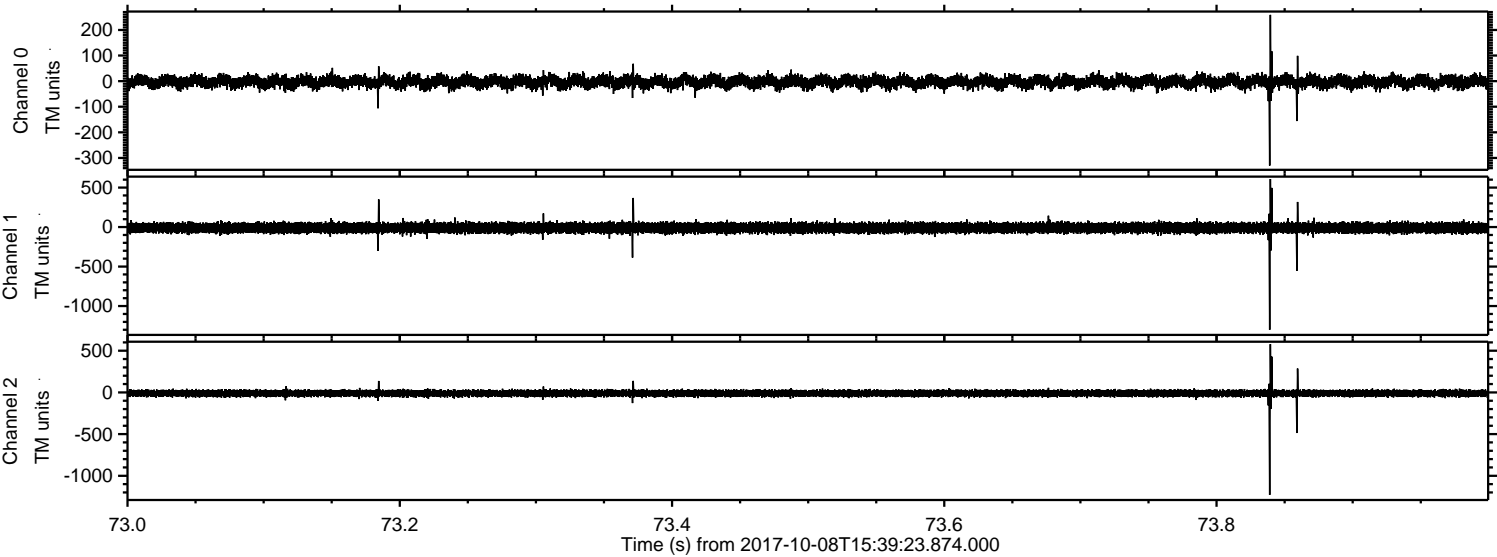
ELMAVAN 3D WAVEFORMS (Measured data sampled at 50 kHz) 51000 packets of 144 samples from 2017-10-08T15:39:23.874.000. Part 110/147

Processed Sun Oct 8 17:47:56 2017 by ELM ver.2012-10-06 from 001__elm20171008_153922__dat00.bin



ELMAVAN 3D WAVEFORMS (Measured data sampled at 50 kHz) 51000 packets of 144 samples from 2017-10-08T15:39:23.874.000. Part 74/147

Processed Sun Oct 8 17:47:57 2017 by ELM ver.2012-10-06 from 001__elm20171008_153922__dat00.bin

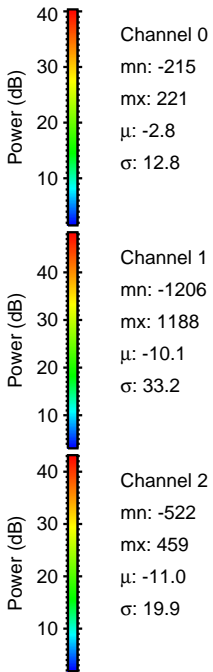
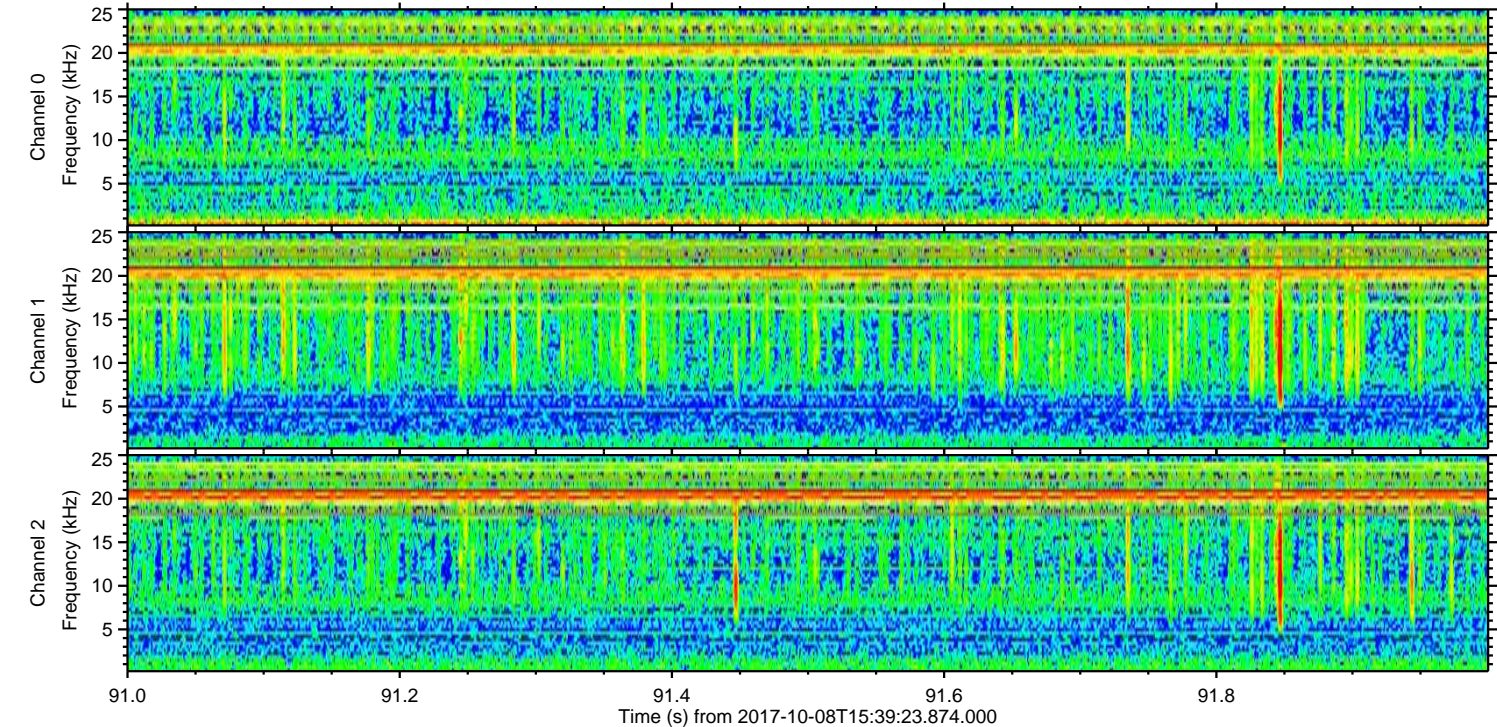
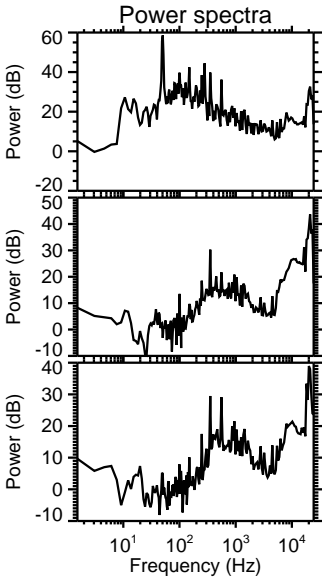
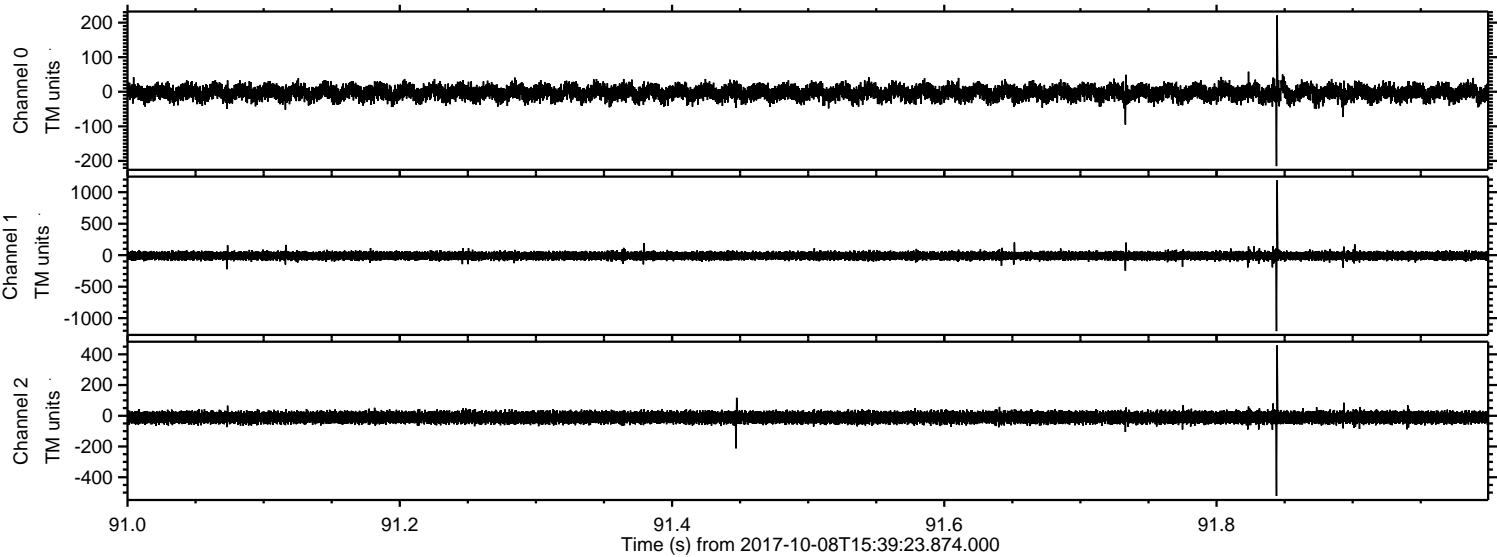


Channel 0
mn: -330
mx: 259
 μ : -2.9
 σ : 13.1

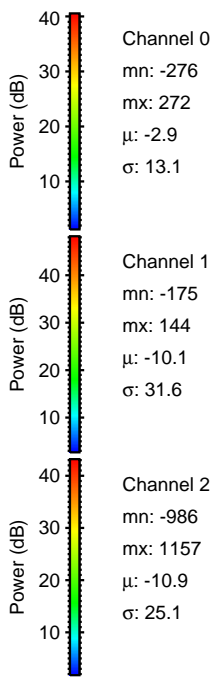
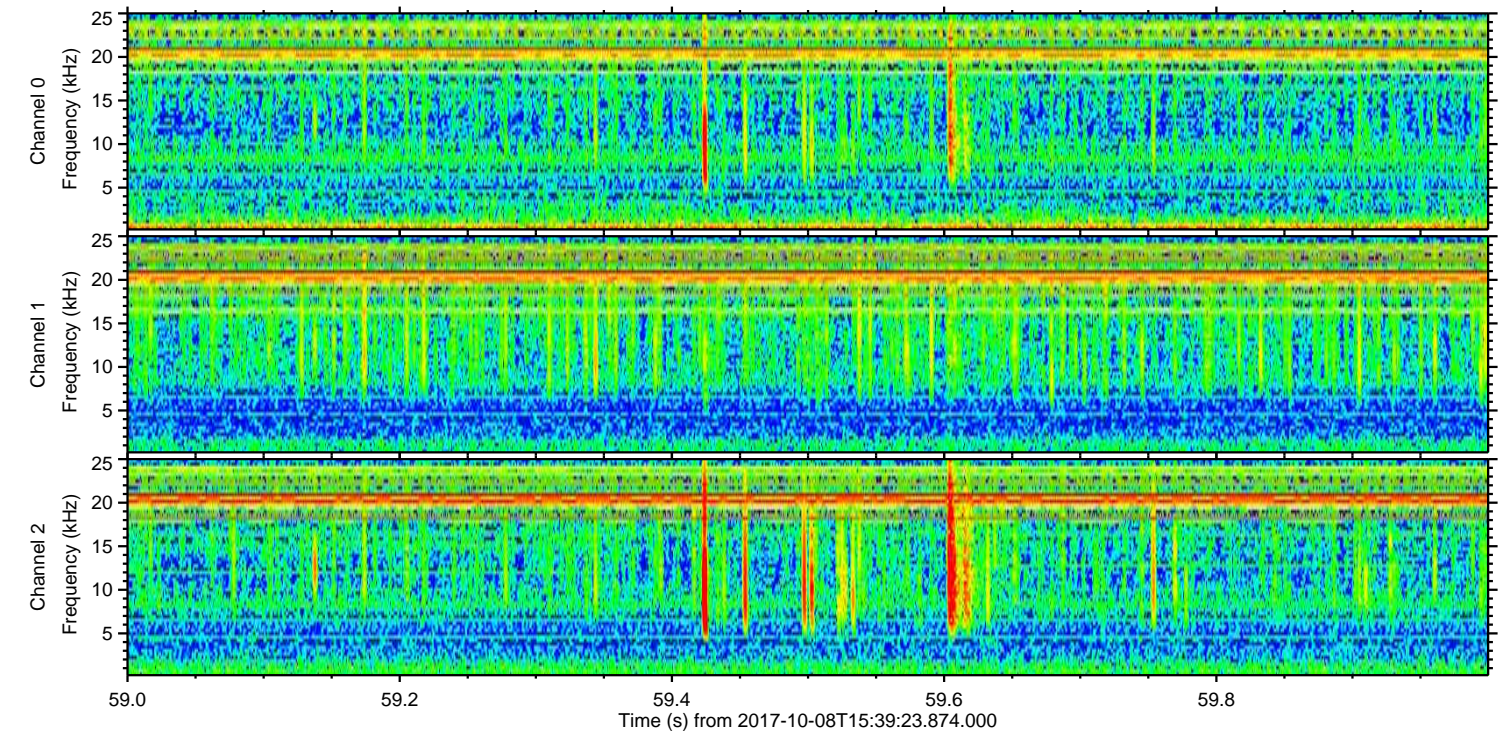
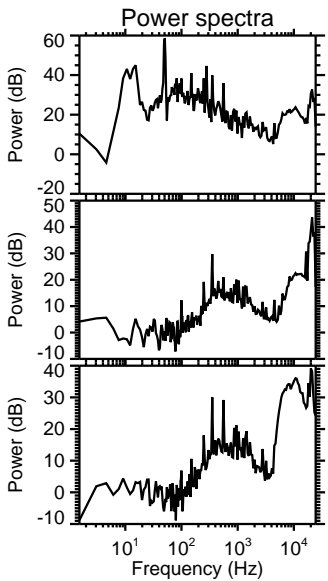
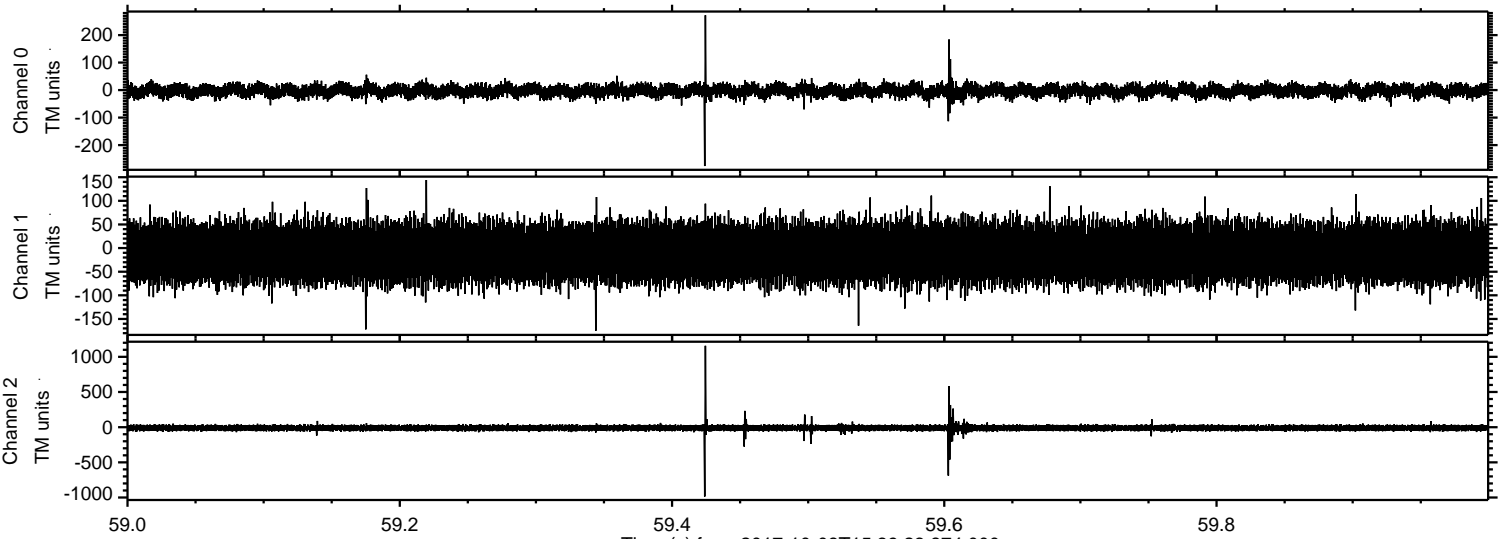
Channel 1
mn: -1300
mx: 608
 μ : -10.2
 σ : 34.1

Channel 2
mn: -1229
mx: 579
 μ : -11.0
 σ : 22.4

Processed Sun Oct 8 17:47:58 2017 by ELM ver.2012-10-06 from 001__elm20171008_153922__dat00.bin



Processed Sun Oct 8 17:47:58 2017 by ELM ver.2012-10-06 from 001__elm20171008_153922__dat00.bin



Processed Sun Oct 8 17:47:59 2017 by ELM ver.2012-10-06 from 001__elm20171008_153922__dat00.bin

