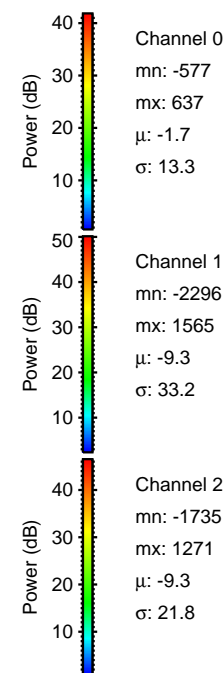
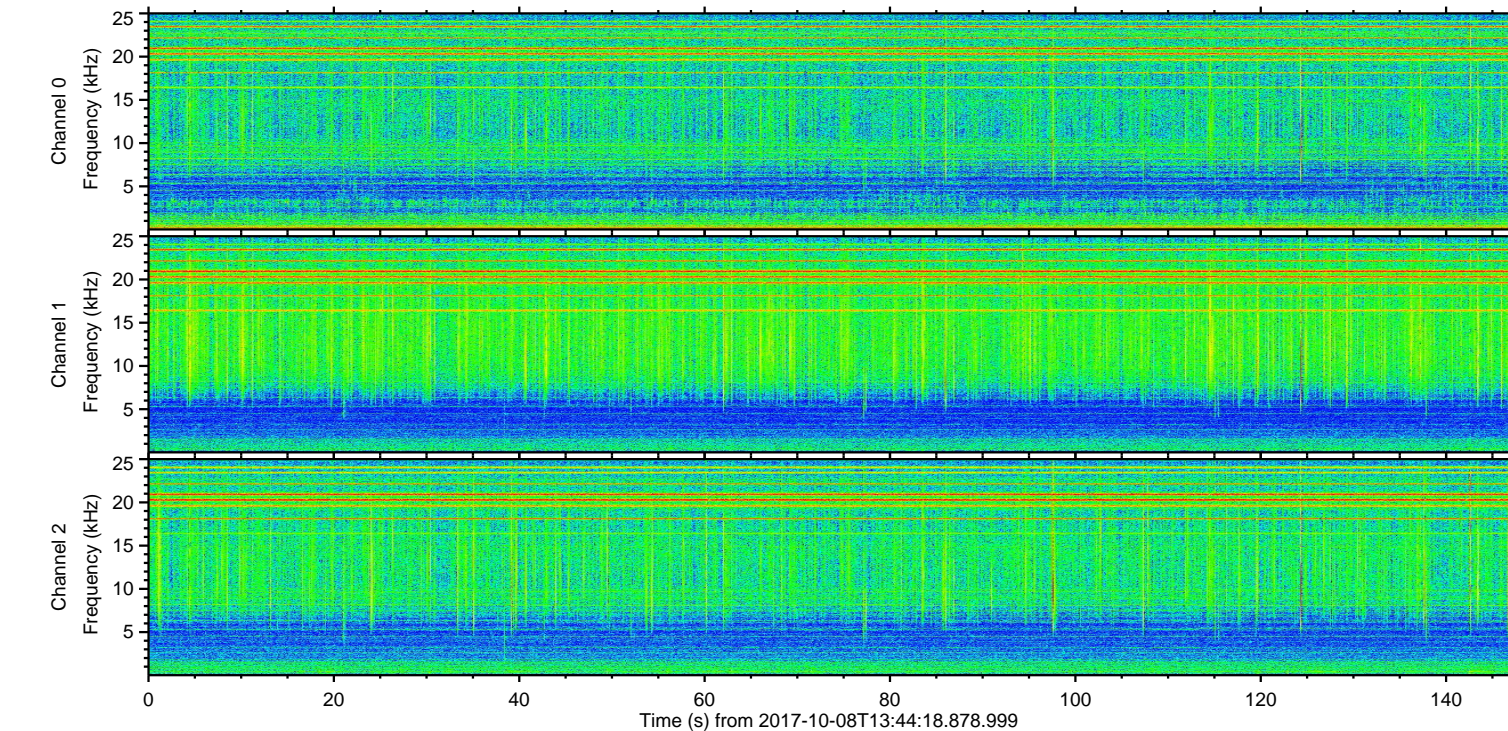
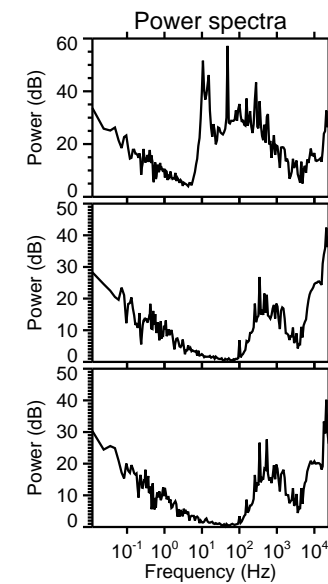
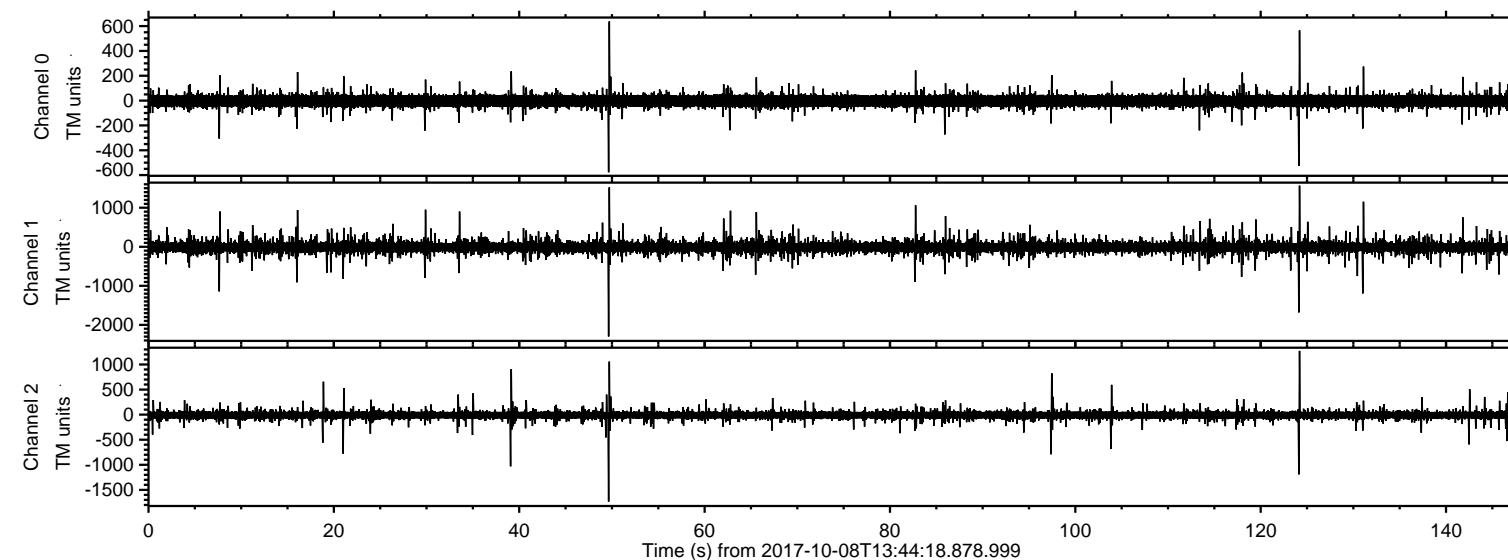
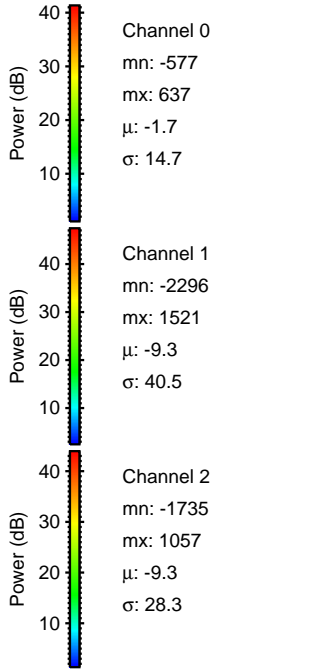
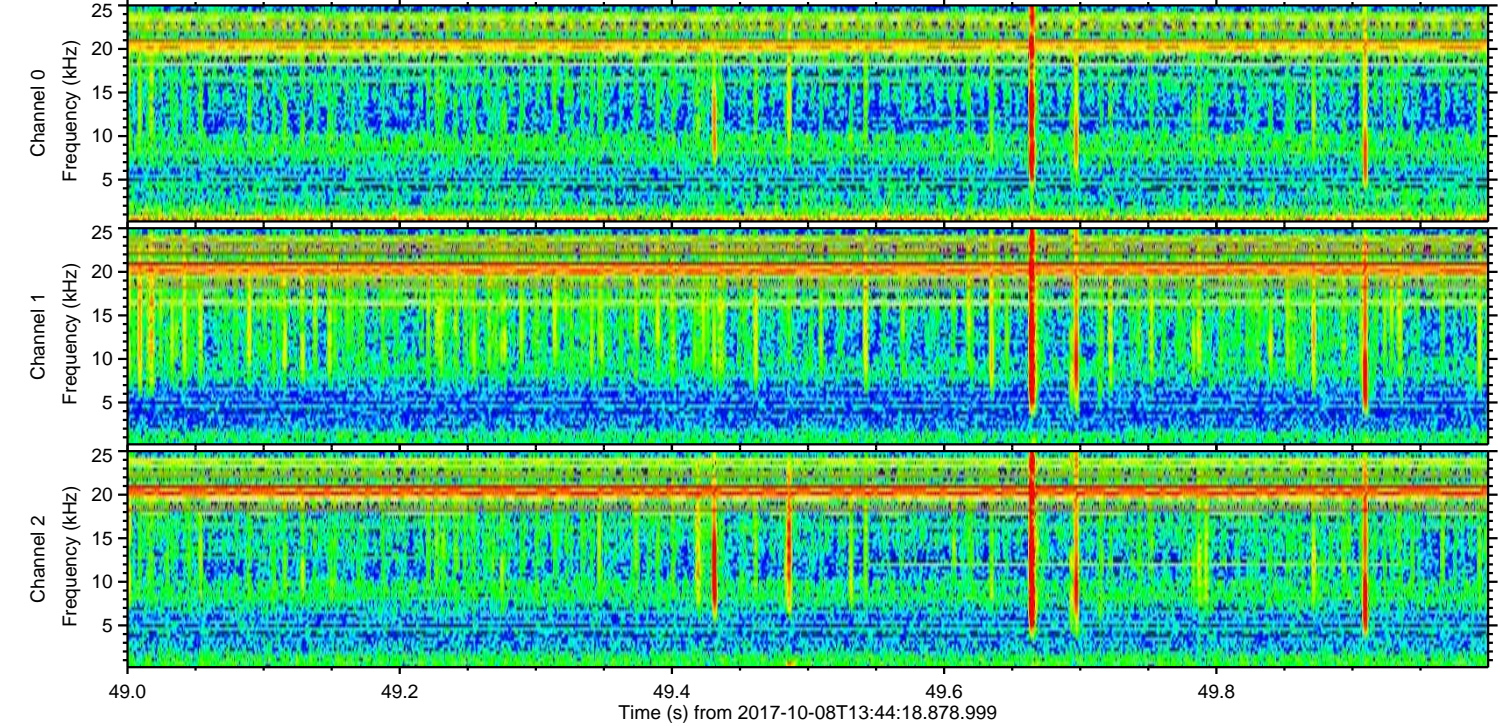
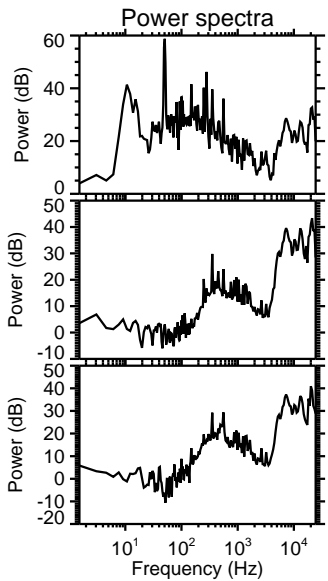
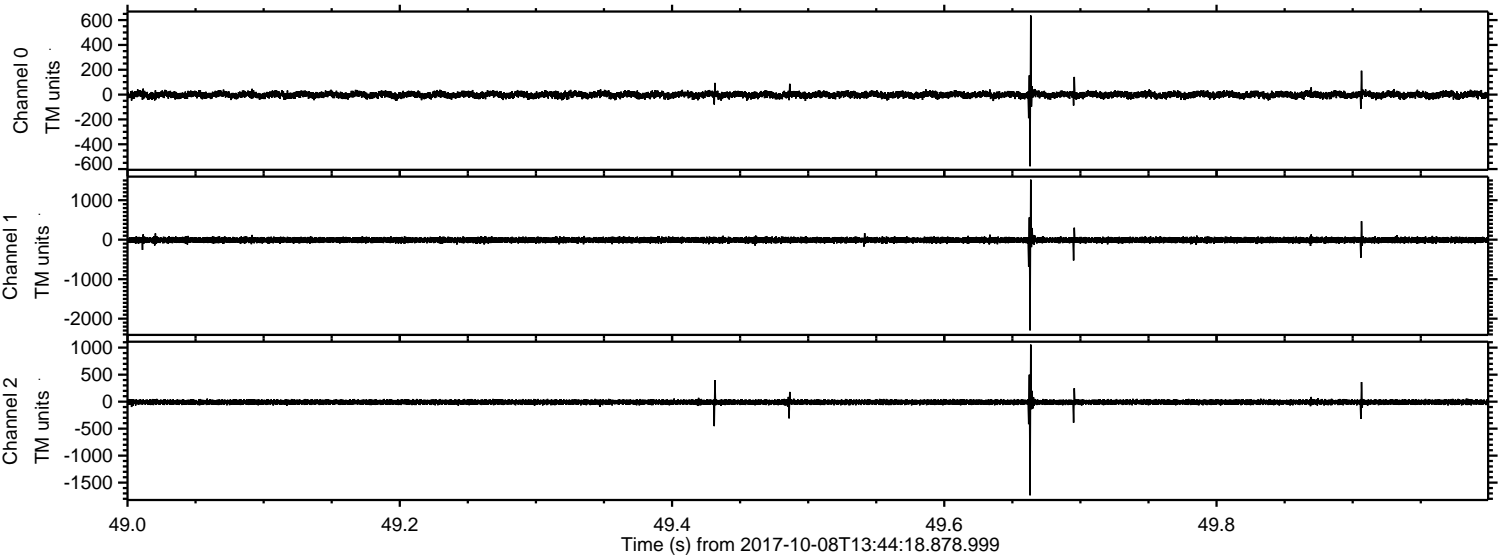


ELMAVAN 3D WAVEFORMS (Measured data sampled at 50 kHz) 51000 packets of 144 samples from 2017-10-08T13:44:18.878.999.

Processed Sun Oct 8 15:51:49 2017 by ELM ver.2012-10-06 from 001__elm20171008_134417__dat00.bin

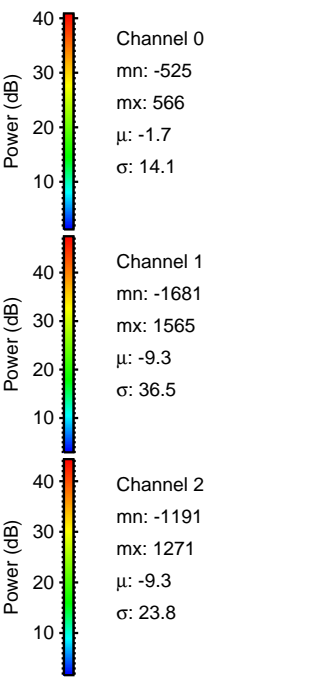
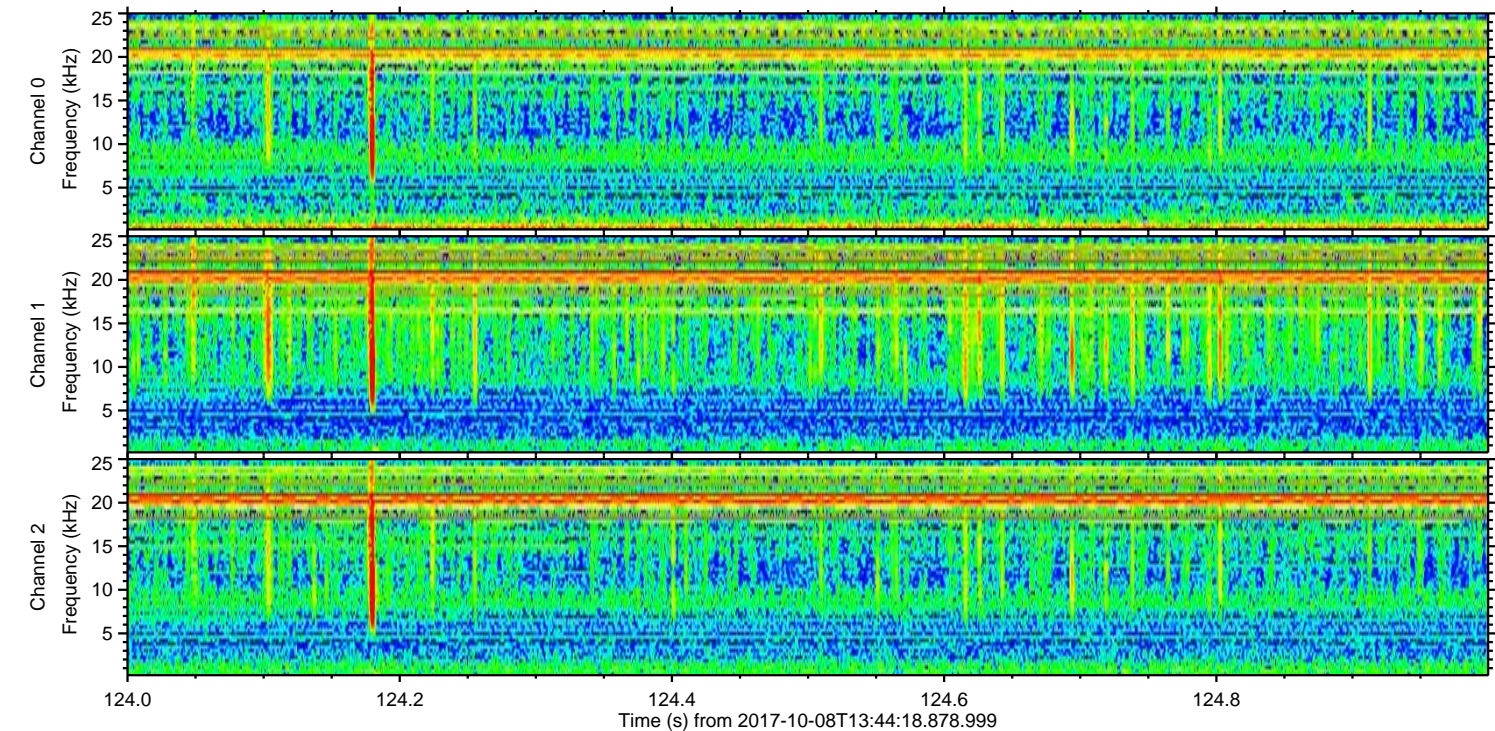
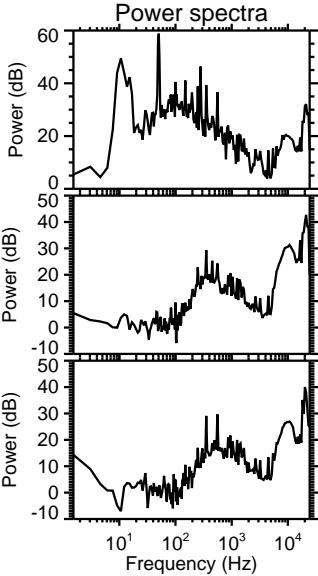
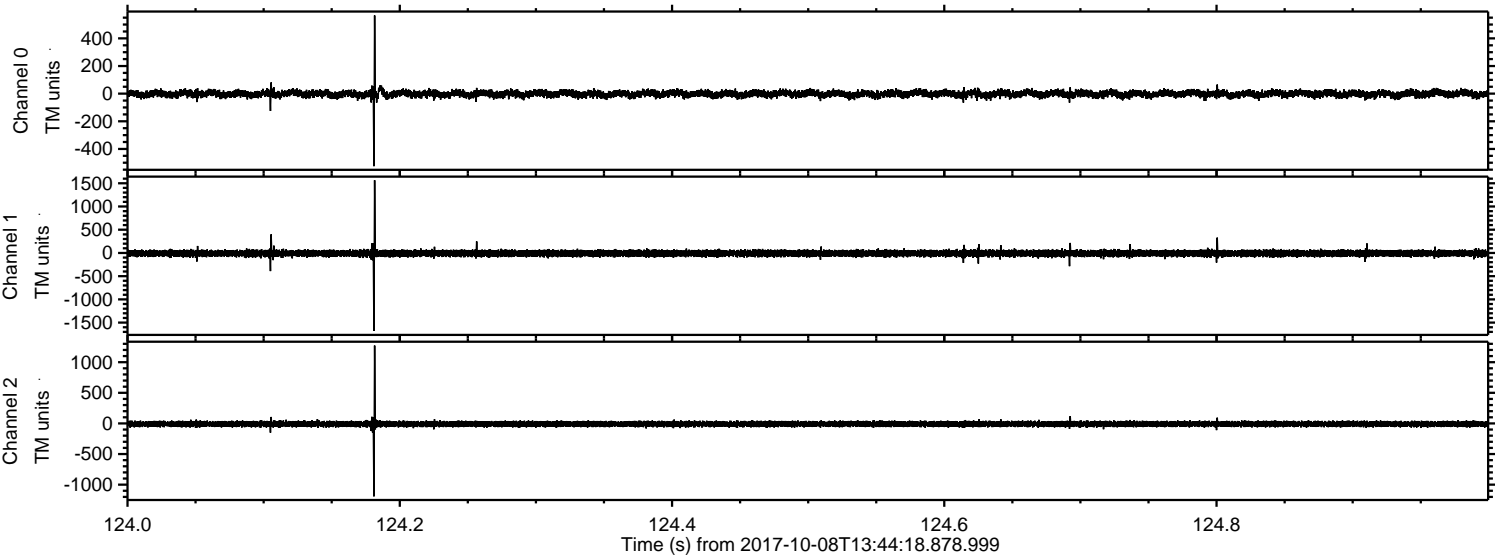


Processed Sun Oct 8 15:51:54 2017 by ELM ver.2012-10-06 from 001__elm20171008_134417__dat00.bin



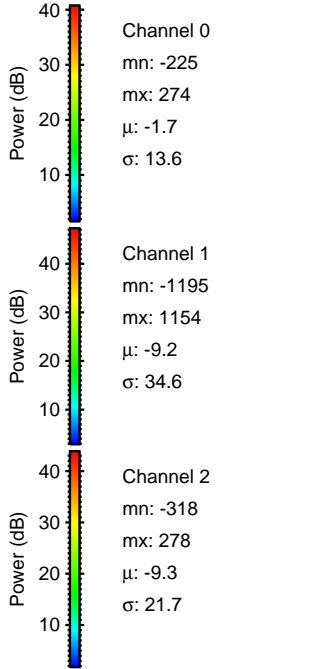
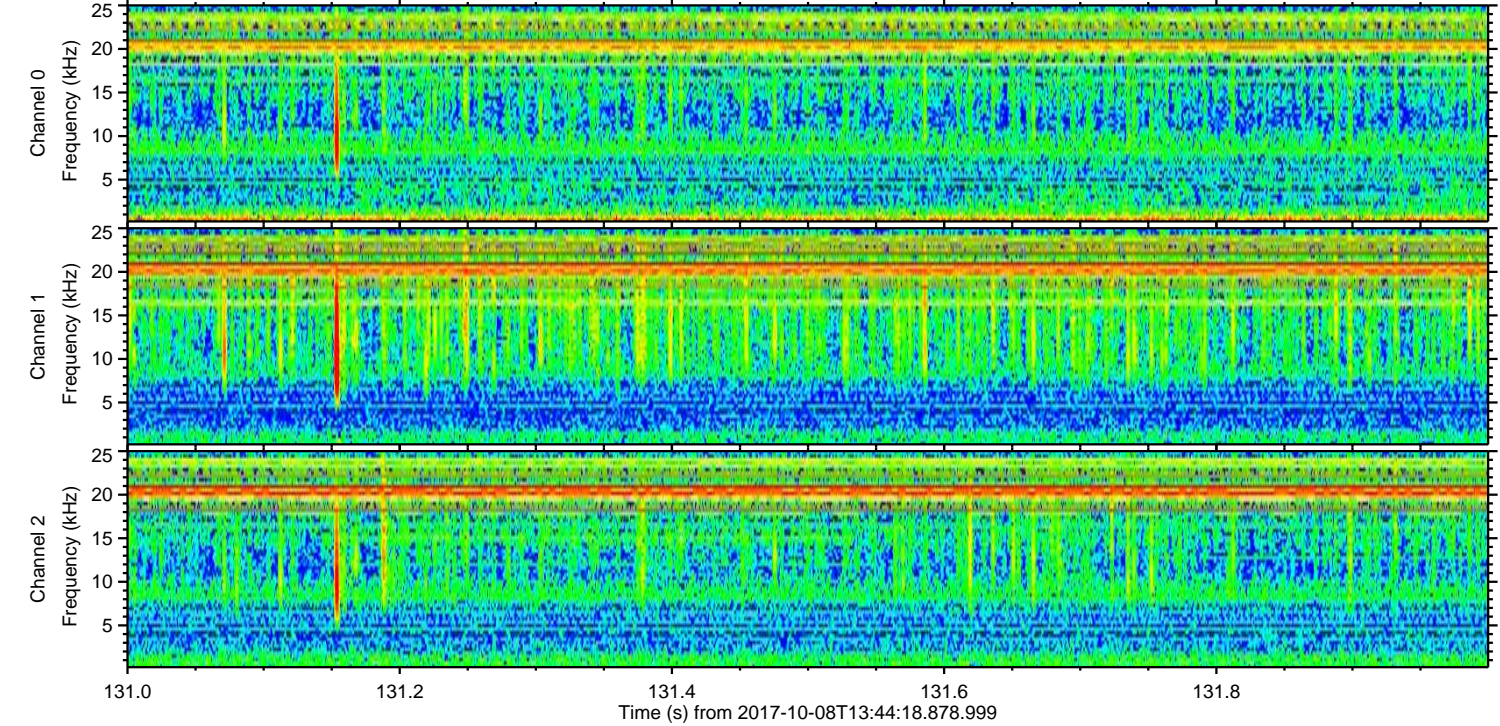
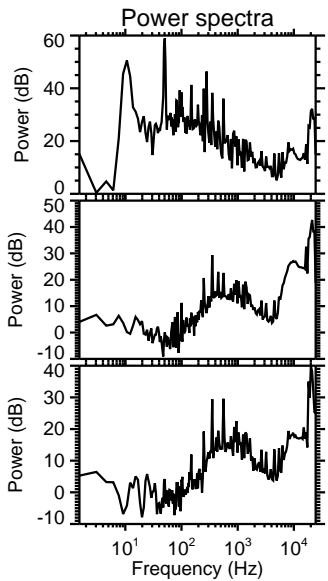
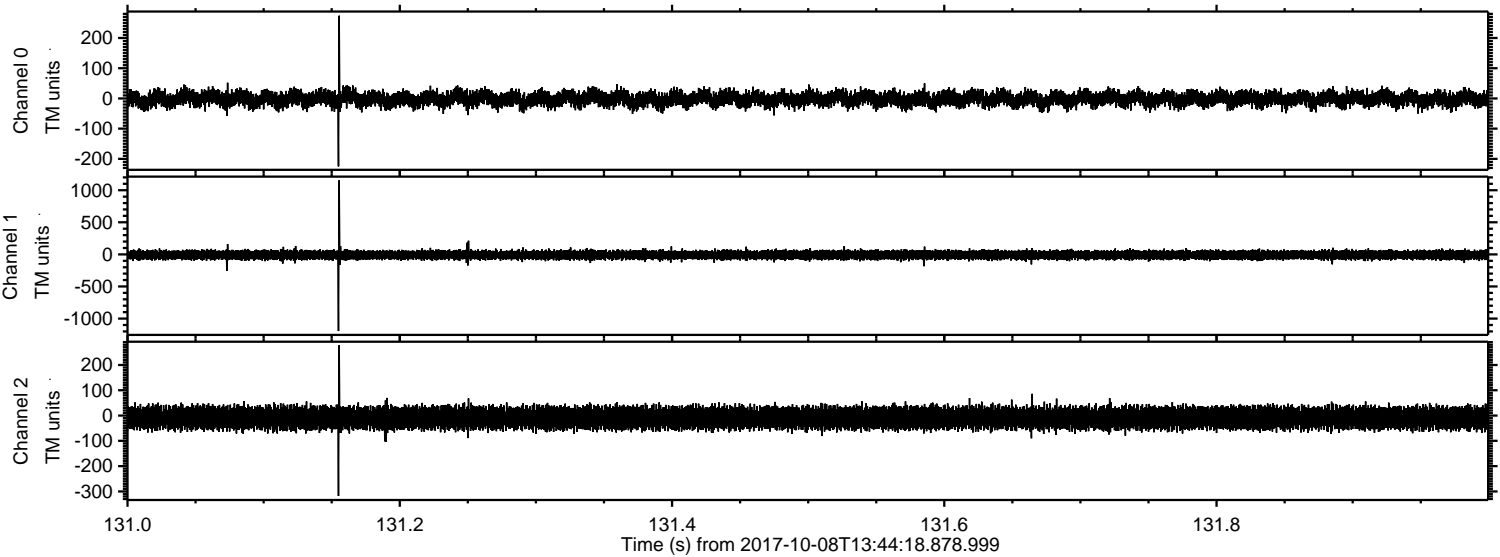
ELMAVAN 3D WAVEFORMS (Measured data sampled at 50 kHz) 51000 packets of 144 samples from 2017-10-08T13:44:18.878.999. Part 125/147

Processed Sun Oct 8 15:51:55 2017 by ELM ver.2012-10-06 from 001__elm20171008_134417__dat00.bin



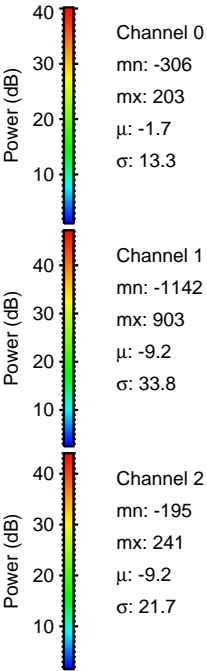
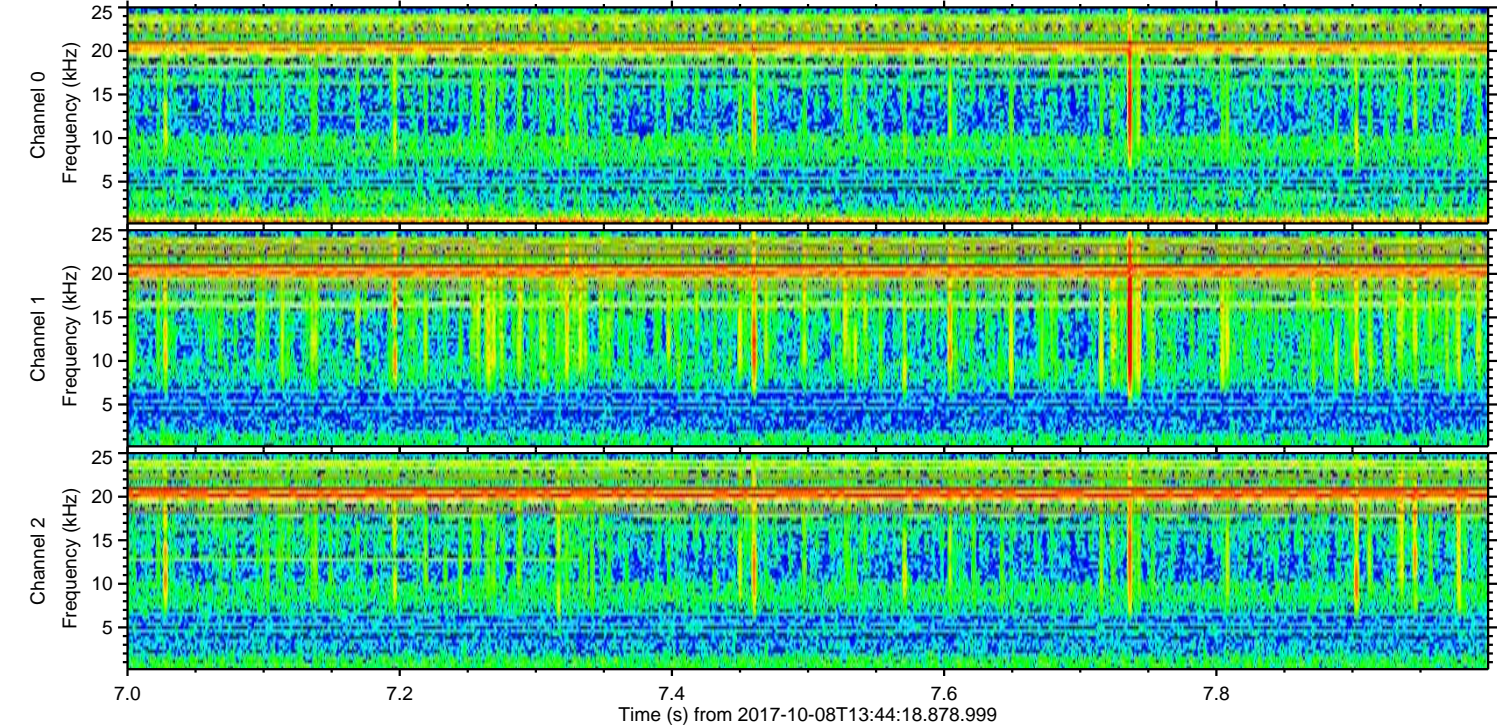
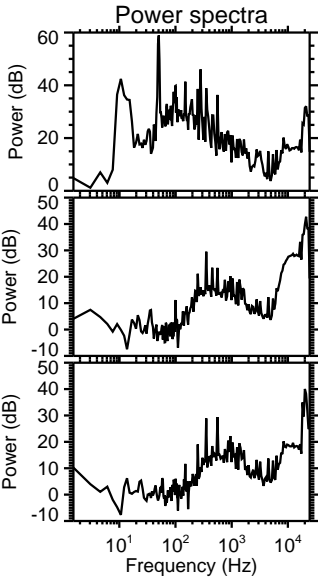
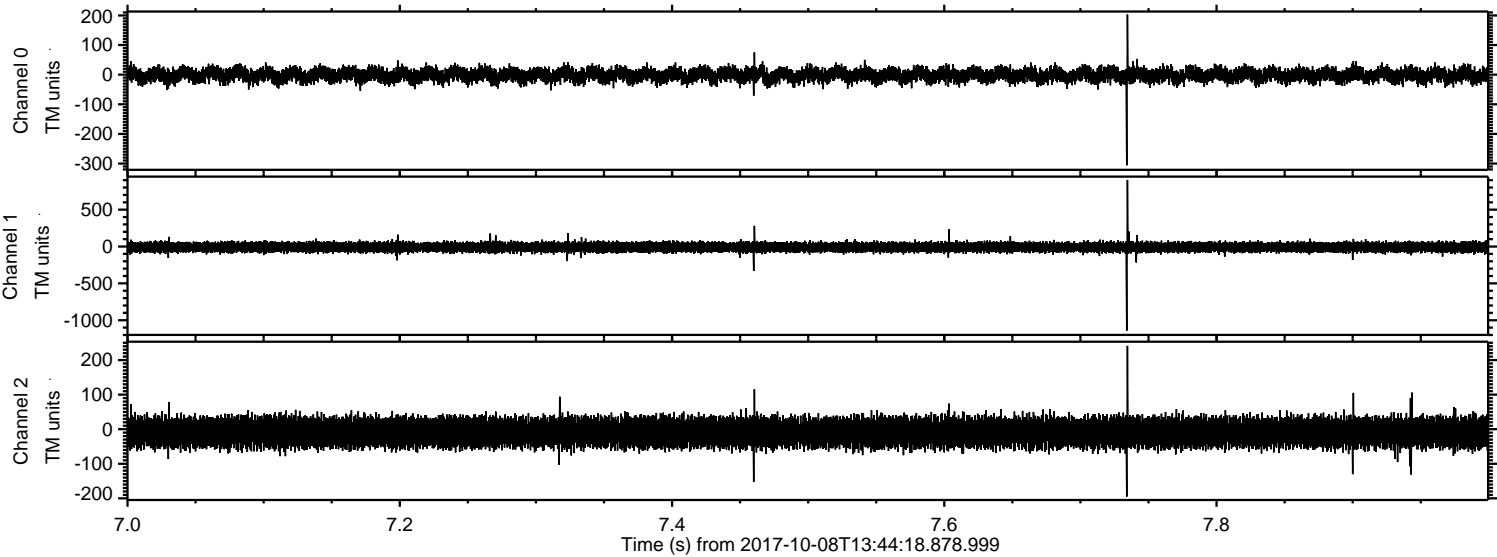
ELMAVAN 3D WAVEFORMS (Measured data sampled at 50 kHz) 51000 packets of 144 samples from 2017-10-08T13:44:18.878.999. Part 132/147

Processed Sun Oct 8 15:51:56 2017 by ELM ver.2012-10-06 from 001__elm20171008_134417__dat00.bin

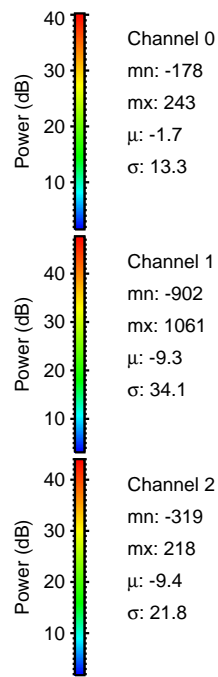
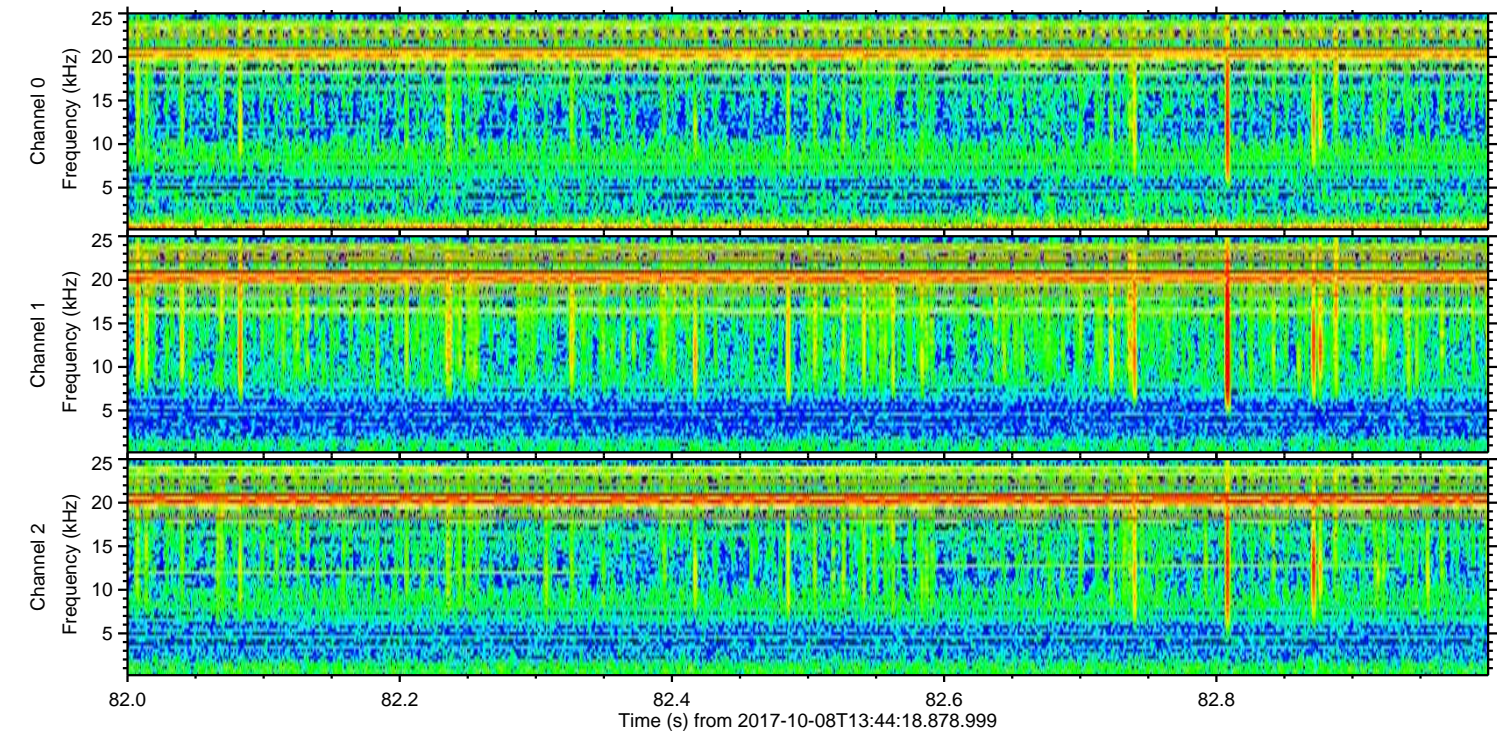
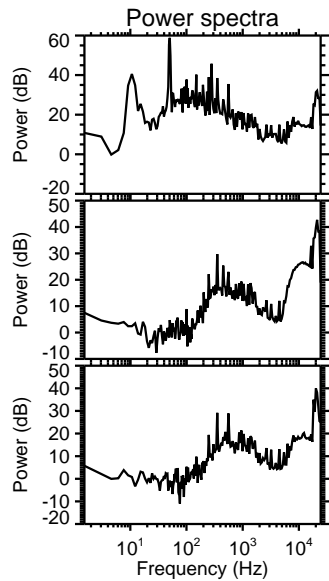
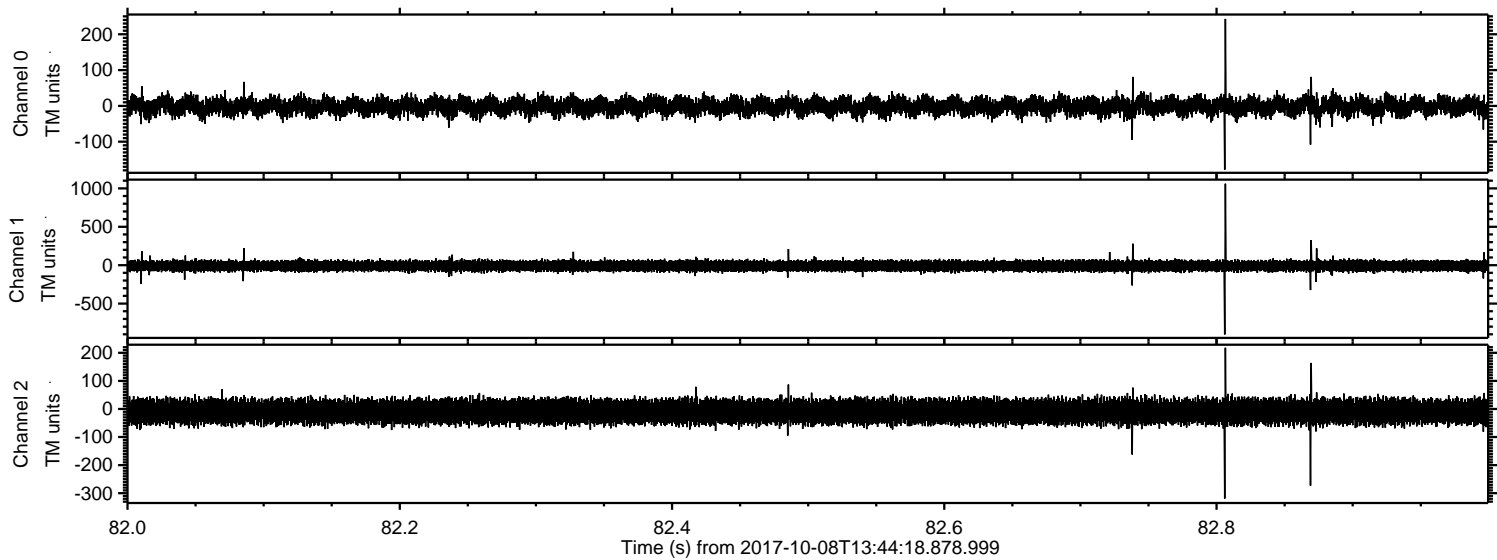


ELMAVAN 3D WAVEFORMS (Measured data sampled at 50 kHz) 51000 packets of 144 samples from 2017-10-08T13:44:18.878.999. Part 8/147

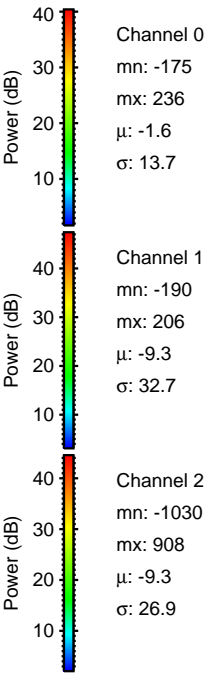
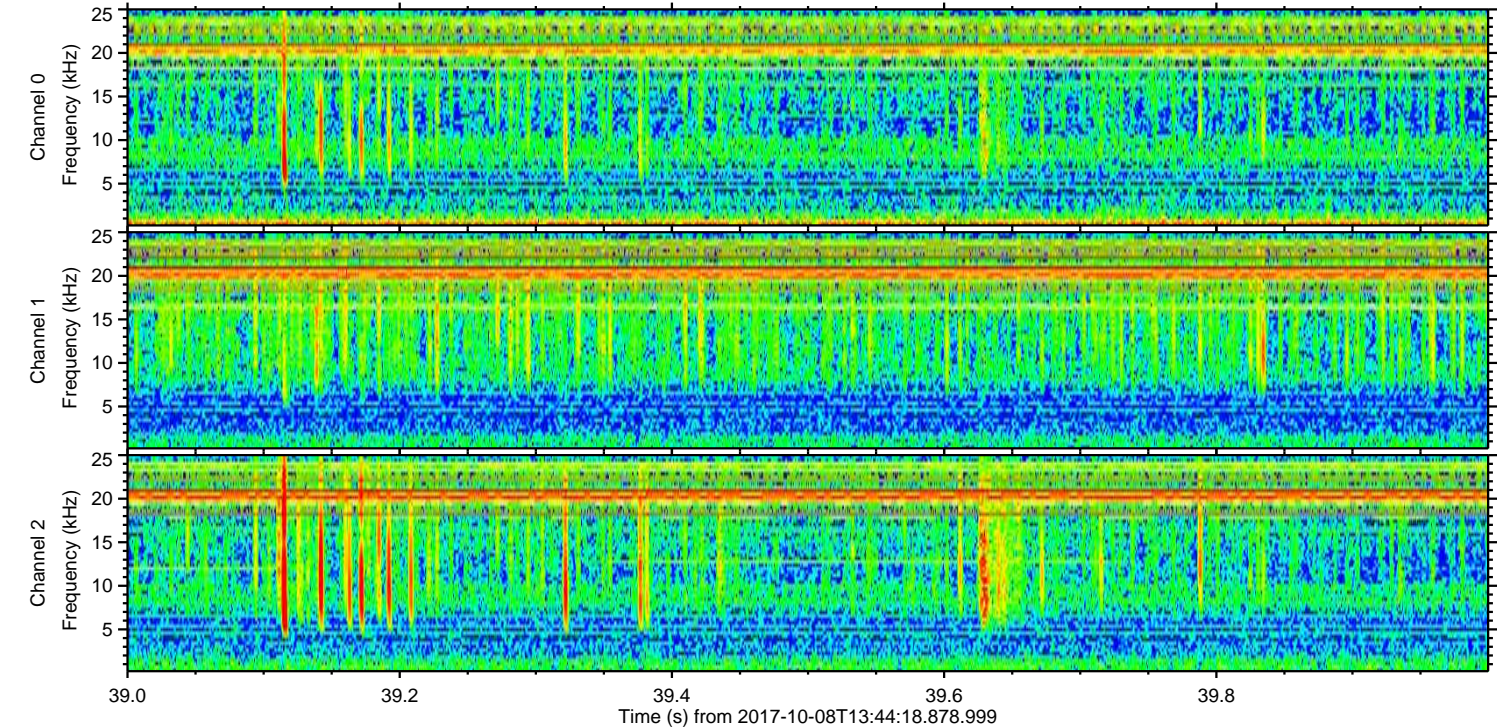
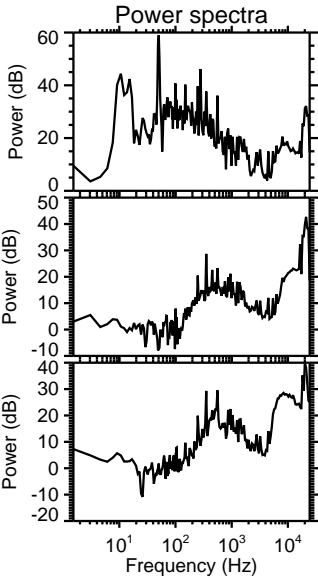
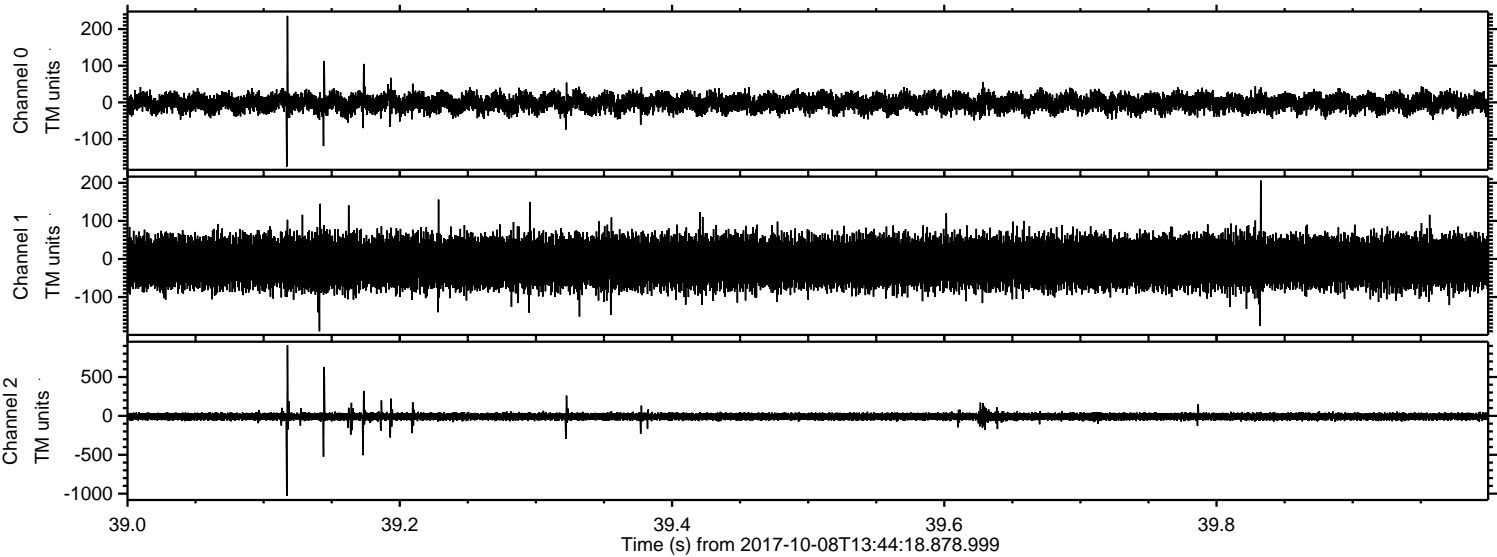
Processed Sun Oct 8 15:51:56 2017 by ELM ver.2012-10-06 from 001__elm20171008_134417__dat00.bin



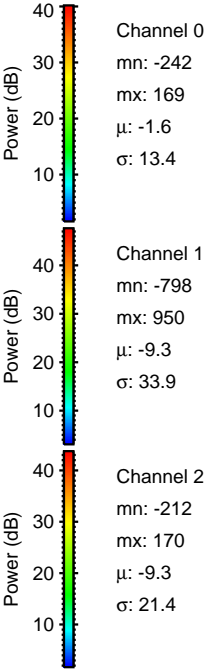
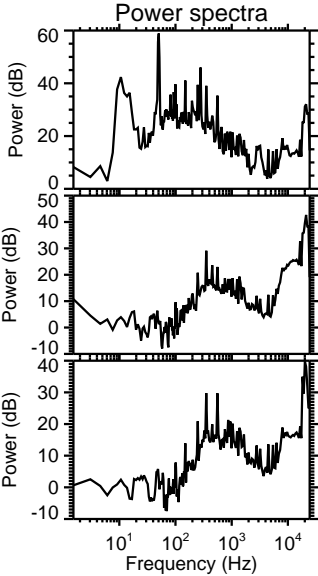
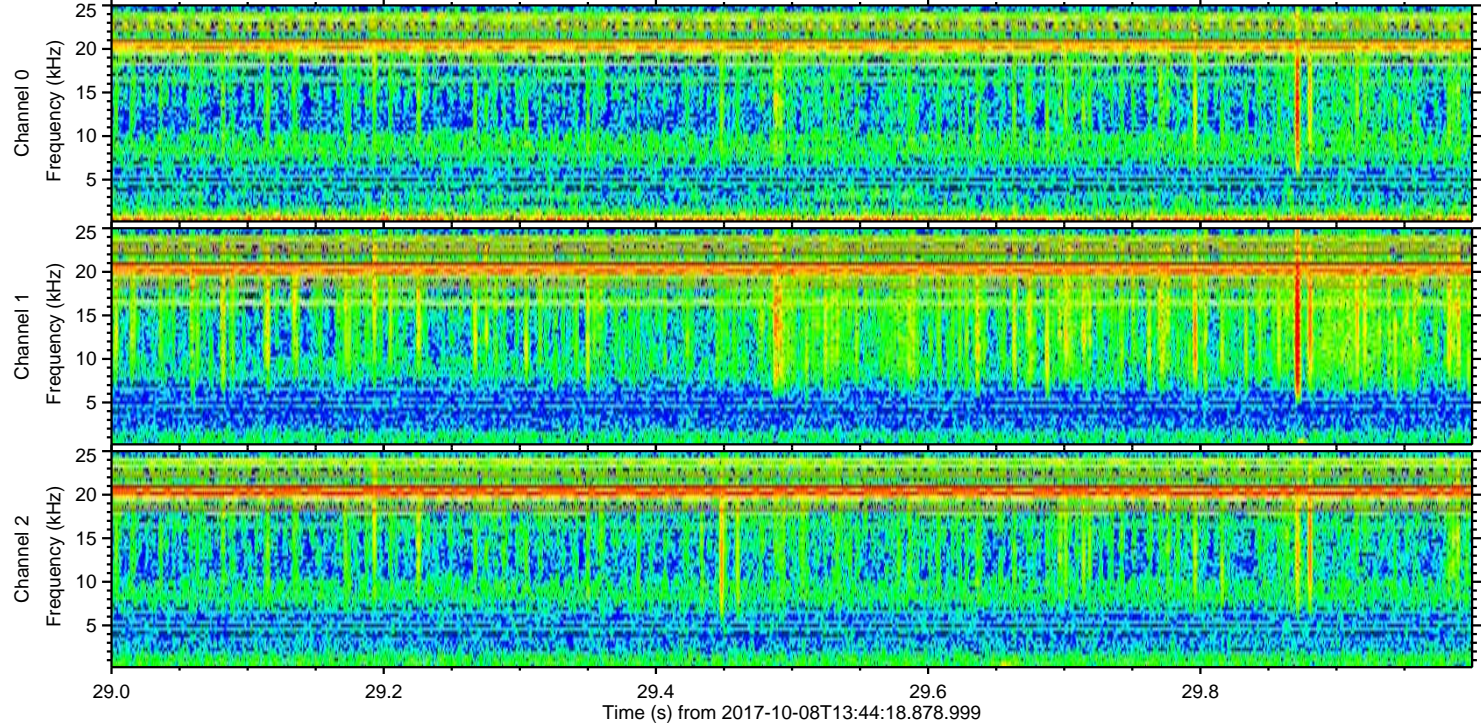
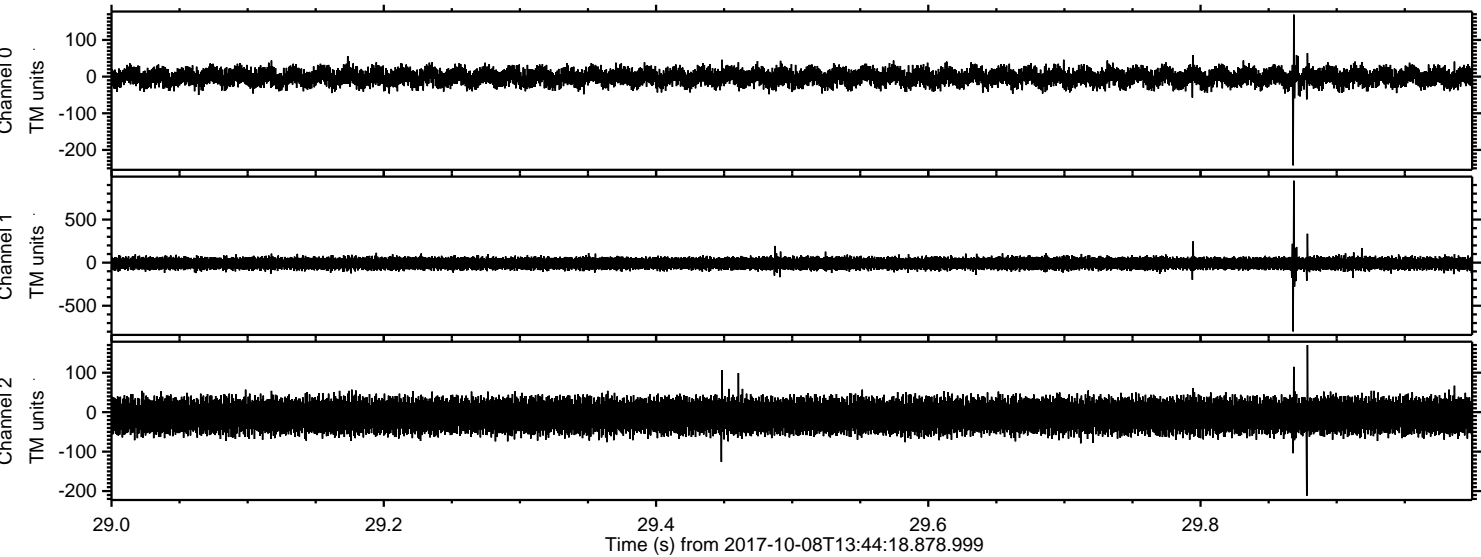
Processed Sun Oct 8 15:51:57 2017 by ELM ver.2012-10-06 from 001__elm20171008_134417__dat00.bin



Processed Sun Oct 8 15:51:58 2017 by ELM ver.2012-10-06 from 001__elm20171008_134417__dat00.bin



Processed Sun Oct 8 15:51:58 2017 by ELM ver.2012-10-06 from 001__elm20171008_134417__dat00.bin

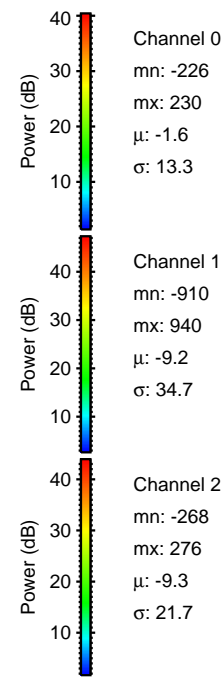
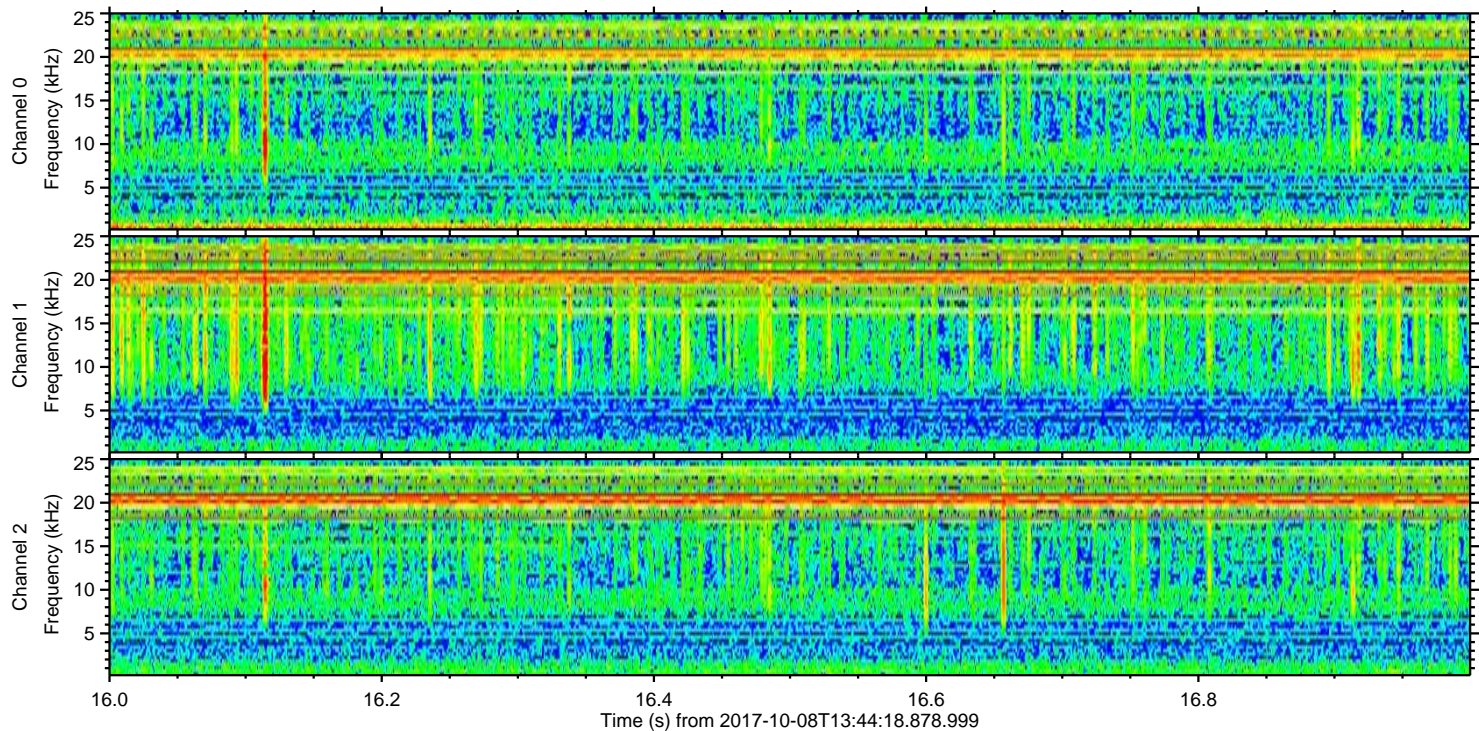
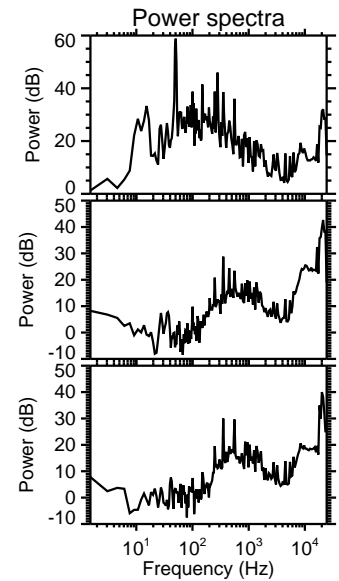
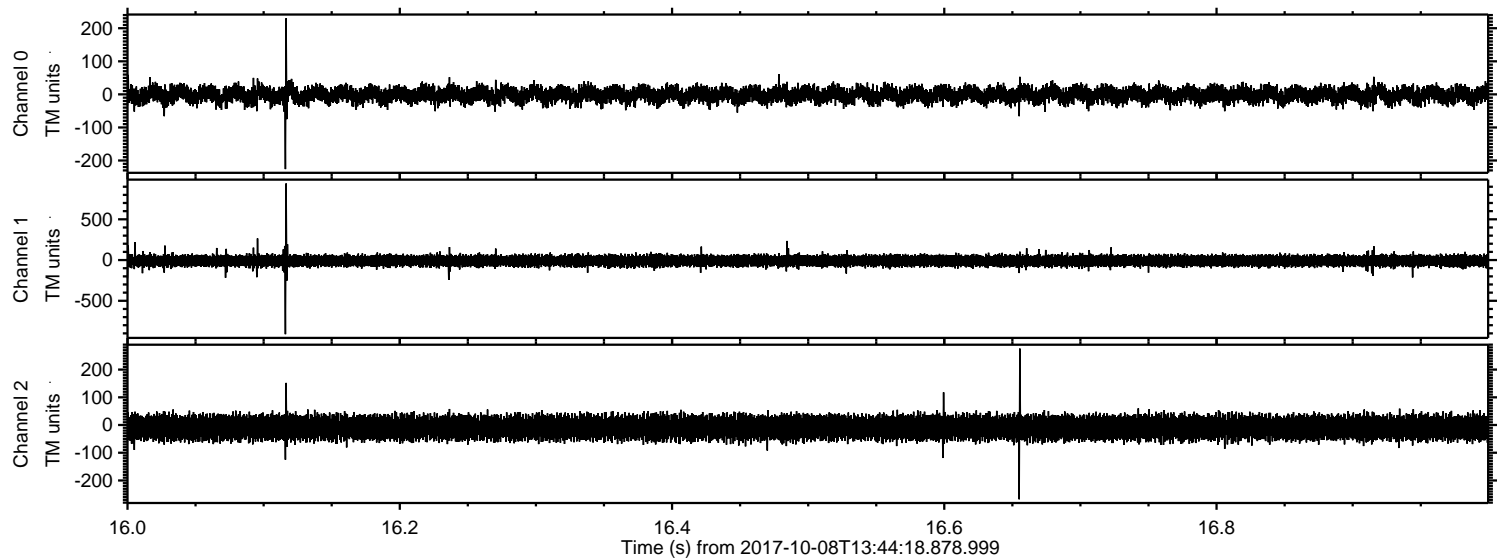


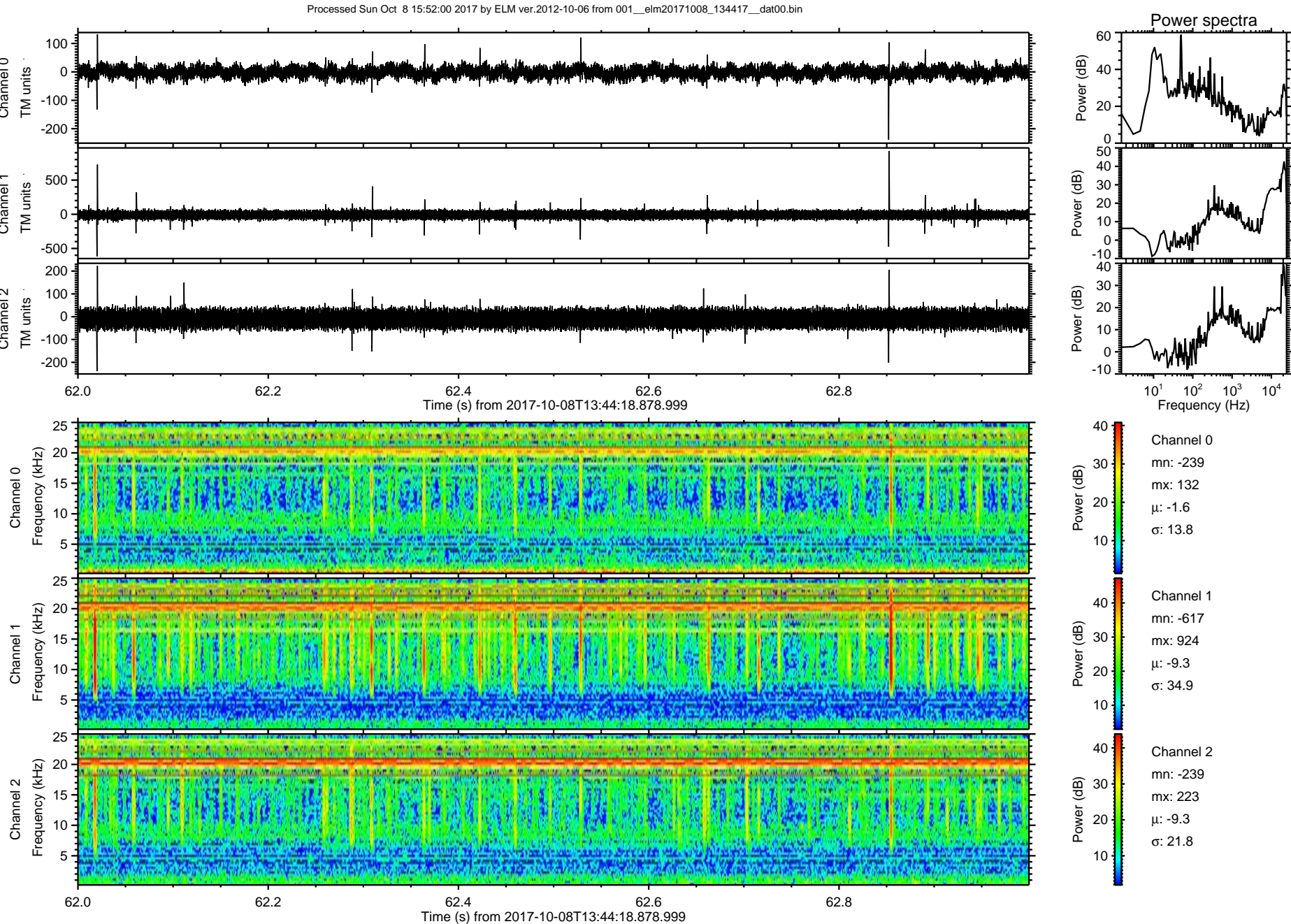
Channel 0
mn: -242
mx: 169
 μ : -1.6
 σ : 13.4

Channel 1
mn: -798
mx: 950
 μ : -9.3
 σ : 33.9

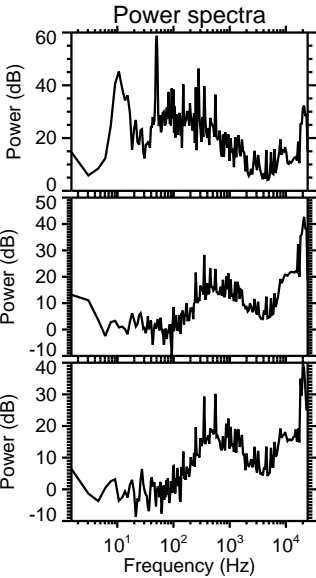
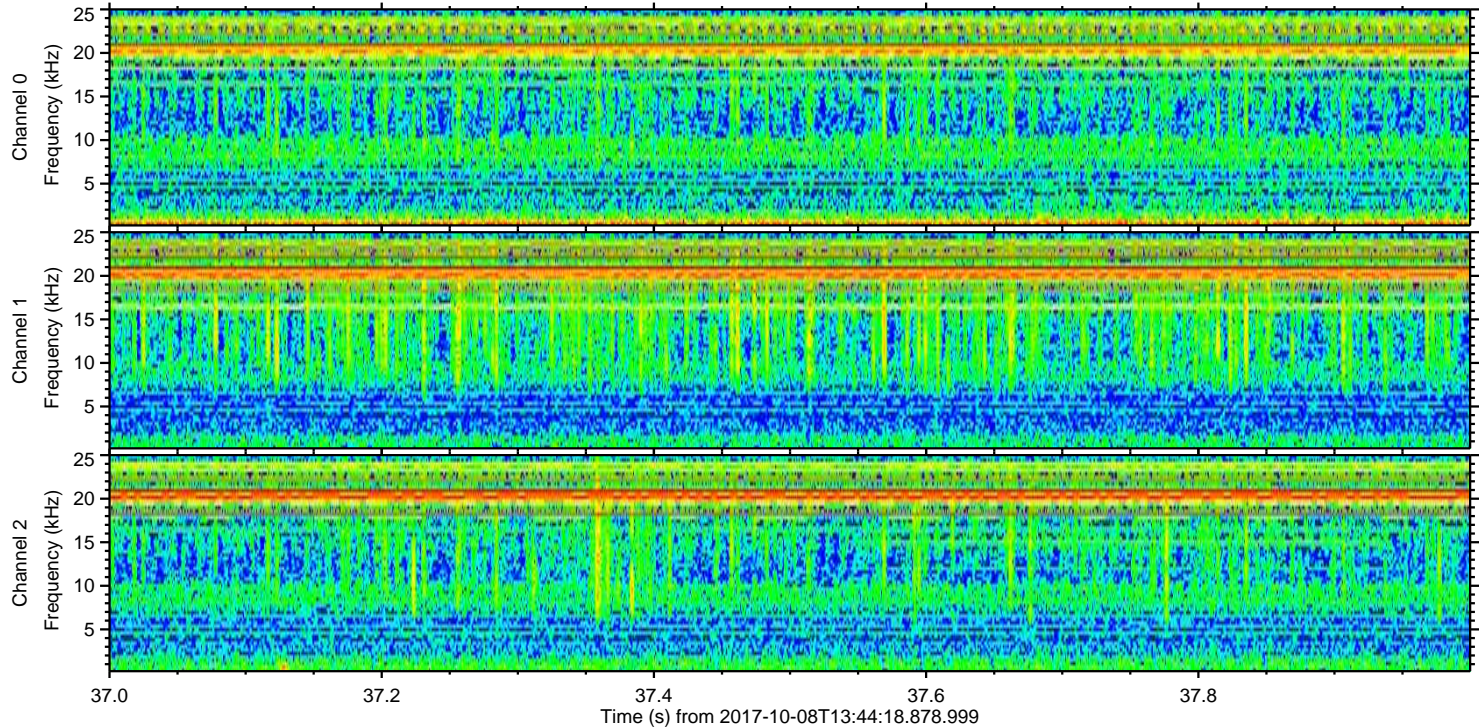
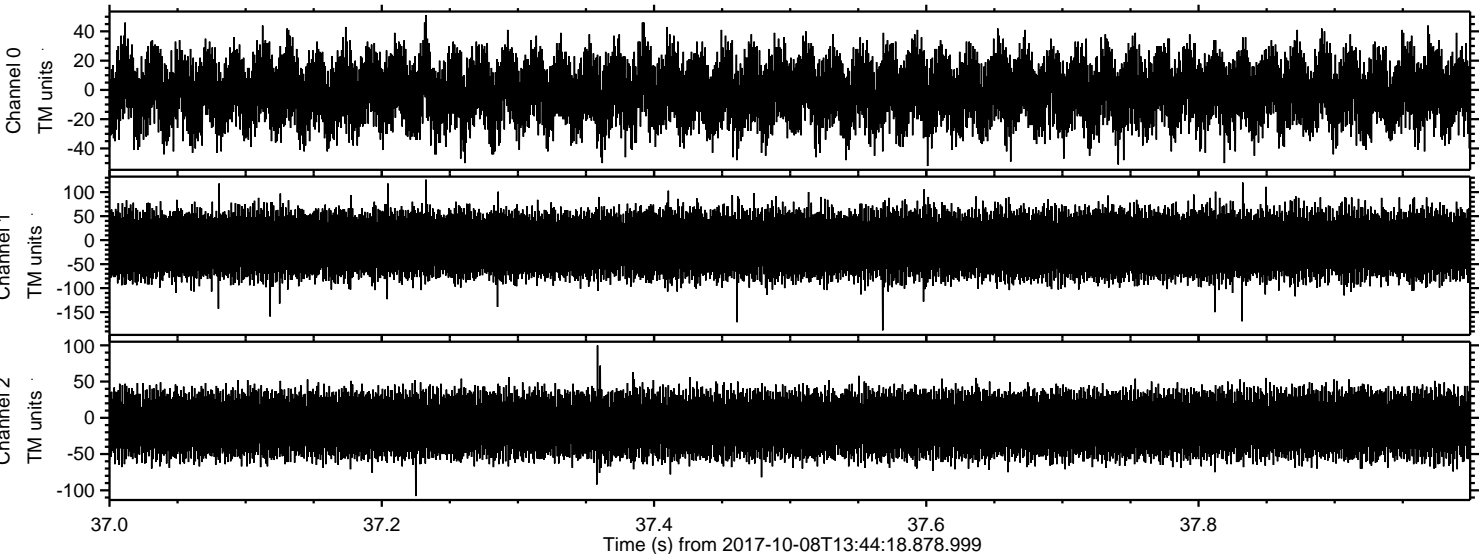
Channel 2
mn: -212
mx: 170
 μ : -9.3
 σ : 21.4

Processed Sun Oct 8 15:51:59 2017 by ELM ver.2012-10-06 from 001__elm20171008_134417__dat00.bin





Processed Sun Oct 8 15:52:00 2017 by ELM ver.2012-10-06 from 001__elm20171008_134417__dat00.bin



Channel 0
mn: -52
mx: 51
 μ : -1.6
 σ : 13.2

Channel 1
mn: -188
mx: 126
 μ : -9.3
 σ : 32.4

Channel 2
mn: -108
mx: 100
 μ : -9.3
 σ : 21.3