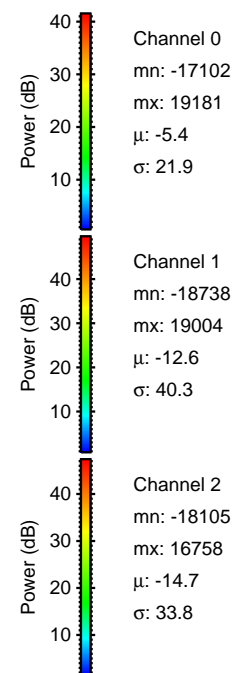
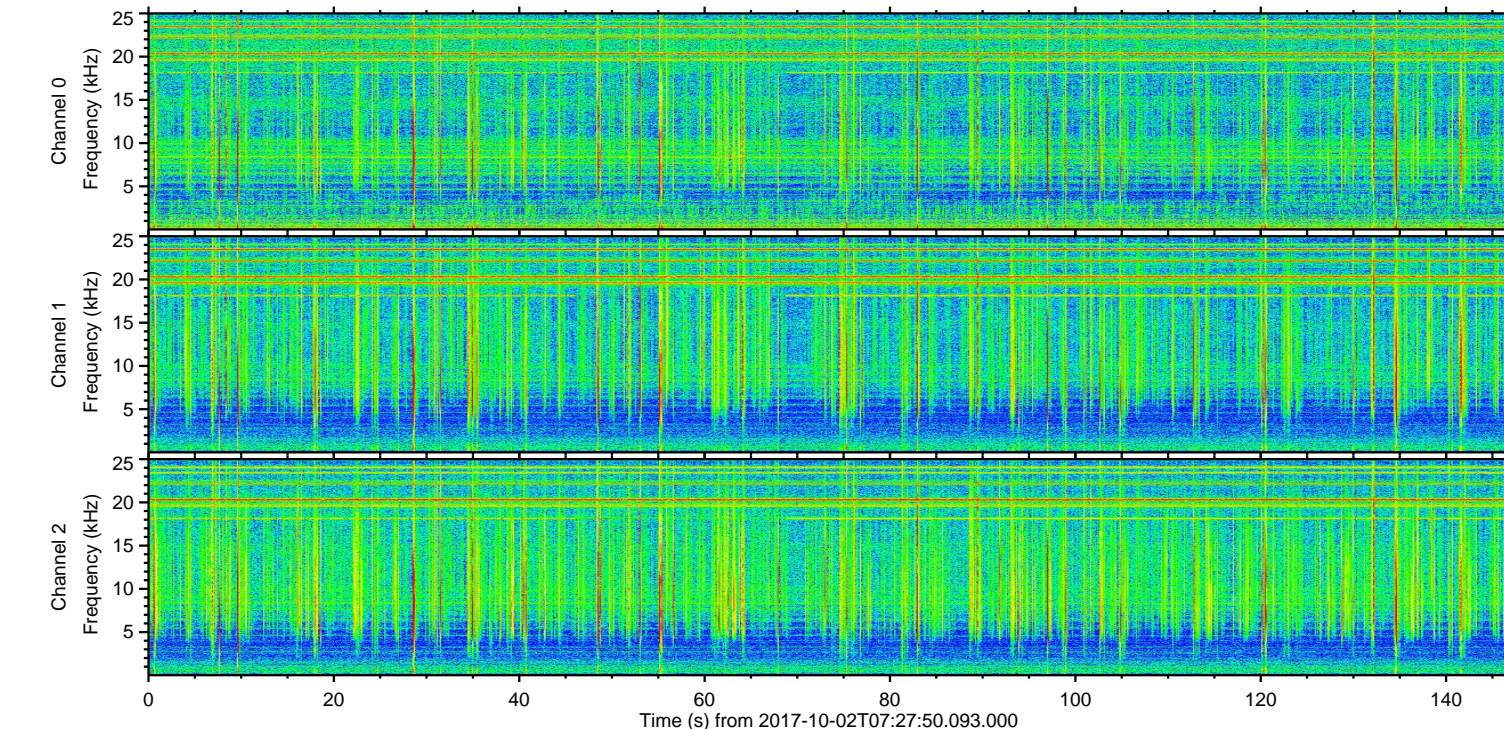
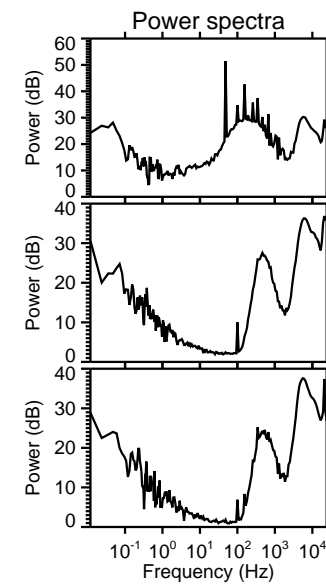
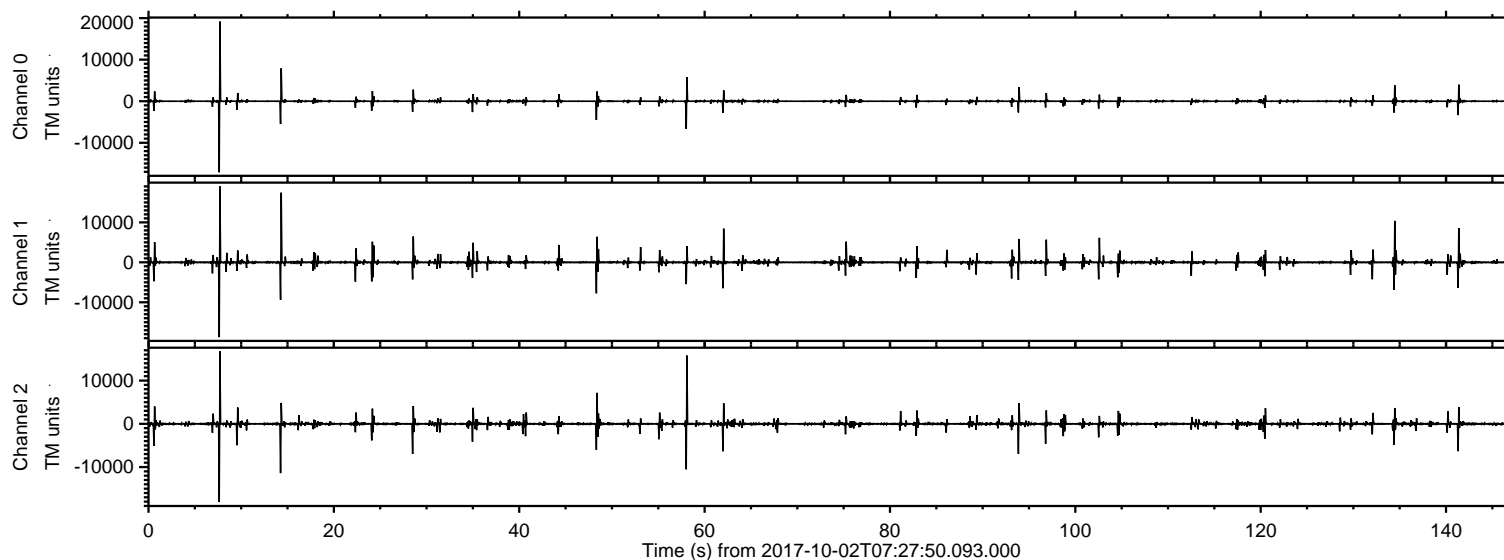


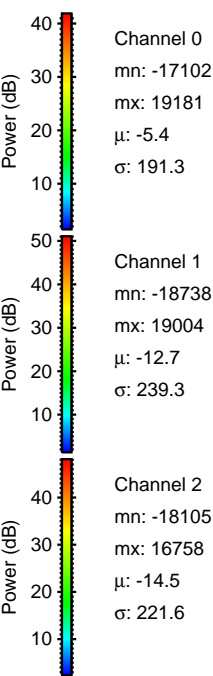
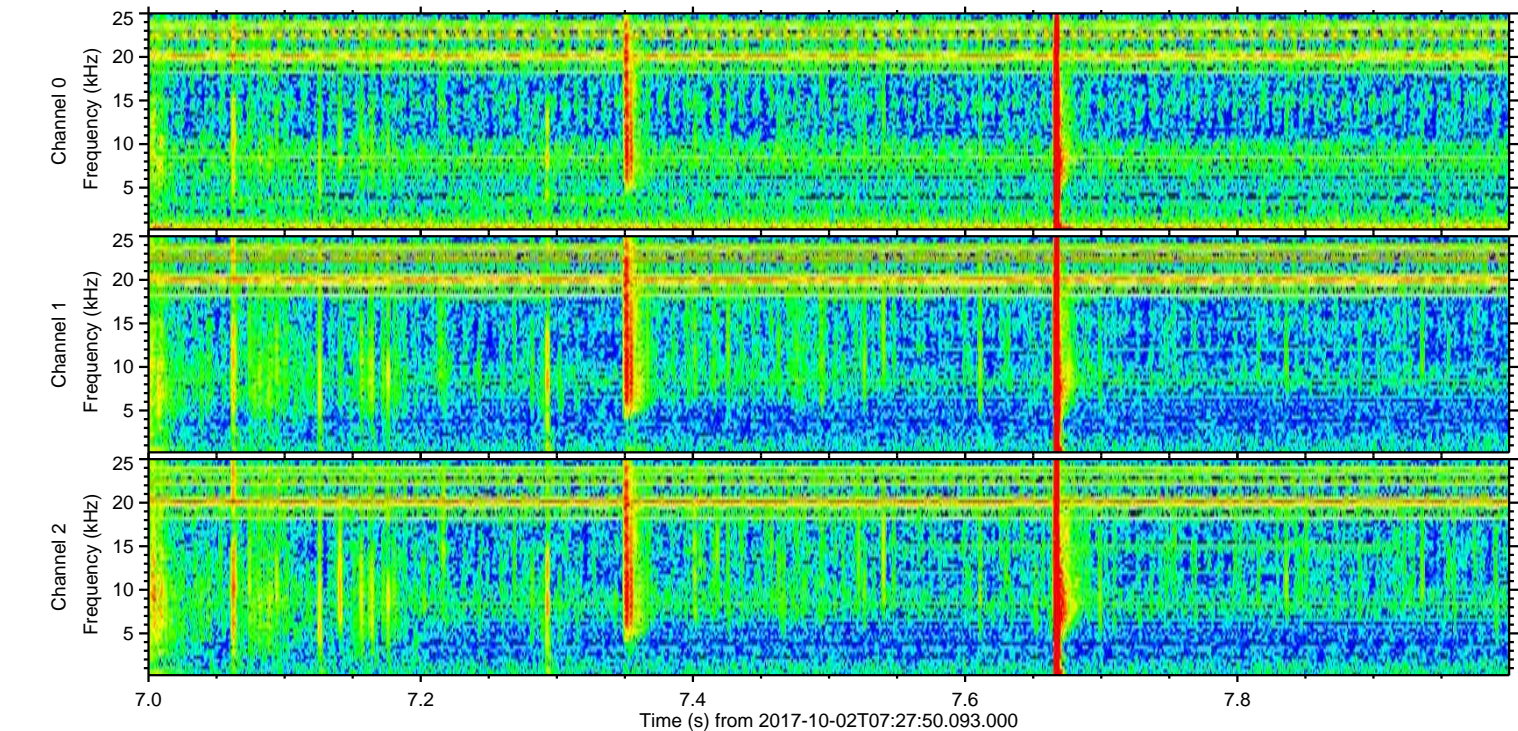
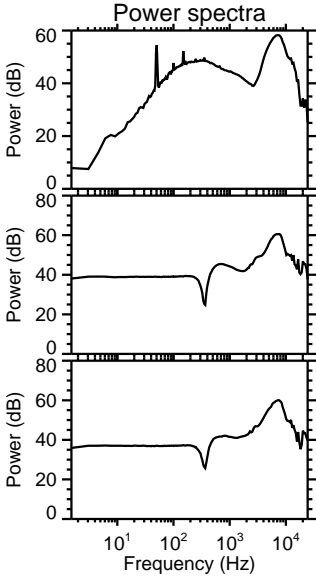
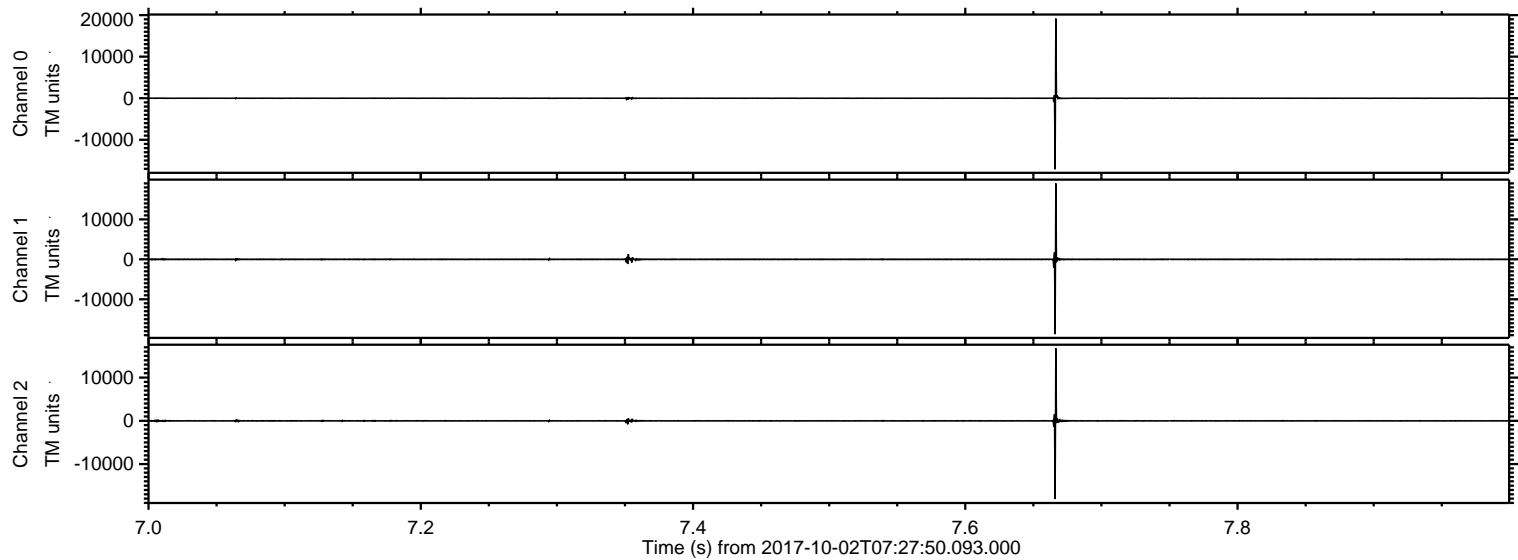
ELMAVAN 3D WAVEFORMS (Measured data sampled at 50 kHz) 51000 packets of 144 samples from 2017-10-02T07:27:50.093.000.

Processed Mon Oct 2 09:35:59 2017 by ELM ver.2012-10-06 from 001__elm20171002_072749__dat00.bin



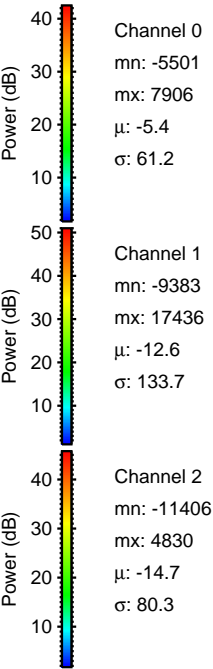
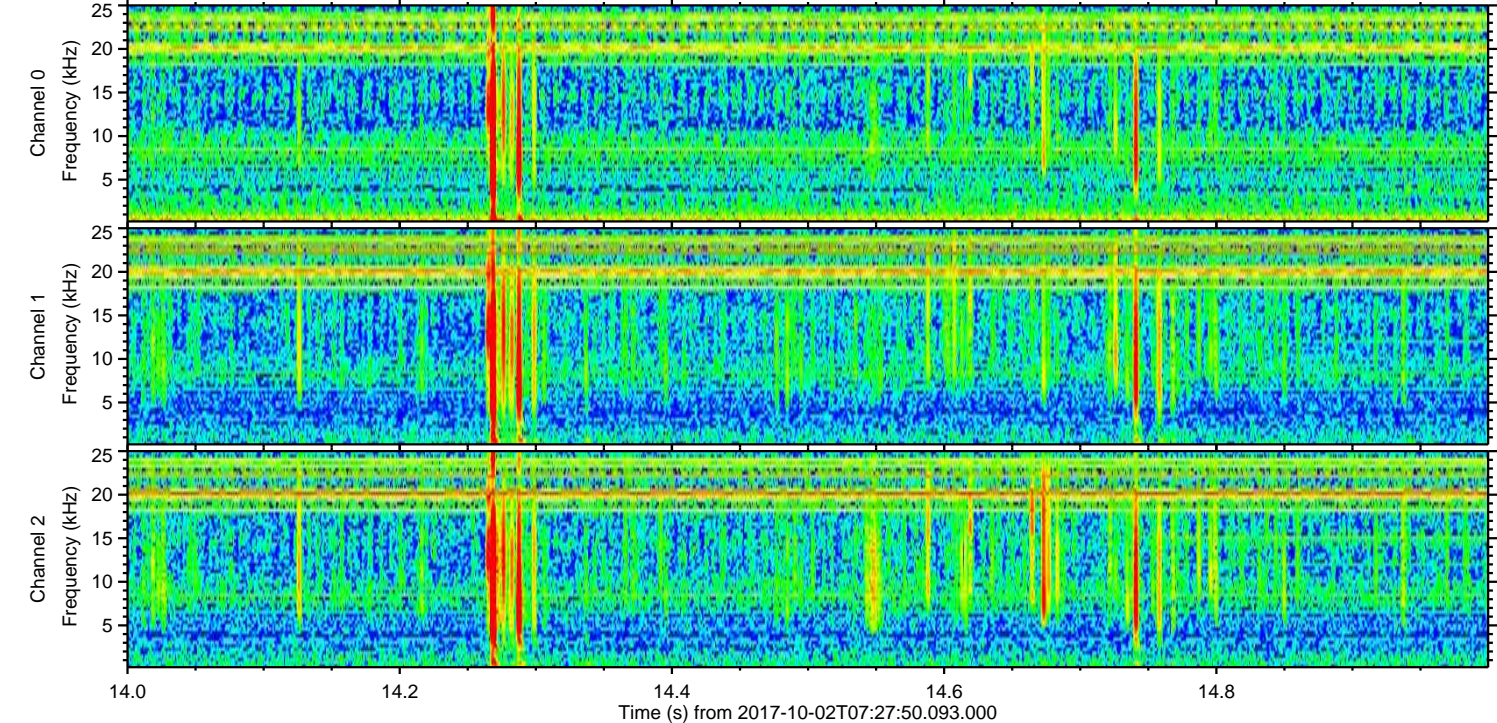
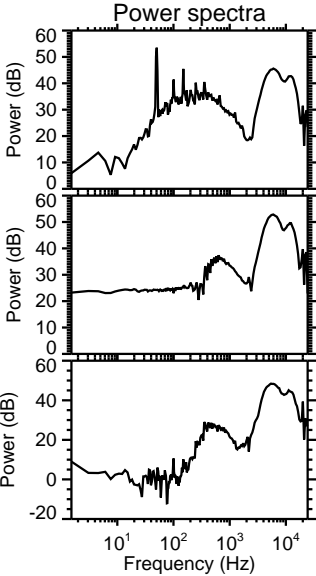
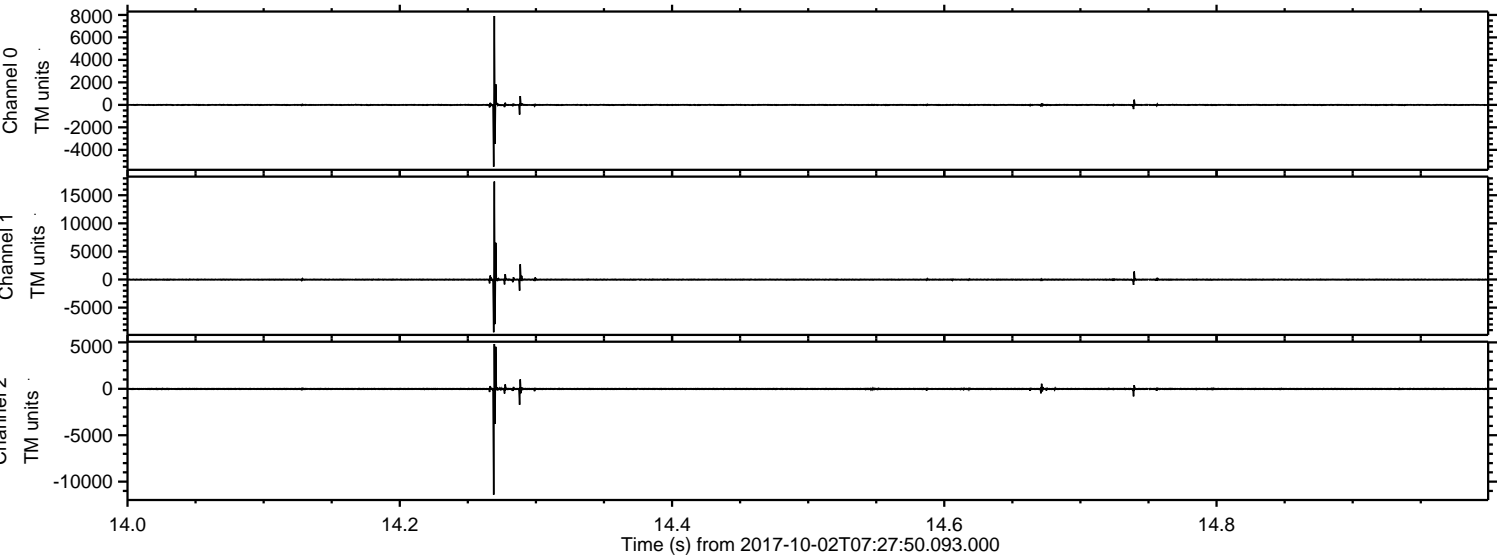
ELMAVAN 3D WAVEFORMS (Measured data sampled at 50 kHz) 51000 packets of 144 samples from 2017-10-02T07:27:50.093.000. Part 8/147

Processed Mon Oct 2 09:36:06 2017 by ELM ver.2012-10-06 from 001__elm20171002_072749__dat00.bin

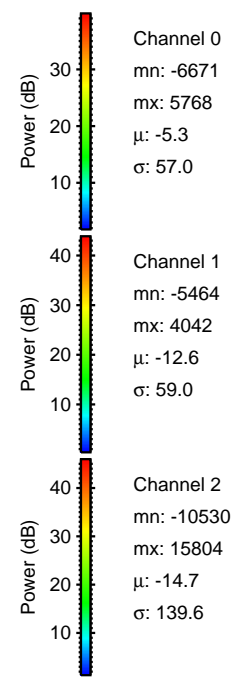
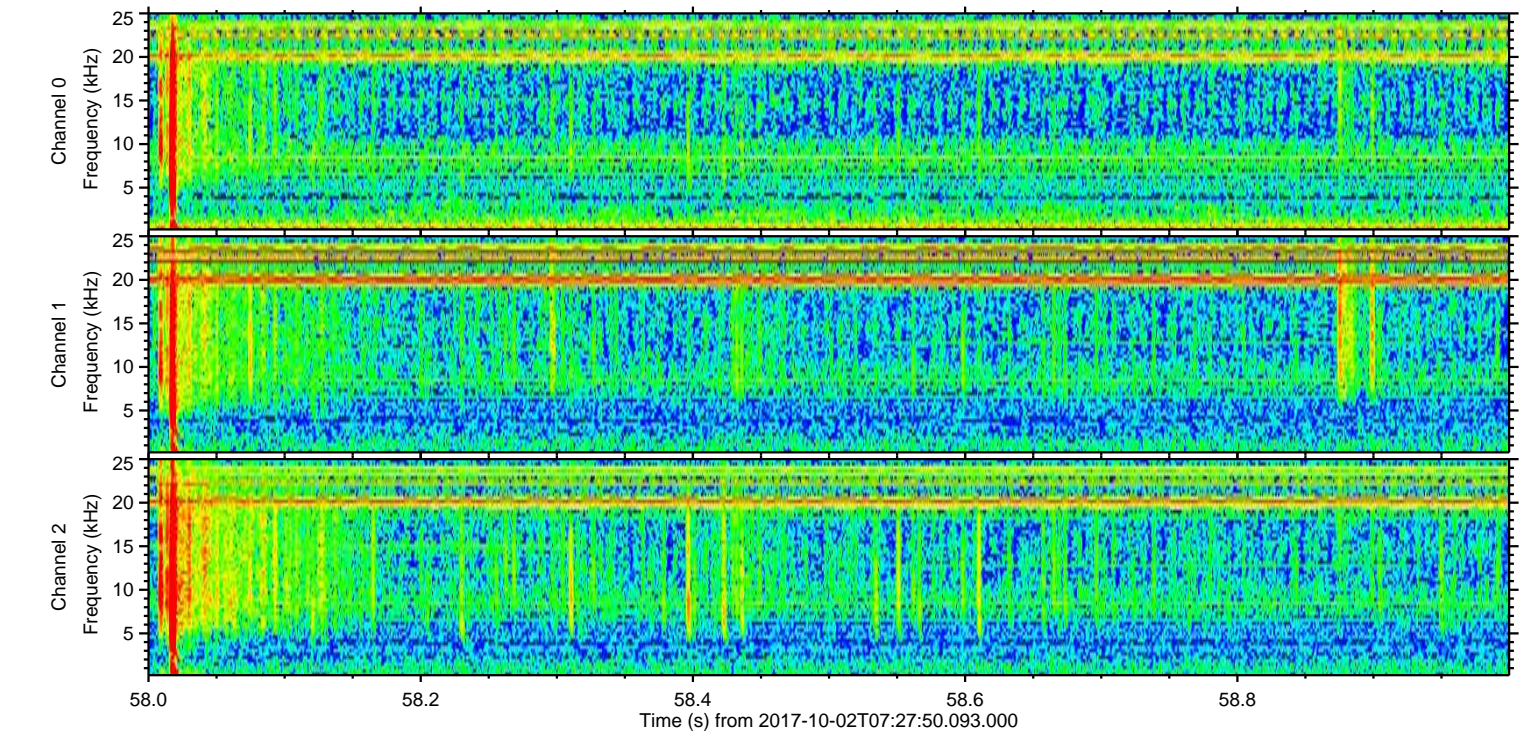
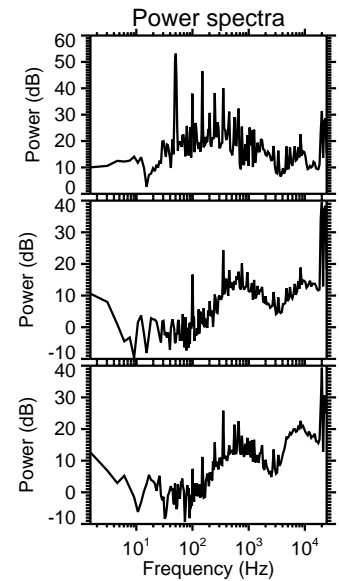
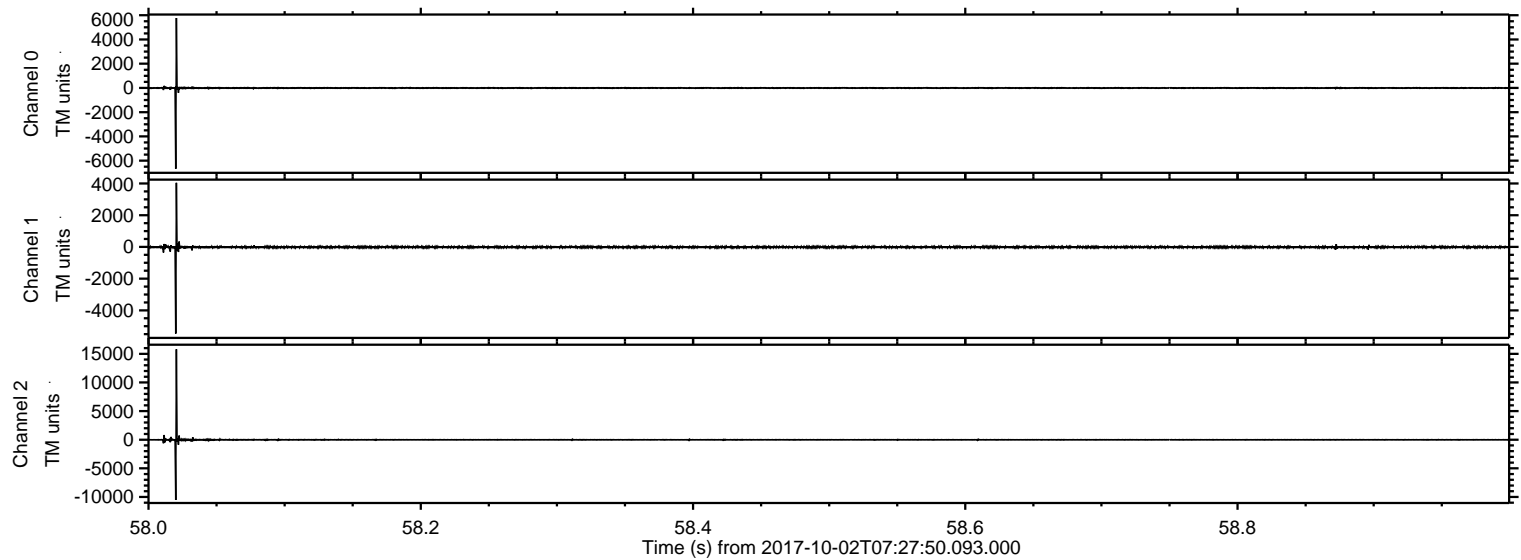


ELMAVAN 3D WAVEFORMS (Measured data sampled at 50 kHz) 51000 packets of 144 samples from 2017-10-02T07:27:50.093.000. Part 15/147

Processed Mon Oct 2 09:36:07 2017 by ELM ver.2012-10-06 from 001__elm20171002_072749__dat00.bin

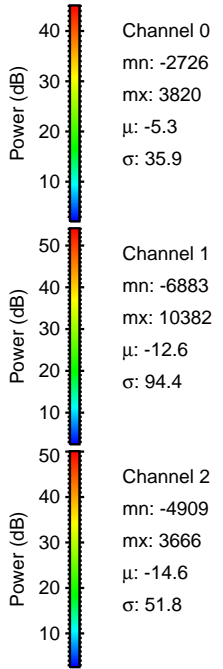
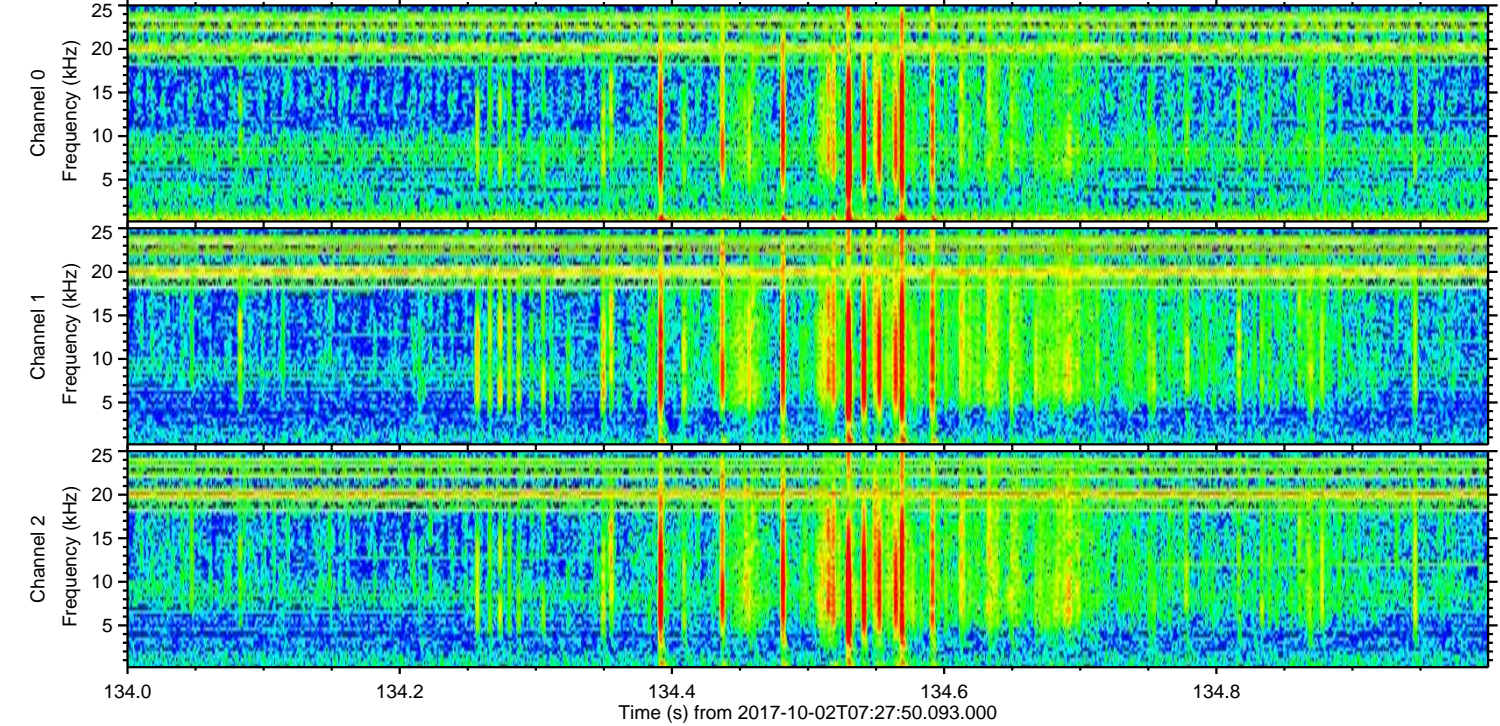
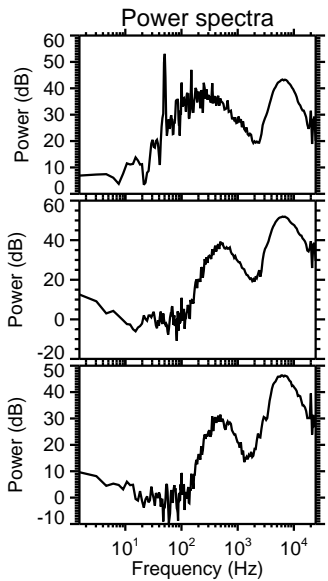
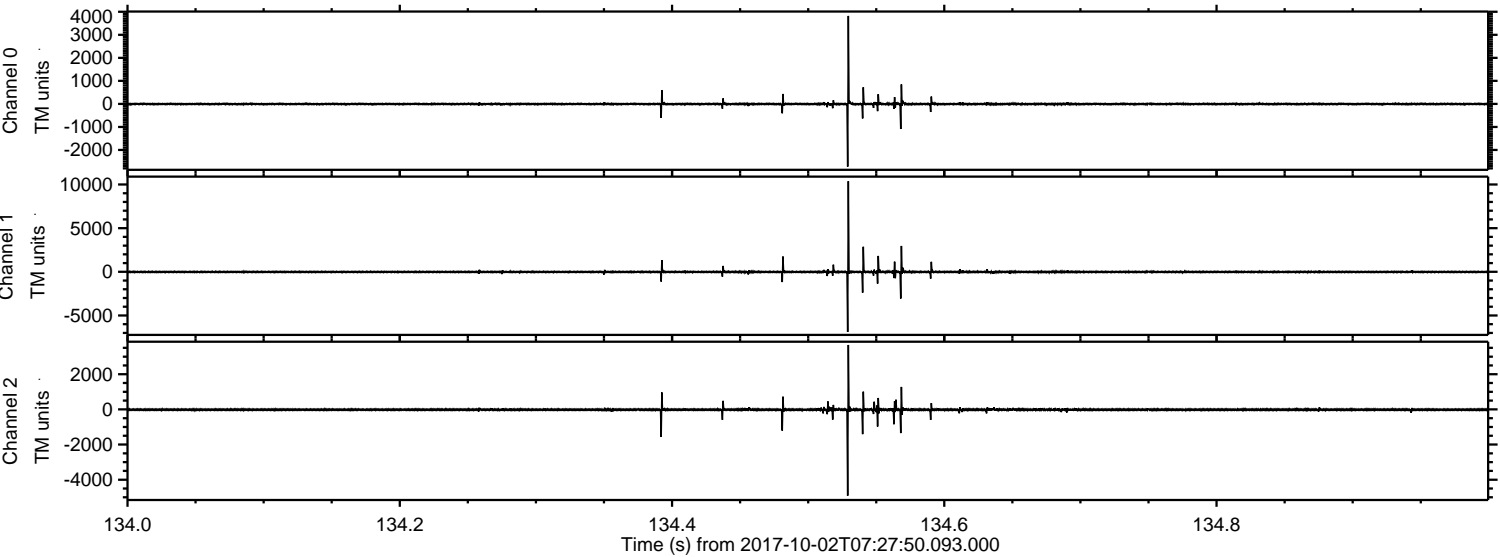


Processed Mon Oct 2 09:36:07 2017 by ELM ver.2012-10-06 from 001__elm20171002_072749__dat00.bin



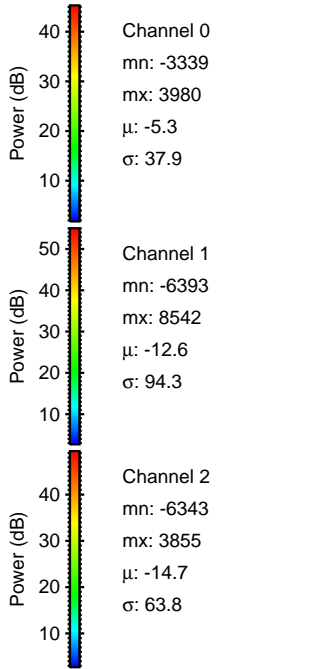
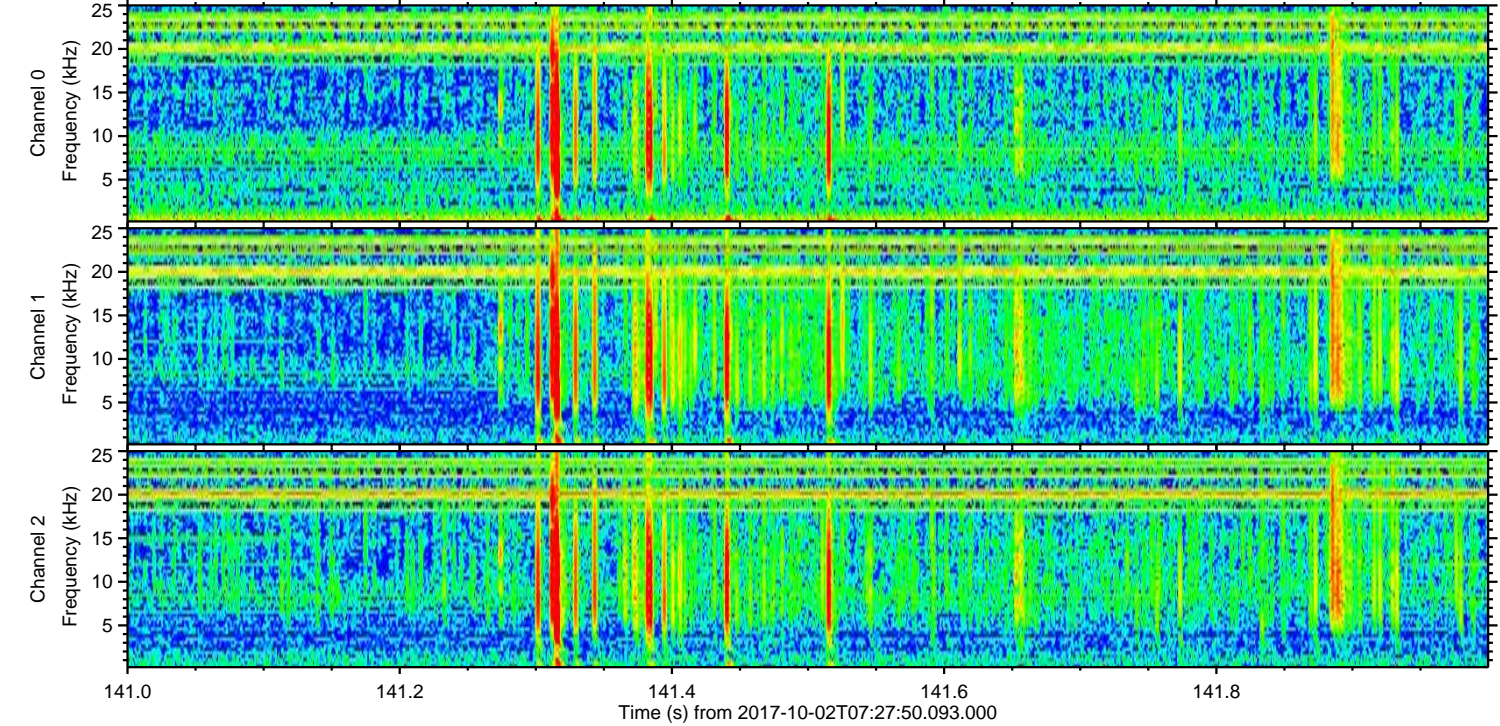
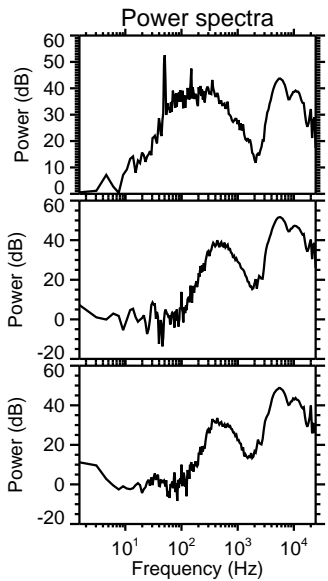
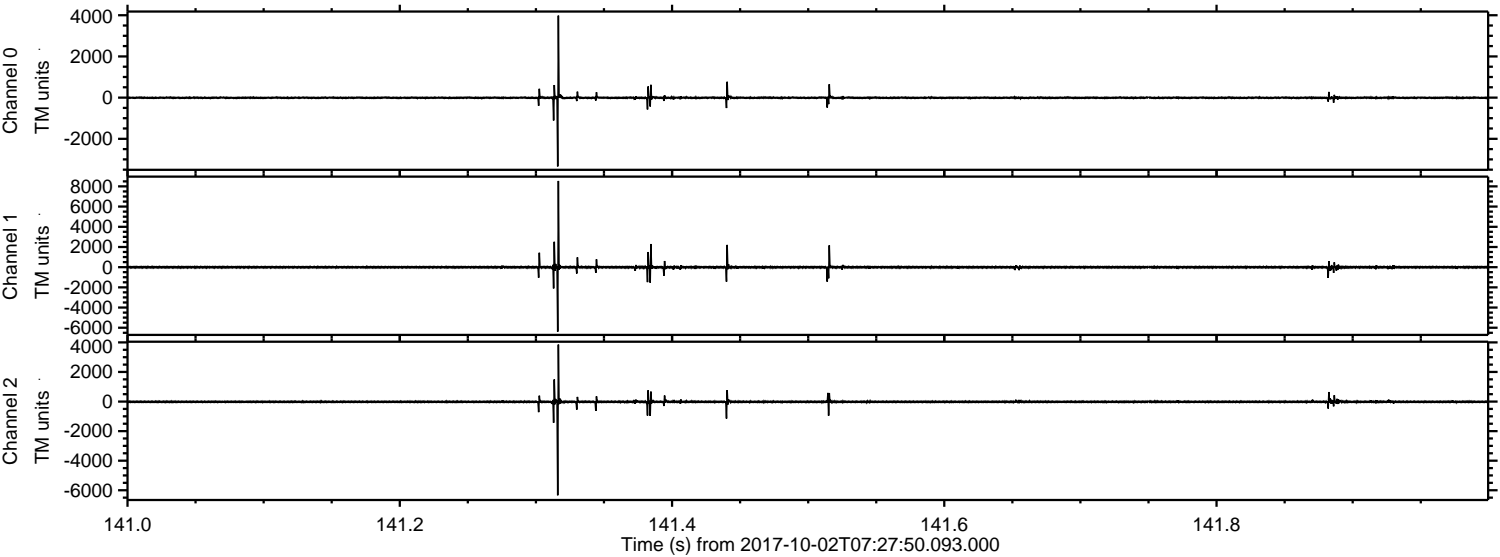
ELMAVAN 3D WAVEFORMS (Measured data sampled at 50 kHz) 51000 packets of 144 samples from 2017-10-02T07:27:50.093.000. Part 135/147

Processed Mon Oct 2 09:36:08 2017 by ELM ver.2012-10-06 from 001__elm20171002_072749__dat00.bin

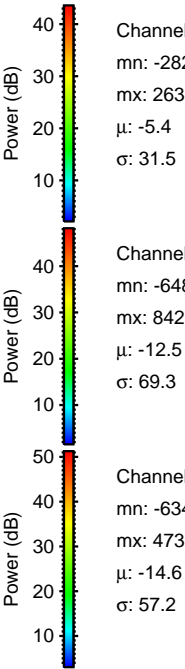
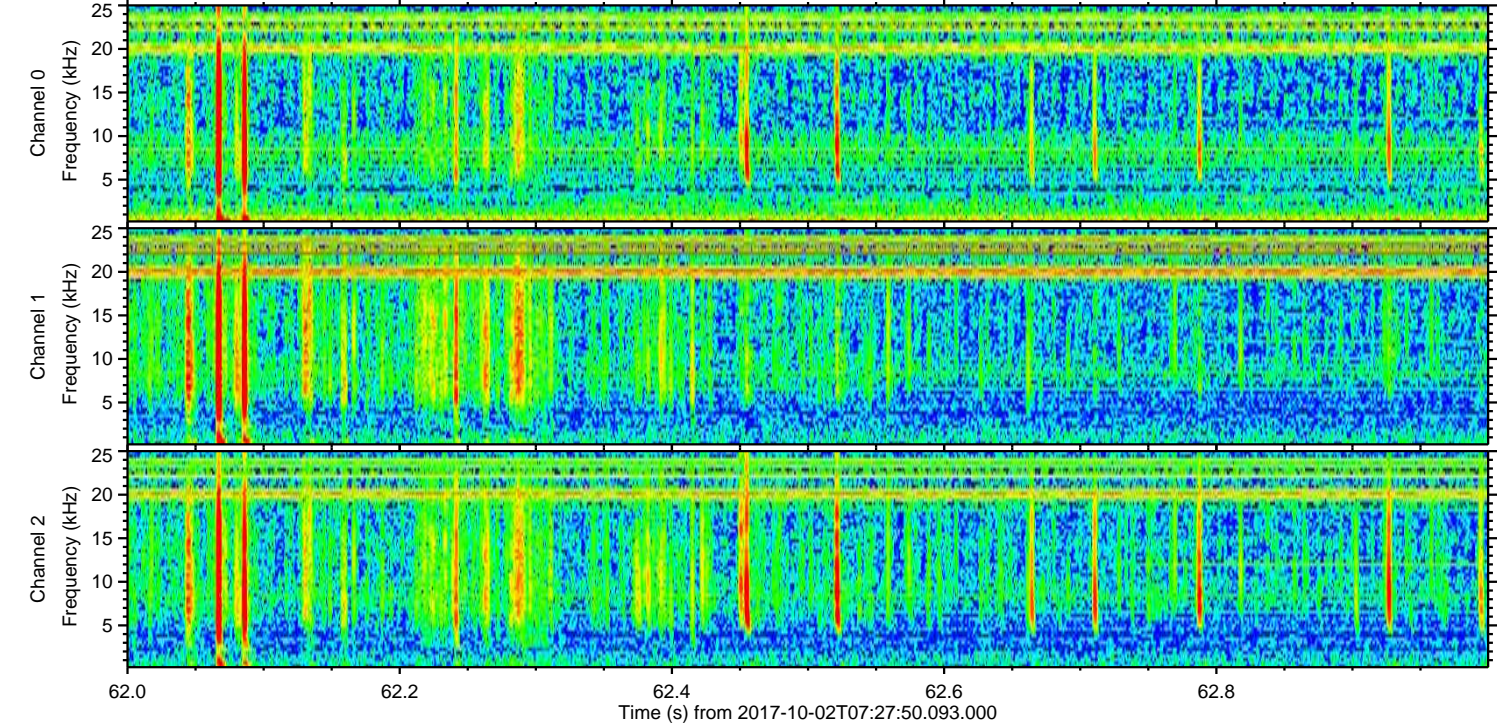
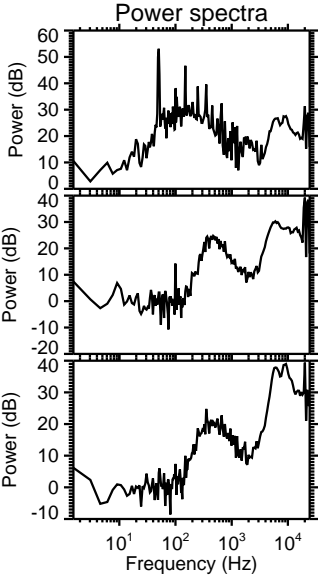
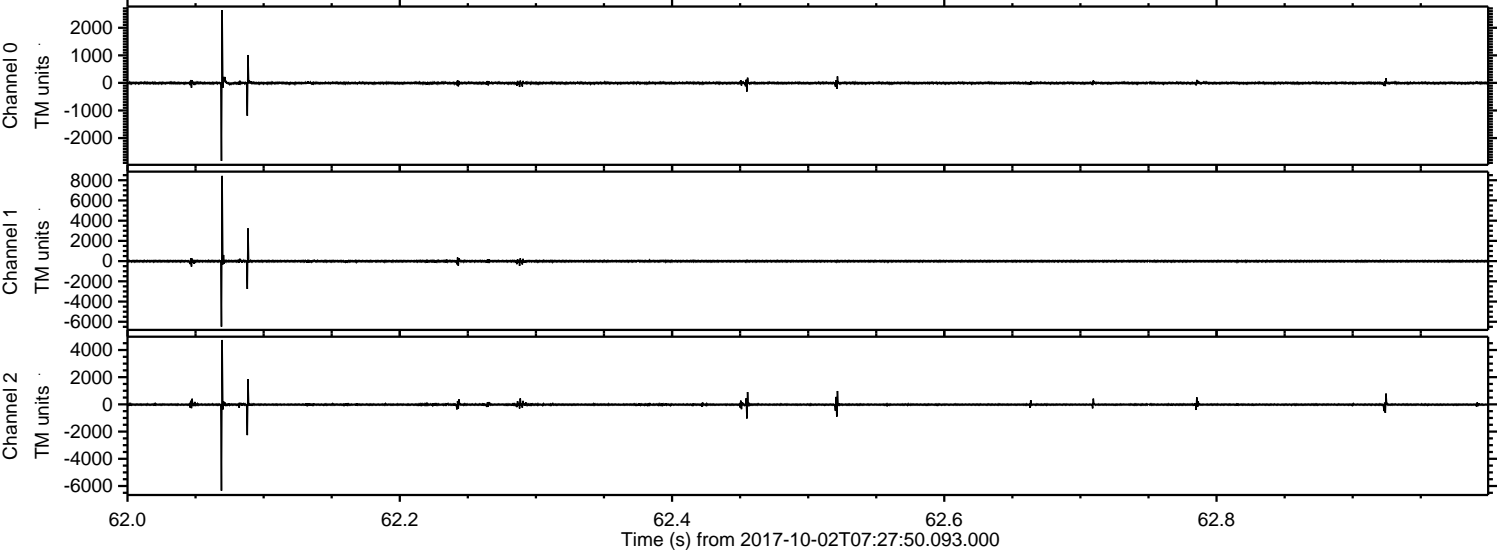


ELMAVAN 3D WAVEFORMS (Measured data sampled at 50 kHz) 51000 packets of 144 samples from 2017-10-02T07:27:50.093.000. Part 142/147

Processed Mon Oct 2 09:36:09 2017 by ELM ver.2012-10-06 from 001__elm20171002_072749__dat00.bin

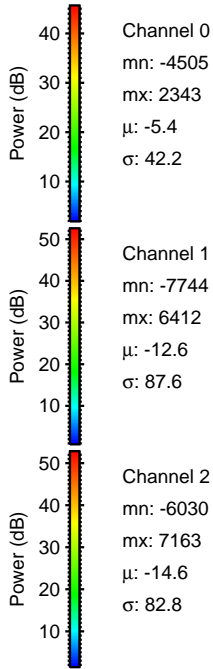
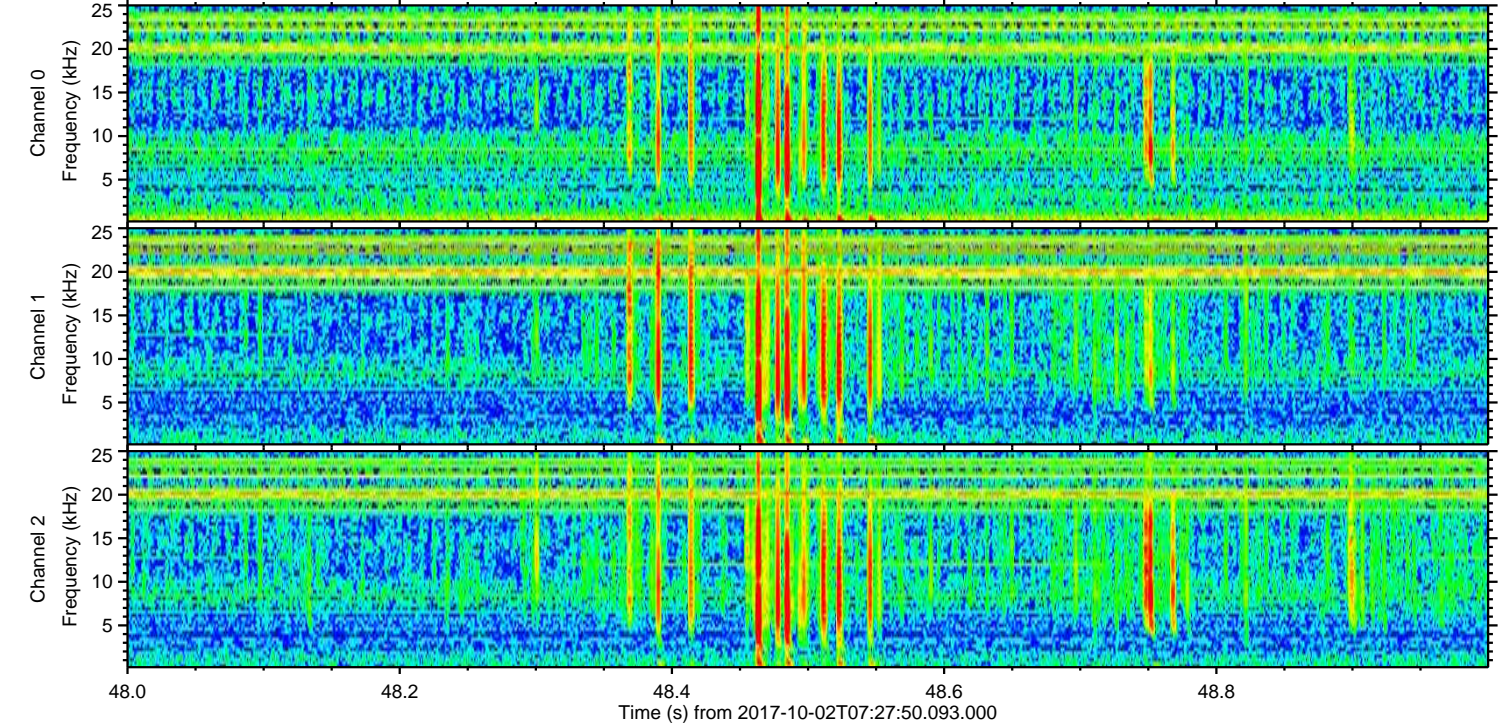
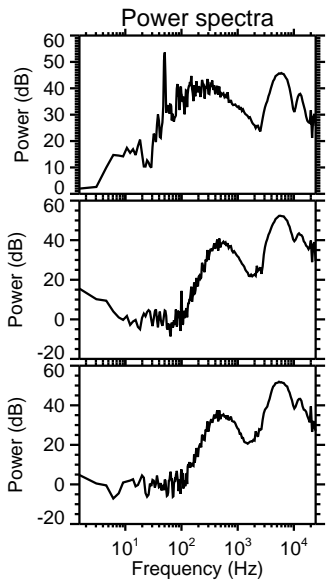
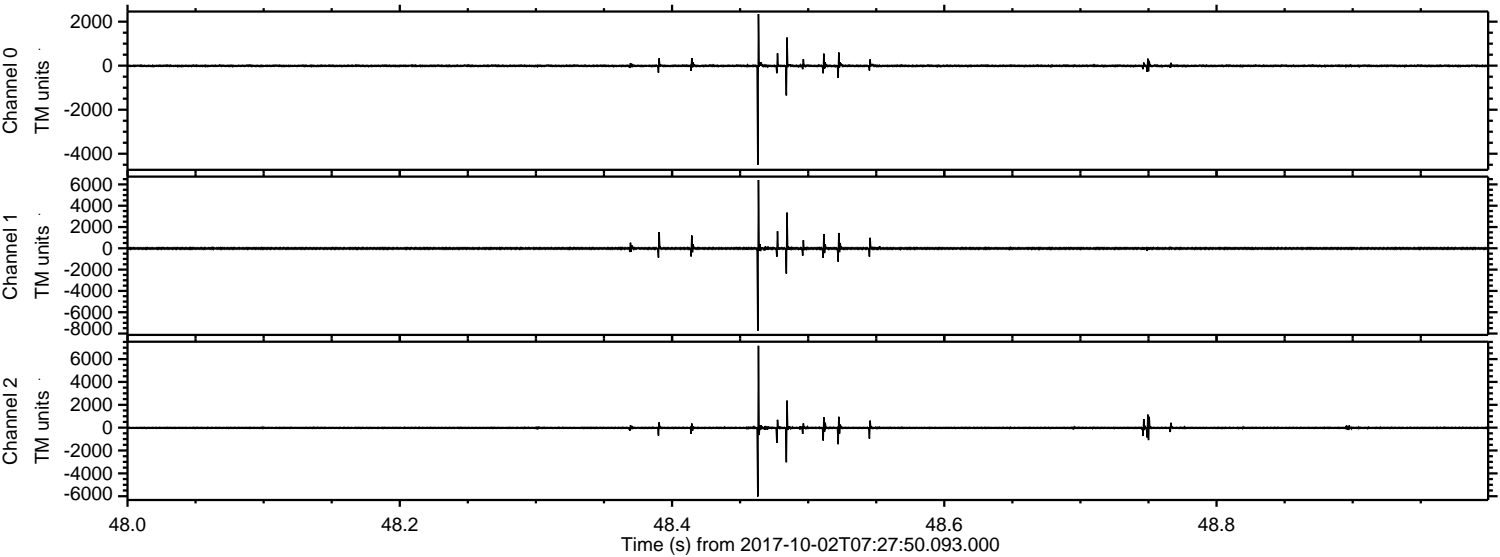


Processed Mon Oct 2 09:36:09 2017 by ELM ver.2012-10-06 from 001__elm20171002_072749__dat00.bin

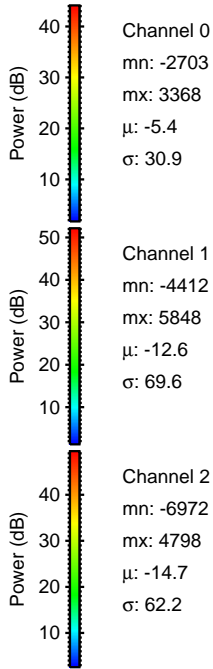
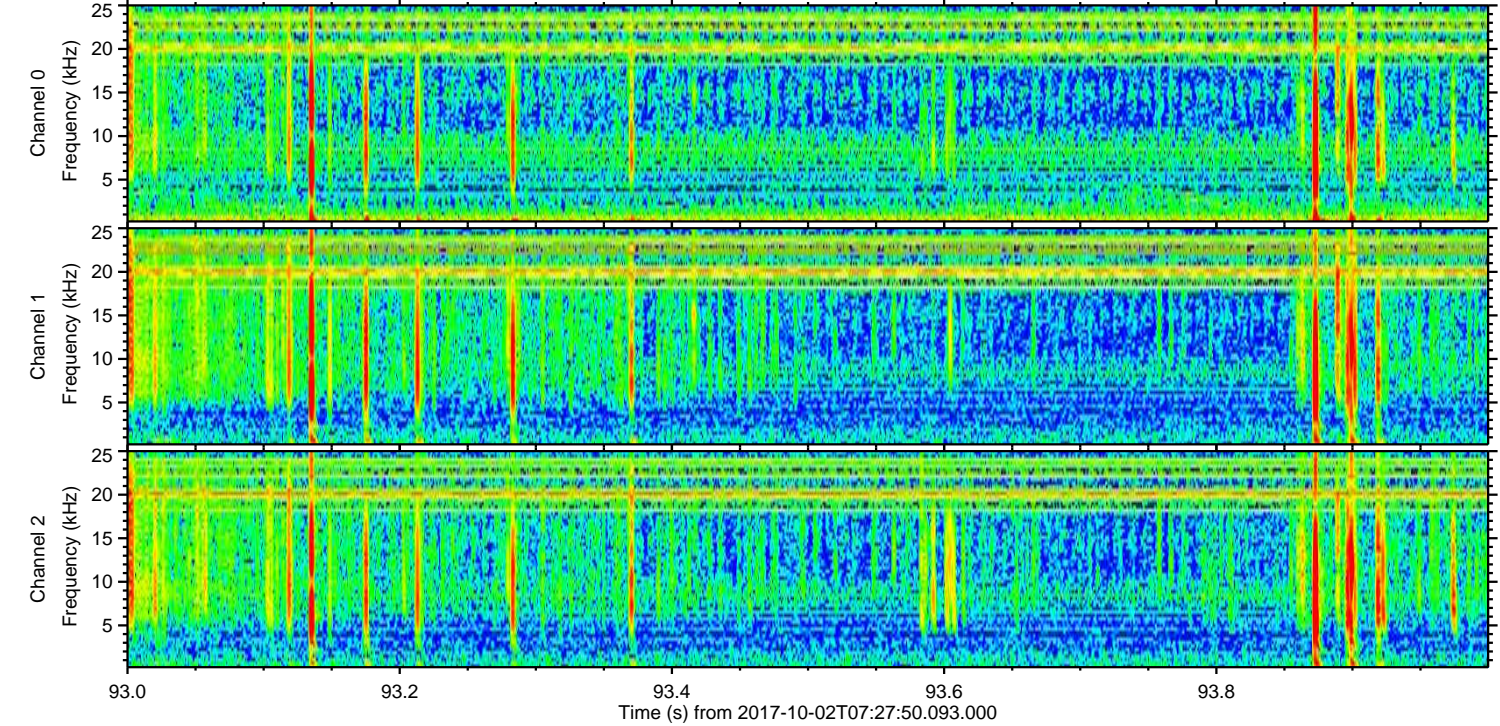
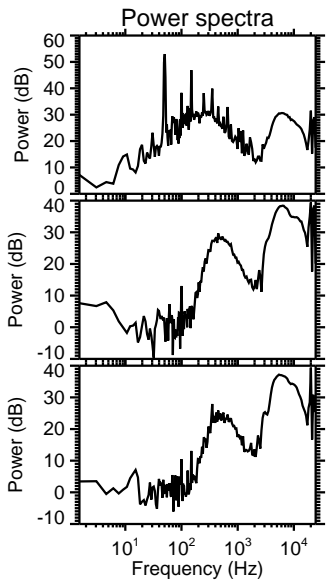
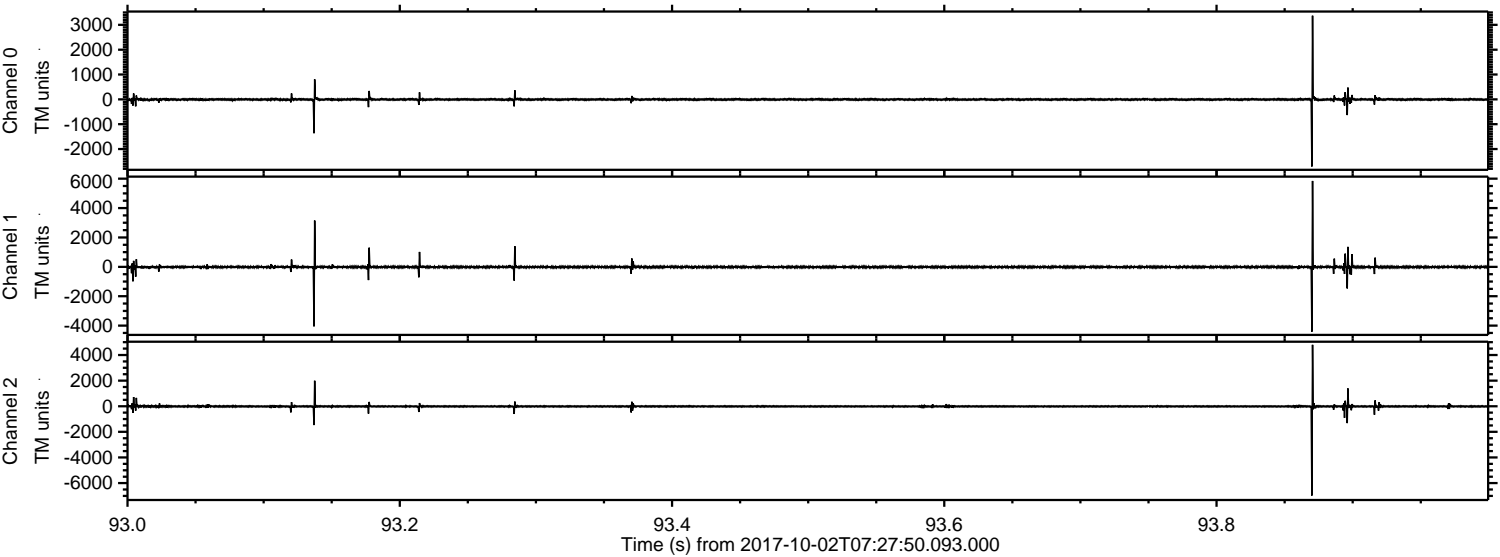


ELMAVAN 3D WAVEFORMS (Measured data sampled at 50 kHz) 51000 packets of 144 samples from 2017-10-02T07:27:50.093.000. Part 49/147

Processed Mon Oct 2 09:36:10 2017 by ELM ver.2012-10-06 from 001__elm20171002_072749__dat00.bin



Processed Mon Oct 2 09:36:11 2017 by ELM ver.2012-10-06 from 001__elm20171002_072749__dat00.bin



Channel 0
mn: -2703
mx: 3368
 μ : -5.4
 σ : 30.9

Channel 1
mn: -4412
mx: 5848
 μ : -12.6
 σ : 69.6

Channel 2
mn: -6972
mx: 4798
 μ : -14.7
 σ : 62.2

Processed Mon Oct 2 09:36:12 2017 by ELM ver.2012-10-06 from 001__elm20171002_072749__dat00.bin

