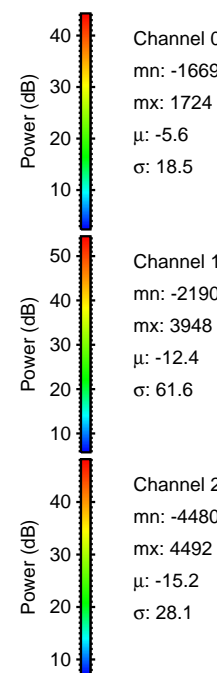
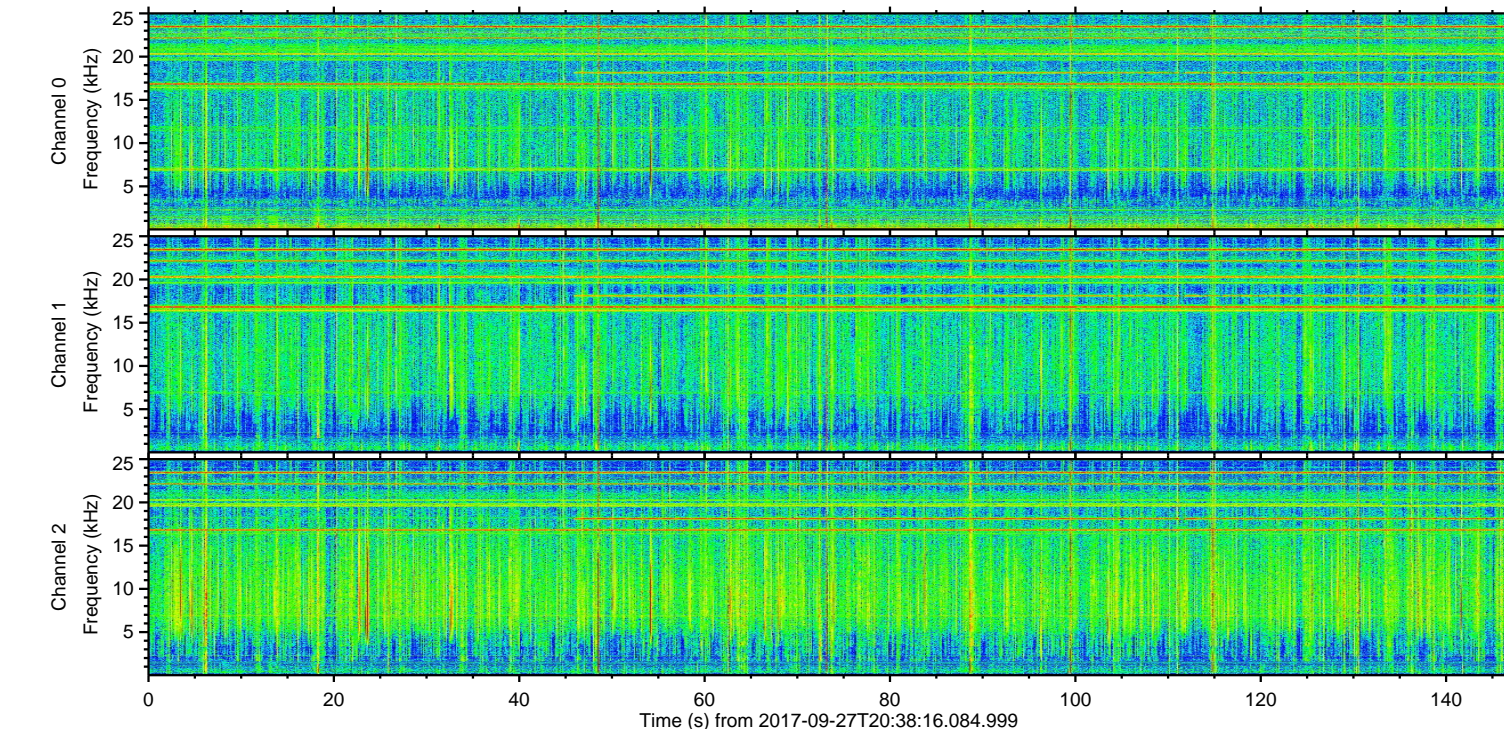
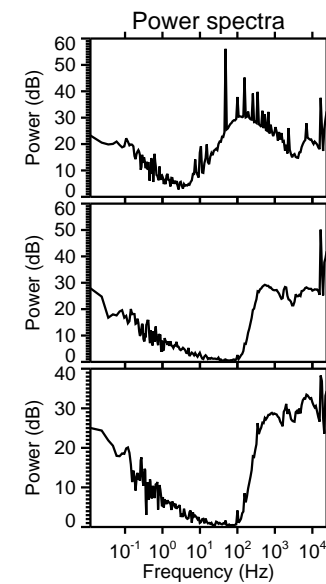
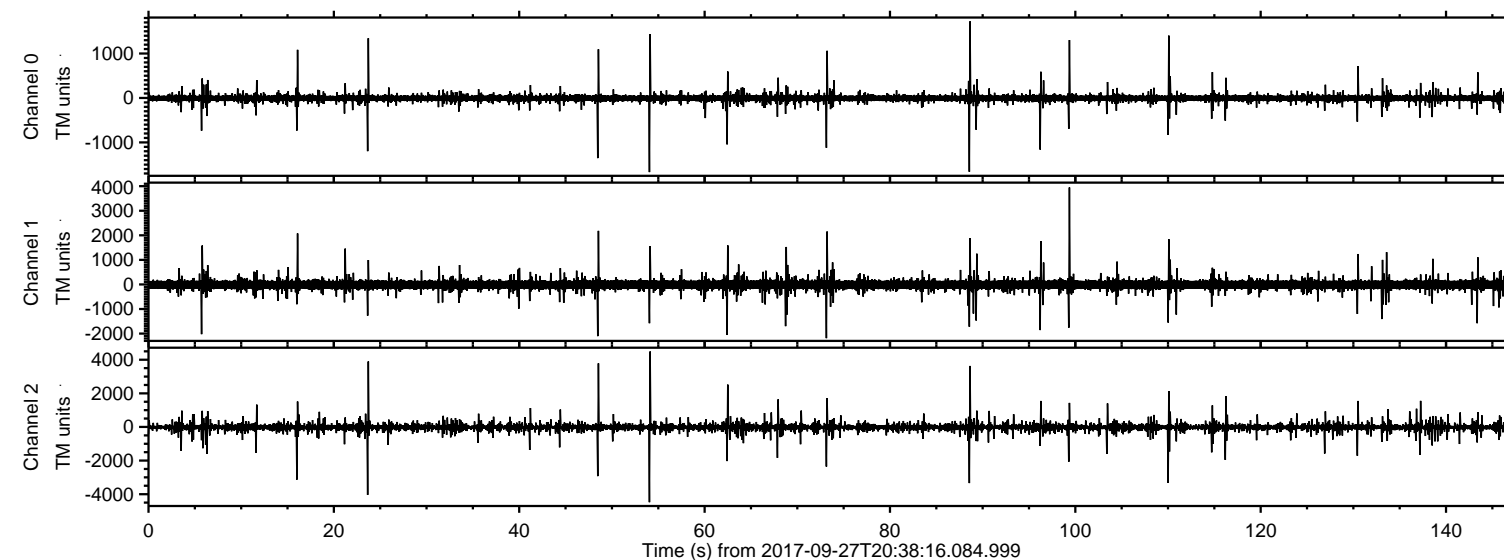


ELMAVAN 3D WAVEFORMS (Measured data sampled at 50 kHz) 51000 packets of 144 samples from 2017-09-27T20:38:16.084.999.

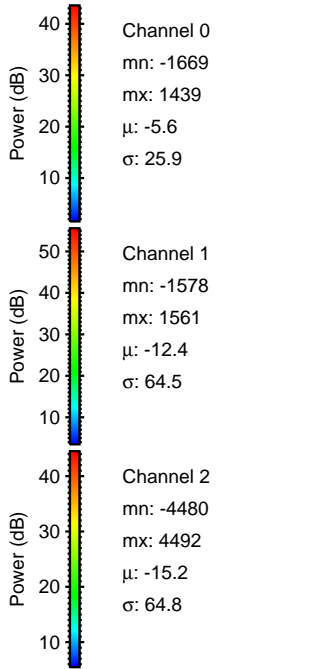
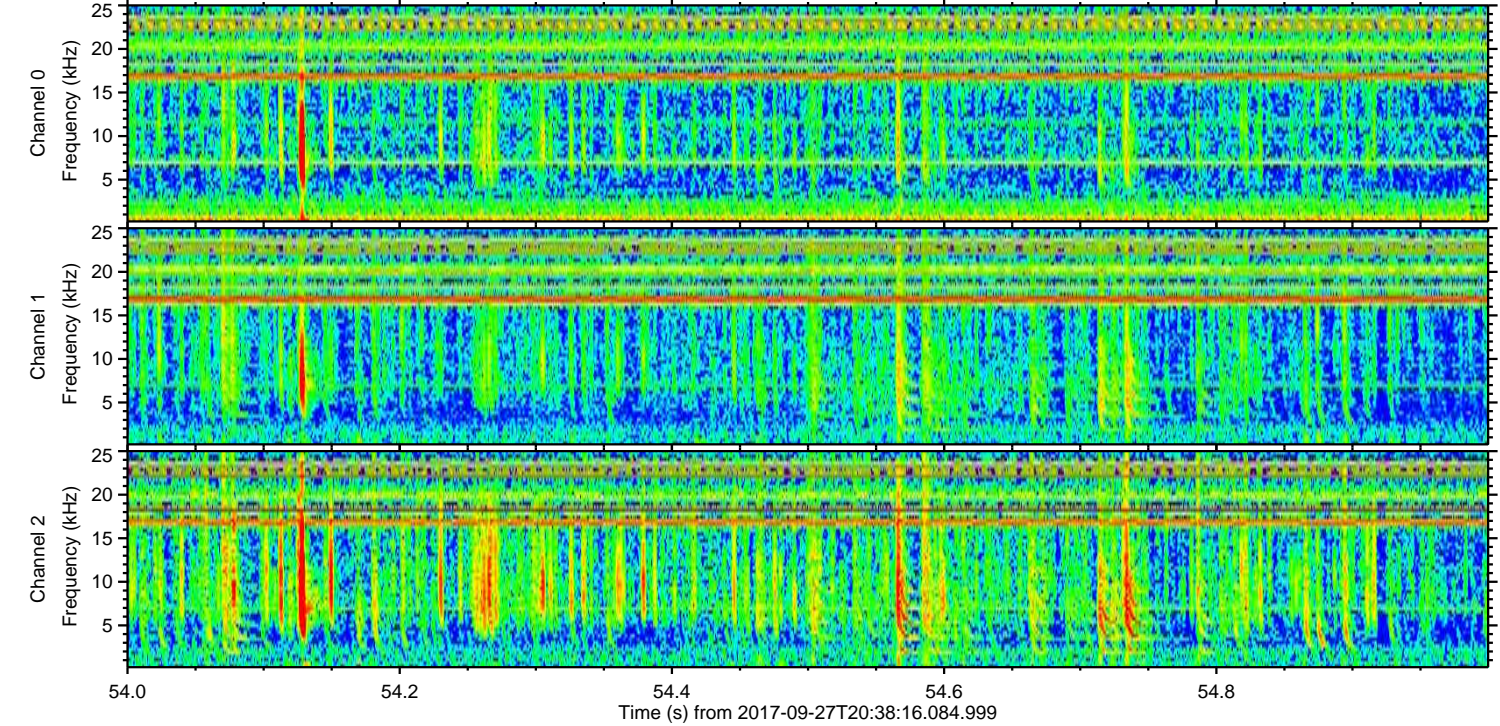
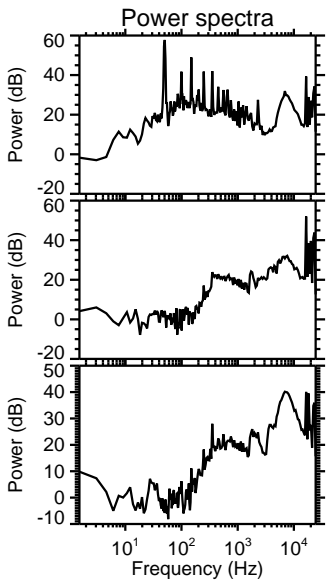
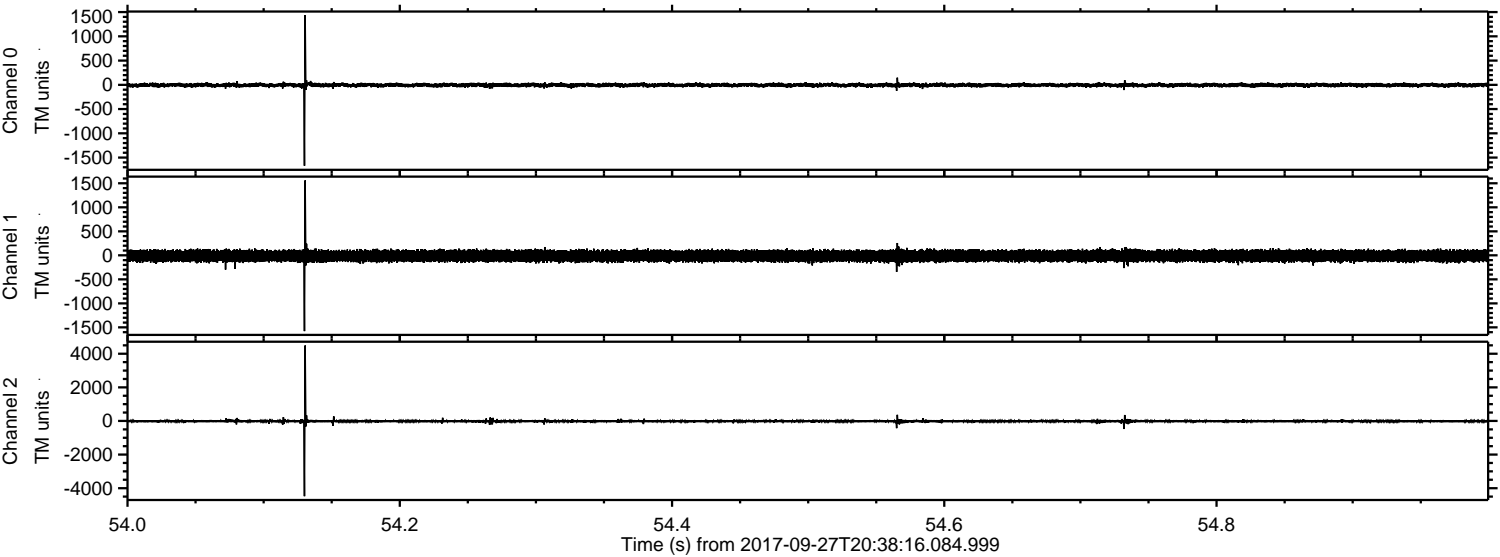
Processed Wed Sep 27 22:45:39 2017 by ELM ver.2012-10-06 from 001\_\_elm20170927\_203815\_\_dat00.bin





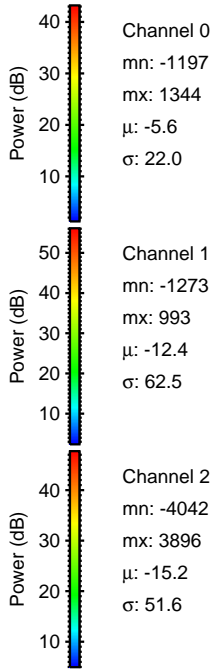
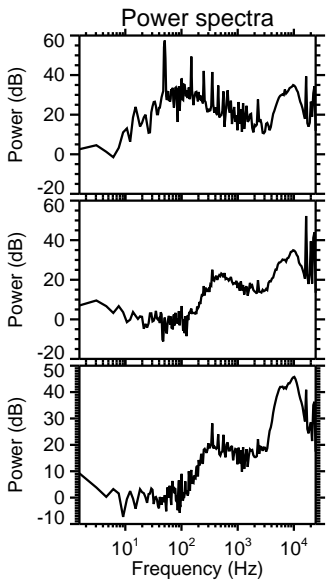
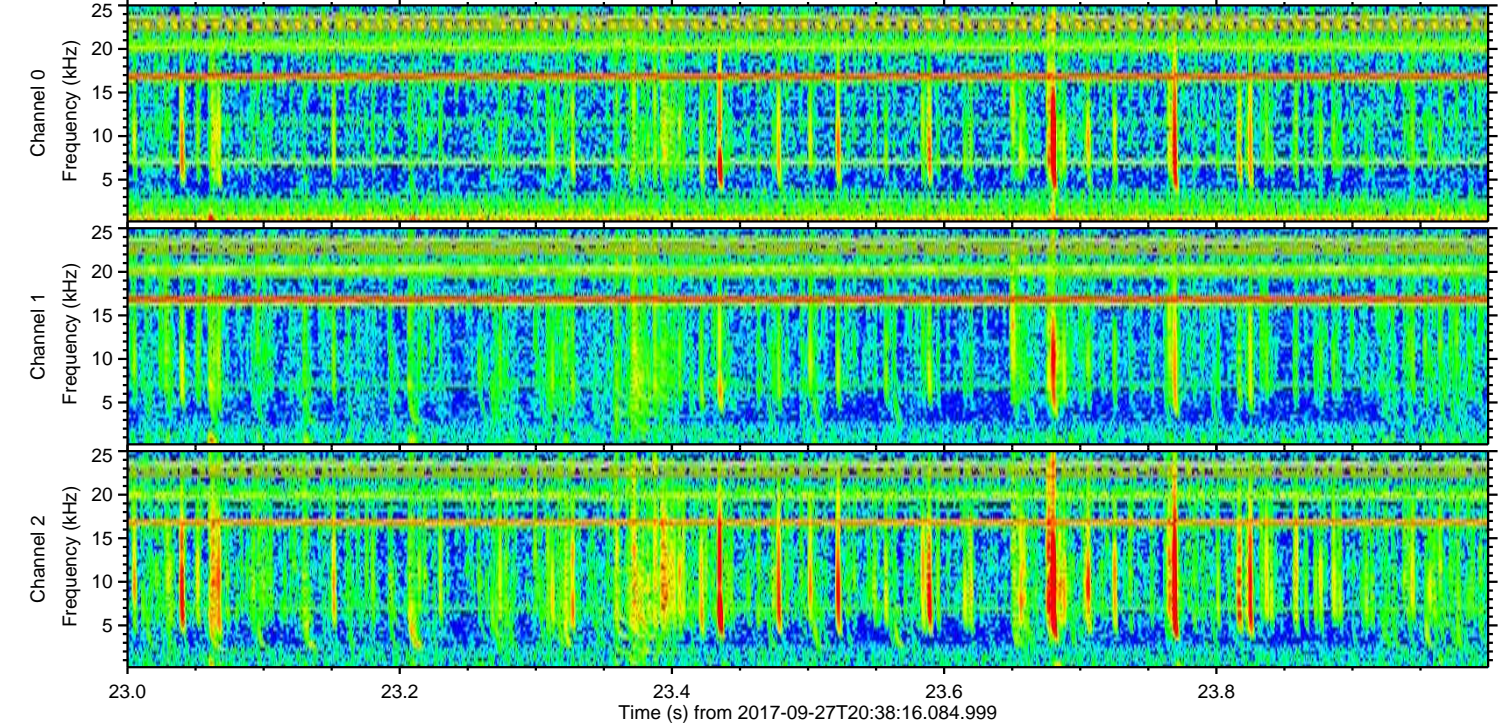
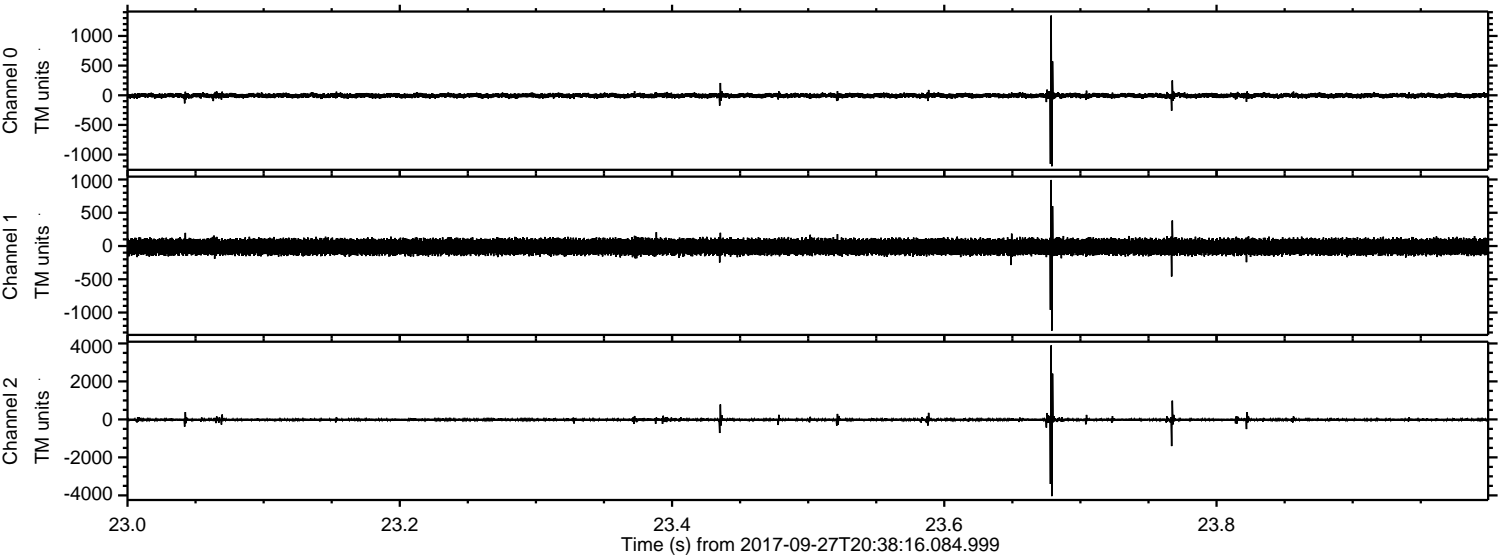
ELMAVAN 3D WAVEFORMS (Measured data sampled at 50 kHz) 51000 packets of 144 samples from 2017-09-27T20:38:16.084.999. Part 55/147

Processed Wed Sep 27 22:45:46 2017 by ELM ver.2012-10-06 from 001\_\_elm20170927\_203815\_\_dat00.bin





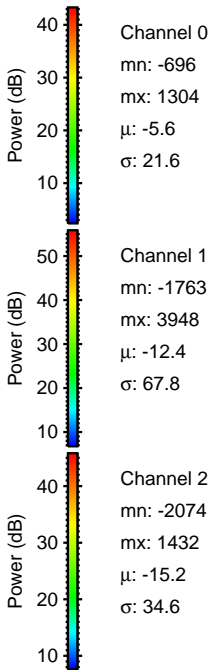
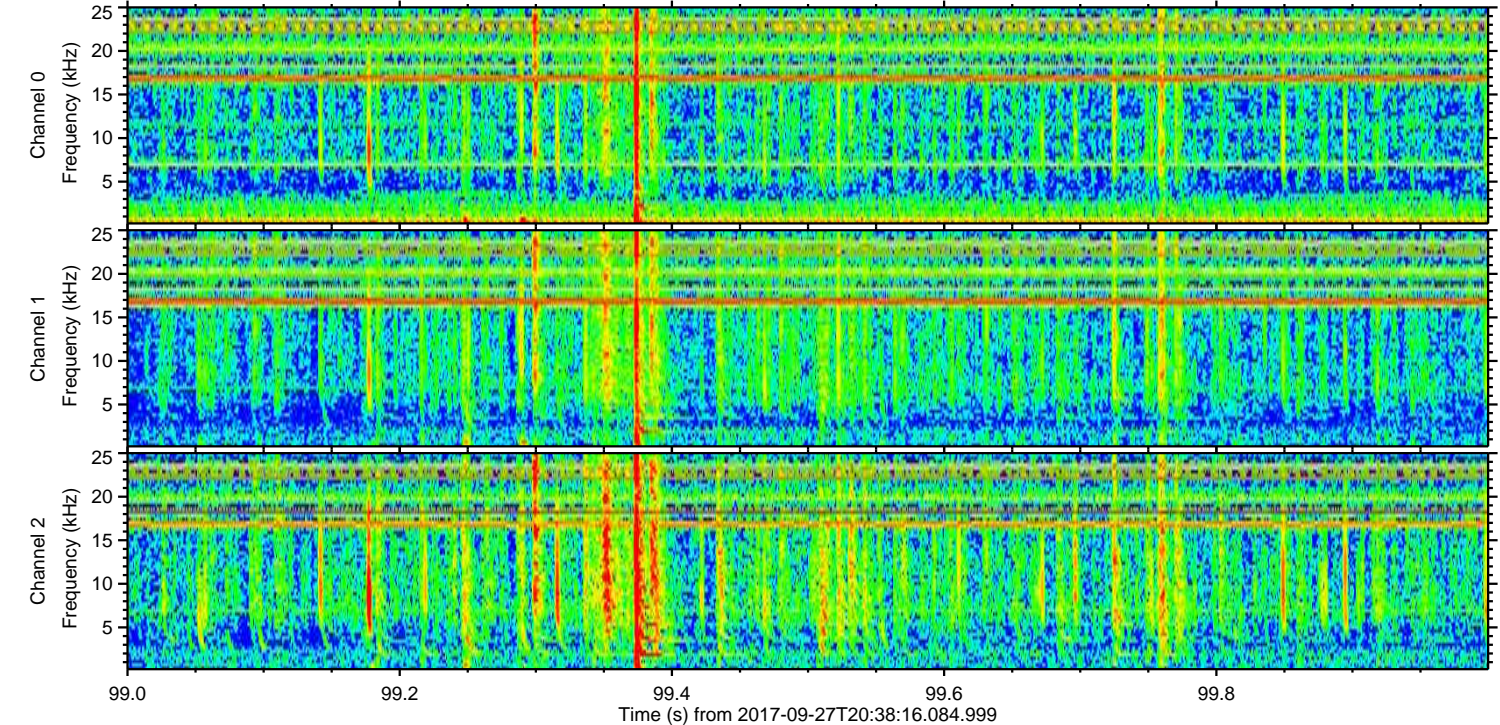
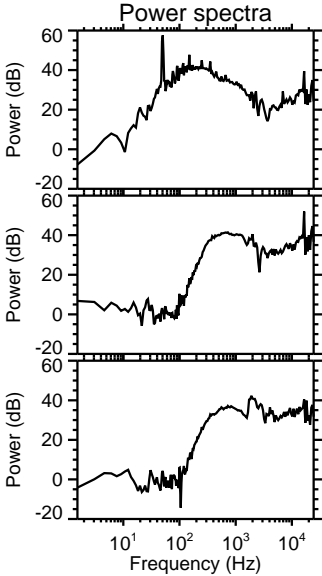
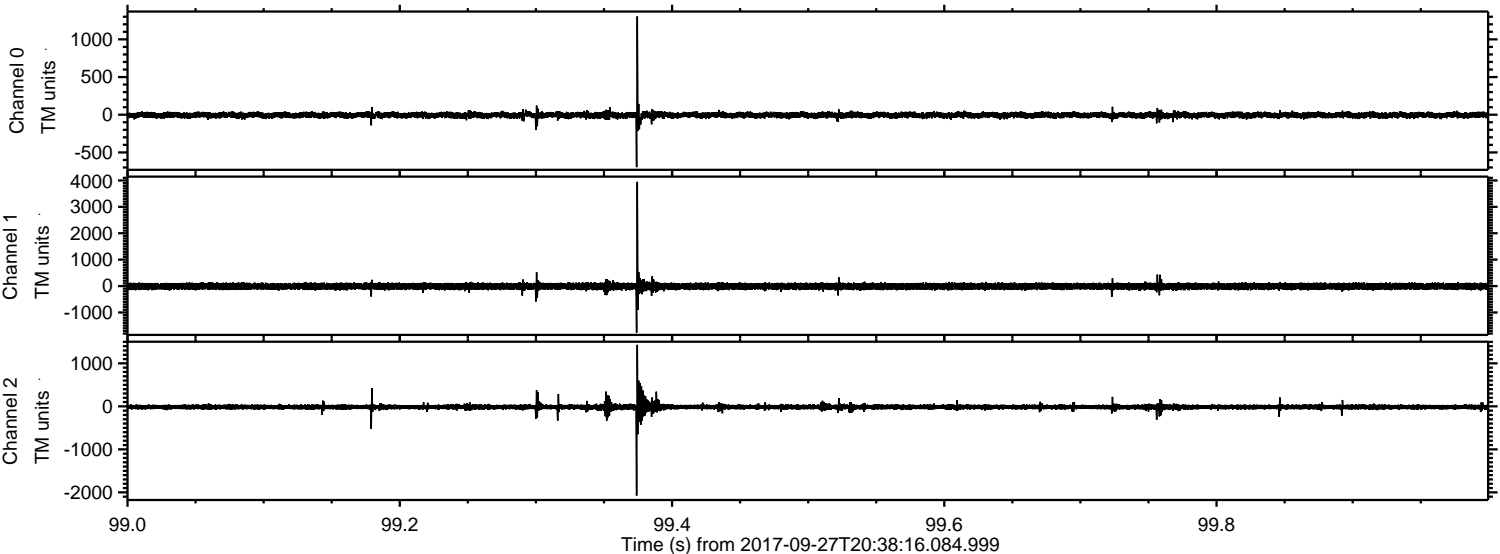
Processed Wed Sep 27 22:45:46 2017 by ELM ver.2012-10-06 from 001\_\_elm20170927\_203815\_\_dat00.bin





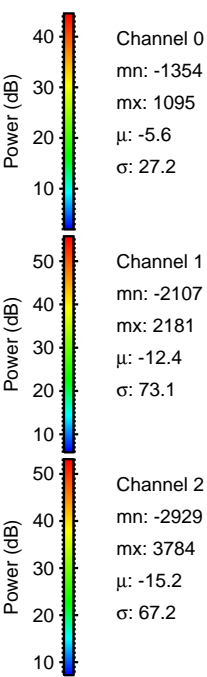
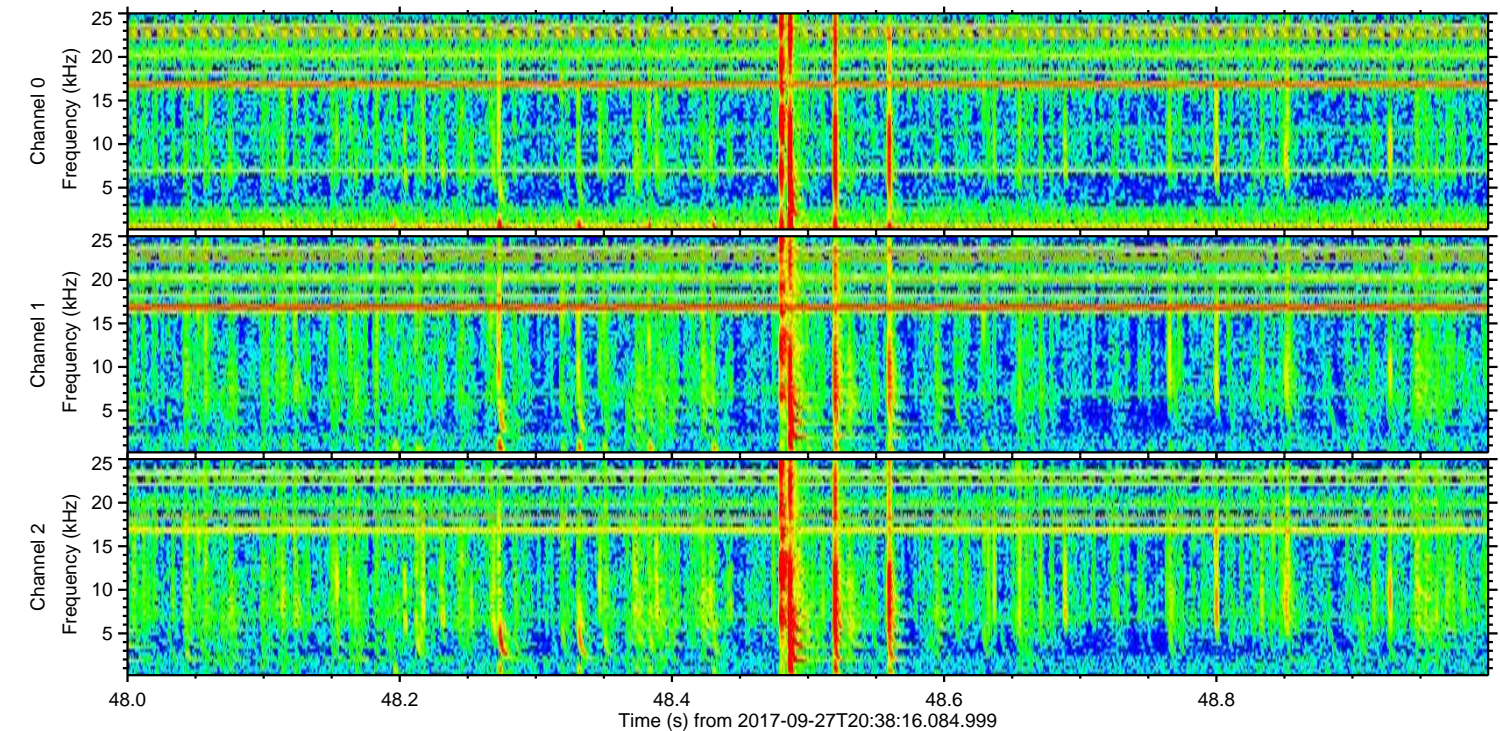
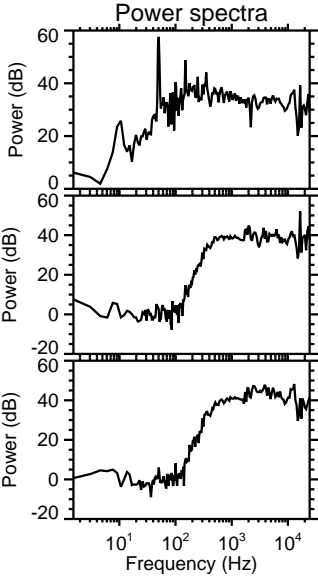
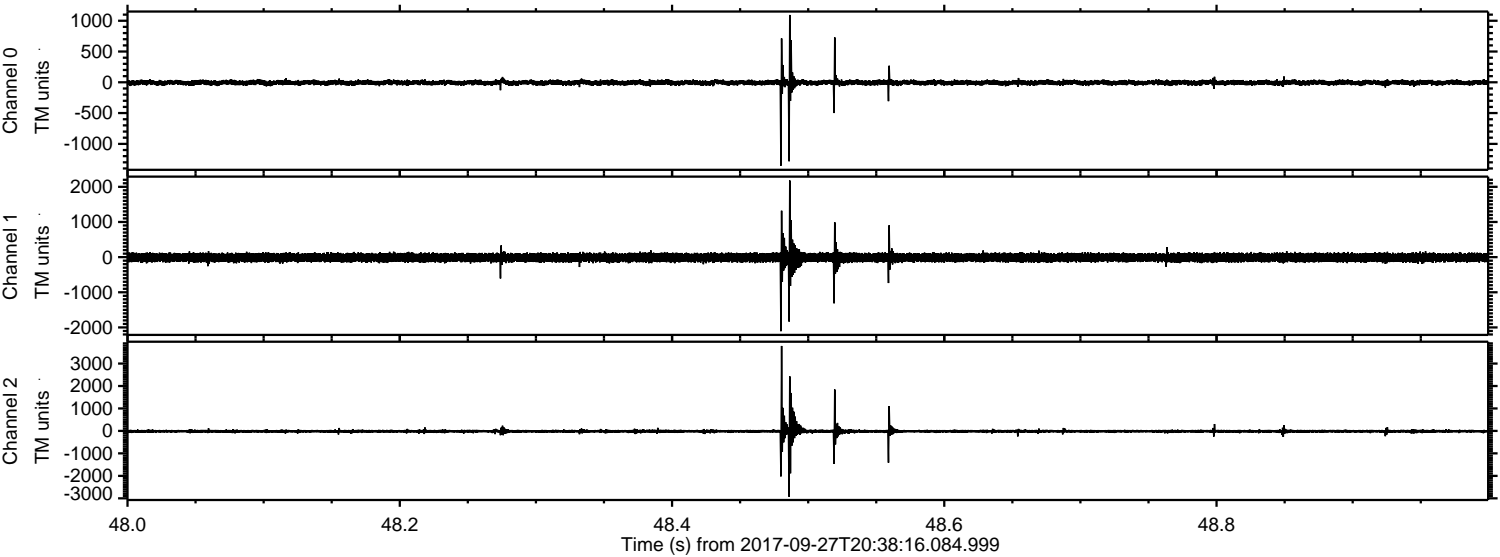
ELMAVAN 3D WAVEFORMS (Measured data sampled at 50 kHz) 51000 packets of 144 samples from 2017-09-27T20:38:16.084.999. Part 100/147

Processed Wed Sep 27 22:45:47 2017 by ELM ver.2012-10-06 from 001\_\_elm20170927\_203815\_\_dat00.bin



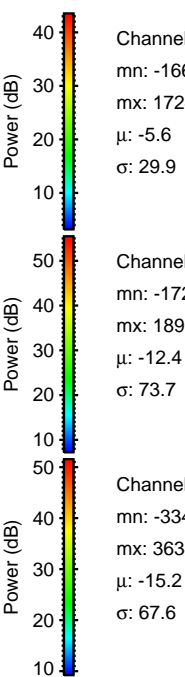
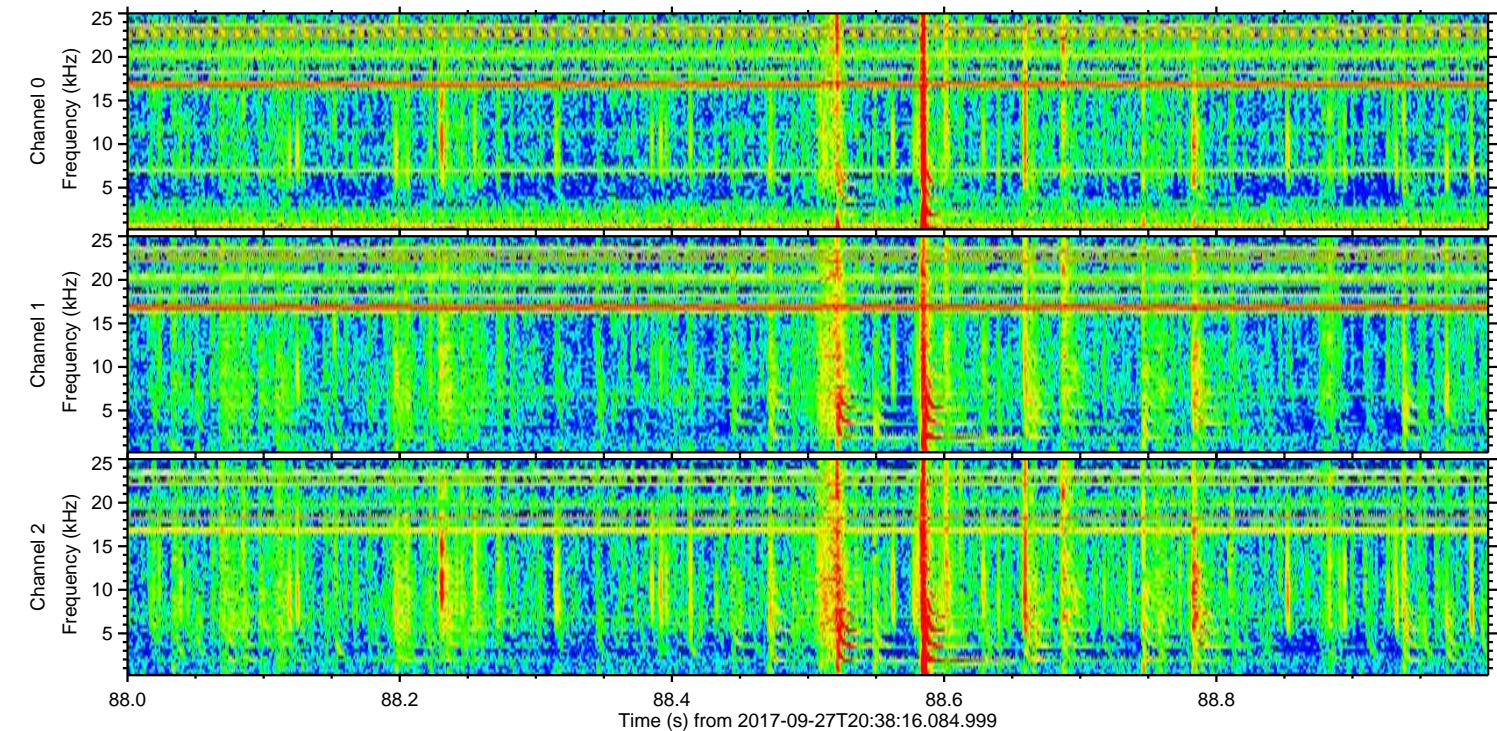
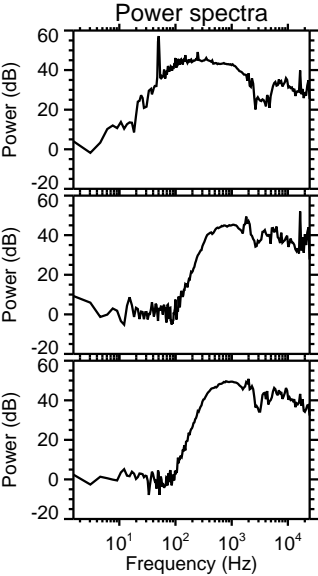
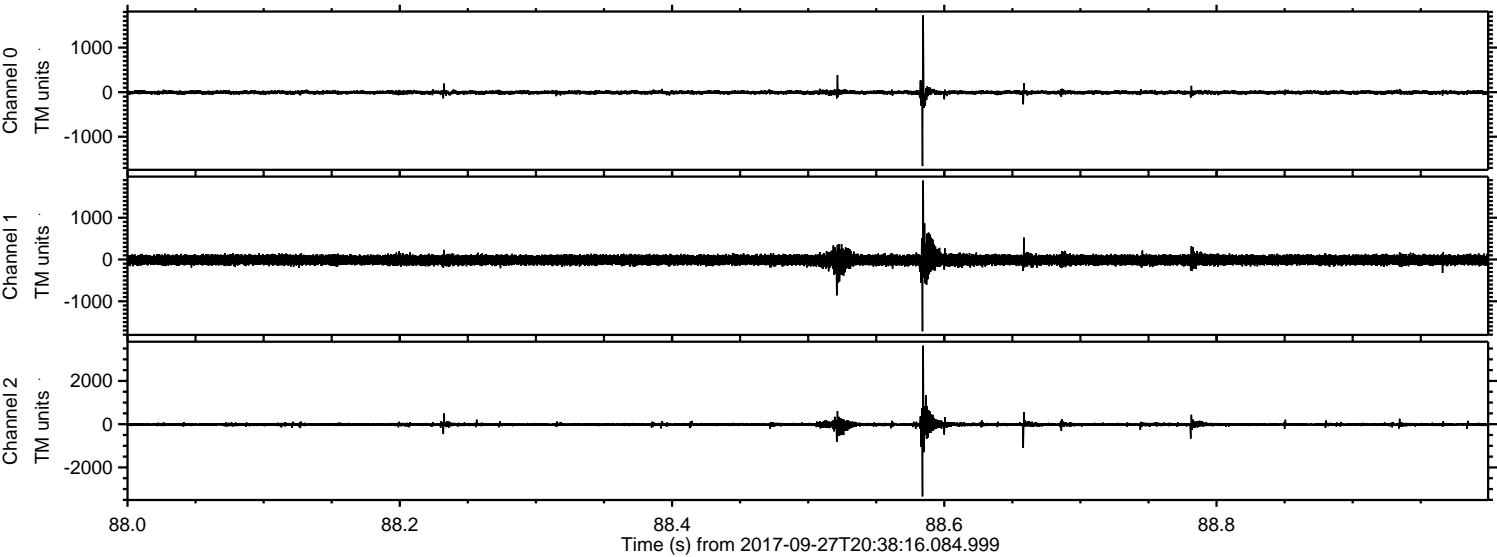


Processed Wed Sep 27 22:45:48 2017 by ELM ver.2012-10-06 from 001\_\_elm20170927\_203815\_\_dat00.bin





Processed Wed Sep 27 22:45:48 2017 by ELM ver.2012-10-06 from 001\_\_elm20170927\_203815\_\_dat00.bin



Channel 0  
mn: -1660  
mx: 1724  
 $\mu$ : -5.6  
 $\sigma$ : 29.9

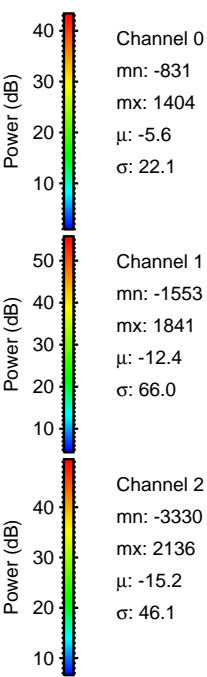
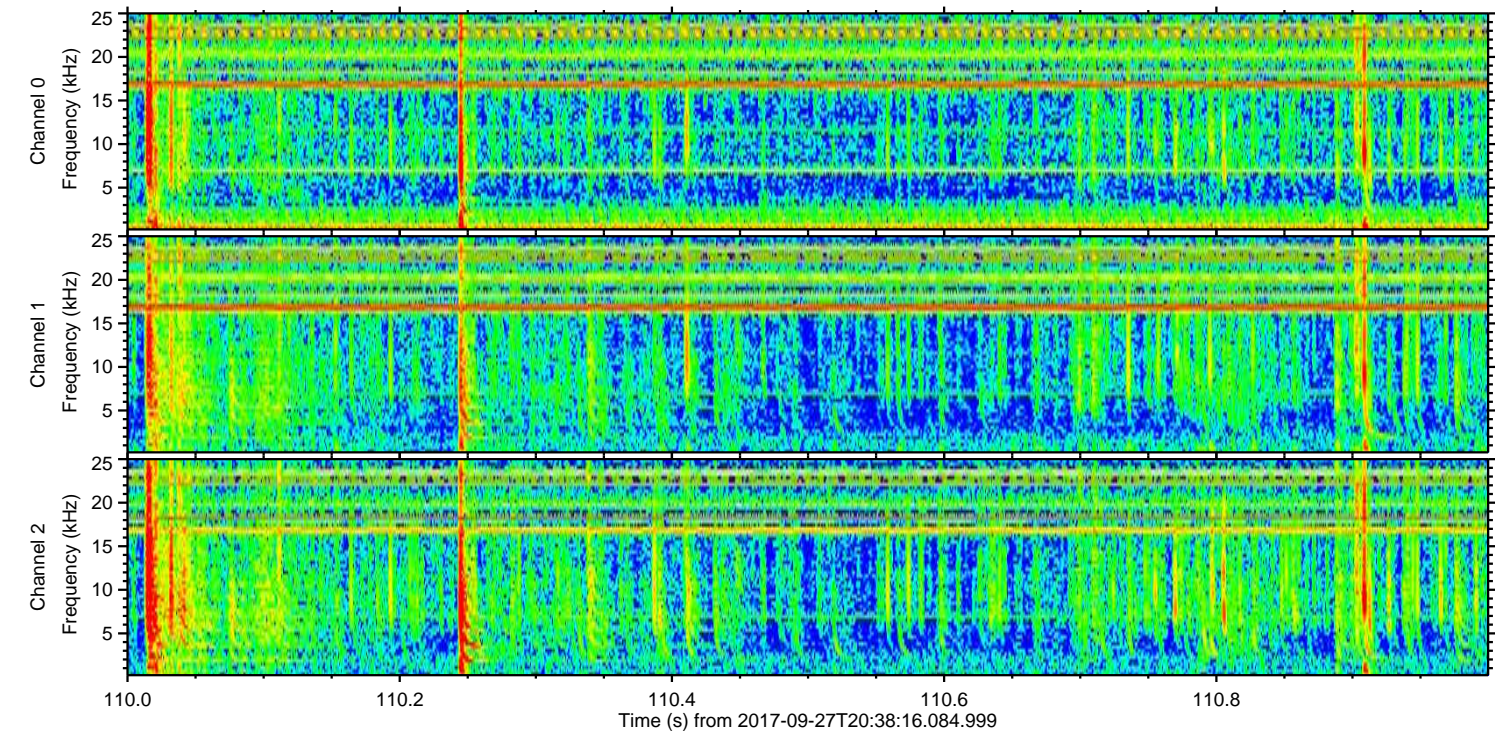
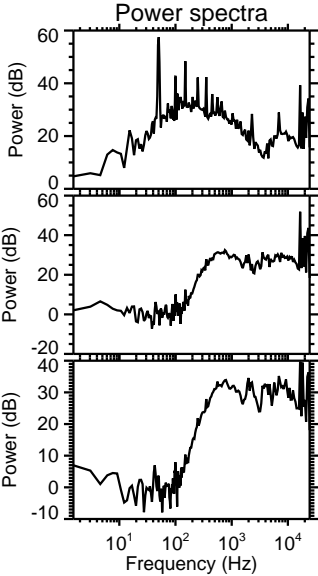
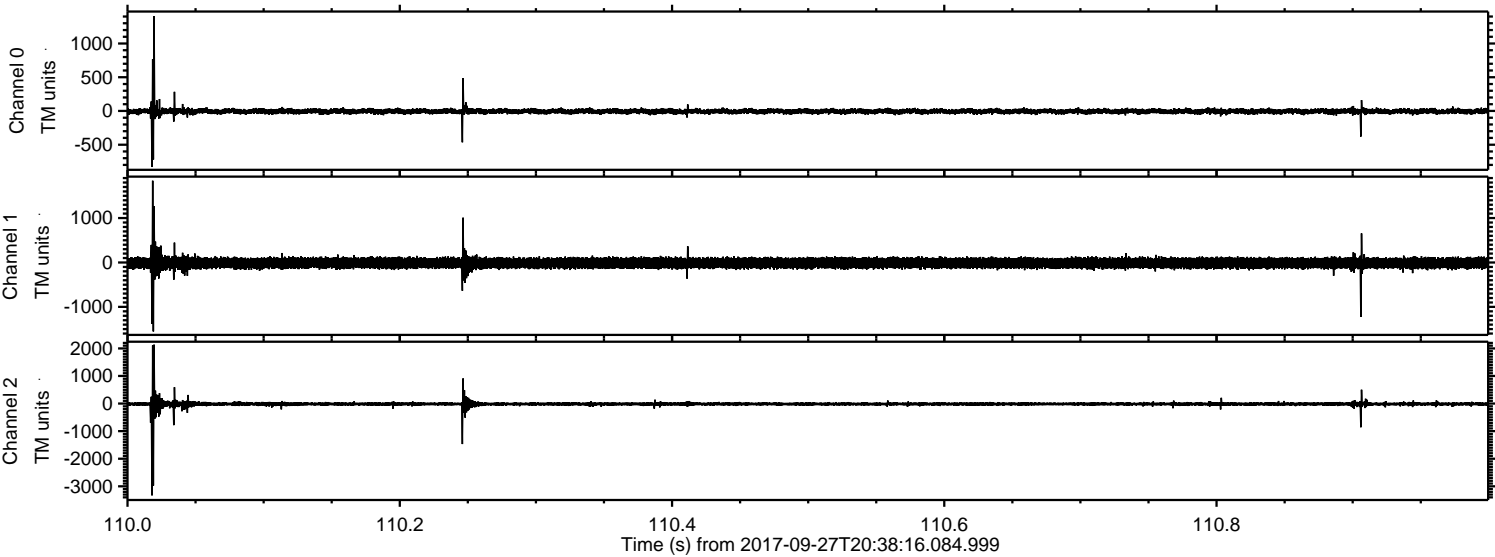
Channel 1  
mn: -1720  
mx: 1890  
 $\mu$ : -12.4  
 $\sigma$ : 73.7

Channel 2  
mn: -3340  
mx: 3634  
 $\mu$ : -15.2  
 $\sigma$ : 67.6



ELMAVAN 3D WAVEFORMS (Measured data sampled at 50 kHz) 51000 packets of 144 samples from 2017-09-27T20:38:16.084.999. Part 111/147

Processed Wed Sep 27 22:45:49 2017 by ELM ver.2012-10-06 from 001\_\_elm20170927\_203815\_\_dat00.bin



Channel 0  
mn: -831  
mx: 1404  
 $\mu$ : -5.6  
 $\sigma$ : 22.1

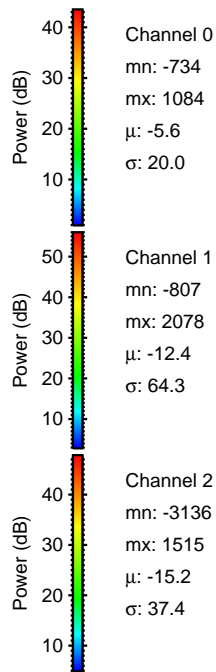
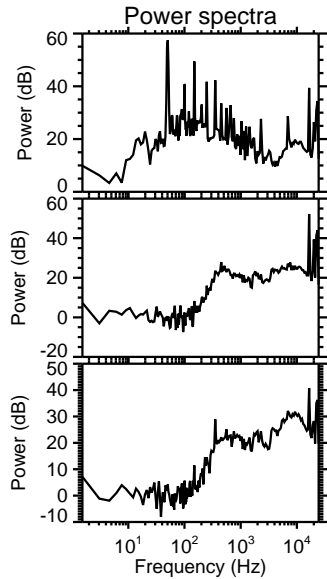
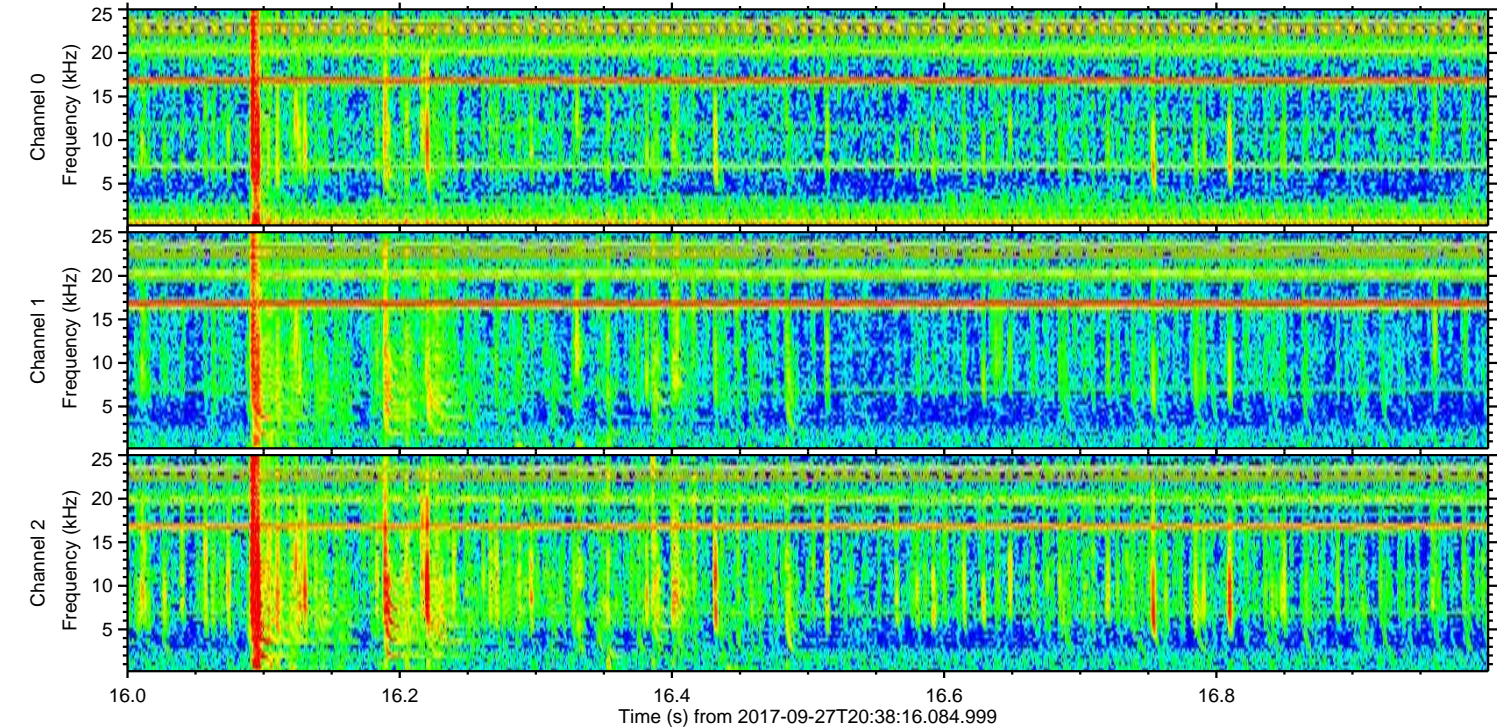
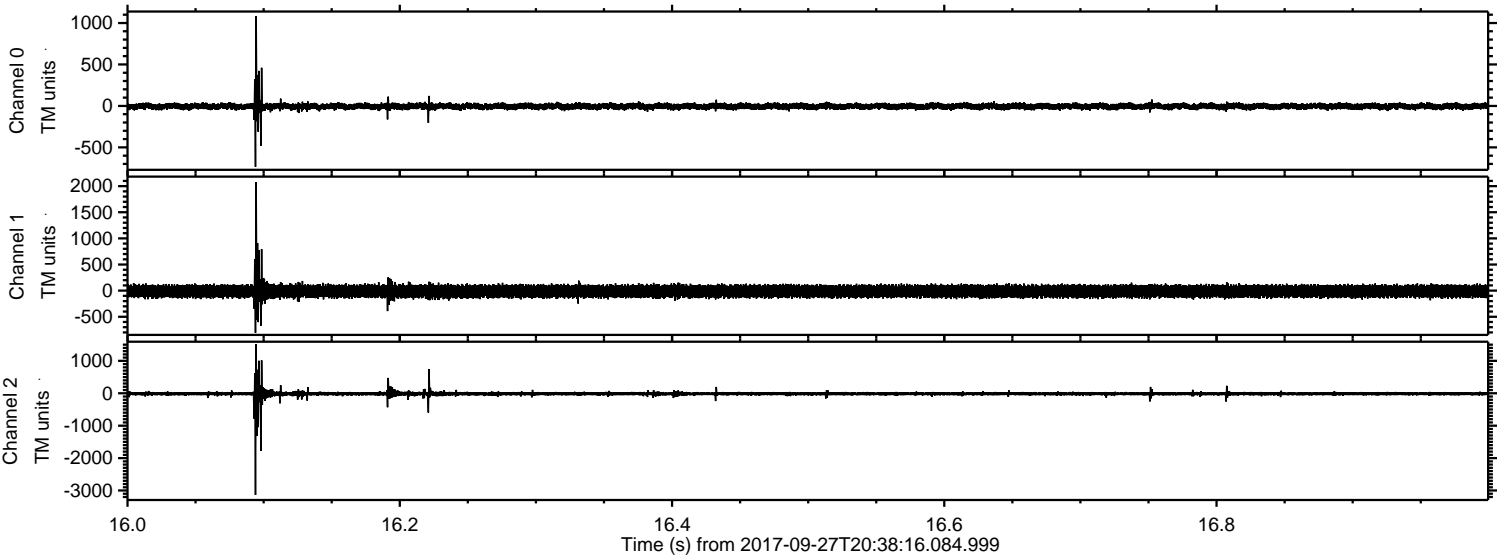
Channel 1  
mn: -1553  
mx: 1841  
 $\mu$ : -12.4  
 $\sigma$ : 66.0

Channel 2  
mn: -3330  
mx: 2136  
 $\mu$ : -15.2  
 $\sigma$ : 46.1



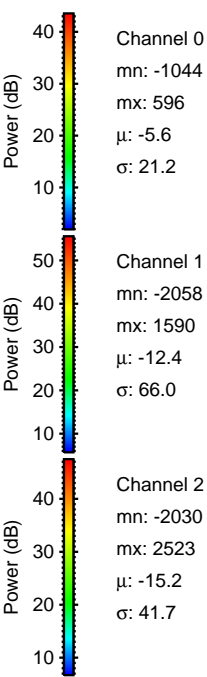
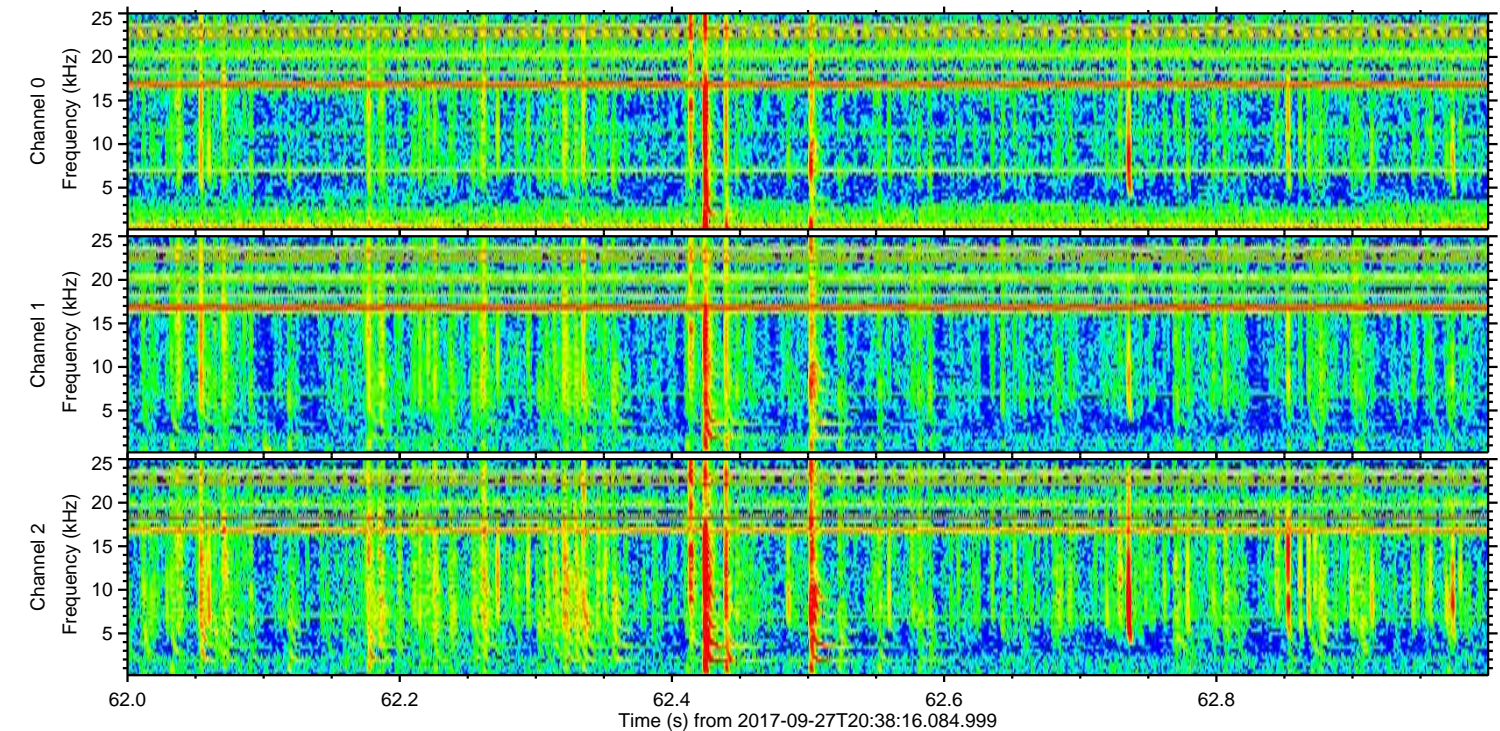
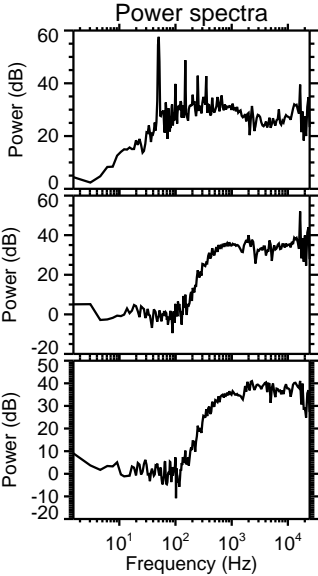
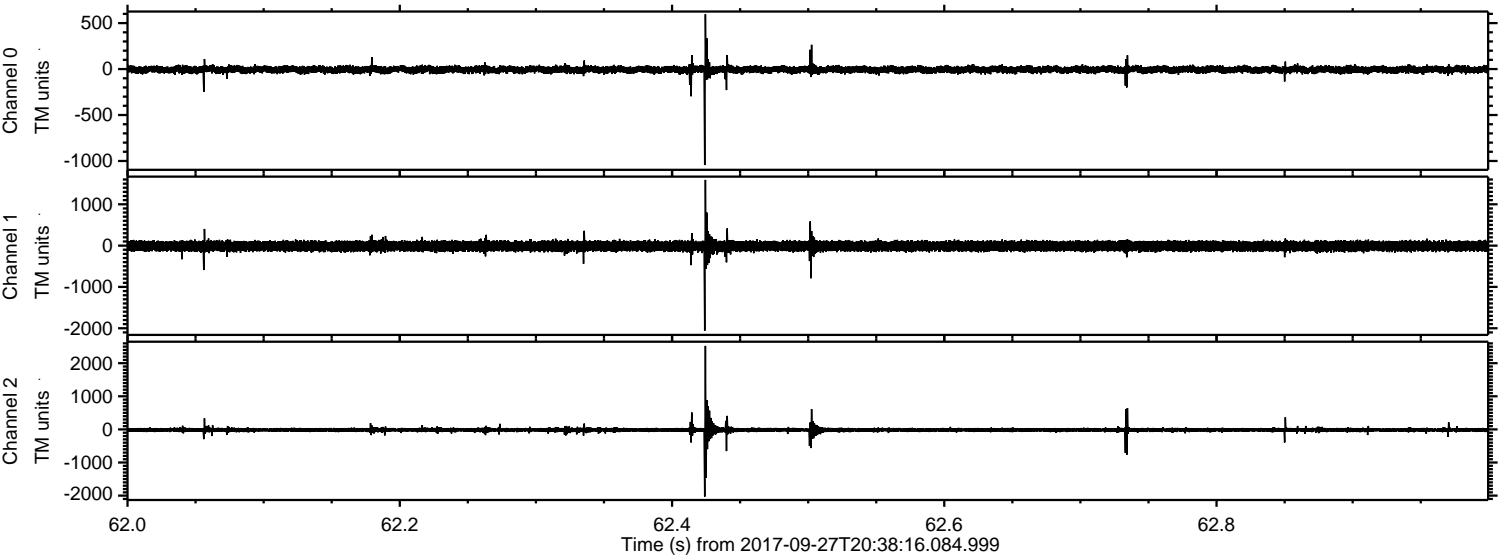
ELMAVAN 3D WAVEFORMS (Measured data sampled at 50 kHz) 51000 packets of 144 samples from 2017-09-27T20:38:16.084.999. Part 17/147

Processed Wed Sep 27 22:45:50 2017 by ELM ver.2012-10-06 from 001\_\_elm20170927\_203815\_\_dat00.bin





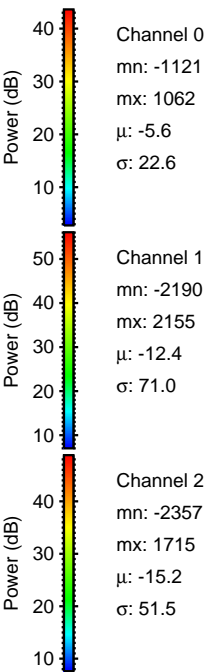
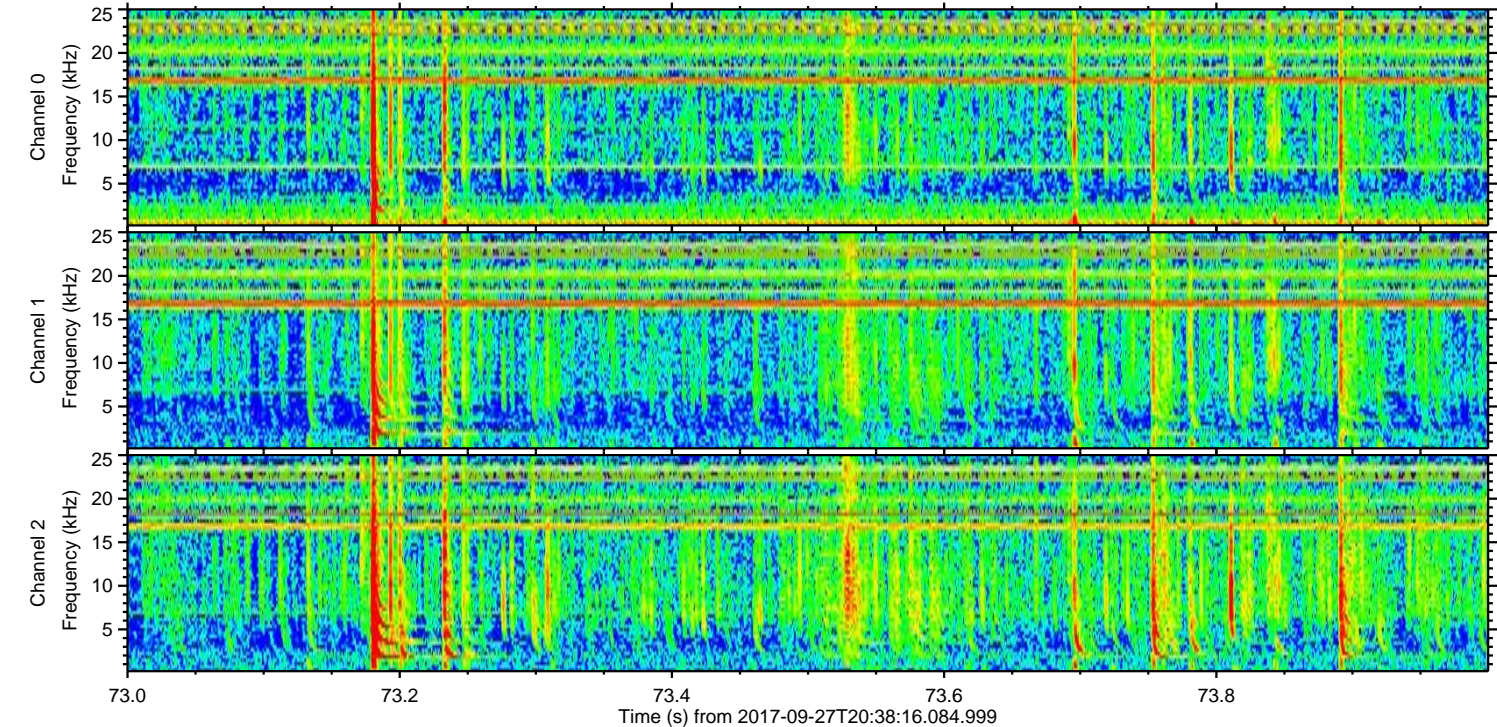
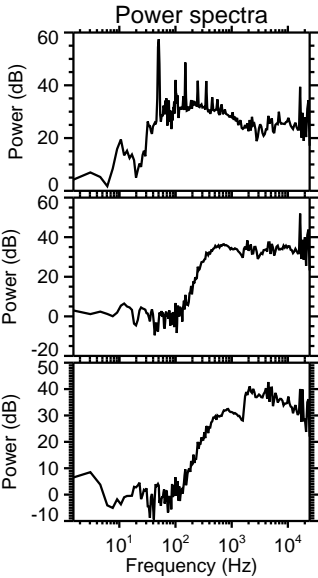
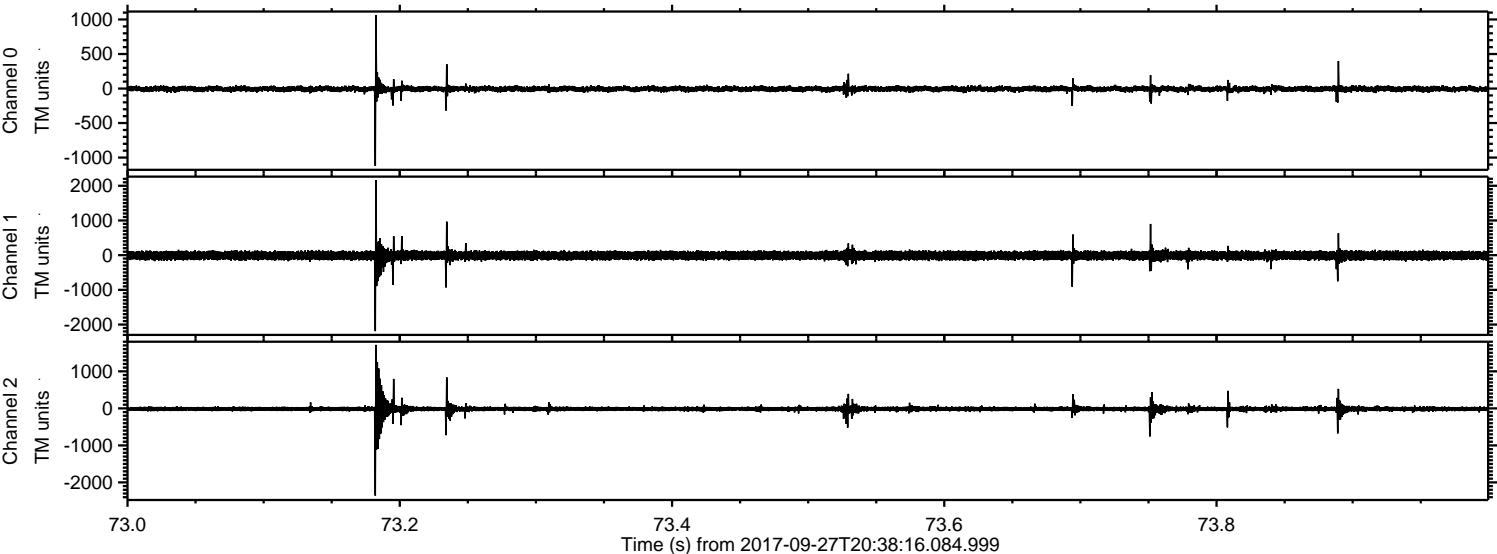
Processed Wed Sep 27 22:45:51 2017 by ELM ver.2012-10-06 from 001\_\_elm20170927\_203815\_\_dat00.bin





ELMAVAN 3D WAVEFORMS (Measured data sampled at 50 kHz) 51000 packets of 144 samples from 2017-09-27T20:38:16.084.999. Part 74/147

Processed Wed Sep 27 22:45:51 2017 by ELM ver.2012-10-06 from 001\_\_elm20170927\_203815\_\_dat00.bin



Channel 0  
mn: -1121  
mx: 1062  
 $\mu$ : -5.6  
 $\sigma$ : 22.6

Channel 1  
mn: -2190  
mx: 2155  
 $\mu$ : -12.4  
 $\sigma$ : 71.0

Channel 2  
mn: -2357  
mx: 1715  
 $\mu$ : -15.2  
 $\sigma$ : 51.5



ELMAVAN 3D WAVEFORMS (Measured data sampled at 50 kHz) 51000 packets of 144 samples from 2017-09-27T20:38:16.084.999. Part 114/147

