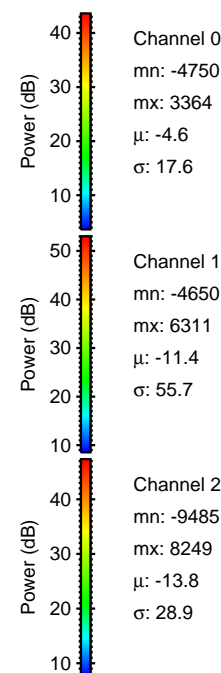
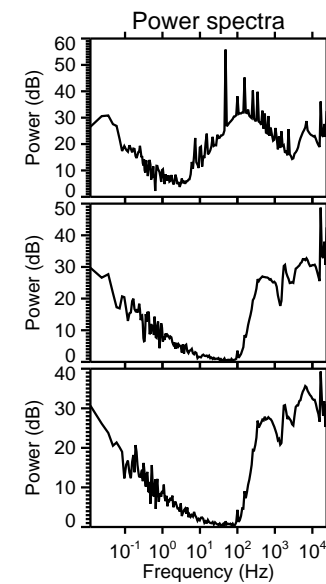
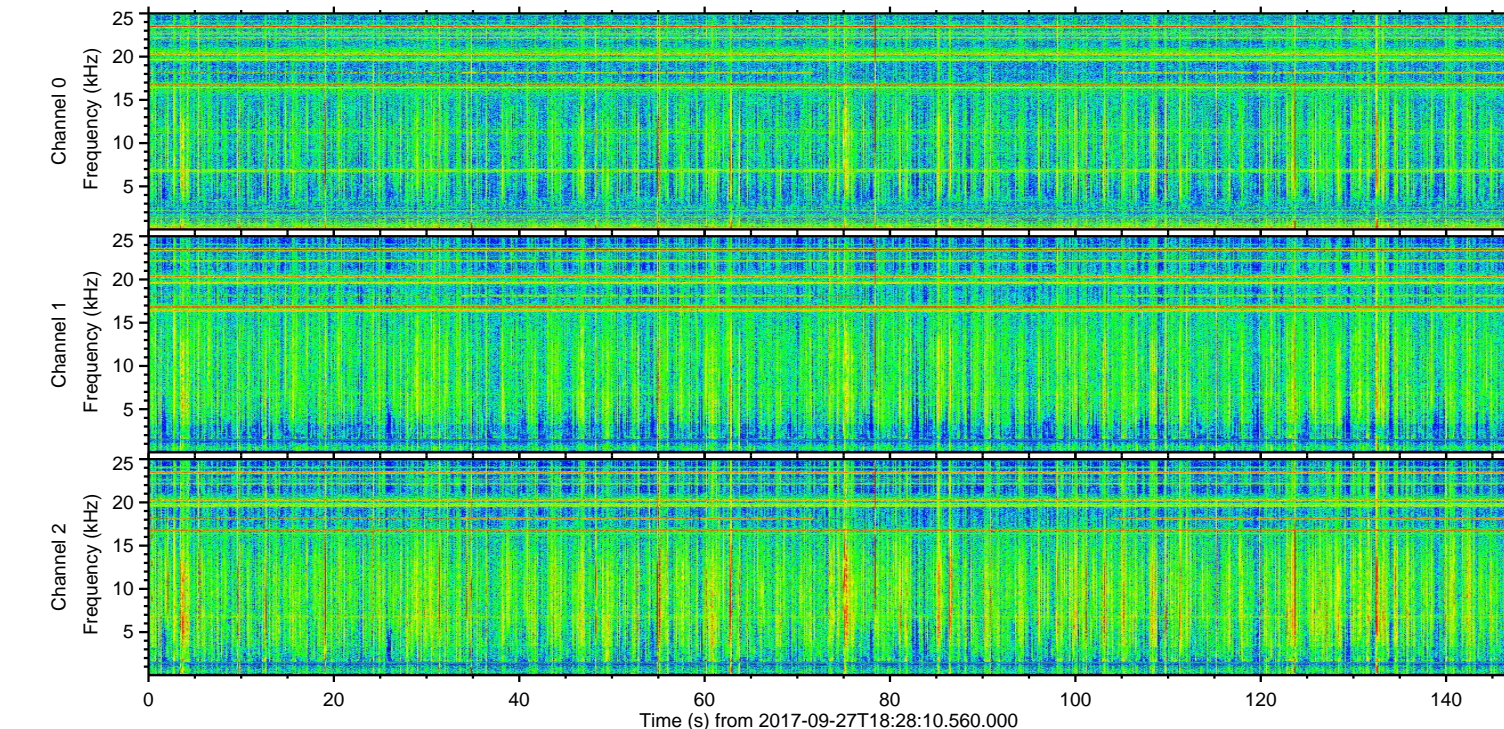
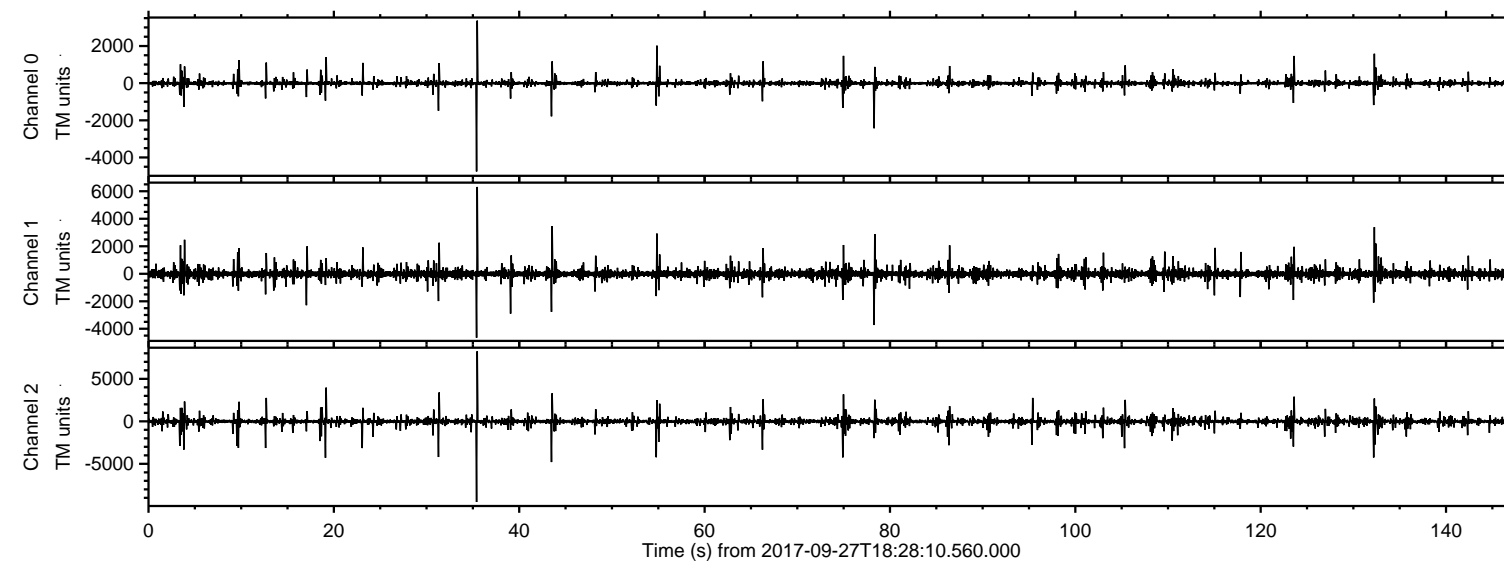


ELMAVAN 3D WAVEFORMS (Measured data sampled at 50 kHz) 51000 packets of 144 samples from 2017-09-27T18:28:10.560.000.

Processed Wed Sep 27 20:36:06 2017 by ELM ver.2012-10-06 from 001__elm20170927_182809__dat00.bin

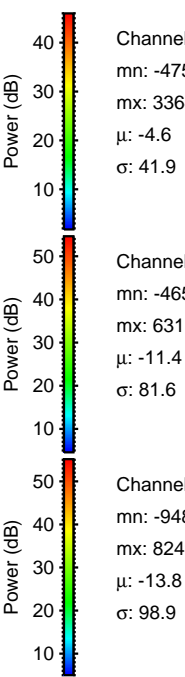
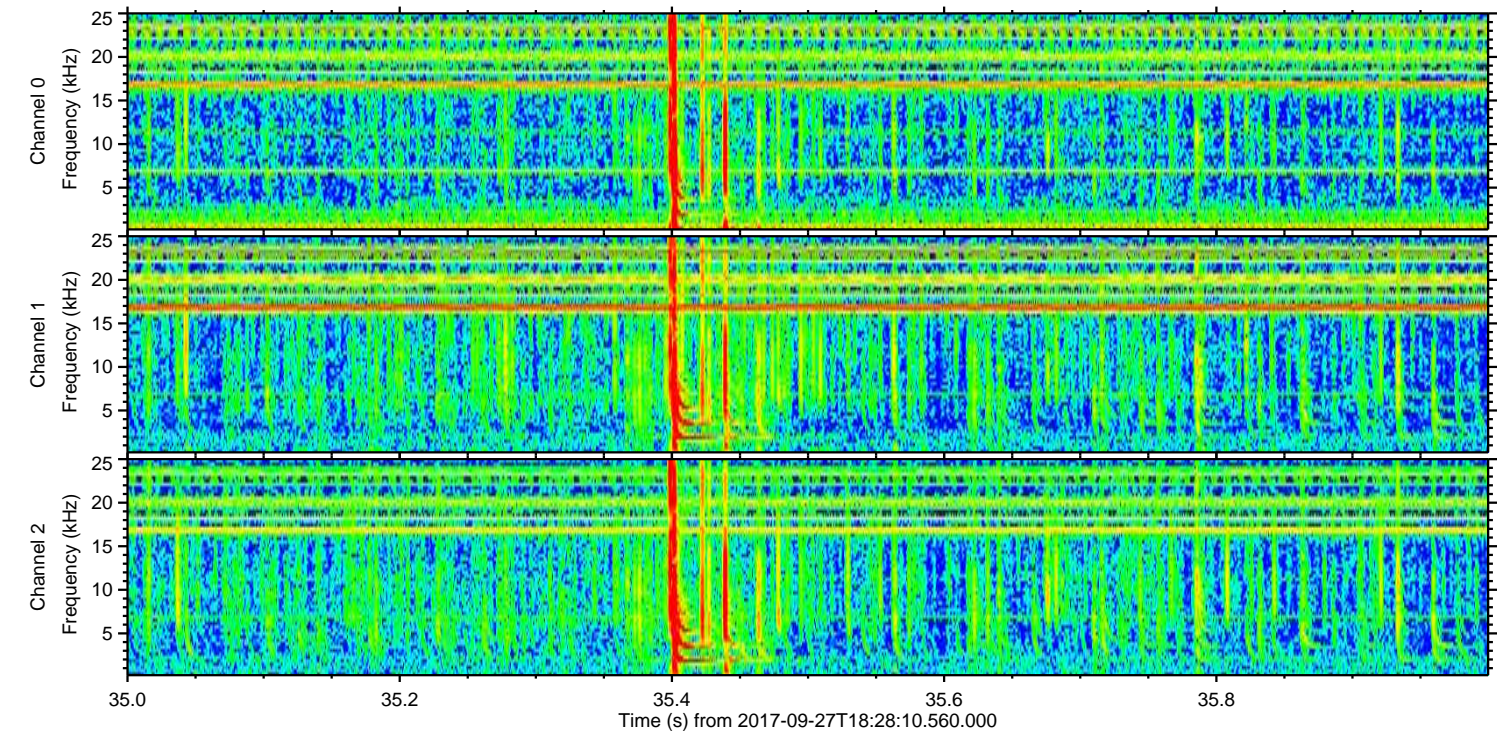
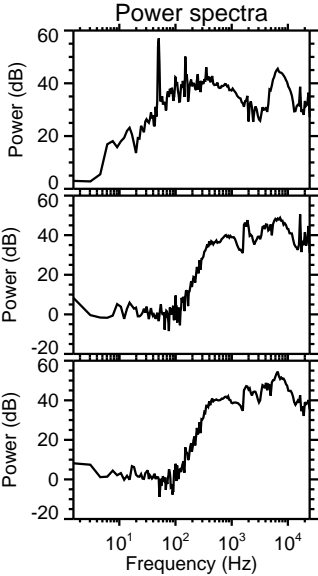
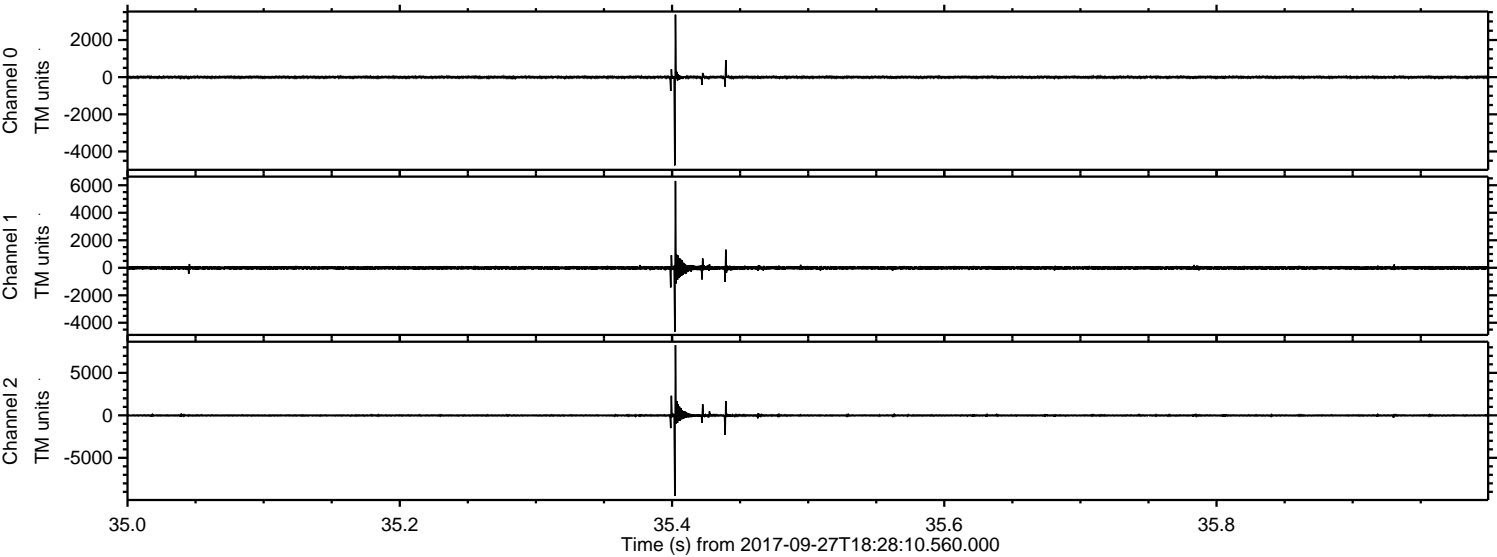


Channel 0
mn: -4750
mx: 3364
 μ : -4.6
 σ : 17.6

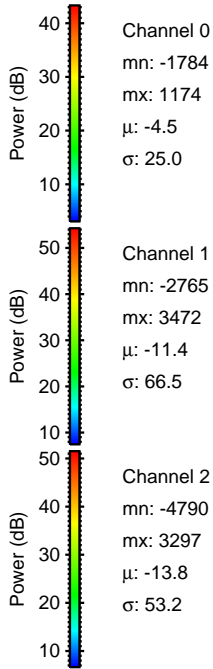
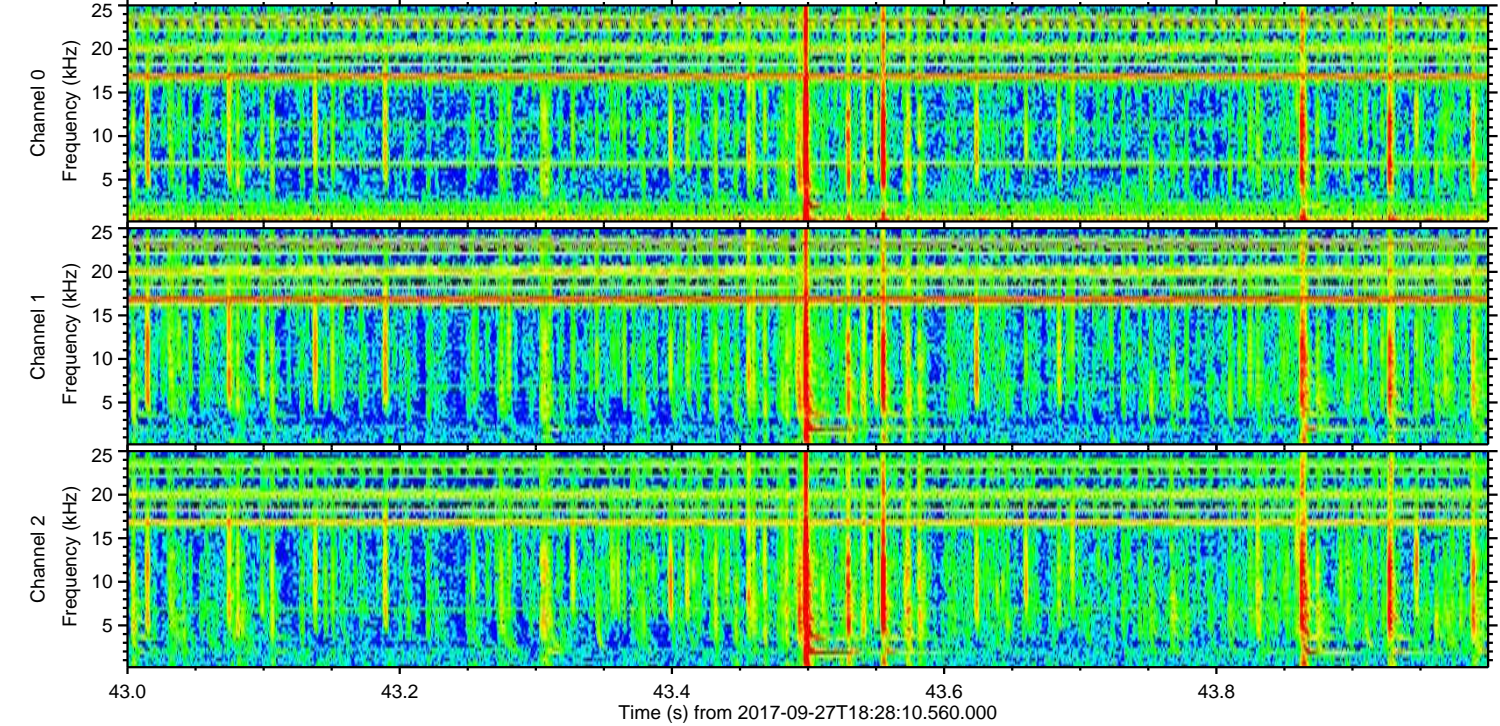
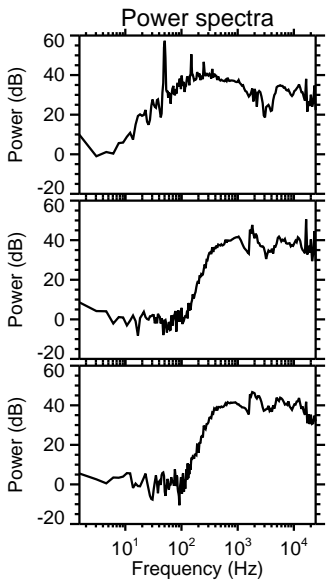
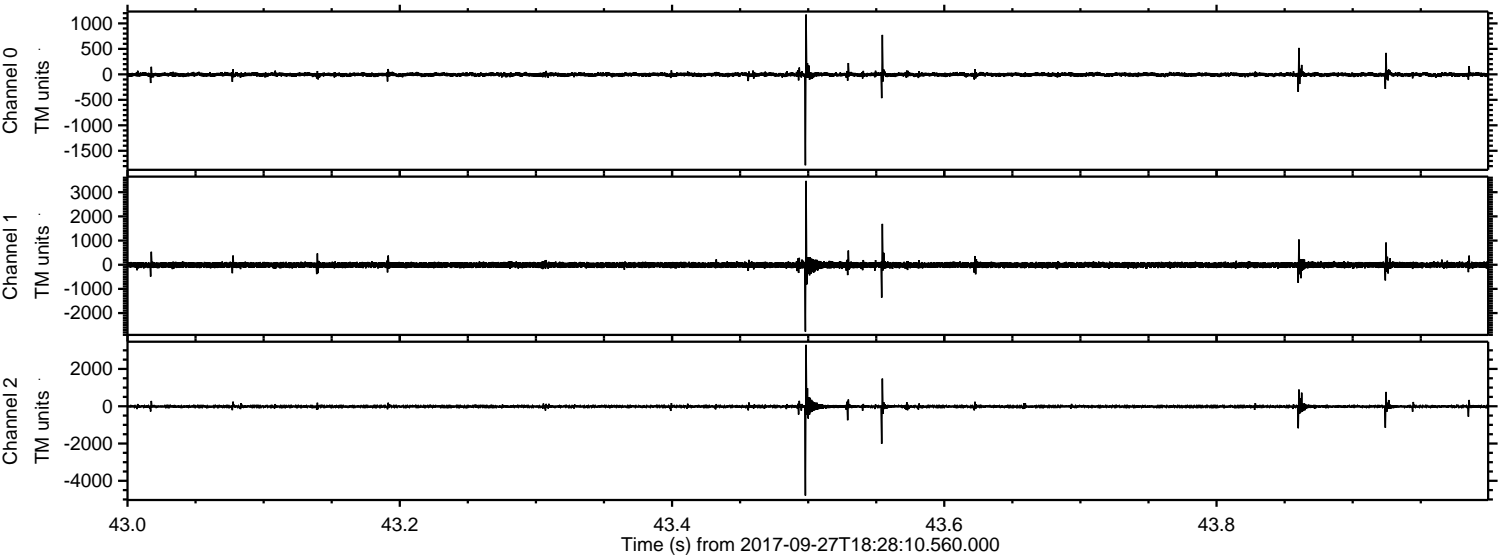
Channel 1
mn: -4650
mx: 6311
 μ : -11.4
 σ : 55.7

Channel 2
mn: -9485
mx: 8249
 μ : -13.8
 σ : 28.9

Processed Wed Sep 27 20:36:13 2017 by ELM ver.2012-10-06 from 001__elm20170927_182809__dat00.bin

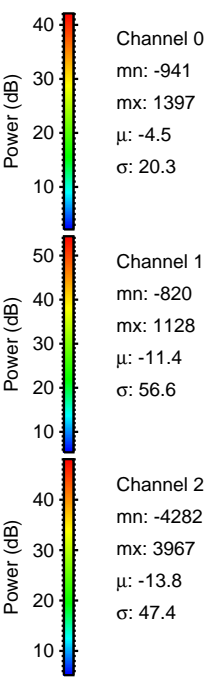
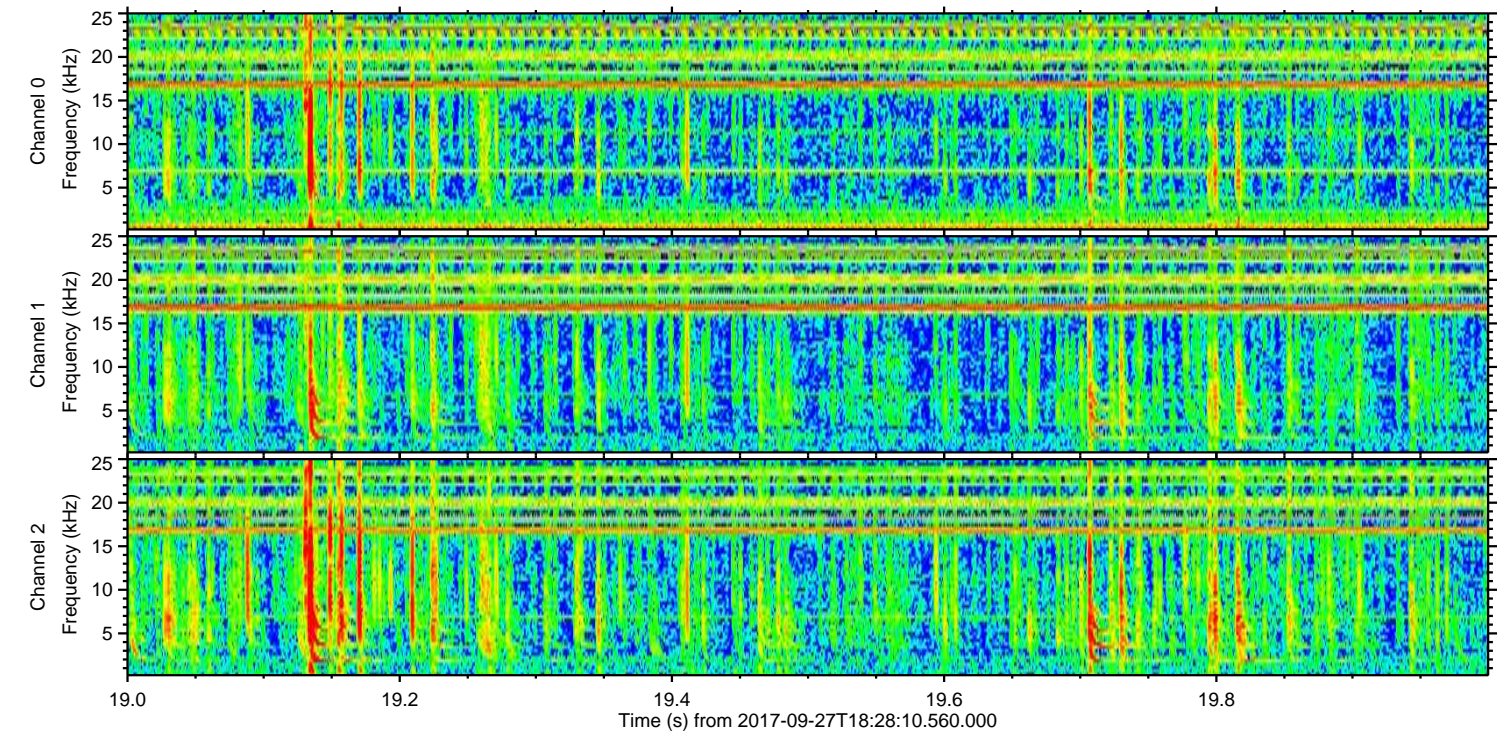
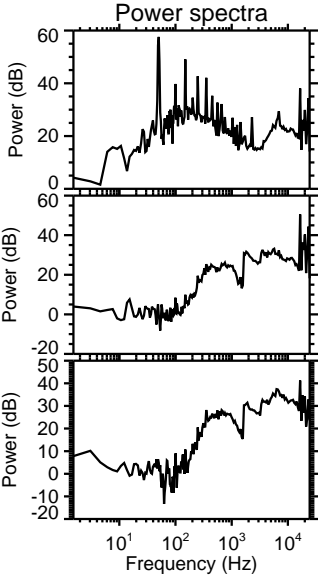
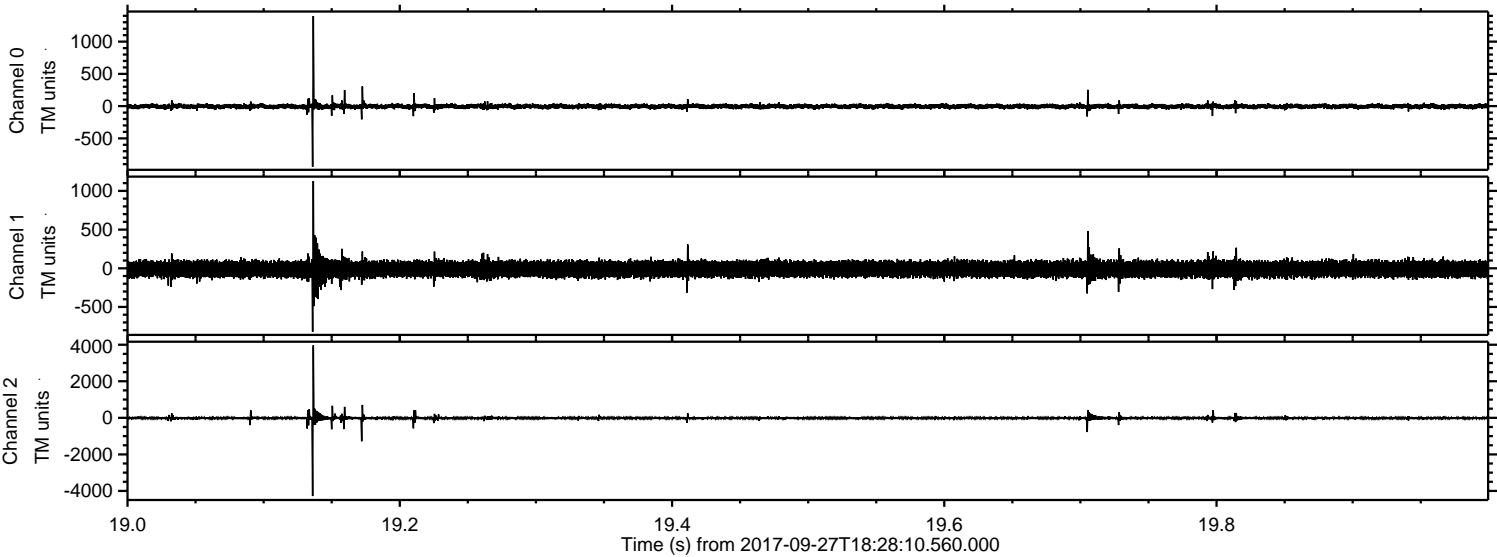


Processed Wed Sep 27 20:36:13 2017 by ELM ver.2012-10-06 from 001__elm20170927_182809__dat00.bin



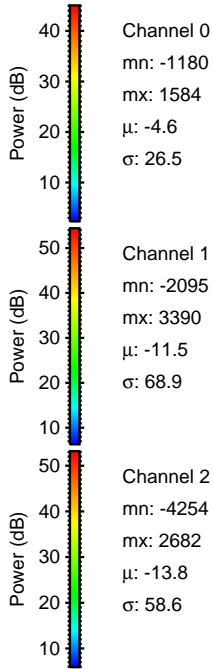
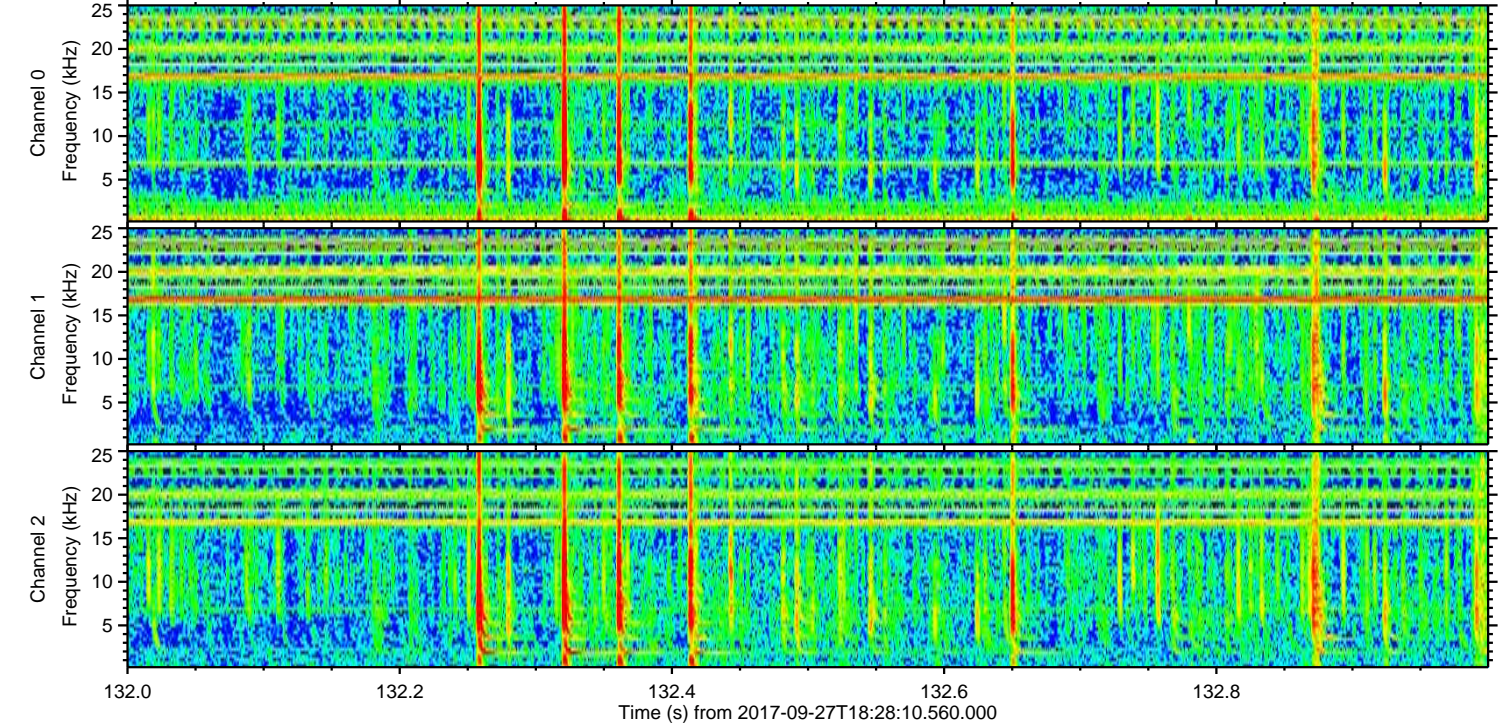
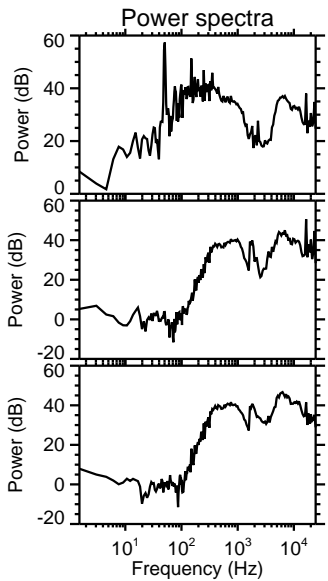
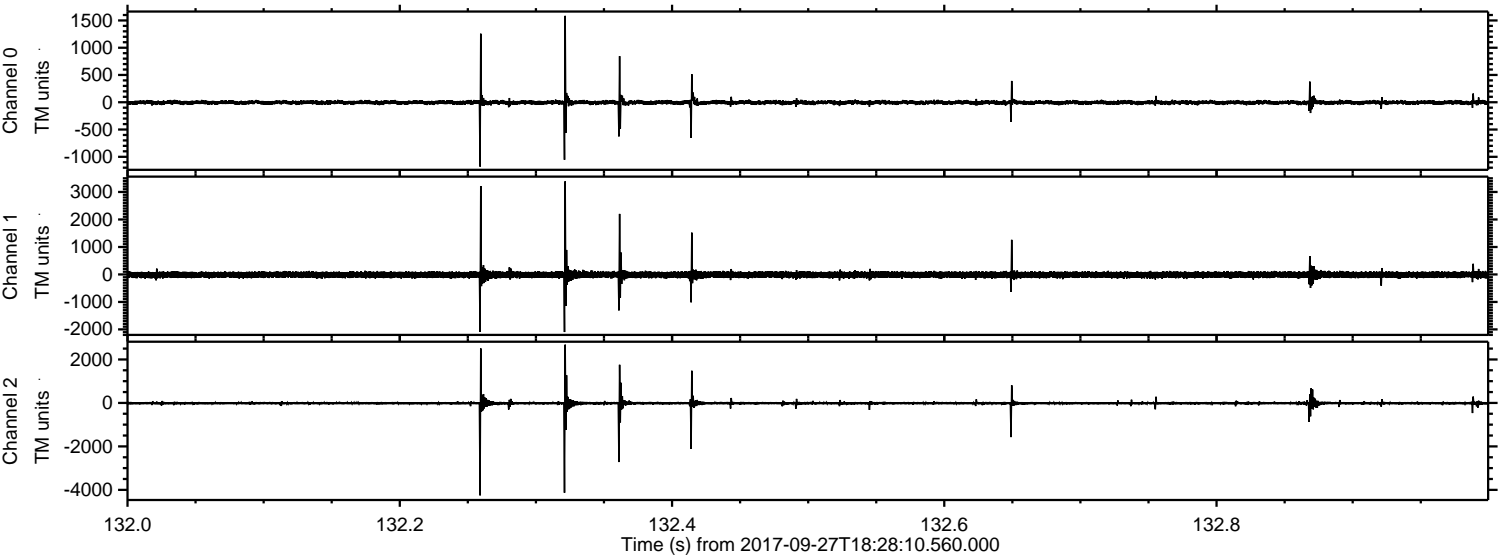
ELMAVAN 3D WAVEFORMS (Measured data sampled at 50 kHz) 51000 packets of 144 samples from 2017-09-27T18:28:10.560.000. Part 20/147

Processed Wed Sep 27 20:36:14 2017 by ELM ver.2012-10-06 from 001__elm20170927_182809__dat00.bin

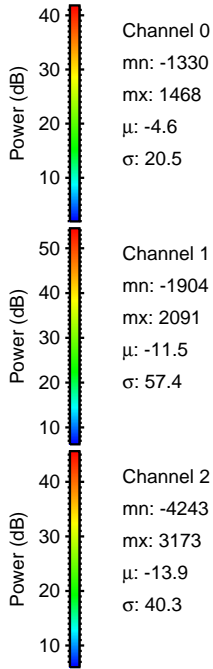
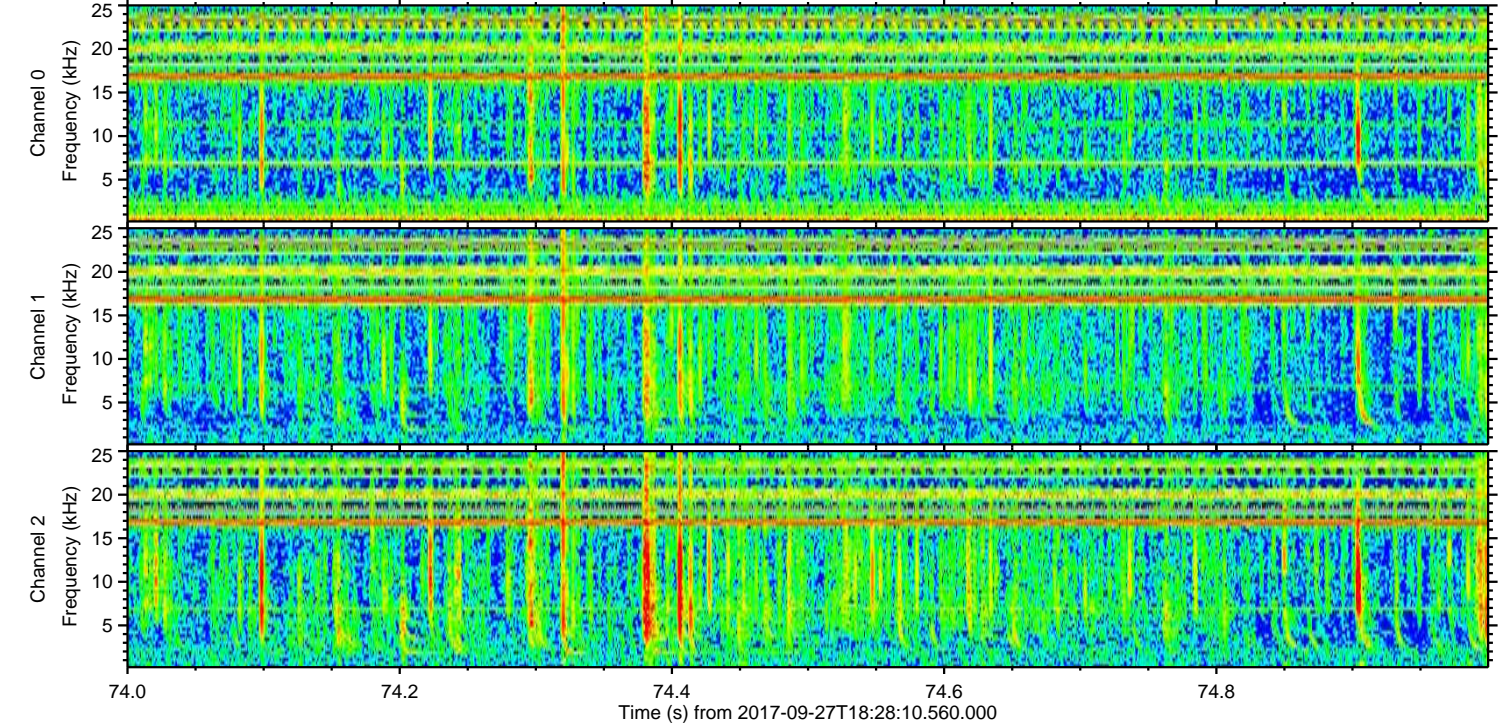
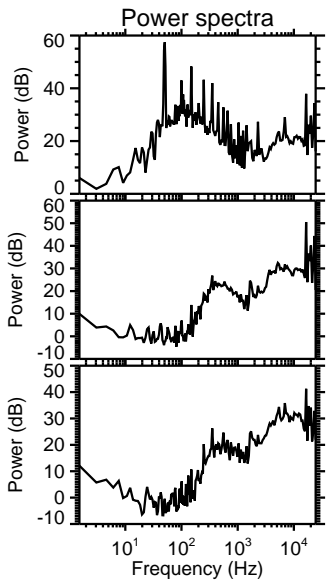
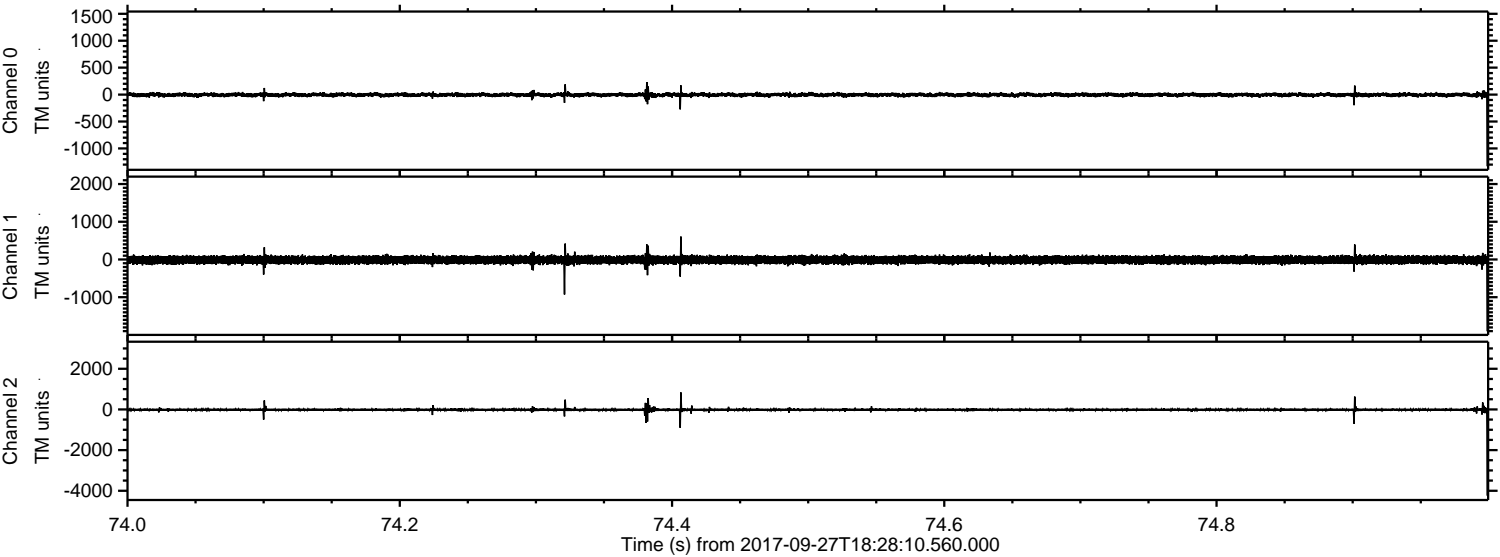


ELMAVAN 3D WAVEFORMS (Measured data sampled at 50 kHz) 51000 packets of 144 samples from 2017-09-27T18:28:10.560.000. Part 133/147

Processed Wed Sep 27 20:36:15 2017 by ELM ver.2012-10-06 from 001__elm20170927_182809__dat00.bin



Processed Wed Sep 27 20:36:16 2017 by ELM ver.2012-10-06 from 001_elm20170927_182809__dat00.bin

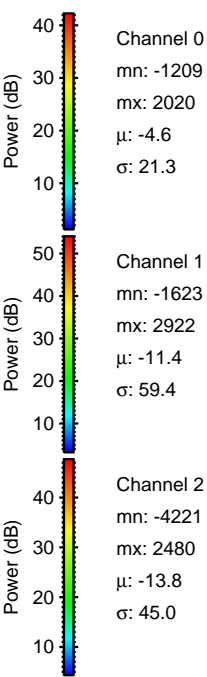
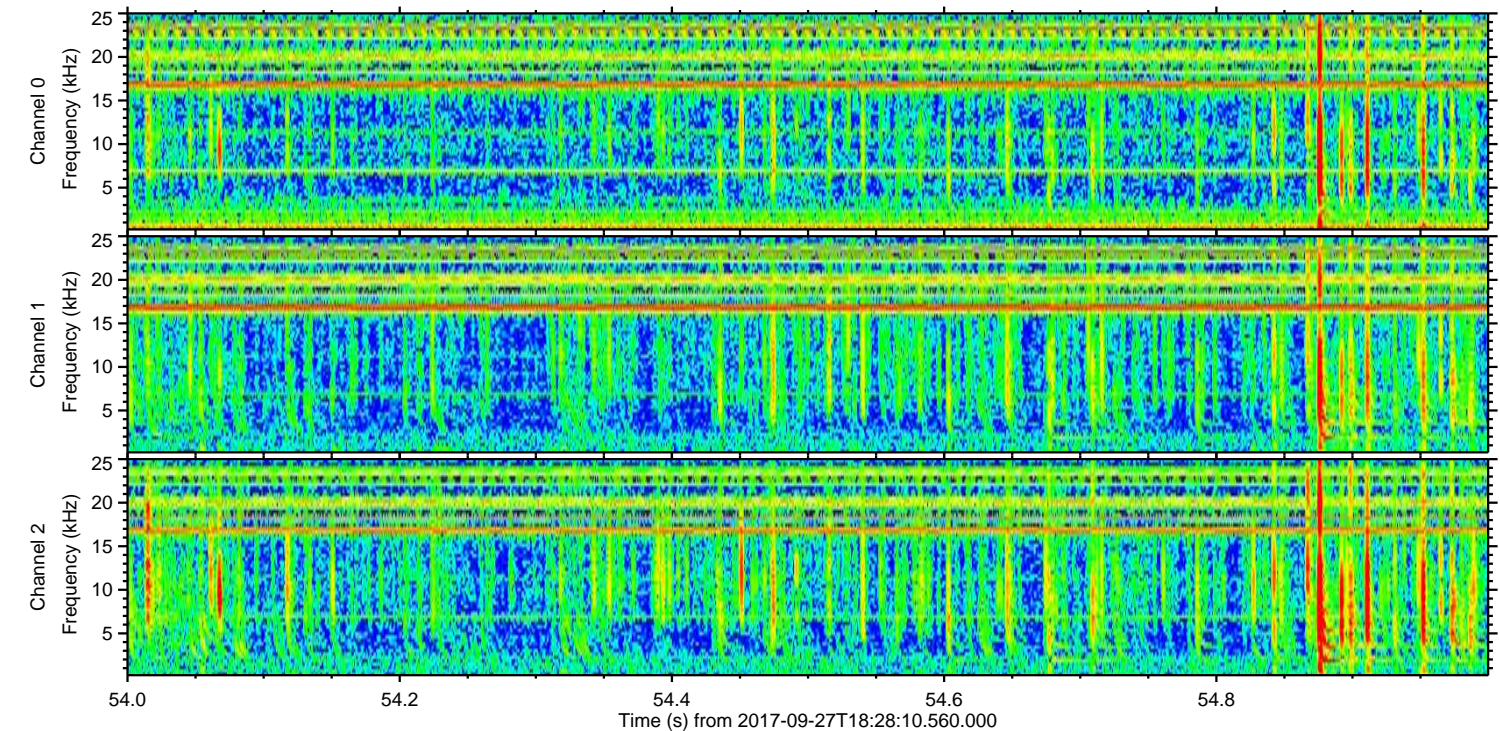
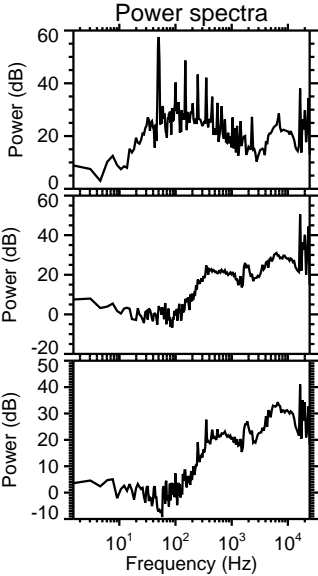
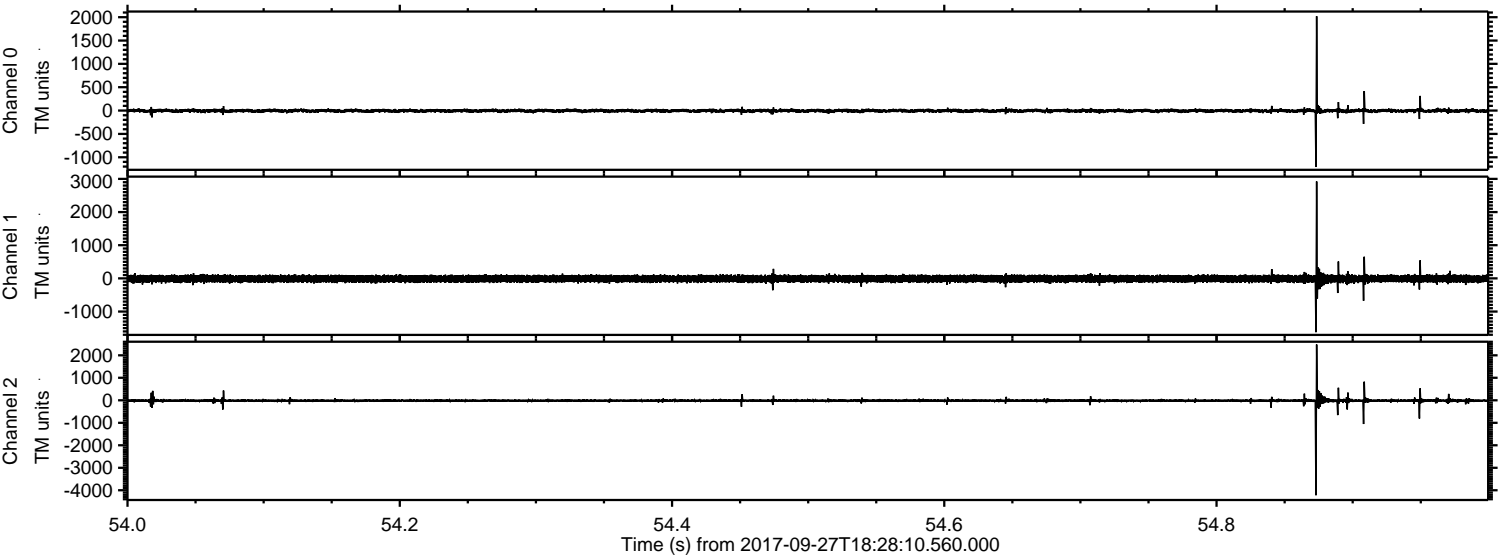


Channel 0
mn: -1330
mx: 1468
 μ : -4.6
 σ : 20.5

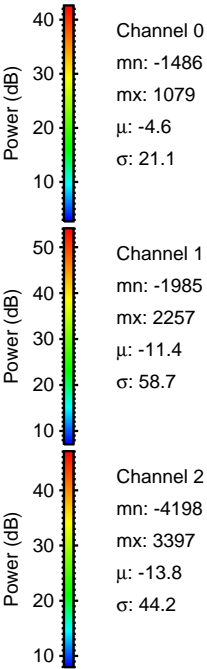
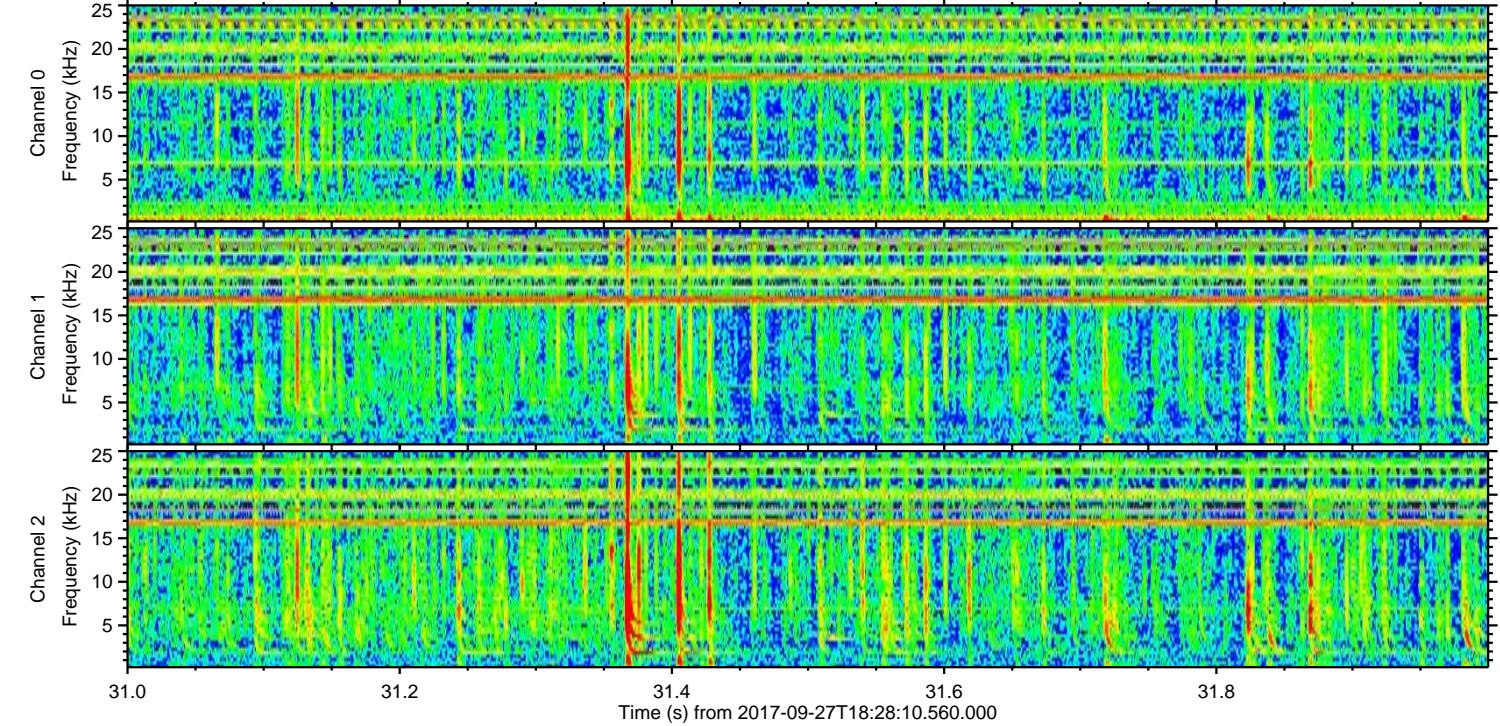
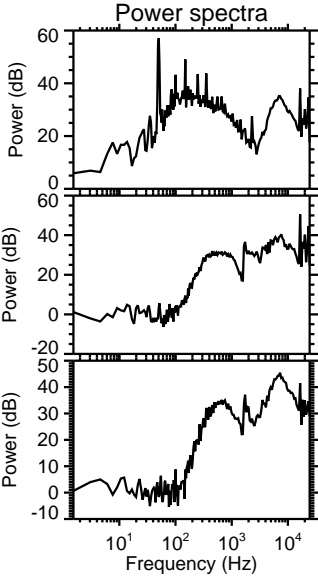
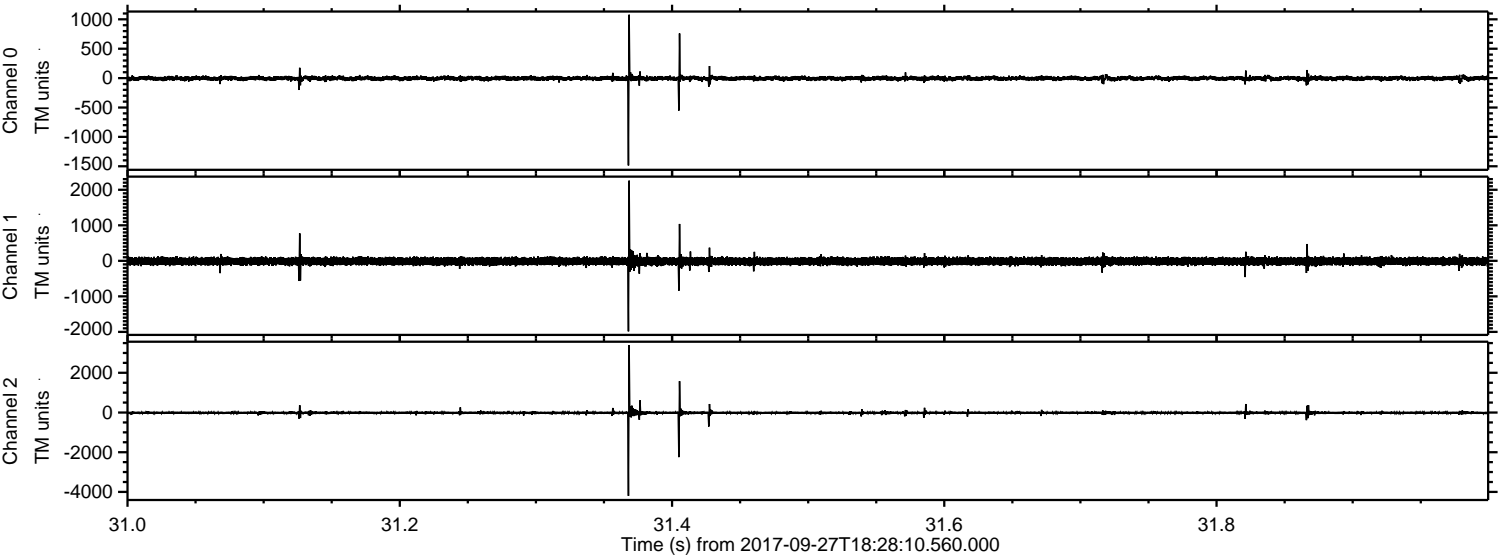
Channel 1
mn: -1904
mx: 2091
 μ : -11.5
 σ : 57.4

Channel 2
mn: -4243
mx: 3173
 μ : -13.9
 σ : 40.3

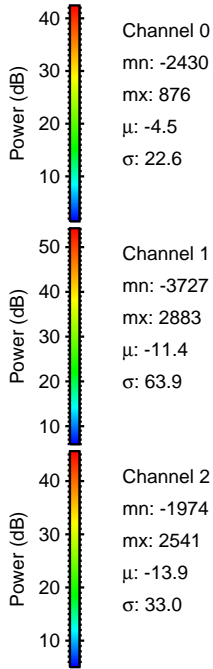
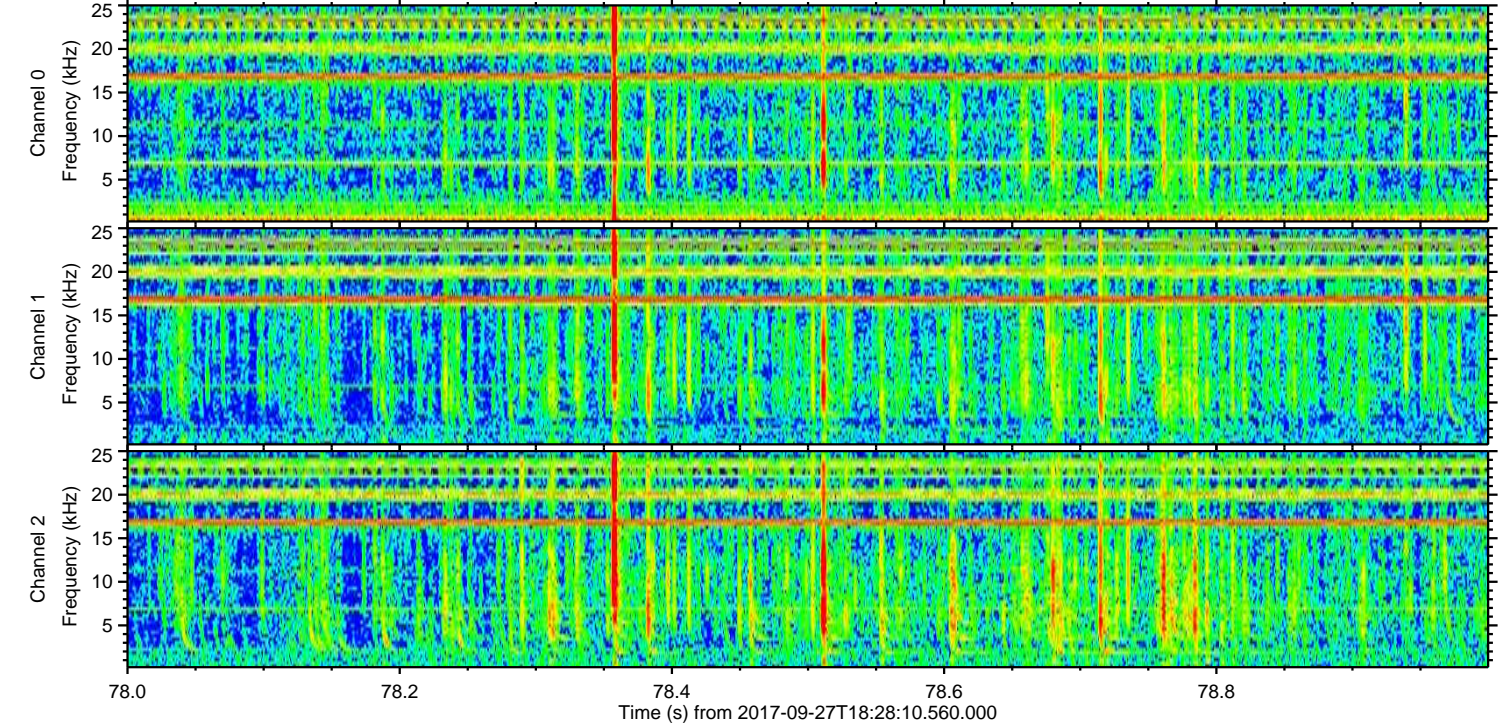
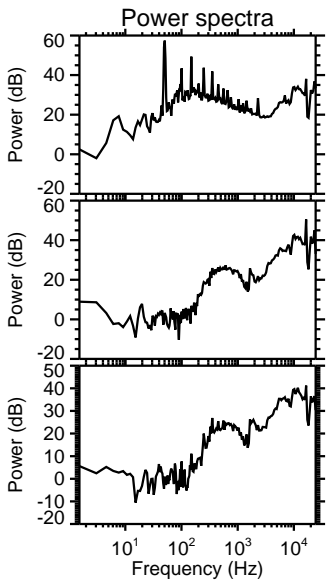
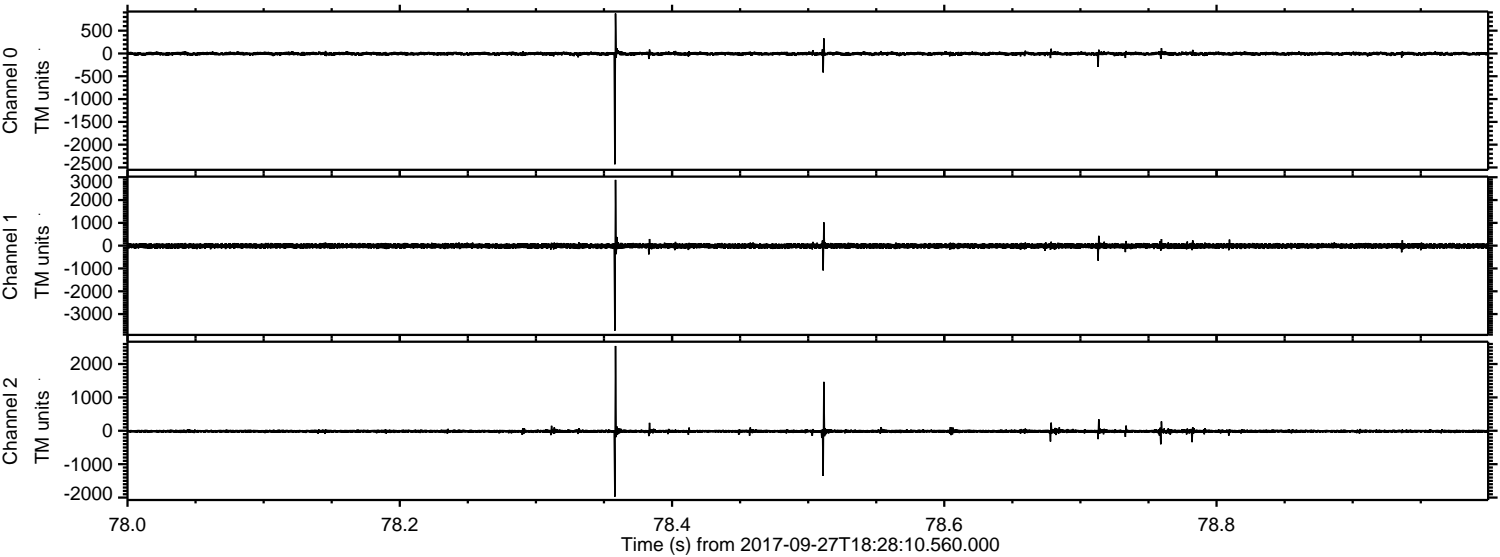
Processed Wed Sep 27 20:36:17 2017 by ELM ver.2012-10-06 from 001__elm20170927_182809__dat00.bin



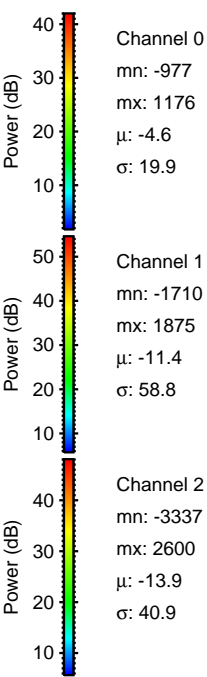
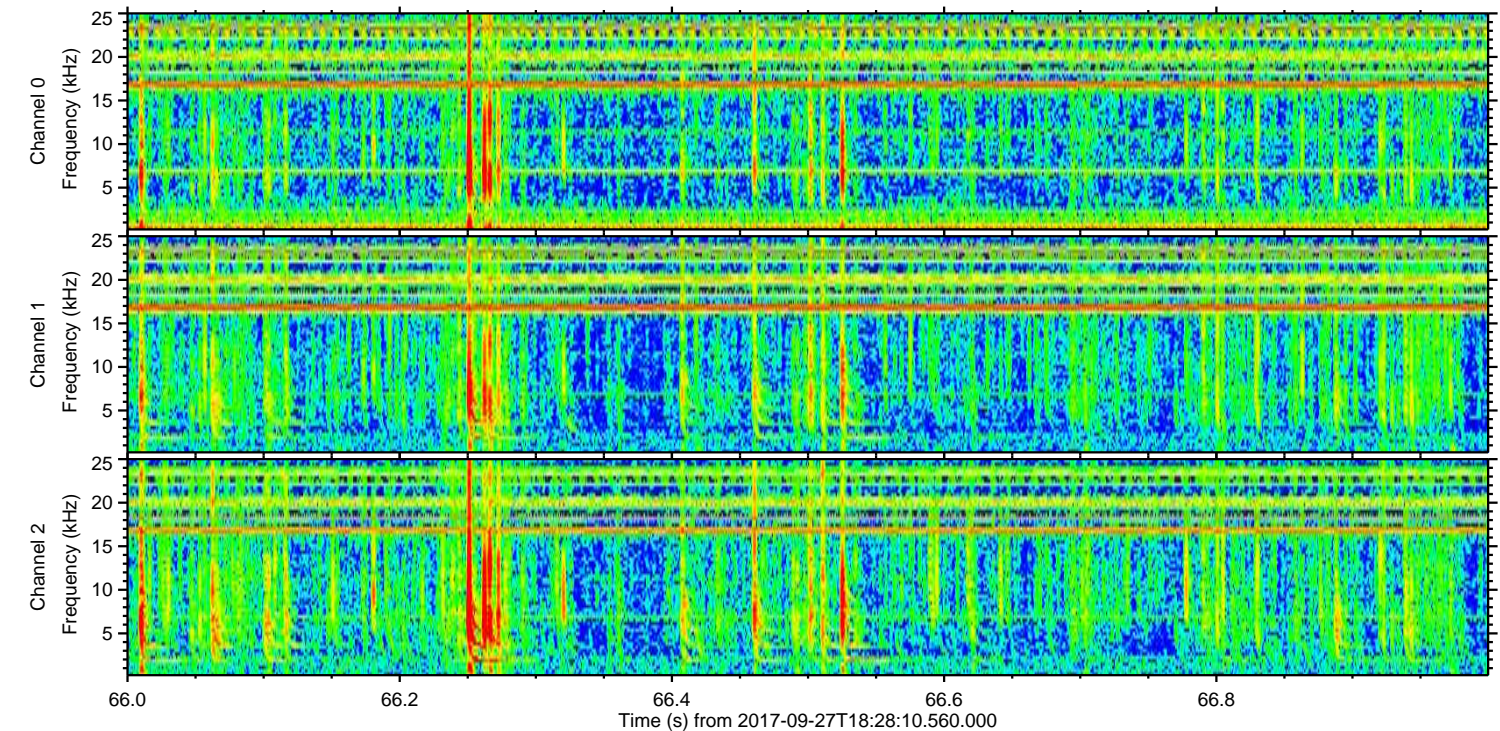
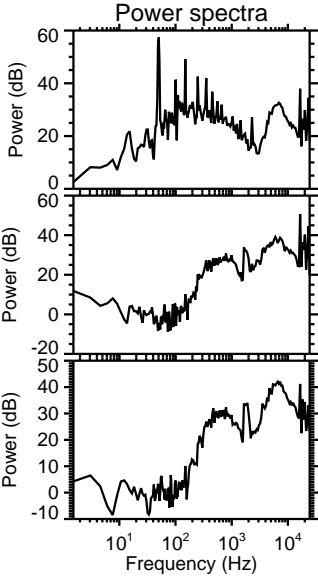
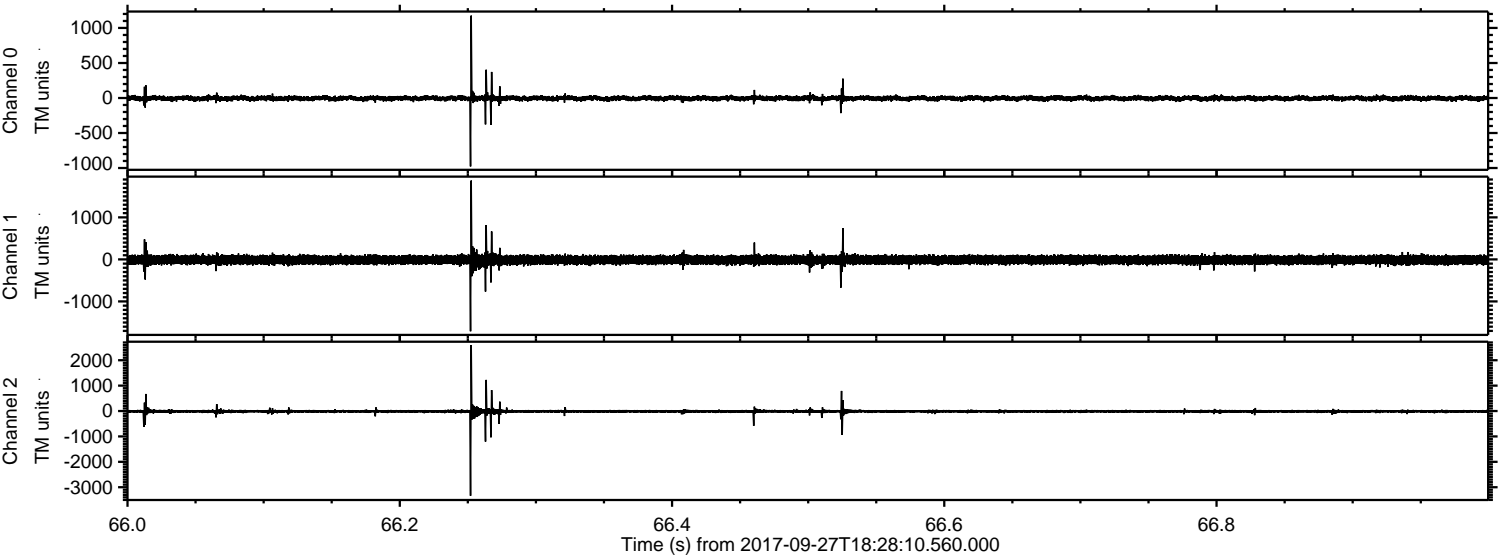
Processed Wed Sep 27 20:36:17 2017 by ELM ver.2012-10-06 from 001__elm20170927_182809__dat00.bin



Processed Wed Sep 27 20:36:18 2017 by ELM ver.2012-10-06 from 001__elm20170927_182809__dat00.bin



Processed Wed Sep 27 20:36:19 2017 by ELM ver.2012-10-06 from 001__elm20170927_182809__dat00.bin



Channel 0
mn: -977
mx: 1176
 μ : -4.6
 σ : 19.9

Channel 1
mn: -1710
mx: 1875
 μ : -11.4
 σ : 58.8

Channel 2
mn: -3337
mx: 2600
 μ : -13.9
 σ : 40.9

Processed Wed Sep 27 20:36:20 2017 by ELM ver.2012-10-06 from 001__elm20170927_182809__dat00.bin

