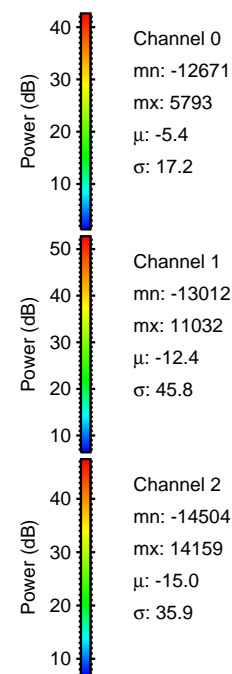
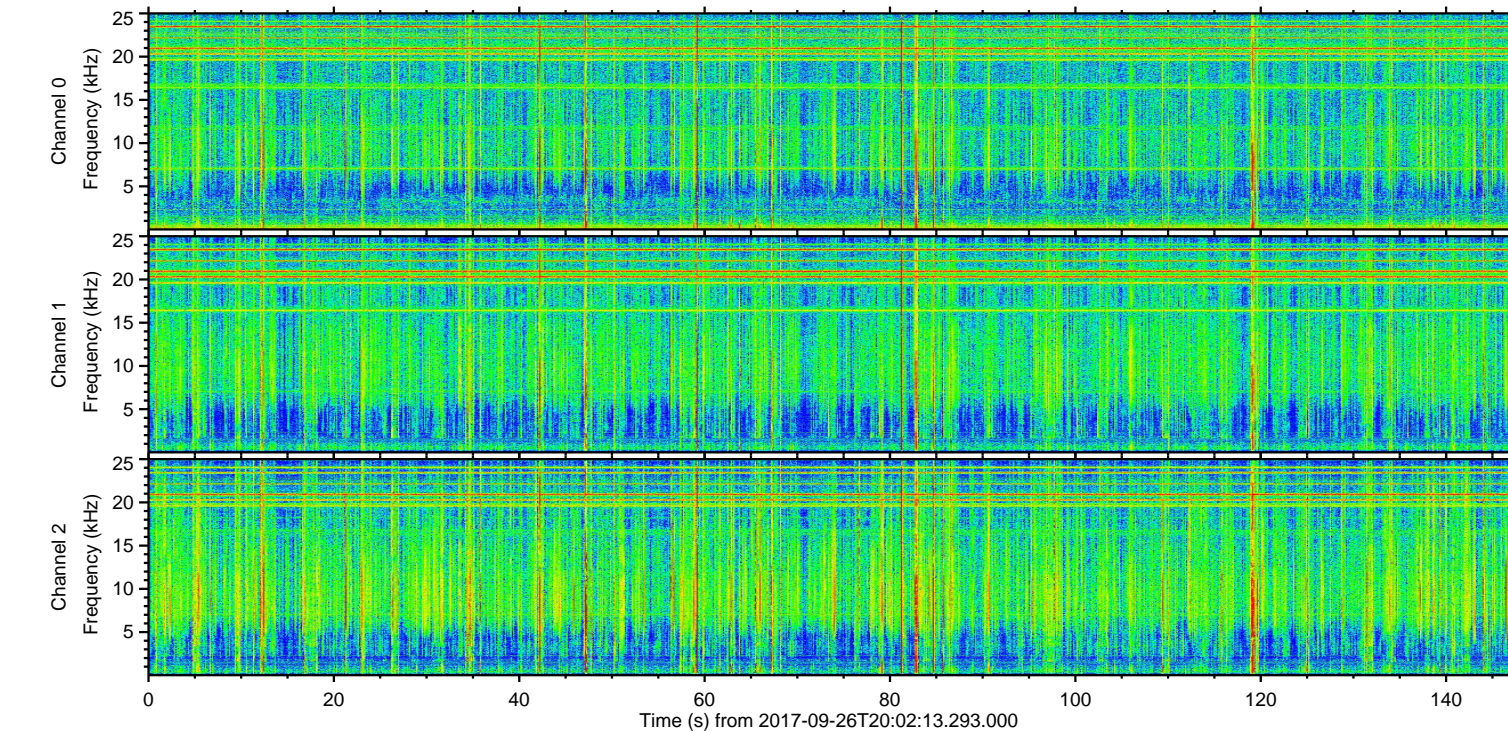
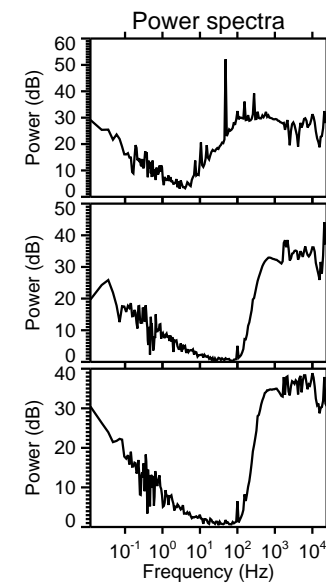
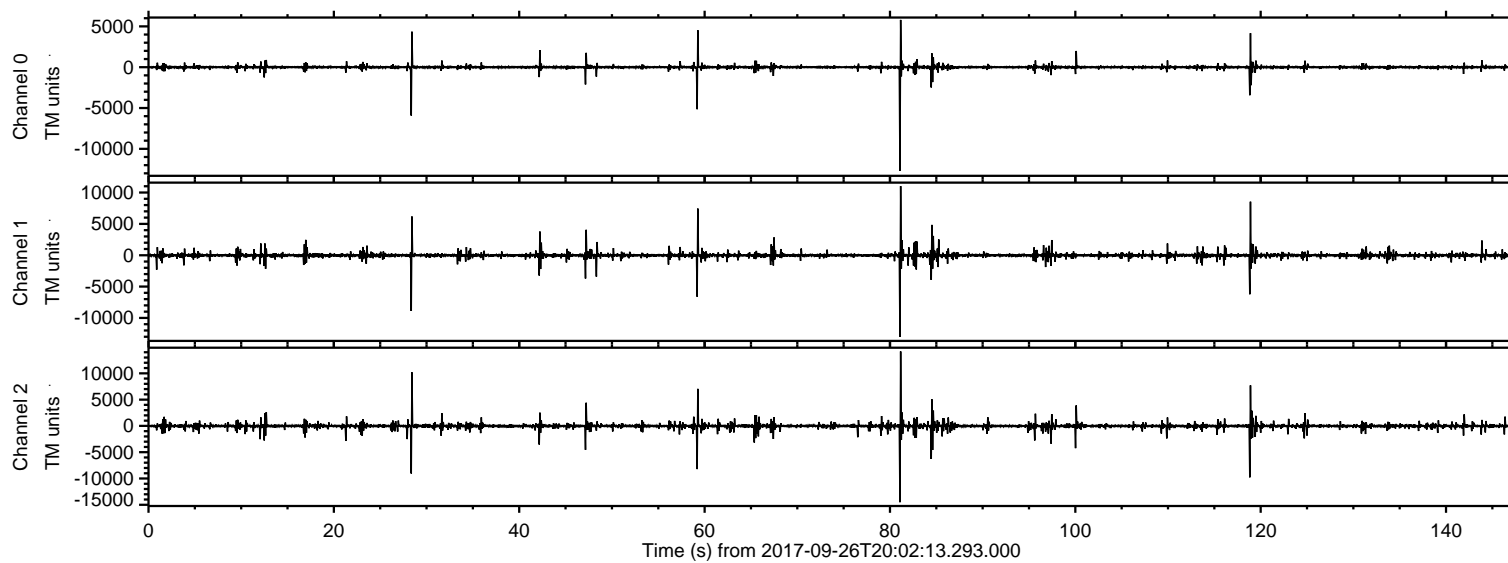


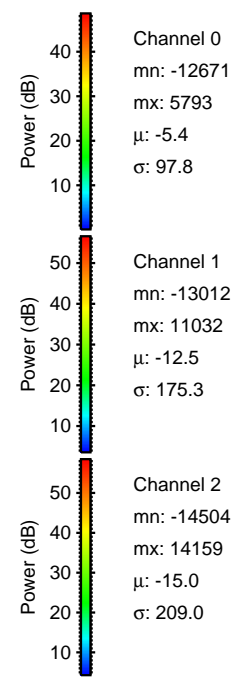
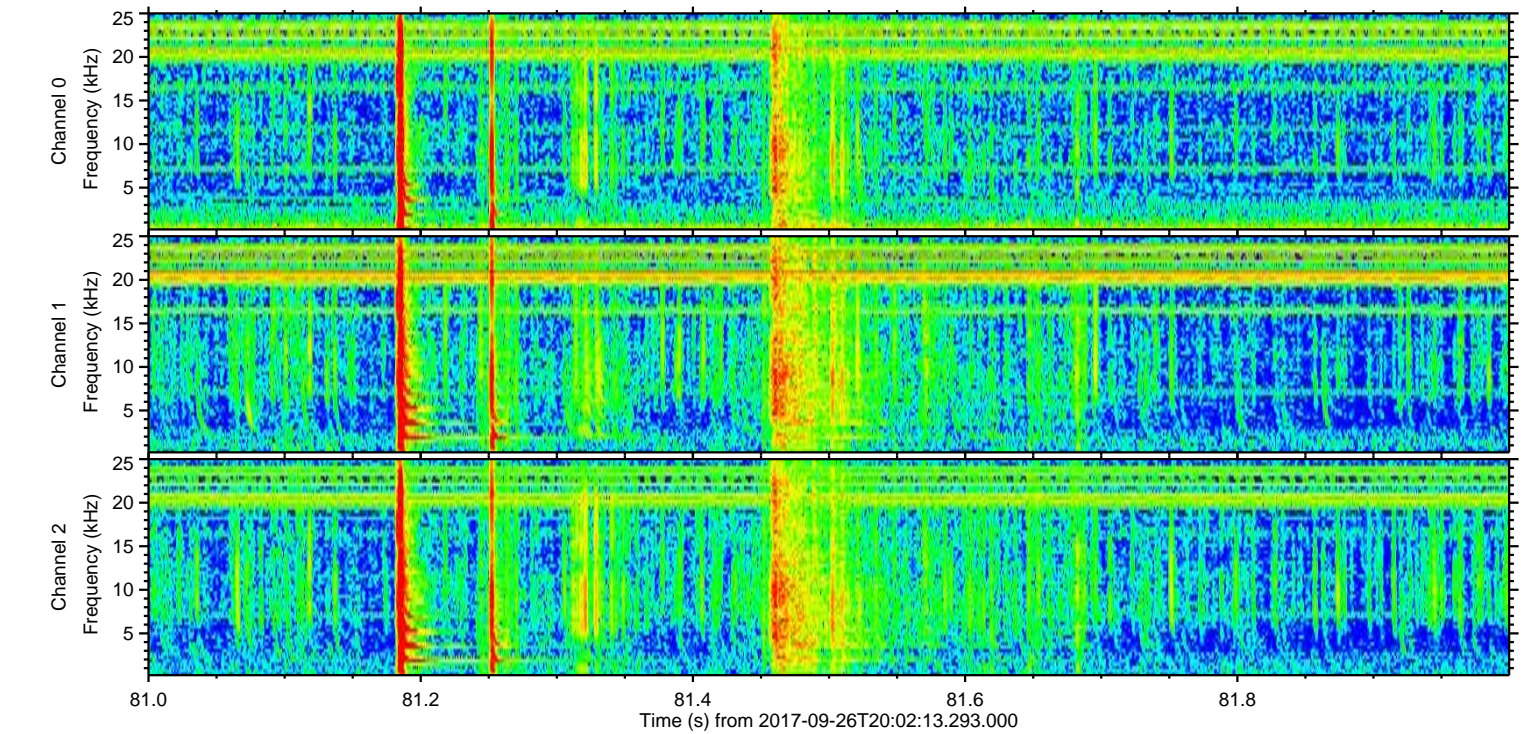
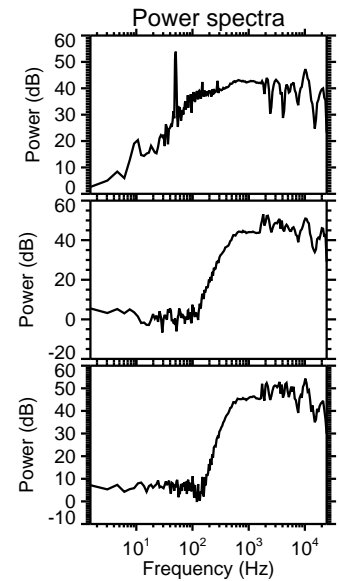
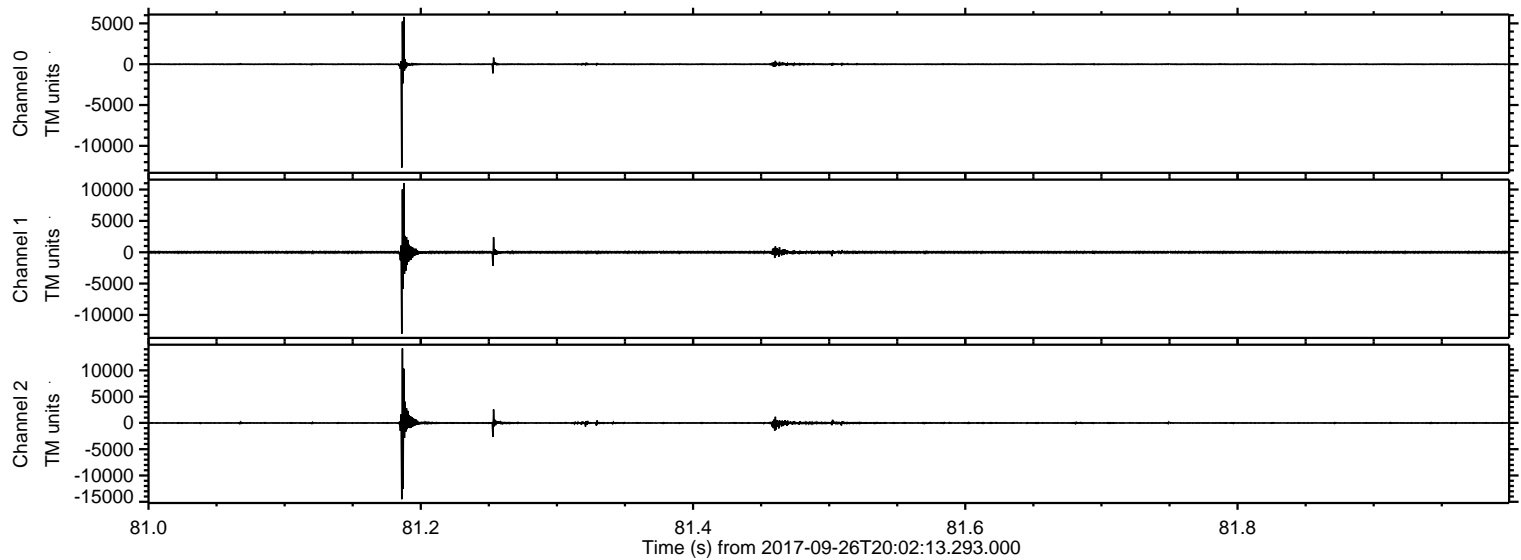
# ELMAVAN 3D WAVEFORMS (Measured data sampled at 50 kHz) 51000 packets of 144 samples from 2017-09-26T20:02:13.293.000.

Processed Tue Sep 26 22:09:42 2017 by ELM ver.2012-10-06 from 001\_\_elm20170926\_200212\_\_dat00.bin



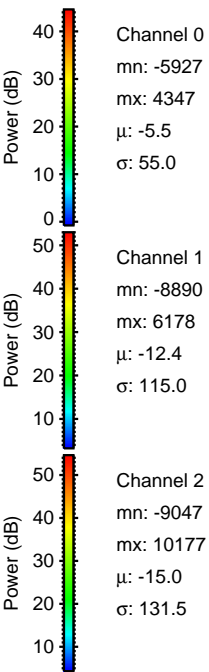
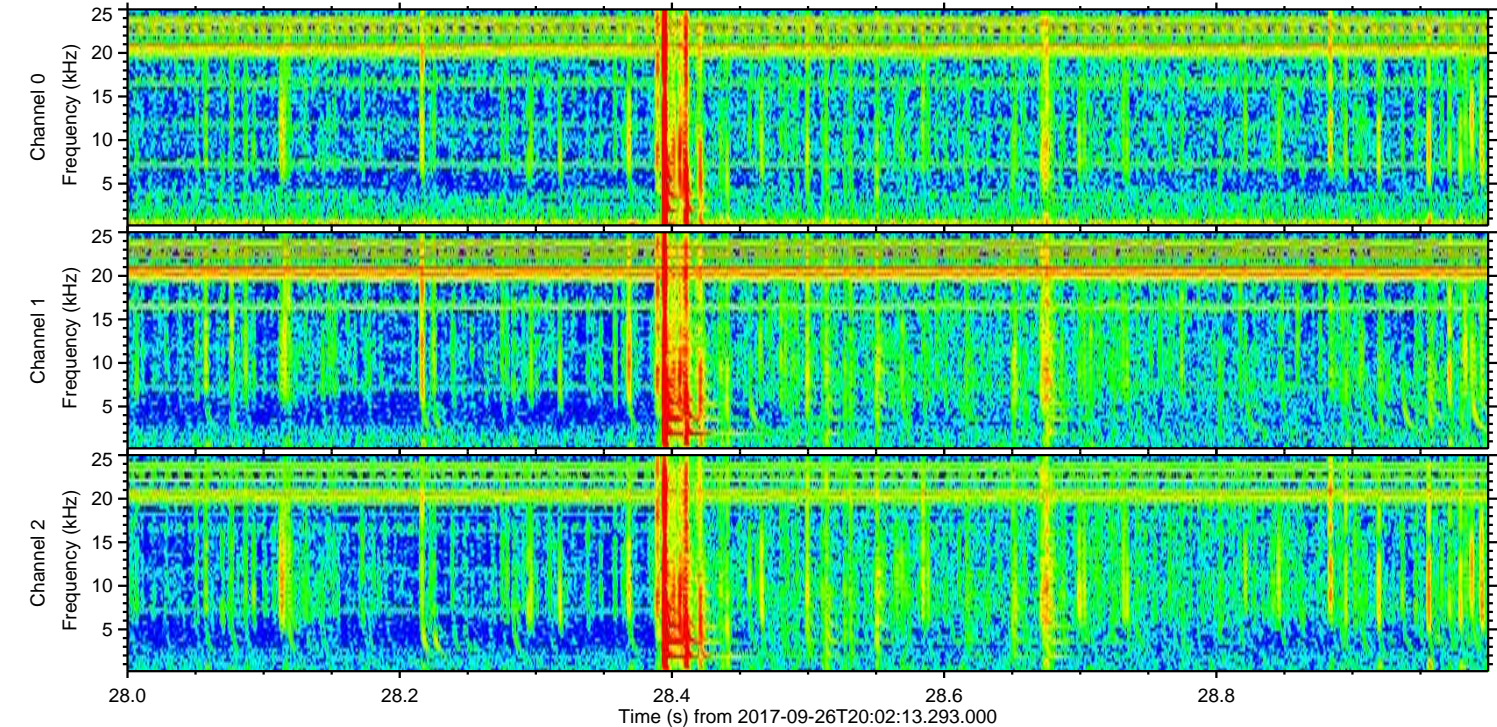
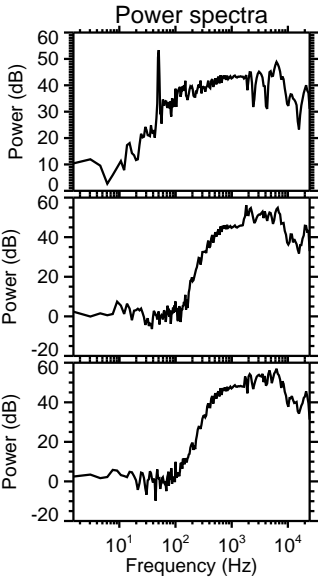
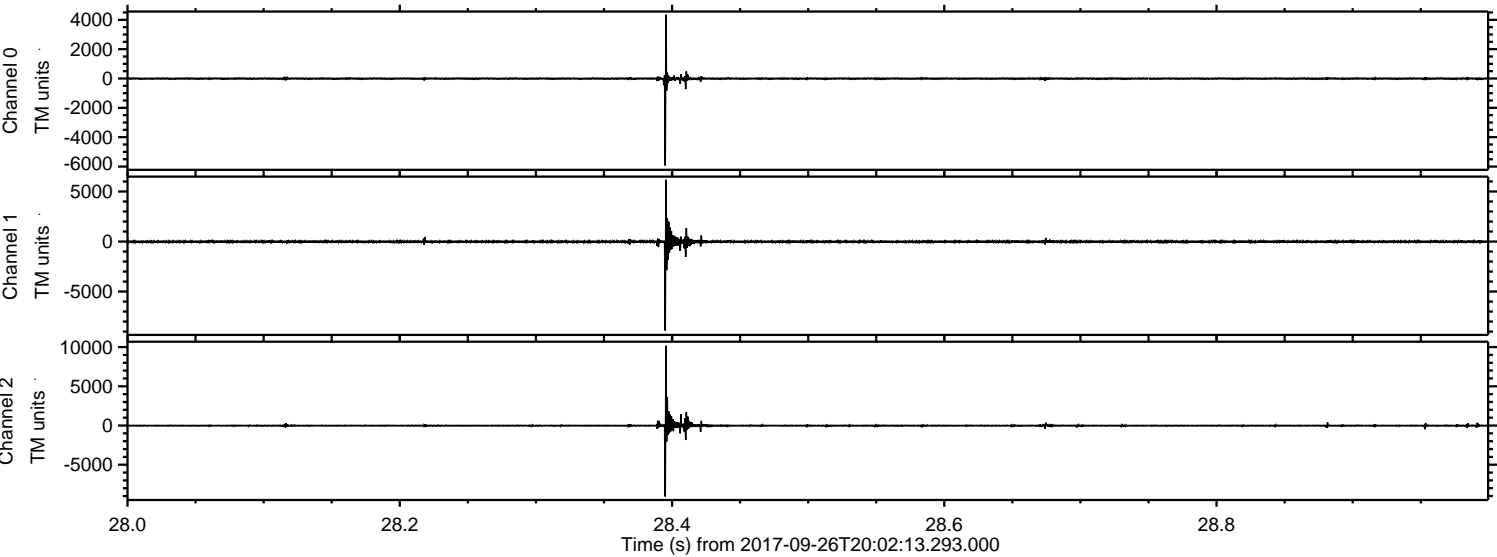


Processed Tue Sep 26 22:09:49 2017 by ELM ver.2012-10-06 from 001\_\_elm20170926\_200212\_\_dat00.bin





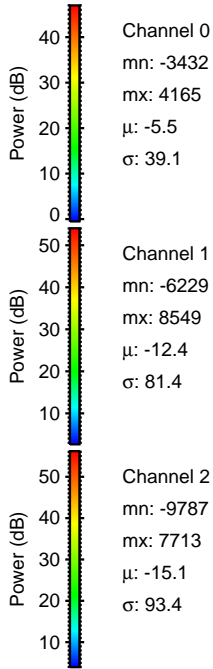
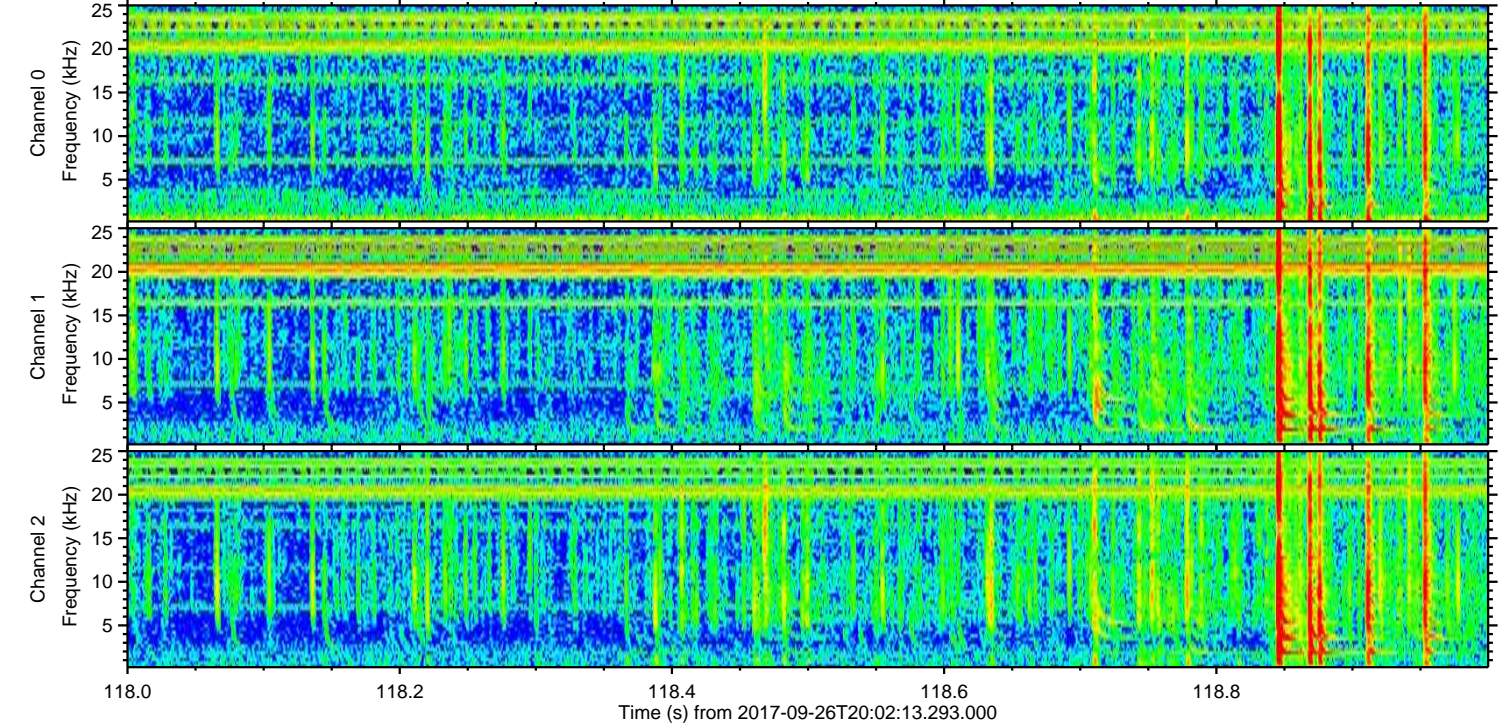
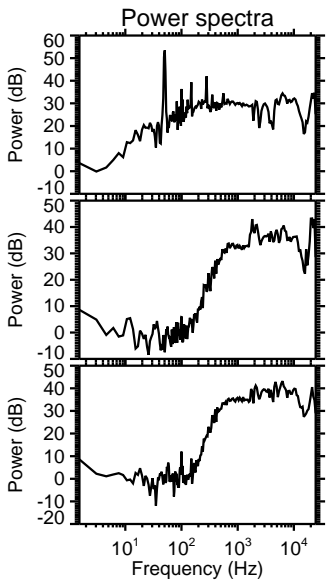
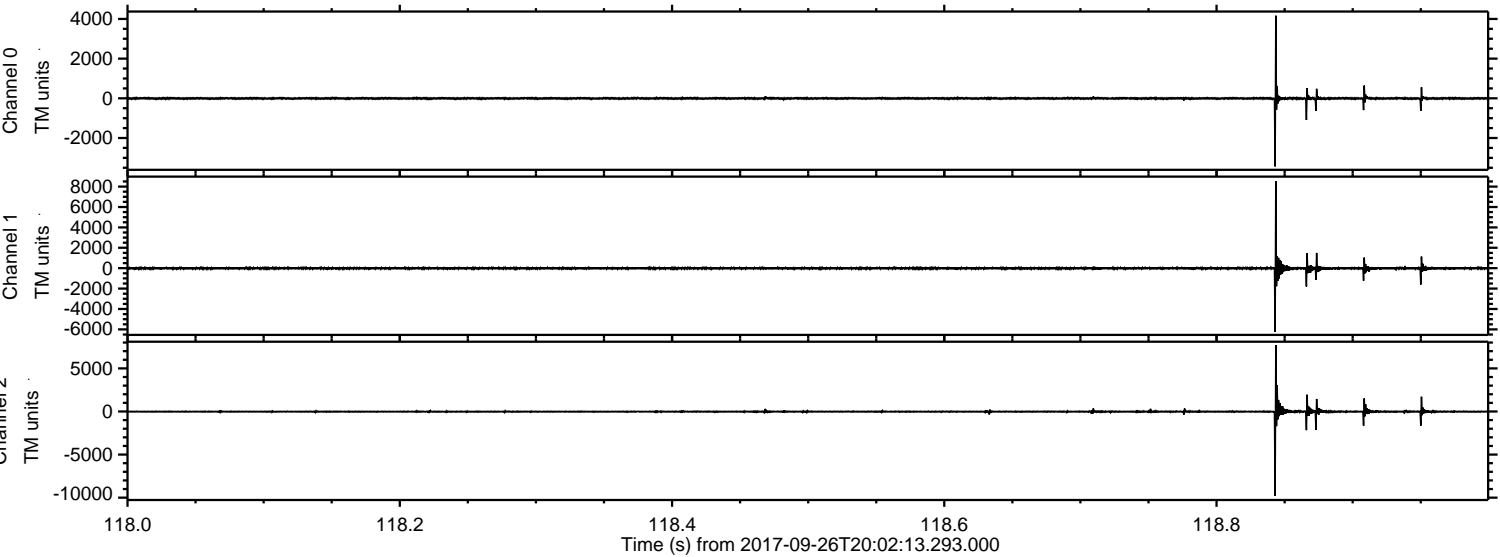
Processed Tue Sep 26 22:09:49 2017 by ELM ver.2012-10-06 from 001\_\_elm20170926\_200212\_\_dat00.bin





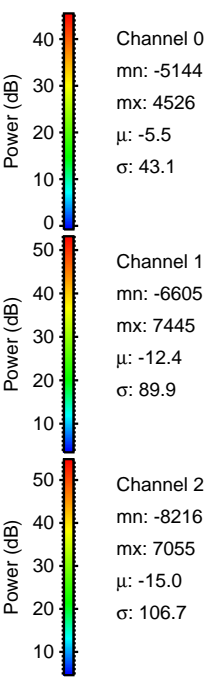
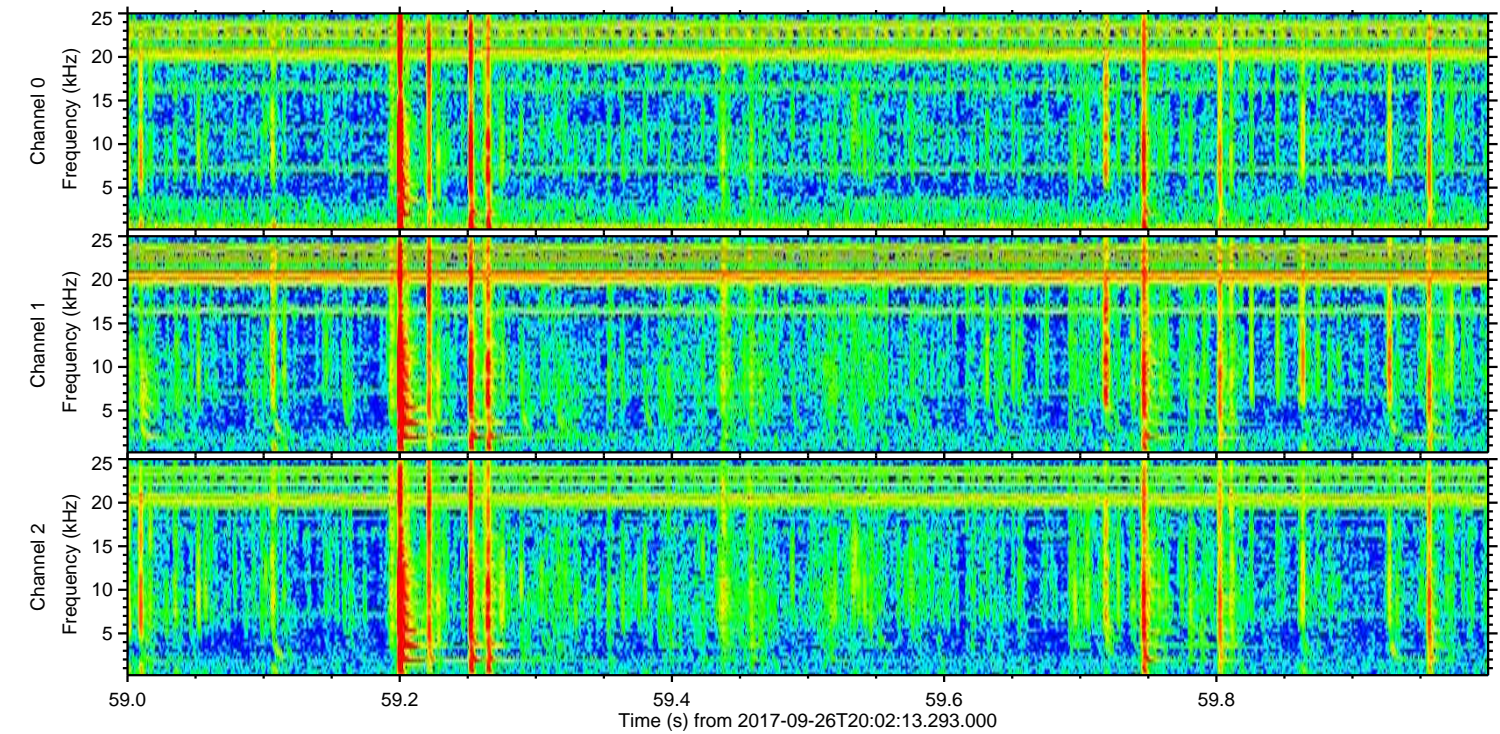
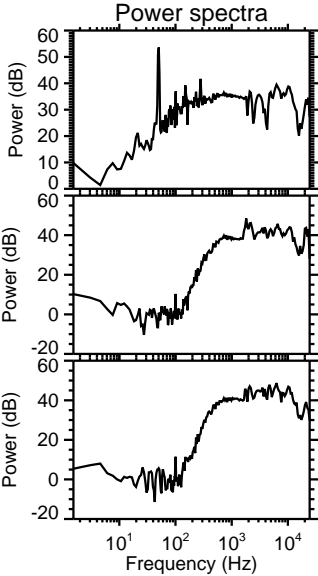
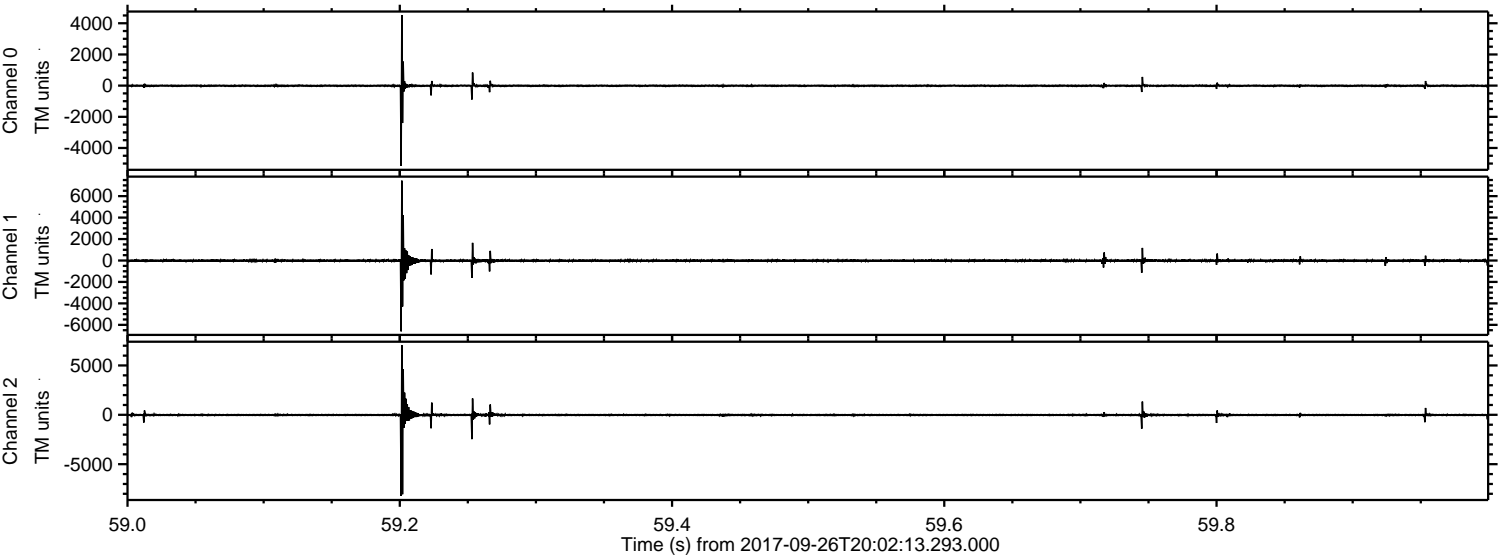
ELMAVAN 3D WAVEFORMS (Measured data sampled at 50 kHz) 51000 packets of 144 samples from 2017-09-26T20:02:13.293.000. Part 119/147

Processed Tue Sep 26 22:09:50 2017 by ELM ver.2012-10-06 from 001\_\_elm20170926\_200212\_\_dat00.bin





Processed Tue Sep 26 22:09:51 2017 by ELM ver.2012-10-06 from 001\_\_elm20170926\_200212\_\_dat00.bin



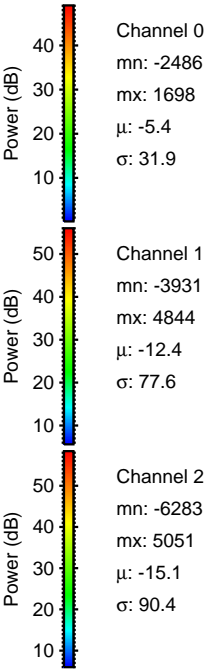
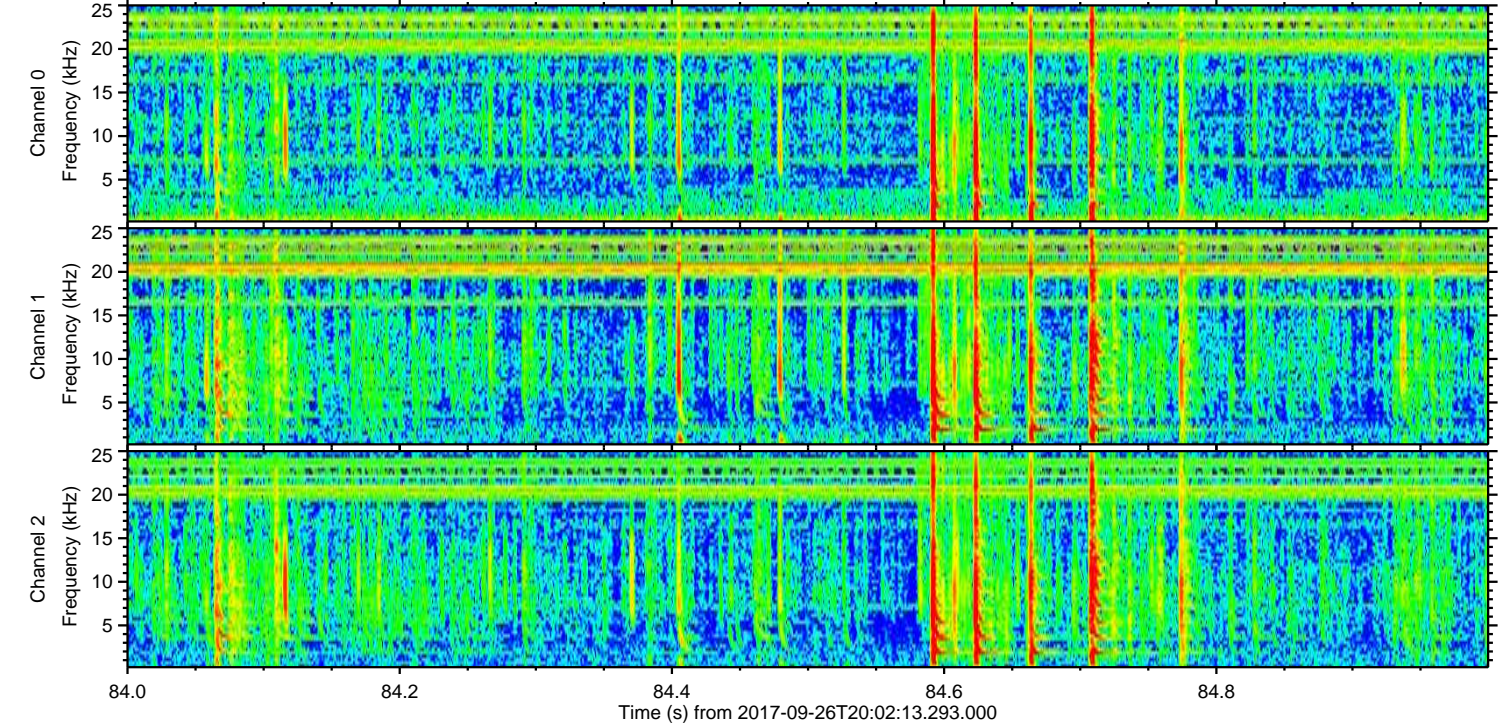
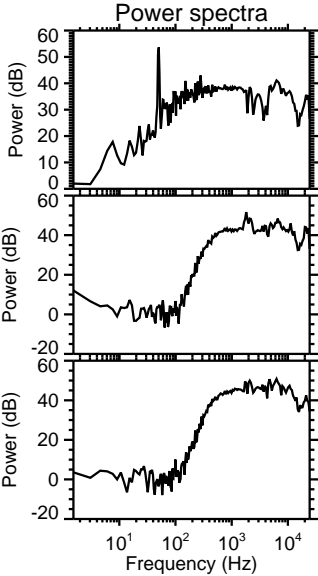
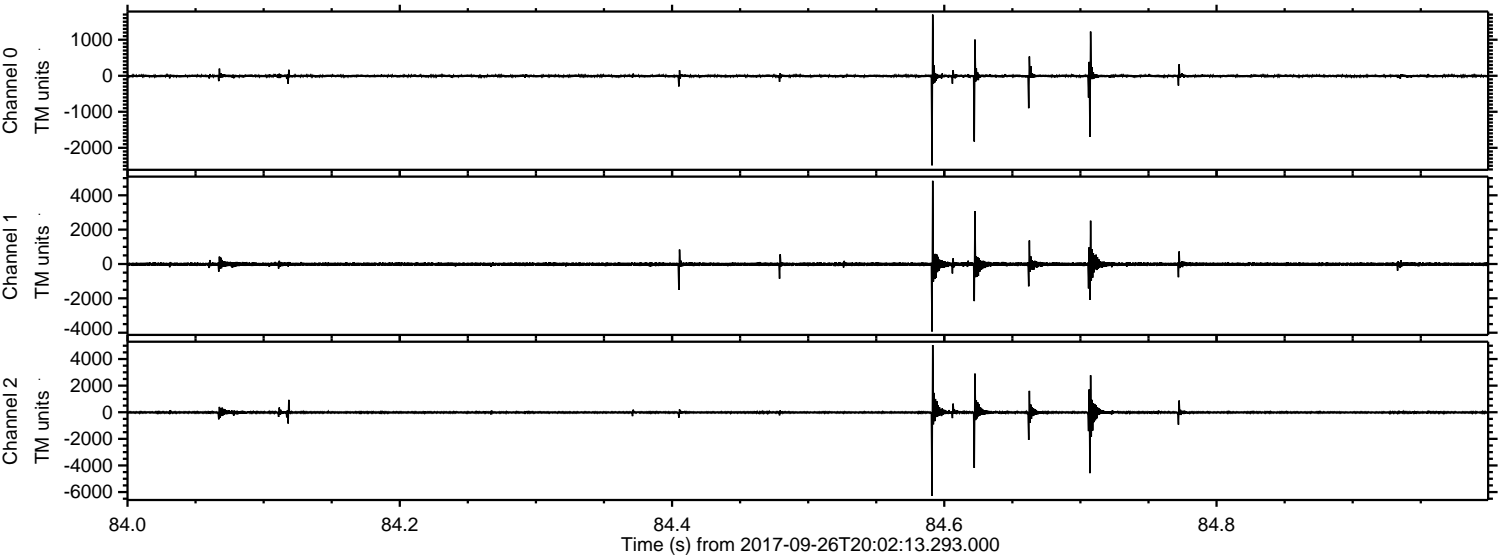
Channel 0  
mn: -5144  
mx: 4526  
 $\mu$ : -5.5  
 $\sigma$ : 43.1

Channel 1  
mn: -6605  
mx: 7445  
 $\mu$ : -12.4  
 $\sigma$ : 89.9

Channel 2  
mn: -8216  
mx: 7055  
 $\mu$ : -15.0  
 $\sigma$ : 106.7

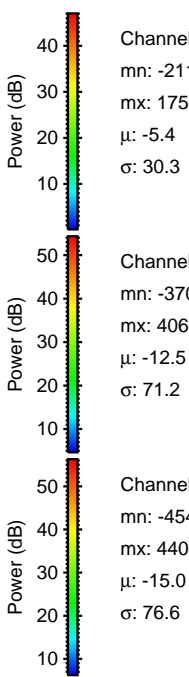
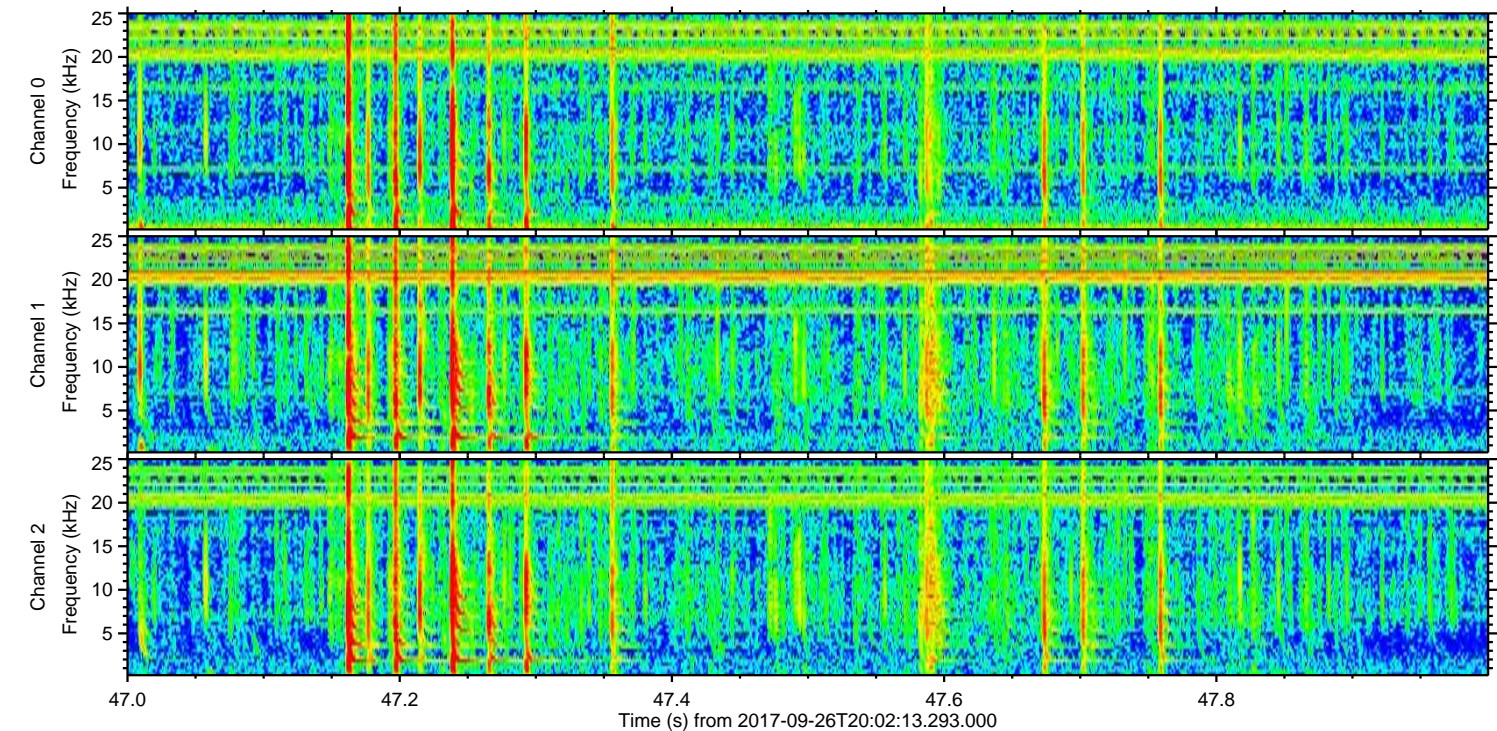
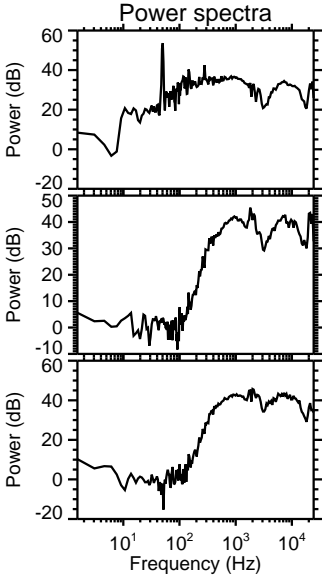
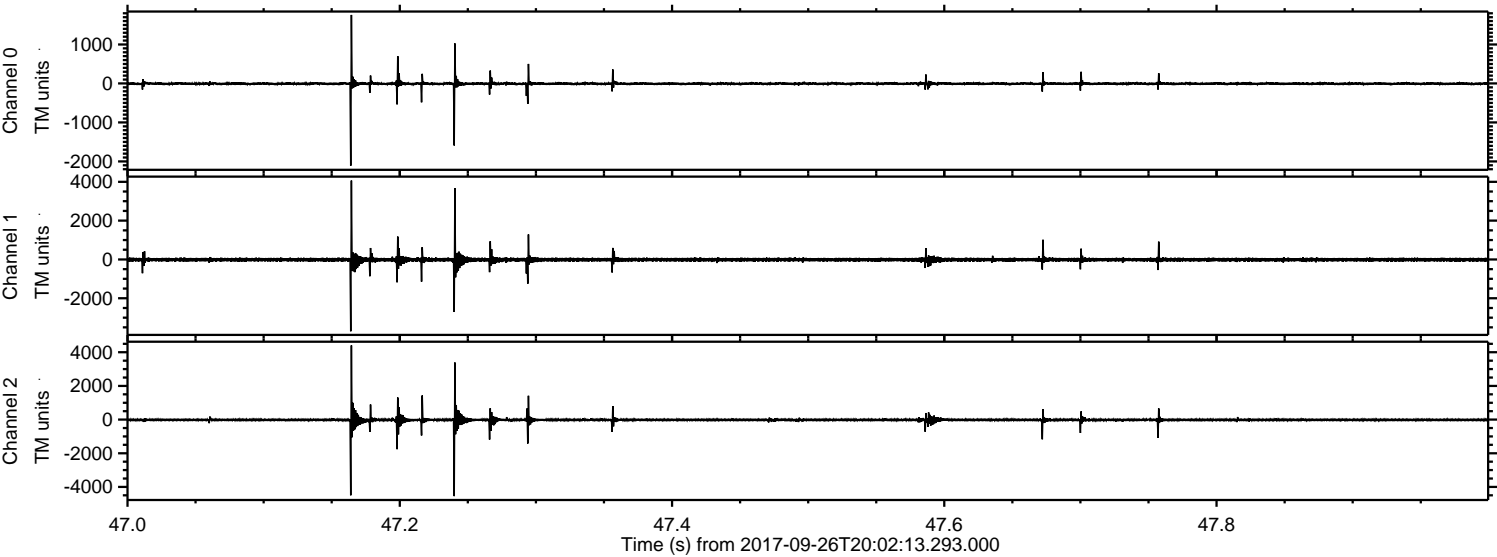


Processed Tue Sep 26 22:09:51 2017 by ELM ver.2012-10-06 from 001\_\_elm20170926\_200212\_\_dat00.bin





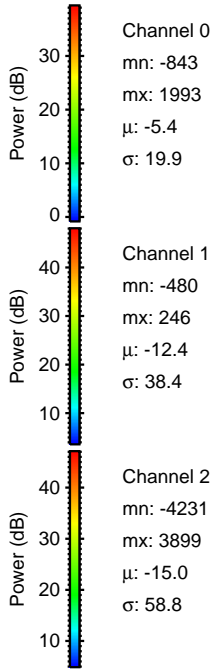
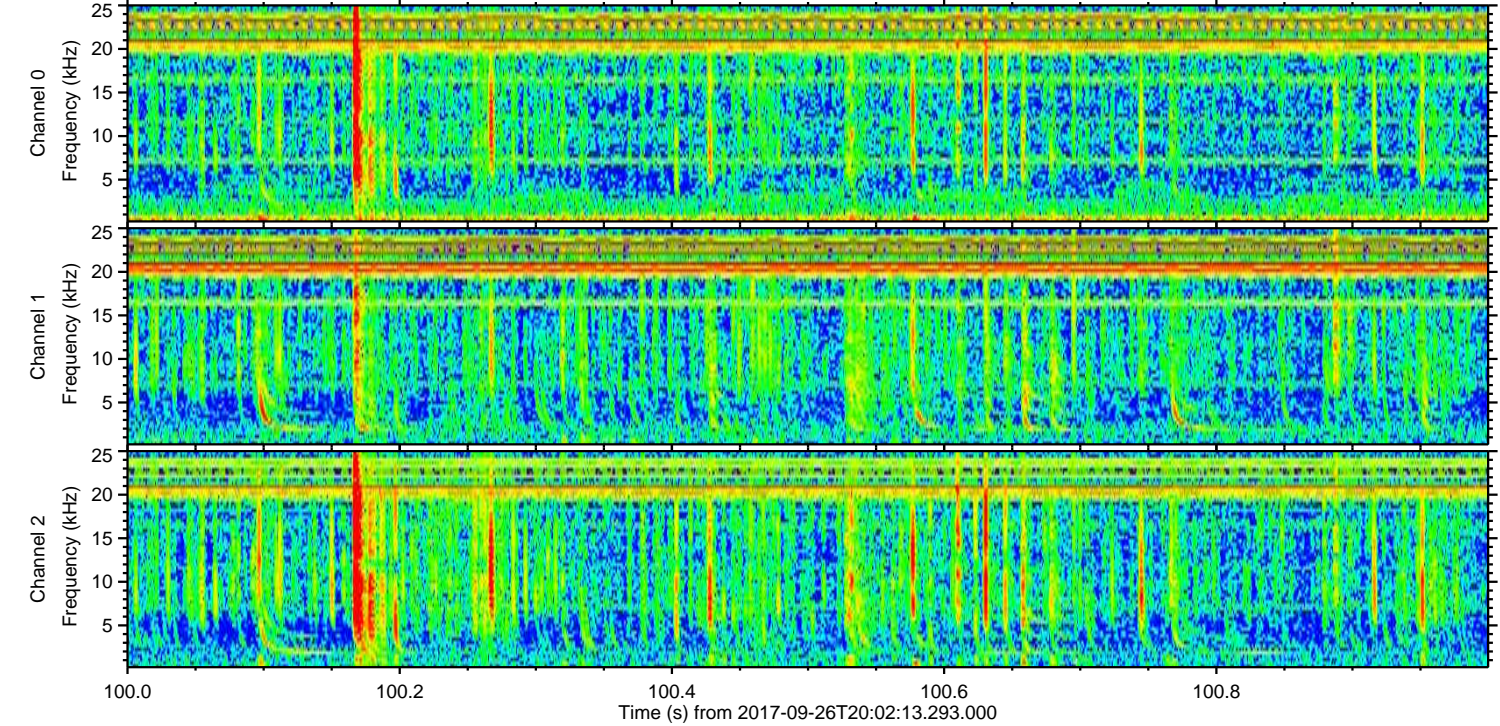
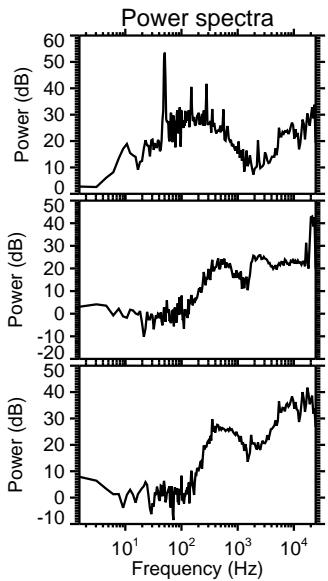
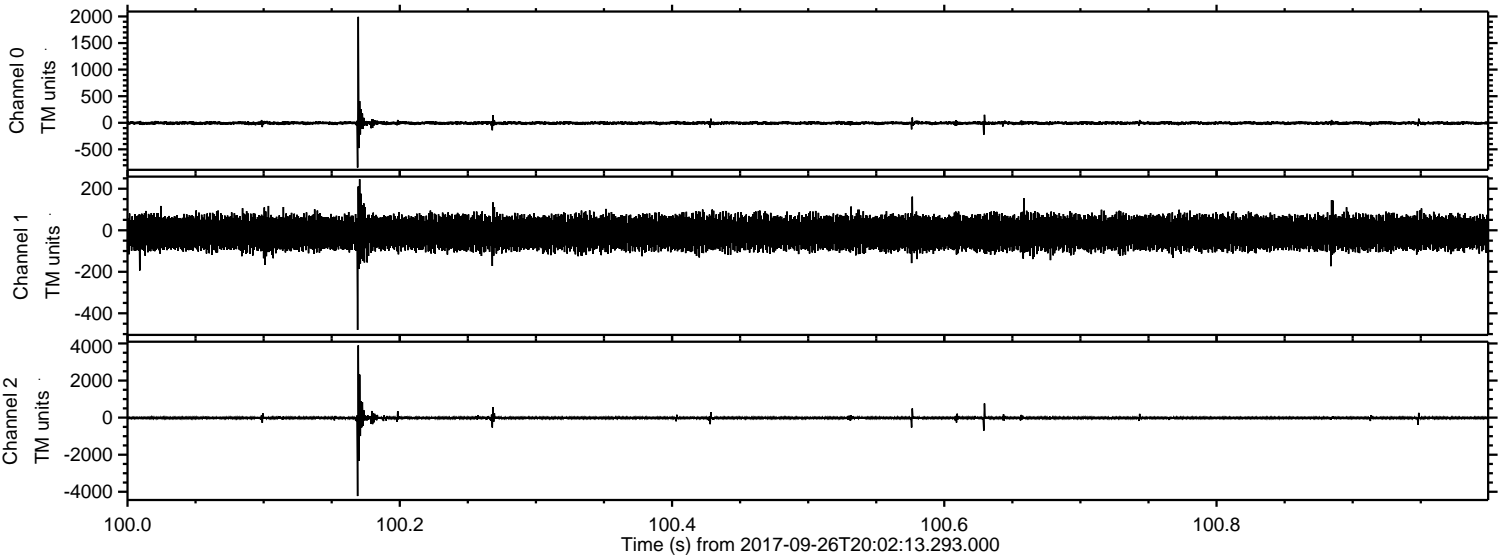
Processed Tue Sep 26 22:09:52 2017 by ELM ver.2012-10-06 from 001\_\_elm20170926\_200212\_\_dat00.bin





ELMAVAN 3D WAVEFORMS (Measured data sampled at 50 kHz) 51000 packets of 144 samples from 2017-09-26T20:02:13.293.000. Part 101/147

Processed Tue Sep 26 22:09:53 2017 by ELM ver.2012-10-06 from 001\_\_elm20170926\_200212\_\_dat00.bin



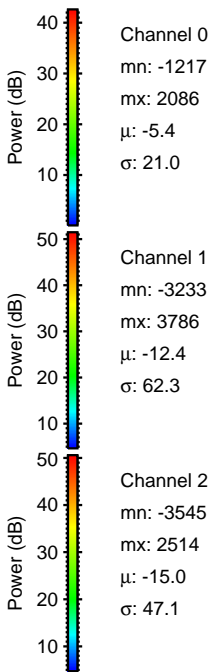
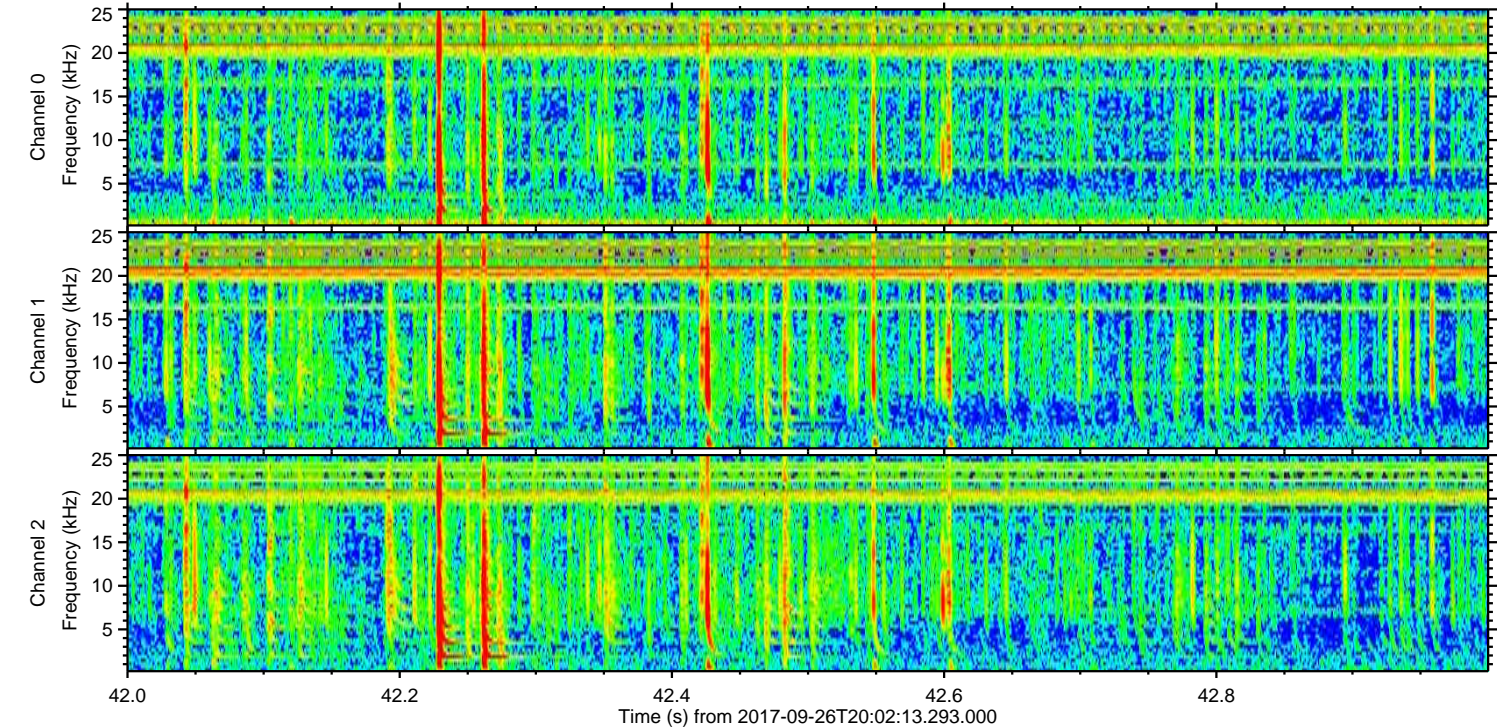
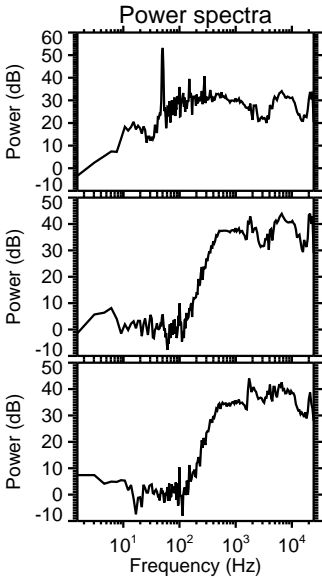
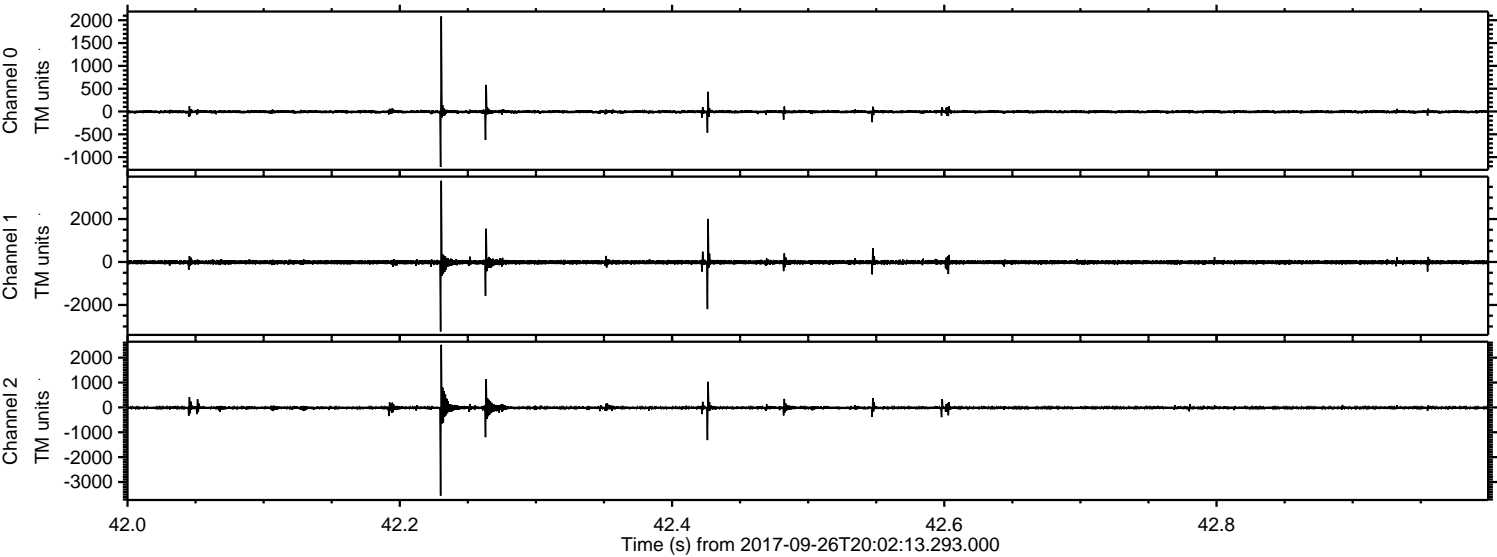
Channel 0  
mn: -843  
mx: 1993  
 $\mu$ : -5.4  
 $\sigma$ : 19.9

Channel 1  
mn: -480  
mx: 246  
 $\mu$ : -12.4  
 $\sigma$ : 38.4

Channel 2  
mn: -4231  
mx: 3899  
 $\mu$ : -15.0  
 $\sigma$ : 58.8



Processed Tue Sep 26 22:09:53 2017 by ELM ver.2012-10-06 from 001\_\_elm20170926\_200212\_\_dat00.bin





Processed Tue Sep 26 22:09:54 2017 by ELM ver.2012-10-06 from 001\_\_elm20170926\_200212\_\_dat00.bin

