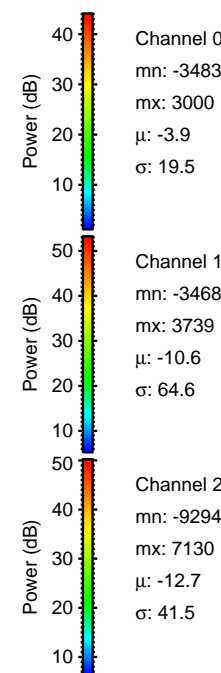
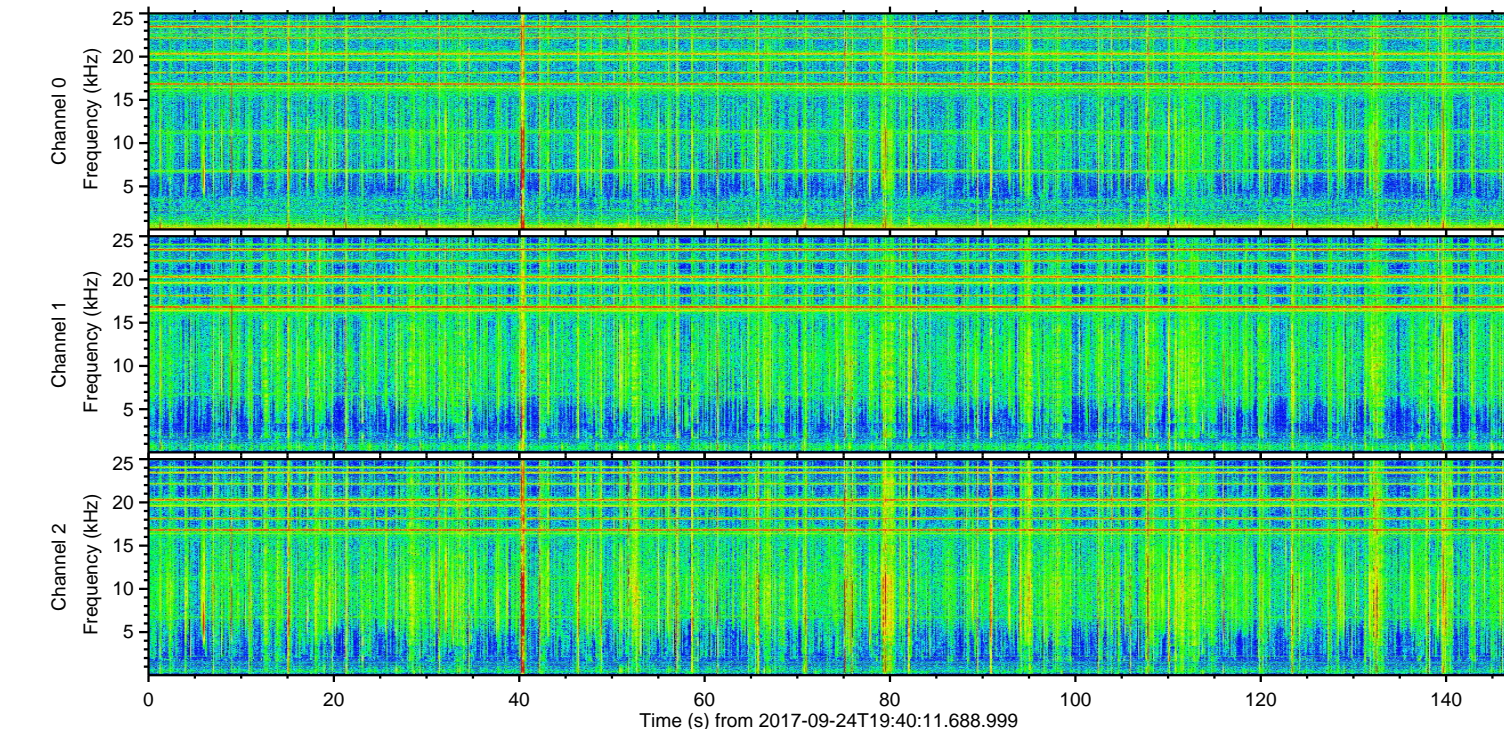
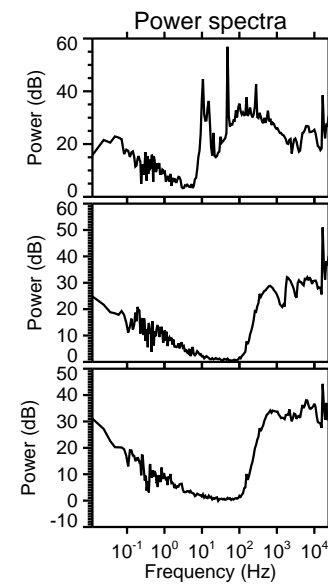
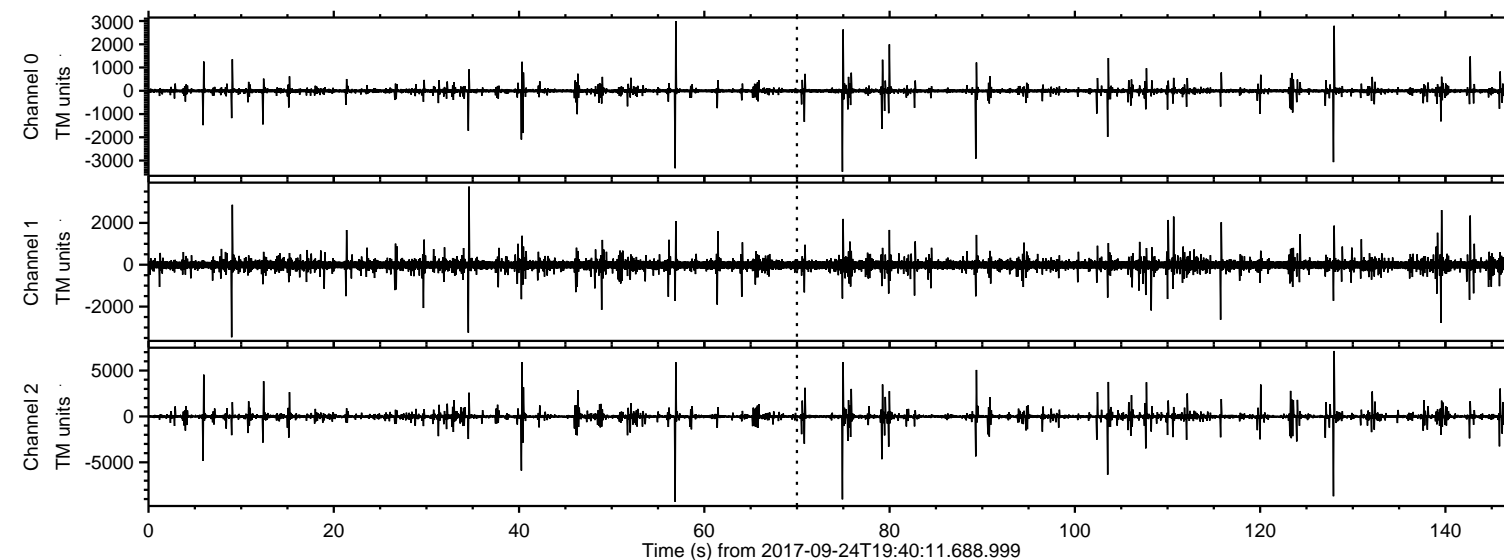


ELMAVAN 3D WAVEFORMS (Measured data sampled at 50 kHz) 50999 packets of 144 samples from 2017-09-24T19:40:11.688.999.

Processed Sun Sep 24 21:47:44 2017 by ELM ver.2012-10-06 from 001__elm20170924_194010__dat00.bin

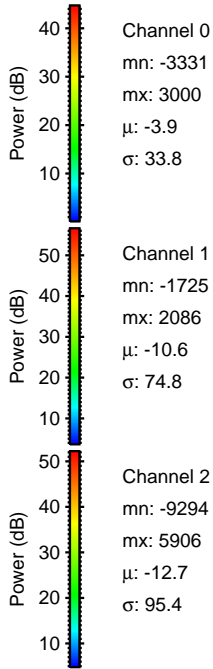
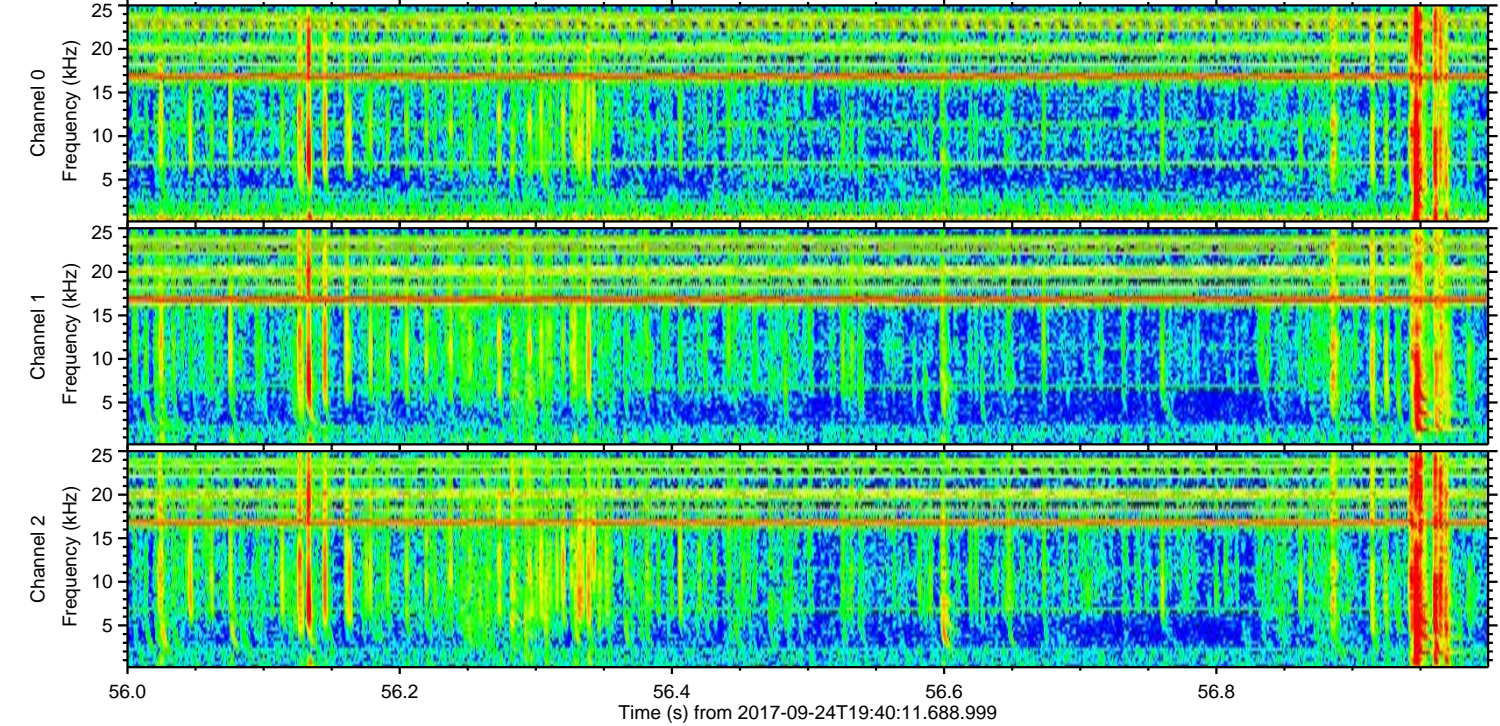
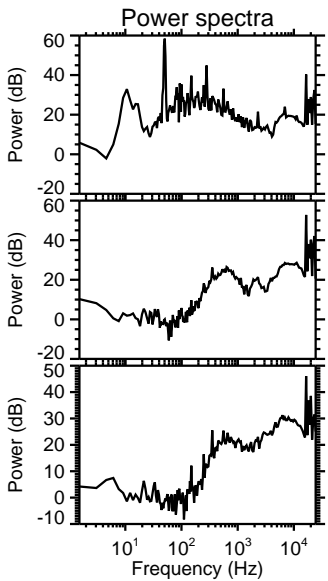
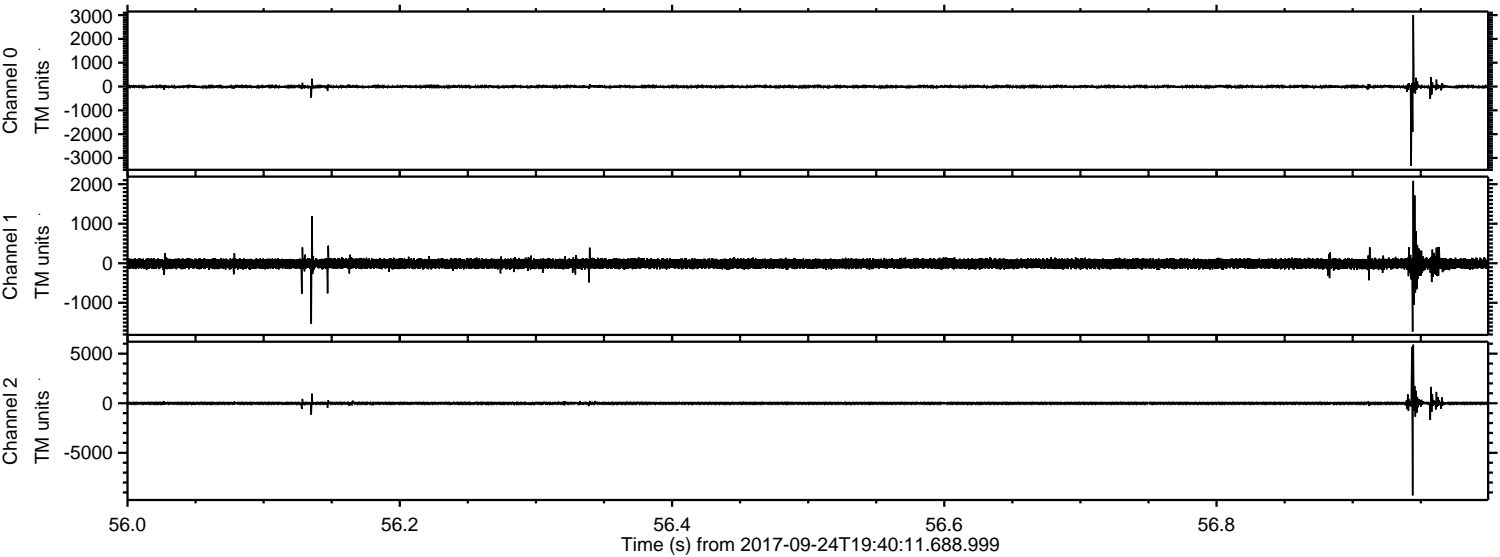


Channel 0
mn: -3483
mx: 3000
 μ : -3.9
 σ : 19.5

Channel 1
mn: -3468
mx: 3739
 μ : -10.6
 σ : 64.6

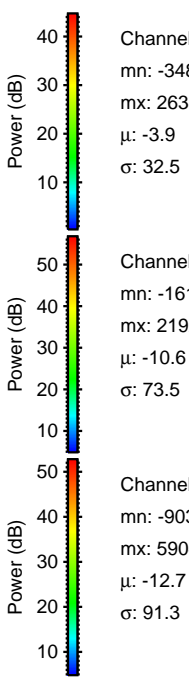
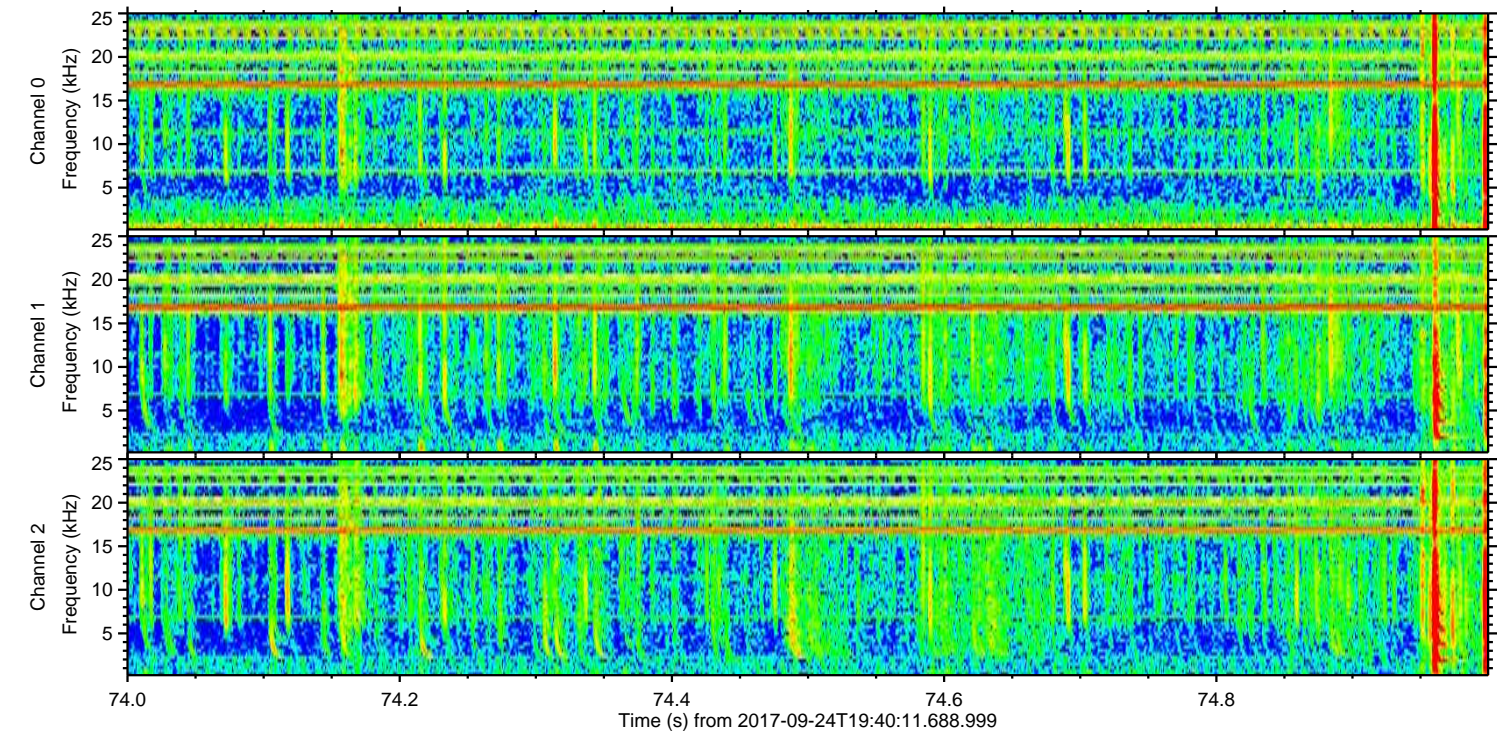
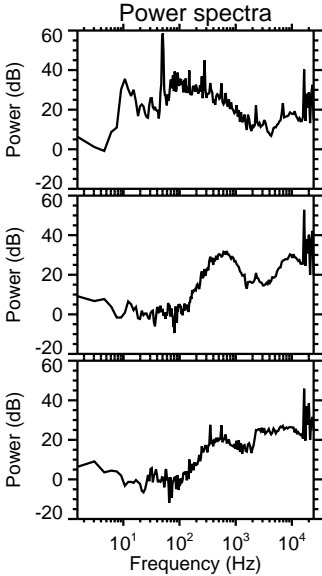
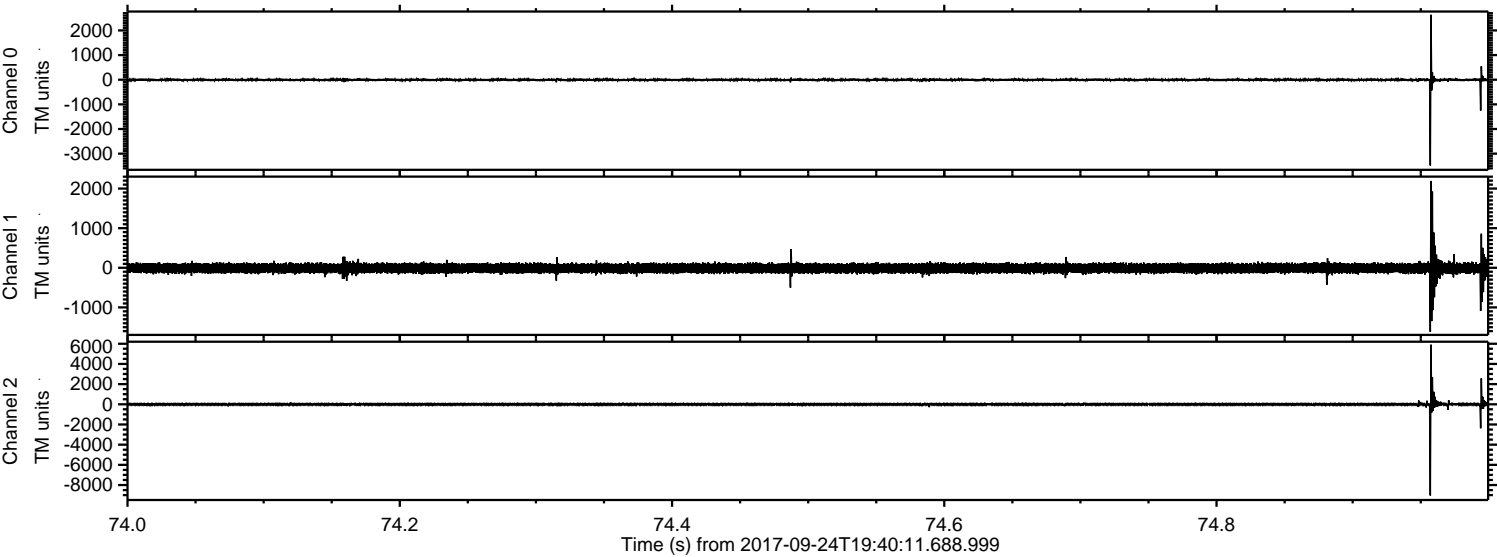
Channel 2
mn: -9294
mx: 7130
 μ : -12.7
 σ : 41.5

Processed Sun Sep 24 21:47:50 2017 by ELM ver.2012-10-06 from 001__elm20170924_194010__dat00.bin



ELMAVAN 3D WAVEFORMS (Measured data sampled at 50 kHz) 50999 packets of 144 samples from 2017-09-24T19:40:11.688.999. Part 75/147

Processed Sun Sep 24 21:47:51 2017 by ELM ver.2012-10-06 from 001__elm20170924_194010__dat00.bin



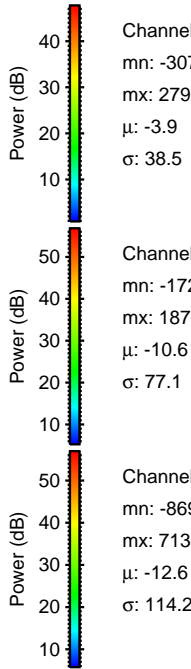
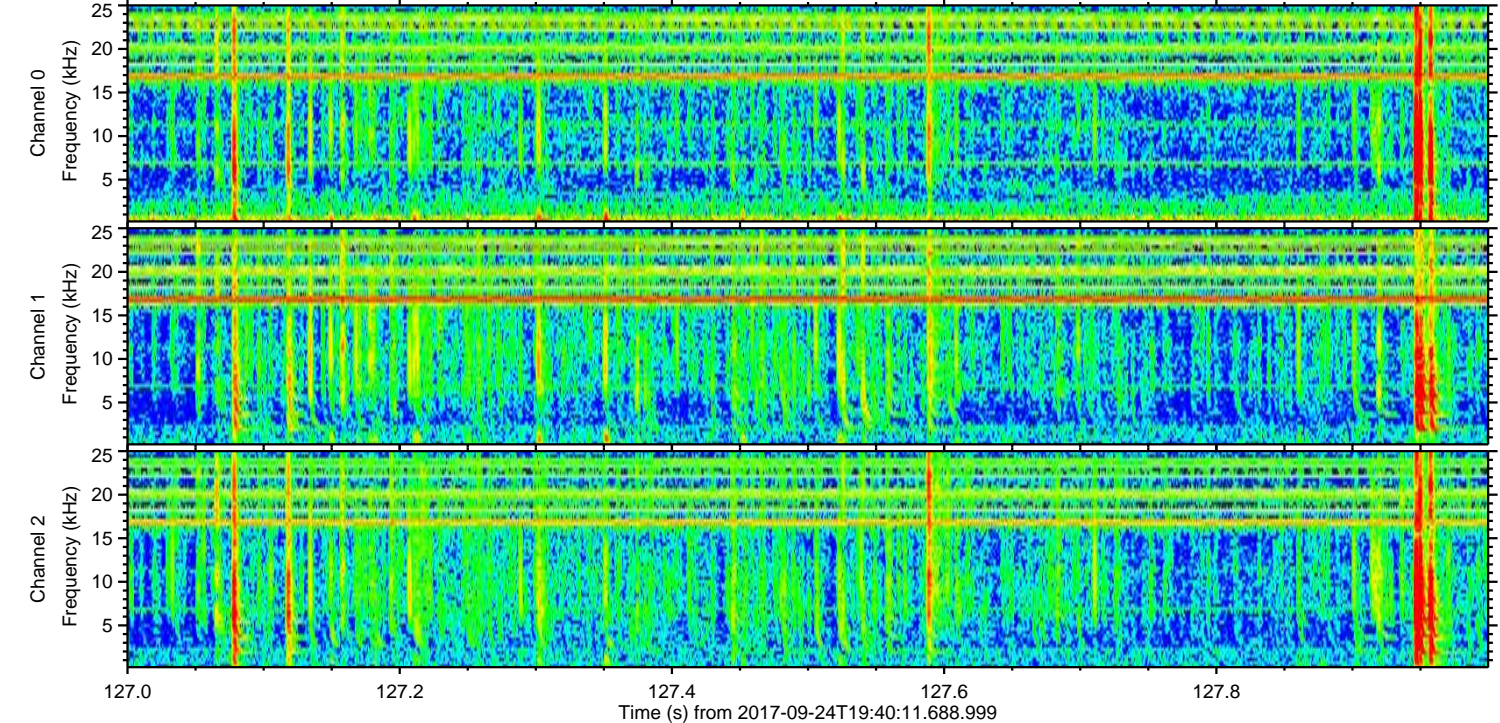
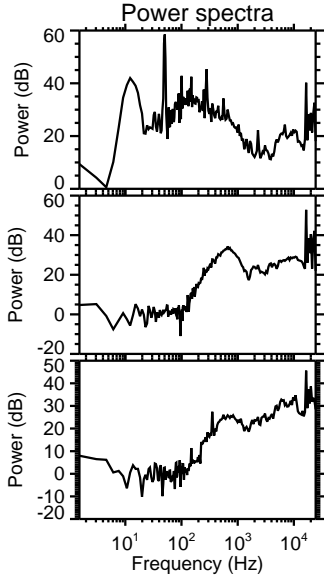
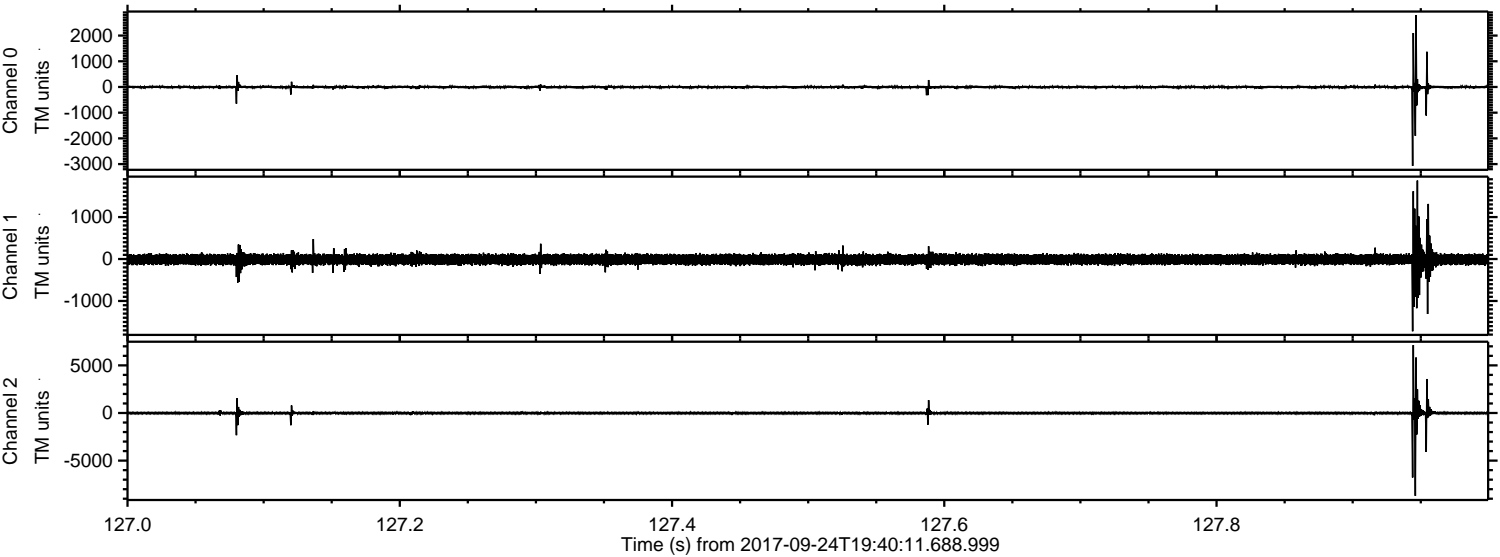
Channel 0
mn: -3483
mx: 2635
 μ : -3.9
 σ : 32.5

Channel 1
mn: -1614
mx: 2192
 μ : -10.6
 σ : 73.5

Channel 2
mn: -9032
mx: 5904
 μ : -12.7
 σ : 91.3

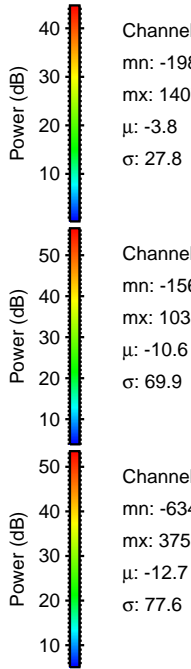
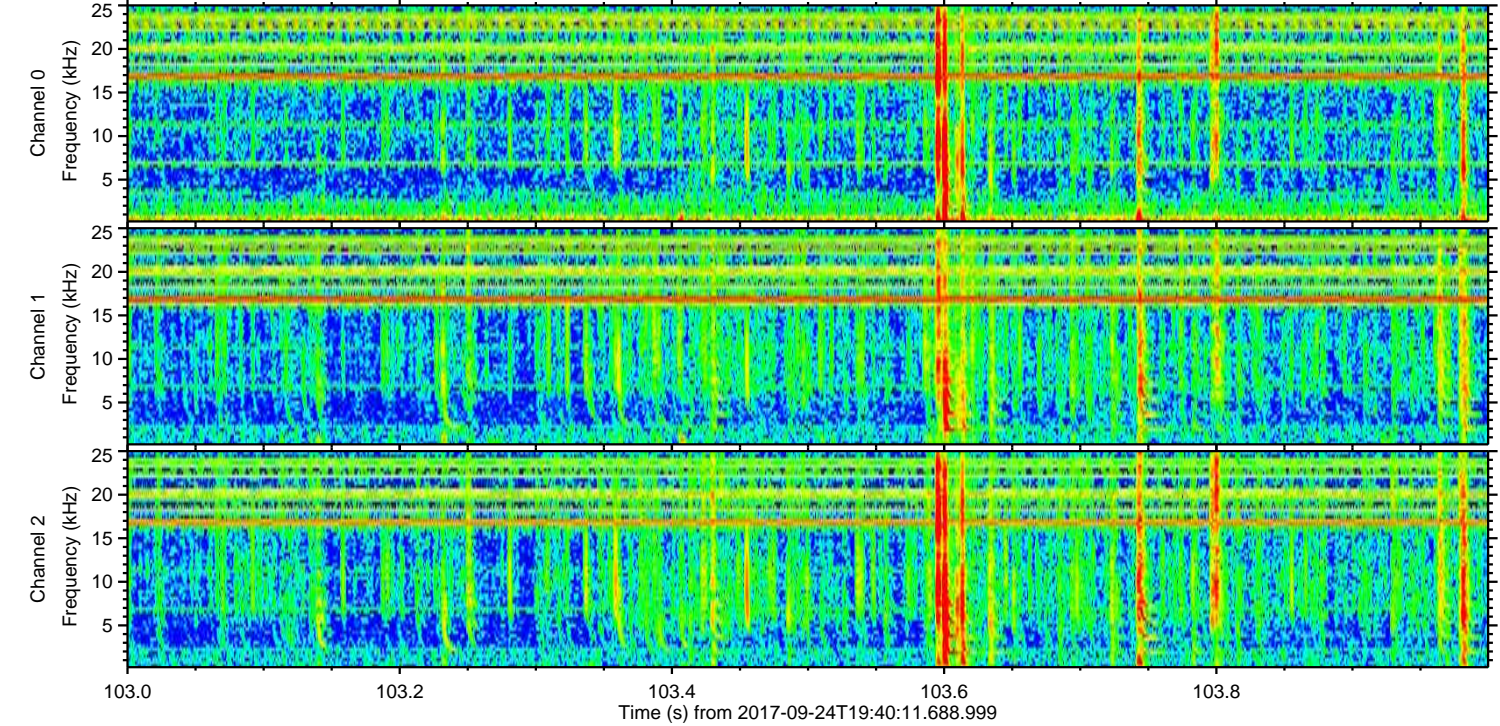
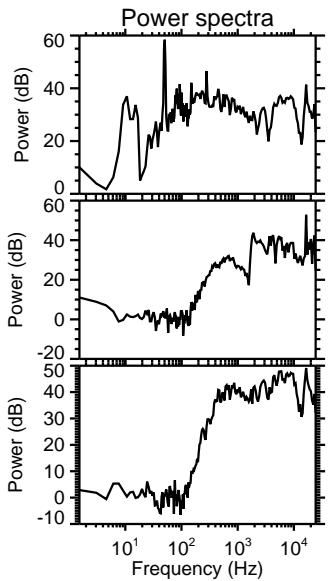
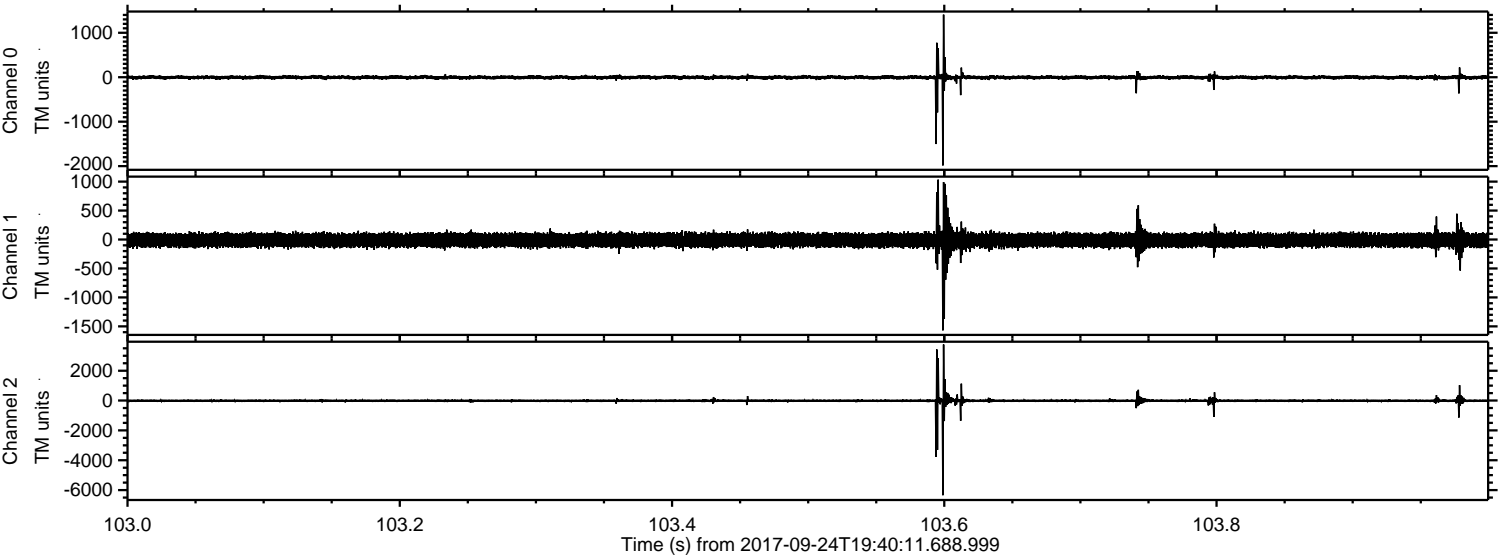
ELMAVAN 3D WAVEFORMS (Measured data sampled at 50 kHz) 50999 packets of 144 samples from 2017-09-24T19:40:11.688.999. Part 128/147

Processed Sun Sep 24 21:47:52 2017 by ELM ver.2012-10-06 from 001__elm20170924_194010__dat00.bin



ELMAVAN 3D WAVEFORMS (Measured data sampled at 50 kHz) 50999 packets of 144 samples from 2017-09-24T19:40:11.688.999. Part 104/147

Processed Sun Sep 24 21:47:52 2017 by ELM ver.2012-10-06 from 001__elm20170924_194010__dat00.bin



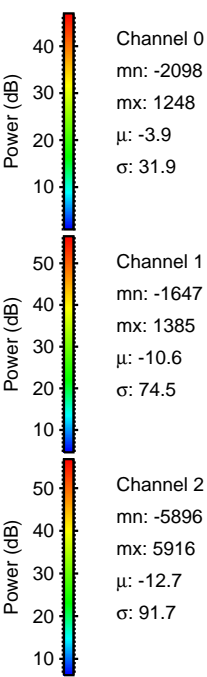
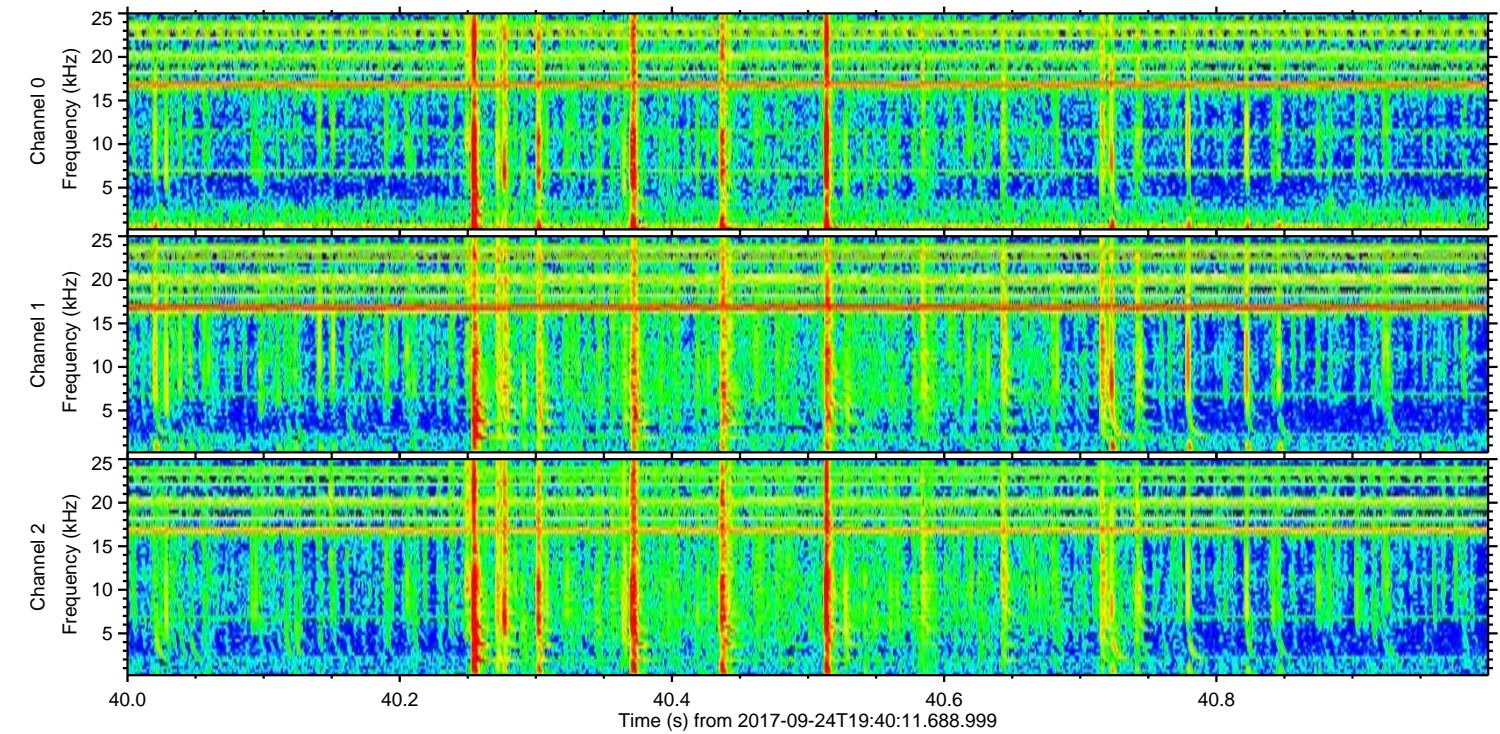
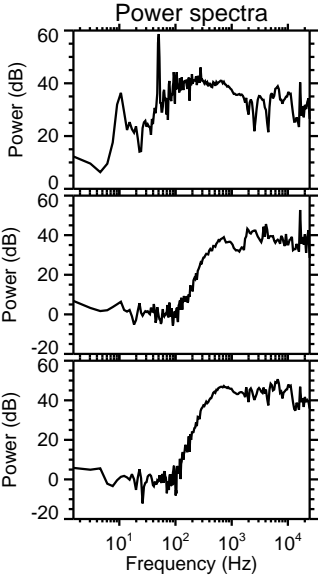
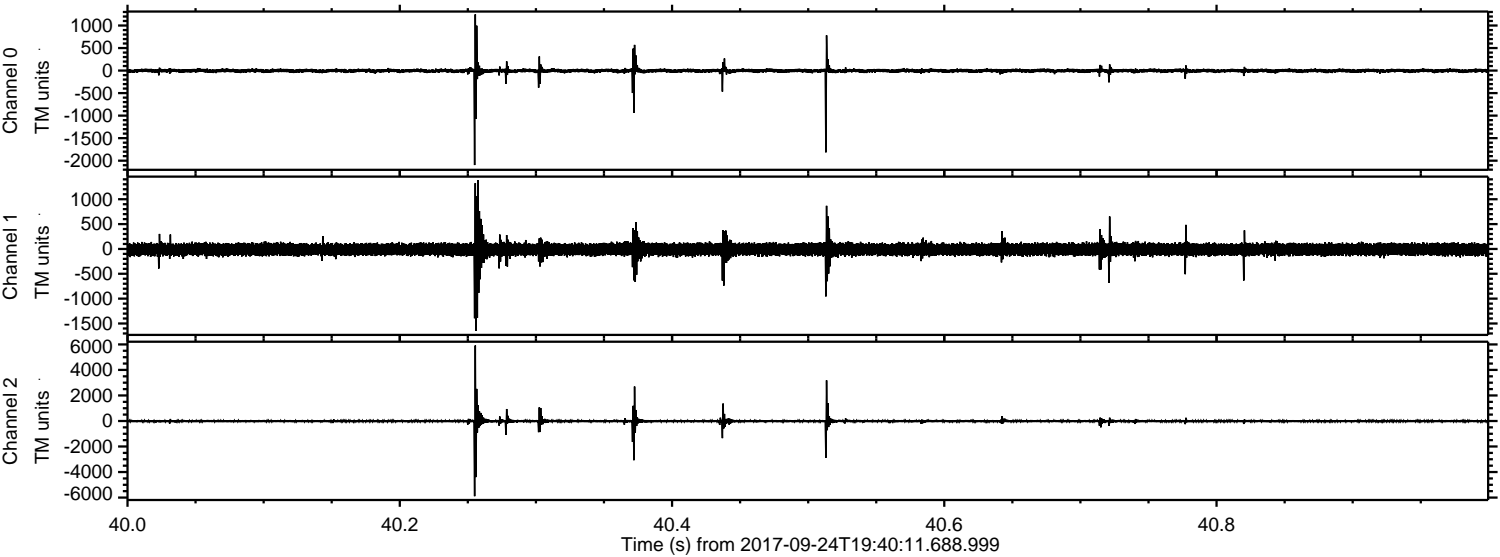
Channel 0
mn: -1984
mx: 1407
 μ : -3.8
 σ : 27.8

Channel 1
mn: -1569
mx: 1035
 μ : -10.6
 σ : 69.9

Channel 2
mn: -6347
mx: 3755
 μ : -12.7
 σ : 77.6

ELMAVAN 3D WAVEFORMS (Measured data sampled at 50 kHz) 50999 packets of 144 samples from 2017-09-24T19:40:11.688.999. Part 41/147

Processed Sun Sep 24 21:47:53 2017 by ELM ver.2012-10-06 from 001__elm20170924_194010__dat00.bin



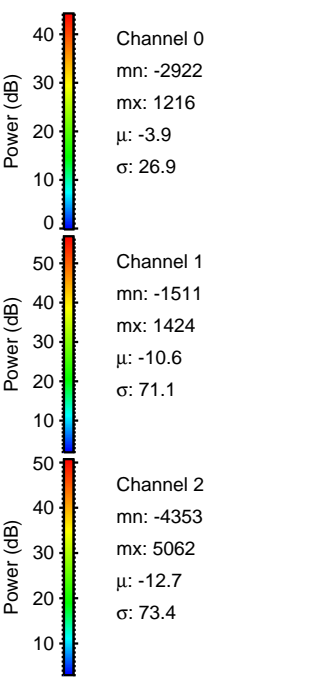
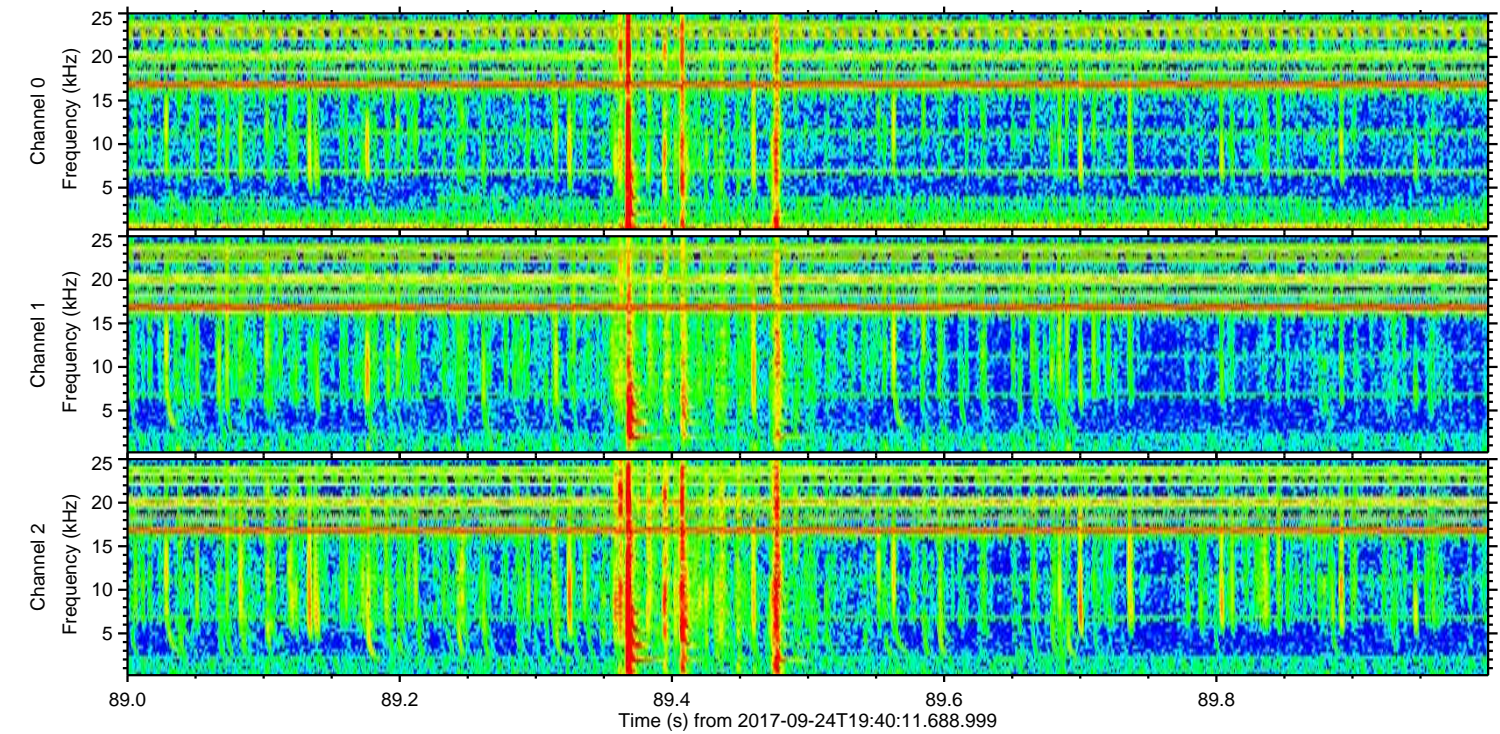
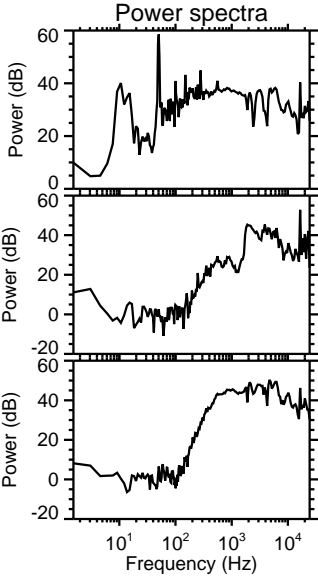
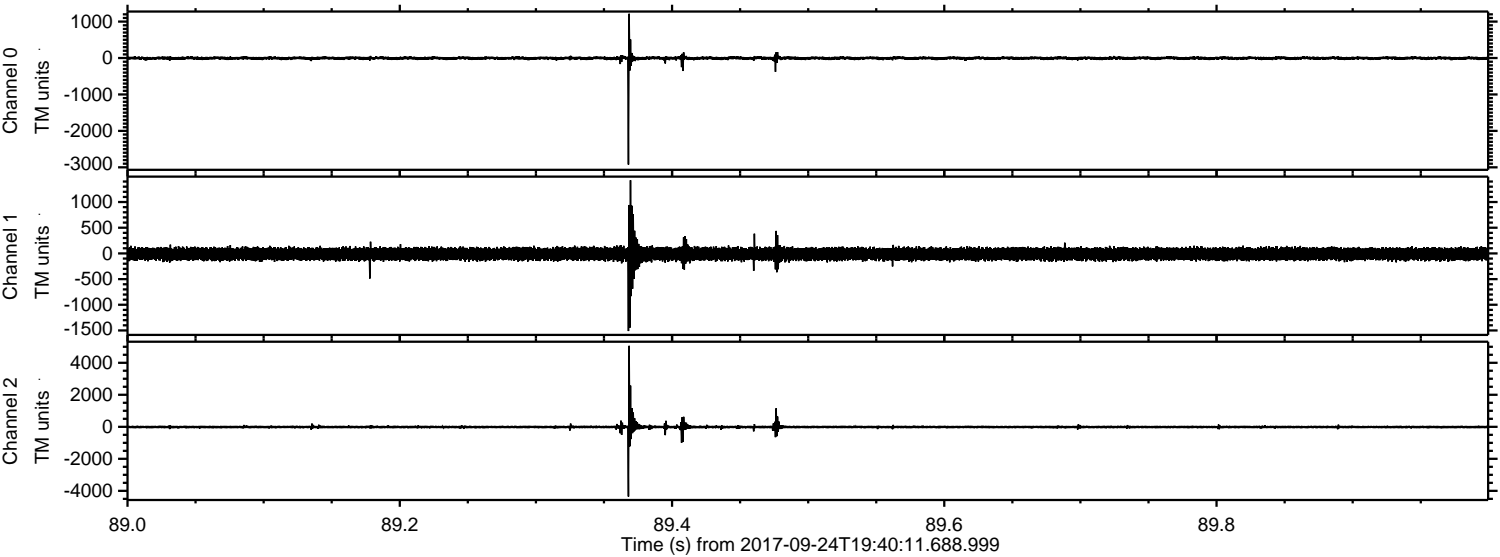
Channel 0
mn: -2098
mx: 1248
 μ : -3.9
 σ : 31.9

Channel 1
mn: -1647
mx: 1385
 μ : -10.6
 σ : 74.5

Channel 2
mn: -5896
mx: 5916
 μ : -12.7
 σ : 91.7

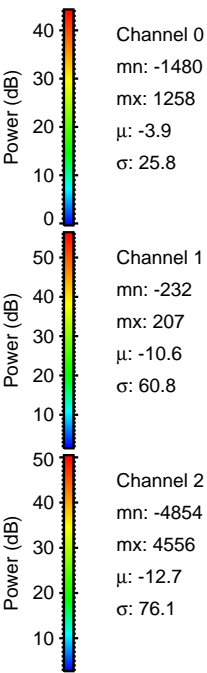
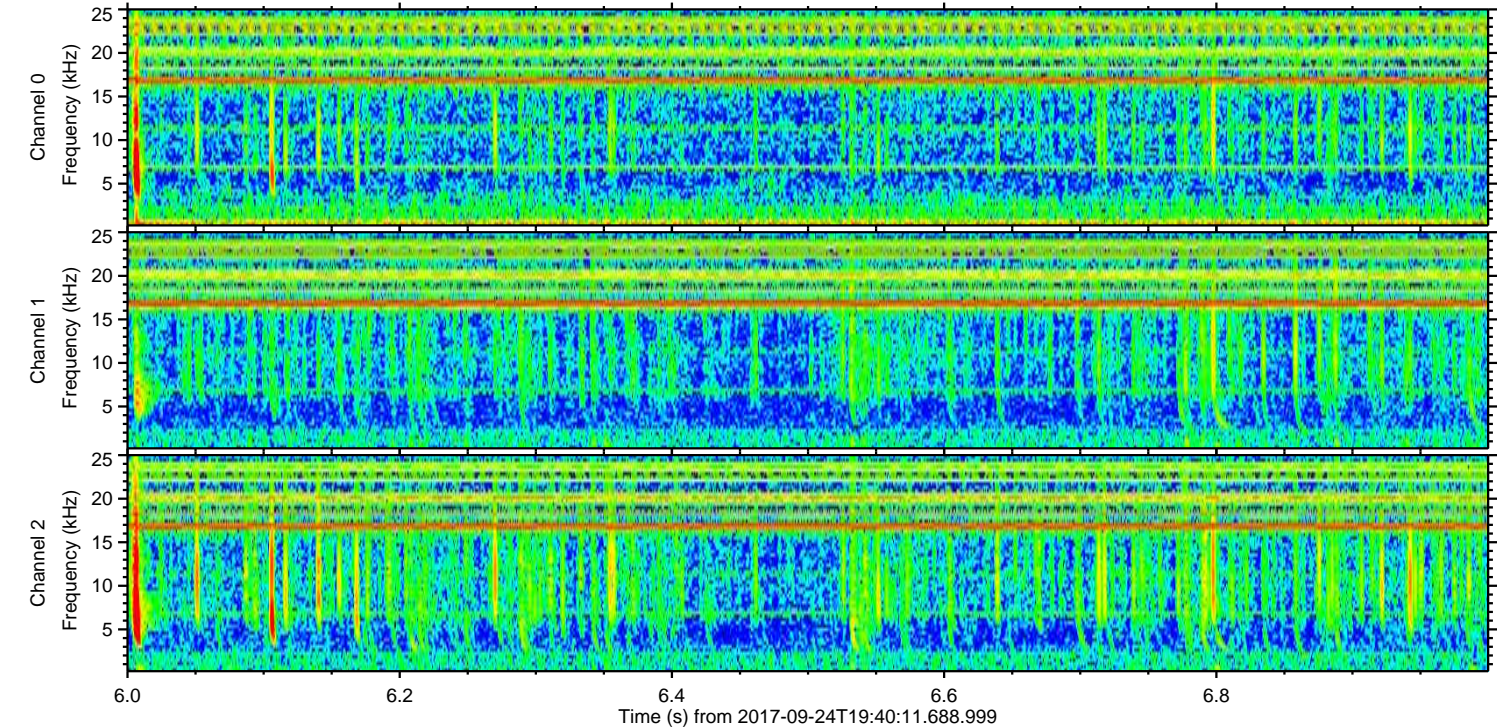
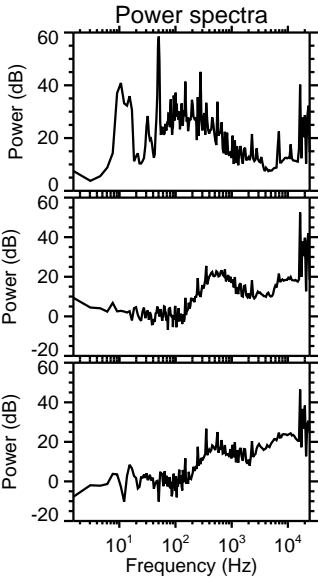
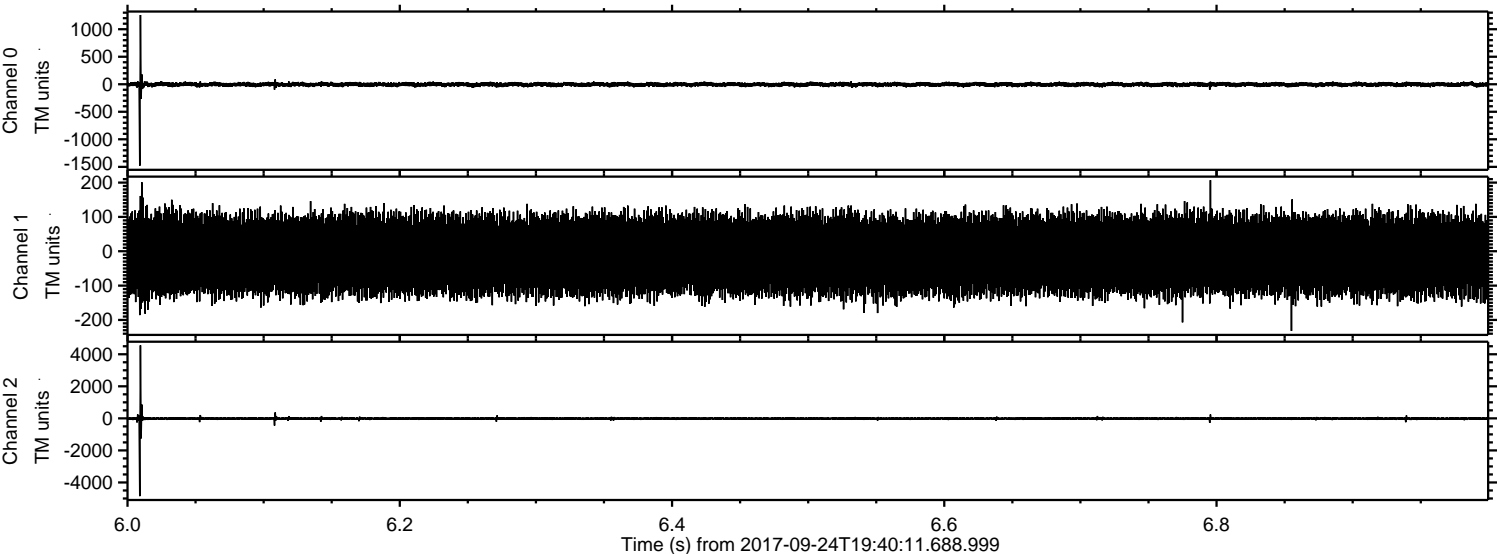
ELMAVAN 3D WAVEFORMS (Measured data sampled at 50 kHz) 50999 packets of 144 samples from 2017-09-24T19:40:11.688.999. Part 90/147

Processed Sun Sep 24 21:47:54 2017 by ELM ver.2012-10-06 from 001__elm20170924_194010__dat00.bin



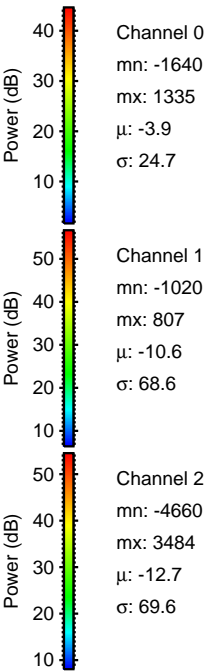
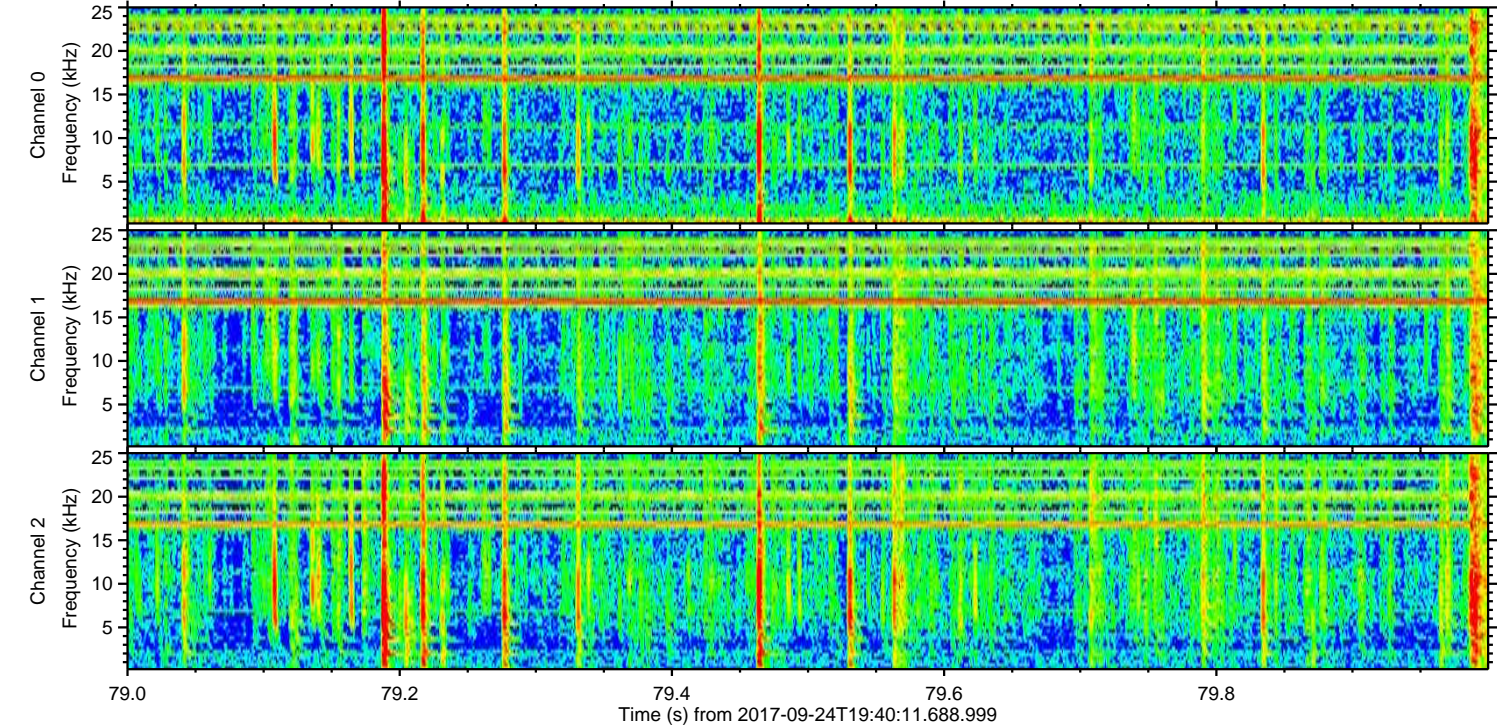
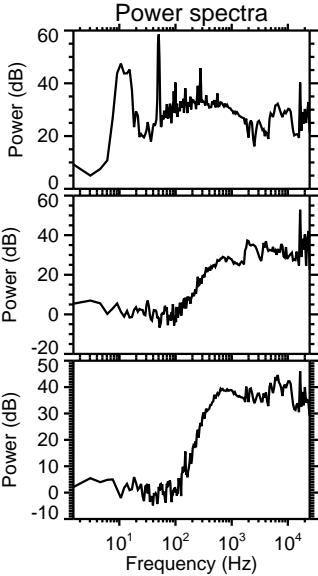
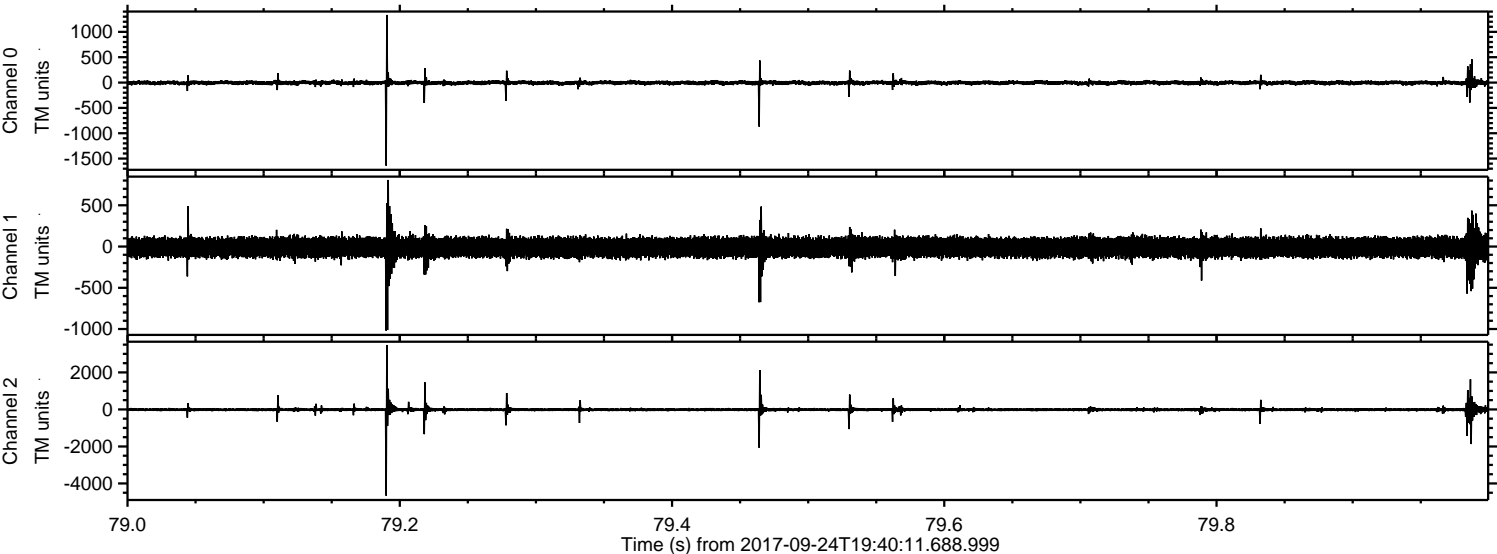
ELMAVAN 3D WAVEFORMS (Measured data sampled at 50 kHz) 50999 packets of 144 samples from 2017-09-24T19:40:11.688.999. Part 7/147

Processed Sun Sep 24 21:47:55 2017 by ELM ver.2012-10-06 from 001__elm20170924_194010__dat00.bin

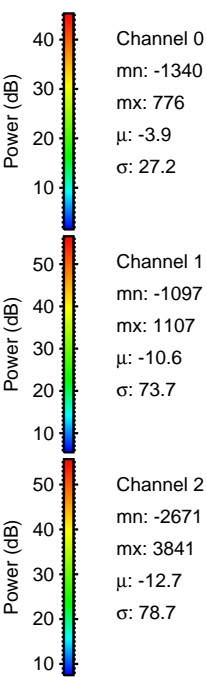
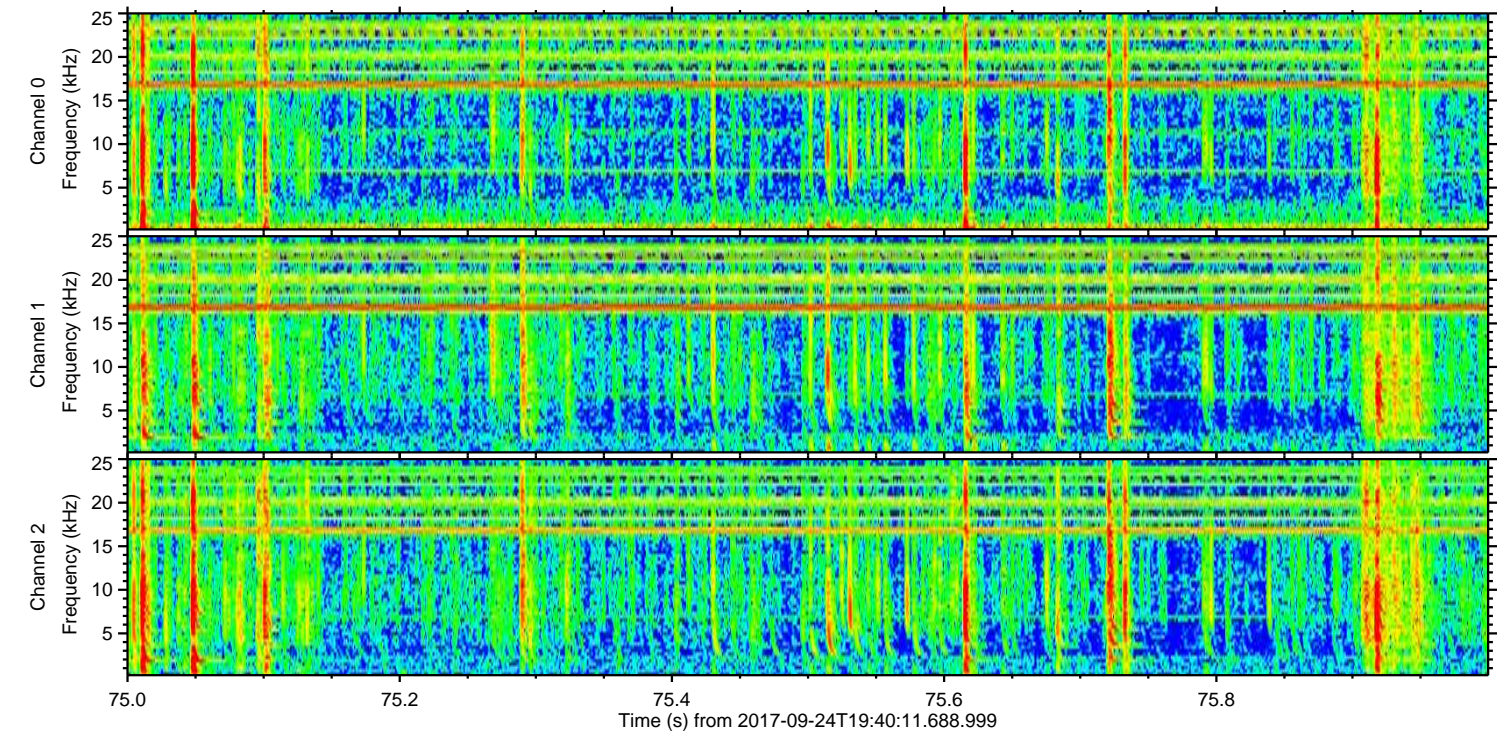
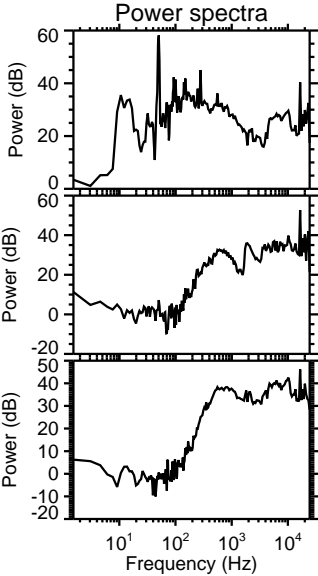
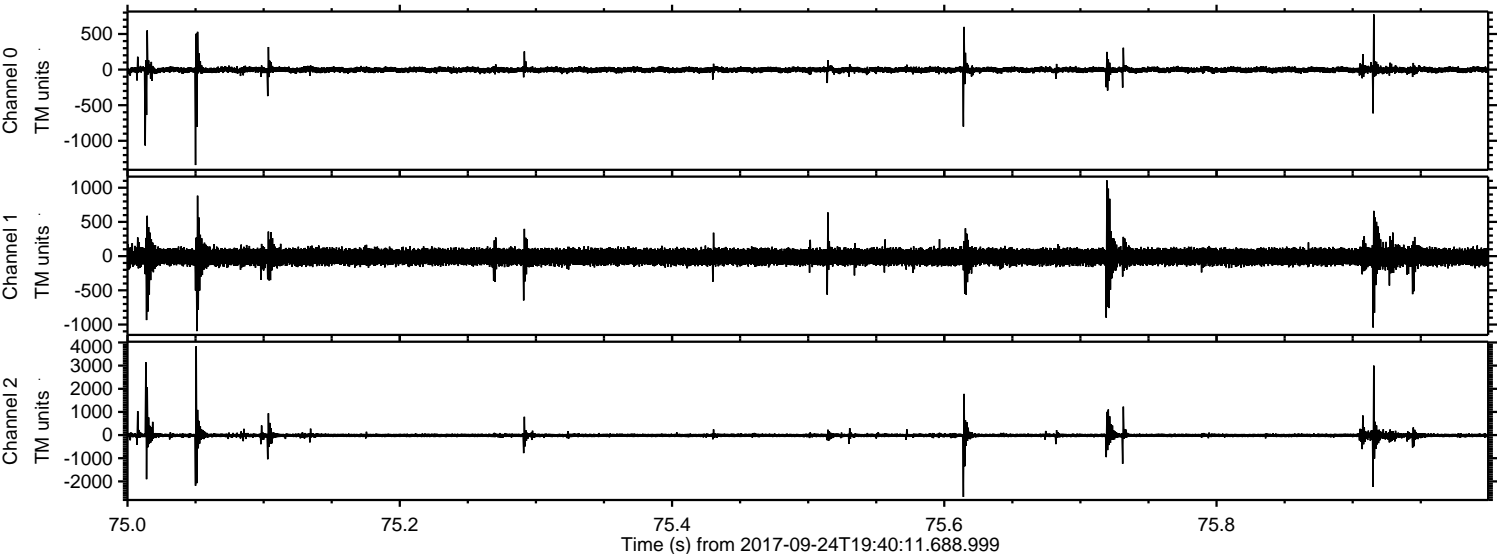


ELMAVAN 3D WAVEFORMS (Measured data sampled at 50 kHz) 50999 packets of 144 samples from 2017-09-24T19:40:11.688.999. Part 80/147

Processed Sun Sep 24 21:47:55 2017 by ELM ver.2012-10-06 from 001__elm20170924_194010__dat00.bin



Processed Sun Sep 24 21:47:56 2017 by ELM ver.2012-10-06 from 001__elm20170924_194010__dat00.bin



ELMAVAN 3D WAVEFORMS (Measured data sampled at 50 kHz) 50999 packets of 144 samples from 2017-09-24T19:40:11.688.999. Part 127/147

