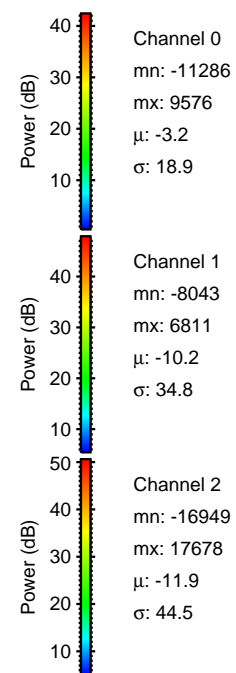
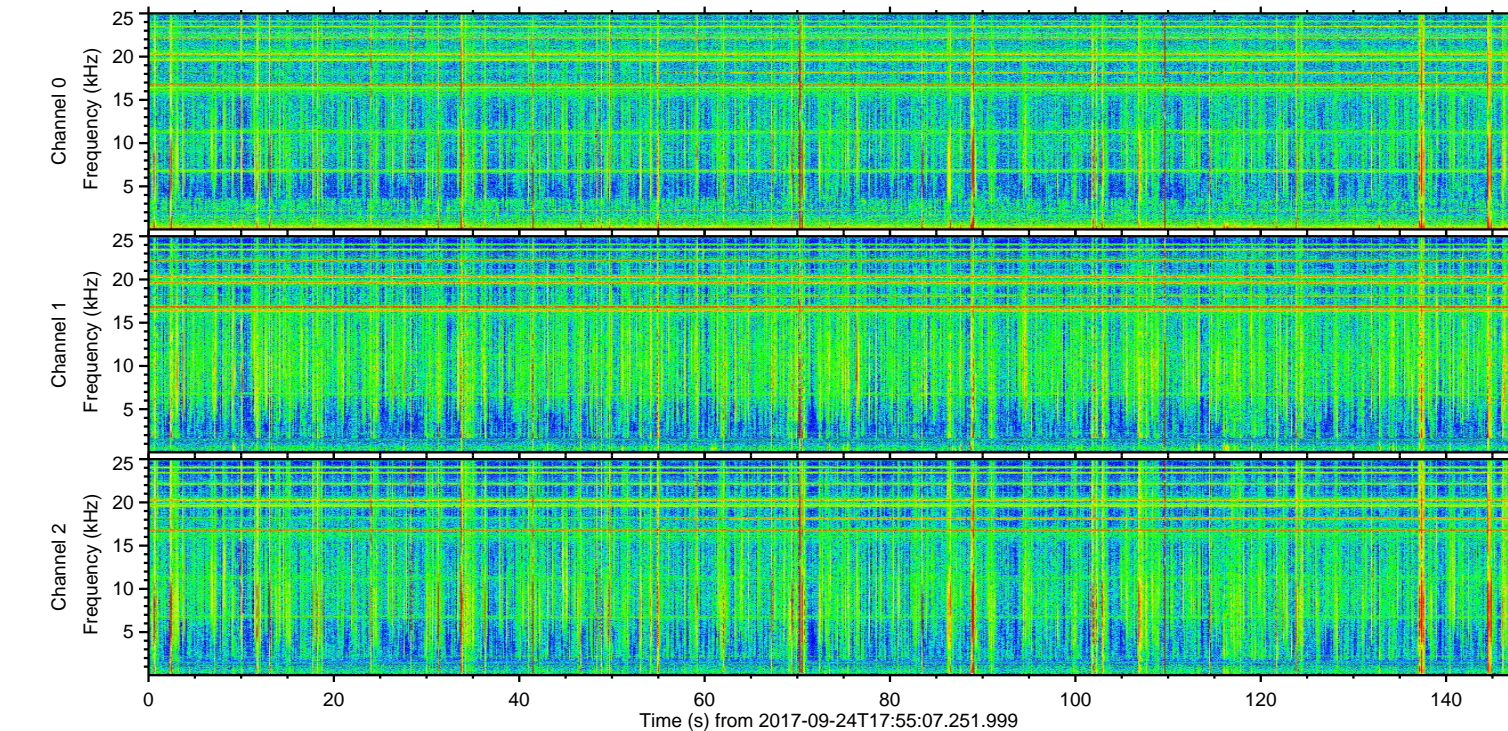
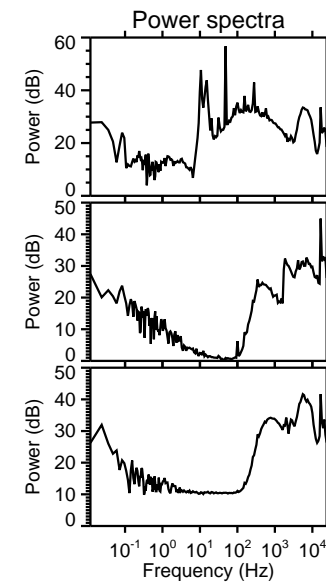
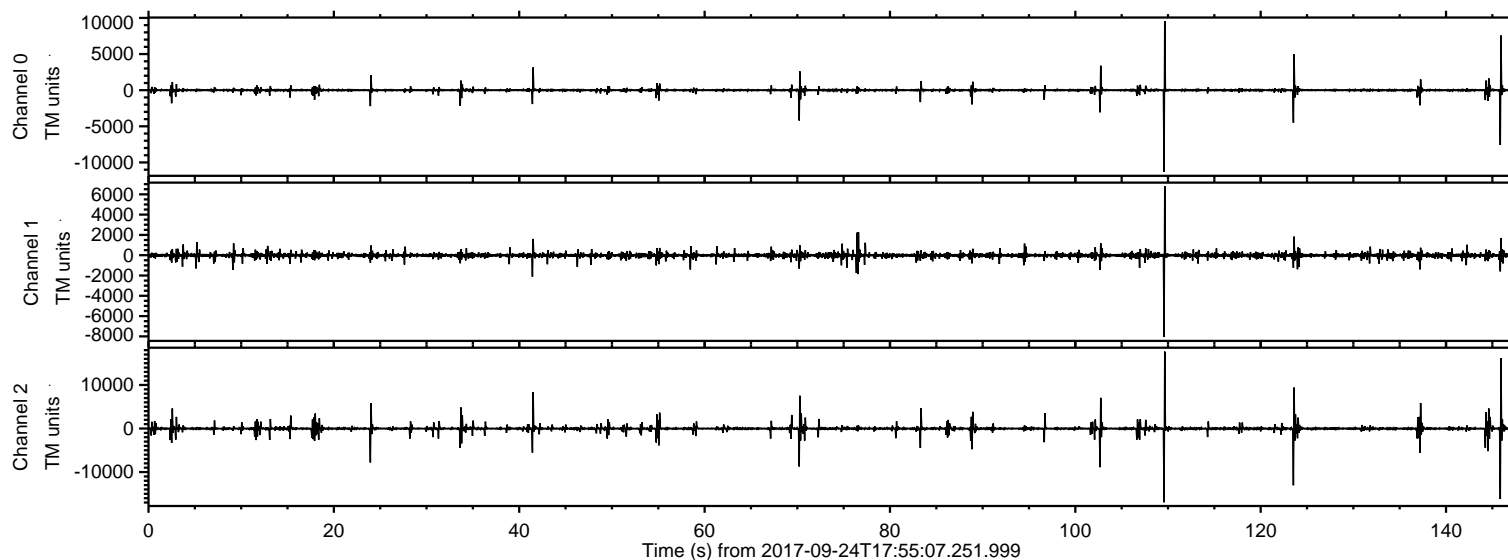


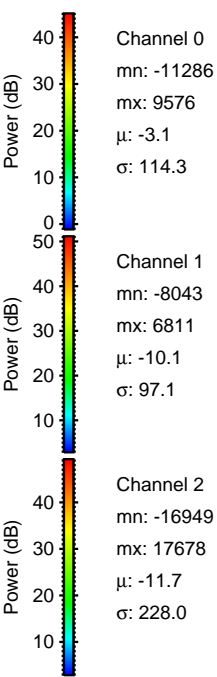
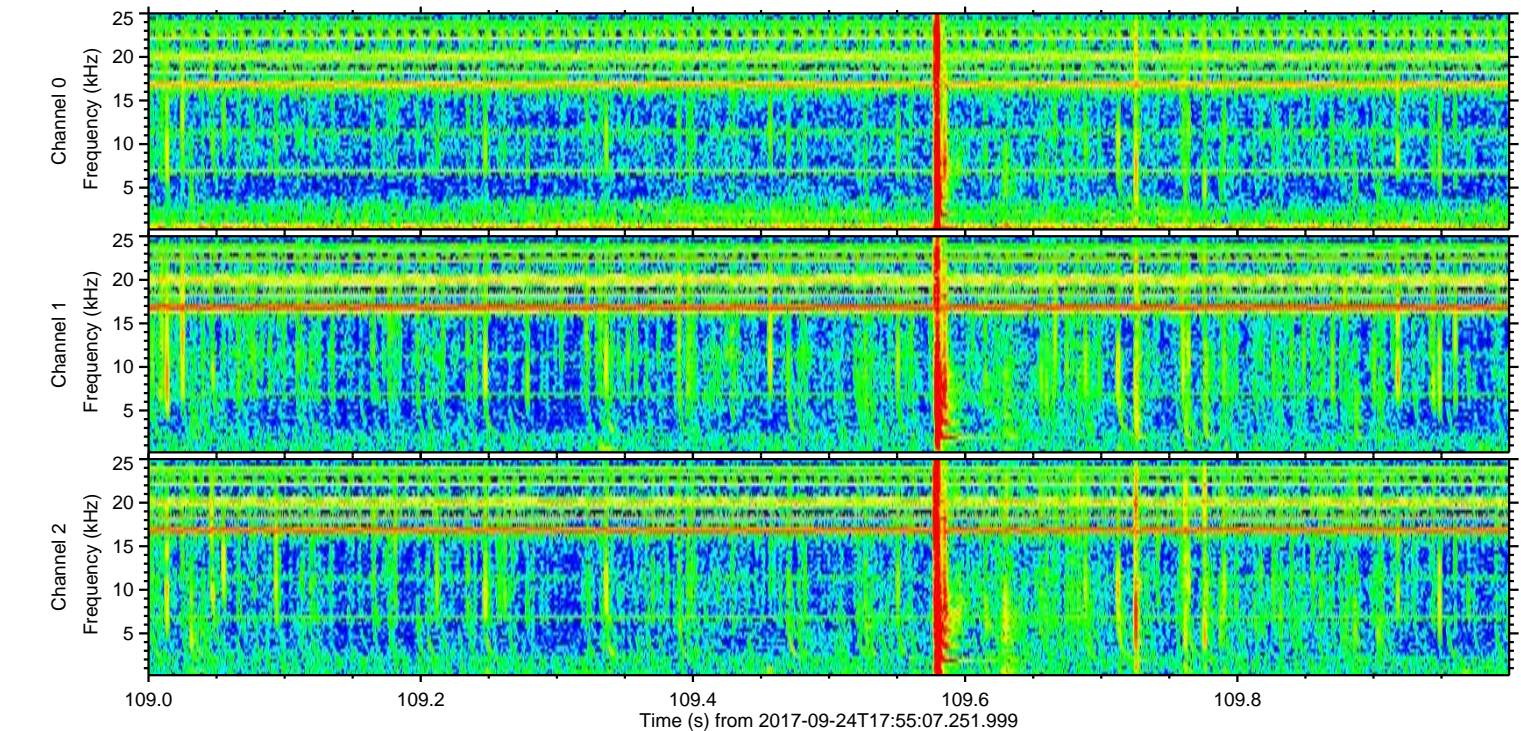
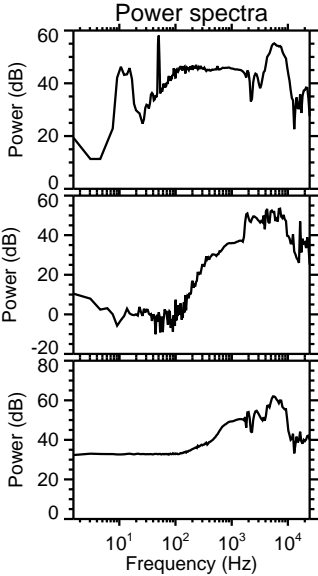
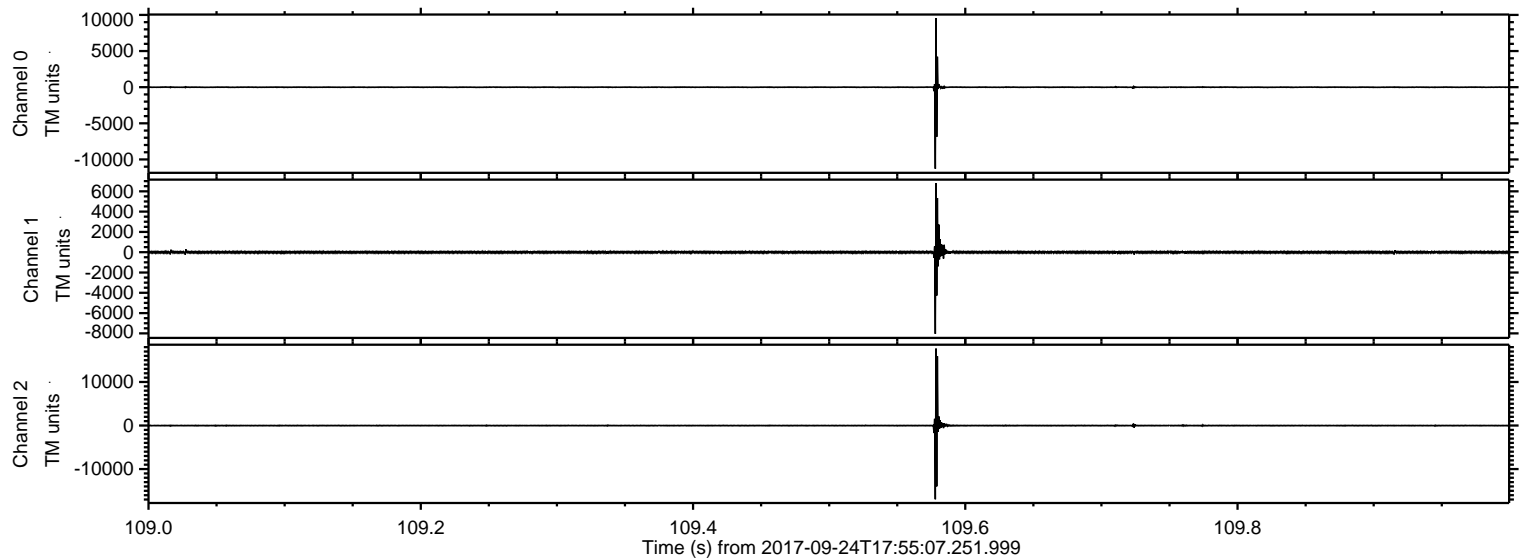
ELMAVAN 3D WAVEFORMS (Measured data sampled at 50 kHz) 51000 packets of 144 samples from 2017-09-24T17:55:07.251.999.

Processed Sun Sep 24 20:03:18 2017 by ELM ver.2012-10-06 from 001__elm20170924_175506__dat00.bin



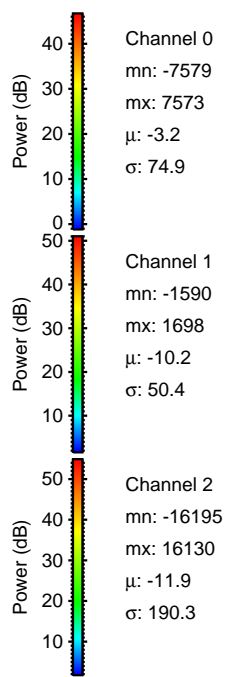
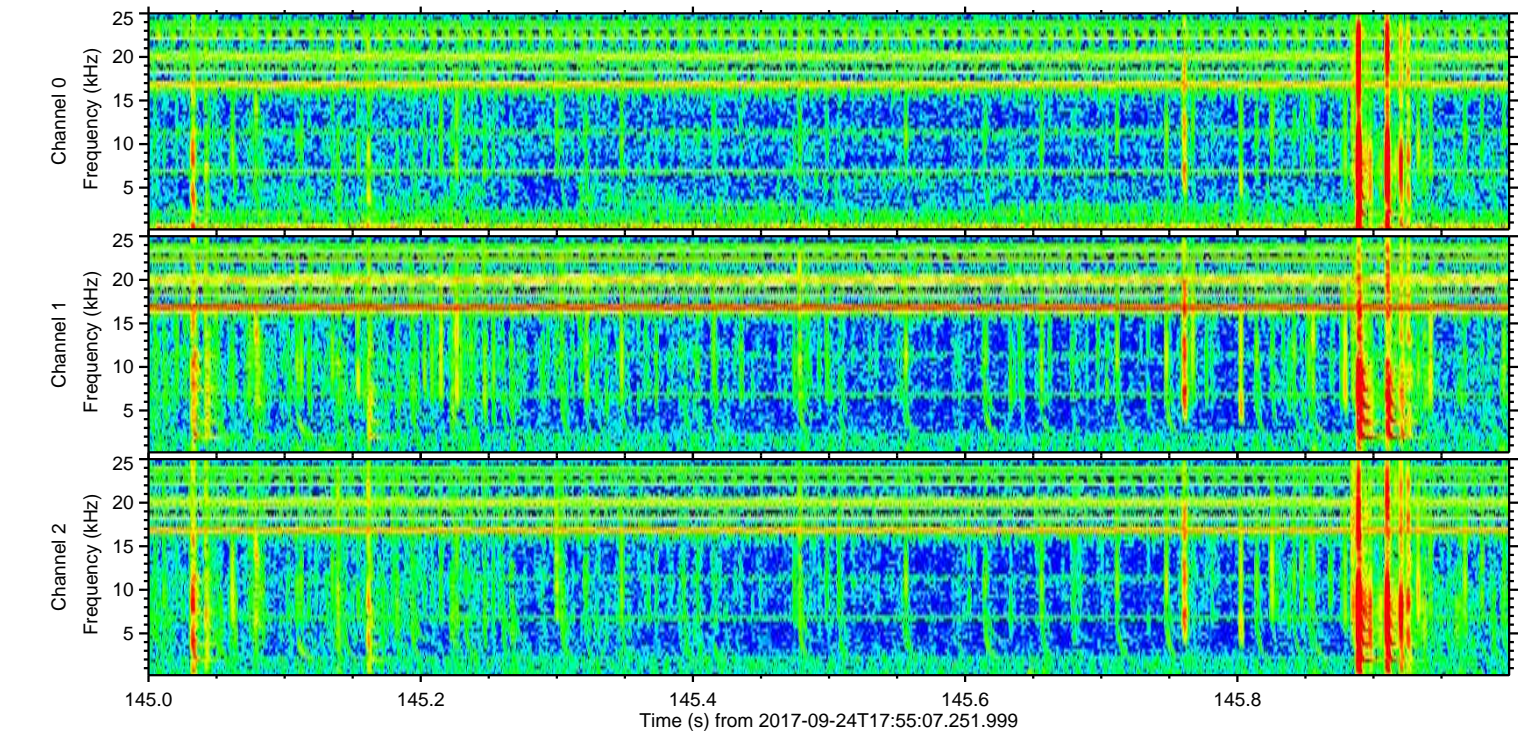
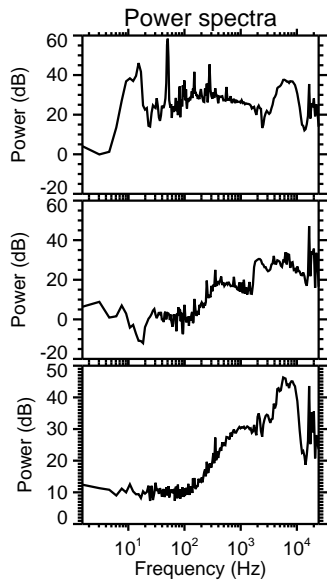
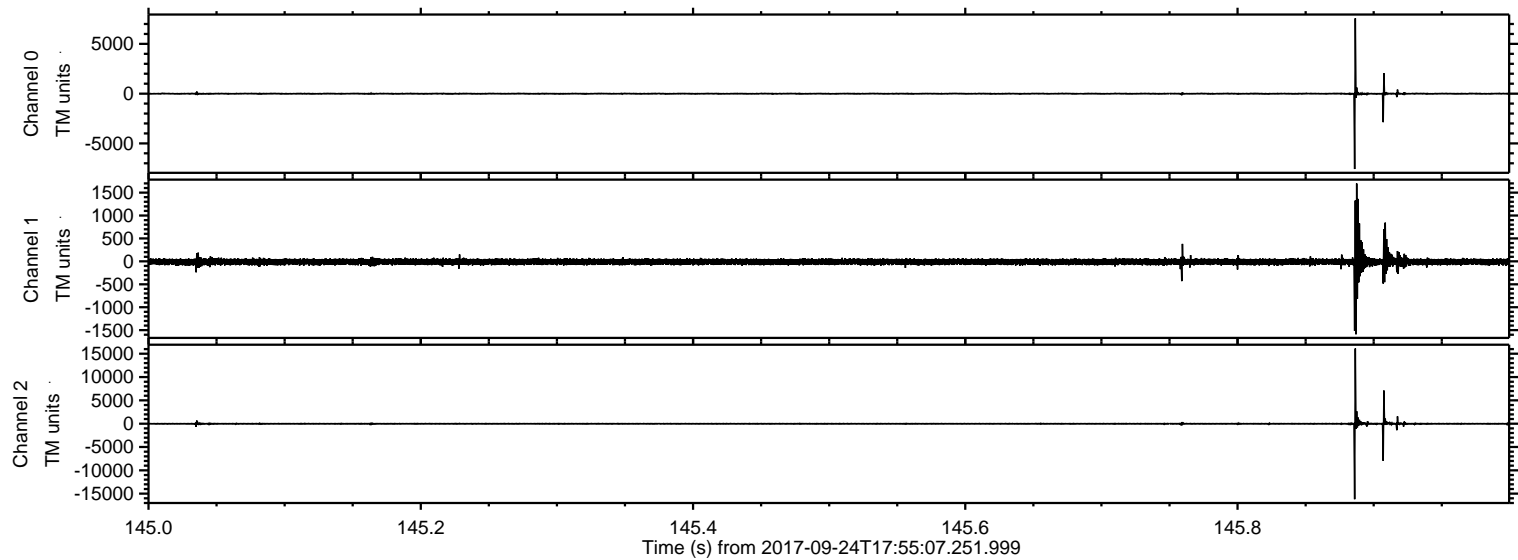
ELMAVAN 3D WAVEFORMS (Measured data sampled at 50 kHz) 51000 packets of 144 samples from 2017-09-24T17:55:07.251.999. Part 110/147

Processed Sun Sep 24 20:03:24 2017 by ELM ver.2012-10-06 from 001__elm20170924_175506__dat00.bin



ELMAVAN 3D WAVEFORMS (Measured data sampled at 50 kHz) 51000 packets of 144 samples from 2017-09-24T17:55:07.251.999. Part 146/147

Processed Sun Sep 24 20:03:25 2017 by ELM ver.2012-10-06 from 001__elm20170924_175506__dat00.bin



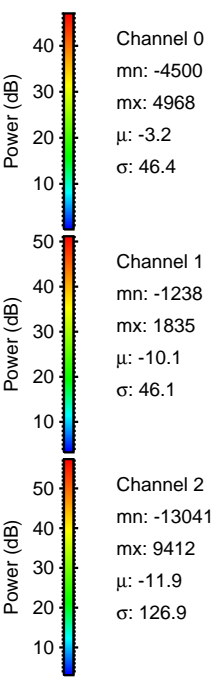
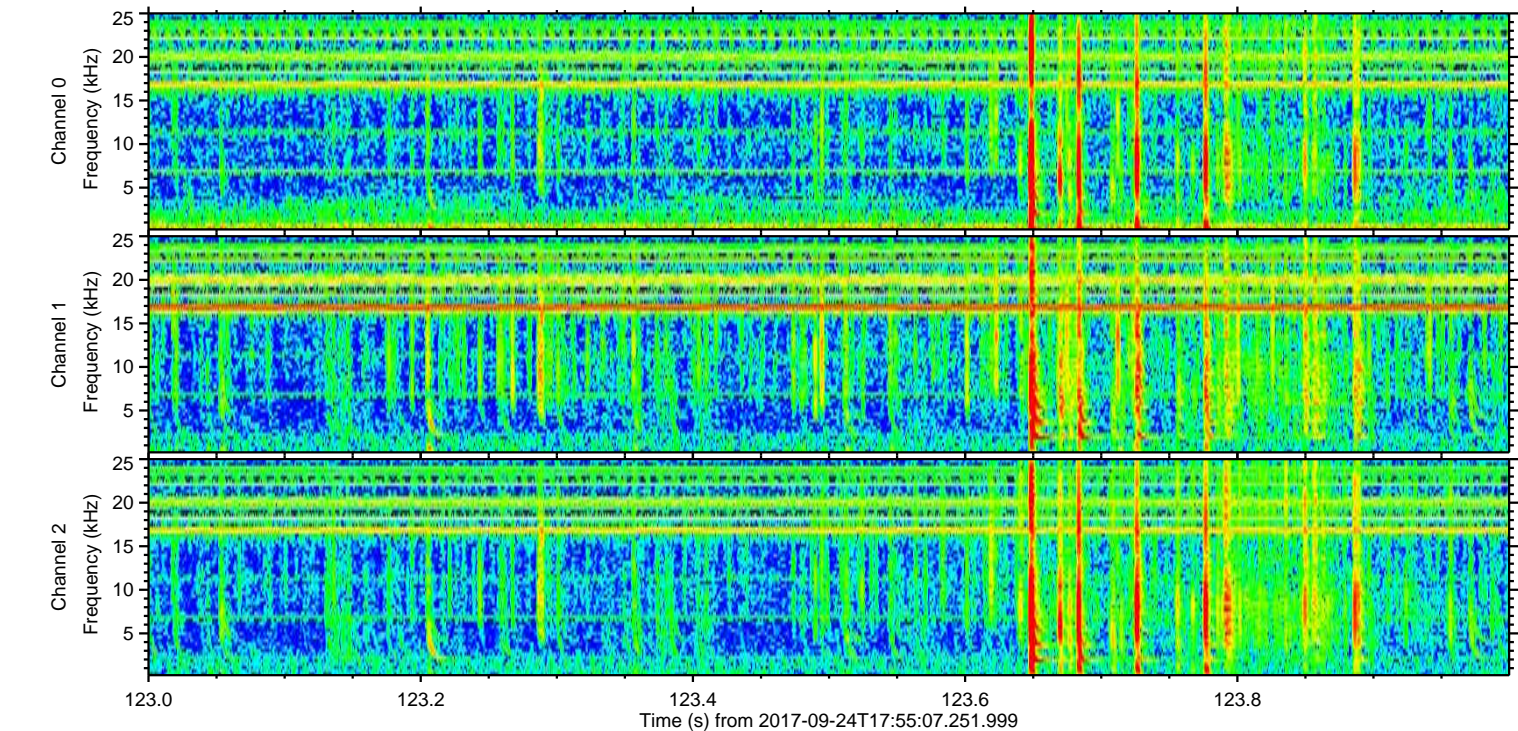
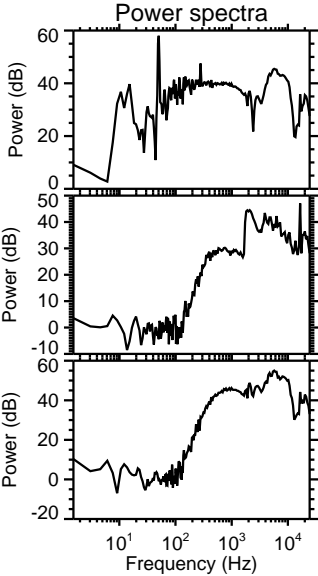
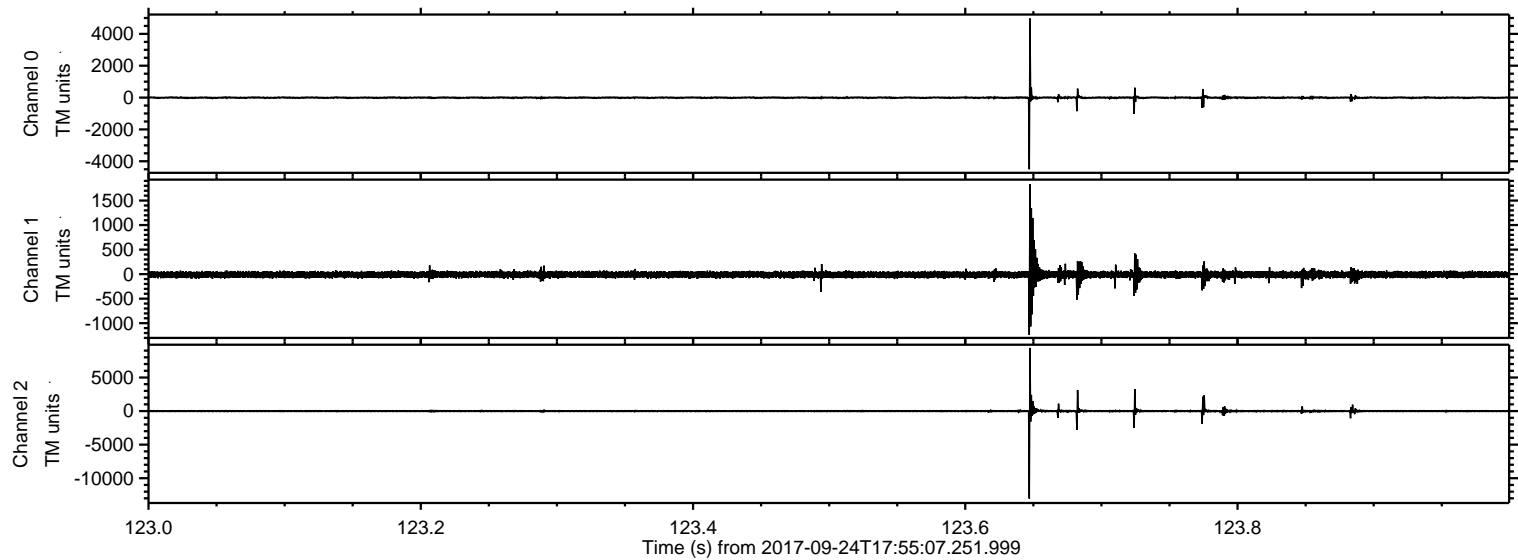
Channel 0
mn: -7579
mx: 7573
 μ : -3.2
 σ : 74.9

Channel 1
mn: -1590
mx: 1698
 μ : -10.2
 σ : 50.4

Channel 2
mn: -16195
mx: 16130
 μ : -11.9
 σ : 190.3

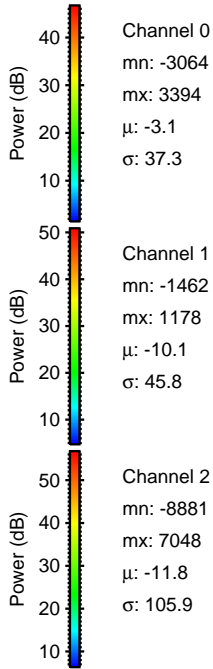
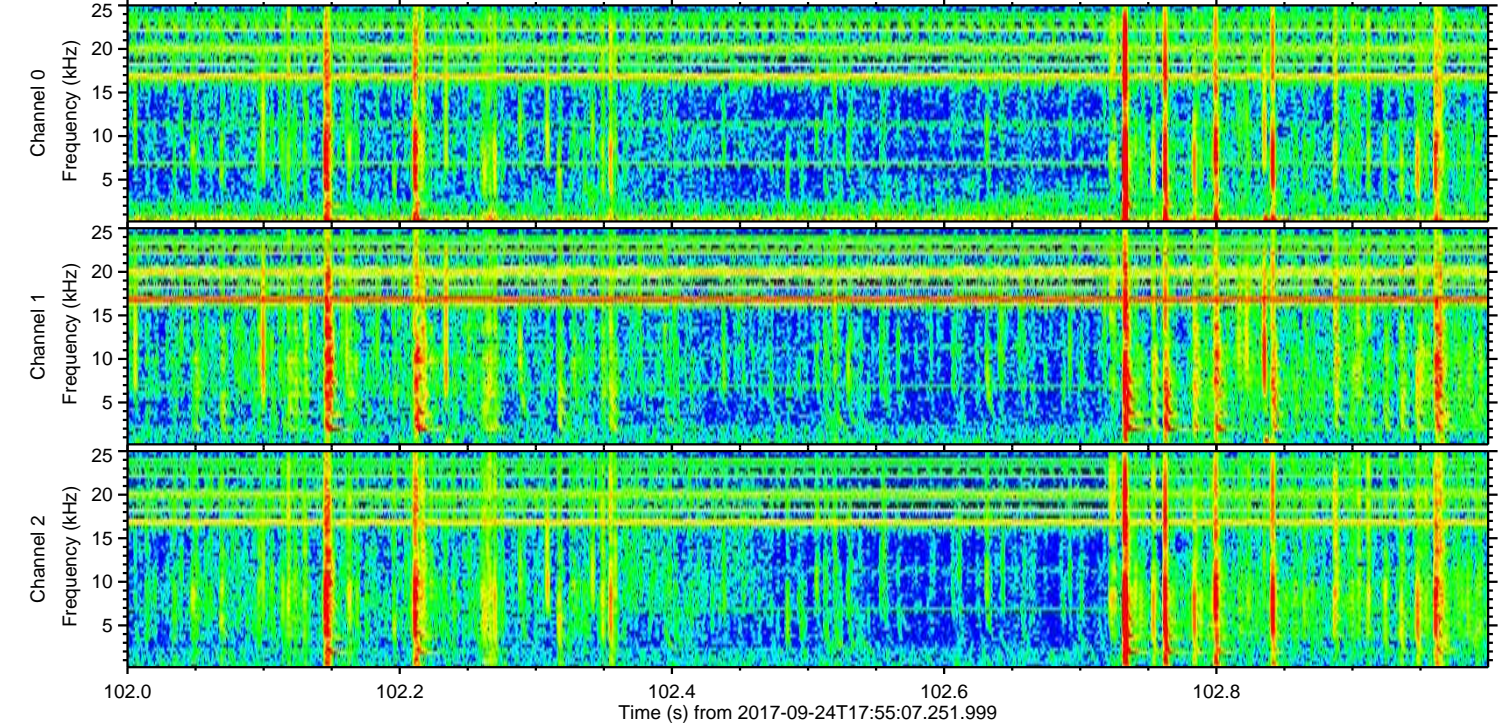
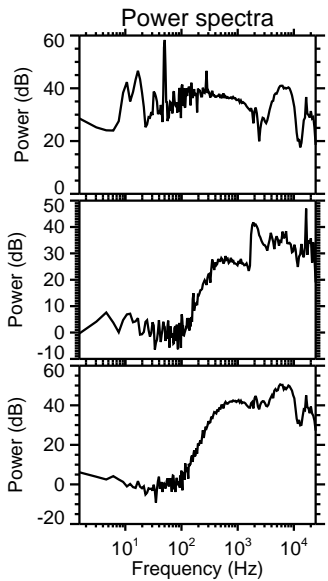
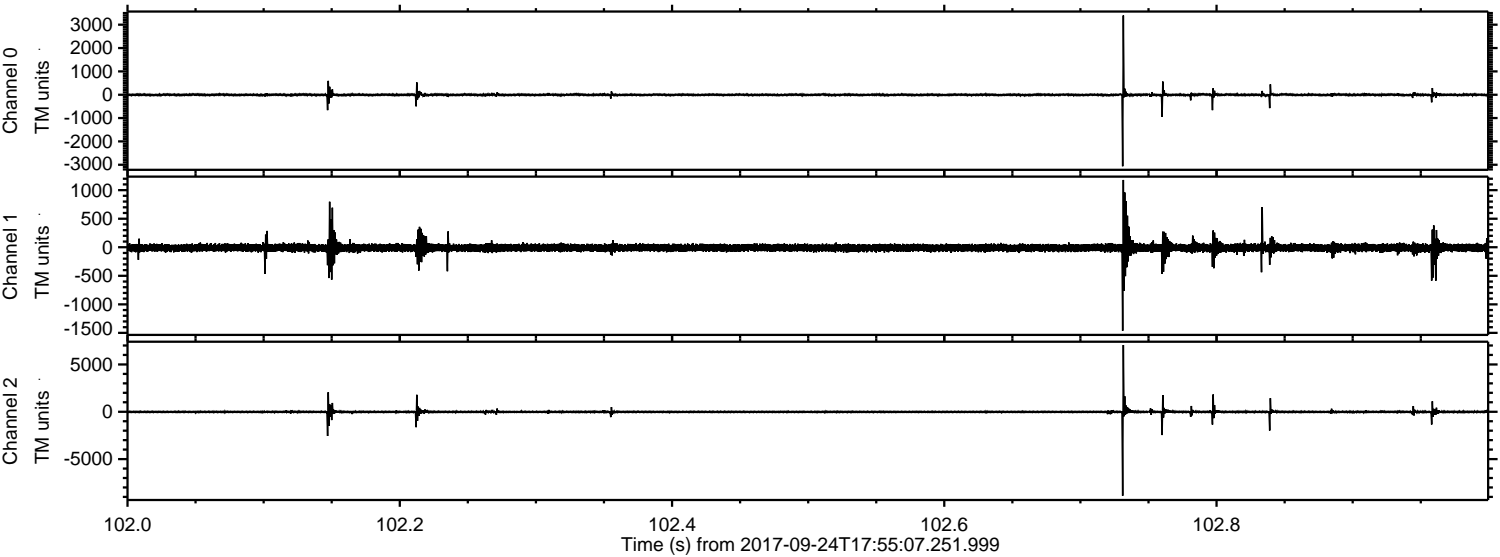
ELMAVAN 3D WAVEFORMS (Measured data sampled at 50 kHz) 51000 packets of 144 samples from 2017-09-24T17:55:07.251.999. Part 124/147

Processed Sun Sep 24 20:03:26 2017 by ELM ver.2012-10-06 from 001__elm20170924_175506__dat00.bin

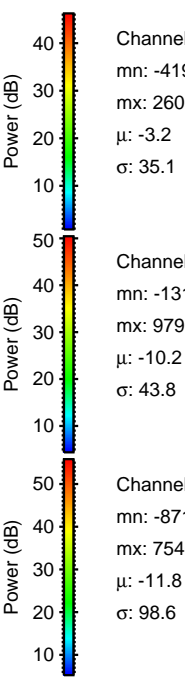
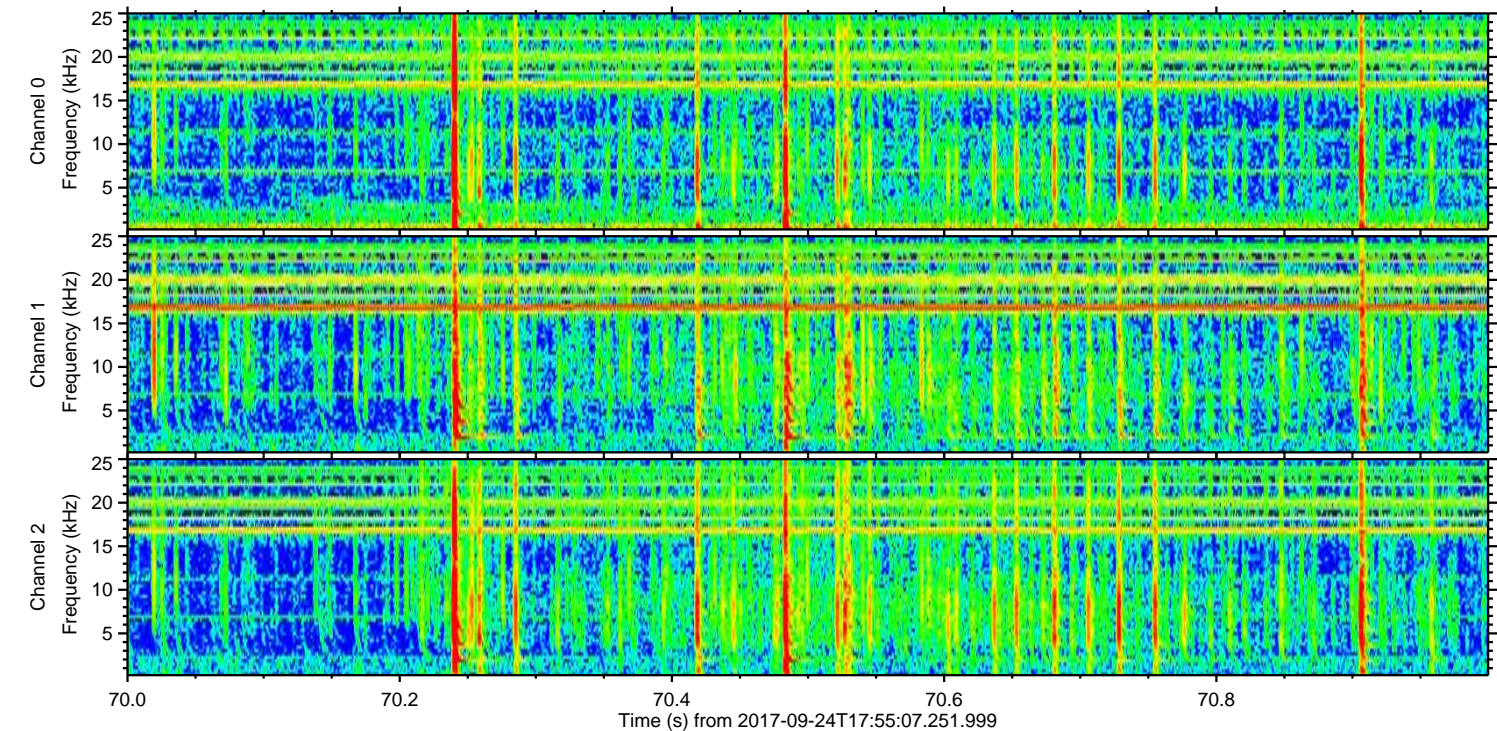
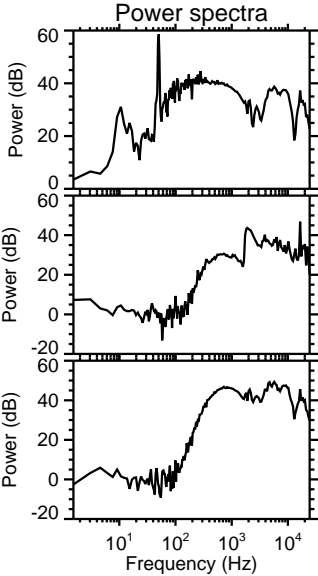
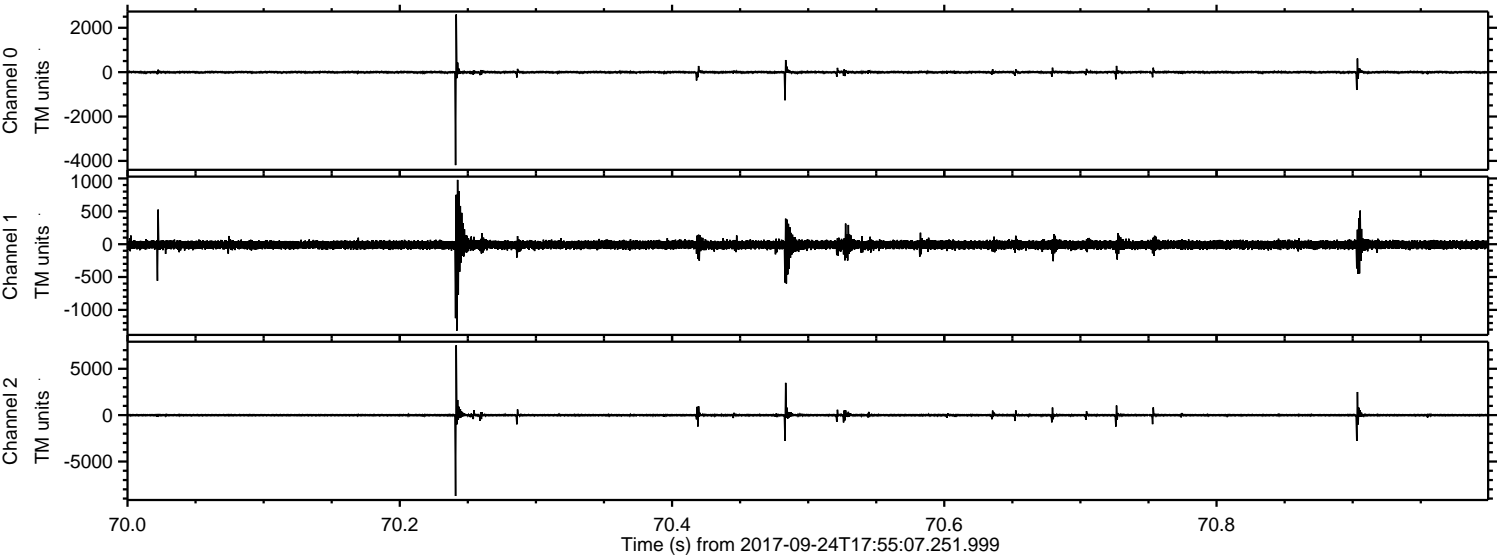


ELMAVAN 3D WAVEFORMS (Measured data sampled at 50 kHz) 51000 packets of 144 samples from 2017-09-24T17:55:07.251.999. Part 103/147

Processed Sun Sep 24 20:03:27 2017 by ELM ver.2012-10-06 from 001__elm20170924_175506__dat00.bin



Processed Sun Sep 24 20:03:28 2017 by ELM ver.2012-10-06 from 001__elm20170924_175506__dat00.bin

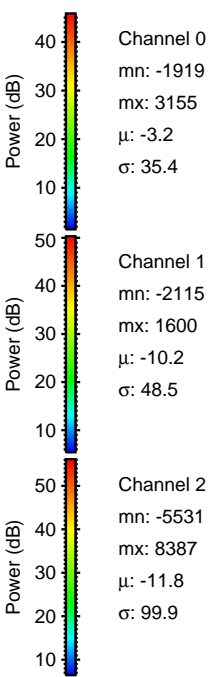
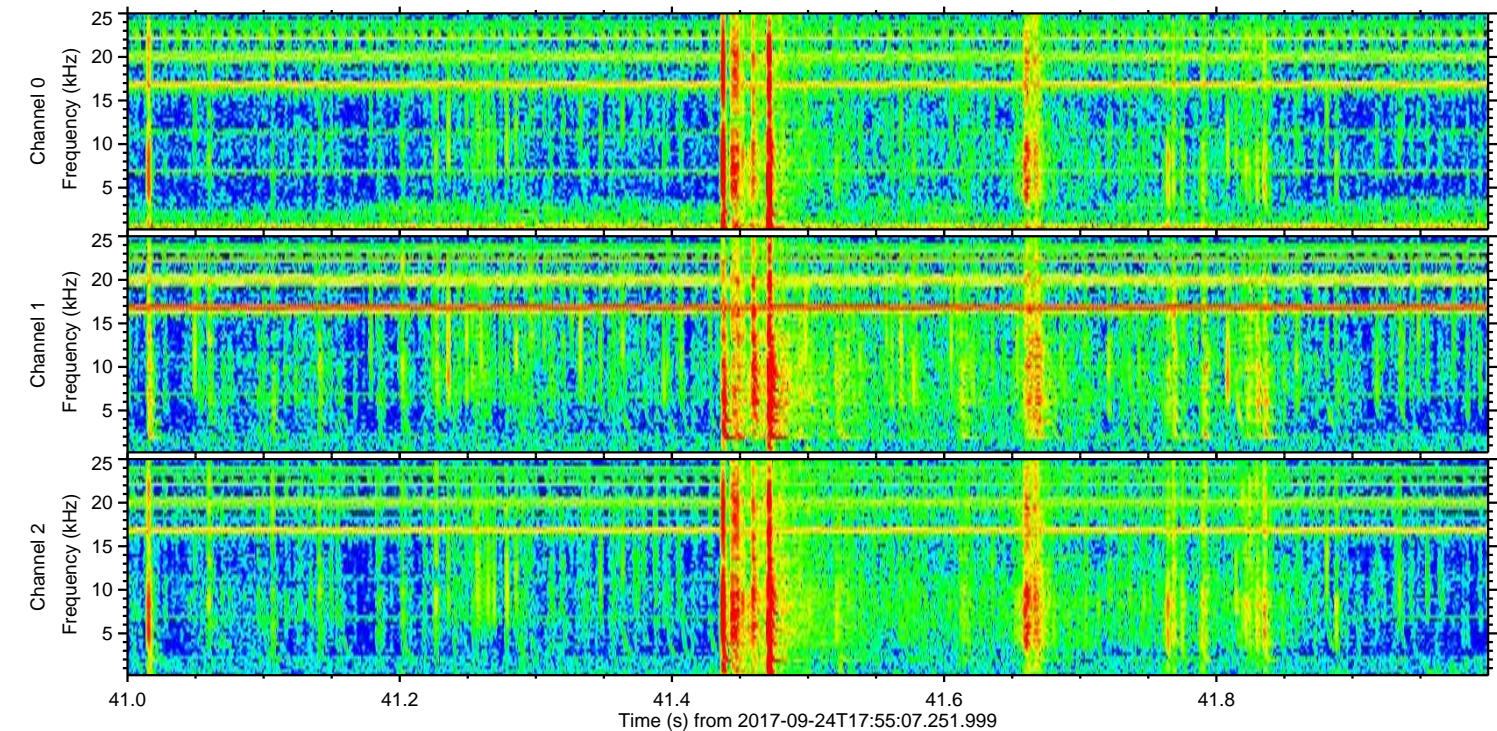
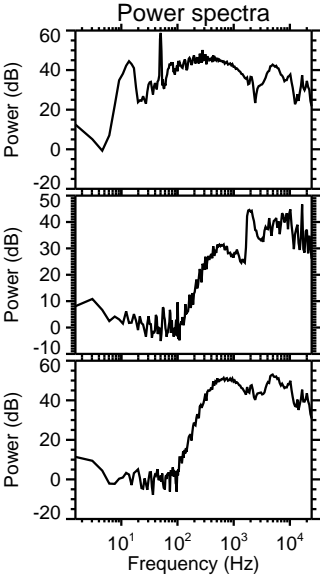
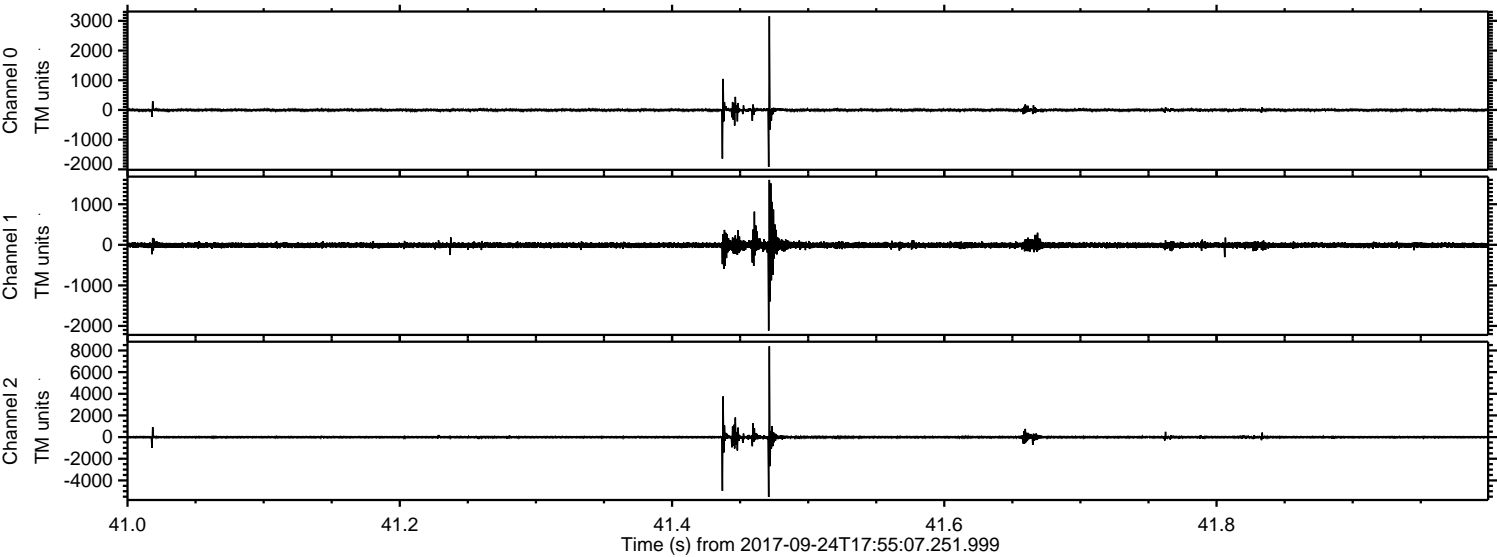


Channel 0
mn: -4192
mx: 2603
 μ : -3.2
 σ : 35.1

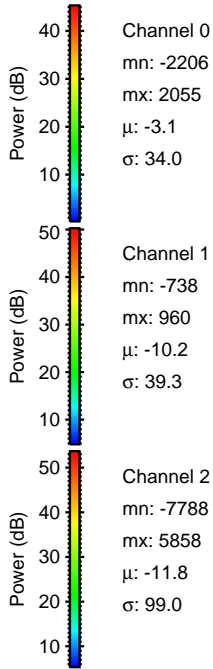
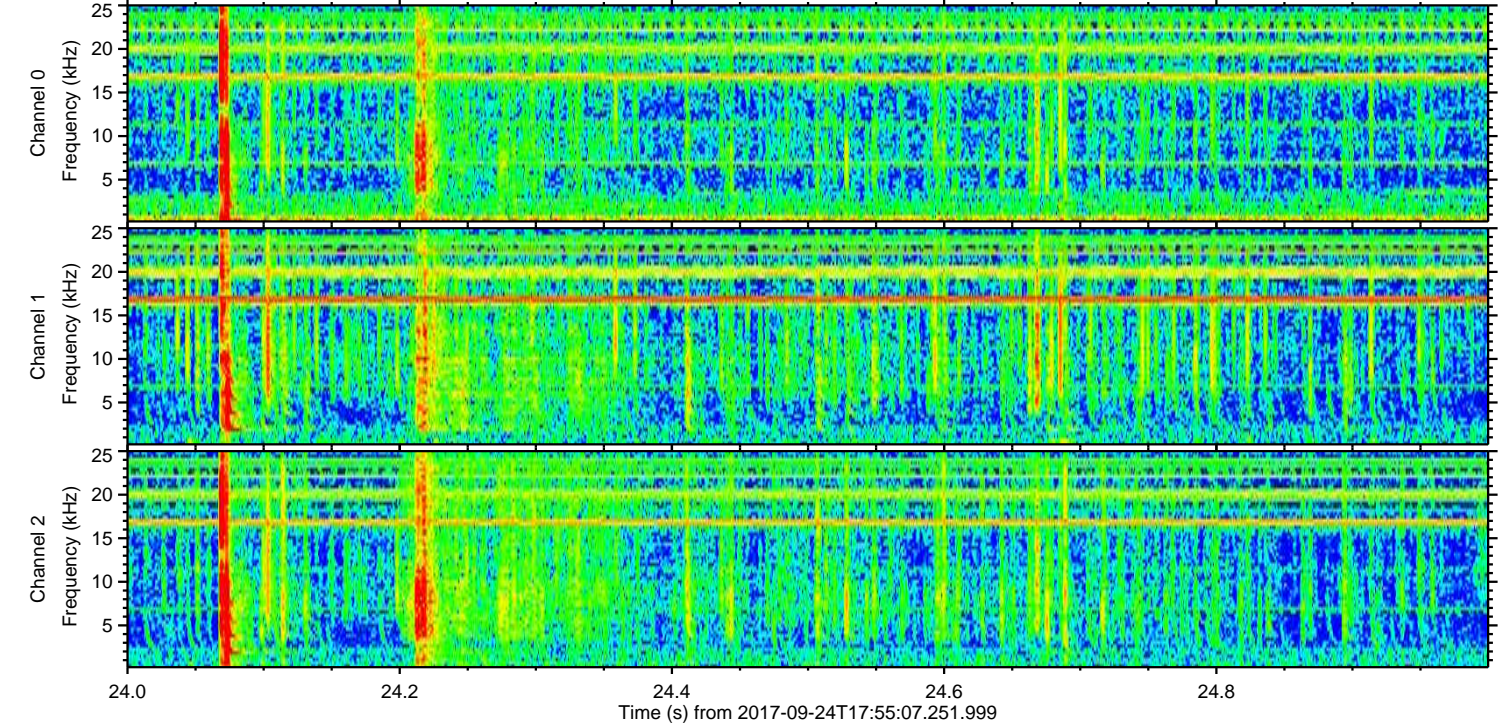
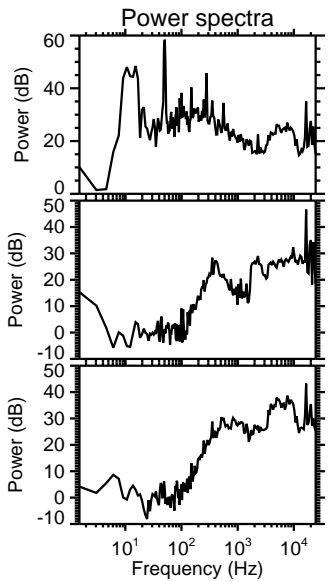
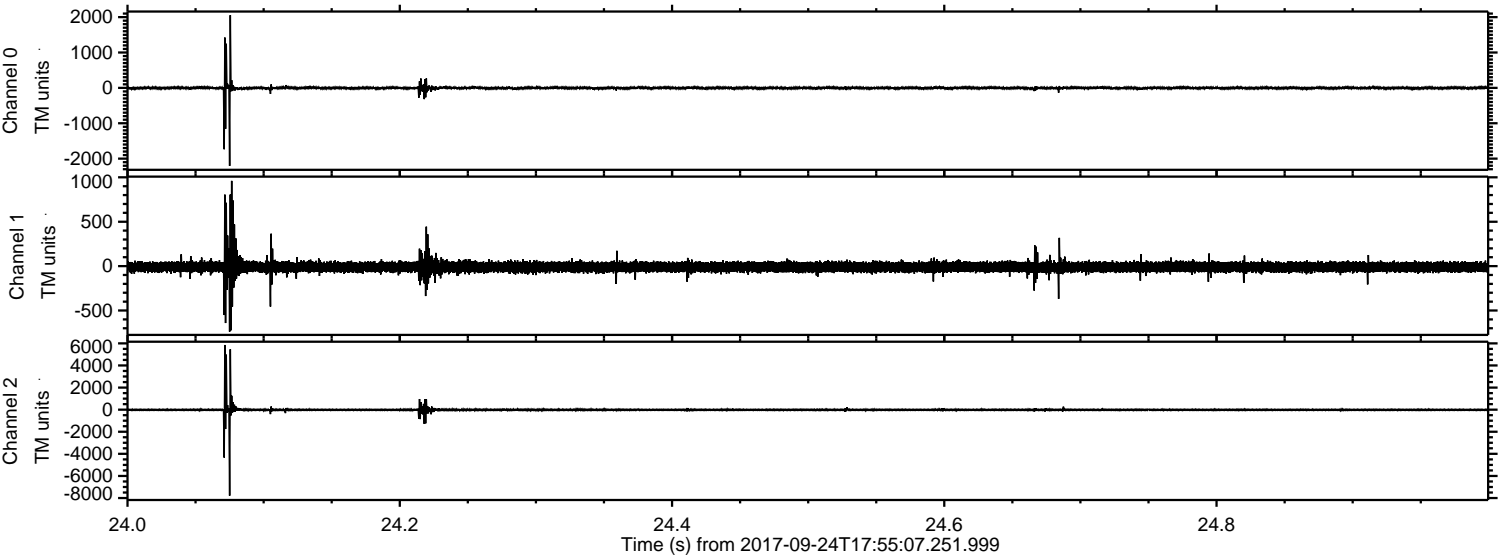
Channel 1
mn: -1315
mx: 979
 μ : -10.2
 σ : 43.8

Channel 2
mn: -8717
mx: 7540
 μ : -11.8
 σ : 98.6

Processed Sun Sep 24 20:03:28 2017 by ELM ver.2012-10-06 from 001__elm20170924_175506__dat00.bin



Processed Sun Sep 24 20:03:29 2017 by ELM ver.2012-10-06 from 001__elm20170924_175506__dat00.bin



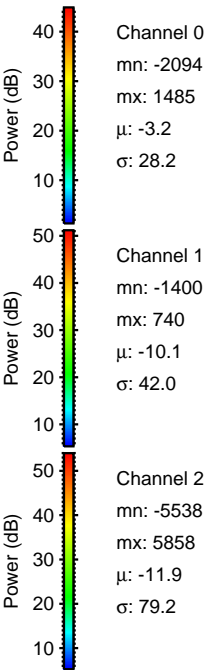
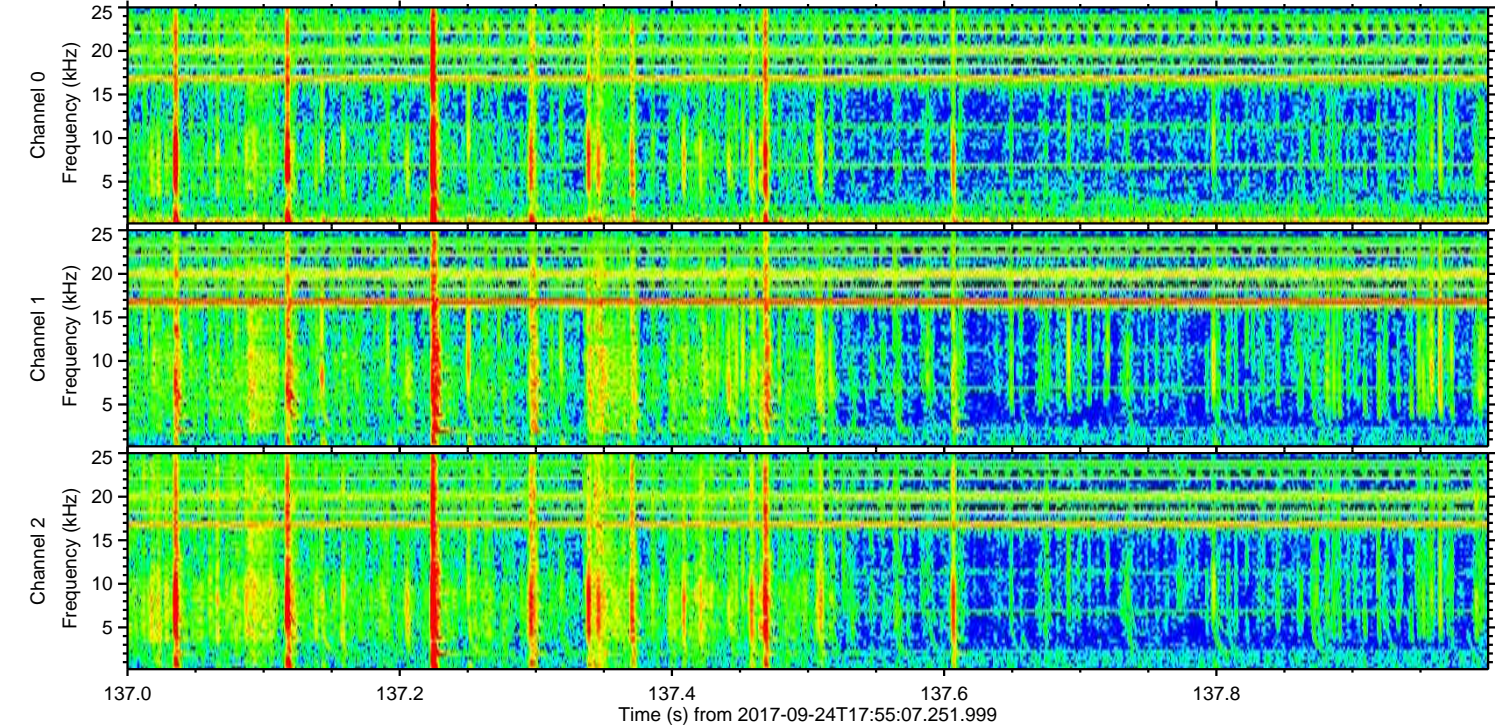
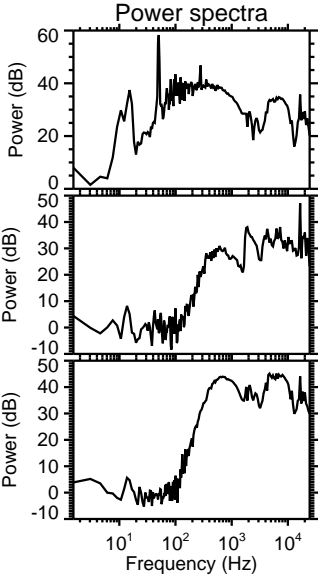
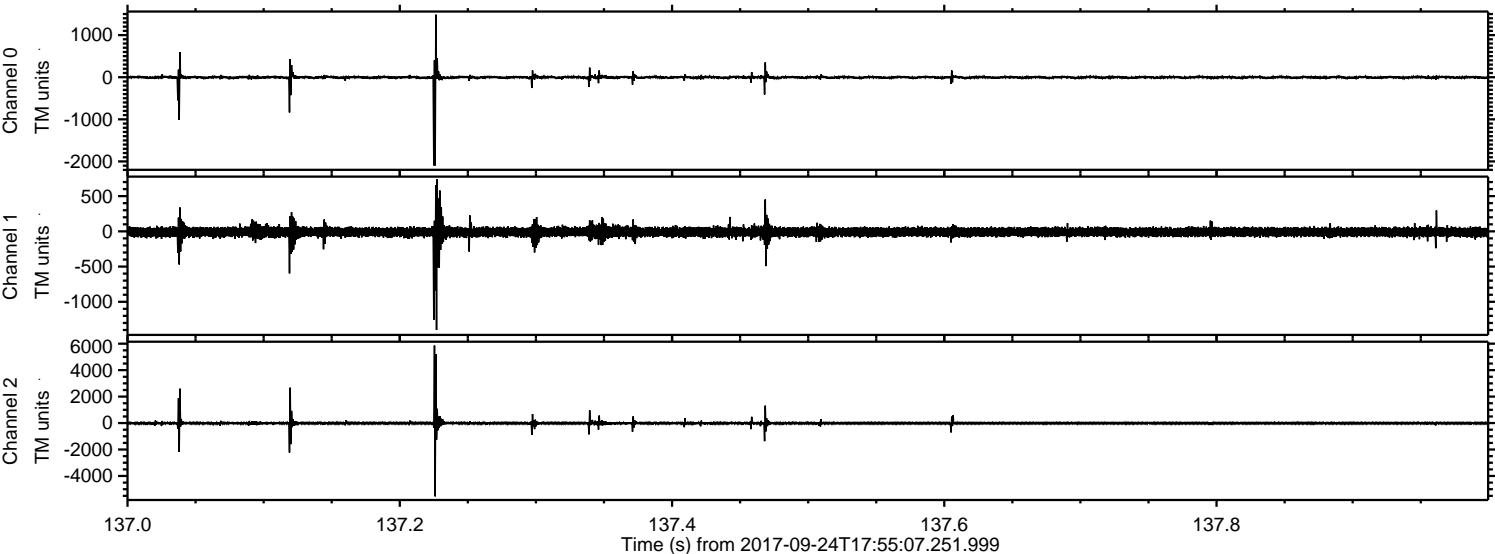
Channel 0
mn: -2206
mx: 2055
 μ : -3.1
 σ : 34.0

Channel 1
mn: -738
mx: 960
 μ : -10.2
 σ : 39.3

Channel 2
mn: -7788
mx: 5858
 μ : -11.8
 σ : 99.0

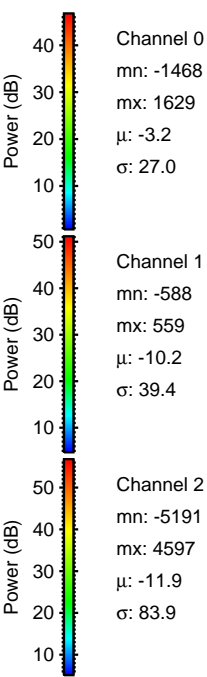
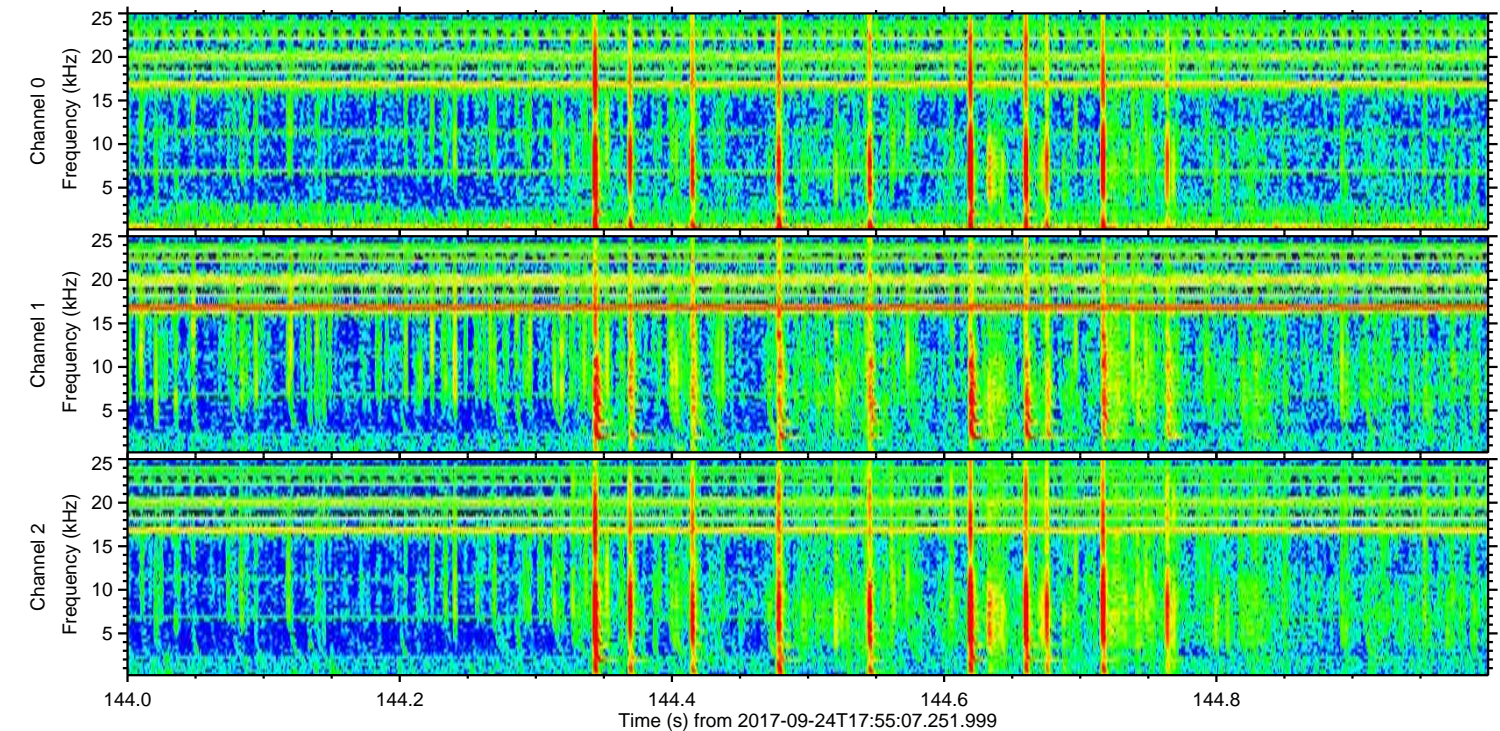
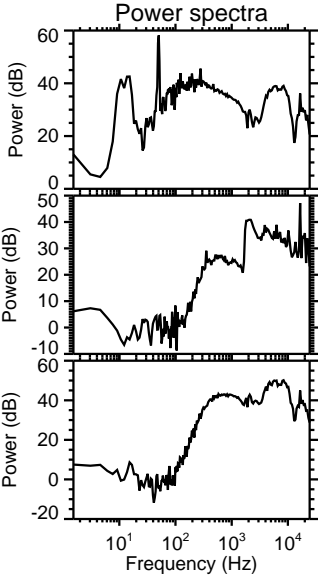
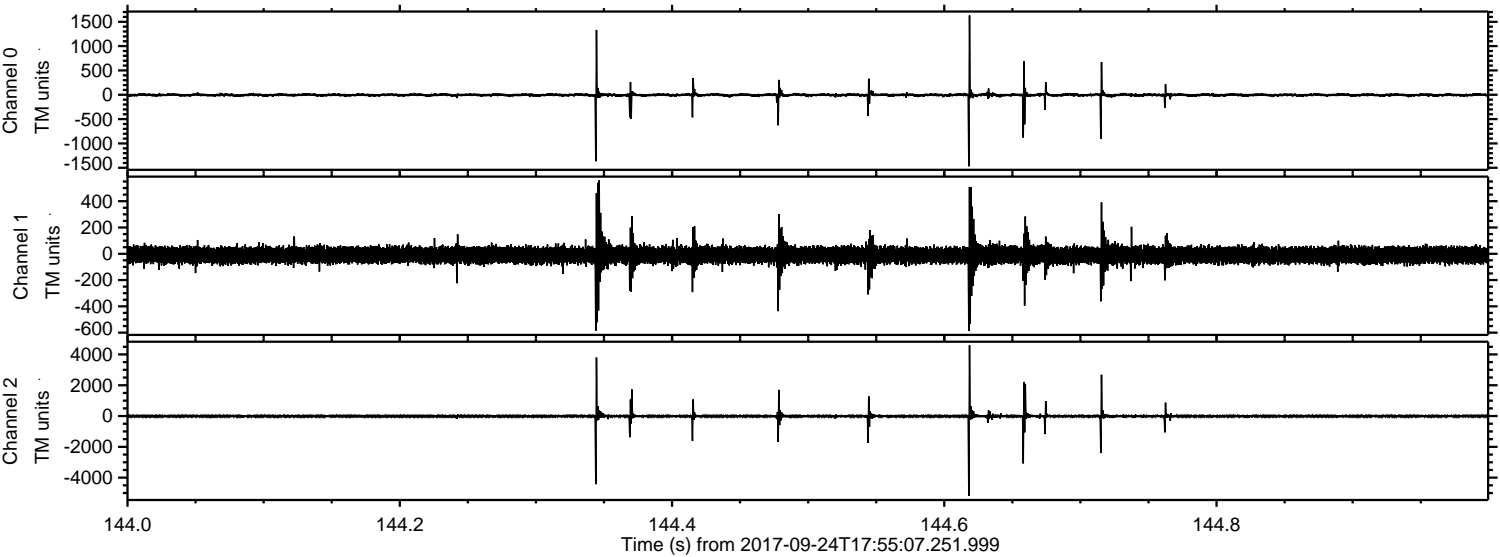
ELMAVAN 3D WAVEFORMS (Measured data sampled at 50 kHz) 51000 packets of 144 samples from 2017-09-24T17:55:07.251.999. Part 138/147

Processed Sun Sep 24 20:03:30 2017 by ELM ver.2012-10-06 from 001__elm20170924_175506__dat00.bin



ELMAVAN 3D WAVEFORMS (Measured data sampled at 50 kHz) 51000 packets of 144 samples from 2017-09-24T17:55:07.251.999. Part 145/147

Processed Sun Sep 24 20:03:30 2017 by ELM ver.2012-10-06 from 001__elm20170924_175506__dat00.bin



Channel 0
mn: -1468
mx: 1629
 μ : -3.2
 σ : 27.0

Channel 1
mn: -588
mx: 559
 μ : -10.2
 σ : 39.4

Channel 2
mn: -5191
mx: 4597
 μ : -11.9
 σ : 83.9

Processed Sun Sep 24 20:03:31 2017 by ELM ver.2012-10-06 from 001__elm20170924_175506__dat00.bin

