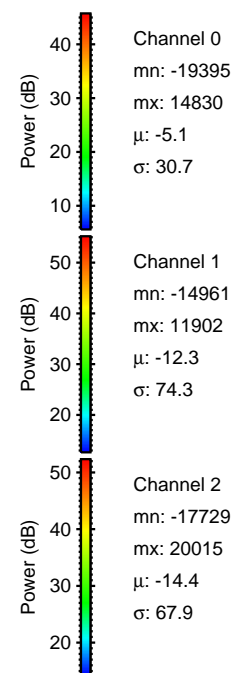
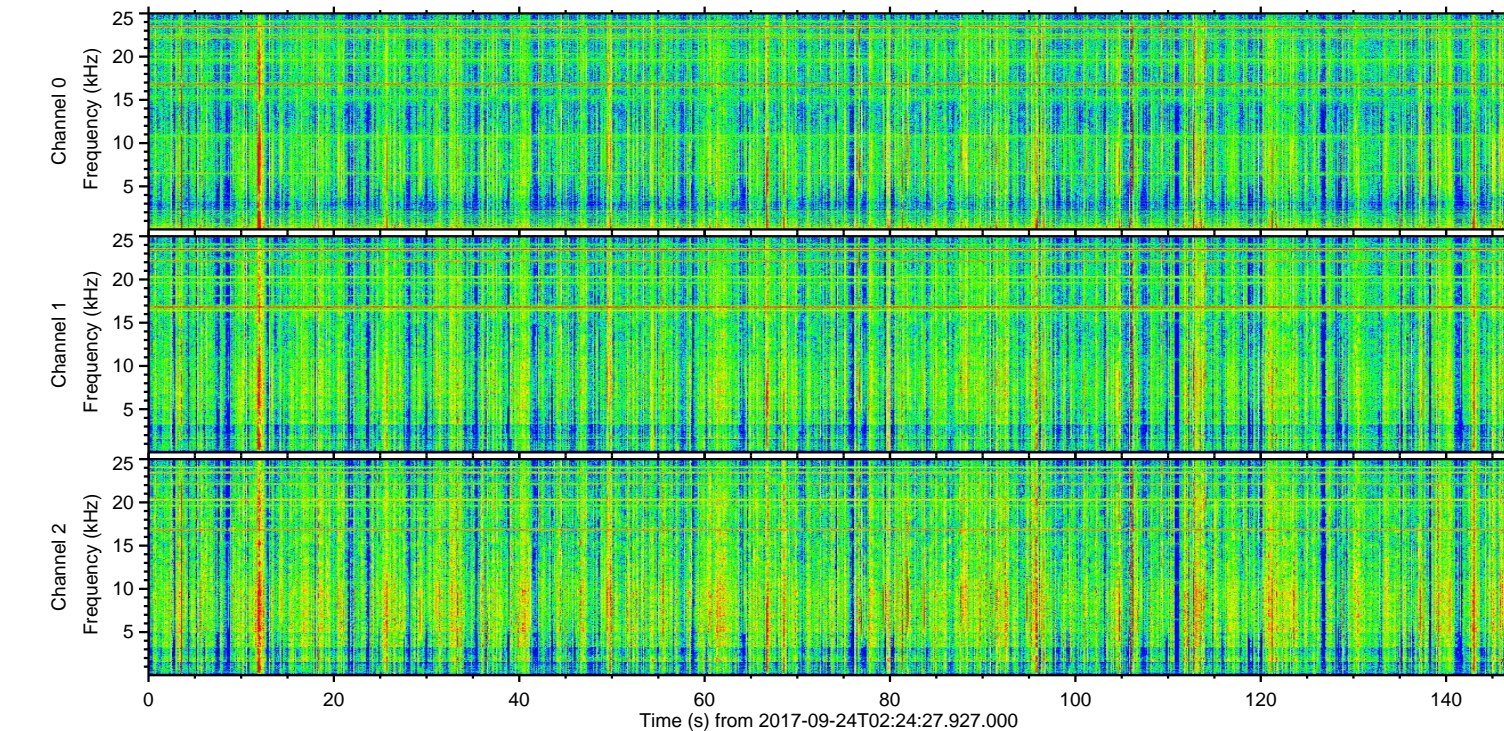
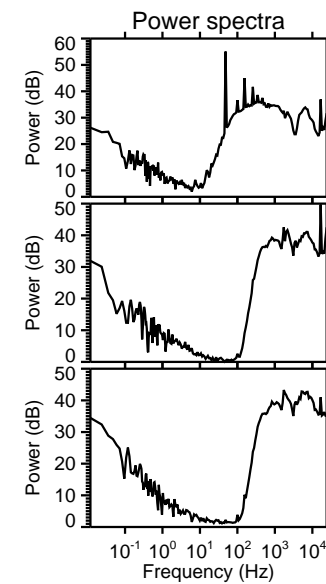
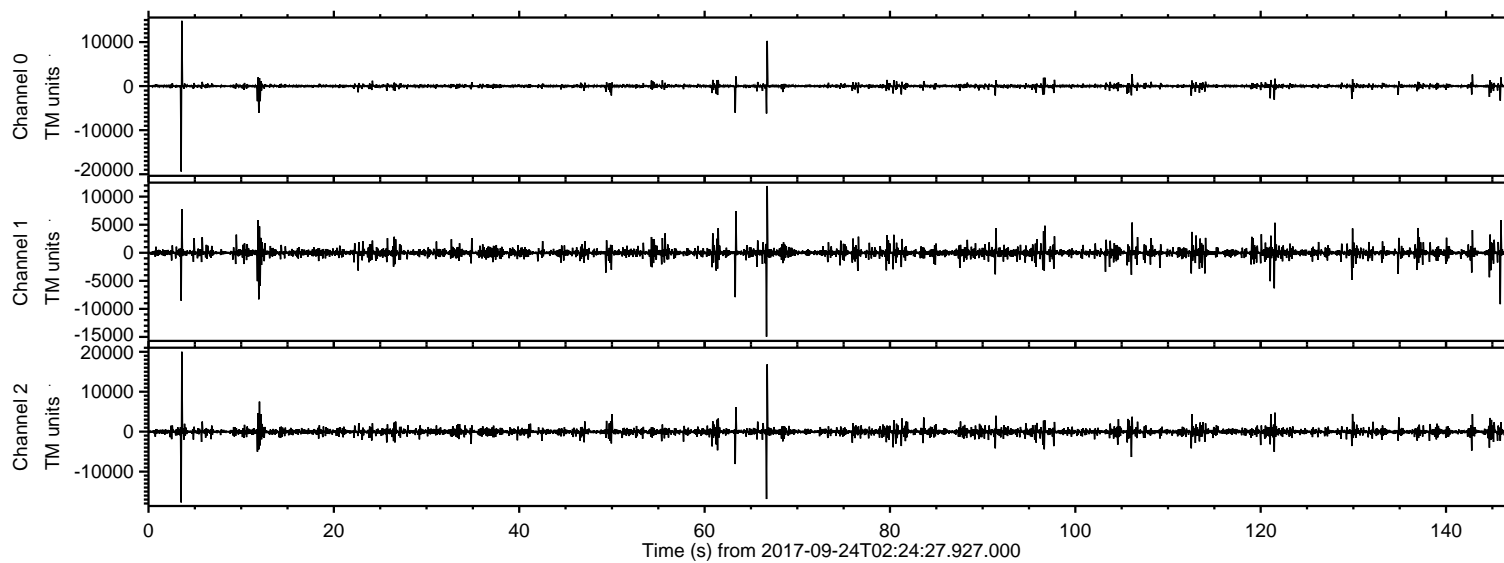


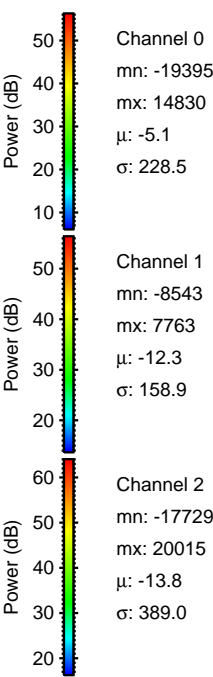
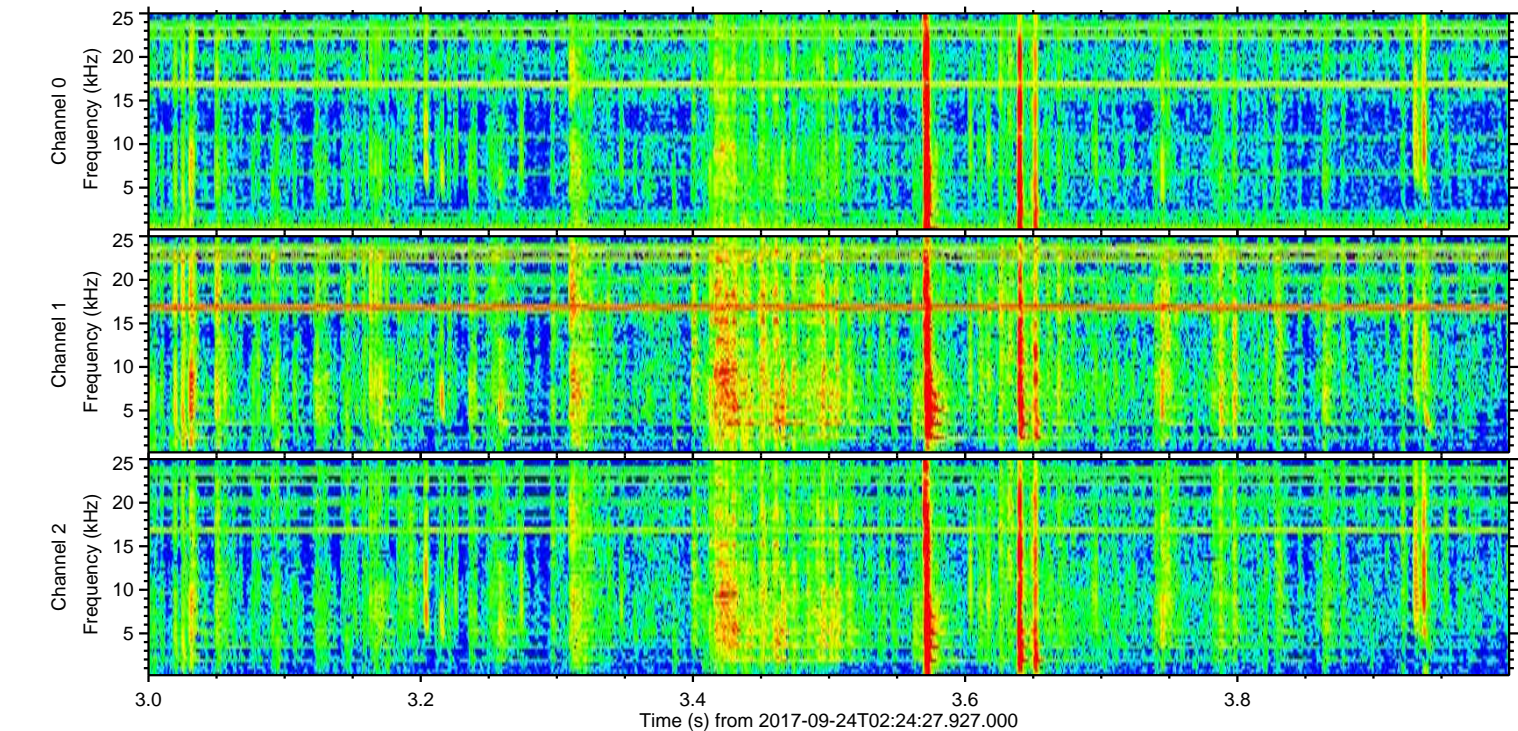
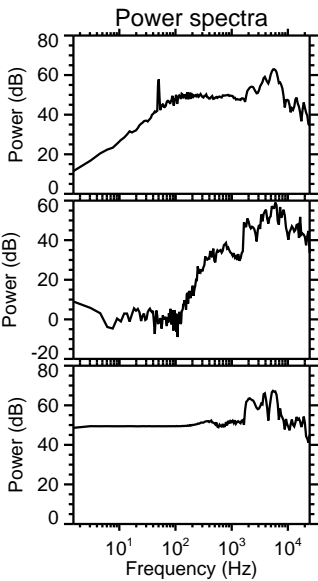
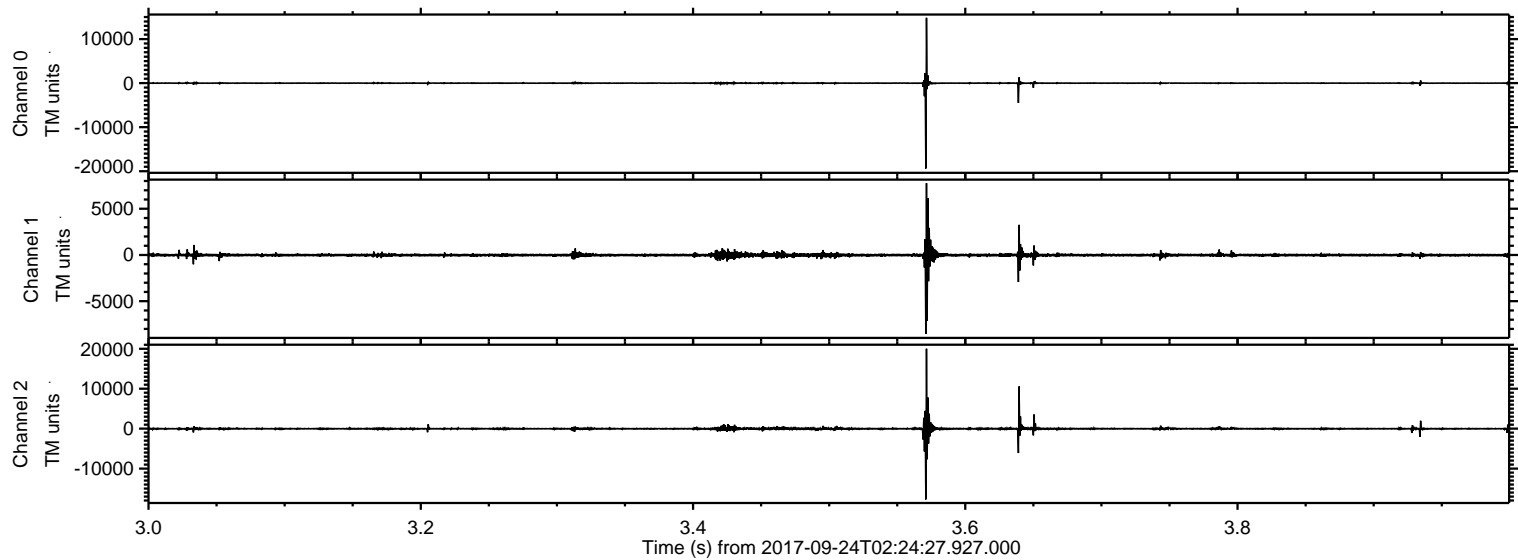
ELMAVAN 3D WAVEFORMS (Measured data sampled at 50 kHz) 51000 packets of 144 samples from 2017-09-24T02:24:27.927.000.

Processed Sun Sep 24 04:32:31 2017 by ELM ver.2012-10-06 from 001__elm20170924_022426__dat00.bin

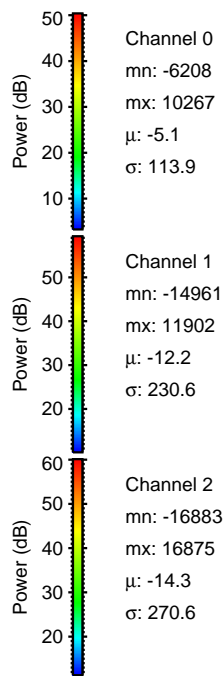
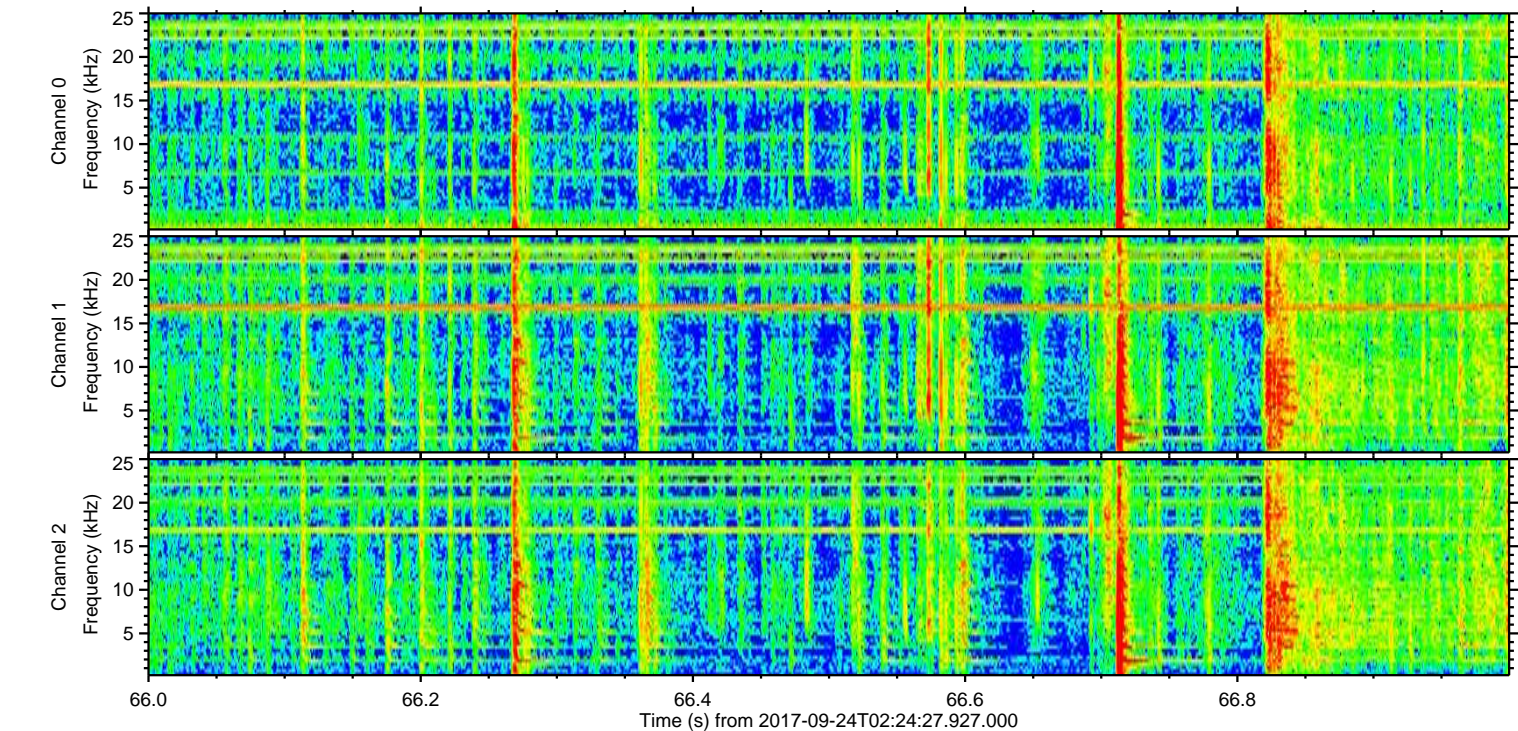
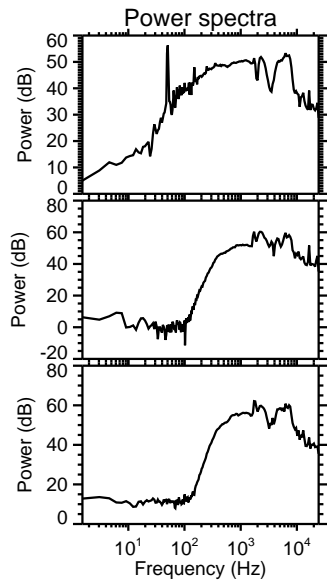
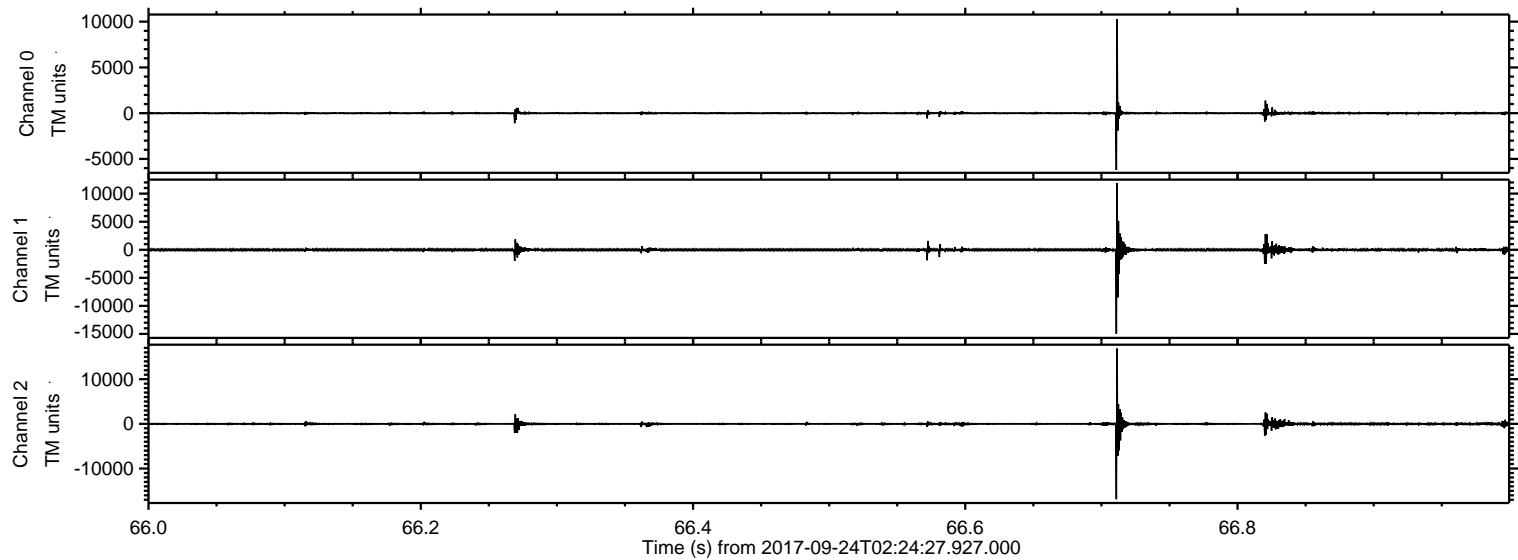


ELMAVAN 3D WAVEFORMS (Measured data sampled at 50 kHz) 51000 packets of 144 samples from 2017-09-24T02:24:27.927.000. Part 4/147

Processed Sun Sep 24 04:32:38 2017 by ELM ver.2012-10-06 from 001__elm20170924_022426__dat00.bin

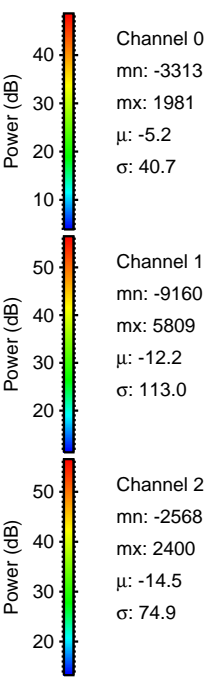
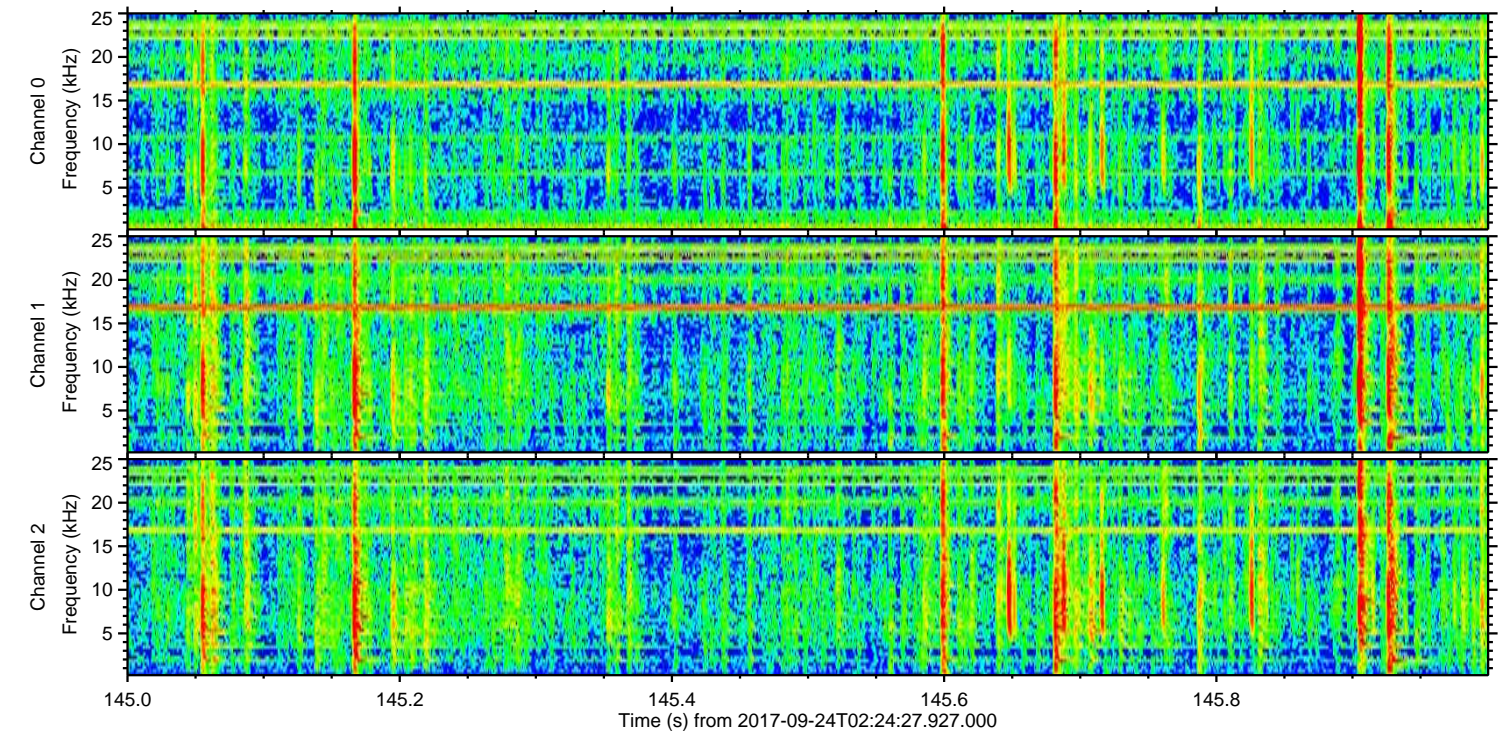
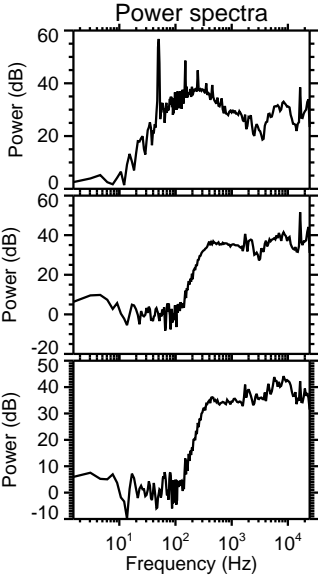
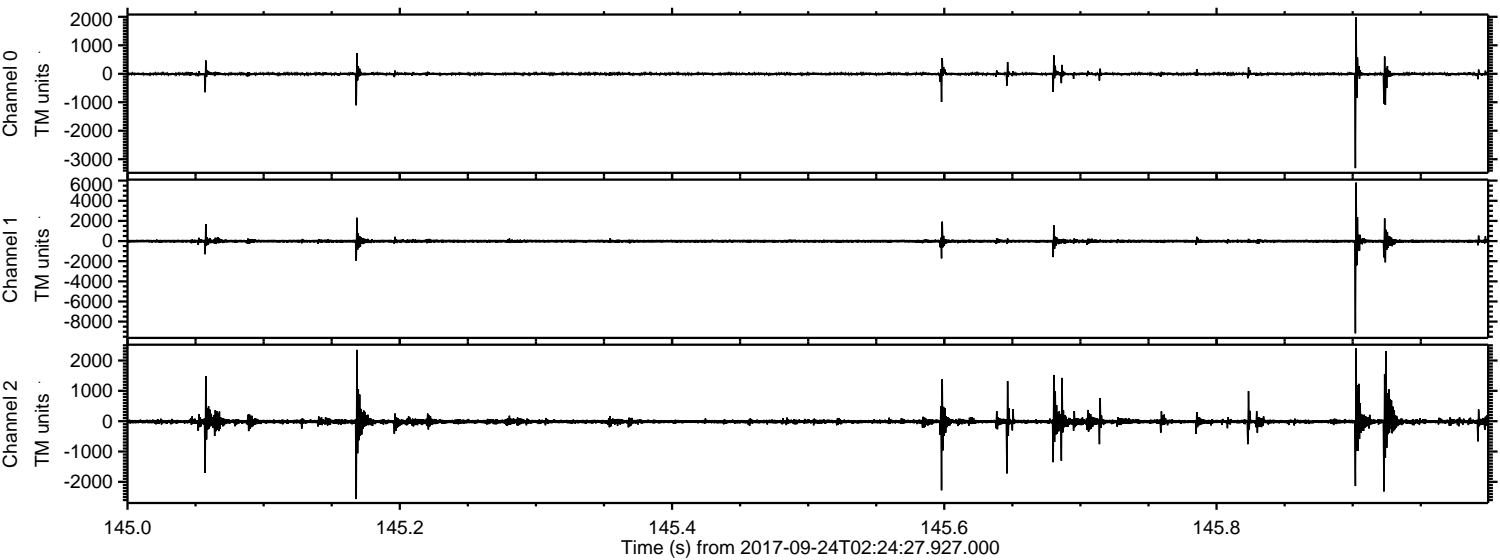


Processed Sun Sep 24 04:32:39 2017 by ELM ver.2012-10-06 from 001__elm20170924_022426__dat00.bin



ELMAVAN 3D WAVEFORMS (Measured data sampled at 50 kHz) 51000 packets of 144 samples from 2017-09-24T02:24:27.927.000. Part 146/147

Processed Sun Sep 24 04:32:40 2017 by ELM ver.2012-10-06 from 001__elm20170924_022426__dat00.bin

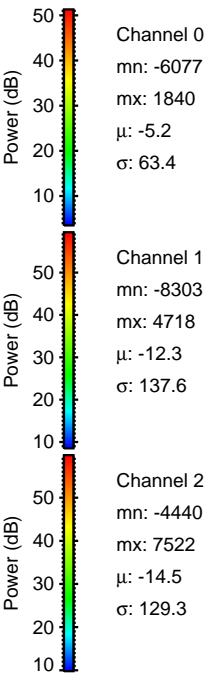
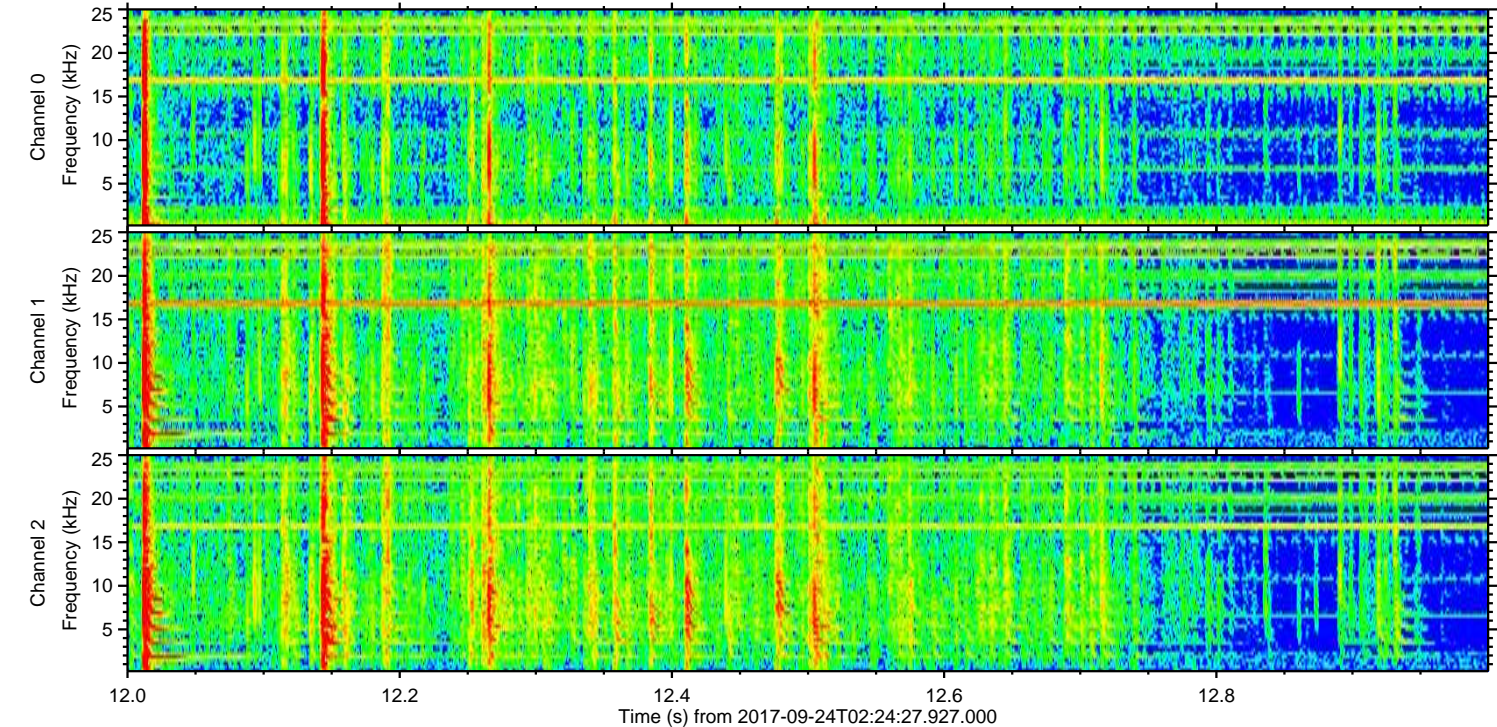
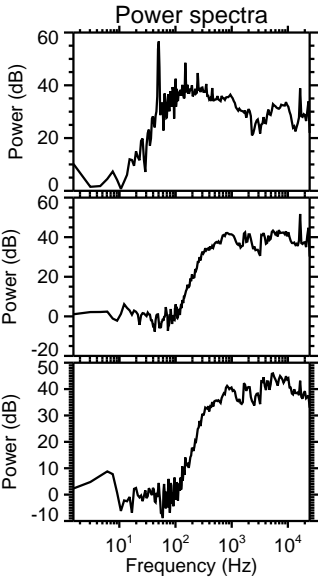
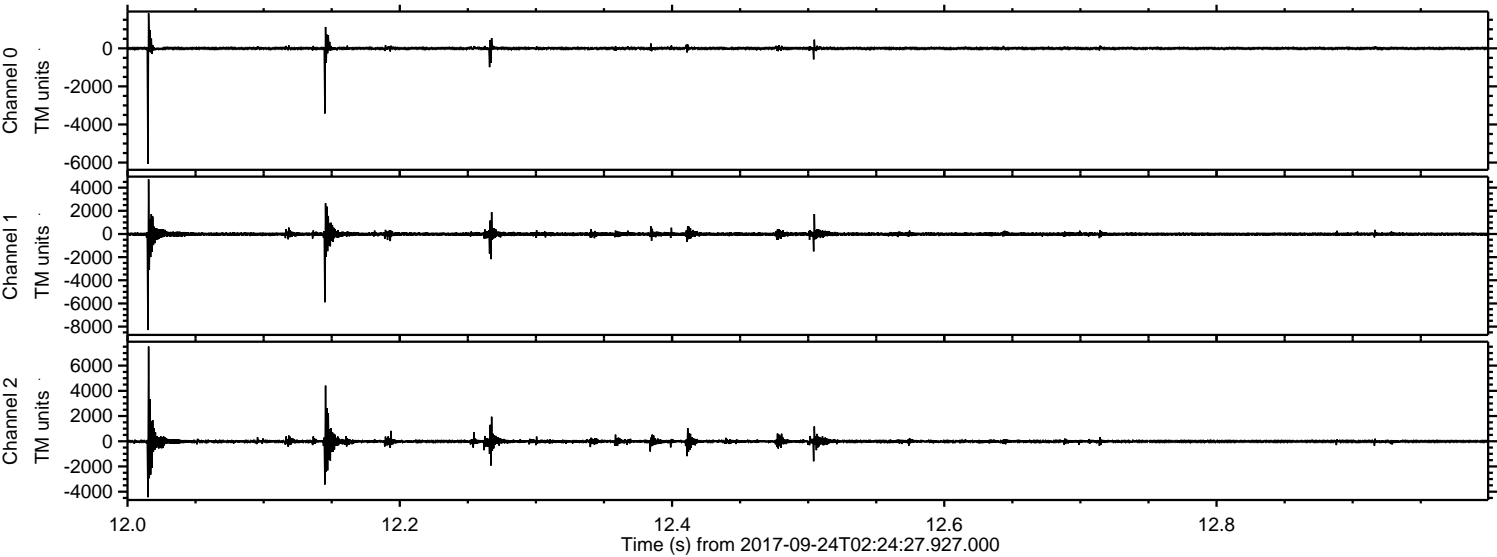


Channel 0
mn: -3313
mx: 1981
 μ : -5.2
 σ : 40.7

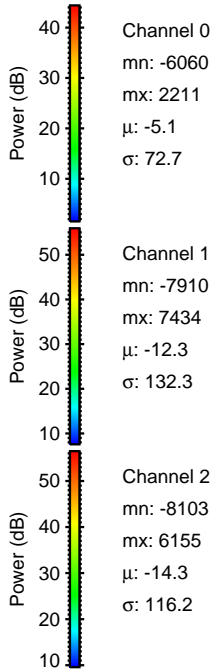
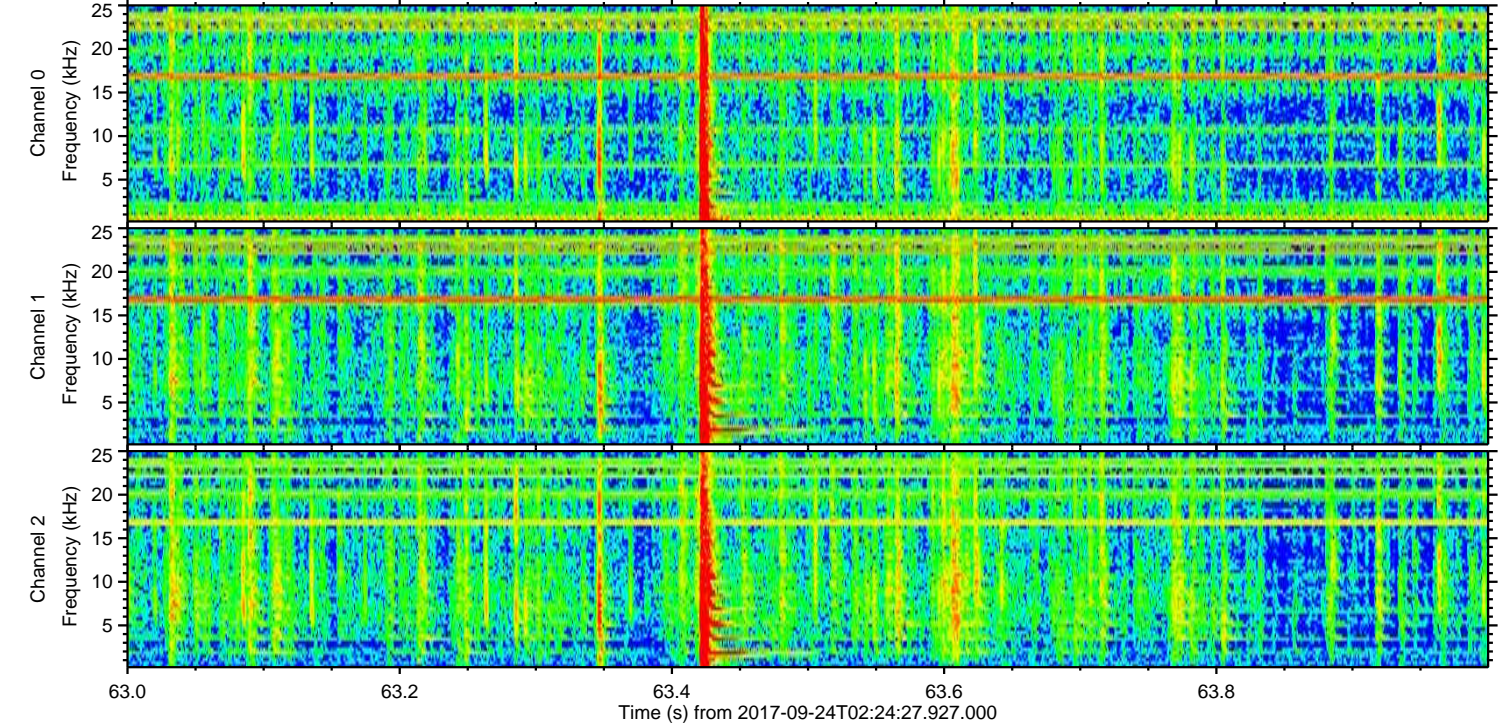
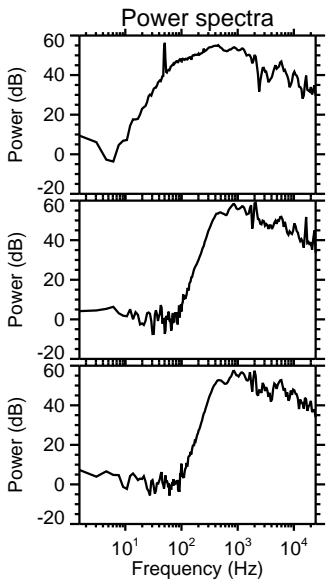
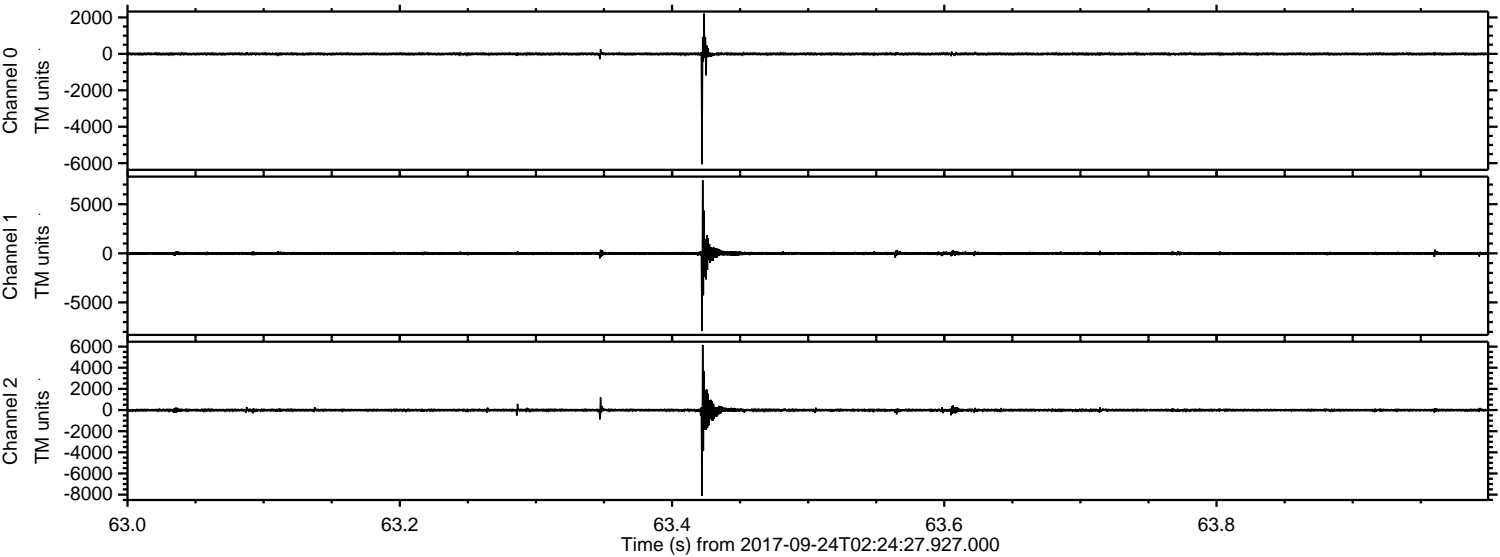
Channel 1
mn: -9160
mx: 5809
 μ : -12.2
 σ : 113.0

Channel 2
mn: -2568
mx: 2400
 μ : -14.5
 σ : 74.9

Processed Sun Sep 24 04:32:41 2017 by ELM ver.2012-10-06 from 001__elm20170924_022426__dat00.bin

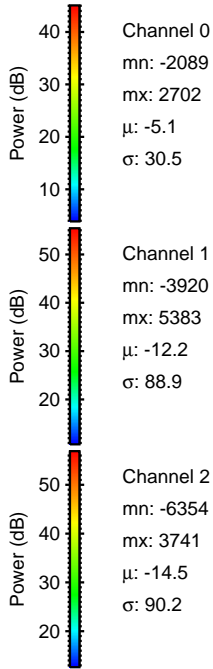
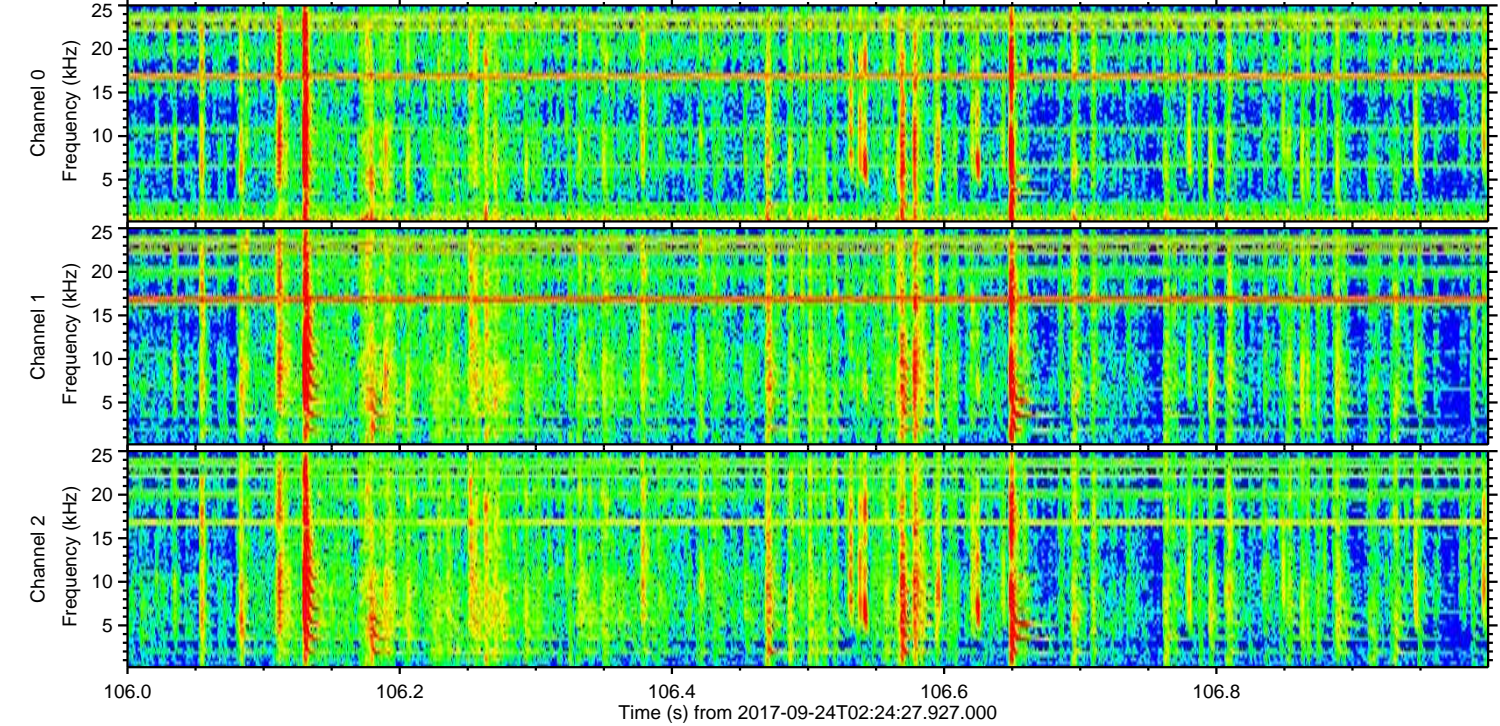
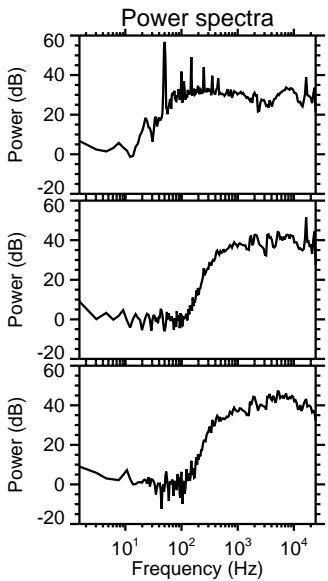
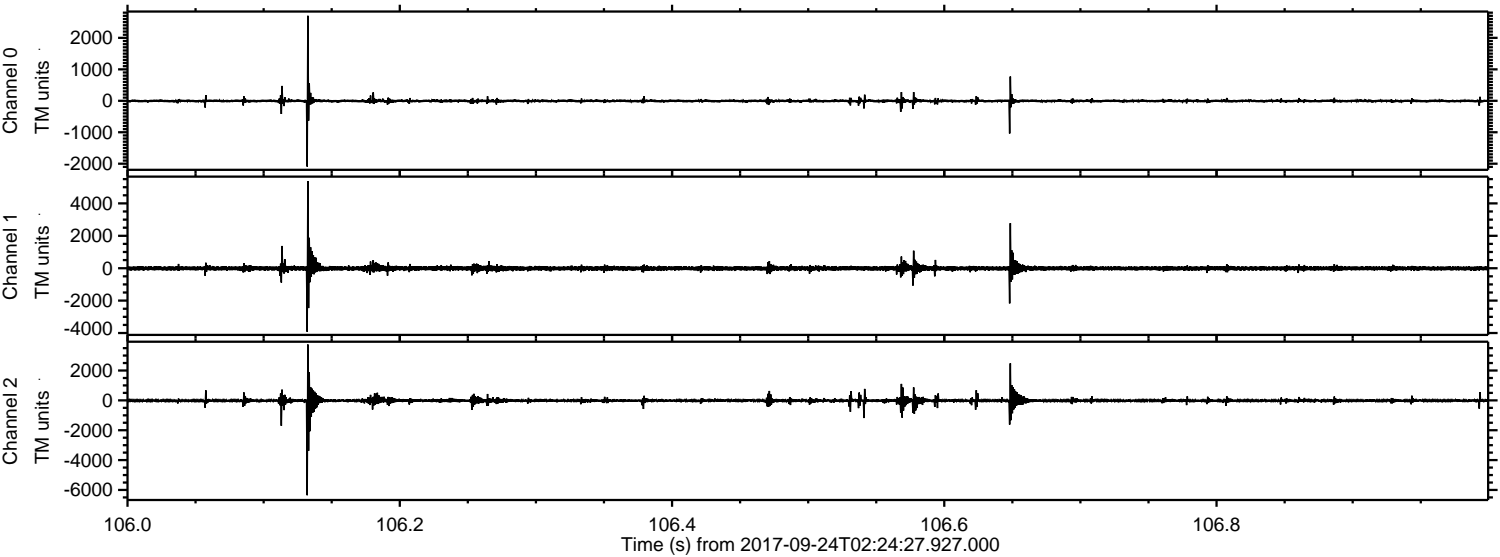


Processed Sun Sep 24 04:32:41 2017 by ELM ver.2012-10-06 from 001__elm20170924_022426__dat00.bin



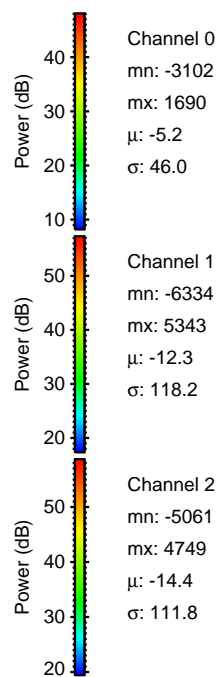
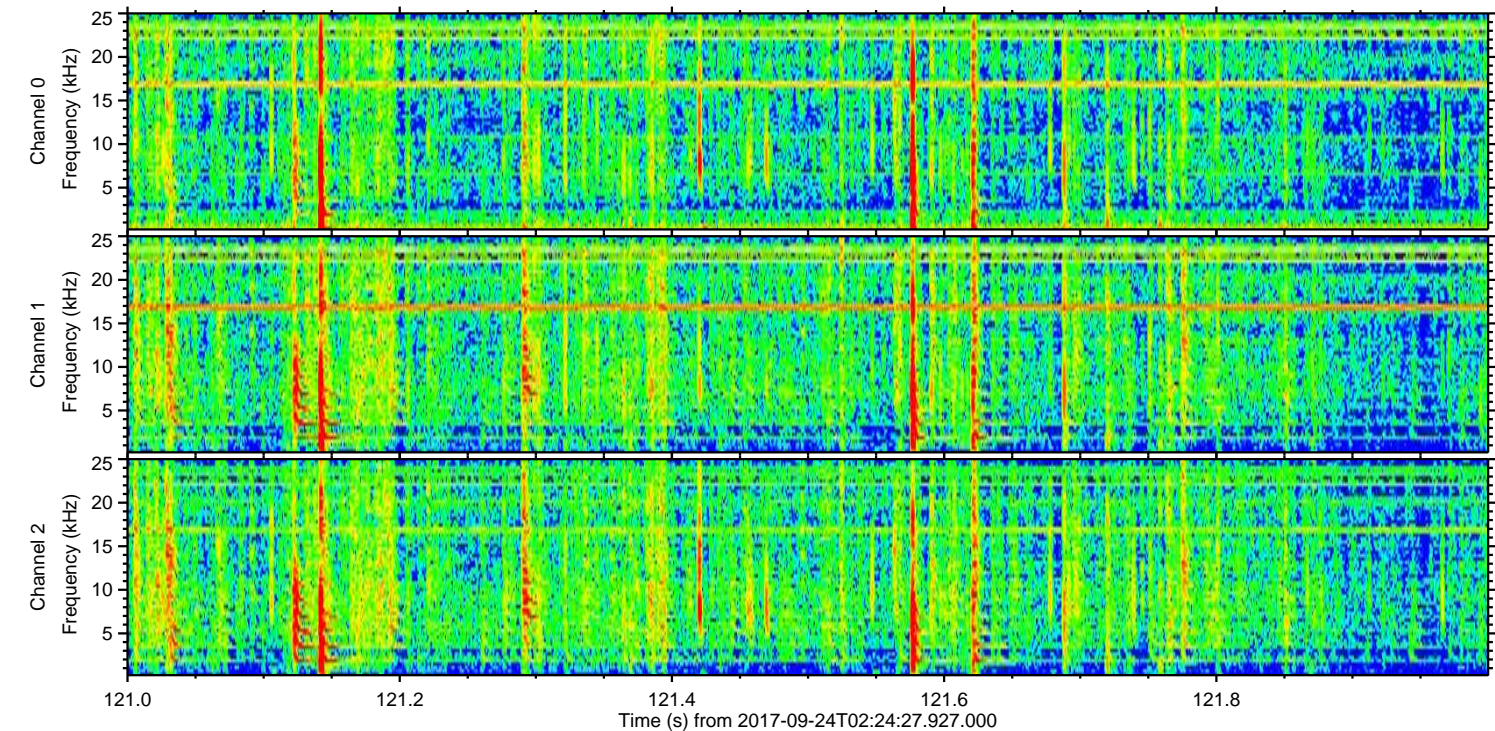
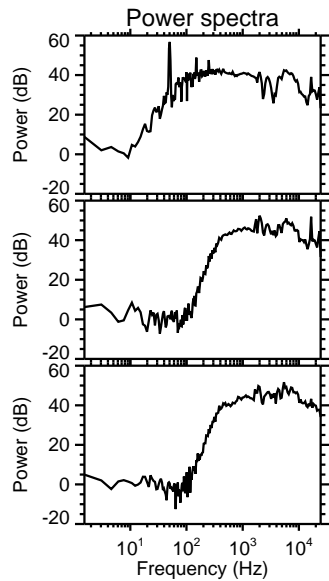
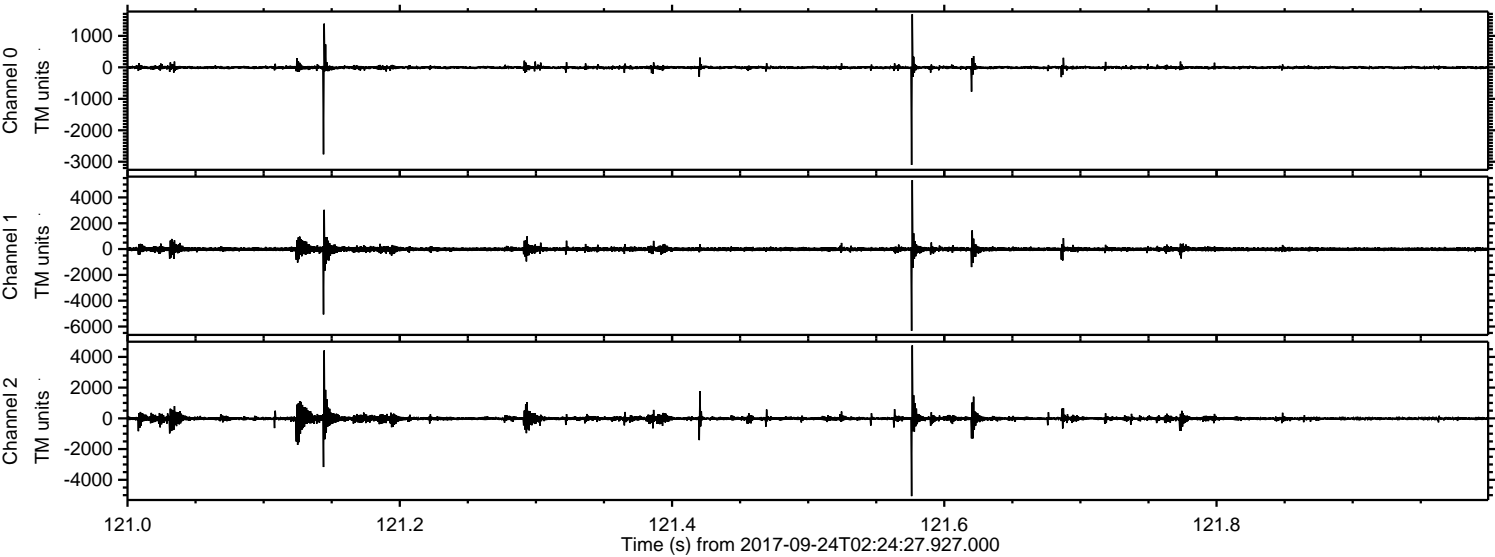
ELMAVAN 3D WAVEFORMS (Measured data sampled at 50 kHz) 51000 packets of 144 samples from 2017-09-24T02:24:27.927.000. Part 107/147

Processed Sun Sep 24 04:32:42 2017 by ELM ver.2012-10-06 from 001__elm20170924_022426__dat00.bin



ELMAVAN 3D WAVEFORMS (Measured data sampled at 50 kHz) 51000 packets of 144 samples from 2017-09-24T02:24:27.927.000. Part 122/147

Processed Sun Sep 24 04:32:43 2017 by ELM ver.2012-10-06 from 001__elm20170924_022426__dat00.bin

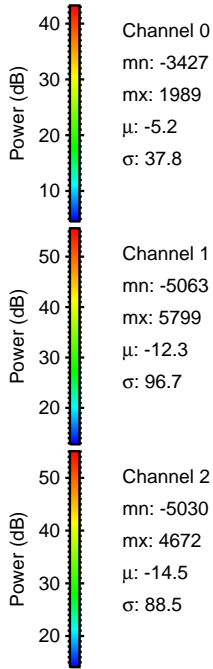
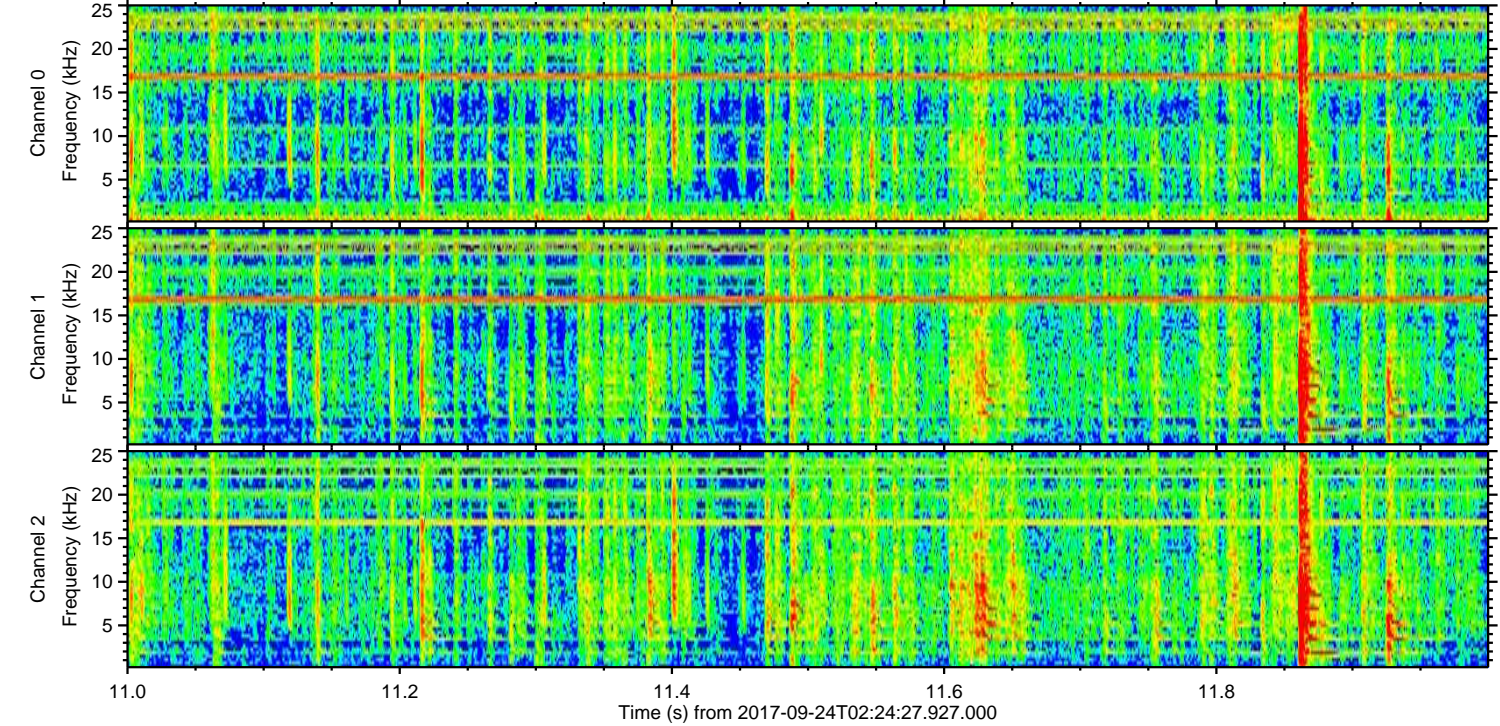
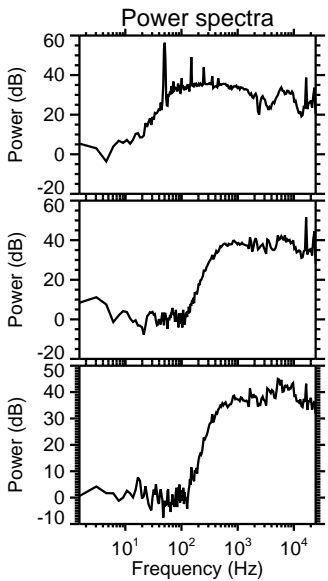
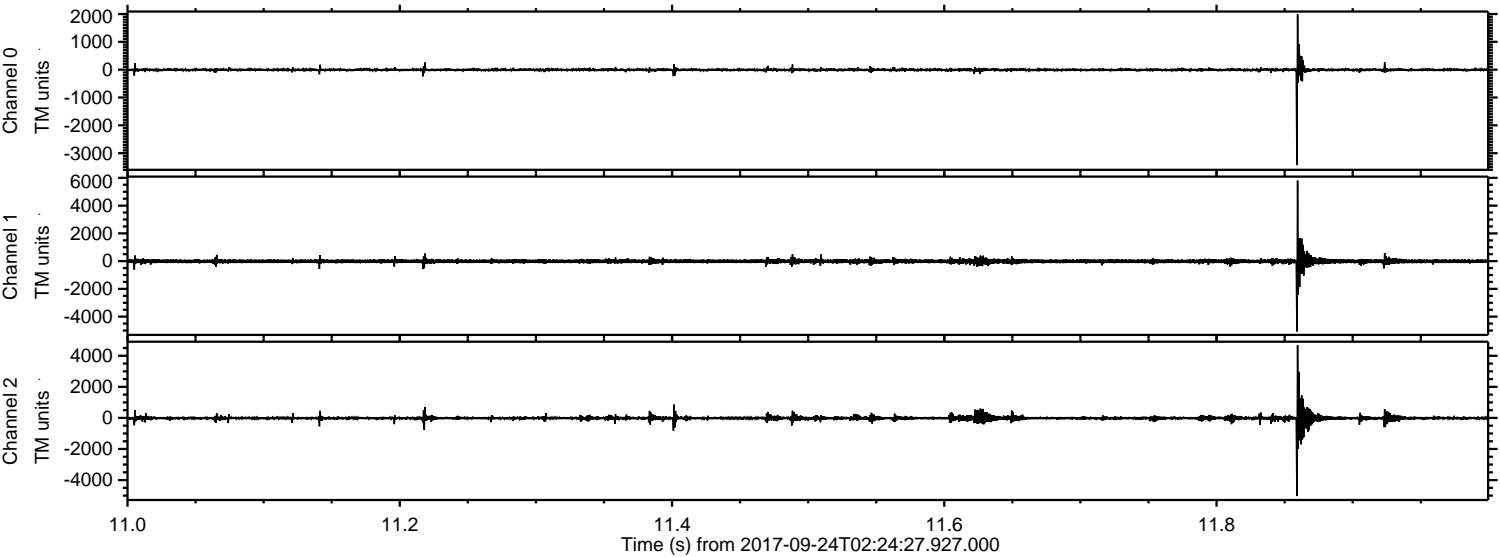


Channel 0
mn: -3102
mx: 1690
 μ : -5.2
 σ : 46.0

Channel 1
mn: -6334
mx: 5343
 μ : -12.3
 σ : 118.2

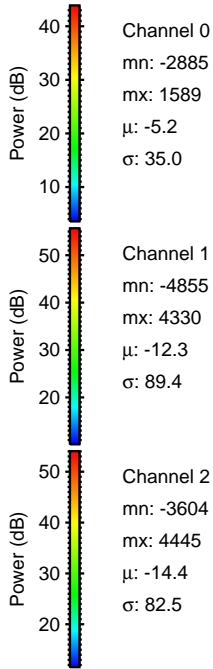
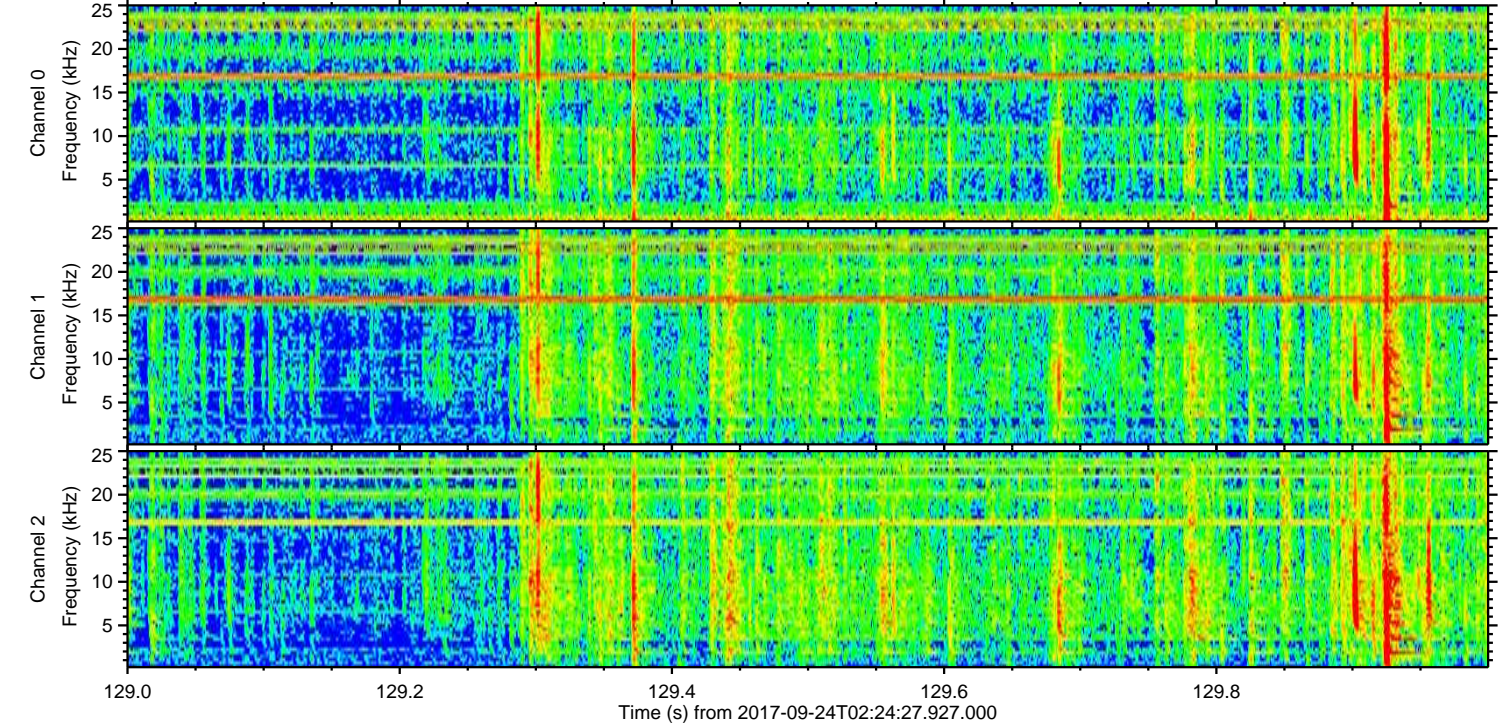
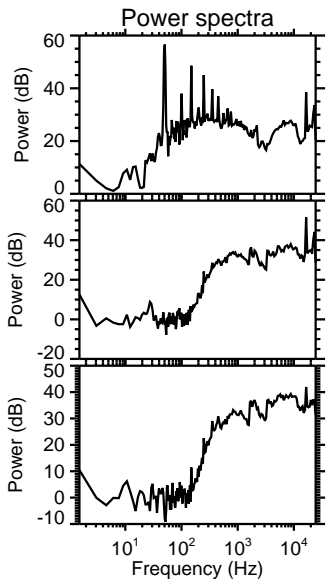
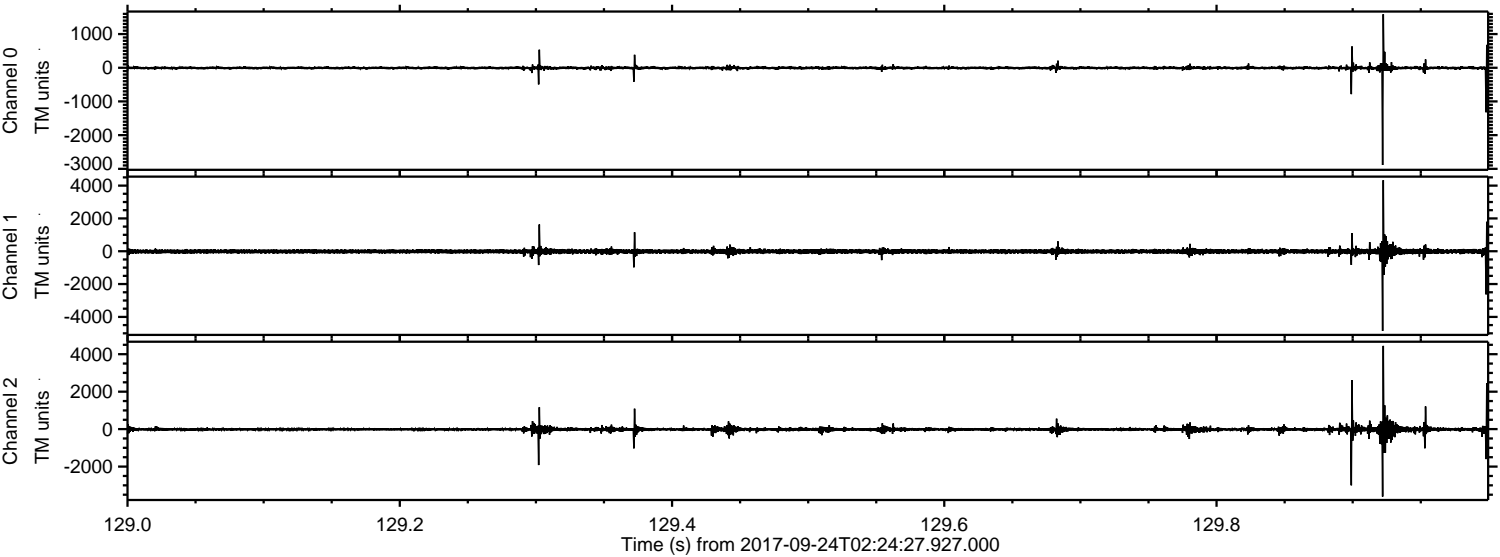
Channel 2
mn: -5061
mx: 4749
 μ : -14.4
 σ : 111.8

Processed Sun Sep 24 04:32:44 2017 by ELM ver.2012-10-06 from 001__elm20170924_022426__dat00.bin

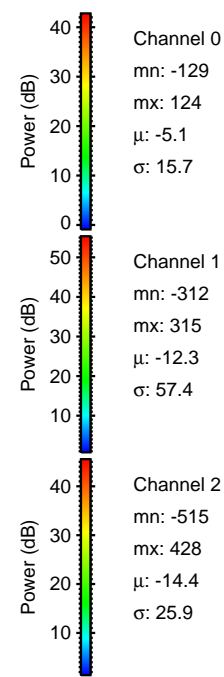
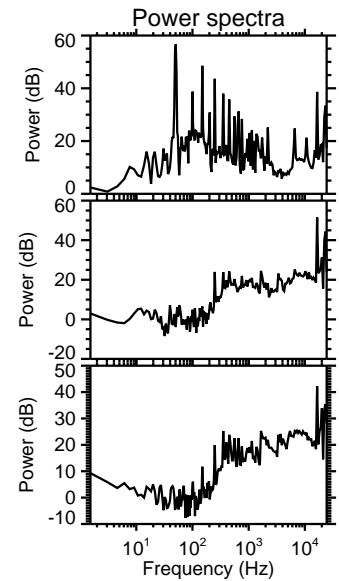
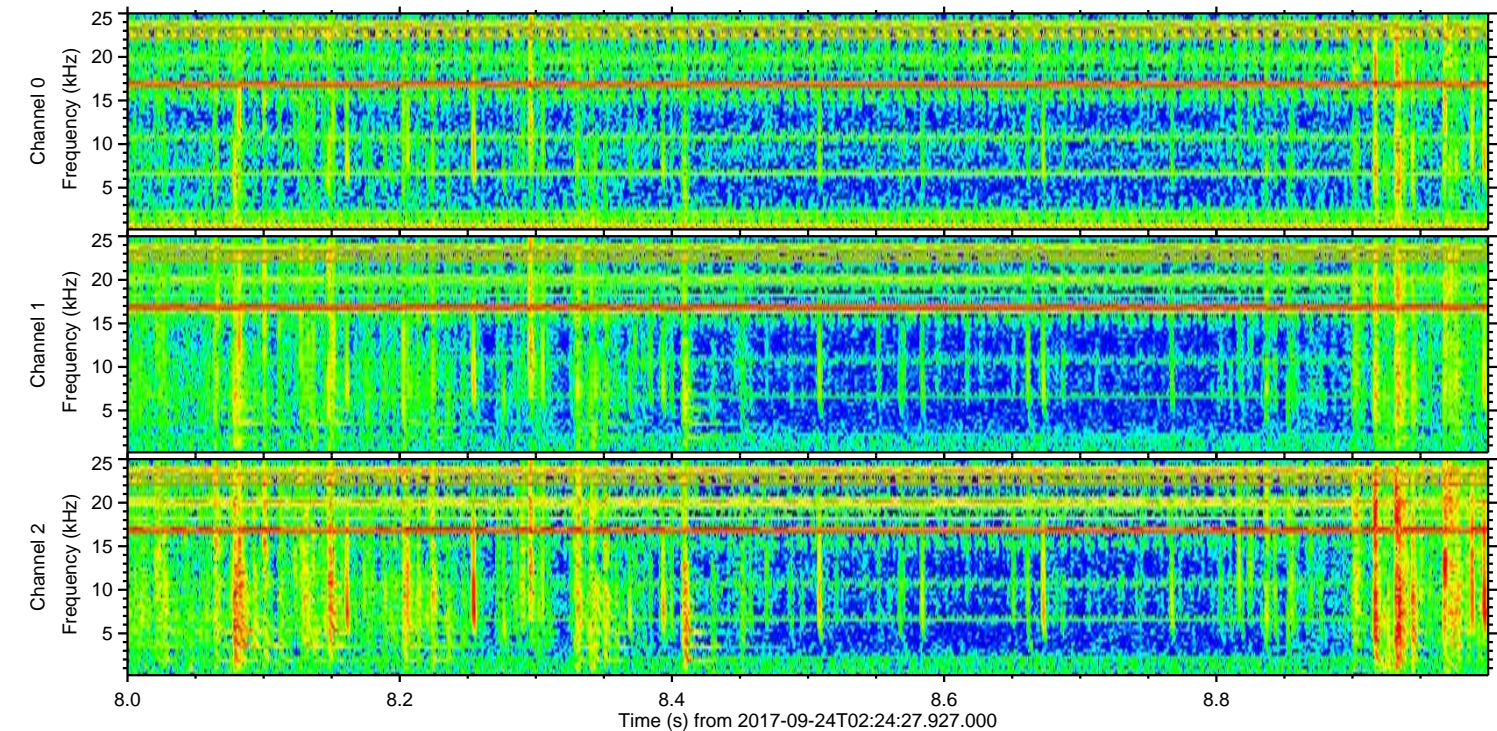
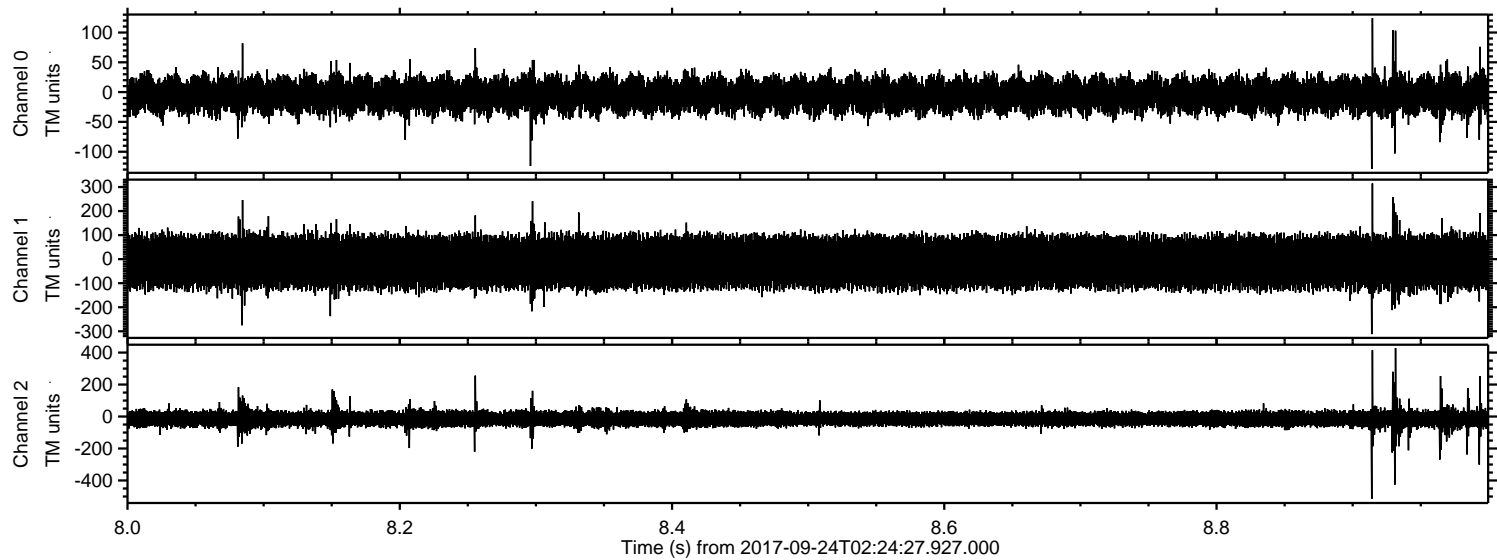


ELMAVAN 3D WAVEFORMS (Measured data sampled at 50 kHz) 51000 packets of 144 samples from 2017-09-24T02:24:27.927.000. Part 130/147

Processed Sun Sep 24 04:32:44 2017 by ELM ver.2012-10-06 from 001__elm20170924_022426__dat00.bin



Processed Sun Sep 24 04:32:45 2017 by ELM ver.2012-10-06 from 001__elm20170924_022426__dat00.bin



Channel 0
mn: -129
mx: 124
 μ : -5.1
 σ : 15.7

Channel 1
mn: -312
mx: 315
 μ : -12.3
 σ : 57.4

Channel 2
mn: -515
mx: 428
 μ : -14.4
 σ : 25.9