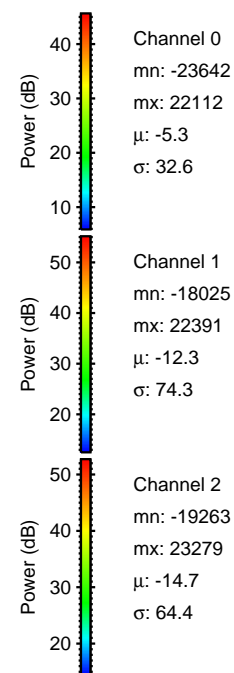
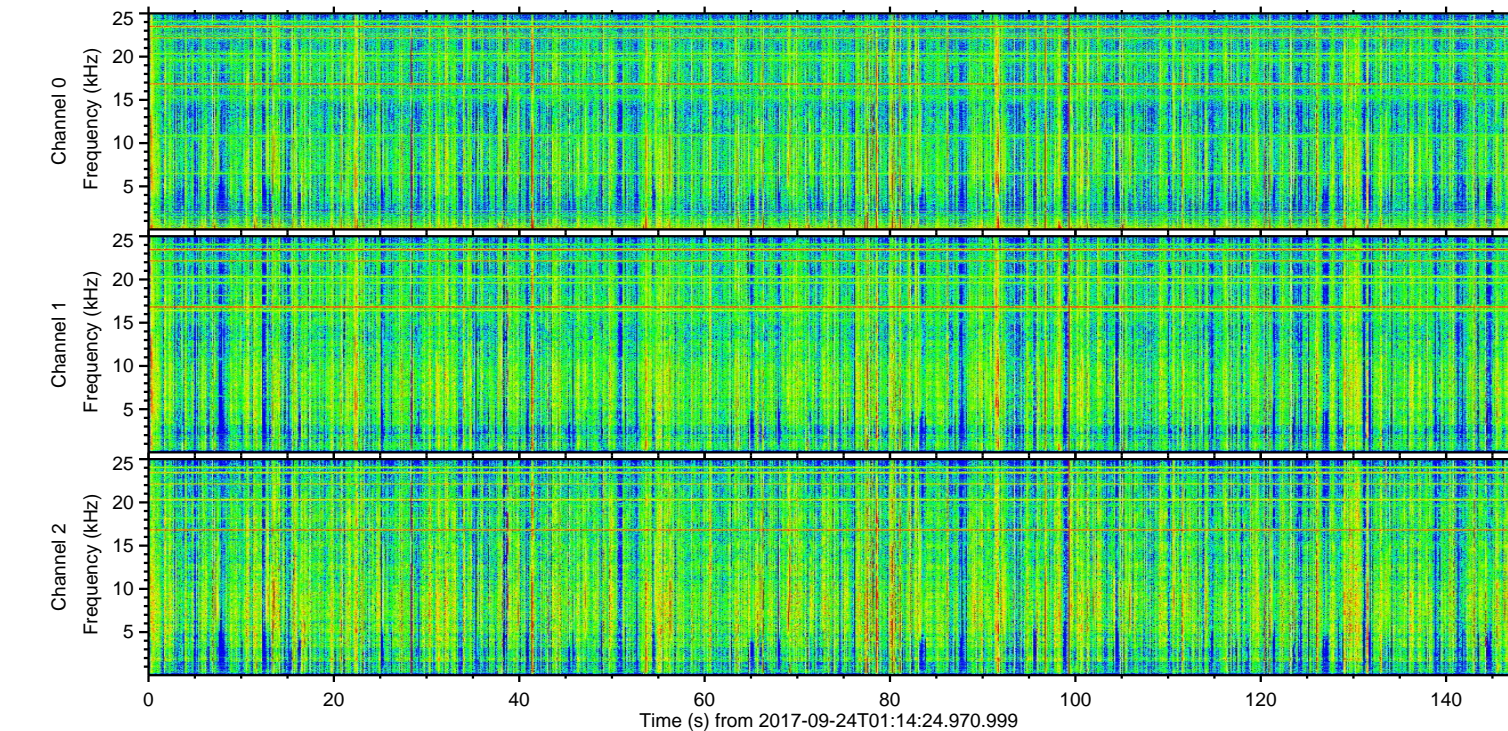
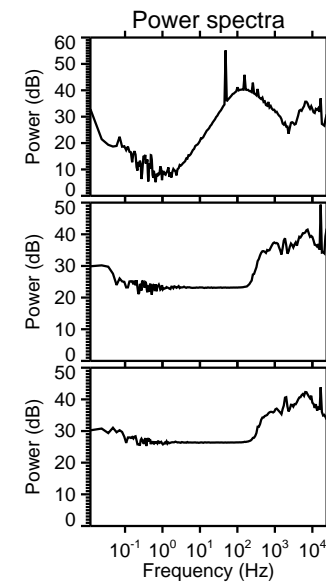
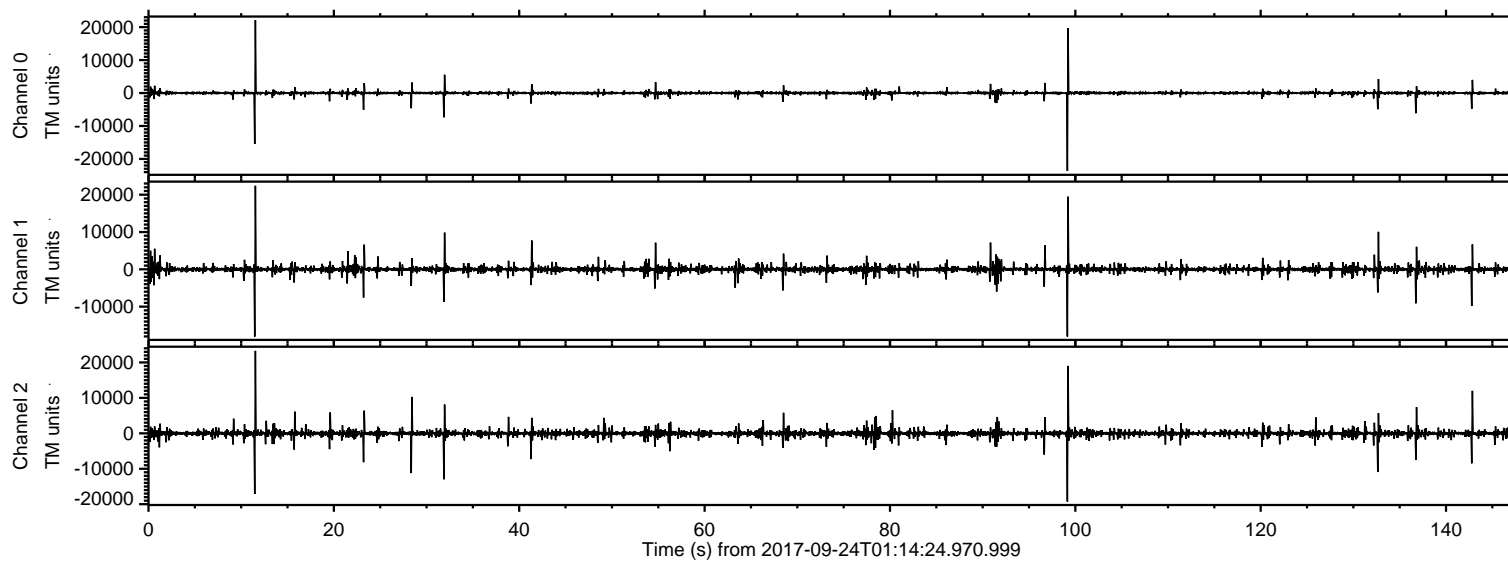


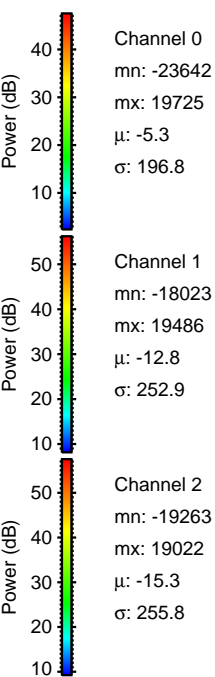
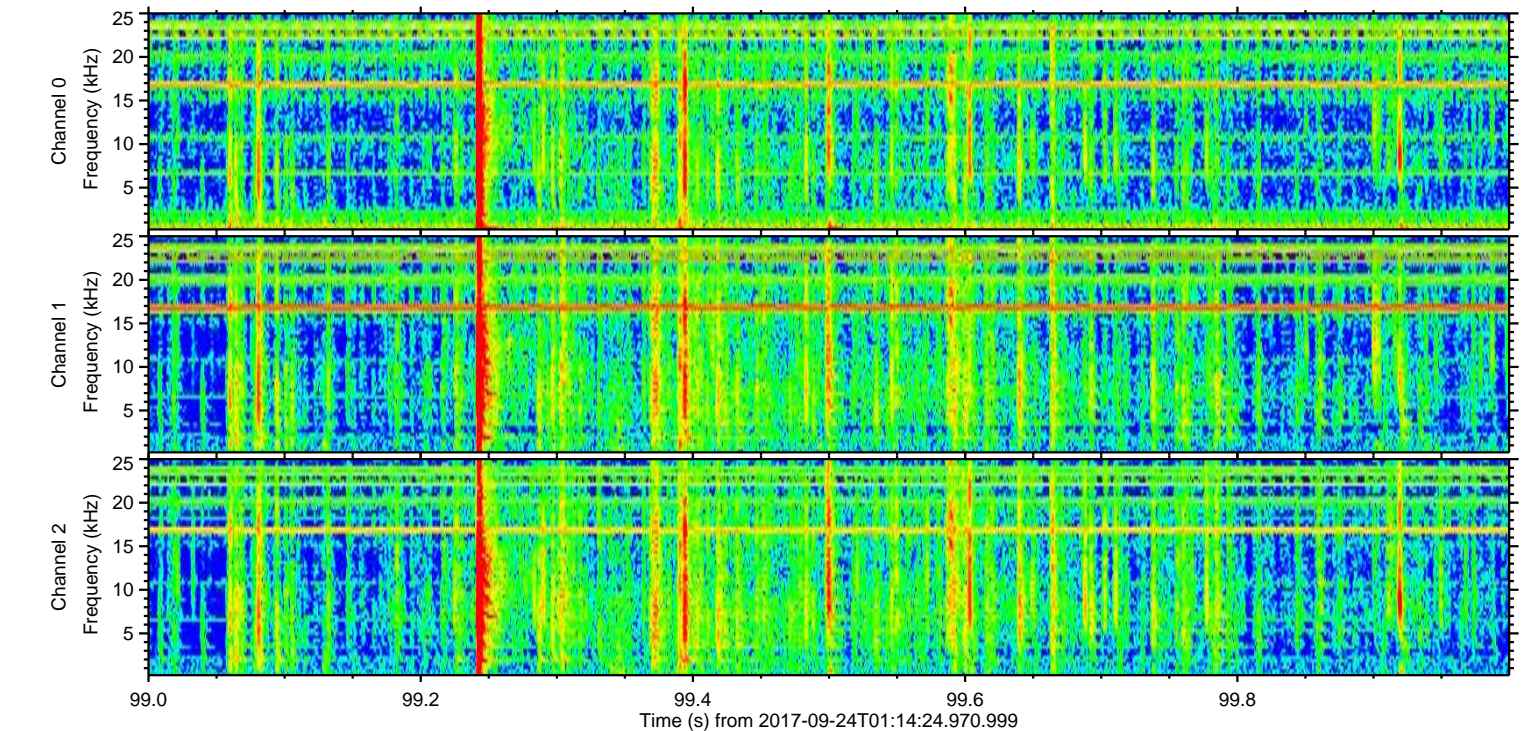
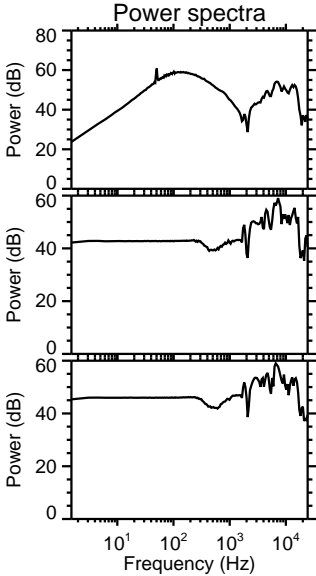
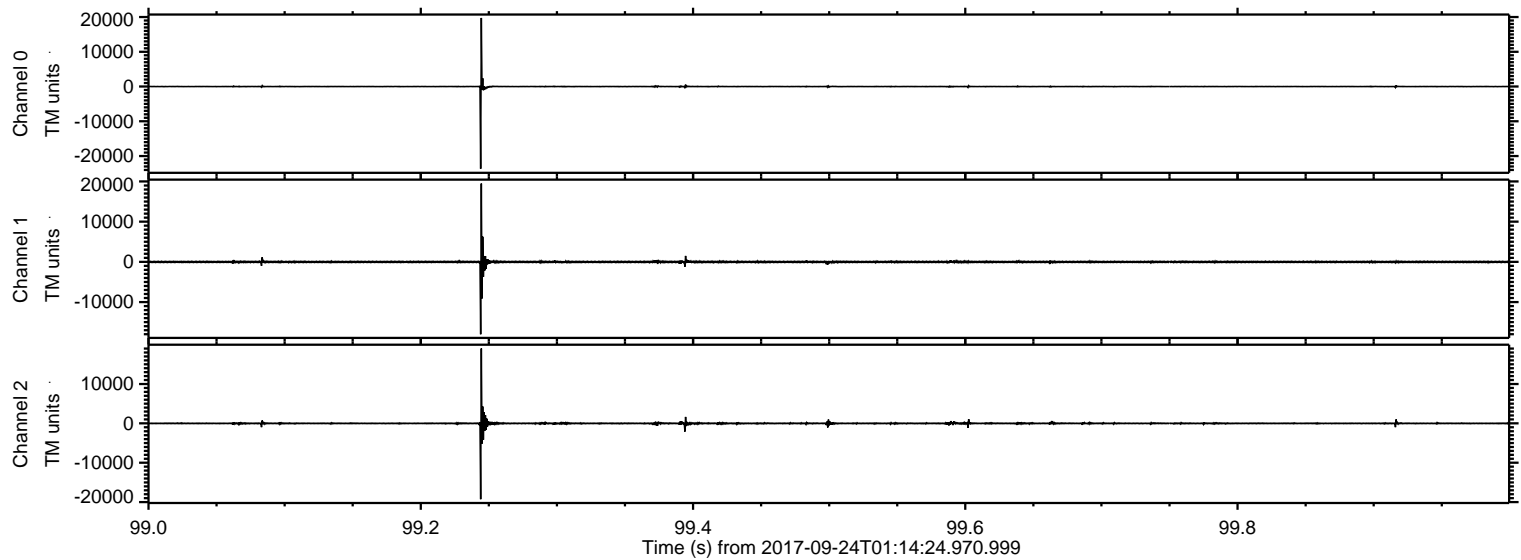
ELMAVAN 3D WAVEFORMS (Measured data sampled at 50 kHz) 51000 packets of 144 samples from 2017-09-24T01:14:24.970.999.

Processed Sun Sep 24 03:22:28 2017 by ELM ver.2012-10-06 from 001__elm20170924_011423__dat00.bin

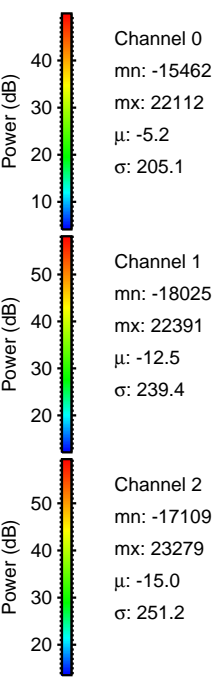
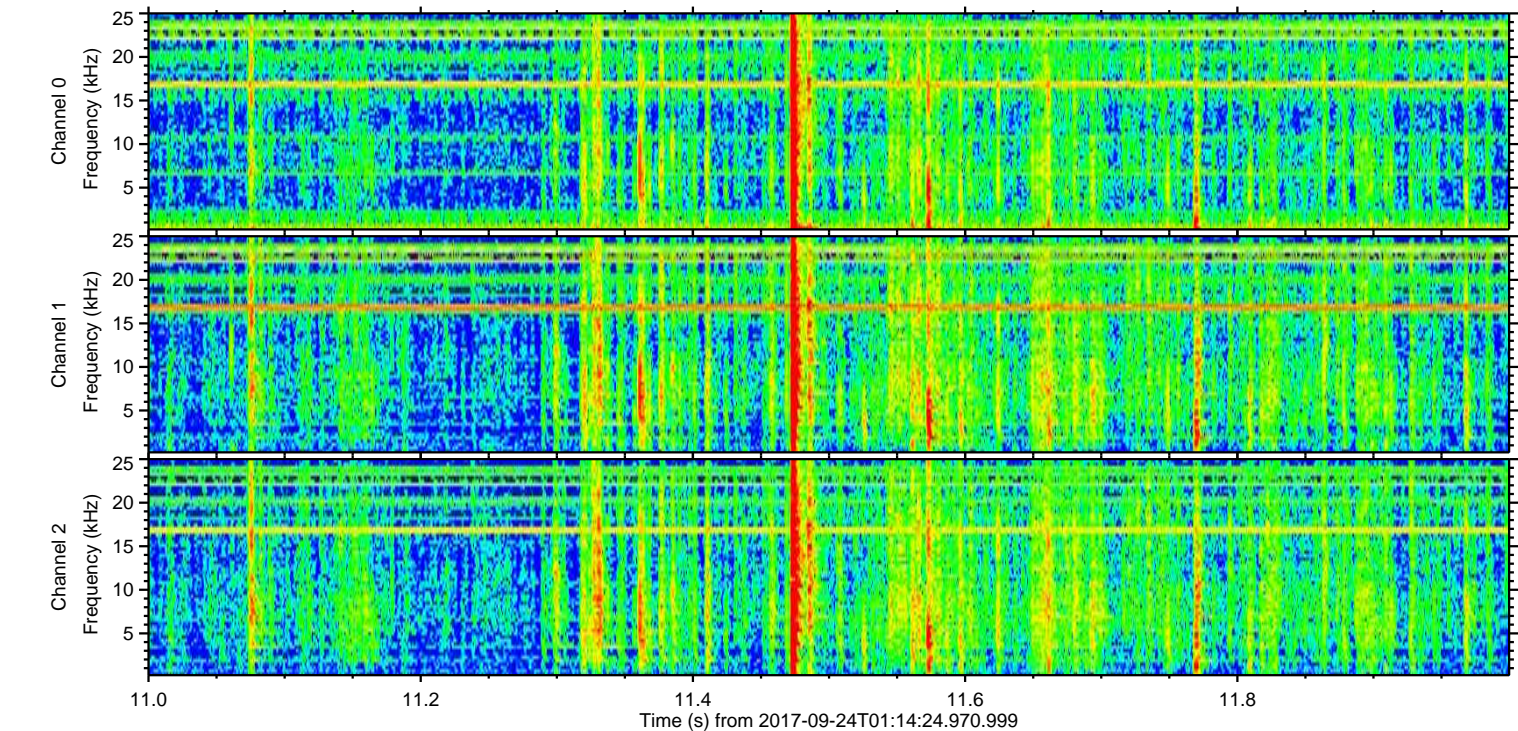
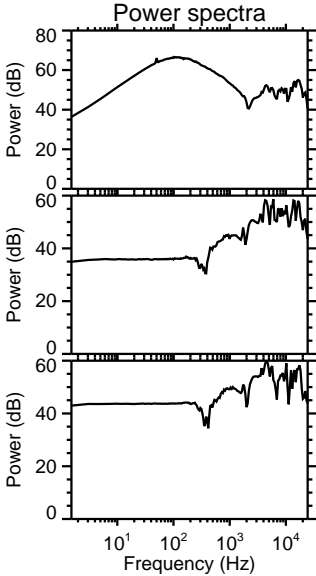
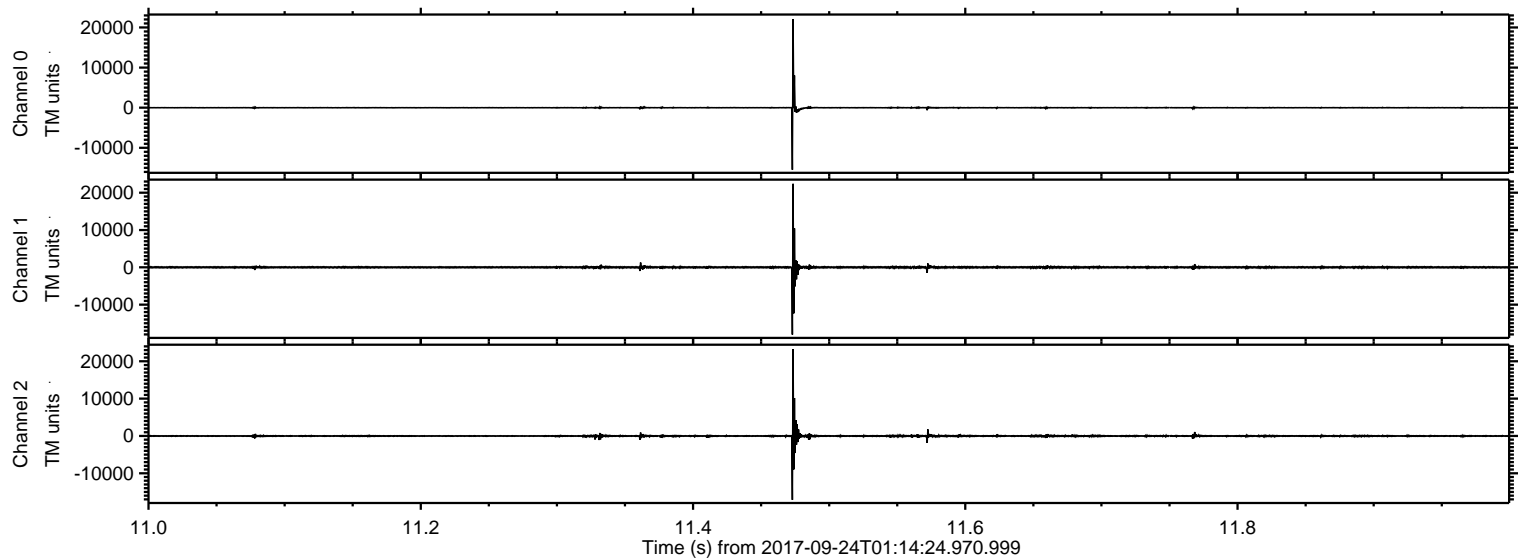


ELMAVAN 3D WAVEFORMS (Measured data sampled at 50 kHz) 51000 packets of 144 samples from 2017-09-24T01:14:24.970.999. Part 100/147

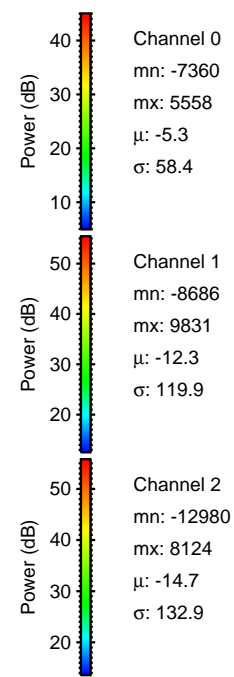
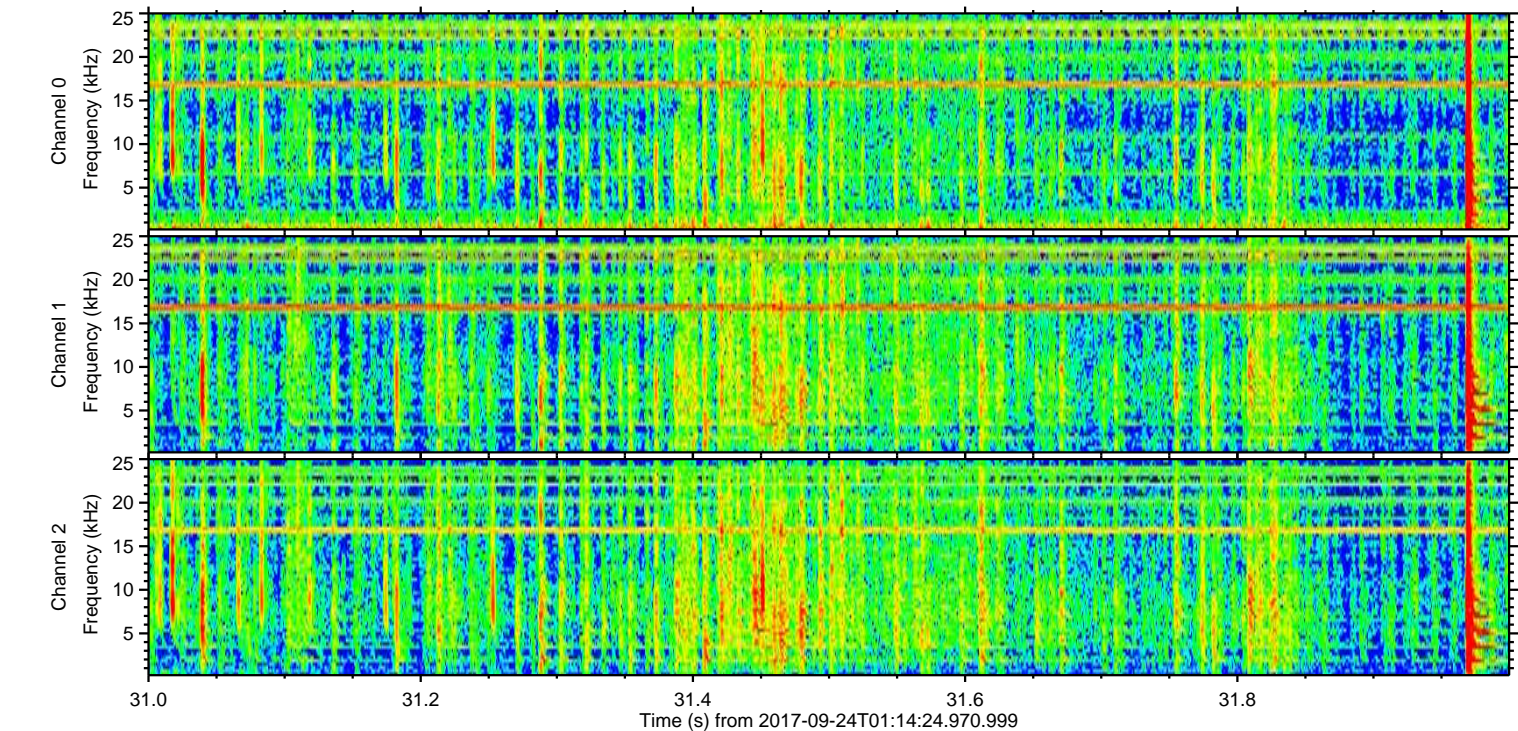
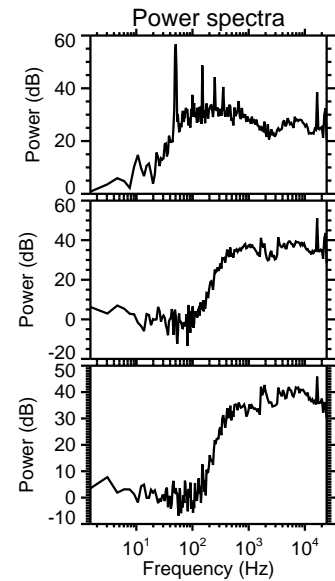
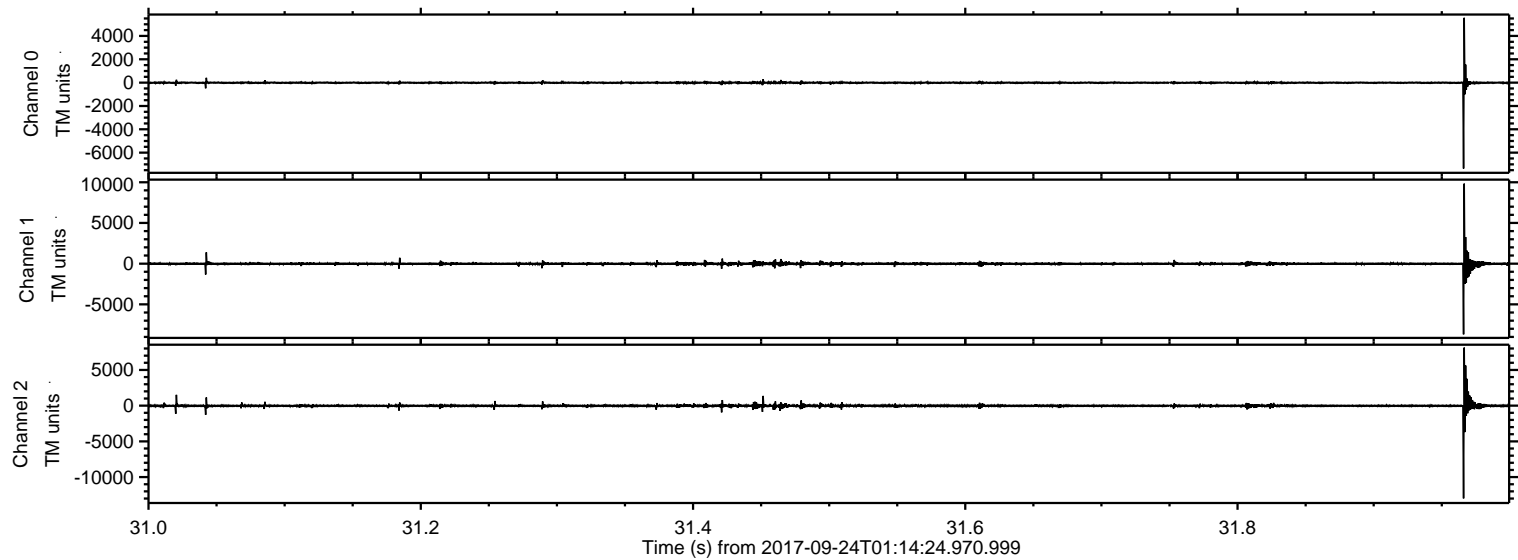
Processed Sun Sep 24 03:22:35 2017 by ELM ver.2012-10-06 from 001__elm20170924_011423__dat00.bin



Processed Sun Sep 24 03:22:36 2017 by ELM ver.2012-10-06 from 001__elm20170924_011423__dat00.bin

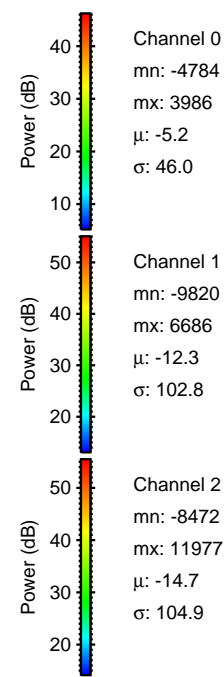
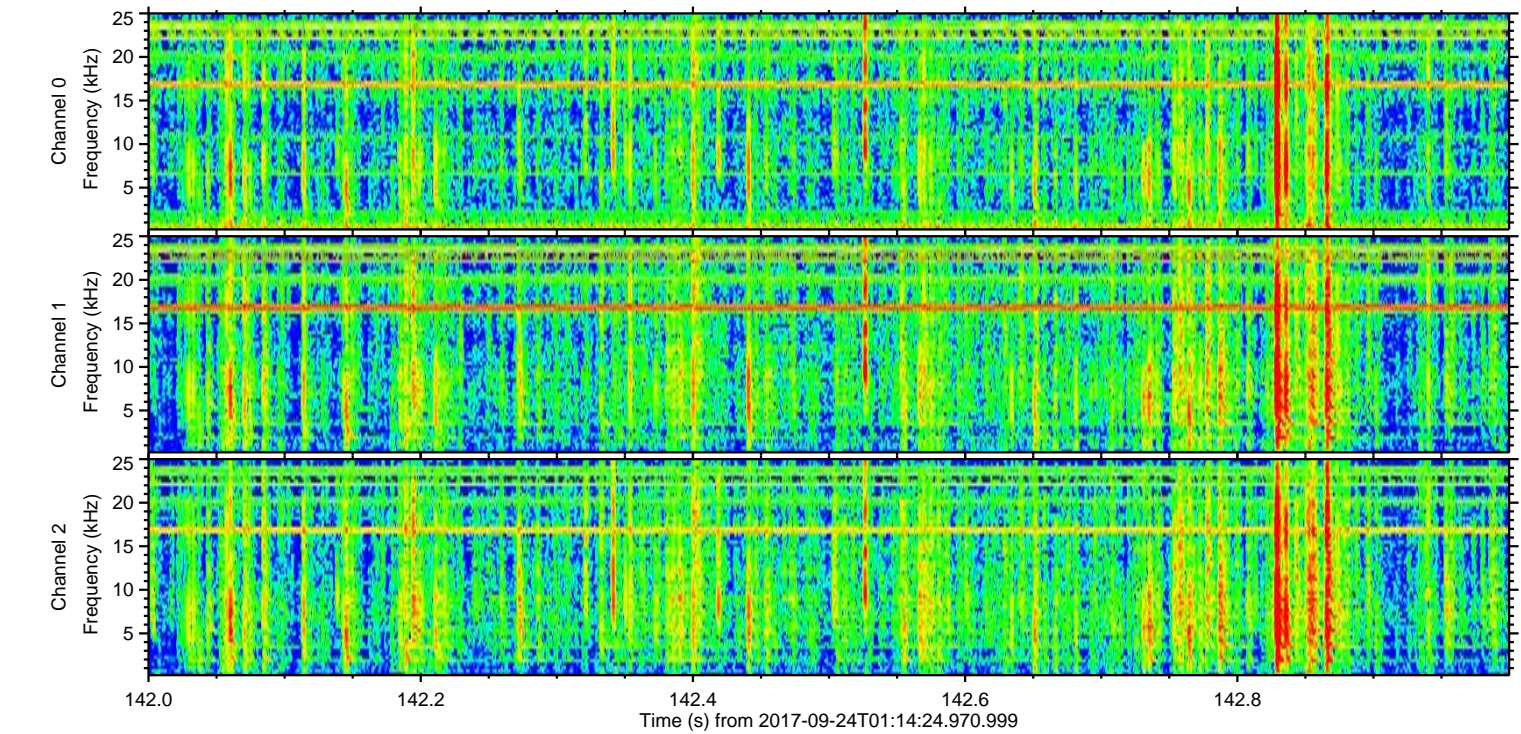
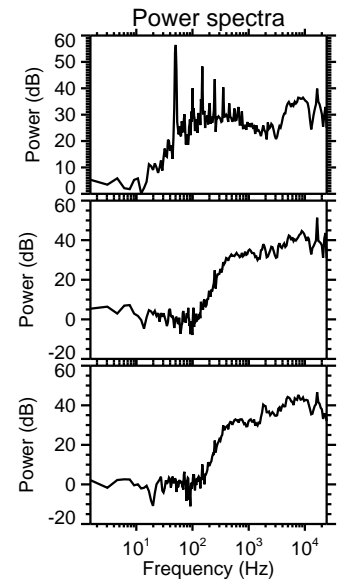
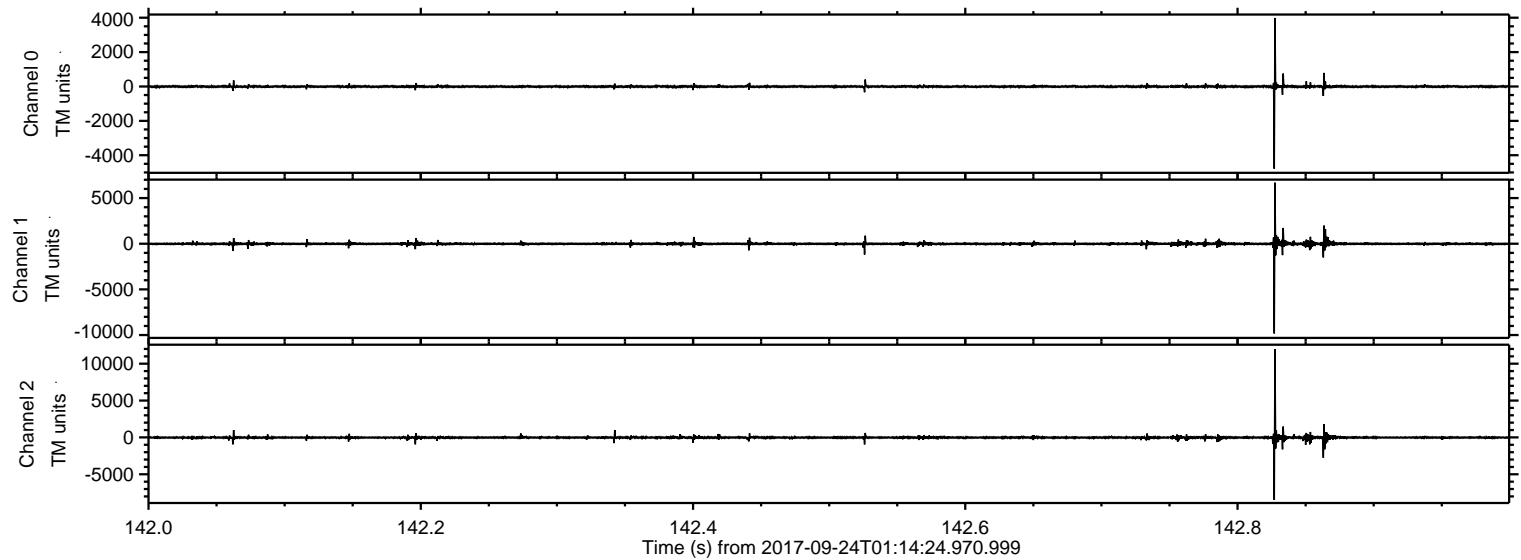


Processed Sun Sep 24 03:22:37 2017 by ELM ver.2012-10-06 from 001__elm20170924_011423__dat00.bin

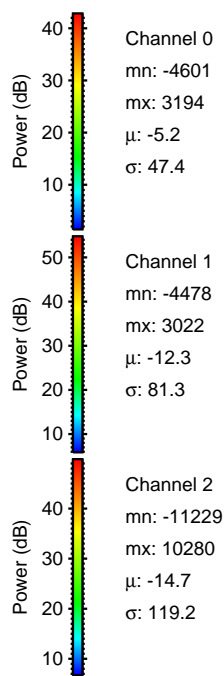
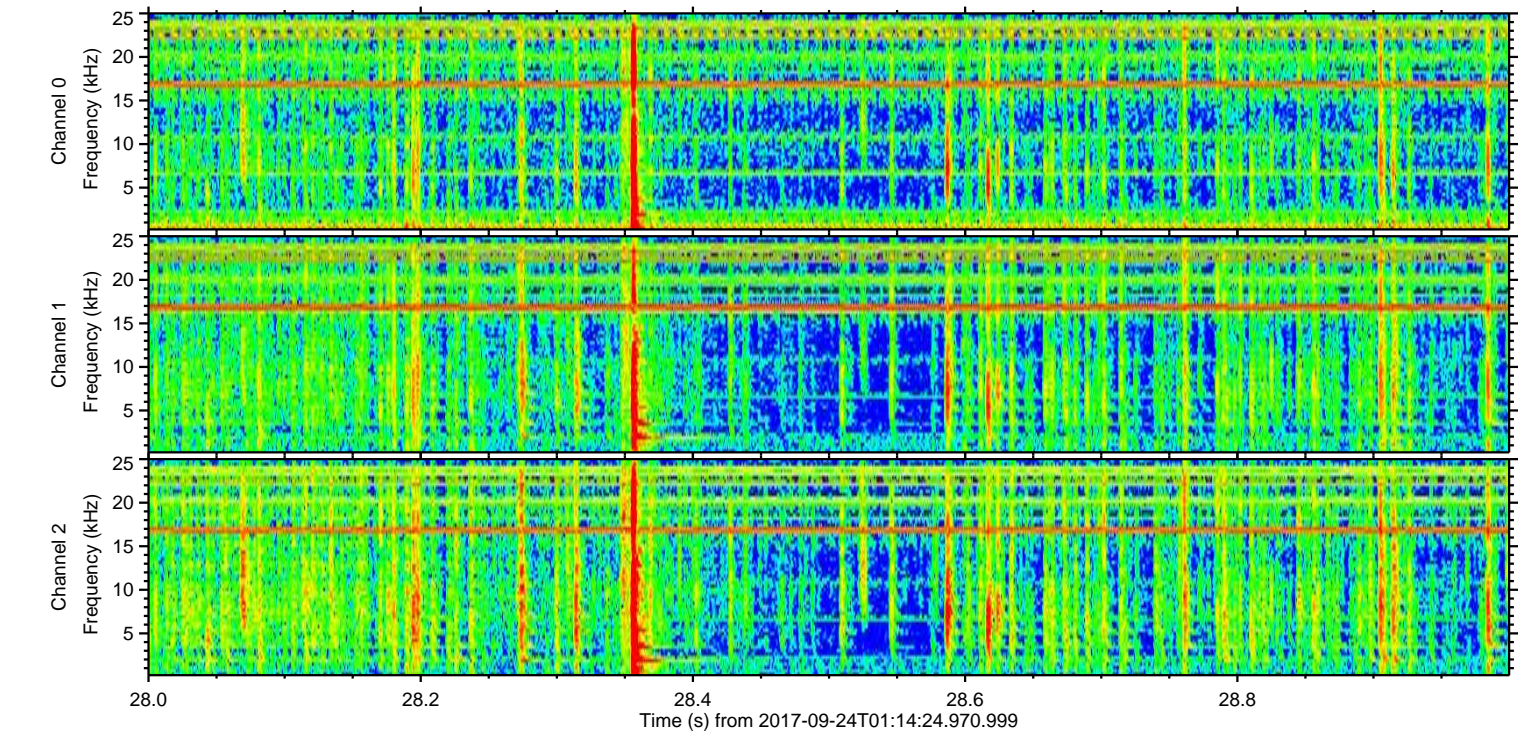
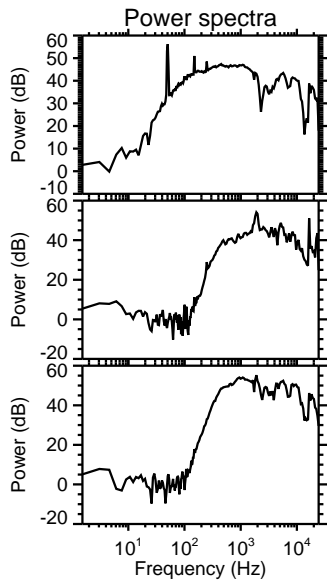
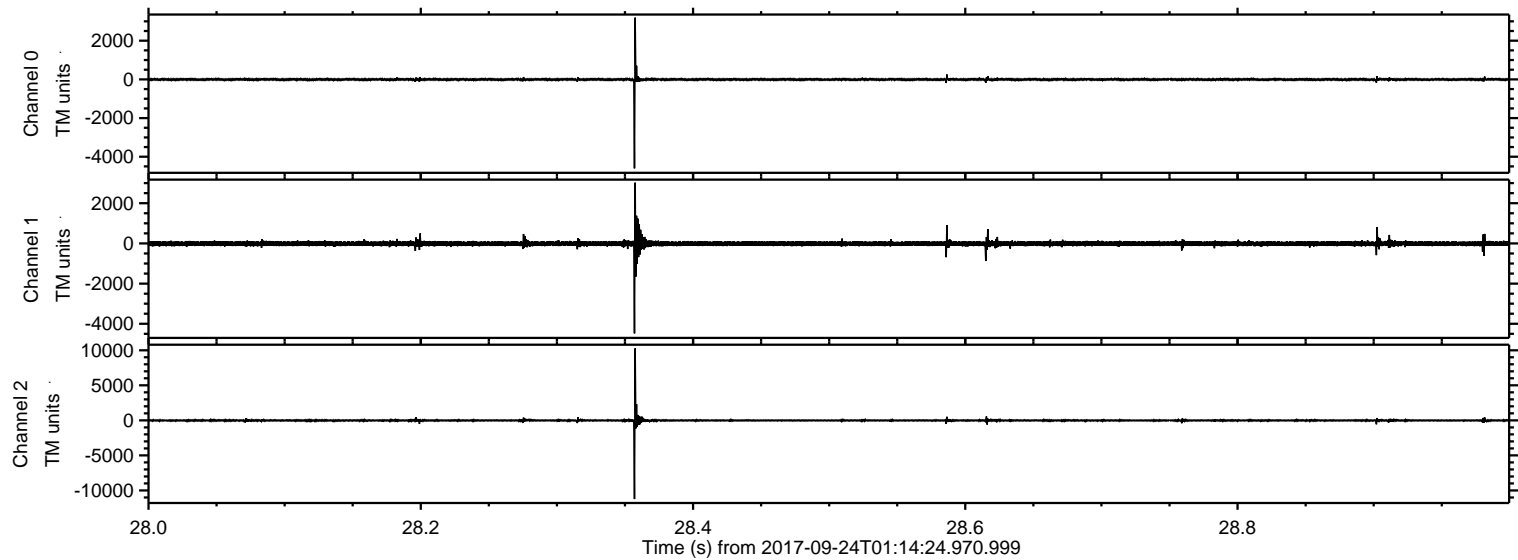


ELMAVAN 3D WAVEFORMS (Measured data sampled at 50 kHz) 51000 packets of 144 samples from 2017-09-24T01:14:24.970.999. Part 143/147

Processed Sun Sep 24 03:22:38 2017 by ELM ver.2012-10-06 from 001__elm20170924_011423__dat00.bin

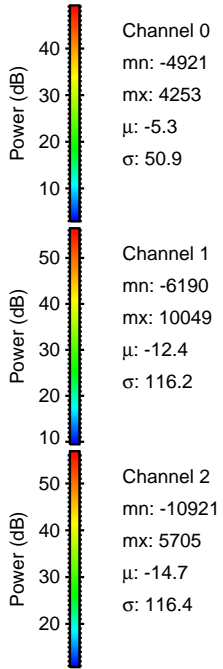
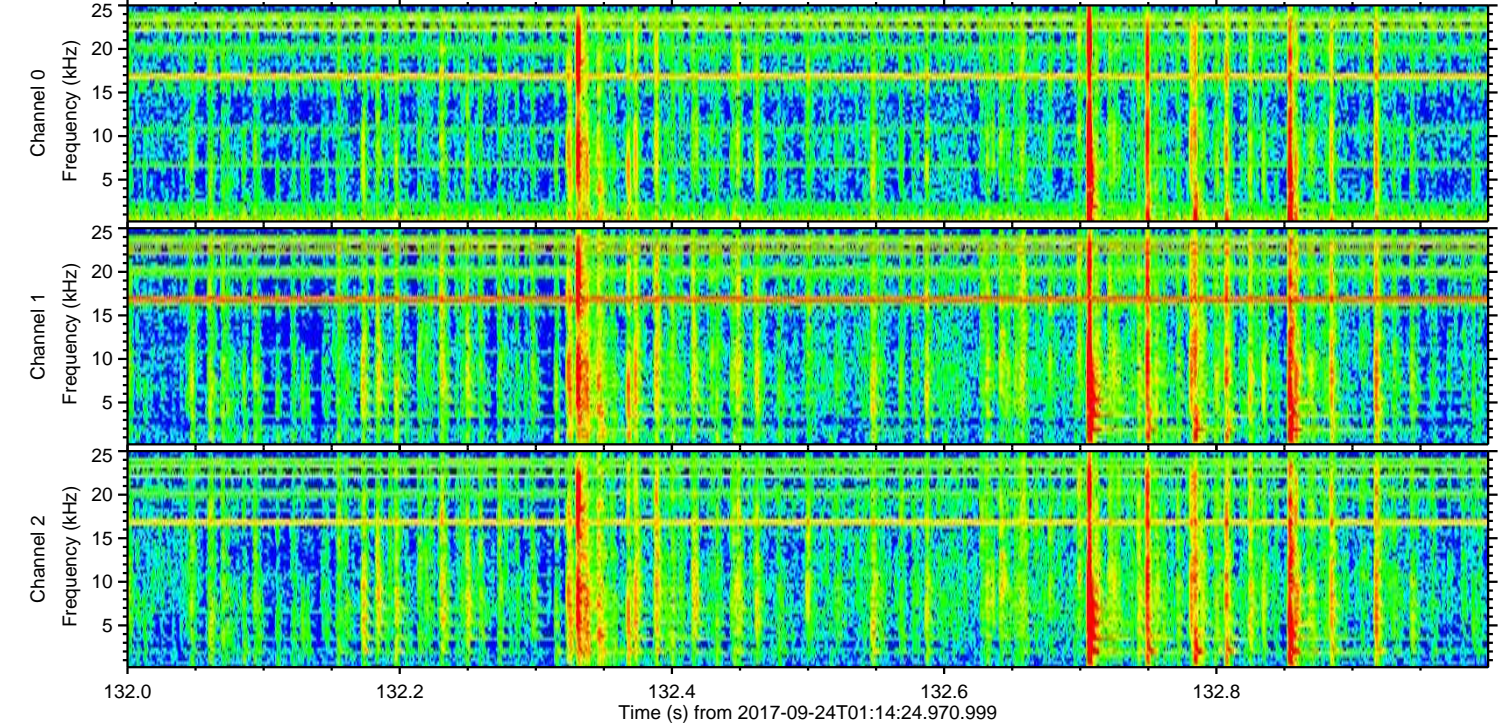
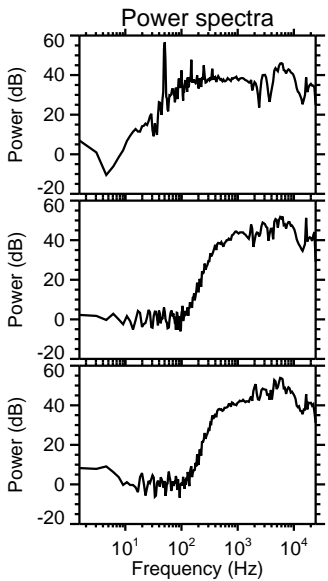
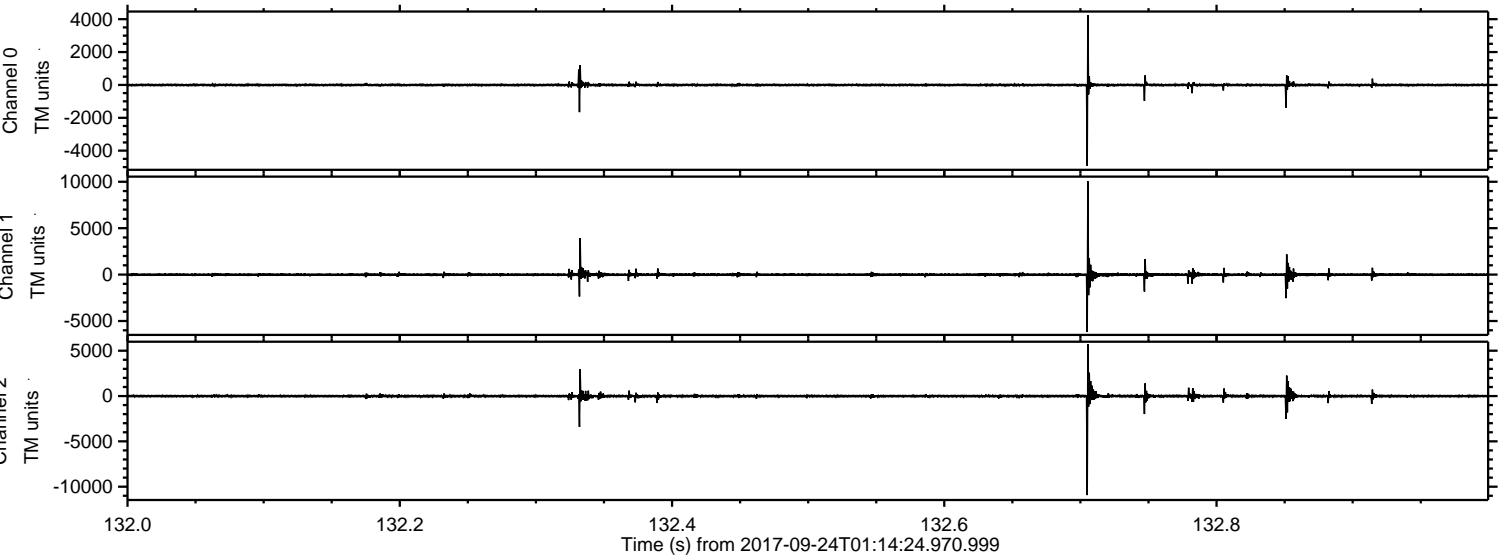


Processed Sun Sep 24 03:22:38 2017 by ELM ver.2012-10-06 from 001__elm20170924_011423__dat00.bin



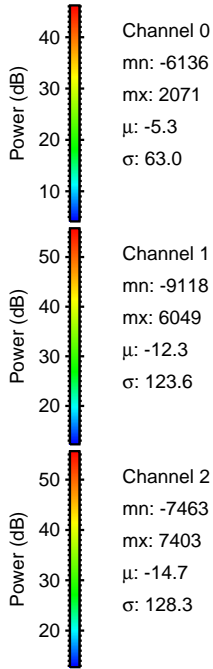
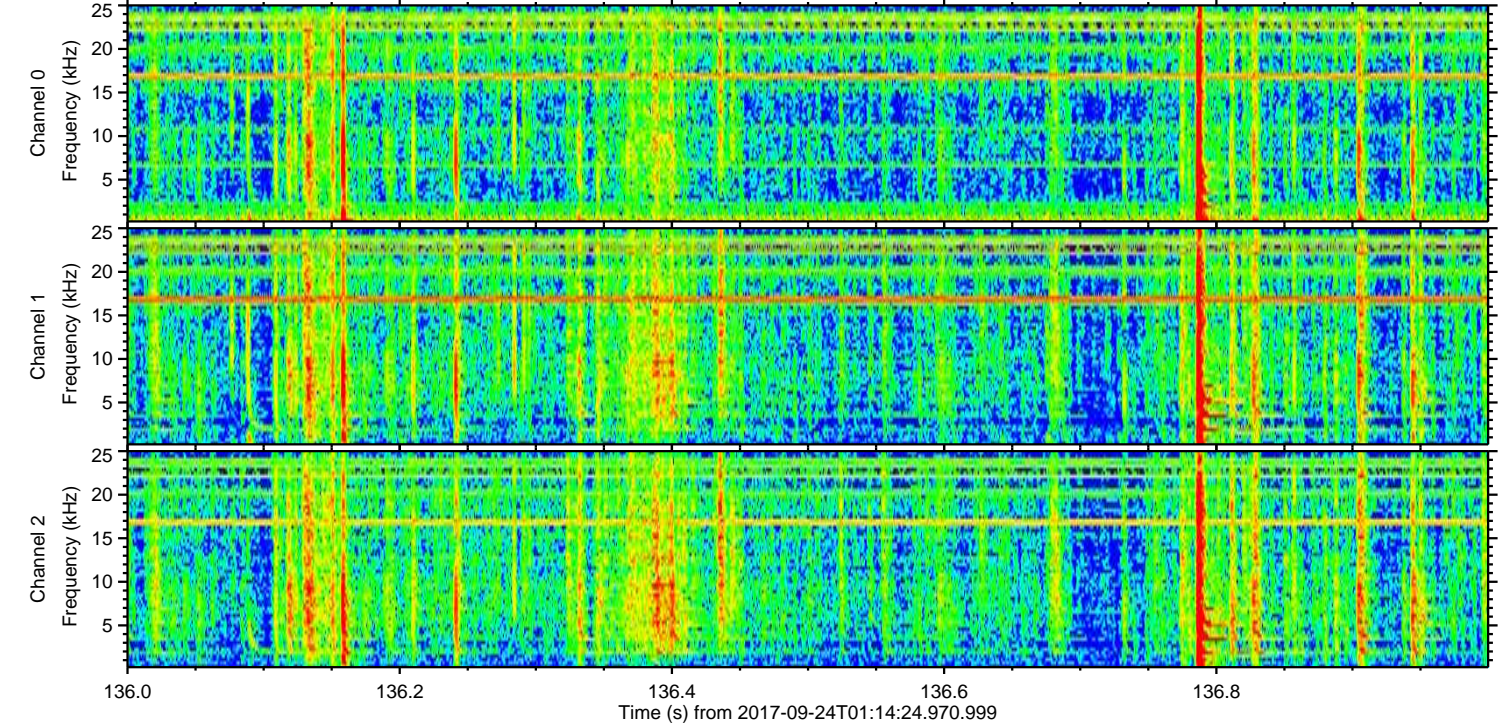
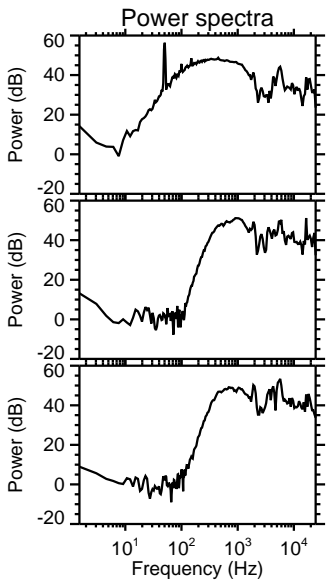
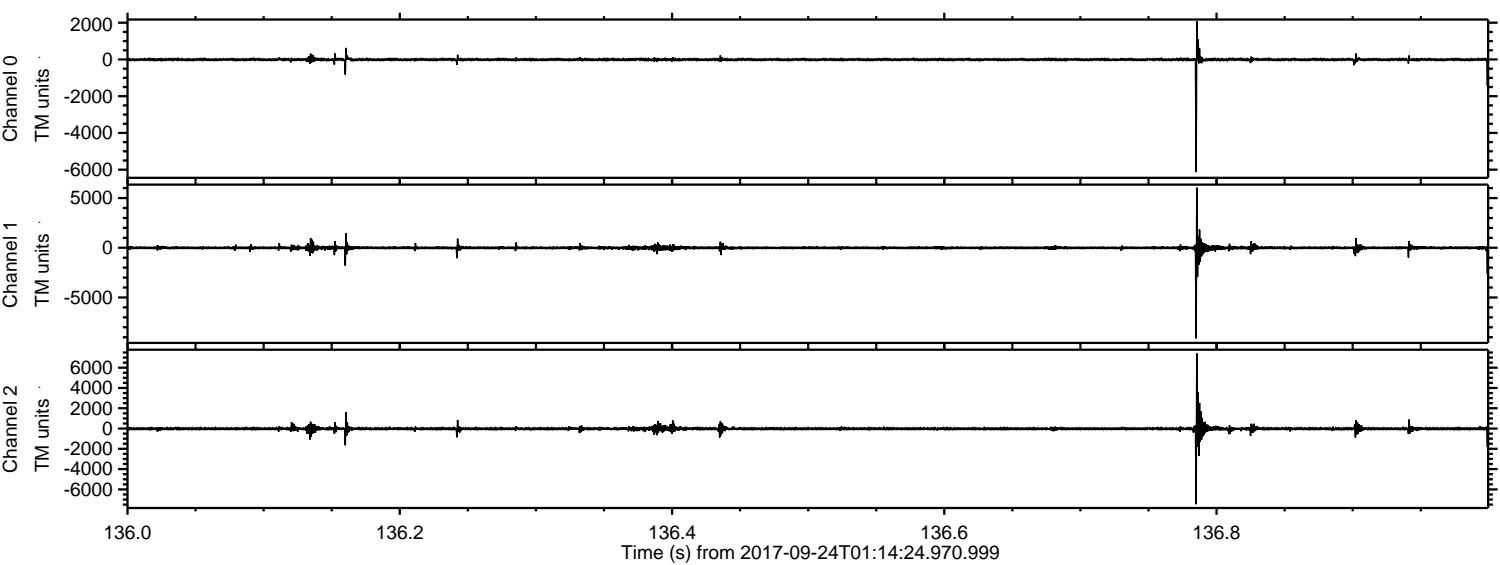
ELMAVAN 3D WAVEFORMS (Measured data sampled at 50 kHz) 51000 packets of 144 samples from 2017-09-24T01:14:24.970.999. Part 133/147

Processed Sun Sep 24 03:22:39 2017 by ELM ver.2012-10-06 from 001__elm20170924_011423__dat00.bin



ELMAVAN 3D WAVEFORMS (Measured data sampled at 50 kHz) 51000 packets of 144 samples from 2017-09-24T01:14:24.970.999. Part 137/147

Processed Sun Sep 24 03:22:40 2017 by ELM ver.2012-10-06 from 001__elm20170924_011423__dat00.bin

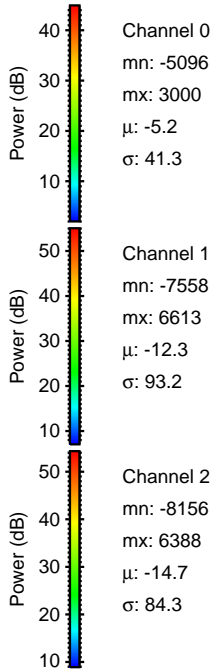
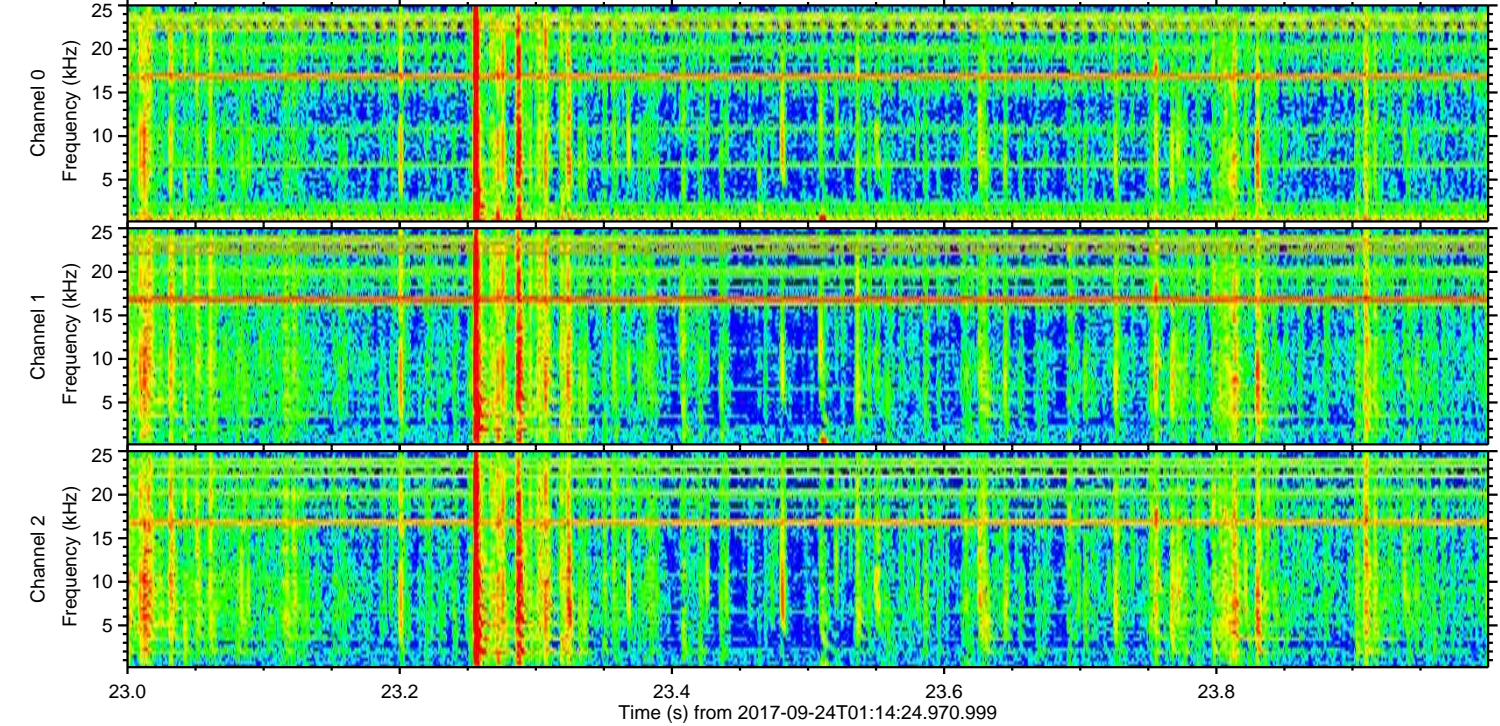
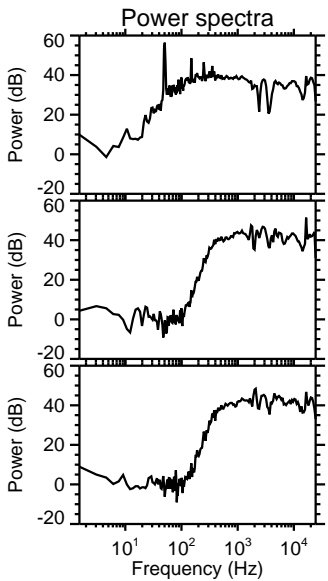
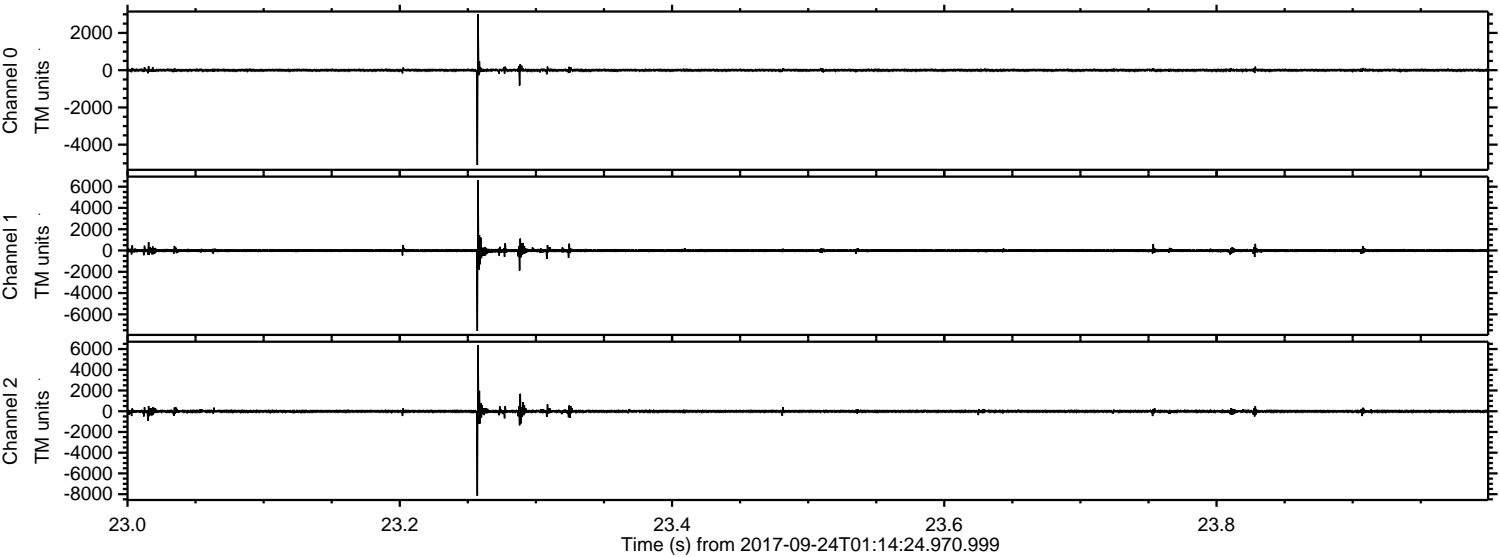


Channel 0
mn: -6136
mx: 2071
 μ : -5.3
 σ : 63.0

Channel 1
mn: -9118
mx: 6049
 μ : -12.3
 σ : 123.6

Channel 2
mn: -7463
mx: 7403
 μ : -14.7
 σ : 128.3

Processed Sun Sep 24 03:22:40 2017 by ELM ver.2012-10-06 from 001__elm20170924_011423__dat00.bin

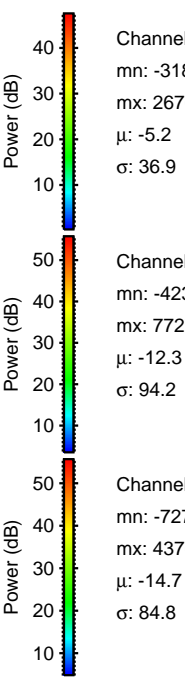
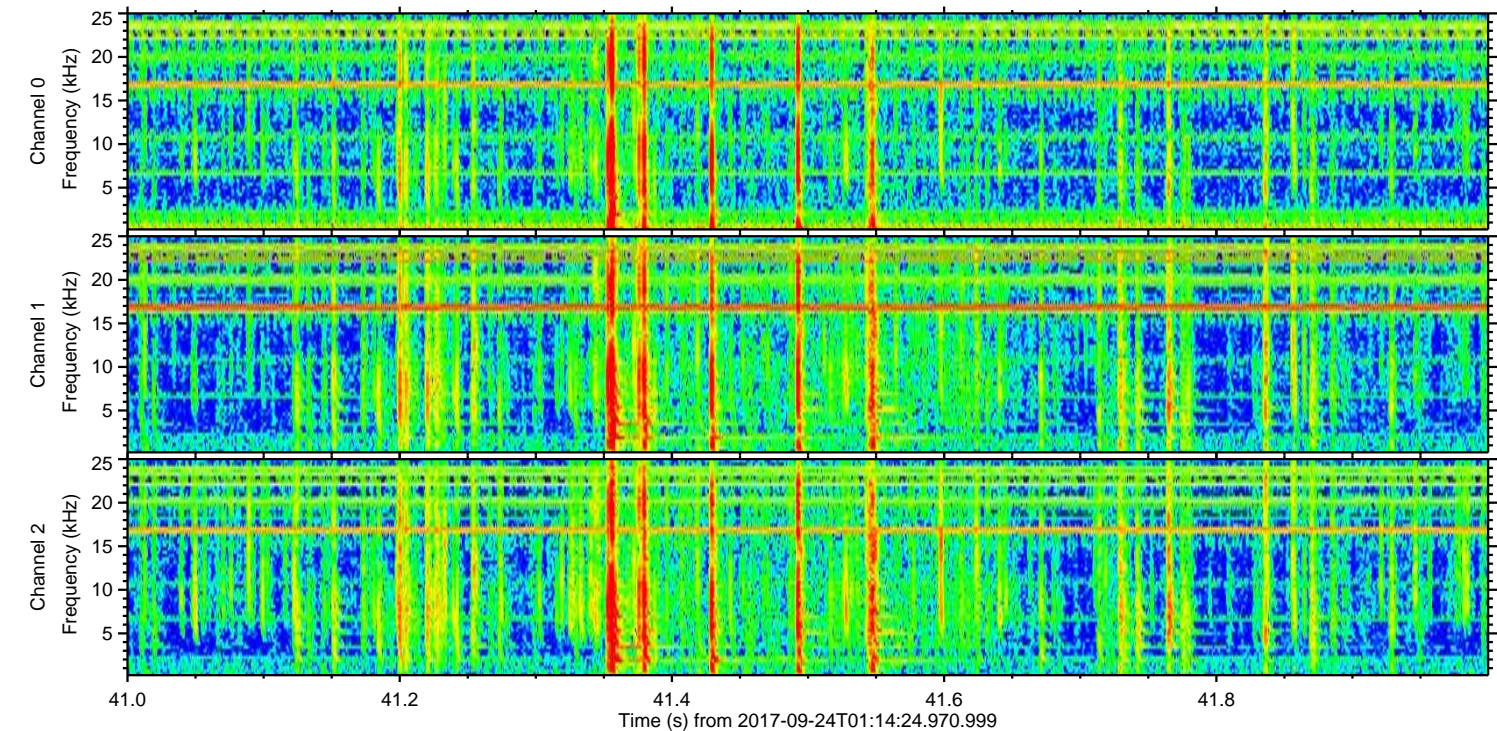
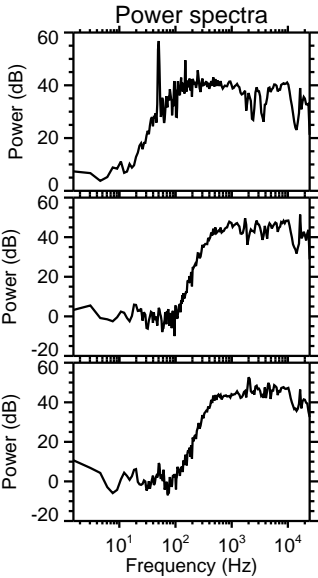
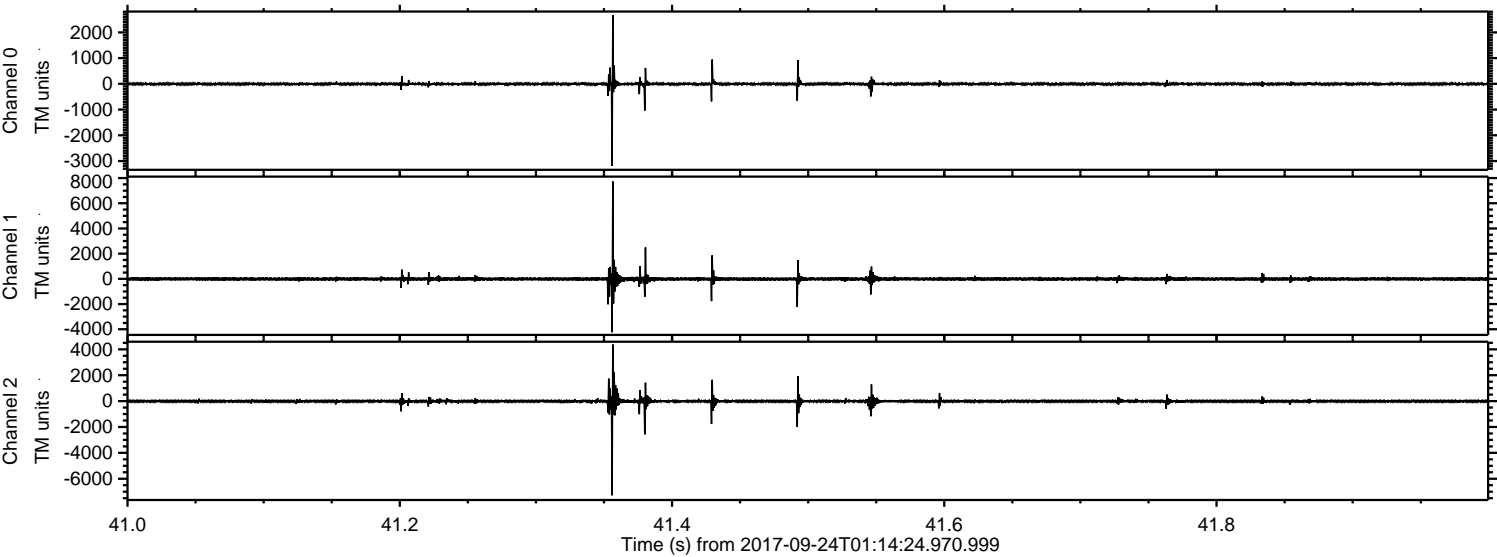


Channel 0
mn: -5096
mx: 3000
 μ : -5.2
 σ : 41.3

Channel 1
mn: -7558
mx: 6613
 μ : -12.3
 σ : 93.2

Channel 2
mn: -8156
mx: 6388
 μ : -14.7
 σ : 84.3

Processed Sun Sep 24 03:22:41 2017 by ELM ver.2012-10-06 from 001__elm20170924_011423__dat00.bin



Channel 0
mn: -3183
mx: 2676
 μ : -5.2
 σ : 36.9

Channel 1
mn: -4238
mx: 7727
 μ : -12.3
 σ : 94.2

Channel 2
mn: -7279
mx: 4370
 μ : -14.7
 σ : 84.8

ELMAVAN 3D WAVEFORMS (Measured data sampled at 50 kHz) 51000 packets of 144 samples from 2017-09-24T01:14:24.970.999. Part 142/147

