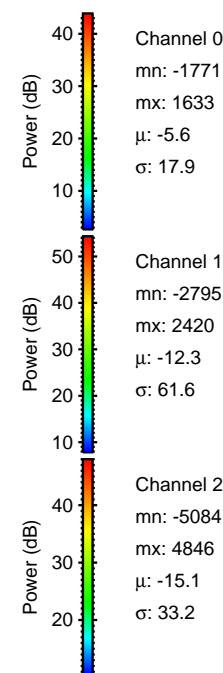
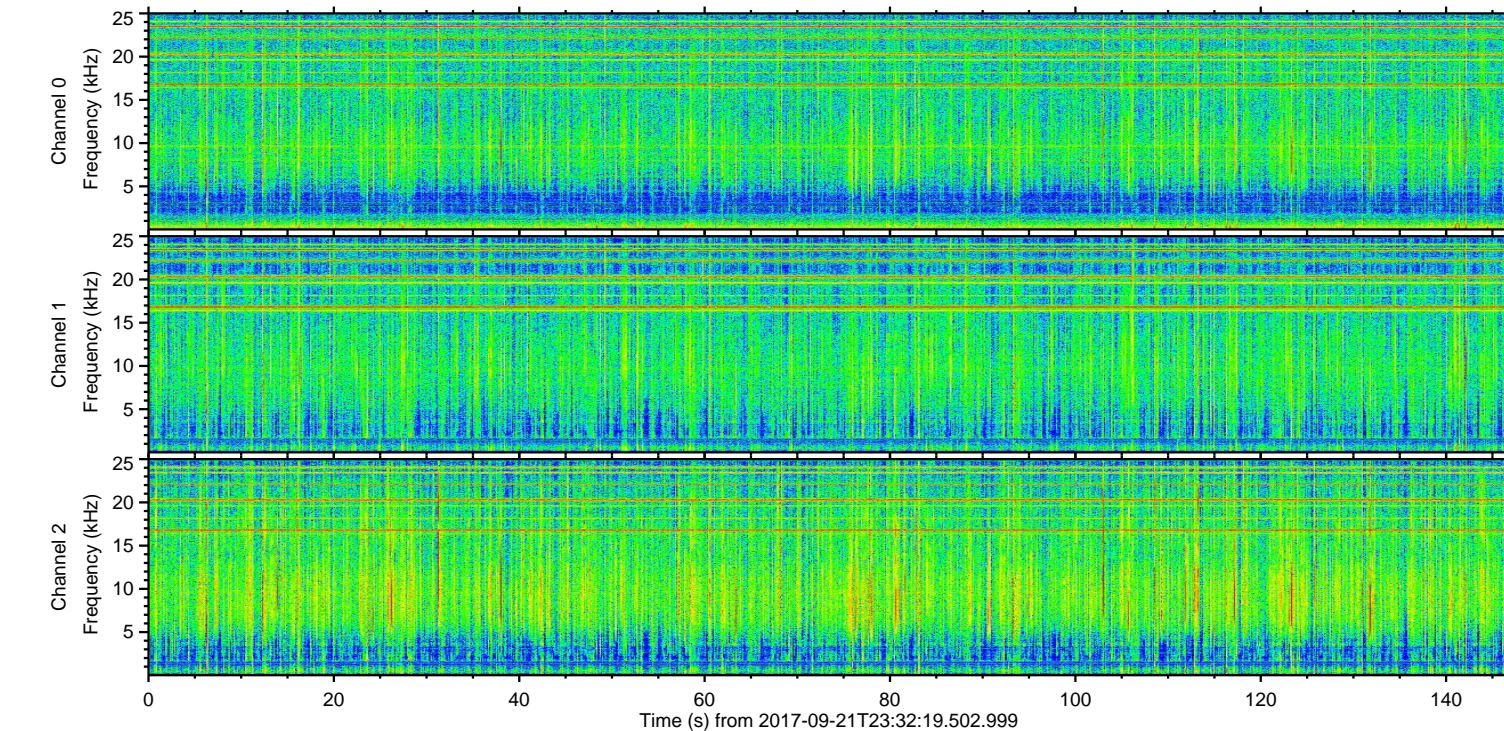
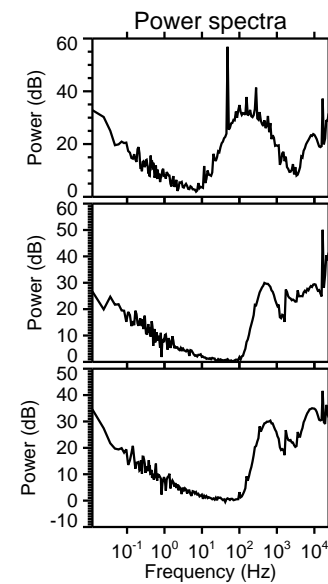
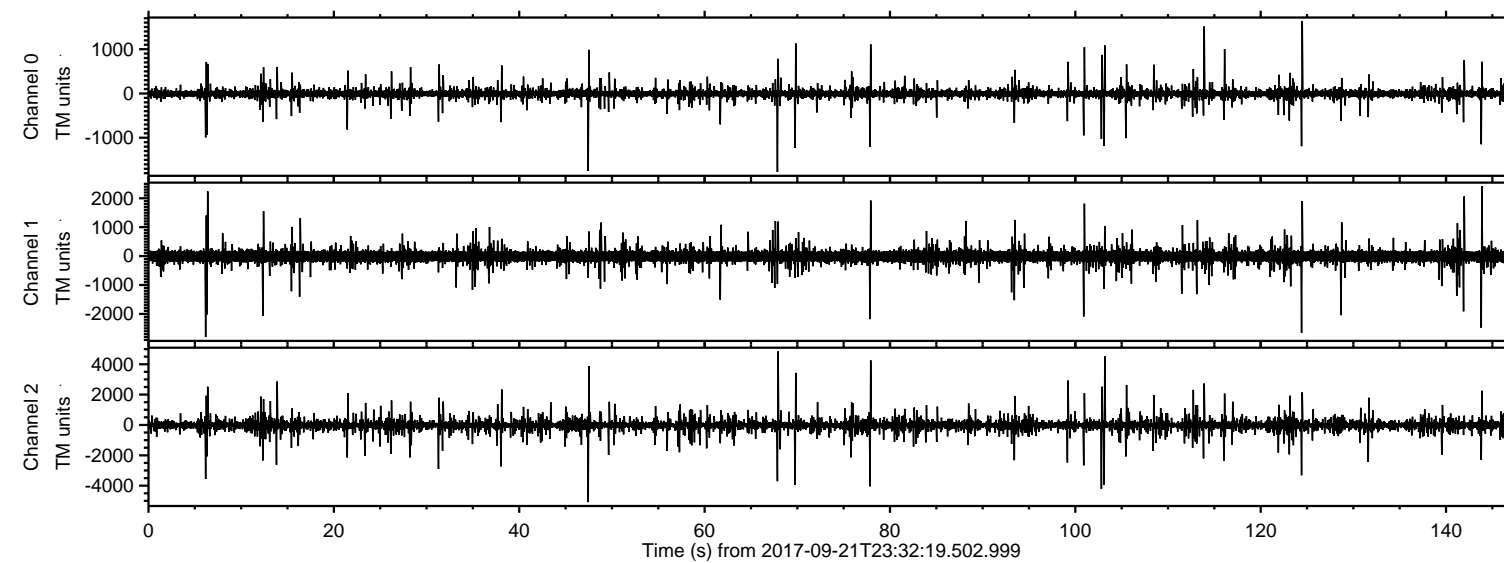


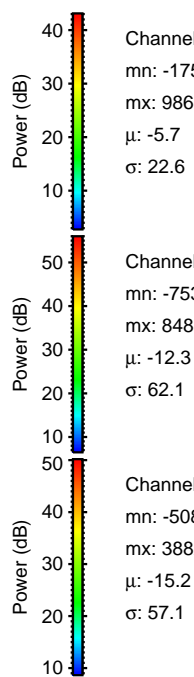
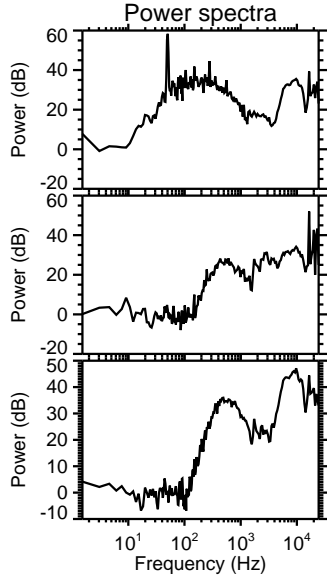
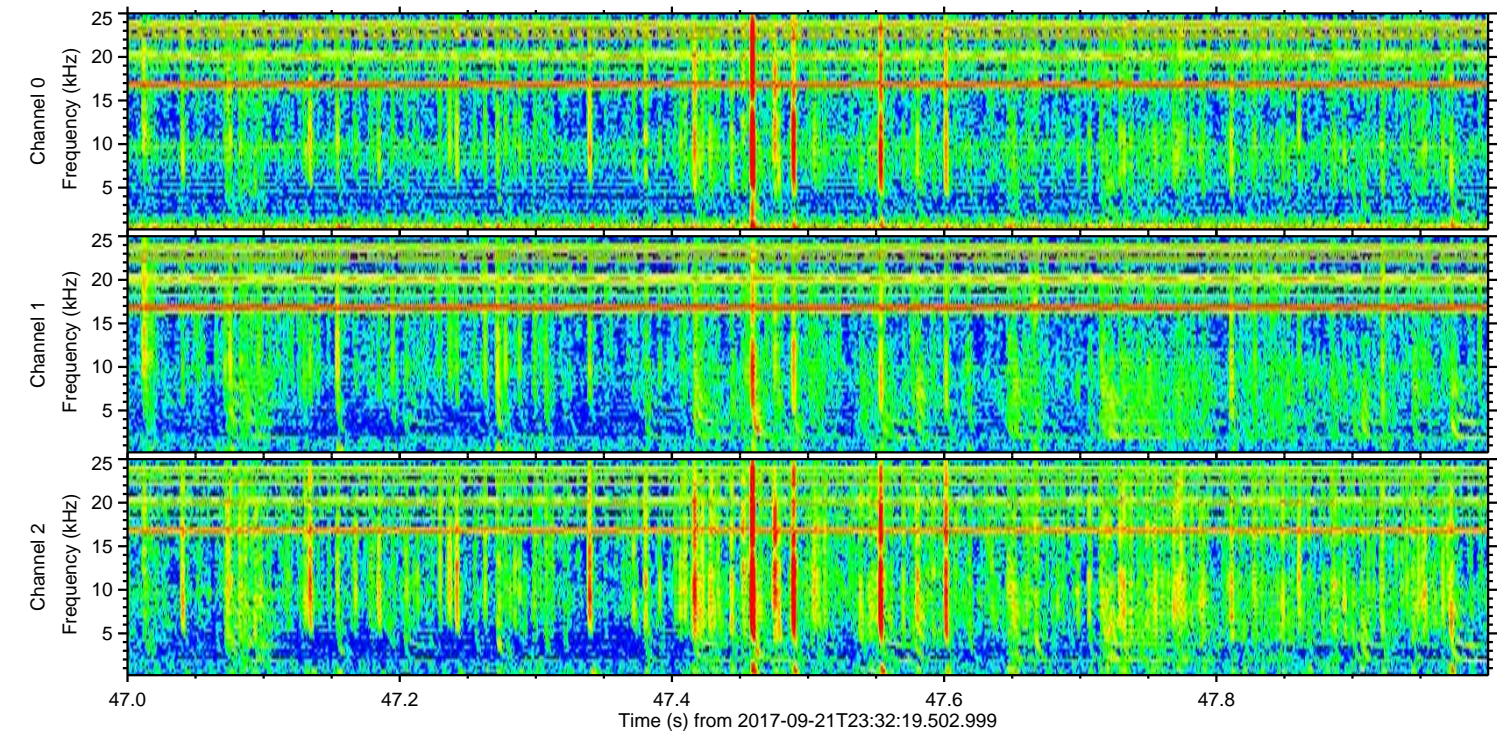
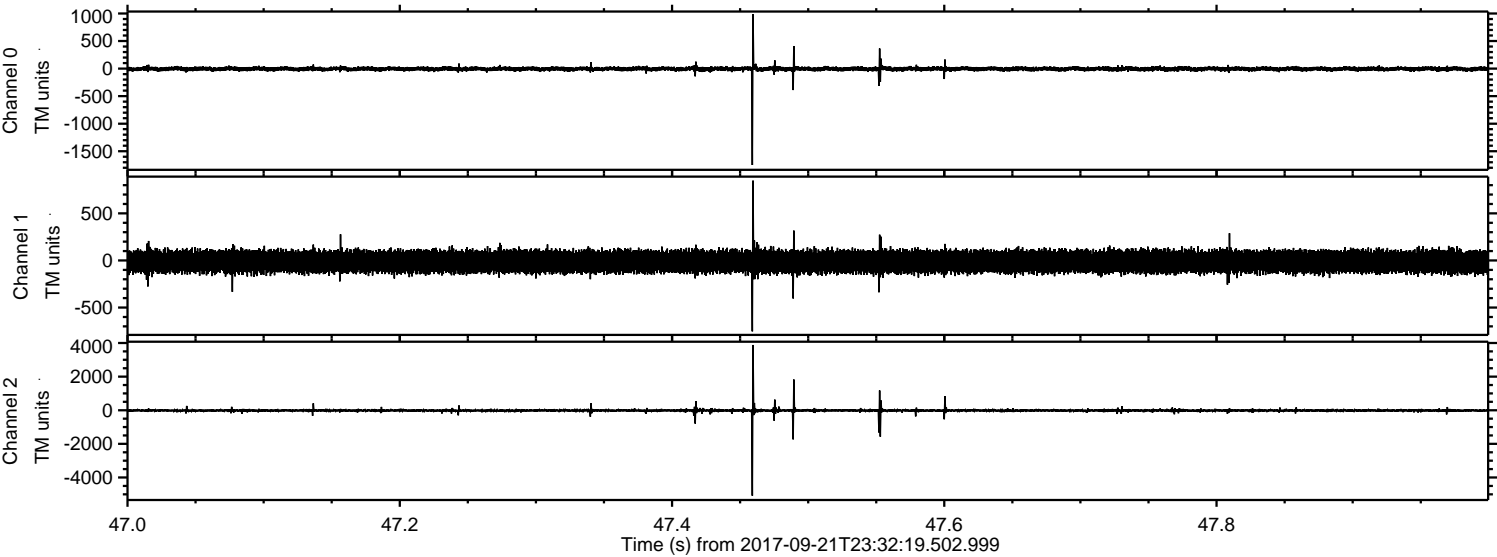
ELMAVAN 3D WAVEFORMS (Measured data sampled at 50 kHz) 51000 packets of 144 samples from 2017-09-21T23:32:19.502.999.

Processed Fri Sep 22 01:39:58 2017 by ELM ver.2012-10-06 from 001__elm20170921_233218__dat00.bin



ELMAVAN 3D WAVEFORMS (Measured data sampled at 50 kHz) 51000 packets of 144 samples from 2017-09-21T23:32:19.502.999. Part 48/147

Processed Fri Sep 22 01:40:04 2017 by ELM ver.2012-10-06 from 001__elm20170921_233218__dat00.bin



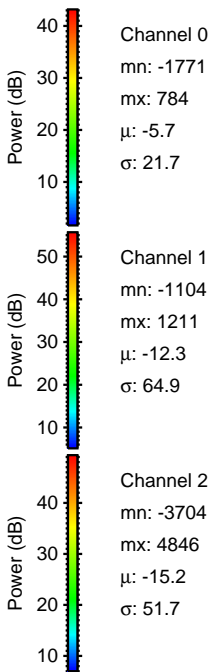
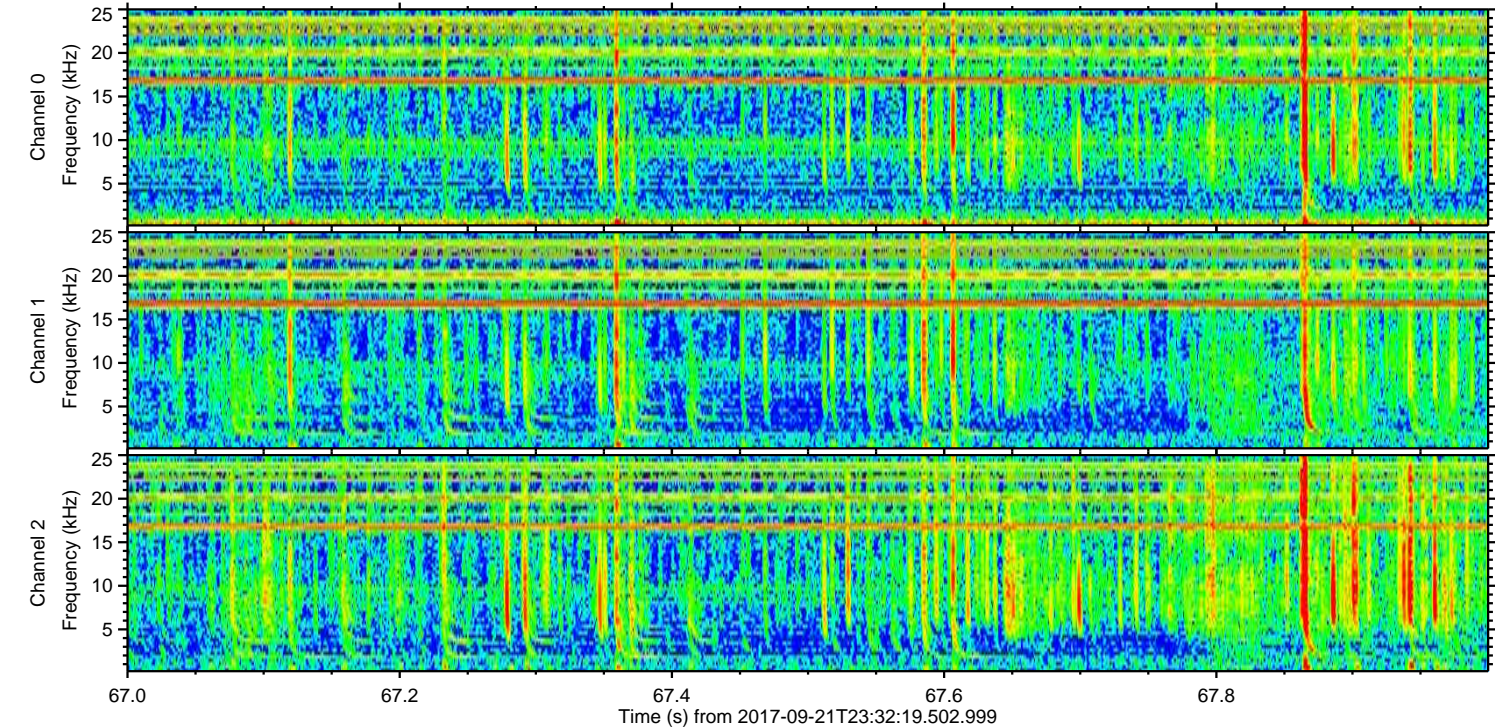
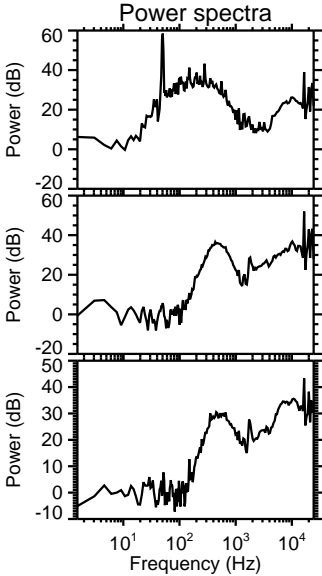
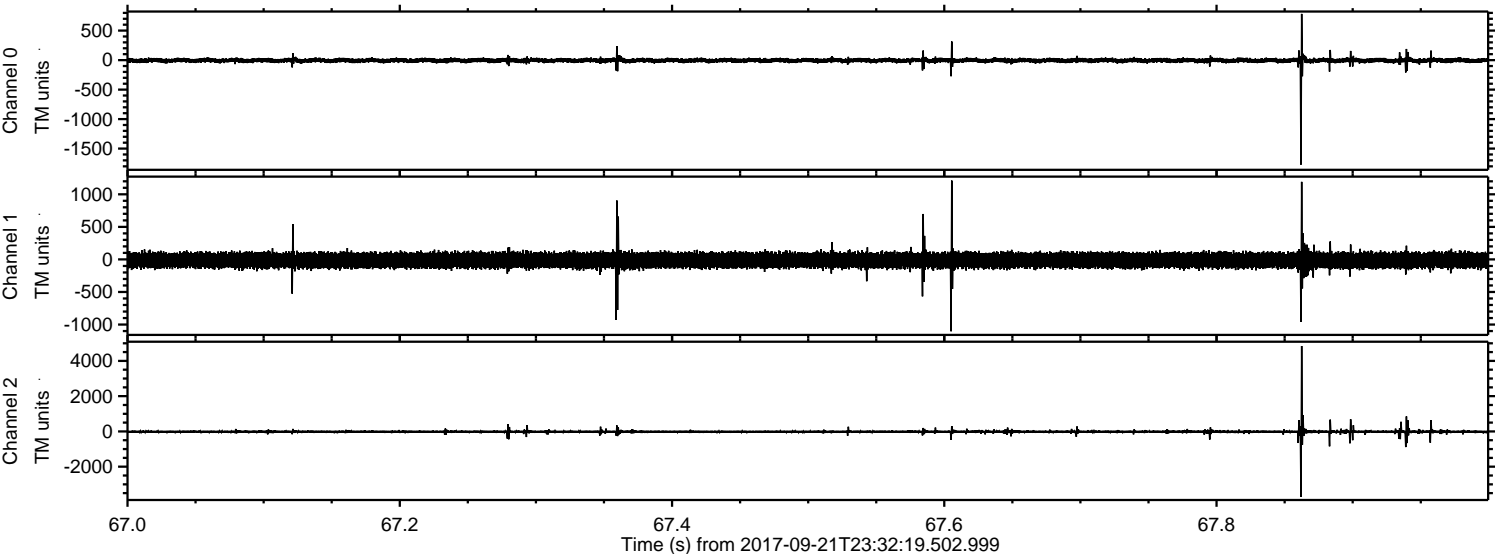
Channel 0
mn: -1750
mx: 986
 μ : -5.7
 σ : 22.6

Channel 1
mn: -753
mx: 848
 μ : -12.3
 σ : 62.1

Channel 2
mn: -5084
mx: 3882
 μ : -15.2
 σ : 57.1

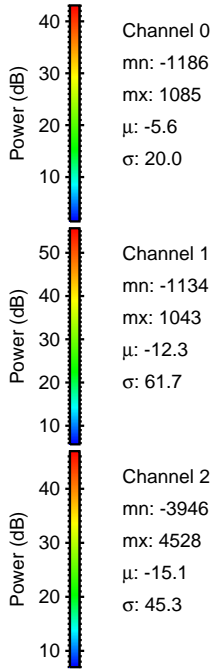
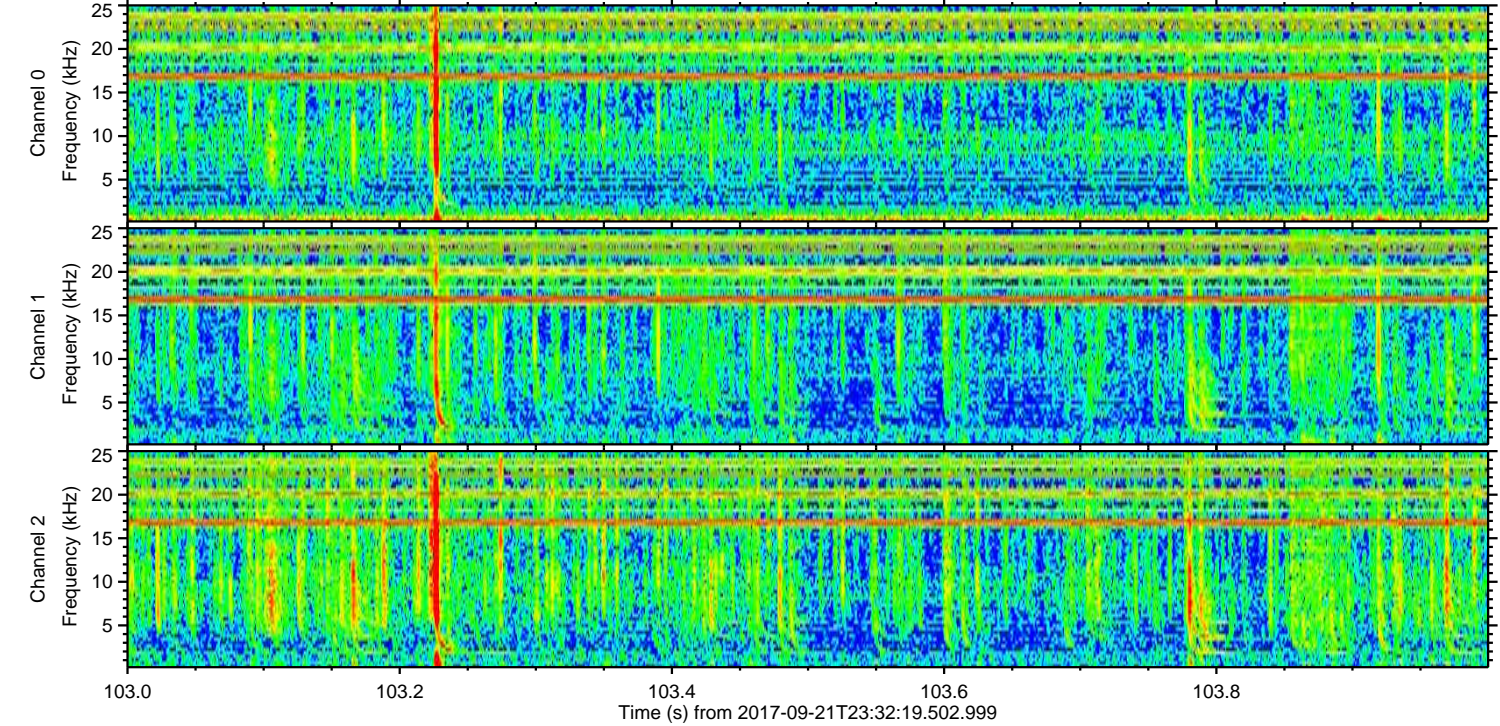
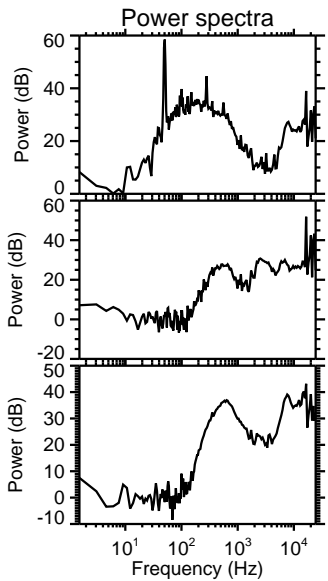
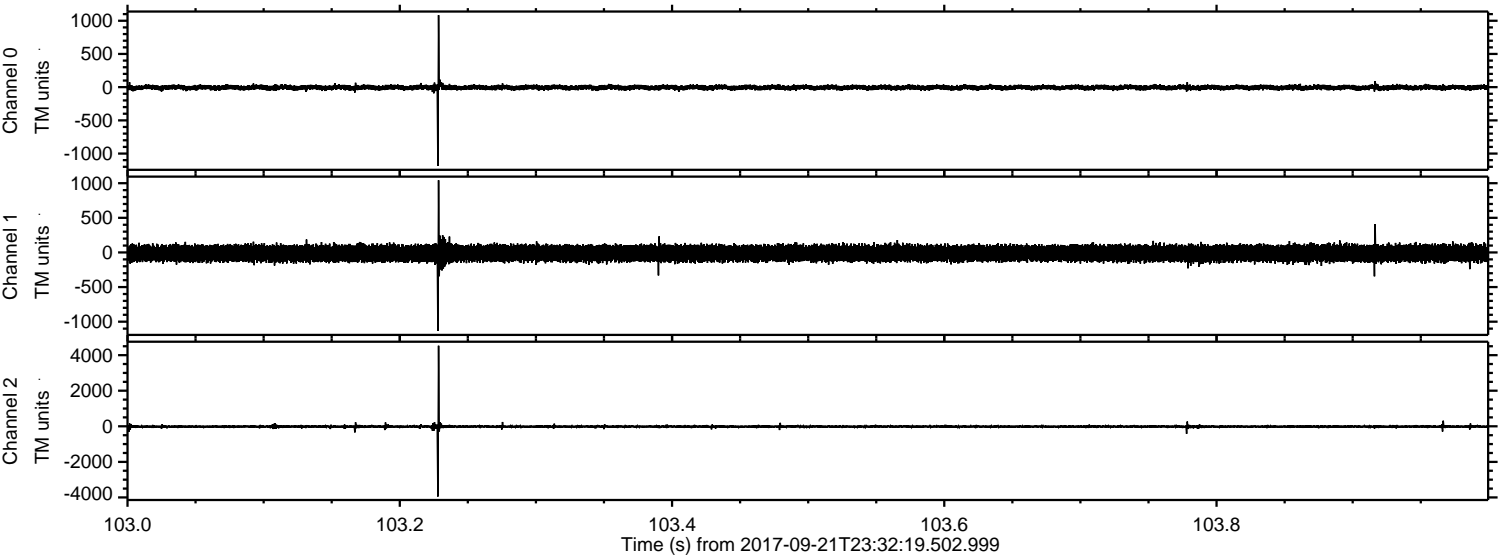
ELMAVAN 3D WAVEFORMS (Measured data sampled at 50 kHz) 51000 packets of 144 samples from 2017-09-21T23:32:19.502.999. Part 68/147

Processed Fri Sep 22 01:40:05 2017 by ELM ver.2012-10-06 from 001__elm20170921_233218__dat00.bin



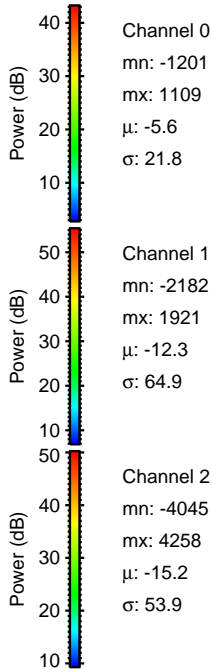
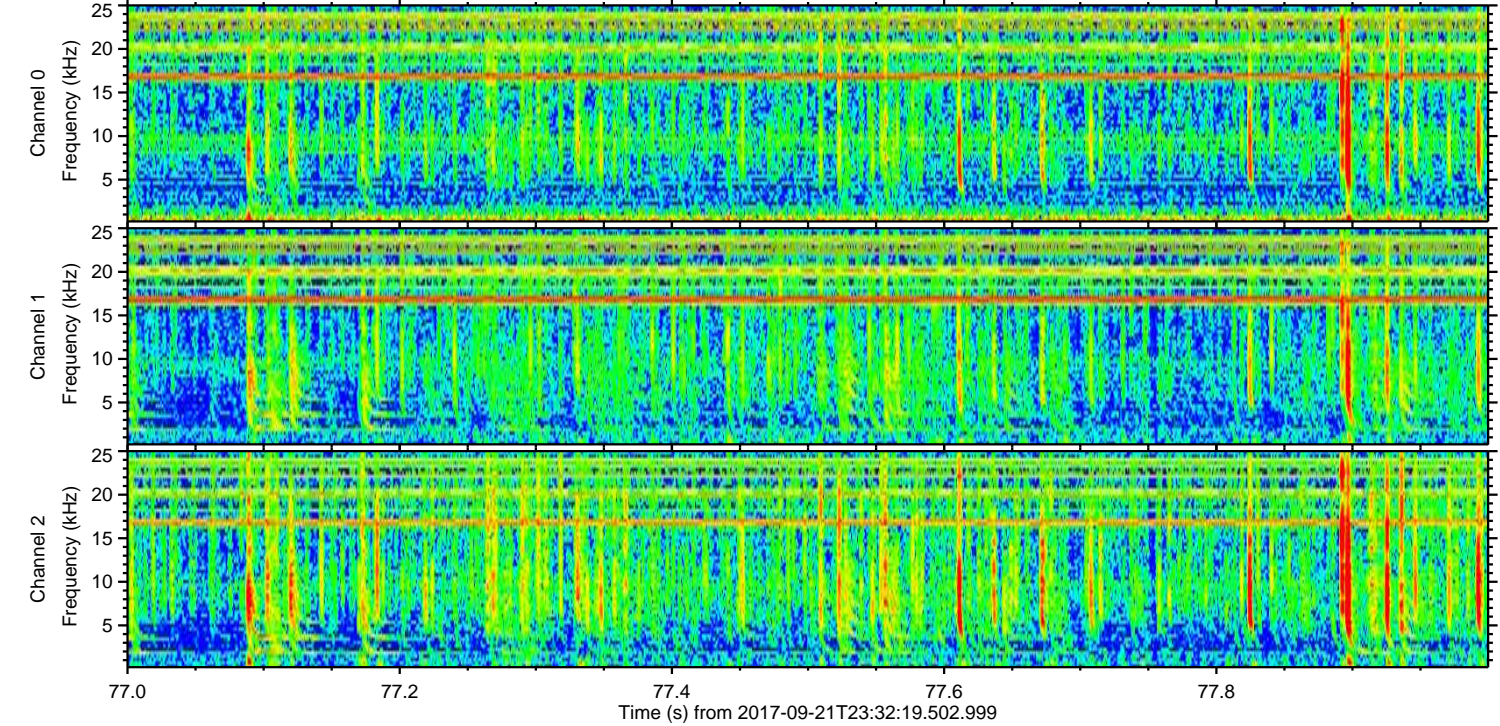
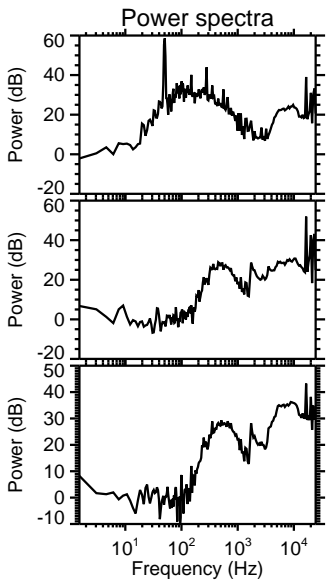
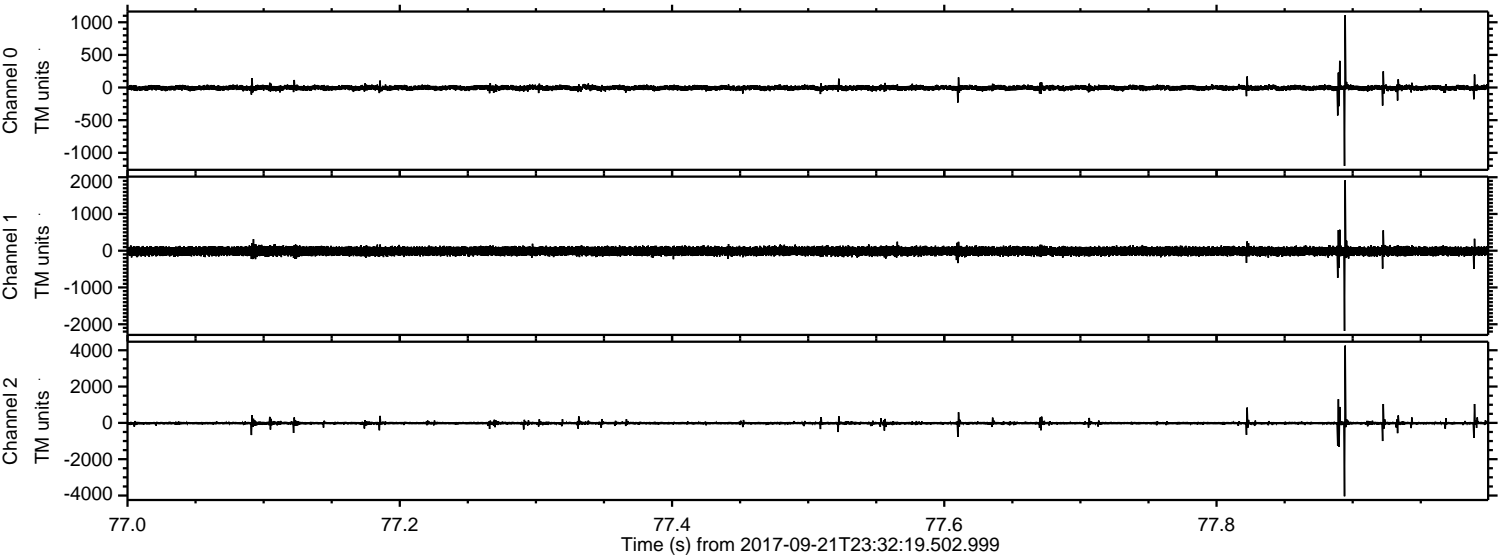
ELMAVAN 3D WAVEFORMS (Measured data sampled at 50 kHz) 51000 packets of 144 samples from 2017-09-21T23:32:19.502.999. Part 104/147

Processed Fri Sep 22 01:40:06 2017 by ELM ver.2012-10-06 from 001__elm20170921_233218__dat00.bin



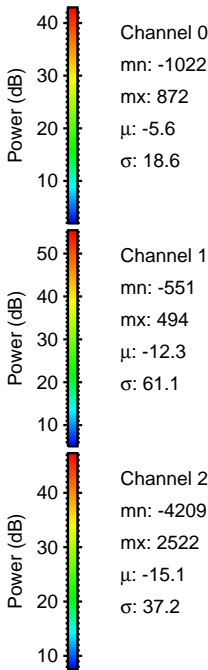
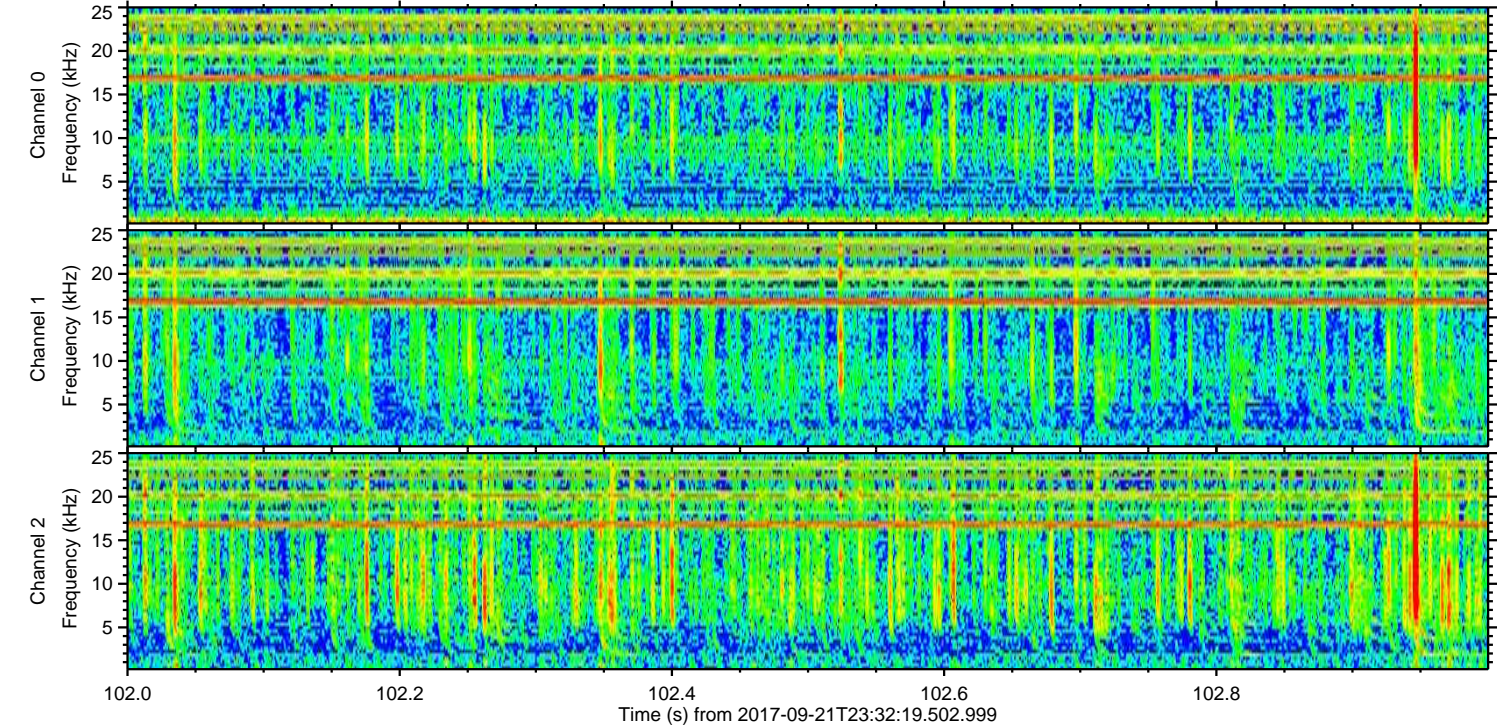
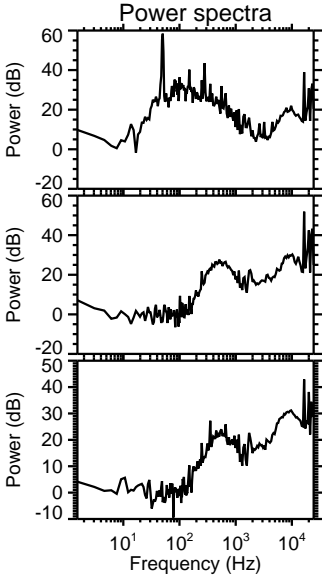
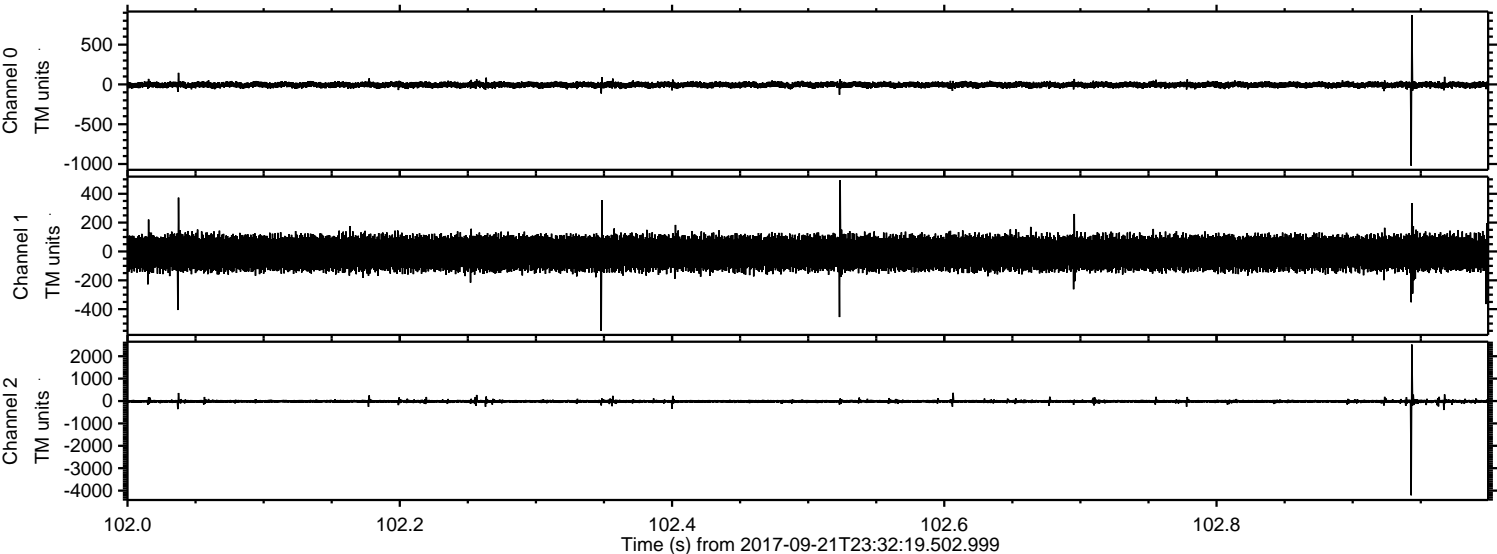
ELMAVAN 3D WAVEFORMS (Measured data sampled at 50 kHz) 51000 packets of 144 samples from 2017-09-21T23:32:19.502.999. Part 78/147

Processed Fri Sep 22 01:40:07 2017 by ELM ver.2012-10-06 from 001__elm20170921_233218__dat00.bin



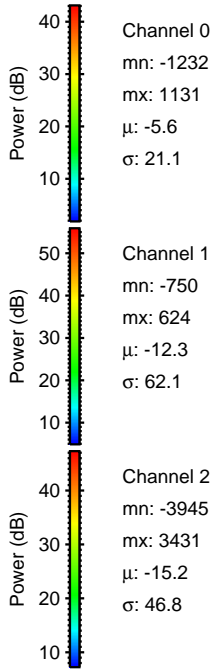
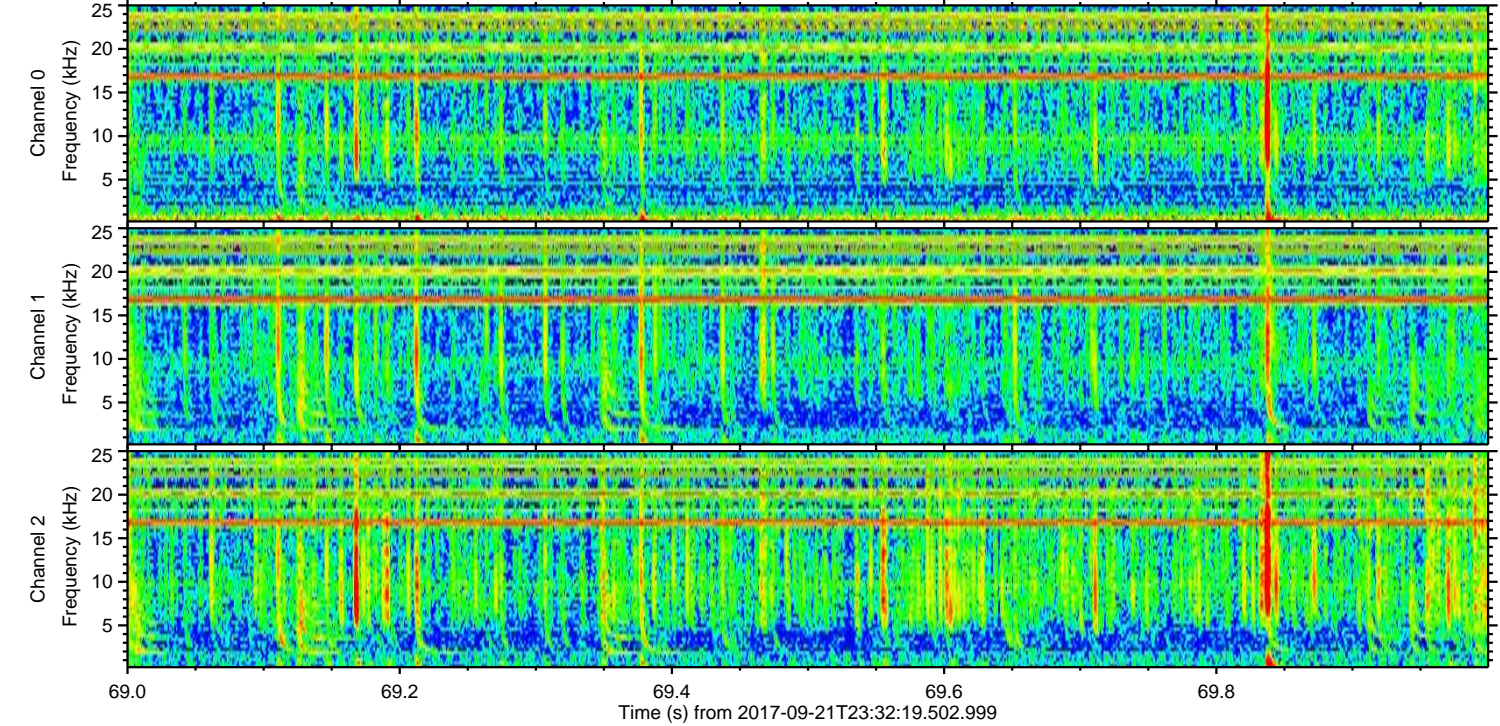
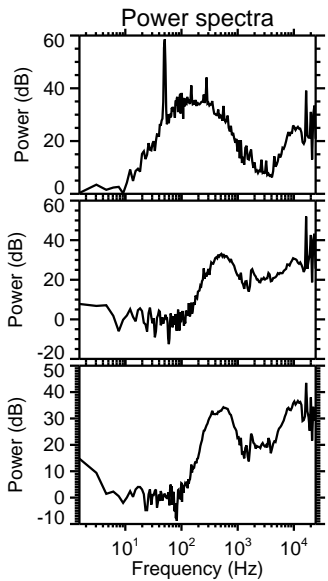
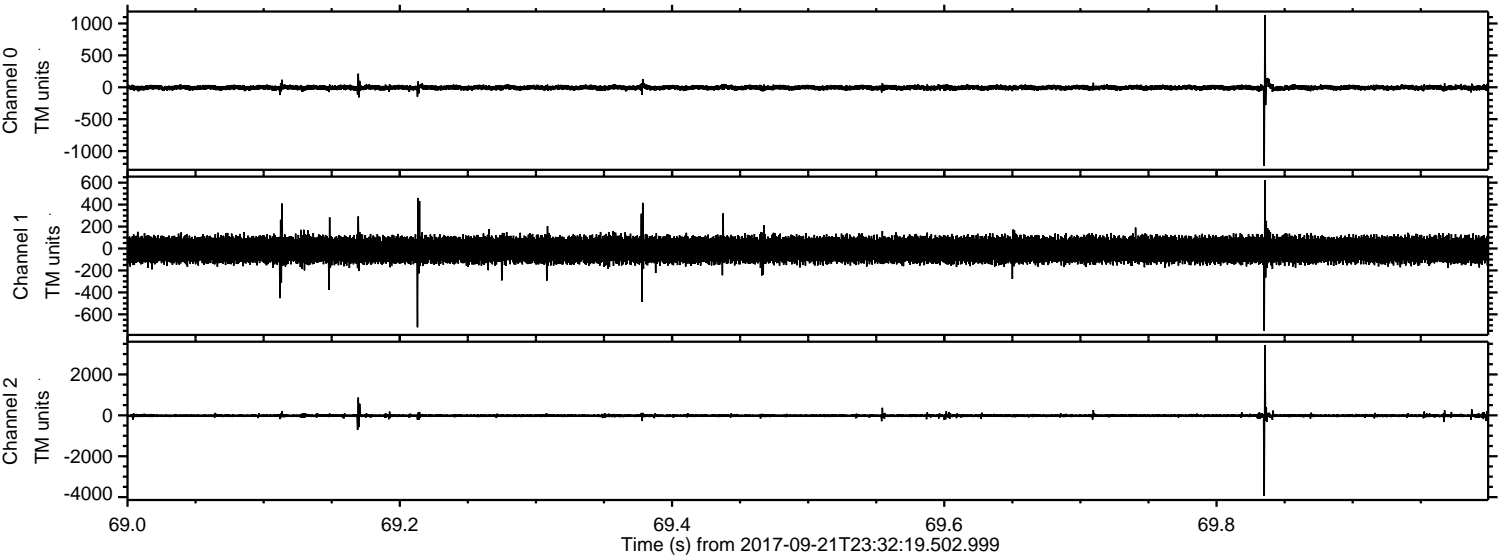
ELMAVAN 3D WAVEFORMS (Measured data sampled at 50 kHz) 51000 packets of 144 samples from 2017-09-21T23:32:19.502.999. Part 103/147

Processed Fri Sep 22 01:40:07 2017 by ELM ver.2012-10-06 from 001__elm20170921_233218__dat00.bin



ELMAVAN 3D WAVEFORMS (Measured data sampled at 50 kHz) 51000 packets of 144 samples from 2017-09-21T23:32:19.502.999. Part 70/147

Processed Fri Sep 22 01:40:08 2017 by ELM ver.2012-10-06 from 001__elm20170921_233218__dat00.bin

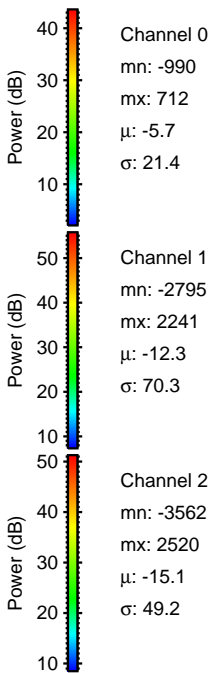
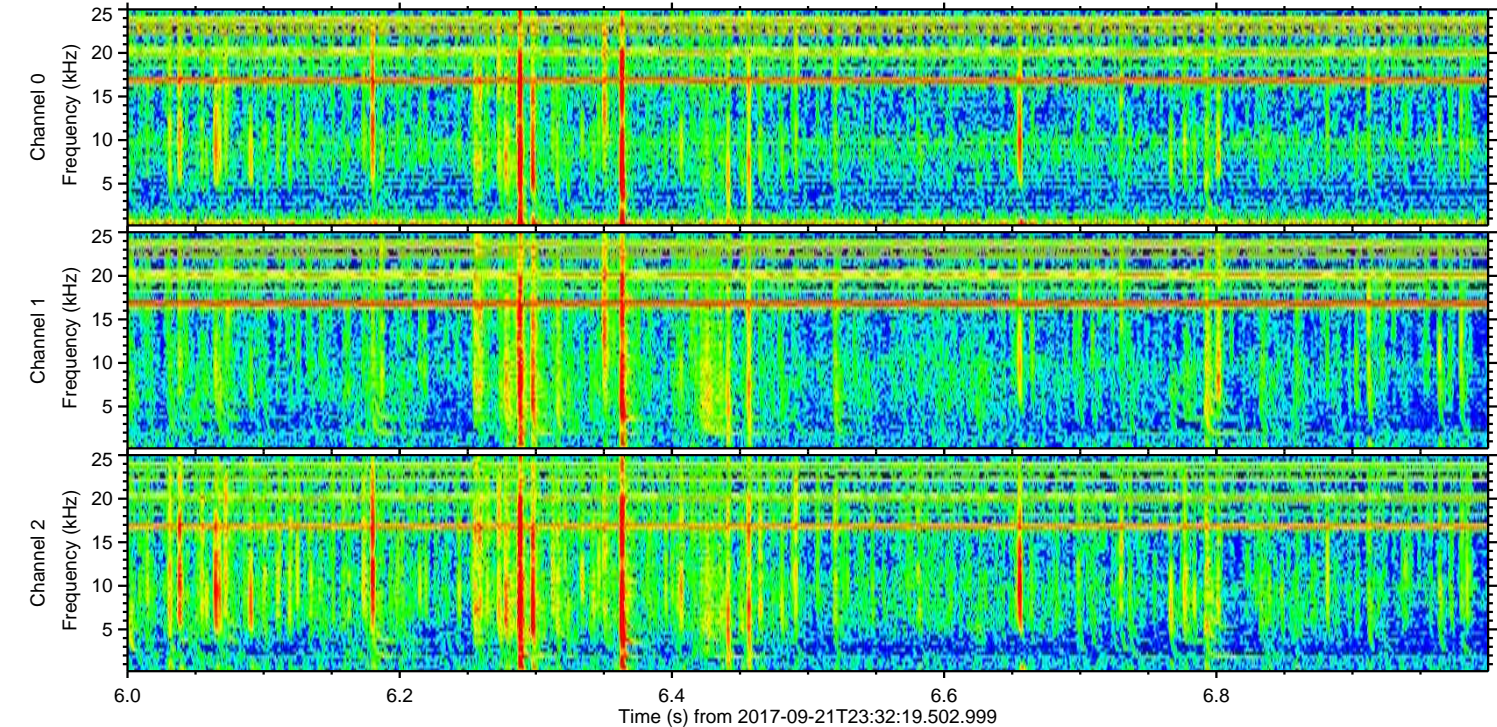
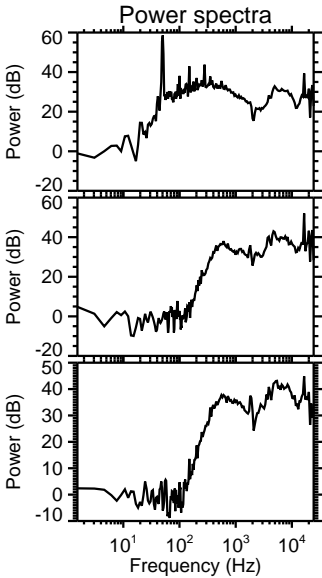
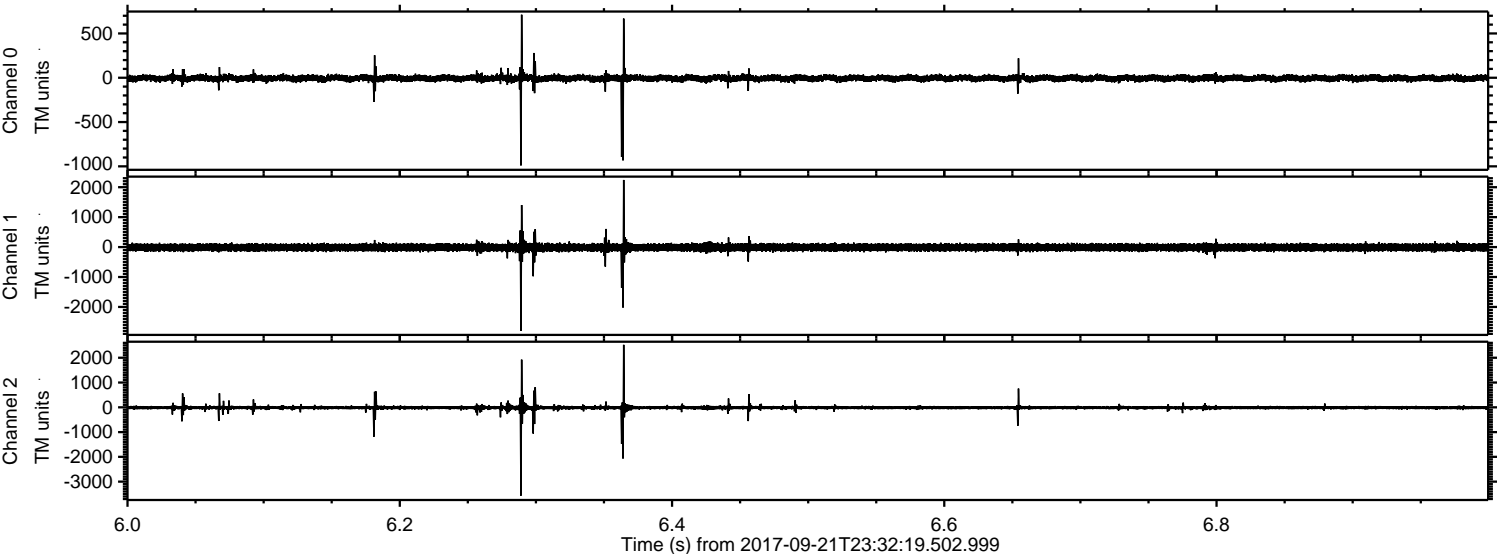


Channel 0
mn: -1232
mx: 1131
 μ : -5.6
 σ : 21.1

Channel 1
mn: -750
mx: 624
 μ : -12.3
 σ : 62.1

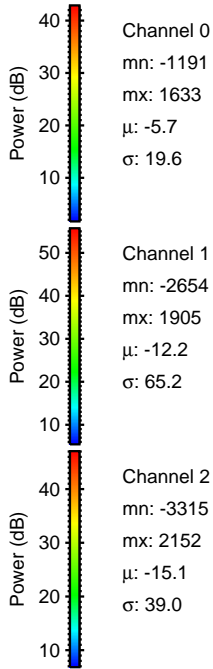
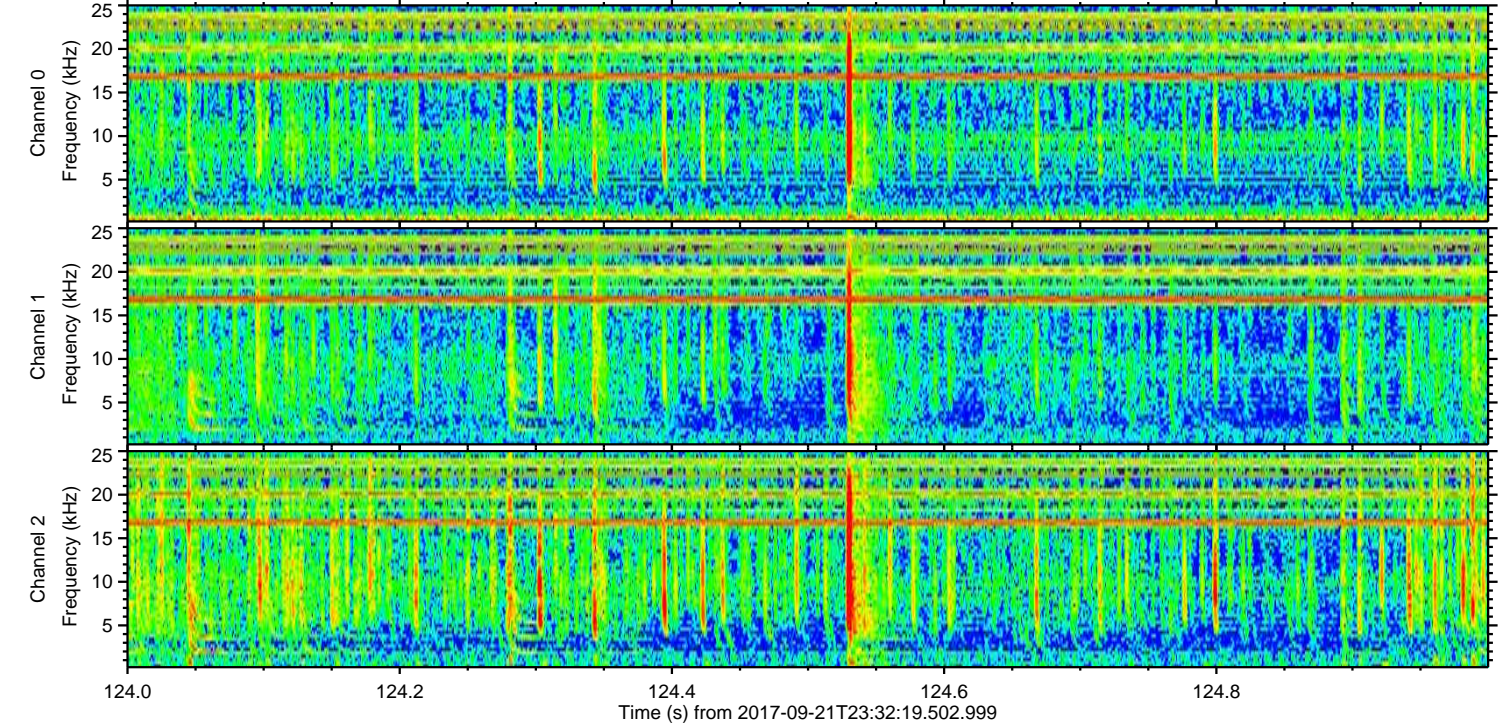
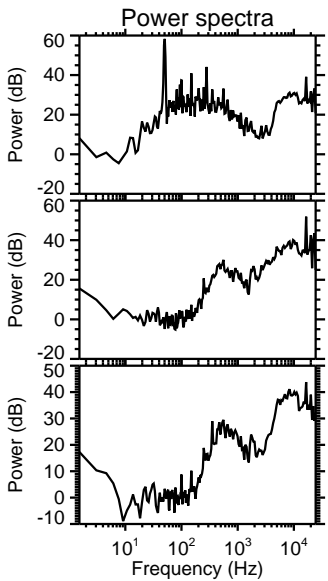
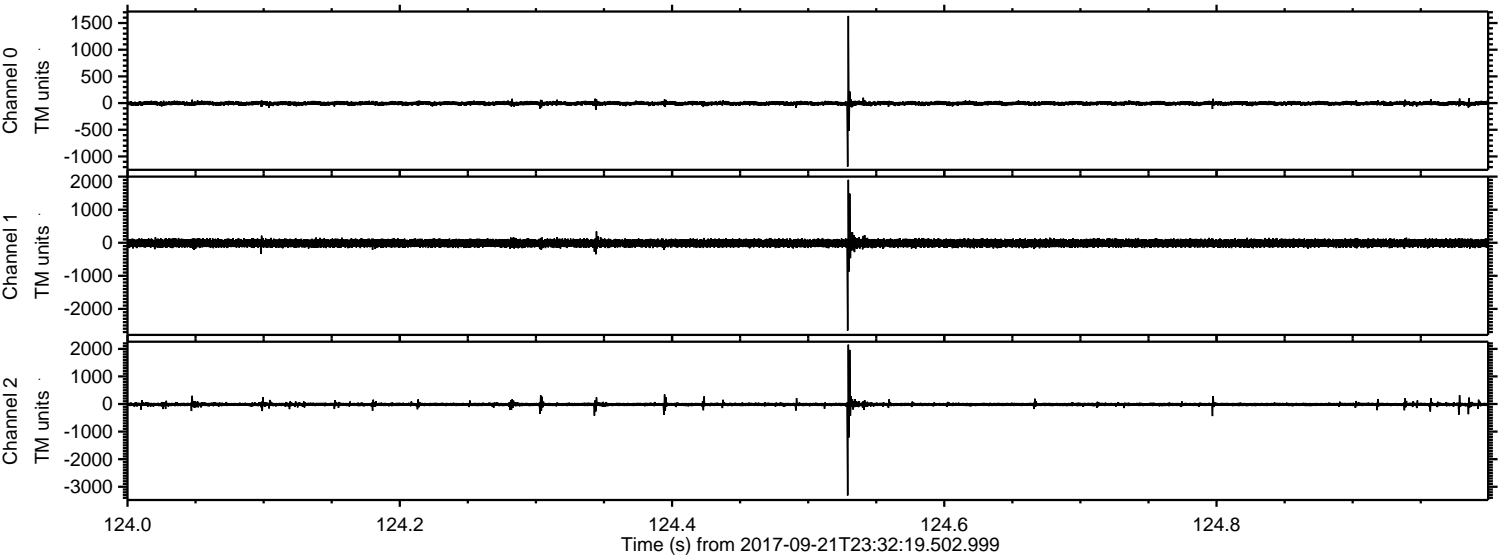
Channel 2
mn: -3945
mx: 3431
 μ : -15.2
 σ : 46.8

Processed Fri Sep 22 01:40:09 2017 by ELM ver.2012-10-06 from 001__elm20170921_233218__dat00.bin



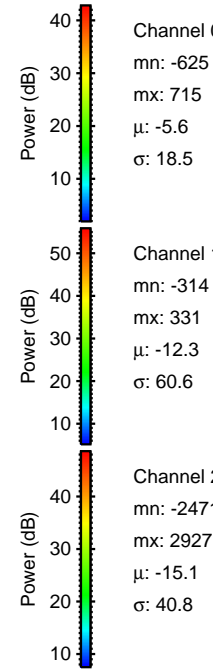
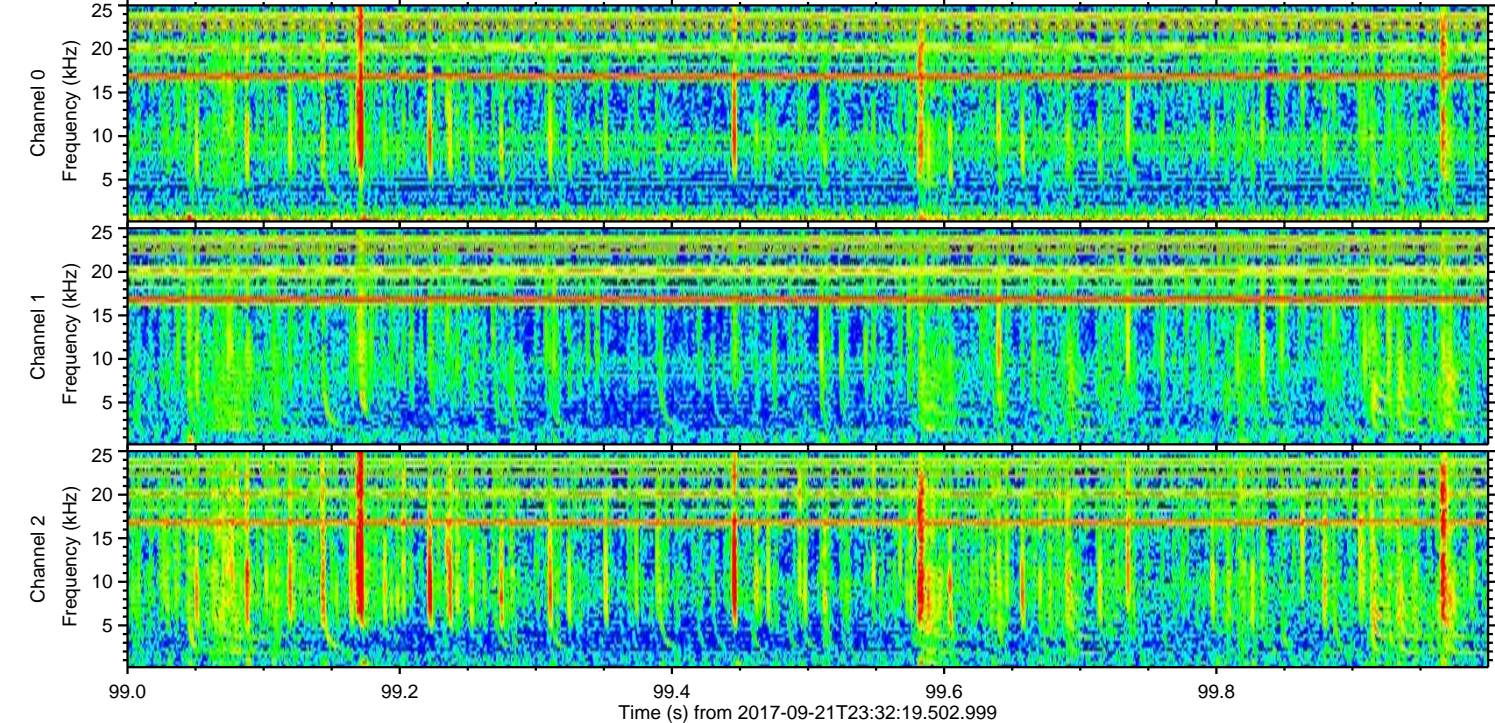
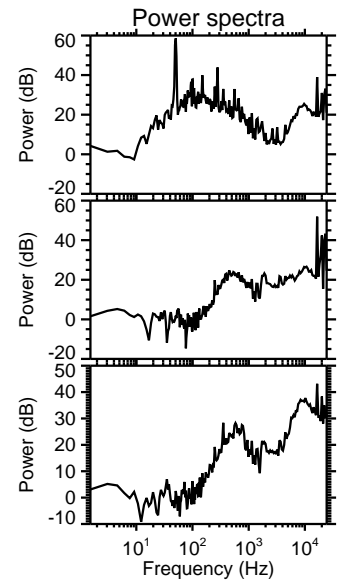
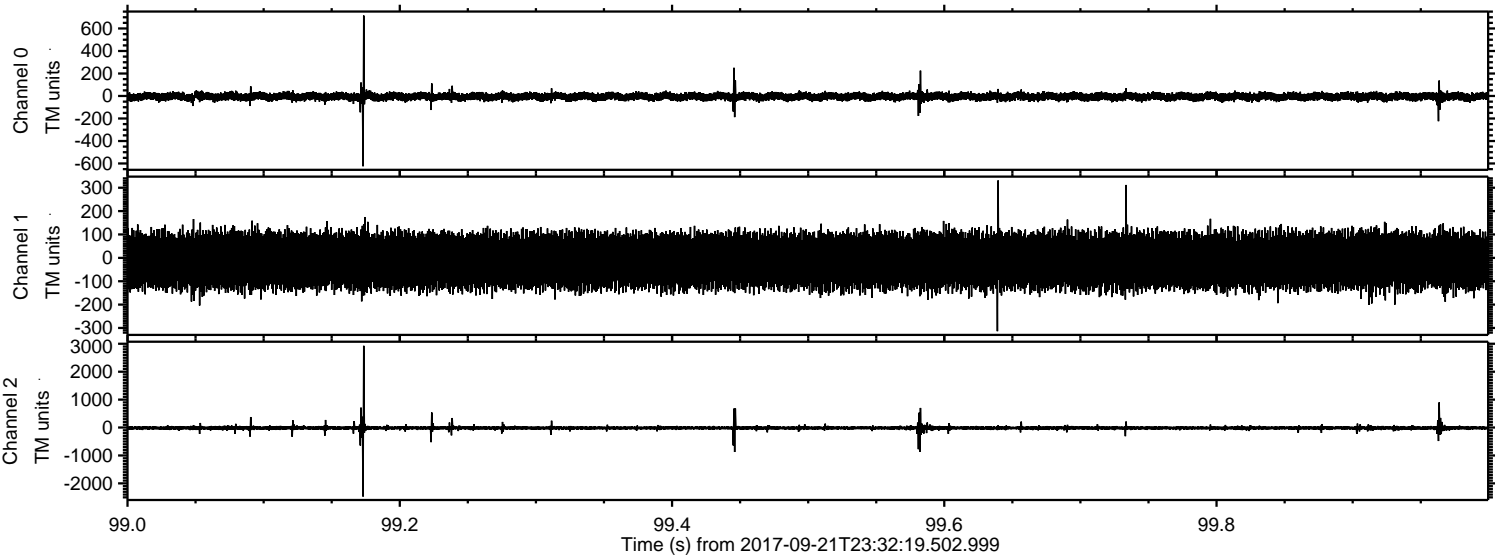
ELMAVAN 3D WAVEFORMS (Measured data sampled at 50 kHz) 51000 packets of 144 samples from 2017-09-21T23:32:19.502.999. Part 125/147

Processed Fri Sep 22 01:40:09 2017 by ELM ver.2012-10-06 from 001__elm20170921_233218__dat00.bin



ELMAVAN 3D WAVEFORMS (Measured data sampled at 50 kHz) 51000 packets of 144 samples from 2017-09-21T23:32:19.502.999. Part 100/147

Processed Fri Sep 22 01:40:10 2017 by ELM ver.2012-10-06 from 001__elm20170921_233218__dat00.bin



Channel 0
mn: -625
mx: 715
 μ : -5.6
 σ : 18.5

Channel 1
mn: -314
mx: 331
 μ : -12.3
 σ : 60.6

Channel 2
mn: -2471
mx: 2927
 μ : -15.1
 σ : 40.8

Processed Fri Sep 22 01:40:11 2017 by ELM ver.2012-10-06 from 001__elm20170921_233218__dat00.bin

