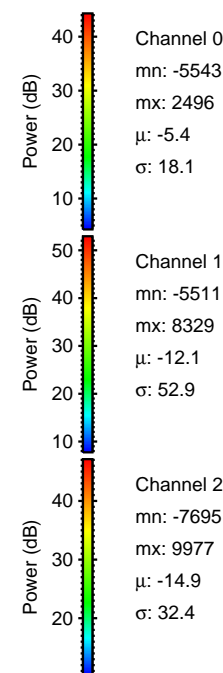
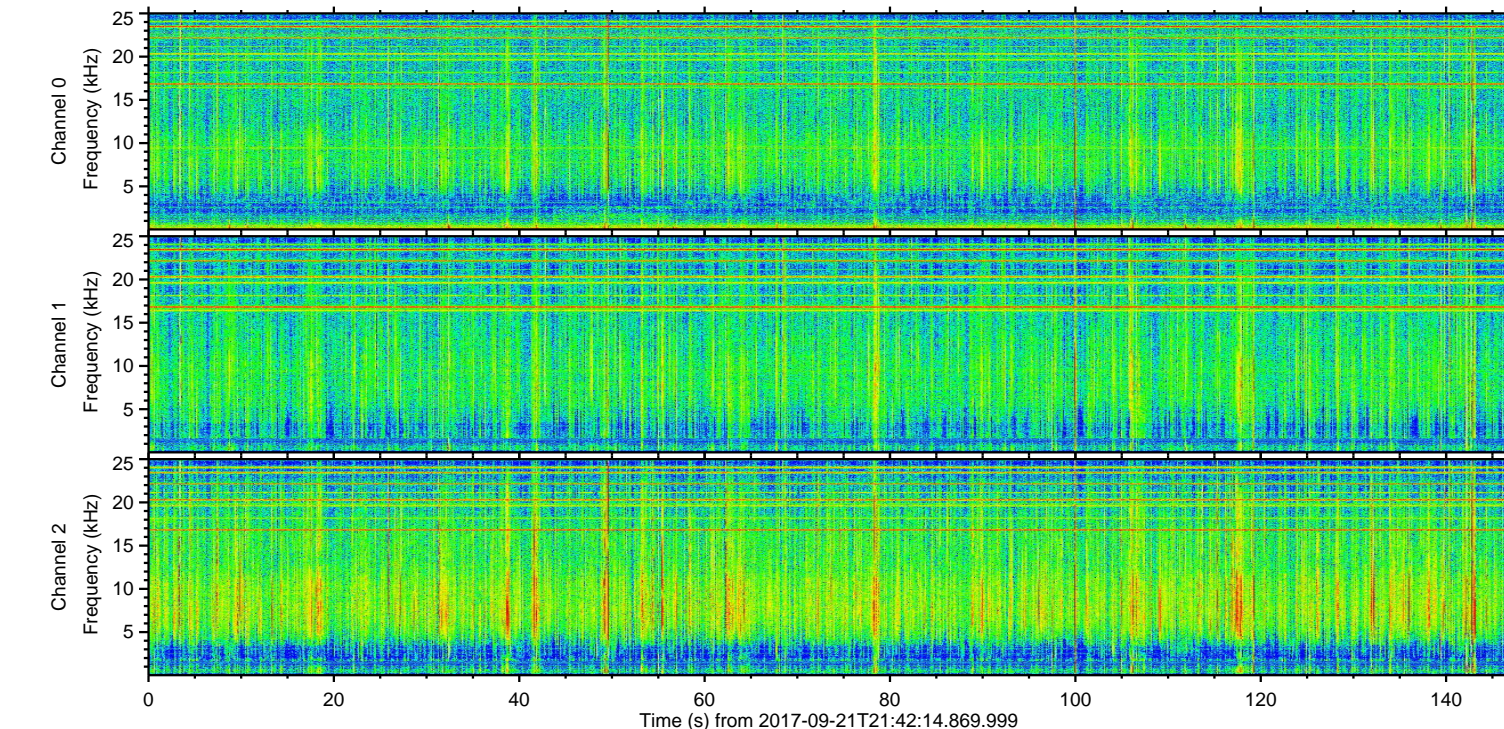
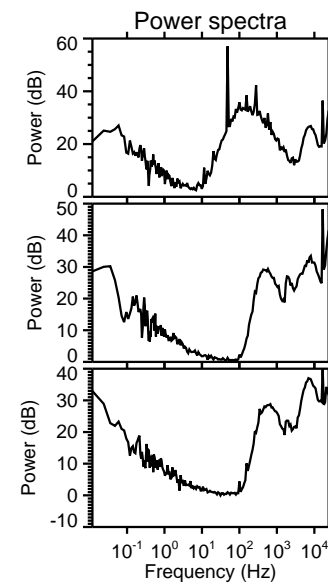
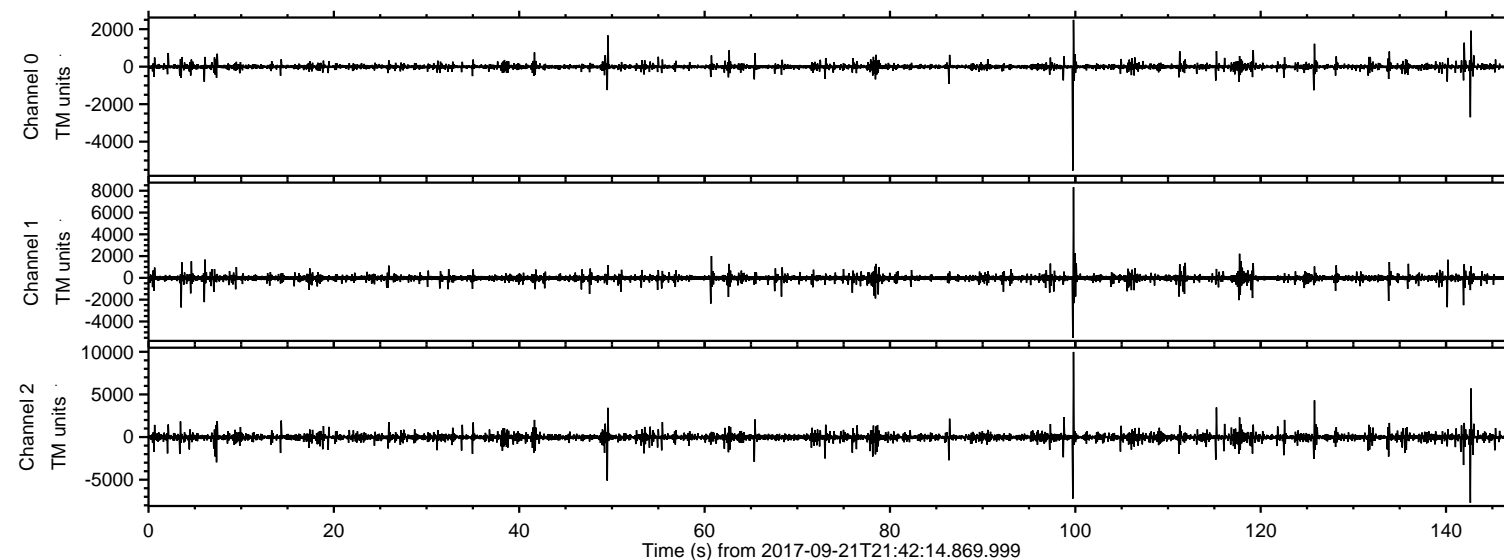


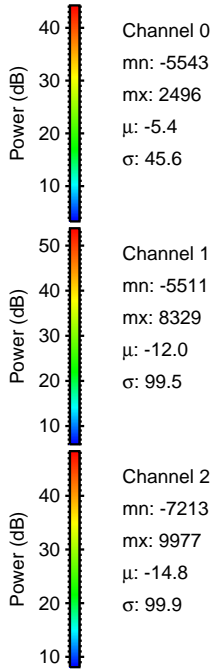
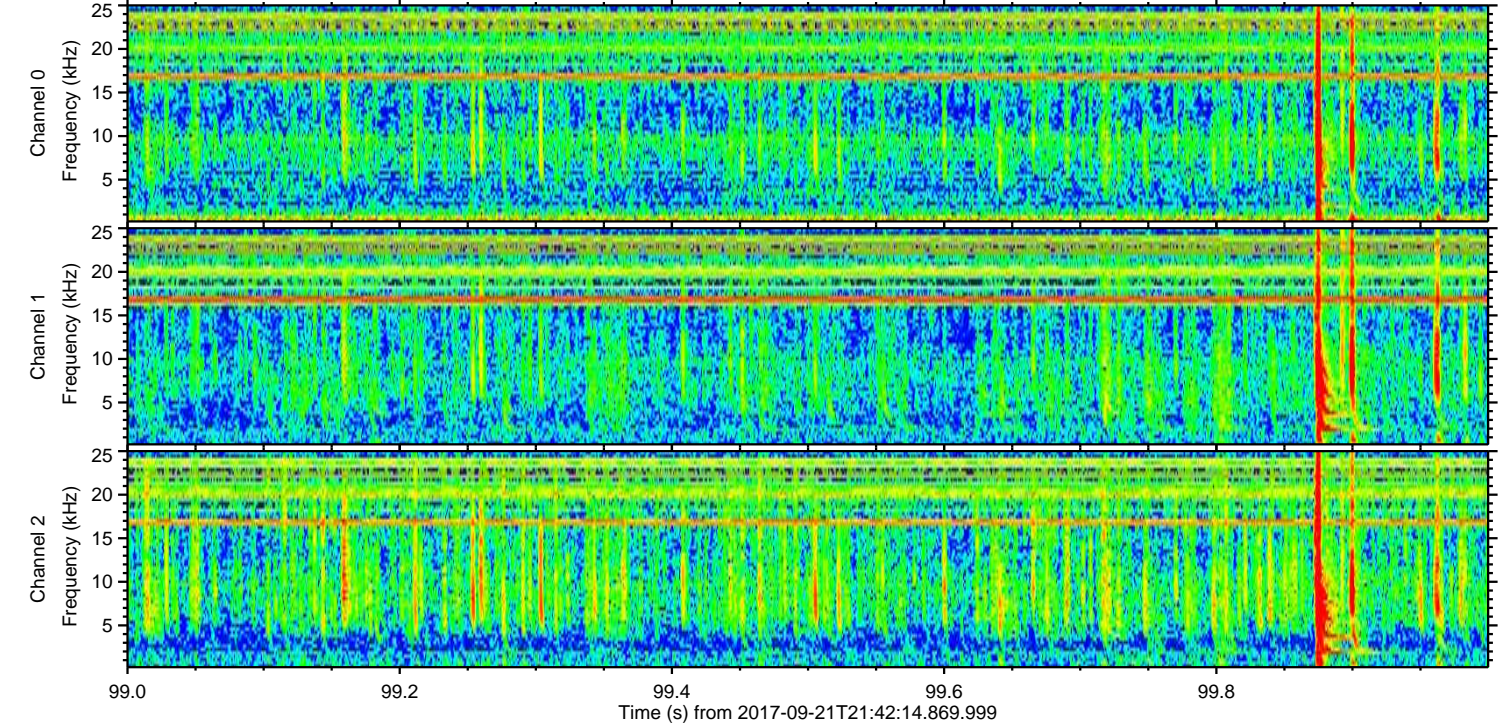
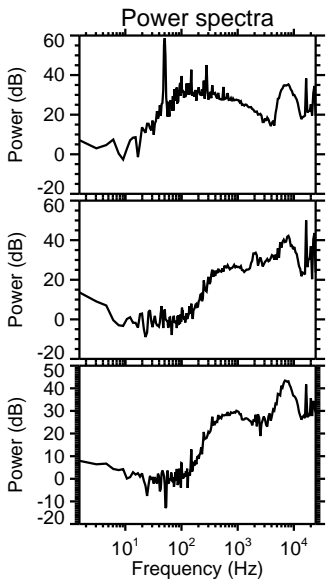
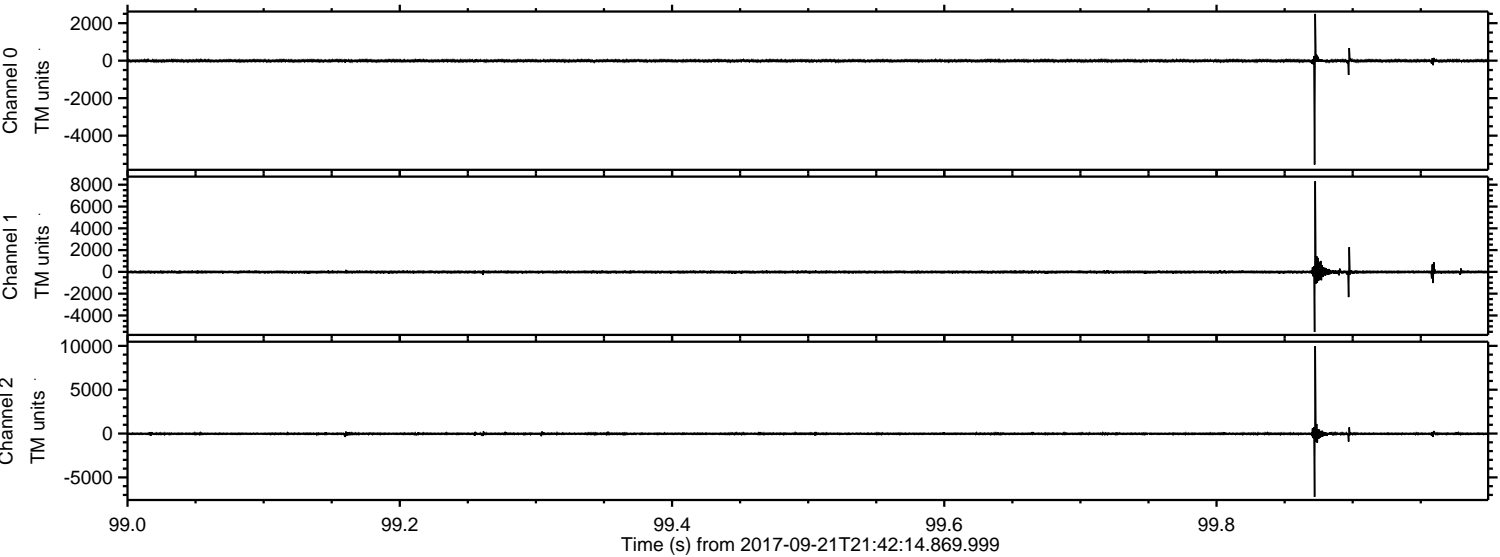
ELMAVAN 3D WAVEFORMS (Measured data sampled at 50 kHz) 51000 packets of 144 samples from 2017-09-21T21:42:14.869.999.

Processed Thu Sep 21 23:50:05 2017 by ELM ver.2012-10-06 from 001__elm20170921_214213__dat00.bin



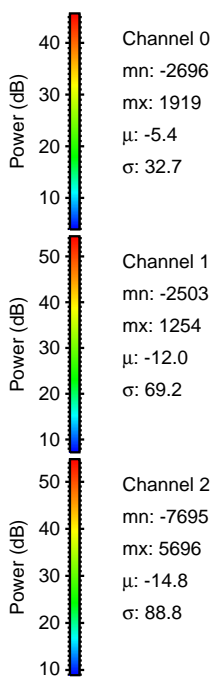
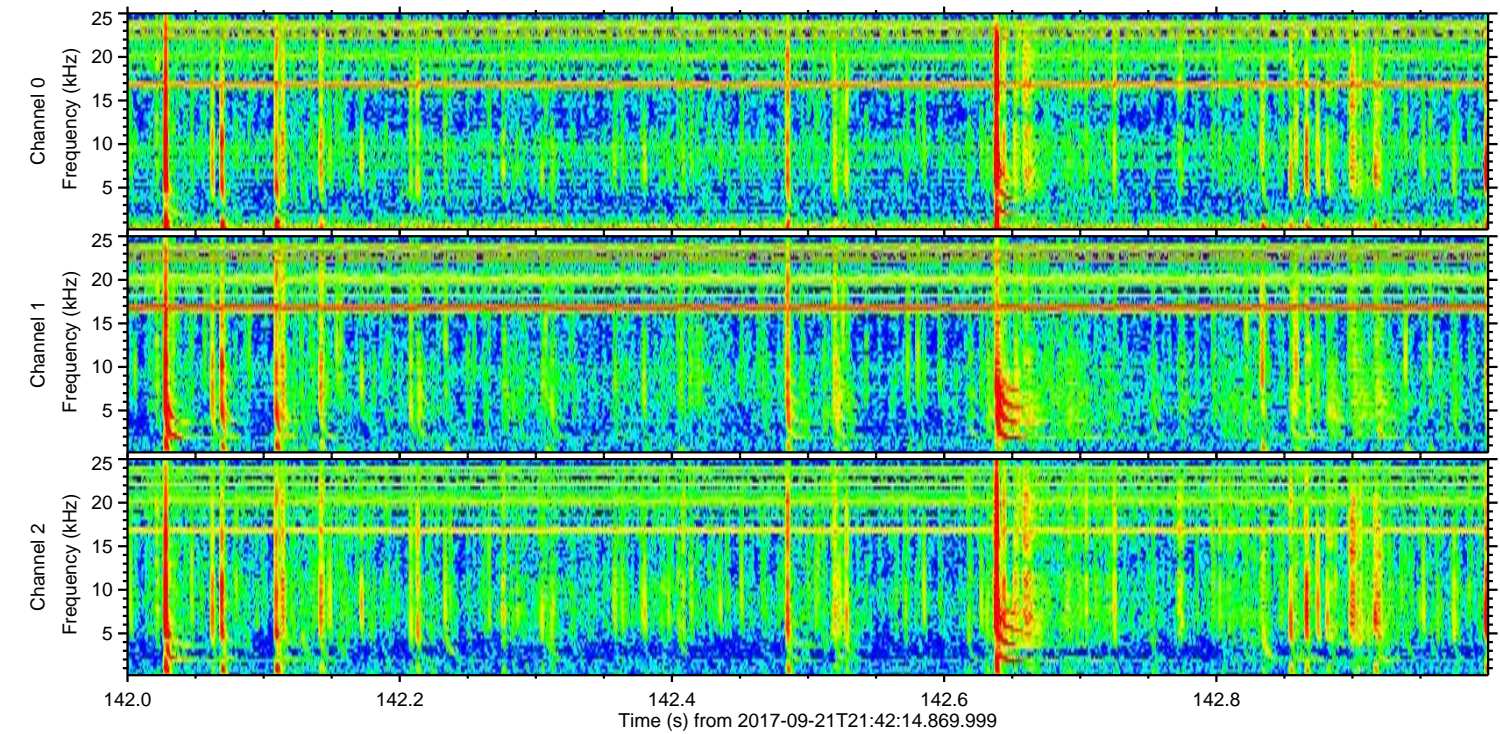
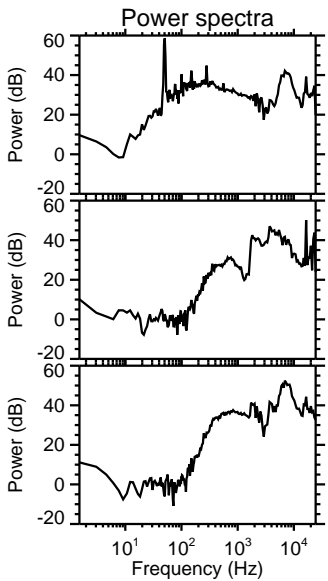
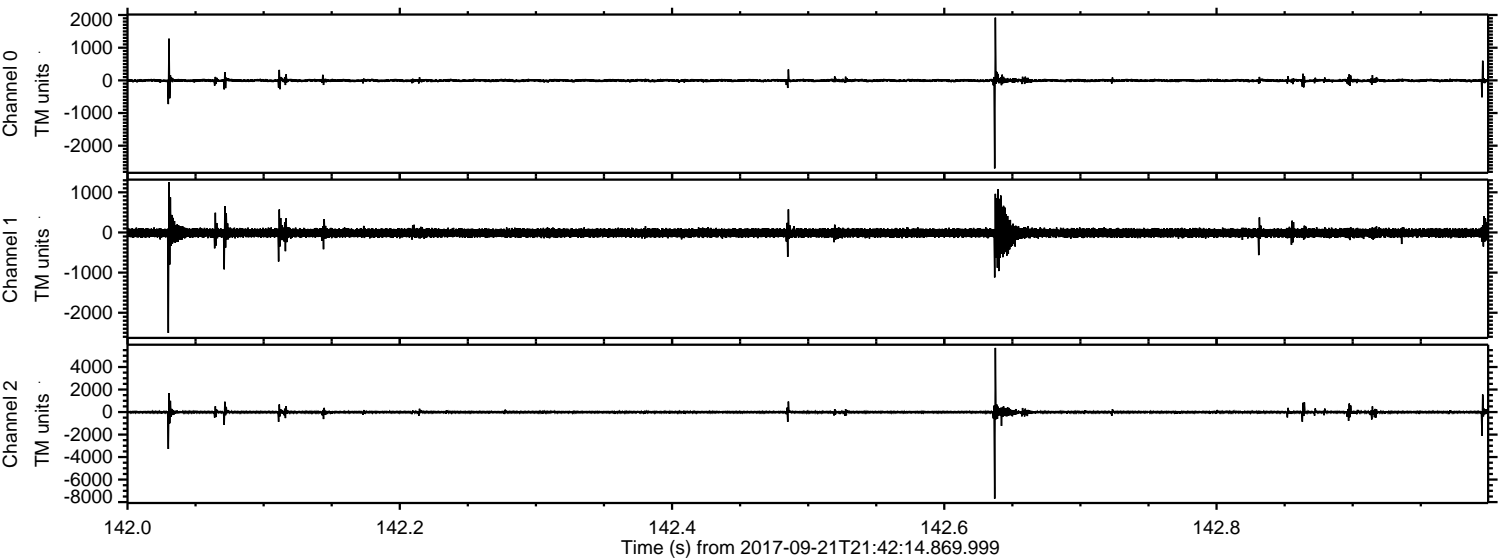
ELMAVAN 3D WAVEFORMS (Measured data sampled at 50 kHz) 51000 packets of 144 samples from 2017-09-21T21:42:14.869.999. Part 100/147

Processed Thu Sep 21 23:50:12 2017 by ELM ver.2012-10-06 from 001__elm20170921_214213__dat00.bin



ELMAVAN 3D WAVEFORMS (Measured data sampled at 50 kHz) 51000 packets of 144 samples from 2017-09-21T21:42:14.869.999. Part 143/147

Processed Thu Sep 21 23:50:13 2017 by ELM ver.2012-10-06 from 001__elm20170921_214213__dat00.bin



Channel 0

mn: -2696
mx: 1919
 μ : -5.4
 σ : 32.7

Channel 1

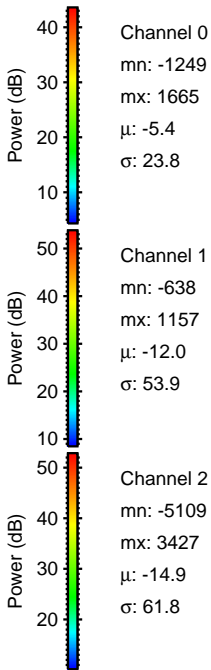
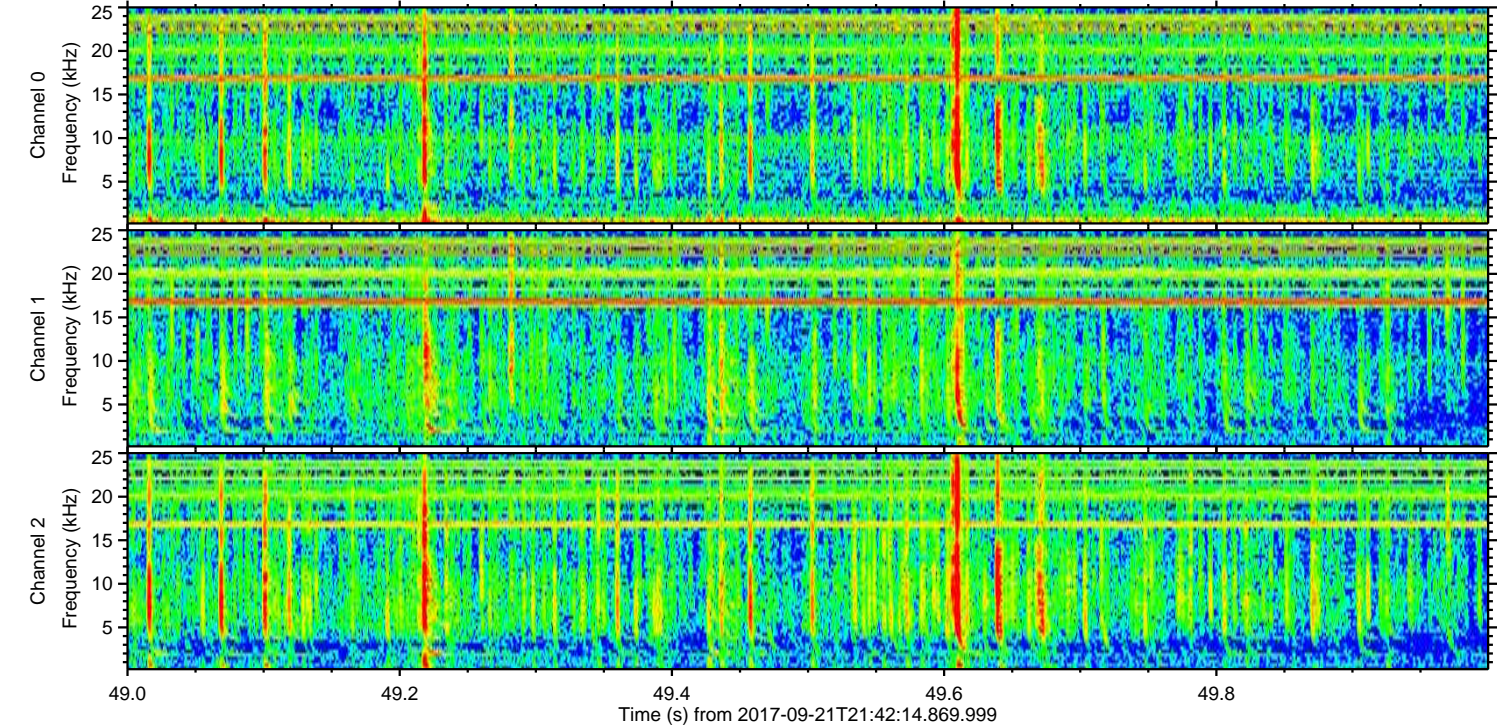
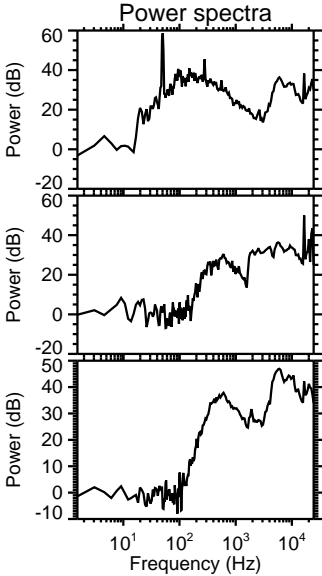
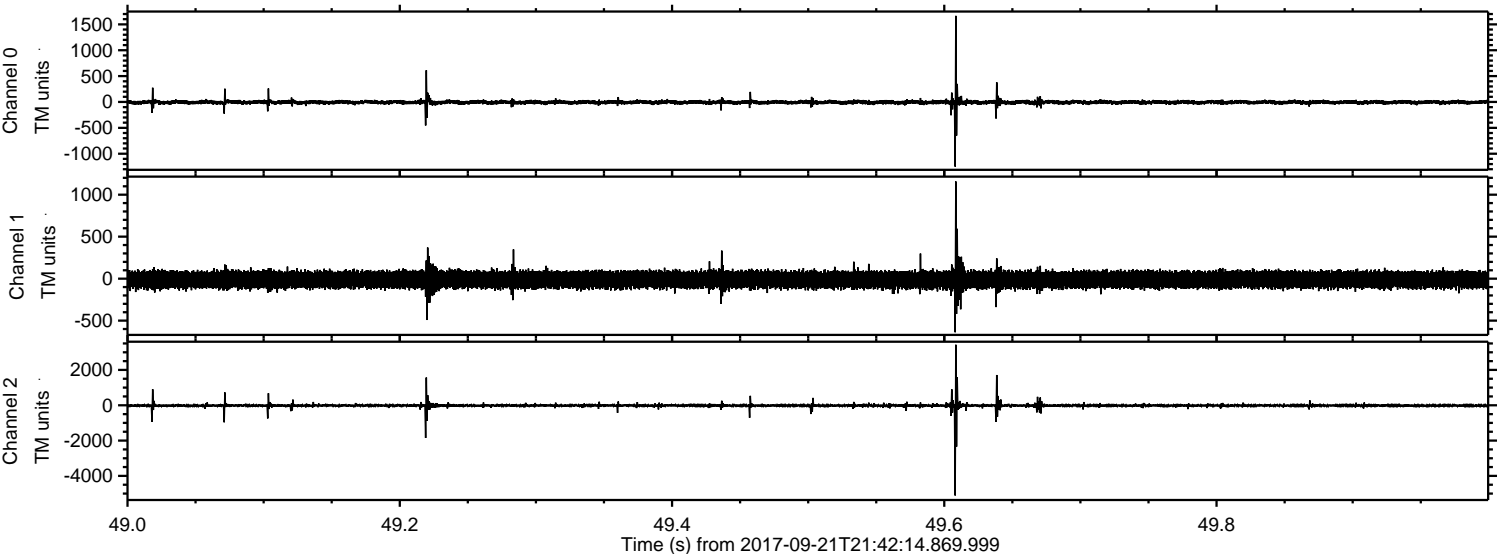
mn: -2503
mx: 1254
 μ : -12.0
 σ : 69.2

Channel 2

mn: -7695
mx: 5696
 μ : -14.8
 σ : 88.8

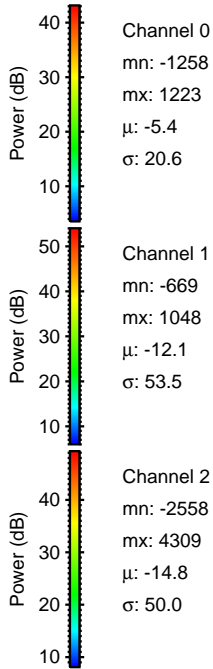
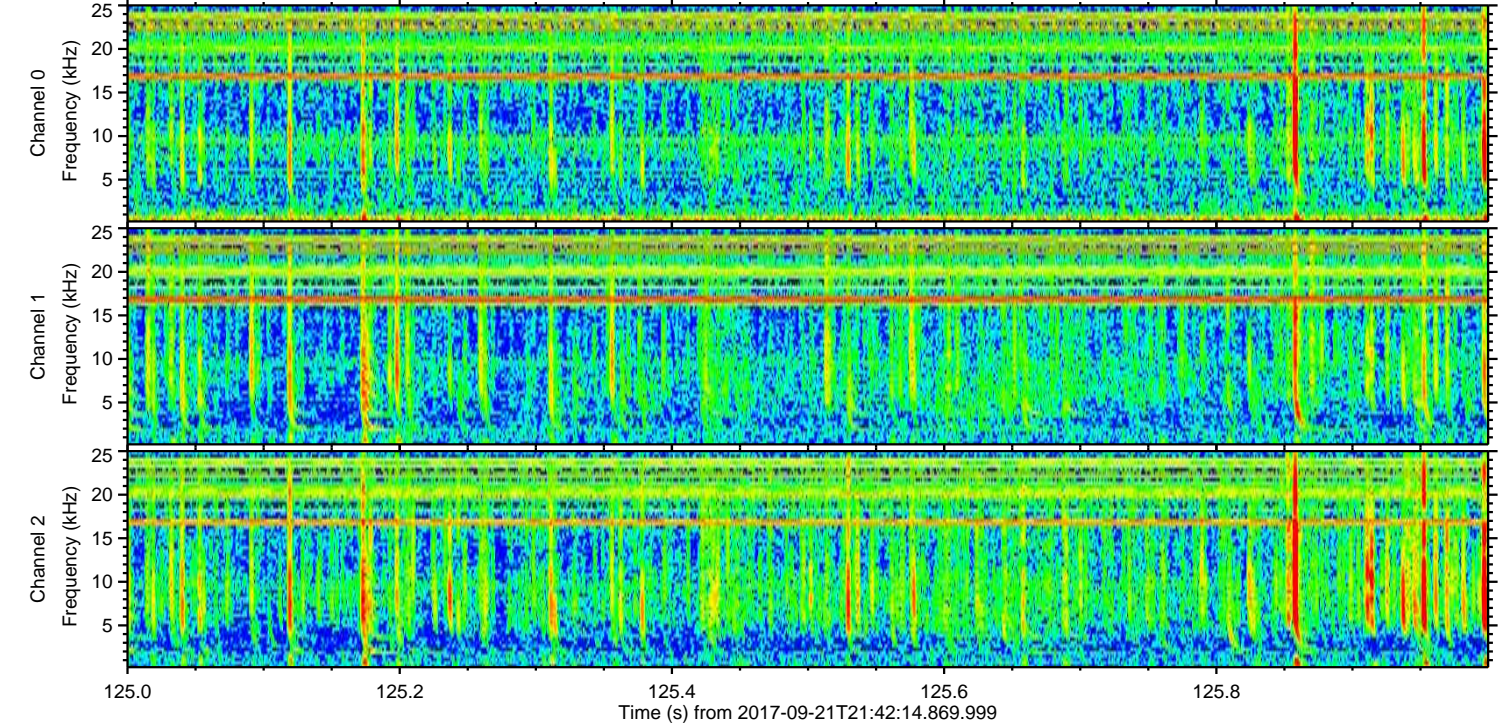
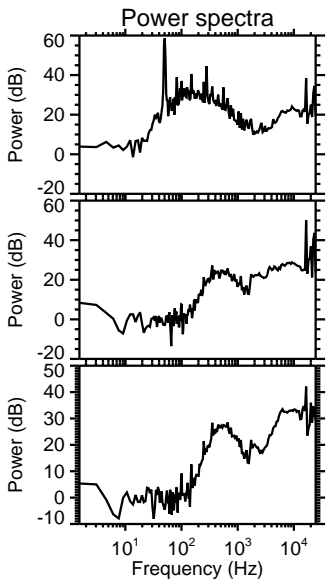
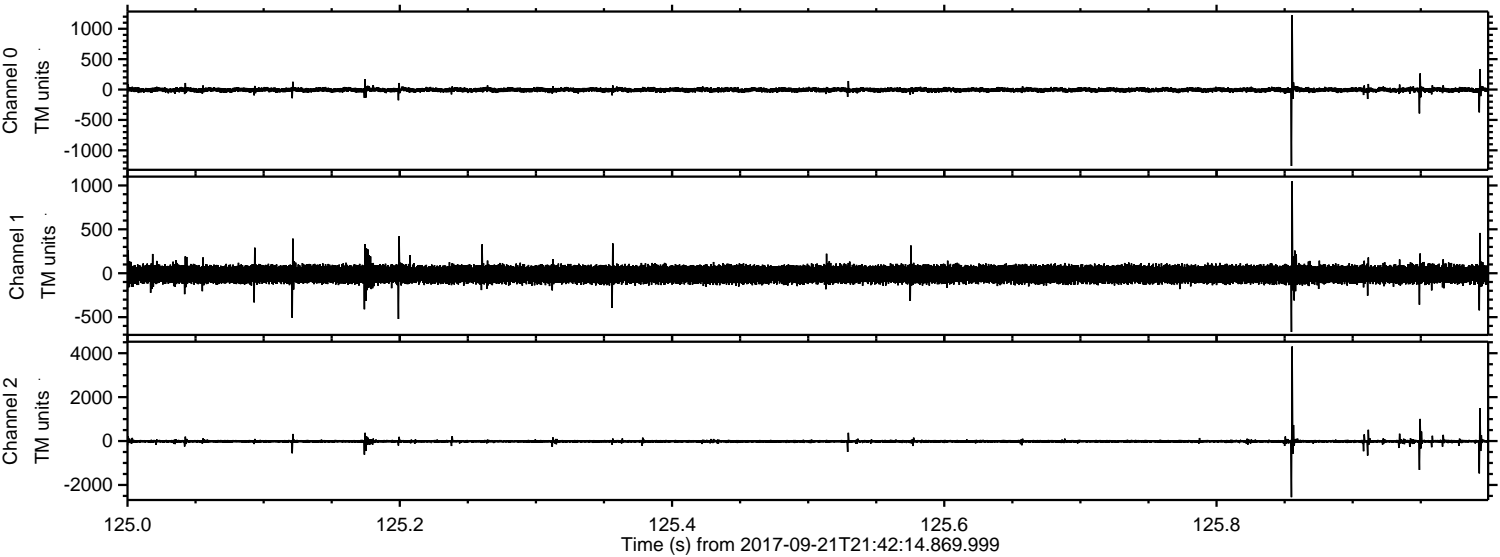
ELMAVAN 3D WAVEFORMS (Measured data sampled at 50 kHz) 51000 packets of 144 samples from 2017-09-21T21:42:14.869.999. Part 50/147

Processed Thu Sep 21 23:50:13 2017 by ELM ver.2012-10-06 from 001__elm20170921_214213__dat00.bin



ELMAVAN 3D WAVEFORMS (Measured data sampled at 50 kHz) 51000 packets of 144 samples from 2017-09-21T21:42:14.869.999. Part 126/147

Processed Thu Sep 21 23:50:14 2017 by ELM ver.2012-10-06 from 001__elm20170921_214213__dat00.bin



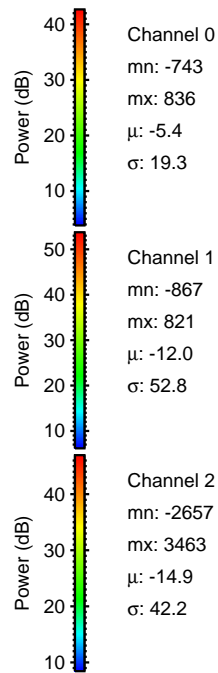
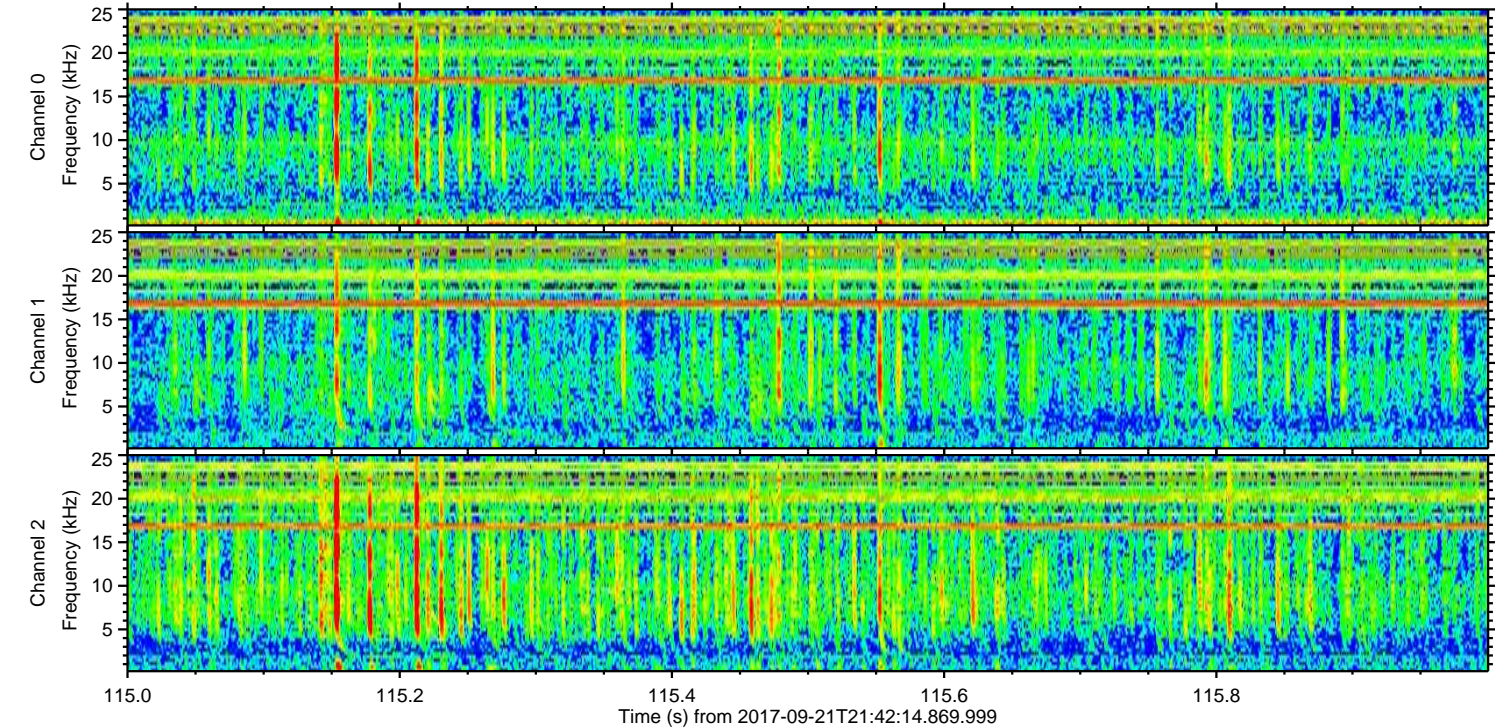
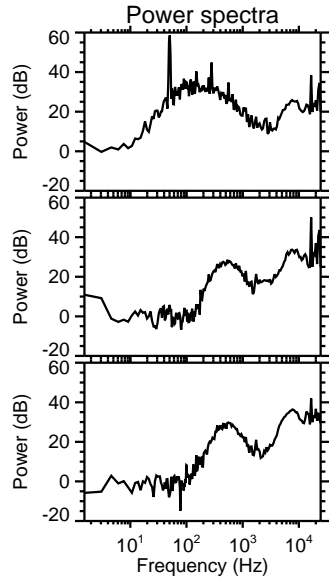
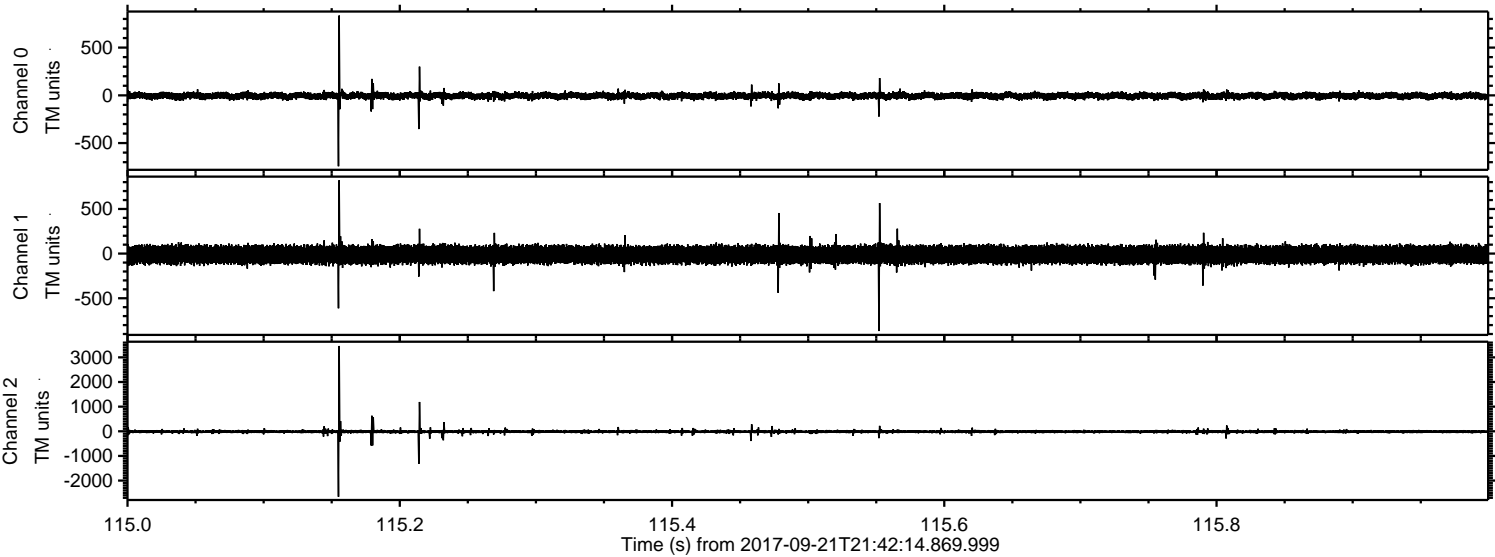
Channel 0
mn: -1258
mx: 1223
 μ : -5.4
 σ : 20.6

Channel 1
mn: -669
mx: 1048
 μ : -12.1
 σ : 53.5

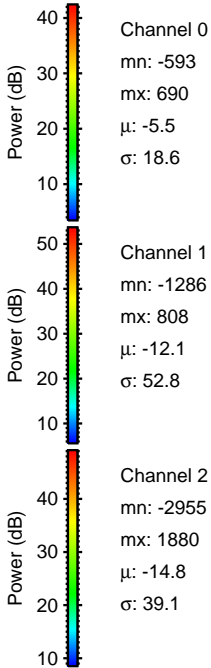
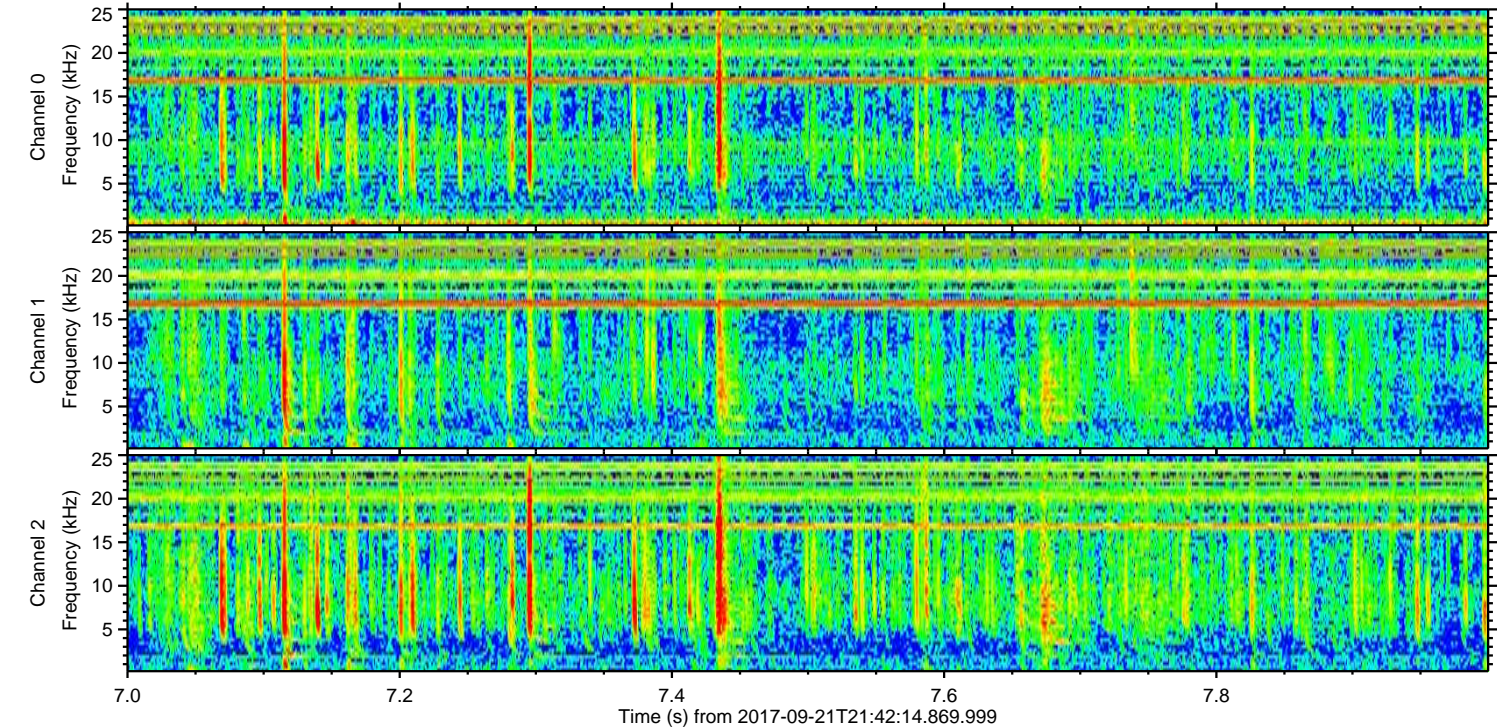
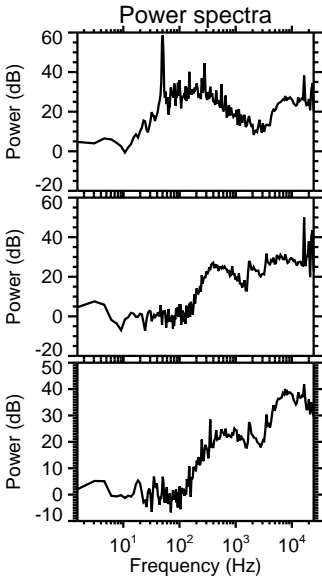
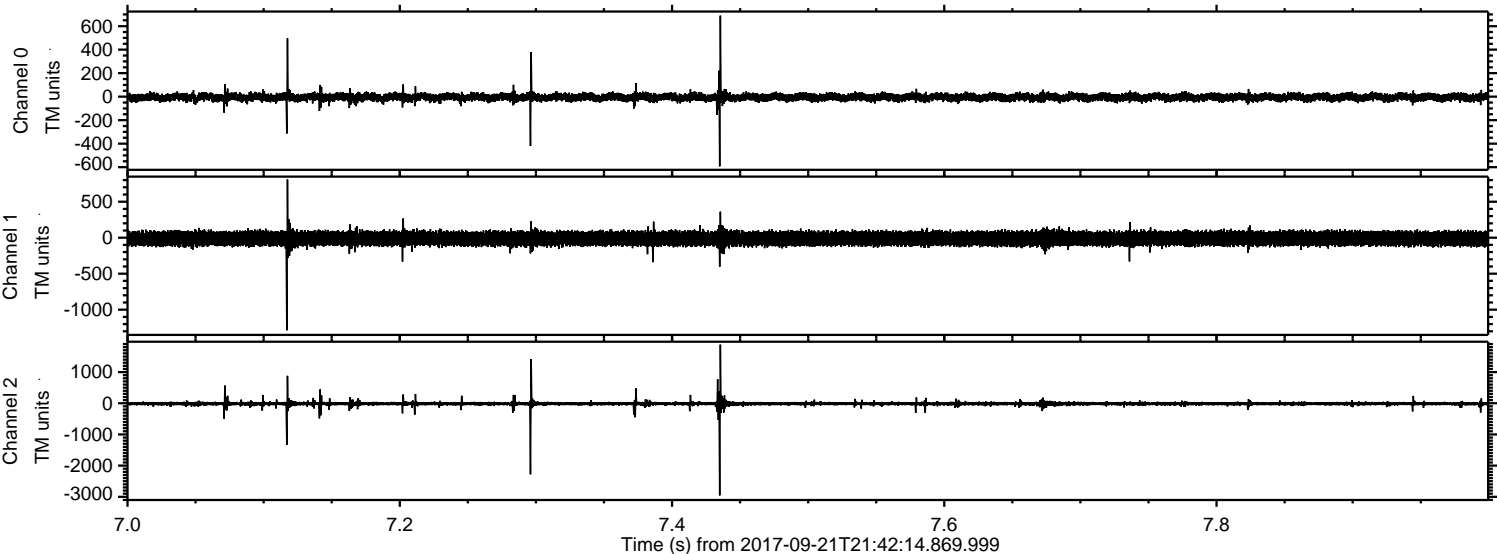
Channel 2
mn: -2558
mx: 4309
 μ : -14.8
 σ : 50.0

ELMAVAN 3D WAVEFORMS (Measured data sampled at 50 kHz) 51000 packets of 144 samples from 2017-09-21T21:42:14.869.999. Part 116/147

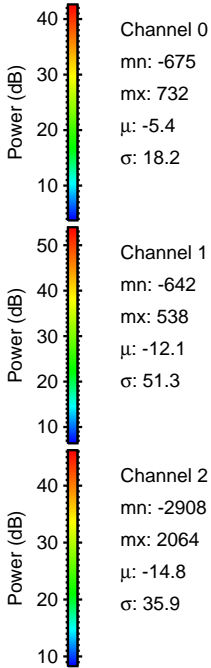
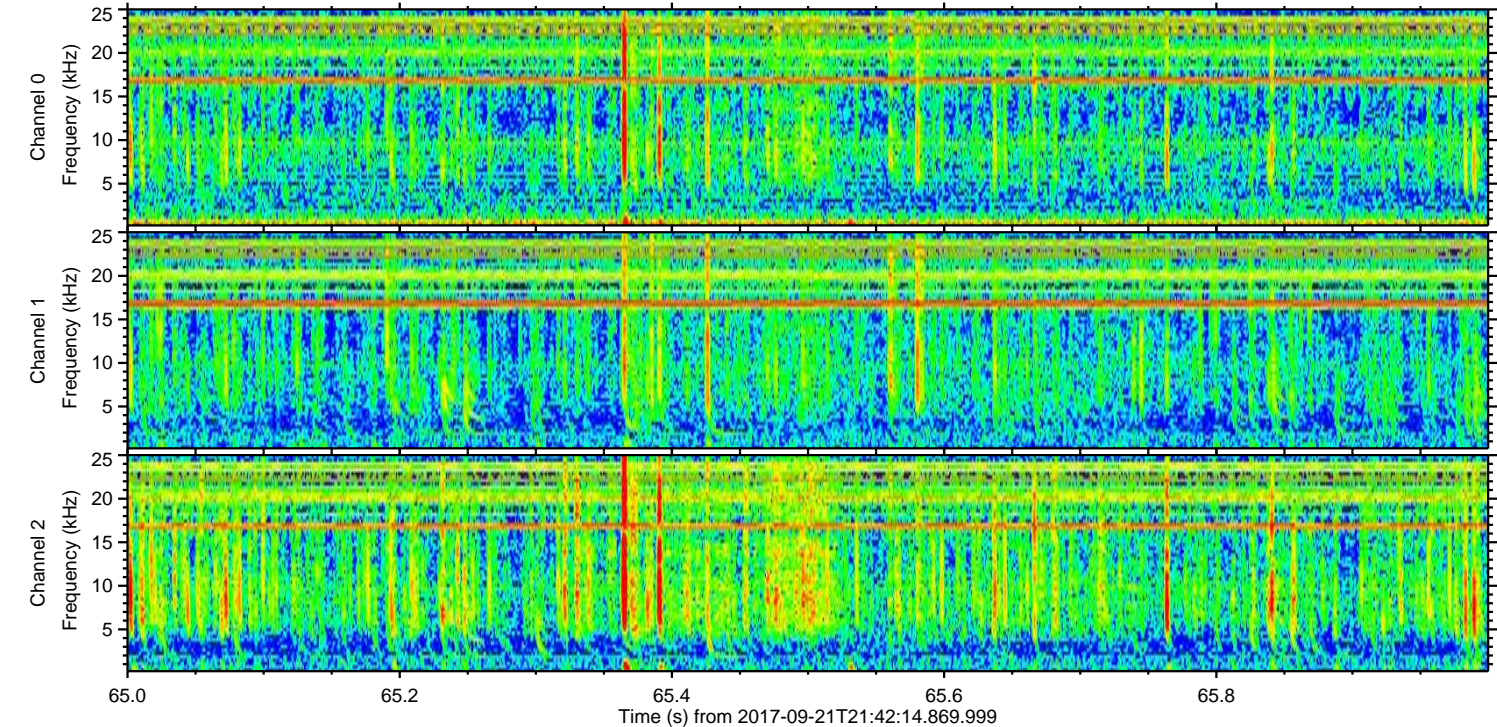
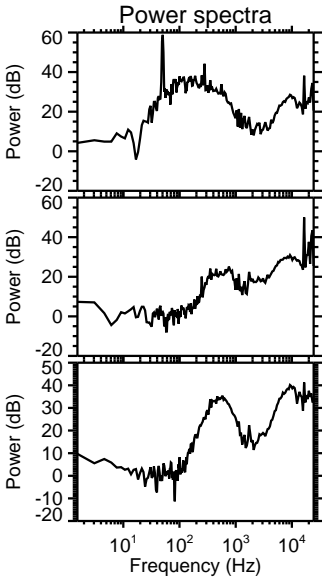
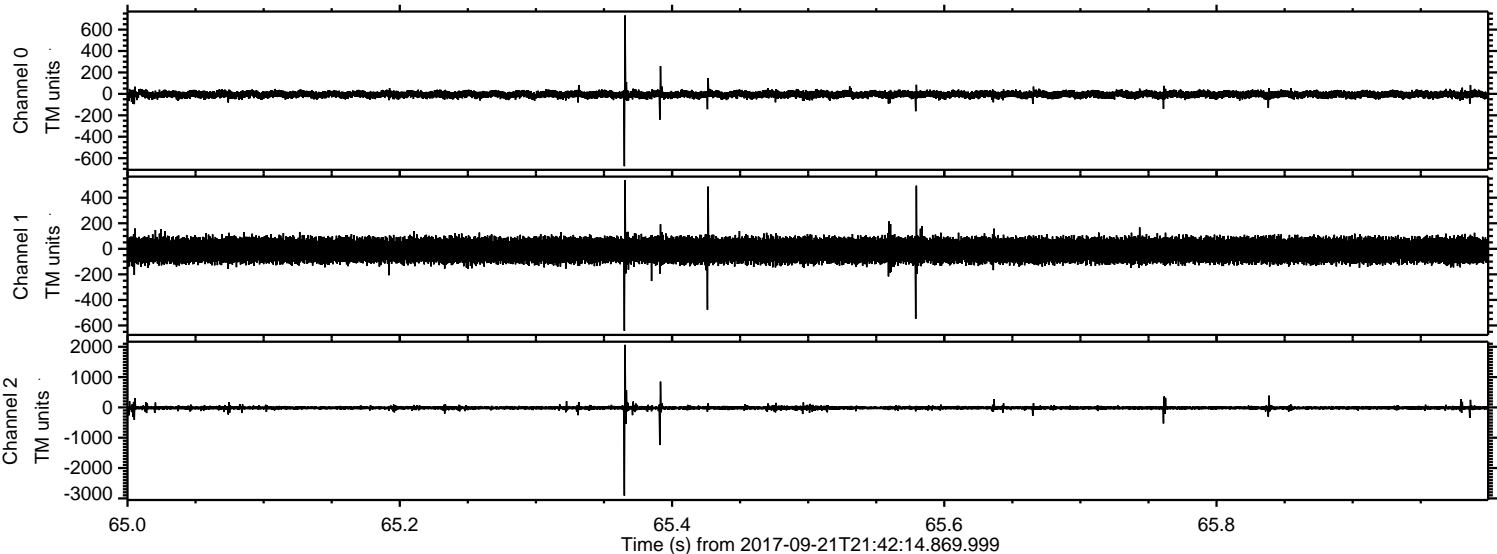
Processed Thu Sep 21 23:50:15 2017 by ELM ver.2012-10-06 from 001__elm20170921_214213__dat00.bin



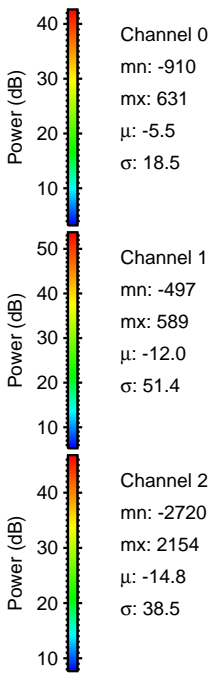
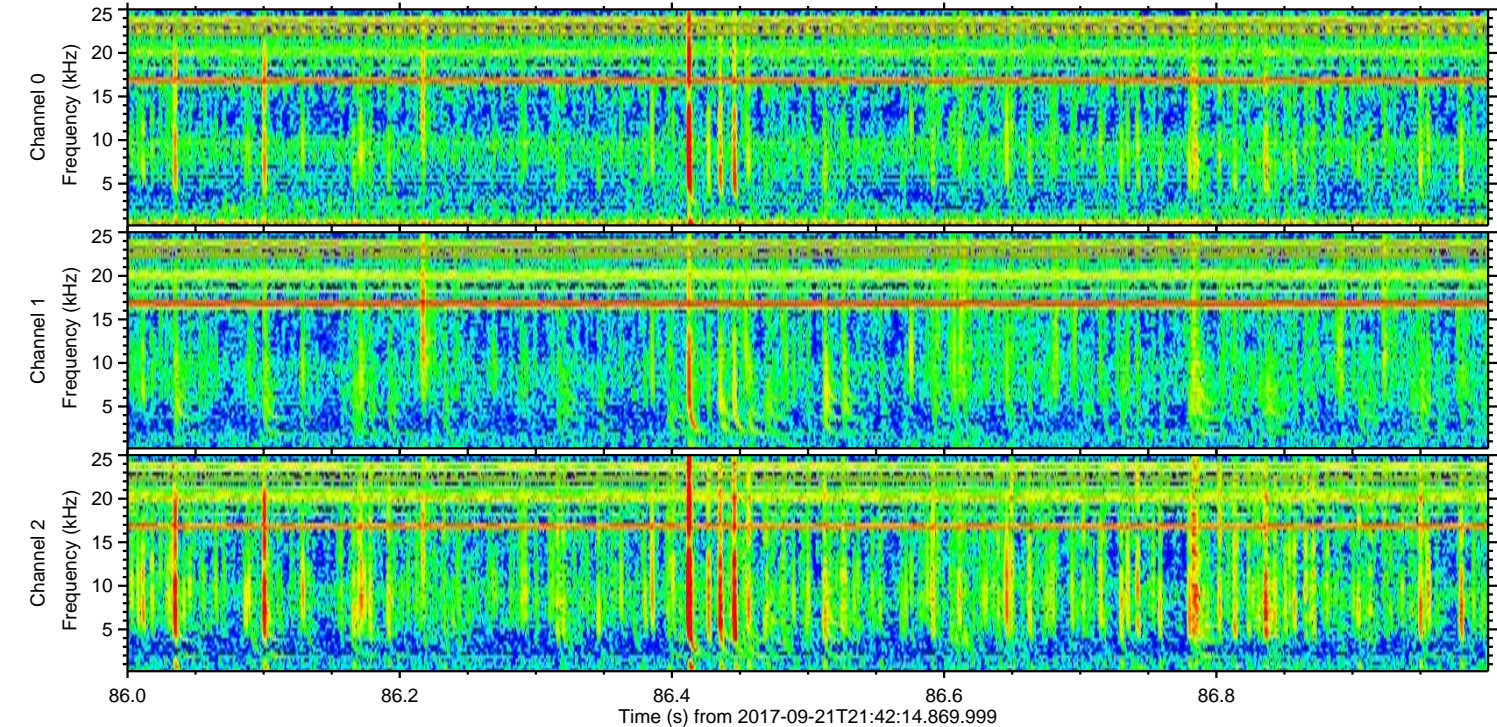
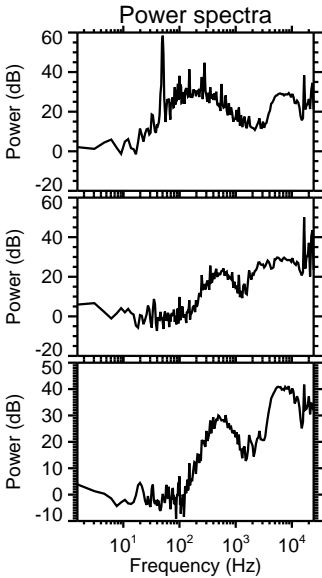
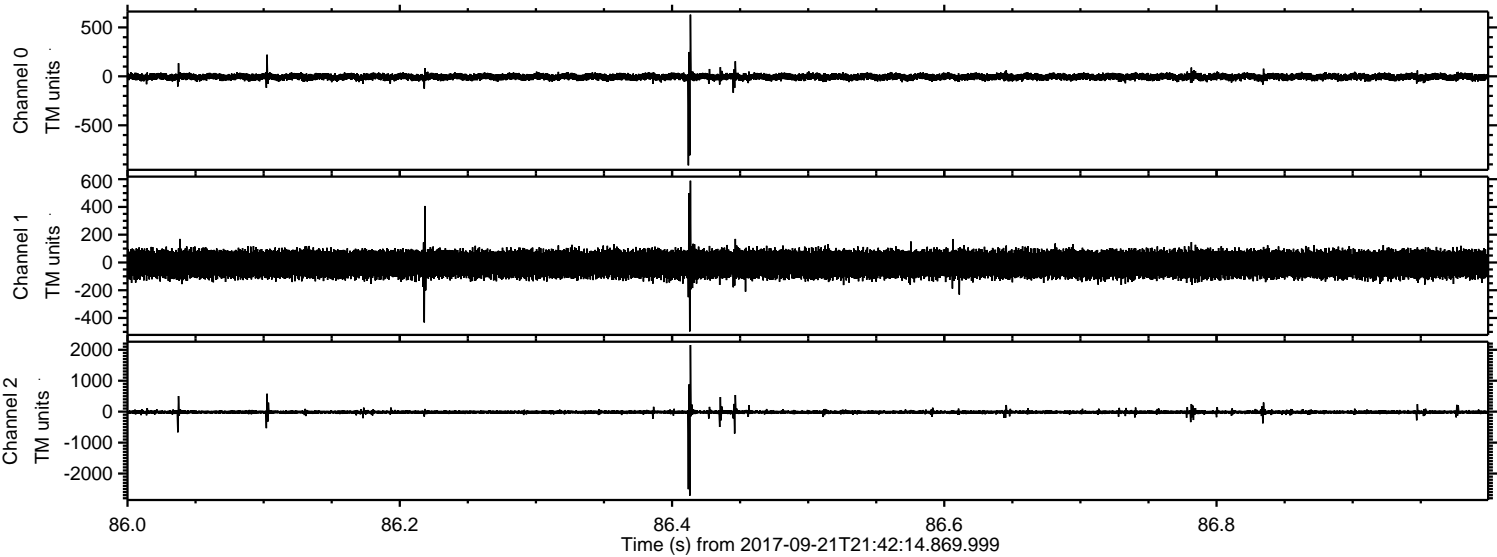
Processed Thu Sep 21 23:50:16 2017 by ELM ver.2012-10-06 from 001__elm20170921_214213__dat00.bin



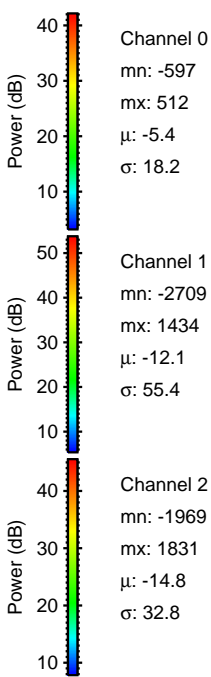
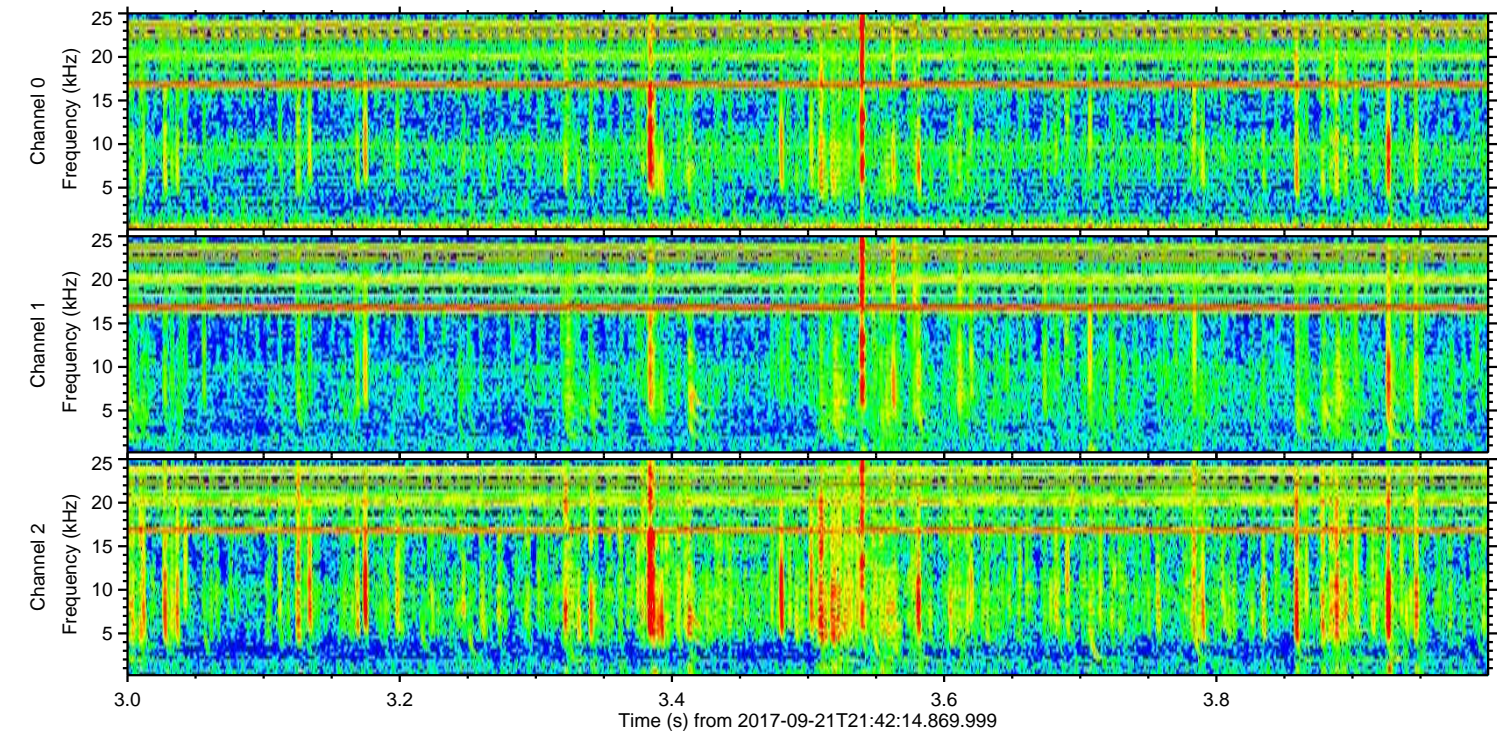
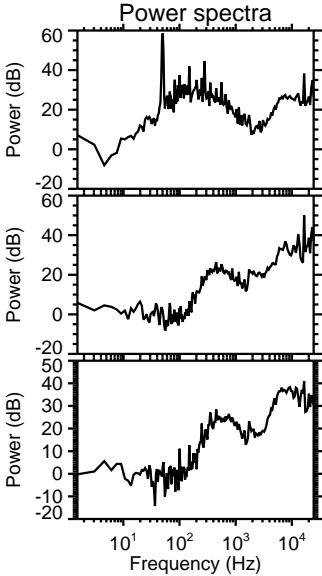
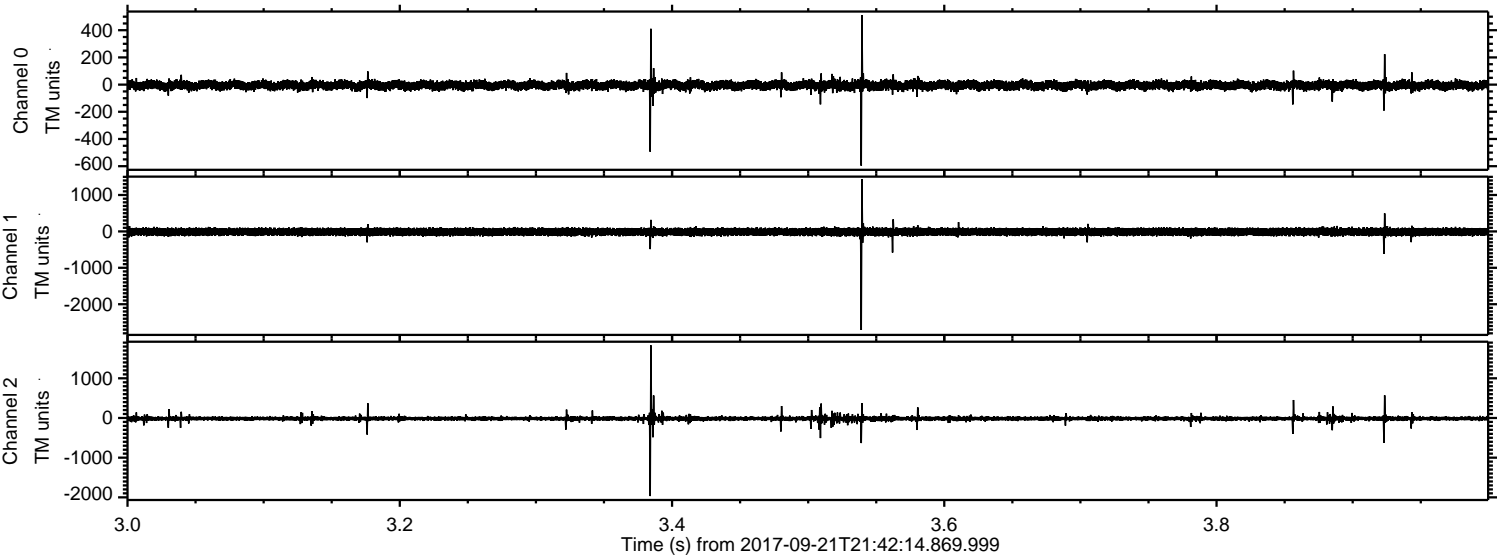
Processed Thu Sep 21 23:50:16 2017 by ELM ver.2012-10-06 from 001__elm20170921_214213__dat00.bin



Processed Thu Sep 21 23:50:17 2017 by ELM ver.2012-10-06 from 001__elm20170921_214213__dat00.bin



Processed Thu Sep 21 23:50:18 2017 by ELM ver.2012-10-06 from 001__elm20170921_214213__dat00.bin



Processed Thu Sep 21 23:50:19 2017 by ELM ver.2012-10-06 from 001__elm20170921_214213__dat00.bin

