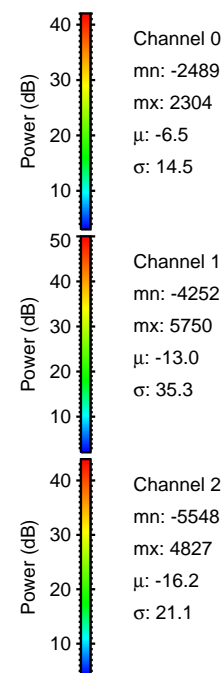
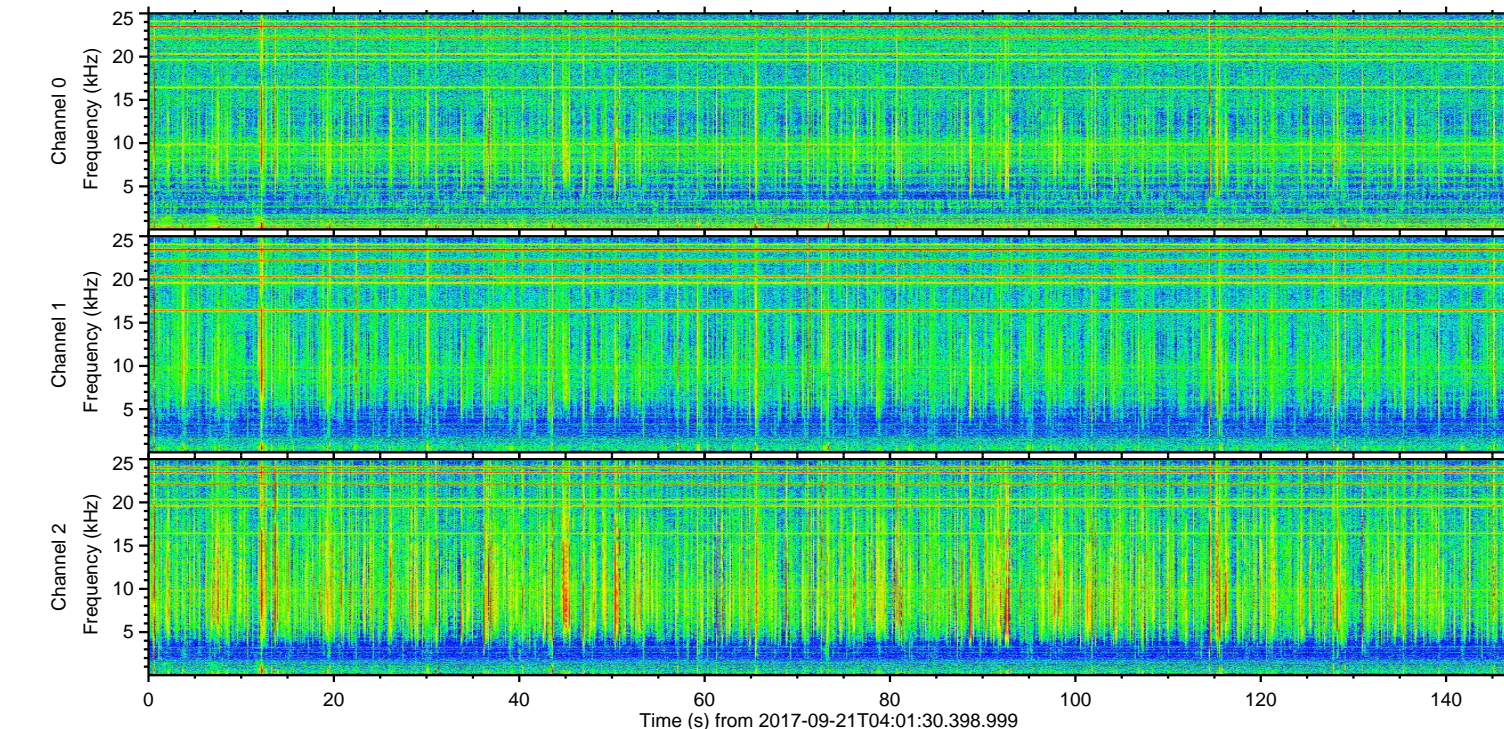
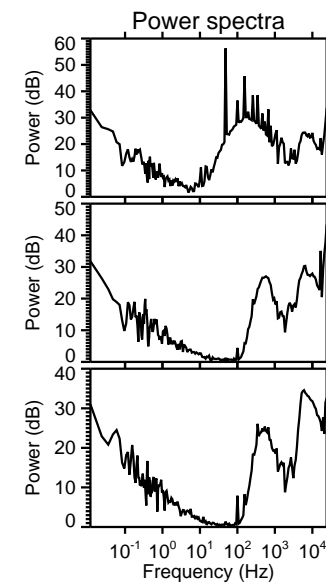
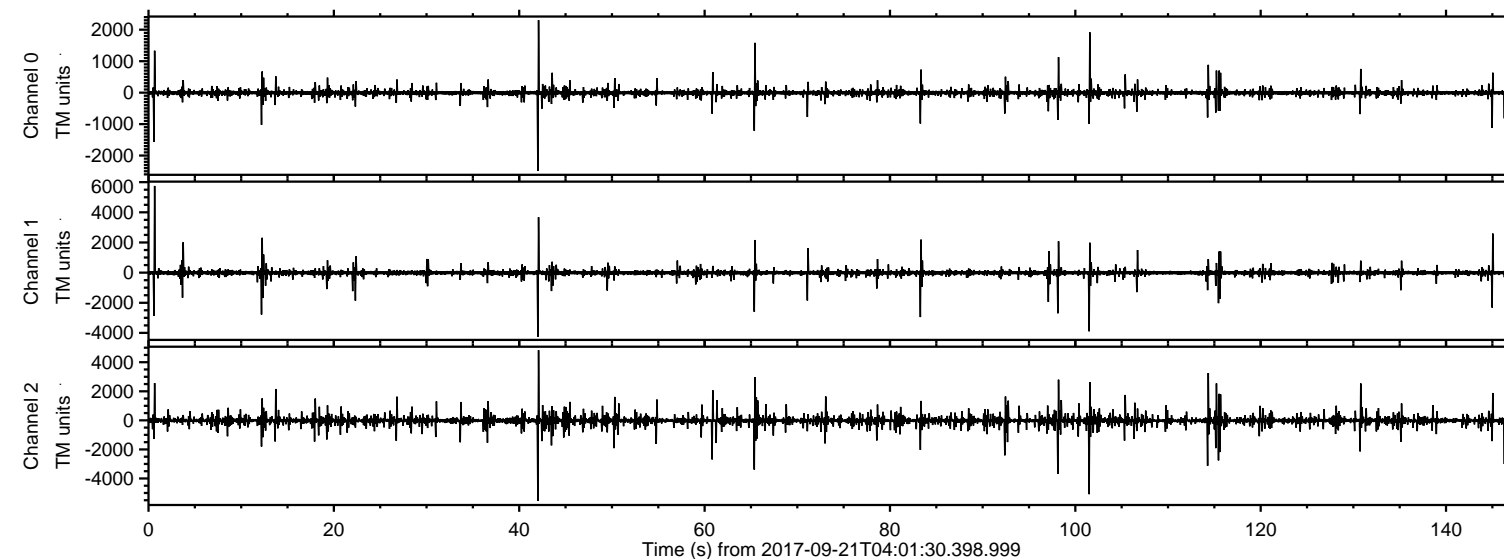
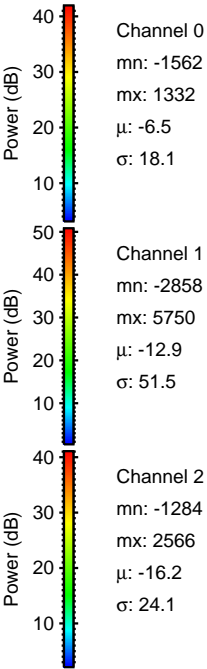
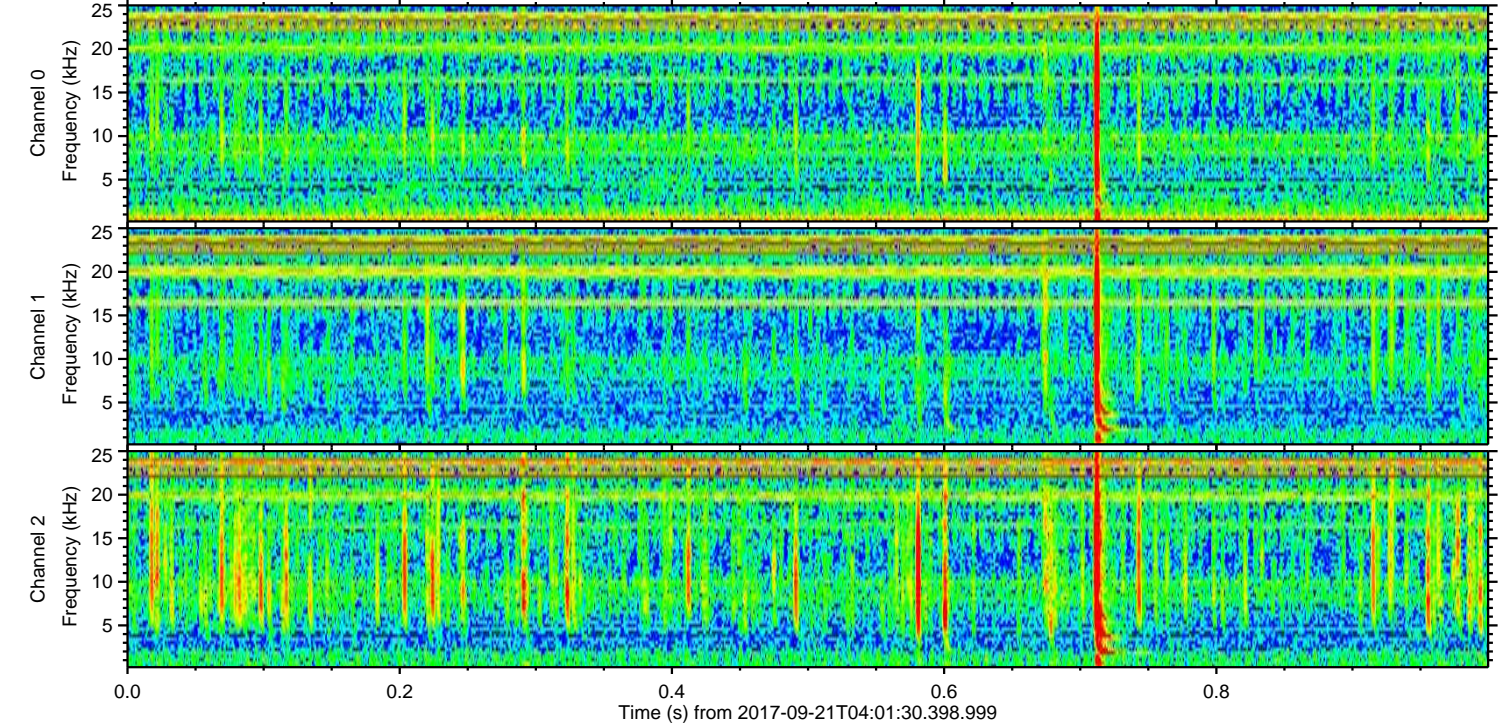
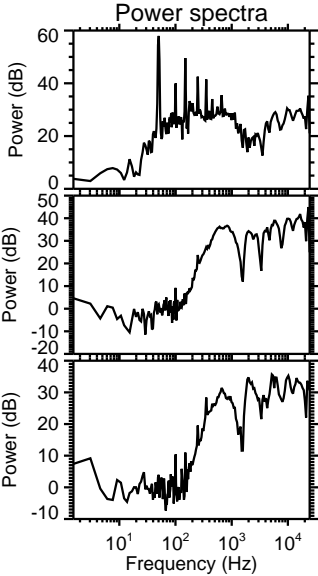
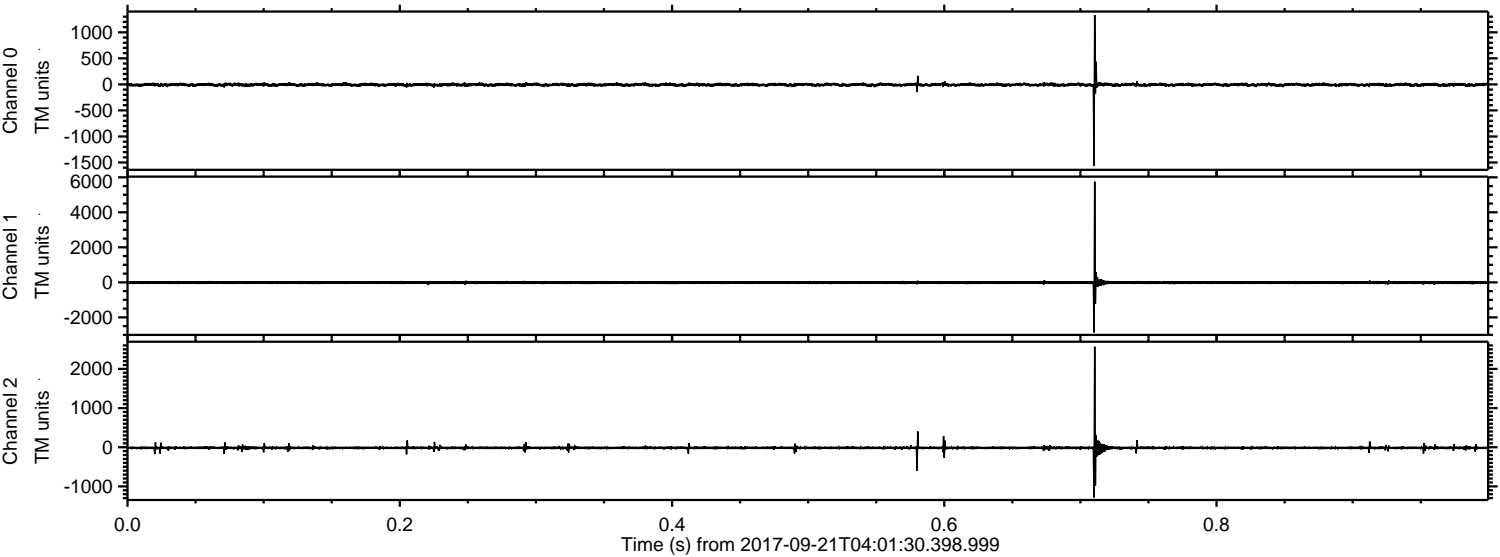


ELMAVAN 3D WAVEFORMS (Measured data sampled at 50 kHz) 51000 packets of 144 samples from 2017-09-21T04:01:30.398.999.

Processed Thu Sep 21 06:09:44 2017 by ELM ver.2012-10-06 from 001__elm20170921_040129__dat00.bin



Processed Thu Sep 21 06:09:51 2017 by ELM ver.2012-10-06 from 001__elm20170921_040129__dat00.bin

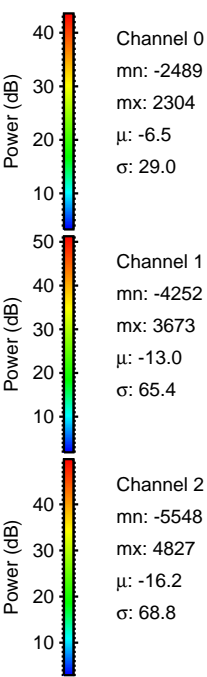
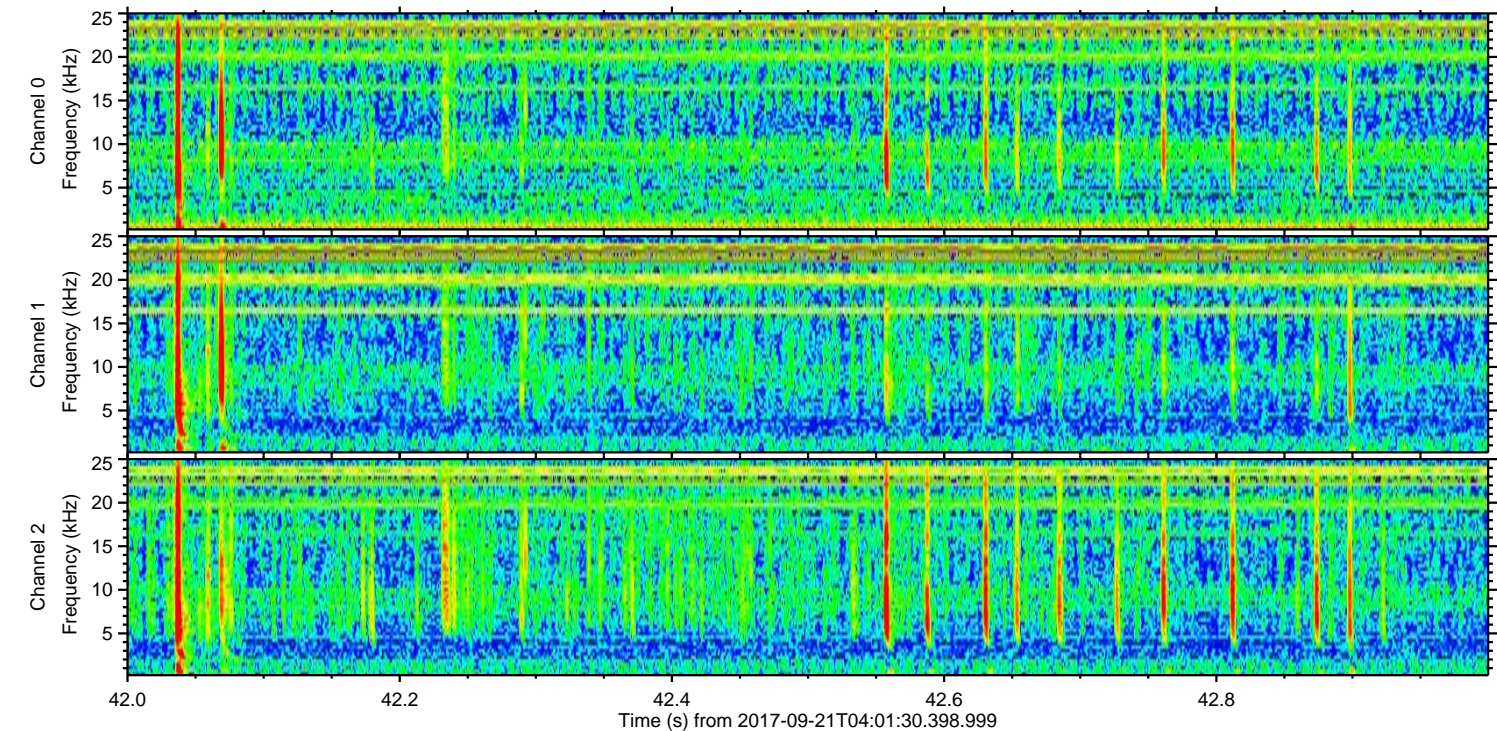
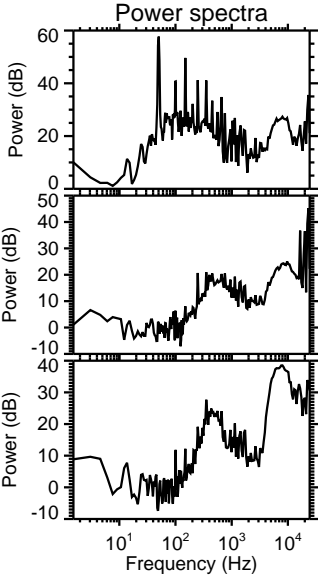
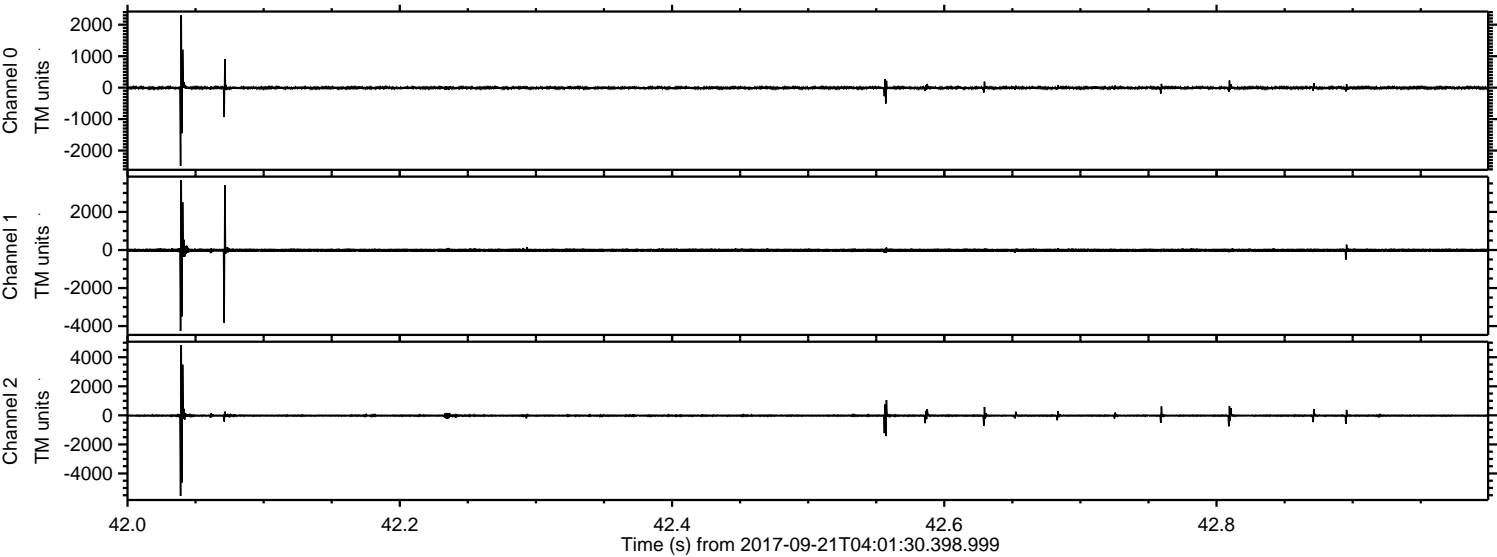


Channel 0
mn: -1562
mx: 1332
 μ : -6.5
 σ : 18.1

Channel 1
mn: -2858
mx: 5750
 μ : -12.9
 σ : 51.5

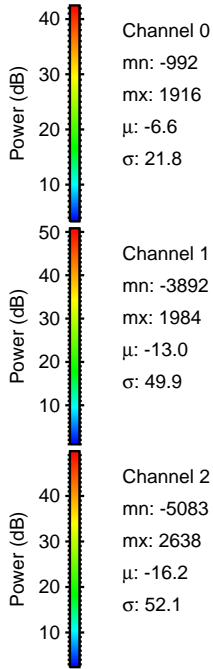
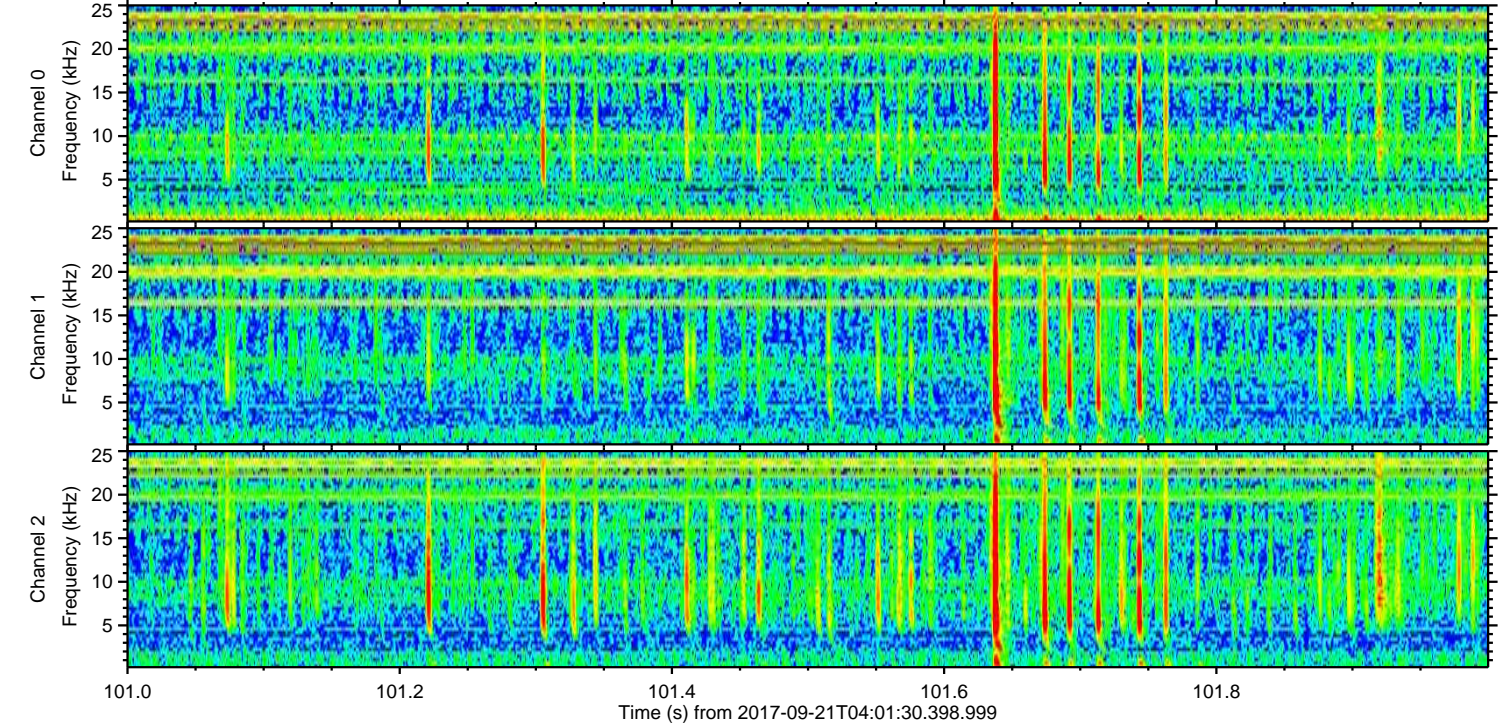
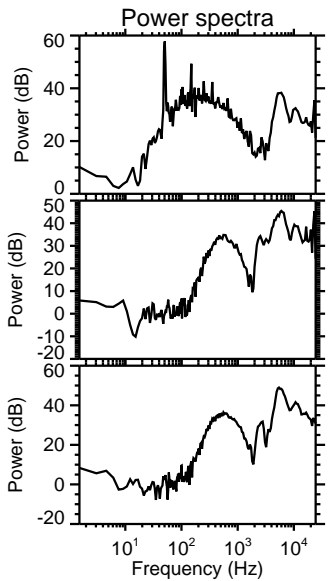
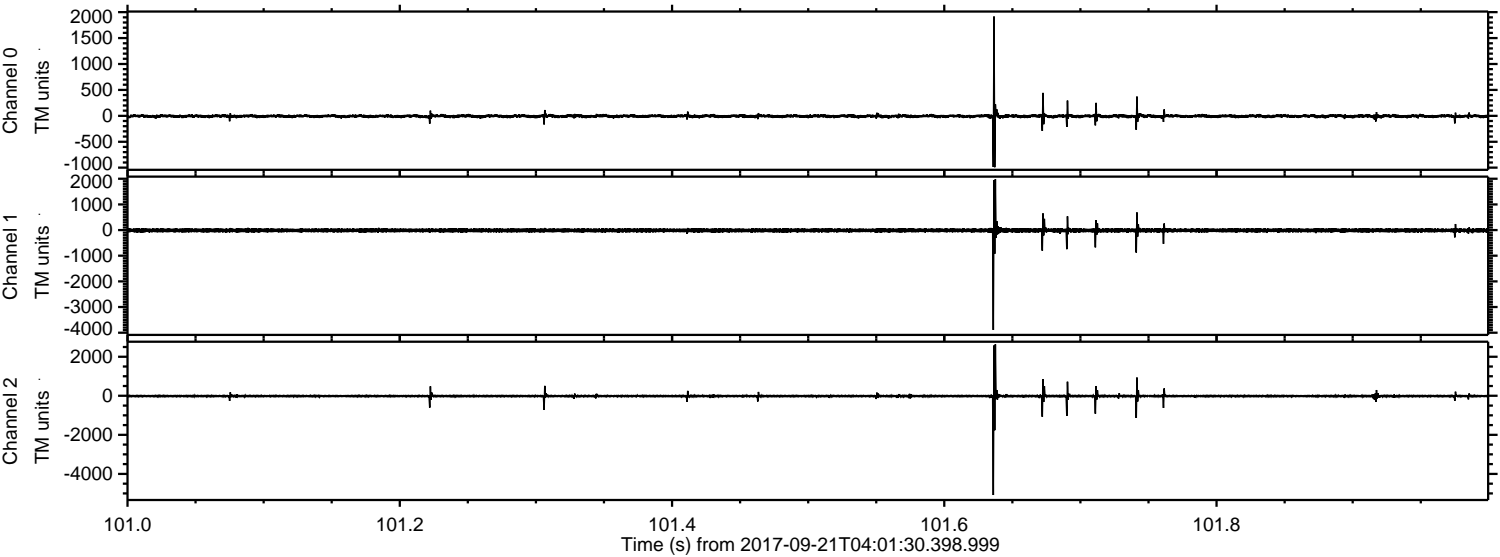
Channel 2
mn: -1284
mx: 2566
 μ : -16.2
 σ : 24.1

Processed Thu Sep 21 06:09:52 2017 by ELM ver.2012-10-06 from 001__elm20170921_040129__dat00.bin



ELMAVAN 3D WAVEFORMS (Measured data sampled at 50 kHz) 51000 packets of 144 samples from 2017-09-21T04:01:30.398.999. Part 102/147

Processed Thu Sep 21 06:09:53 2017 by ELM ver.2012-10-06 from 001__elm20170921_040129__dat00.bin

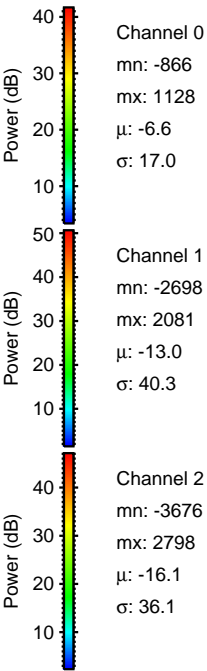
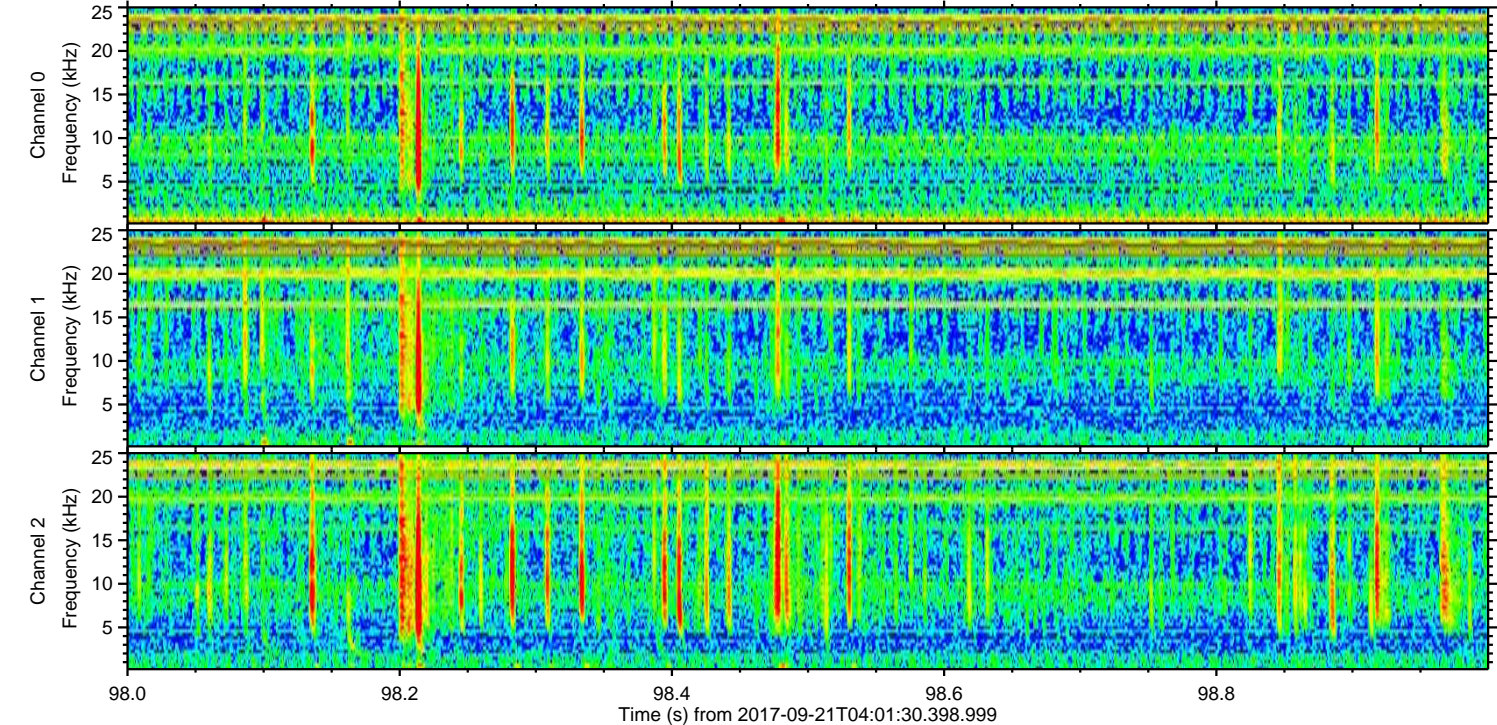
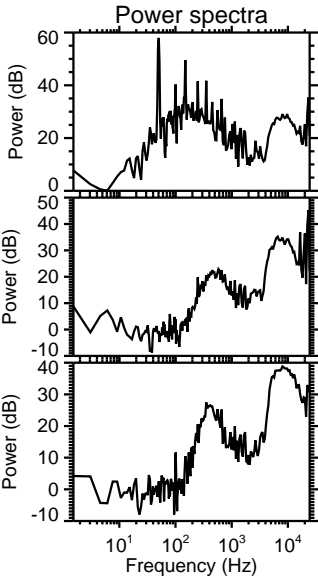
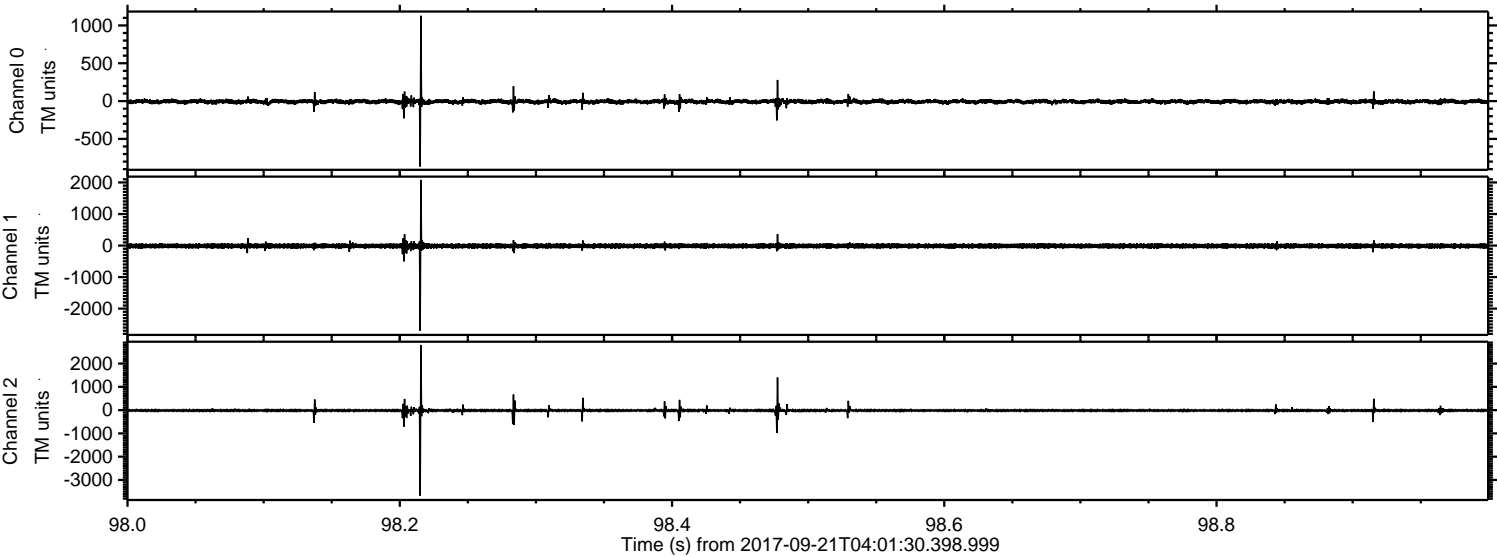


Channel 0
mn: -992
mx: 1916
 μ : -6.6
 σ : 21.8

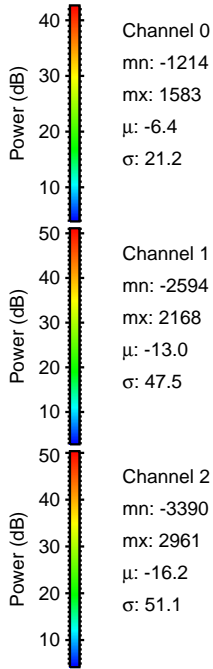
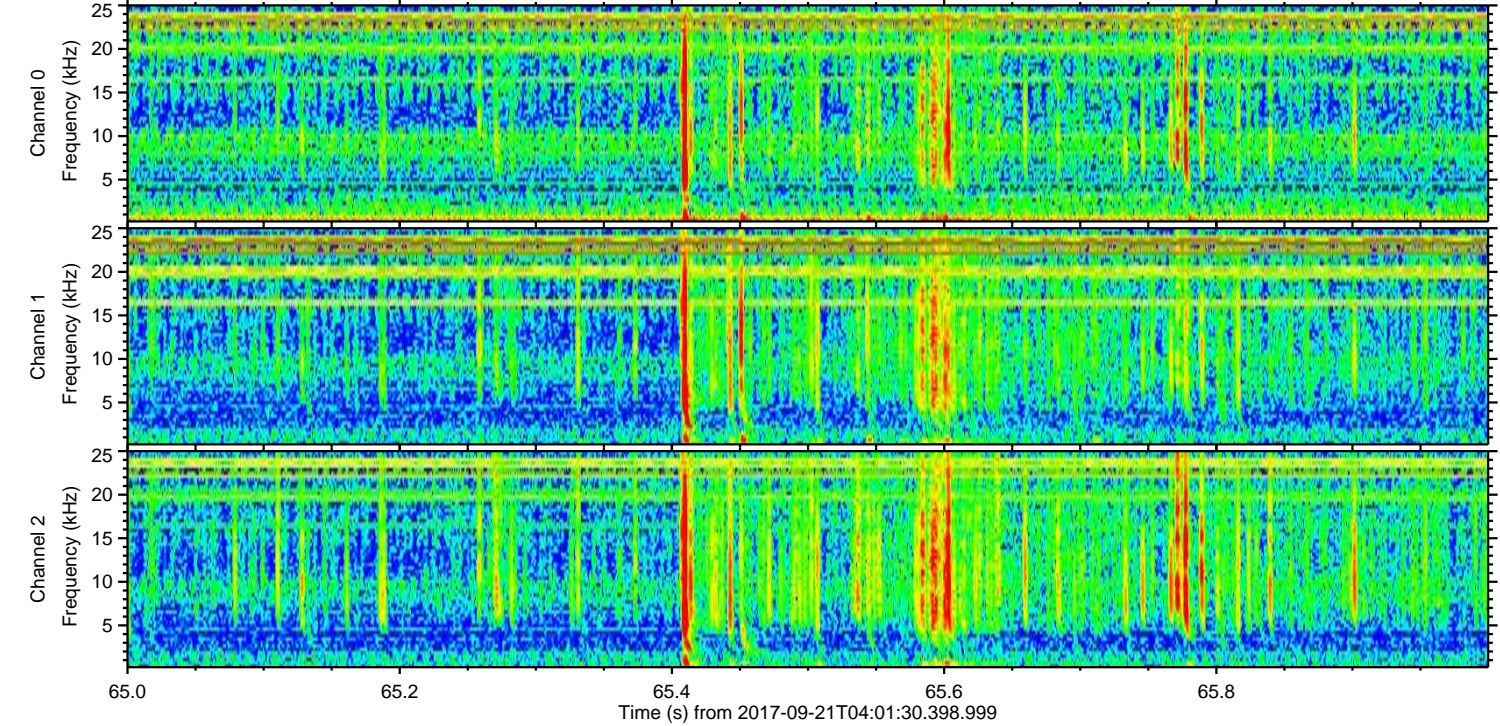
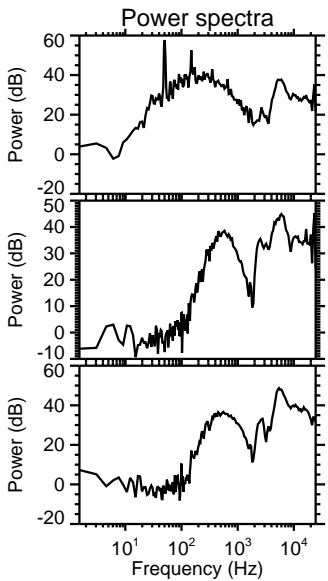
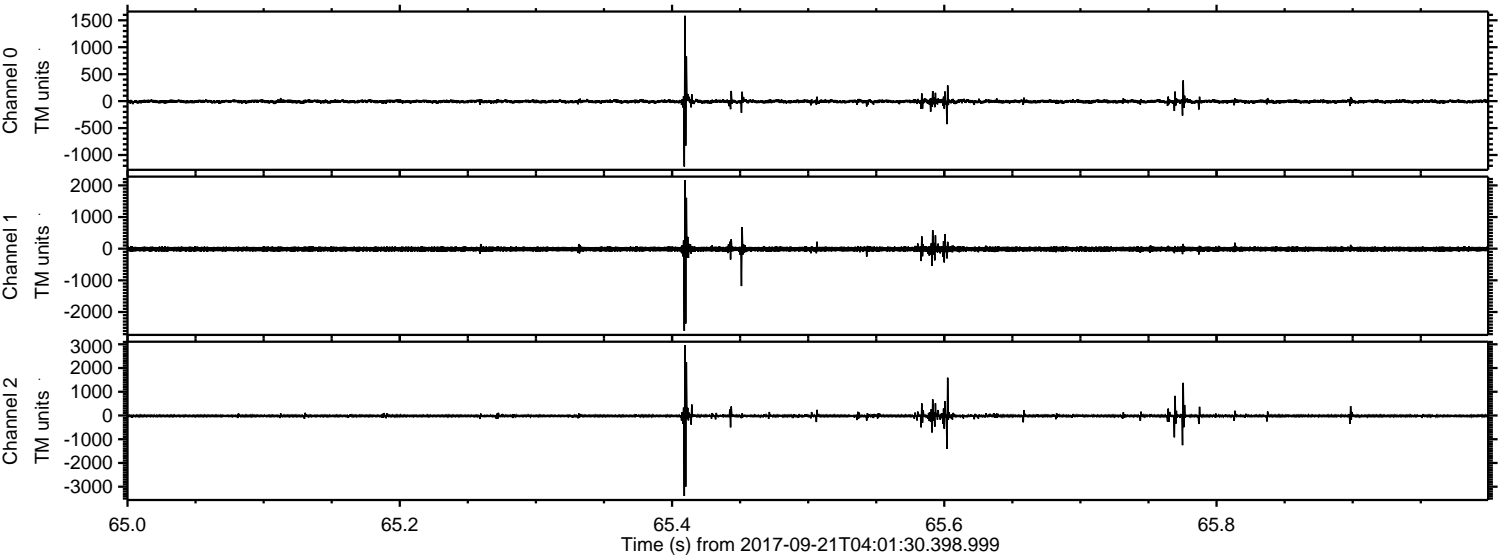
Channel 1
mn: -3892
mx: 1984
 μ : -13.0
 σ : 49.9

Channel 2
mn: -5083
mx: 2638
 μ : -16.2
 σ : 52.1

Processed Thu Sep 21 06:09:53 2017 by ELM ver.2012-10-06 from 001__elm20170921_040129__dat00.bin



Processed Thu Sep 21 06:09:54 2017 by ELM ver.2012-10-06 from 001__elm20170921_040129__dat00.bin



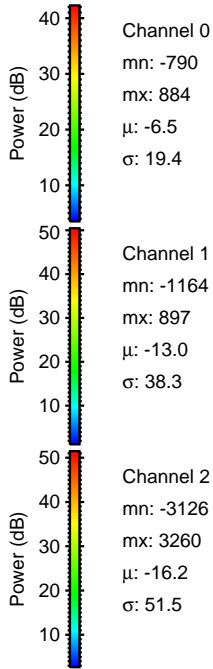
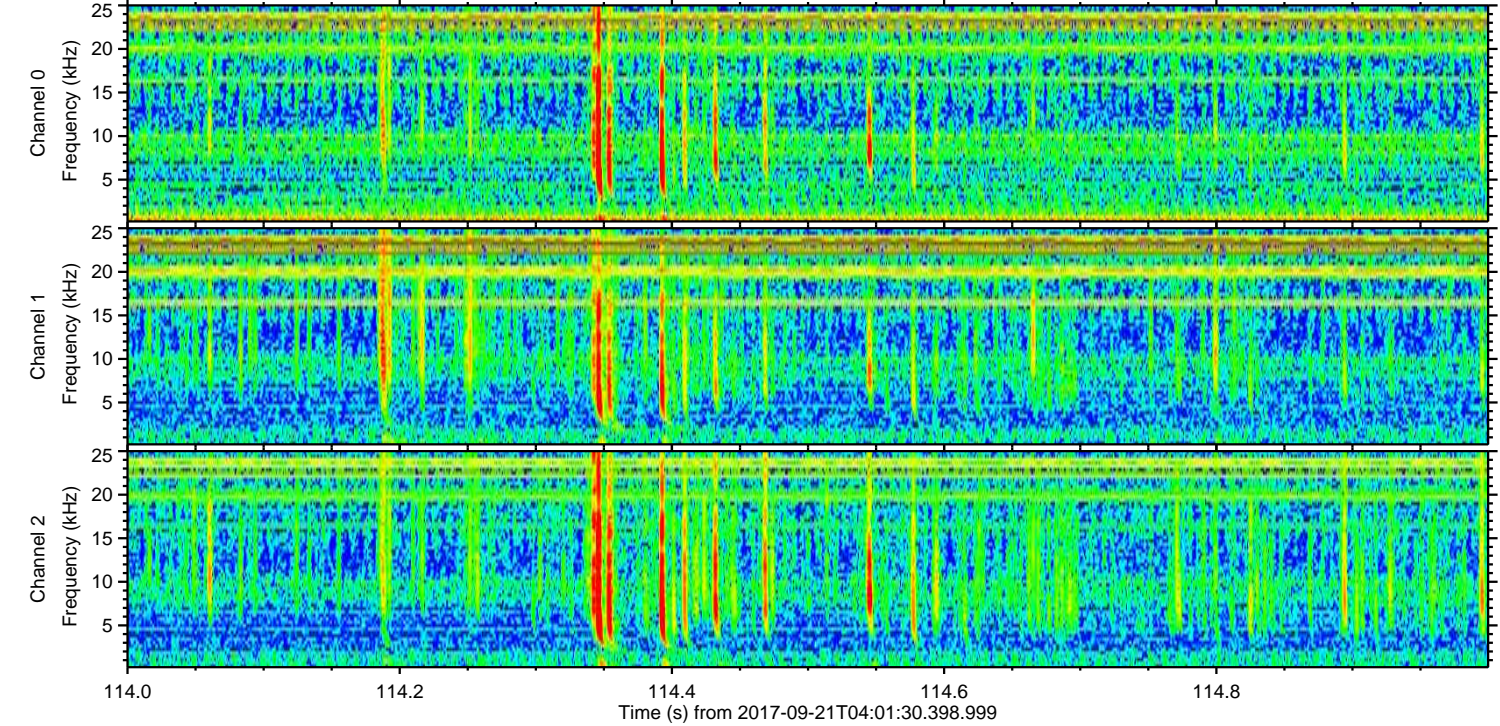
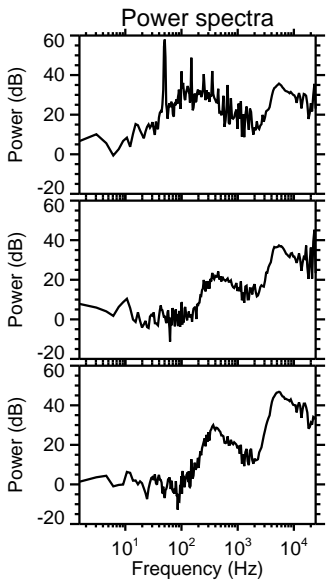
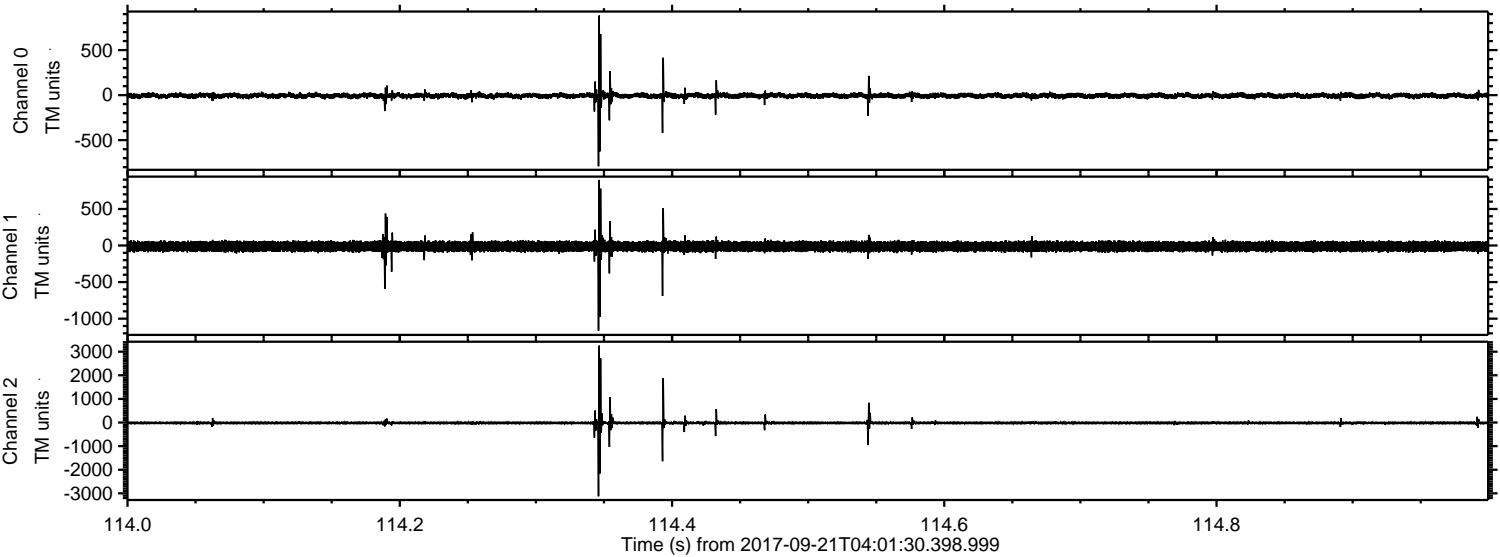
Channel 0
mn: -1214
mx: 1583
 μ : -6.4
 σ : 21.2

Channel 1
mn: -2594
mx: 2168
 μ : -13.0
 σ : 47.5

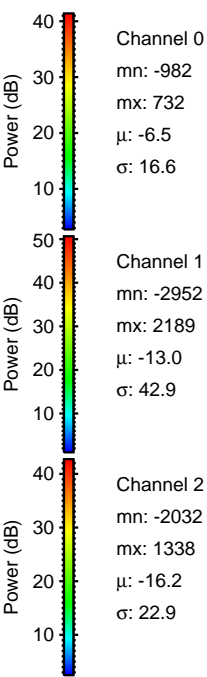
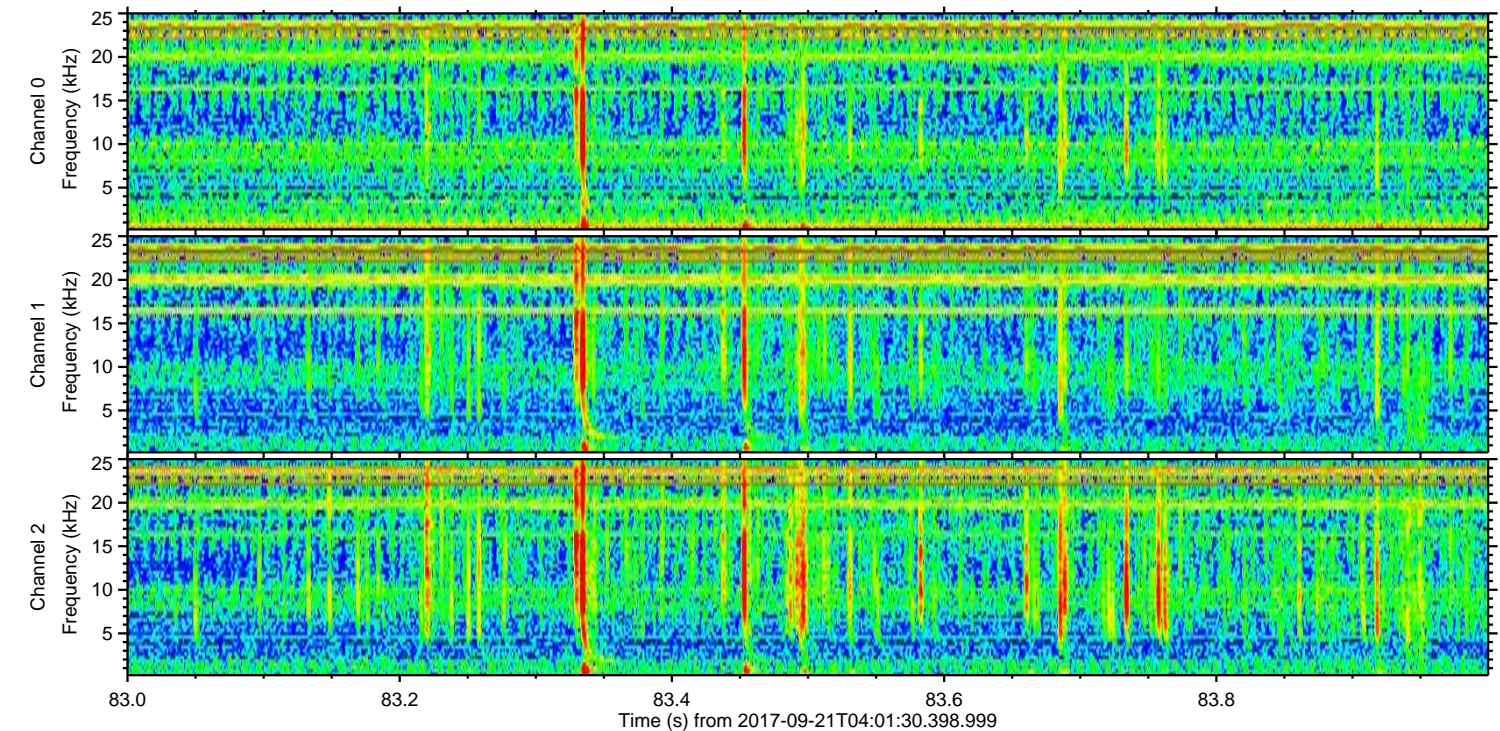
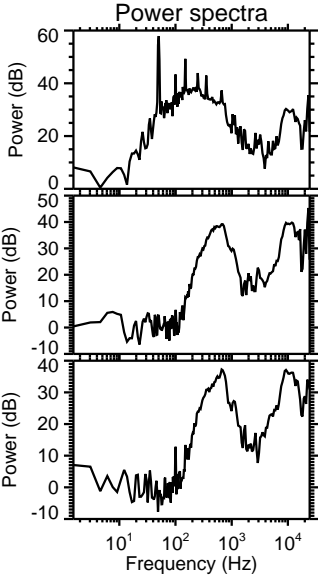
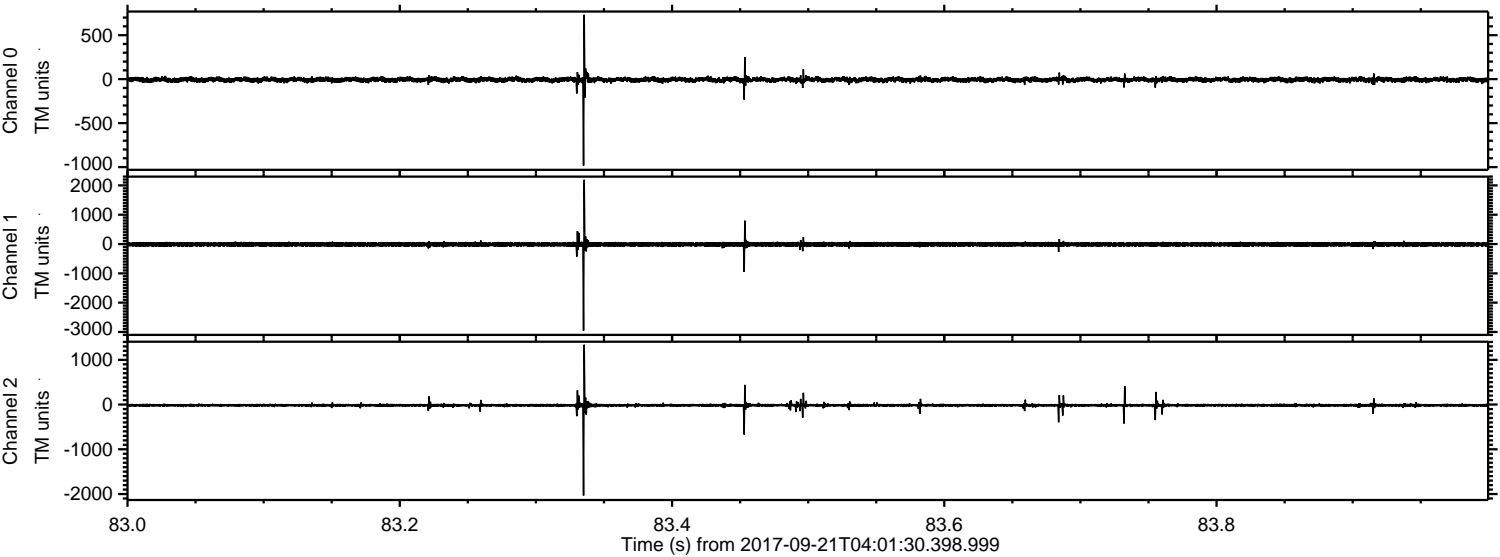
Channel 2
mn: -3390
mx: 2961
 μ : -16.2
 σ : 51.1

ELMAVAN 3D WAVEFORMS (Measured data sampled at 50 kHz) 51000 packets of 144 samples from 2017-09-21T04:01:30.398.999. Part 115/147

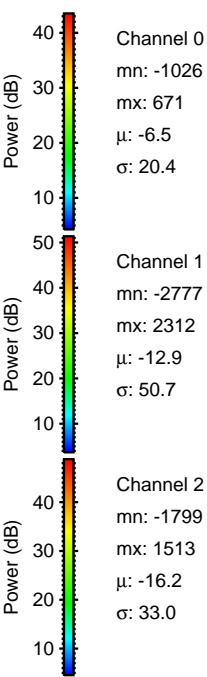
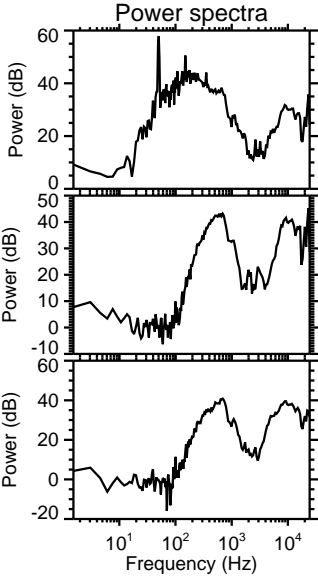
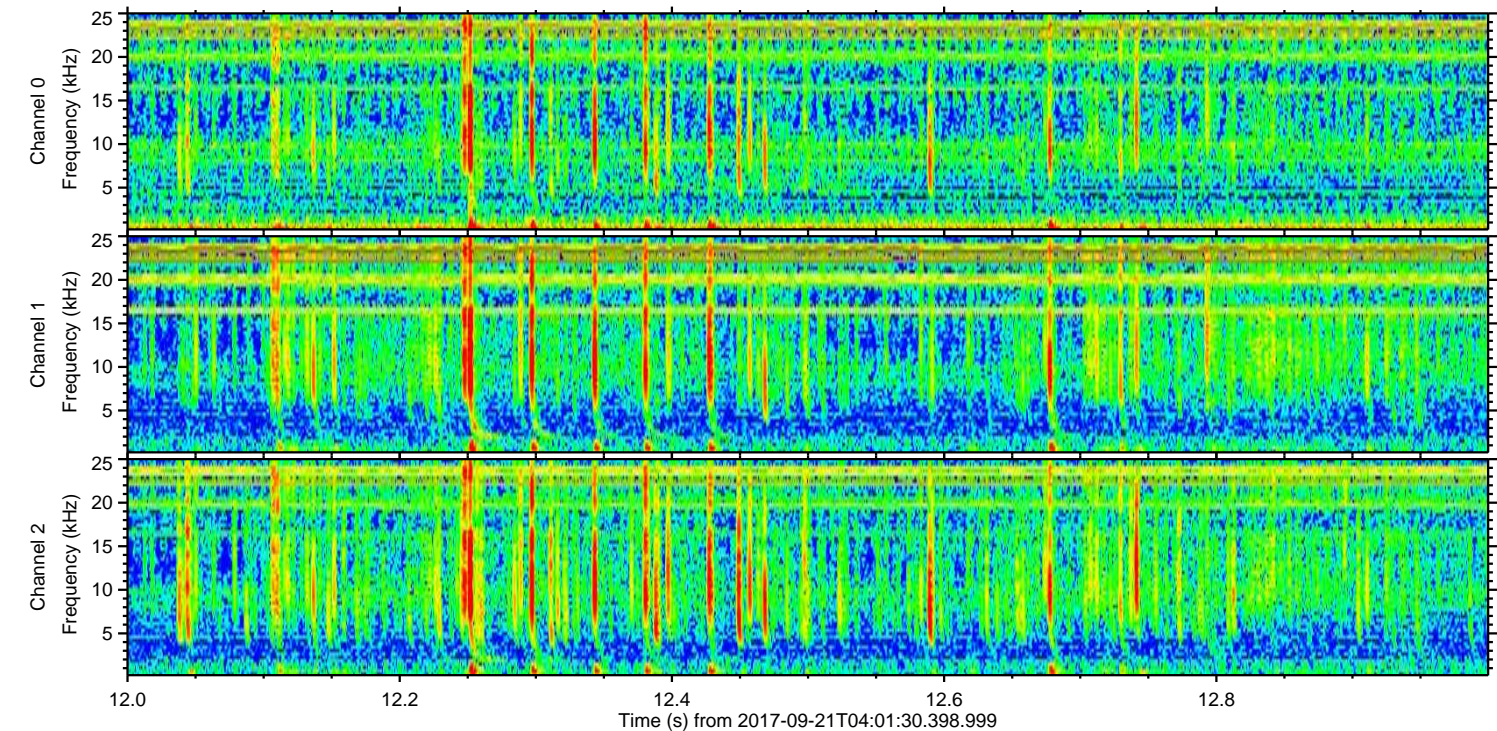
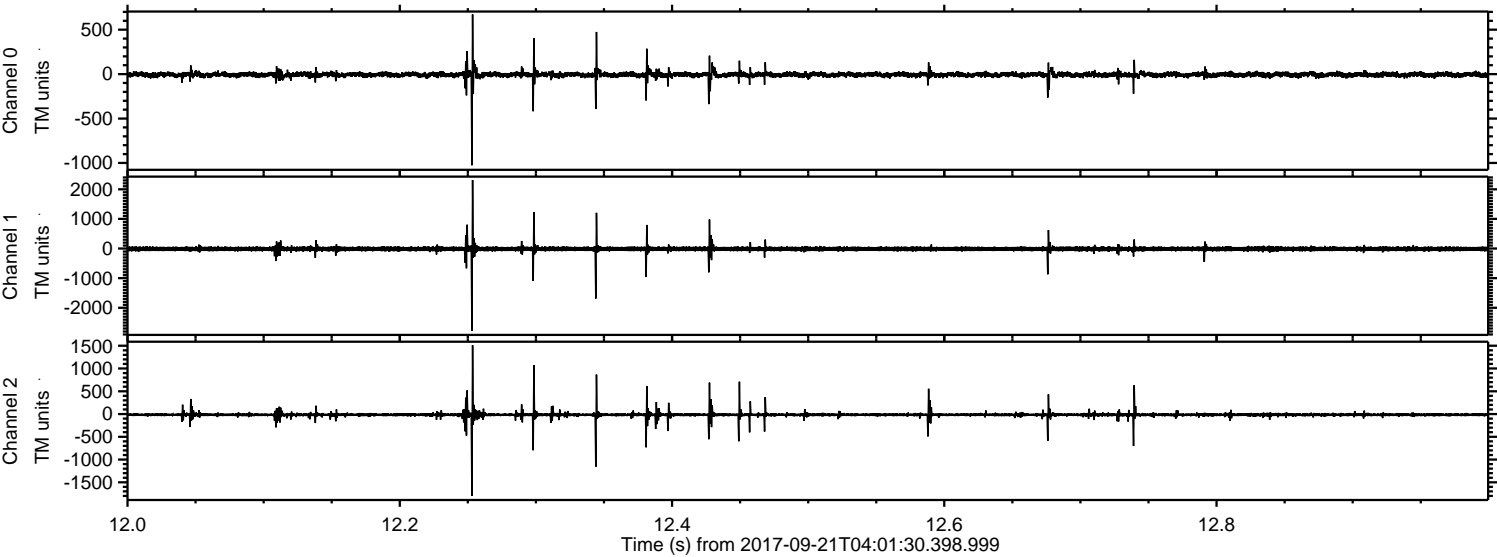
Processed Thu Sep 21 06:09:55 2017 by ELM ver.2012-10-06 from 001__elm20170921_040129__dat00.bin



Processed Thu Sep 21 06:09:56 2017 by ELM ver.2012-10-06 from 001__elm20170921_040129__dat00.bin



Processed Thu Sep 21 06:09:56 2017 by ELM ver.2012-10-06 from 001__elm20170921_040129__dat00.bin



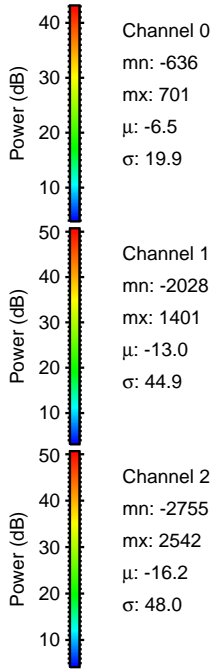
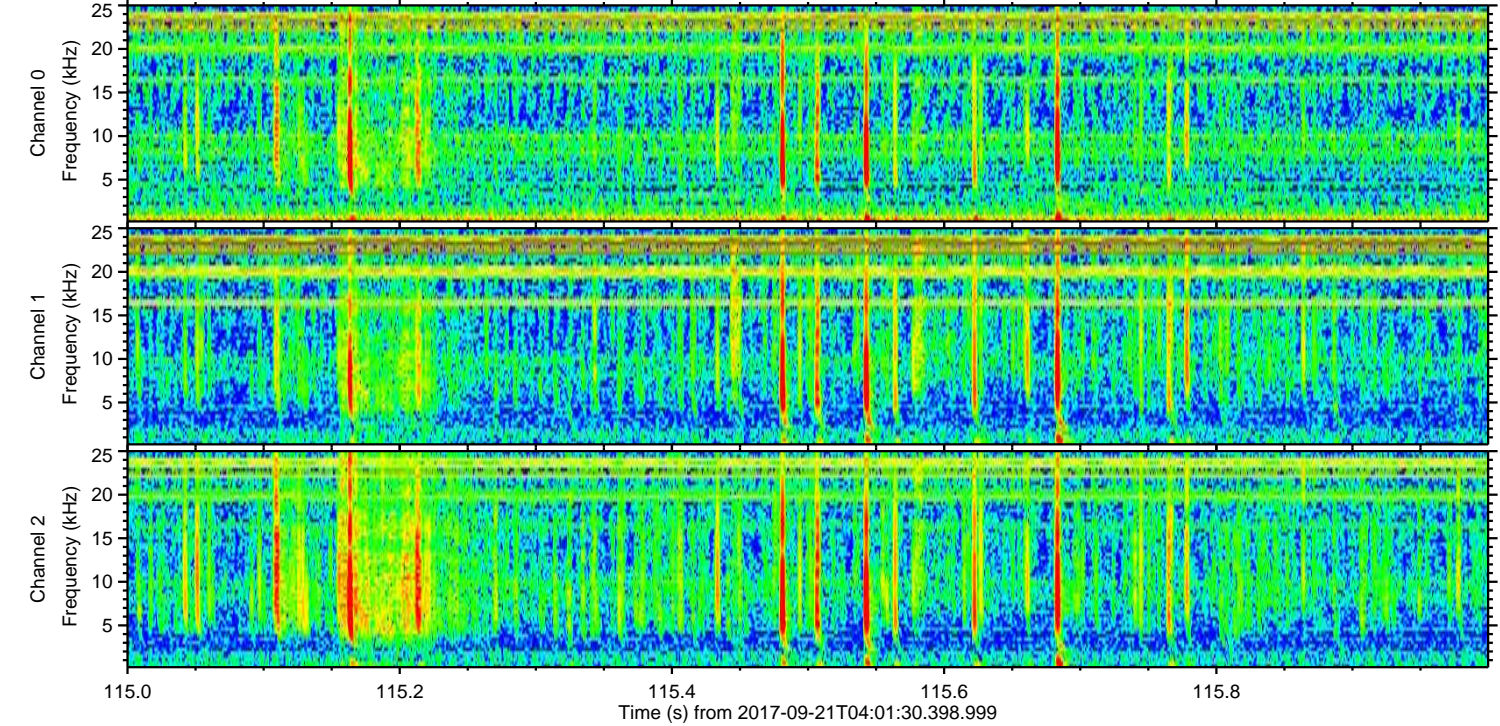
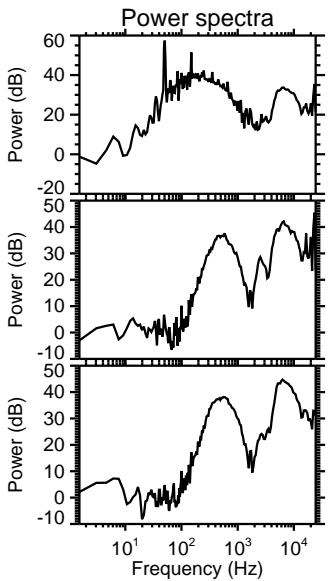
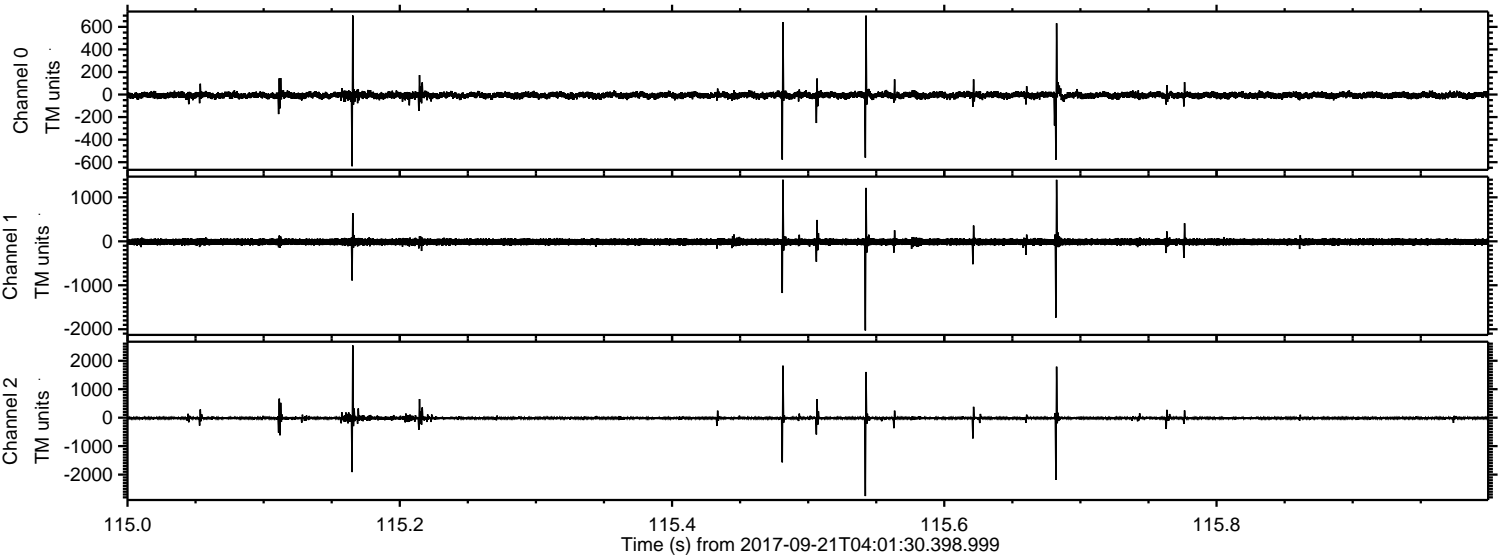
Channel 0
mn: -1026
mx: 671
 μ : -6.5
 σ : 20.4

Channel 1
mn: -2777
mx: 2312
 μ : -12.9
 σ : 50.7

Channel 2
mn: -1799
mx: 1513
 μ : -16.2
 σ : 33.0

ELMAVAN 3D WAVEFORMS (Measured data sampled at 50 kHz) 51000 packets of 144 samples from 2017-09-21T04:01:30.398.999. Part 116/147

Processed Thu Sep 21 06:09:57 2017 by ELM ver.2012-10-06 from 001__elm20170921_040129__dat00.bin



ELMAVAN 3D WAVEFORMS (Measured data sampled at 50 kHz) 51000 packets of 144 samples from 2017-09-21T04:01:30.398.999. Part 141/147

