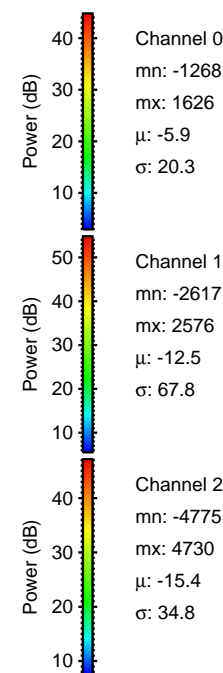
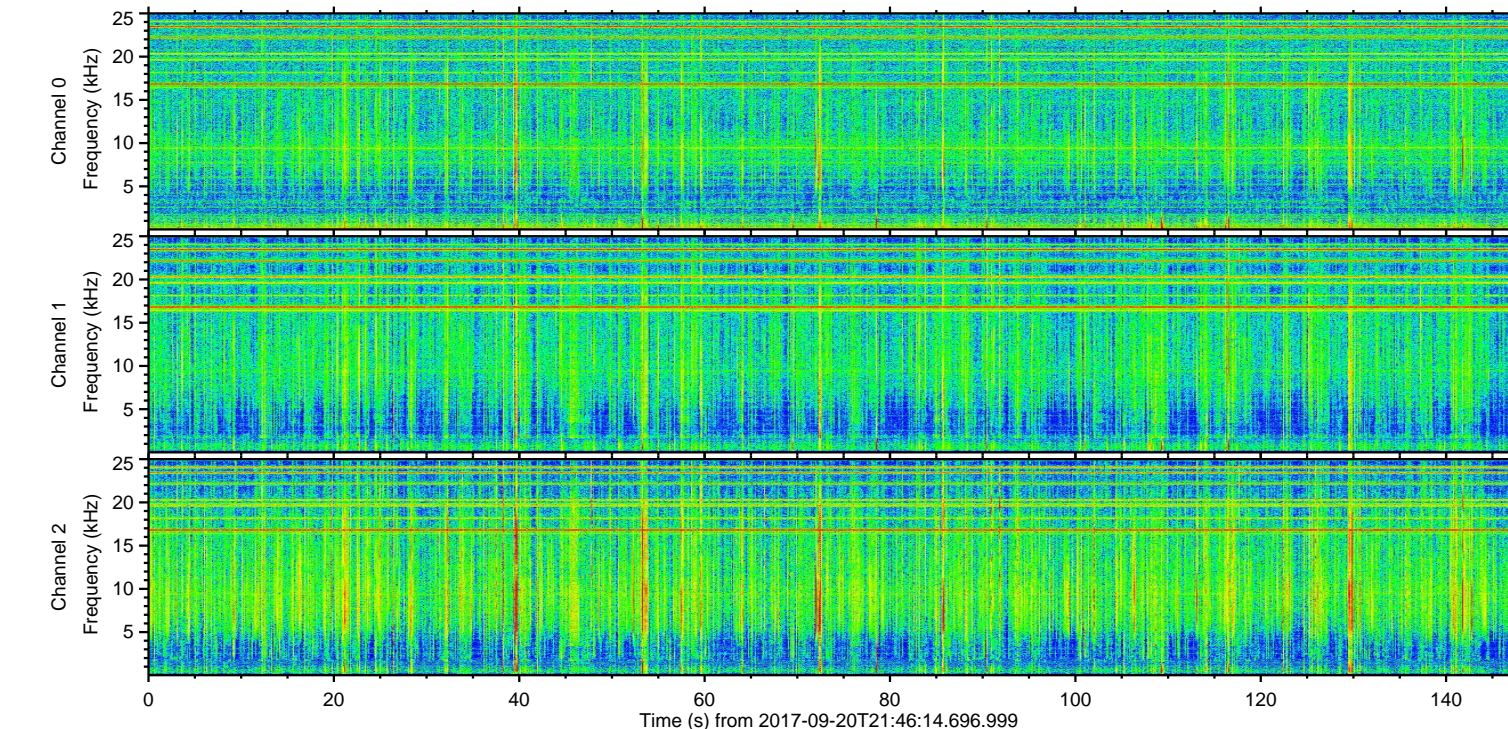
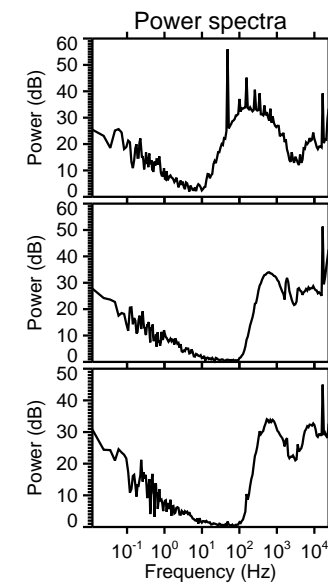
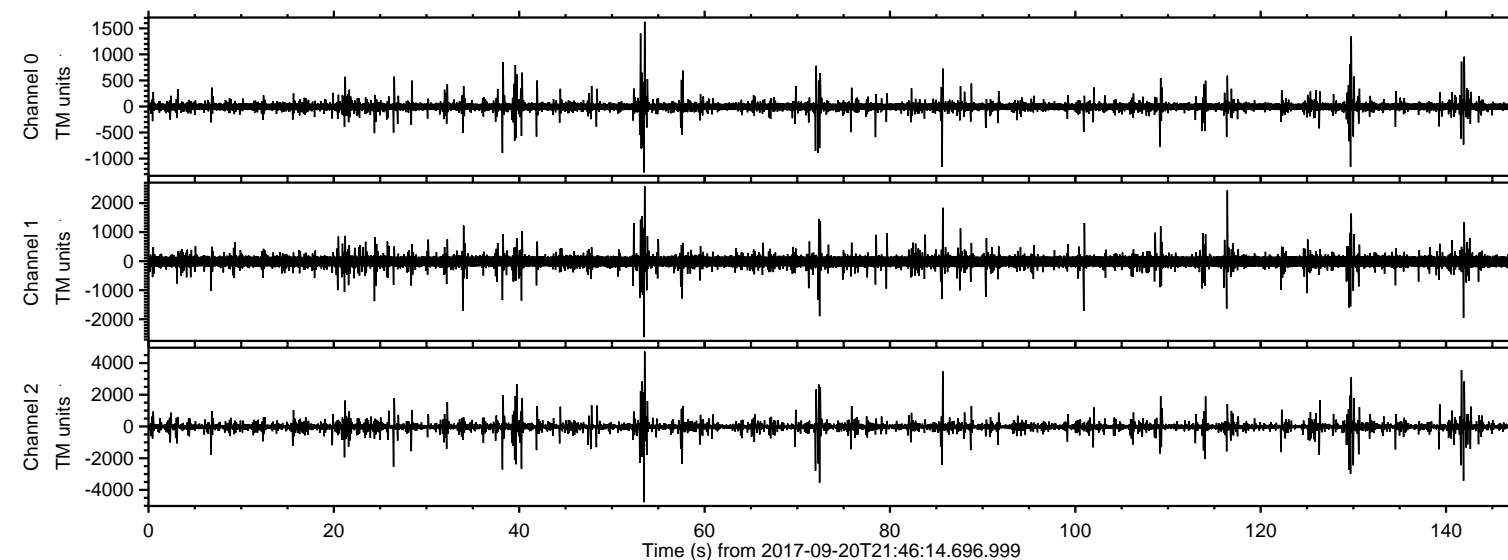
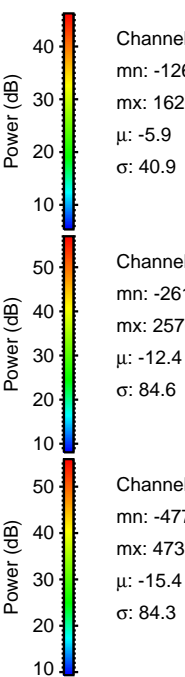
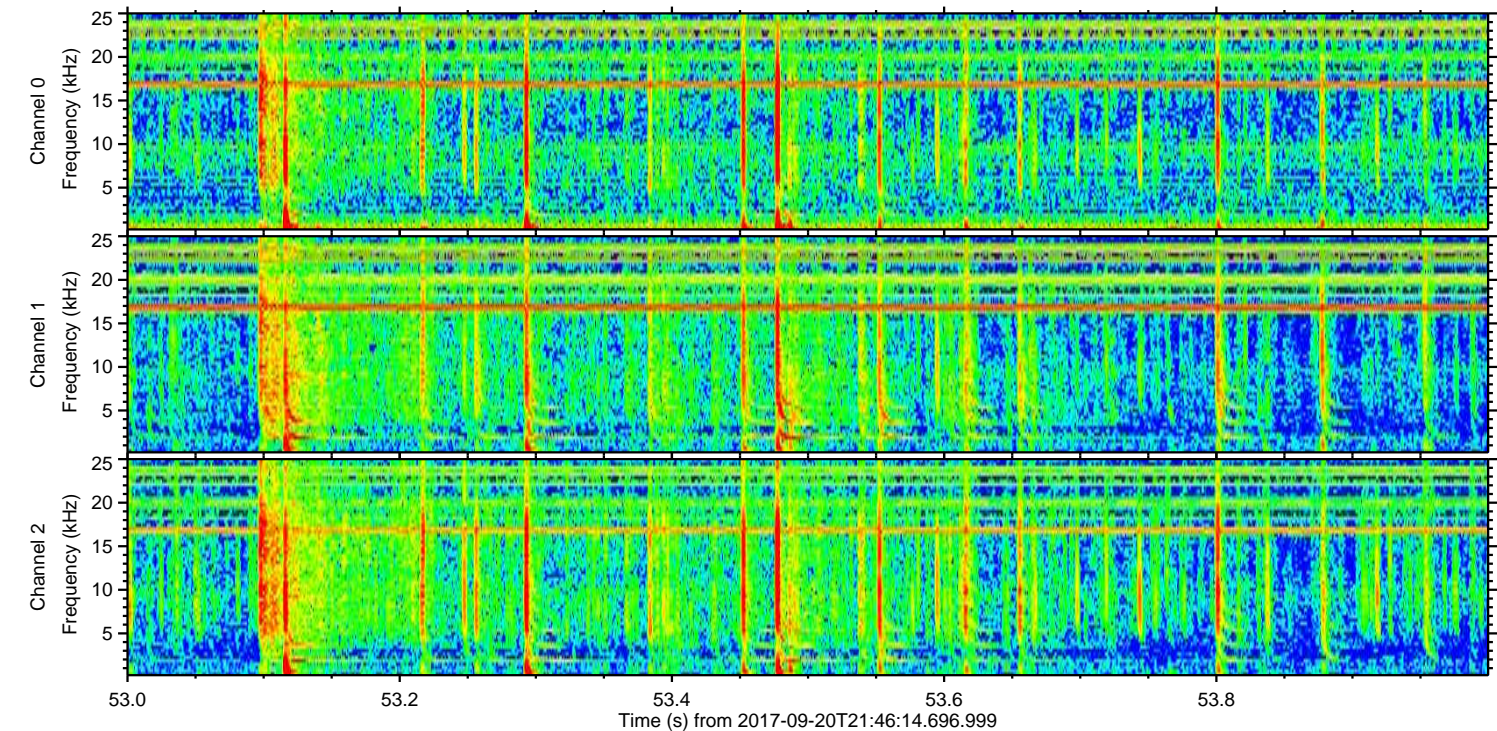
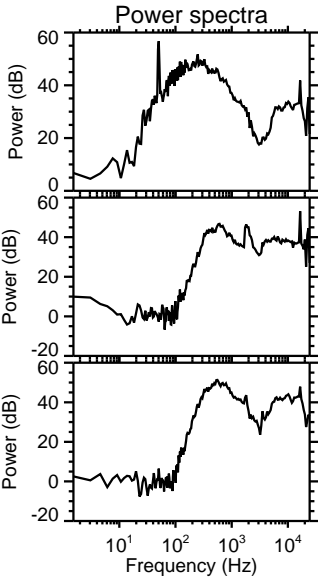
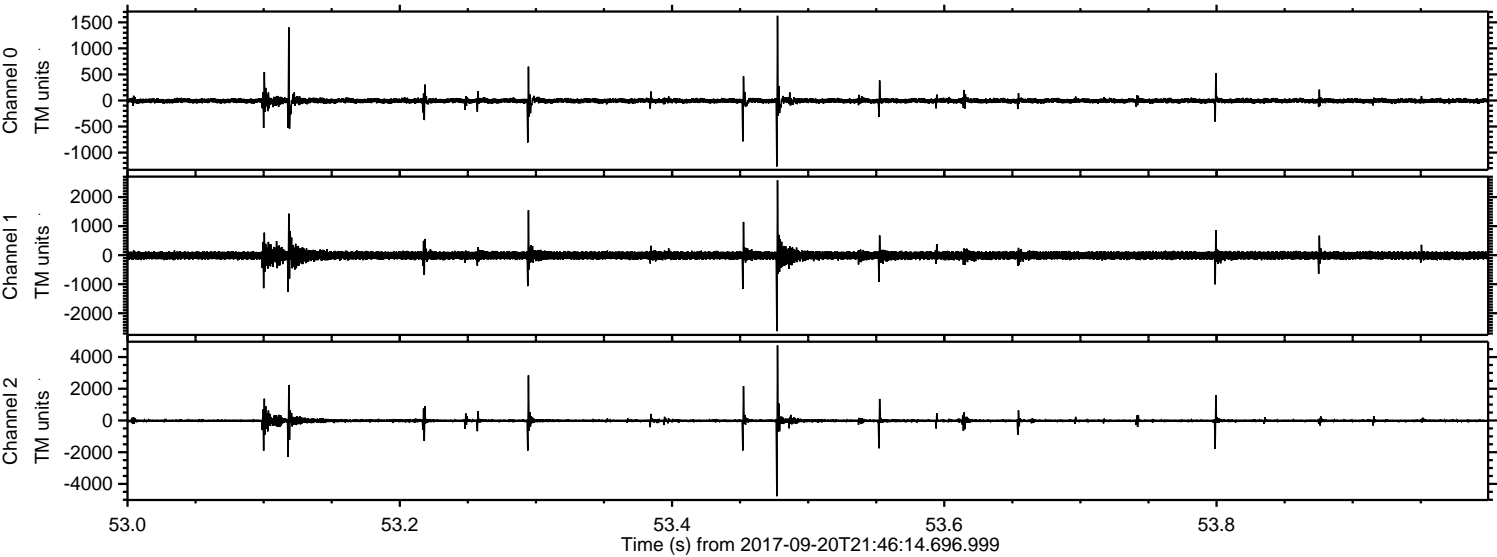


ELMAVAN 3D WAVEFORMS (Measured data sampled at 50 kHz) 51000 packets of 144 samples from 2017-09-20T21:46:14.696.999.

Processed Wed Sep 20 23:54:35 2017 by ELM ver.2012-10-06 from 001__elm20170920_214613__dat00.bin



Processed Wed Sep 20 23:54:42 2017 by ELM ver.2012-10-06 from 001__elm20170920_214613__dat00.bin



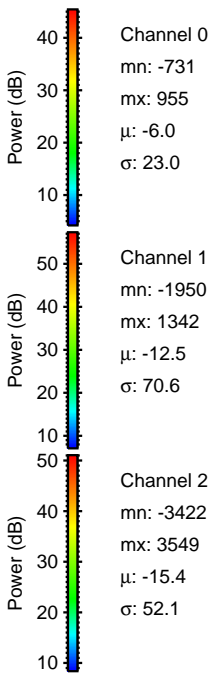
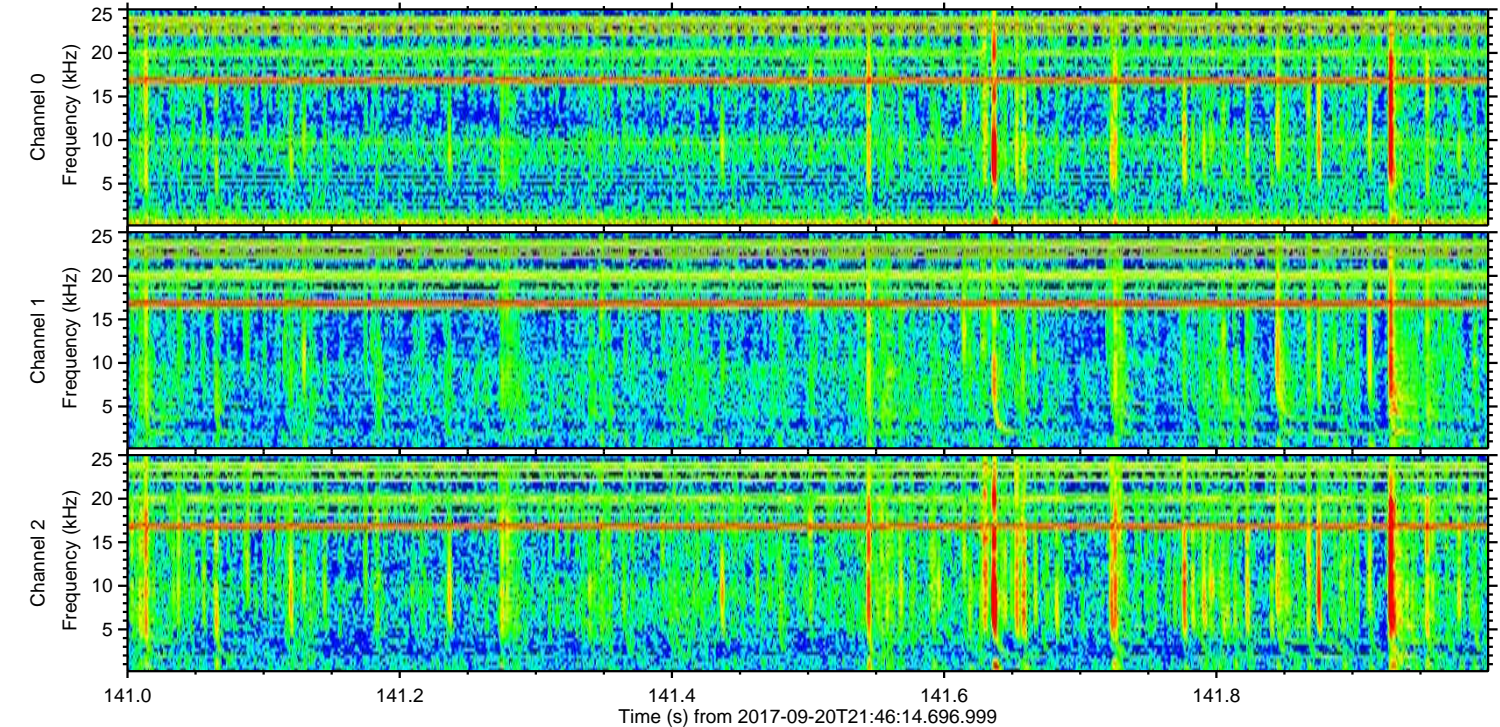
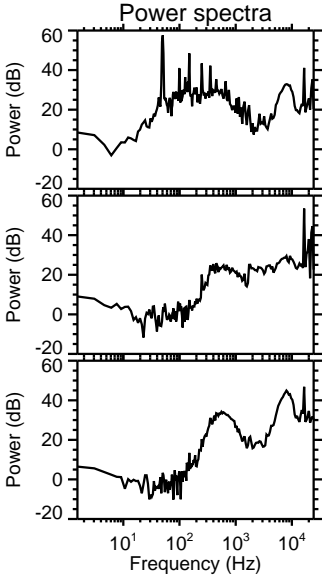
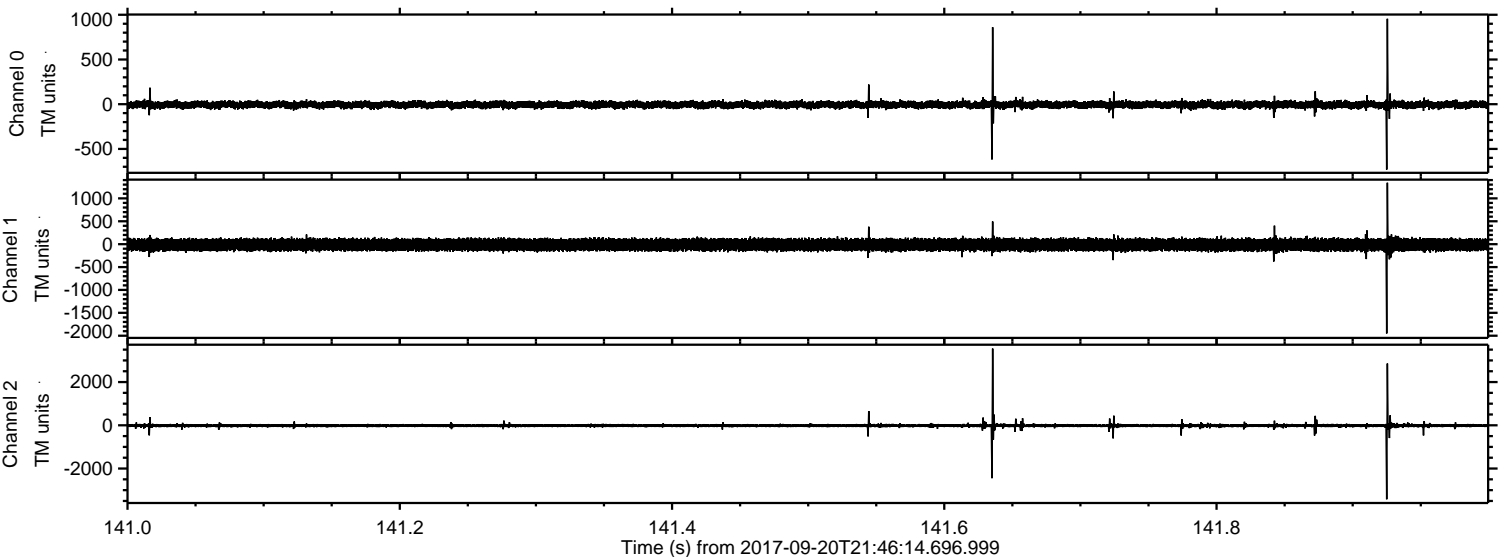
Channel 0
mn: -1268
mx: 1626
 μ : -5.9
 σ : 40.9

Channel 1
mn: -2617
mx: 2576
 μ : -12.4
 σ : 84.6

Channel 2
mn: -4775
mx: 4730
 μ : -15.4
 σ : 84.3

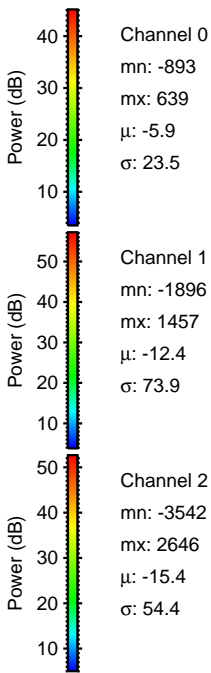
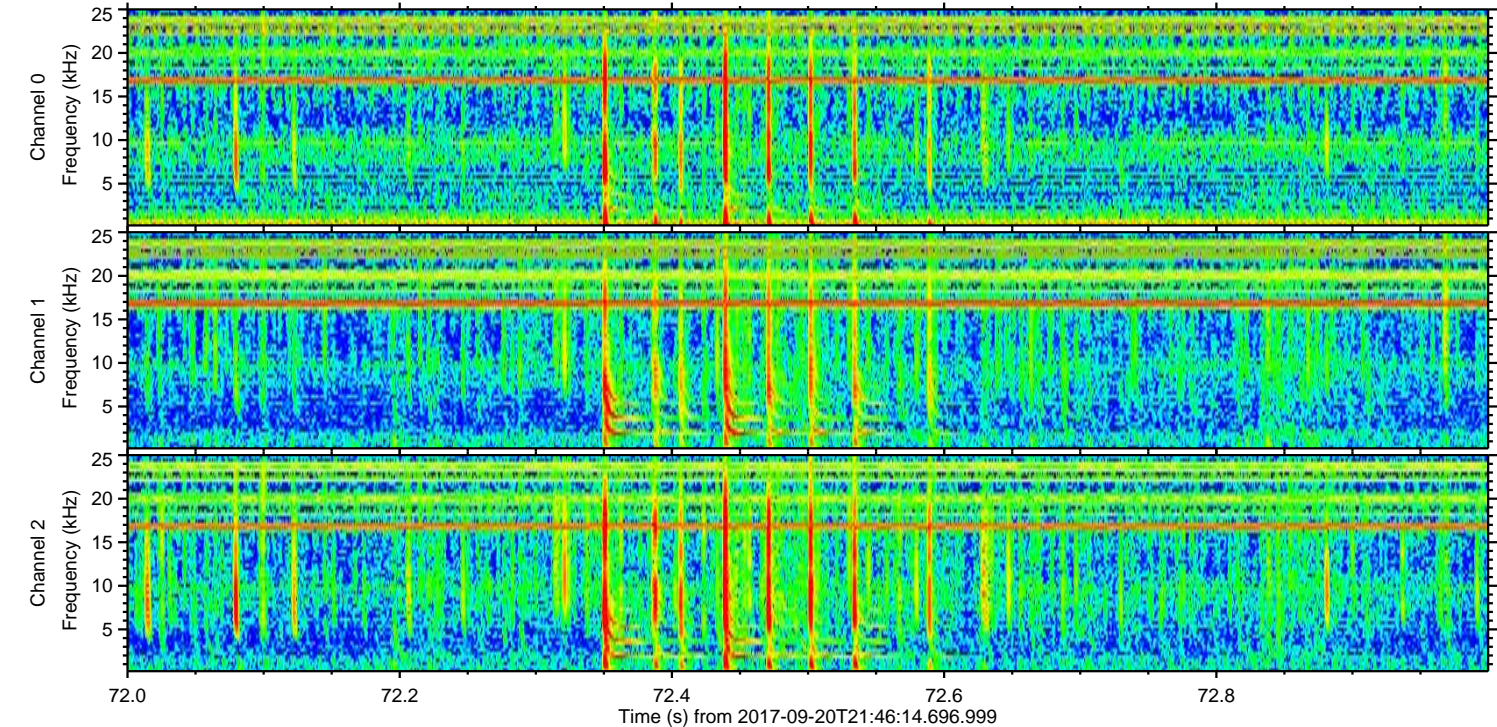
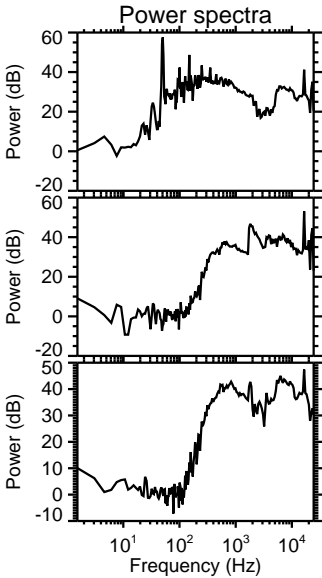
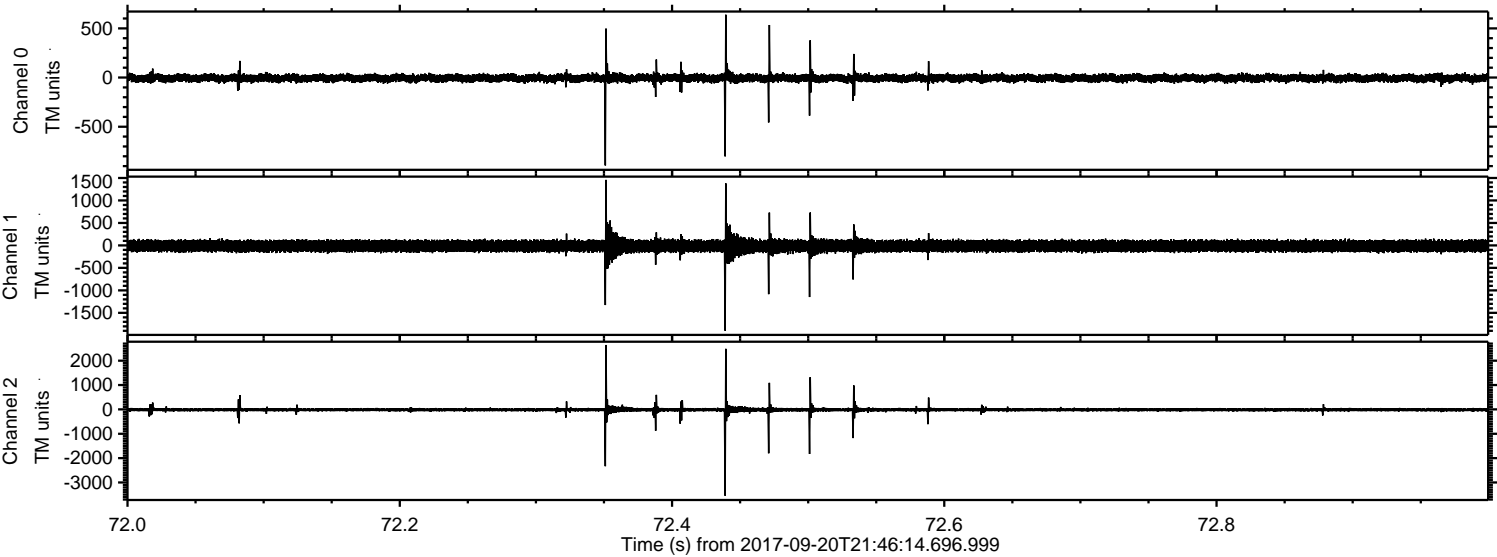
ELMAVAN 3D WAVEFORMS (Measured data sampled at 50 kHz) 51000 packets of 144 samples from 2017-09-20T21:46:14.696.999. Part 142/147

Processed Wed Sep 20 23:54:43 2017 by ELM ver.2012-10-06 from 001__elm20170920_214613__dat00.bin



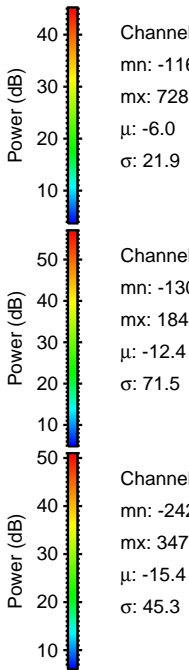
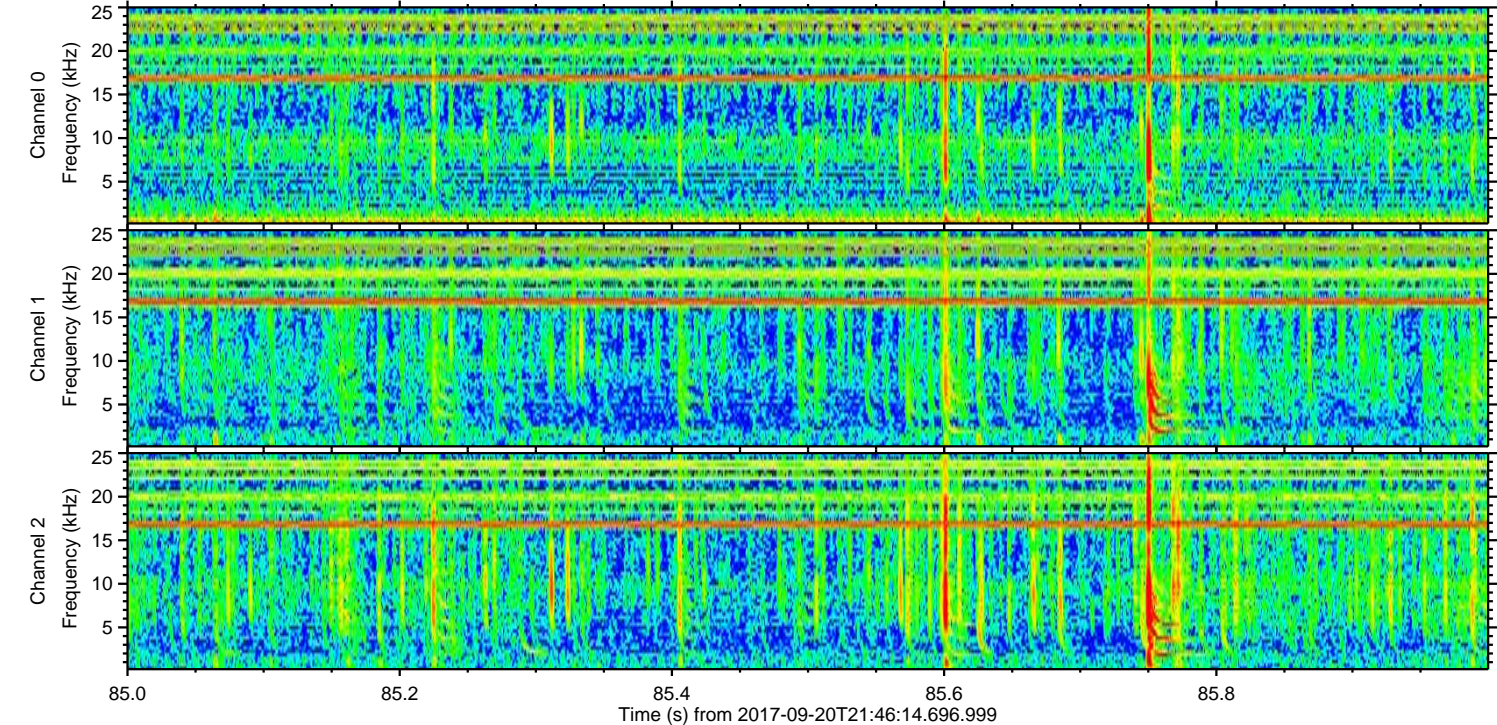
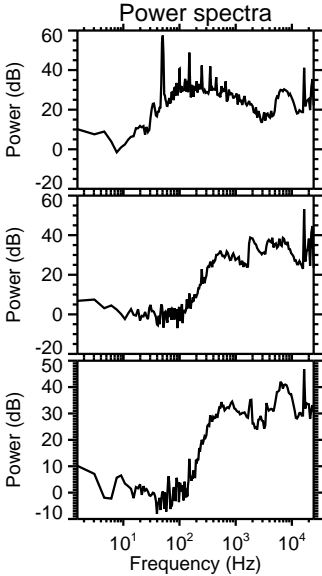
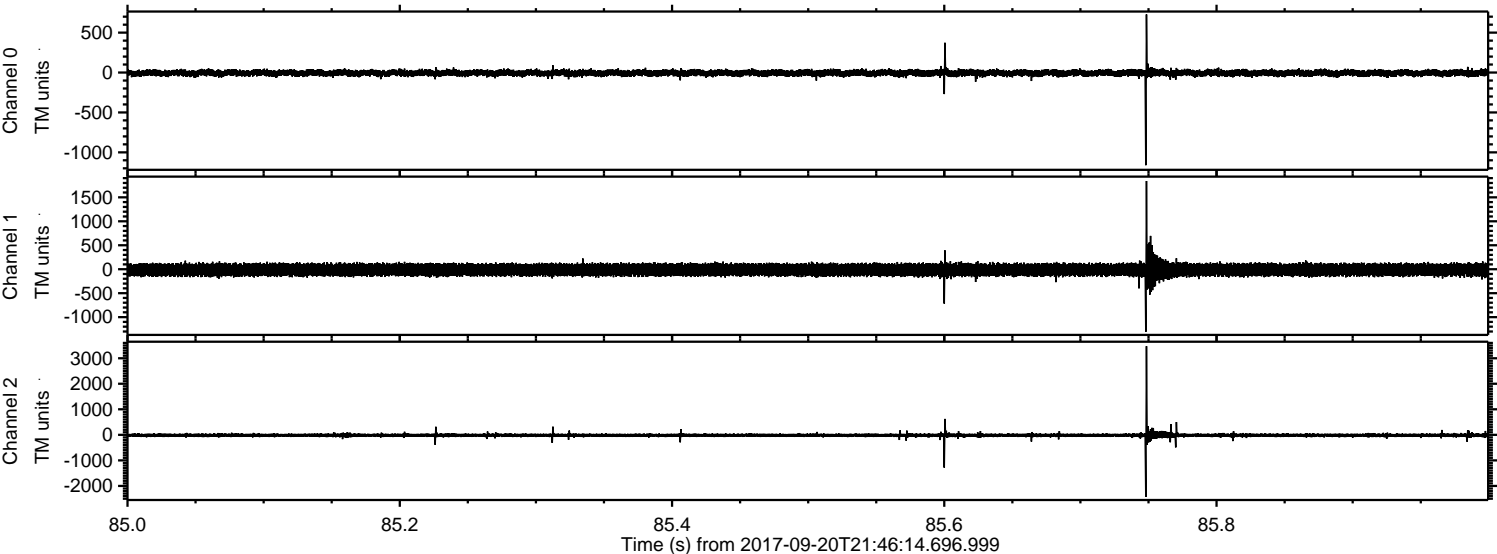
ELMAVAN 3D WAVEFORMS (Measured data sampled at 50 kHz) 51000 packets of 144 samples from 2017-09-20T21:46:14.696.999. Part 73/147

Processed Wed Sep 20 23:54:43 2017 by ELM ver.2012-10-06 from 001__elm20170920_214613__dat00.bin



ELMAVAN 3D WAVEFORMS (Measured data sampled at 50 kHz) 51000 packets of 144 samples from 2017-09-20T21:46:14.696.999. Part 86/147

Processed Wed Sep 20 23:54:44 2017 by ELM ver.2012-10-06 from 001__elm20170920_214613__dat00.bin



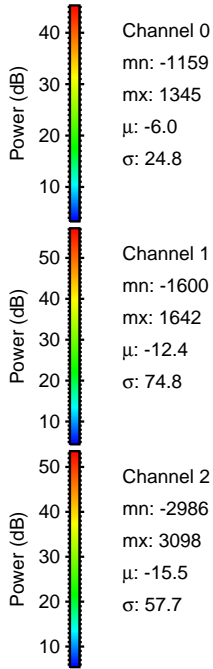
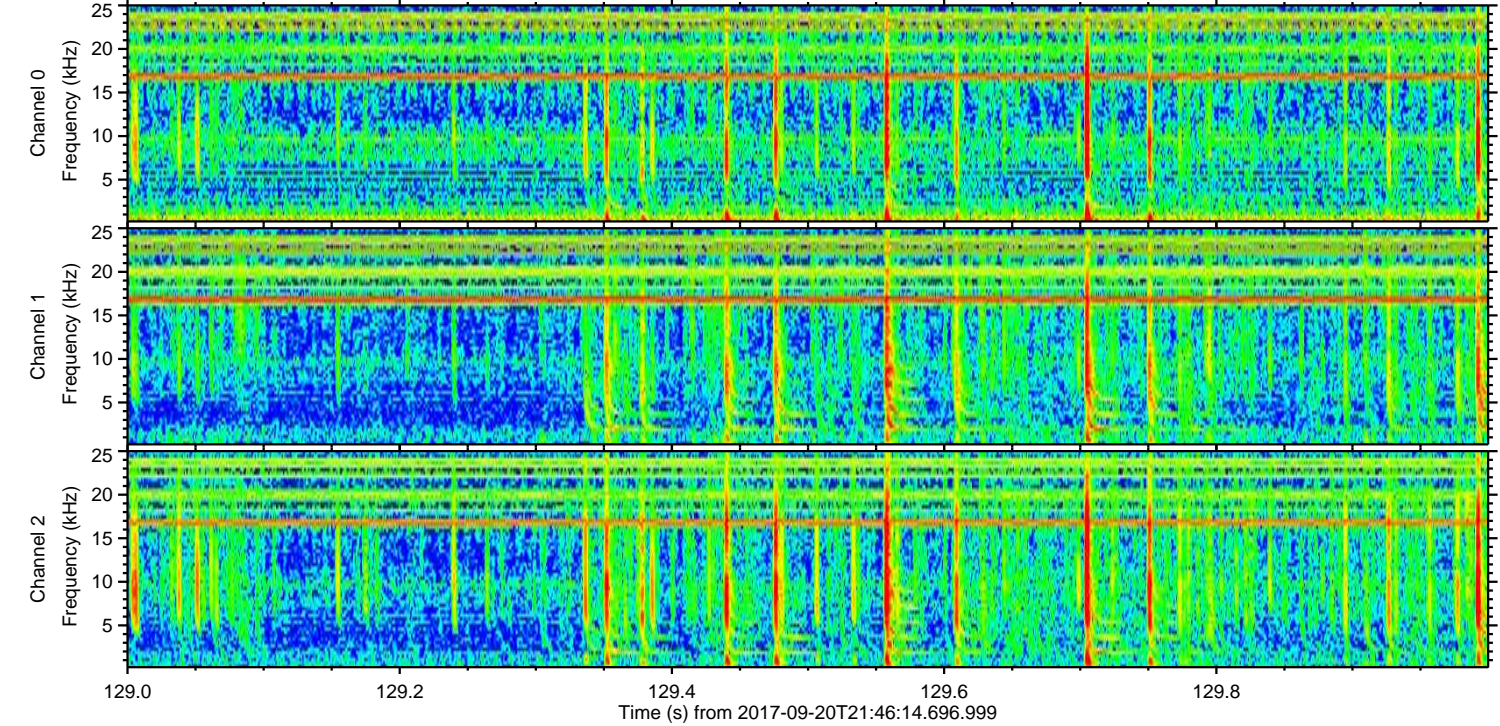
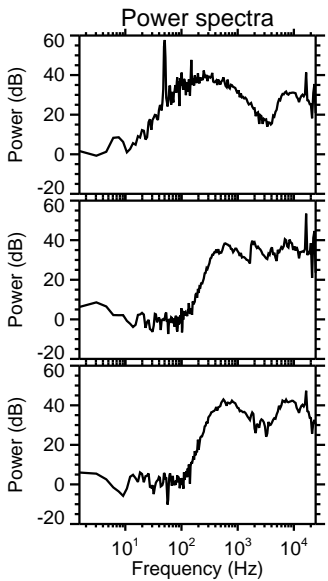
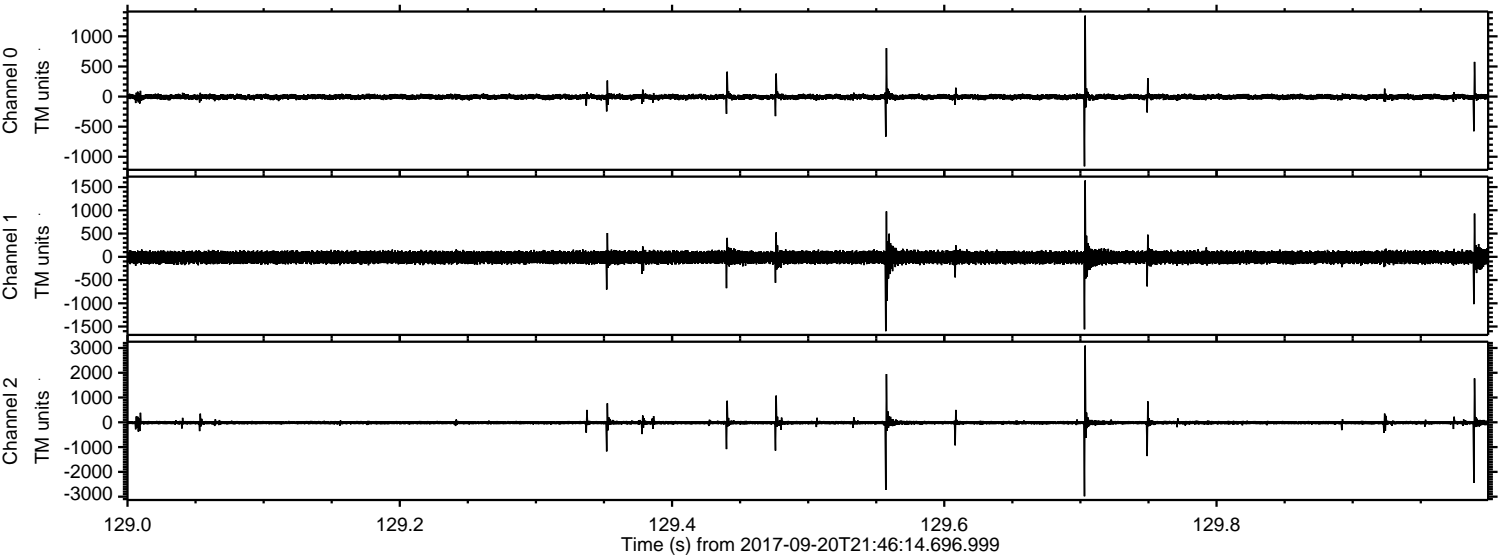
Channel 0
mn: -1161
mx: 728
 μ : -6.0
 σ : 21.9

Channel 1
mn: -1306
mx: 1840
 μ : -12.4
 σ : 71.5

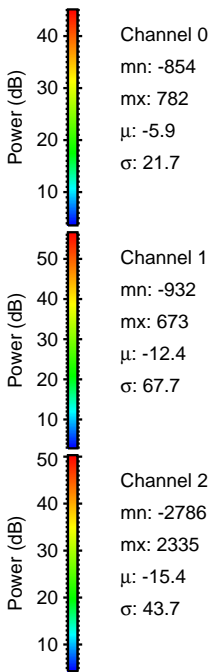
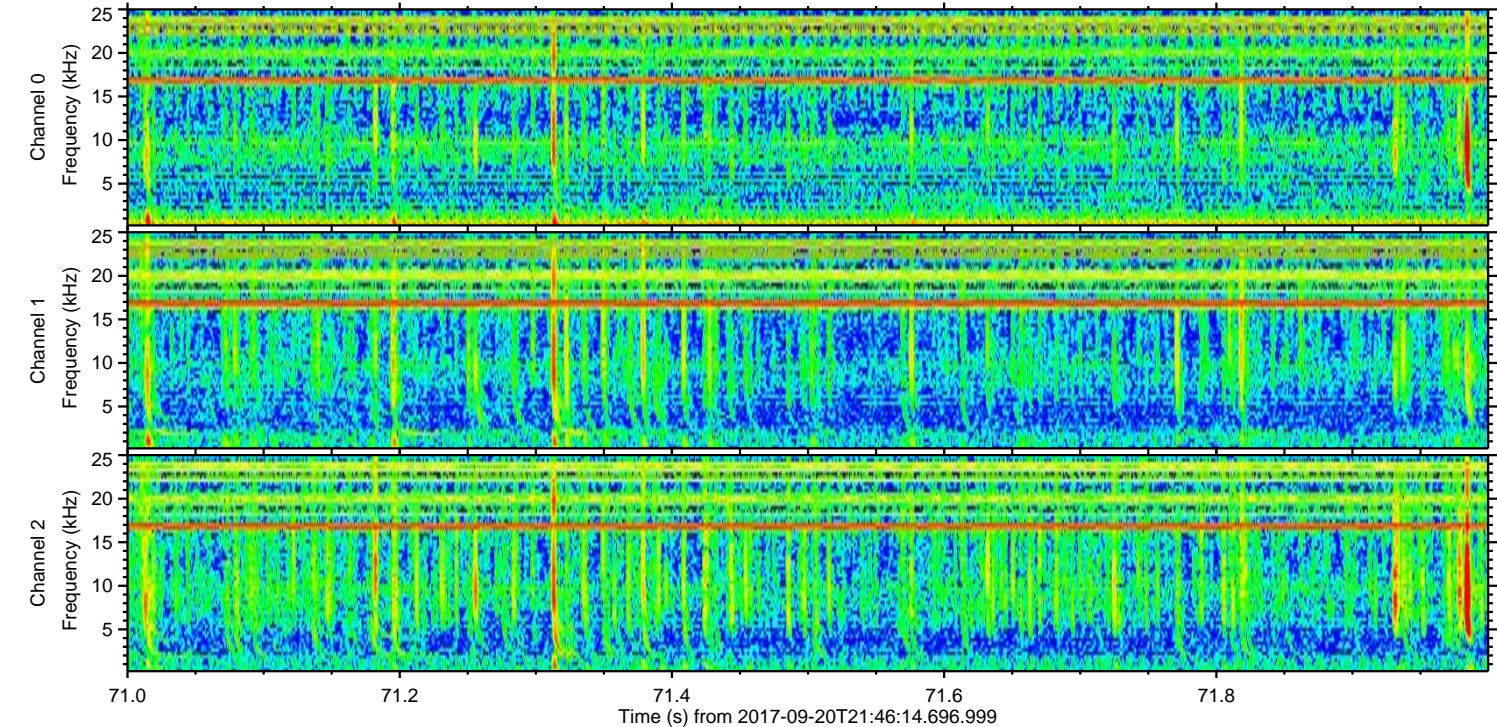
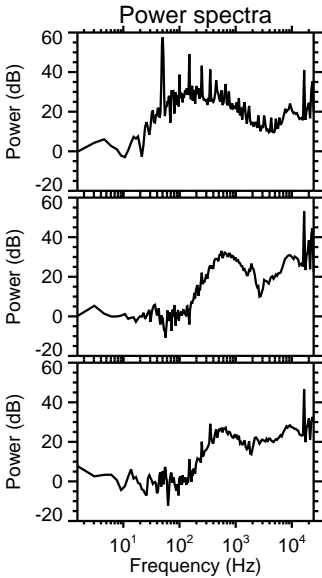
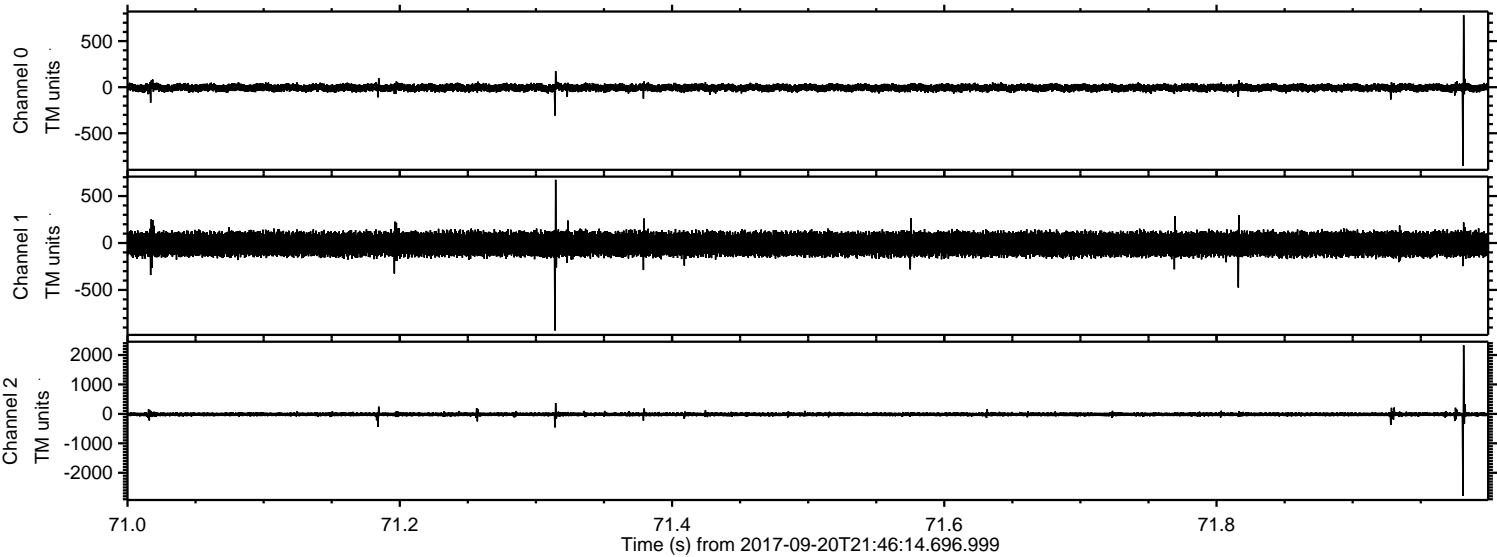
Channel 2
mn: -2429
mx: 3473
 μ : -15.4
 σ : 45.3

ELMAVAN 3D WAVEFORMS (Measured data sampled at 50 kHz) 51000 packets of 144 samples from 2017-09-20T21:46:14.696.999. Part 130/147

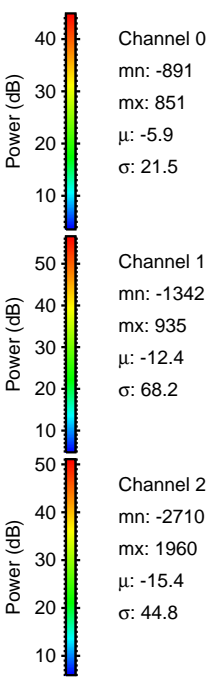
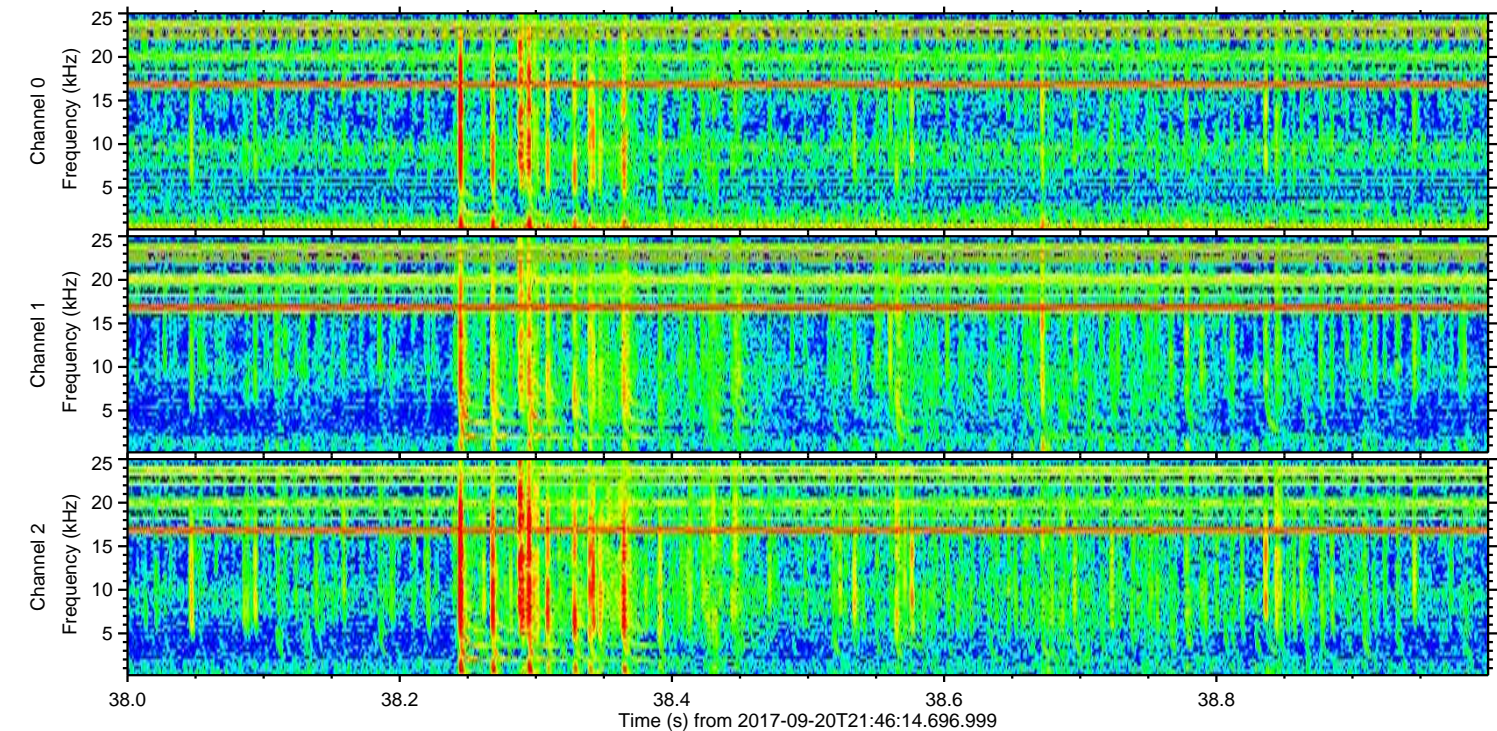
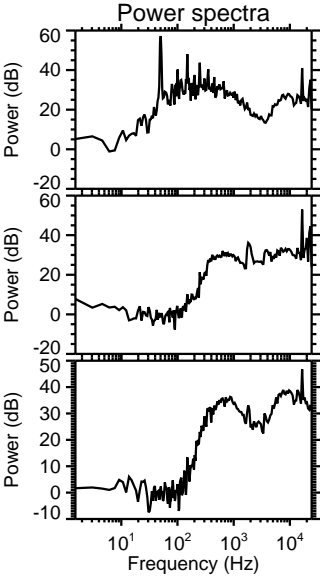
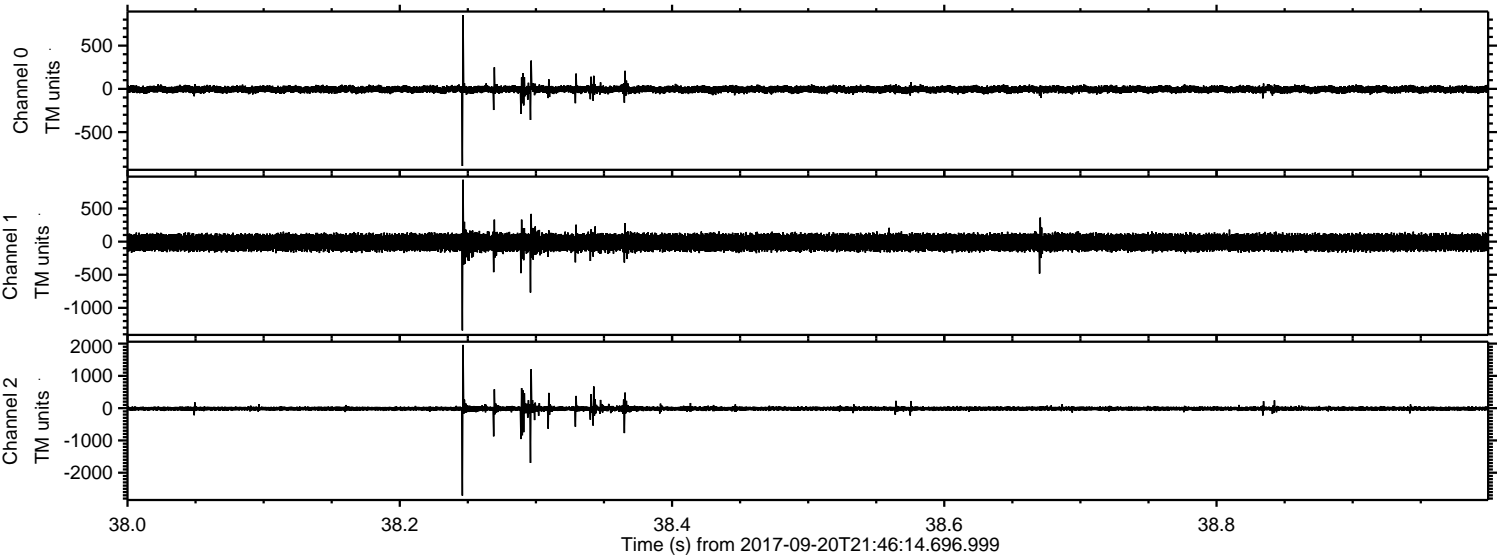
Processed Wed Sep 20 23:54:45 2017 by ELM ver.2012-10-06 from 001__elm20170920_214613__dat00.bin



Processed Wed Sep 20 23:54:46 2017 by ELM ver.2012-10-06 from 001__elm20170920_214613__dat00.bin



Processed Wed Sep 20 23:54:46 2017 by ELM ver.2012-10-06 from 001__elm20170920_214613__dat00.bin

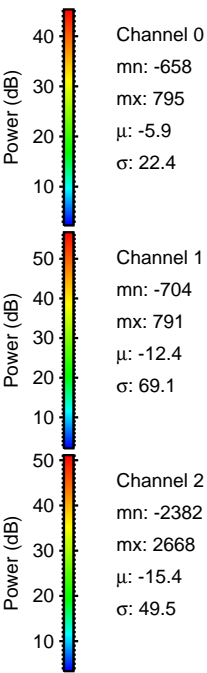
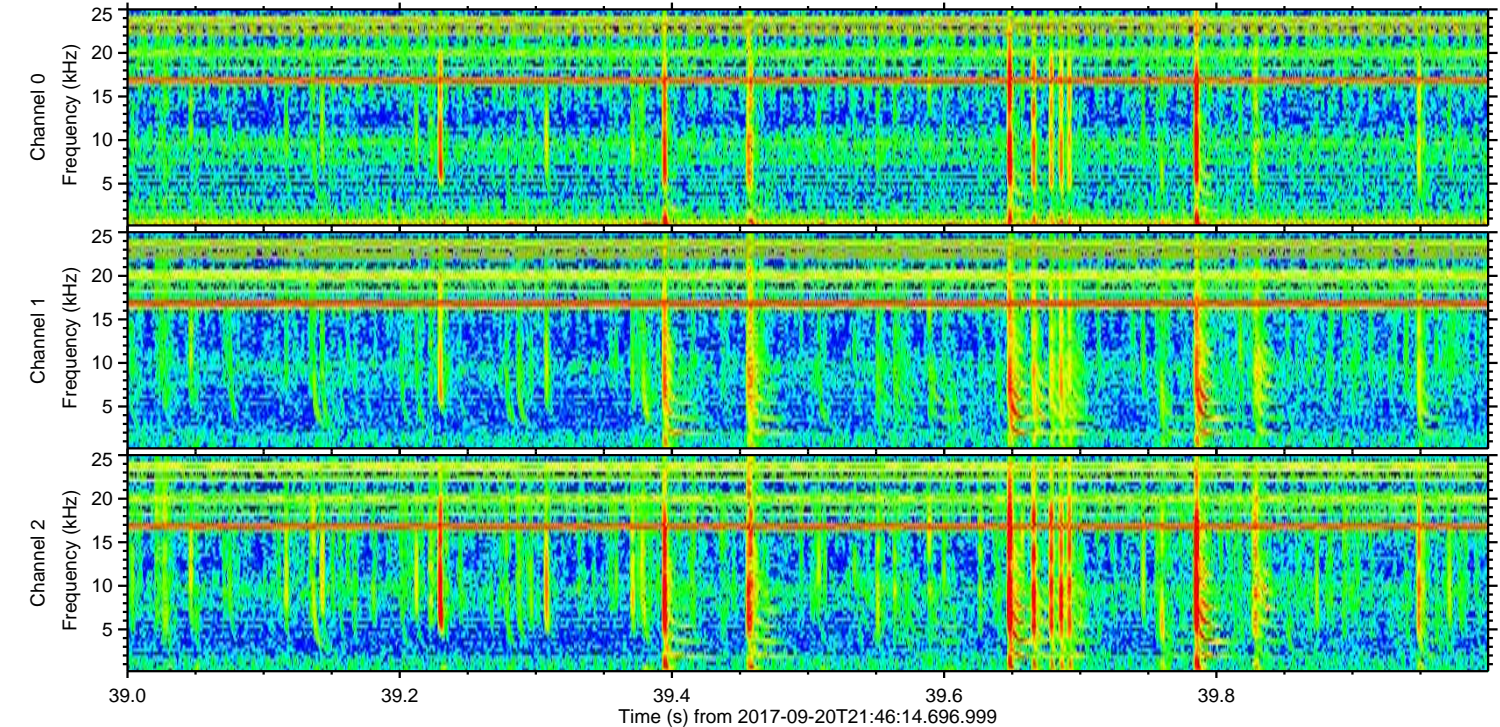
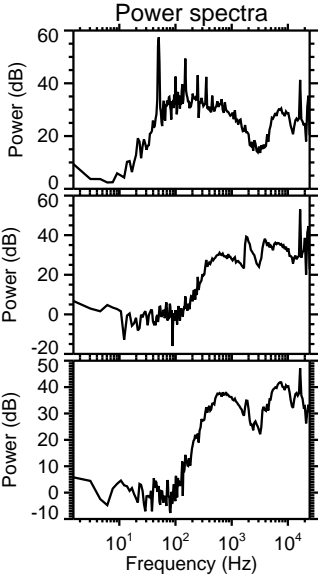
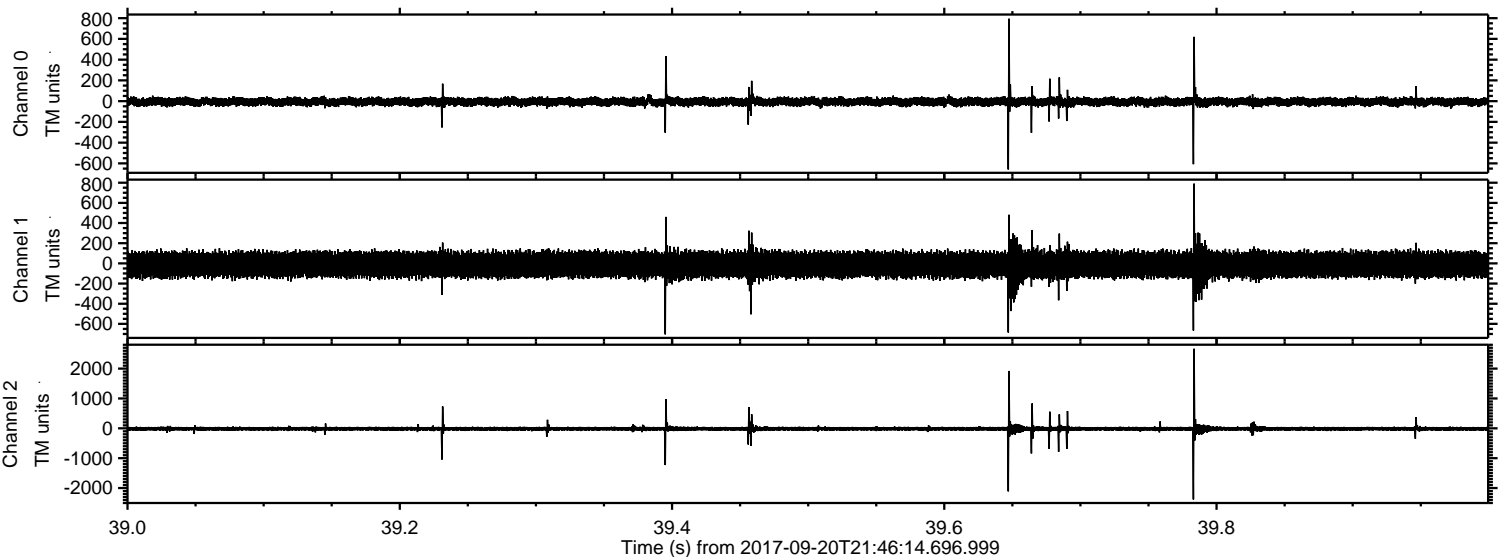


Channel 0
mn: -891
mx: 851
 μ : -5.9
 σ : 21.5

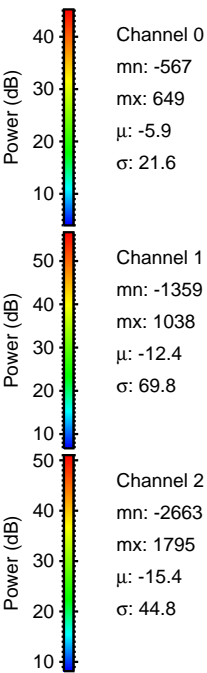
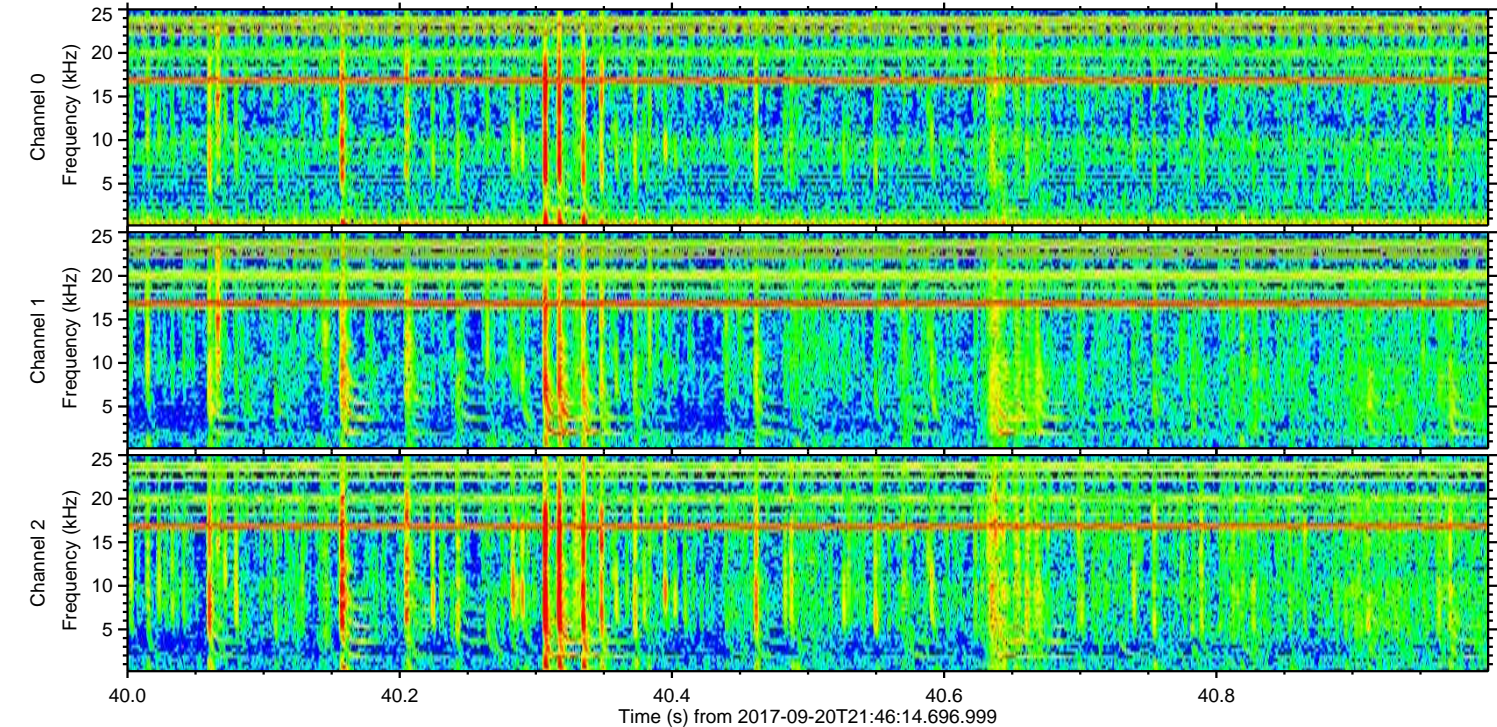
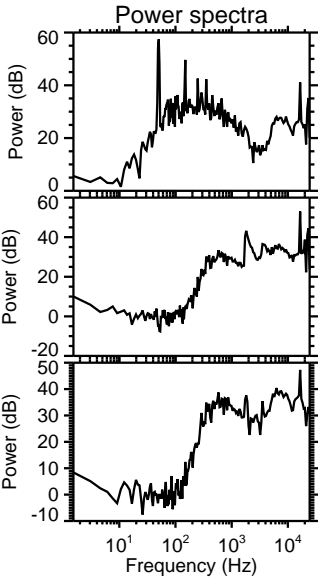
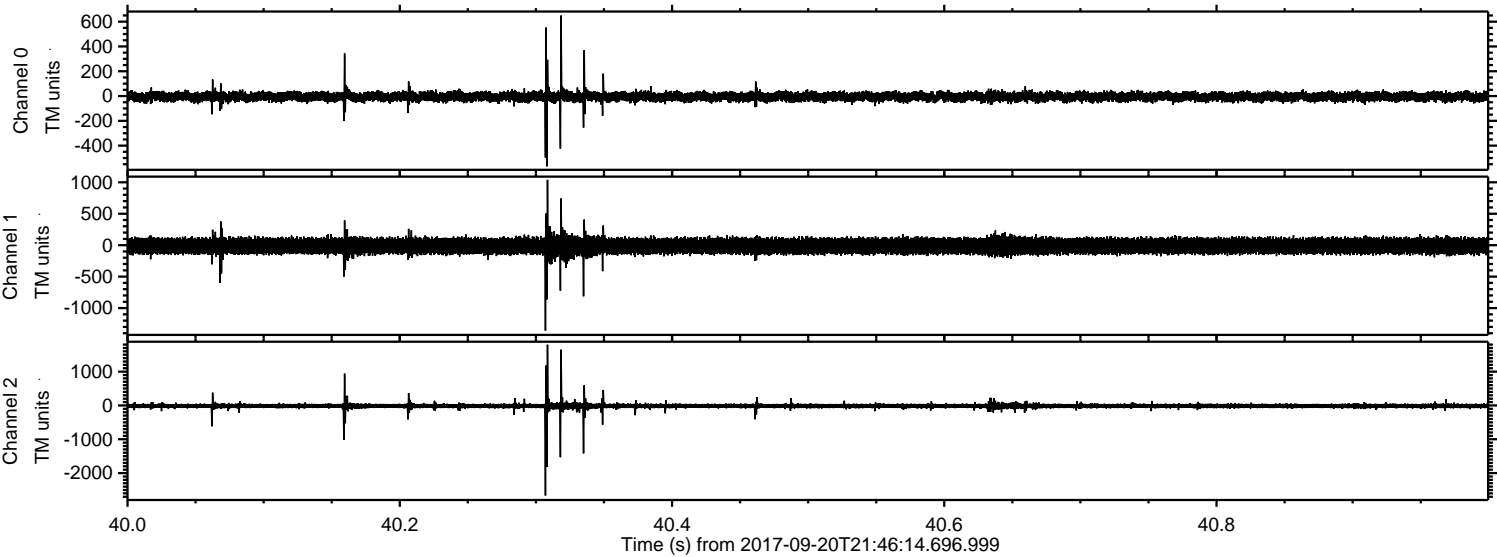
Channel 1
mn: -1342
mx: 935
 μ : -12.4
 σ : 68.2

Channel 2
mn: -2710
mx: 1960
 μ : -15.4
 σ : 44.8

Processed Wed Sep 20 23:54:47 2017 by ELM ver.2012-10-06 from 001_elm20170920_214613__dat00.bin



Processed Wed Sep 20 23:54:48 2017 by ELM ver.2012-10-06 from 001__elm20170920_214613__dat00.bin



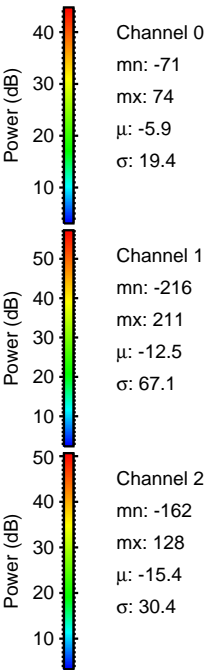
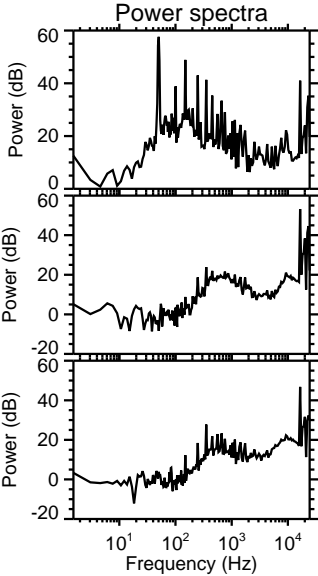
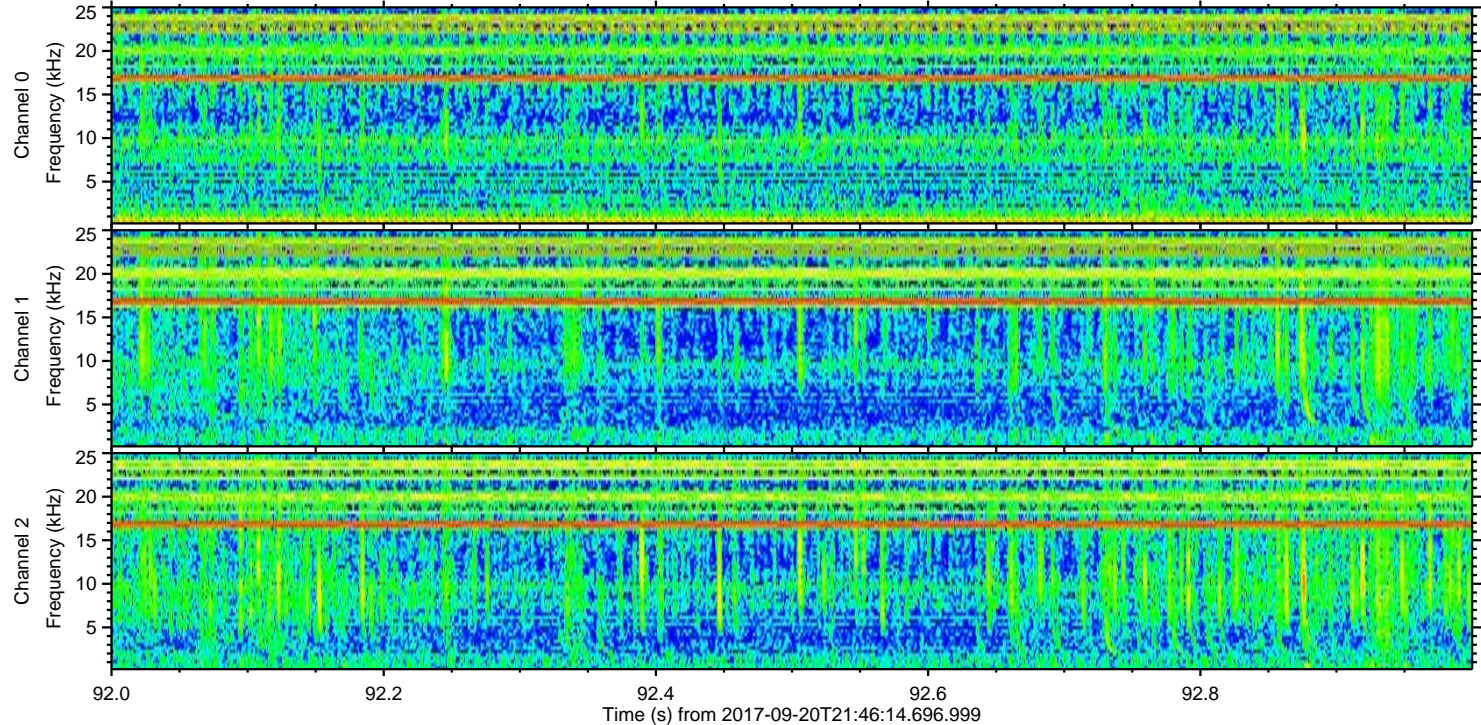
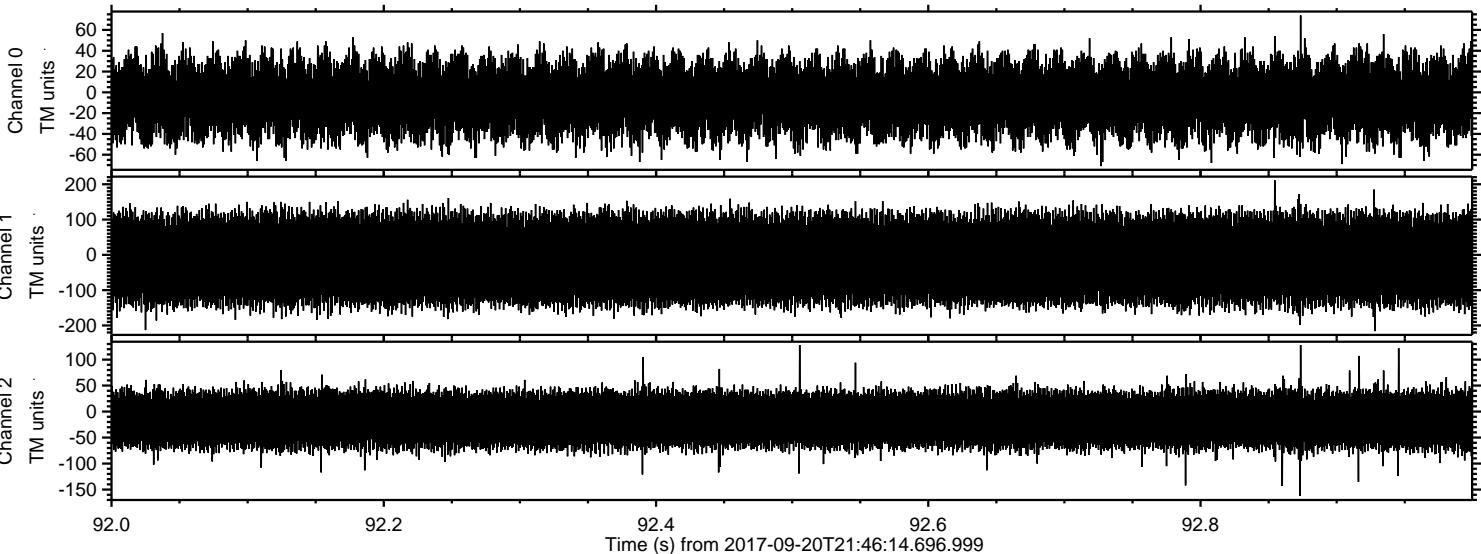
Channel 0
mn: -567
mx: 649
 μ : -5.9
 σ : 21.6

Channel 1
mn: -1359
mx: 1038
 μ : -12.4
 σ : 69.8

Channel 2
mn: -2663
mx: 1795
 μ : -15.4
 σ : 44.8

ELMAVAN 3D WAVEFORMS (Measured data sampled at 50 kHz) 51000 packets of 144 samples from 2017-09-20T21:46:14.696.999. Part 93/147

Processed Wed Sep 20 23:54:49 2017 by ELM ver.2012-10-06 from 001__elm20170920_214613__dat00.bin



Power spectra

Channel 0
mn: -71
mx: 74
 μ : -5.9
 σ : 19.4

Channel 1
mn: -216
mx: 211
 μ : -12.5
 σ : 67.1

Channel 2
mn: -162
mx: 128
 μ : -15.4
 σ : 30.4