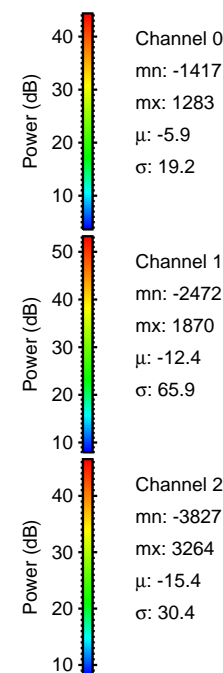
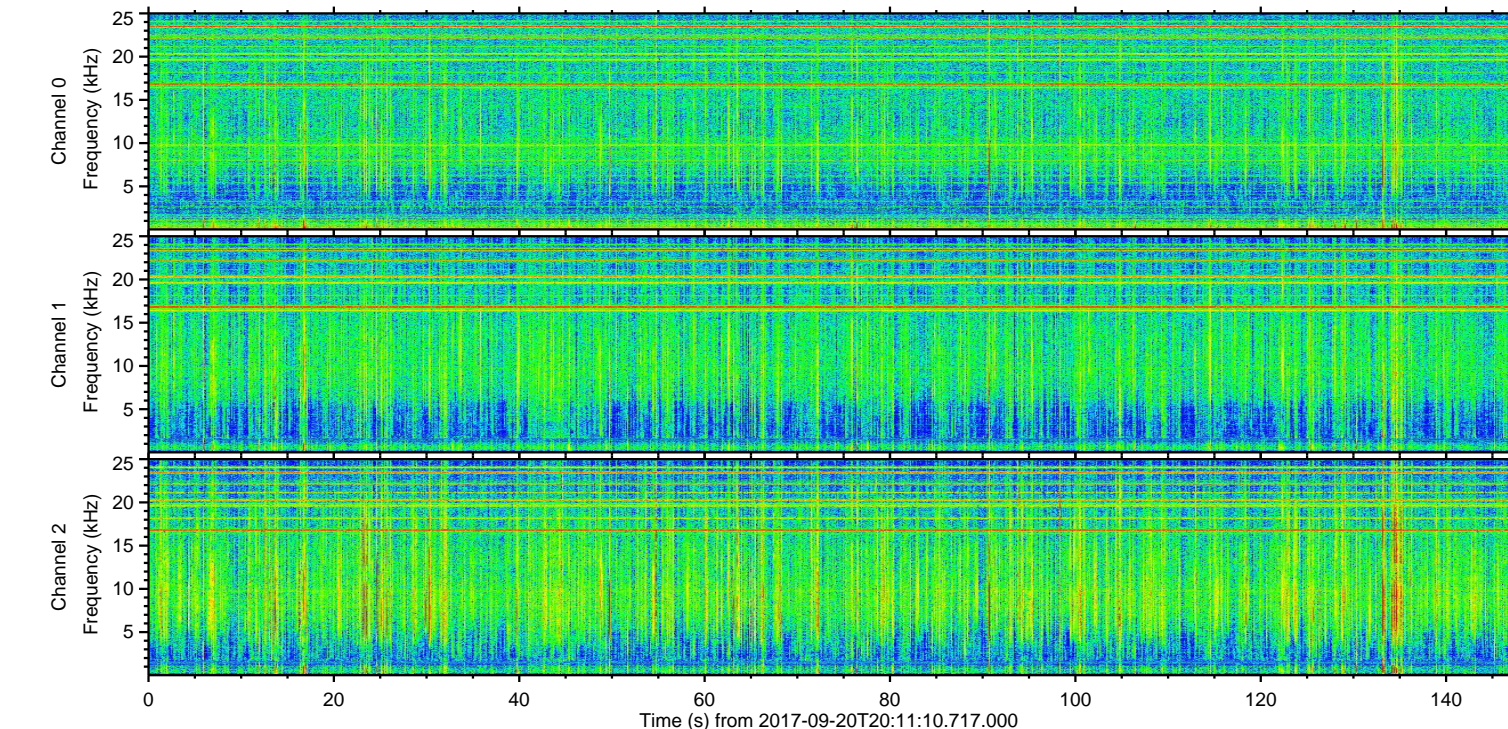
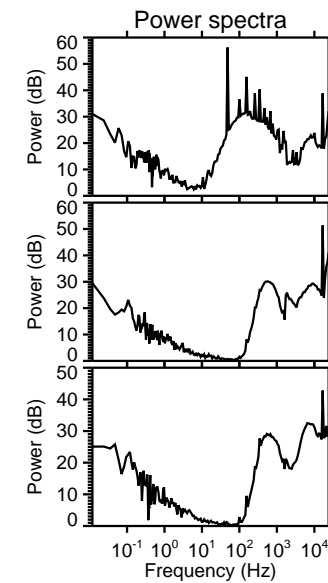
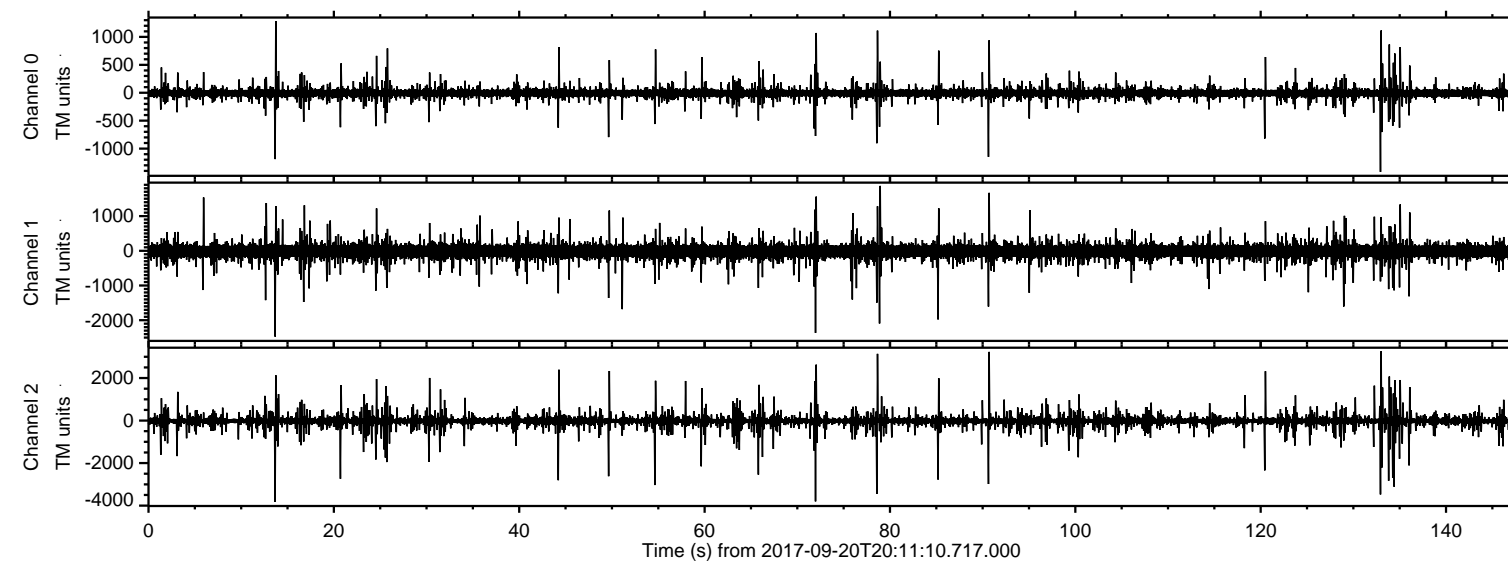
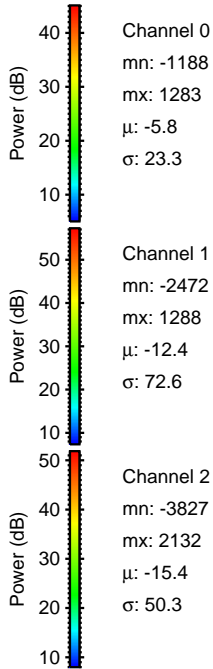
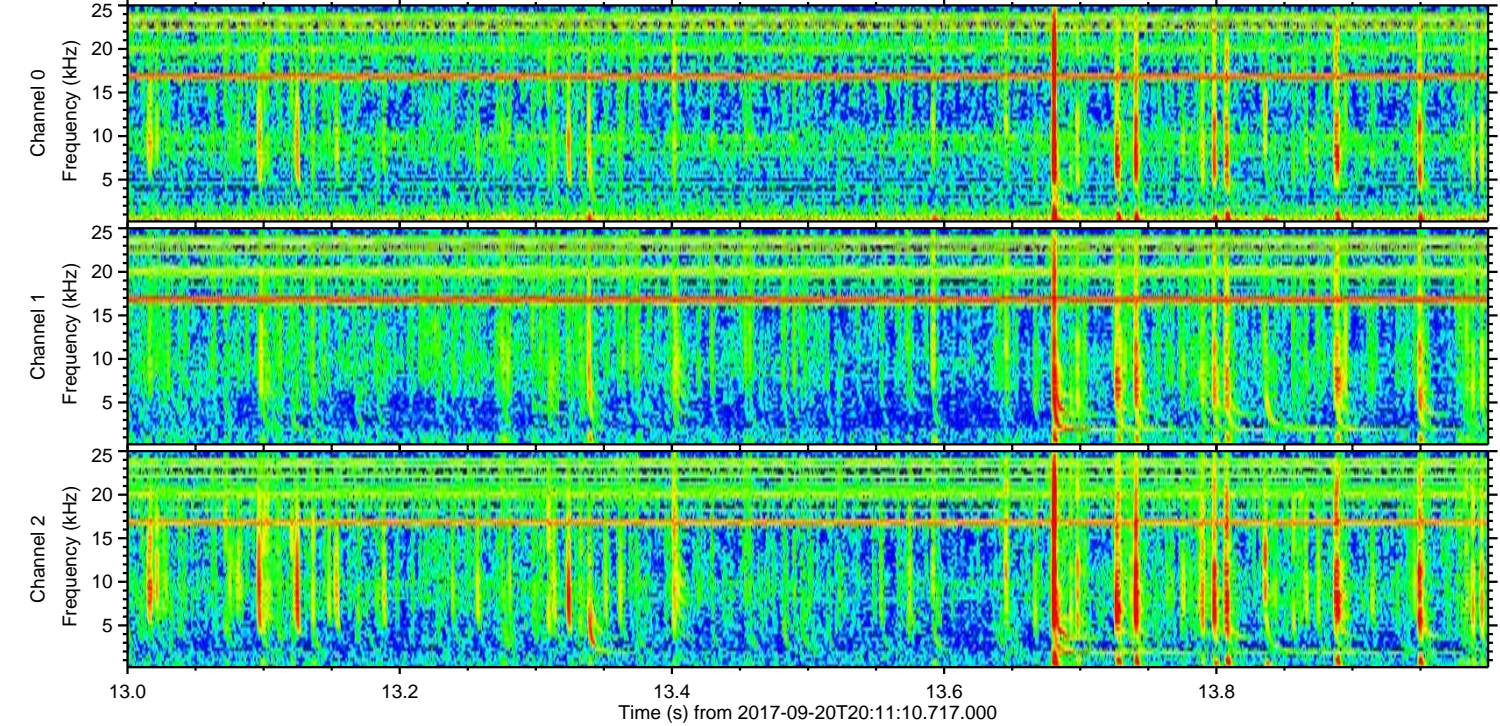
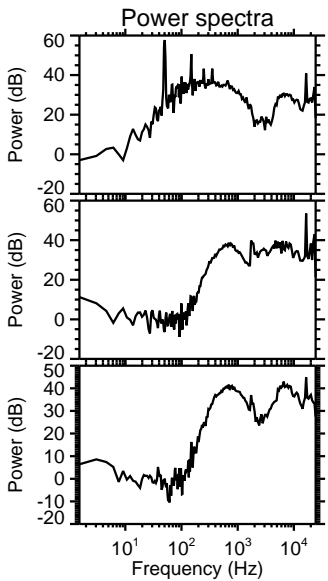
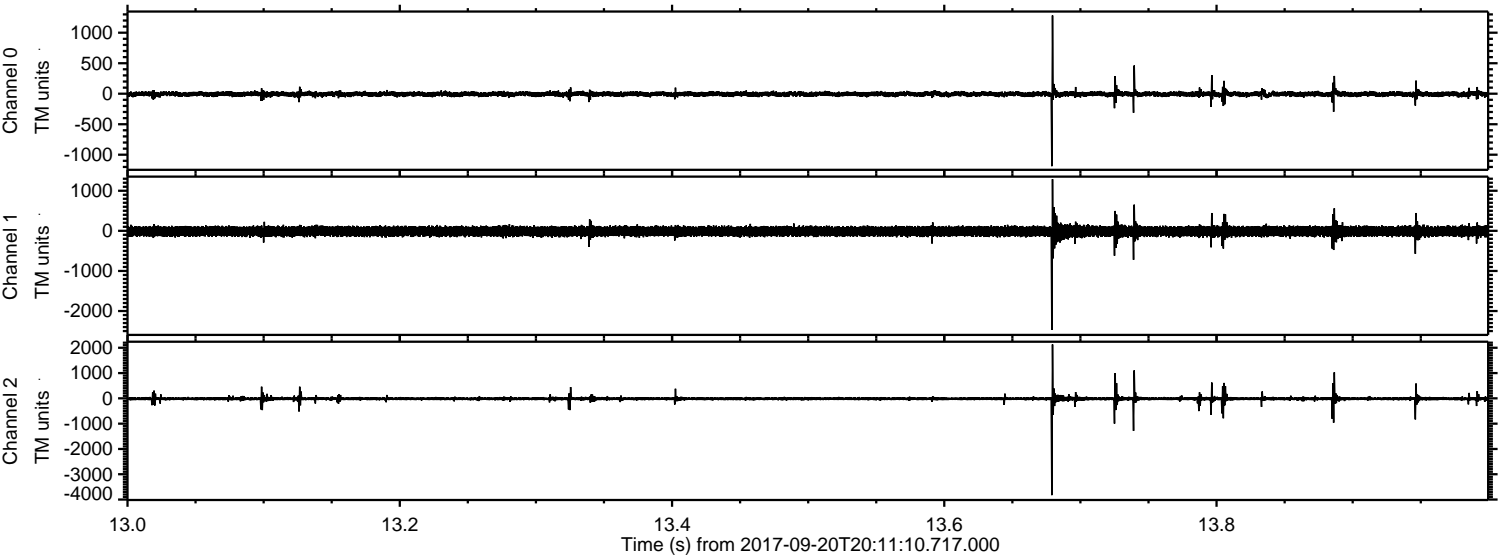


ELMAVAN 3D WAVEFORMS (Measured data sampled at 50 kHz) 51000 packets of 144 samples from 2017-09-20T20:11:10.717.000.

Processed Wed Sep 20 22:18:33 2017 by ELM ver.2012-10-06 from 001__elm20170920_2011109__dat00.bin



Processed Wed Sep 20 22:18:41 2017 by ELM ver.2012-10-06 from 001__elm20170920_201109__dat00.bin

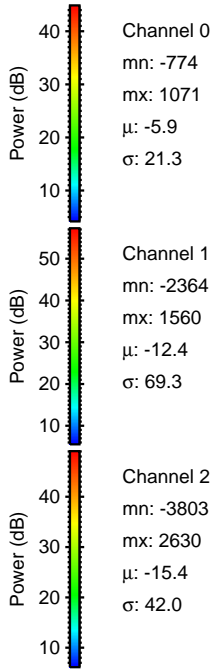
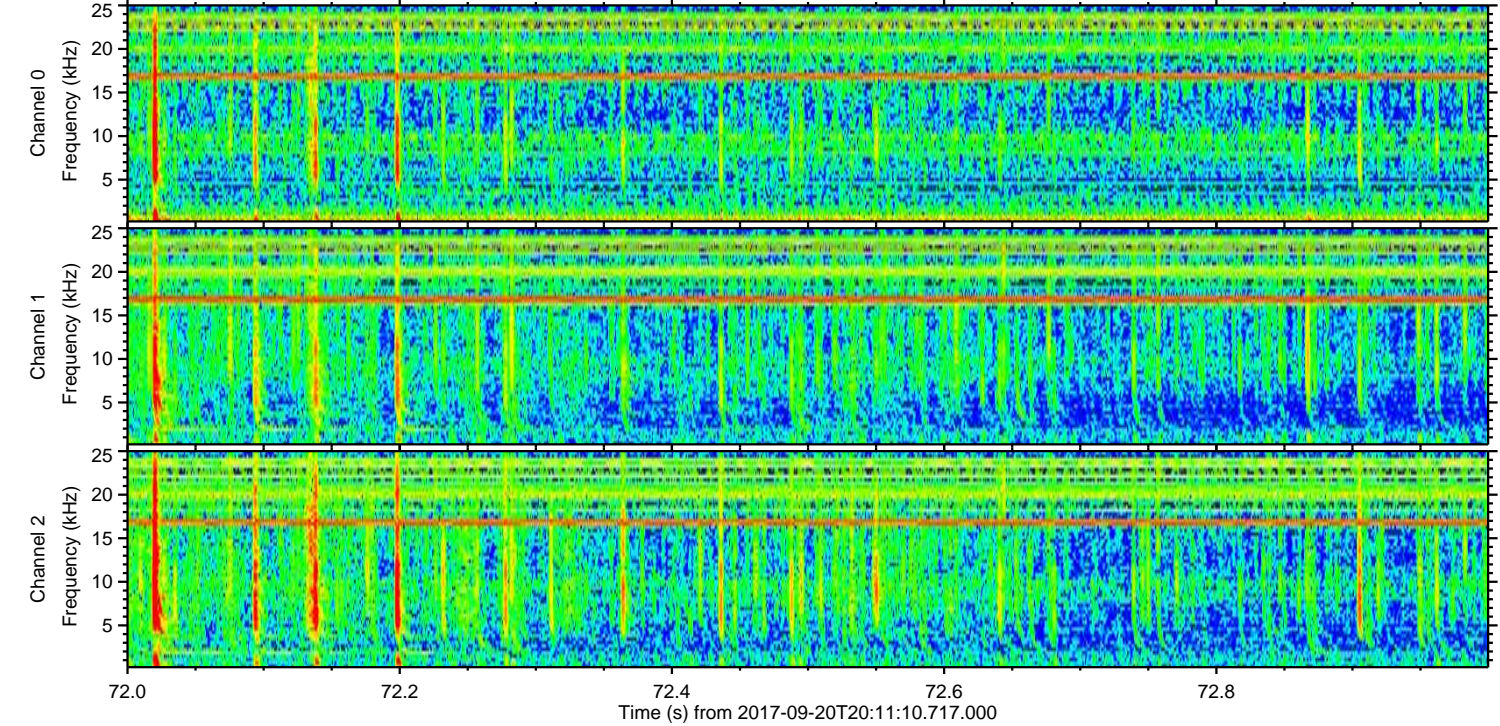
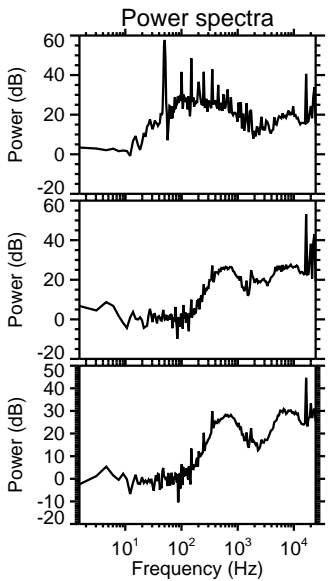
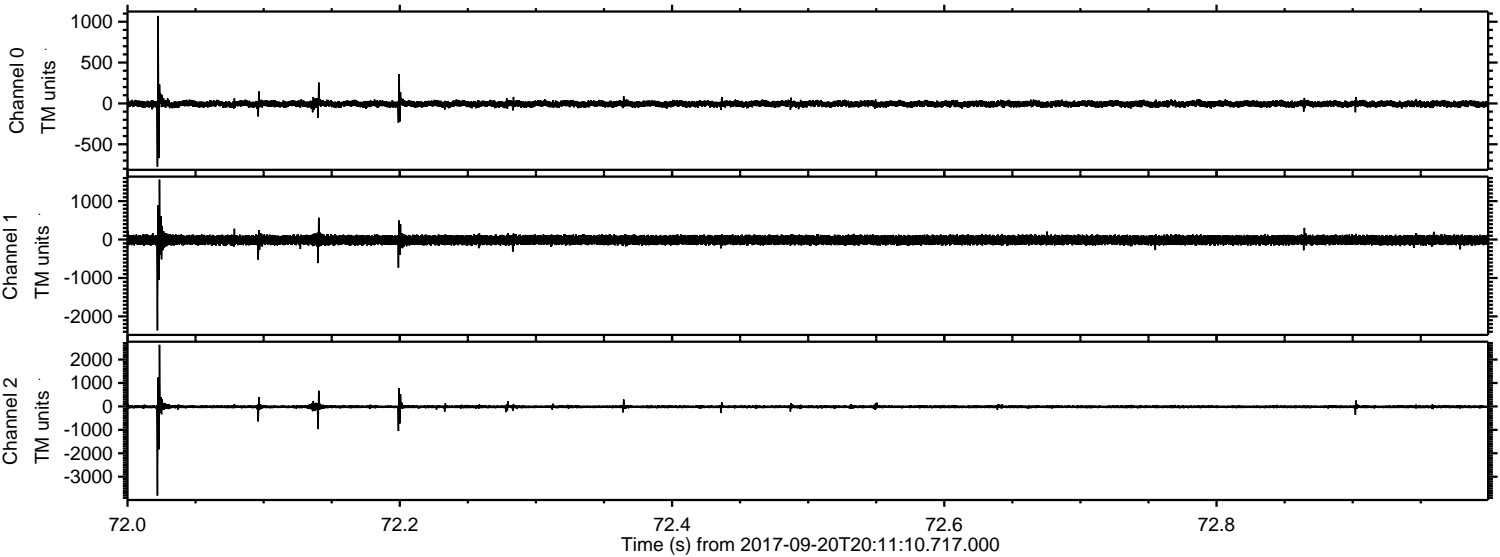


Channel 0
mn: -1188
mx: 1283
 μ : -5.8
 σ : 23.3

Channel 1
mn: -2472
mx: 1288
 μ : -12.4
 σ : 72.6

Channel 2
mn: -3827
mx: 2132
 μ : -15.4
 σ : 50.3

Processed Wed Sep 20 22:18:42 2017 by ELM ver.2012-10-06 from 001__elm20170920_201109__dat00.bin



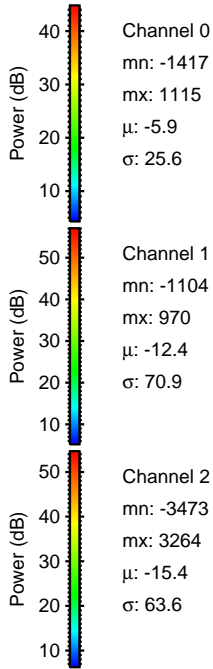
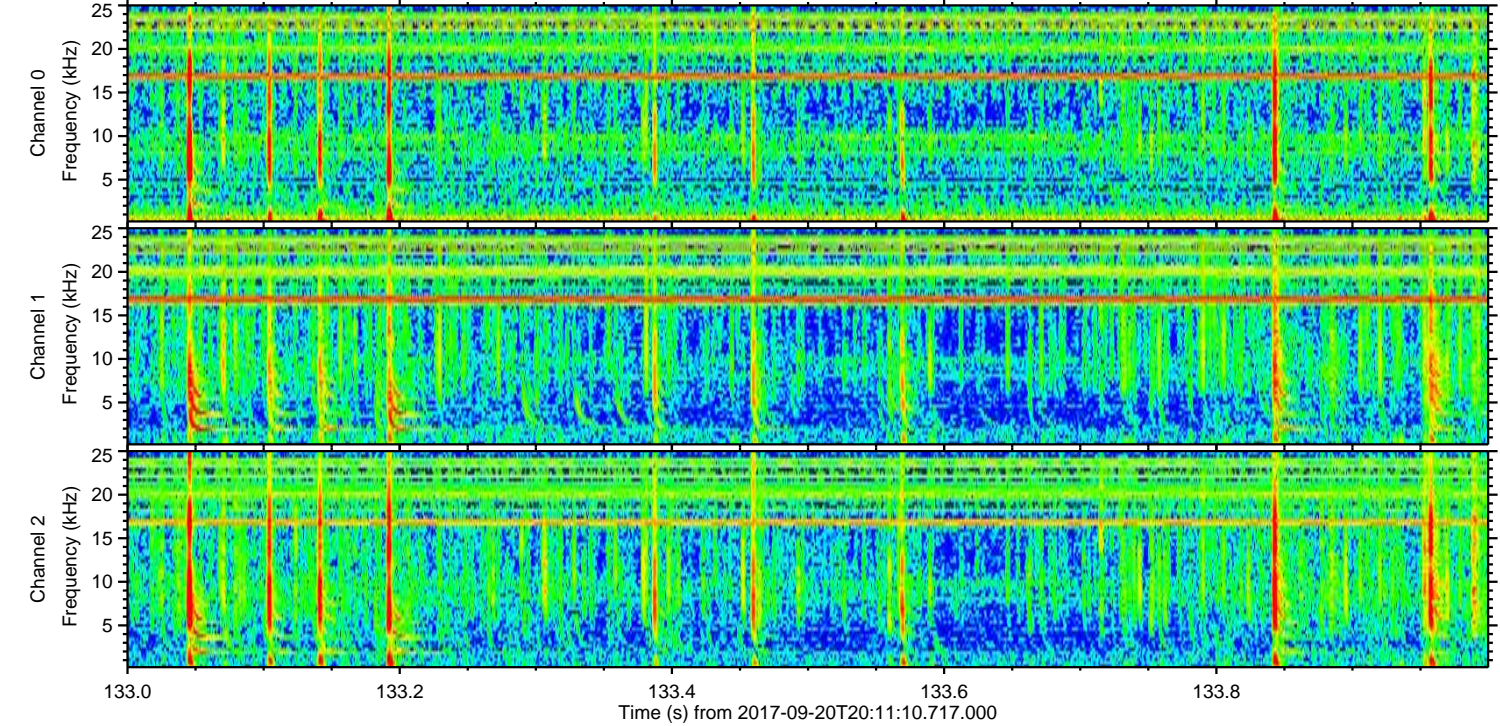
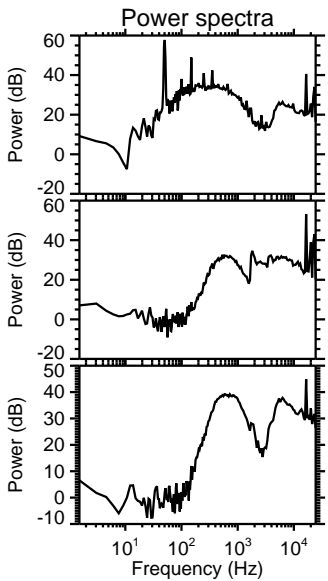
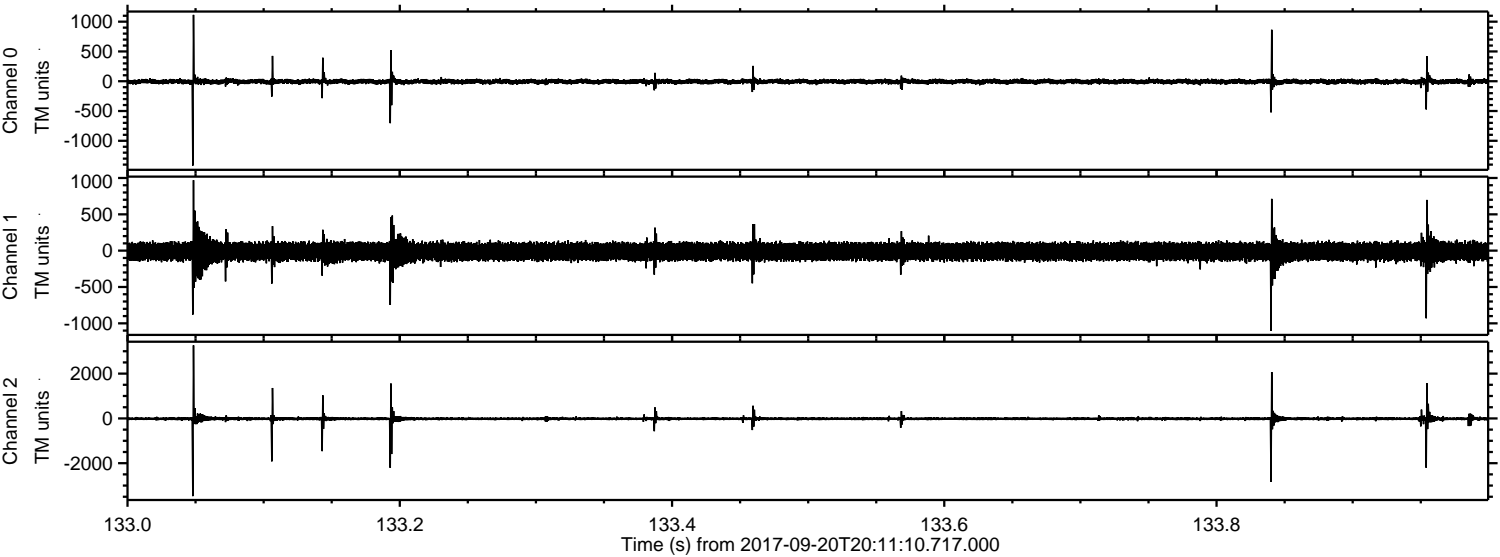
Channel 0
mn: -774
mx: 1071
 μ : -5.9
 σ : 21.3

Channel 1
mn: -2364
mx: 1560
 μ : -12.4
 σ : 69.3

Channel 2
mn: -3803
mx: 2630
 μ : -15.4
 σ : 42.0

ELMAVAN 3D WAVEFORMS (Measured data sampled at 50 kHz) 51000 packets of 144 samples from 2017-09-20T20:11:10.717.000. Part 134/147

Processed Wed Sep 20 22:18:42 2017 by ELM ver.2012-10-06 from 001__elm20170920_201109__dat00.bin

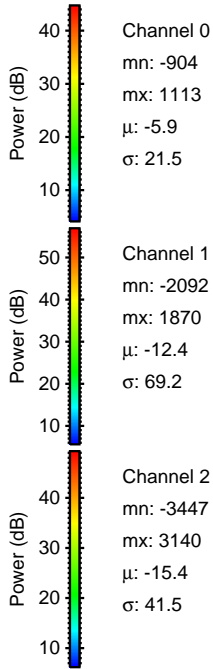
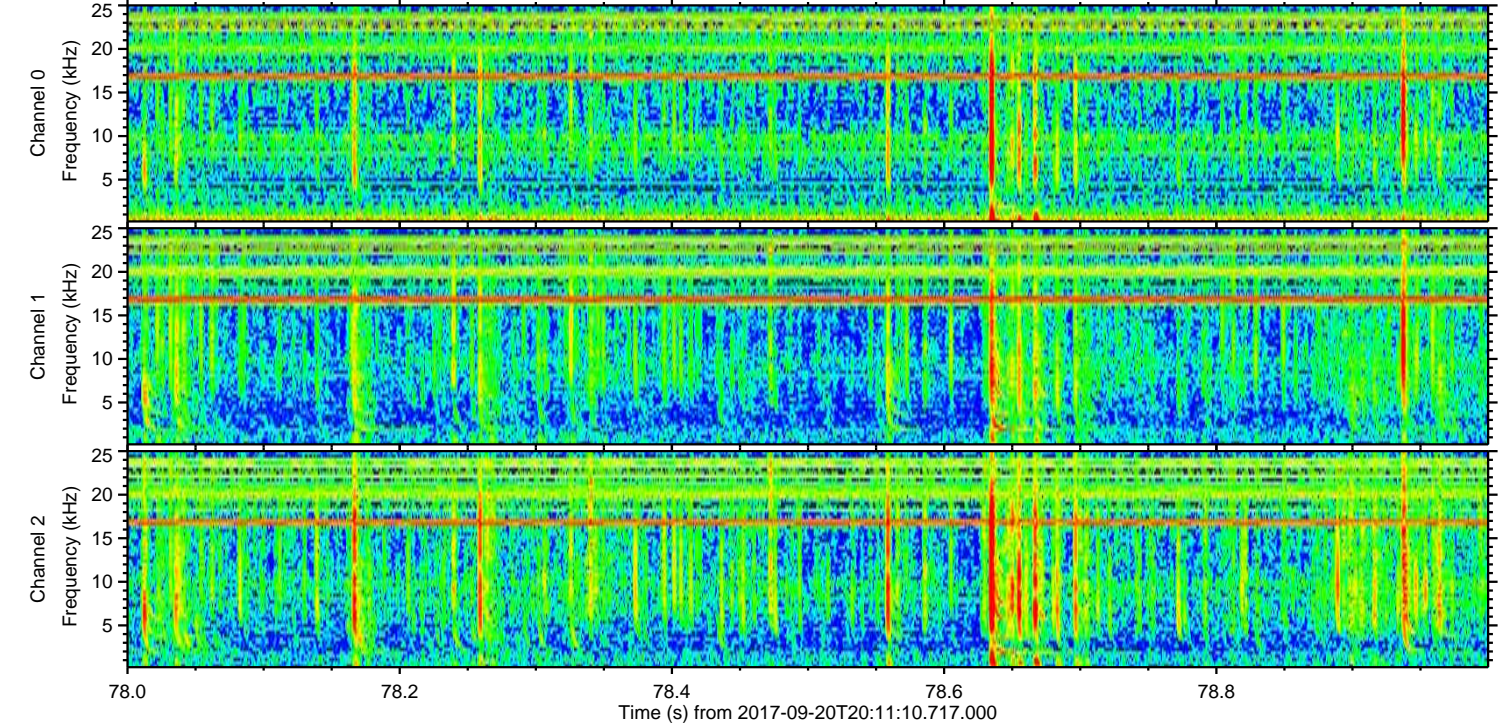
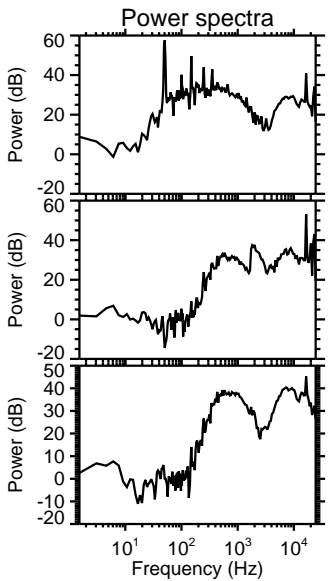
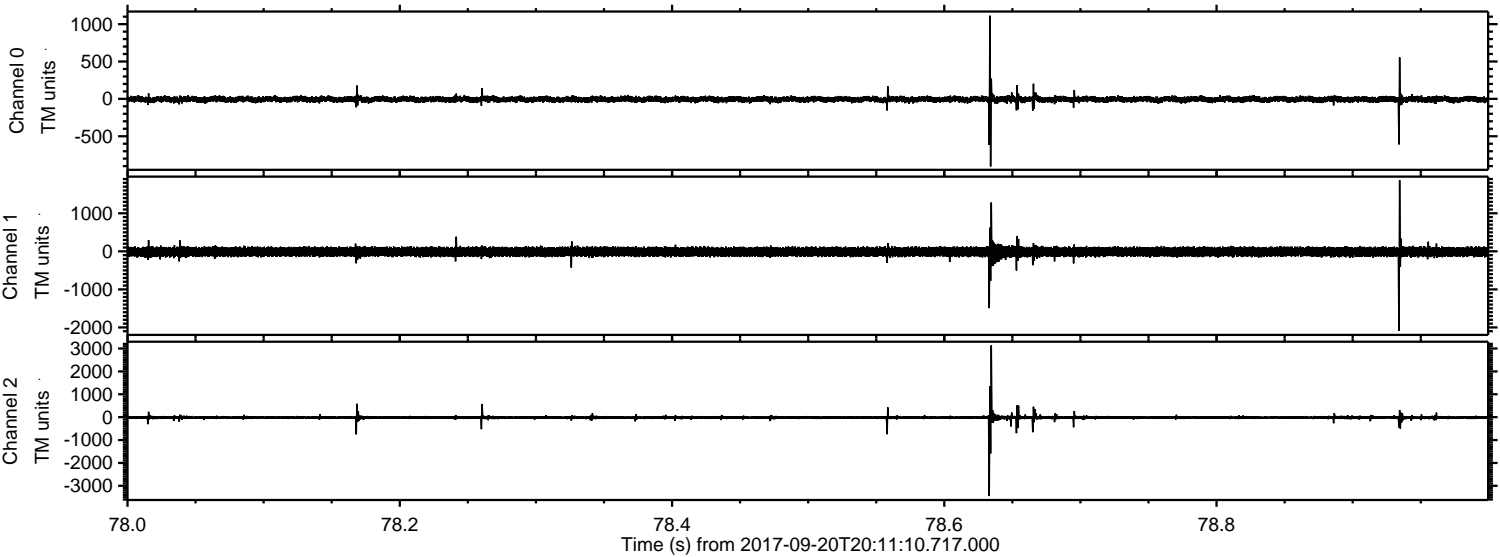


Channel 0
mn: -1417
mx: 1115
 μ : -5.9
 σ : 25.6

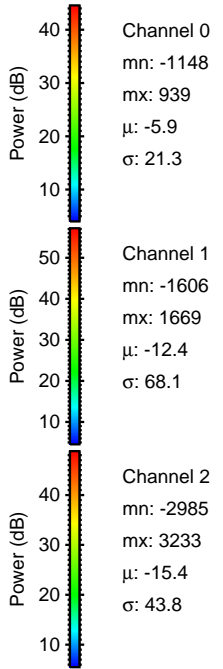
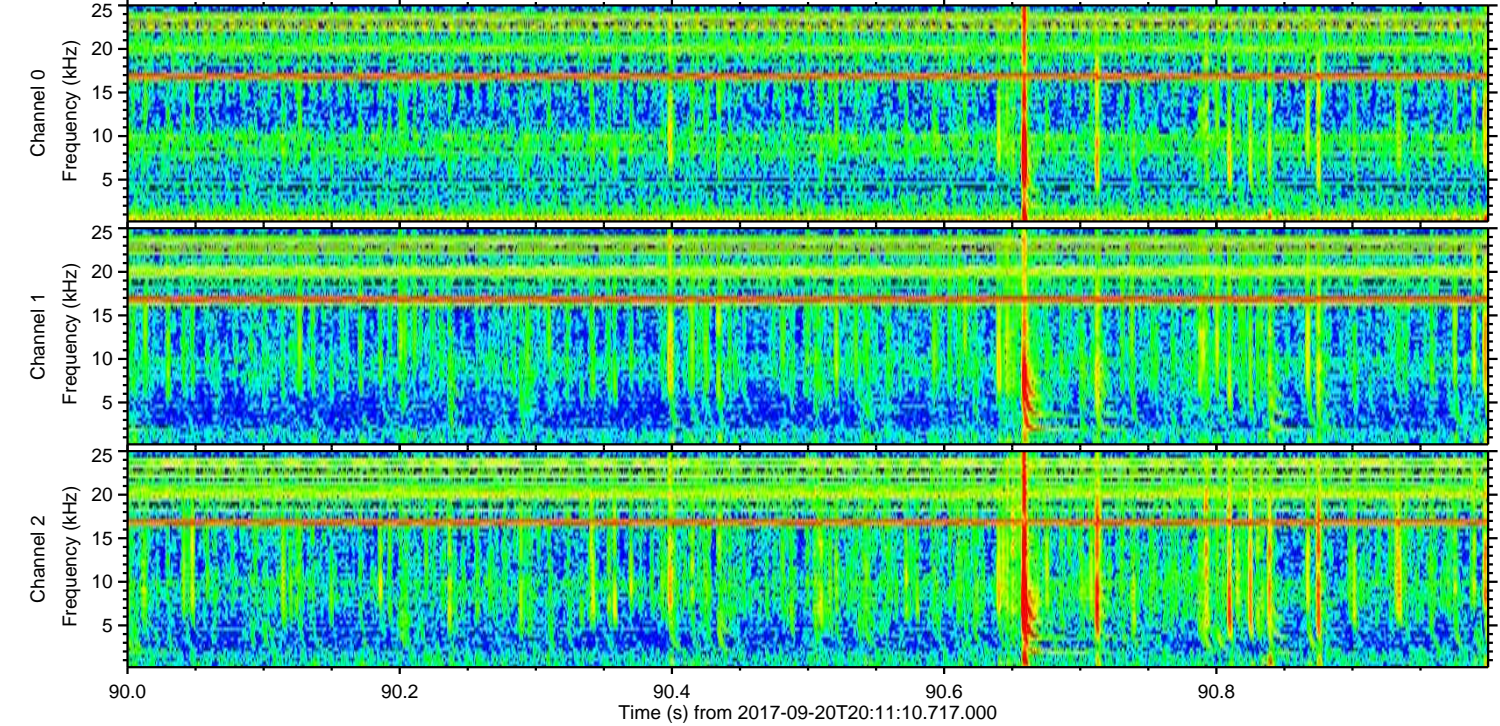
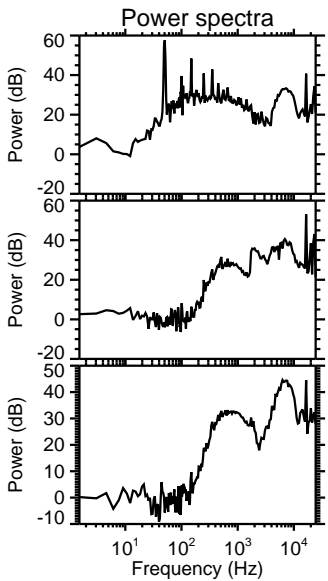
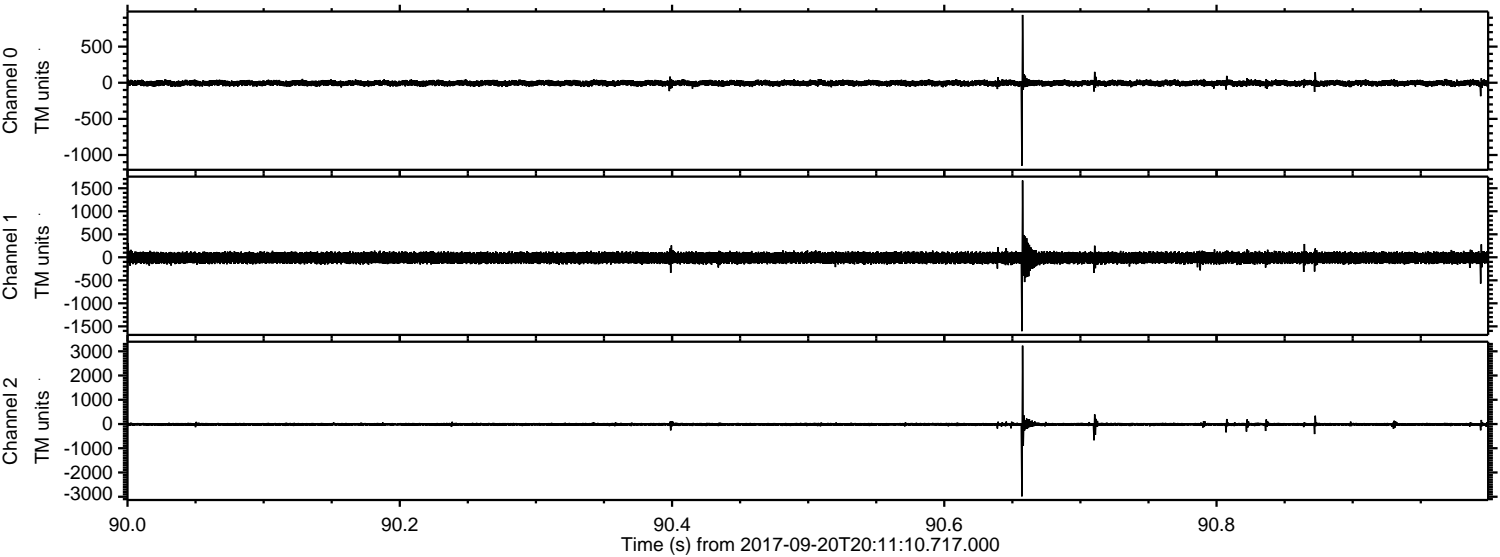
Channel 1
mn: -1104
mx: 970
 μ : -12.4
 σ : 70.9

Channel 2
mn: -3473
mx: 3264
 μ : -15.4
 σ : 63.6

Processed Wed Sep 20 22:18:44 2017 by ELM ver.2012-10-06 from 001__elm20170920_201109__dat00.bin



Processed Wed Sep 20 22:18:44 2017 by ELM ver.2012-10-06 from 001__elm20170920_201109__dat00.bin



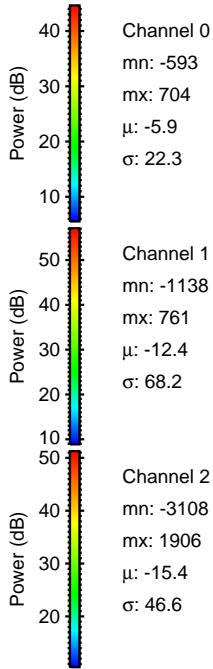
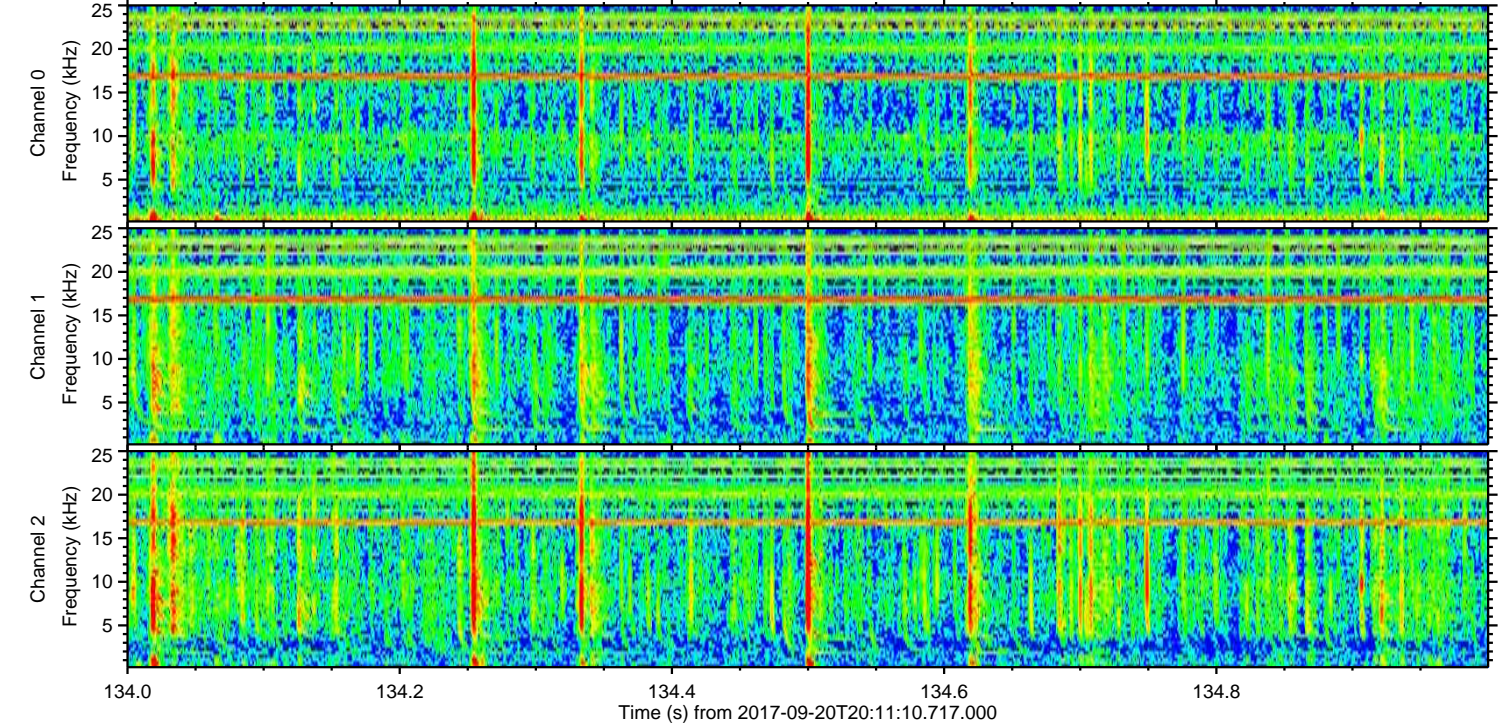
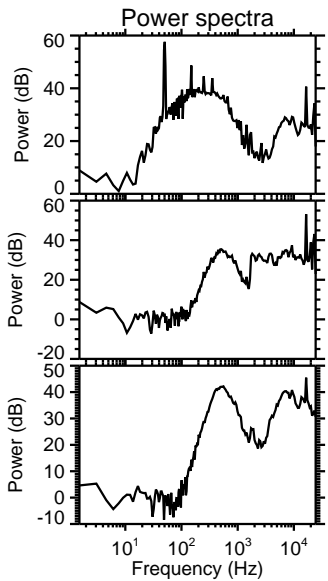
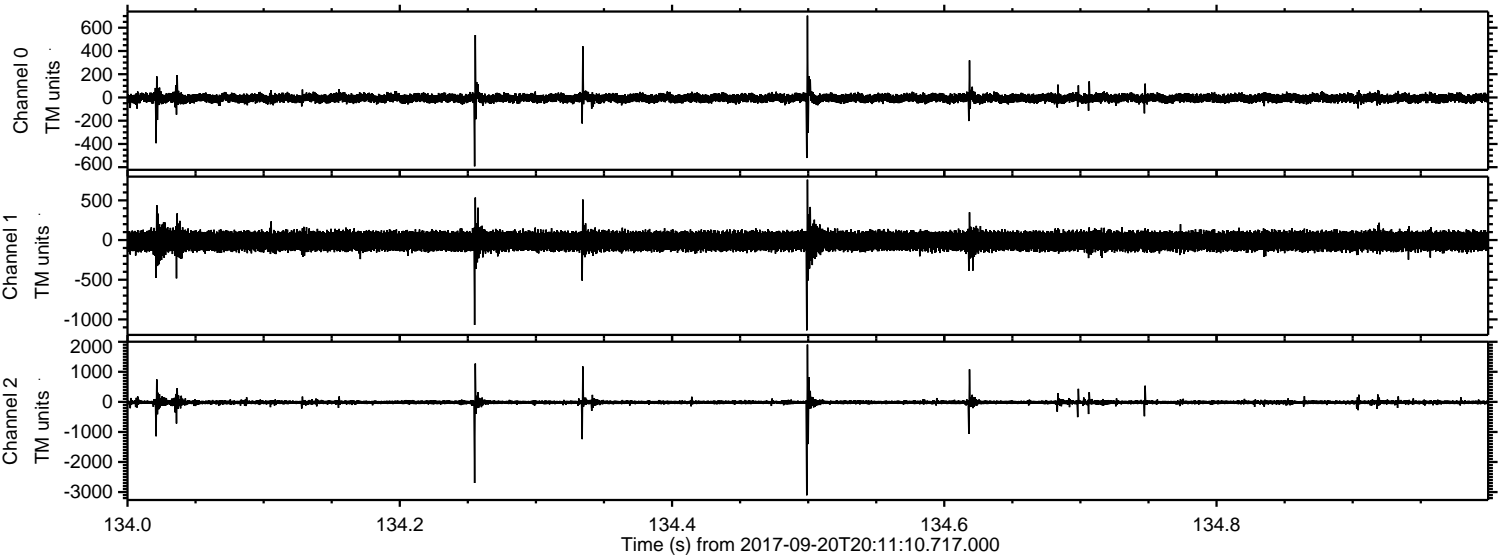
Channel 0
mn: -1148
mx: 939
 μ : -5.9
 σ : 21.3

Channel 1
mn: -1606
mx: 1669
 μ : -12.4
 σ : 68.1

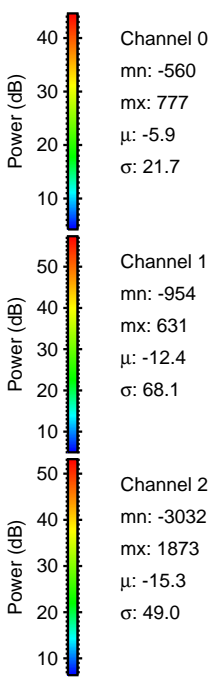
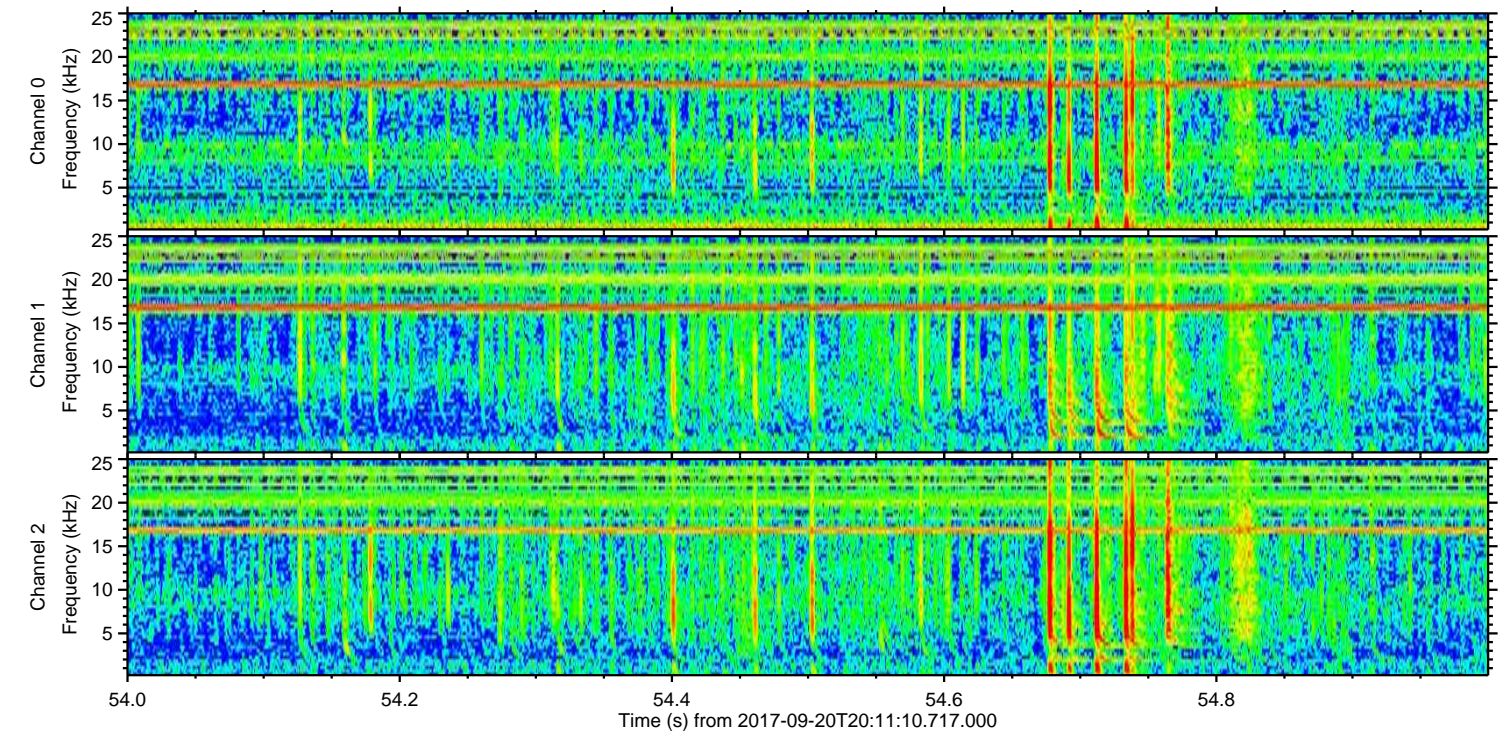
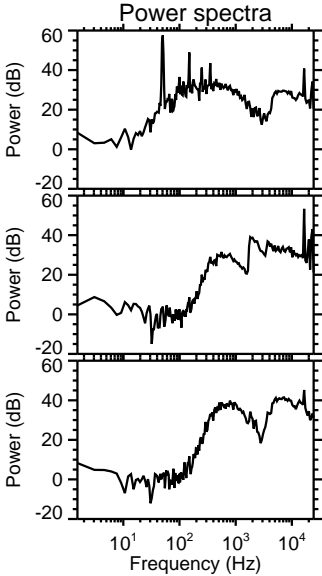
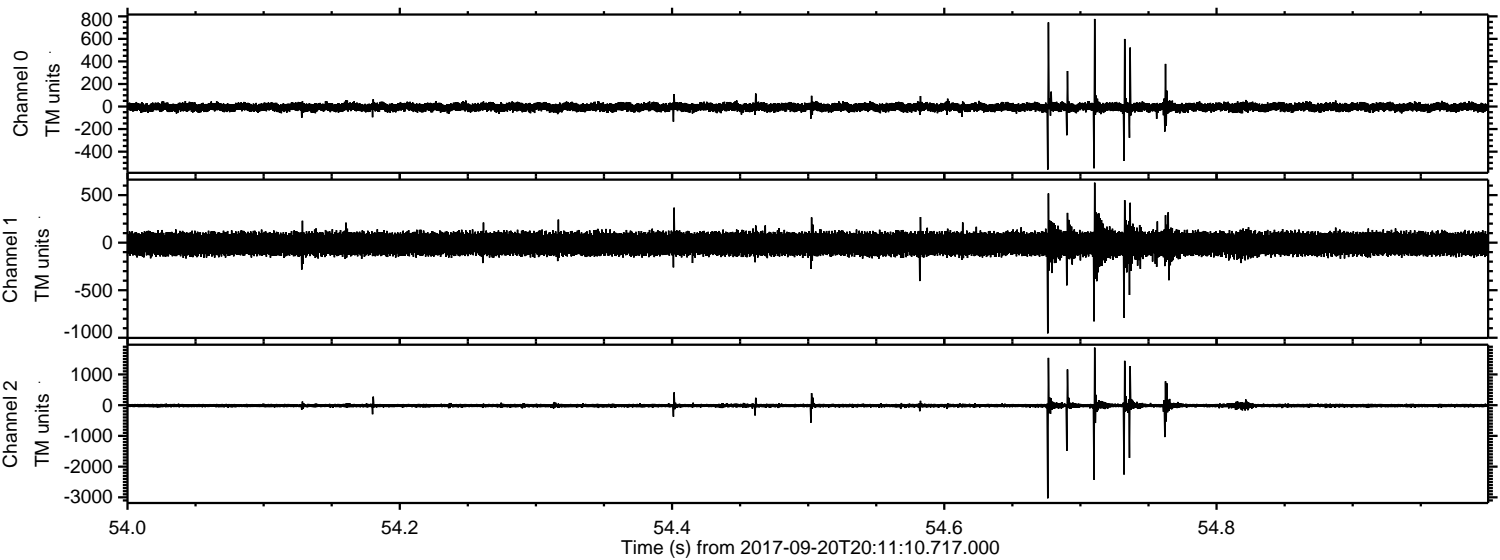
Channel 2
mn: -2985
mx: 3233
 μ : -15.4
 σ : 43.8

ELMAVAN 3D WAVEFORMS (Measured data sampled at 50 kHz) 51000 packets of 144 samples from 2017-09-20T20:11:10.717.000. Part 135/147

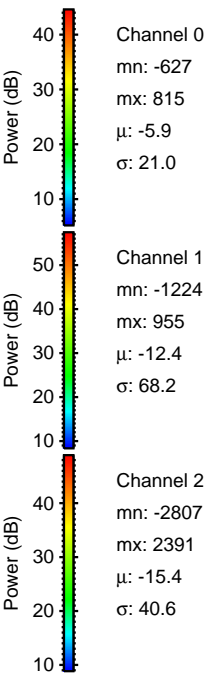
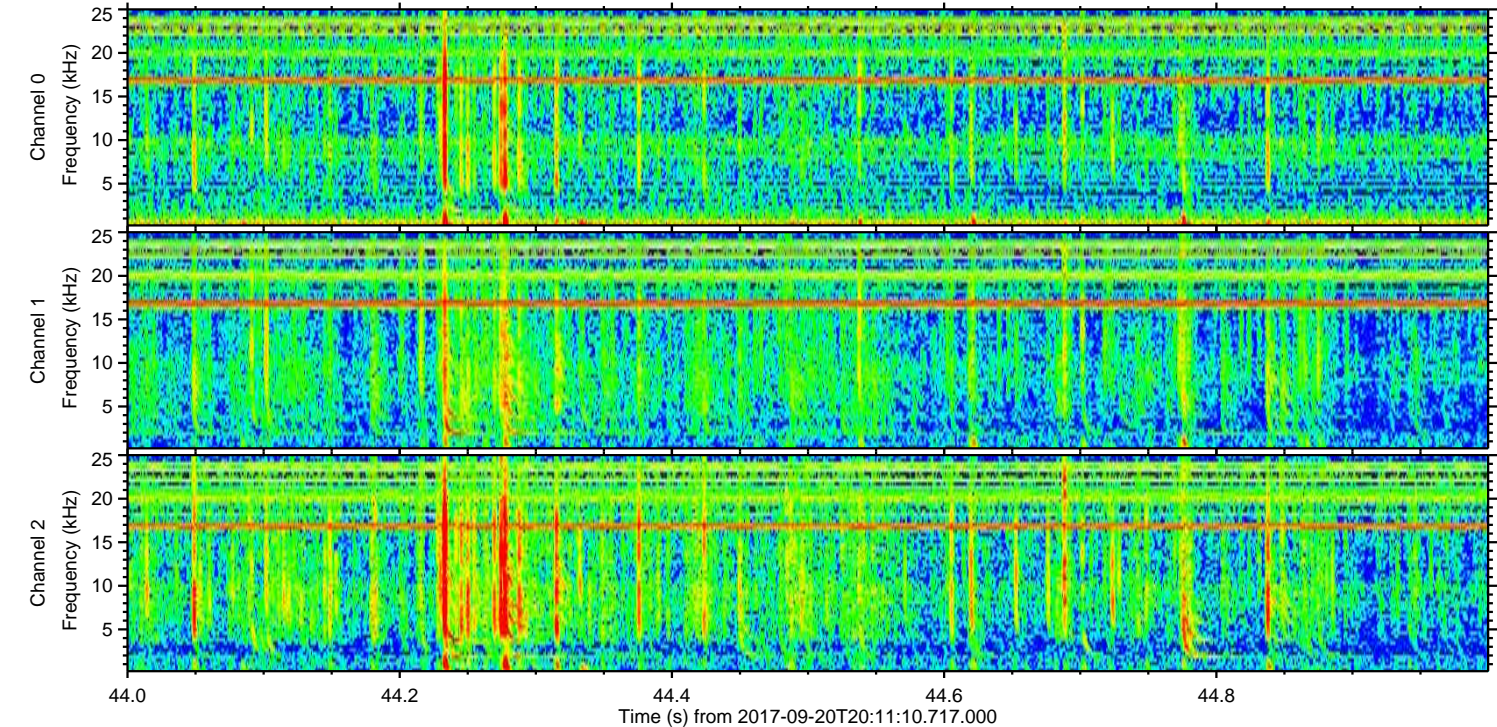
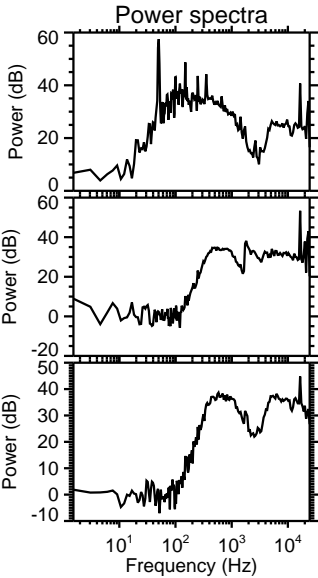
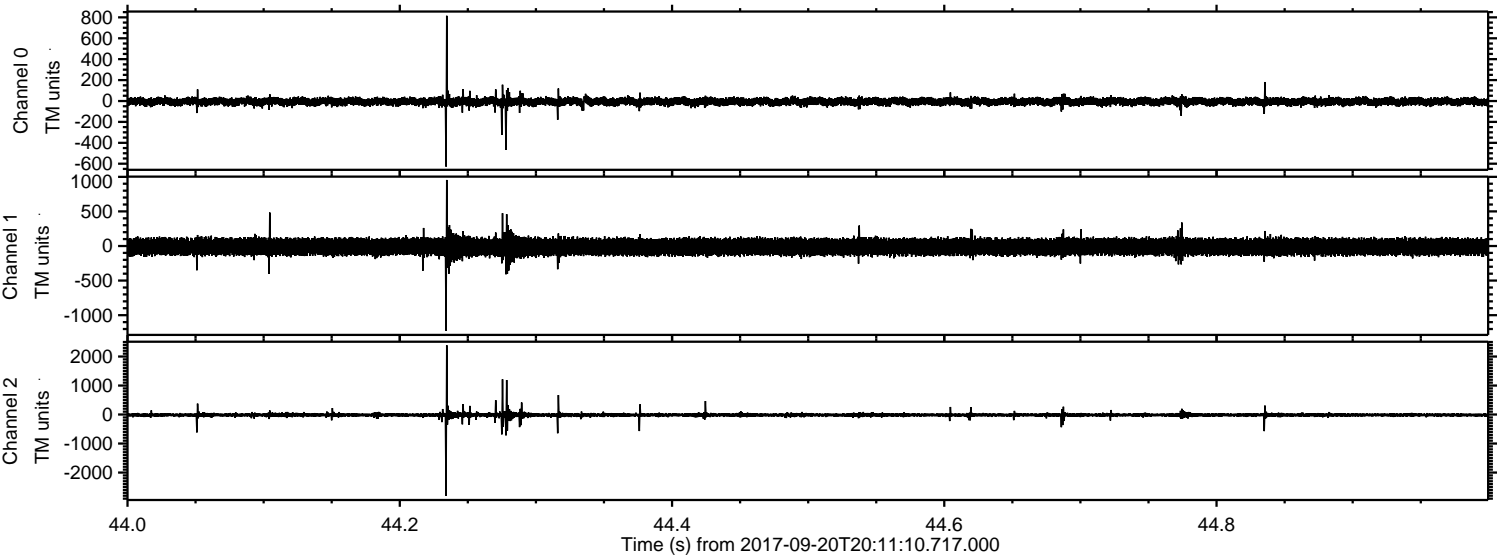
Processed Wed Sep 20 22:18:45 2017 by ELM ver.2012-10-06 from 001_elm20170920_201109__dat00.bin



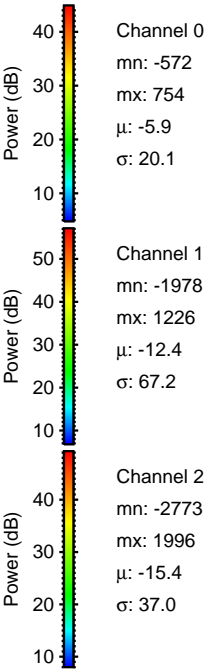
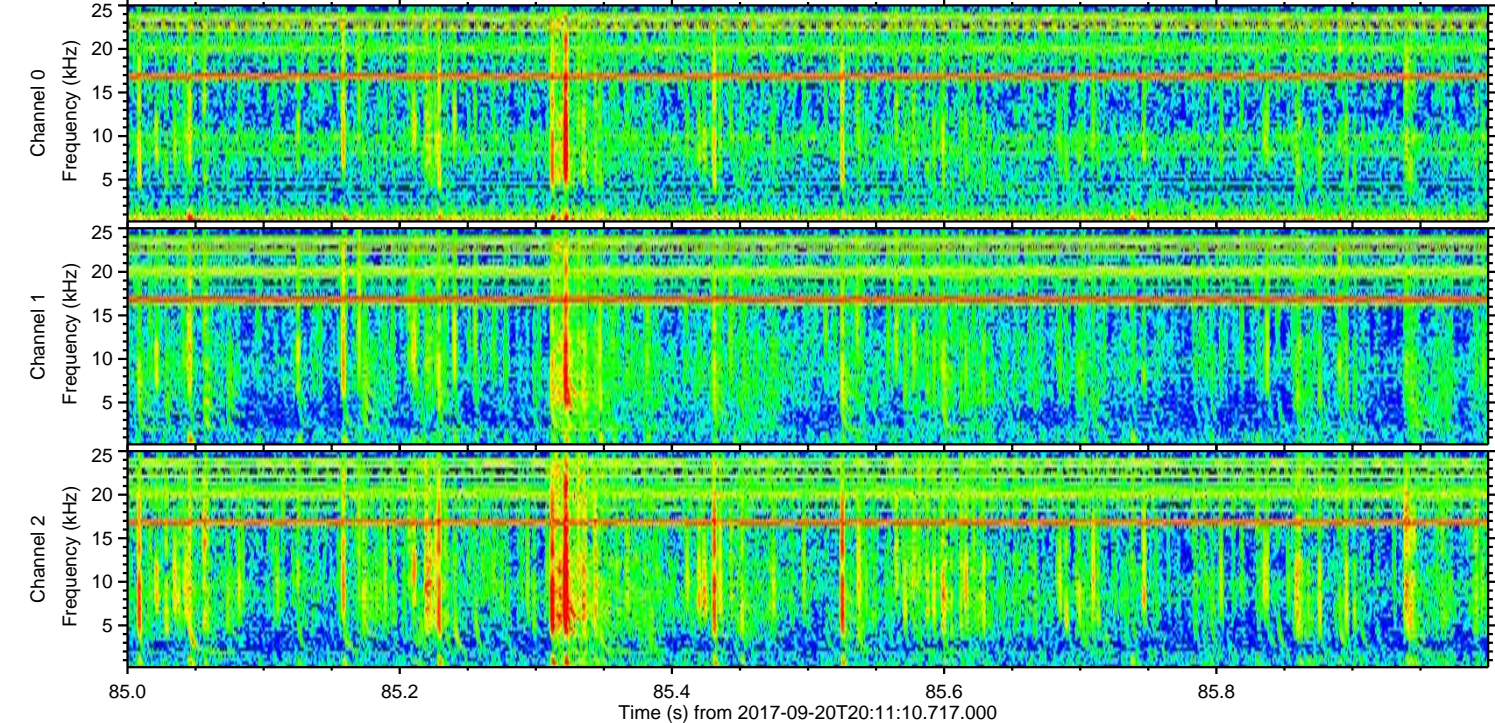
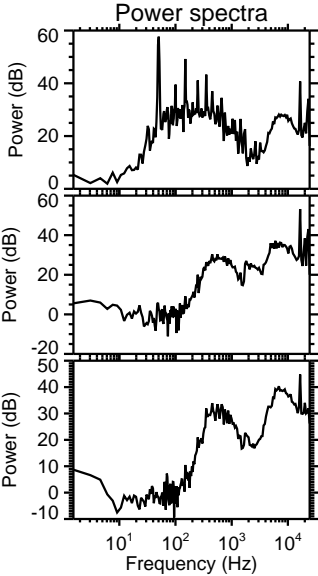
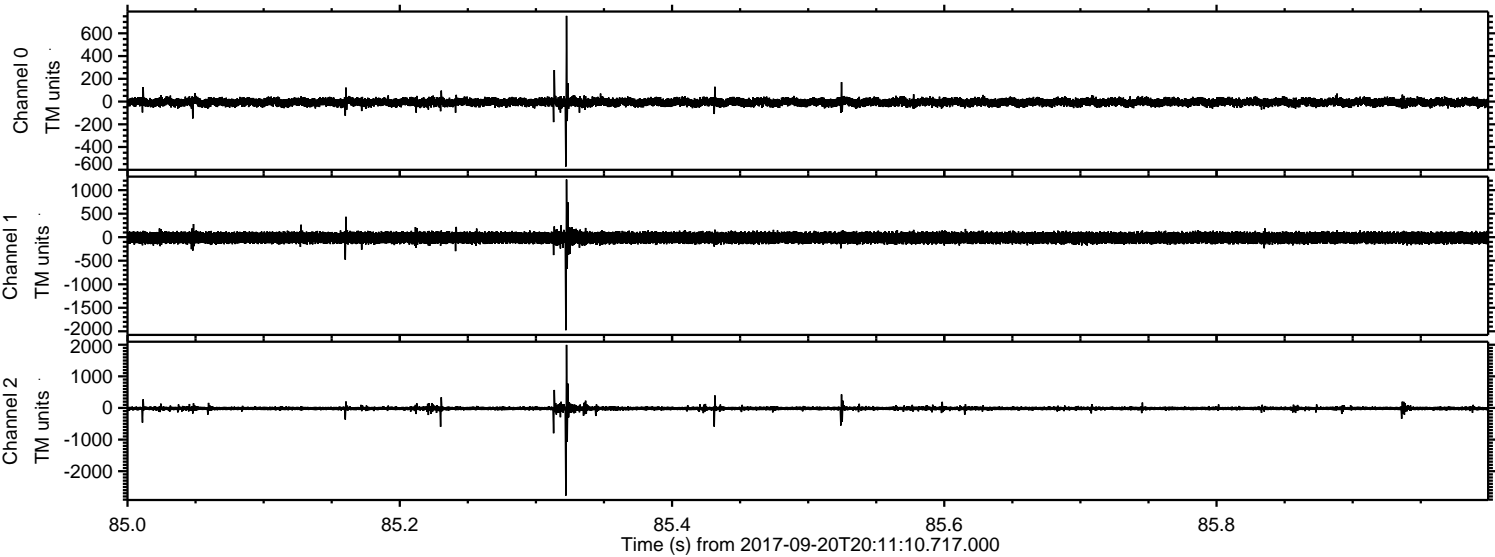
Processed Wed Sep 20 22:18:46 2017 by ELM ver.2012-10-06 from 001__elm20170920_201109__dat00.bin



Processed Wed Sep 20 22:18:47 2017 by ELM ver.2012-10-06 from 001__elm20170920_201109__dat00.bin



Processed Wed Sep 20 22:18:48 2017 by ELM ver.2012-10-06 from 001__elm20170920_201109__dat00.bin



Channel 0
mn: -572
mx: 754
 μ : -5.9
 σ : 20.1

Channel 1
mn: -1978
mx: 1226
 μ : -12.4
 σ : 67.2

Channel 2
mn: -2773
mx: 1996
 μ : -15.4
 σ : 37.0

Processed Wed Sep 20 22:18:49 2017 by ELM ver.2012-10-06 from 001__elm20170920_201109__dat00.bin

