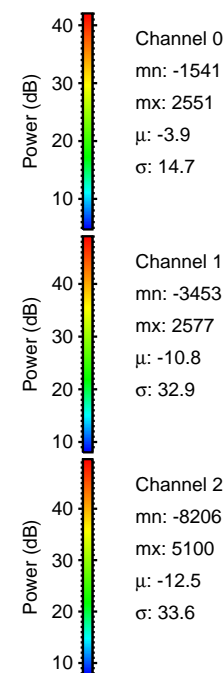
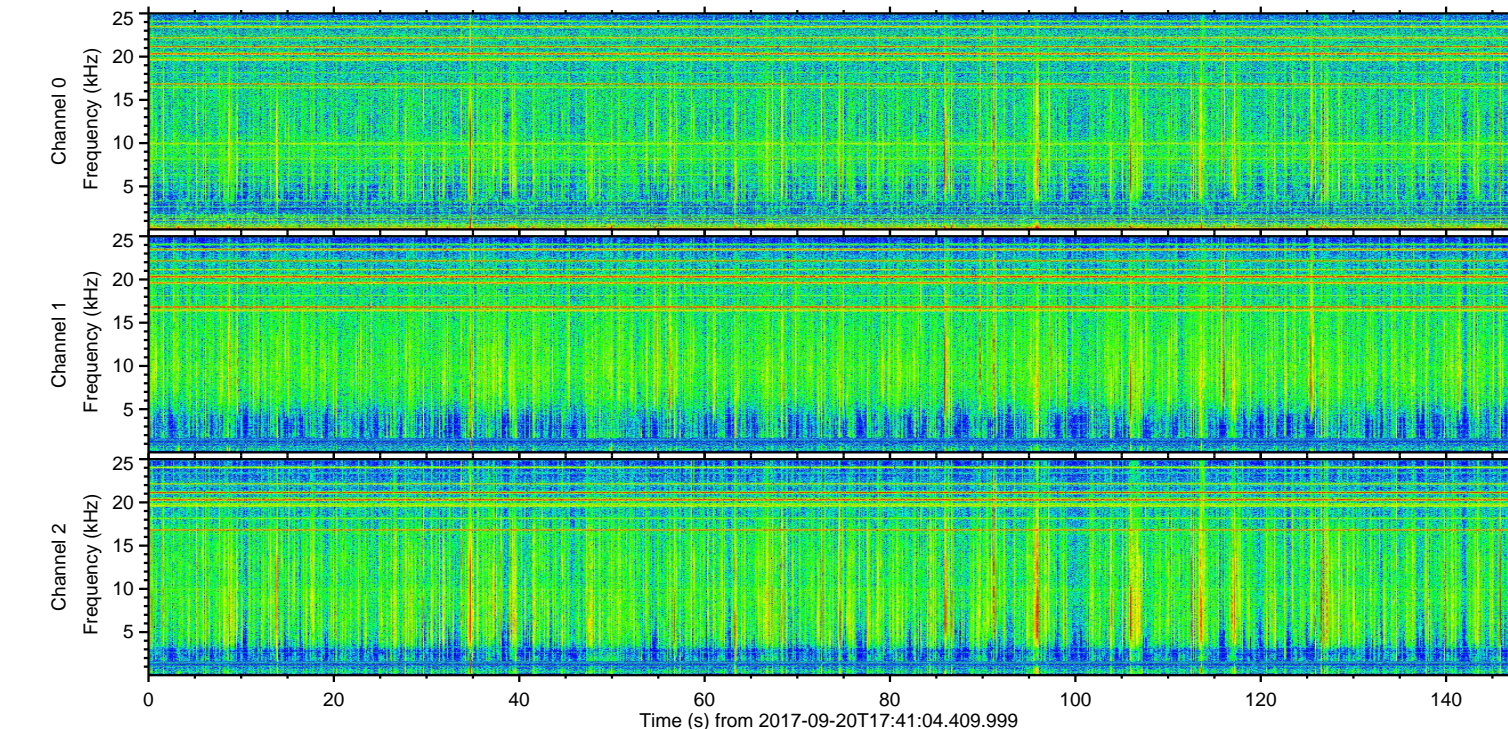
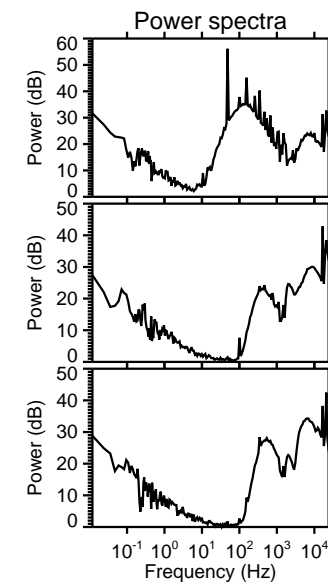
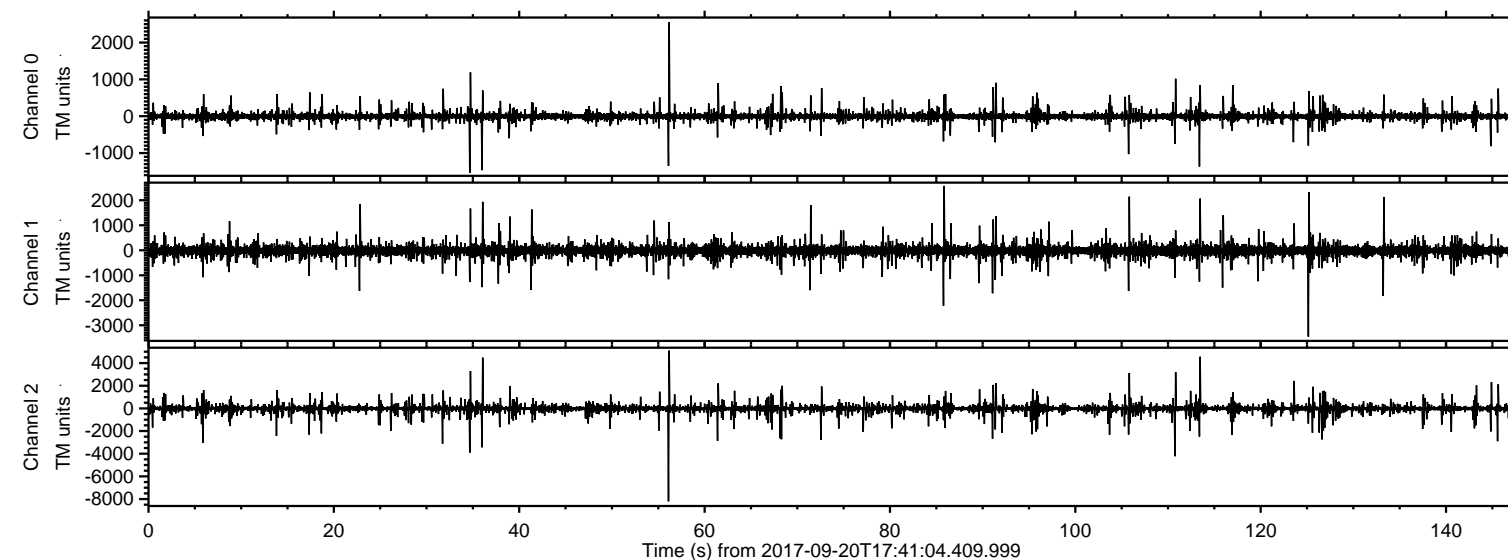
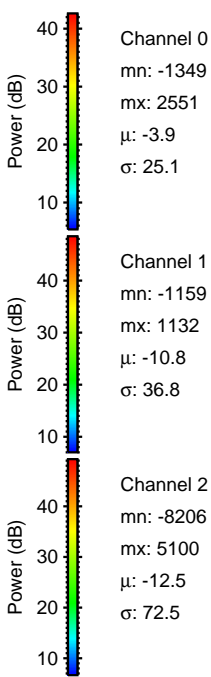
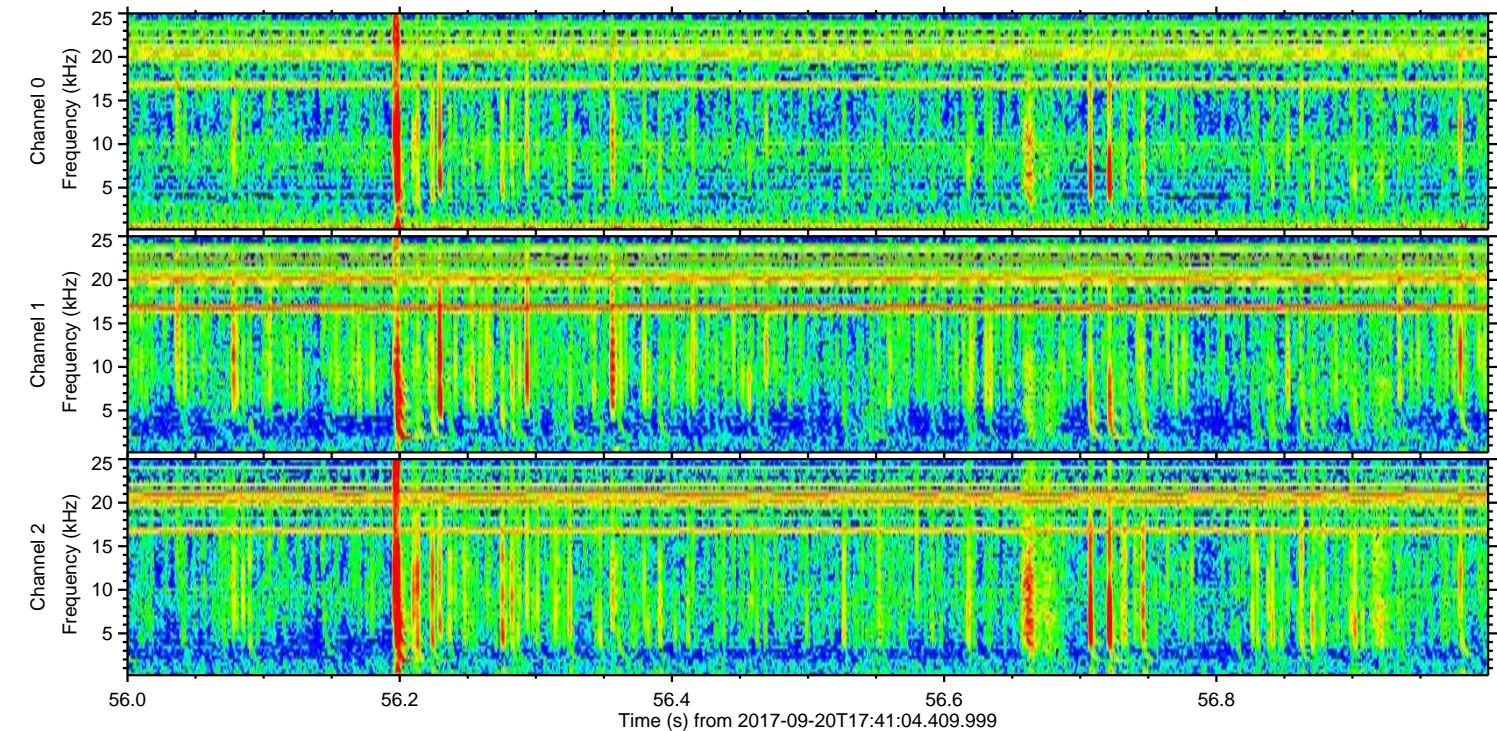
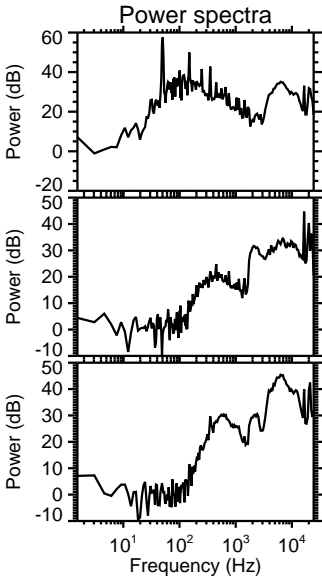
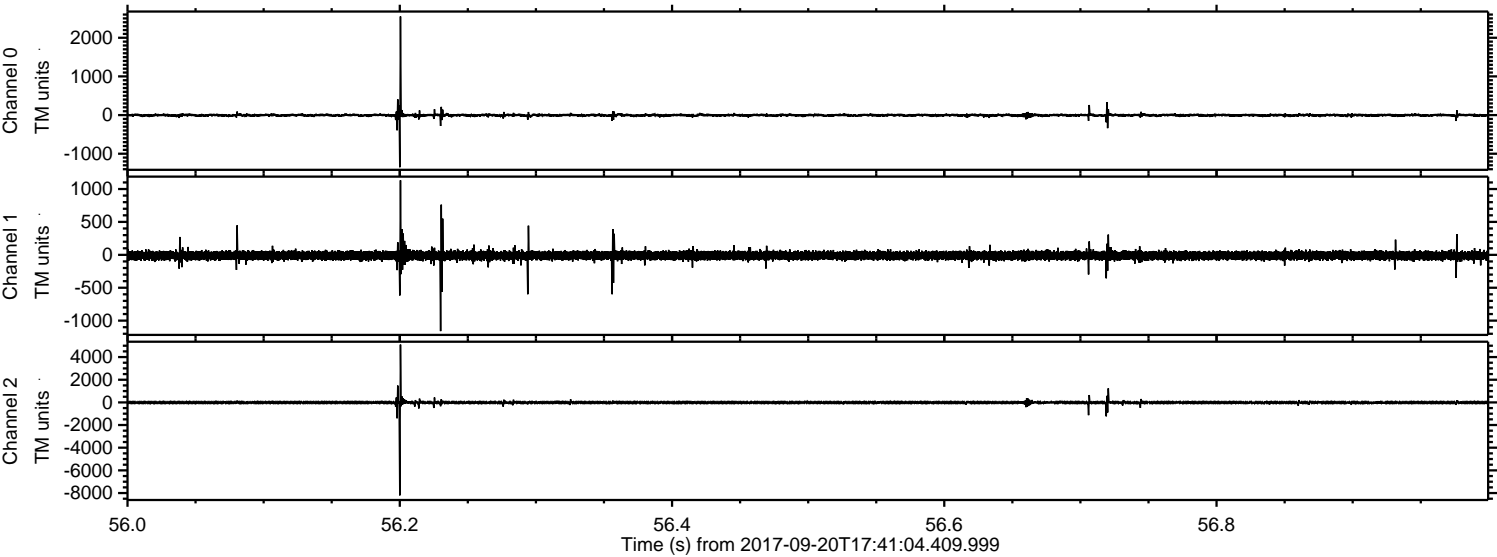


ELMAVAN 3D WAVEFORMS (Measured data sampled at 50 kHz) 51000 packets of 144 samples from 2017-09-20T17:41:04.409.999.

Processed Wed Sep 20 19:48:39 2017 by ELM ver.2012-10-06 from 001__elm20170920_174103__dat00.bin

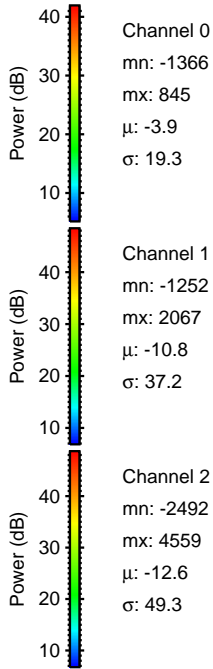
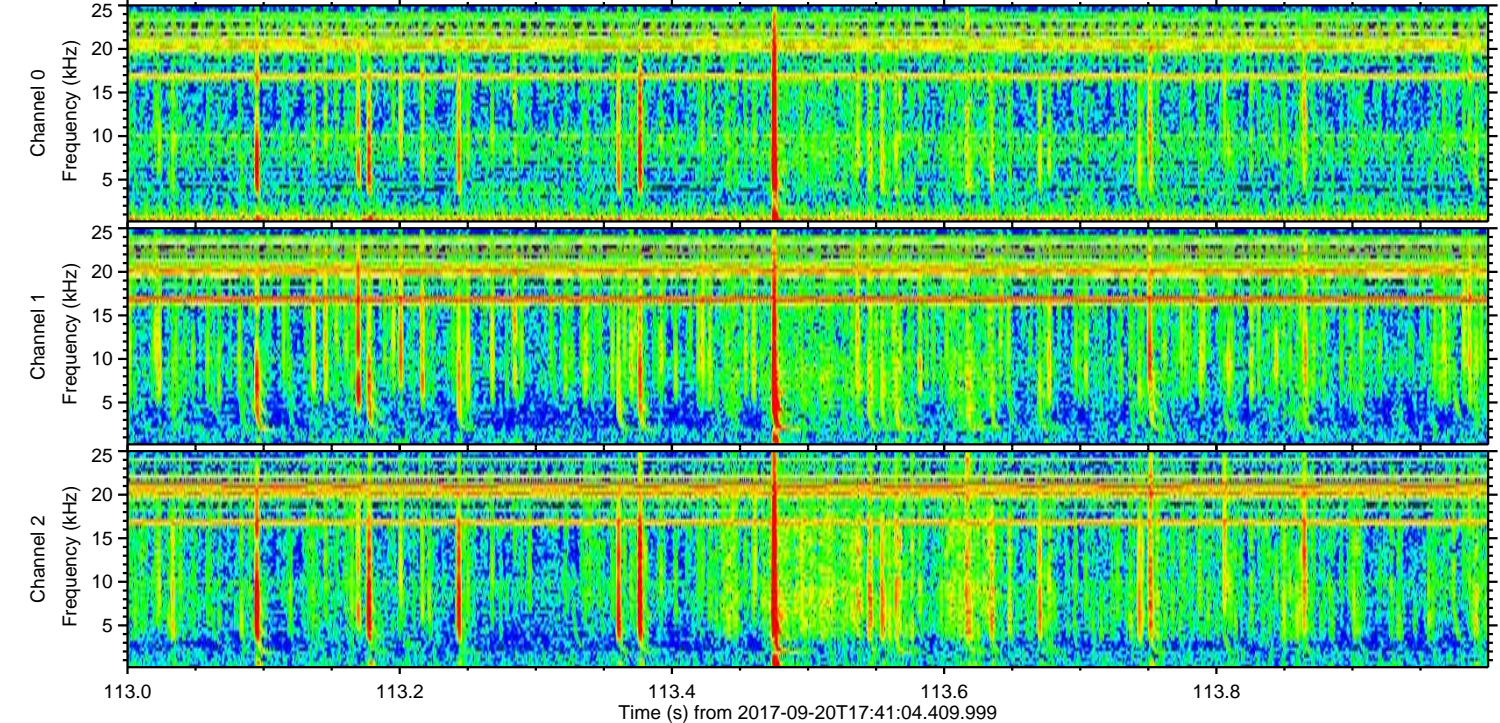
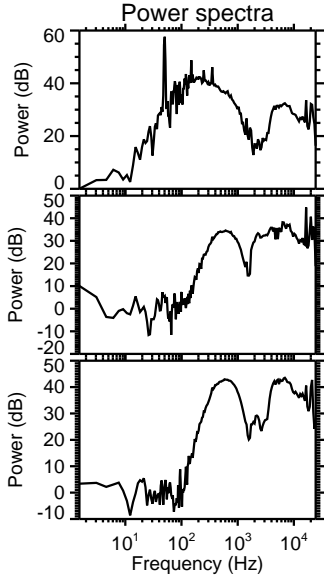
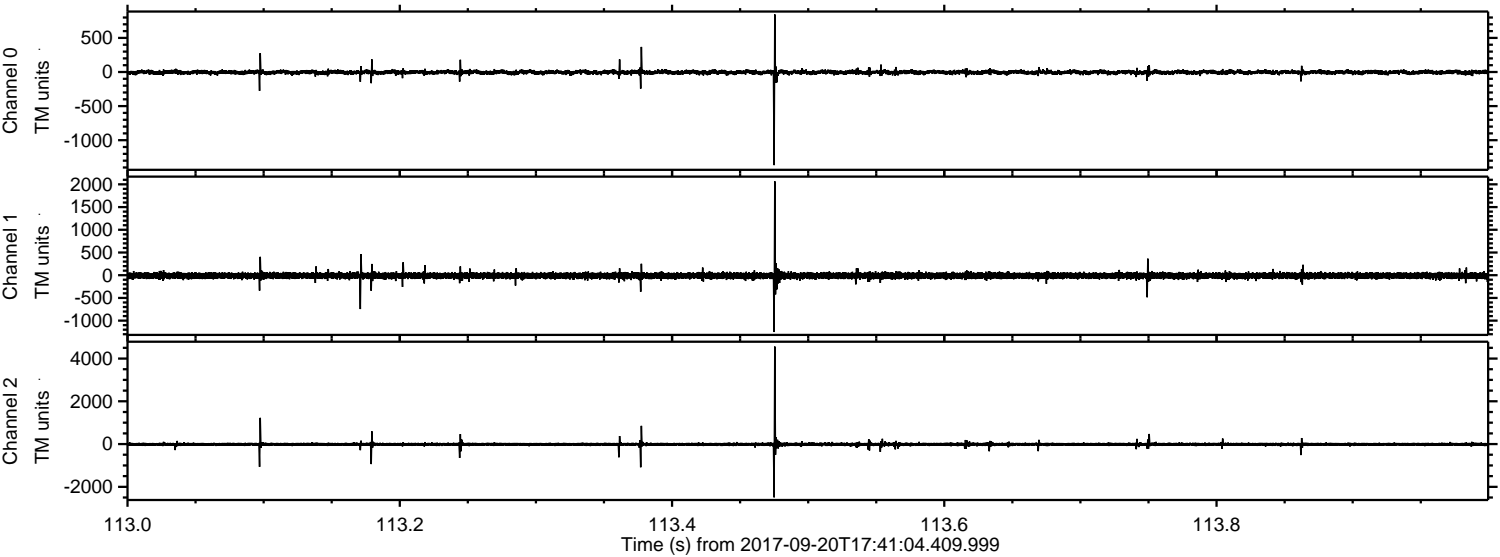


Processed Wed Sep 20 19:48:46 2017 by ELM ver.2012-10-06 from 001__elm20170920_174103__dat00.bin



ELMAVAN 3D WAVEFORMS (Measured data sampled at 50 kHz) 51000 packets of 144 samples from 2017-09-20T17:41:04.409.999. Part 114/147

Processed Wed Sep 20 19:48:46 2017 by ELM ver.2012-10-06 from 001__elm20170920_174103__dat00.bin

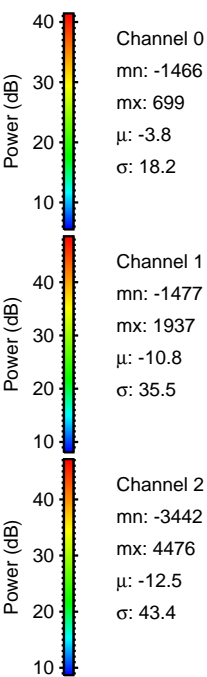
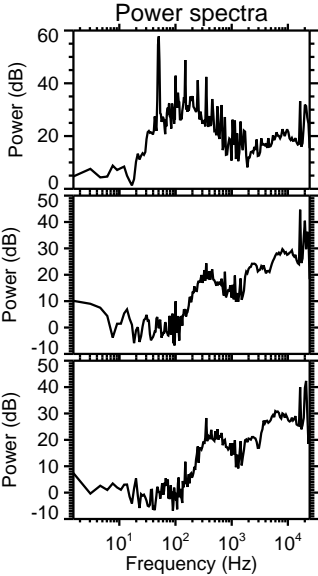
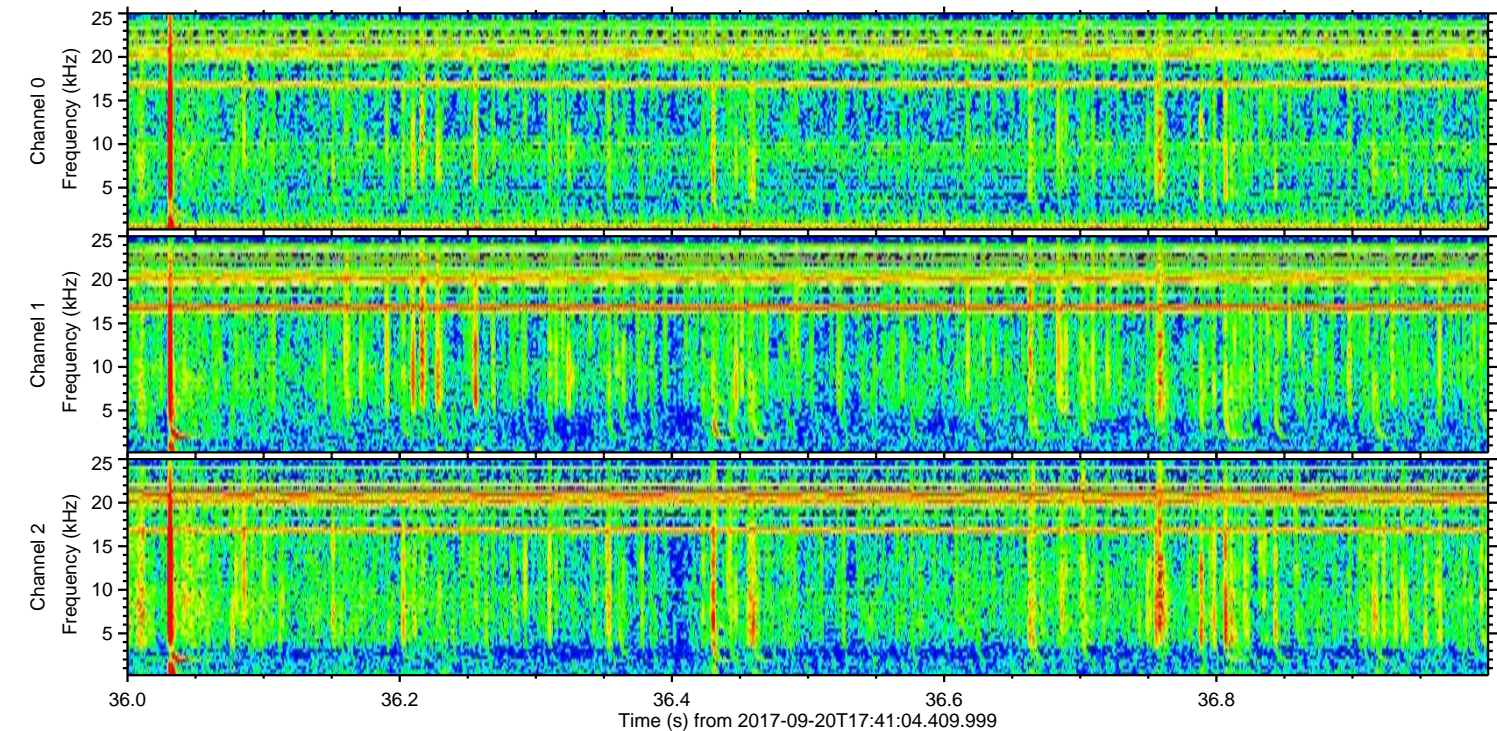
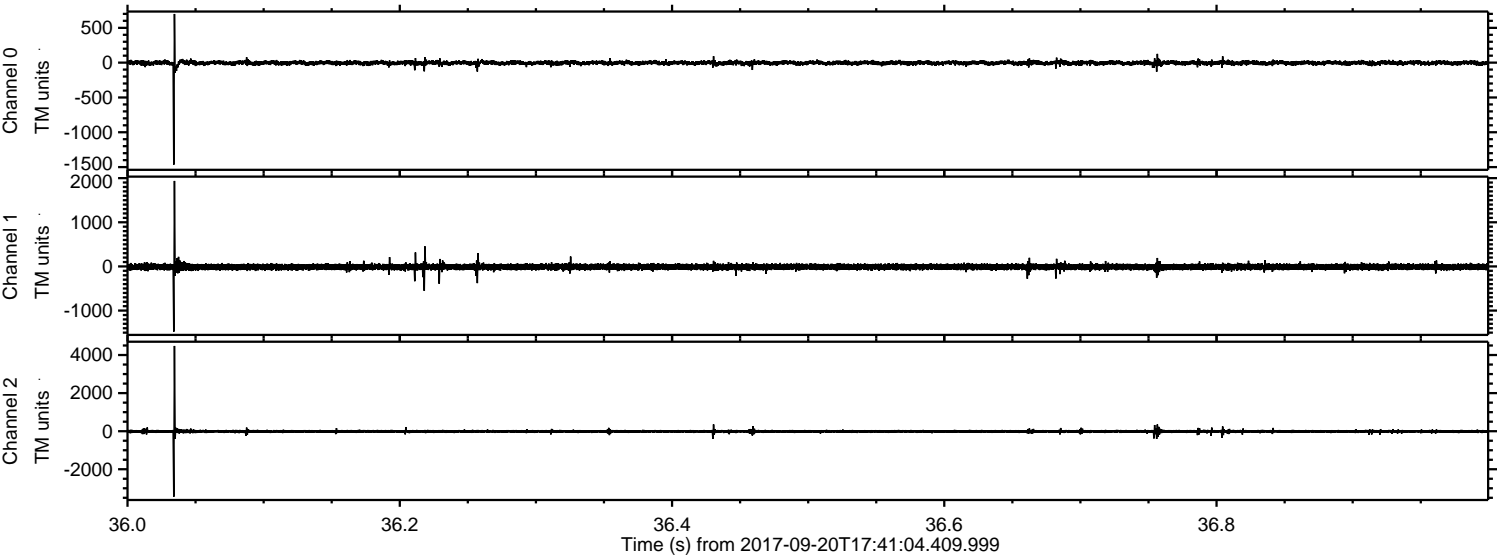


Channel 0
mn: -1366
mx: 845
 μ : -3.9
 σ : 19.3

Channel 1
mn: -1252
mx: 2067
 μ : -10.8
 σ : 37.2

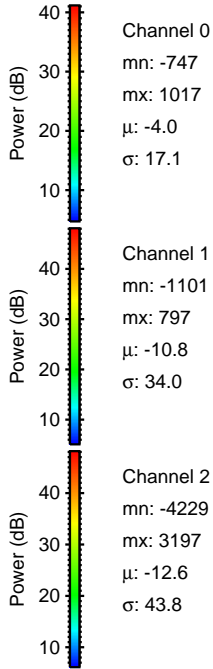
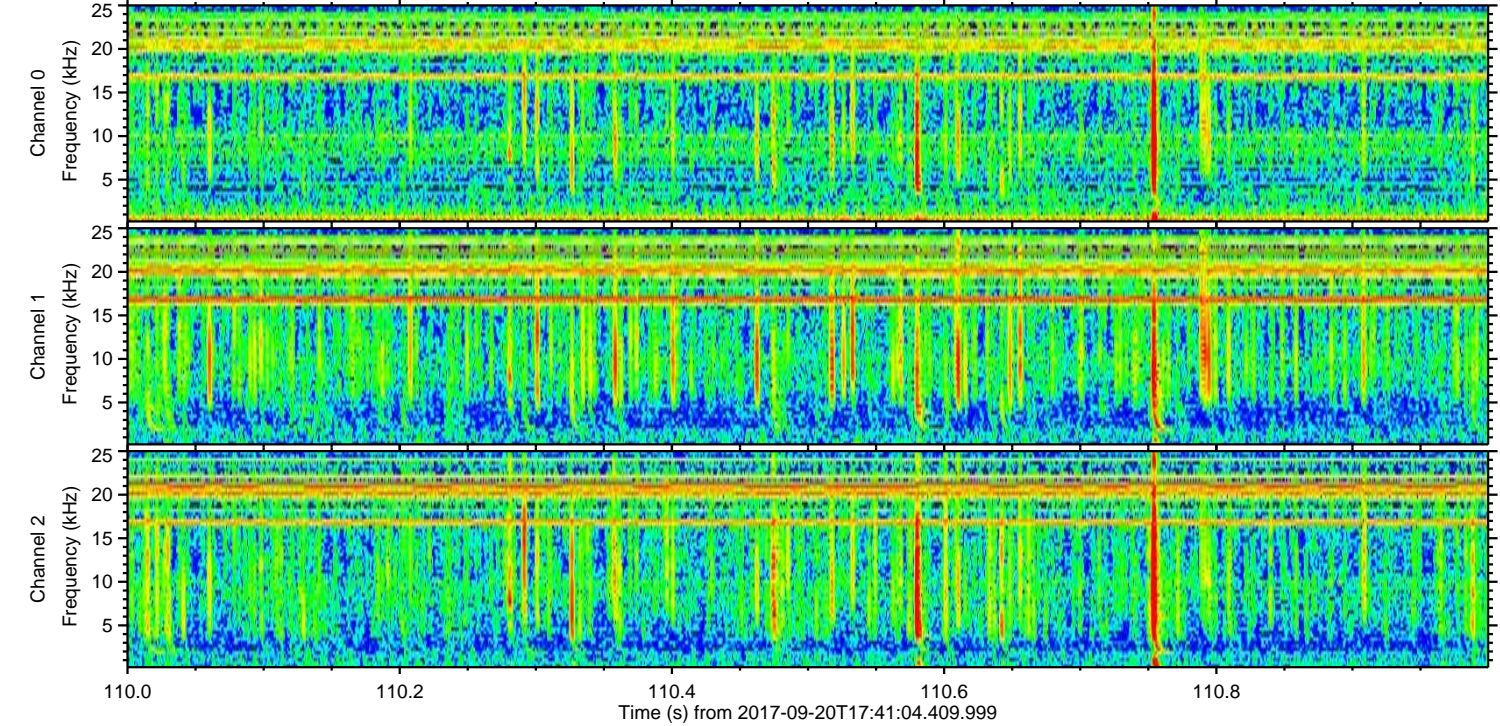
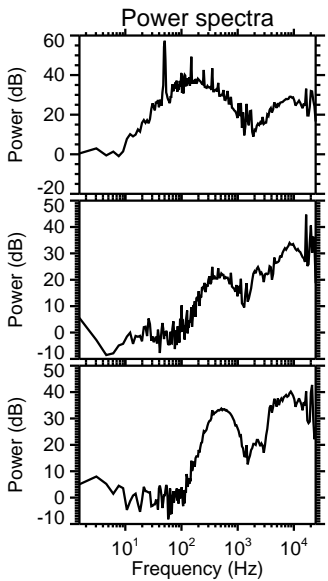
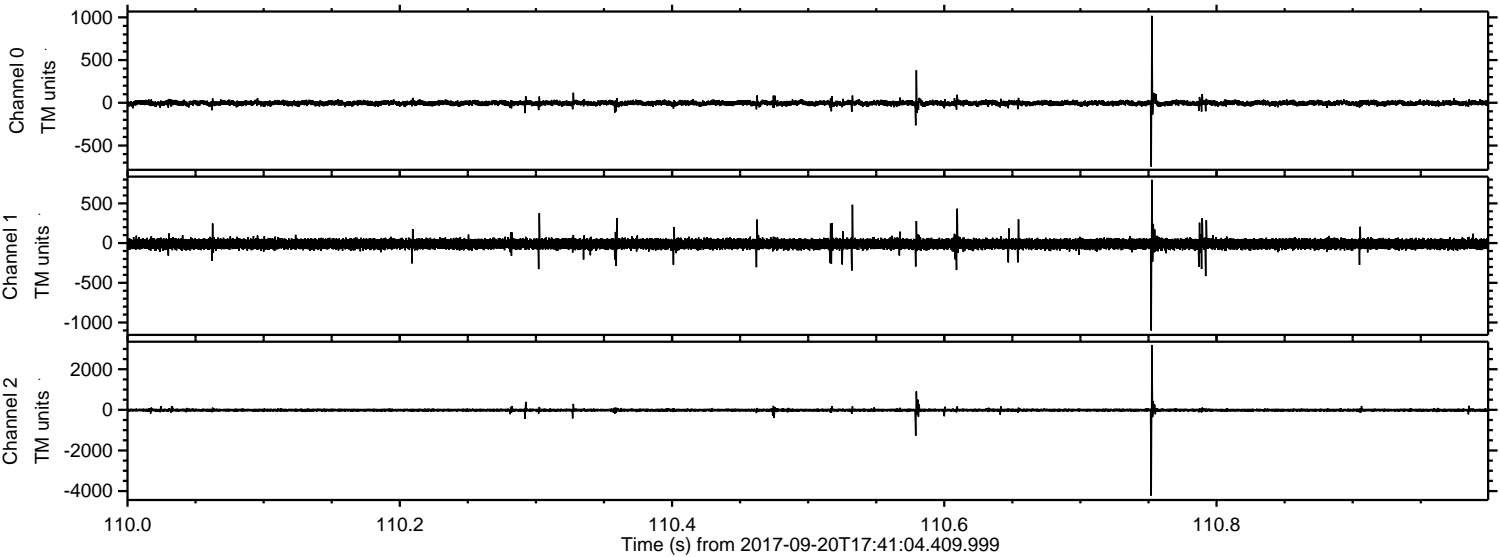
Channel 2
mn: -2492
mx: 4559
 μ : -12.6
 σ : 49.3

Processed Wed Sep 20 19:48:47 2017 by ELM ver.2012-10-06 from 001__elm20170920_174103__dat00.bin



ELMAVAN 3D WAVEFORMS (Measured data sampled at 50 kHz) 51000 packets of 144 samples from 2017-09-20T17:41:04.409.999. Part 111/147

Processed Wed Sep 20 19:48:48 2017 by ELM ver.2012-10-06 from 001__elm20170920_174103__dat00.bin

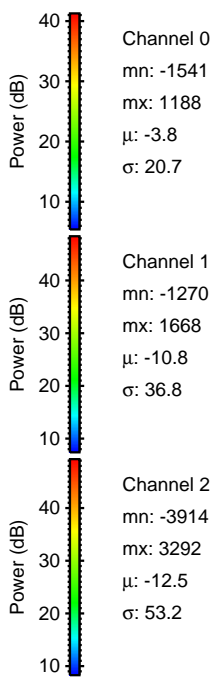
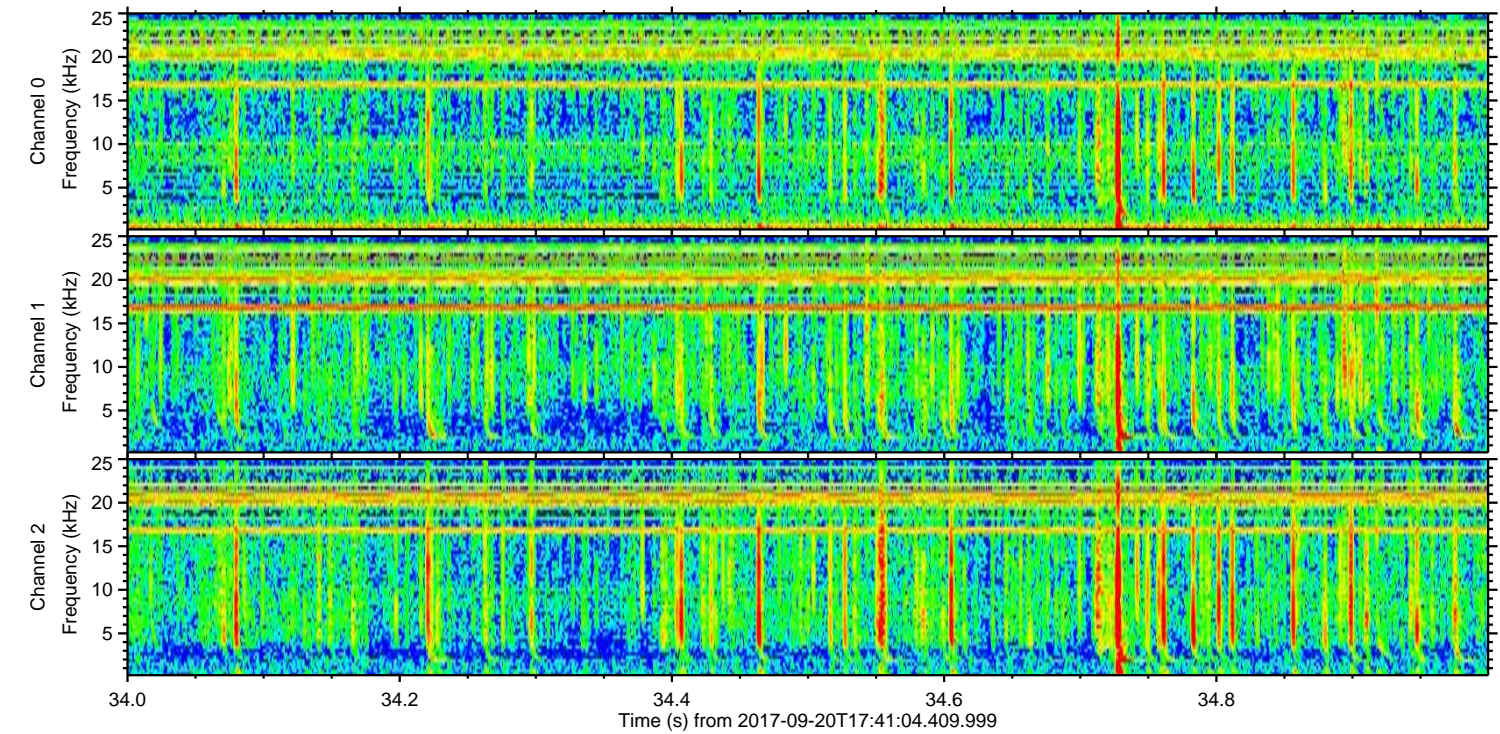
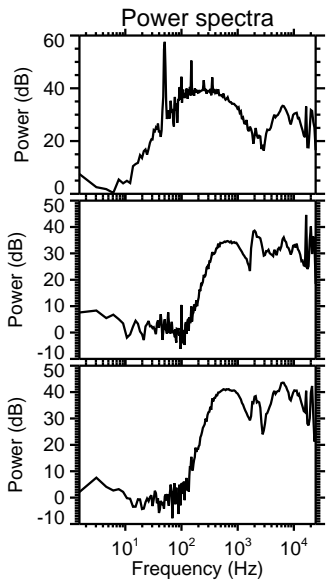
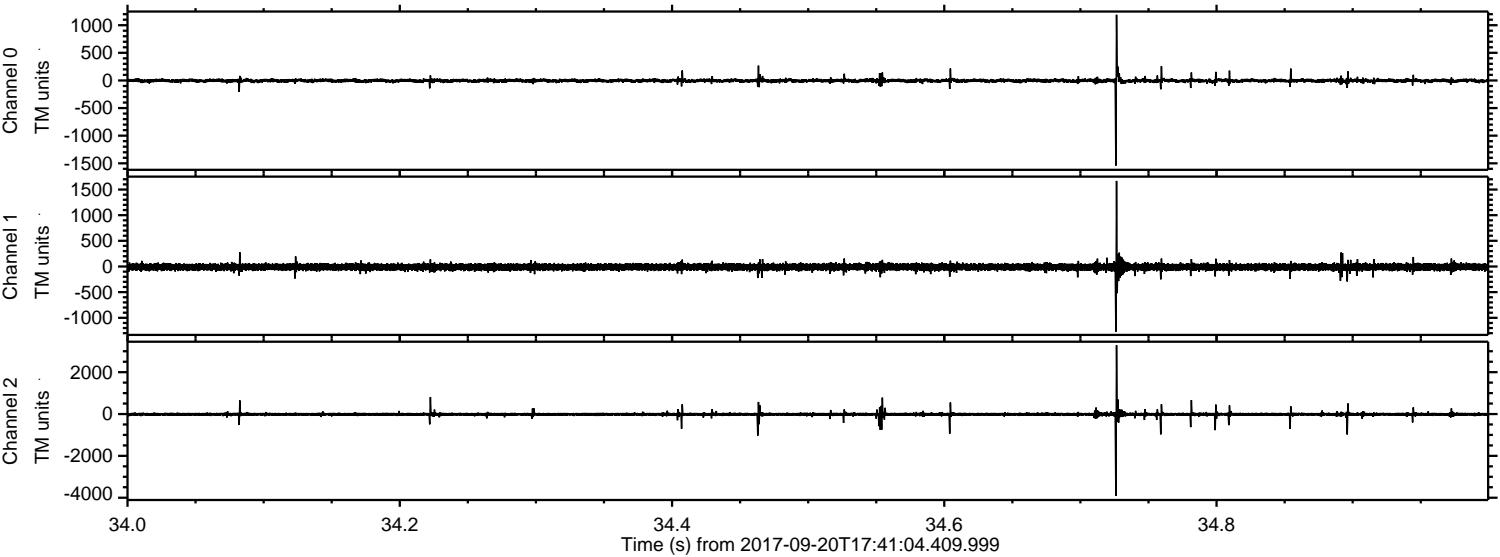


Channel 0
mn: -747
mx: 1017
 μ : -4.0
 σ : 17.1

Channel 1
mn: -1101
mx: 797
 μ : -10.8
 σ : 34.0

Channel 2
mn: -4229
mx: 3197
 μ : -12.6
 σ : 43.8

Processed Wed Sep 20 19:48:49 2017 by ELM ver.2012-10-06 from 001__elm20170920_174103__dat00.bin



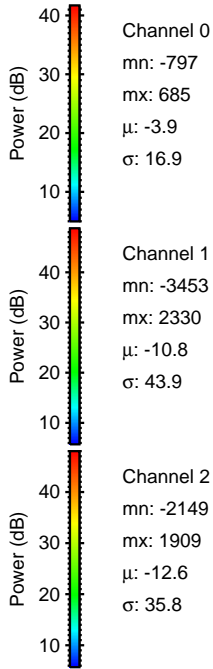
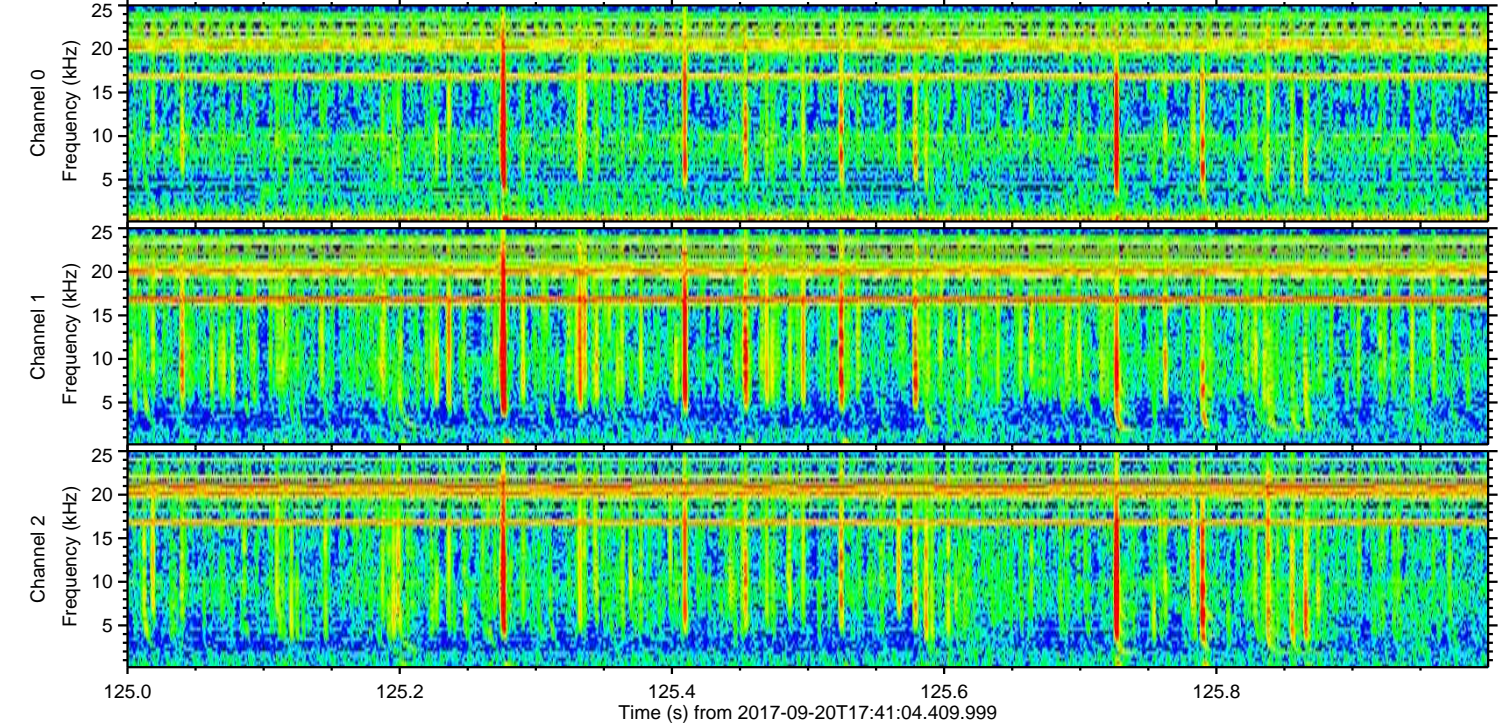
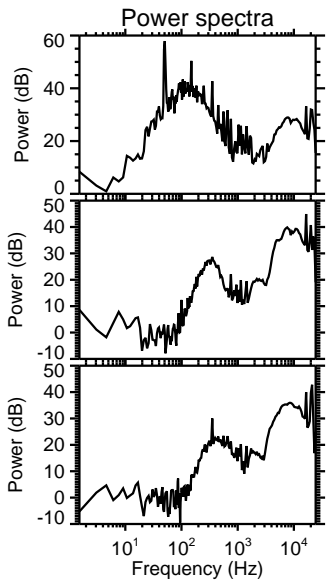
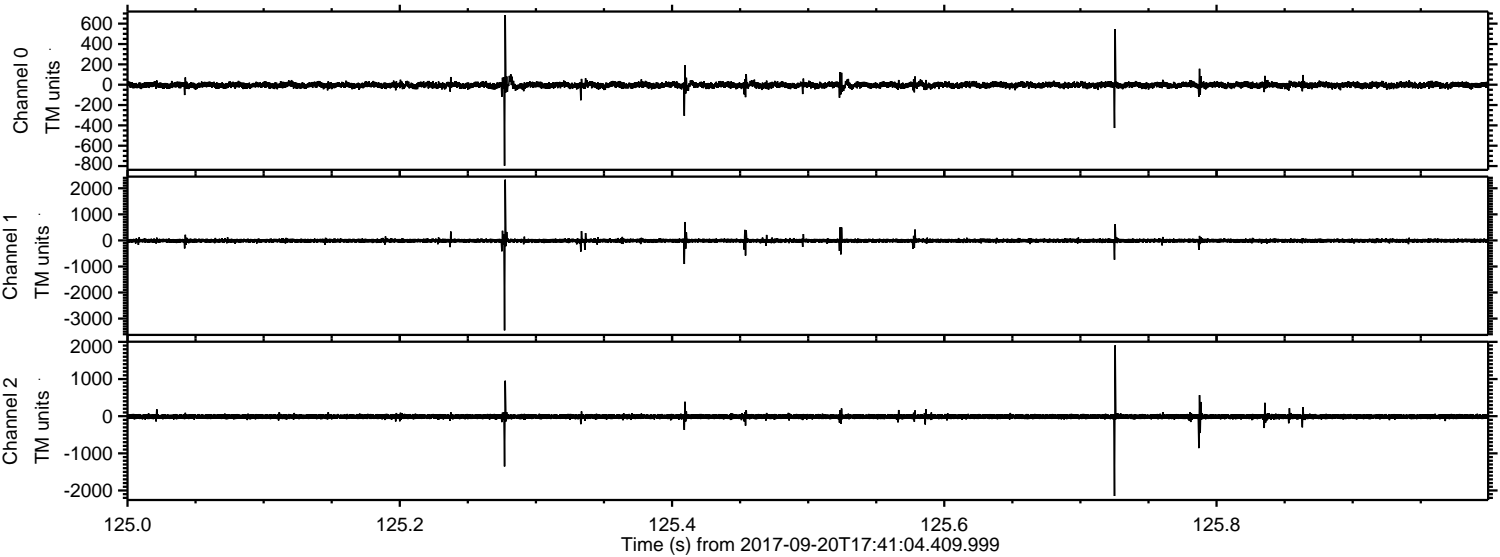
Channel 0
mn: -1541
mx: 1188
 μ : -3.8
 σ : 20.7

Channel 1
mn: -1270
mx: 1668
 μ : -10.8
 σ : 36.8

Channel 2
mn: -3914
mx: 3292
 μ : -12.5
 σ : 53.2

ELMAVAN 3D WAVEFORMS (Measured data sampled at 50 kHz) 51000 packets of 144 samples from 2017-09-20T17:41:04.409.999. Part 126/147

Processed Wed Sep 20 19:48:49 2017 by ELM ver.2012-10-06 from 001__elm20170920_174103__dat00.bin



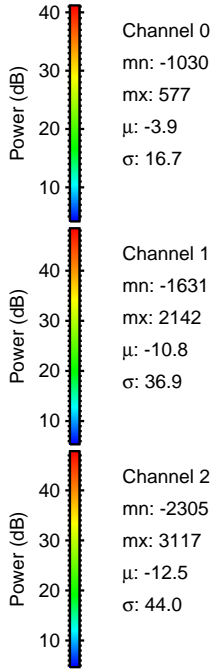
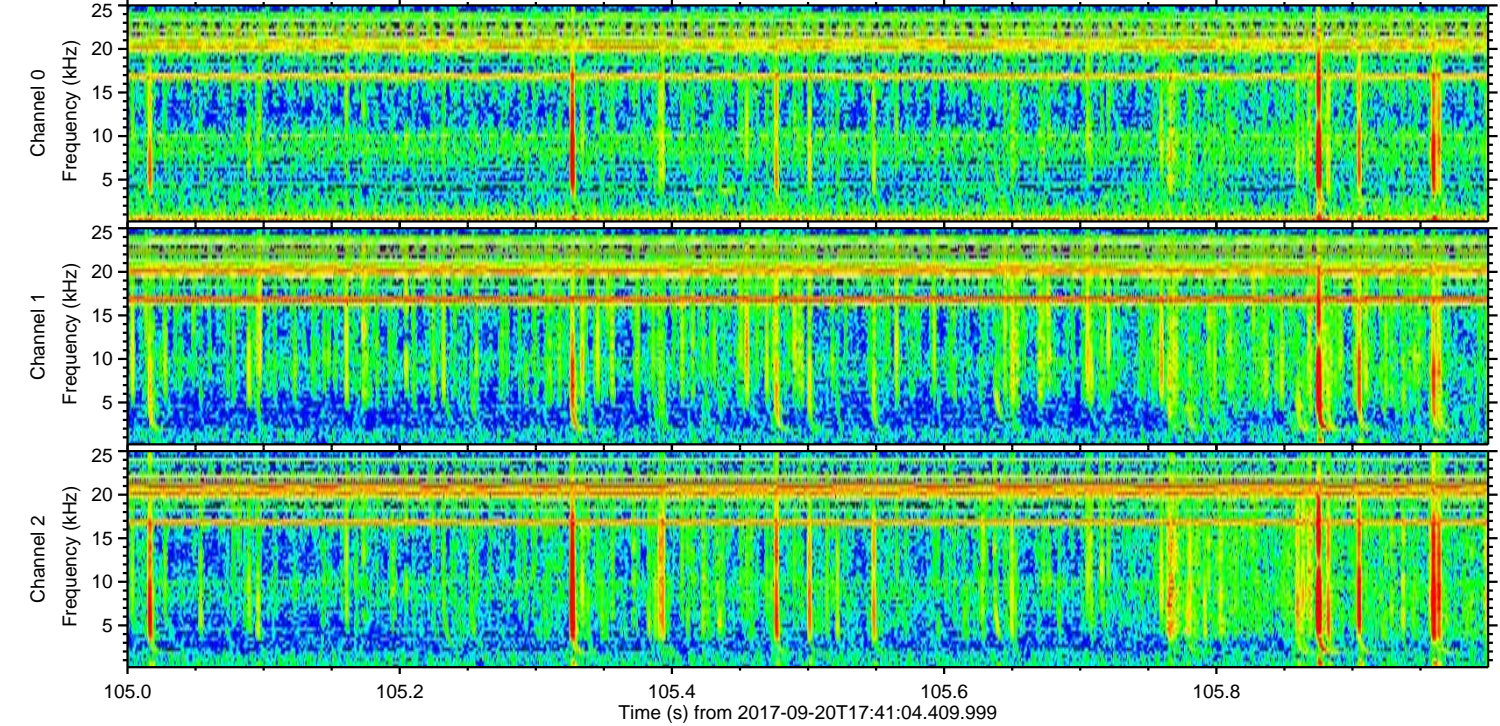
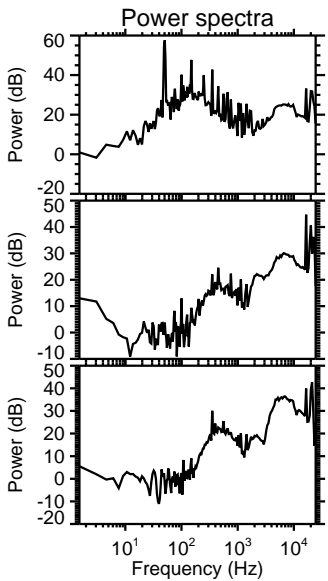
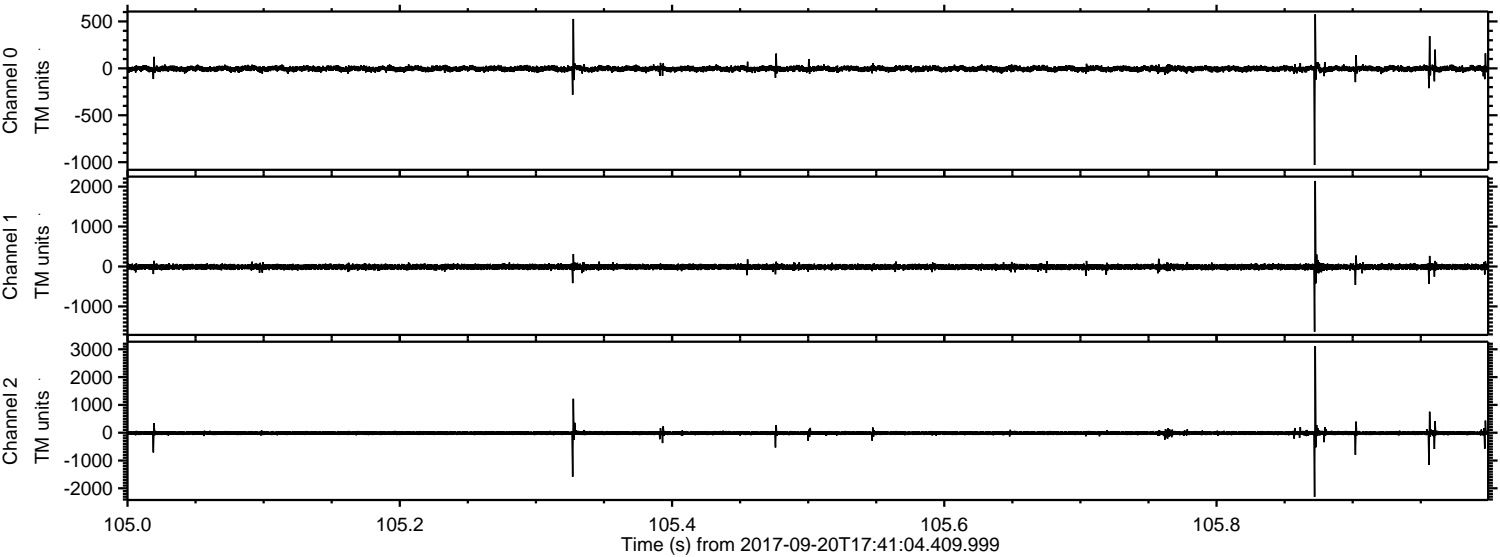
Channel 0
mn: -797
mx: 685
 μ : -3.9
 σ : 16.9

Channel 1
mn: -3453
mx: 2330
 μ : -10.8
 σ : 43.9

Channel 2
mn: -2149
mx: 1909
 μ : -12.6
 σ : 35.8

ELMAVAN 3D WAVEFORMS (Measured data sampled at 50 kHz) 51000 packets of 144 samples from 2017-09-20T17:41:04.409.999. Part 106/147

Processed Wed Sep 20 19:48:50 2017 by ELM ver.2012-10-06 from 001__elm20170920_174103__dat00.bin

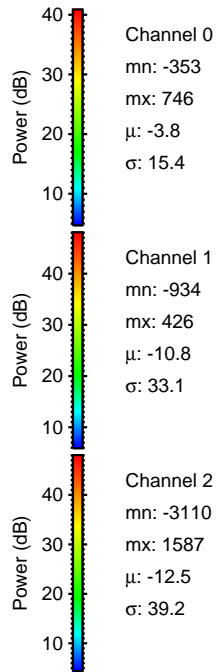
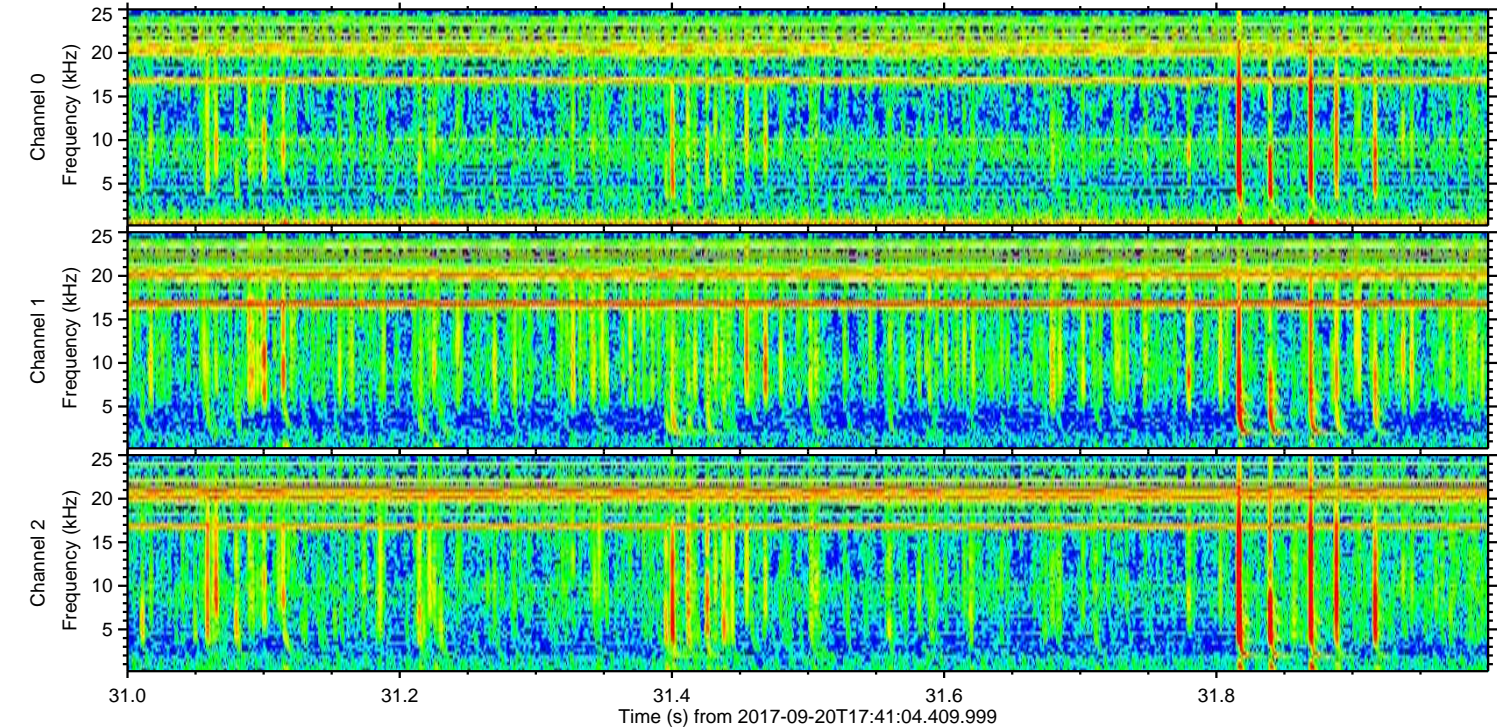
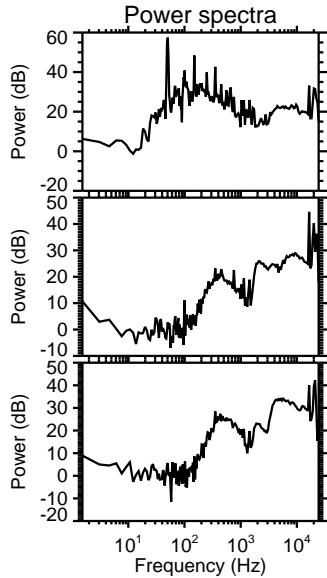
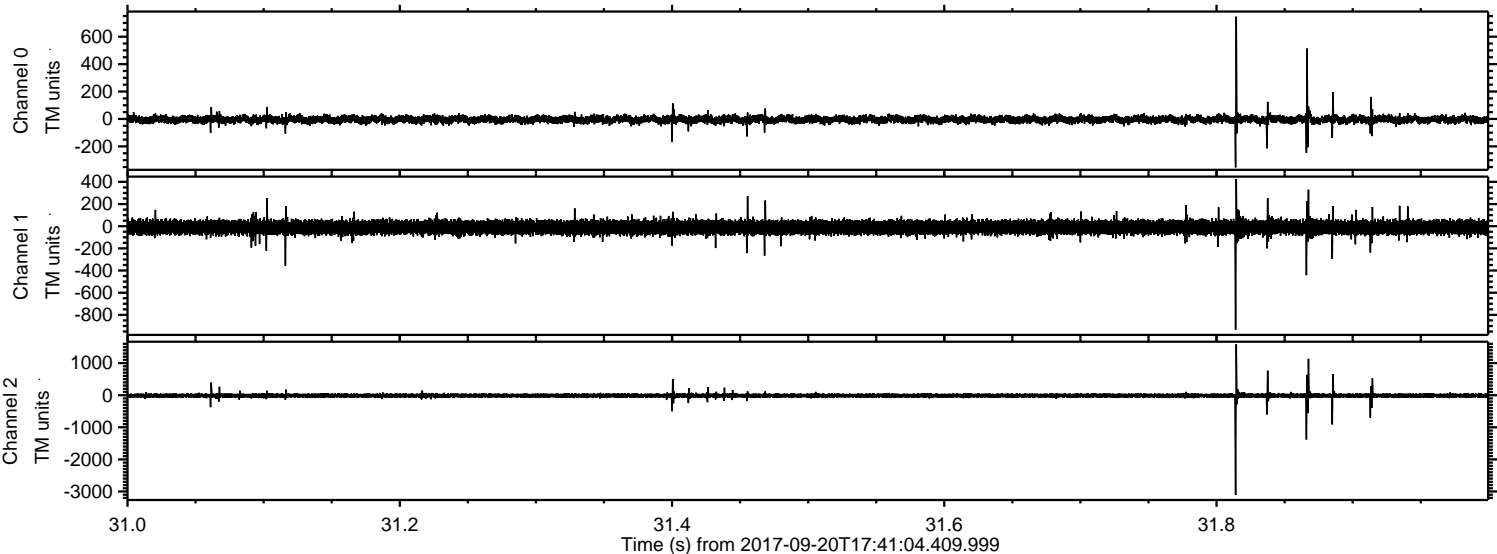


Channel 0
mn: -1030
mx: 577
 μ : -3.9
 σ : 16.7

Channel 1
mn: -1631
mx: 2142
 μ : -10.8
 σ : 36.9

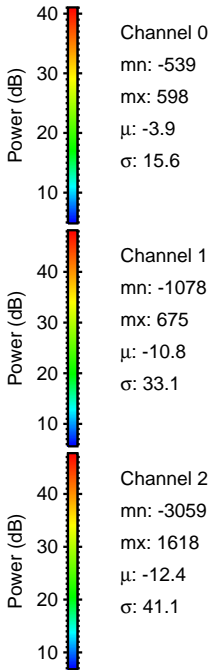
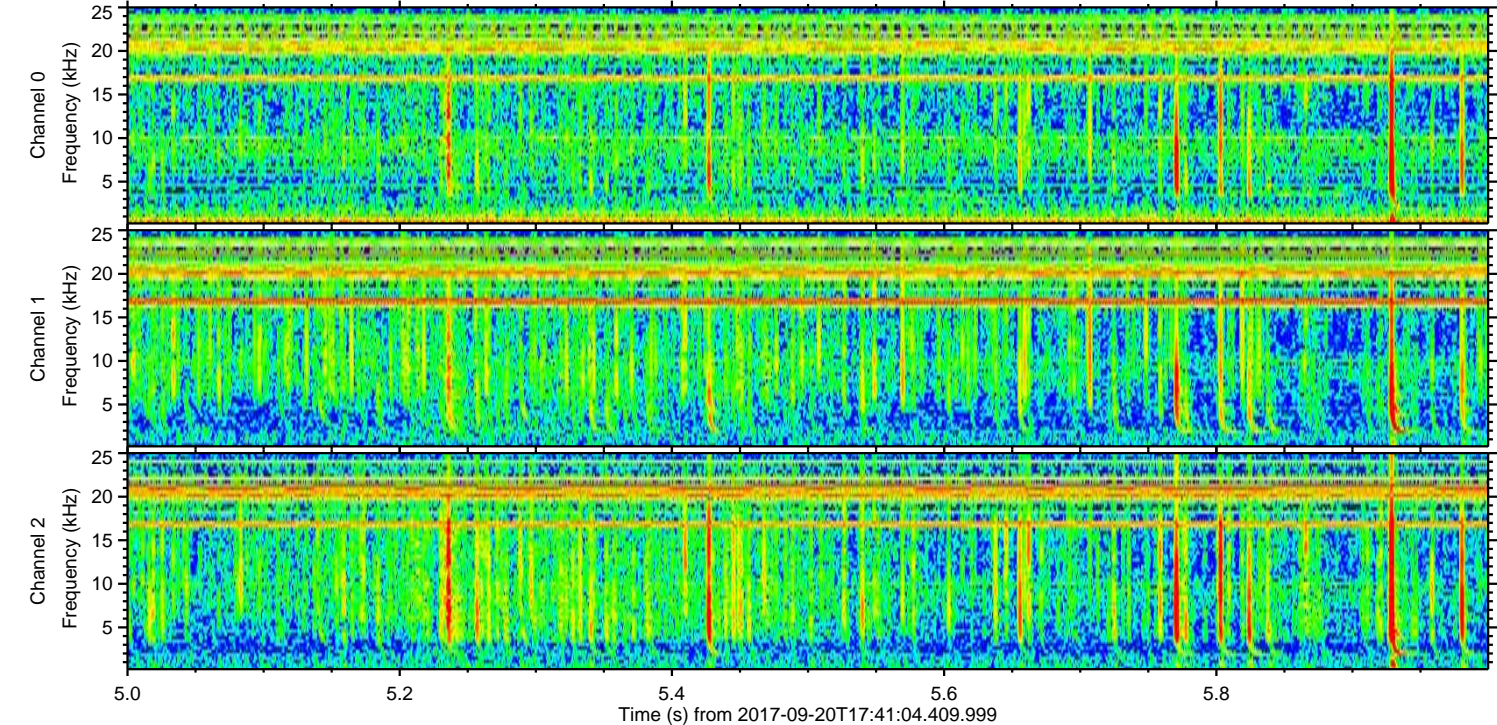
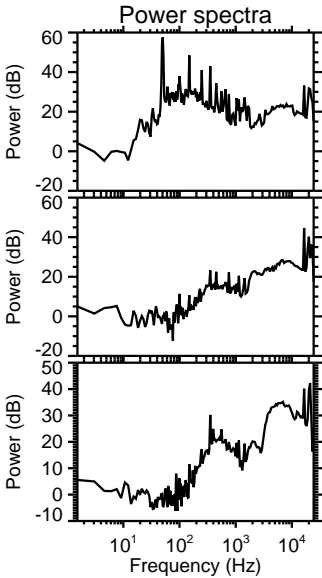
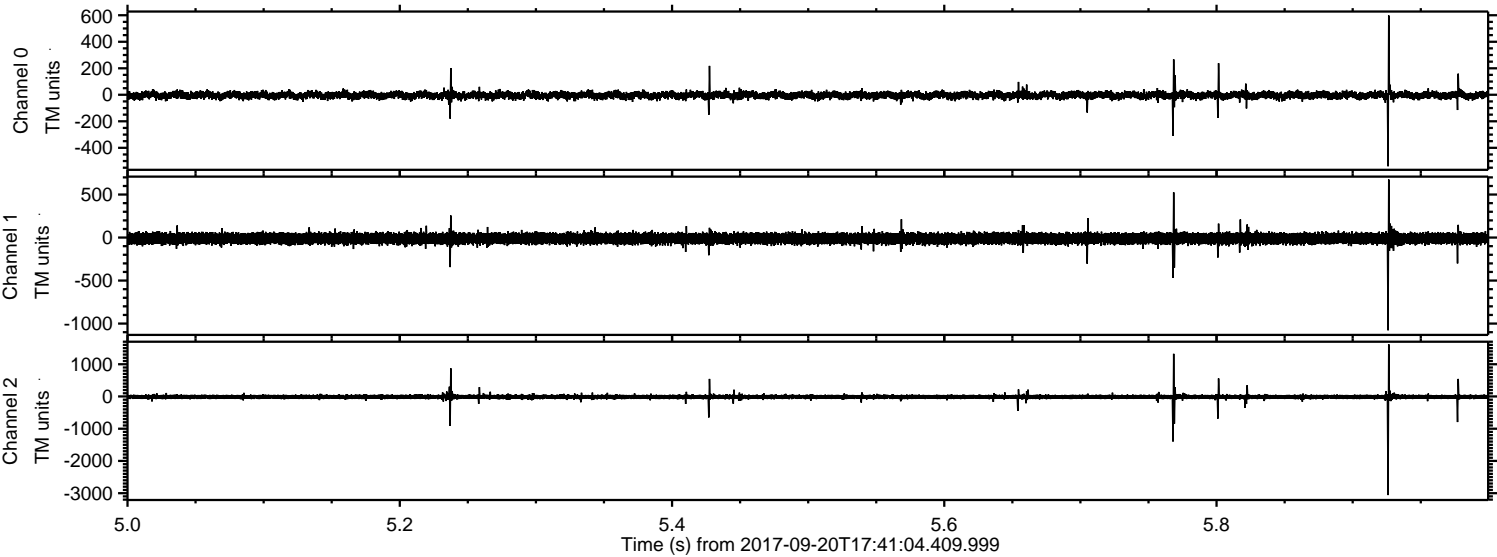
Channel 2
mn: -2305
mx: 3117
 μ : -12.5
 σ : 44.0

Processed Wed Sep 20 19:48:51 2017 by ELM ver.2012-10-06 from 001__elm20170920_174103__dat00.bin



ELMAVAN 3D WAVEFORMS (Measured data sampled at 50 kHz) 51000 packets of 144 samples from 2017-09-20T17:41:04.409.999. Part 6/147

Processed Wed Sep 20 19:48:51 2017 by ELM ver.2012-10-06 from 001__elm20170920_174103__dat00.bin



Processed Wed Sep 20 19:48:52 2017 by ELM ver.2012-10-06 from 001__elm20170920_174103__dat00.bin

