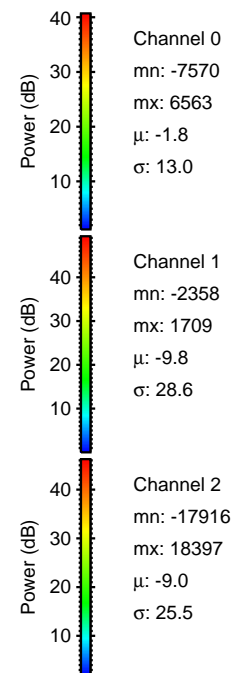
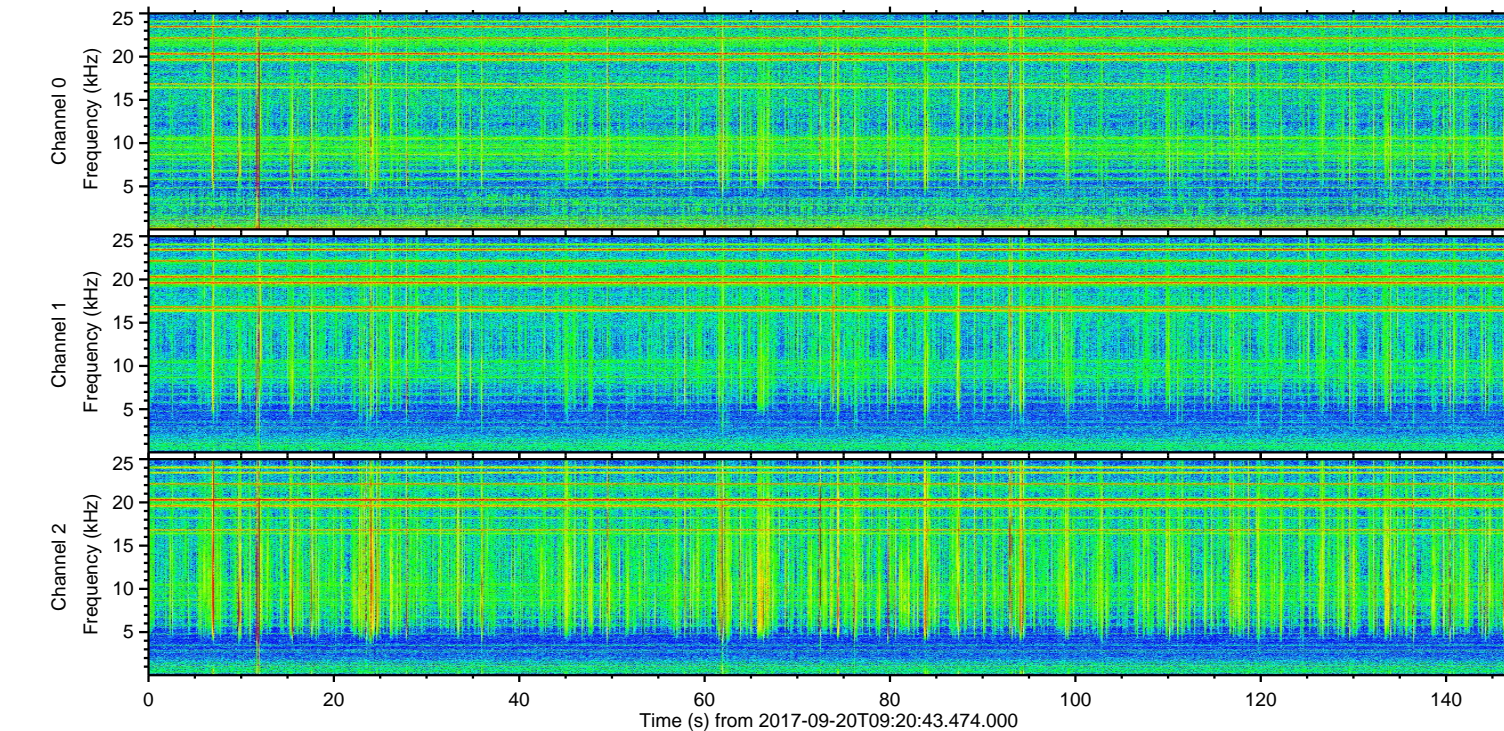
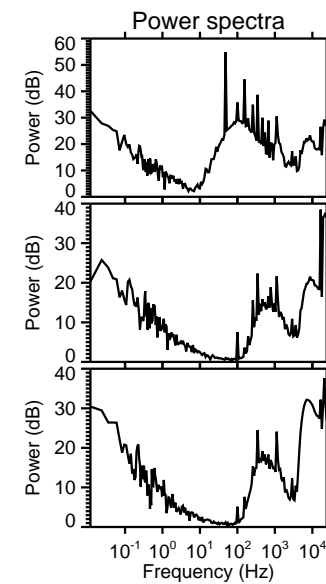
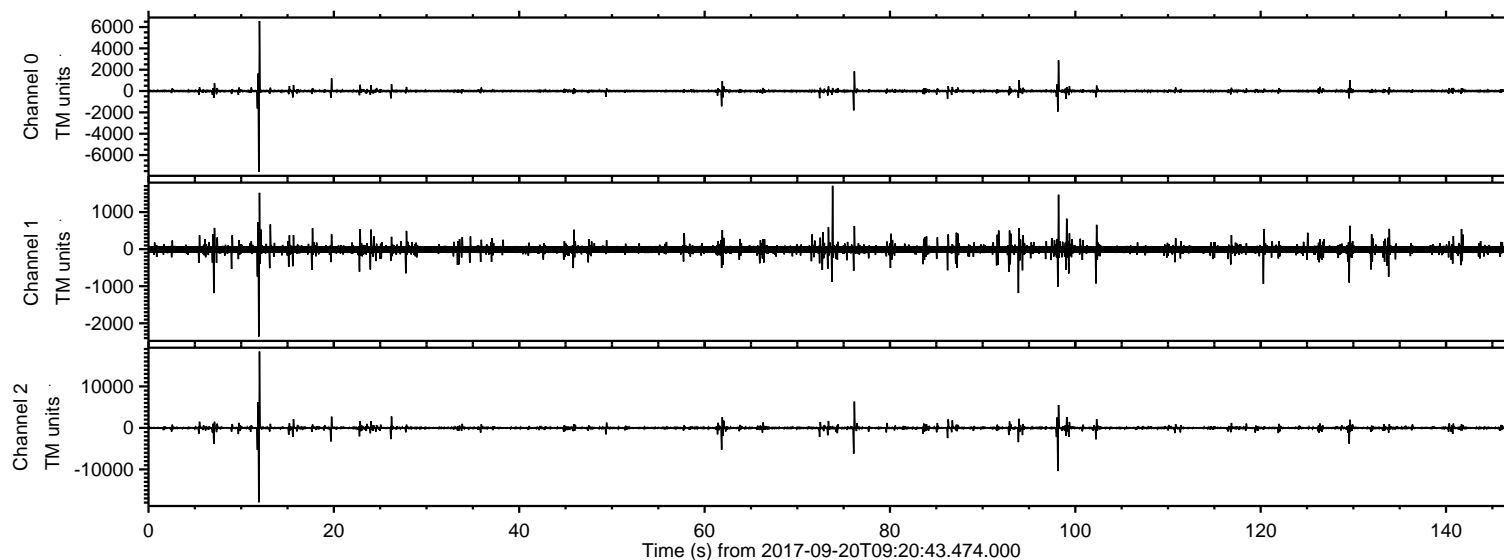
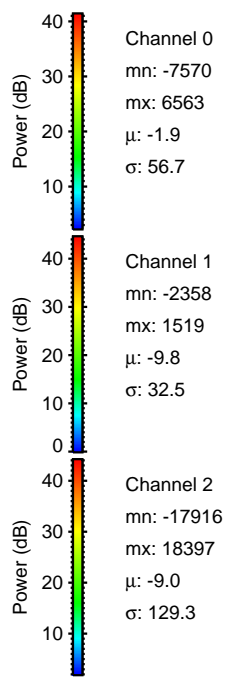
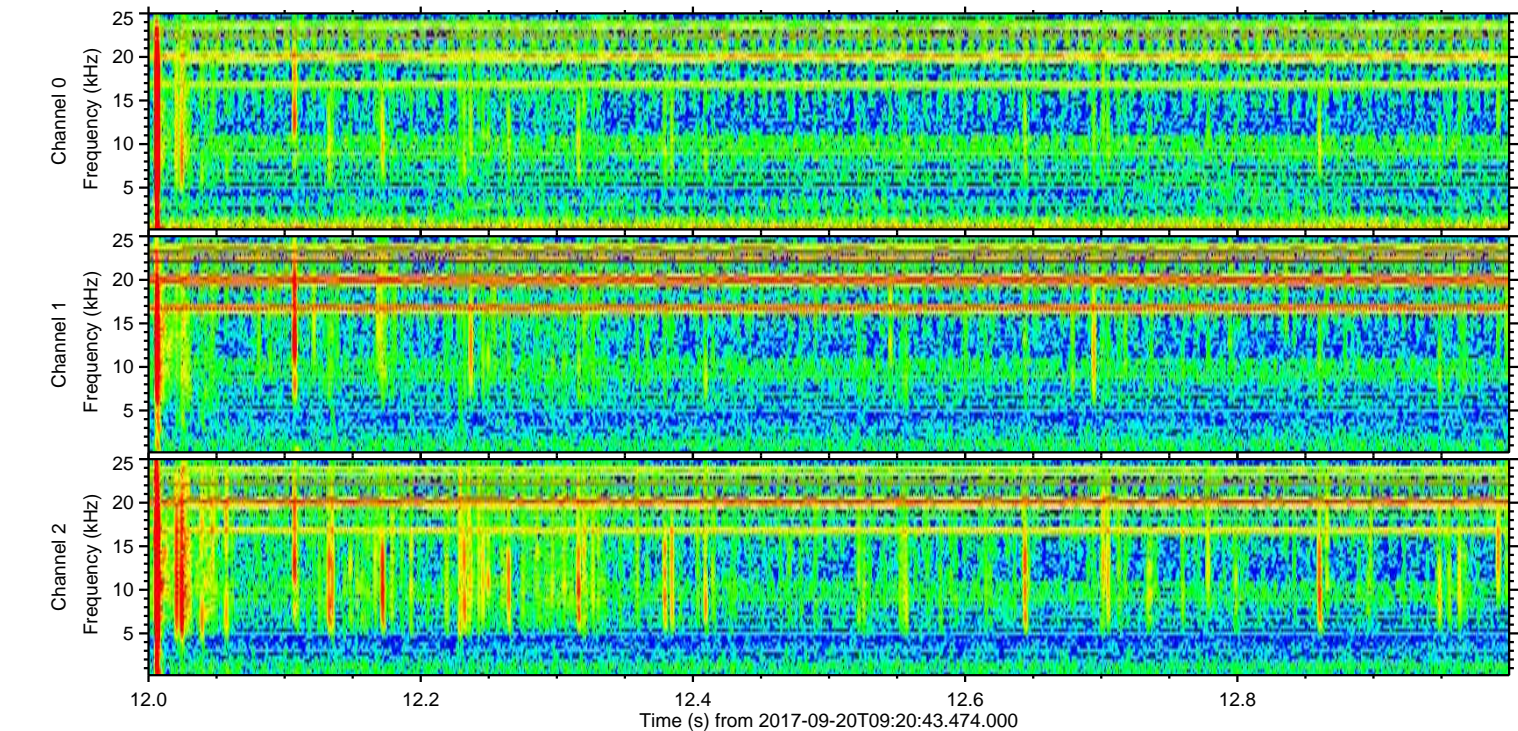
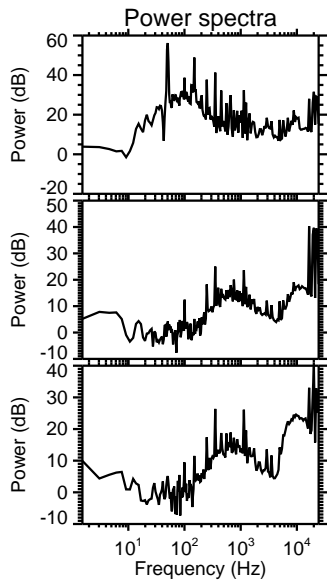
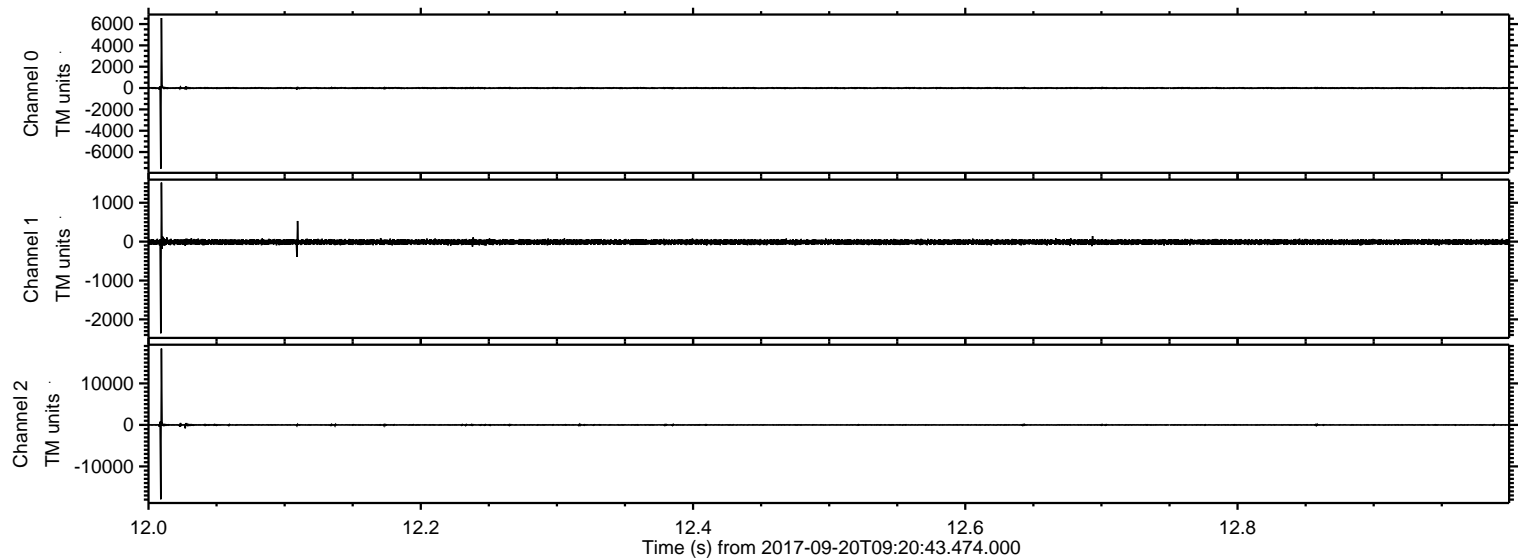


# ELMAVAN 3D WAVEFORMS (Measured data sampled at 50 kHz) 51000 packets of 144 samples from 2017-09-20T09:20:43.474.000.

Processed Wed Sep 20 11:28:35 2017 by ELM ver.2012-10-06 from 001\_\_elm20170920\_092042\_\_dat00.bin

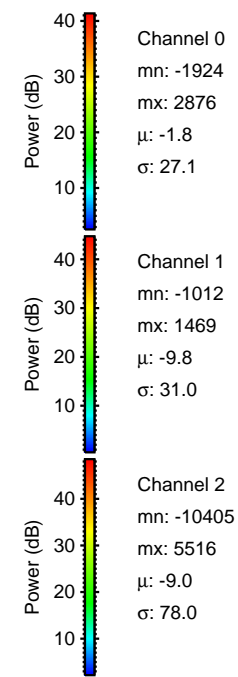
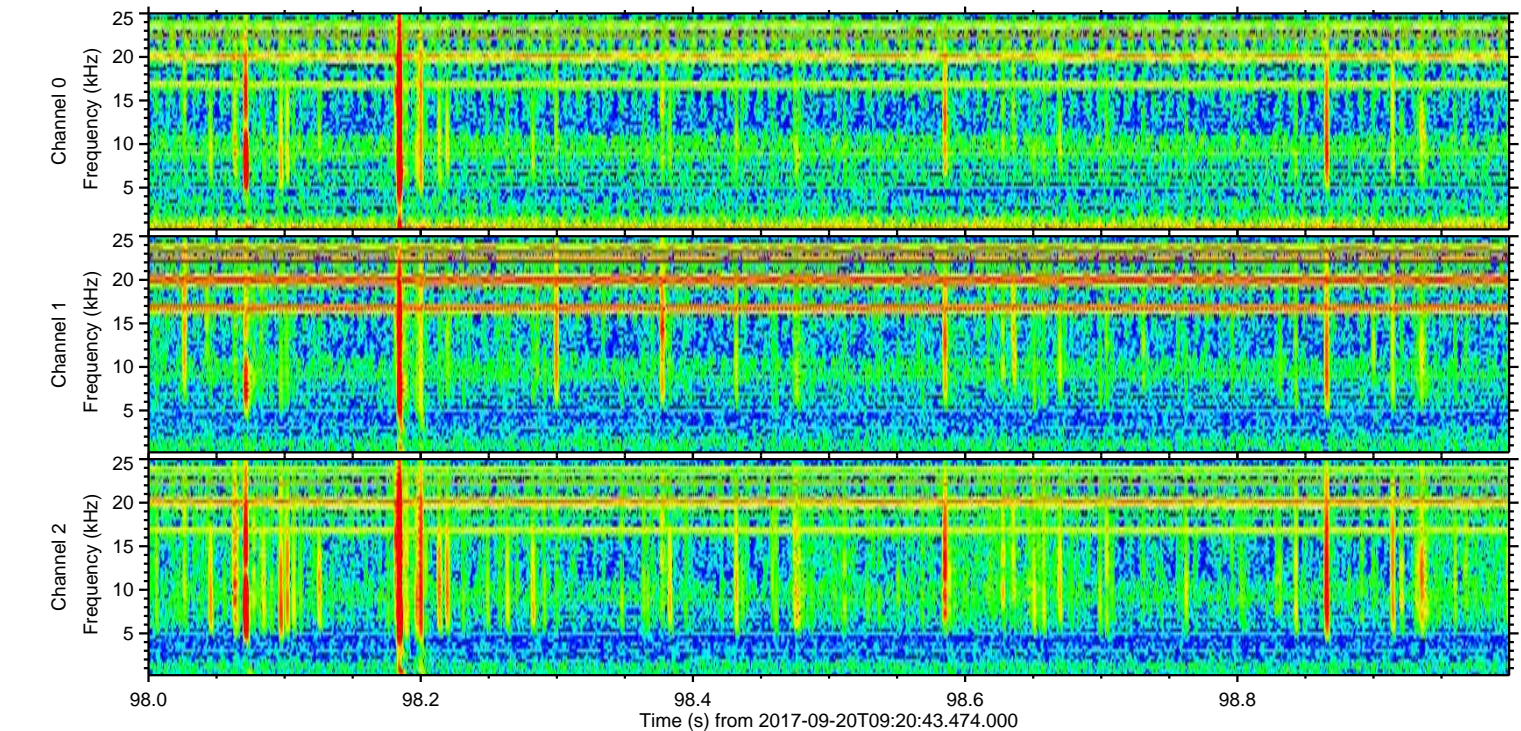
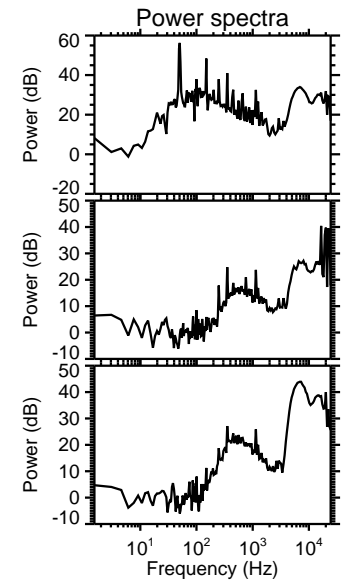
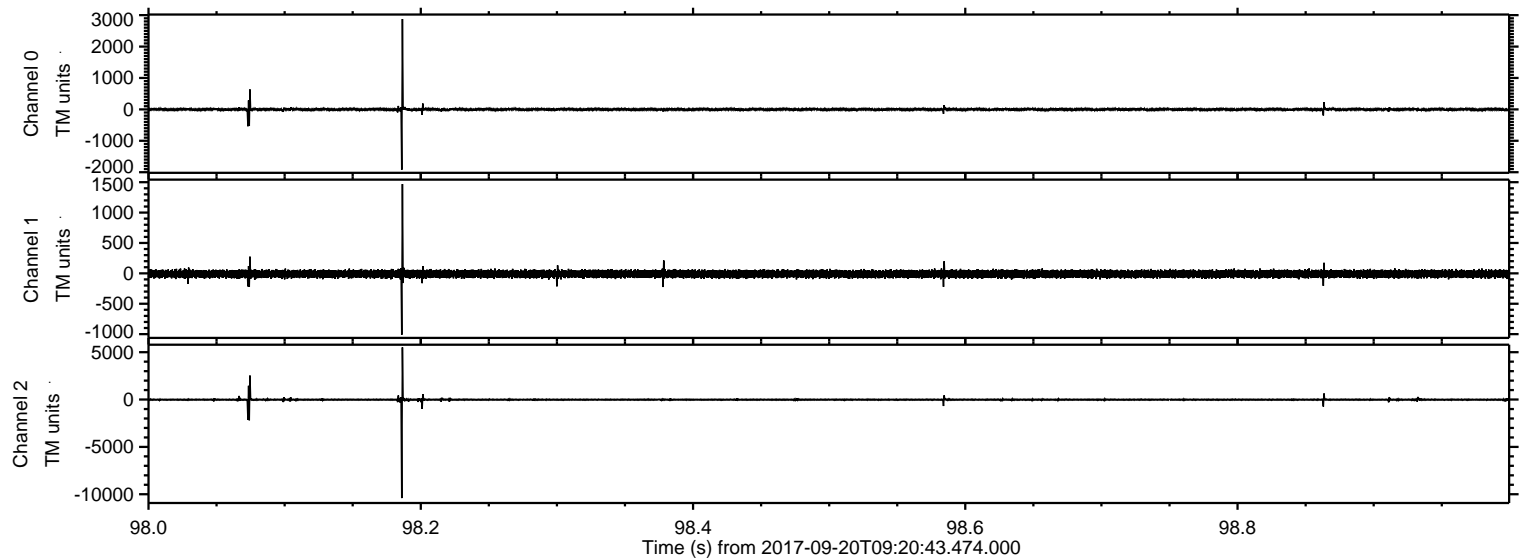


Processed Wed Sep 20 11:28:41 2017 by ELM ver.2012-10-06 from 001\_\_elm20170920\_092042\_\_dat00.bin

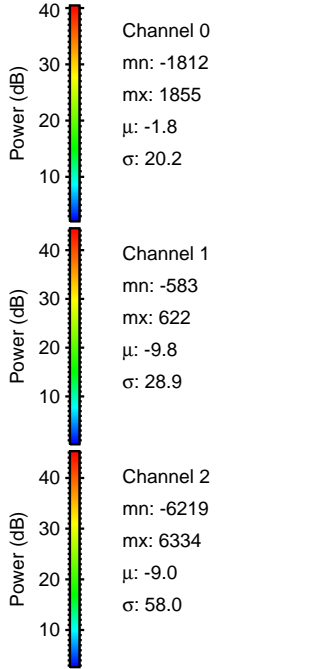
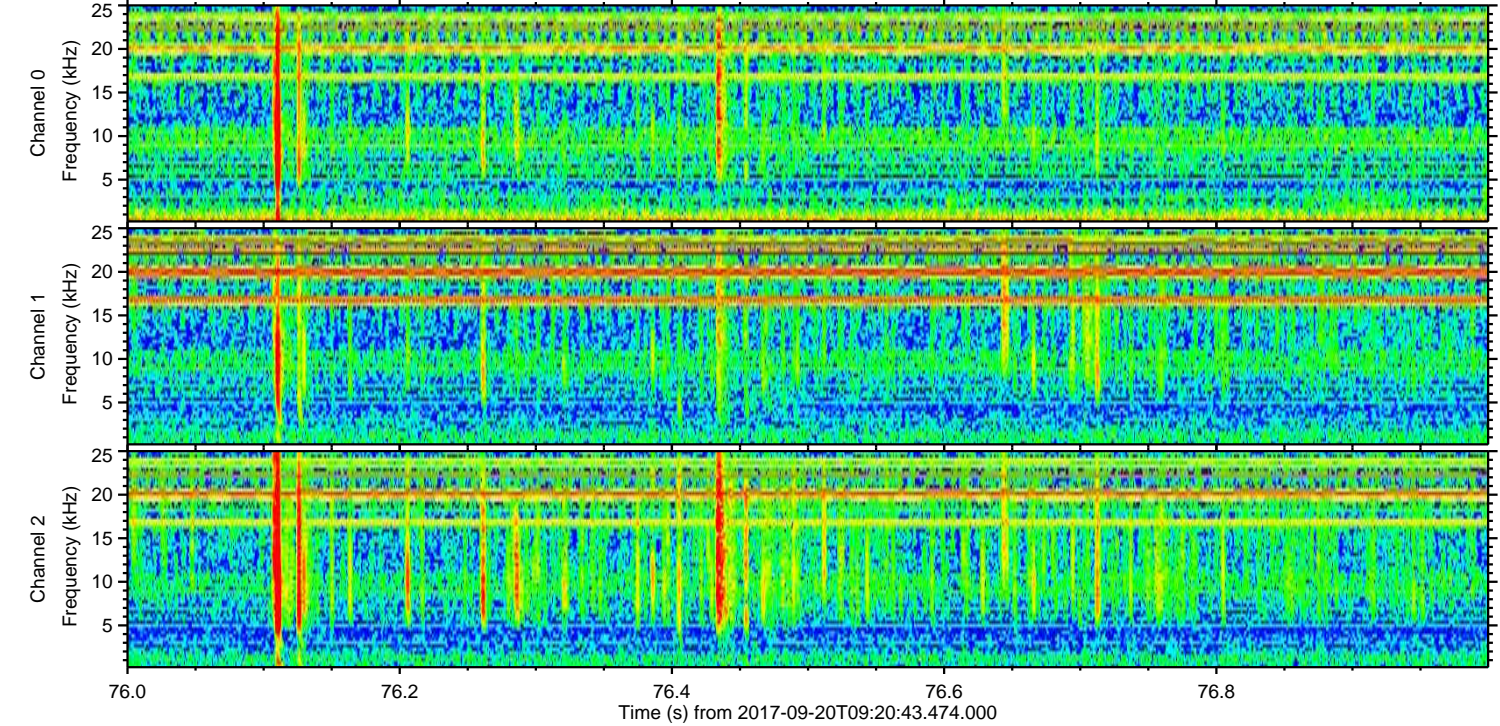
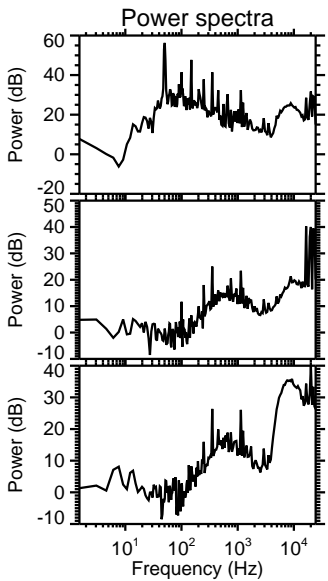
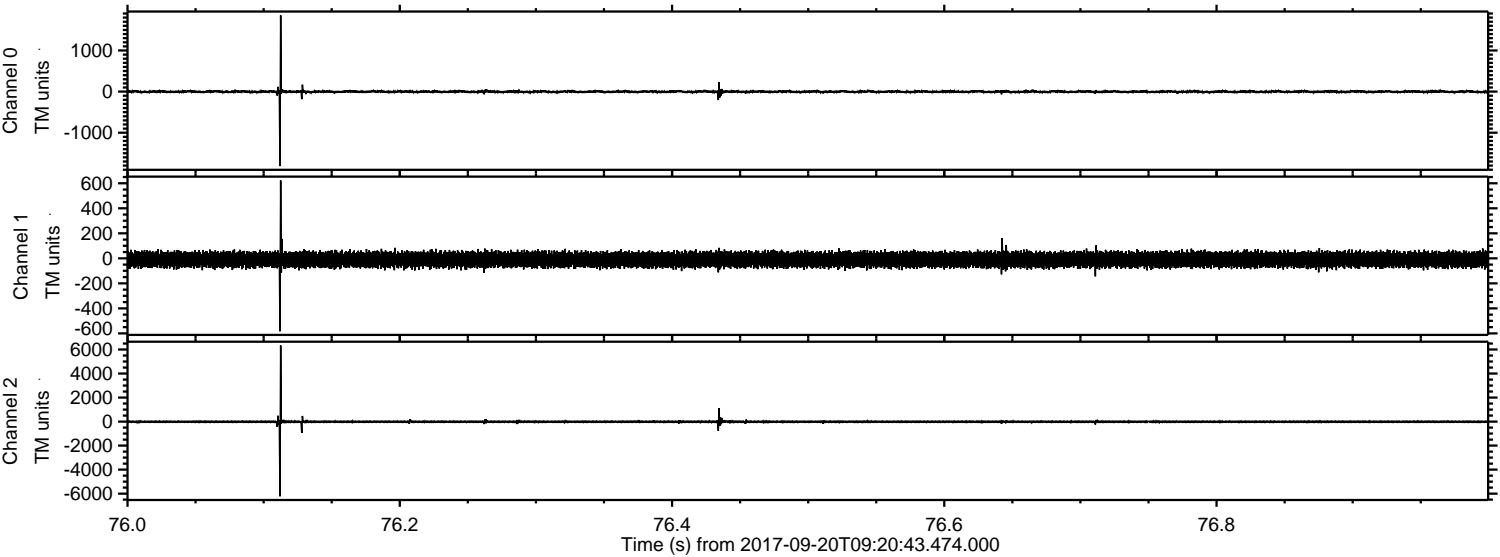


ELMAVAN 3D WAVEFORMS (Measured data sampled at 50 kHz) 51000 packets of 144 samples from 2017-09-20T09:20:43.474.000. Part 99/147

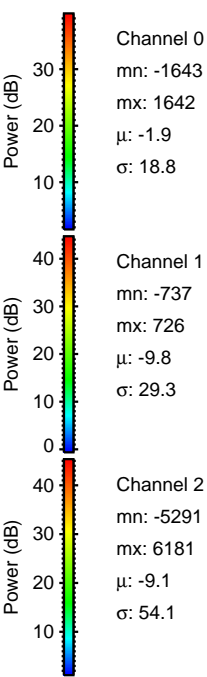
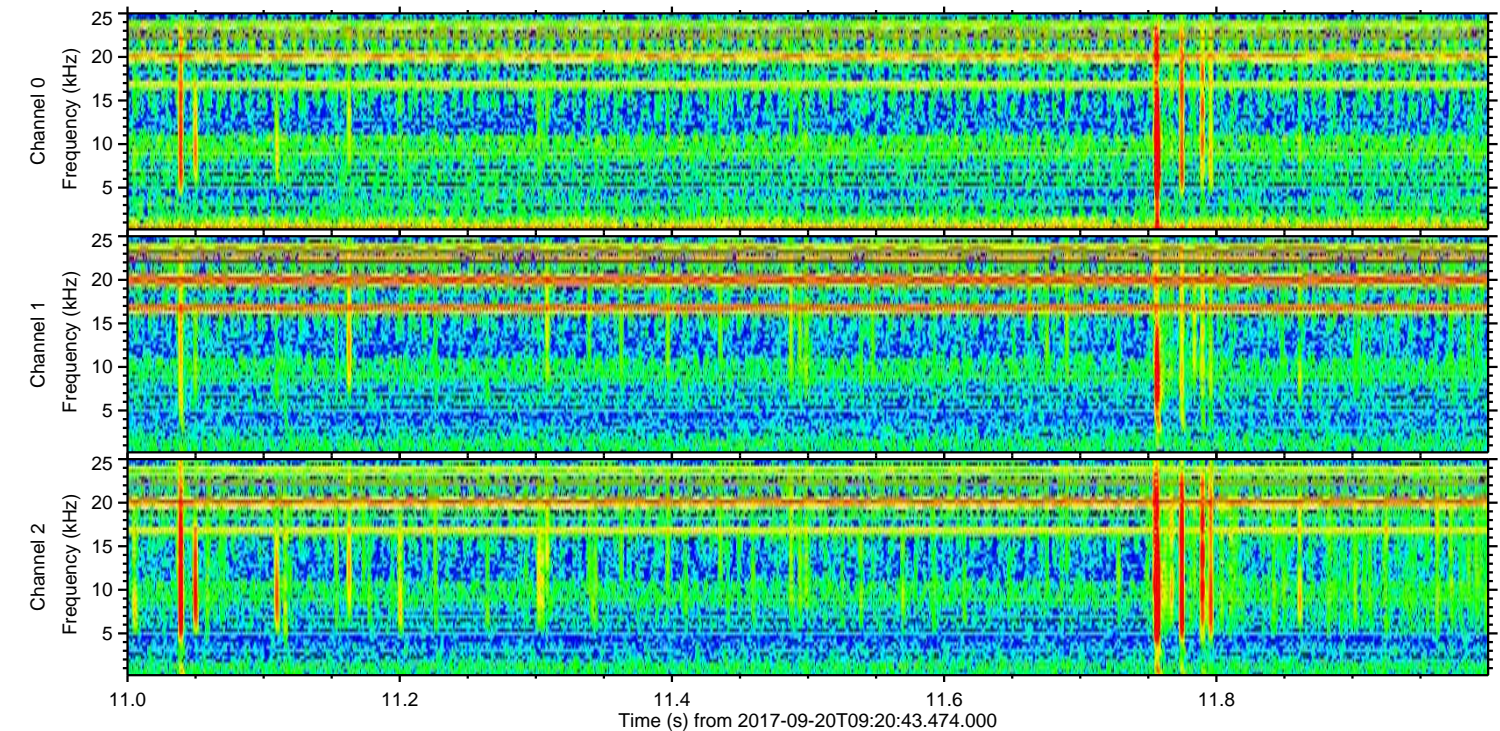
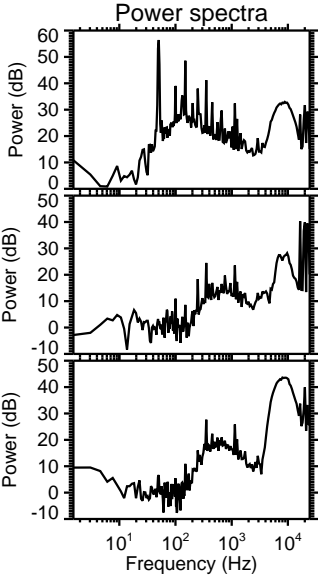
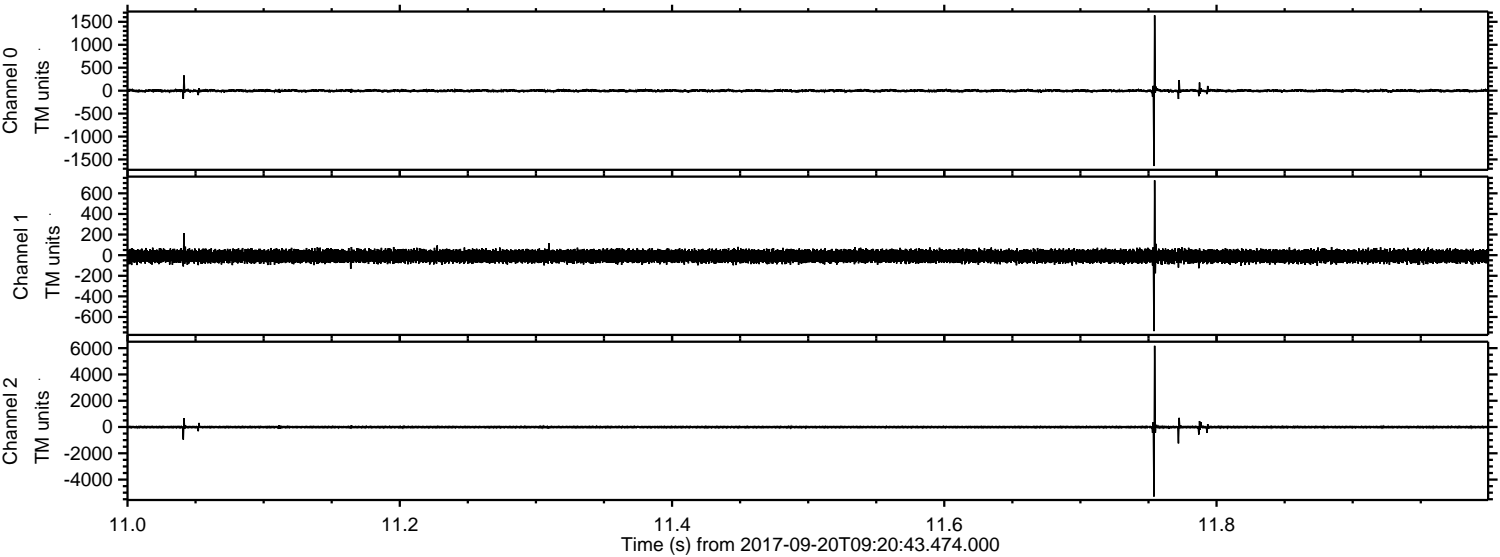
Processed Wed Sep 20 11:28:42 2017 by ELM ver.2012-10-06 from 001\_\_elm20170920\_092042\_\_dat00.bin



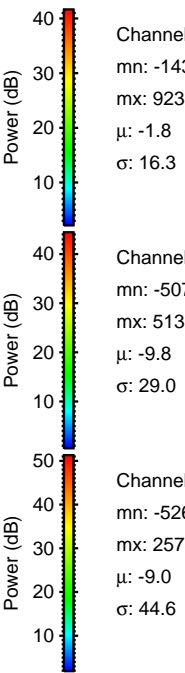
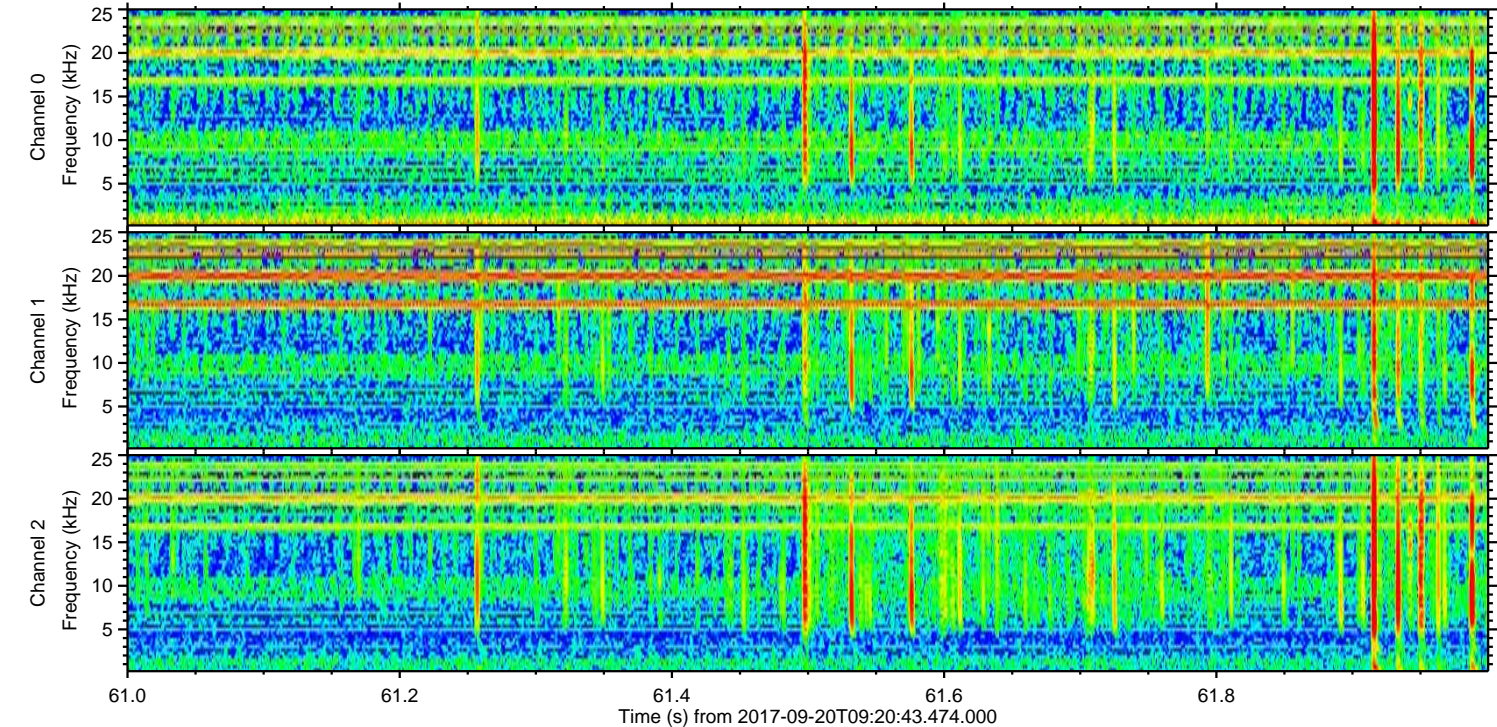
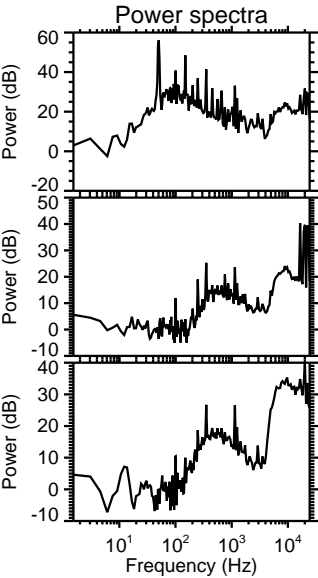
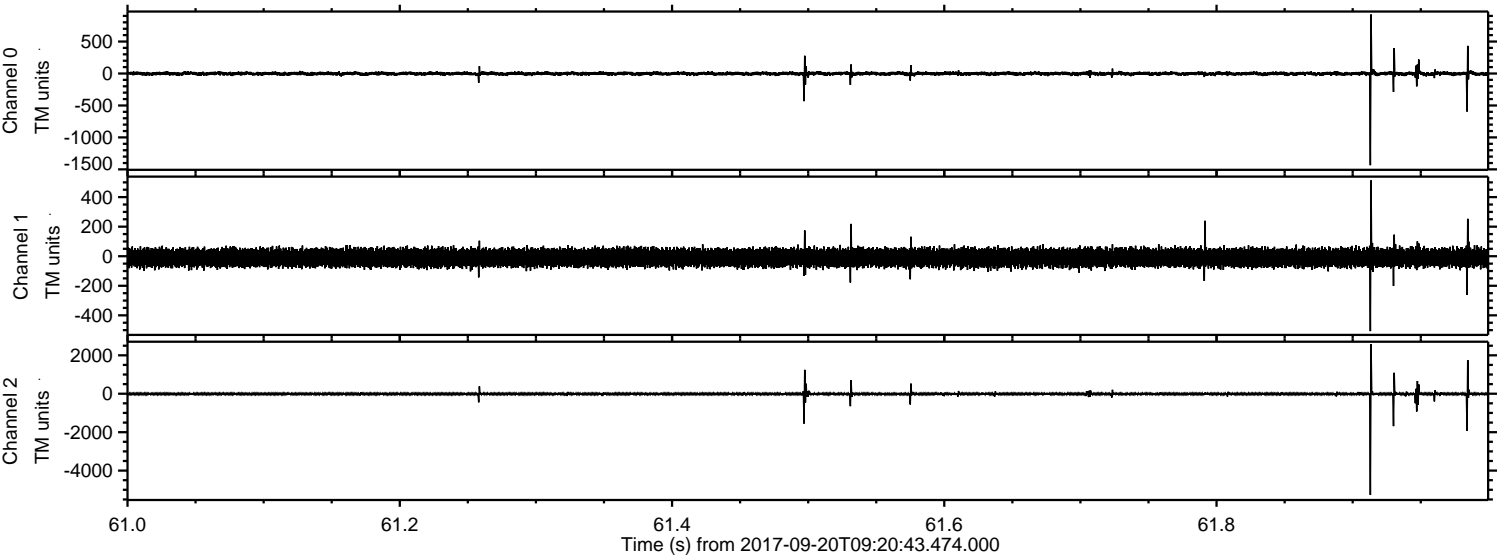
Processed Wed Sep 20 11:28:43 2017 by ELM ver.2012-10-06 from 001\_\_elm20170920\_092042\_\_dat00.bin



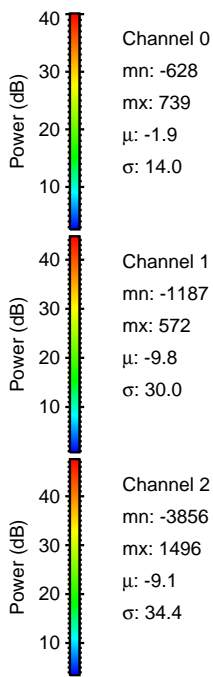
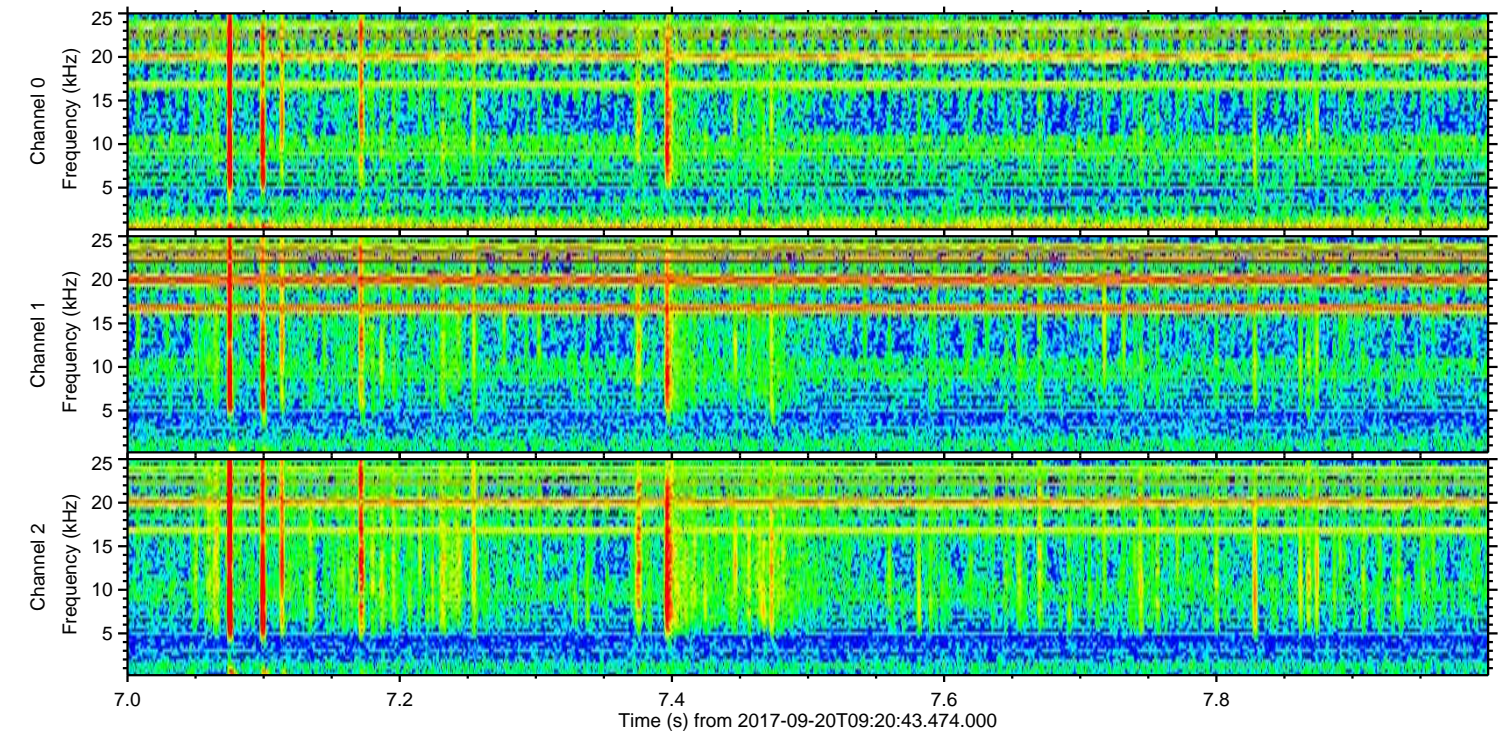
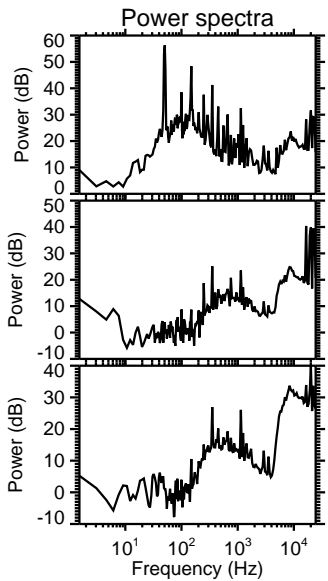
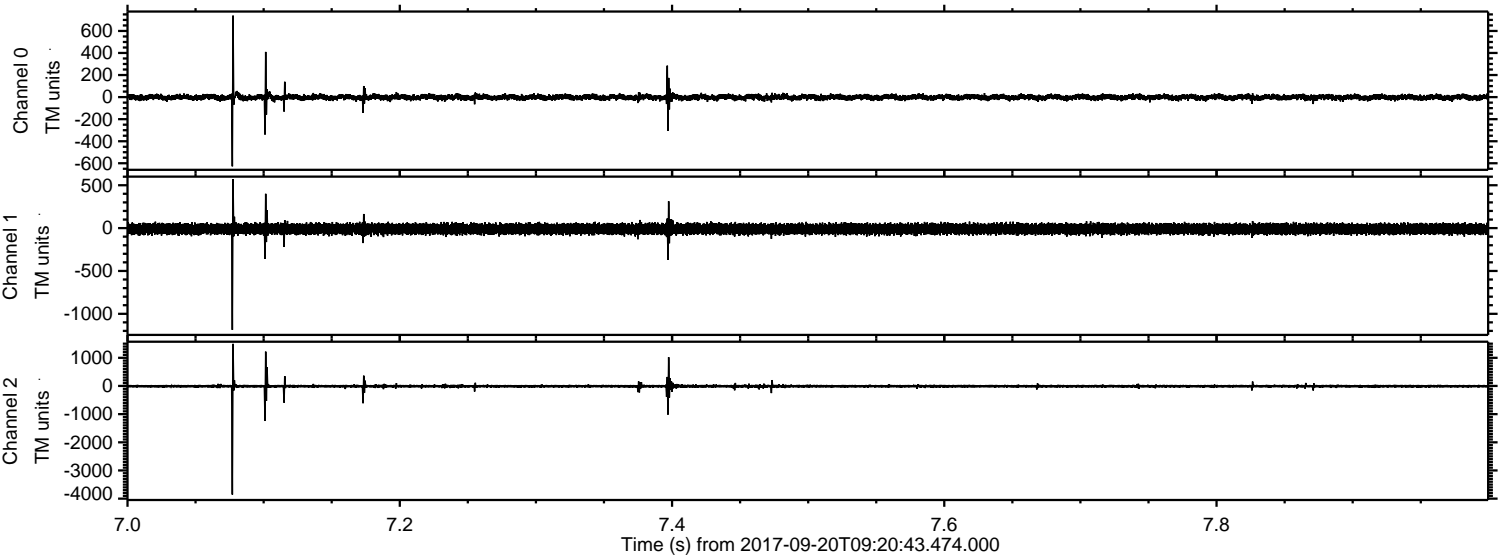
Processed Wed Sep 20 11:28:44 2017 by ELM ver.2012-10-06 from 001\_\_elm20170920\_092042\_\_dat00.bin



Processed Wed Sep 20 11:28:44 2017 by ELM ver.2012-10-06 from 001\_\_elm20170920\_092042\_\_dat00.bin

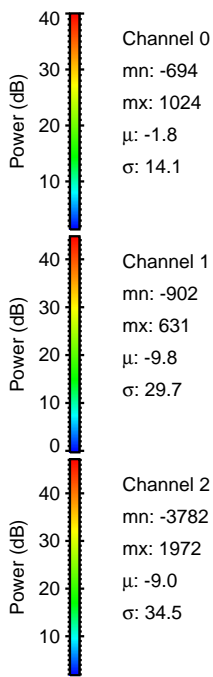
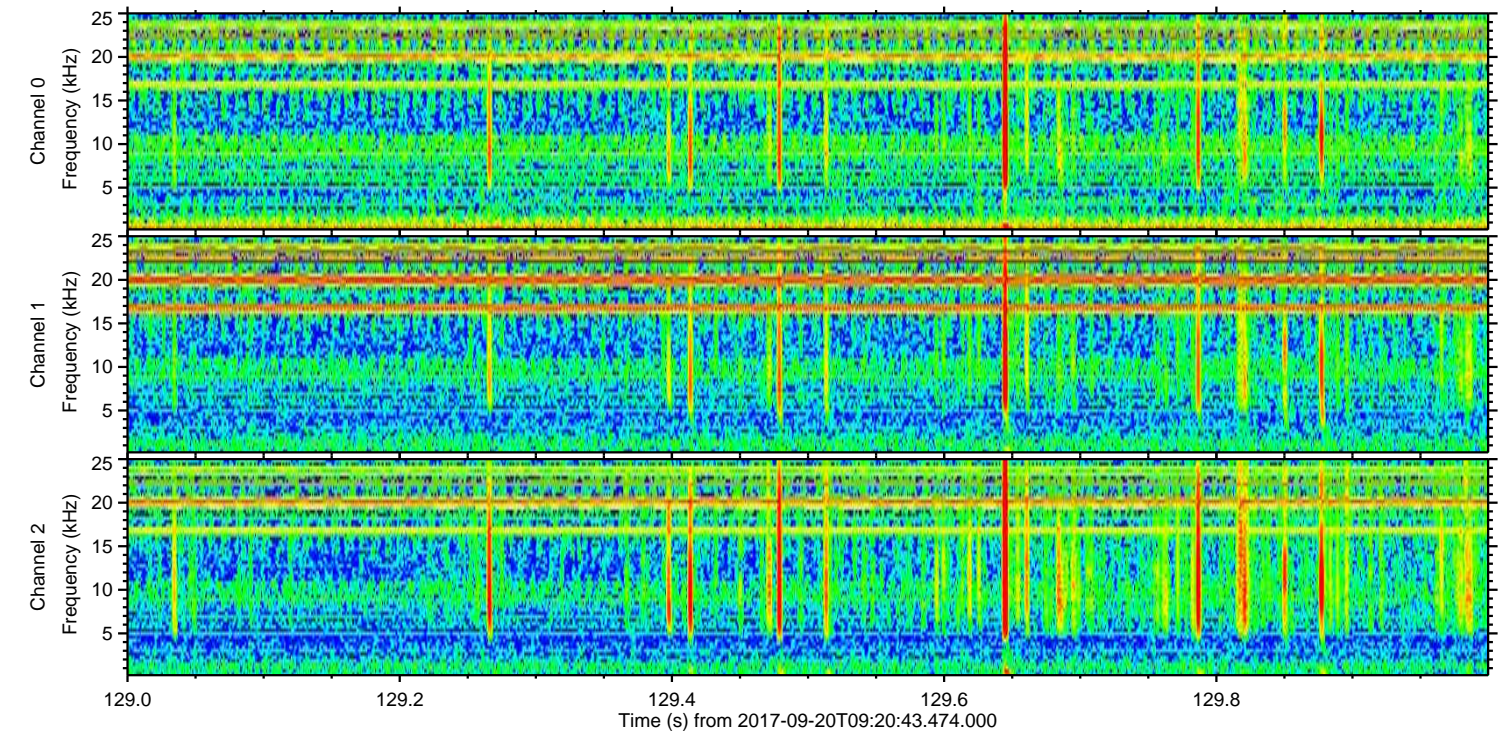
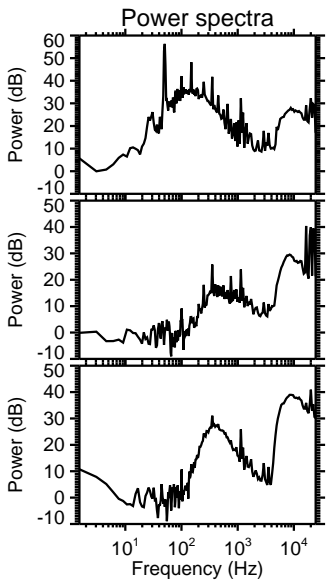
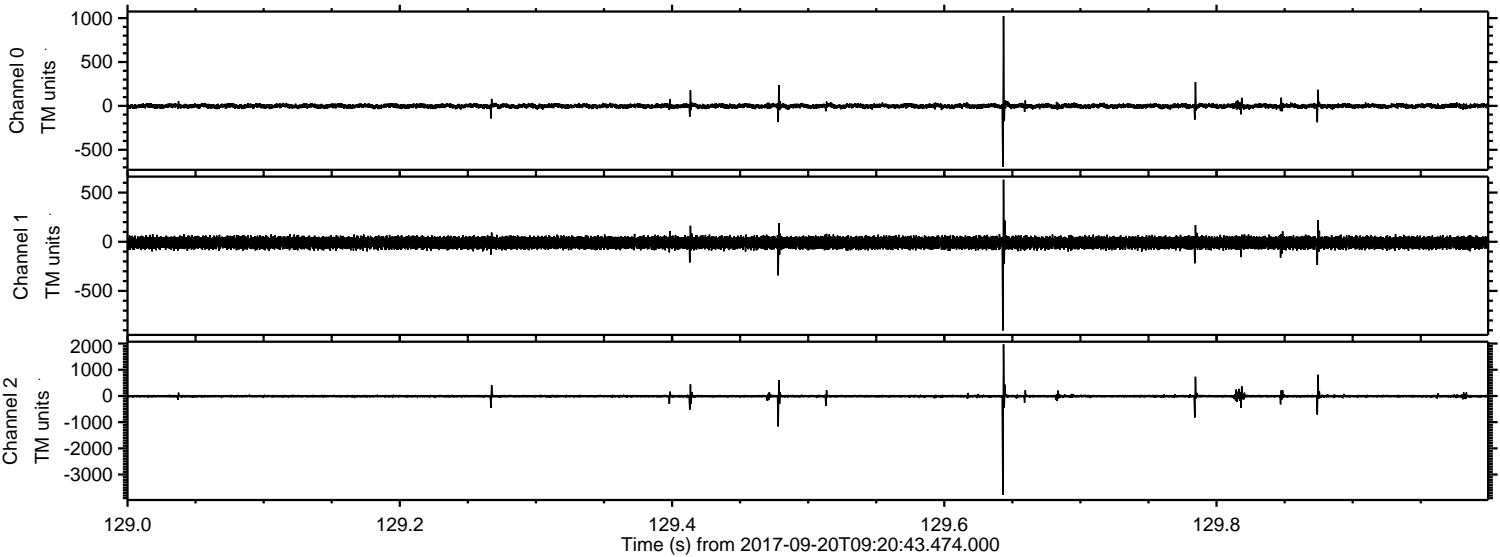


Processed Wed Sep 20 11:28:45 2017 by ELM ver.2012-10-06 from 001\_\_elm20170920\_092042\_\_dat00.bin

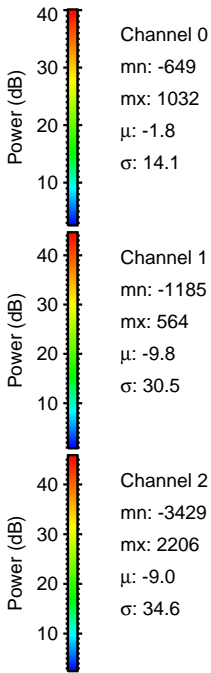
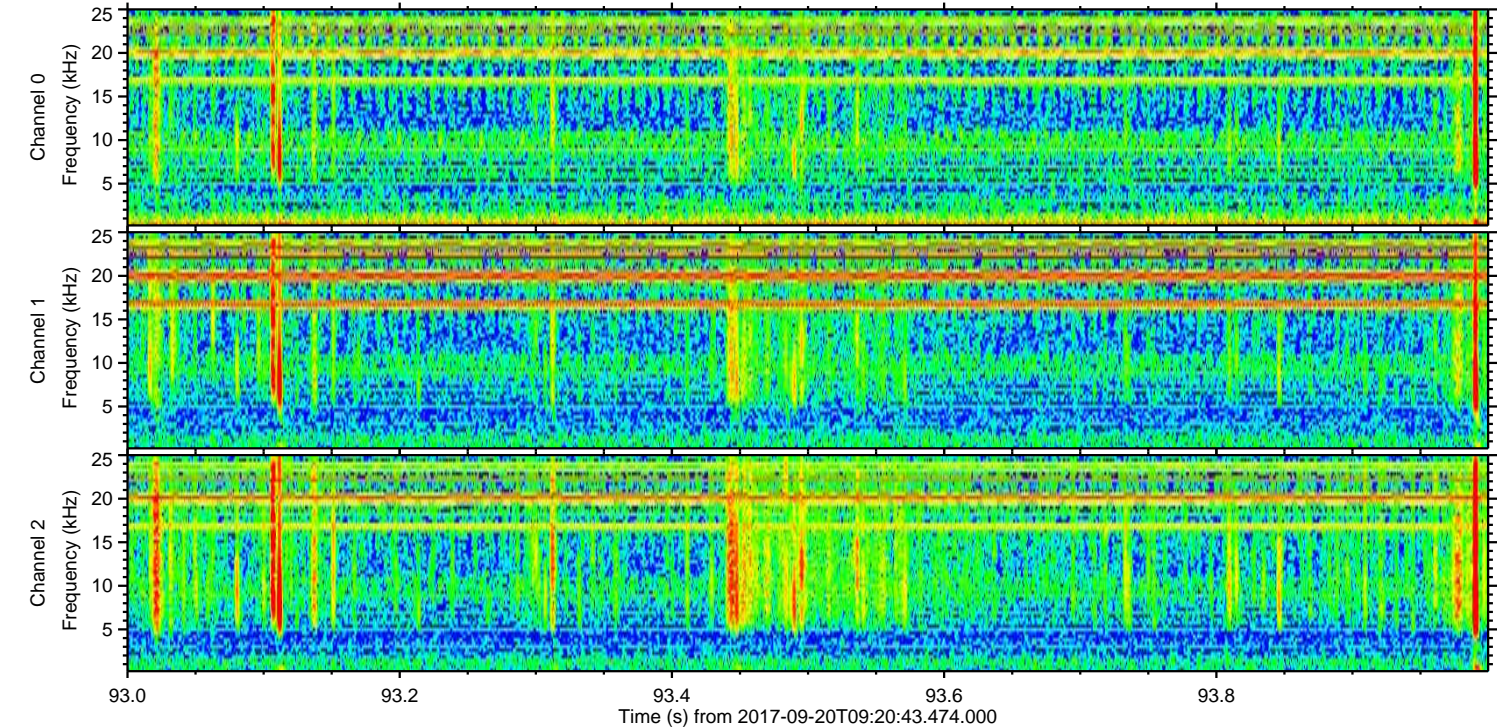
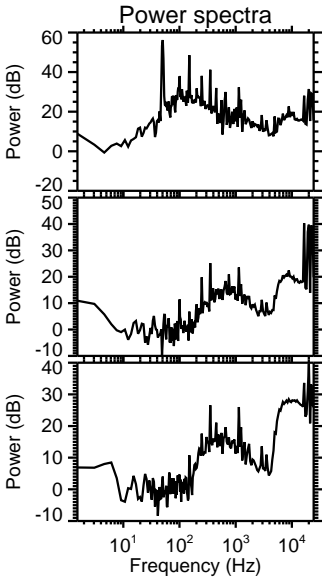
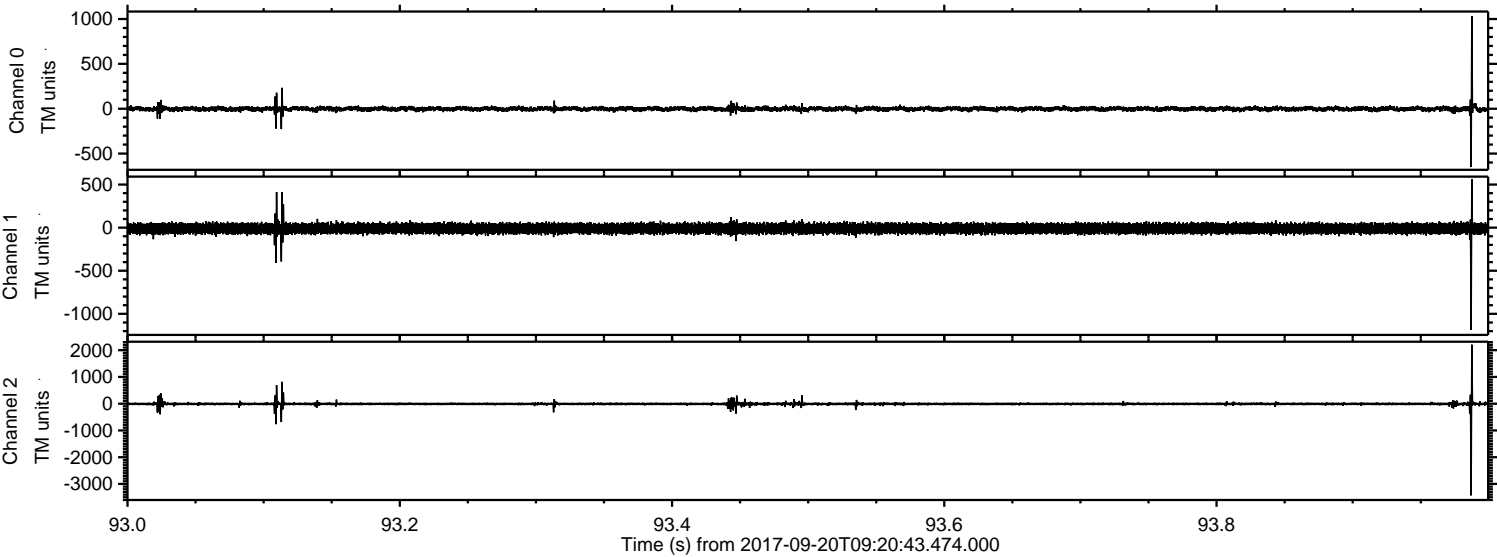


ELMAVAN 3D WAVEFORMS (Measured data sampled at 50 kHz) 51000 packets of 144 samples from 2017-09-20T09:20:43.474.000. Part 130/147

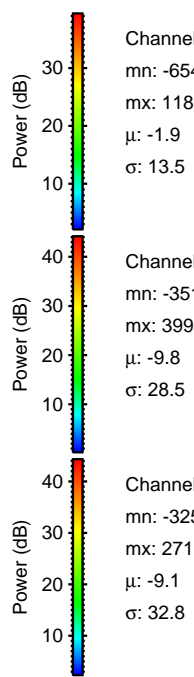
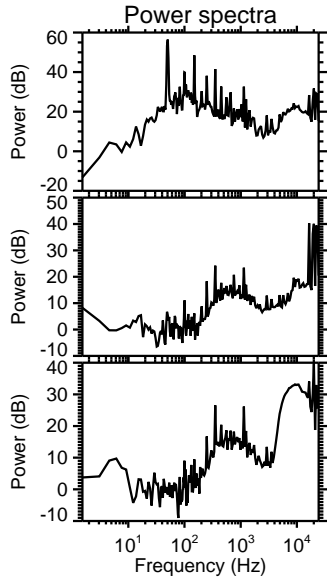
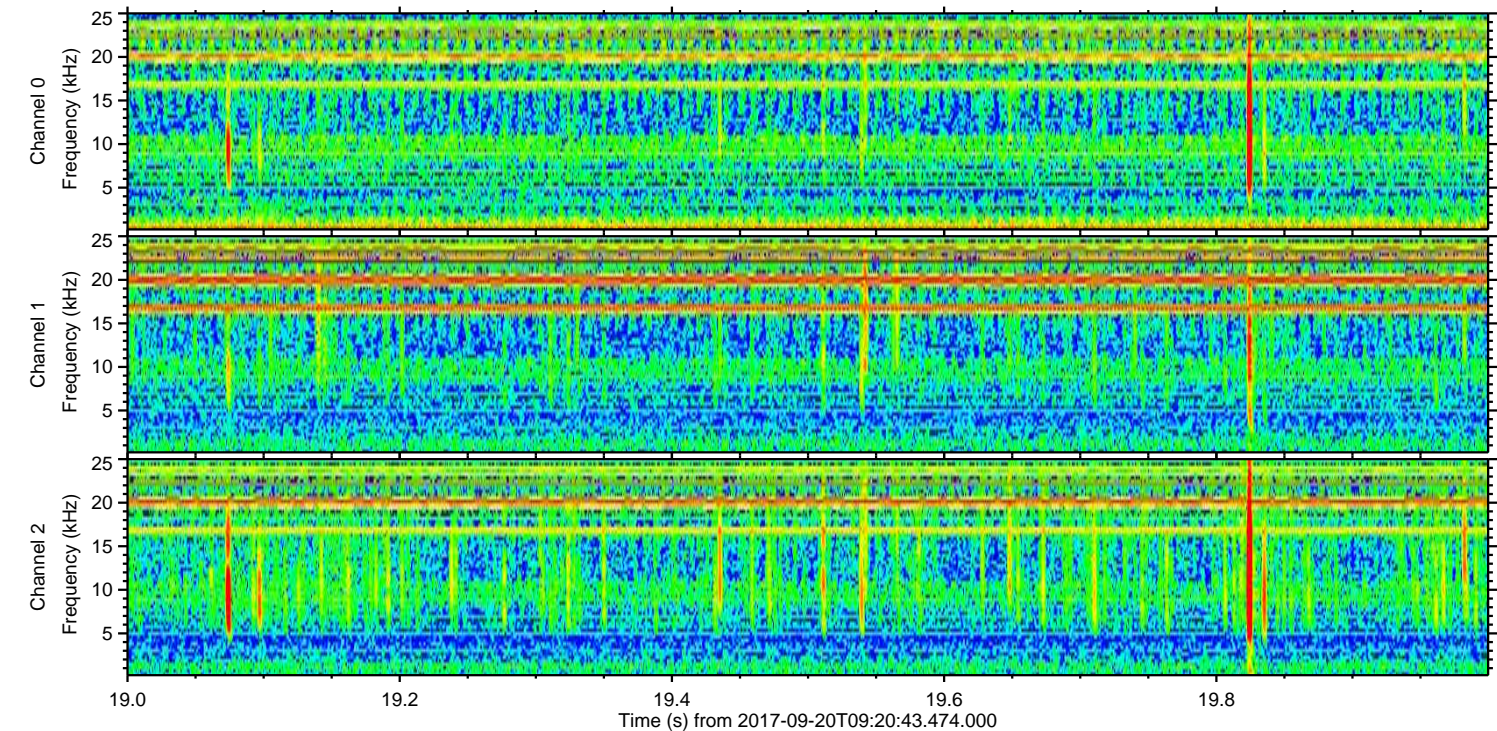
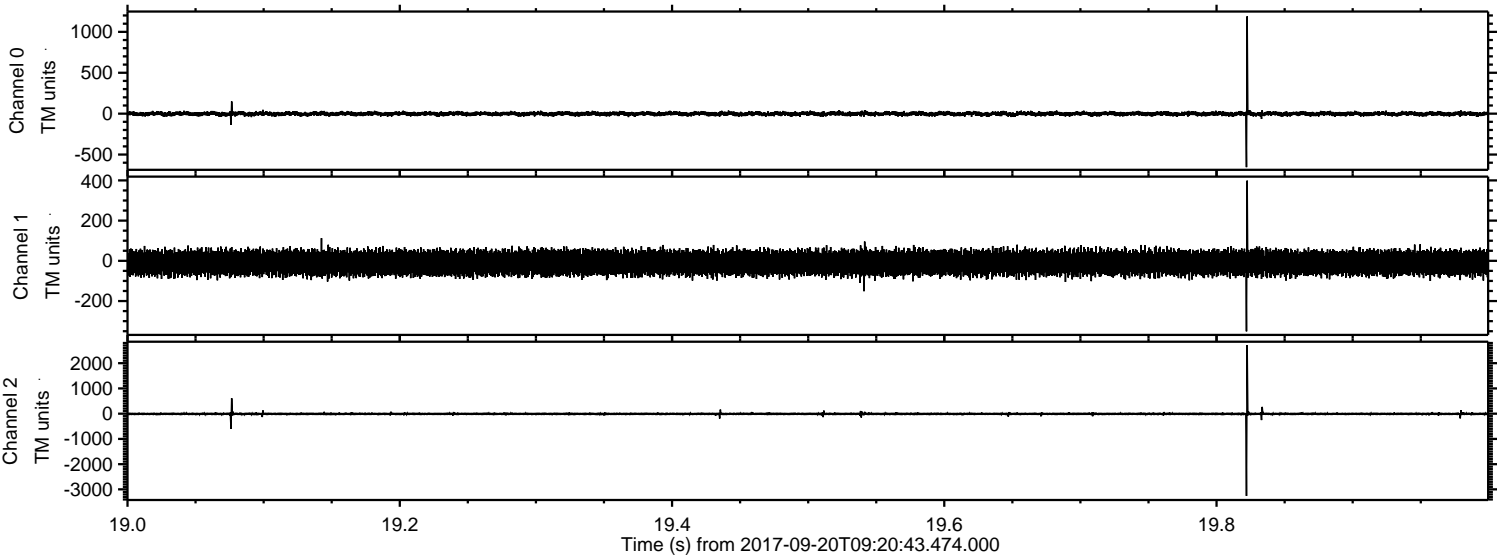
Processed Wed Sep 20 11:28:46 2017 by ELM ver.2012-10-06 from 001\_\_elm20170920\_092042\_\_dat00.bin



Processed Wed Sep 20 11:28:46 2017 by ELM ver.2012-10-06 from 001\_\_elm20170920\_092042\_\_dat00.bin



Processed Wed Sep 20 11:28:47 2017 by ELM ver.2012-10-06 from 001\_\_elm20170920\_092042\_\_dat00.bin



Channel 0  
mn: -654  
mx: 1189  
 $\mu$ : -1.9  
 $\sigma$ : 13.5

Channel 1  
mn: -351  
mx: 399  
 $\mu$ : -9.8  
 $\sigma$ : 28.5

Channel 2  
mn: -3258  
mx: 2715  
 $\mu$ : -9.1  
 $\sigma$ : 32.8

