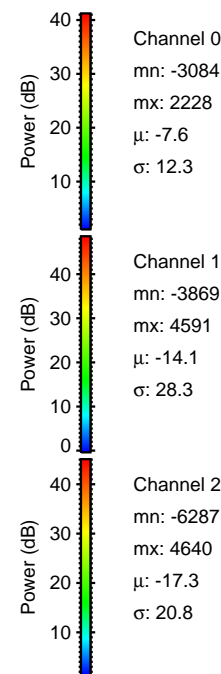
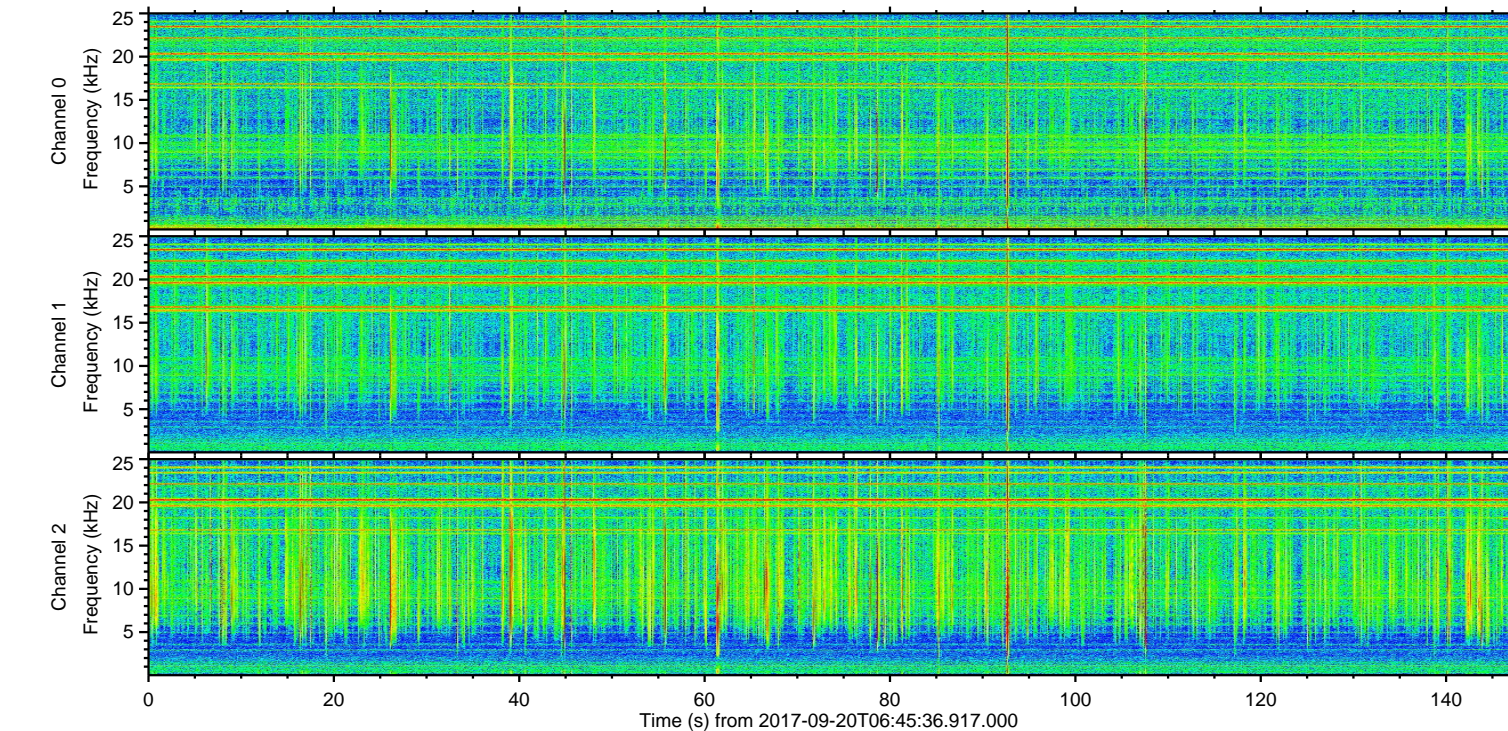
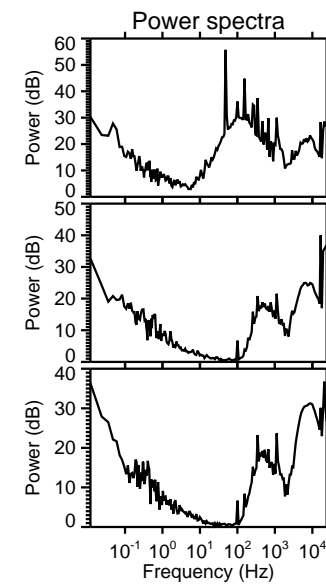
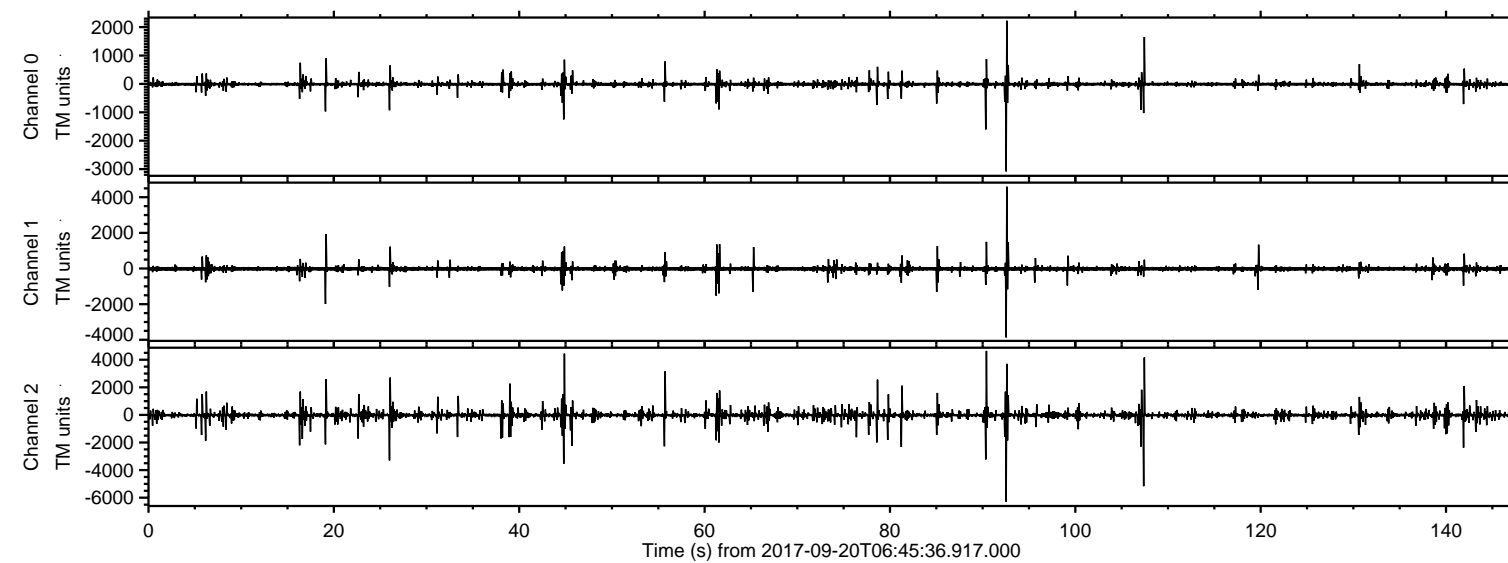
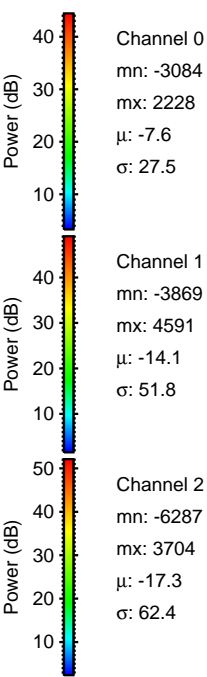
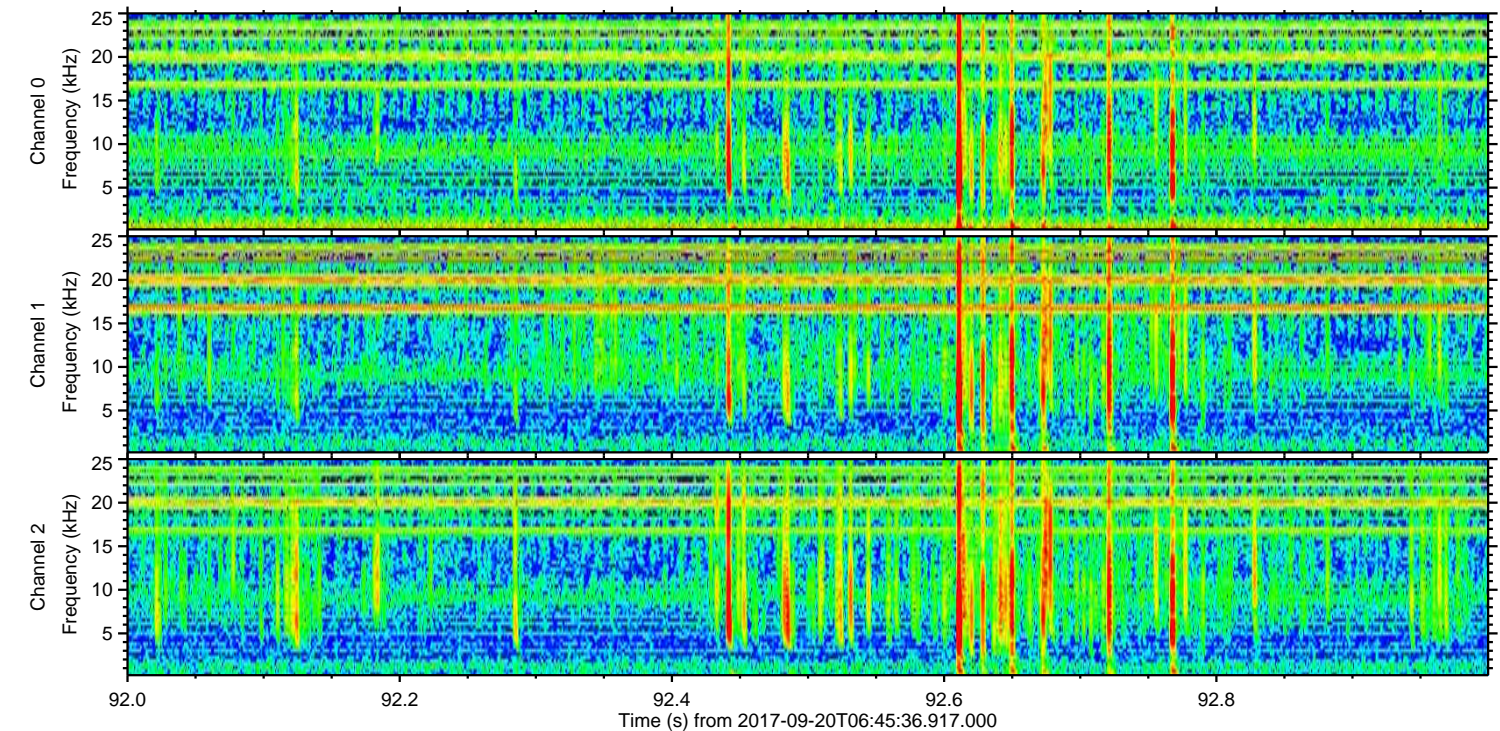
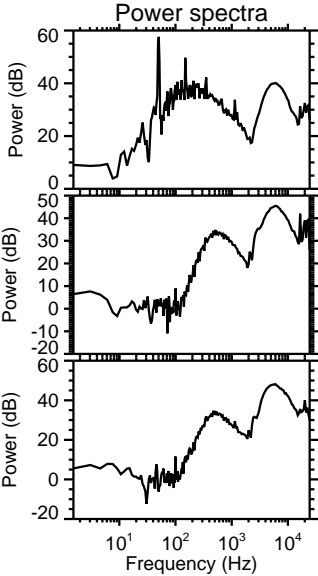
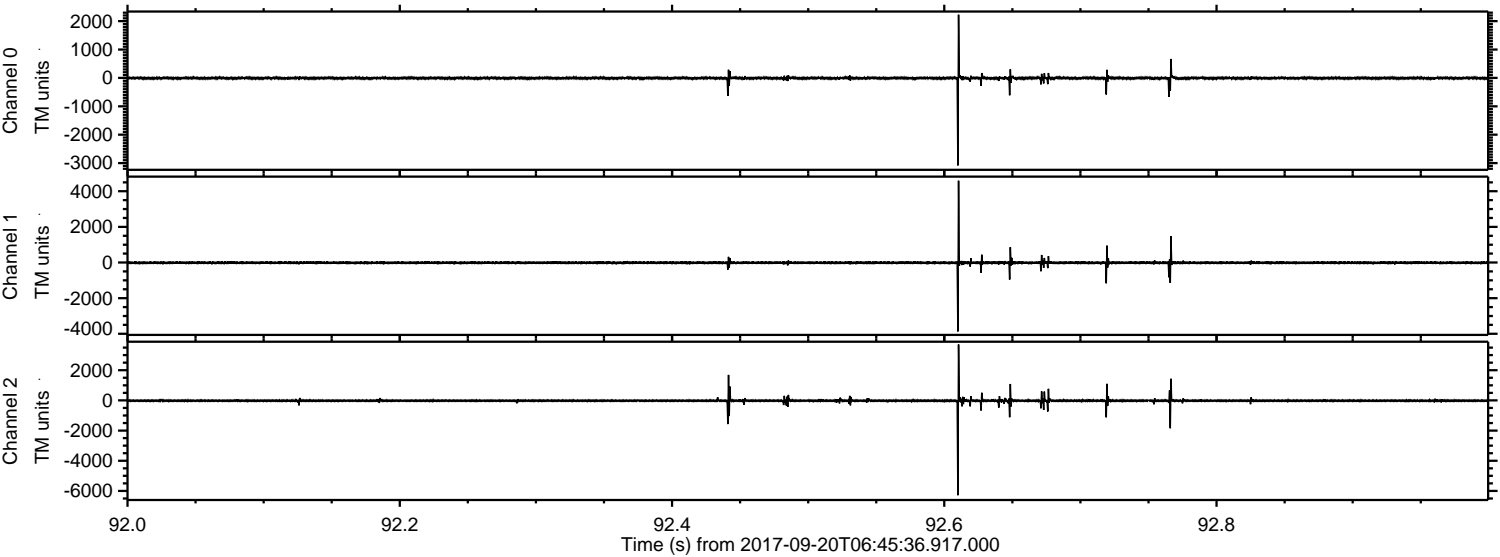


ELMAVAN 3D WAVEFORMS (Measured data sampled at 50 kHz) 51000 packets of 144 samples from 2017-09-20T06:45:36.917.000.

Processed Wed Sep 20 08:53:59 2017 by ELM ver.2012-10-06 from 001__elm20170920_064535__dat00.bin



Processed Wed Sep 20 08:54:06 2017 by ELM ver.2012-10-06 from 001__elm20170920_064535__dat00.bin



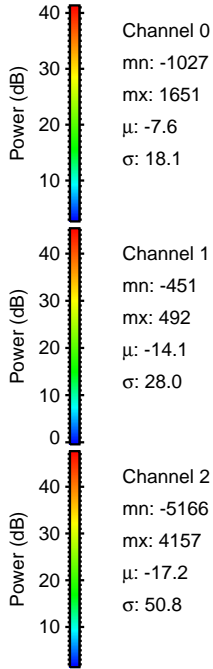
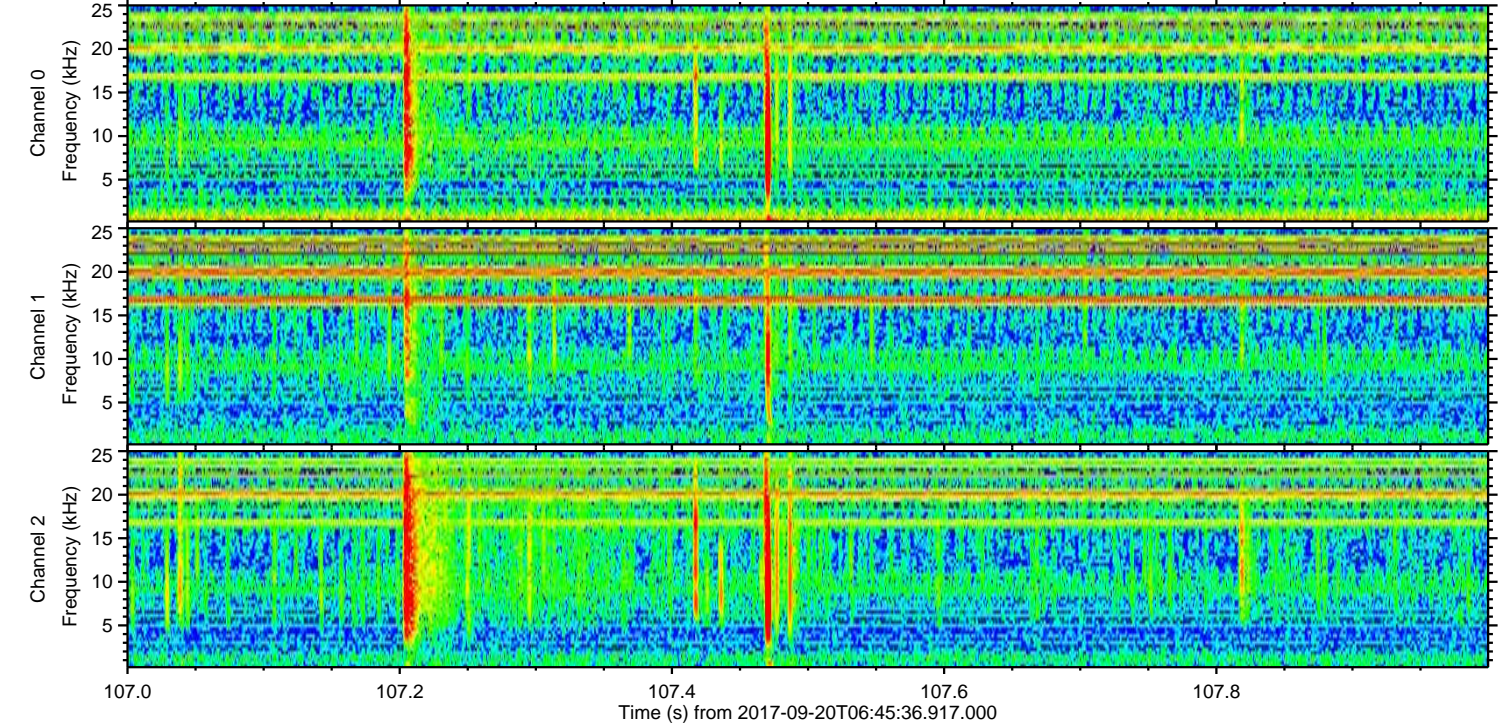
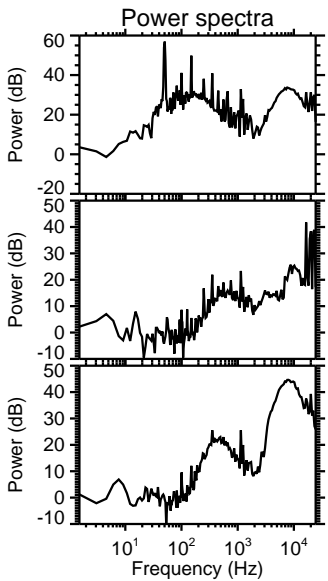
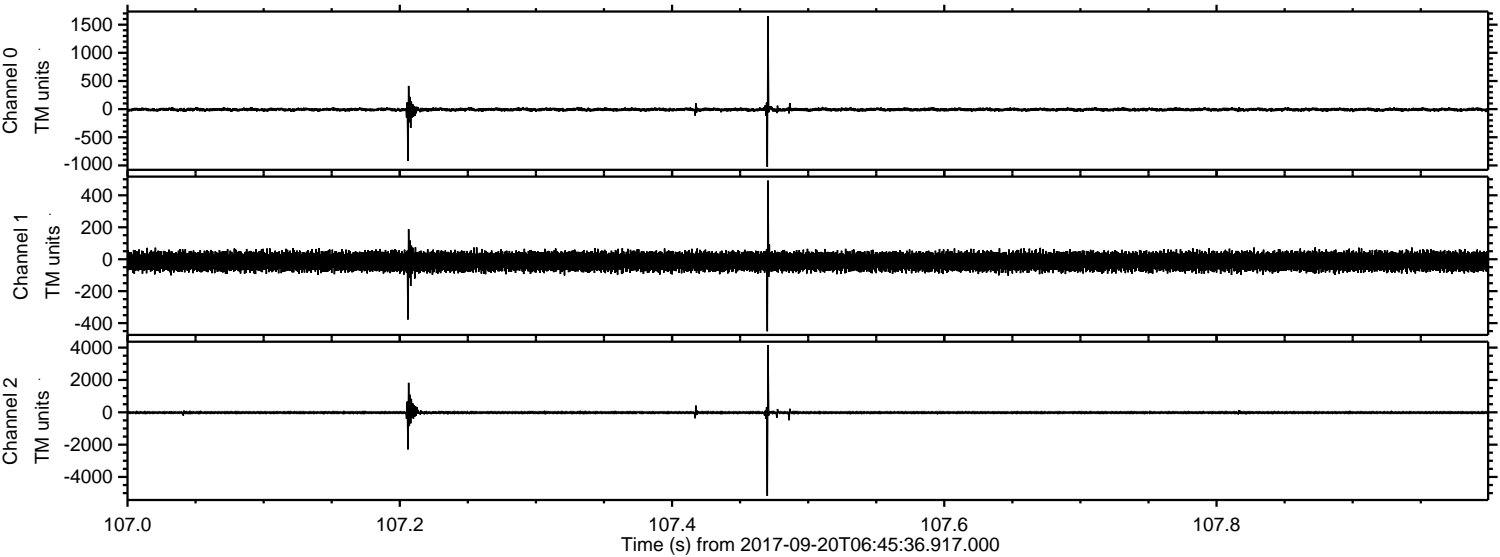
Channel 0
mn: -3084
mx: 2228
 μ : -7.6
 σ : 27.5

Channel 1
mn: -3869
mx: 4591
 μ : -14.1
 σ : 51.8

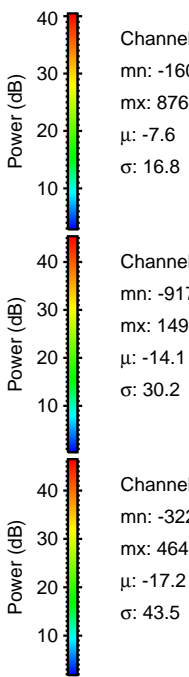
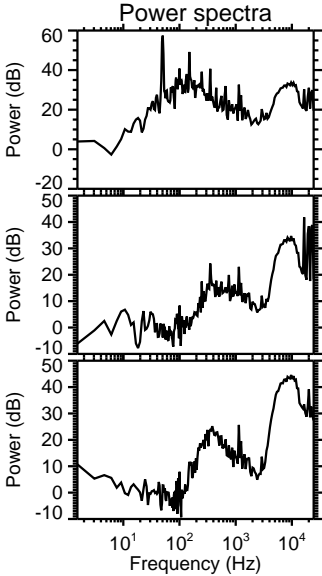
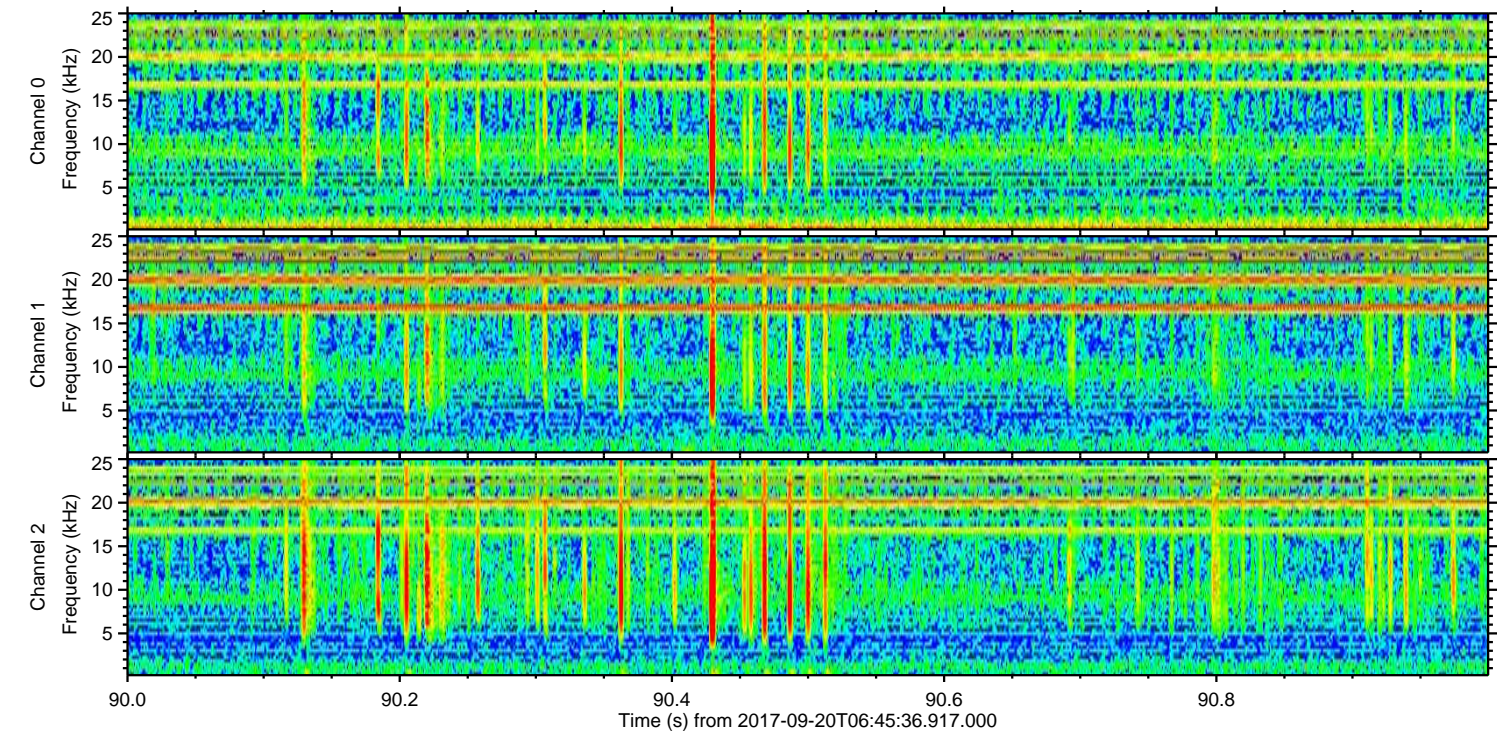
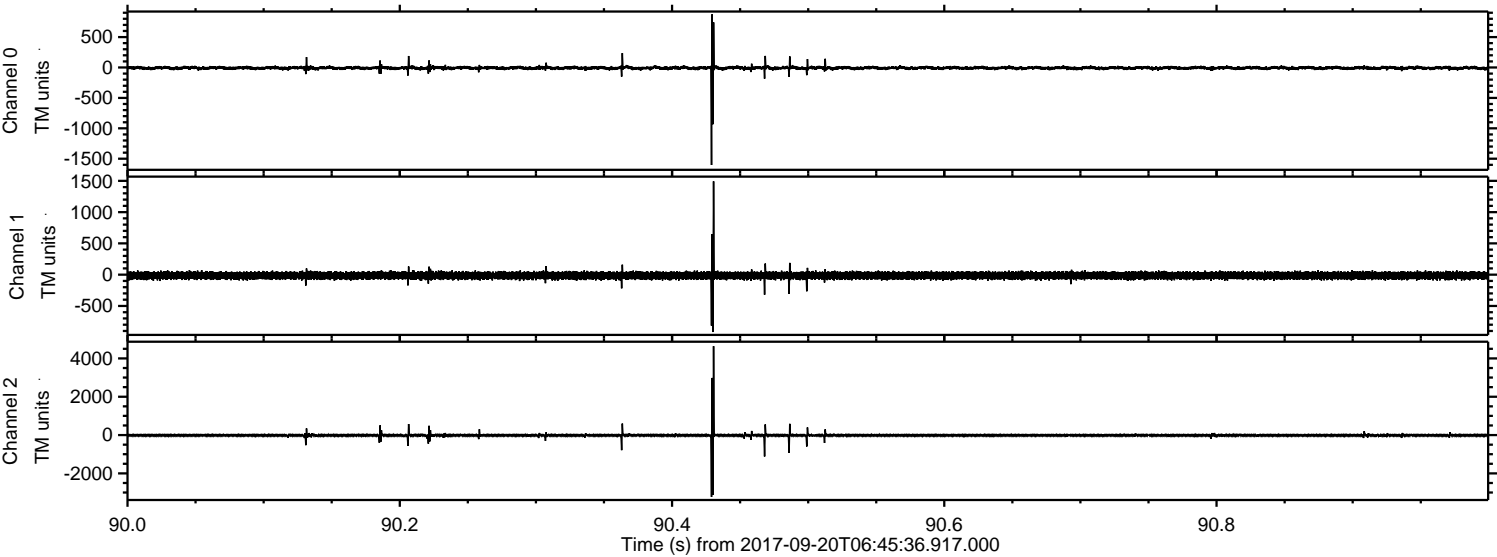
Channel 2
mn: -6287
mx: 3704
 μ : -17.3
 σ : 62.4

ELMAVAN 3D WAVEFORMS (Measured data sampled at 50 kHz) 51000 packets of 144 samples from 2017-09-20T06:45:36.917.000. Part 108/147

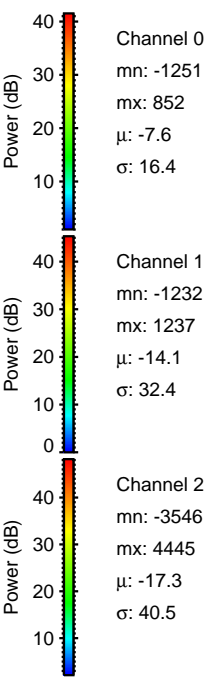
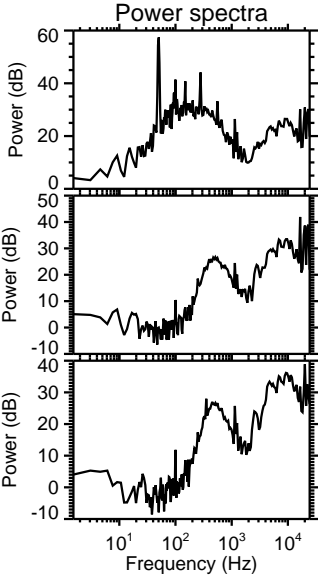
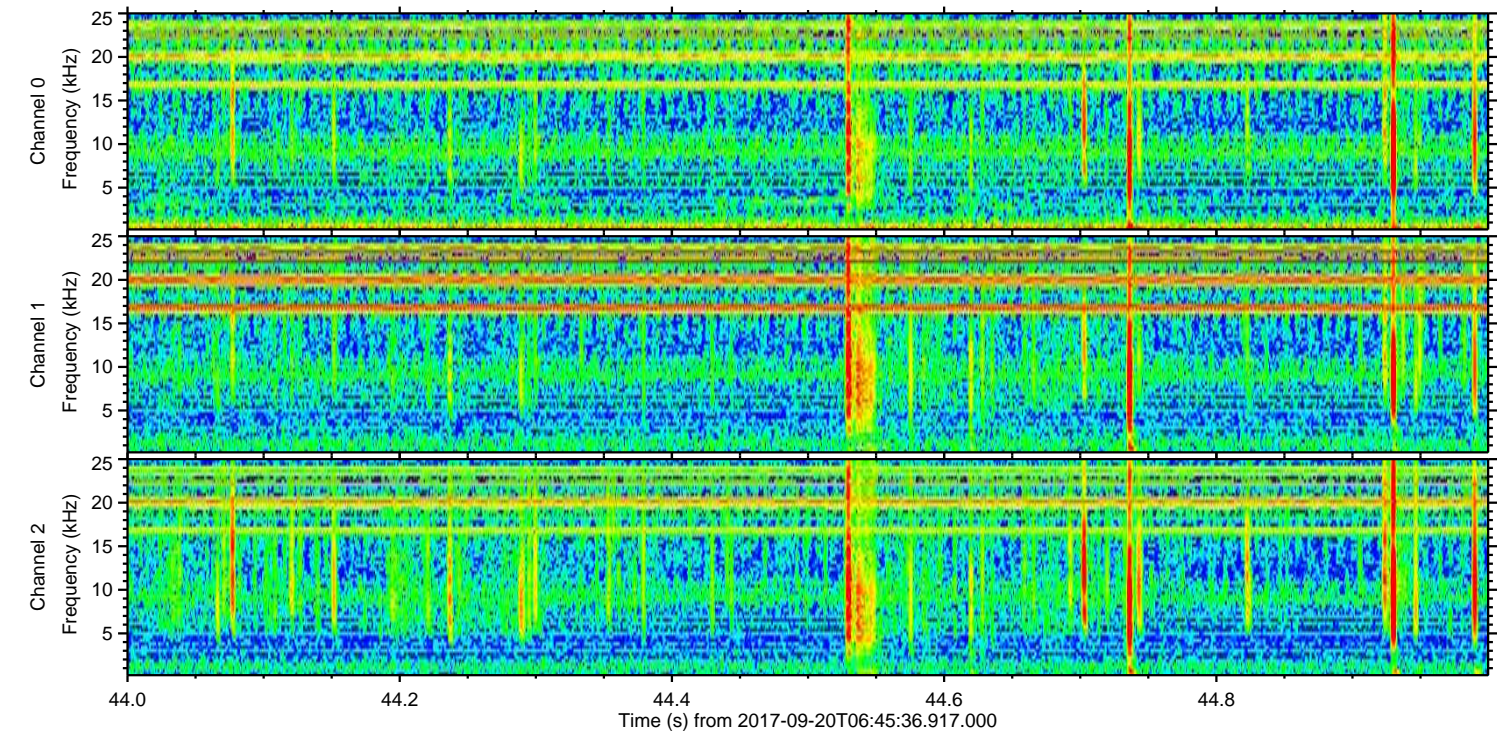
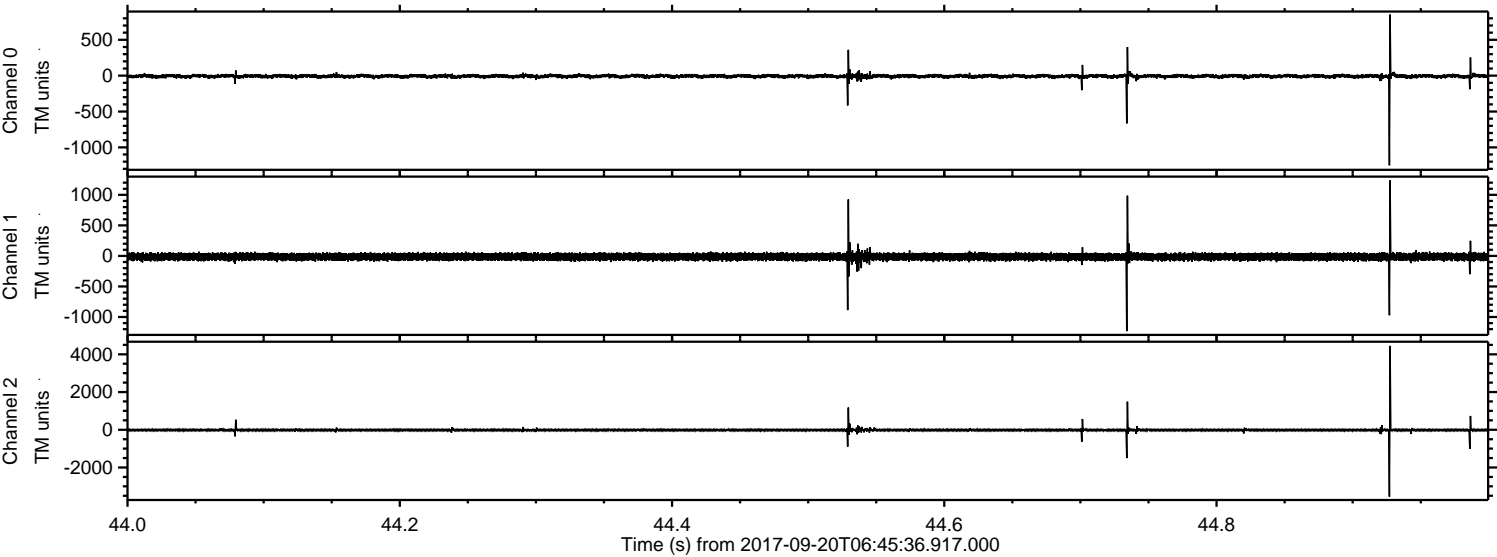
Processed Wed Sep 20 08:54:06 2017 by ELM ver.2012-10-06 from 001__elm20170920_064535__dat00.bin



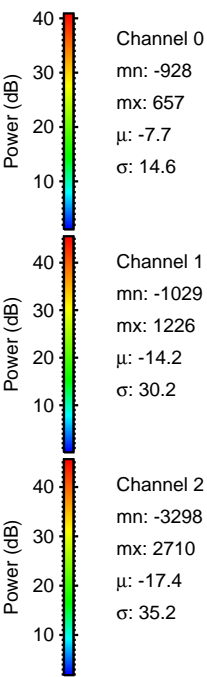
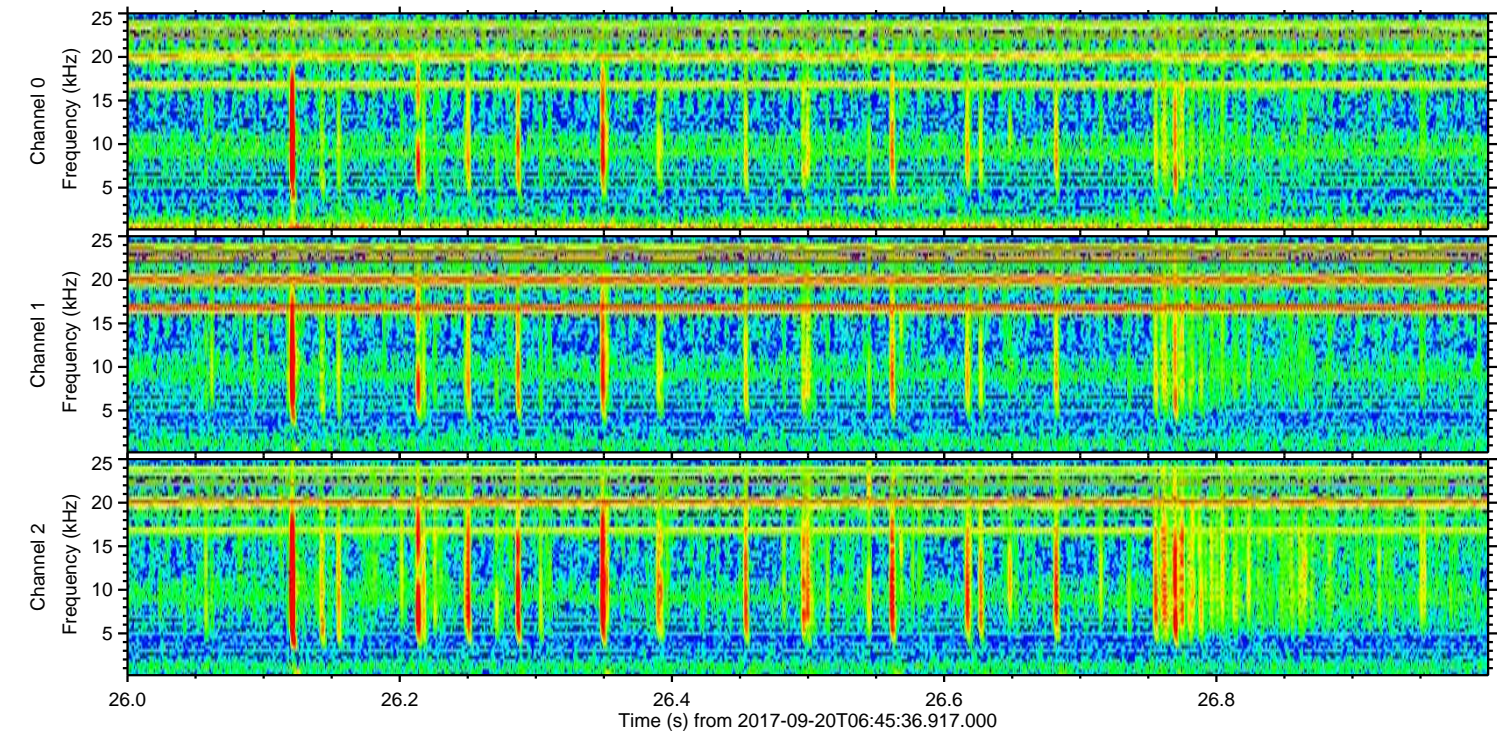
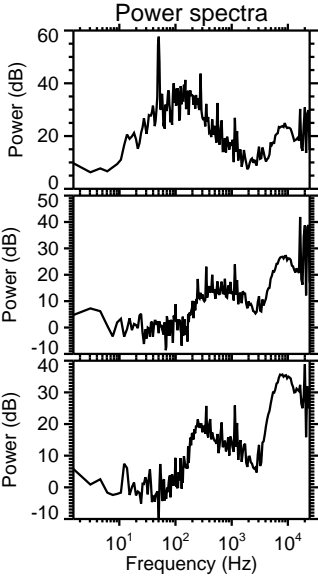
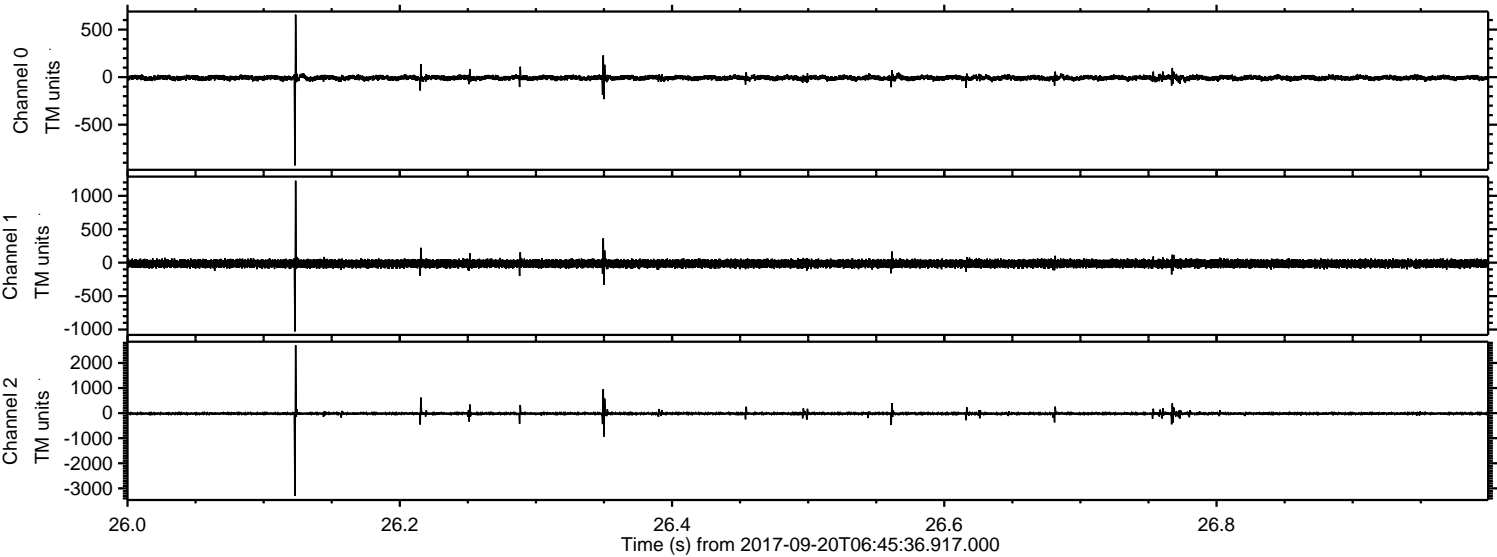
Processed Wed Sep 20 08:54:07 2017 by ELM ver.2012-10-06 from 001__elm20170920_064535__dat00.bin



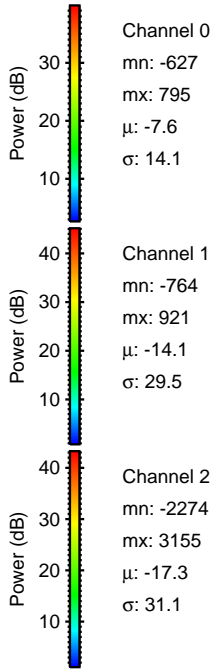
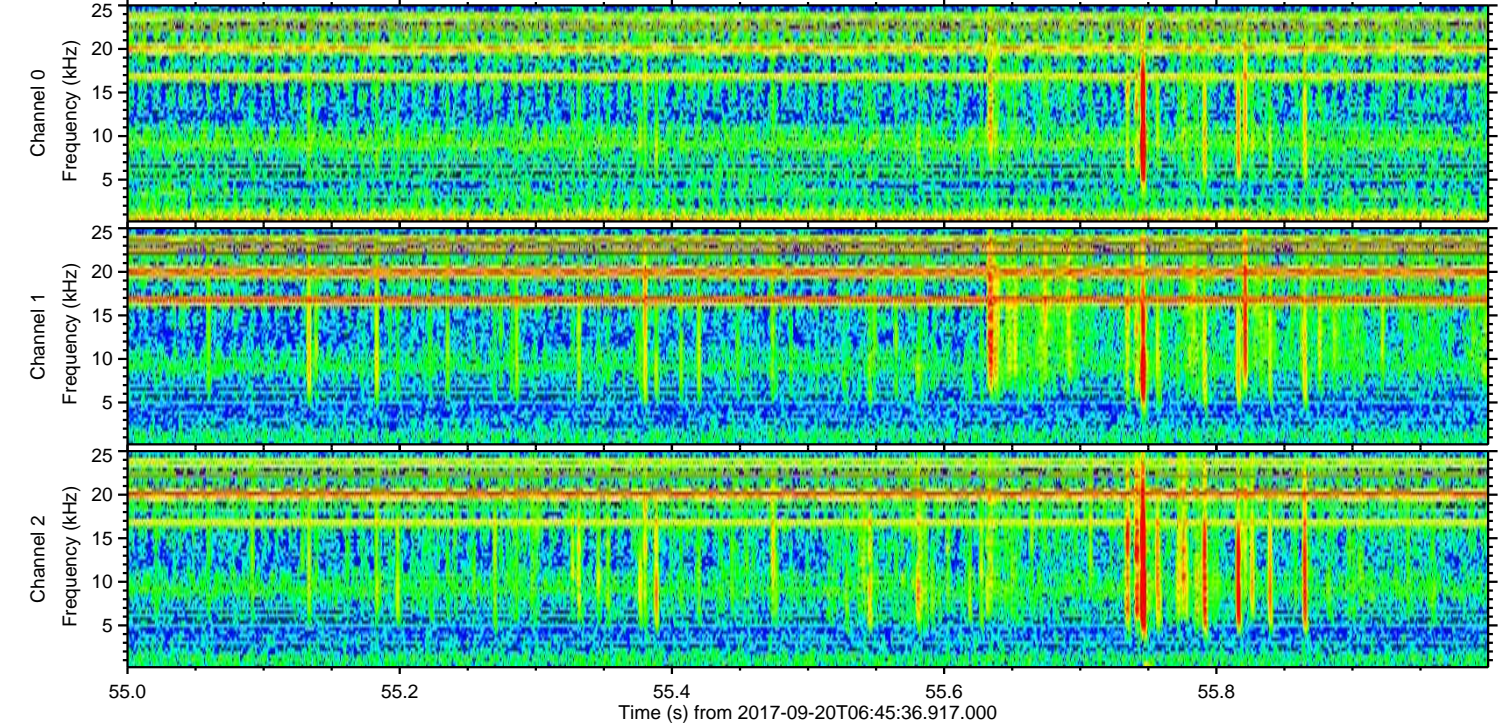
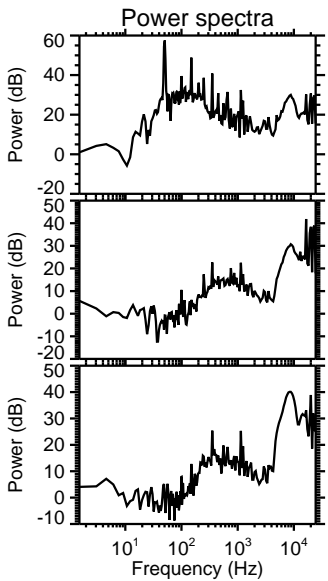
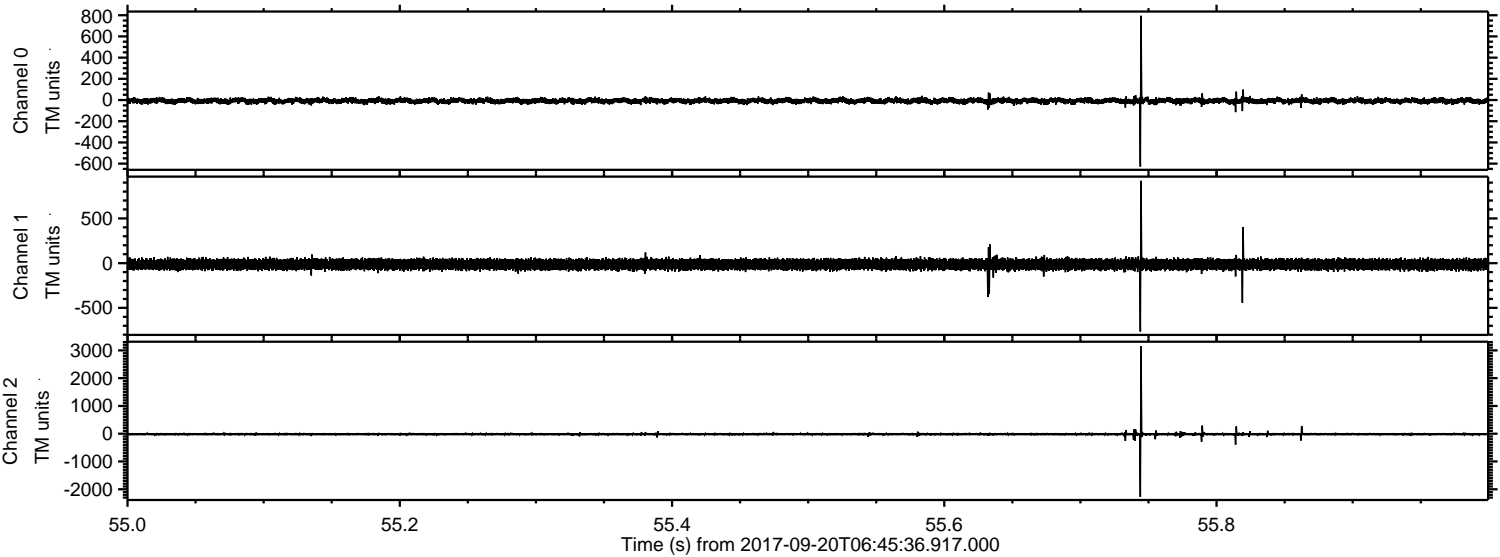
Processed Wed Sep 20 08:54:08 2017 by ELM ver.2012-10-06 from 001__elm20170920_064535__dat00.bin



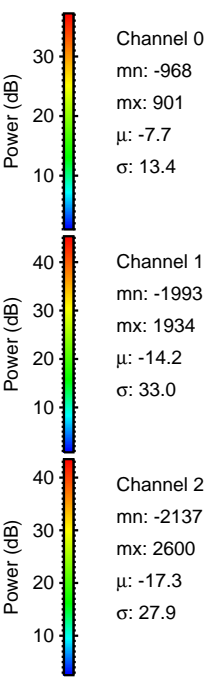
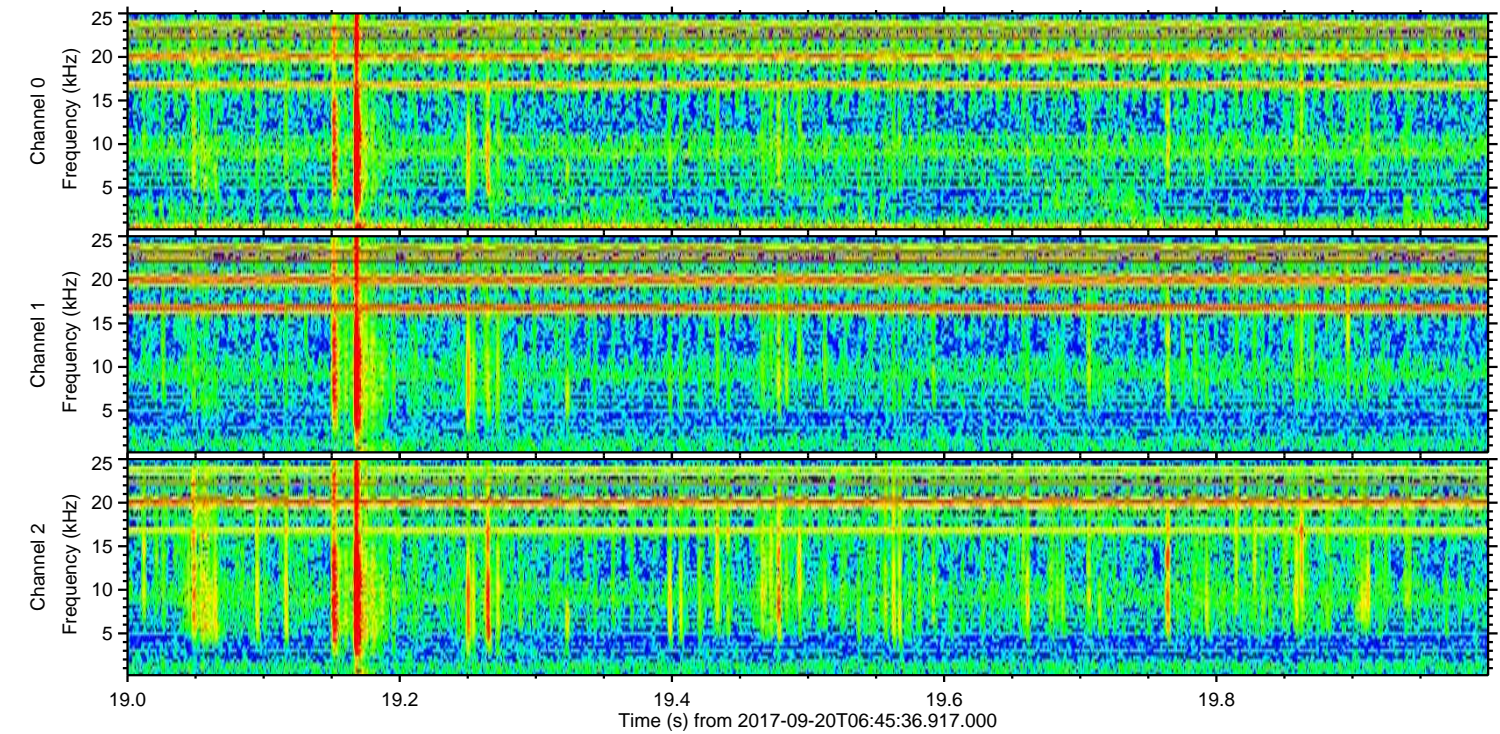
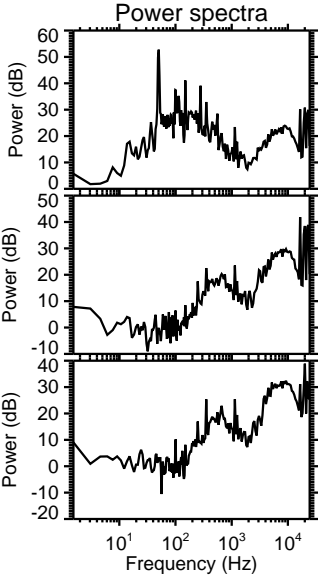
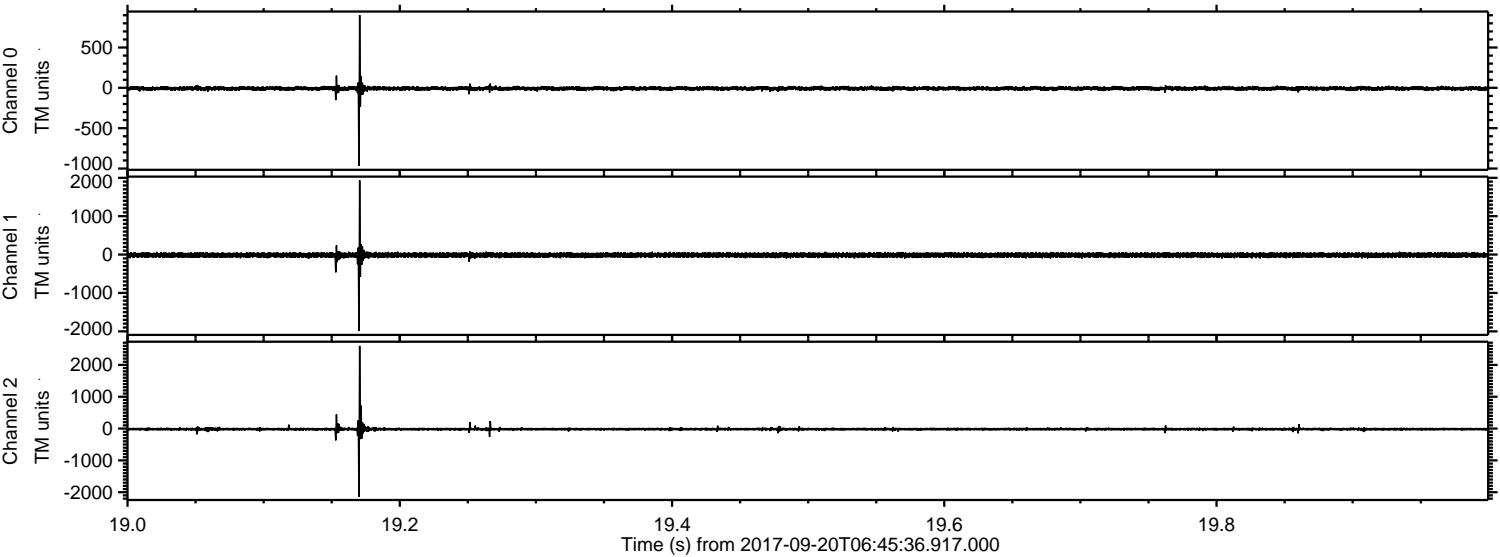
Processed Wed Sep 20 08:54:09 2017 by ELM ver.2012-10-06 from 001__elm20170920_064535__dat00.bin



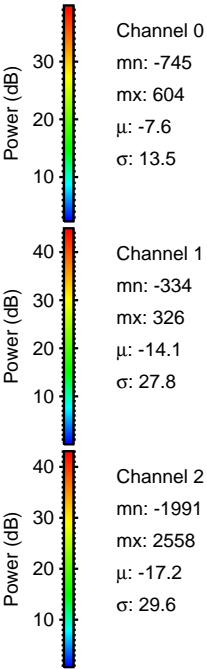
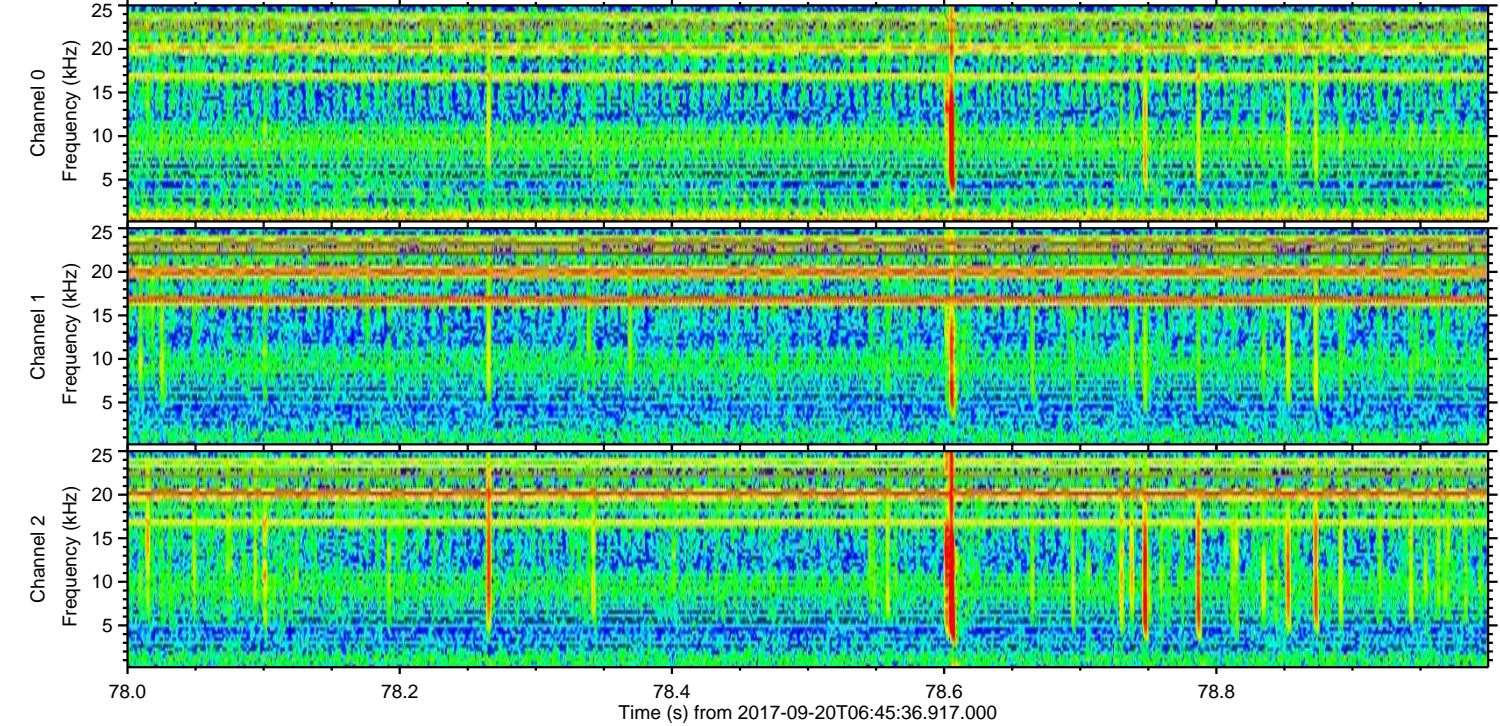
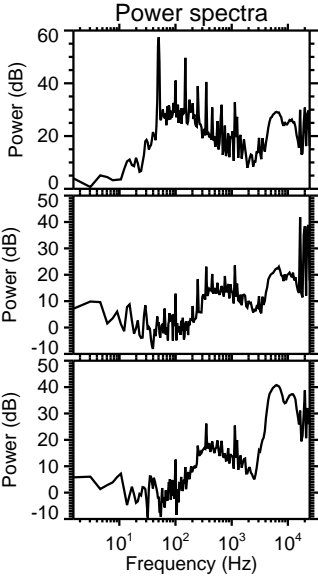
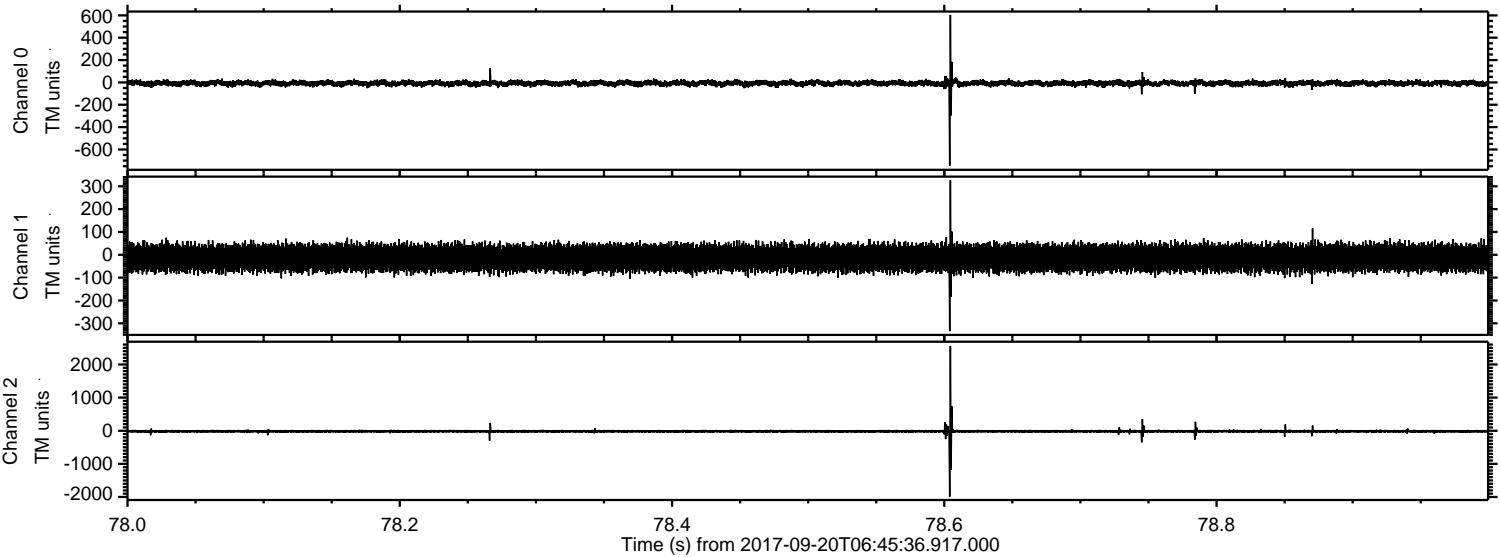
Processed Wed Sep 20 08:54:09 2017 by ELM ver.2012-10-06 from 001__elm20170920_064535__dat00.bin



Processed Wed Sep 20 08:54:10 2017 by ELM ver.2012-10-06 from 001__elm20170920_064535__dat00.bin

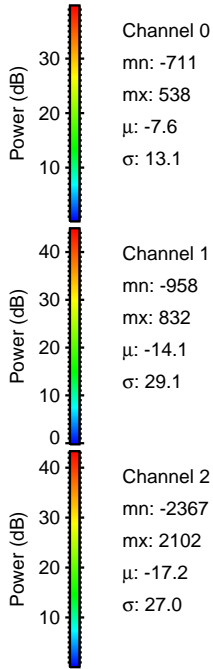
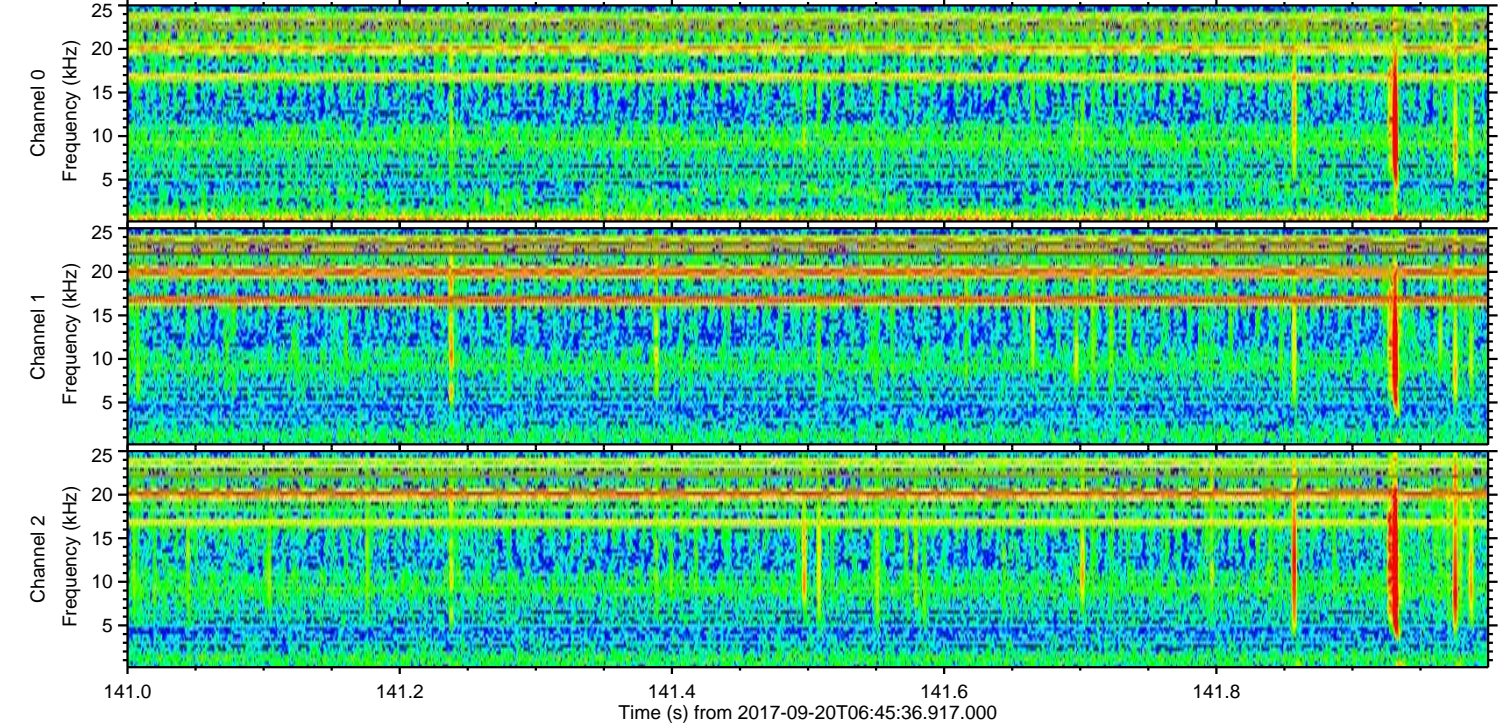
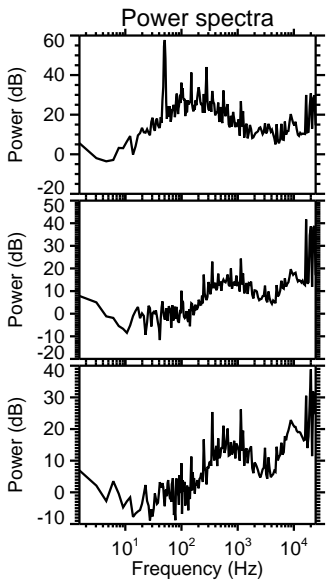
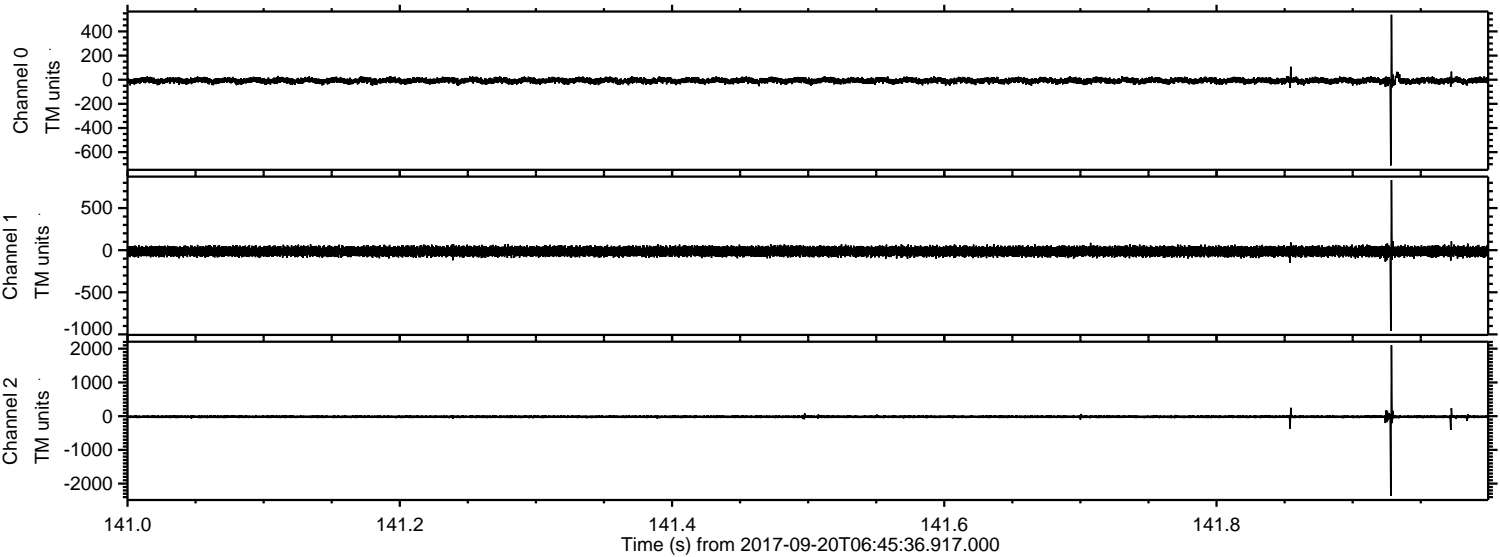


Processed Wed Sep 20 08:54:11 2017 by ELM ver.2012-10-06 from 001__elm20170920_064535__dat00.bin



ELMAVAN 3D WAVEFORMS (Measured data sampled at 50 kHz) 51000 packets of 144 samples from 2017-09-20T06:45:36.917.000. Part 142/147

Processed Wed Sep 20 08:54:11 2017 by ELM ver.2012-10-06 from 001__elm20170920_064535__dat00.bin



Channel 0
mn: -711
mx: 538
 μ : -7.6
 σ : 13.1

Channel 1
mn: -958
mx: 832
 μ : -14.1
 σ : 29.1

Channel 2
mn: -2367
mx: 2102
 μ : -17.2
 σ : 27.0

Processed Wed Sep 20 08:54:12 2017 by ELM ver.2012-10-06 from 001__elm20170920_064535__dat00.bin

