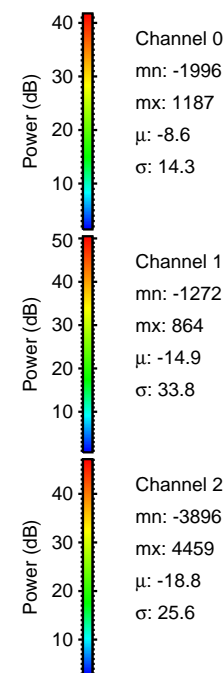
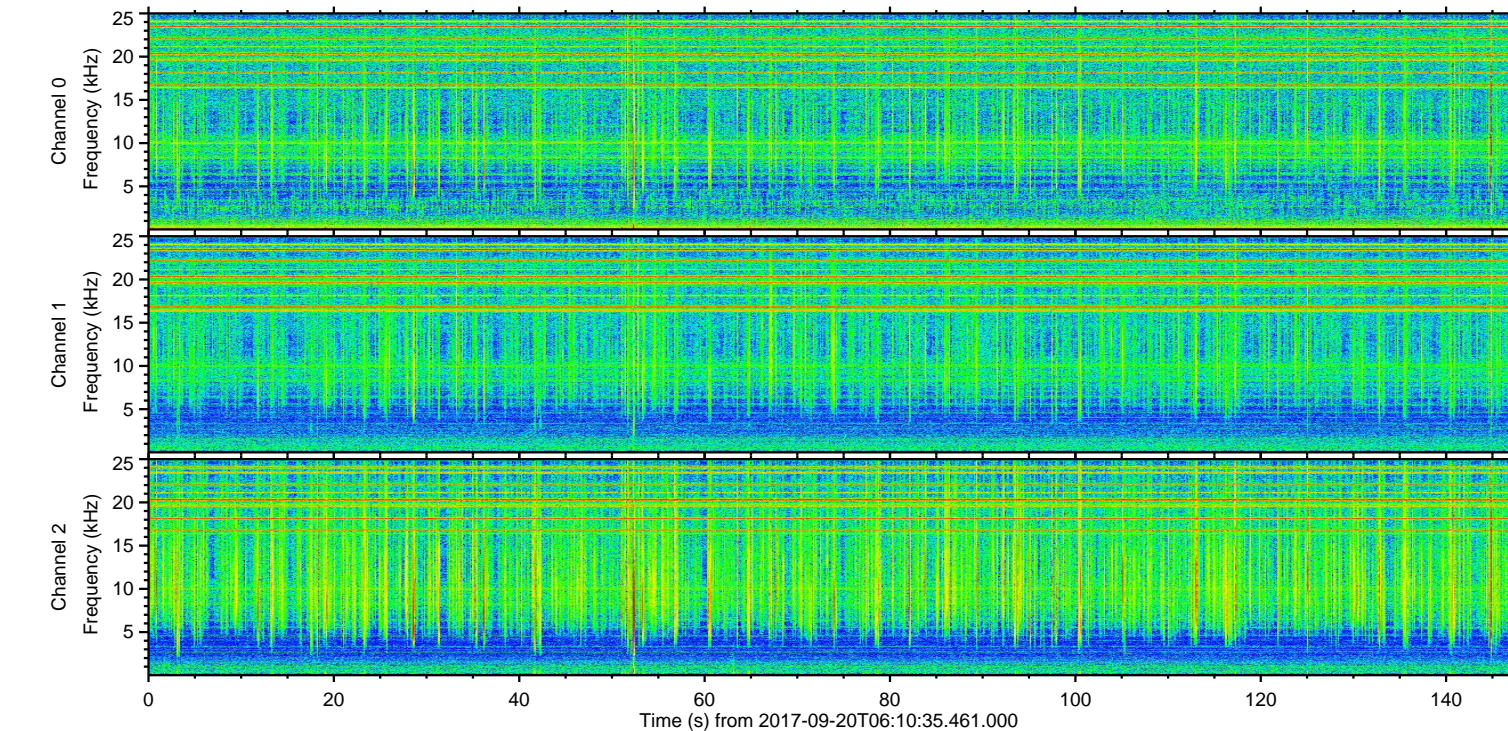
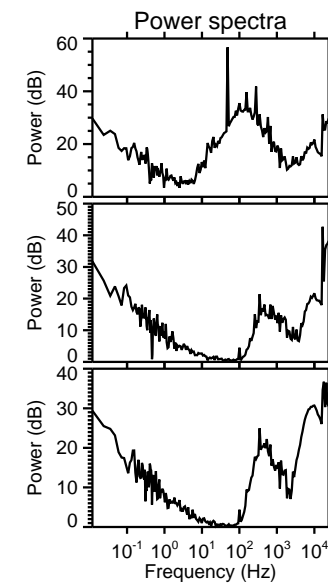
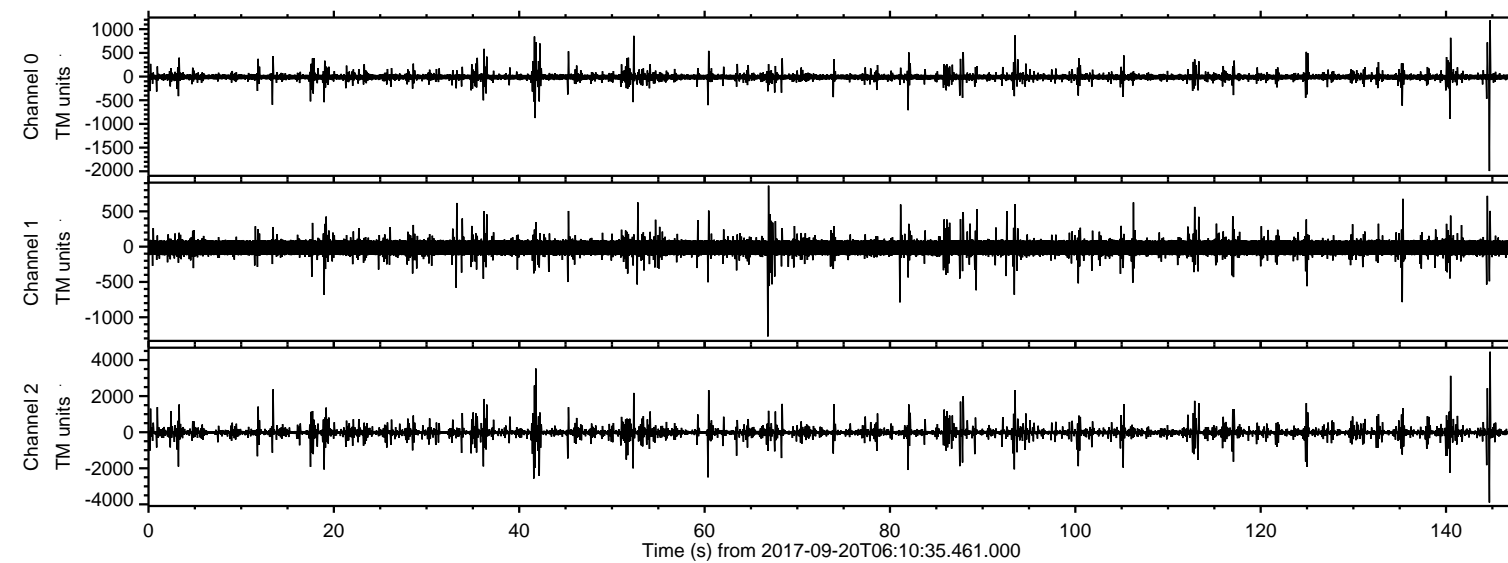


ELMAVAN 3D WAVEFORMS (Measured data sampled at 50 kHz) 51000 packets of 144 samples from 2017-09-20T06:10:35.461.000.

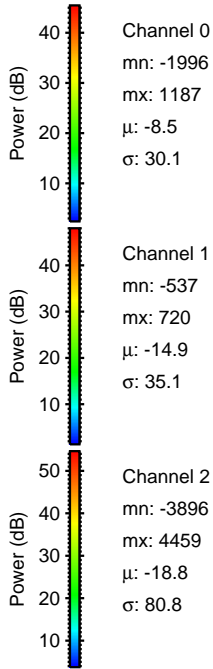
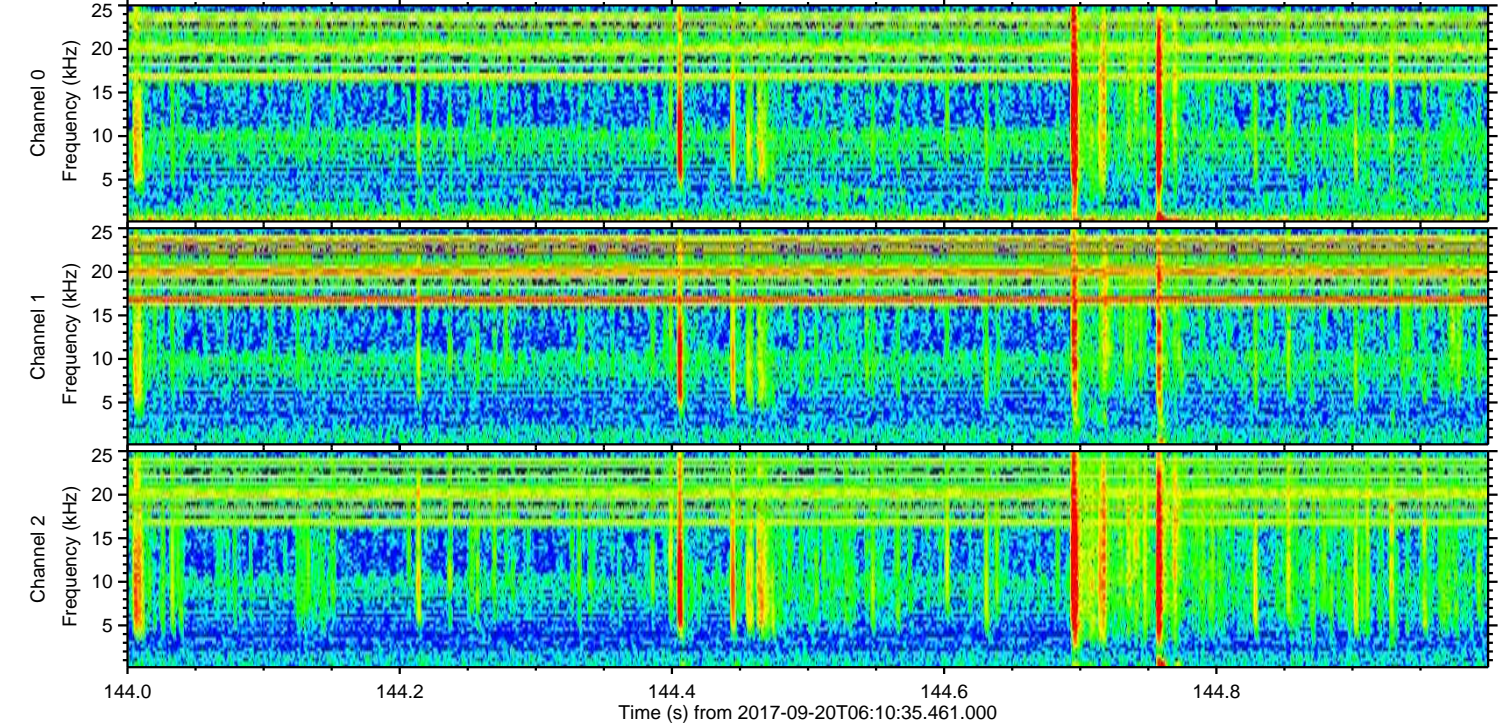
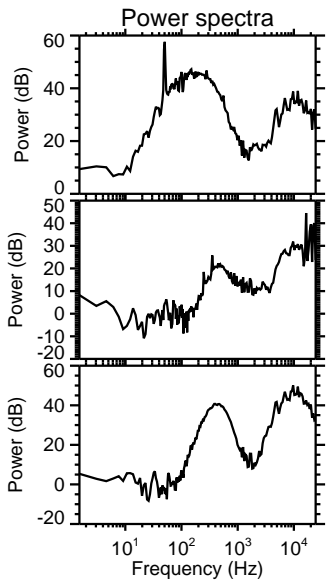
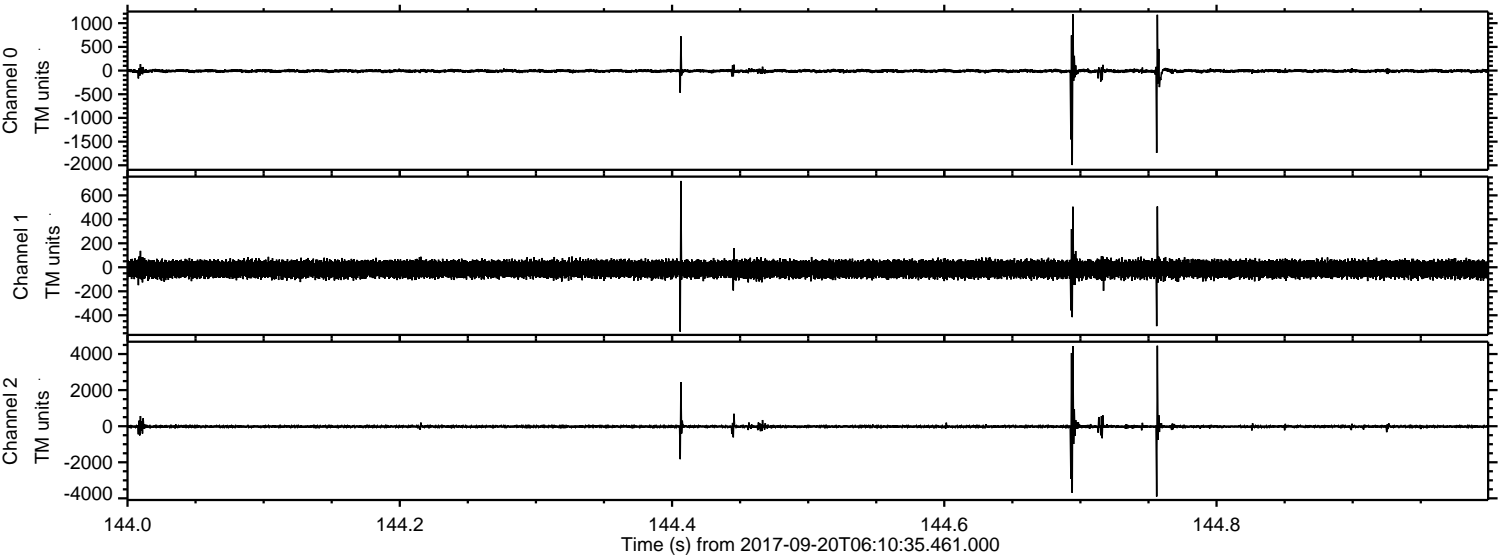
Processed Wed Sep 20 08:17:59 2017 by ELM ver.2012-10-06 from 001\_\_elm20170920\_061034\_\_dat00.bin





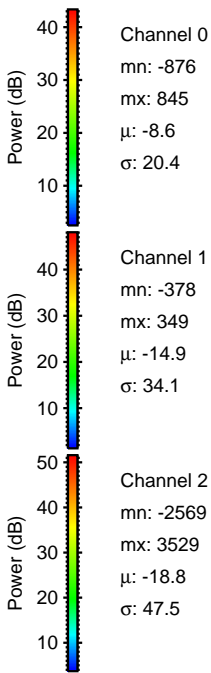
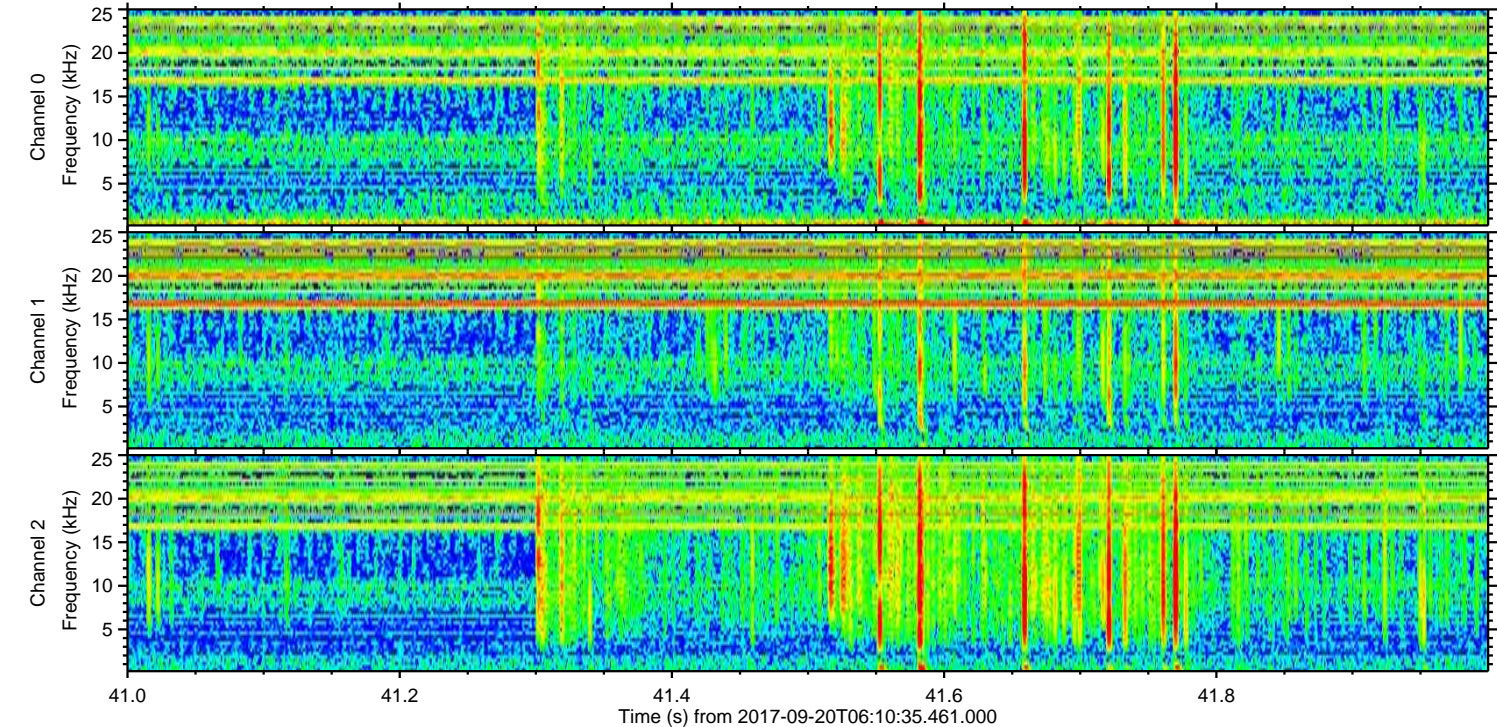
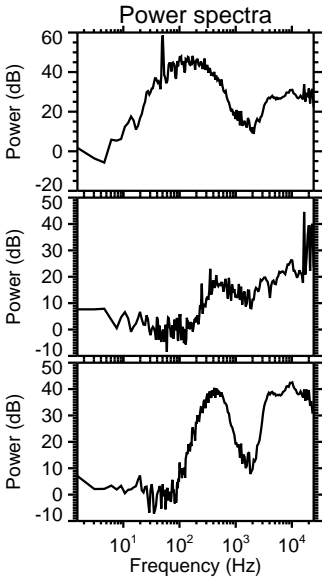
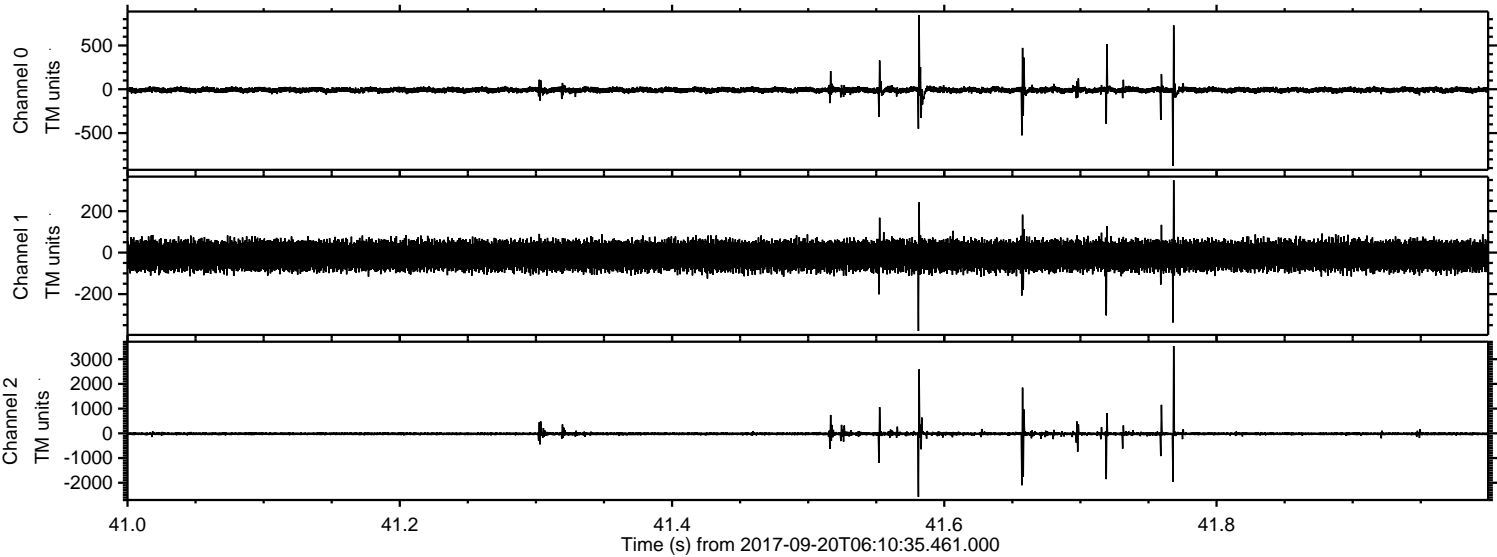
ELMAVAN 3D WAVEFORMS (Measured data sampled at 50 kHz) 51000 packets of 144 samples from 2017-09-20T06:10:35.461.000. Part 145/147

Processed Wed Sep 20 08:18:06 2017 by ELM ver.2012-10-06 from 001\_\_elm20170920\_061034\_\_dat00.bin





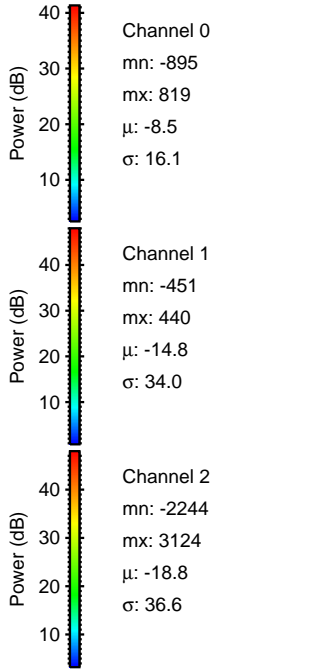
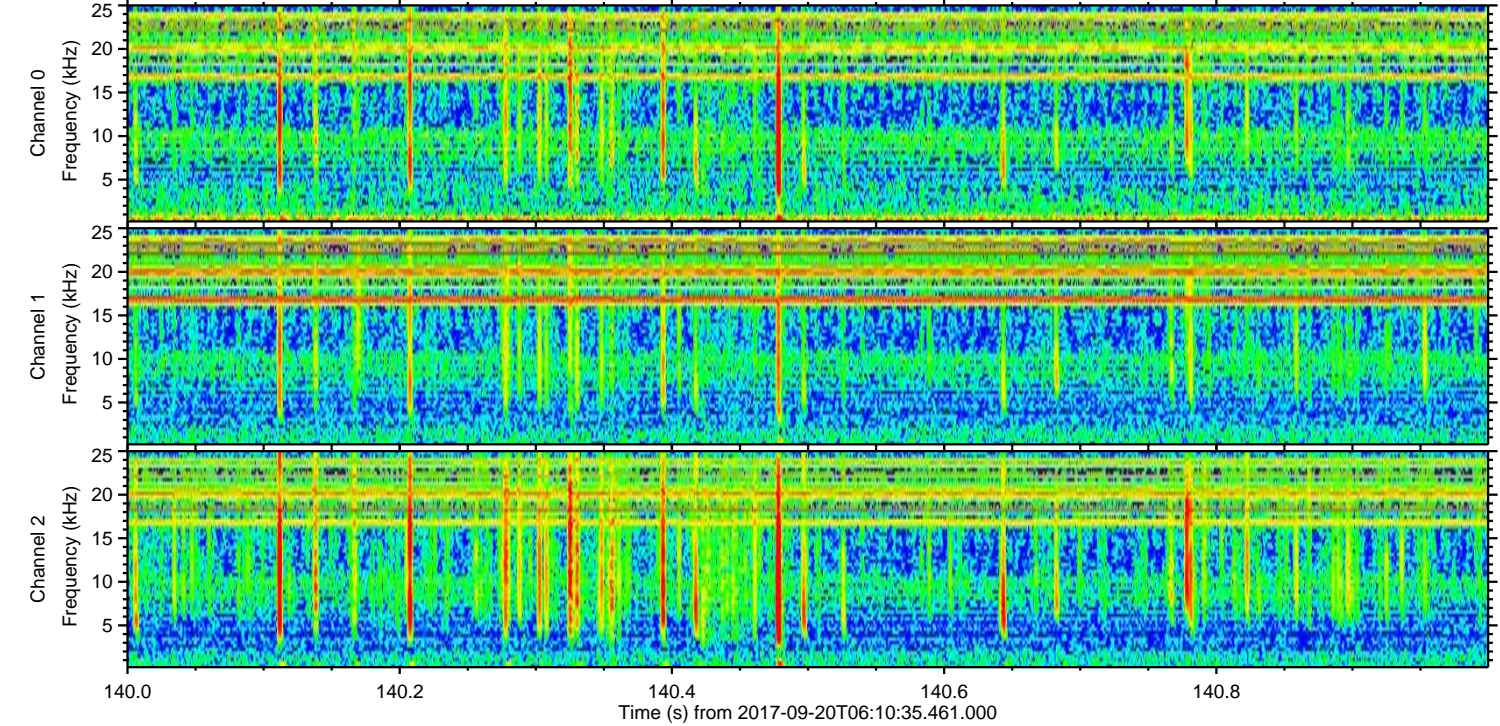
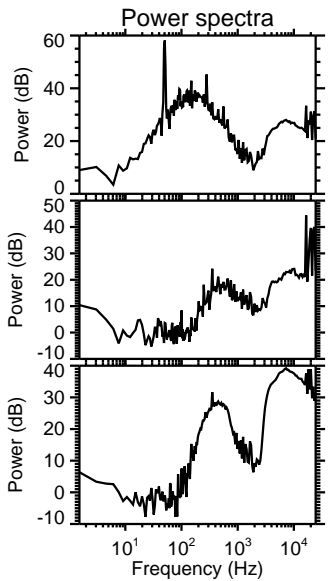
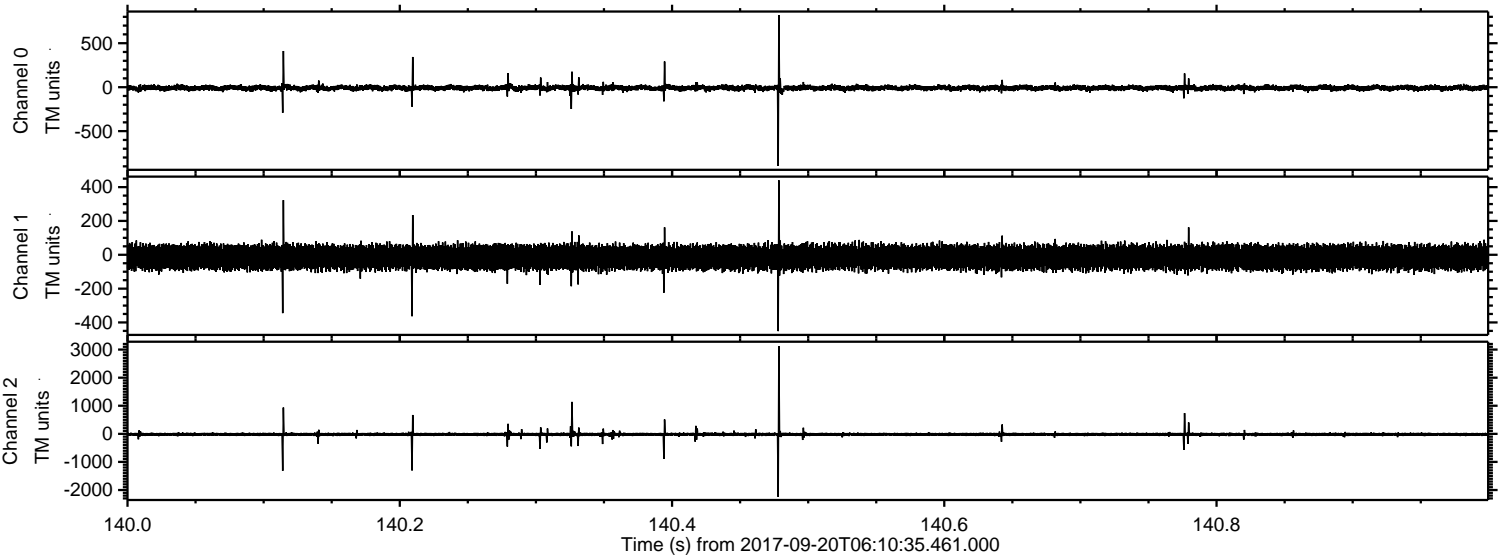
Processed Wed Sep 20 08:18:06 2017 by ELM ver.2012-10-06 from 001\_\_elm20170920\_061034\_\_dat00.bin





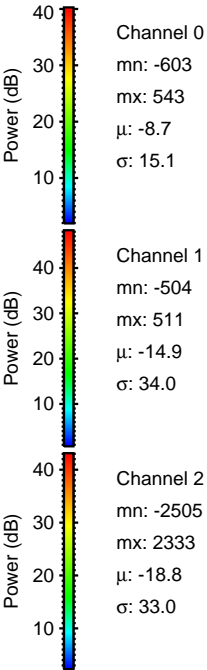
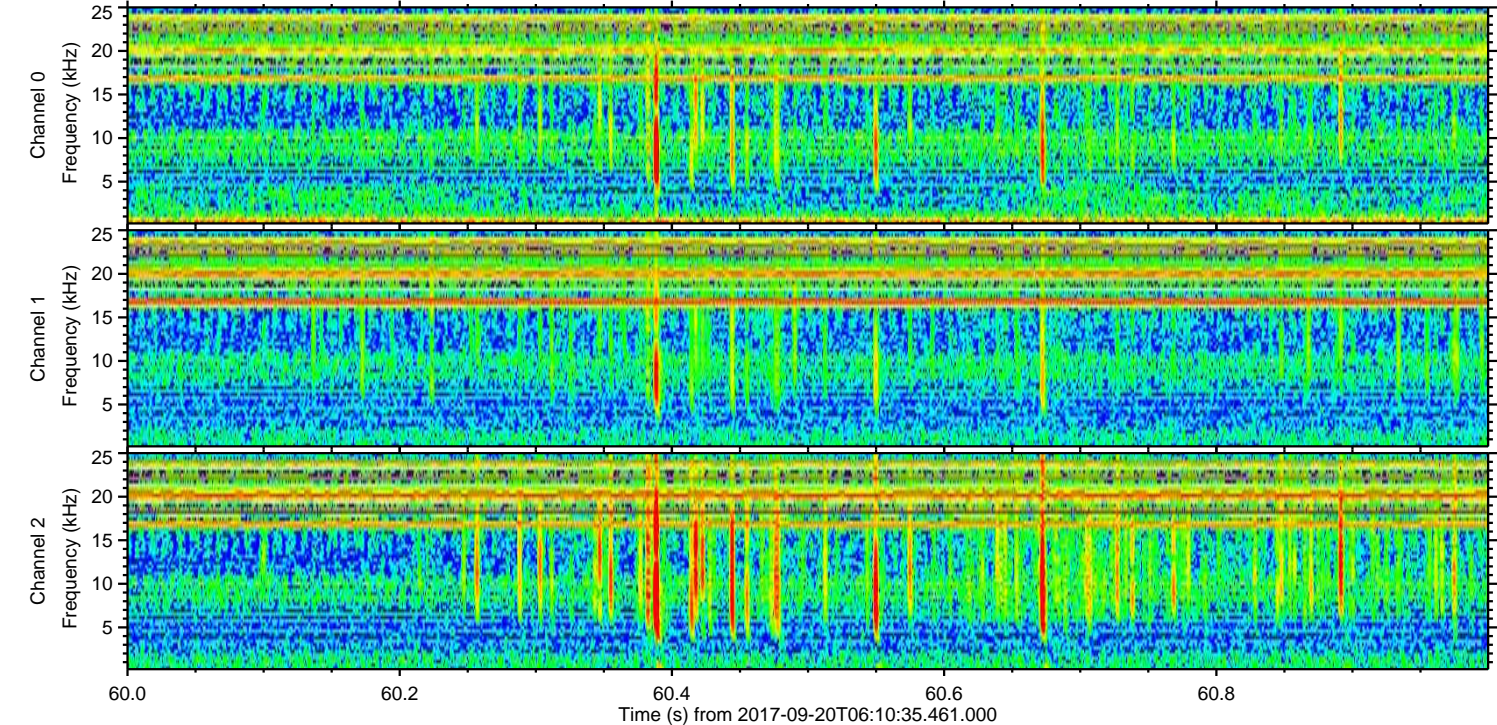
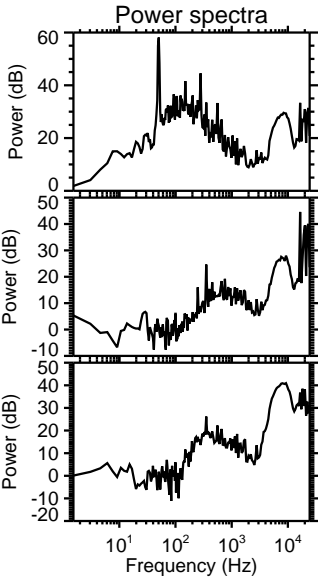
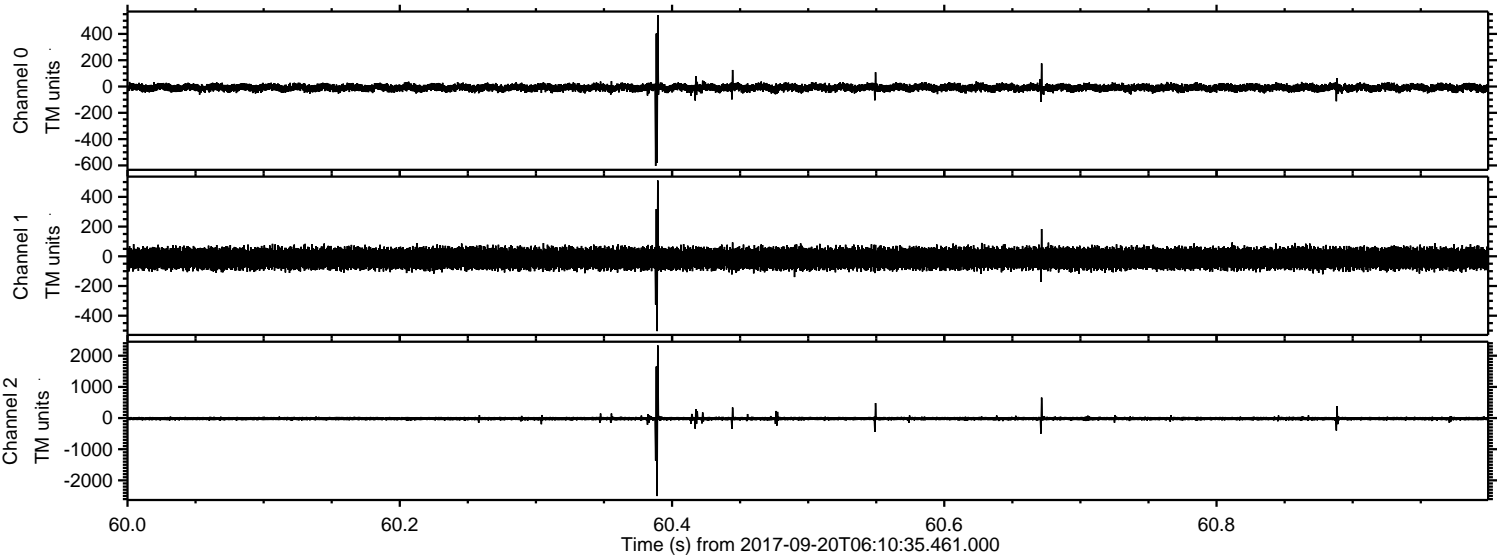
ELMAVAN 3D WAVEFORMS (Measured data sampled at 50 kHz) 51000 packets of 144 samples from 2017-09-20T06:10:35.461.000. Part 141/147

Processed Wed Sep 20 08:18:07 2017 by ELM ver.2012-10-06 from 001\_\_elm20170920\_061034\_\_dat00.bin



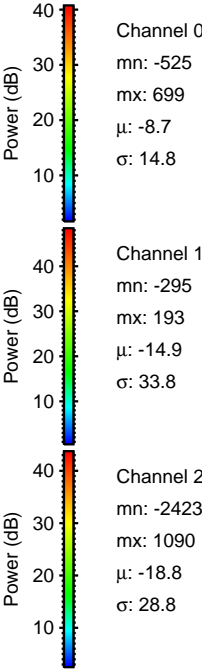
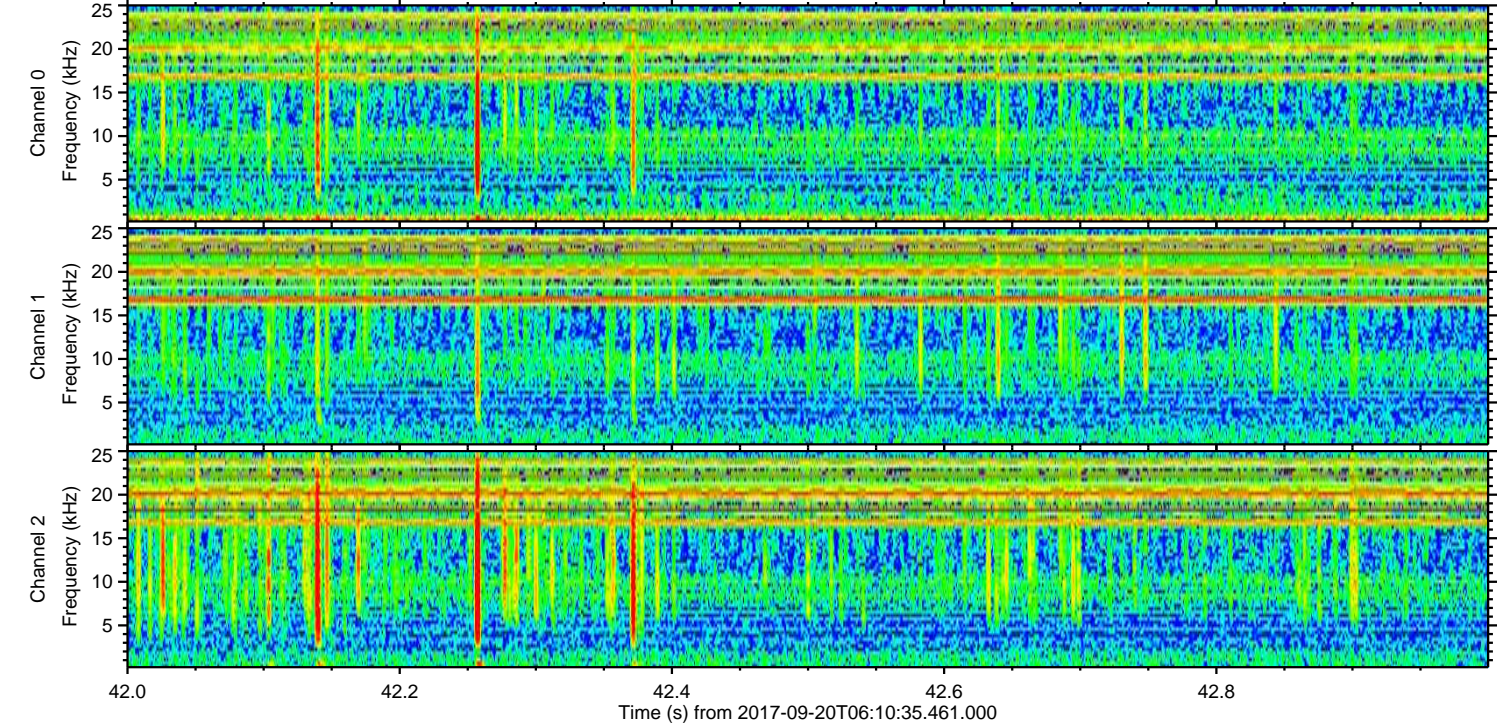
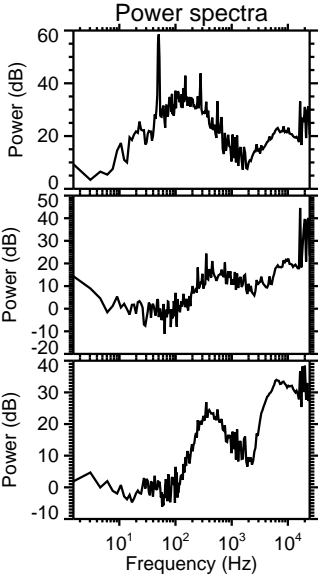
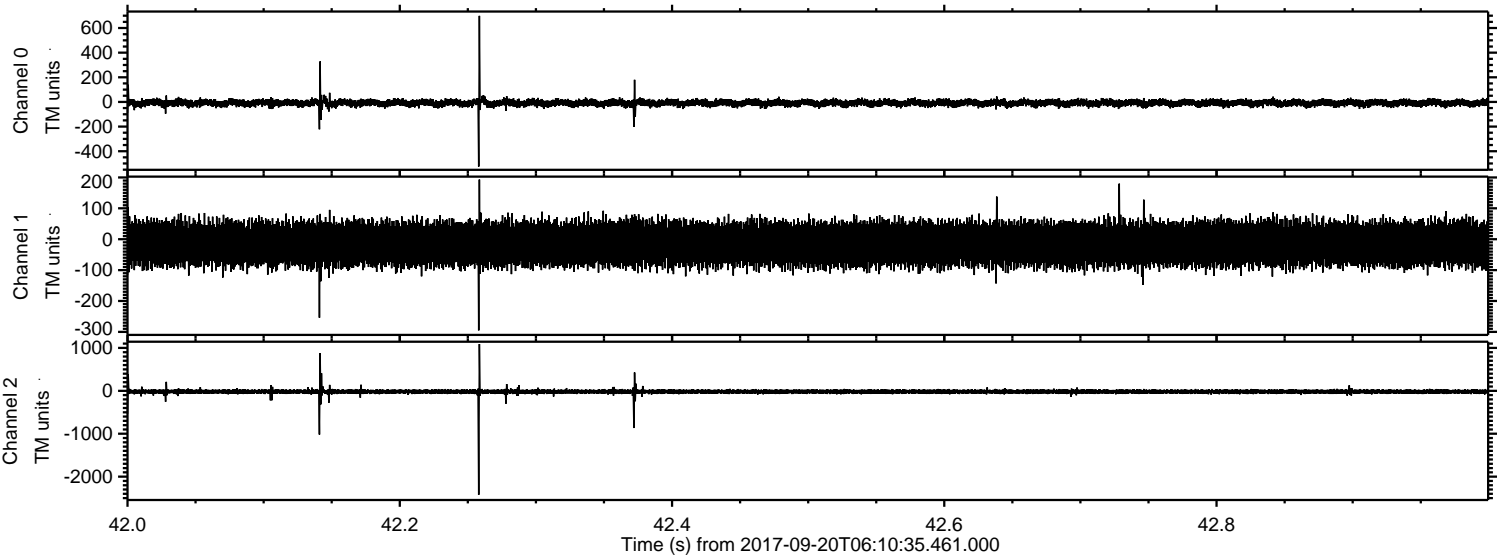


Processed Wed Sep 20 08:18:08 2017 by ELM ver.2012-10-06 from 001\_\_elm20170920\_061034\_\_dat00.bin





Processed Wed Sep 20 08:18:09 2017 by ELM ver.2012-10-06 from 001\_\_elm20170920\_061034\_\_dat00.bin



Channel 0  
mn: -525  
mx: 699  
 $\mu$ : -8.7  
 $\sigma$ : 14.8

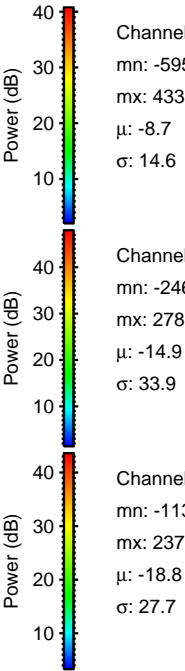
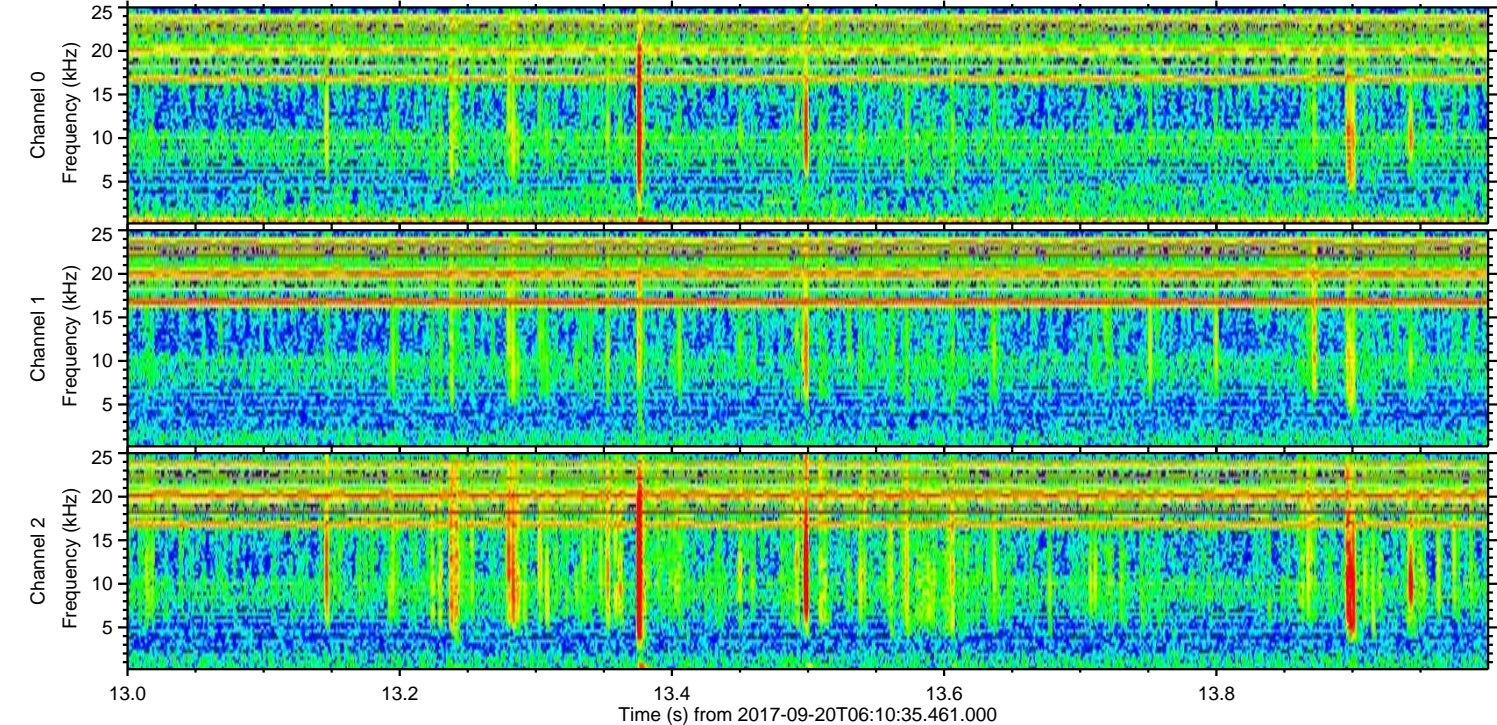
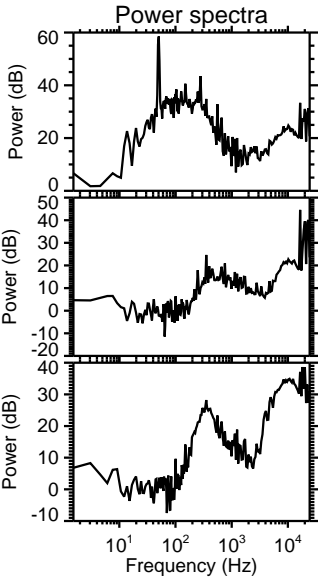
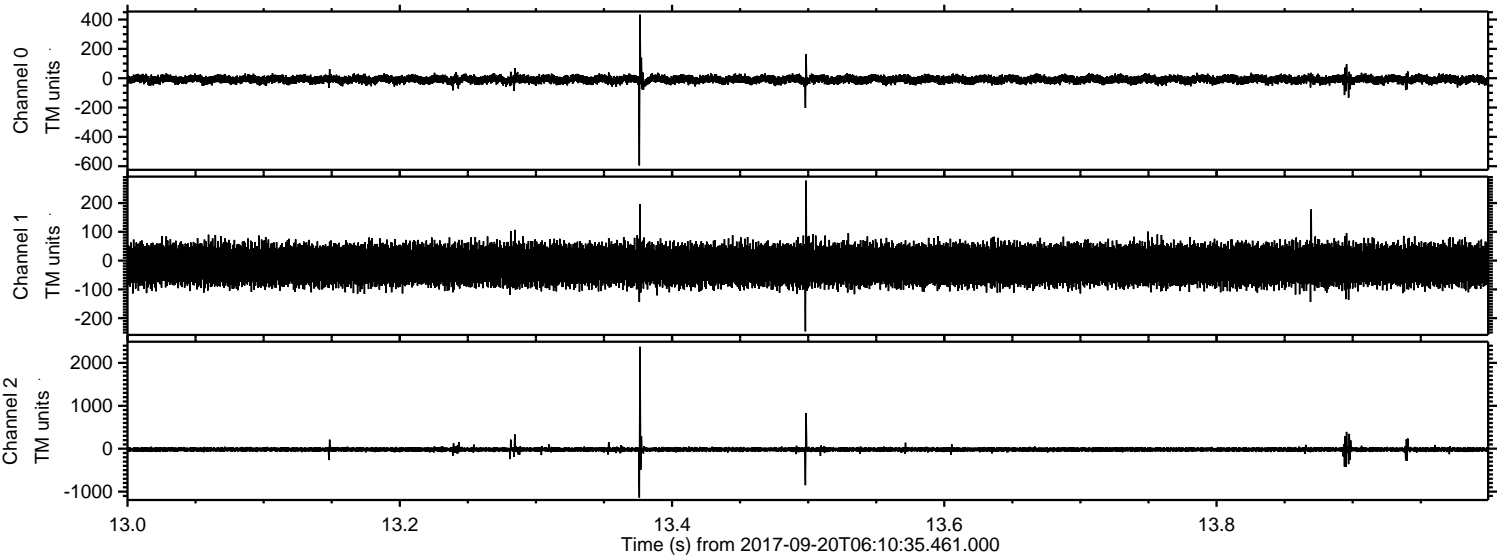
Channel 1  
mn: -295  
mx: 193  
 $\mu$ : -14.9  
 $\sigma$ : 33.8

Channel 2  
mn: -2423  
mx: 1090  
 $\mu$ : -18.8  
 $\sigma$ : 28.8



ELMAVAN 3D WAVEFORMS (Measured data sampled at 50 kHz) 51000 packets of 144 samples from 2017-09-20T06:10:35.461.000. Part 14/147

Processed Wed Sep 20 08:18:09 2017 by ELM ver.2012-10-06 from 001\_\_elm20170920\_061034\_\_dat00.bin



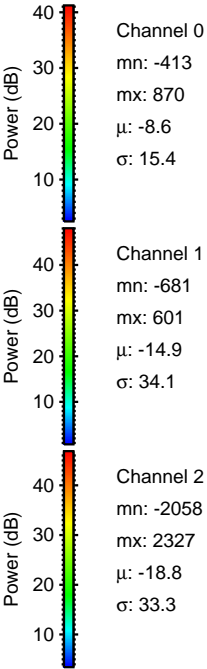
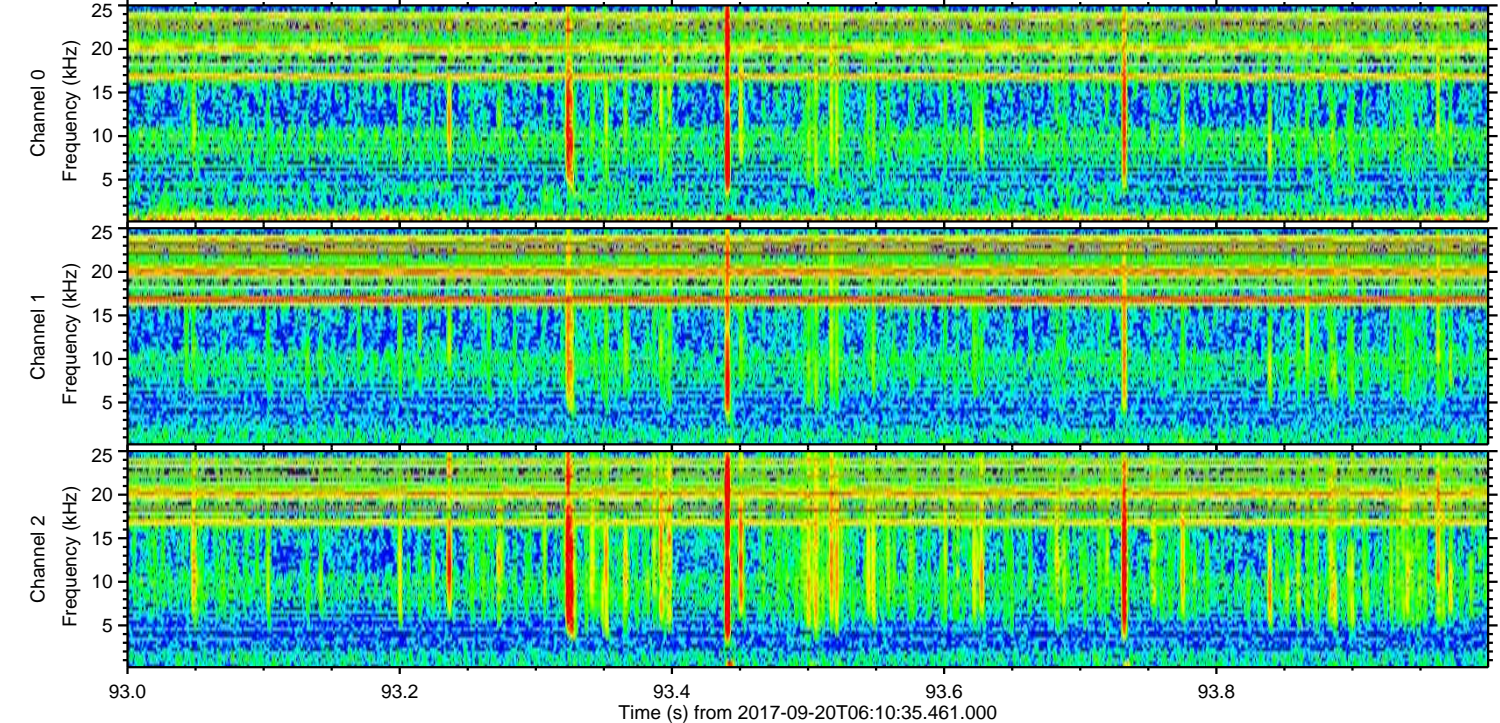
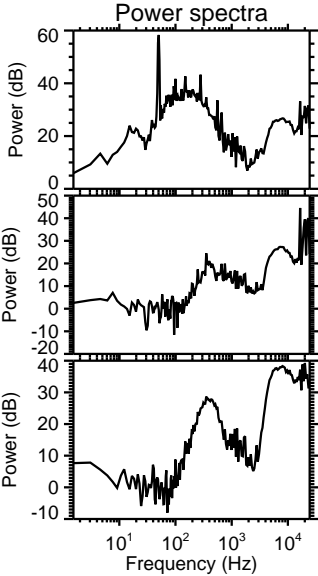
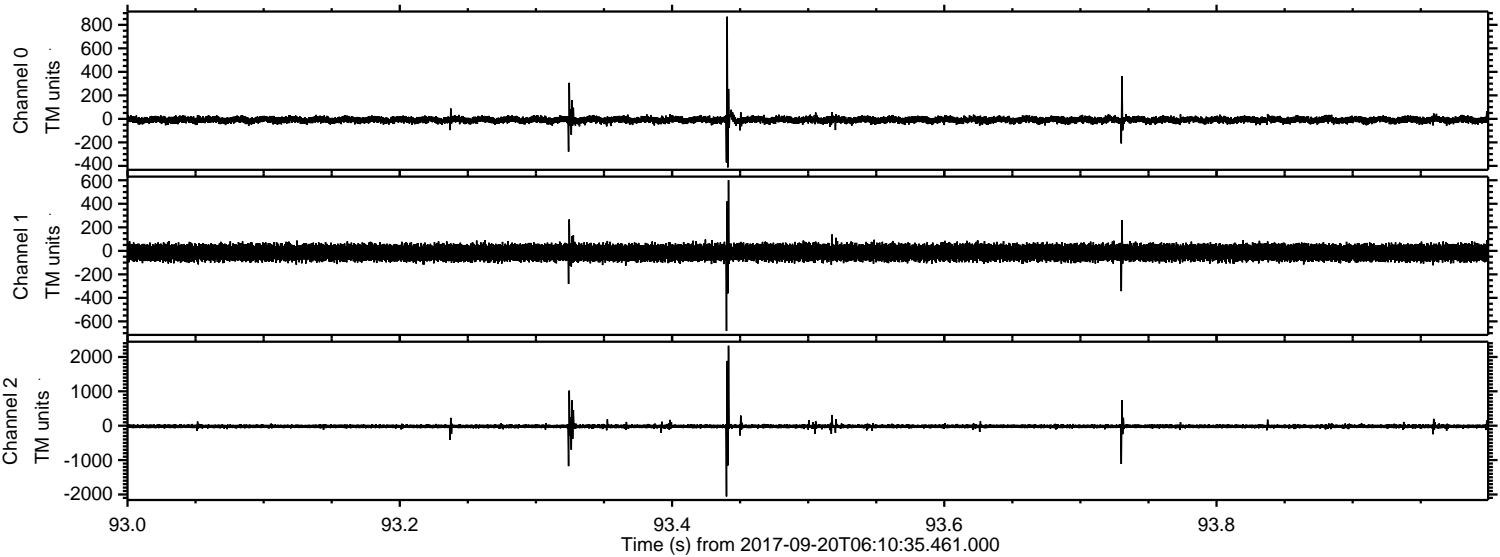
Channel 0  
mn: -595  
mx: 433  
 $\mu$ : -8.7  
 $\sigma$ : 14.6

Channel 1  
mn: -246  
mx: 278  
 $\mu$ : -14.9  
 $\sigma$ : 33.9

Channel 2  
mn: -1139  
mx: 2375  
 $\mu$ : -18.8  
 $\sigma$ : 27.7

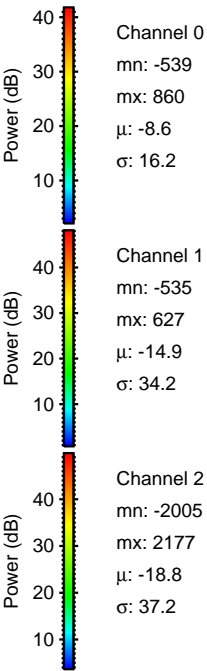
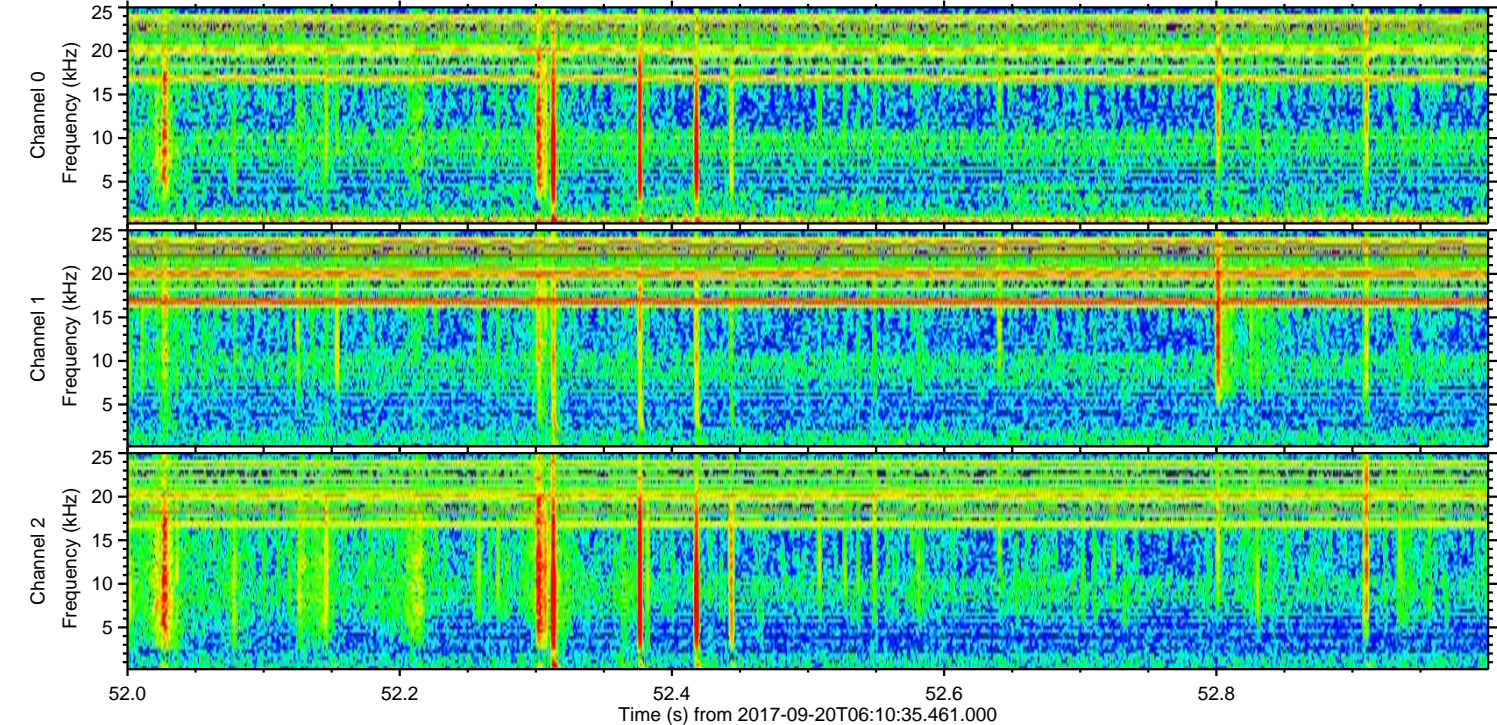
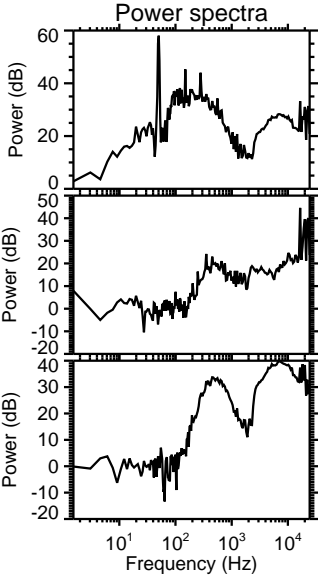
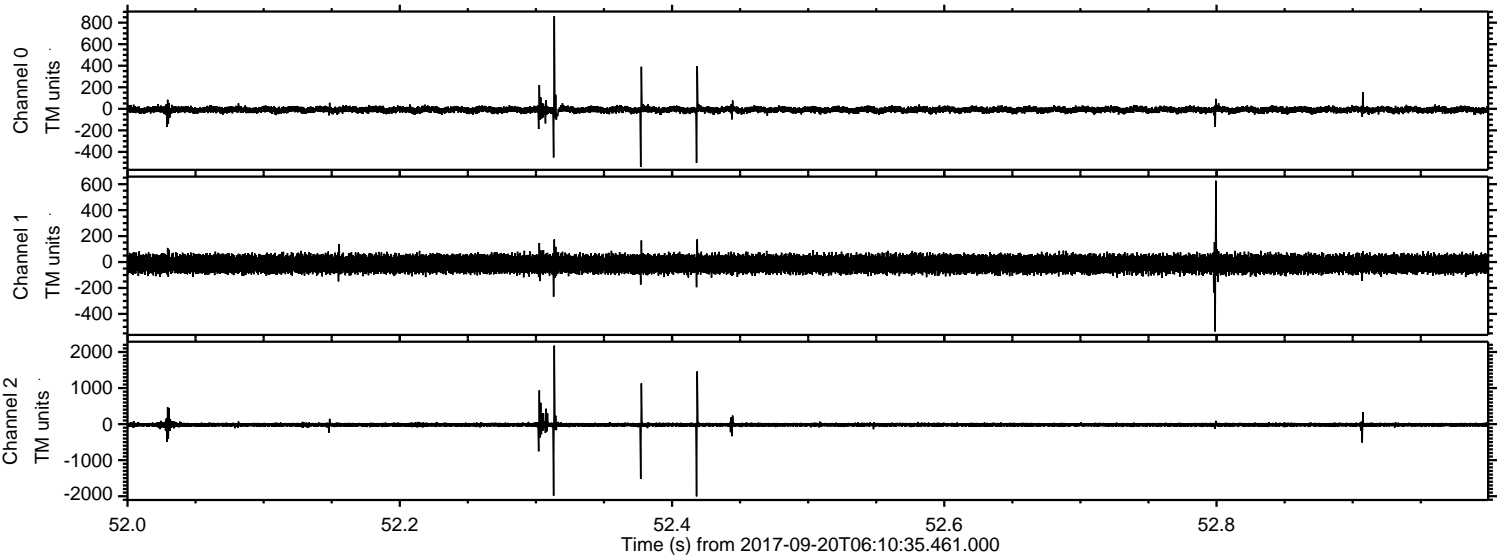


Processed Wed Sep 20 08:18:10 2017 by ELM ver.2012-10-06 from 001\_\_elm20170920\_061034\_\_dat00.bin





Processed Wed Sep 20 08:18:11 2017 by ELM ver.2012-10-06 from 001\_\_elm20170920\_061034\_\_dat00.bin





Processed Wed Sep 20 08:18:11 2017 by ELM ver.2012-10-06 from 001\_\_elm20170920\_061034\_\_dat00.bin

