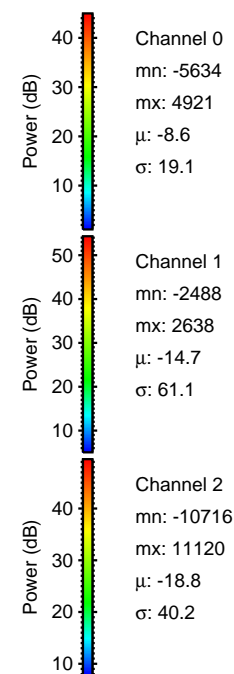
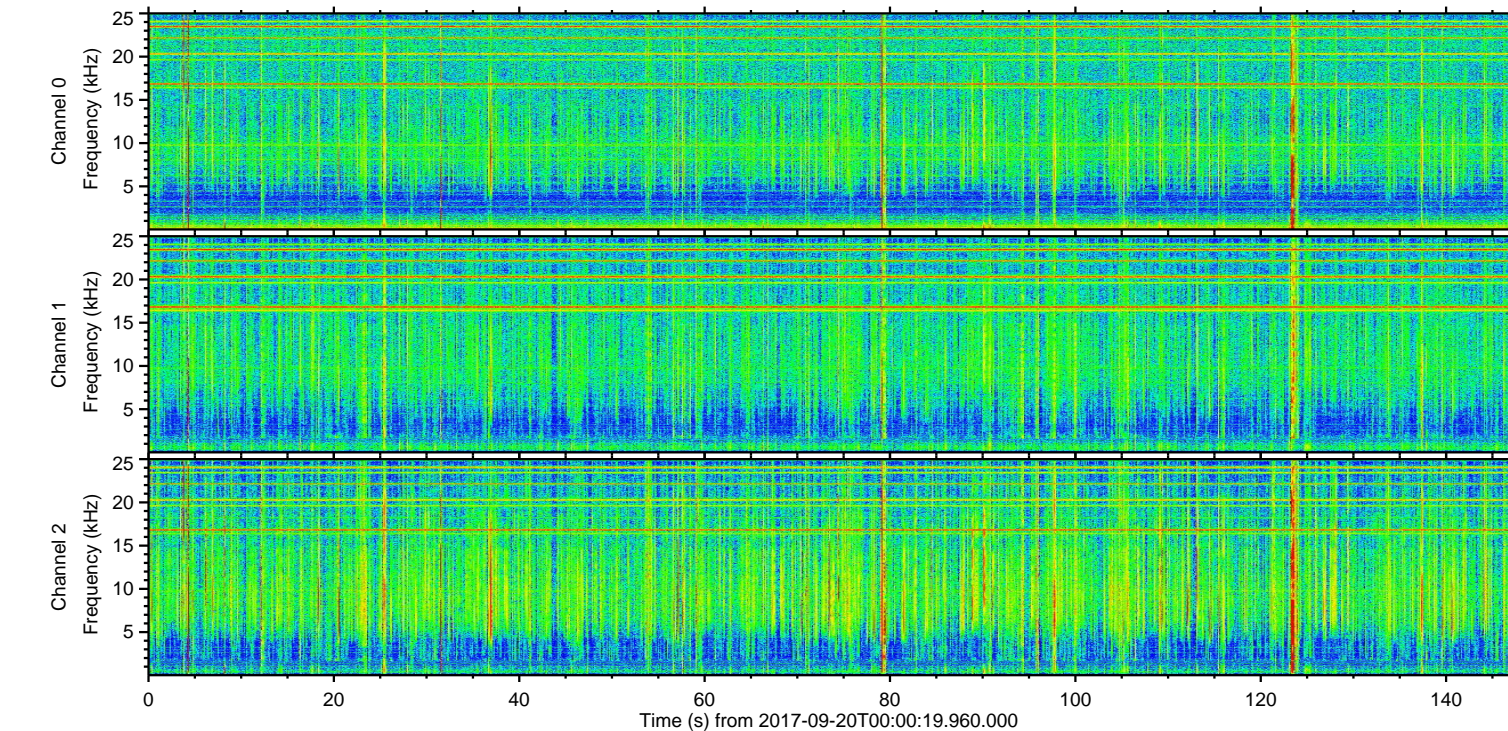
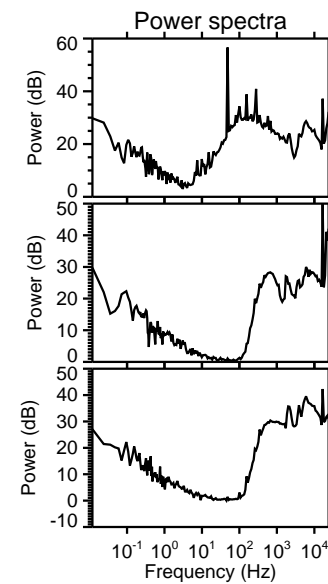
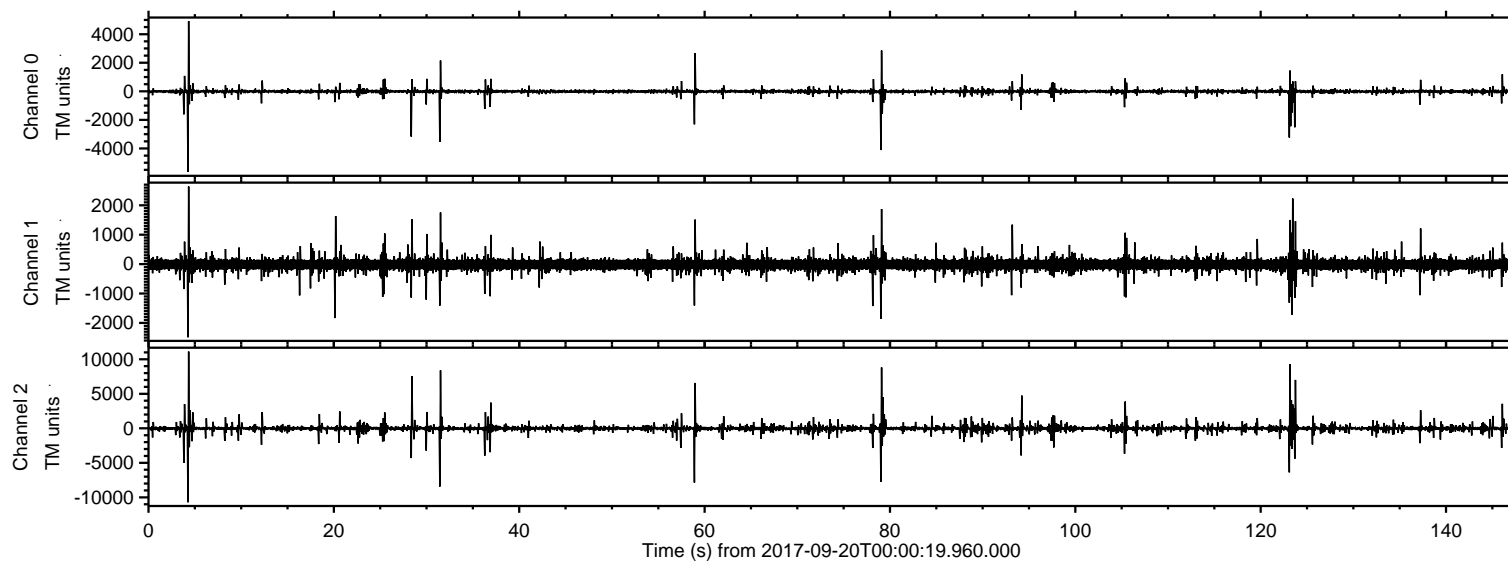


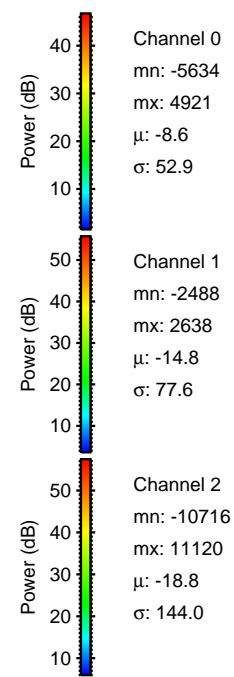
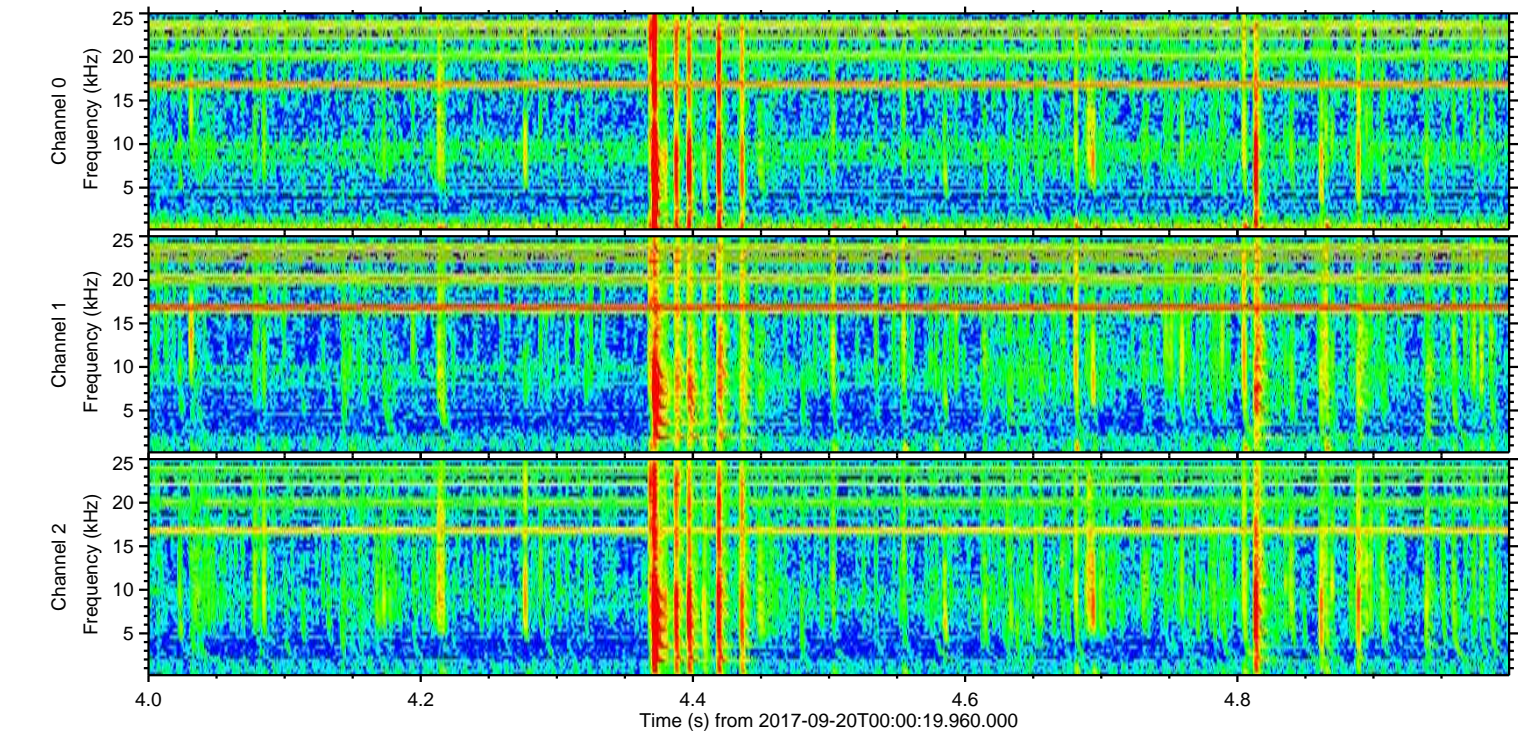
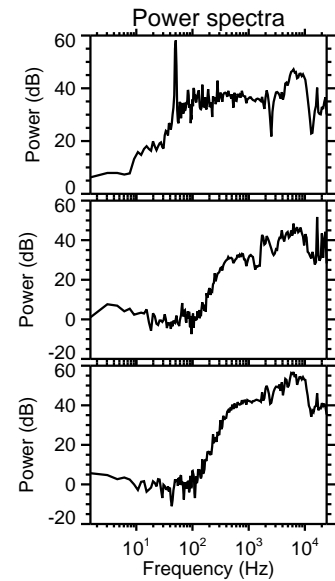
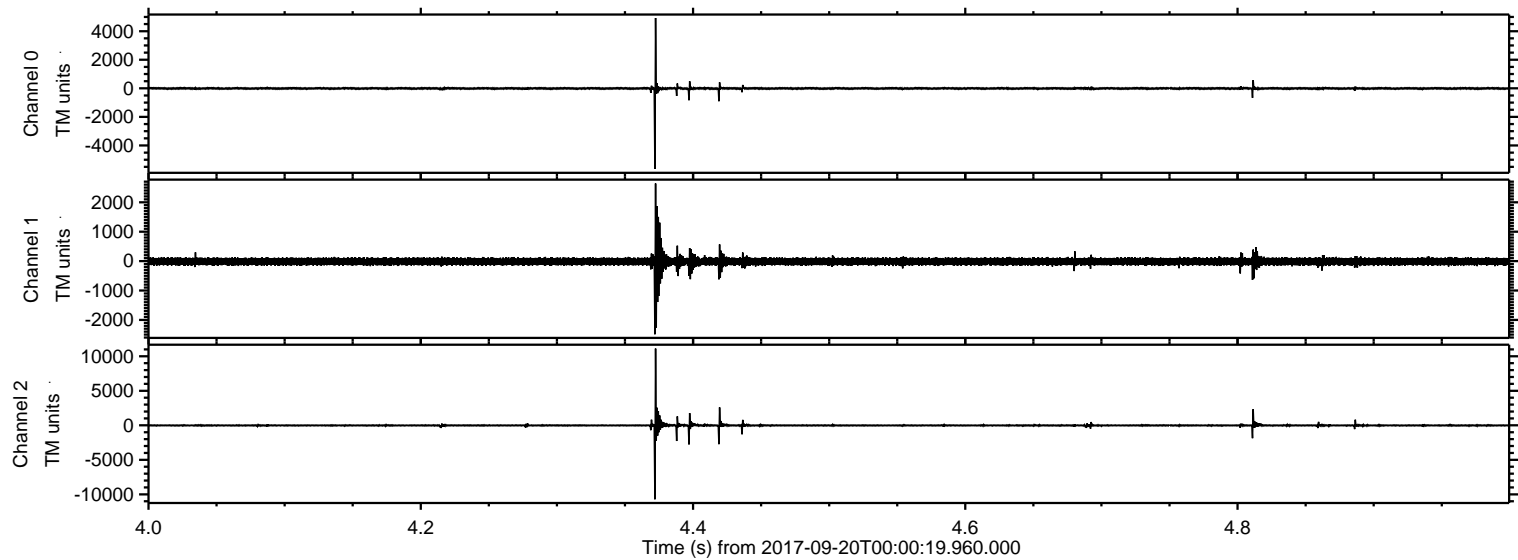
ELMAVAN 3D WAVEFORMS (Measured data sampled at 50 kHz) 51000 packets of 144 samples from 2017-09-20T00:00:19.960.000.

Processed Wed Sep 20 02:07:43 2017 by ELM ver.2012-10-06 from 001\_\_elm20170920\_000018\_\_dat00.bin





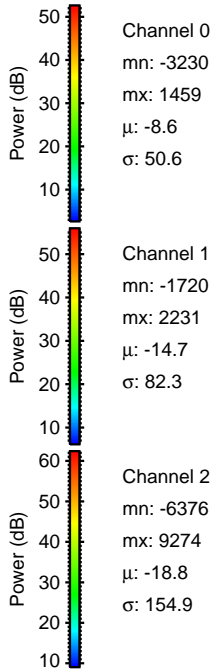
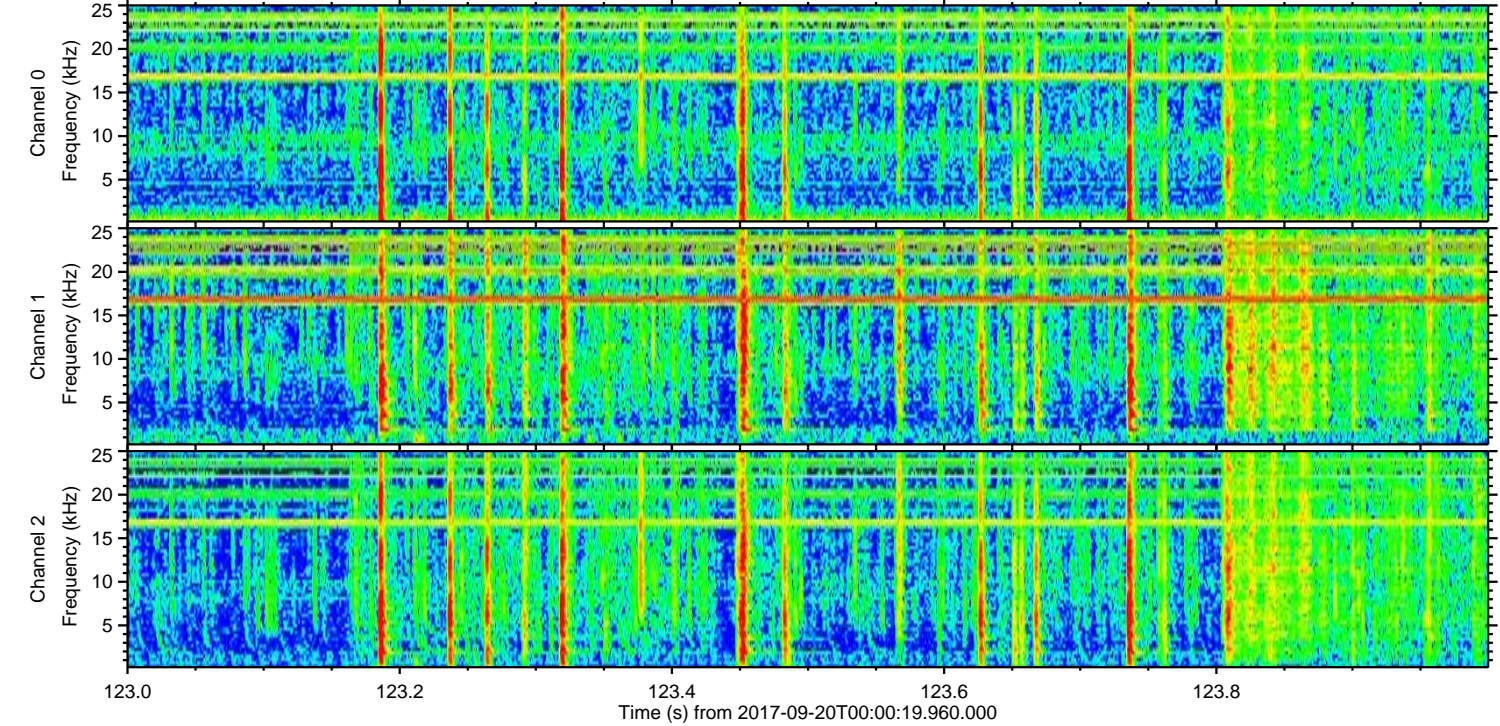
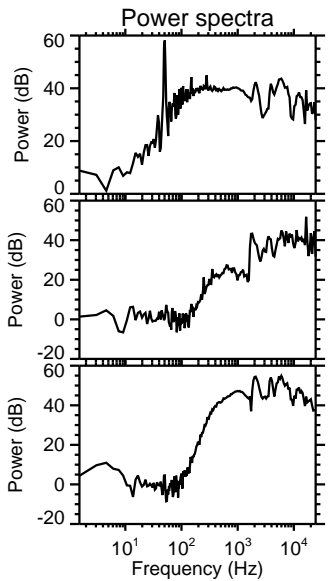
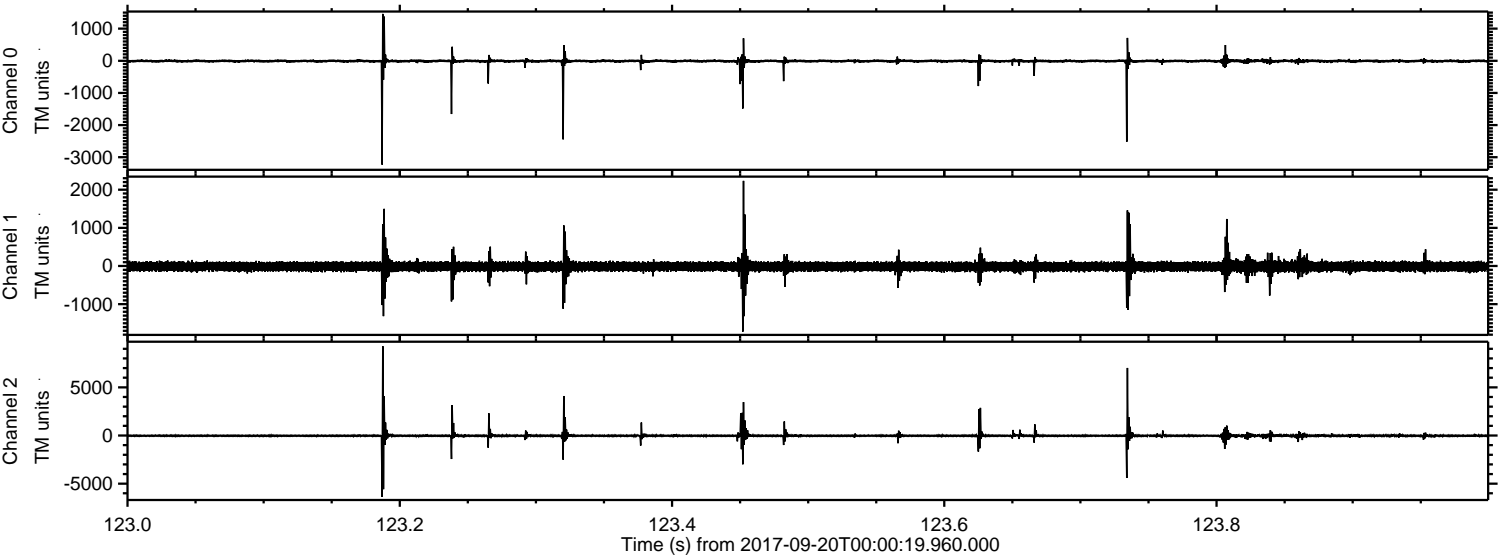
Processed Wed Sep 20 02:07:50 2017 by ELM ver.2012-10-06 from 001\_\_elm20170920\_000018\_\_dat00.bin





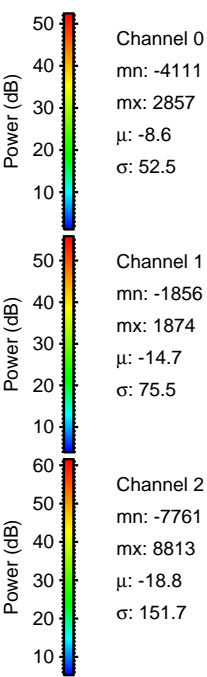
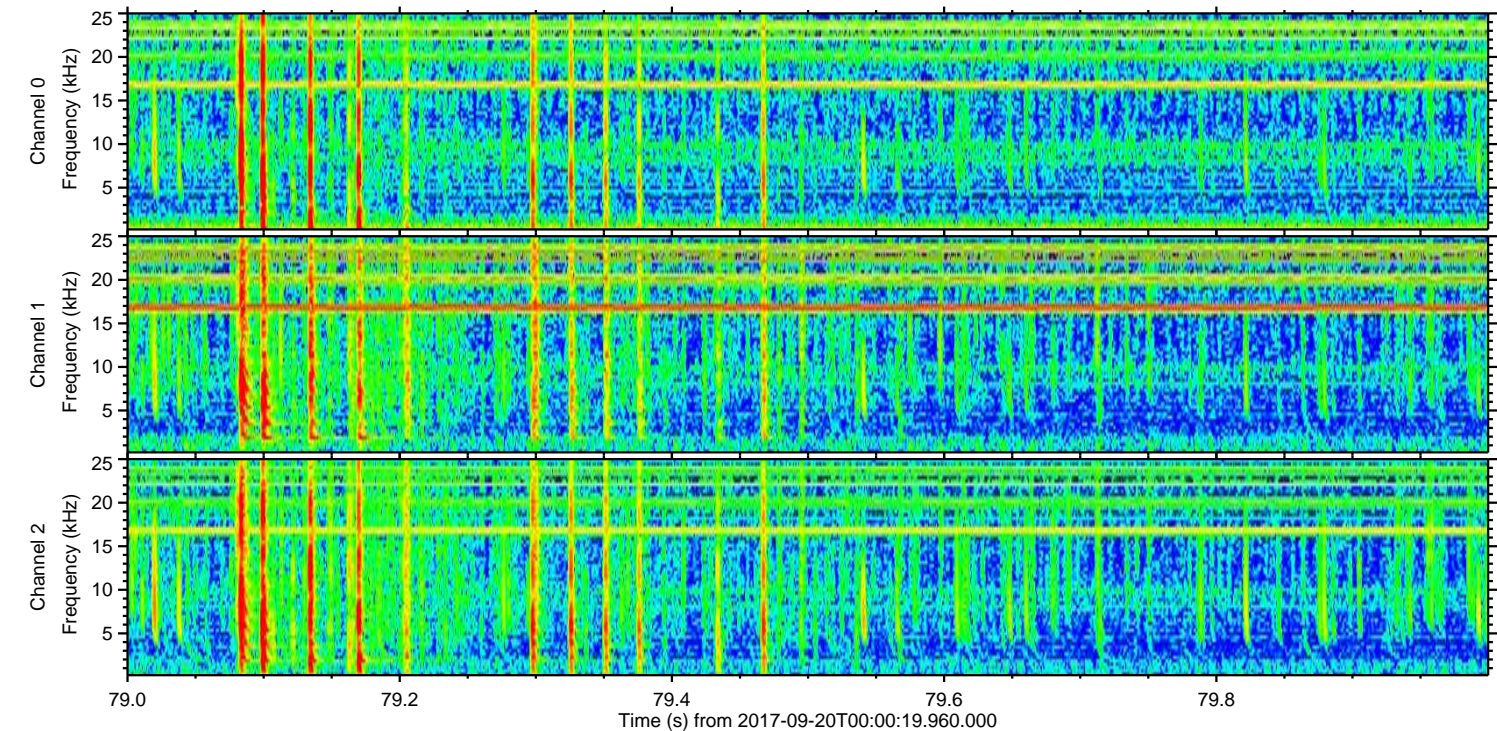
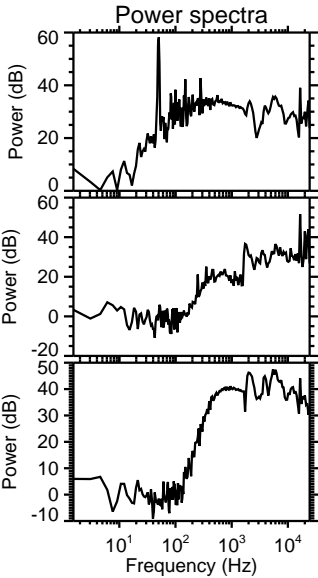
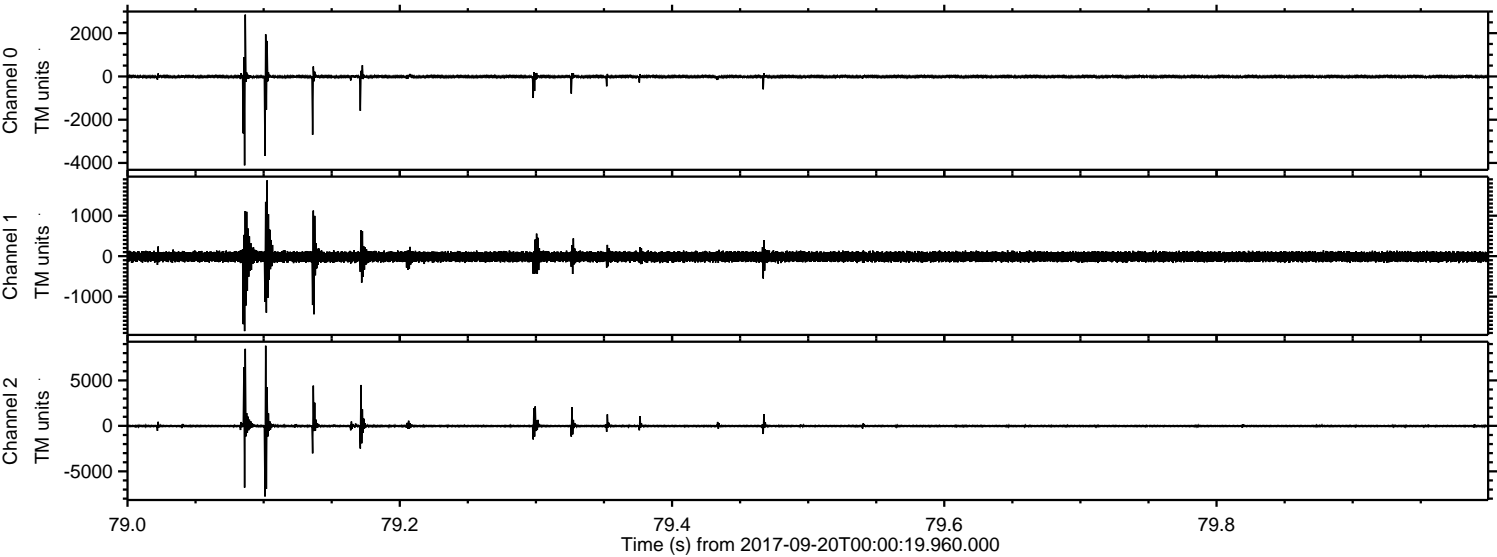
ELMAVAN 3D WAVEFORMS (Measured data sampled at 50 kHz) 51000 packets of 144 samples from 2017-09-20T00:00:19.960.000. Part 124/147

Processed Wed Sep 20 02:07:51 2017 by ELM ver.2012-10-06 from 001\_\_elm20170920\_000018\_\_dat00.bin



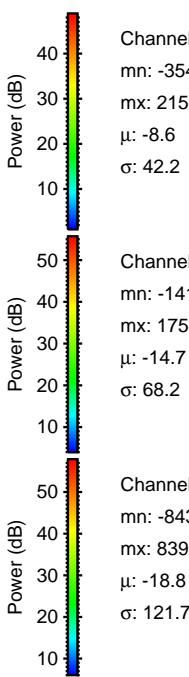
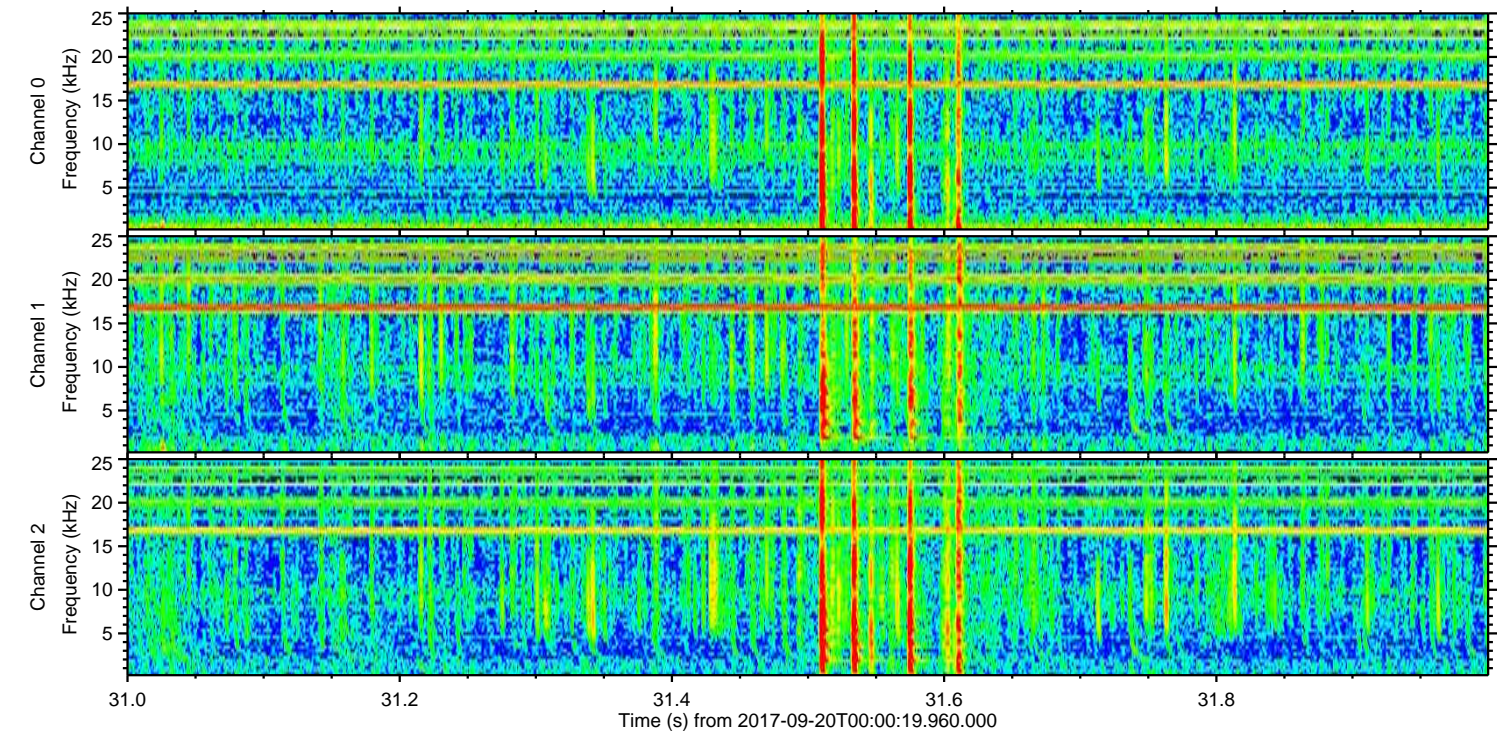
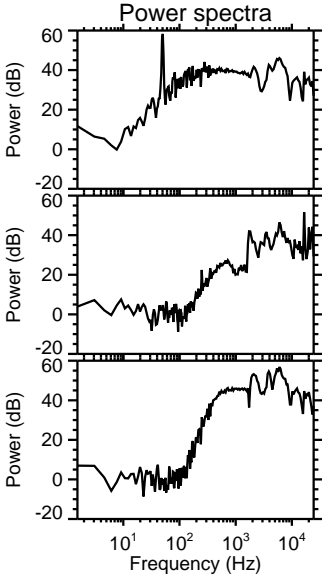
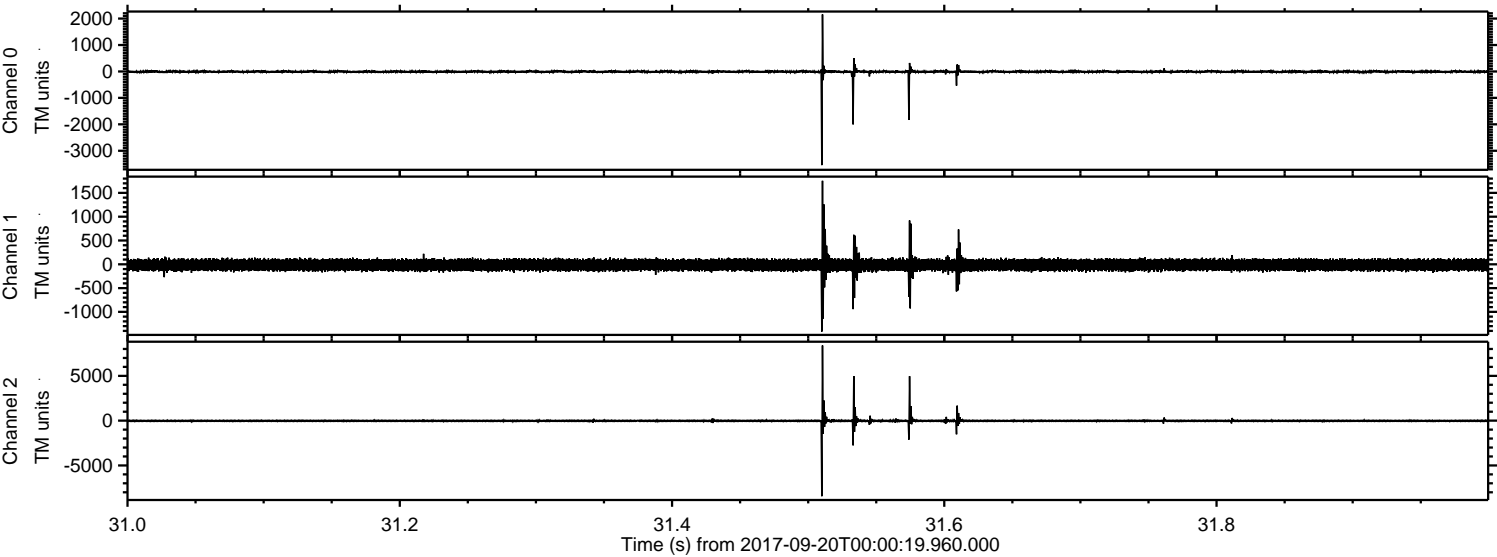


Processed Wed Sep 20 02:07:52 2017 by ELM ver.2012-10-06 from 001\_\_elm20170920\_000018\_\_dat00.bin



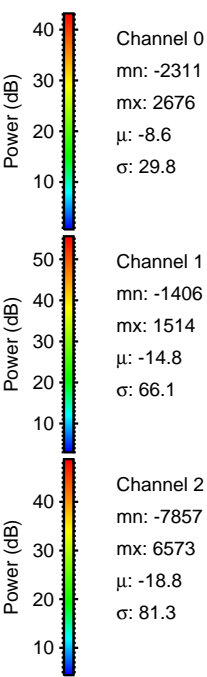
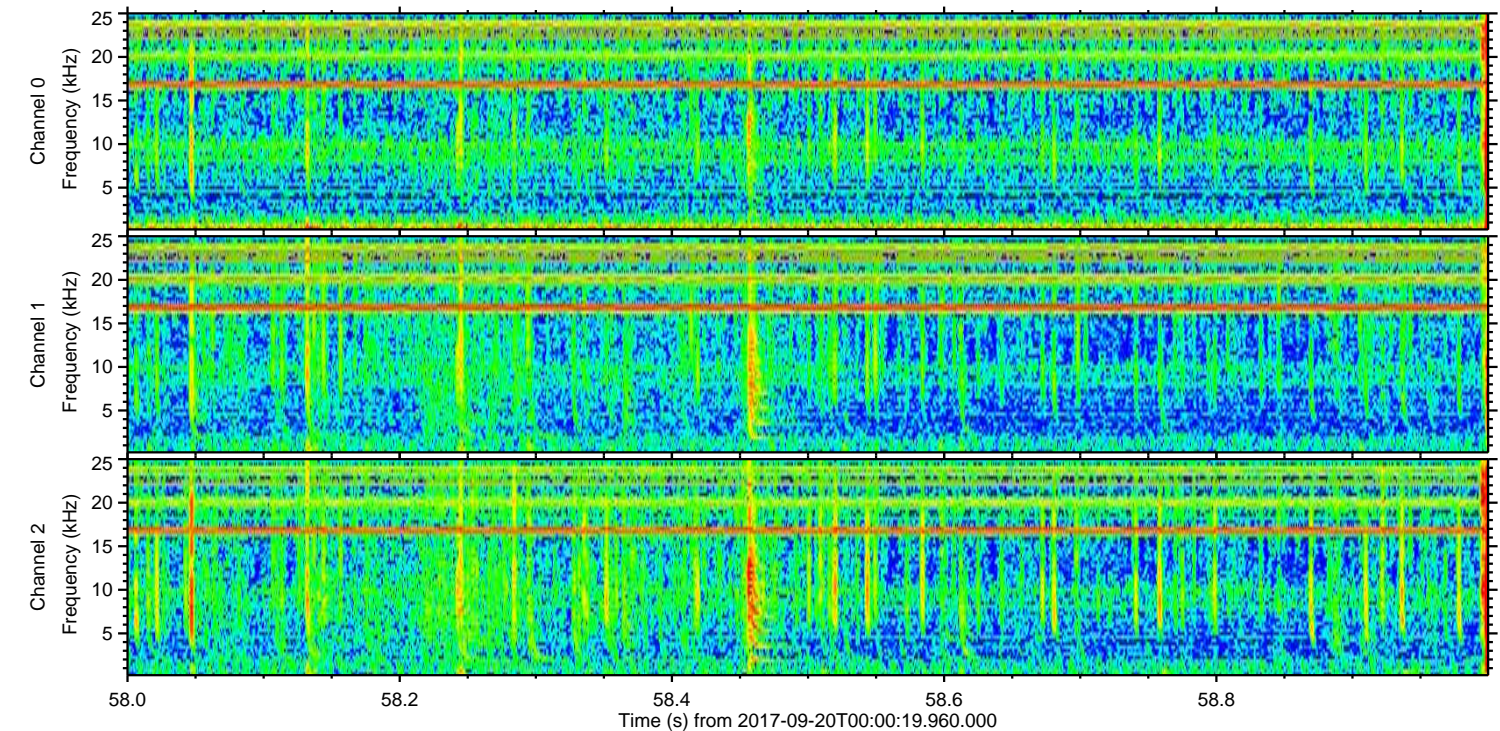
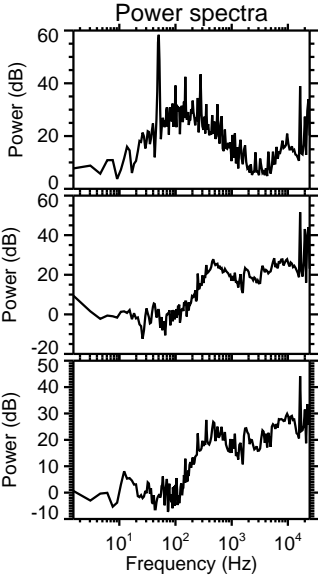
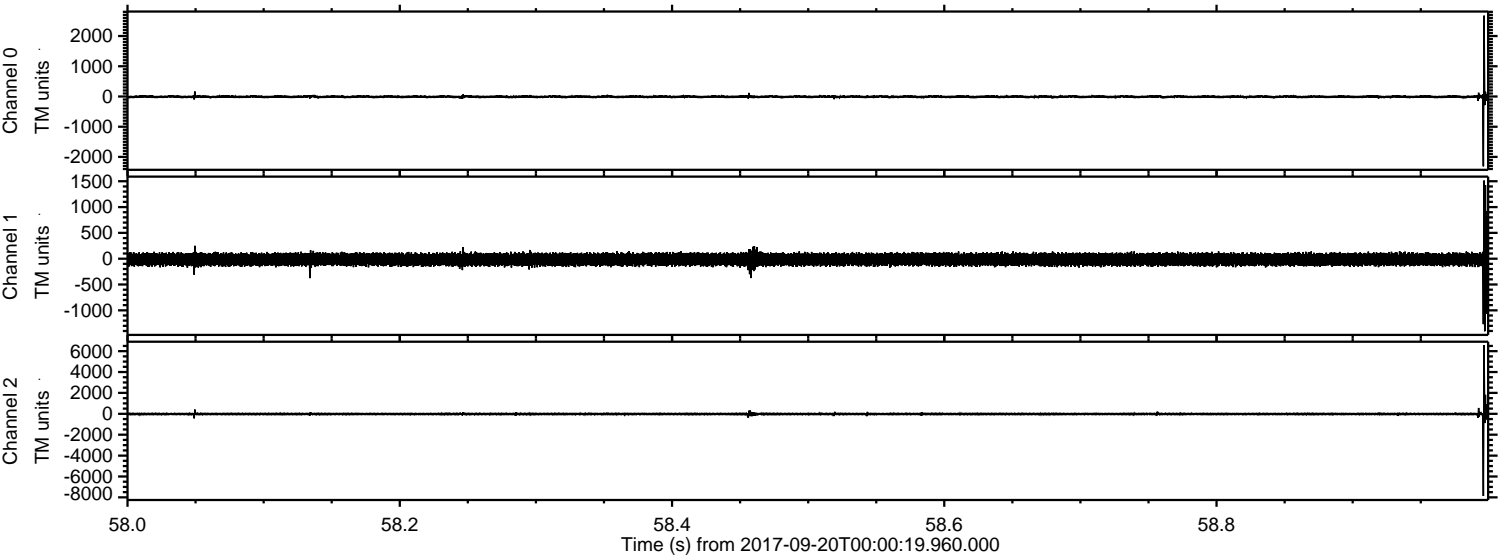


Processed Wed Sep 20 02:07:52 2017 by ELM ver.2012-10-06 from 001\_\_elm20170920\_000018\_\_dat00.bin





Processed Wed Sep 20 02:07:53 2017 by ELM ver.2012-10-06 from 001\_\_elm20170920\_000018\_\_dat00.bin



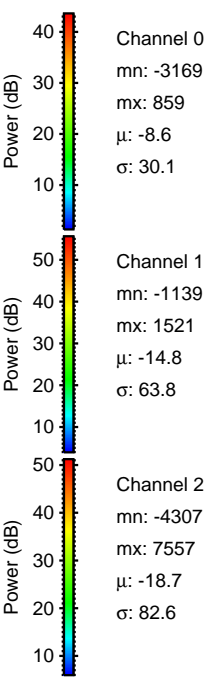
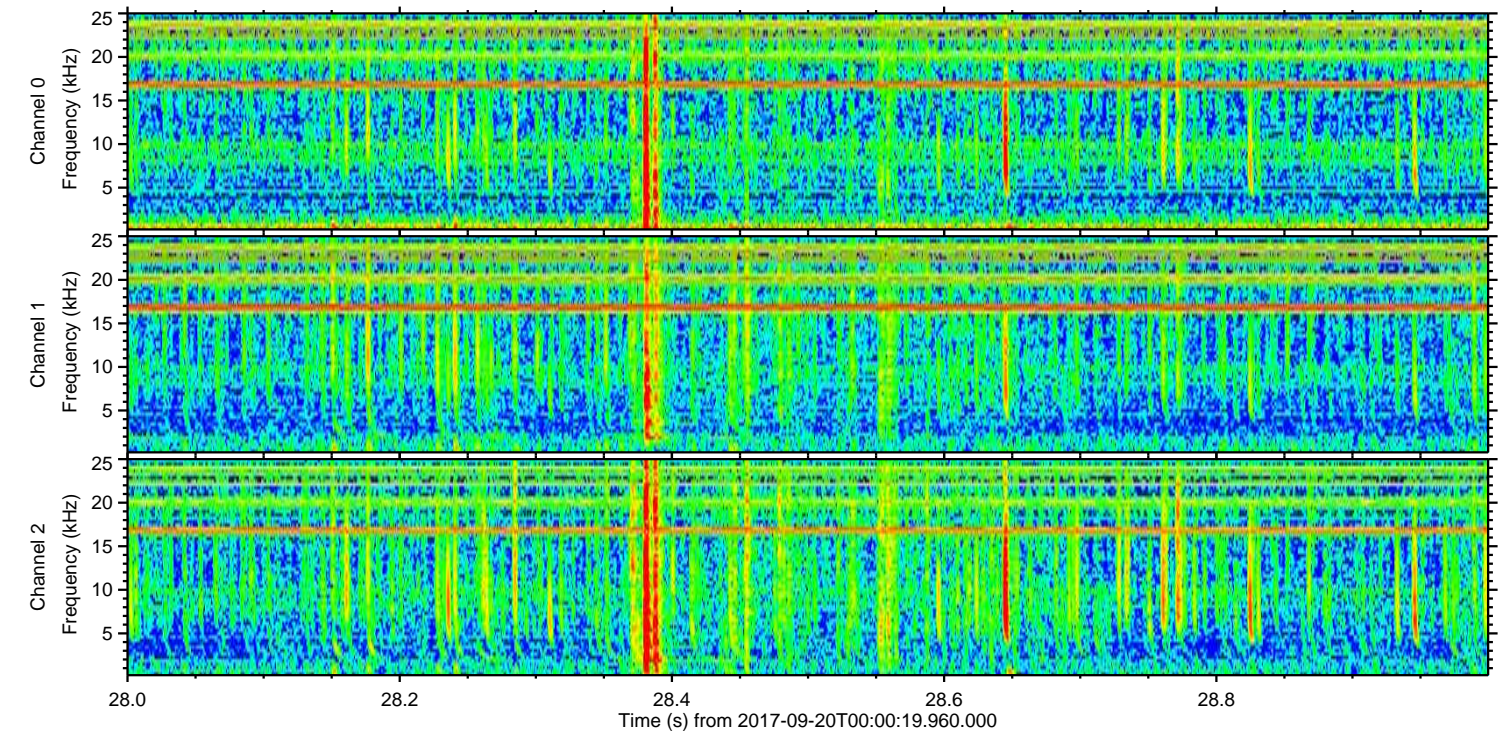
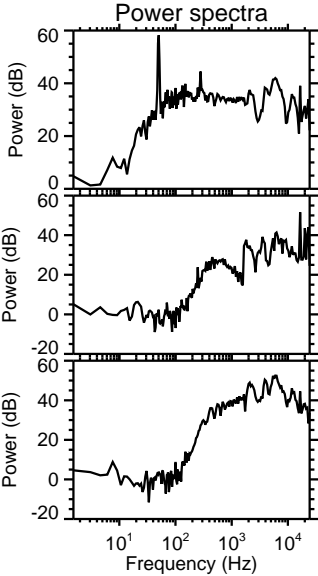
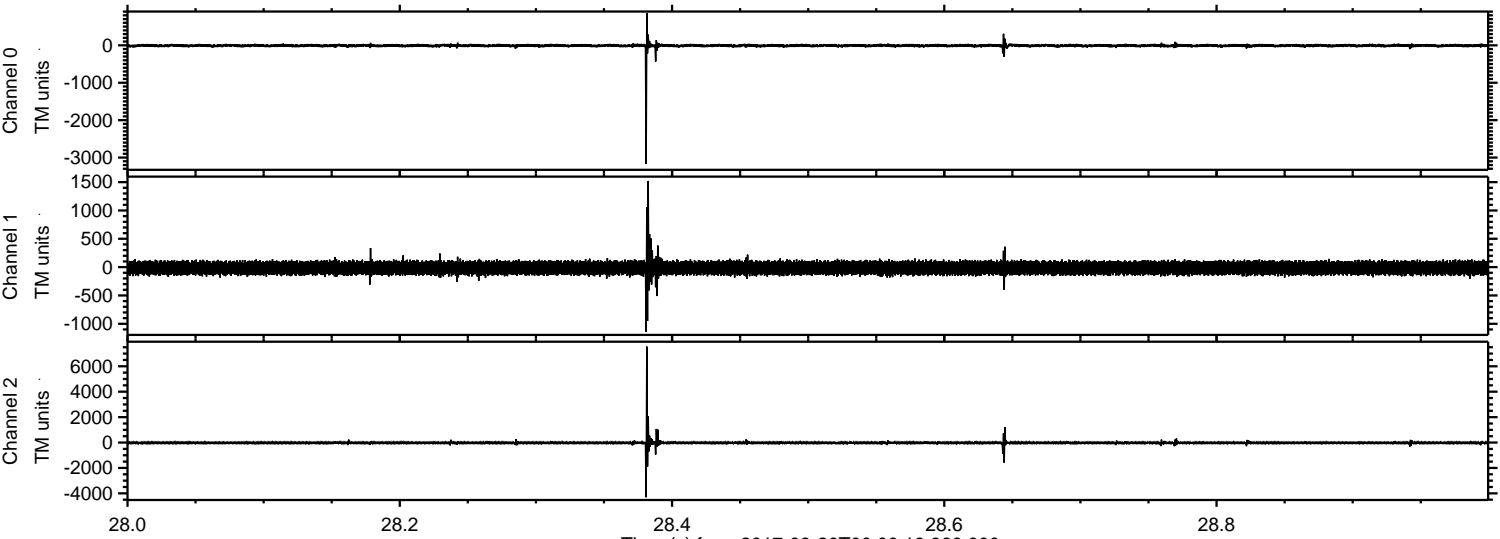
Channel 0  
mn: -2311  
mx: 2676  
 $\mu$ : -8.6  
 $\sigma$ : 29.8

Channel 1  
mn: -1406  
mx: 1514  
 $\mu$ : -14.8  
 $\sigma$ : 66.1

Channel 2  
mn: -7857  
mx: 6573  
 $\mu$ : -18.8  
 $\sigma$ : 81.3

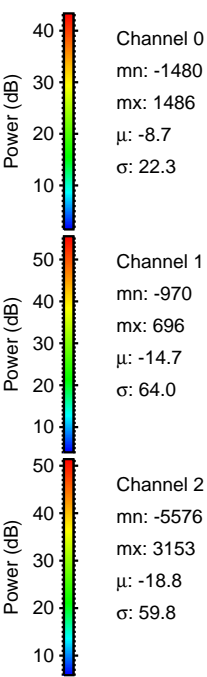
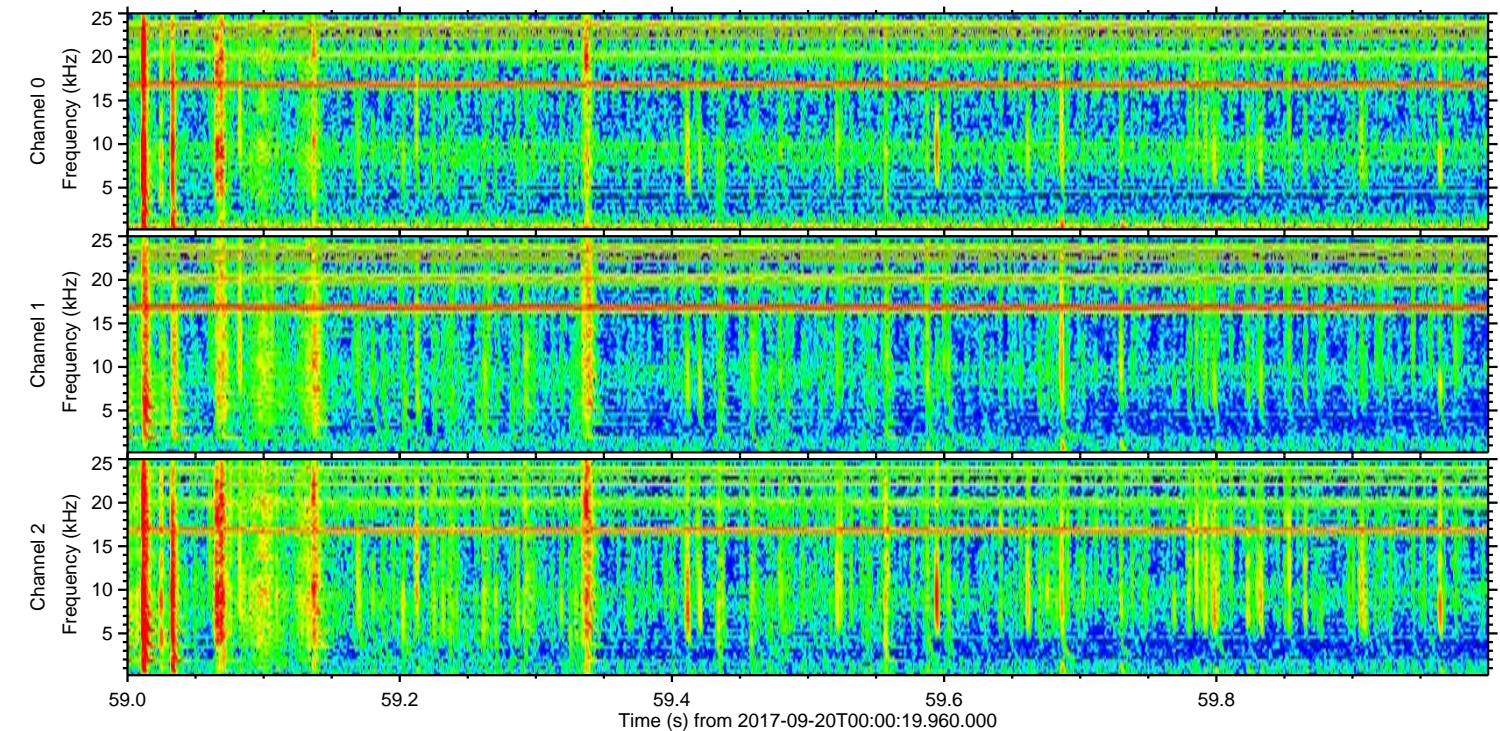
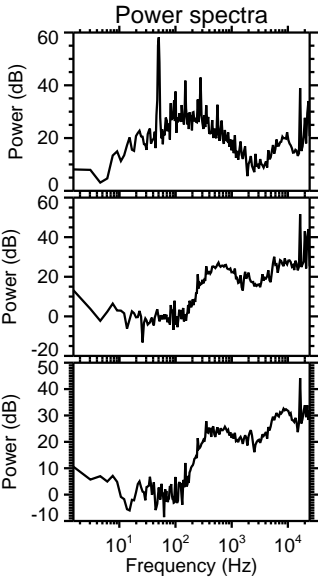
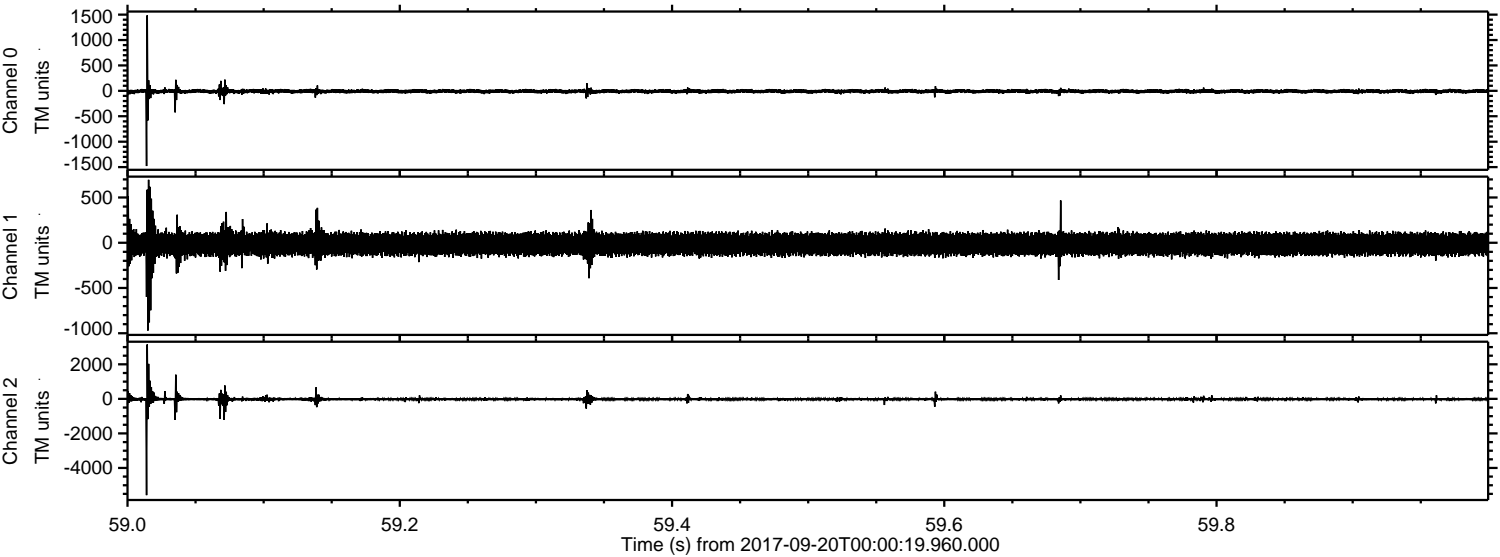


Processed Wed Sep 20 02:07:54 2017 by ELM ver.2012-10-06 from 001\_\_elm20170920\_000018\_\_dat00.bin



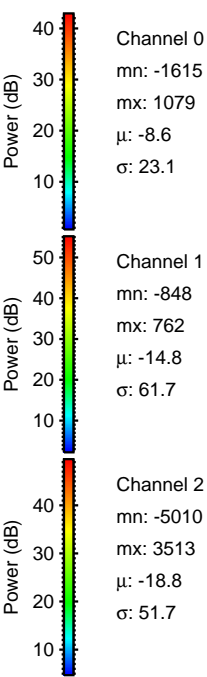
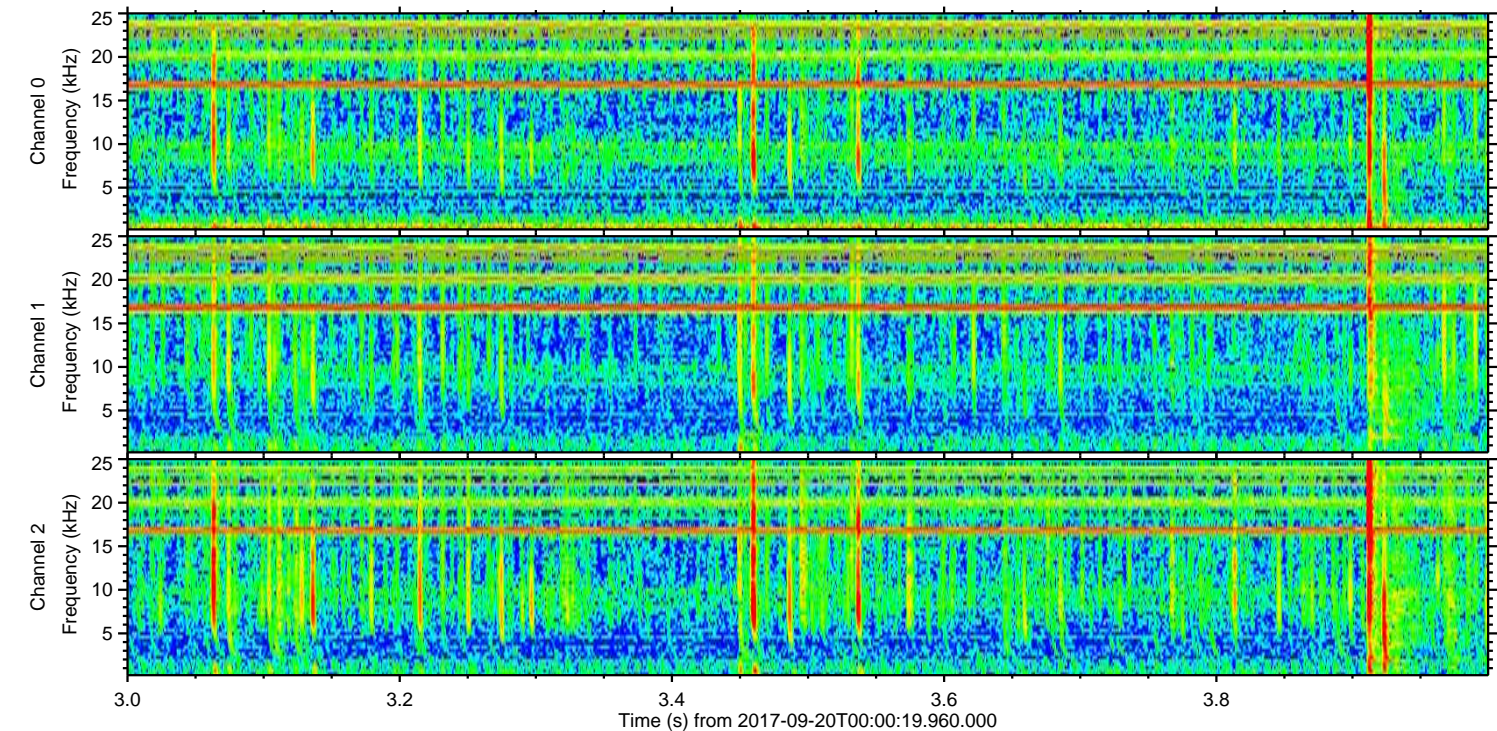
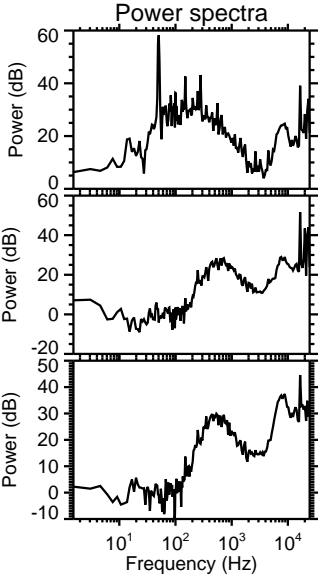
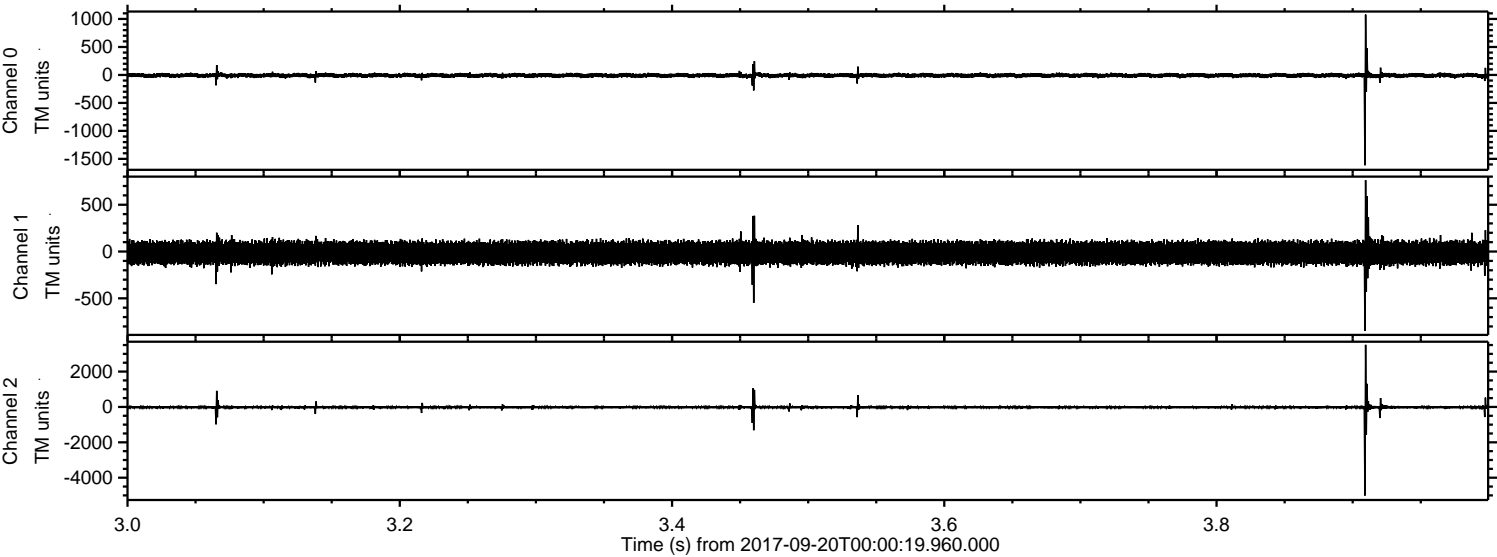


Processed Wed Sep 20 02:07:54 2017 by ELM ver.2012-10-06 from 001\_\_elm20170920\_000018\_\_dat00.bin





Processed Wed Sep 20 02:07:55 2017 by ELM ver.2012-10-06 from 001\_\_elm20170920\_000018\_\_dat00.bin



Channel 0  
mn: -1615  
mx: 1079  
 $\mu$ : -8.6  
 $\sigma$ : 23.1

Channel 1  
mn: -848  
mx: 762  
 $\mu$ : -14.8  
 $\sigma$ : 61.7

Channel 2  
mn: -5010  
mx: 3513  
 $\mu$ : -18.8  
 $\sigma$ : 51.7



Processed Wed Sep 20 02:07:56 2017 by ELM ver.2012-10-06 from 001\_\_elm20170920\_000018\_\_dat00.bin

