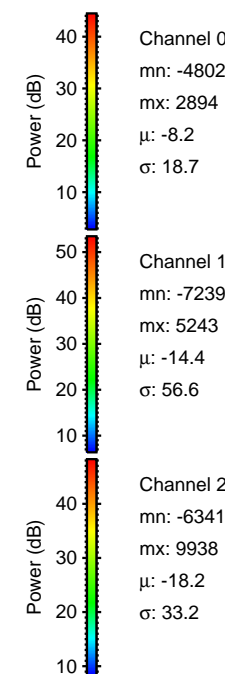
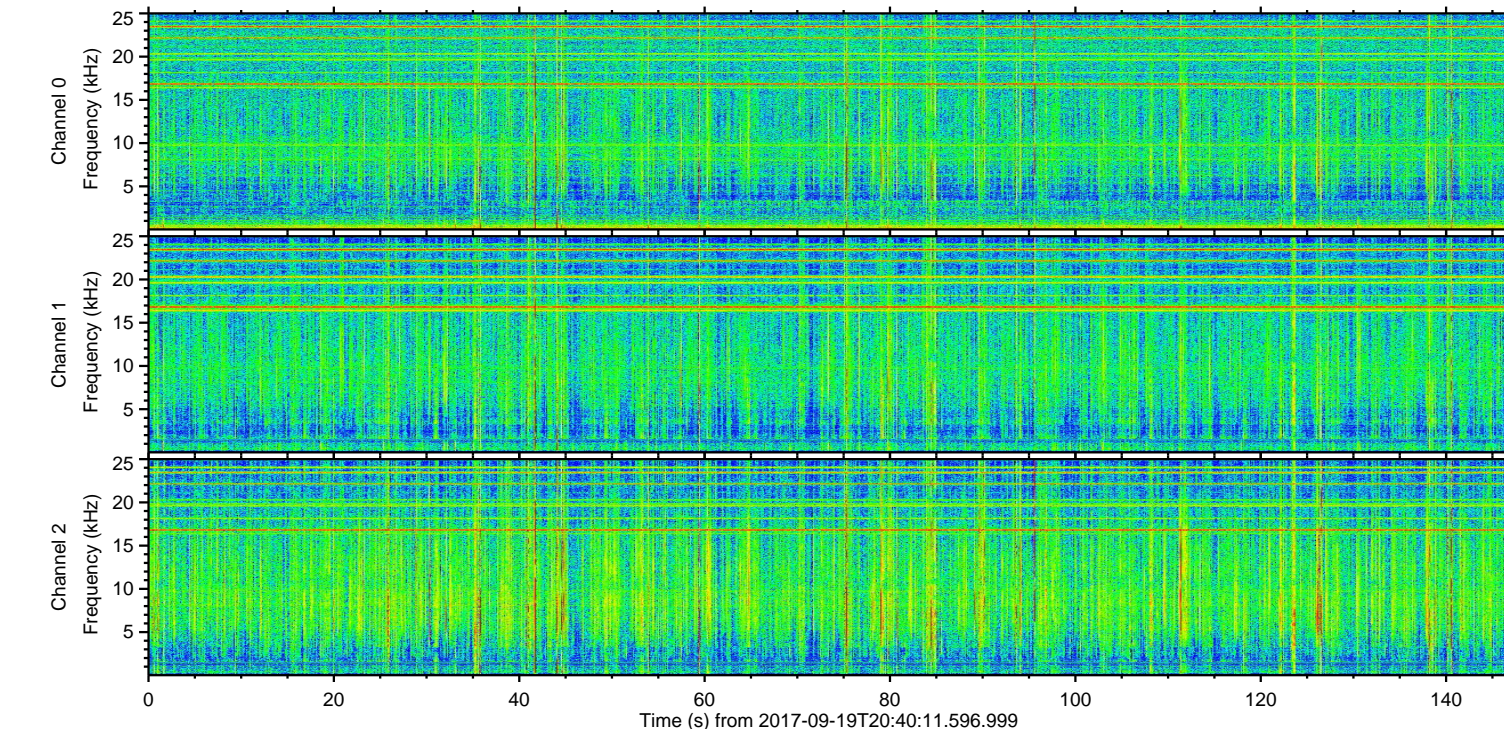
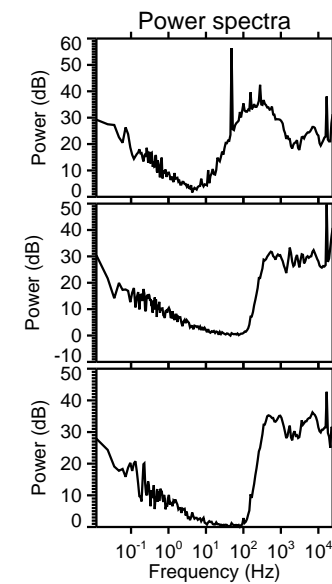
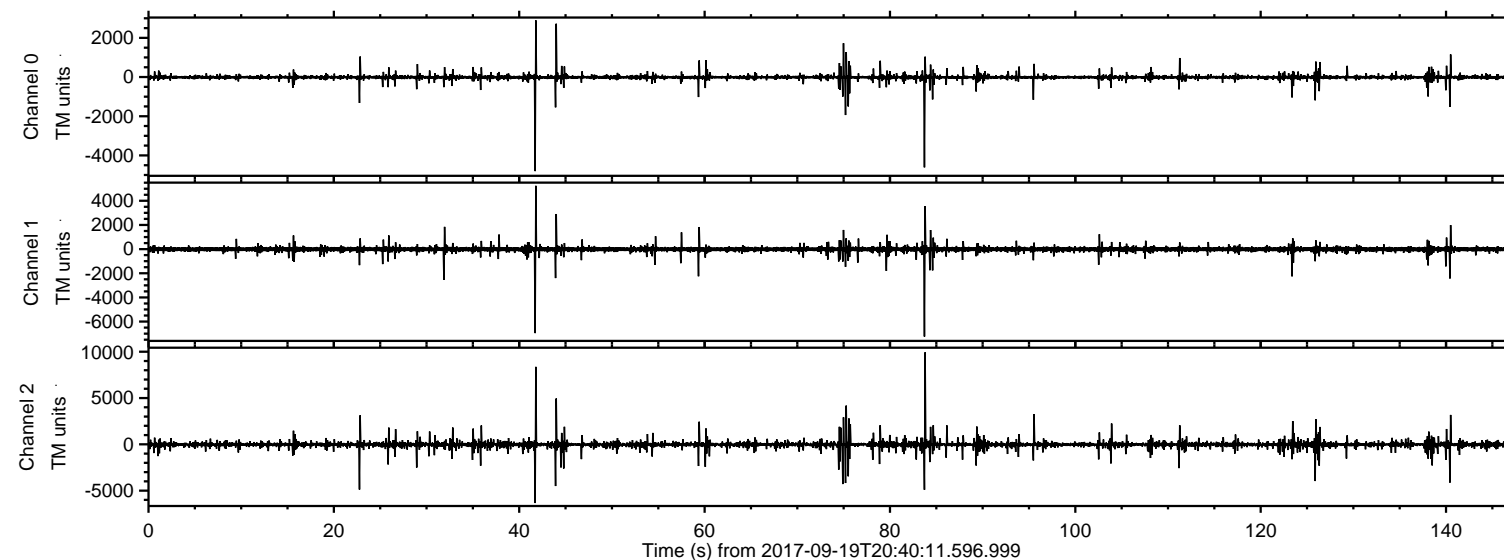
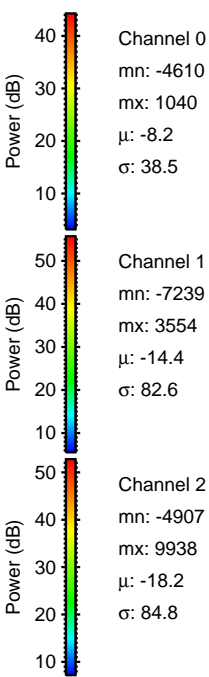
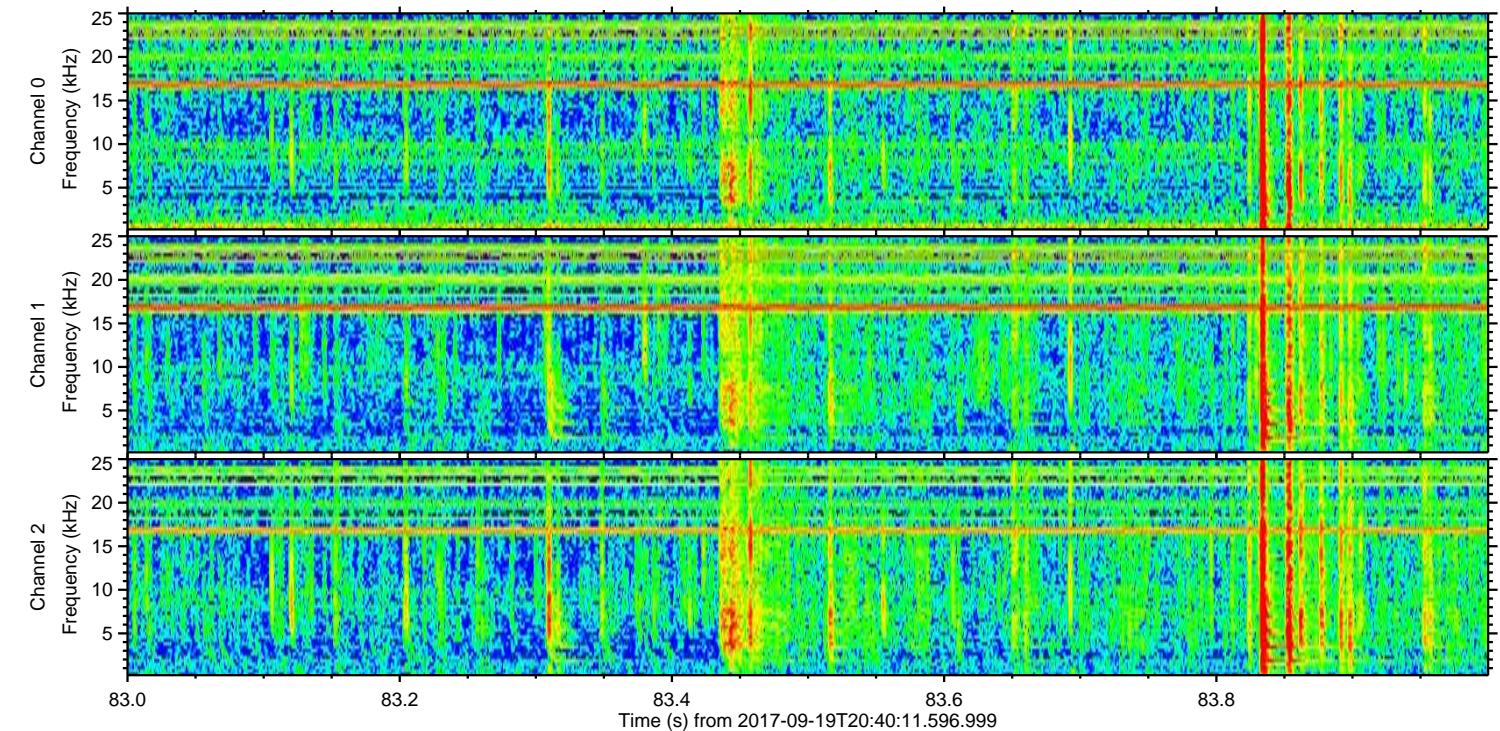
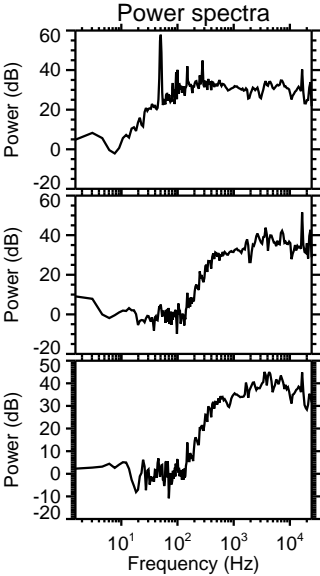
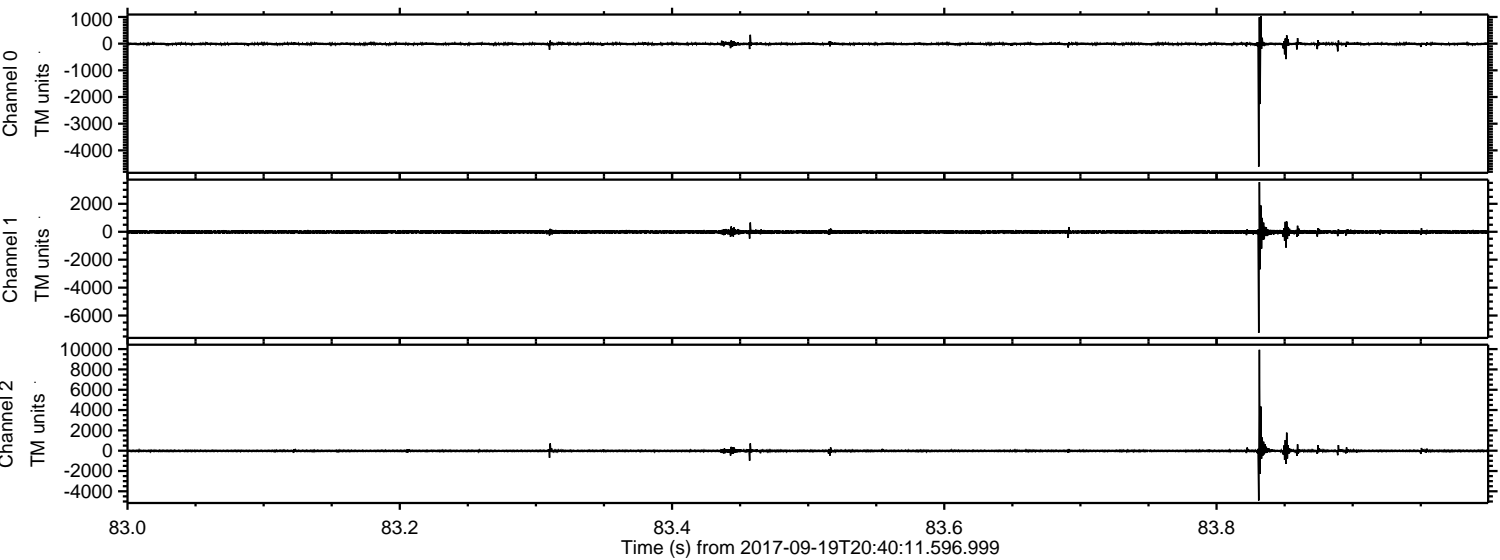


ELMAVAN 3D WAVEFORMS (Measured data sampled at 50 kHz) 51000 packets of 144 samples from 2017-09-19T20:40:11.596.999.

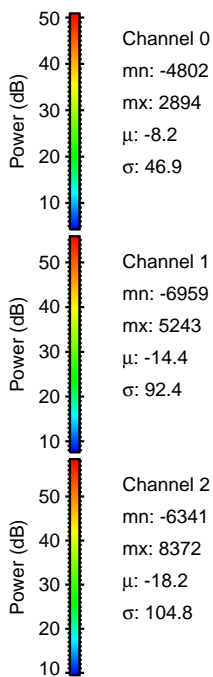
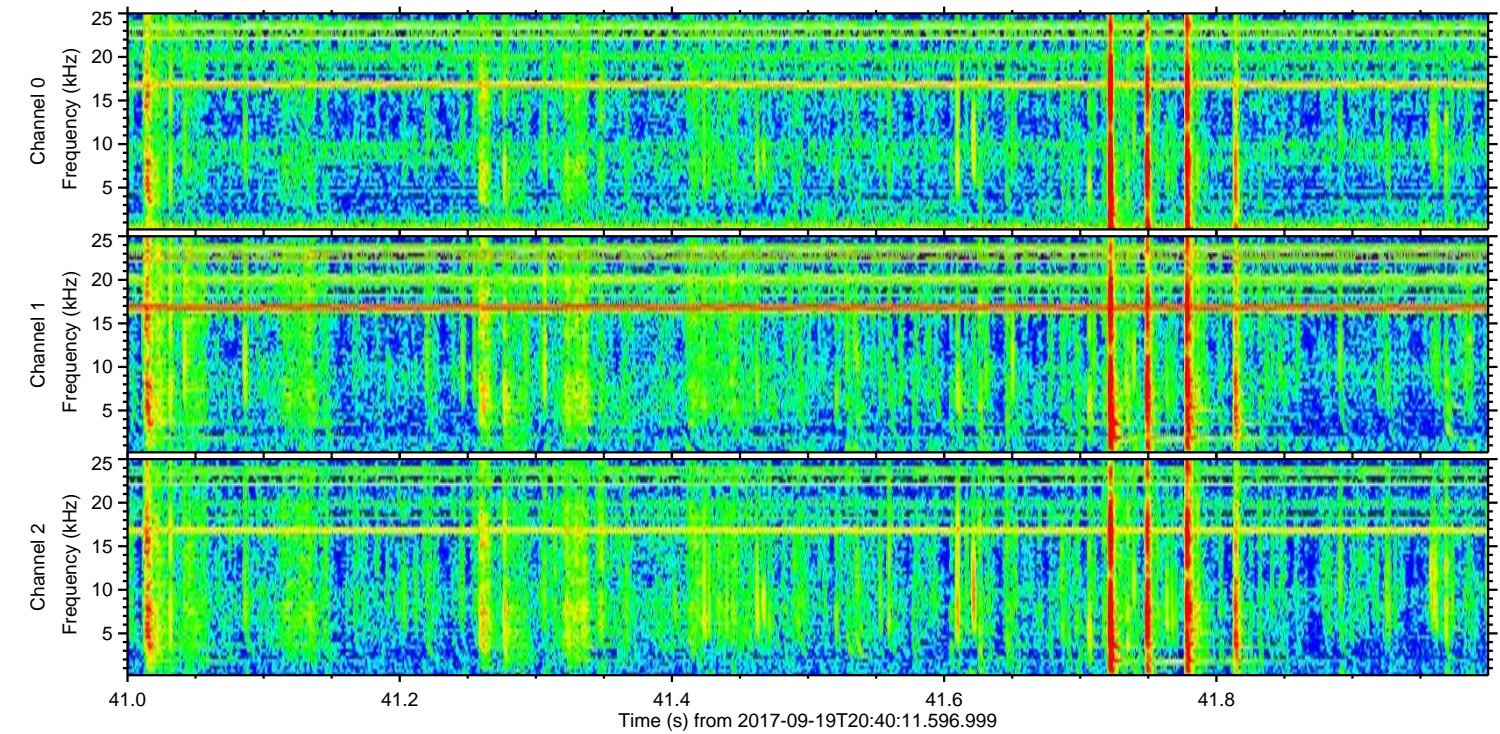
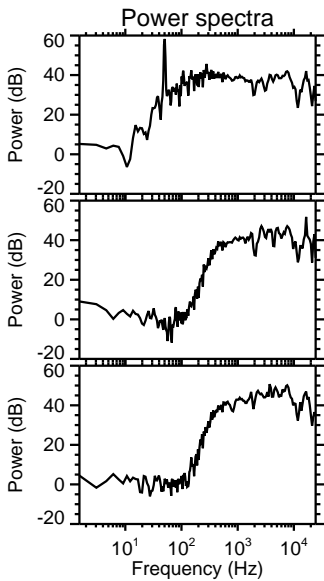
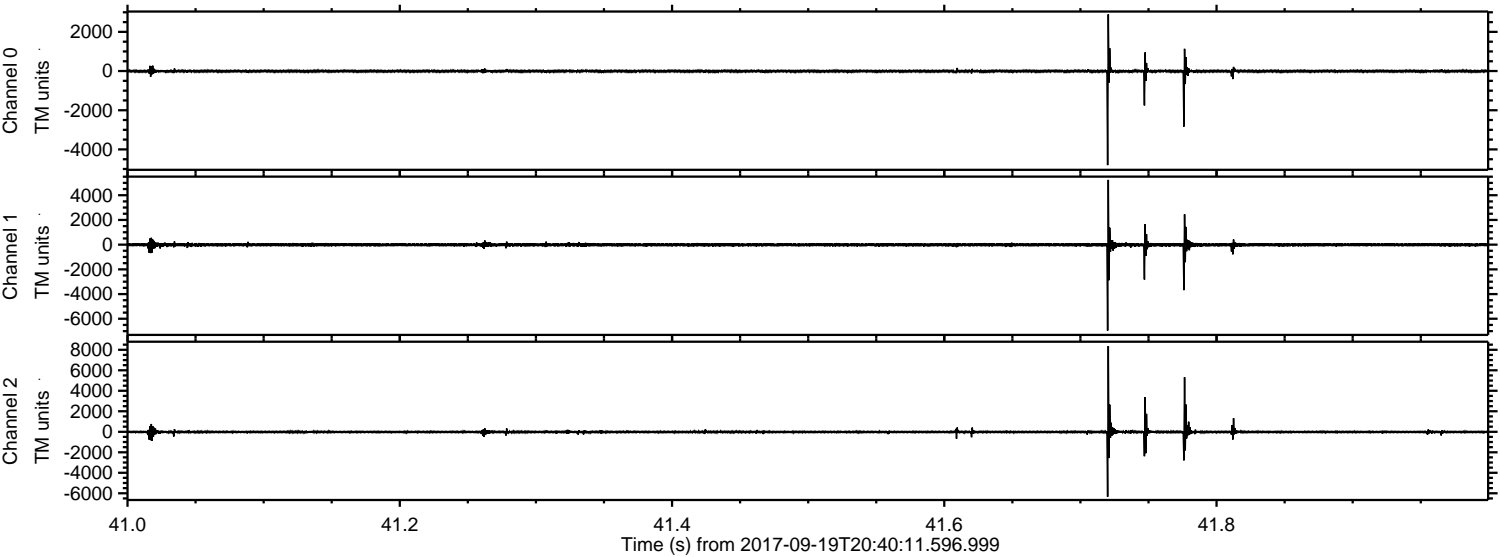
Processed Tue Sep 19 22:47:38 2017 by ELM ver.2012-10-06 from 001__elm20170919_204010__dat00.bin



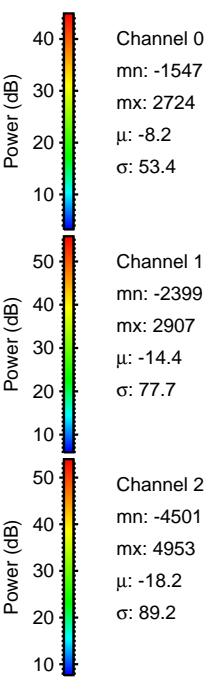
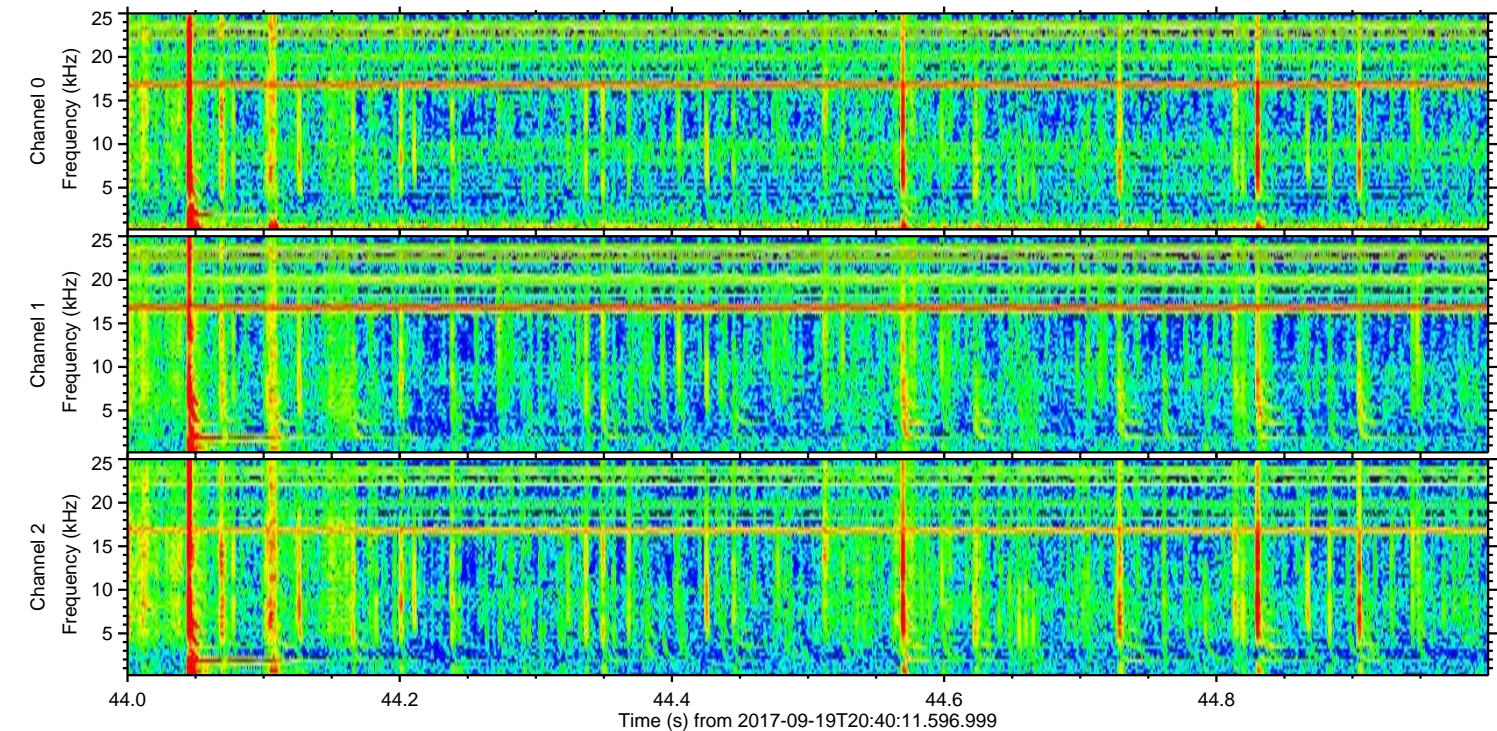
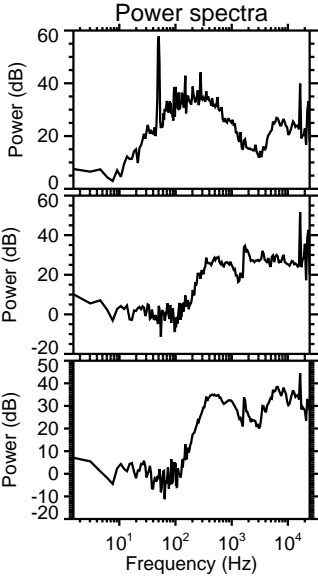
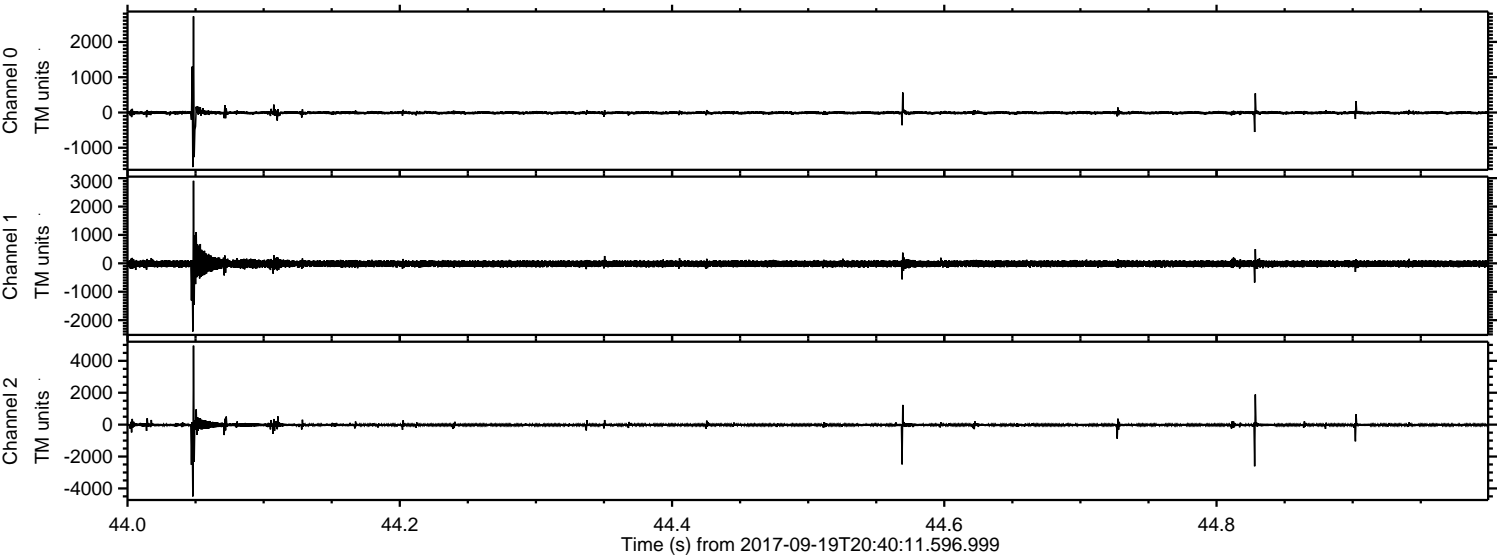
Processed Tue Sep 19 22:47:45 2017 by ELM ver.2012-10-06 from 001__elm20170919_204010__dat00.bin



Processed Tue Sep 19 22:47:45 2017 by ELM ver.2012-10-06 from 001__elm20170919_204010__dat00.bin

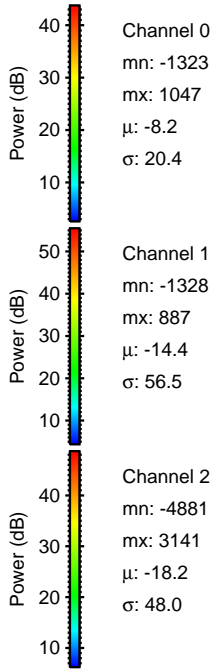
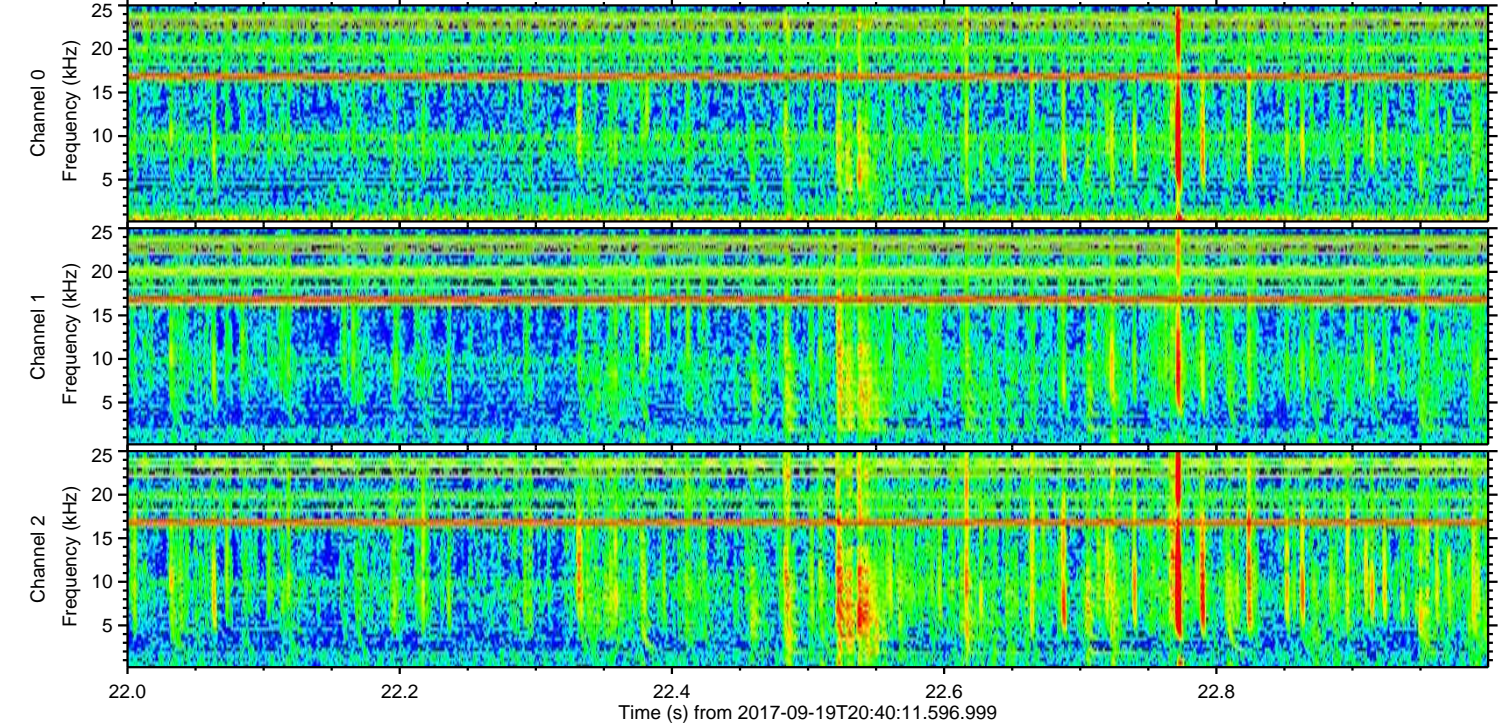
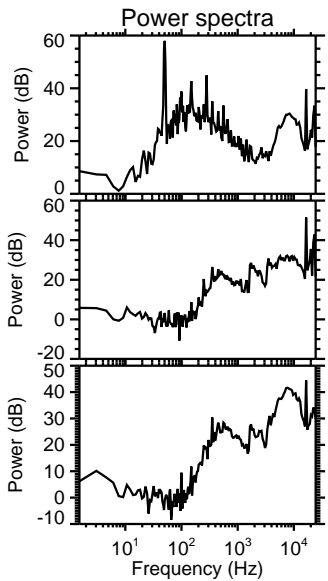
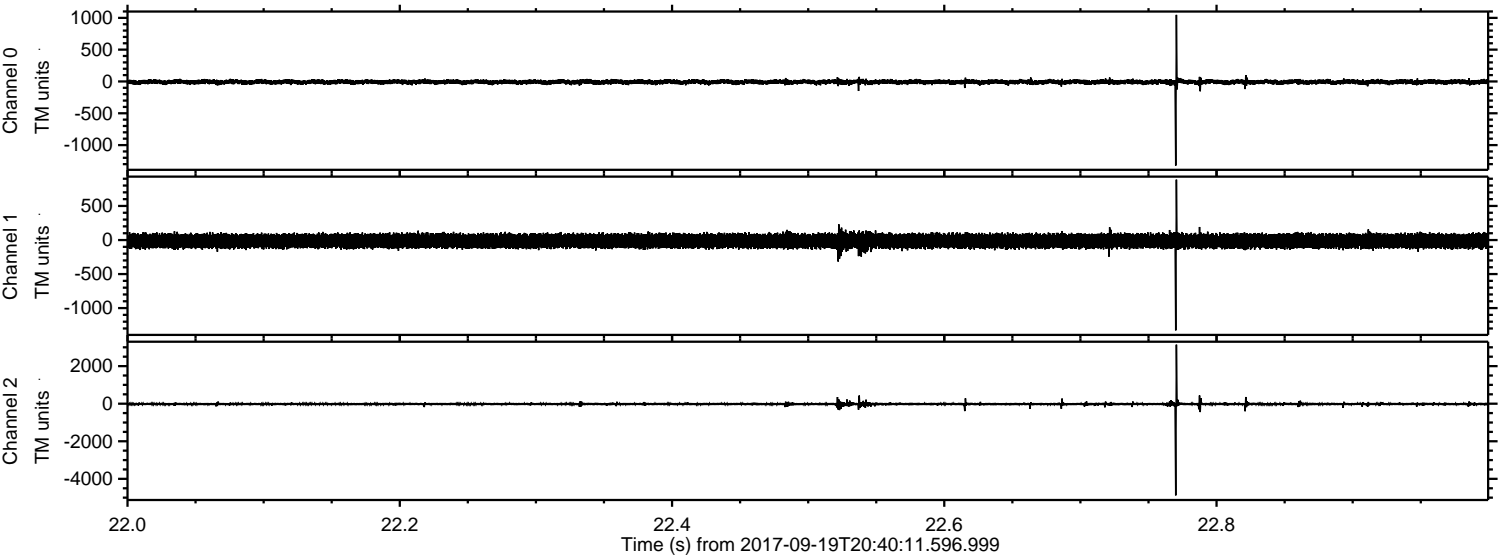


Processed Tue Sep 19 22:47:46 2017 by ELM ver.2012-10-06 from 001__elm20170919_204010__dat00.bin

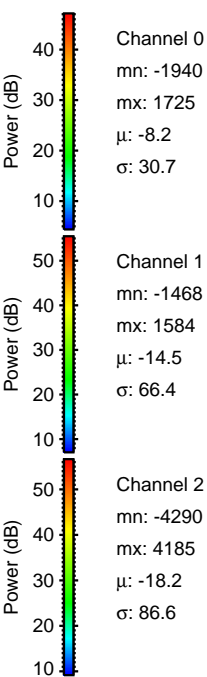
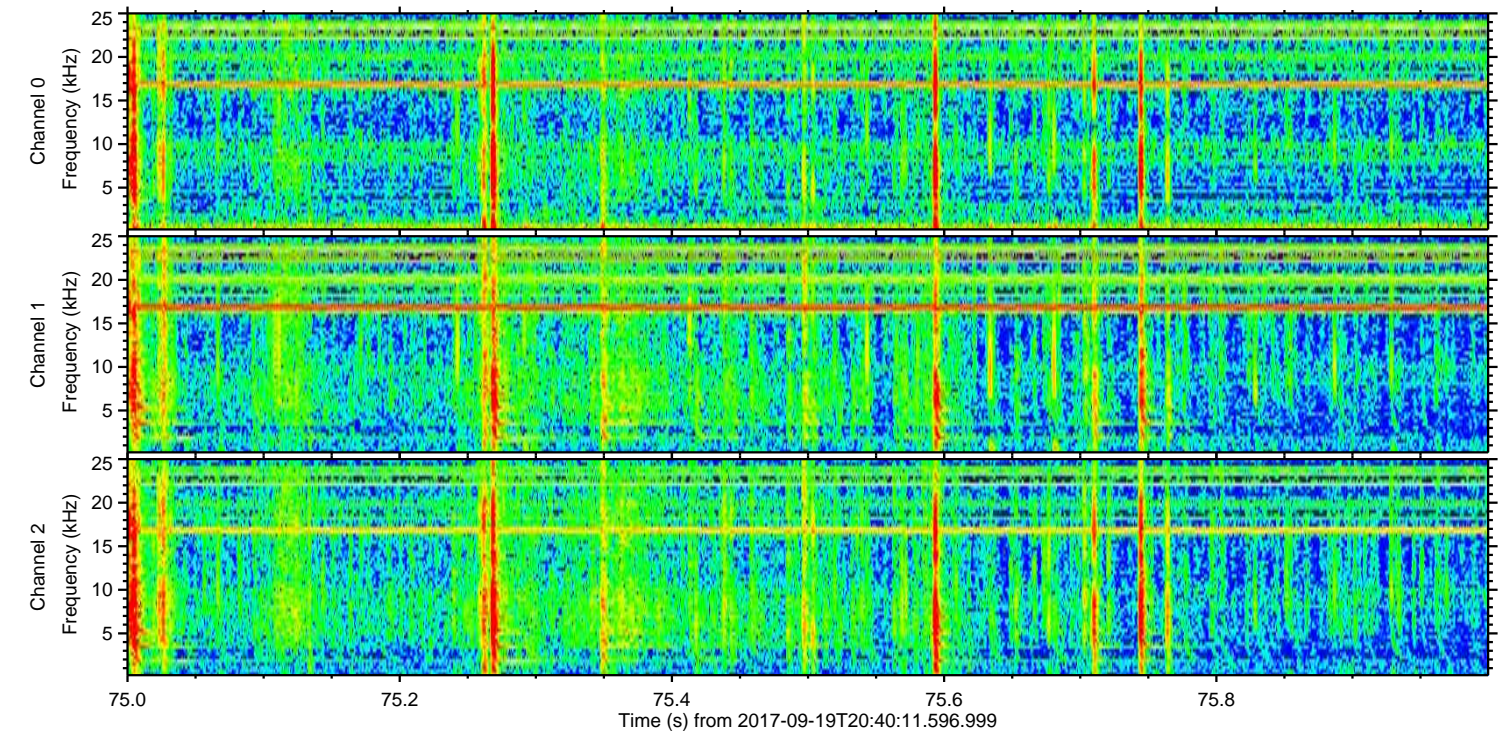
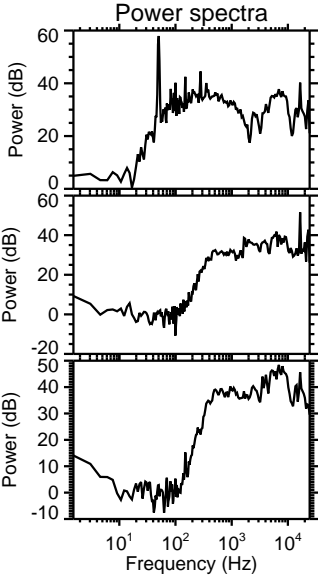
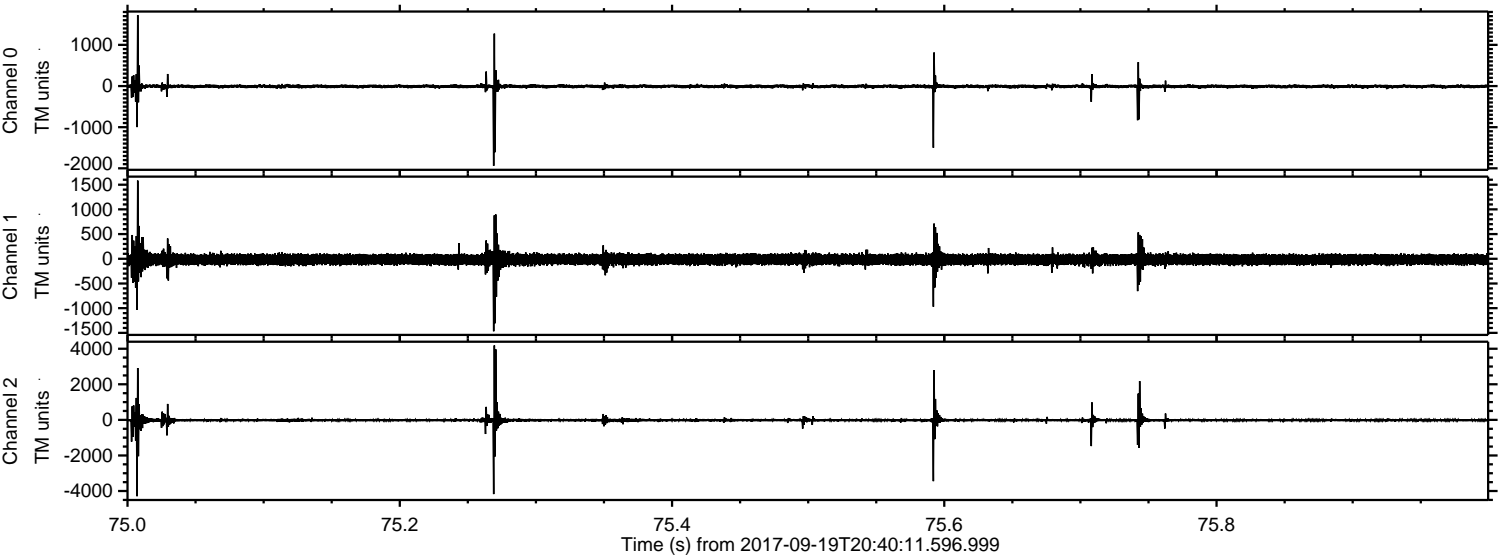


ELMAVAN 3D WAVEFORMS (Measured data sampled at 50 kHz) 51000 packets of 144 samples from 2017-09-19T20:40:11.596.999. Part 23/147

Processed Tue Sep 19 22:47:47 2017 by ELM ver.2012-10-06 from 001__elm20170919_204010__dat00.bin

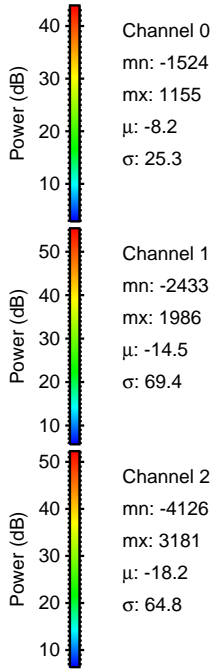
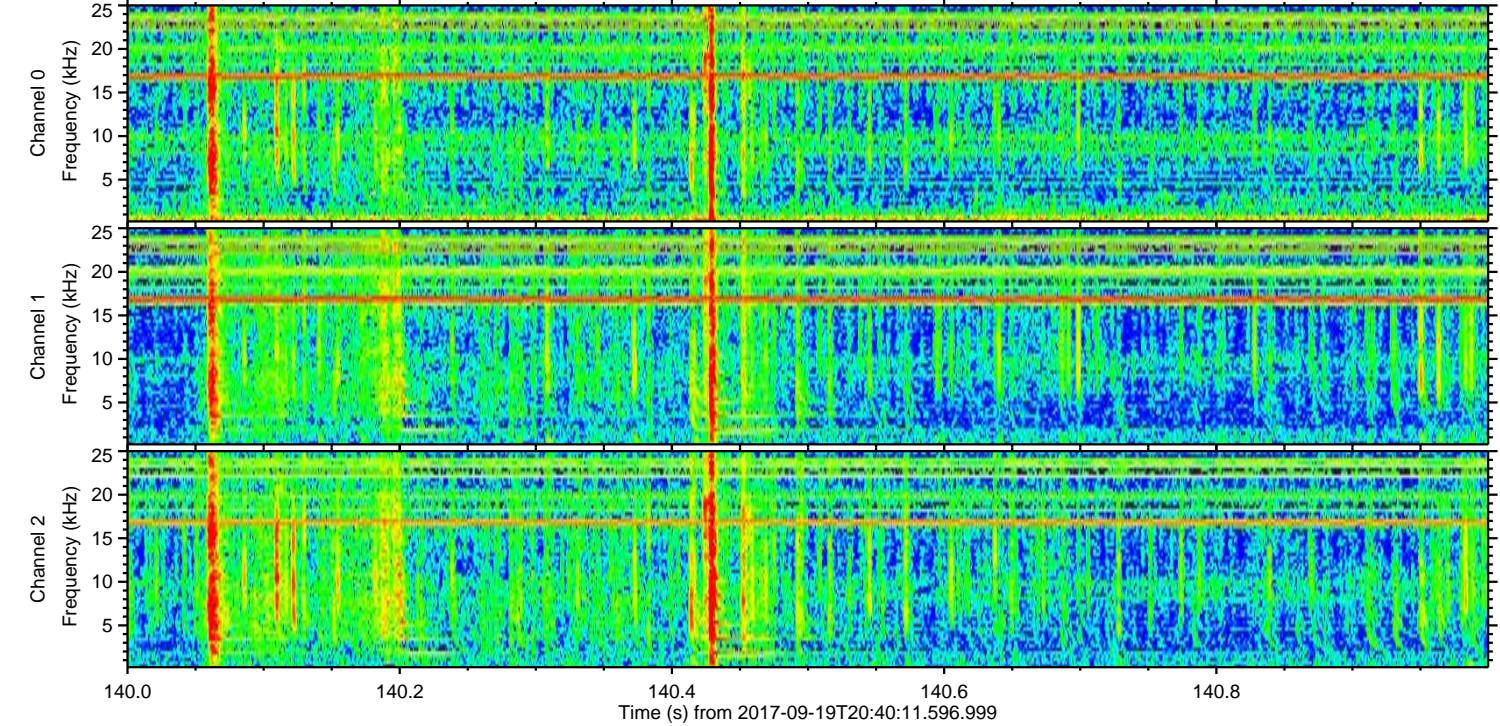
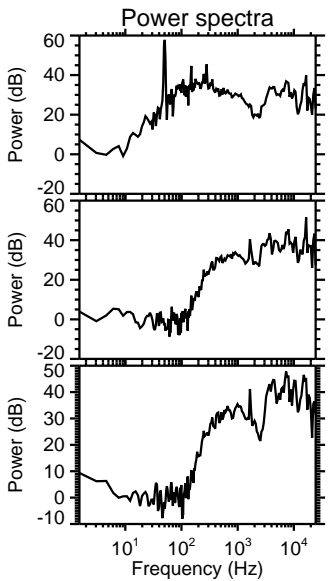
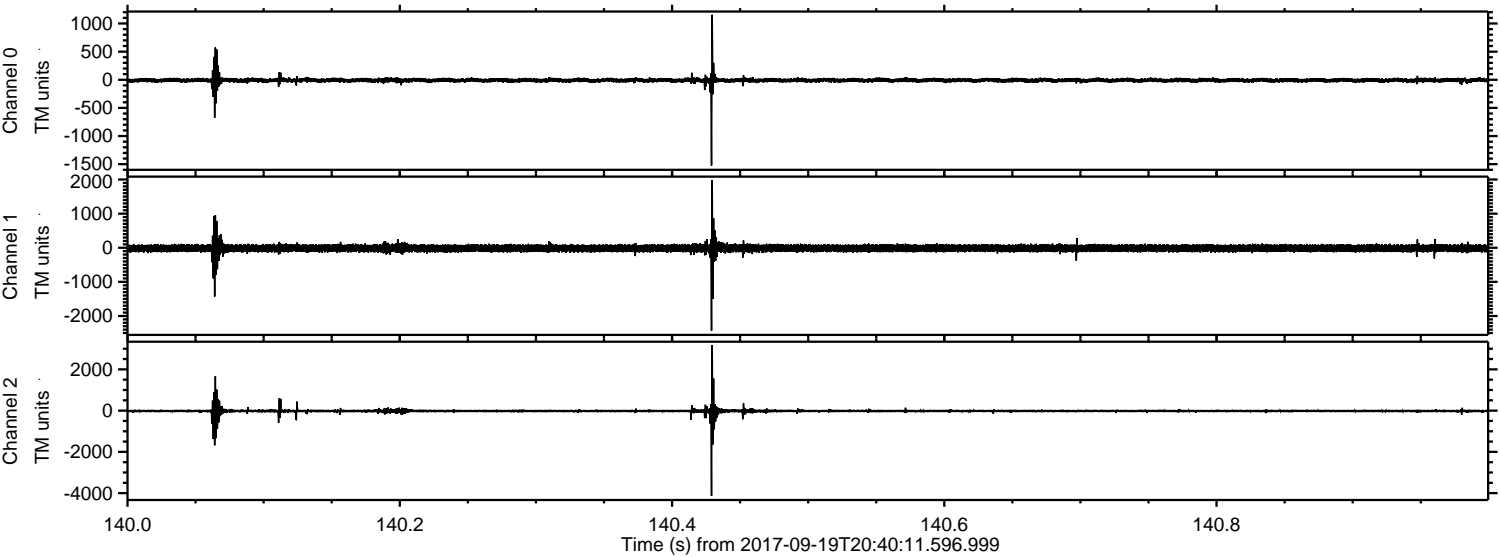


Processed Tue Sep 19 22:47:48 2017 by ELM ver.2012-10-06 from 001__elm20170919_204010__dat00.bin



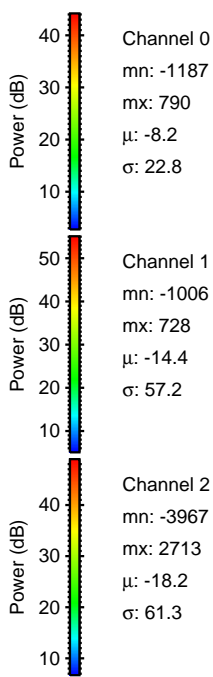
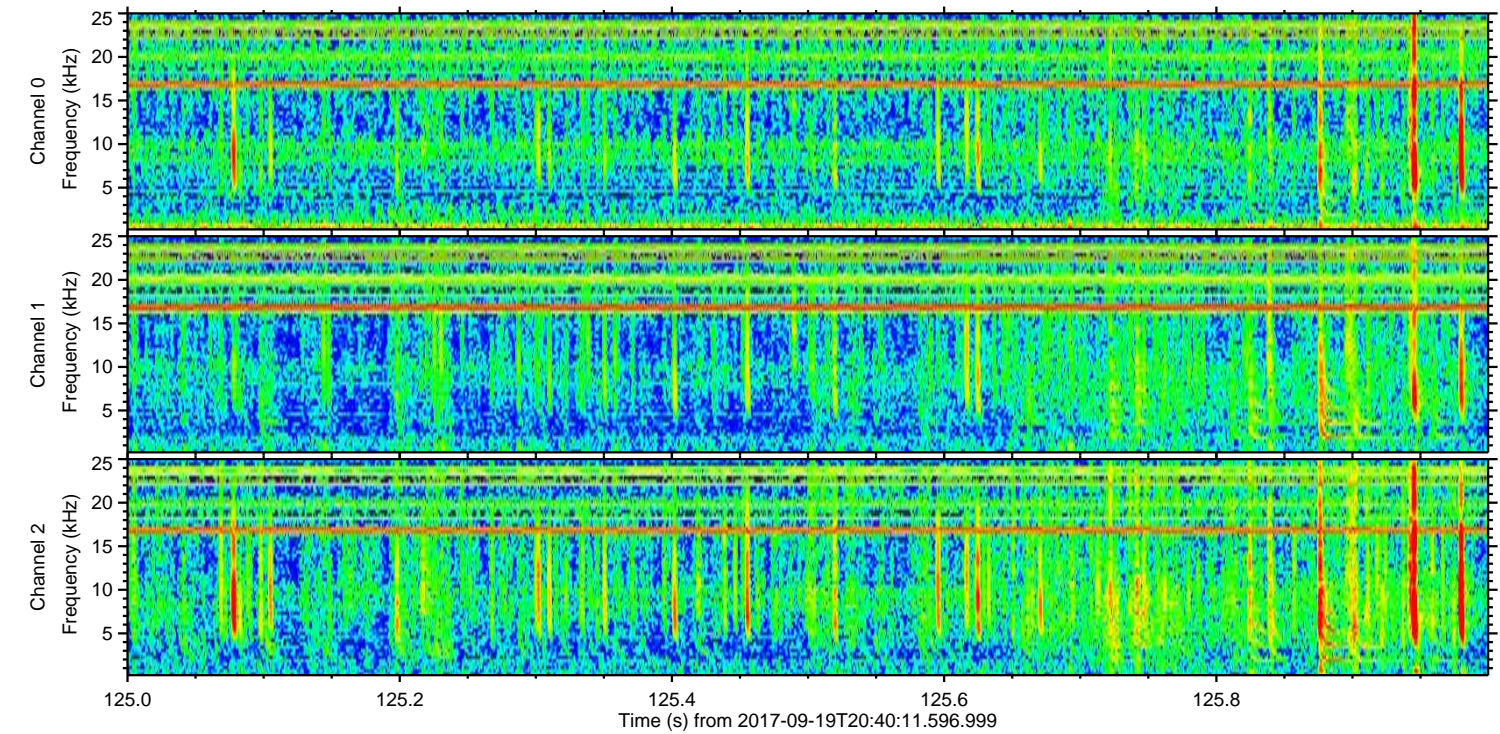
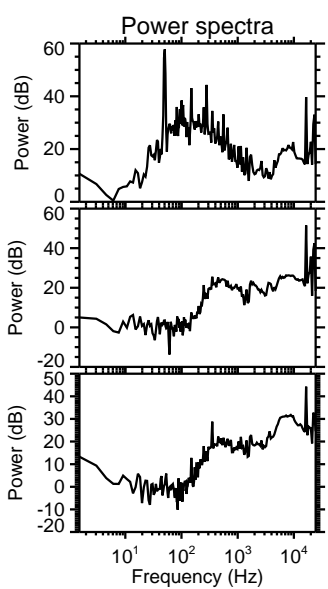
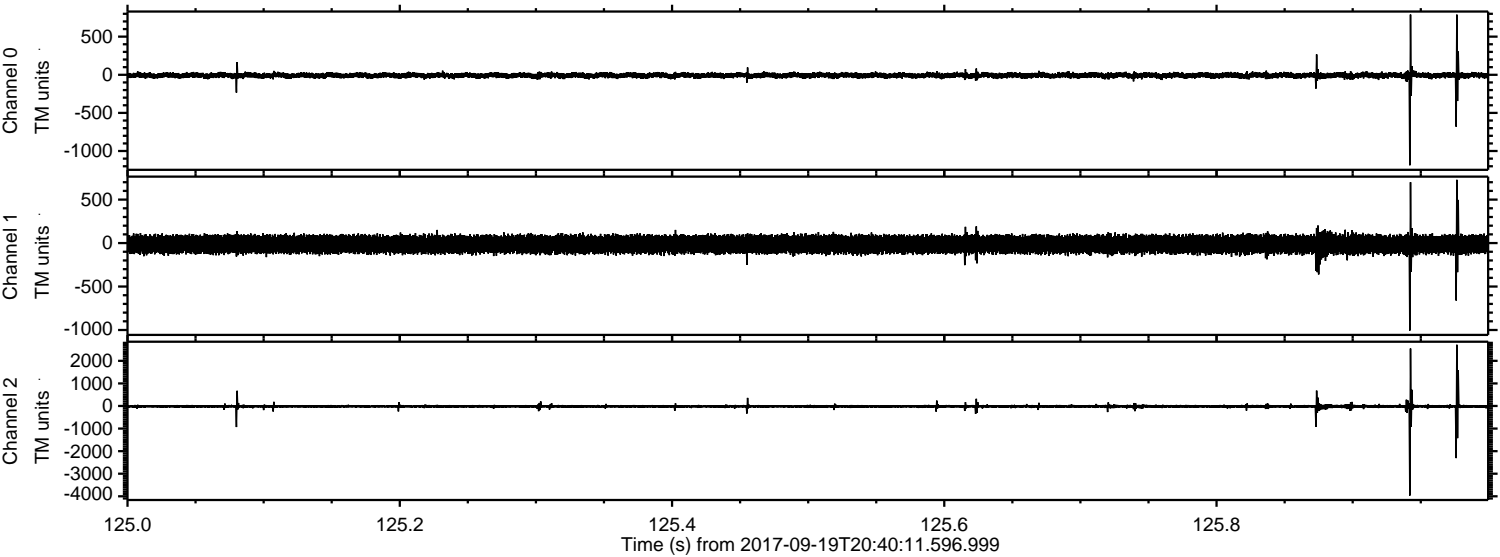
ELMAVAN 3D WAVEFORMS (Measured data sampled at 50 kHz) 51000 packets of 144 samples from 2017-09-19T20:40:11.596.999. Part 141/147

Processed Tue Sep 19 22:47:48 2017 by ELM ver.2012-10-06 from 001__elm20170919_204010__dat00.bin



ELMAVAN 3D WAVEFORMS (Measured data sampled at 50 kHz) 51000 packets of 144 samples from 2017-09-19T20:40:11.596.999. Part 126/147

Processed Tue Sep 19 22:47:49 2017 by ELM ver.2012-10-06 from 001__elm20170919_204010__dat00.bin

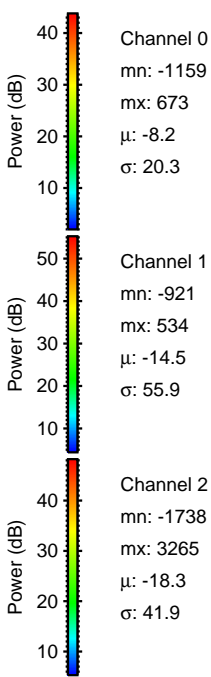
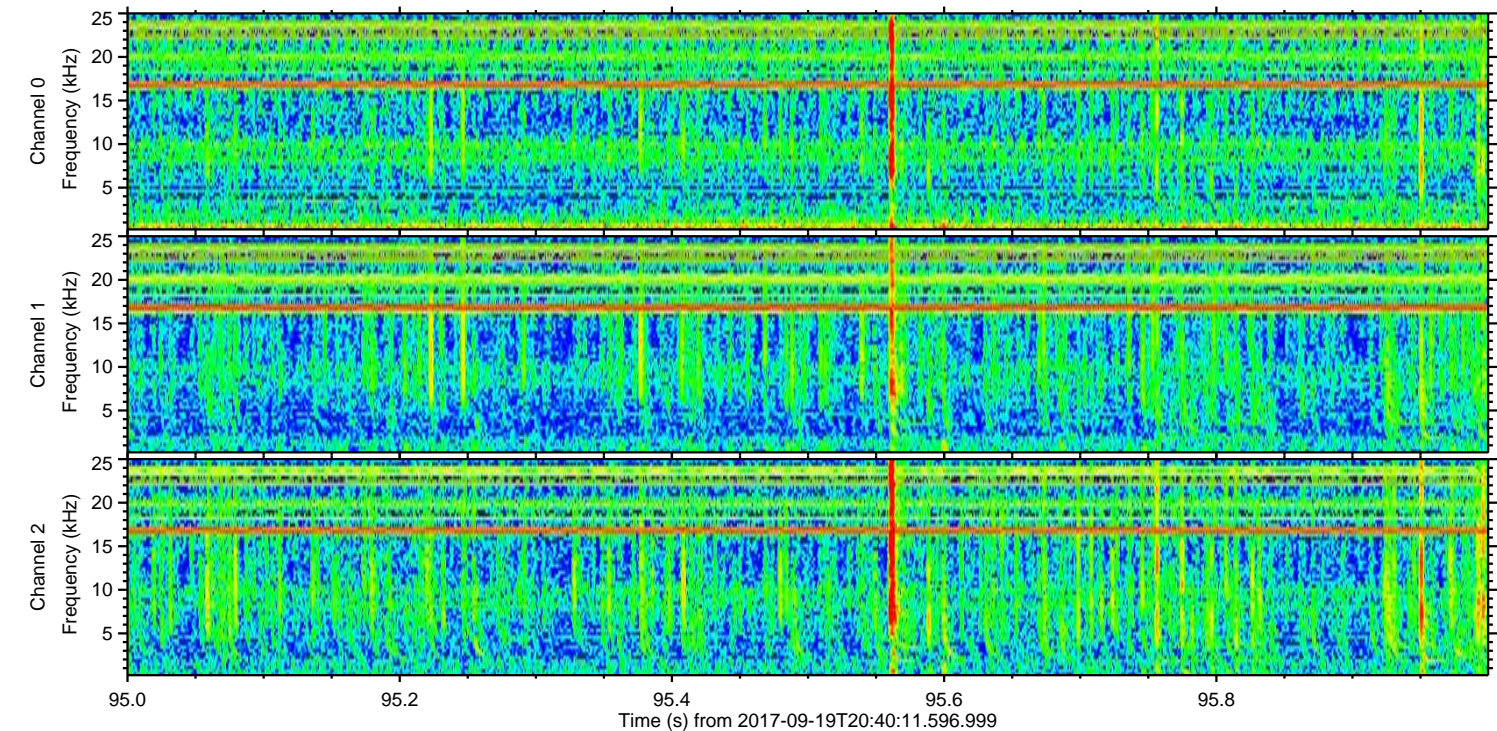
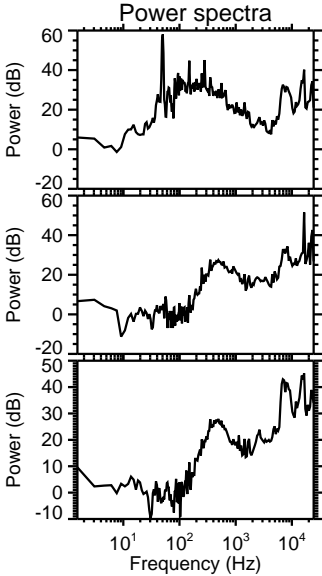
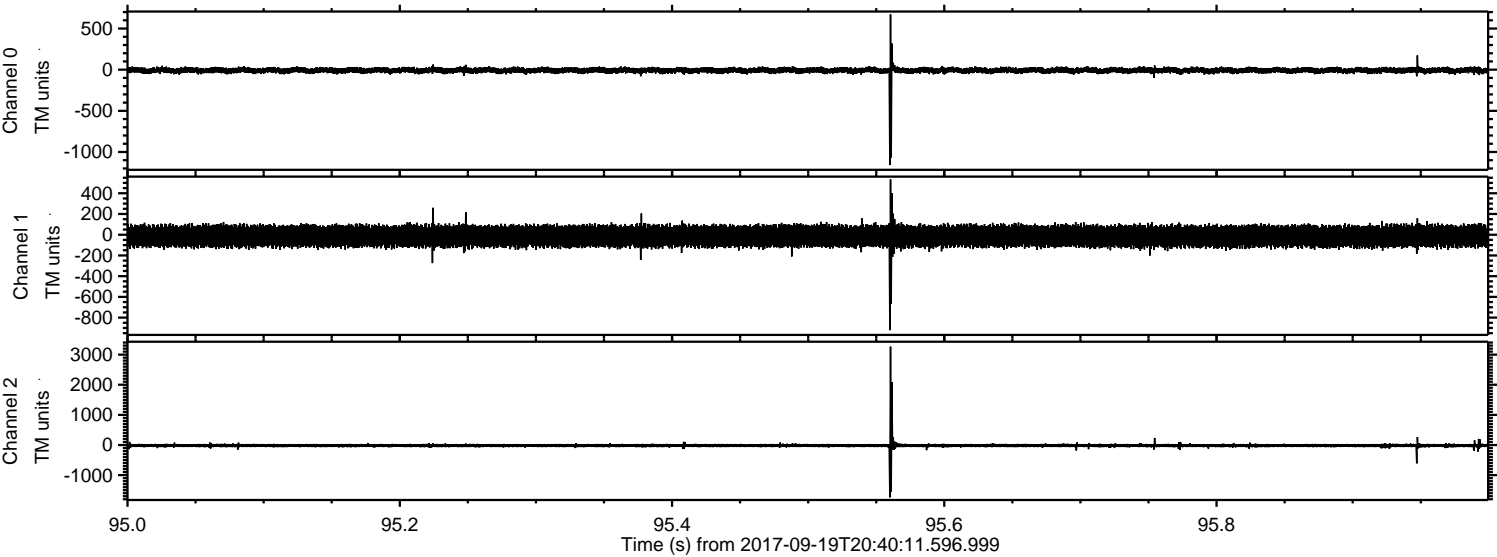


Channel 0
mn: -1187
mx: 790
 μ : -8.2
 σ : 22.8

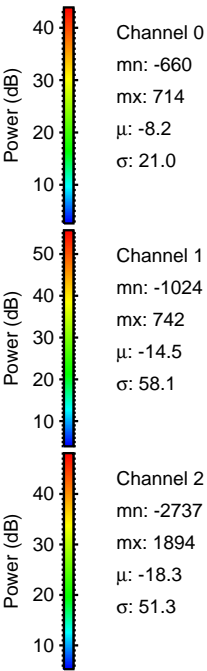
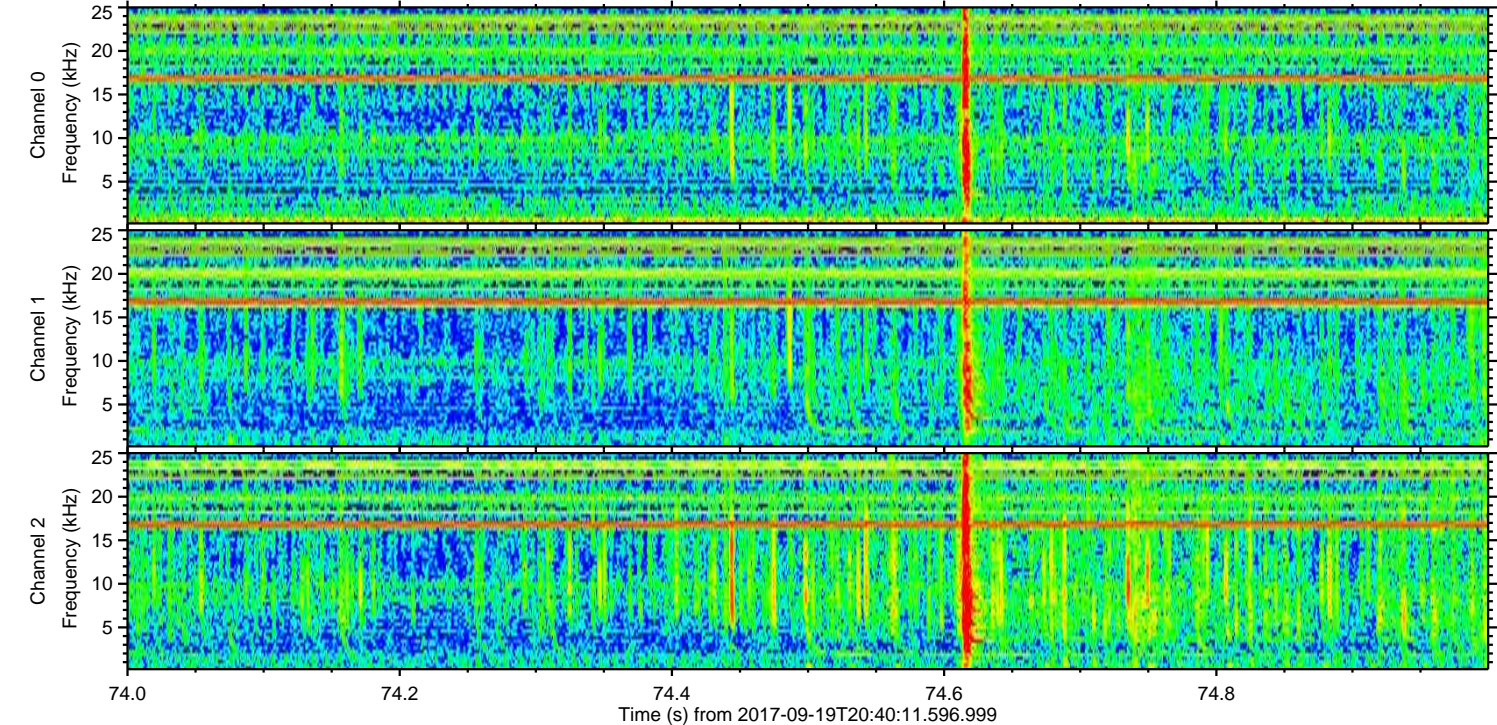
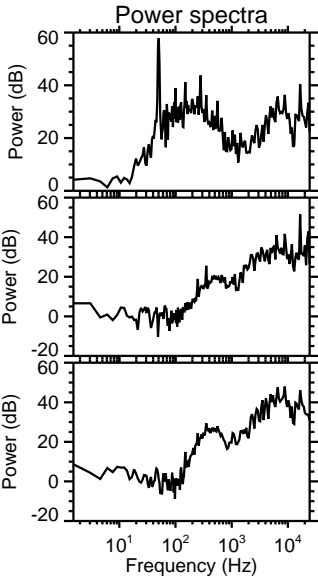
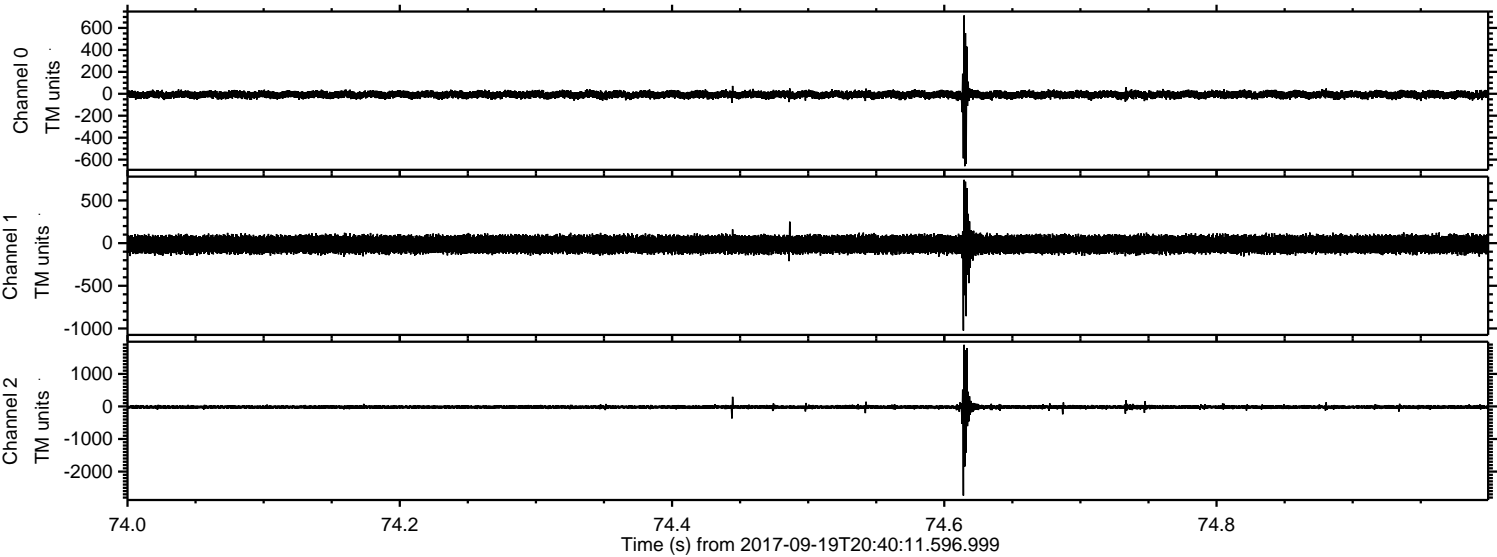
Channel 1
mn: -1006
mx: 728
 μ : -14.4
 σ : 57.2

Channel 2
mn: -3967
mx: 2713
 μ : -18.2
 σ : 61.3

Processed Tue Sep 19 22:47:50 2017 by ELM ver.2012-10-06 from 001__elm20170919_204010__dat00.bin



Processed Tue Sep 19 22:47:51 2017 by ELM ver.2012-10-06 from 001__elm20170919_204010__dat00.bin



Processed Tue Sep 19 22:47:51 2017 by ELM ver.2012-10-06 from 001__elm20170919_204010__dat00.bin

