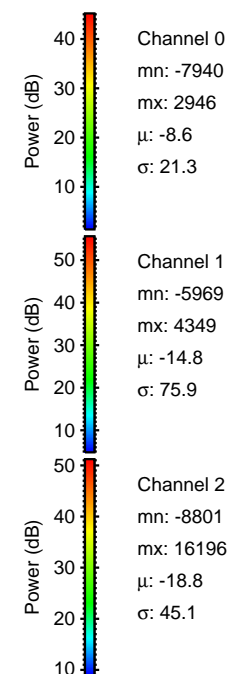
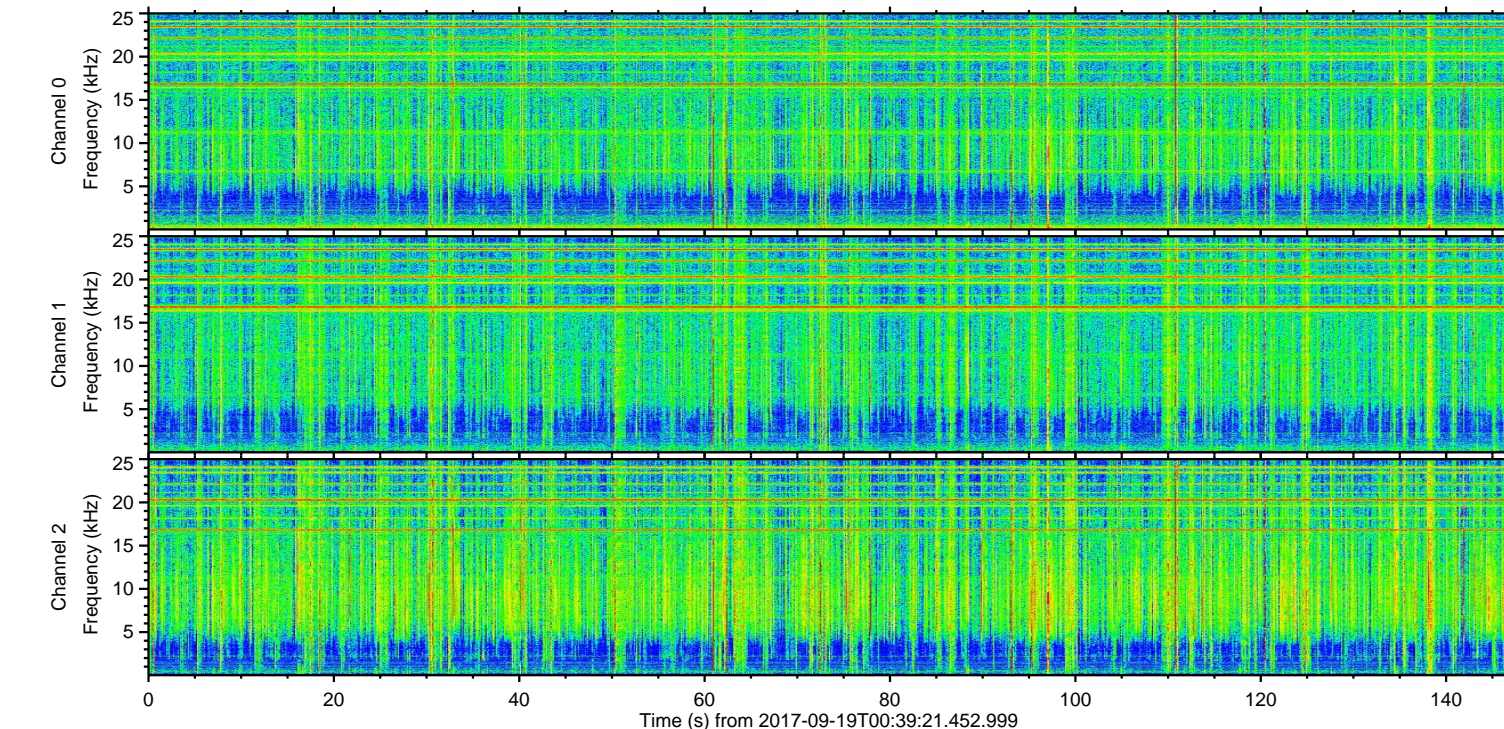
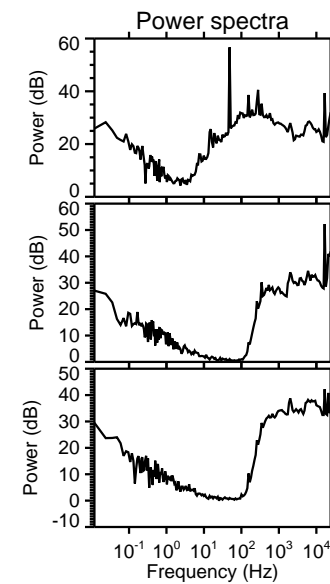
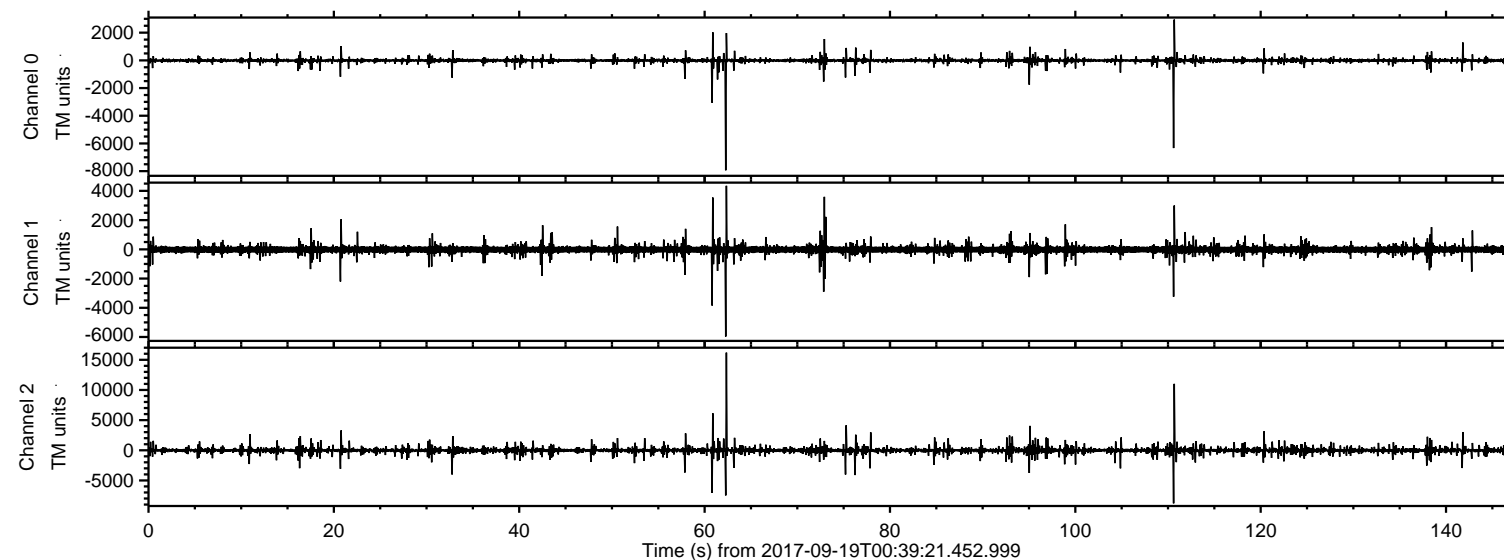
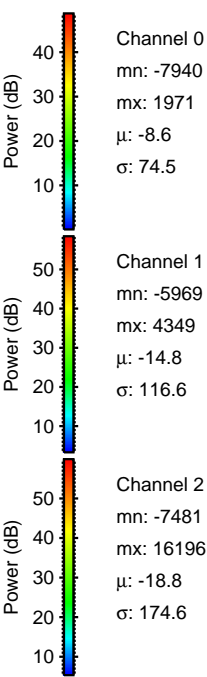
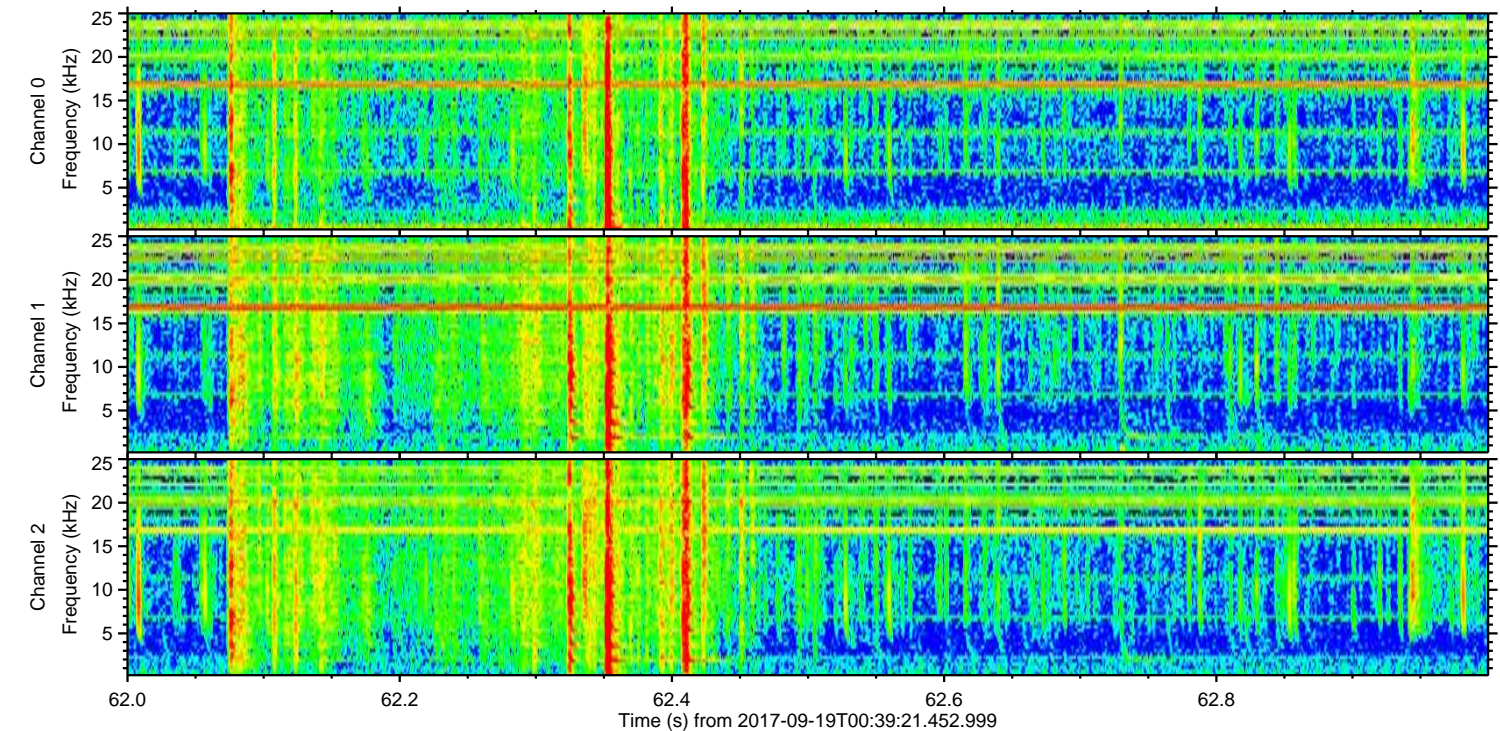
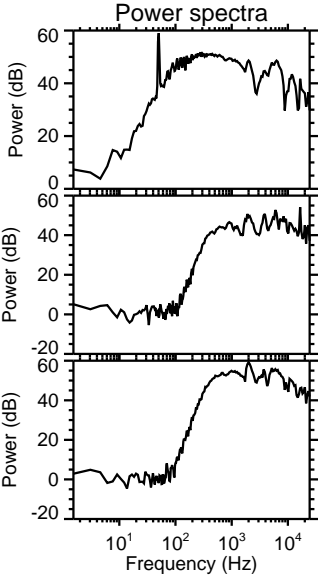
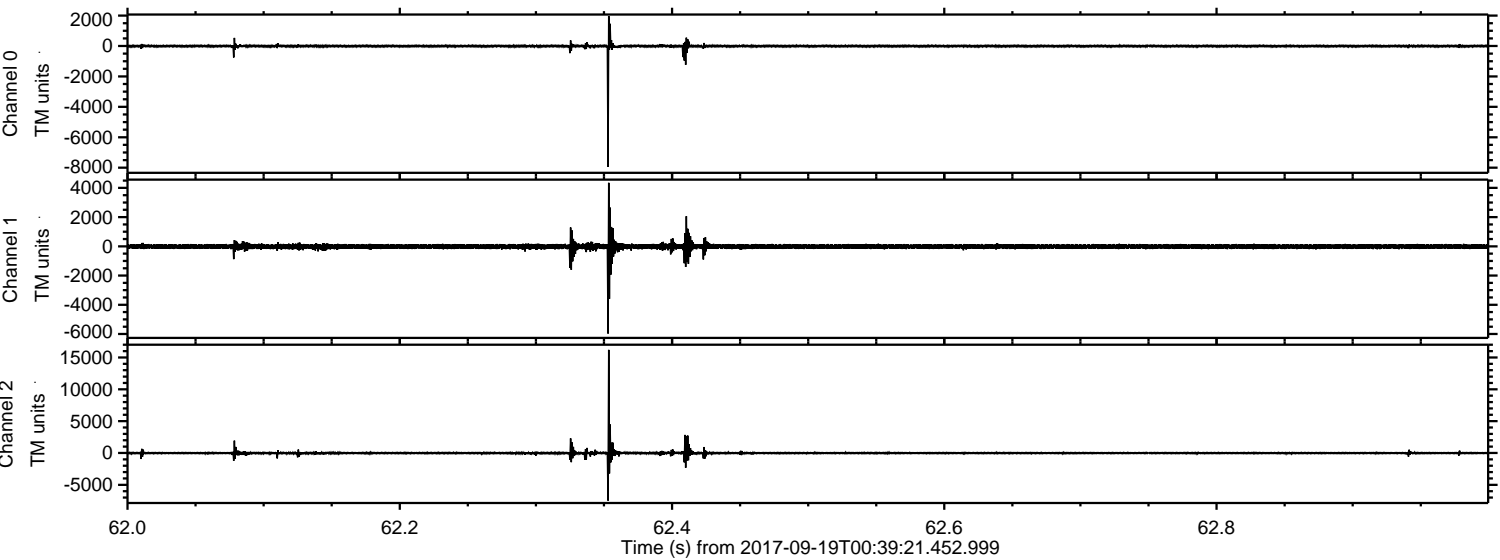


ELMAVAN 3D WAVEFORMS (Measured data sampled at 50 kHz) 51000 packets of 144 samples from 2017-09-19T00:39:21.452.999.

Processed Tue Sep 19 09:52:45 2017 by ELM ver.2012-10-06 from 001__elm20170919_003920__dat00.bin



Processed Tue Sep 19 09:52:52 2017 by ELM ver.2012-10-06 from 001__elm20170919_003920__dat00.bin



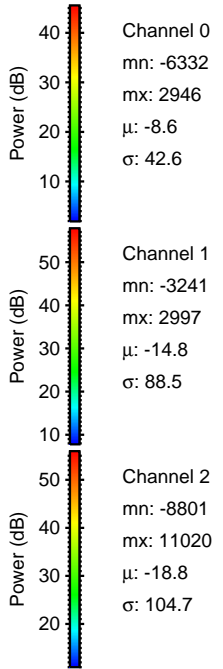
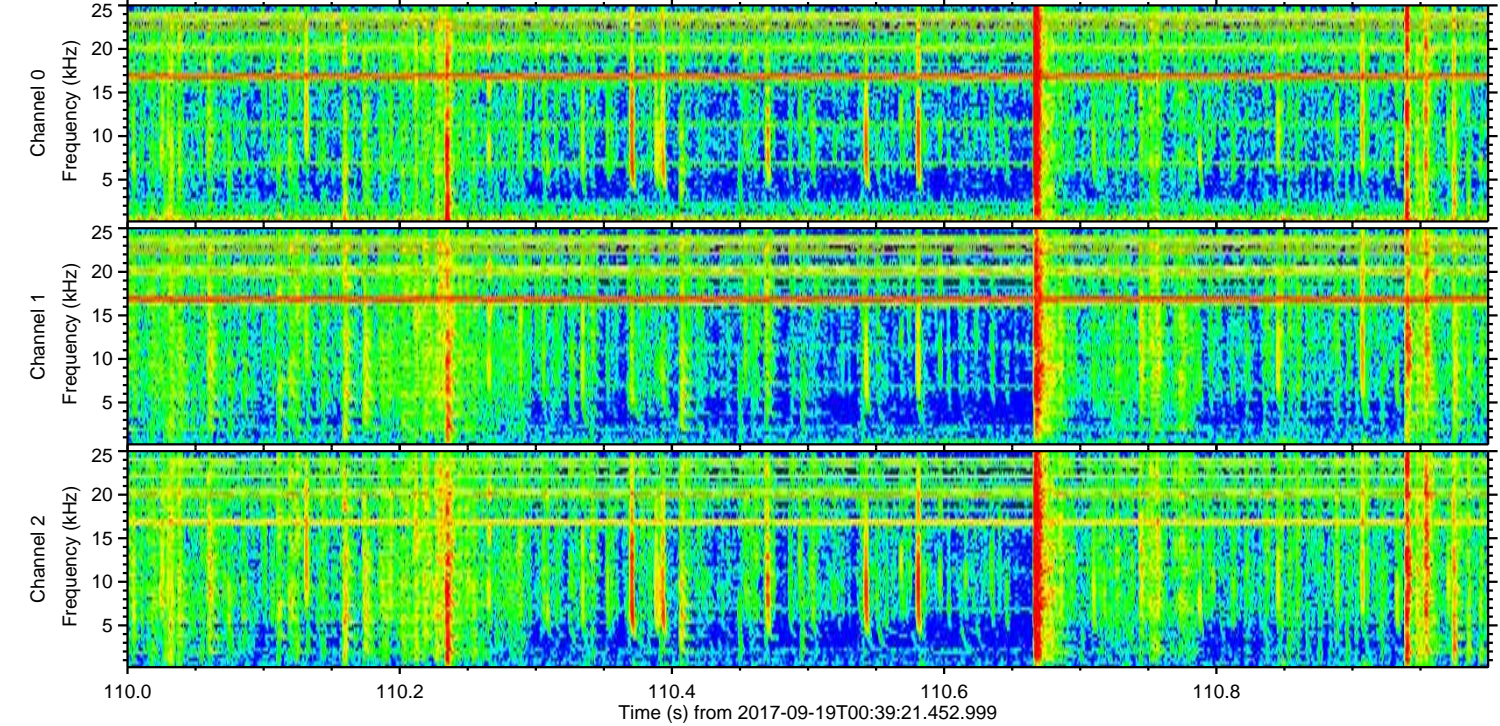
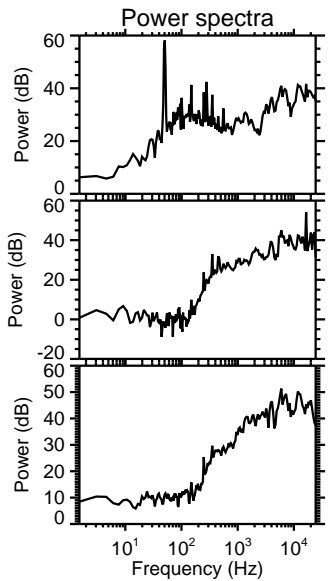
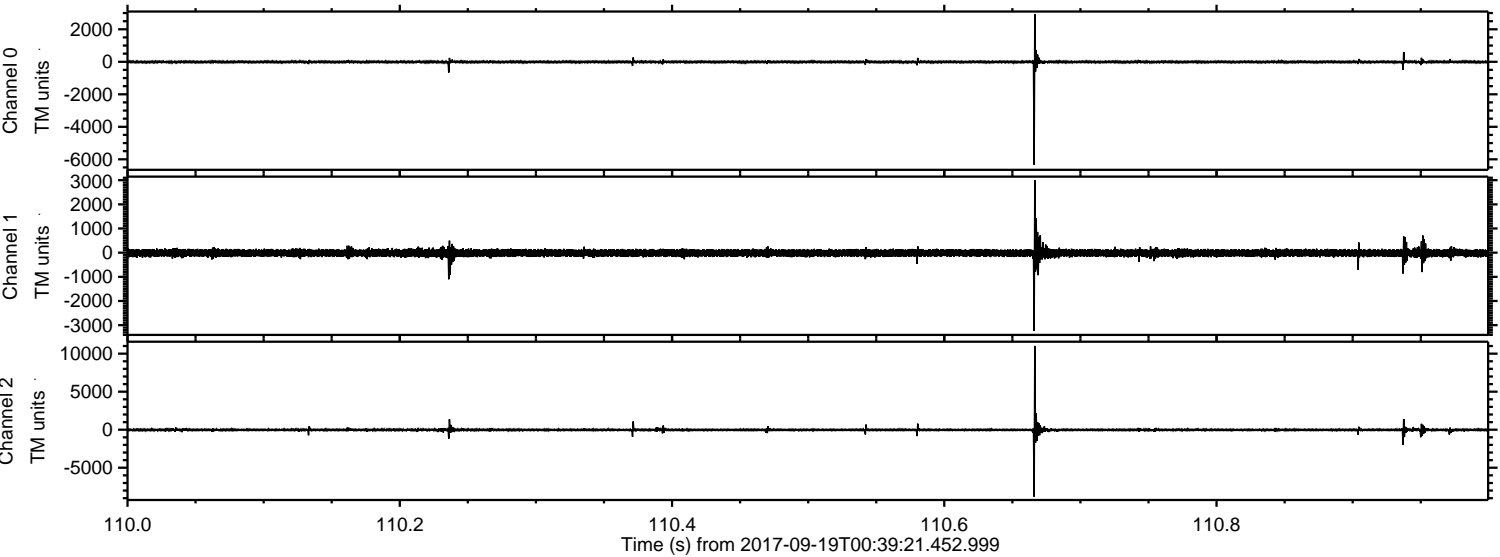
Channel 0
mn: -7940
mx: 1971
 μ : -8.6
 σ : 74.5

Channel 1
mn: -5969
mx: 4349
 μ : -14.8
 σ : 116.6

Channel 2
mn: -7481
mx: 16196
 μ : -18.8
 σ : 174.6

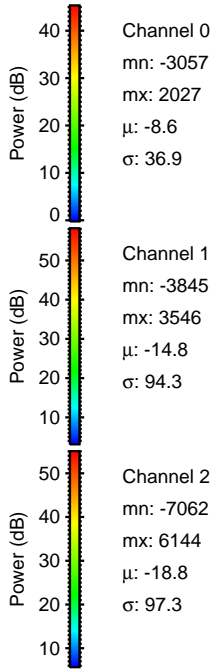
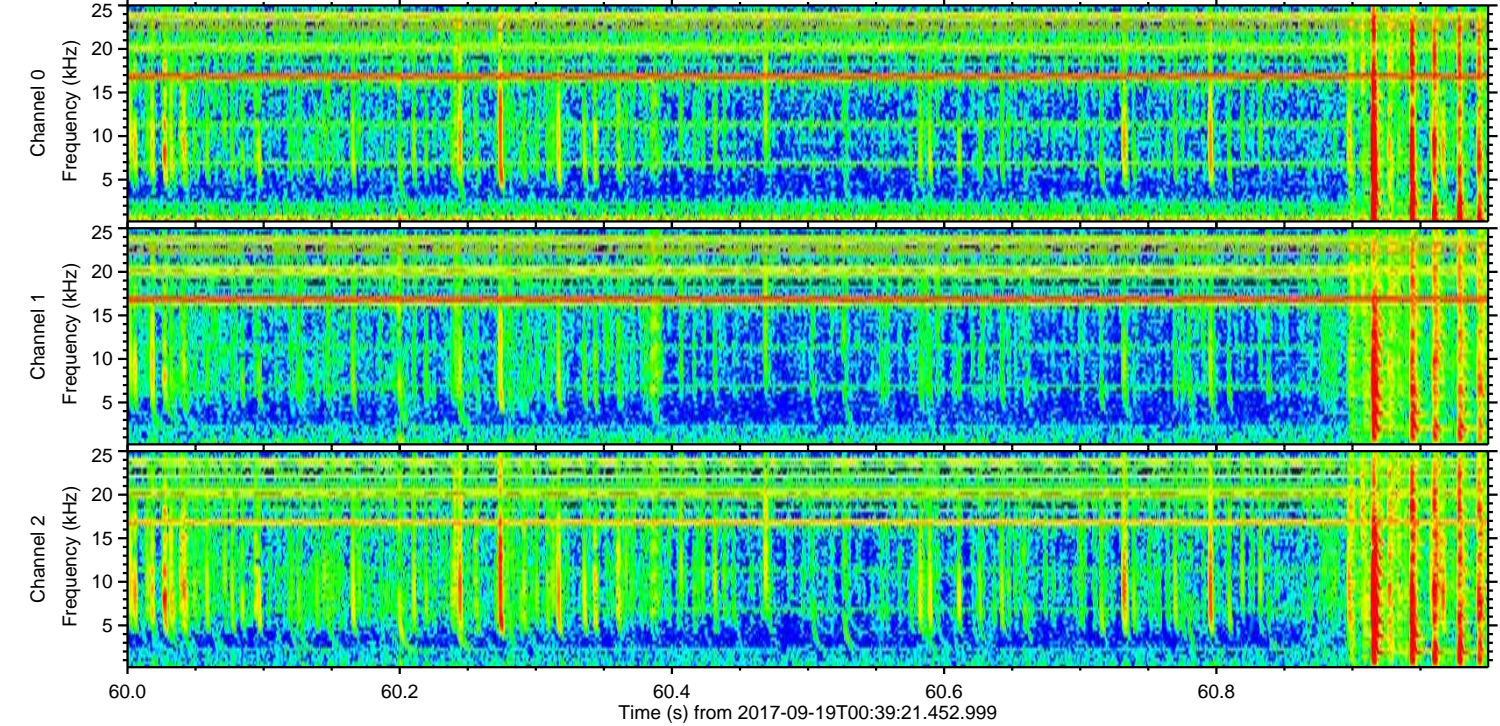
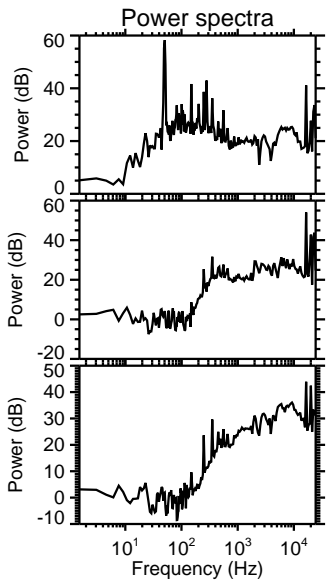
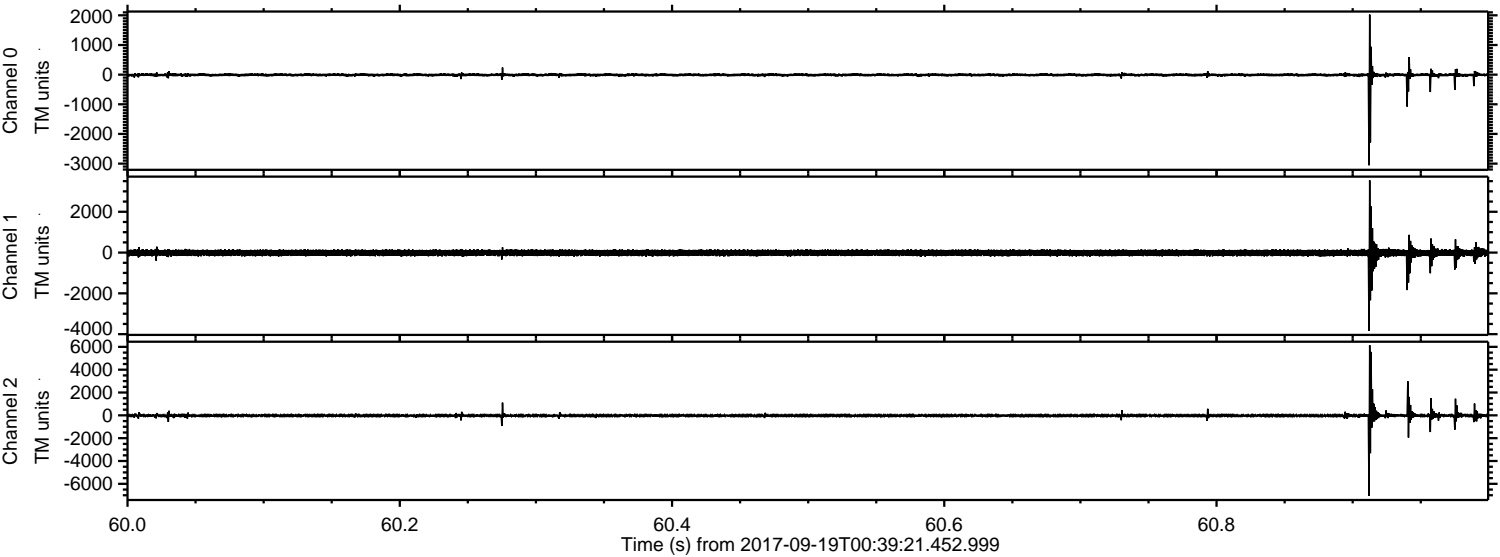
ELMAVAN 3D WAVEFORMS (Measured data sampled at 50 kHz) 51000 packets of 144 samples from 2017-09-19T00:39:21.452.999. Part 111/147

Processed Tue Sep 19 09:52:52 2017 by ELM ver.2012-10-06 from 001__elm20170919_003920__dat00.bin



ELMAVAN 3D WAVEFORMS (Measured data sampled at 50 kHz) 51000 packets of 144 samples from 2017-09-19T00:39:21.452.999. Part 61/147

Processed Tue Sep 19 09:52:53 2017 by ELM ver.2012-10-06 from 001__elm20170919_003920__dat00.bin

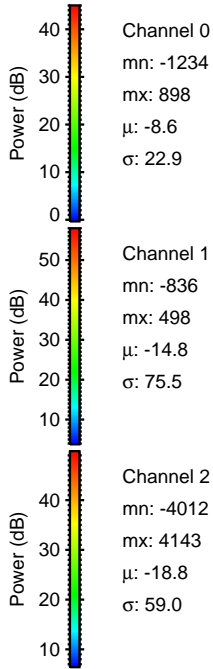
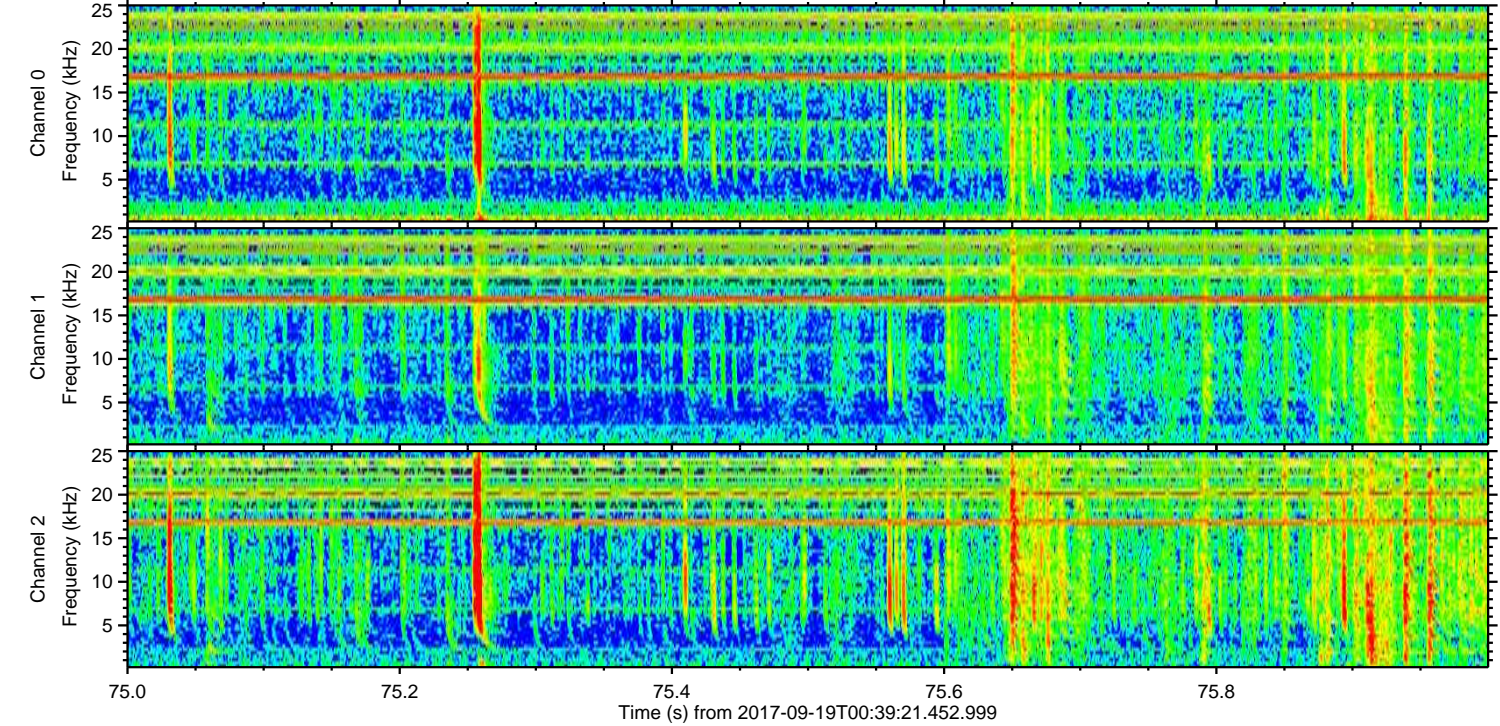
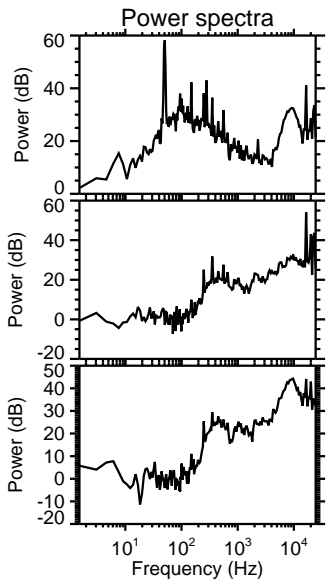
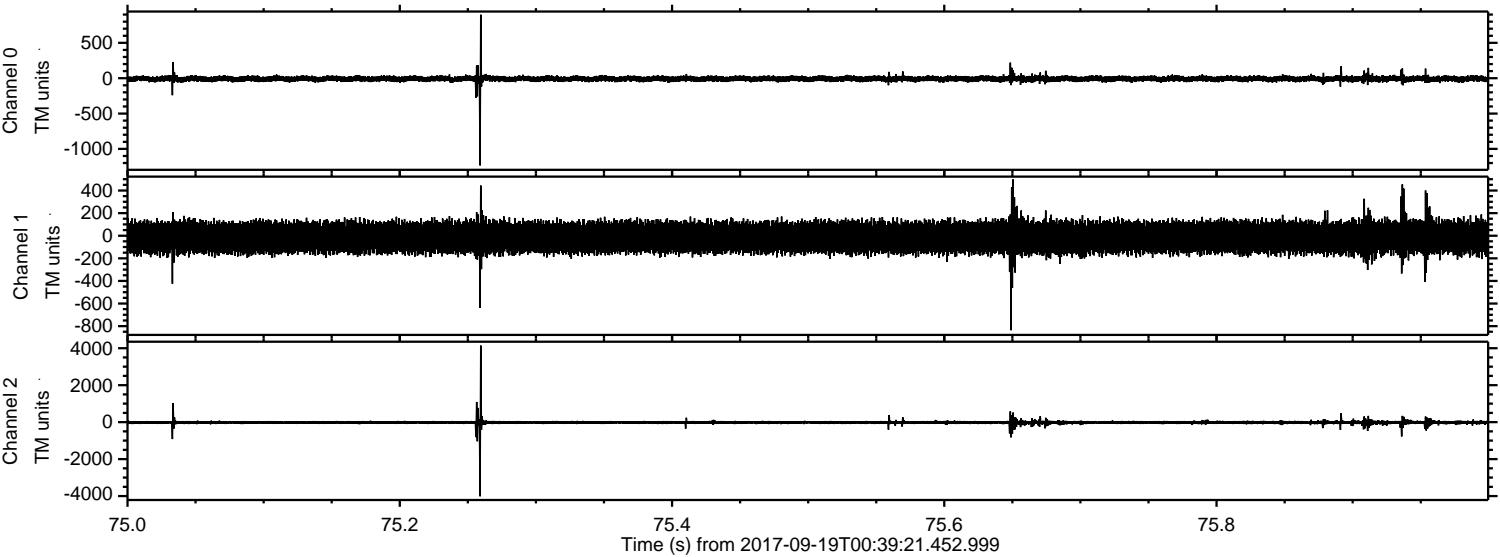


Channel 0
mn: -3057
mx: 2027
 μ : -8.6
 σ : 36.9

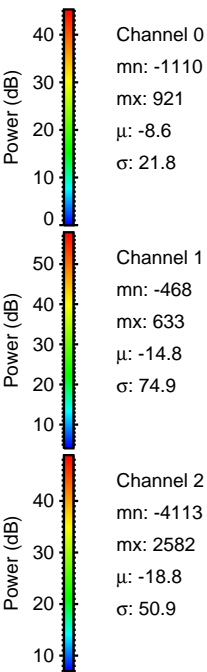
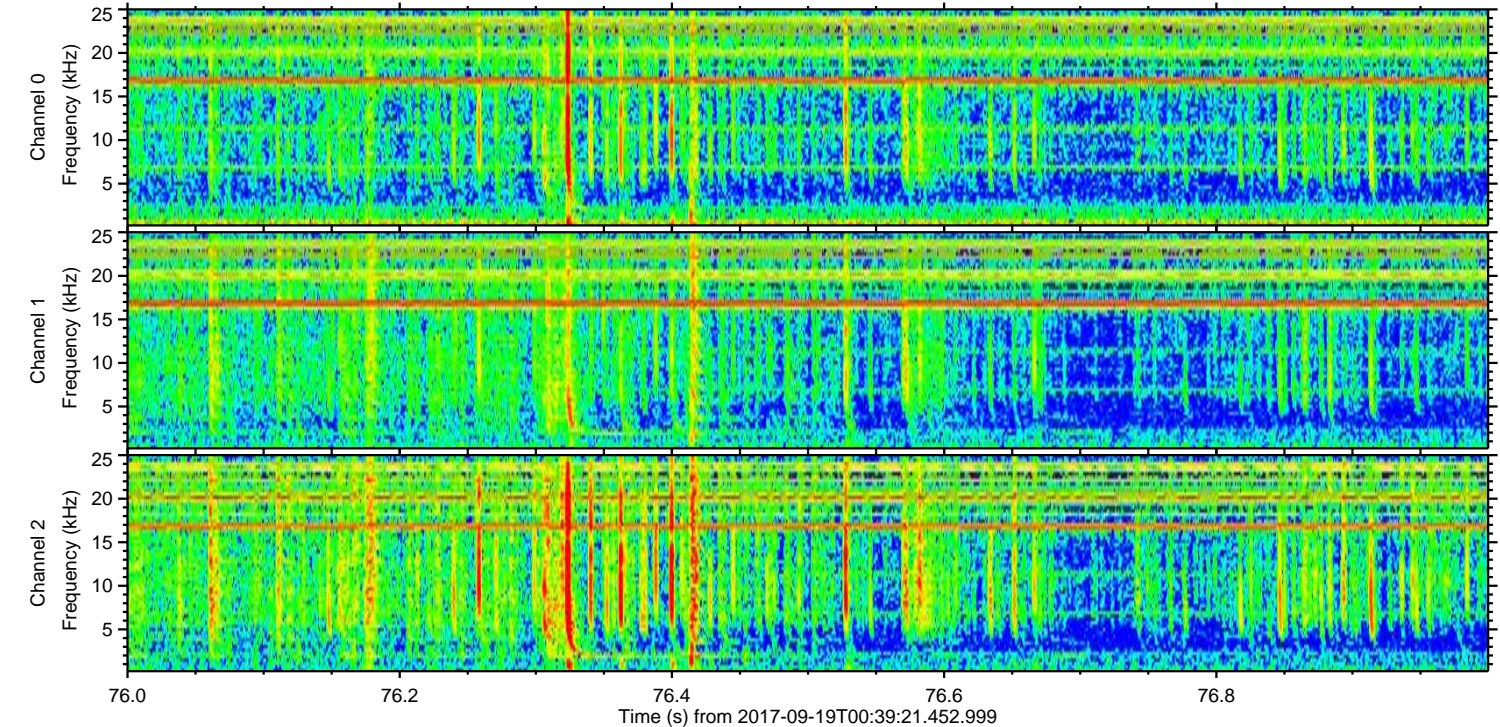
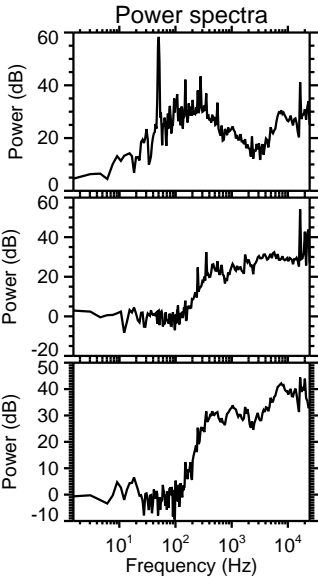
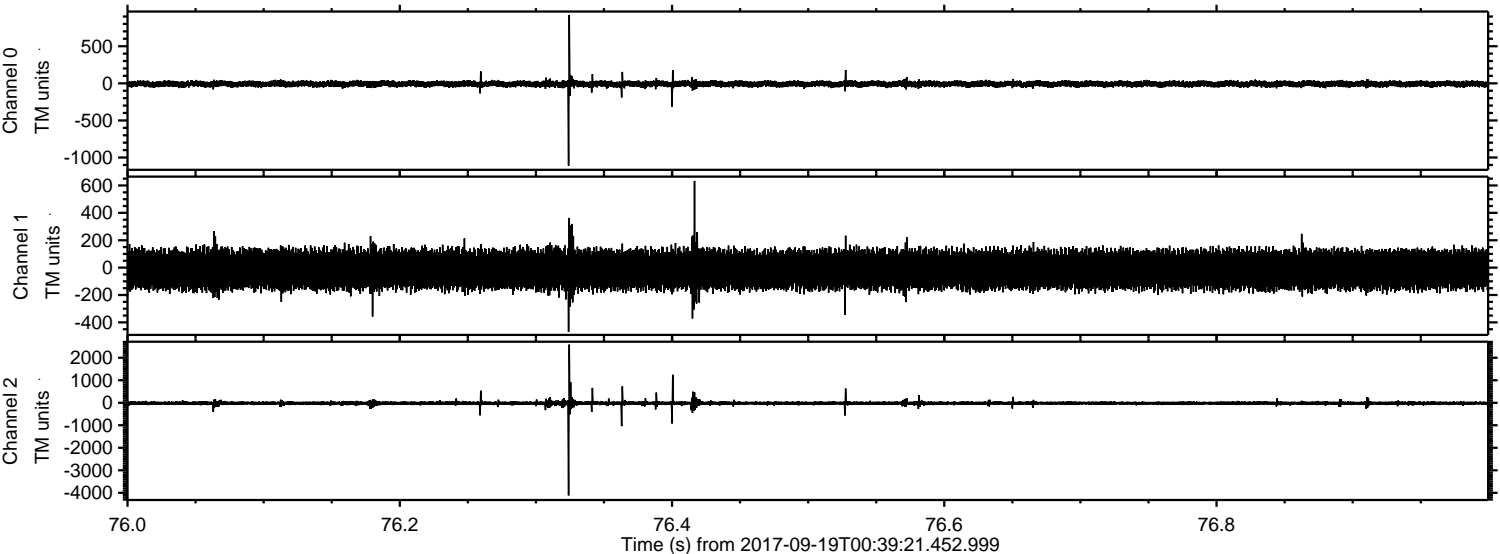
Channel 1
mn: -3845
mx: 3546
 μ : -14.8
 σ : 94.3

Channel 2
mn: -7062
mx: 6144
 μ : -18.8
 σ : 97.3

Processed Tue Sep 19 09:52:54 2017 by ELM ver.2012-10-06 from 001__elm20170919_003920__dat00.bin



Processed Tue Sep 19 09:52:55 2017 by ELM ver.2012-10-06 from 001__elm20170919_003920__dat00.bin



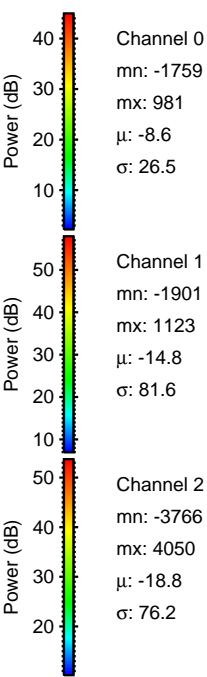
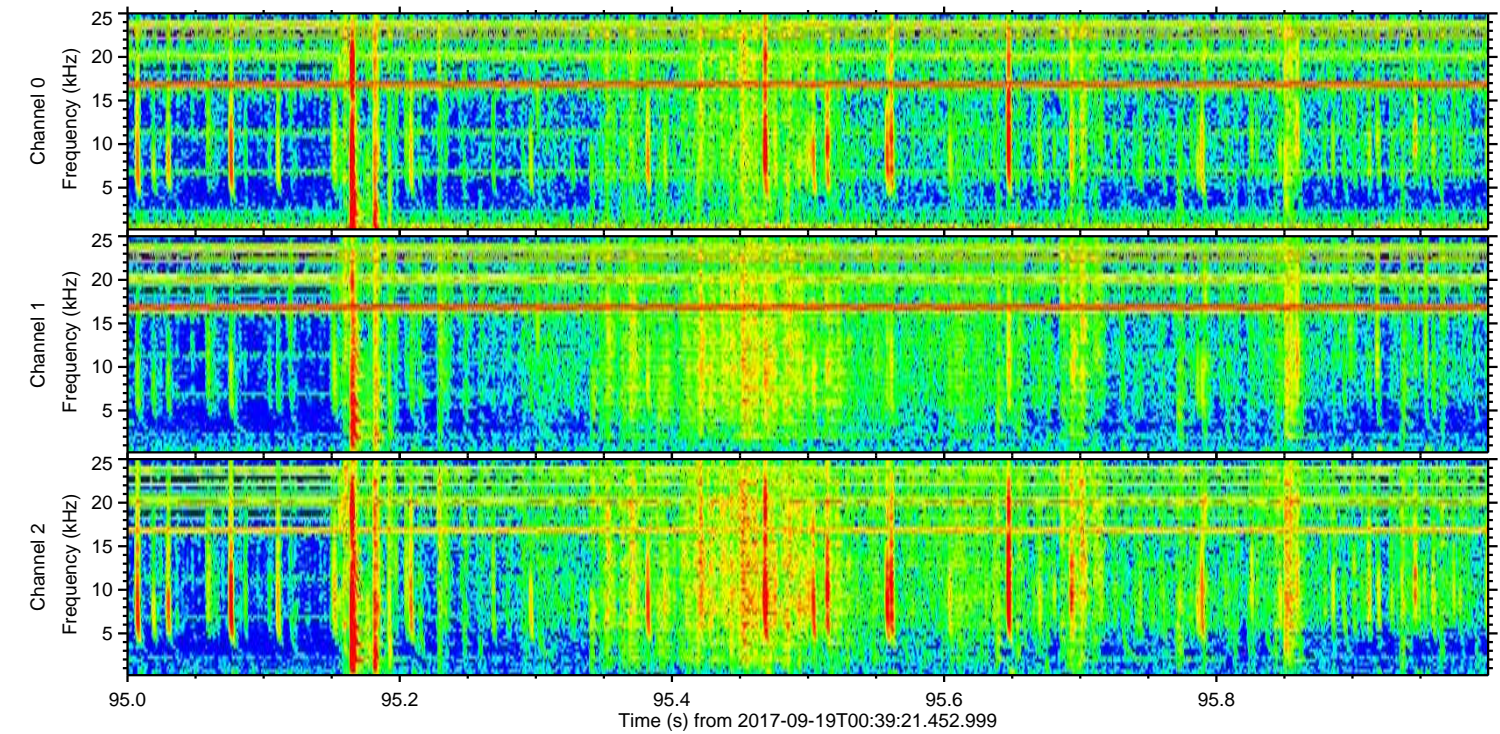
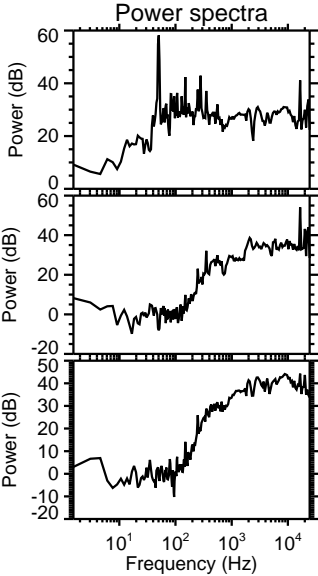
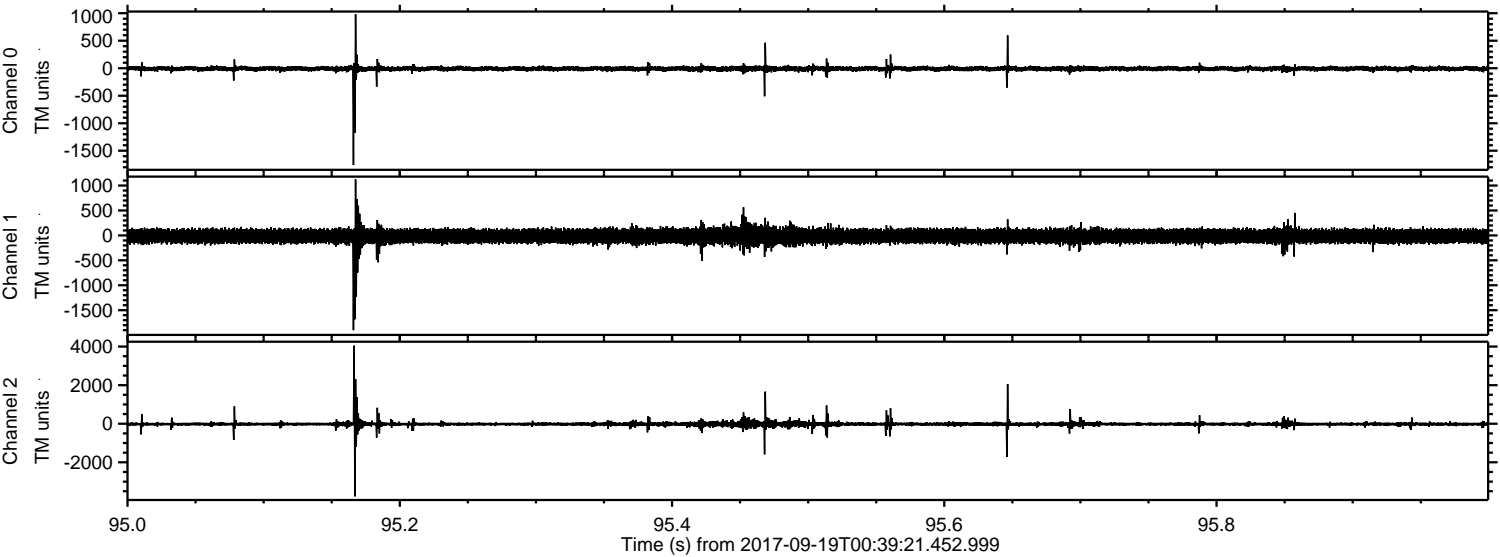
Channel 0
mn: -1110
mx: 921
 μ : -8.6
 σ : 21.8

Channel 1
mn: -468
mx: 633
 μ : -14.8
 σ : 74.9

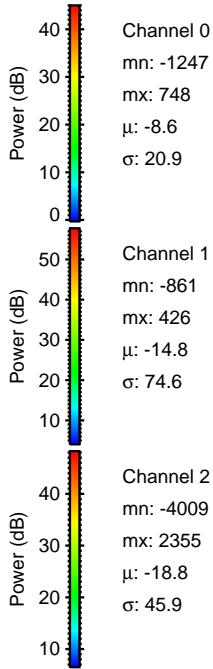
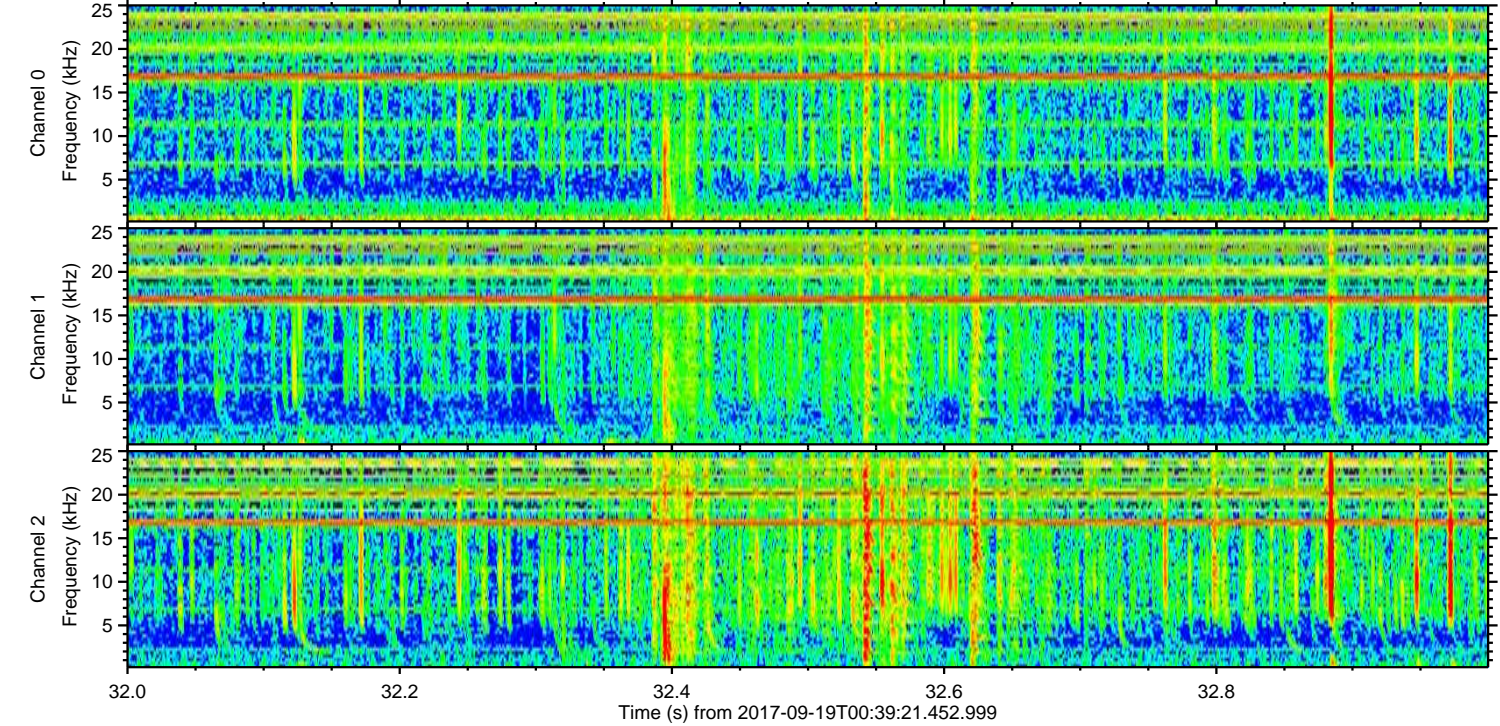
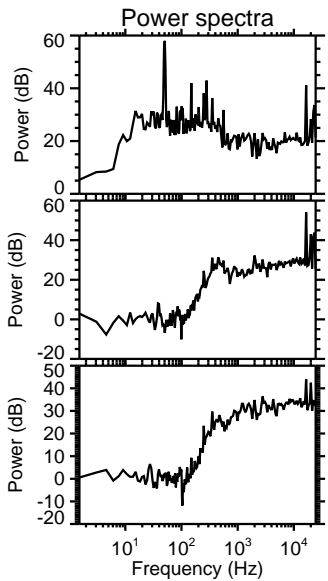
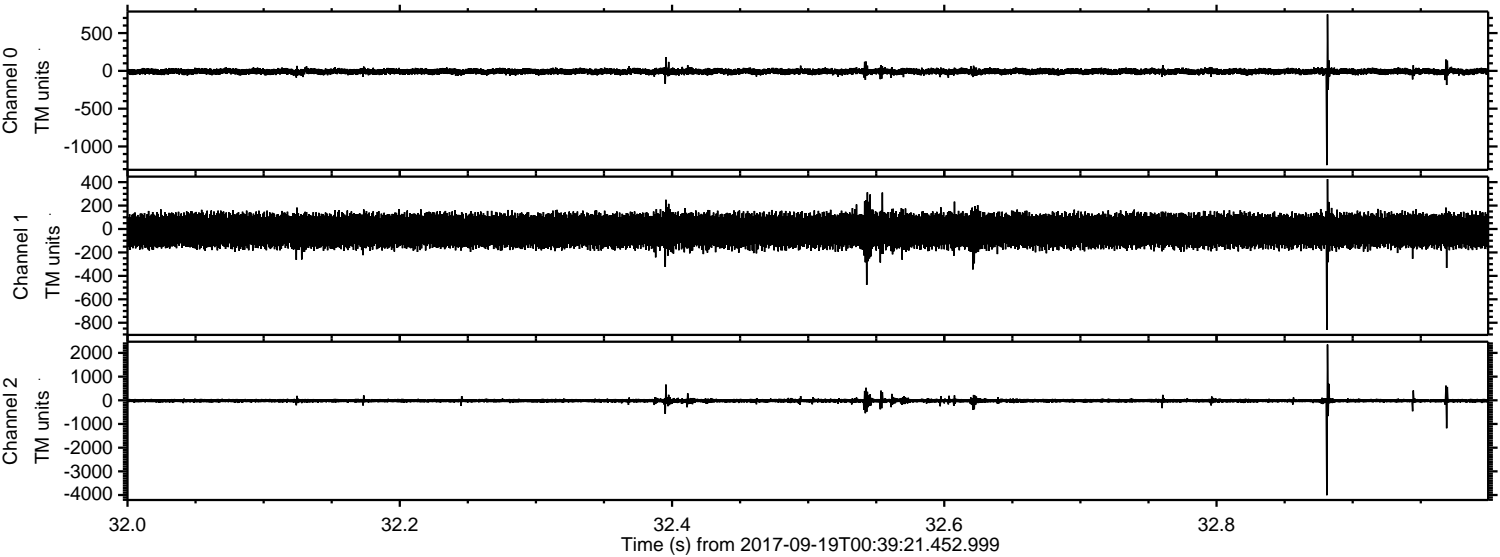
Channel 2
mn: -4113
mx: 2582
 μ : -18.8
 σ : 50.9

ELMAVAN 3D WAVEFORMS (Measured data sampled at 50 kHz) 51000 packets of 144 samples from 2017-09-19T00:39:21.452.999. Part 96/147

Processed Tue Sep 19 09:52:56 2017 by ELM ver.2012-10-06 from 001__elm20170919_003920__dat00.bin



Processed Tue Sep 19 09:52:56 2017 by ELM ver.2012-10-06 from 001__elm20170919_003920__dat00.bin



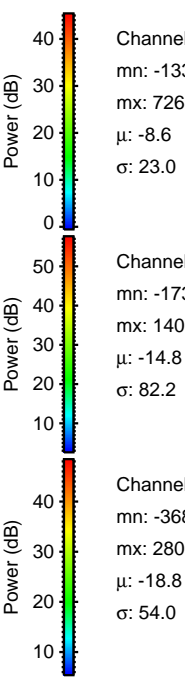
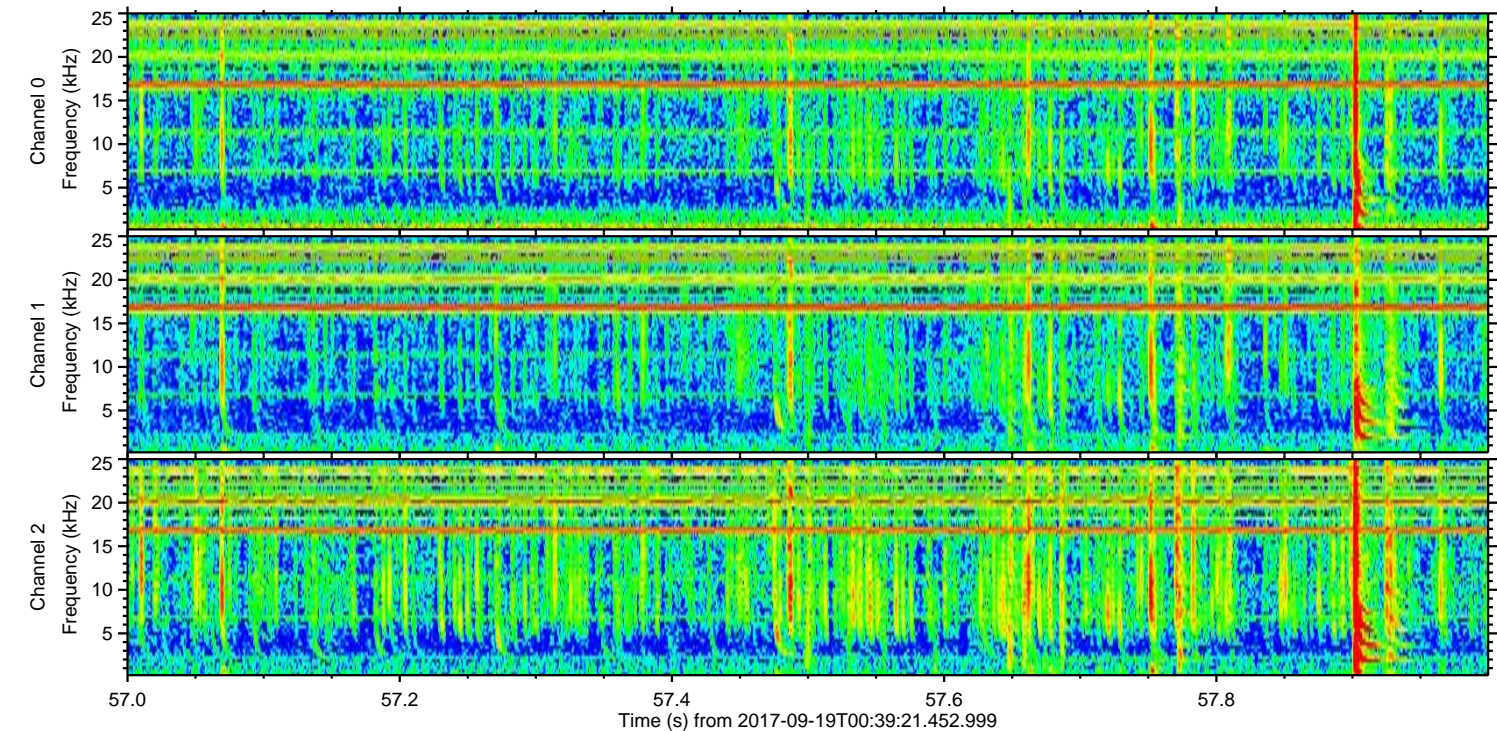
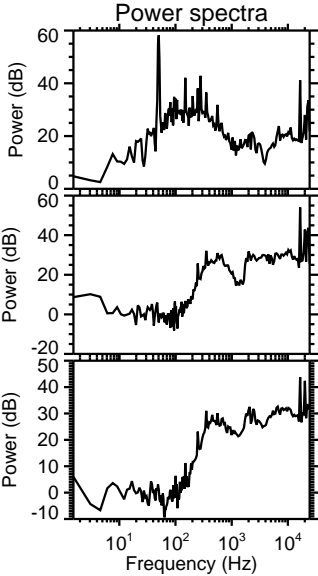
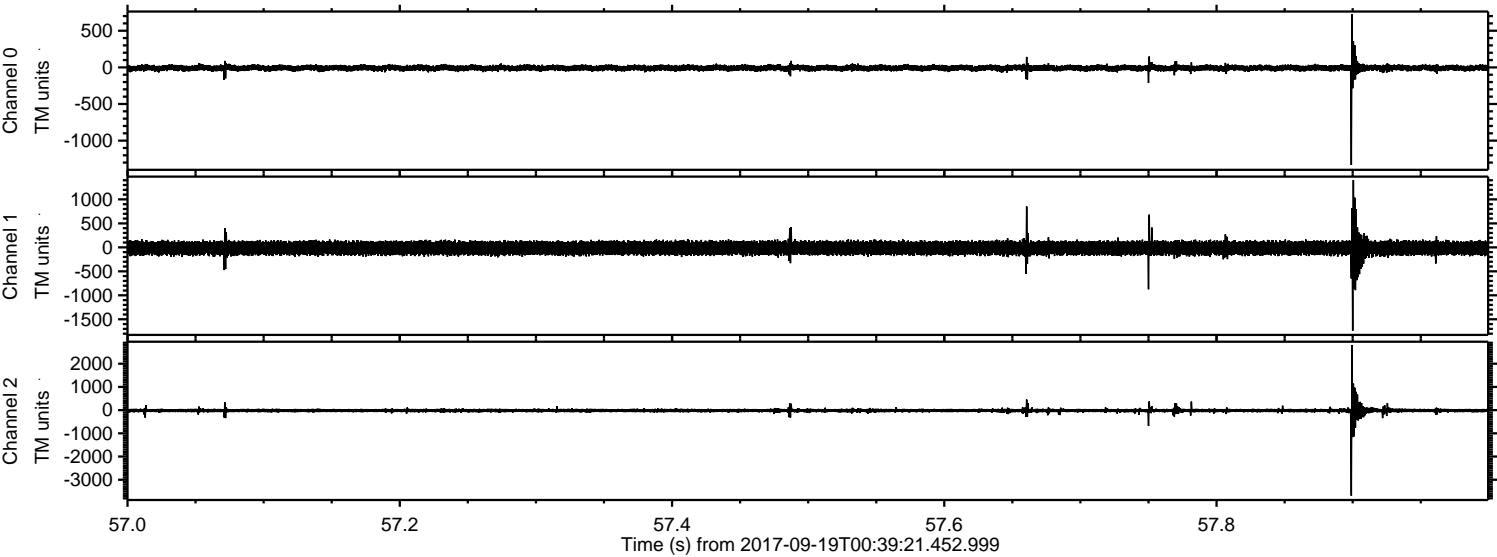
Channel 0
mn: -1247
mx: 748
 μ : -8.6
 σ : 20.9

Channel 1
mn: -861
mx: 426
 μ : -14.8
 σ : 74.6

Channel 2
mn: -4009
mx: 2355
 μ : -18.8
 σ : 45.9

ELMAVAN 3D WAVEFORMS (Measured data sampled at 50 kHz) 51000 packets of 144 samples from 2017-09-19T00:39:21.452.999. Part 58/147

Processed Tue Sep 19 09:52:57 2017 by ELM ver.2012-10-06 from 001__elm20170919_003920__dat00.bin



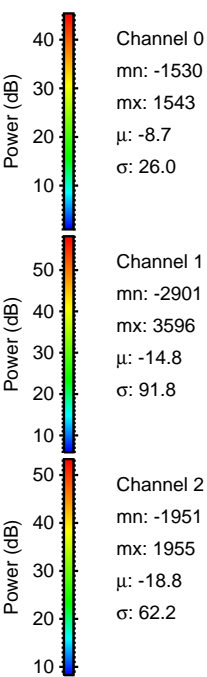
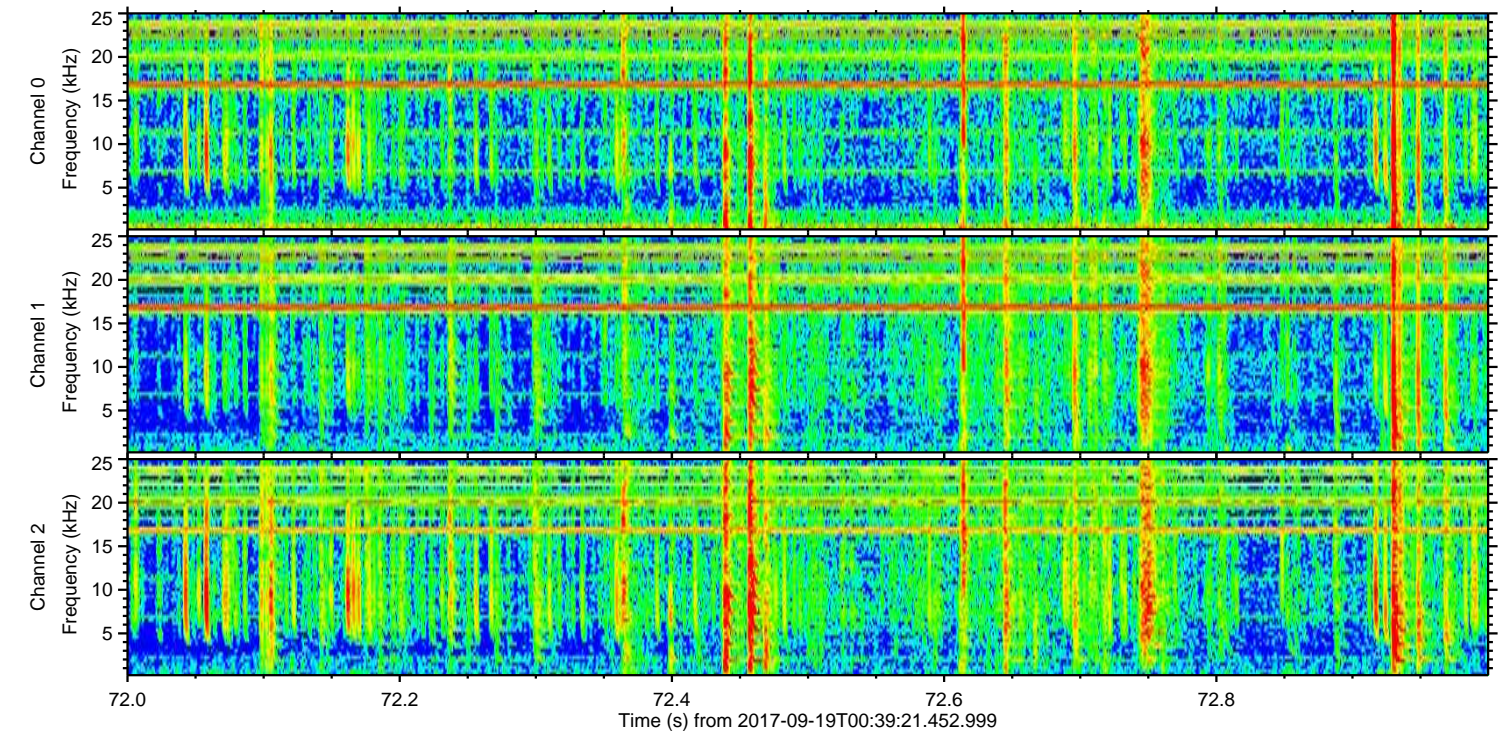
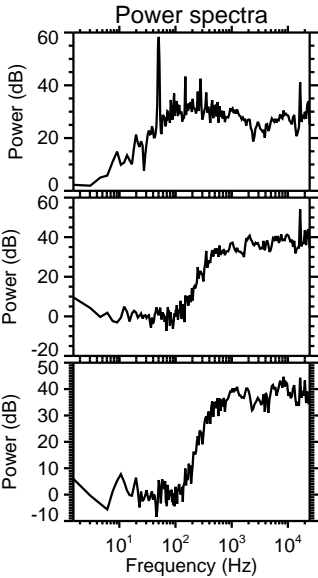
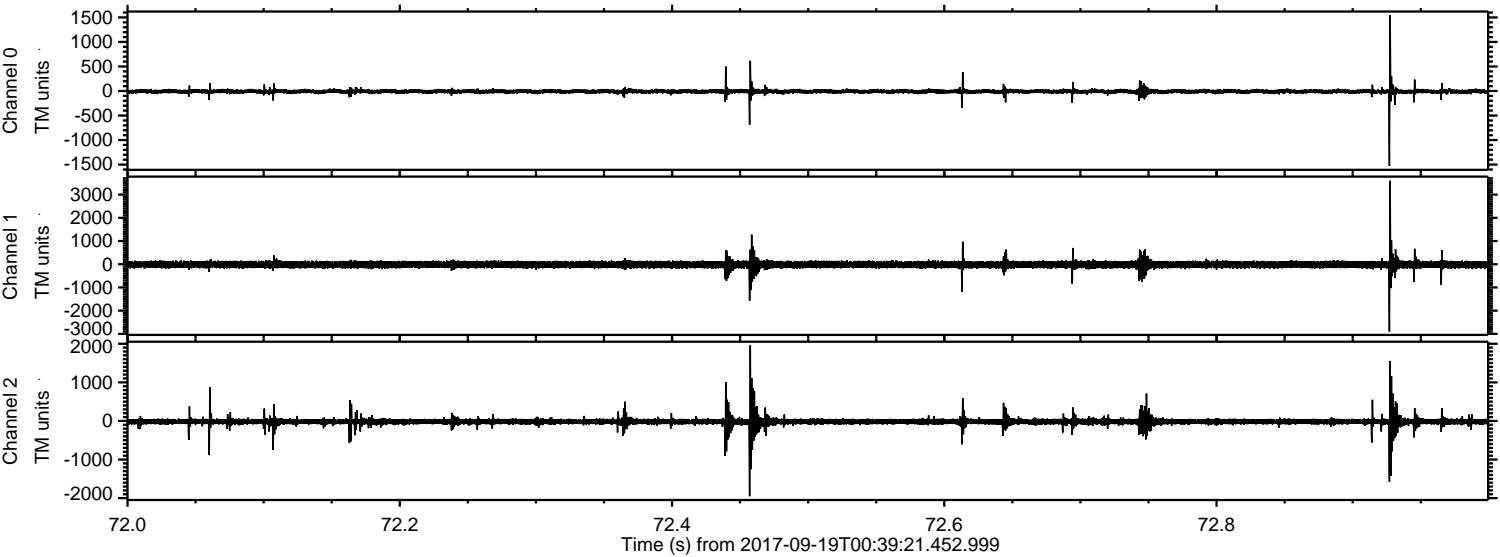
Channel 0
mn: -1332
mx: 726
 μ : -8.6
 σ : 23.0

Channel 1
mn: -1739
mx: 1405
 μ : -14.8
 σ : 82.2

Channel 2
mn: -3687
mx: 2806
 μ : -18.8
 σ : 54.0

ELMAVAN 3D WAVEFORMS (Measured data sampled at 50 kHz) 51000 packets of 144 samples from 2017-09-19T00:39:21.452.999. Part 73/147

Processed Tue Sep 19 09:52:58 2017 by ELM ver.2012-10-06 from 001__elm20170919_003920__dat00.bin



Processed Tue Sep 19 09:52:59 2017 by ELM ver.2012-10-06 from 001__elm20170919_003920__dat00.bin

