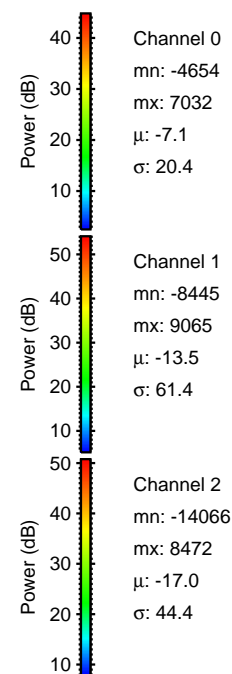
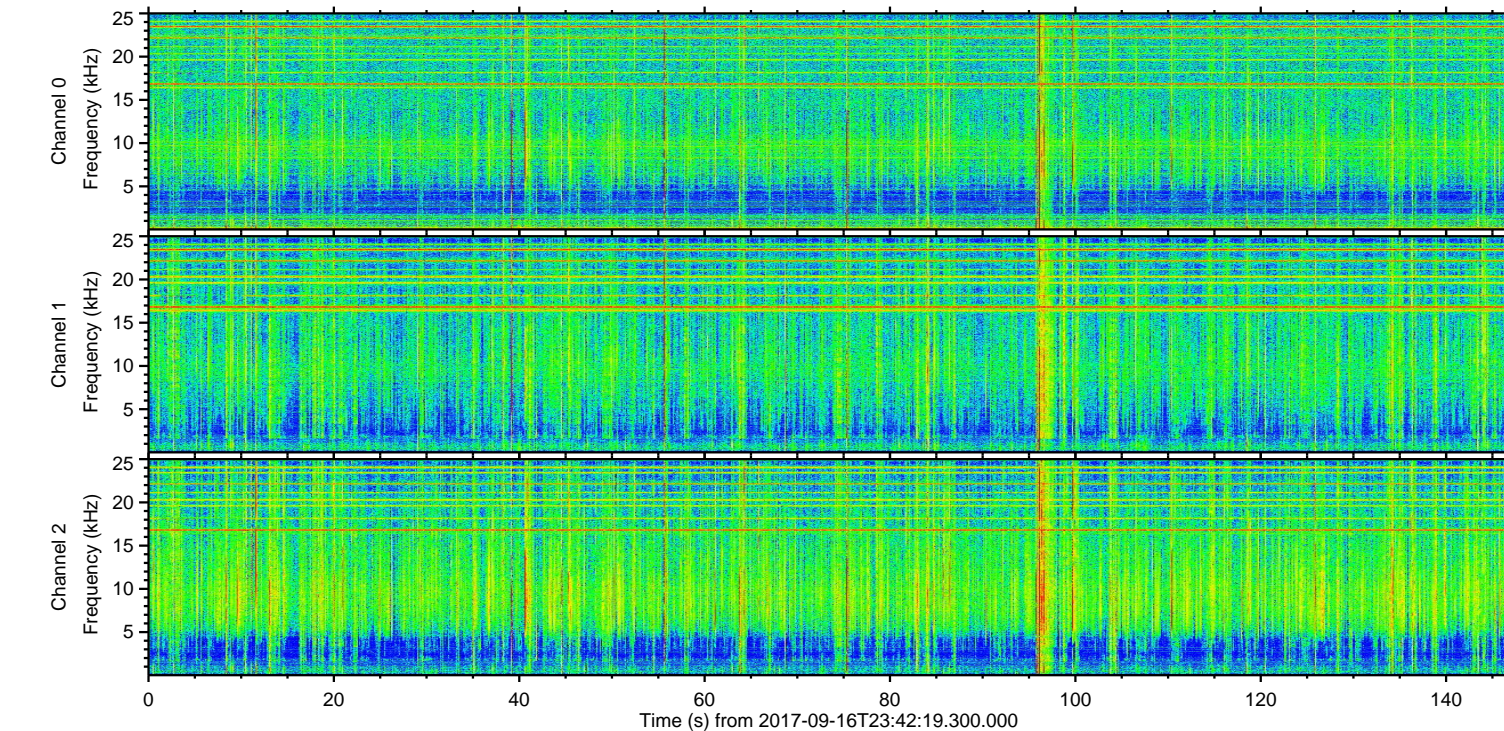
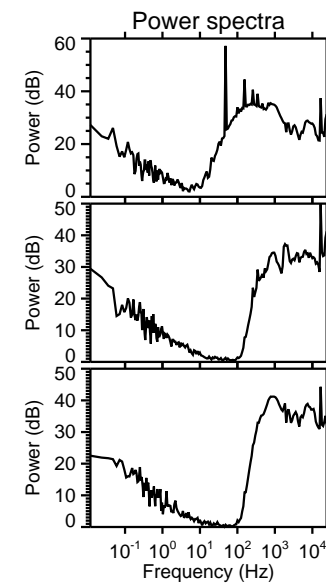
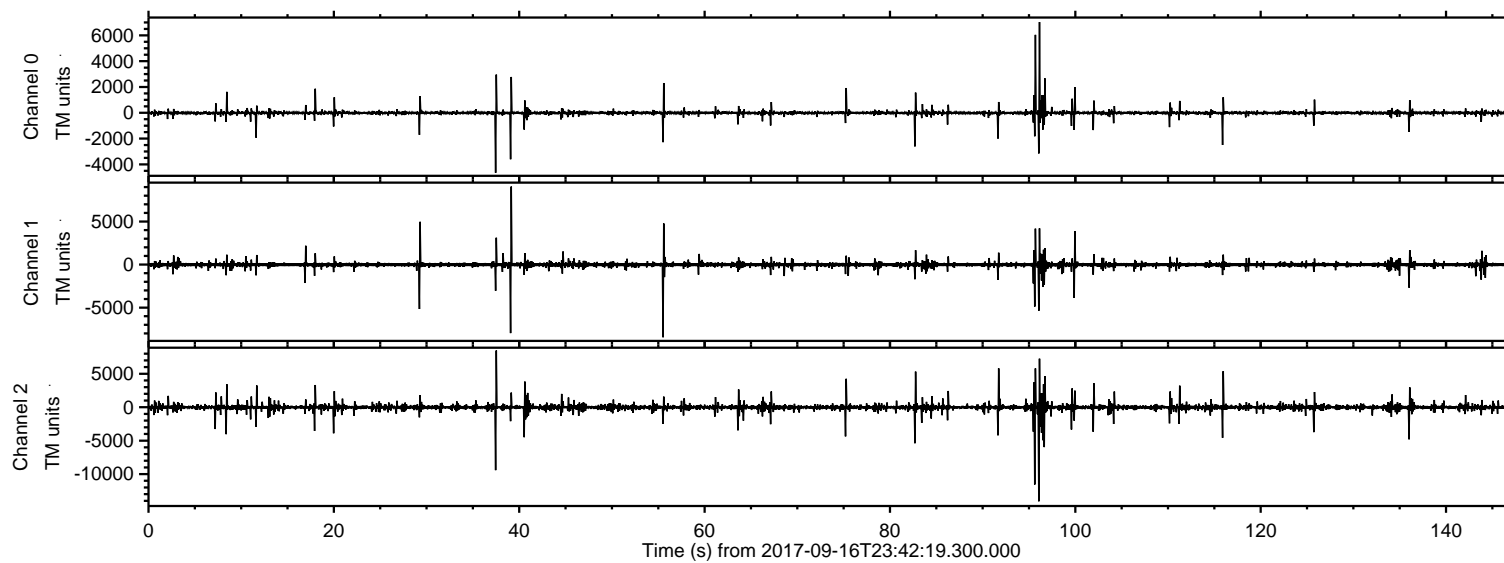
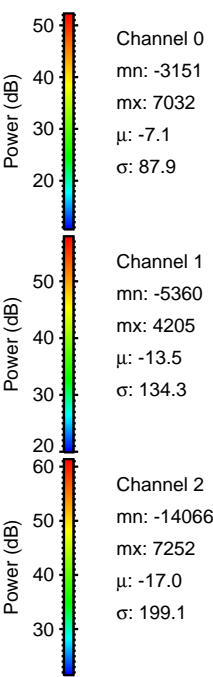
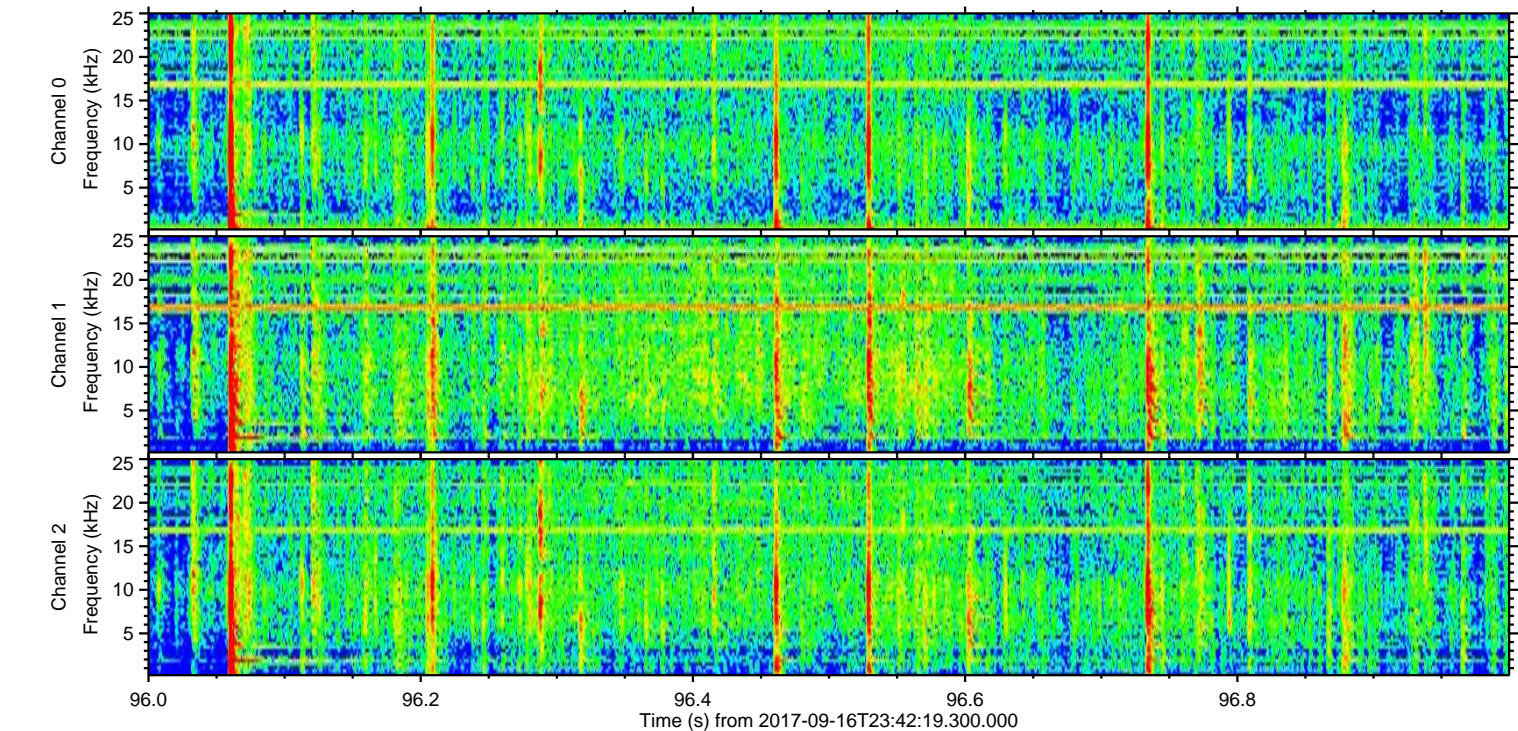
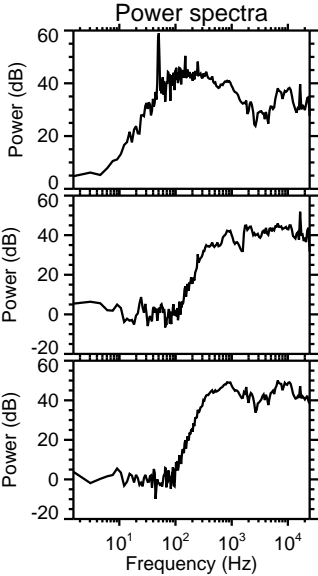
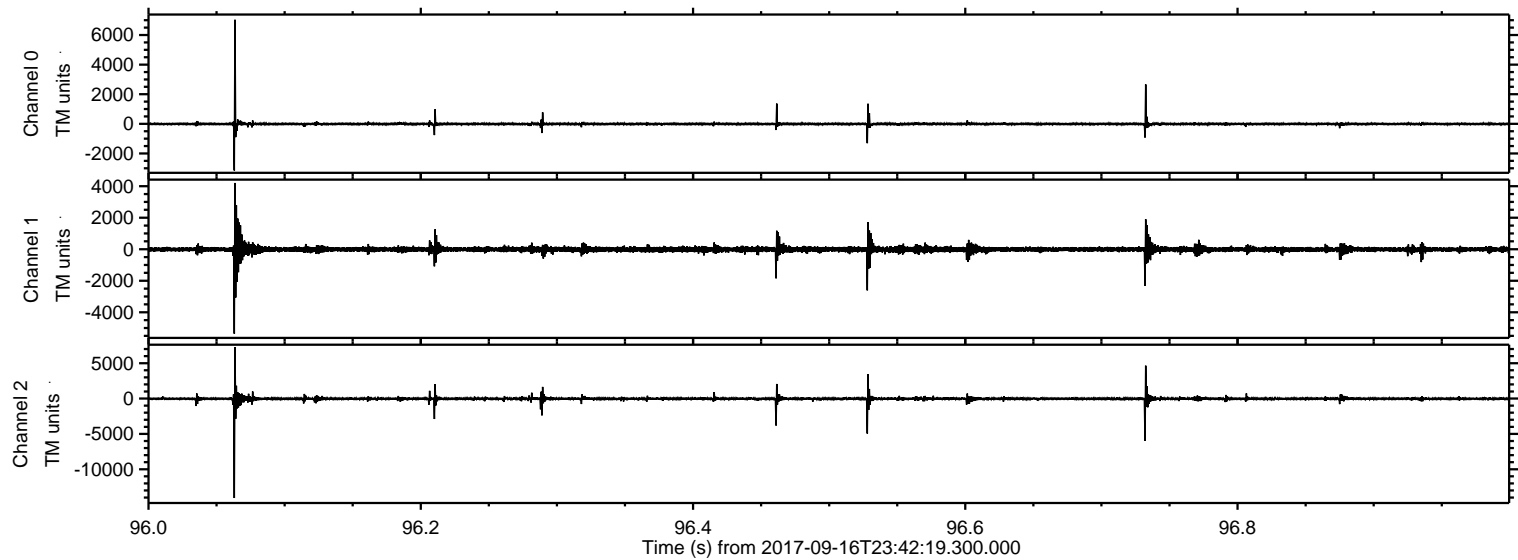


ELMAVAN 3D WAVEFORMS (Measured data sampled at 50 kHz) 51000 packets of 144 samples from 2017-09-16T23:42:19.300.000.

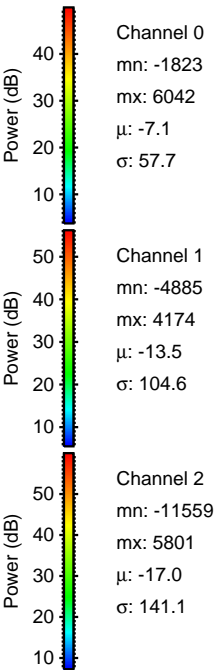
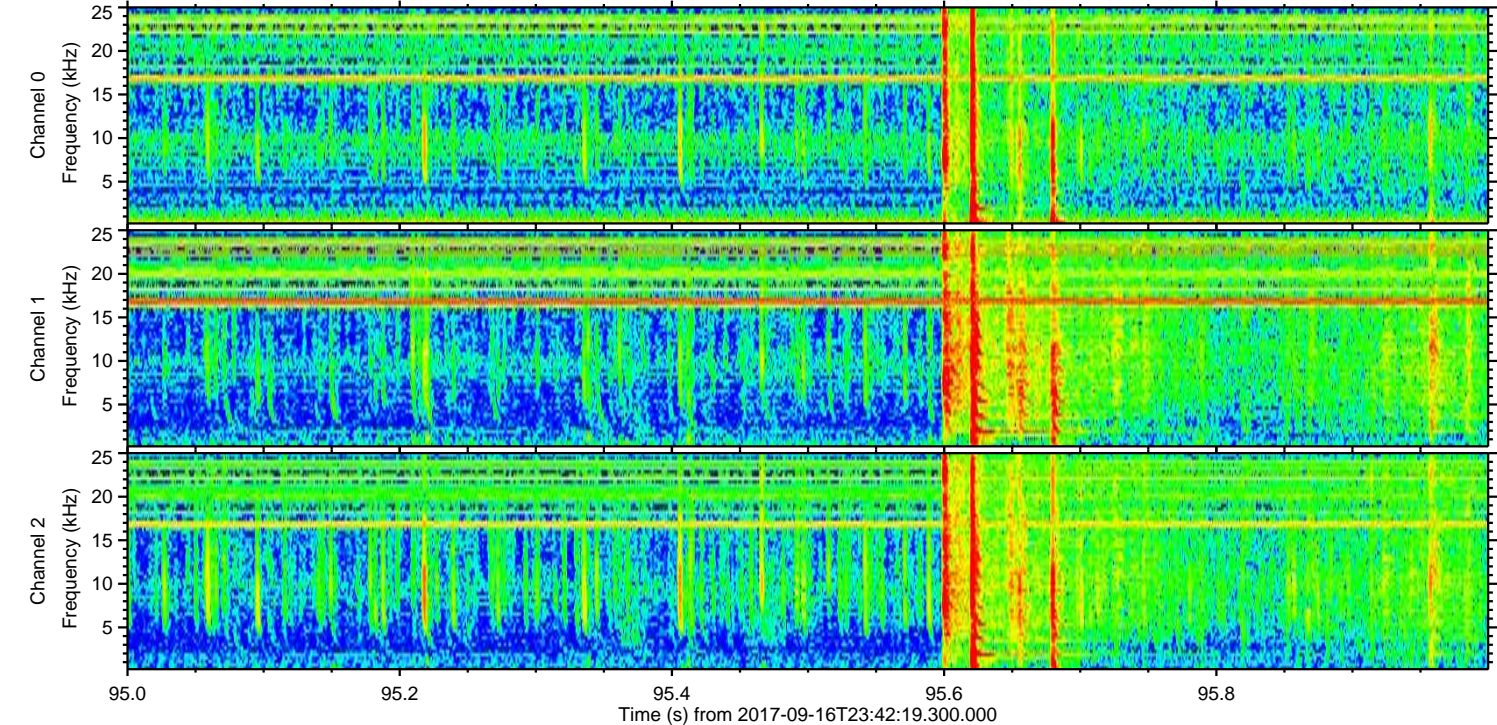
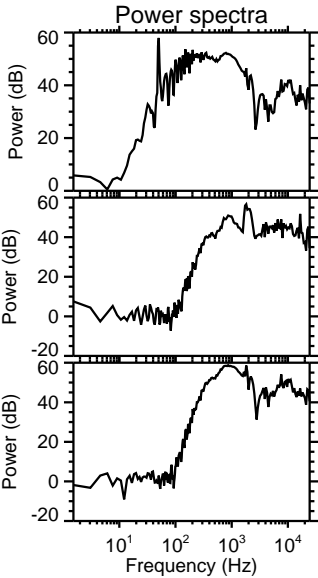
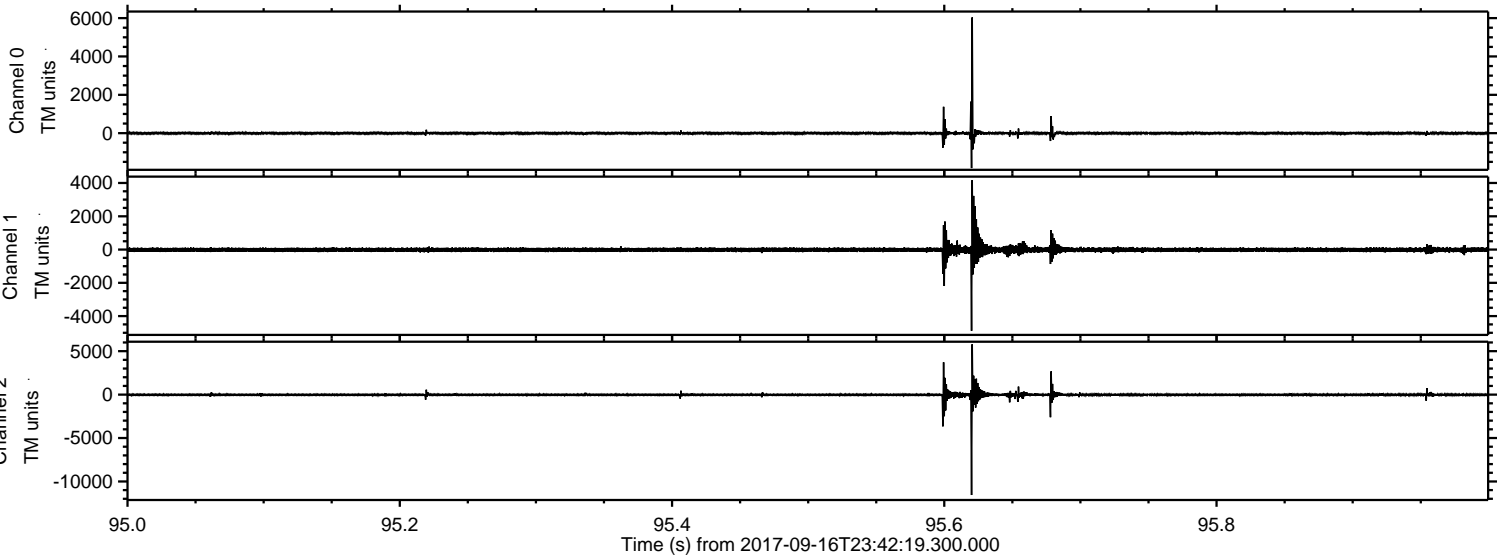
Processed Sun Sep 17 01:50:04 2017 by ELM ver.2012-10-06 from 001__elm20170916_234218__dat00.bin



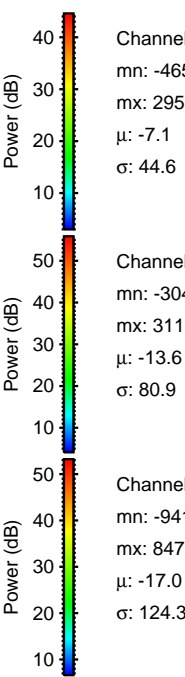
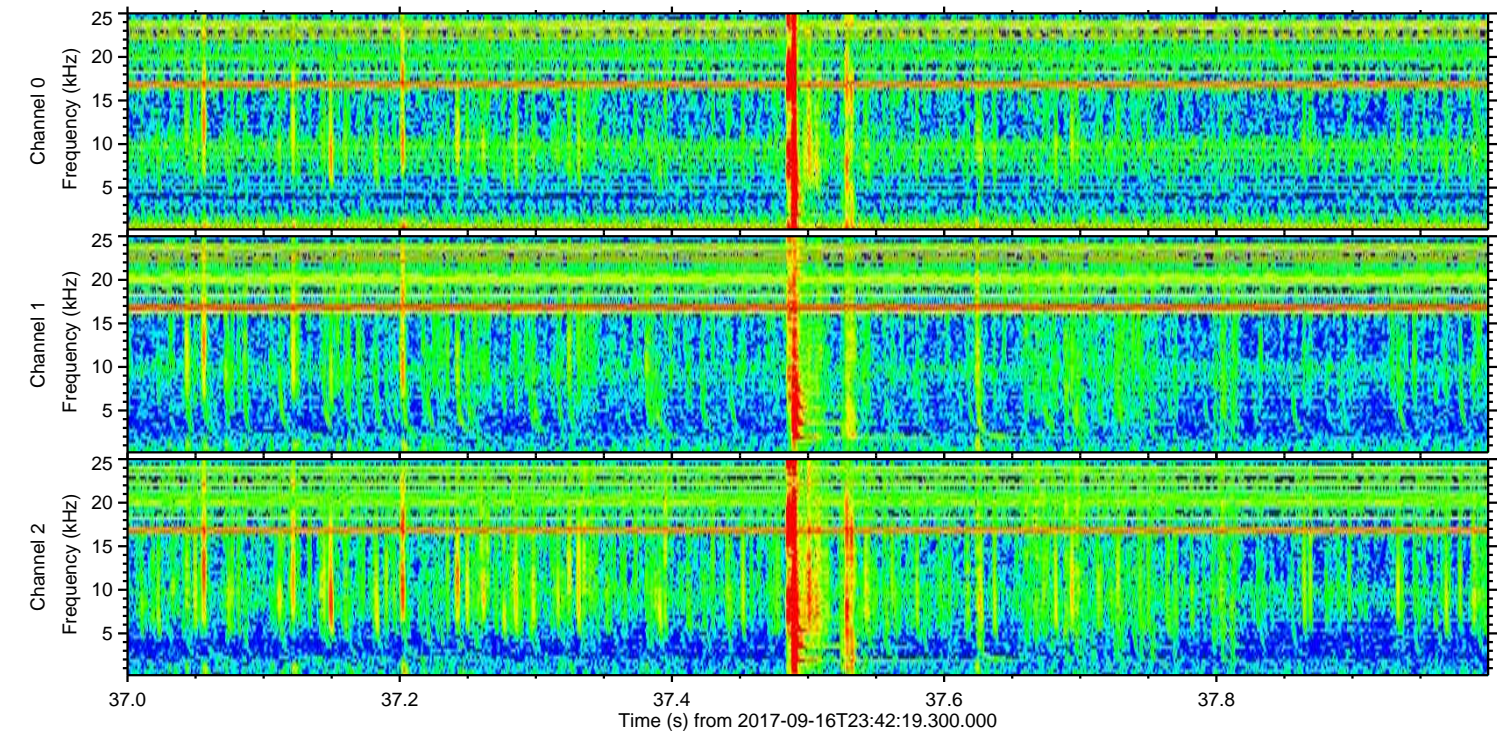
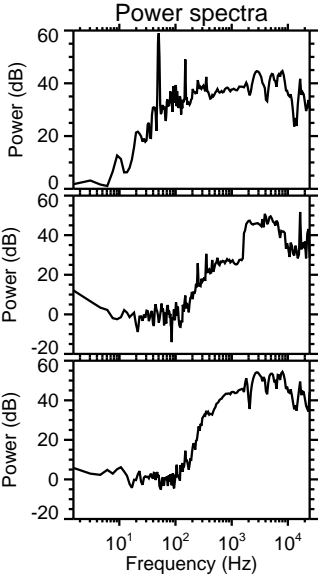
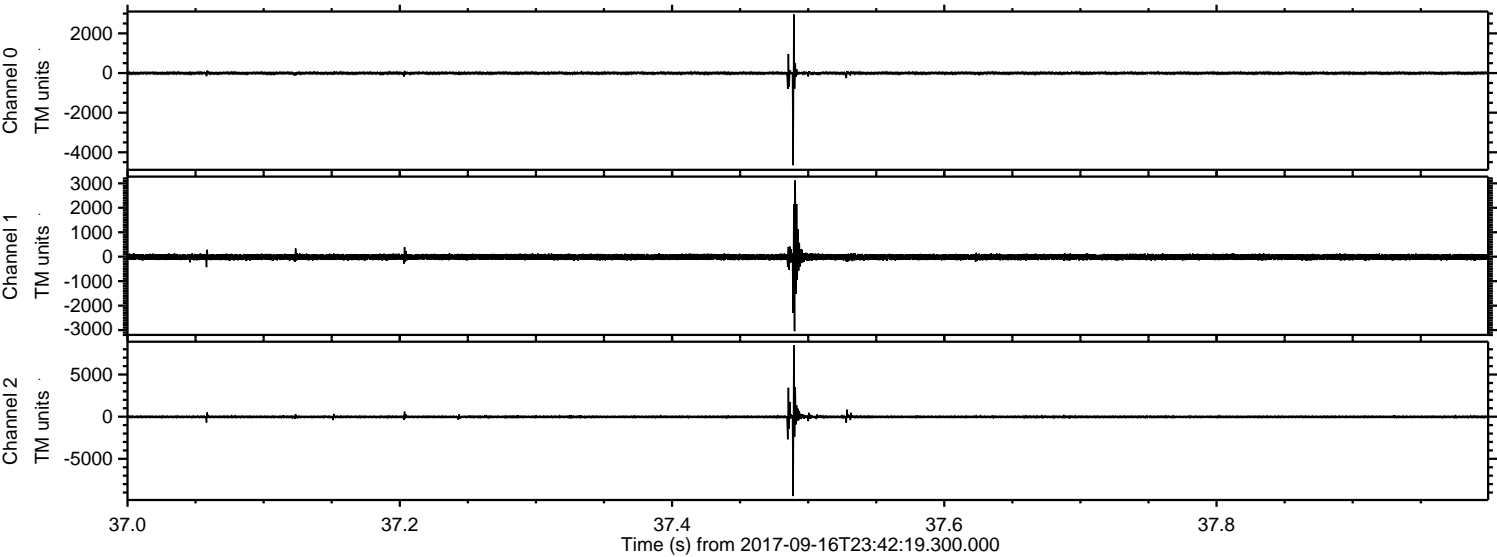
Processed Sun Sep 17 01:50:11 2017 by ELM ver.2012-10-06 from 001__elm20170916_234218__dat00.bin



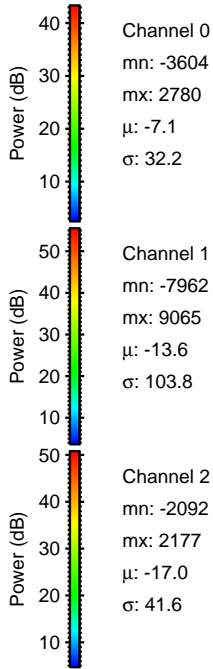
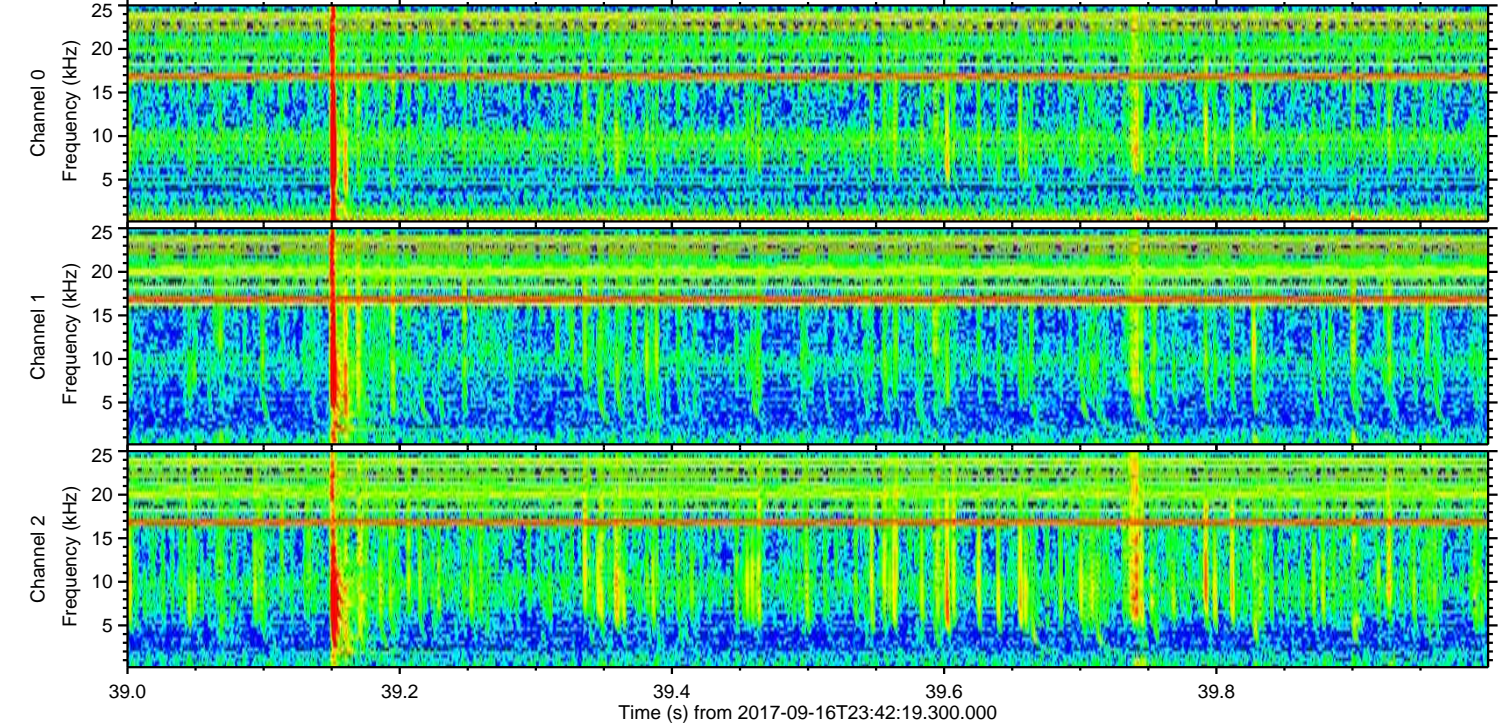
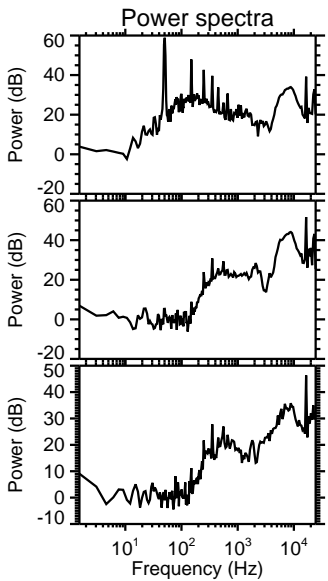
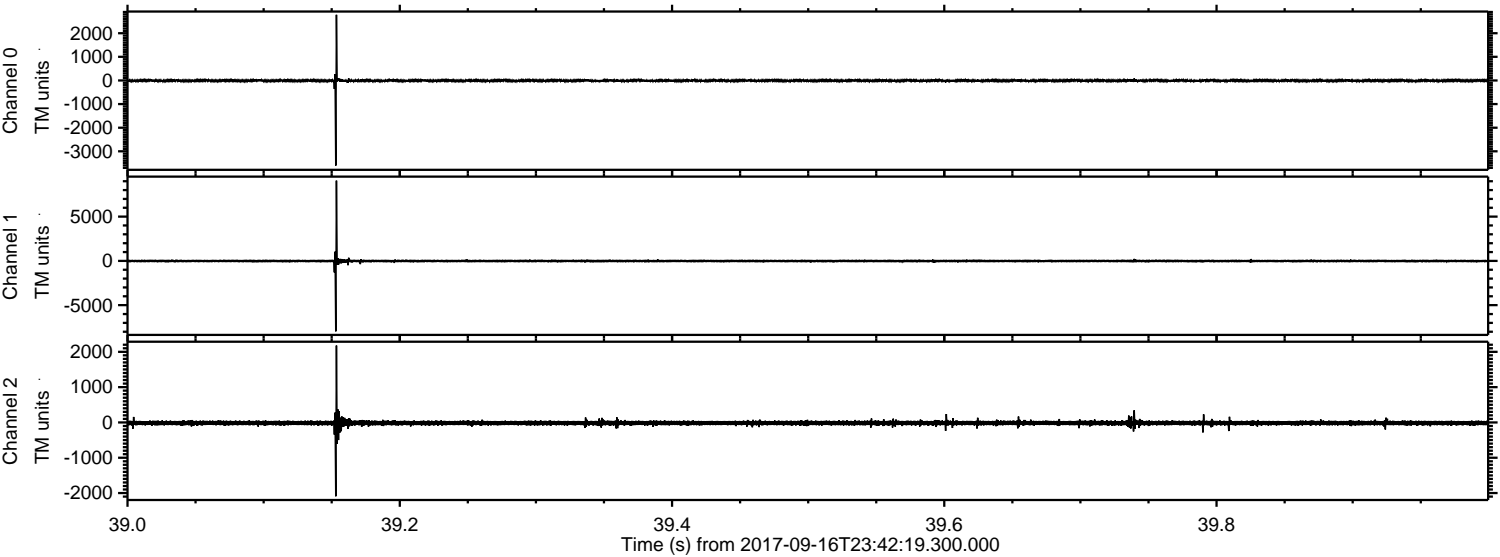
Processed Sun Sep 17 01:50:12 2017 by ELM ver.2012-10-06 from 001__elm20170916_234218__dat00.bin



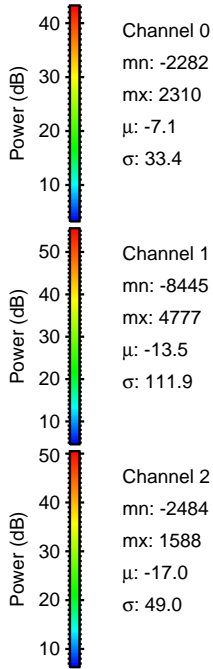
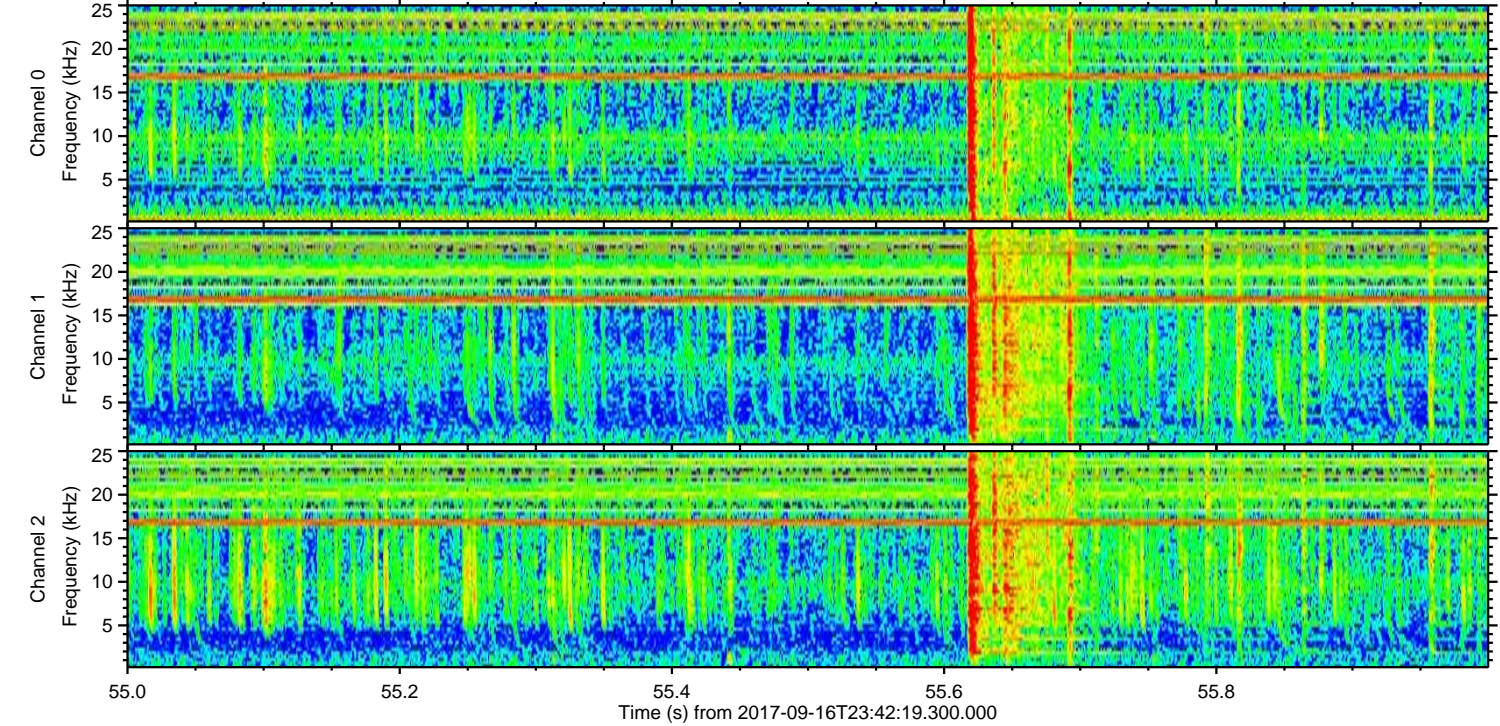
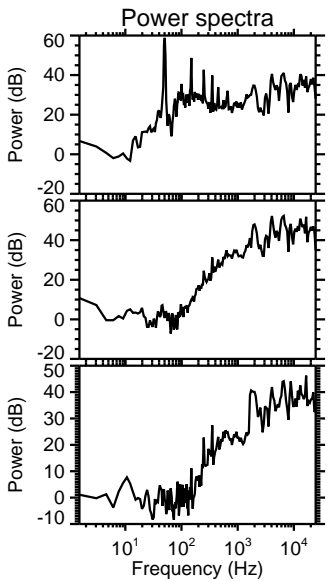
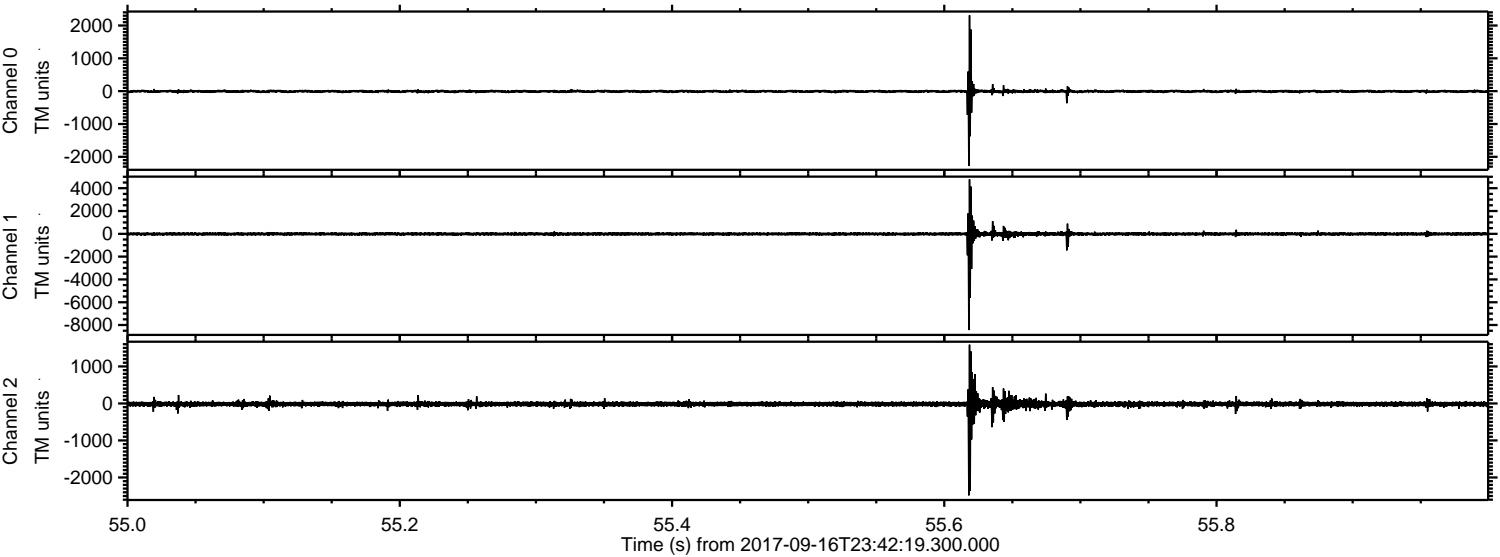
Processed Sun Sep 17 01:50:13 2017 by ELM ver.2012-10-06 from 001__elm20170916_234218__dat00.bin



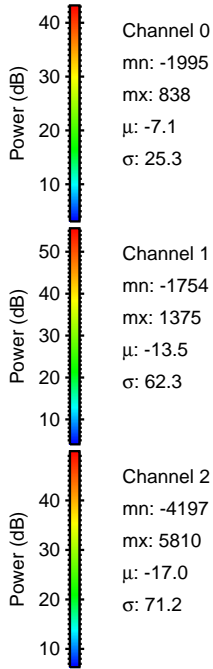
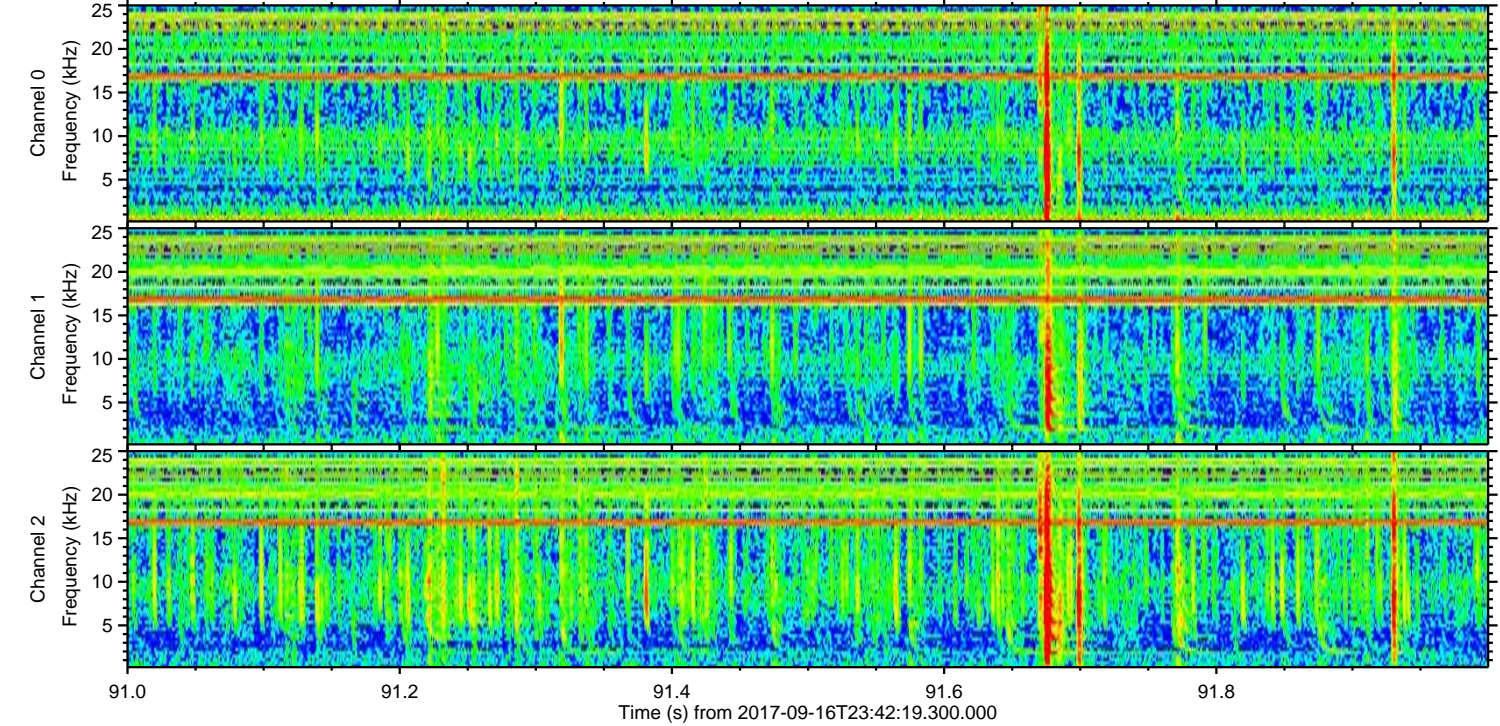
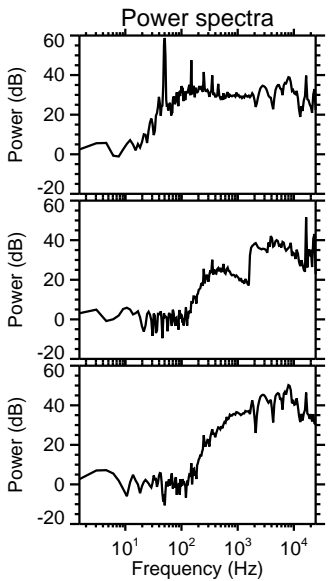
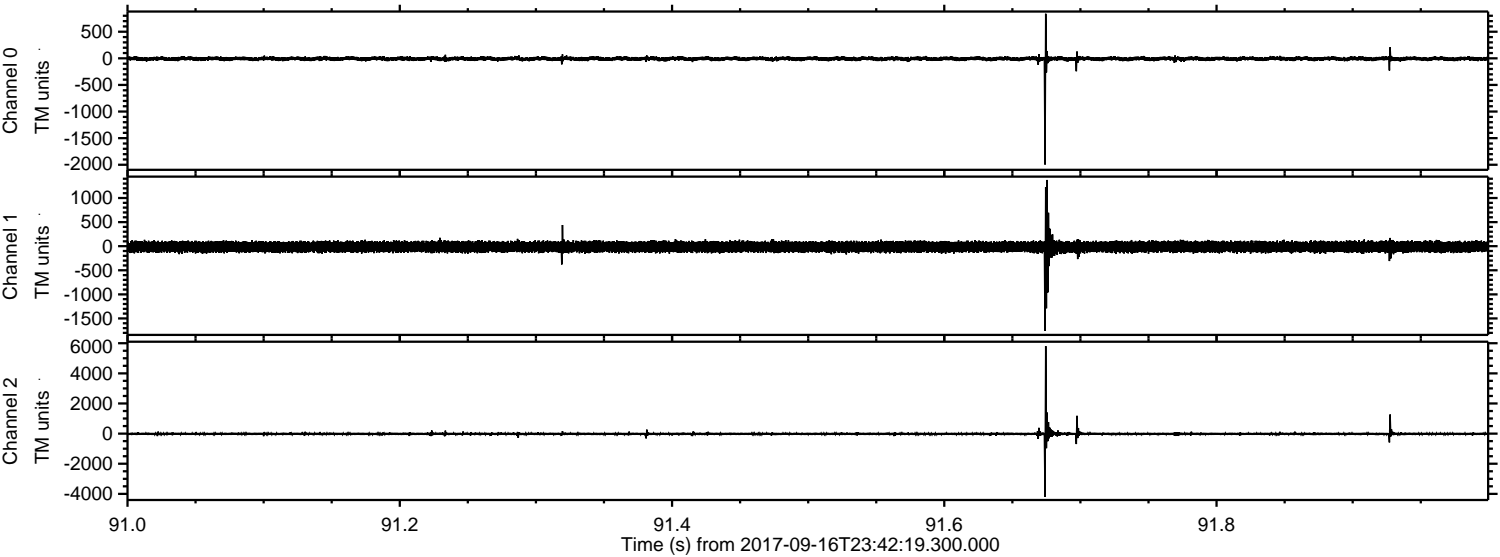
Processed Sun Sep 17 01:50:13 2017 by ELM ver.2012-10-06 from 001__elm20170916_234218__dat00.bin



Processed Sun Sep 17 01:50:14 2017 by ELM ver.2012-10-06 from 001__elm20170916_234218__dat00.bin

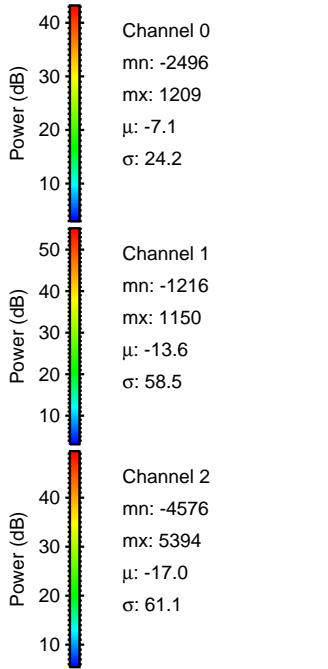
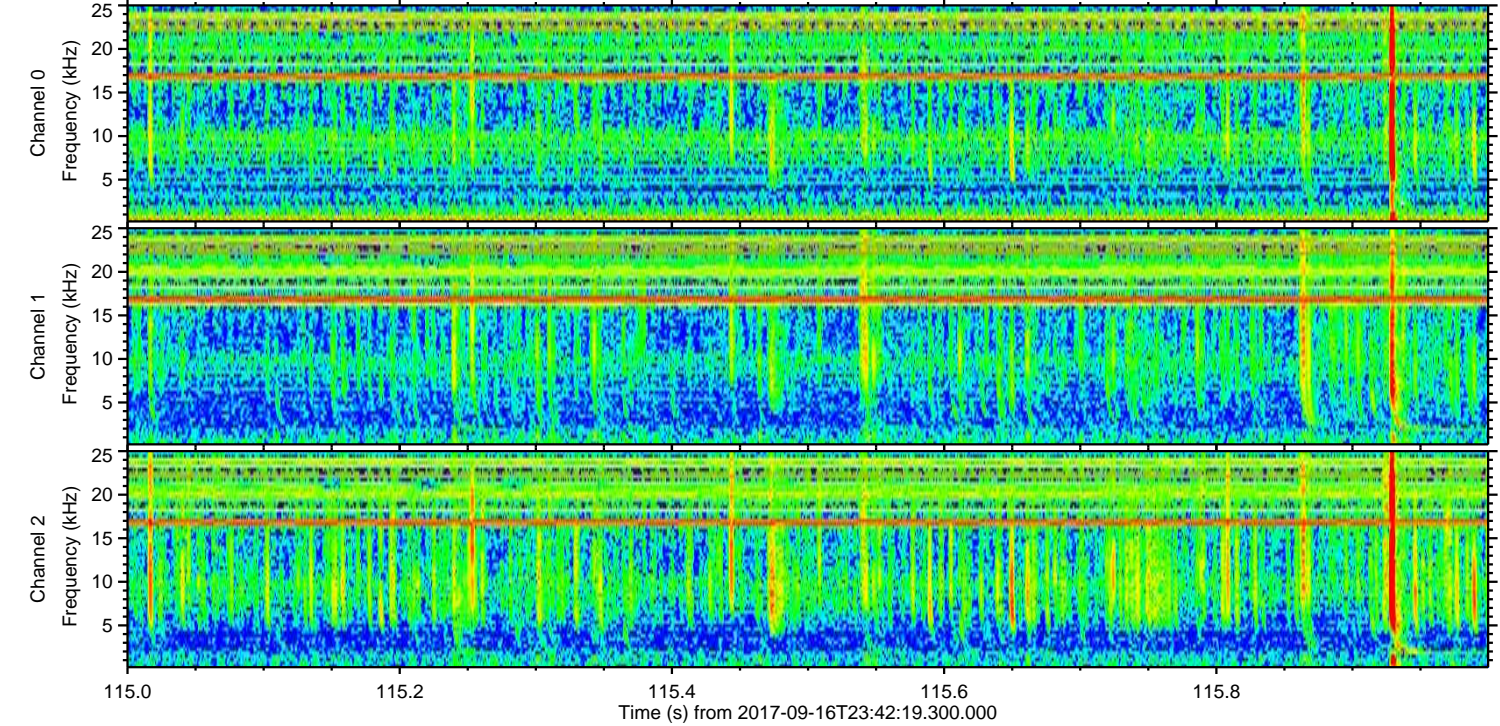
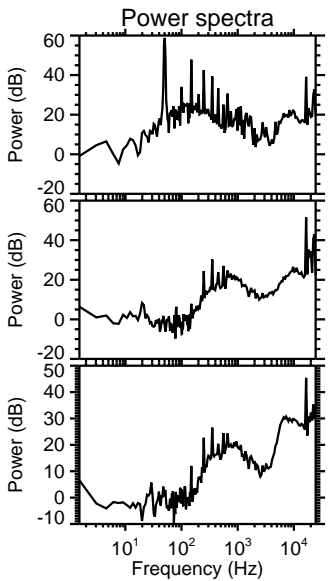
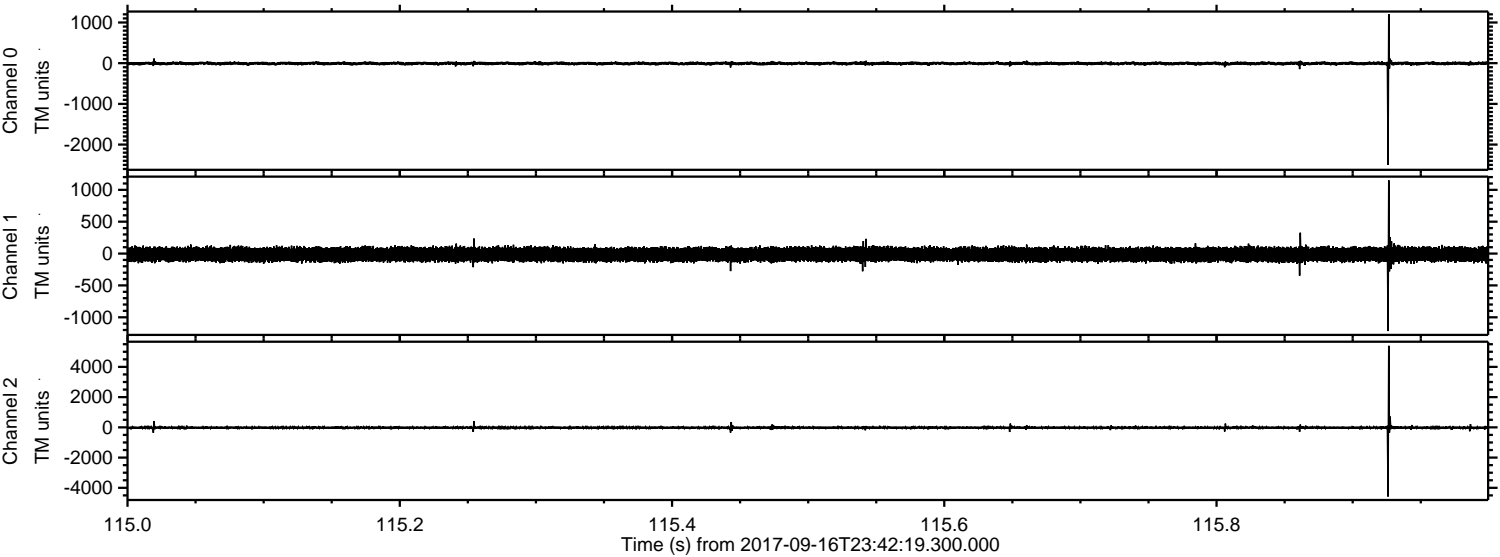


Processed Sun Sep 17 01:50:15 2017 by ELM ver.2012-10-06 from 001__elm20170916_234218__dat00.bin

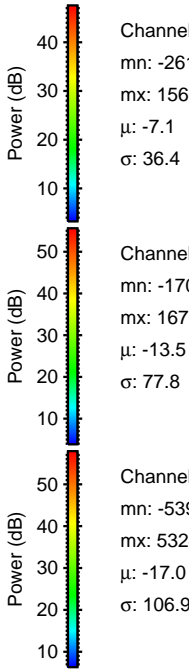
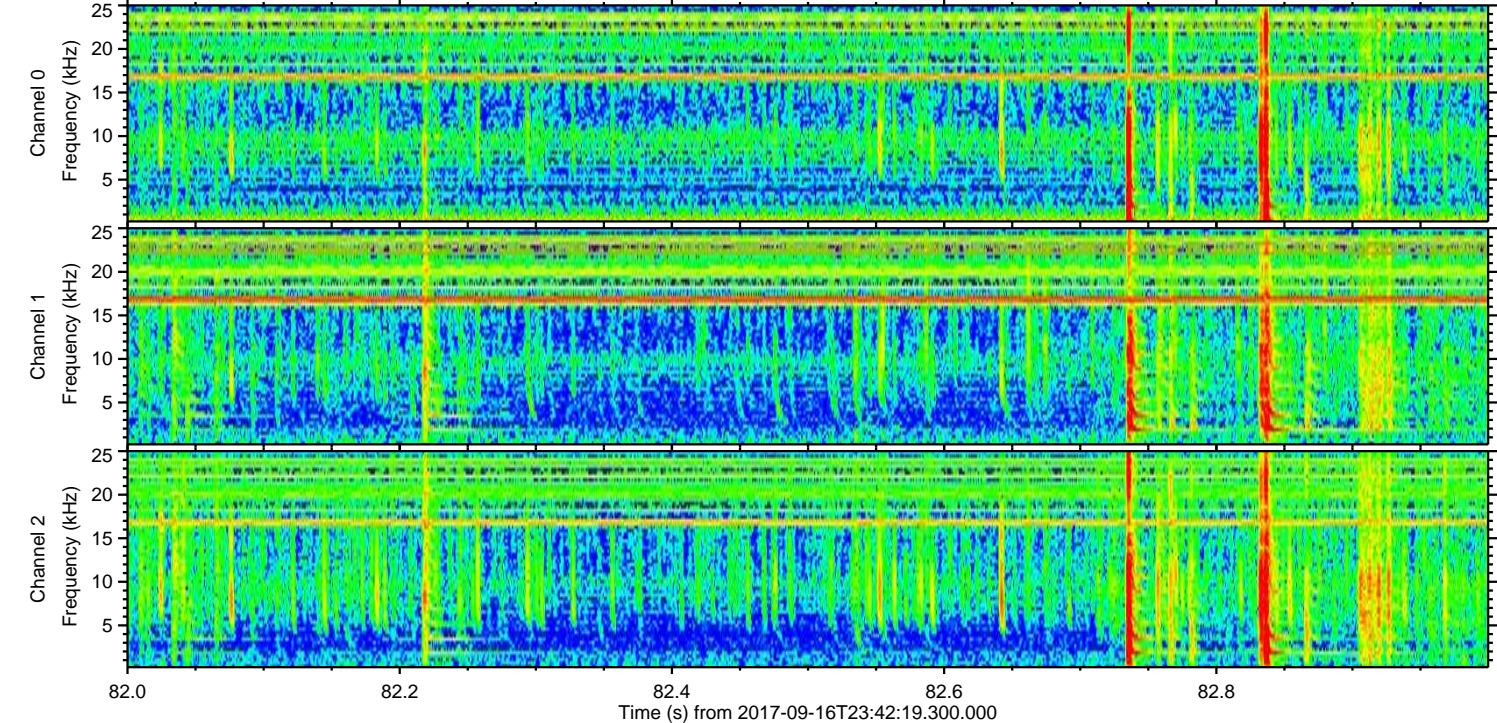
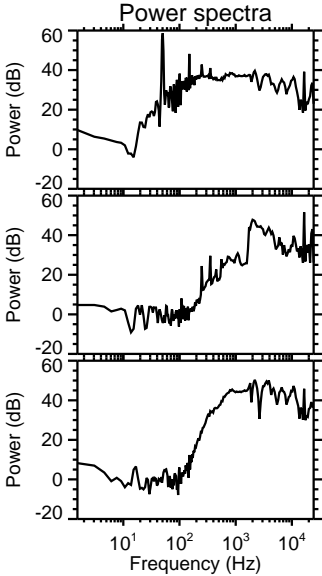
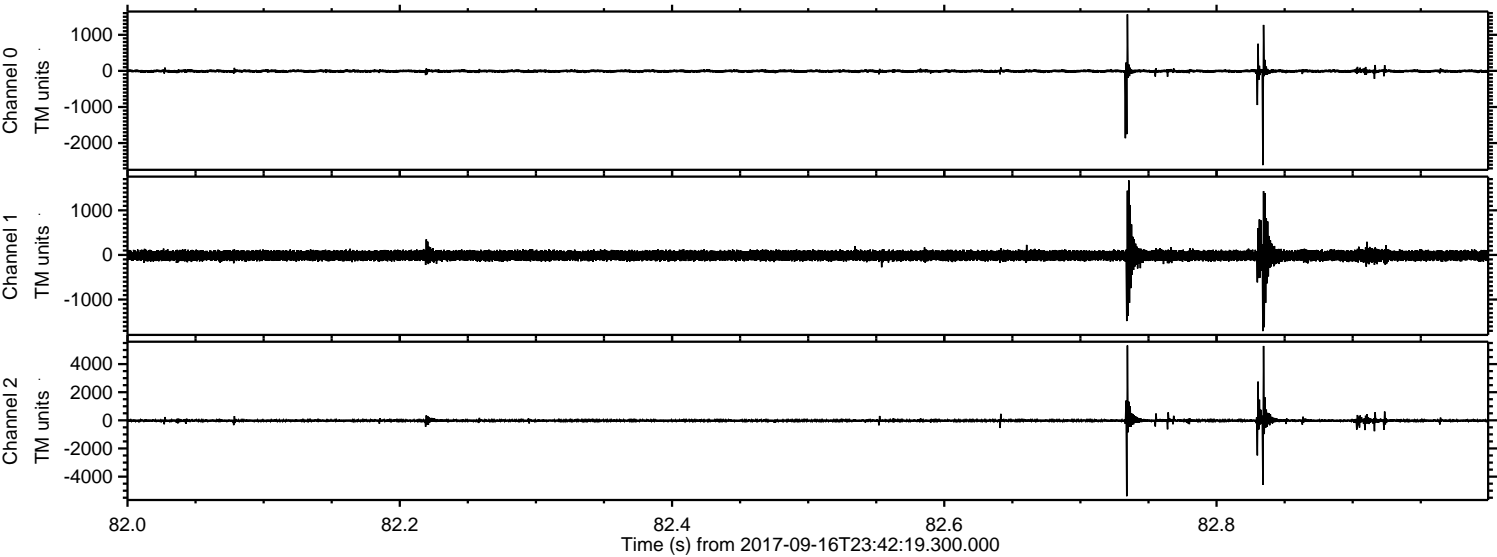


ELMAVAN 3D WAVEFORMS (Measured data sampled at 50 kHz) 51000 packets of 144 samples from 2017-09-16T23:42:19.300.000. Part 116/147

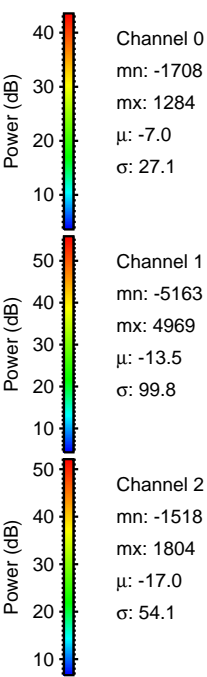
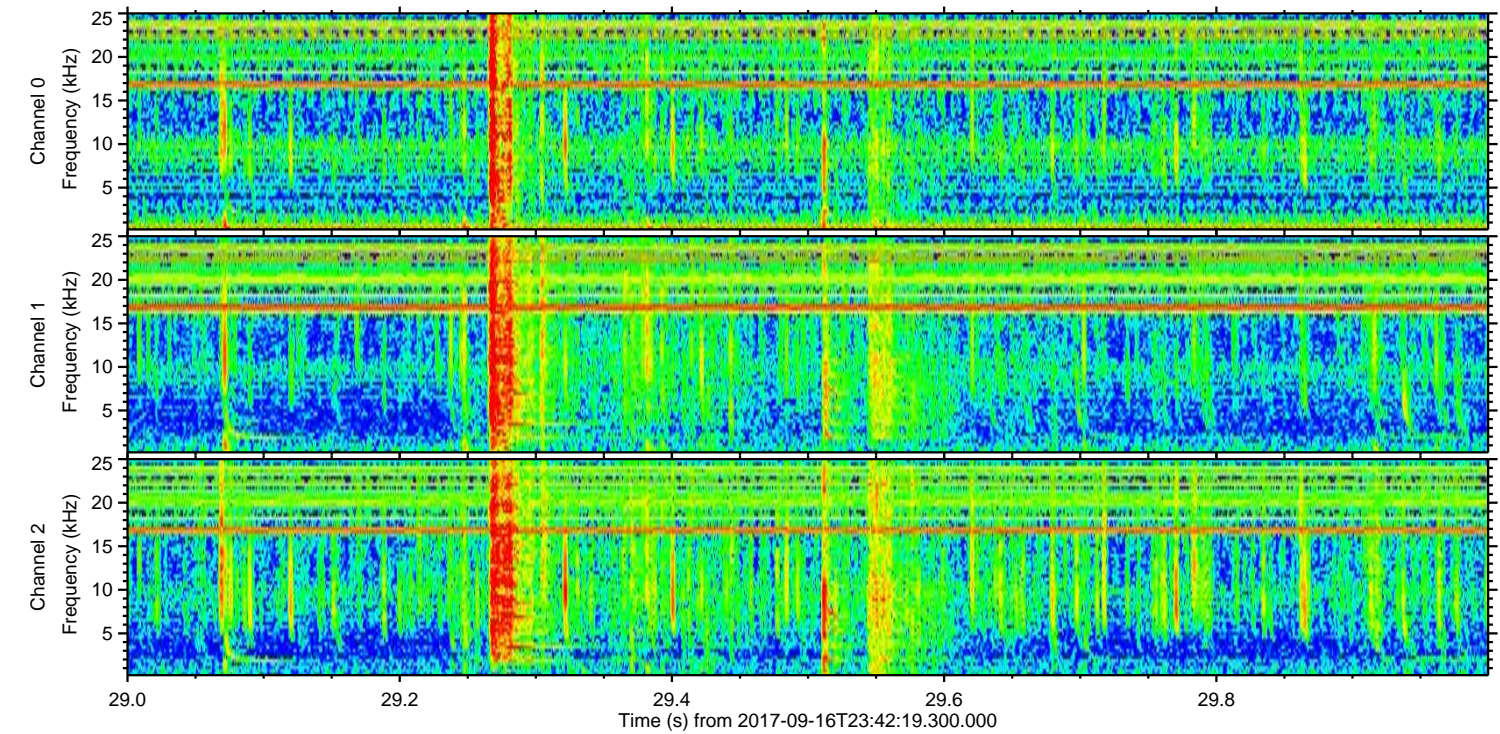
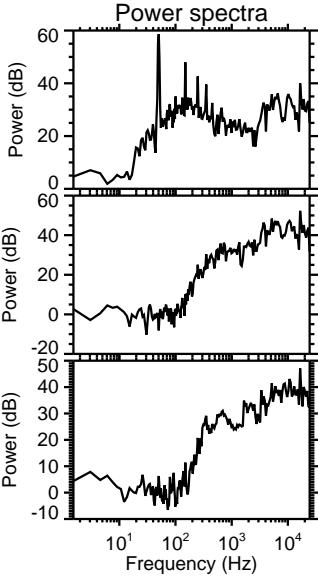
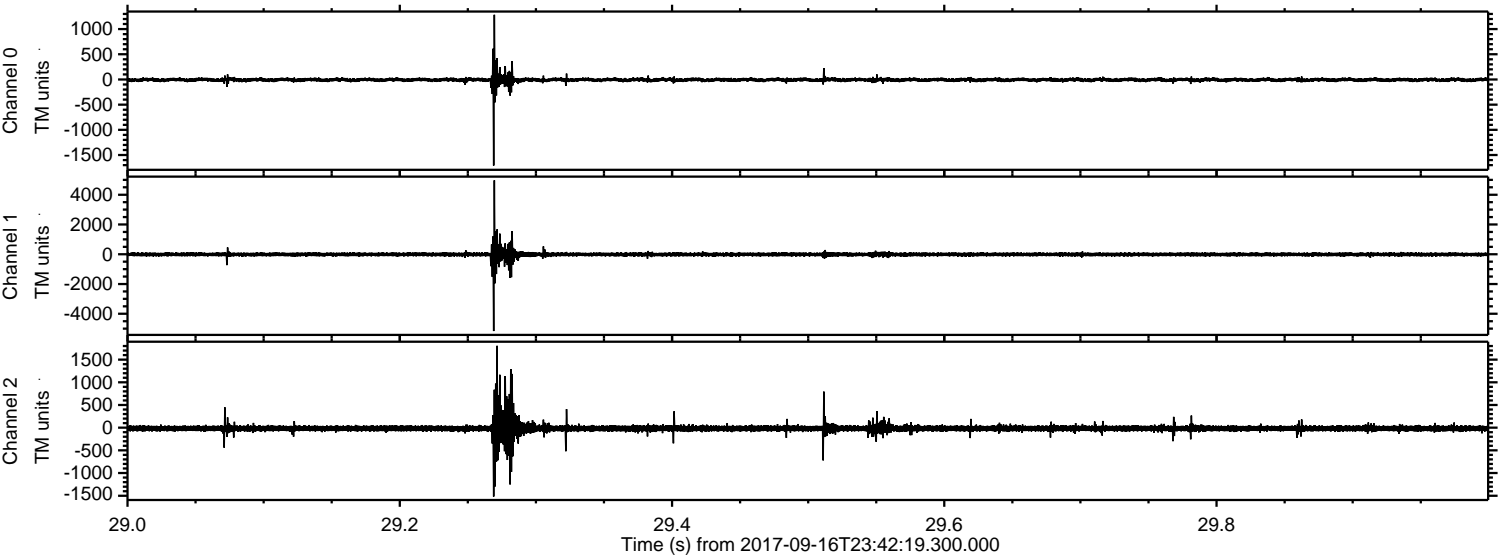
Processed Sun Sep 17 01:50:16 2017 by ELM ver.2012-10-06 from 001__elm20170916_234218__dat00.bin



Processed Sun Sep 17 01:50:16 2017 by ELM ver.2012-10-06 from 001__elm20170916_234218__dat00.bin



Processed Sun Sep 17 01:50:17 2017 by ELM ver.2012-10-06 from 001__elm20170916_234218__dat00.bin



Channel 0
mn: -1708
mx: 1284
 μ : -7.0
 σ : 27.1

Channel 1
mn: -5163
mx: 4969
 μ : -13.5
 σ : 99.8

Channel 2
mn: -1518
mx: 1804
 μ : -17.0
 σ : 54.1

