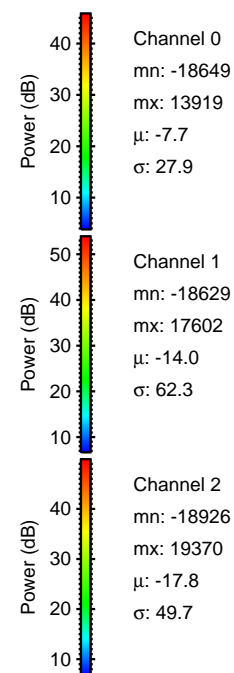
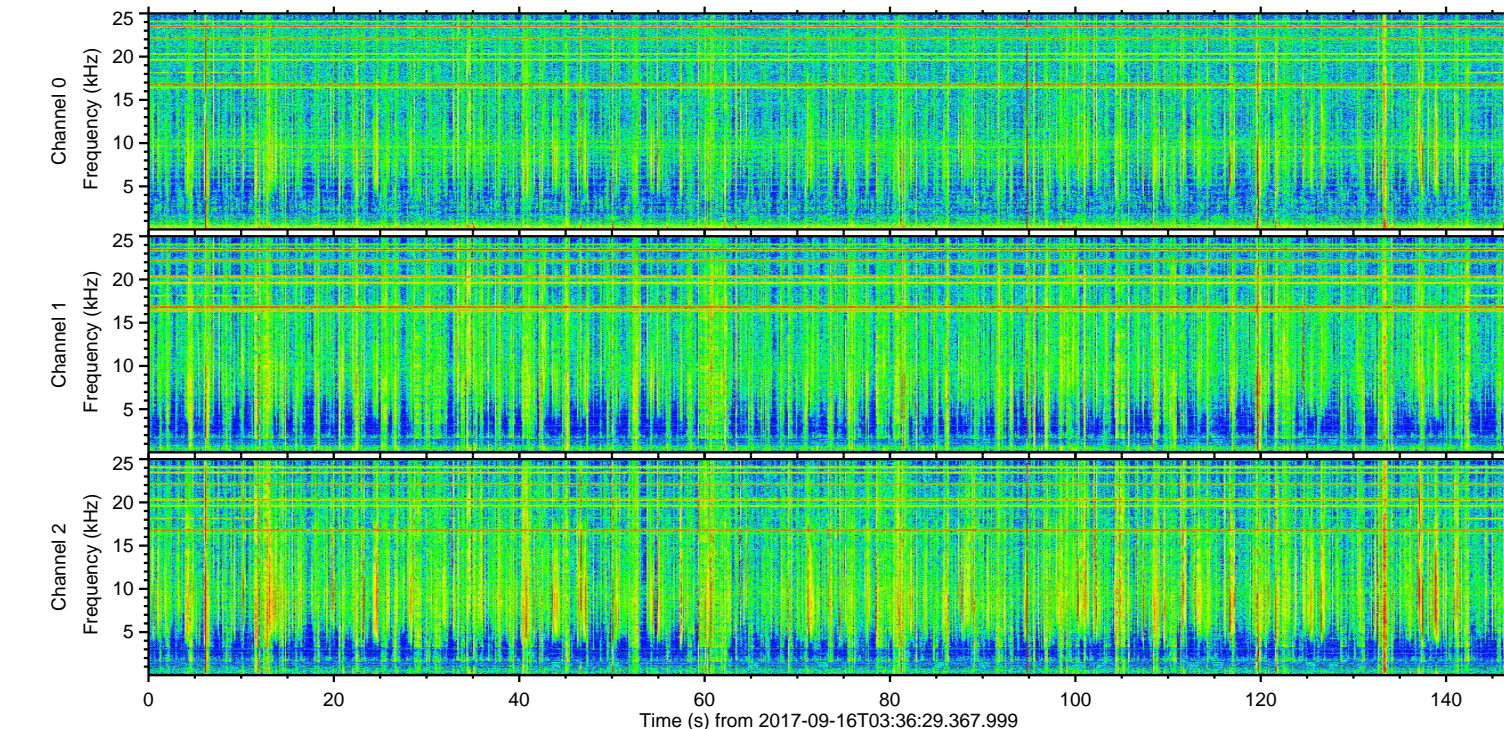
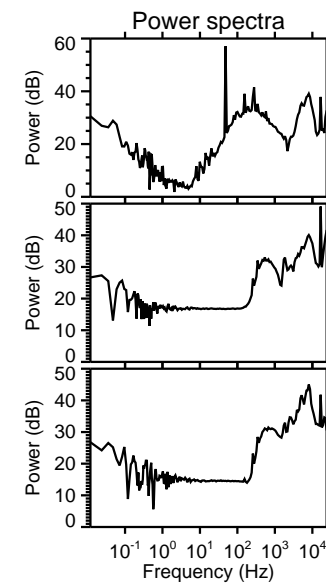
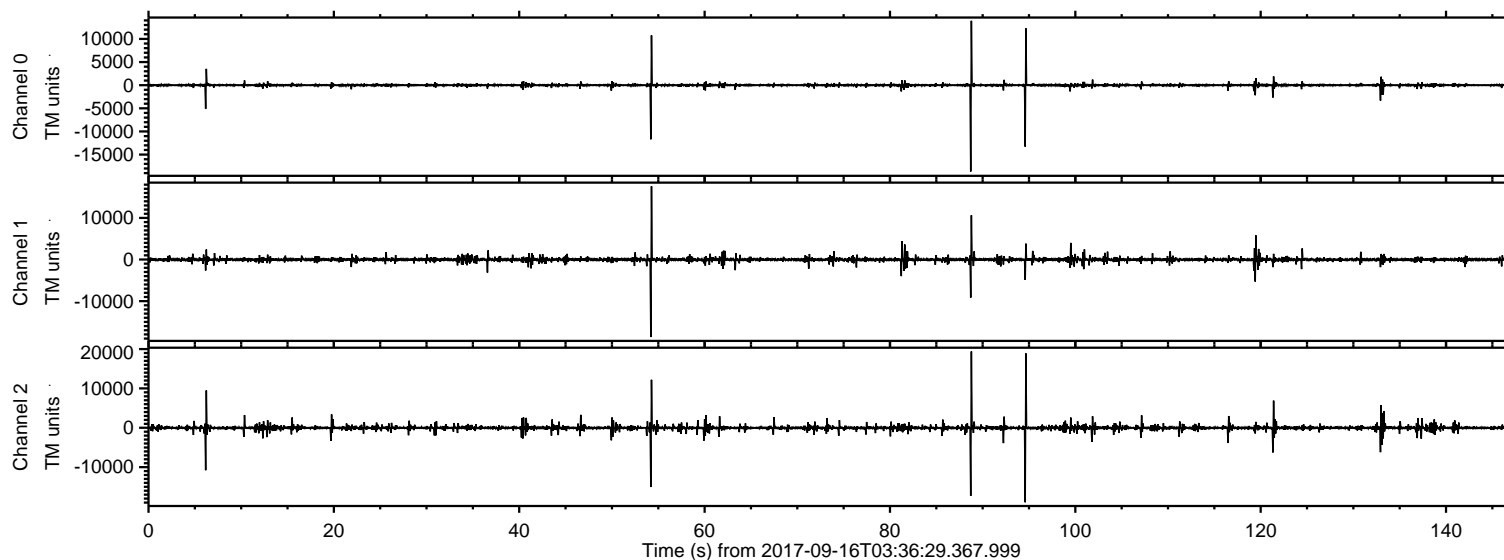


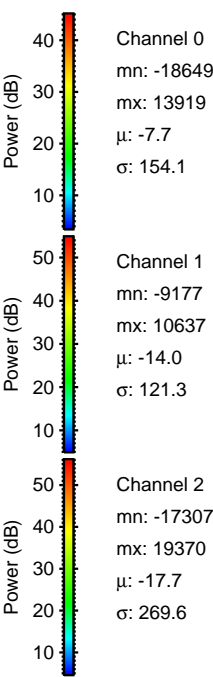
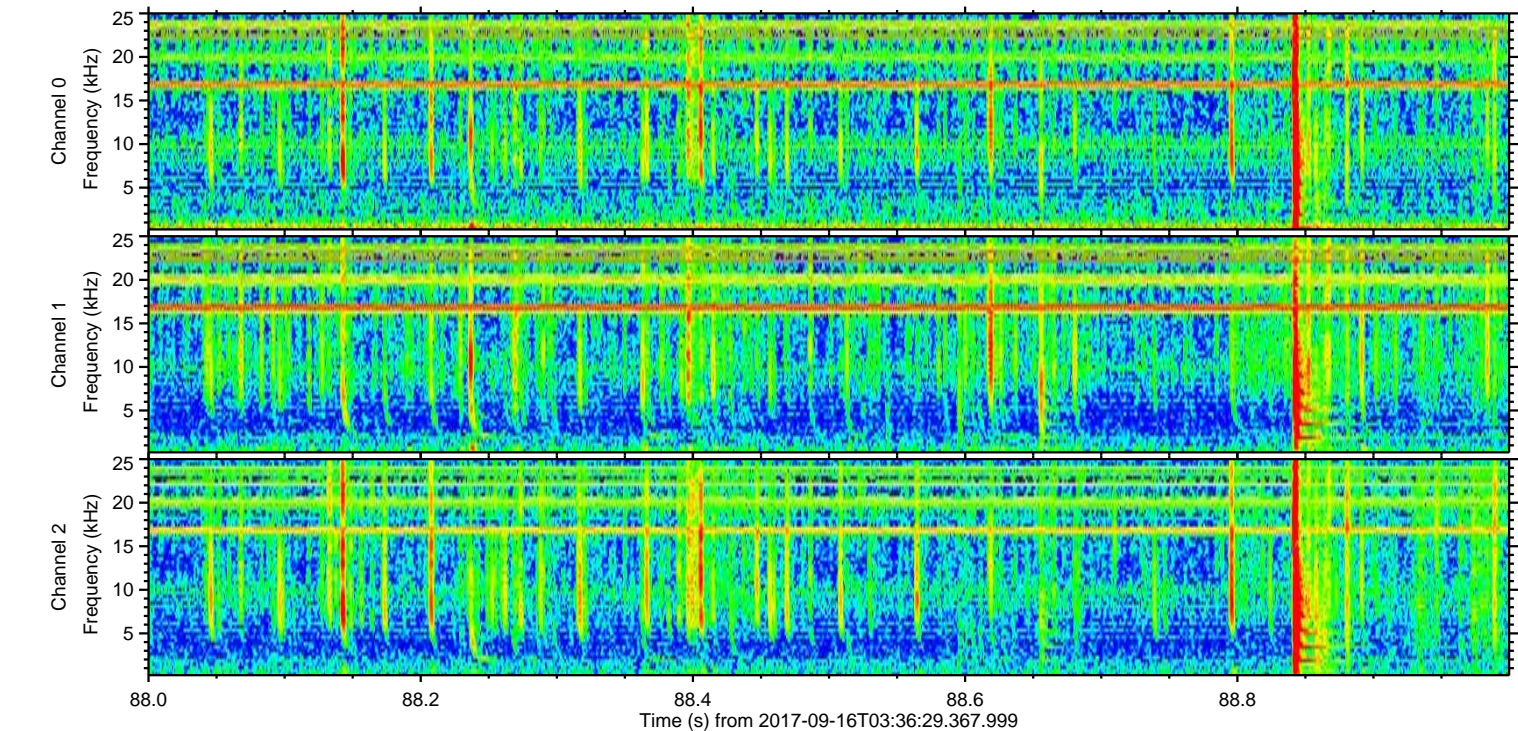
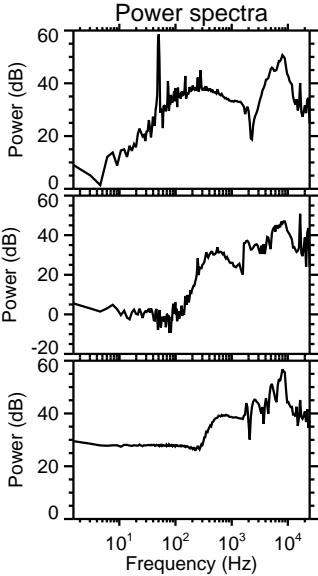
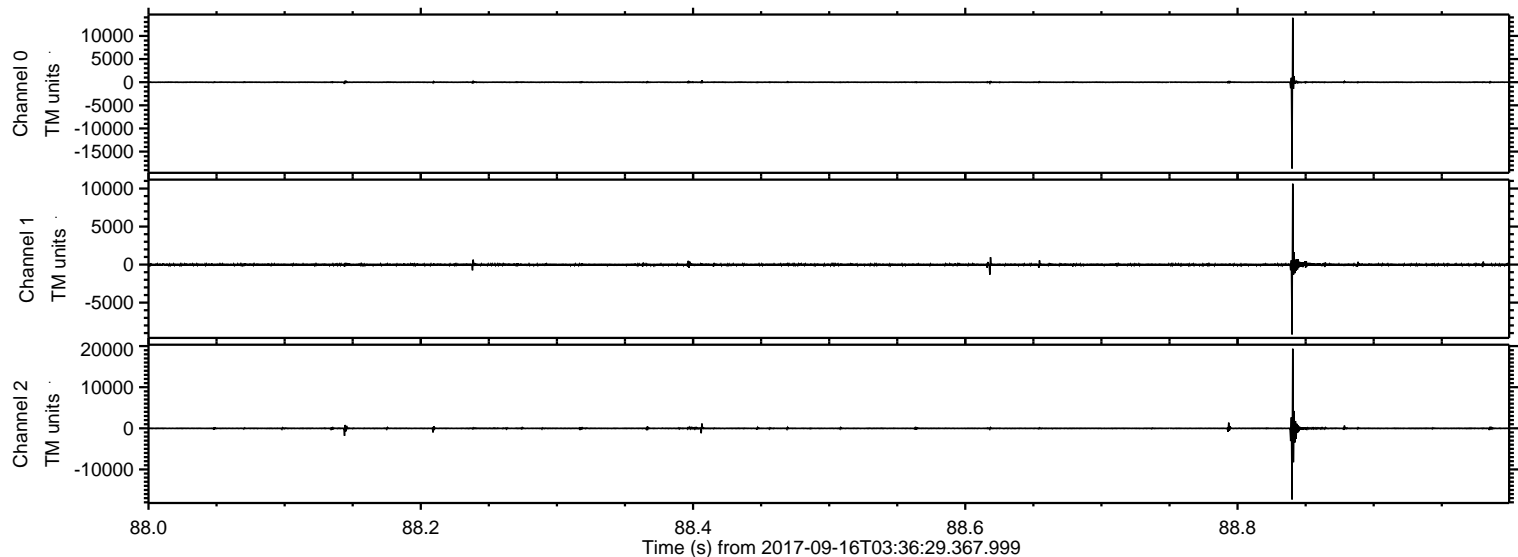
# ELMAVAN 3D WAVEFORMS (Measured data sampled at 50 kHz) 51000 packets of 144 samples from 2017-09-16T03:36:29.367.999.

Processed Sat Sep 16 05:44:37 2017 by ELM ver.2012-10-06 from 001\_\_elm20170916\_033628\_\_dat00.bin



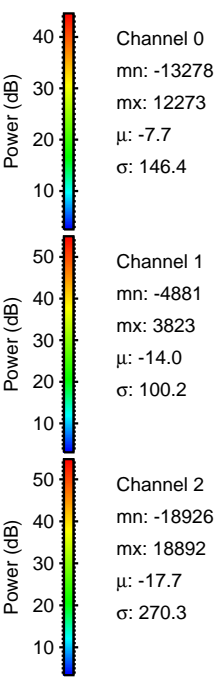
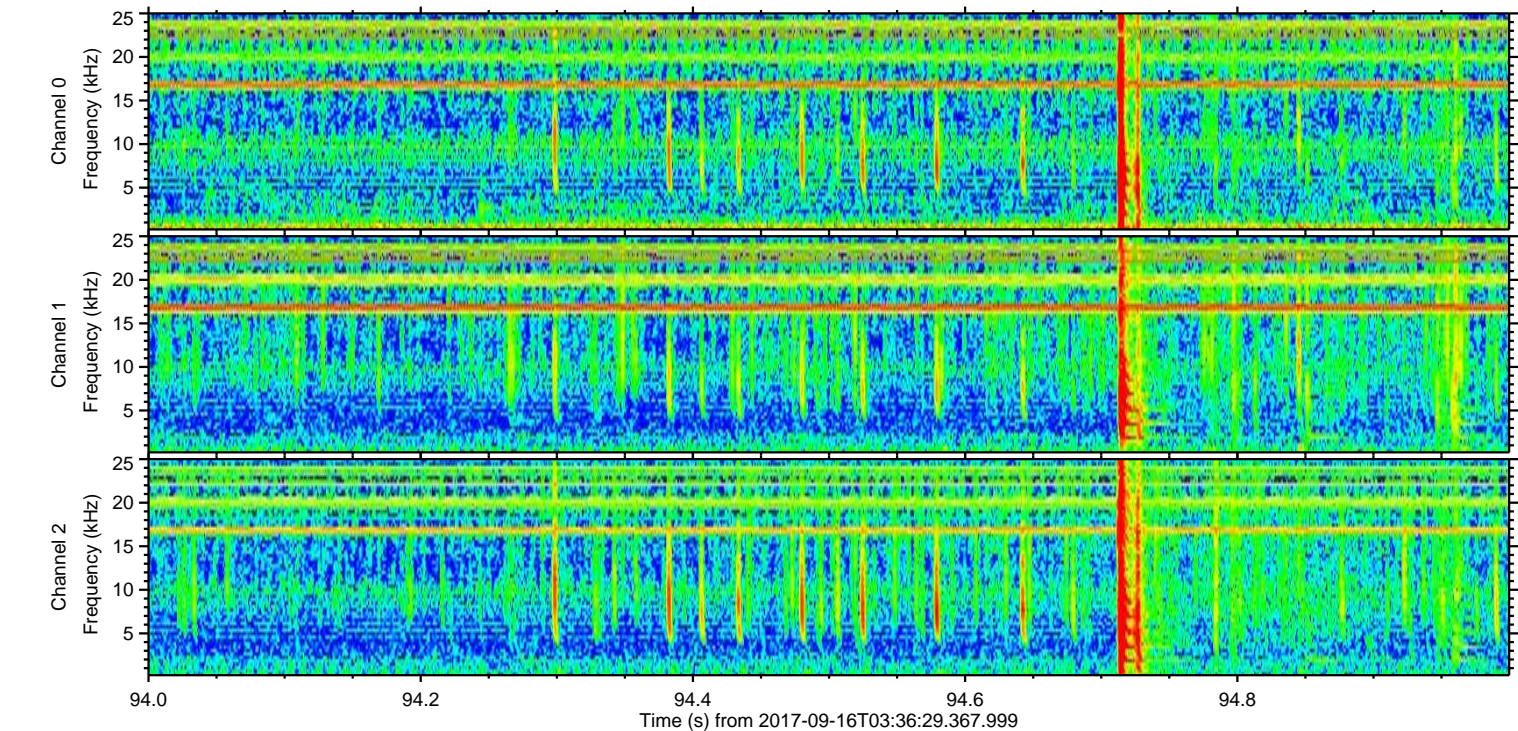
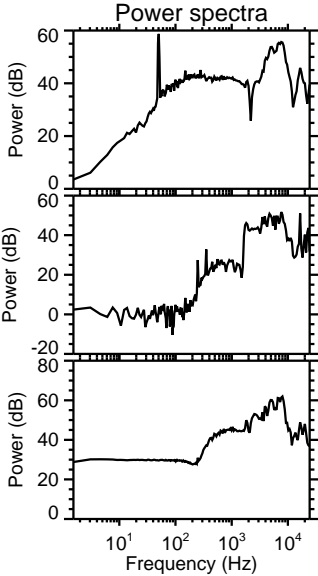
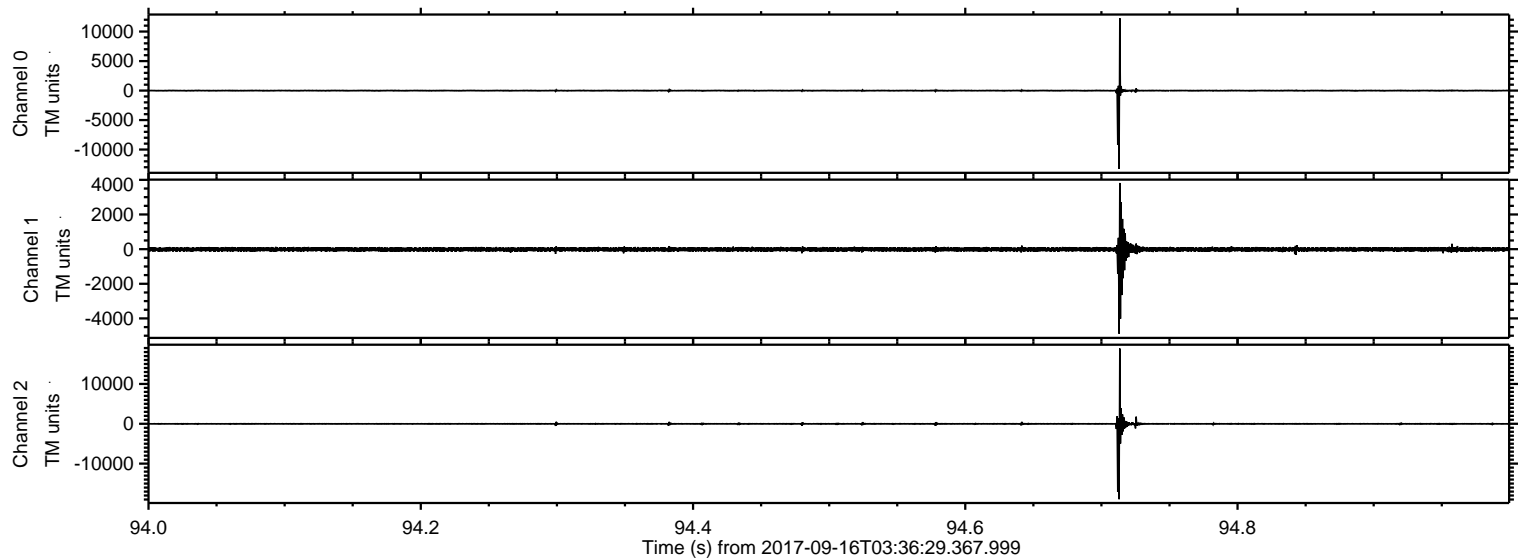


Processed Sat Sep 16 05:44:42 2017 by ELM ver.2012-10-06 from 001\_\_elm20170916\_033628\_\_dat00.bin



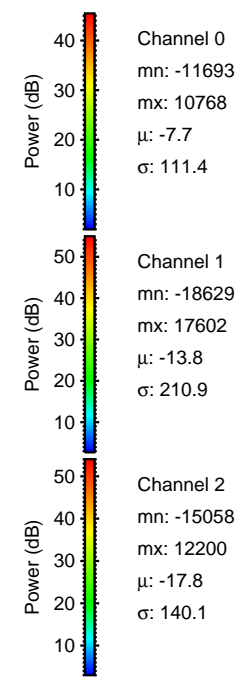
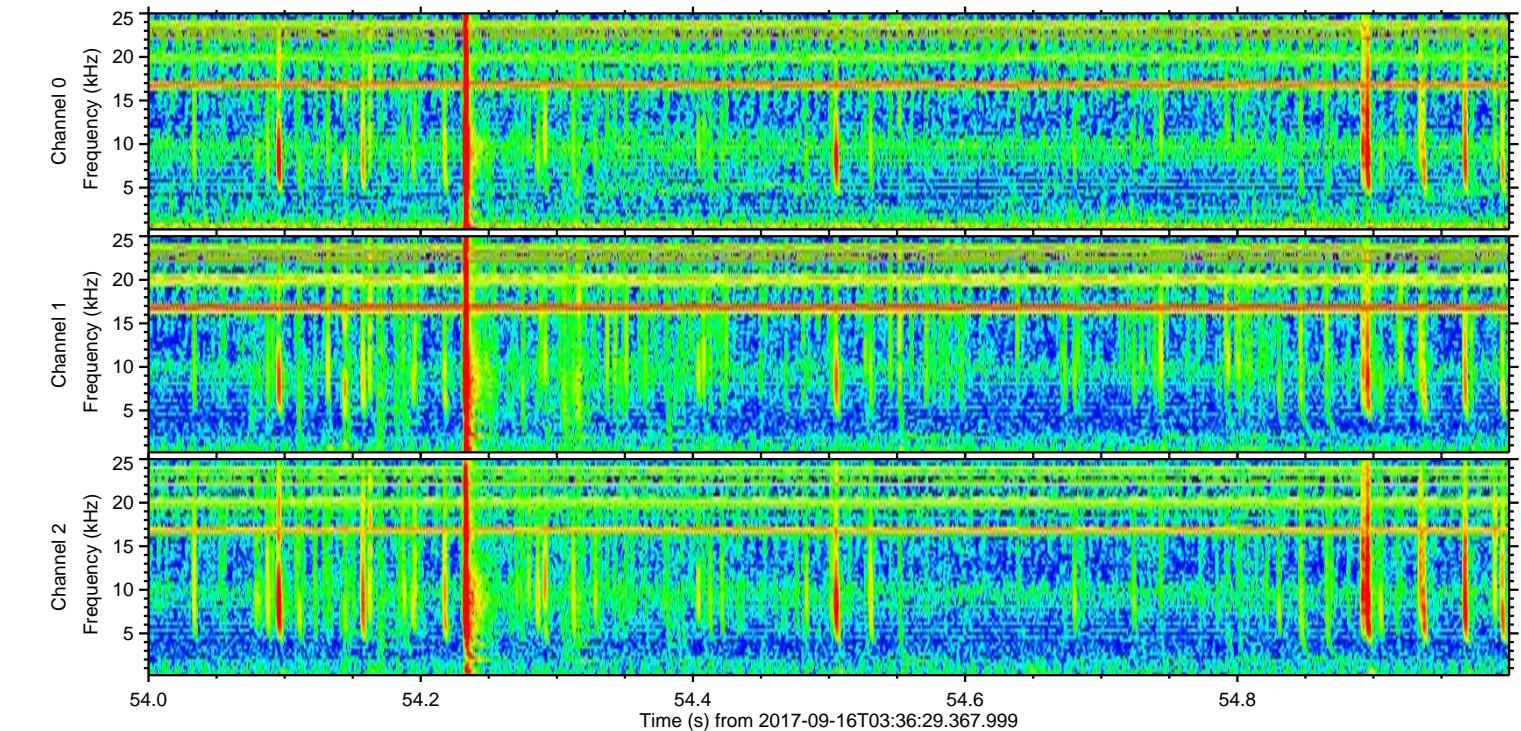
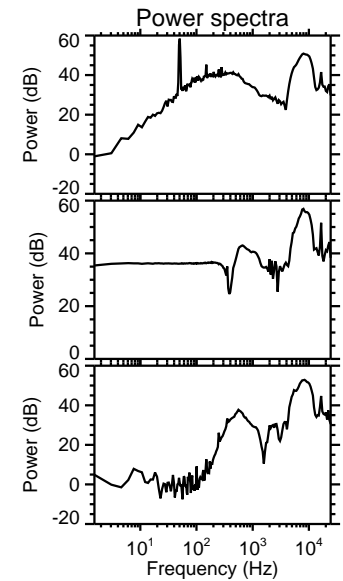
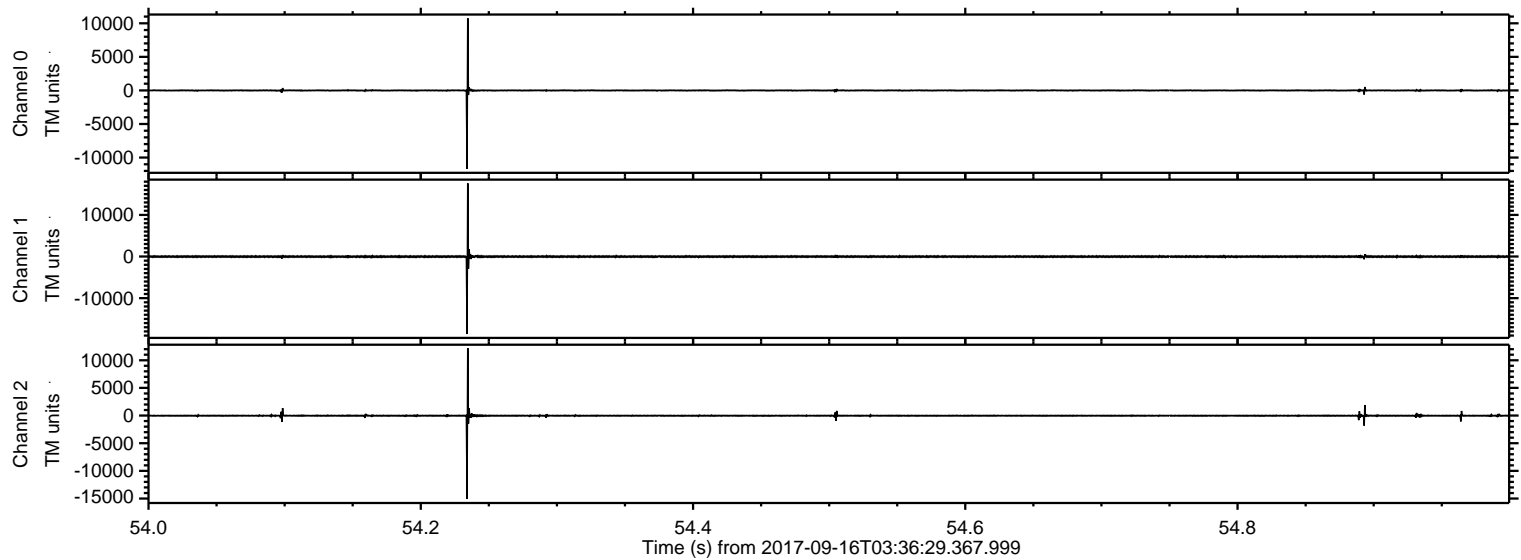


Processed Sat Sep 16 05:44:43 2017 by ELM ver.2012-10-06 from 001\_\_elm20170916\_033628\_\_dat00.bin





Processed Sat Sep 16 05:44:44 2017 by ELM ver.2012-10-06 from 001\_\_elm20170916\_033628\_\_dat00.bin



Channel 0  
mn: -11693  
mx: 10768  
 $\mu$ : -7.7  
 $\sigma$ : 111.4

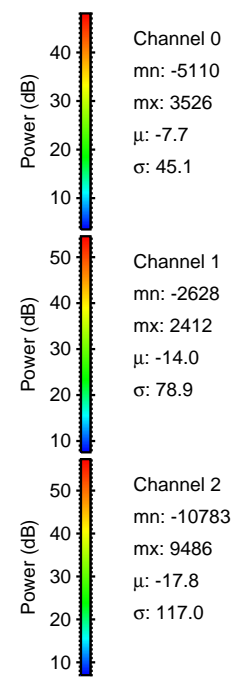
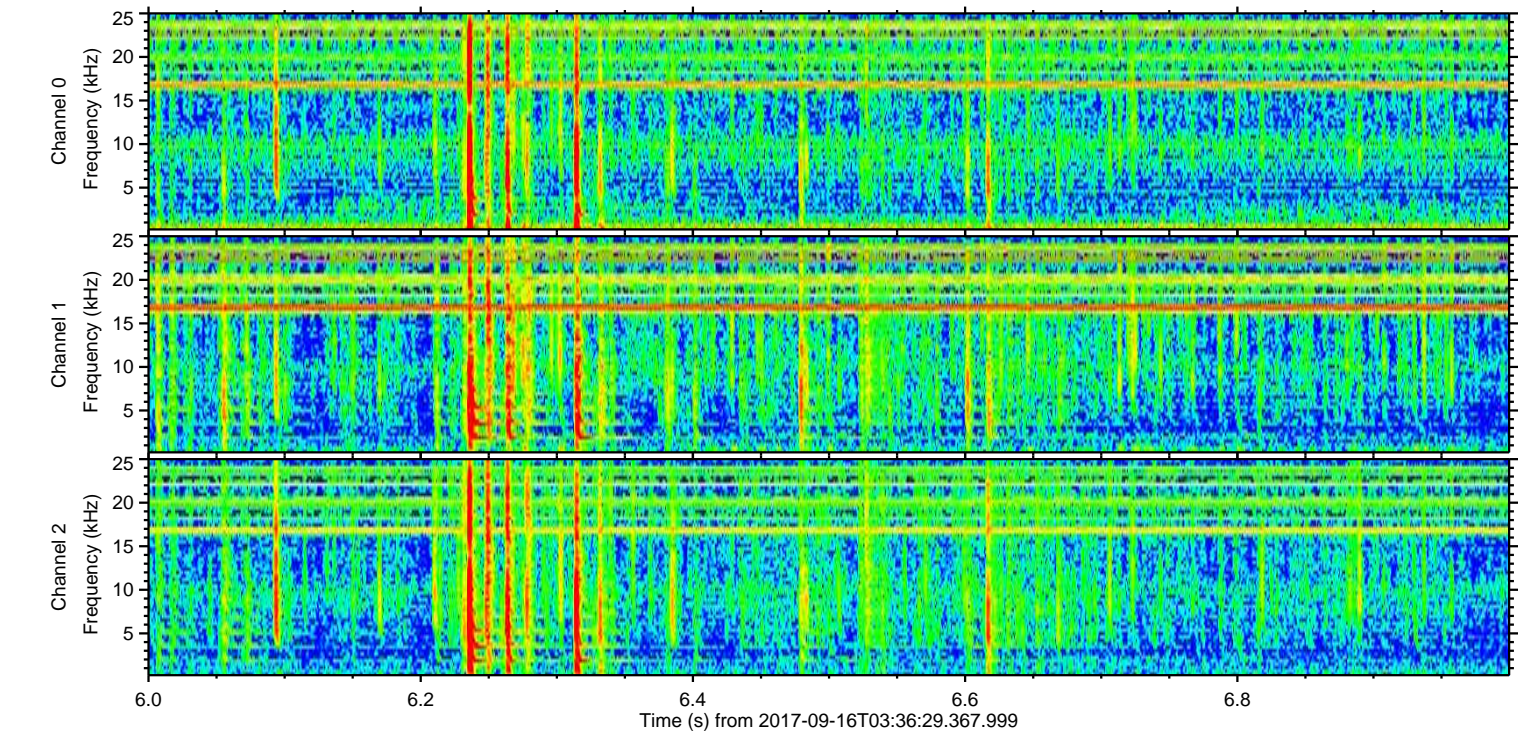
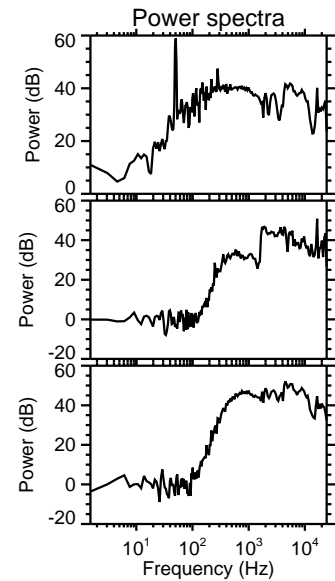
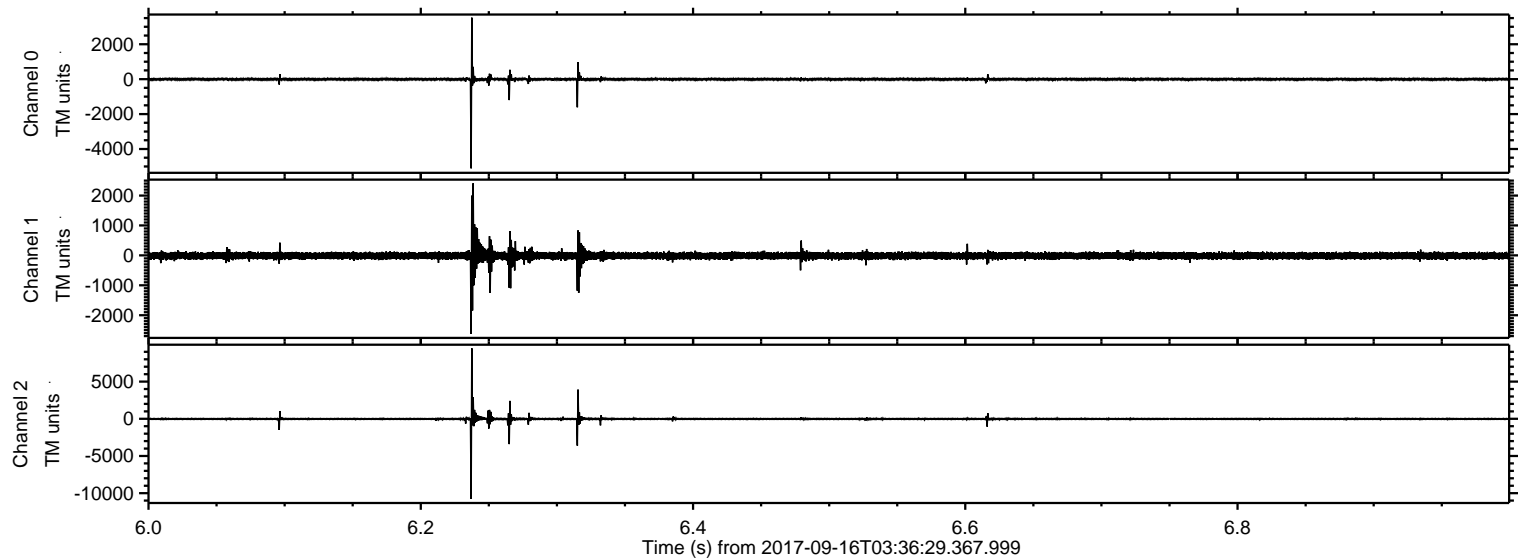
Channel 1  
mn: -18629  
mx: 17602  
 $\mu$ : -13.8  
 $\sigma$ : 210.9

Channel 2  
mn: -15058  
mx: 12200  
 $\mu$ : -17.8  
 $\sigma$ : 140.1



ELMAVAN 3D WAVEFORMS (Measured data sampled at 50 kHz) 51000 packets of 144 samples from 2017-09-16T03:36:29.367.999. Part 7/147

Processed Sat Sep 16 05:44:44 2017 by ELM ver.2012-10-06 from 001\_\_elm20170916\_033628\_\_dat00.bin



Channel 0  
mn: -5110  
mx: 3526  
 $\mu$ : -7.7  
 $\sigma$ : 45.1

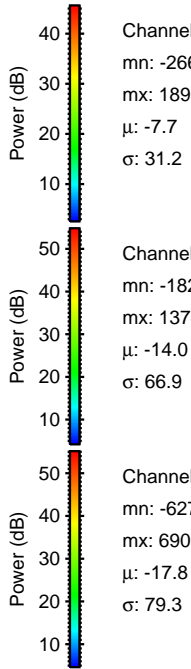
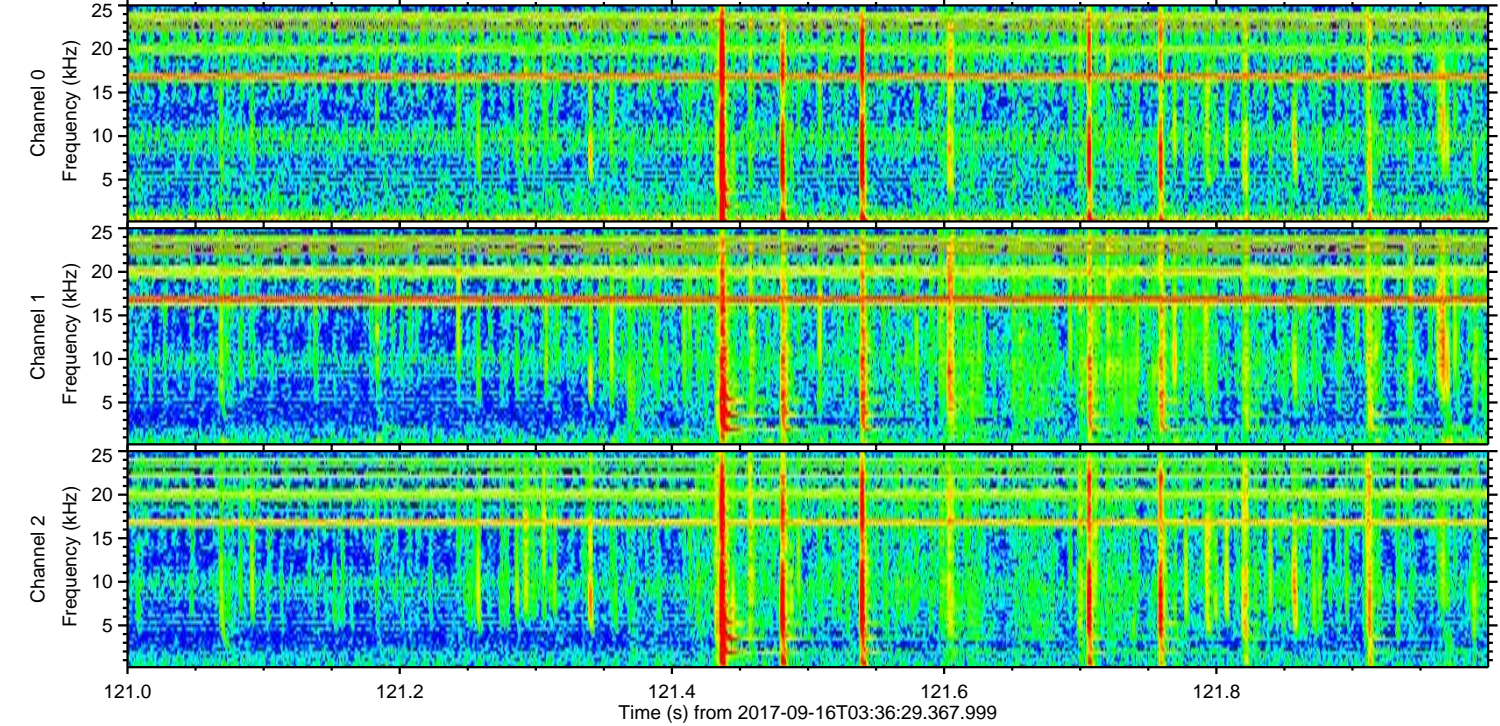
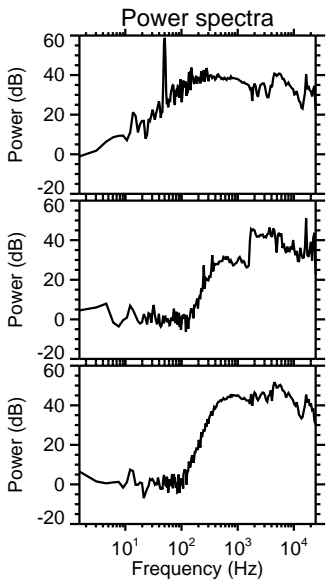
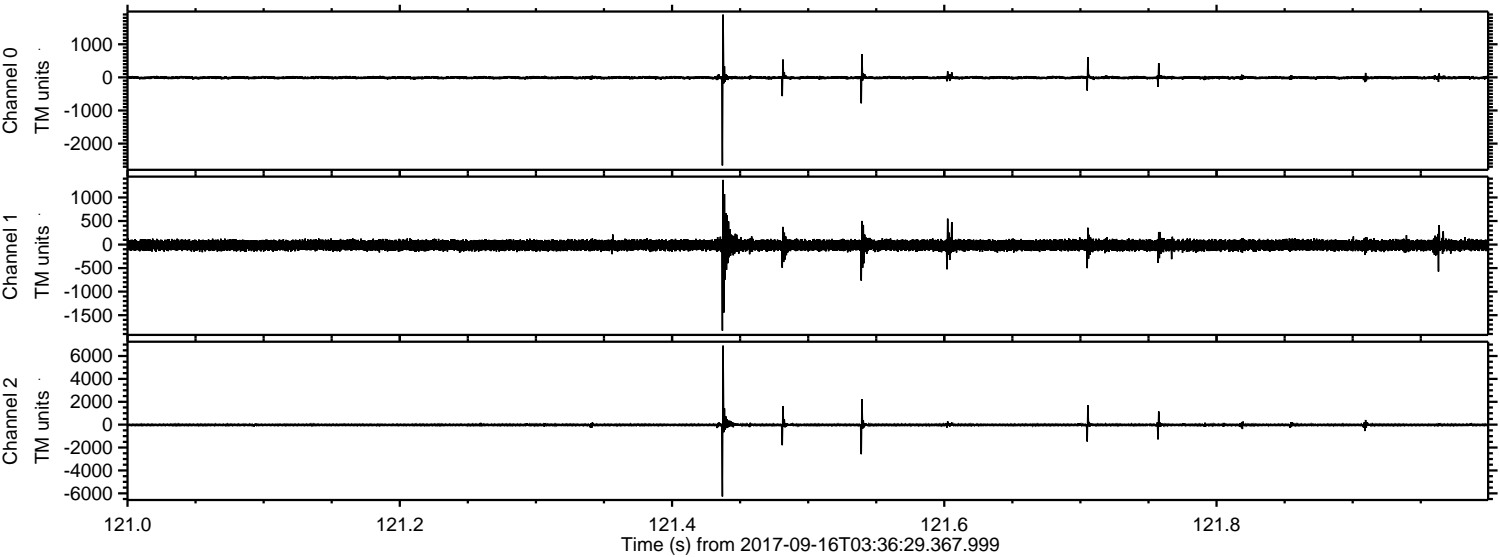
Channel 1  
mn: -2628  
mx: 2412  
 $\mu$ : -14.0  
 $\sigma$ : 78.9

Channel 2  
mn: -10783  
mx: 9486  
 $\mu$ : -17.8  
 $\sigma$ : 117.0



ELMAVAN 3D WAVEFORMS (Measured data sampled at 50 kHz) 51000 packets of 144 samples from 2017-09-16T03:36:29.367.999. Part 122/147

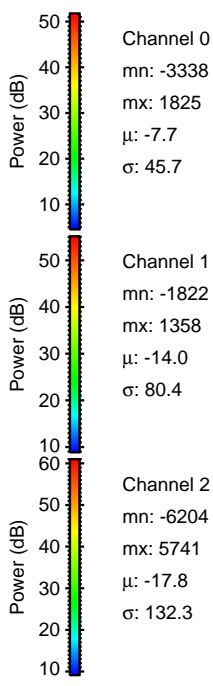
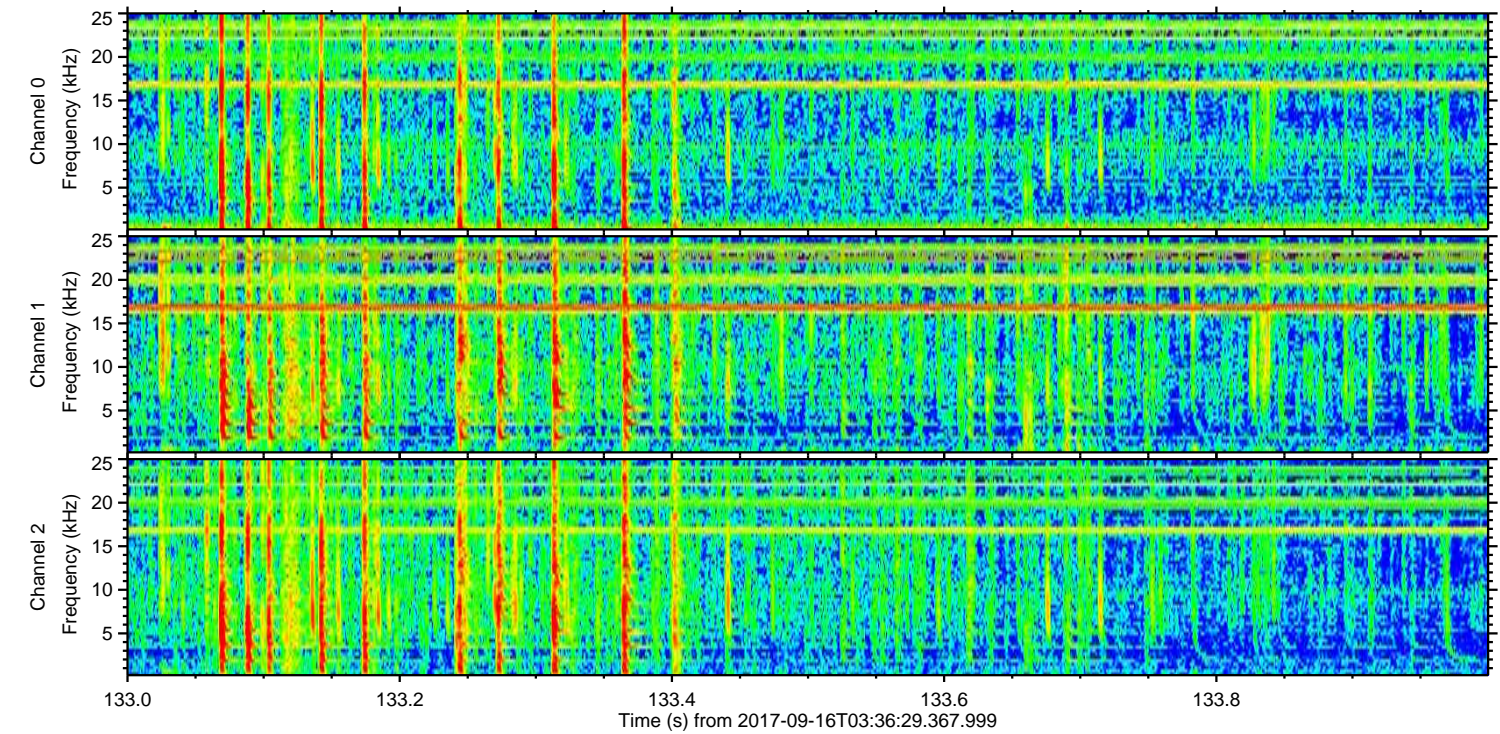
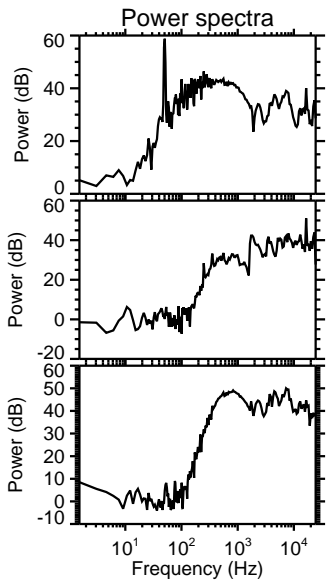
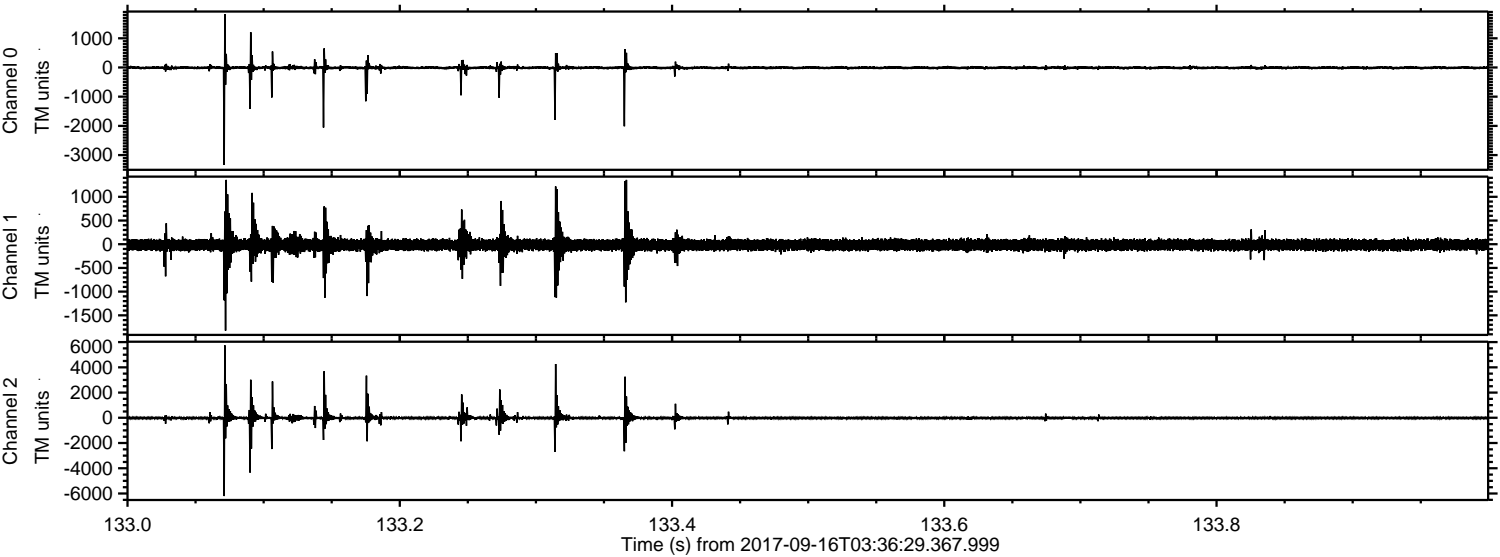
Processed Sat Sep 16 05:44:45 2017 by ELM ver.2012-10-06 from 001\_\_elm20170916\_033628\_\_dat00.bin





ELMAVAN 3D WAVEFORMS (Measured data sampled at 50 kHz) 51000 packets of 144 samples from 2017-09-16T03:36:29.367.999. Part 134/147

Processed Sat Sep 16 05:44:45 2017 by ELM ver.2012-10-06 from 001\_\_elm20170916\_033628\_\_dat00.bin



Channel 0  
mn: -3338  
mx: 1825  
 $\mu$ : -7.7  
 $\sigma$ : 45.7

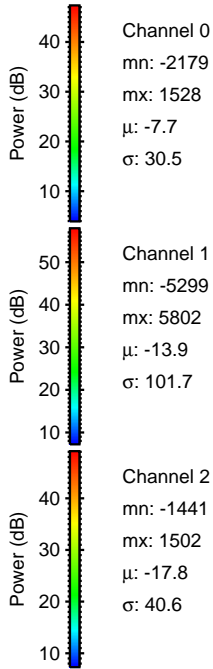
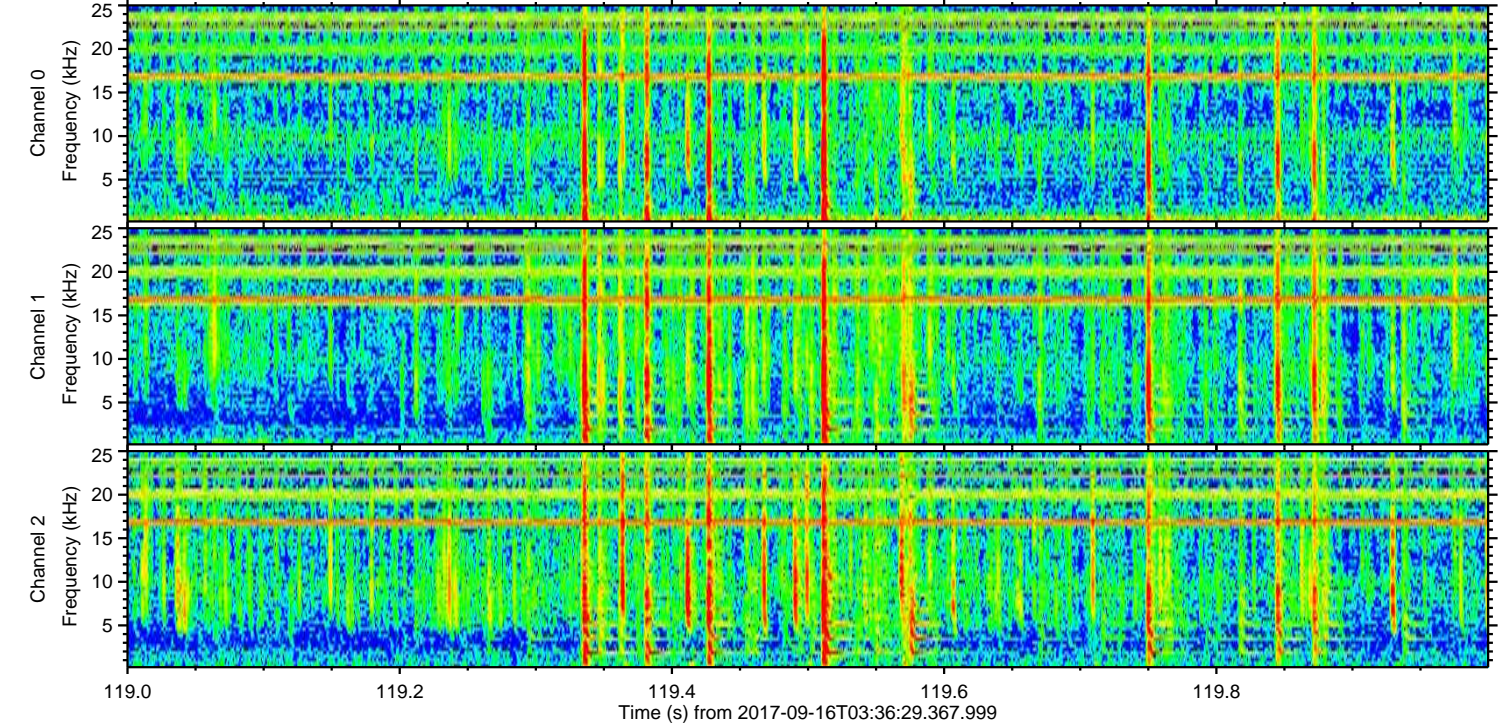
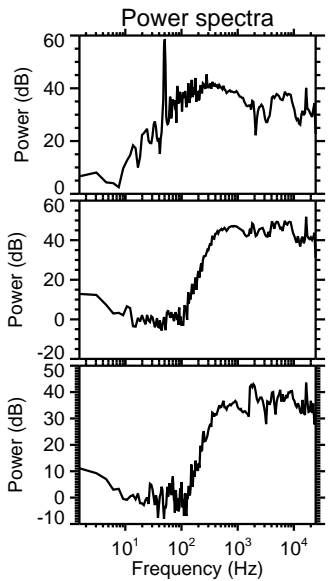
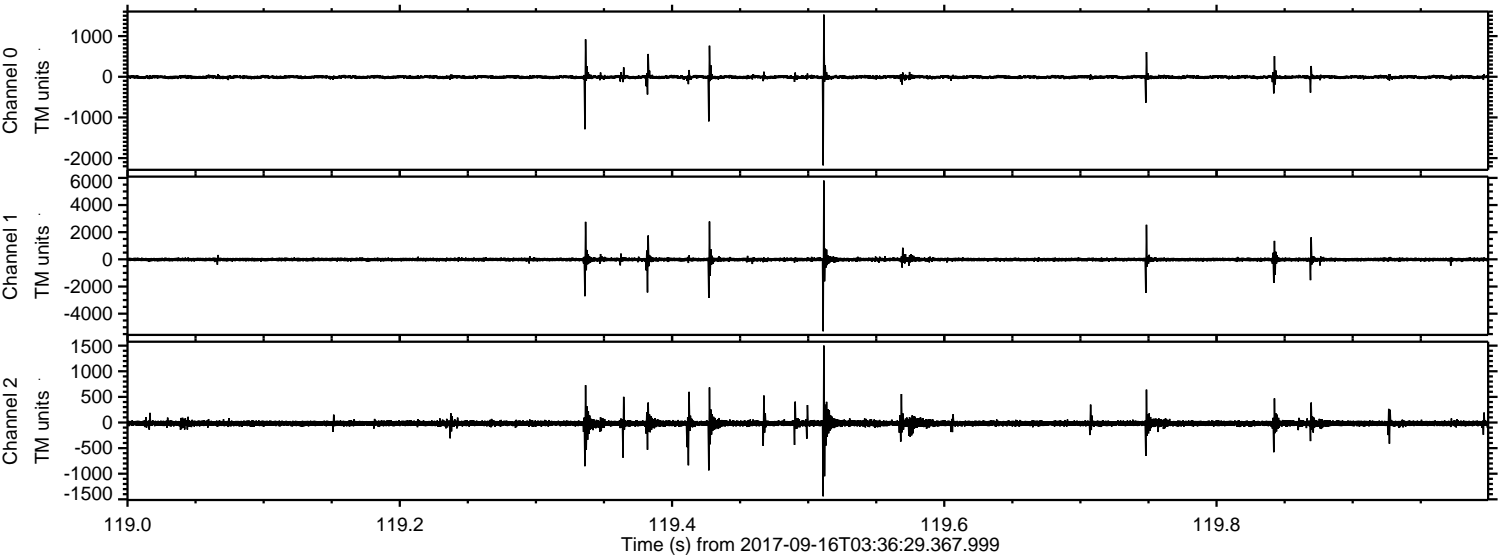
Channel 1  
mn: -1822  
mx: 1358  
 $\mu$ : -14.0  
 $\sigma$ : 80.4

Channel 2  
mn: -6204  
mx: 5741  
 $\mu$ : -17.8  
 $\sigma$ : 132.3



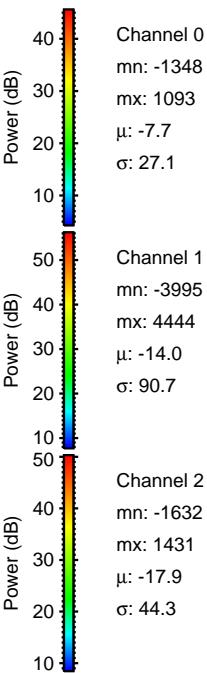
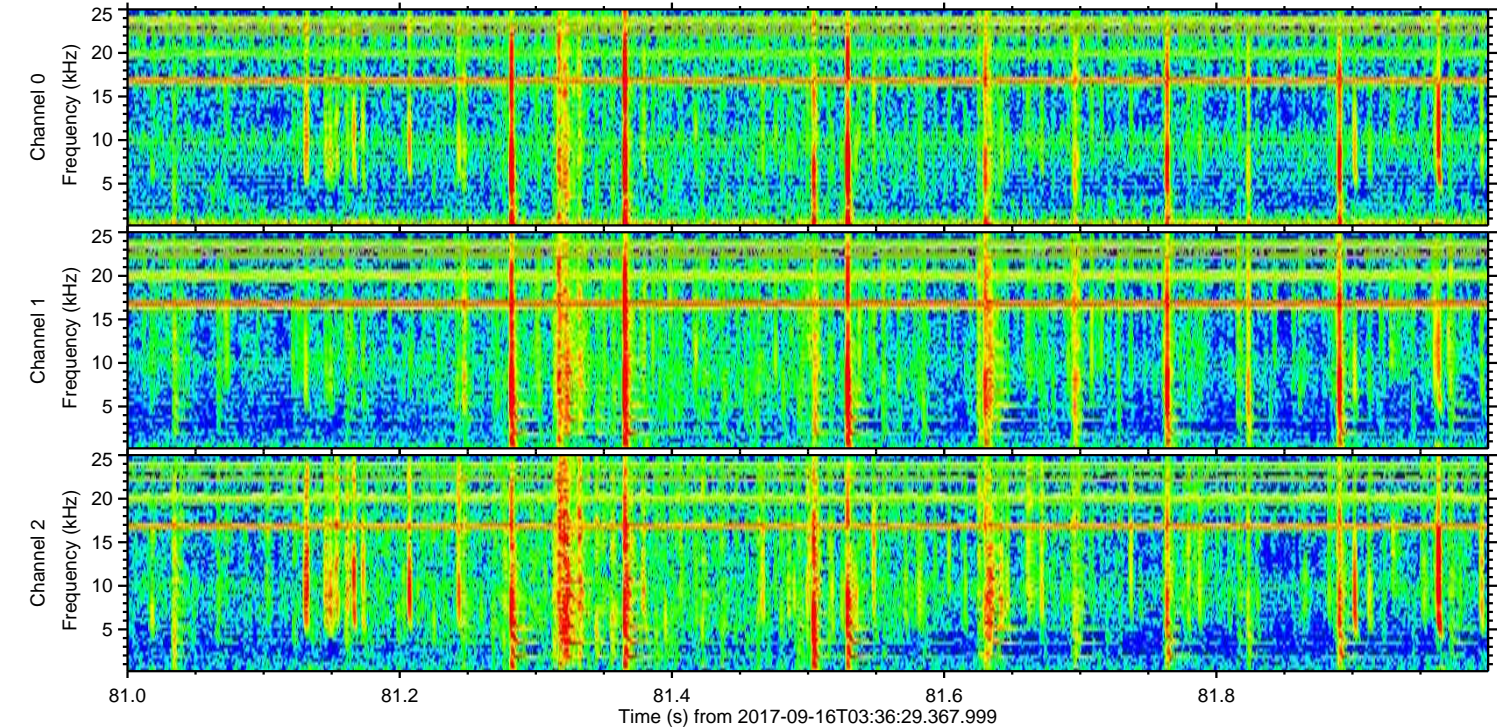
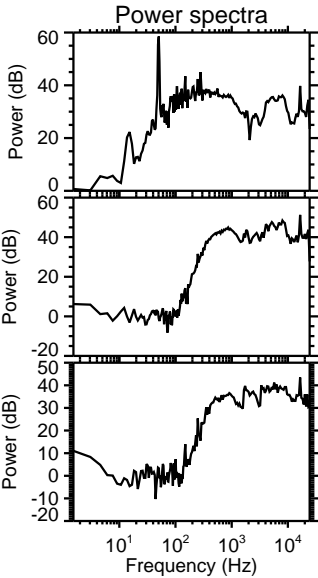
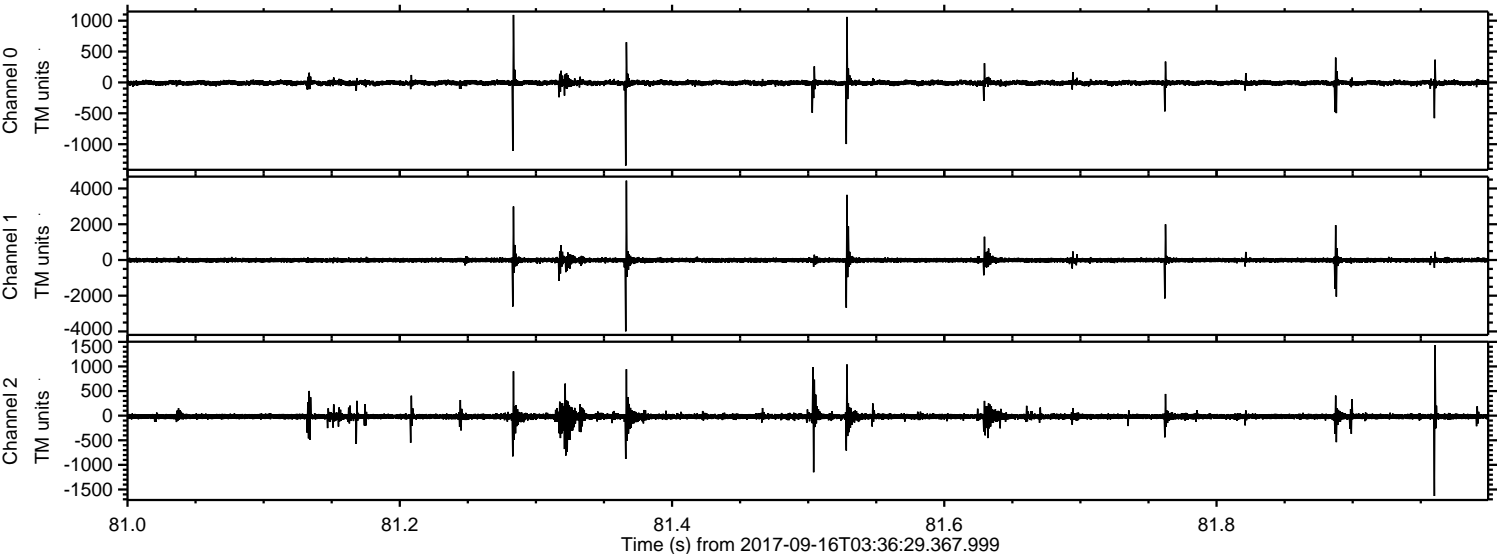
ELMAVAN 3D WAVEFORMS (Measured data sampled at 50 kHz) 51000 packets of 144 samples from 2017-09-16T03:36:29.367.999. Part 120/147

Processed Sat Sep 16 05:44:46 2017 by ELM ver.2012-10-06 from 001\_\_elm20170916\_033628\_\_dat00.bin





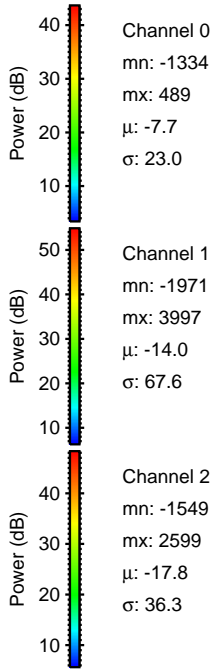
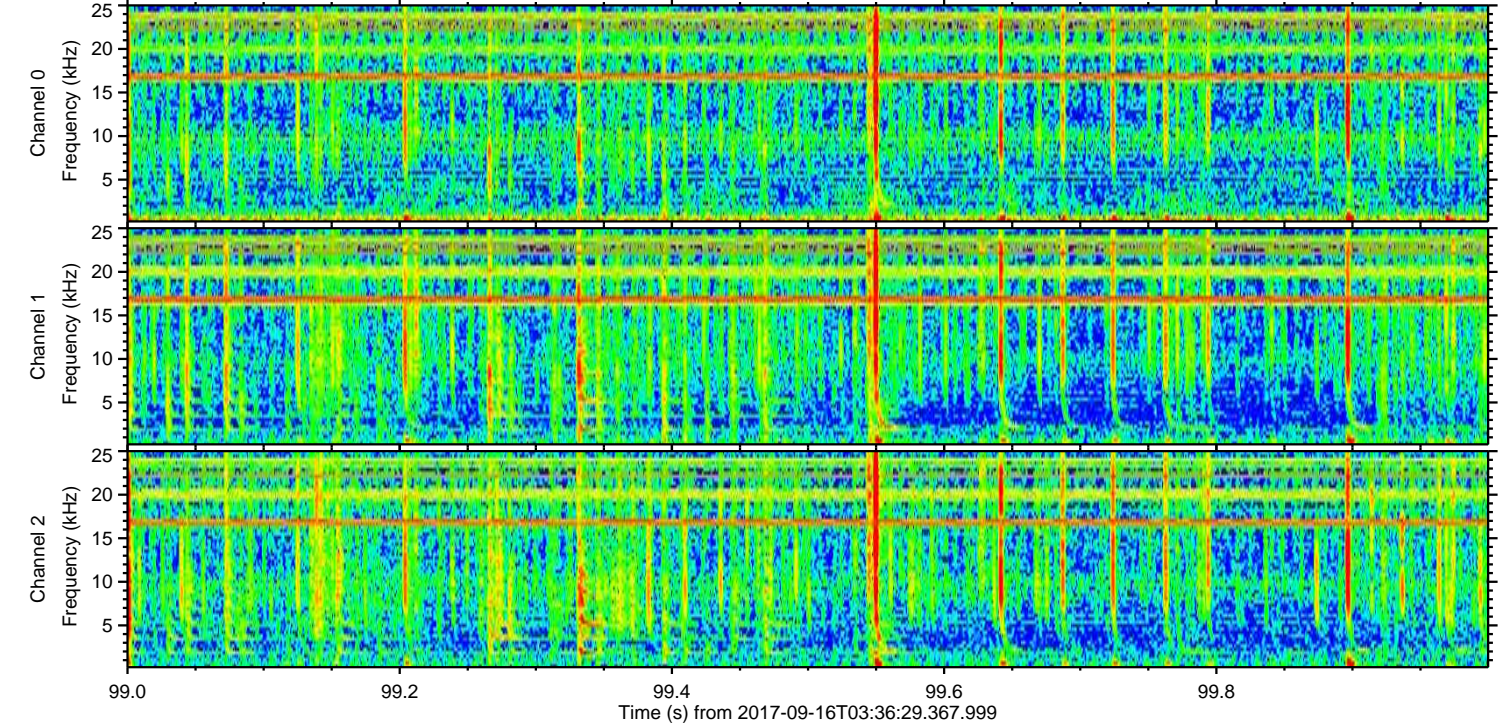
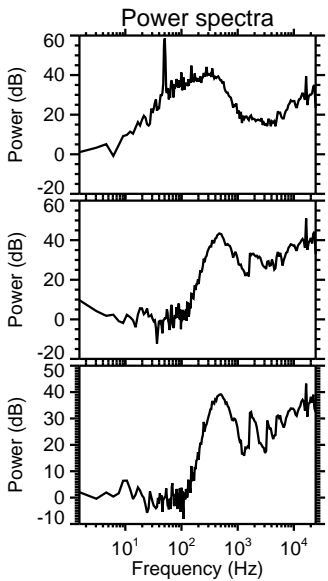
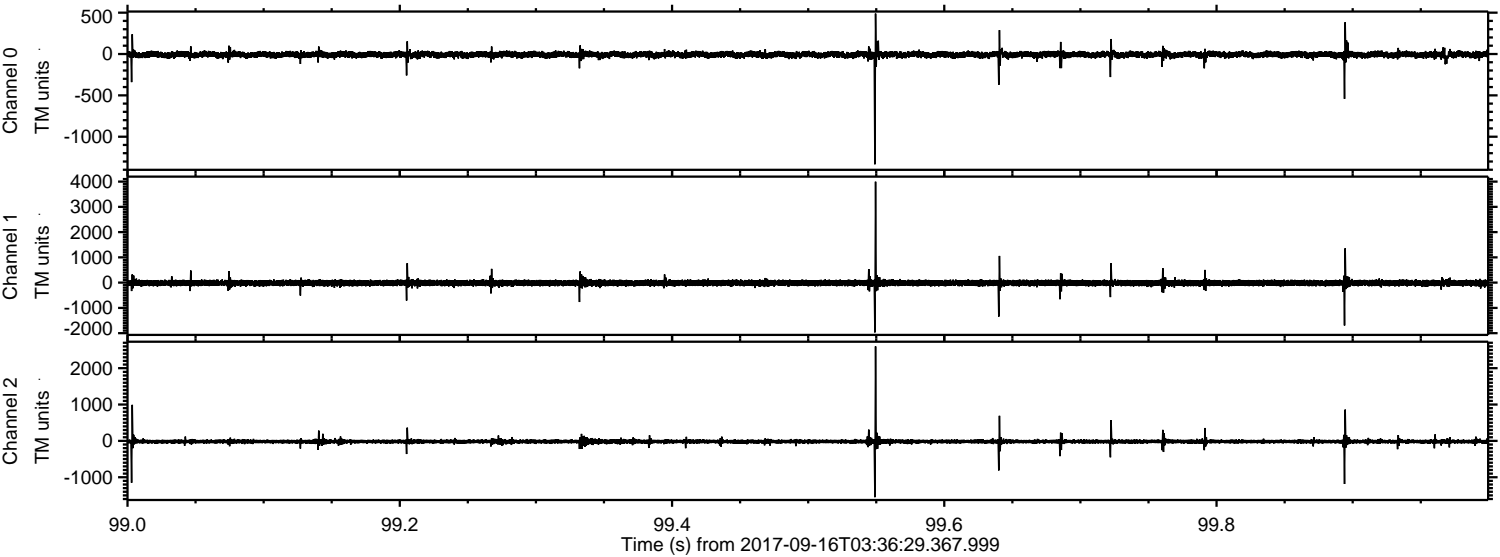
Processed Sat Sep 16 05:44:47 2017 by ELM ver.2012-10-06 from 001\_\_elm20170916\_033628\_\_dat00.bin





ELMAVAN 3D WAVEFORMS (Measured data sampled at 50 kHz) 51000 packets of 144 samples from 2017-09-16T03:36:29.367.999. Part 100/147

Processed Sat Sep 16 05:44:47 2017 by ELM ver.2012-10-06 from 001\_\_elm20170916\_033628\_\_dat00.bin





Processed Sat Sep 16 05:44:48 2017 by ELM ver.2012-10-06 from 001\_\_elm20170916\_033628\_\_dat00.bin

