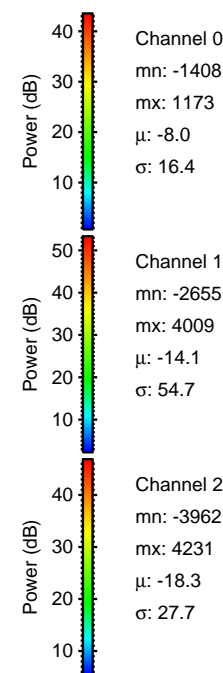
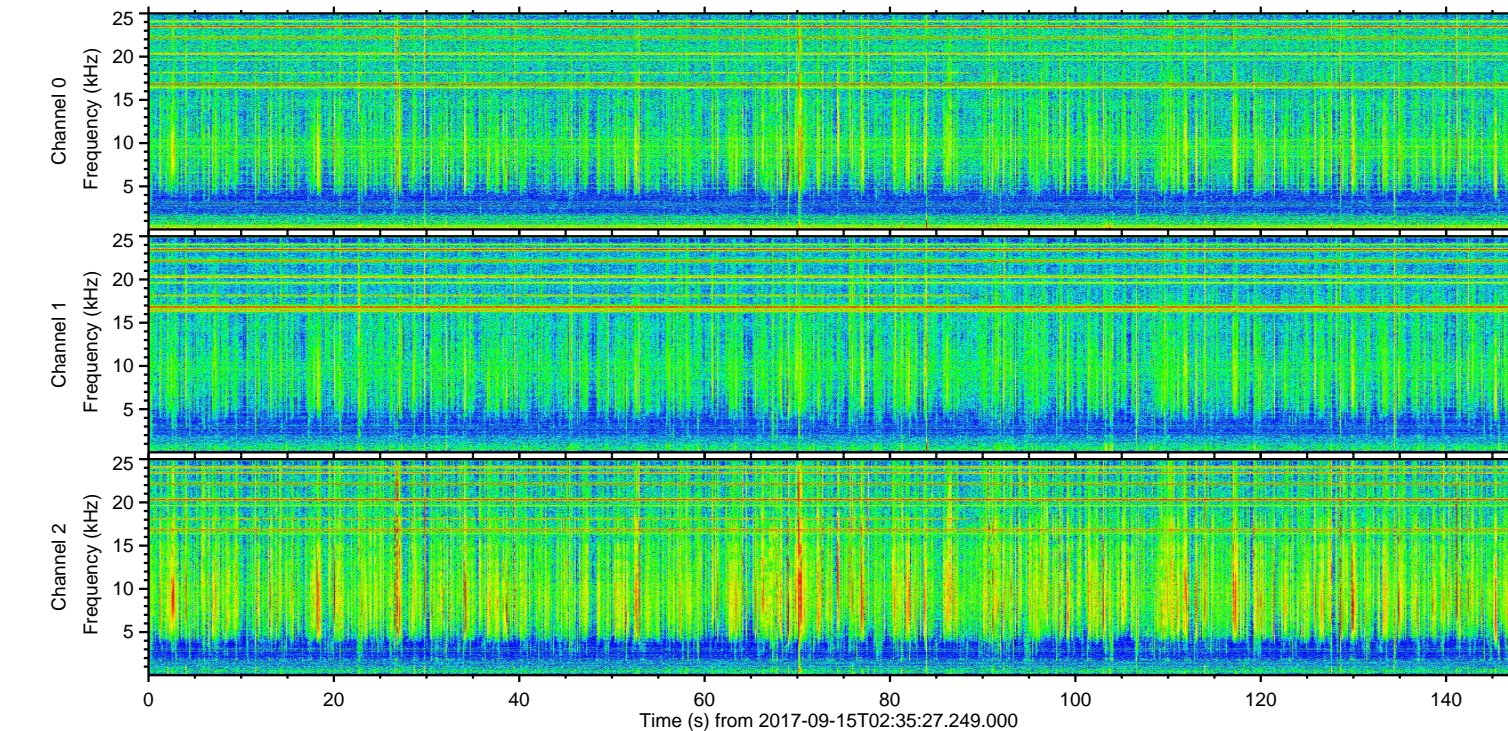
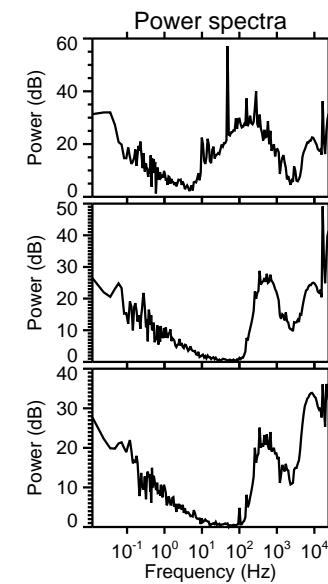
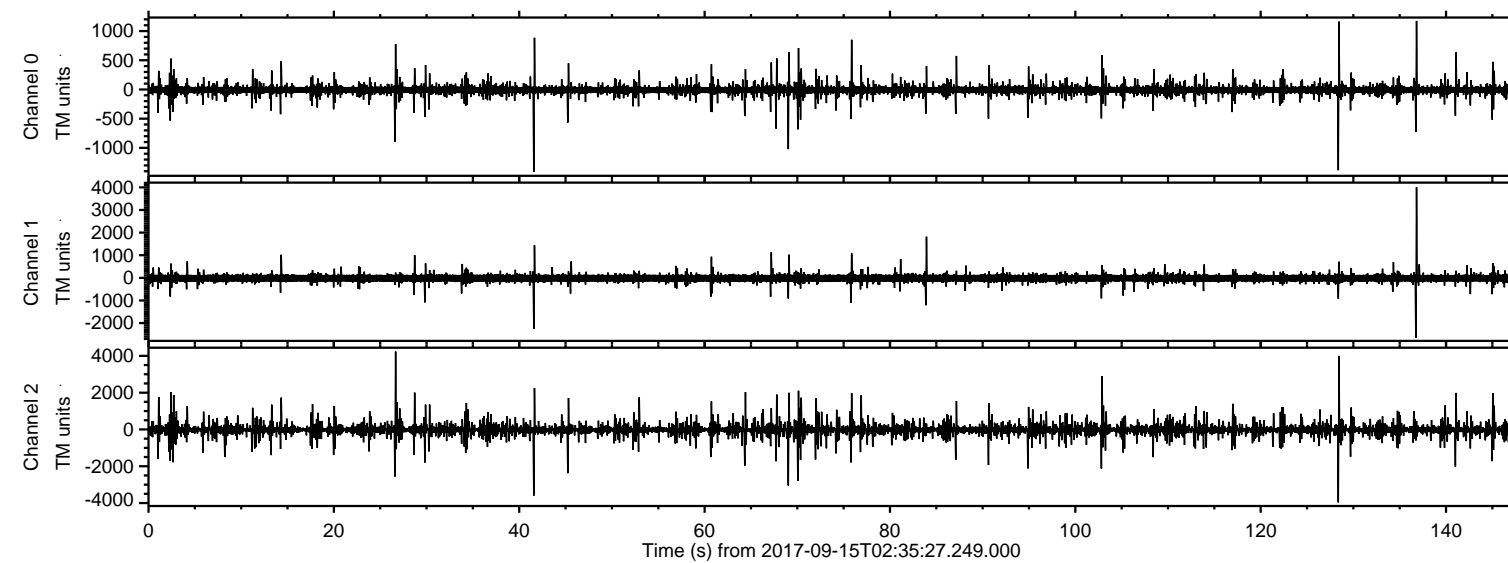


ELMAVAN 3D WAVEFORMS (Measured data sampled at 50 kHz) 51000 packets of 144 samples from 2017-09-15T02:35:27.249.000.

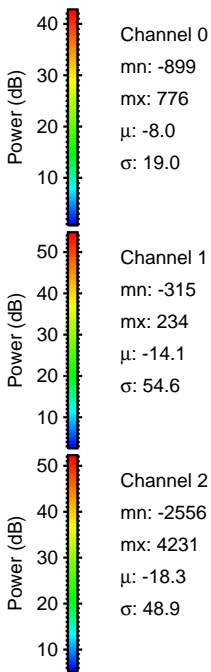
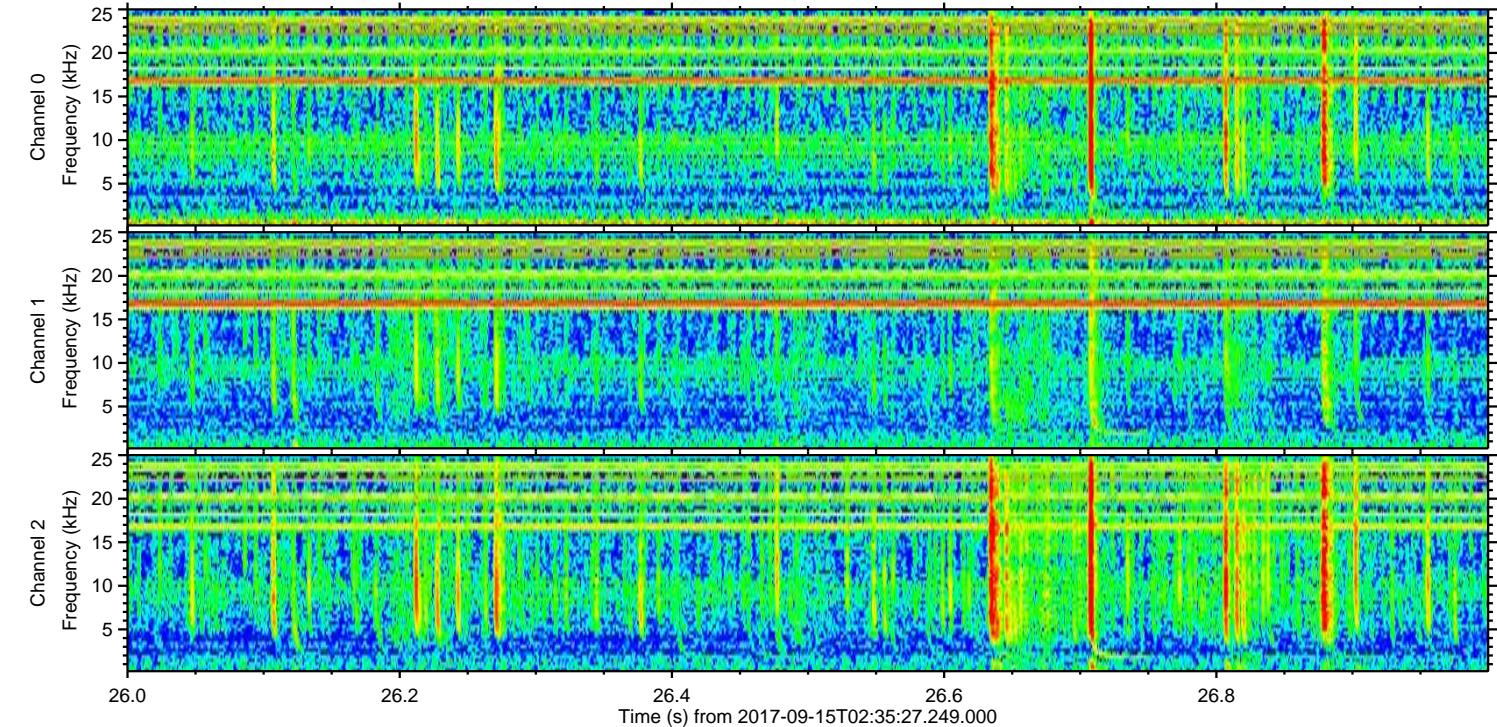
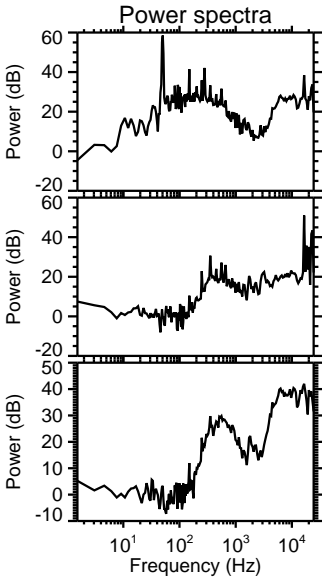
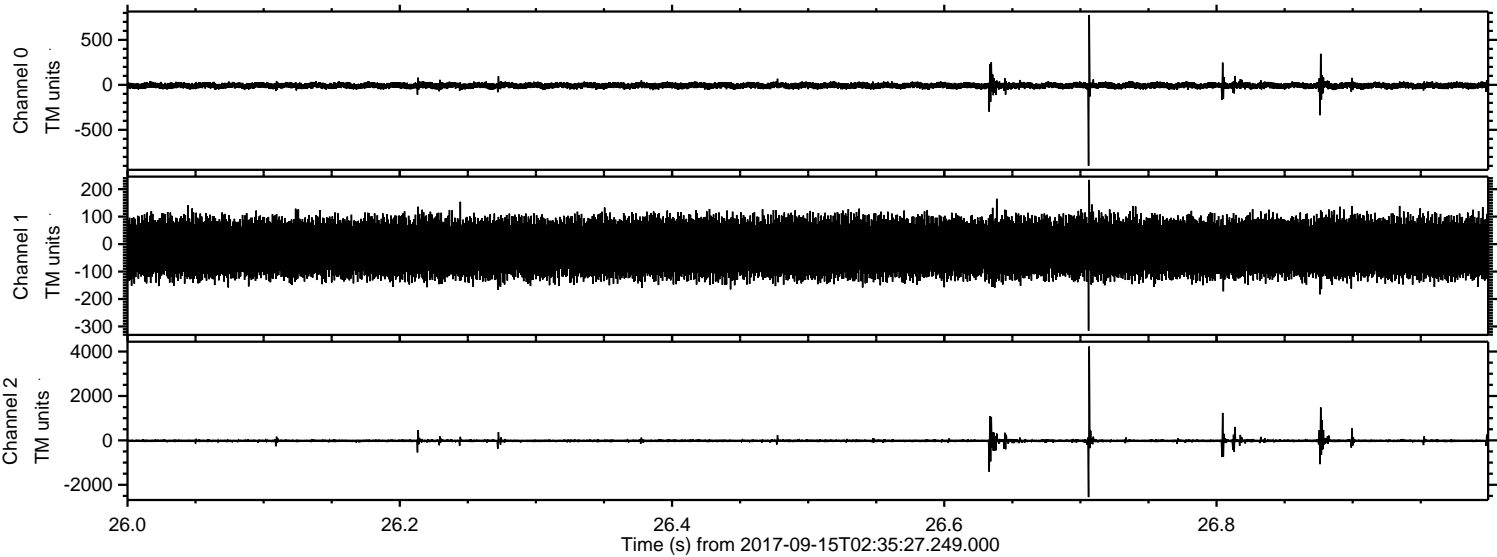
Processed Fri Sep 15 04:43:37 2017 by ELM ver.2012-10-06 from 001\_\_elm20170915\_023526\_\_dat00.bin





ELMAVAN 3D WAVEFORMS (Measured data sampled at 50 kHz) 51000 packets of 144 samples from 2017-09-15T02:35:27.249.000. Part 27/147

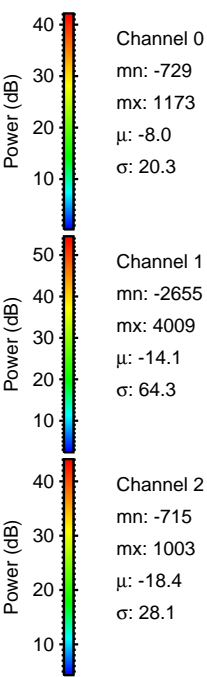
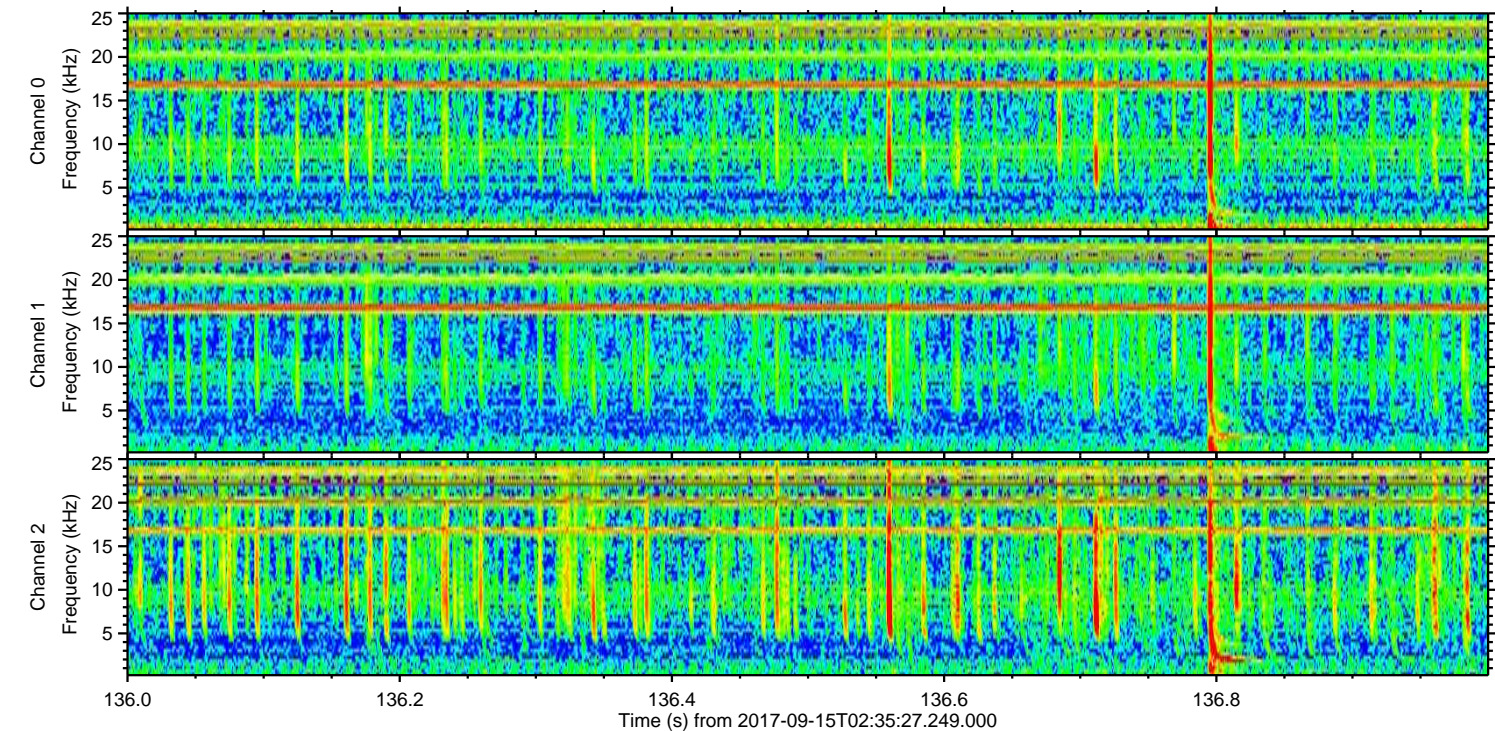
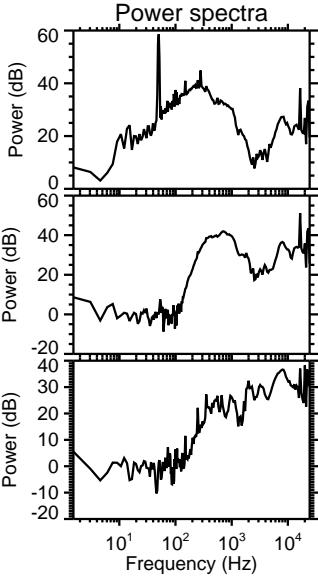
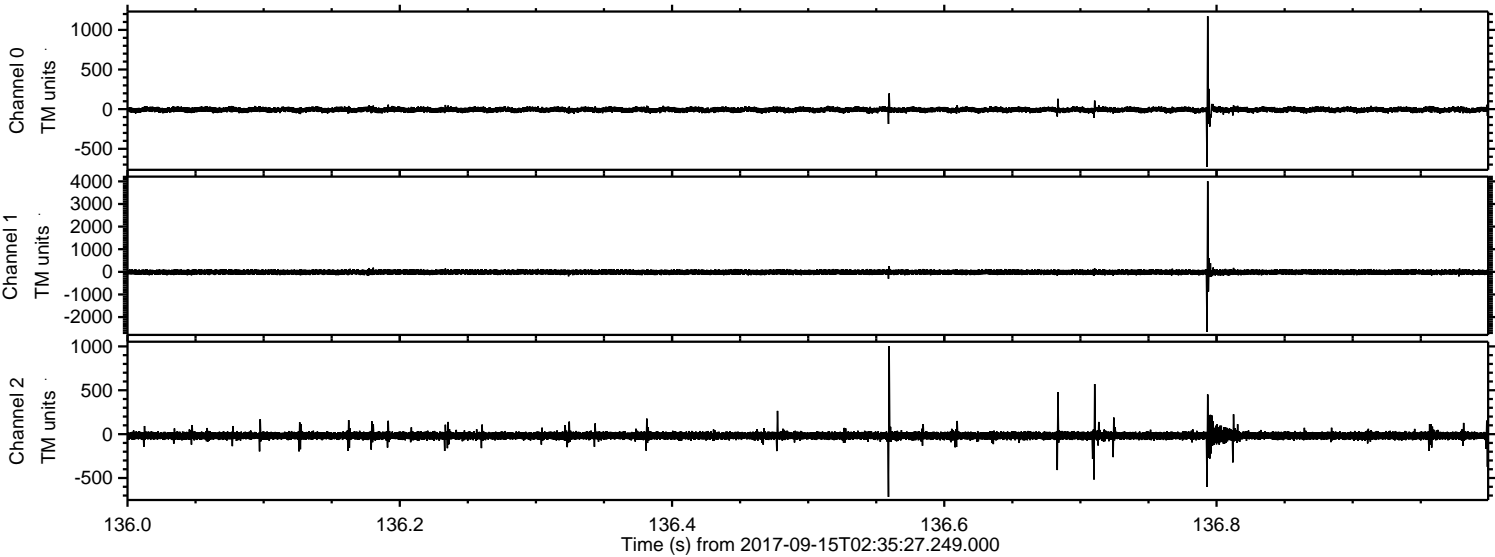
Processed Fri Sep 15 04:43:44 2017 by ELM ver.2012-10-06 from 001\_\_elm20170915\_023526\_\_dat00.bin





ELMAVAN 3D WAVEFORMS (Measured data sampled at 50 kHz) 51000 packets of 144 samples from 2017-09-15T02:35:27.249.000. Part 137/147

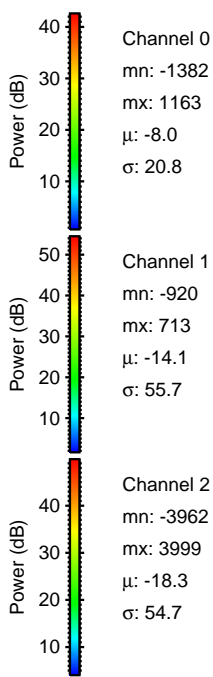
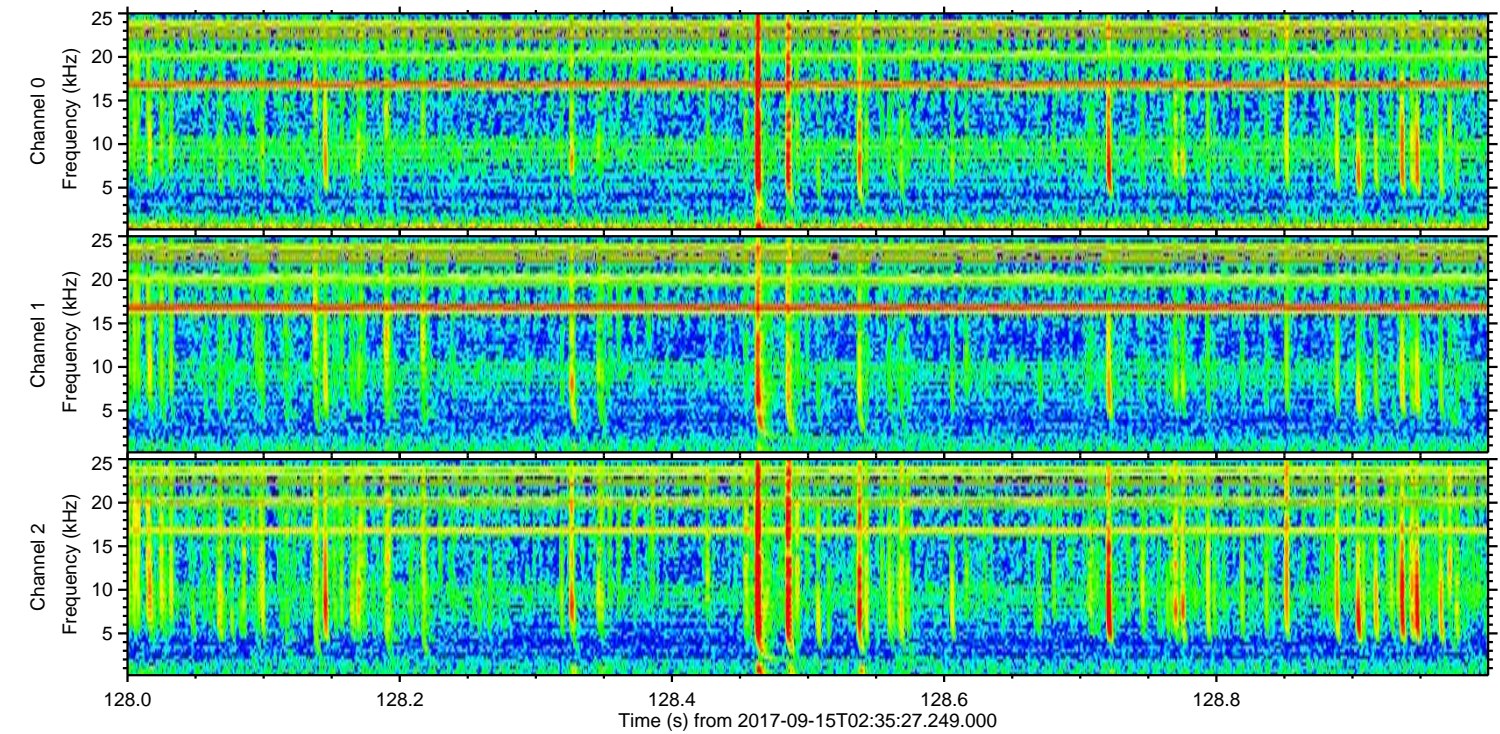
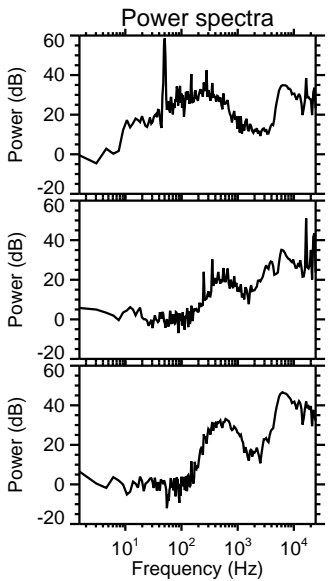
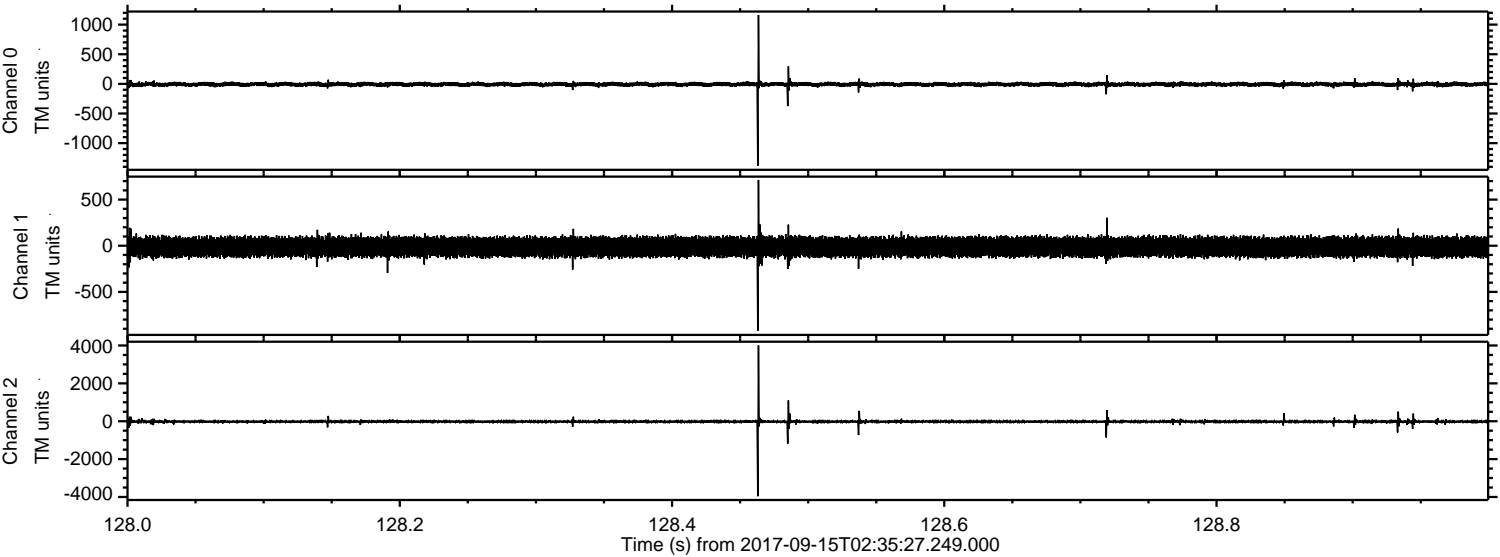
Processed Fri Sep 15 04:43:44 2017 by ELM ver.2012-10-06 from 001\_\_elm20170915\_023526\_\_dat00.bin





ELMAVAN 3D WAVEFORMS (Measured data sampled at 50 kHz) 51000 packets of 144 samples from 2017-09-15T02:35:27.249.000. Part 129/147

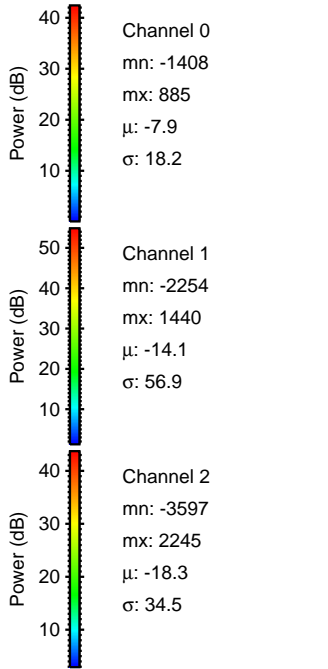
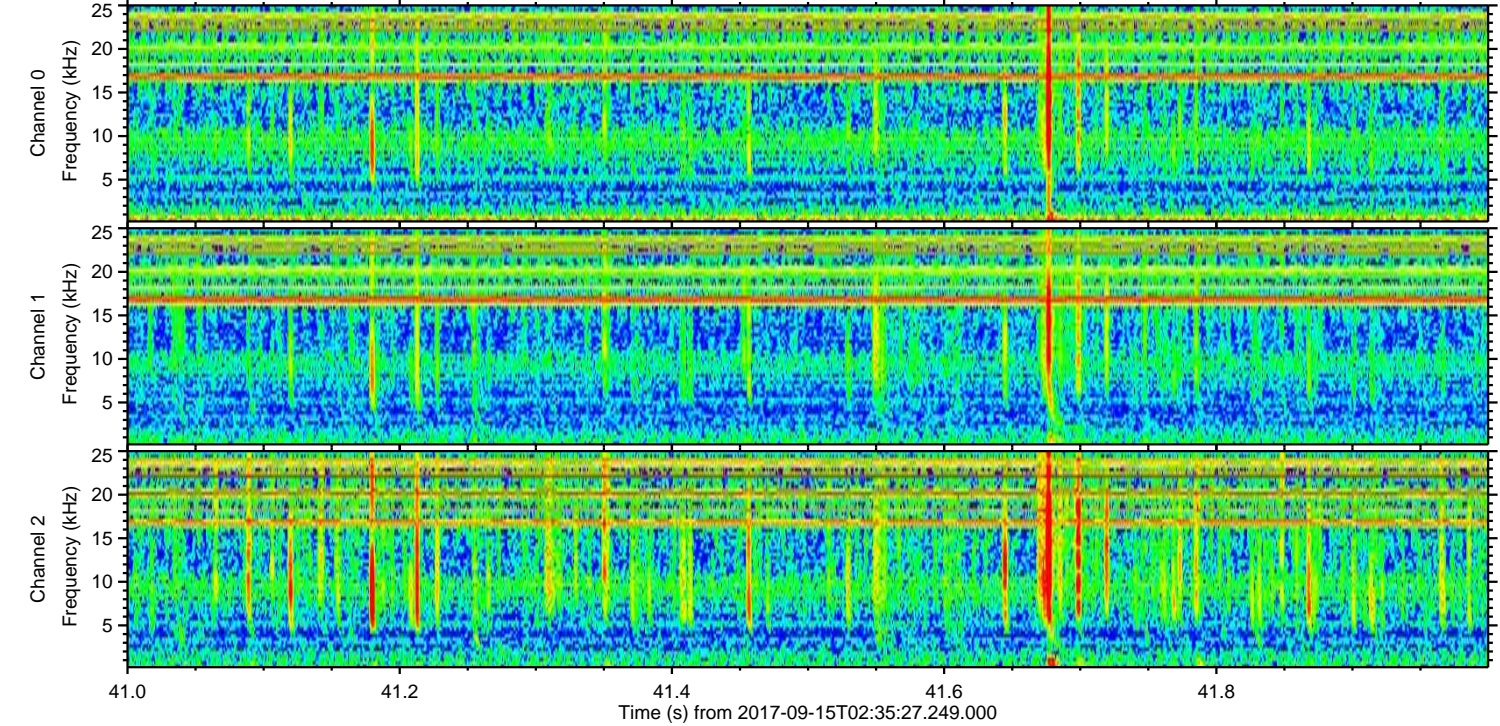
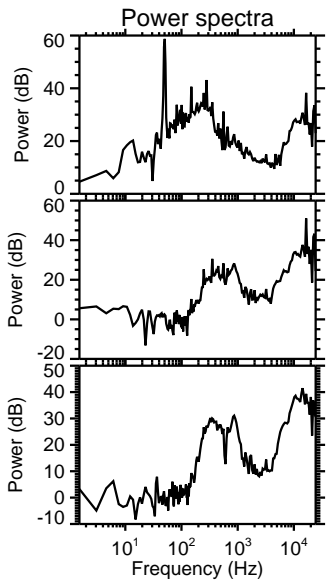
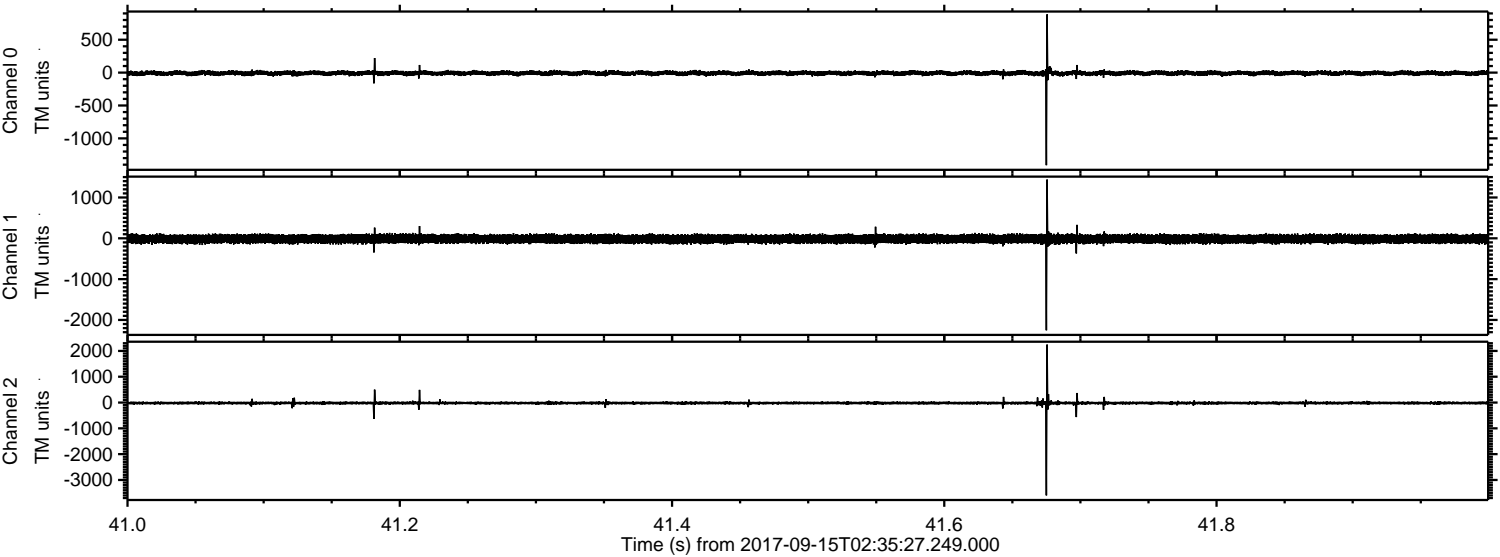
Processed Fri Sep 15 04:43:45 2017 by ELM ver.2012-10-06 from 001\_\_elm20170915\_023526\_\_dat00.bin





ELMAVAN 3D WAVEFORMS (Measured data sampled at 50 kHz) 51000 packets of 144 samples from 2017-09-15T02:35:27.249.000. Part 42/147

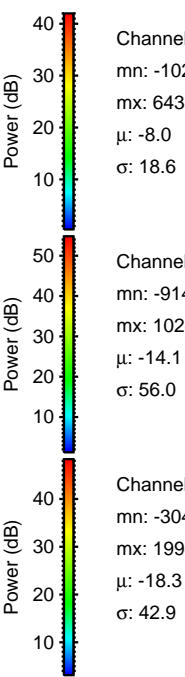
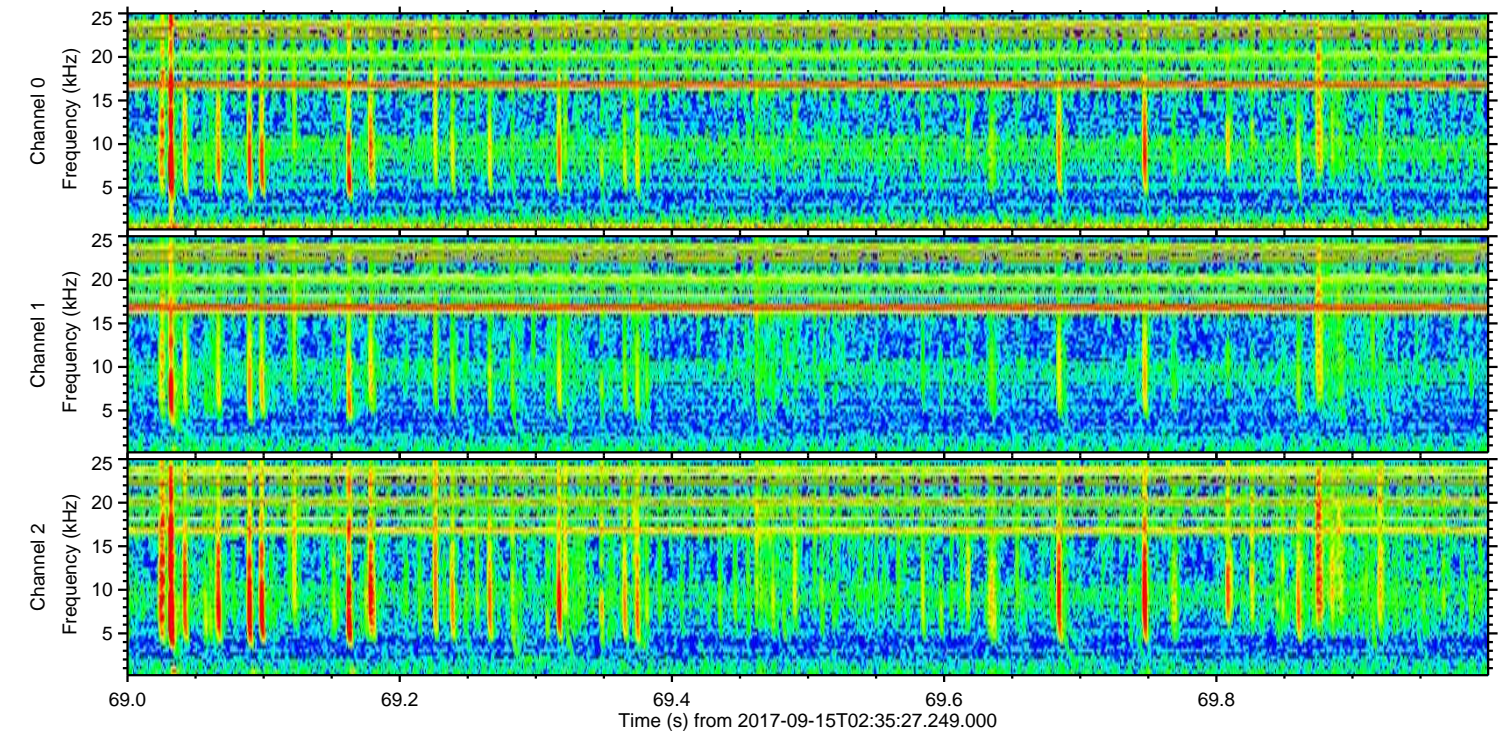
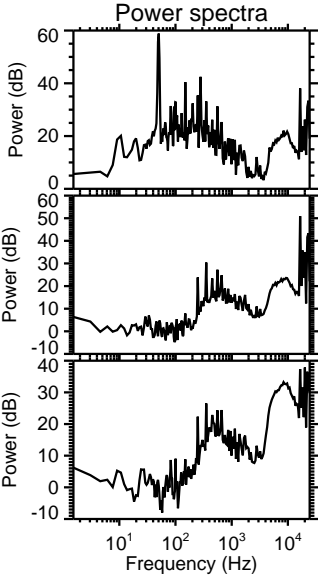
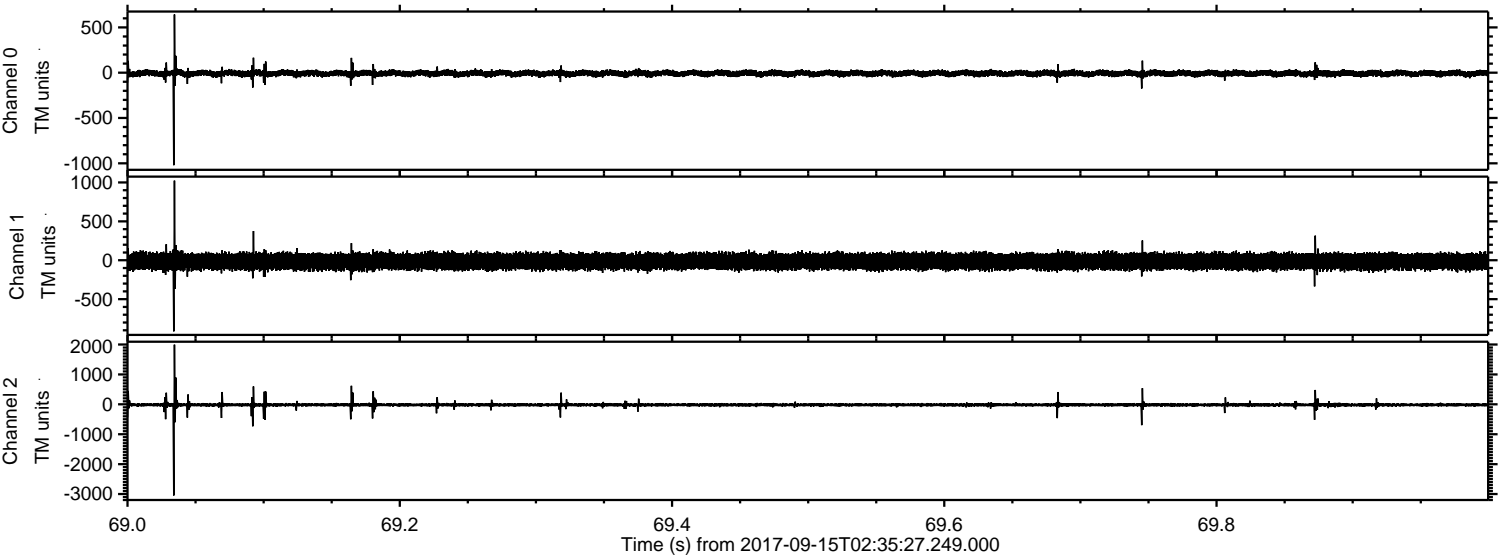
Processed Fri Sep 15 04:43:46 2017 by ELM ver.2012-10-06 from 001\_\_elm20170915\_023526\_\_dat00.bin





ELMAVAN 3D WAVEFORMS (Measured data sampled at 50 kHz) 51000 packets of 144 samples from 2017-09-15T02:35:27.249.000. Part 70/147

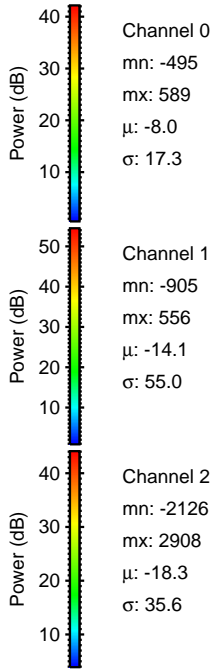
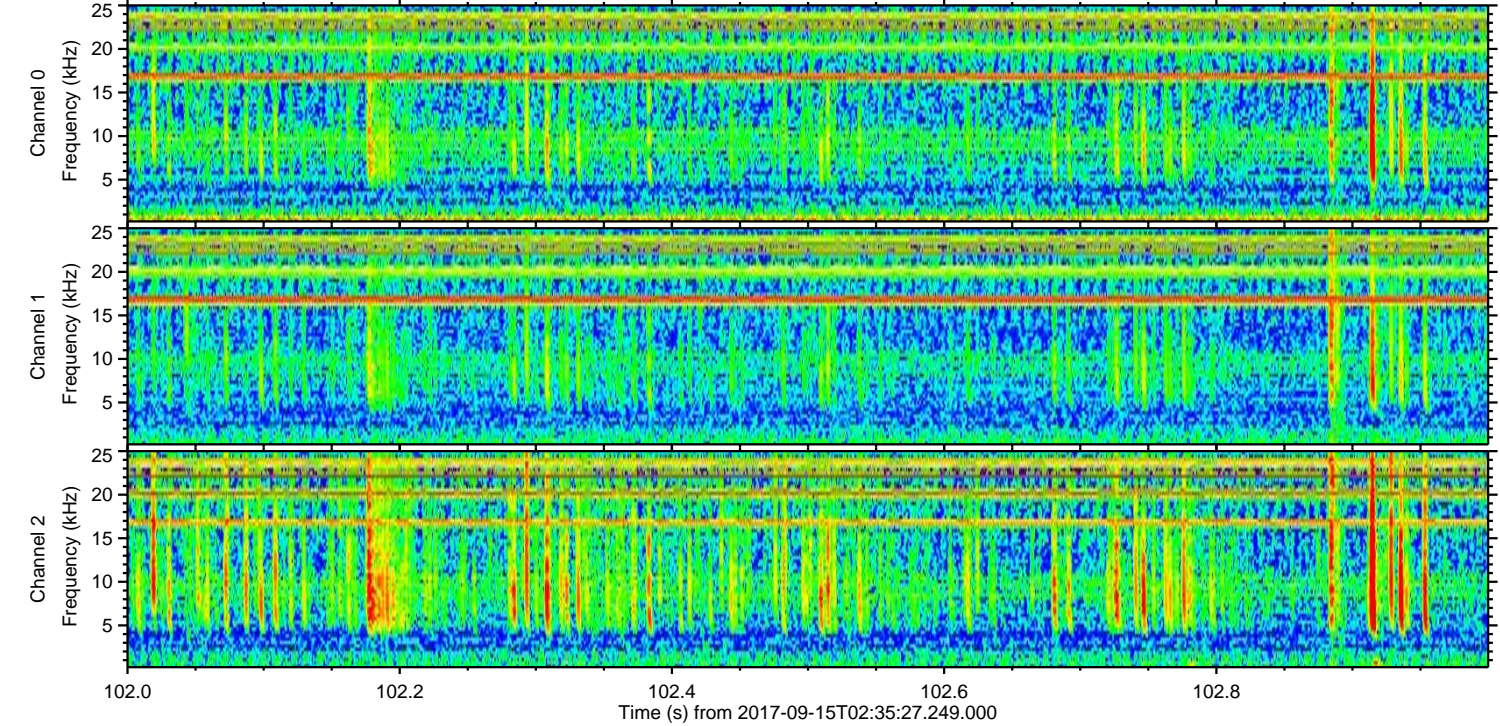
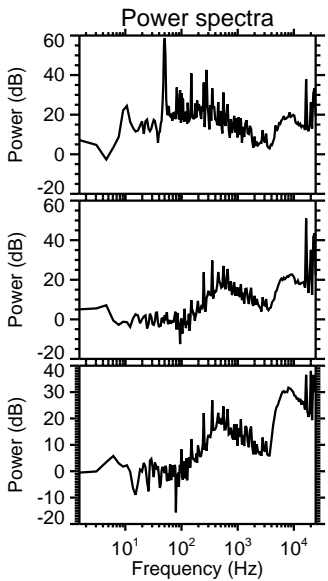
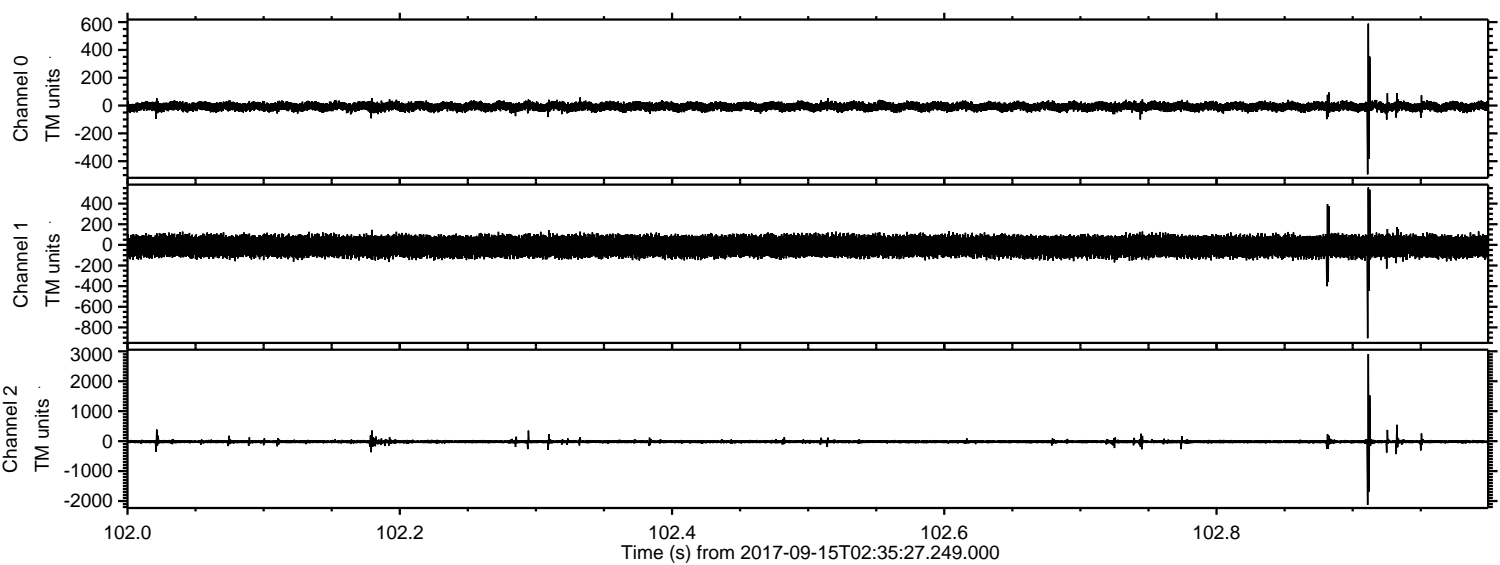
Processed Fri Sep 15 04:43:46 2017 by ELM ver.2012-10-06 from 001\_\_elm20170915\_023526\_\_dat00.bin





ELMAVAN 3D WAVEFORMS (Measured data sampled at 50 kHz) 51000 packets of 144 samples from 2017-09-15T02:35:27.249.000. Part 103/147

Processed Fri Sep 15 04:43:47 2017 by ELM ver.2012-10-06 from 001\_\_elm20170915\_023526\_\_dat00.bin



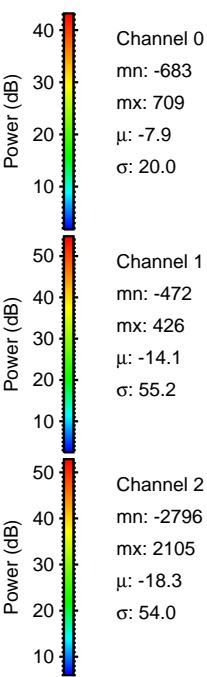
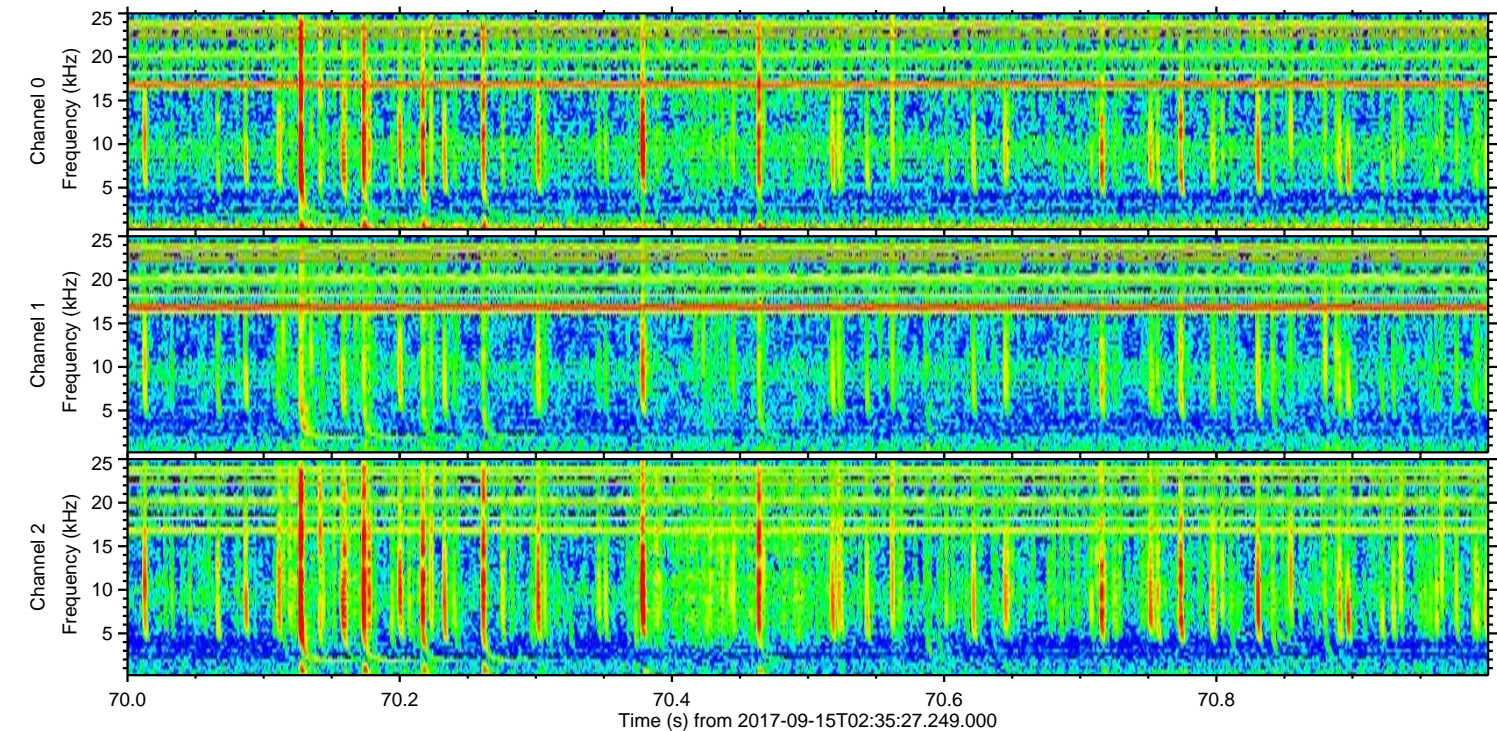
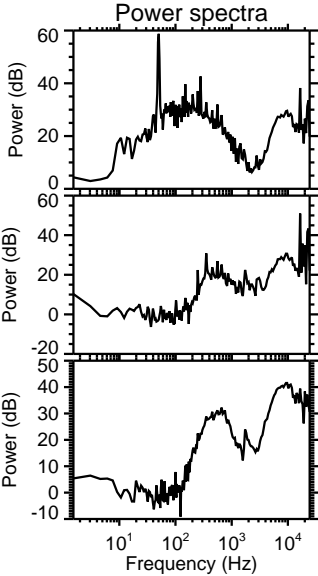
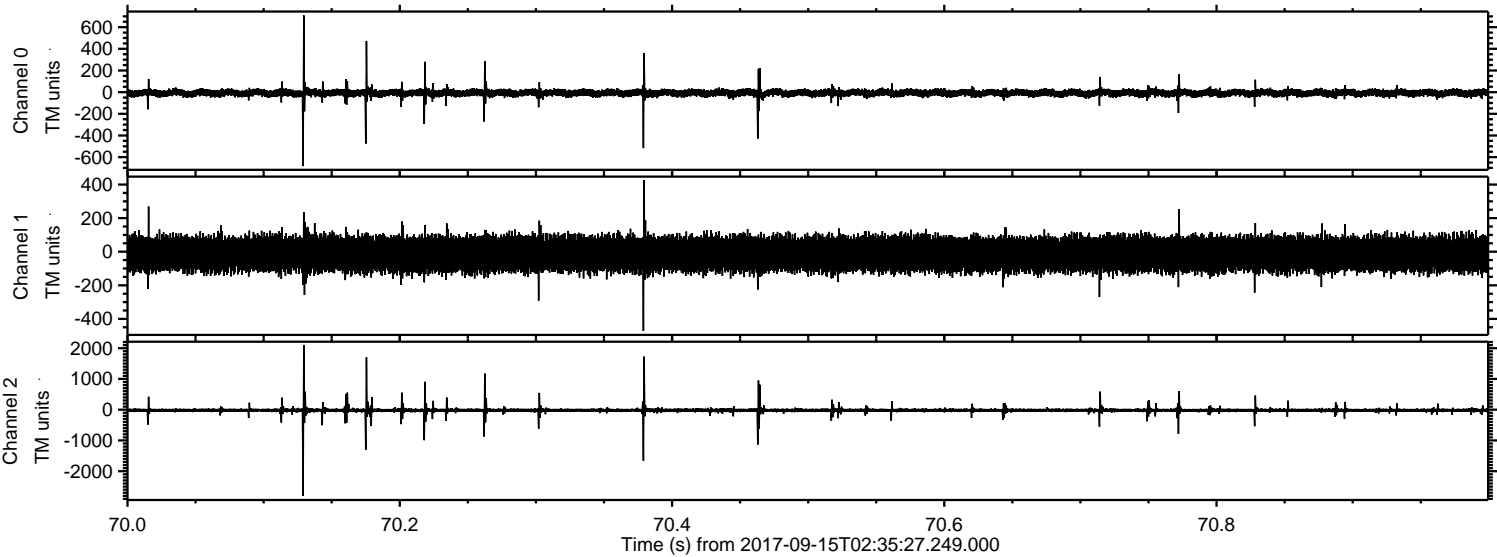
Channel 0  
mn: -495  
mx: 589  
 $\mu$ : -8.0  
 $\sigma$ : 17.3

Channel 1  
mn: -905  
mx: 556  
 $\mu$ : -14.1  
 $\sigma$ : 55.0

Channel 2  
mn: -2126  
mx: 2908  
 $\mu$ : -18.3  
 $\sigma$ : 35.6

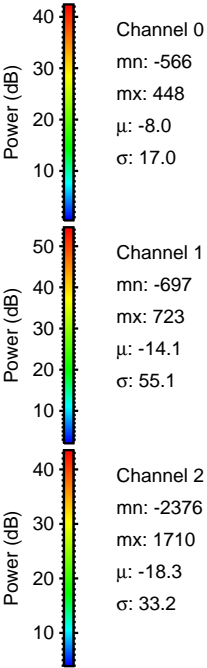
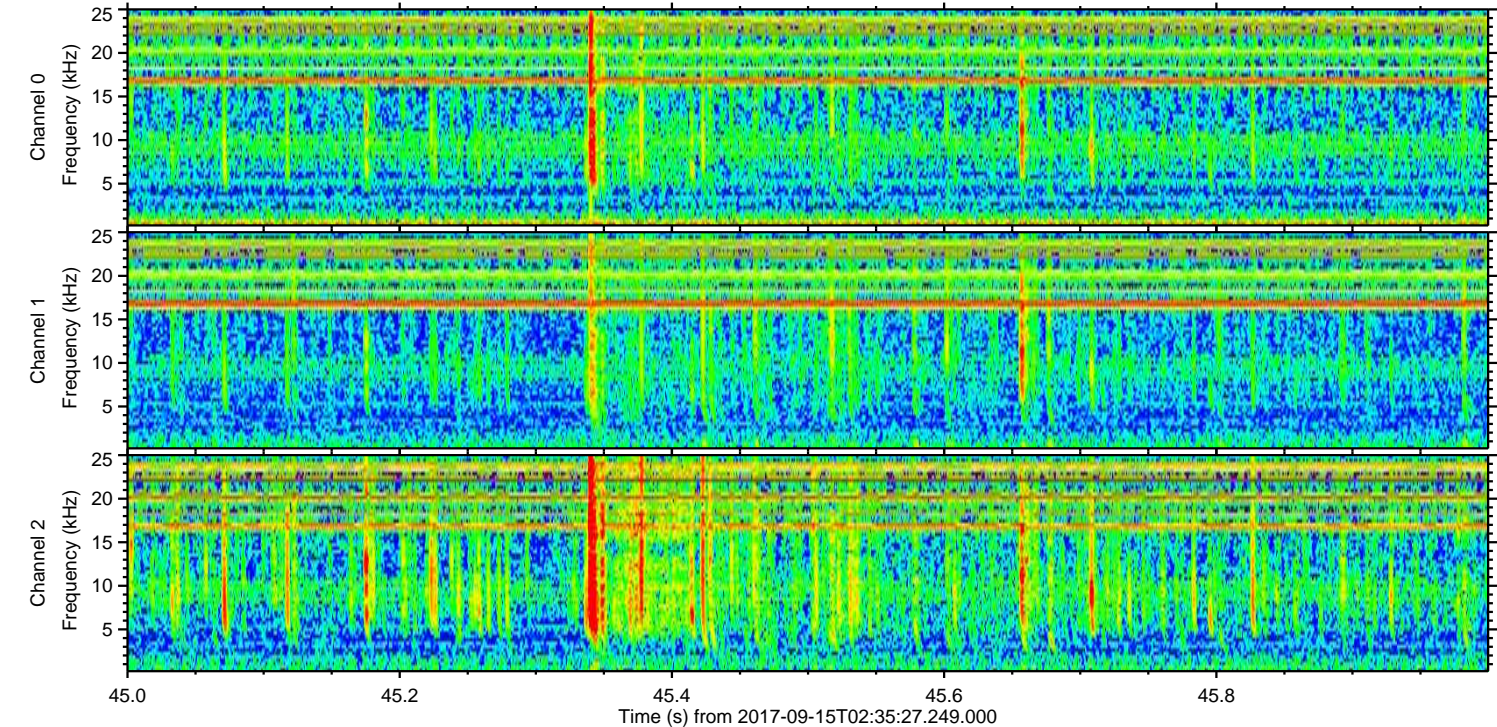
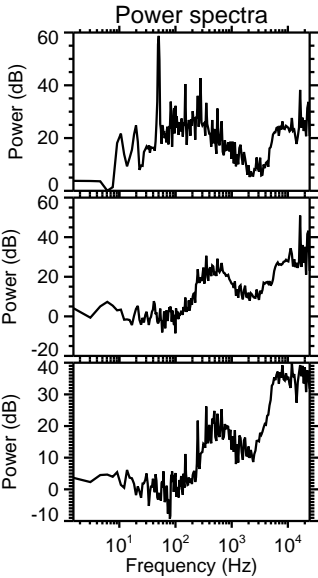
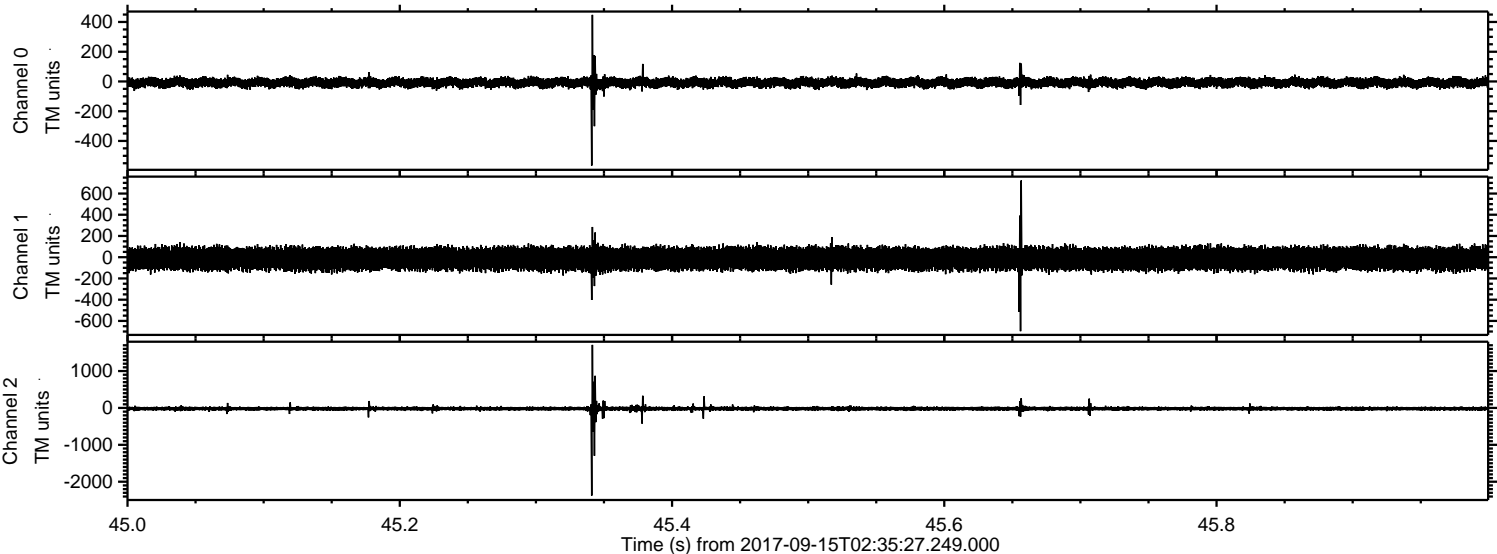


Processed Fri Sep 15 04:43:48 2017 by ELM ver.2012-10-06 from 001\_\_elm20170915\_023526\_\_dat00.bin



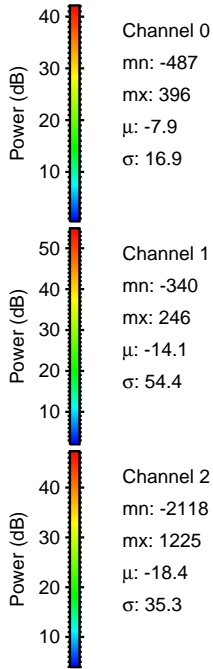
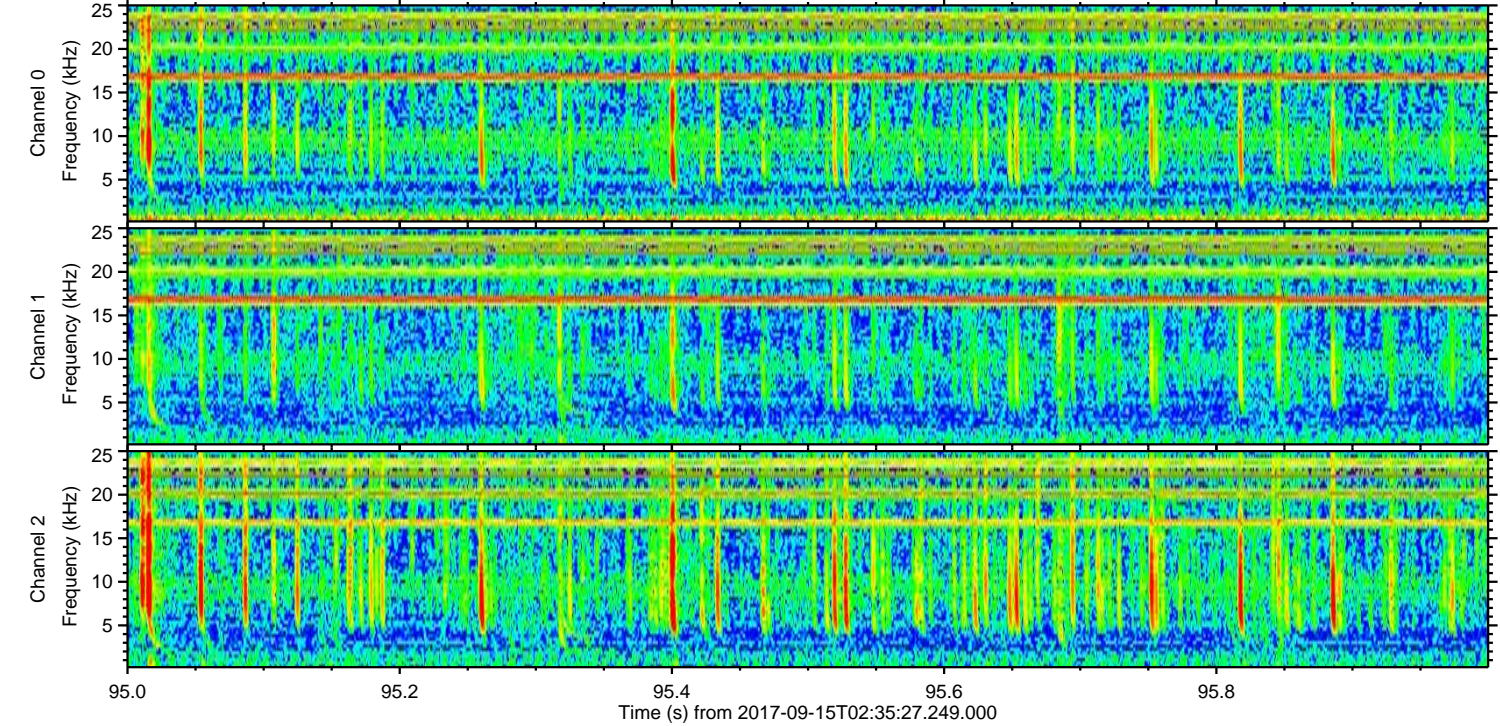
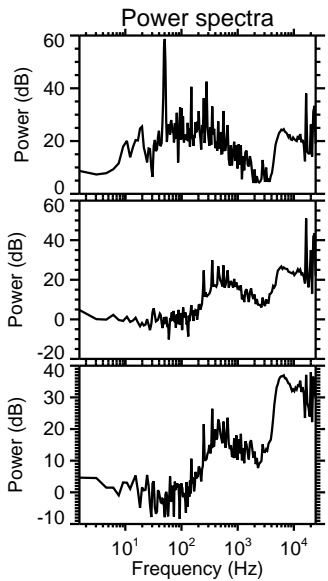
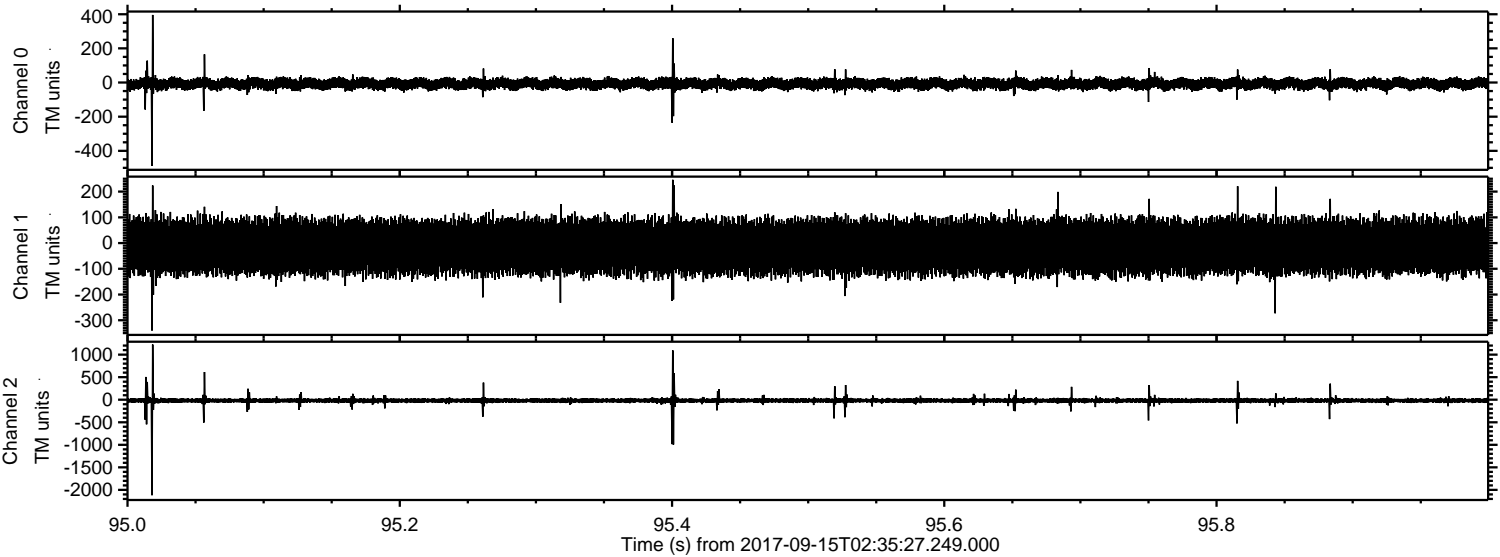


Processed Fri Sep 15 04:43:48 2017 by ELM ver.2012-10-06 from 001\_\_elm20170915\_023526\_\_dat00.bin





Processed Fri Sep 15 04:43:49 2017 by ELM ver.2012-10-06 from 001\_\_elm20170915\_023526\_\_dat00.bin



Channel 0  
mn: -487  
mx: 396  
 $\mu$ : -7.9  
 $\sigma$ : 16.9

Channel 1  
mn: -340  
mx: 246  
 $\mu$ : -14.1  
 $\sigma$ : 54.4

Channel 2  
mn: -2118  
mx: 1225  
 $\mu$ : -18.4  
 $\sigma$ : 35.3



Processed Fri Sep 15 04:43:50 2017 by ELM ver.2012-10-06 from 001\_\_elm20170915\_023526\_\_dat00.bin

