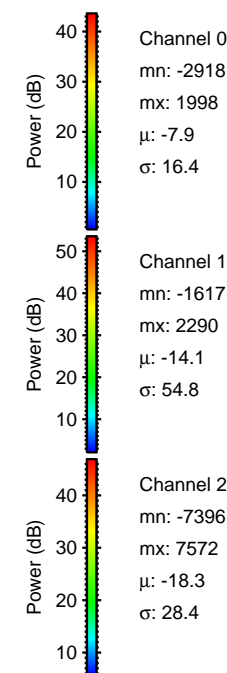
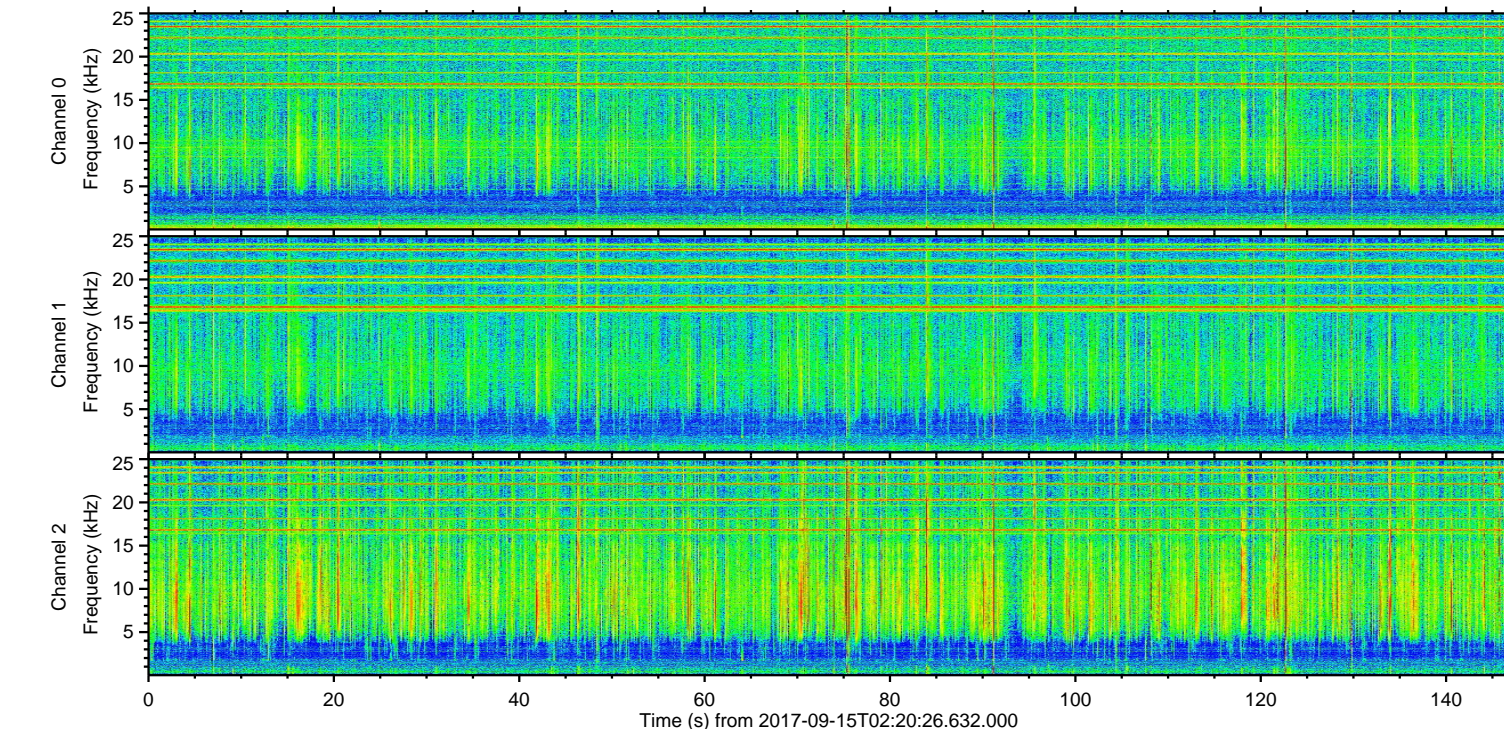
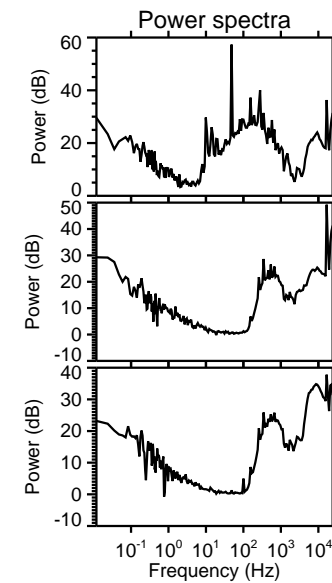
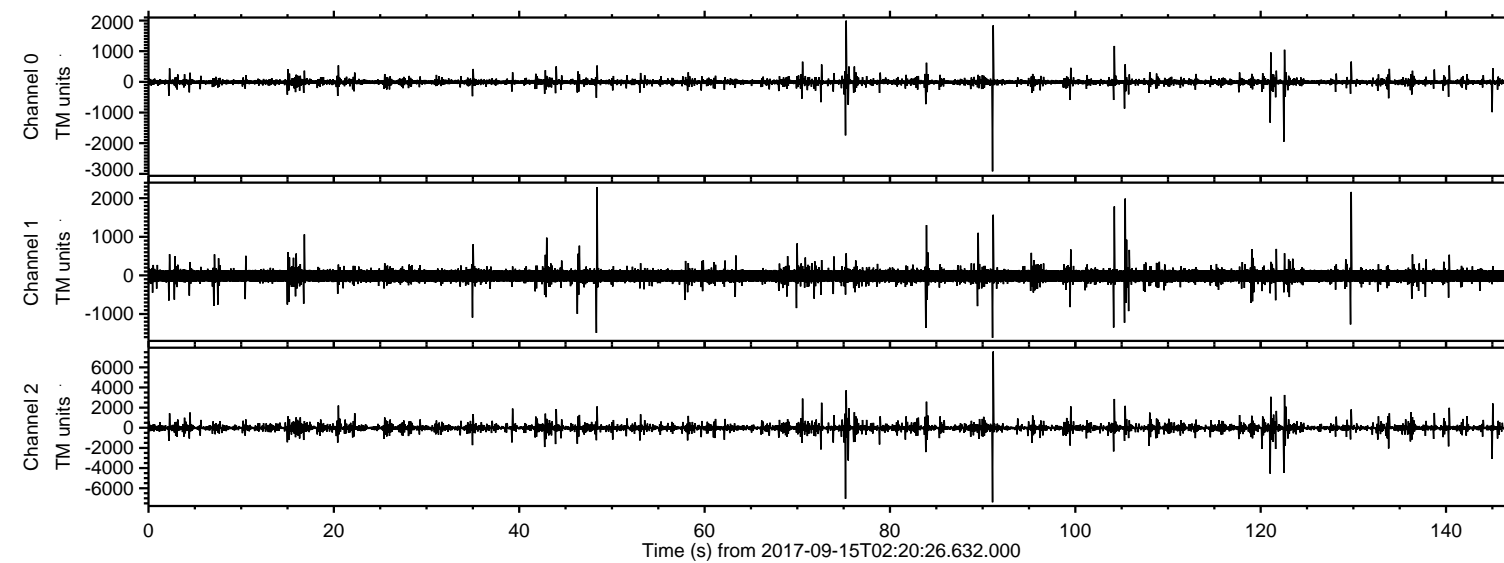
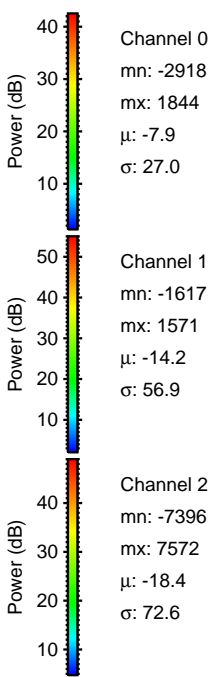
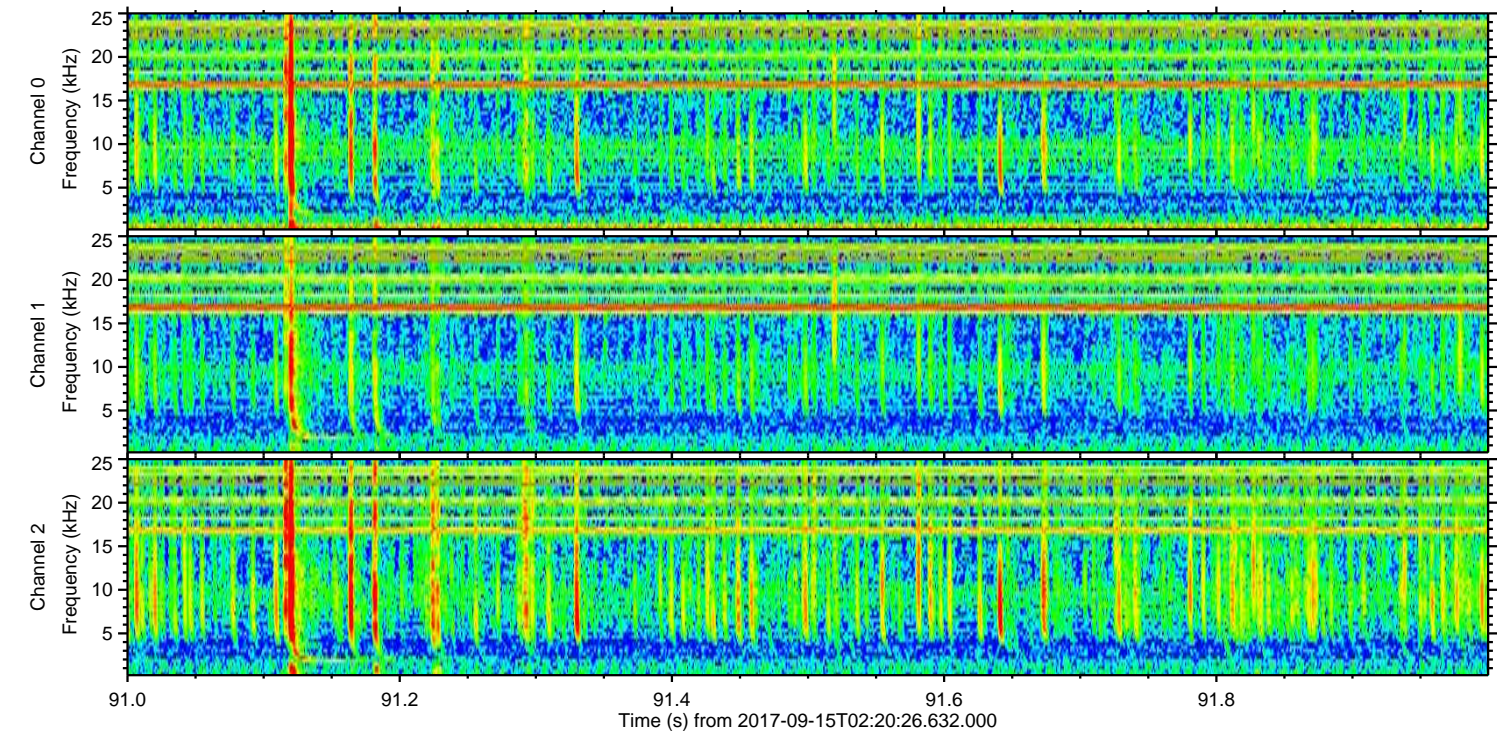
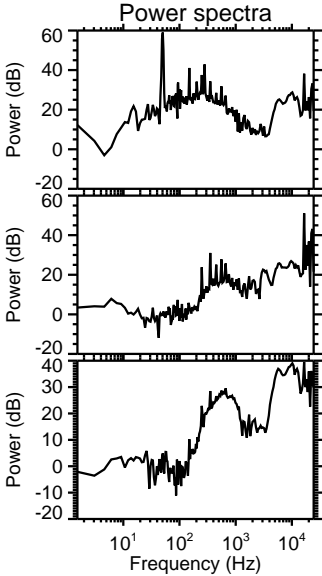
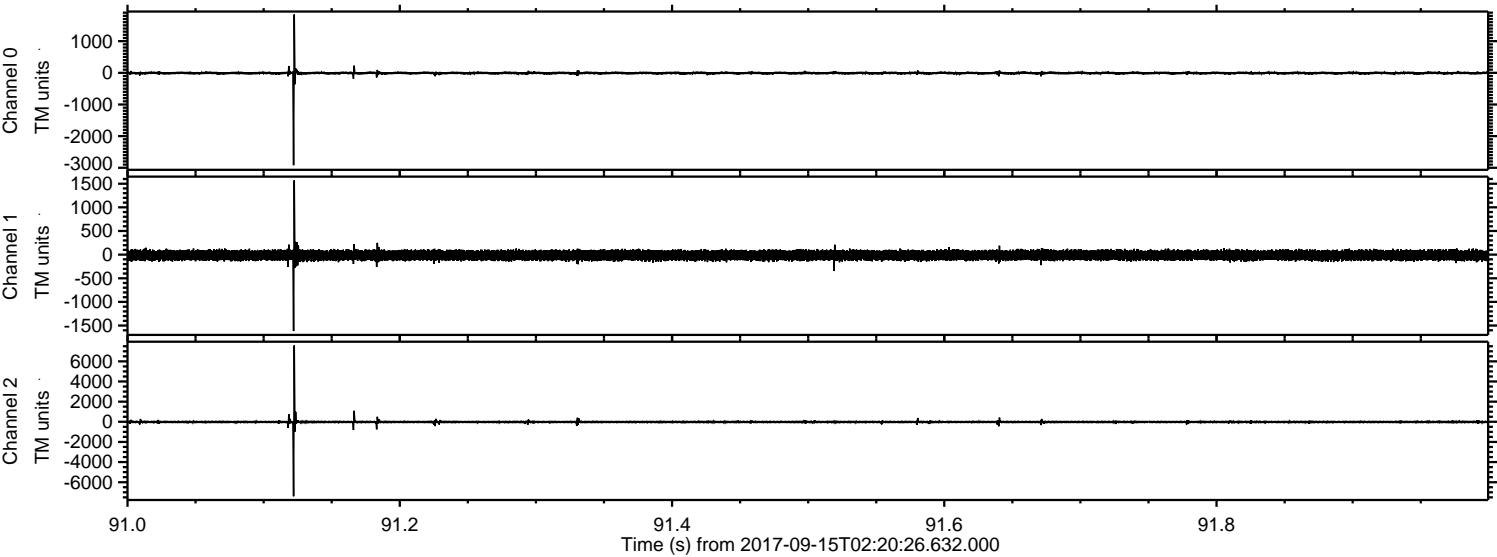


ELMAVAN 3D WAVEFORMS (Measured data sampled at 50 kHz) 51000 packets of 144 samples from 2017-09-15T02:20:26.632.000.

Processed Fri Sep 15 04:27:45 2017 by ELM ver.2012-10-06 from 001__elm20170915_022025__dat00.bin

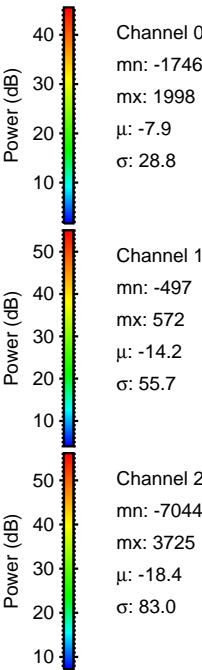
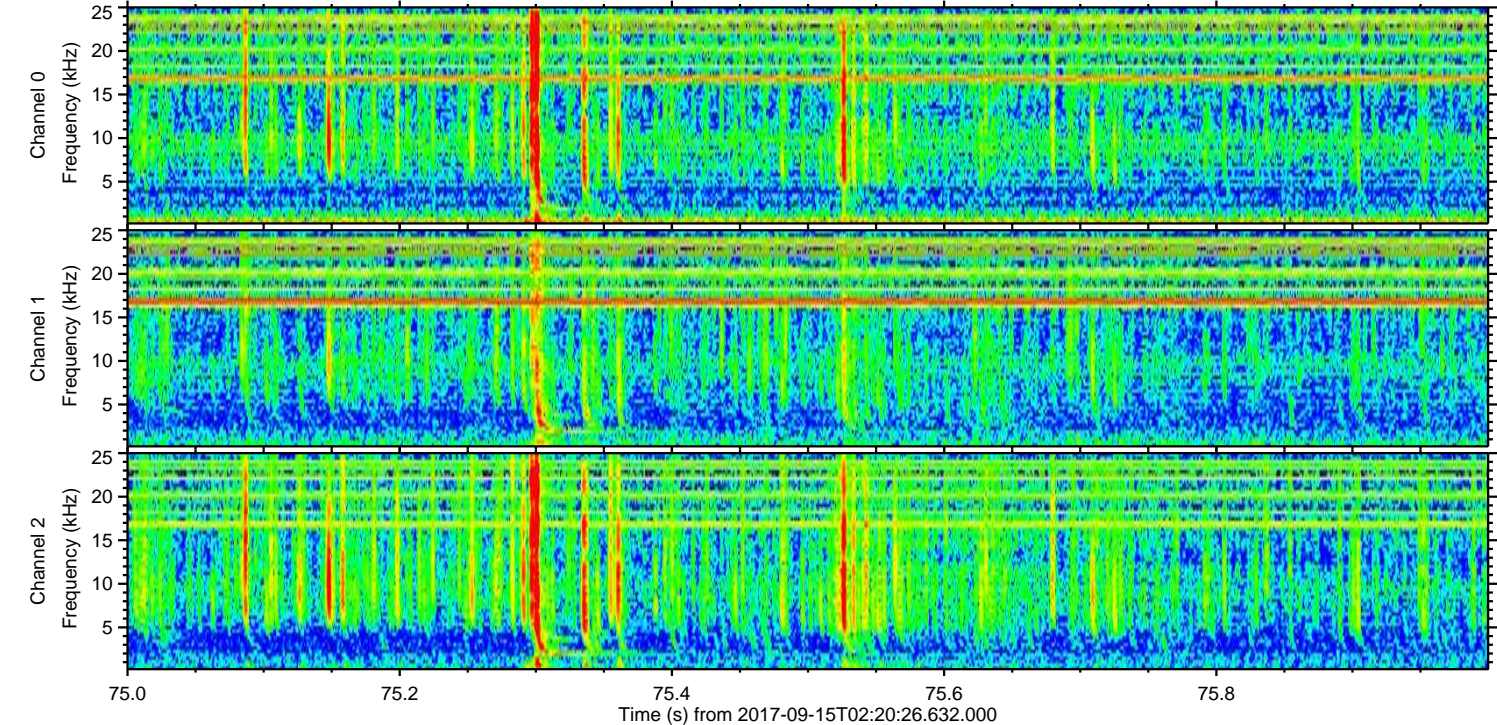
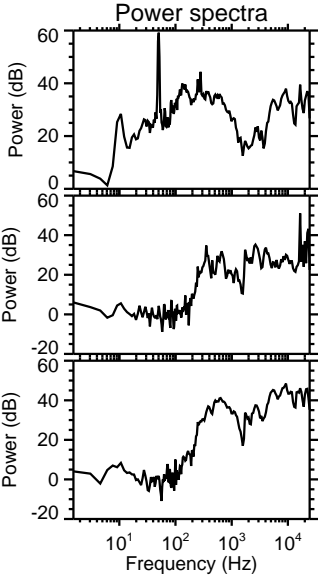
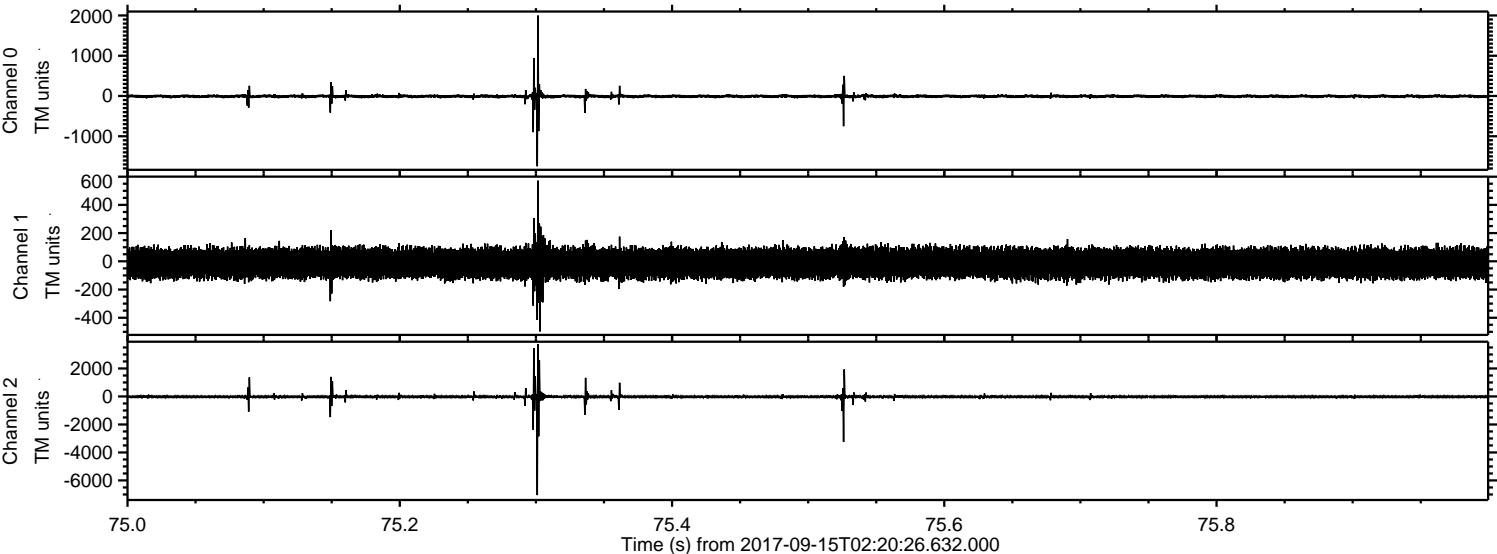


Processed Fri Sep 15 04:27:51 2017 by ELM ver.2012-10-06 from 001__elm20170915_022025__dat00.bin



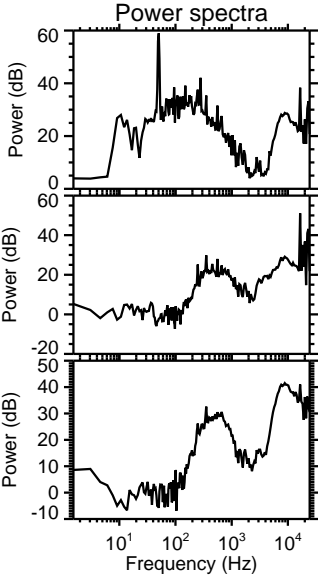
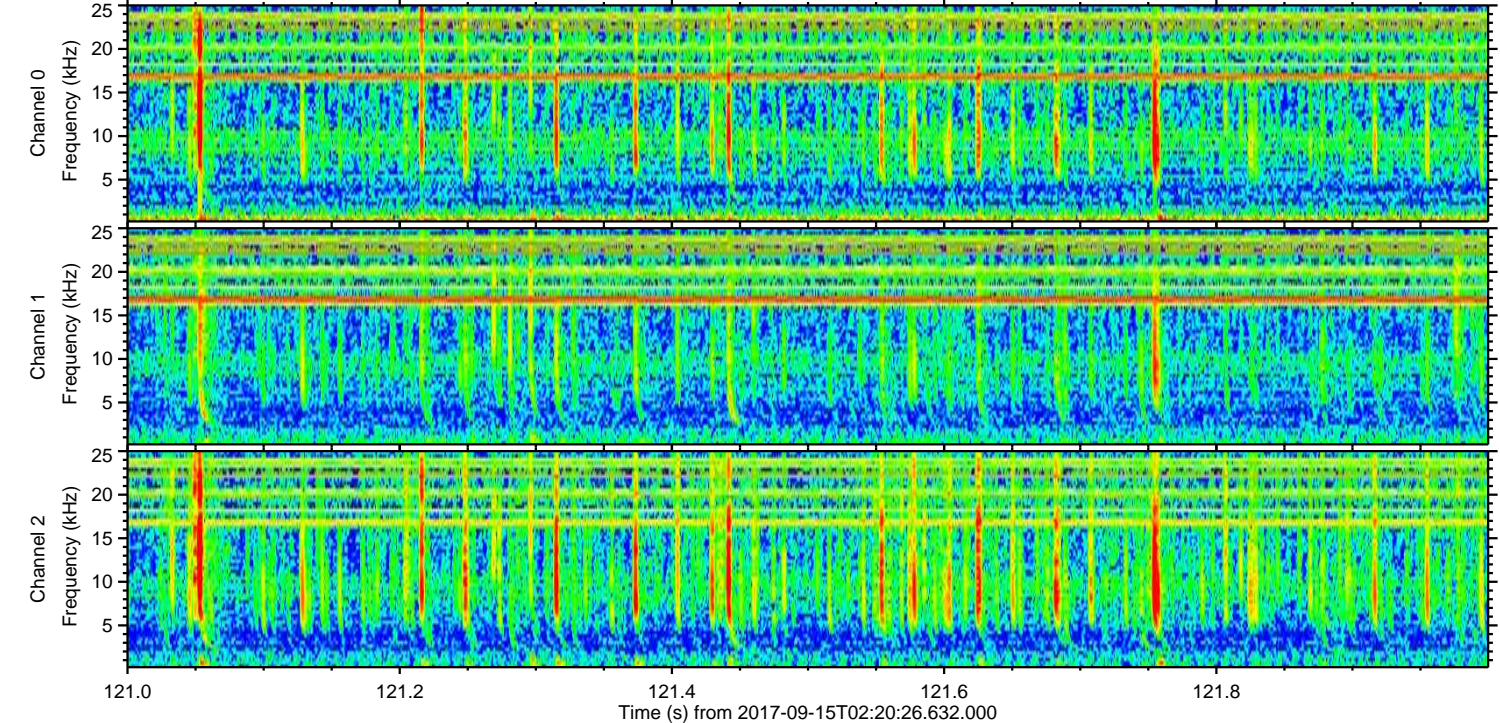
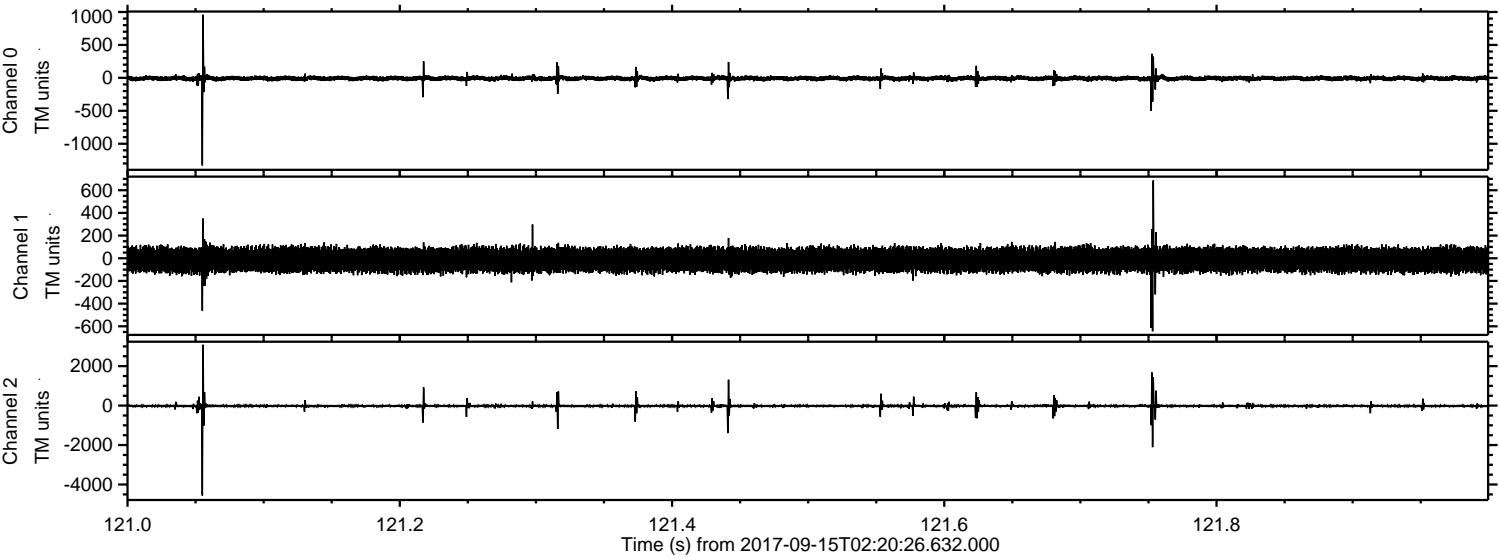
ELMAVAN 3D WAVEFORMS (Measured data sampled at 50 kHz) 51000 packets of 144 samples from 2017-09-15T02:20:26.632.000. Part 76/147

Processed Fri Sep 15 04:27:51 2017 by ELM ver.2012-10-06 from 001__elm20170915_022025__dat00.bin



ELMAVAN 3D WAVEFORMS (Measured data sampled at 50 kHz) 51000 packets of 144 samples from 2017-09-15T02:20:26.632.000. Part 122/147

Processed Fri Sep 15 04:27:52 2017 by ELM ver.2012-10-06 from 001__elm20170915_022025__dat00.bin



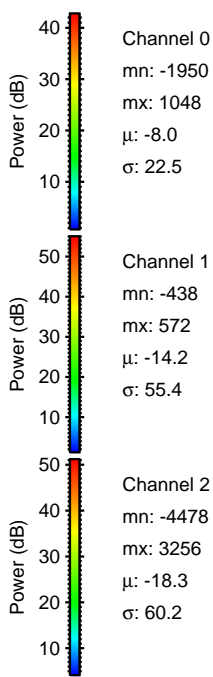
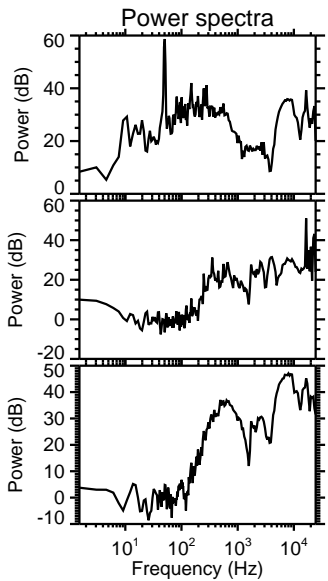
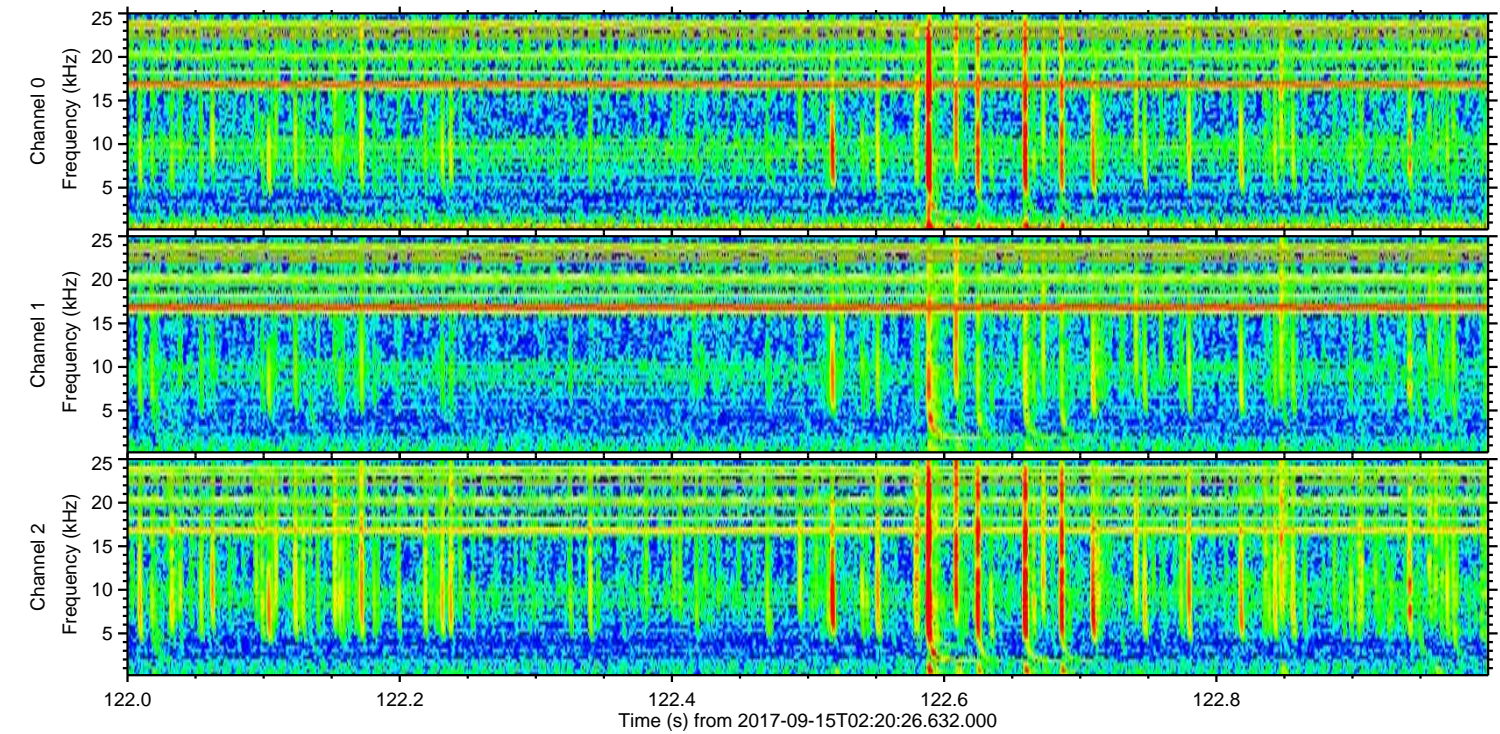
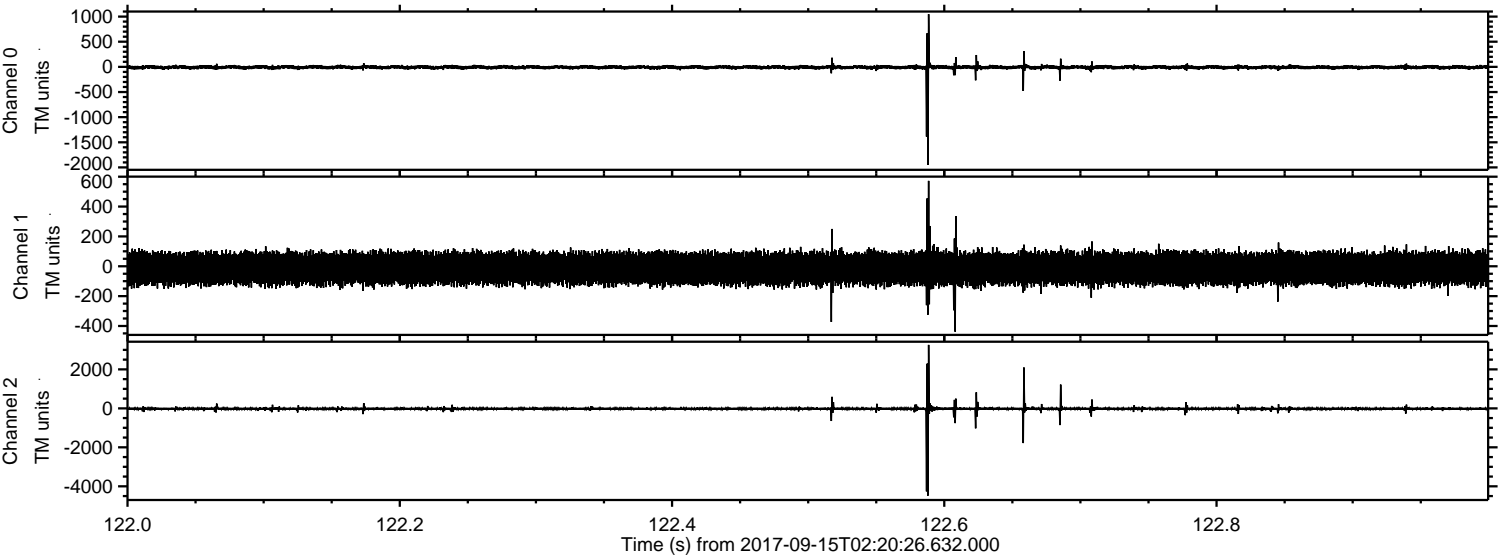
Channel 0
mn: -1330
mx: 959
 μ : -8.0
 σ : 20.1

Channel 1
mn: -644
mx: 686
 μ : -14.2
 σ : 55.5

Channel 2
mn: -4556
mx: 3083
 μ : -18.3
 σ : 52.4

ELMAVAN 3D WAVEFORMS (Measured data sampled at 50 kHz) 51000 packets of 144 samples from 2017-09-15T02:20:26.632.000. Part 123/147

Processed Fri Sep 15 04:27:53 2017 by ELM ver.2012-10-06 from 001__elm20170915_022025__dat00.bin



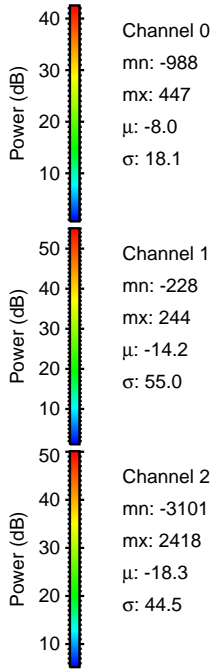
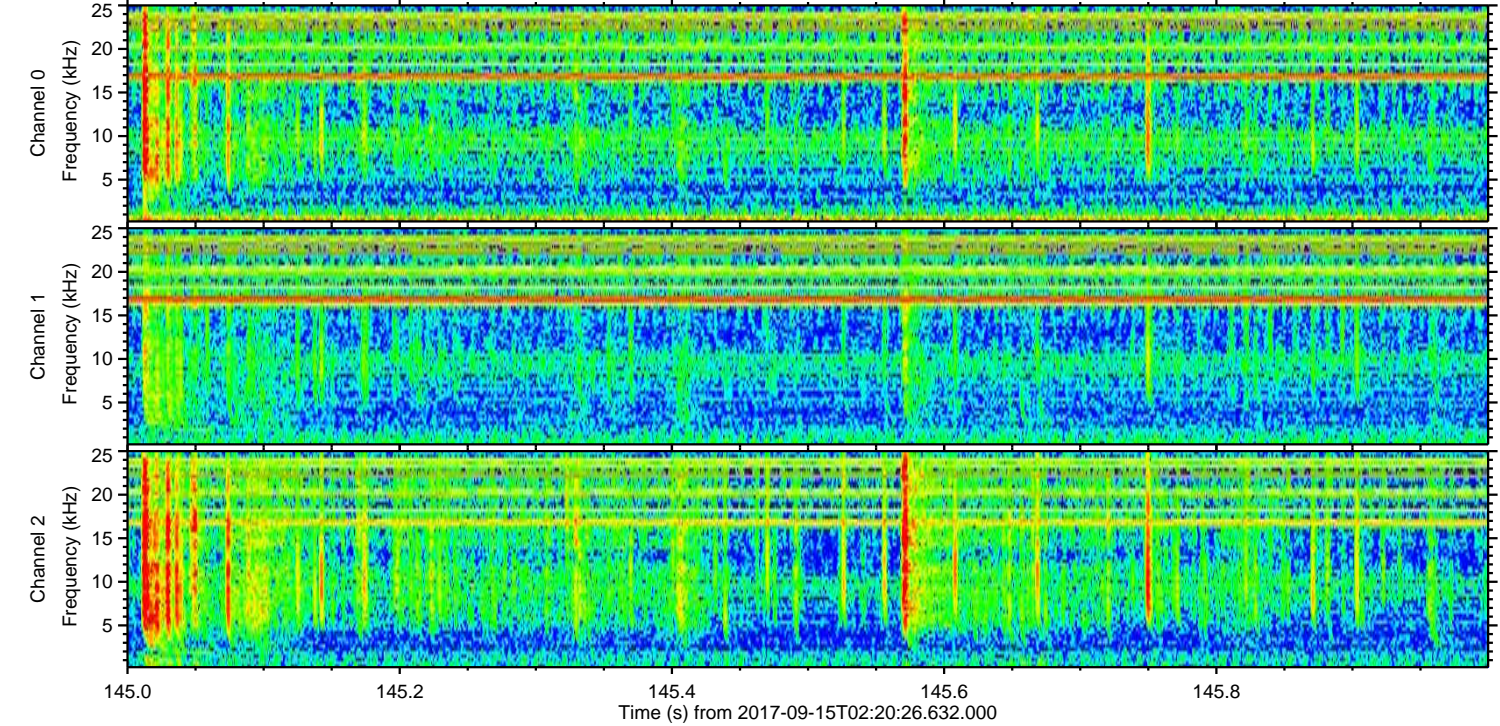
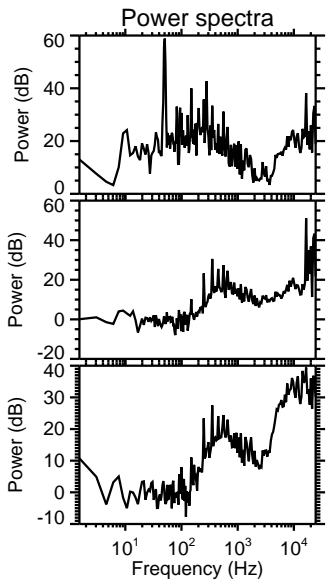
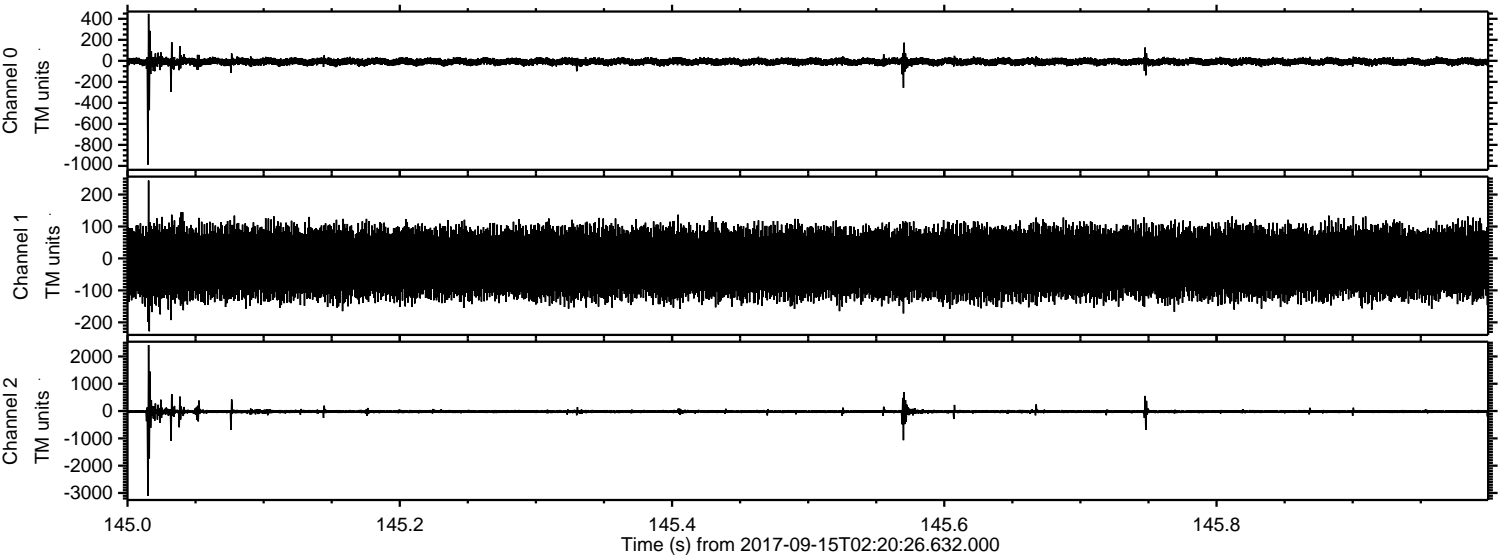
Channel 0
mn: -1950
mx: 1048
 μ : -8.0
 σ : 22.5

Channel 1
mn: -438
mx: 572
 μ : -14.2
 σ : 55.4

Channel 2
mn: -4478
mx: 3256
 μ : -18.3
 σ : 60.2

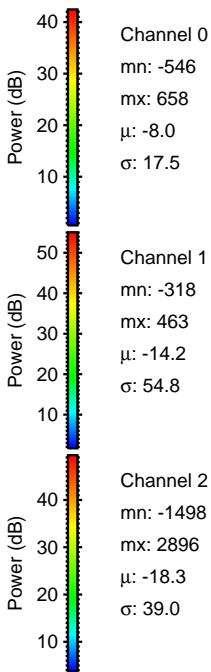
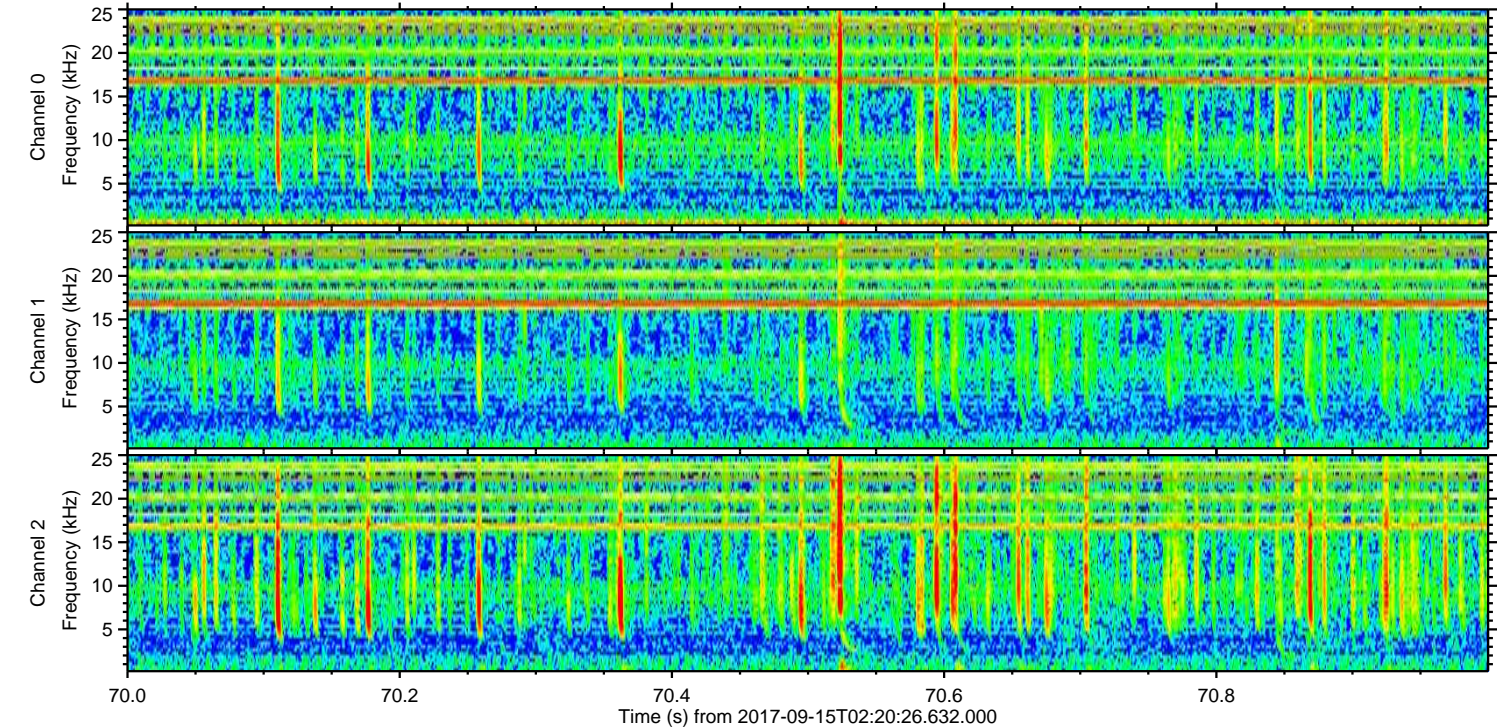
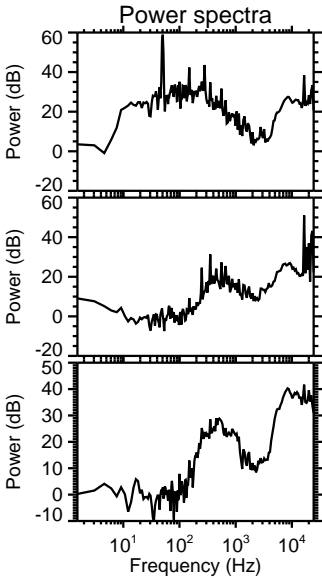
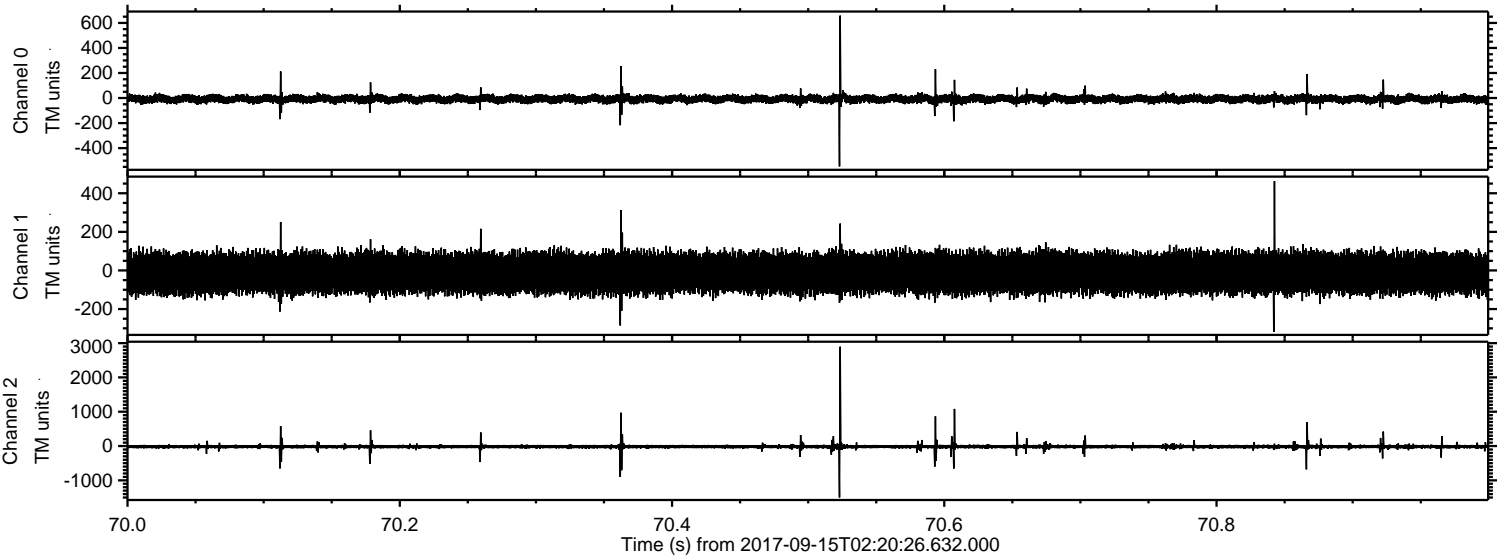
ELMAVAN 3D WAVEFORMS (Measured data sampled at 50 kHz) 51000 packets of 144 samples from 2017-09-15T02:20:26.632.000. Part 146/147

Processed Fri Sep 15 04:27:53 2017 by ELM ver.2012-10-06 from 001__elm20170915_022025__dat00.bin



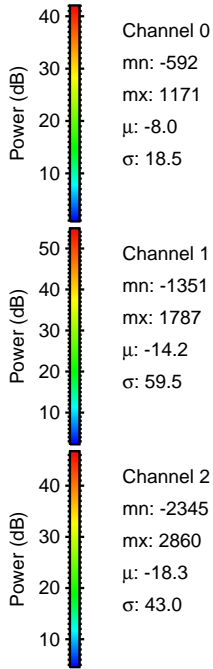
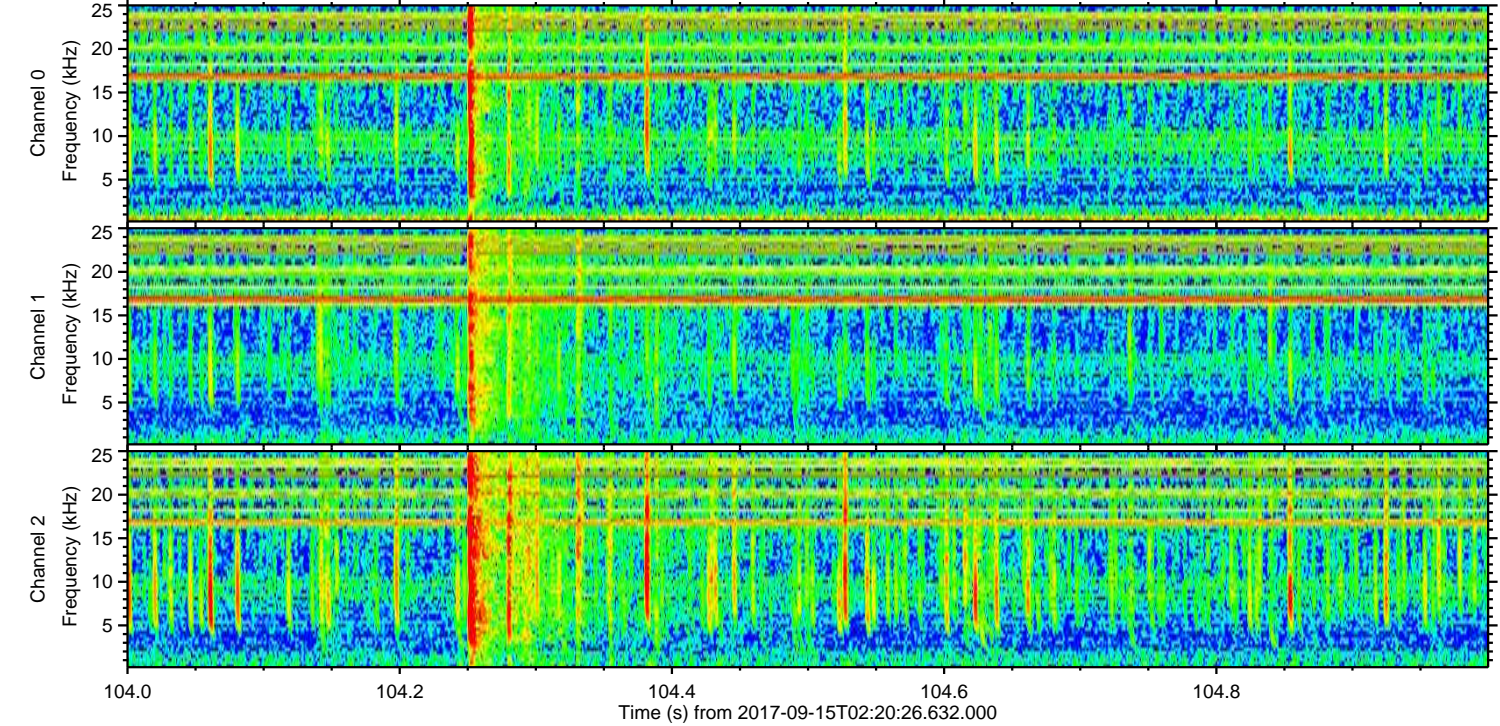
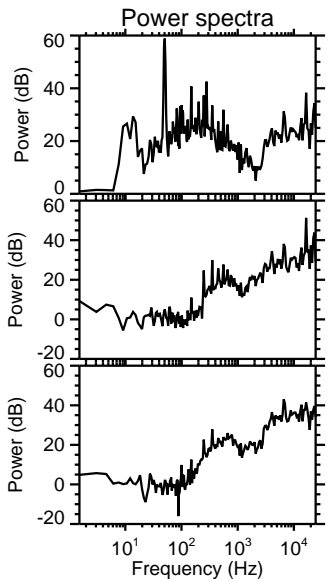
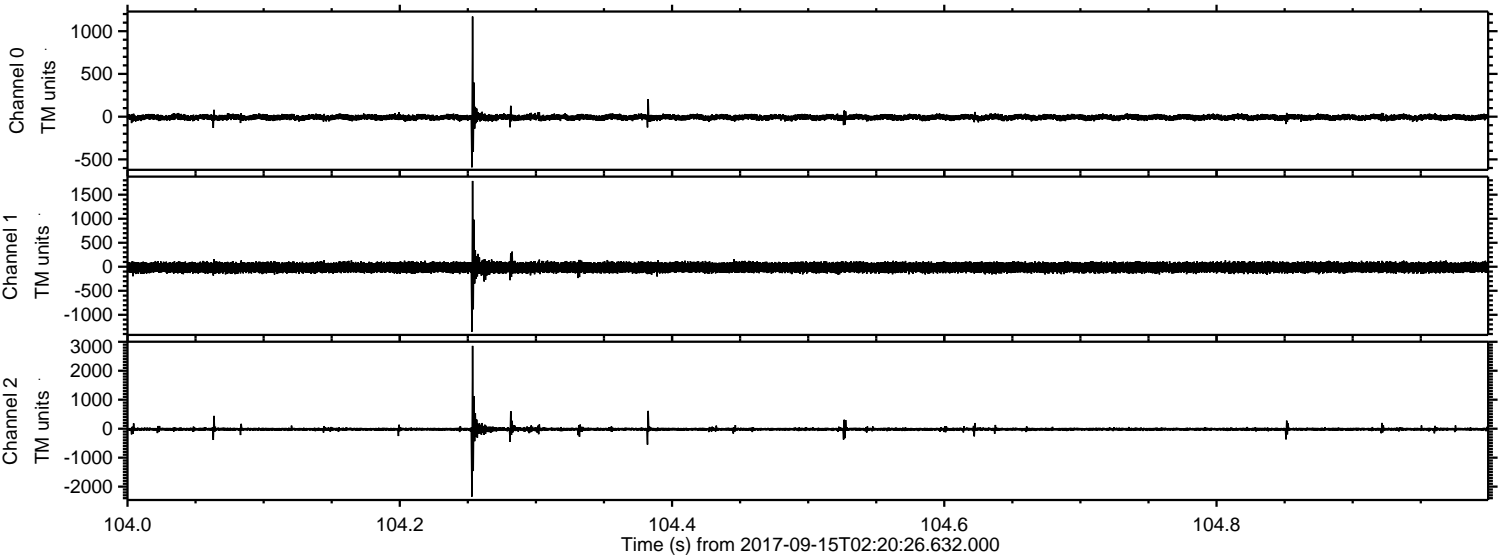
ELMAVAN 3D WAVEFORMS (Measured data sampled at 50 kHz) 51000 packets of 144 samples from 2017-09-15T02:20:26.632.000. Part 71/147

Processed Fri Sep 15 04:27:54 2017 by ELM ver.2012-10-06 from 001__elm20170915_022025__dat00.bin



ELMAVAN 3D WAVEFORMS (Measured data sampled at 50 kHz) 51000 packets of 144 samples from 2017-09-15T02:20:26.632.000. Part 105/147

Processed Fri Sep 15 04:27:55 2017 by ELM ver.2012-10-06 from 001__elm20170915_022025__dat00.bin

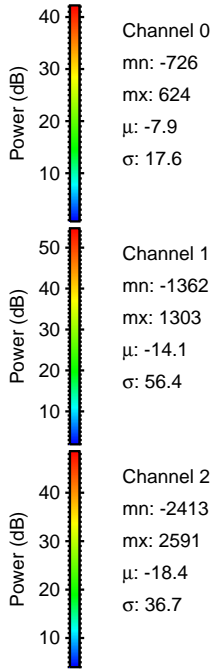
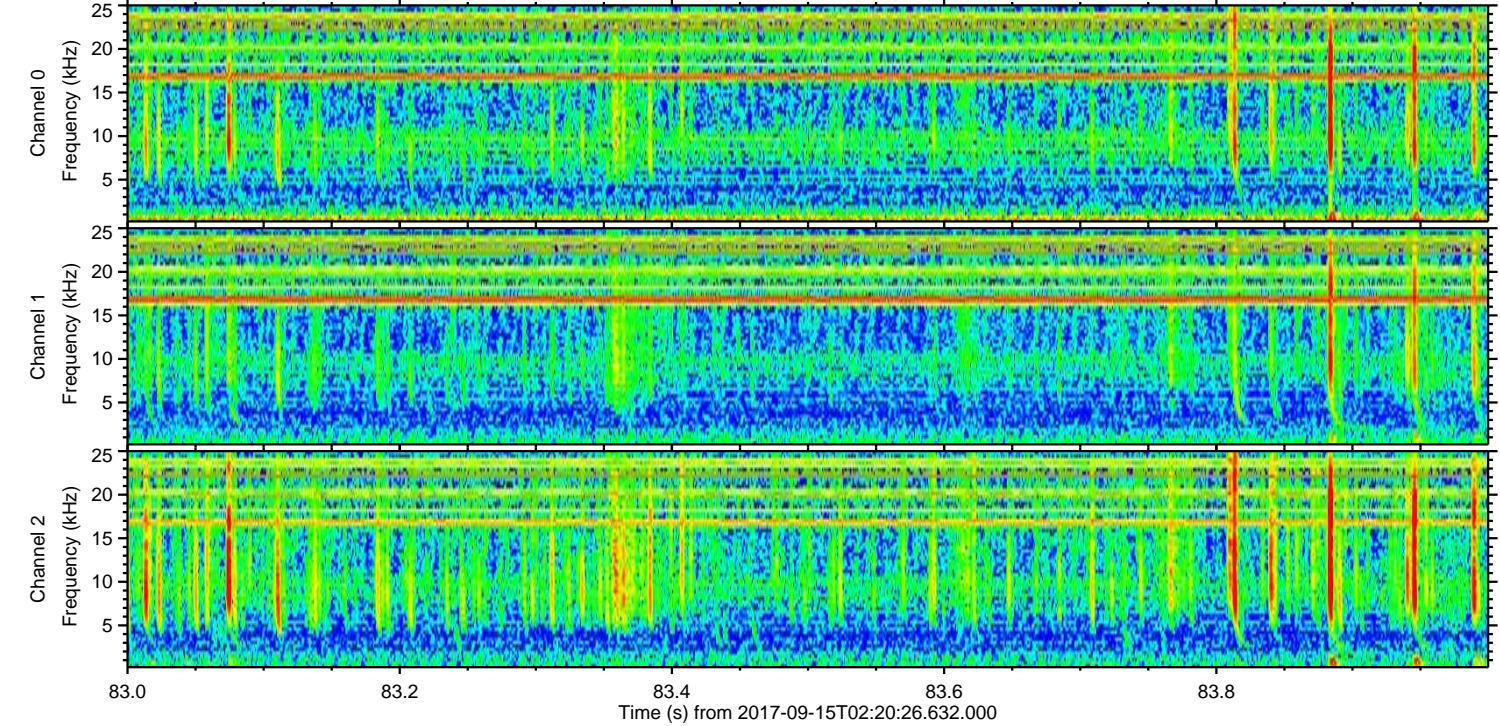
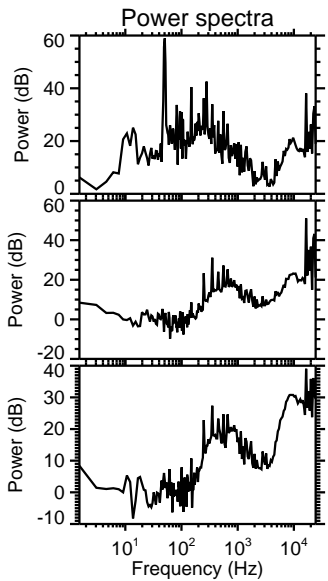
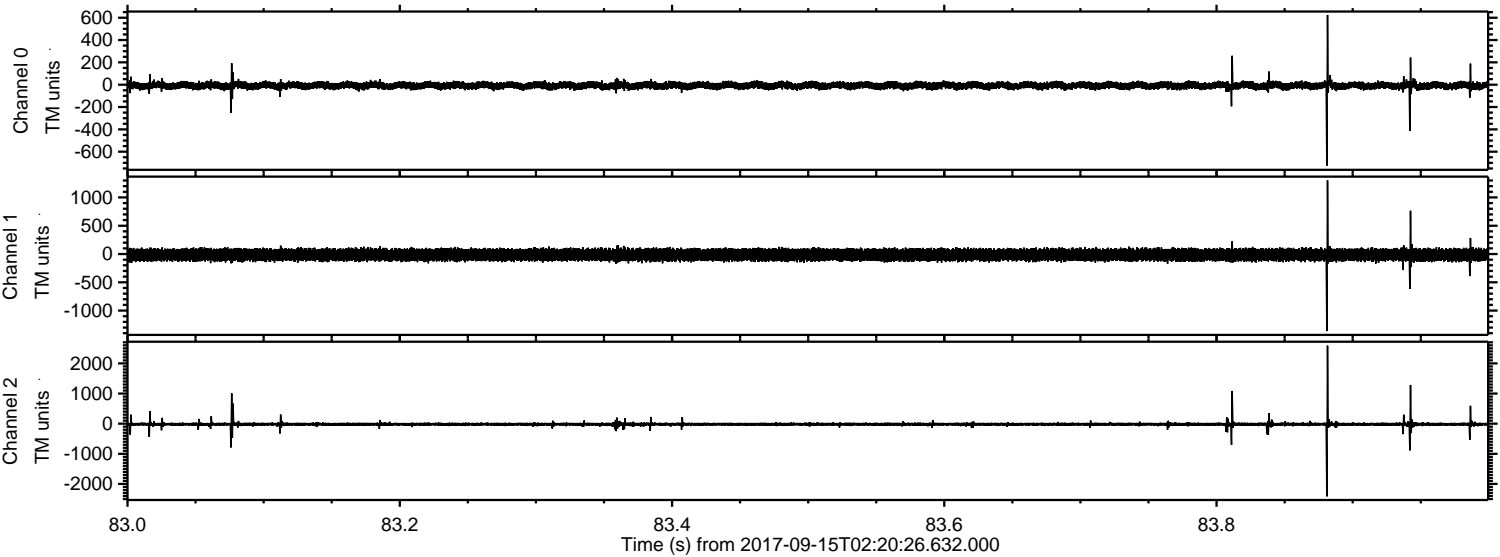


Channel 0
mn: -592
mx: 1171
 μ : -8.0
 σ : 18.5

Channel 1
mn: -1351
mx: 1787
 μ : -14.2
 σ : 59.5

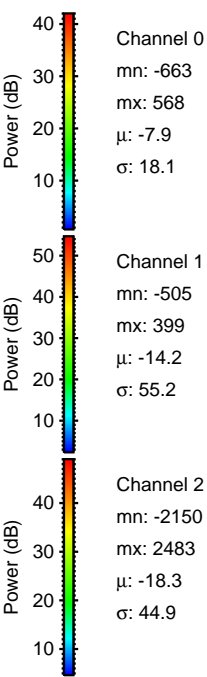
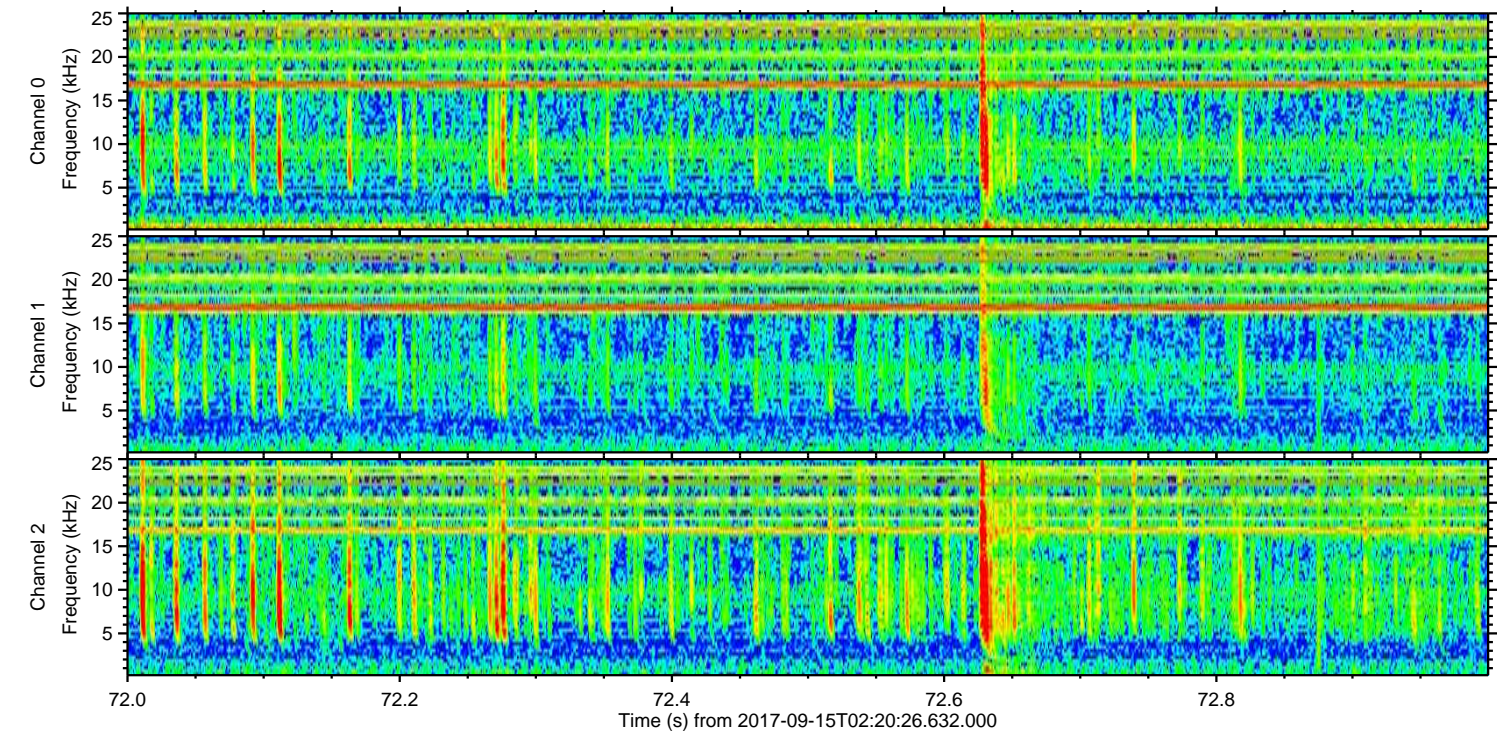
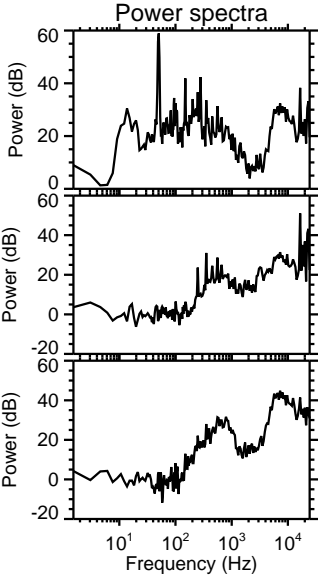
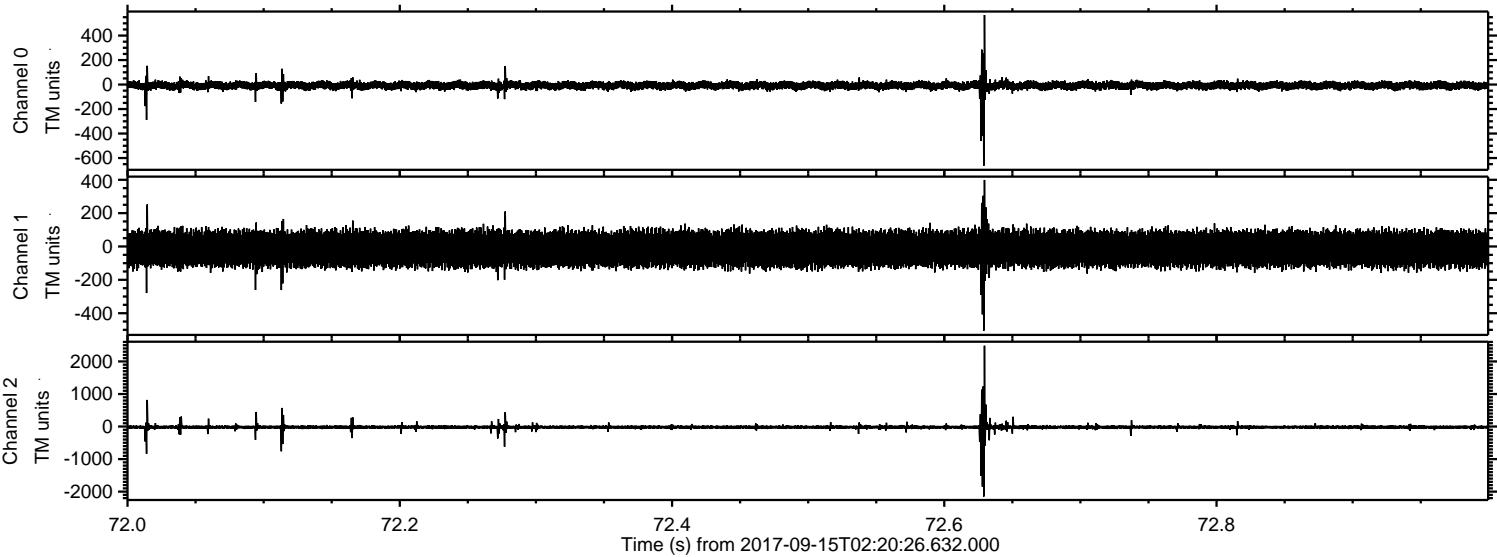
Channel 2
mn: -2345
mx: 2860
 μ : -18.3
 σ : 43.0

Processed Fri Sep 15 04:27:55 2017 by ELM ver.2012-10-06 from 001__elm20170915_022025__dat00.bin



ELMAVAN 3D WAVEFORMS (Measured data sampled at 50 kHz) 51000 packets of 144 samples from 2017-09-15T02:20:26.632.000. Part 73/147

Processed Fri Sep 15 04:27:56 2017 by ELM ver.2012-10-06 from 001__elm20170915_022025__dat00.bin



Channel 0
mn: -663
mx: 568
 μ : -7.9
 σ : 18.1

Channel 1
mn: -505
mx: 399
 μ : -14.2
 σ : 55.2

Channel 2
mn: -2150
mx: 2483
 μ : -18.3
 σ : 44.9

ELMAVAN 3D WAVEFORMS (Measured data sampled at 50 kHz) 51000 packets of 144 samples from 2017-09-15T02:20:26.632.000. Part 7/147

Processed Fri Sep 15 04:27:56 2017 by ELM ver.2012-10-06 from 001__elm20170915_022025__dat00.bin

