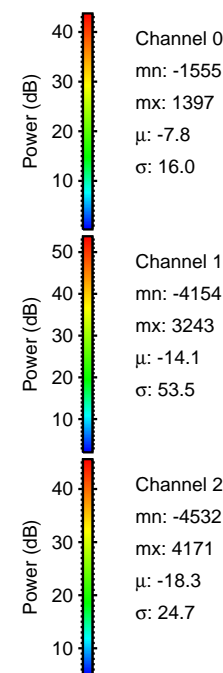
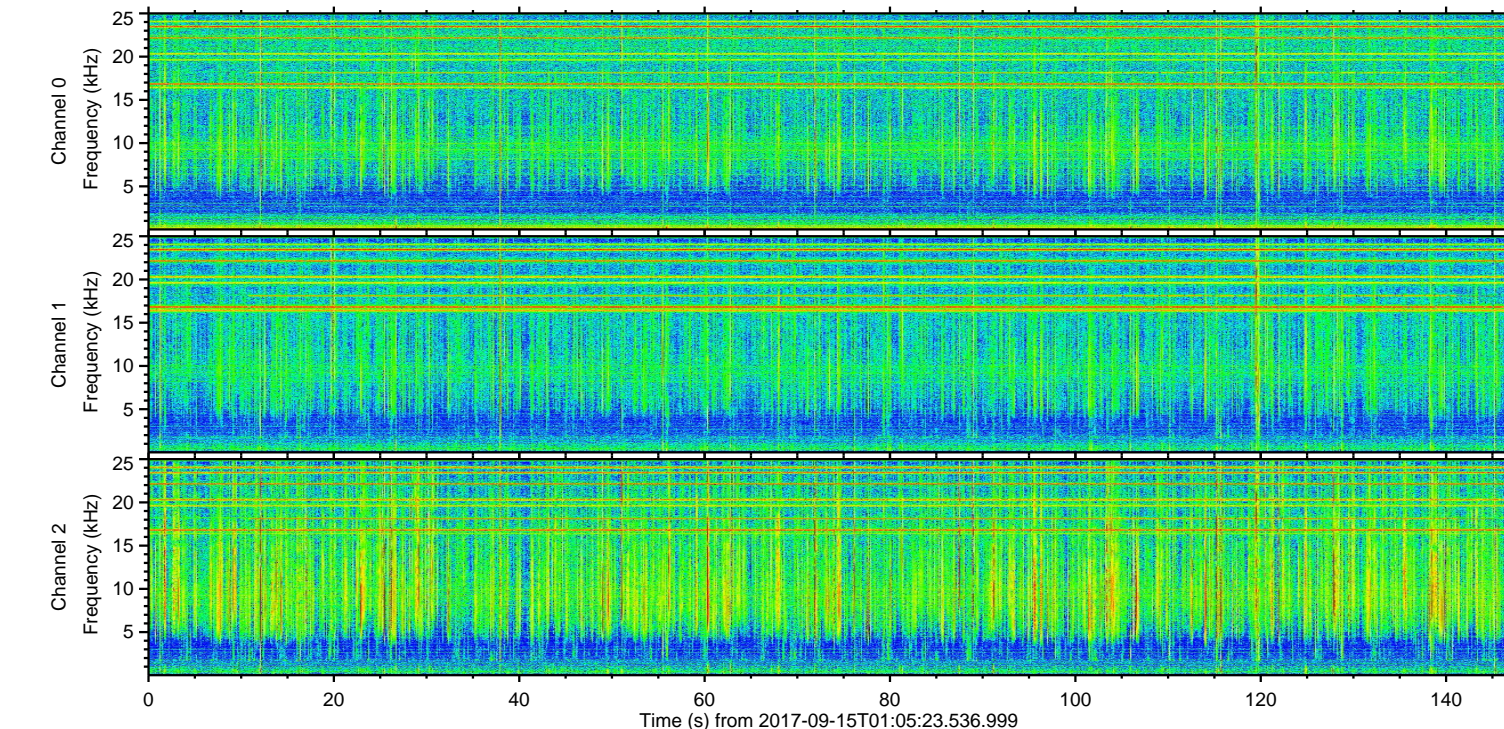
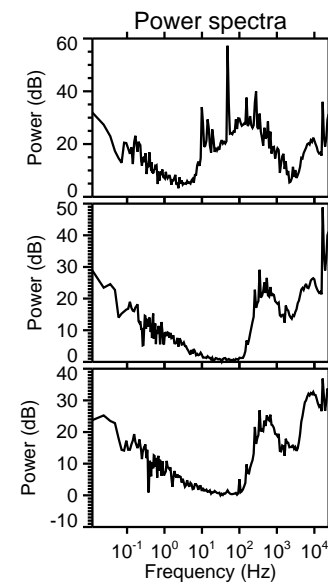
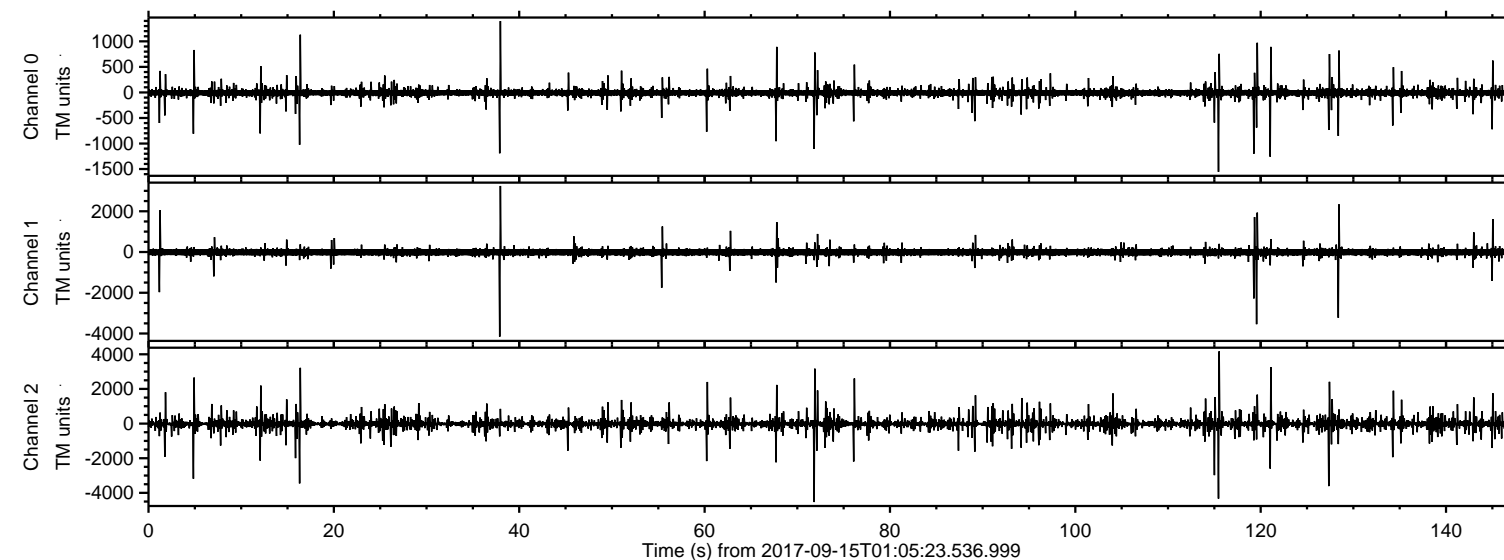


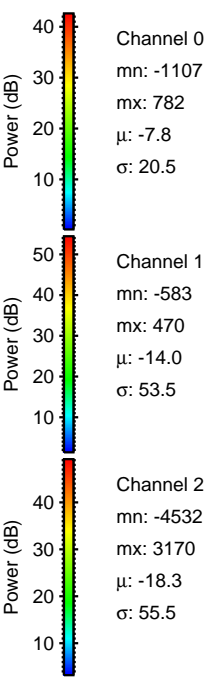
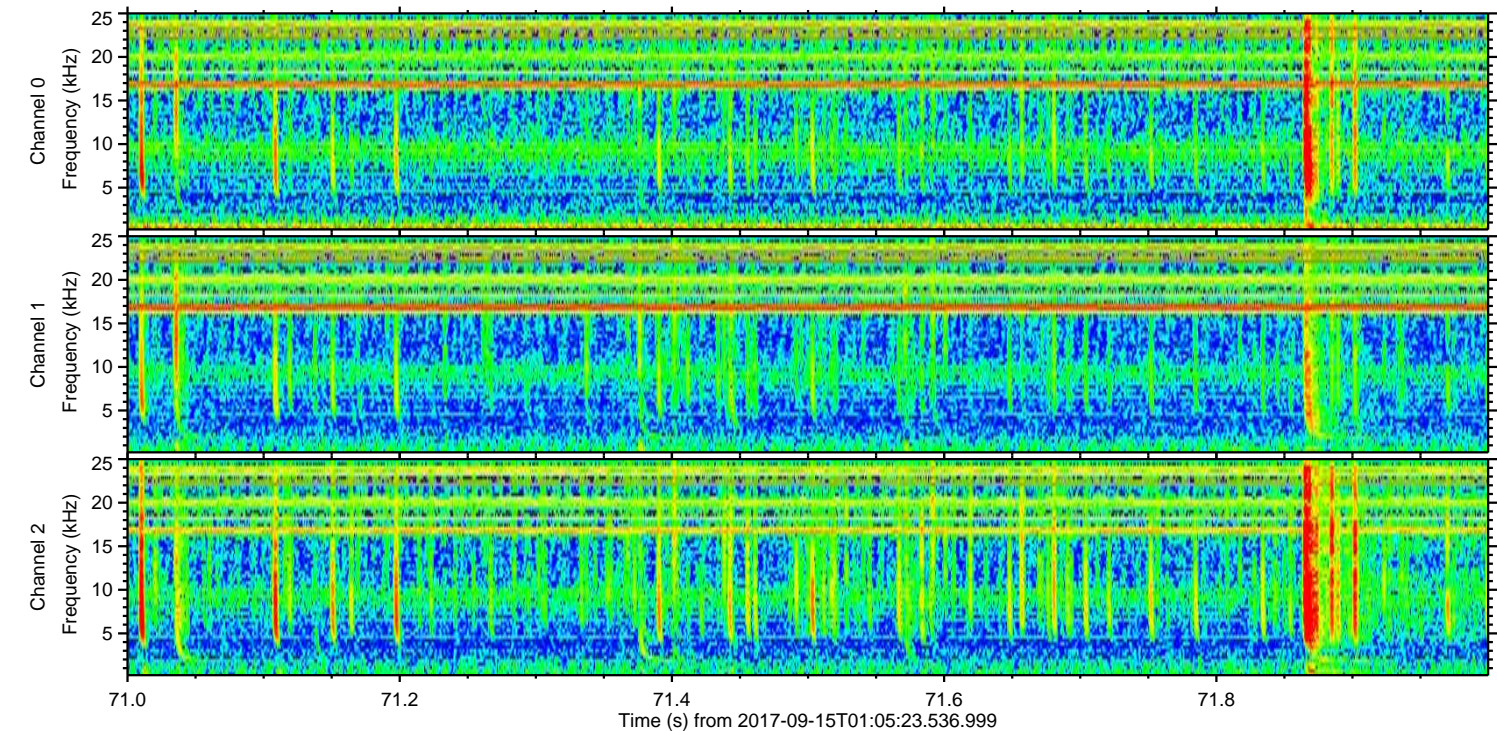
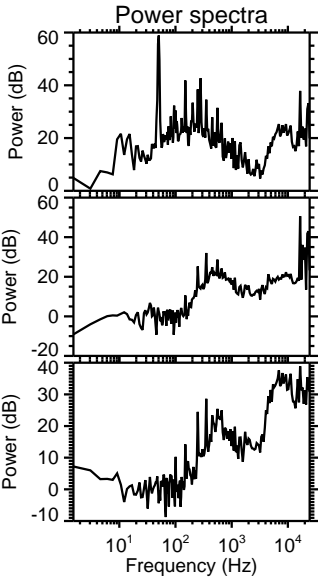
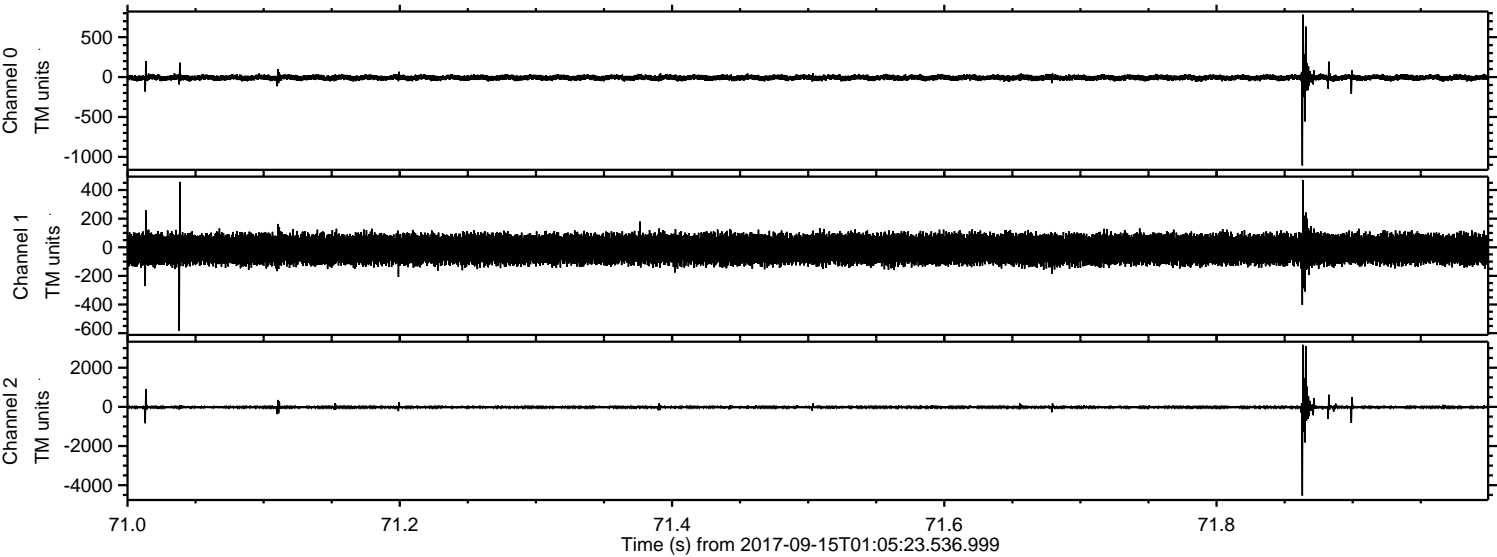
ELMAVAN 3D WAVEFORMS (Measured data sampled at 50 kHz) 51000 packets of 144 samples from 2017-09-15T01:05:23.536.999.

Processed Fri Sep 15 03:12:45 2017 by ELM ver.2012-10-06 from 001__elm20170915_010522__dat00.bin



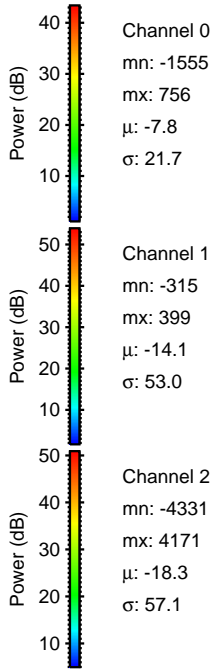
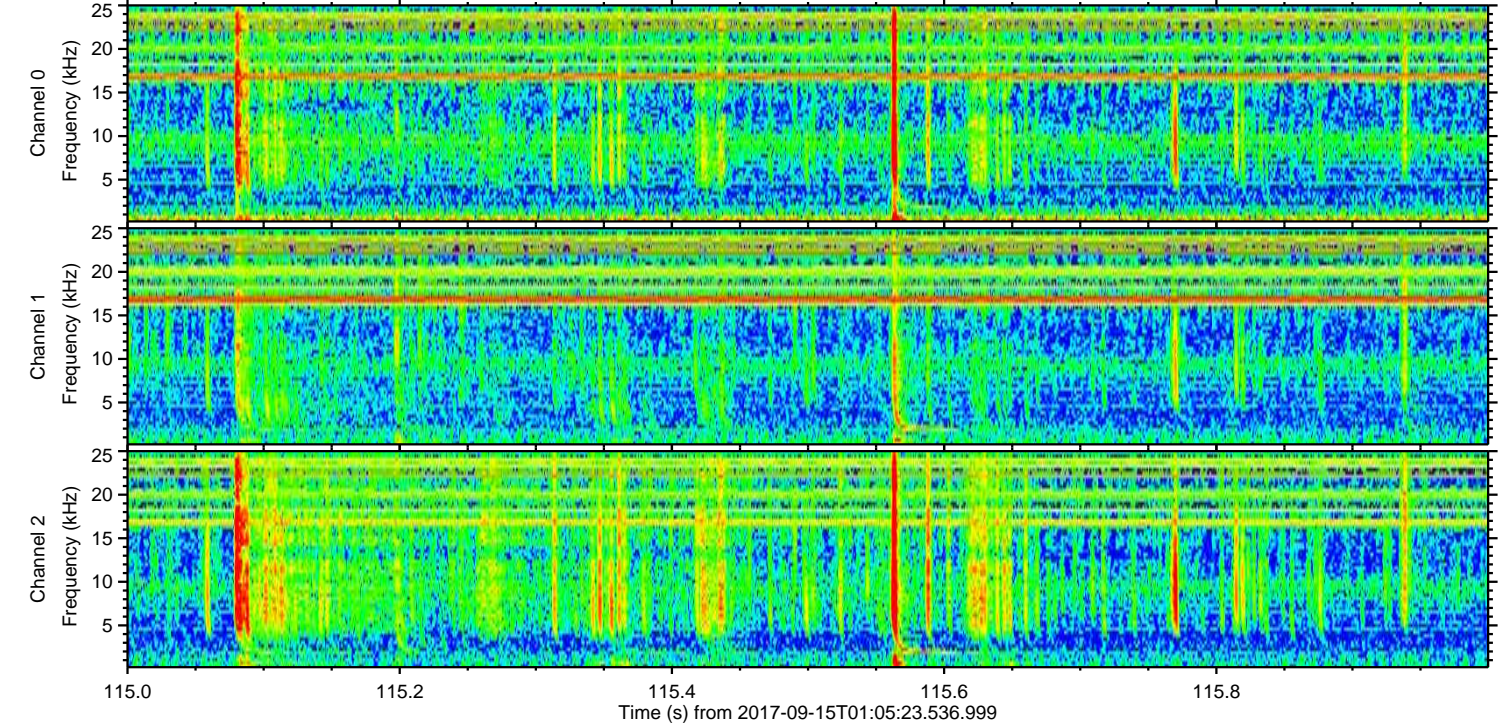
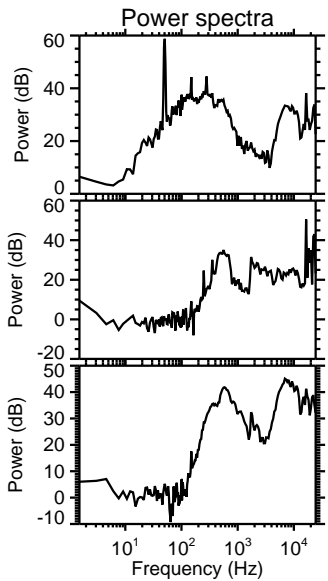
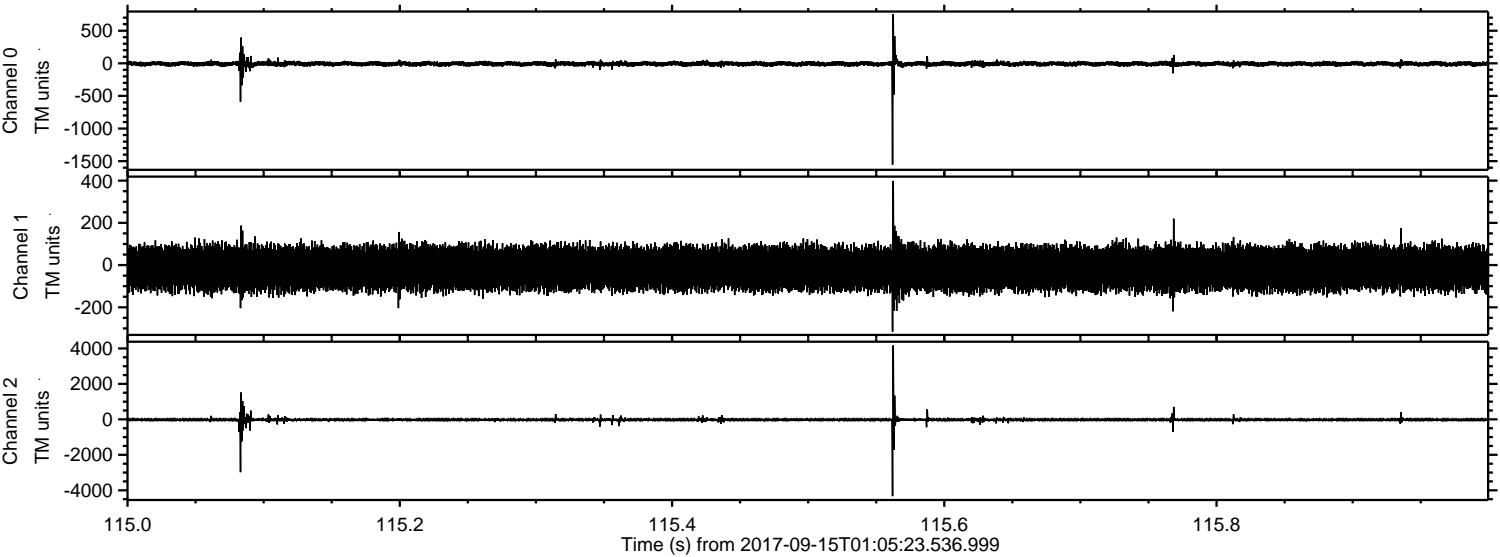
ELMAVAN 3D WAVEFORMS (Measured data sampled at 50 kHz) 51000 packets of 144 samples from 2017-09-15T01:05:23.536.999. Part 72/147

Processed Fri Sep 15 03:12:51 2017 by ELM ver.2012-10-06 from 001__elm20170915_010522__dat00.bin



ELMAVAN 3D WAVEFORMS (Measured data sampled at 50 kHz) 51000 packets of 144 samples from 2017-09-15T01:05:23.536.999. Part 116/147

Processed Fri Sep 15 03:12:51 2017 by ELM ver.2012-10-06 from 001__elm20170915_010522__dat00.bin



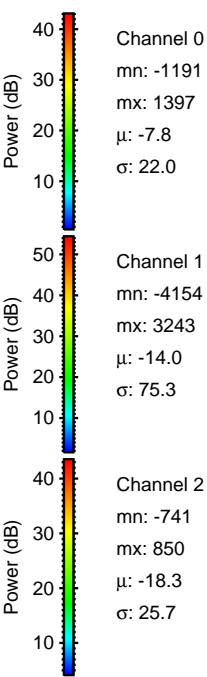
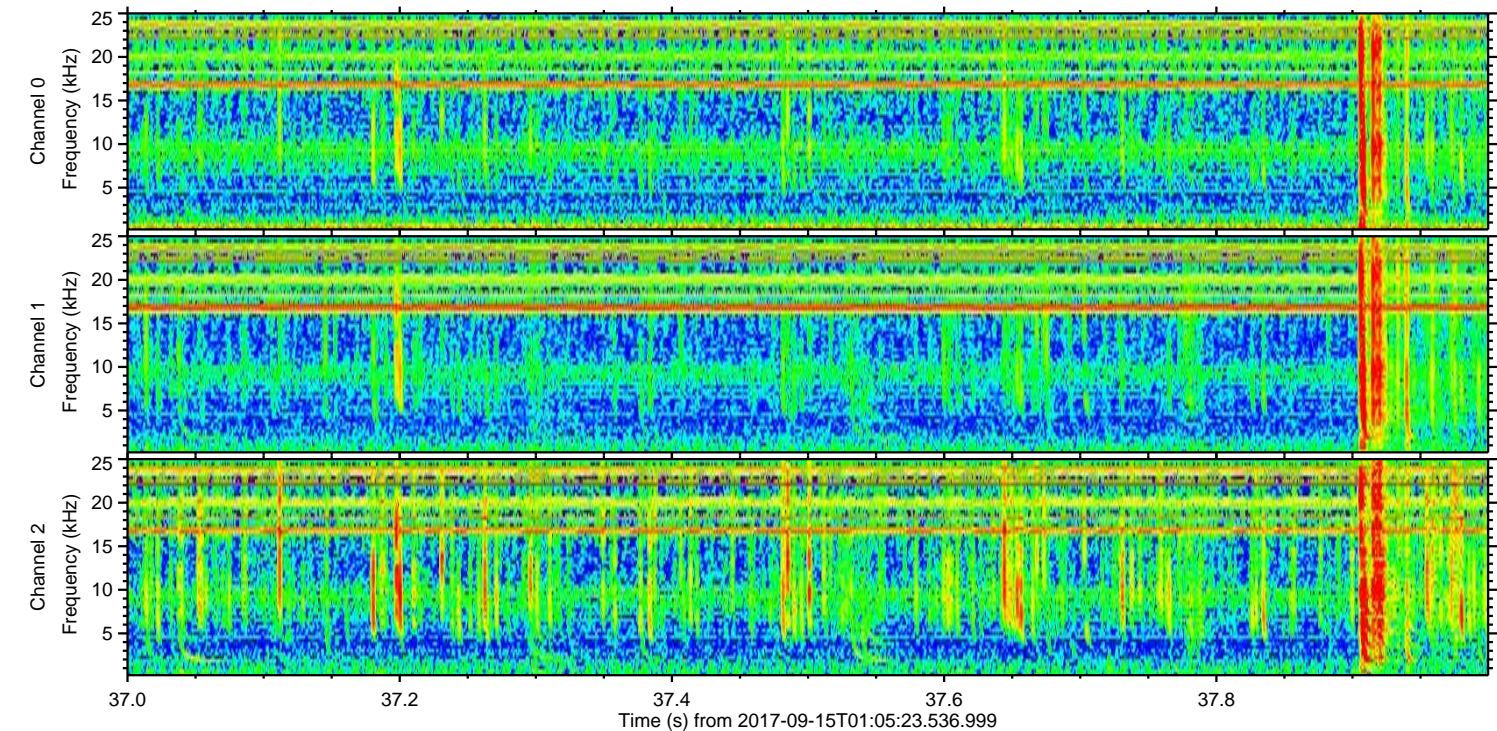
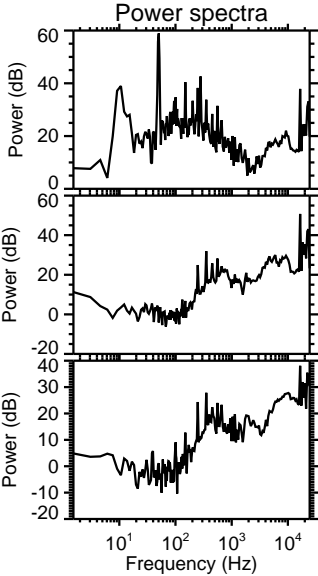
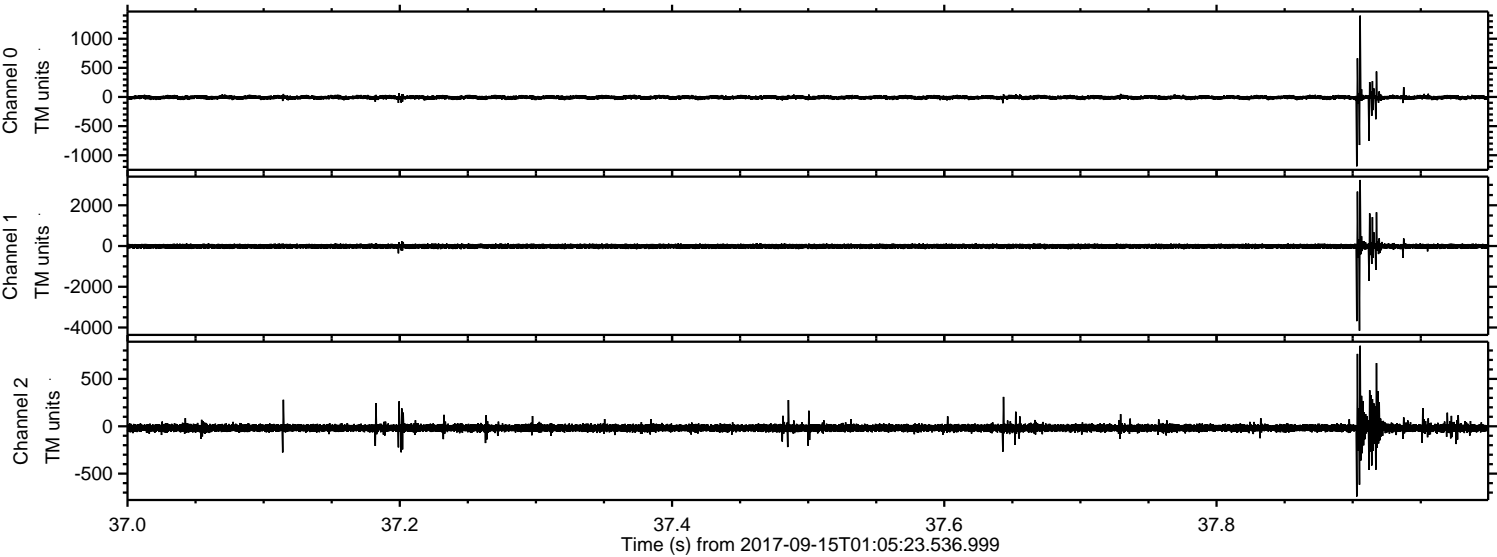
Channel 0
mn: -1555
mx: 756
μ: -7.8
σ: 21.7

Channel 1
mn: -315
mx: 399
μ: -14.1
σ: 53.0

Channel 2
mn: -4331
mx: 4171
μ: -18.3
σ: 57.1

ELMAVAN 3D WAVEFORMS (Measured data sampled at 50 kHz) 51000 packets of 144 samples from 2017-09-15T01:05:23.536.999. Part 38/147

Processed Fri Sep 15 03:12:52 2017 by ELM ver.2012-10-06 from 001__elm20170915_010522__dat00.bin



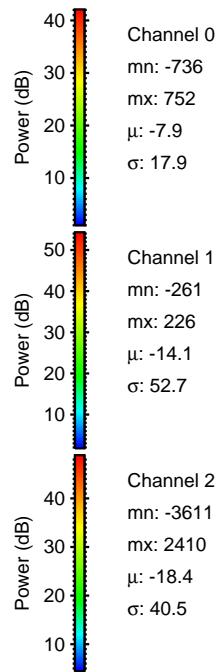
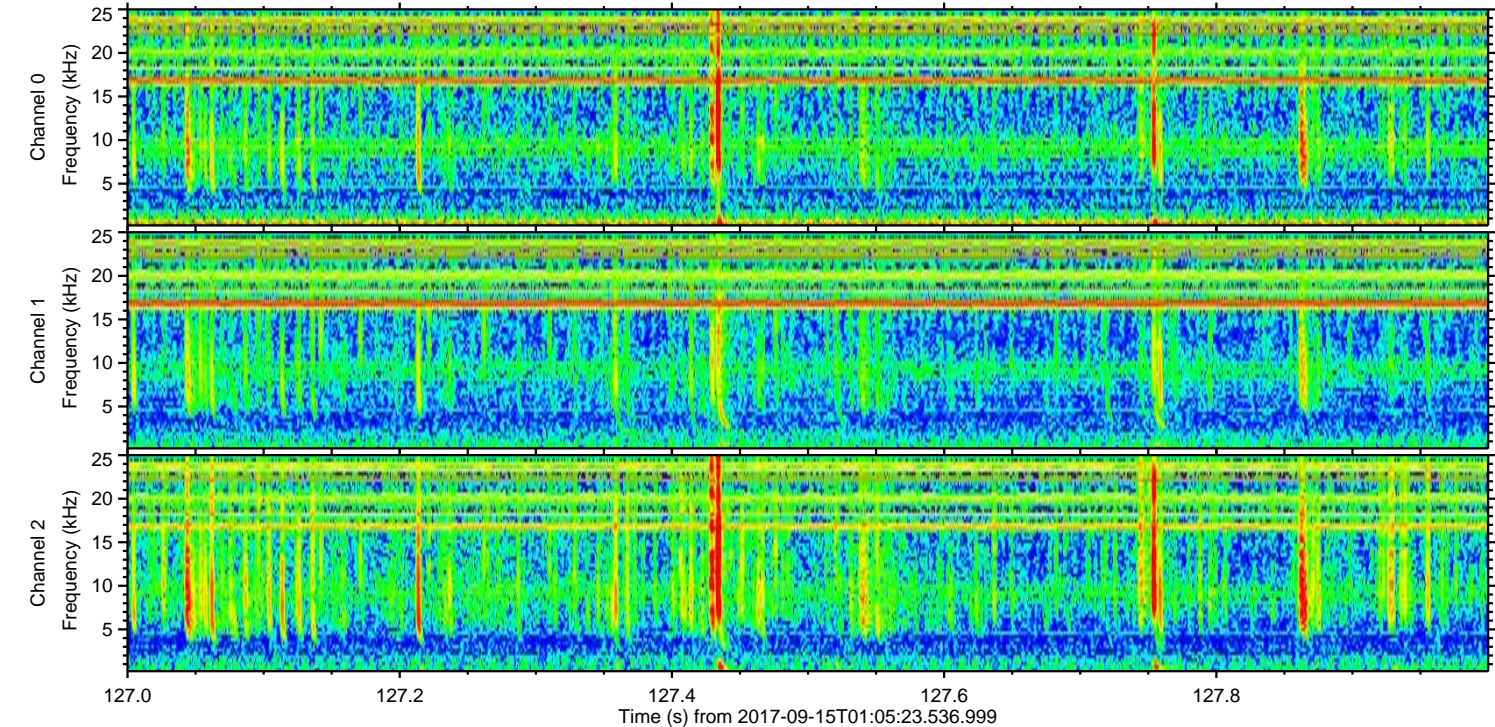
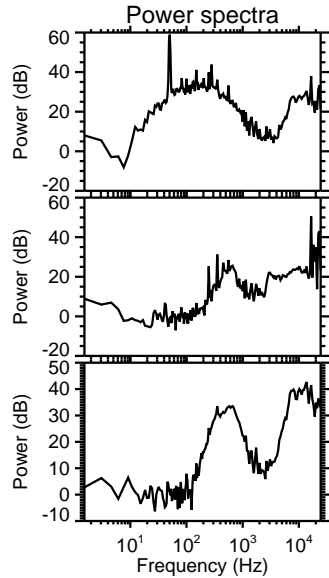
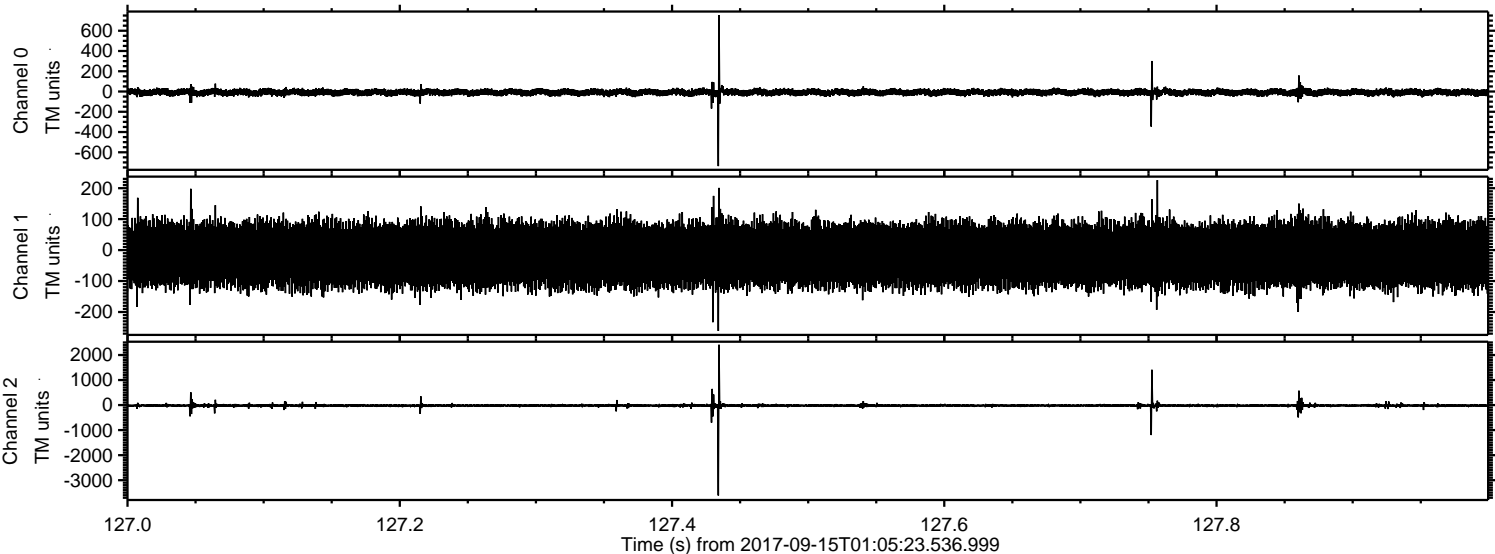
Channel 0
mn: -1191
mx: 1397
 μ : -7.8
 σ : 22.0

Channel 1
mn: -4154
mx: 3243
 μ : -14.0
 σ : 75.3

Channel 2
mn: -741
mx: 850
 μ : -18.3
 σ : 25.7

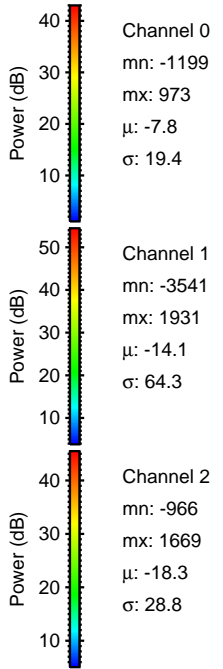
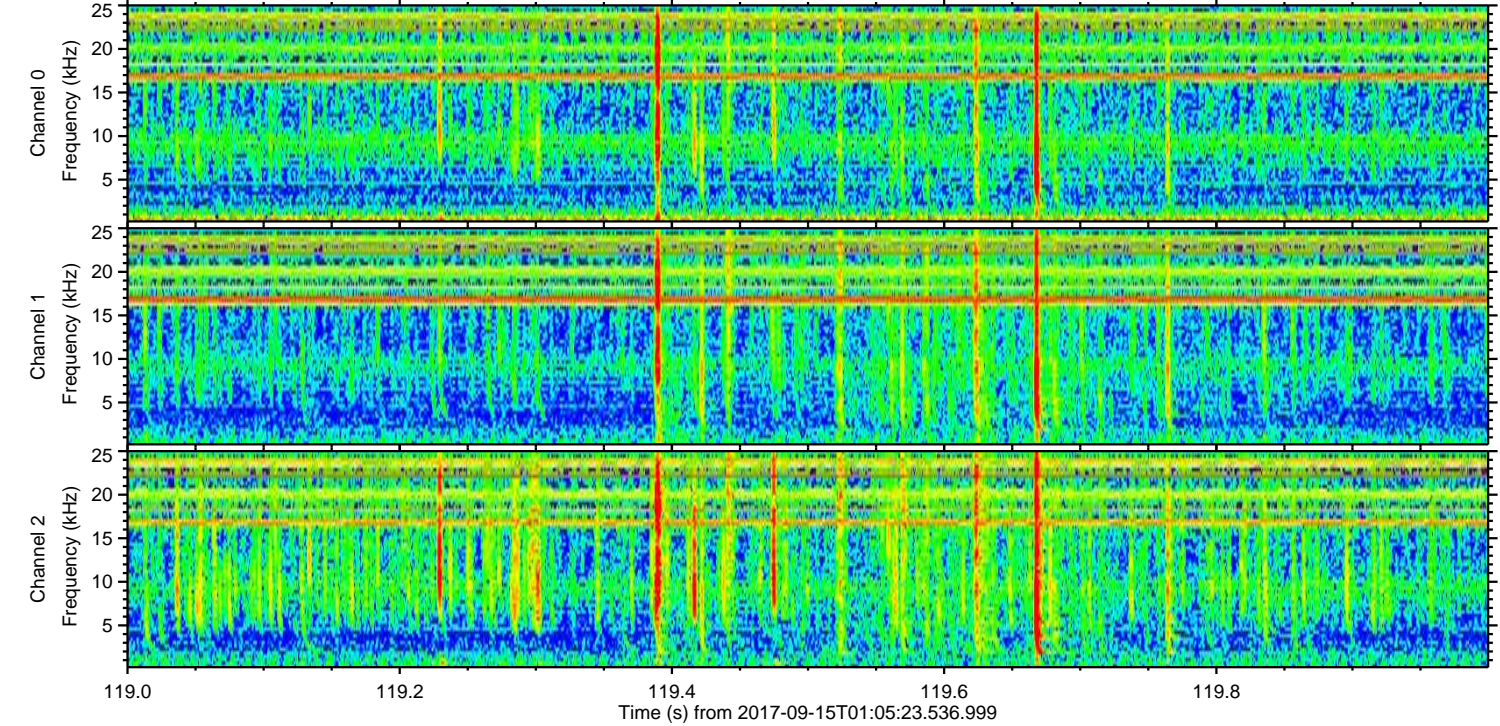
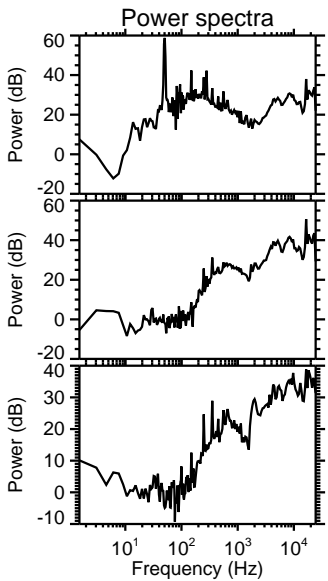
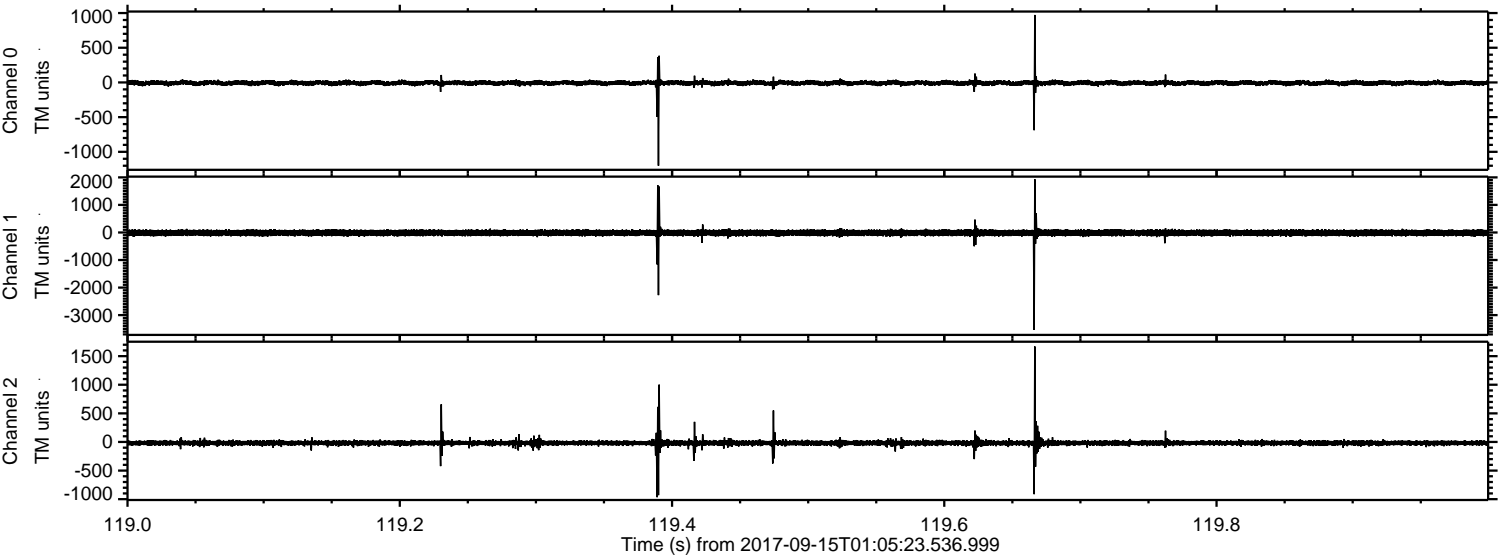
ELMAVAN 3D WAVEFORMS (Measured data sampled at 50 kHz) 51000 packets of 144 samples from 2017-09-15T01:05:23.536.999. Part 128/147

Processed Fri Sep 15 03:12:53 2017 by ELM ver.2012-10-06 from 001__elm20170915_010522__dat00.bin

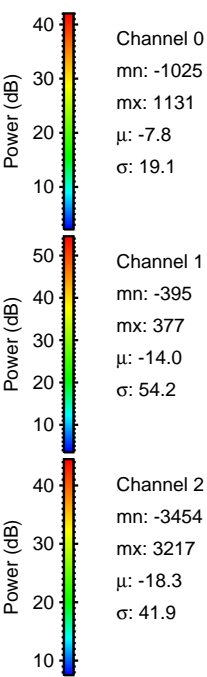
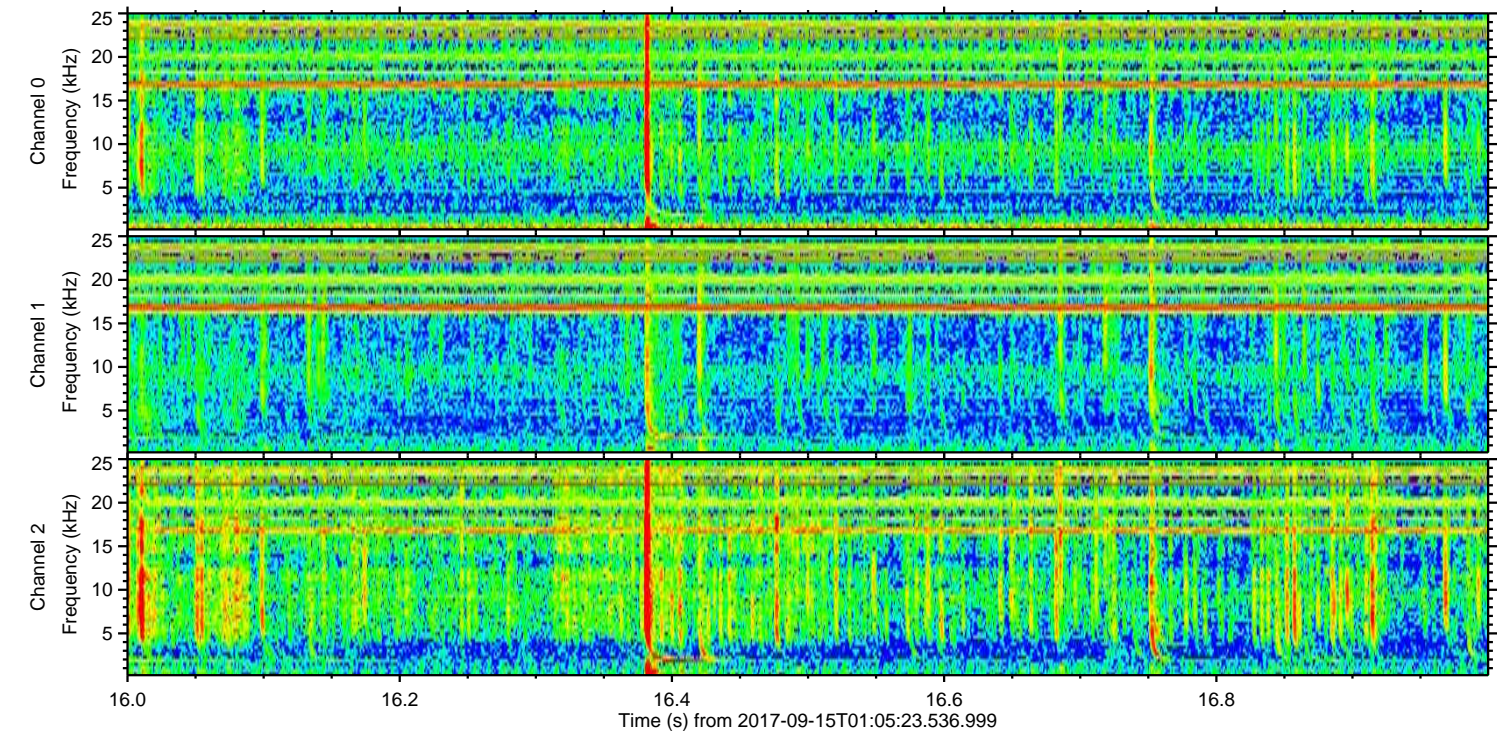
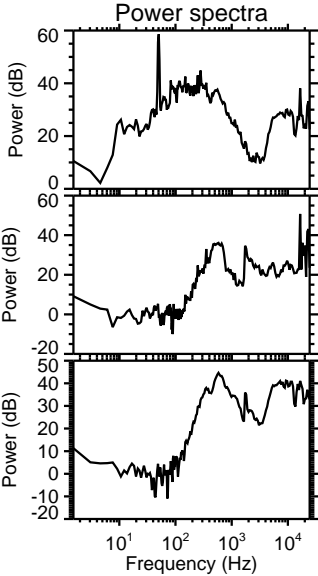
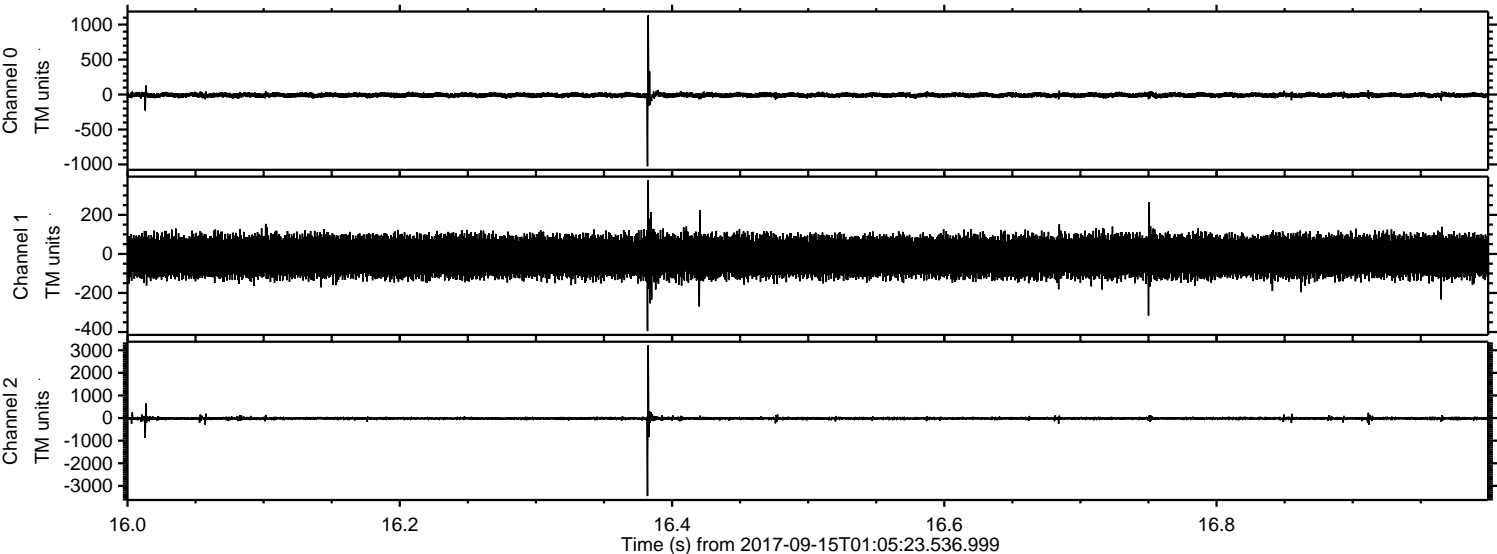


ELMAVAN 3D WAVEFORMS (Measured data sampled at 50 kHz) 51000 packets of 144 samples from 2017-09-15T01:05:23.536.999. Part 120/147

Processed Fri Sep 15 03:12:54 2017 by ELM ver.2012-10-06 from 001__elm20170915_010522__dat00.bin

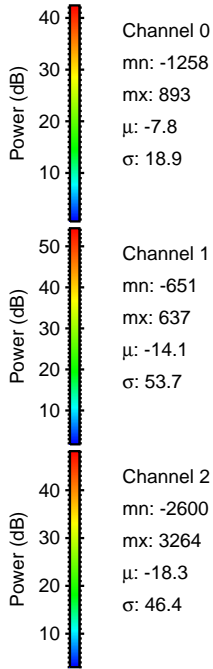
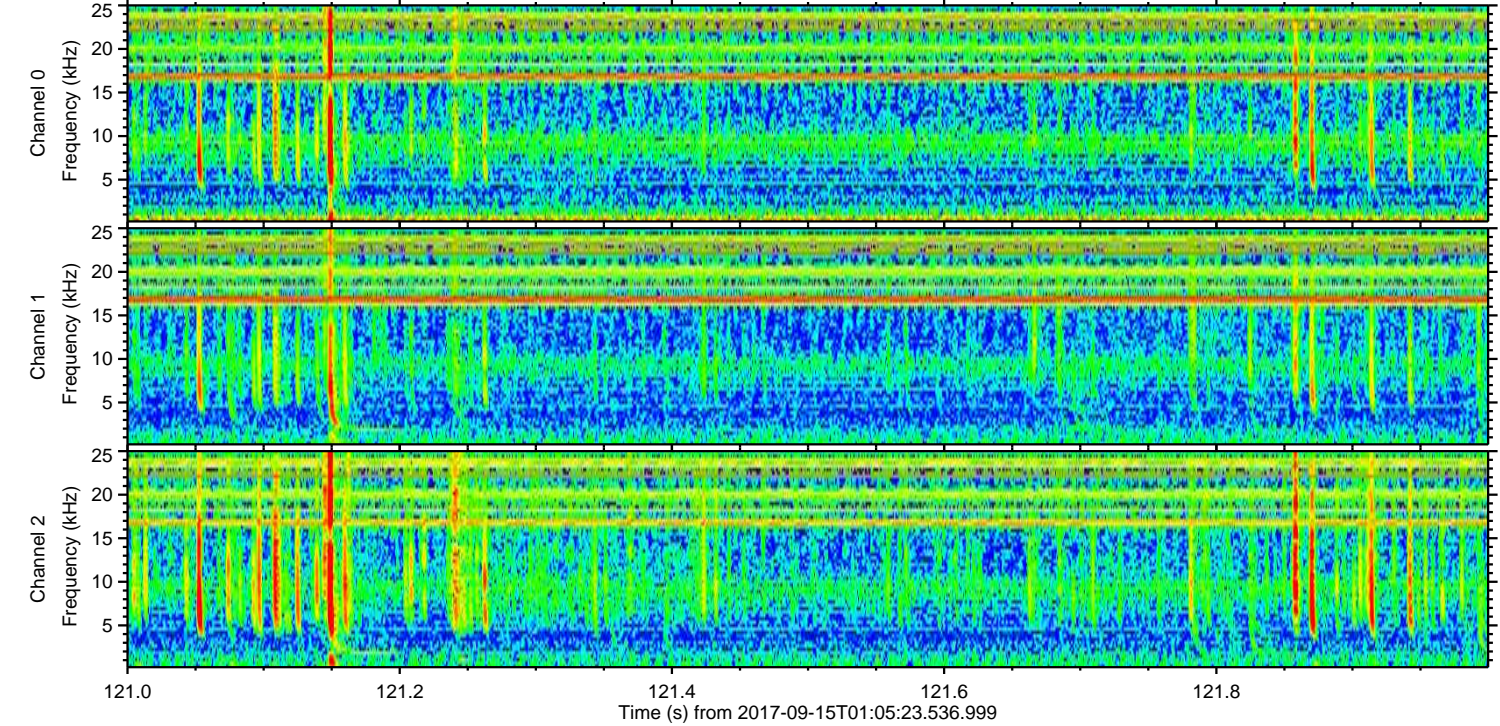
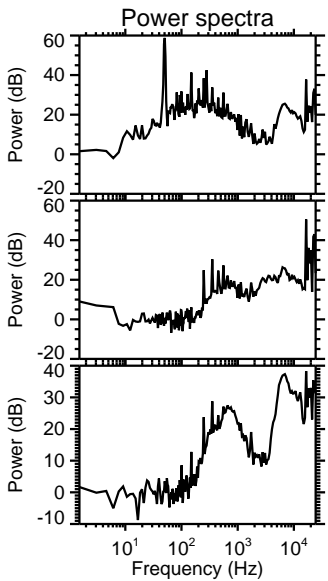
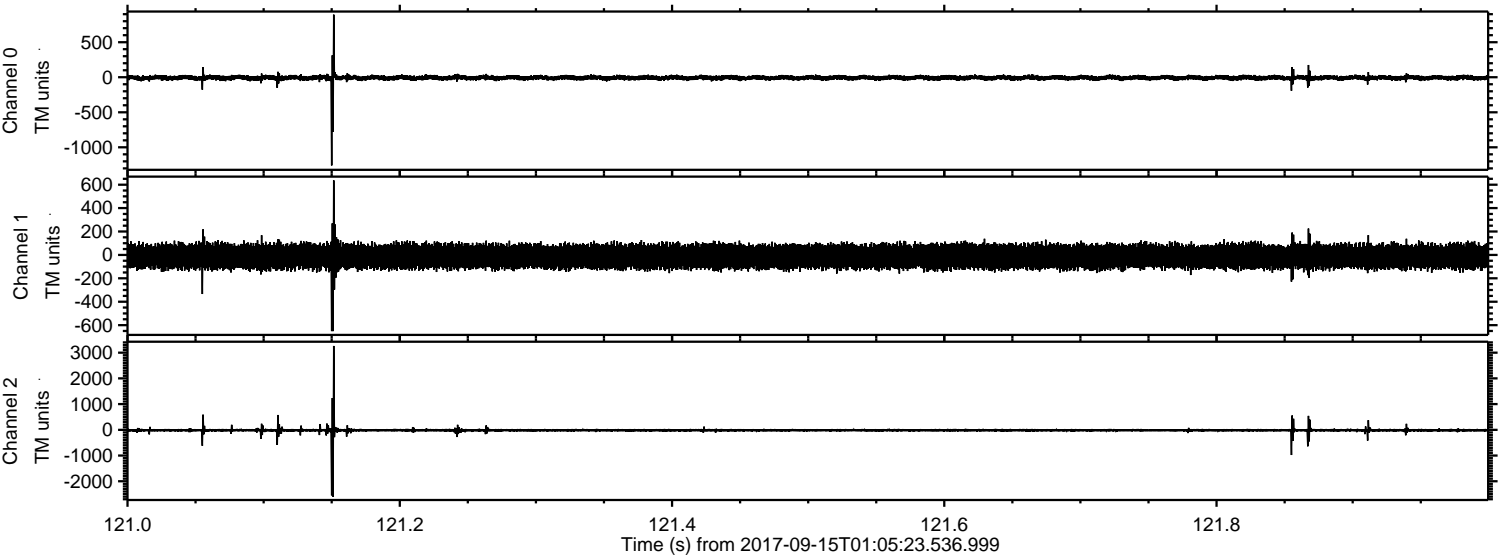


Processed Fri Sep 15 03:12:54 2017 by ELM ver.2012-10-06 from 001__elm20170915_010522__dat00.bin



ELMAVAN 3D WAVEFORMS (Measured data sampled at 50 kHz) 51000 packets of 144 samples from 2017-09-15T01:05:23.536.999. Part 122/147

Processed Fri Sep 15 03:12:55 2017 by ELM ver.2012-10-06 from 001__elm20170915_010522__dat00.bin



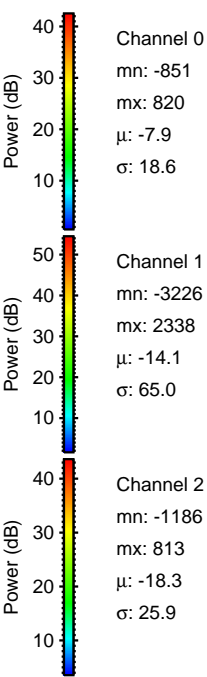
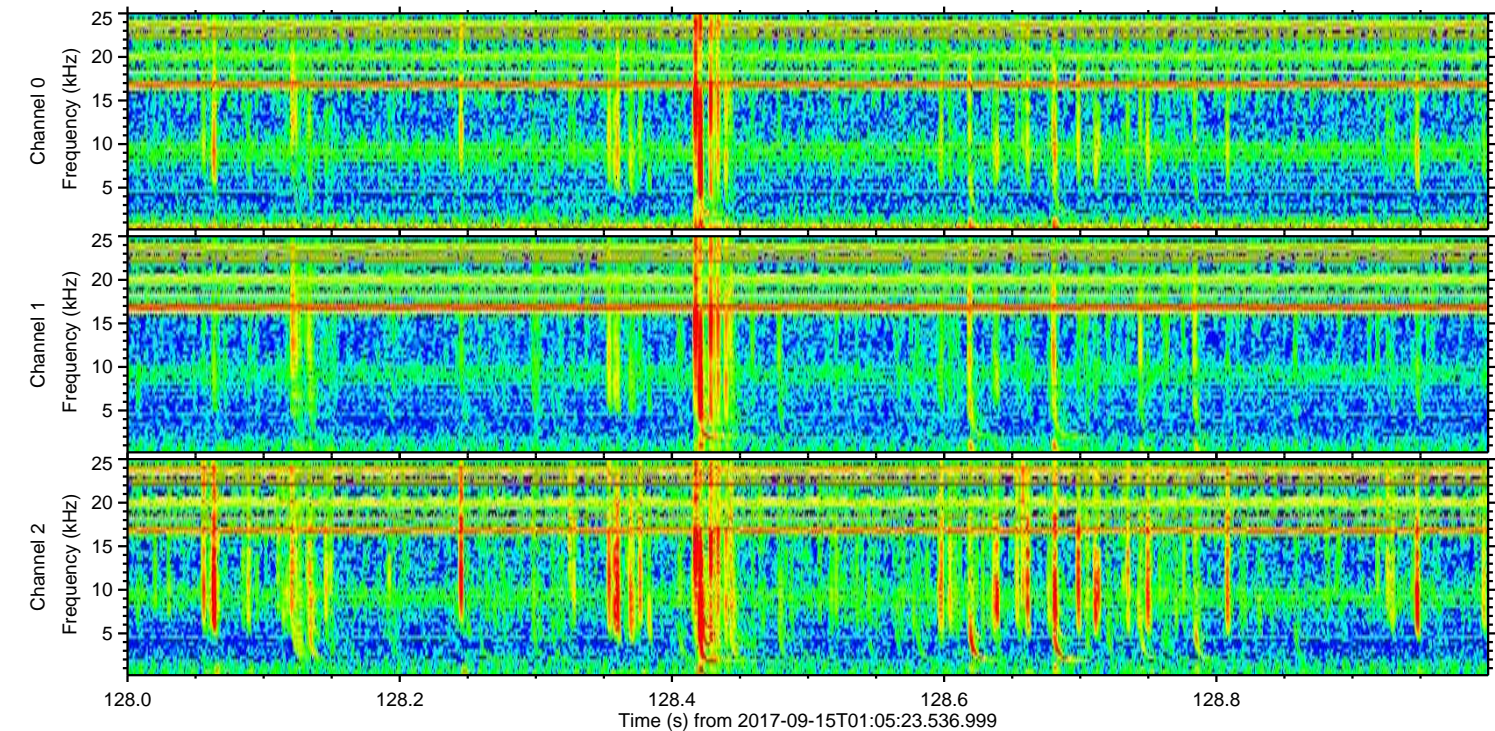
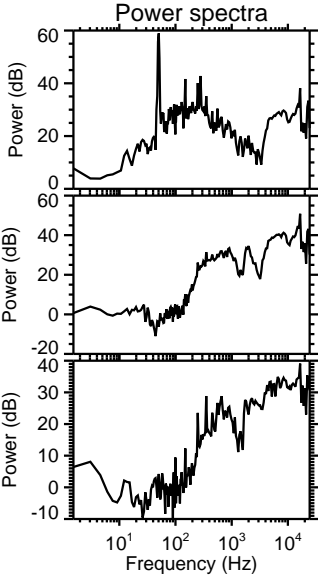
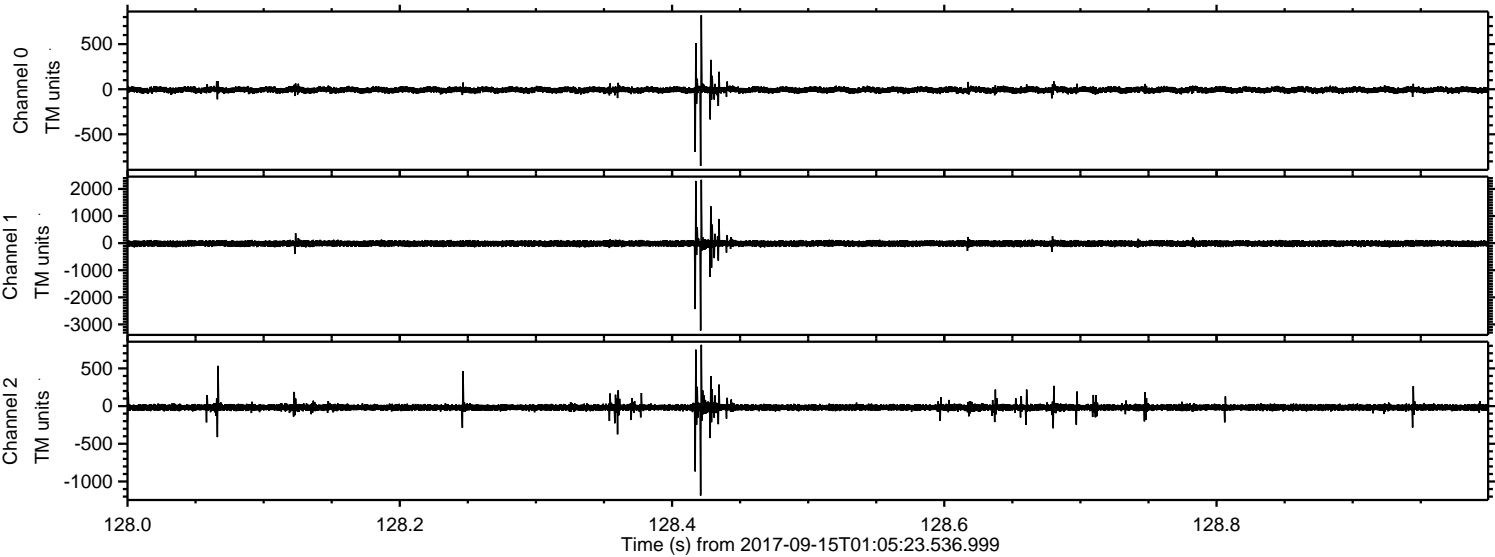
Channel 0
mn: -1258
mx: 893
 μ : -7.8
 σ : 18.9

Channel 1
mn: -651
mx: 637
 μ : -14.1
 σ : 53.7

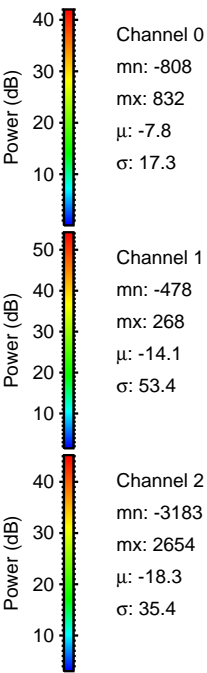
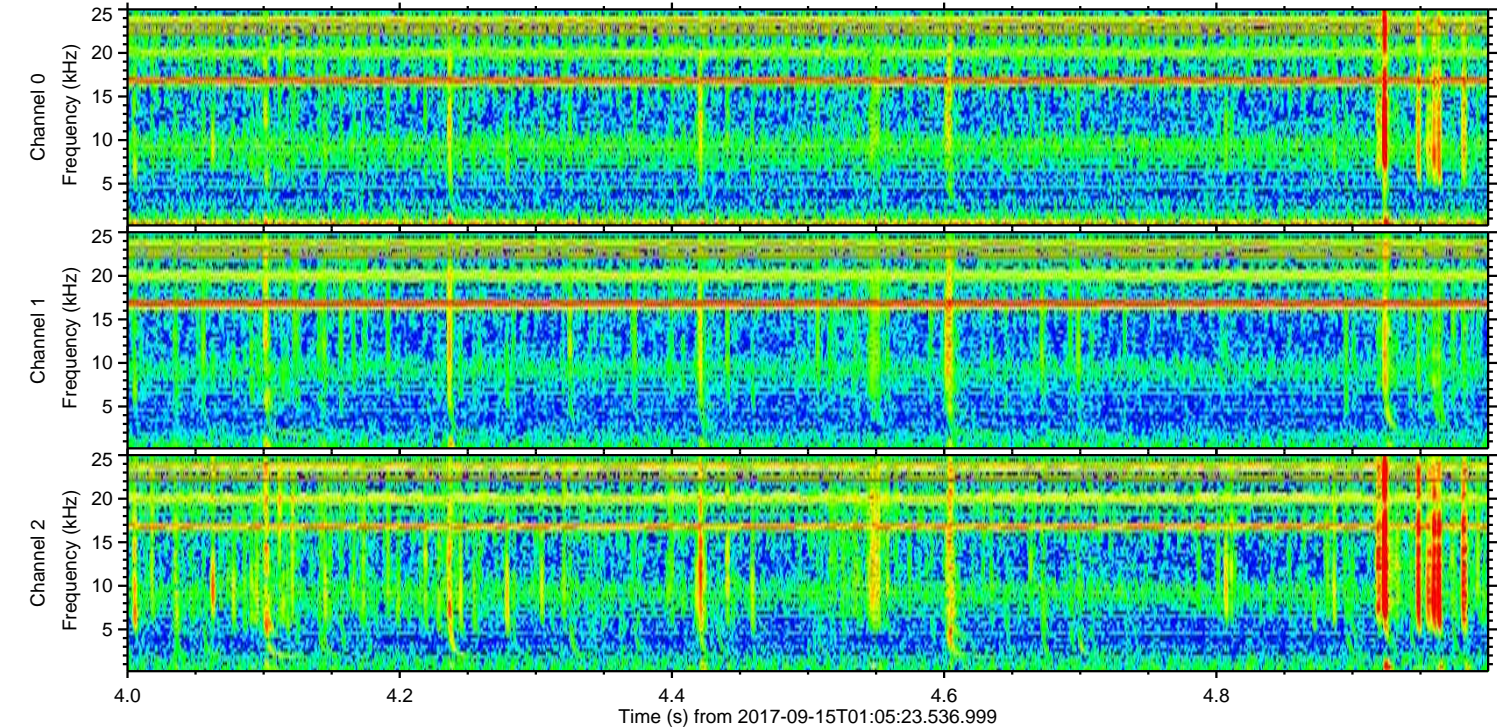
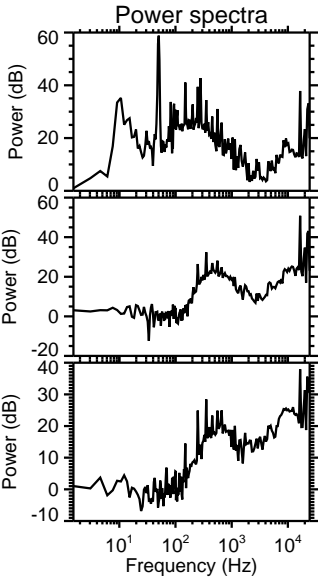
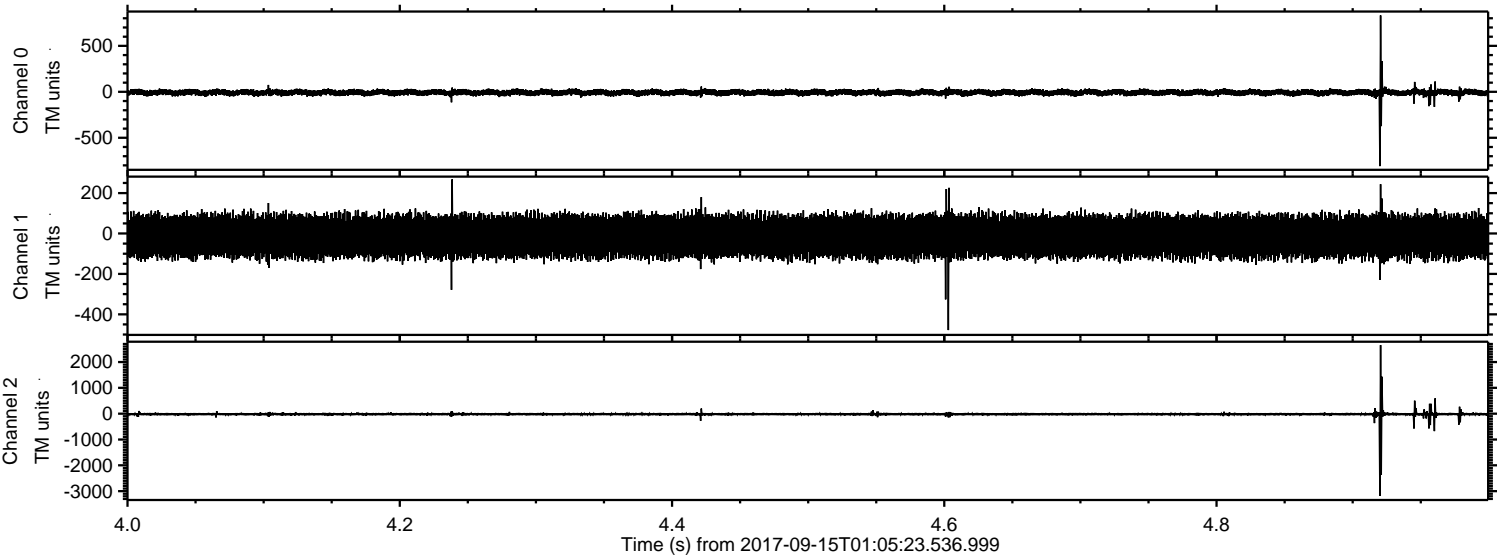
Channel 2
mn: -2600
mx: 3264
 μ : -18.3
 σ : 46.4

ELMAVAN 3D WAVEFORMS (Measured data sampled at 50 kHz) 51000 packets of 144 samples from 2017-09-15T01:05:23.536.999. Part 129/147

Processed Fri Sep 15 03:12:56 2017 by ELM ver.2012-10-06 from 001__elm20170915_010522__dat00.bin



Processed Fri Sep 15 03:12:56 2017 by ELM ver.2012-10-06 from 001__elm20170915_010522__dat00.bin



Processed Fri Sep 15 03:12:57 2017 by ELM ver.2012-10-06 from 001__elm20170915_010522__dat00.bin

