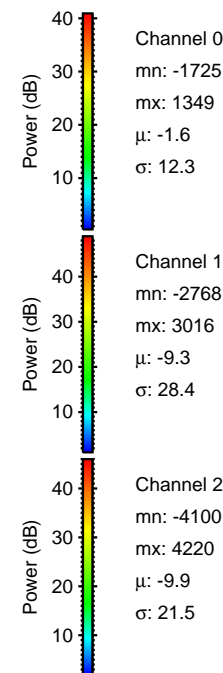
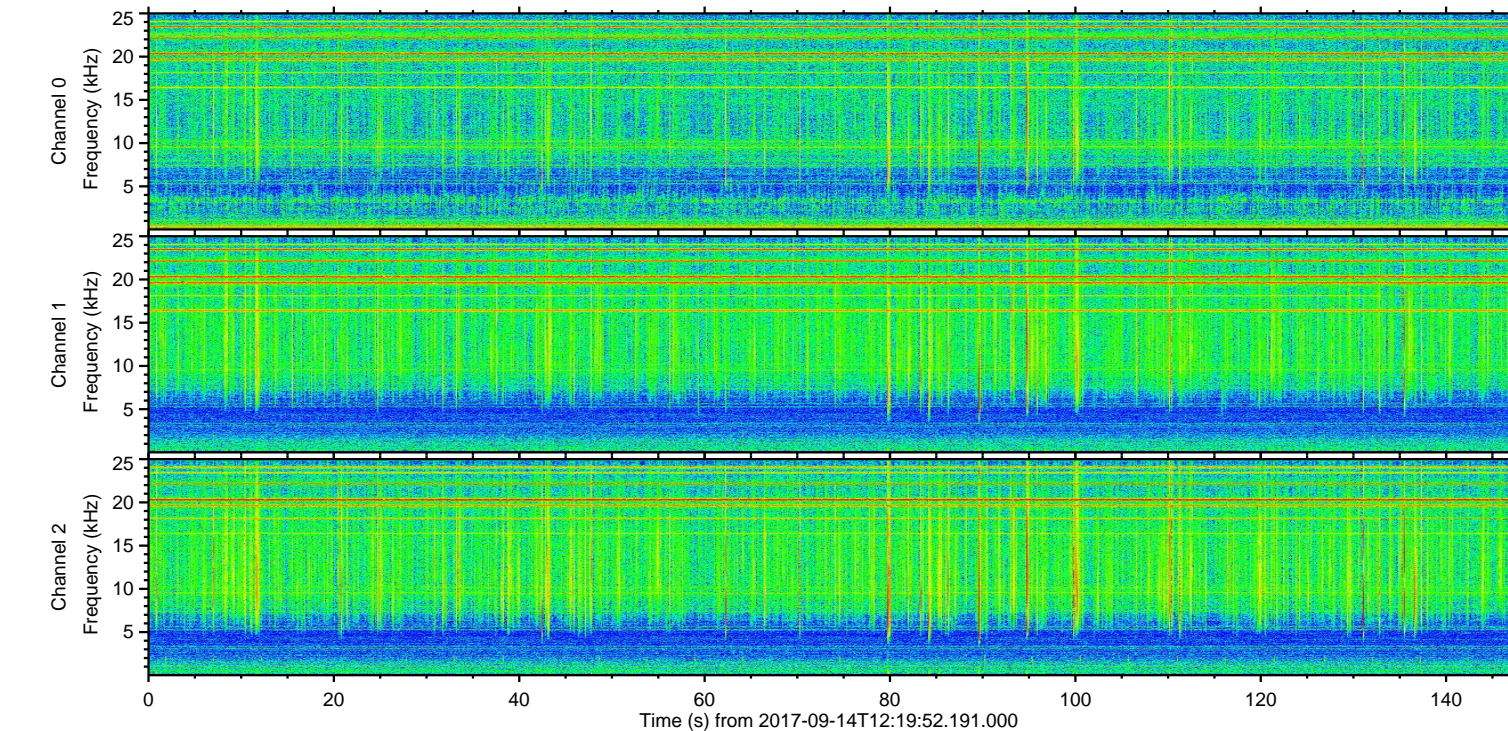
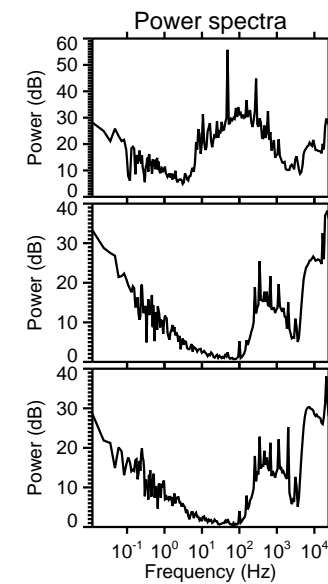
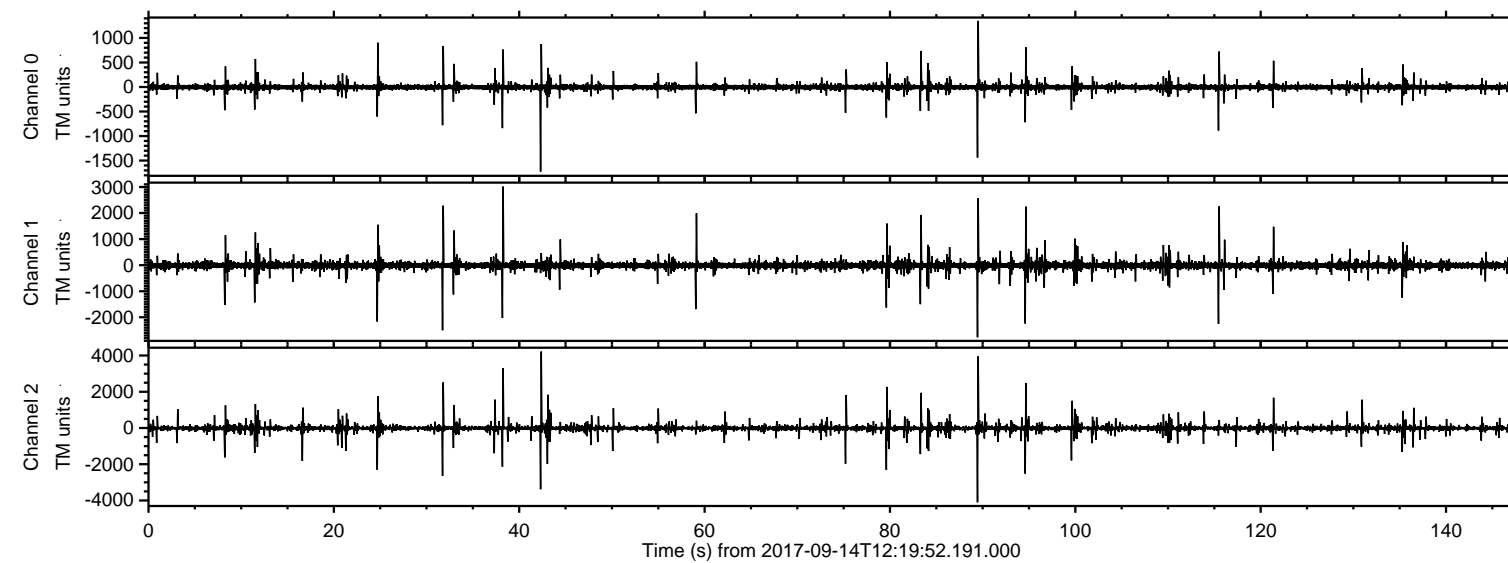
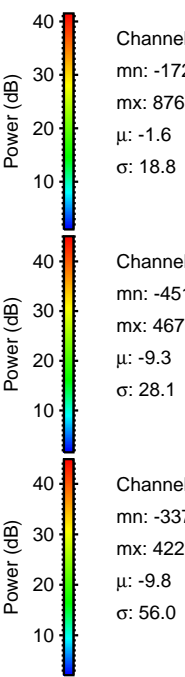
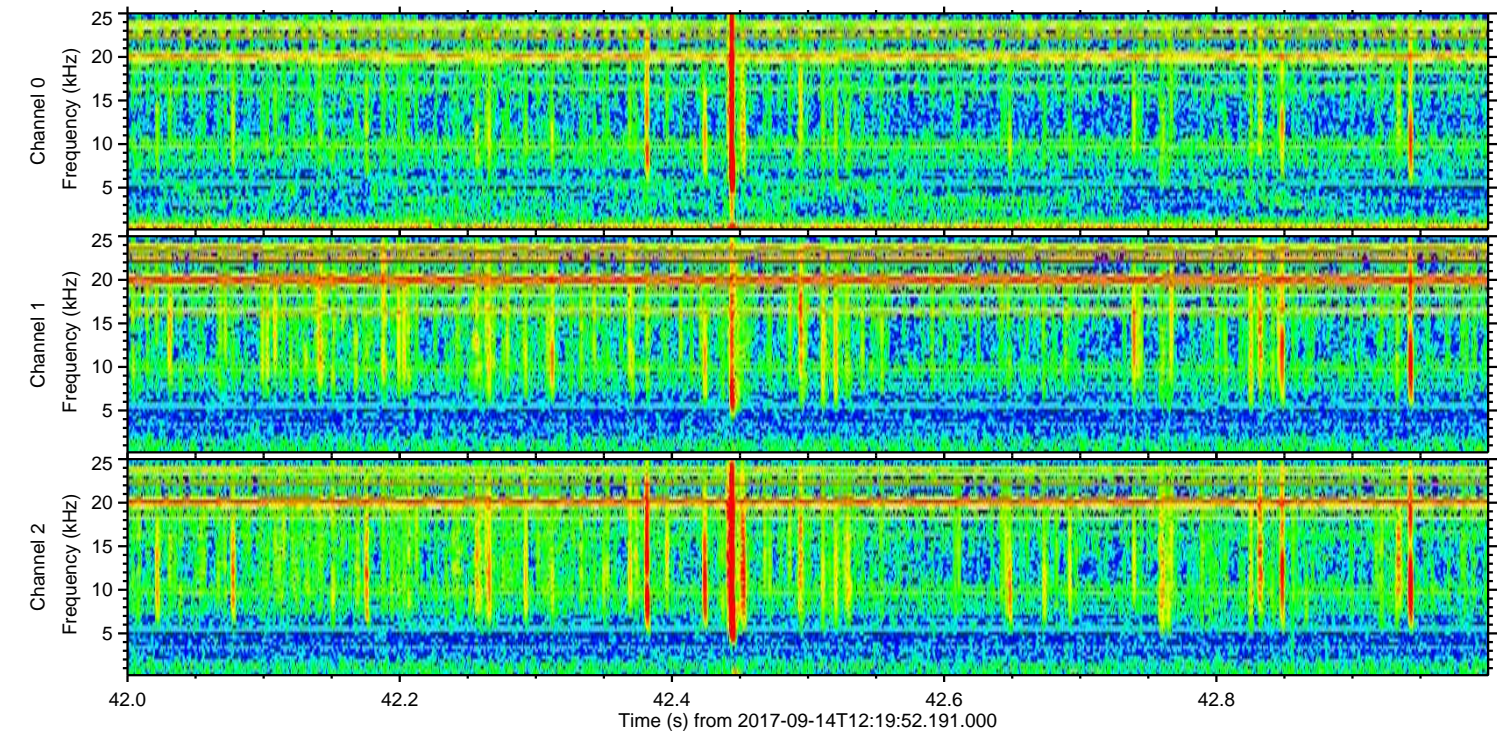
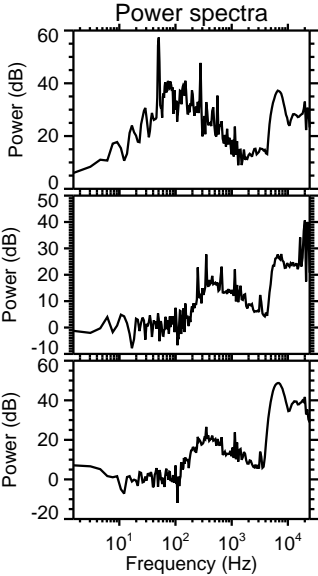
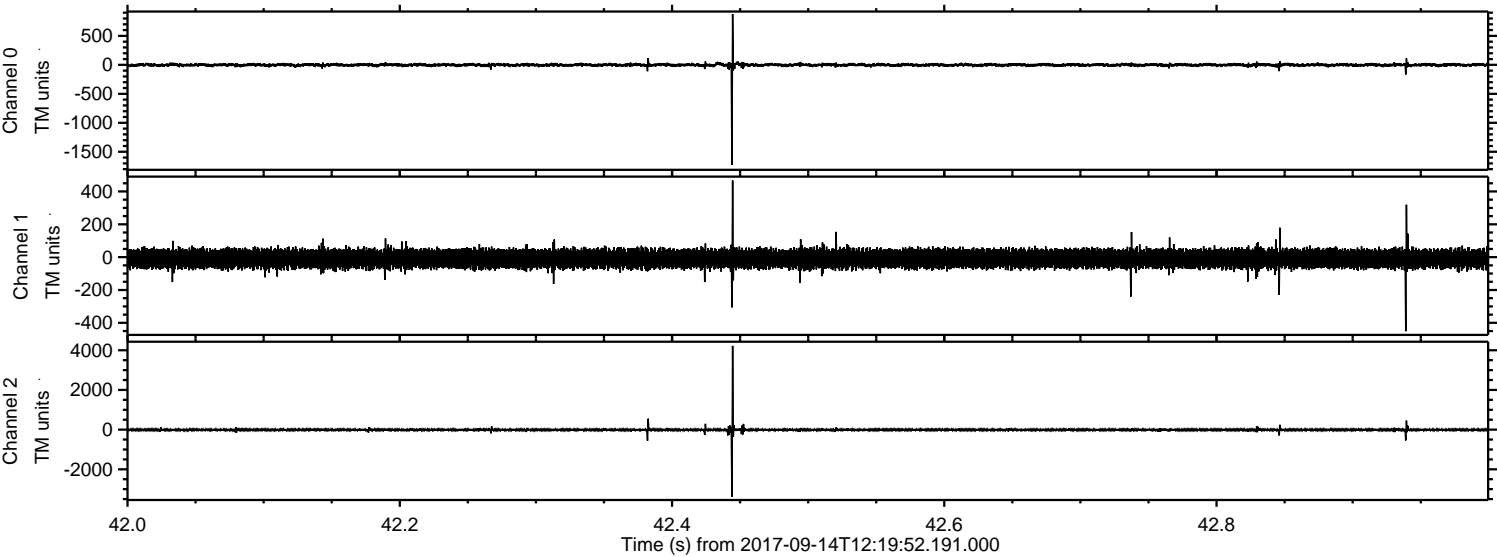


ELMAVAN 3D WAVEFORMS (Measured data sampled at 50 kHz) 51000 packets of 144 samples from 2017-09-14T12:19:52.191.000.

Processed Thu Sep 14 14:28:18 2017 by ELM ver.2012-10-06 from 001__elm20170914_121951__dat00.bin

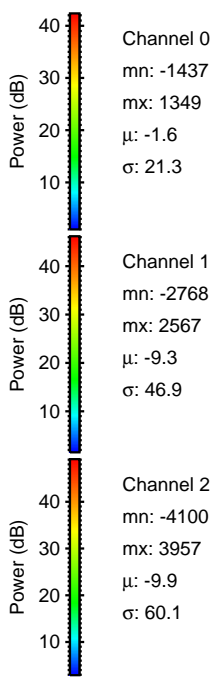
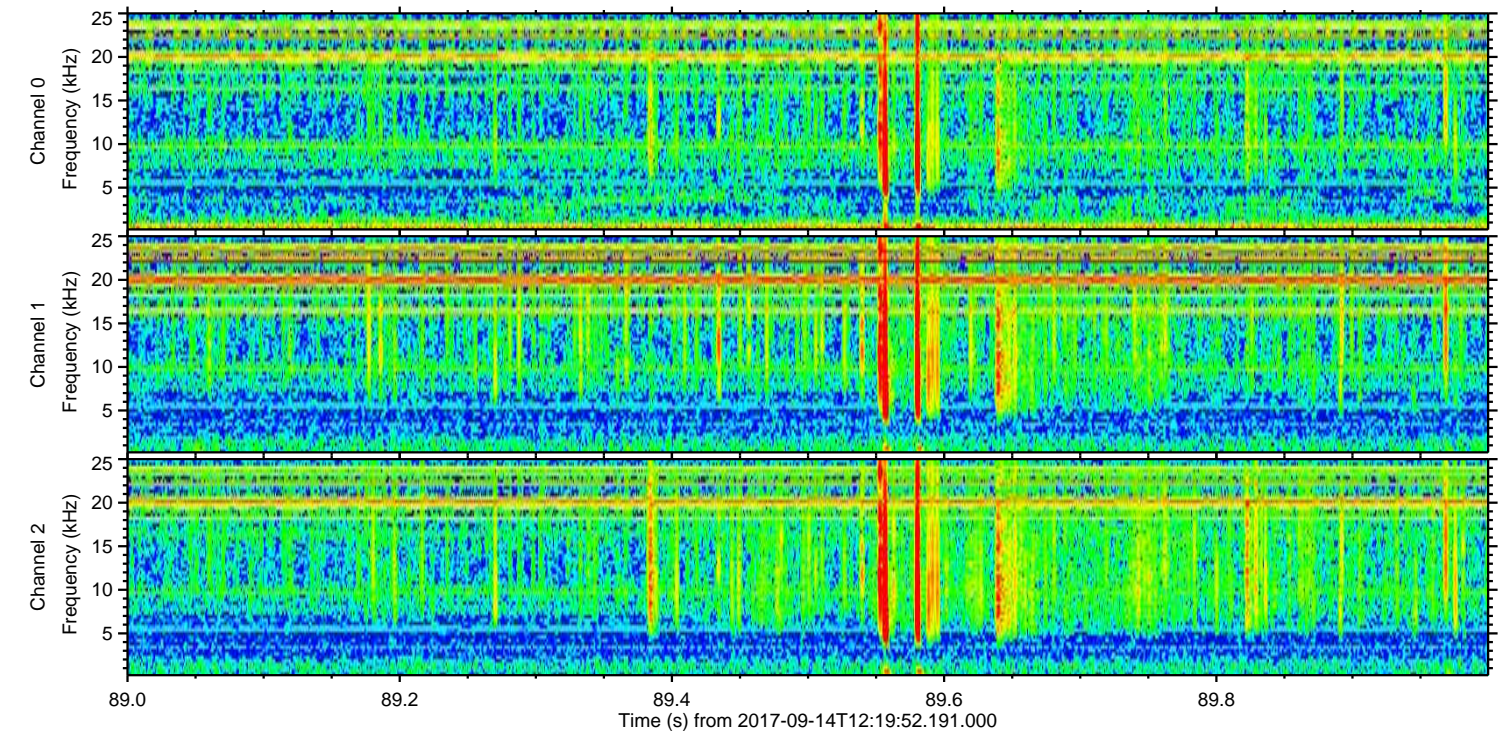
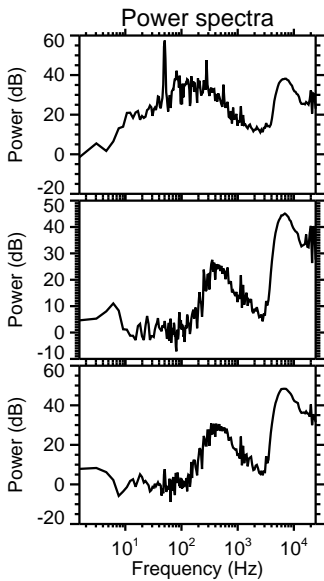
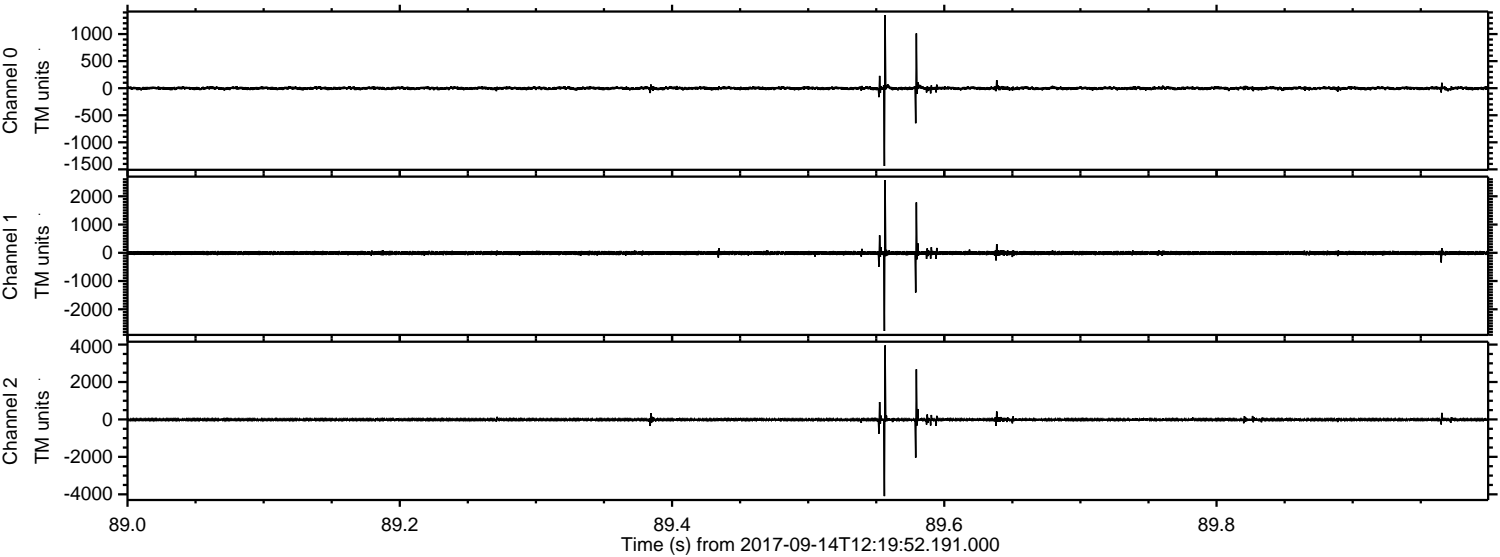


Processed Thu Sep 14 14:28:24 2017 by ELM ver.2012-10-06 from 001__elm20170914_121951__dat00.bin



ELMAVAN 3D WAVEFORMS (Measured data sampled at 50 kHz) 51000 packets of 144 samples from 2017-09-14T12:19:52.191.000. Part 90/147

Processed Thu Sep 14 14:28:24 2017 by ELM ver.2012-10-06 from 001__elm20170914_121951__dat00.bin

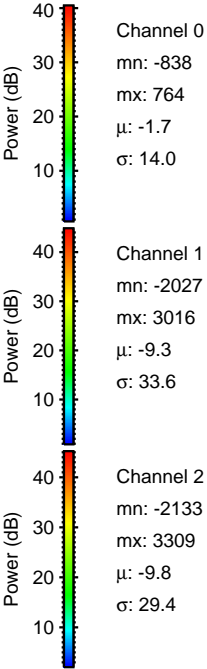
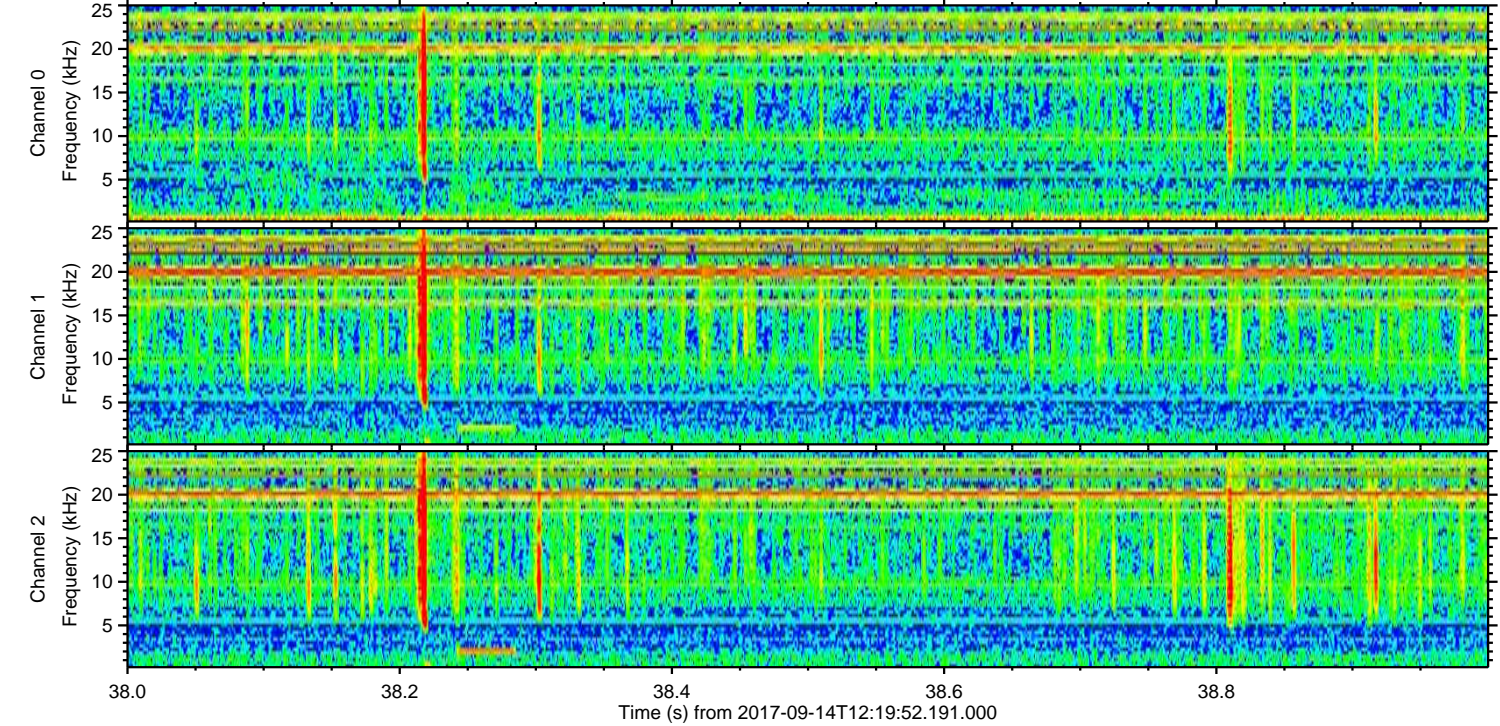
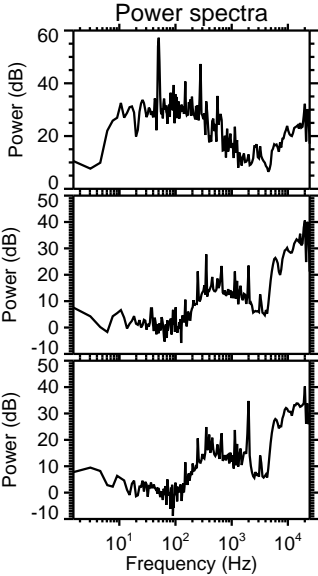
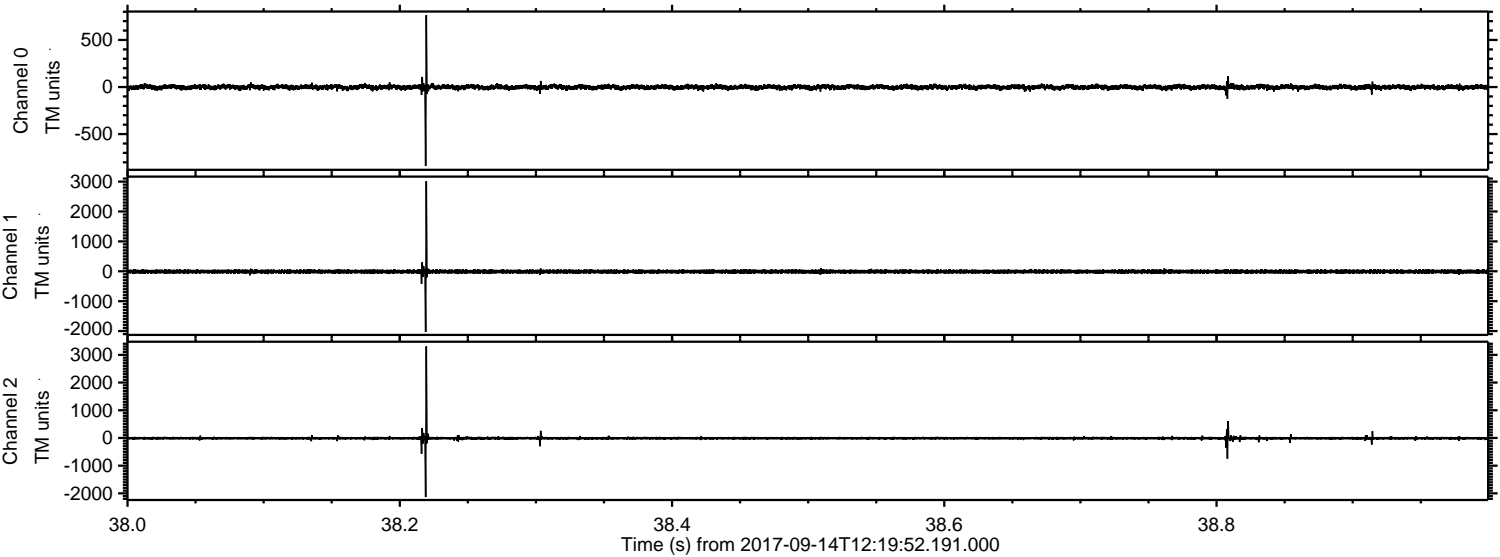


Channel 0
mn: -1437
mx: 1349
 μ : -1.6
 σ : 21.3

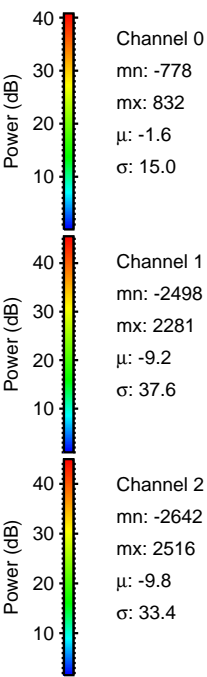
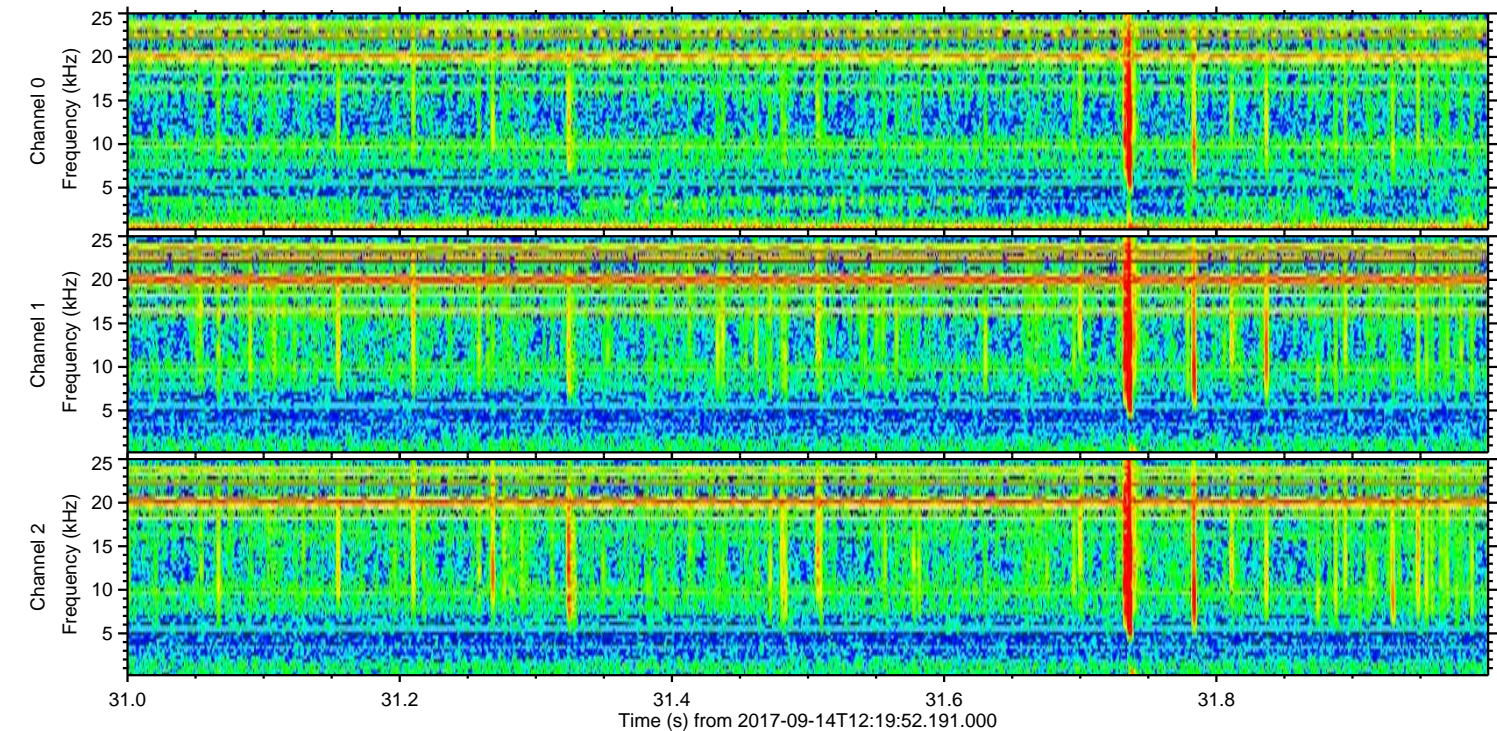
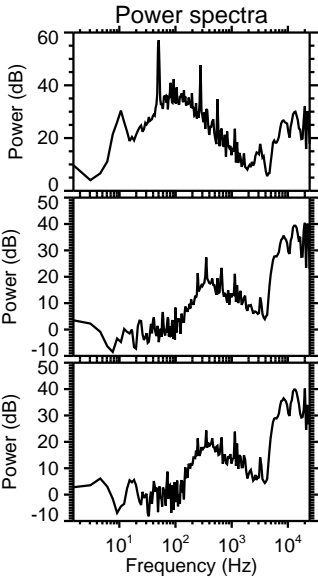
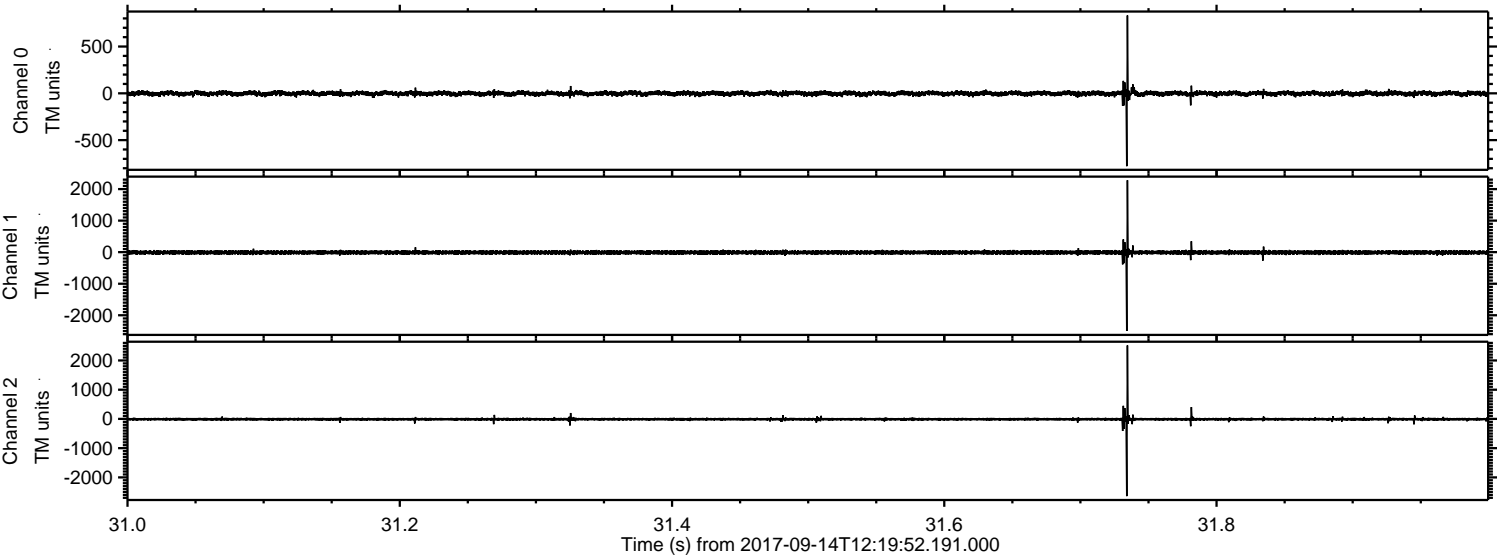
Channel 1
mn: -2768
mx: 2567
 μ : -9.3
 σ : 46.9

Channel 2
mn: -4100
mx: 3957
 μ : -9.9
 σ : 60.1

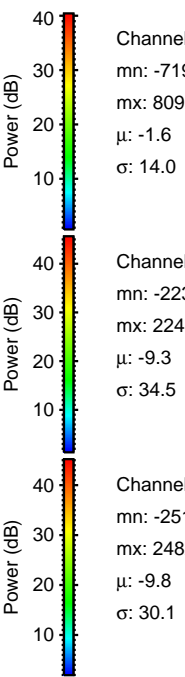
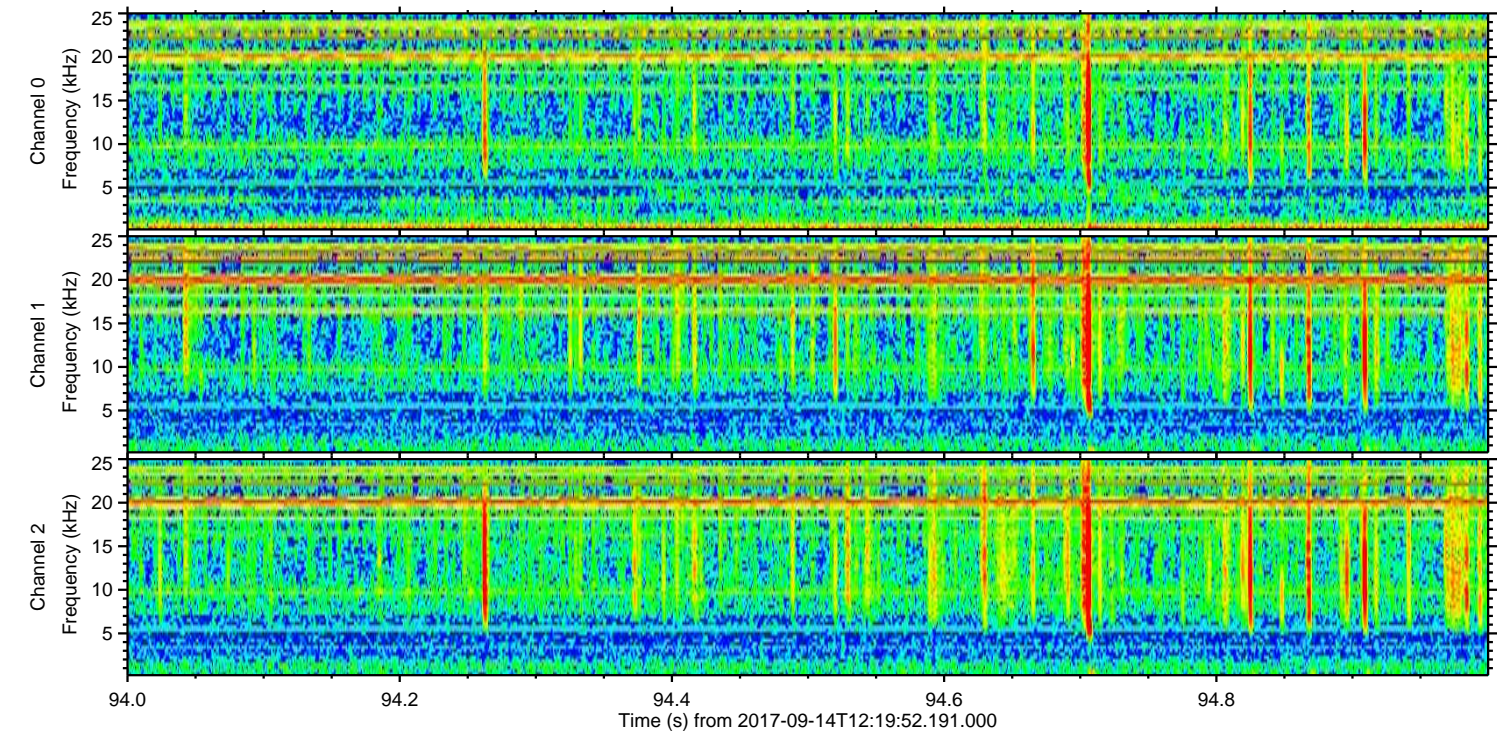
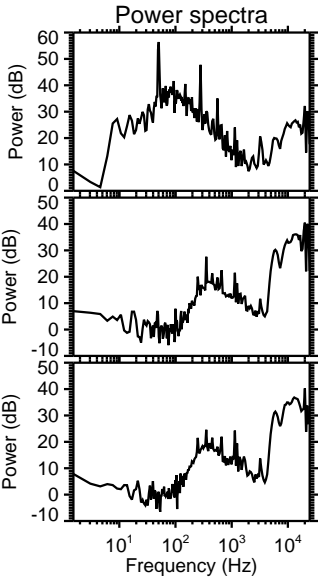
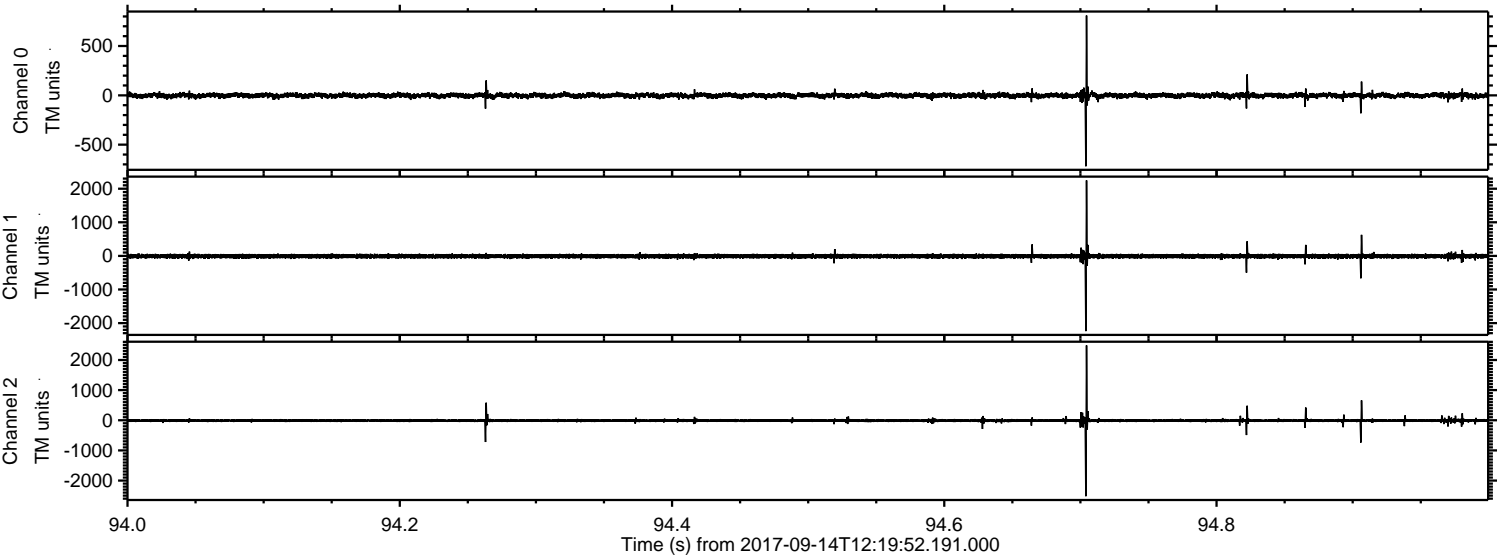
Processed Thu Sep 14 14:28:25 2017 by ELM ver.2012-10-06 from 001__elm20170914_121951__dat00.bin



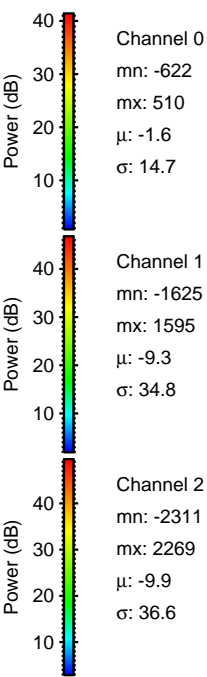
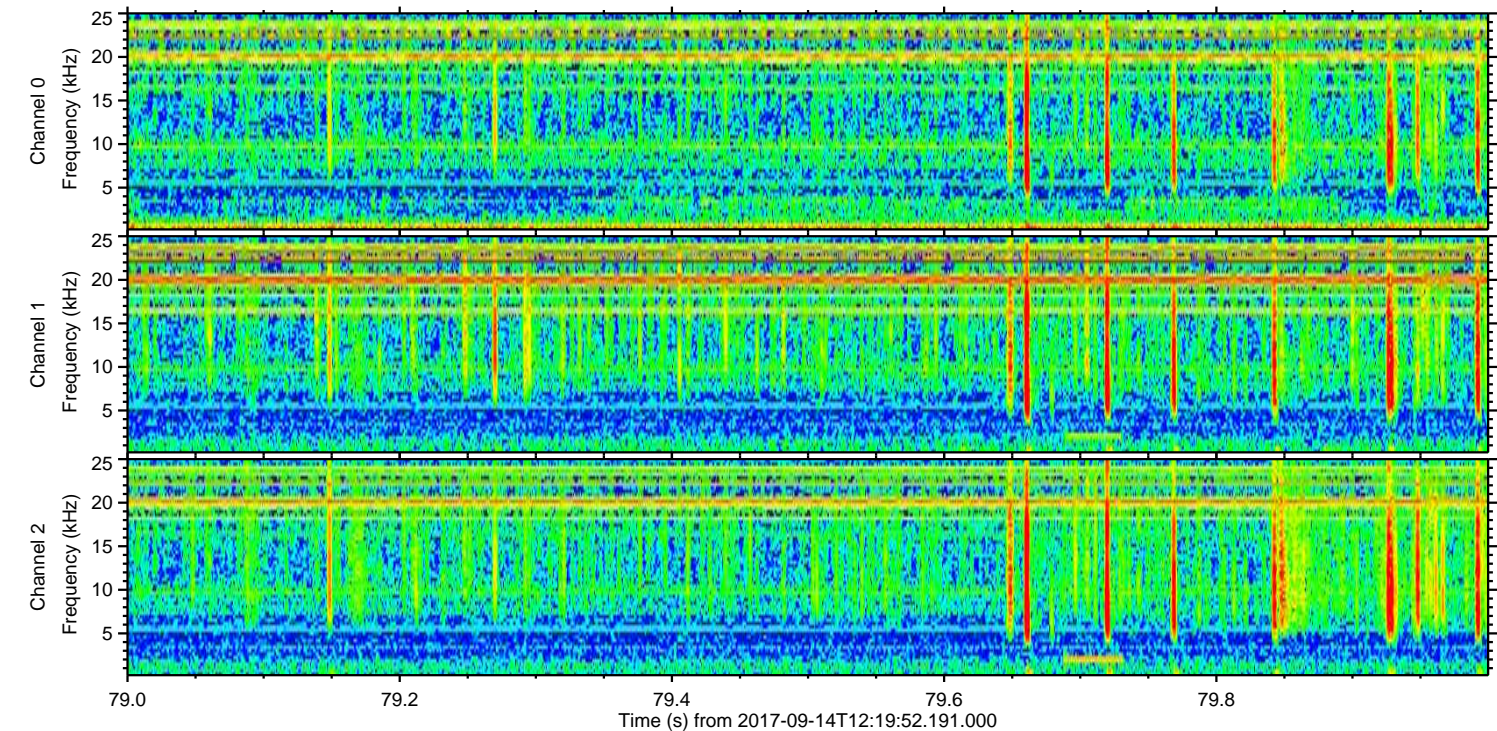
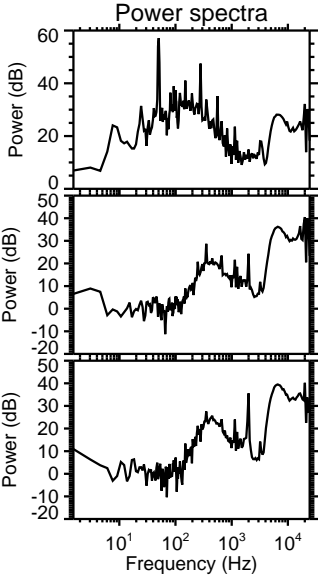
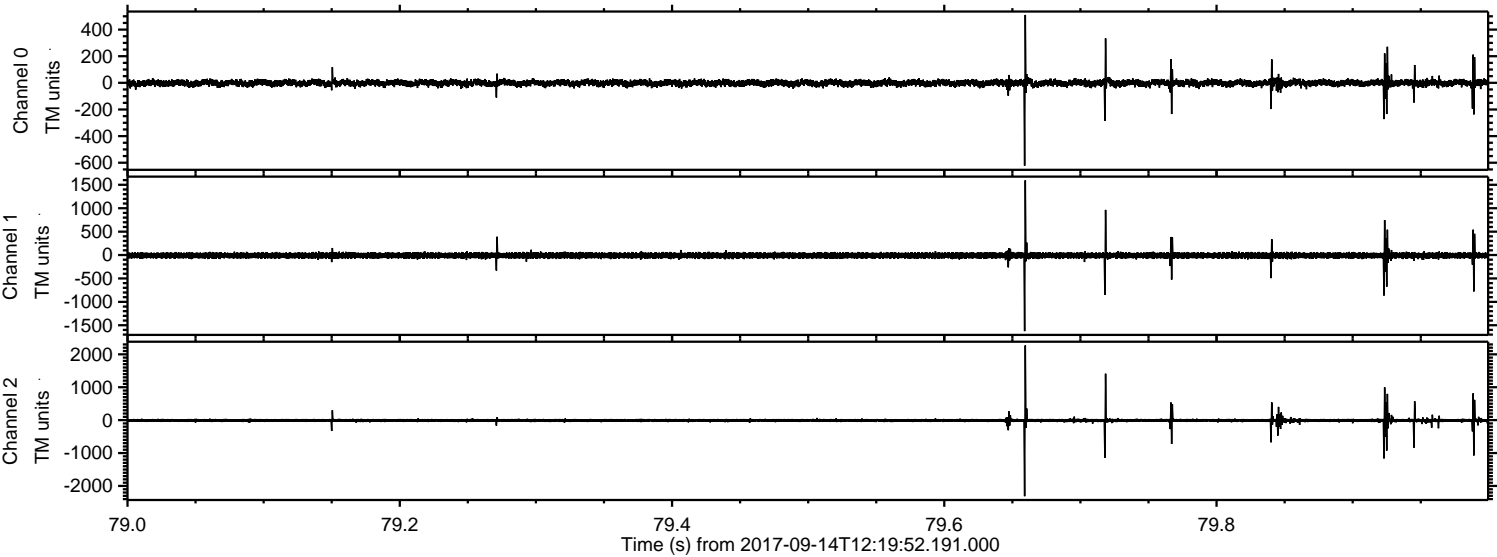
Processed Thu Sep 14 14:28:26 2017 by ELM ver.2012-10-06 from 001__elm20170914_121951__dat00.bin



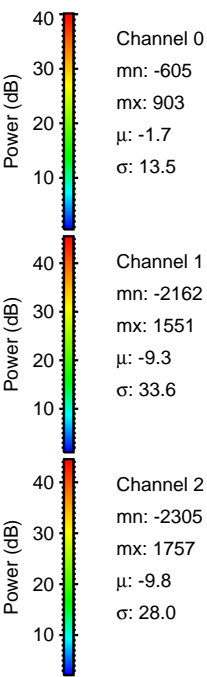
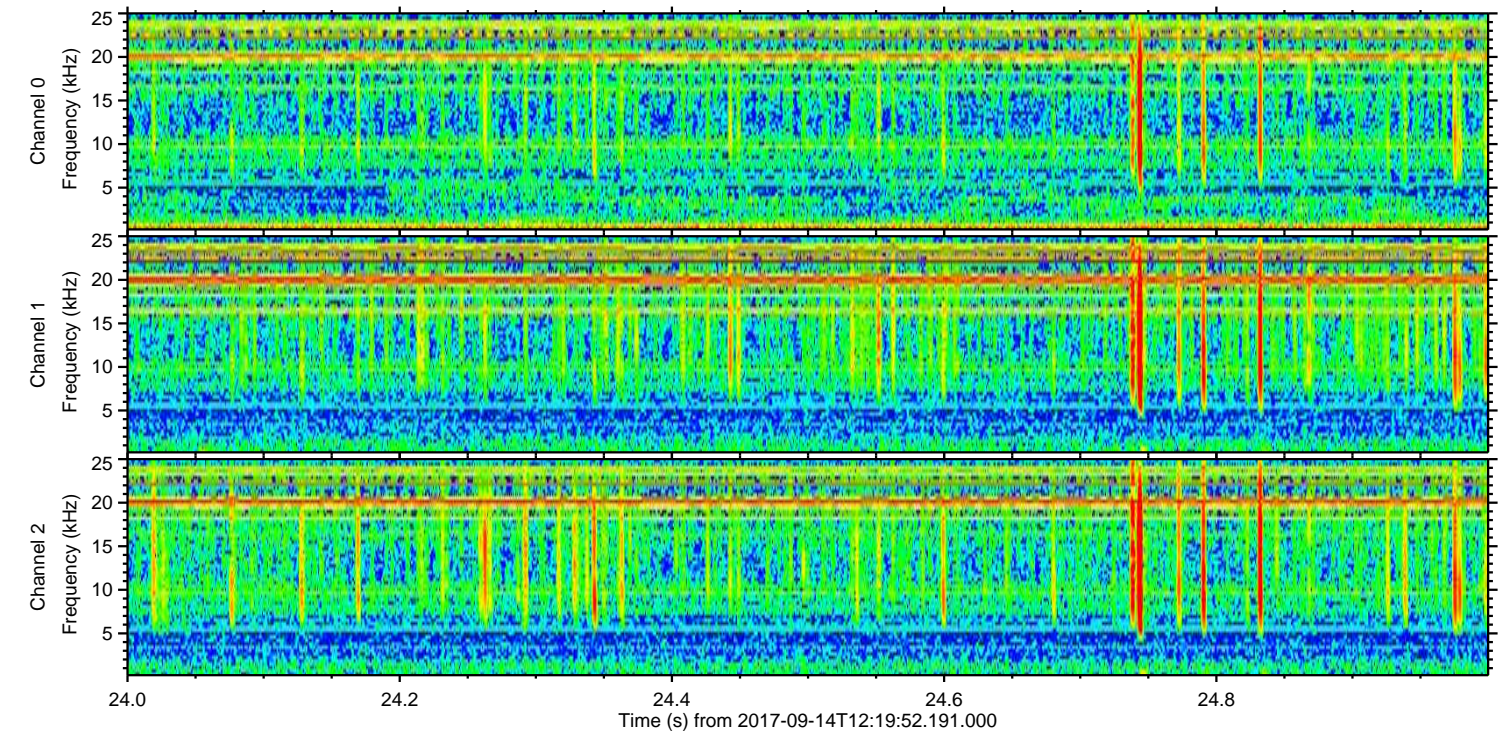
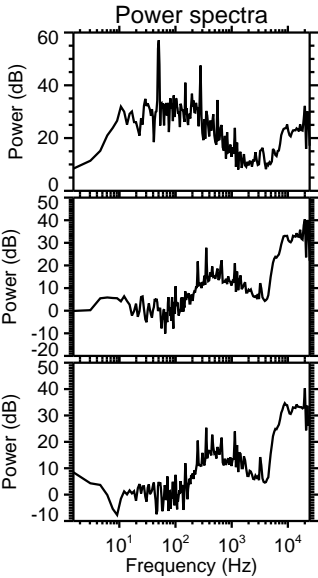
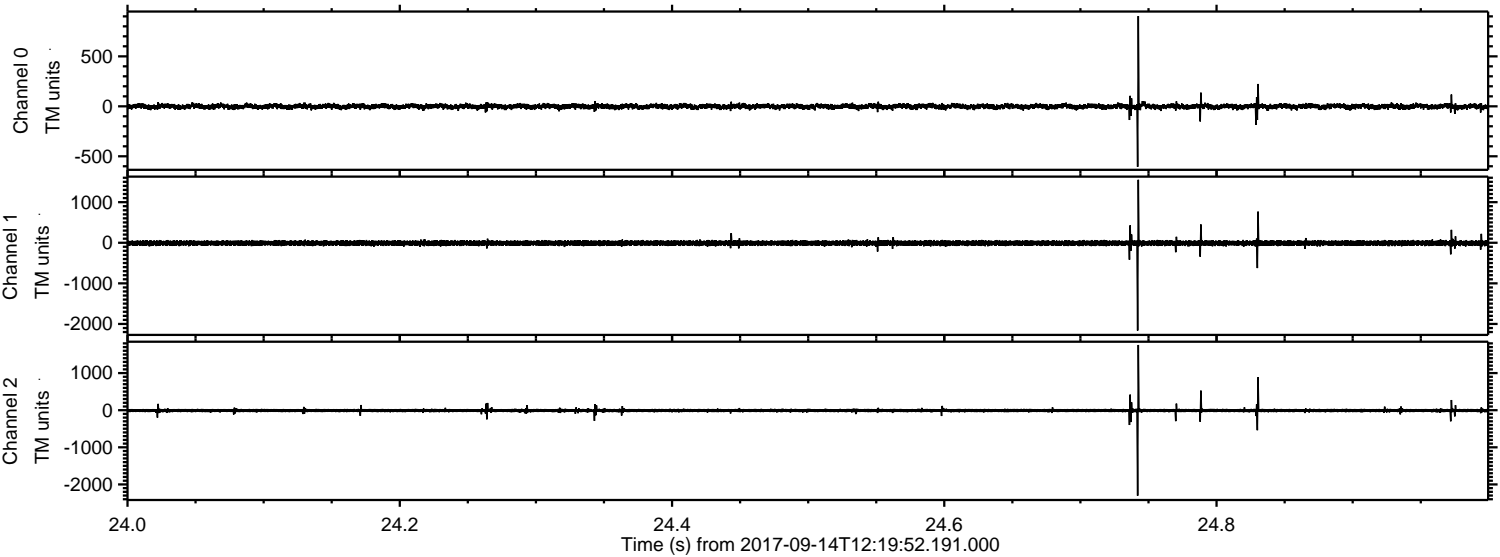
Processed Thu Sep 14 14:28:26 2017 by ELM ver.2012-10-06 from 001__elm20170914_121951__dat00.bin



Processed Thu Sep 14 14:28:27 2017 by ELM ver.2012-10-06 from 001__elm20170914_121951__dat00.bin

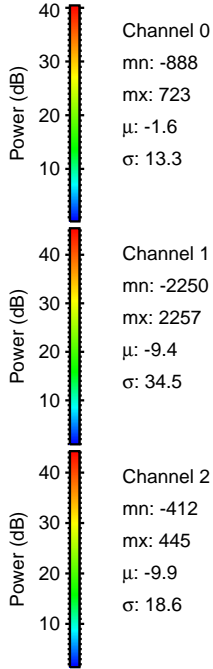
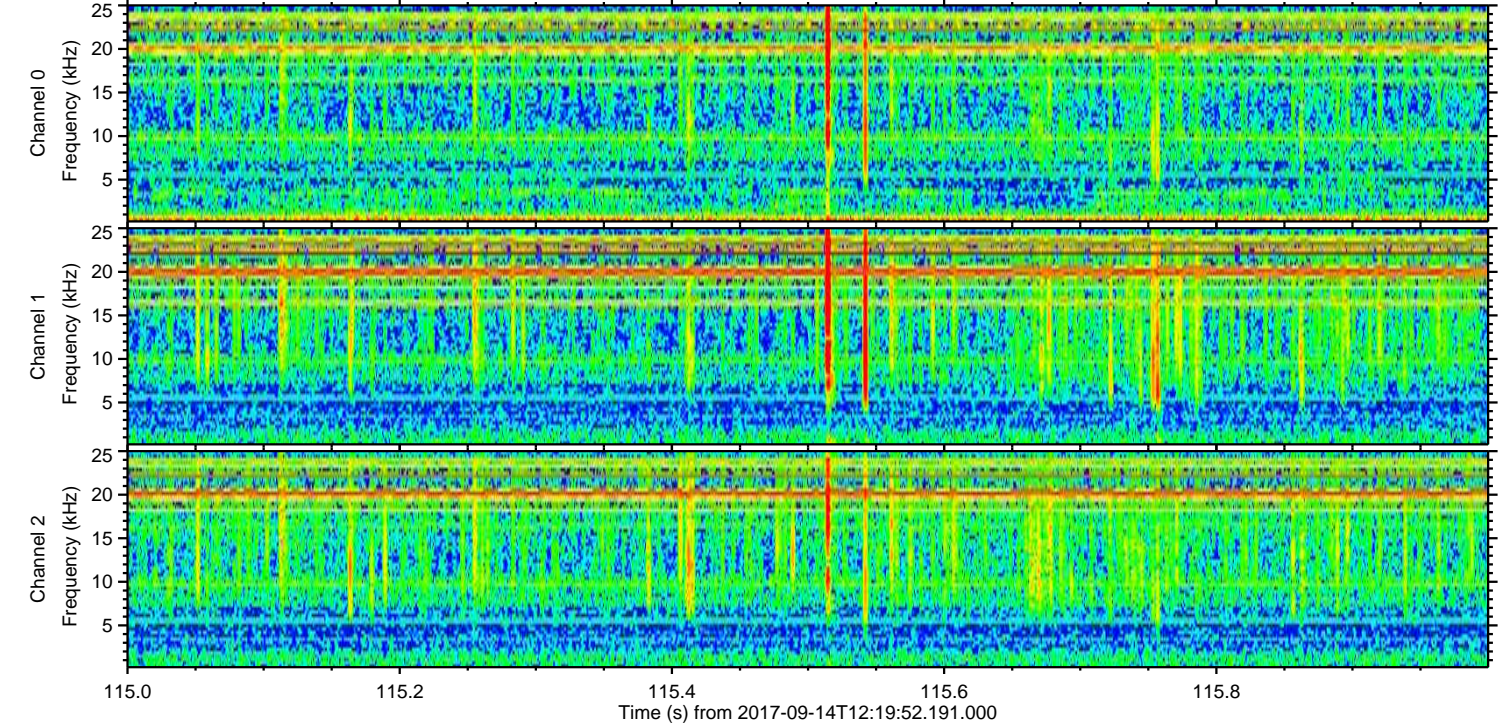
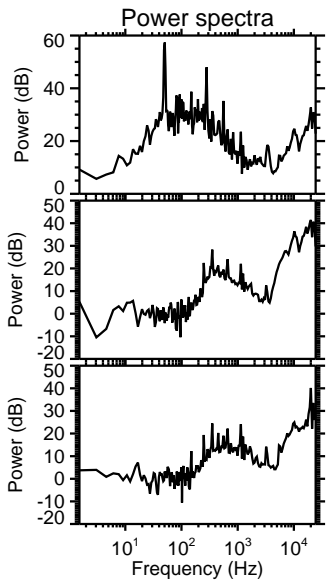
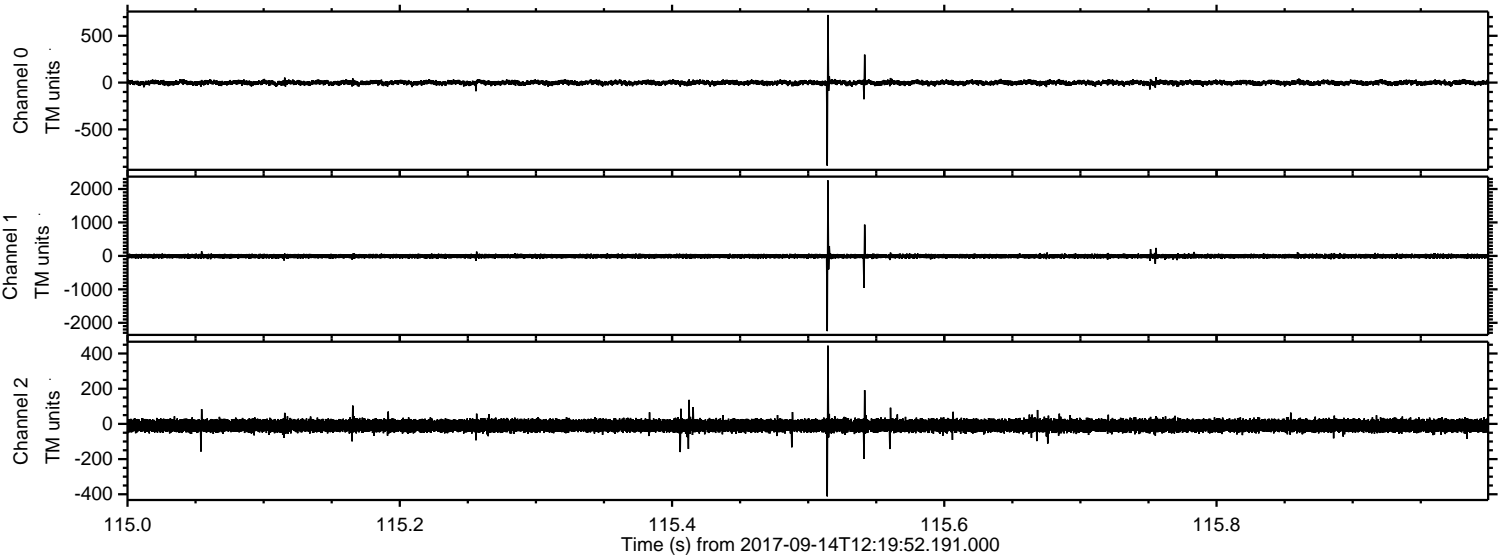


Processed Thu Sep 14 14:28:28 2017 by ELM ver.2012-10-06 from 001__elm20170914_121951__dat00.bin

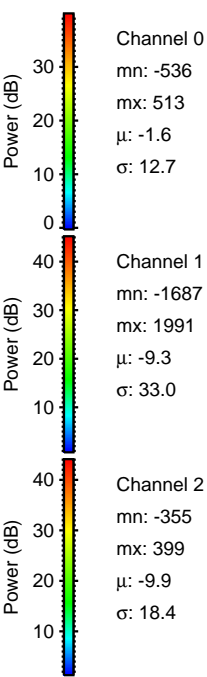
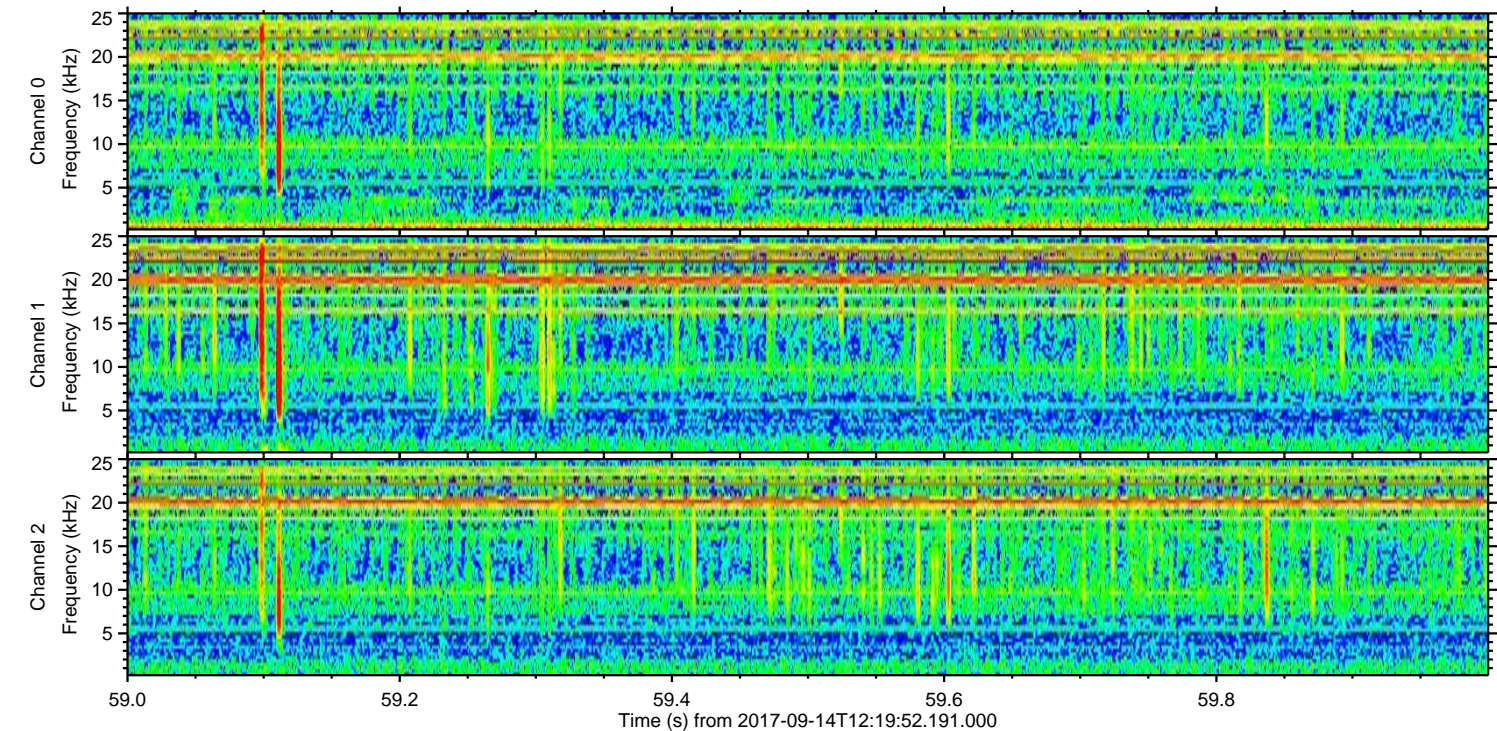
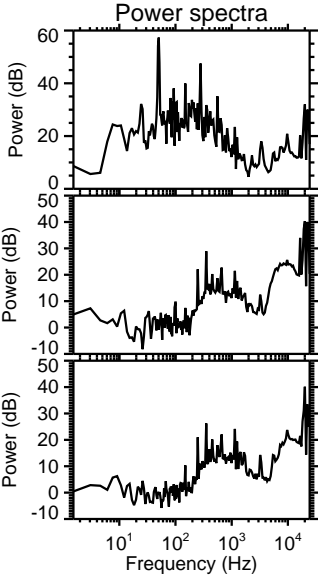
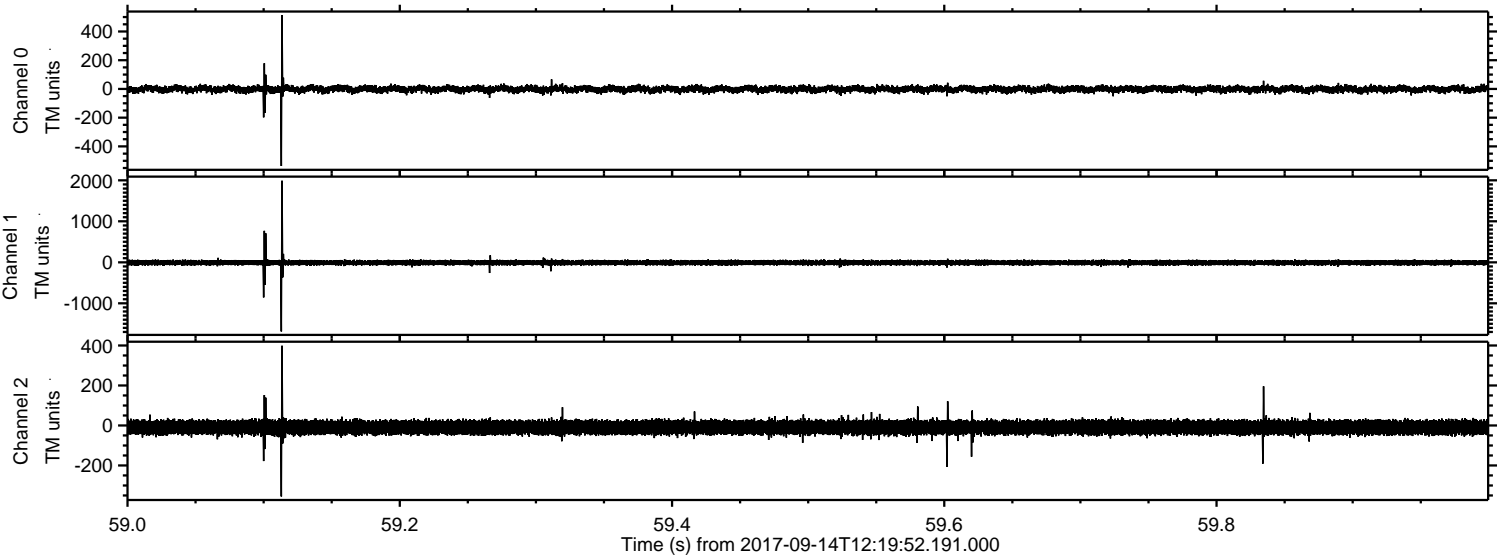


ELMAVAN 3D WAVEFORMS (Measured data sampled at 50 kHz) 51000 packets of 144 samples from 2017-09-14T12:19:52.191.000. Part 116/147

Processed Thu Sep 14 14:28:28 2017 by ELM ver.2012-10-06 from 001__elm20170914_121951__dat00.bin



Processed Thu Sep 14 14:28:29 2017 by ELM ver.2012-10-06 from 001__elm20170914_121951__dat00.bin



Channel 0
mn: -536
mx: 513
 μ : -1.6
 σ : 12.7

Channel 1
mn: -1687
mx: 1991
 μ : -9.3
 σ : 33.0

Channel 2
mn: -355
mx: 399
 μ : -9.9
 σ : 18.4

