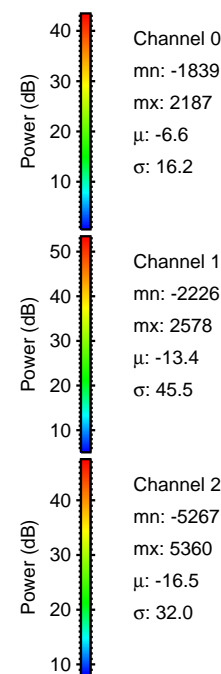
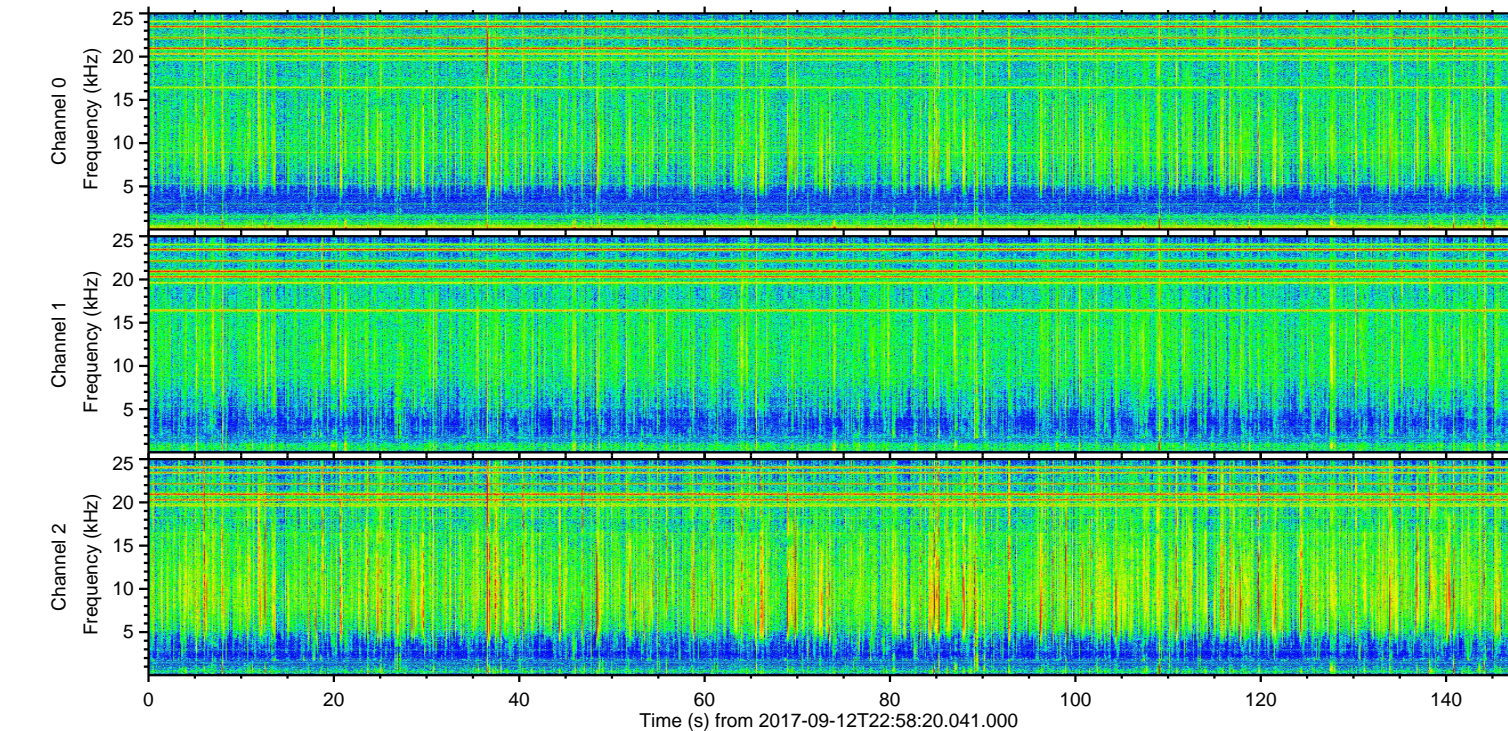
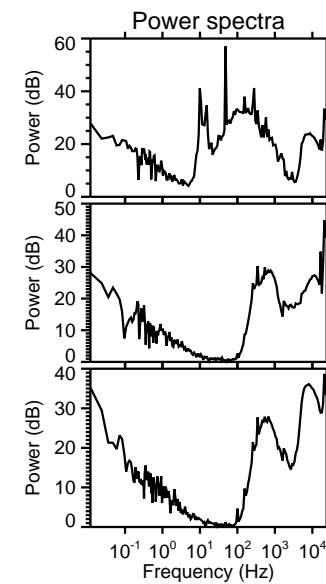
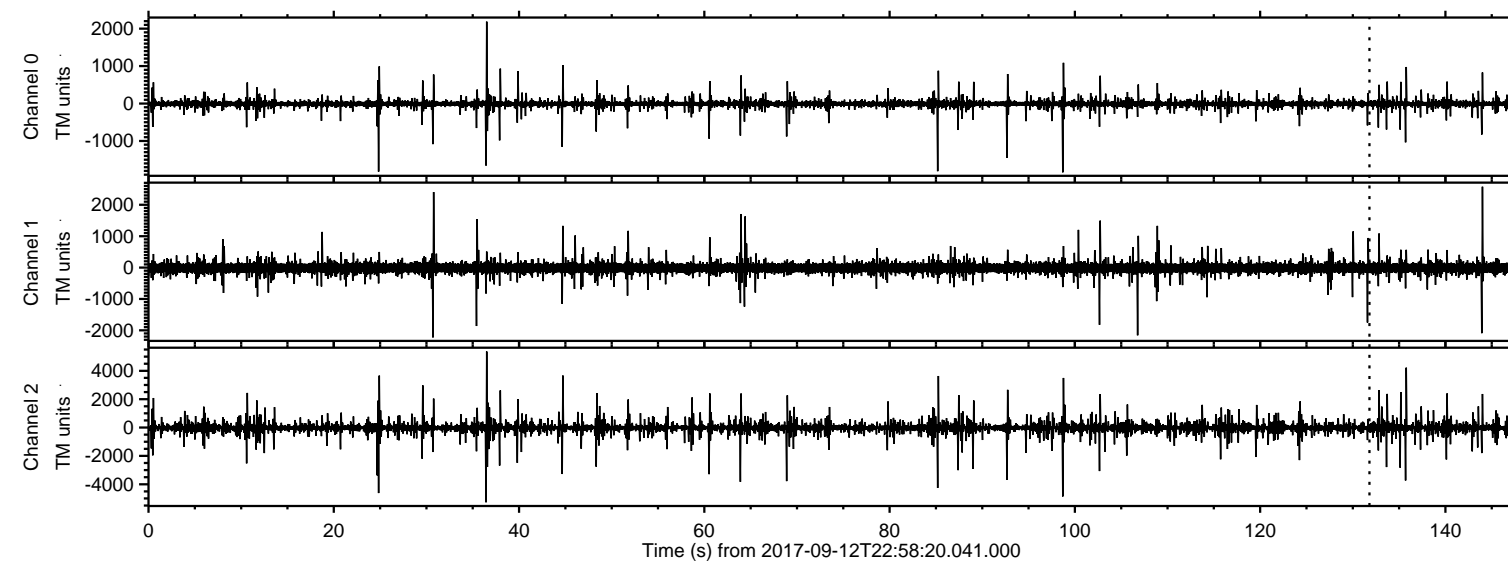


# ELMAVAN 3D WAVEFORMS (Measured data sampled at 50 kHz) 50999 packets of 144 samples from 2017-09-12T22:58:20.041.000.

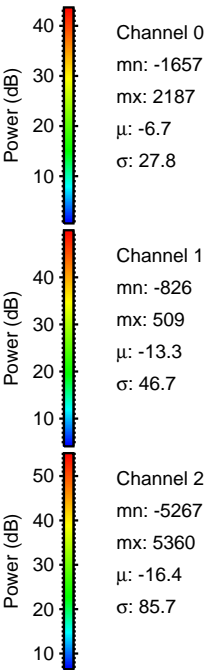
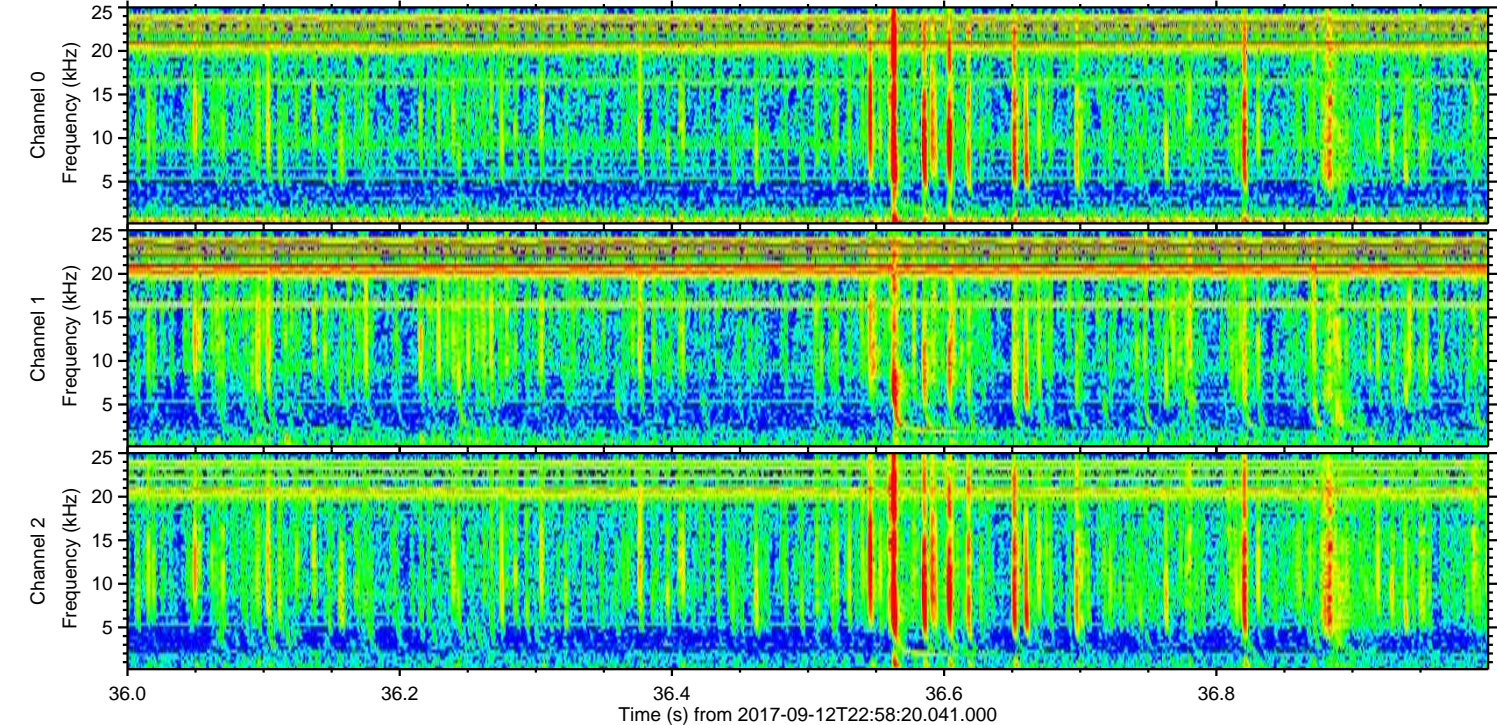
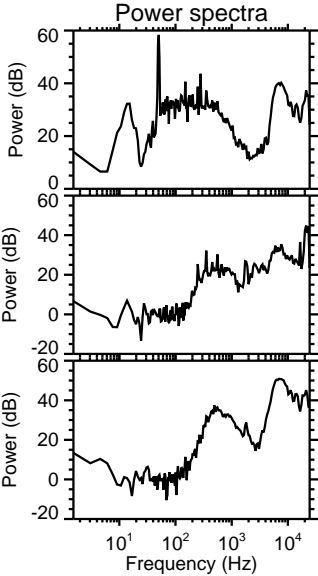
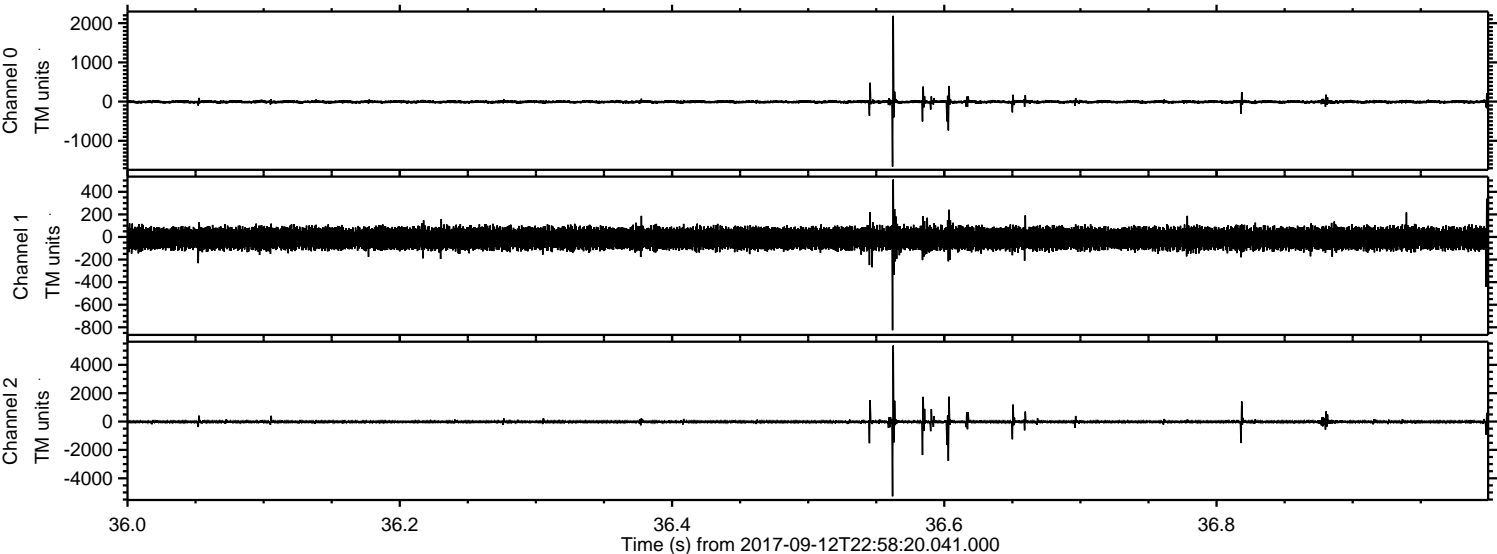
Processed Wed Sep 13 01:06:02 2017 by ELM ver.2012-10-06 from 001\_\_elm20170912\_225819\_\_dat00.bin





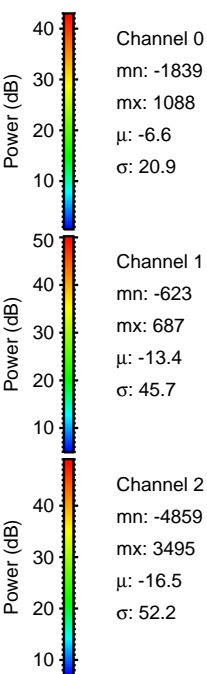
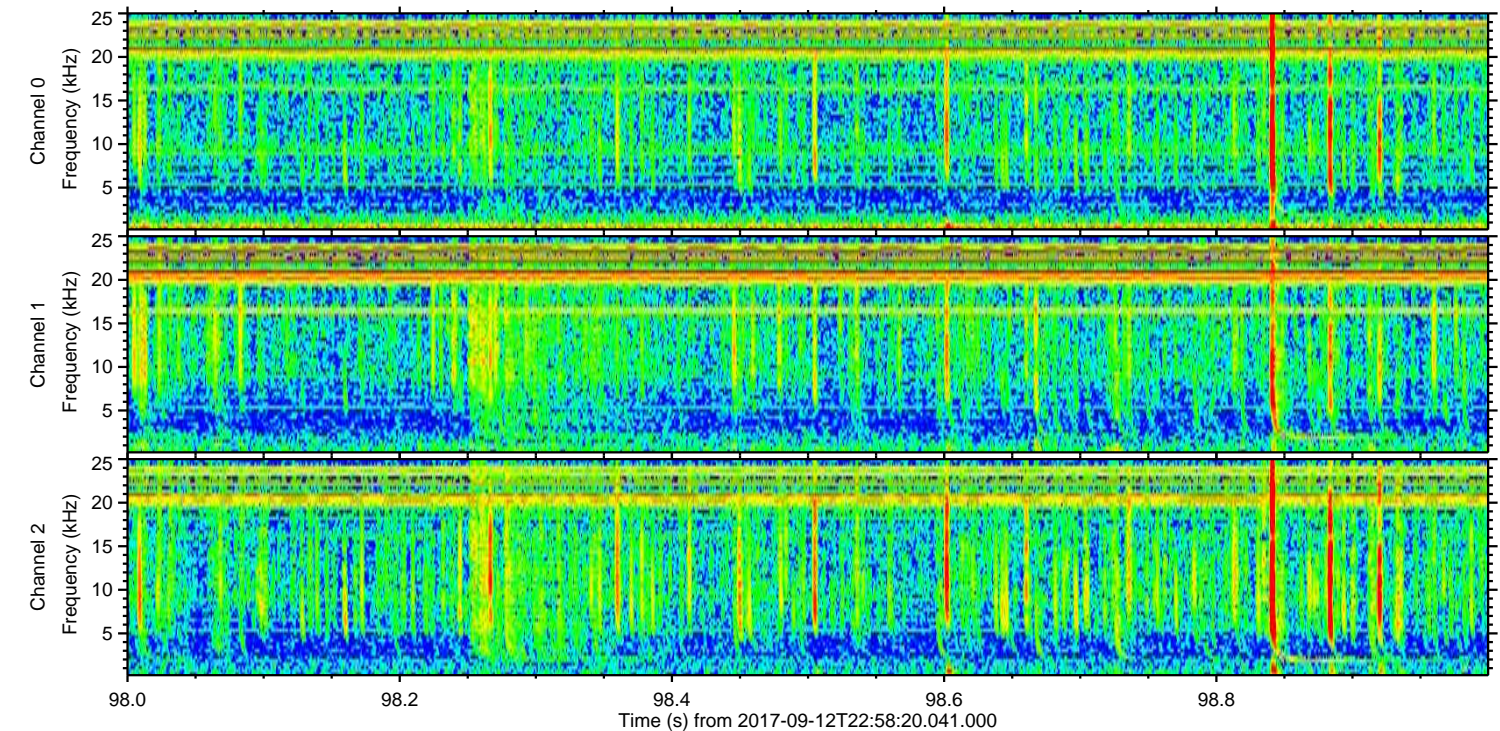
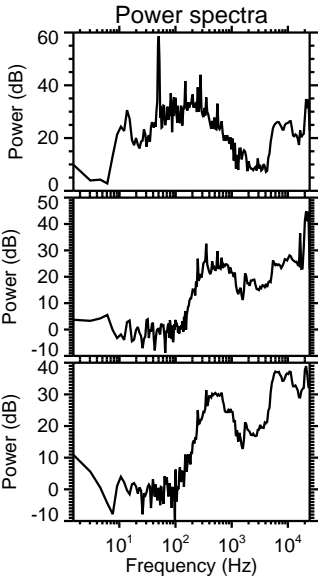
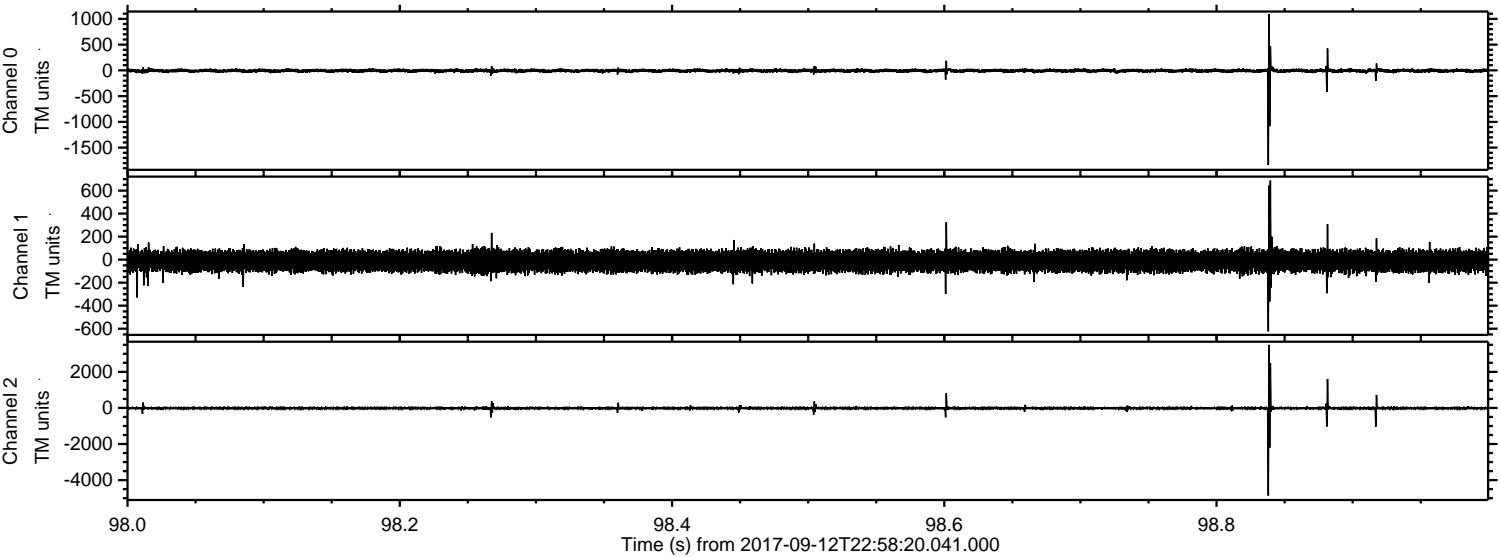
ELMAVAN 3D WAVEFORMS (Measured data sampled at 50 kHz) 50999 packets of 144 samples from 2017-09-12T22:58:20.041.000. Part 37/147

Processed Wed Sep 13 01:06:08 2017 by ELM ver.2012-10-06 from 001\_\_elm20170912\_225819\_\_dat00.bin





Processed Wed Sep 13 01:06:09 2017 by ELM ver.2012-10-06 from 001\_\_elm20170912\_225819\_\_dat00.bin



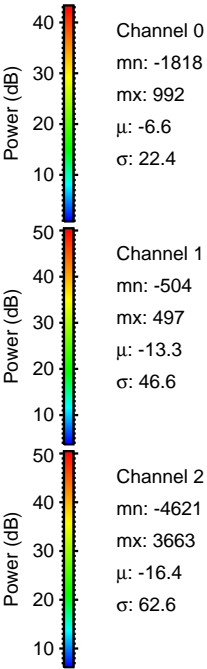
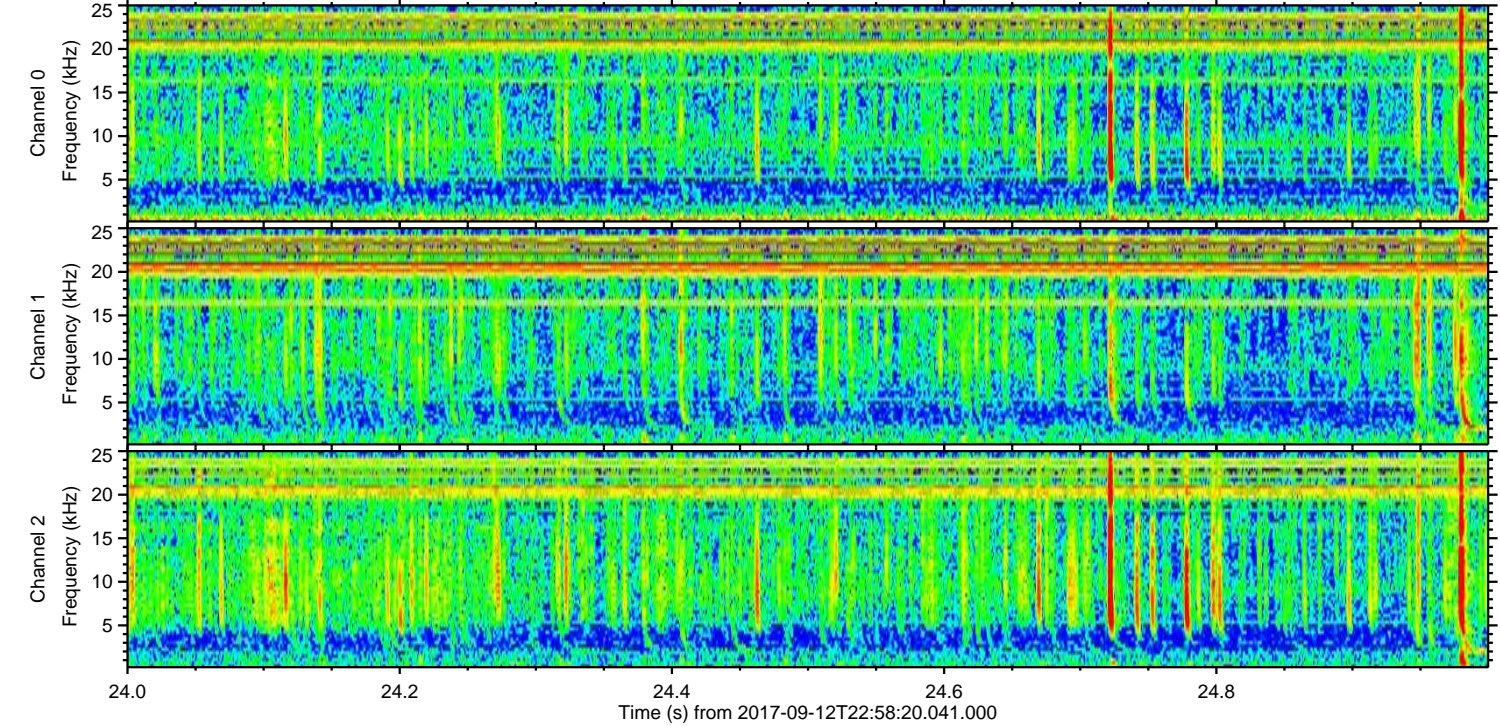
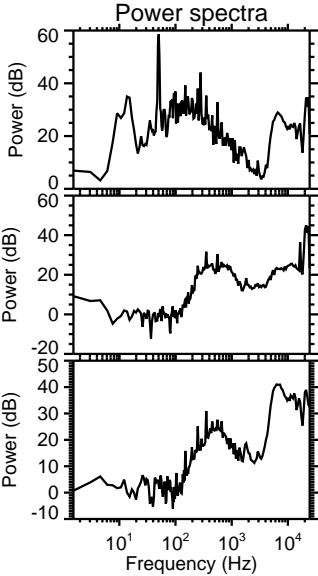
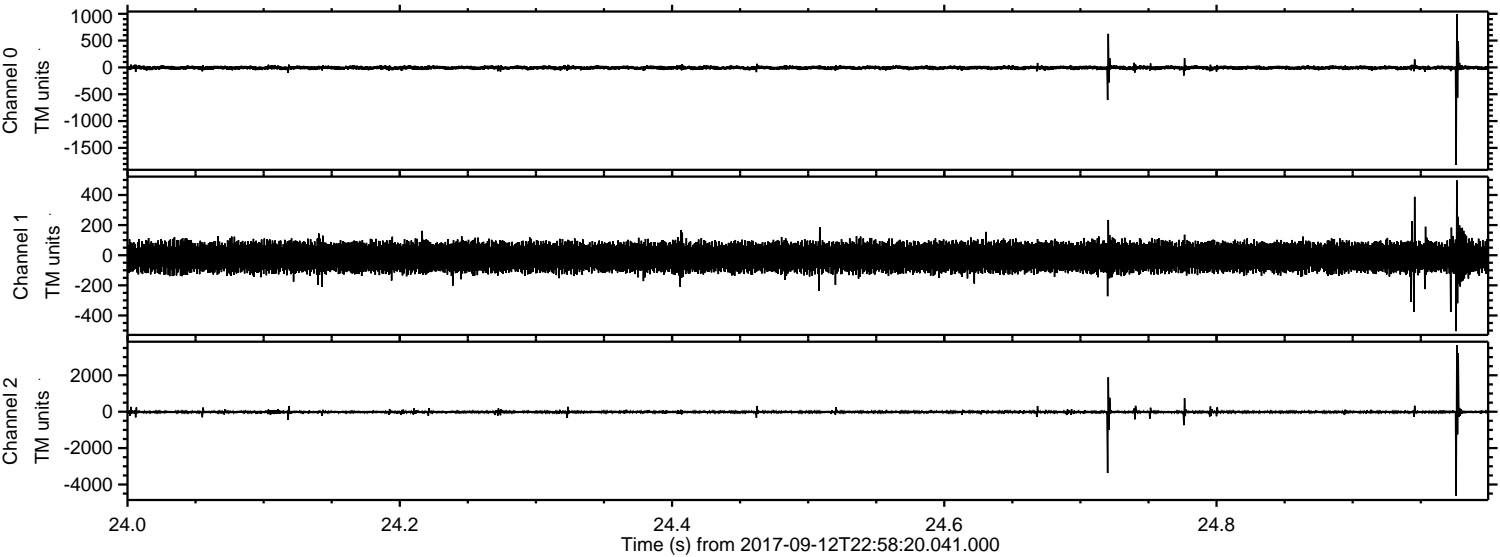
Channel 0  
mn: -1839  
mx: 1088  
 $\mu$ : -6.6  
 $\sigma$ : 20.9

Channel 1  
mn: -623  
mx: 687  
 $\mu$ : -13.4  
 $\sigma$ : 45.7

Channel 2  
mn: -4859  
mx: 3495  
 $\mu$ : -16.5  
 $\sigma$ : 52.2

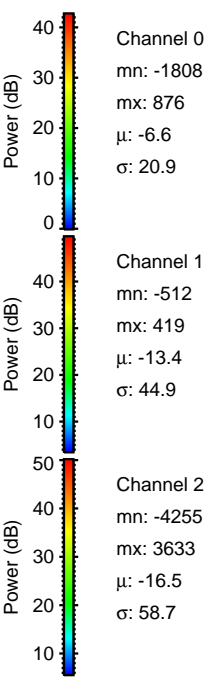
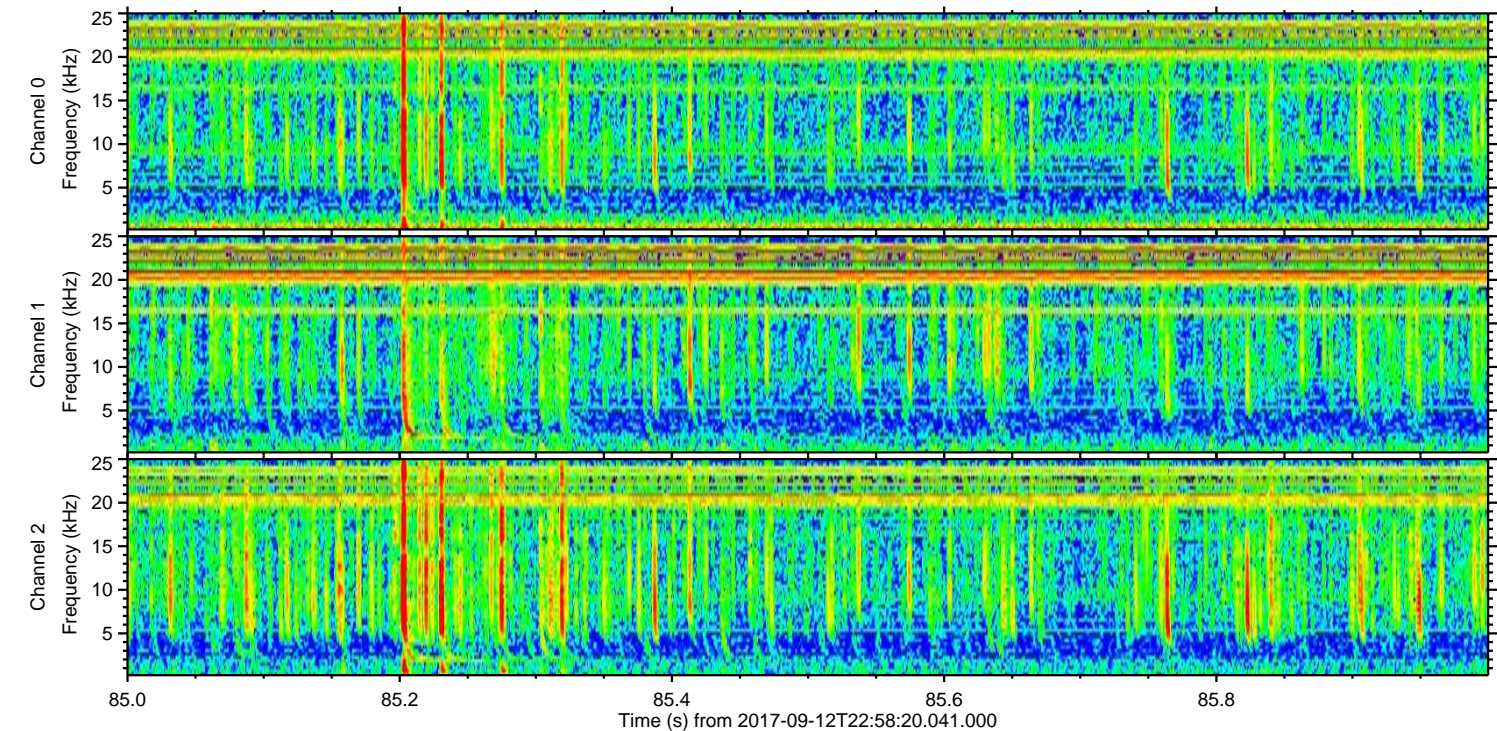
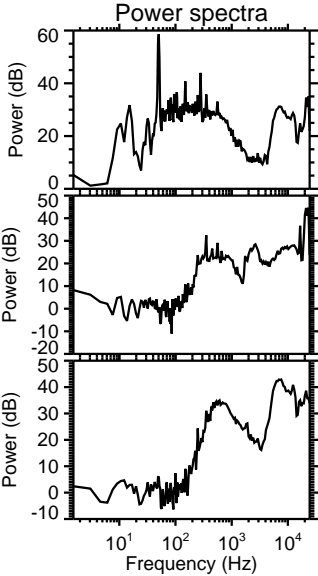
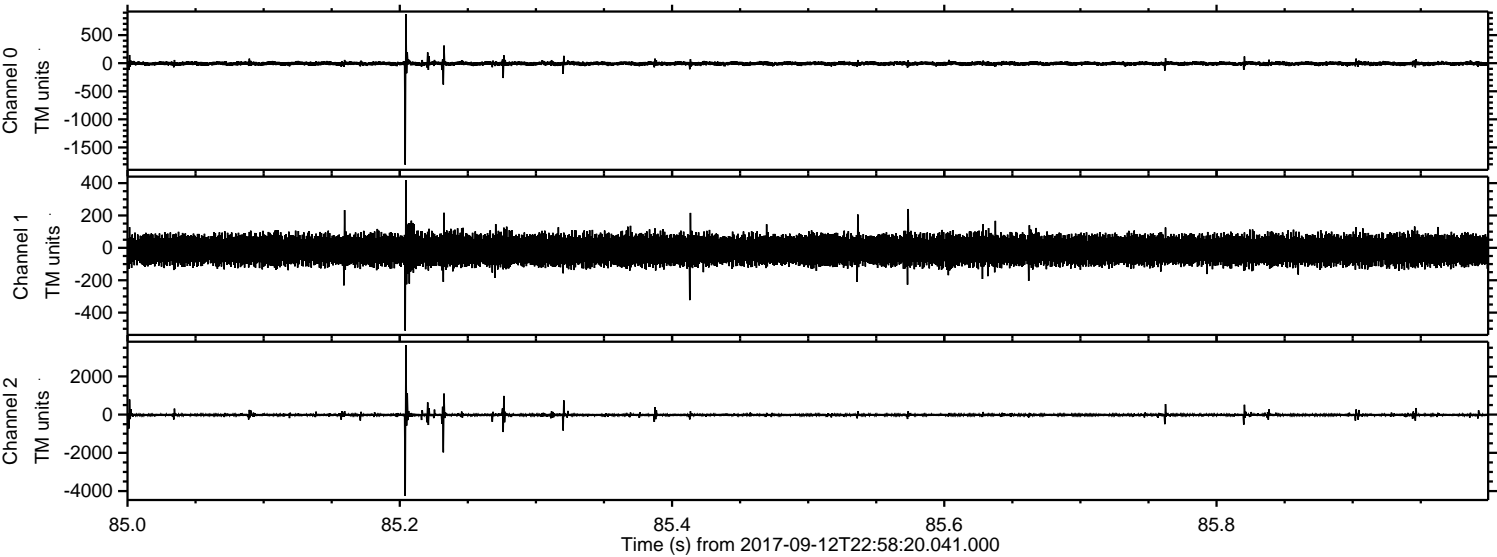


Processed Wed Sep 13 01:06:09 2017 by ELM ver.2012-10-06 from 001\_\_elm20170912\_225819\_\_dat00.bin





Processed Wed Sep 13 01:06:10 2017 by ELM ver.2012-10-06 from 001\_\_elm20170912\_225819\_\_dat00.bin



Channel 0  
mn: -1808  
mx: 876  
 $\mu$ : -6.6  
 $\sigma$ : 20.9

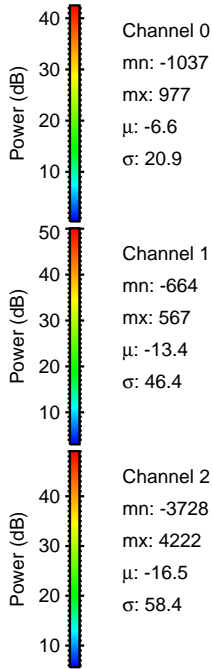
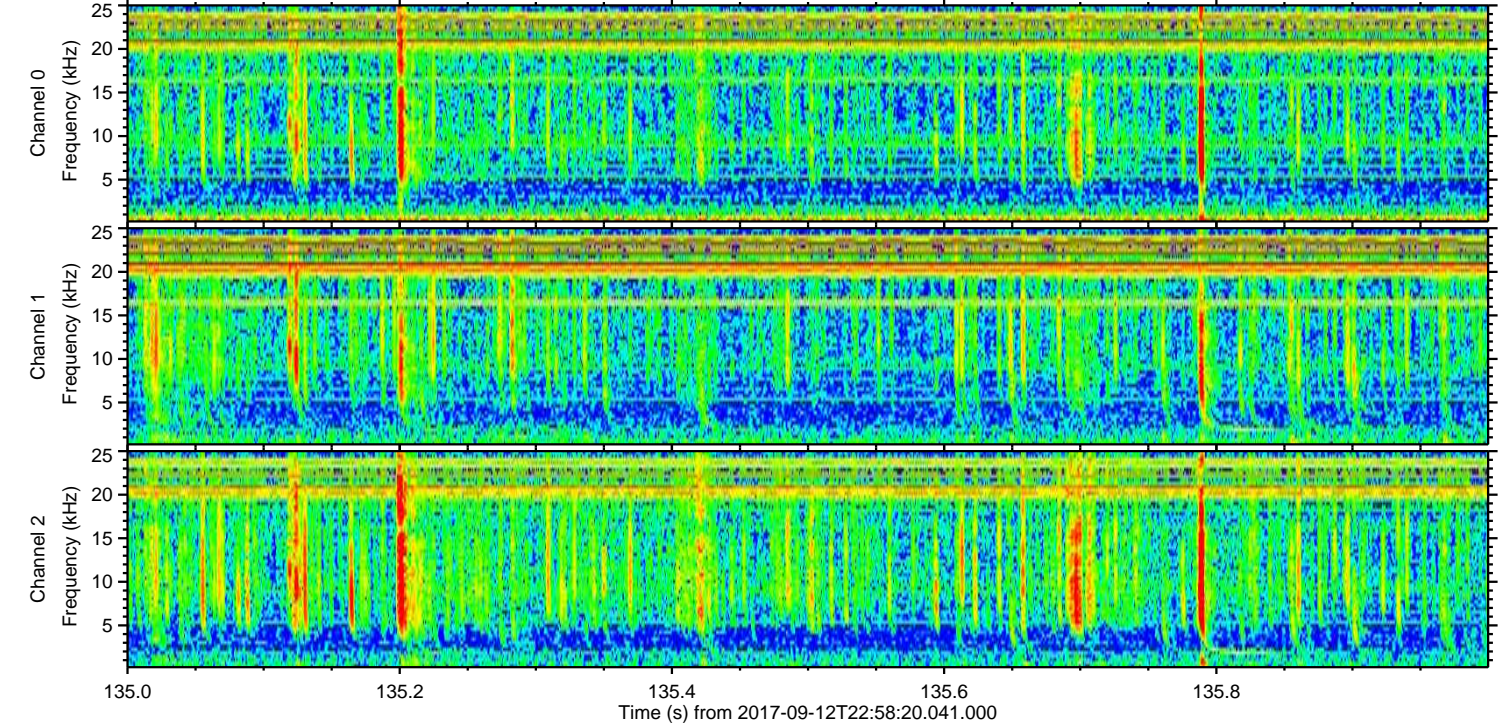
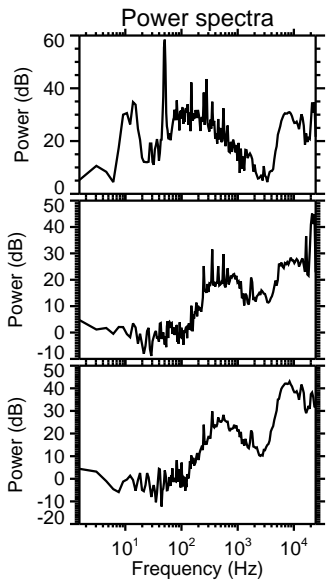
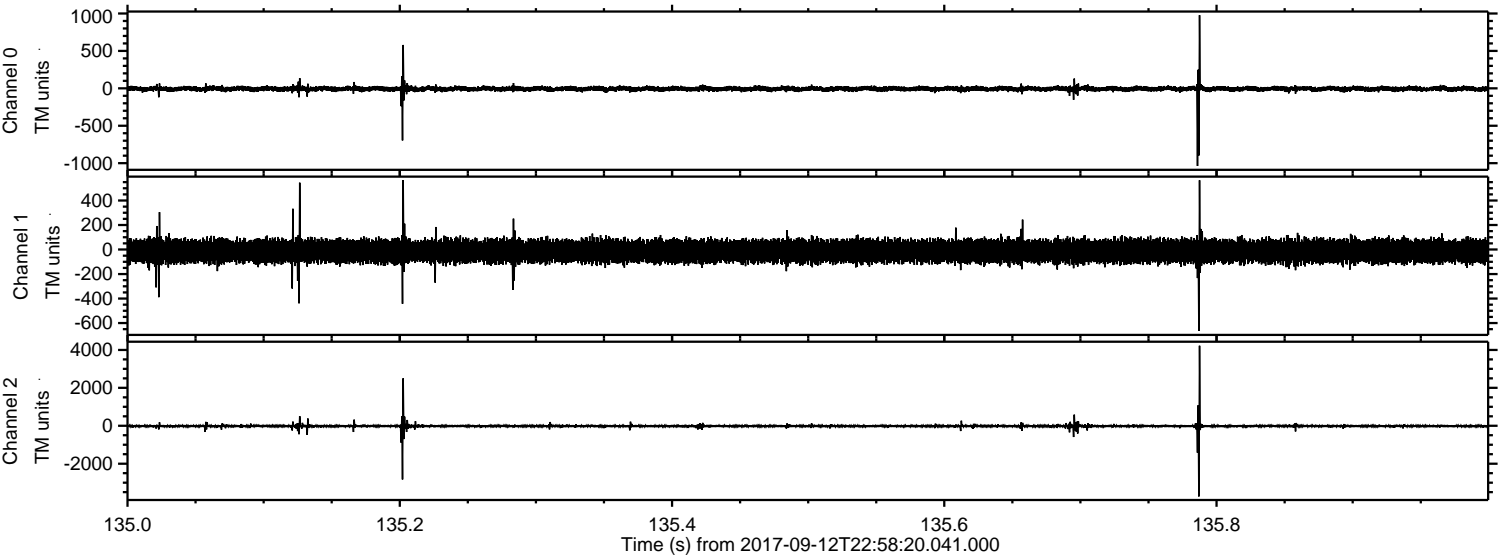
Channel 1  
mn: -512  
mx: 419  
 $\mu$ : -13.4  
 $\sigma$ : 44.9

Channel 2  
mn: -4255  
mx: 3633  
 $\mu$ : -16.5  
 $\sigma$ : 58.7



ELMAVAN 3D WAVEFORMS (Measured data sampled at 50 kHz) 50999 packets of 144 samples from 2017-09-12T22:58:20.041.000. Part 136/147

Processed Wed Sep 13 01:06:10 2017 by ELM ver.2012-10-06 from 001\_\_elm20170912\_225819\_\_dat00.bin



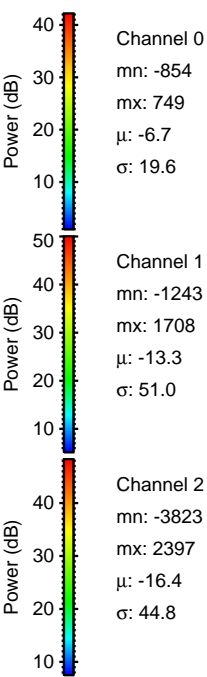
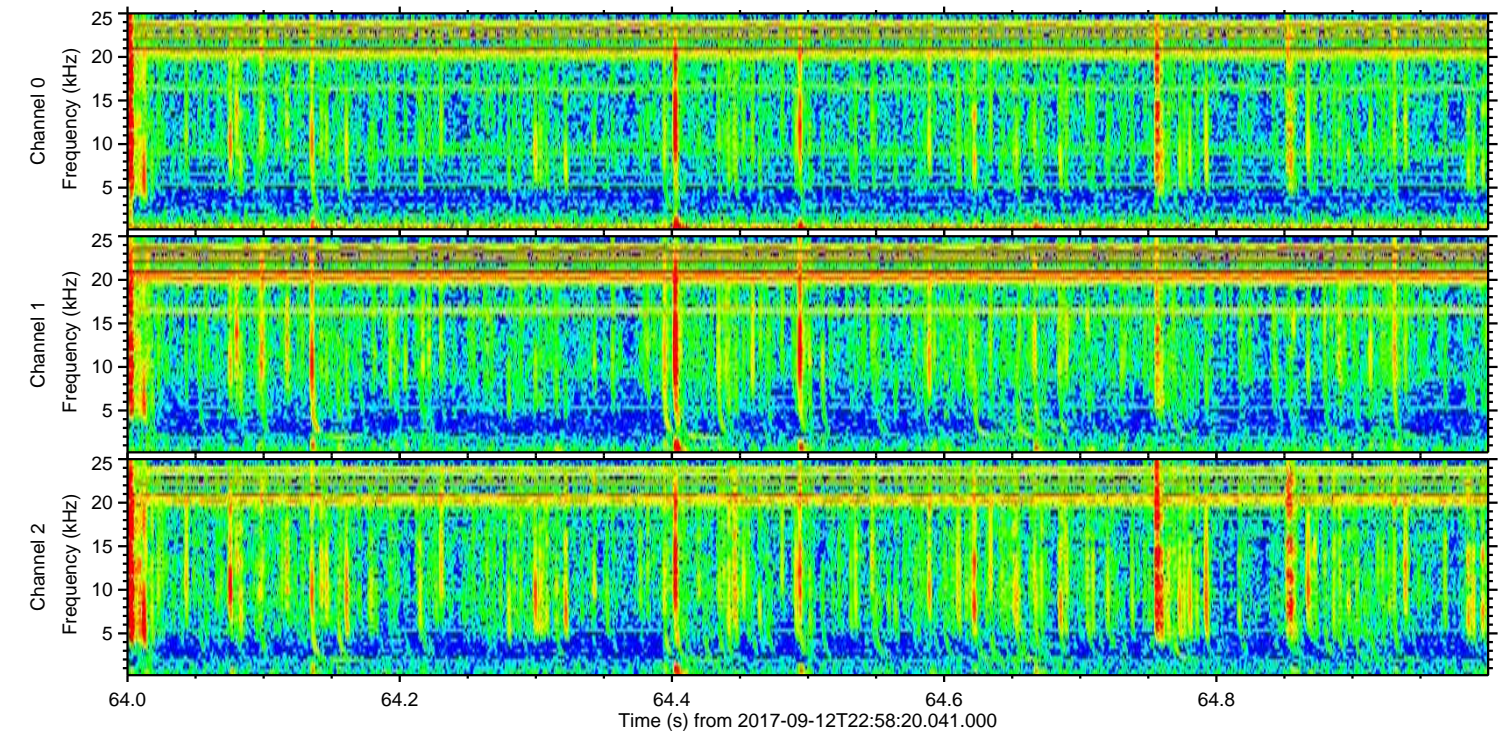
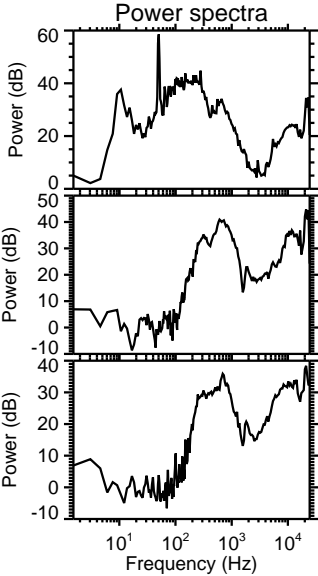
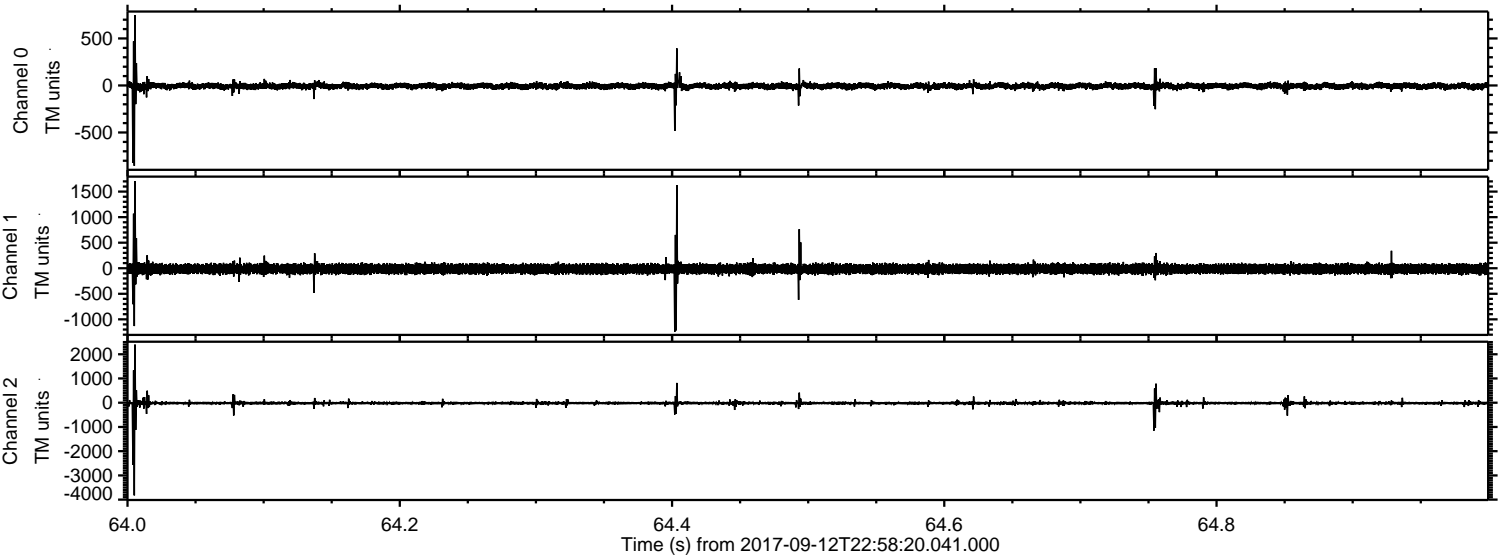
Channel 0  
mn: -1037  
mx: 977  
 $\mu$ : -6.6  
 $\sigma$ : 20.9

Channel 1  
mn: -664  
mx: 567  
 $\mu$ : -13.4  
 $\sigma$ : 46.4

Channel 2  
mn: -3728  
mx: 4222  
 $\mu$ : -16.5  
 $\sigma$ : 58.4

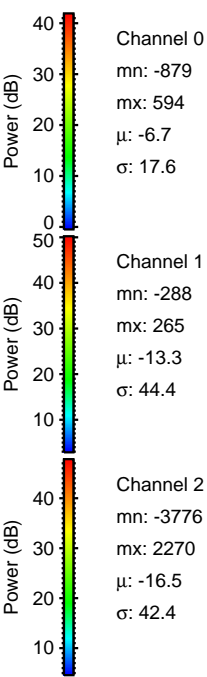
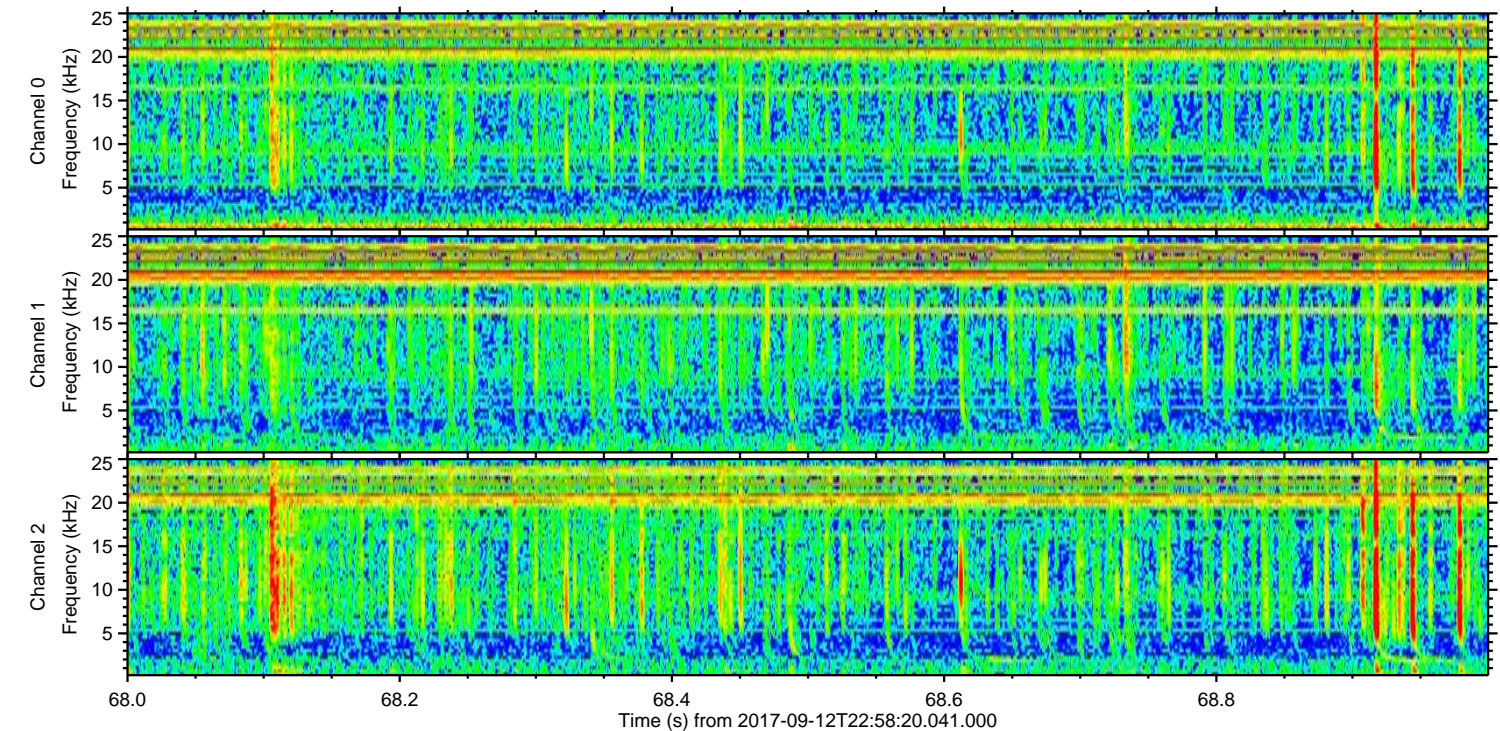
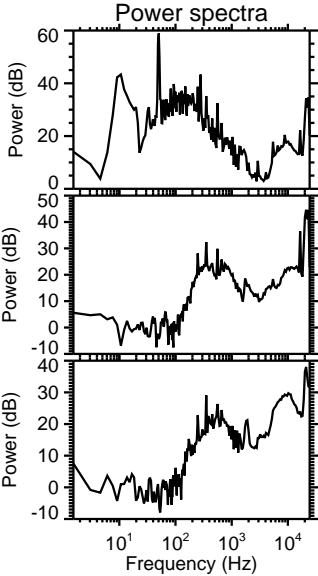
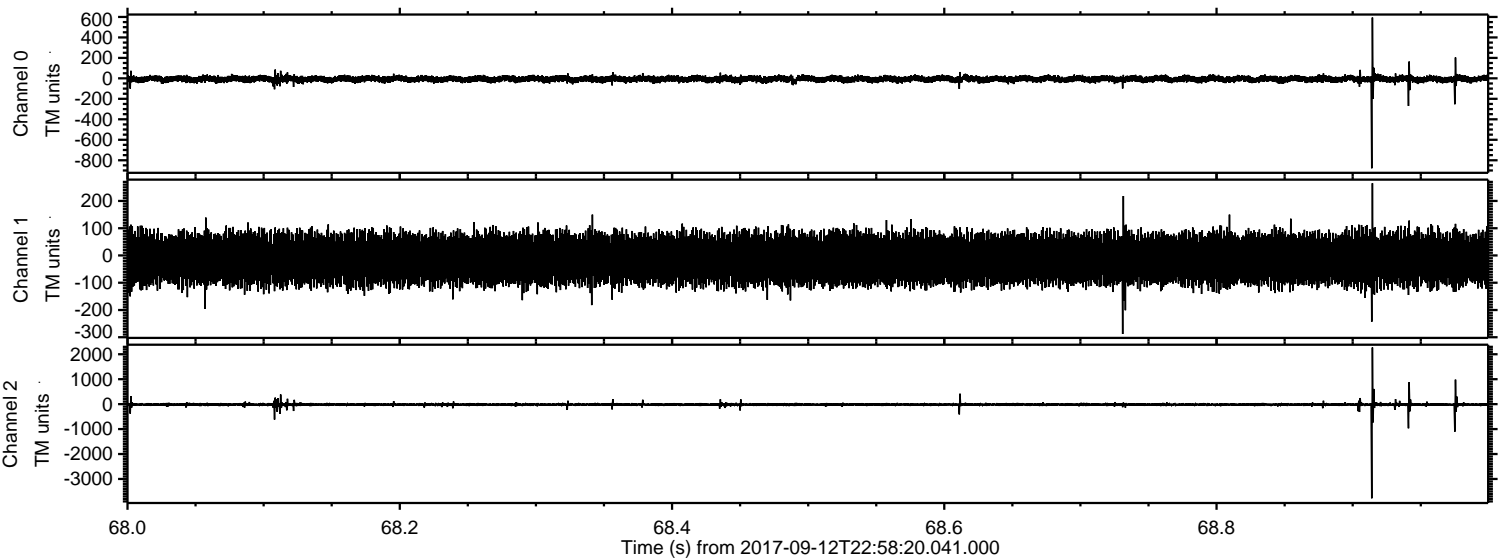


Processed Wed Sep 13 01:06:11 2017 by ELM ver.2012-10-06 from 001\_\_elm20170912\_225819\_\_dat00.bin





Processed Wed Sep 13 01:06:12 2017 by ELM ver.2012-10-06 from 001\_\_elm20170912\_225819\_\_dat00.bin



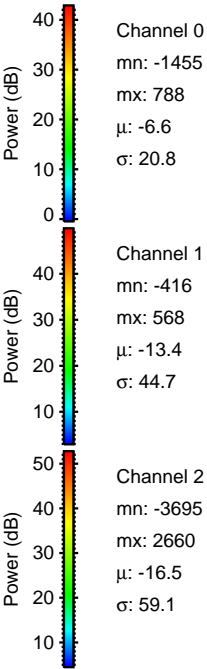
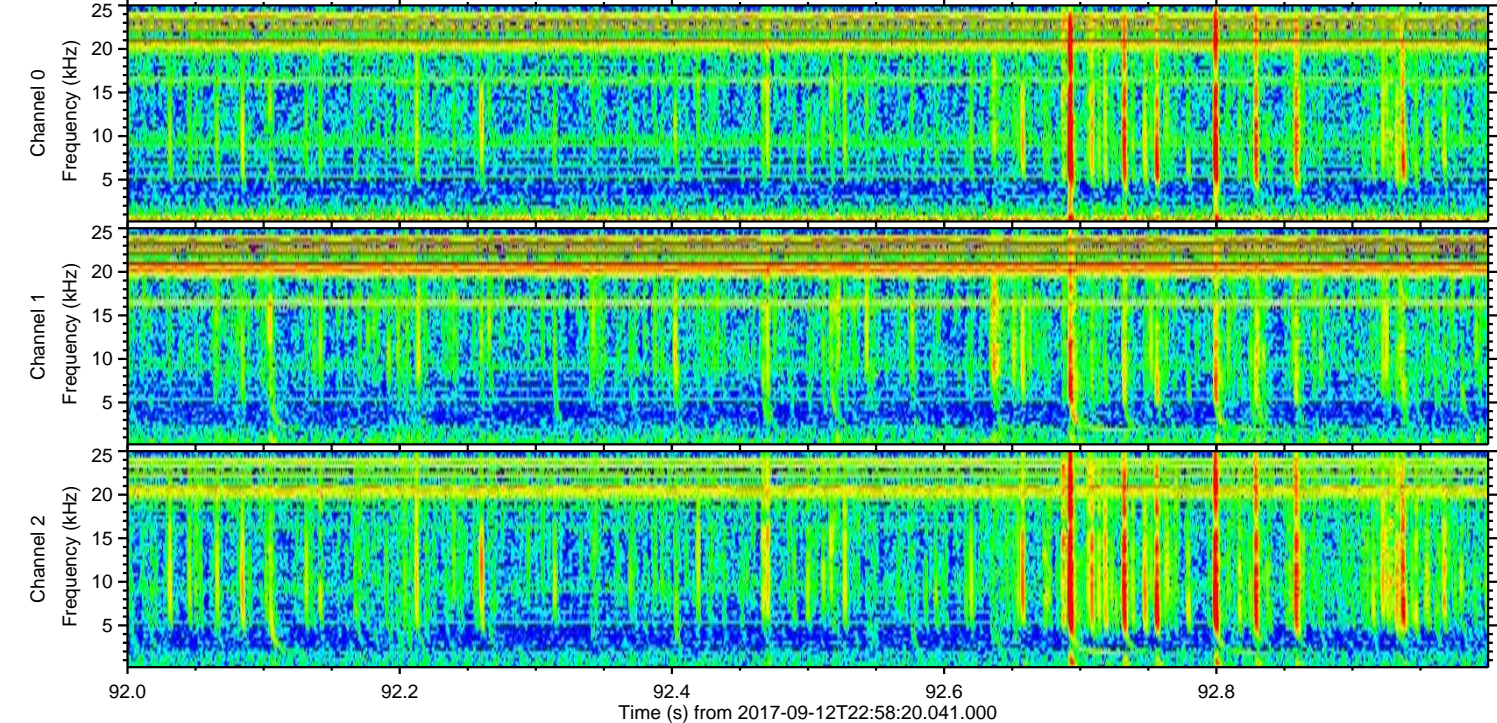
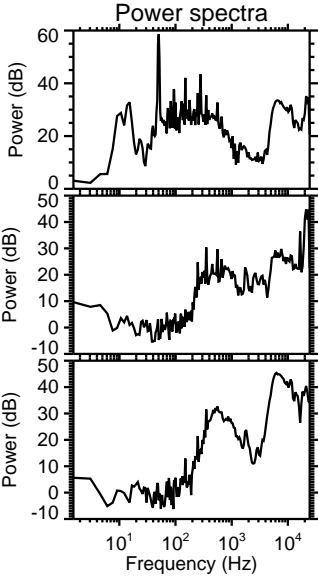
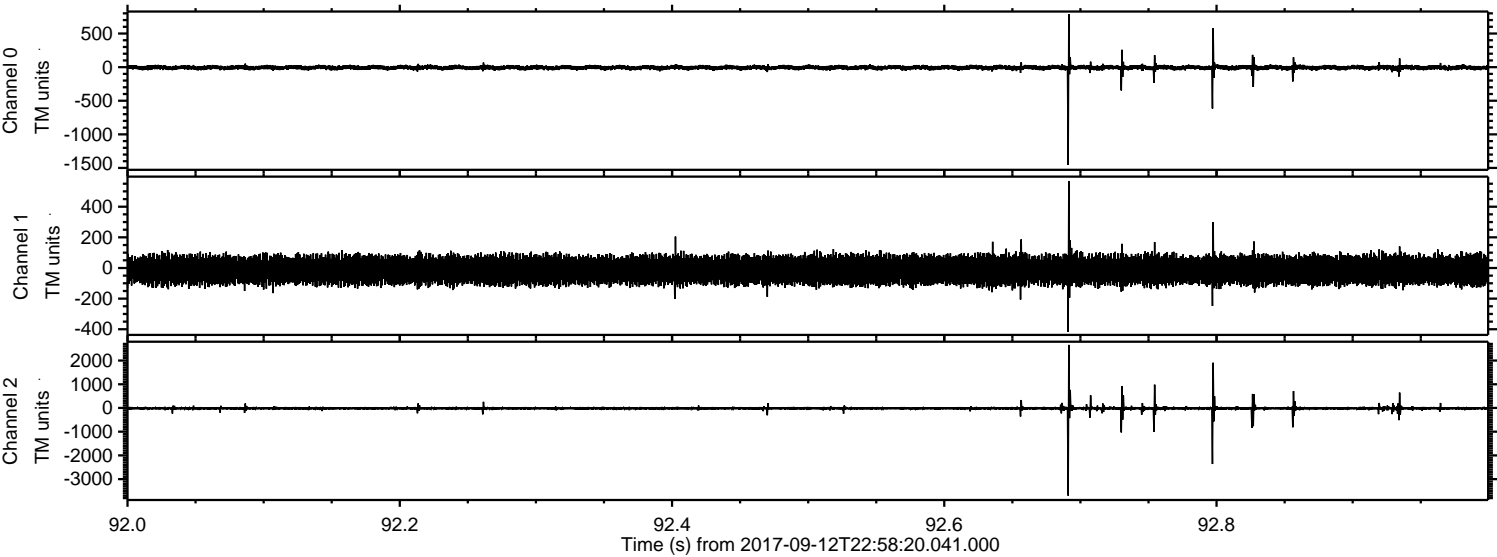
Channel 0  
mn: -879  
mx: 594  
 $\mu$ : -6.7  
 $\sigma$ : 17.6

Channel 1  
mn: -288  
mx: 265  
 $\mu$ : -13.3  
 $\sigma$ : 44.4

Channel 2  
mn: -3776  
mx: 2270  
 $\mu$ : -16.5  
 $\sigma$ : 42.4

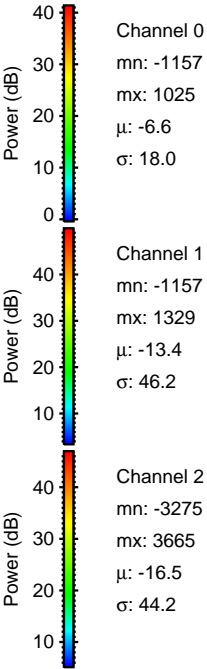
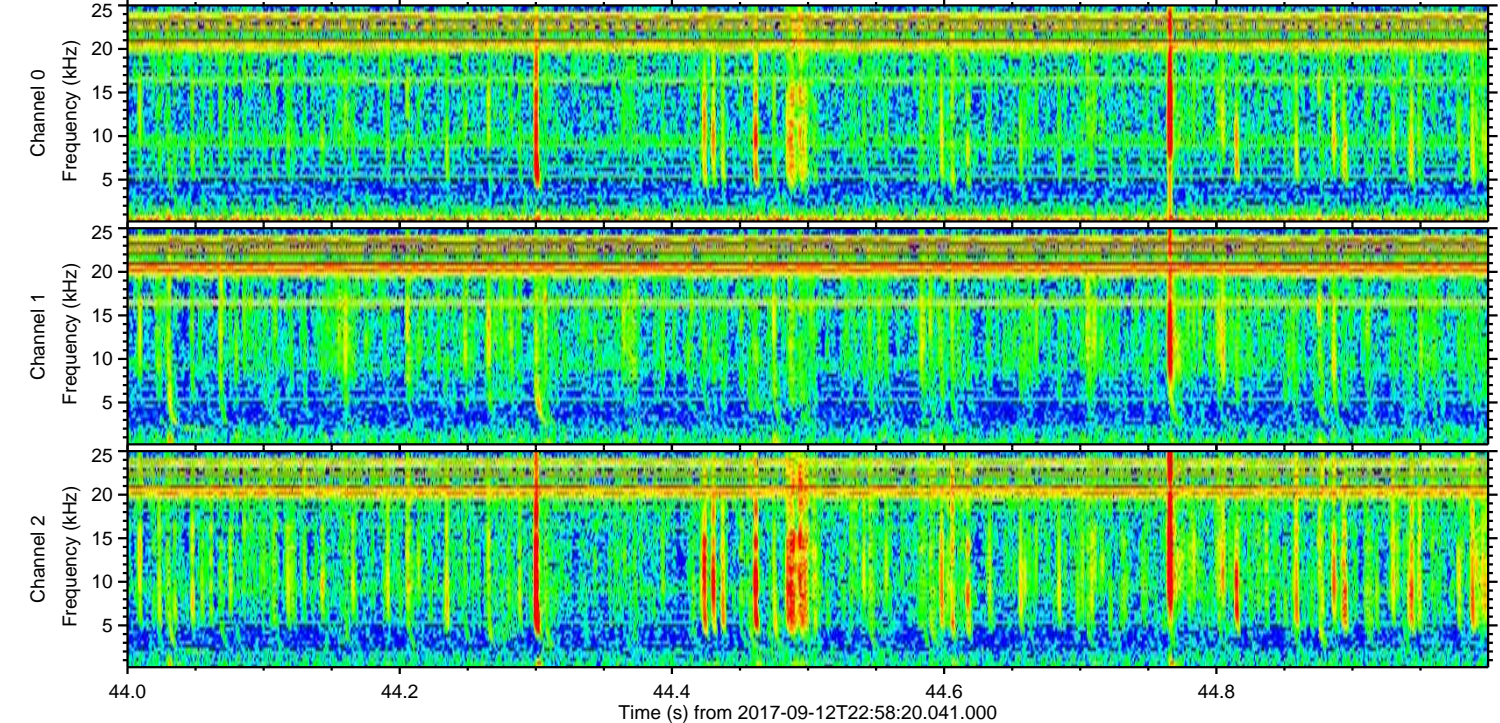
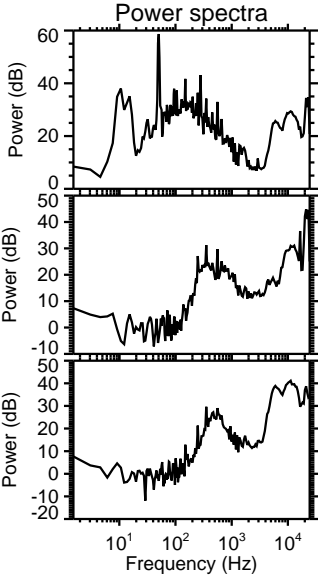
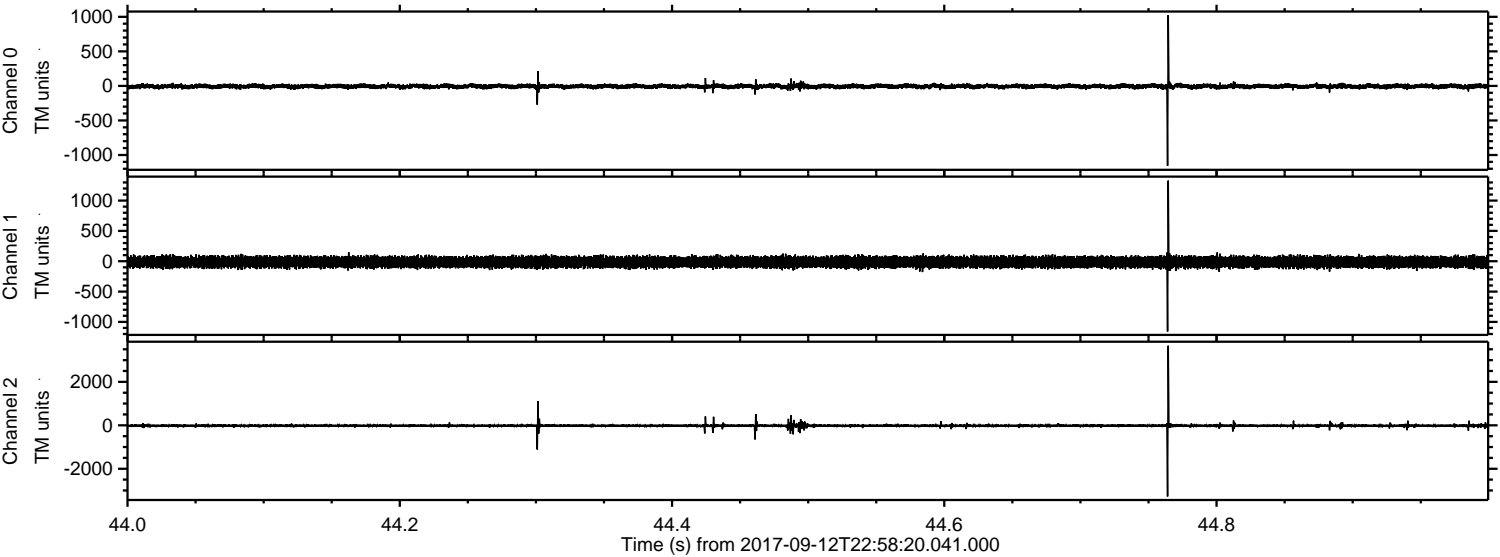


Processed Wed Sep 13 01:06:12 2017 by ELM ver.2012-10-06 from 001\_elm20170912\_225819\_\_dat00.bin





Processed Wed Sep 13 01:06:13 2017 by ELM ver.2012-10-06 from 001\_\_elm20170912\_225819\_\_dat00.bin



Channel 0  
mn: -1157  
mx: 1025  
 $\mu$ : -6.6  
 $\sigma$ : 18.0

Channel 1  
mn: -1157  
mx: 1329  
 $\mu$ : -13.4  
 $\sigma$ : 46.2

Channel 2  
mn: -3275  
mx: 3665  
 $\mu$ : -16.5  
 $\sigma$ : 44.2



Processed Wed Sep 13 01:06:14 2017 by ELM ver.2012-10-06 from 001\_\_elm20170912\_225819\_\_dat00.bin

