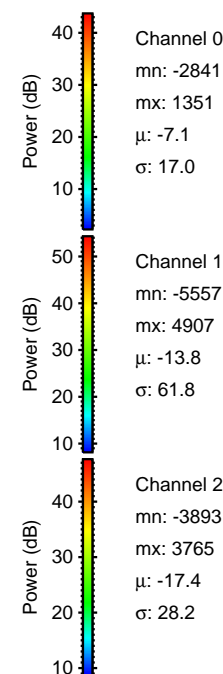
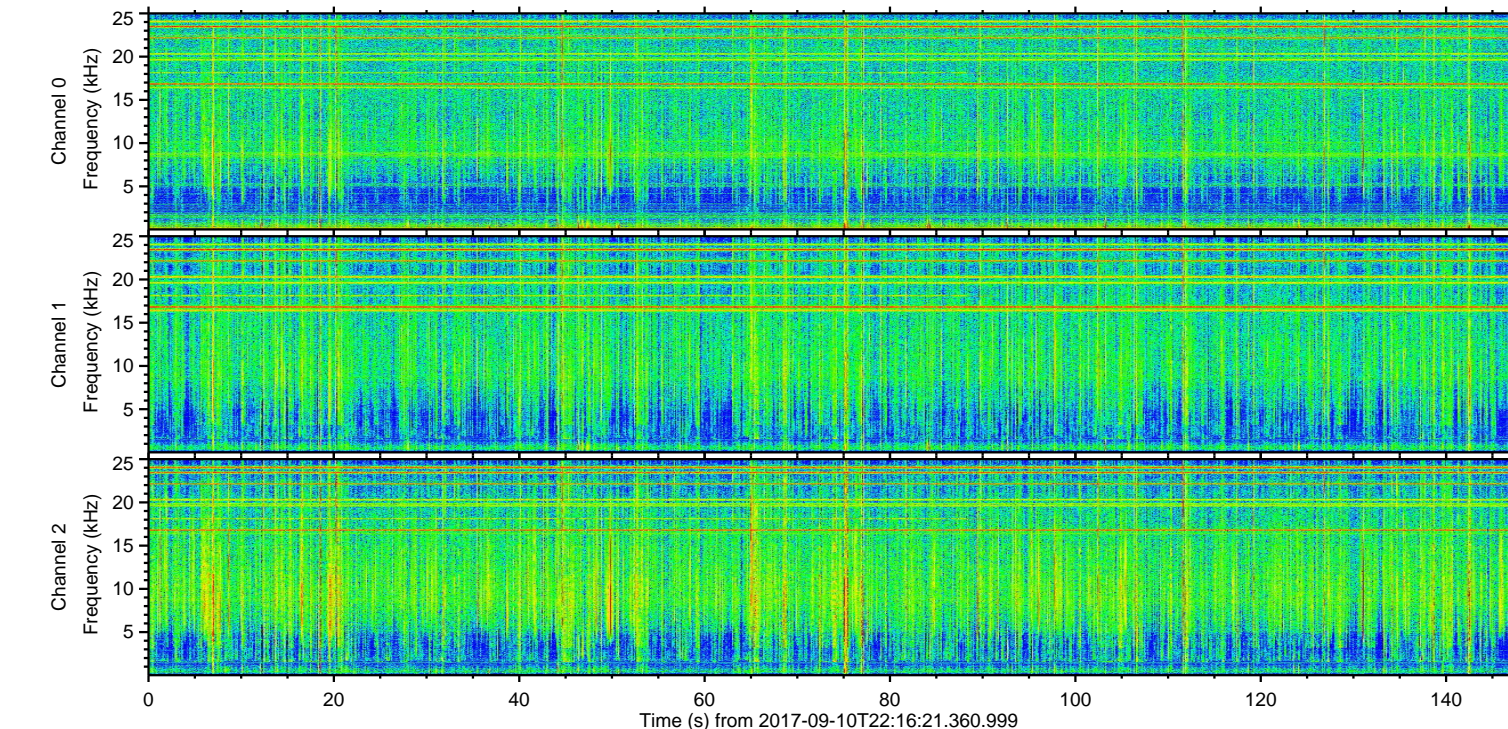
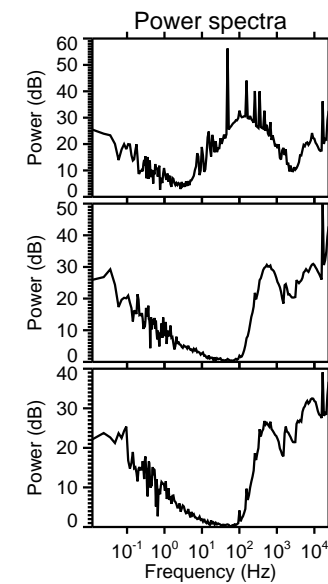
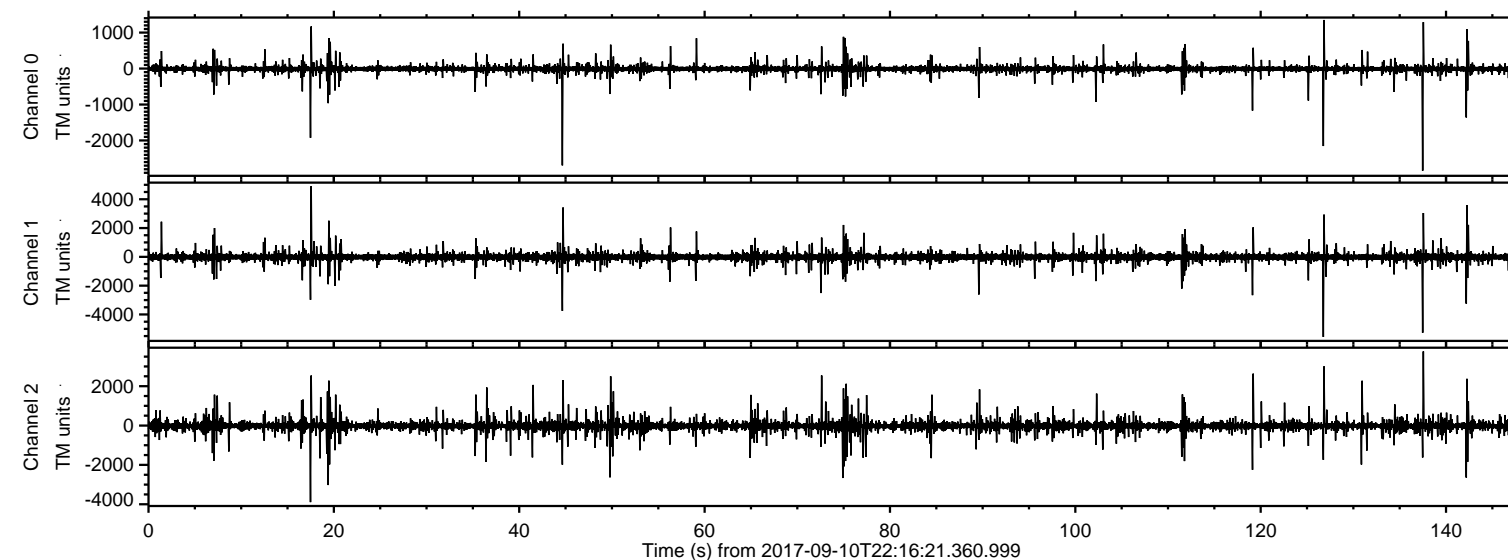


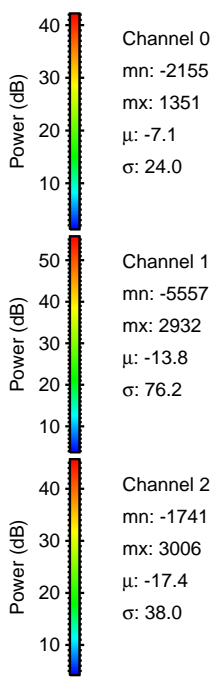
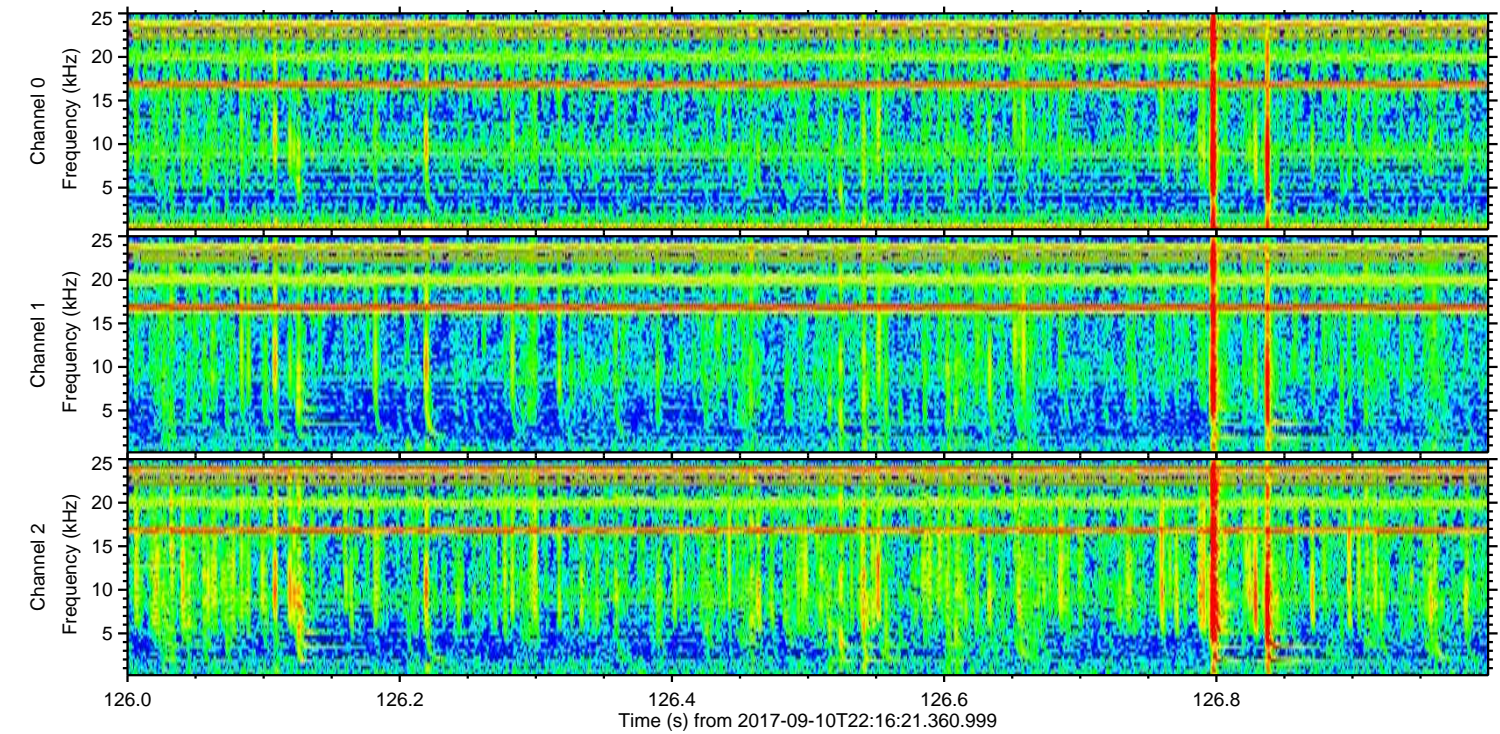
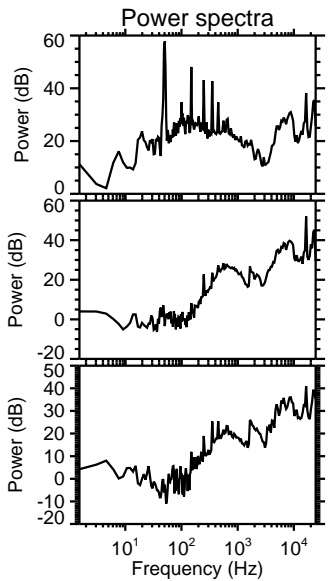
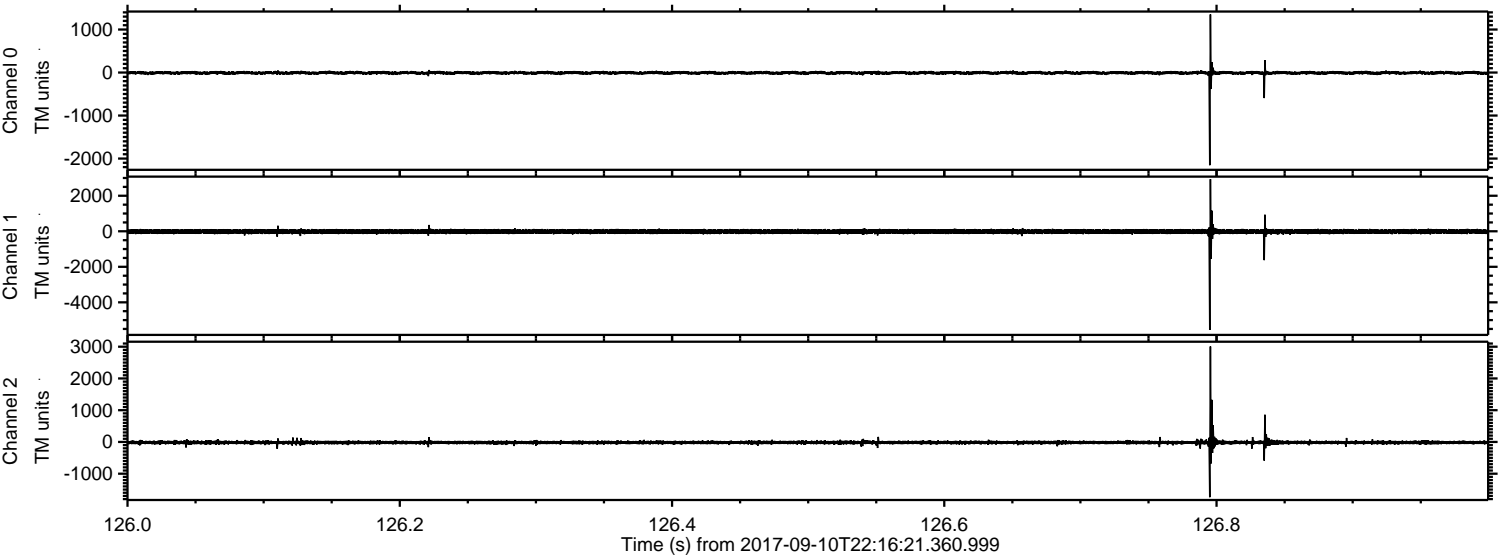
ELMAVAN 3D WAVEFORMS (Measured data sampled at 50 kHz) 51000 packets of 144 samples from 2017-09-10T22:16:21.360.999.

Processed Mon Sep 11 00:25:11 2017 by ELM ver.2012-10-06 from 001__elm20170910_221620__dat00.bin



ELMAVAN 3D WAVEFORMS (Measured data sampled at 50 kHz) 51000 packets of 144 samples from 2017-09-10T22:16:21.360.999. Part 127/147

Processed Mon Sep 11 00:25:20 2017 by ELM ver.2012-10-06 from 001__elm20170910_221620__dat00.bin



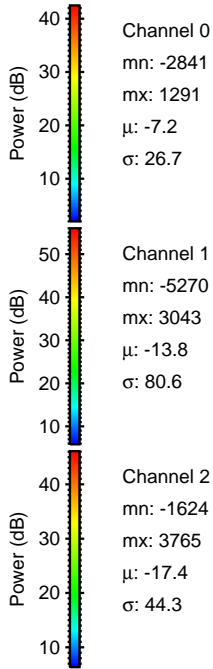
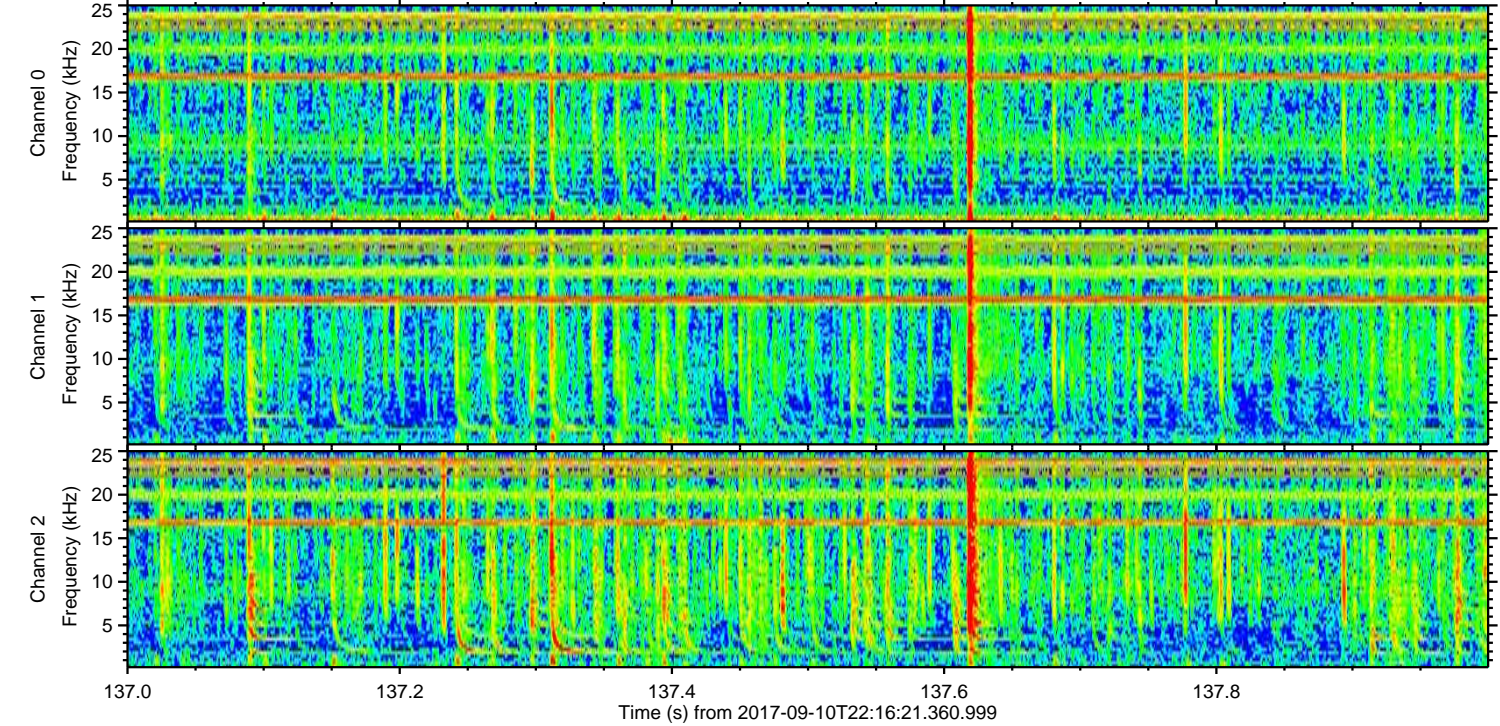
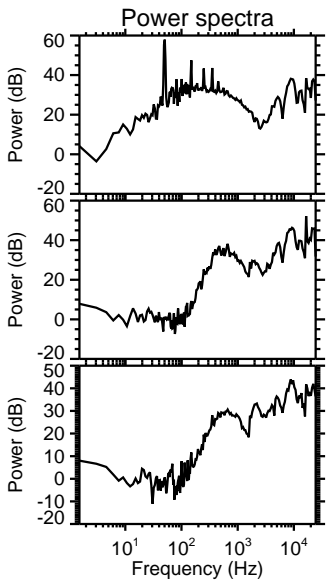
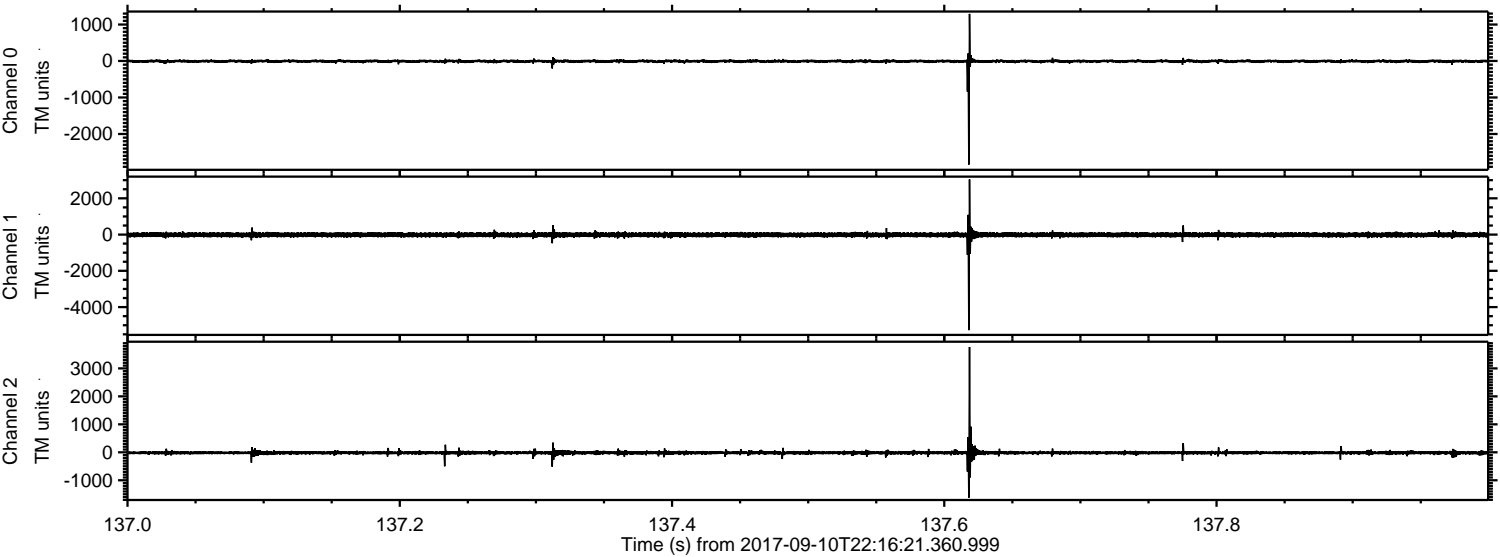
Channel 0
mn: -2155
mx: 1351
 μ : -7.1
 σ : 24.0

Channel 1
mn: -5557
mx: 2932
 μ : -13.8
 σ : 76.2

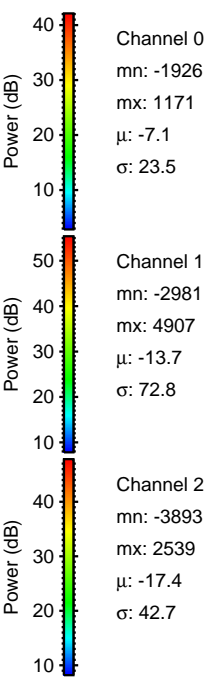
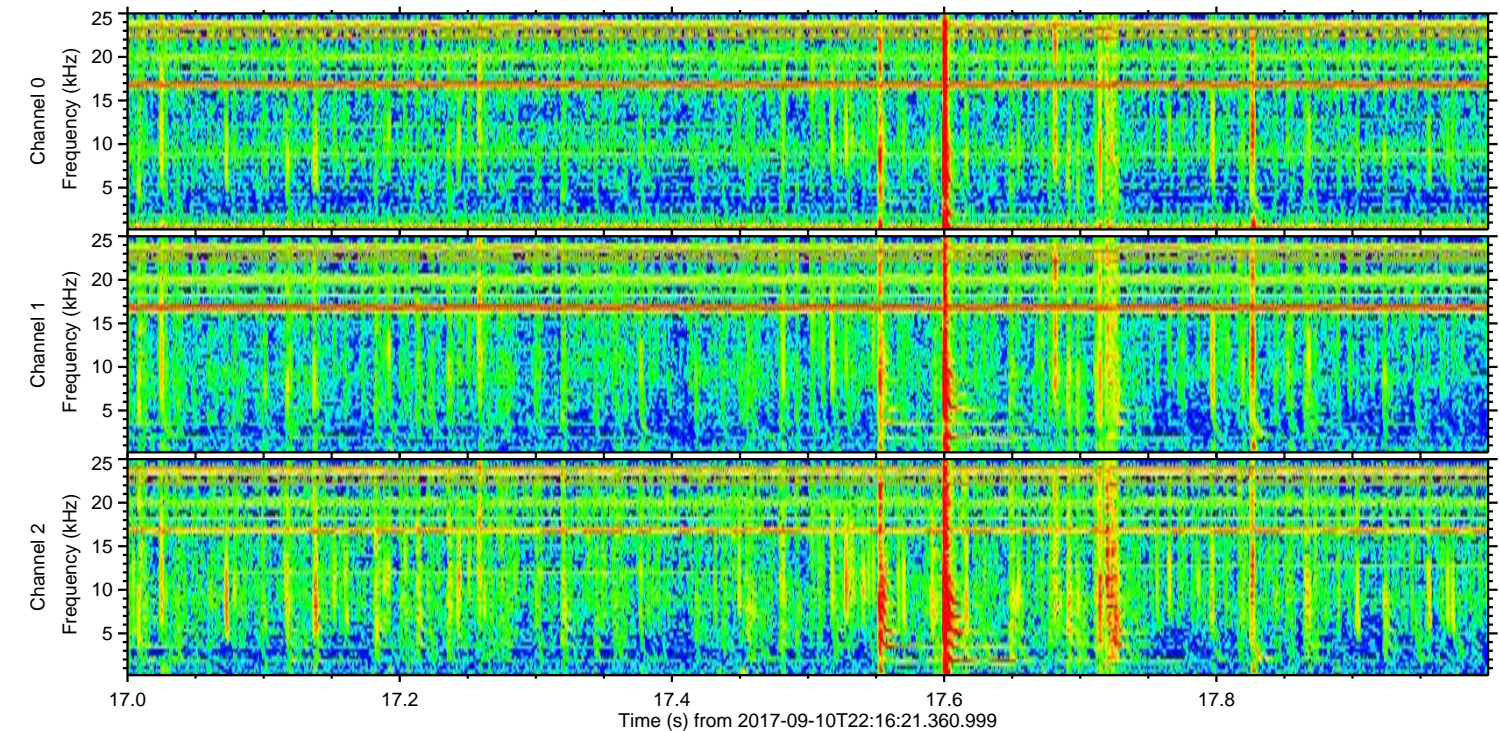
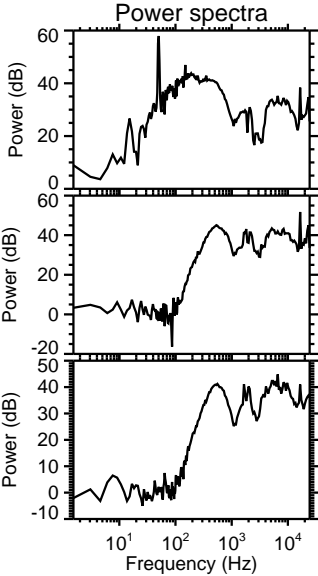
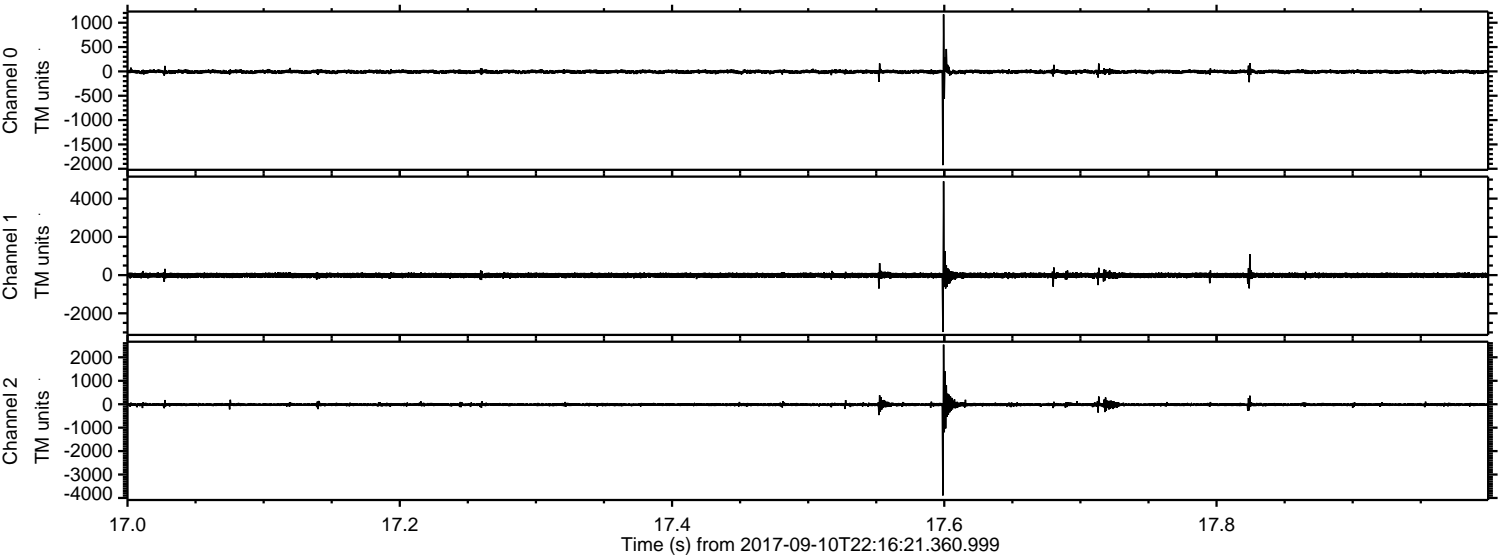
Channel 2
mn: -1741
mx: 3006
 μ : -17.4
 σ : 38.0

ELMAVAN 3D WAVEFORMS (Measured data sampled at 50 kHz) 51000 packets of 144 samples from 2017-09-10T22:16:21.360.999. Part 138/147

Processed Mon Sep 11 00:25:21 2017 by ELM ver.2012-10-06 from 001__elm20170910_221620__dat00.bin



Processed Mon Sep 11 00:25:21 2017 by ELM ver.2012-10-06 from 001__elm20170910_221620__dat00.bin

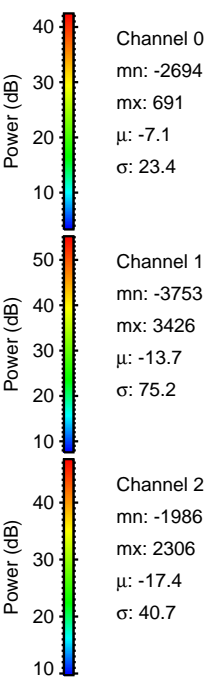
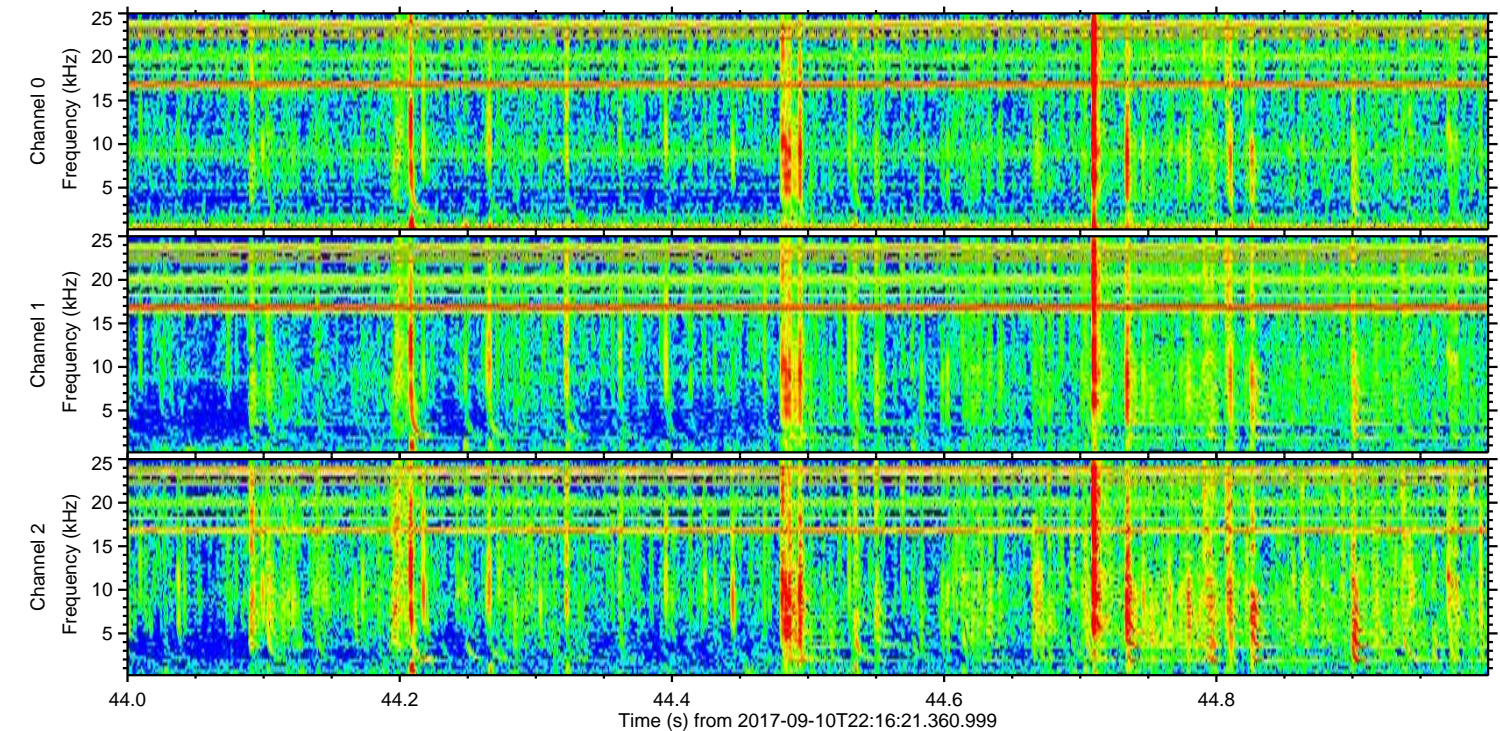
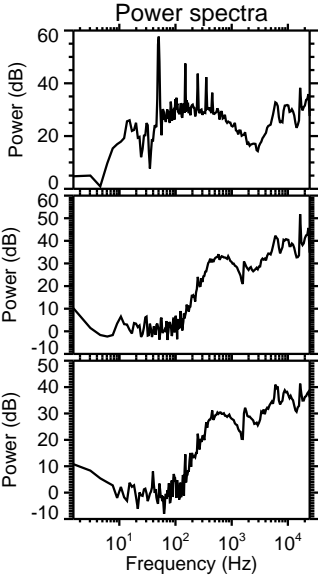
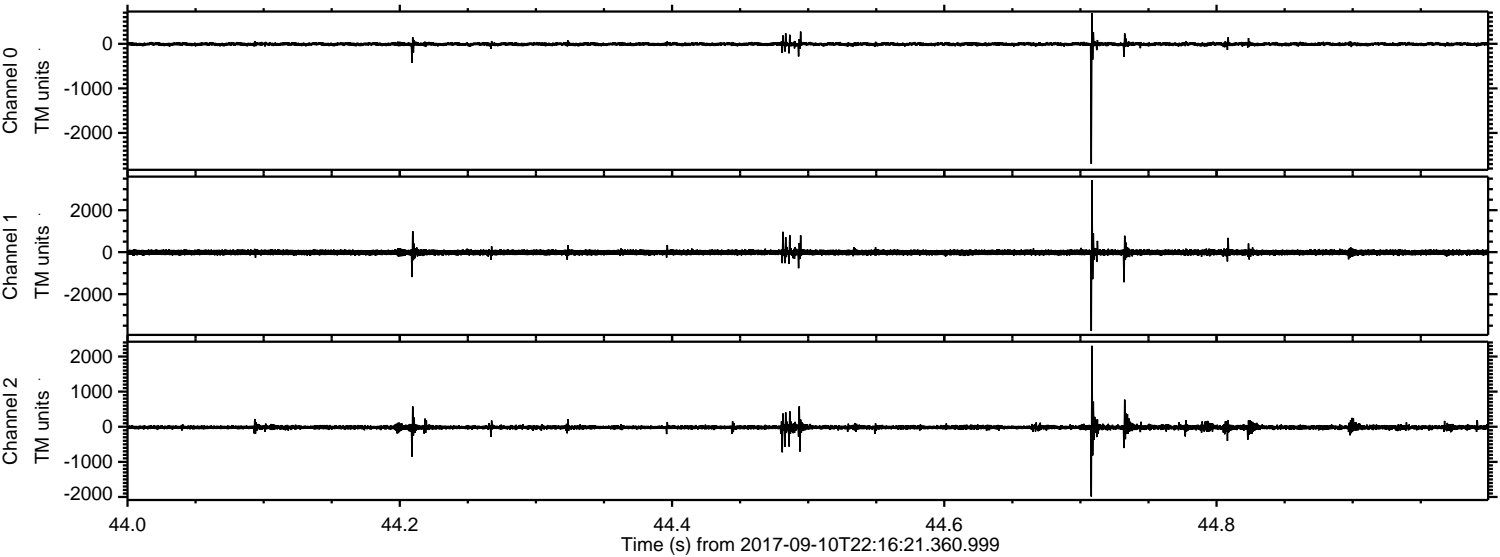


Channel 0
mn: -1926
mx: 1171
μ: -7.1
σ: 23.5

Channel 1
mn: -2981
mx: 4907
μ: -13.7
σ: 72.8

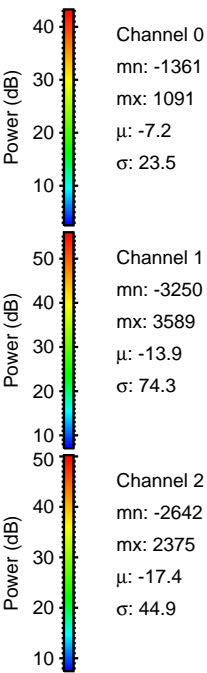
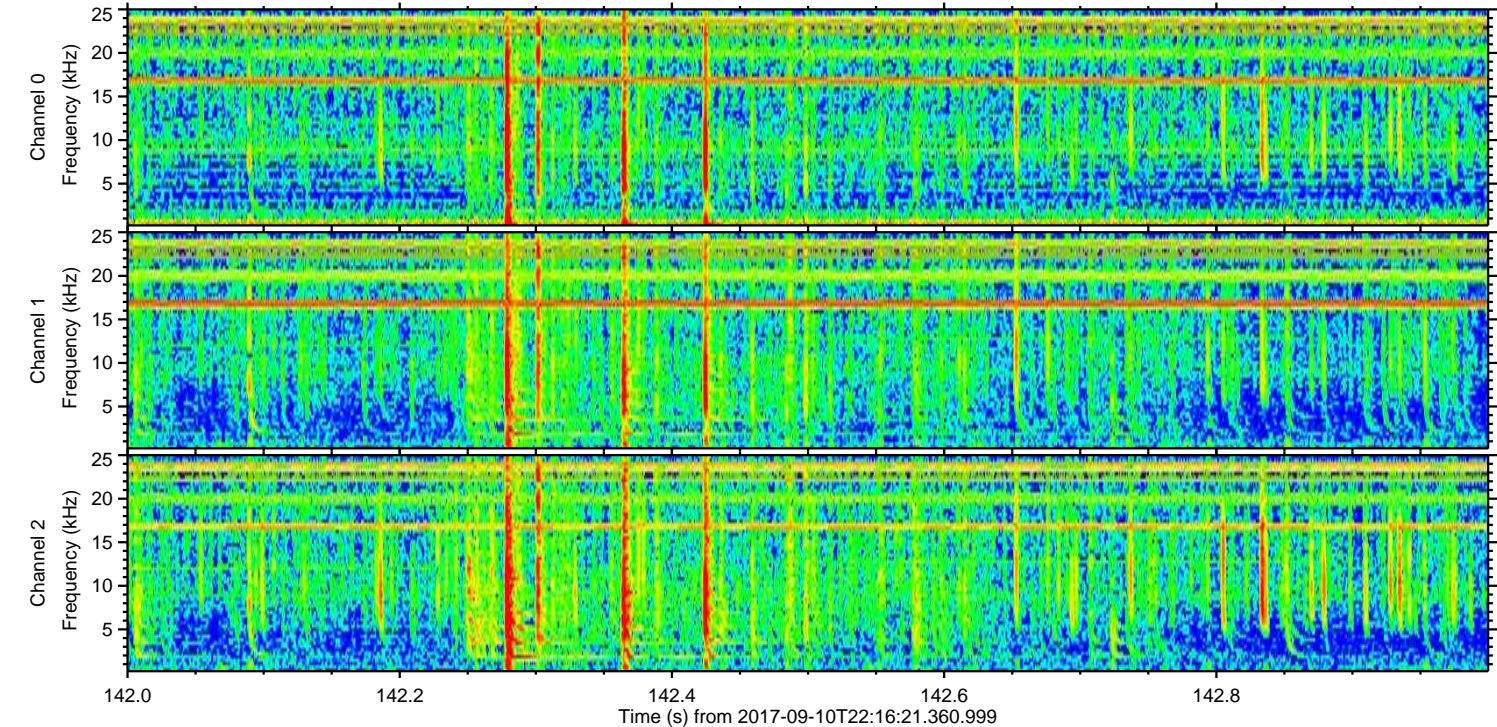
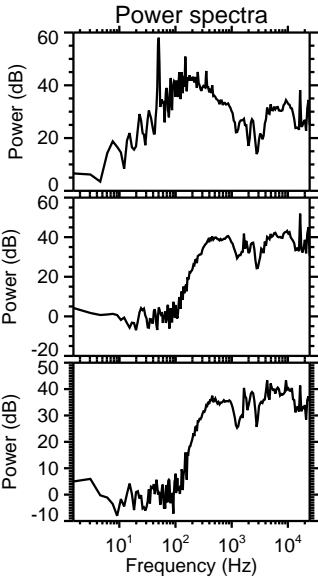
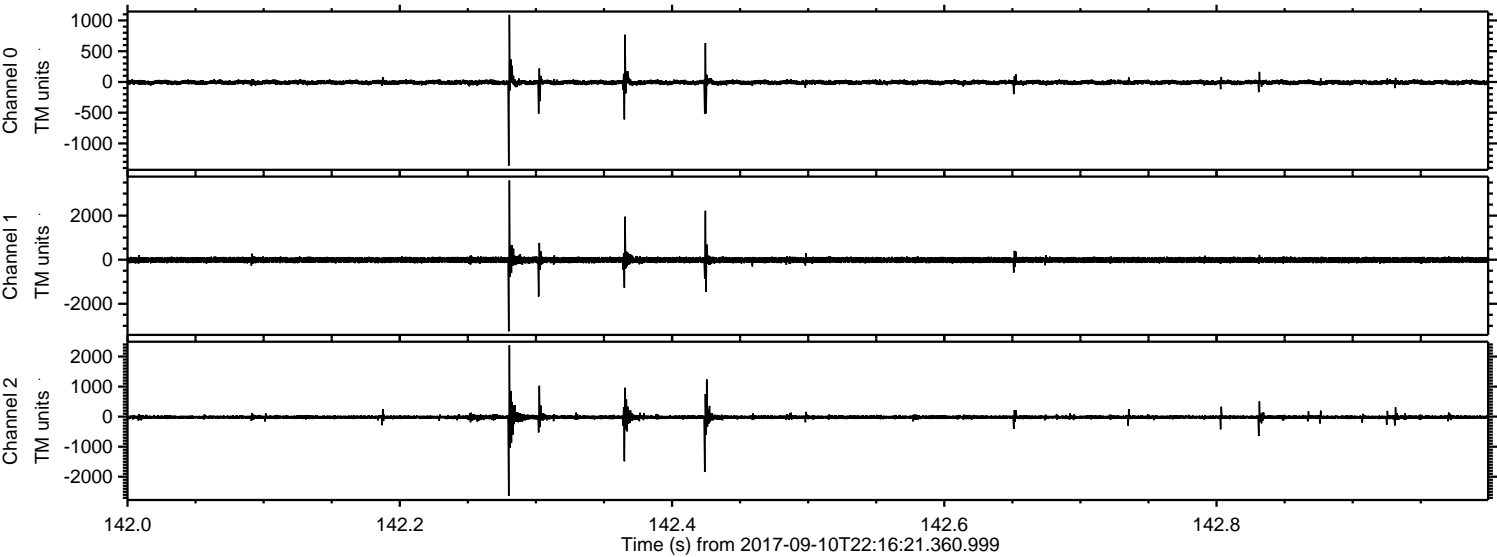
Channel 2
mn: -3893
mx: 2539
μ: -17.4
σ: 42.7

Processed Mon Sep 11 00:25:22 2017 by ELM ver.2012-10-06 from 001__elm20170910_221620__dat00.bin



ELMAVAN 3D WAVEFORMS (Measured data sampled at 50 kHz) 51000 packets of 144 samples from 2017-09-10T22:16:21.360.999. Part 143/147

Processed Mon Sep 11 00:25:23 2017 by ELM ver.2012-10-06 from 001__elm20170910_221620__dat00.bin

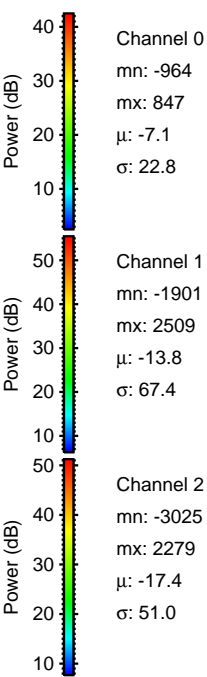
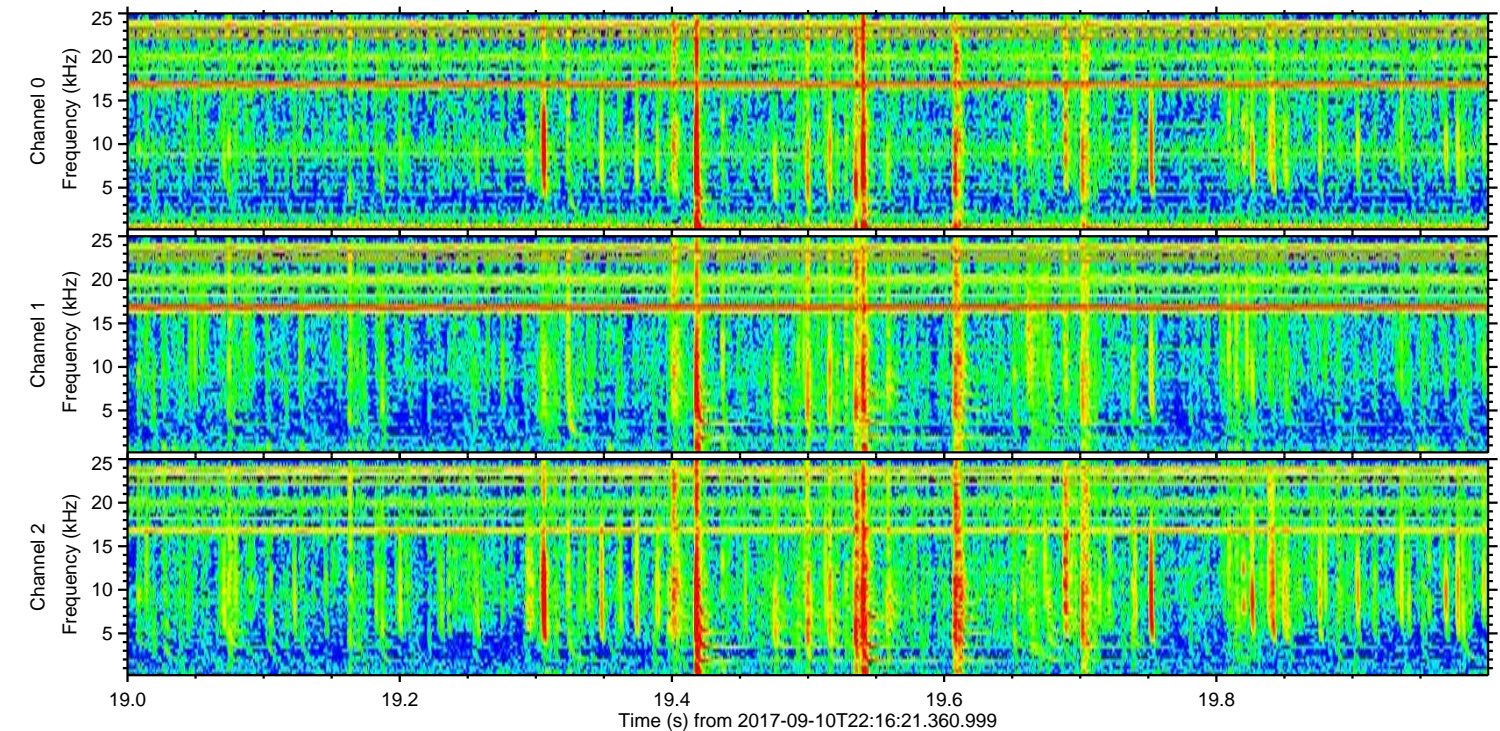
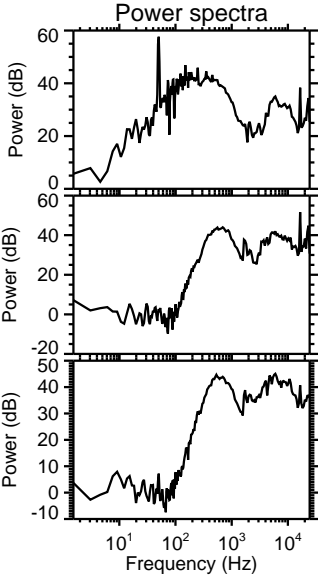
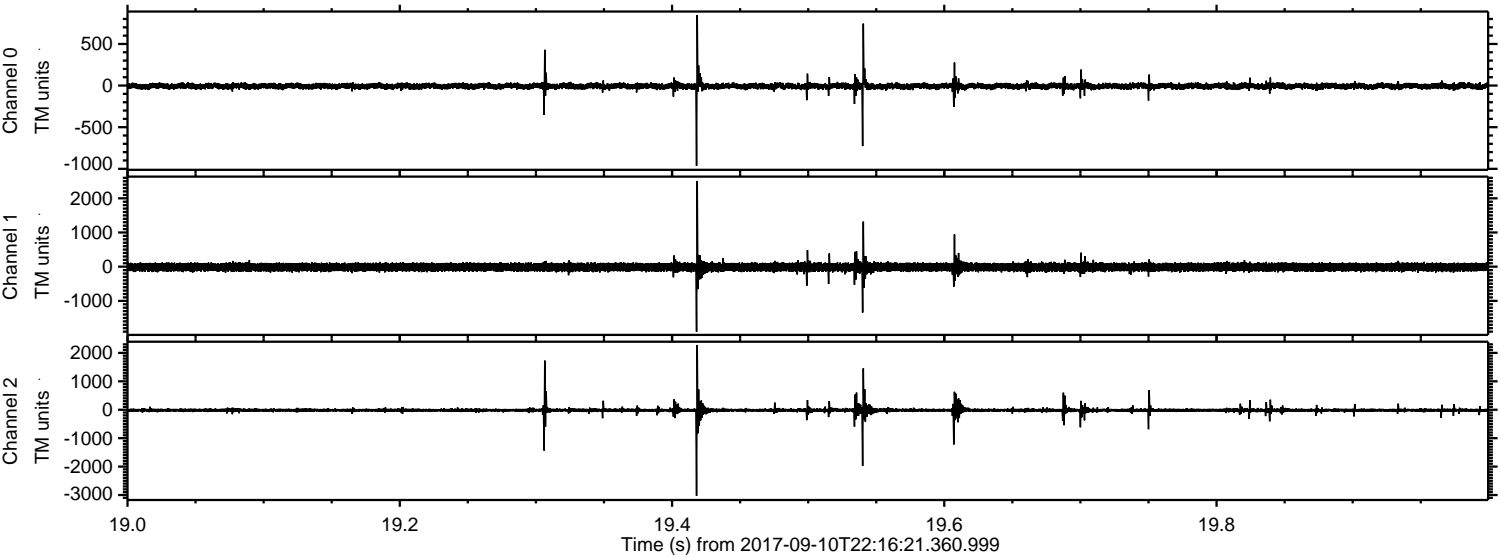


Channel 0
mn: -1361
mx: 1091
 μ : -7.2
 σ : 23.5

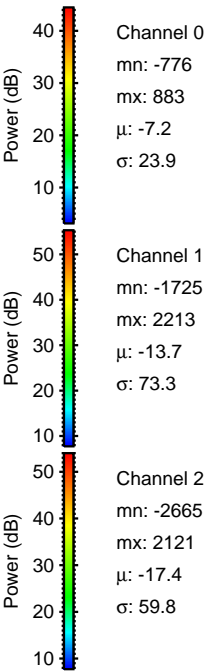
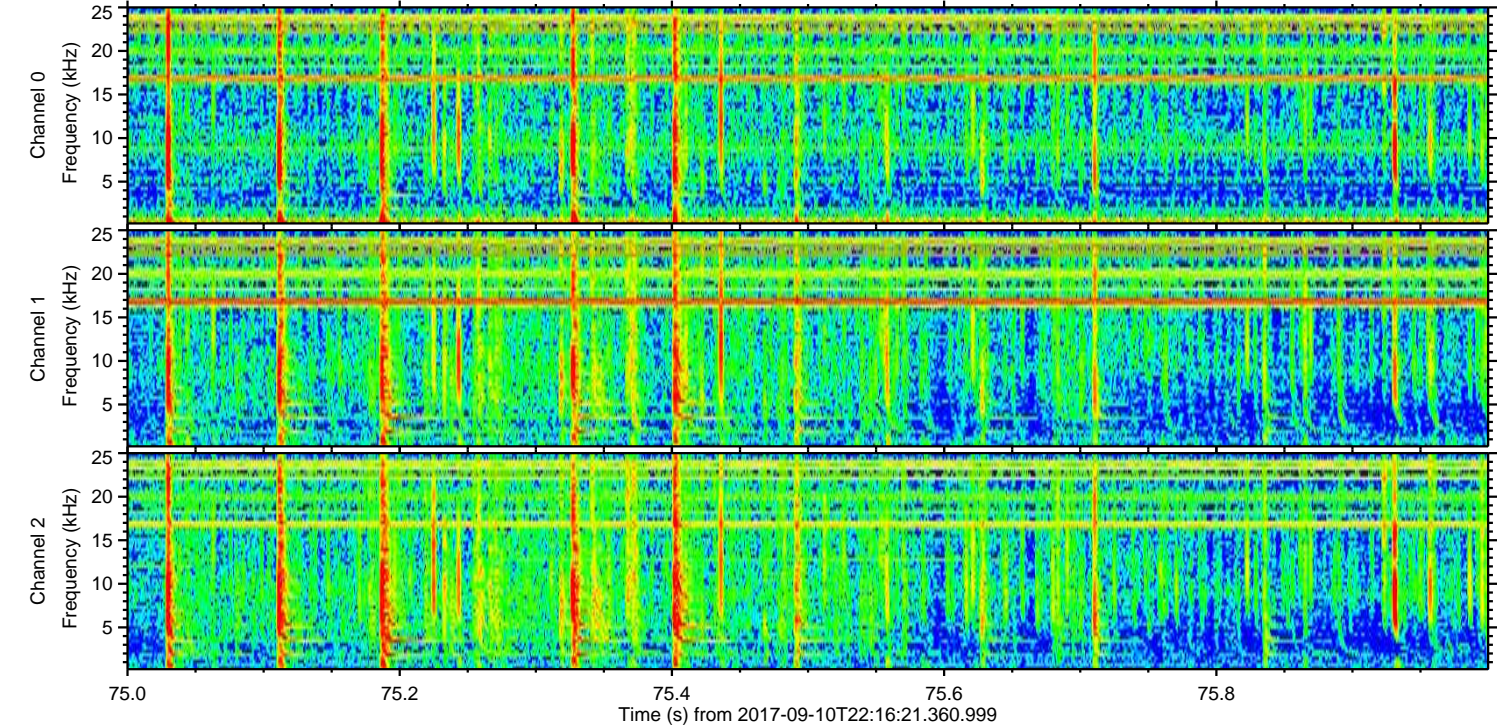
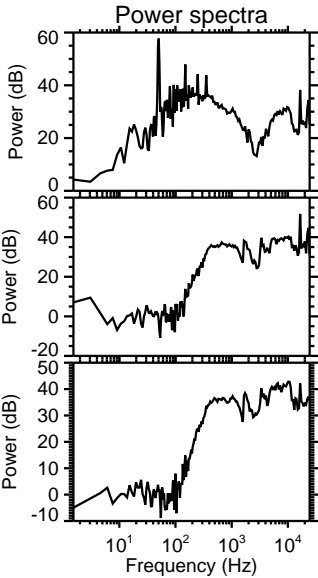
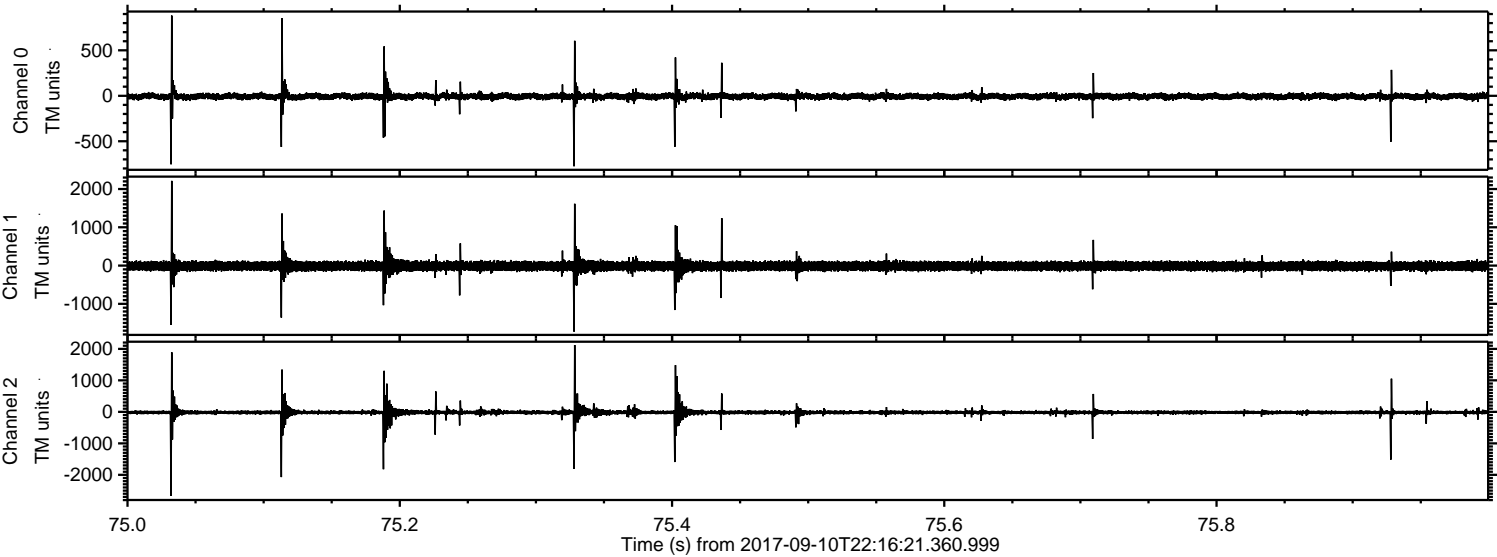
Channel 1
mn: -3250
mx: 3589
 μ : -13.9
 σ : 74.3

Channel 2
mn: -2642
mx: 2375
 μ : -17.4
 σ : 44.9

Processed Mon Sep 11 00:25:24 2017 by ELM ver.2012-10-06 from 001__elm20170910_221620__dat00.bin

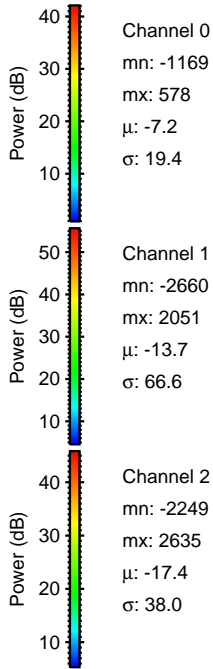
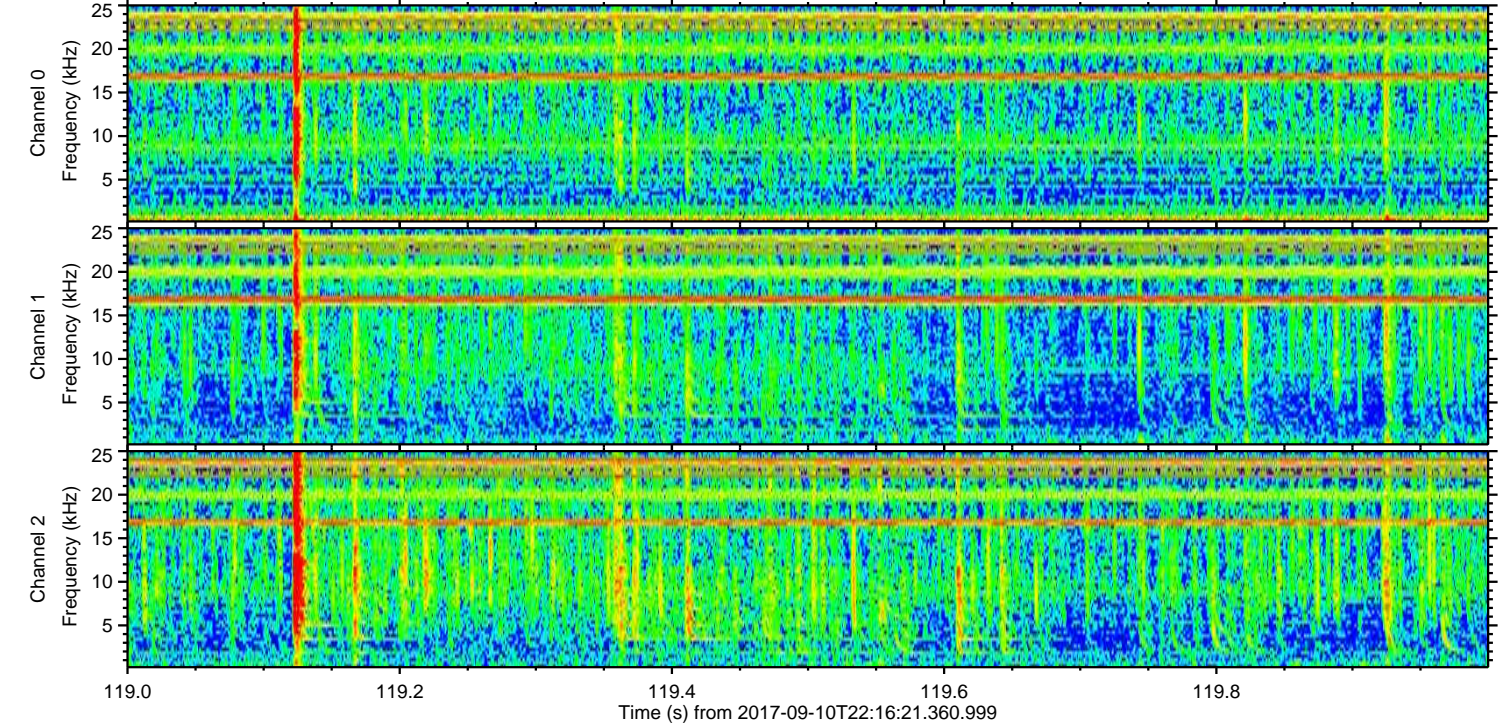
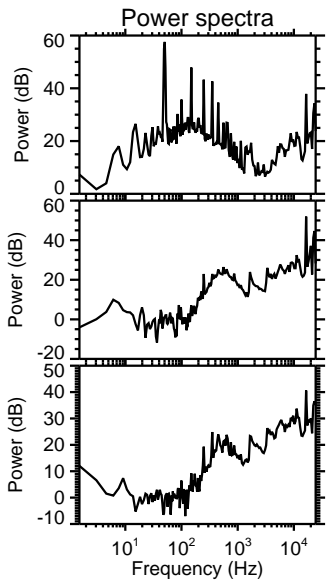
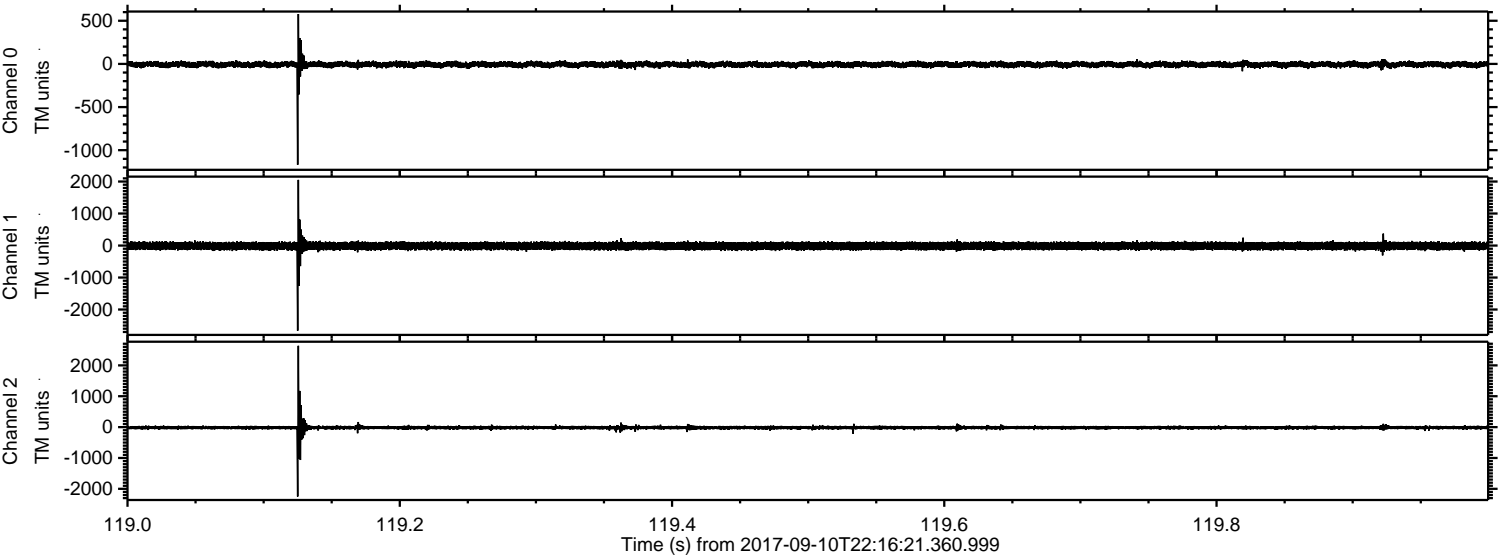


Processed Mon Sep 11 00:25:25 2017 by ELM ver.2012-10-06 from 001__elm20170910_221620__dat00.bin



ELMAVAN 3D WAVEFORMS (Measured data sampled at 50 kHz) 51000 packets of 144 samples from 2017-09-10T22:16:21.360.999. Part 120/147

Processed Mon Sep 11 00:25:26 2017 by ELM ver.2012-10-06 from 001__elm20170910_221620__dat00.bin

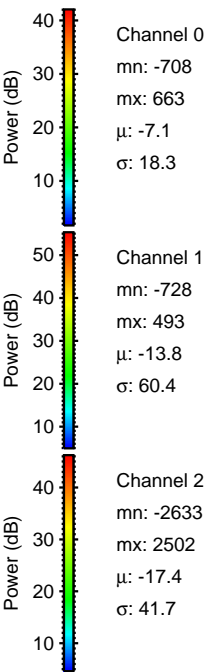
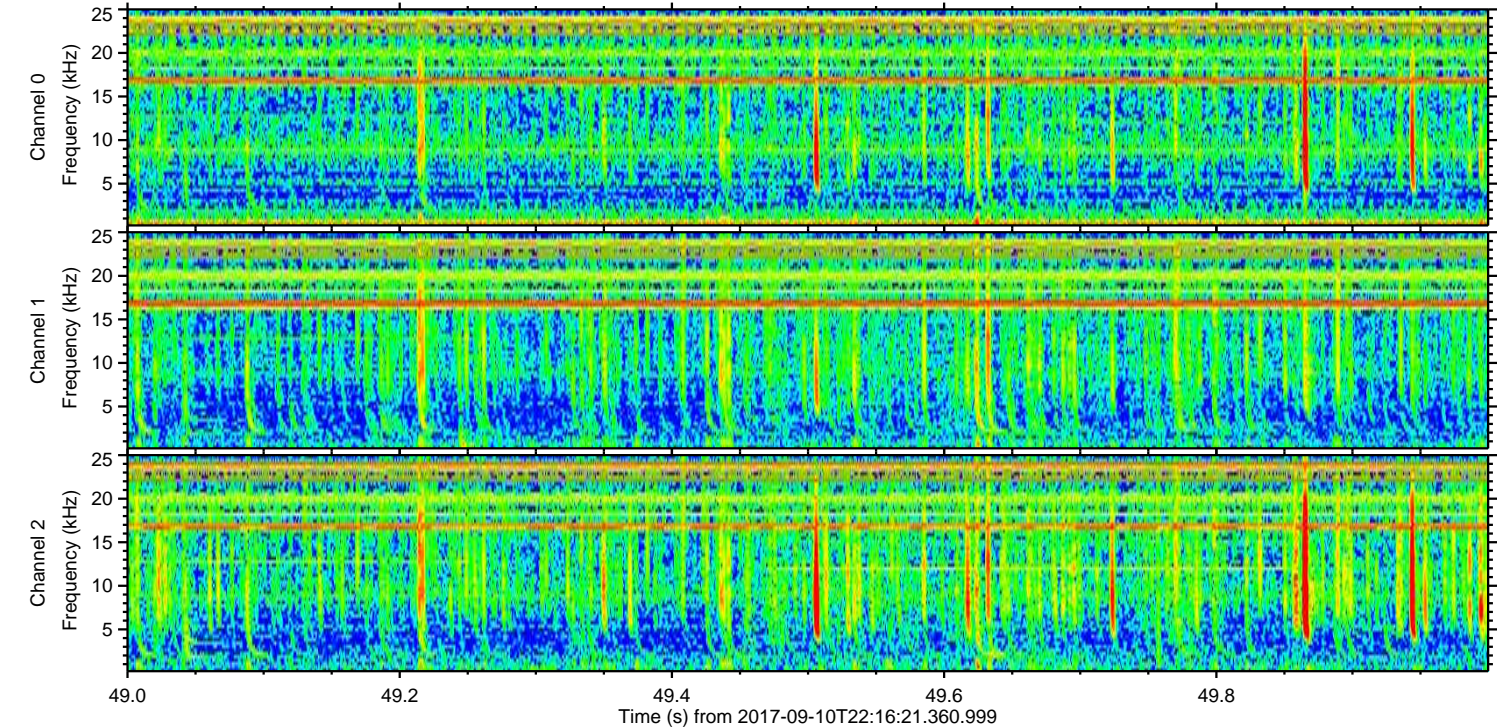
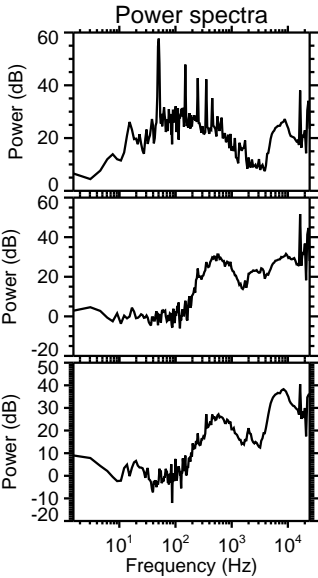
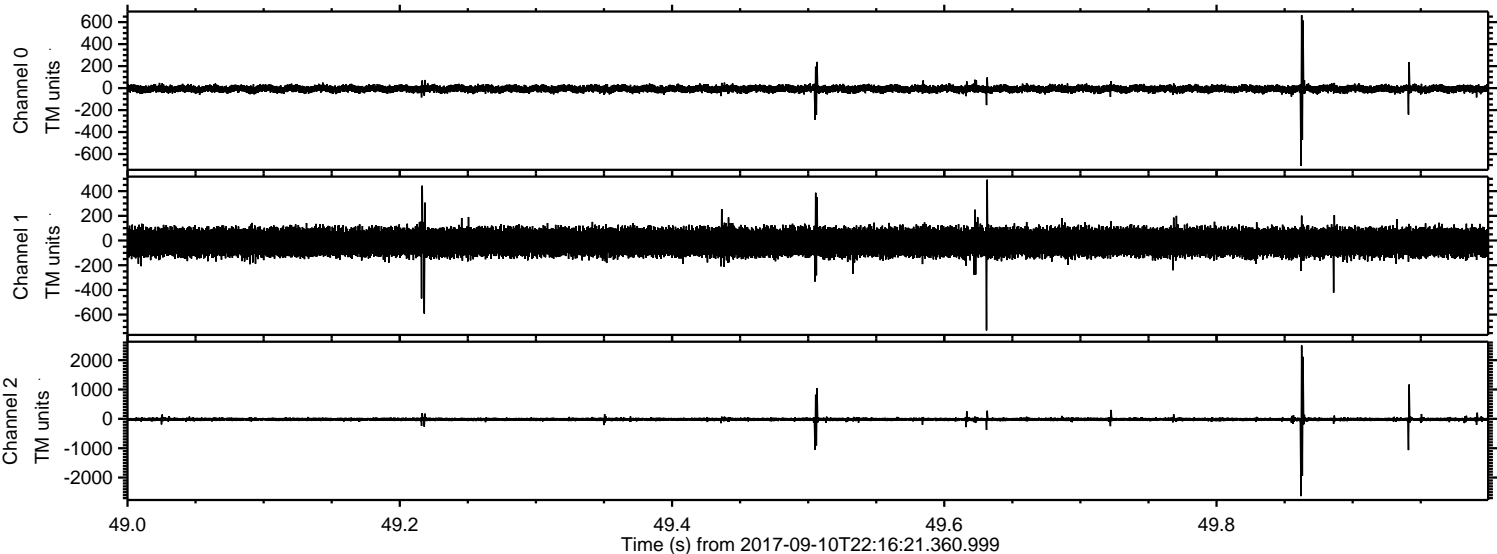


Channel 0
mn: -1169
mx: 578
 μ : -7.2
 σ : 19.4

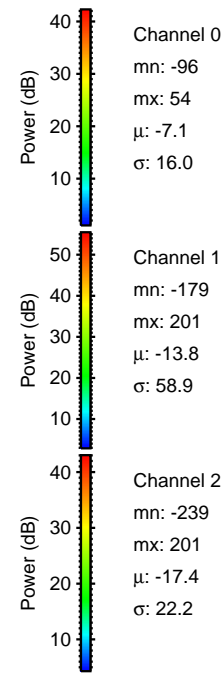
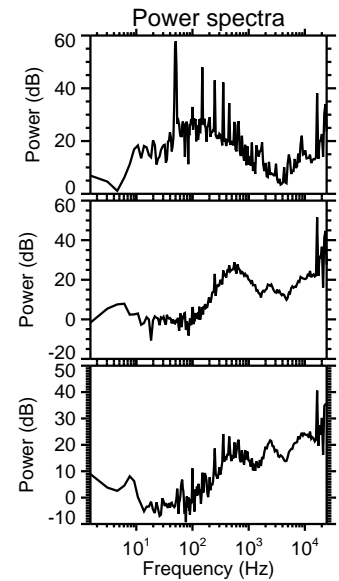
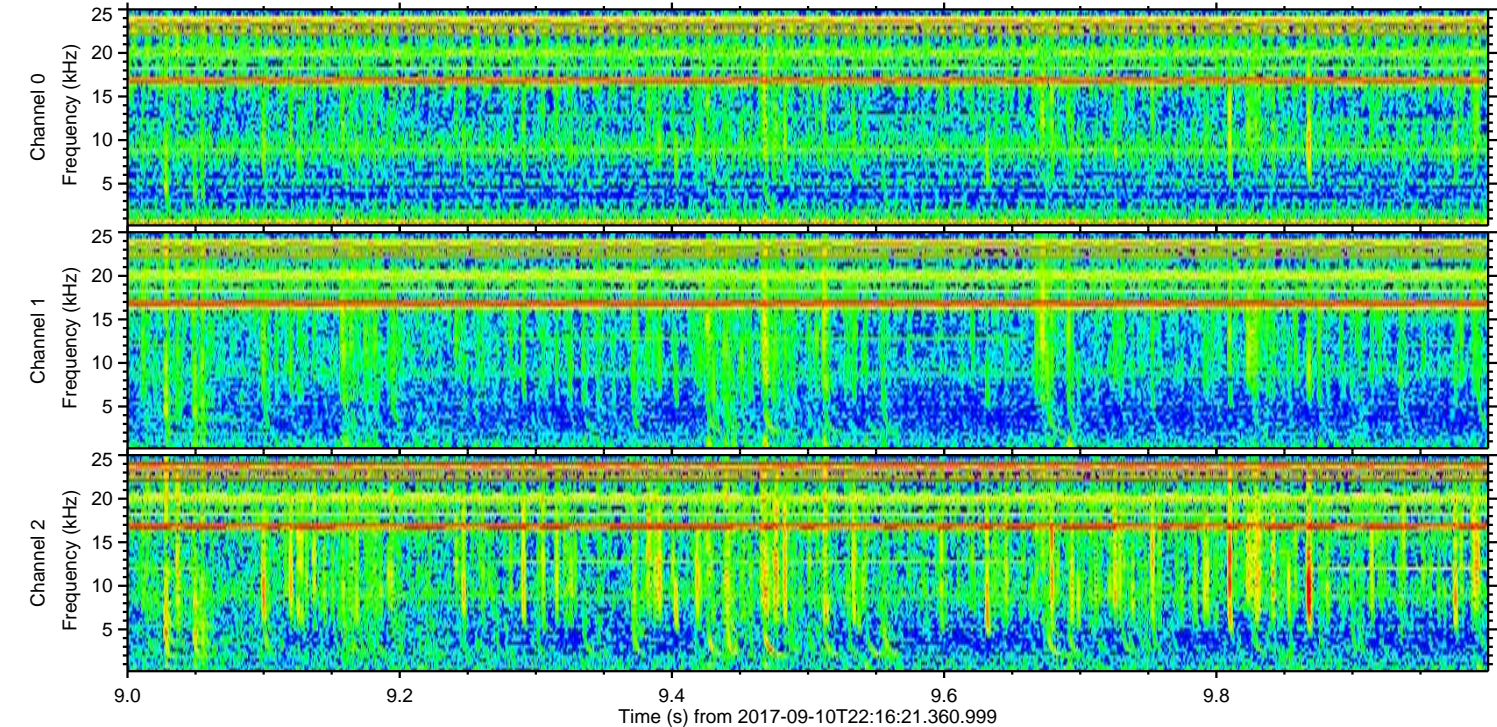
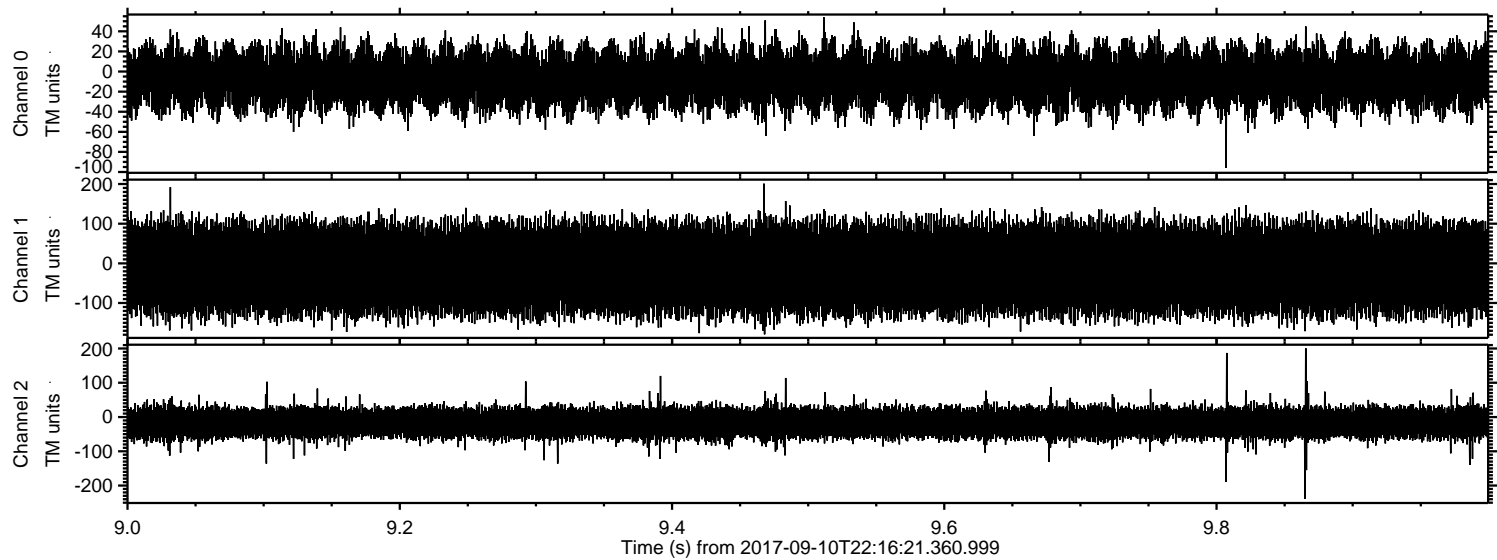
Channel 1
mn: -2660
mx: 2051
 μ : -13.7
 σ : 66.6

Channel 2
mn: -2249
mx: 2635
 μ : -17.4
 σ : 38.0

Processed Mon Sep 11 00:25:26 2017 by ELM ver.2012-10-06 from 001__elm20170910_221620__dat00.bin



Processed Mon Sep 11 00:25:27 2017 by ELM ver.2012-10-06 from 001__elm20170910_221620__dat00.bin



Channel 0
mn: -96
mx: 54
 μ : -7.1
 σ : 16.0

Channel 1
mn: -179
mx: 201
 μ : -13.8
 σ : 58.9

Channel 2
mn: -239
mx: 201
 μ : -17.4
 σ : 22.2