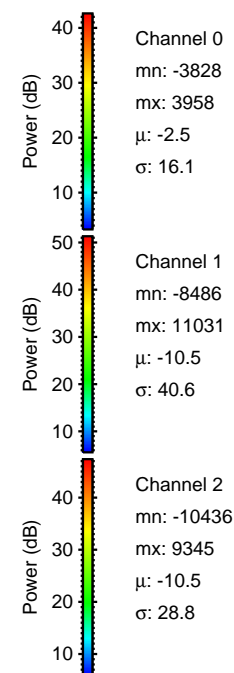
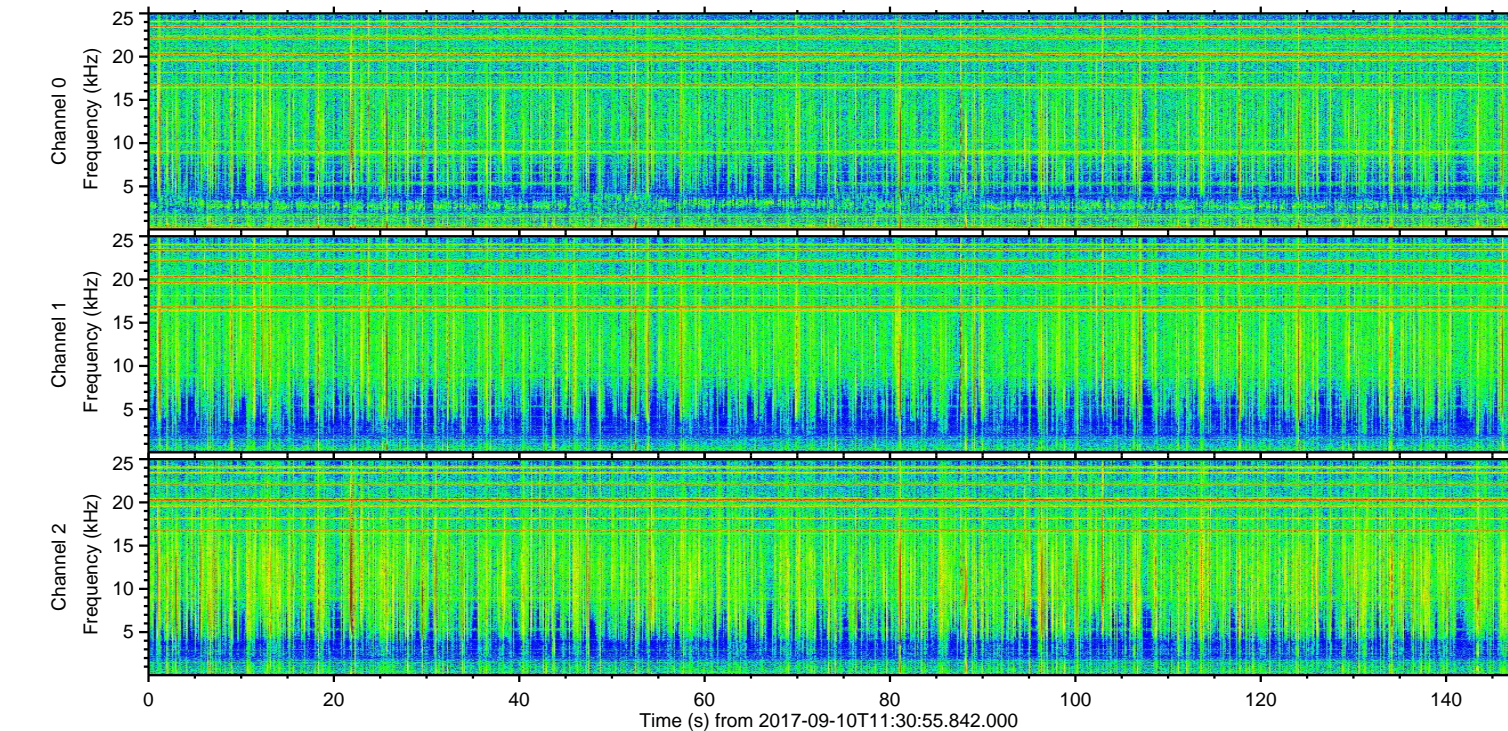
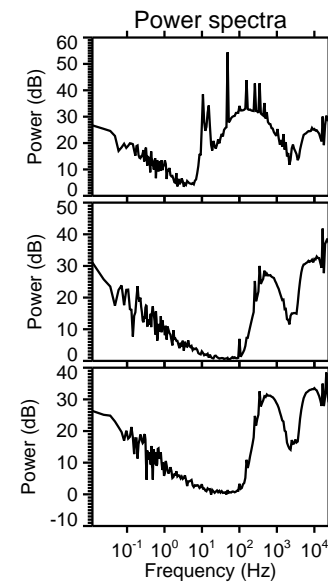
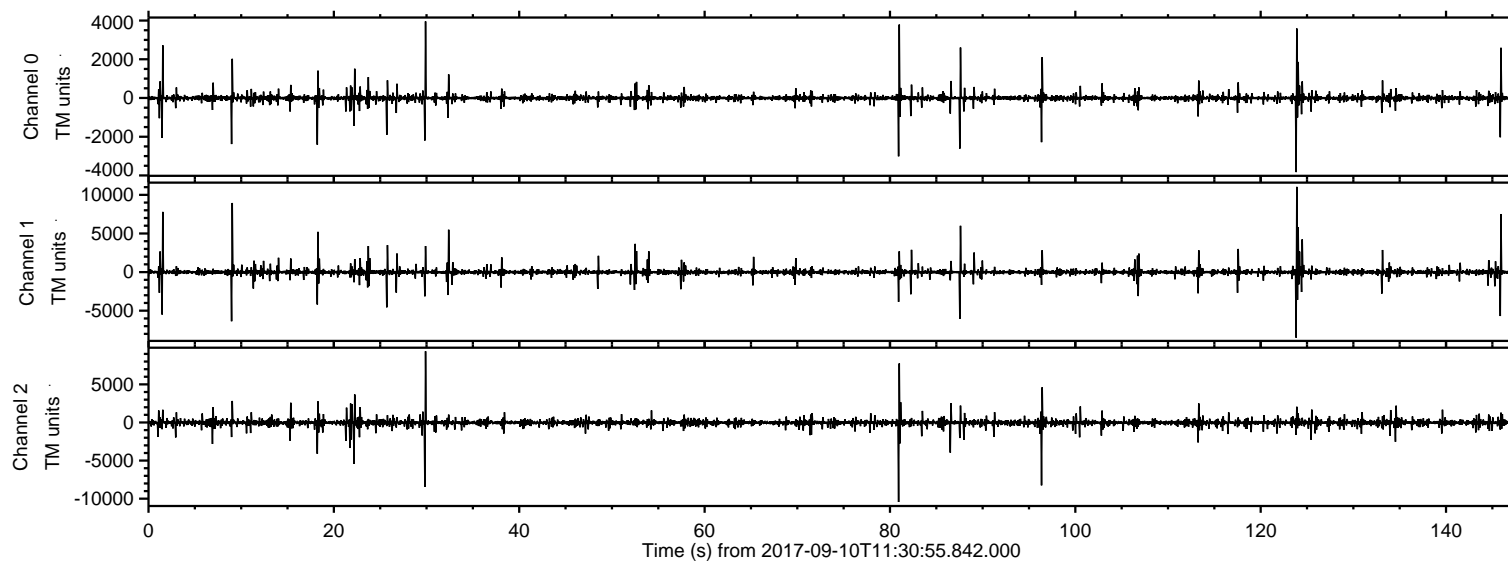


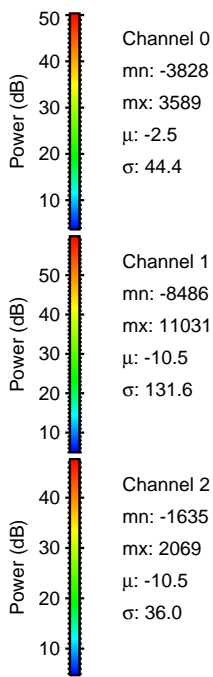
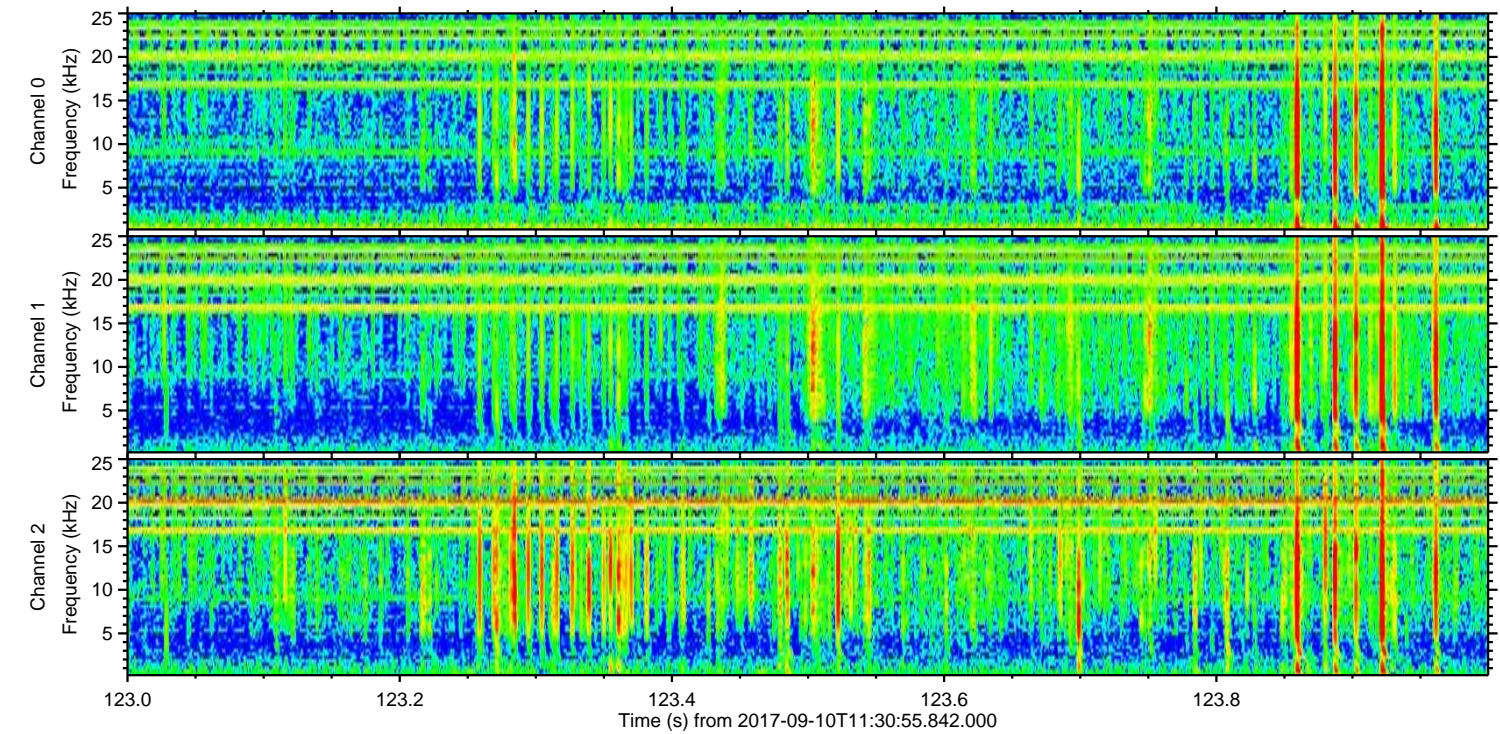
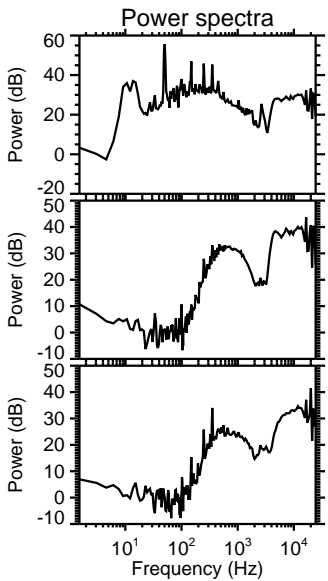
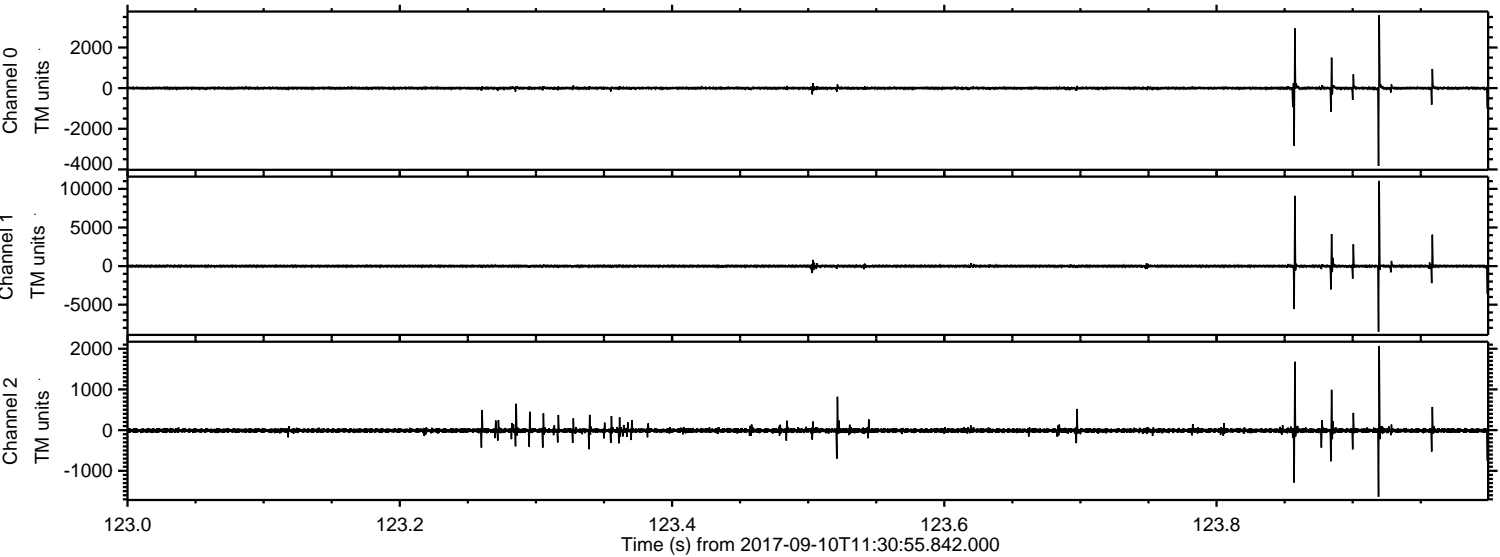
ELMAVAN 3D WAVEFORMS (Measured data sampled at 50 kHz) 51000 packets of 144 samples from 2017-09-10T11:30:55.842.000.

Processed Sun Sep 10 13:39:14 2017 by ELM ver.2012-10-06 from 001__elm20170910_113054__dat00.bin

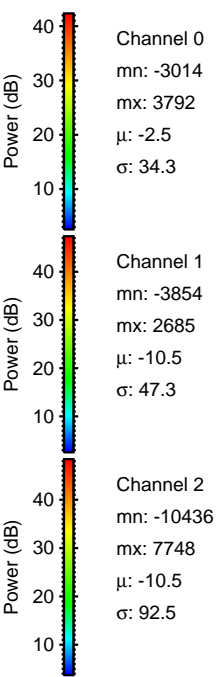
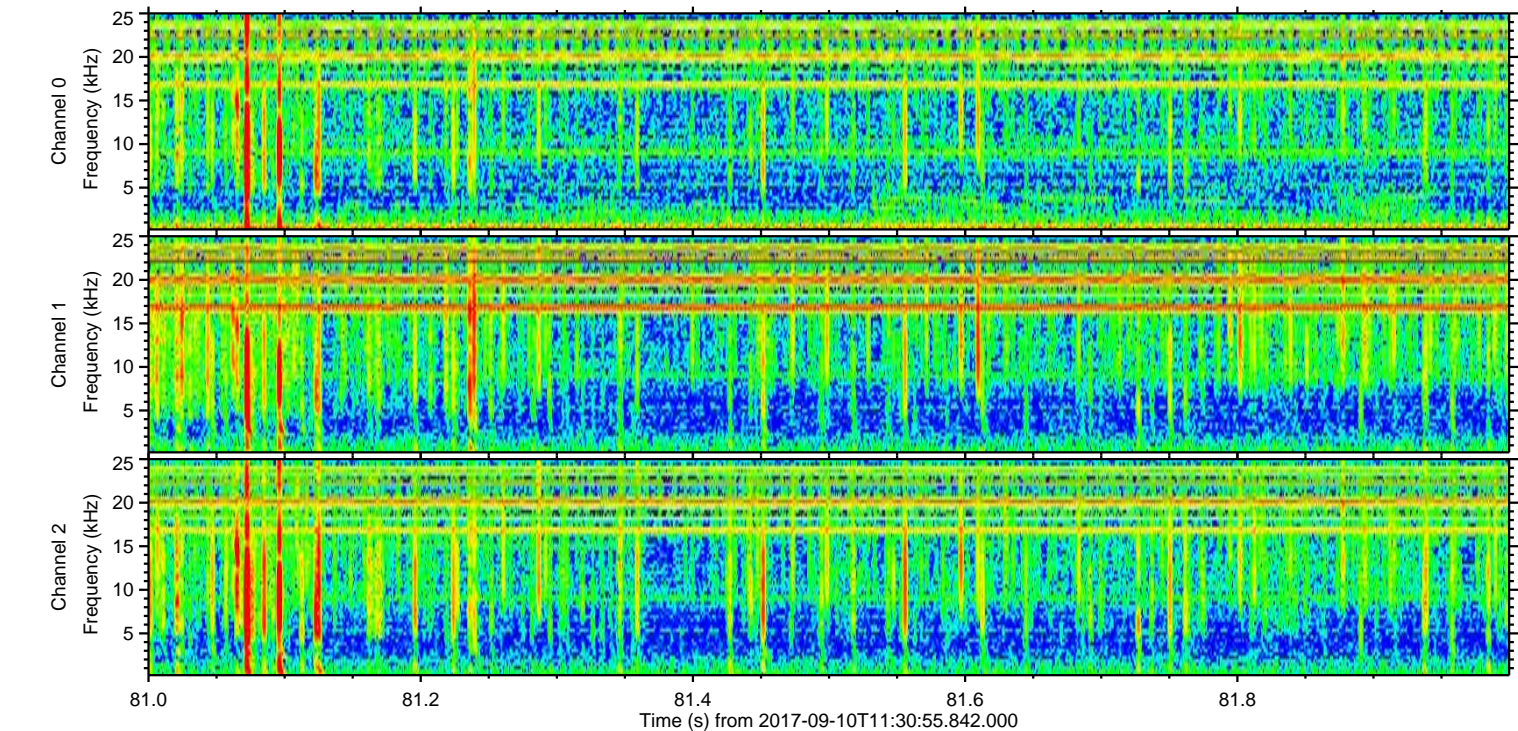
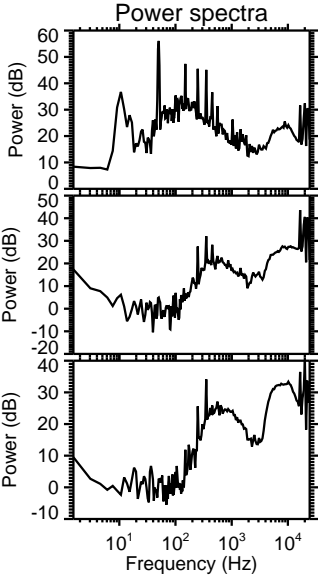
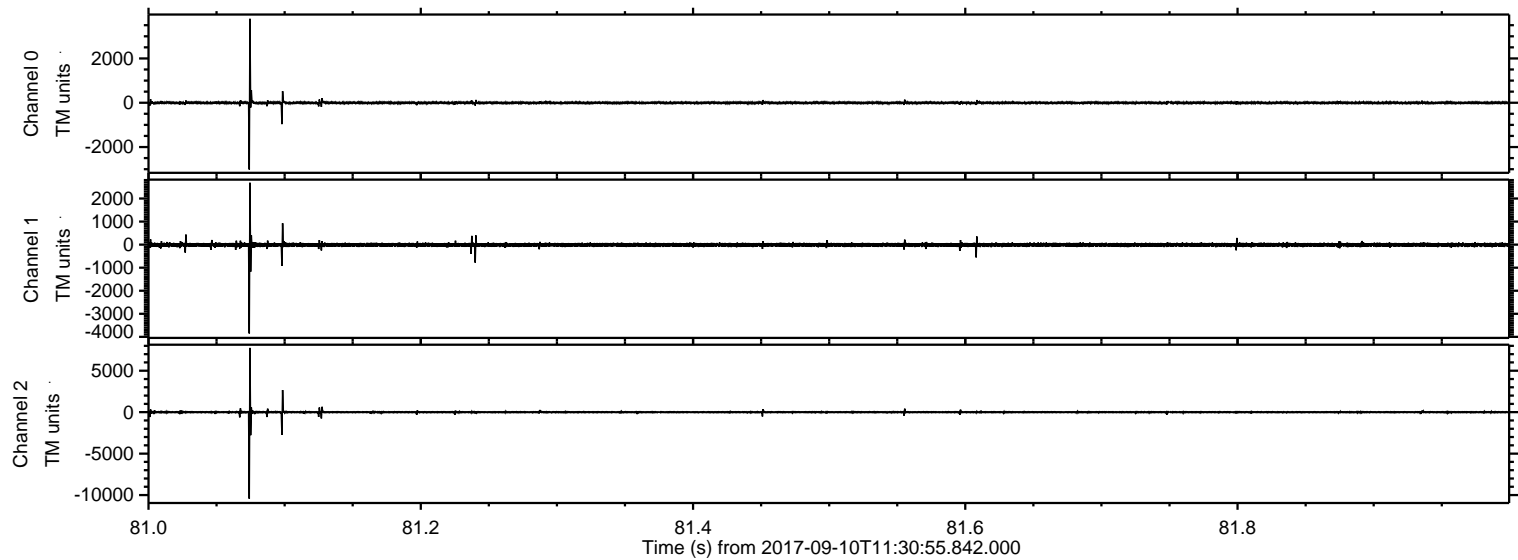


ELMAVAN 3D WAVEFORMS (Measured data sampled at 50 kHz) 51000 packets of 144 samples from 2017-09-10T11:30:55.842.000. Part 124/147

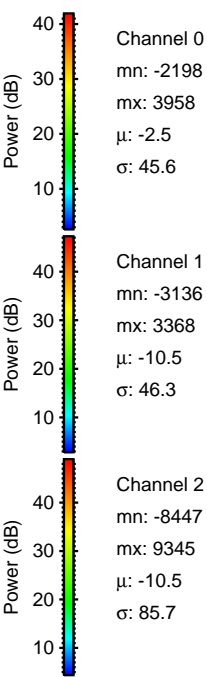
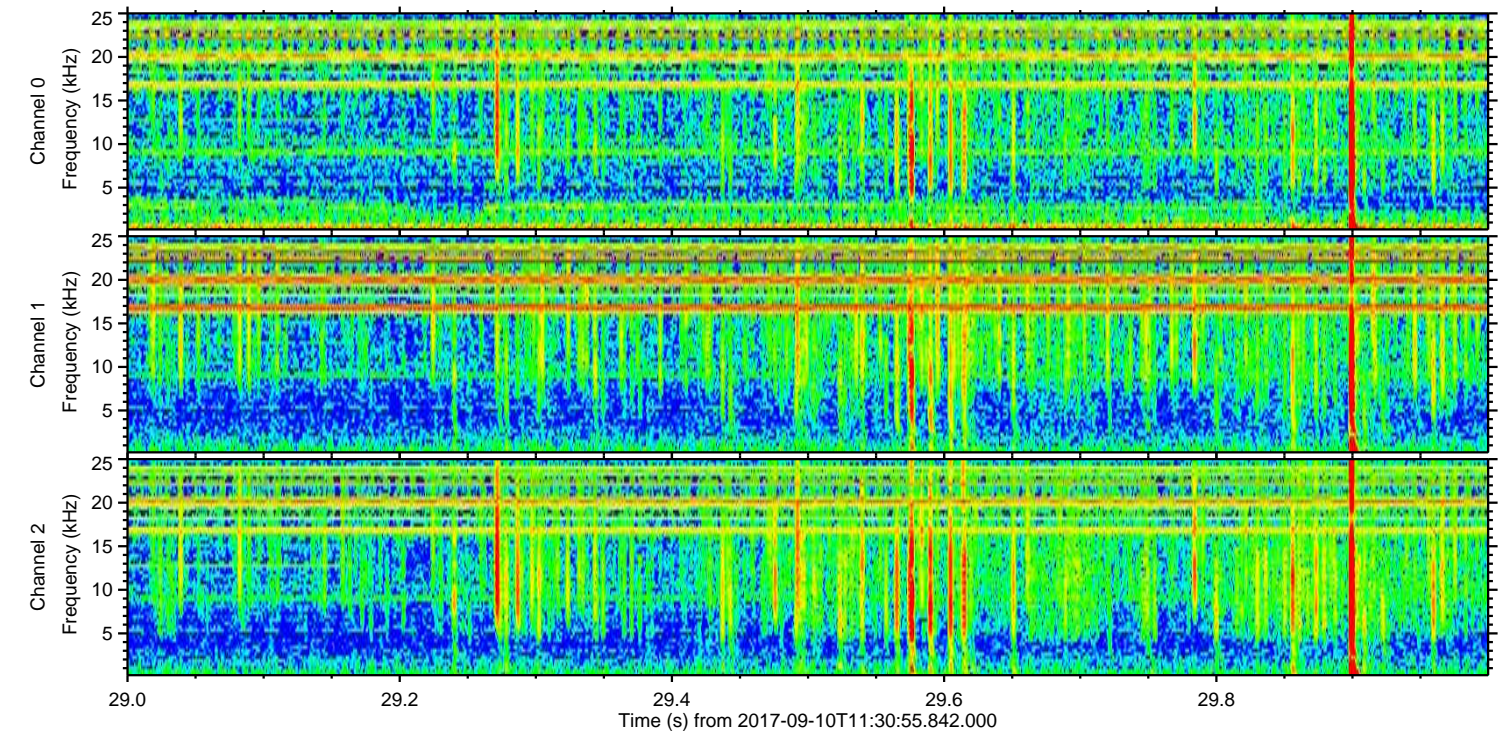
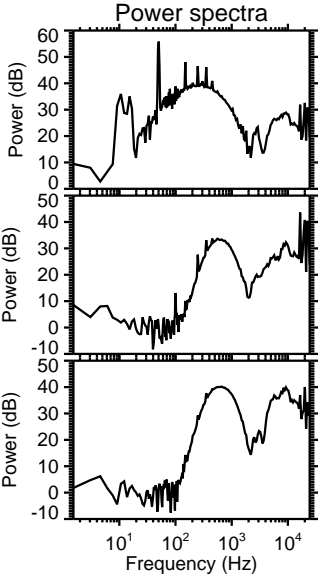
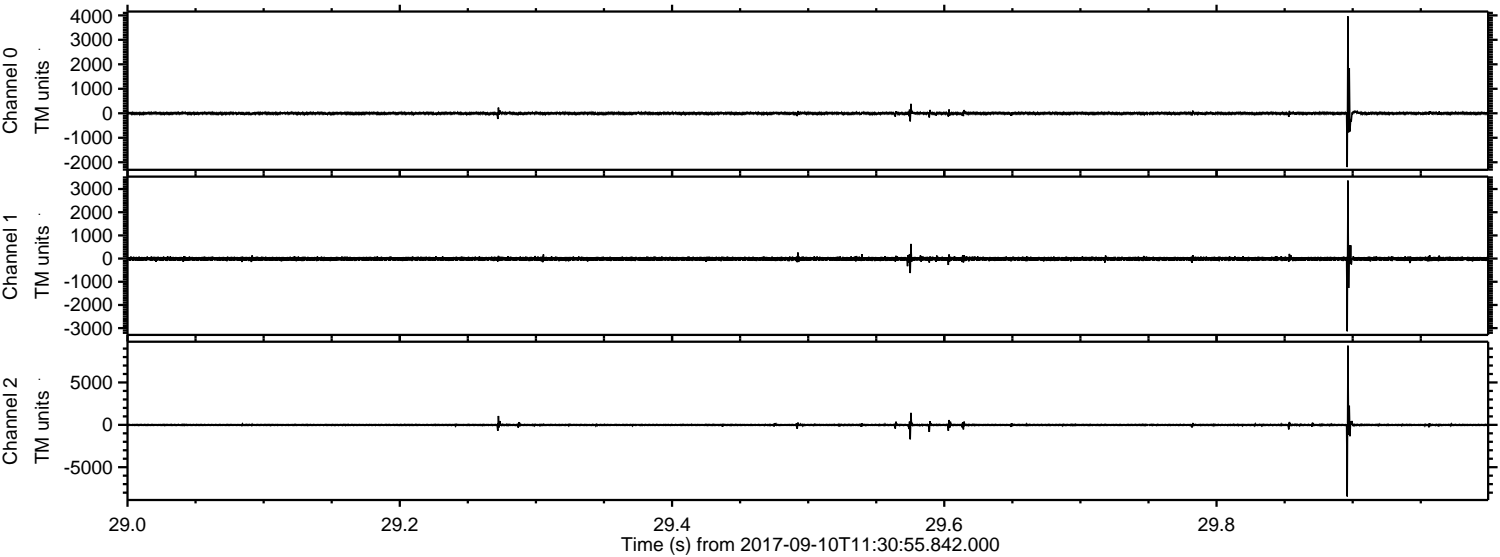
Processed Sun Sep 10 13:39:20 2017 by ELM ver.2012-10-06 from 001__elm20170910_113054__dat00.bin



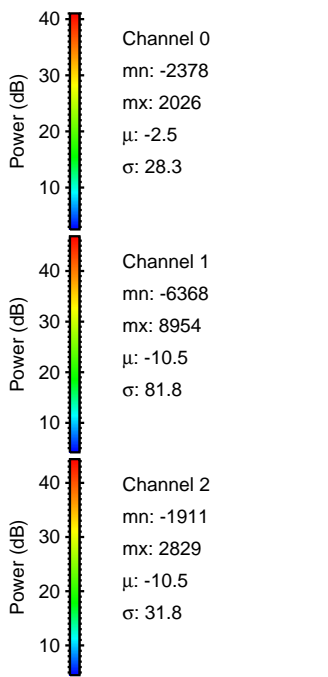
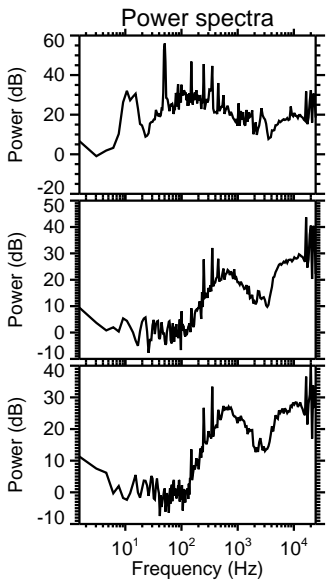
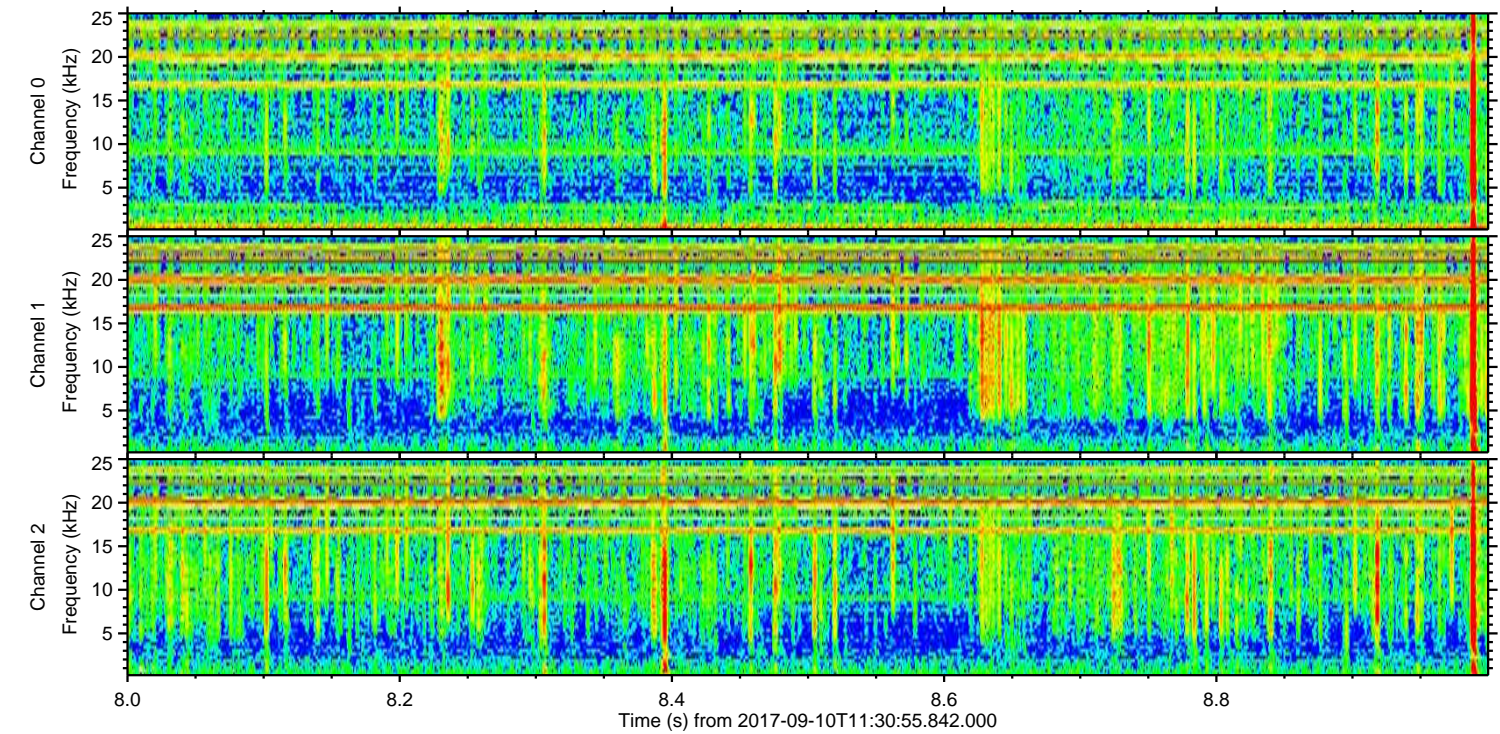
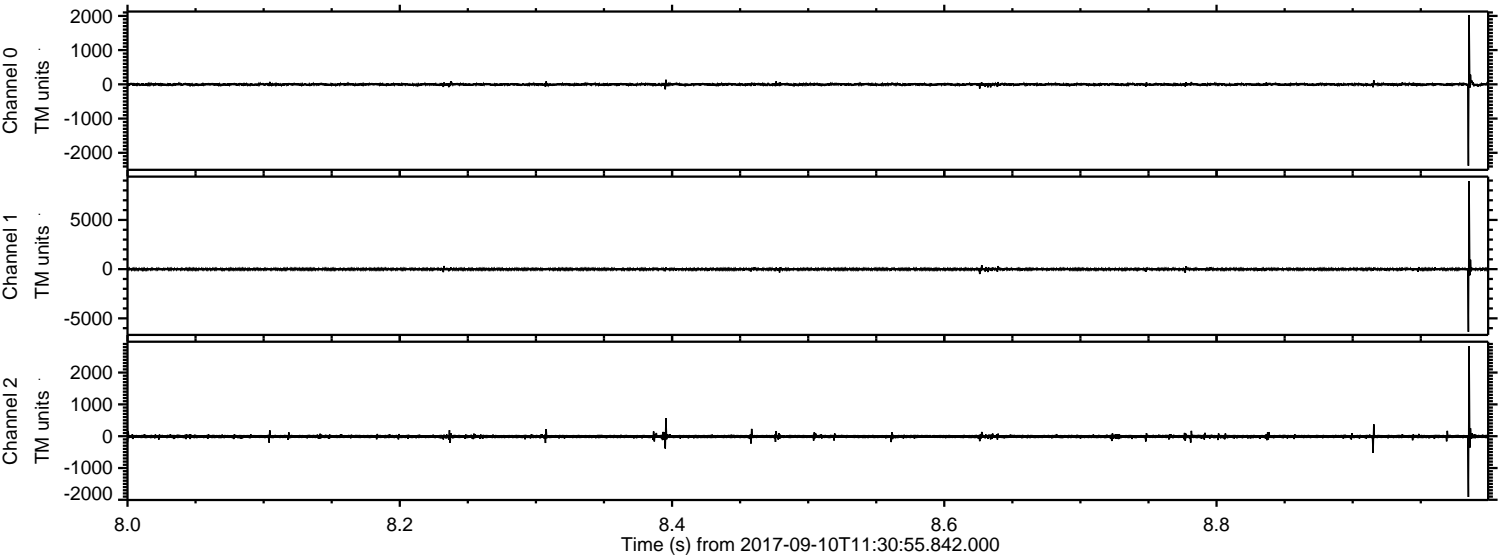
Processed Sun Sep 10 13:39:20 2017 by ELM ver.2012-10-06 from 001__elm20170910_113054__dat00.bin



Processed Sun Sep 10 13:39:21 2017 by ELM ver.2012-10-06 from 001__elm20170910_113054__dat00.bin

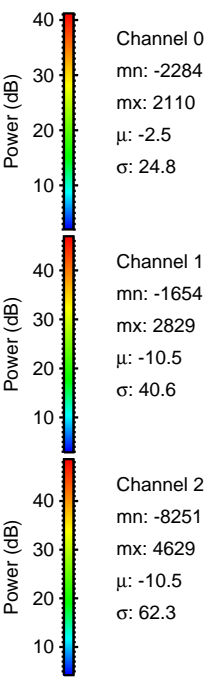
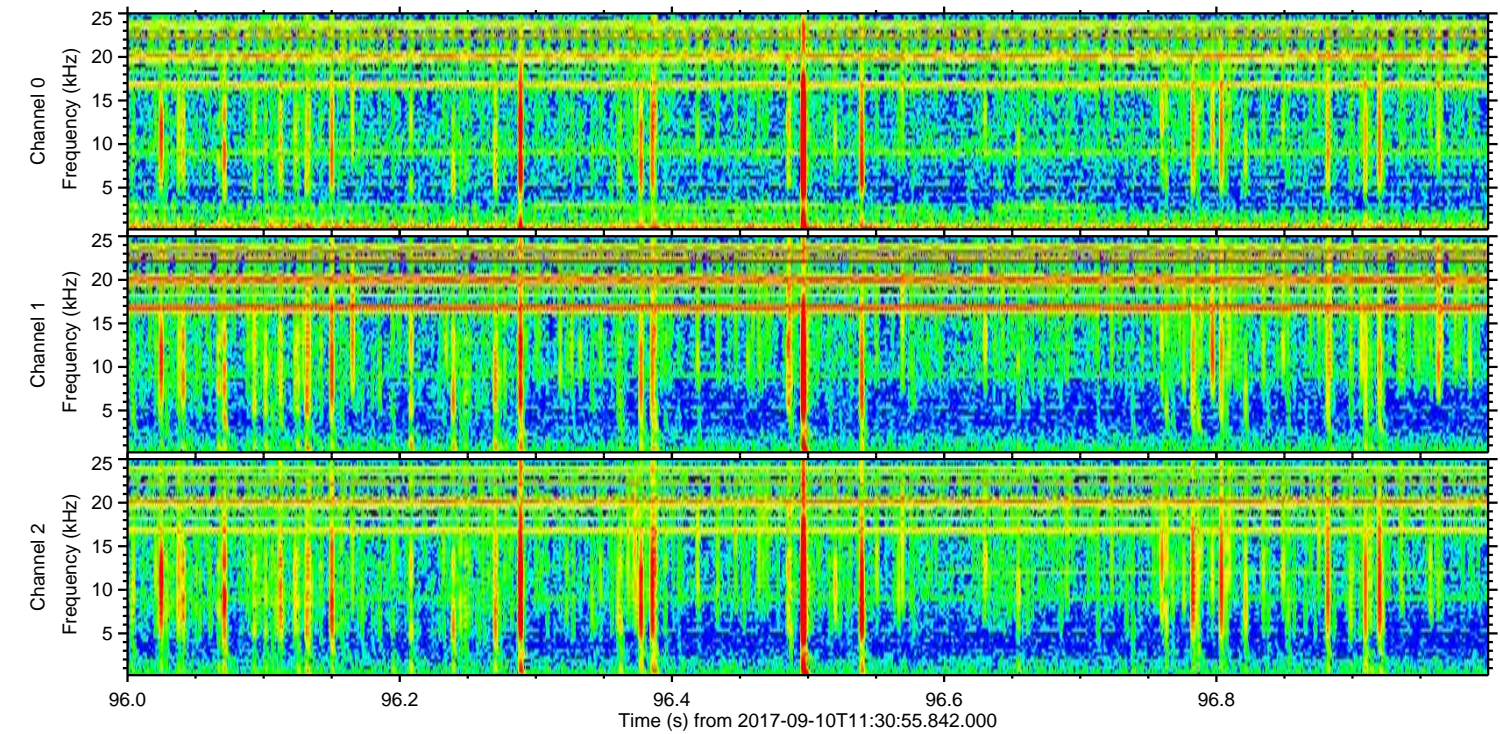
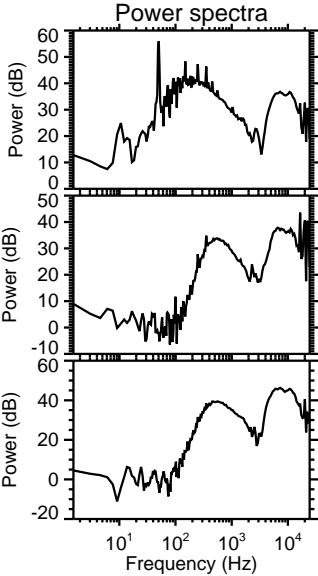
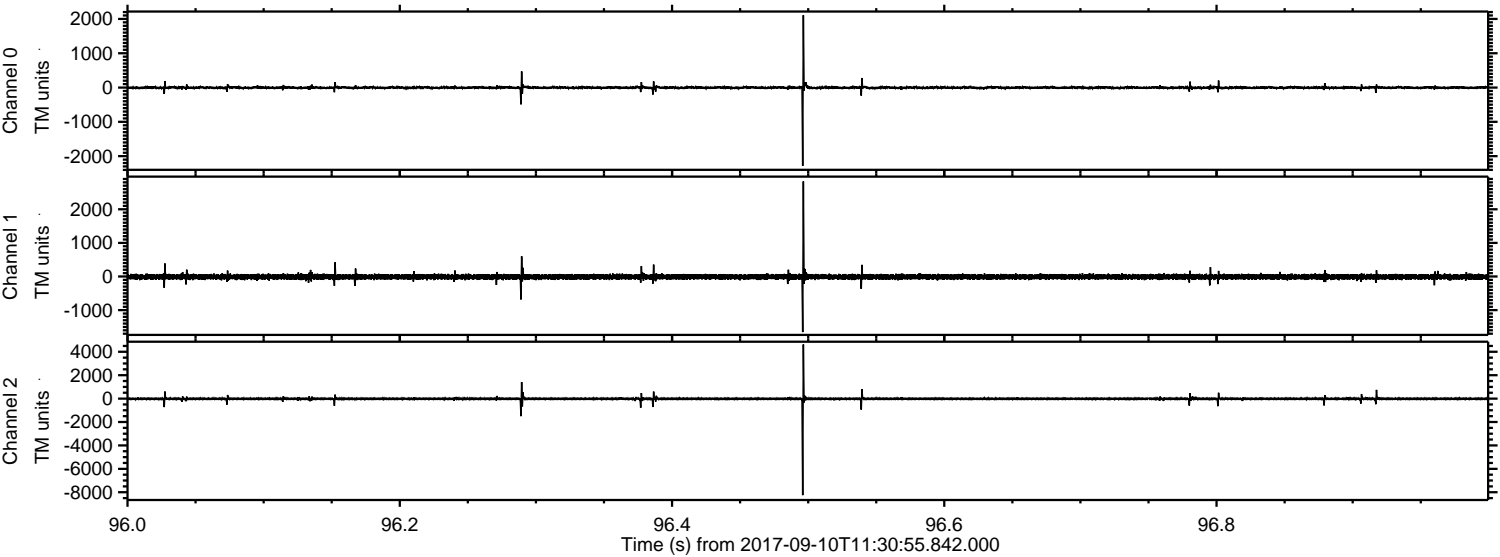


Processed Sun Sep 10 13:39:22 2017 by ELM ver.2012-10-06 from 001__elm20170910_113054__dat00.bin

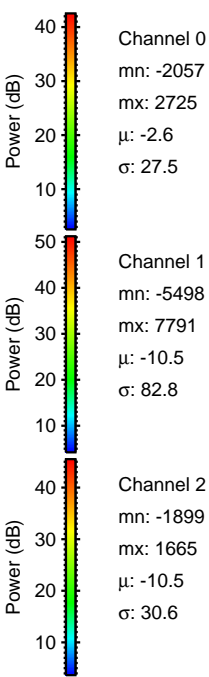
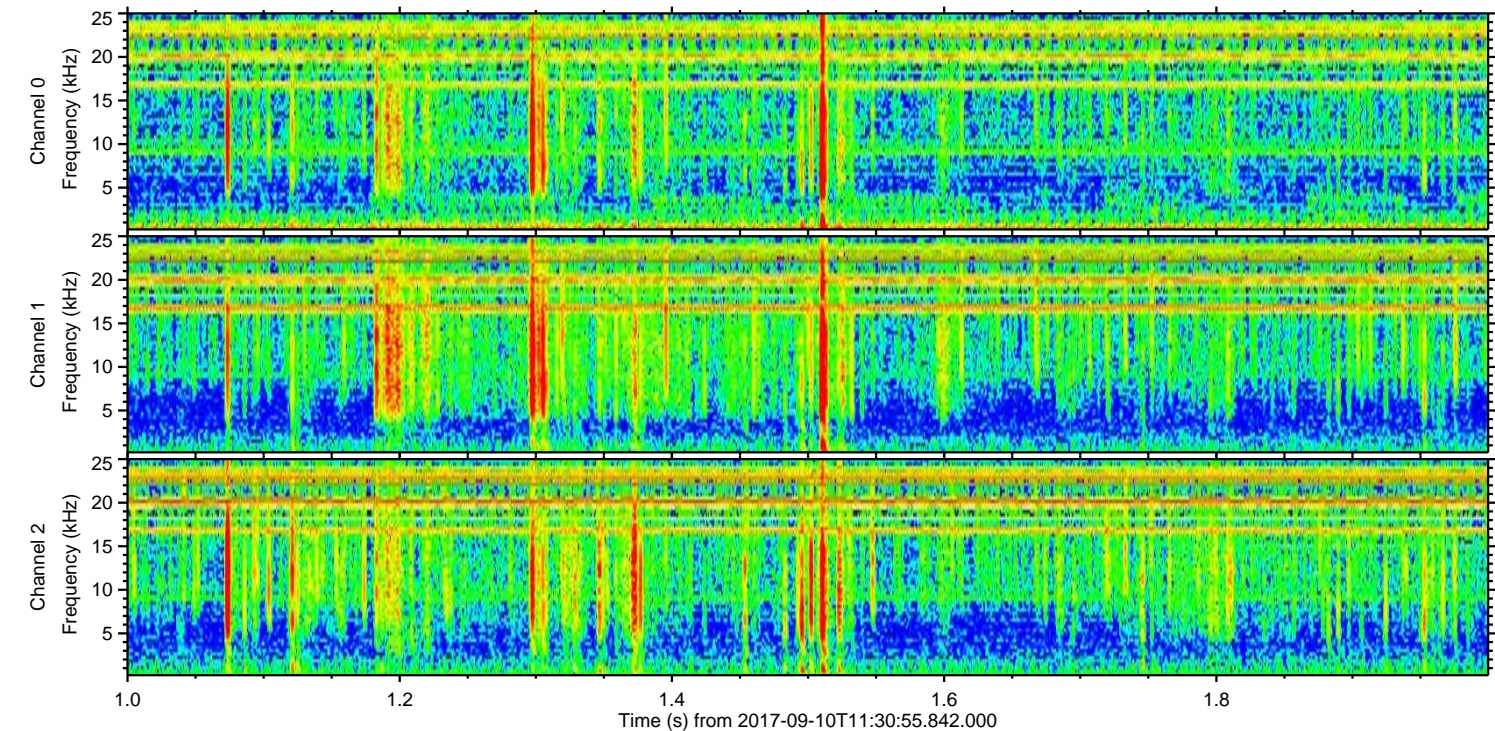
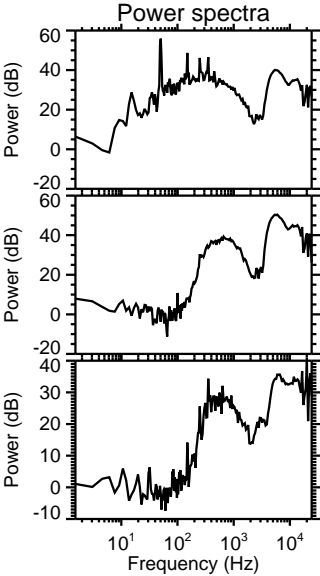
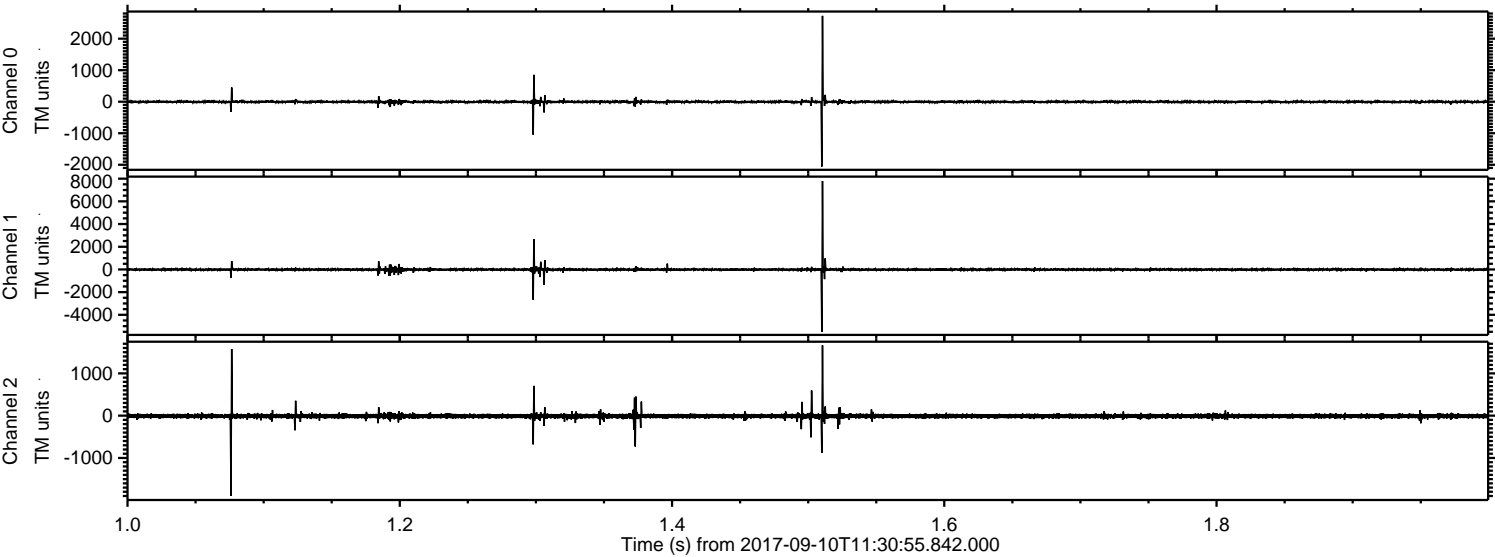


ELMAVAN 3D WAVEFORMS (Measured data sampled at 50 kHz) 51000 packets of 144 samples from 2017-09-10T11:30:55.842.000. Part 97/147

Processed Sun Sep 10 13:39:22 2017 by ELM ver.2012-10-06 from 001__elm20170910_113054__dat00.bin

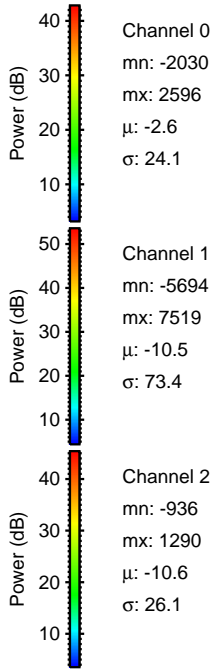
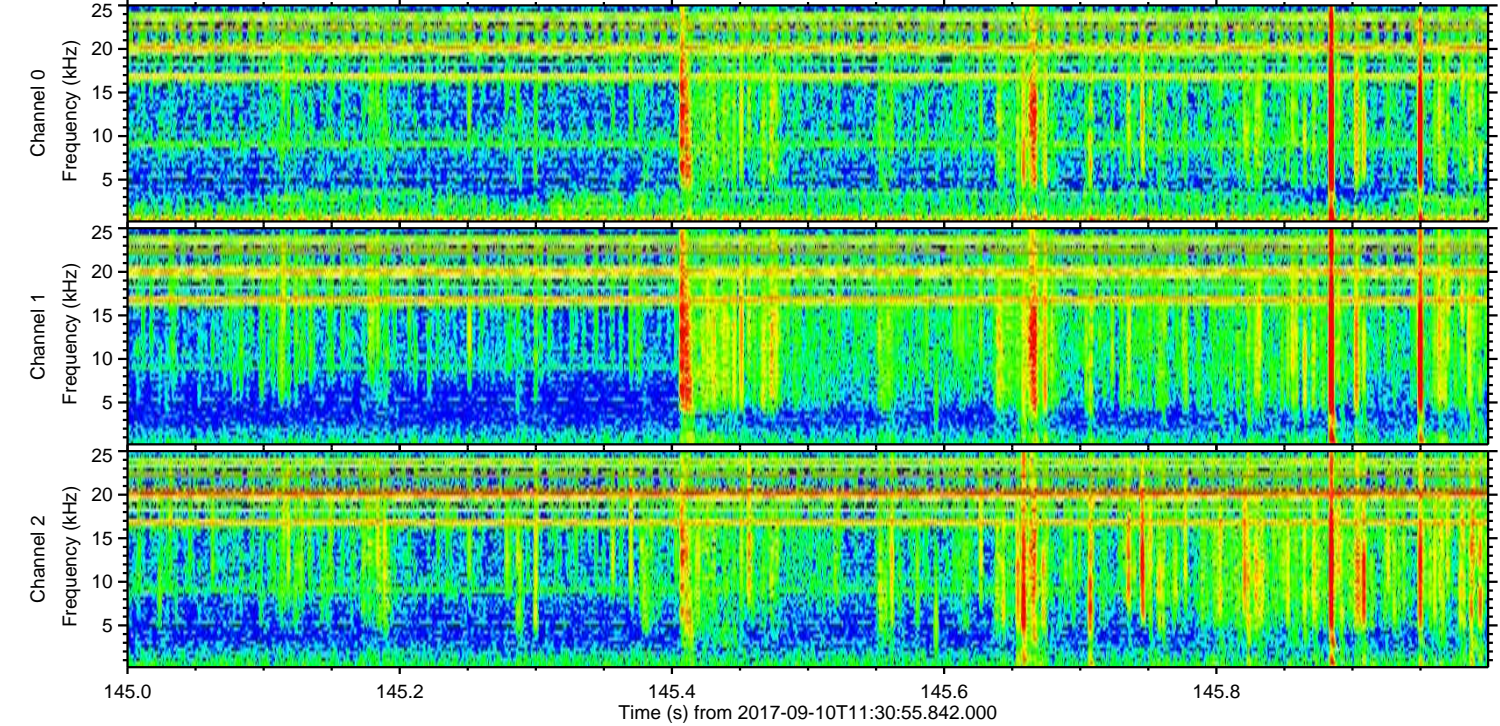
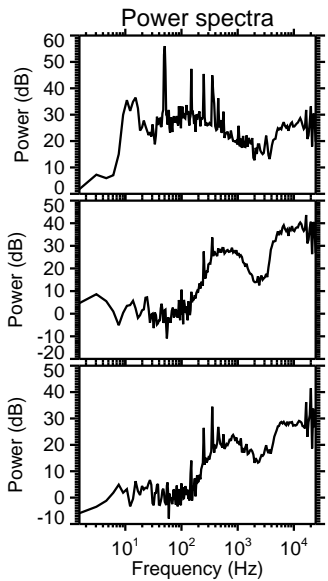
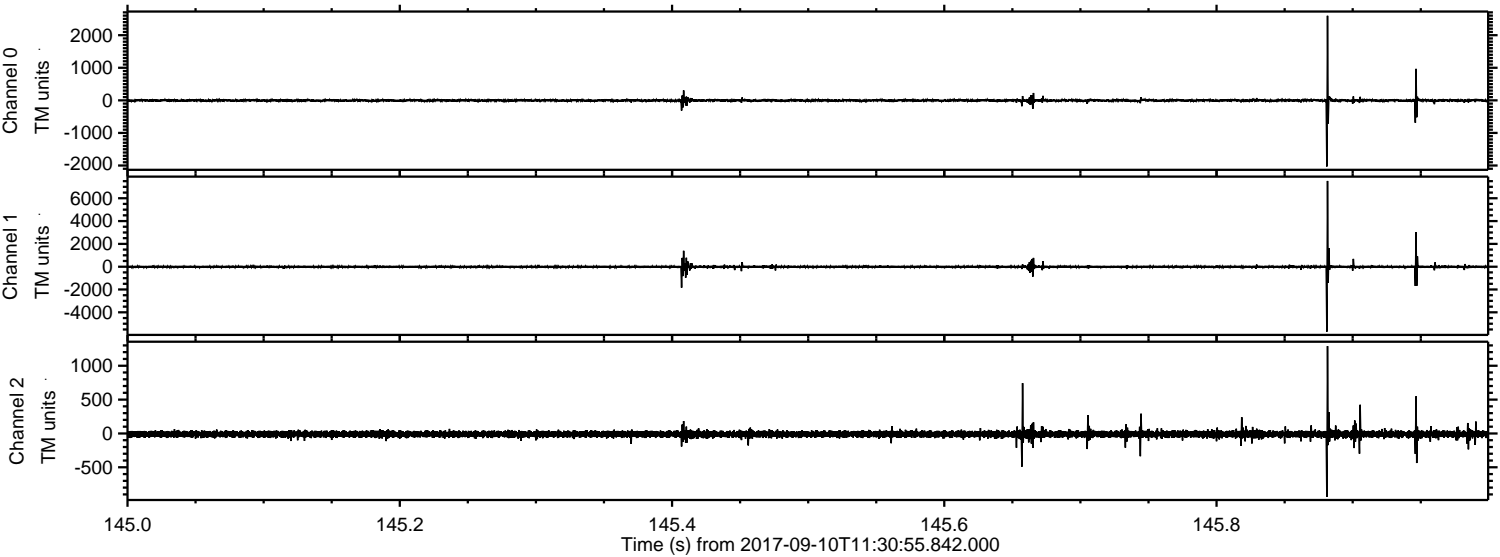


Processed Sun Sep 10 13:39:23 2017 by ELM ver.2012-10-06 from 001__elm20170910_113054__dat00.bin



ELMAVAN 3D WAVEFORMS (Measured data sampled at 50 kHz) 51000 packets of 144 samples from 2017-09-10T11:30:55.842.000. Part 146/147

Processed Sun Sep 10 13:39:23 2017 by ELM ver.2012-10-06 from 001__elm20170910_113054__dat00.bin

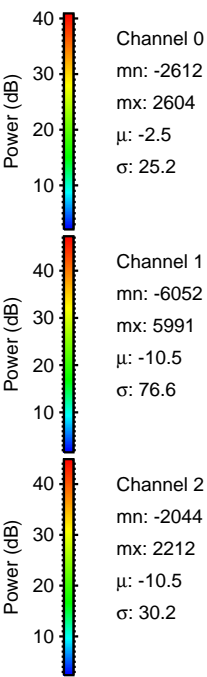
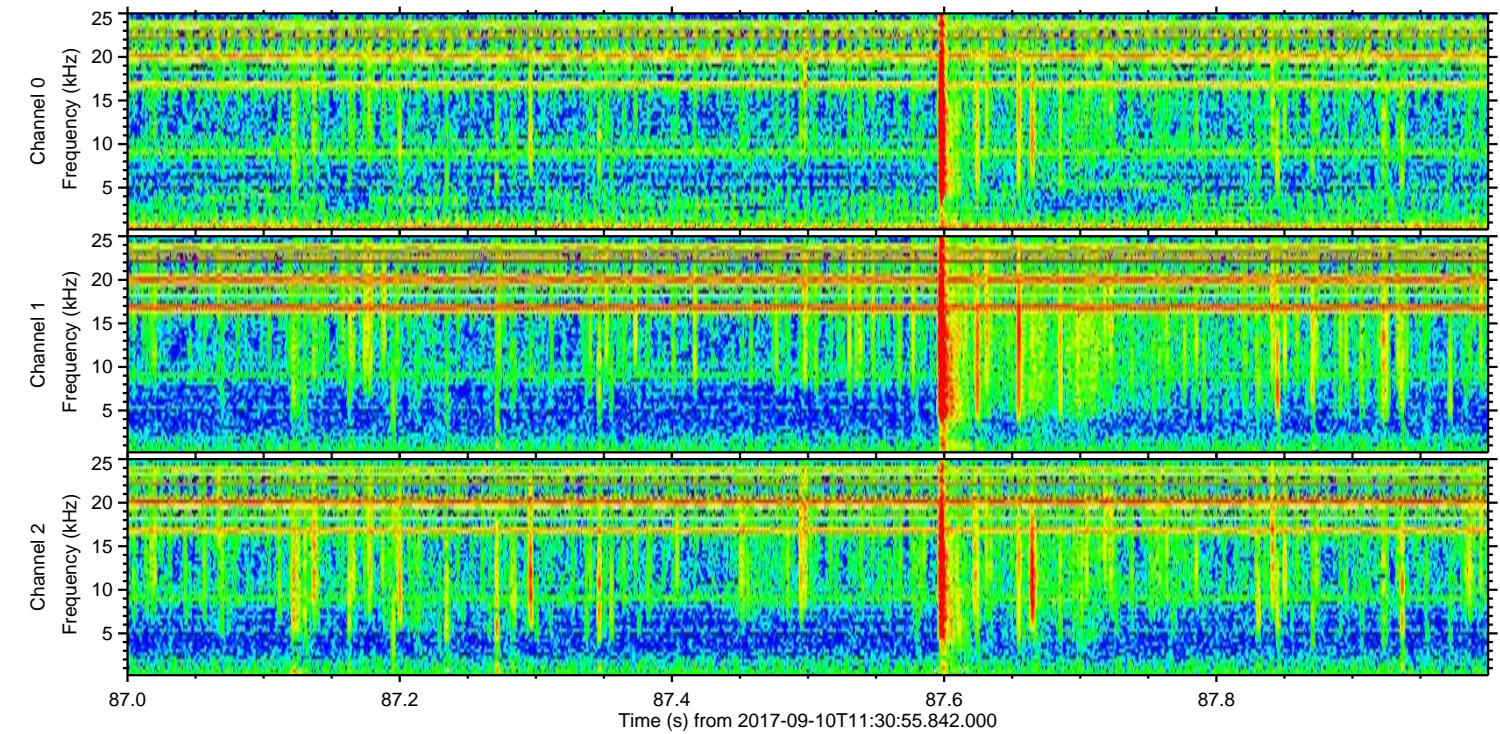
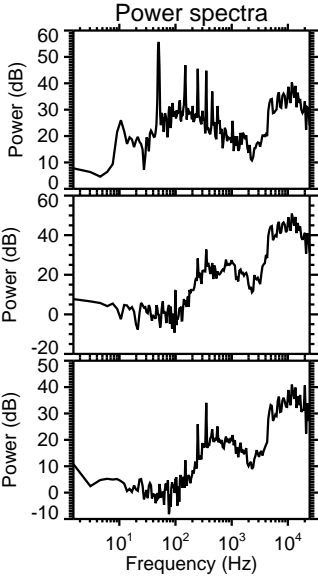
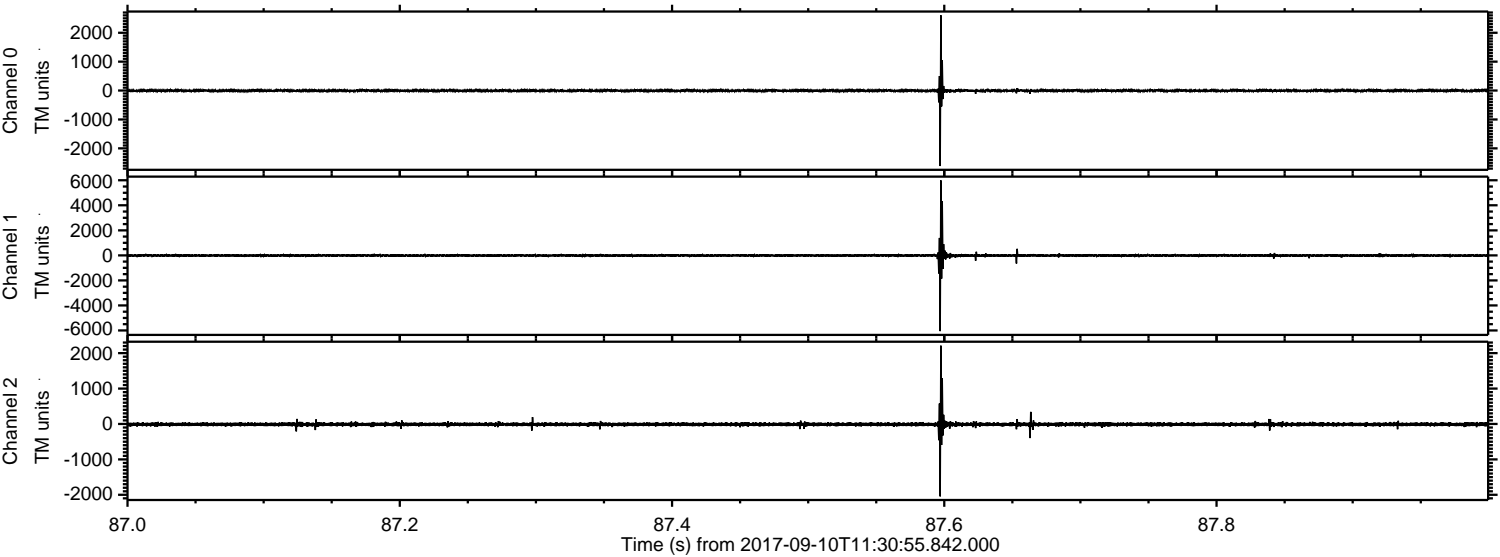


Channel 0
mn: -2030
mx: 2596
 μ : -2.6
 σ : 24.1

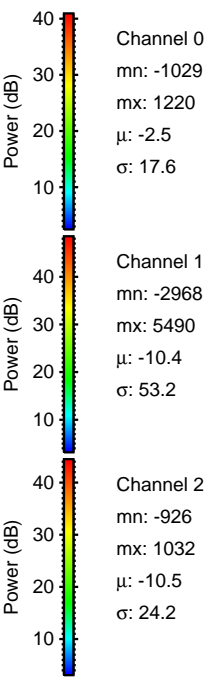
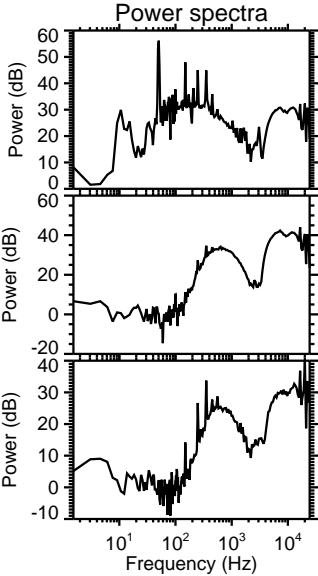
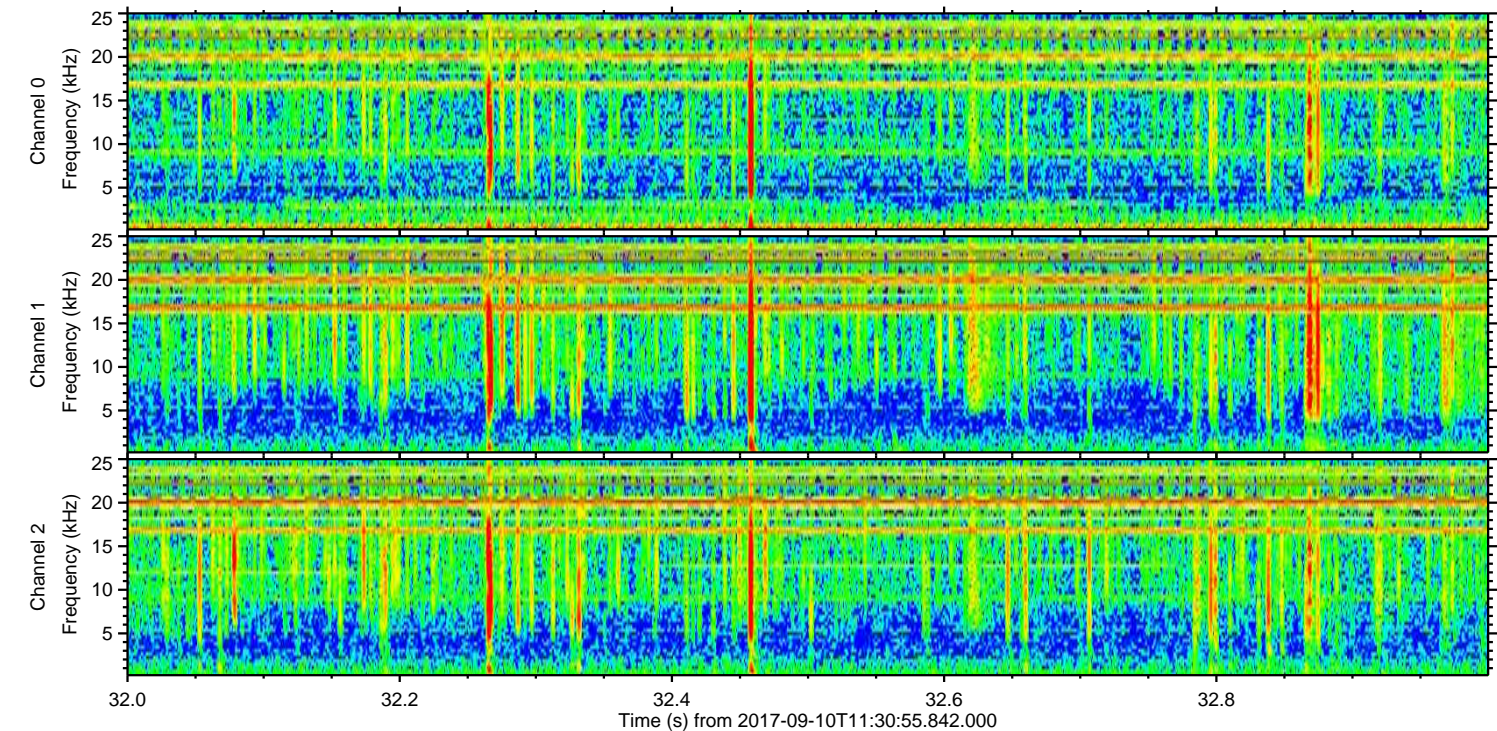
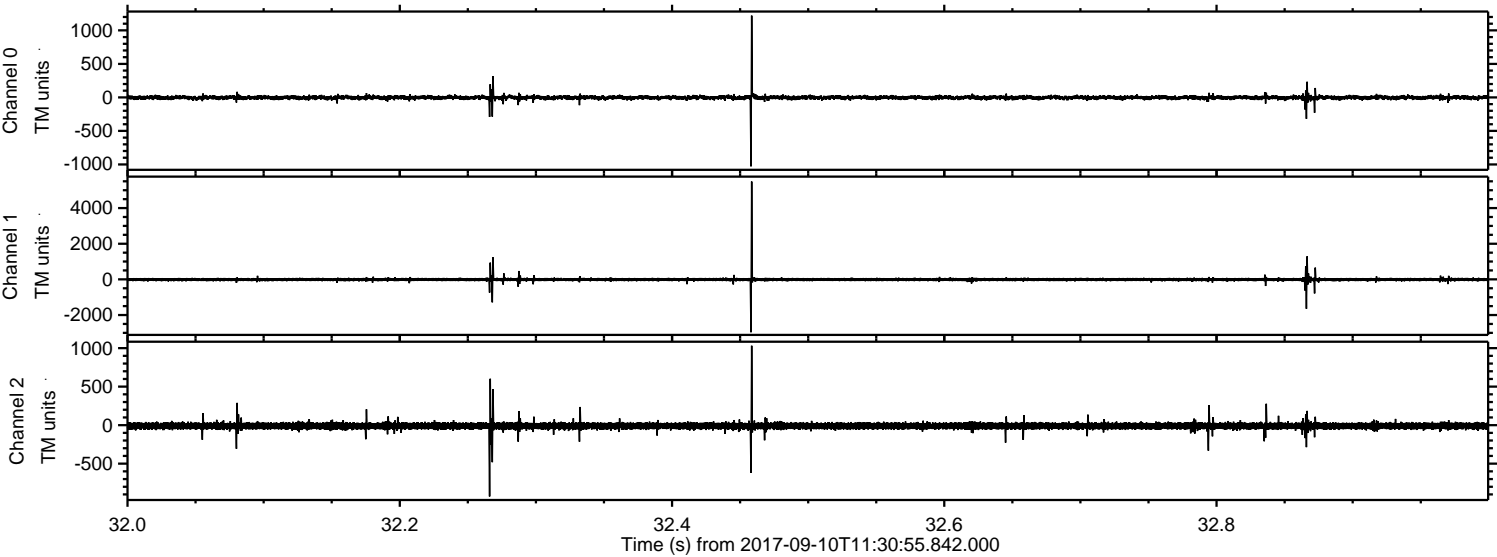
Channel 1
mn: -5694
mx: 7519
 μ : -10.5
 σ : 73.4

Channel 2
mn: -936
mx: 1290
 μ : -10.6
 σ : 26.1

Processed Sun Sep 10 13:39:24 2017 by ELM ver.2012-10-06 from 001__elm20170910_113054__dat00.bin



Processed Sun Sep 10 13:39:25 2017 by ELM ver.2012-10-06 from 001__elm20170910_113054__dat00.bin



Processed Sun Sep 10 13:39:25 2017 by ELM ver.2012-10-06 from 001__elm20170910_113054__dat00.bin

