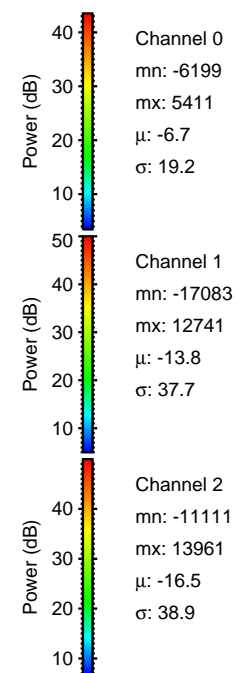
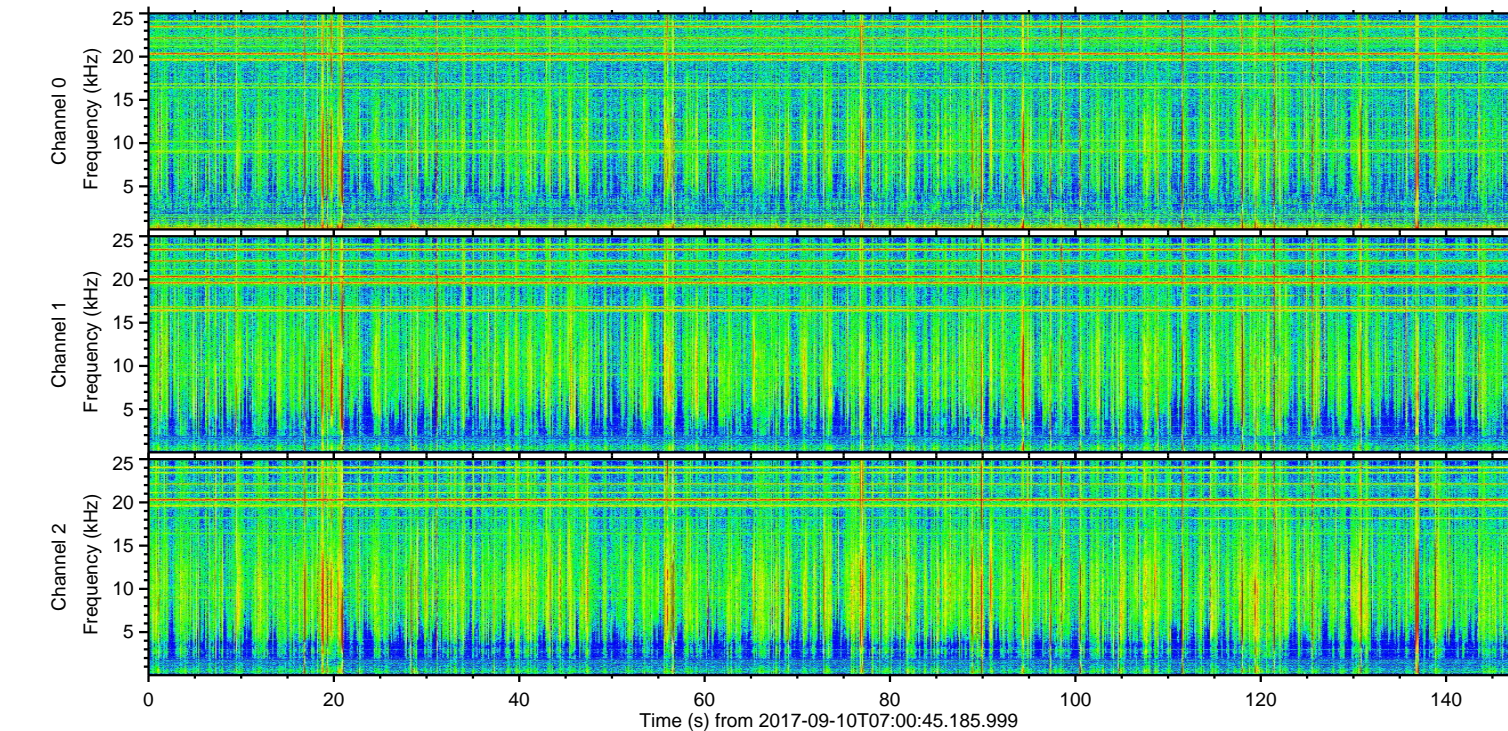
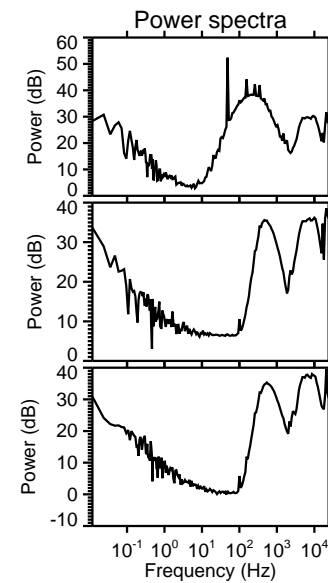
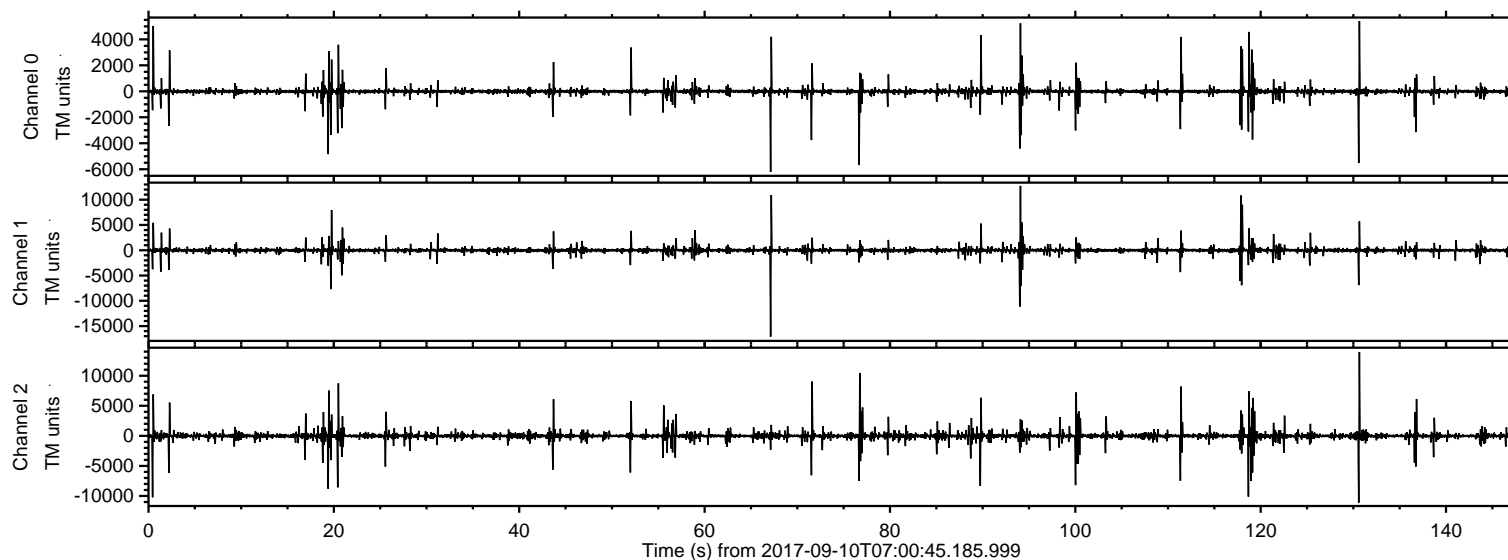
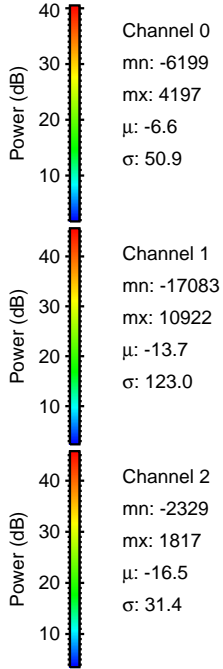
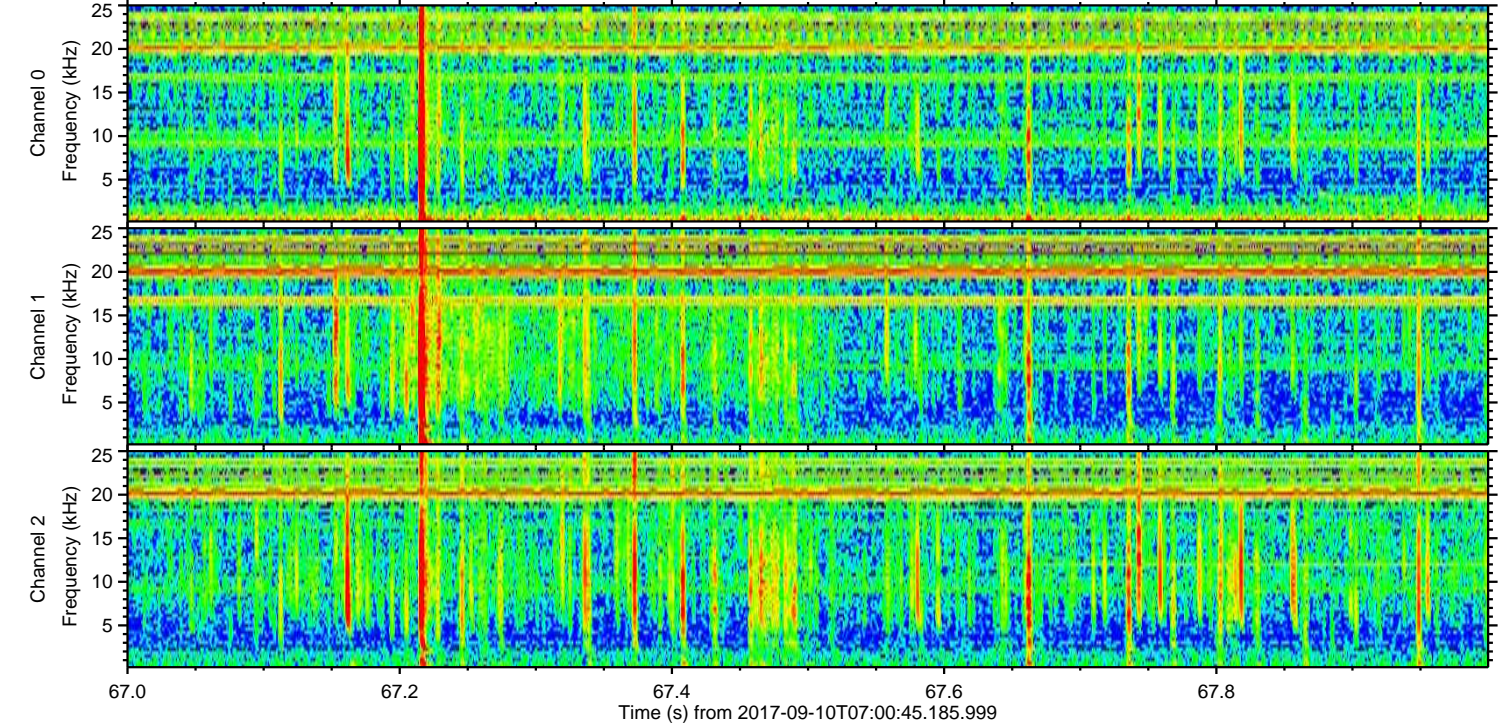
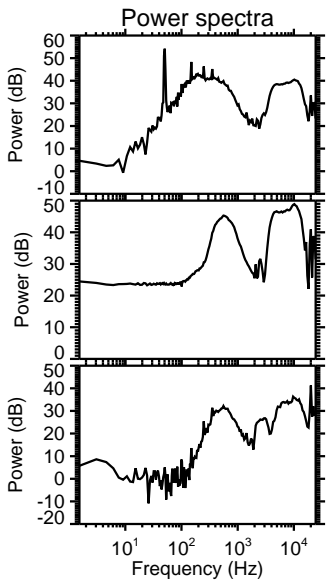
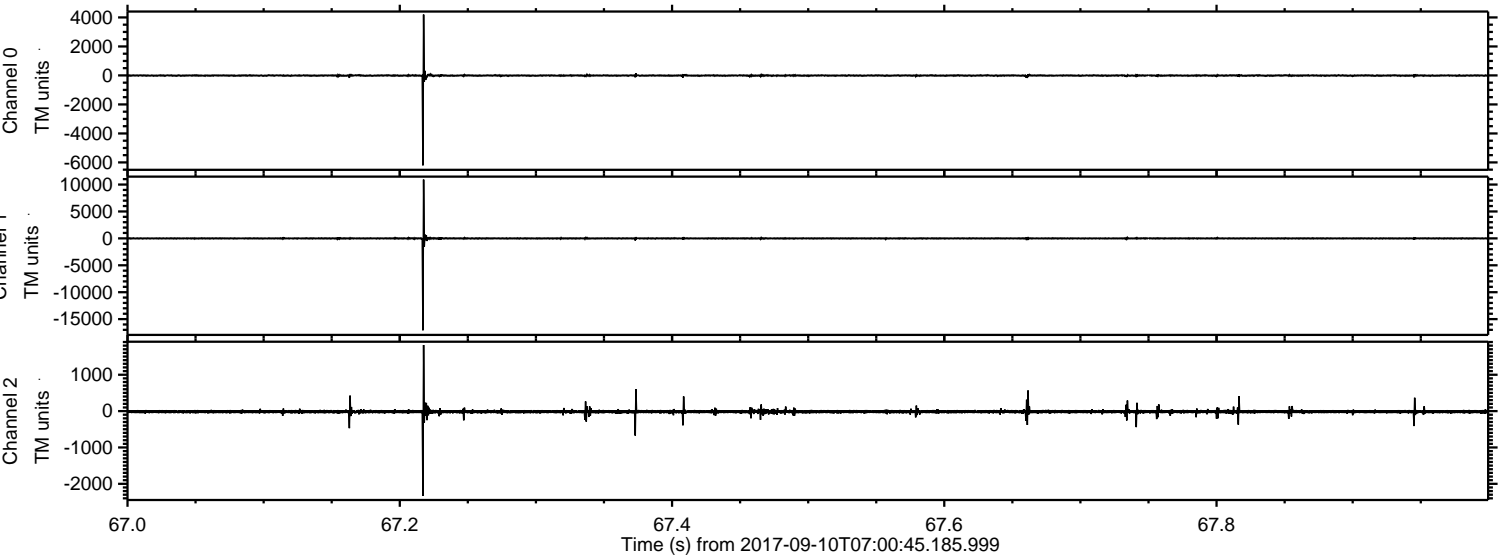


ELMAVAN 3D WAVEFORMS (Measured data sampled at 50 kHz) 51000 packets of 144 samples from 2017-09-10T07:00:45.185.999.

Processed Sun Sep 10 09:08:58 2017 by ELM ver.2012-10-06 from 001__elm20170910_070044__dat00.bin

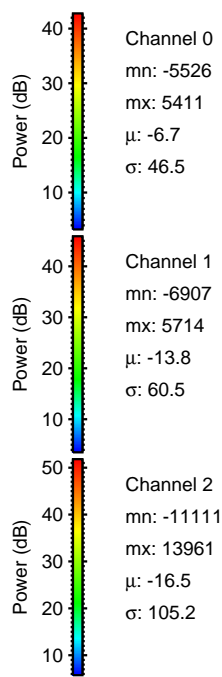
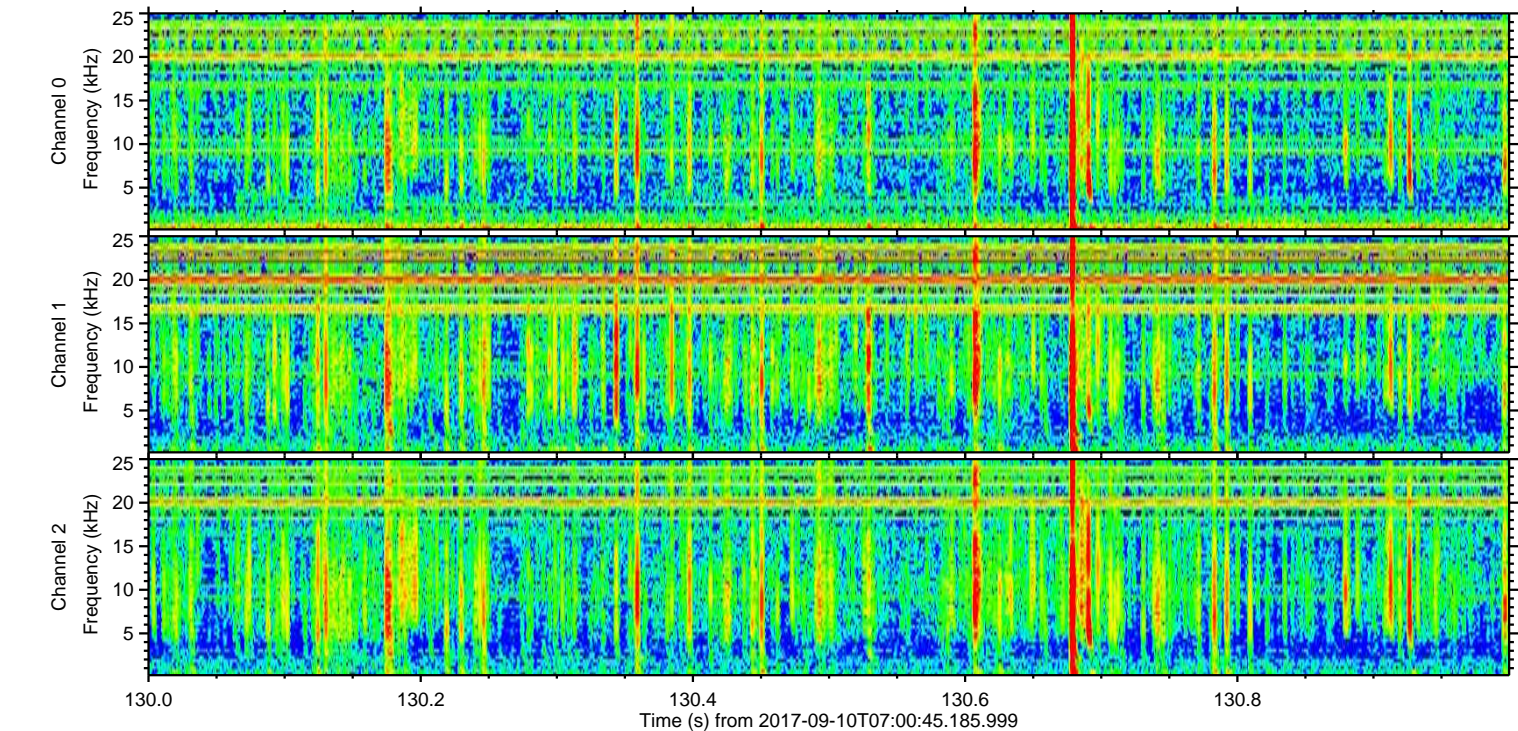
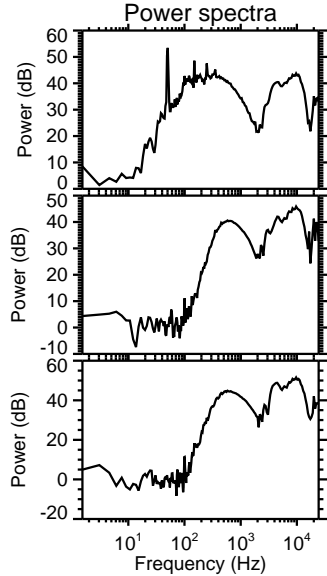
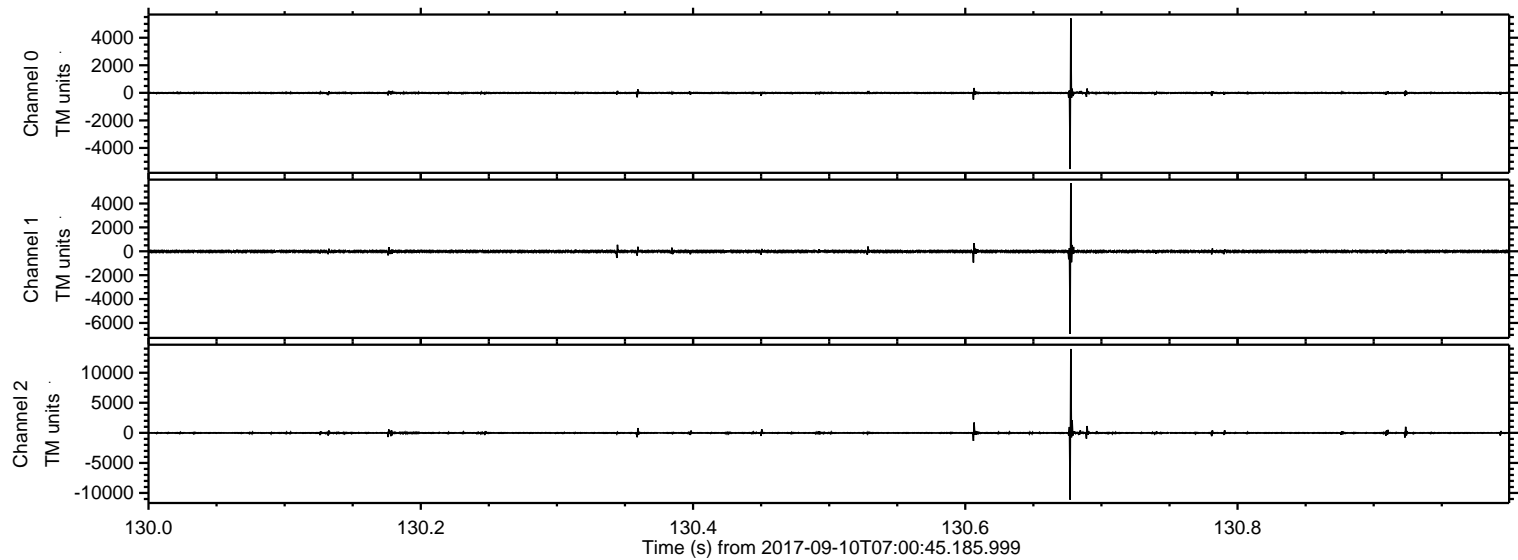


Processed Sun Sep 10 09:09:06 2017 by ELM ver.2012-10-06 from 001__elm20170910_070044__dat00.bin

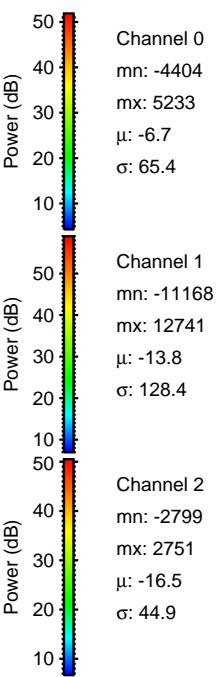
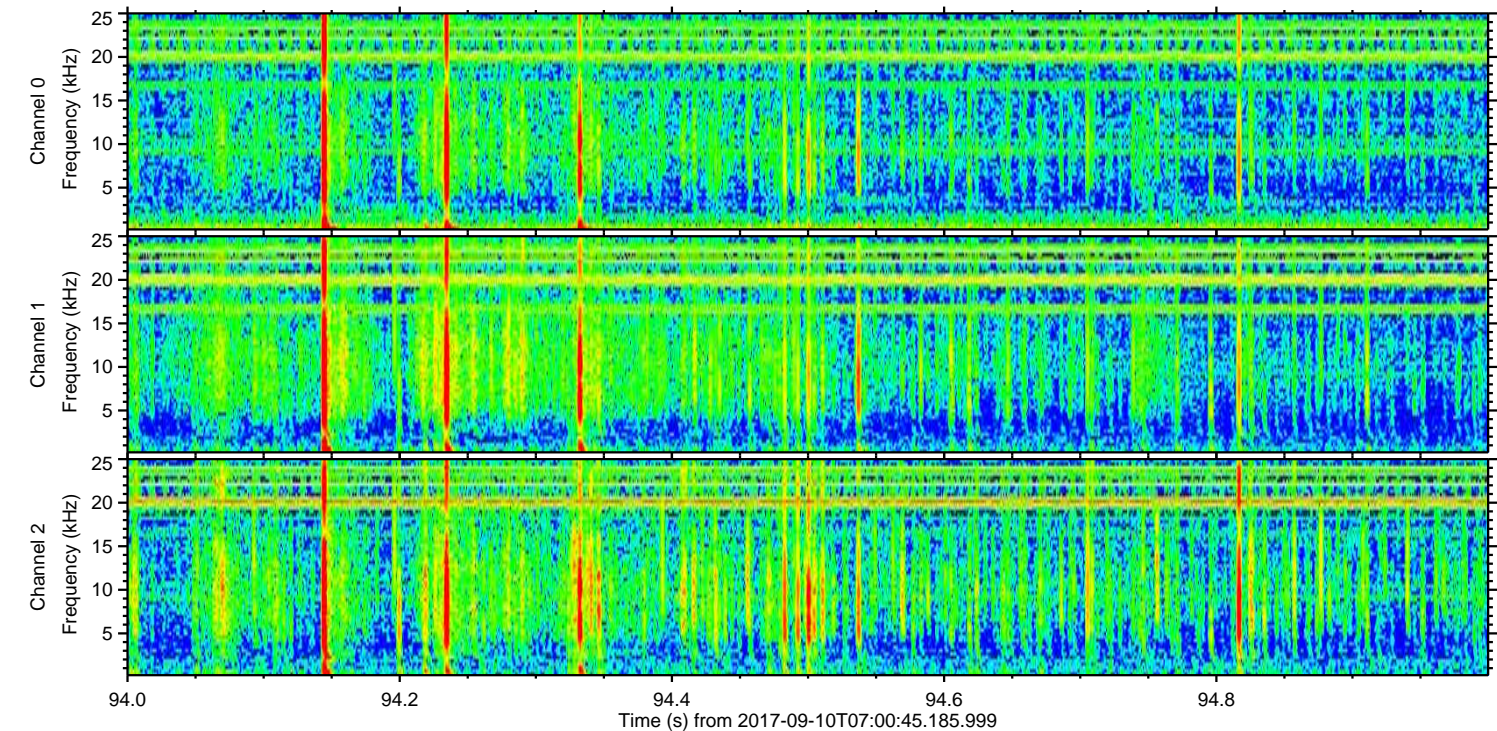
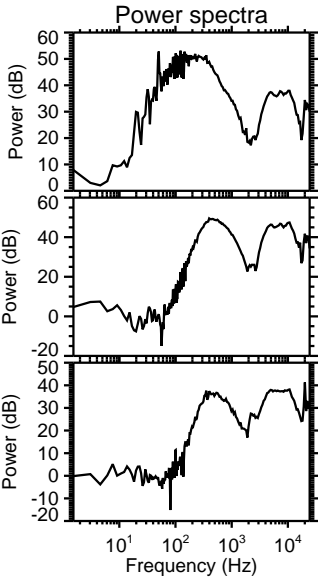
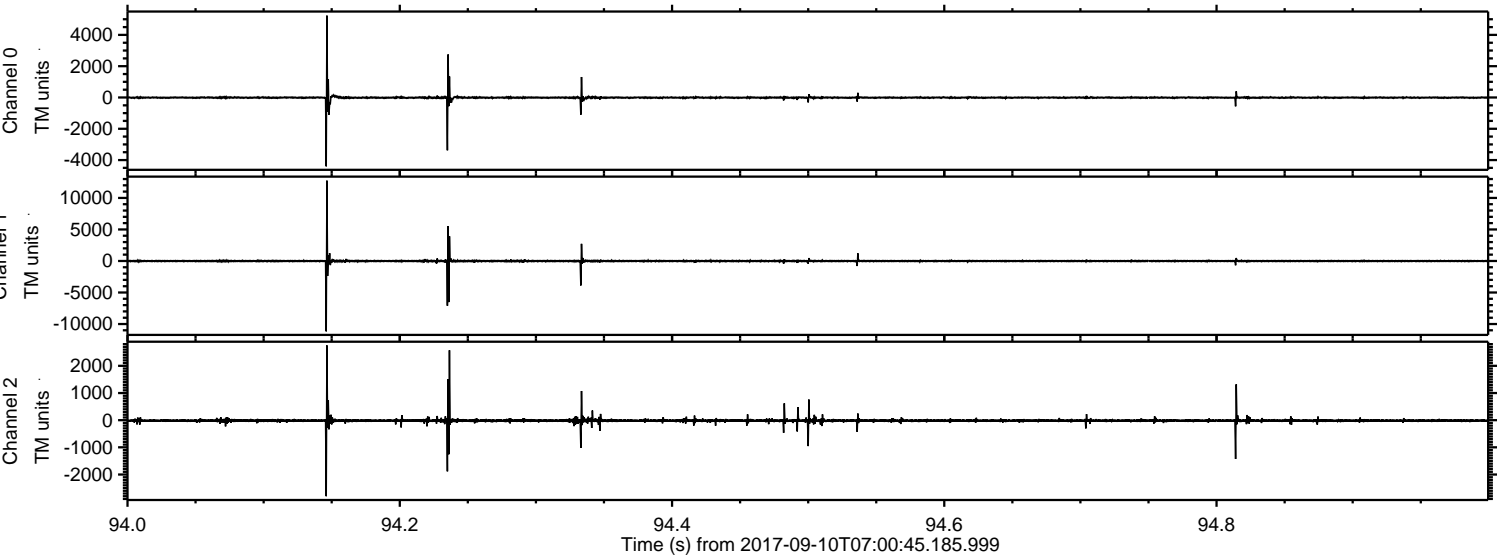


ELMAVAN 3D WAVEFORMS (Measured data sampled at 50 kHz) 51000 packets of 144 samples from 2017-09-10T07:00:45.185.999. Part 131/147

Processed Sun Sep 10 09:09:07 2017 by ELM ver.2012-10-06 from 001__elm20170910_070044__dat00.bin

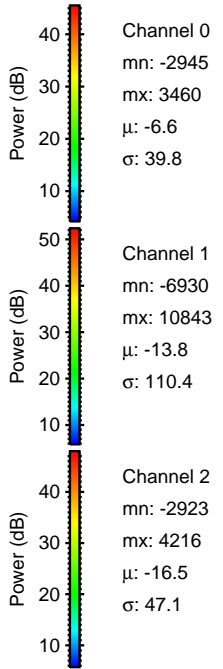
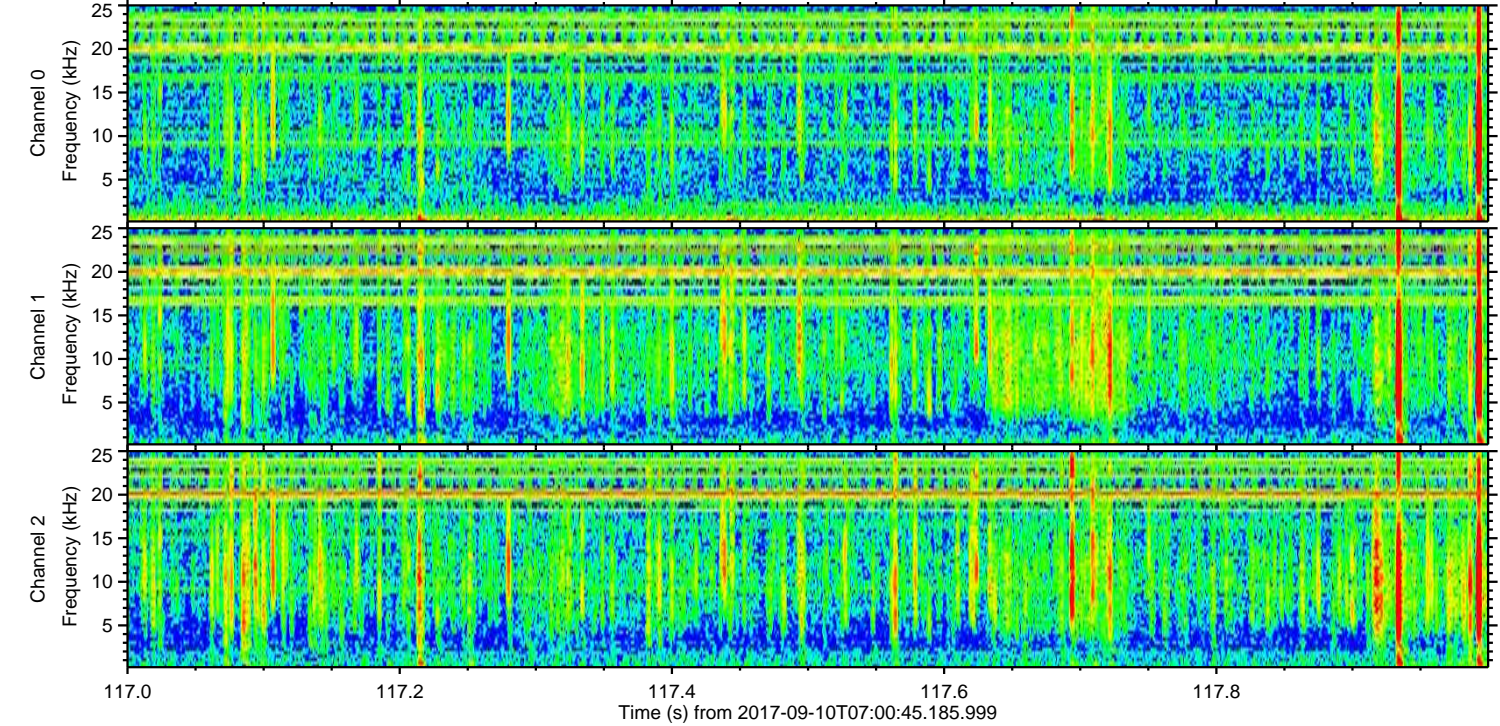
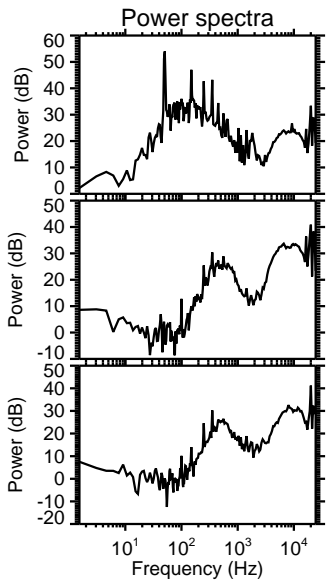
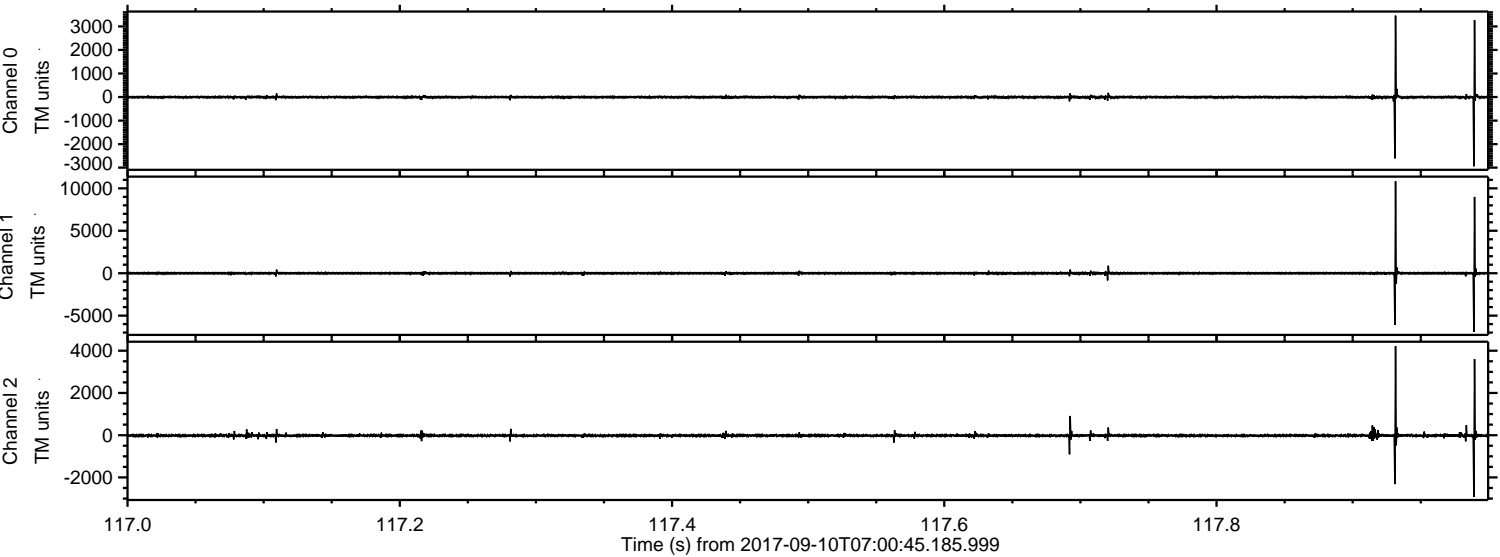


Processed Sun Sep 10 09:09:08 2017 by ELM ver.2012-10-06 from 001__elm20170910_070044__dat00.bin

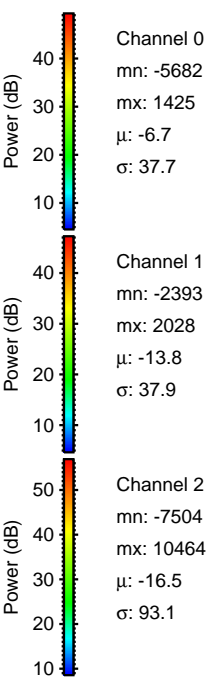
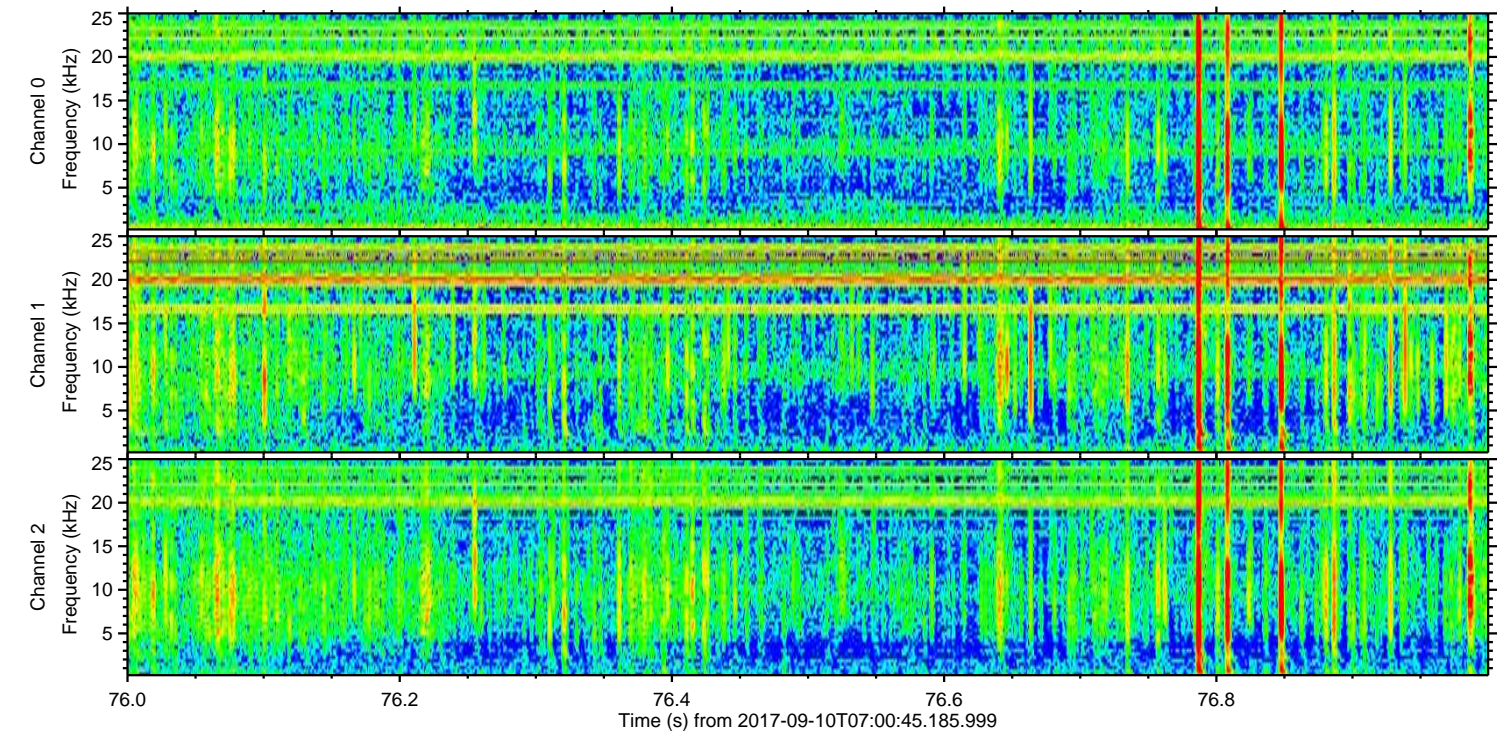
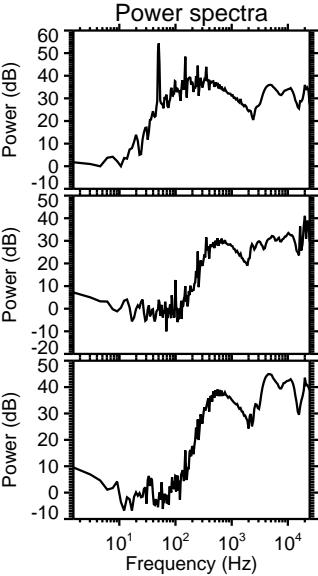
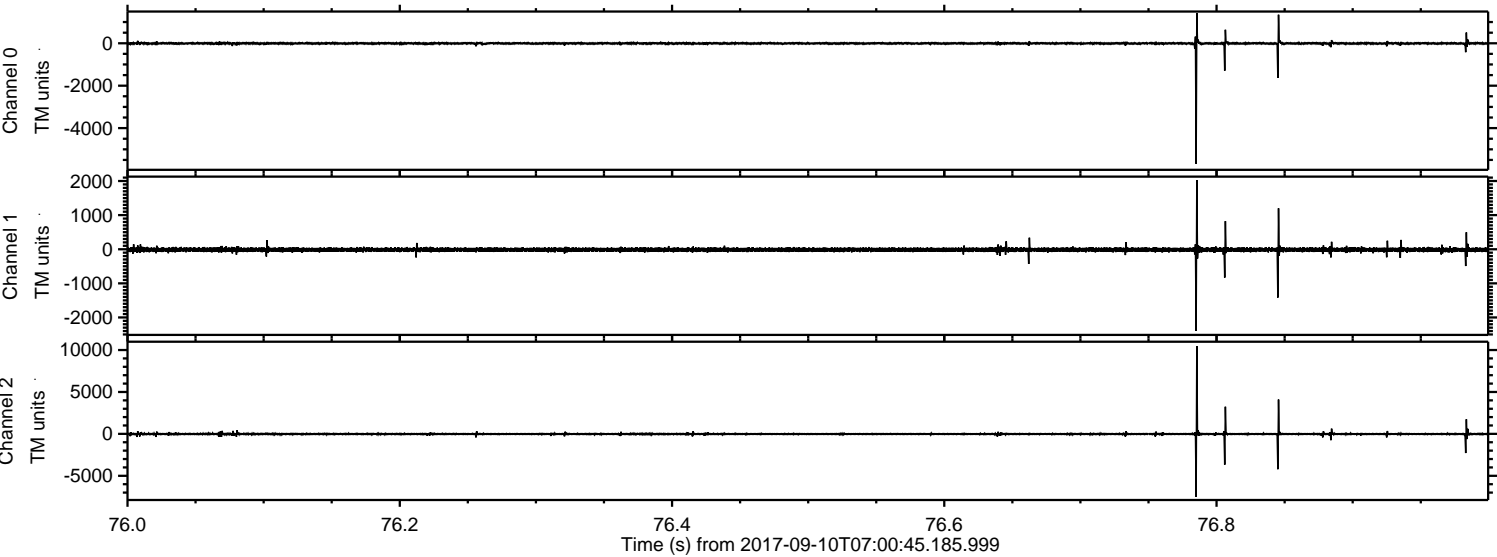


ELMAVAN 3D WAVEFORMS (Measured data sampled at 50 kHz) 51000 packets of 144 samples from 2017-09-10T07:00:45.185.999. Part 118/147

Processed Sun Sep 10 09:09:08 2017 by ELM ver.2012-10-06 from 001__elm20170910_070044__dat00.bin

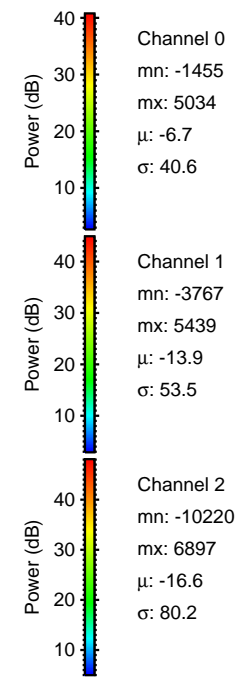
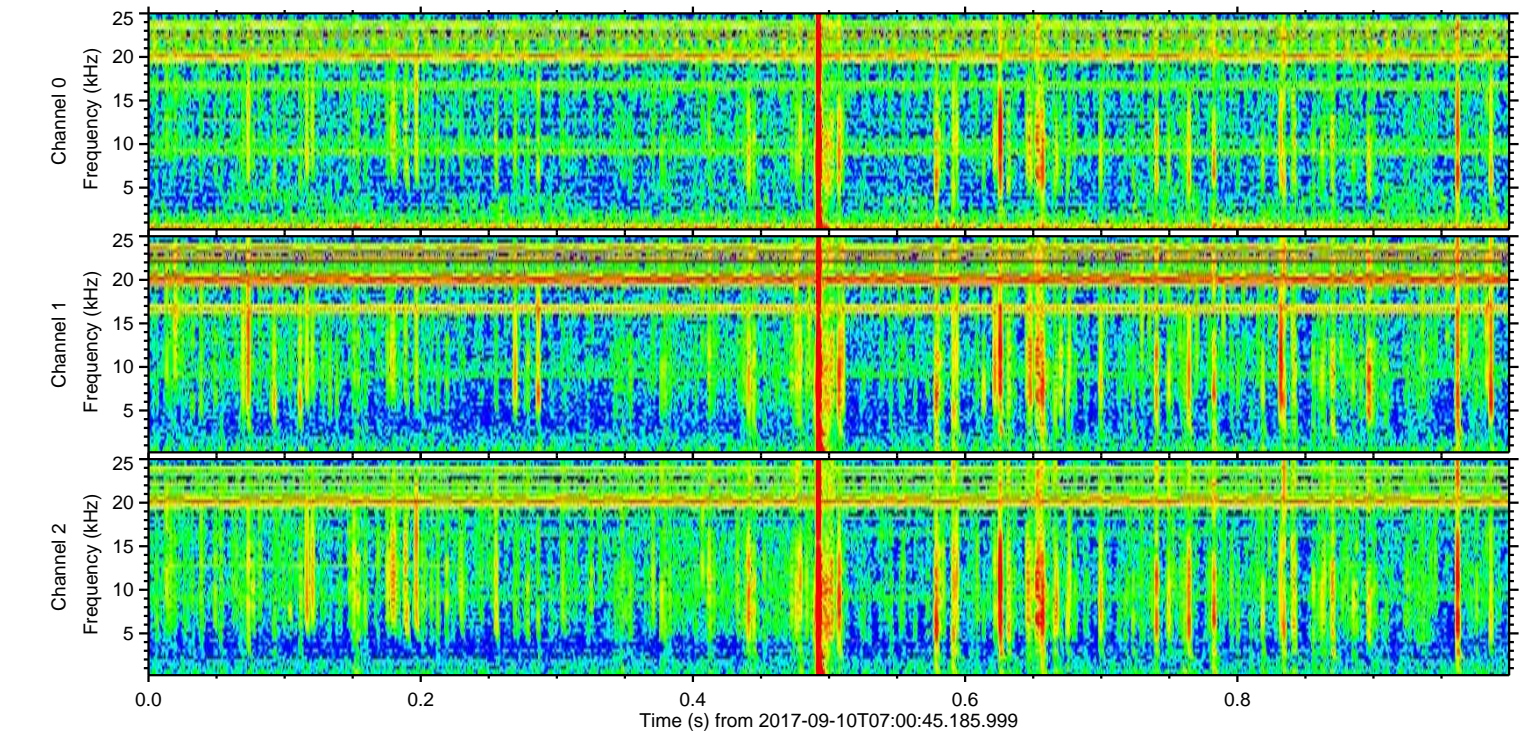
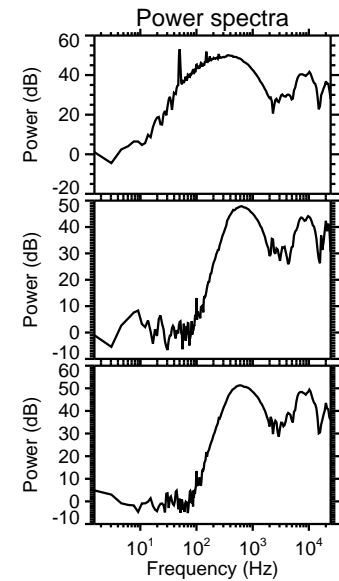
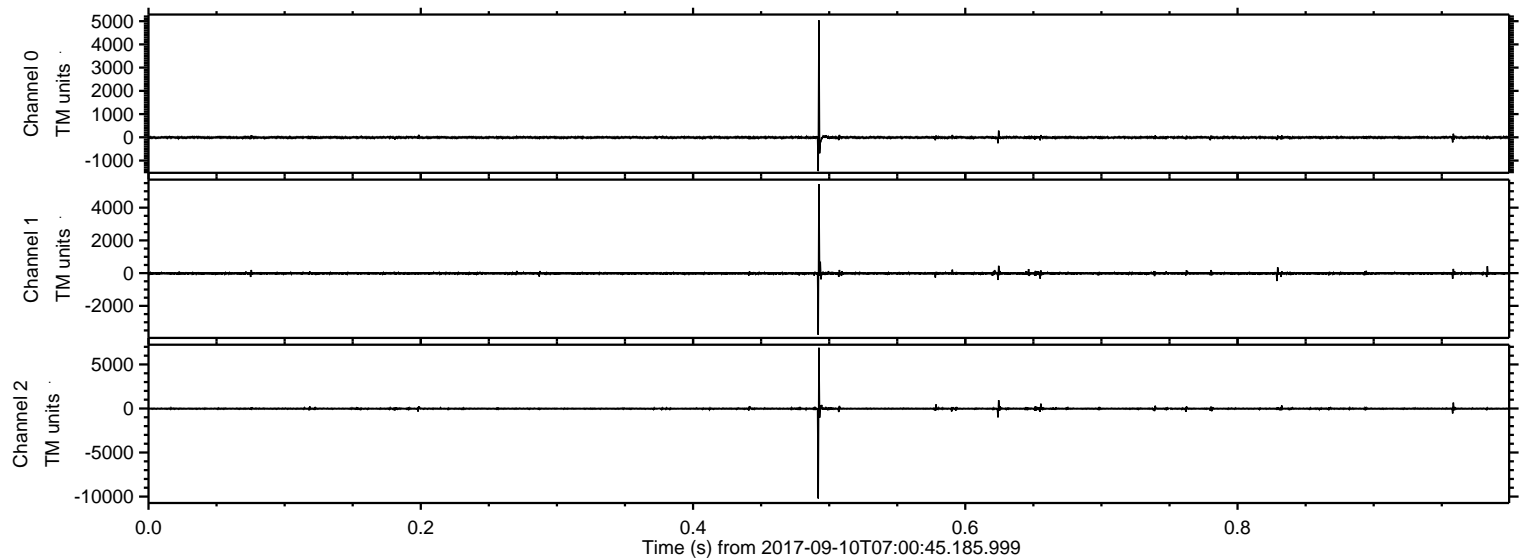


Processed Sun Sep 10 09:09:09 2017 by ELM ver.2012-10-06 from 001__elm20170910_070044__dat00.bin



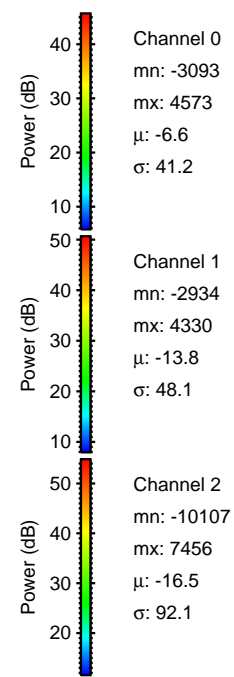
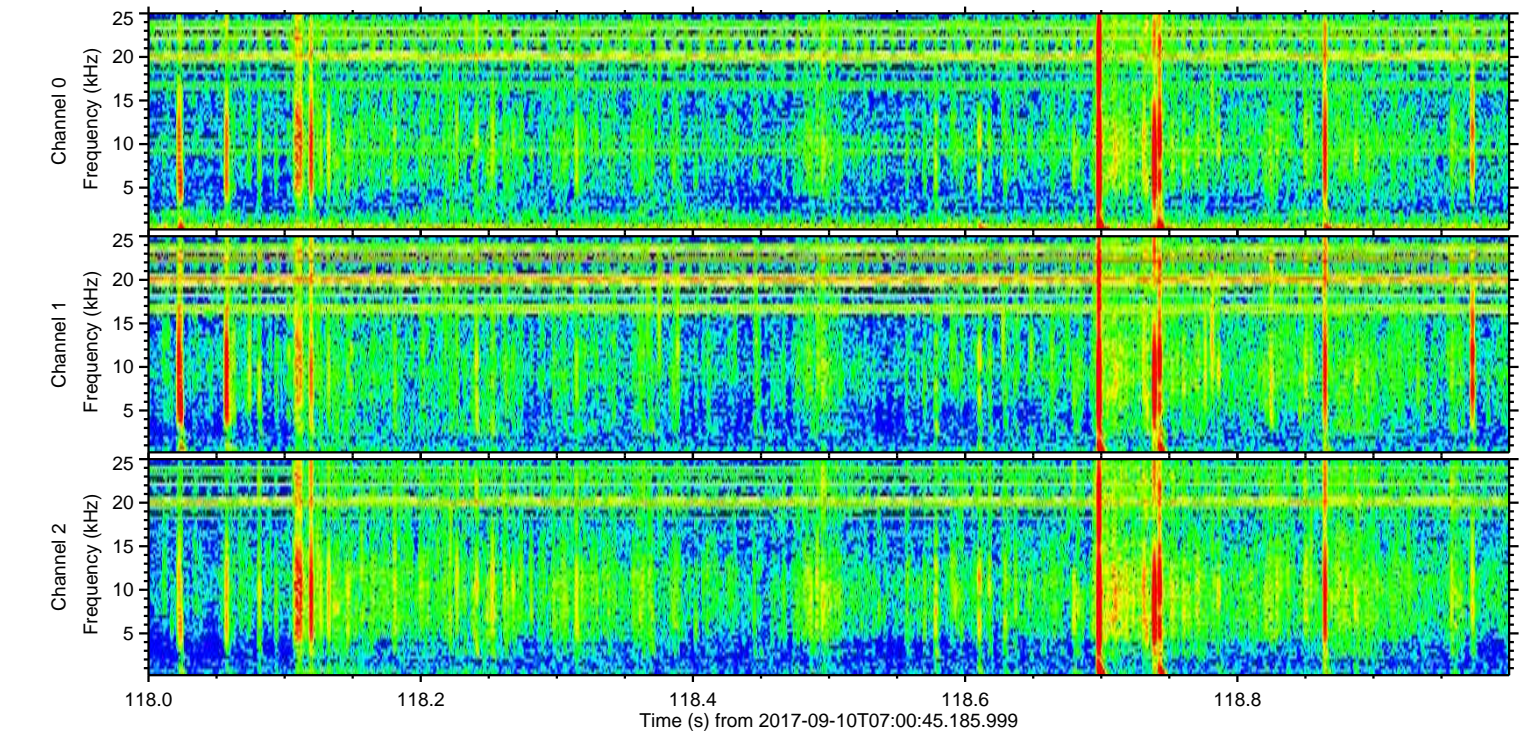
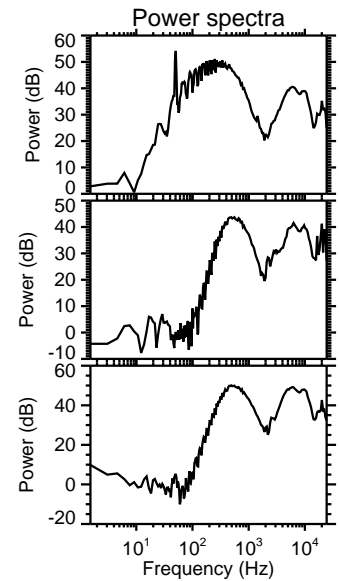
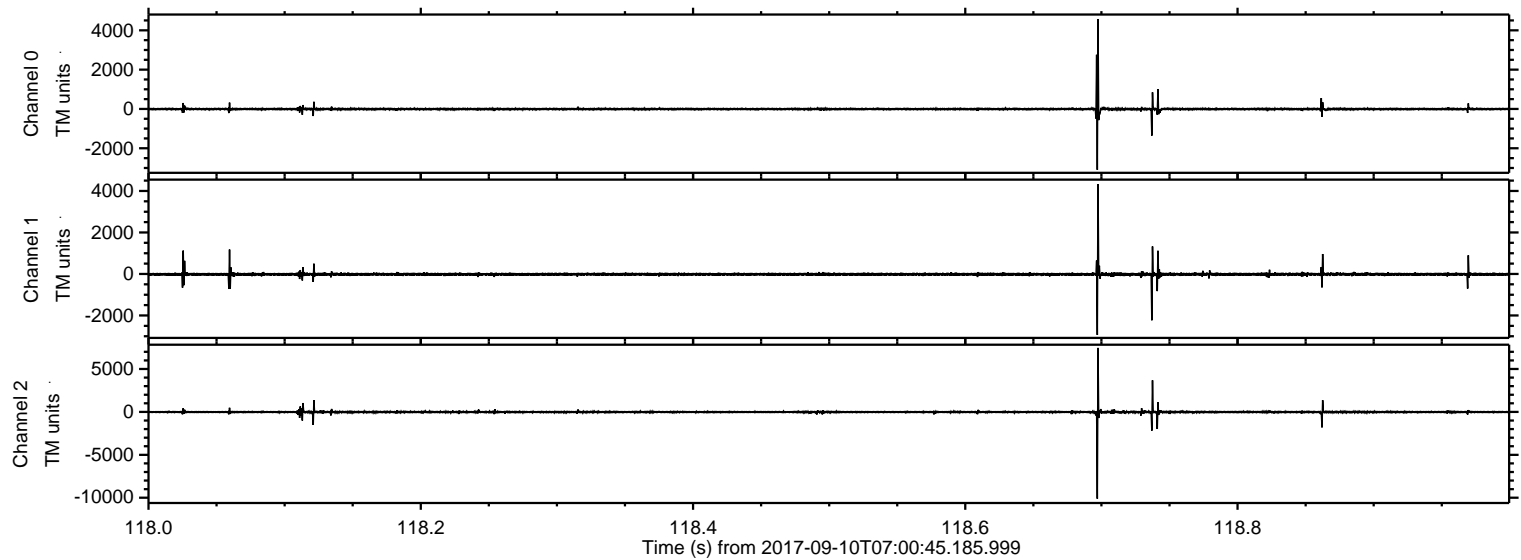
ELMAVAN 3D WAVEFORMS (Measured data sampled at 50 kHz) 51000 packets of 144 samples from 2017-09-10T07:00:45.185.999. Part 1/147

Processed Sun Sep 10 09:09:10 2017 by ELM ver.2012-10-06 from 001__elm20170910_070044__dat00.bin

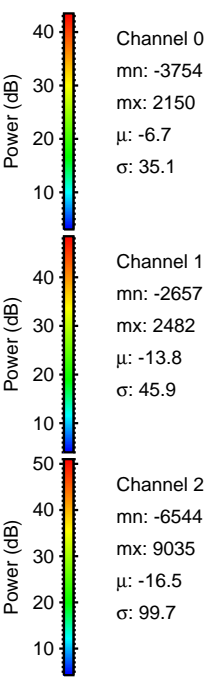
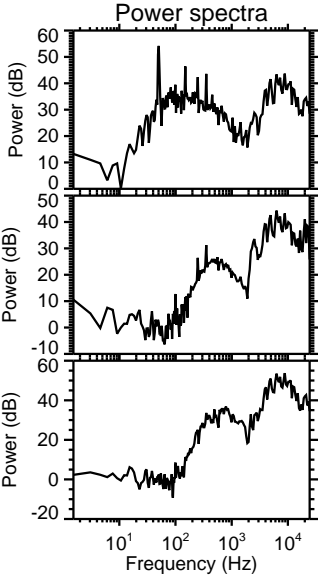
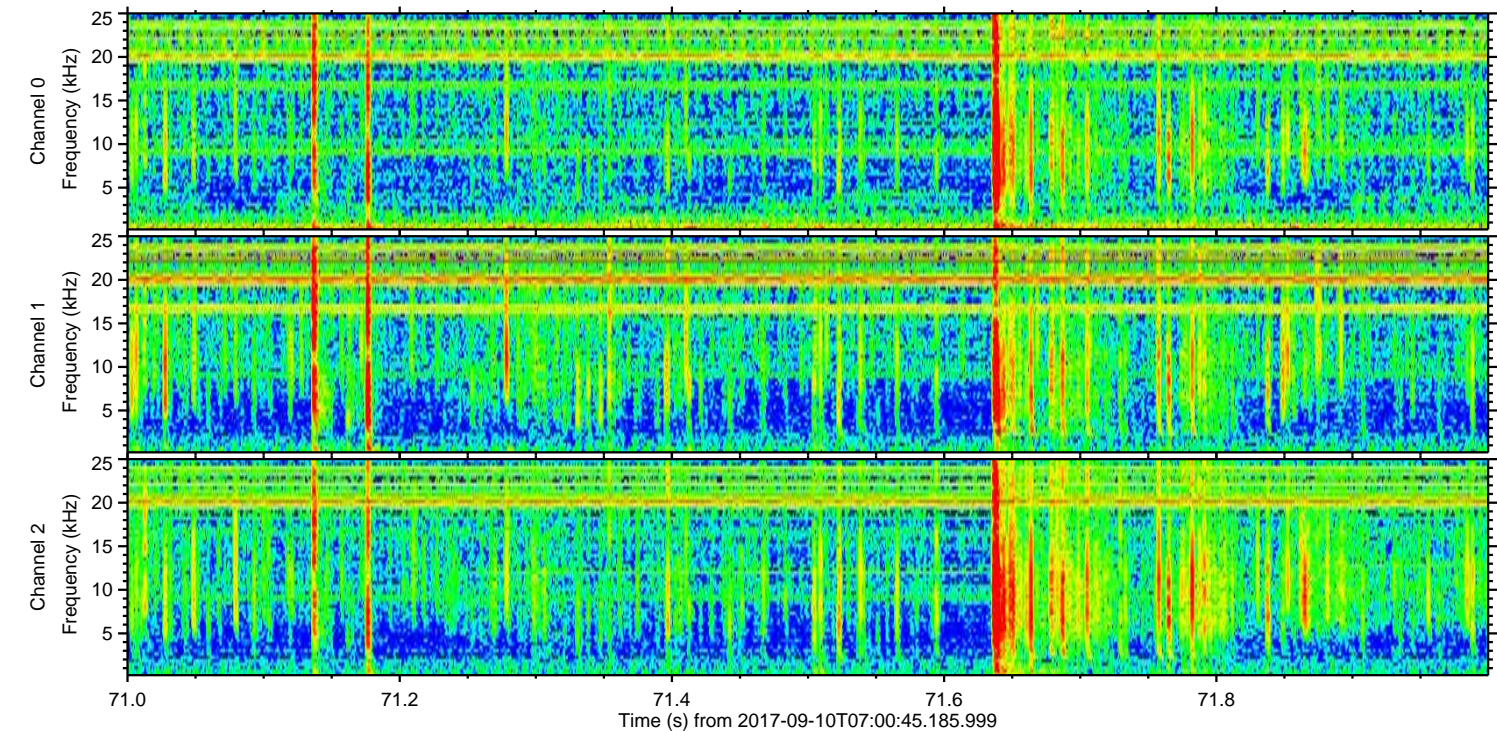
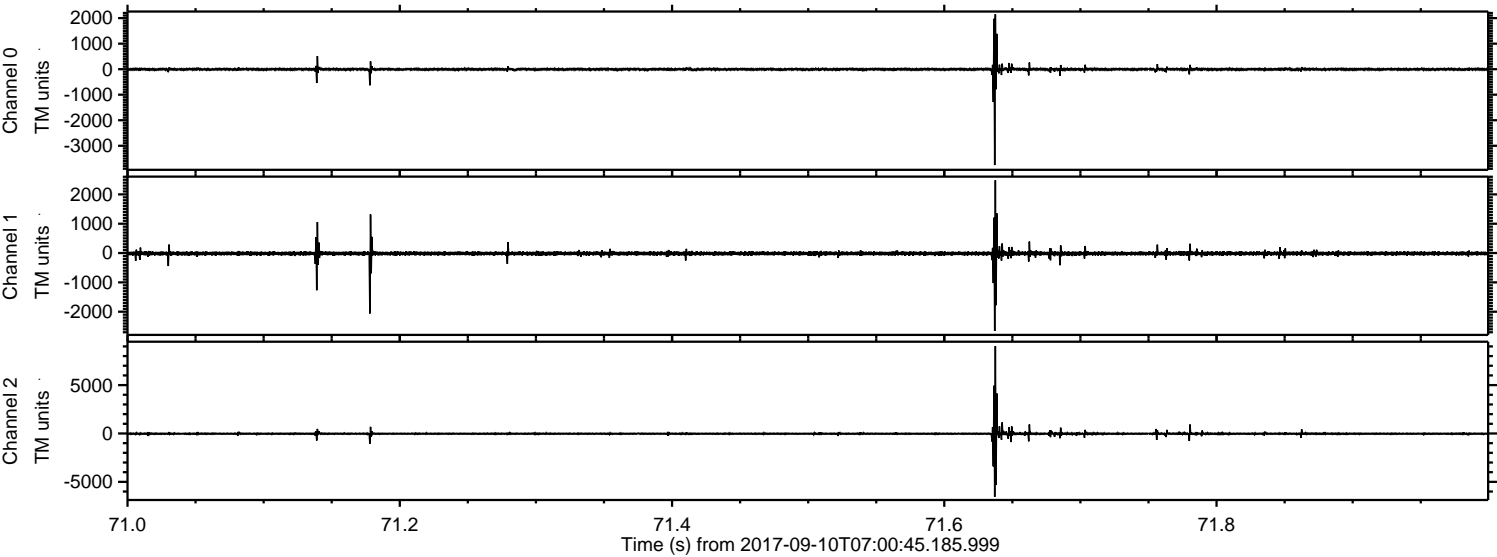


ELMAVAN 3D WAVEFORMS (Measured data sampled at 50 kHz) 51000 packets of 144 samples from 2017-09-10T07:00:45.185.999. Part 119/147

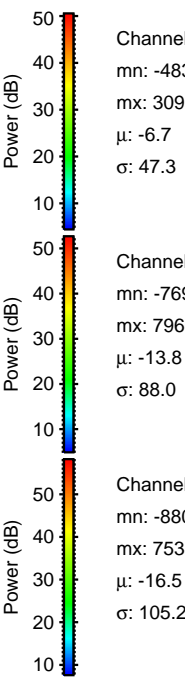
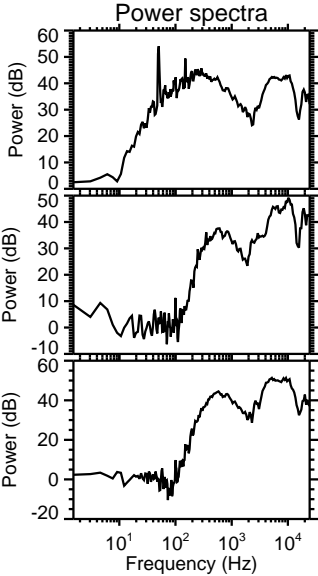
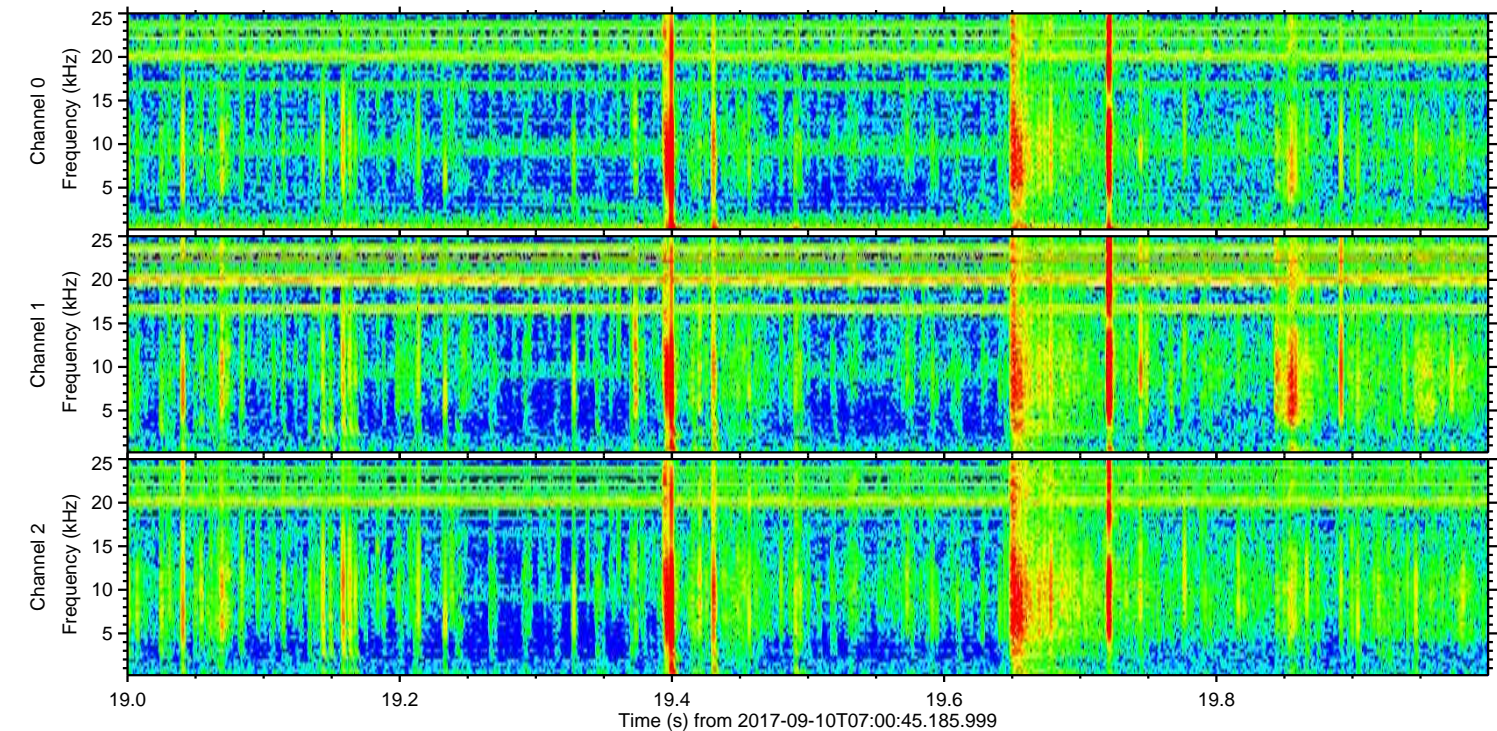
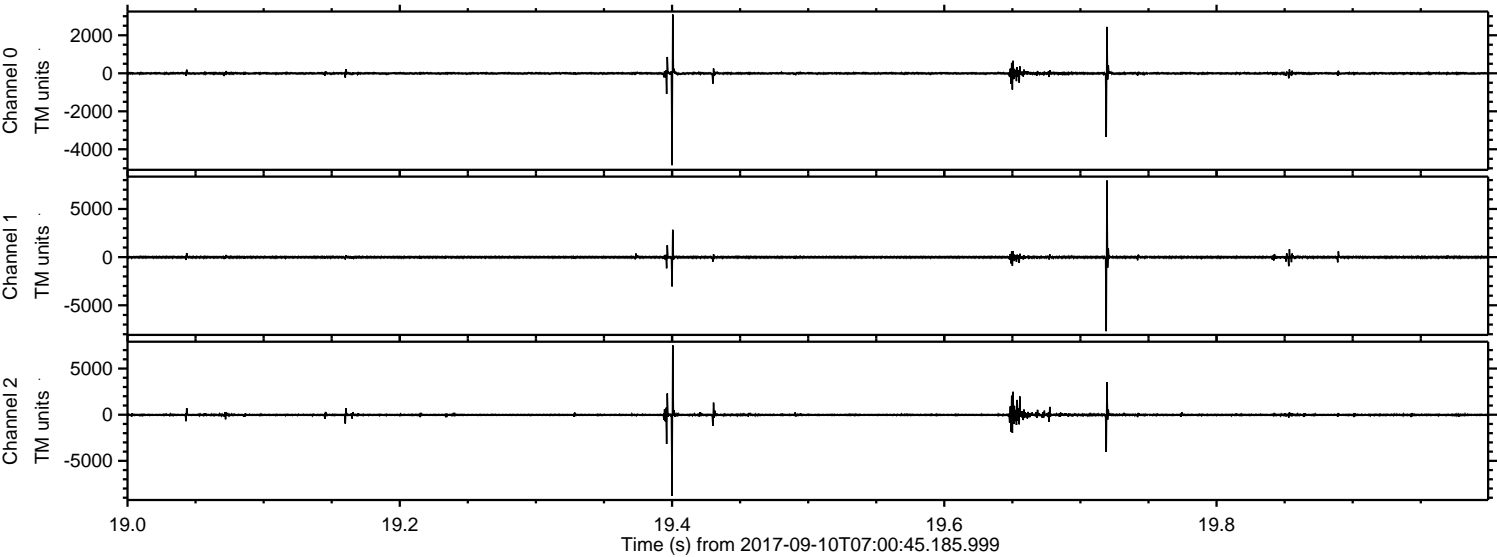
Processed Sun Sep 10 09:09:10 2017 by ELM ver.2012-10-06 from 001__elm20170910_070044__dat00.bin



Processed Sun Sep 10 09:09:11 2017 by ELM ver.2012-10-06 from 001__elm20170910_070044__dat00.bin



Processed Sun Sep 10 09:09:12 2017 by ELM ver.2012-10-06 from 001__elm20170910_070044__dat00.bin



Channel 0
mn: -4838
mx: 3093
 μ : -6.7
 σ : 47.3

Channel 1
mn: -7690
mx: 7960
 μ : -13.8
 σ : 88.0

Channel 2
mn: -8803
mx: 7533
 μ : -16.5
 σ : 105.2

Processed Sun Sep 10 09:09:13 2017 by ELM ver.2012-10-06 from 001__elm20170910_070044__dat00.bin

