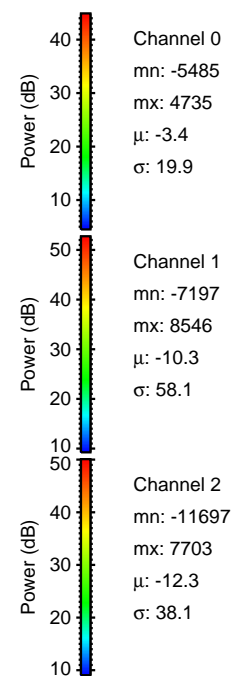
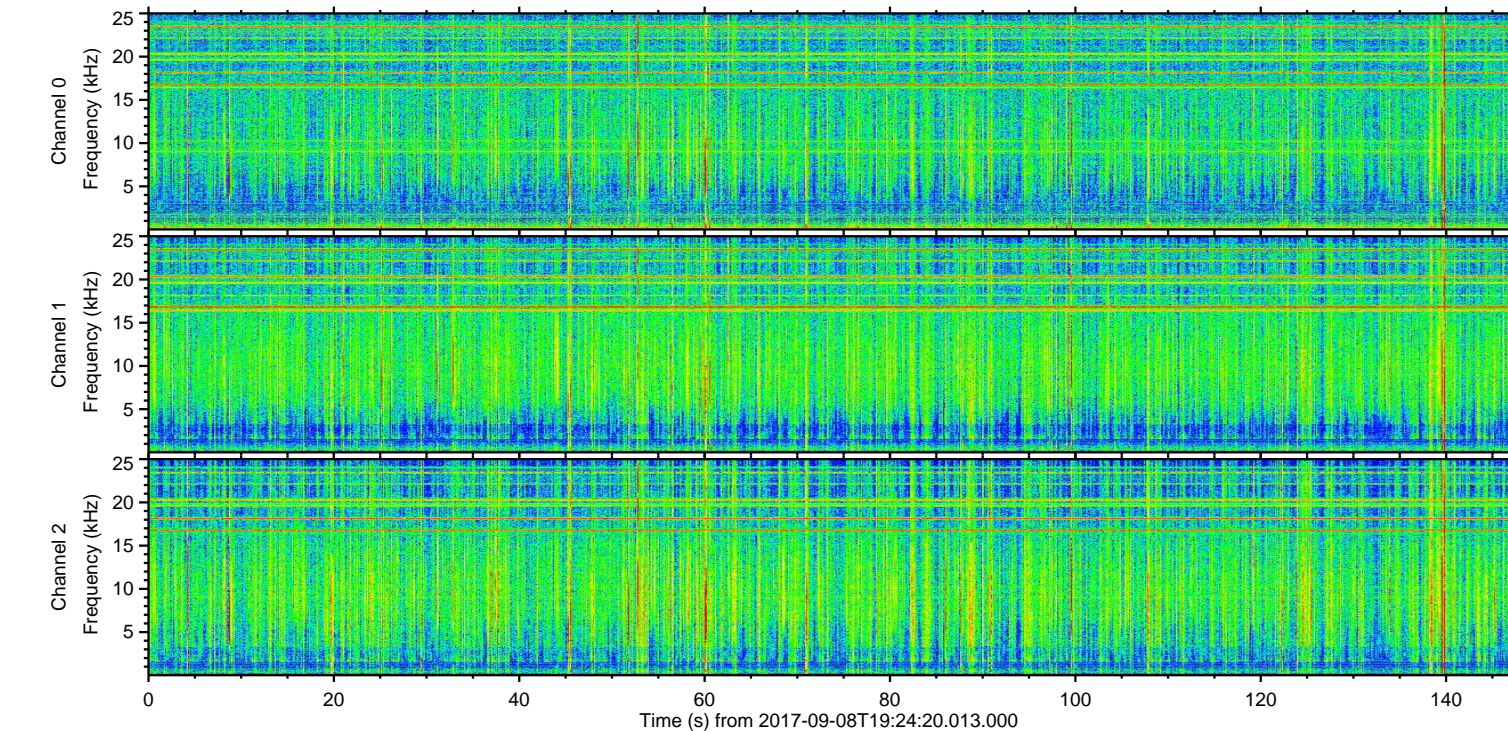
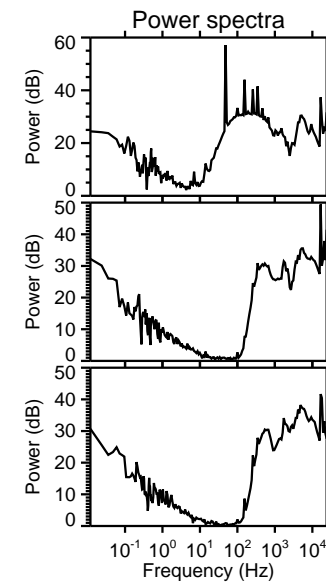
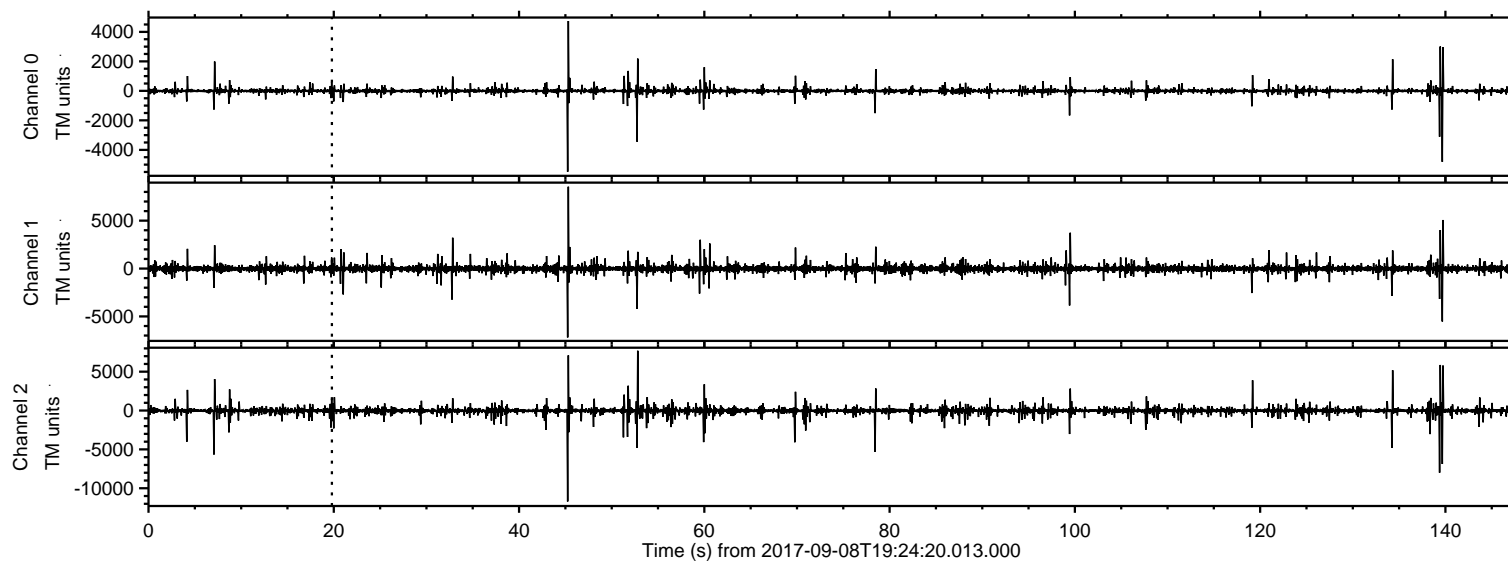
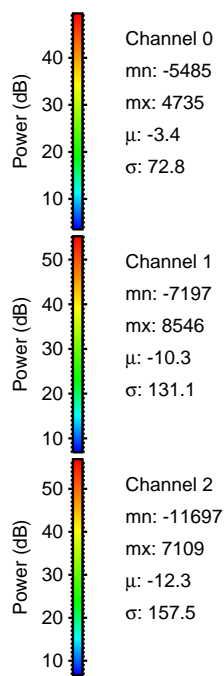
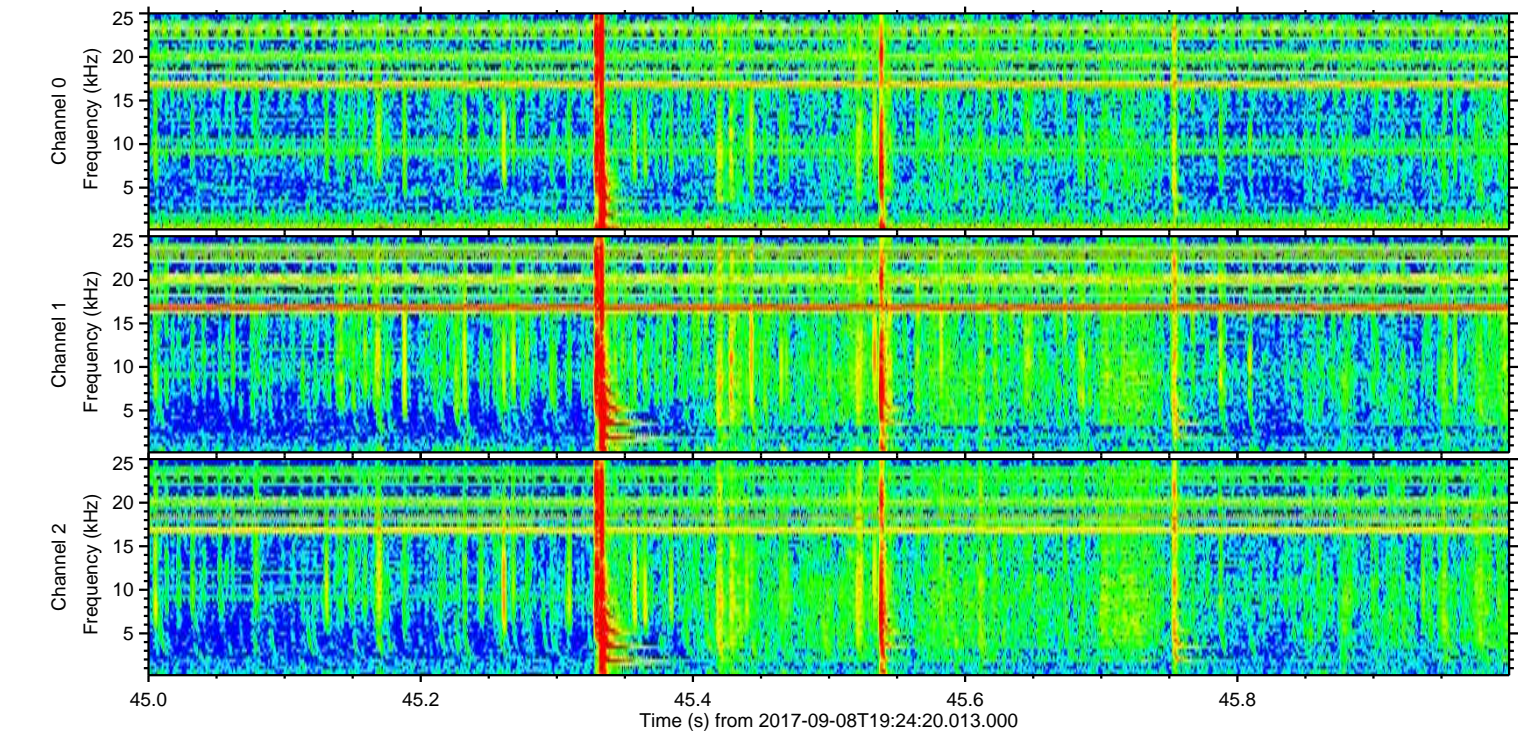
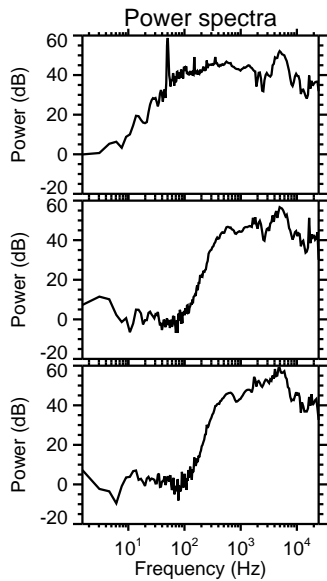
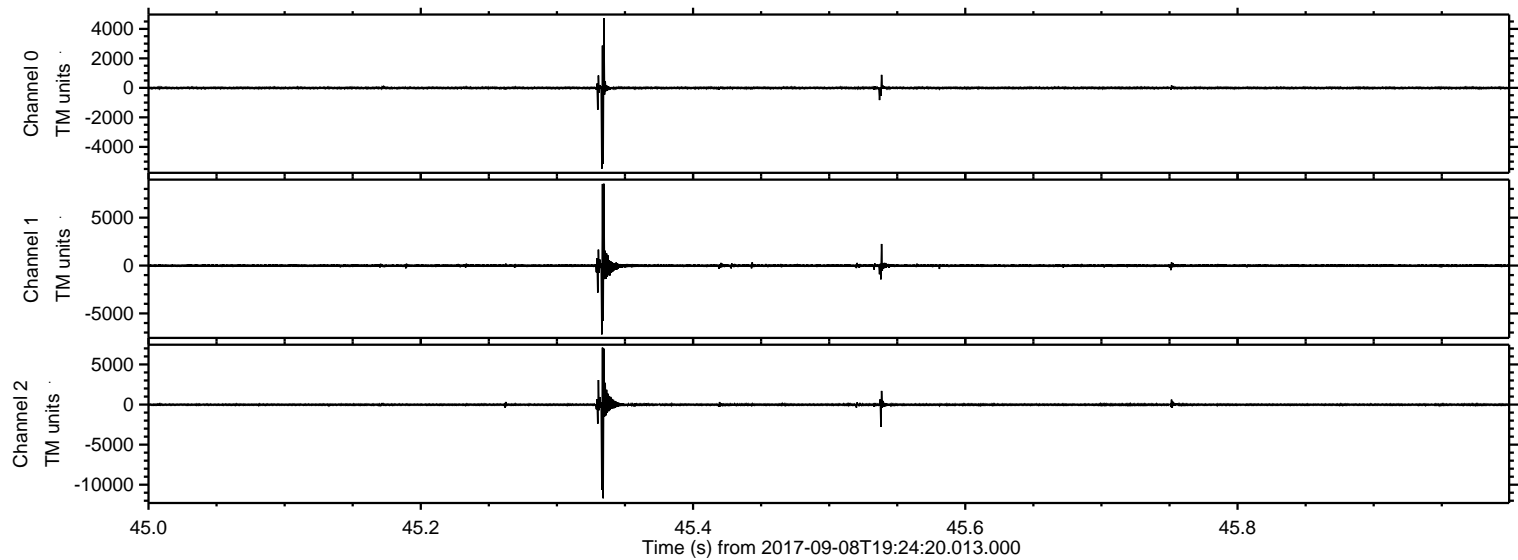


ELMAVAN 3D WAVEFORMS (Measured data sampled at 50 kHz) 50999 packets of 144 samples from 2017-09-08T19:24:20.013.000.

Processed Fri Sep 8 21:32:38 2017 by ELM ver.2012-10-06 from 001__elm20170908_192419__dat00.bin

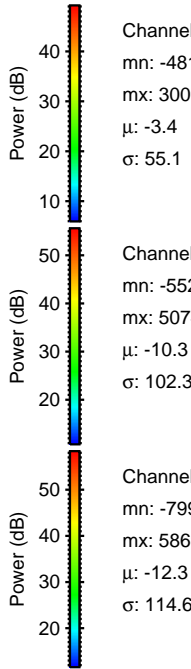
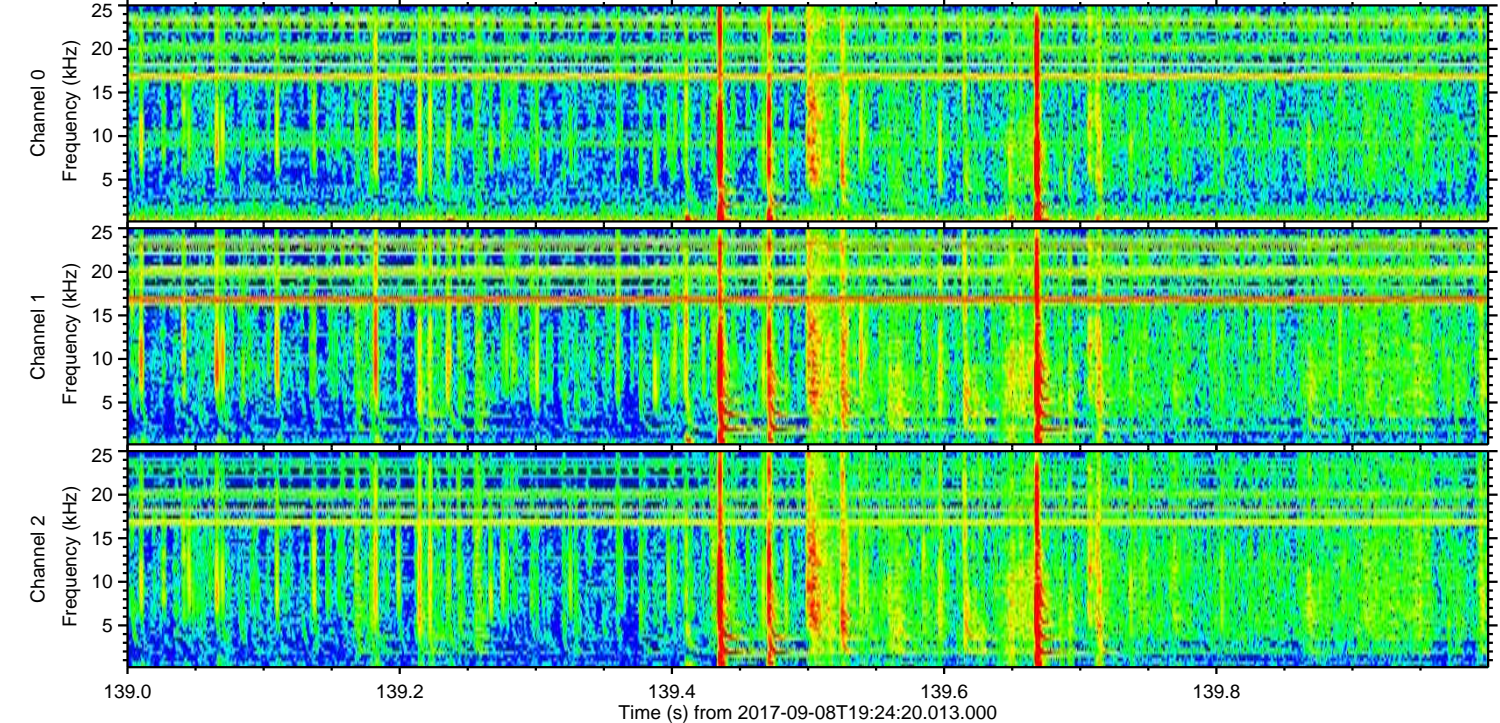
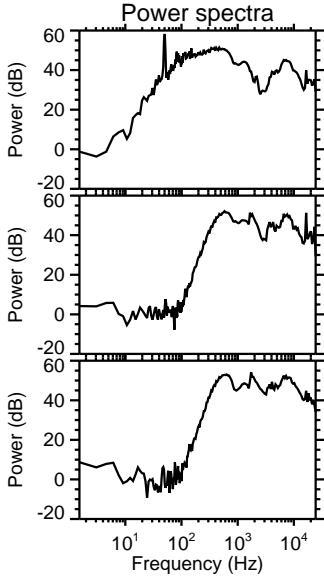
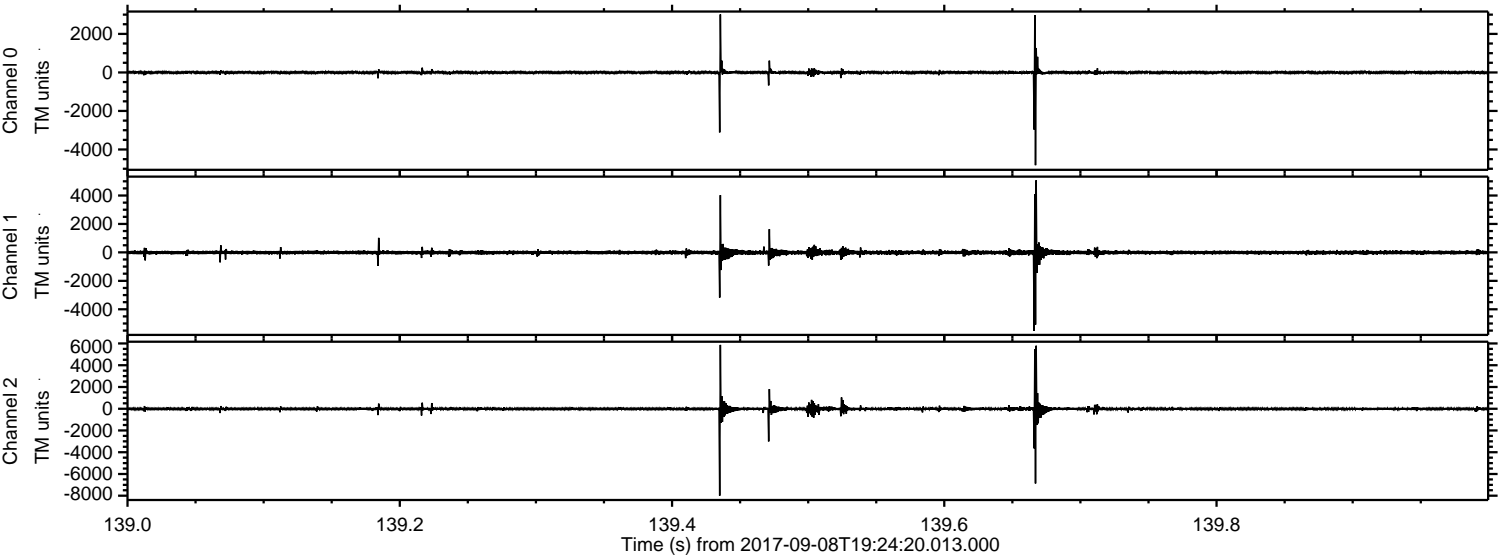


Processed Fri Sep 8 21:32:47 2017 by ELM ver.2012-10-06 from 001__elm20170908_192419__dat00.bin

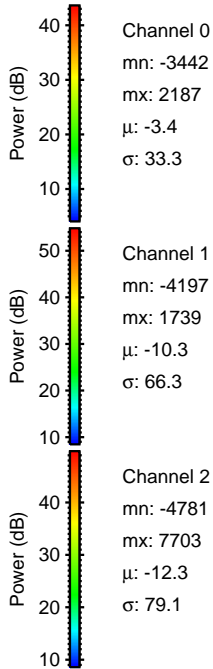
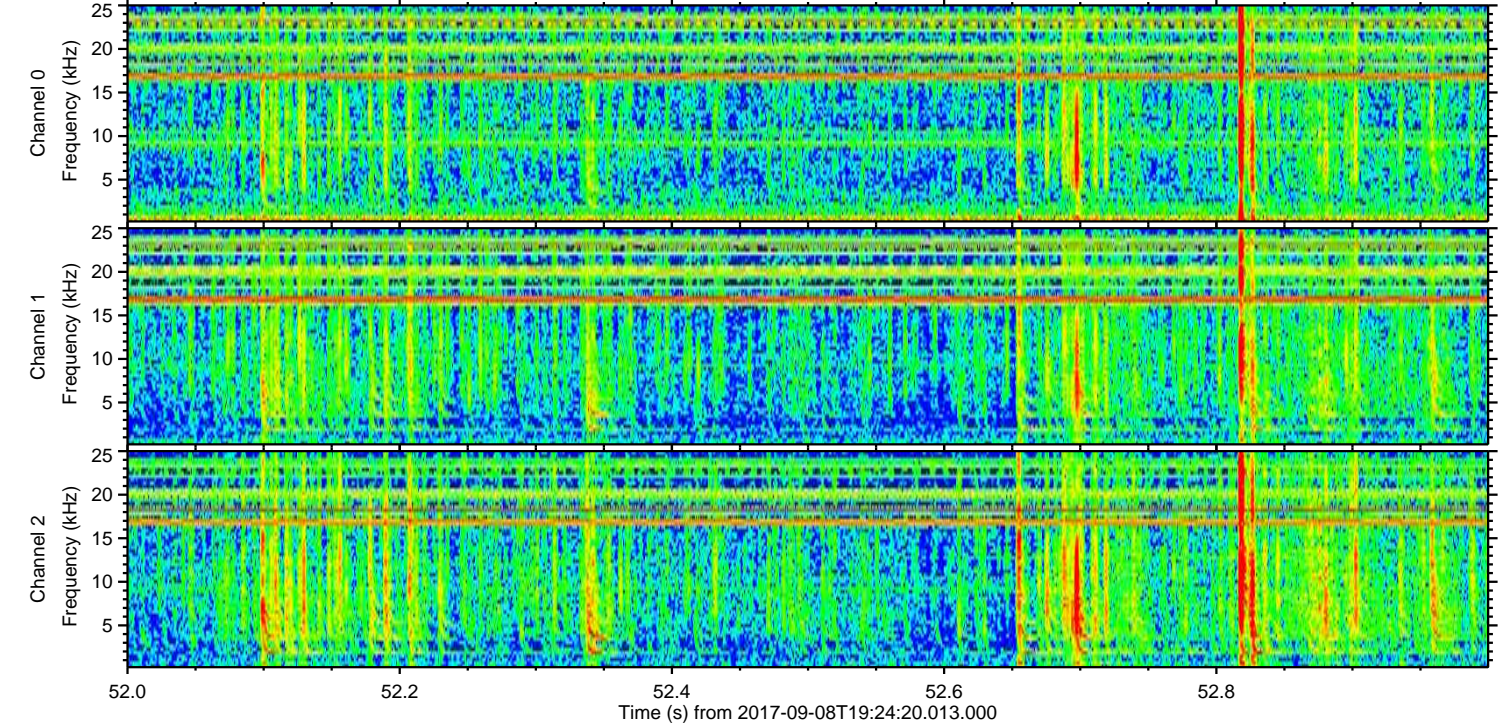
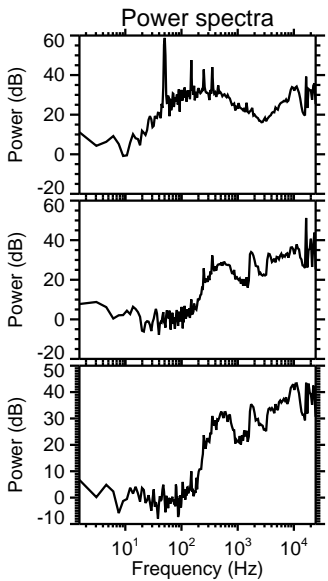
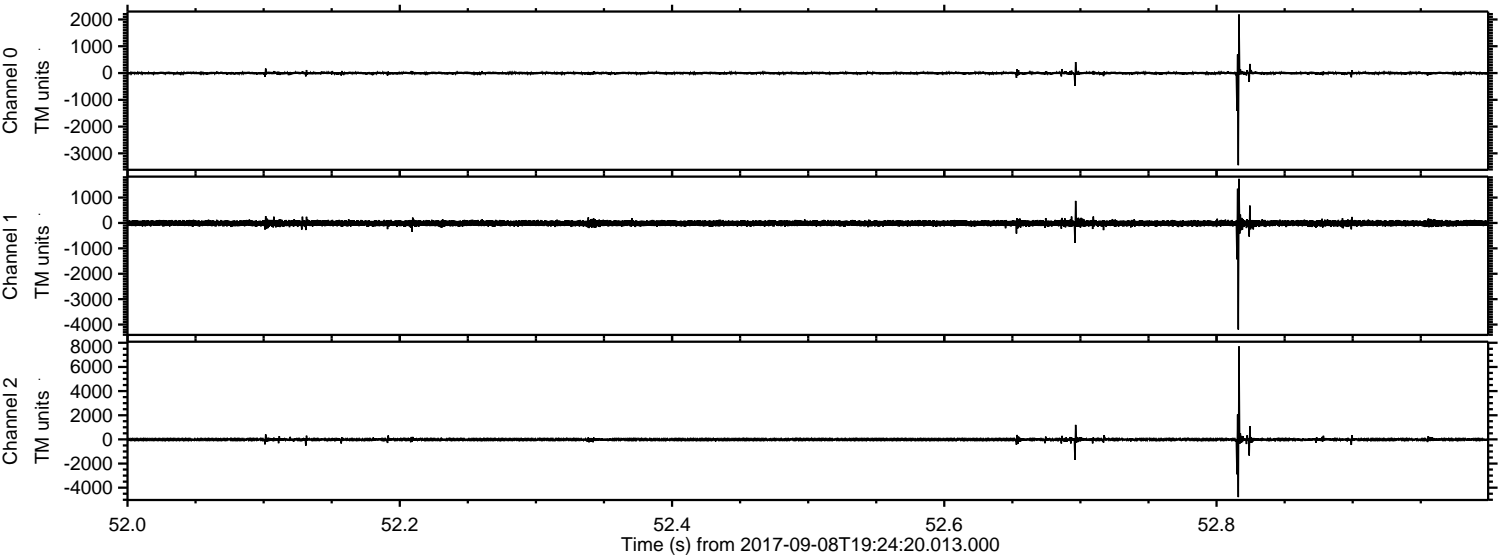


ELMAVAN 3D WAVEFORMS (Measured data sampled at 50 kHz) 50999 packets of 144 samples from 2017-09-08T19:24:20.013.000. Part 140/147

Processed Fri Sep 8 21:32:48 2017 by ELM ver.2012-10-06 from 001__elm20170908_192419__dat00.bin



Processed Fri Sep 8 21:32:48 2017 by ELM ver.2012-10-06 from 001__elm20170908_192419__dat00.bin



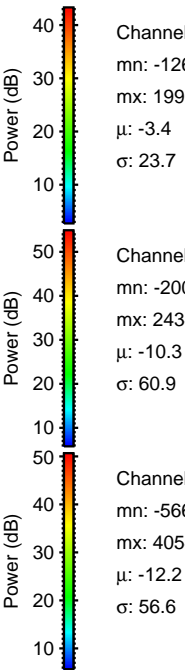
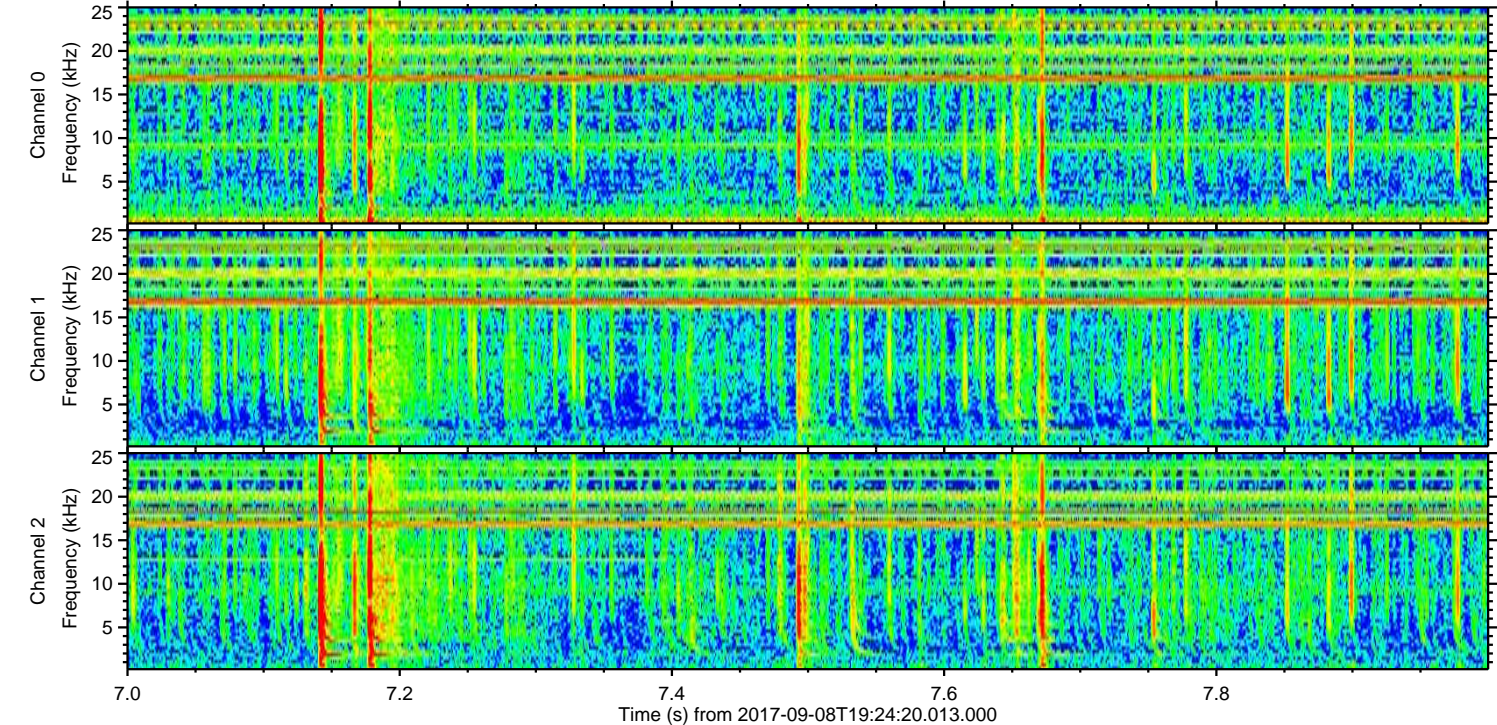
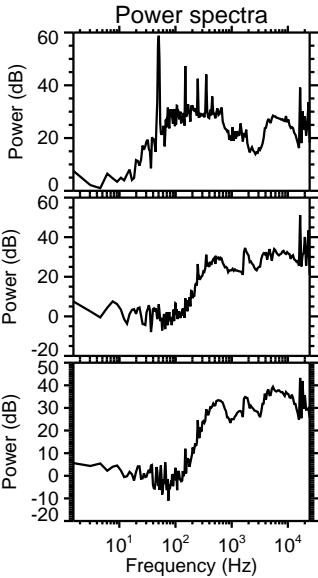
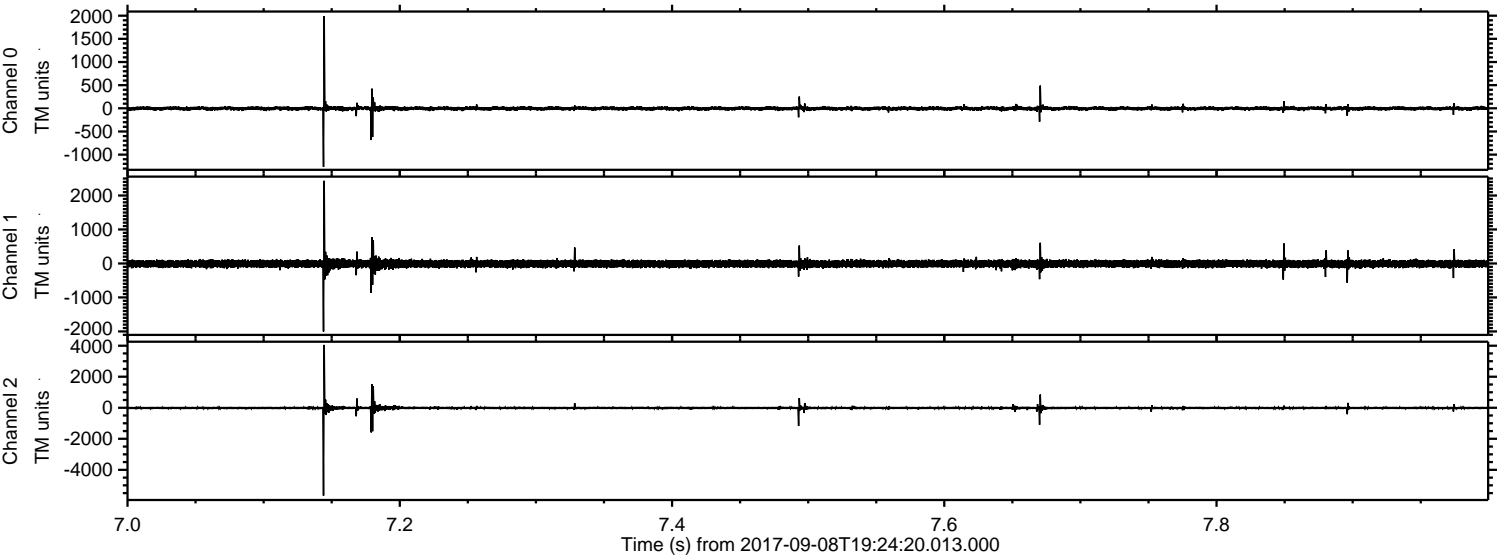
Channel 0
mn: -3442
mx: 2187
 μ : -3.4
 σ : 33.3

Channel 1
mn: -4197
mx: 1739
 μ : -10.3
 σ : 66.3

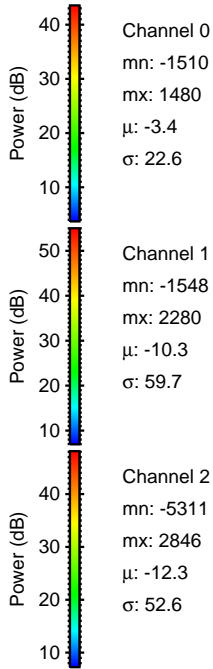
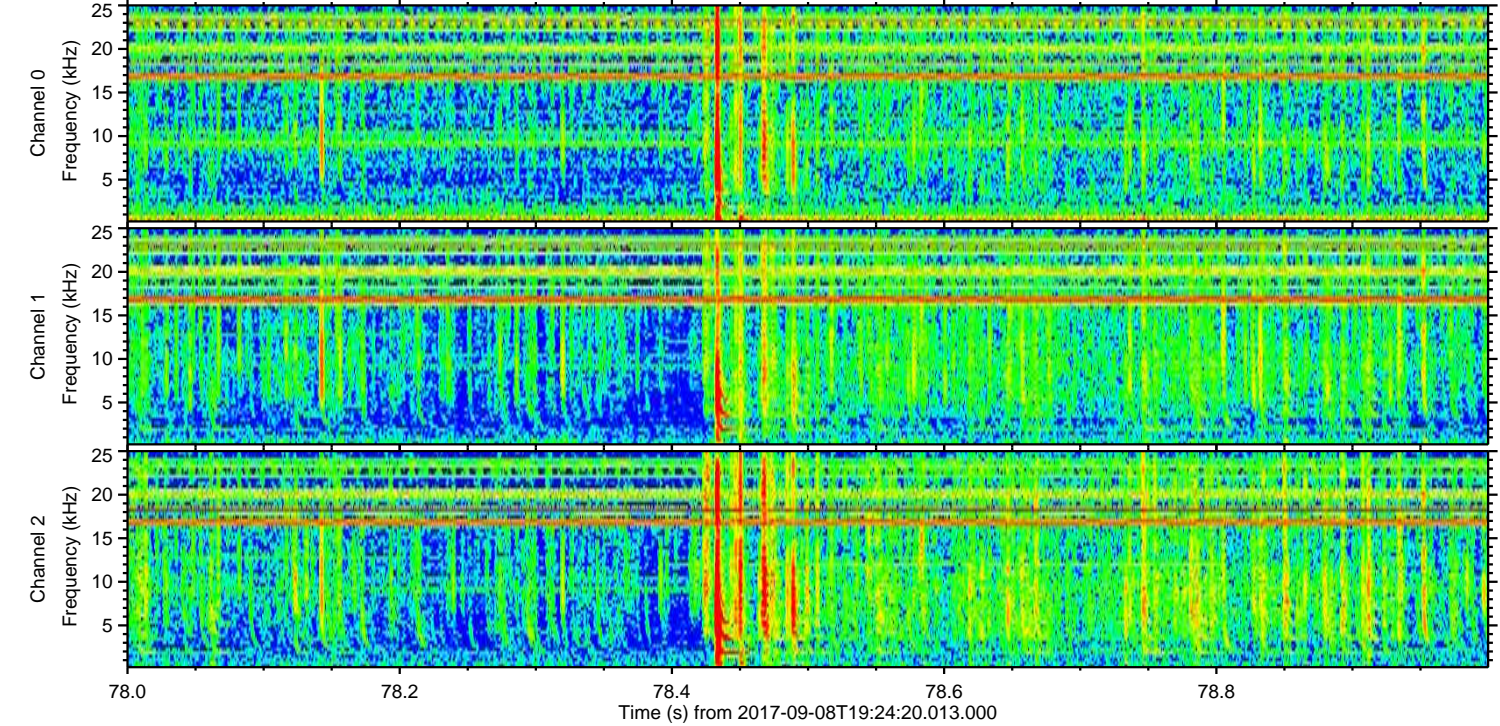
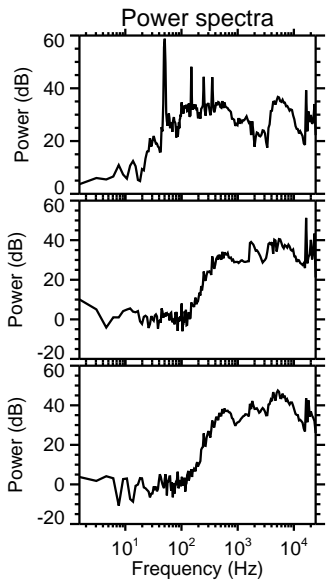
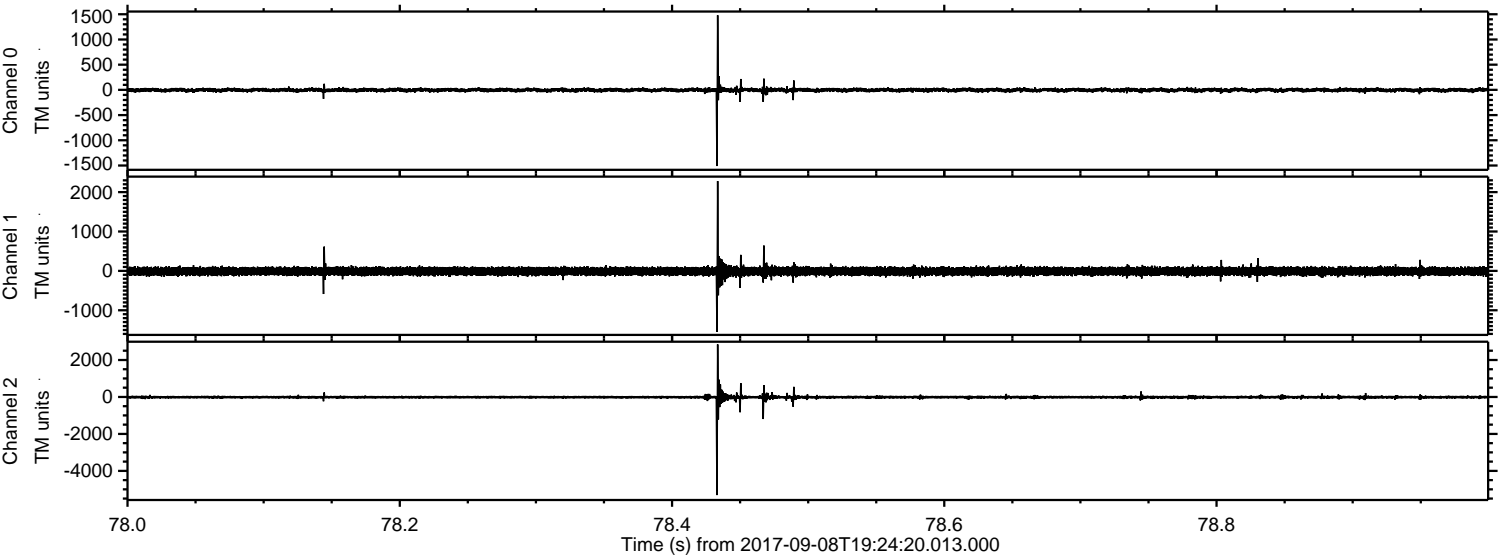
Channel 2
mn: -4781
mx: 7703
 μ : -12.3
 σ : 79.1

ELMAVAN 3D WAVEFORMS (Measured data sampled at 50 kHz) 50999 packets of 144 samples from 2017-09-08T19:24:20.013.000. Part 8/147

Processed Fri Sep 8 21:32:49 2017 by ELM ver.2012-10-06 from 001__elm20170908_192419__dat00.bin

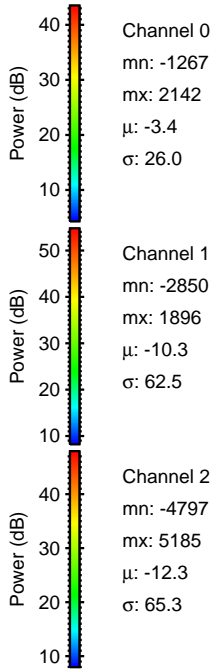
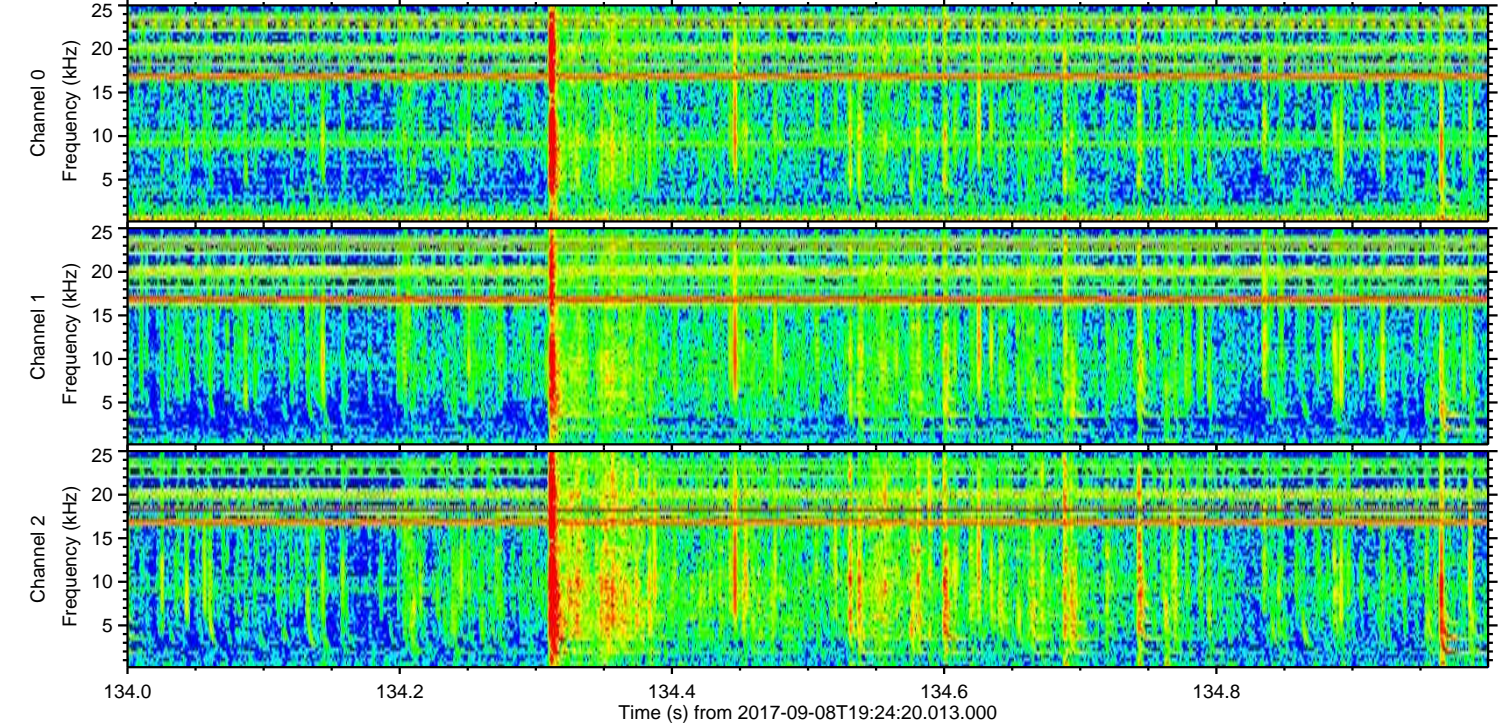
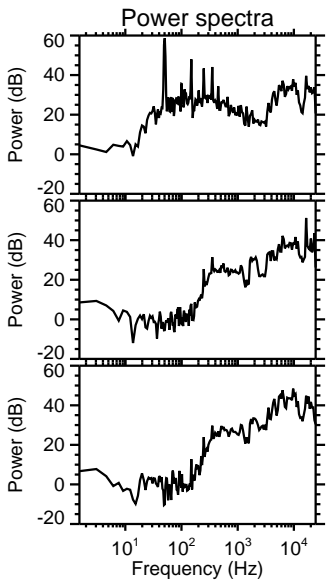
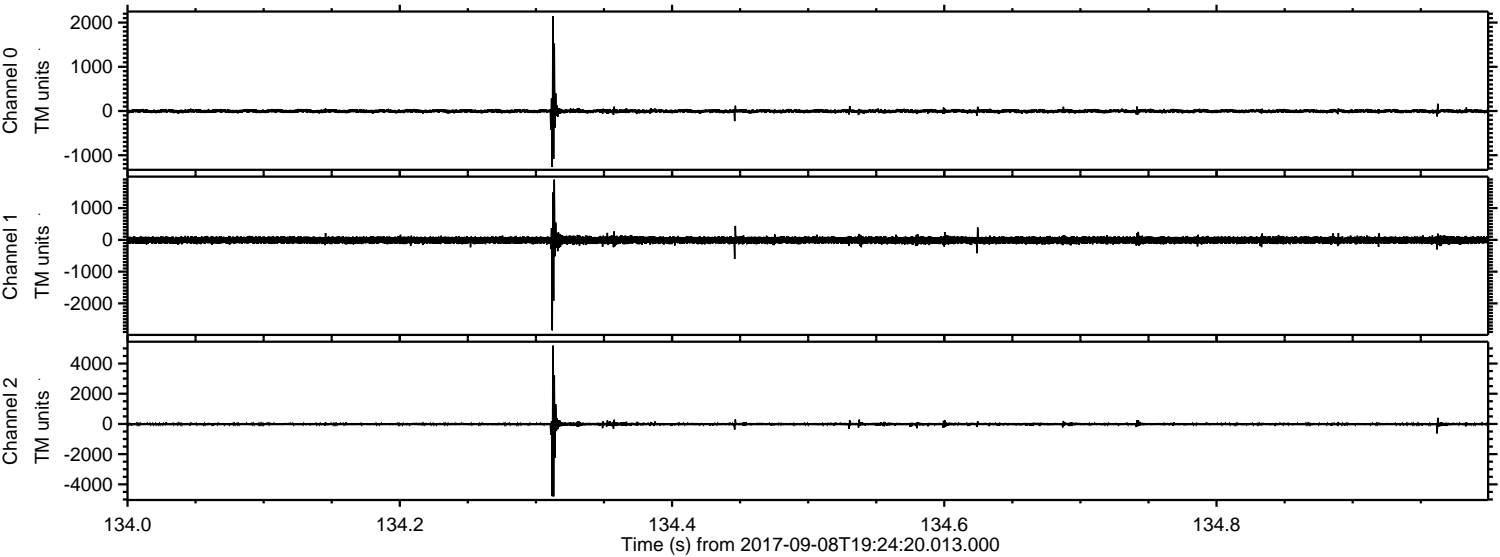


Processed Fri Sep 8 21:32:50 2017 by ELM ver.2012-10-06 from 001__elm20170908_192419__dat00.bin



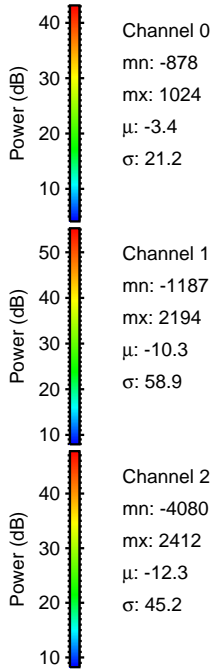
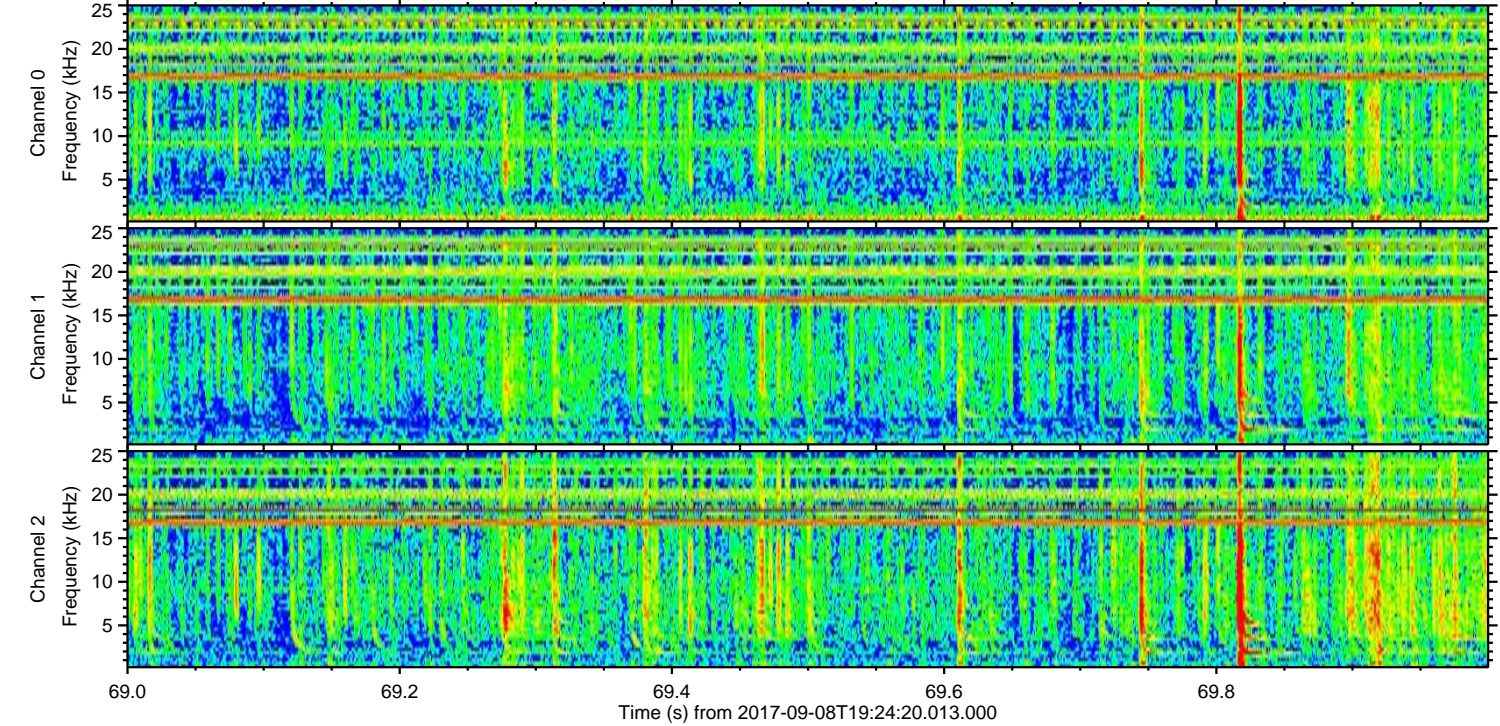
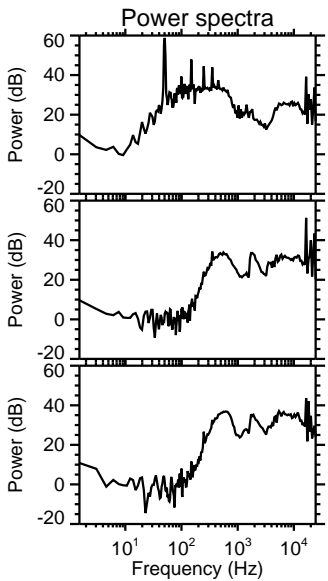
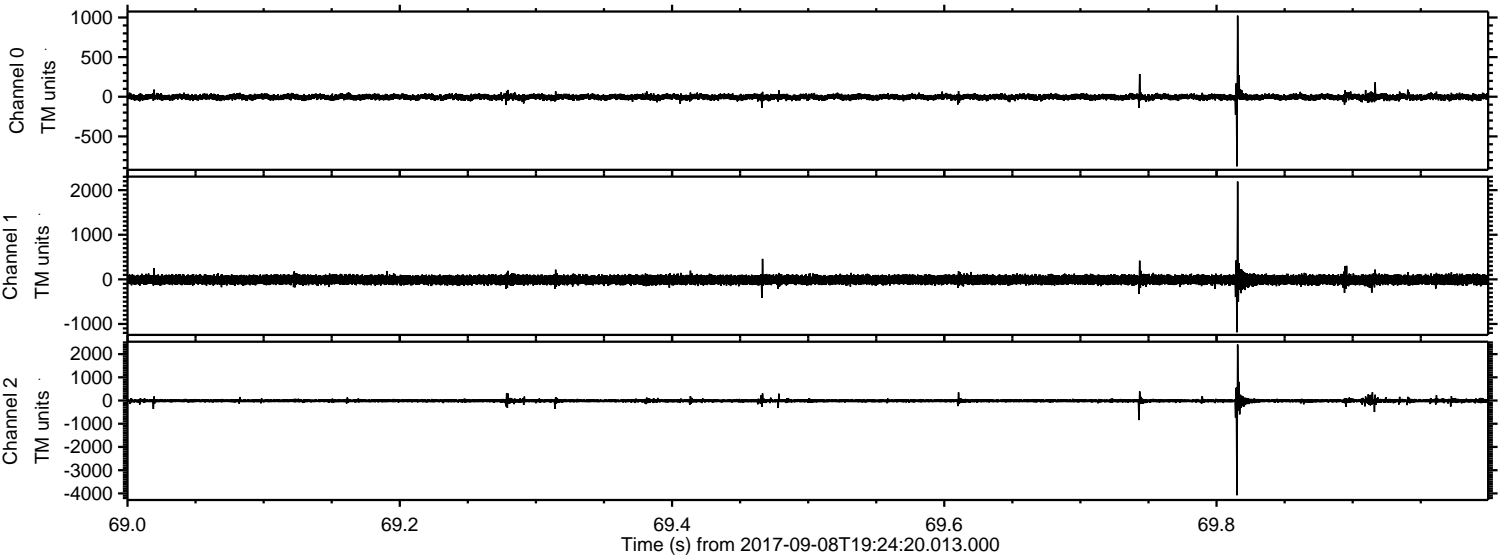
ELMAVAN 3D WAVEFORMS (Measured data sampled at 50 kHz) 50999 packets of 144 samples from 2017-09-08T19:24:20.013.000. Part 135/147

Processed Fri Sep 8 21:32:50 2017 by ELM ver.2012-10-06 from 001__elm20170908_192419__dat00.bin

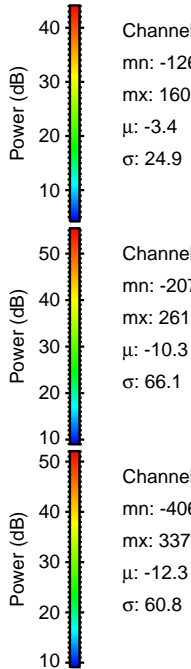
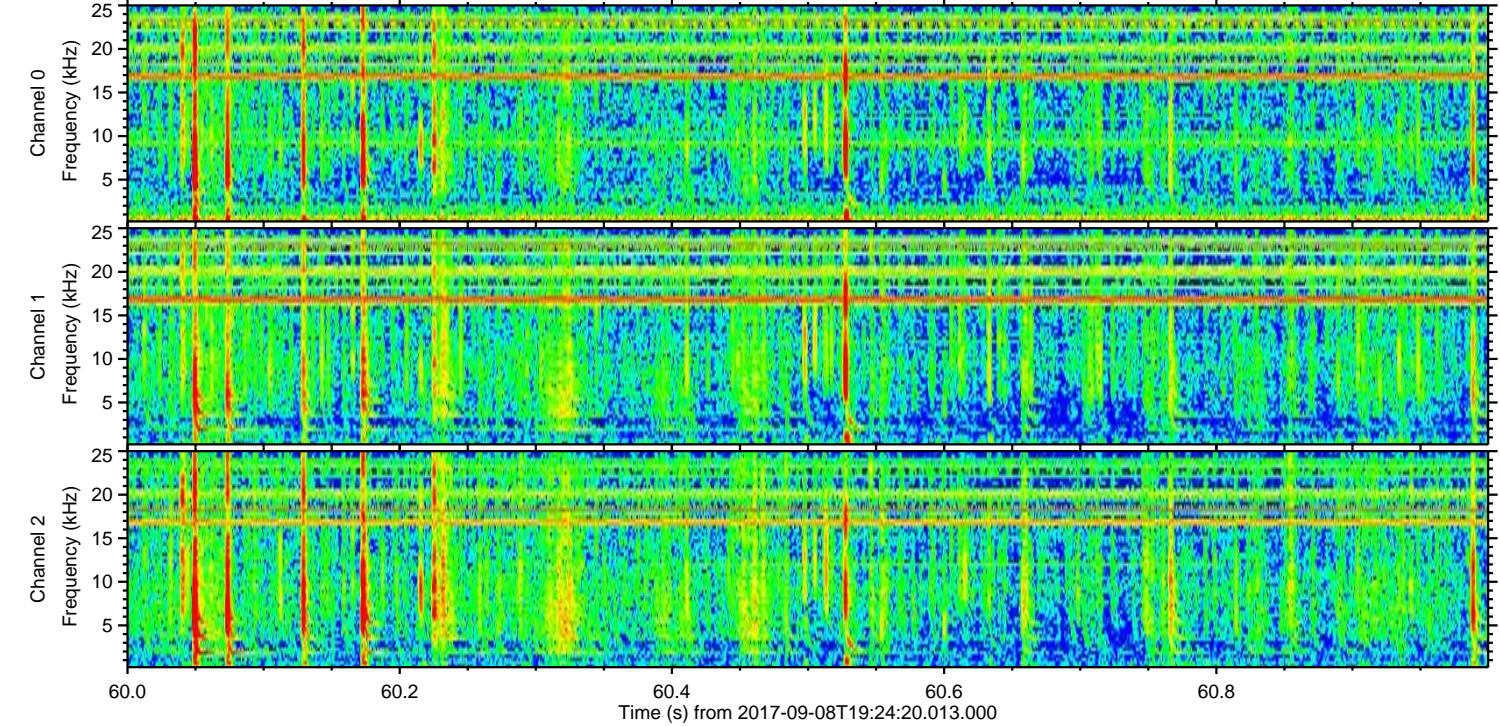
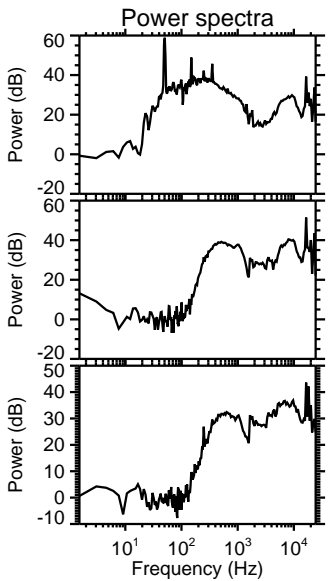
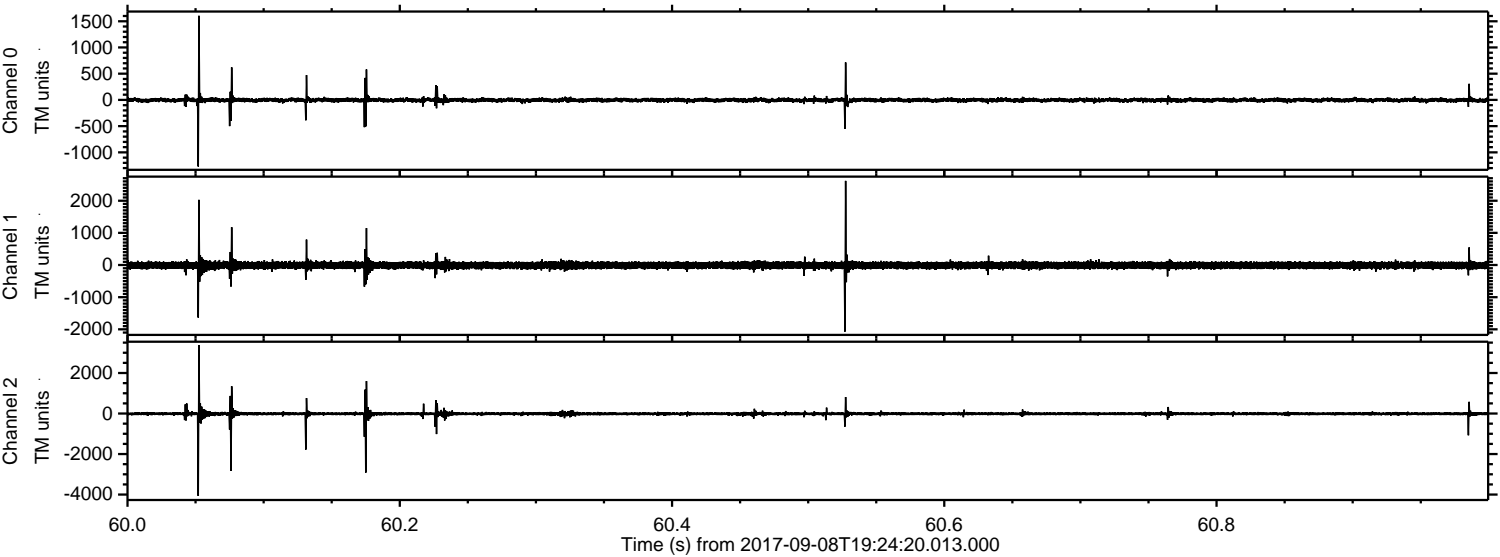


ELMAVAN 3D WAVEFORMS (Measured data sampled at 50 kHz) 50999 packets of 144 samples from 2017-09-08T19:24:20.013.000. Part 70/147

Processed Fri Sep 8 21:32:51 2017 by ELM ver.2012-10-06 from 001__elm20170908_192419__dat00.bin



Processed Fri Sep 8 21:32:52 2017 by ELM ver.2012-10-06 from 001__elm20170908_192419__dat00.bin



Channel 0

Channel 1

Channel 2

mn: -1269
mx: 1605
 μ : -3.4
 σ : 24.9

mn: -2070
mx: 2618
 μ : -10.3
 σ : 66.1

mn: -4065
mx: 3376
 μ : -12.3
 σ : 60.8

Processed Fri Sep 8 21:32:53 2017 by ELM ver.2012-10-06 from 001__elm20170908_192419__dat00.bin

