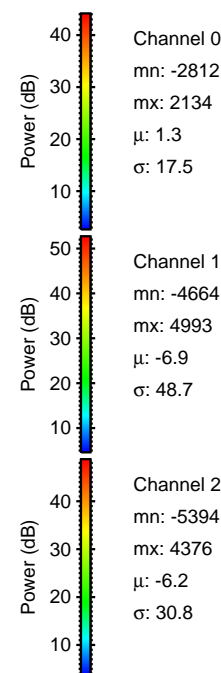
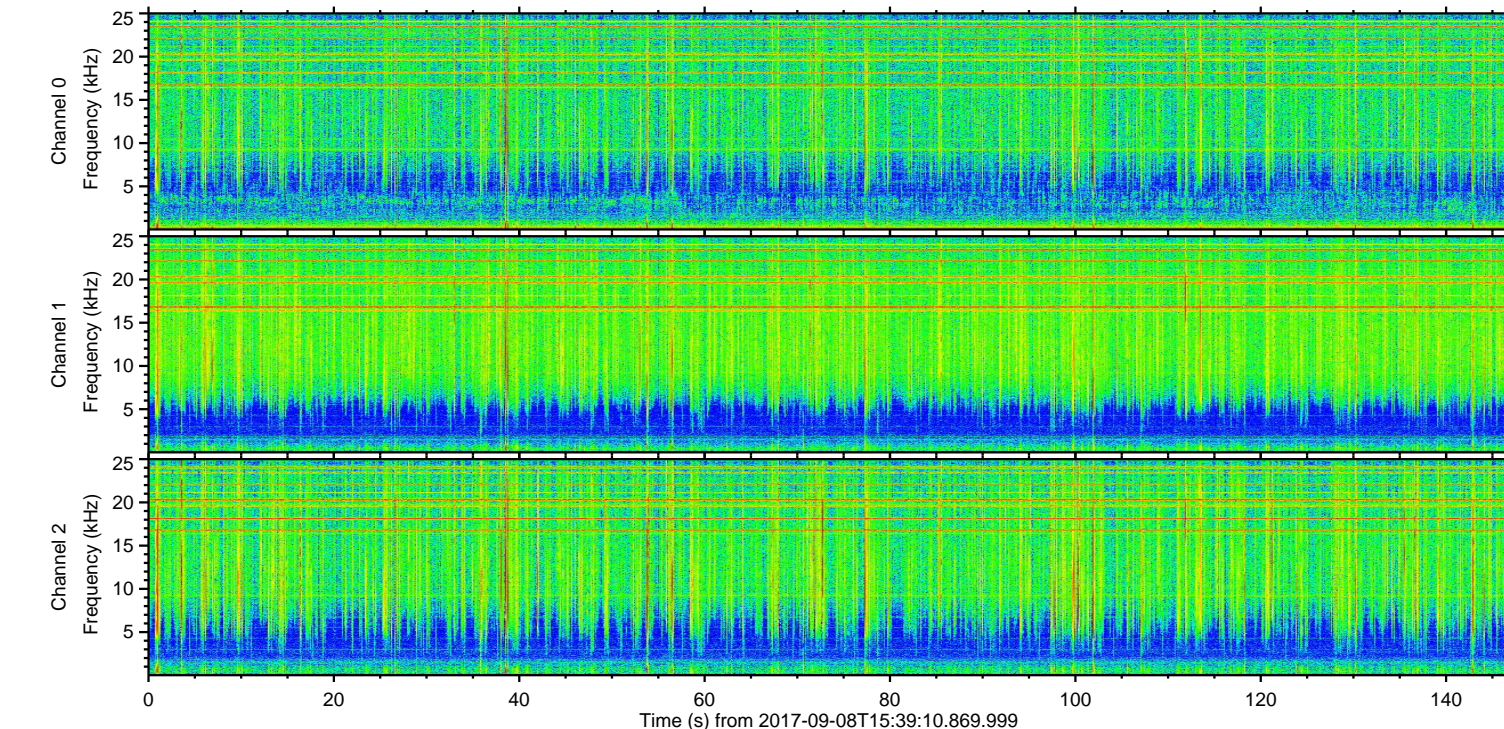
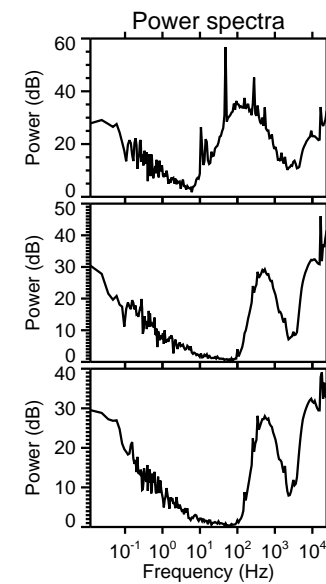
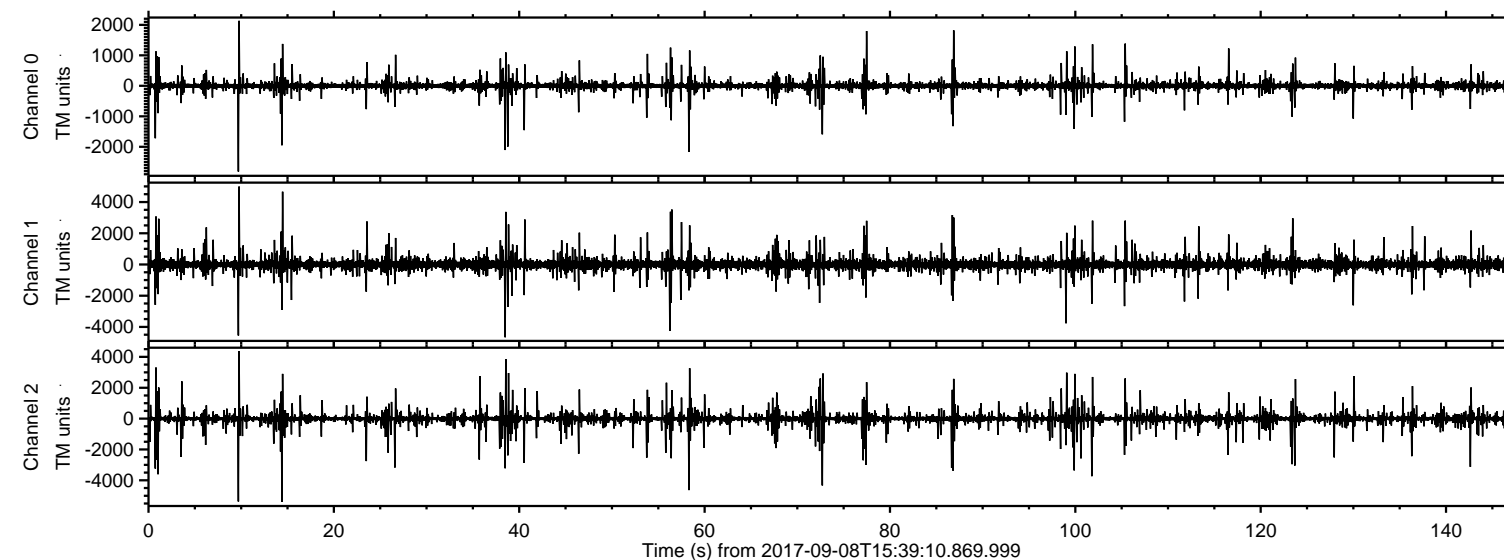


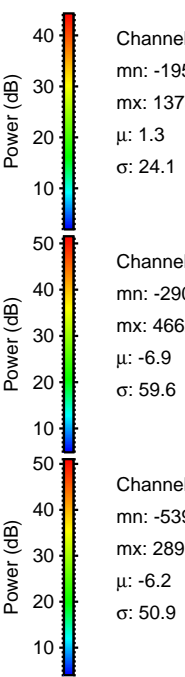
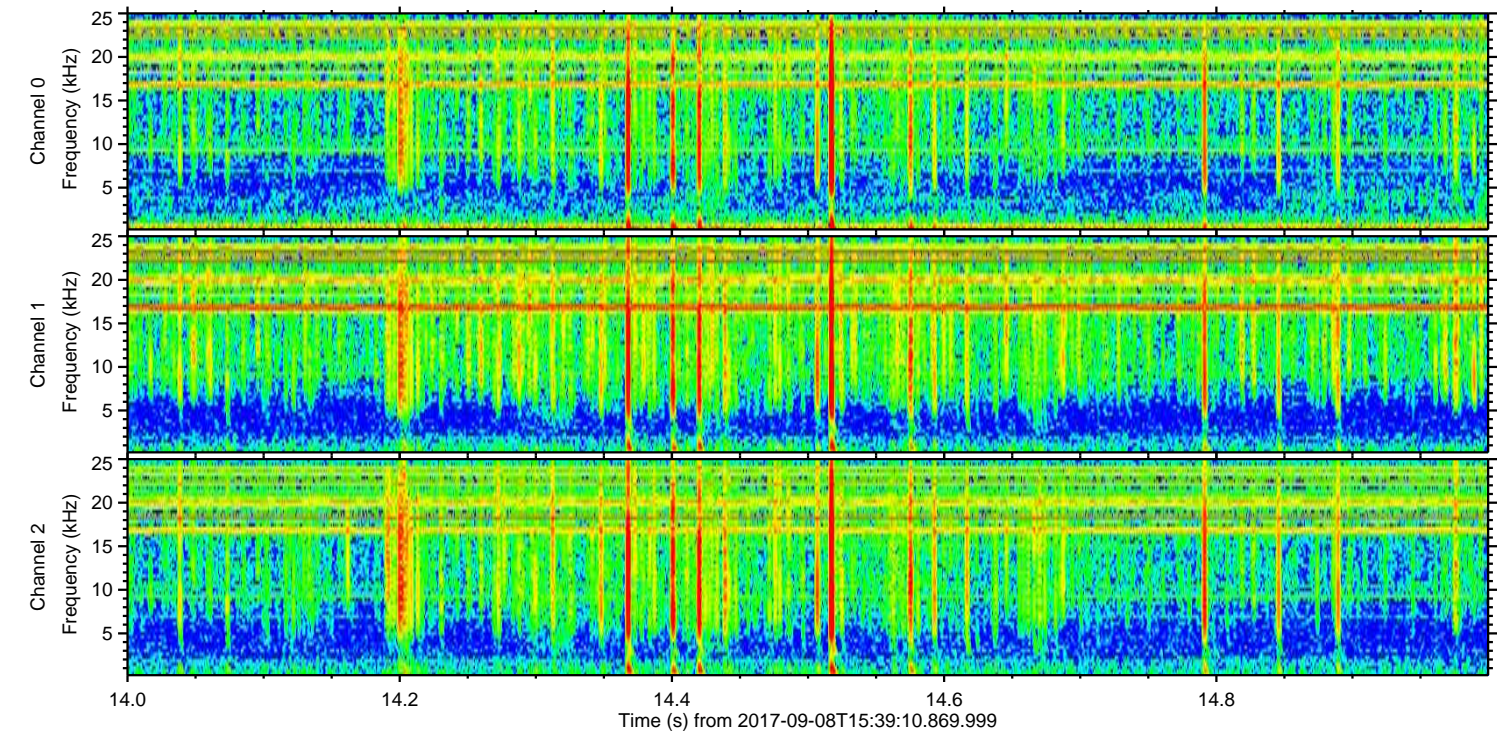
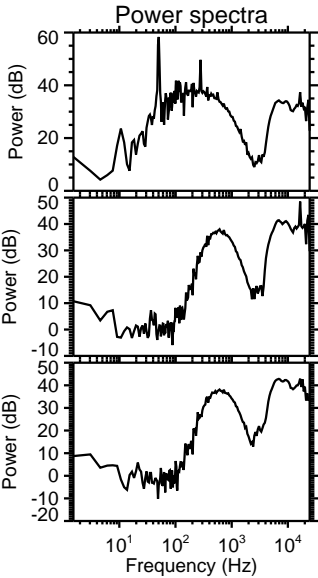
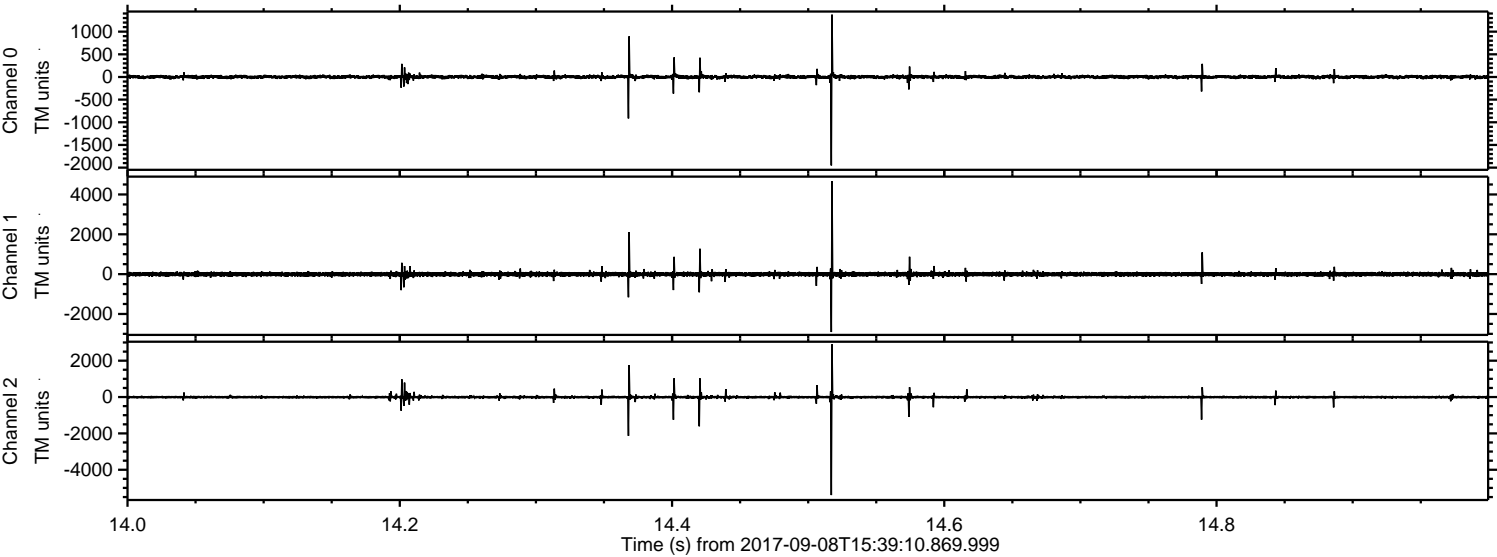
ELMAVAN 3D WAVEFORMS (Measured data sampled at 50 kHz) 51000 packets of 144 samples from 2017-09-08T15:39:10.869.999.

Processed Fri Sep 8 17:46:56 2017 by ELM ver.2012-10-06 from 001__elm20170908_153909__dat00.bin



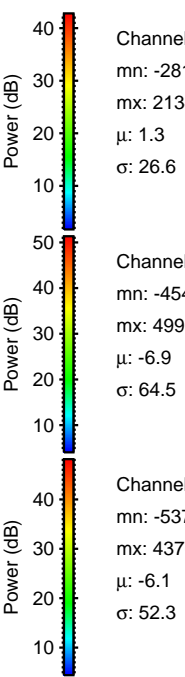
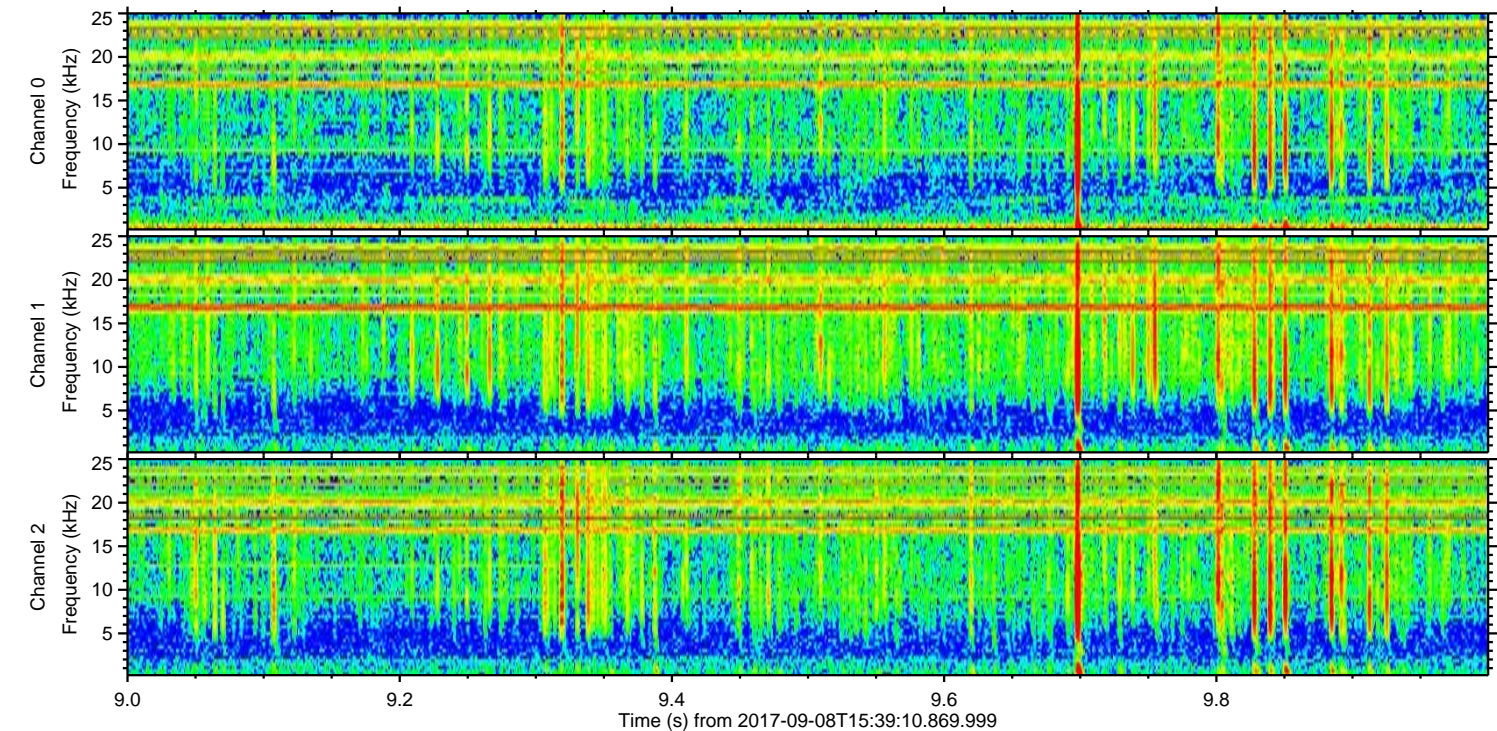
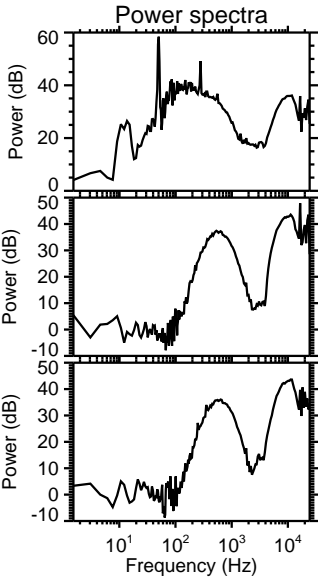
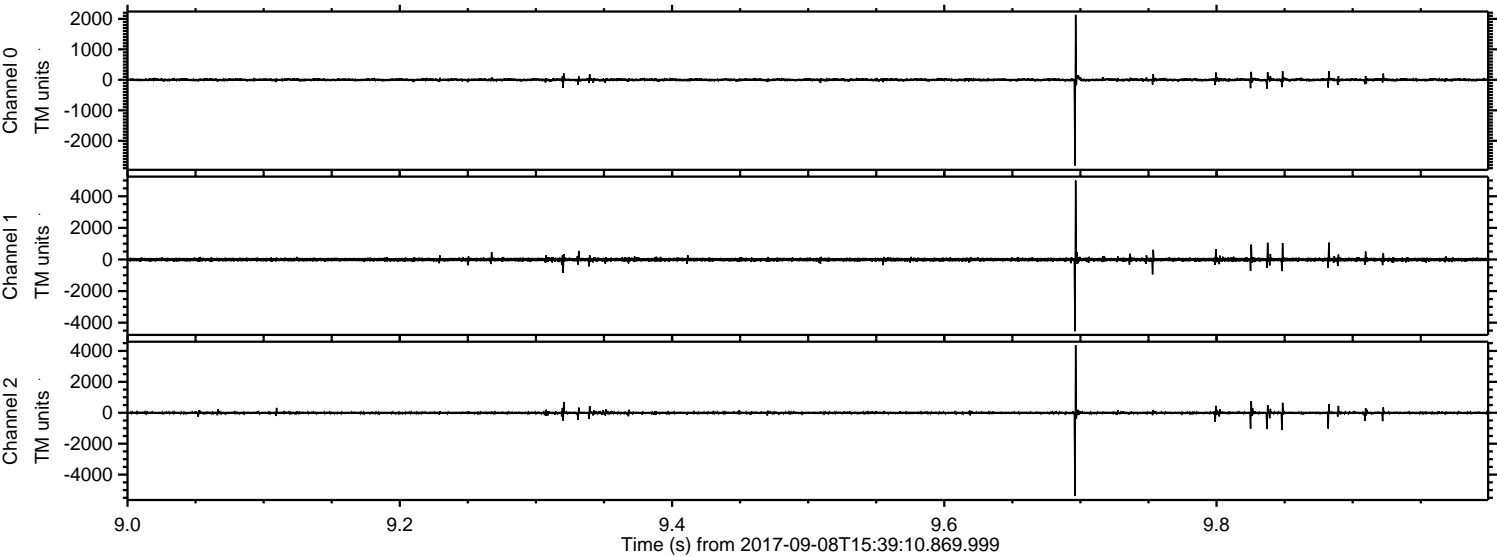
ELMAVAN 3D WAVEFORMS (Measured data sampled at 50 kHz) 51000 packets of 144 samples from 2017-09-08T15:39:10.869.999. Part 15/147

Processed Fri Sep 8 17:47:02 2017 by ELM ver.2012-10-06 from 001__elm20170908_153909__dat00.bin



ELMAVAN 3D WAVEFORMS (Measured data sampled at 50 kHz) 51000 packets of 144 samples from 2017-09-08T15:39:10.869.999. Part 10/147

Processed Fri Sep 8 17:47:03 2017 by ELM ver.2012-10-06 from 001__elm20170908_153909__dat00.bin



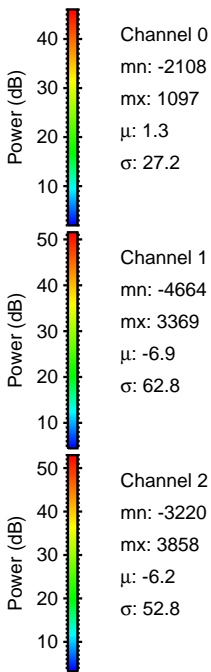
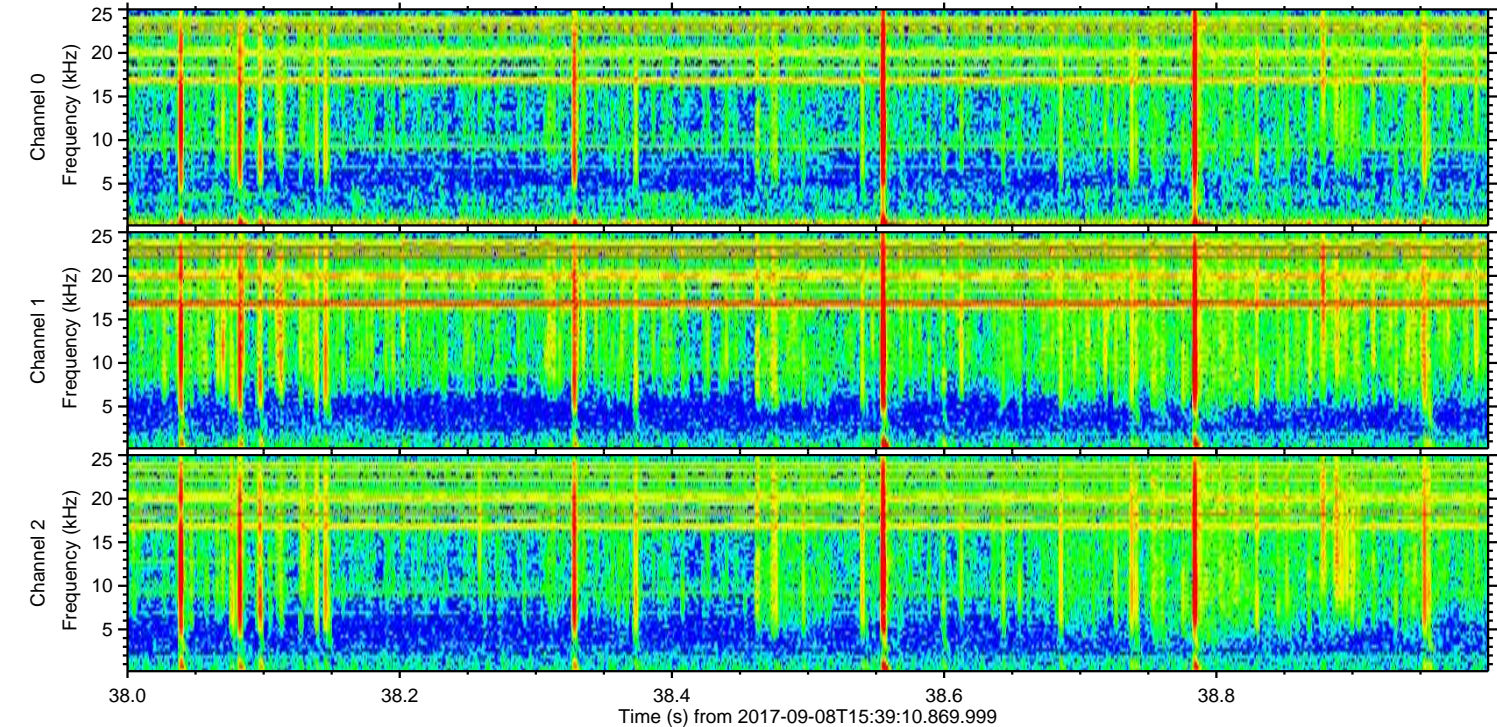
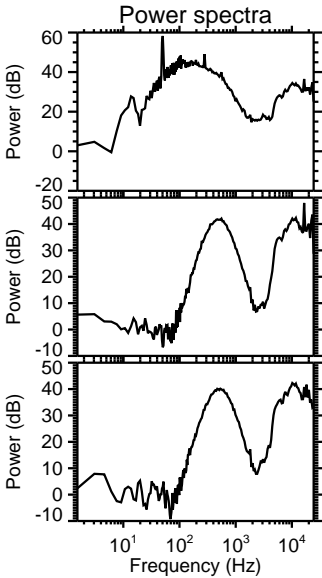
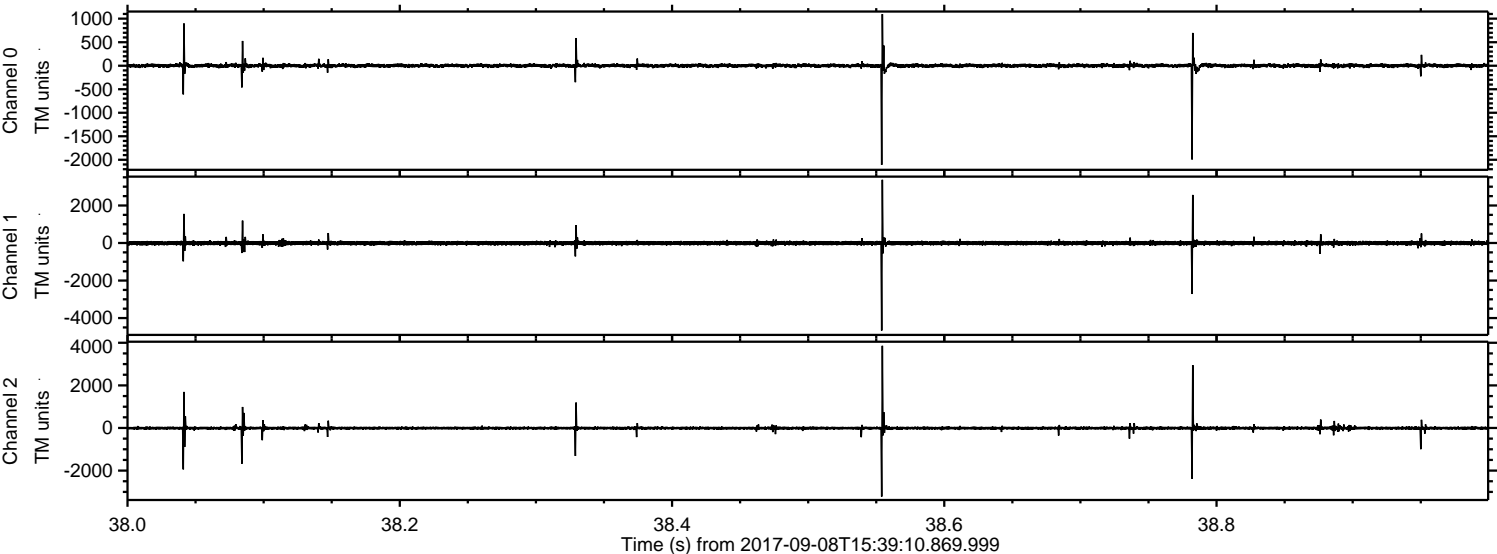
Channel 0
mn: -2812
mx: 2134
 μ : 1.3
 σ : 26.6

Channel 1
mn: -4547
mx: 4993
 μ : -6.9
 σ : 64.5

Channel 2
mn: -5372
mx: 4376
 μ : -6.1
 σ : 52.3

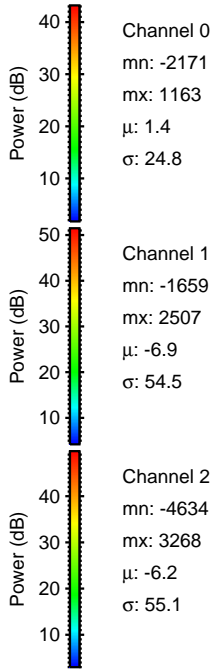
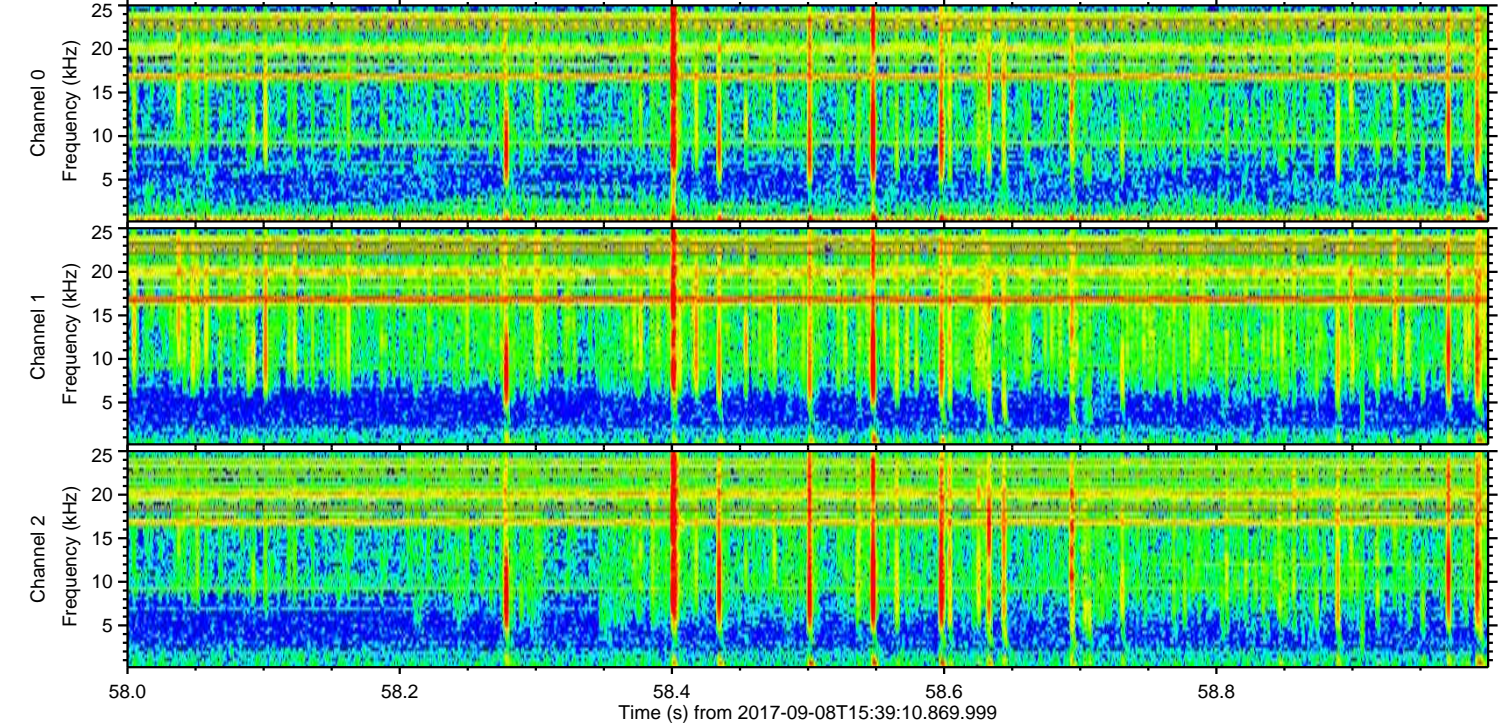
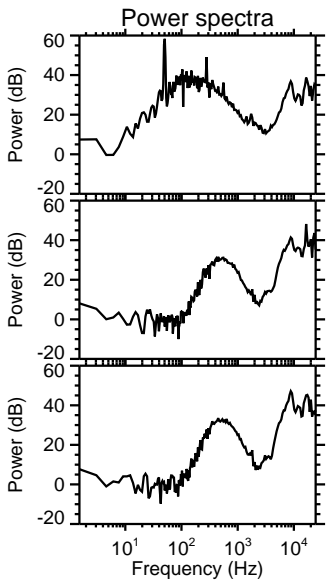
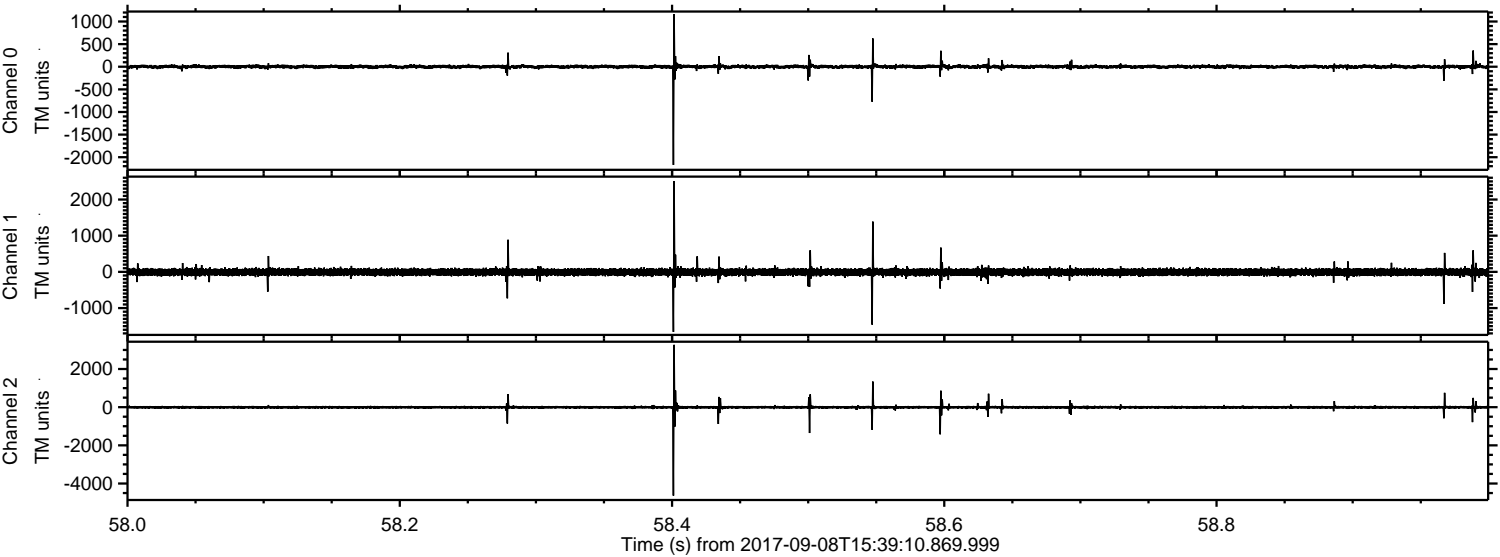
ELMAVAN 3D WAVEFORMS (Measured data sampled at 50 kHz) 51000 packets of 144 samples from 2017-09-08T15:39:10.869.999. Part 39/147

Processed Fri Sep 8 17:47:04 2017 by ELM ver.2012-10-06 from 001__elm20170908_153909__dat00.bin



ELMAVAN 3D WAVEFORMS (Measured data sampled at 50 kHz) 51000 packets of 144 samples from 2017-09-08T15:39:10.869.999. Part 59/147

Processed Fri Sep 8 17:47:04 2017 by ELM ver.2012-10-06 from 001__elm20170908_153909__dat00.bin



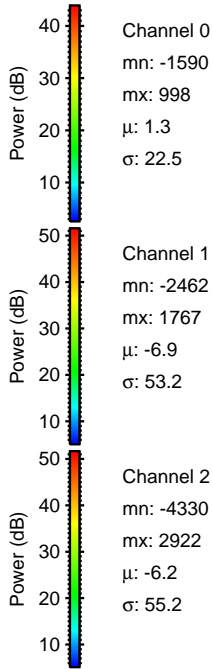
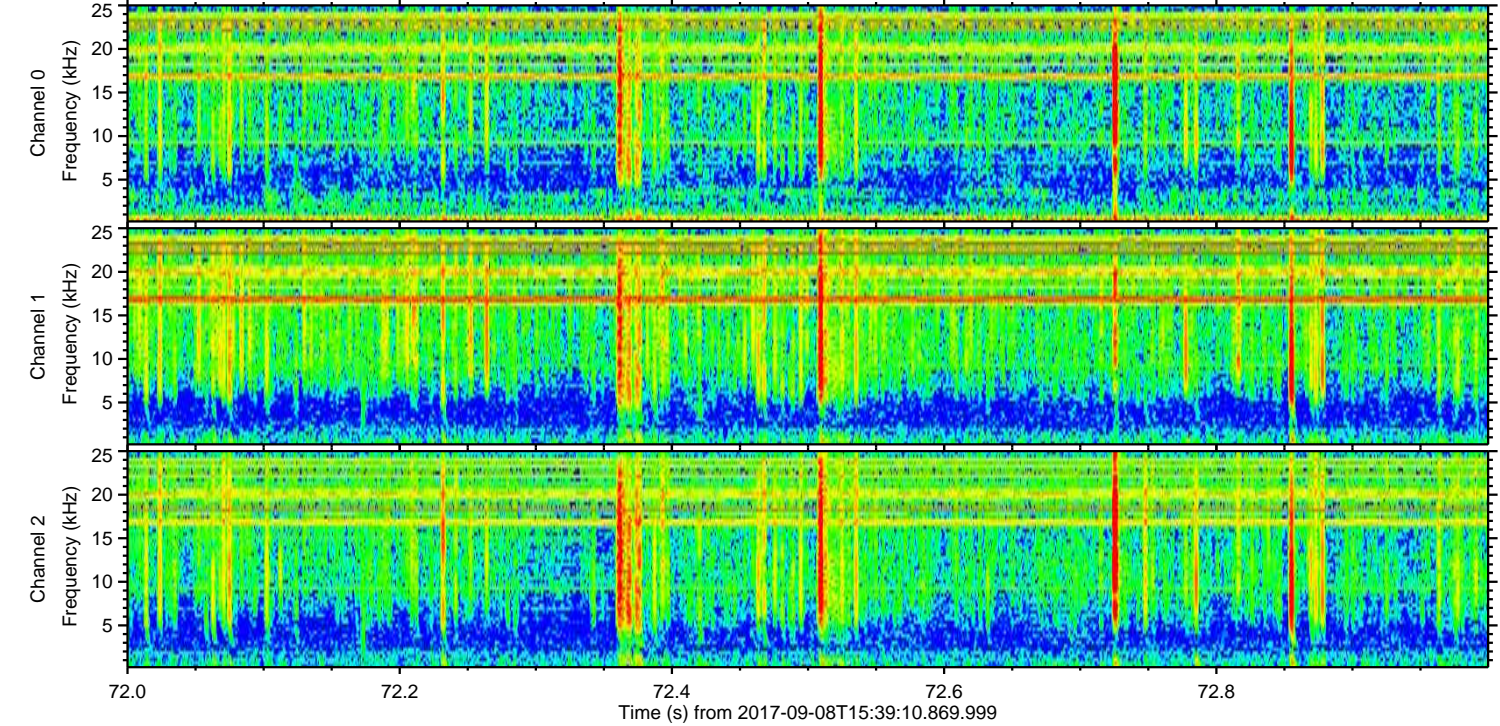
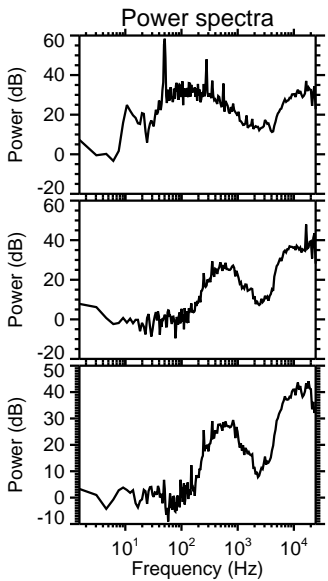
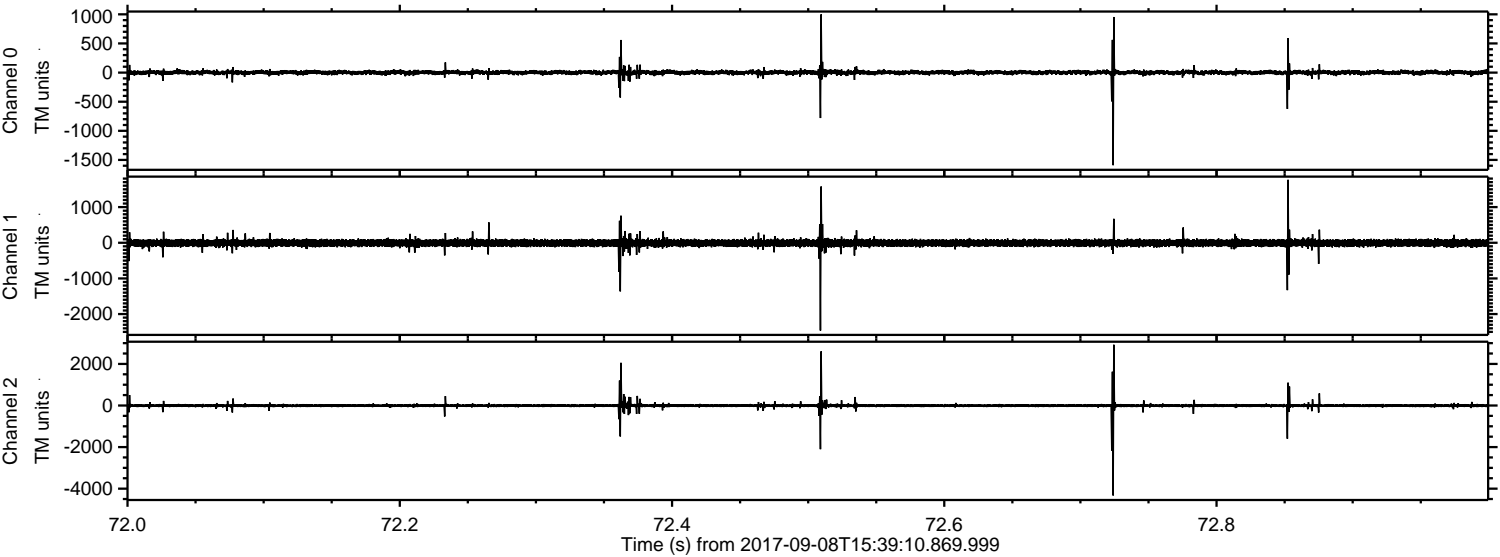
Channel 0
mn: -2171
mx: 1163
 μ : 1.4
 σ : 24.8

Channel 1
mn: -1659
mx: 2507
 μ : -6.9
 σ : 54.5

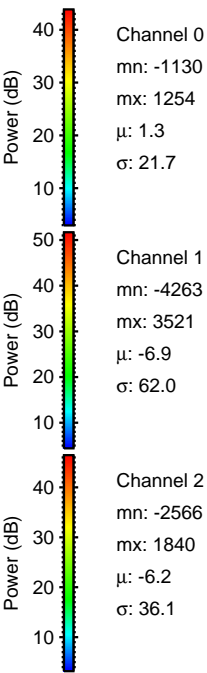
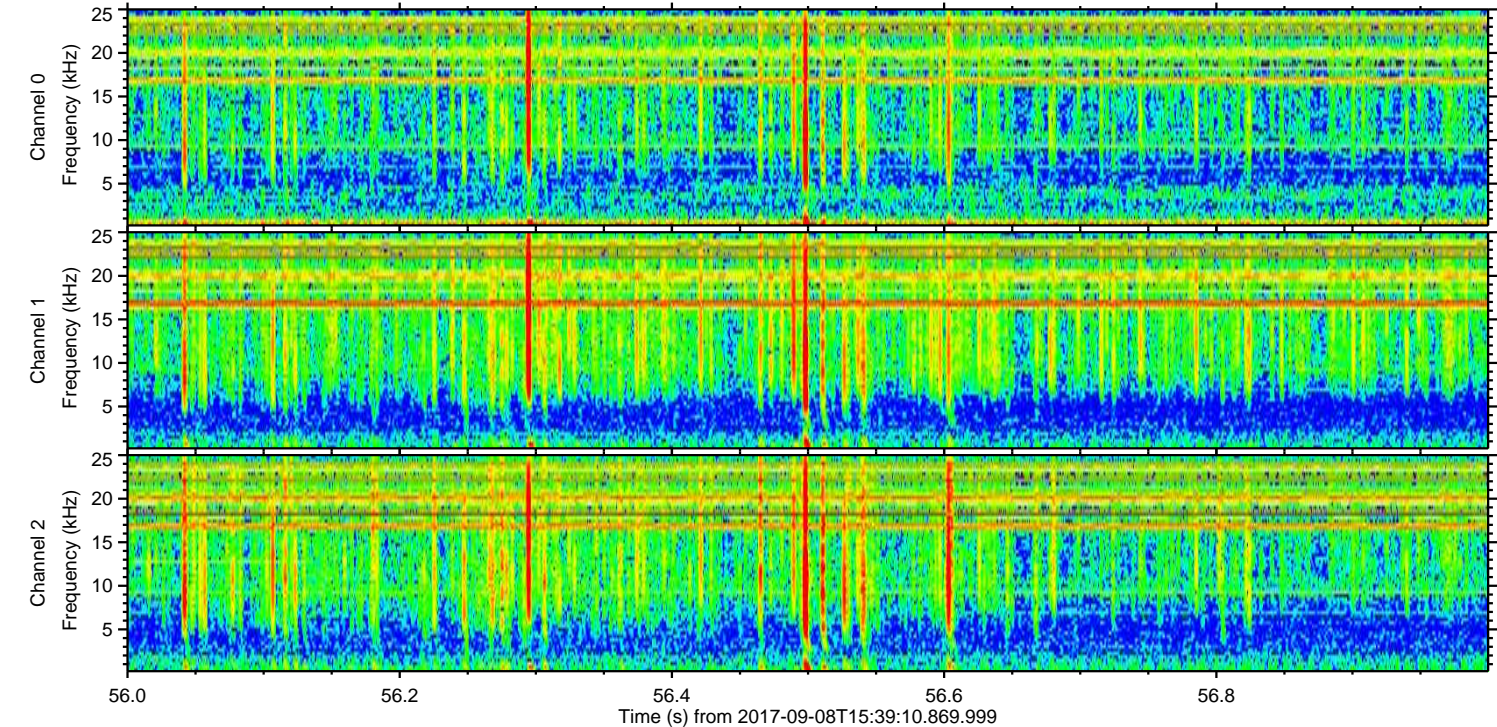
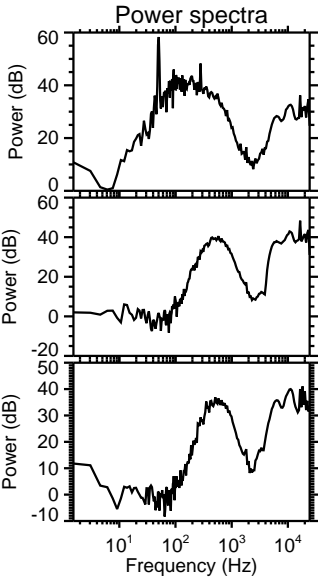
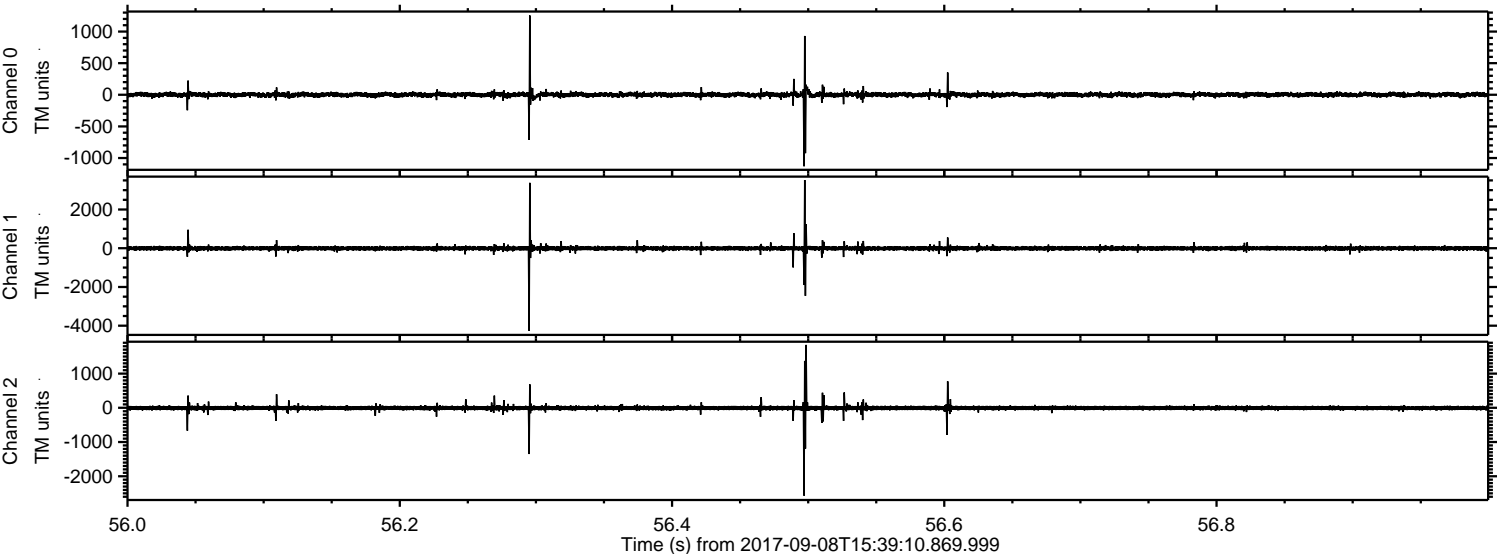
Channel 2
mn: -4634
mx: 3268
 μ : -6.2
 σ : 55.1

ELMAVAN 3D WAVEFORMS (Measured data sampled at 50 kHz) 51000 packets of 144 samples from 2017-09-08T15:39:10.869.999. Part 73/147

Processed Fri Sep 8 17:47:05 2017 by ELM ver.2012-10-06 from 001__elm20170908_153909__dat00.bin



Processed Fri Sep 8 17:47:06 2017 by ELM ver.2012-10-06 from 001__elm20170908_153909__dat00.bin



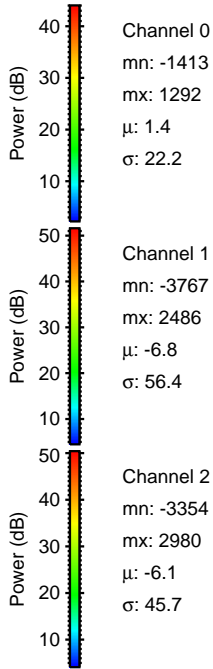
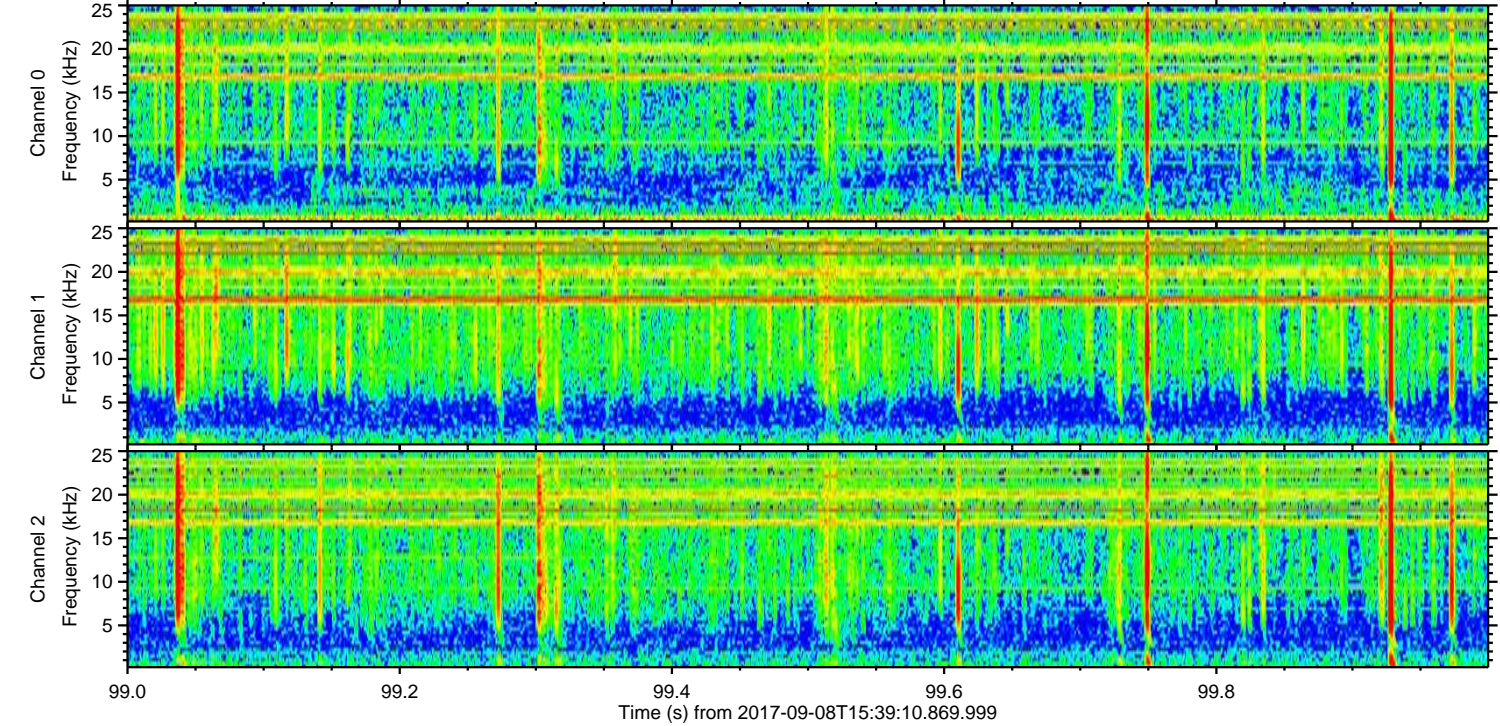
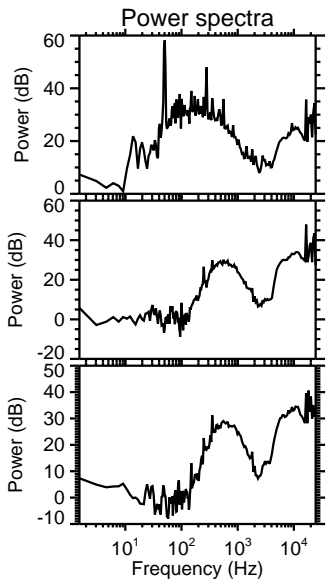
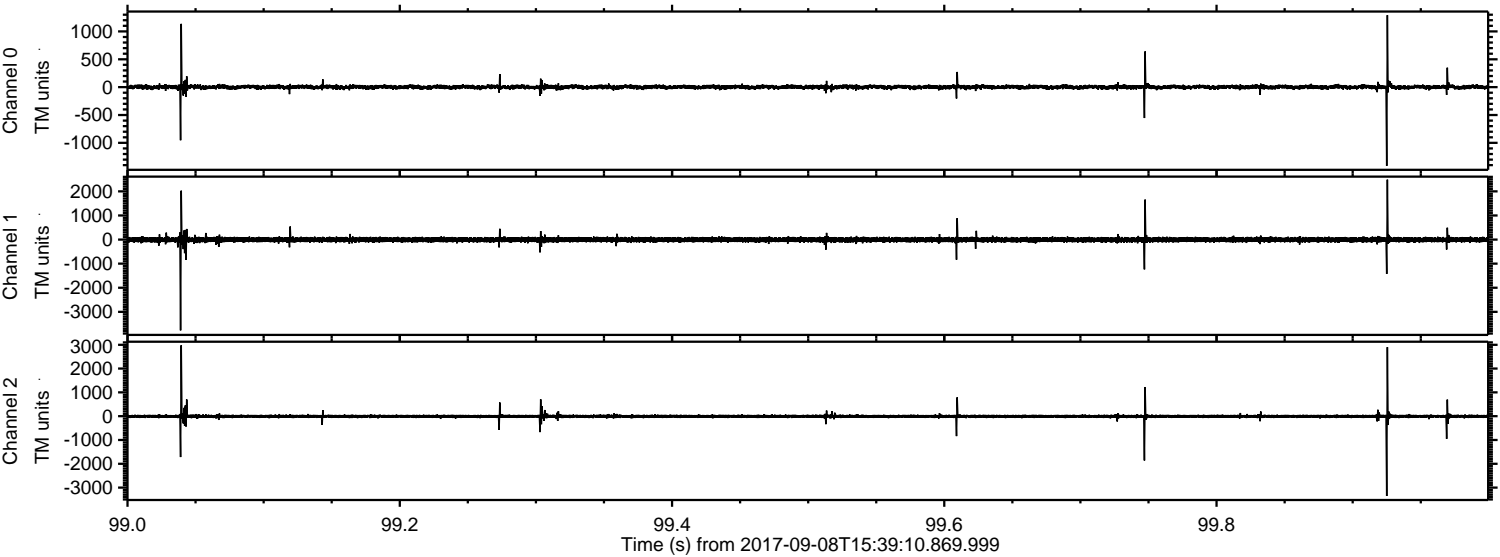
Channel 0
mn: -1130
mx: 1254
 μ : 1.3
 σ : 21.7

Channel 1
mn: -4263
mx: 3521
 μ : -6.9
 σ : 62.0

Channel 2
mn: -2566
mx: 1840
 μ : -6.2
 σ : 36.1

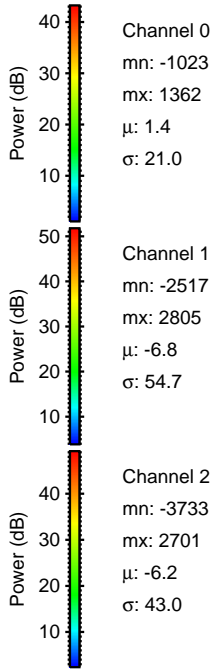
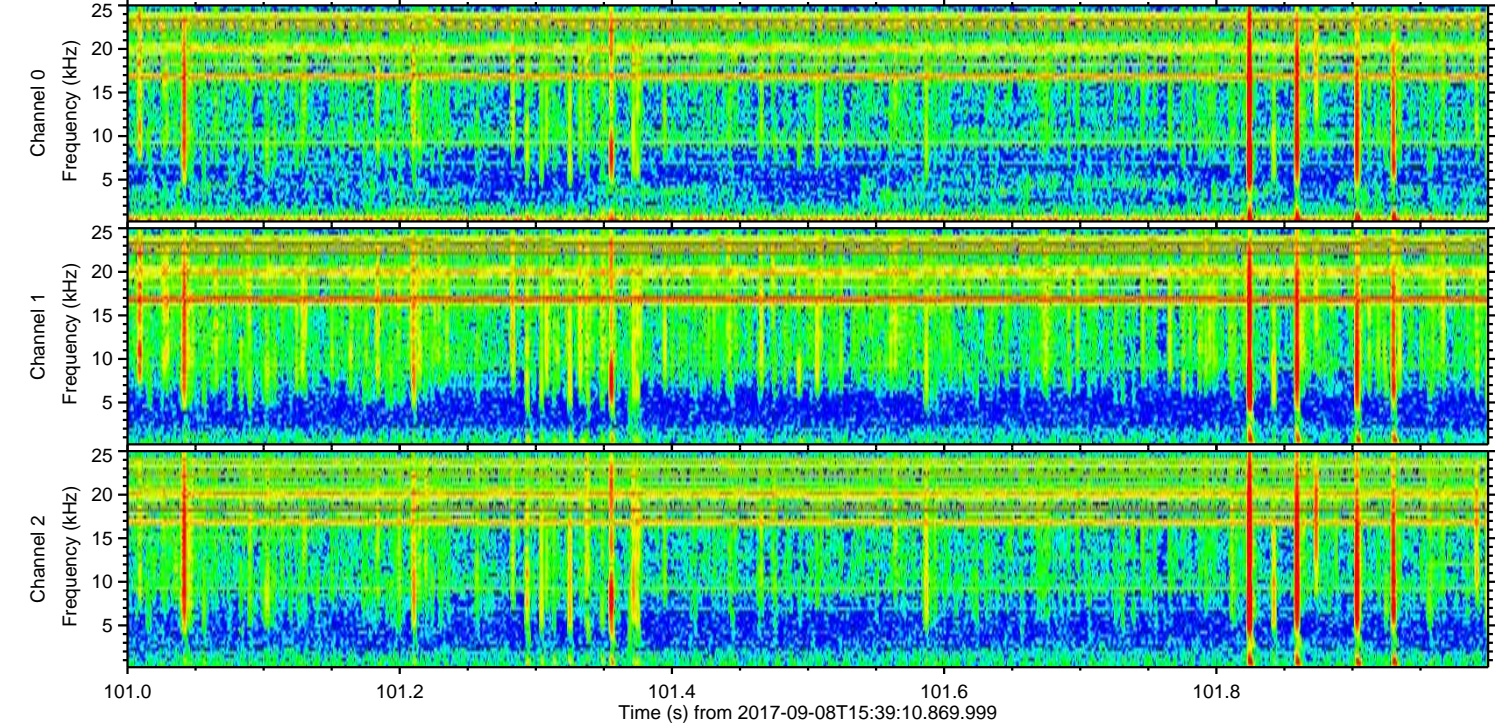
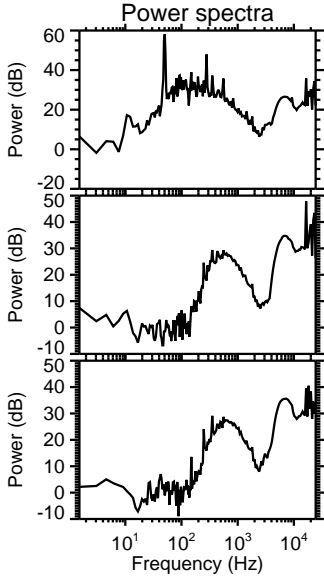
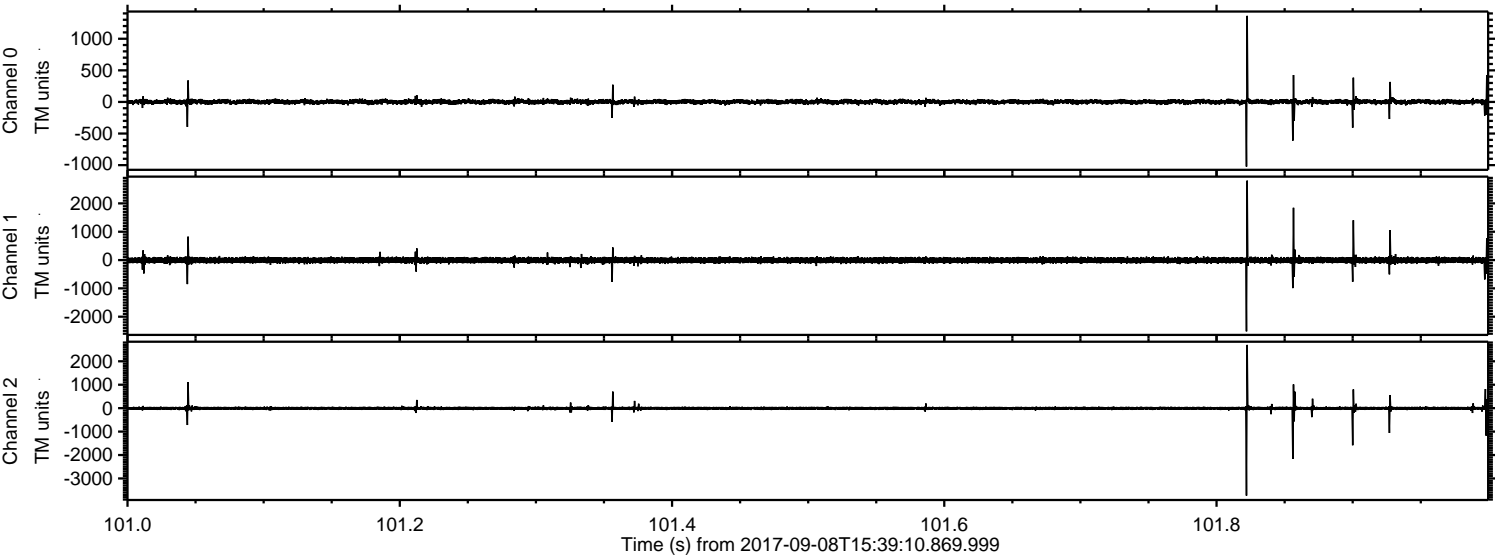
ELMAVAN 3D WAVEFORMS (Measured data sampled at 50 kHz) 51000 packets of 144 samples from 2017-09-08T15:39:10.869.999. Part 100/147

Processed Fri Sep 8 17:47:06 2017 by ELM ver.2012-10-06 from 001__elm20170908_153909__dat00.bin



ELMAVAN 3D WAVEFORMS (Measured data sampled at 50 kHz) 51000 packets of 144 samples from 2017-09-08T15:39:10.869.999. Part 102/147

Processed Fri Sep 8 17:47:07 2017 by ELM ver.2012-10-06 from 001__elm20170908_153909__dat00.bin



Channel 0
mn: -1023
mx: 1362
 μ : 1.4
 σ : 21.0

Channel 1
mn: -2517
mx: 2805
 μ : -6.8
 σ : 54.7

Channel 2
mn: -3733
mx: 2701
 μ : -6.2
 σ : 43.0

ELMAVAN 3D WAVEFORMS (Measured data sampled at 50 kHz) 51000 packets of 144 samples from 2017-09-08T15:39:10.869.999. Part 2/147

Processed Fri Sep 8 17:47:07 2017 by ELM ver.2012-10-06 from 001__elm20170908_153909__dat00.bin

