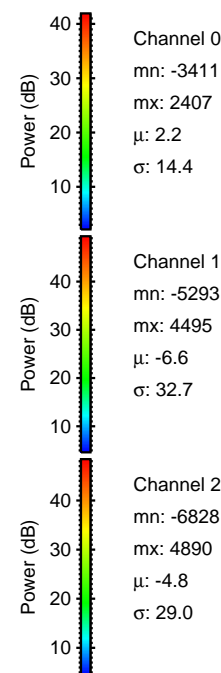
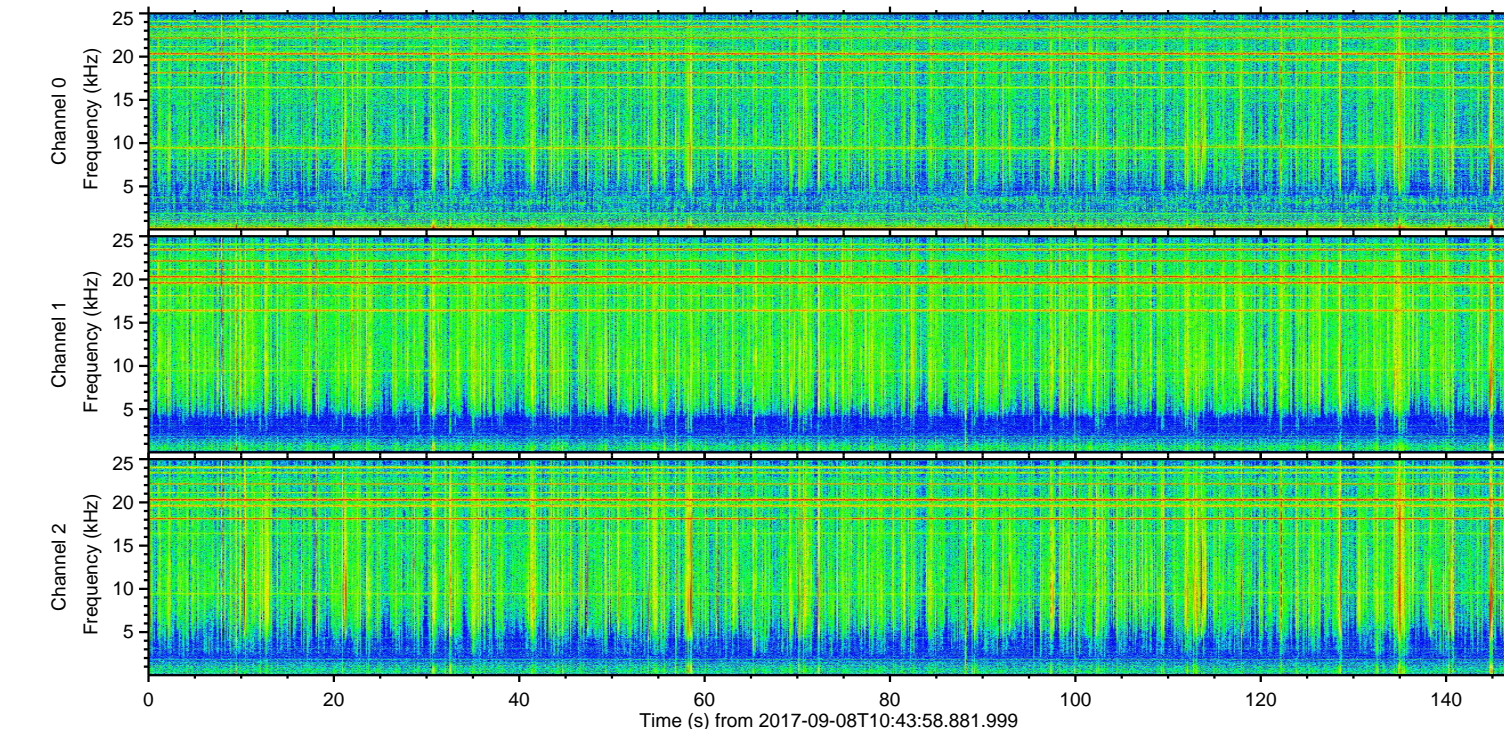
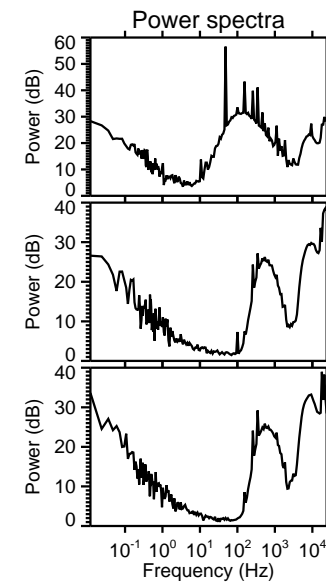
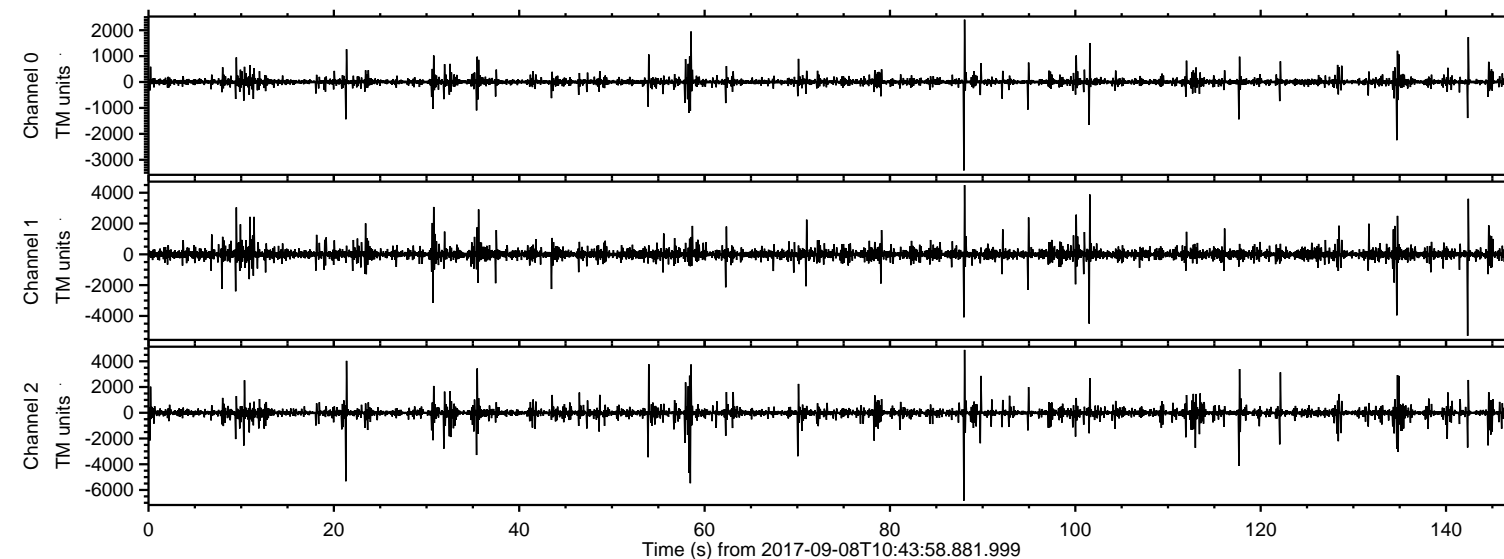
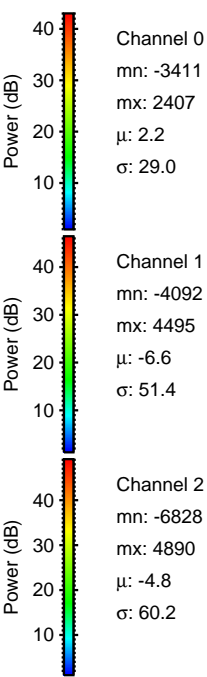
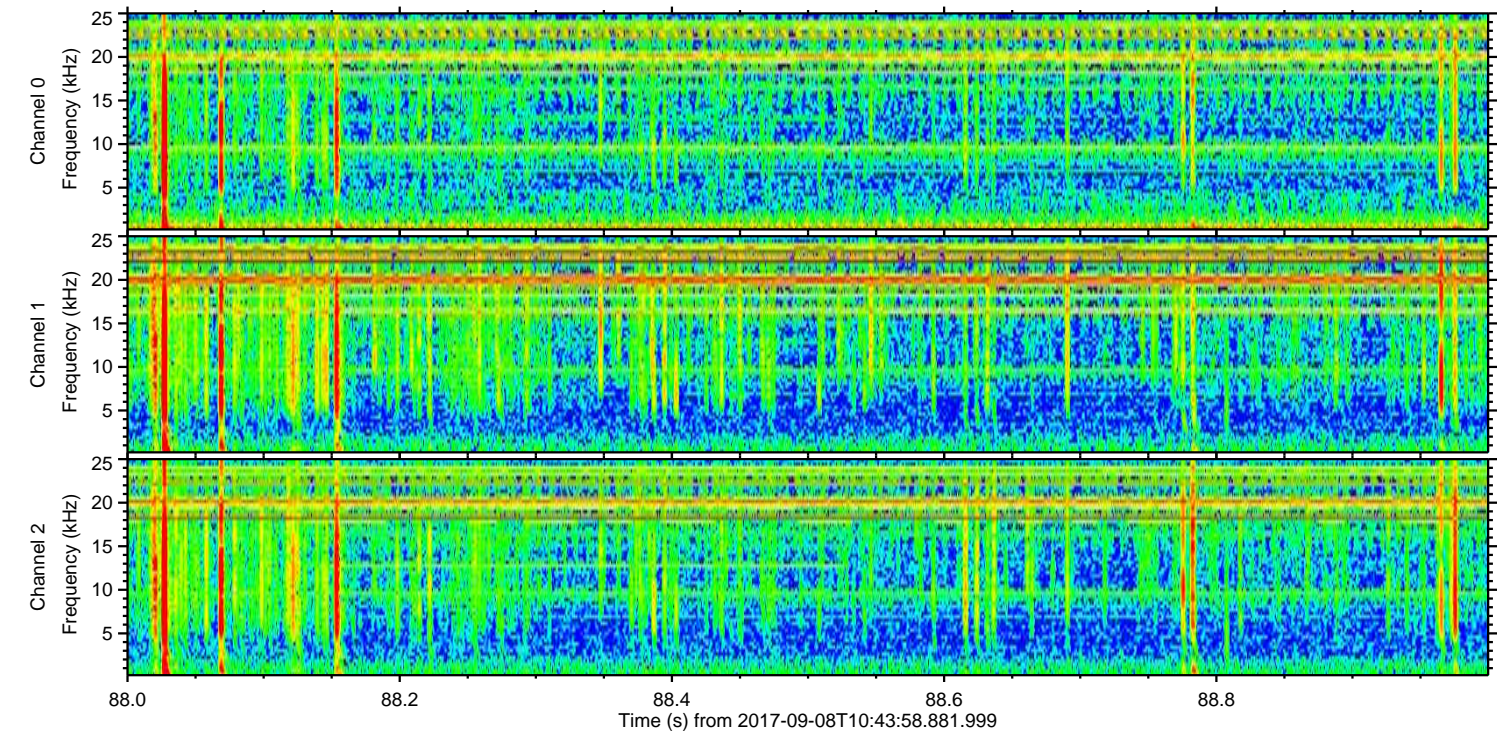
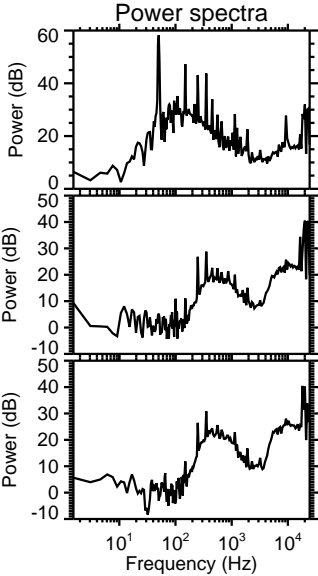
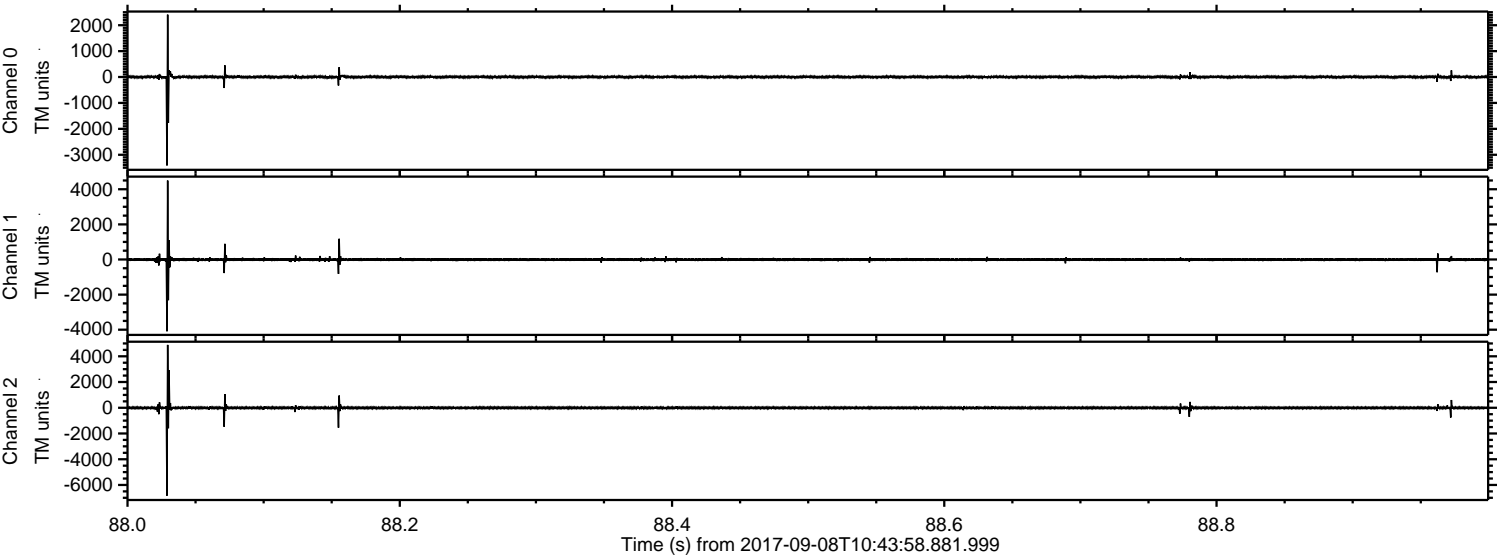


ELMAVAN 3D WAVEFORMS (Measured data sampled at 50 kHz) 51000 packets of 144 samples from 2017-09-08T10:43:58.881.999.

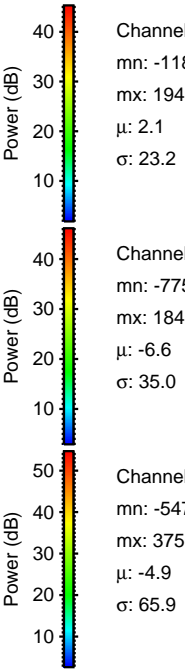
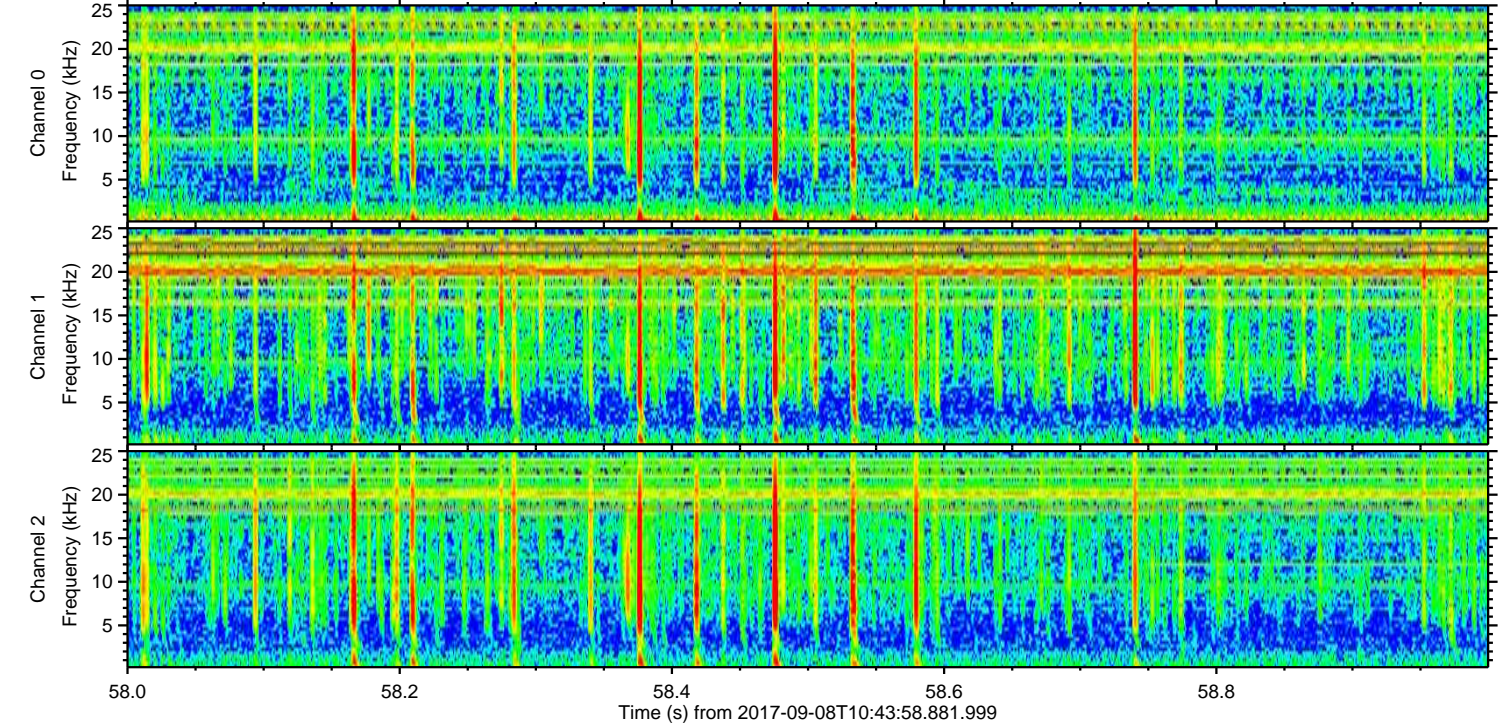
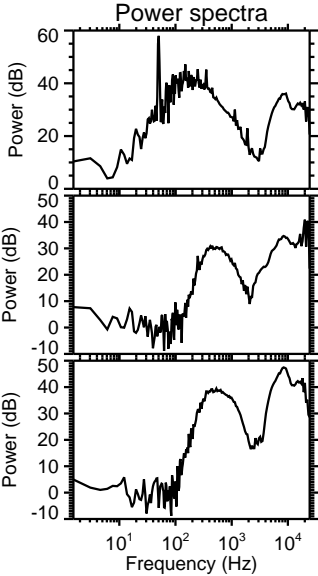
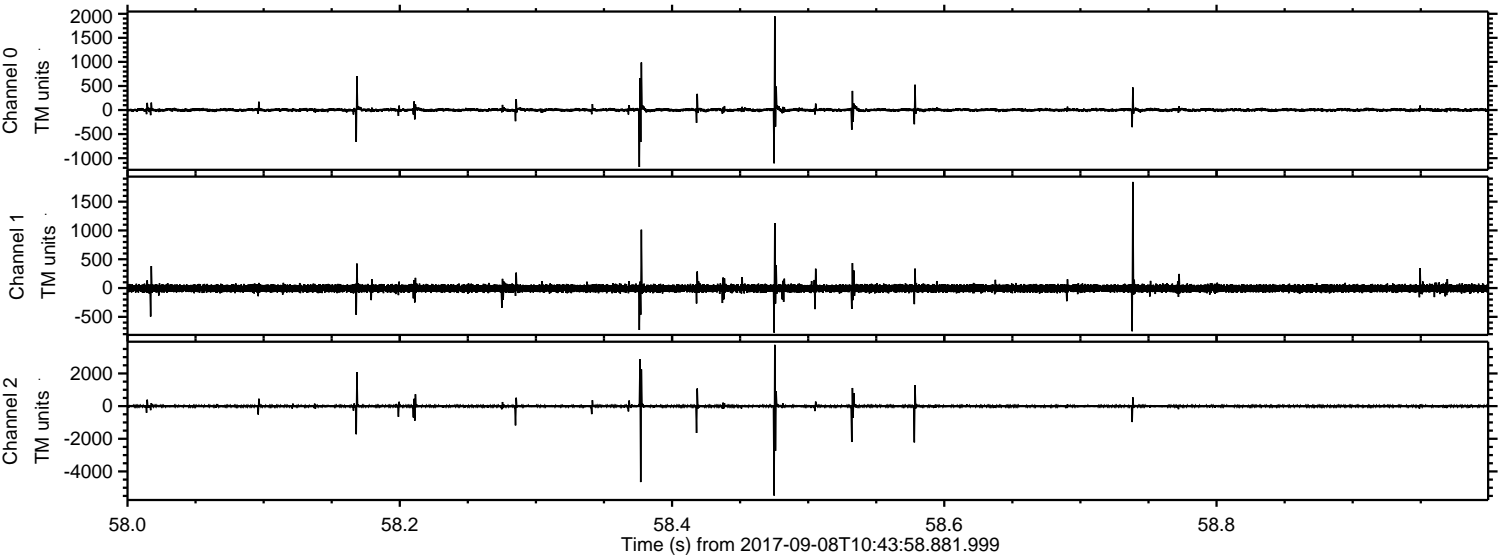
Processed Fri Sep 8 12:52:06 2017 by ELM ver.2012-10-06 from 001__elm20170908_104357__dat00.bin



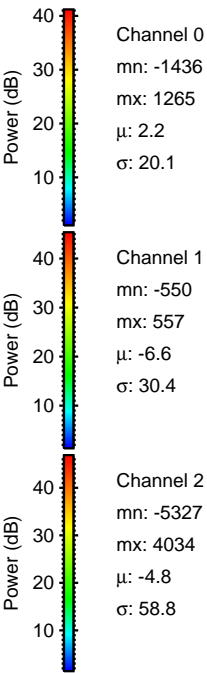
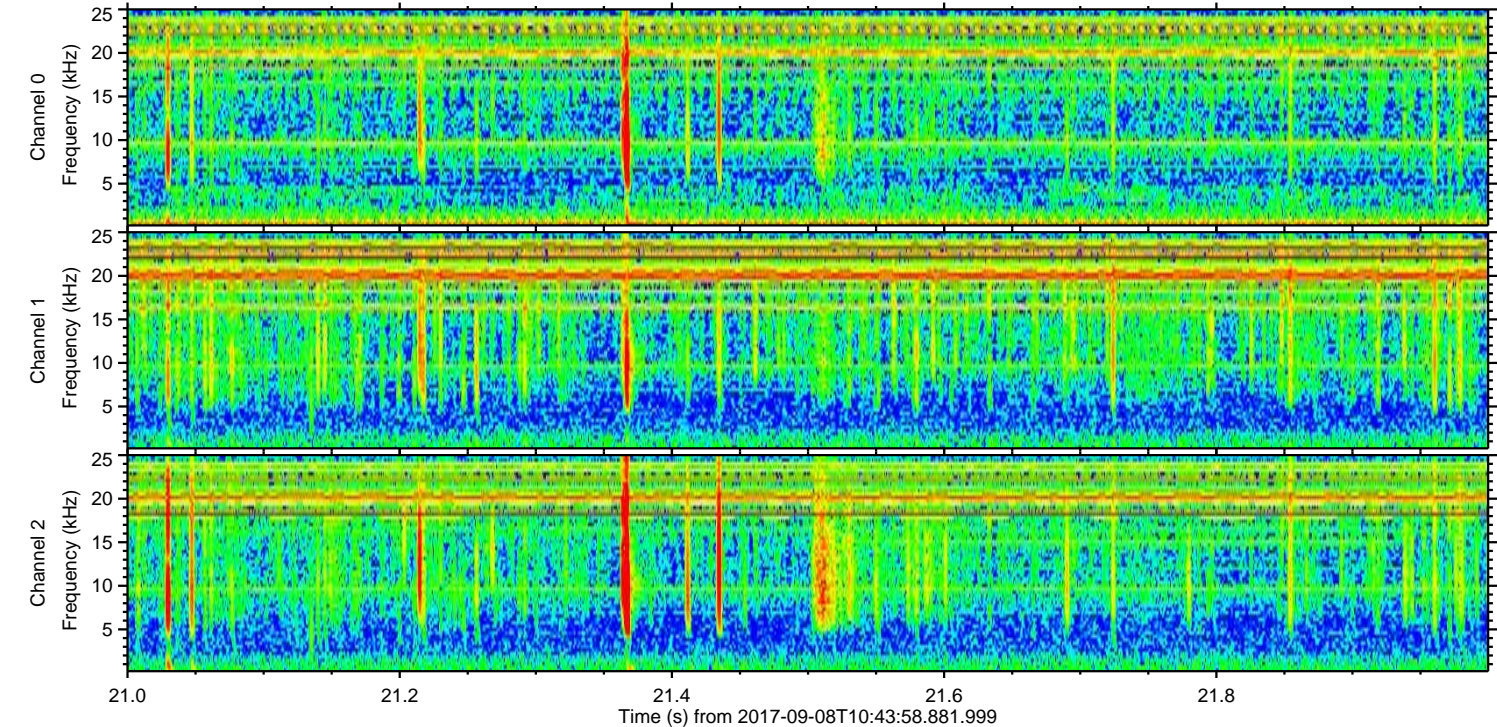
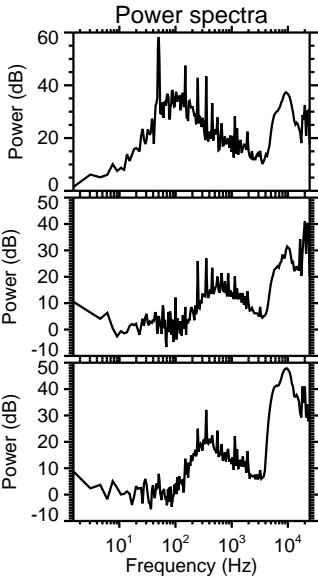
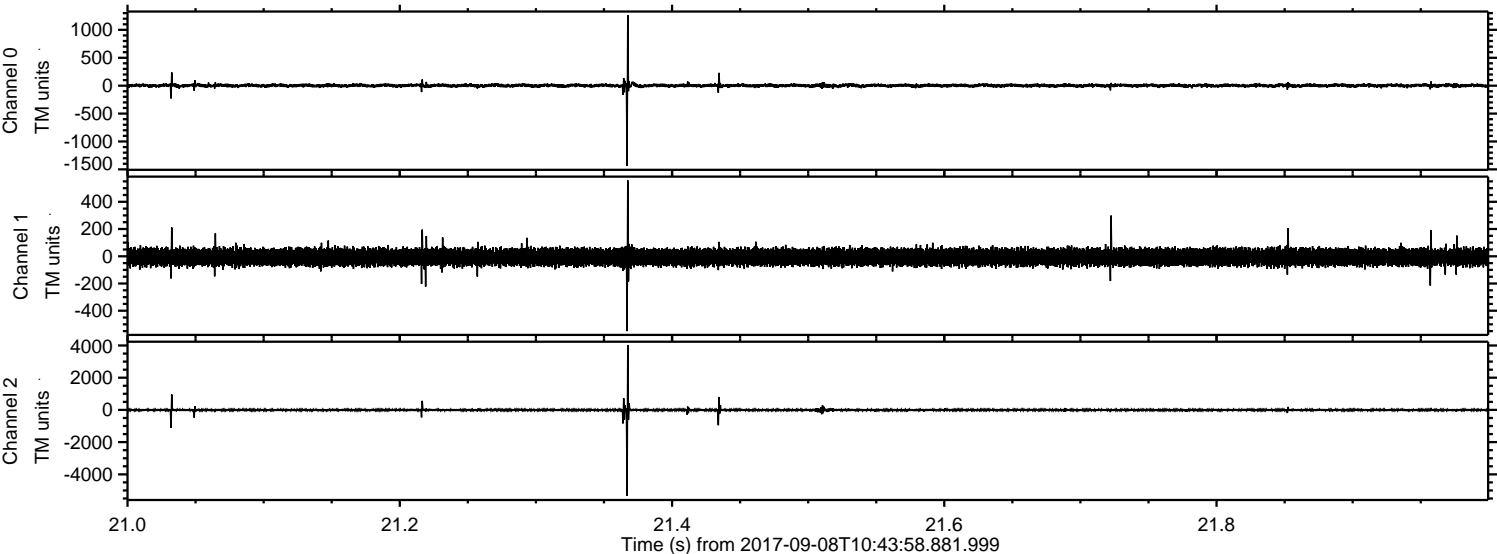
Processed Fri Sep 8 12:52:11 2017 by ELM ver.2012-10-06 from 001__elm20170908_104357__dat00.bin



Processed Fri Sep 8 12:52:12 2017 by ELM ver.2012-10-06 from 001__elm20170908_104357__dat00.bin

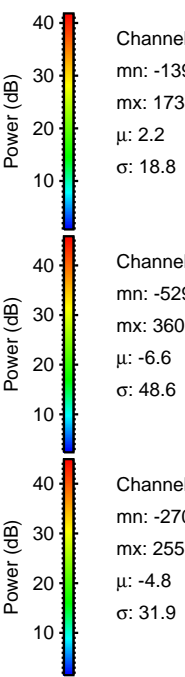
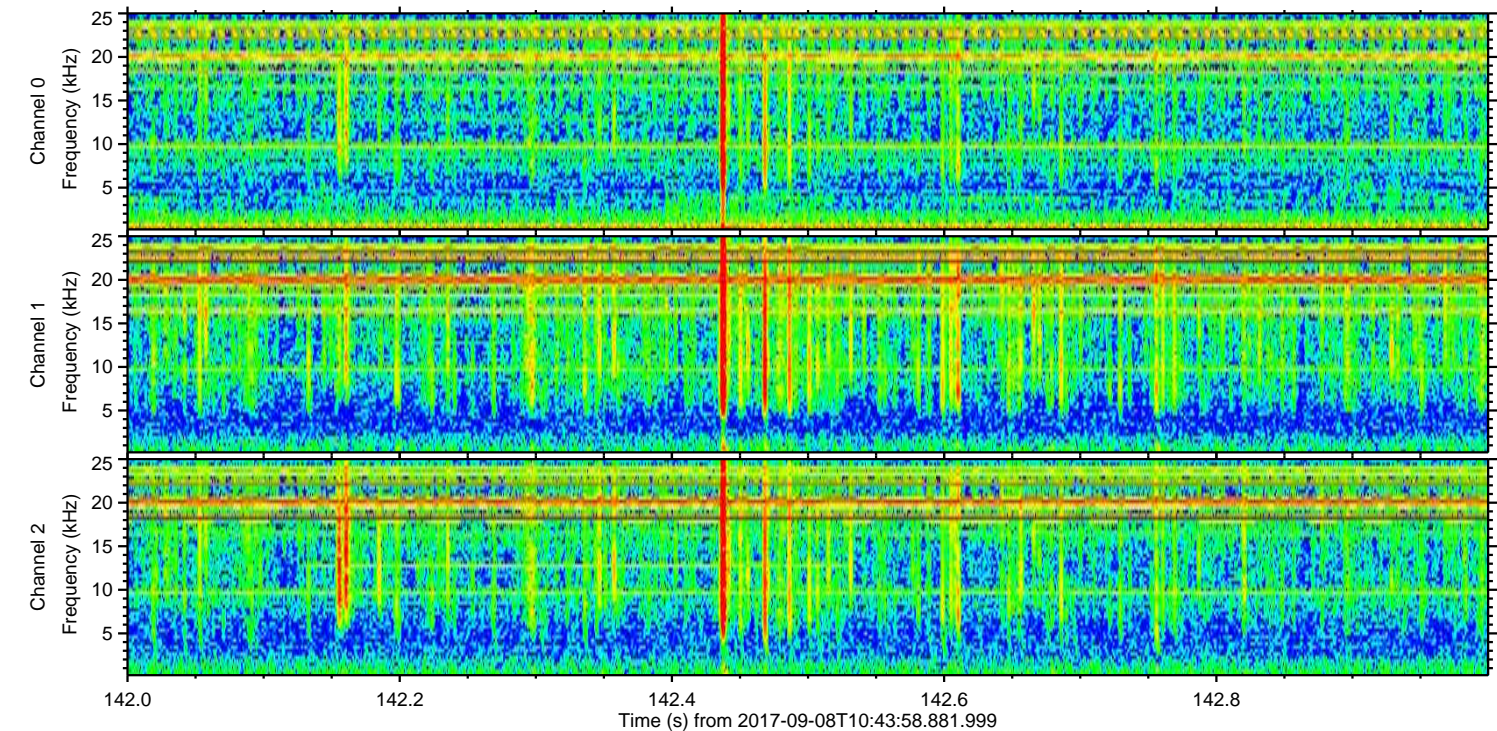
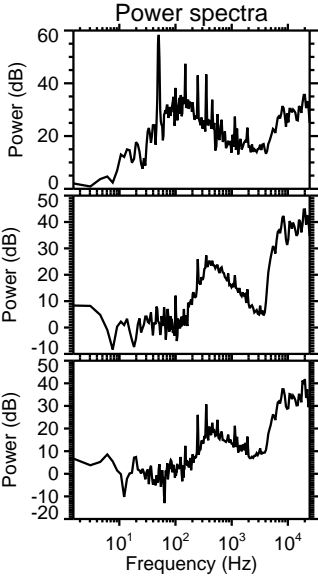
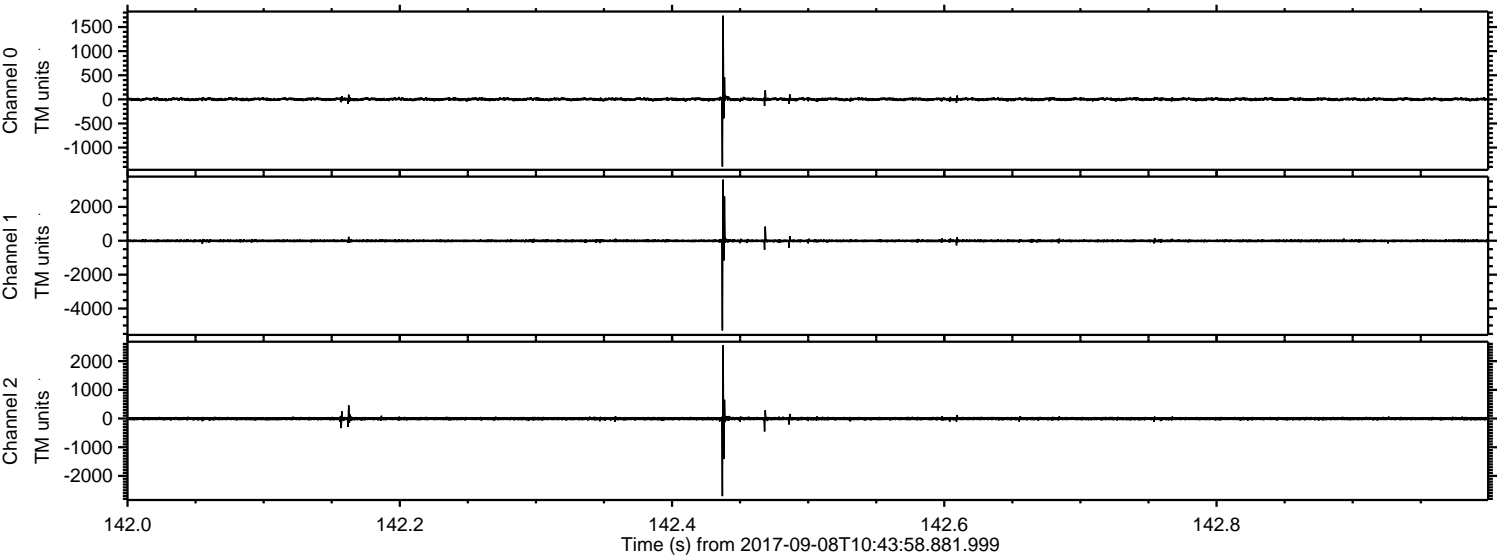


Processed Fri Sep 8 12:52:13 2017 by ELM ver.2012-10-06 from 001__elm20170908_104357__dat00.bin



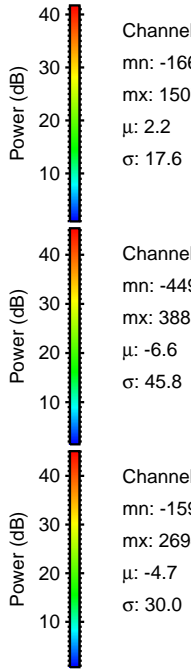
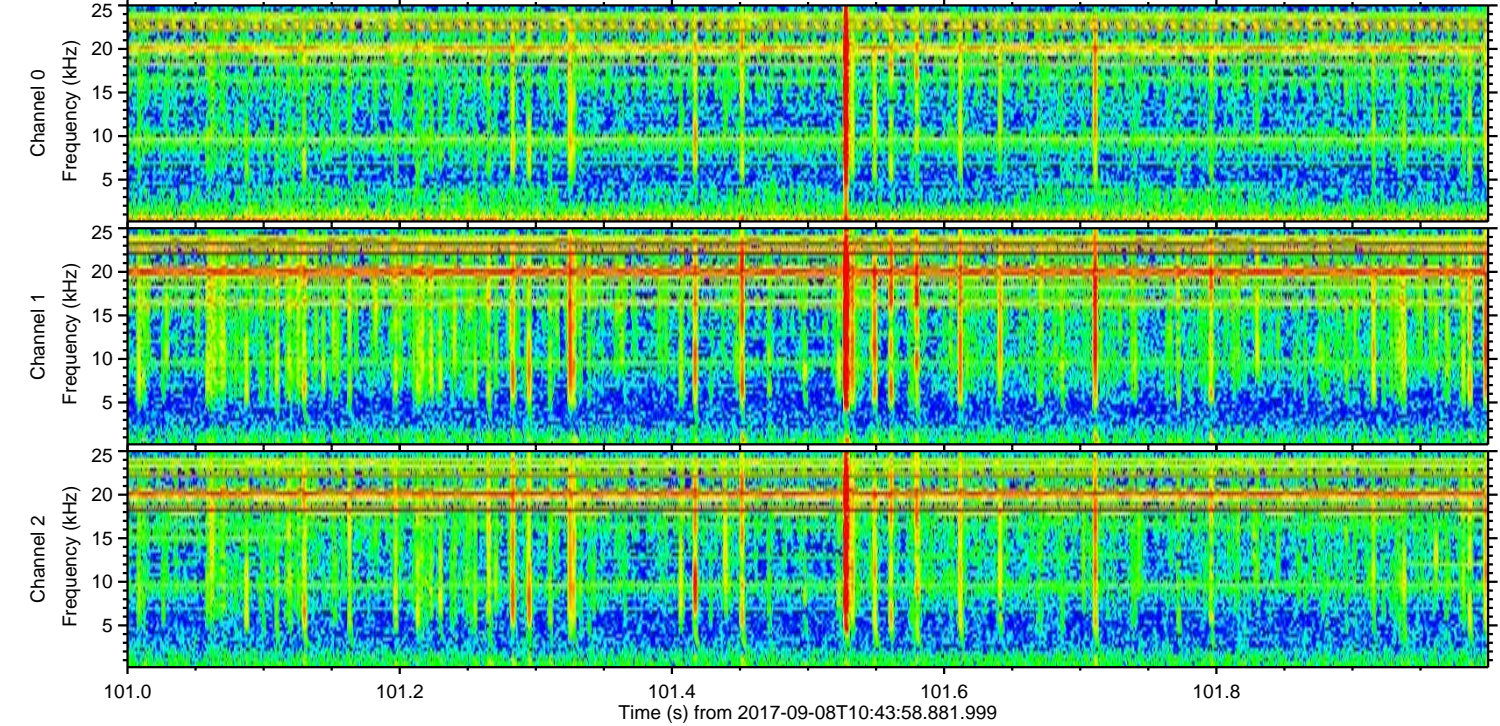
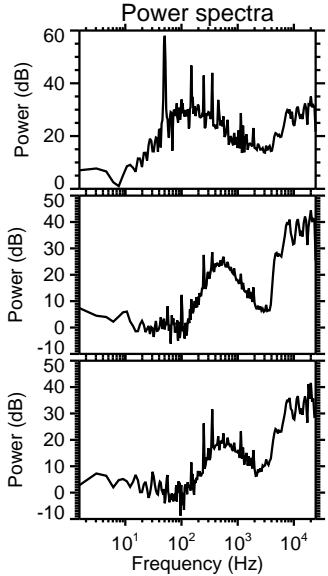
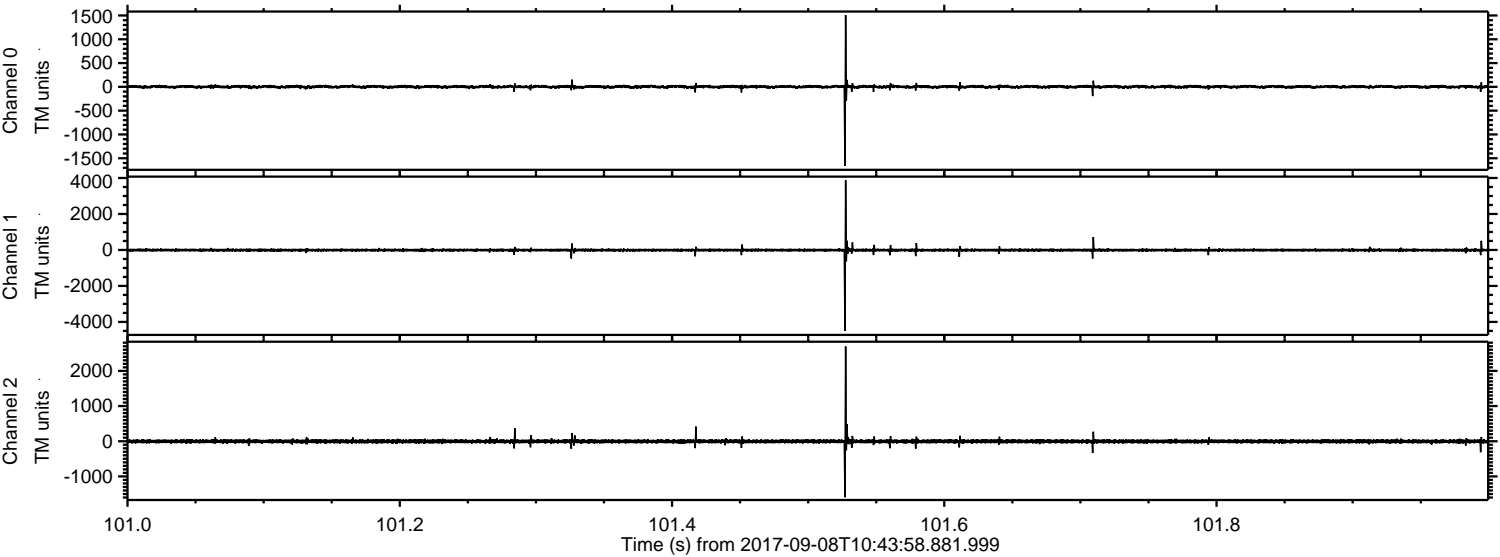
ELMAVAN 3D WAVEFORMS (Measured data sampled at 50 kHz) 51000 packets of 144 samples from 2017-09-08T10:43:58.881.999. Part 143/147

Processed Fri Sep 8 12:52:14 2017 by ELM ver.2012-10-06 from 001__elm20170908_104357__dat00.bin



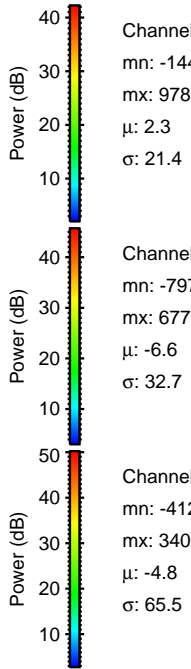
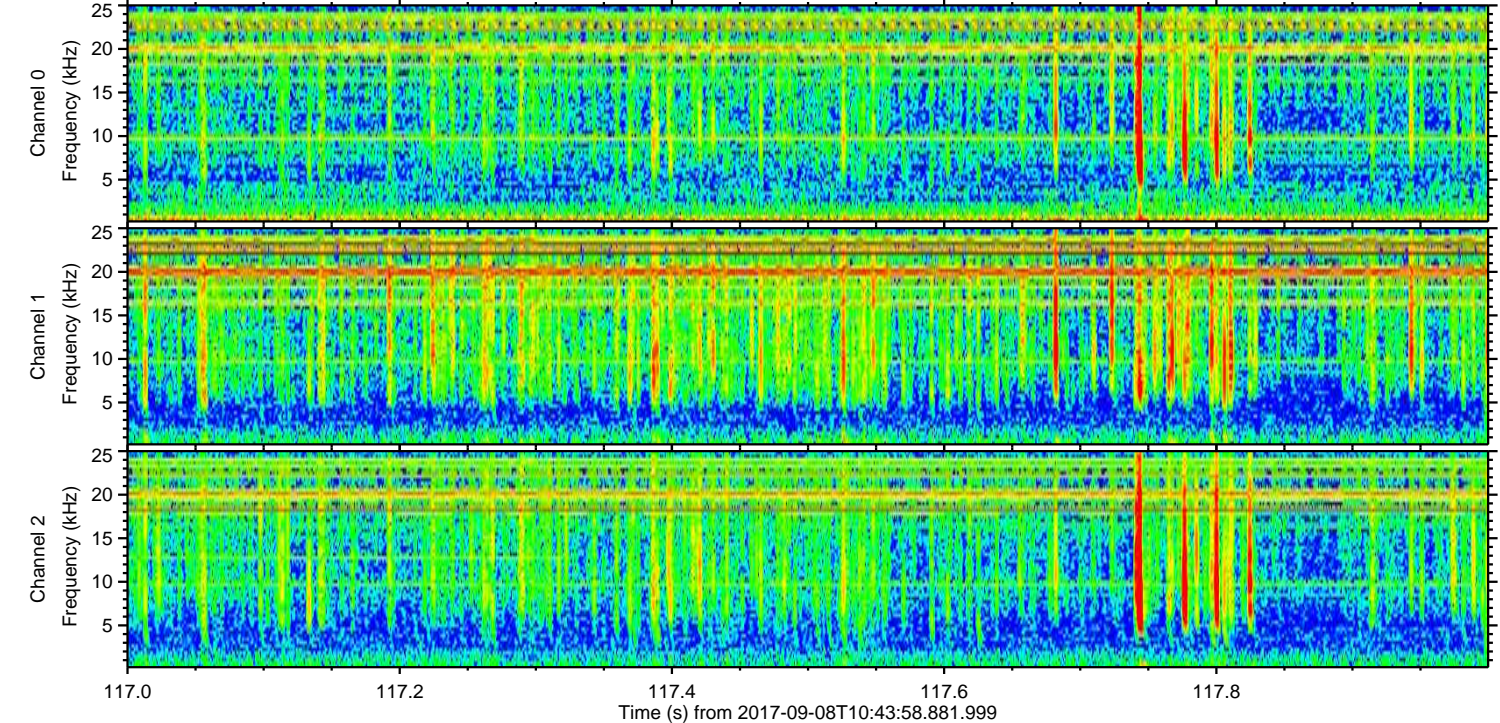
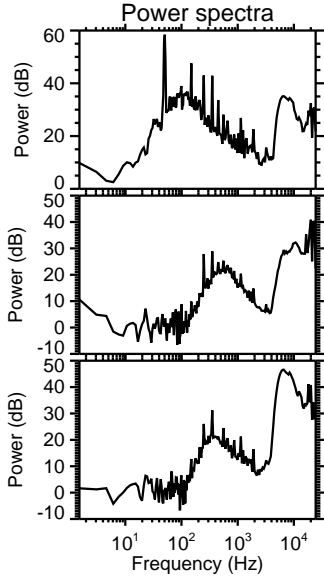
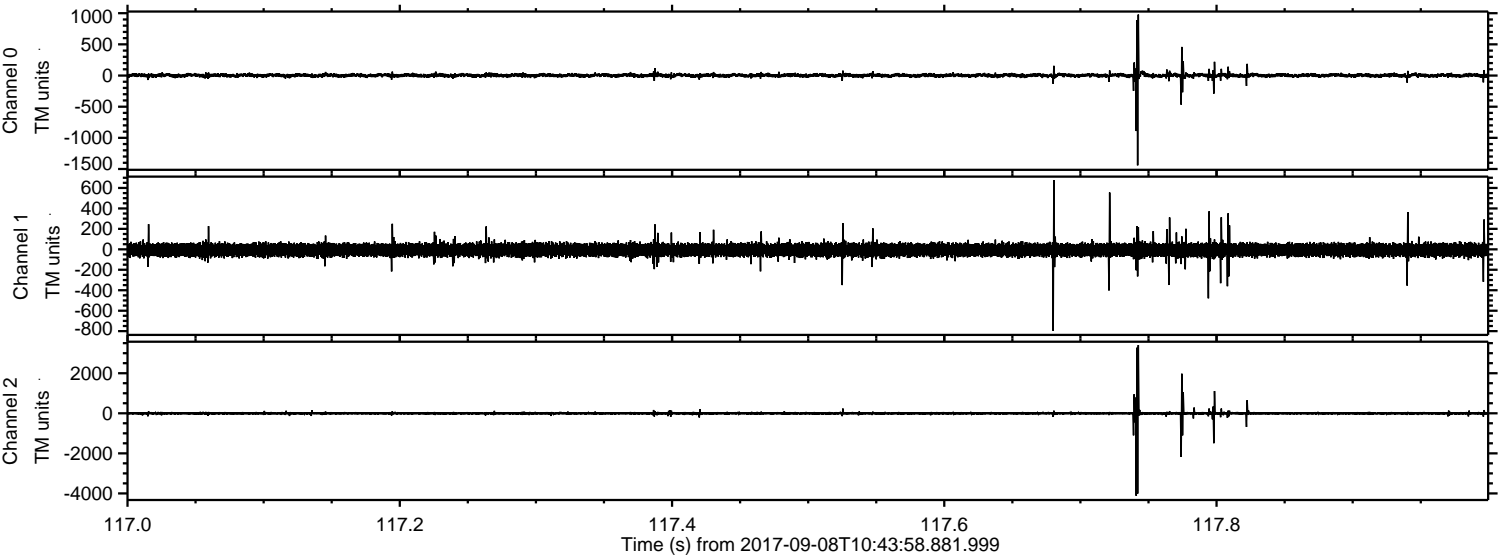
ELMAVAN 3D WAVEFORMS (Measured data sampled at 50 kHz) 51000 packets of 144 samples from 2017-09-08T10:43:58.881.999. Part 102/147

Processed Fri Sep 8 12:52:14 2017 by ELM ver.2012-10-06 from 001__elm20170908_104357__dat00.bin



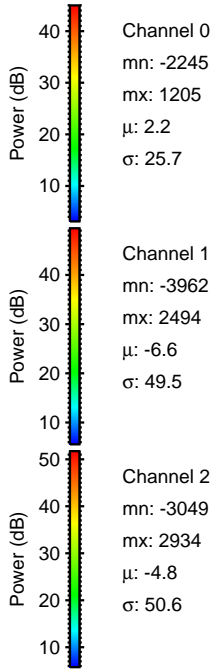
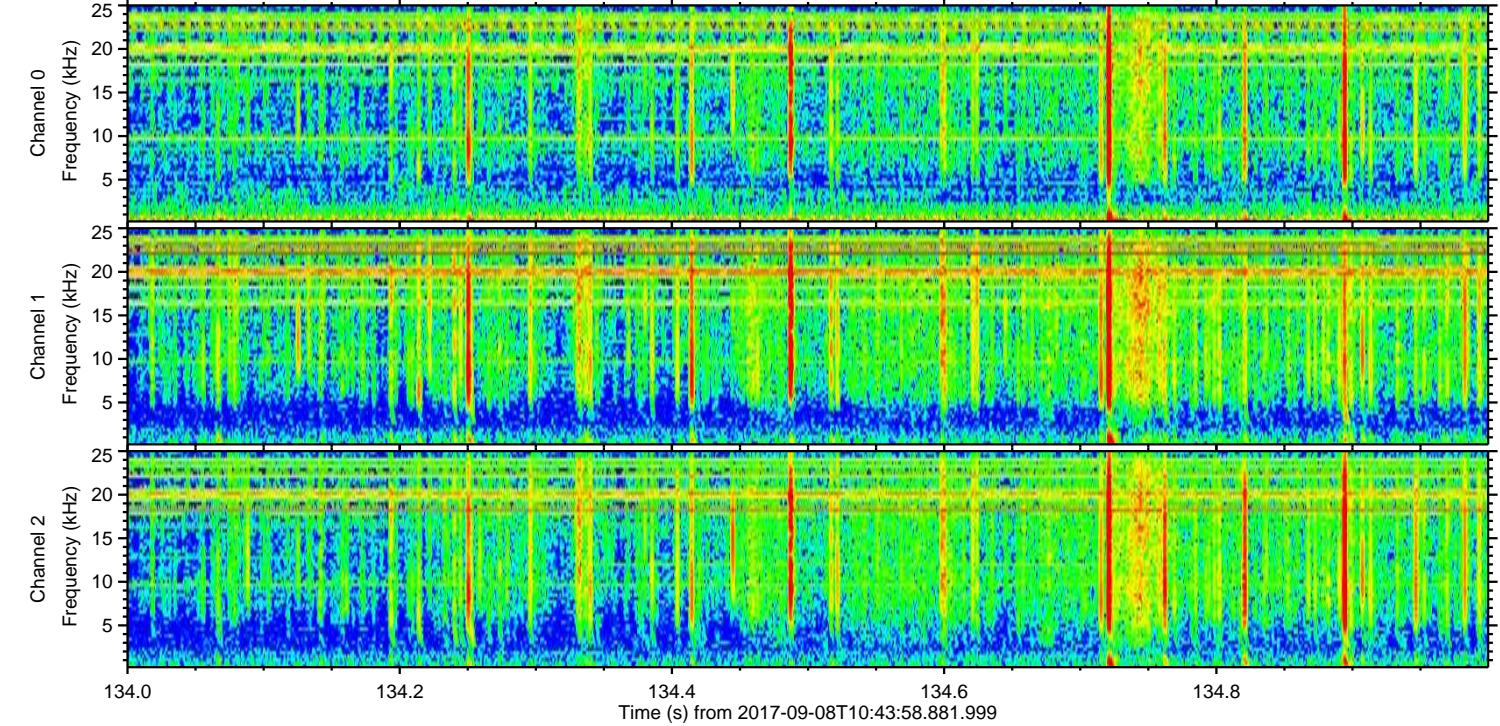
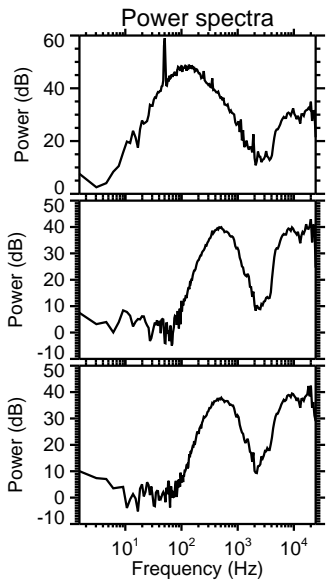
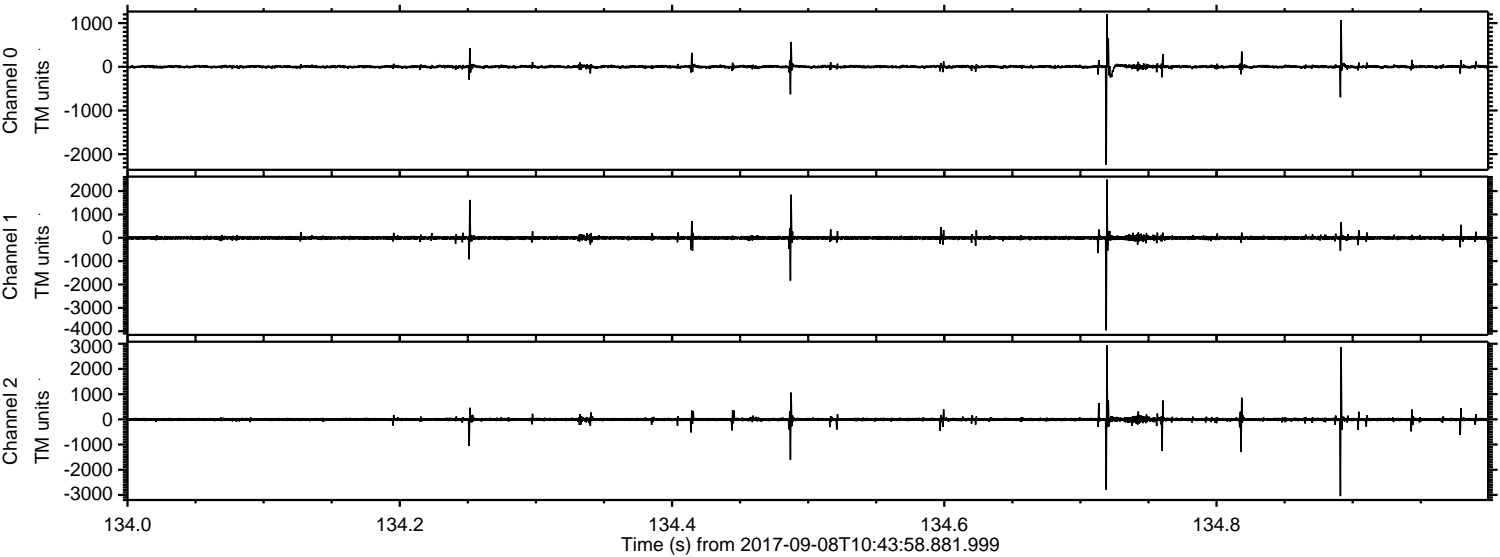
ELMAVAN 3D WAVEFORMS (Measured data sampled at 50 kHz) 51000 packets of 144 samples from 2017-09-08T10:43:58.881.999. Part 118/147

Processed Fri Sep 8 12:52:15 2017 by ELM ver.2012-10-06 from 001__elm20170908_104357__dat00.bin



ELMAVAN 3D WAVEFORMS (Measured data sampled at 50 kHz) 51000 packets of 144 samples from 2017-09-08T10:43:58.881.999. Part 135/147

Processed Fri Sep 8 12:52:16 2017 by ELM ver.2012-10-06 from 001__elm20170908_104357__dat00.bin

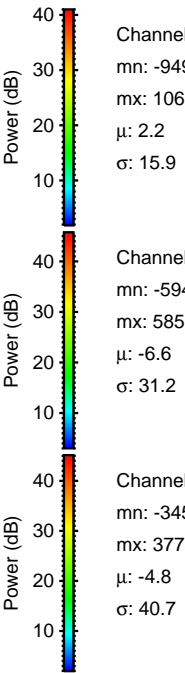
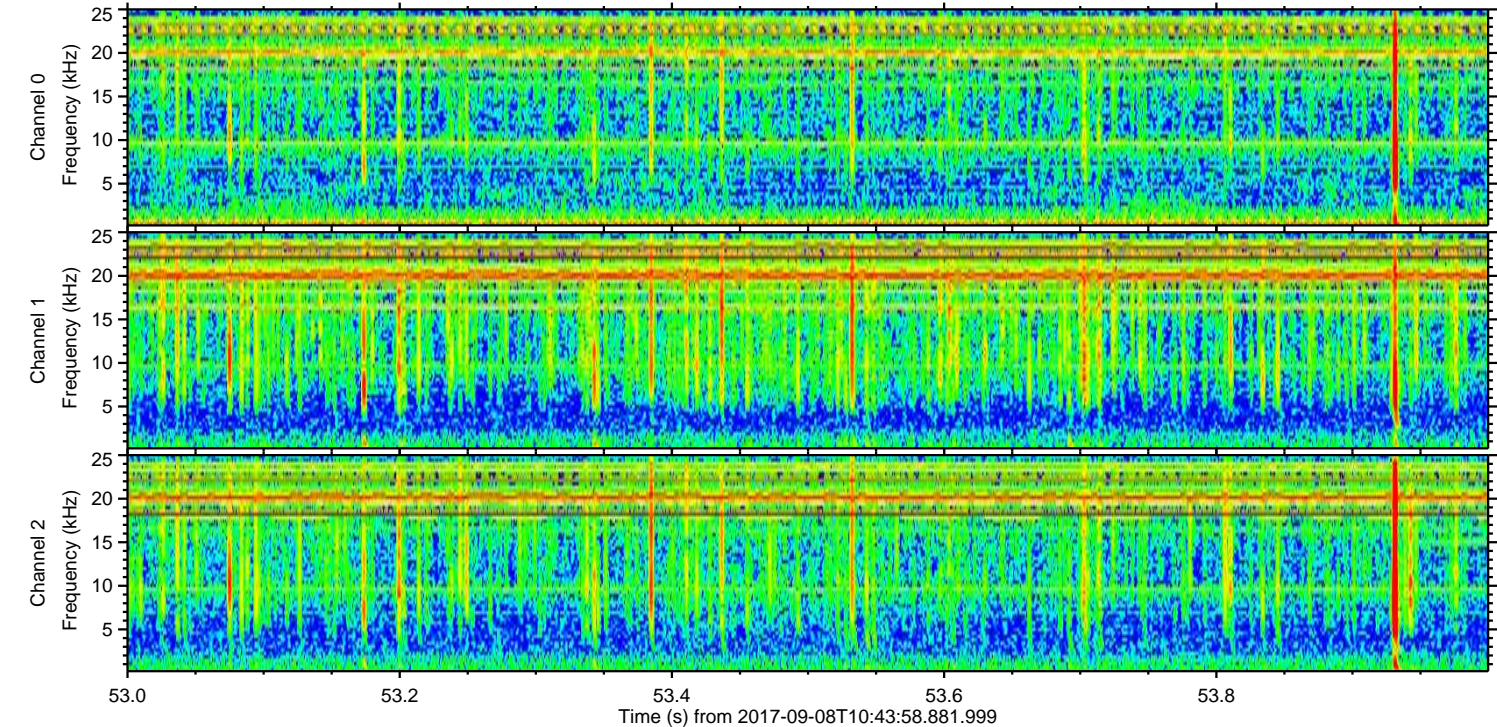
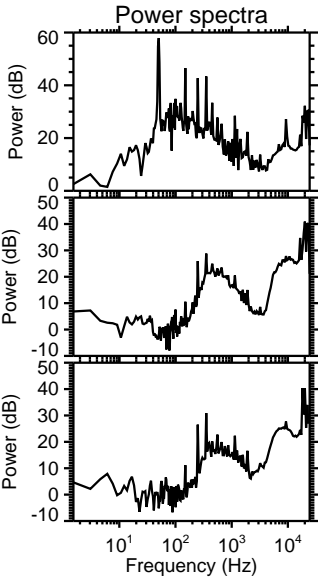
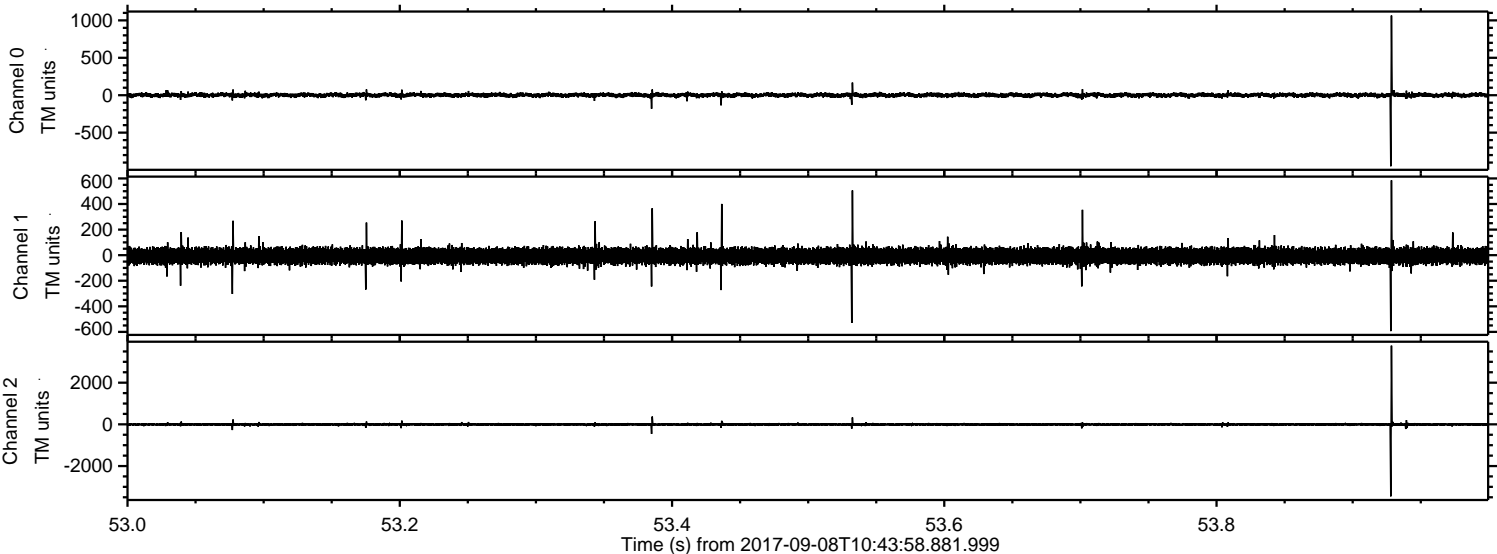


Channel 0
mn: -2245
mx: 1205
 μ : 2.2
 σ : 25.7

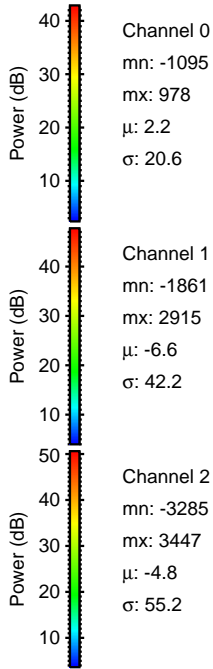
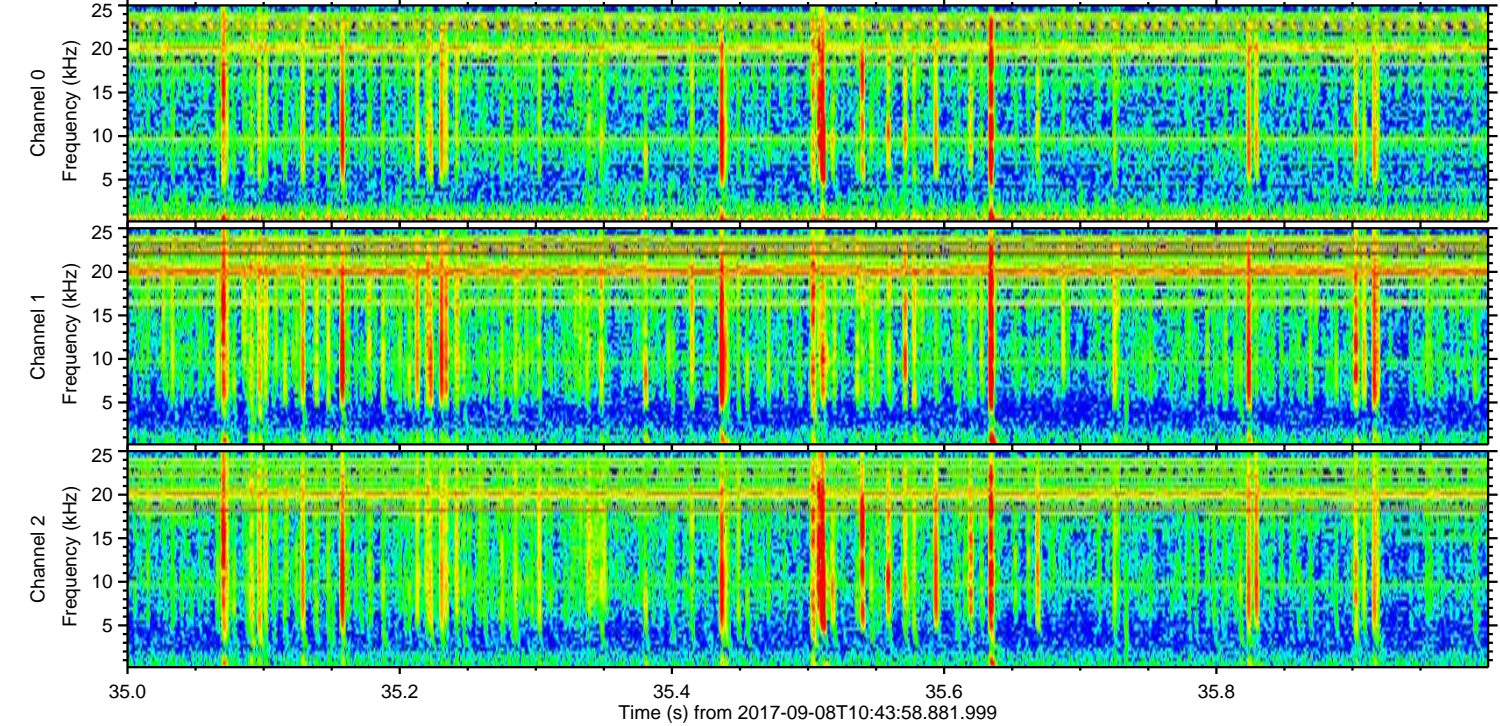
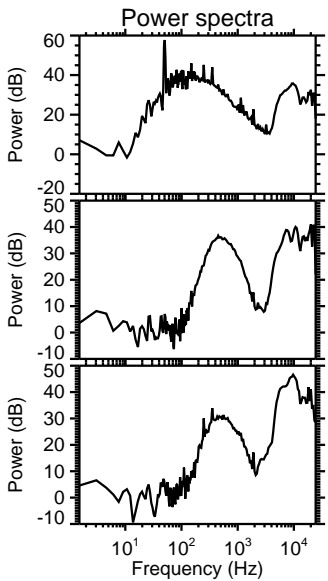
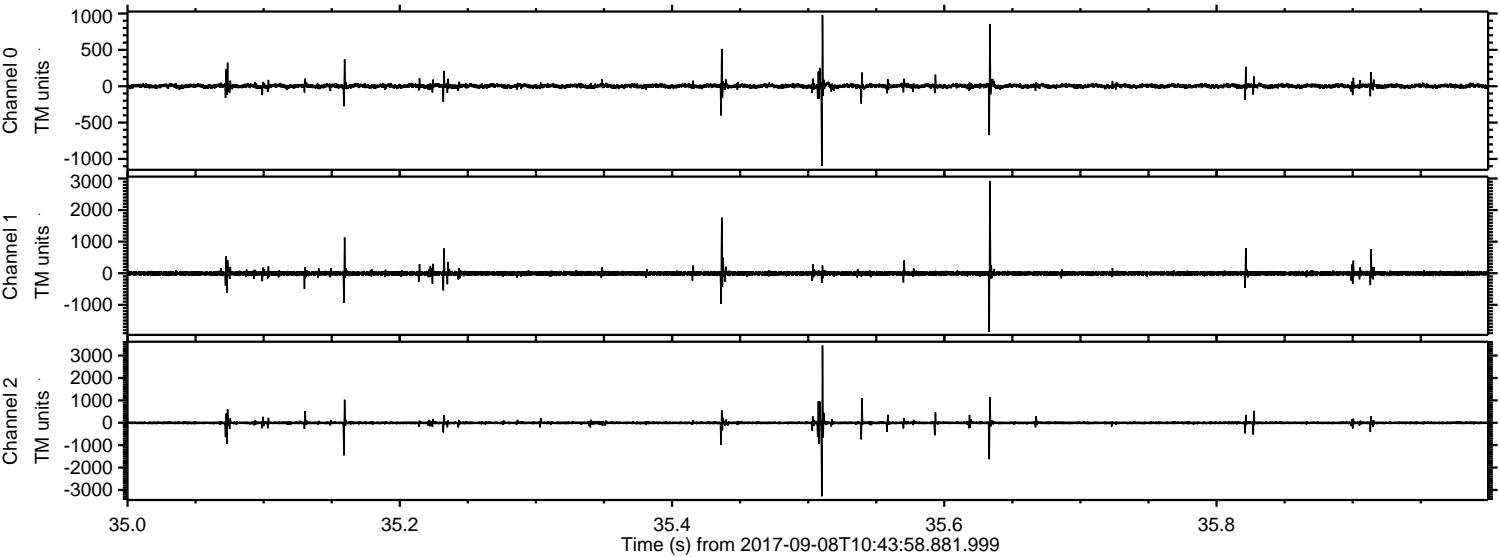
Channel 1
mn: -3962
mx: 2494
 μ : -6.6
 σ : 49.5

Channel 2
mn: -3049
mx: 2934
 μ : -4.8
 σ : 50.6

Processed Fri Sep 8 12:52:16 2017 by ELM ver.2012-10-06 from 001__elm20170908_104357__dat00.bin



Processed Fri Sep 8 12:52:17 2017 by ELM ver.2012-10-06 from 001__elm20170908_104357__dat00.bin



Channel 0
mn: -1095
mx: 978
 μ : 2.2
 σ : 20.6

Channel 1
mn: -1861
mx: 2915
 μ : -6.6
 σ : 42.2

Channel 2
mn: -3285
mx: 3447
 μ : -4.8
 σ : 55.2

