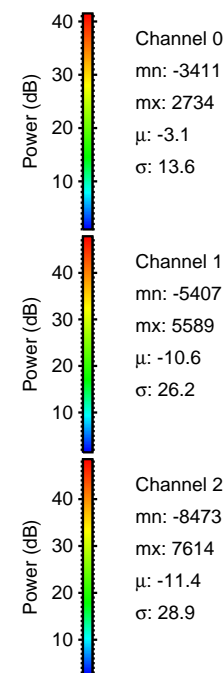
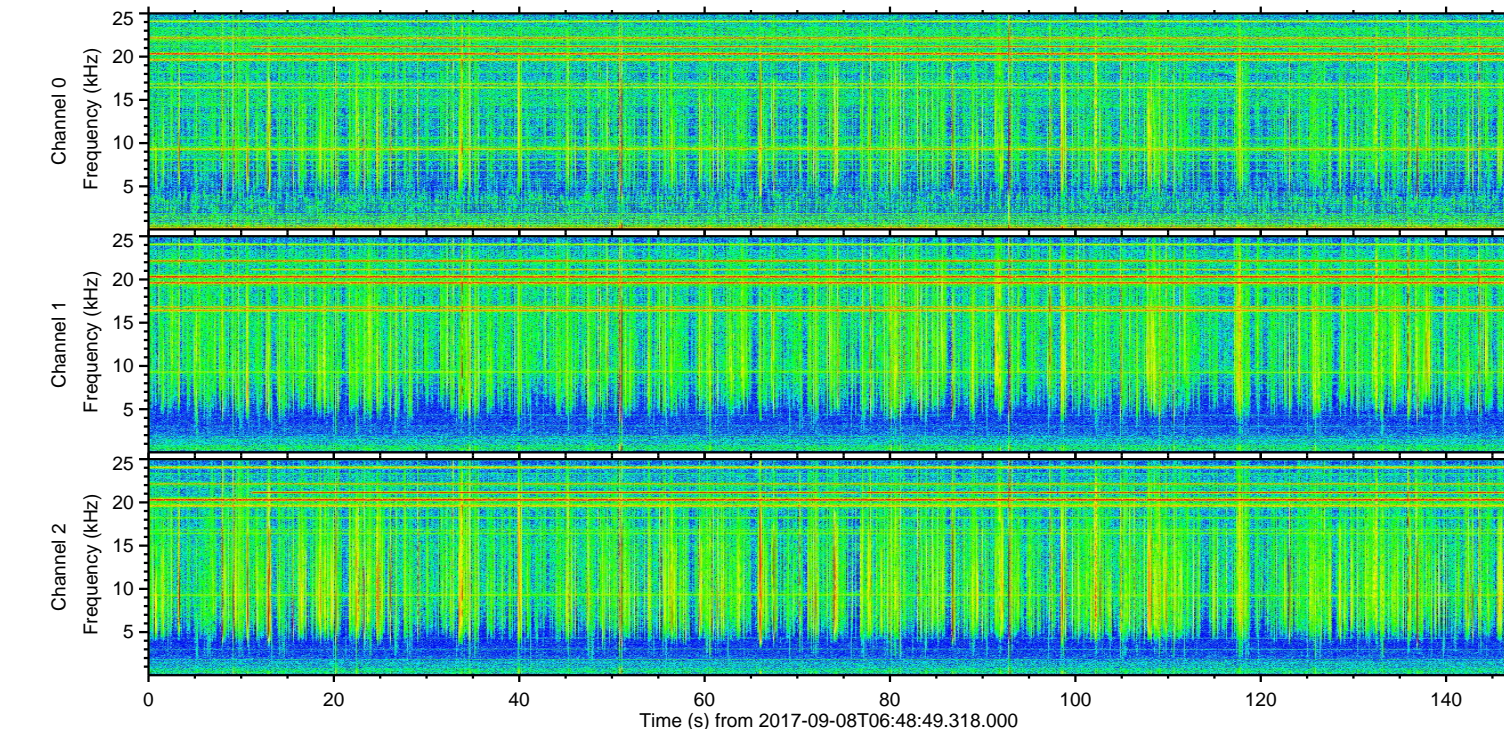
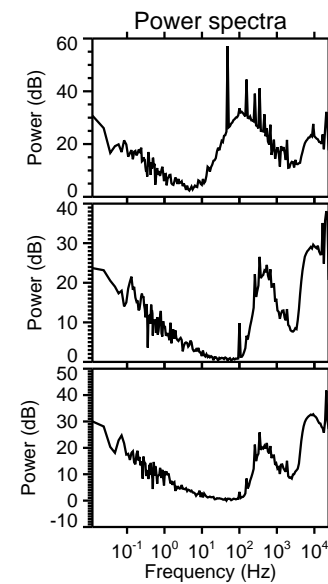
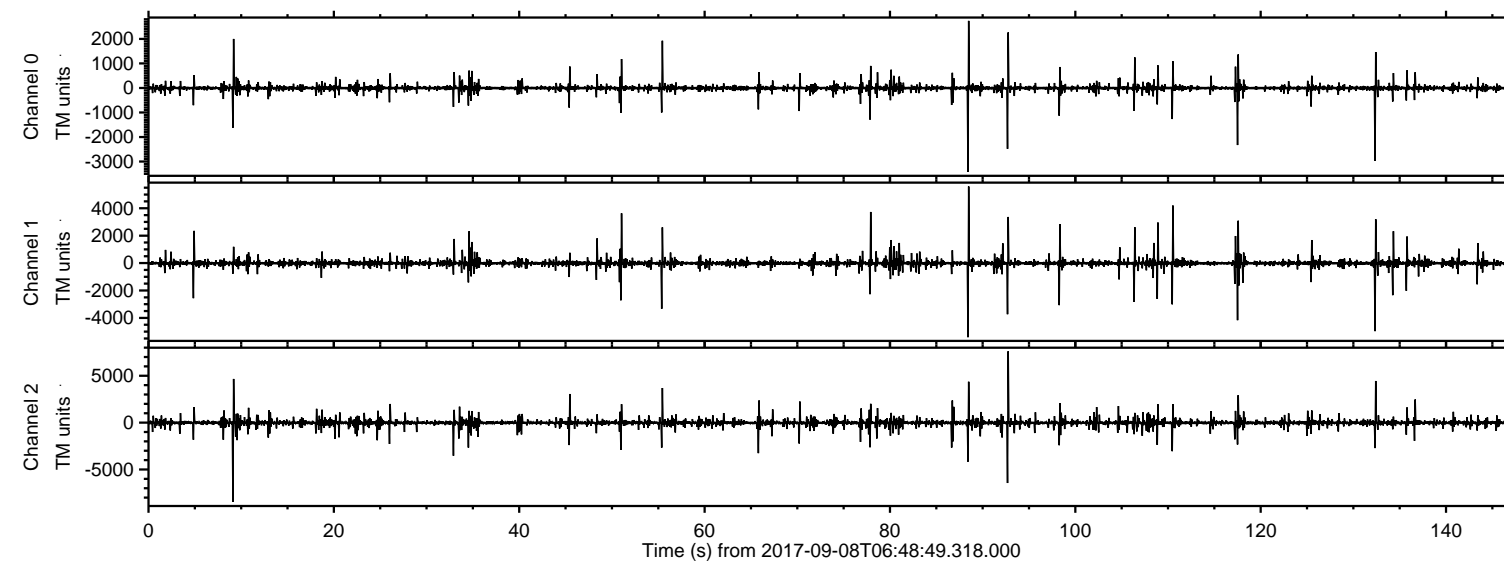
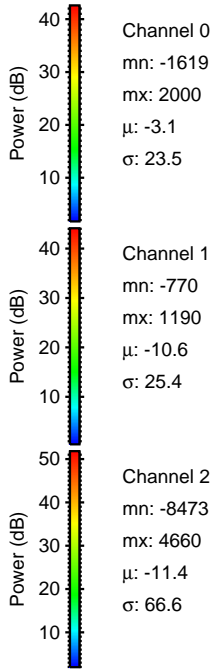
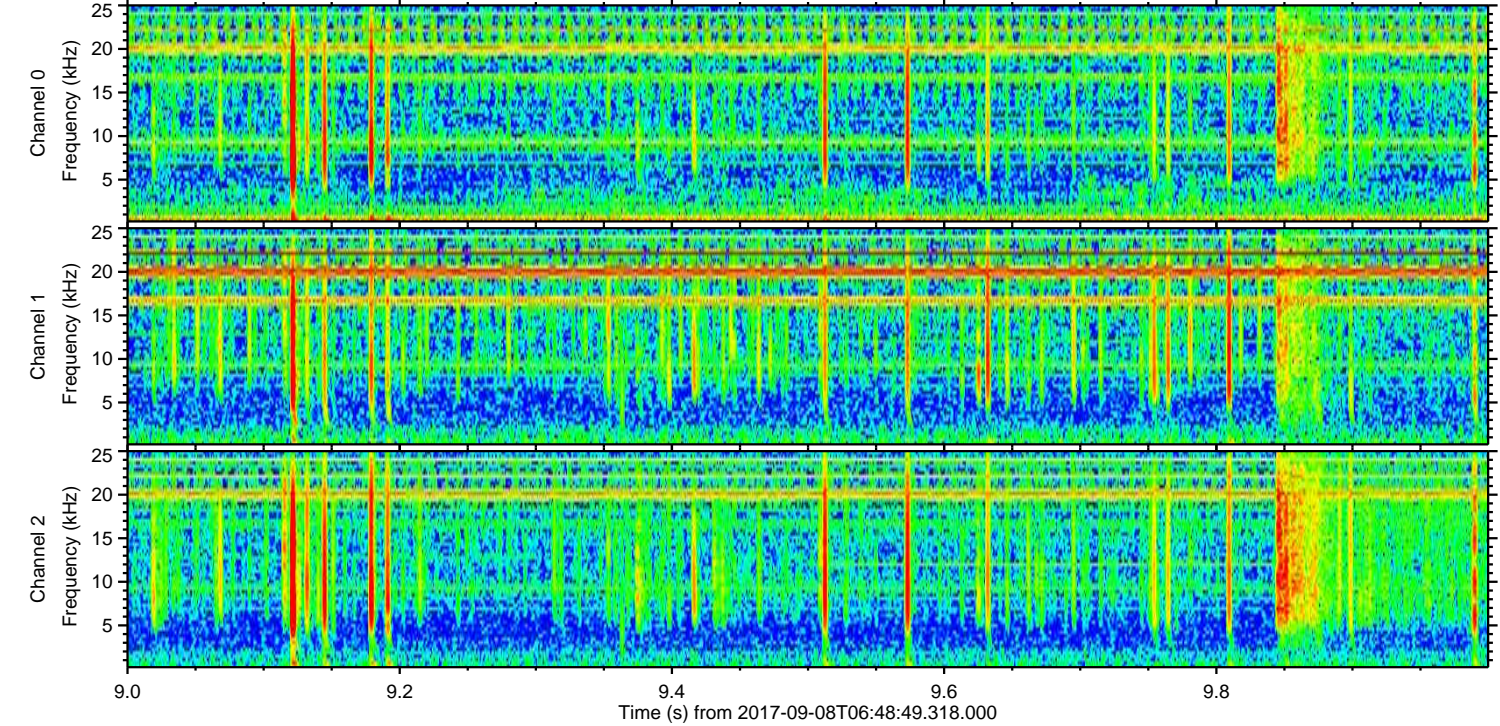
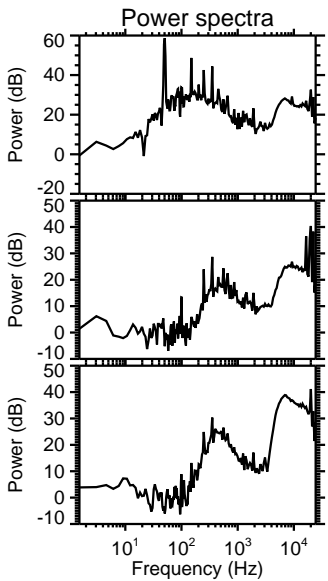
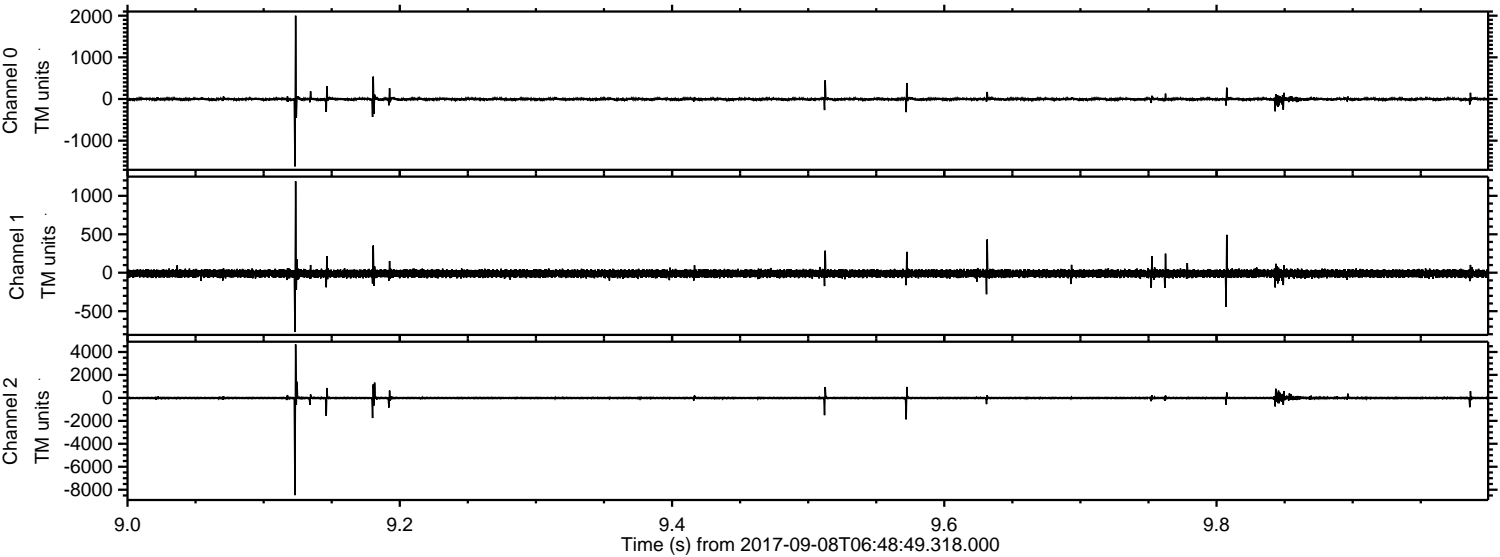


ELMAVAN 3D WAVEFORMS (Measured data sampled at 50 kHz) 51000 packets of 144 samples from 2017-09-08T06:48:49.318.000.

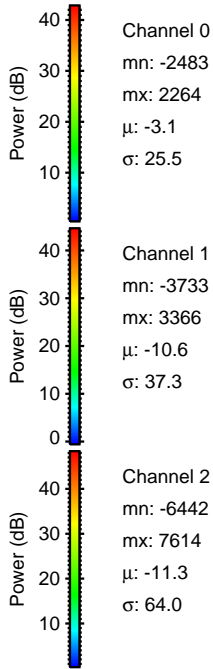
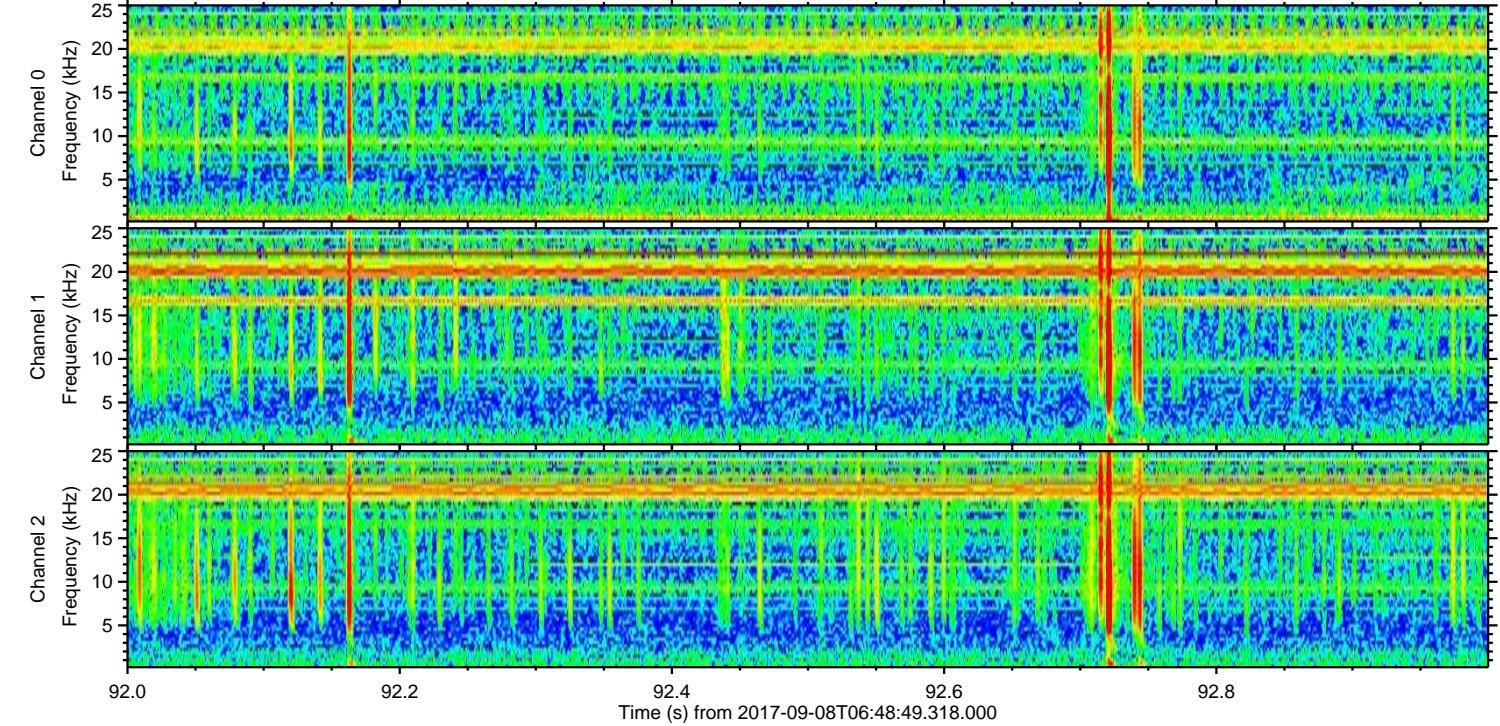
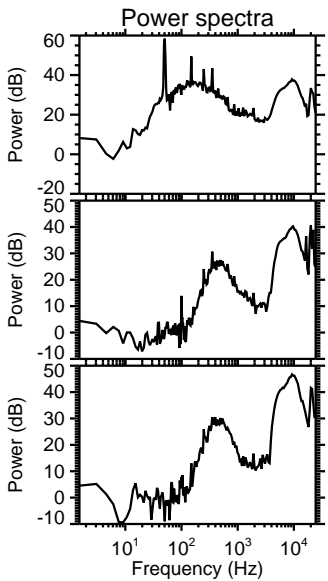
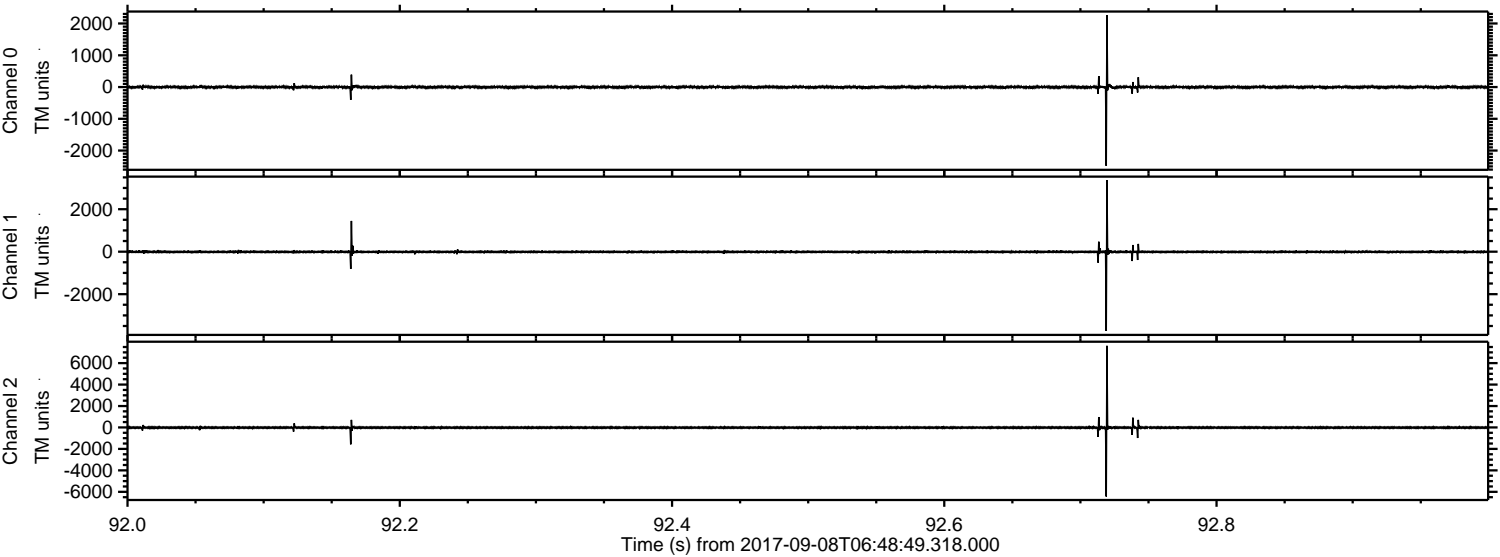
Processed Fri Sep 8 08:56:27 2017 by ELM ver.2012-10-06 from 001__elm20170908_064848__dat00.bin



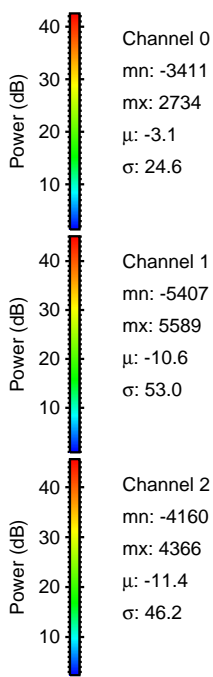
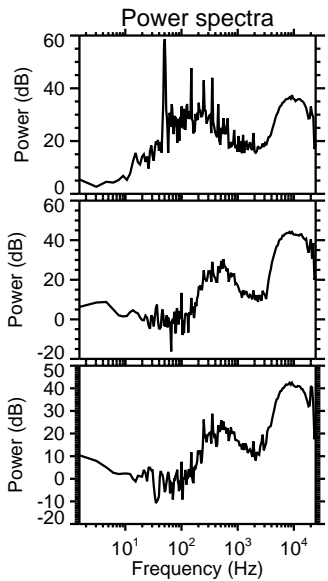
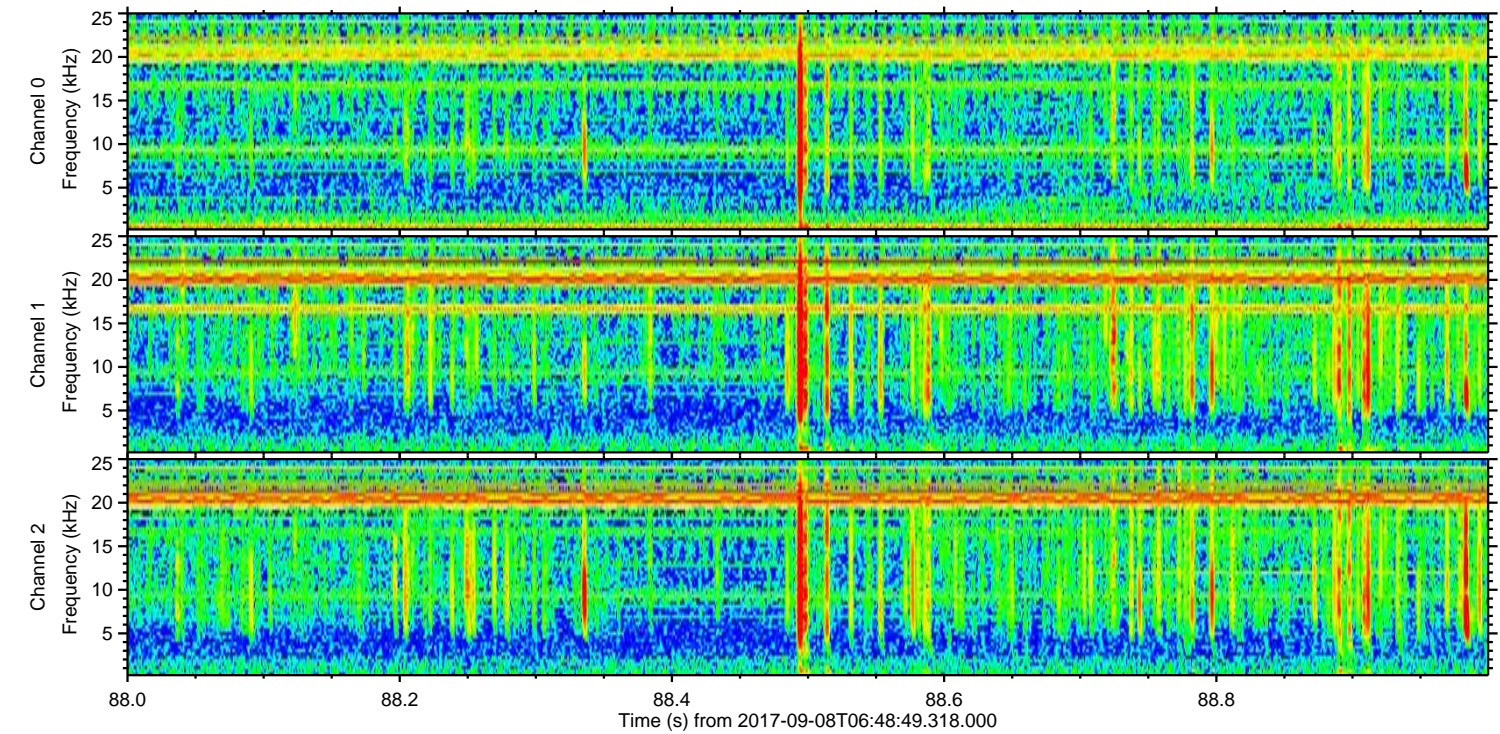
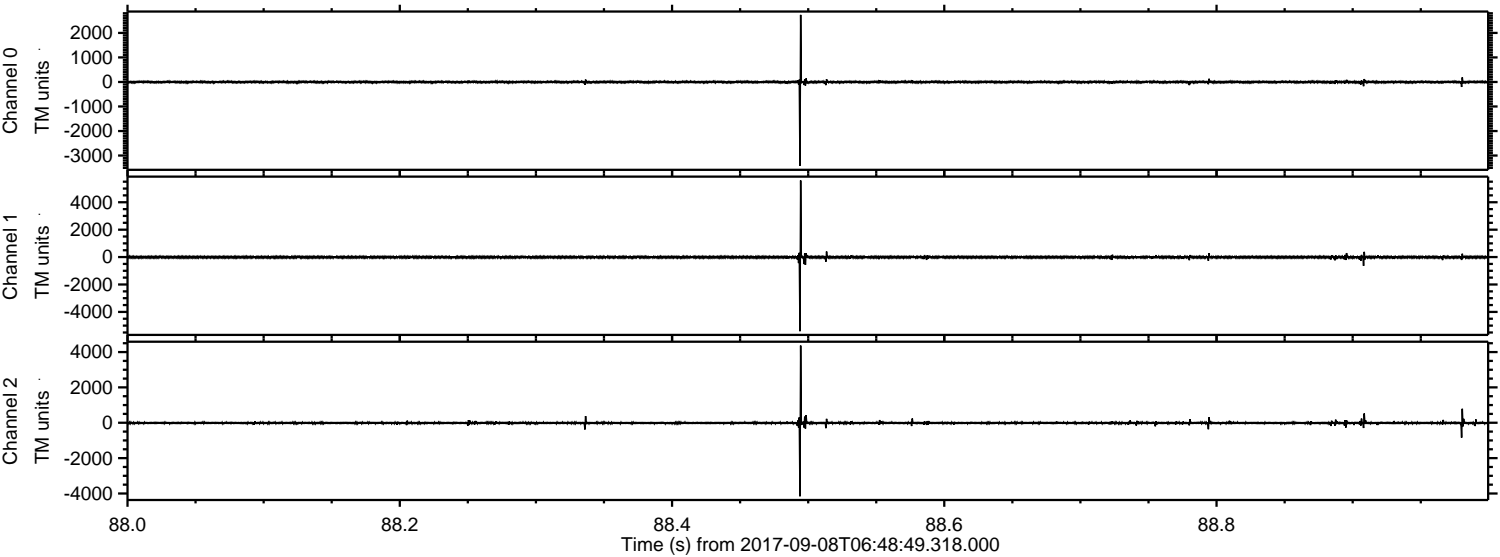
Processed Fri Sep 8 08:56:34 2017 by ELM ver.2012-10-06 from 001__elm20170908_064848__dat00.bin



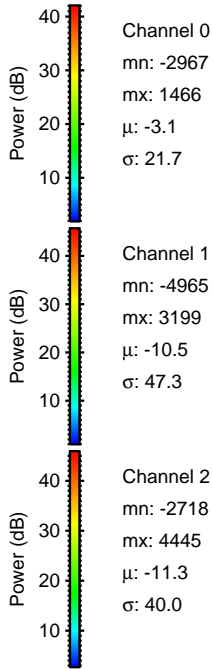
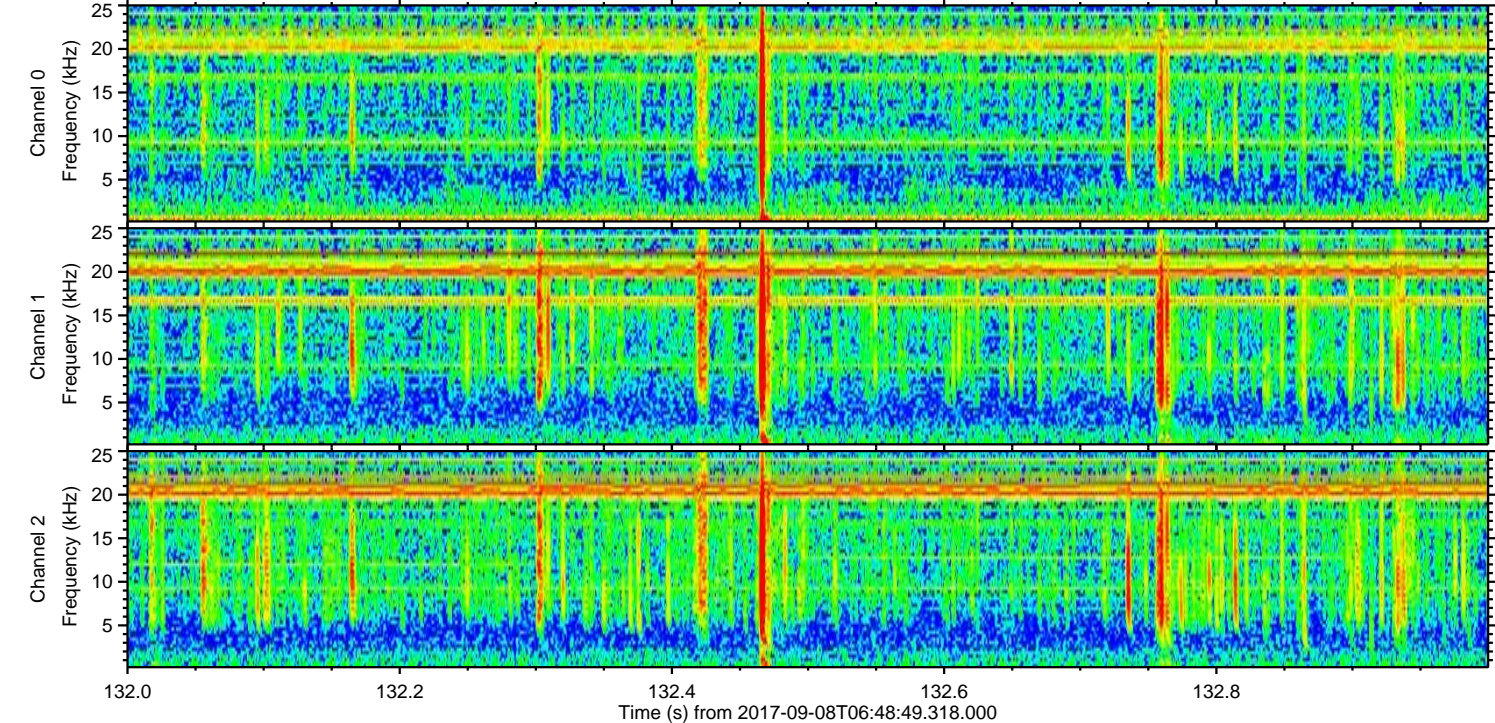
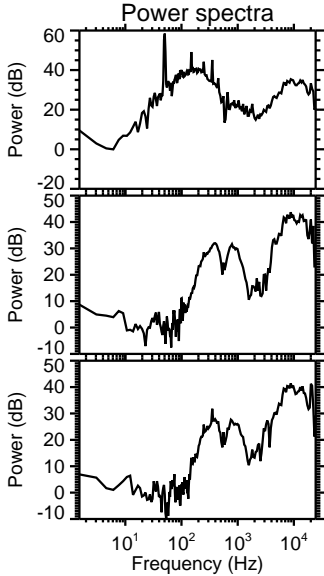
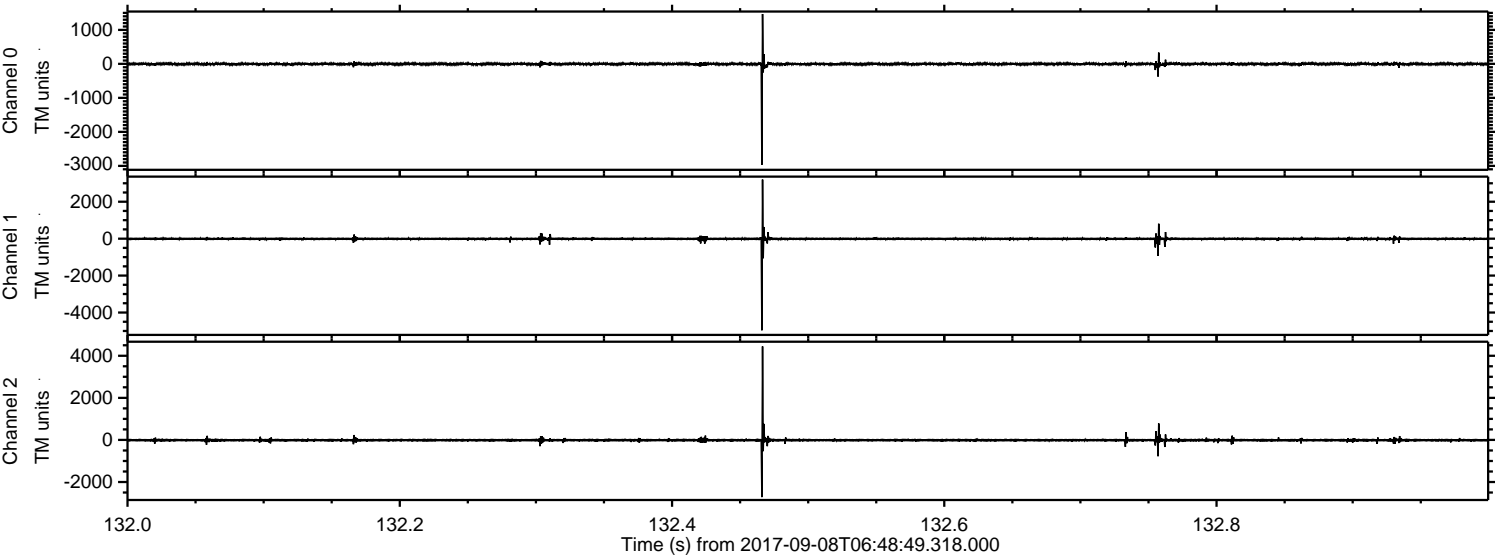
Processed Fri Sep 8 08:56:34 2017 by ELM ver.2012-10-06 from 001__elm20170908_064848__dat00.bin



Processed Fri Sep 8 08:56:35 2017 by ELM ver.2012-10-06 from 001__elm20170908_064848__dat00.bin

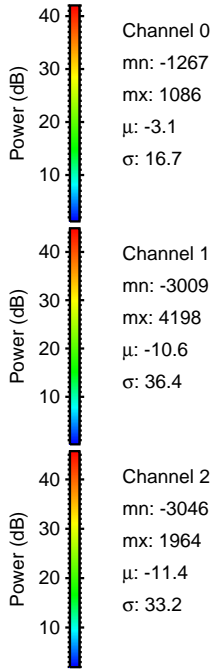
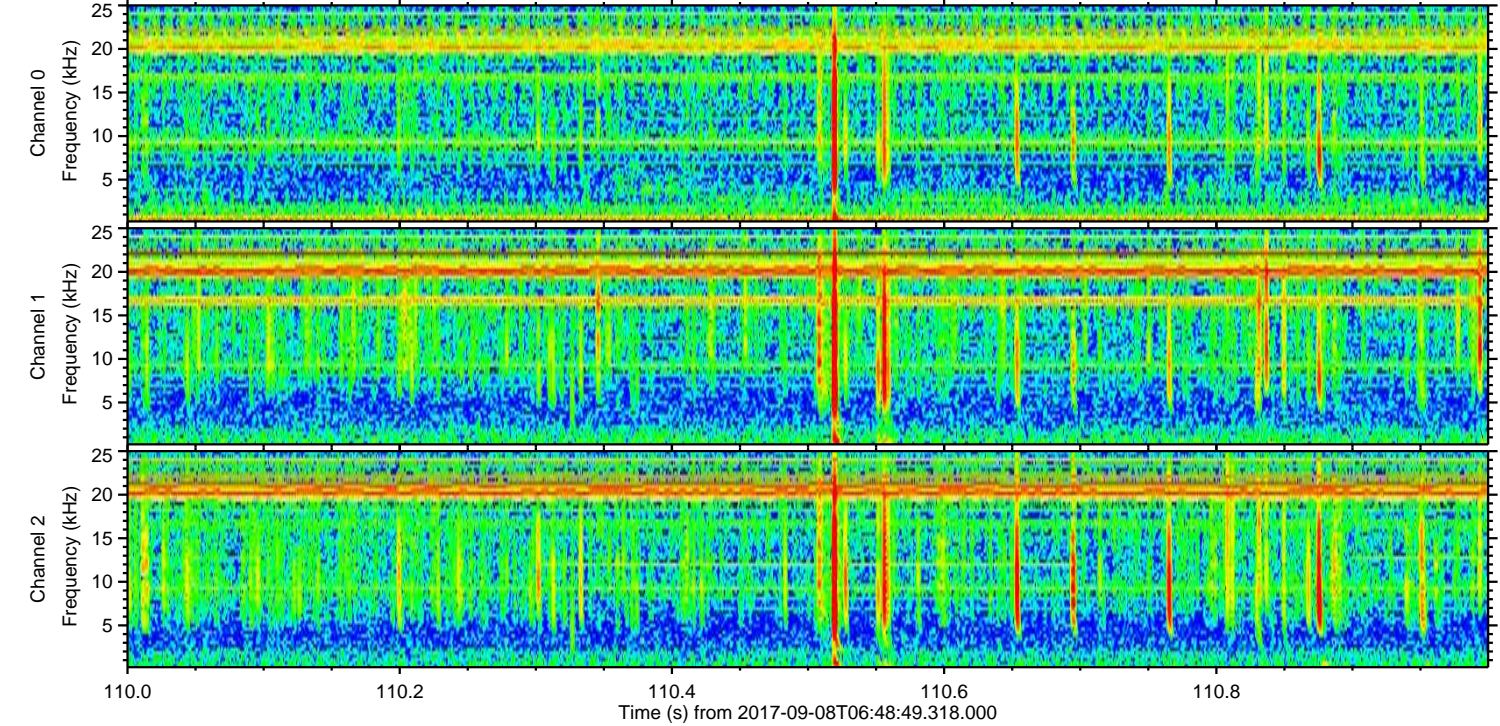
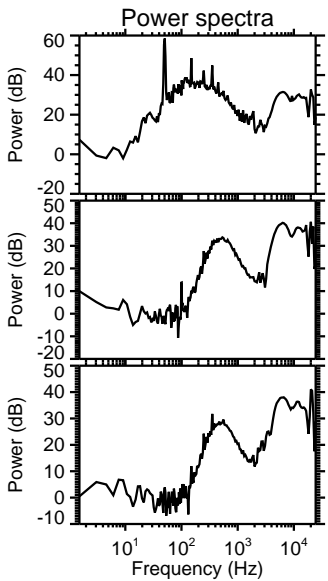
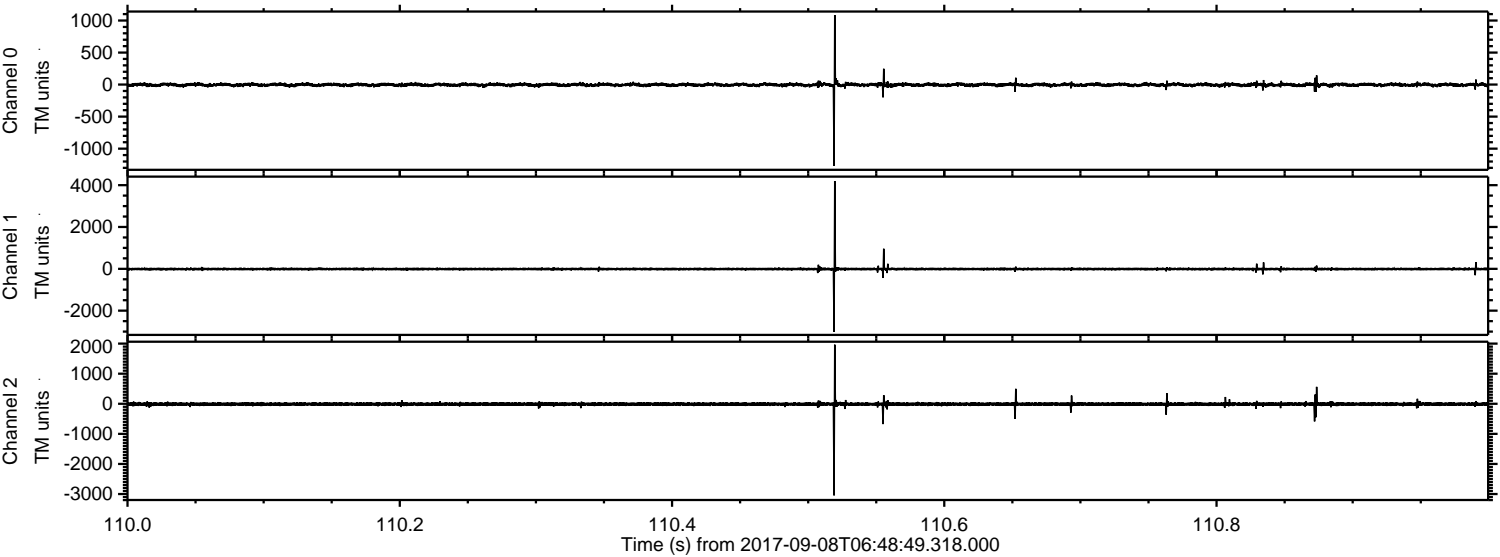


Processed Fri Sep 8 08:56:36 2017 by ELM ver.2012-10-06 from 001__elm20170908_064848__dat00.bin



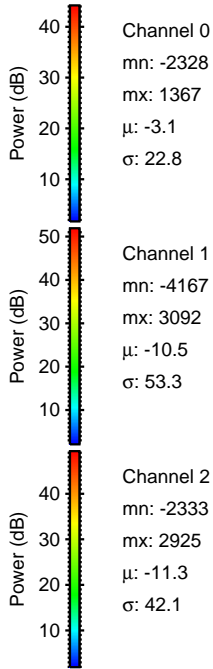
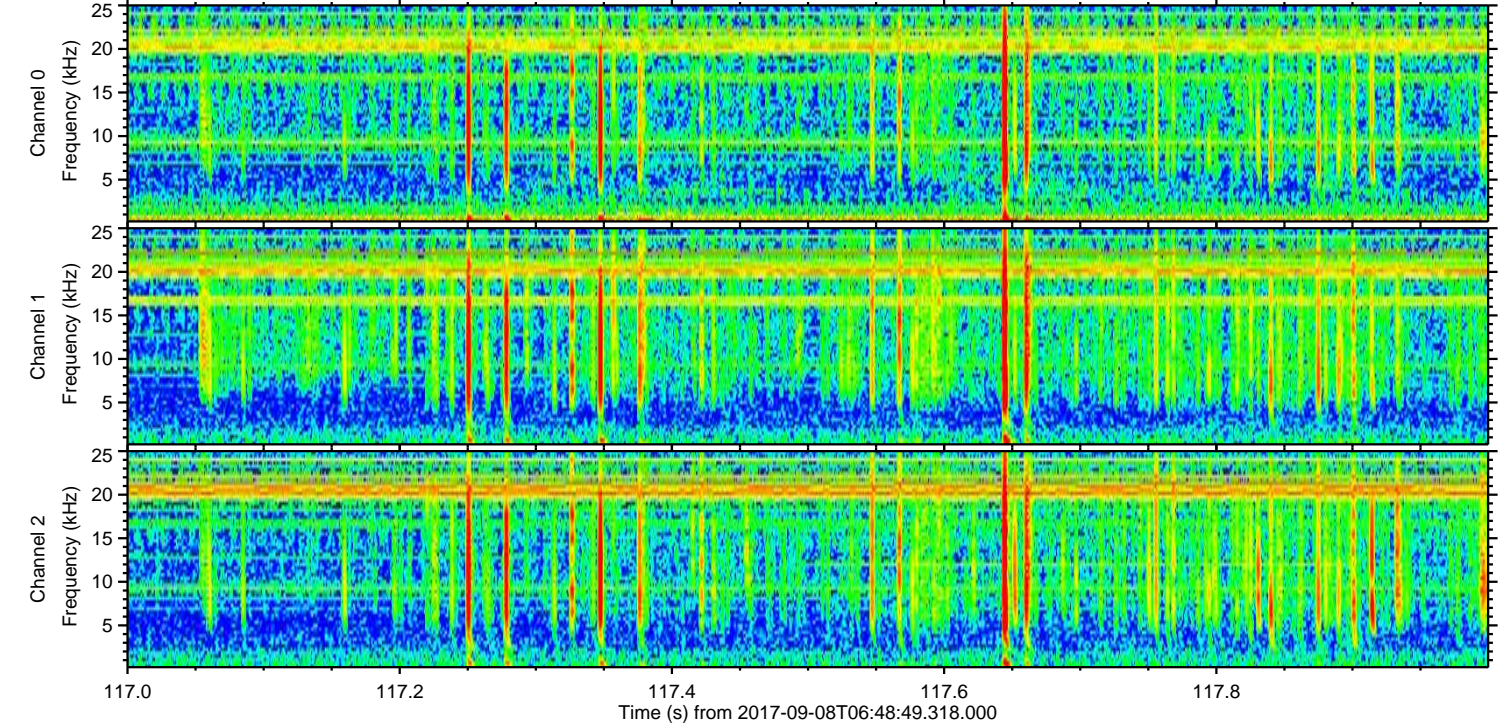
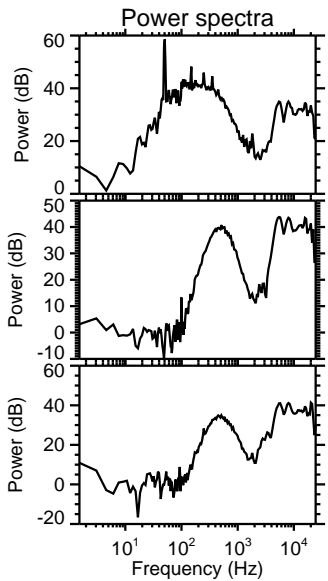
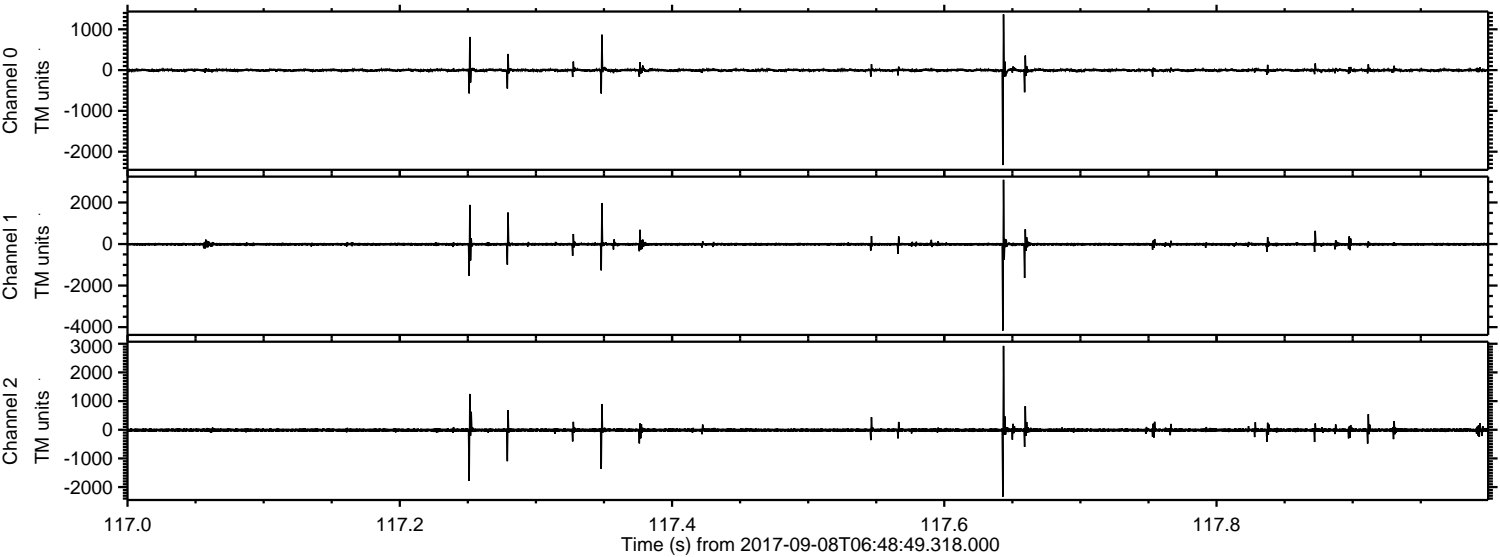
ELMAVAN 3D WAVEFORMS (Measured data sampled at 50 kHz) 51000 packets of 144 samples from 2017-09-08T06:48:49.318.000. Part 111/147

Processed Fri Sep 8 08:56:37 2017 by ELM ver.2012-10-06 from 001__elm20170908_064848__dat00.bin

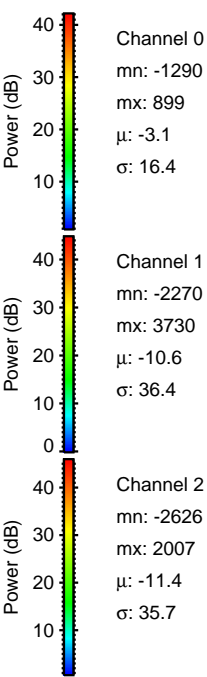
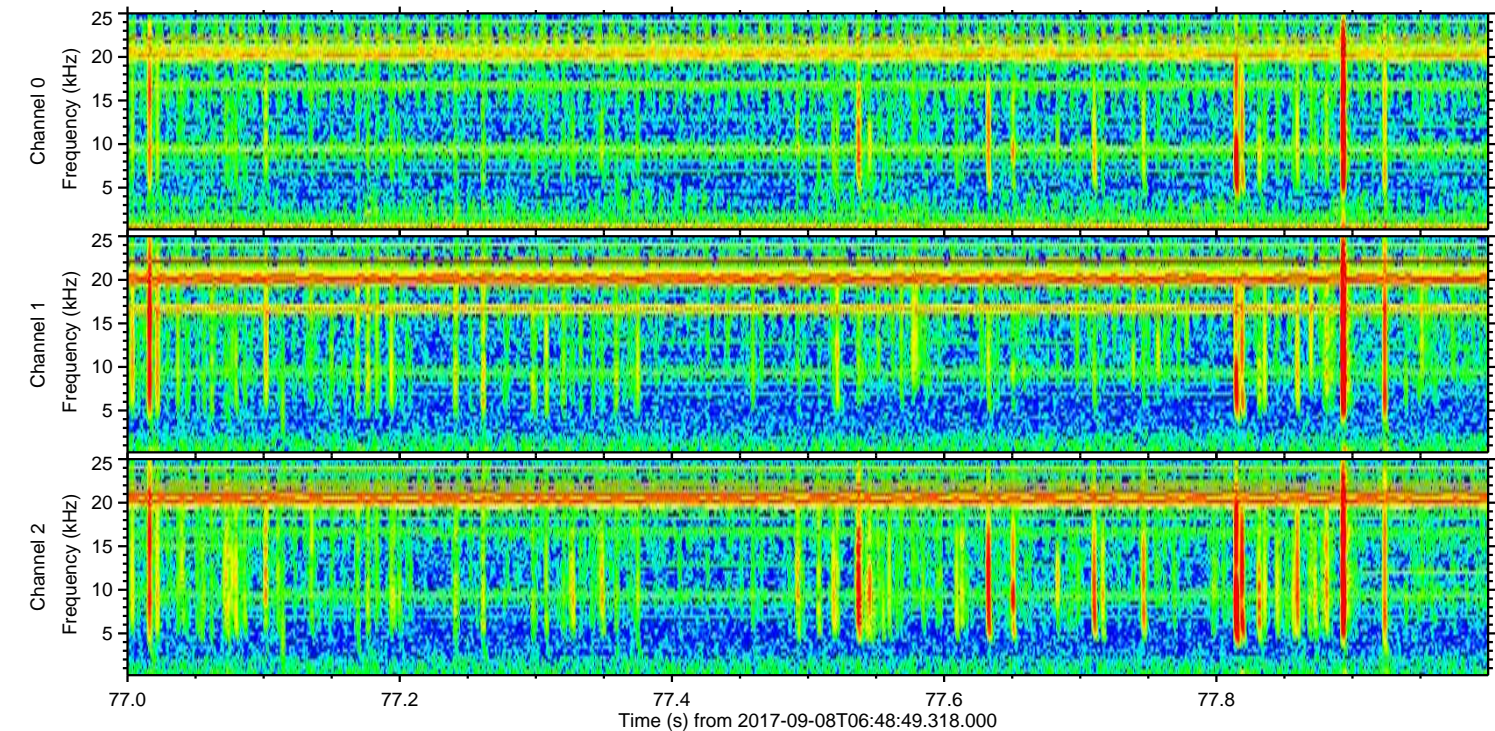
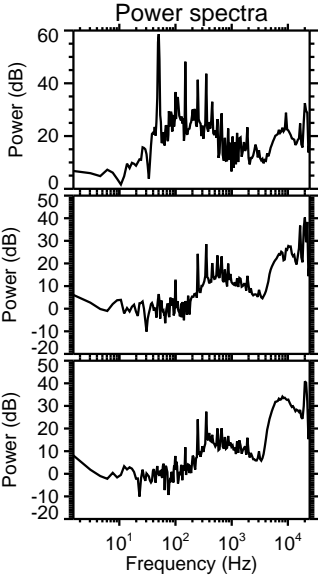
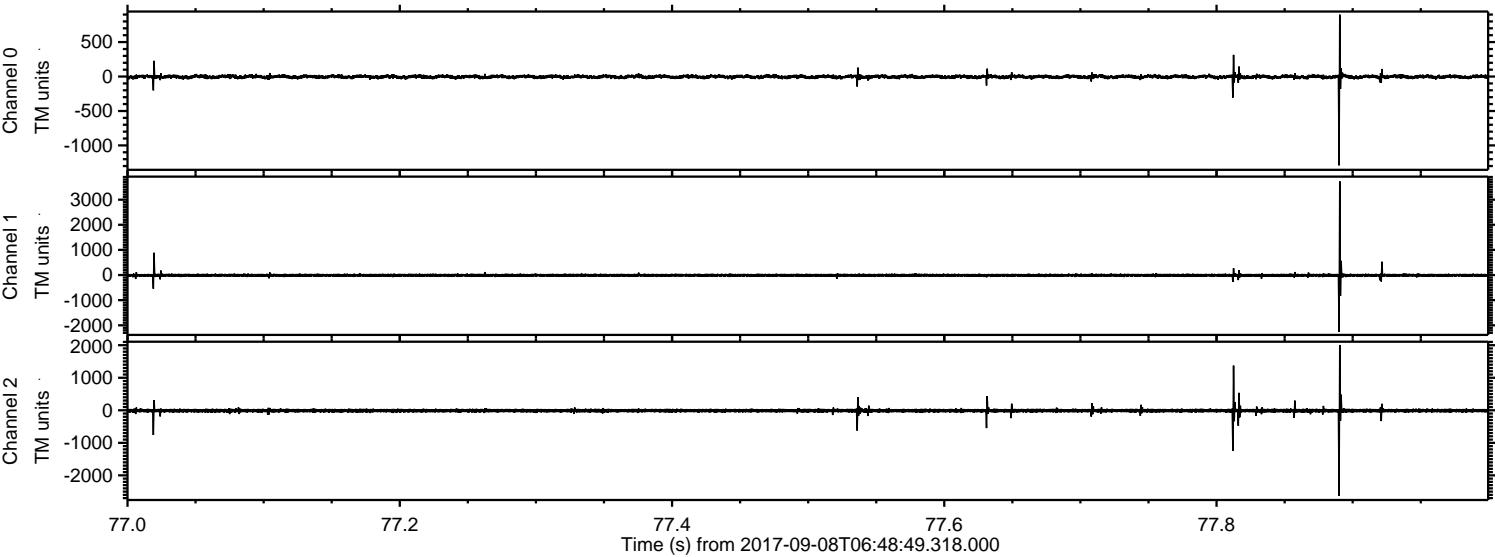


ELMAVAN 3D WAVEFORMS (Measured data sampled at 50 kHz) 51000 packets of 144 samples from 2017-09-08T06:48:49.318.000. Part 118/147

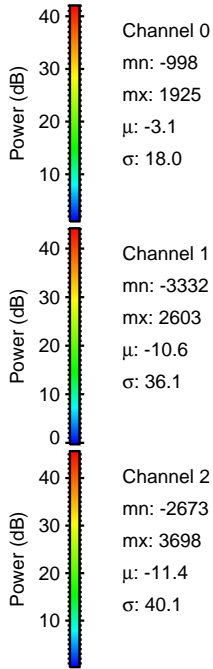
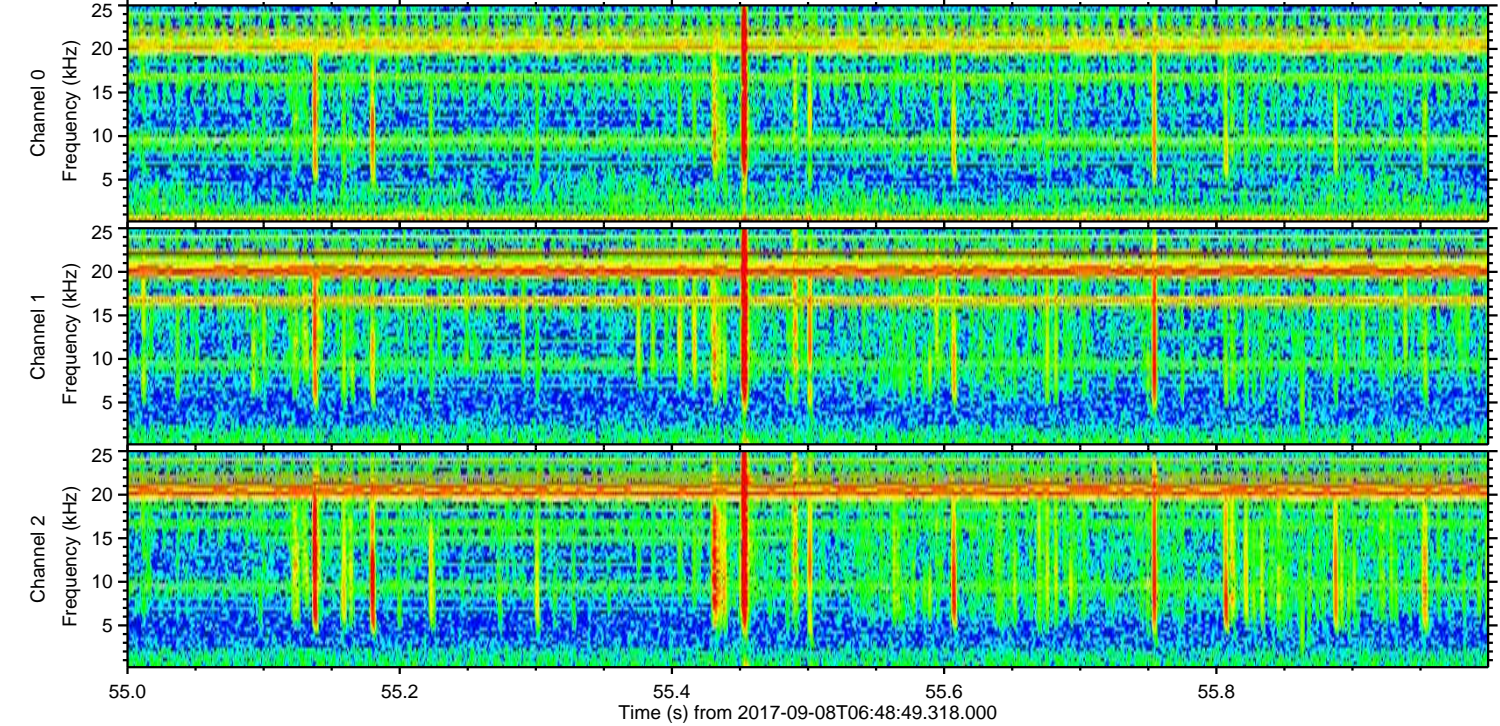
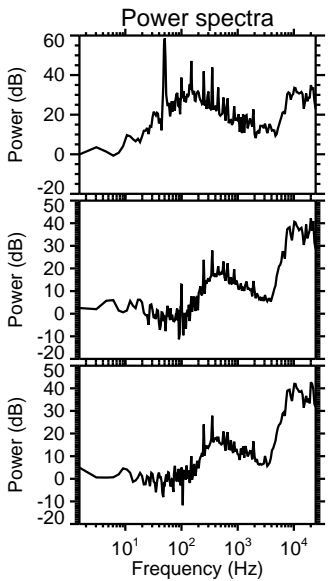
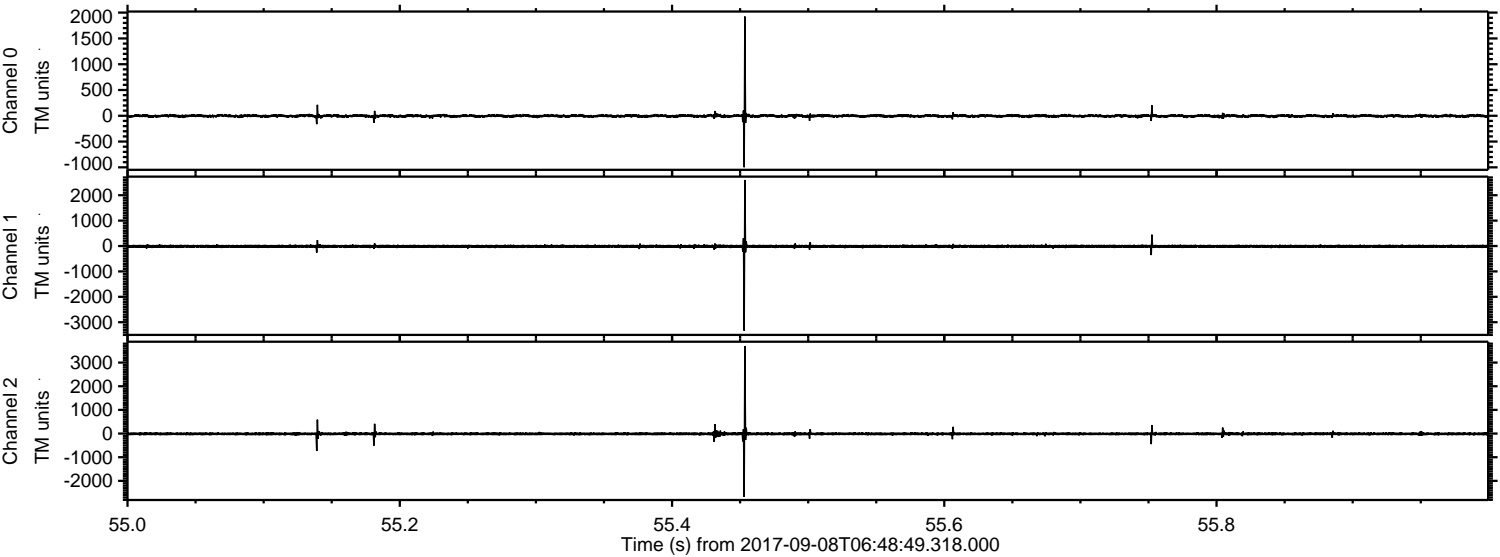
Processed Fri Sep 8 08:56:37 2017 by ELM ver.2012-10-06 from 001__elm20170908_064848__dat00.bin



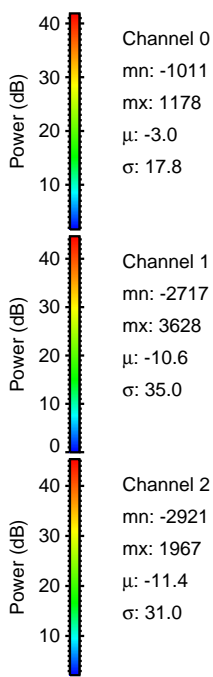
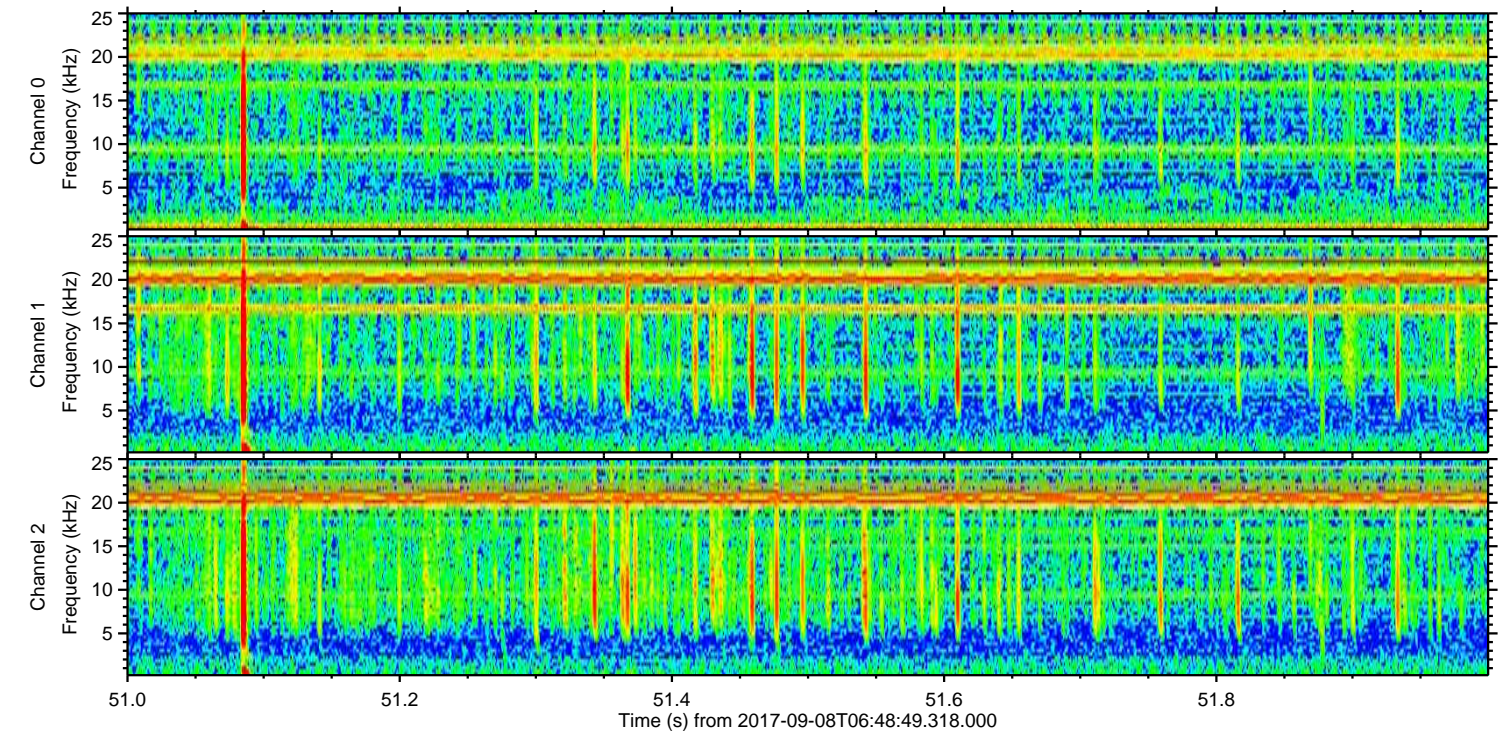
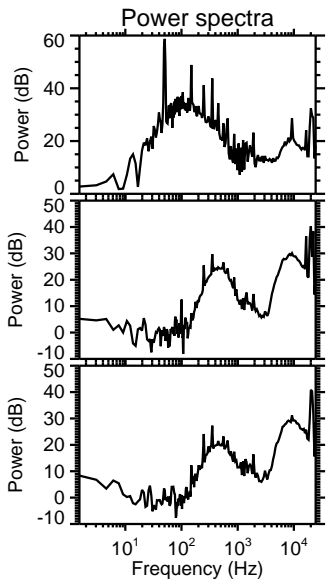
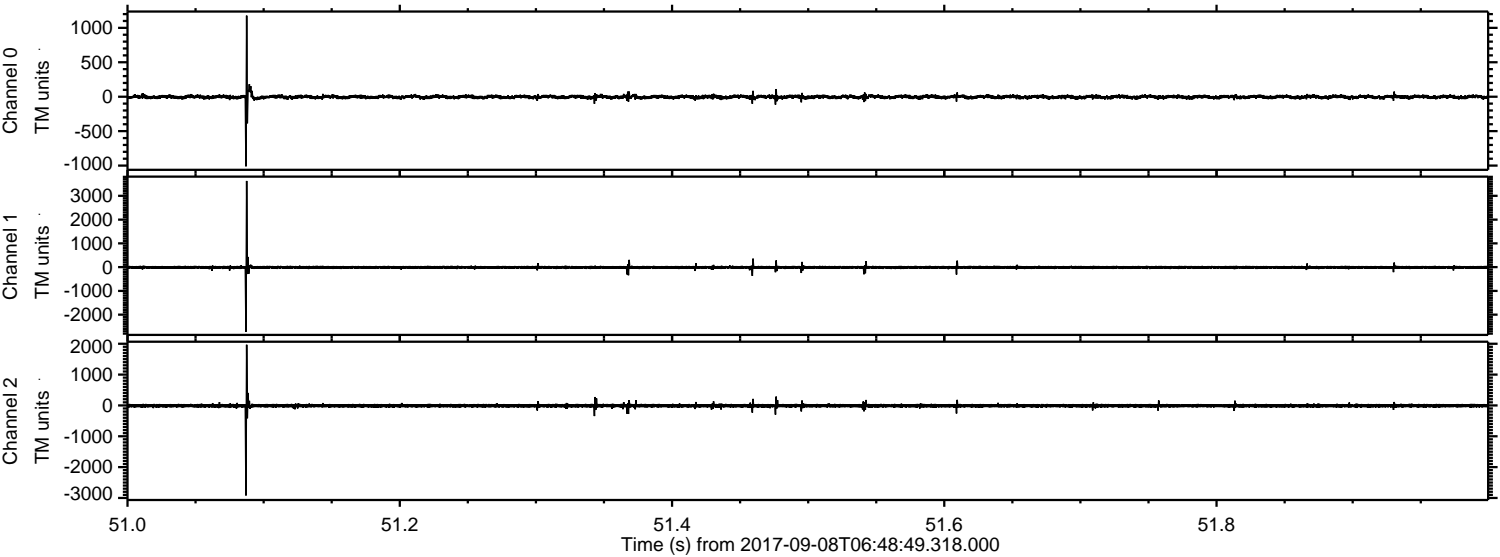
Processed Fri Sep 8 08:56:38 2017 by ELM ver.2012-10-06 from 001__elm20170908_064848__dat00.bin



Processed Fri Sep 8 08:56:39 2017 by ELM ver.2012-10-06 from 001__elm20170908_064848__dat00.bin



Processed Fri Sep 8 08:56:40 2017 by ELM ver.2012-10-06 from 001__elm20170908_064848__dat00.bin



Channel 0
mn: -1011
mx: 1178
 μ : -3.0
 σ : 17.8

Channel 1
mn: -2717
mx: 3628
 μ : -10.6
 σ : 35.0

Channel 2
mn: -2921
mx: 1967
 μ : -11.4
 σ : 31.0

