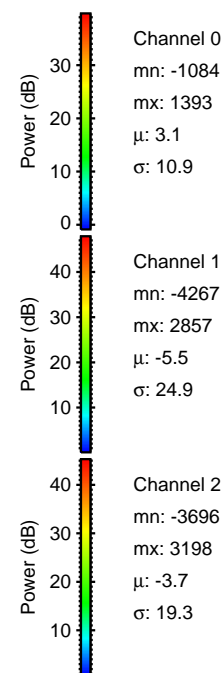
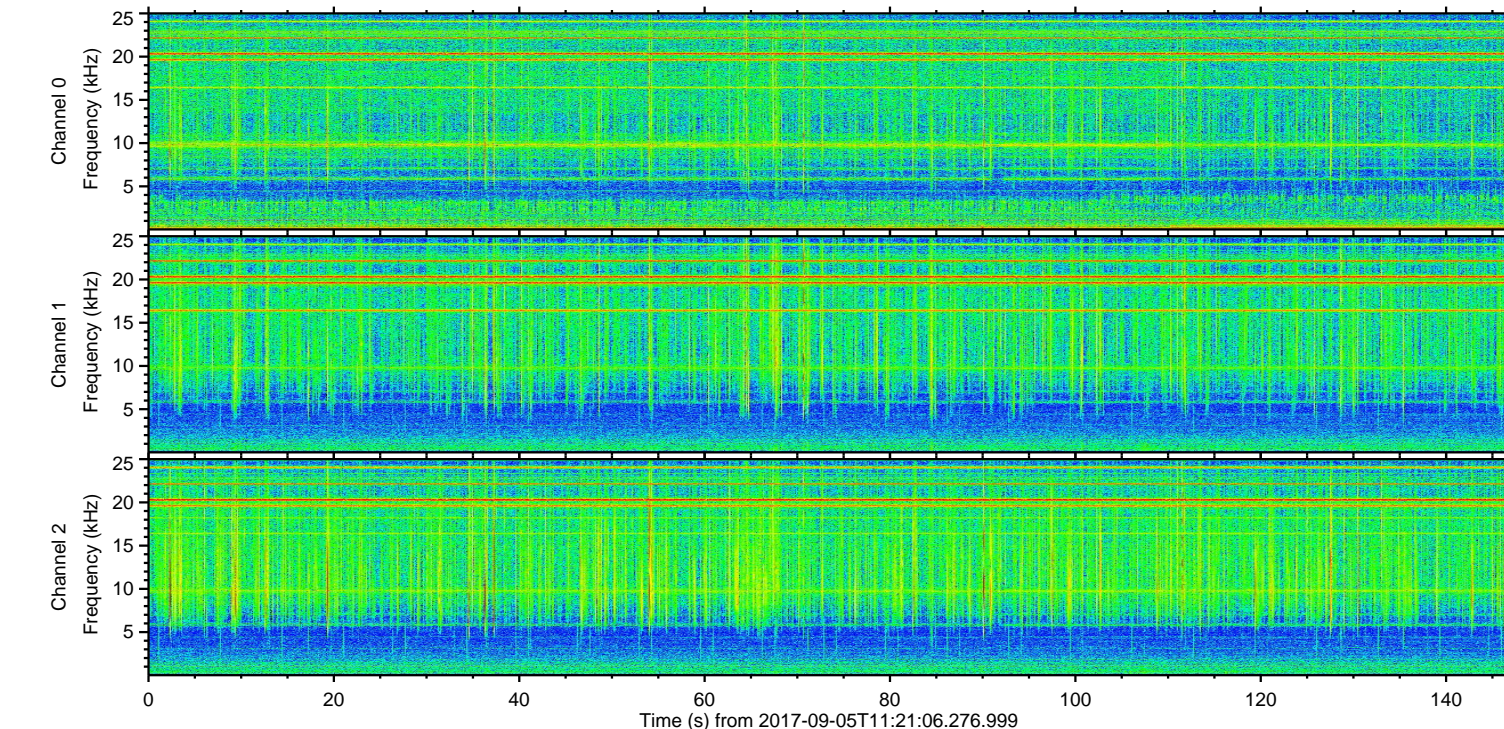
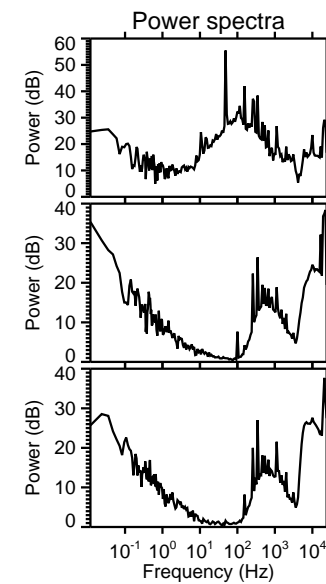
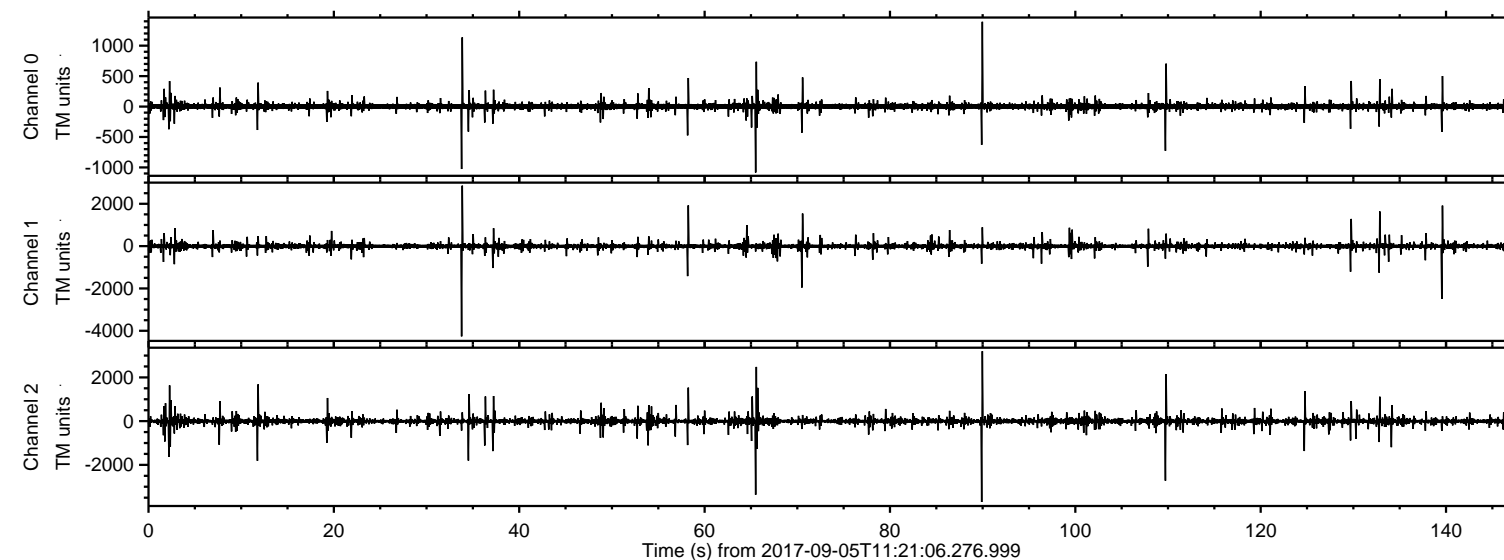


# ELMAVAN 3D WAVEFORMS (Measured data sampled at 50 kHz) 51000 packets of 144 samples from 2017-09-05T11:21:06.276.999.

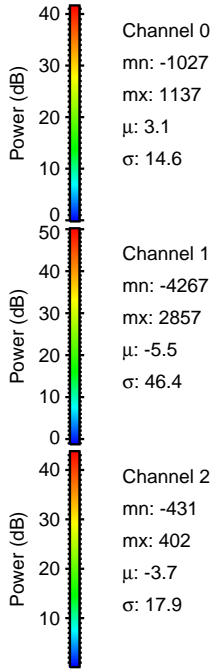
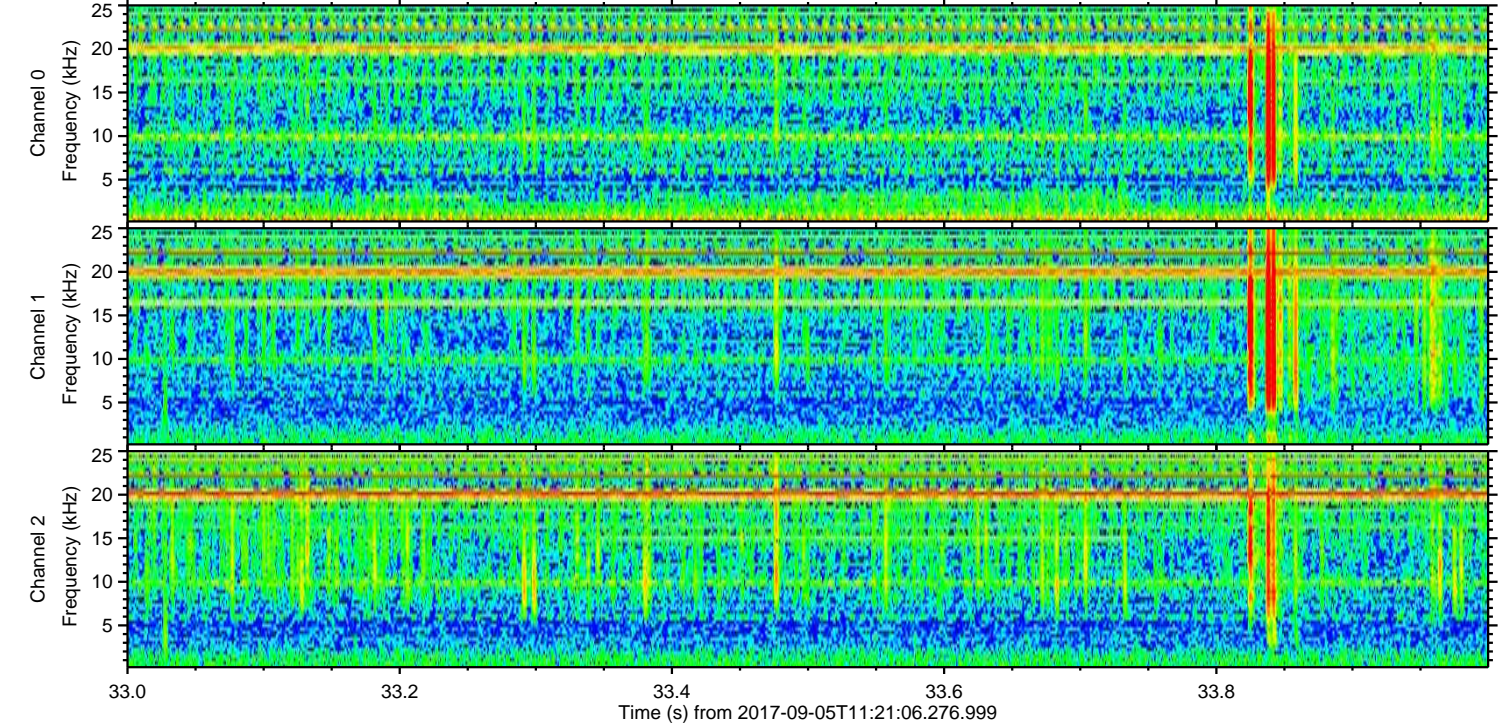
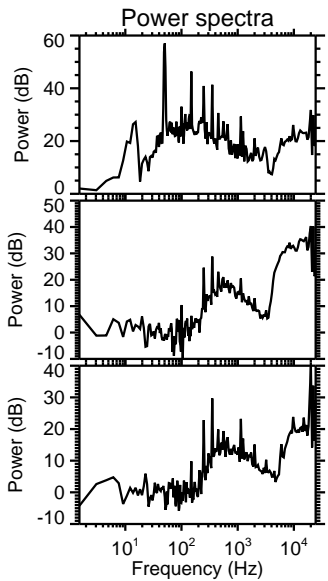
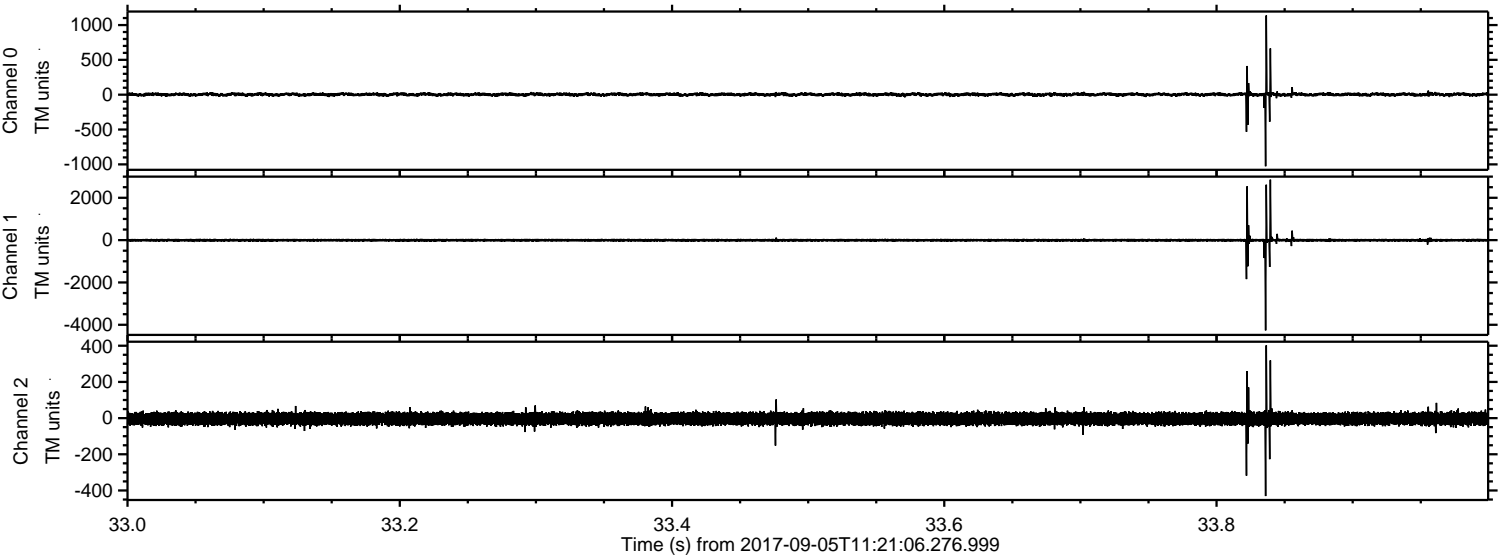
Processed Tue Sep 5 13:29:27 2017 by ELM ver.2012-10-06 from 001\_\_elm20170905\_112105\_\_dat00.bin





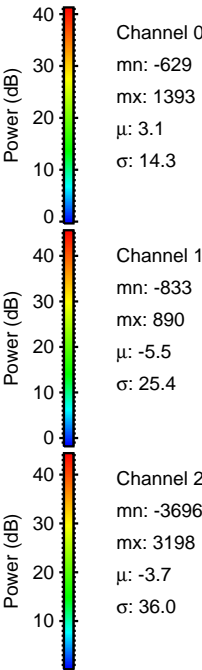
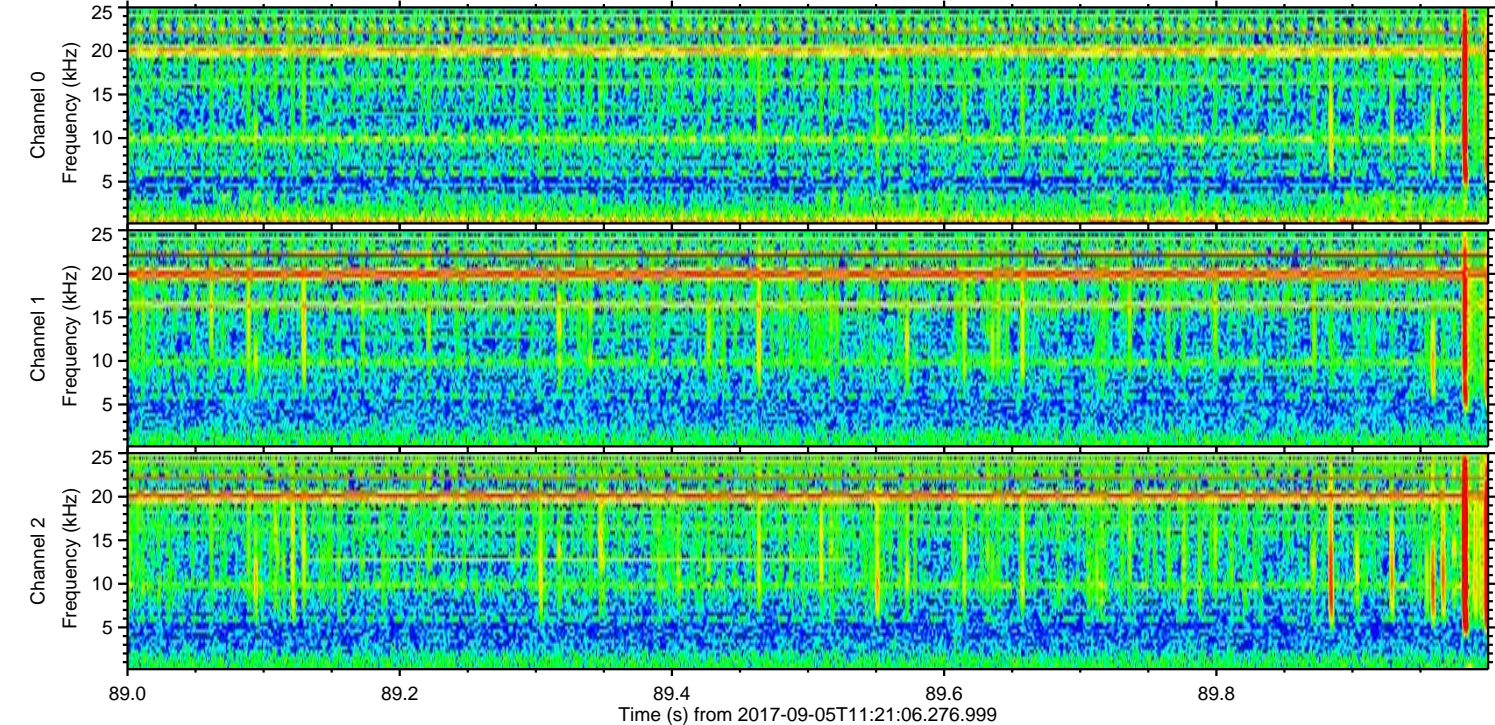
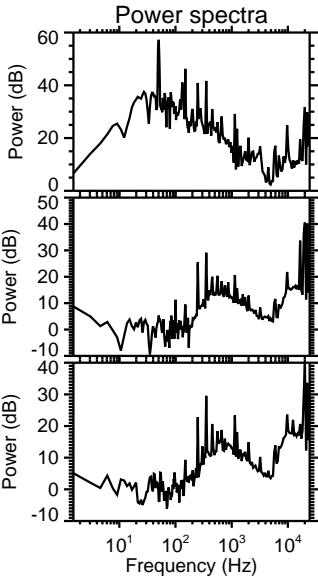
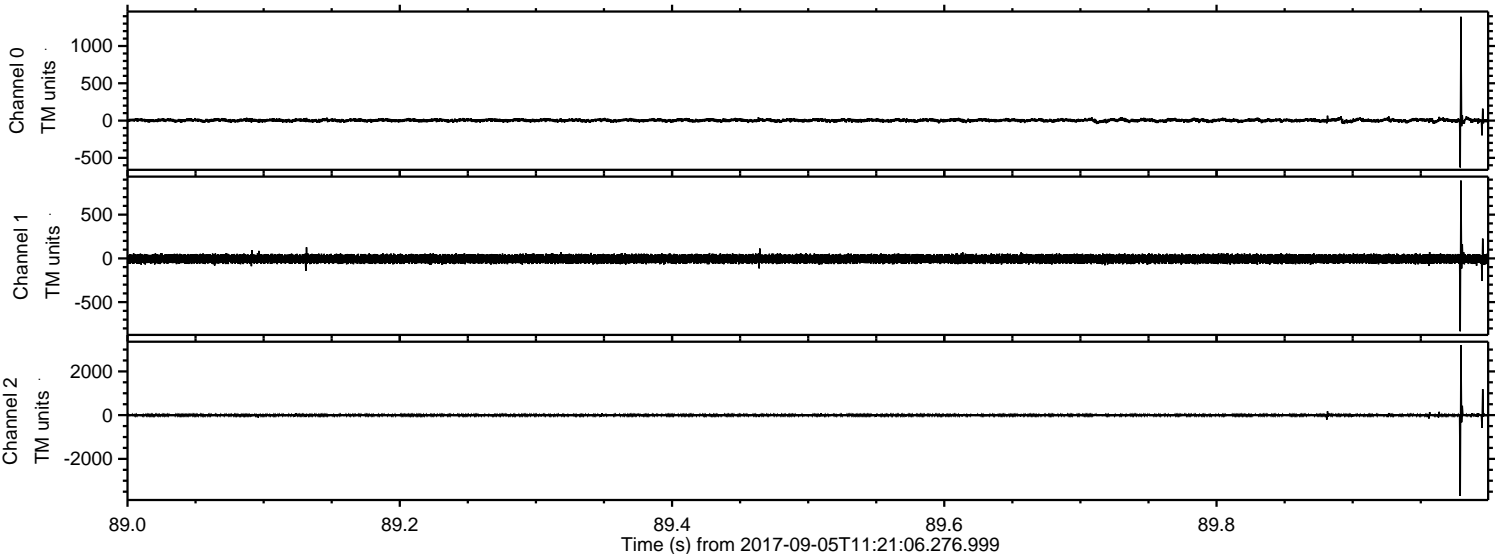
ELMAVAN 3D WAVEFORMS (Measured data sampled at 50 kHz) 51000 packets of 144 samples from 2017-09-05T11:21:06.276.999. Part 34/147

Processed Tue Sep 5 13:29:34 2017 by ELM ver.2012-10-06 from 001\_\_elm20170905\_112105\_\_dat00.bin



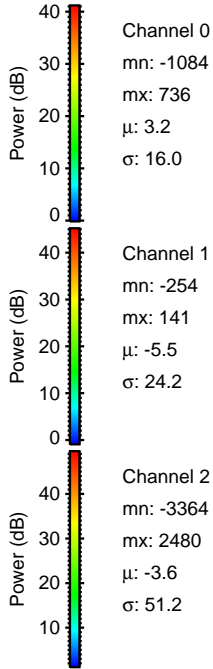
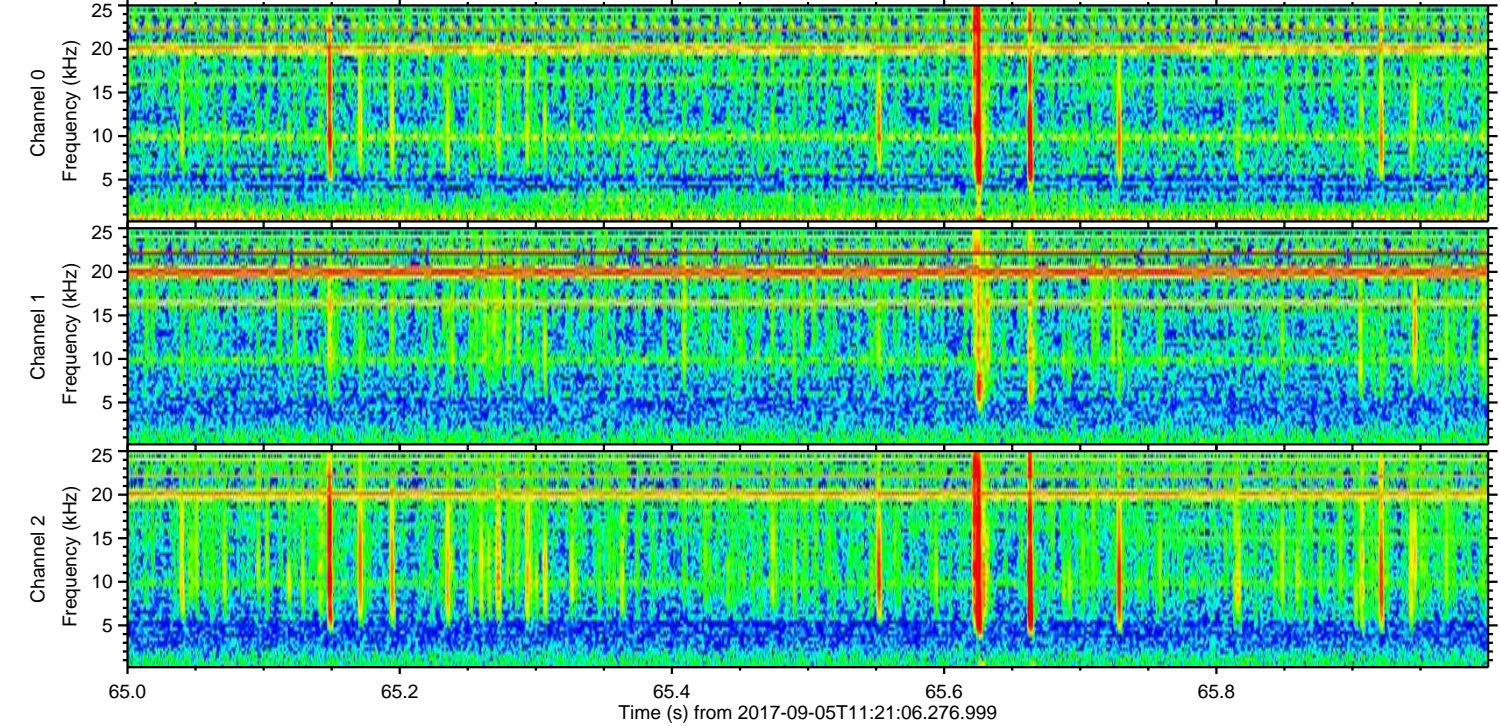
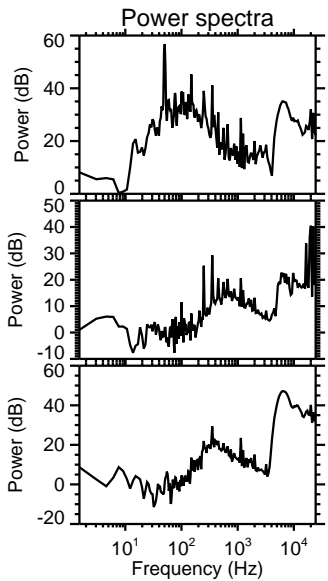
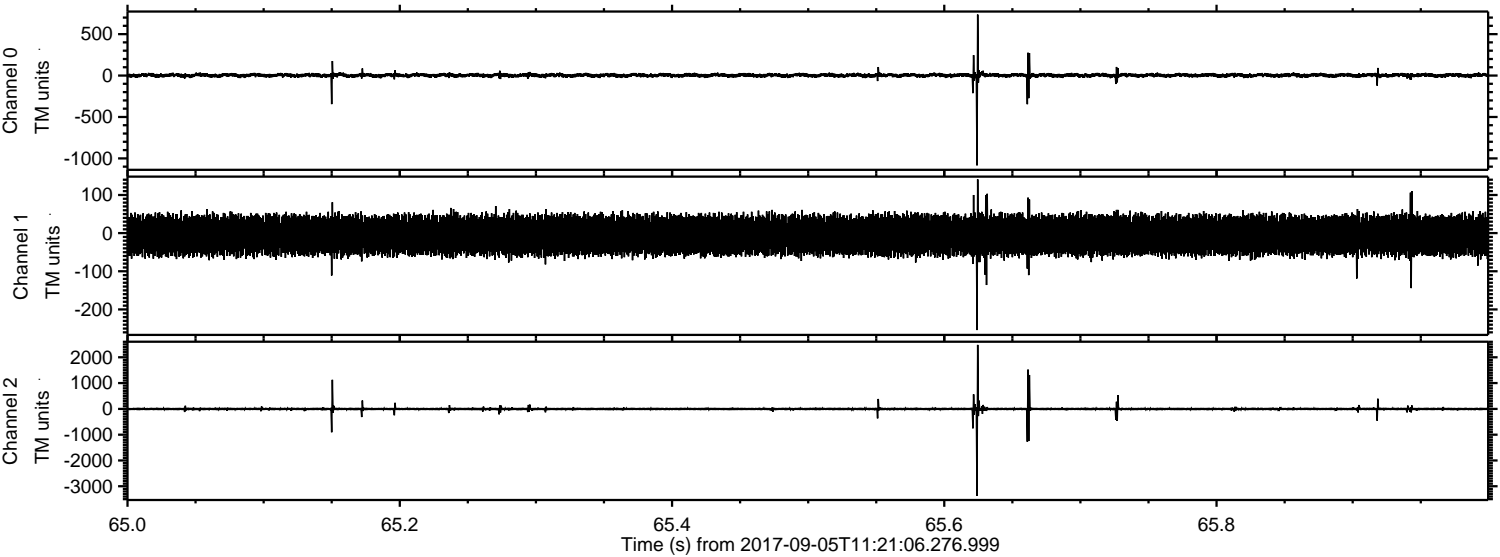


Processed Tue Sep 5 13:29:34 2017 by ELM ver.2012-10-06 from 001\_\_elm20170905\_112105\_\_dat00.bin





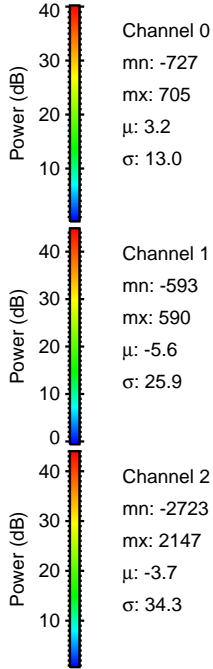
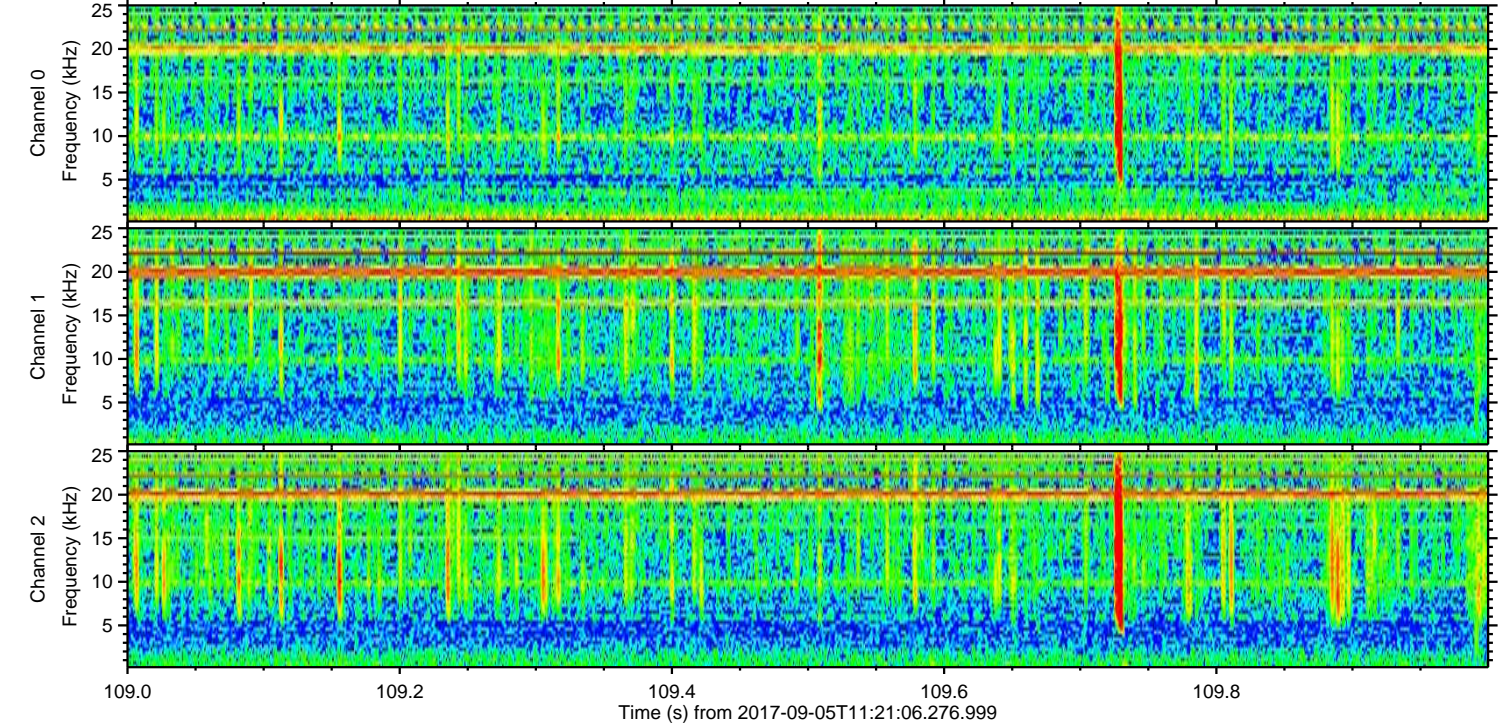
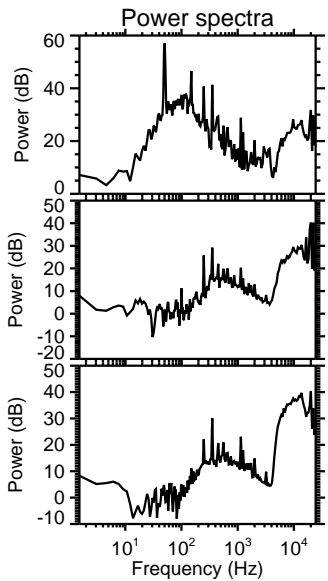
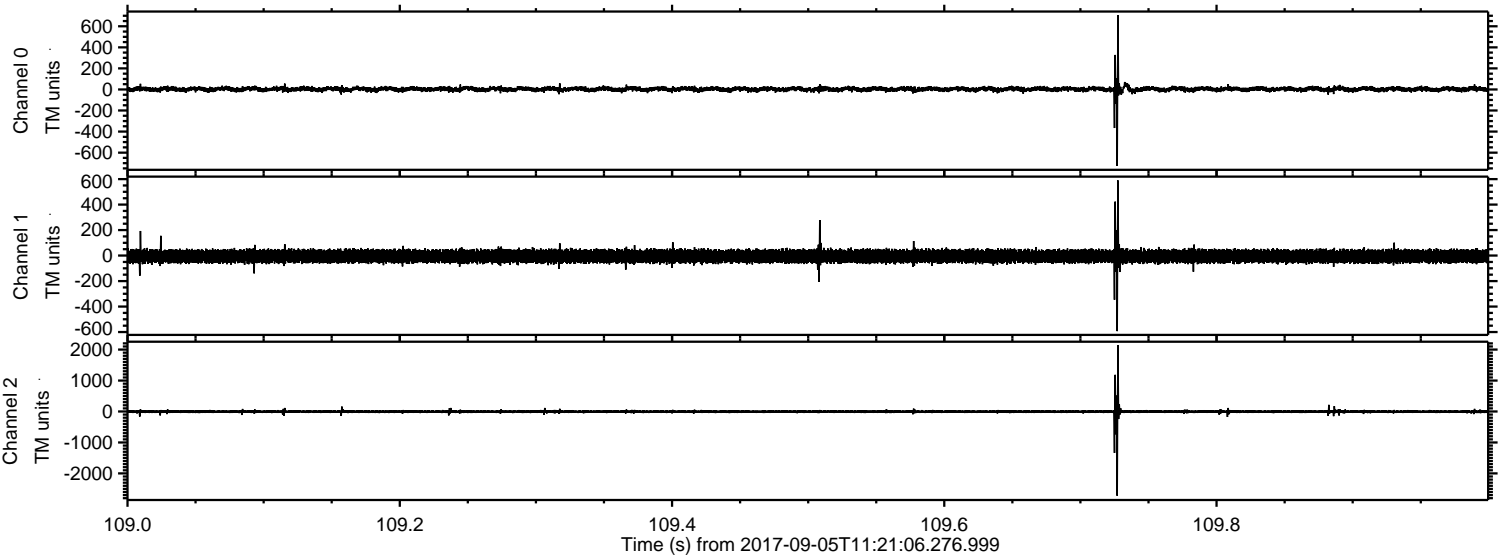
Processed Tue Sep 5 13:29:35 2017 by ELM ver.2012-10-06 from 001\_\_elm20170905\_112105\_\_dat00.bin





ELMAVAN 3D WAVEFORMS (Measured data sampled at 50 kHz) 51000 packets of 144 samples from 2017-09-05T11:21:06.276.999. Part 110/147

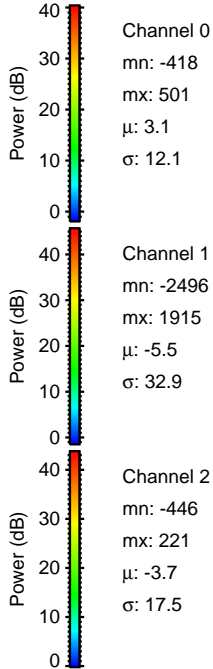
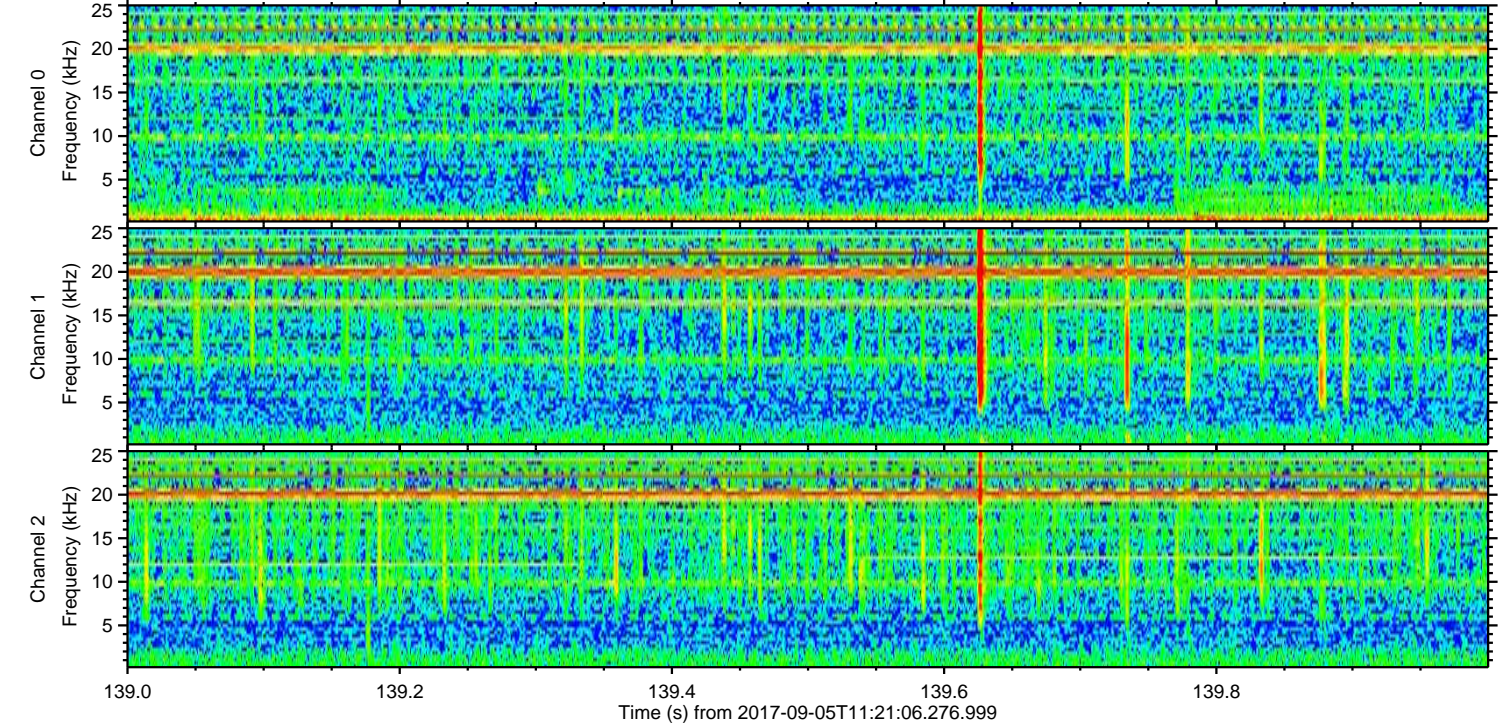
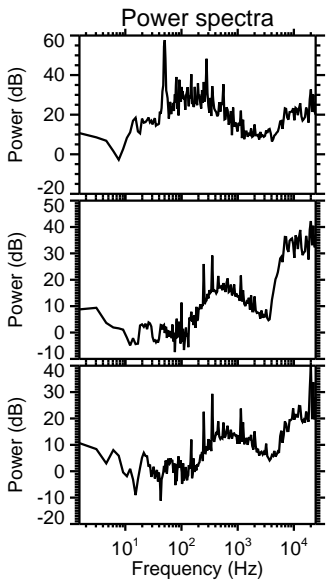
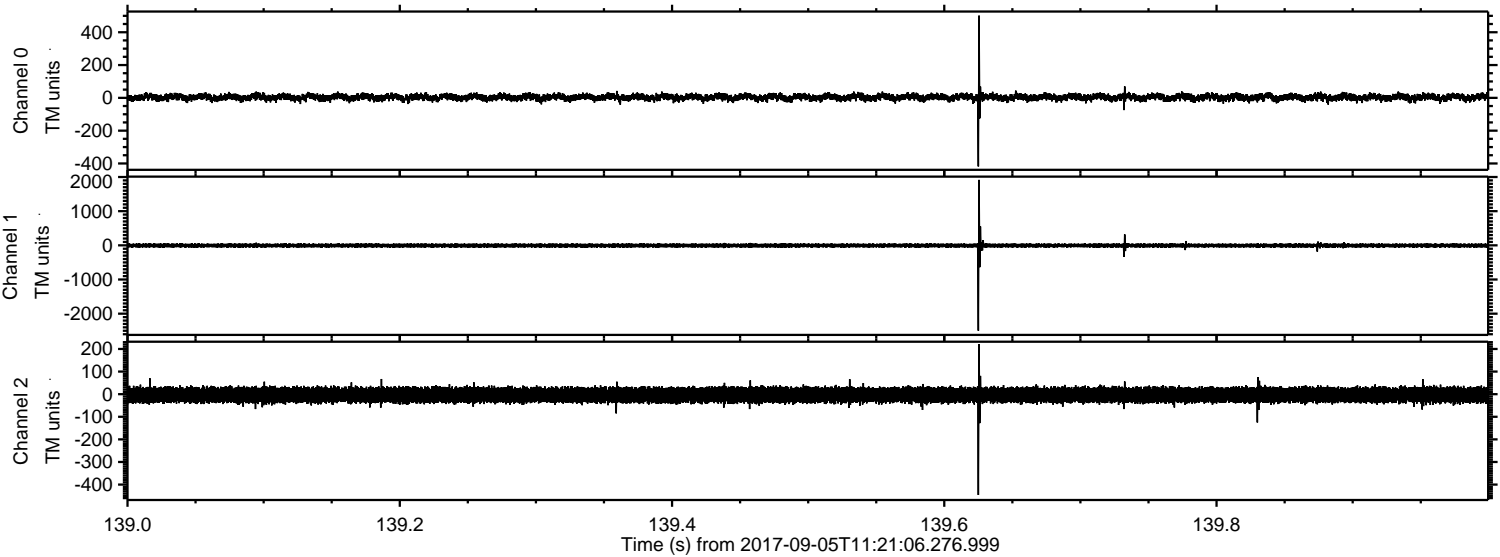
Processed Tue Sep 5 13:29:35 2017 by ELM ver.2012-10-06 from 001\_\_elm20170905\_112105\_\_dat00.bin





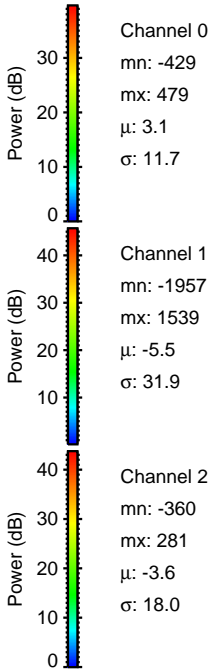
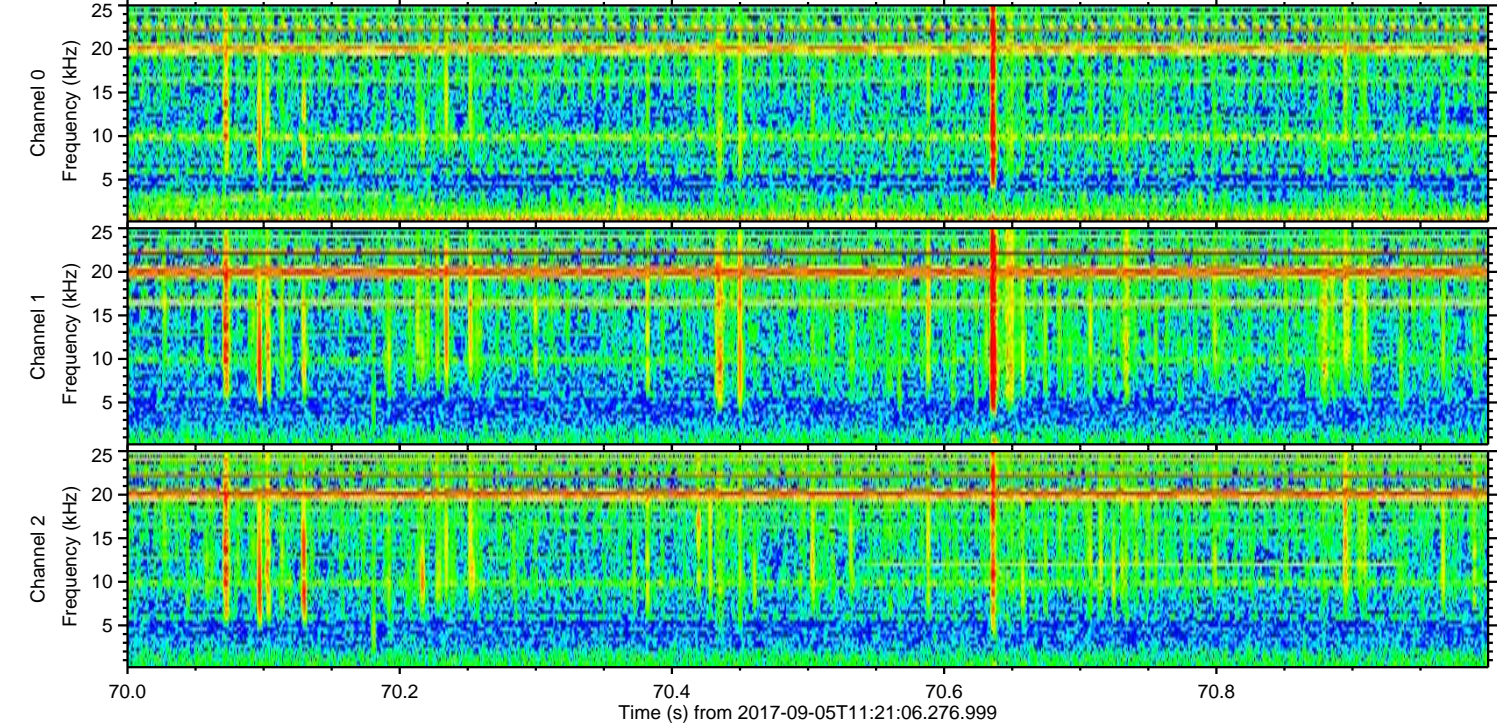
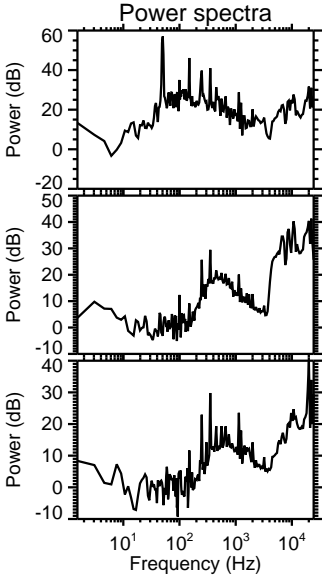
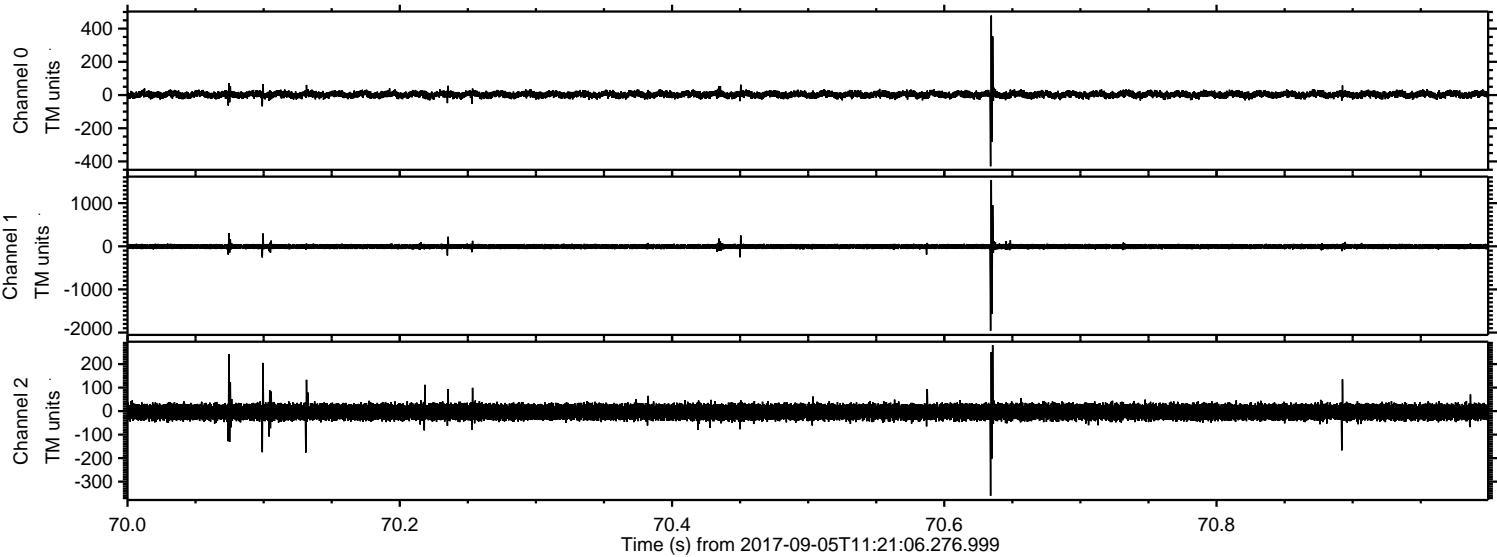
ELMAVAN 3D WAVEFORMS (Measured data sampled at 50 kHz) 51000 packets of 144 samples from 2017-09-05T11:21:06.276.999. Part 140/147

Processed Tue Sep 5 13:29:36 2017 by ELM ver.2012-10-06 from 001\_\_elm20170905\_112105\_\_dat00.bin



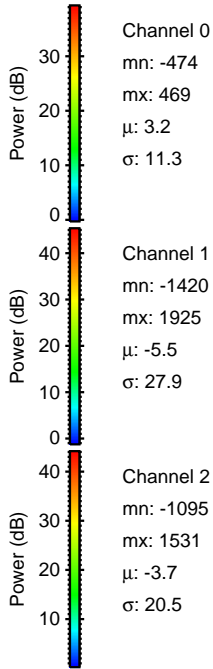
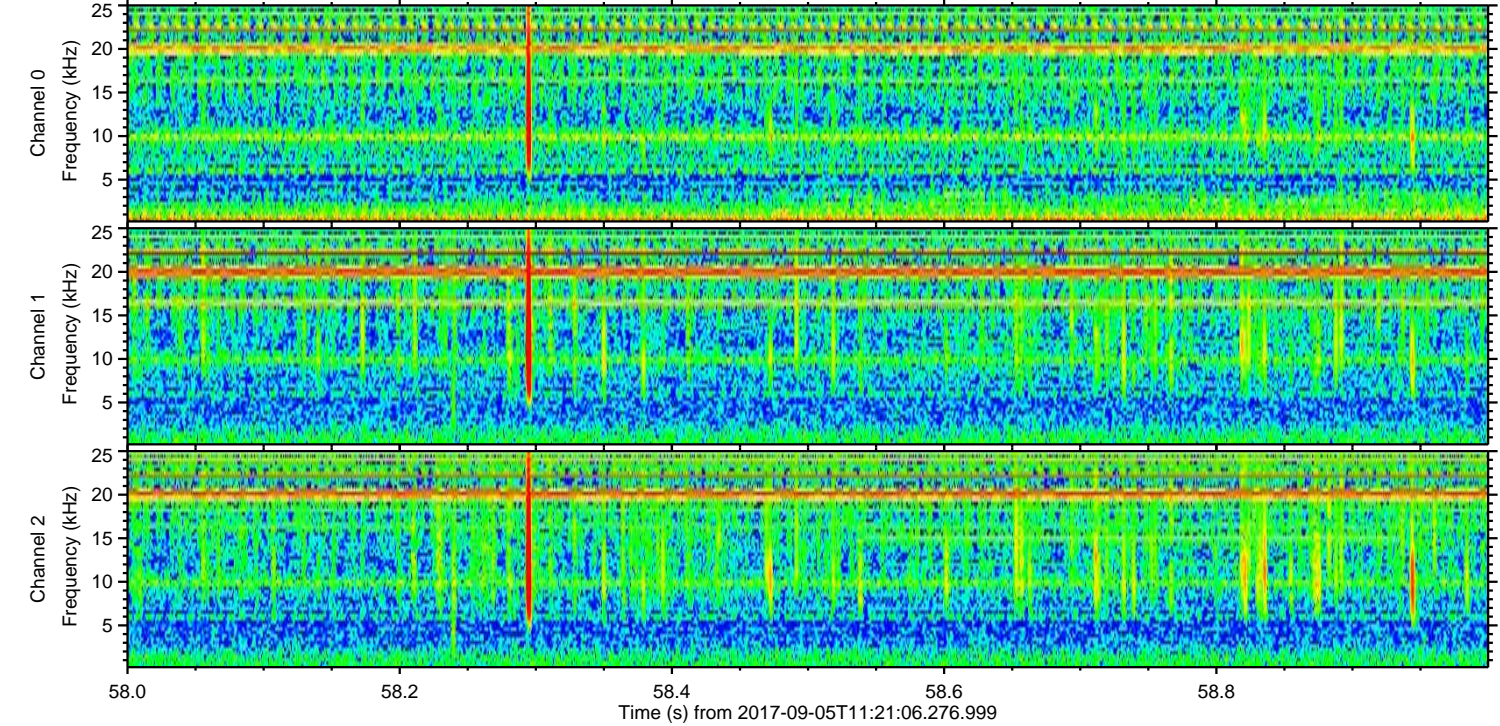
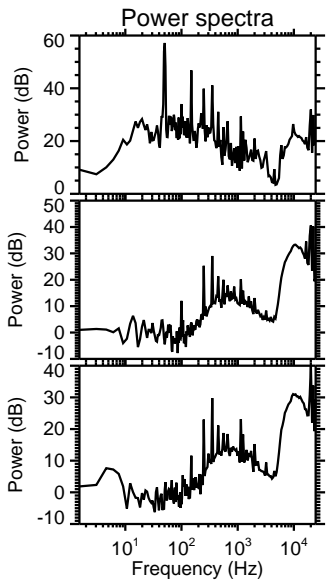
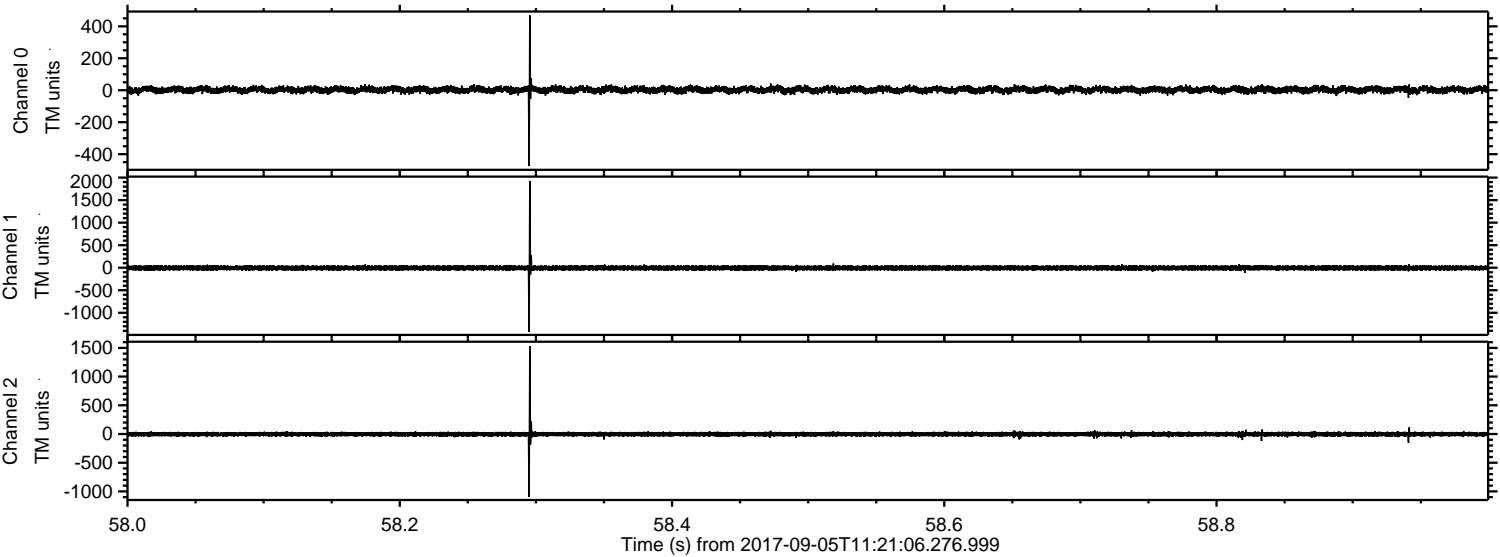


Processed Tue Sep 5 13:29:37 2017 by ELM ver.2012-10-06 from 001\_\_elm20170905\_112105\_\_dat00.bin





Processed Tue Sep 5 13:29:37 2017 by ELM ver.2012-10-06 from 001\_\_elm20170905\_112105\_\_dat00.bin



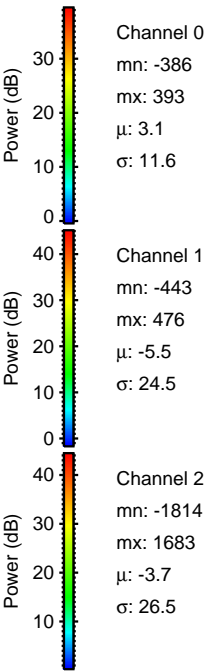
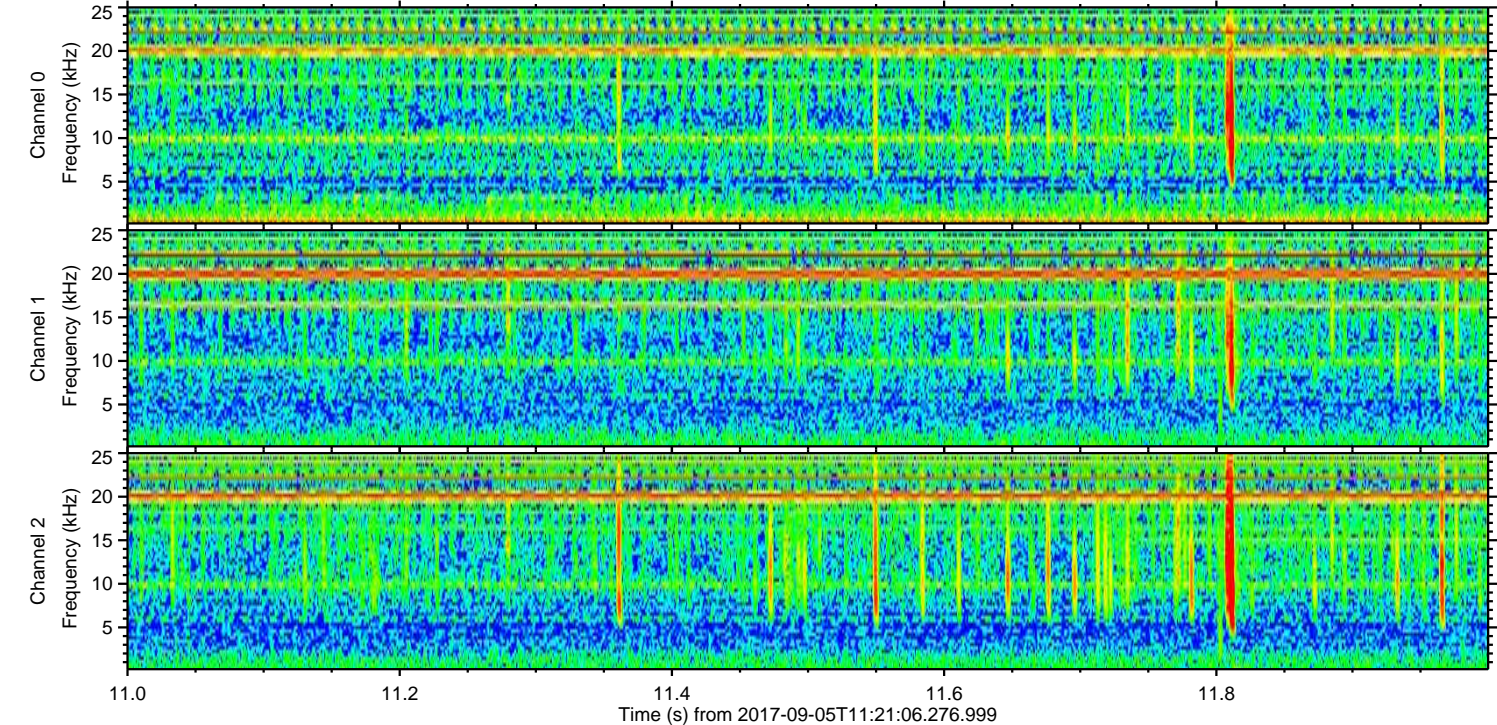
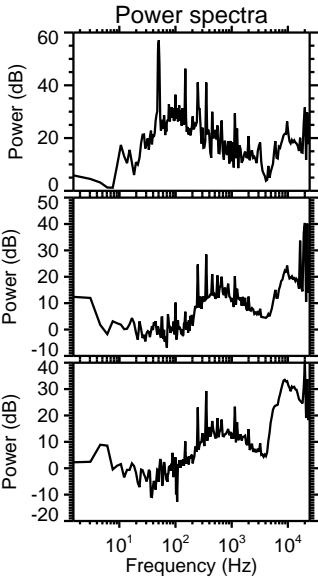
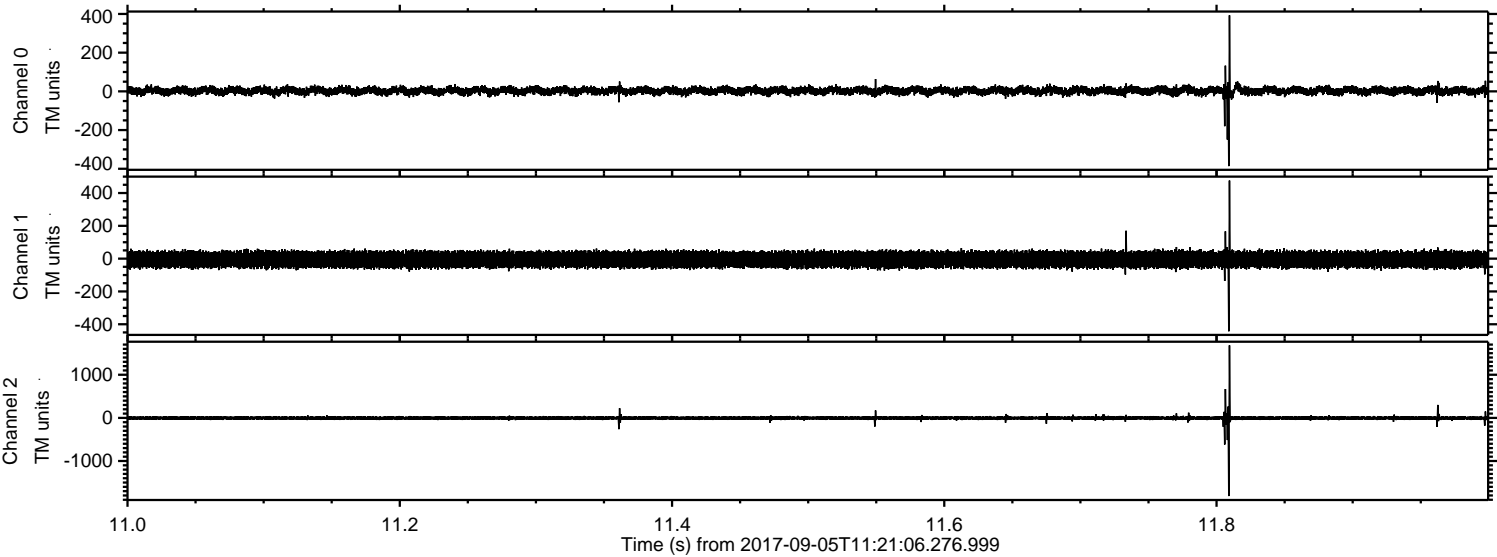
Channel 0  
mn: -474  
mx: 469  
 $\mu$ : 3.2  
 $\sigma$ : 11.3

Channel 1  
mn: -1420  
mx: 1925  
 $\mu$ : -5.5  
 $\sigma$ : 27.9

Channel 2  
mn: -1095  
mx: 1531  
 $\mu$ : -3.7  
 $\sigma$ : 20.5

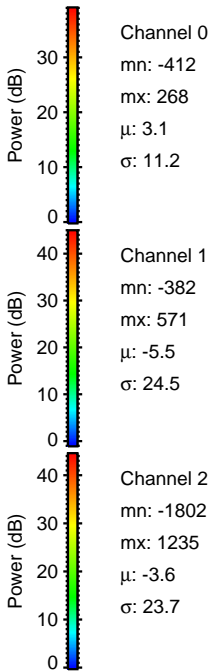
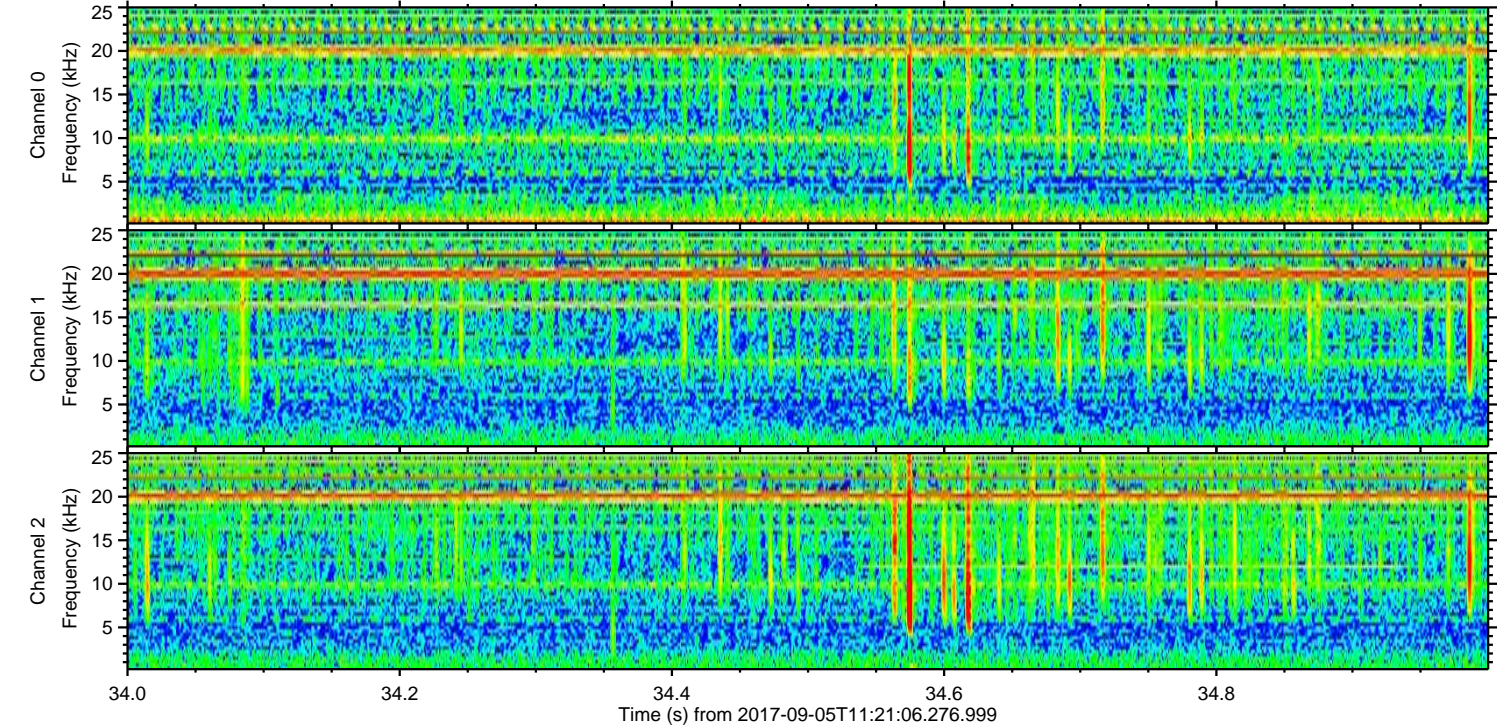
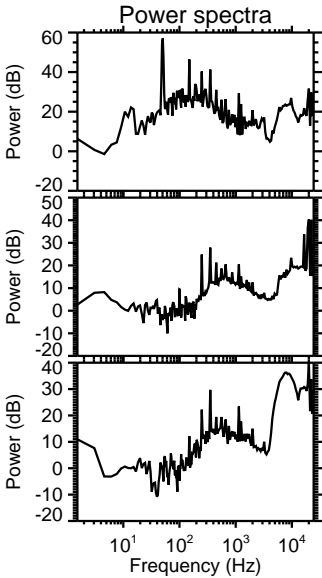
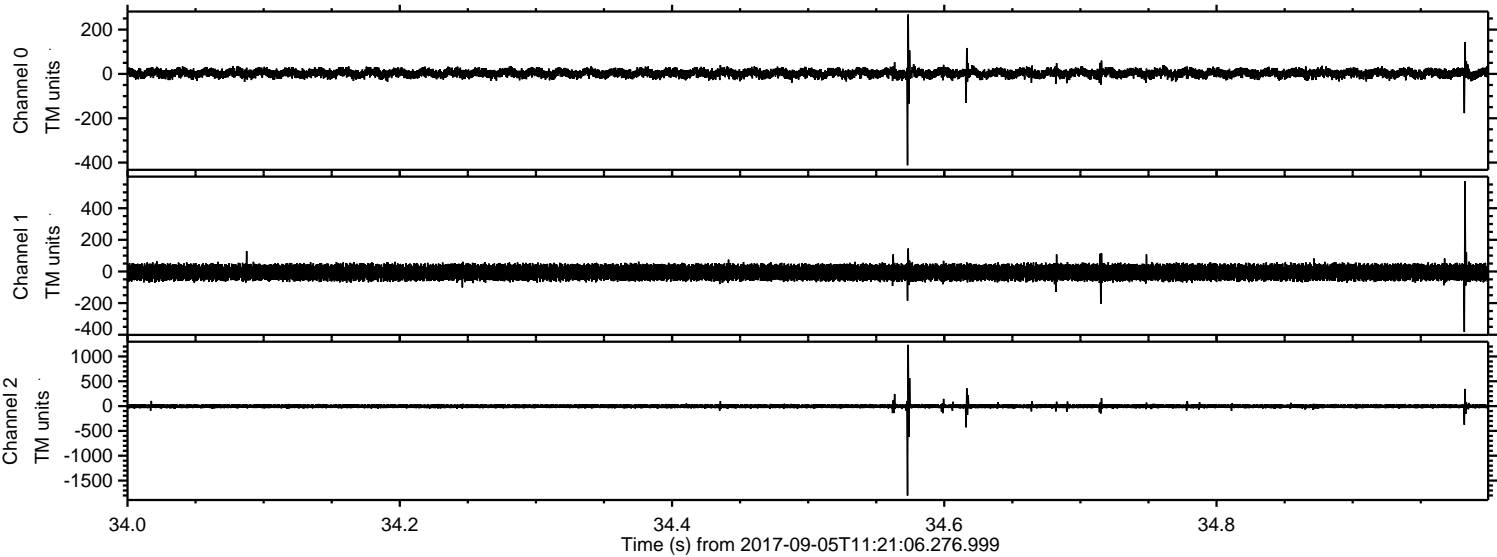


Processed Tue Sep 5 13:29:38 2017 by ELM ver.2012-10-06 from 001\_\_elm20170905\_112105\_\_dat00.bin





Processed Tue Sep 5 13:29:39 2017 by ELM ver.2012-10-06 from 001\_\_elm20170905\_112105\_\_dat00.bin





Processed Tue Sep 5 13:29:39 2017 by ELM ver.2012-10-06 from 001\_\_elm20170905\_112105\_\_dat00.bin

