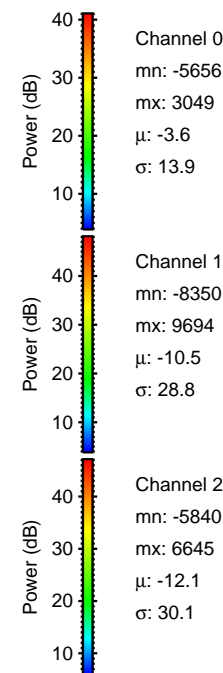
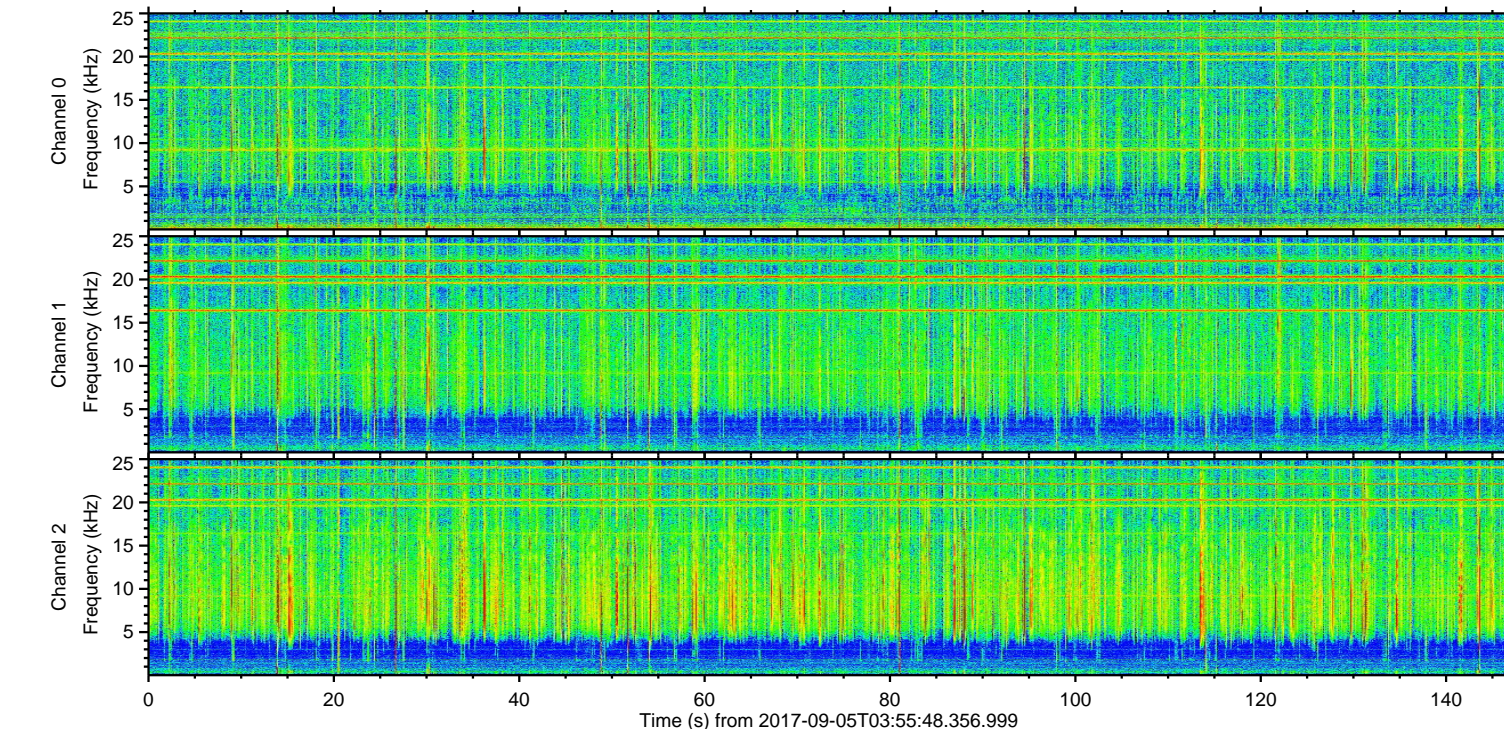
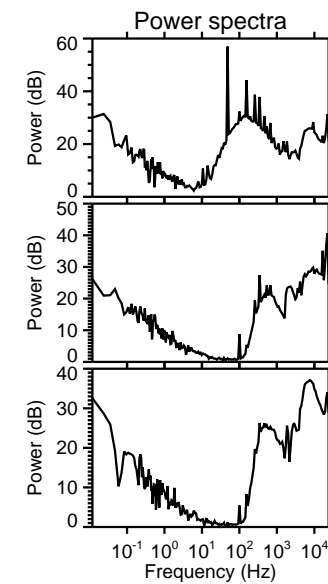
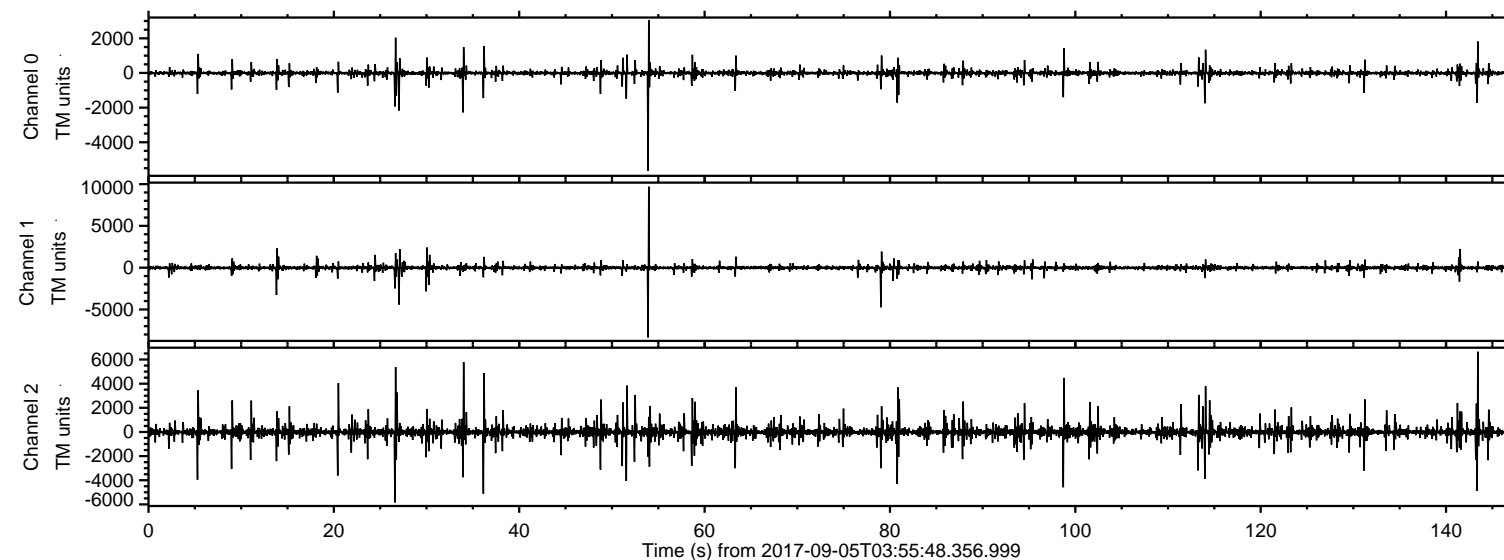


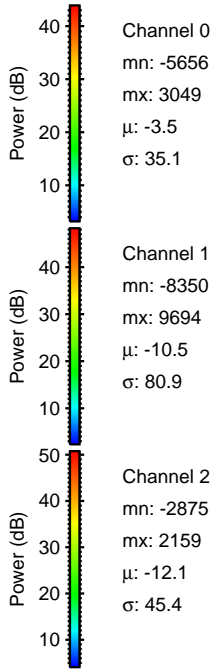
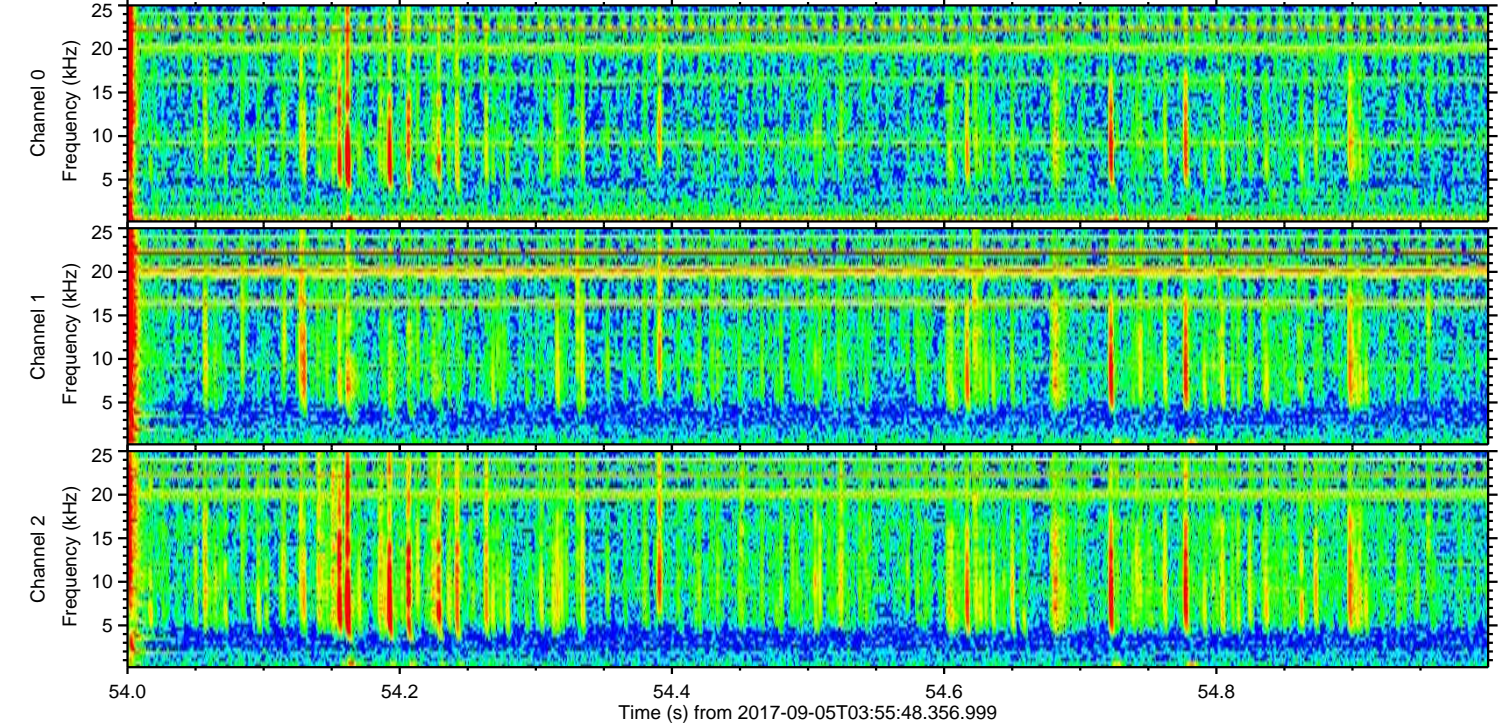
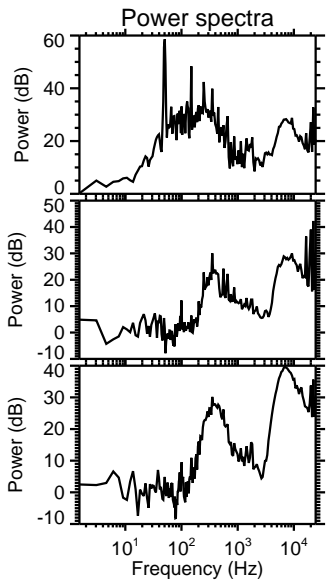
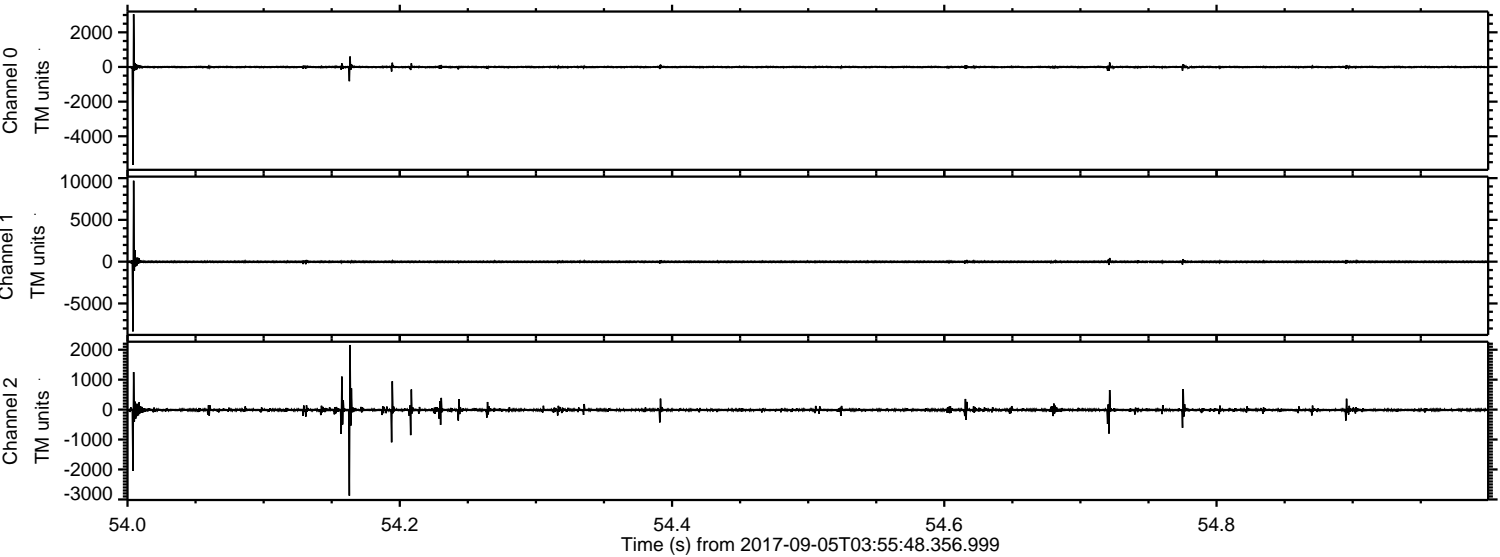
ELMAVAN 3D WAVEFORMS (Measured data sampled at 50 kHz) 51000 packets of 144 samples from 2017-09-05T03:55:48.356.999.

Processed Tue Sep 5 06:03:18 2017 by ELM ver.2012-10-06 from 001__elm20170905_035547__dat00.bin



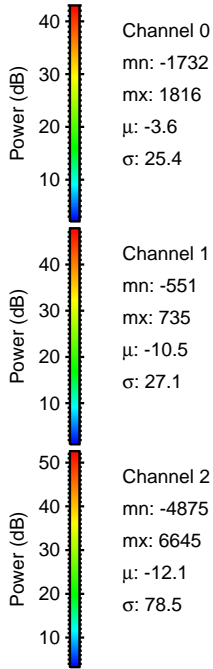
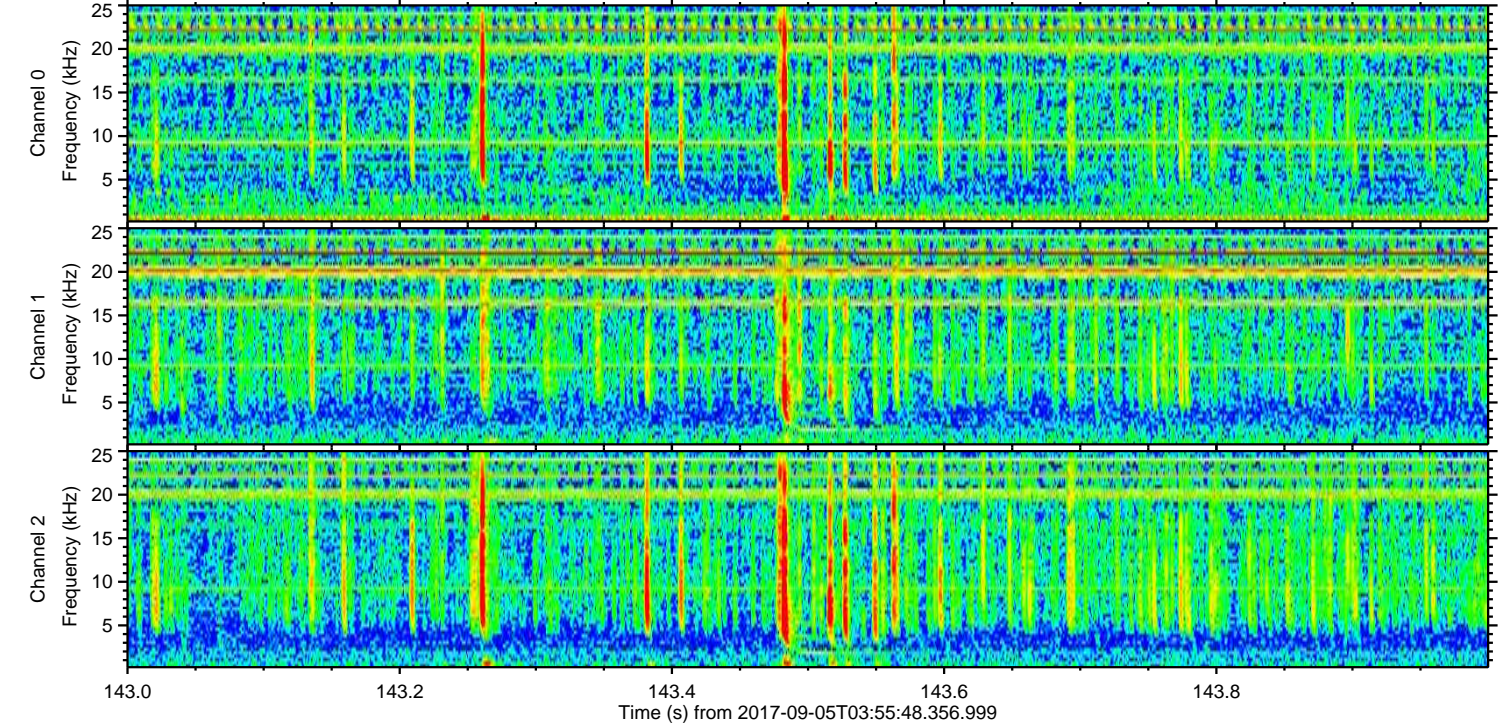
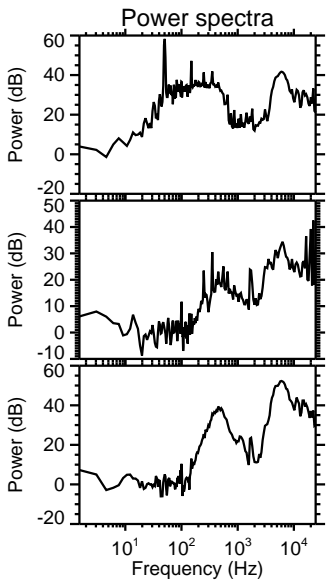
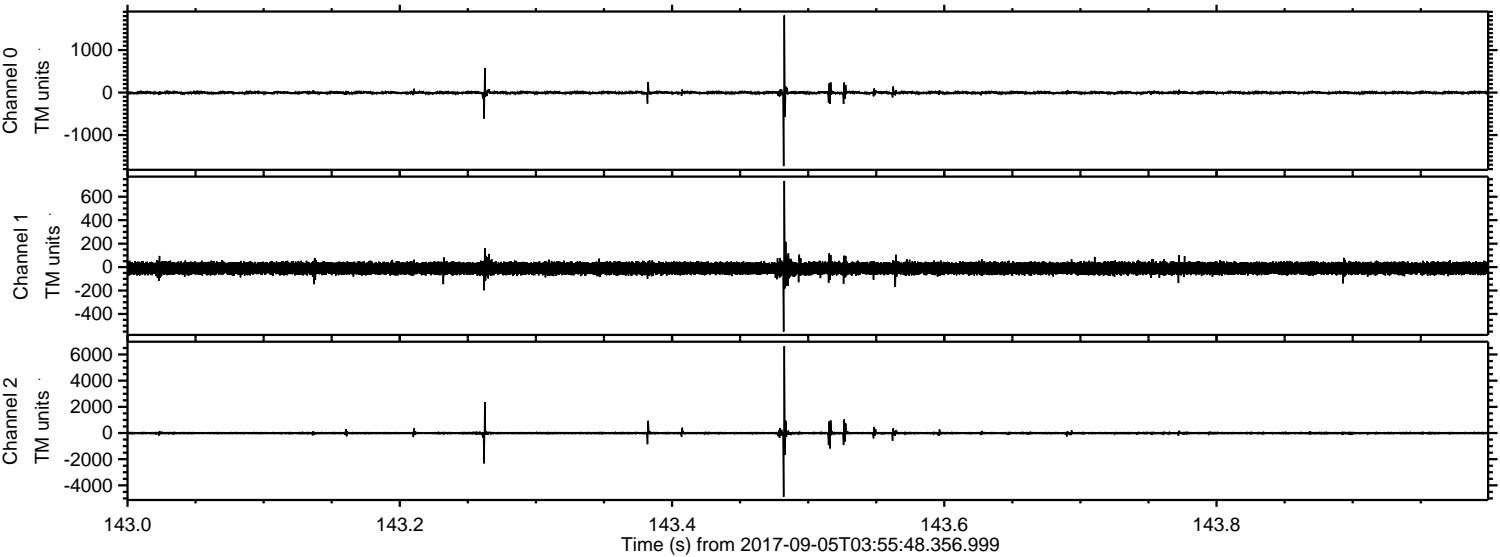
ELMAVAN 3D WAVEFORMS (Measured data sampled at 50 kHz) 51000 packets of 144 samples from 2017-09-05T03:55:48.356.999. Part 55/147

Processed Tue Sep 5 06:03:23 2017 by ELM ver.2012-10-06 from 001__elm20170905_035547__dat00.bin



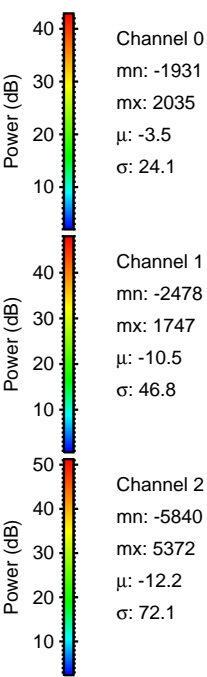
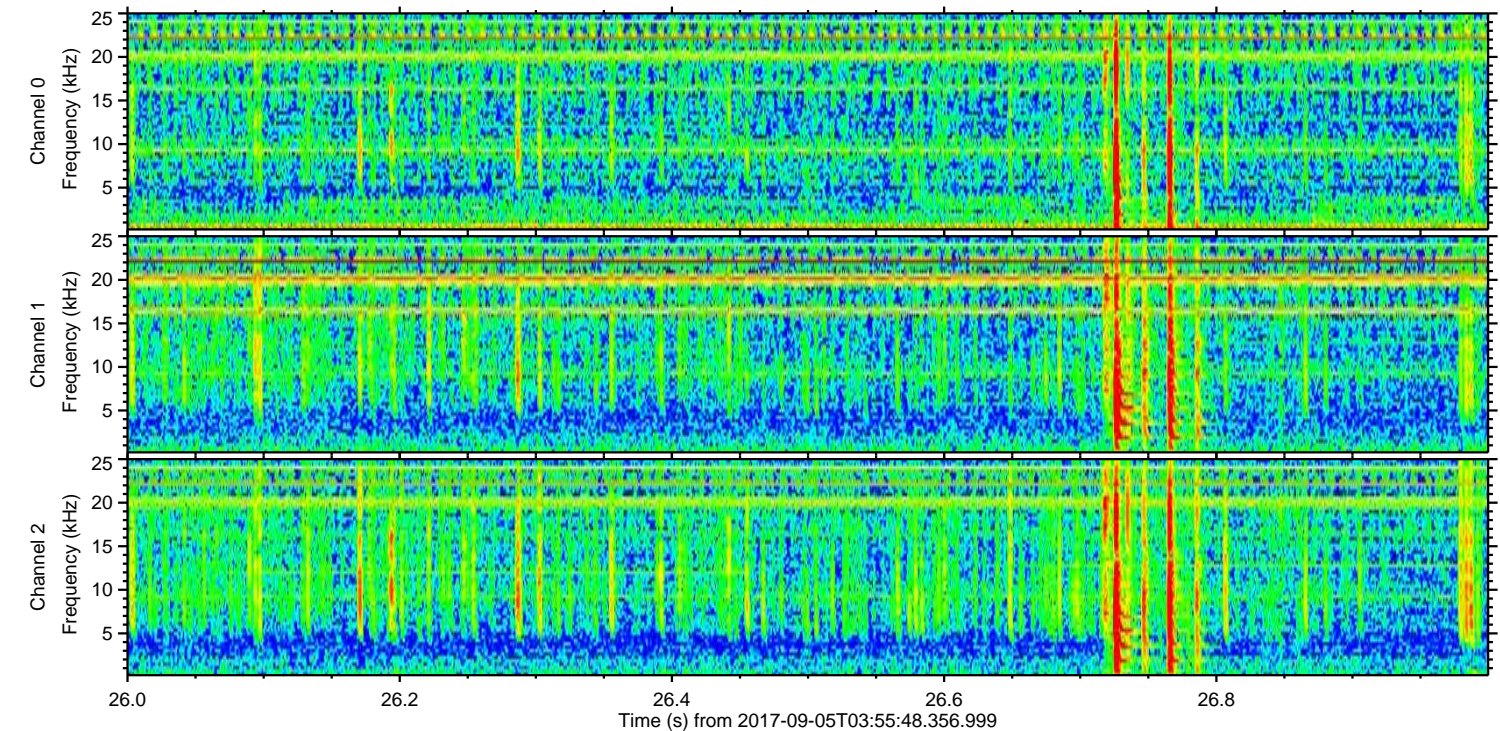
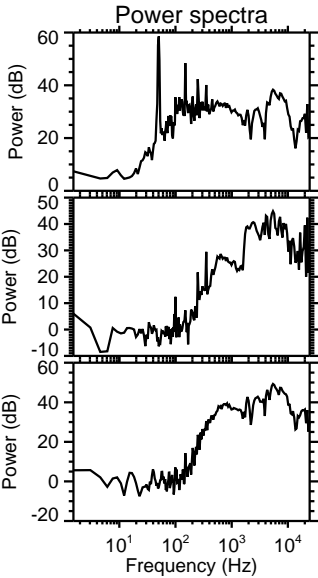
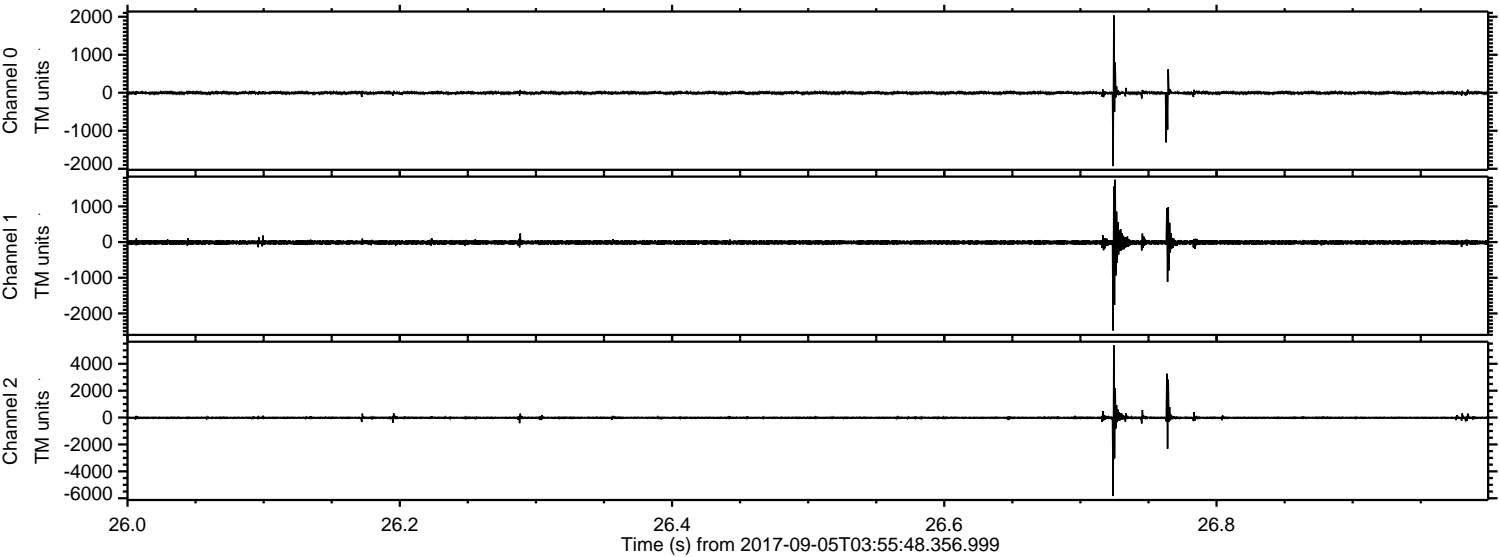
ELMAVAN 3D WAVEFORMS (Measured data sampled at 50 kHz) 51000 packets of 144 samples from 2017-09-05T03:55:48.356.999. Part 144/147

Processed Tue Sep 5 06:03:24 2017 by ELM ver.2012-10-06 from 001__elm20170905_035547__dat00.bin

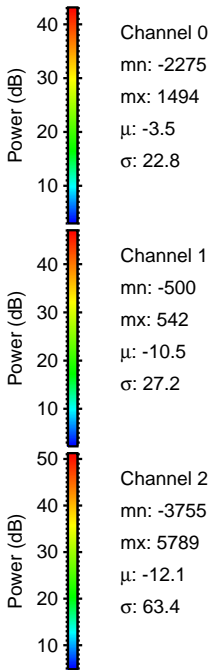
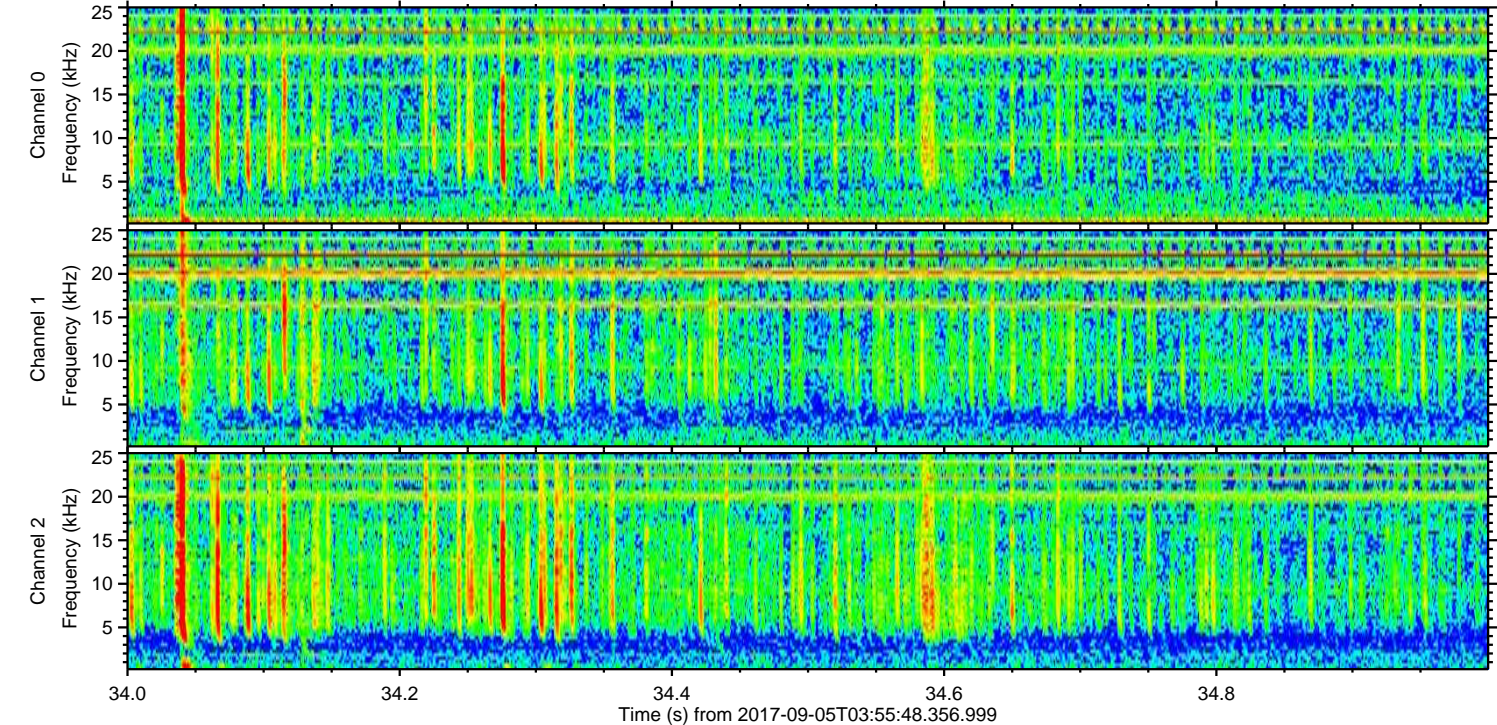
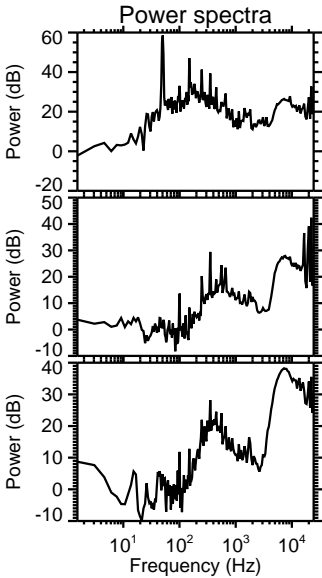
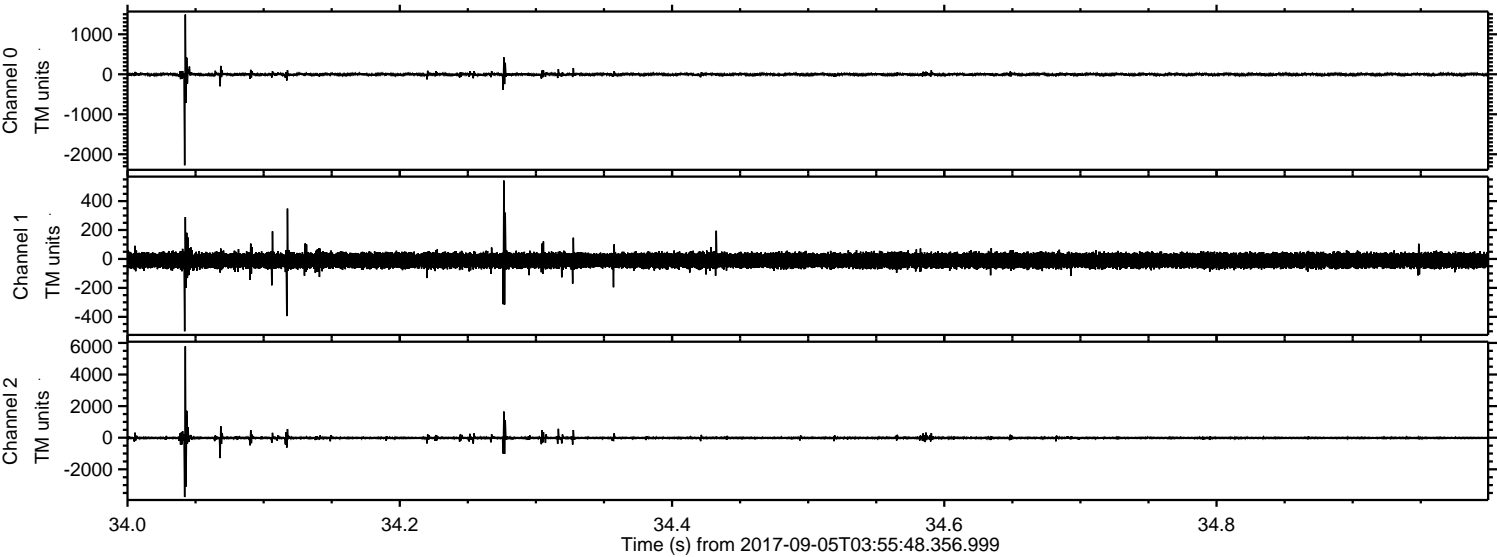


ELMAVAN 3D WAVEFORMS (Measured data sampled at 50 kHz) 51000 packets of 144 samples from 2017-09-05T03:55:48.356.999. Part 27/147

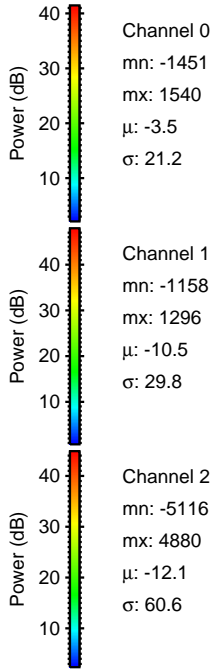
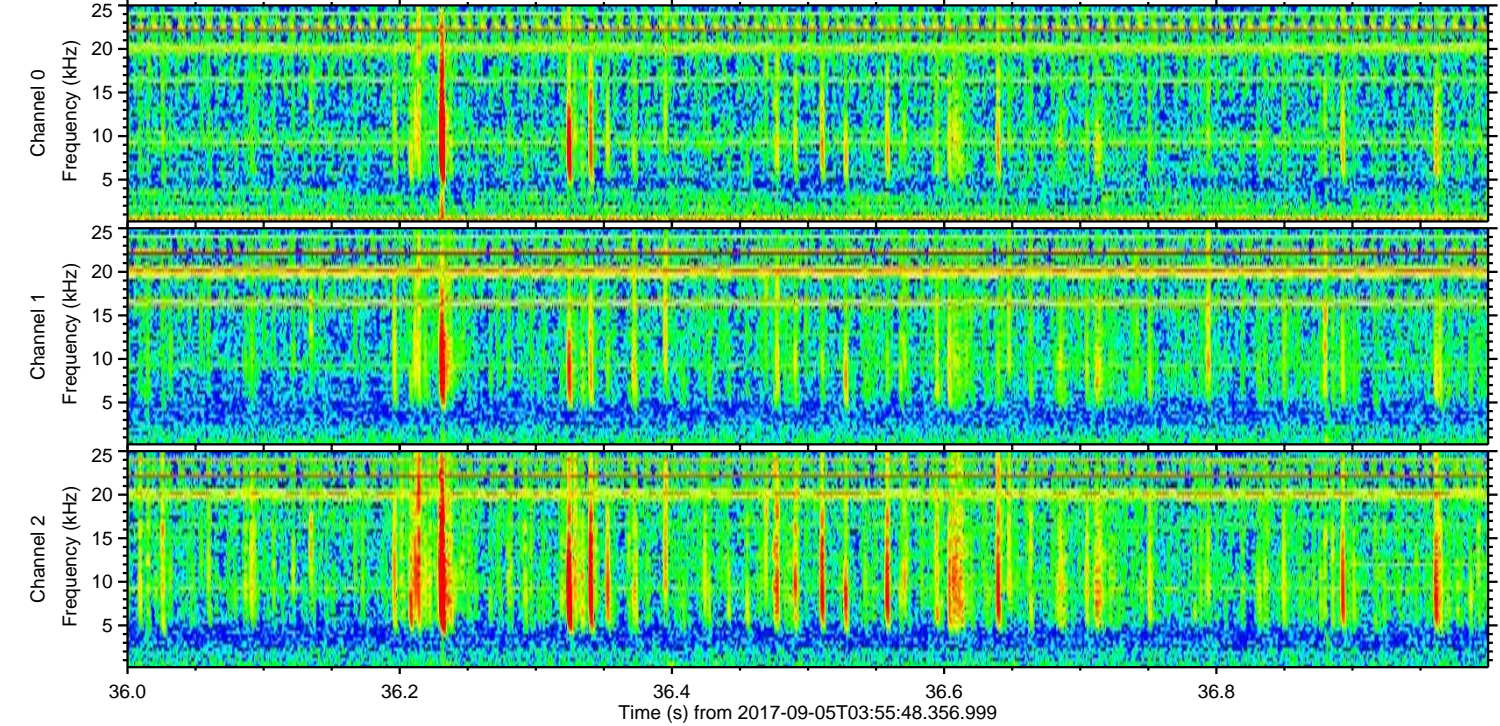
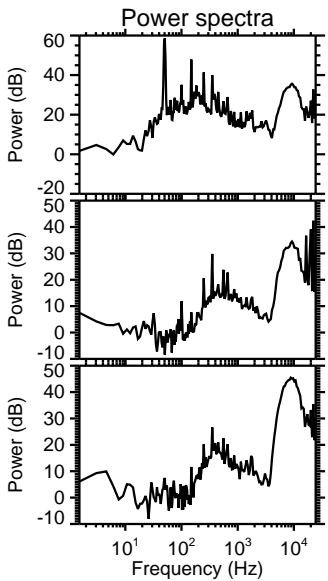
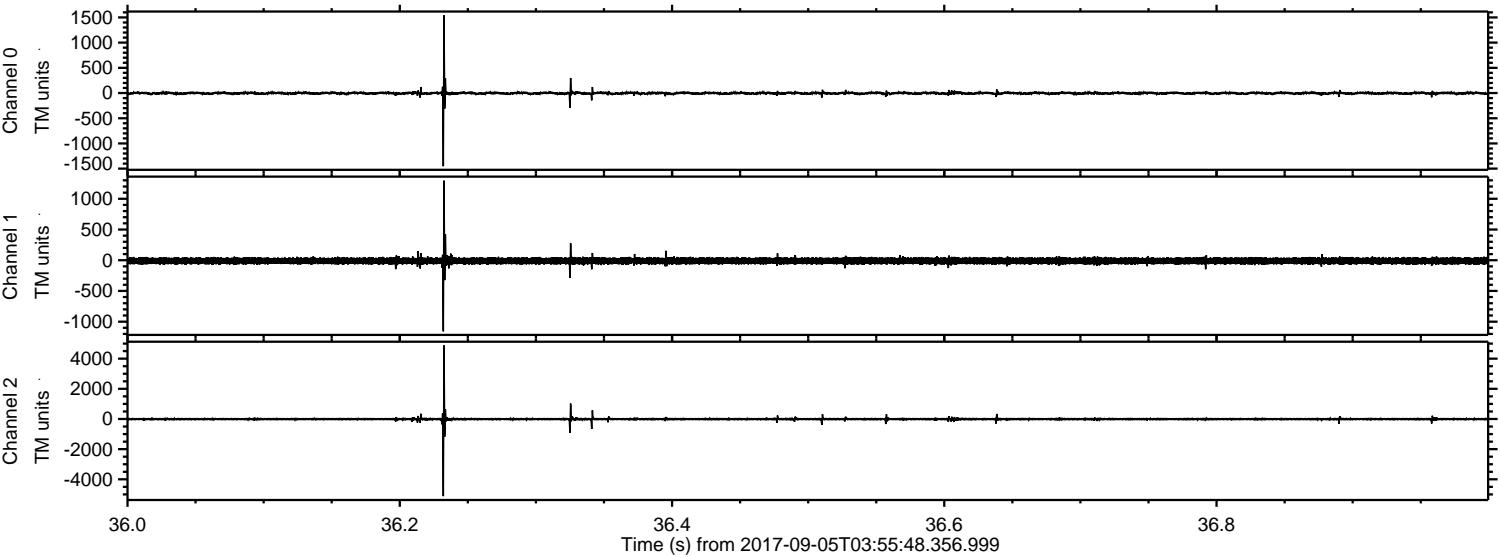
Processed Tue Sep 5 06:03:24 2017 by ELM ver.2012-10-06 from 001__elm20170905_035547__dat00.bin



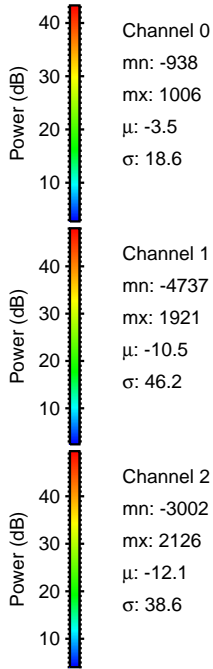
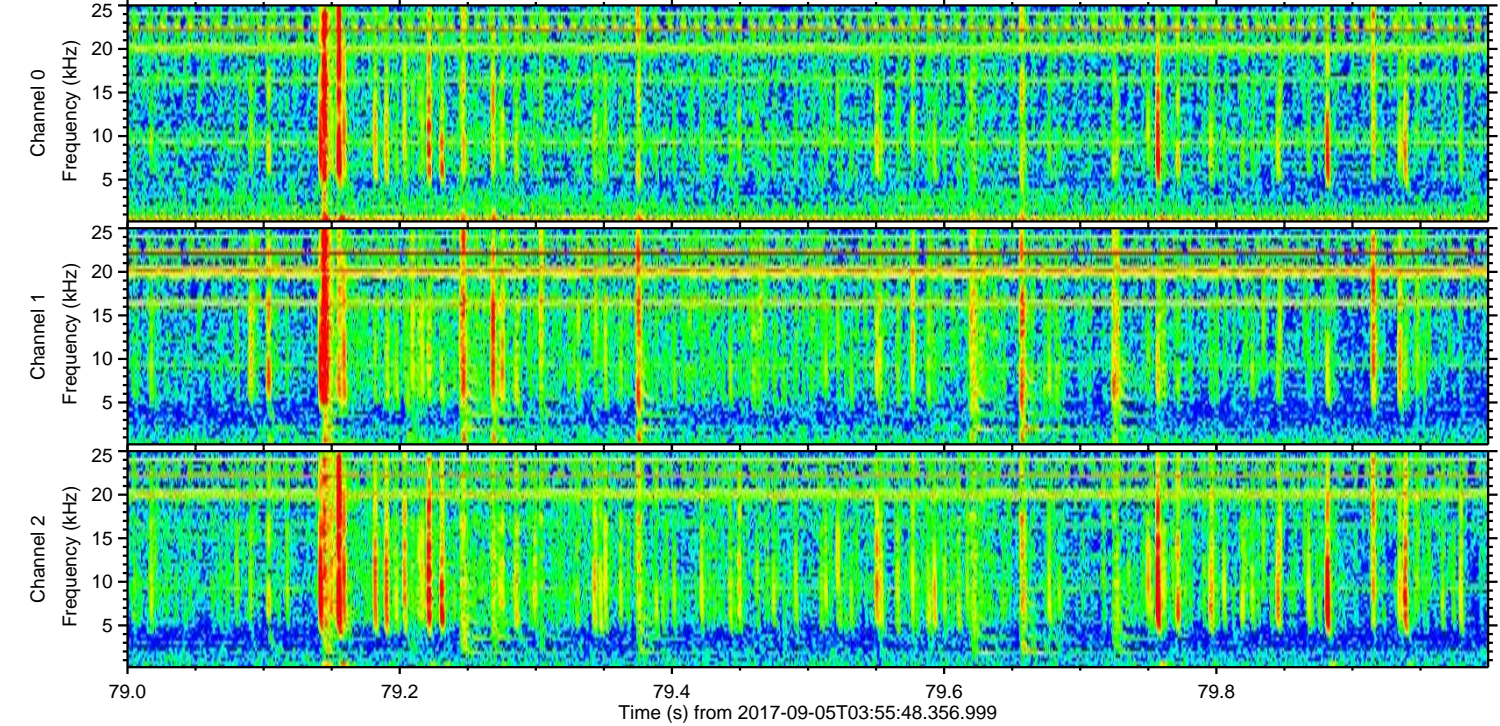
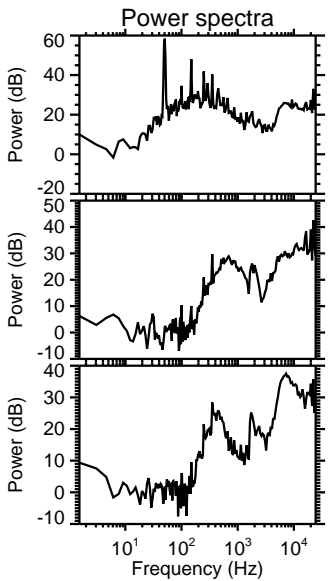
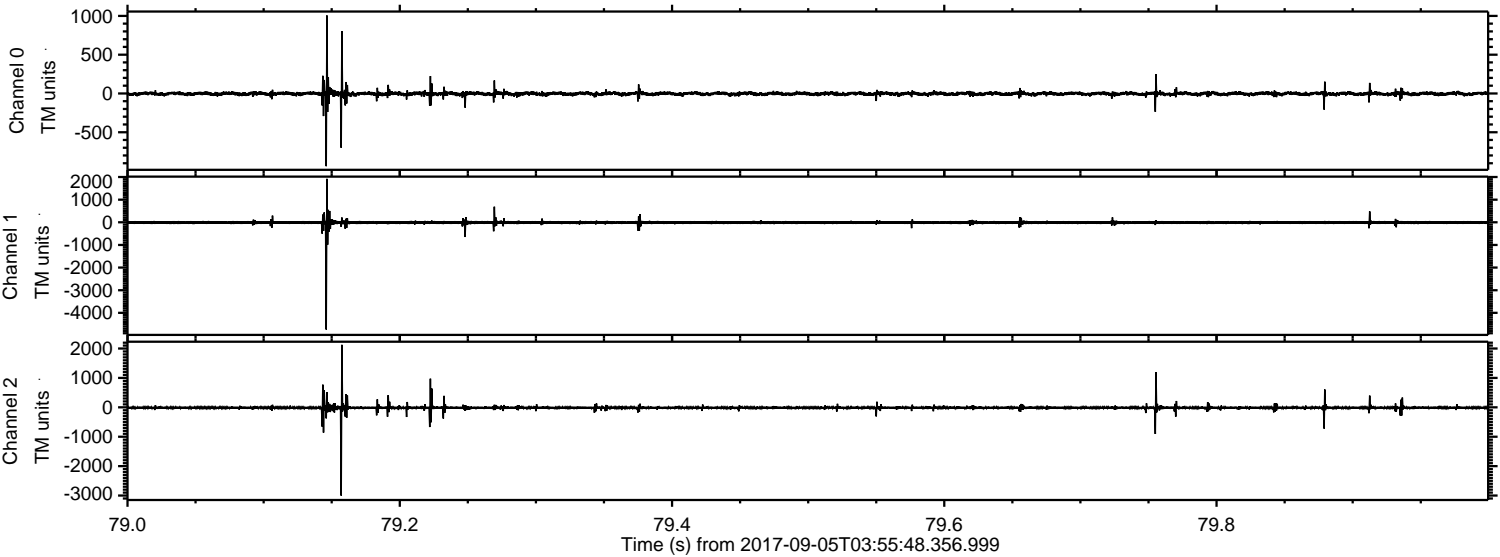
Processed Tue Sep 5 06:03:25 2017 by ELM ver.2012-10-06 from 001__elm20170905_035547__dat00.bin



Processed Tue Sep 5 06:03:26 2017 by ELM ver.2012-10-06 from 001__elm20170905_035547__dat00.bin

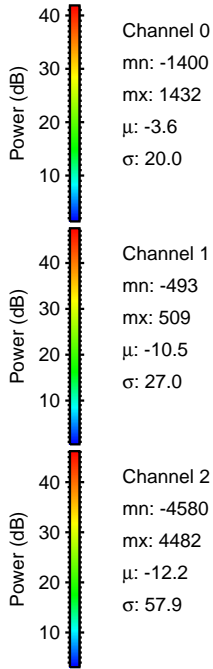
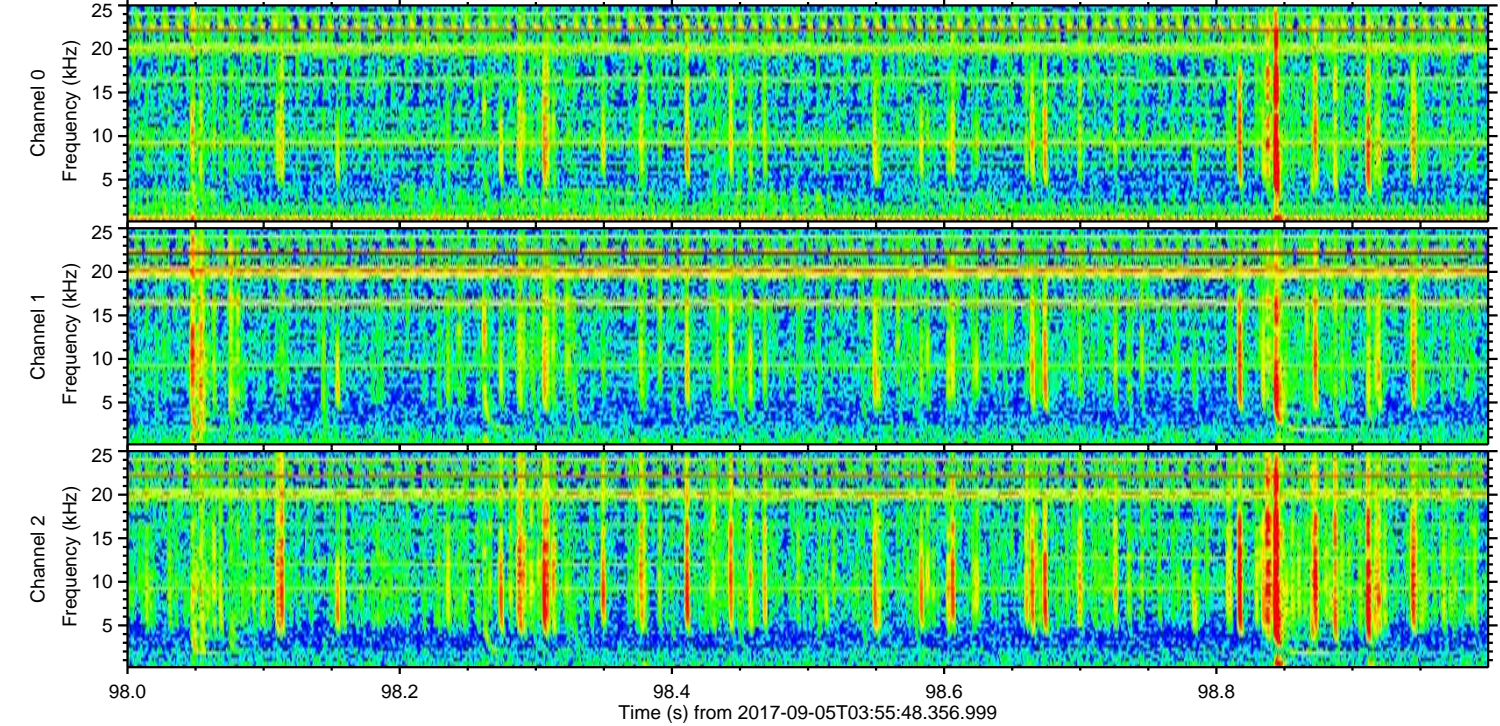
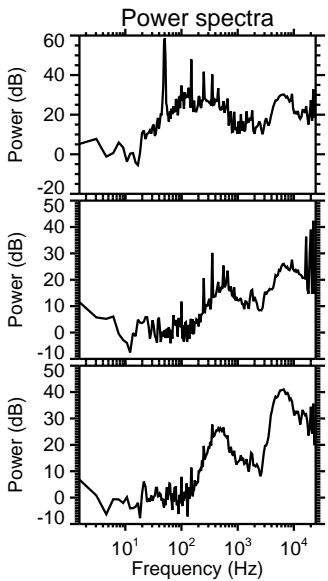
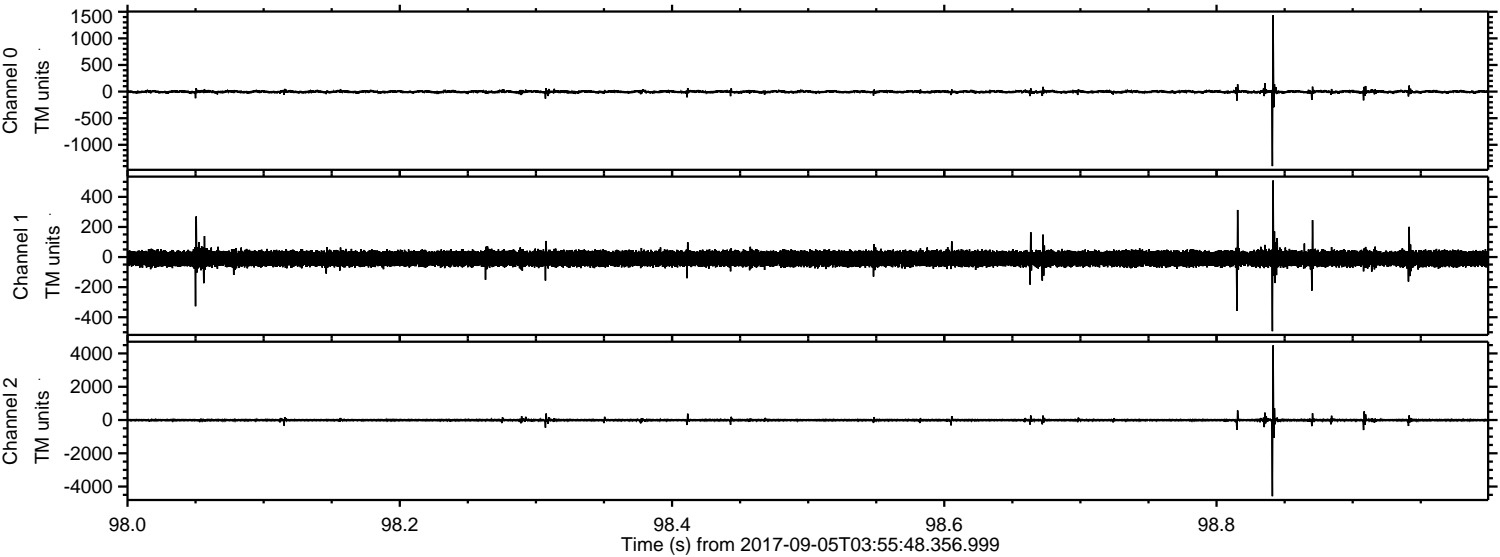


Processed Tue Sep 5 06:03:27 2017 by ELM ver.2012-10-06 from 001__elm20170905_035547__dat00.bin

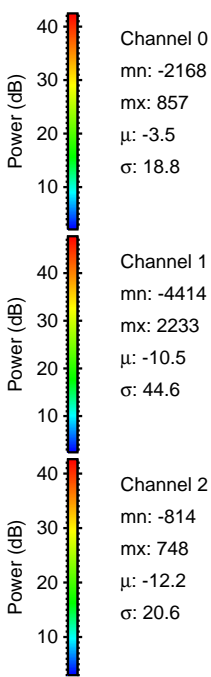
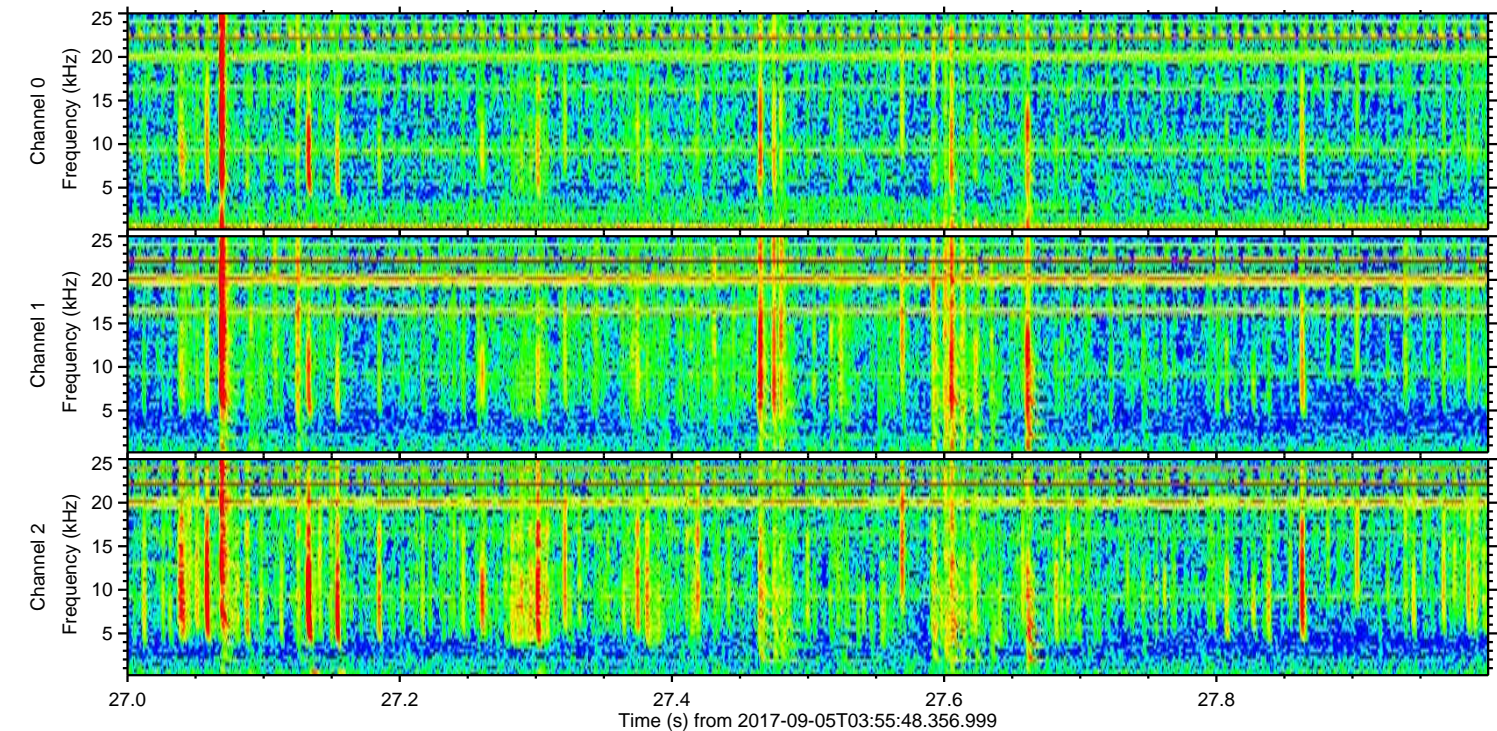
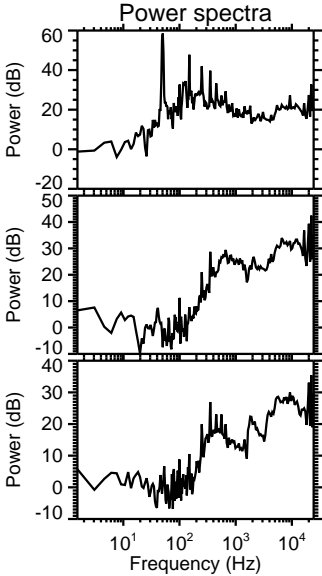
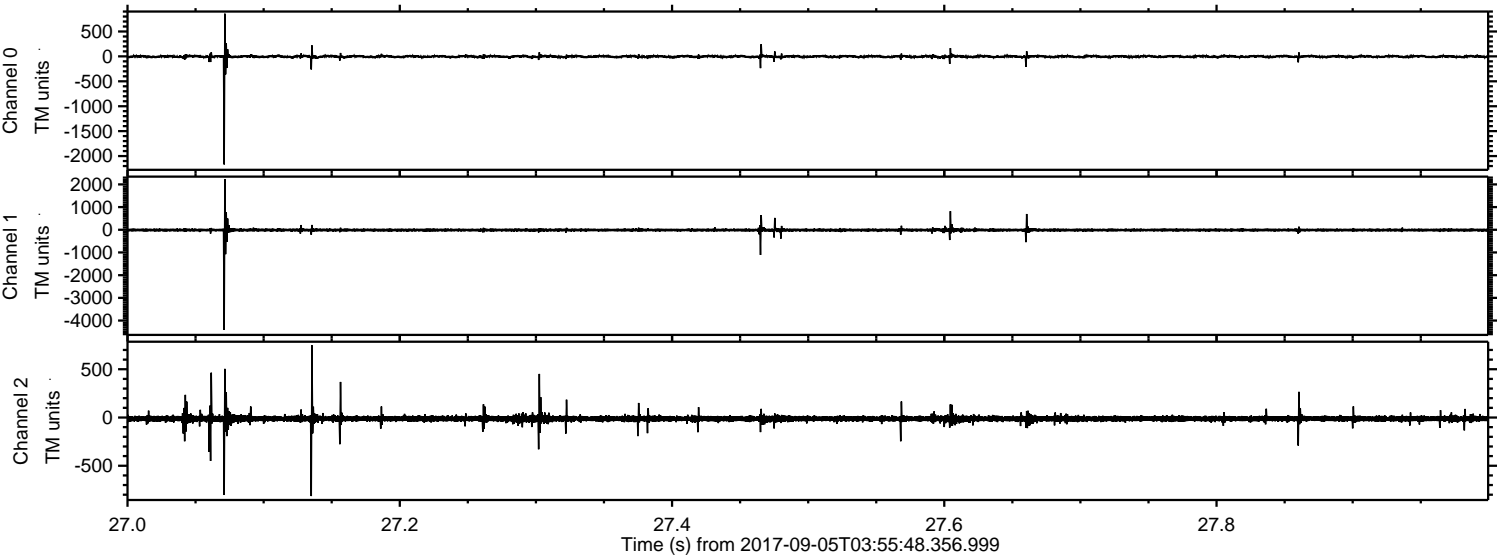


ELMAVAN 3D WAVEFORMS (Measured data sampled at 50 kHz) 51000 packets of 144 samples from 2017-09-05T03:55:48.356.999. Part 99/147

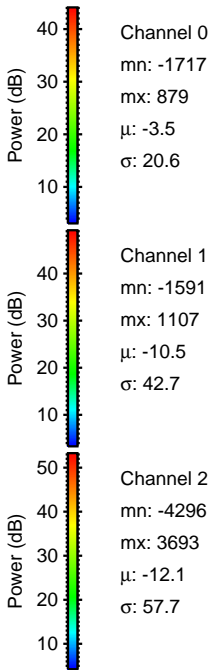
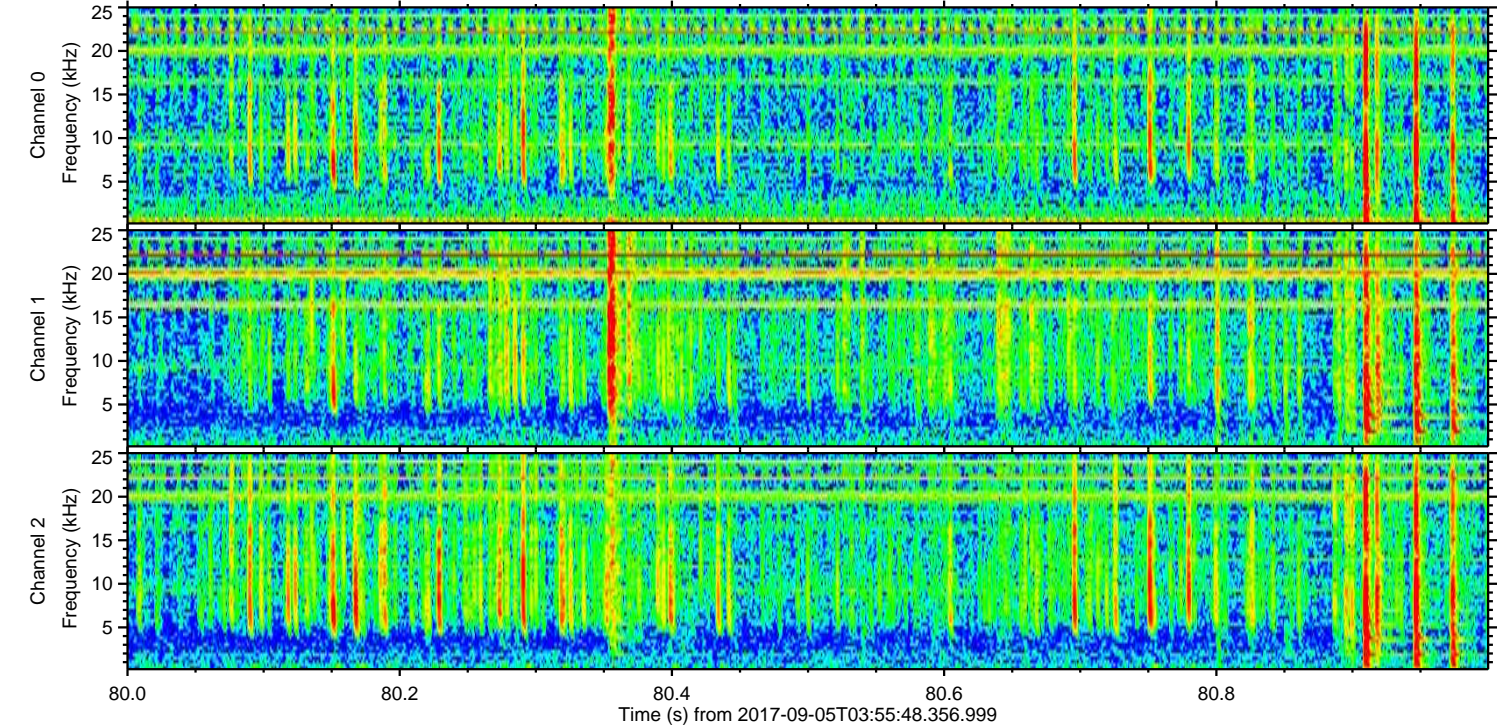
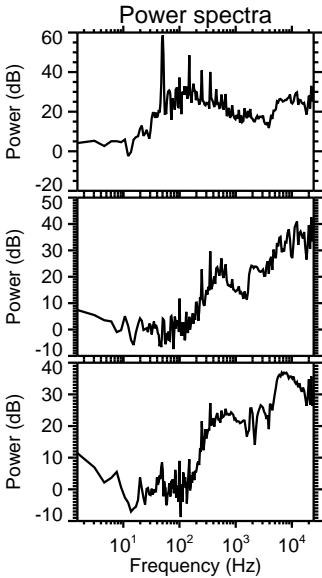
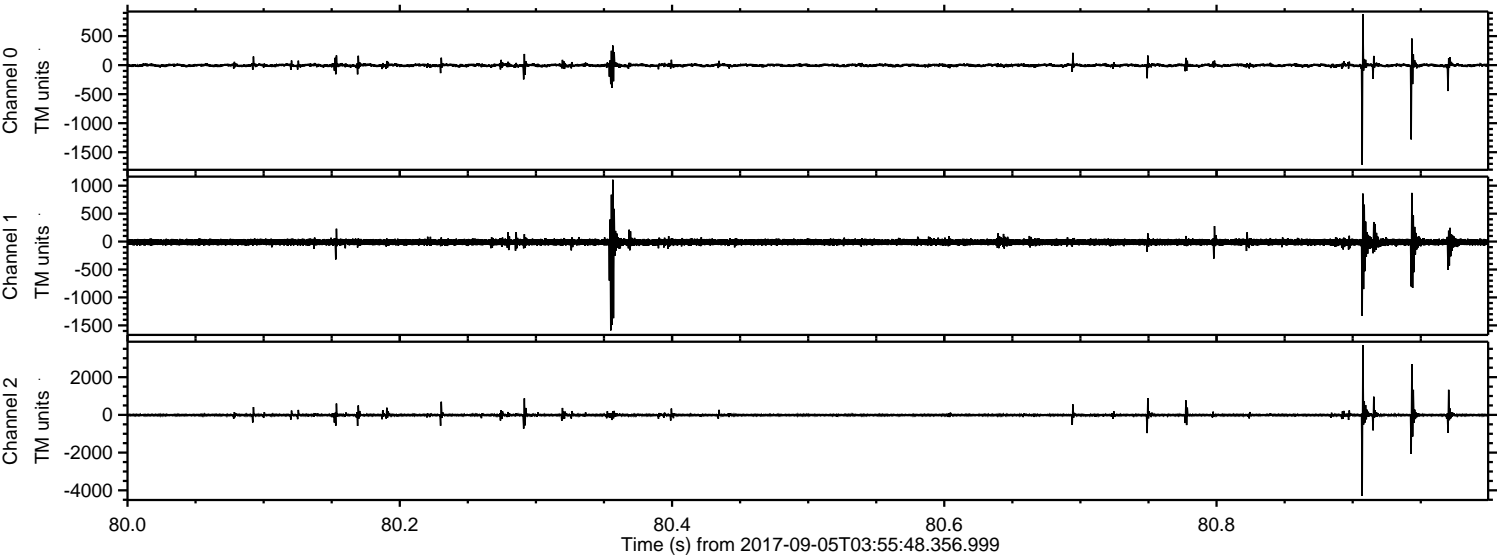
Processed Tue Sep 5 06:03:27 2017 by ELM ver.2012-10-06 from 001__elm20170905_035547__dat00.bin



Processed Tue Sep 5 06:03:28 2017 by ELM ver.2012-10-06 from 001__elm20170905_035547__dat00.bin



Processed Tue Sep 5 06:03:29 2017 by ELM ver.2012-10-06 from 001__elm20170905_035547__dat00.bin



Channel 0
mn: -1717
mx: 879
 μ : -3.5
 σ : 20.6

Channel 1
mn: -1591
mx: 1107
 μ : -10.5
 σ : 42.7

Channel 2
mn: -4296
mx: 3693
 μ : -12.1
 σ : 57.7

Processed Tue Sep 5 06:03:29 2017 by ELM ver.2012-10-06 from 001__elm20170905_035547__dat00.bin

