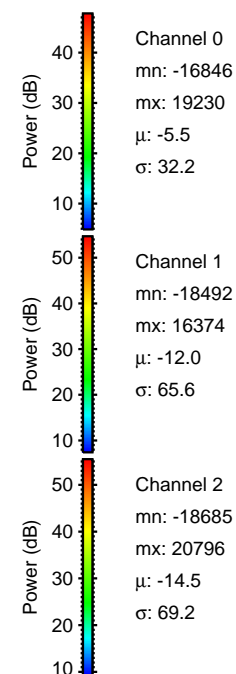
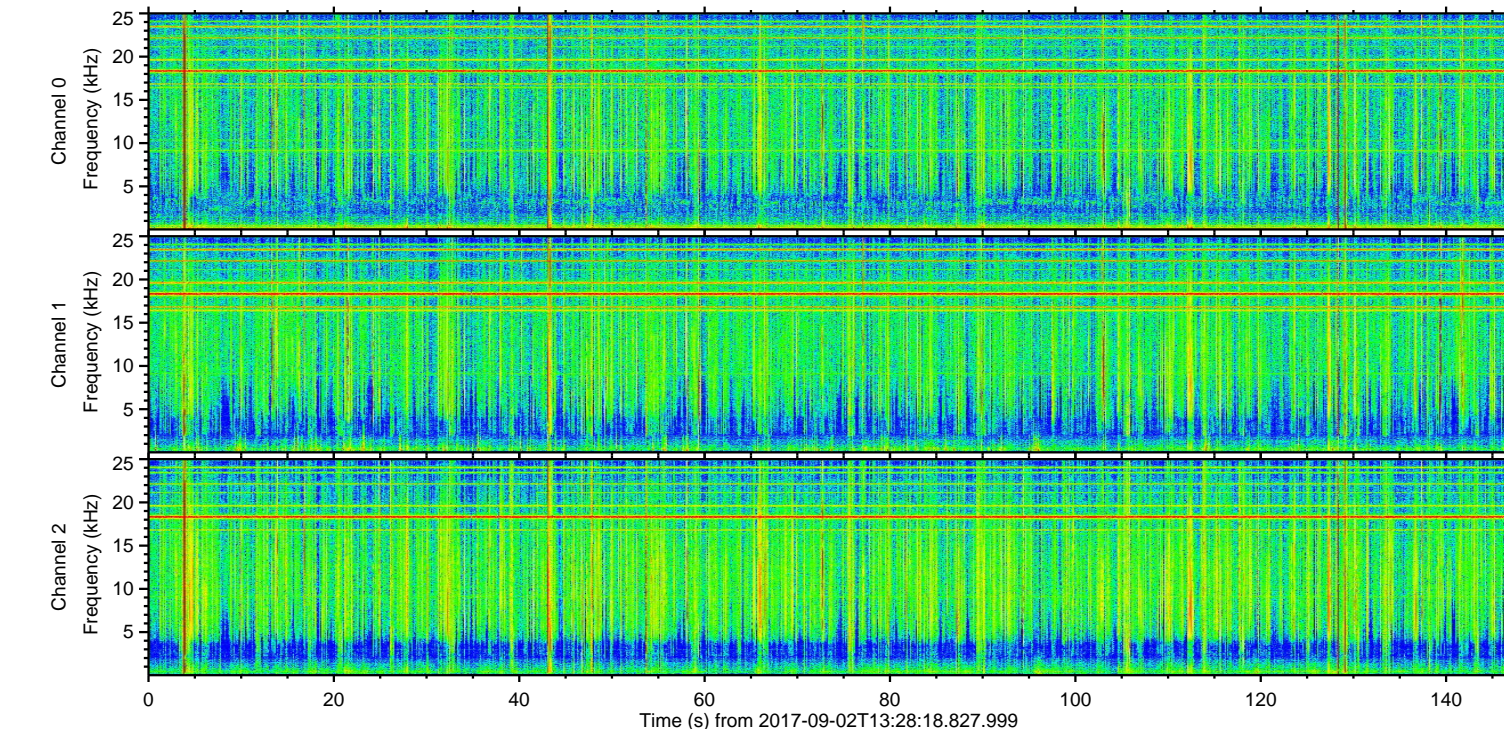
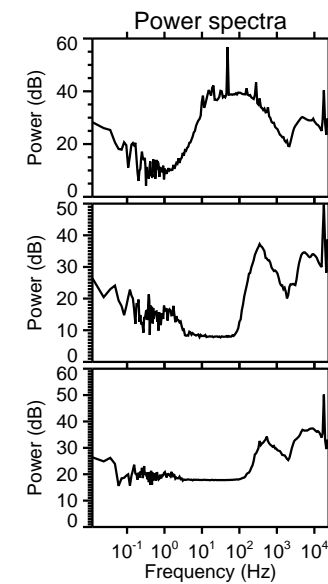
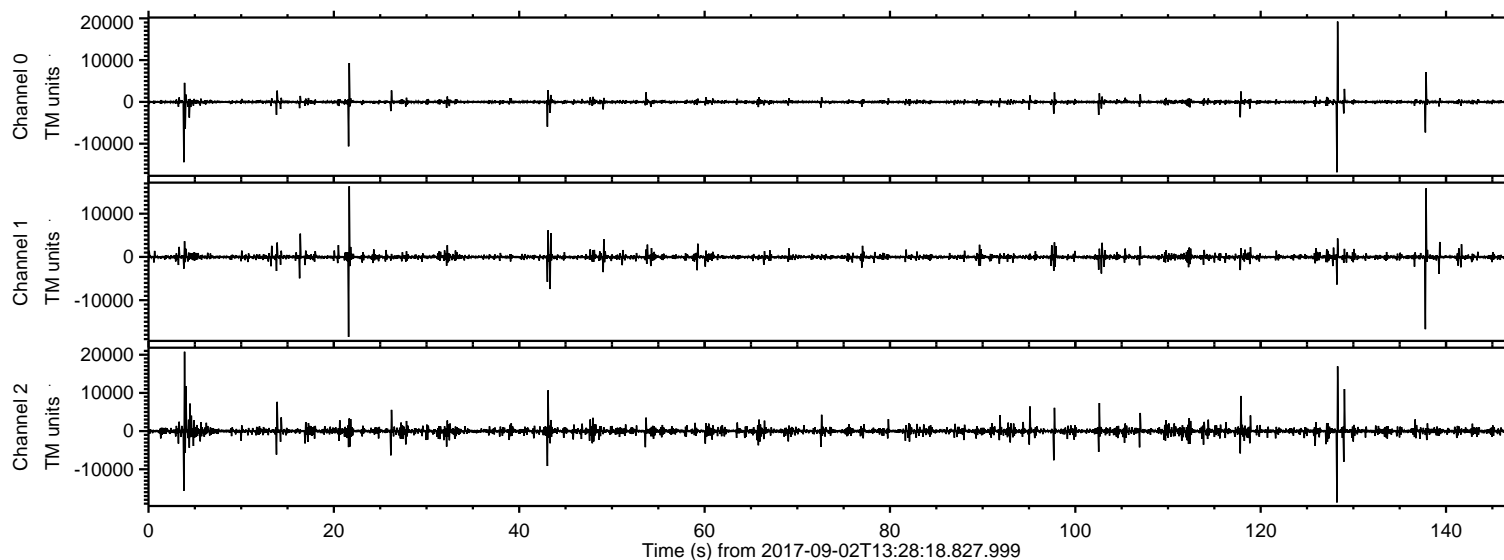
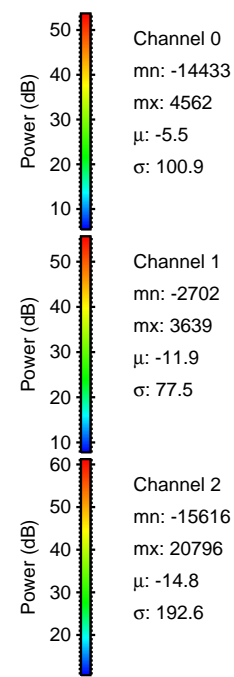
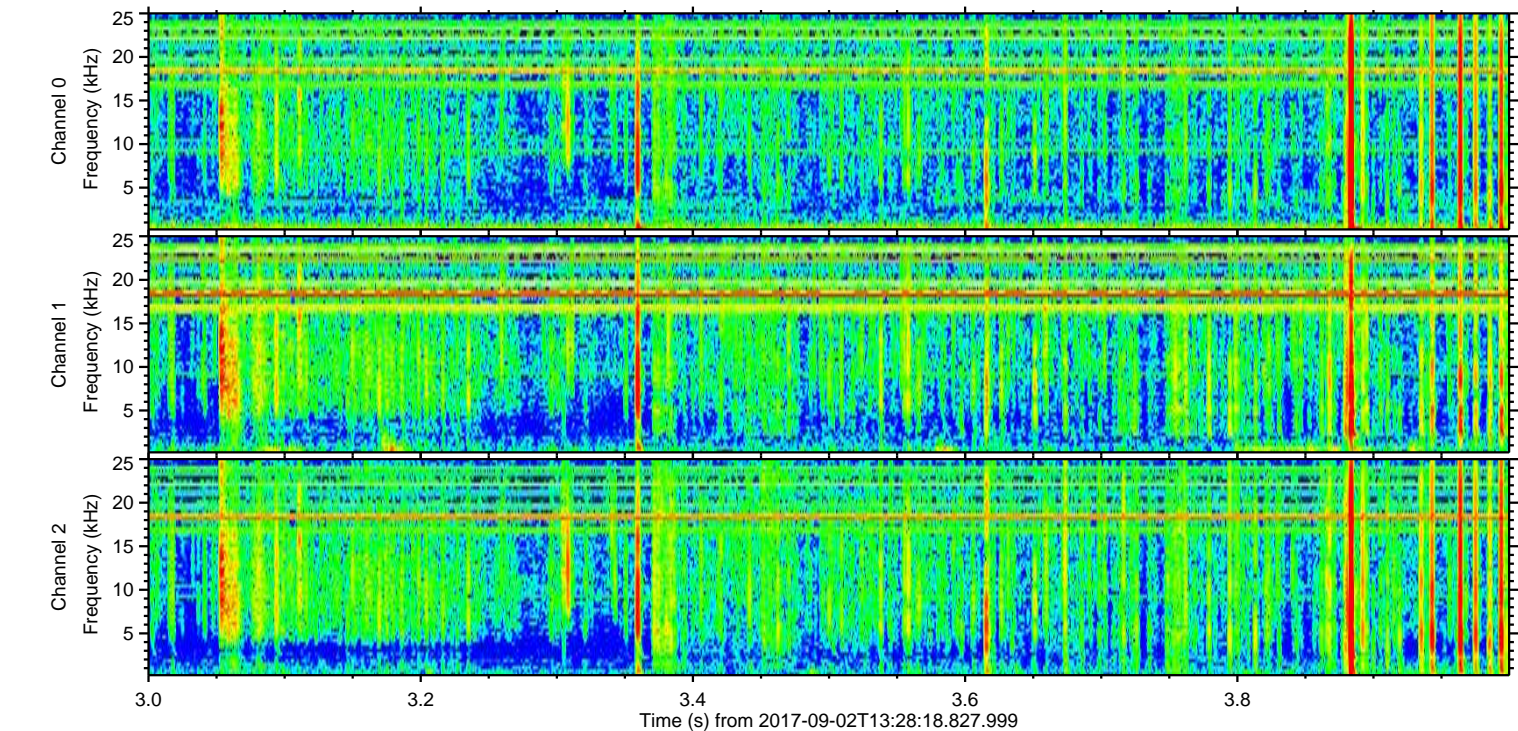
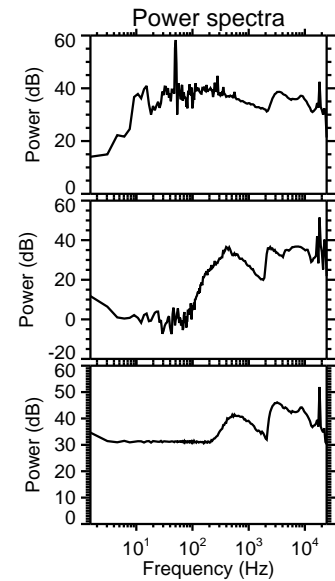
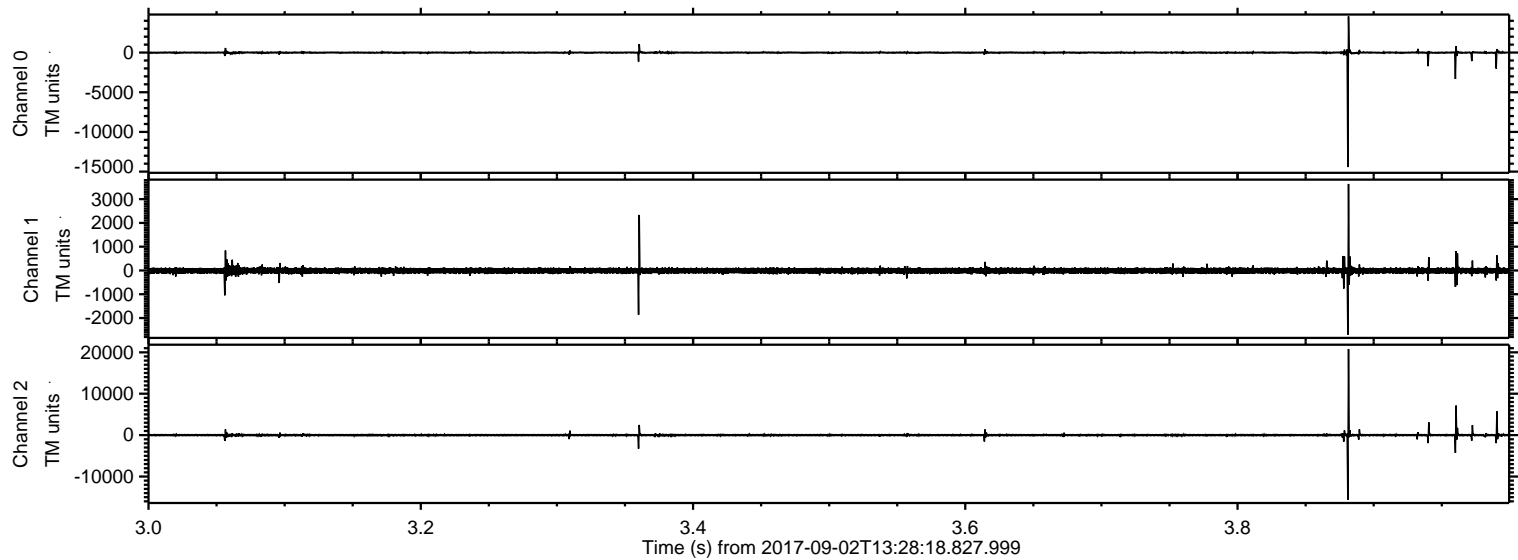


ELMAVAN 3D WAVEFORMS (Measured data sampled at 50 kHz) 51000 packets of 144 samples from 2017-09-02T13:28:18.827.999.

Processed Sat Sep 2 15:35:45 2017 by ELM ver.2012-10-06 from 001__elm20170902_132817__dat00.bin

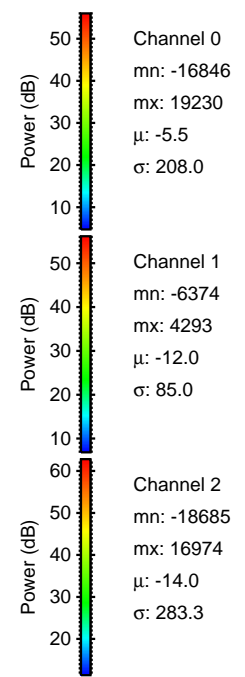
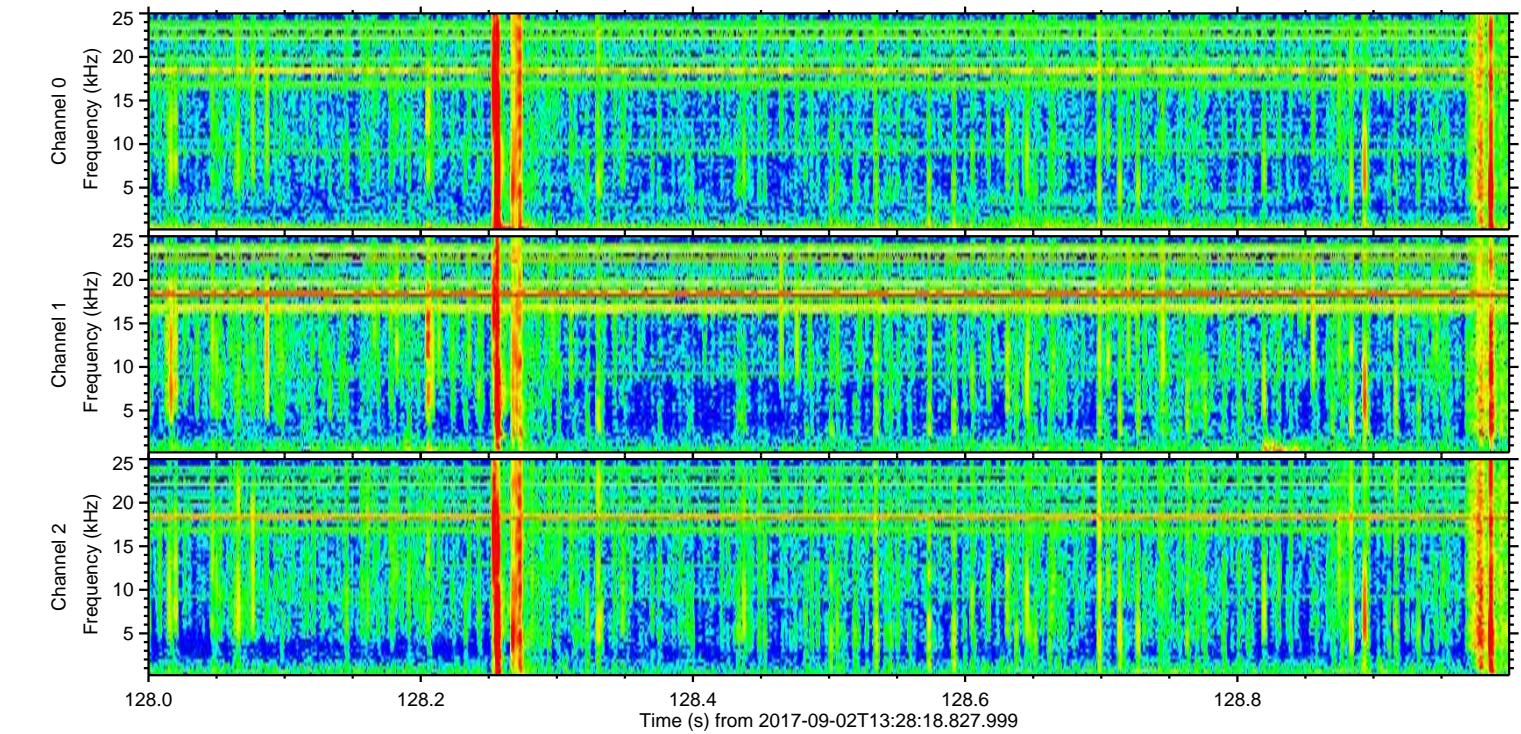
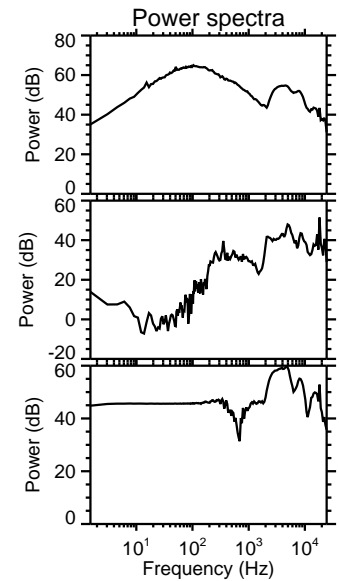
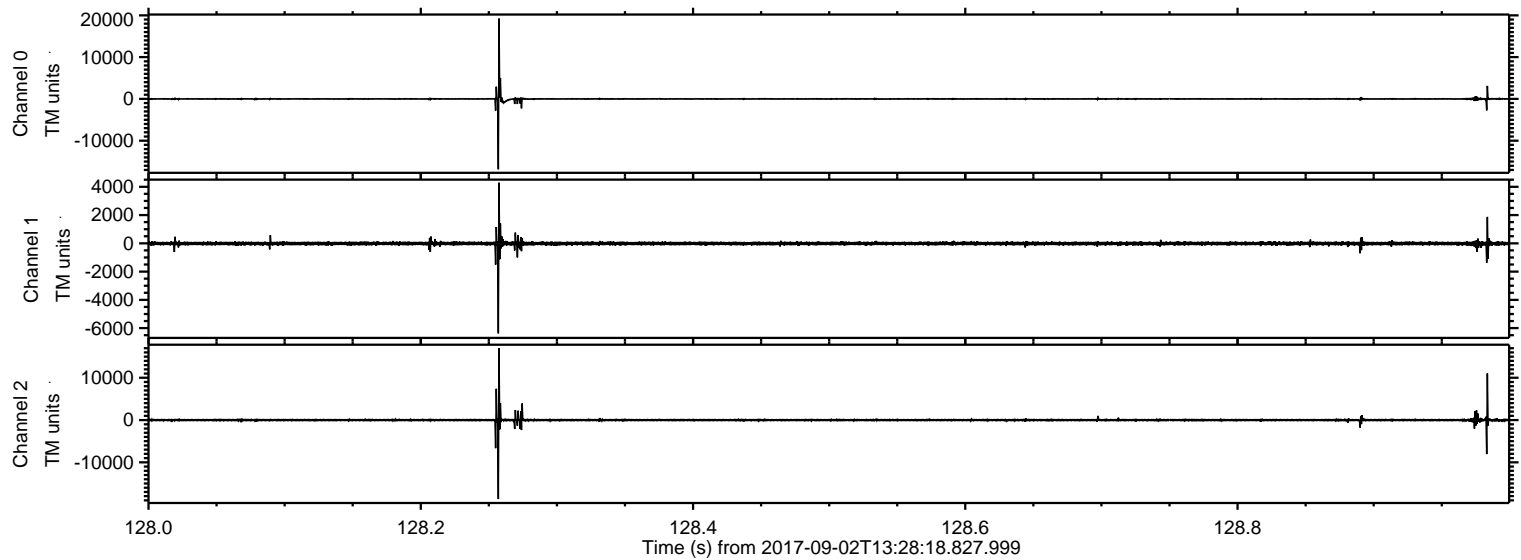


Processed Sat Sep 2 15:35:54 2017 by ELM ver.2012-10-06 from 001__elm20170902_132817__dat00.bin

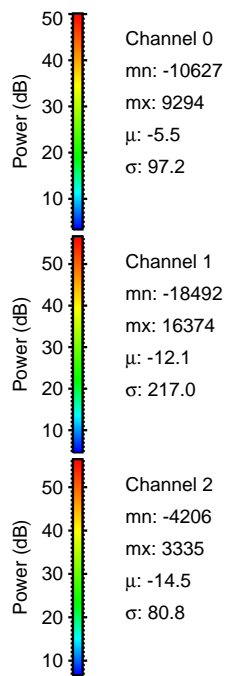
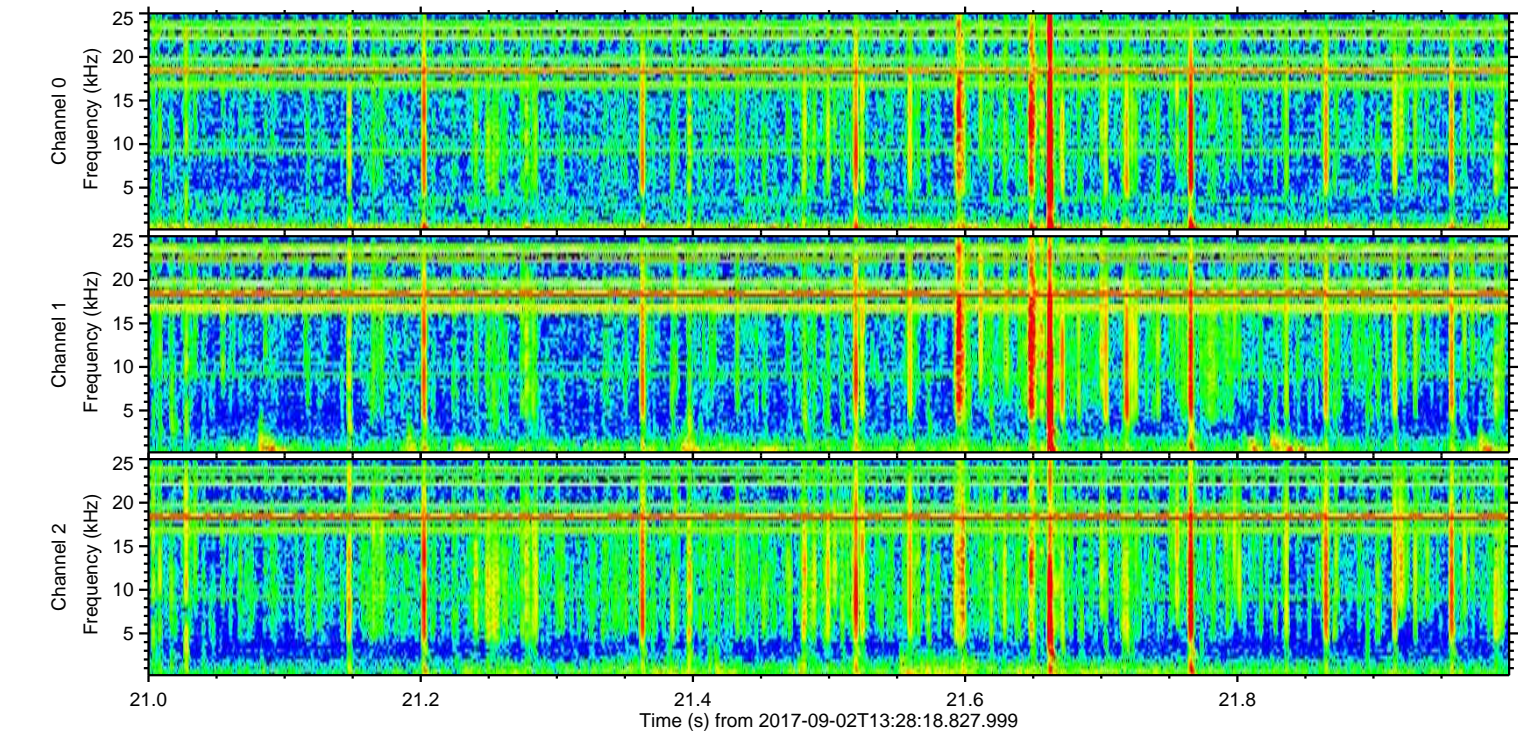
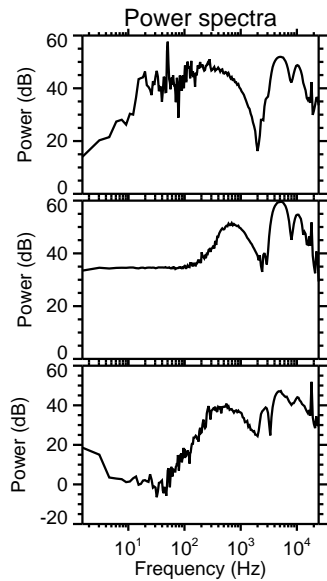
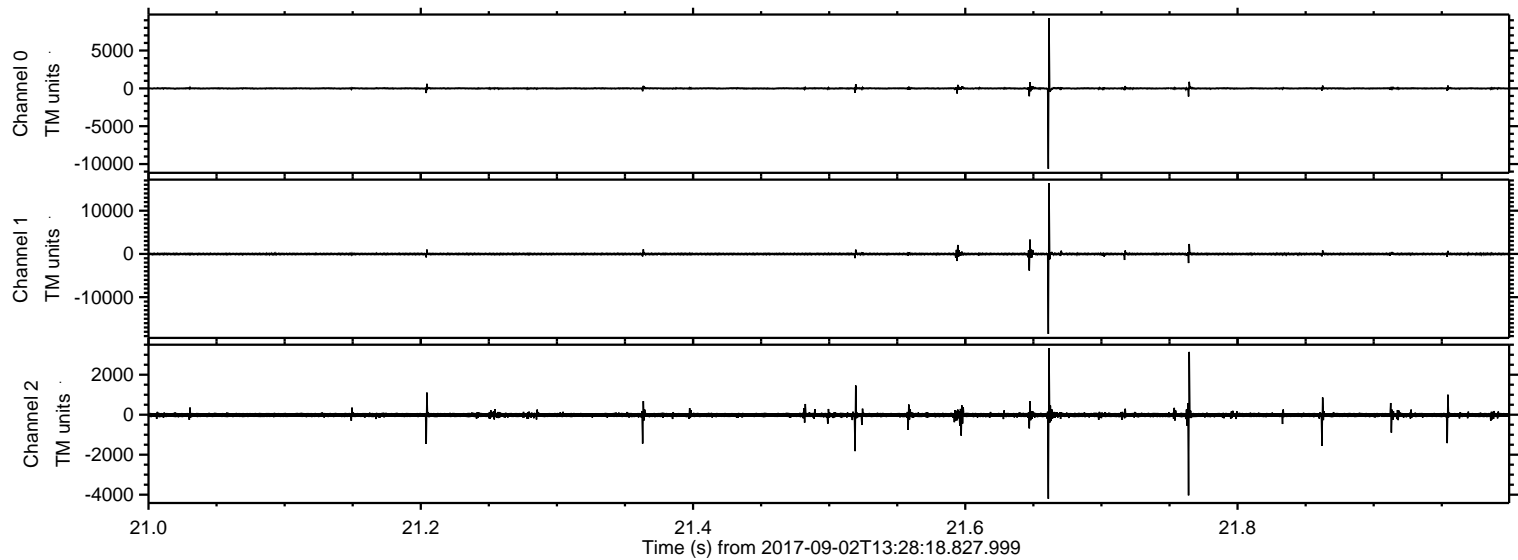


ELMAVAN 3D WAVEFORMS (Measured data sampled at 50 kHz) 51000 packets of 144 samples from 2017-09-02T13:28:18.827.999. Part 129/147

Processed Sat Sep 2 15:35:55 2017 by ELM ver.2012-10-06 from 001__elm20170902_132817__dat00.bin

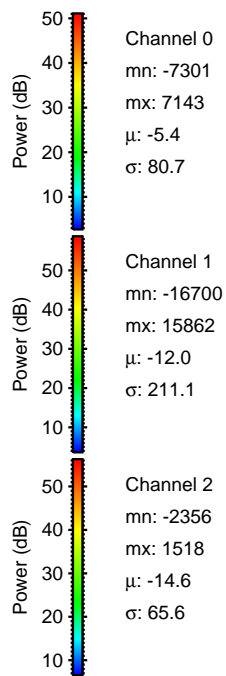
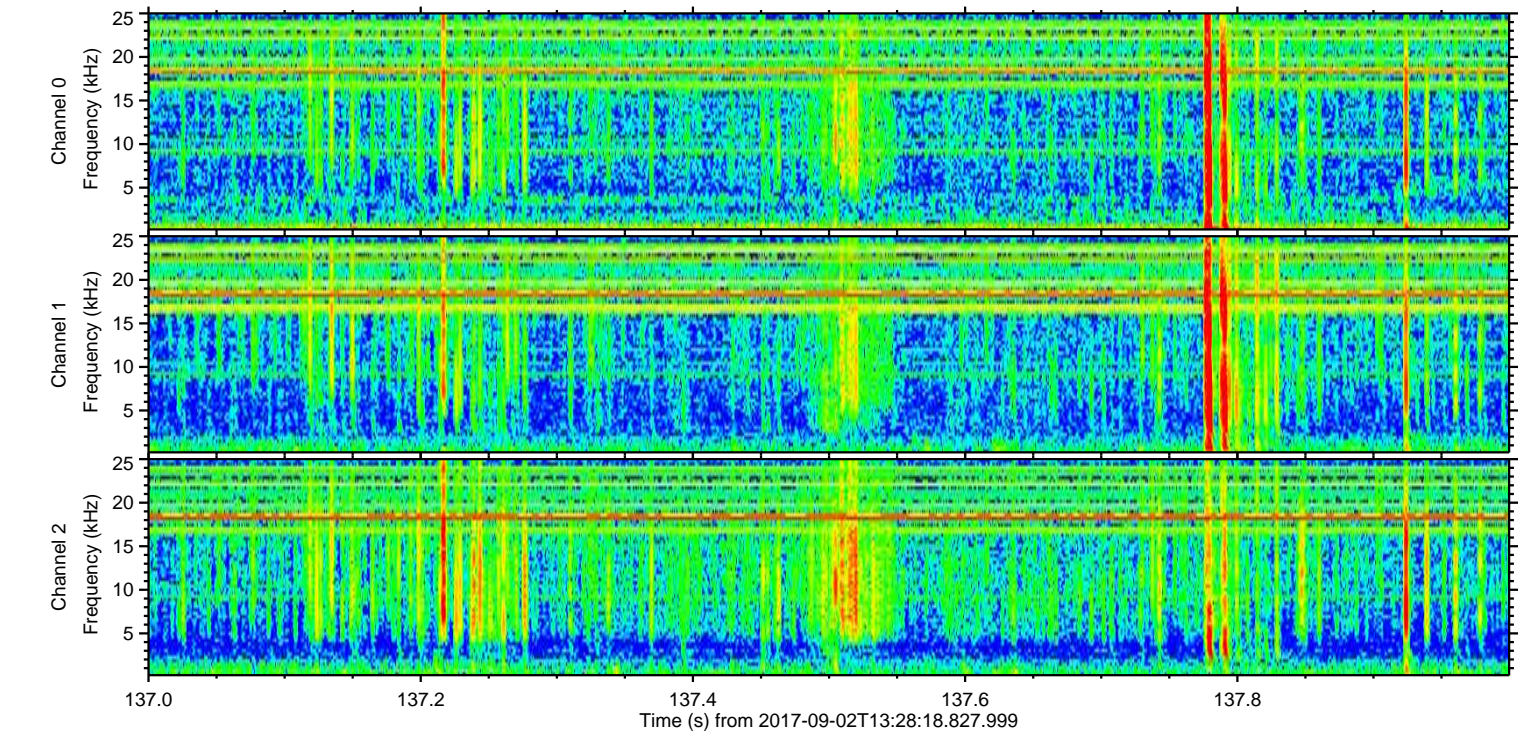
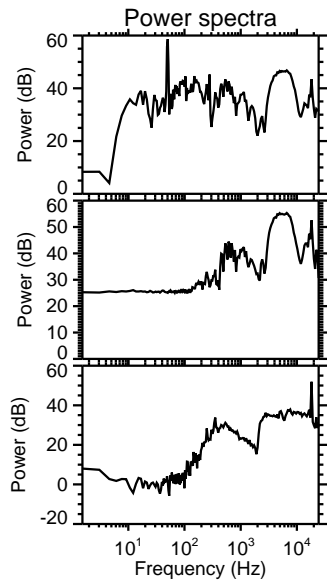
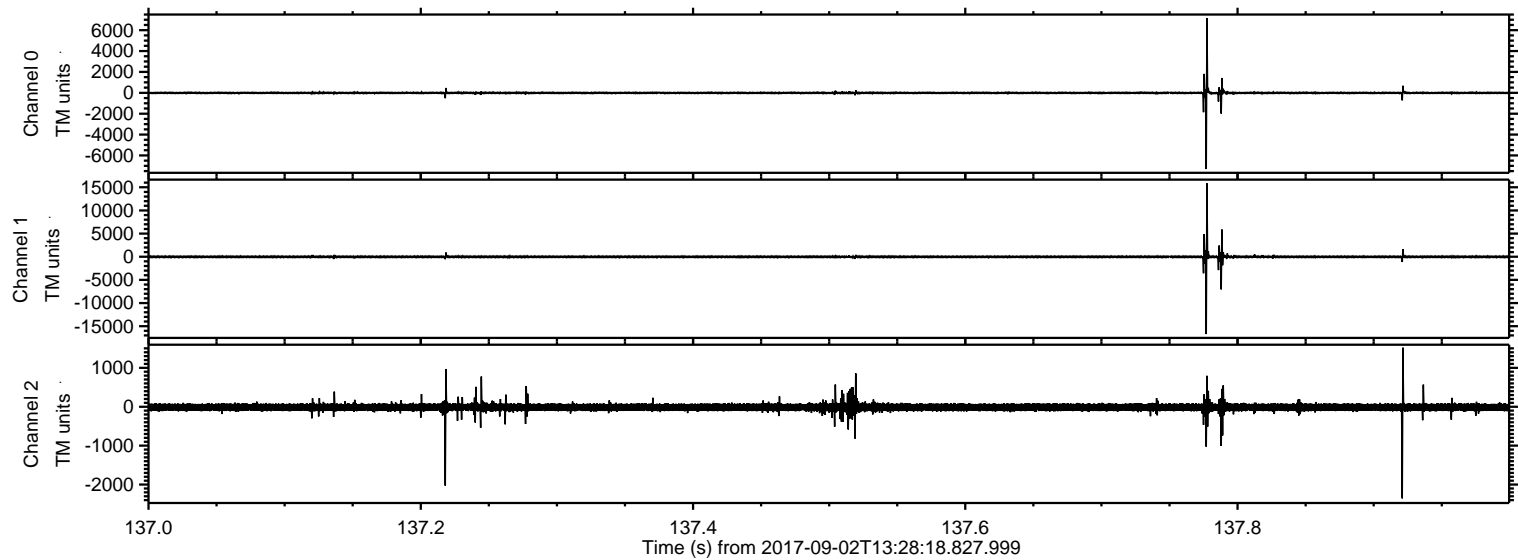


Processed Sat Sep 2 15:35:56 2017 by ELM ver.2012-10-06 from 001__elm20170902_132817__dat00.bin

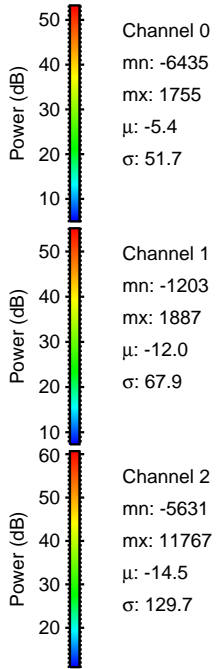
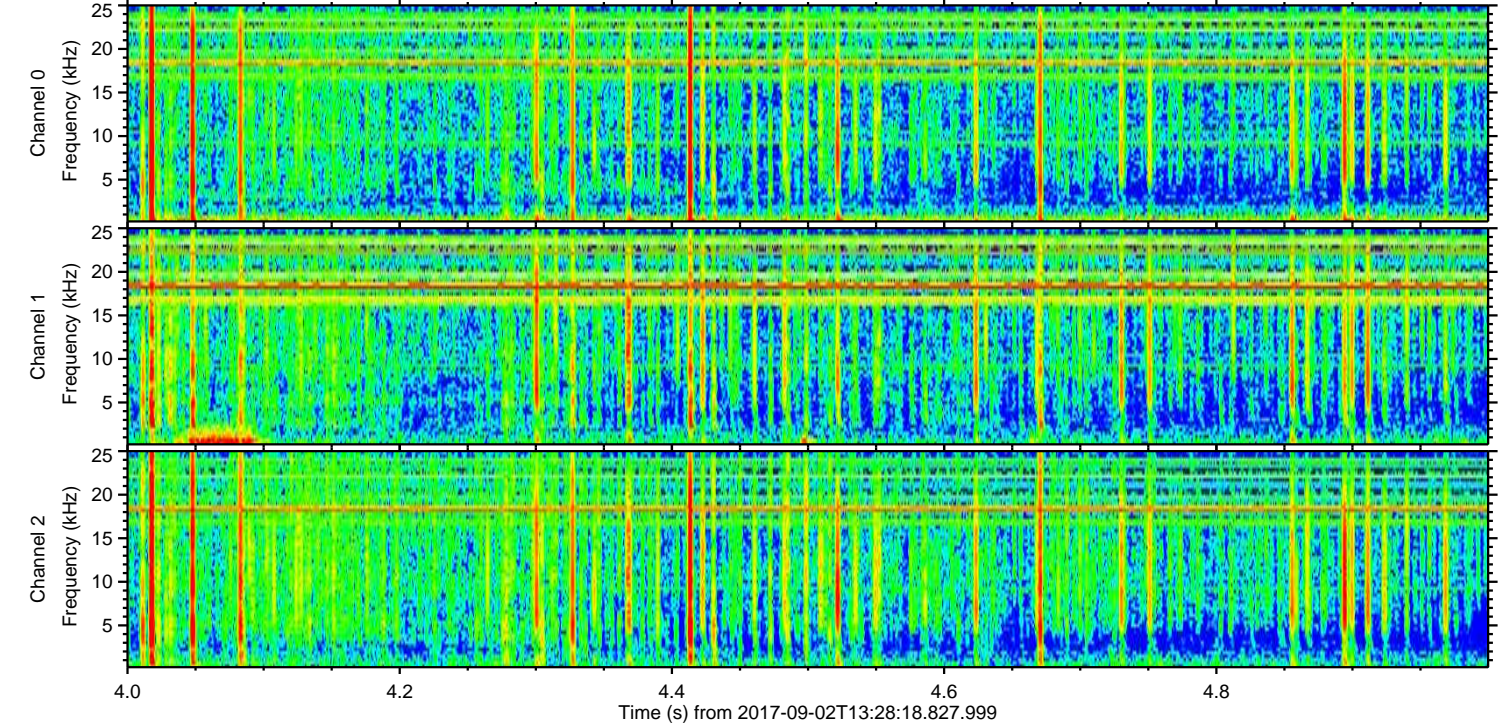
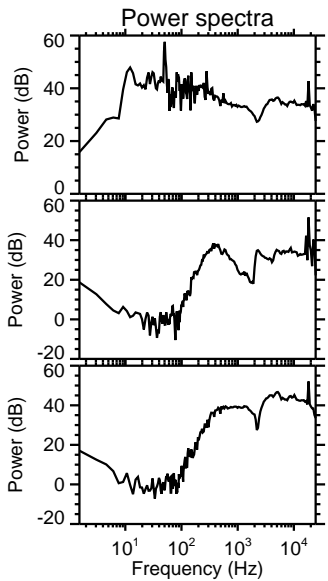
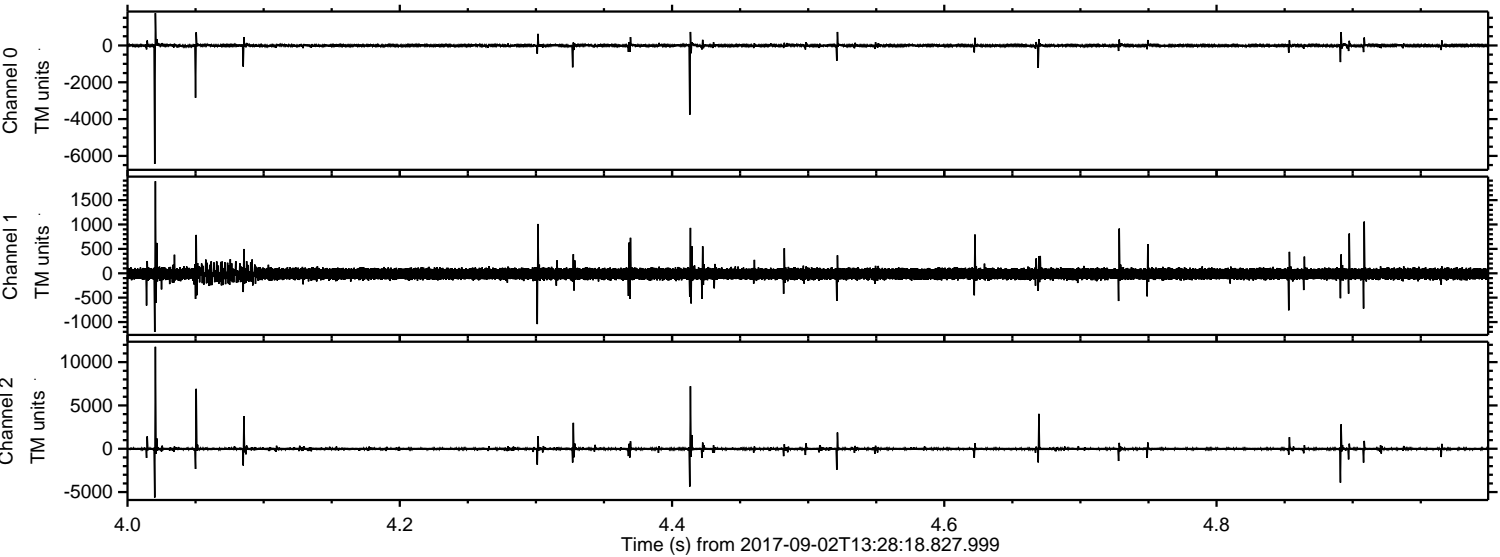


ELMAVAN 3D WAVEFORMS (Measured data sampled at 50 kHz) 51000 packets of 144 samples from 2017-09-02T13:28:18.827.999. Part 138/147

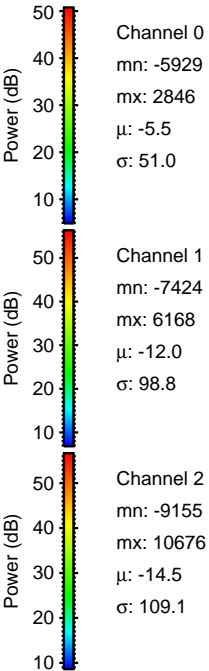
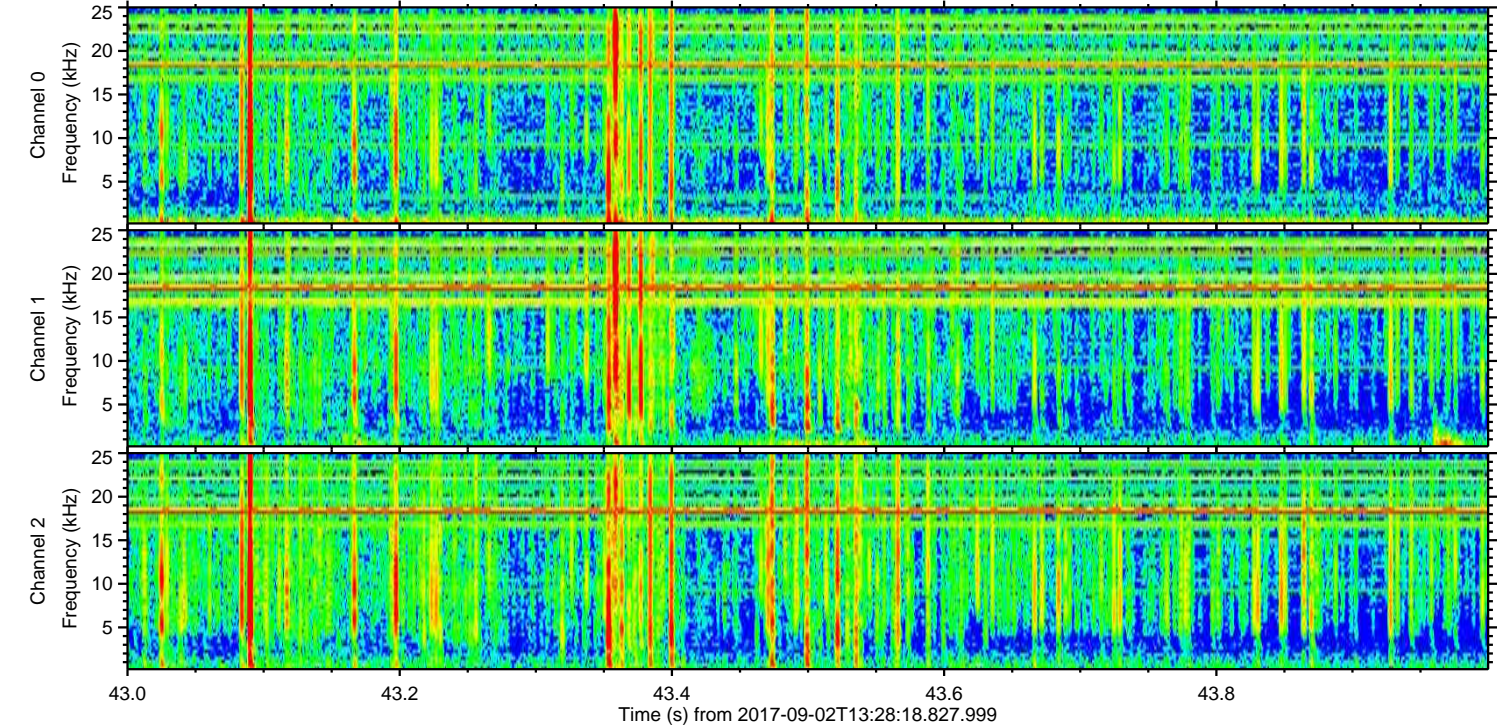
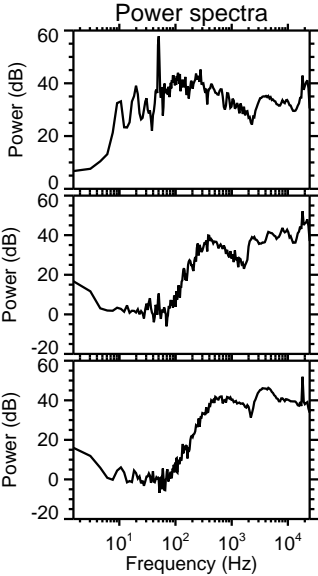
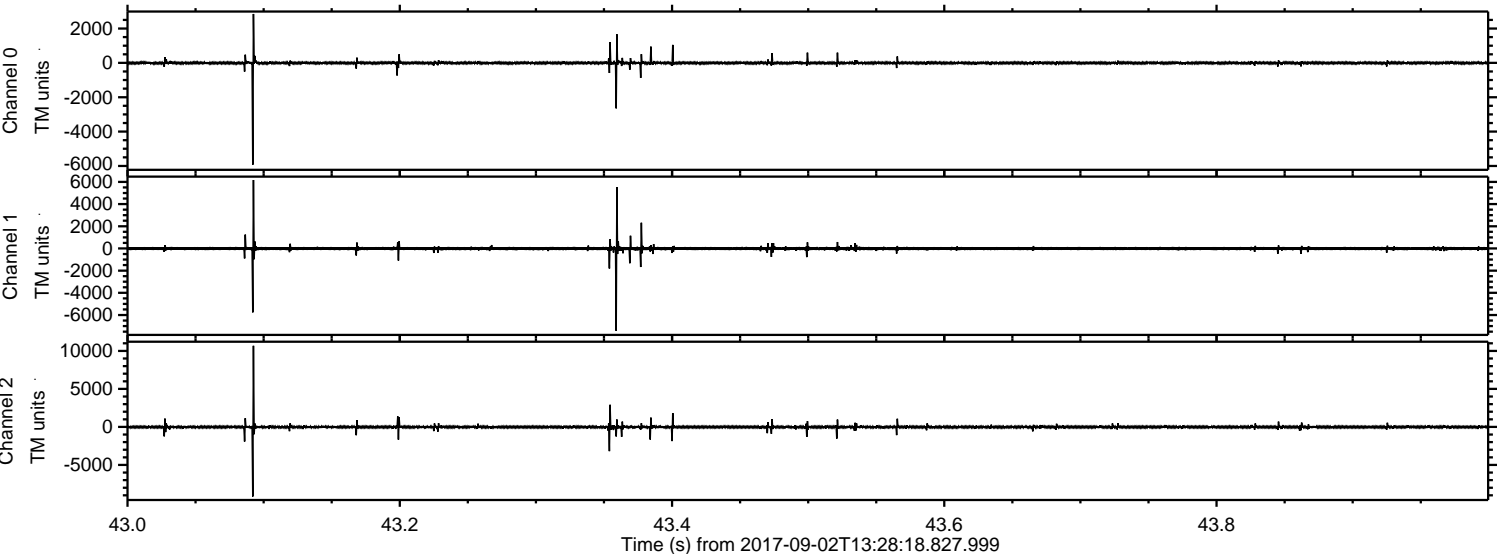
Processed Sat Sep 2 15:35:57 2017 by ELM ver.2012-10-06 from 001__elm20170902_132817__dat00.bin



Processed Sat Sep 2 15:35:58 2017 by ELM ver.2012-10-06 from 001__elm20170902_132817__dat00.bin

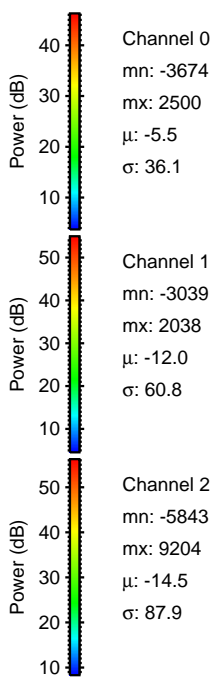
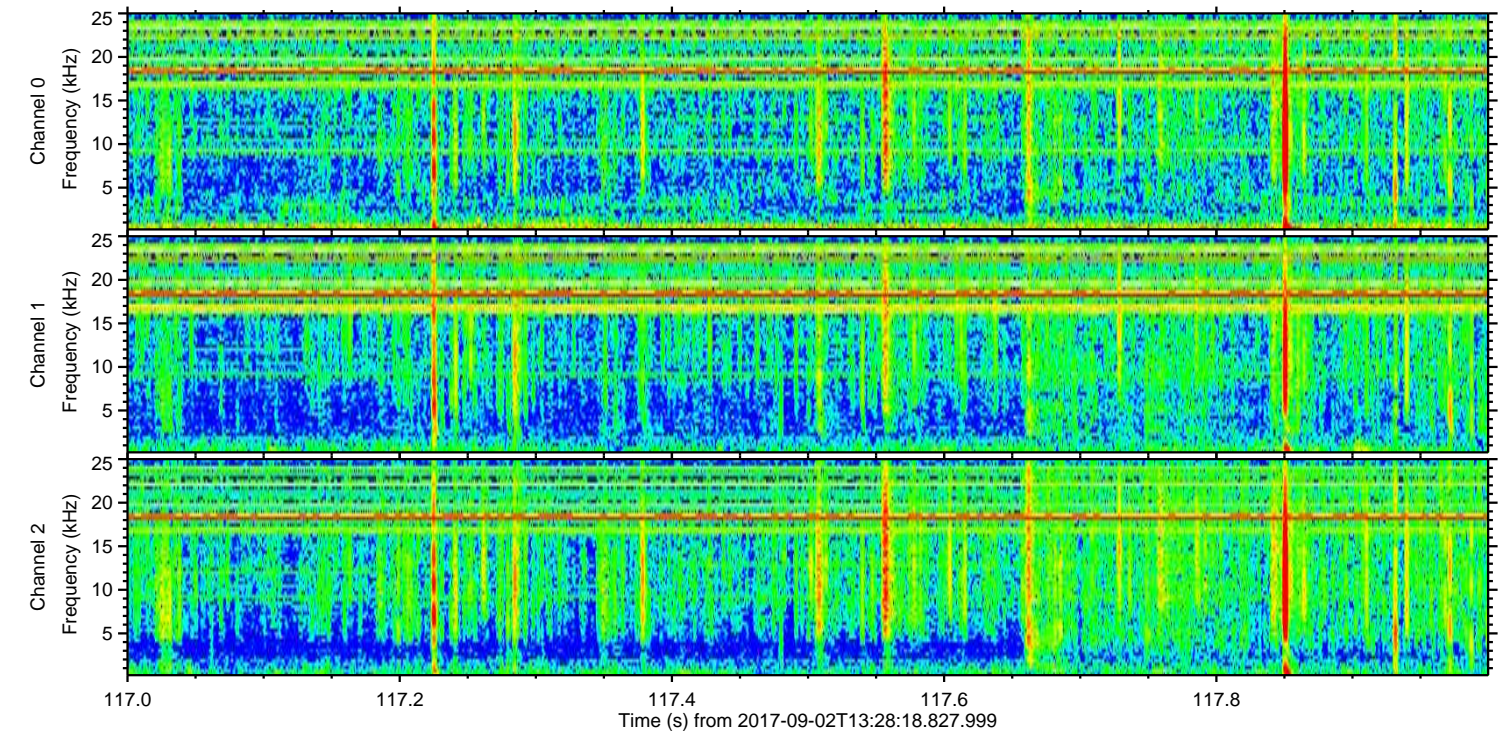
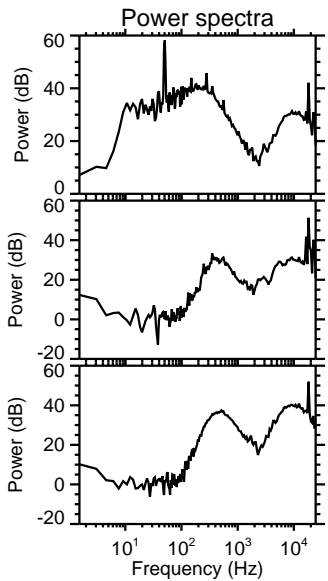
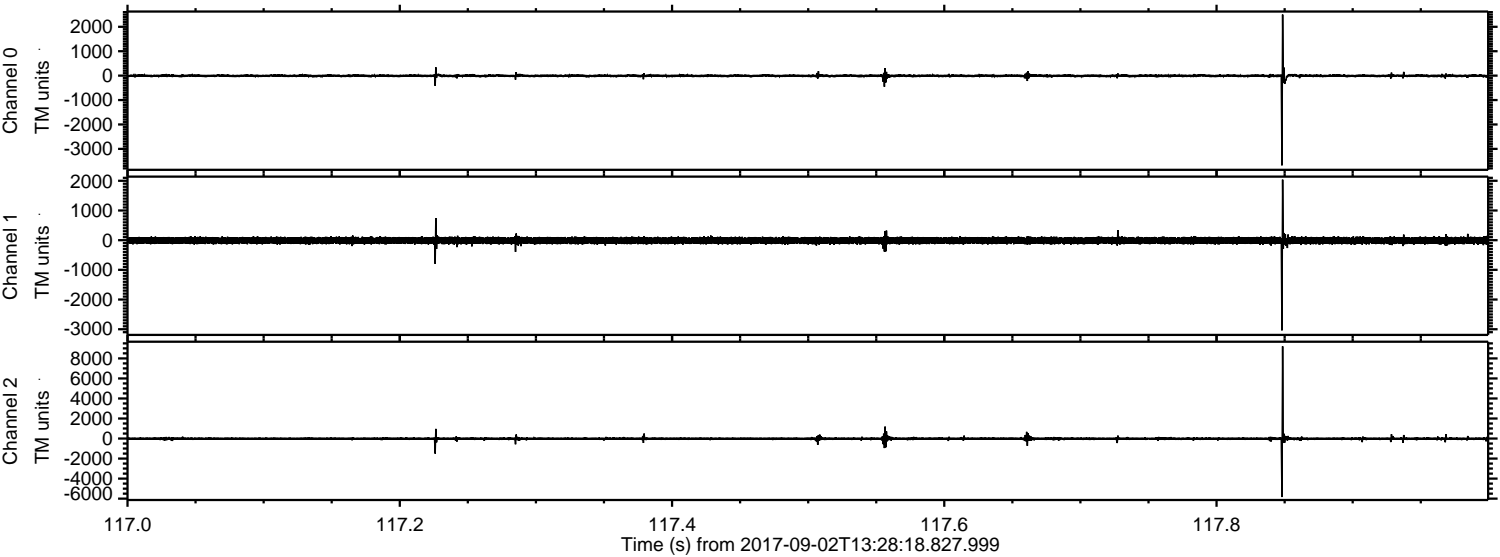


Processed Sat Sep 2 15:35:59 2017 by ELM ver.2012-10-06 from 001__elm20170902_132817__dat00.bin



ELMAVAN 3D WAVEFORMS (Measured data sampled at 50 kHz) 51000 packets of 144 samples from 2017-09-02T13:28:18.827.999. Part 118/147

Processed Sat Sep 2 15:36:00 2017 by ELM ver.2012-10-06 from 001__elm20170902_132817__dat00.bin

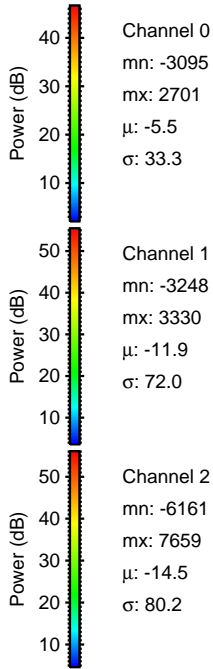
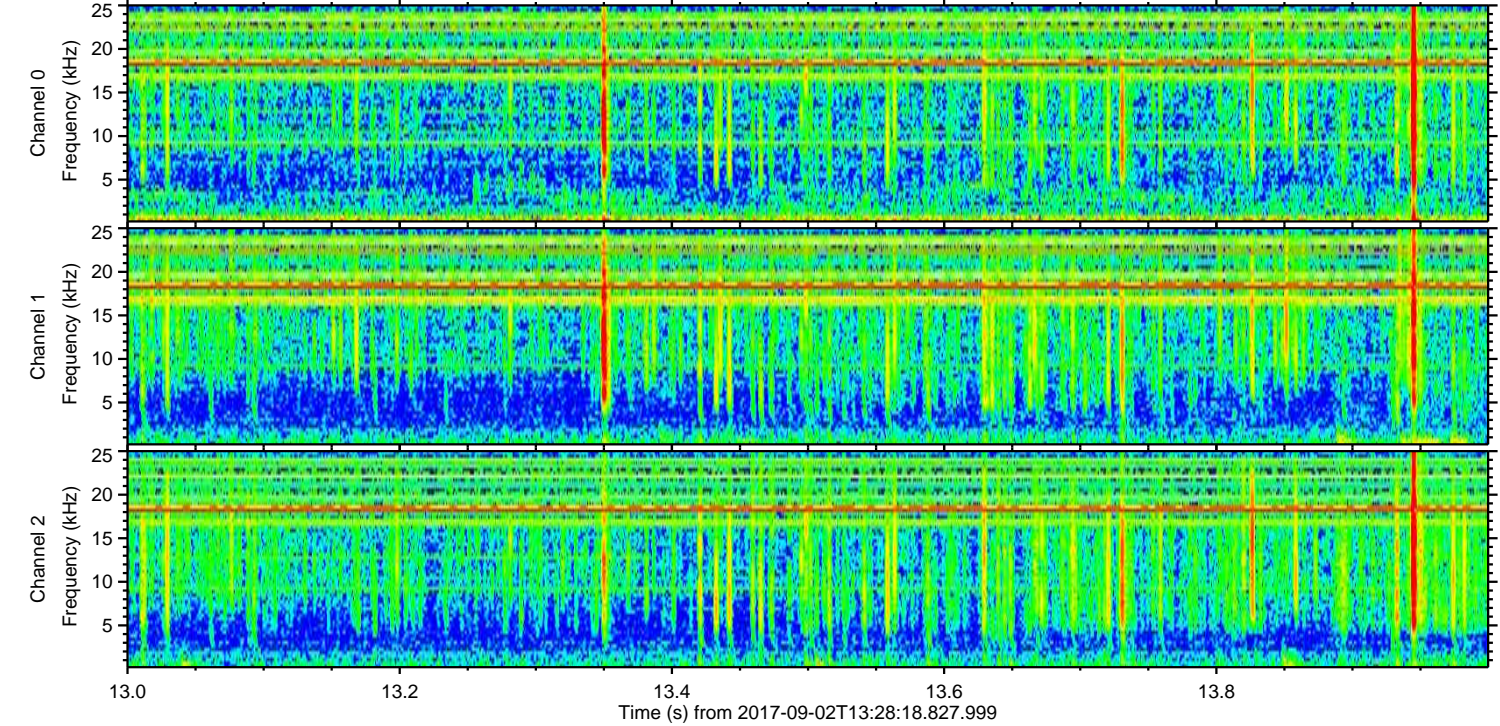
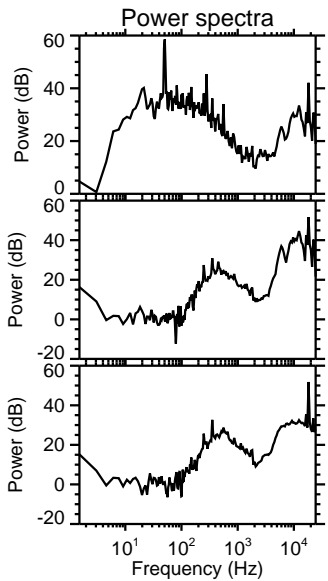
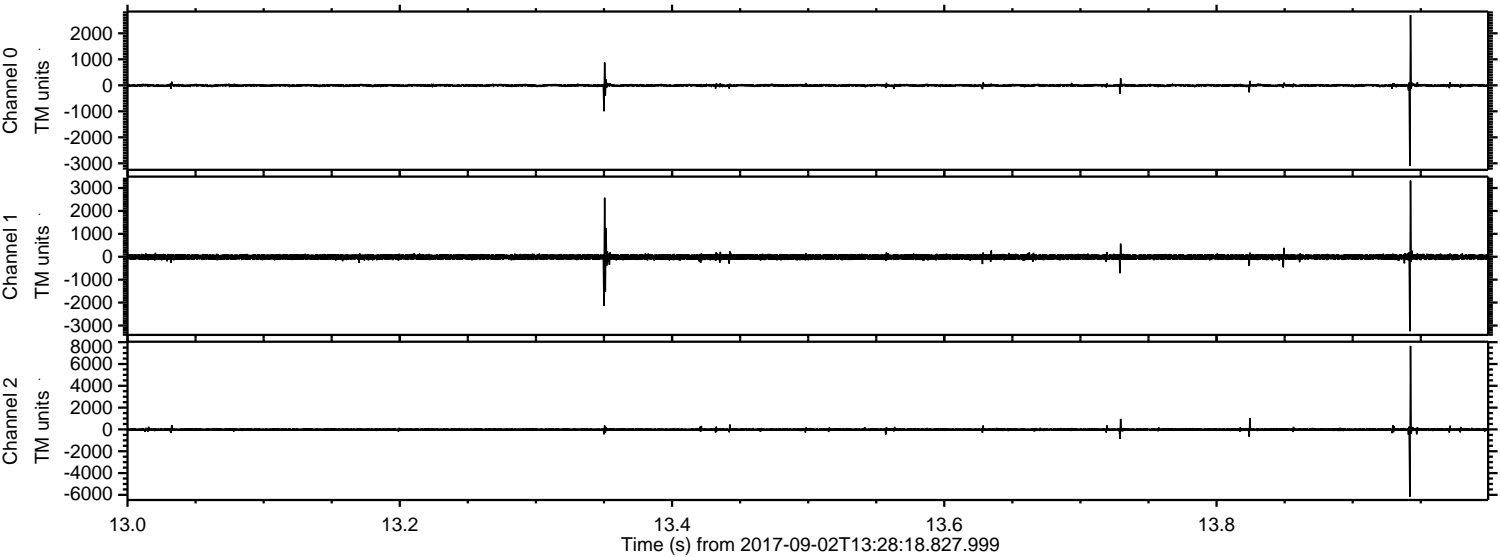


Channel 0
mn: -3674
mx: 2500
 μ : -5.5
 σ : 36.1

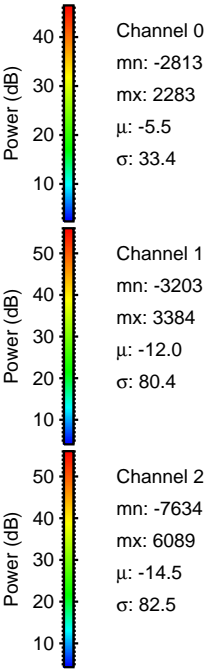
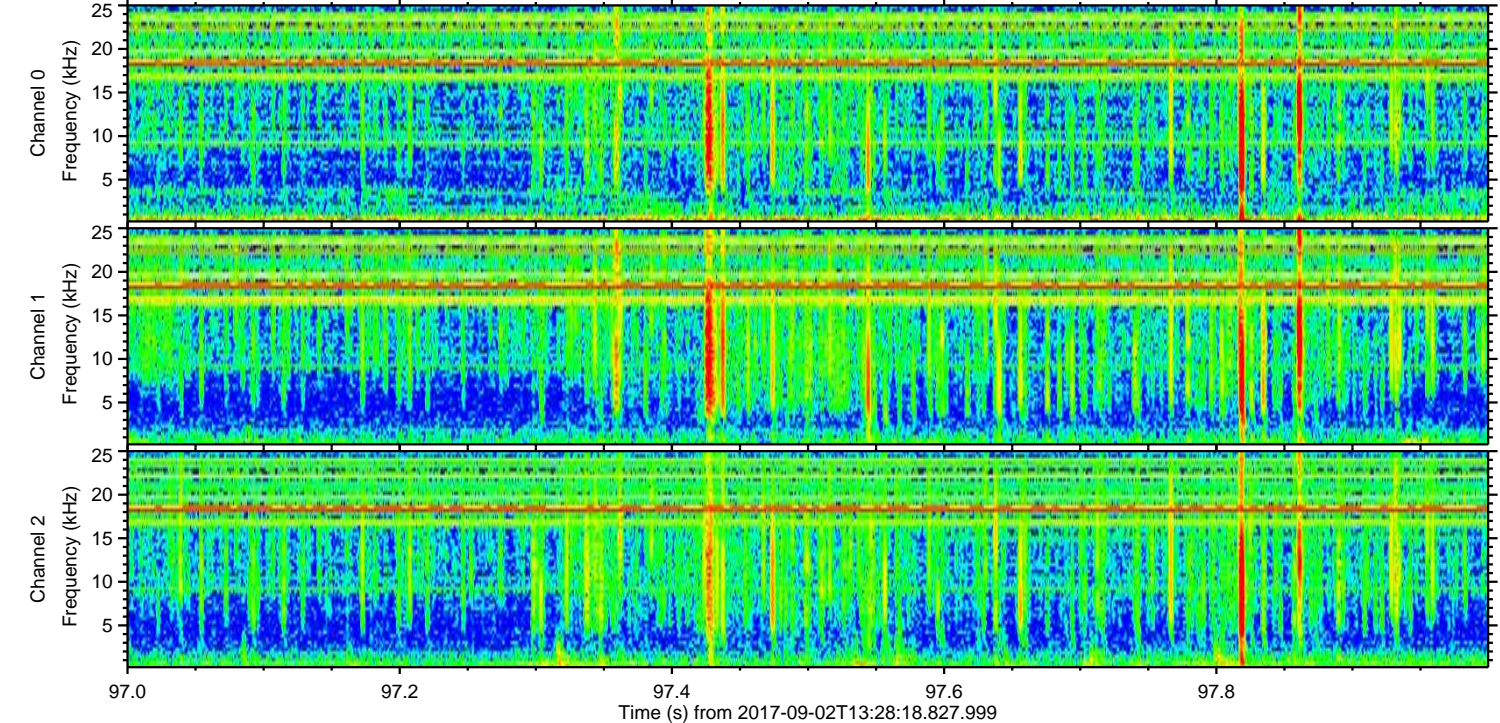
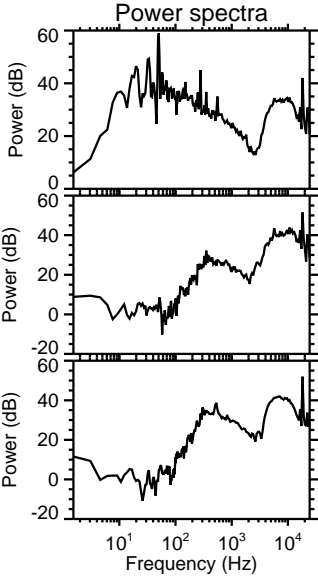
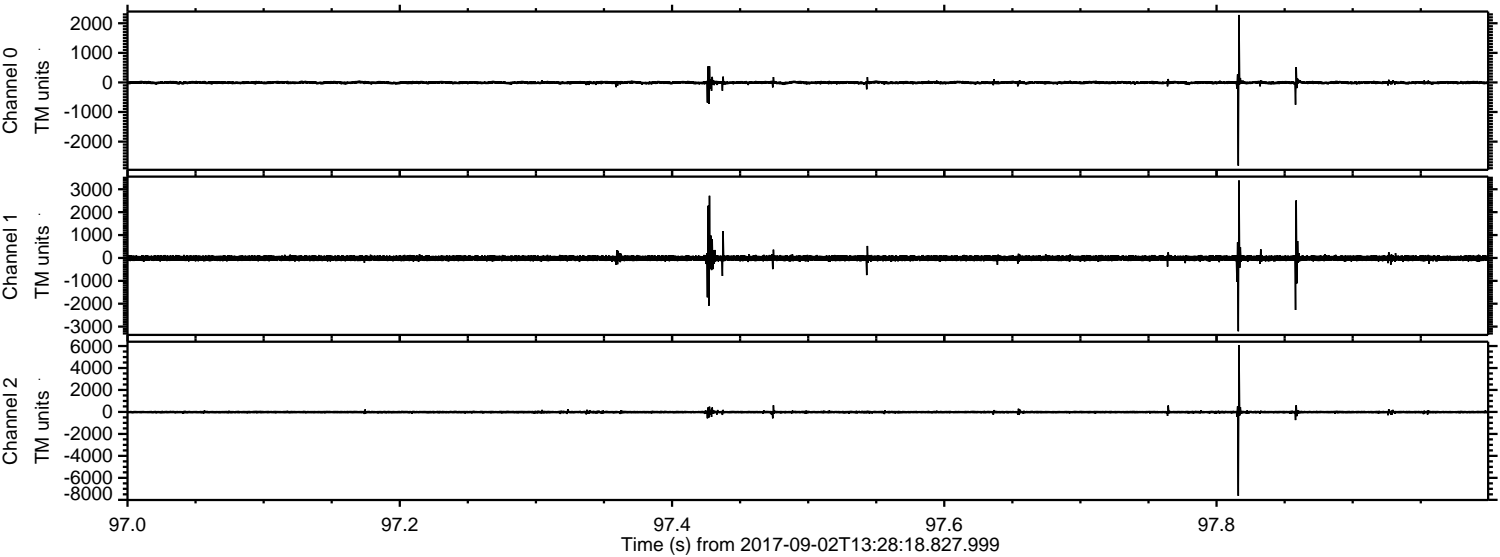
Channel 1
mn: -3039
mx: 2038
 μ : -12.0
 σ : 60.8

Channel 2
mn: -5843
mx: 9204
 μ : -14.5
 σ : 87.9

Processed Sat Sep 2 15:36:01 2017 by ELM ver.2012-10-06 from 001__elm20170902_132817__dat00.bin



Processed Sat Sep 2 15:36:02 2017 by ELM ver.2012-10-06 from 001__elm20170902_132817__dat00.bin



Processed Sat Sep 2 15:36:03 2017 by ELM ver.2012-10-06 from 001__elm20170902_132817__dat00.bin

