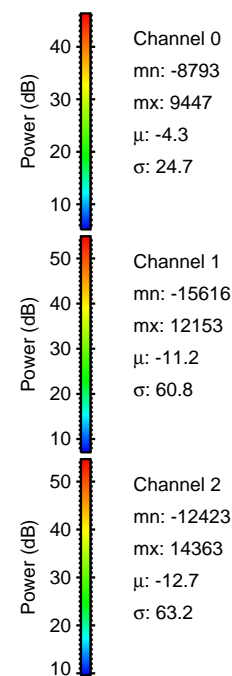
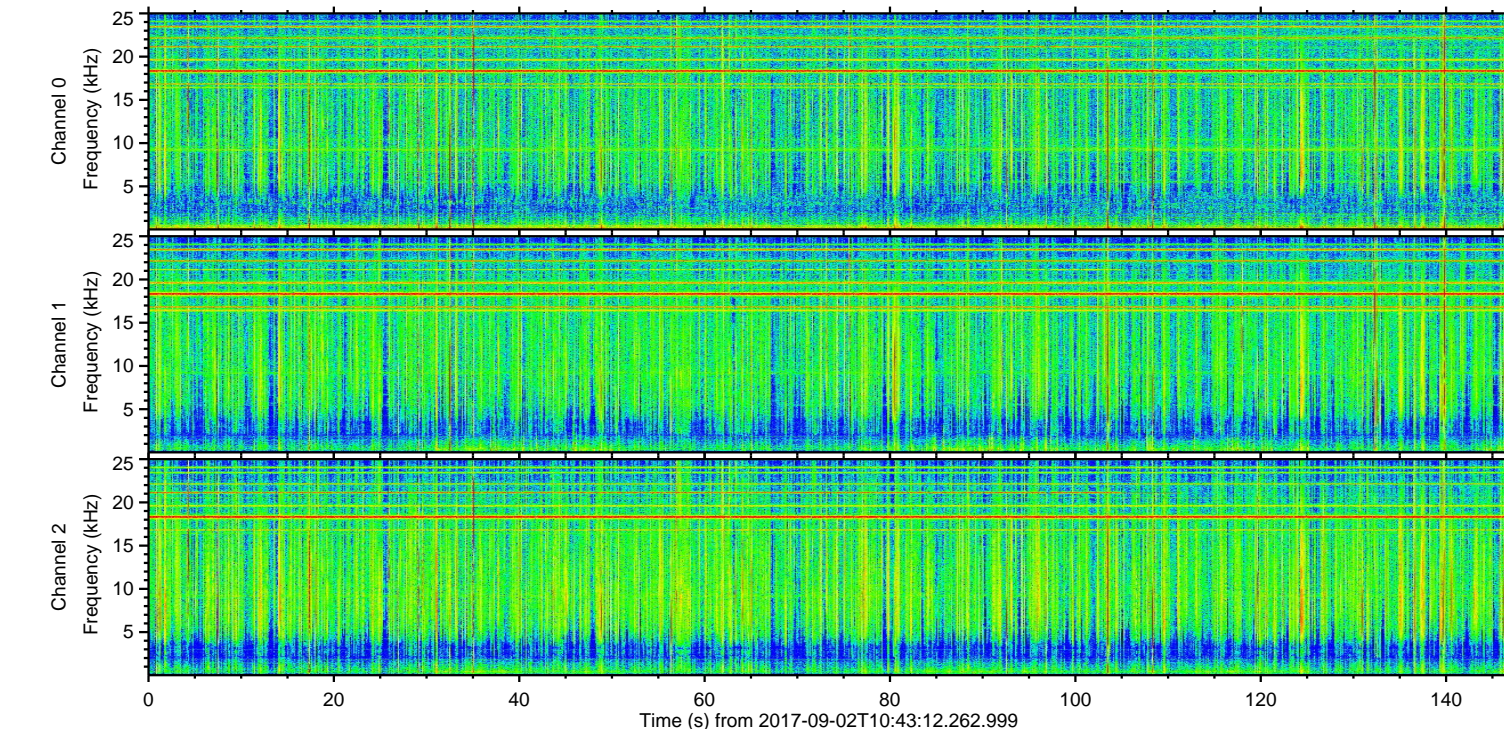
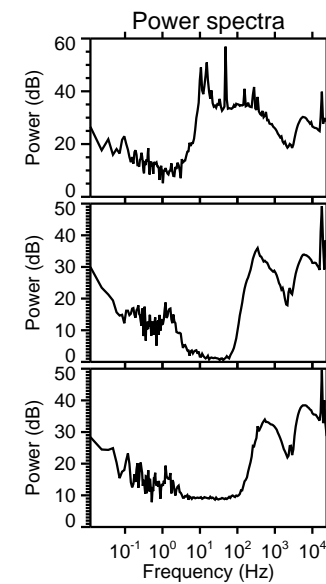
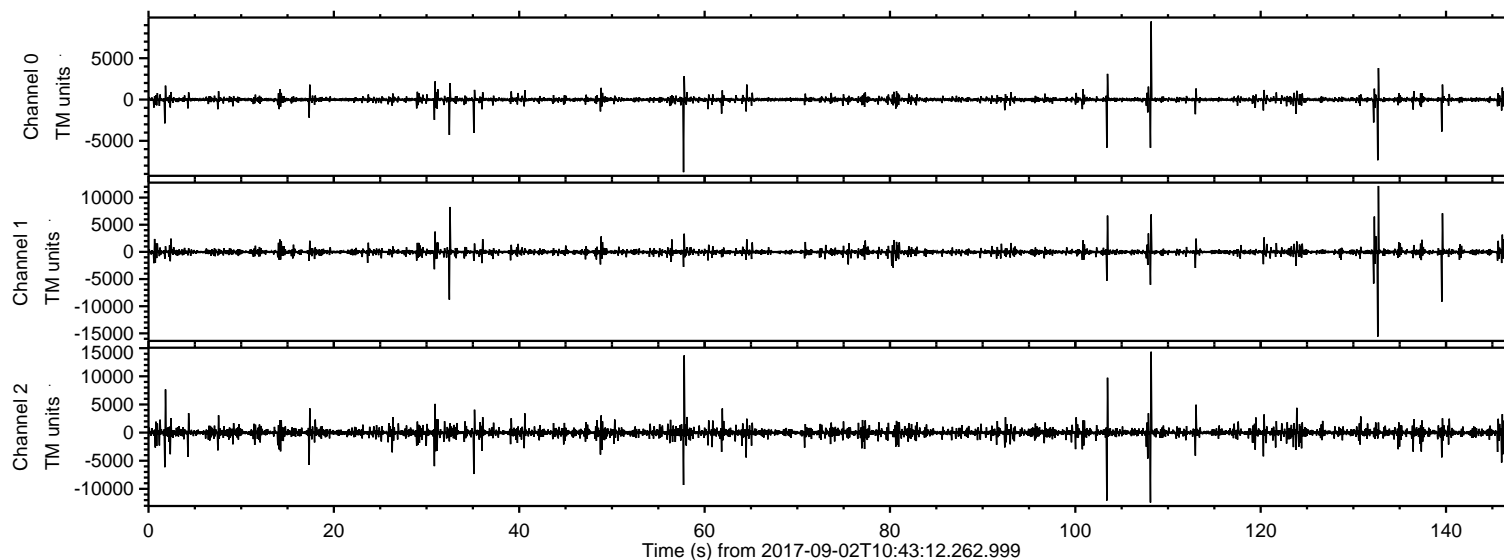


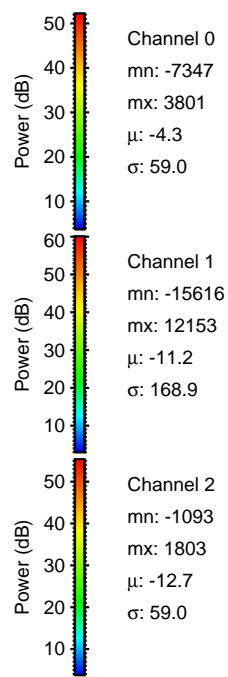
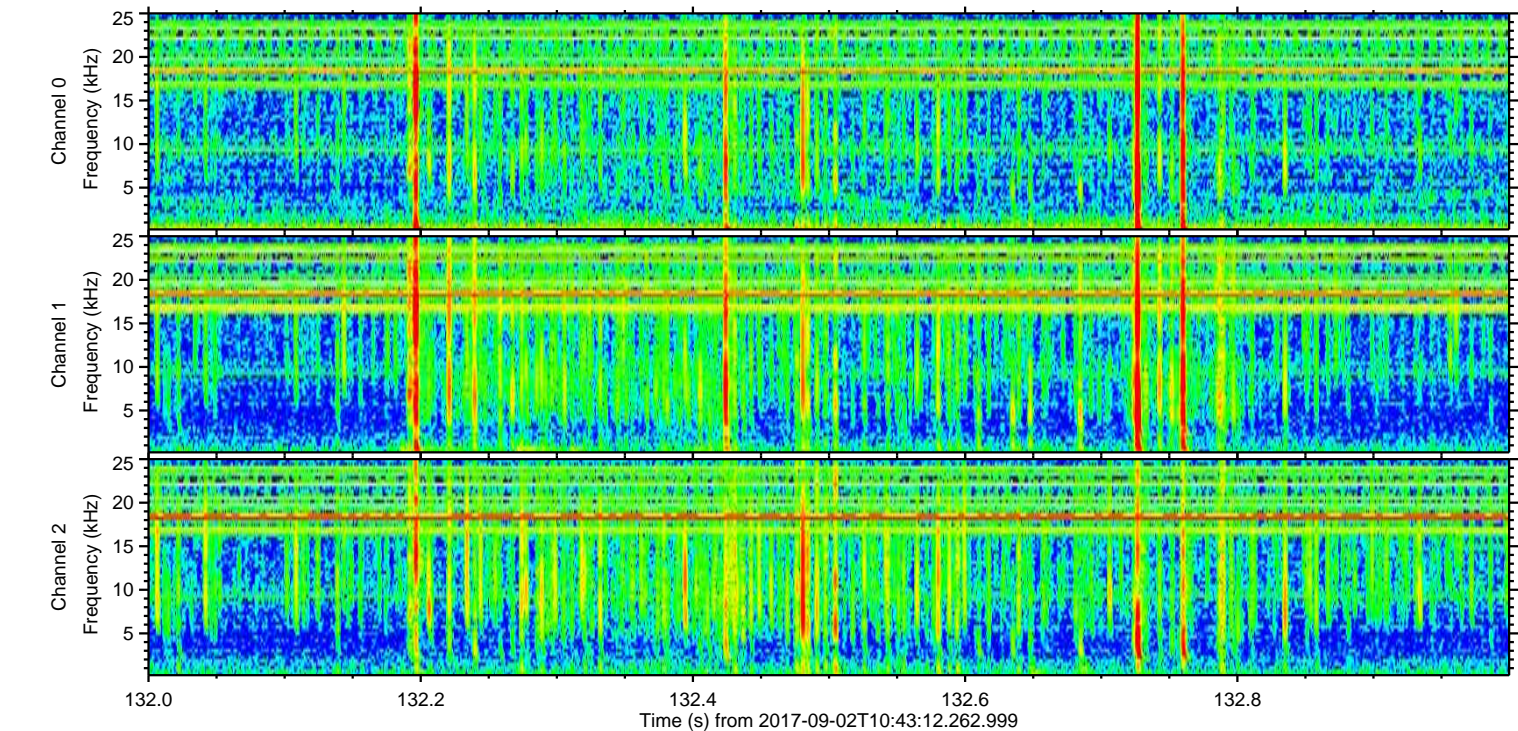
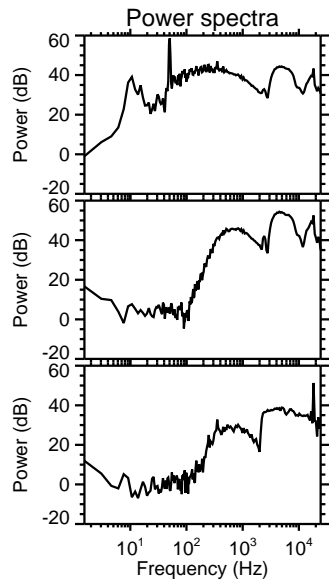
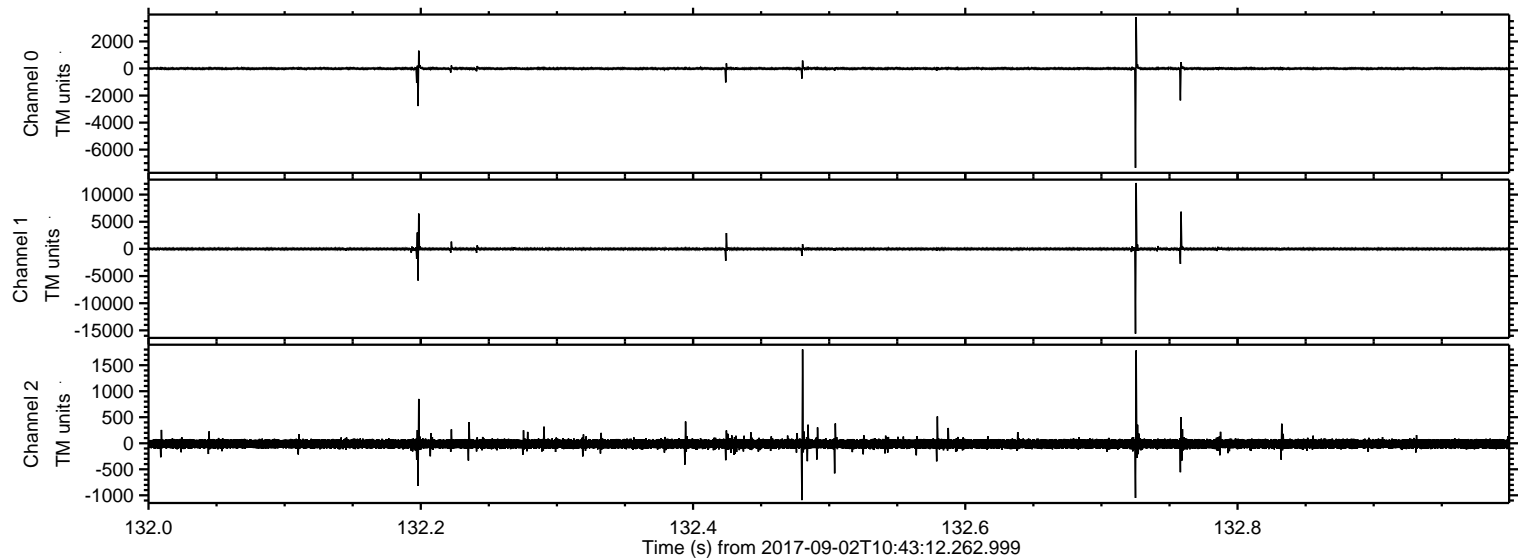
ELMAVAN 3D WAVEFORMS (Measured data sampled at 50 kHz) 51000 packets of 144 samples from 2017-09-02T10:43:12.262.999.

Processed Sat Sep 2 12:50:37 2017 by ELM ver.2012-10-06 from 001__elm20170902_104311__dat00.bin



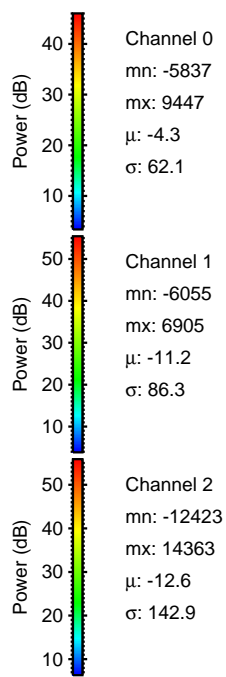
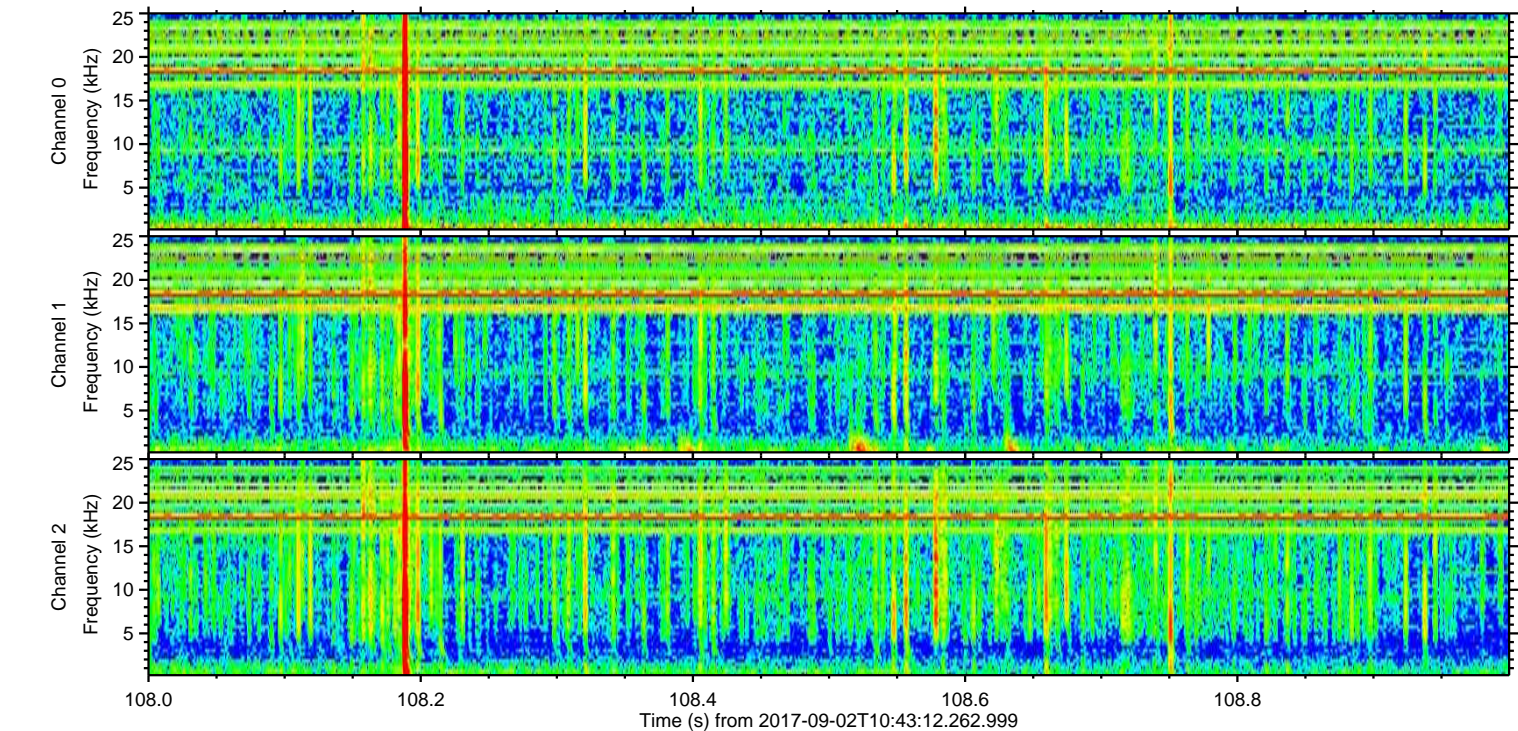
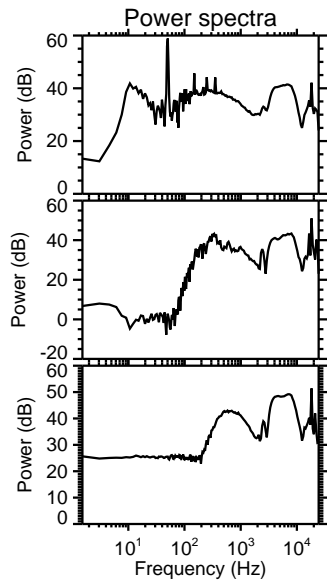
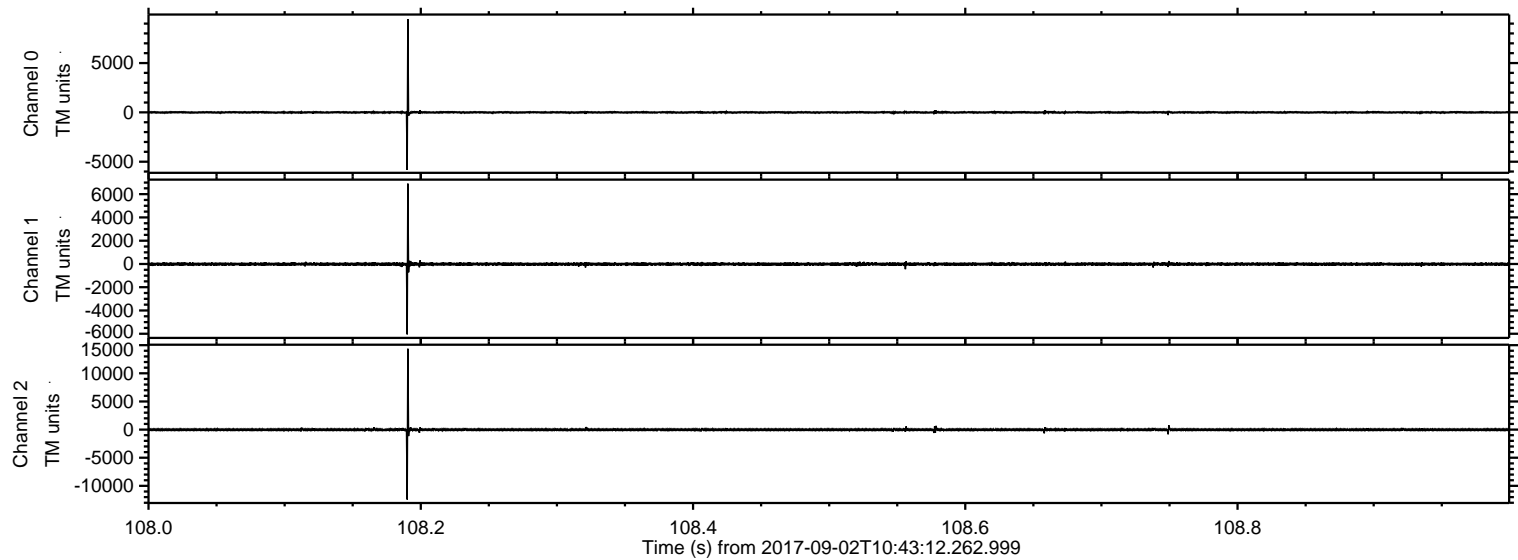
ELMAVAN 3D WAVEFORMS (Measured data sampled at 50 kHz) 51000 packets of 144 samples from 2017-09-02T10:43:12.262.999. Part 133/147

Processed Sat Sep 2 12:50:46 2017 by ELM ver.2012-10-06 from 001__elm20170902_104311__dat00.bin

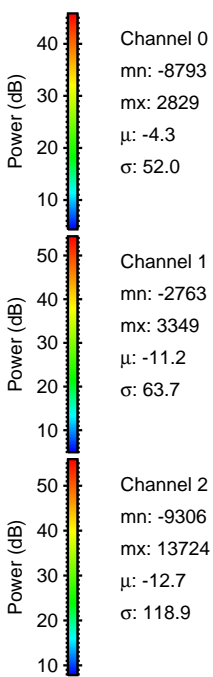
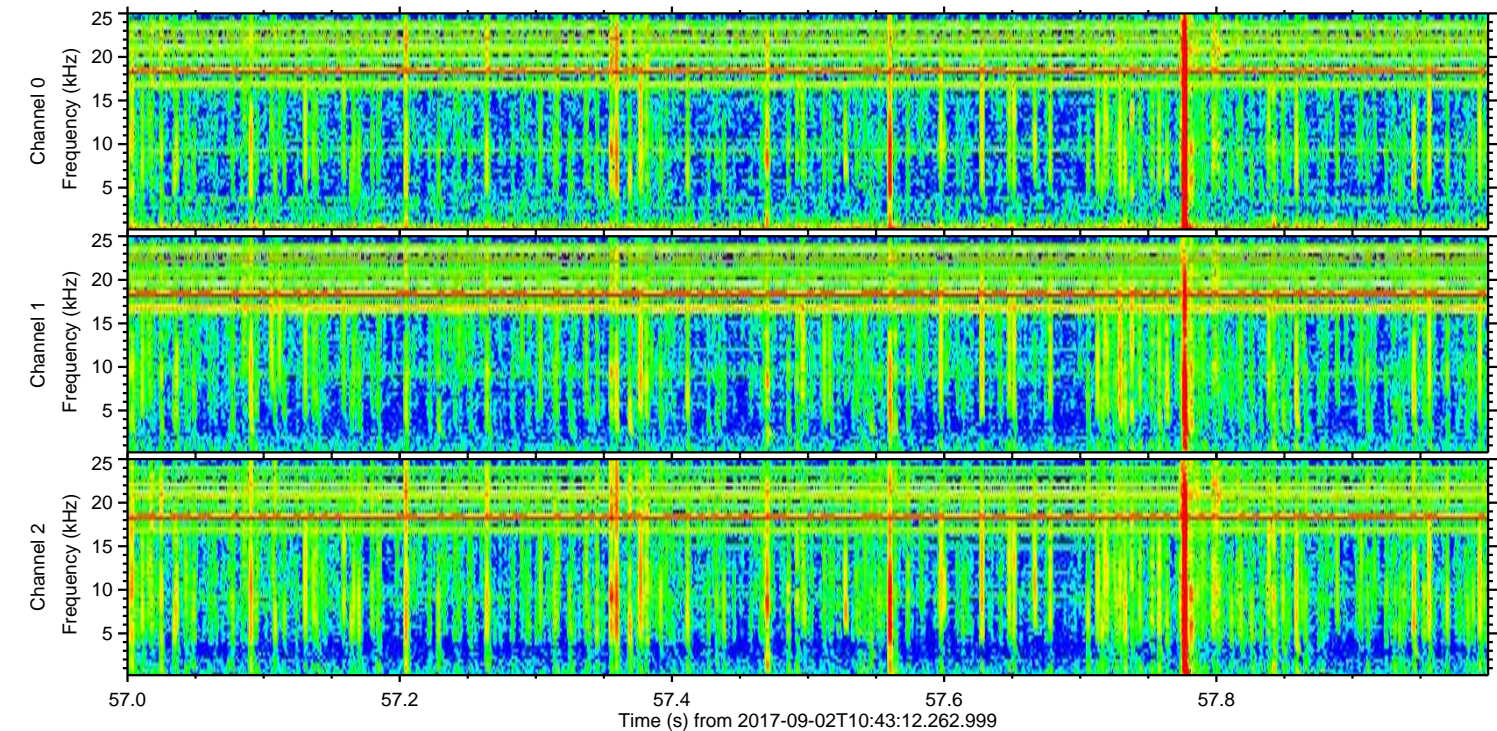
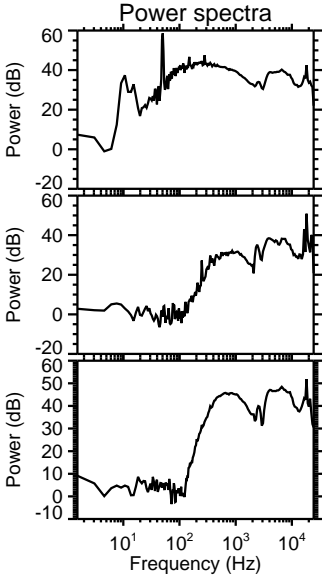
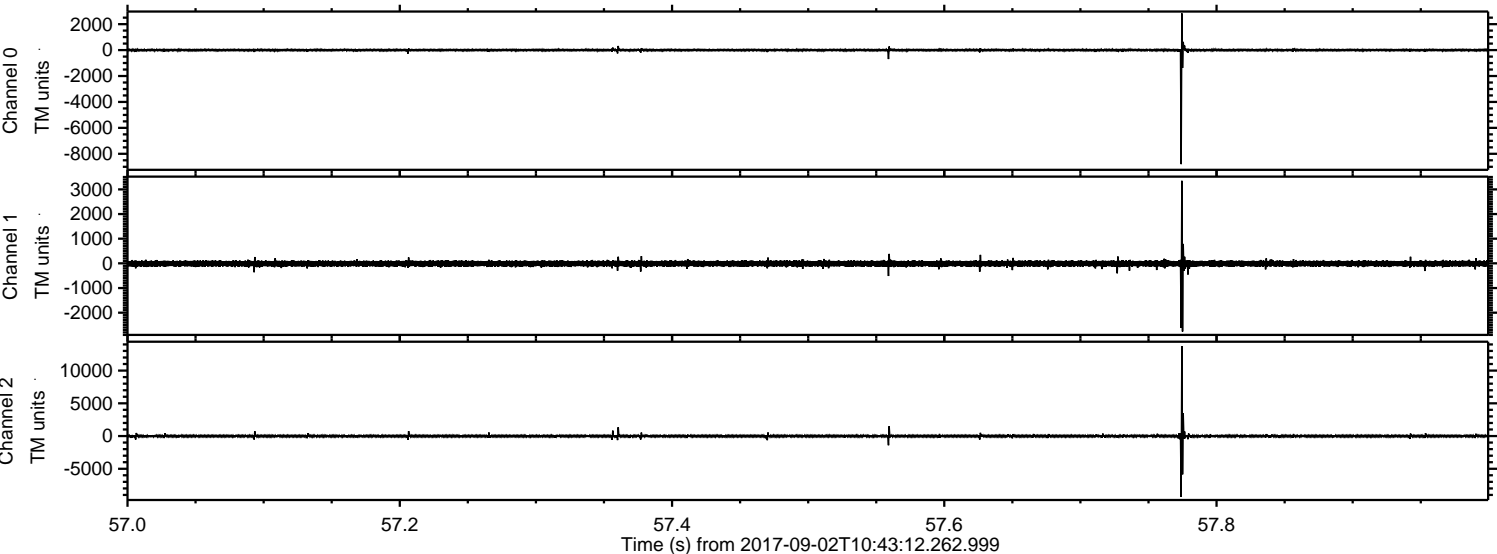


ELMAVAN 3D WAVEFORMS (Measured data sampled at 50 kHz) 51000 packets of 144 samples from 2017-09-02T10:43:12.262.999. Part 109/147

Processed Sat Sep 2 12:50:47 2017 by ELM ver.2012-10-06 from 001__elm20170902_104311__dat00.bin

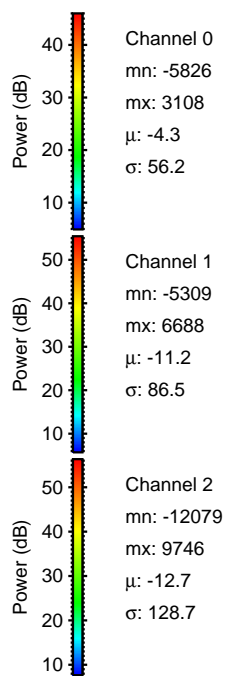
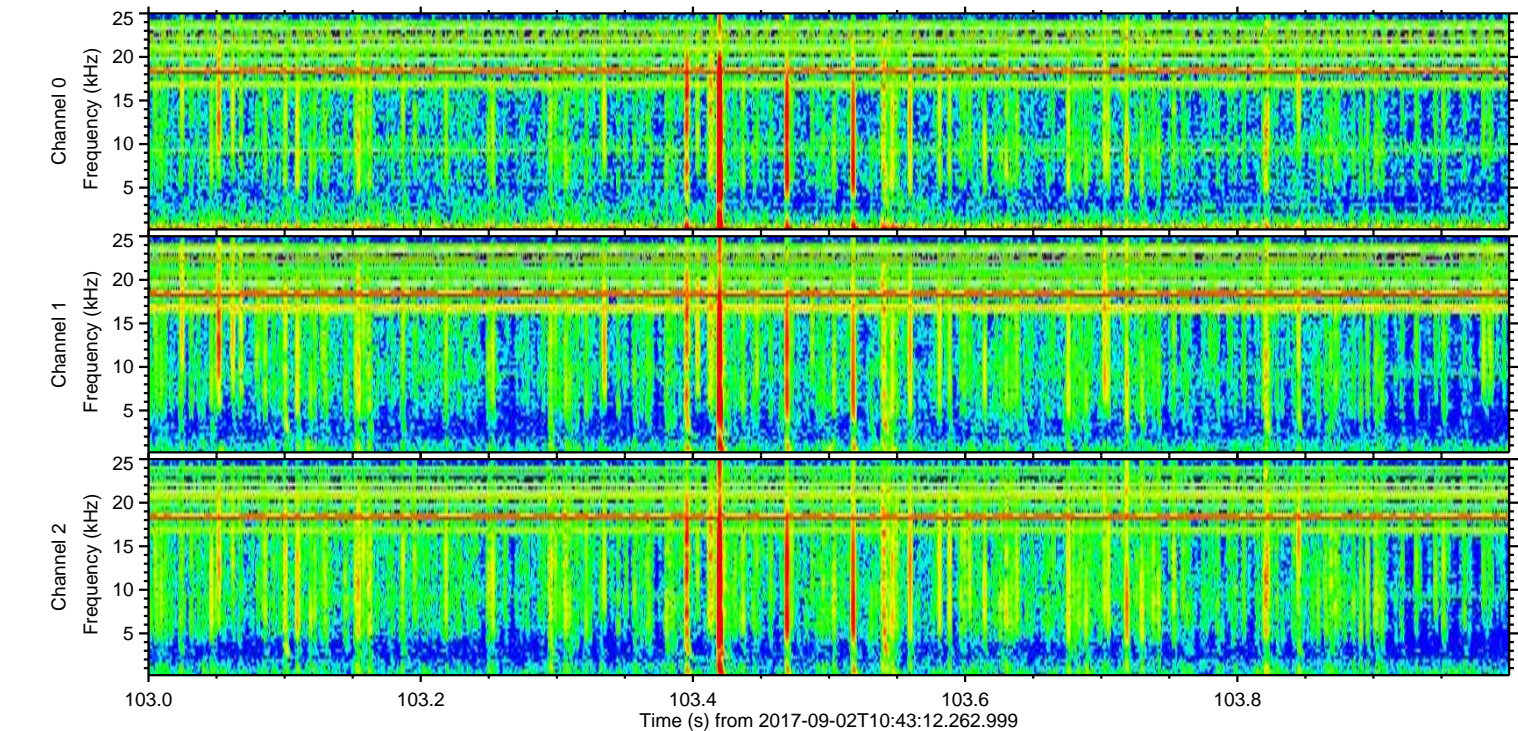
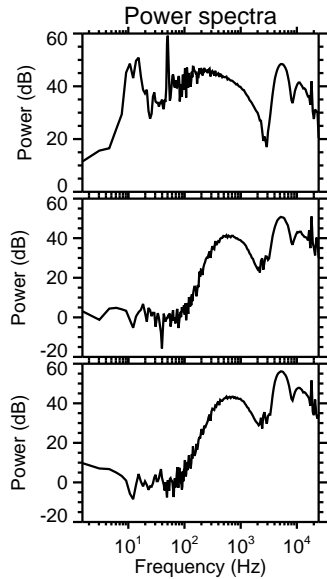
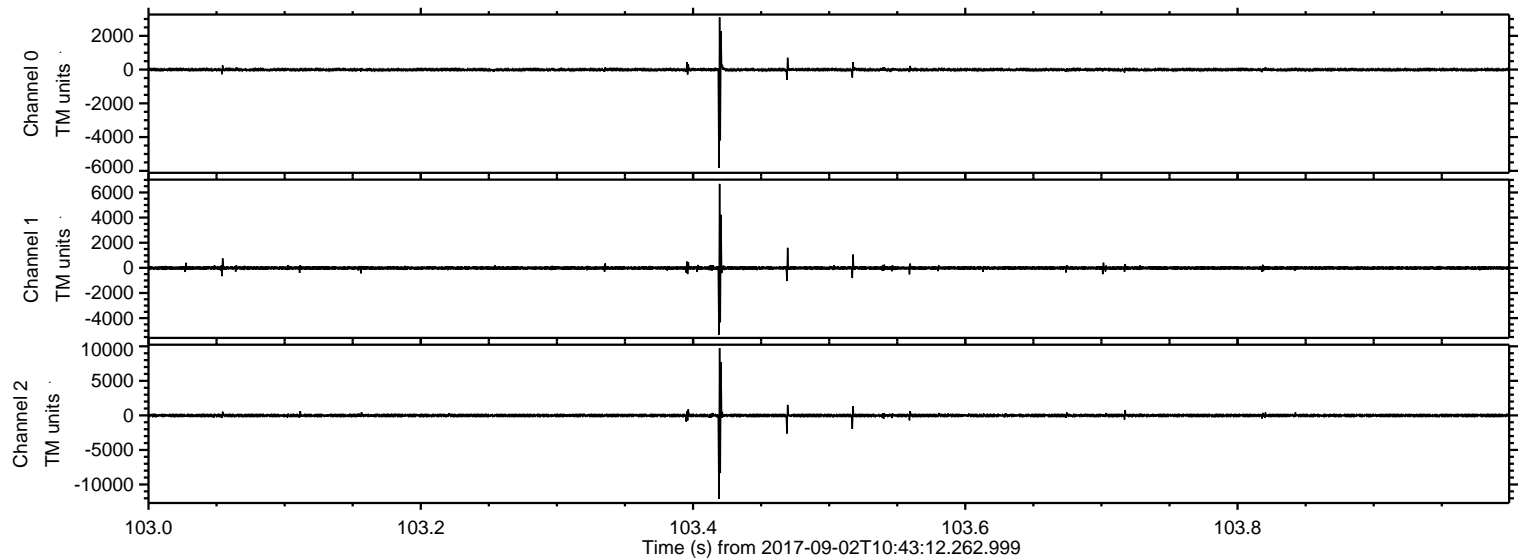


Processed Sat Sep 2 12:50:48 2017 by ELM ver.2012-10-06 from 001__elm20170902_104311__dat00.bin



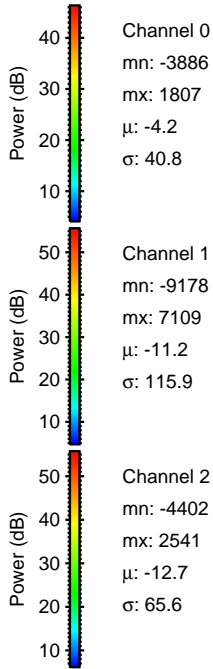
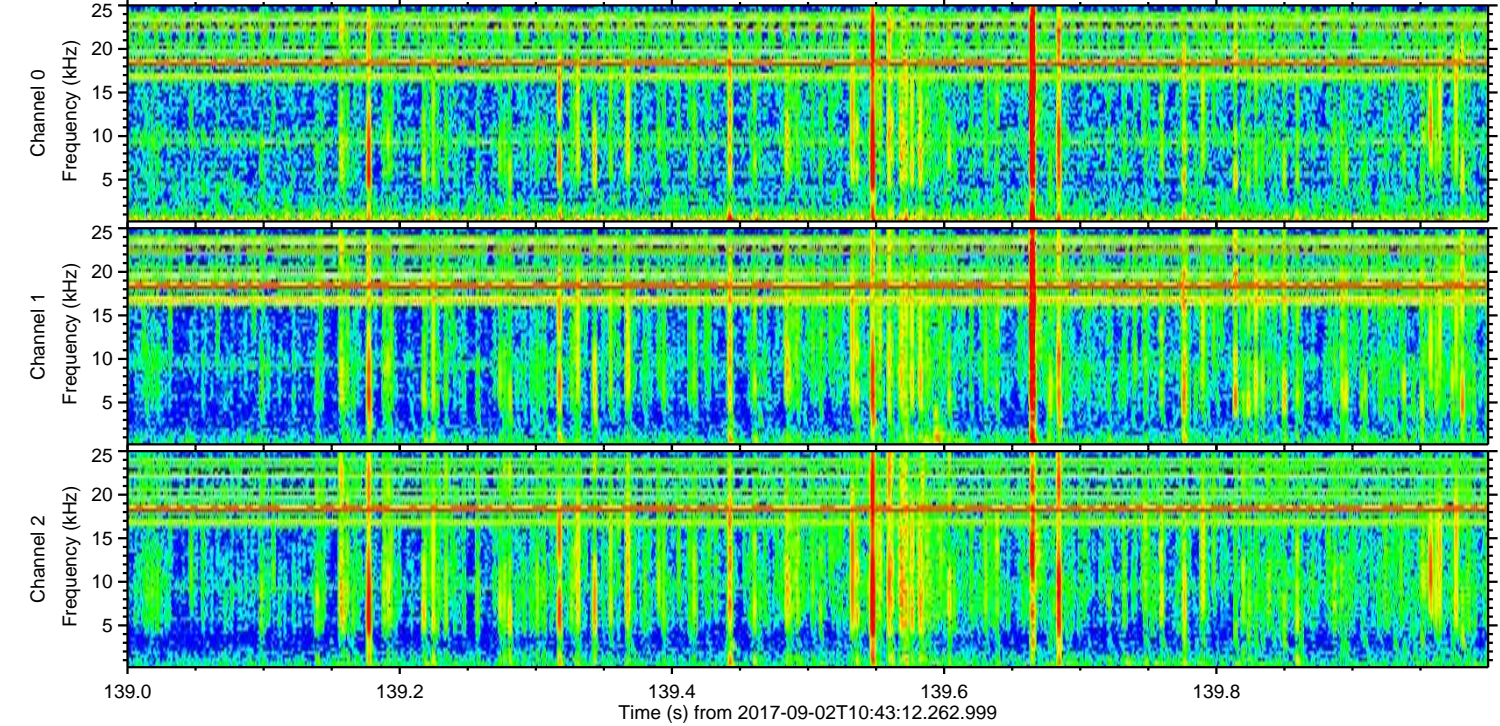
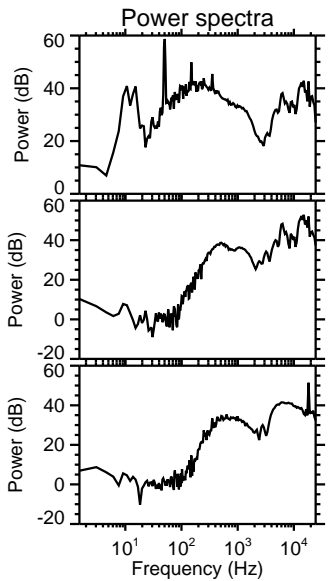
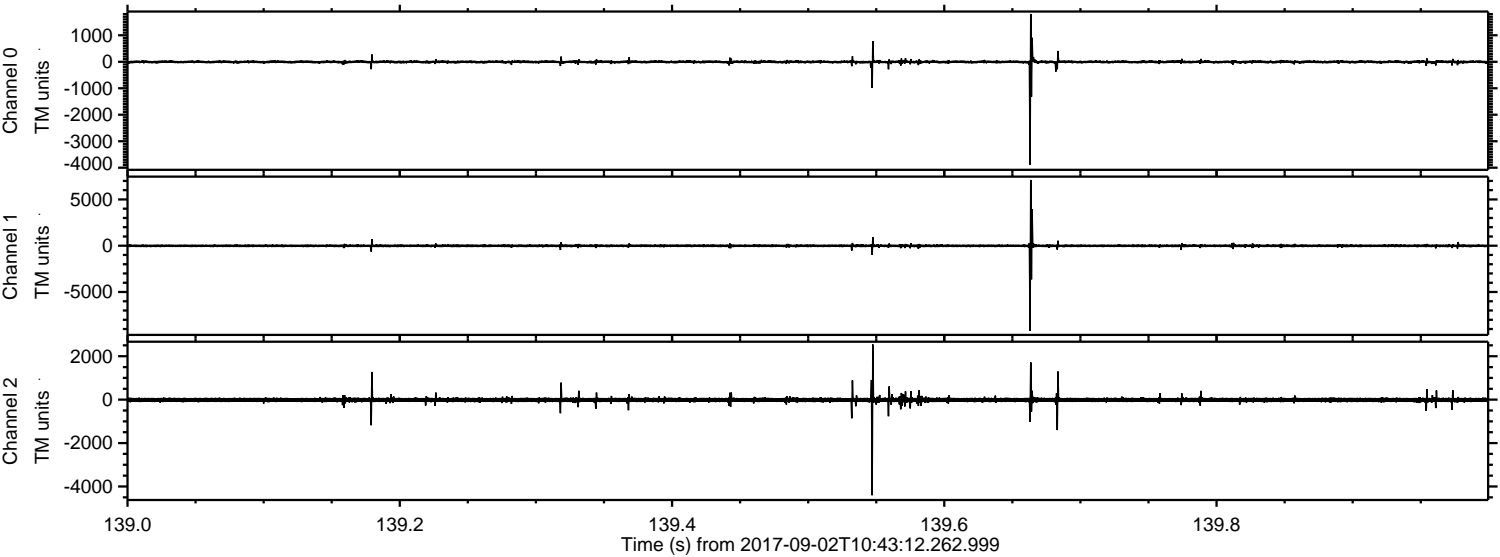
ELMAVAN 3D WAVEFORMS (Measured data sampled at 50 kHz) 51000 packets of 144 samples from 2017-09-02T10:43:12.262.999. Part 104/147

Processed Sat Sep 2 12:50:49 2017 by ELM ver.2012-10-06 from 001__elm20170902_104311__dat00.bin

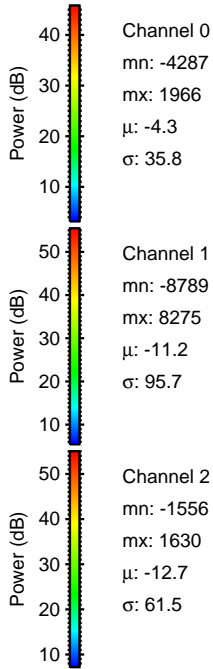
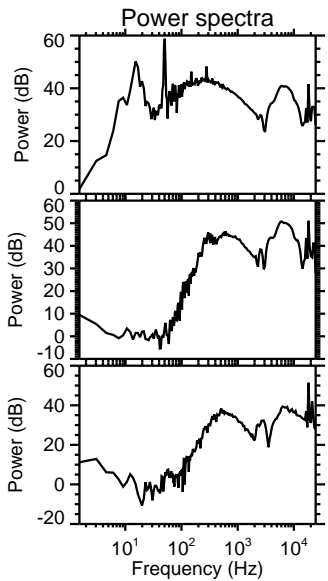
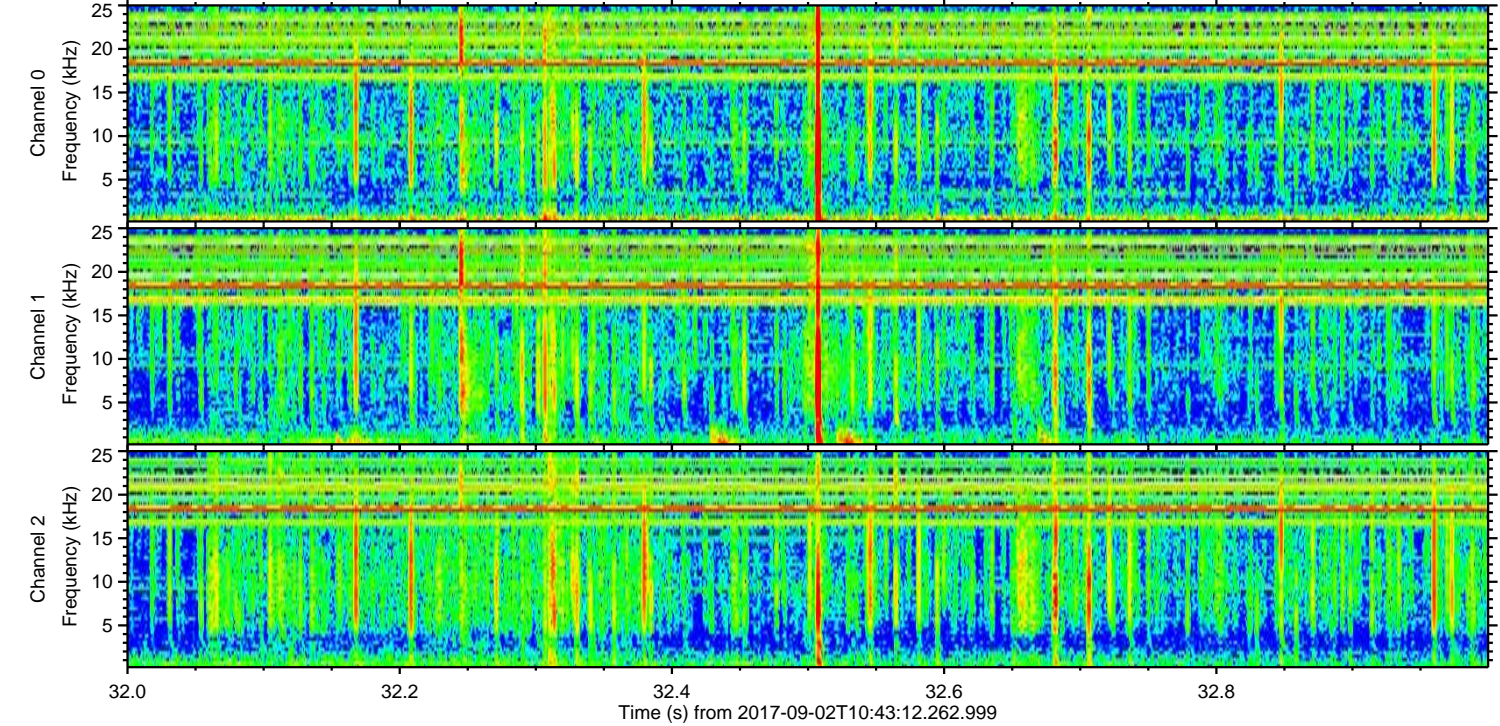
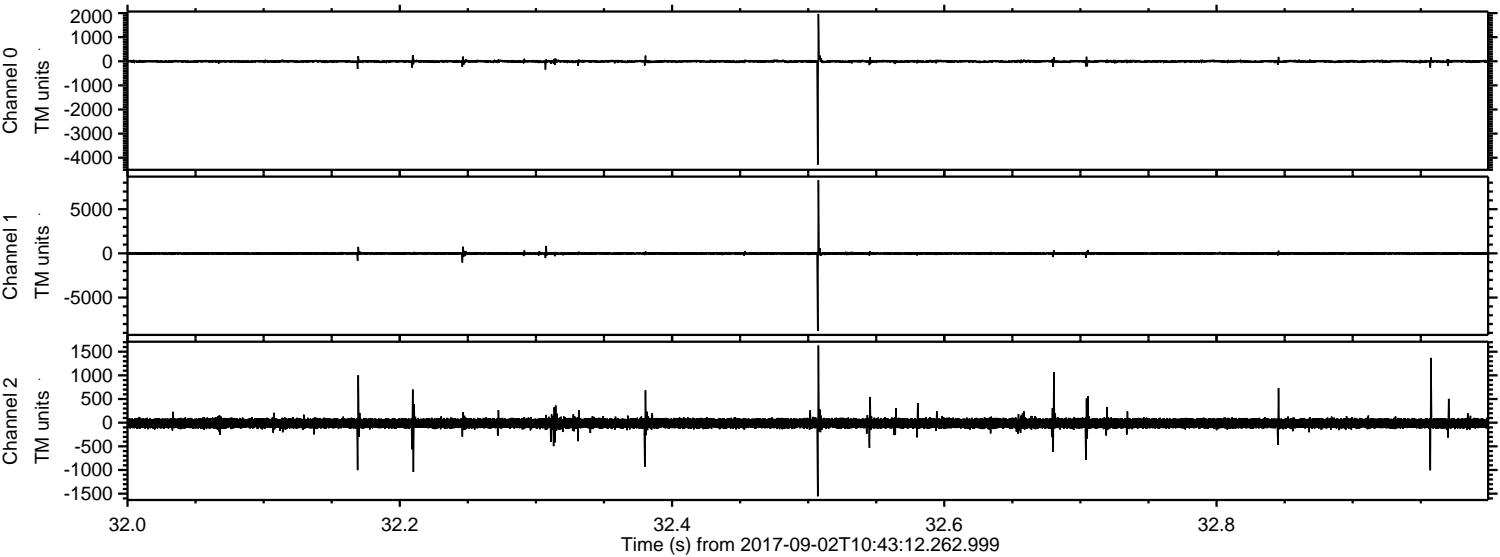


ELMAVAN 3D WAVEFORMS (Measured data sampled at 50 kHz) 51000 packets of 144 samples from 2017-09-02T10:43:12.262.999. Part 140/147

Processed Sat Sep 2 12:50:50 2017 by ELM ver.2012-10-06 from 001__elm20170902_104311__dat00.bin

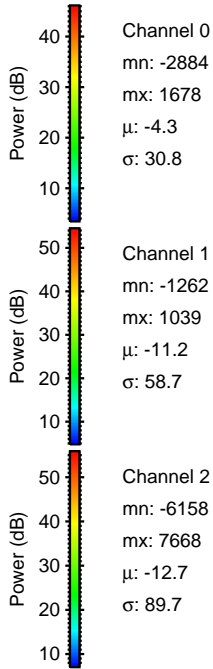
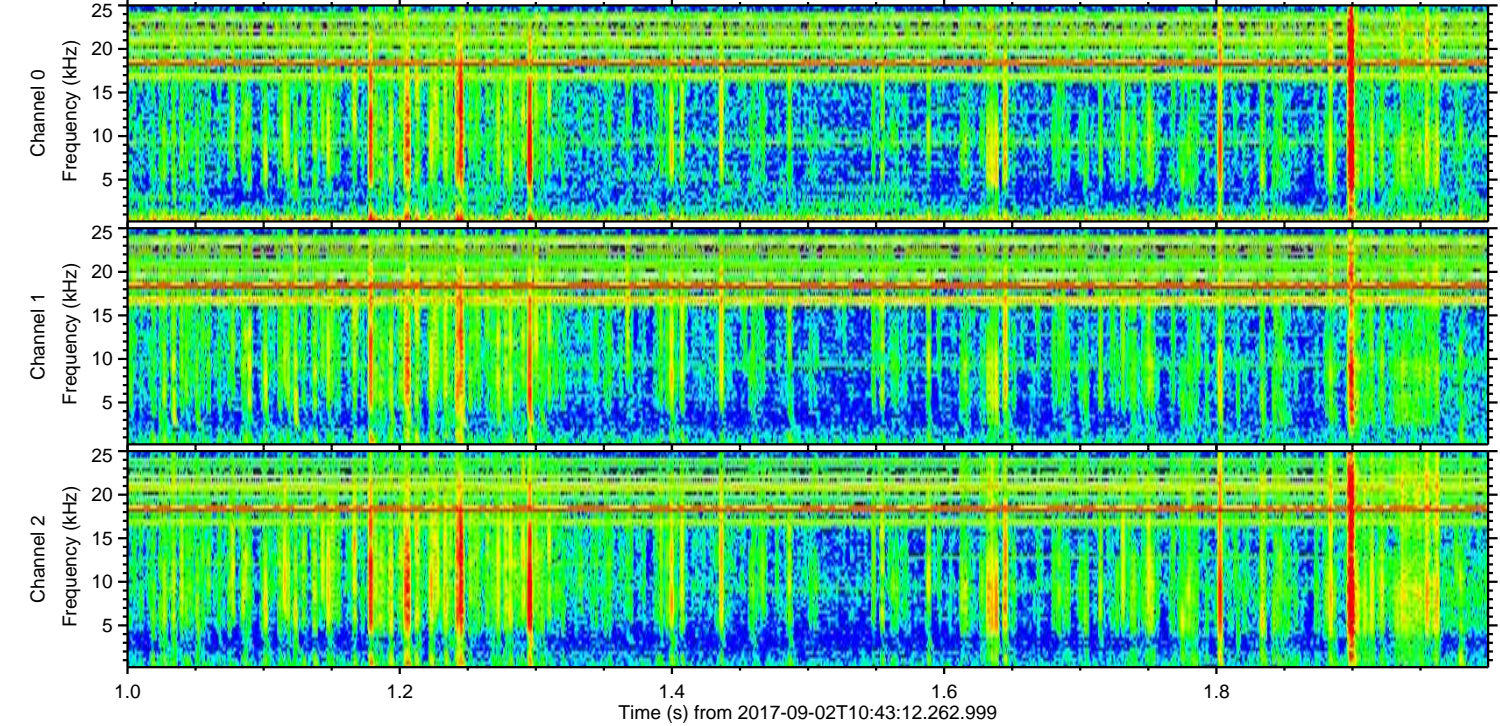
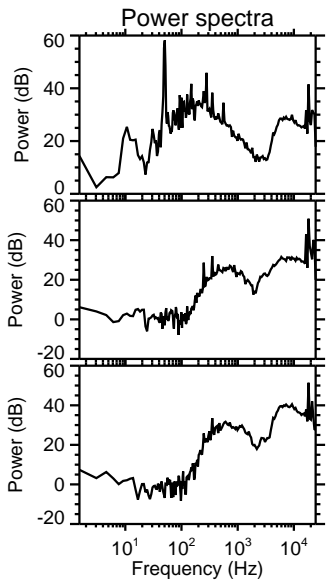
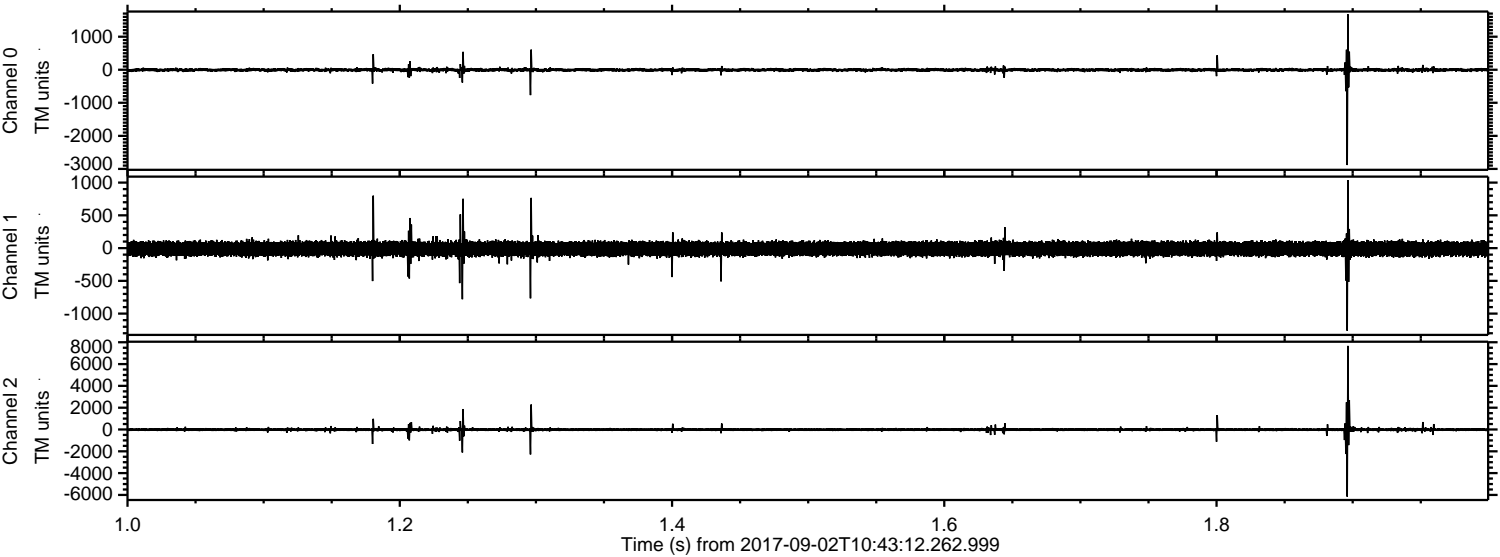


Processed Sat Sep 2 12:50:51 2017 by ELM ver.2012-10-06 from 001__elm20170902_104311__dat00.bin

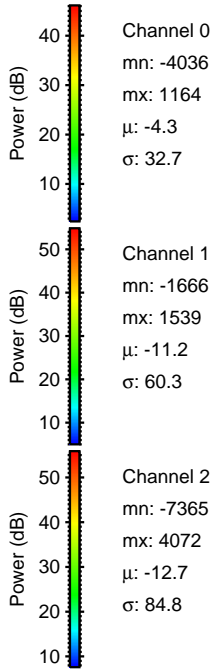
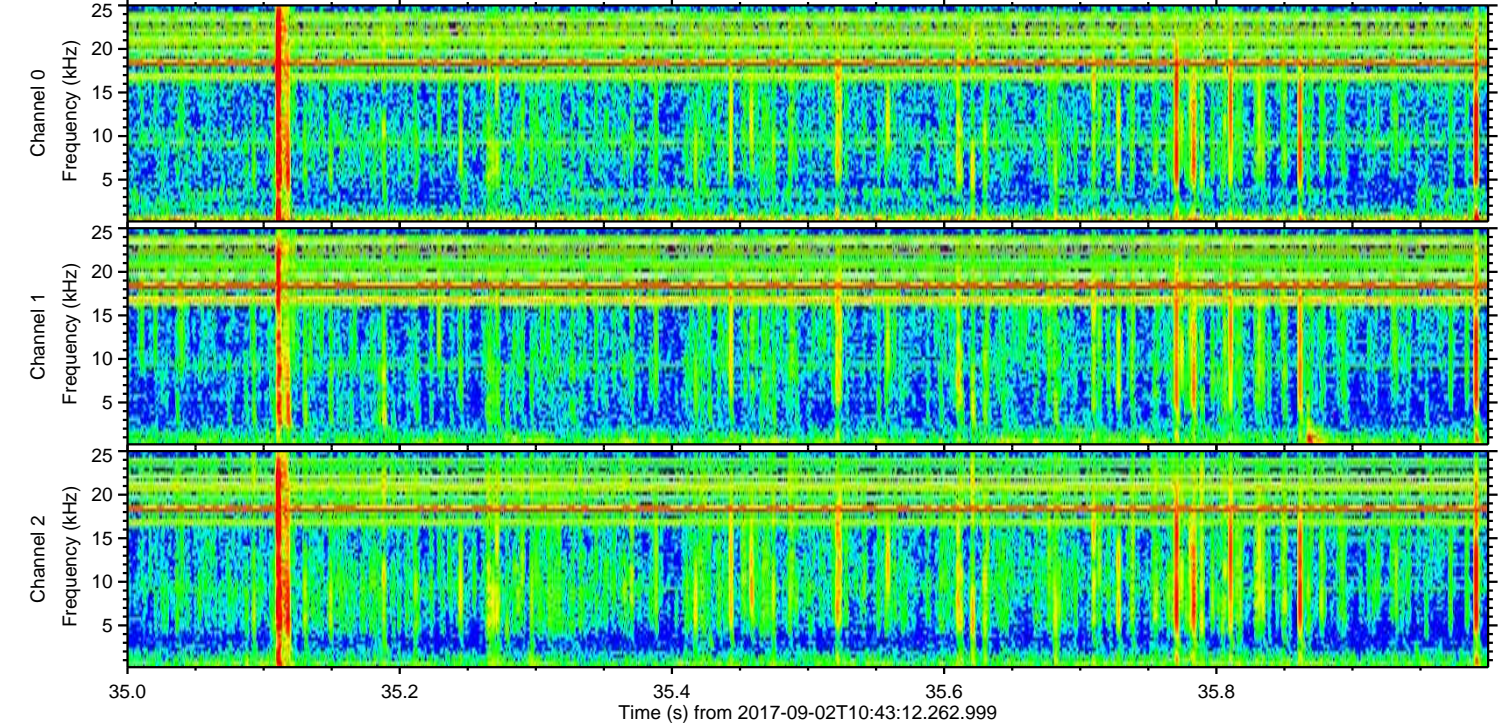
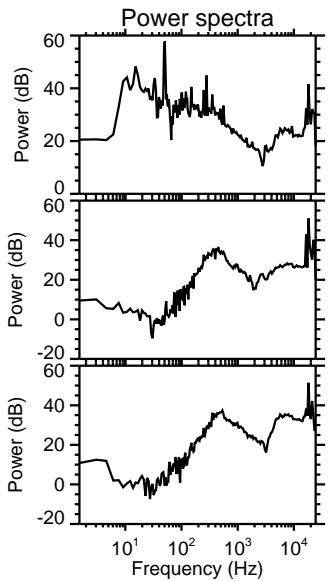
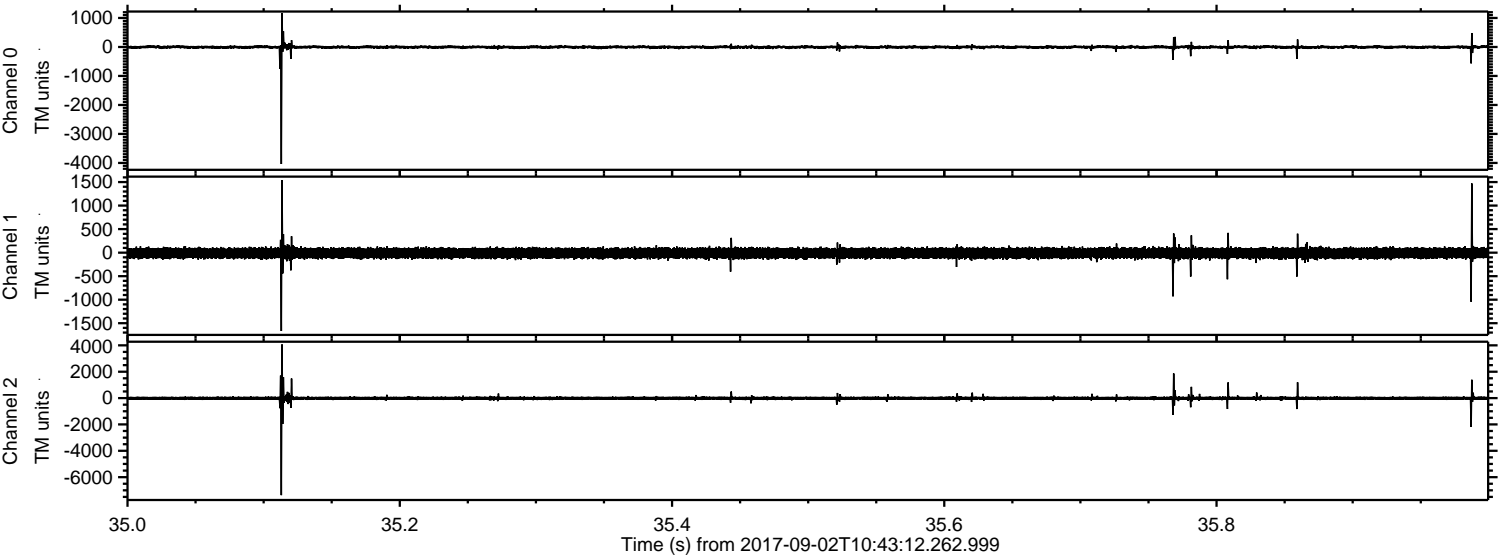


ELMAVAN 3D WAVEFORMS (Measured data sampled at 50 kHz) 51000 packets of 144 samples from 2017-09-02T10:43:12.262.999. Part 2/147

Processed Sat Sep 2 12:50:52 2017 by ELM ver.2012-10-06 from 001__elm20170902_104311__dat00.bin



Processed Sat Sep 2 12:50:52 2017 by ELM ver.2012-10-06 from 001__elm20170902_104311__dat00.bin

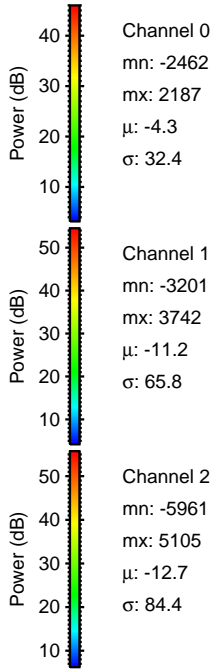
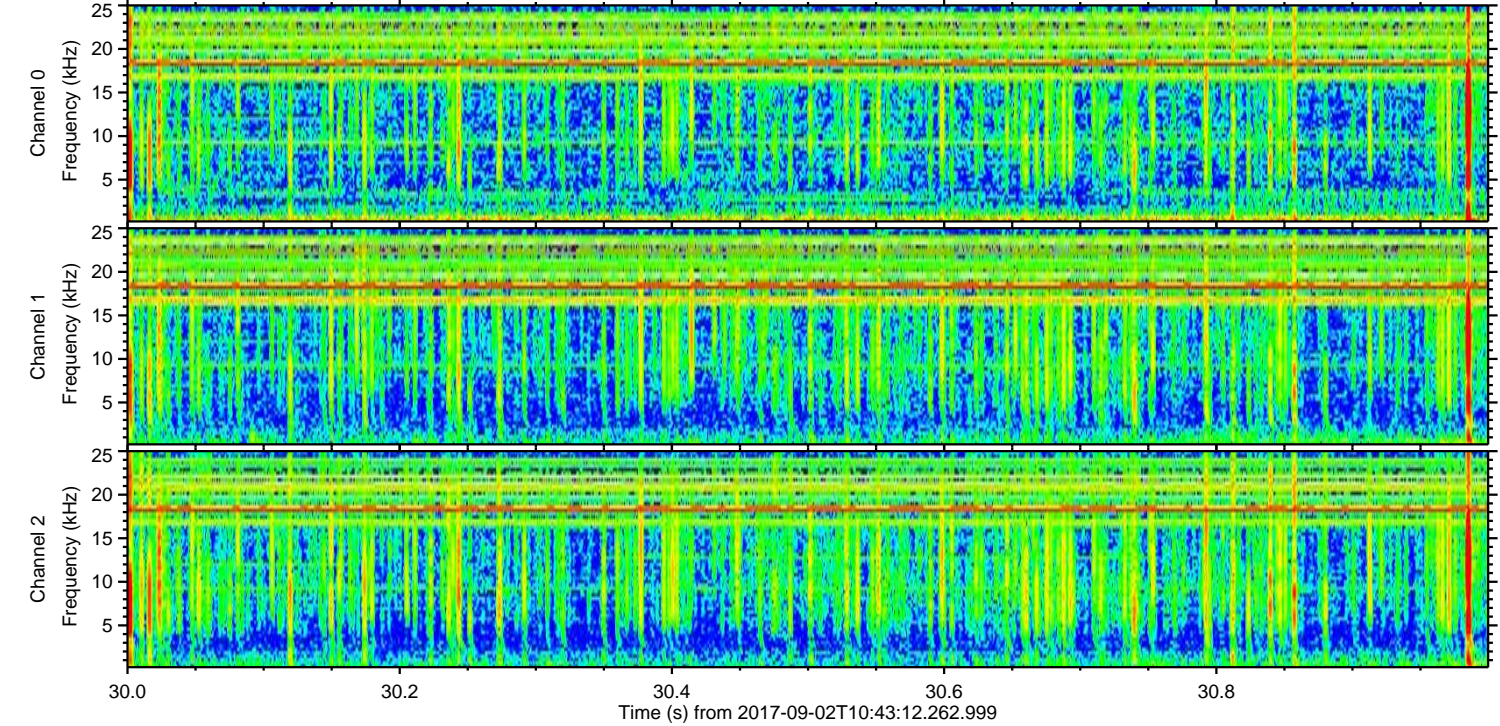
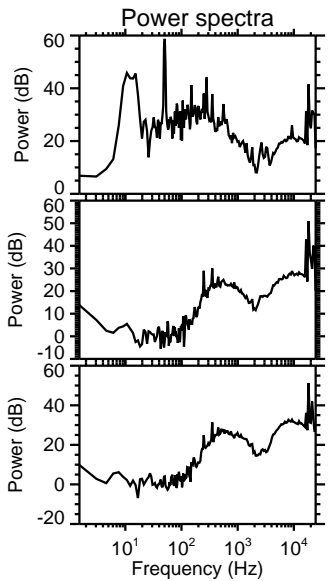
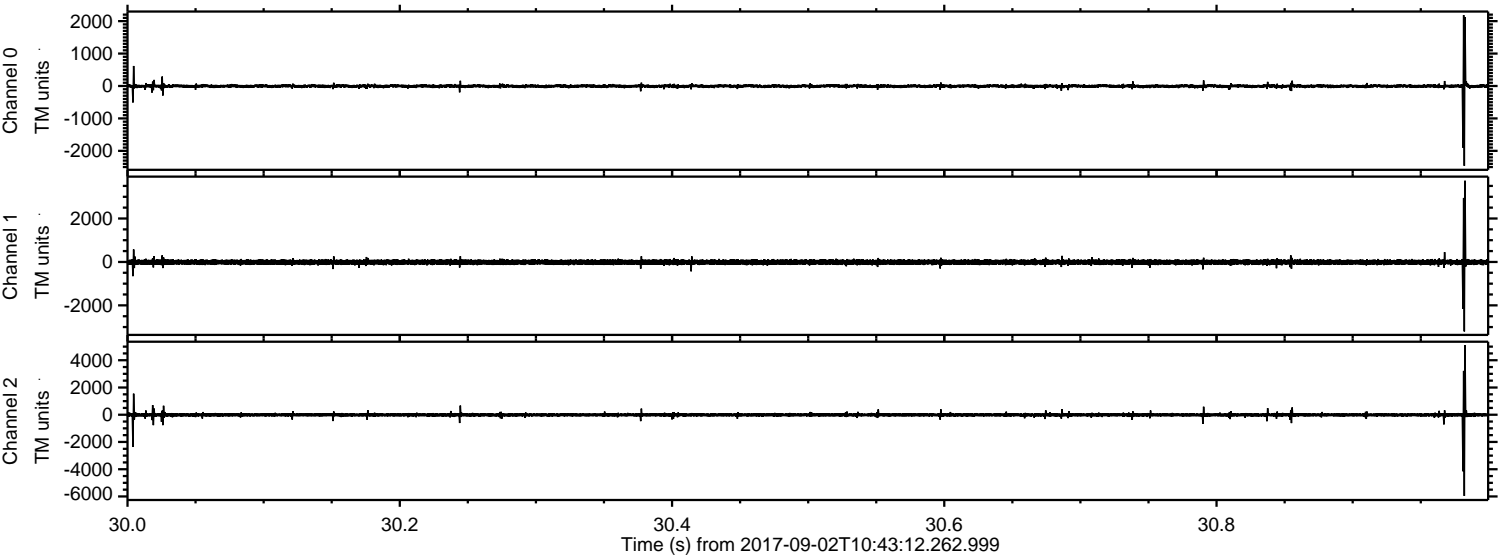


Channel 0
mn: -4036
mx: 1164
 μ : -4.3
 σ : 32.7

Channel 1
mn: -1666
mx: 1539
 μ : -11.2
 σ : 60.3

Channel 2
mn: -7365
mx: 4072
 μ : -12.7
 σ : 84.8

Processed Sat Sep 2 12:50:53 2017 by ELM ver.2012-10-06 from 001__elm20170902_104311__dat00.bin



Processed Sat Sep 2 12:50:54 2017 by ELM ver.2012-10-06 from 001__elm20170902_104311__dat00.bin

