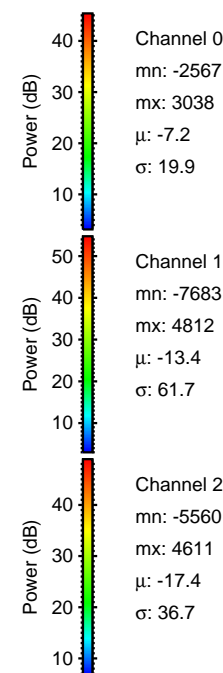
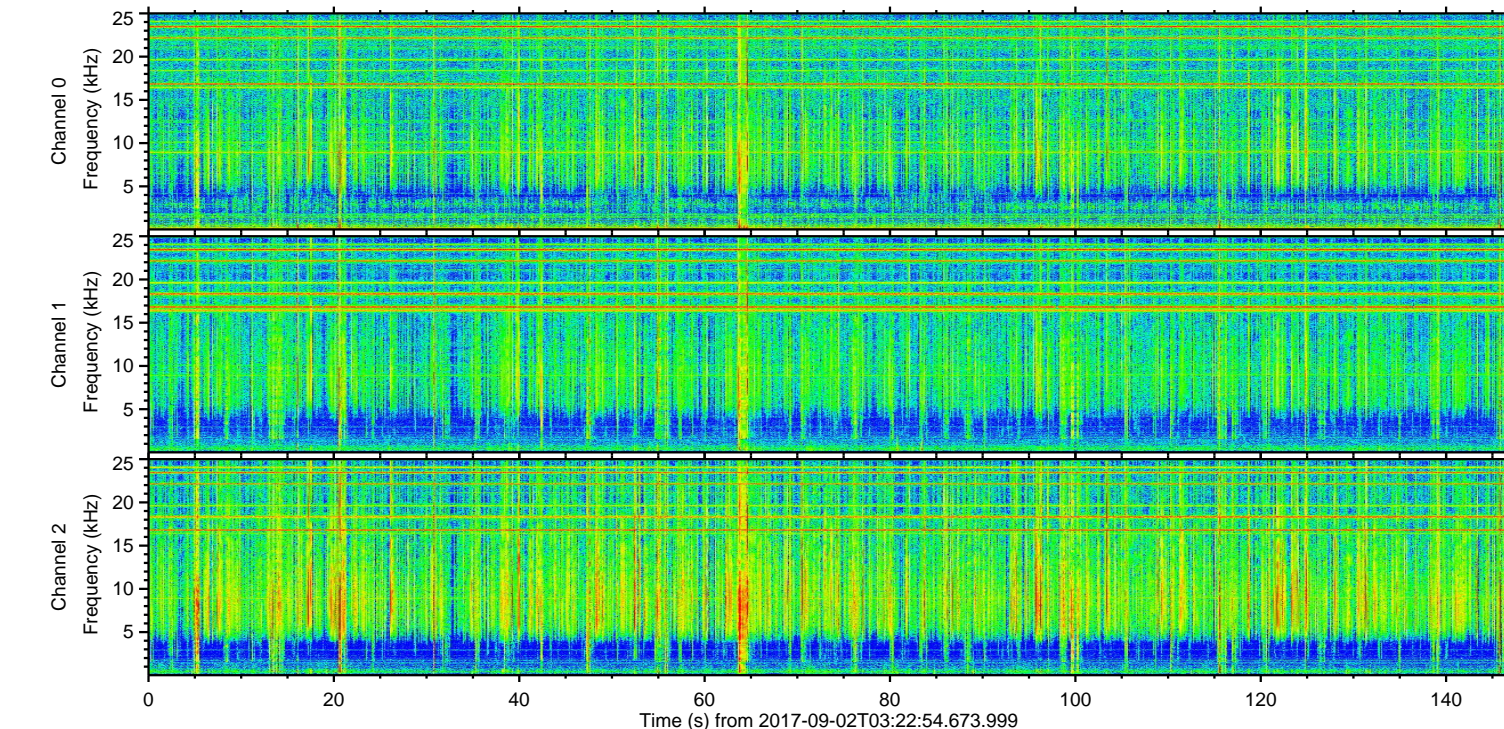
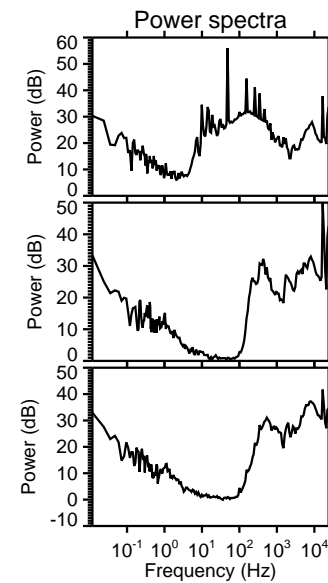
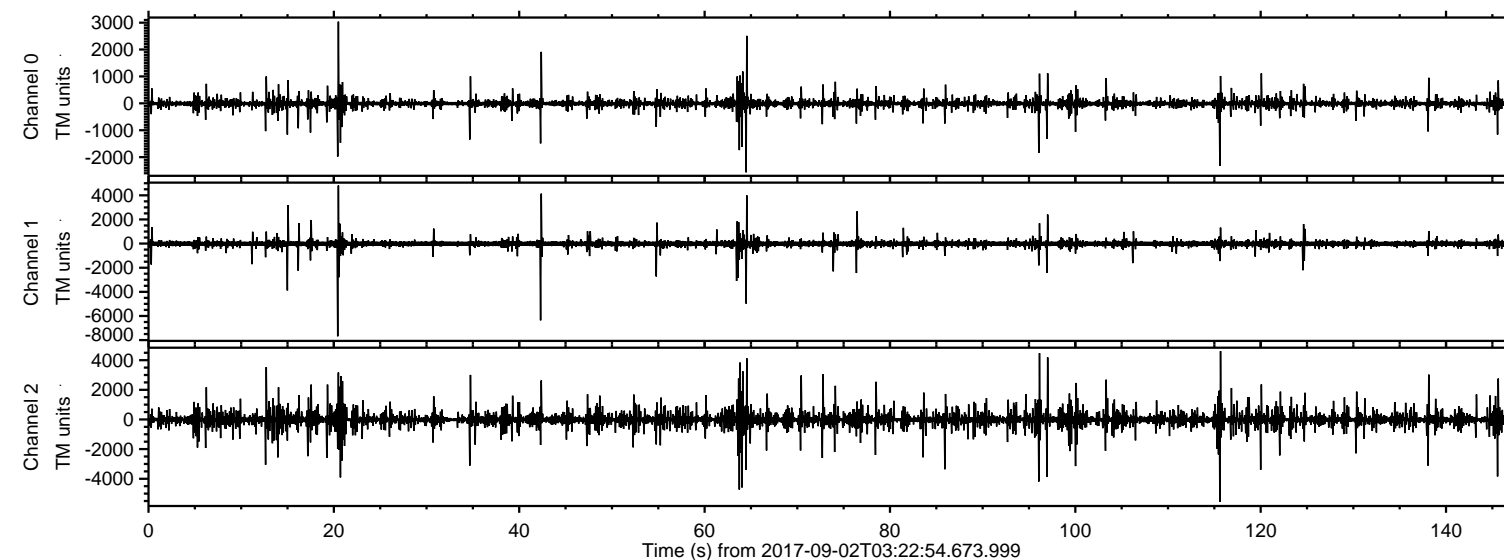


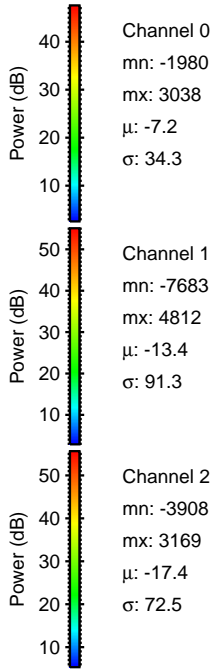
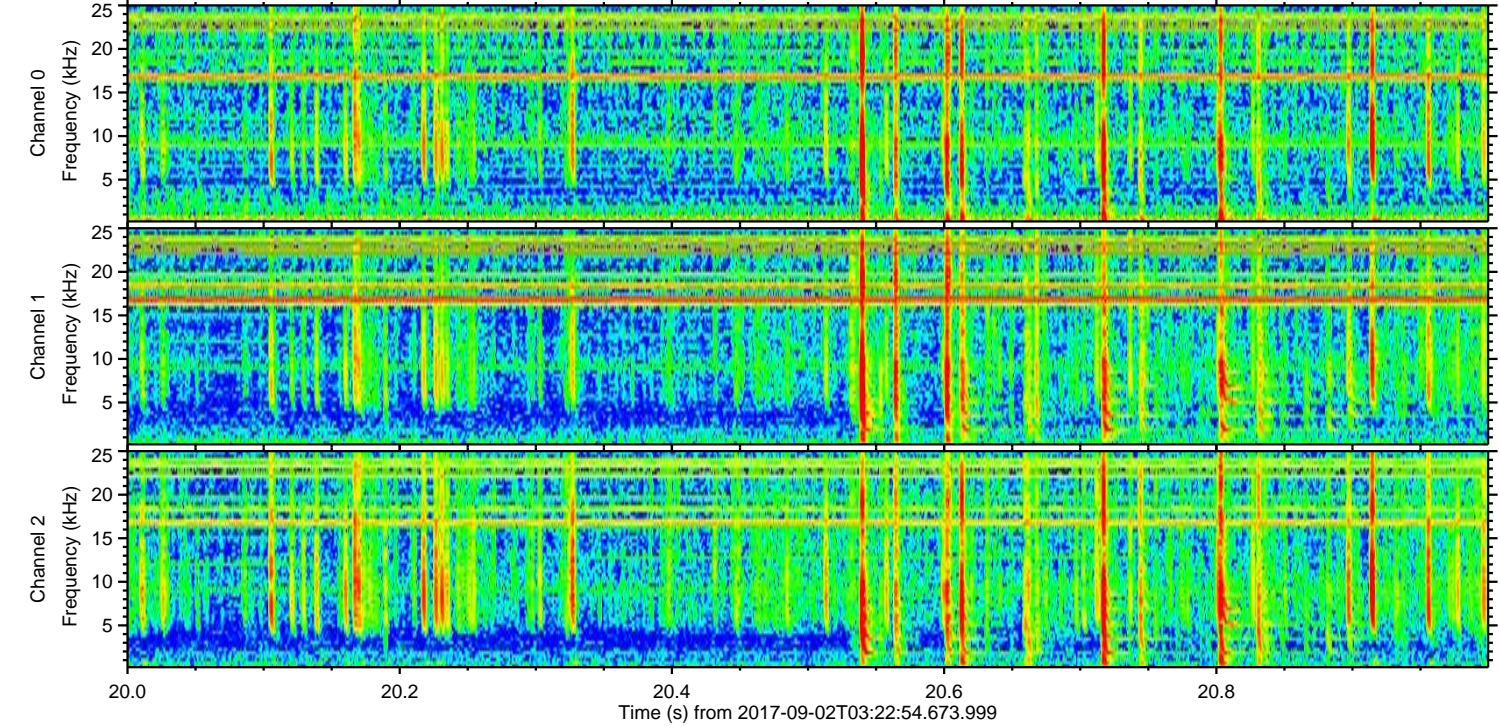
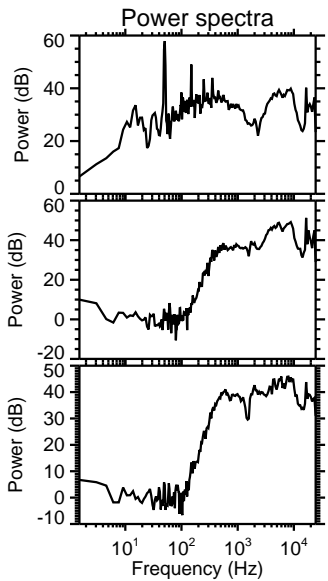
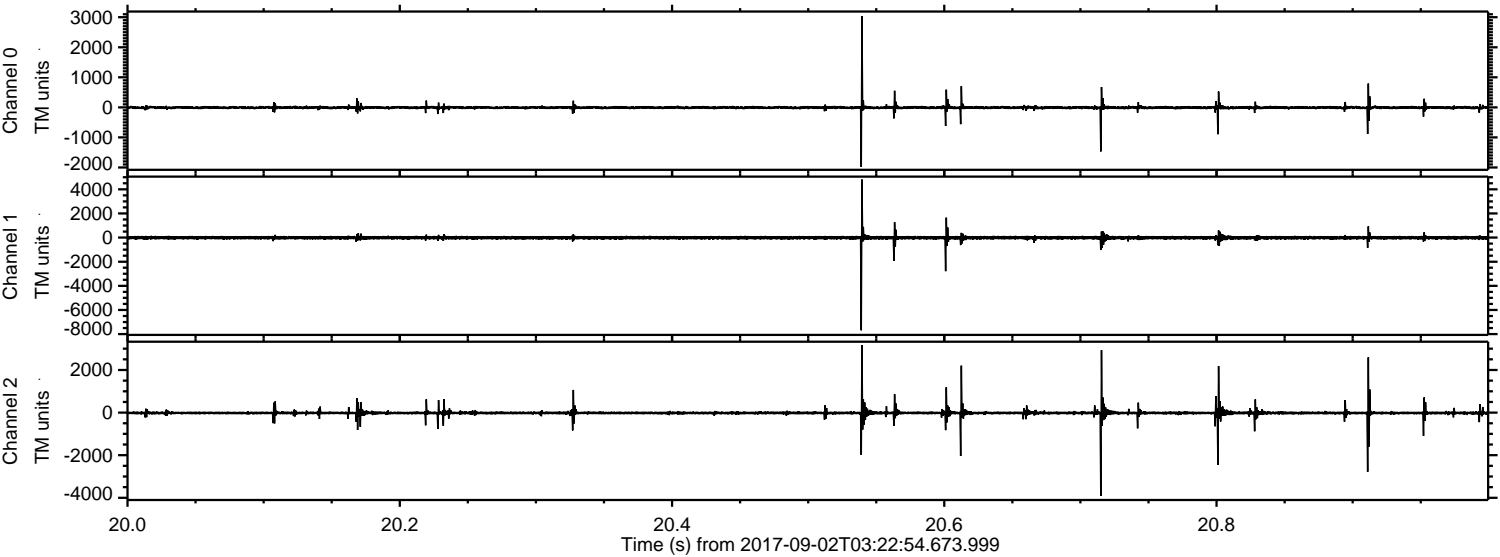
ELMAVAN 3D WAVEFORMS (Measured data sampled at 50 kHz) 51000 packets of 144 samples from 2017-09-02T03:22:54.673.999.

Processed Sat Sep 2 05:30:44 2017 by ELM ver.2012-10-06 from 001__elm20170902_032253__dat00.bin



ELMAVAN 3D WAVEFORMS (Measured data sampled at 50 kHz) 51000 packets of 144 samples from 2017-09-02T03:22:54.673.999. Part 21/147

Processed Sat Sep 2 05:30:50 2017 by ELM ver.2012-10-06 from 001__elm20170902_032253__dat00.bin



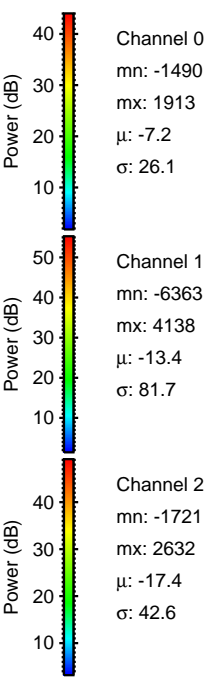
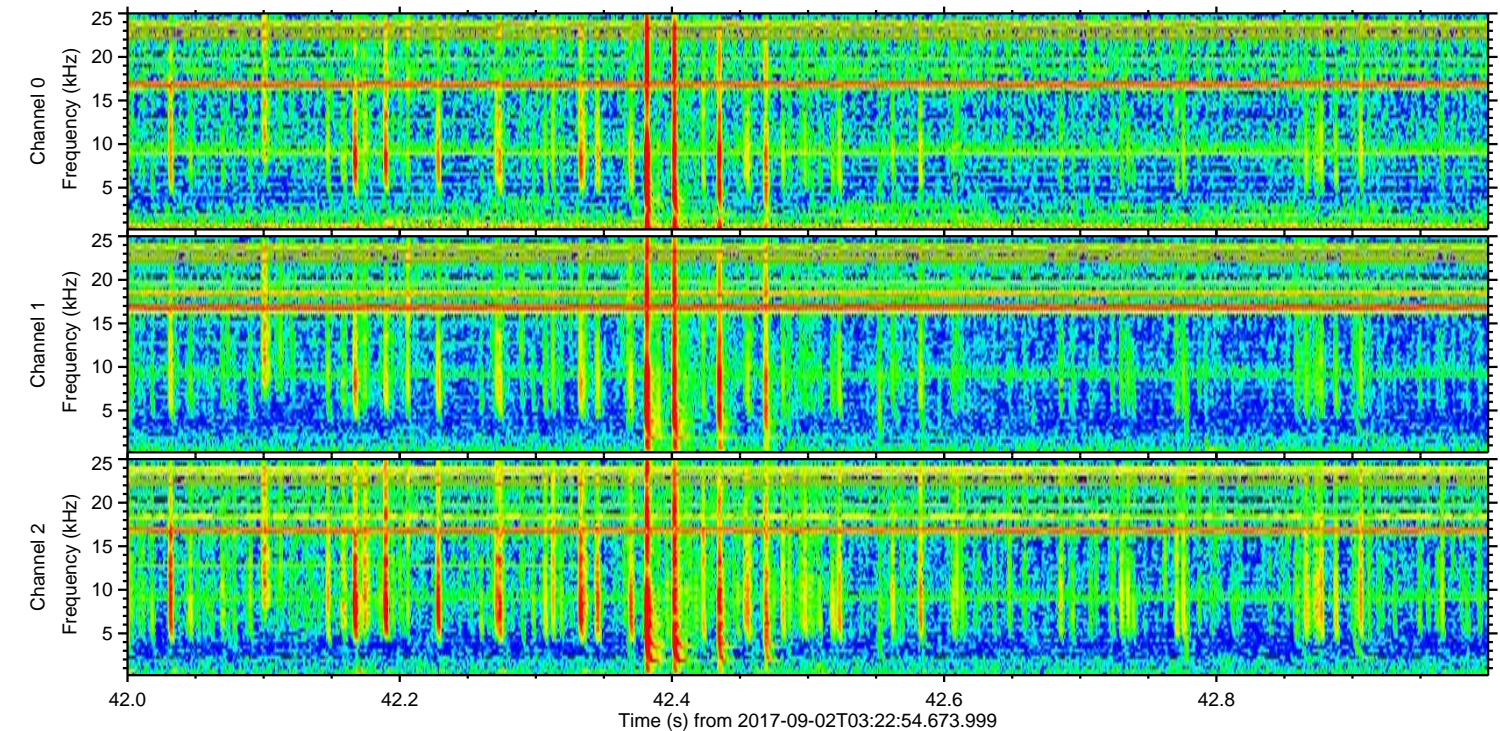
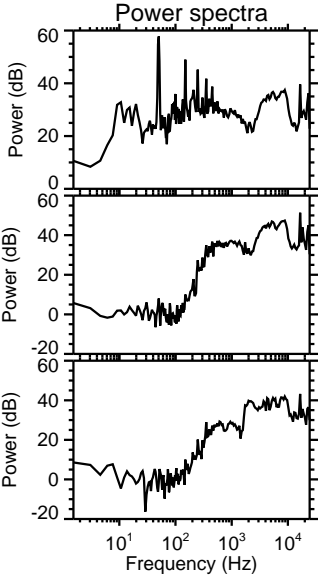
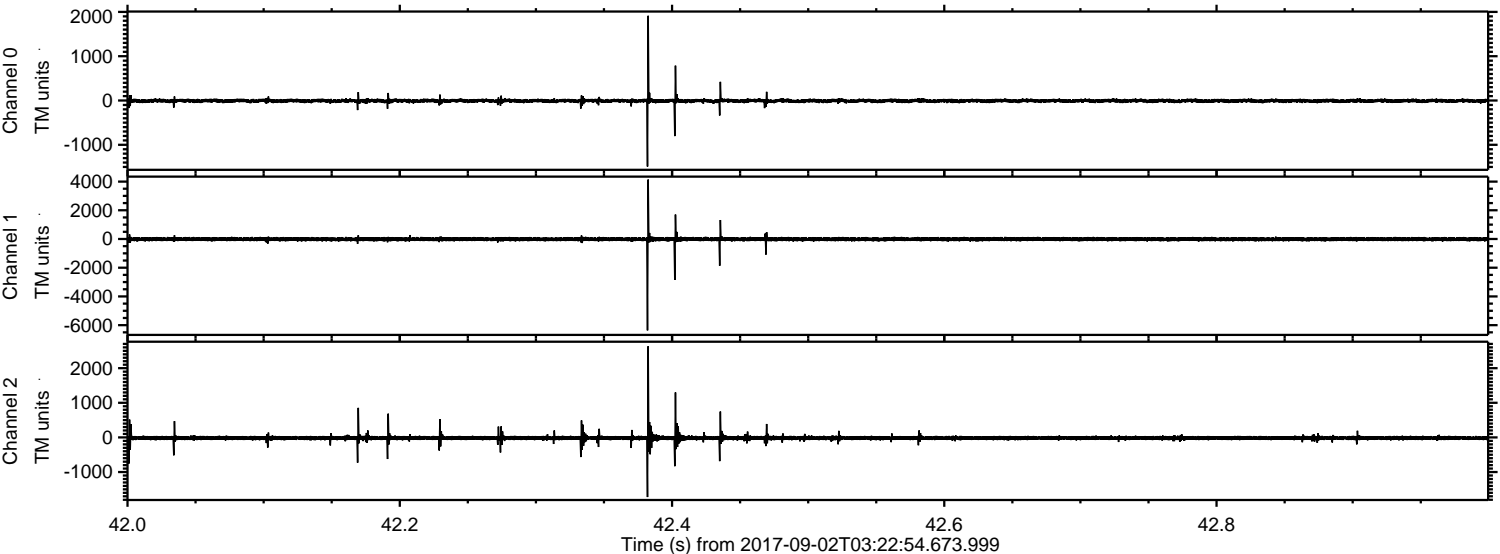
Channel 0
mn: -1980
mx: 3038
 μ : -7.2
 σ : 34.3

Channel 1
mn: -7683
mx: 4812
 μ : -13.4
 σ : 91.3

Channel 2
mn: -3908
mx: 3169
 μ : -17.4
 σ : 72.5

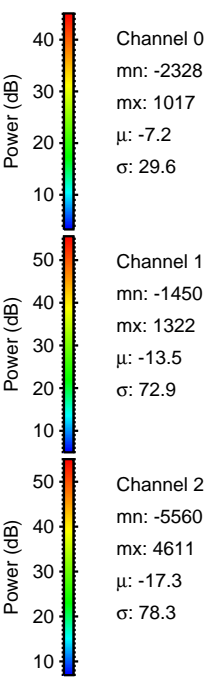
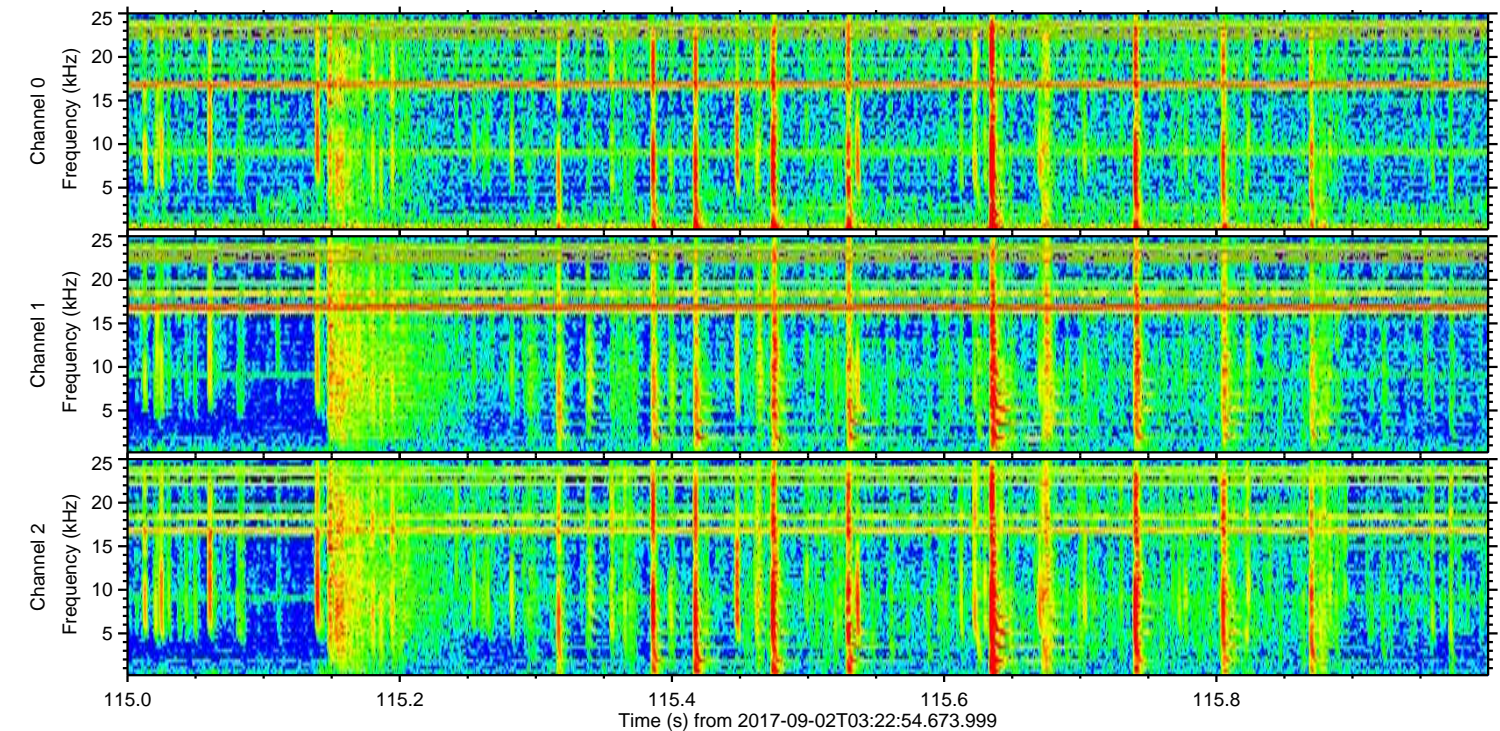
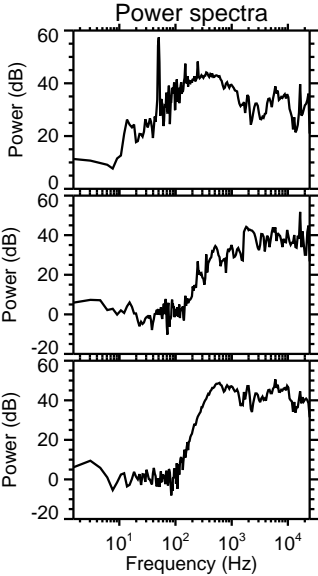
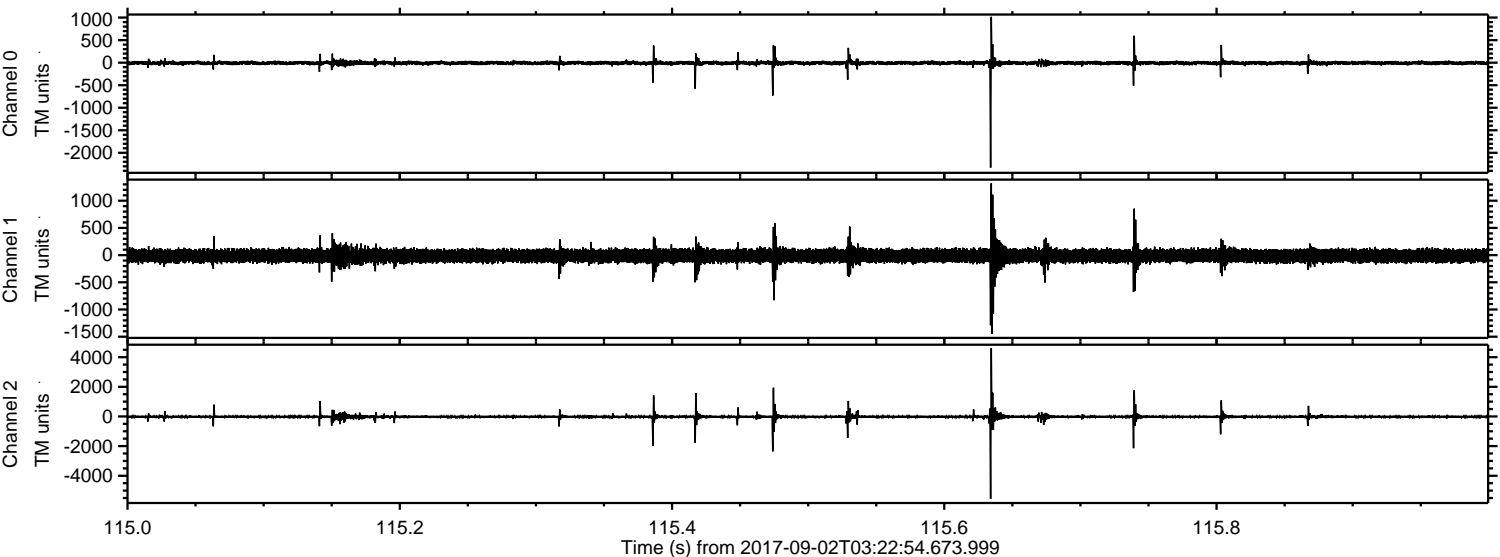
ELMAVAN 3D WAVEFORMS (Measured data sampled at 50 kHz) 51000 packets of 144 samples from 2017-09-02T03:22:54.673.999. Part 43/147

Processed Sat Sep 2 05:30:51 2017 by ELM ver.2012-10-06 from 001__elm20170902_032253__dat00.bin

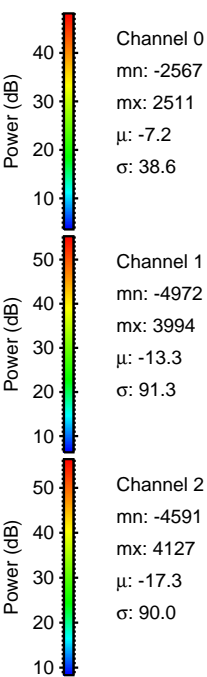
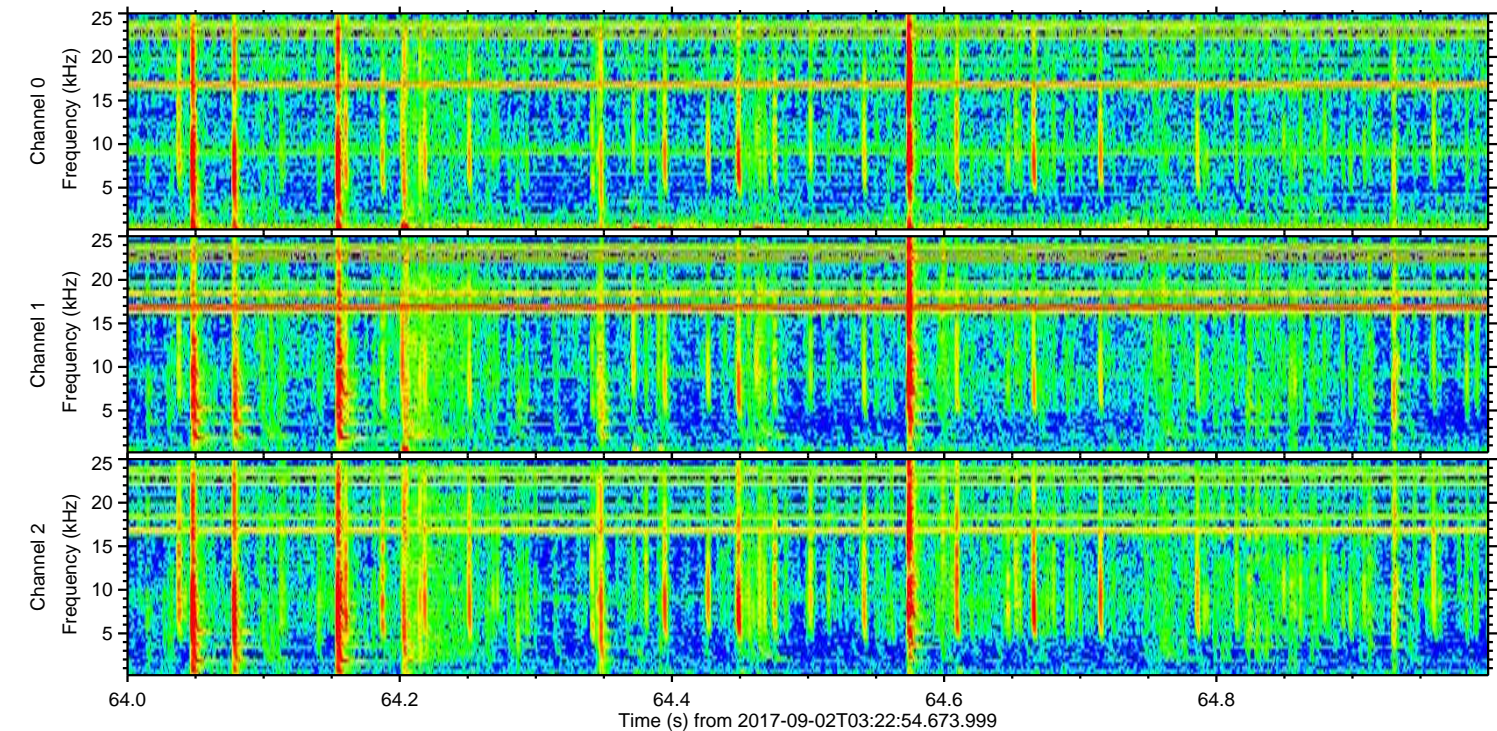
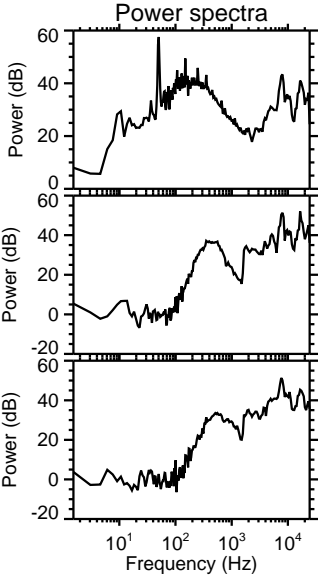
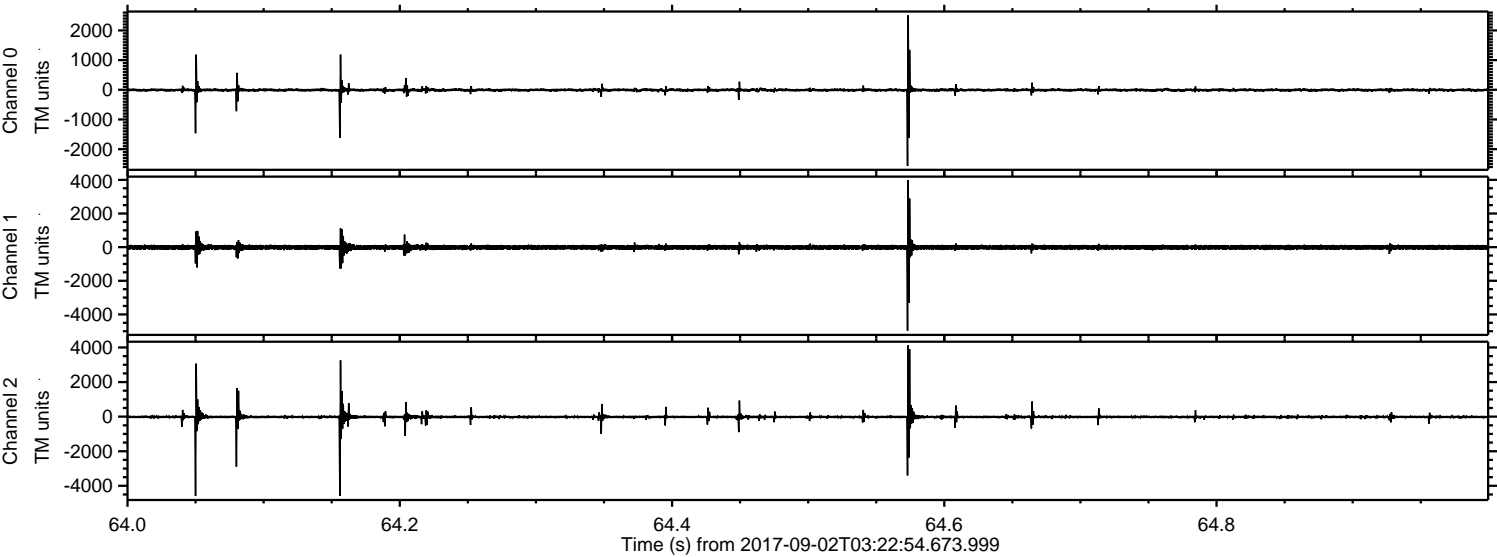


ELMAVAN 3D WAVEFORMS (Measured data sampled at 50 kHz) 51000 packets of 144 samples from 2017-09-02T03:22:54.673.999. Part 116/147

Processed Sat Sep 2 05:30:52 2017 by ELM ver.2012-10-06 from 001__elm20170902_032253__dat00.bin

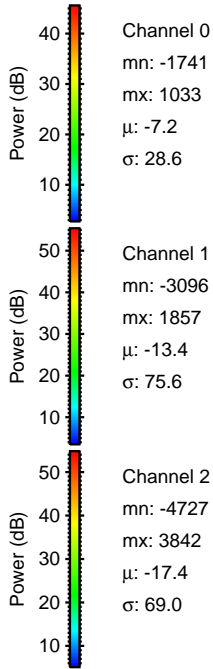
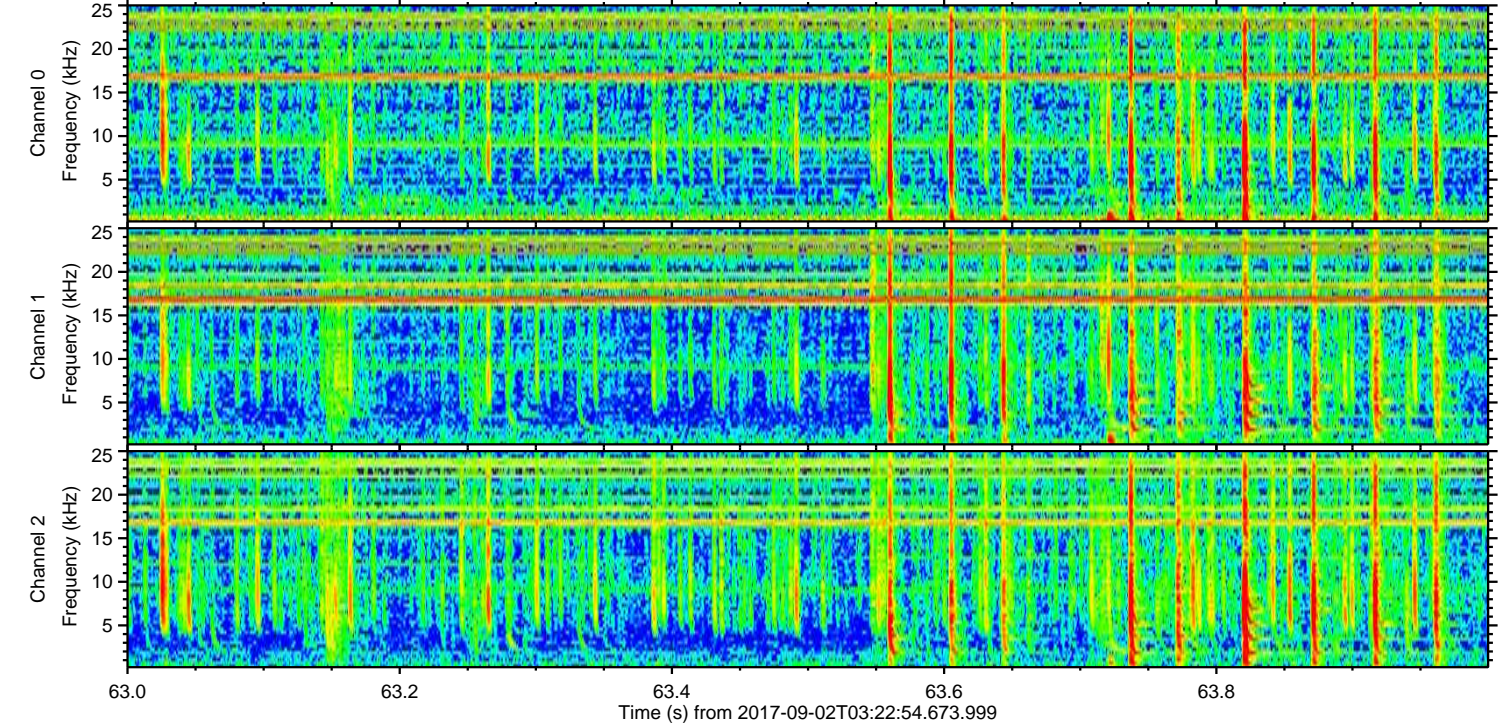
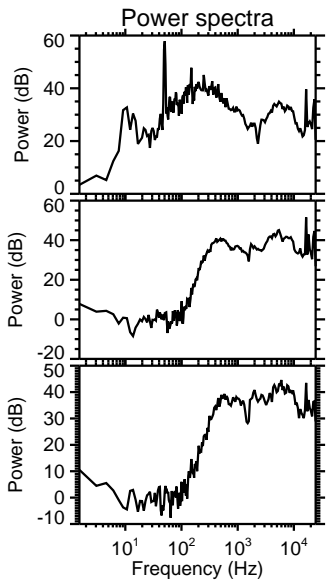
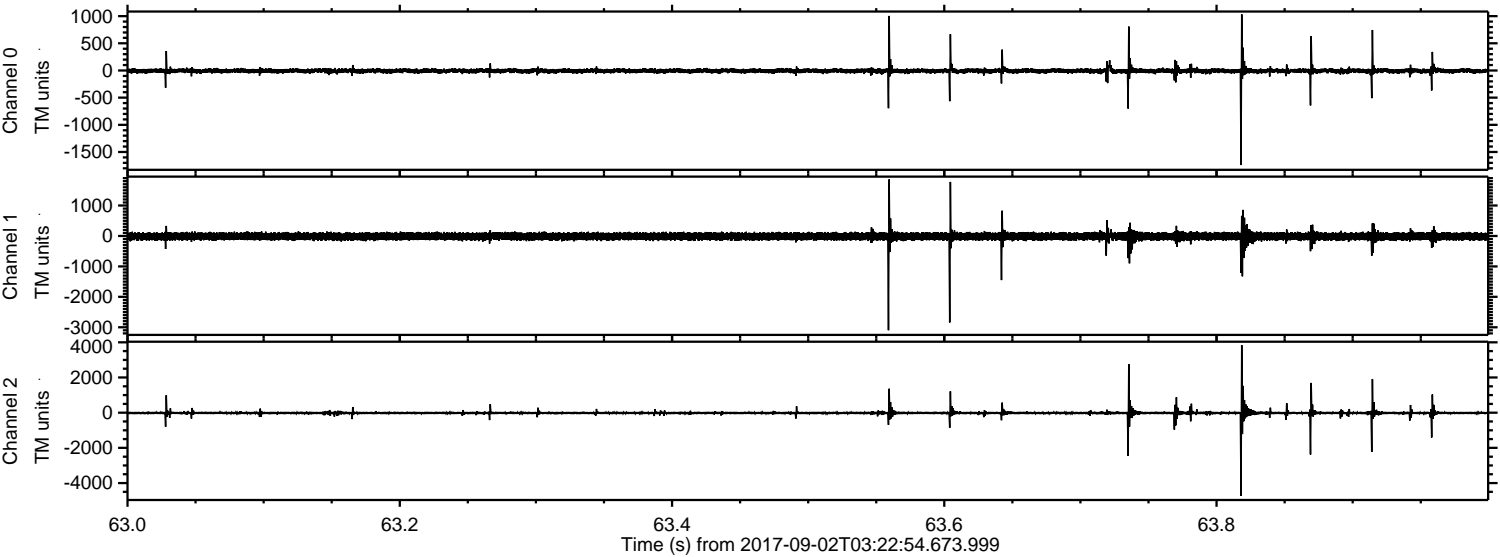


Processed Sat Sep 2 05:30:52 2017 by ELM ver.2012-10-06 from 001__elm20170902_032253__dat00.bin



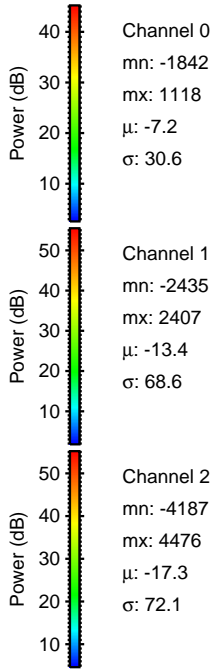
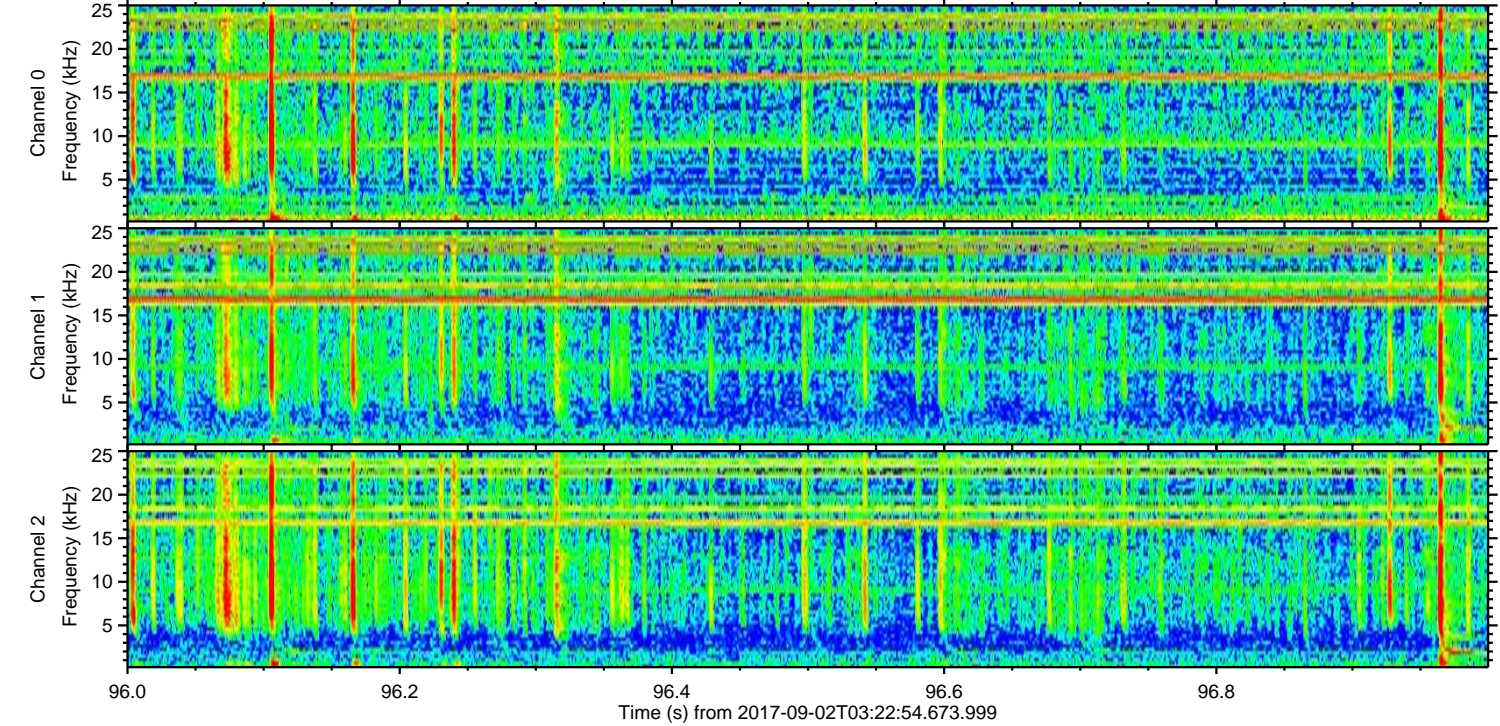
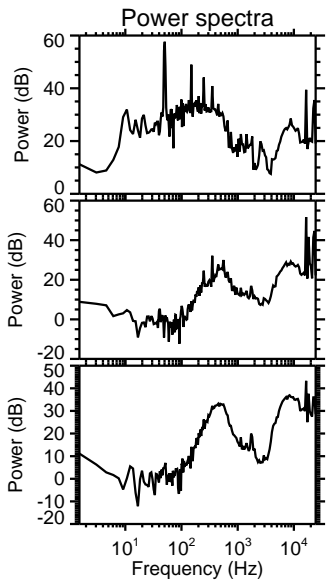
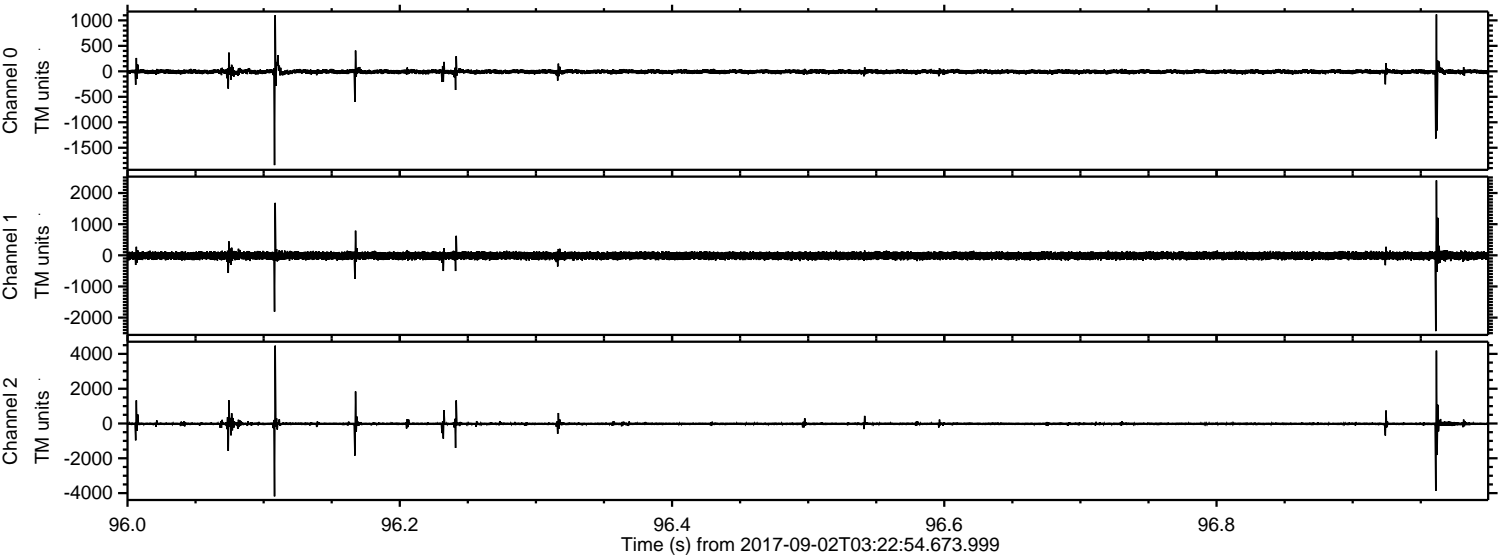
ELMAVAN 3D WAVEFORMS (Measured data sampled at 50 kHz) 51000 packets of 144 samples from 2017-09-02T03:22:54.673.999. Part 64/147

Processed Sat Sep 2 05:30:53 2017 by ELM ver.2012-10-06 from 001__elm20170902_032253__dat00.bin



ELMAVAN 3D WAVEFORMS (Measured data sampled at 50 kHz) 51000 packets of 144 samples from 2017-09-02T03:22:54.673.999. Part 97/147

Processed Sat Sep 2 05:30:54 2017 by ELM ver.2012-10-06 from 001__elm20170902_032253__dat00.bin

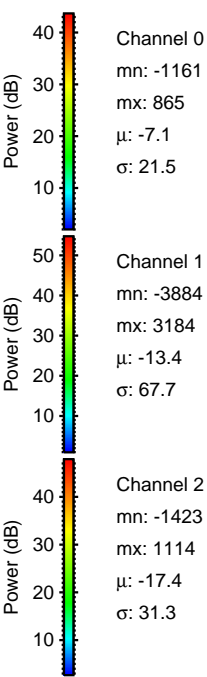
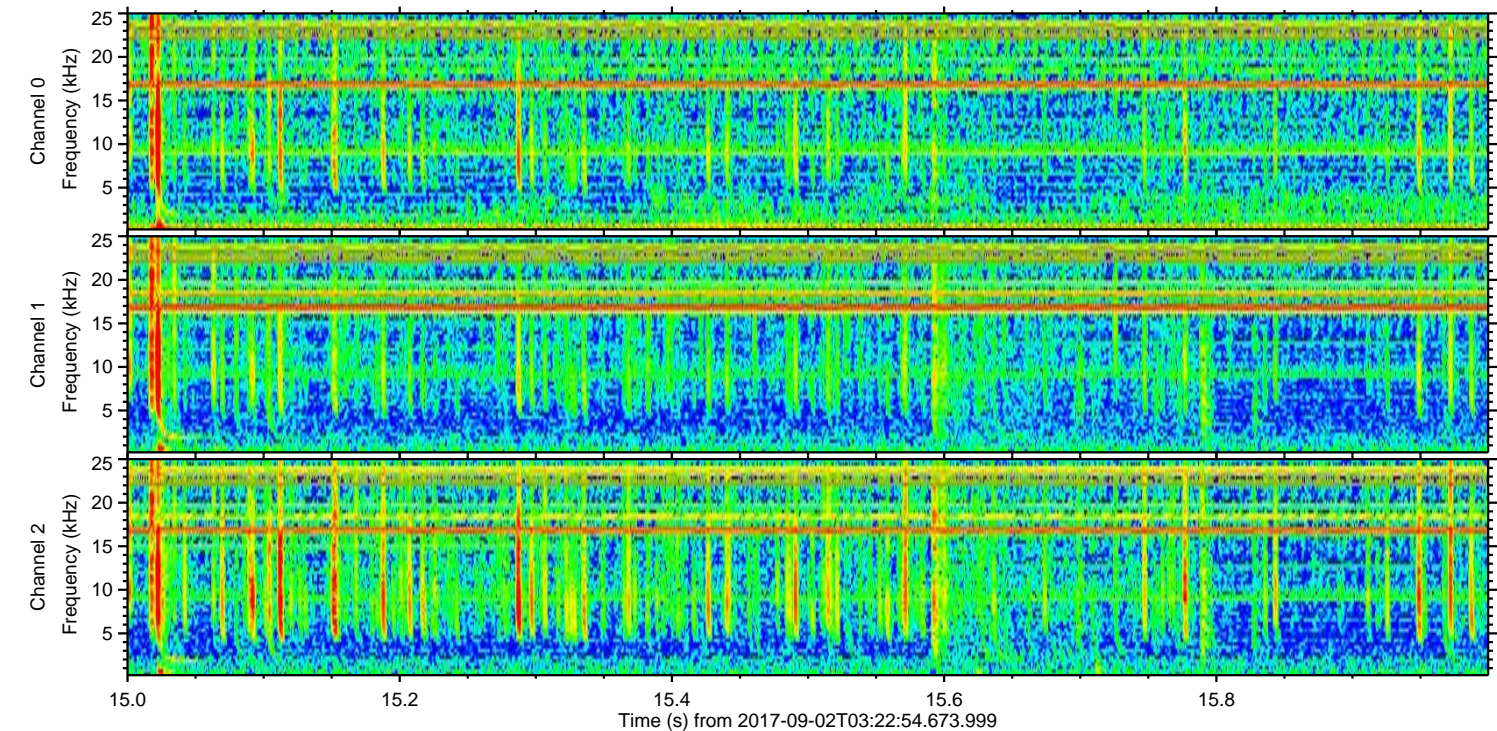
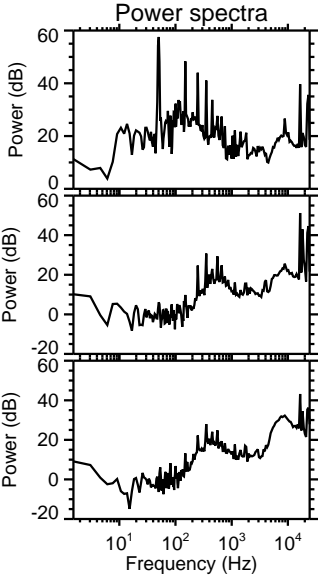
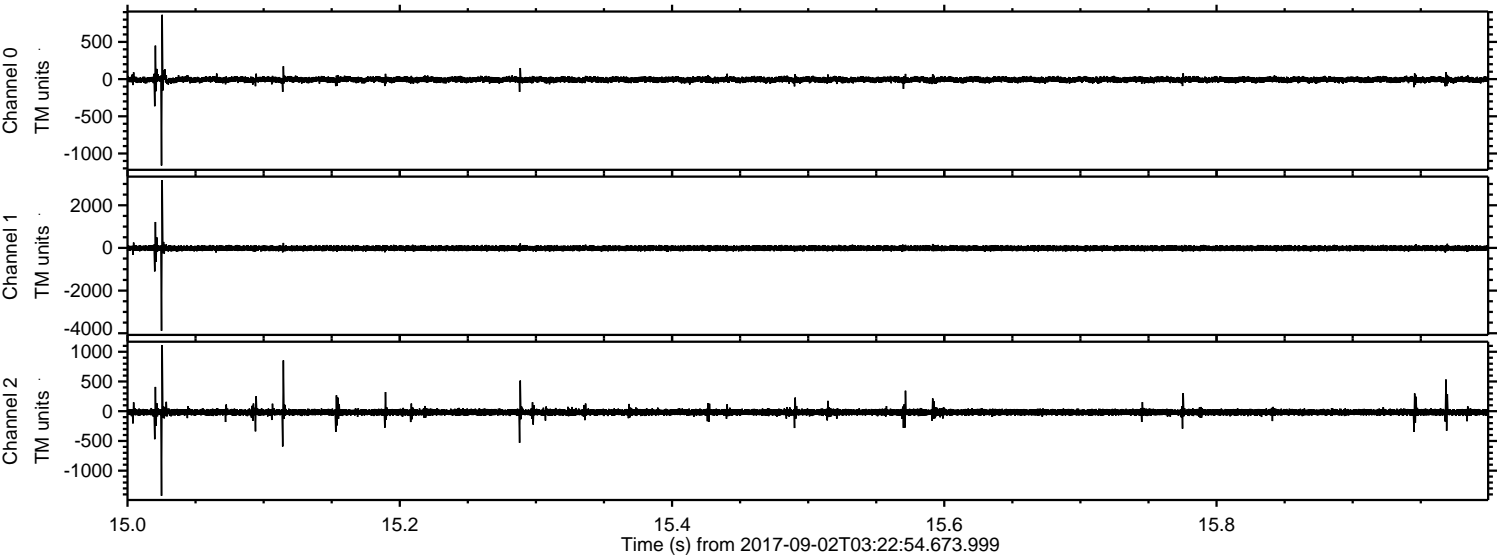


Channel 0
mn: -1842
mx: 1118
 μ : -7.2
 σ : 30.6

Channel 1
mn: -2435
mx: 2407
 μ : -13.4
 σ : 68.6

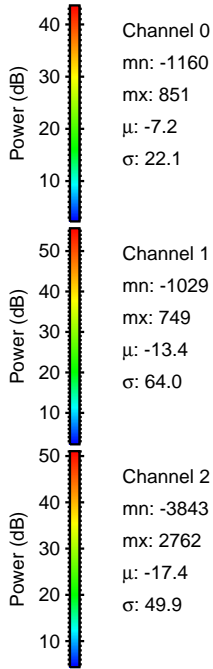
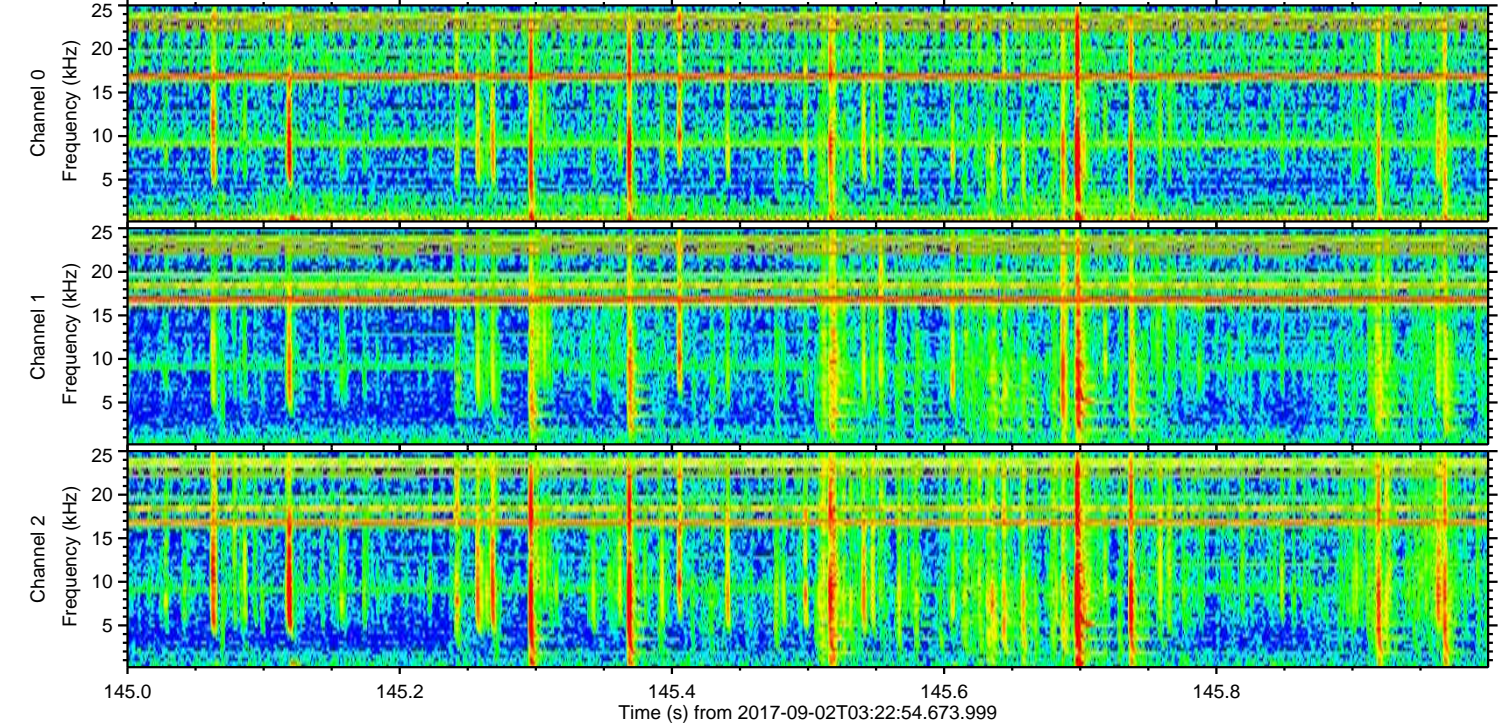
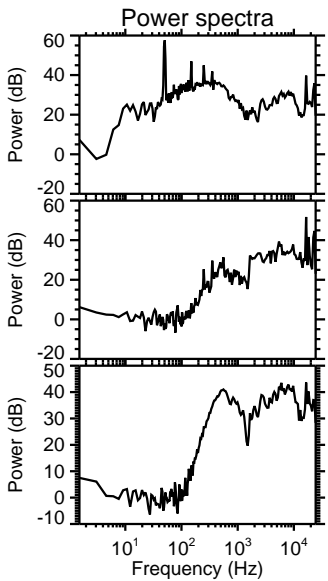
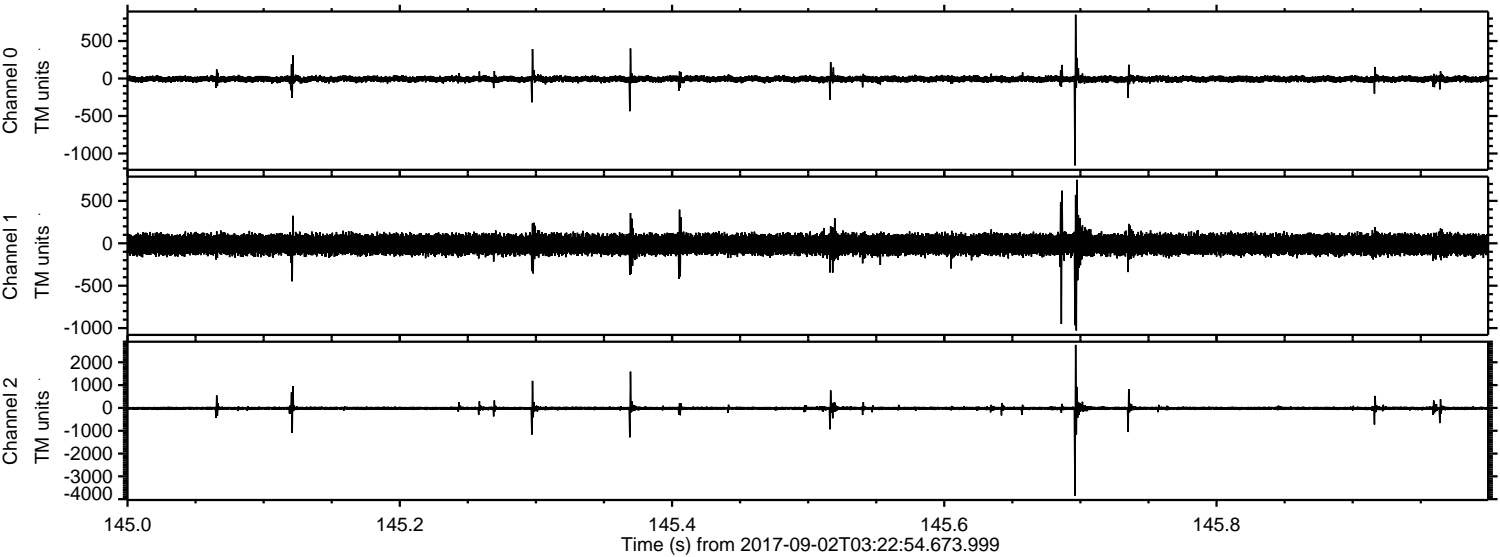
Channel 2
mn: -4187
mx: 4476
 μ : -17.3
 σ : 72.1

Processed Sat Sep 2 05:30:54 2017 by ELM ver.2012-10-06 from 001__elm20170902_032253__dat00.bin



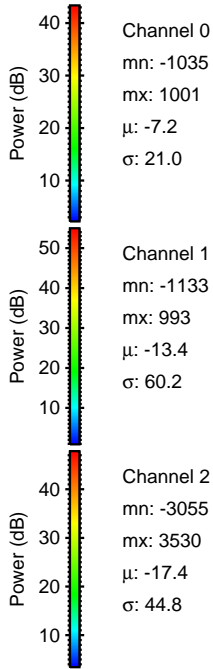
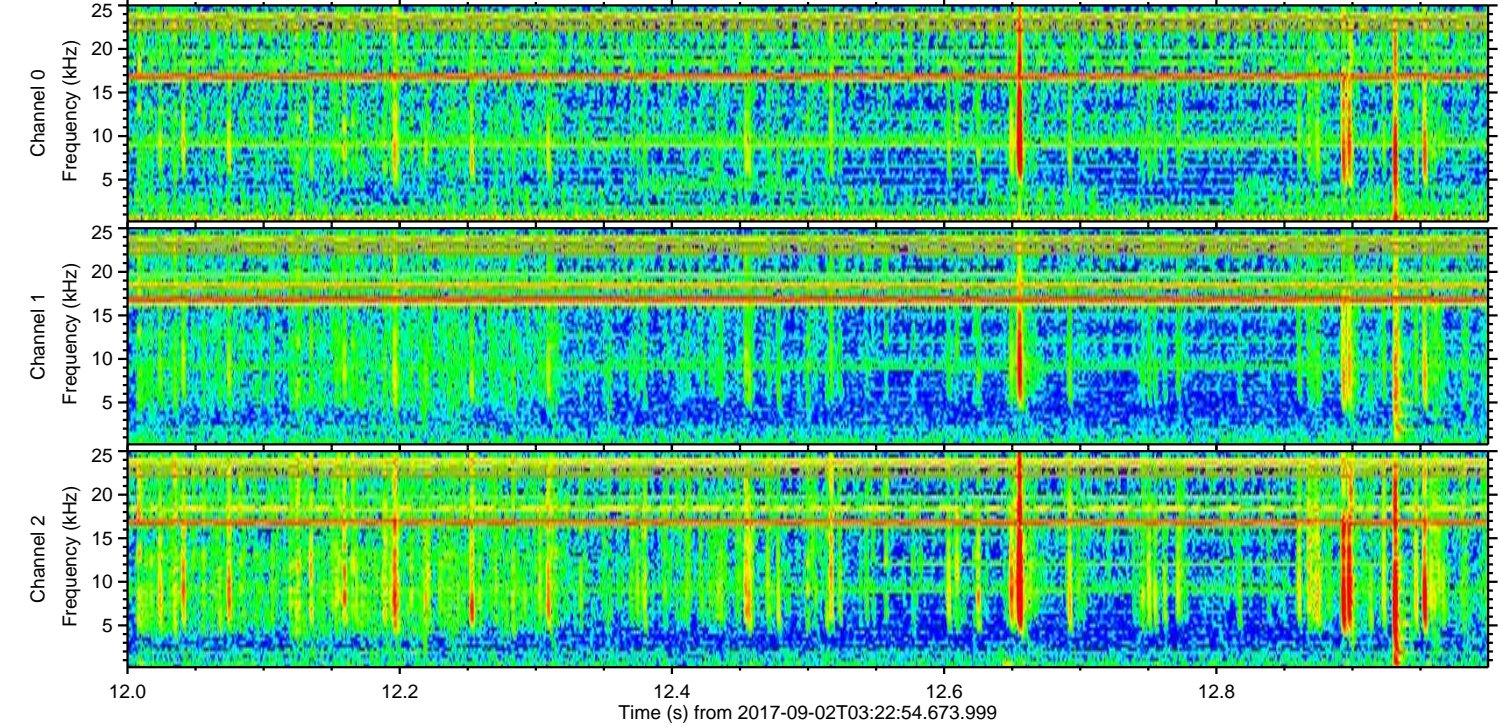
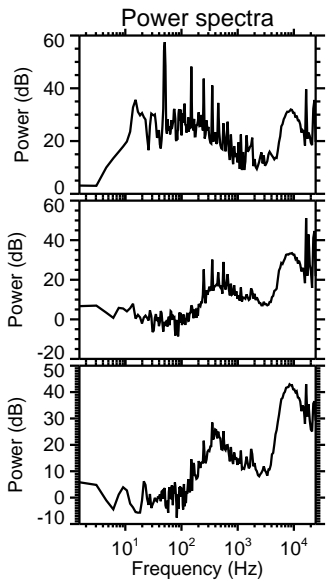
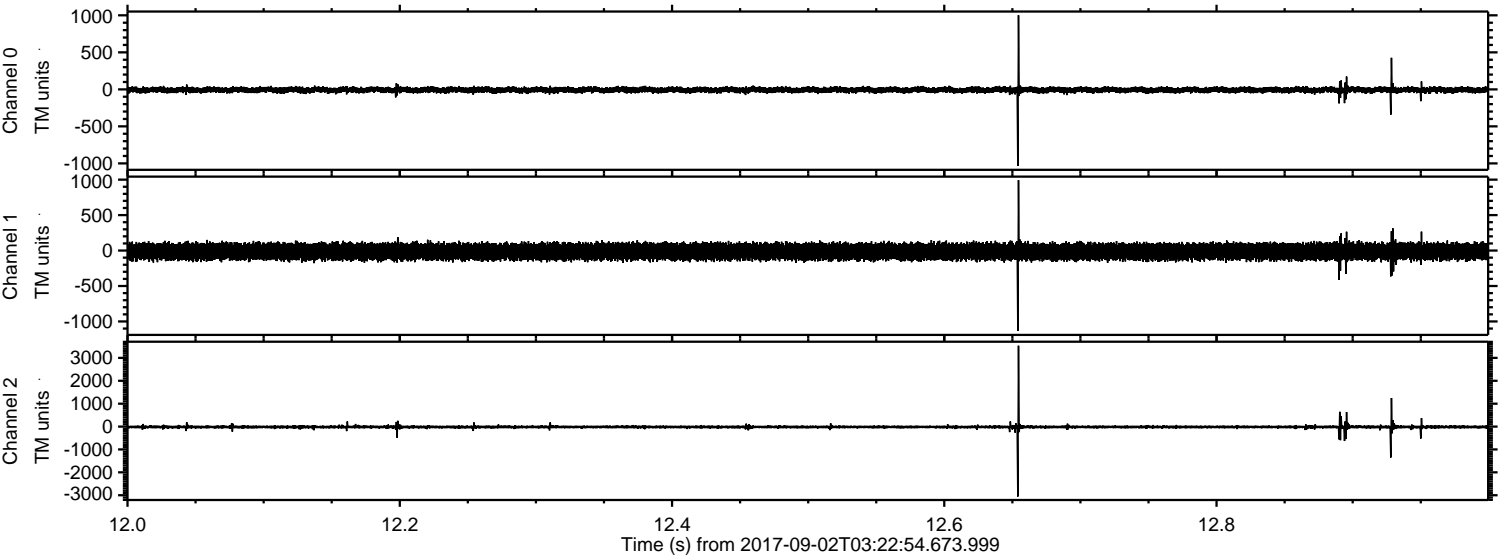
ELMAVAN 3D WAVEFORMS (Measured data sampled at 50 kHz) 51000 packets of 144 samples from 2017-09-02T03:22:54.673.999. Part 146/147

Processed Sat Sep 2 05:30:55 2017 by ELM ver.2012-10-06 from 001__elm20170902_032253__dat00.bin



ELMAVAN 3D WAVEFORMS (Measured data sampled at 50 kHz) 51000 packets of 144 samples from 2017-09-02T03:22:54.673.999. Part 13/147

Processed Sat Sep 2 05:30:56 2017 by ELM ver.2012-10-06 from 001__elm20170902_032253__dat00.bin



ELMAVAN 3D WAVEFORMS (Measured data sampled at 50 kHz) 51000 packets of 144 samples from 2017-09-02T03:22:54.673.999. Part 33/147

Processed Sat Sep 2 05:30:56 2017 by ELM ver.2012-10-06 from 001__elm20170902_032253__dat00.bin

