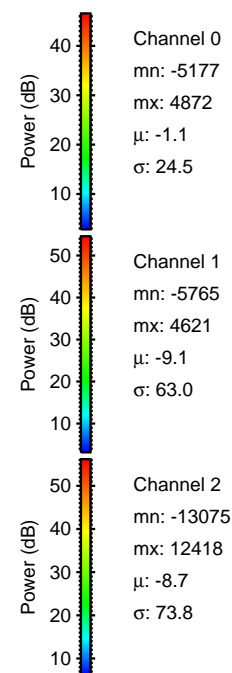
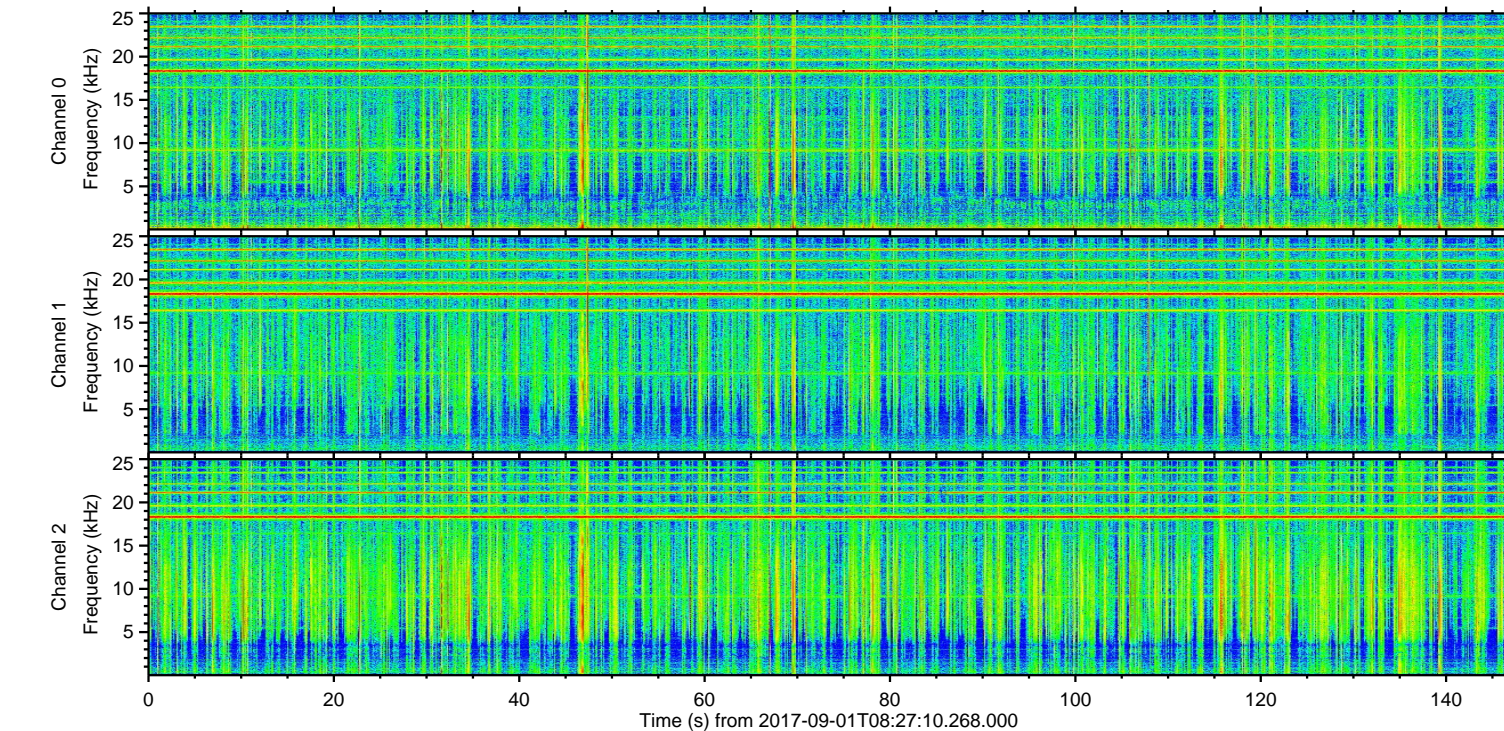
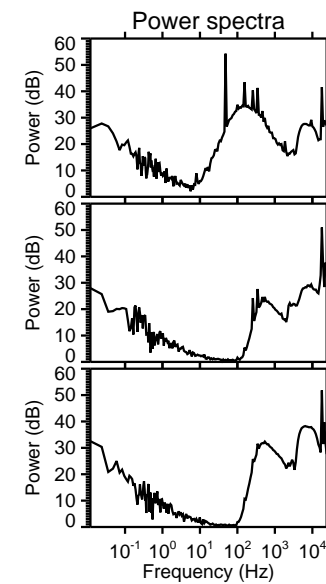
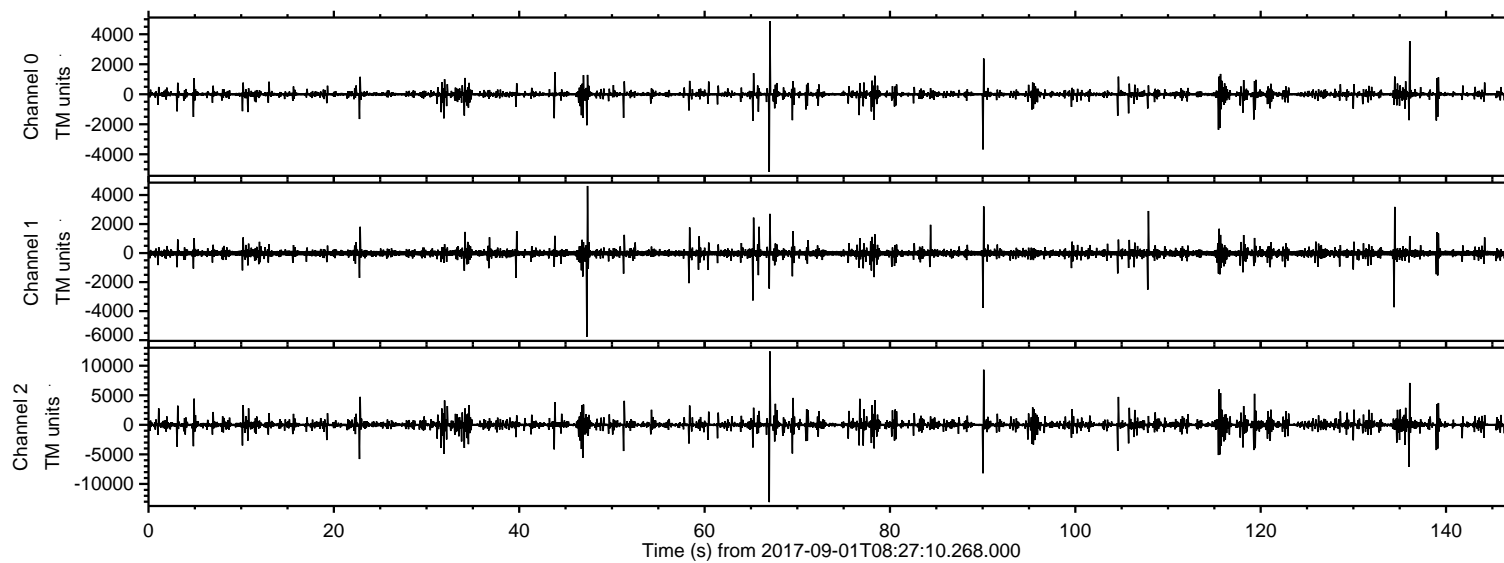
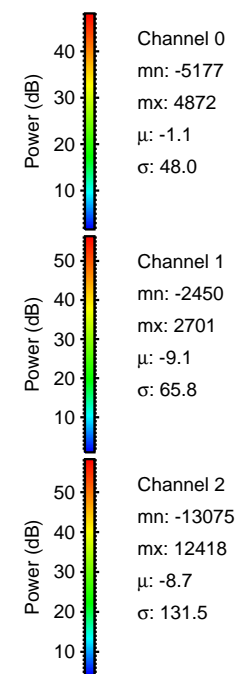
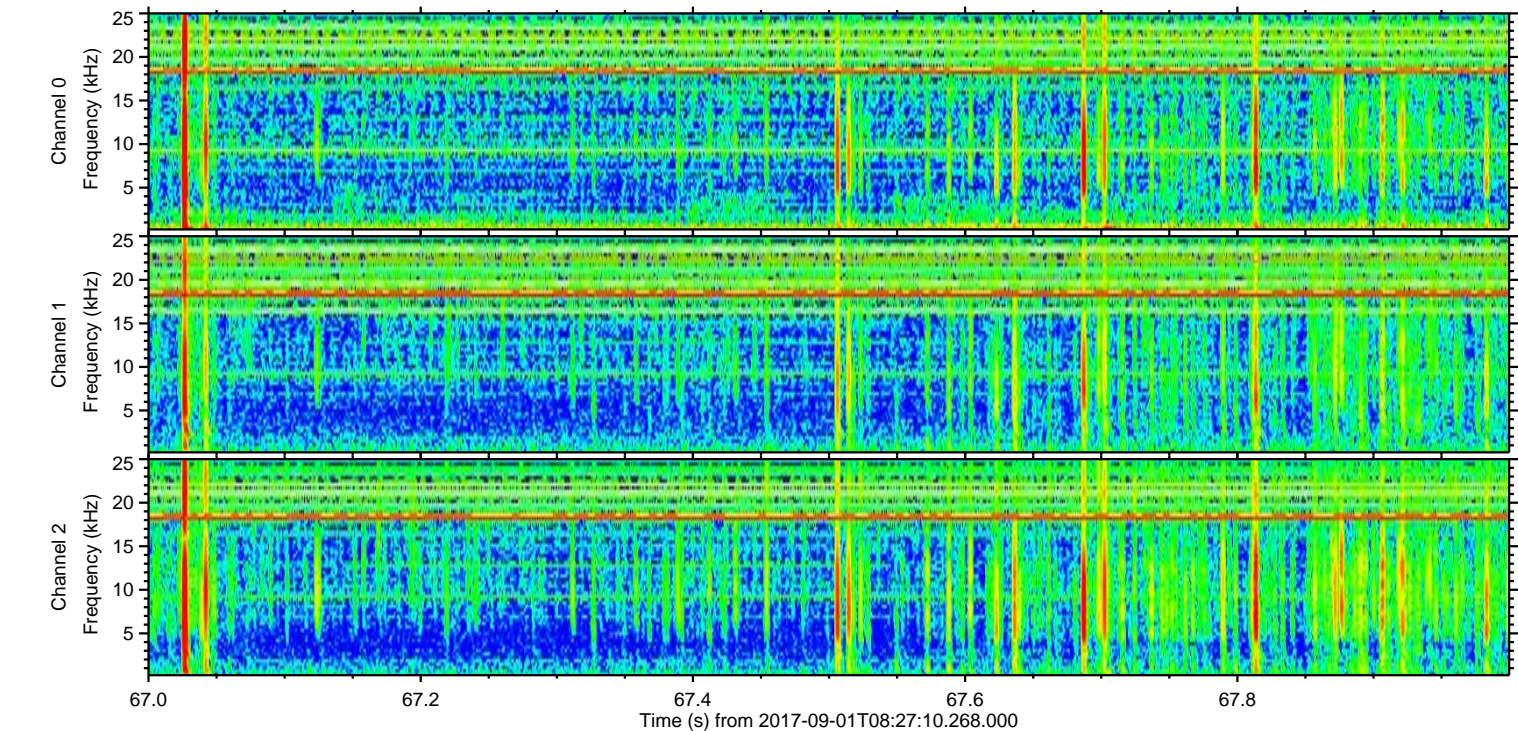
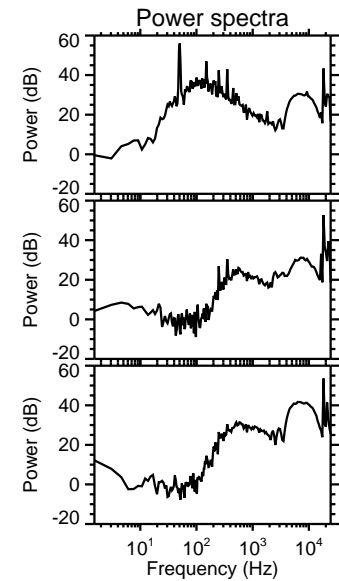
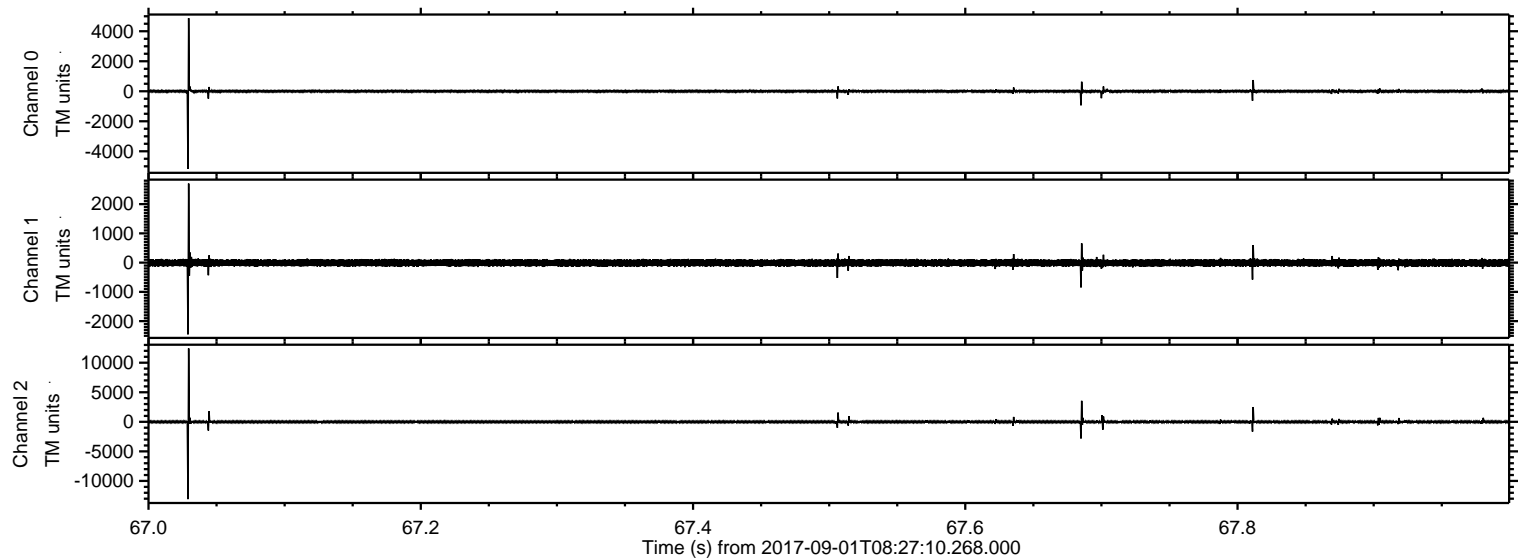


ELMAVAN 3D WAVEFORMS (Measured data sampled at 50 kHz) 51000 packets of 144 samples from 2017-09-01T08:27:10.268.000.

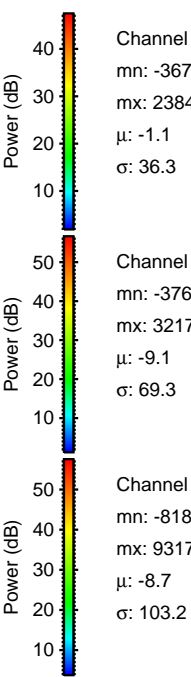
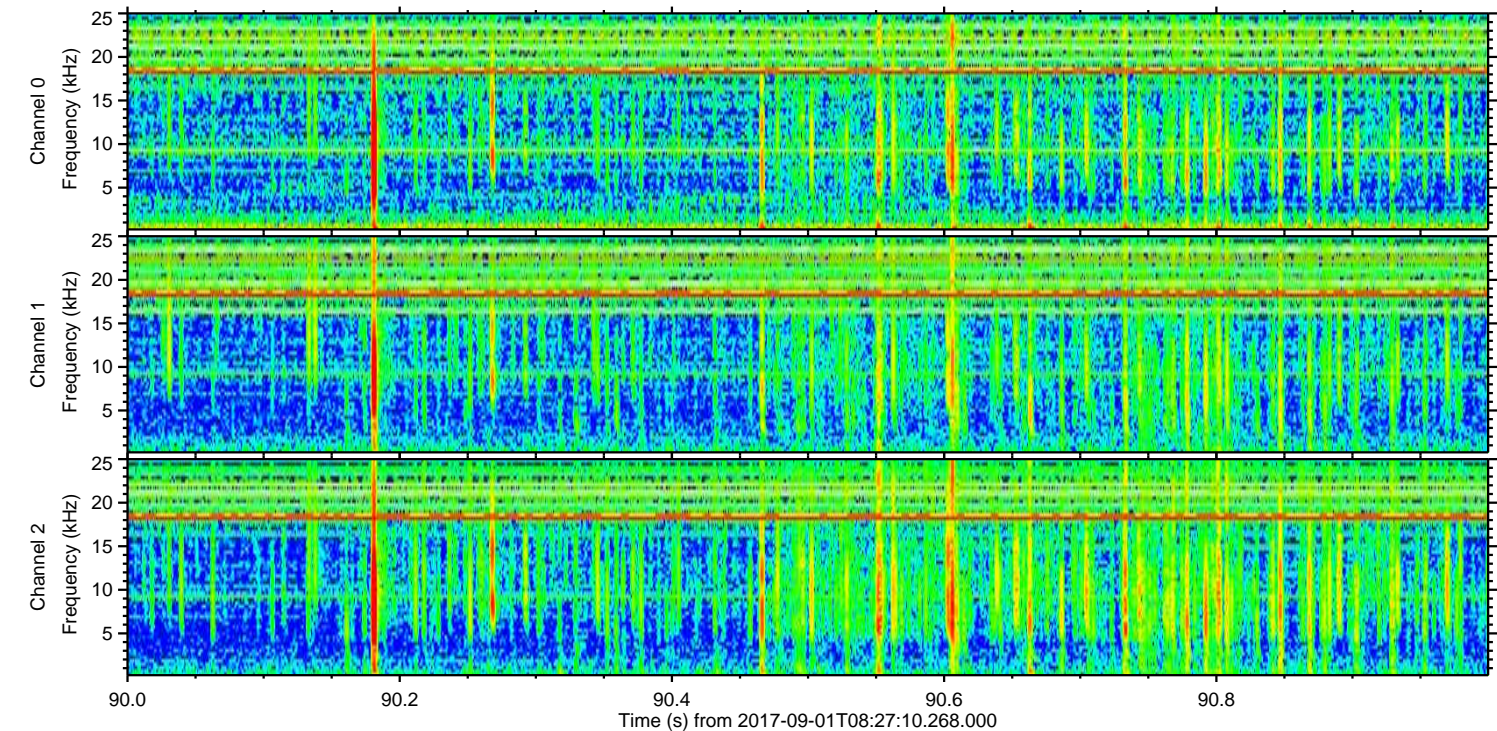
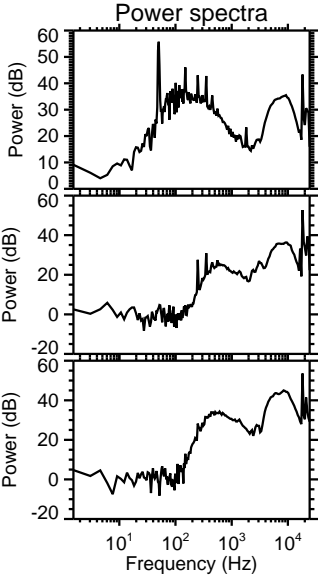
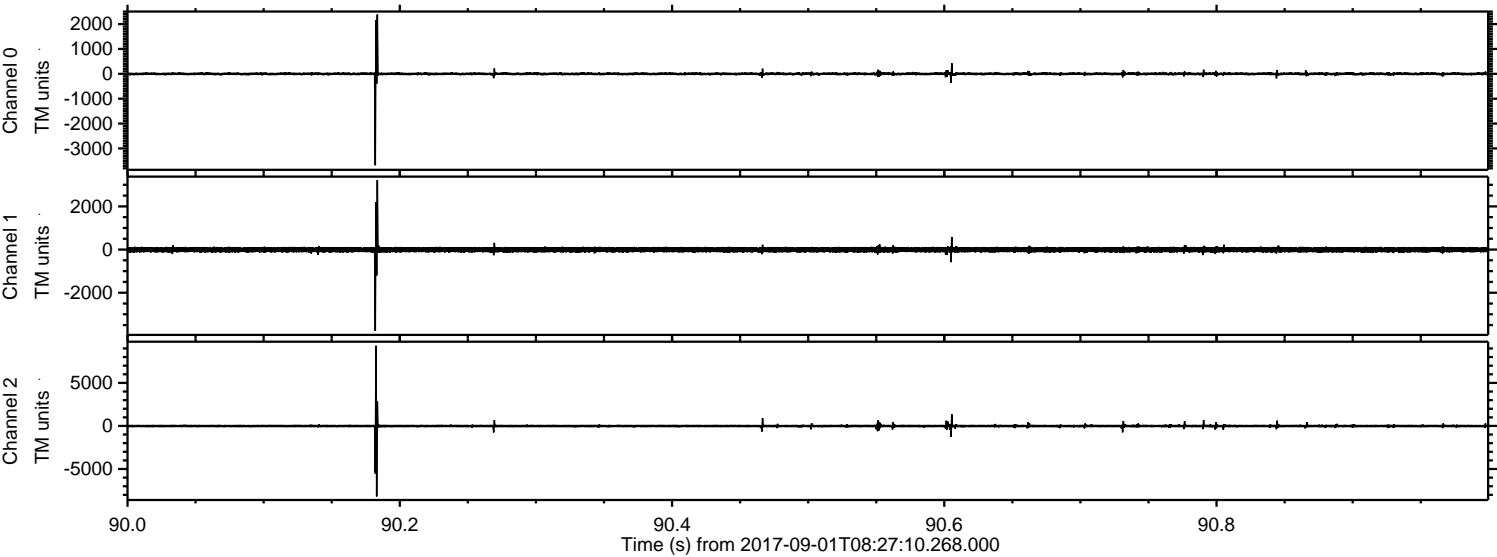
Processed Fri Sep 1 10:35:14 2017 by ELM ver.2012-10-06 from 001__elm20170901_082709__dat00.bin



Processed Fri Sep 1 10:35:22 2017 by ELM ver.2012-10-06 from 001__elm20170901_082709__dat00.bin

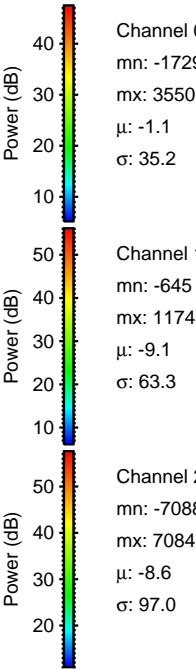
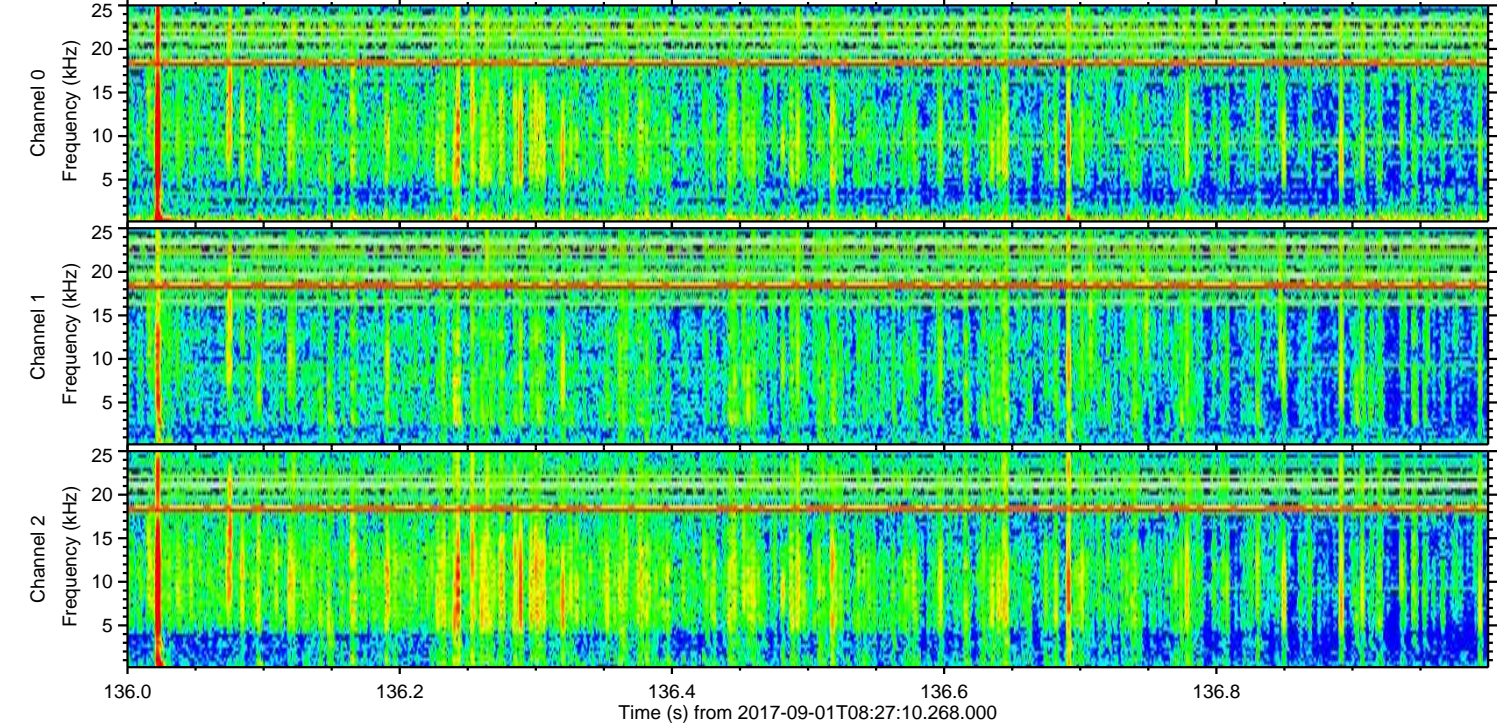
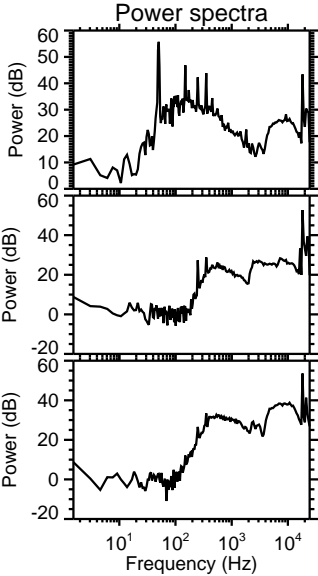
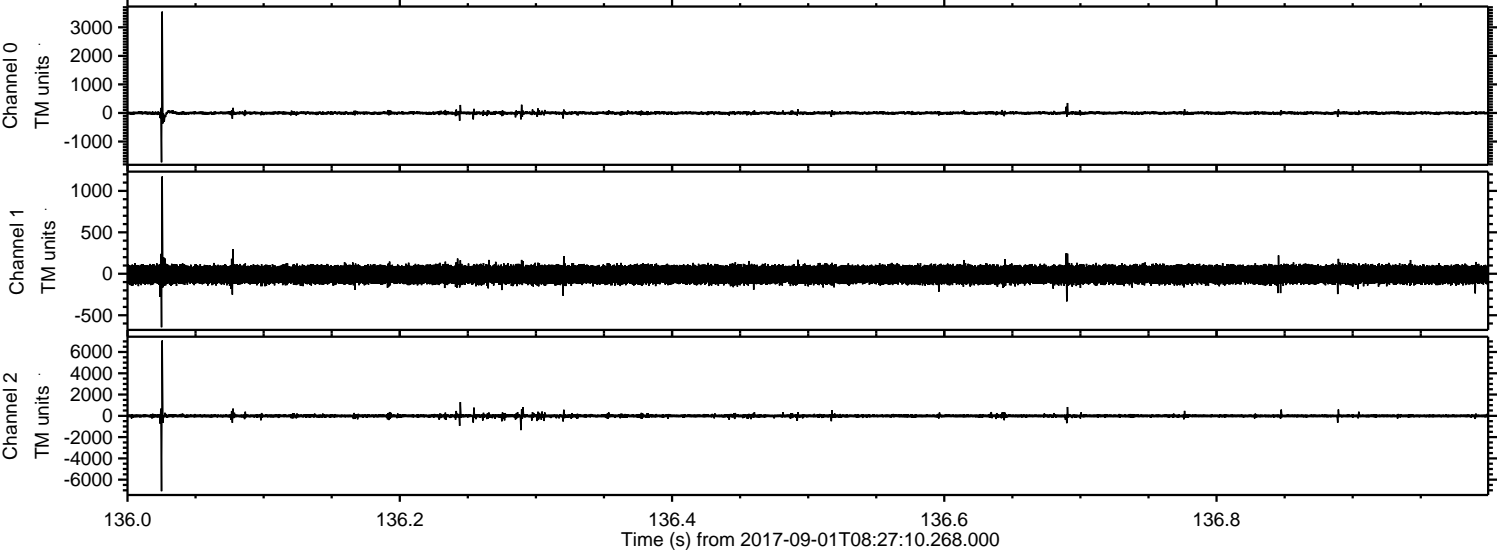


Processed Fri Sep 1 10:35:22 2017 by ELM ver.2012-10-06 from 001__elm20170901_082709__dat00.bin



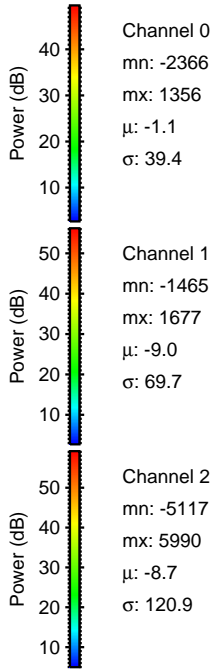
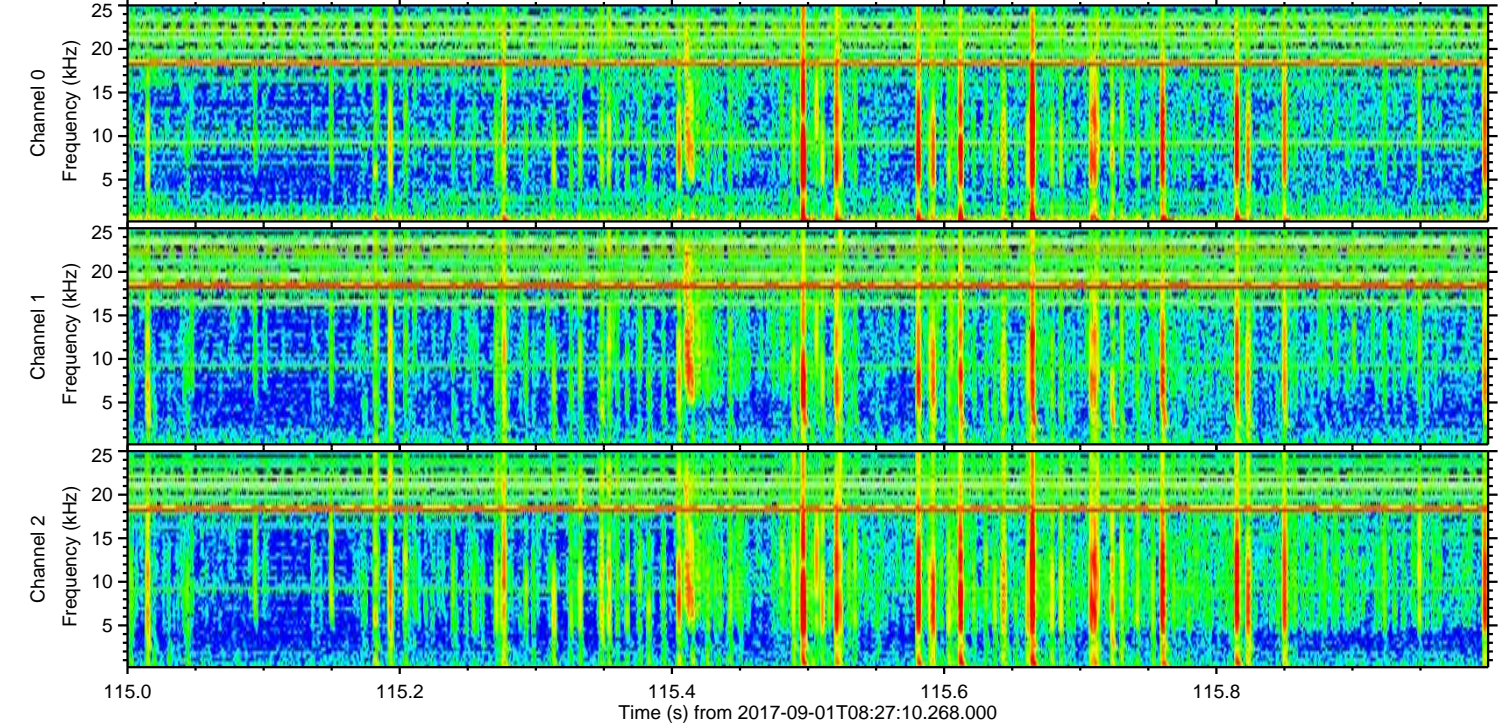
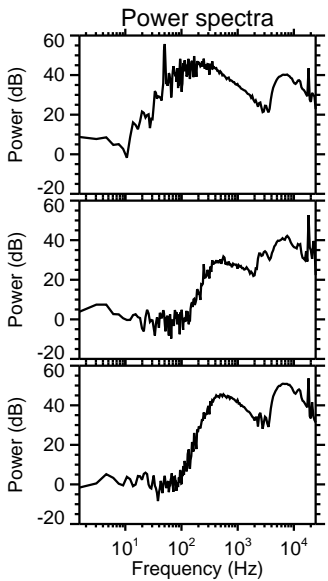
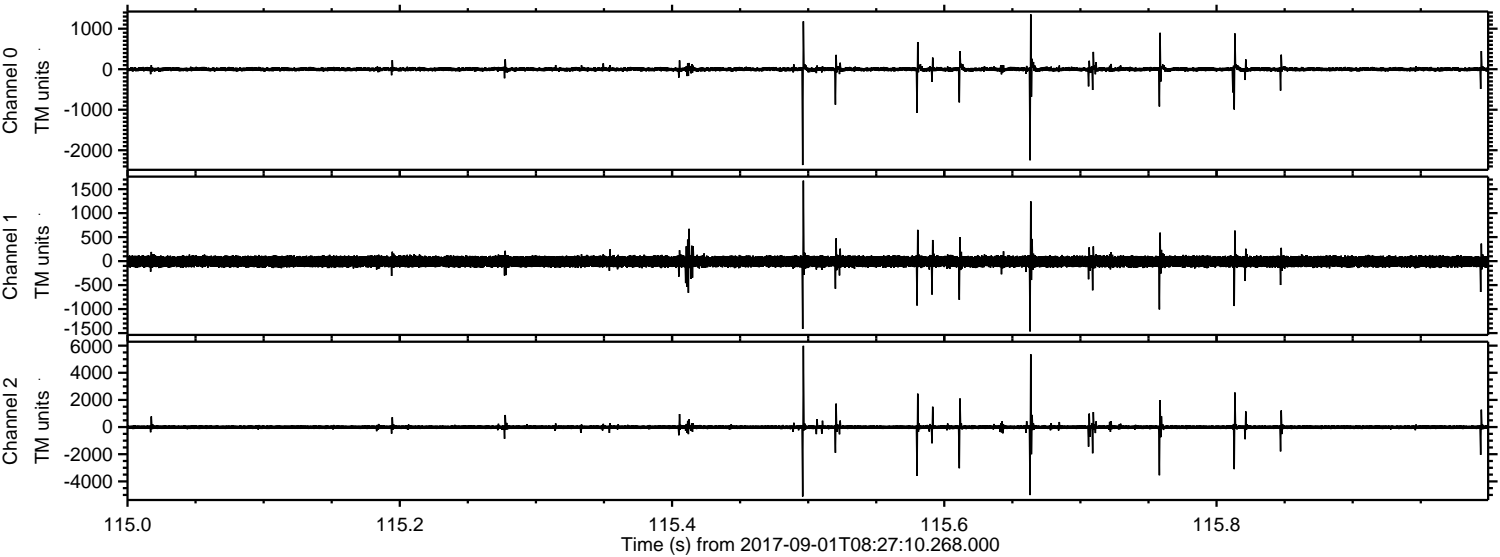
ELMAVAN 3D WAVEFORMS (Measured data sampled at 50 kHz) 51000 packets of 144 samples from 2017-09-01T08:27:10.268.000. Part 137/147

Processed Fri Sep 1 10:35:23 2017 by ELM ver.2012-10-06 from 001__elm20170901_082709__dat00.bin



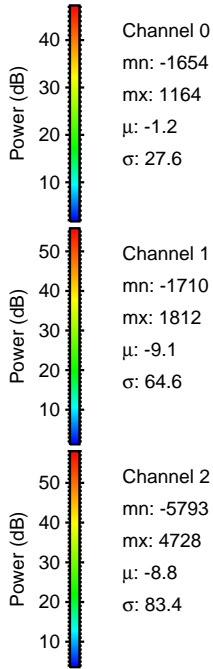
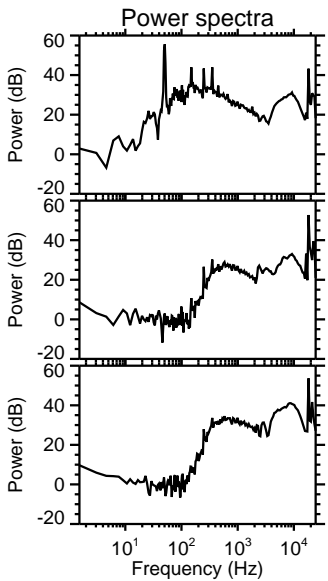
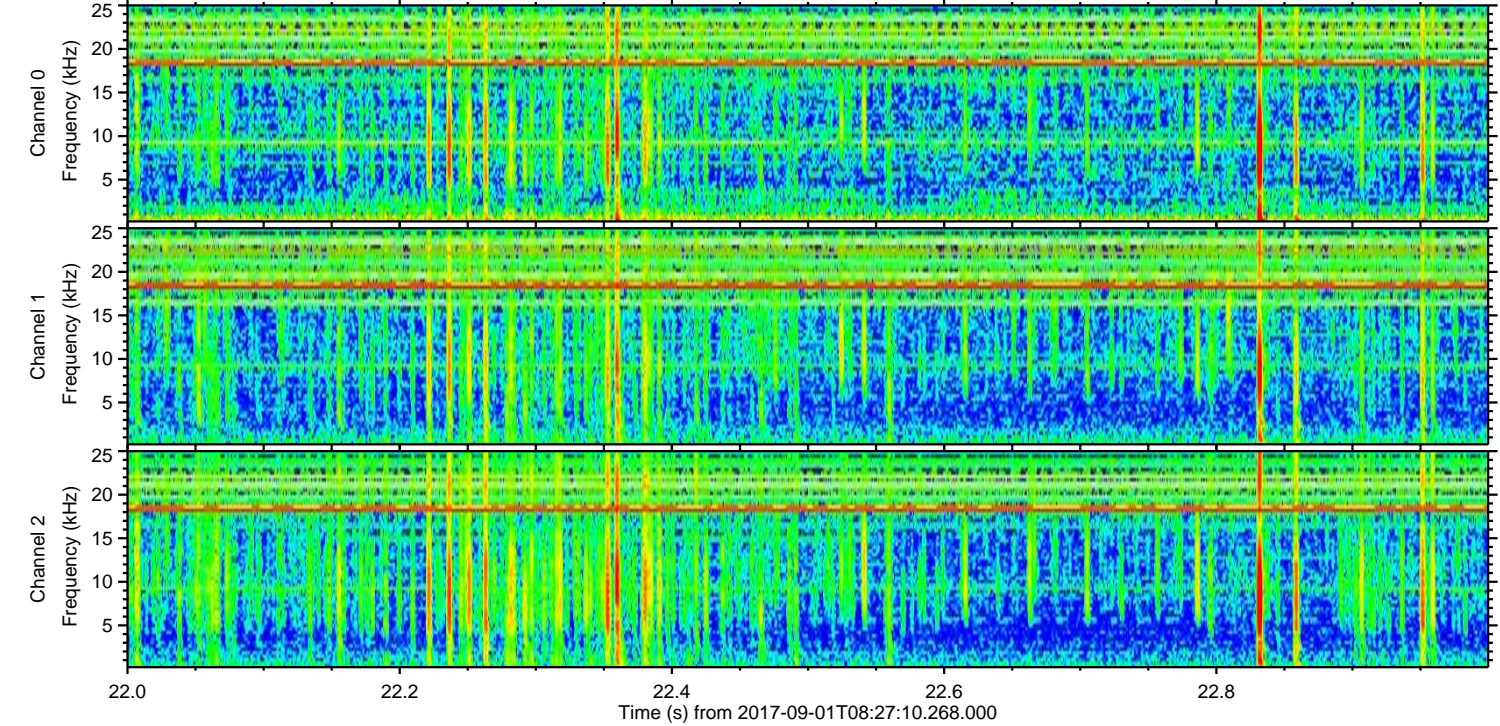
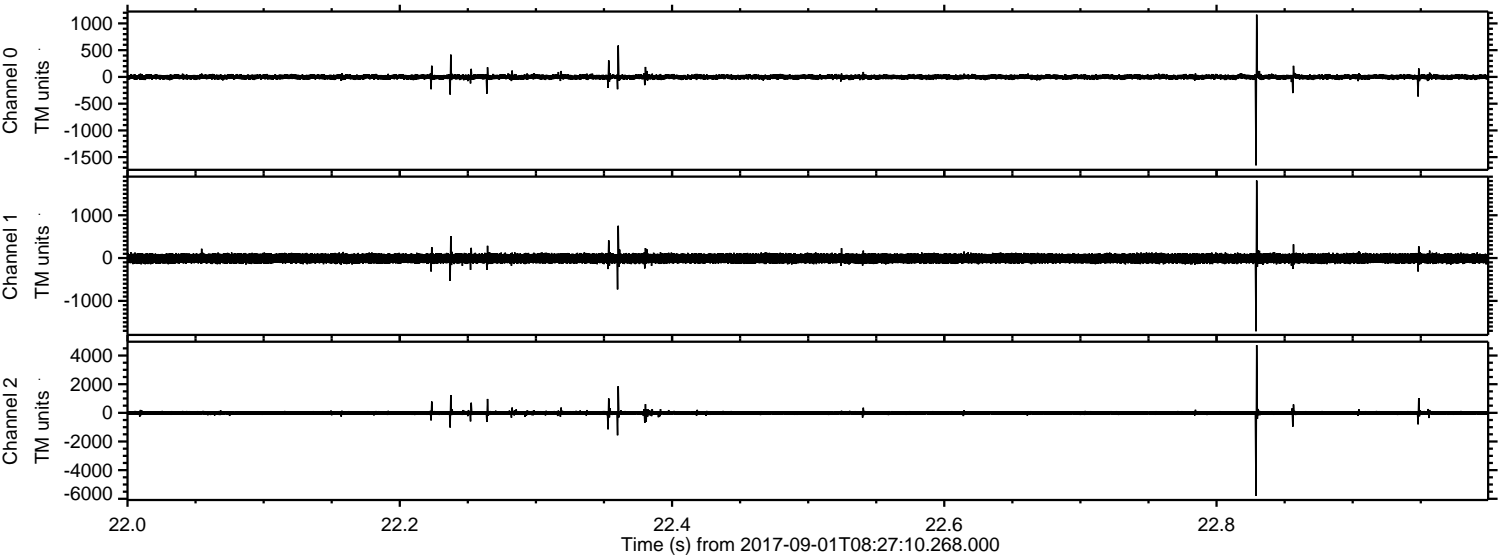
ELMAVAN 3D WAVEFORMS (Measured data sampled at 50 kHz) 51000 packets of 144 samples from 2017-09-01T08:27:10.268.000. Part 116/147

Processed Fri Sep 1 10:35:23 2017 by ELM ver.2012-10-06 from 001__elm20170901_082709__dat00.bin

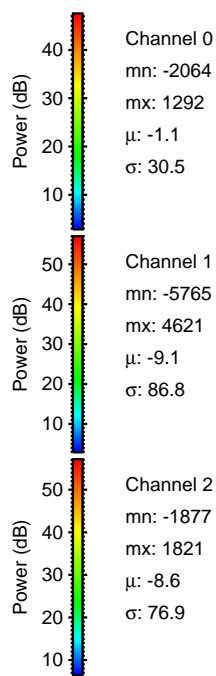
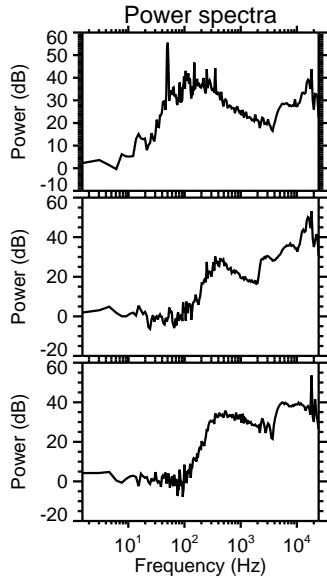
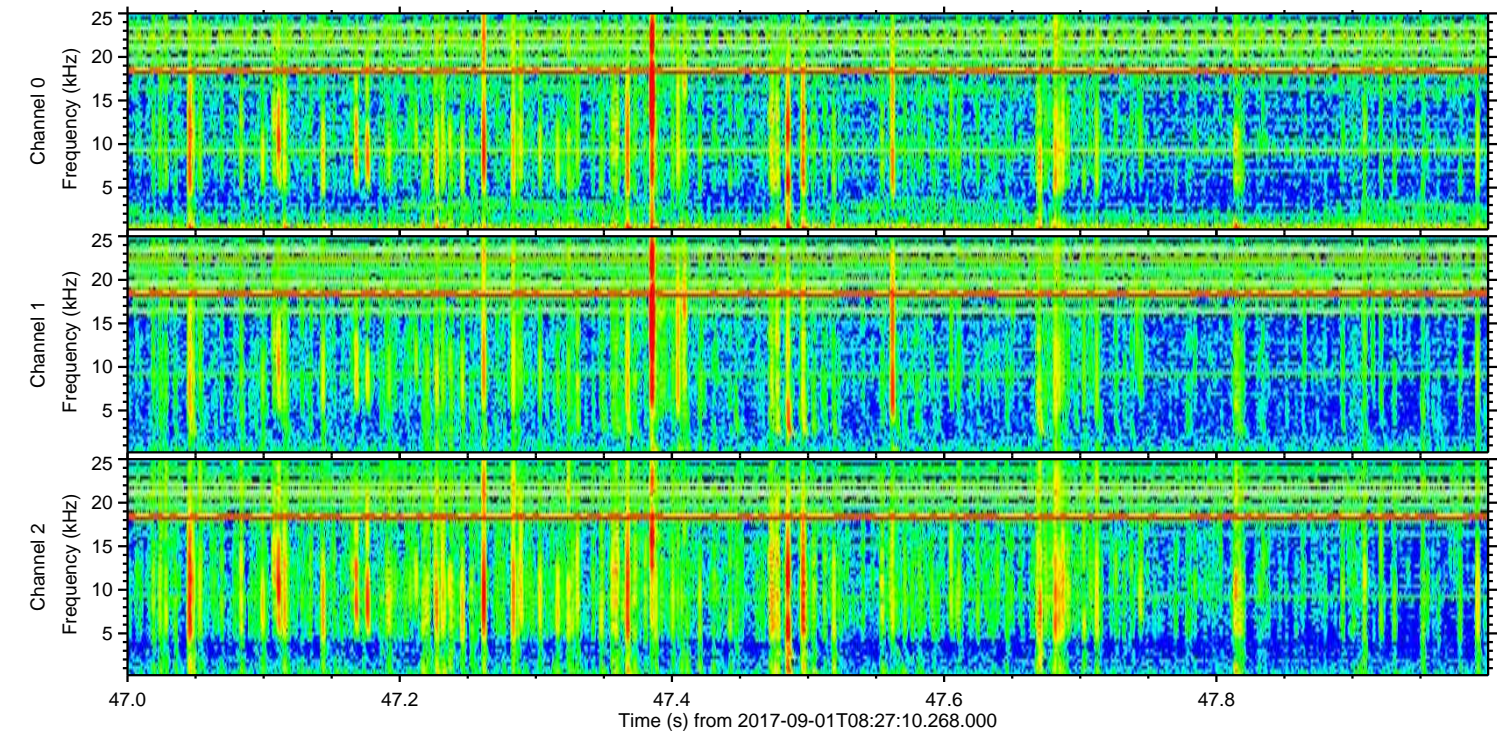
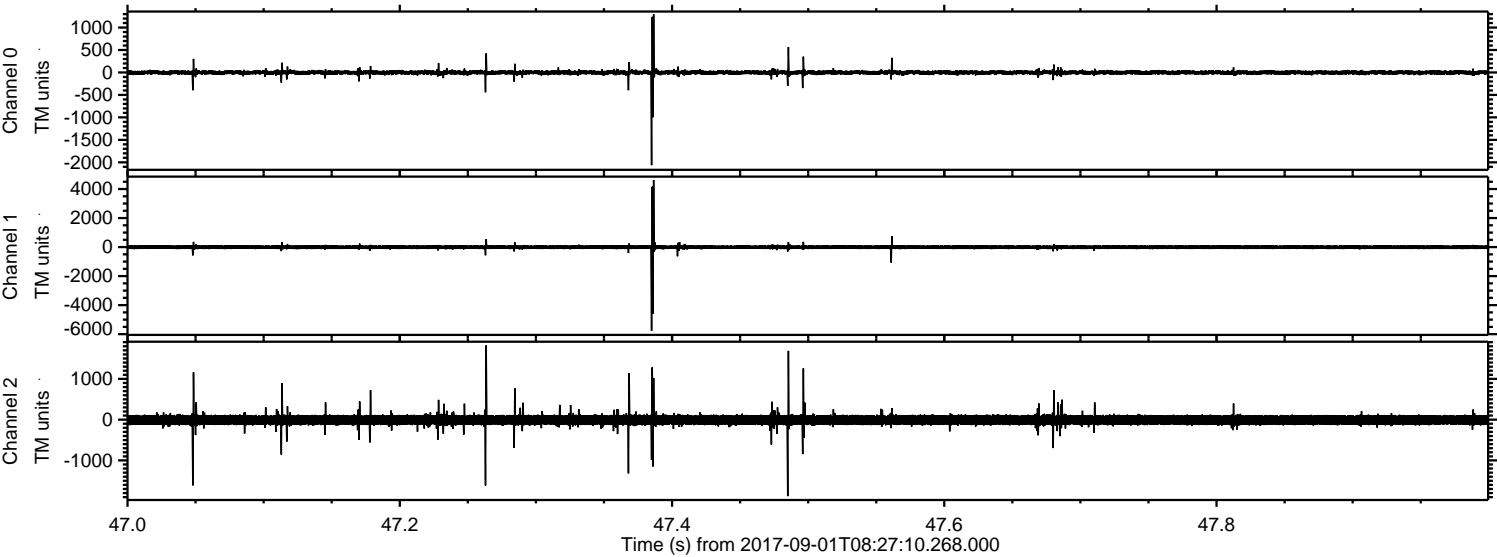


ELMAVAN 3D WAVEFORMS (Measured data sampled at 50 kHz) 51000 packets of 144 samples from 2017-09-01T08:27:10.268.000. Part 23/147

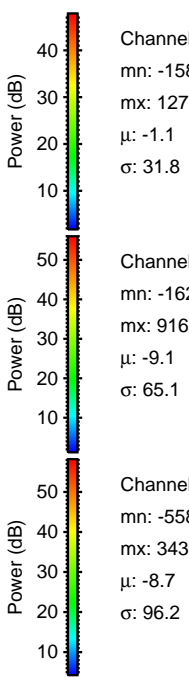
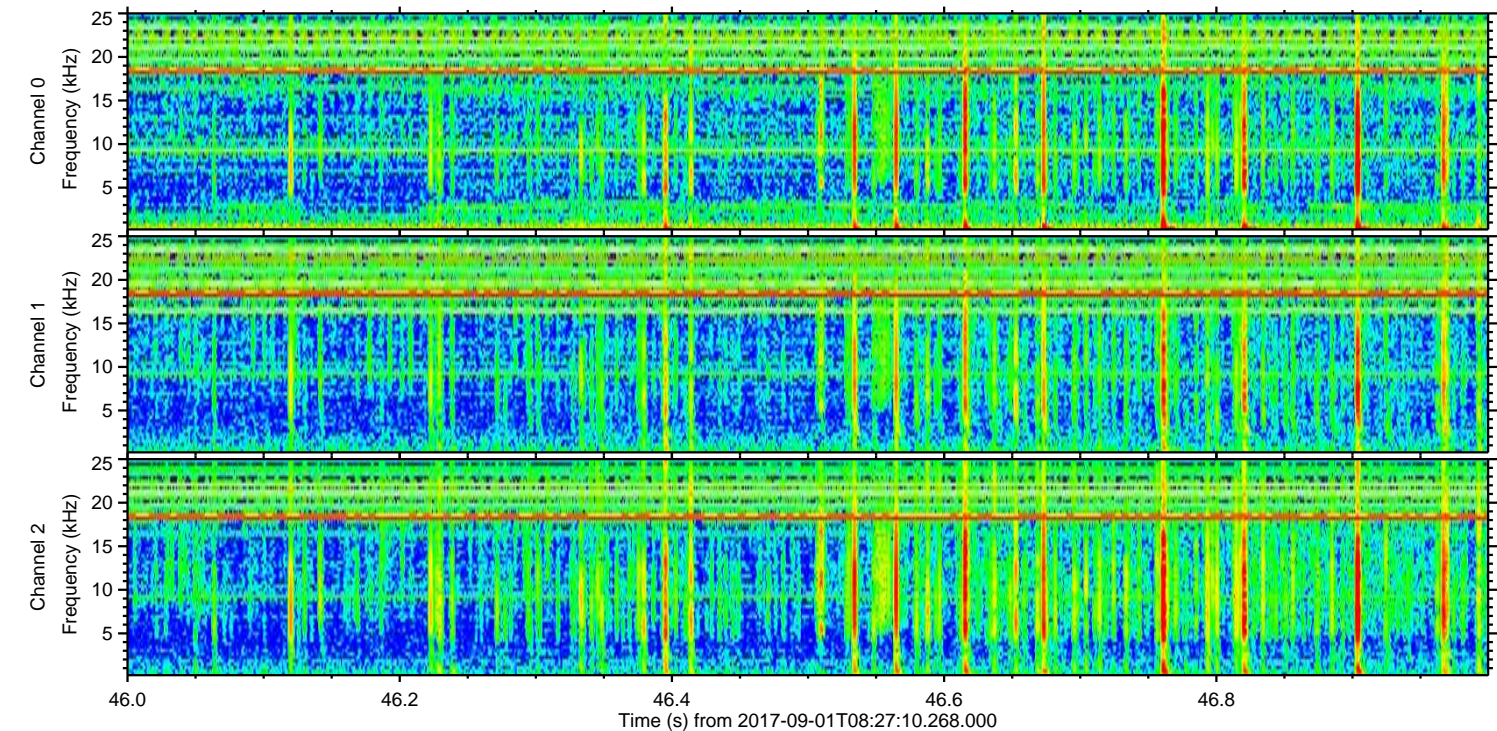
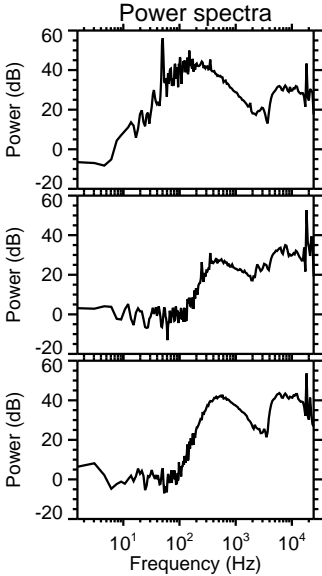
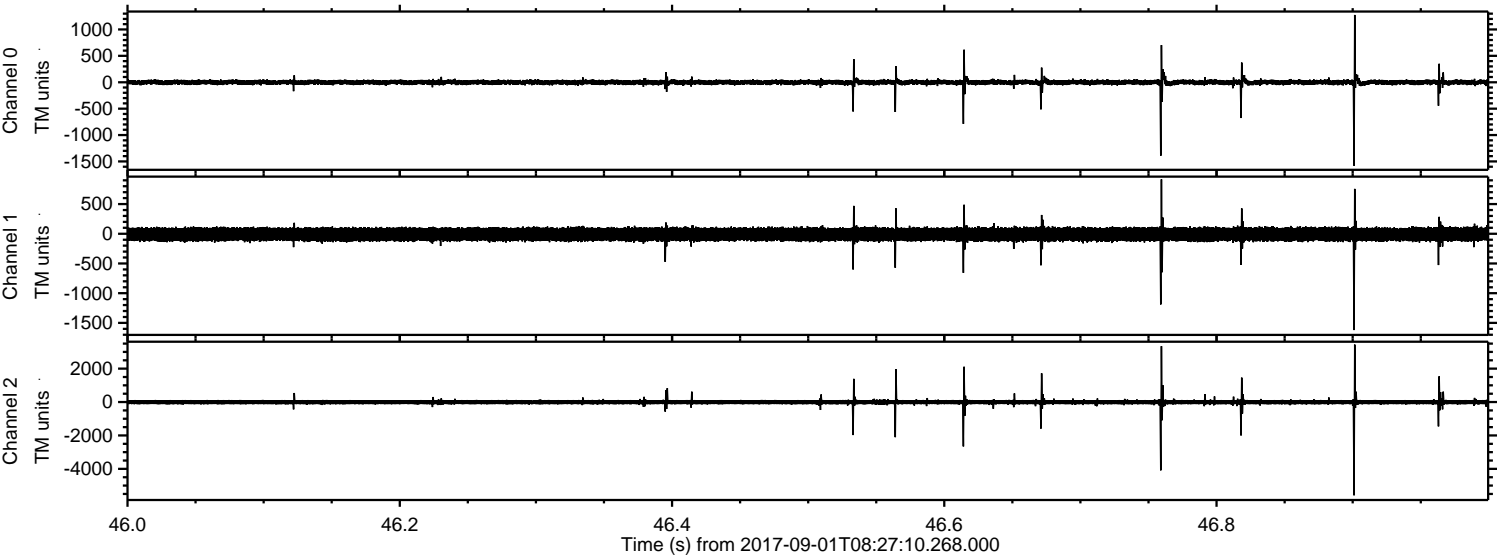
Processed Fri Sep 1 10:35:24 2017 by ELM ver.2012-10-06 from 001__elm20170901_082709__dat00.bin



Processed Fri Sep 1 10:35:25 2017 by ELM ver.2012-10-06 from 001__elm20170901_082709__dat00.bin

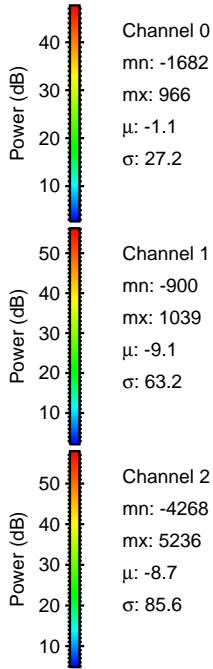
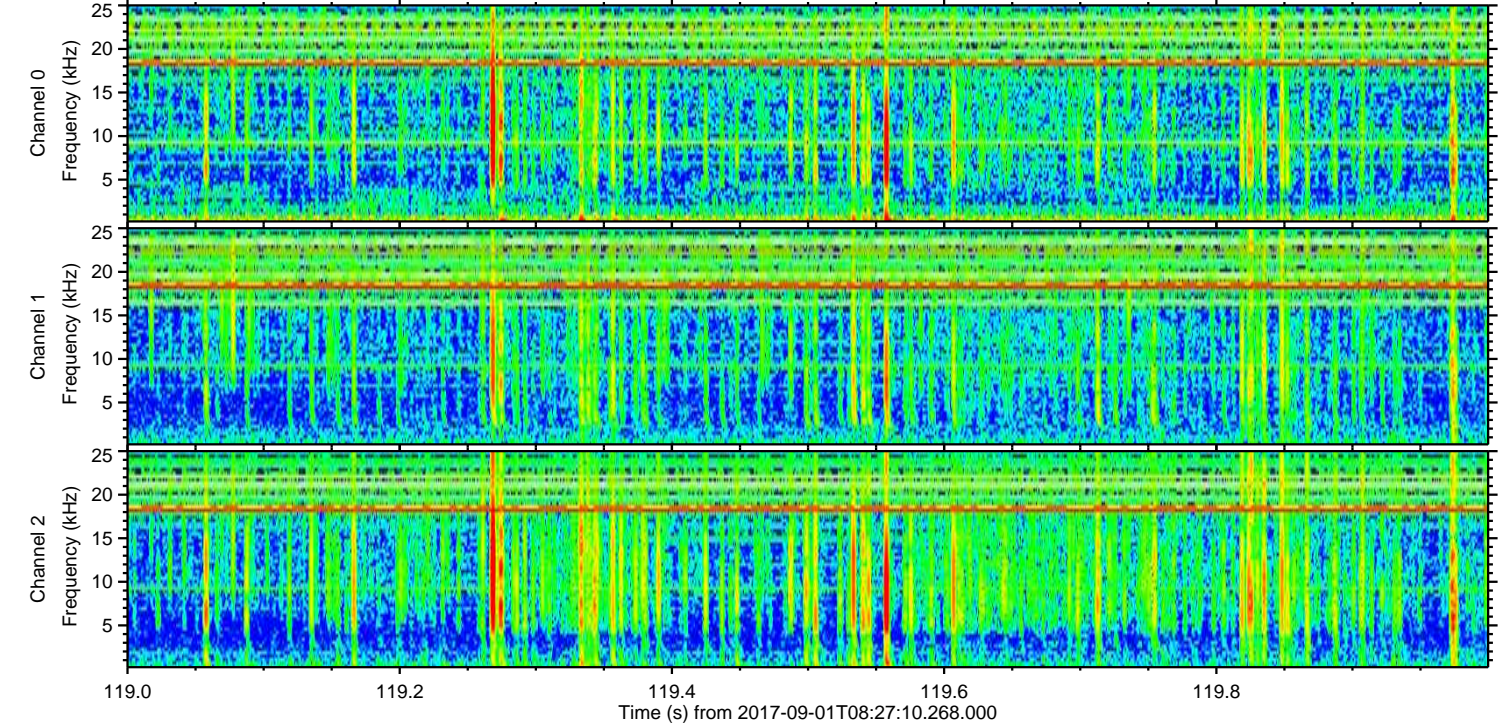
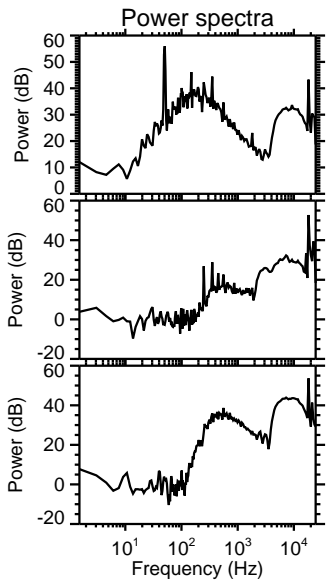
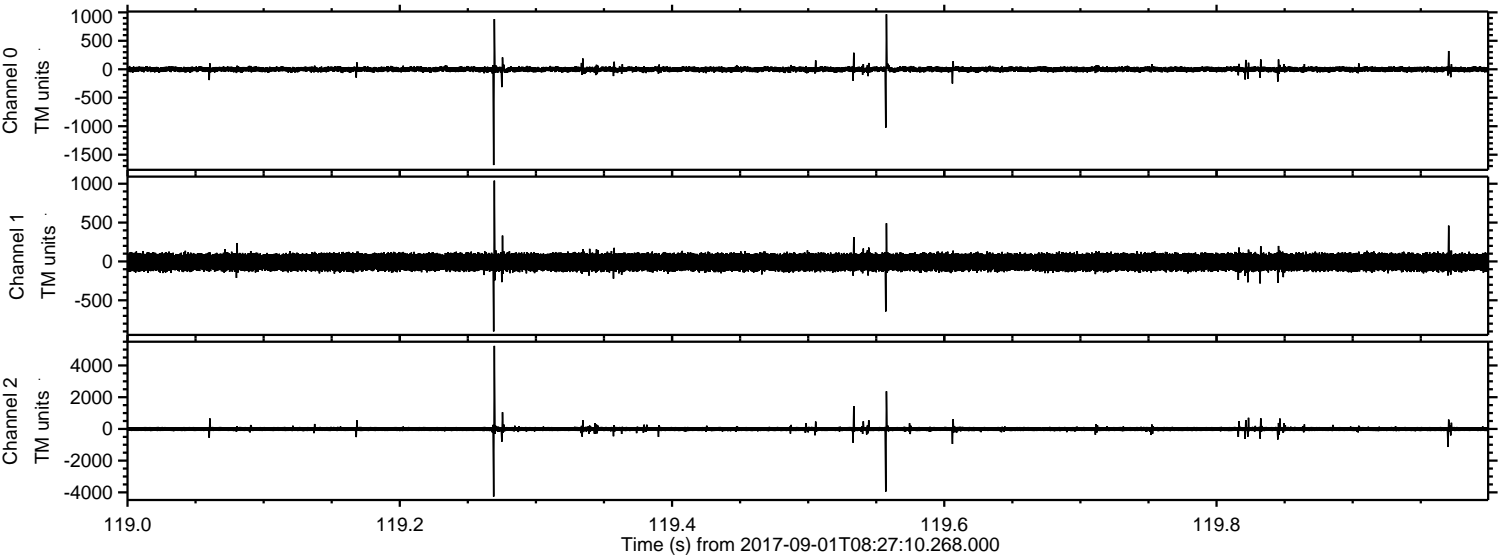


Processed Fri Sep 1 10:35:26 2017 by ELM ver.2012-10-06 from 001__elm20170901_082709__dat00.bin



ELMAVAN 3D WAVEFORMS (Measured data sampled at 50 kHz) 51000 packets of 144 samples from 2017-09-01T08:27:10.268.000. Part 120/147

Processed Fri Sep 1 10:35:27 2017 by ELM ver.2012-10-06 from 001__elm20170901_082709__dat00.bin



Channel 0
mn: -1682
mx: 966
 μ : -1.1
 σ : 27.2

Channel 1
mn: -900
mx: 1039
 μ : -9.1
 σ : 63.2

Channel 2
mn: -4268
mx: 5236
 μ : -8.7
 σ : 85.6

Processed Fri Sep 1 10:35:28 2017 by ELM ver.2012-10-06 from 001__elm20170901_082709__dat00.bin

