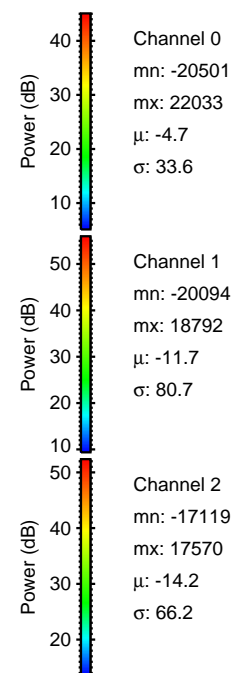
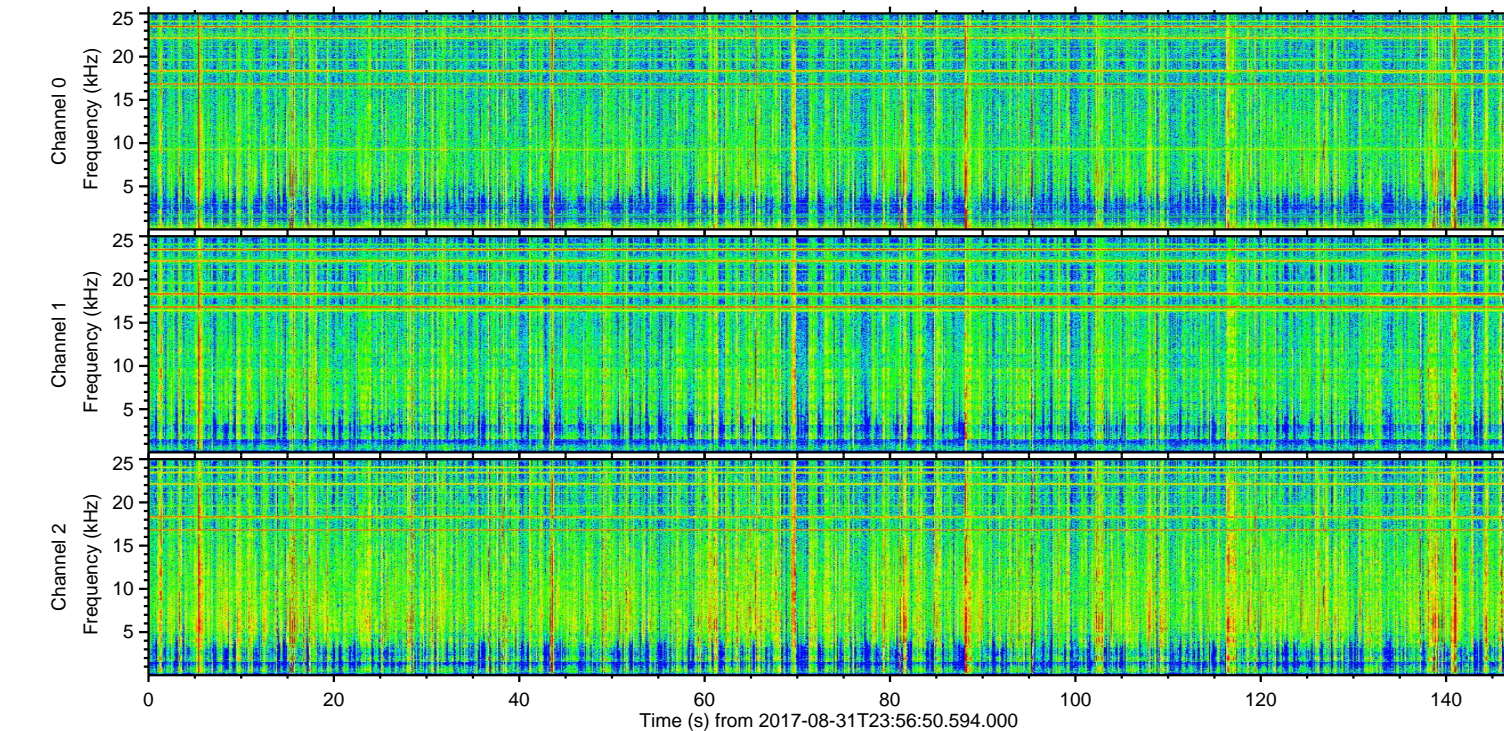
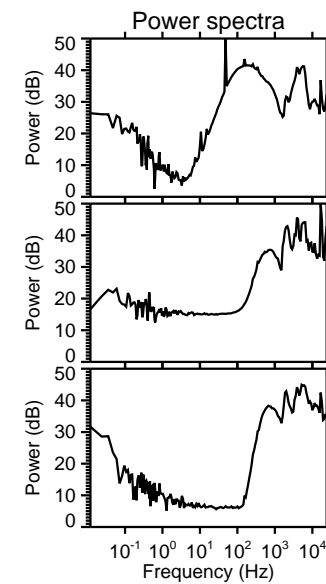
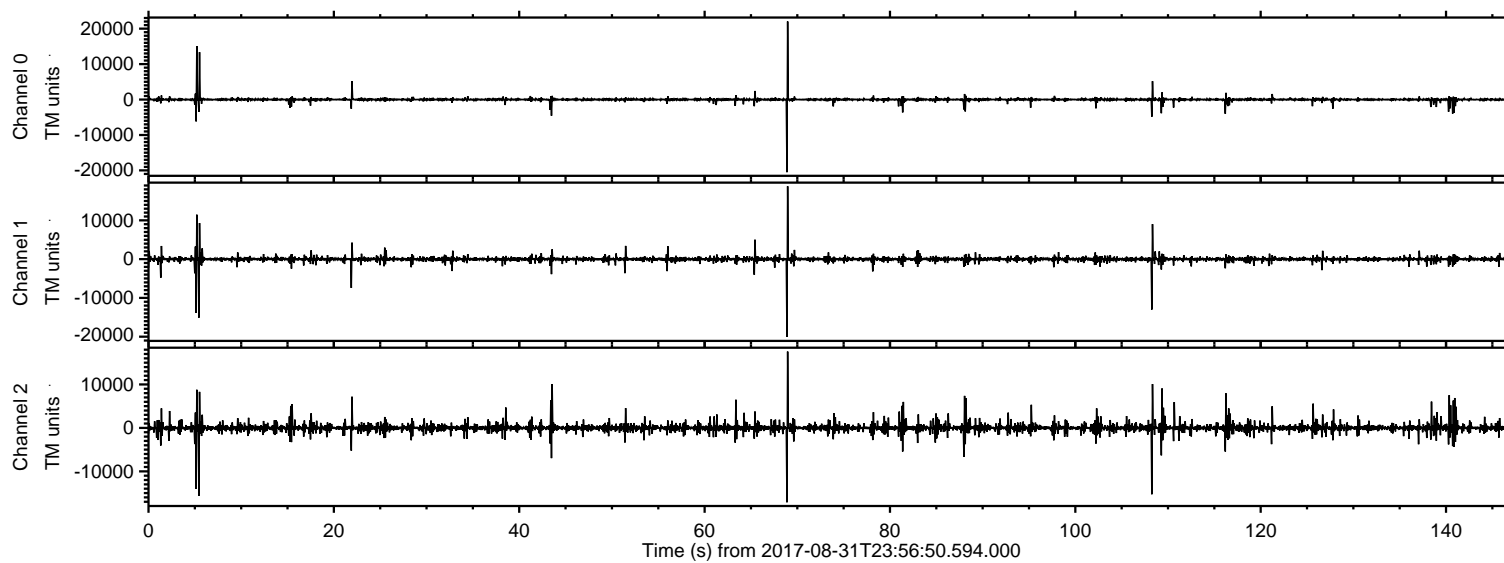
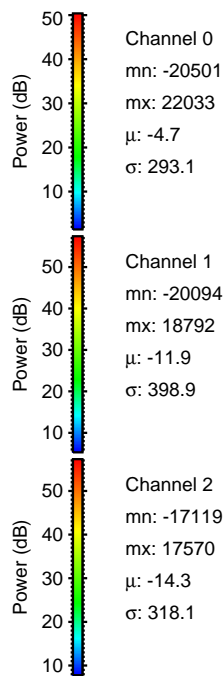
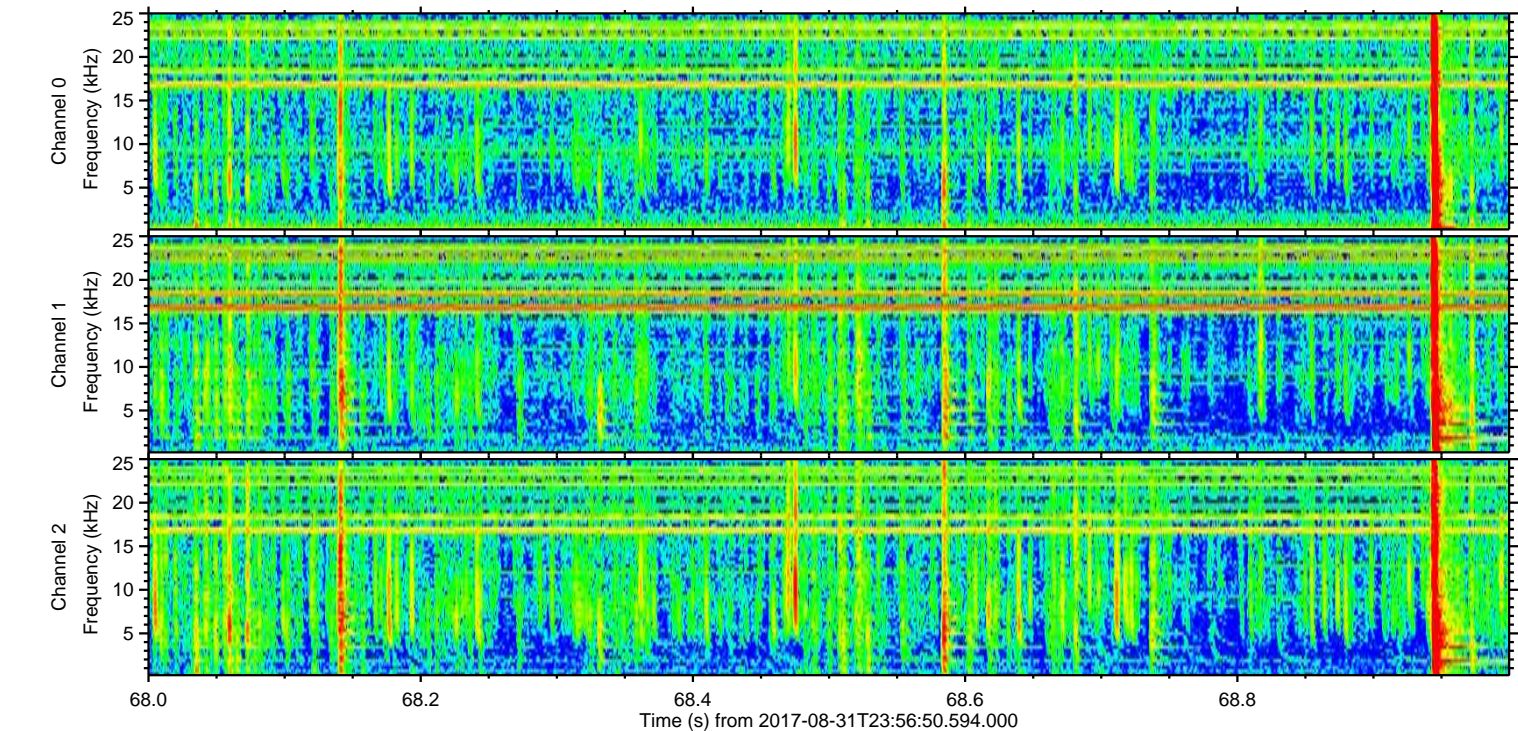
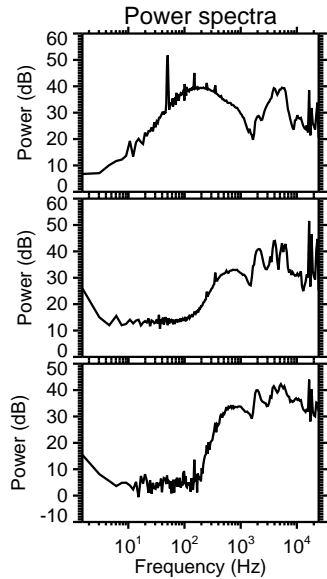
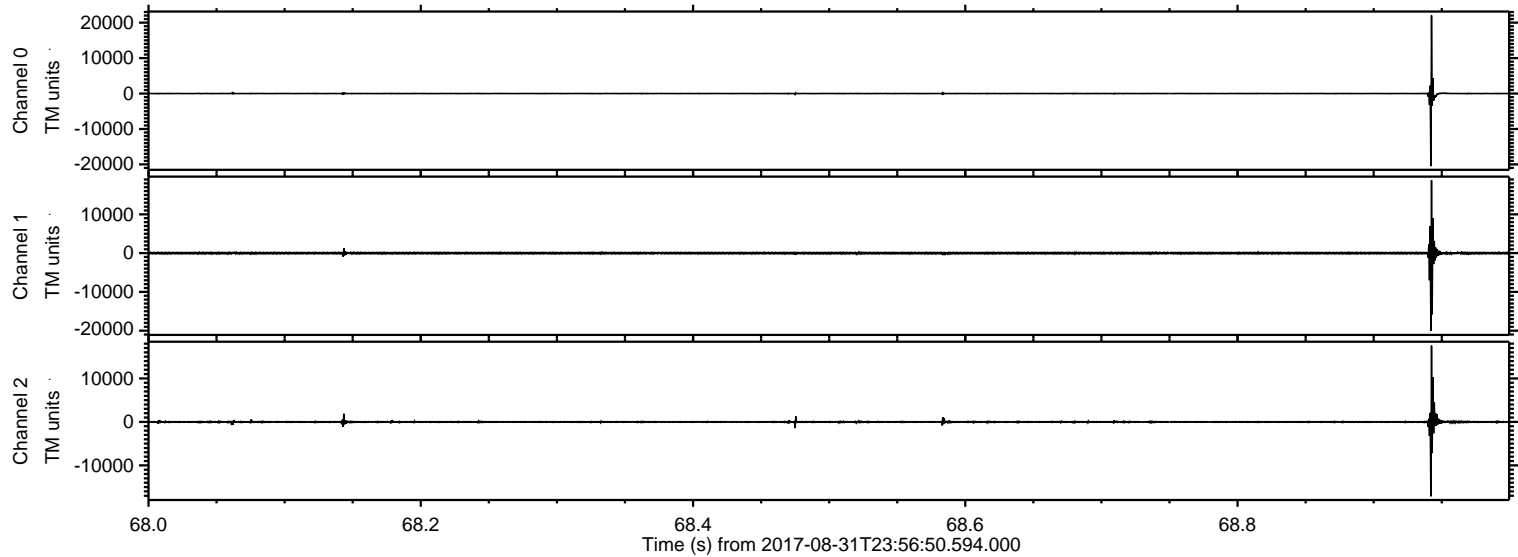


ELMAVAN 3D WAVEFORMS (Measured data sampled at 50 kHz) 51000 packets of 144 samples from 2017-08-31T23:56:50.594.000.

Processed Fri Sep 1 02:04:26 2017 by ELM ver.2012-10-06 from 001__elm20170831_235649__dat00.bin

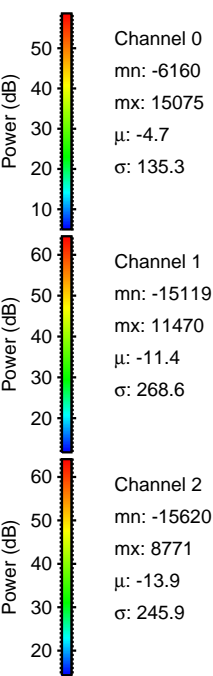
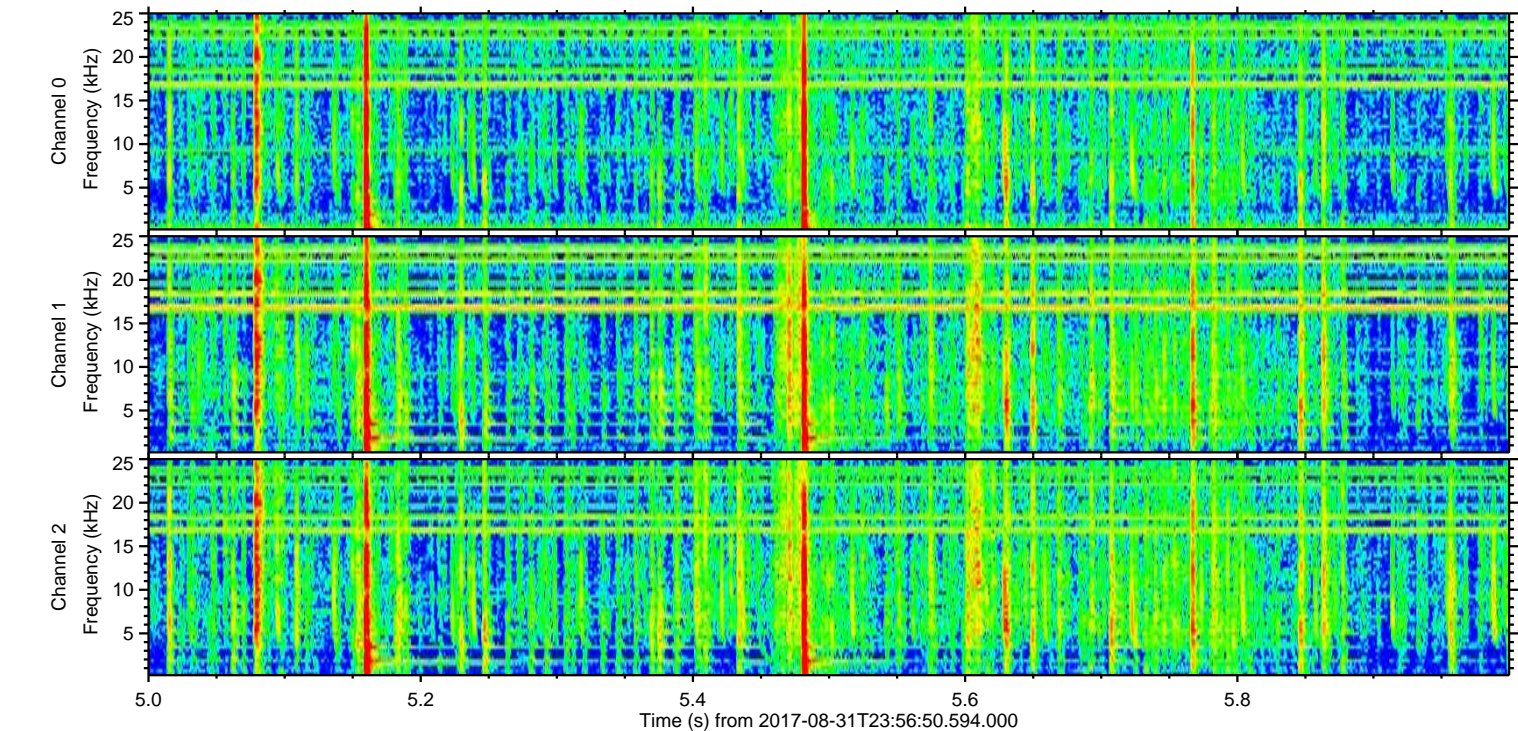
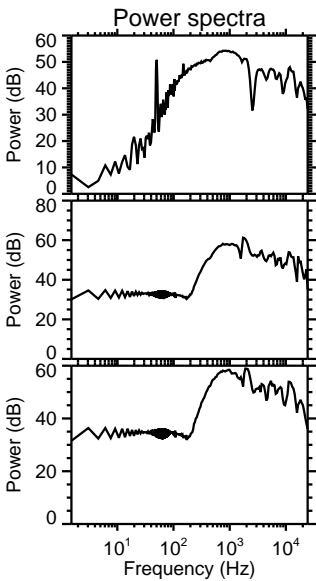
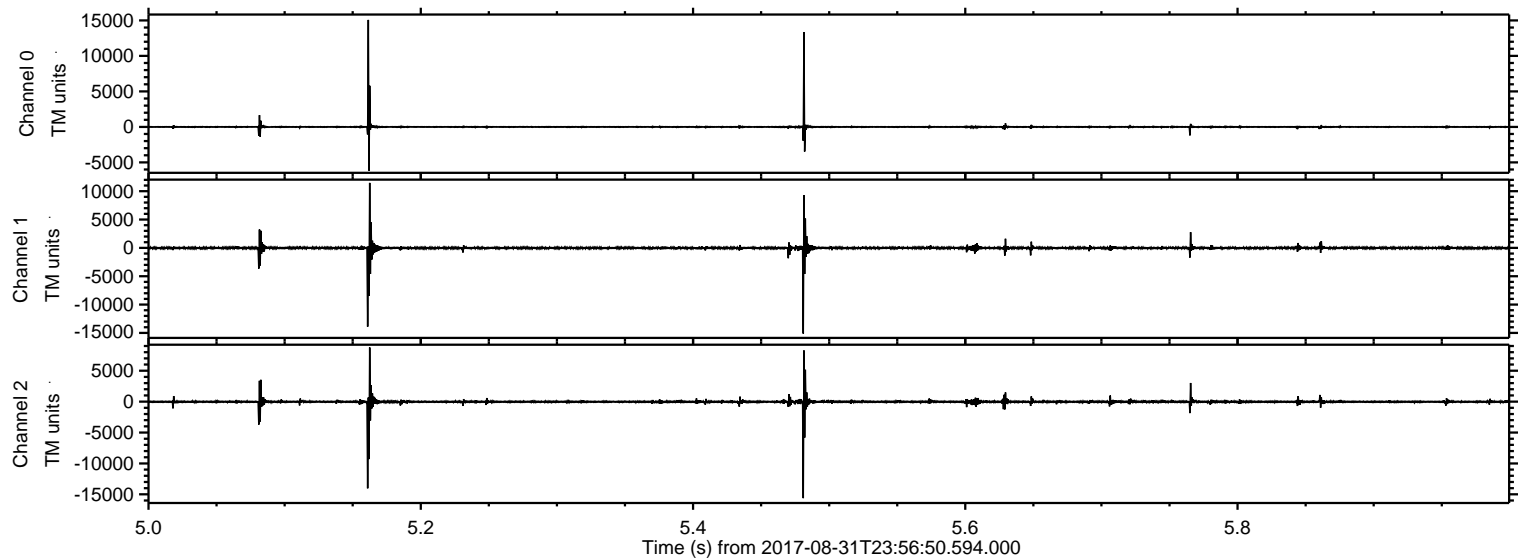


Processed Fri Sep 1 02:04:32 2017 by ELM ver.2012-10-06 from 001__elm20170831_235649__dat00.bin



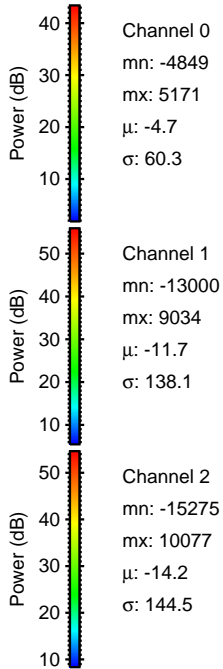
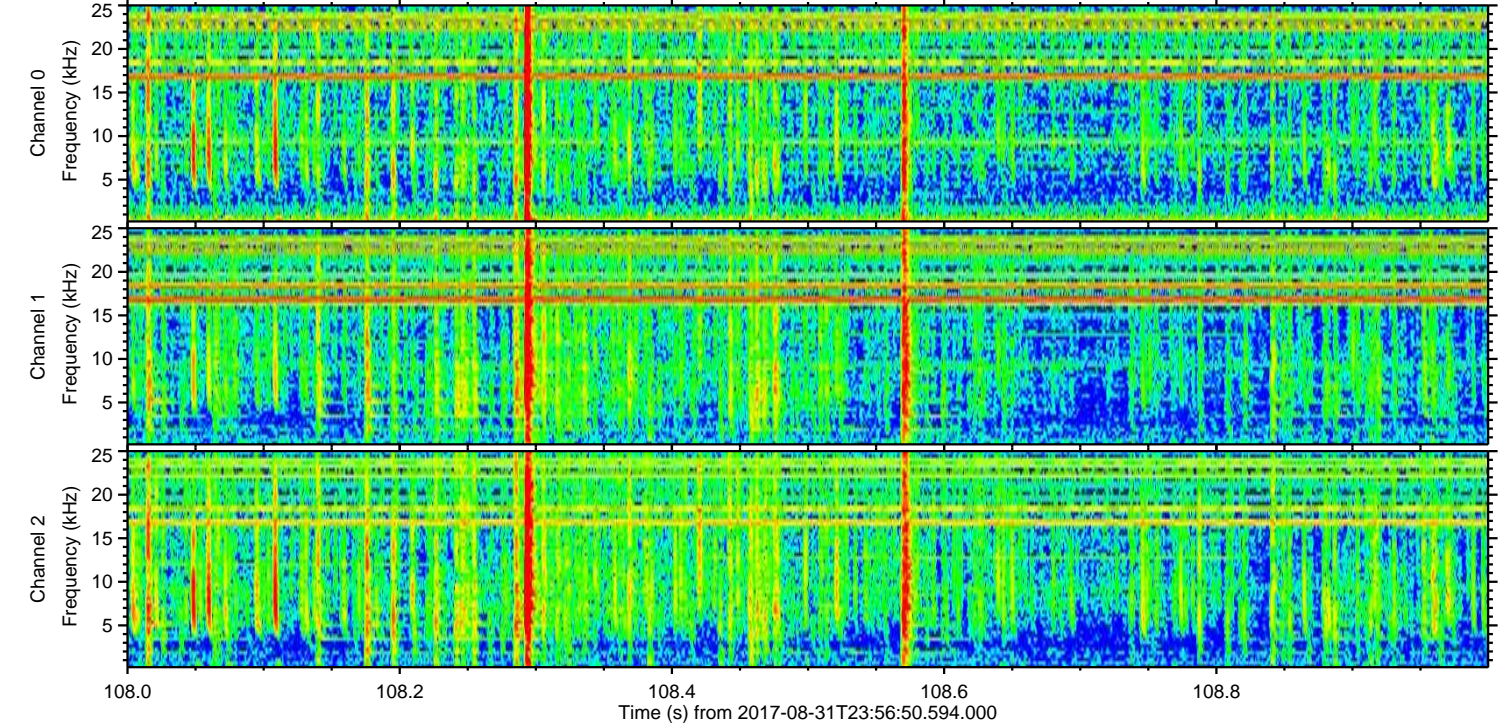
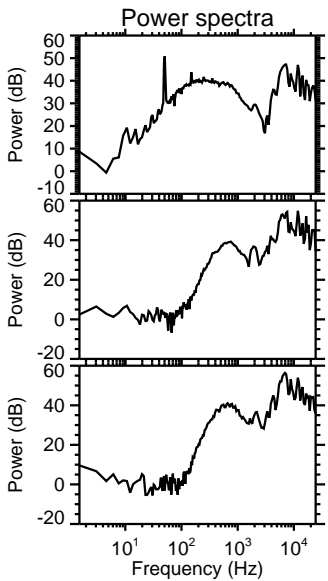
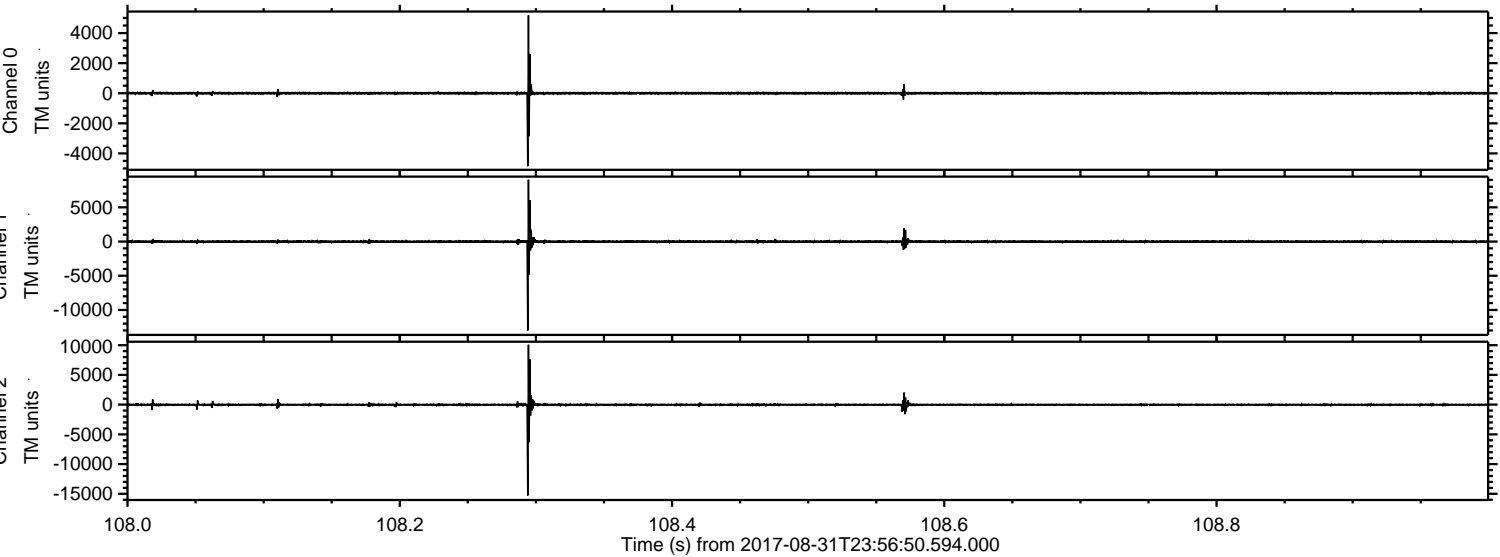
ELMAVAN 3D WAVEFORMS (Measured data sampled at 50 kHz) 51000 packets of 144 samples from 2017-08-31T23:56:50.594.000. Part 6/147

Processed Fri Sep 1 02:04:32 2017 by ELM ver.2012-10-06 from 001__elm20170831_235649__dat00.bin

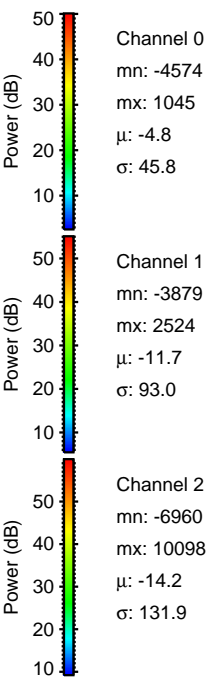
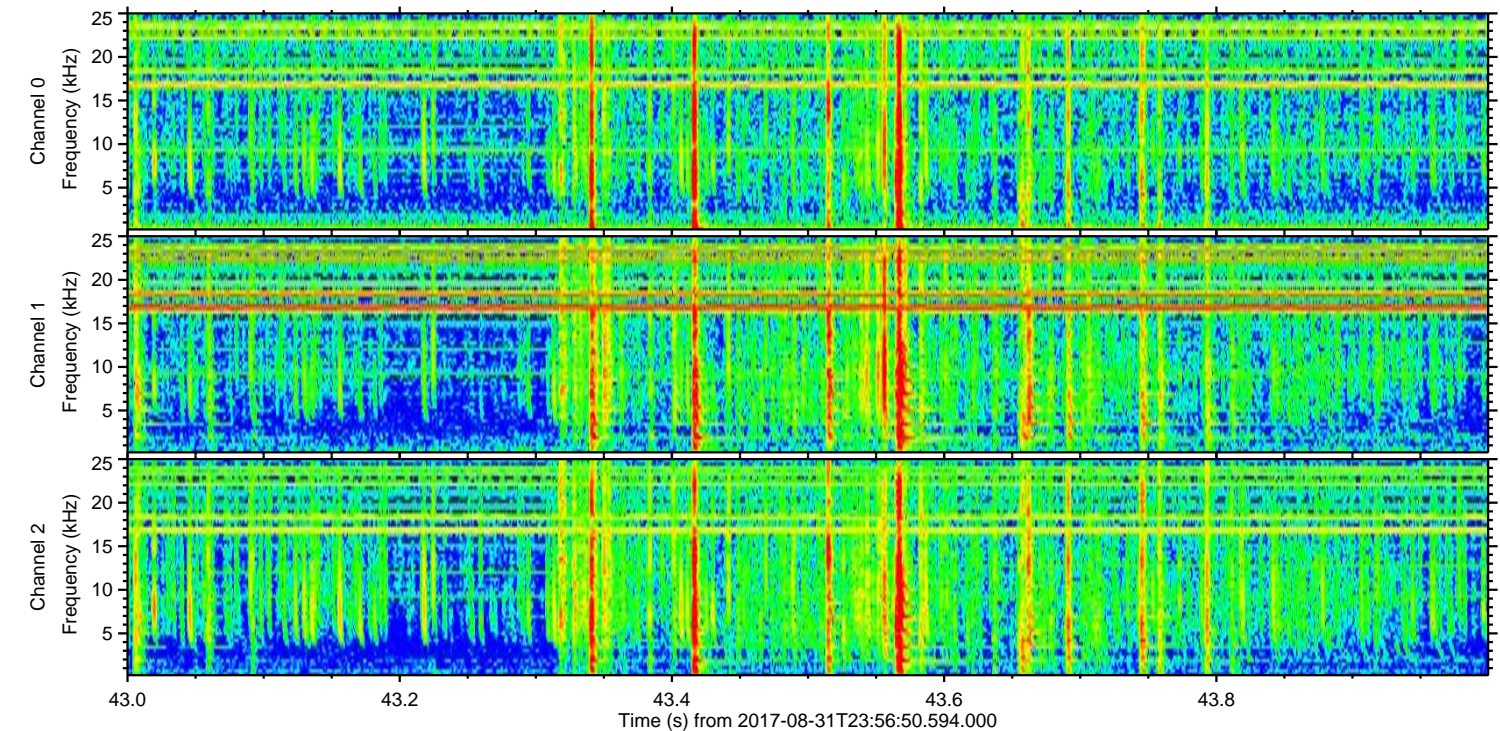
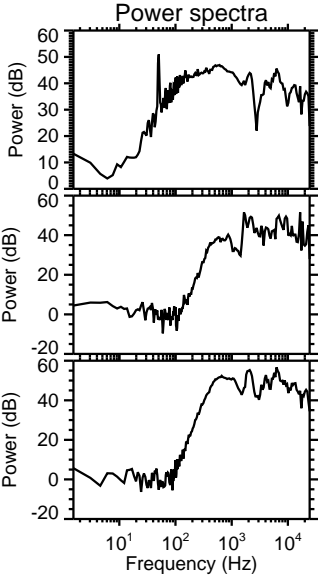
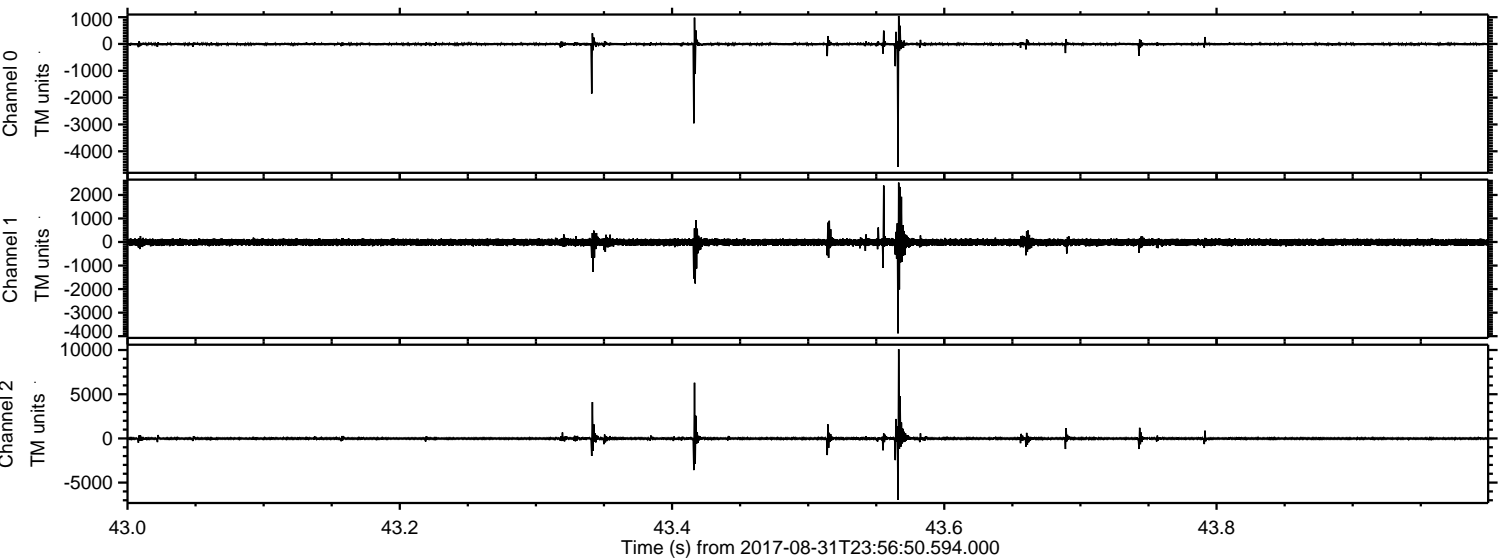


ELMAVAN 3D WAVEFORMS (Measured data sampled at 50 kHz) 51000 packets of 144 samples from 2017-08-31T23:56:50.594.000. Part 109/147

Processed Fri Sep 1 02:04:33 2017 by ELM ver.2012-10-06 from 001__elm20170831_235649__dat00.bin

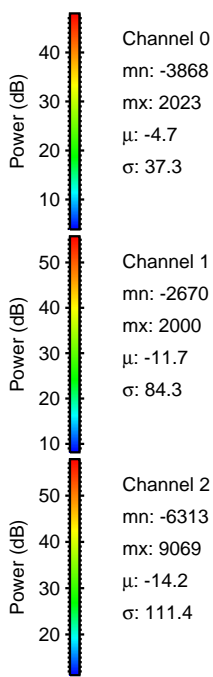
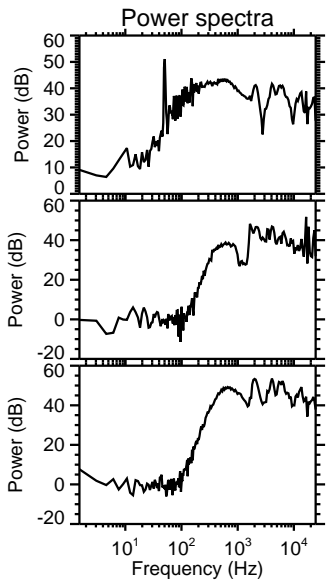
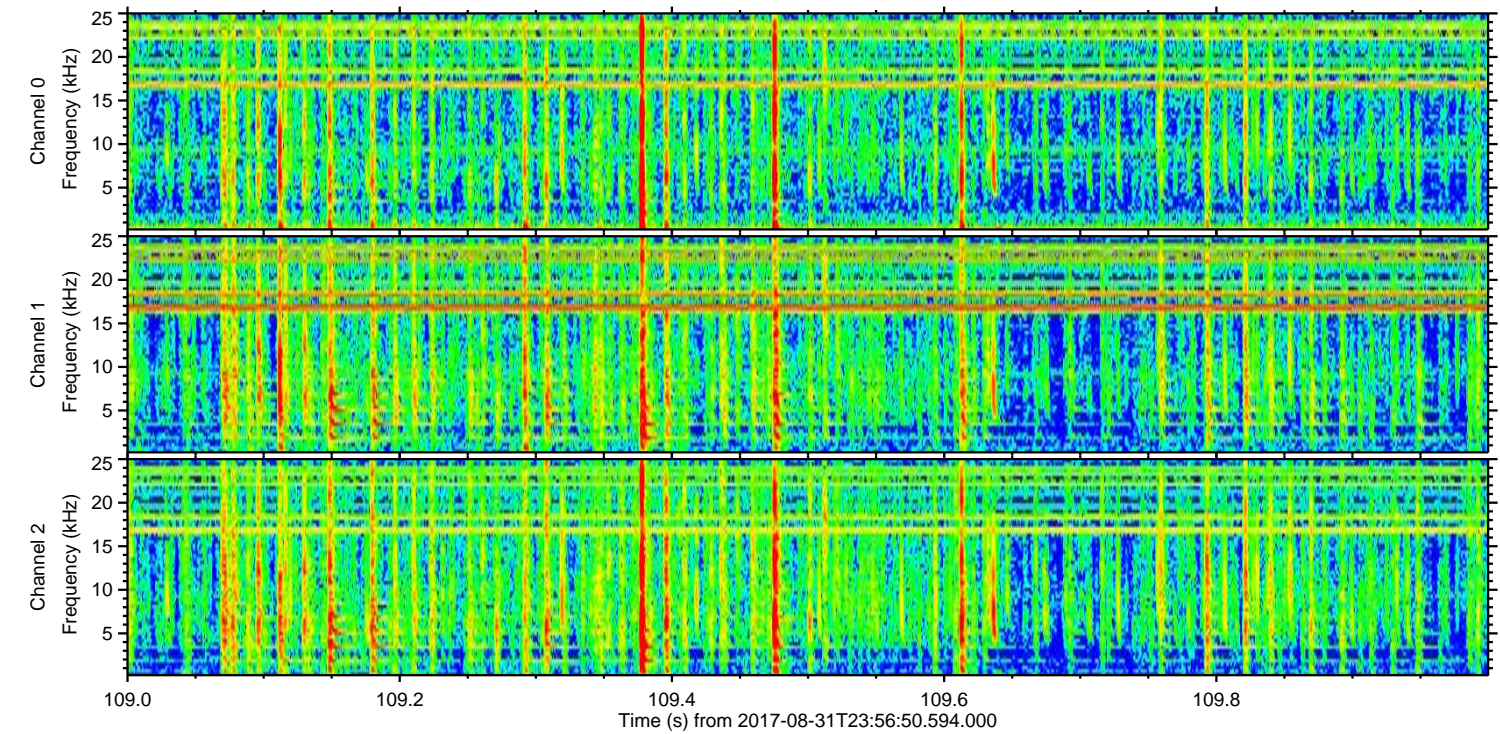
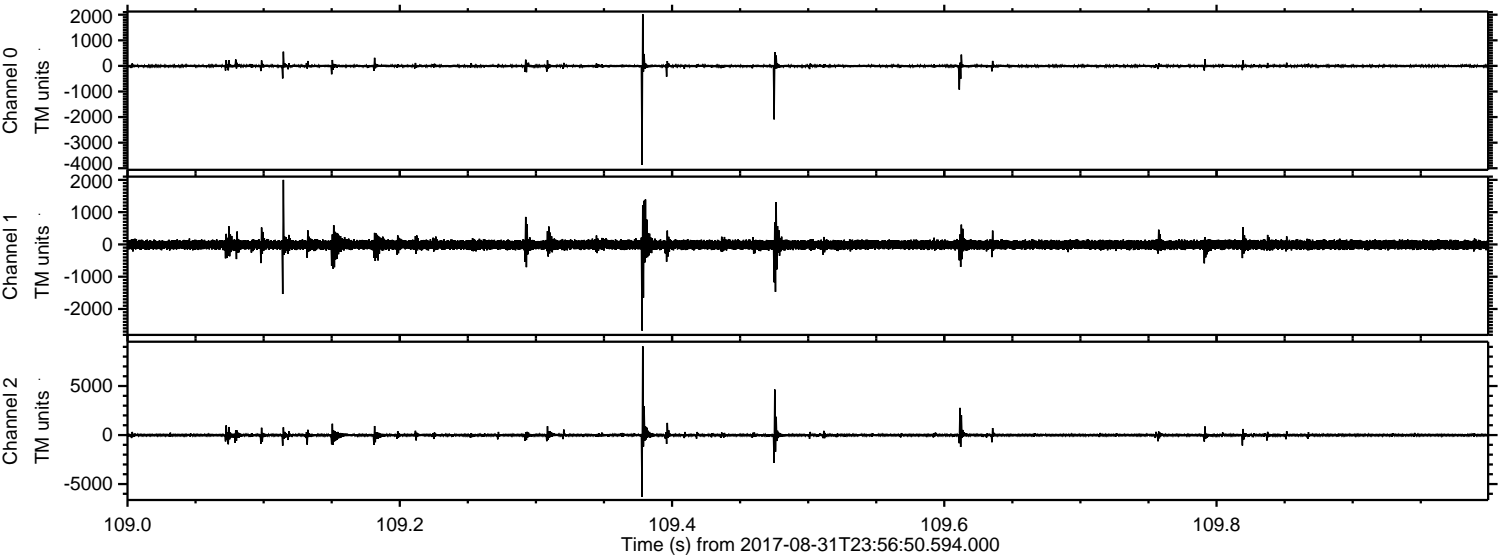


Processed Fri Sep 1 02:04:34 2017 by ELM ver.2012-10-06 from 001__elm20170831_235649__dat00.bin



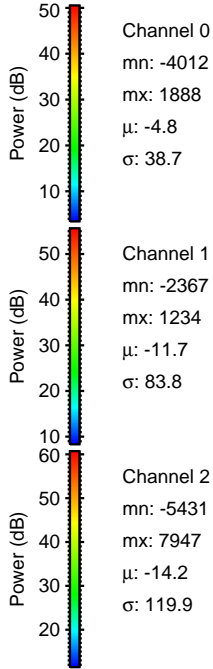
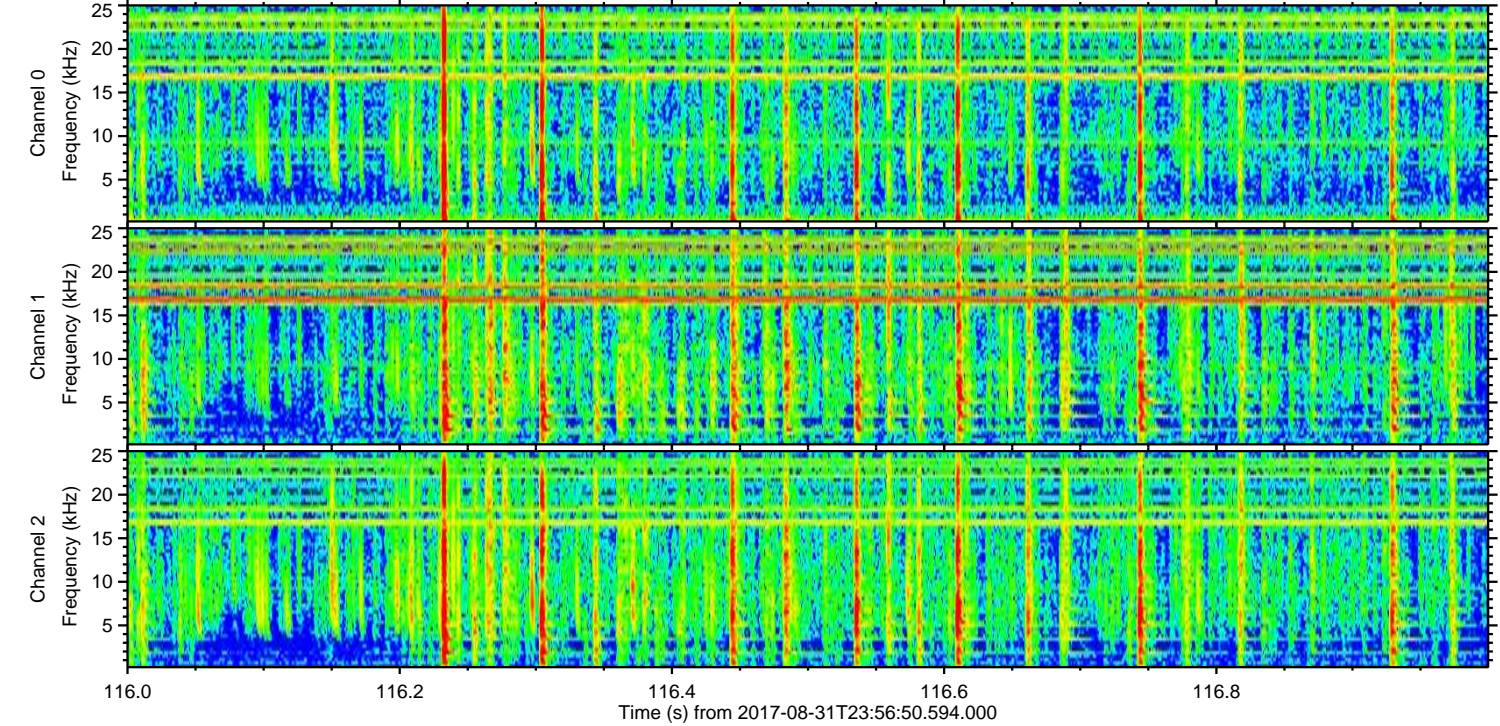
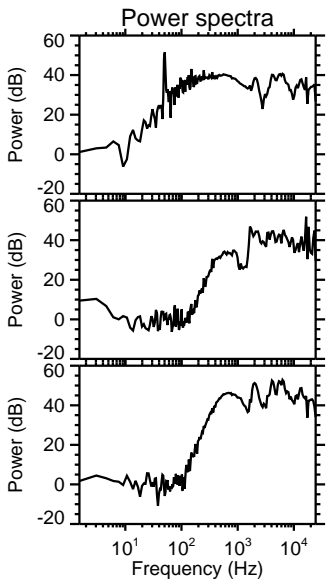
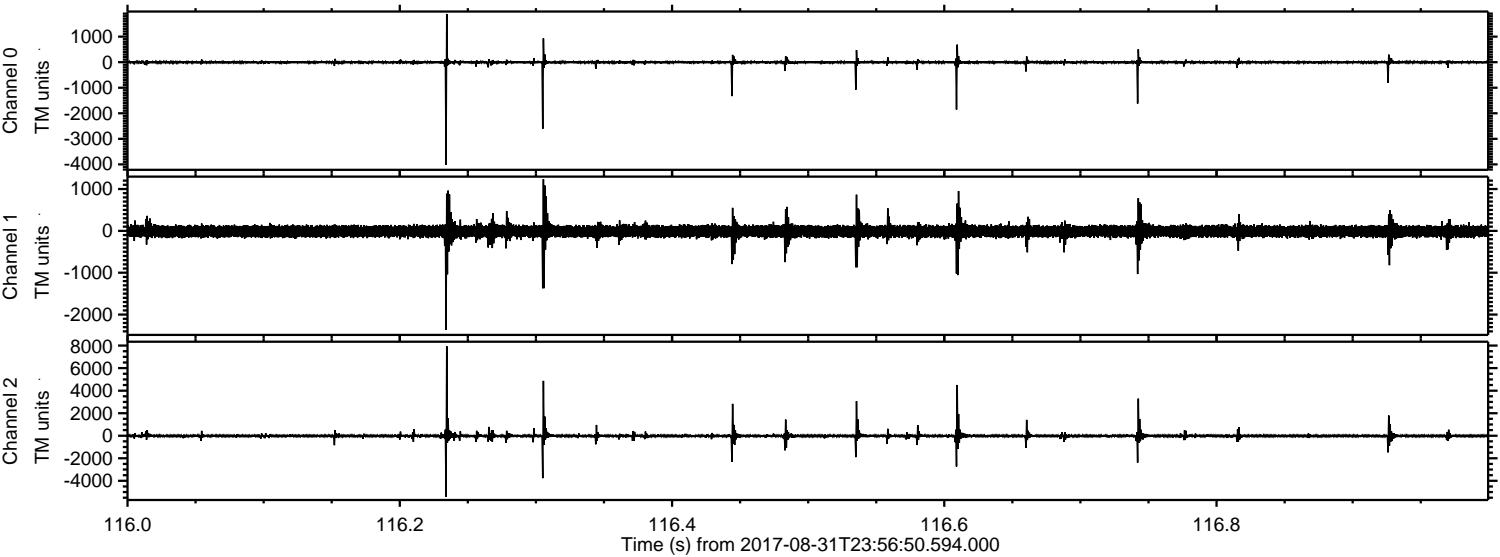
ELMAVAN 3D WAVEFORMS (Measured data sampled at 50 kHz) 51000 packets of 144 samples from 2017-08-31T23:56:50.594.000. Part 110/147

Processed Fri Sep 1 02:04:34 2017 by ELM ver.2012-10-06 from 001__elm20170831_235649__dat00.bin



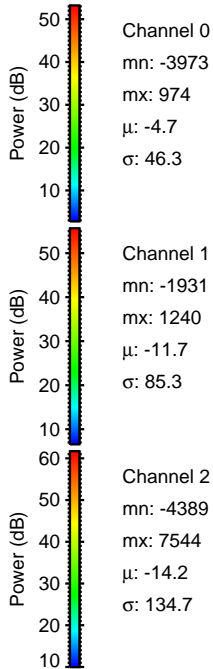
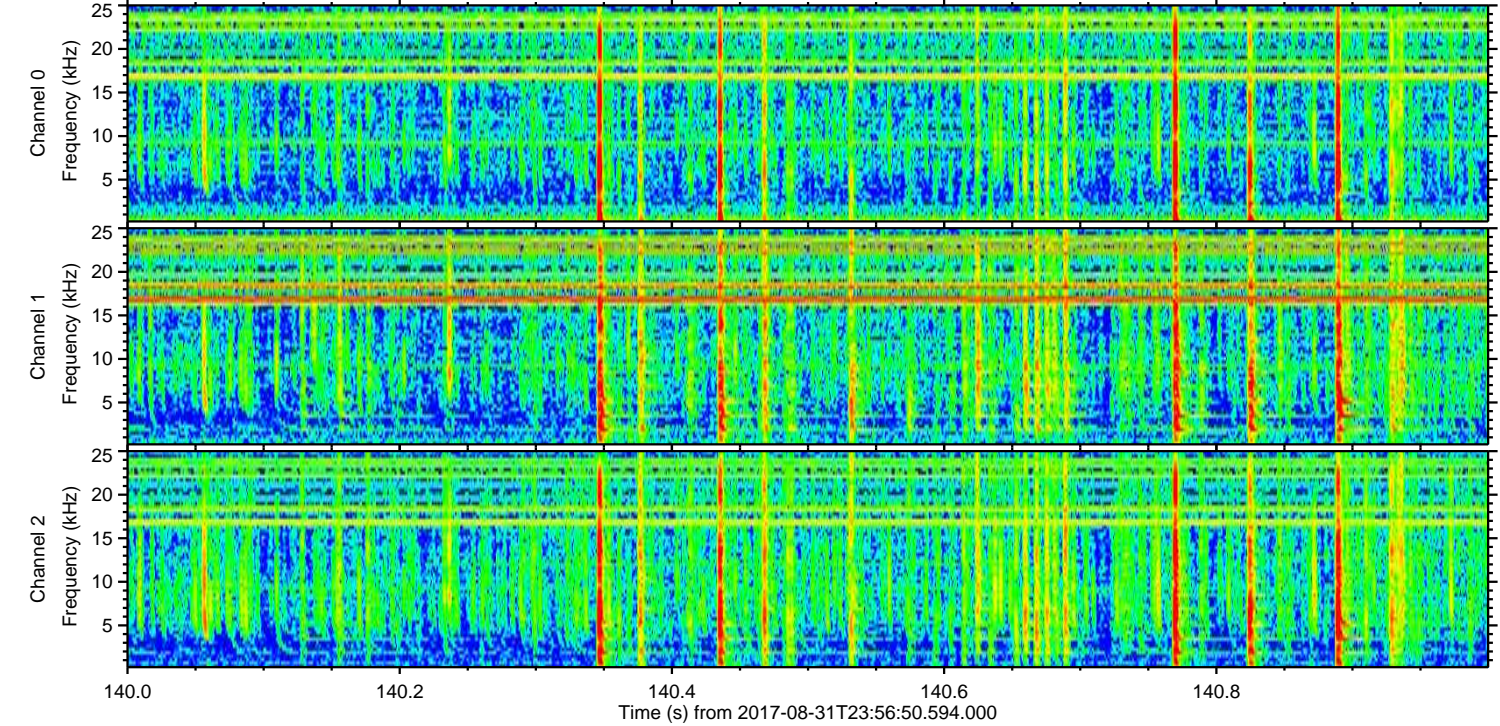
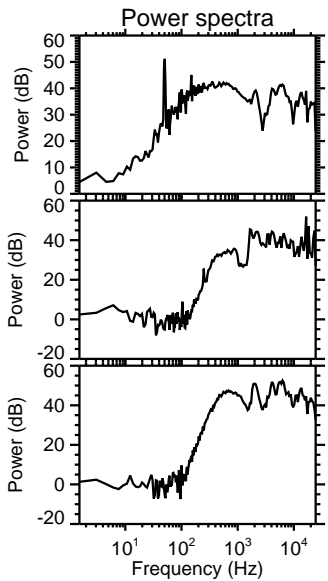
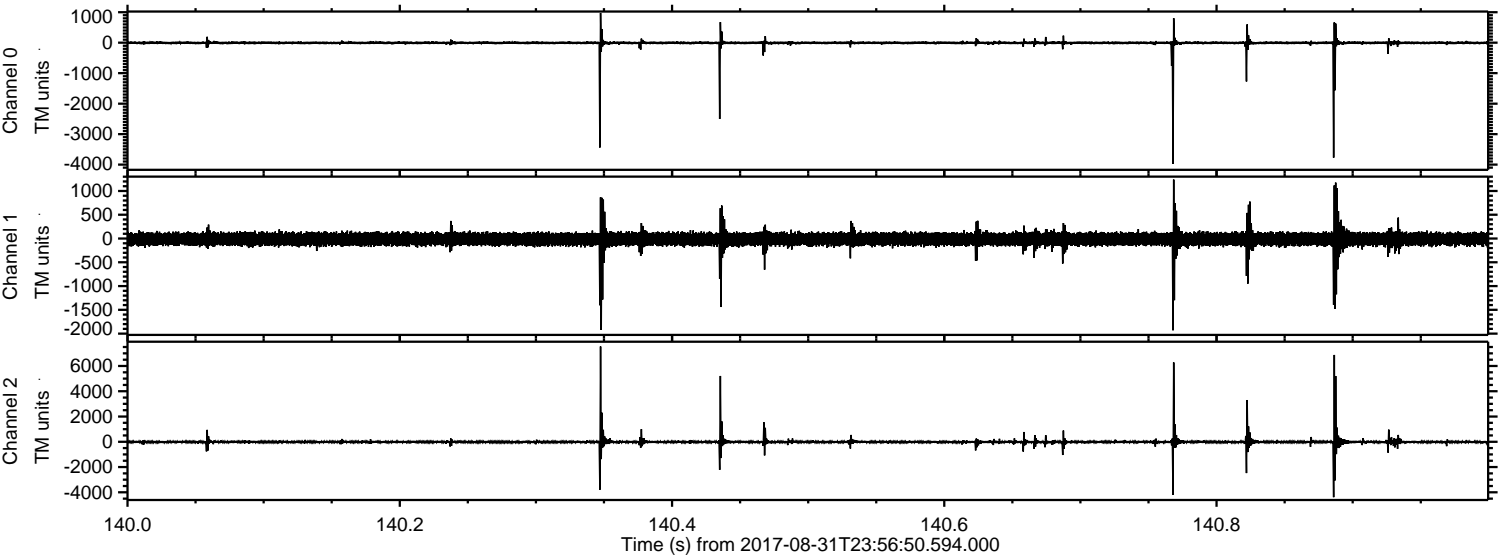
ELMAVAN 3D WAVEFORMS (Measured data sampled at 50 kHz) 51000 packets of 144 samples from 2017-08-31T23:56:50.594.000. Part 117/147

Processed Fri Sep 1 02:04:35 2017 by ELM ver.2012-10-06 from 001__elm20170831_235649__dat00.bin



ELMAVAN 3D WAVEFORMS (Measured data sampled at 50 kHz) 51000 packets of 144 samples from 2017-08-31T23:56:50.594.000. Part 141/147

Processed Fri Sep 1 02:04:36 2017 by ELM ver.2012-10-06 from 001__elm20170831_235649__dat00.bin

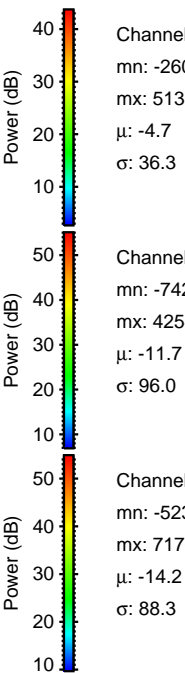
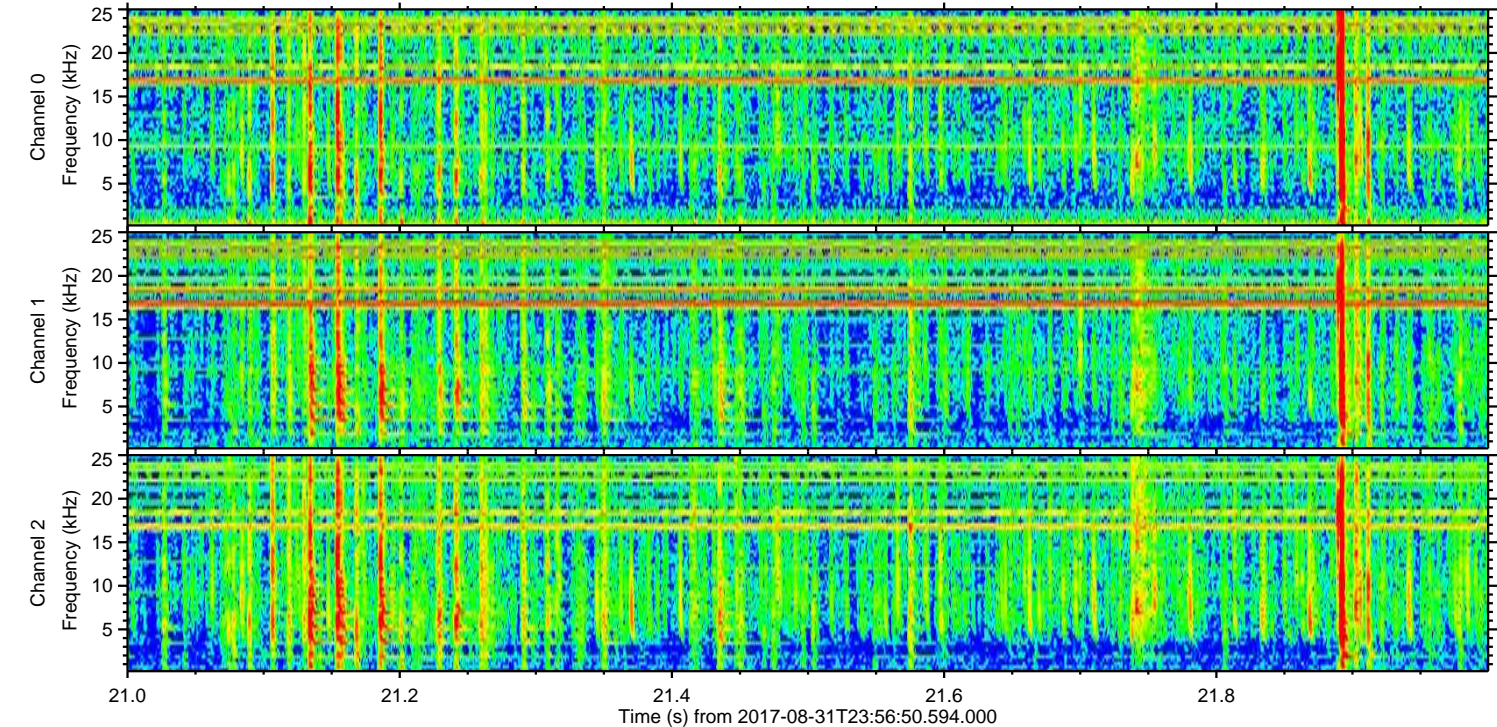
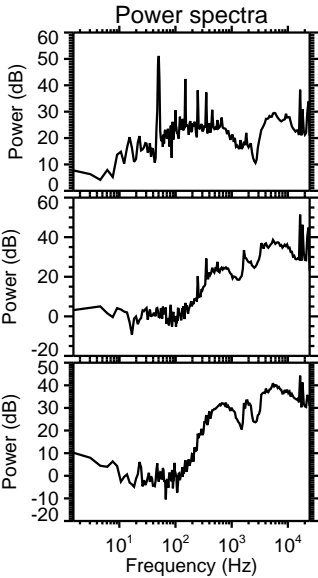
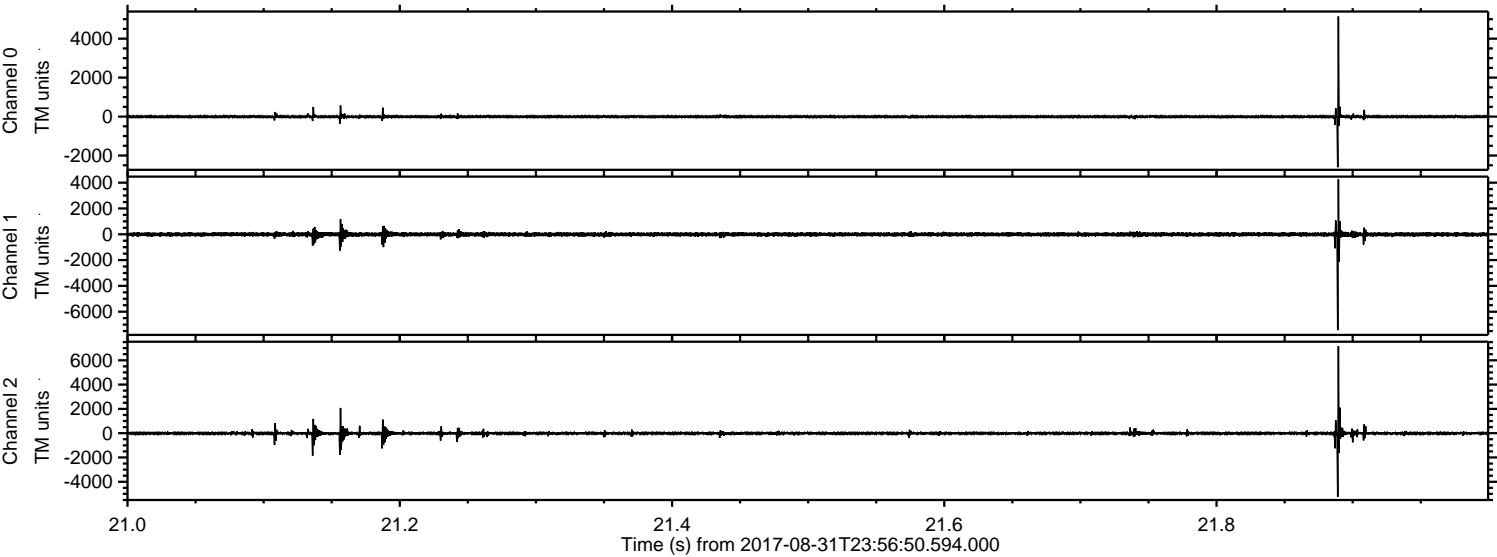


Channel 0
mn: -3973
mx: 974
 μ : -4.7
 σ : 46.3

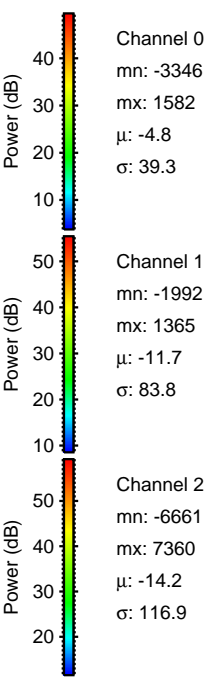
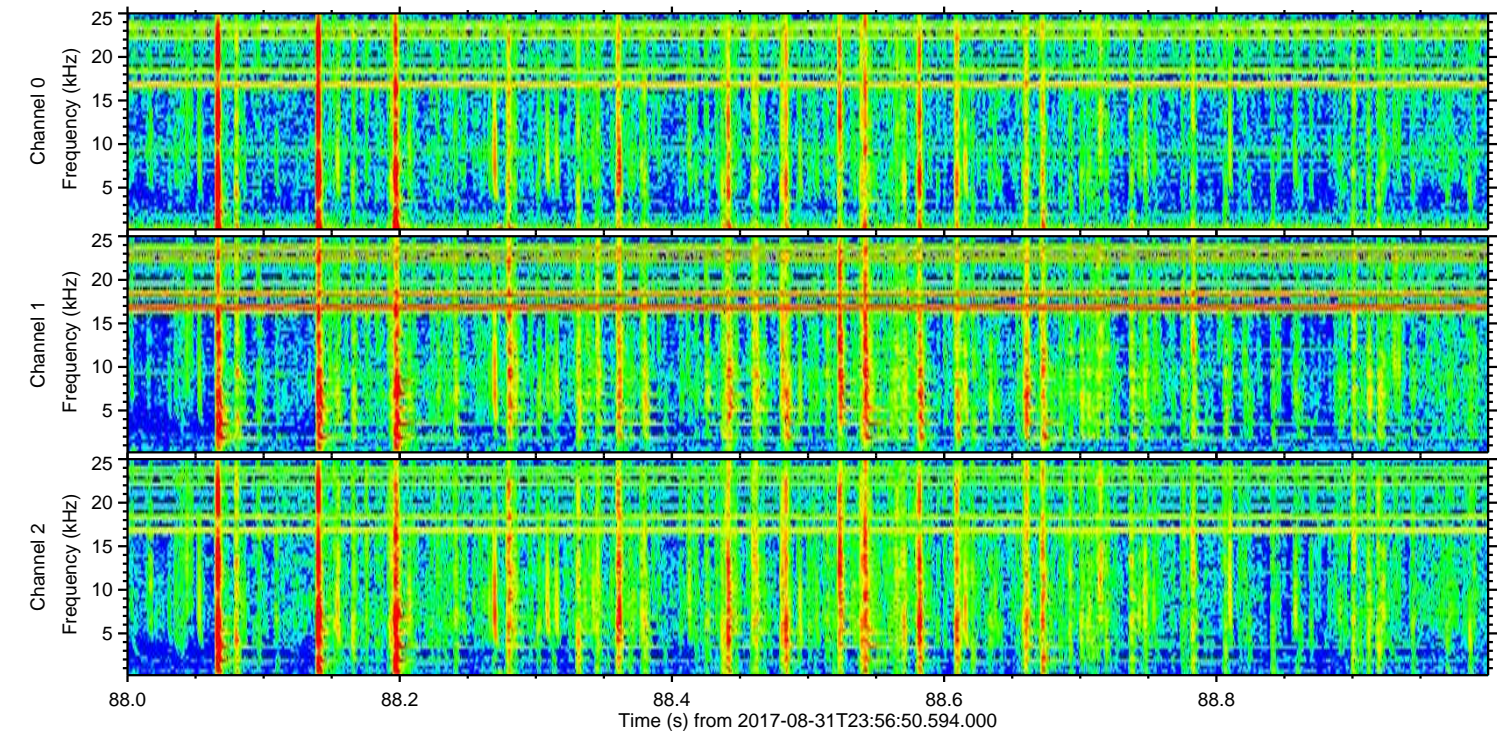
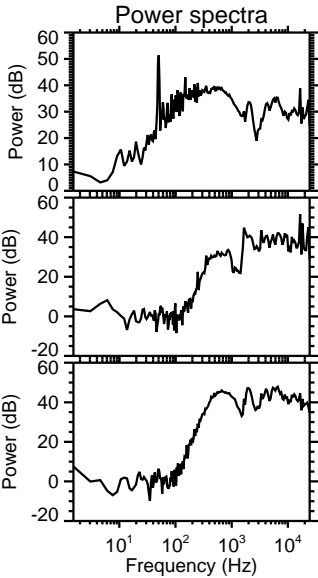
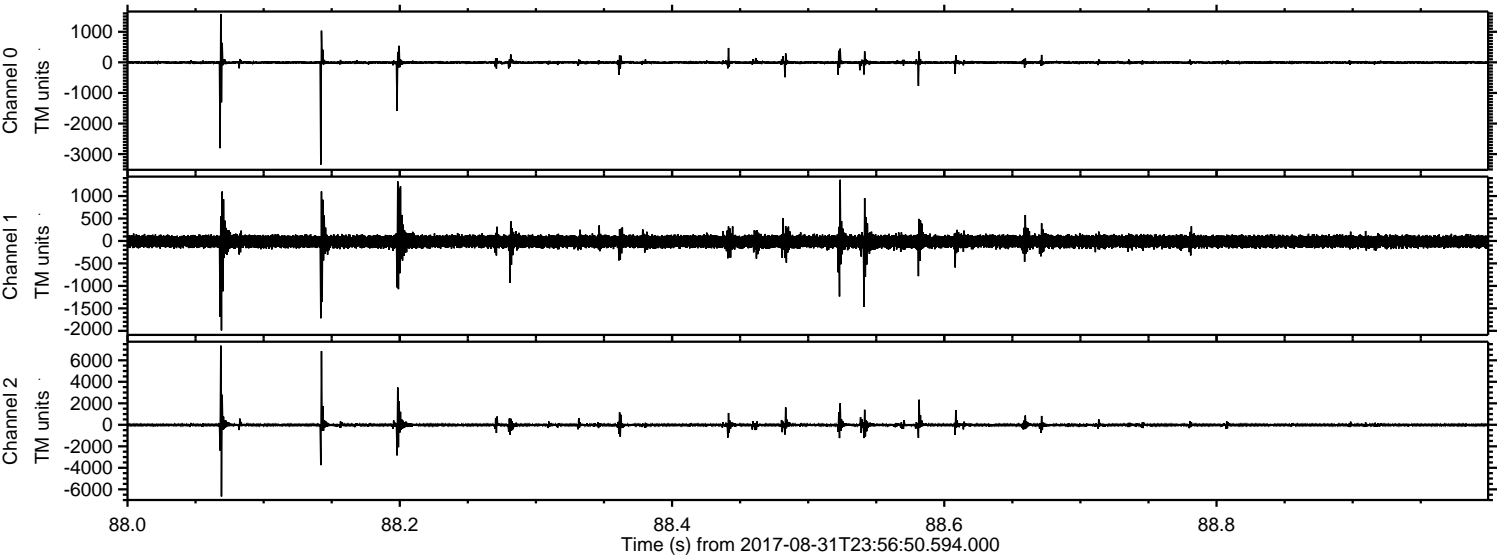
Channel 1
mn: -1931
mx: 1240
 μ : -11.7
 σ : 85.3

Channel 2
mn: -4389
mx: 7544
 μ : -14.2
 σ : 134.7

Processed Fri Sep 1 02:04:36 2017 by ELM ver.2012-10-06 from 001__elm20170831_235649__dat00.bin



Processed Fri Sep 1 02:04:37 2017 by ELM ver.2012-10-06 from 001__elm20170831_235649__dat00.bin



Channel 0
mn: -3346
mx: 1582
 μ : -4.8
 σ : 39.3

Channel 1
mn: -1992
mx: 1365
 μ : -11.7
 σ : 83.8

Channel 2
mn: -6661
mx: 7360
 μ : -14.2
 σ : 116.9

Processed Fri Sep 1 02:04:37 2017 by ELM ver.2012-10-06 from 001__elm20170831_235649__dat00.bin

