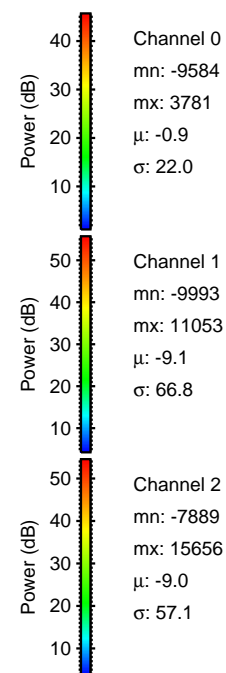
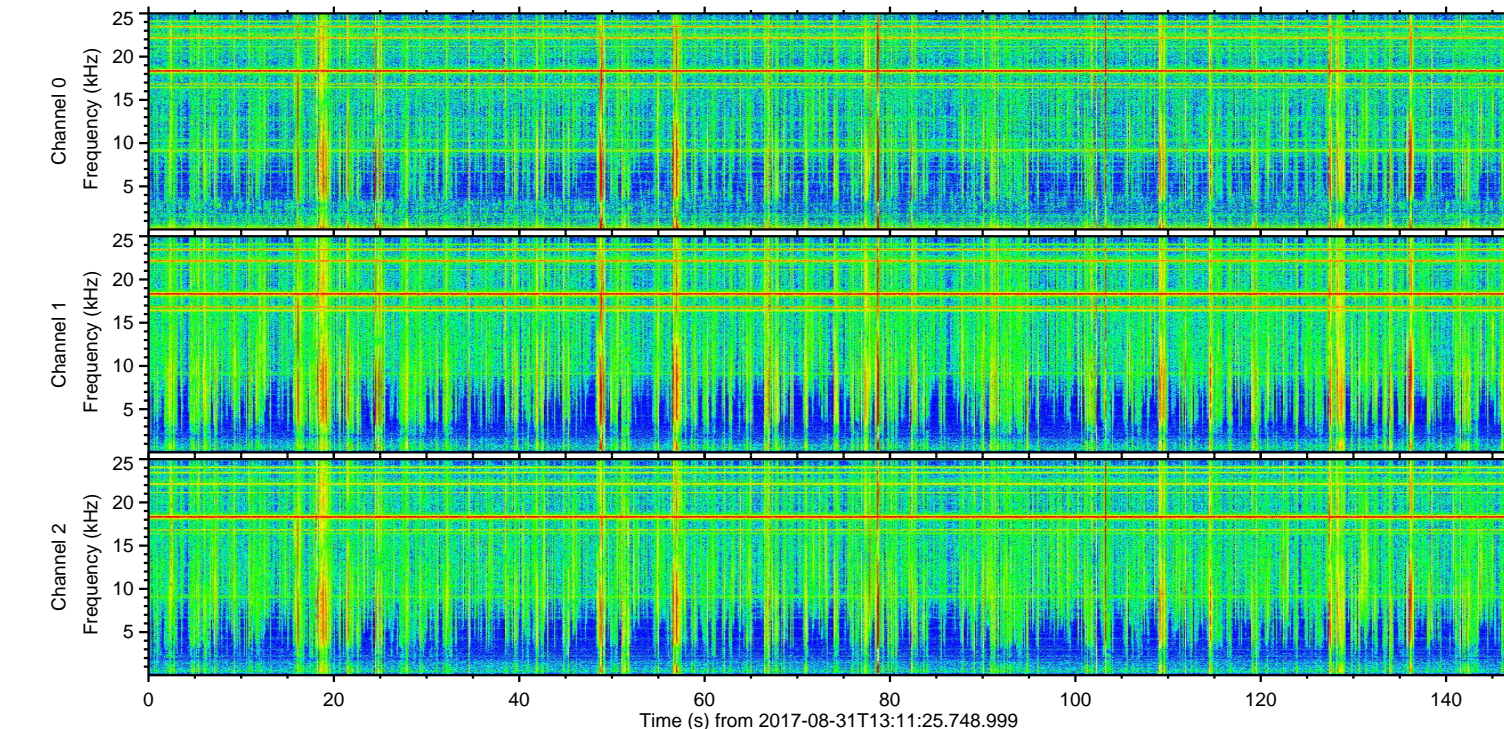
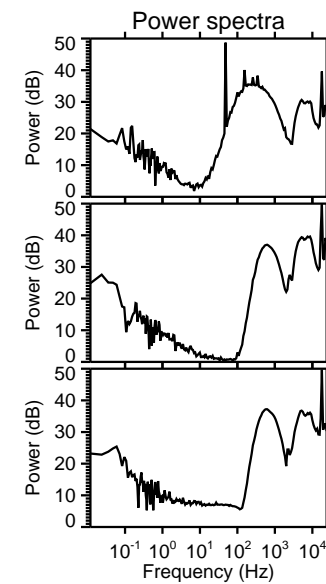
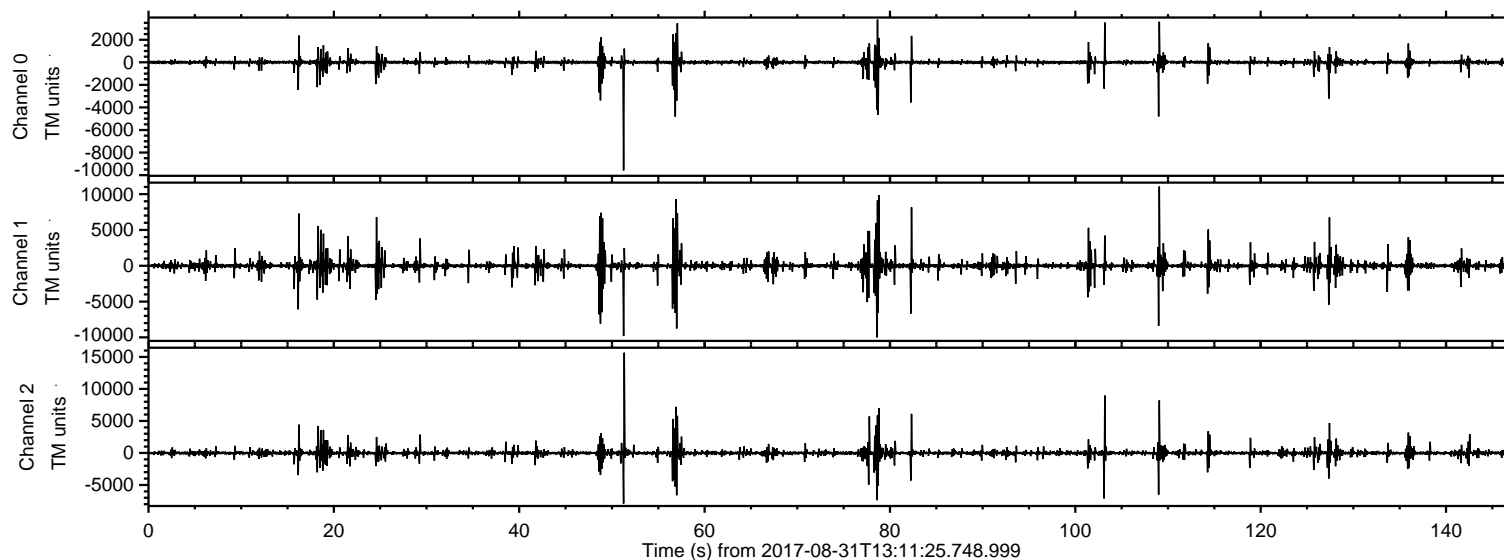
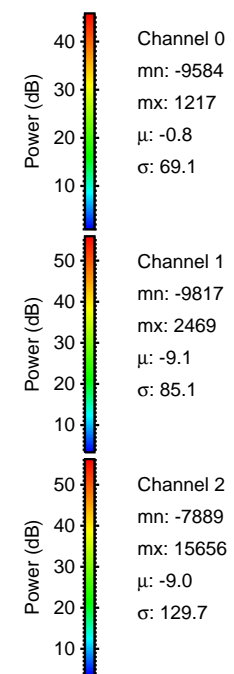
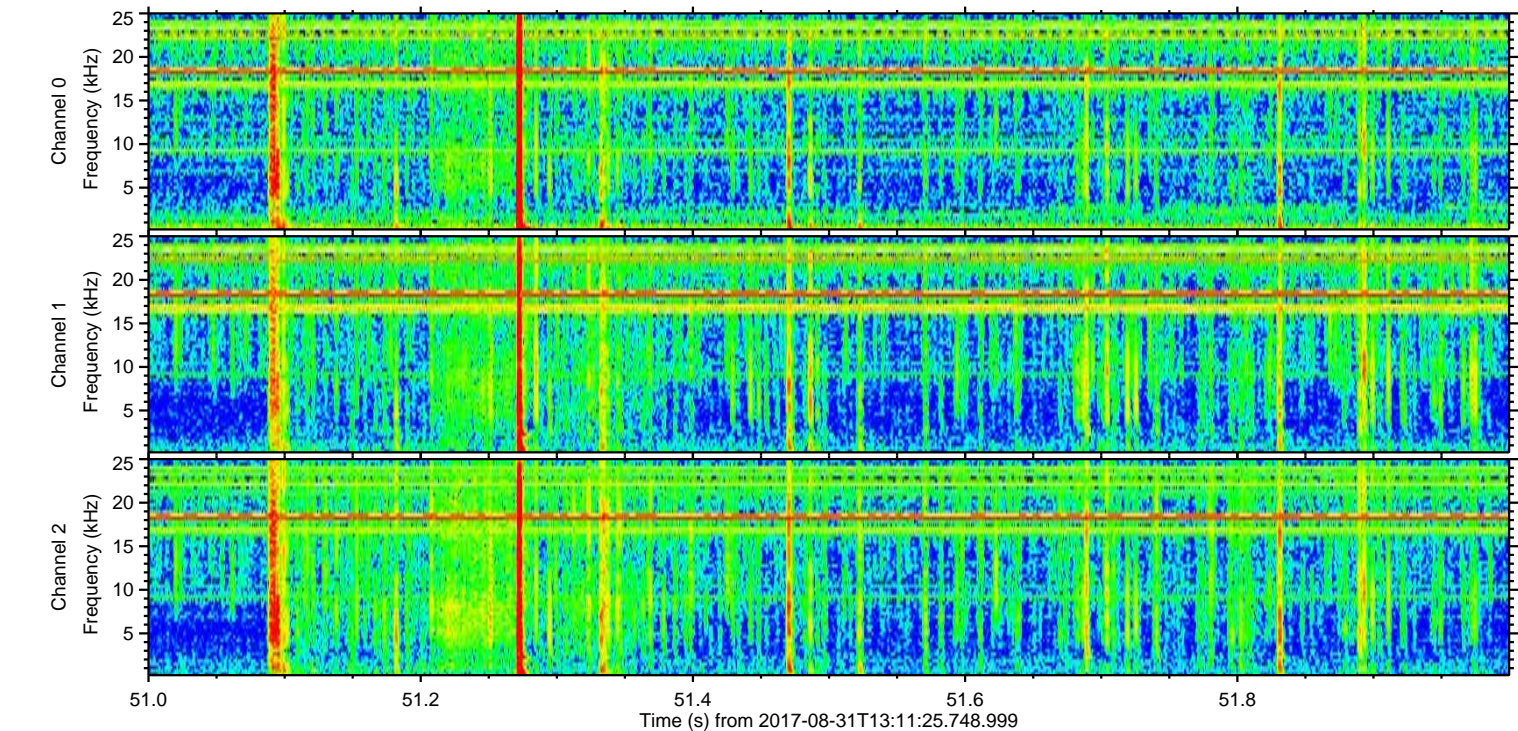
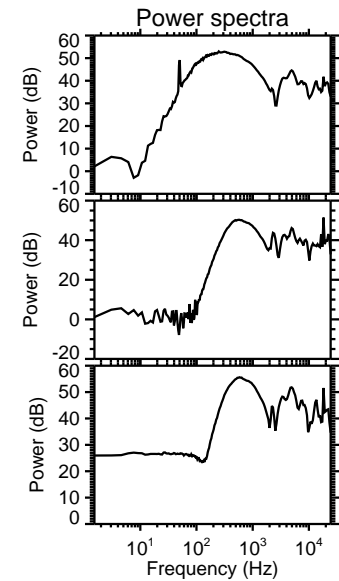
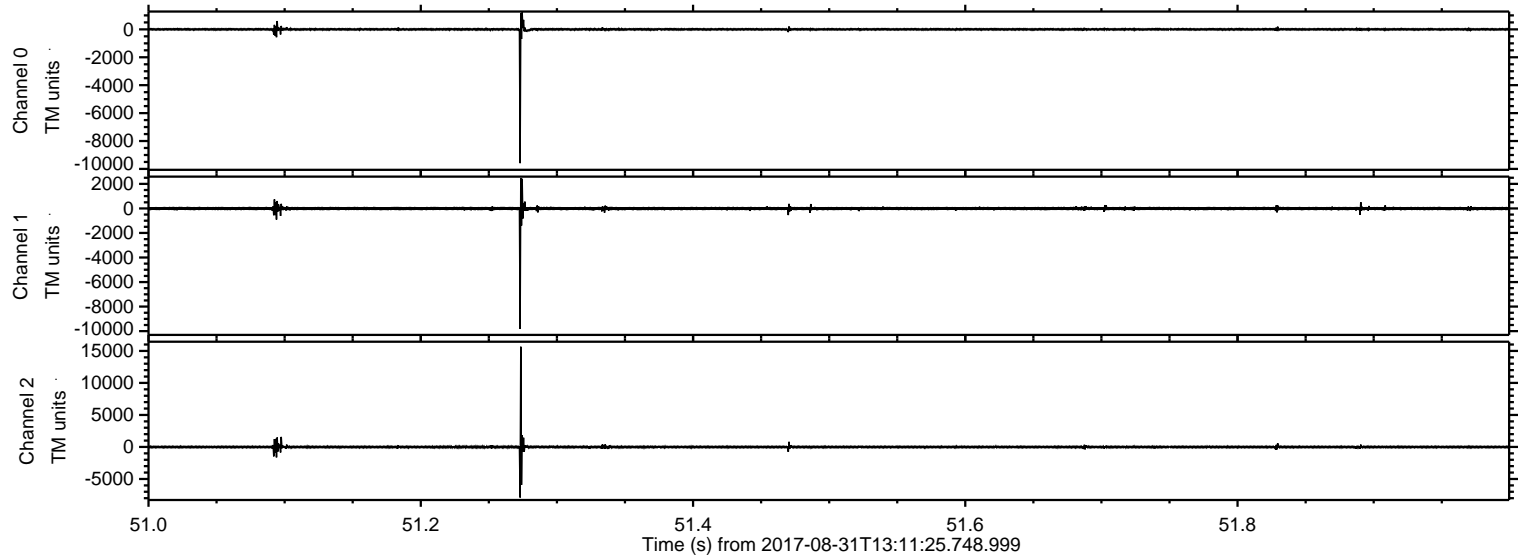


ELMAVAN 3D WAVEFORMS (Measured data sampled at 50 kHz) 51000 packets of 144 samples from 2017-08-31T13:11:25.748.999.

Processed Thu Aug 31 15:19:48 2017 by ELM ver.2012-10-06 from 001__elm20170831_131124__dat00.bin

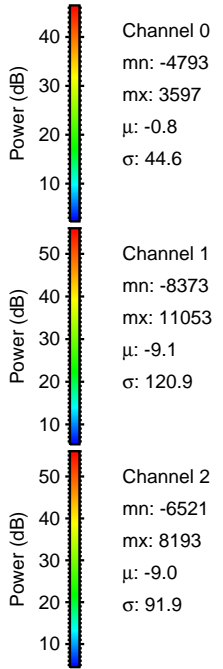
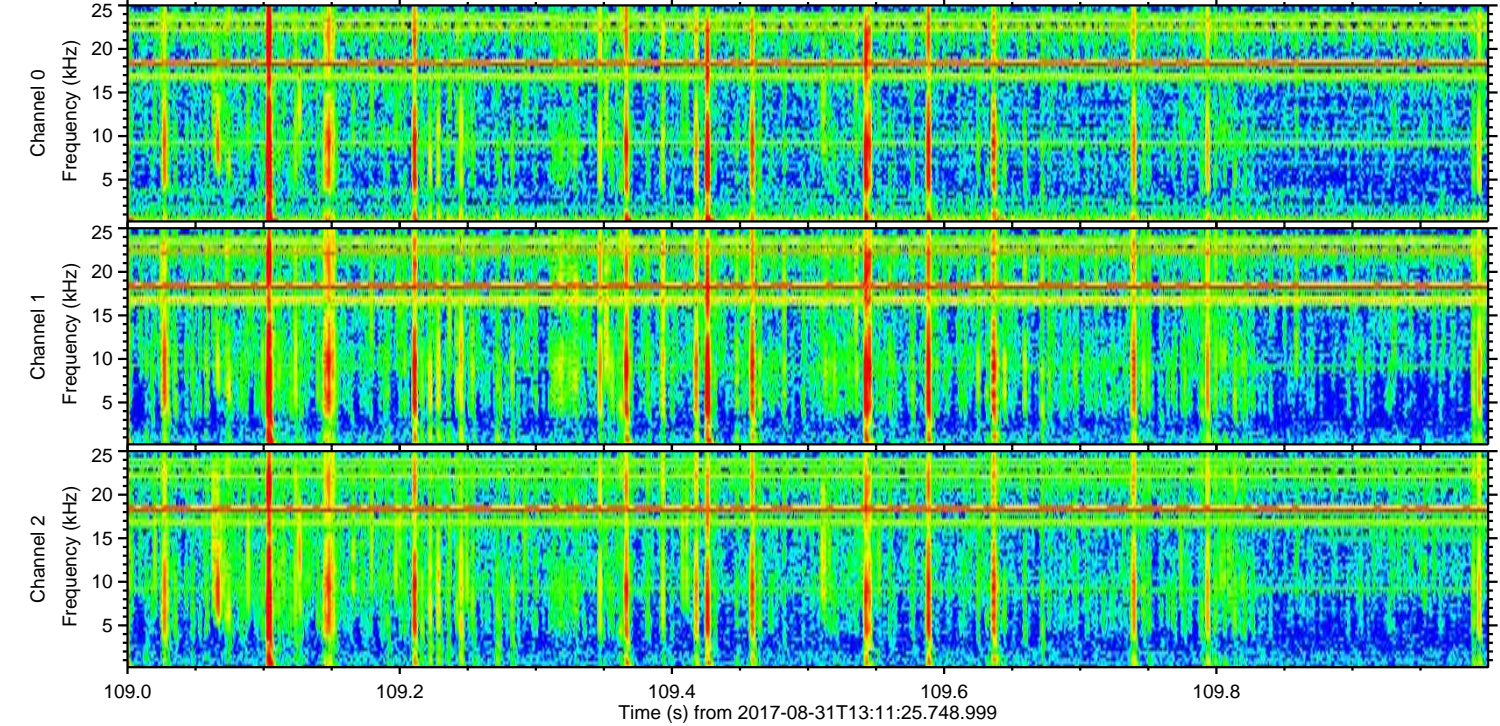
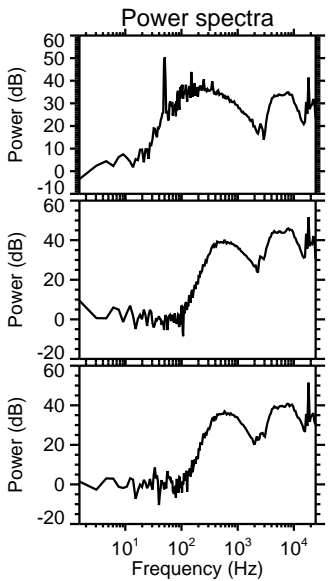
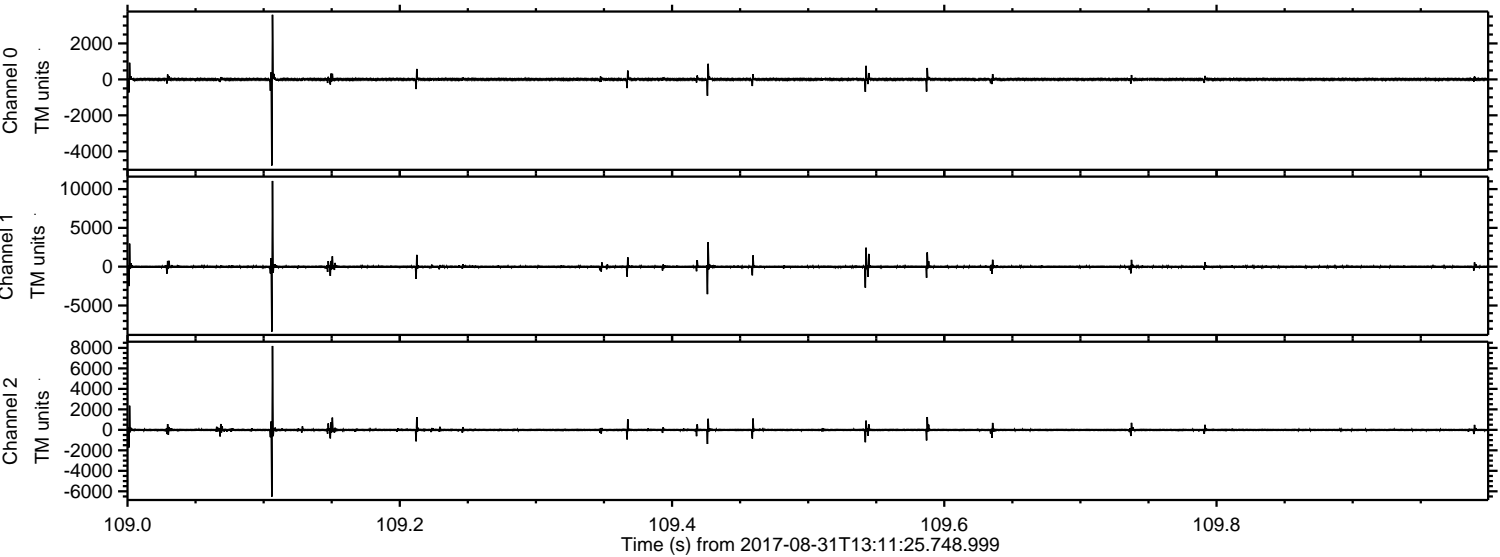


Processed Thu Aug 31 15:19:56 2017 by ELM ver.2012-10-06 from 001__elm20170831_131124__dat00.bin

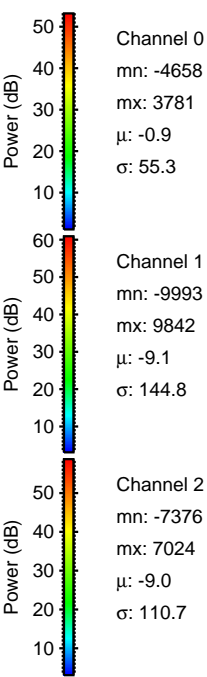
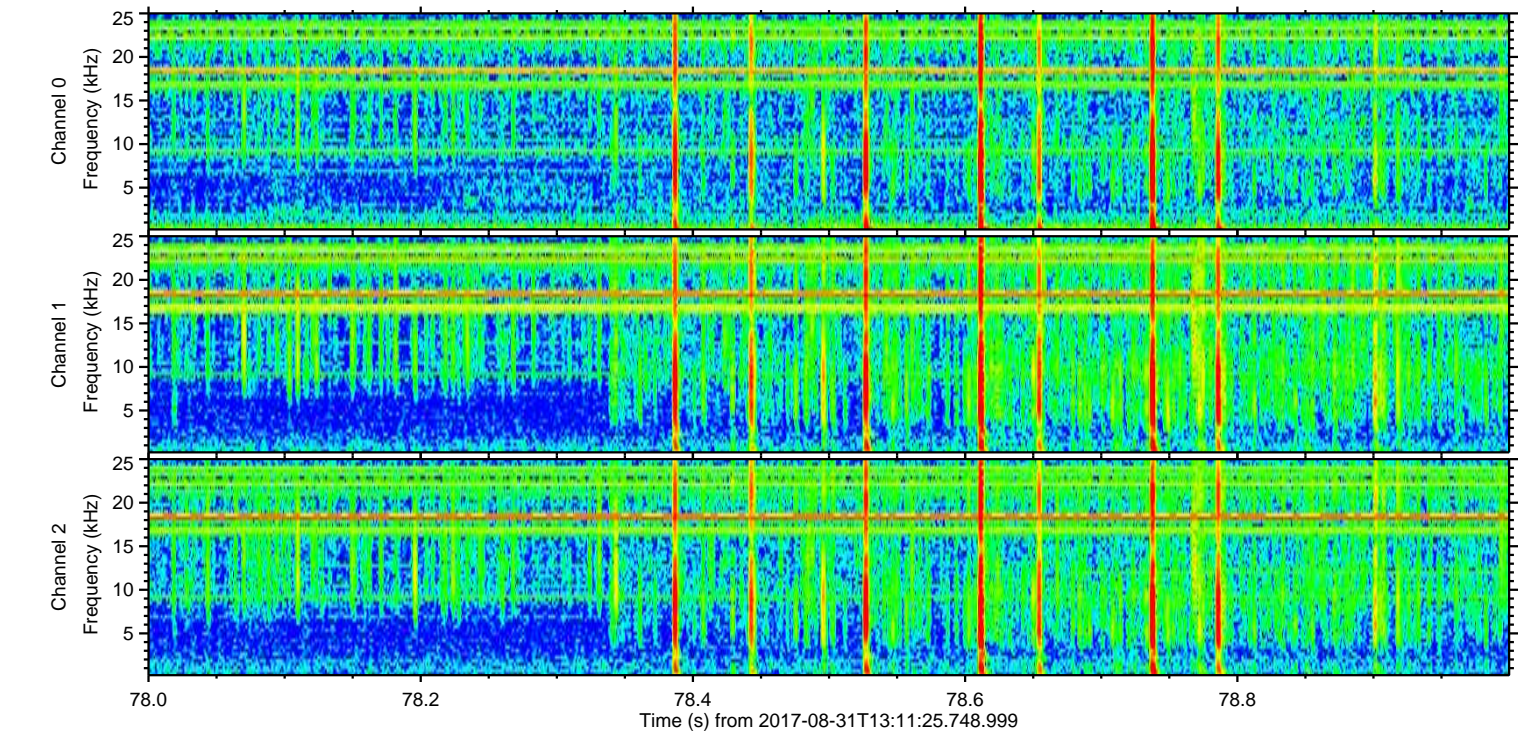
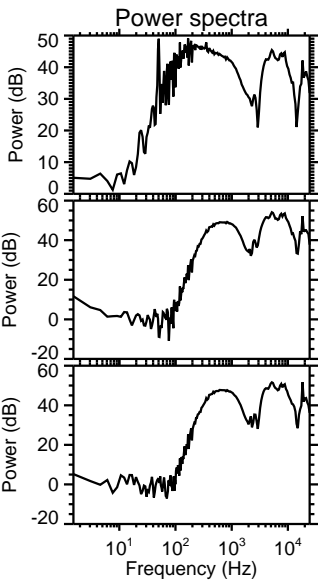
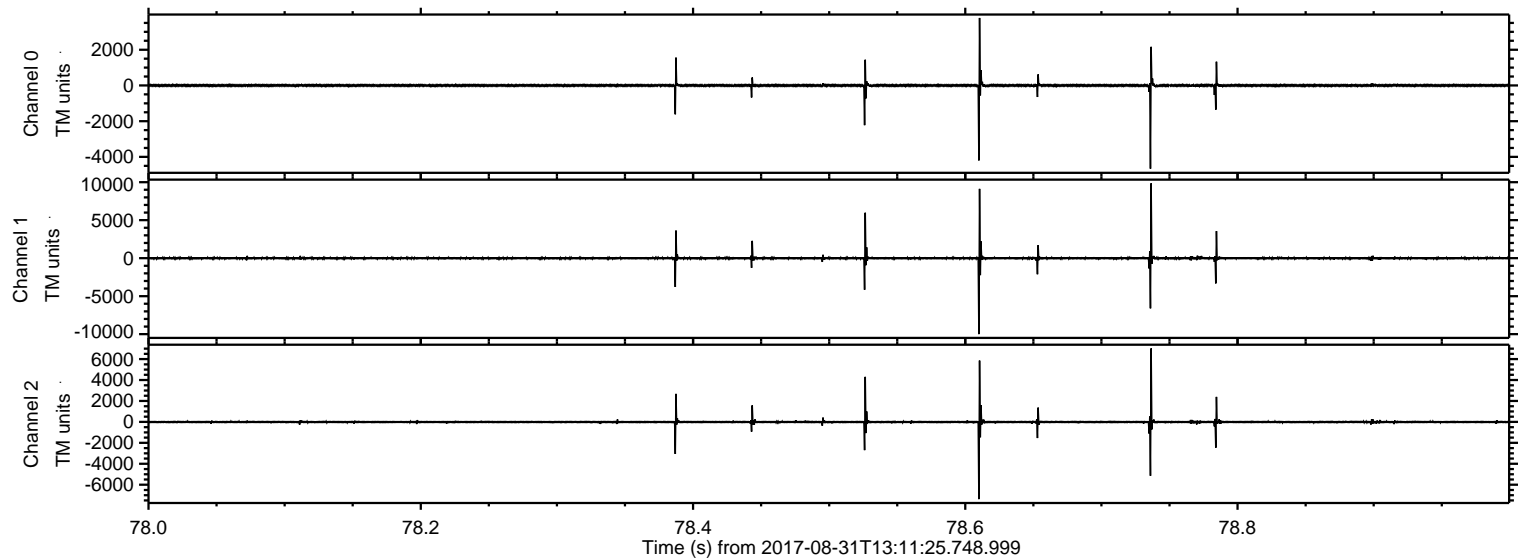


ELMAVAN 3D WAVEFORMS (Measured data sampled at 50 kHz) 51000 packets of 144 samples from 2017-08-31T13:11:25.748.999. Part 110/147

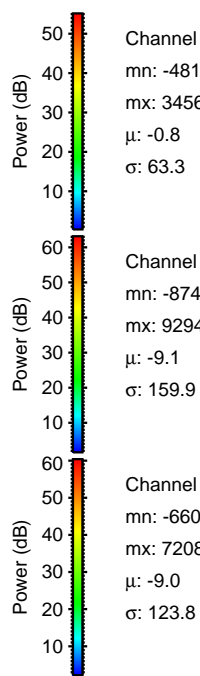
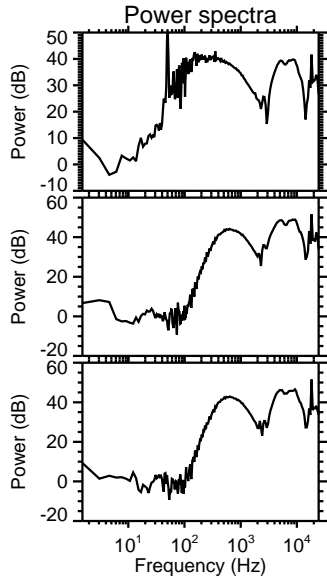
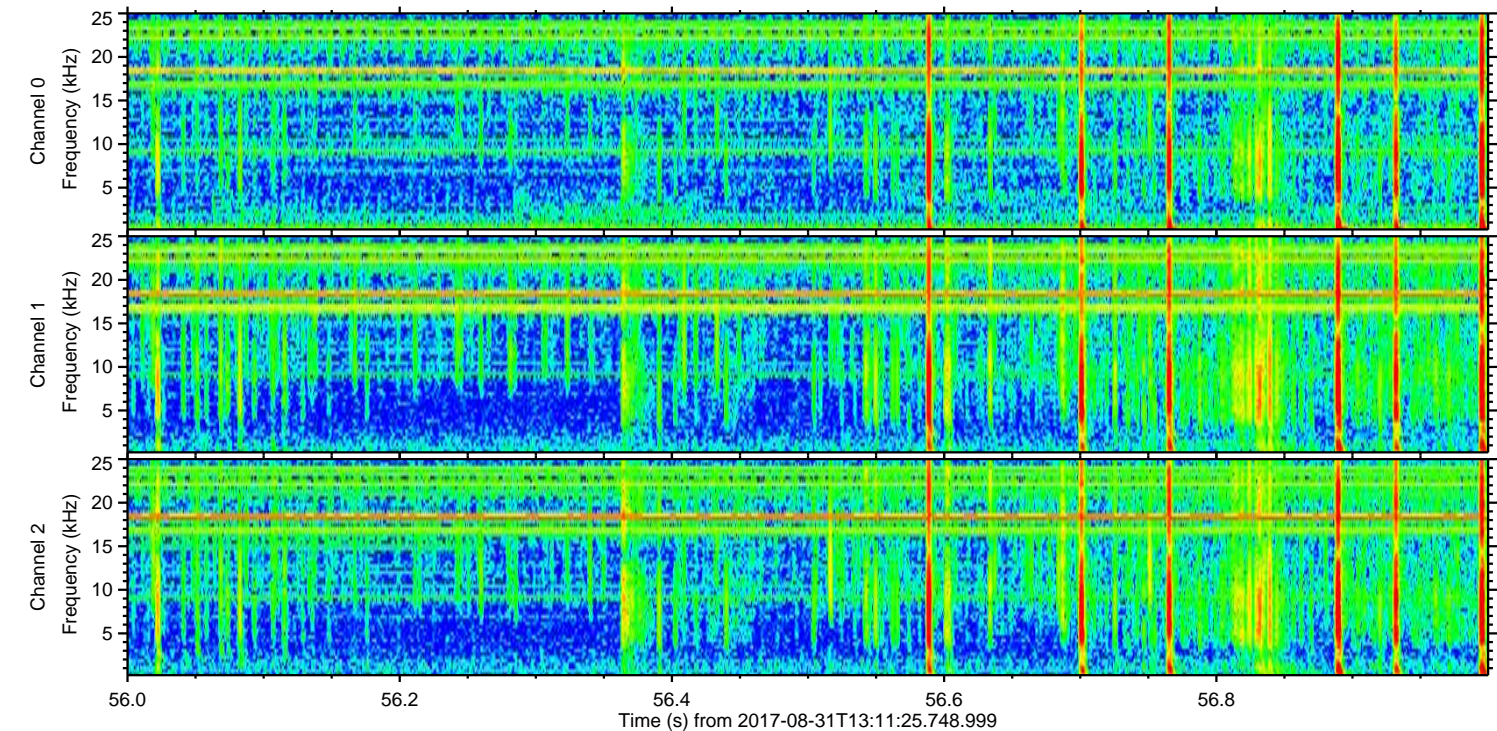
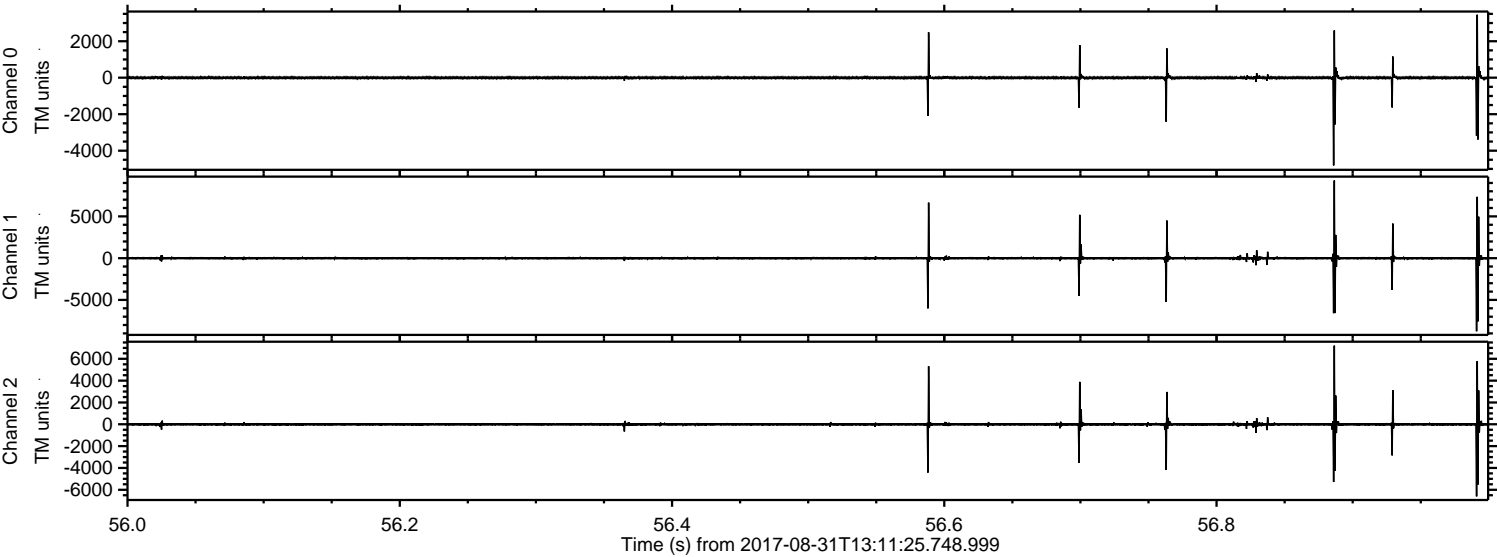
Processed Thu Aug 31 15:19:57 2017 by ELM ver.2012-10-06 from 001__elm20170831_131124__dat00.bin



Processed Thu Aug 31 15:19:58 2017 by ELM ver.2012-10-06 from 001__elm20170831_131124__dat00.bin

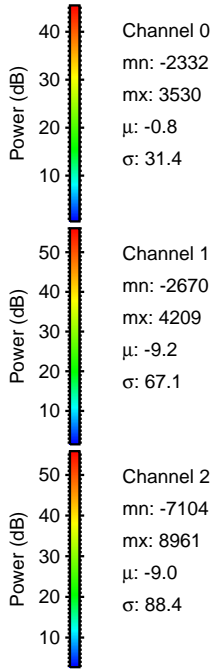
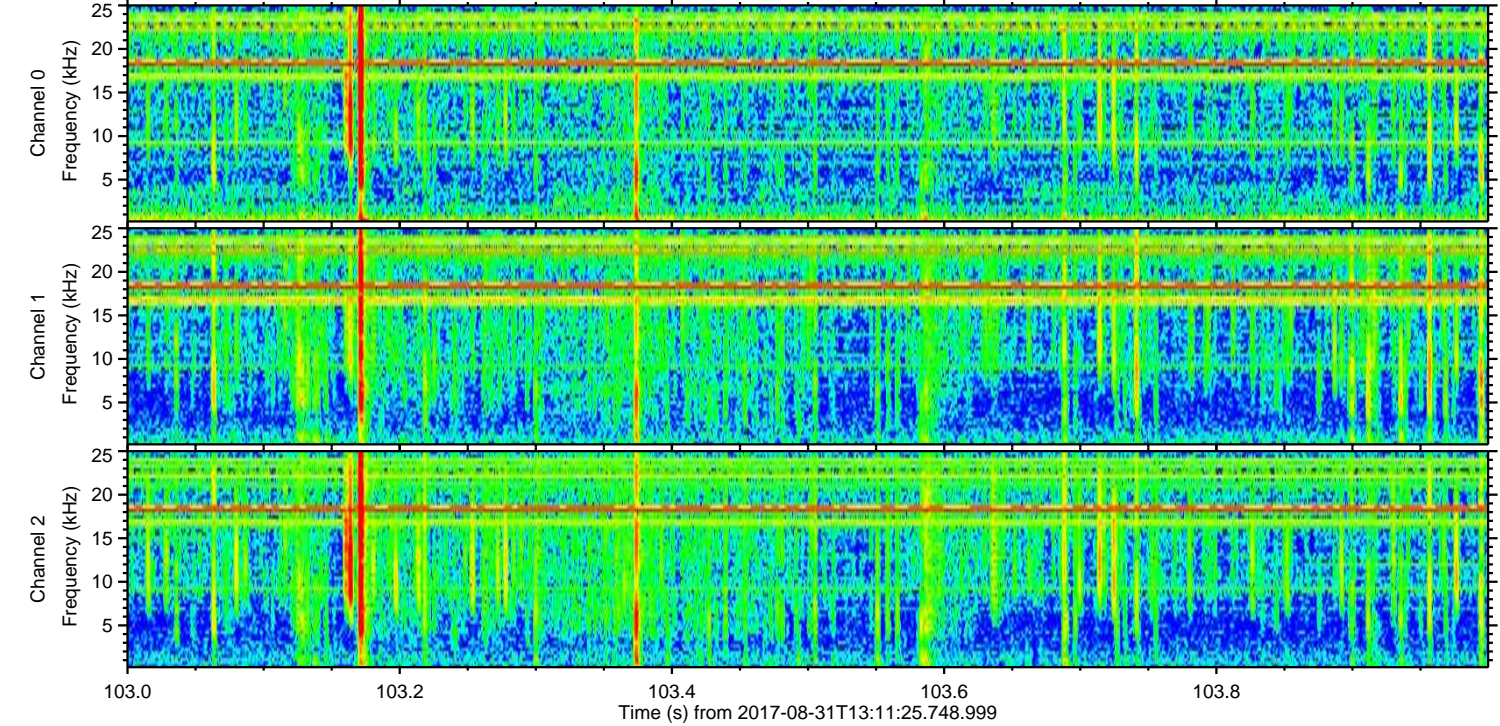
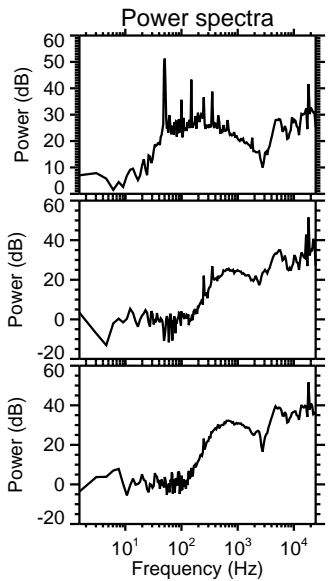
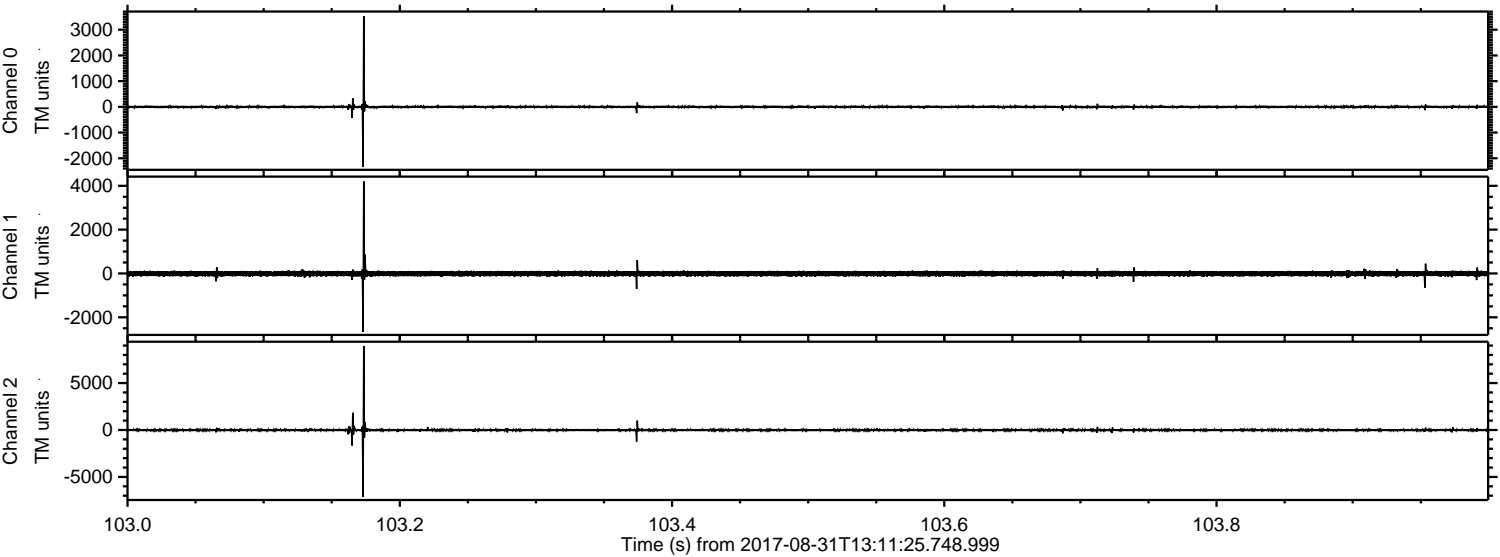


Processed Thu Aug 31 15:19:59 2017 by ELM ver.2012-10-06 from 001__elm20170831_131124__dat00.bin

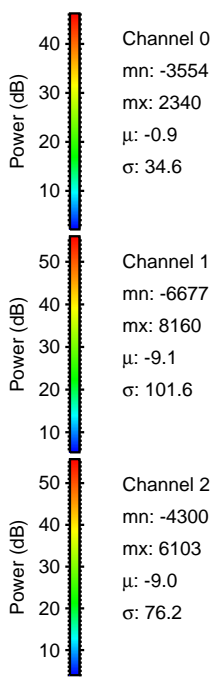
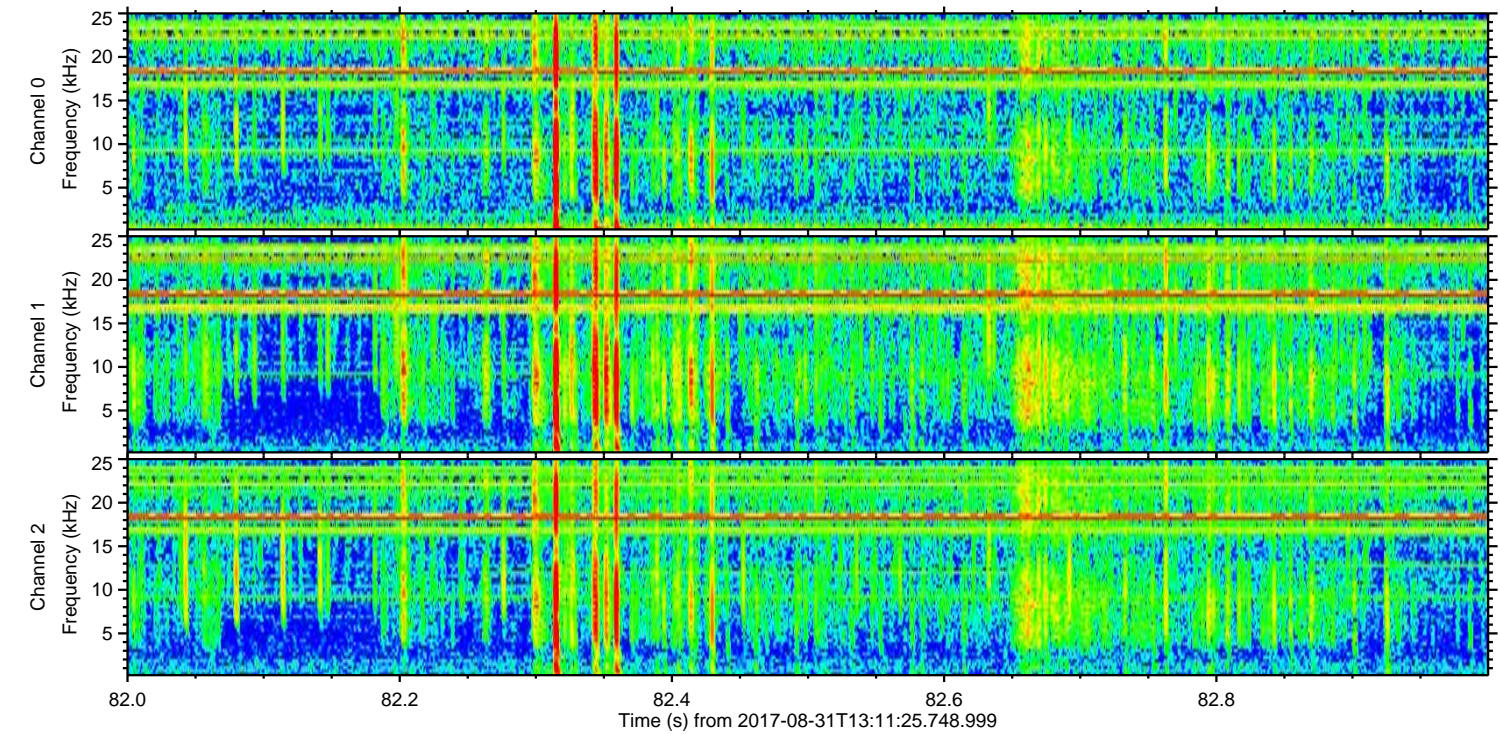
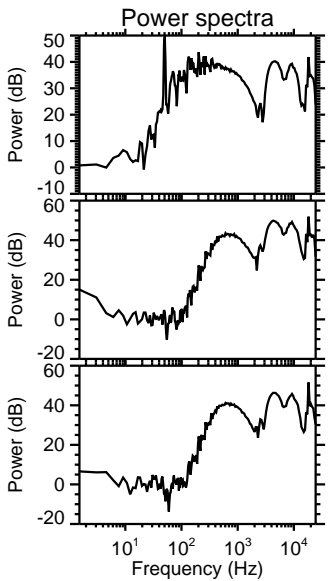
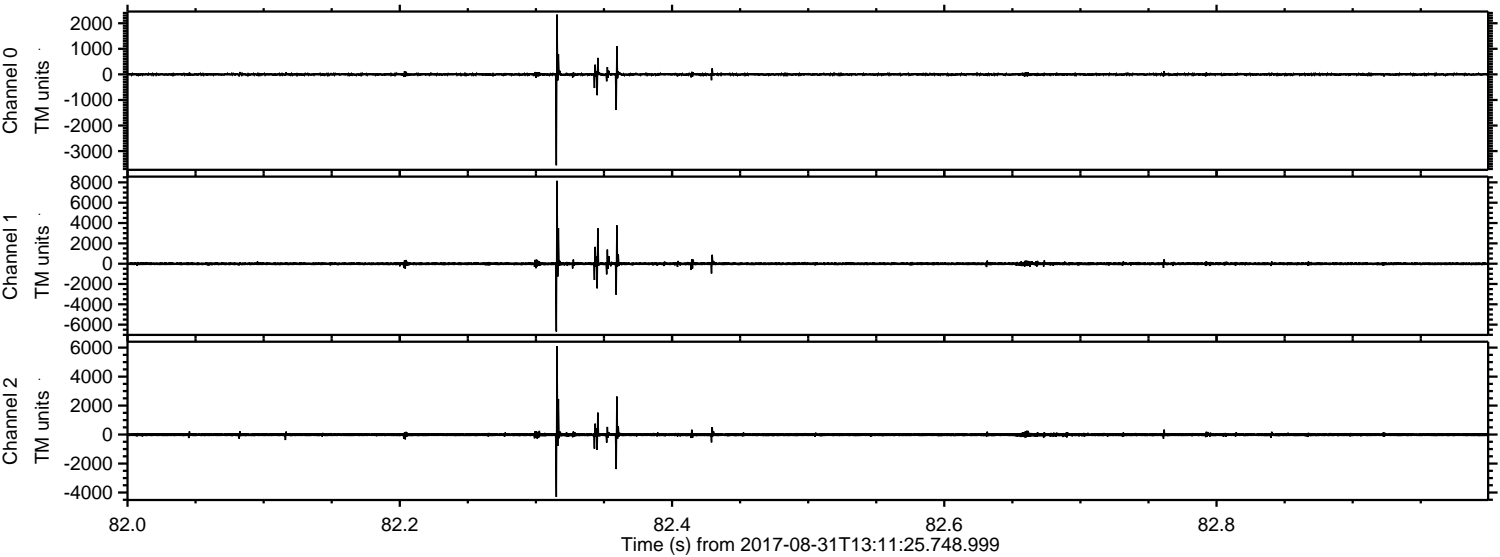


ELMAVAN 3D WAVEFORMS (Measured data sampled at 50 kHz) 51000 packets of 144 samples from 2017-08-31T13:11:25.748.999. Part 104/147

Processed Thu Aug 31 15:19:59 2017 by ELM ver.2012-10-06 from 001__elm20170831_131124__dat00.bin



Processed Thu Aug 31 15:20:00 2017 by ELM ver.2012-10-06 from 001__elm20170831_131124__dat00.bin

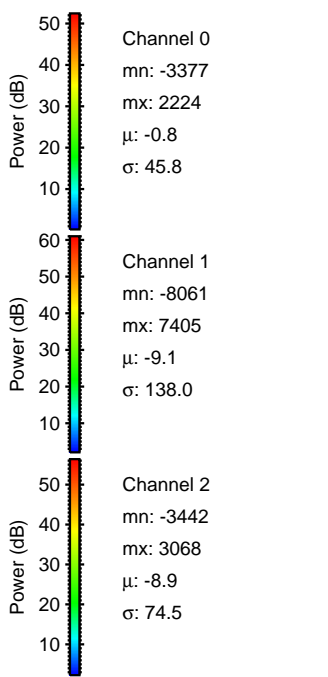
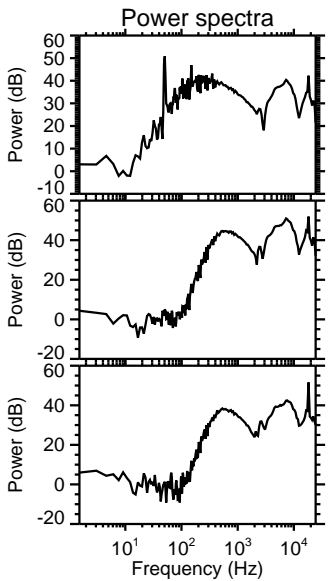
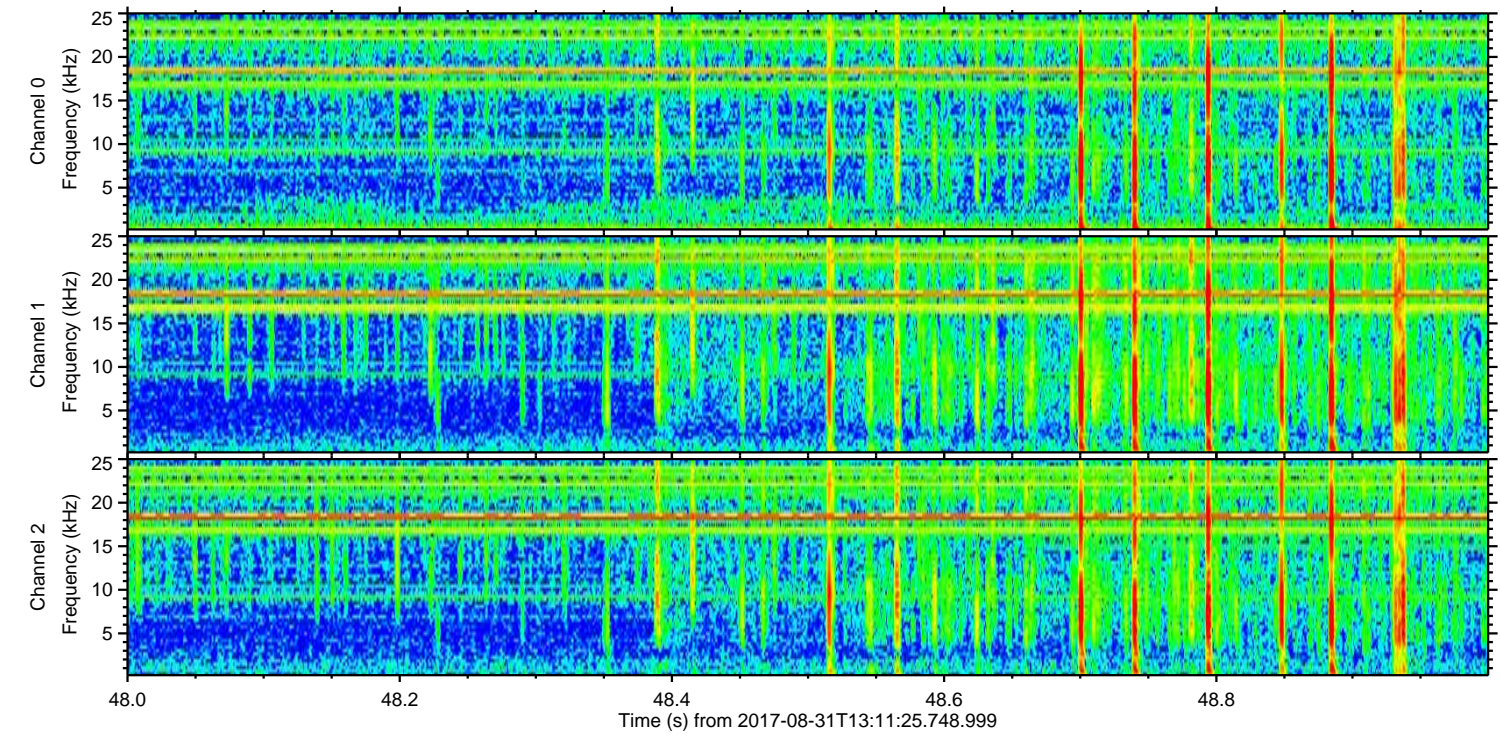
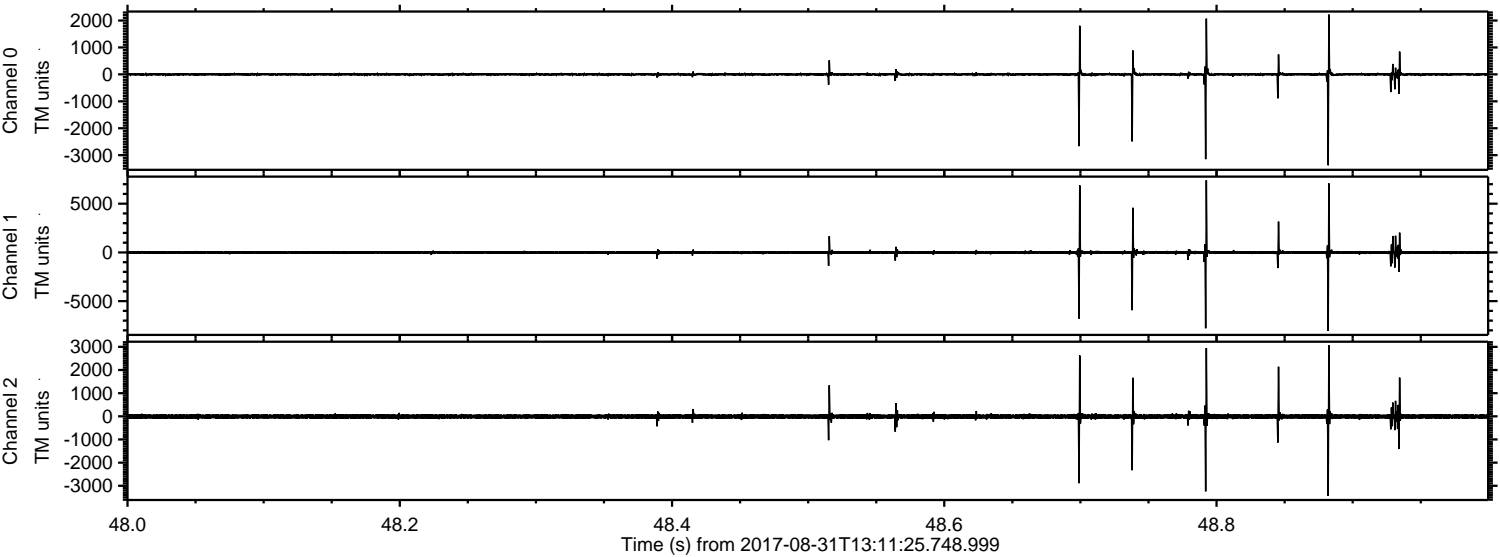


Channel 0
mn: -3554
mx: 2340
 μ : -0.9
 σ : 34.6

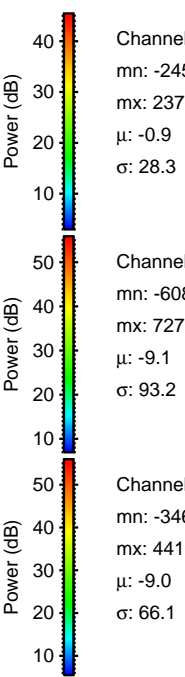
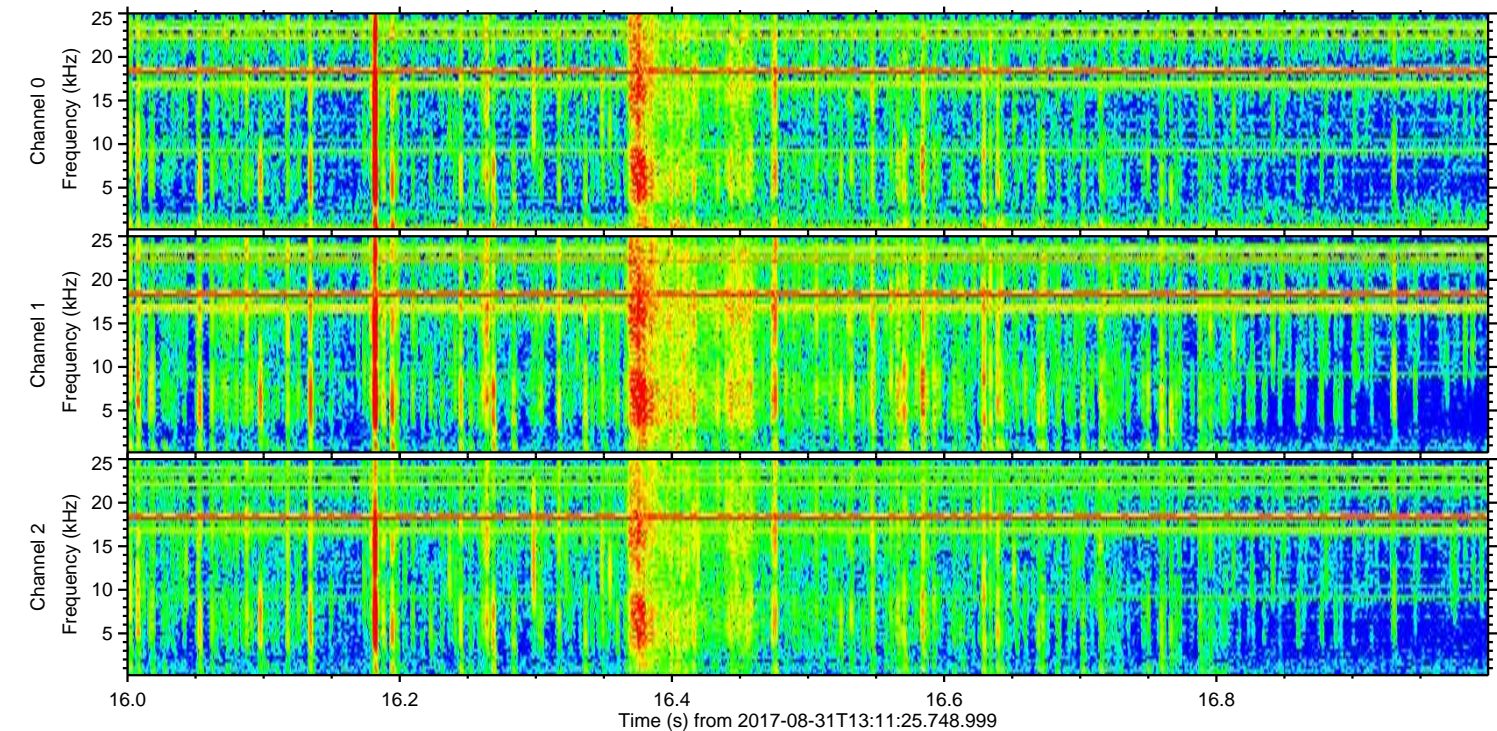
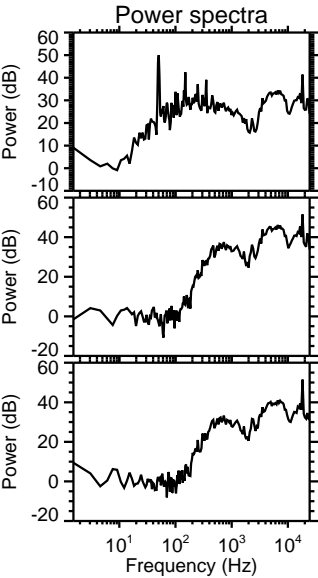
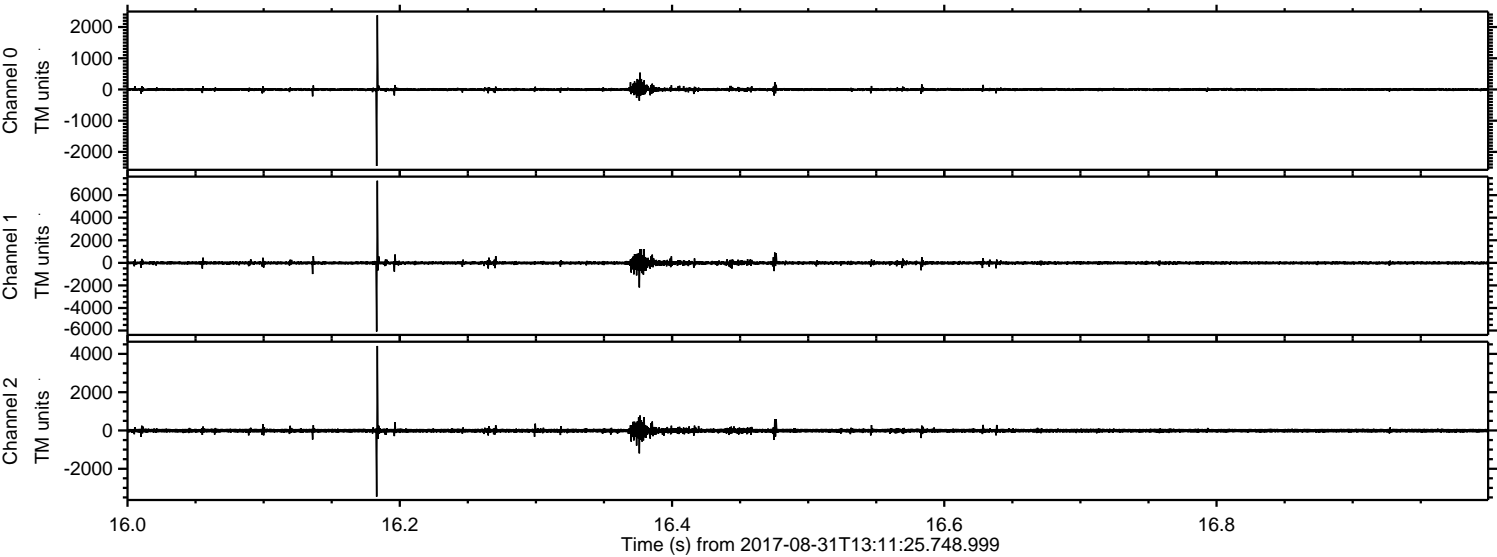
Channel 1
mn: -6677
mx: 8160
 μ : -9.1
 σ : 101.6

Channel 2
mn: -4300
mx: 6103
 μ : -9.0
 σ : 76.2

Processed Thu Aug 31 15:20:01 2017 by ELM ver.2012-10-06 from 001__elm20170831_131124__dat00.bin



Processed Thu Aug 31 15:20:01 2017 by ELM ver.2012-10-06 from 001__elm20170831_131124__dat00.bin



Channel 0
mn: -2450
mx: 2377
 μ : -0.9
 σ : 28.3

Channel 1
mn: -6082
mx: 7276
 μ : -9.1
 σ : 93.2

Channel 2
mn: -3460
mx: 4416
 μ : -9.0
 σ : 66.1

Processed Thu Aug 31 15:20:02 2017 by ELM ver.2012-10-06 from 001__elm20170831_131124__dat00.bin

