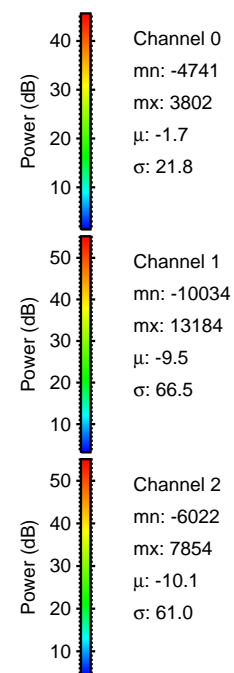
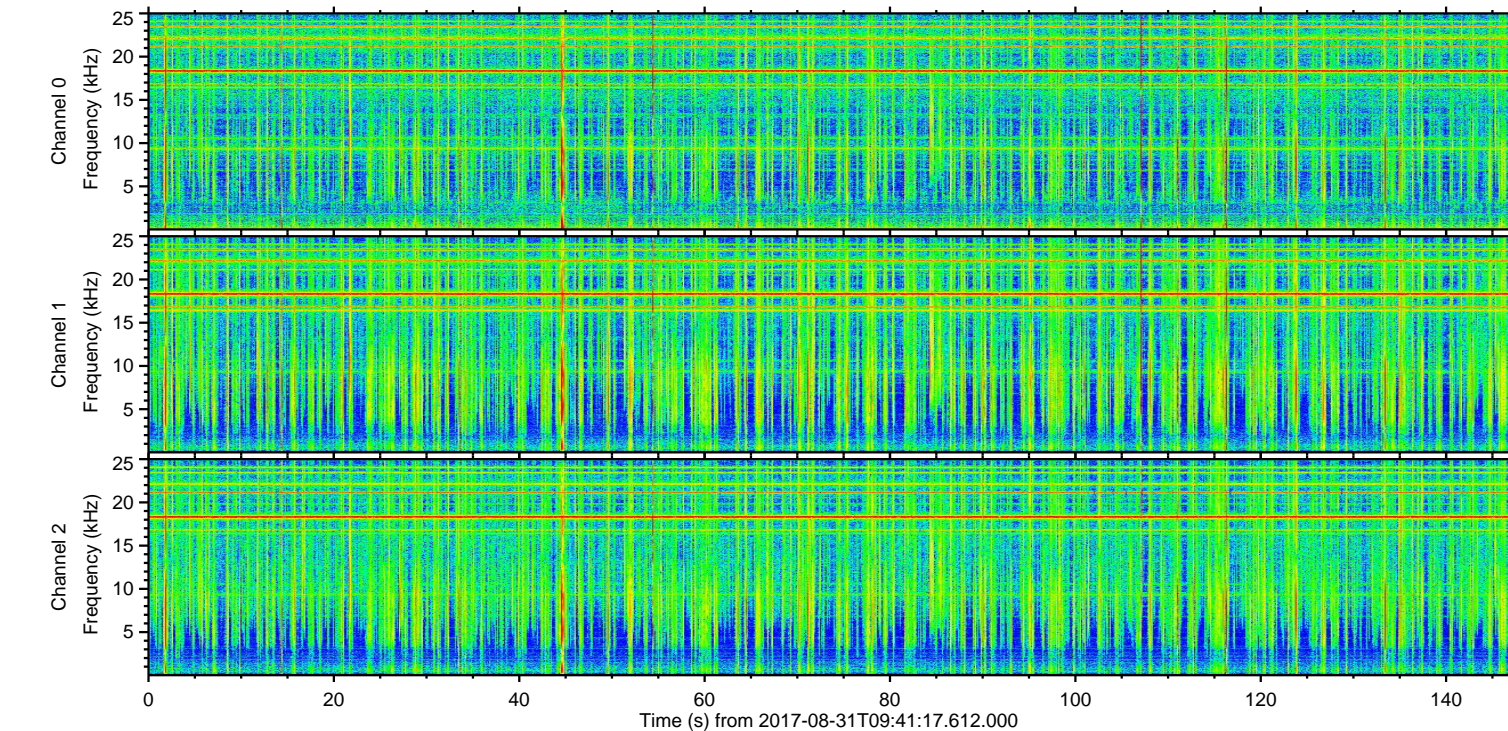
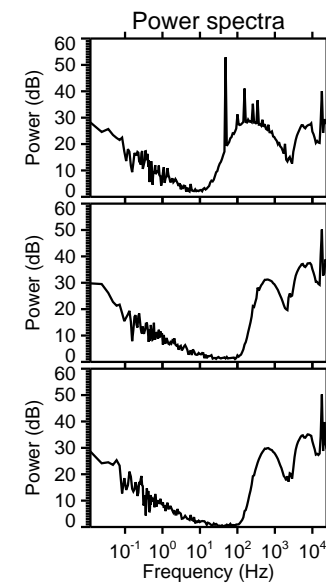
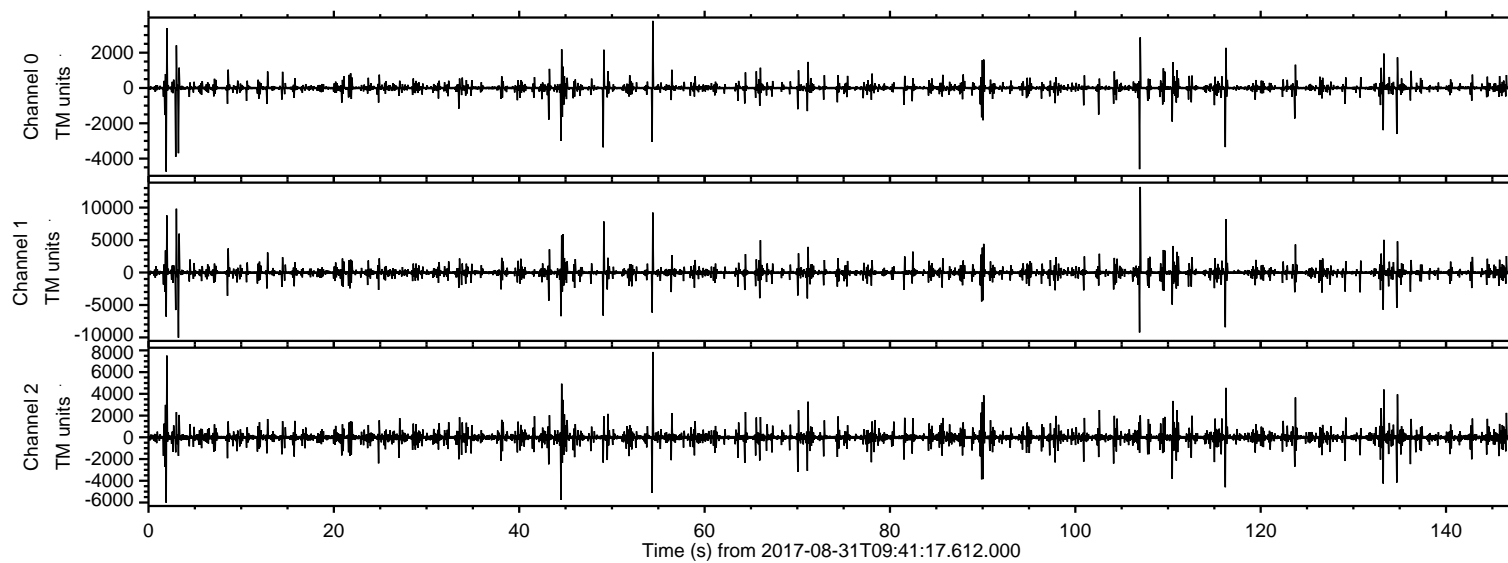


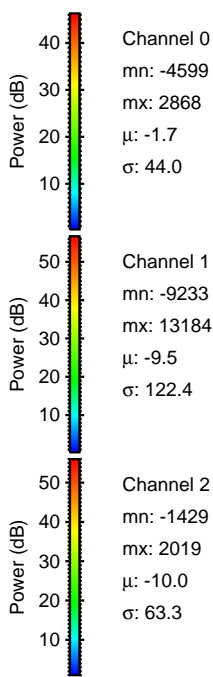
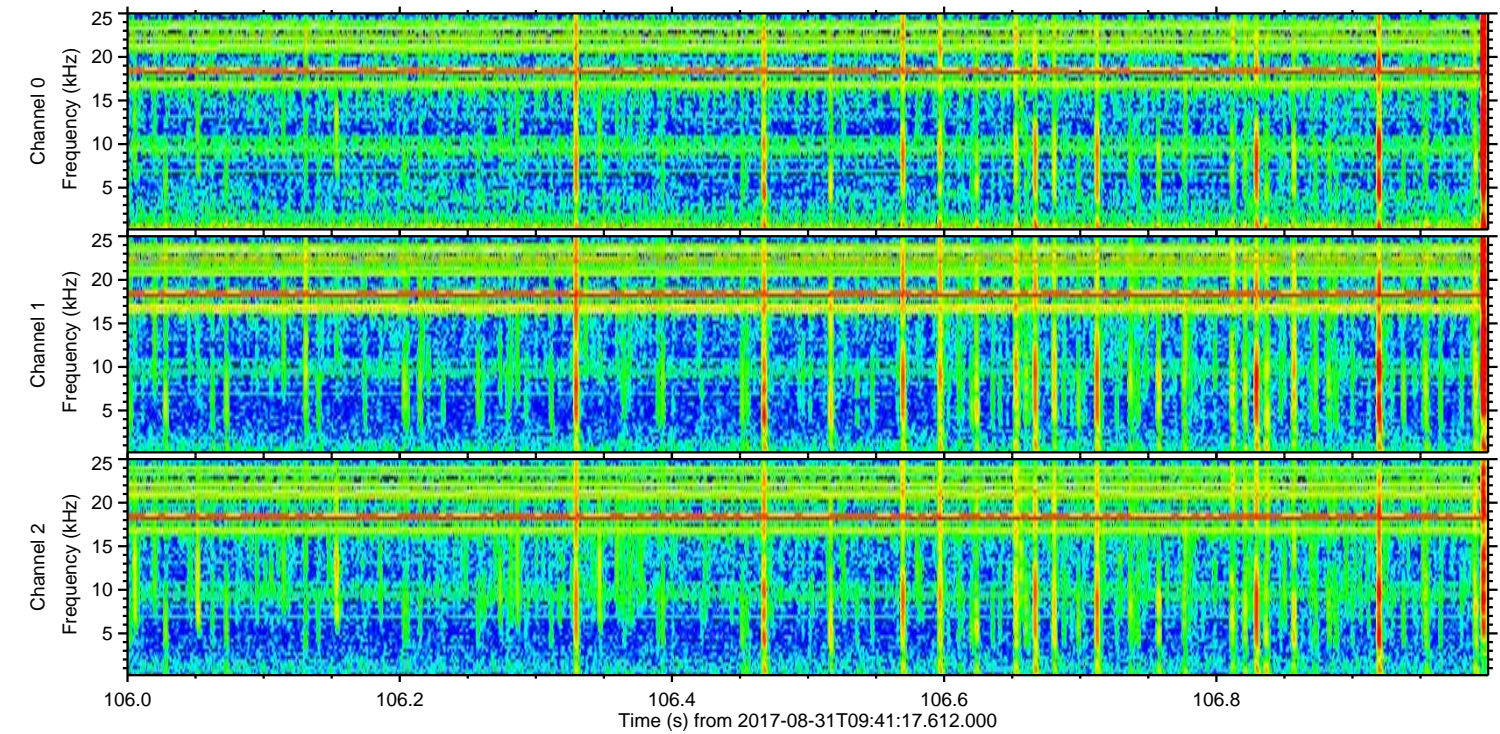
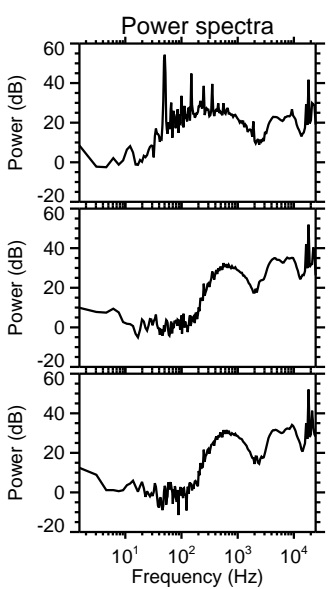
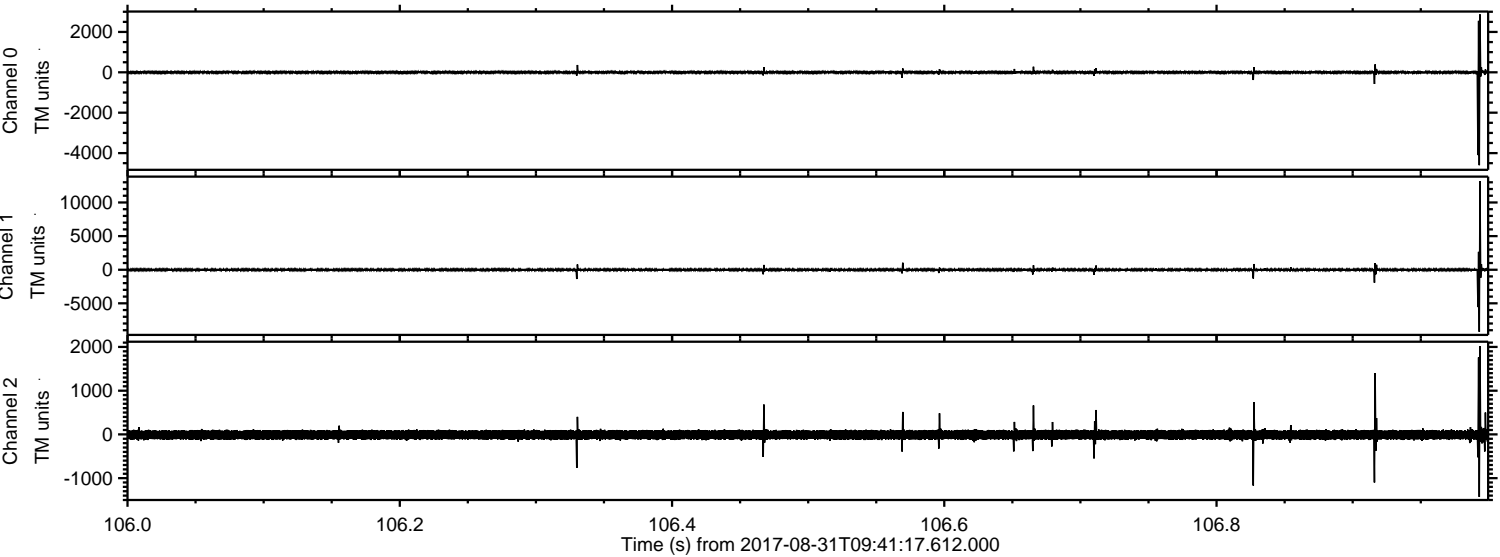
ELMAVAN 3D WAVEFORMS (Measured data sampled at 50 kHz) 51000 packets of 144 samples from 2017-08-31T09:41:17.612.000.

Processed Thu Aug 31 11:48:47 2017 by ELM ver.2012-10-06 from 001__elm20170831_094116__dat00.bin



ELMAVAN 3D WAVEFORMS (Measured data sampled at 50 kHz) 51000 packets of 144 samples from 2017-08-31T09:41:17.612.000. Part 107/147

Processed Thu Aug 31 11:48:53 2017 by ELM ver.2012-10-06 from 001__elm20170831_094116__dat00.bin

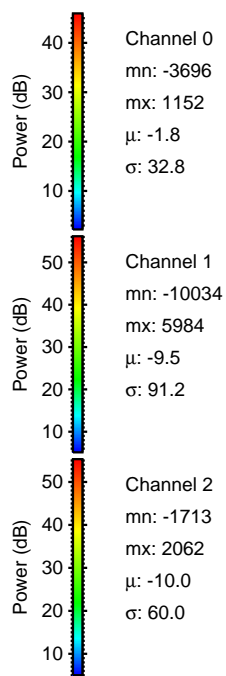
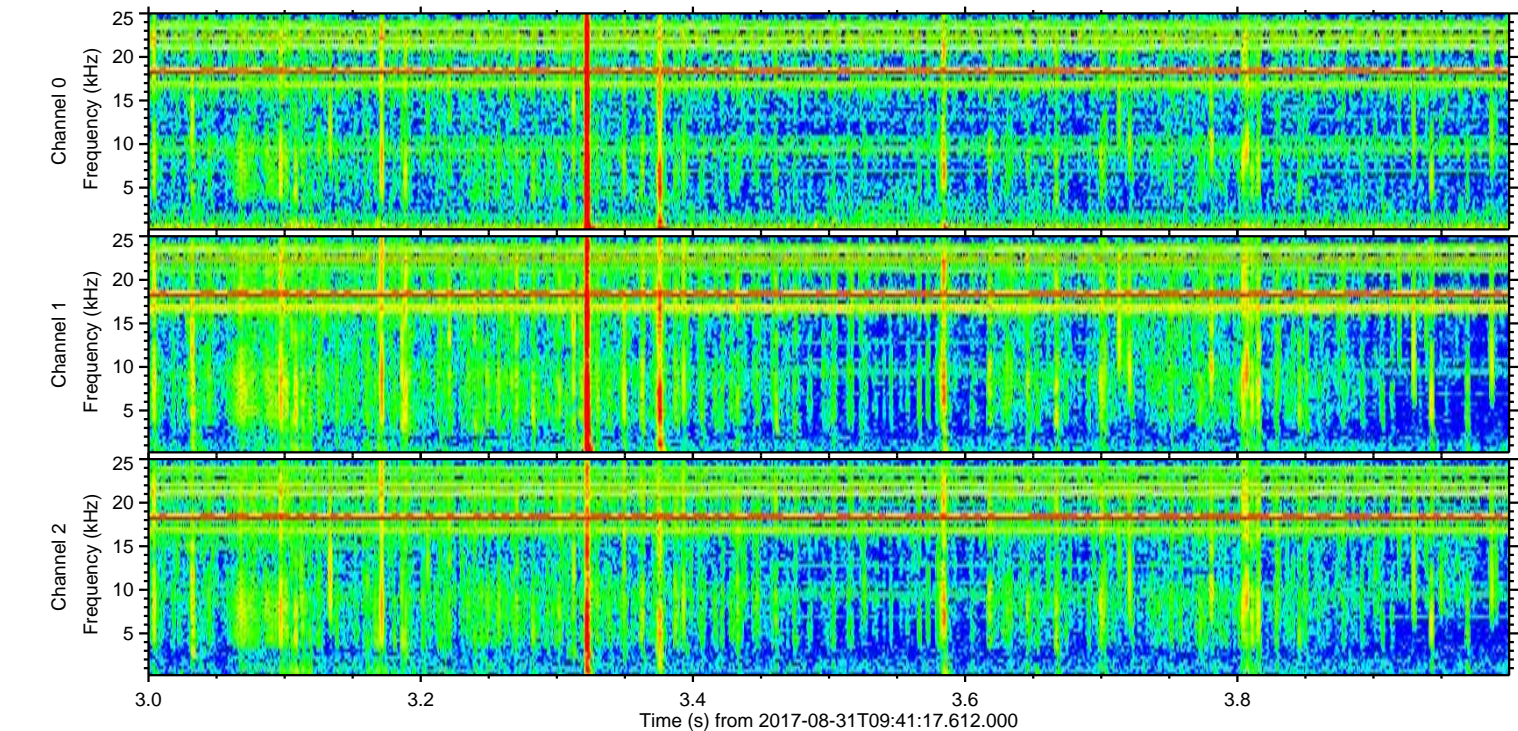
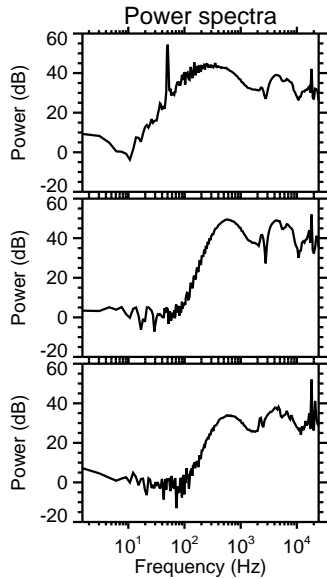
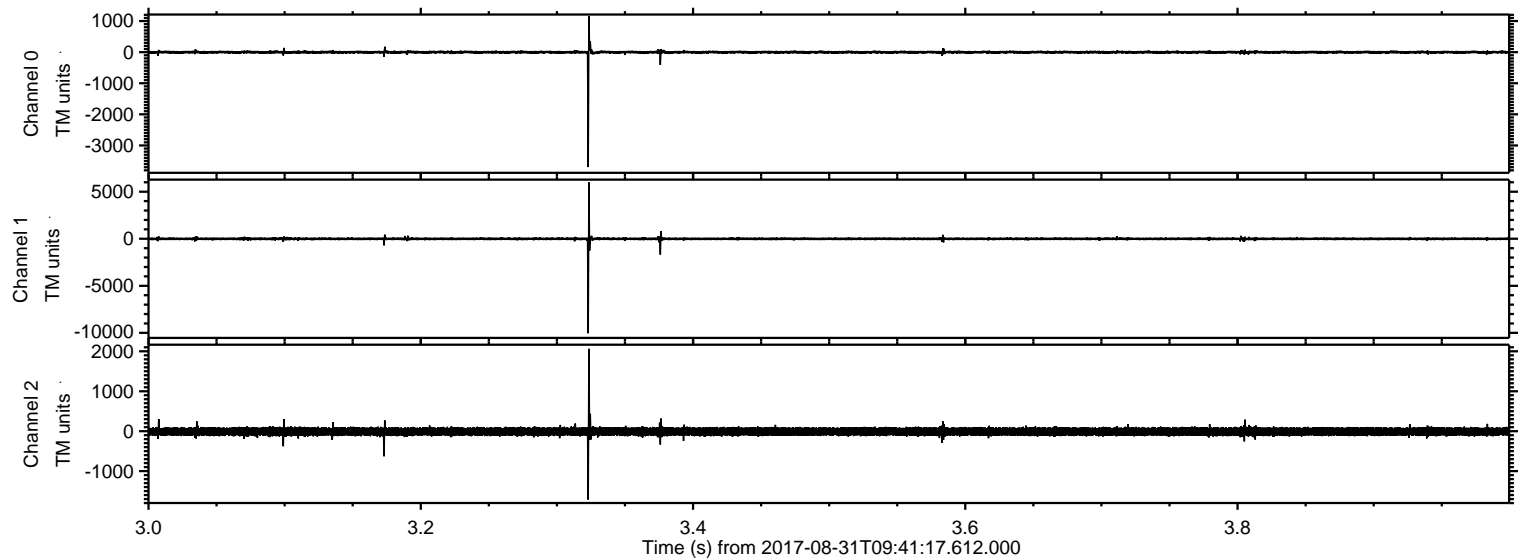


Channel 0
mn: -4599
mx: 2868
 μ : -1.7
 σ : 44.0

Channel 1
mn: -9233
mx: 13184
 μ : -9.5
 σ : 122.4

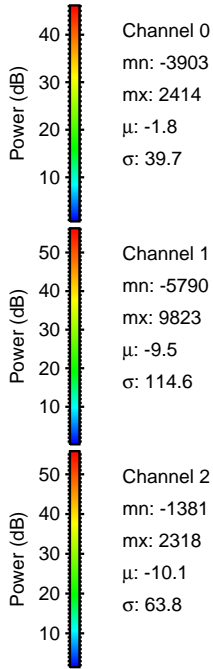
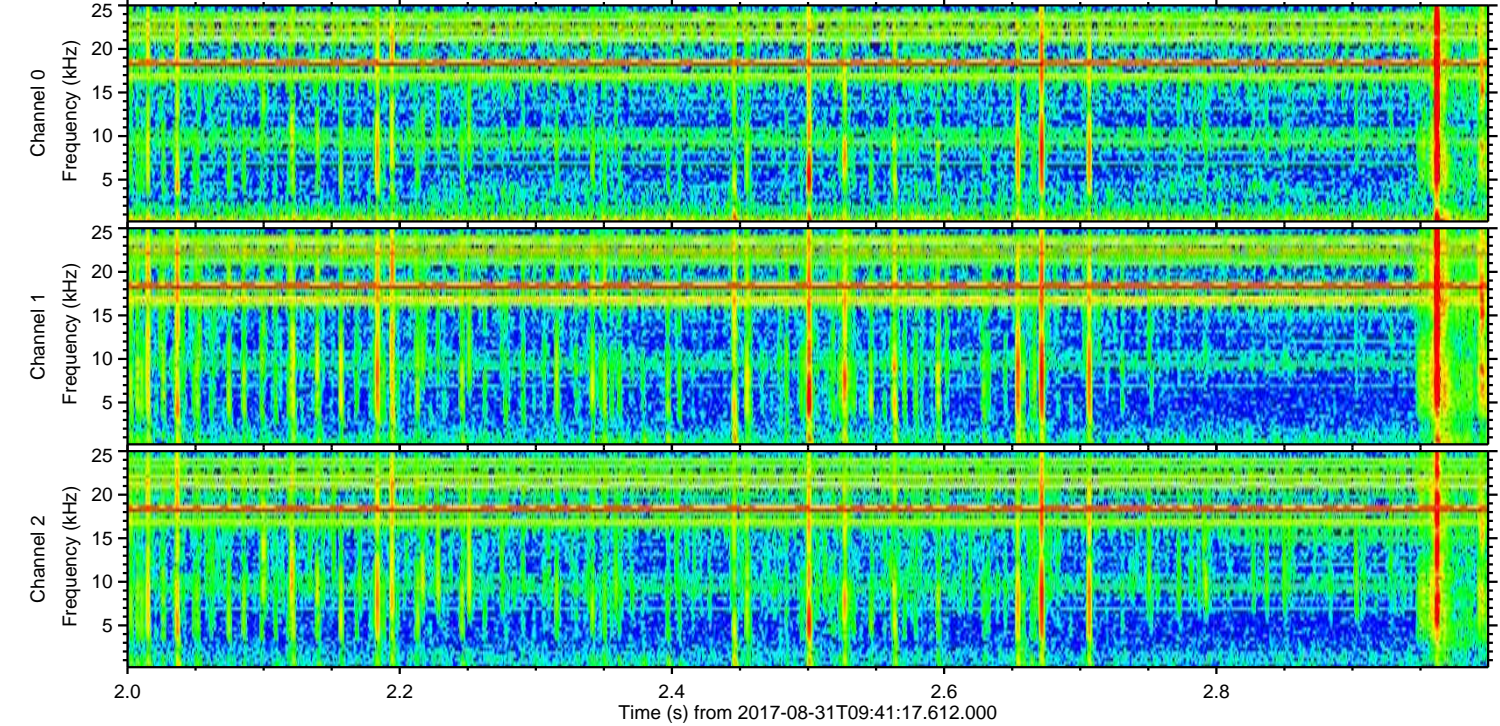
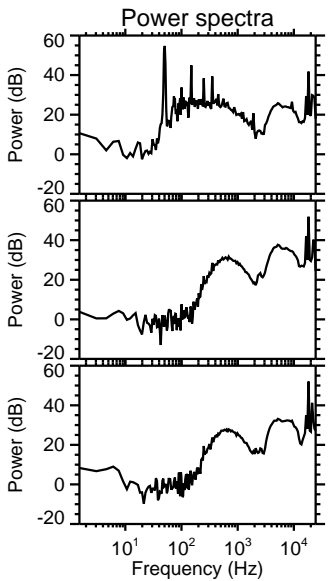
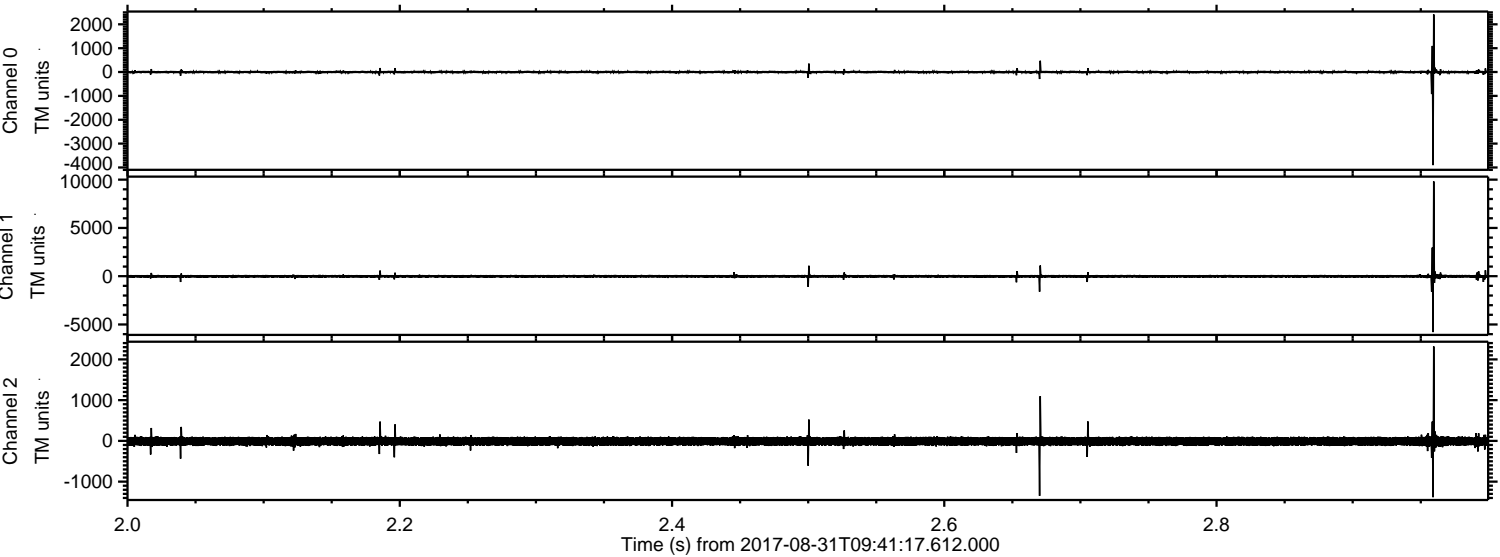
Channel 2
mn: -1429
mx: 2019
 μ : -10.0
 σ : 63.3

Processed Thu Aug 31 11:48:54 2017 by ELM ver.2012-10-06 from 001__elm20170831_094116__dat00.bin

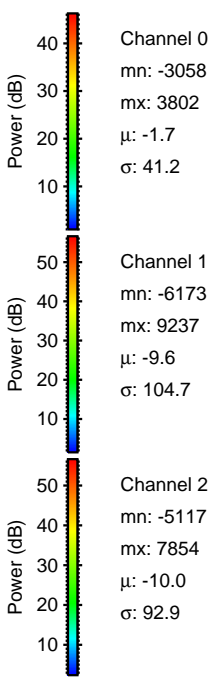
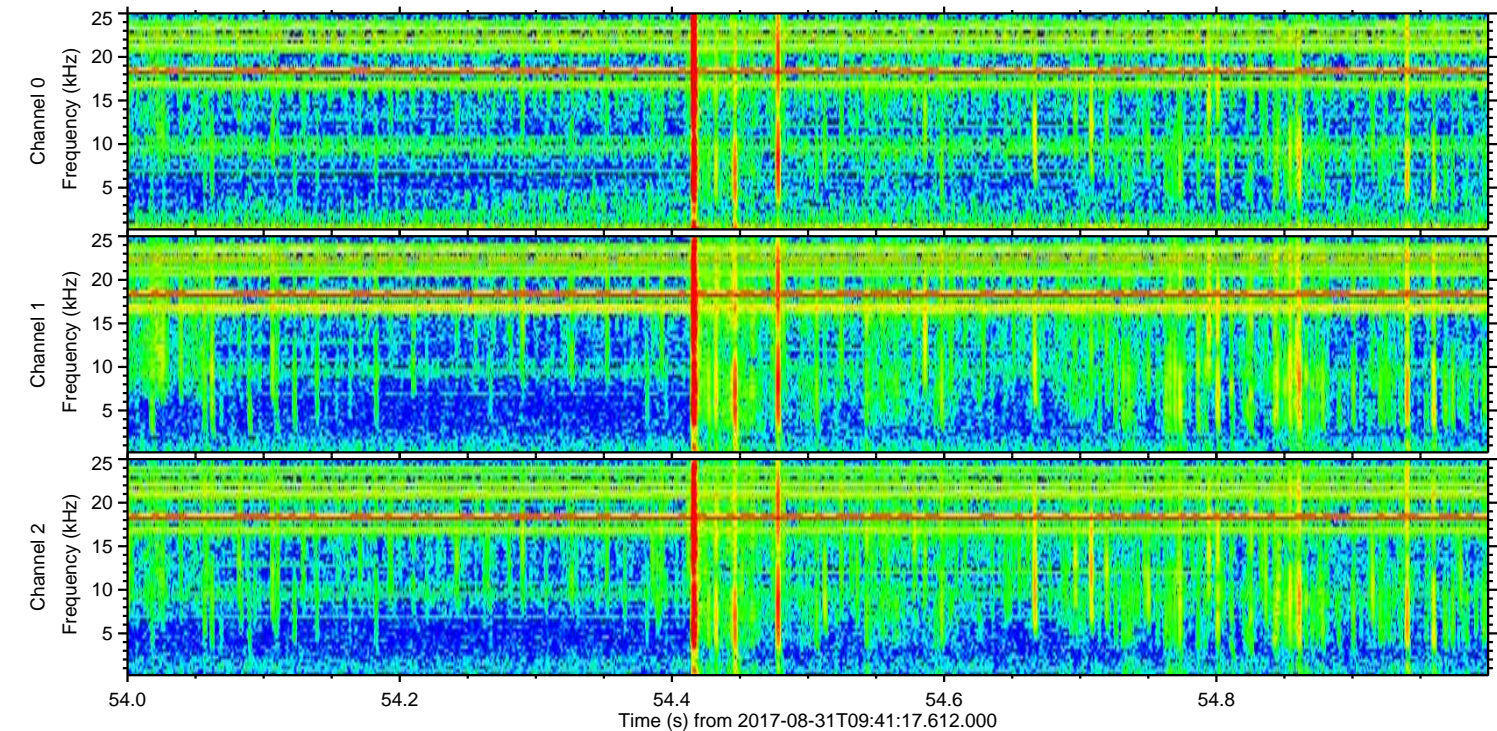
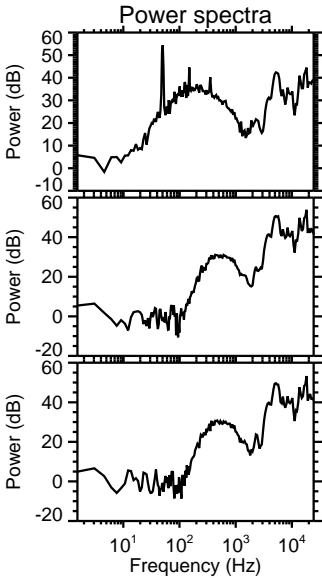
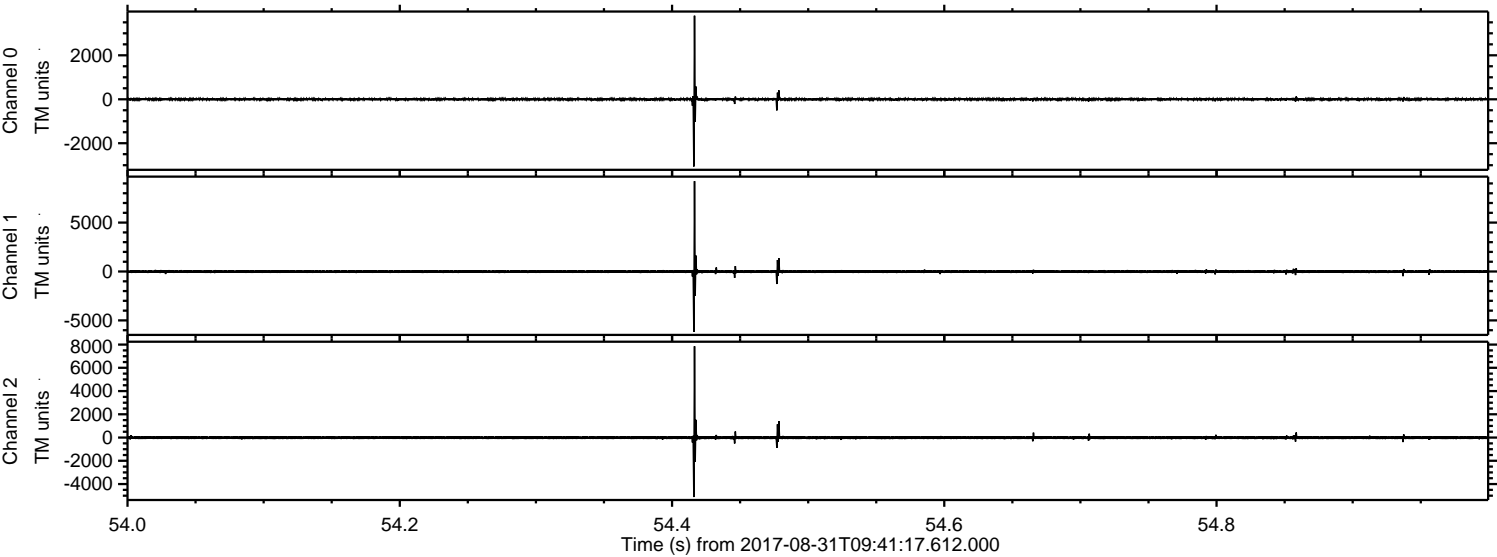


ELMAVAN 3D WAVEFORMS (Measured data sampled at 50 kHz) 51000 packets of 144 samples from 2017-08-31T09:41:17.612.000. Part 3/147

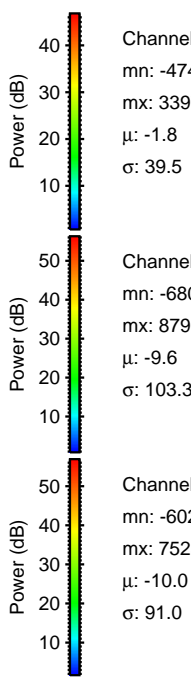
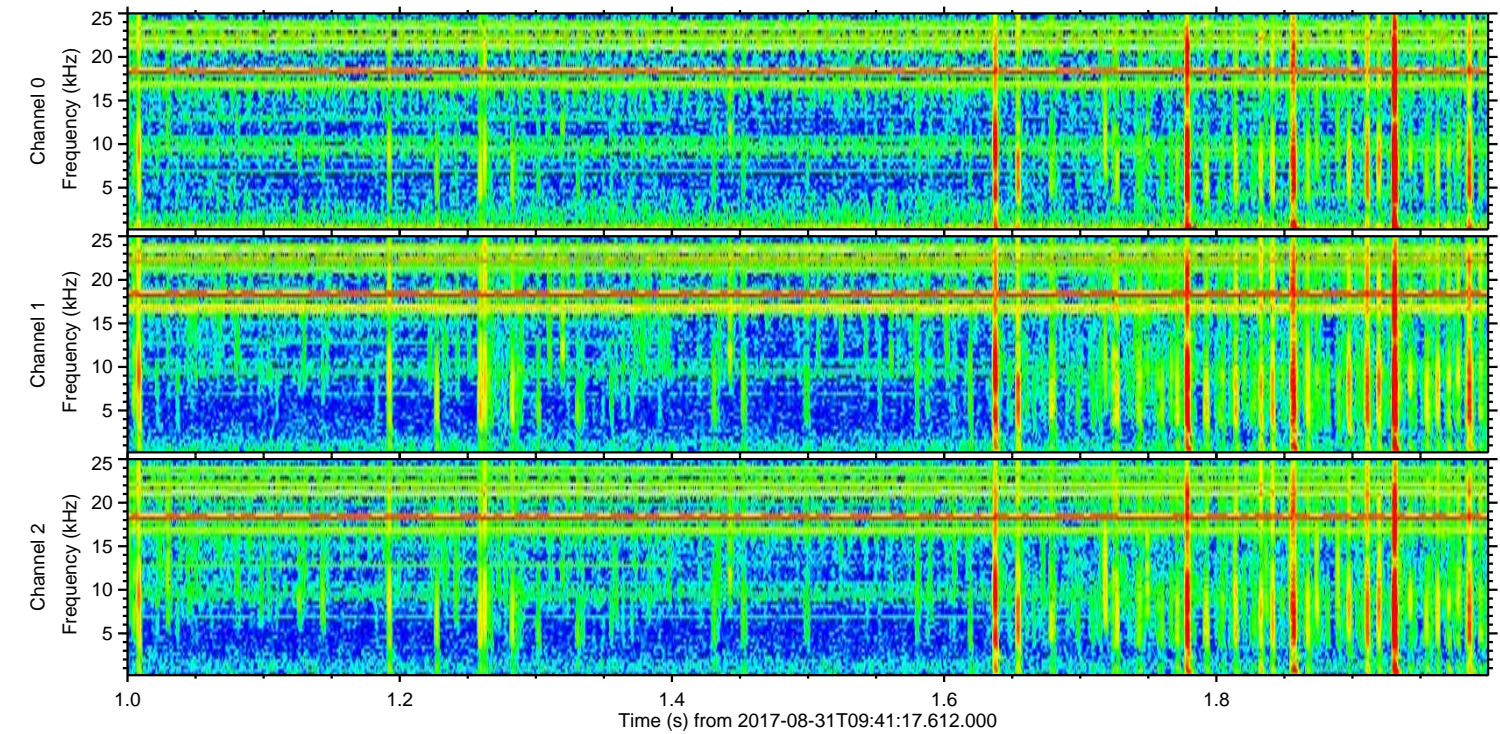
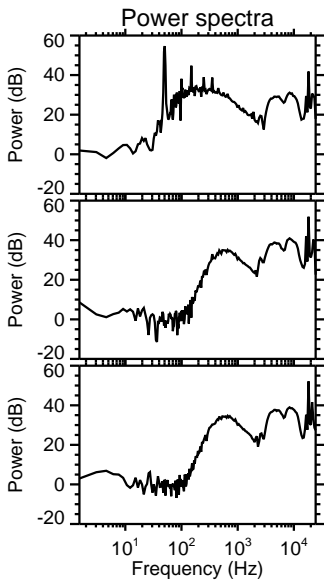
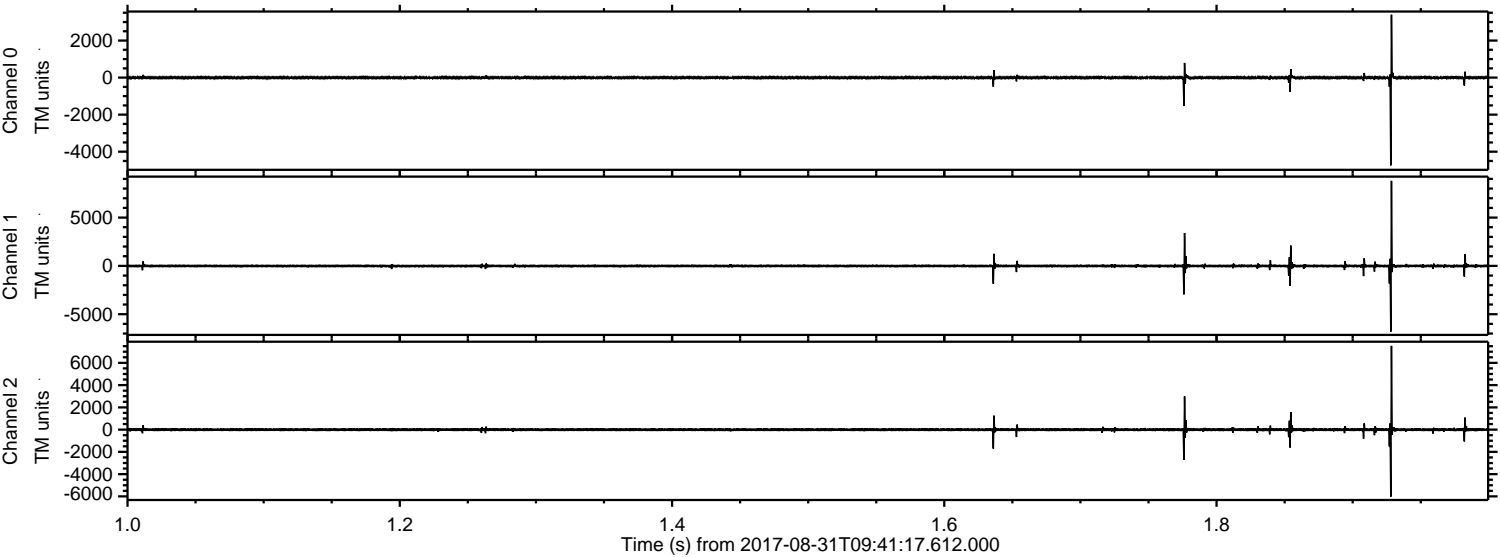
Processed Thu Aug 31 11:48:54 2017 by ELM ver.2012-10-06 from 001__elm20170831_094116__dat00.bin



Processed Thu Aug 31 11:48:55 2017 by ELM ver.2012-10-06 from 001__elm20170831_094116__dat00.bin

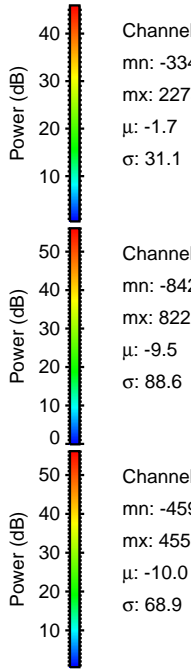
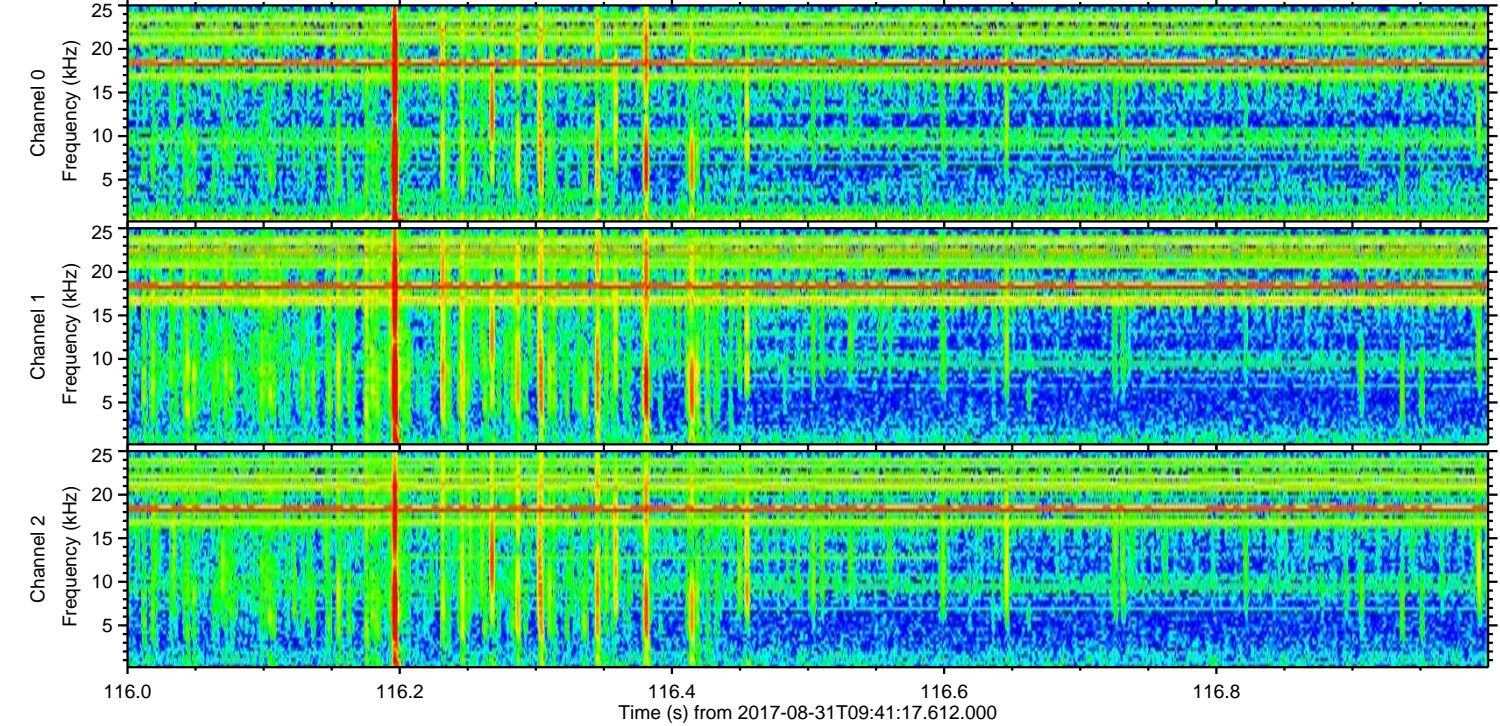
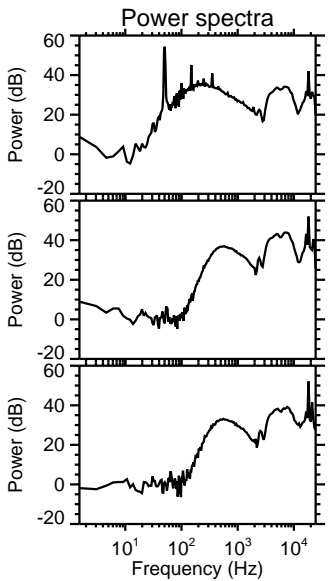
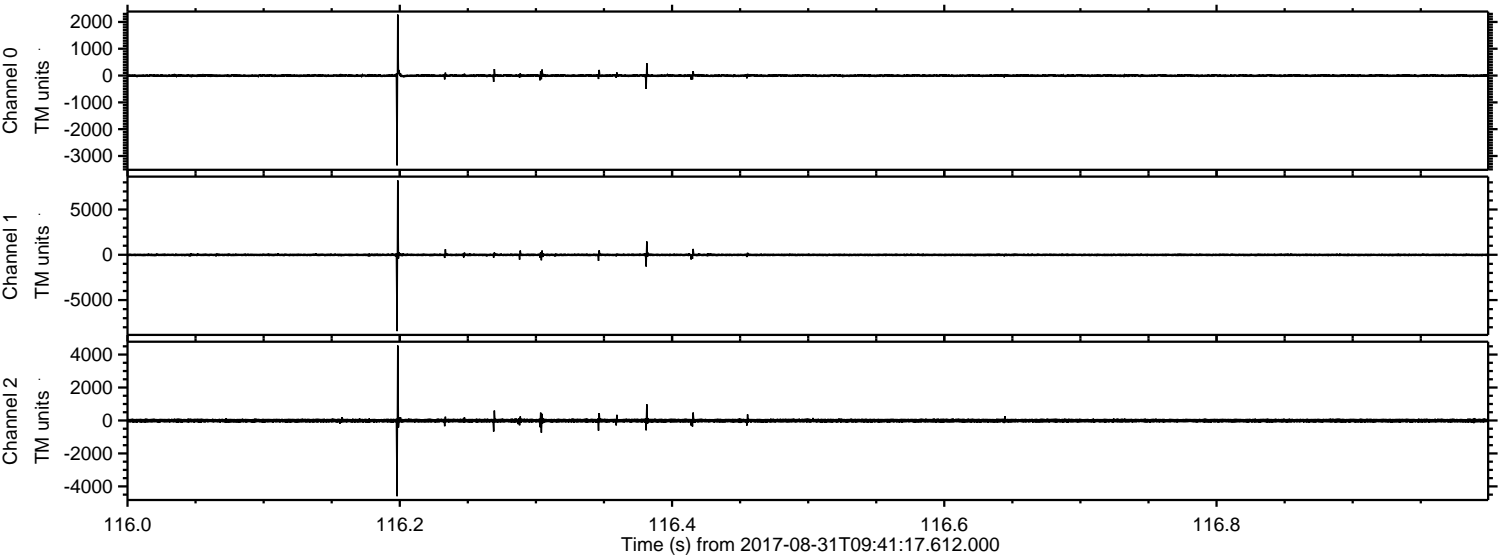


Processed Thu Aug 31 11:48:56 2017 by ELM ver.2012-10-06 from 001__elm20170831_094116__dat00.bin



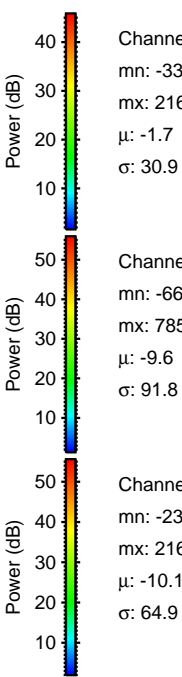
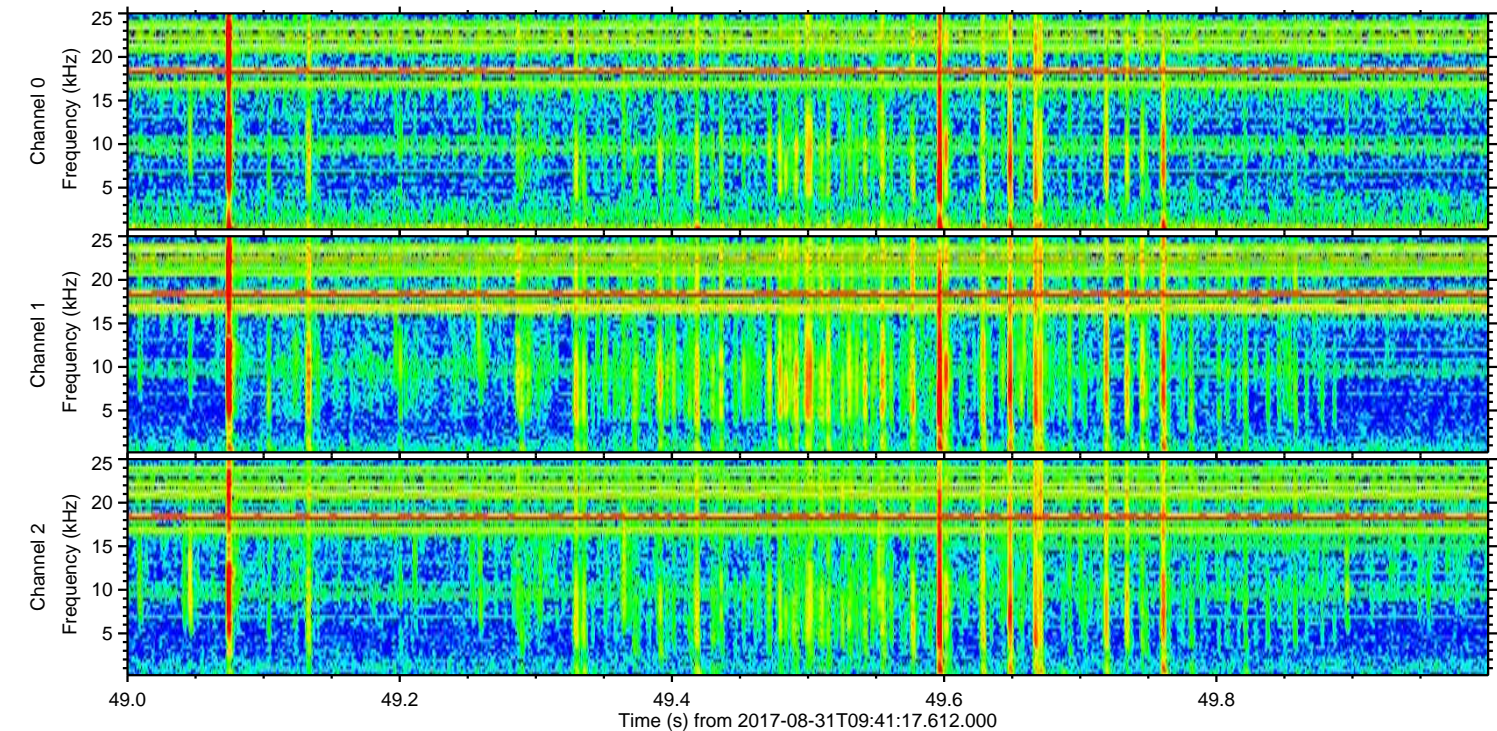
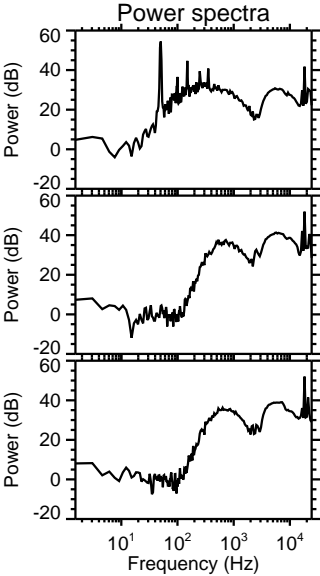
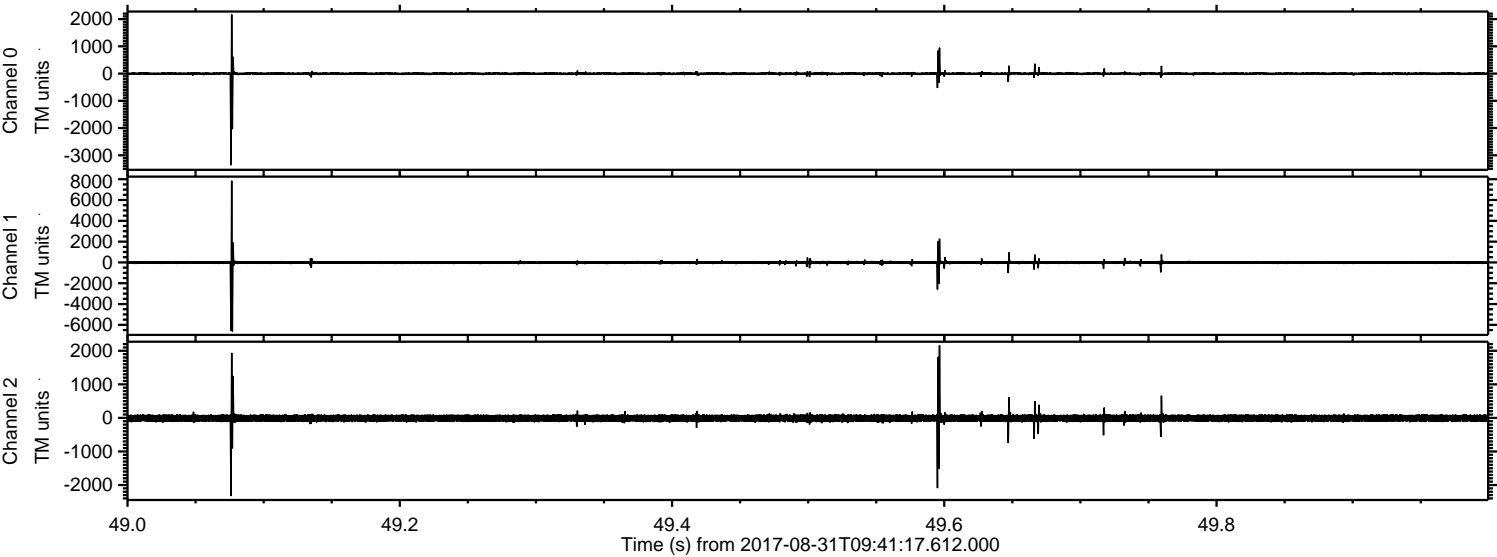
ELMAVAN 3D WAVEFORMS (Measured data sampled at 50 kHz) 51000 packets of 144 samples from 2017-08-31T09:41:17.612.000. Part 117/147

Processed Thu Aug 31 11:48:56 2017 by ELM ver.2012-10-06 from 001__elm20170831_094116__dat00.bin



ELMAVAN 3D WAVEFORMS (Measured data sampled at 50 kHz) 51000 packets of 144 samples from 2017-08-31T09:41:17.612.000. Part 50/147

Processed Thu Aug 31 11:48:57 2017 by ELM ver.2012-10-06 from 001__elm20170831_094116__dat00.bin

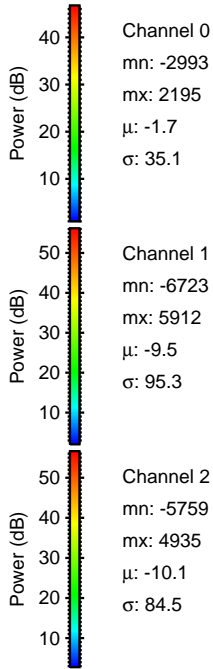
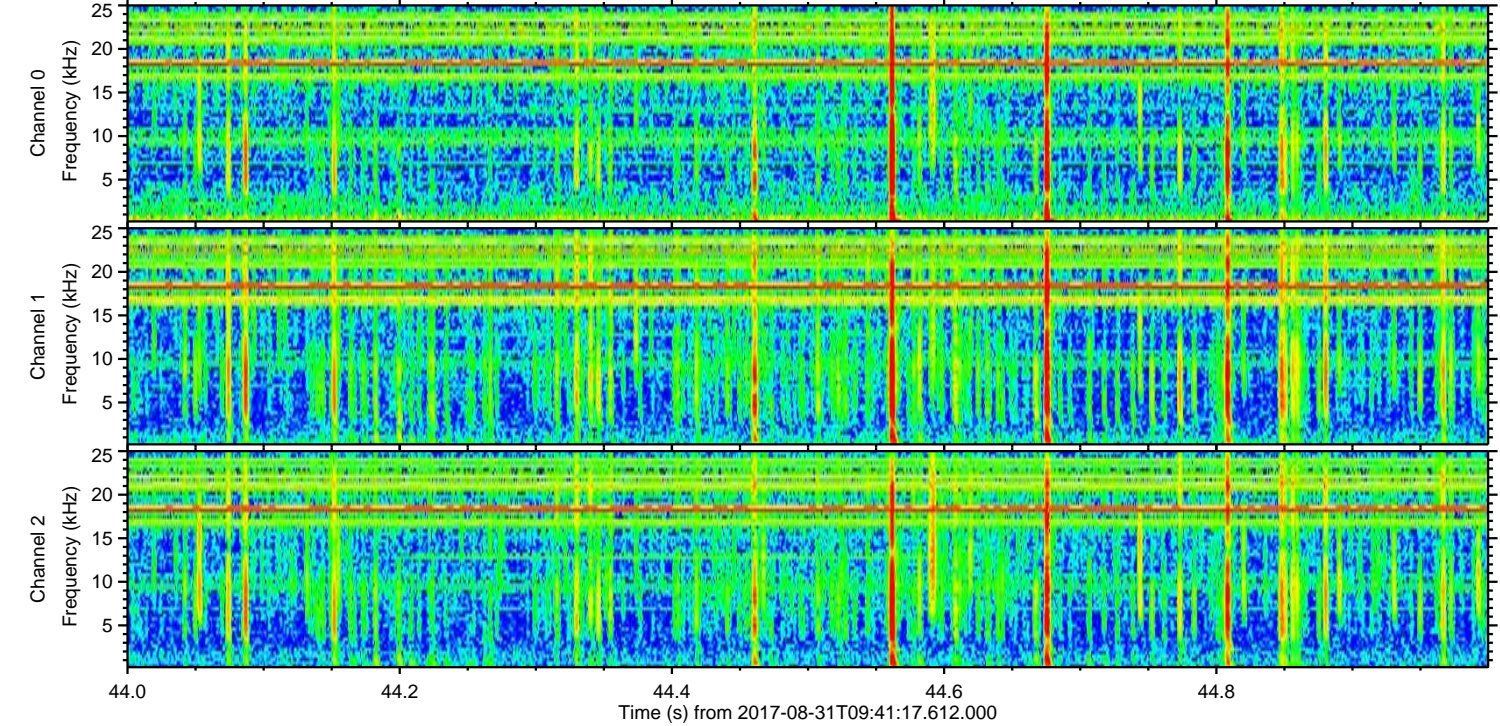
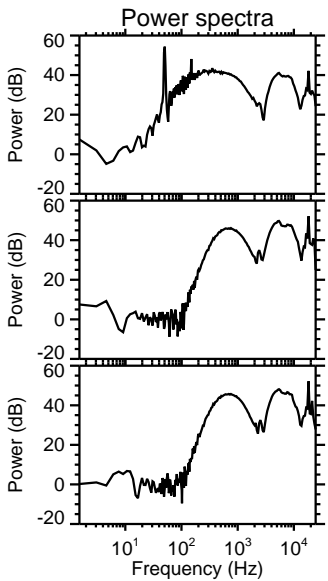
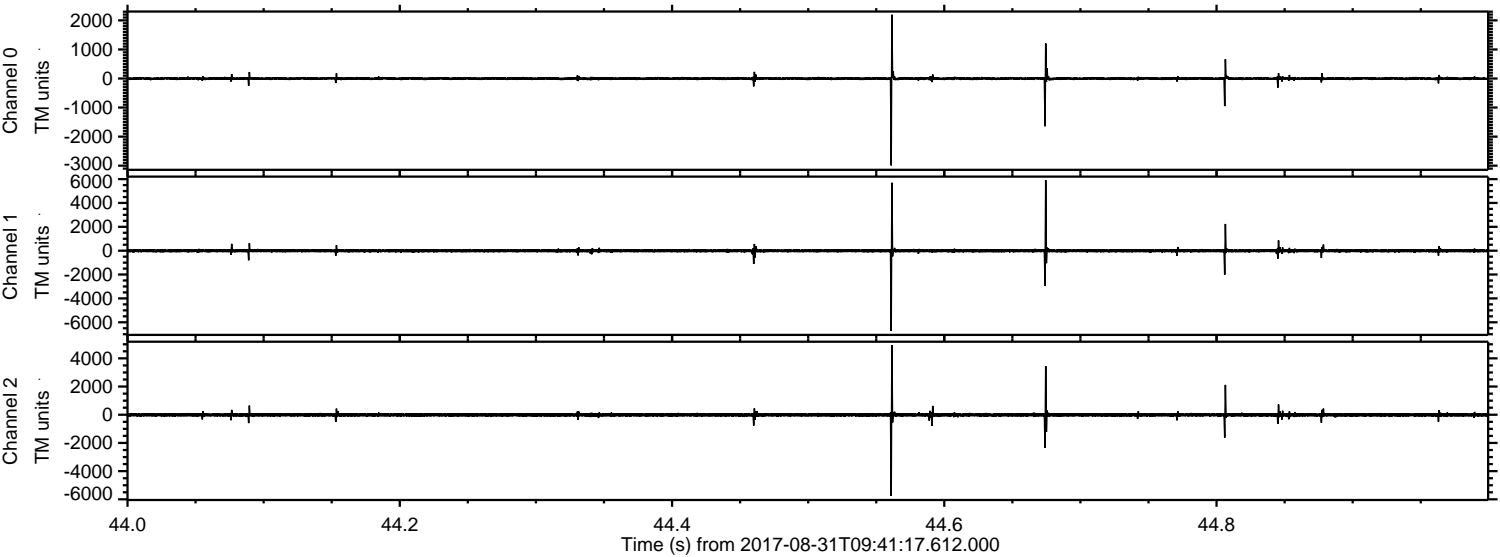


Channel 0
mn: -3365
mx: 2169
 μ : -1.7
 σ : 30.9

Channel 1
mn: -6636
mx: 7855
 μ : -9.6
 σ : 91.8

Channel 2
mn: -2330
mx: 2162
 μ : -10.1
 σ : 64.9

Processed Thu Aug 31 11:48:58 2017 by ELM ver.2012-10-06 from 001__elm20170831_094116__dat00.bin



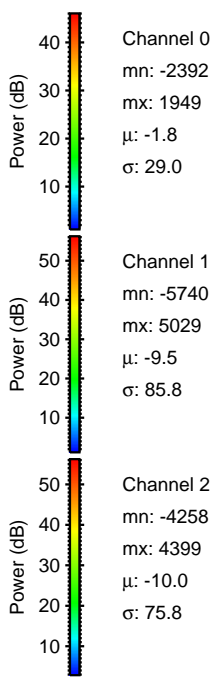
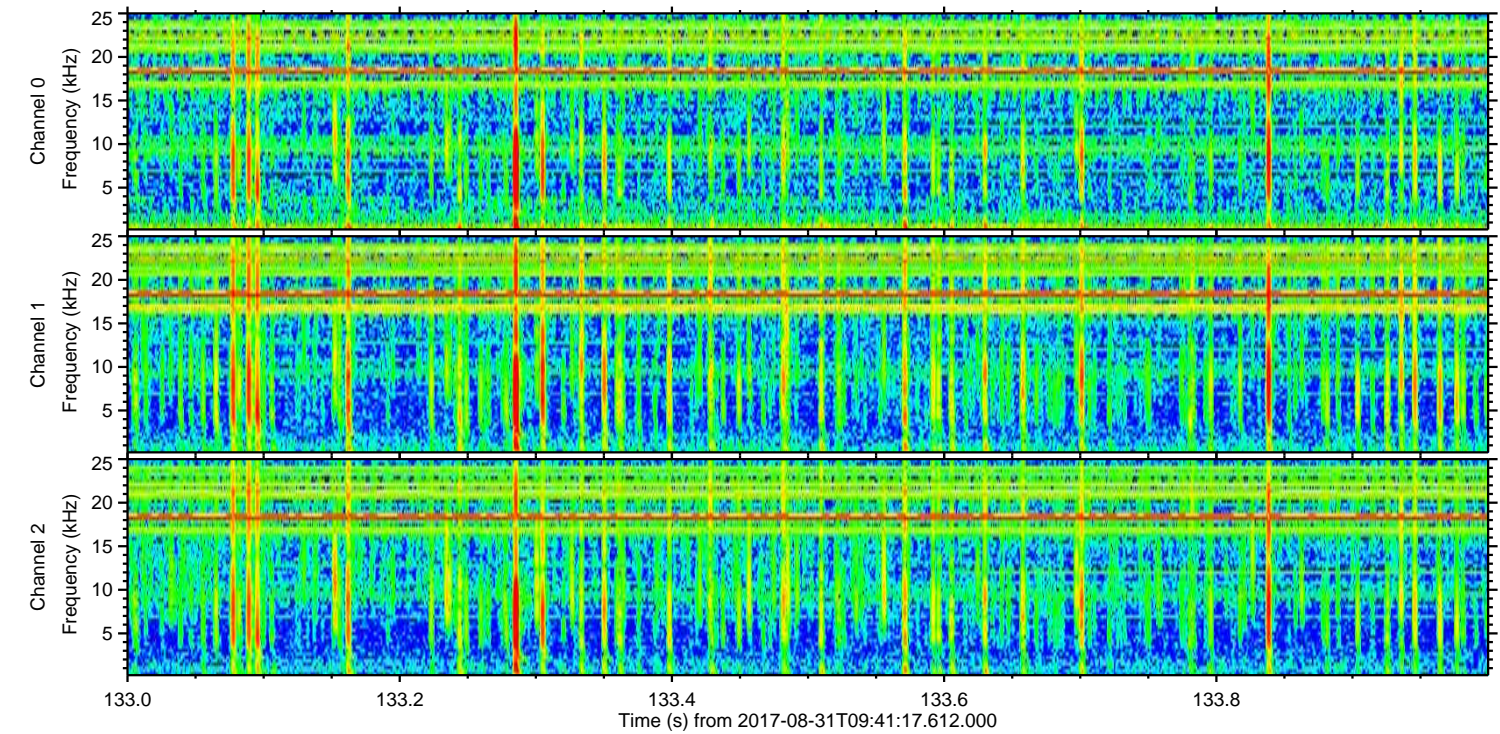
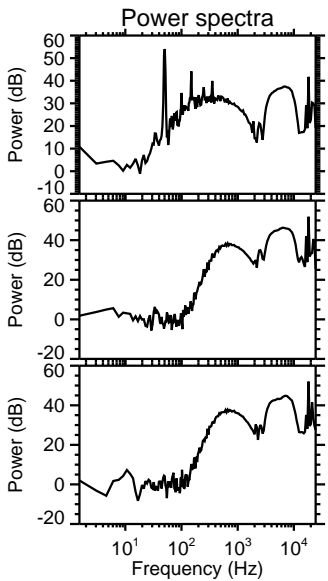
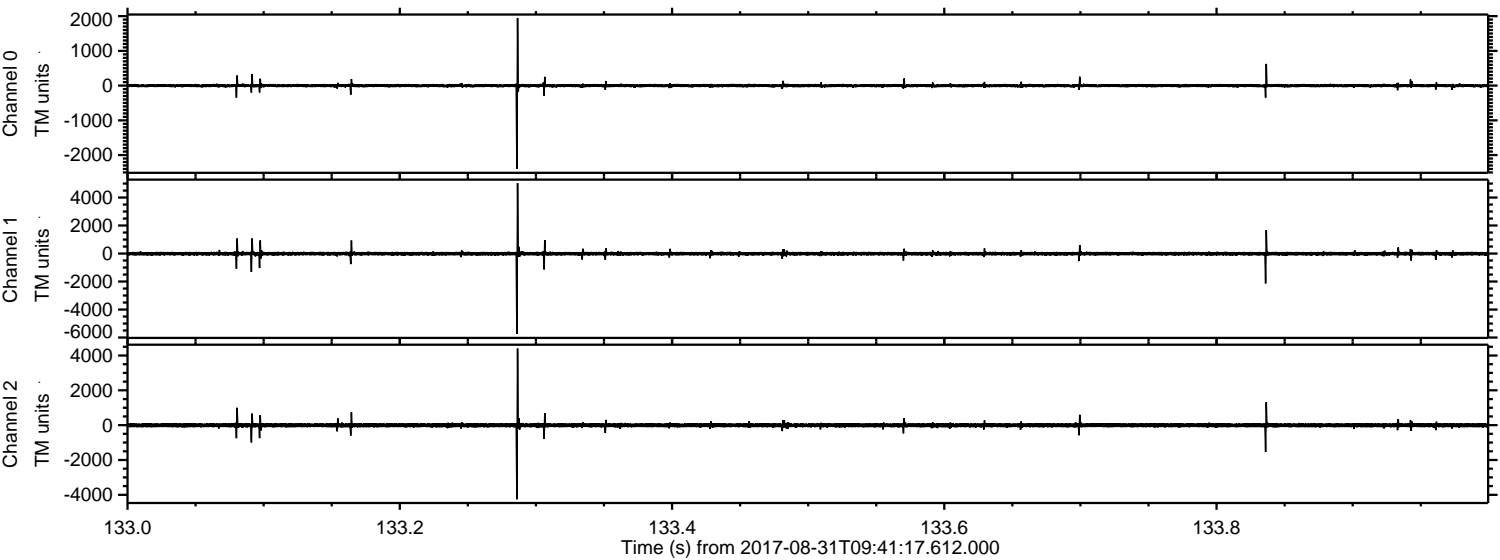
Channel 0
mn: -2993
mx: 2195
 μ : -1.7
 σ : 35.1

Channel 1
mn: -6723
mx: 5912
 μ : -9.5
 σ : 95.3

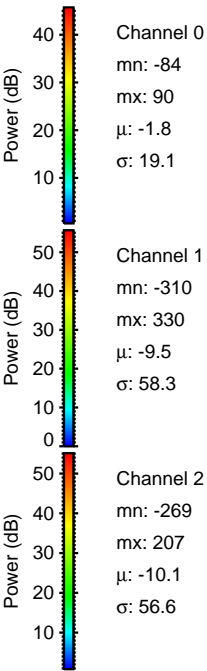
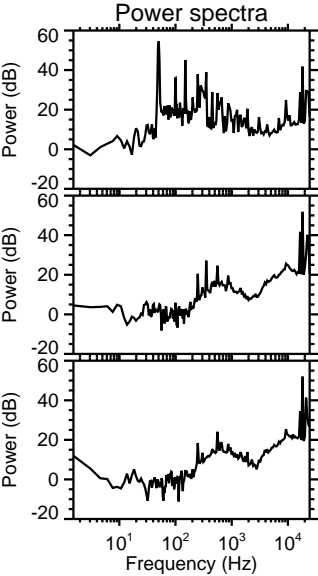
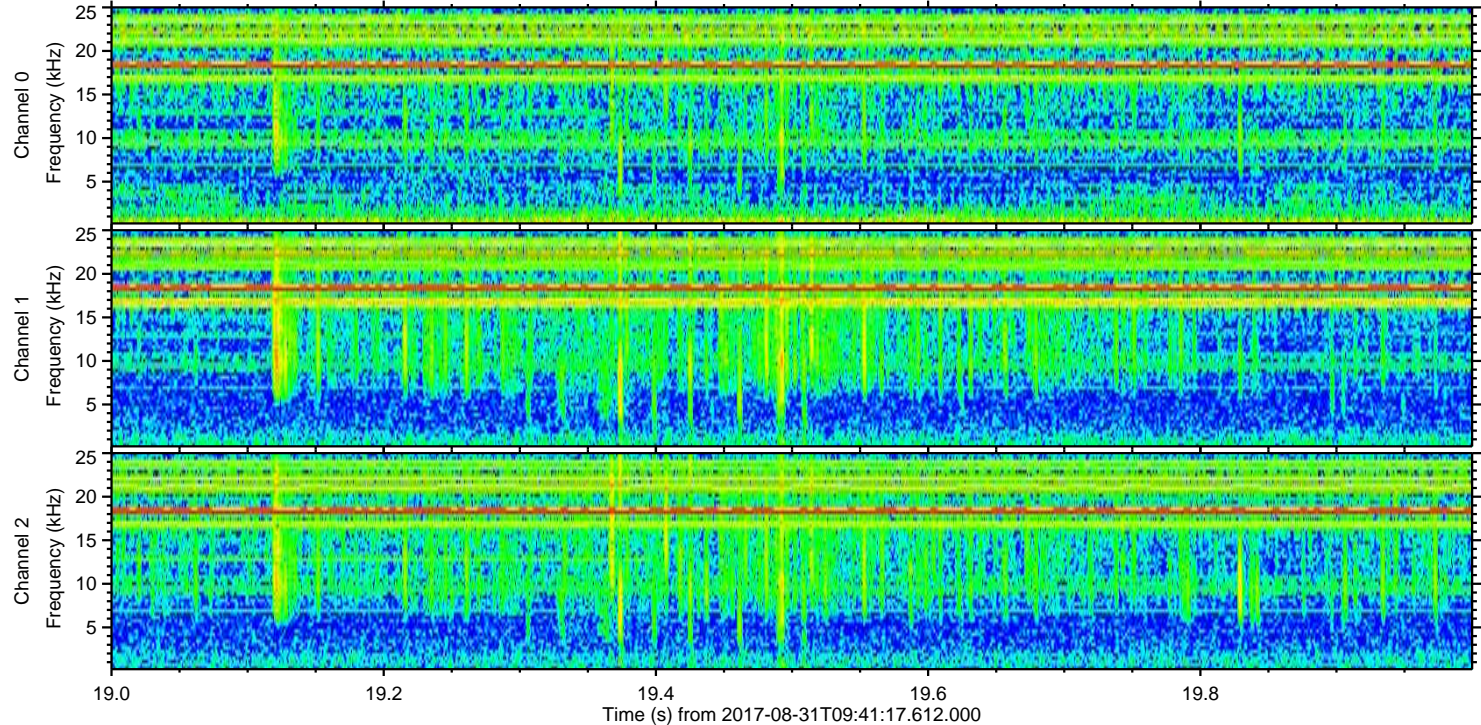
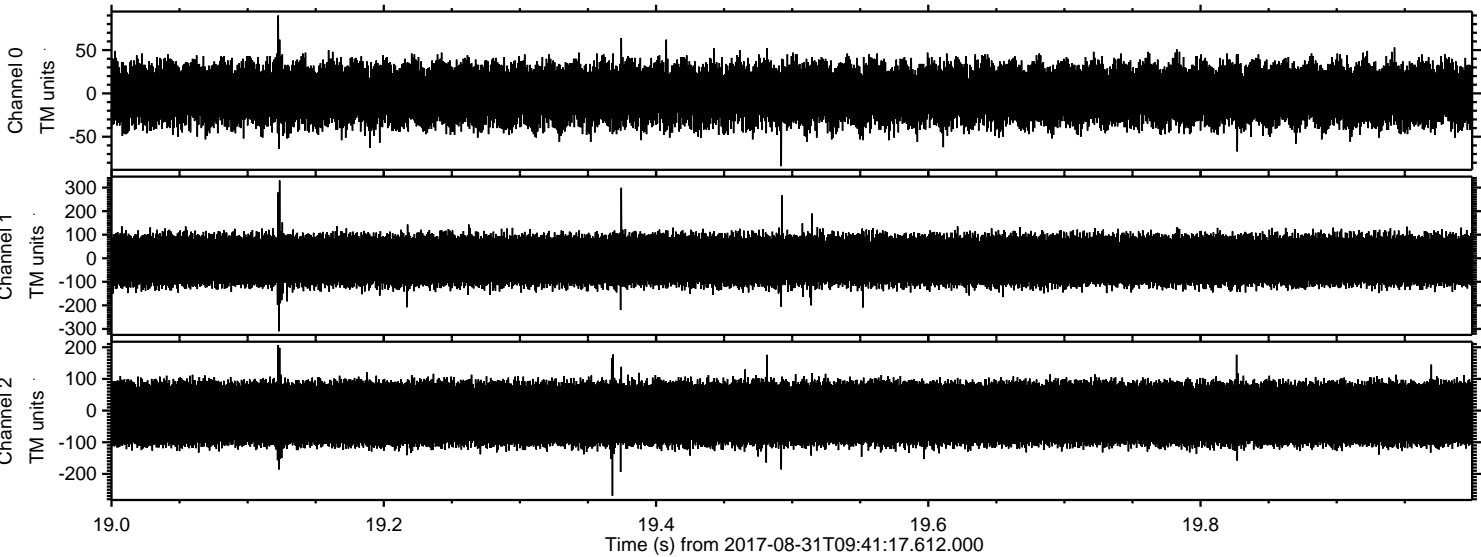
Channel 2
mn: -5759
mx: 4935
 μ : -10.1
 σ : 84.5

ELMAVAN 3D WAVEFORMS (Measured data sampled at 50 kHz) 51000 packets of 144 samples from 2017-08-31T09:41:17.612.000. Part 134/147

Processed Thu Aug 31 11:48:58 2017 by ELM ver.2012-10-06 from 001__elm20170831_094116__dat00.bin



Processed Thu Aug 31 11:48:59 2017 by ELM ver.2012-10-06 from 001__elm20170831_094116__dat00.bin



Channel 0
mn: -84
mx: 90
 μ : -1.8
 σ : 19.1

Channel 1
mn: -310
mx: 330
 μ : -9.5
 σ : 58.3

Channel 2
mn: -269
mx: 207
 μ : -10.1
 σ : 56.6