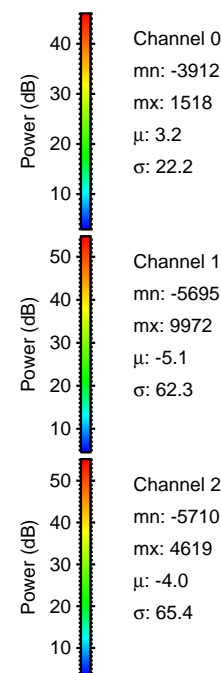
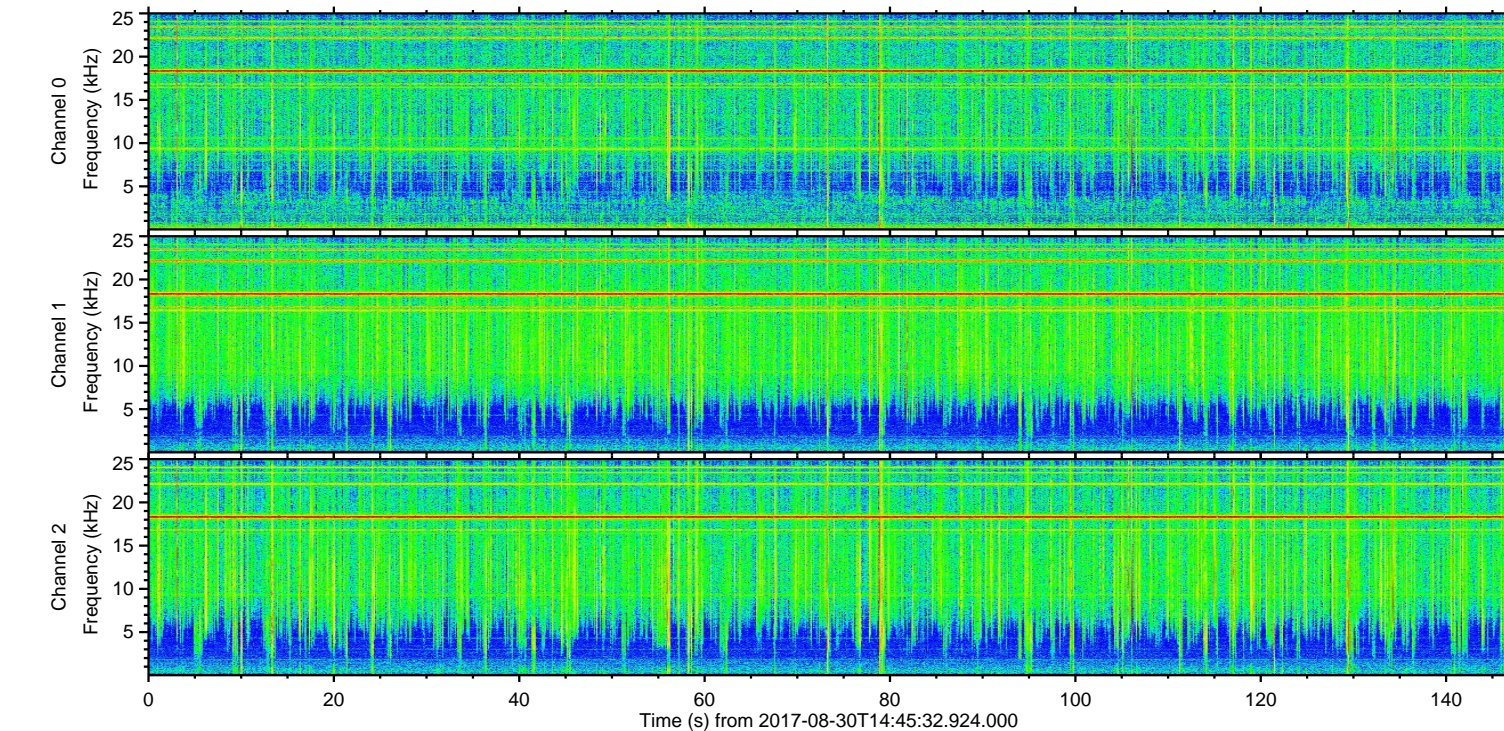
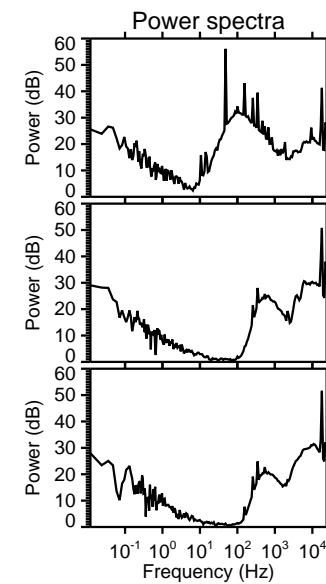
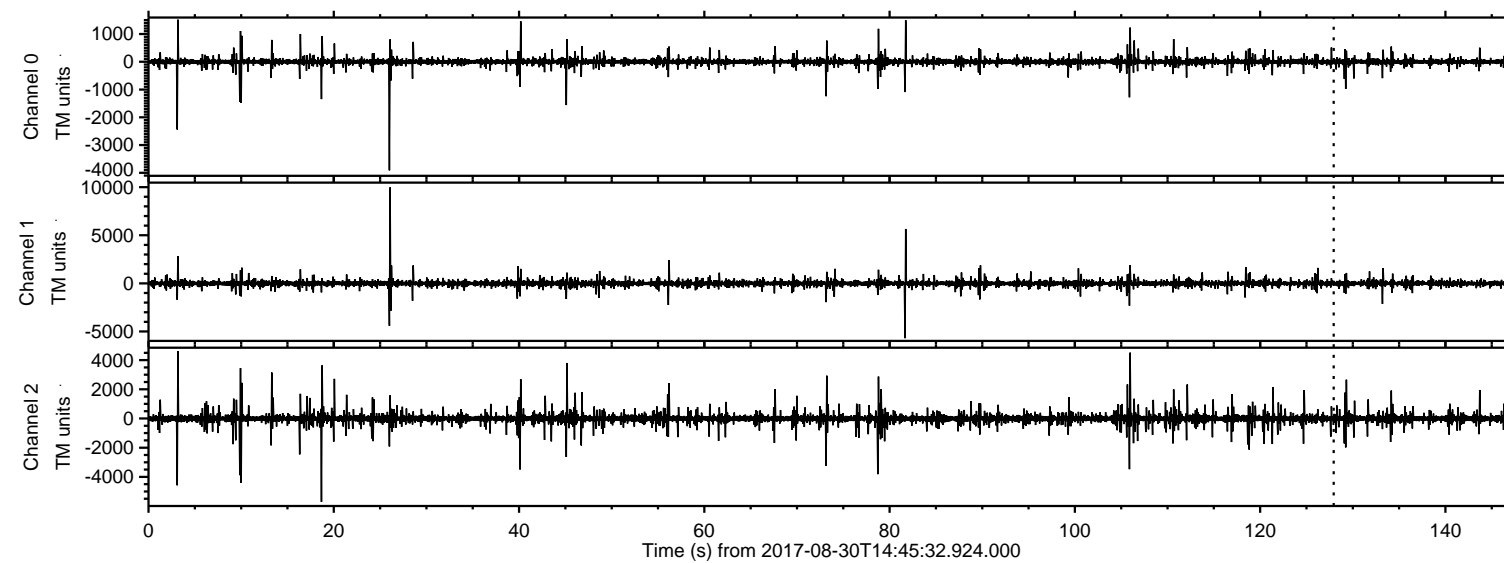
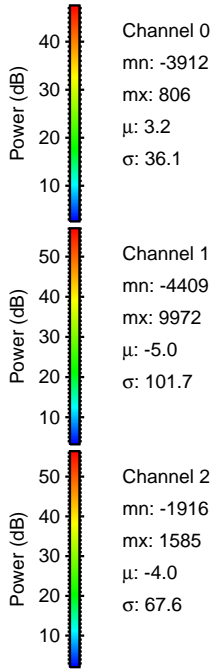
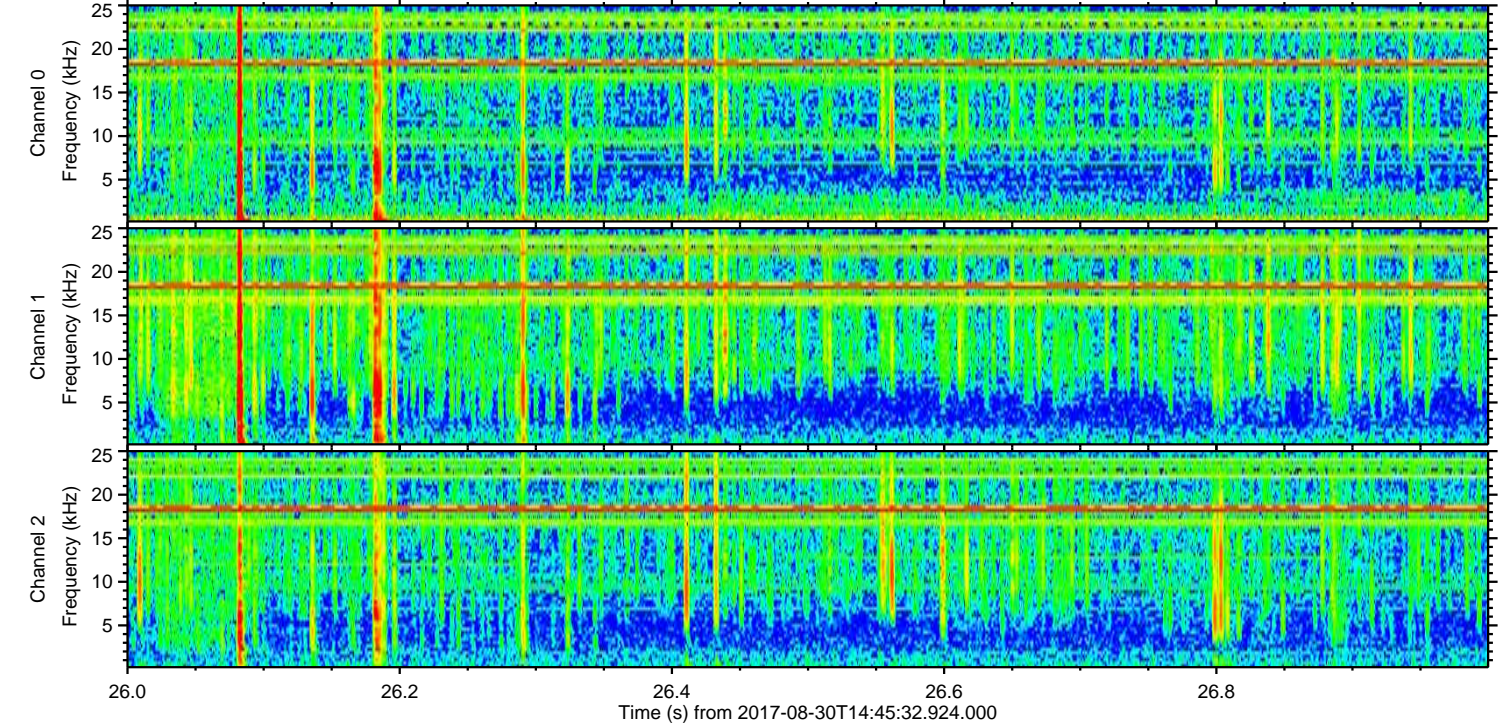
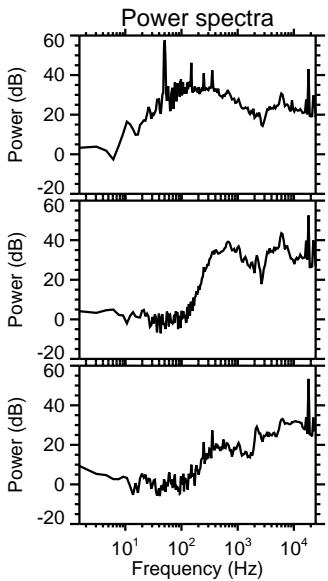
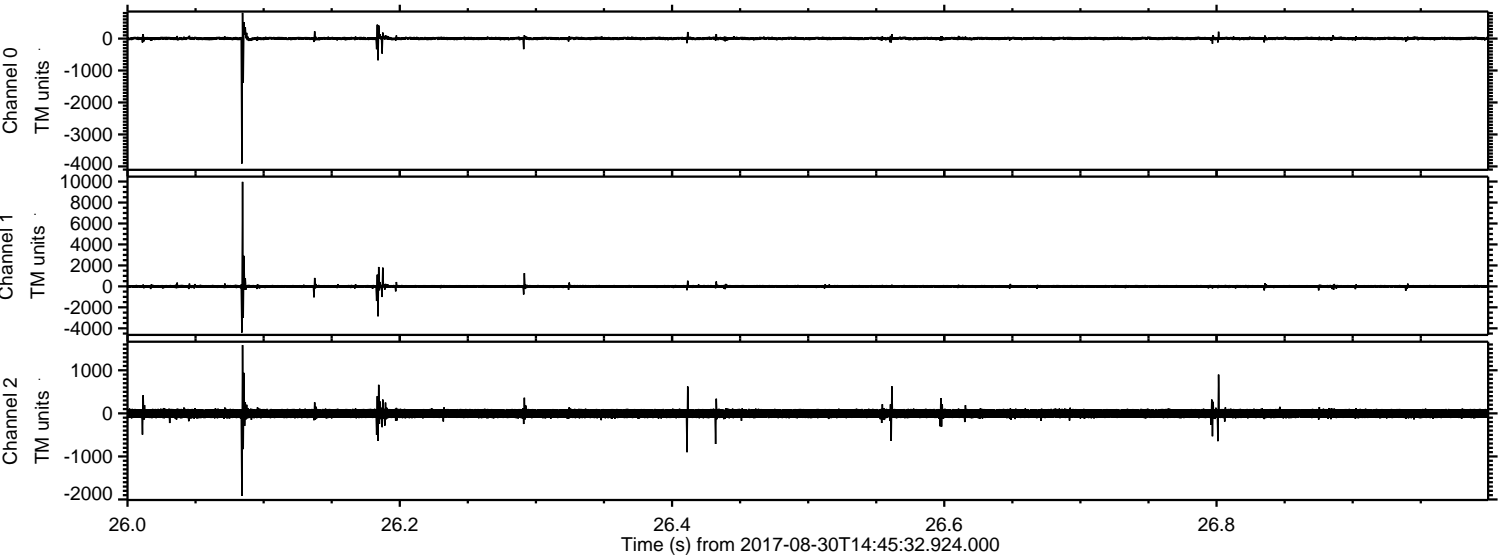


ELMAVAN 3D WAVEFORMS (Measured data sampled at 50 kHz) 50999 packets of 144 samples from 2017-08-30T14:45:32.924.000.

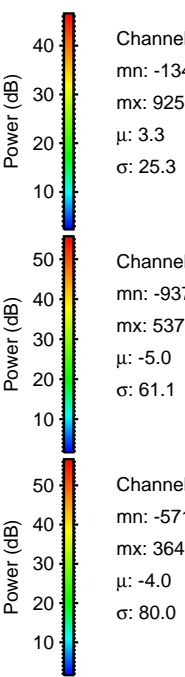
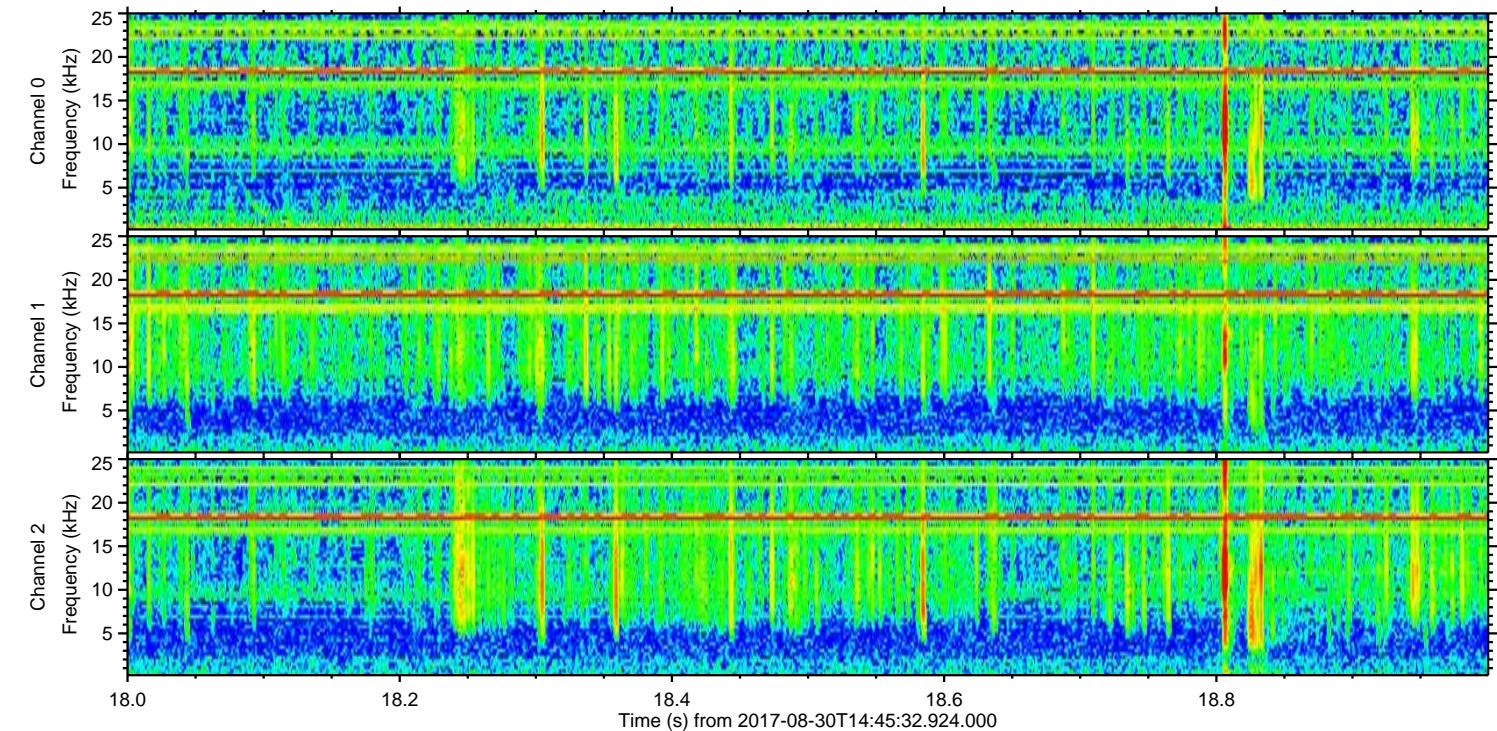
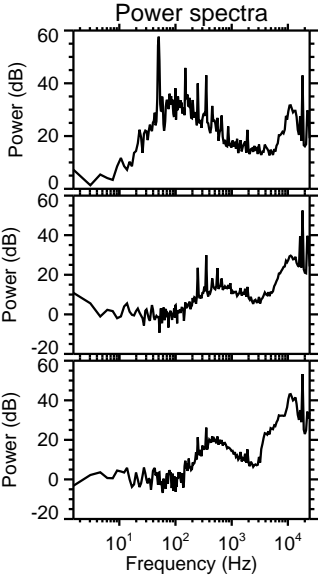
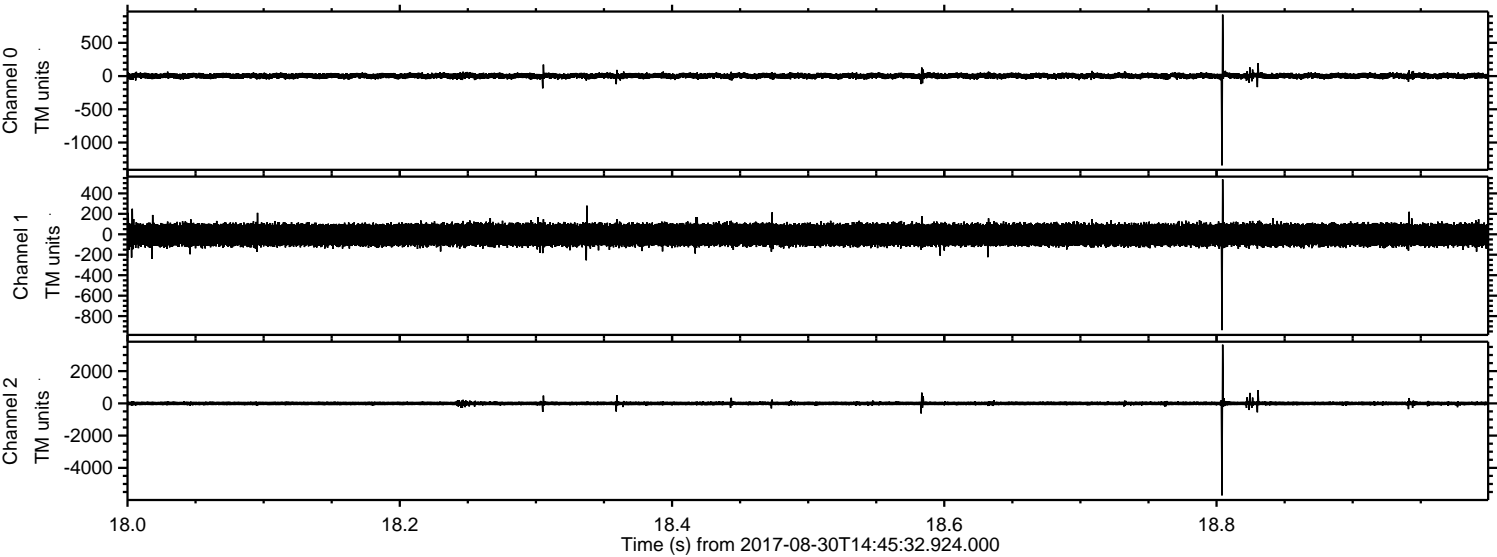
Processed Wed Aug 30 16:53:30 2017 by ELM ver.2012-10-06 from 001__elm20170830_144531__dat00.bin



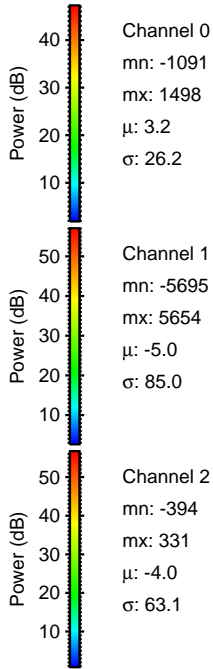
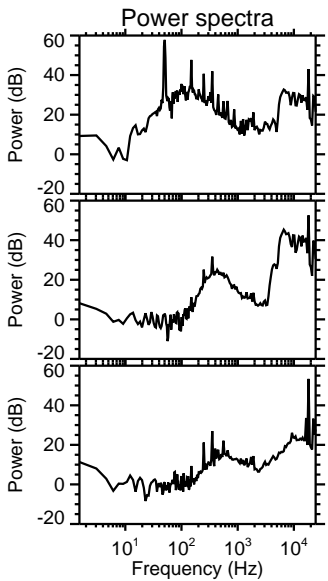
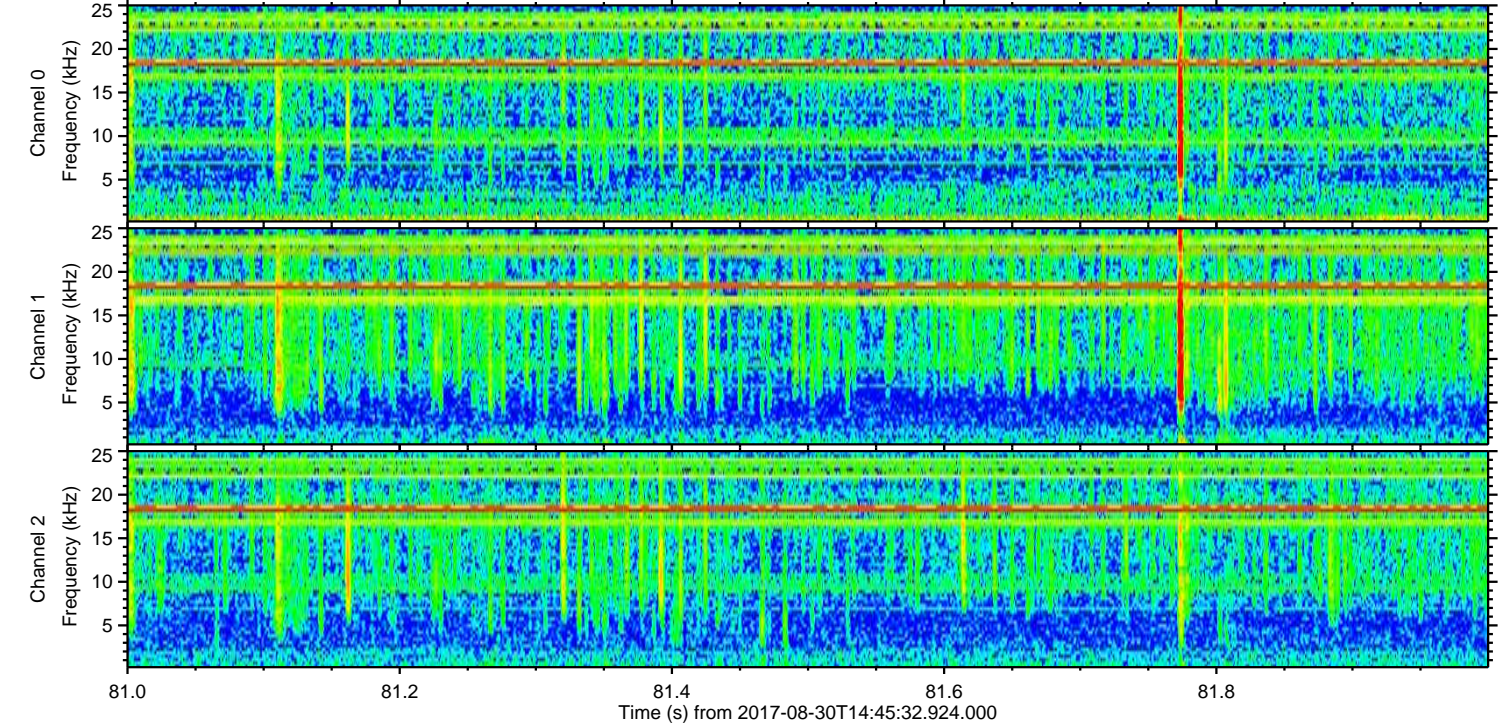
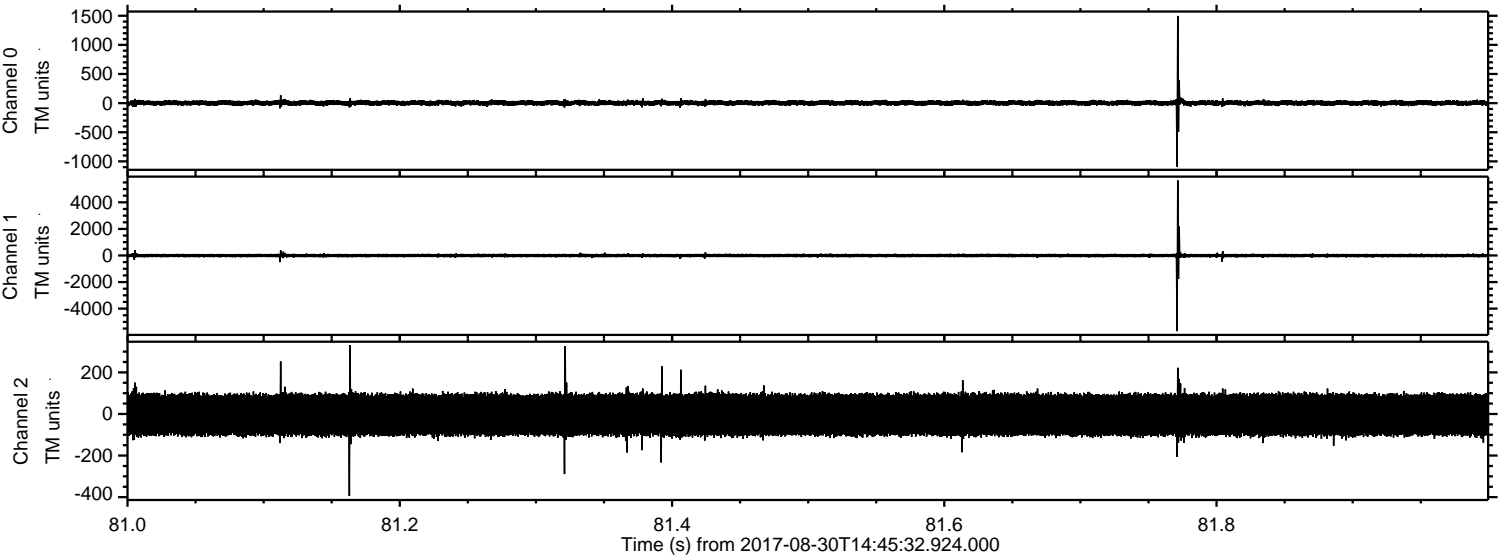
Processed Wed Aug 30 16:53:36 2017 by ELM ver.2012-10-06 from 001__elm20170830_144531__dat00.bin



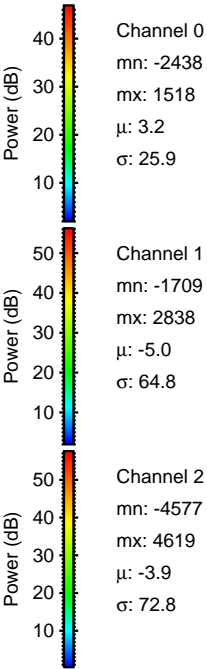
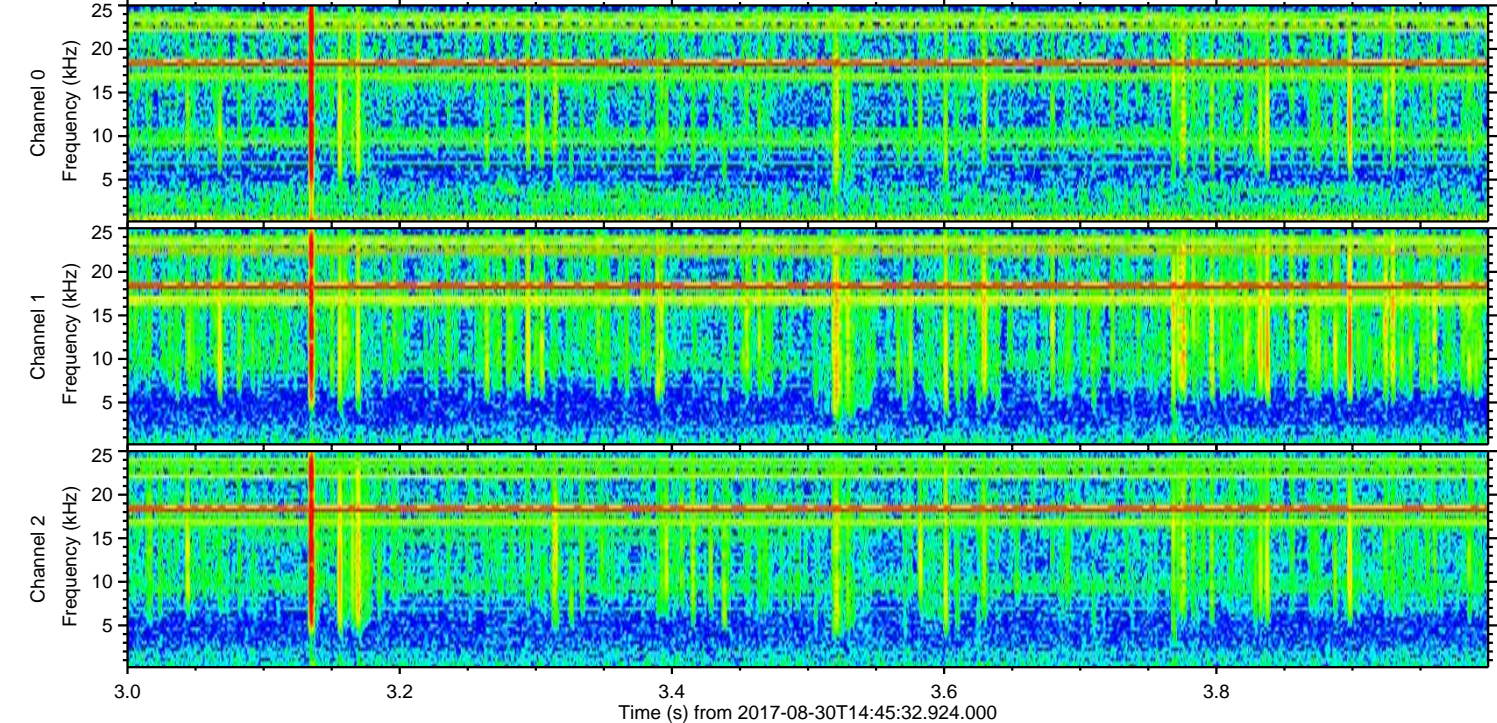
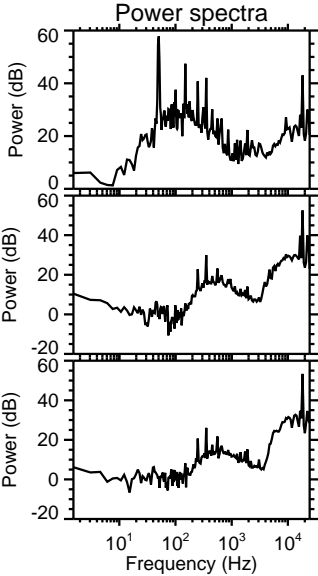
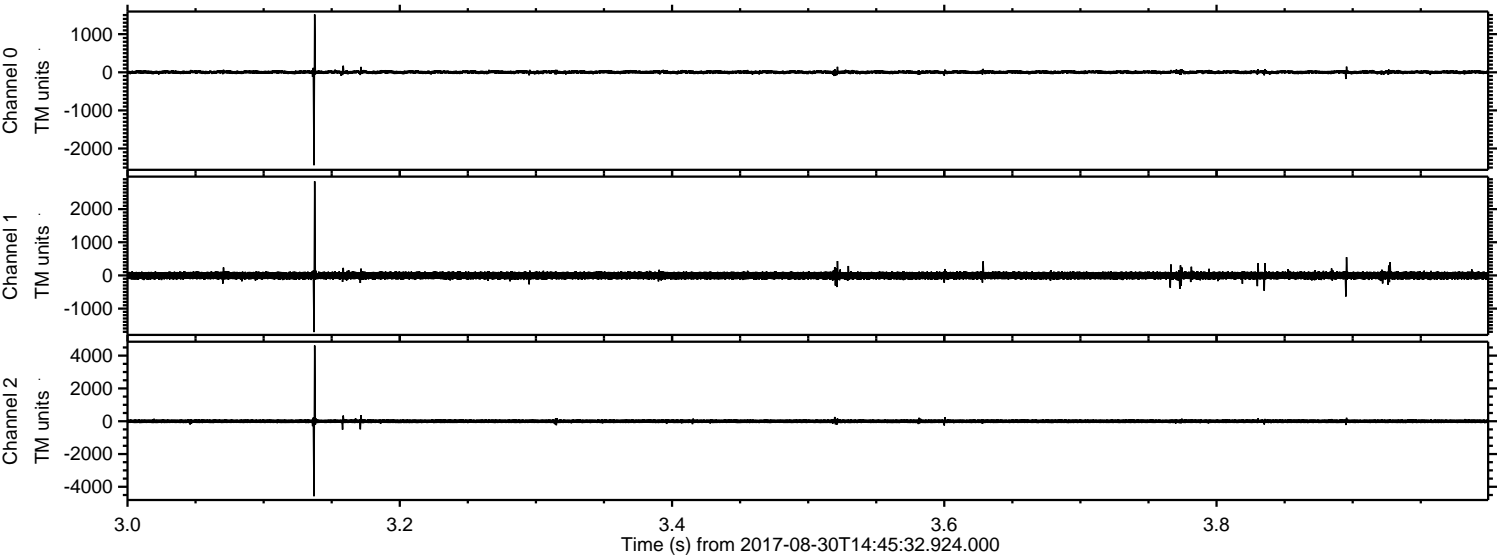
Processed Wed Aug 30 16:53:37 2017 by ELM ver.2012-10-06 from 001__elm20170830_144531__dat00.bin



Processed Wed Aug 30 16:53:37 2017 by ELM ver.2012-10-06 from 001__elm20170830_144531__dat00.bin

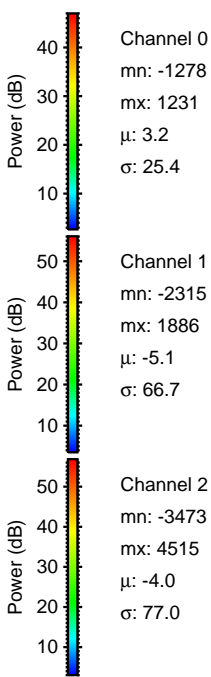
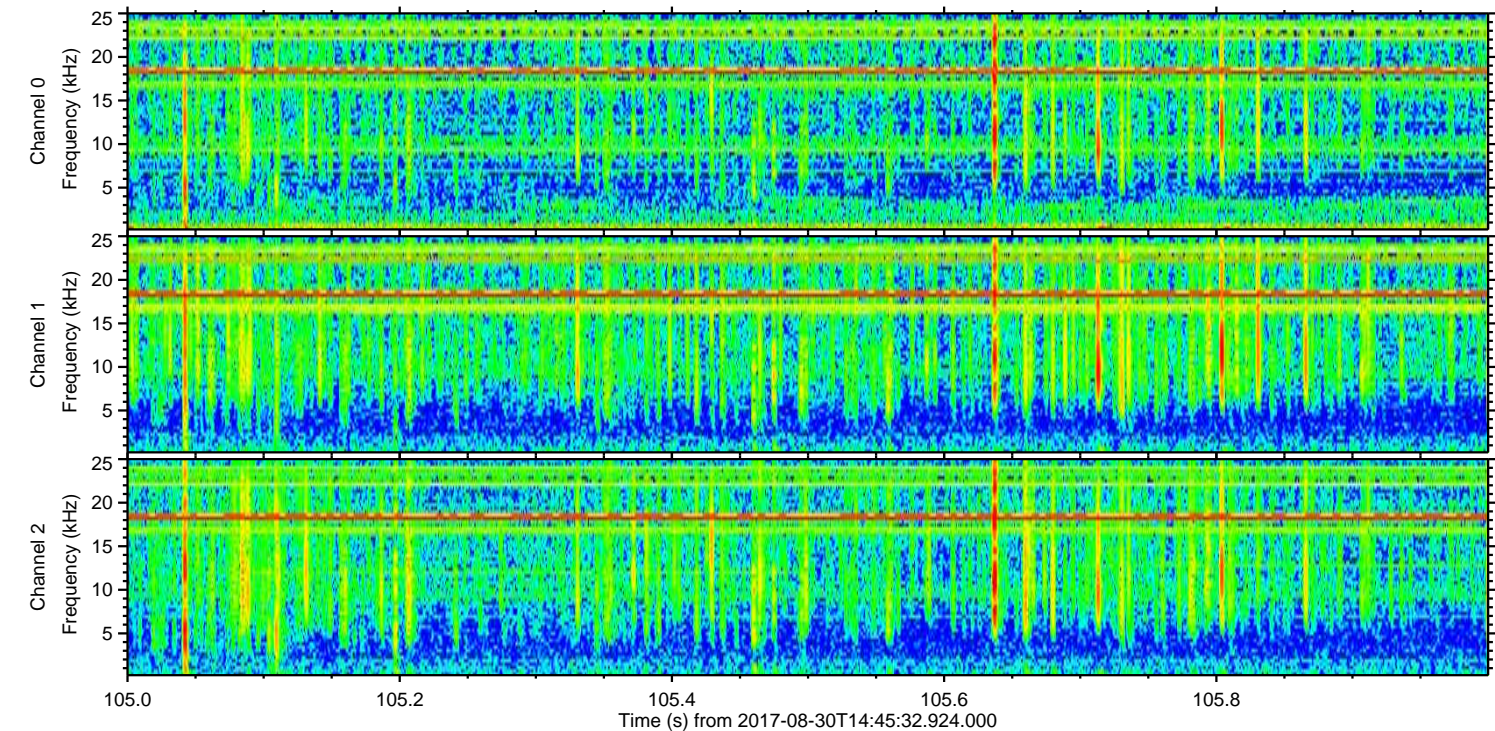
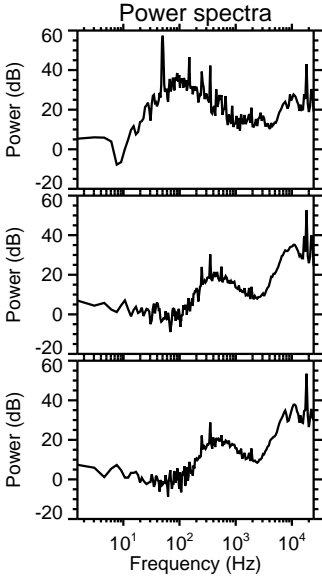
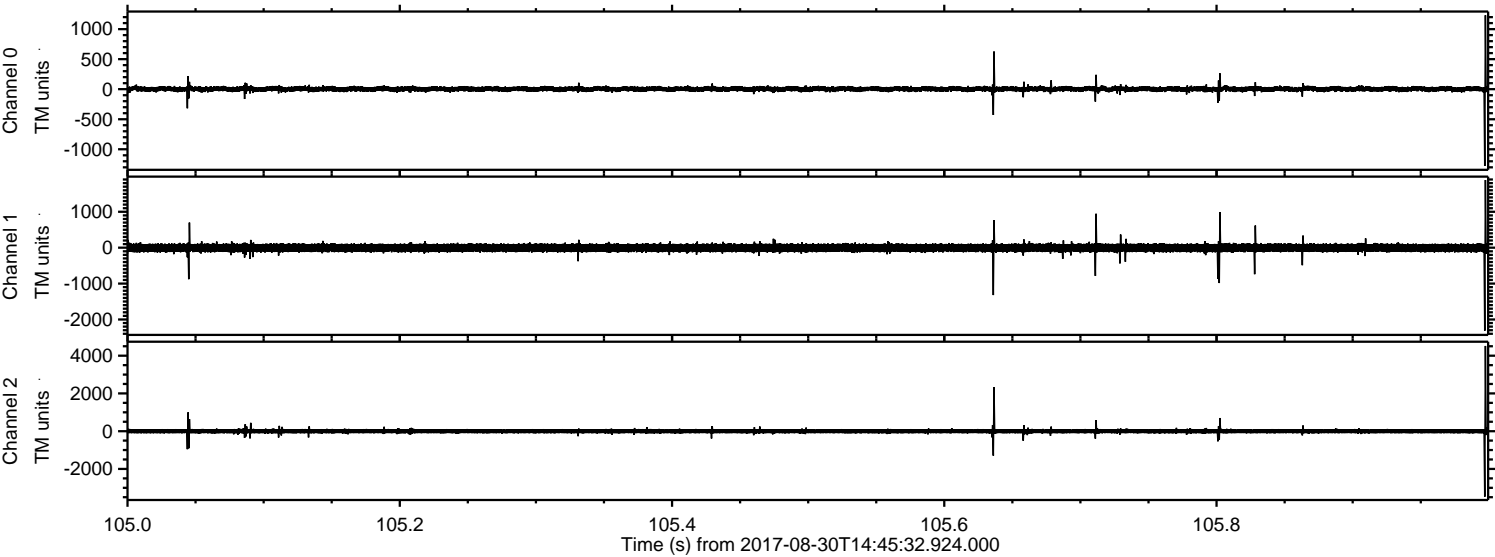


Processed Wed Aug 30 16:53:38 2017 by ELM ver.2012-10-06 from 001__elm20170830_144531__dat00.bin



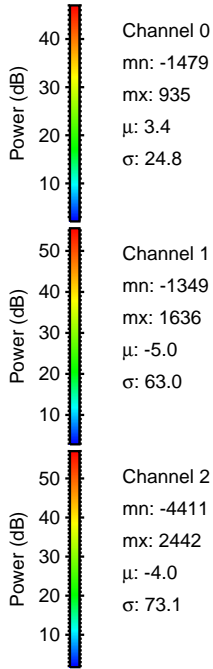
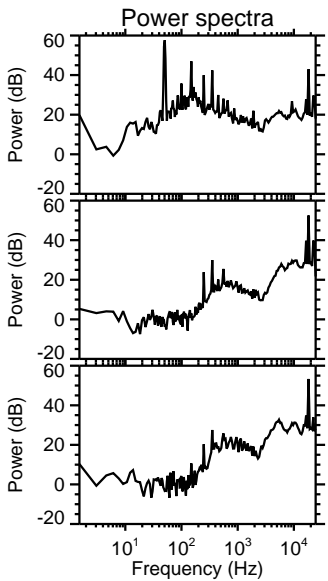
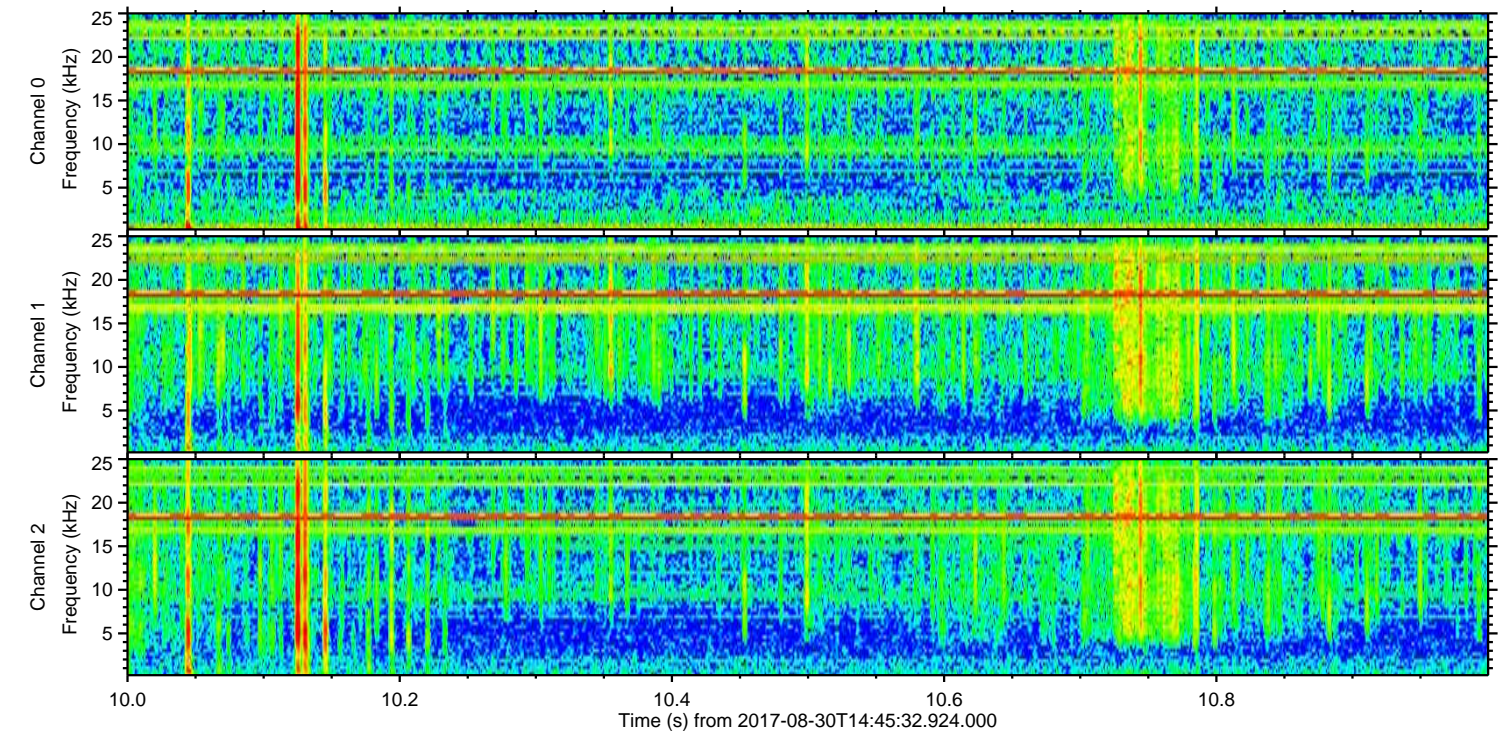
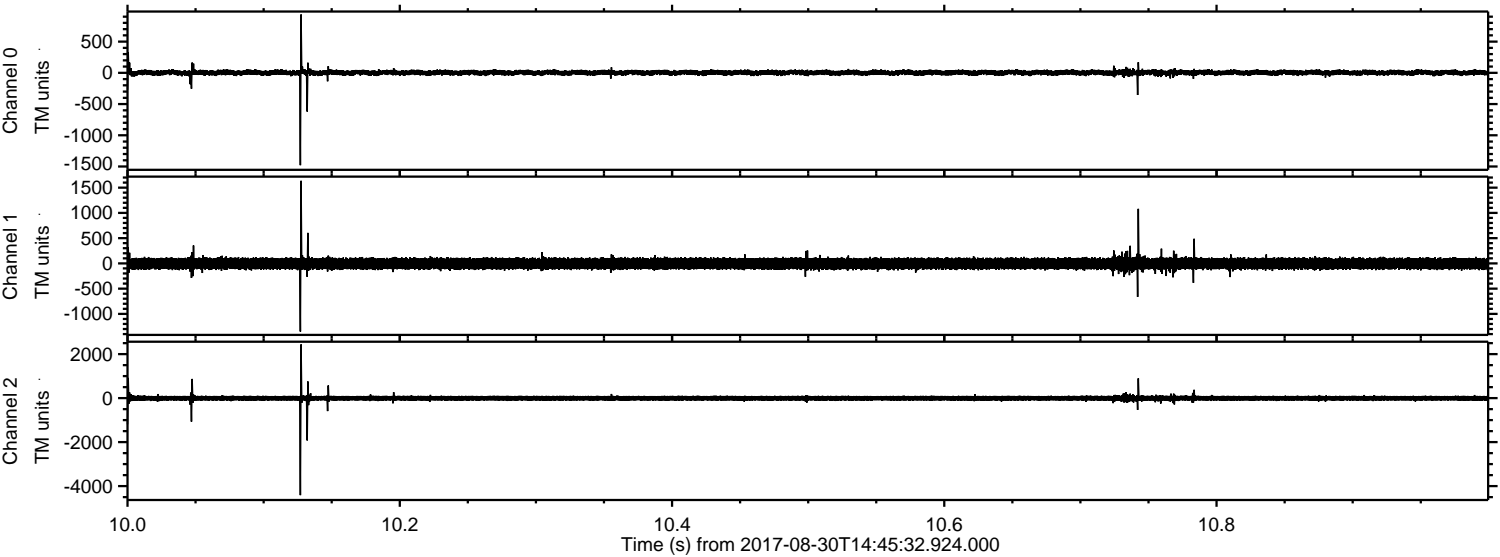
ELMAVAN 3D WAVEFORMS (Measured data sampled at 50 kHz) 50999 packets of 144 samples from 2017-08-30T14:45:32.924.000. Part 106/147

Processed Wed Aug 30 16:53:39 2017 by ELM ver.2012-10-06 from 001__elm20170830_144531__dat00.bin



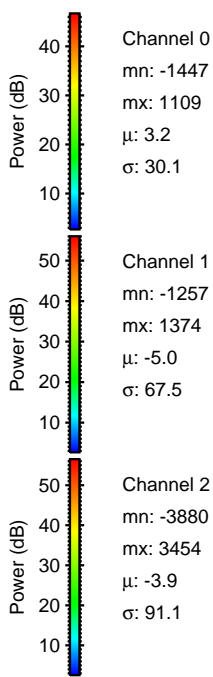
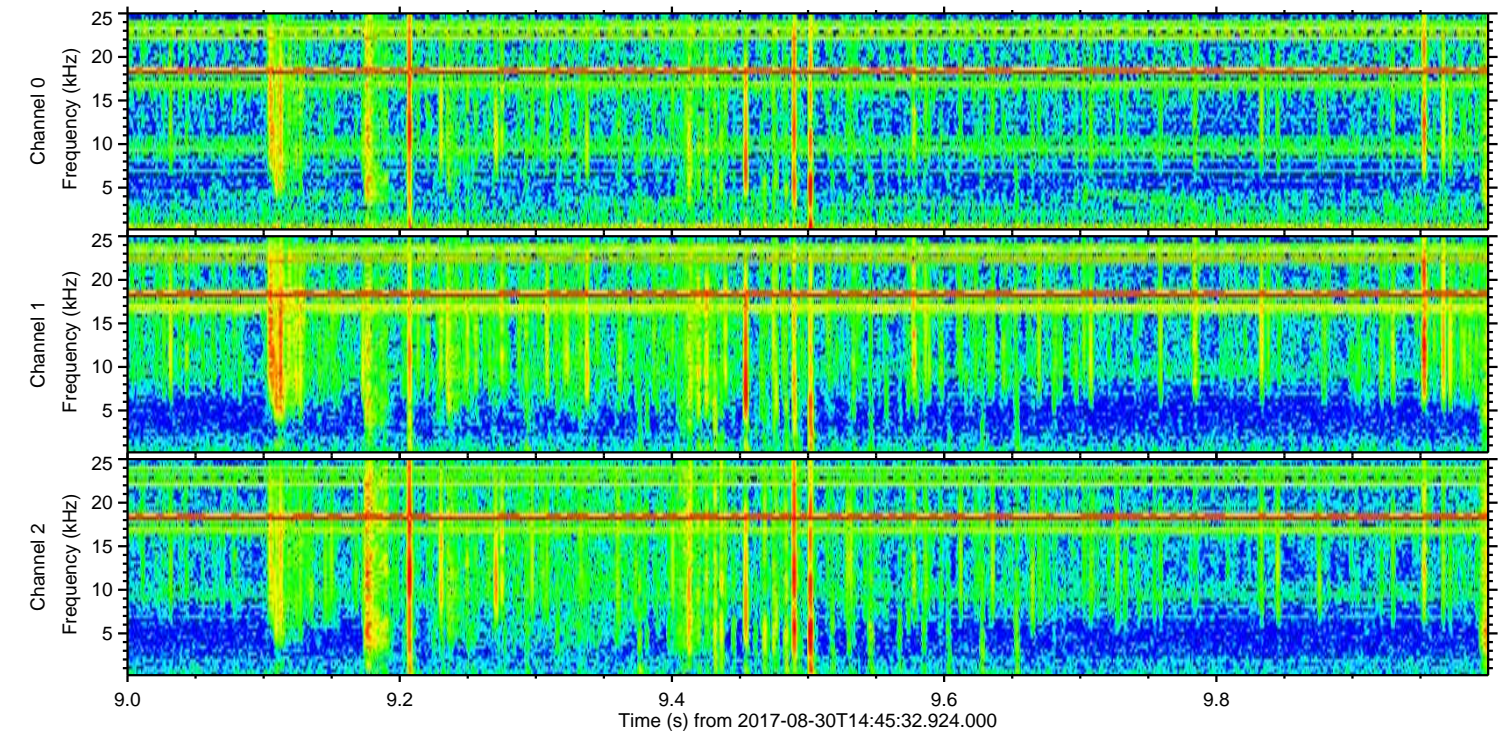
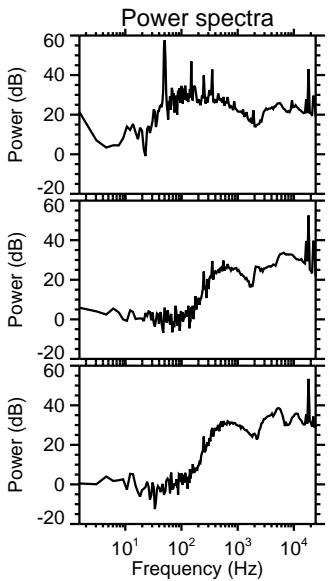
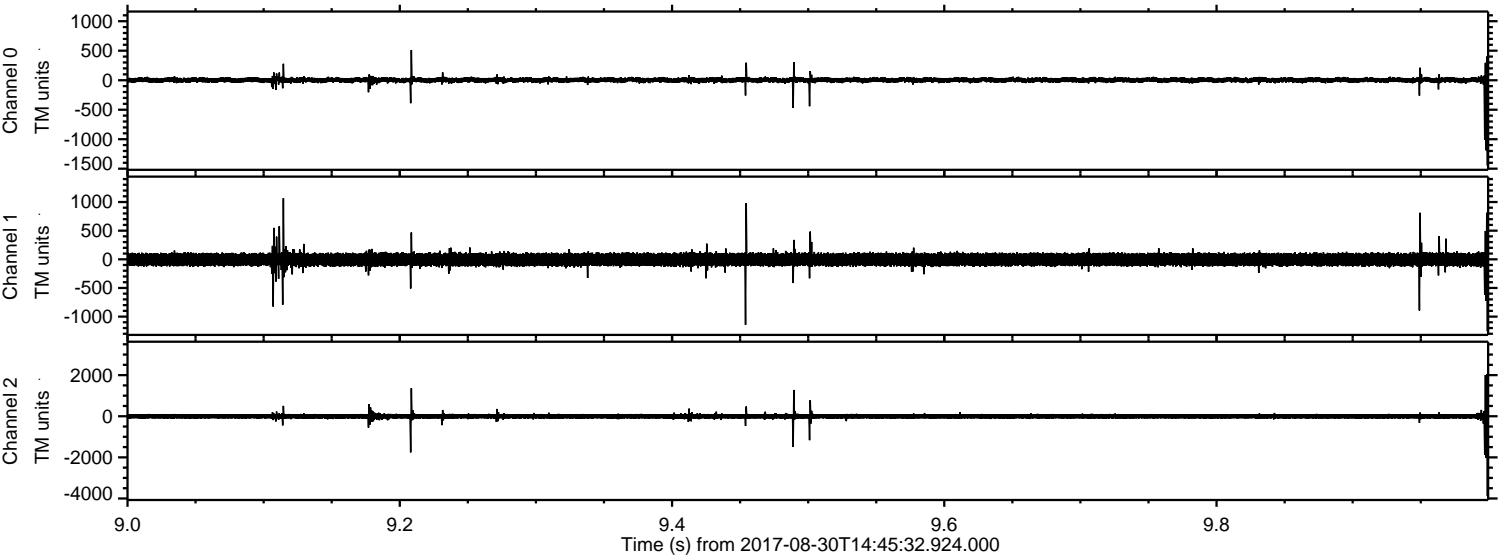
ELMAVAN 3D WAVEFORMS (Measured data sampled at 50 kHz) 50999 packets of 144 samples from 2017-08-30T14:45:32.924.000. Part 11/147

Processed Wed Aug 30 16:53:40 2017 by ELM ver.2012-10-06 from 001__elm20170830_144531__dat00.bin



ELMAVAN 3D WAVEFORMS (Measured data sampled at 50 kHz) 50999 packets of 144 samples from 2017-08-30T14:45:32.924.000. Part 10/147

Processed Wed Aug 30 16:53:40 2017 by ELM ver.2012-10-06 from 001__elm20170830_144531__dat00.bin

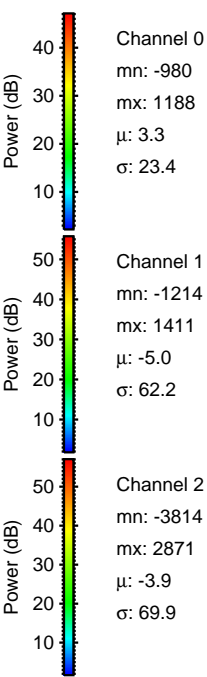
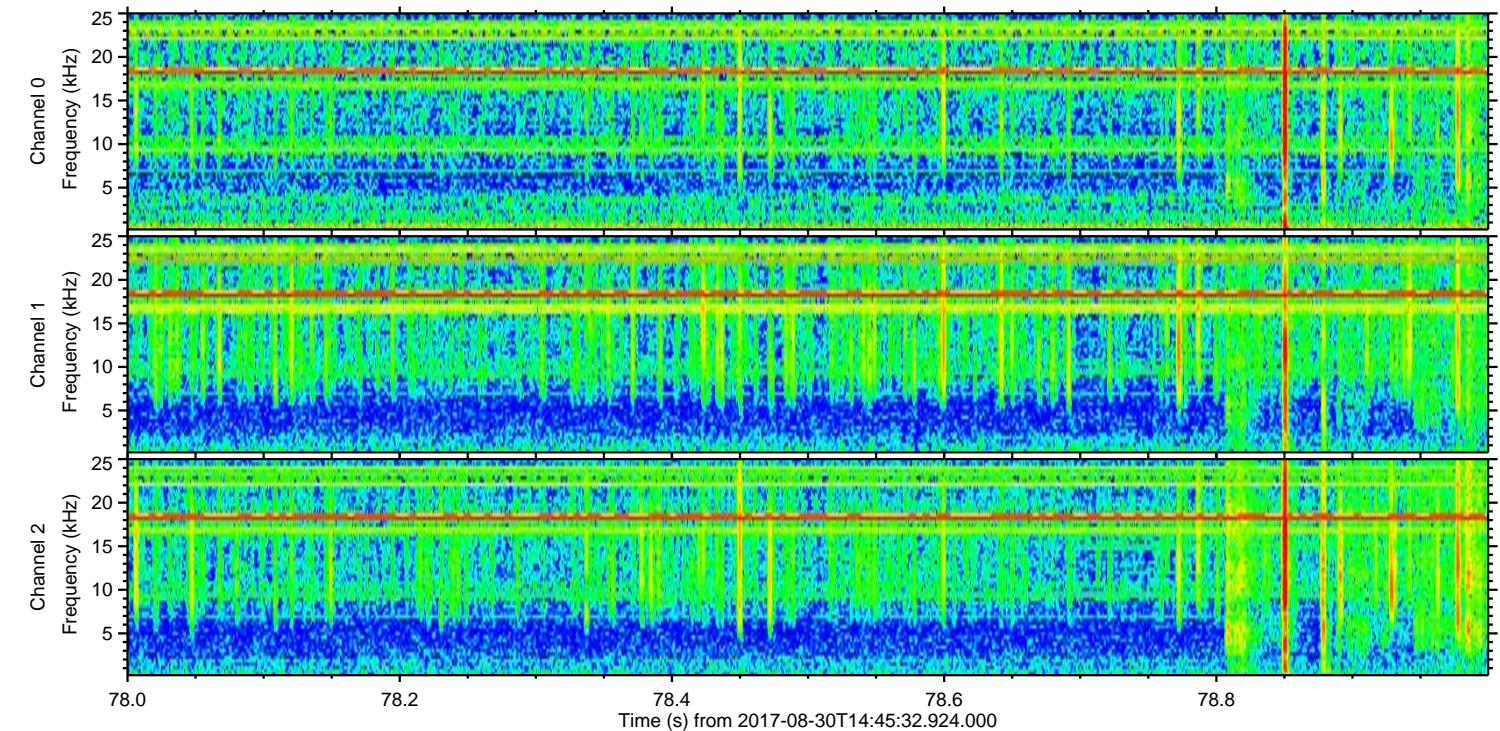
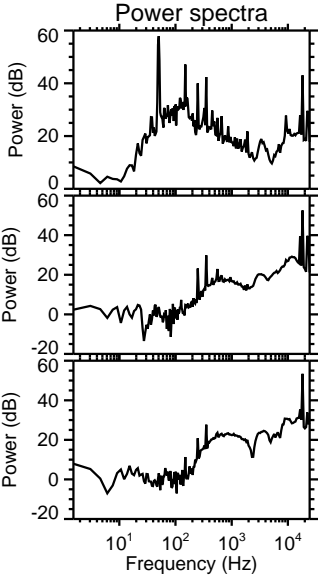
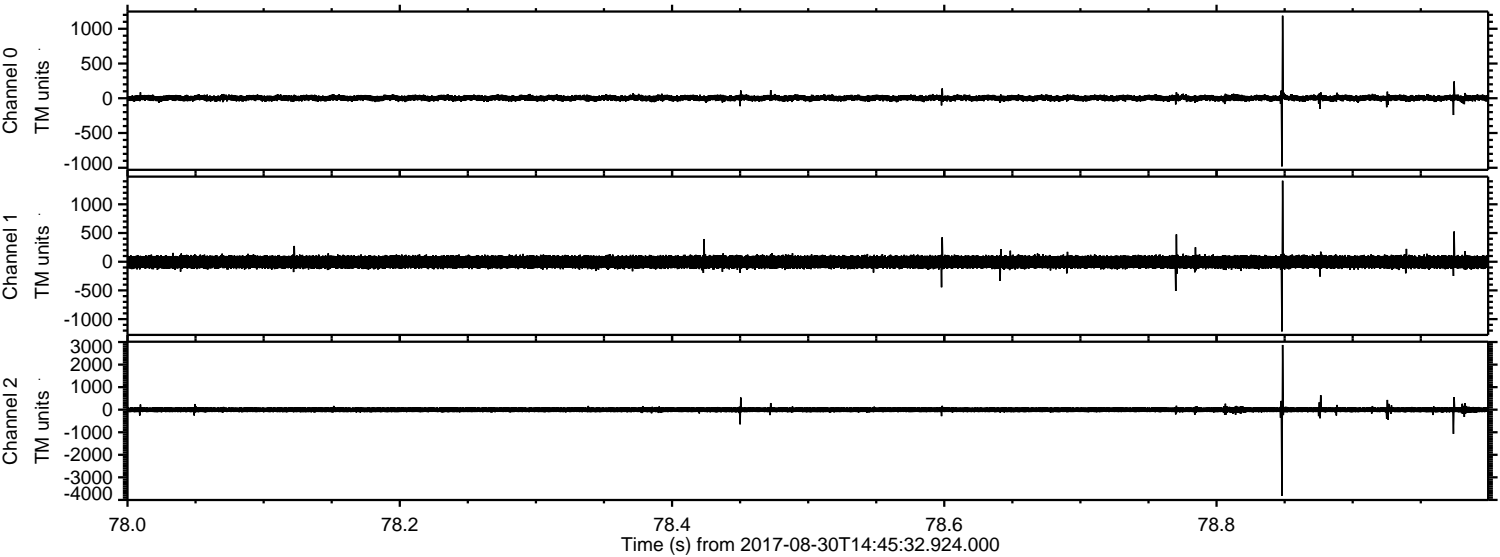


Channel 0
mn: -1447
mx: 1109
 μ : 3.2
 σ : 30.1

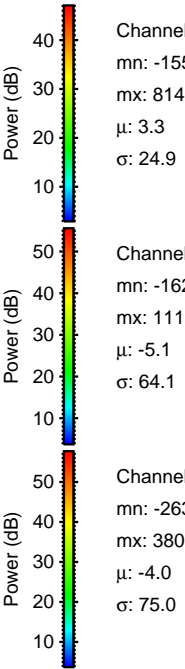
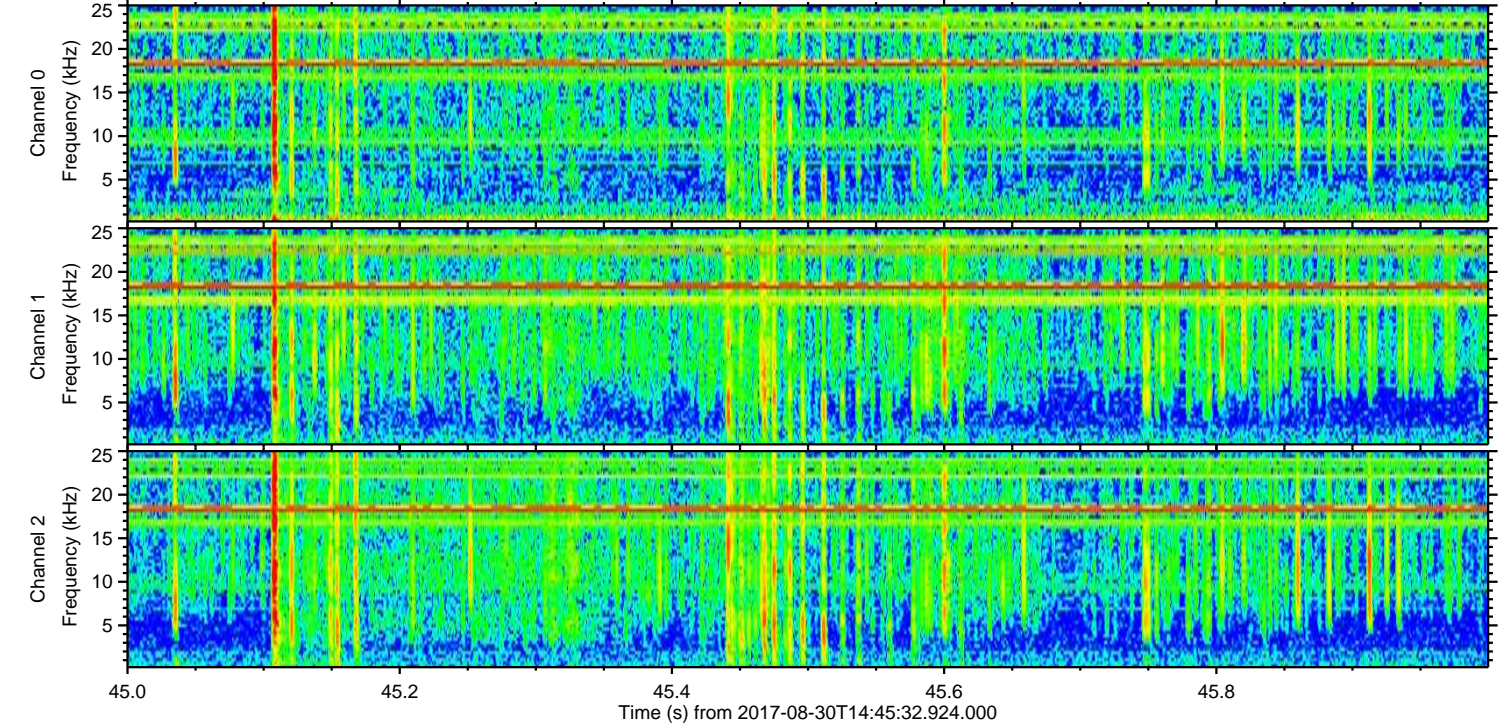
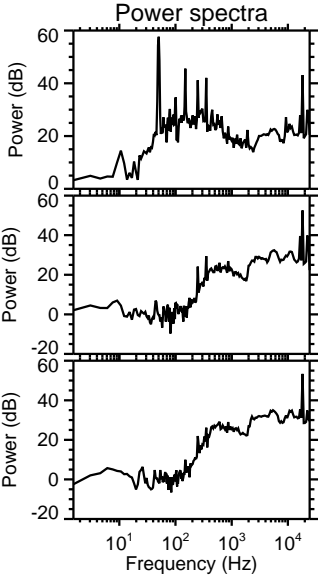
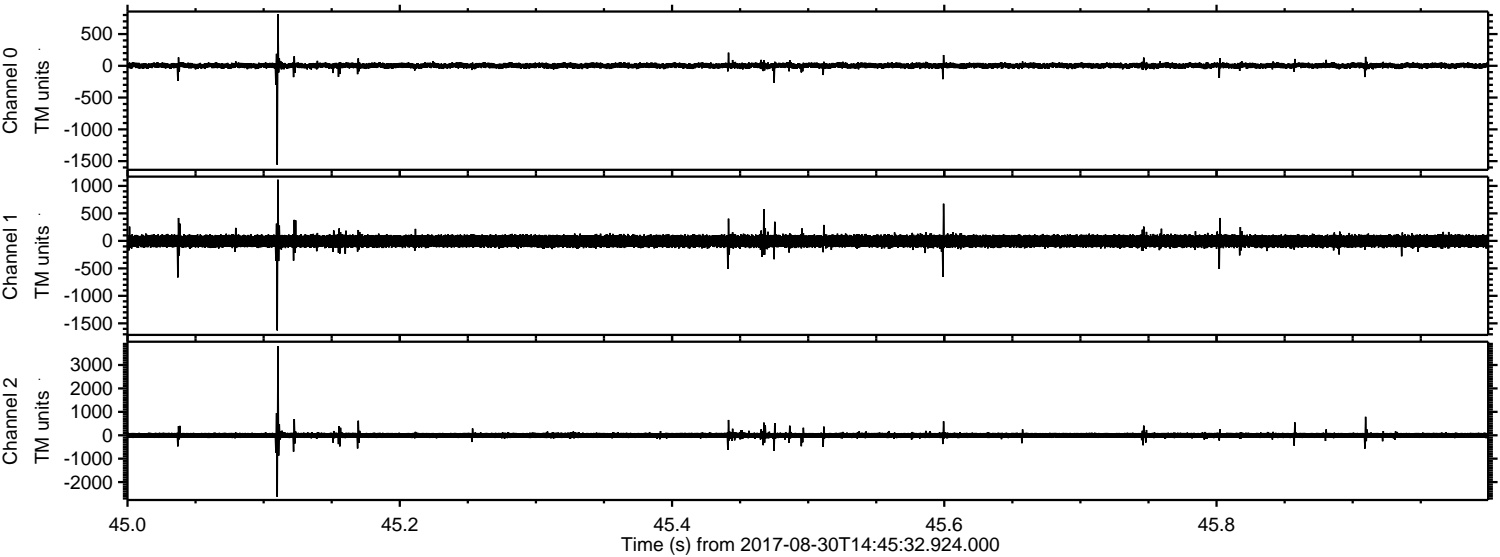
Channel 1
mn: -1257
mx: 1374
 μ : -5.0
 σ : 67.5

Channel 2
mn: -3880
mx: 3454
 μ : -3.9
 σ : 91.1

Processed Wed Aug 30 16:53:41 2017 by ELM ver.2012-10-06 from 001__elm20170830_144531__dat00.bin



Processed Wed Aug 30 16:53:42 2017 by ELM ver.2012-10-06 from 001__elm20170830_144531__dat00.bin



Processed Wed Aug 30 16:53:42 2017 by ELM ver.2012-10-06 from 001__elm20170830_144531__dat00.bin

