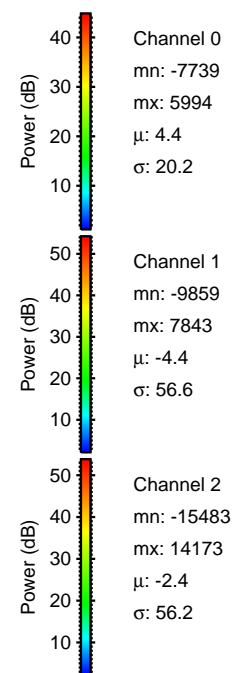
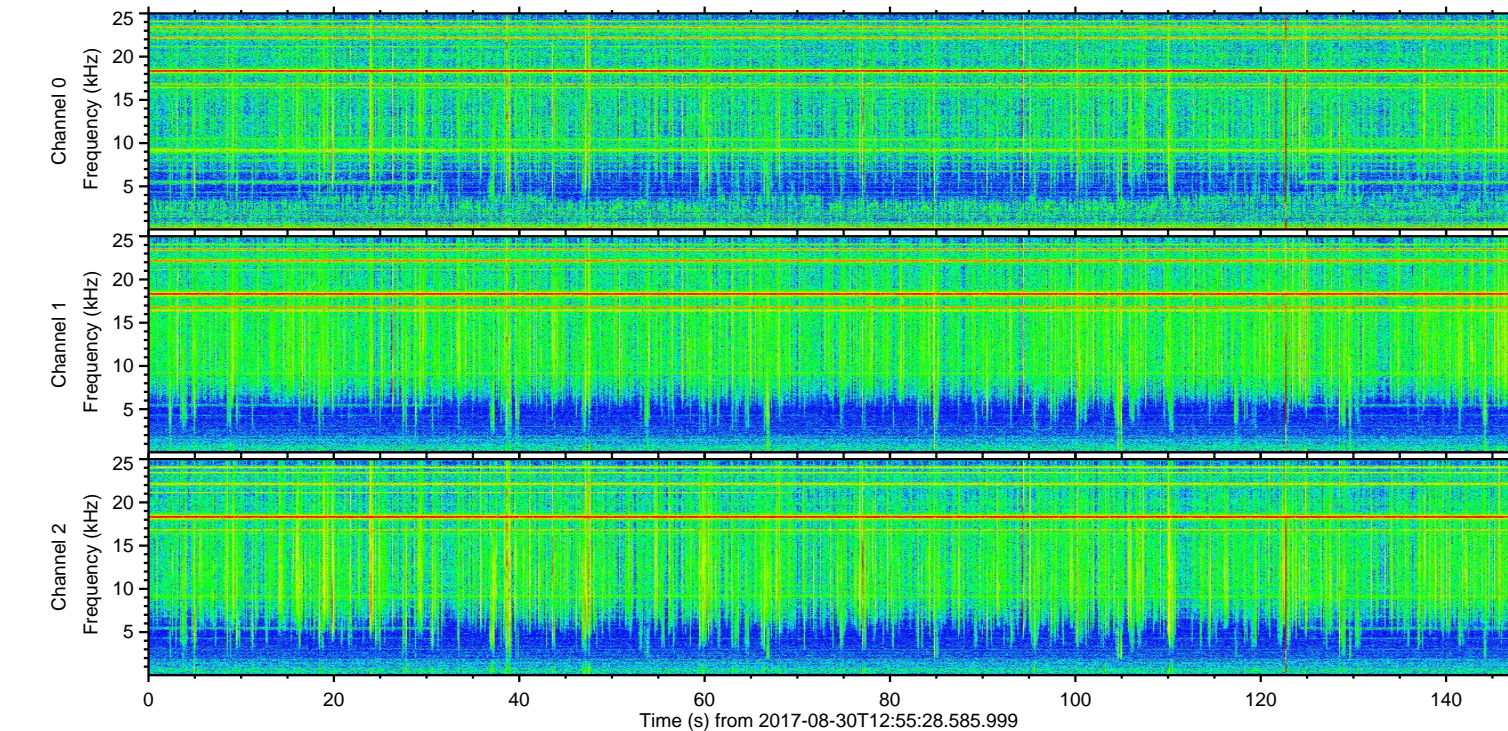
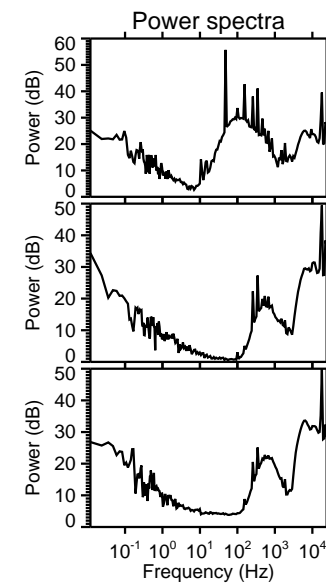
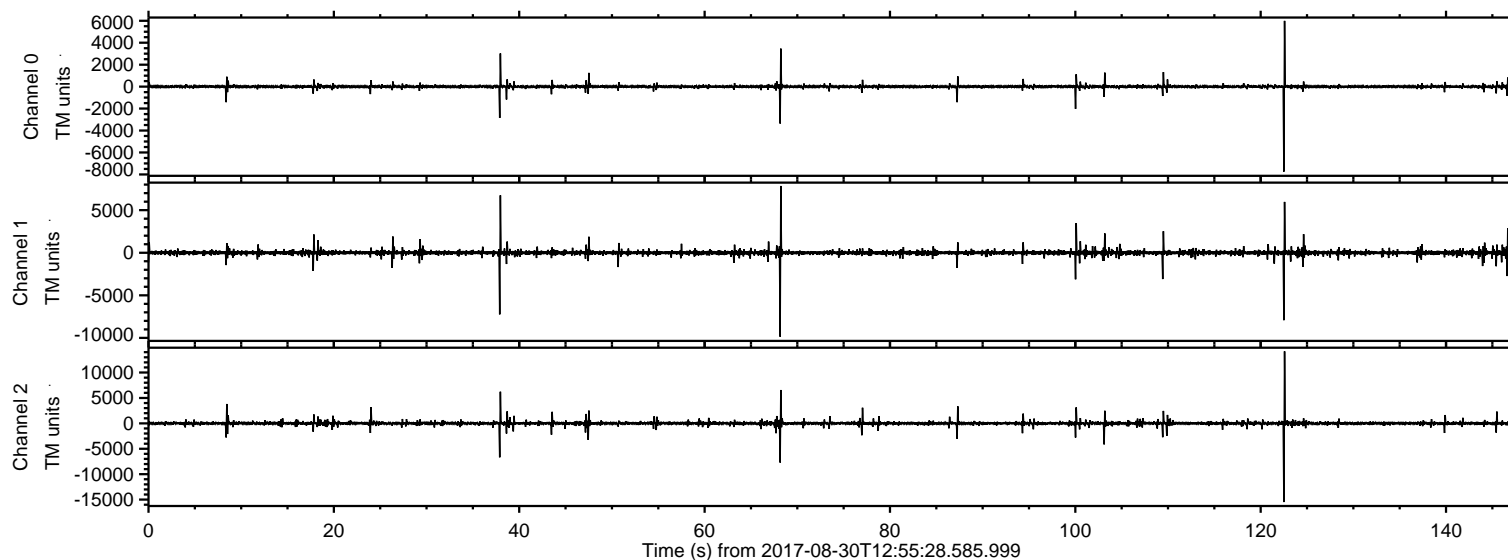


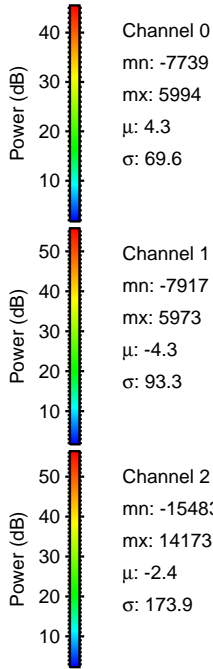
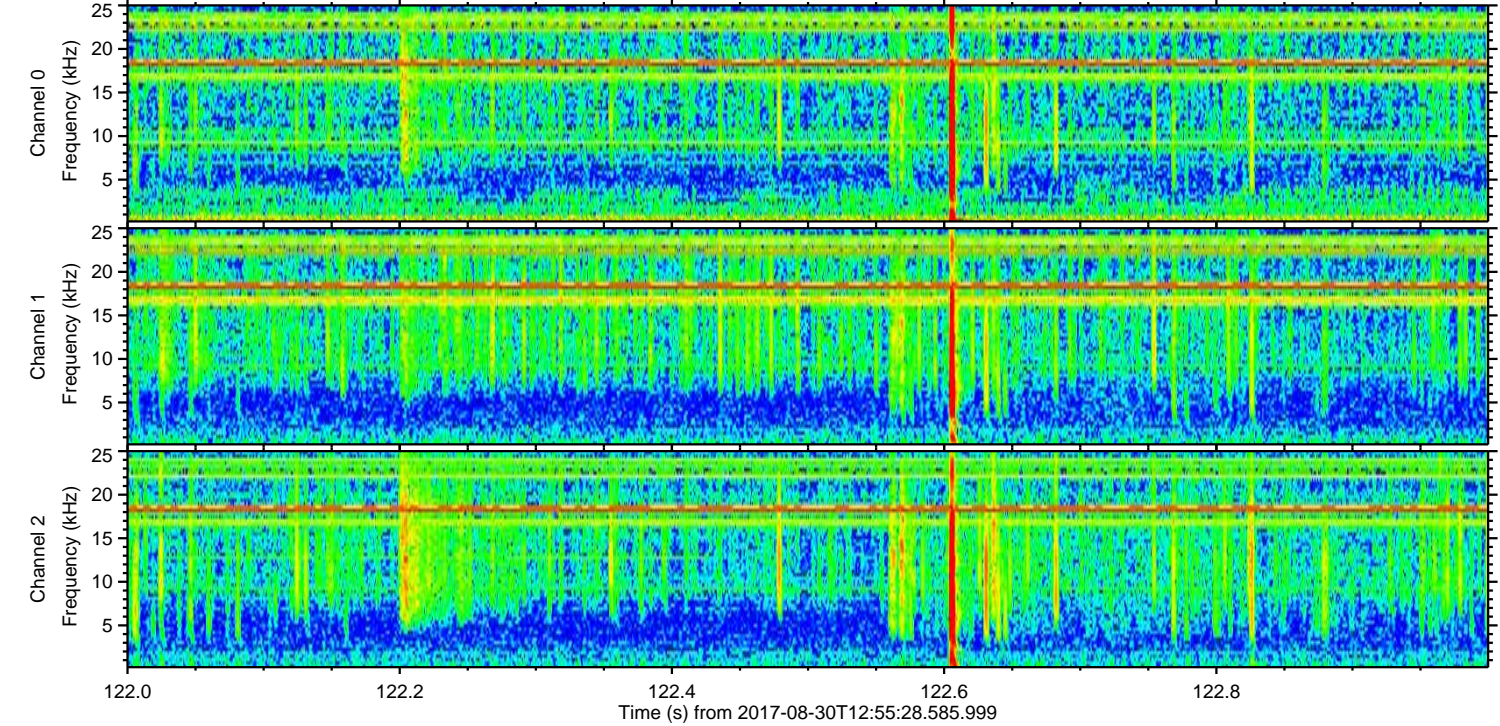
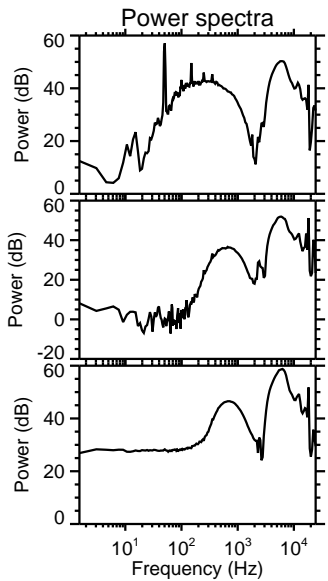
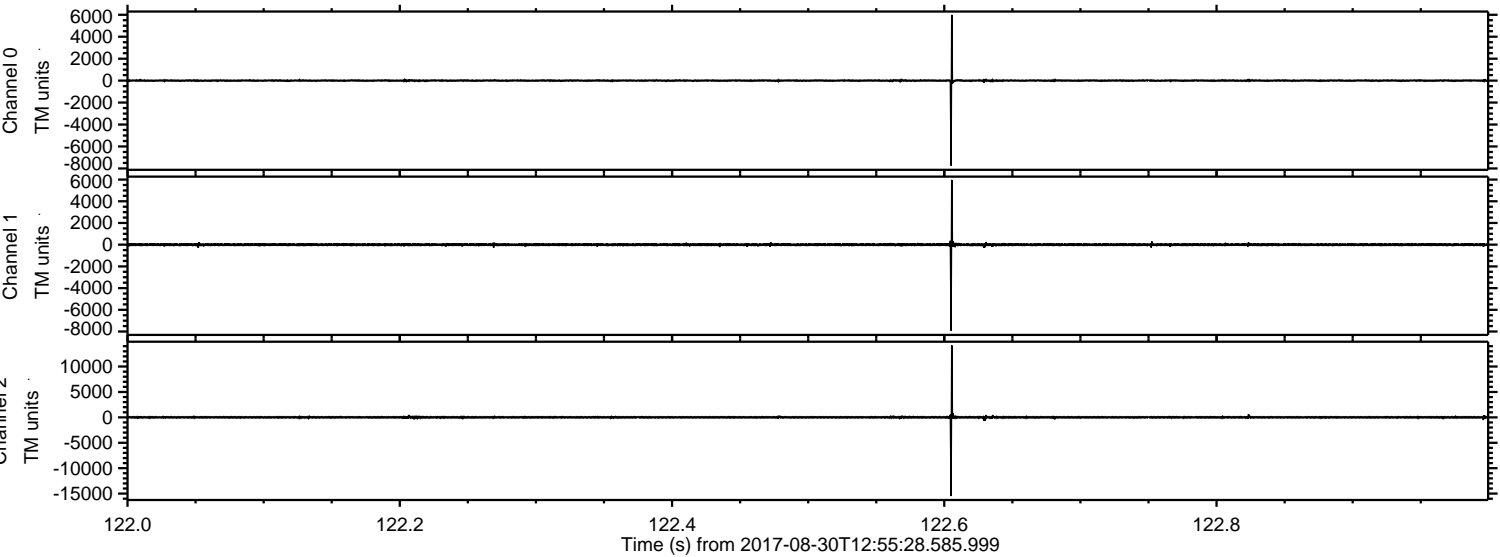
ELMAVAN 3D WAVEFORMS (Measured data sampled at 50 kHz) 51000 packets of 144 samples from 2017-08-30T12:55:28.585.999.

Processed Wed Aug 30 15:02:59 2017 by ELM ver.2012-10-06 from 001__elm20170830_125527__dat00.bin



ELMAVAN 3D WAVEFORMS (Measured data sampled at 50 kHz) 51000 packets of 144 samples from 2017-08-30T12:55:28.585.999. Part 123/147

Processed Wed Aug 30 15:03:05 2017 by ELM ver.2012-10-06 from 001__elm20170830_125527__dat00.bin

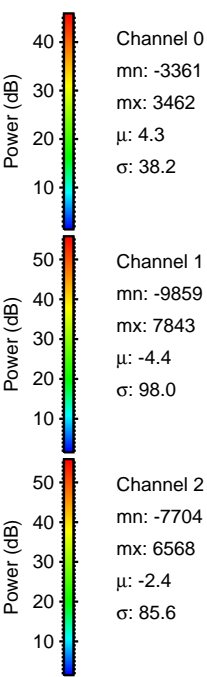
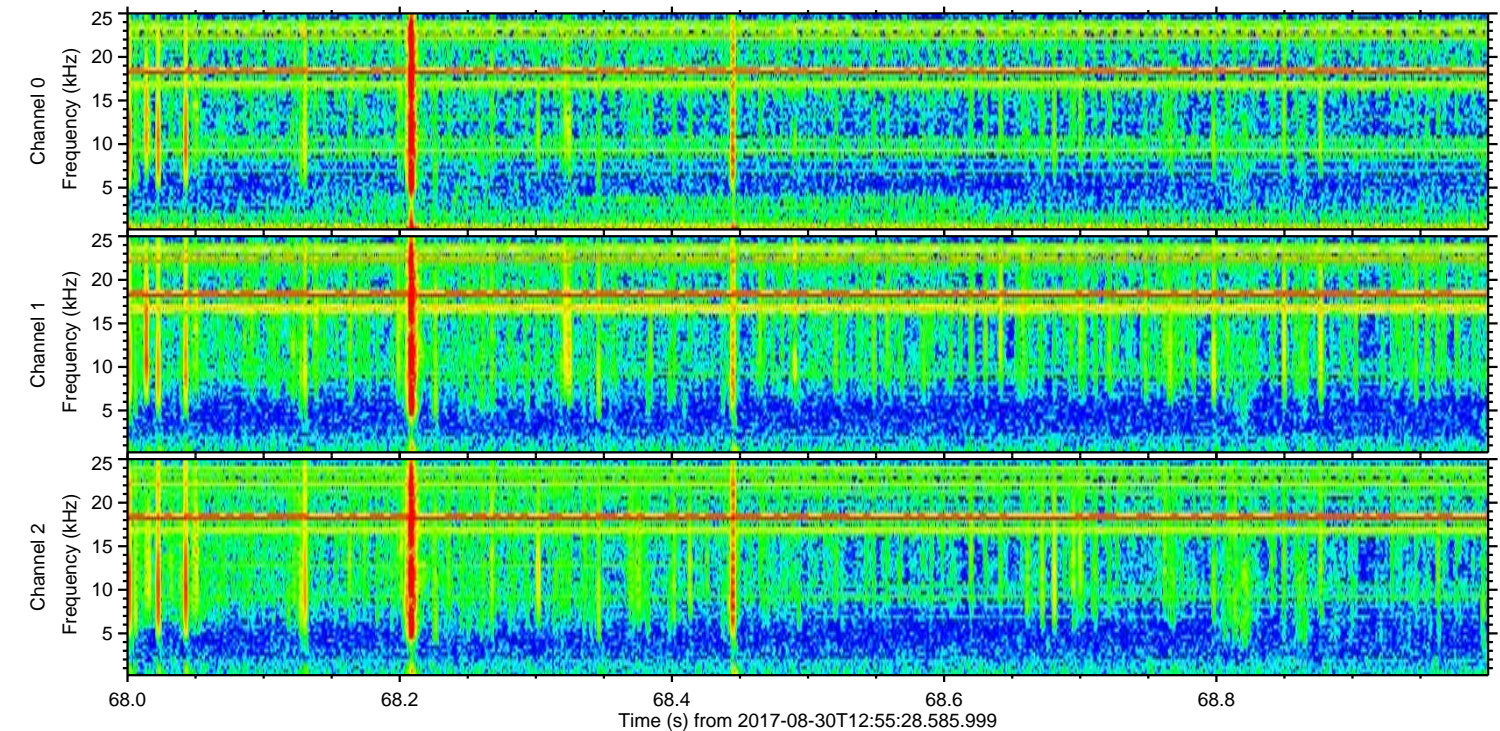
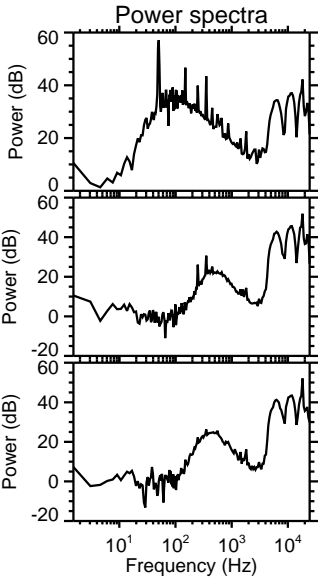
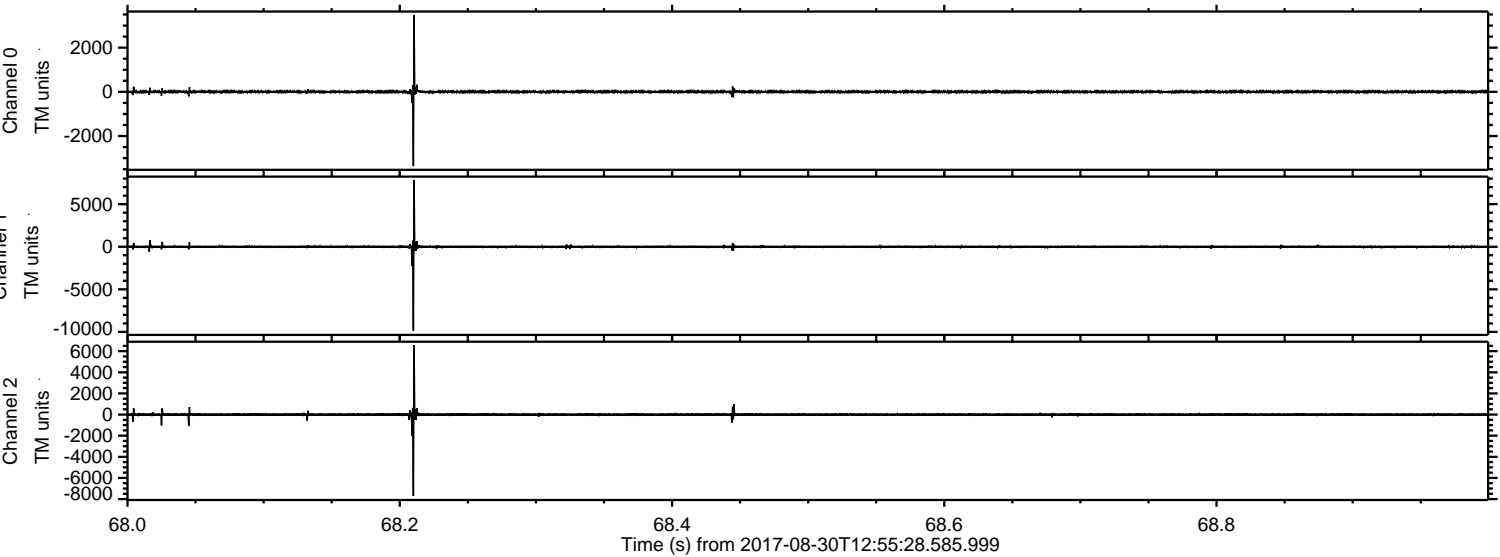


Channel 0
mn: -7739
mx: 5994
 μ : 4.3
 σ : 69.6

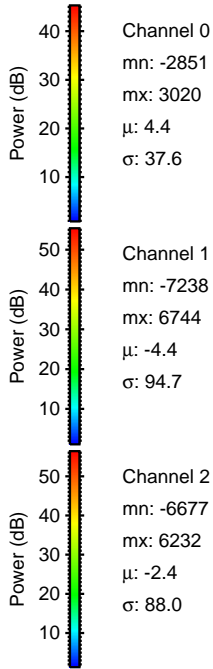
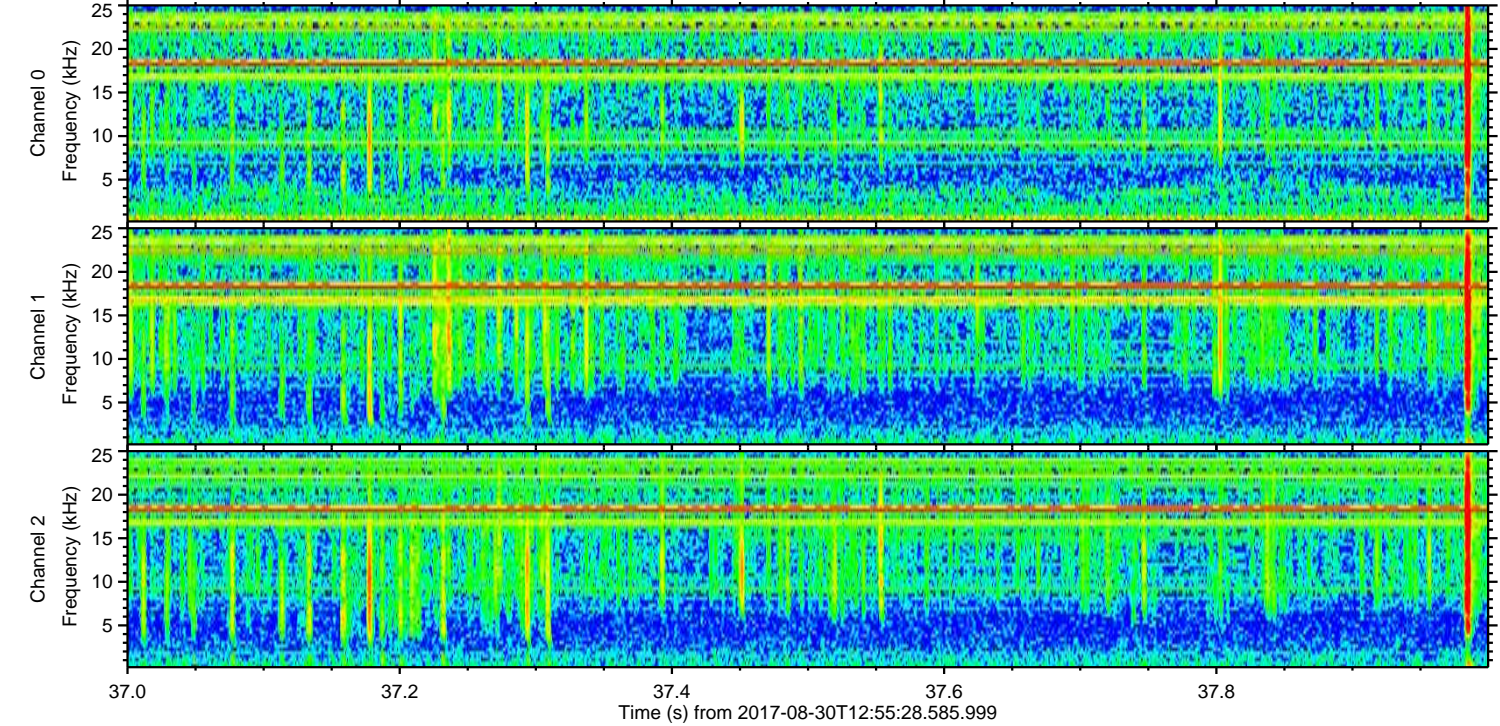
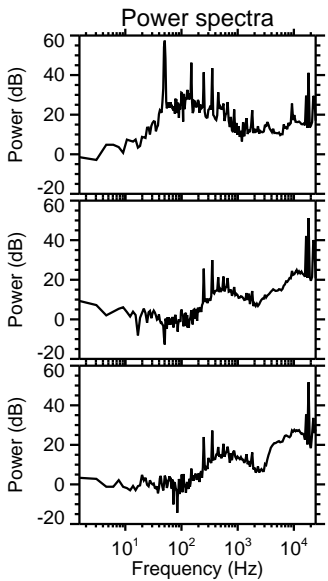
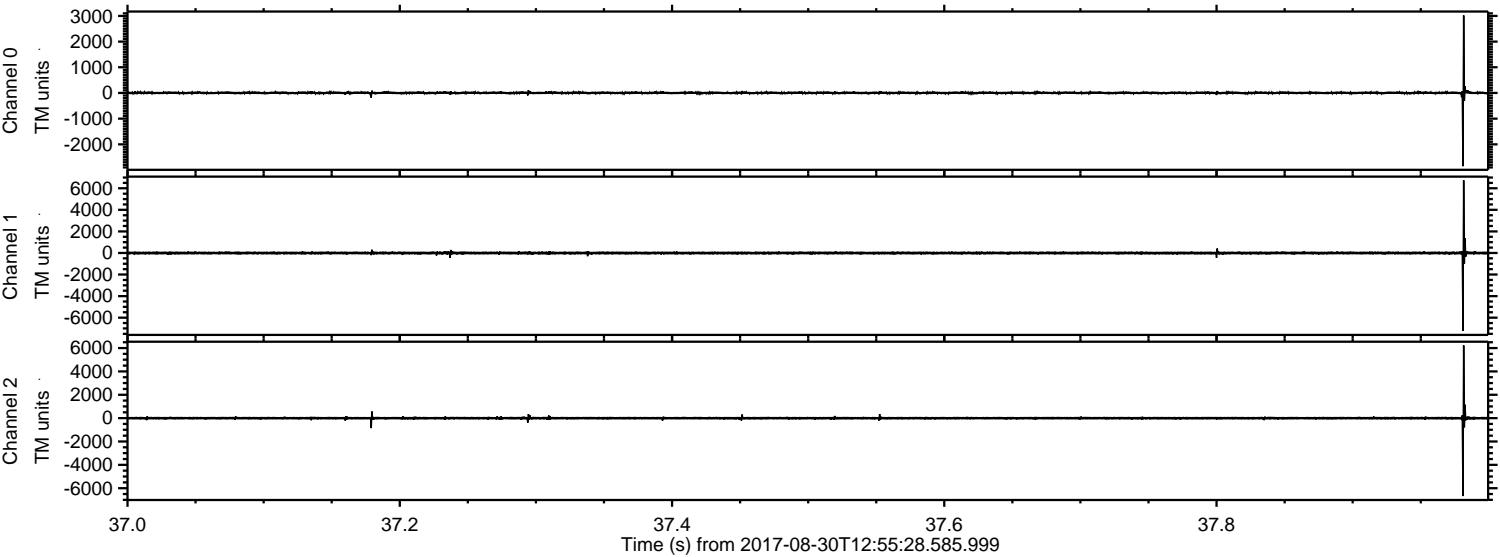
Channel 1
mn: -7917
mx: 5973
 μ : -4.3
 σ : 93.3

Channel 2
mn: -15483
mx: 14173
 μ : -2.4
 σ : 173.9

Processed Wed Aug 30 15:03:05 2017 by ELM ver.2012-10-06 from 001__elm20170830_125527__dat00.bin

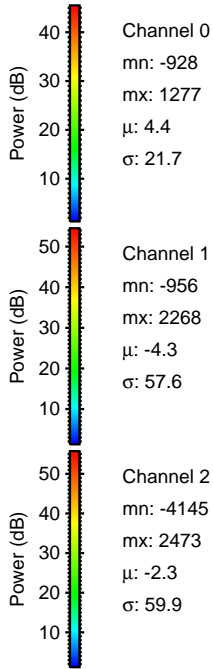
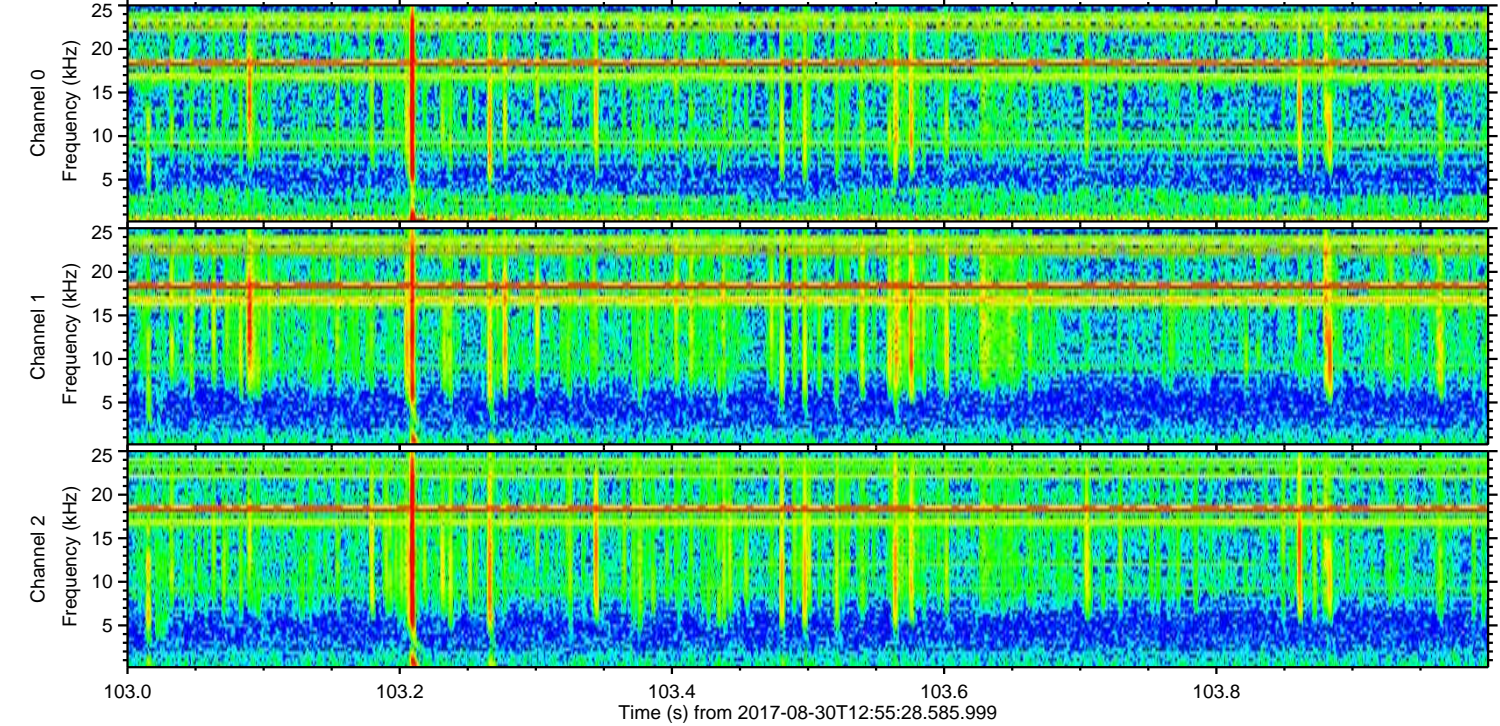
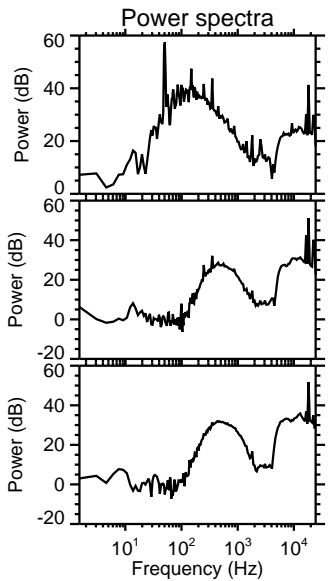
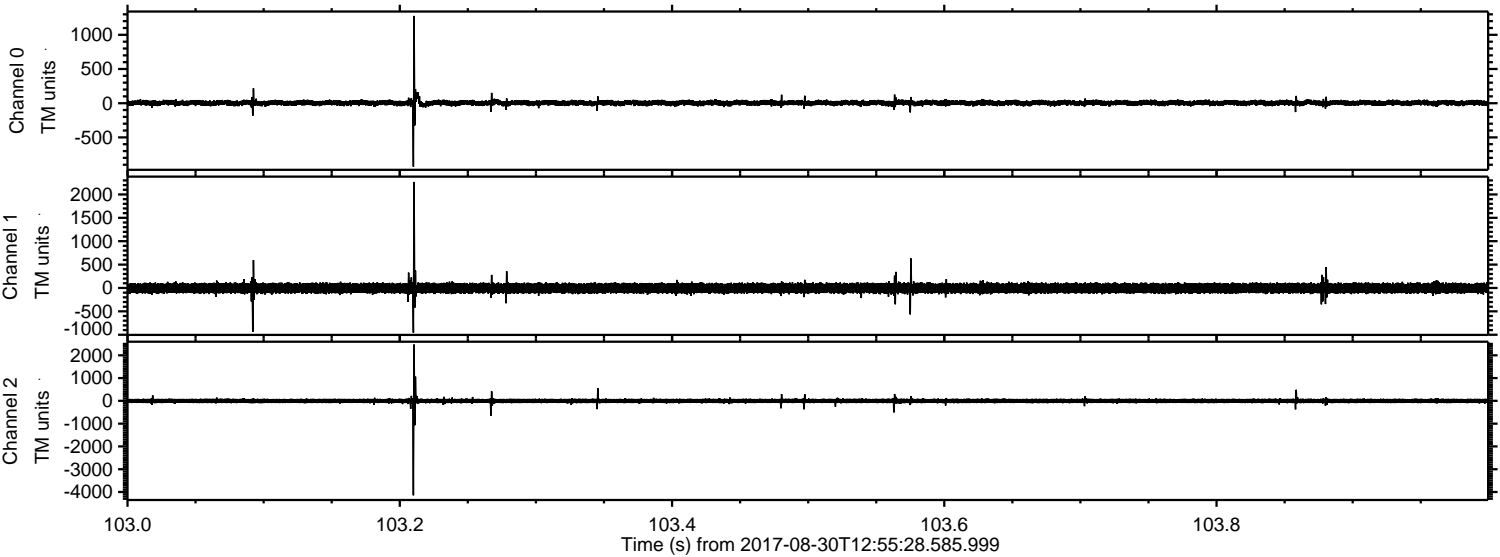


Processed Wed Aug 30 15:03:06 2017 by ELM ver.2012-10-06 from 001__elm20170830_125527__dat00.bin



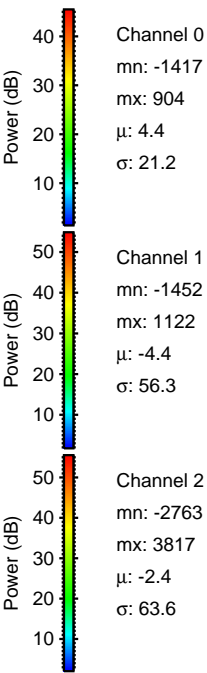
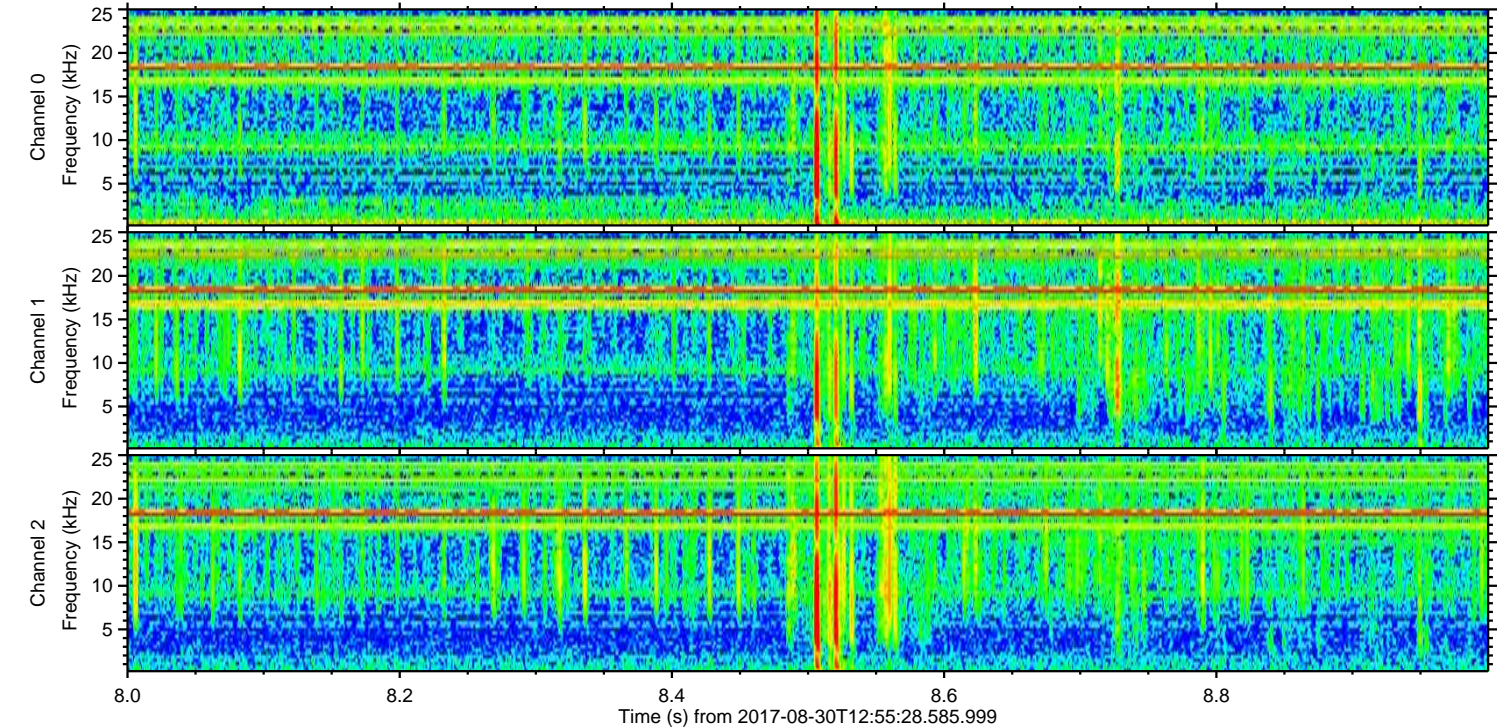
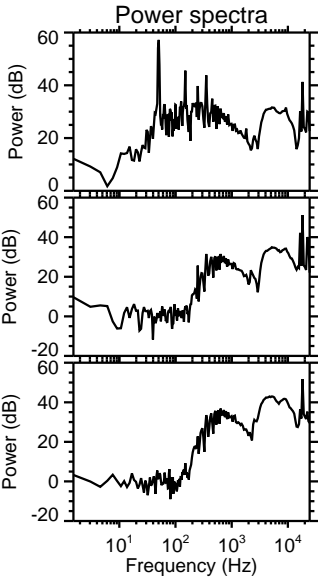
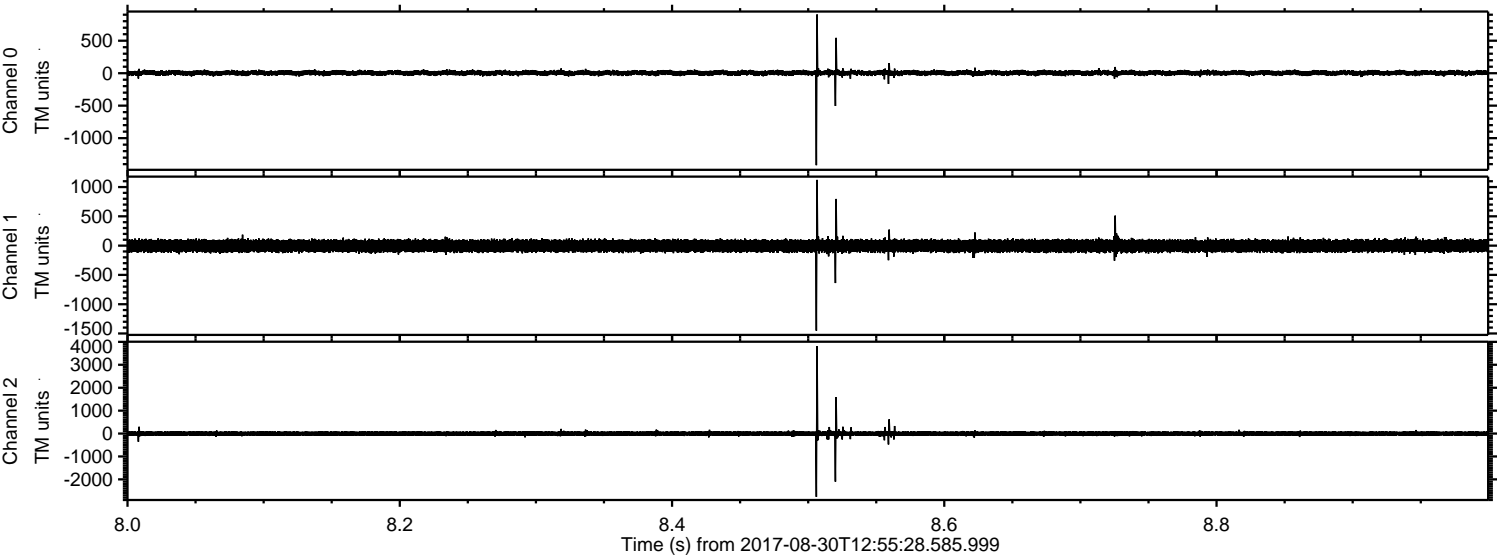
ELMAVAN 3D WAVEFORMS (Measured data sampled at 50 kHz) 51000 packets of 144 samples from 2017-08-30T12:55:28.585.999. Part 104/147

Processed Wed Aug 30 15:03:07 2017 by ELM ver.2012-10-06 from 001__elm20170830_125527__dat00.bin



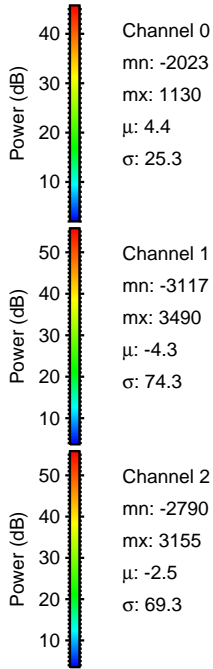
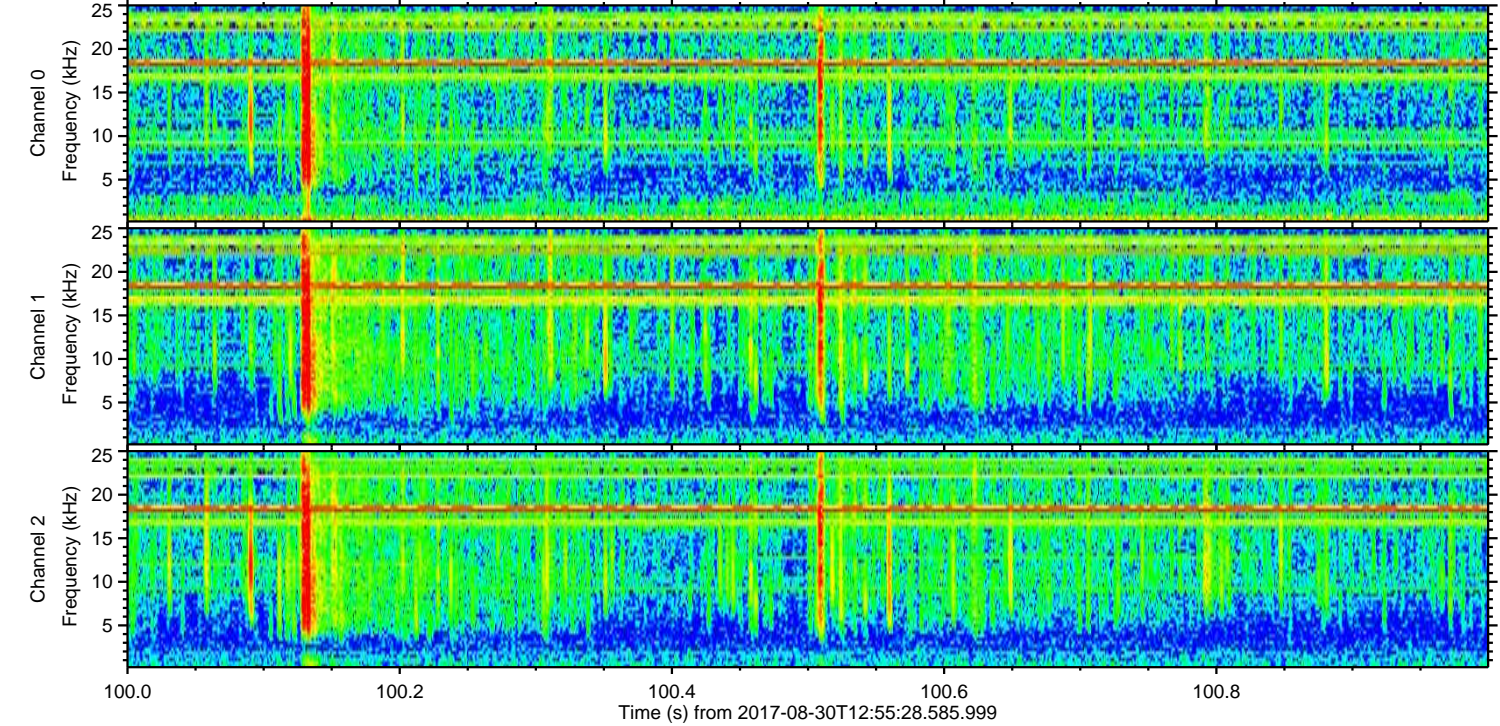
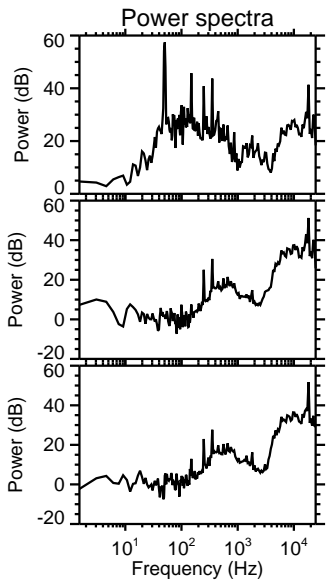
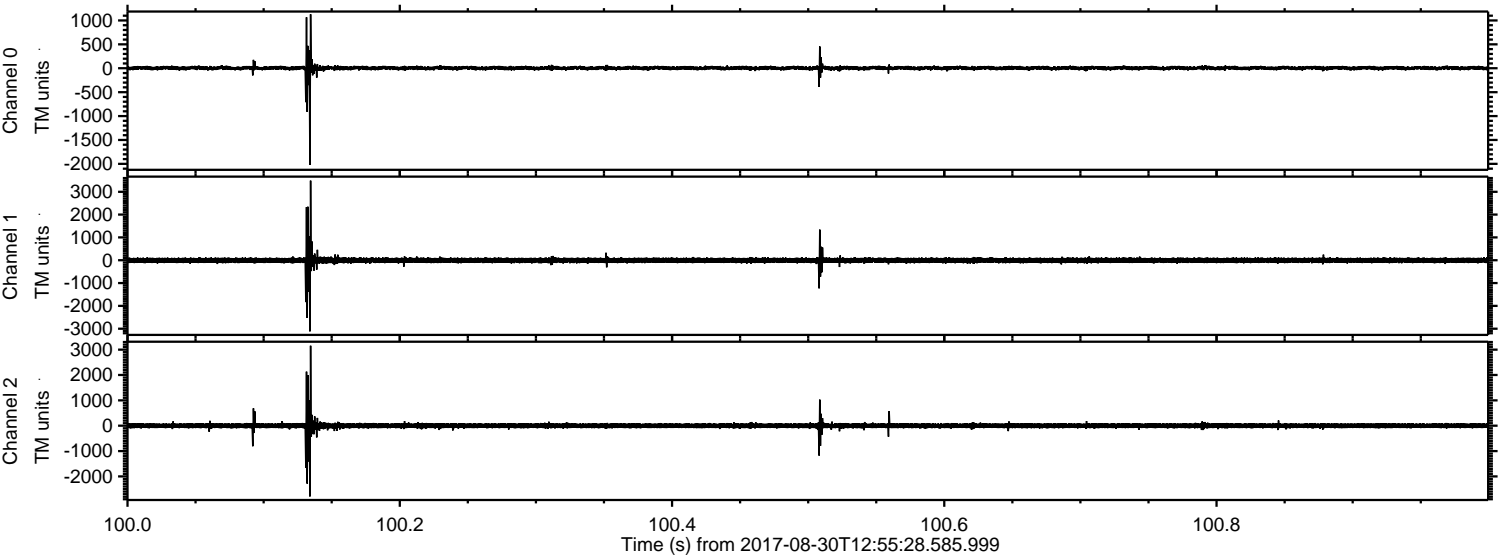
ELMAVAN 3D WAVEFORMS (Measured data sampled at 50 kHz) 51000 packets of 144 samples from 2017-08-30T12:55:28.585.999. Part 9/147

Processed Wed Aug 30 15:03:08 2017 by ELM ver.2012-10-06 from 001__elm20170830_125527__dat00.bin

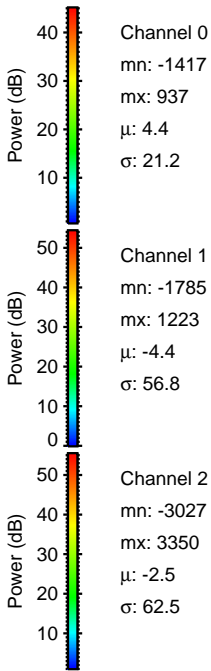
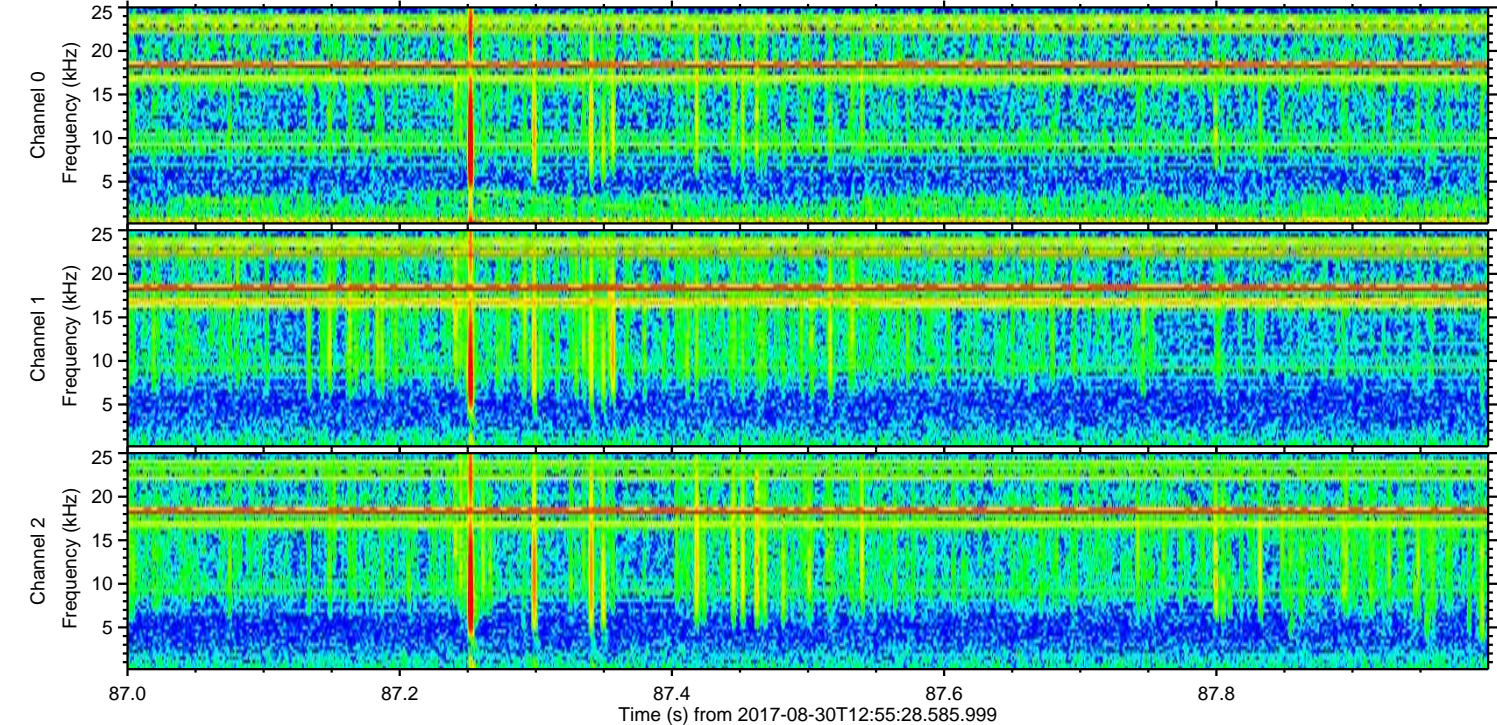
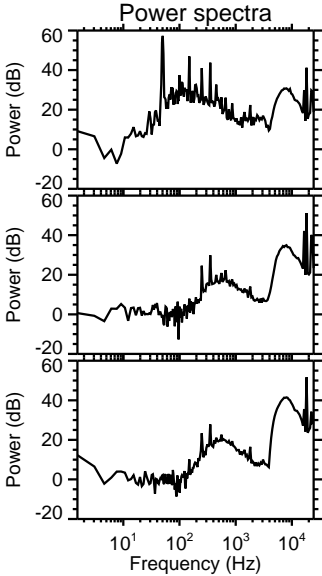
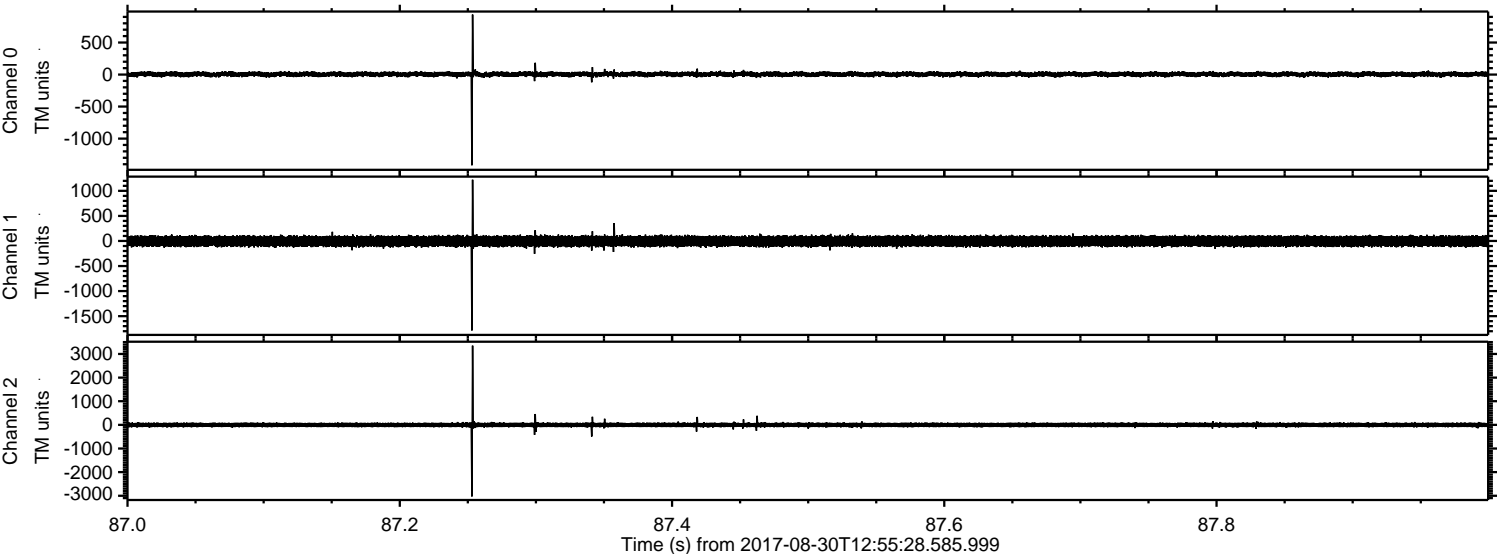


ELMAVAN 3D WAVEFORMS (Measured data sampled at 50 kHz) 51000 packets of 144 samples from 2017-08-30T12:55:28.585.999. Part 101/147

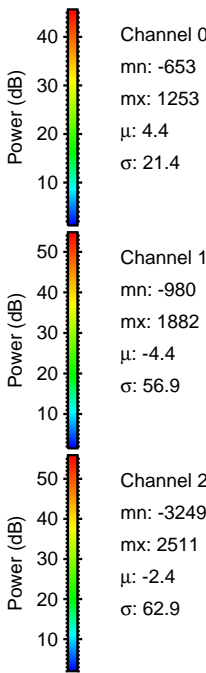
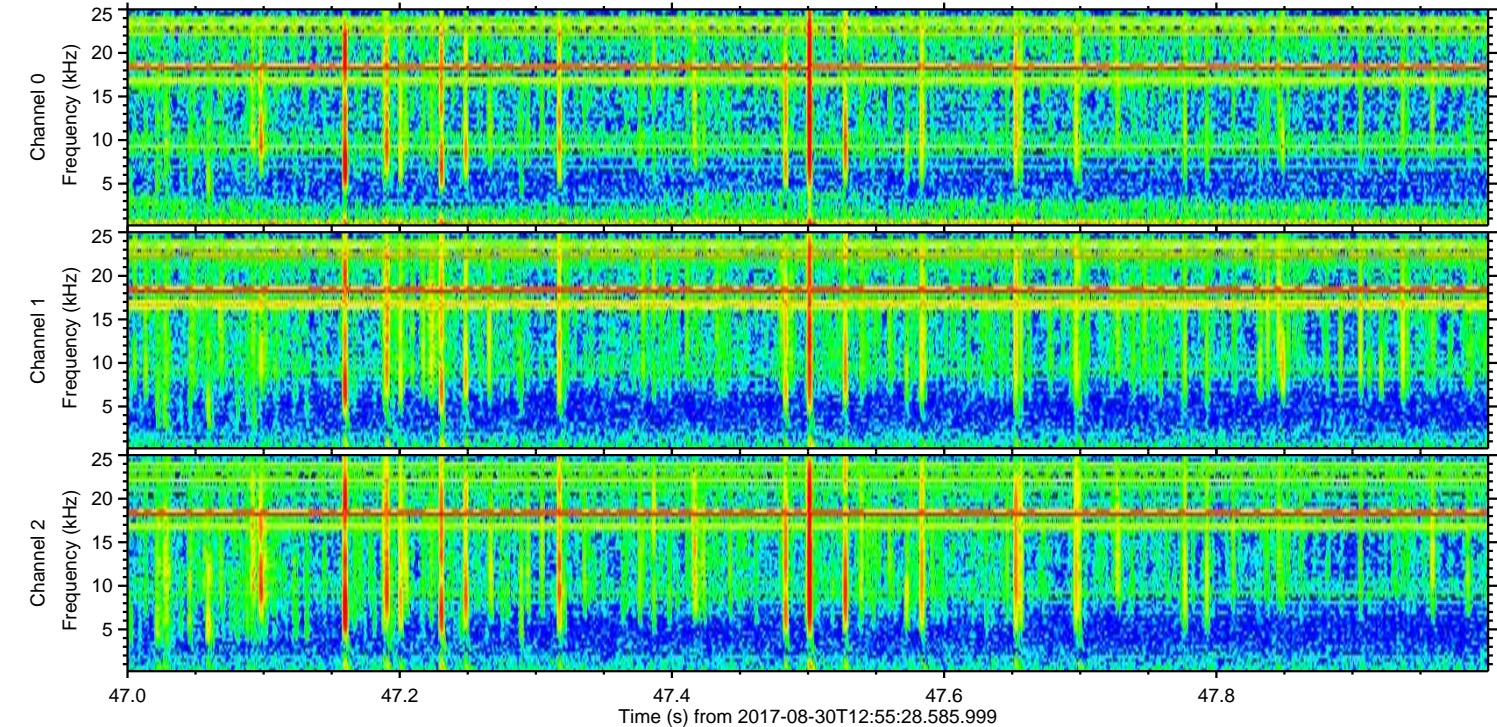
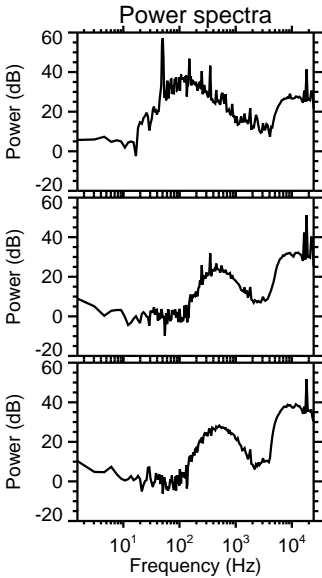
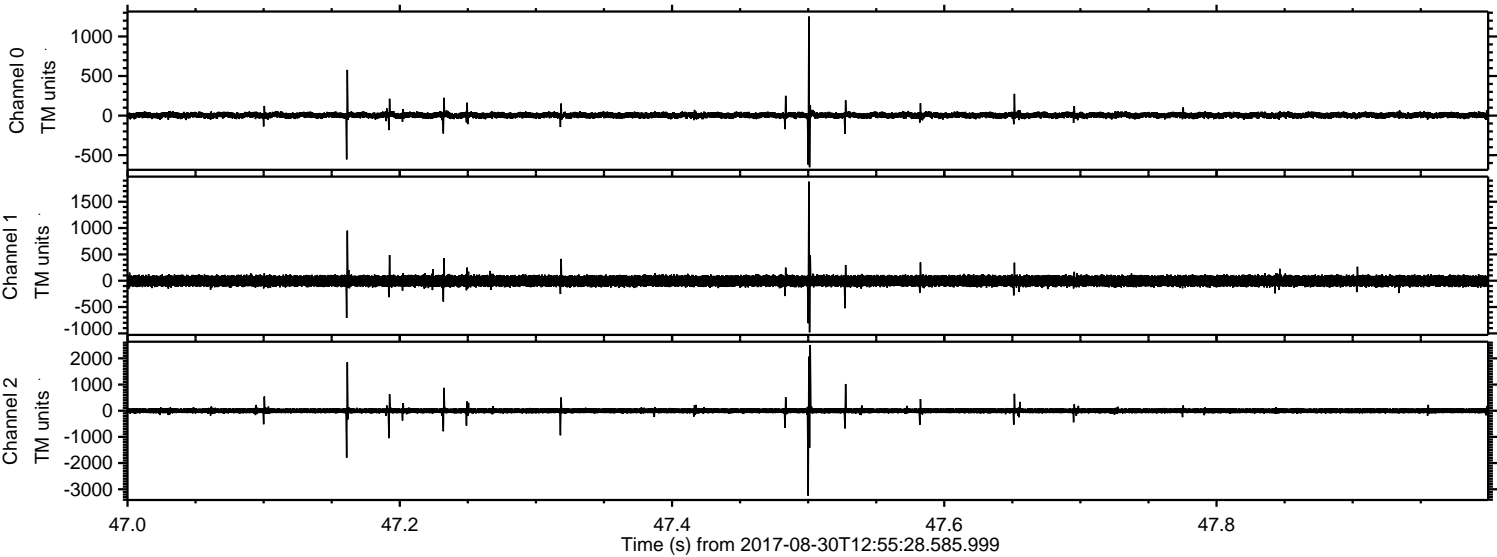
Processed Wed Aug 30 15:03:08 2017 by ELM ver.2012-10-06 from 001__elm20170830_125527__dat00.bin



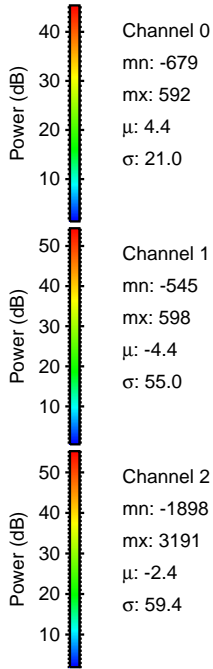
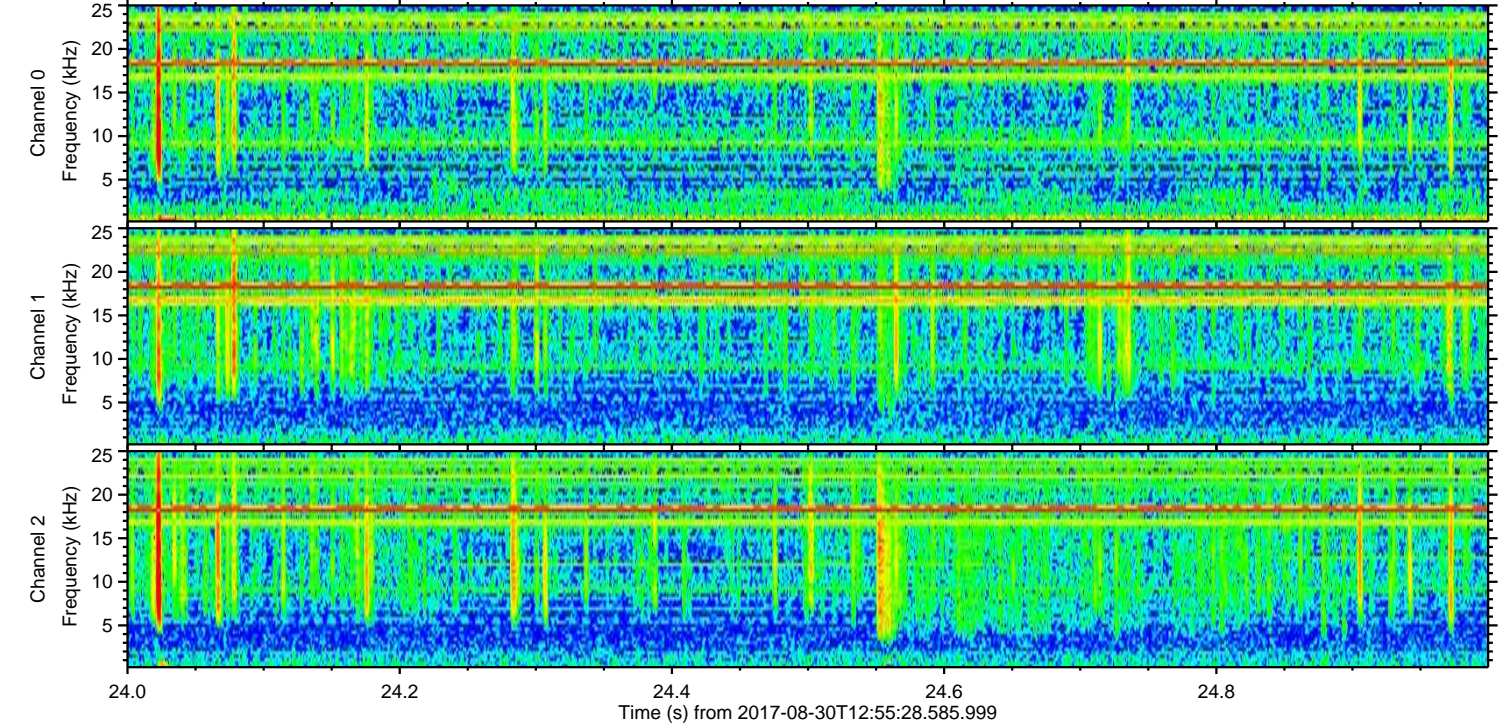
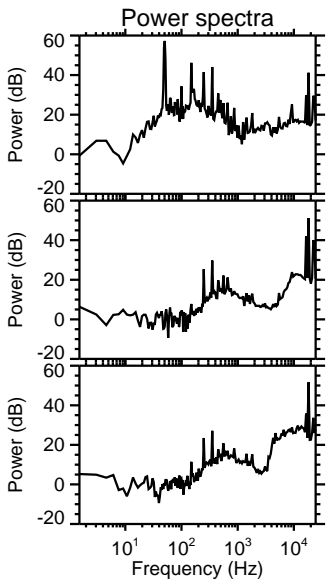
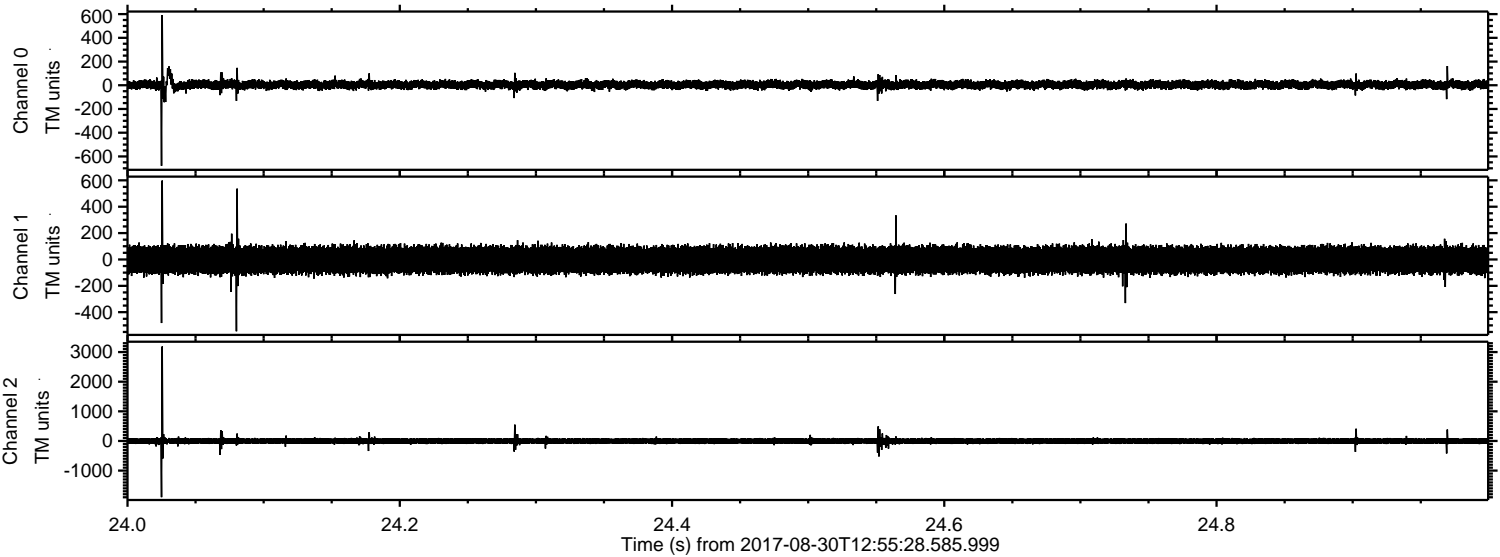
Processed Wed Aug 30 15:03:09 2017 by ELM ver.2012-10-06 from 001__elm20170830_125527__dat00.bin



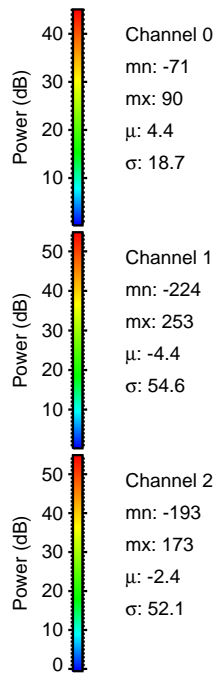
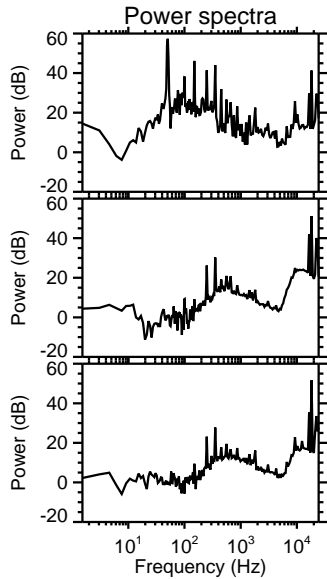
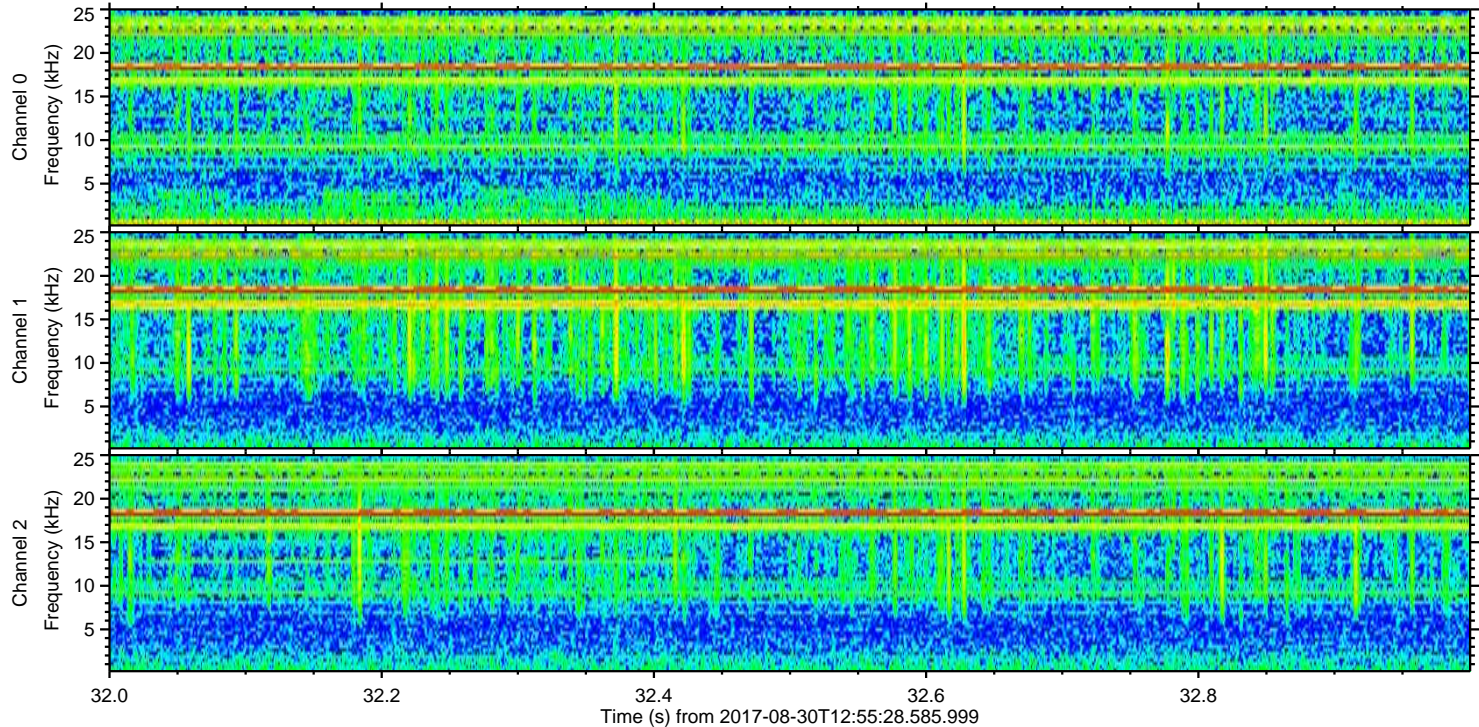
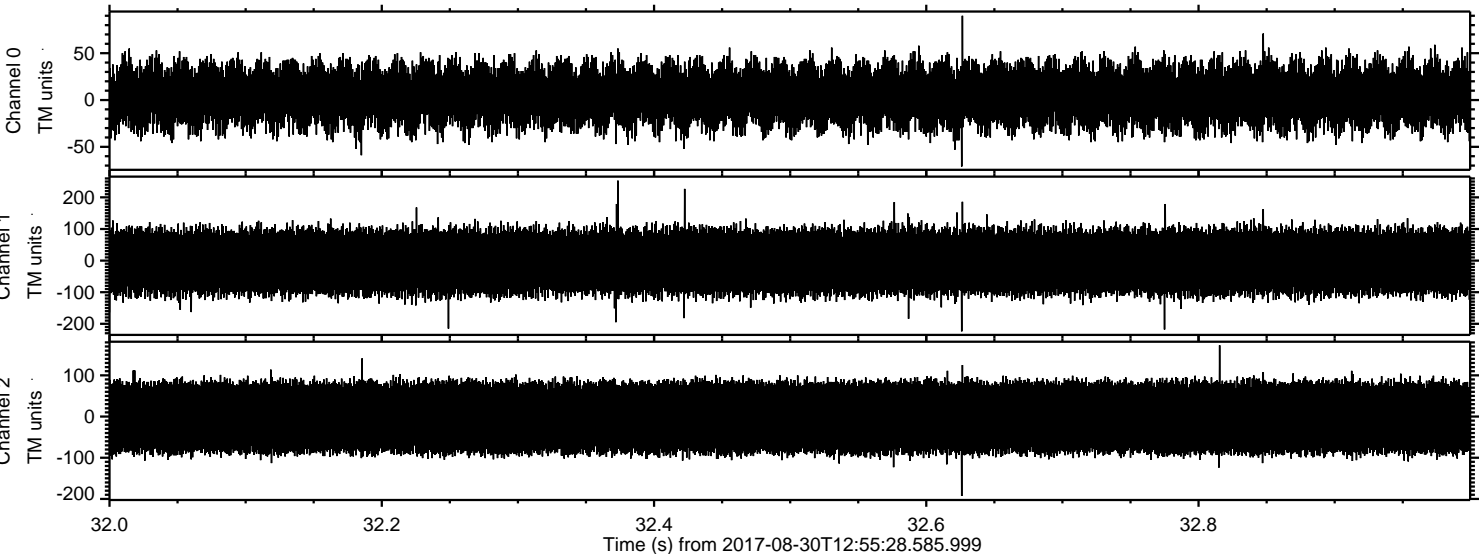
Processed Wed Aug 30 15:03:10 2017 by ELM ver.2012-10-06 from 001__elm20170830_125527__dat00.bin



Processed Wed Aug 30 15:03:10 2017 by ELM ver.2012-10-06 from 001__elm20170830_125527__dat00.bin



Processed Wed Aug 30 15:03:11 2017 by ELM ver.2012-10-06 from 001__elm20170830_125527__dat00.bin



Power spectra

Channel 0
mn: -71
mx: 90
 μ : 4.4
 σ : 18.7

Channel 1
mn: -224
mx: 253
 μ : -4.4
 σ : 54.6

Channel 2
mn: -193
mx: 173
 μ : -2.4
 σ : 52.1