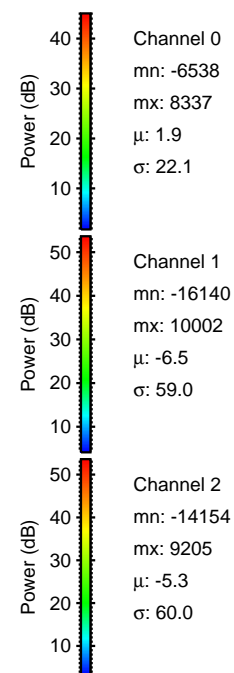
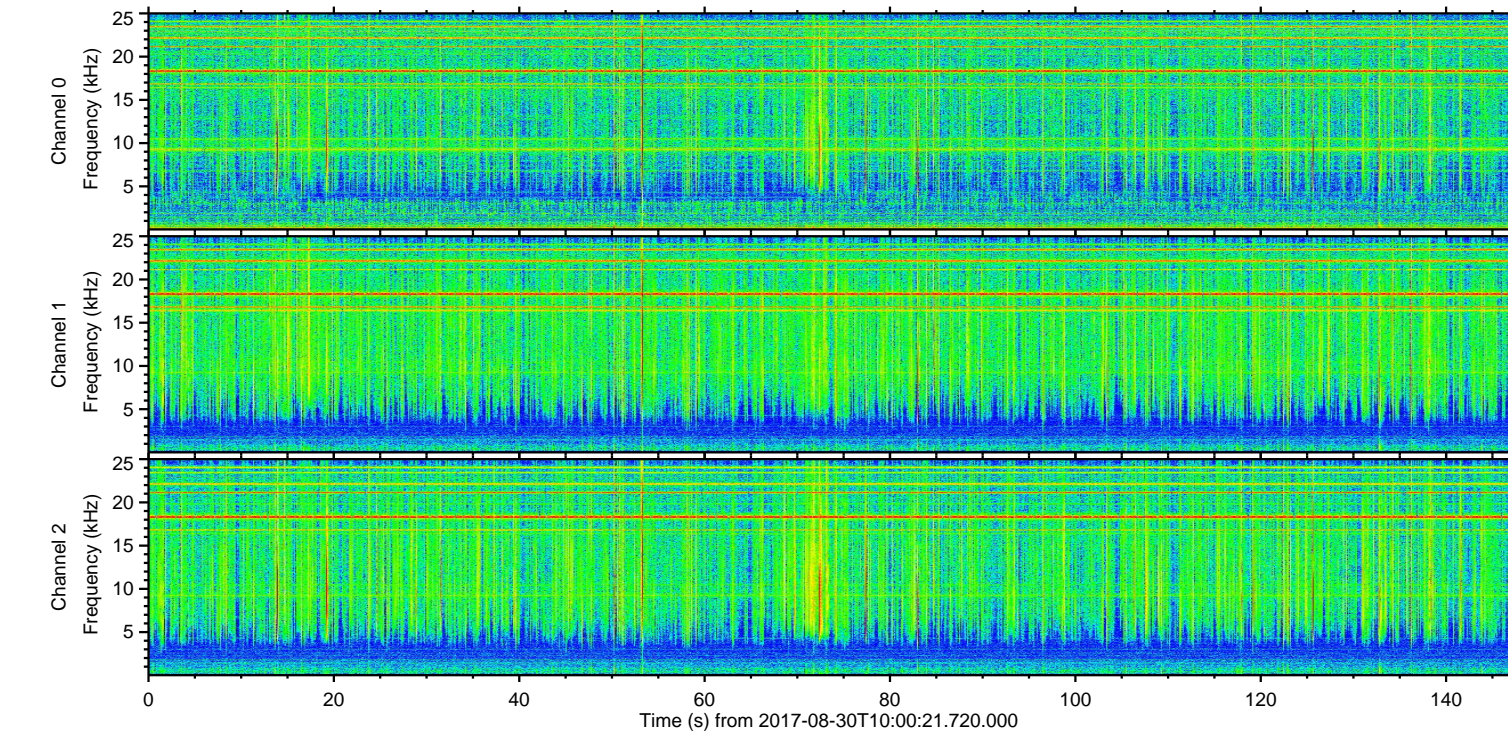
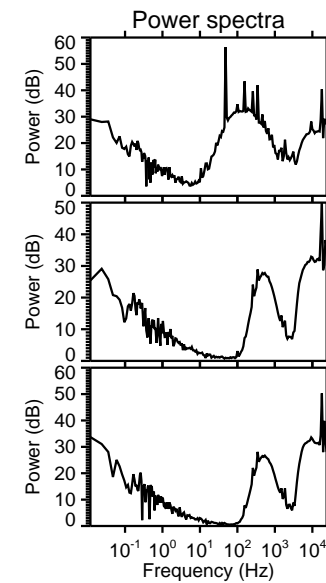
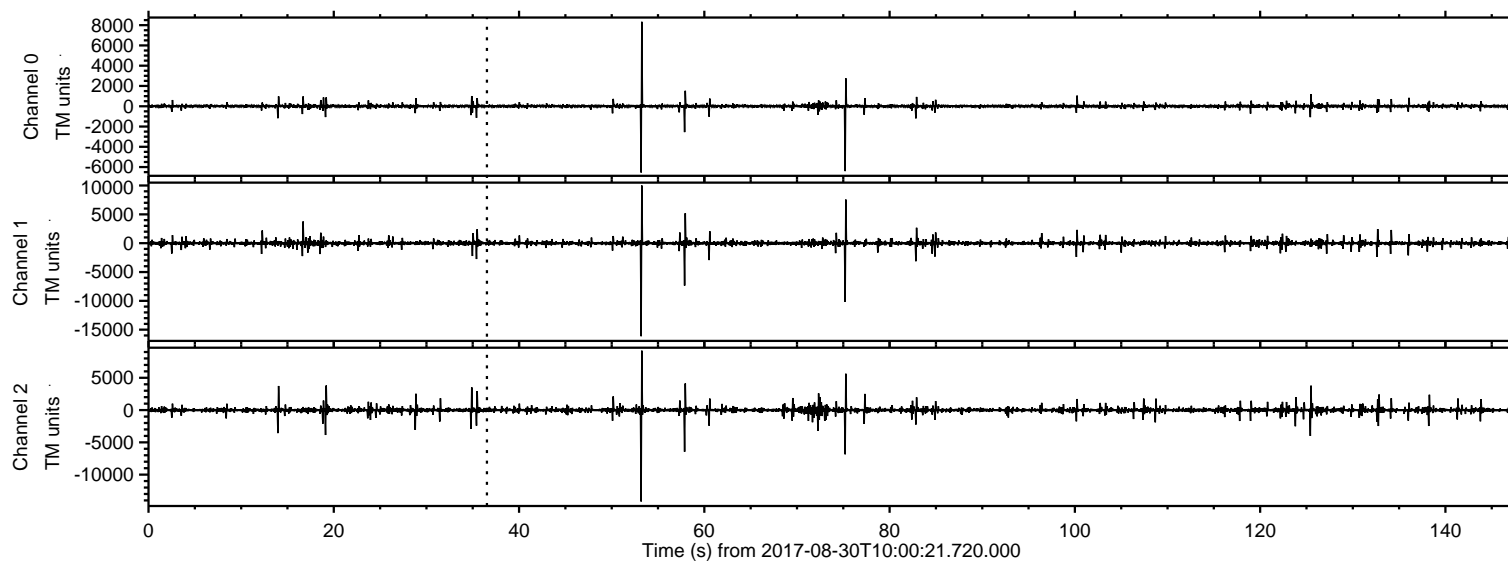


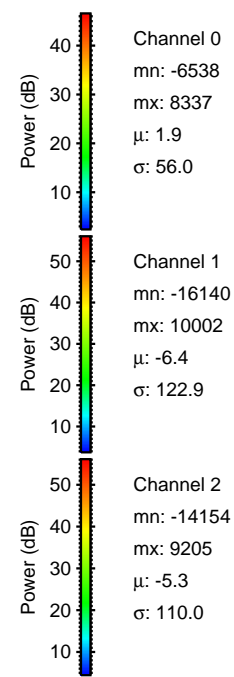
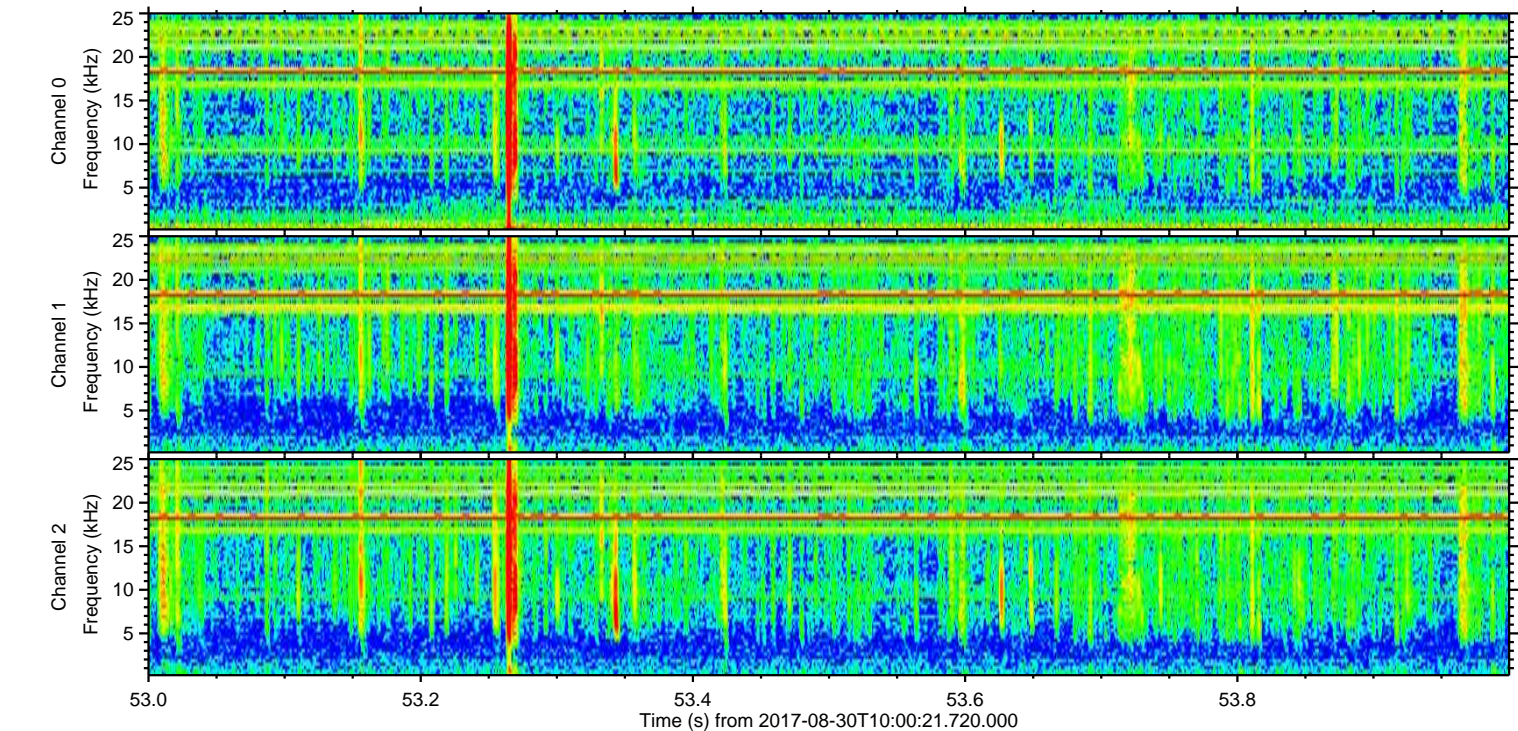
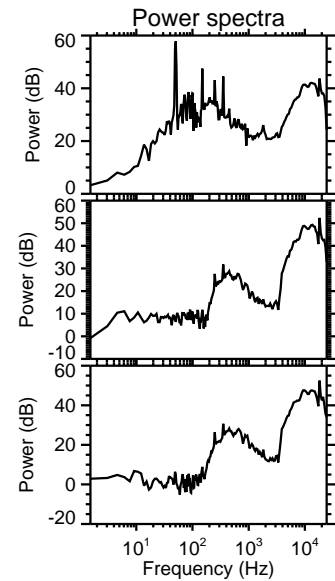
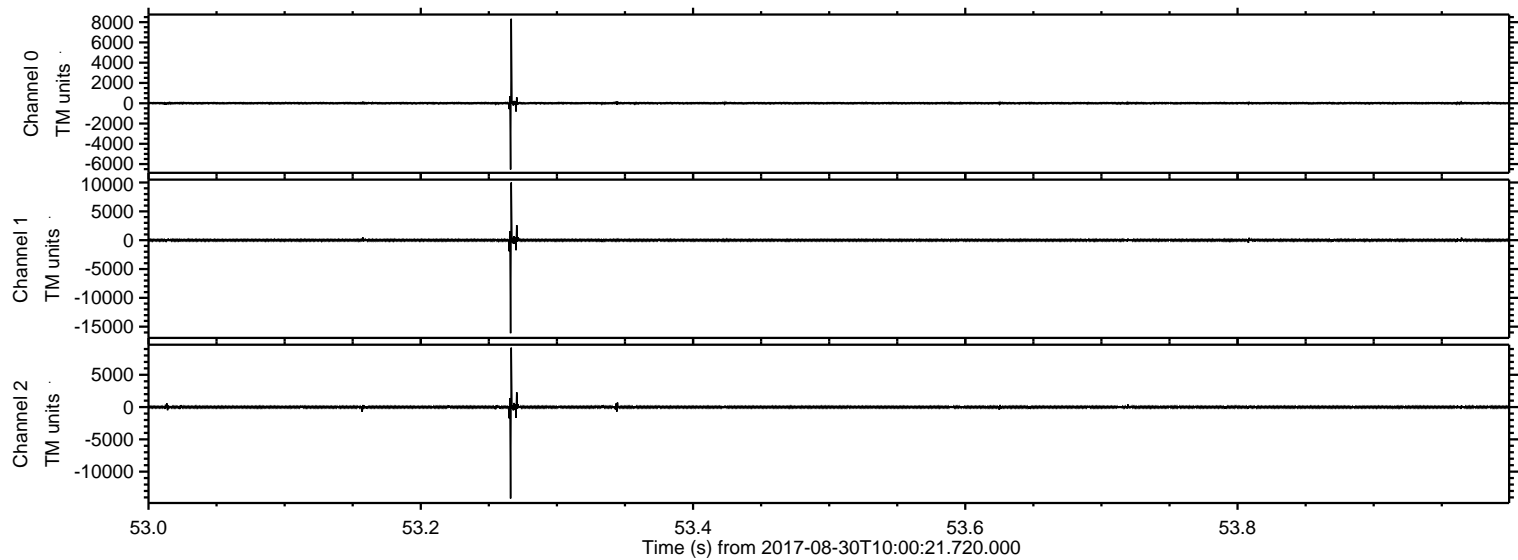
# ELMAVAN 3D WAVEFORMS (Measured data sampled at 50 kHz) 50999 packets of 144 samples from 2017-08-30T10:00:21.720.000.

Processed Wed Aug 30 12:07:50 2017 by ELM ver.2012-10-06 from 001\_\_elm20170830\_100020\_\_dat00.bin



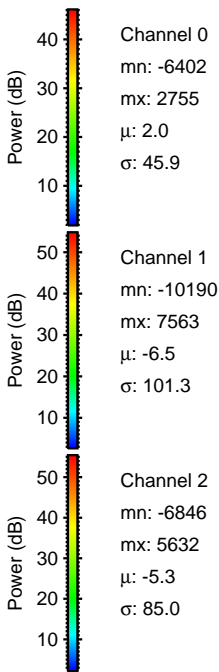
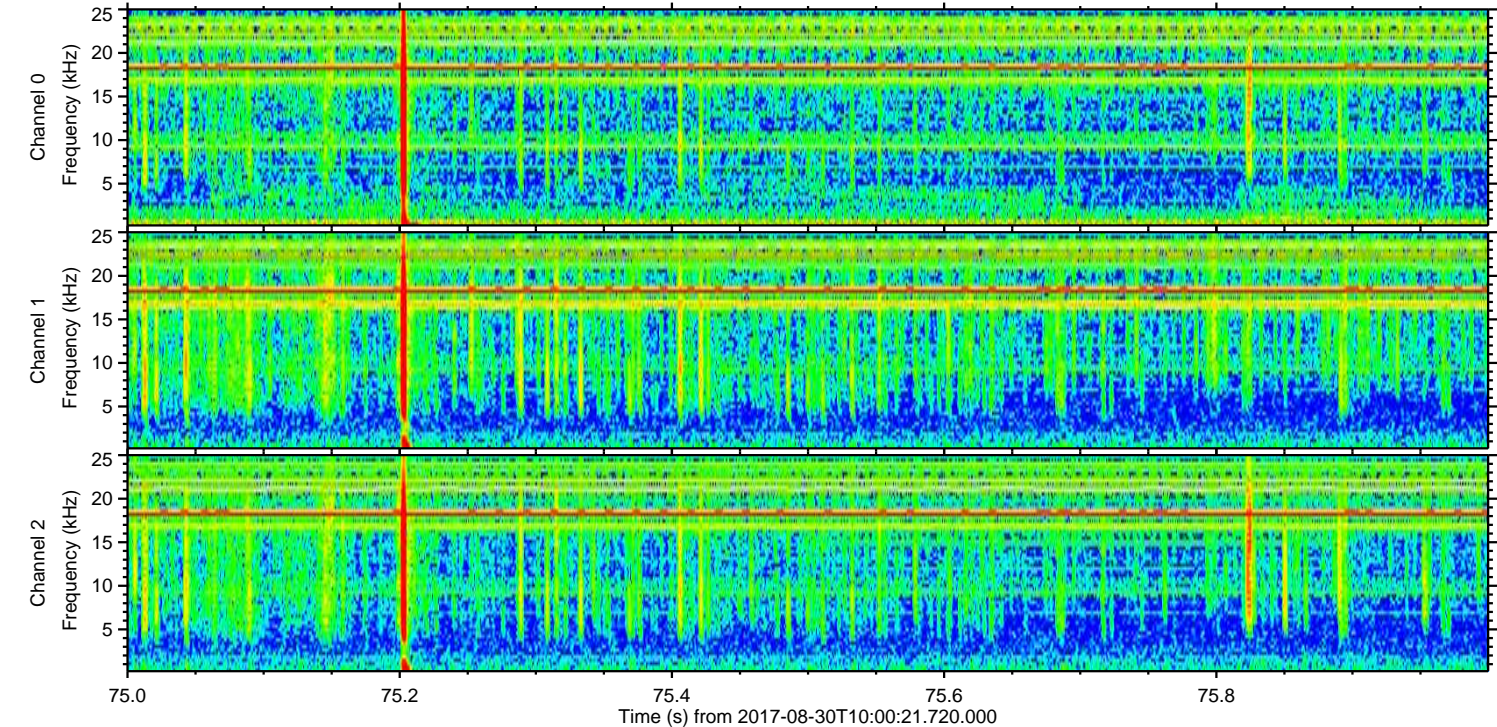
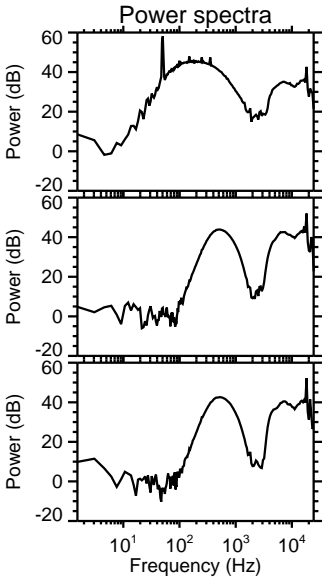
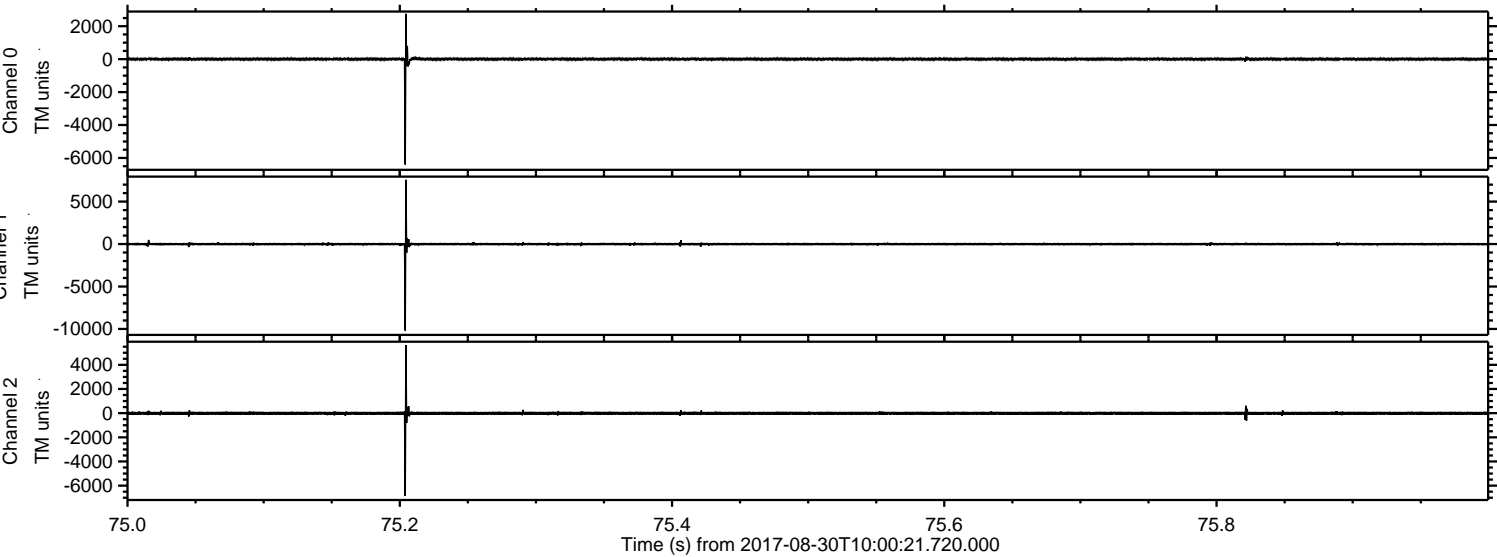


Processed Wed Aug 30 12:07:55 2017 by ELM ver.2012-10-06 from 001\_\_elm20170830\_100020\_\_dat00.bin



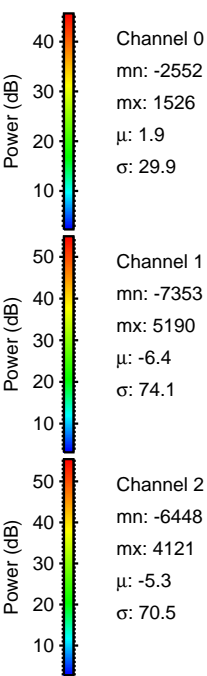
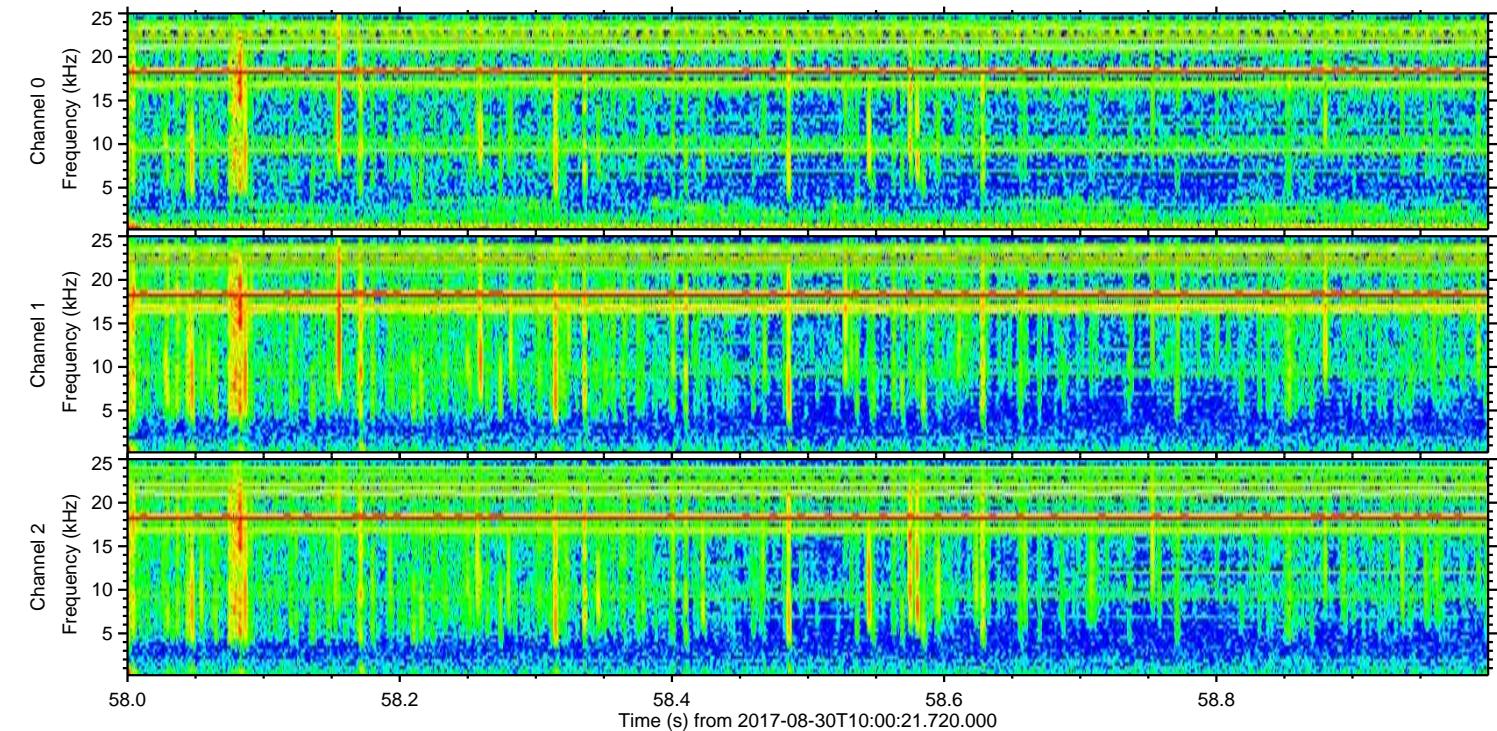
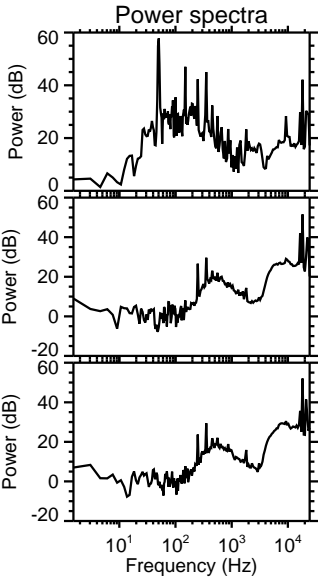
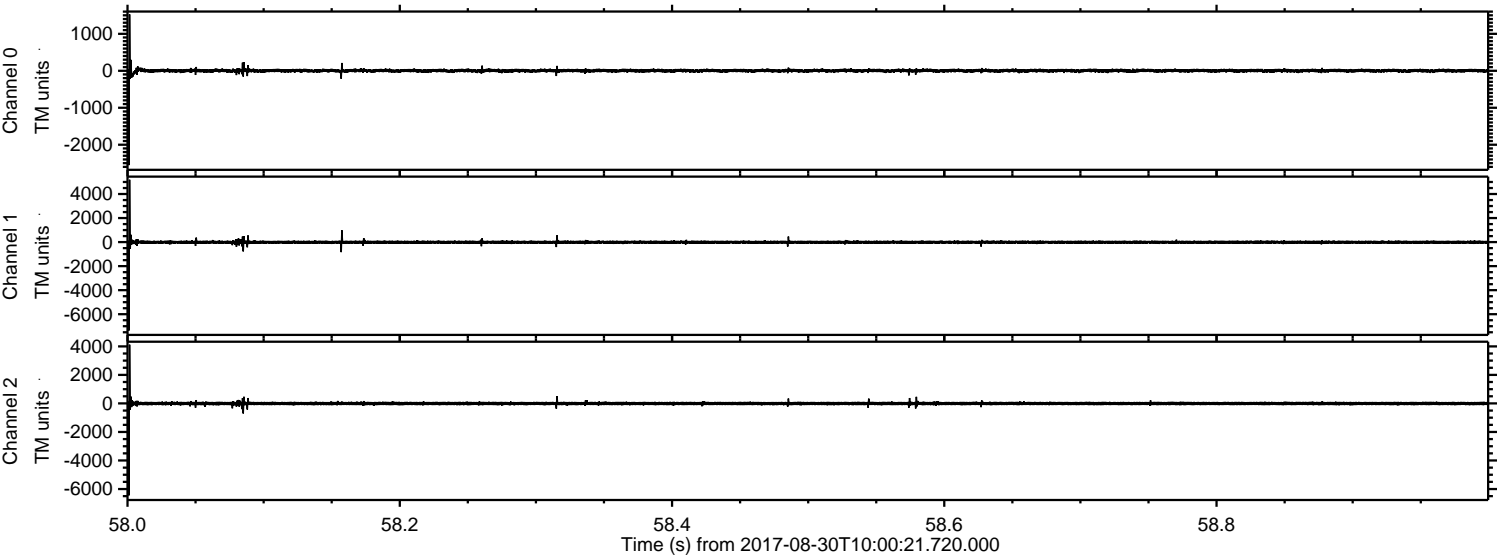


Processed Wed Aug 30 12:07:56 2017 by ELM ver.2012-10-06 from 001\_\_elm20170830\_100020\_\_dat00.bin





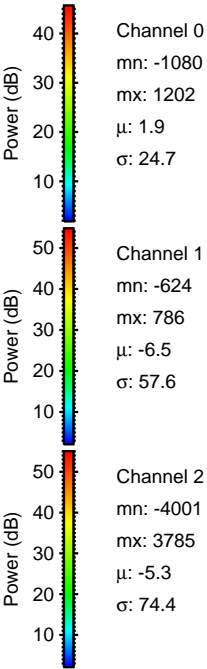
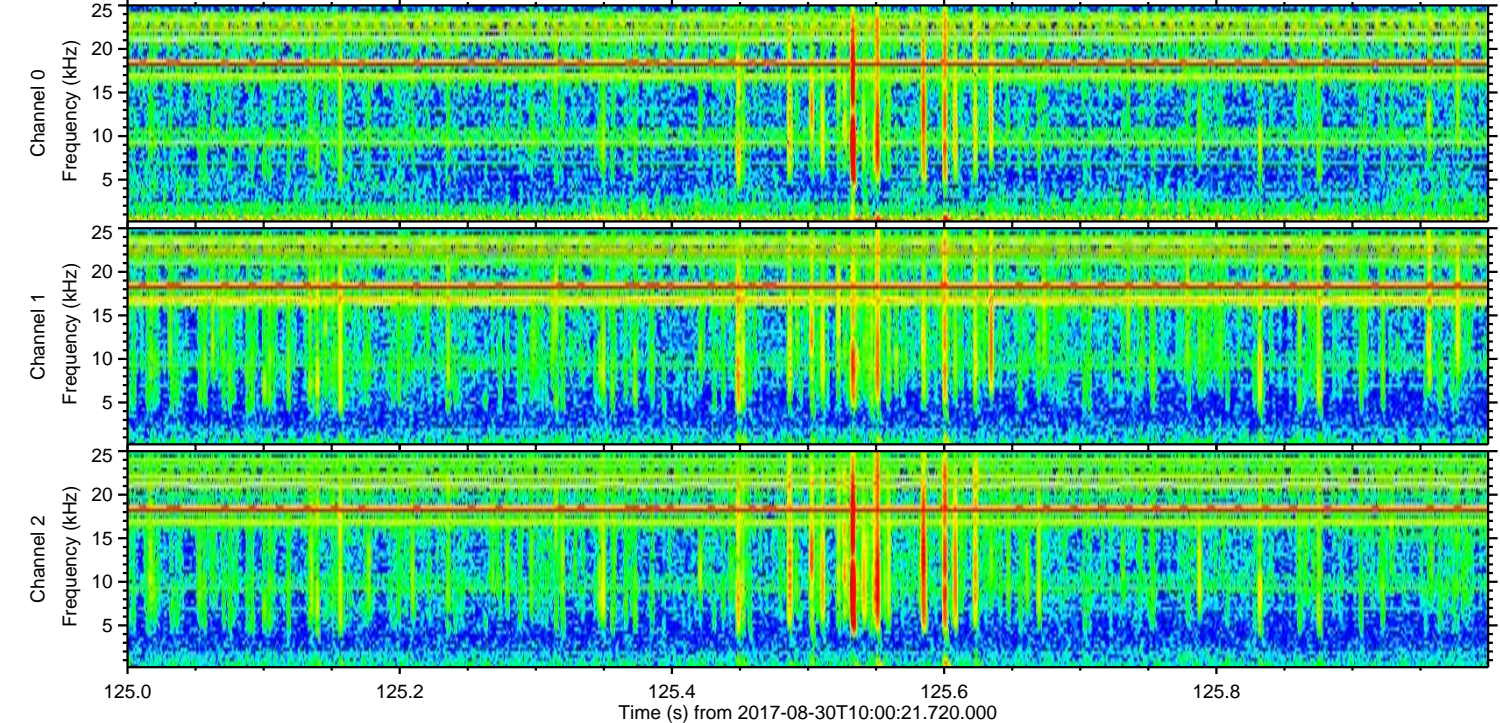
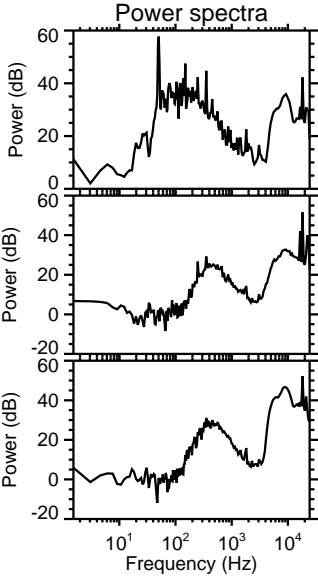
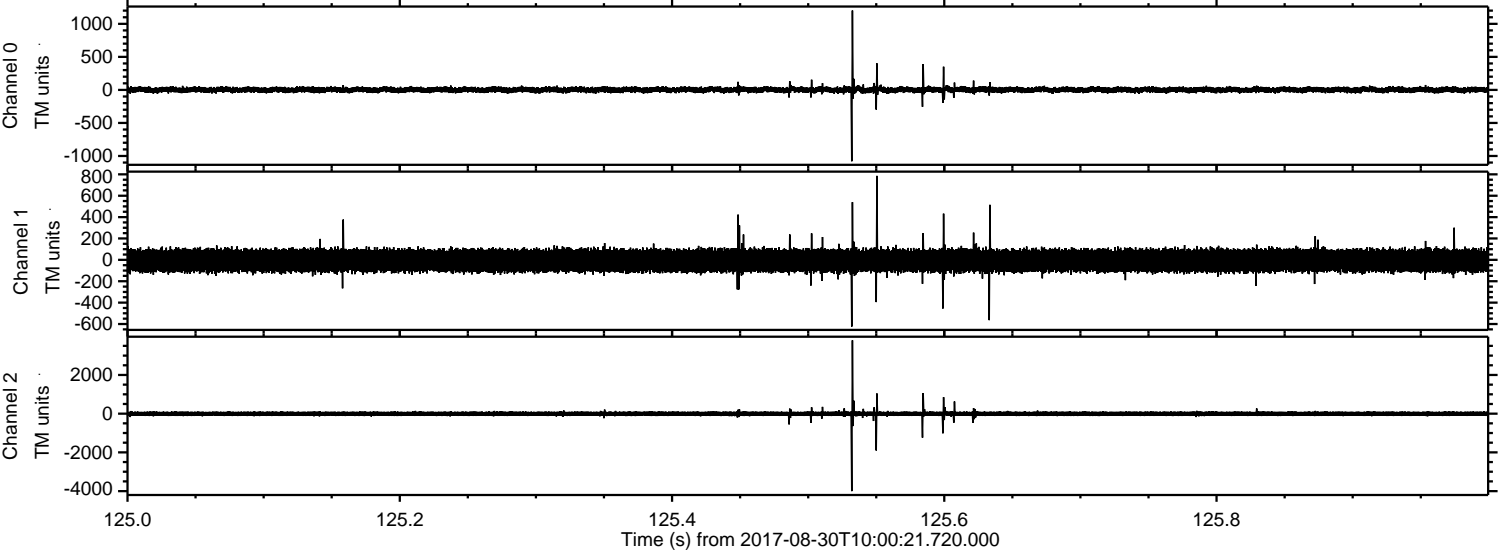
Processed Wed Aug 30 12:07:57 2017 by ELM ver.2012-10-06 from 001\_\_elm20170830\_100020\_\_dat00.bin





ELMAVAN 3D WAVEFORMS (Measured data sampled at 50 kHz) 50999 packets of 144 samples from 2017-08-30T10:00:21.720.000. Part 126/147

Processed Wed Aug 30 12:07:57 2017 by ELM ver.2012-10-06 from 001\_\_elm20170830\_100020\_\_dat00.bin



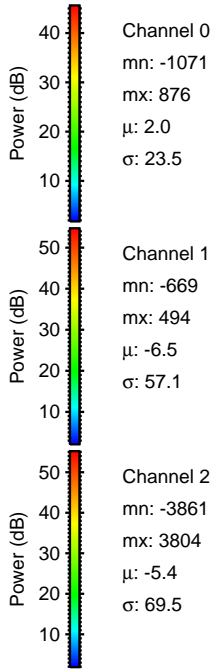
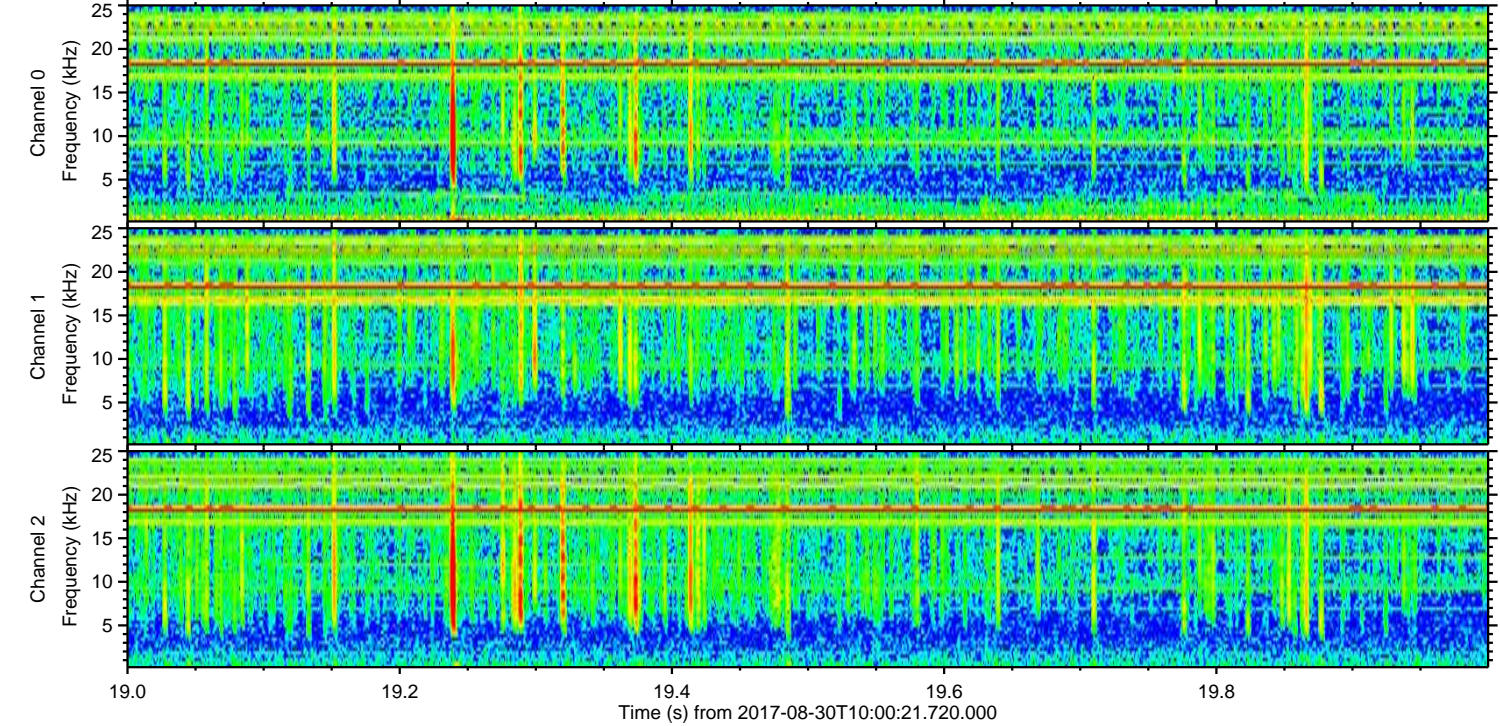
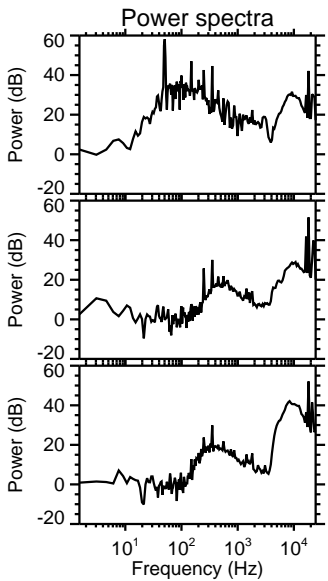
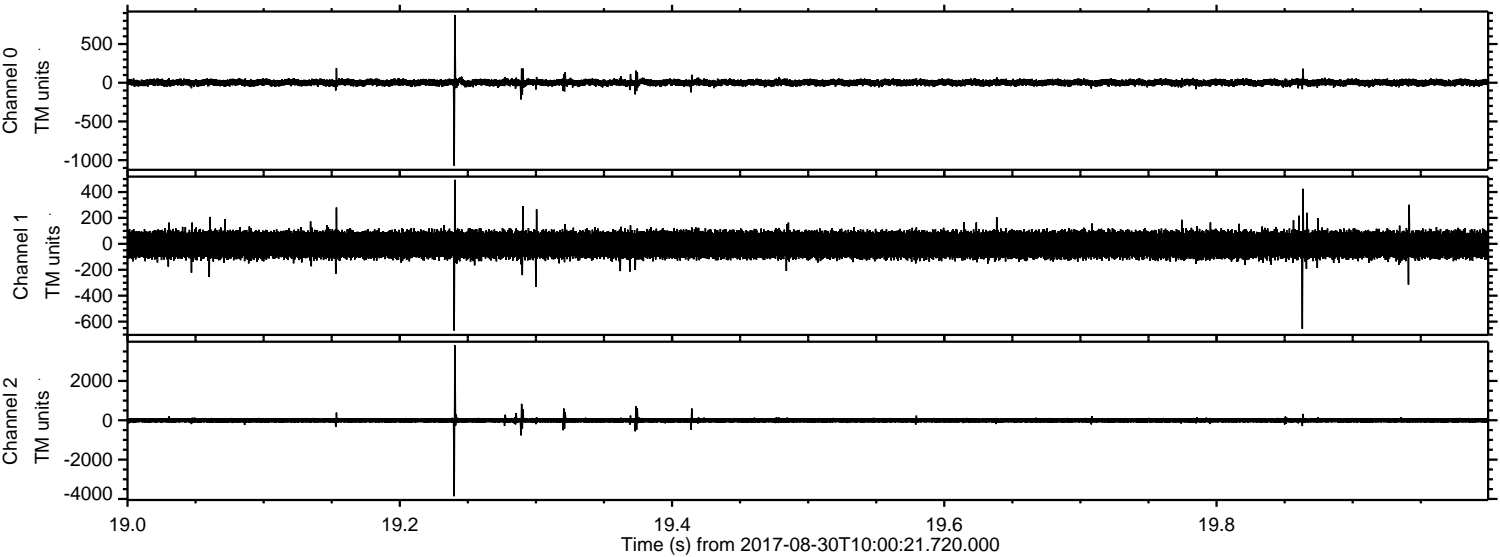
Channel 0  
mn: -1080  
mx: 1202  
 $\mu$ : 1.9  
 $\sigma$ : 24.7

Channel 1  
mn: -624  
mx: 786  
 $\mu$ : -6.5  
 $\sigma$ : 57.6

Channel 2  
mn: -4001  
mx: 3785  
 $\mu$ : -5.3  
 $\sigma$ : 74.4



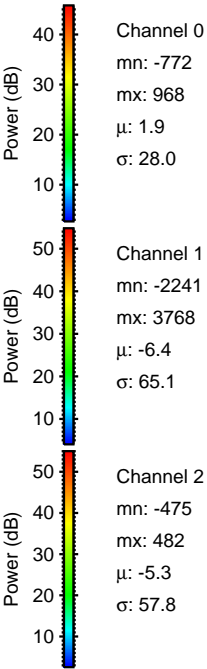
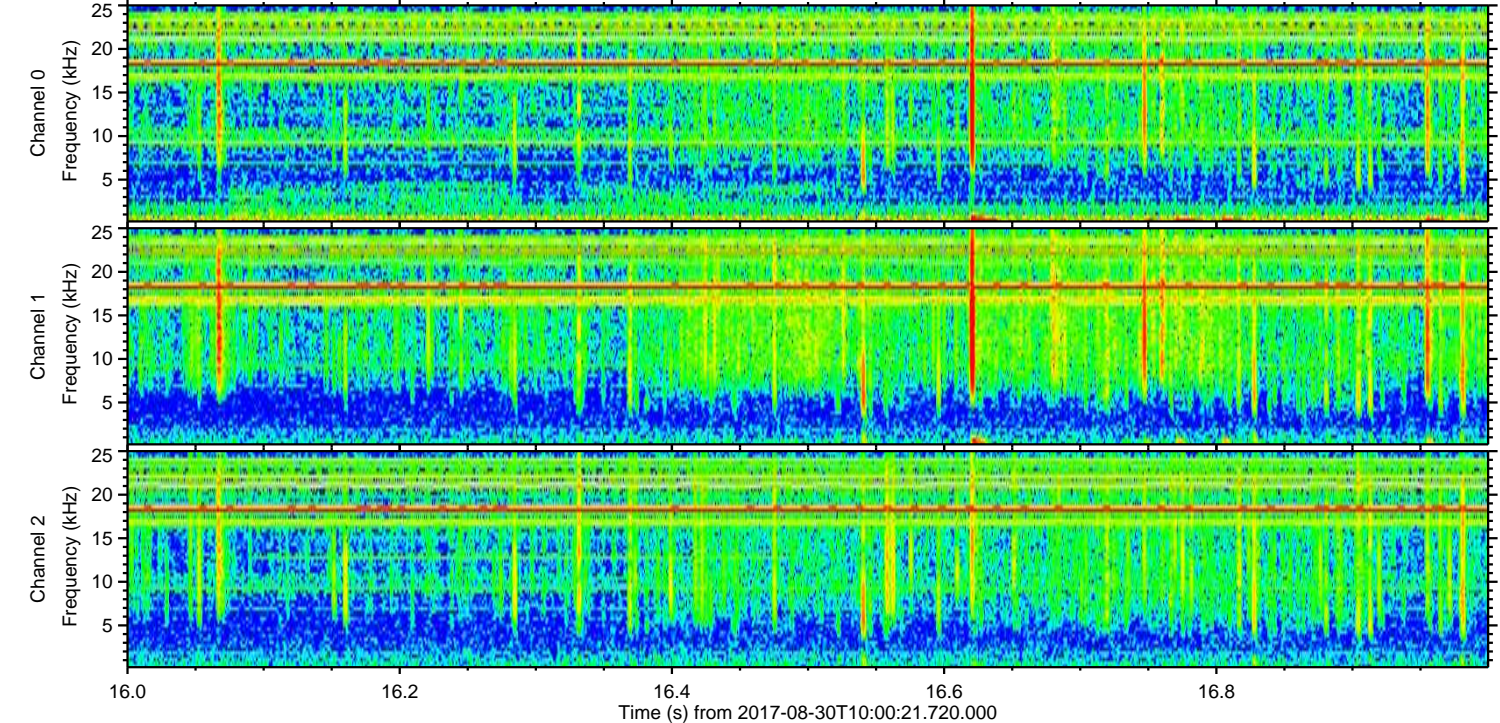
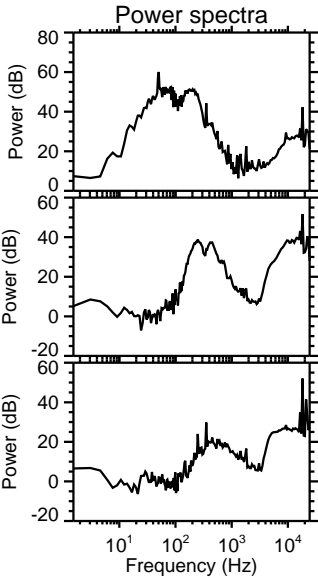
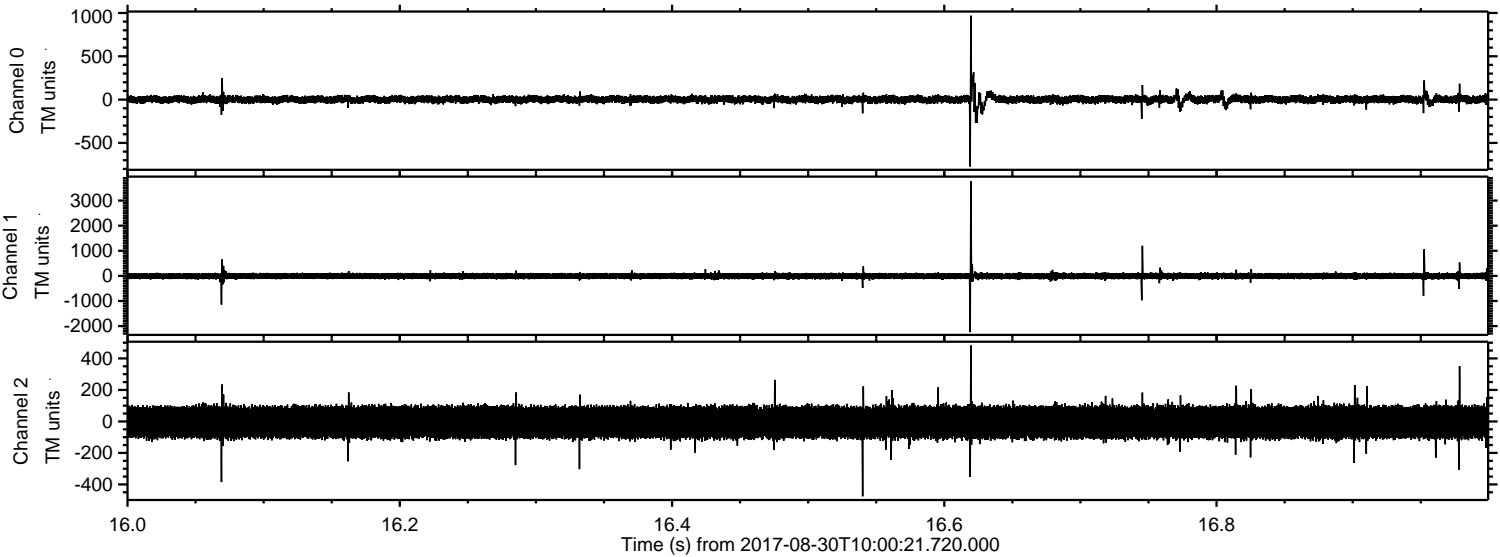
Processed Wed Aug 30 12:07:58 2017 by ELM ver.2012-10-06 from 001\_\_elm20170830\_100020\_\_dat00.bin





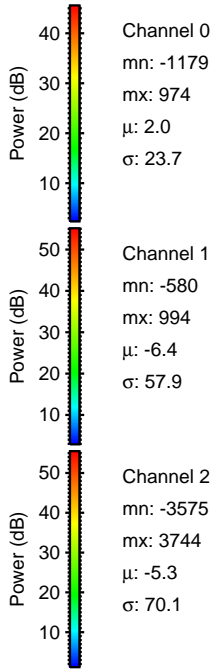
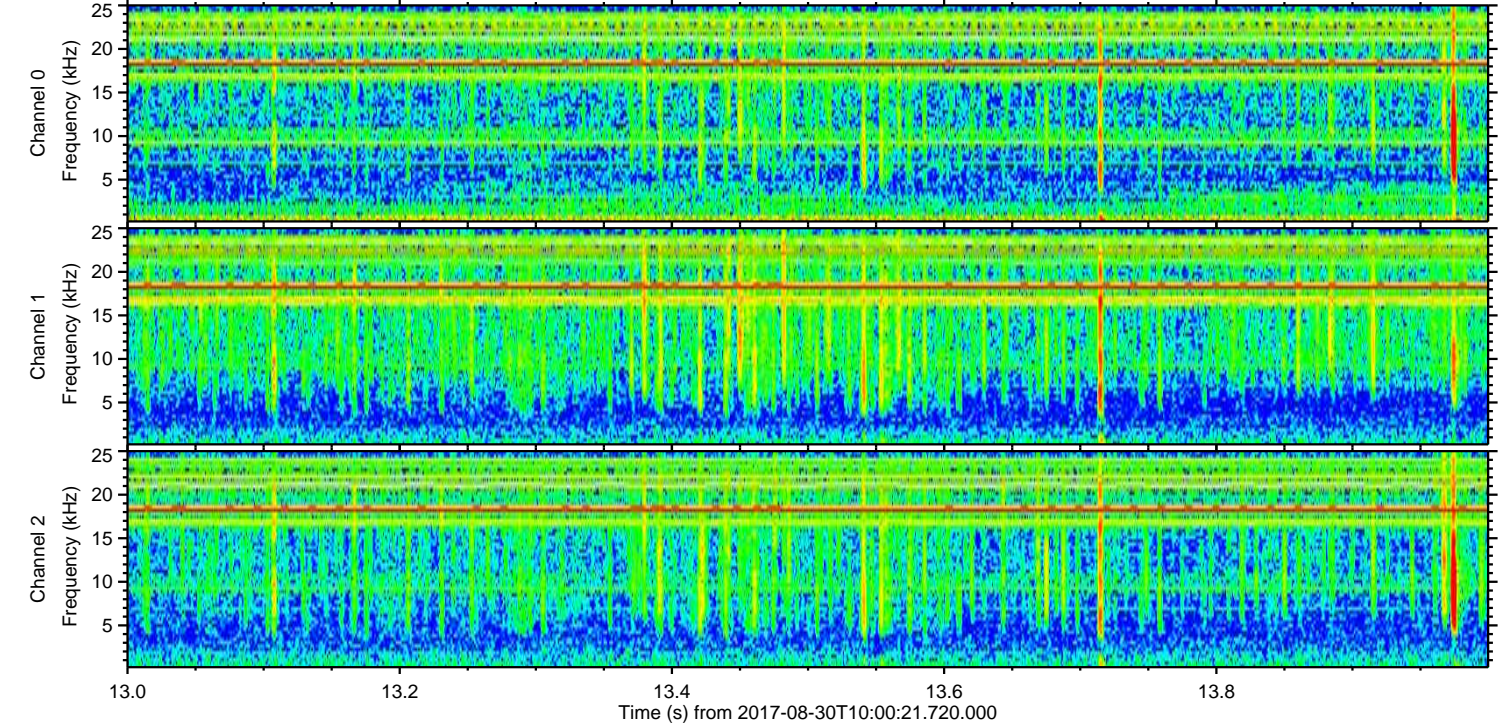
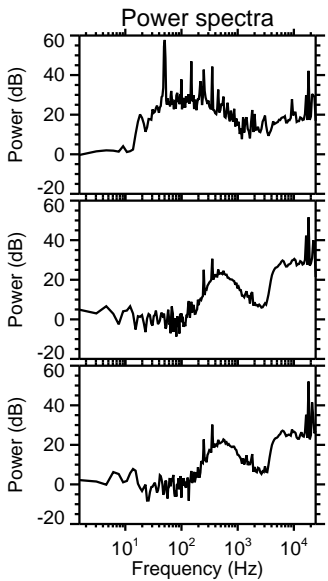
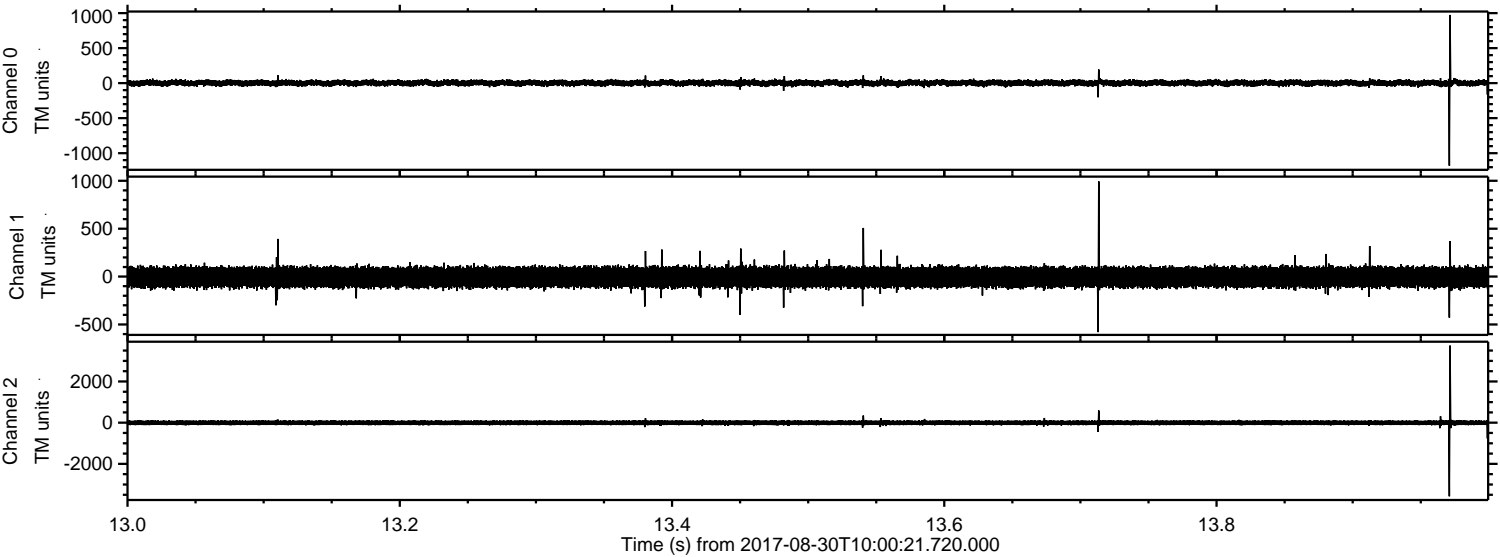
ELMAVAN 3D WAVEFORMS (Measured data sampled at 50 kHz) 50999 packets of 144 samples from 2017-08-30T10:00:21.720.000. Part 17/147

Processed Wed Aug 30 12:07:58 2017 by ELM ver.2012-10-06 from 001\_\_elm20170830\_100020\_\_dat00.bin





Processed Wed Aug 30 12:07:59 2017 by ELM ver.2012-10-06 from 001\_\_elm20170830\_100020\_\_dat00.bin



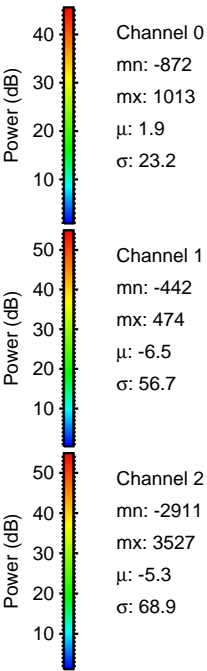
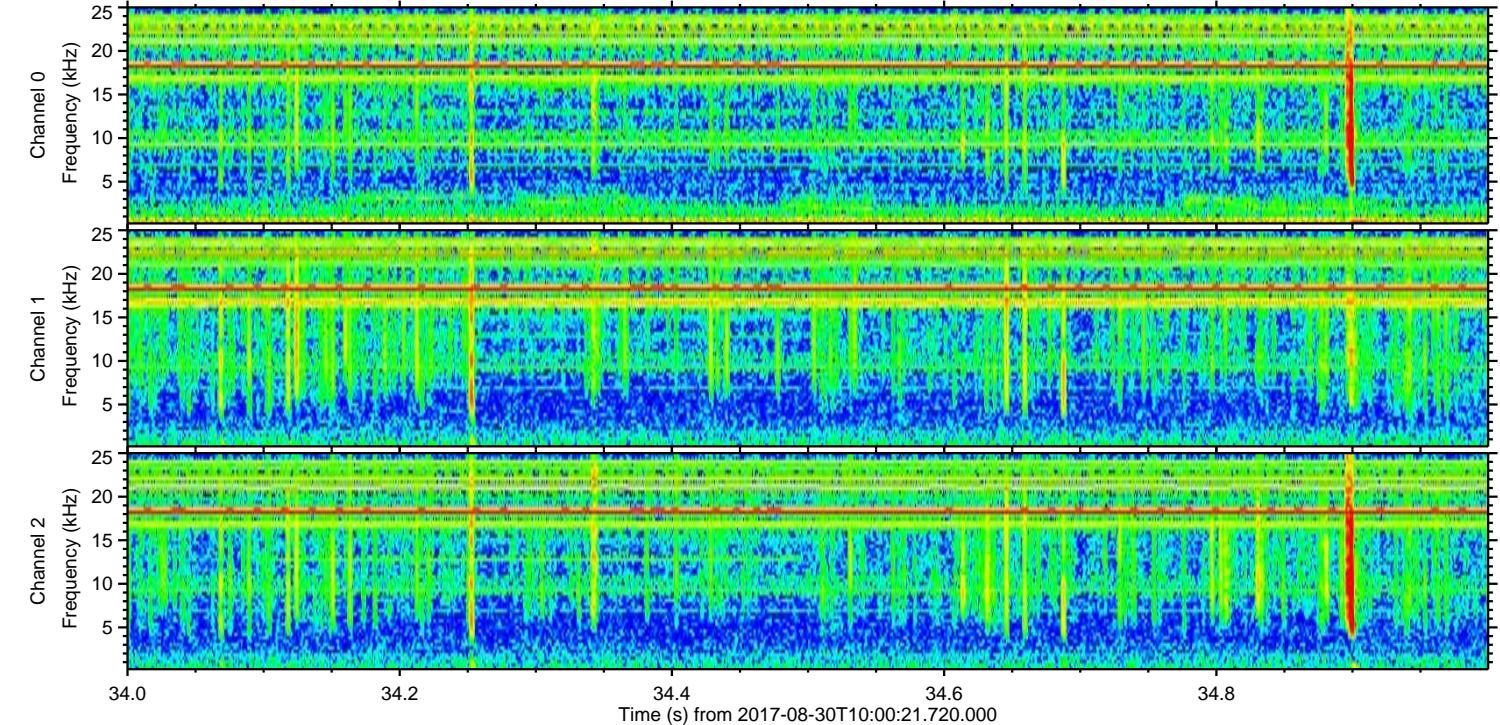
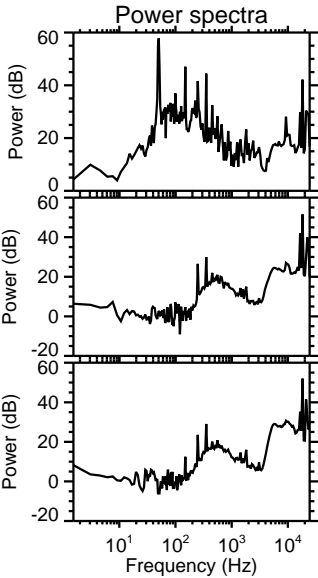
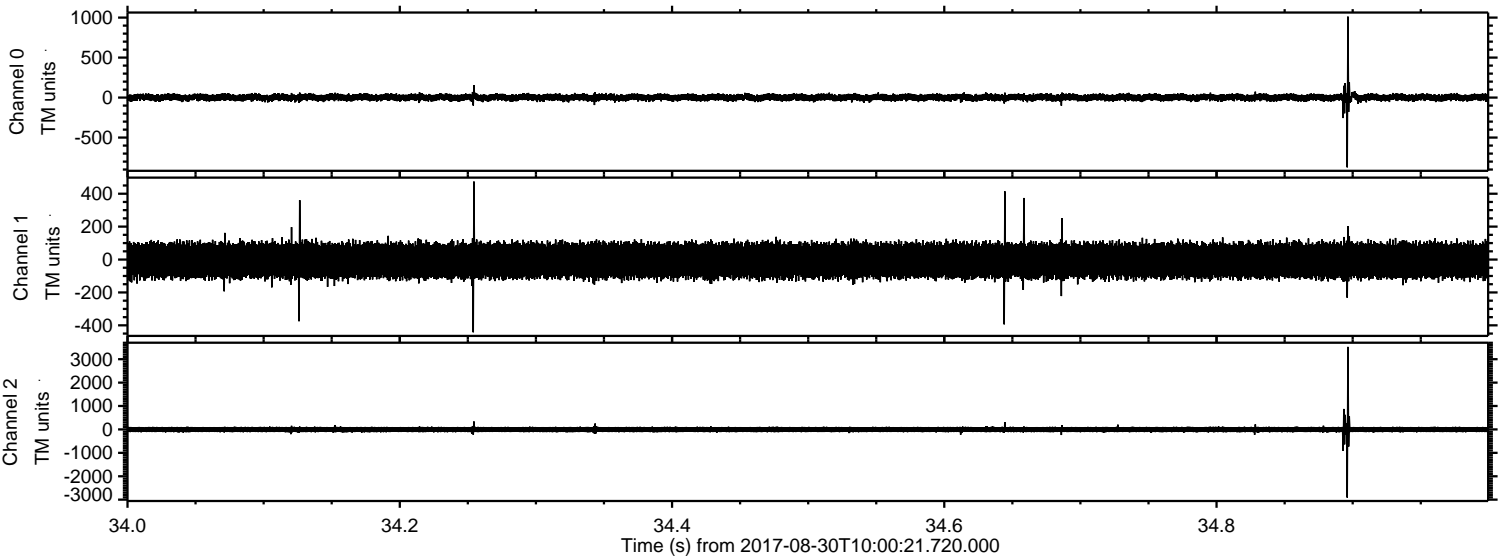
Channel 0  
mn: -1179  
mx: 974  
 $\mu$ : 2.0  
 $\sigma$ : 23.7

Channel 1  
mn: -580  
mx: 994  
 $\mu$ : -6.4  
 $\sigma$ : 57.9

Channel 2  
mn: -3575  
mx: 3744  
 $\mu$ : -5.3  
 $\sigma$ : 70.1

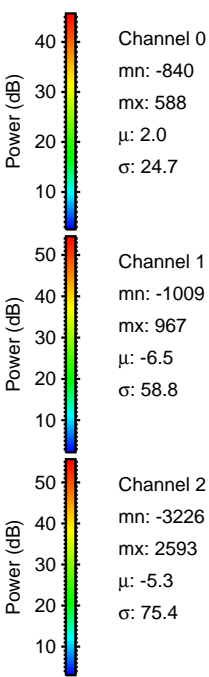
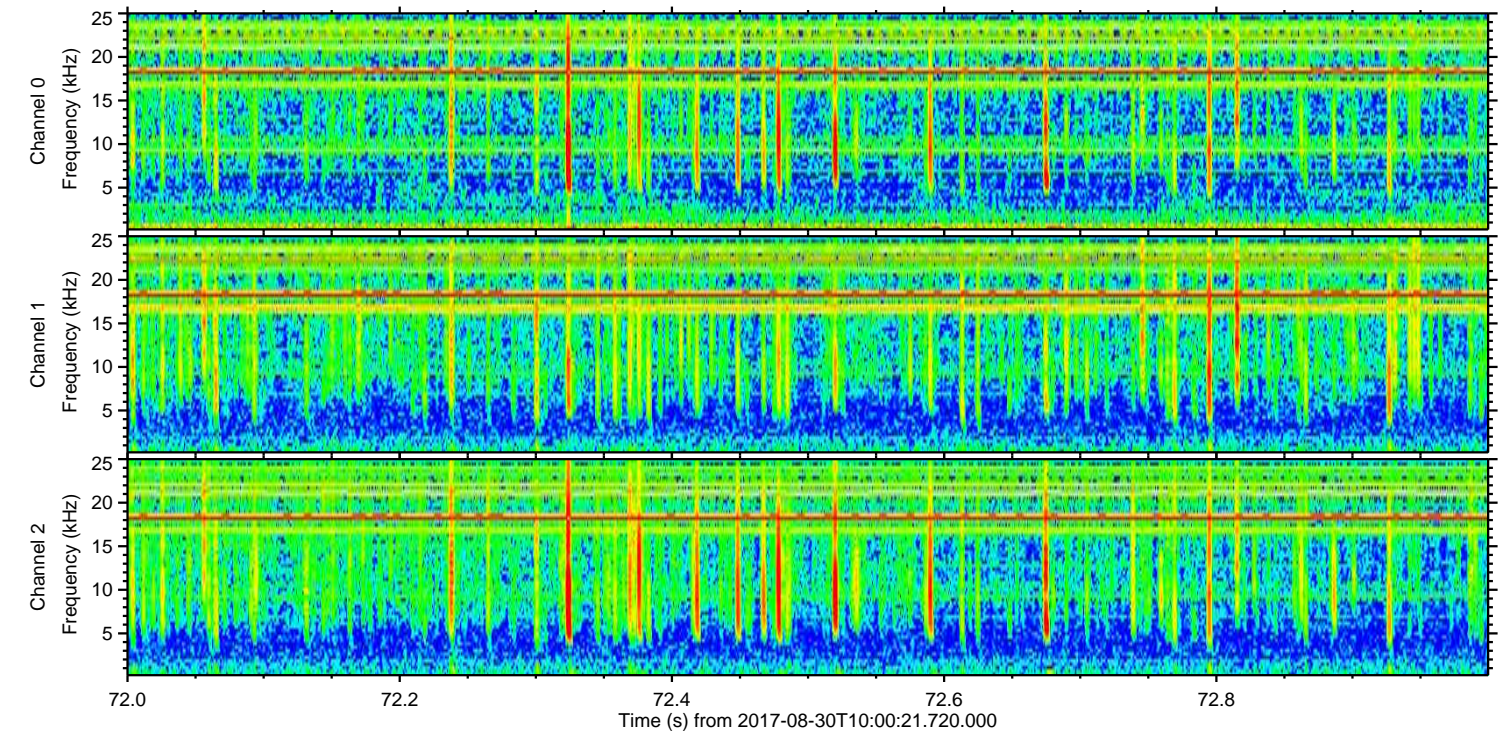
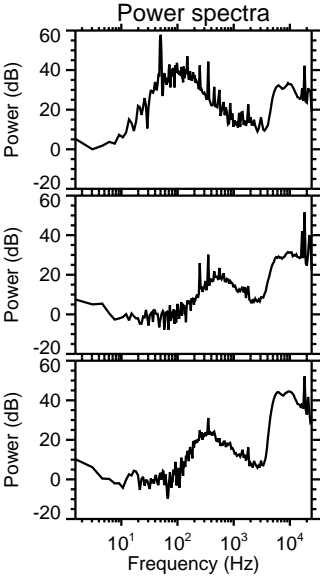
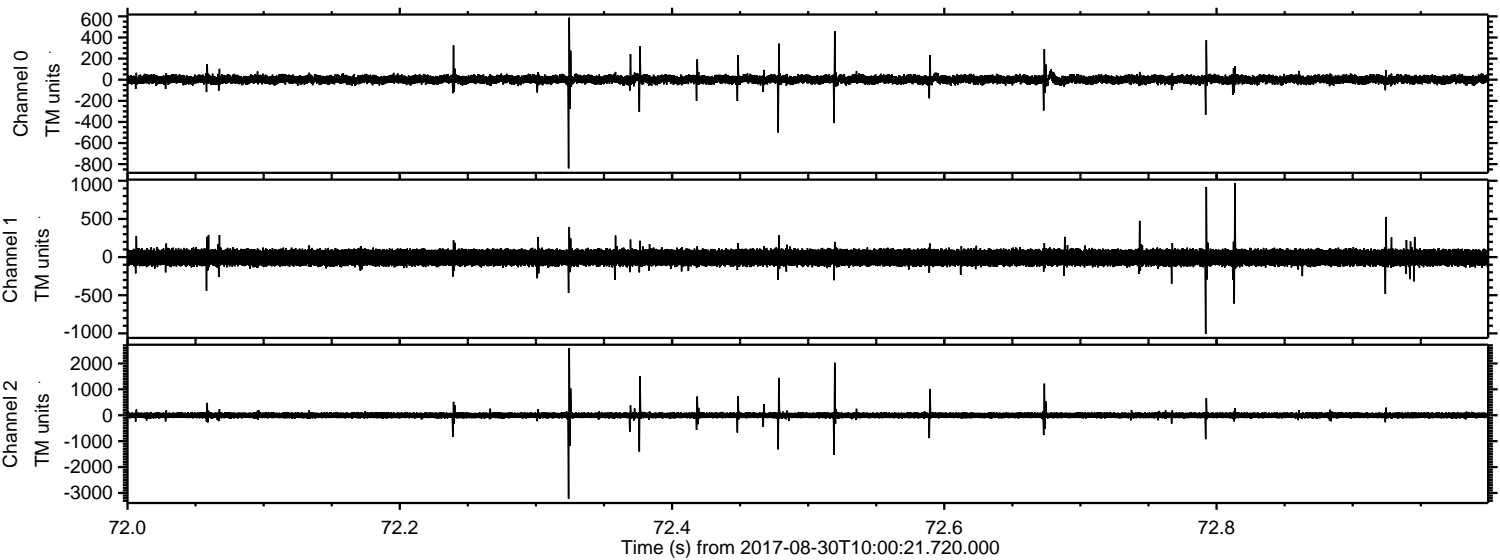


Processed Wed Aug 30 12:08:00 2017 by ELM ver.2012-10-06 from 001\_\_elm20170830\_100020\_\_dat00.bin





Processed Wed Aug 30 12:08:00 2017 by ELM ver.2012-10-06 from 001\_\_elm20170830\_100020\_\_dat00.bin





Processed Wed Aug 30 12:08:01 2017 by ELM ver.2012-10-06 from 001\_\_elm20170830\_100020\_\_dat00.bin

