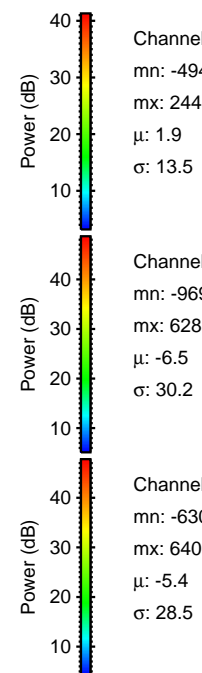
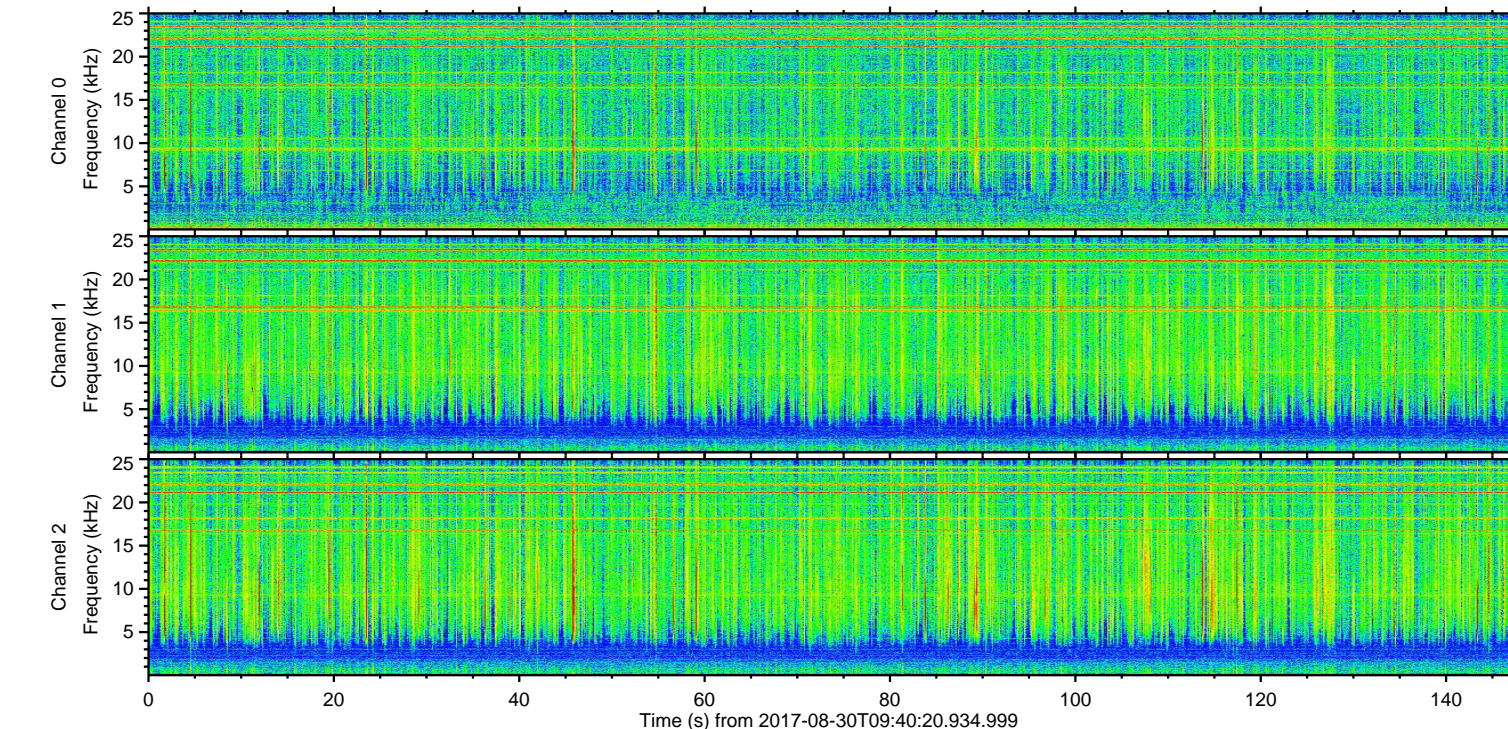
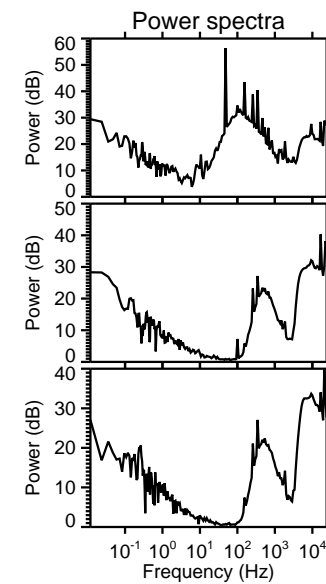
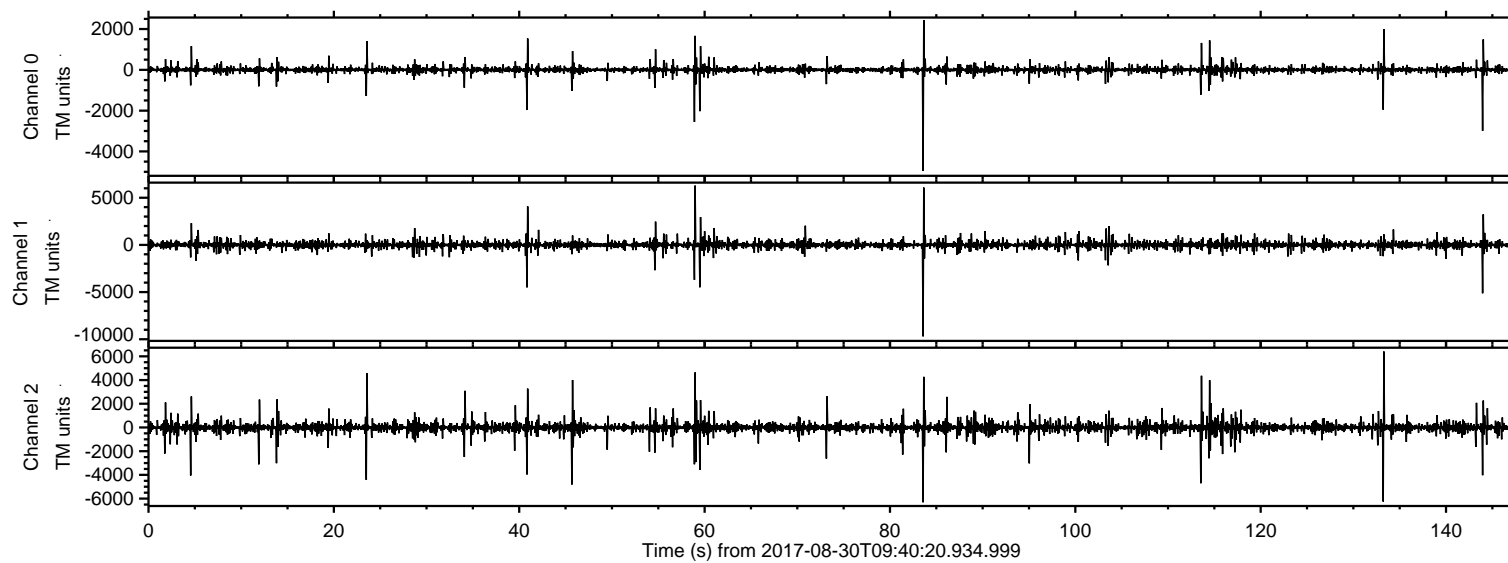
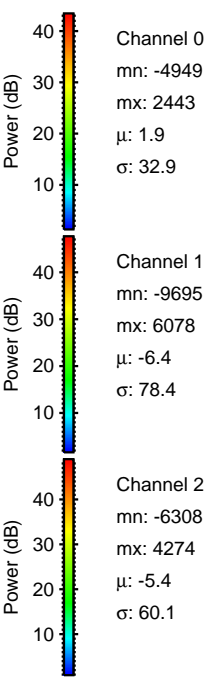
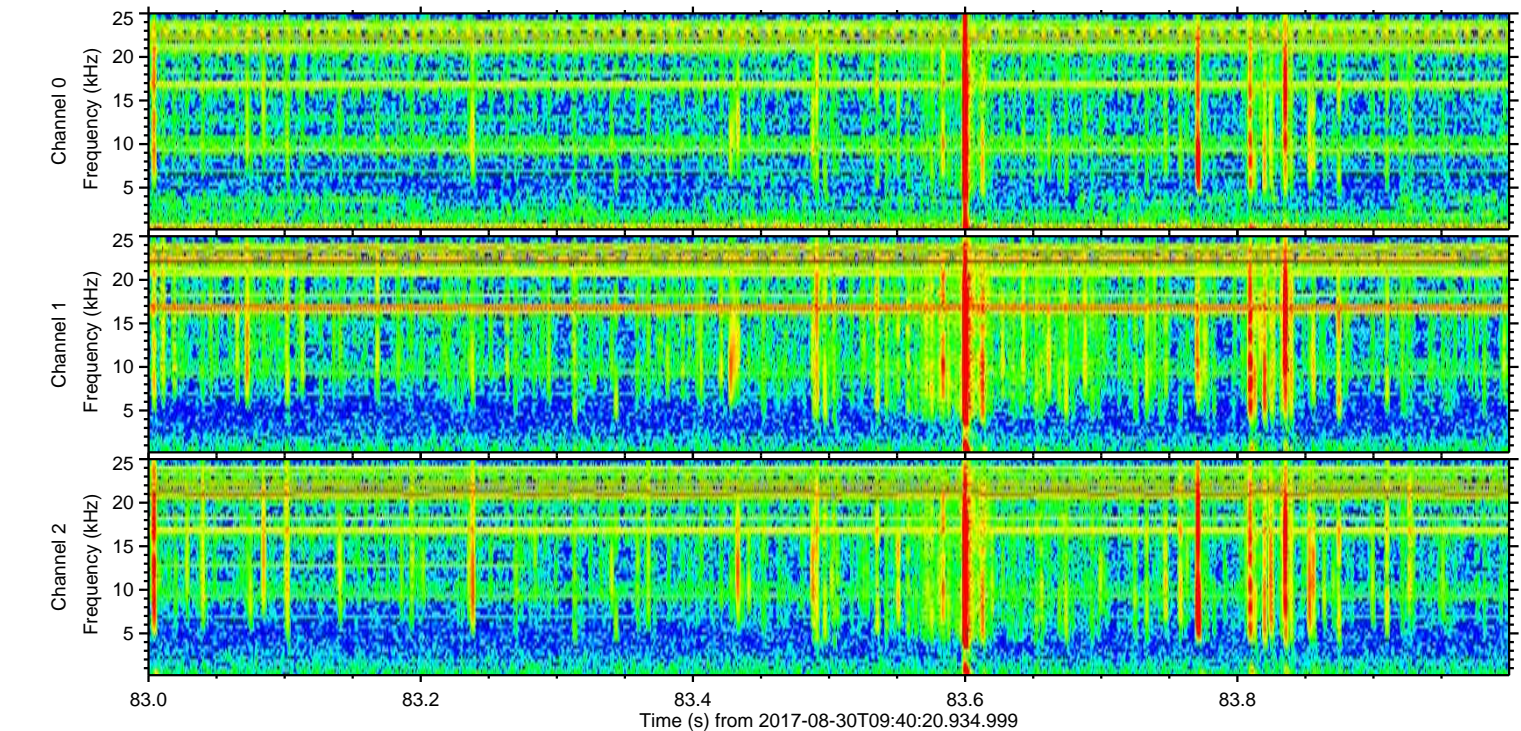
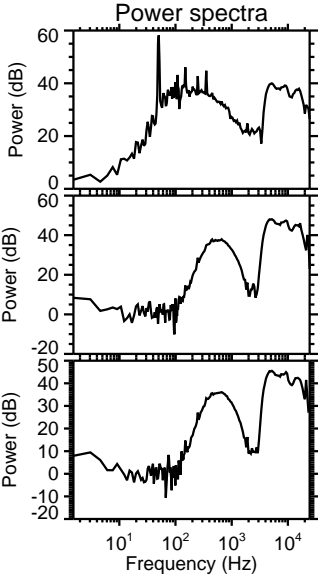
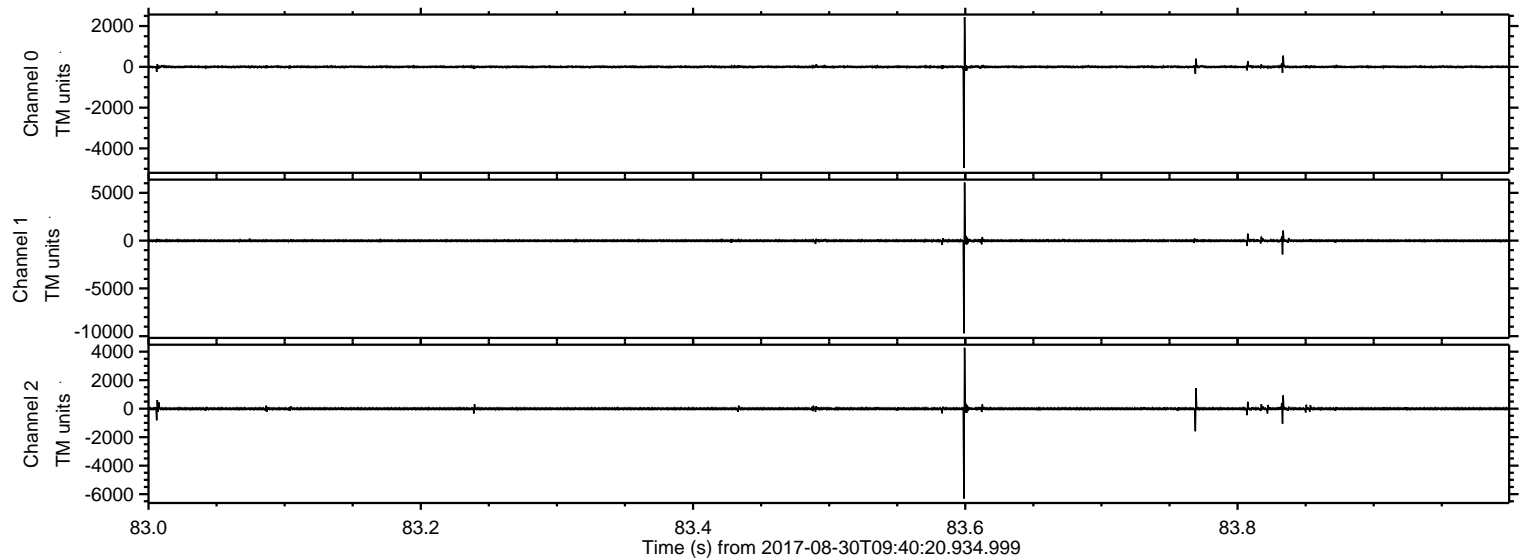


ELMAVAN 3D WAVEFORMS (Measured data sampled at 50 kHz) 51000 packets of 144 samples from 2017-08-30T09:40:20.934.999.

Processed Wed Aug 30 11:48:20 2017 by ELM ver.2012-10-06 from 001__elm20170830_094019__dat00.bin

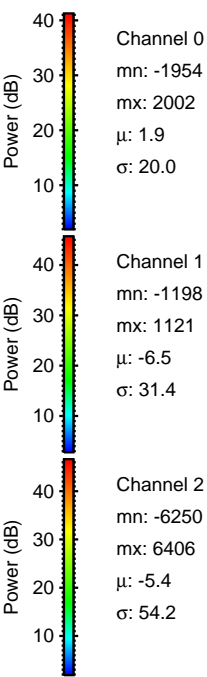
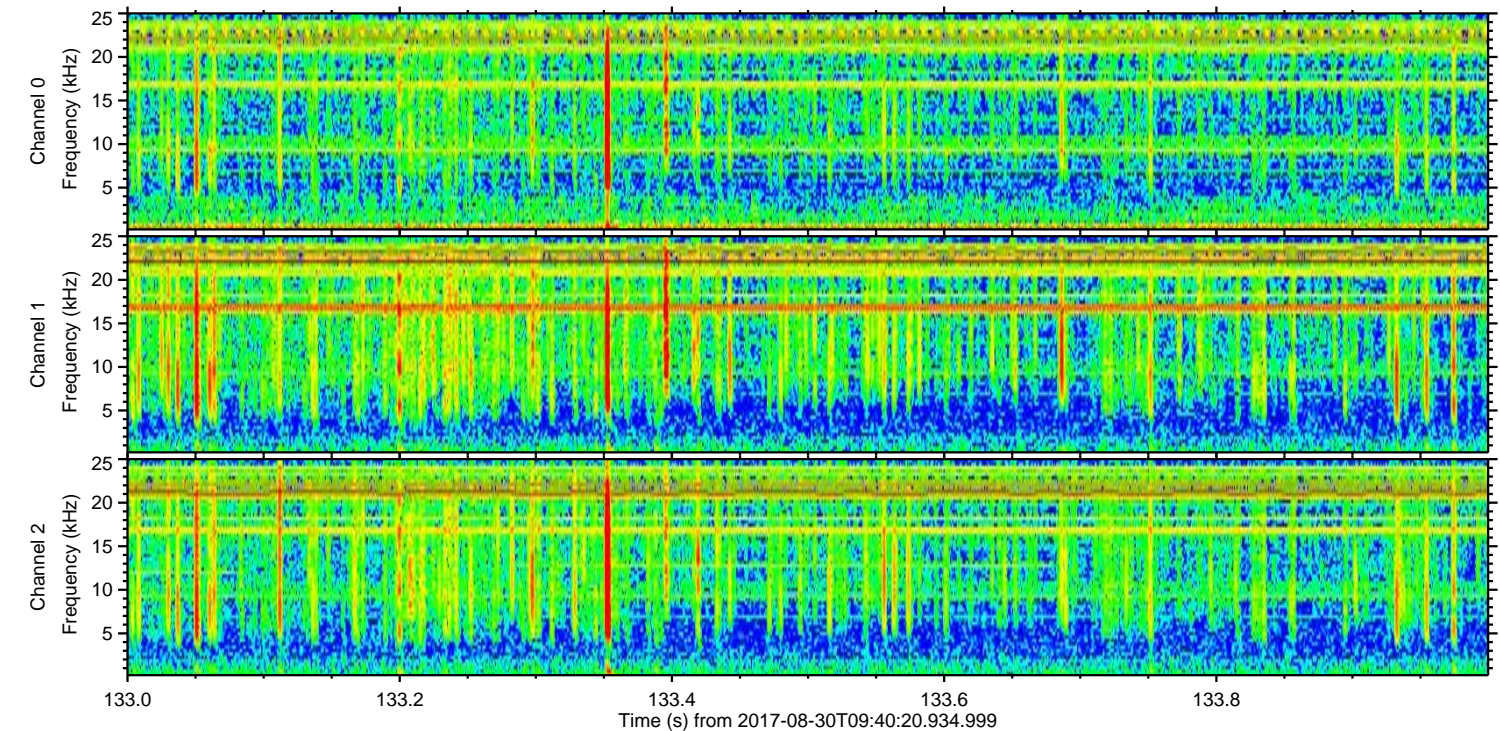
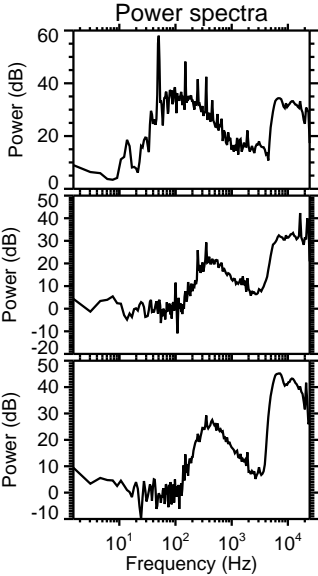
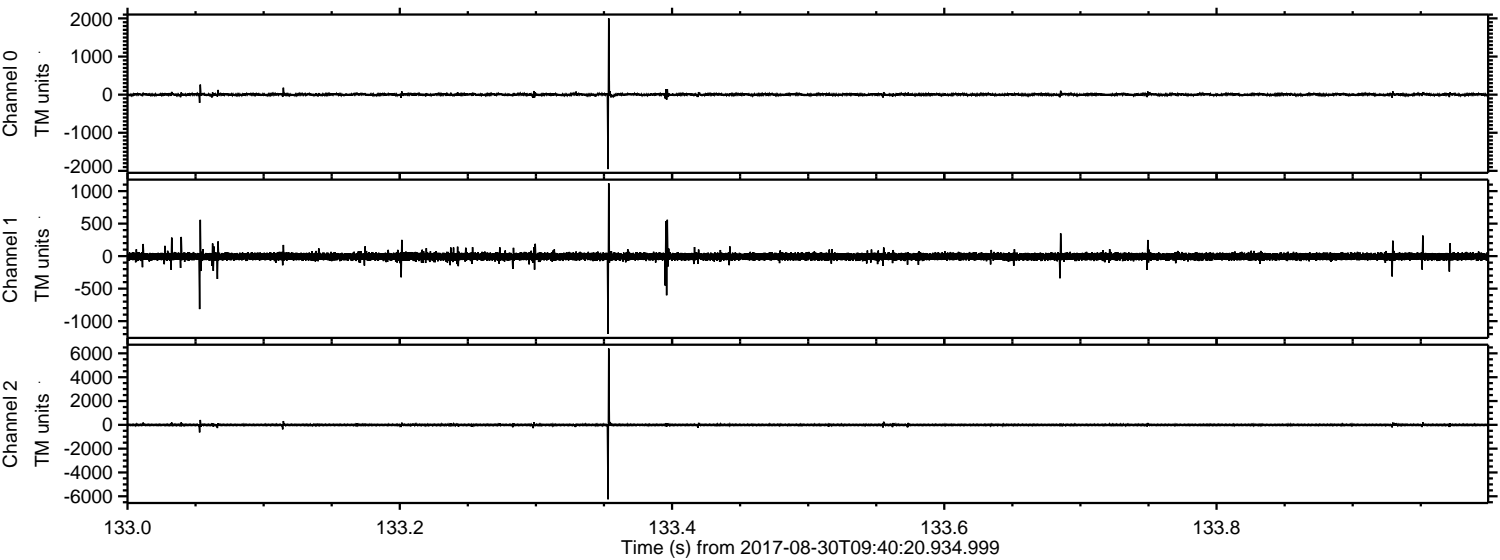


Processed Wed Aug 30 11:48:26 2017 by ELM ver.2012-10-06 from 001__elm20170830_094019__dat00.bin

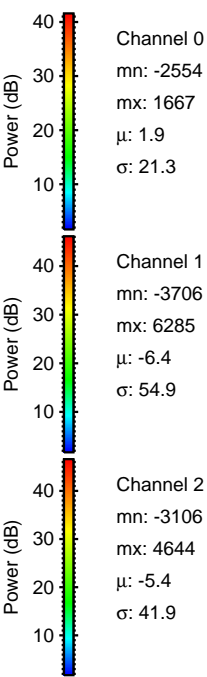
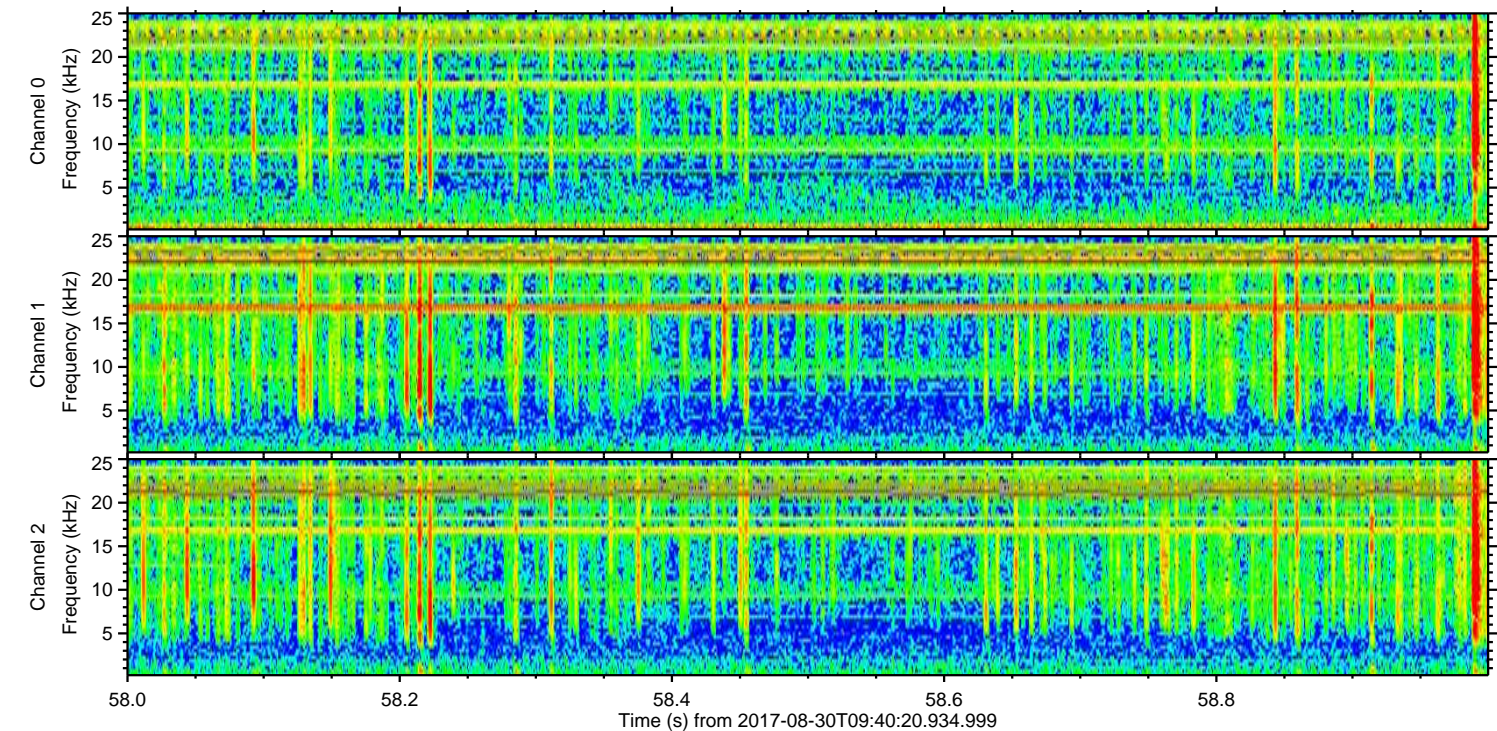
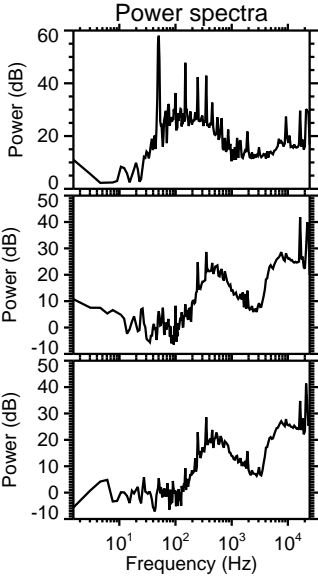
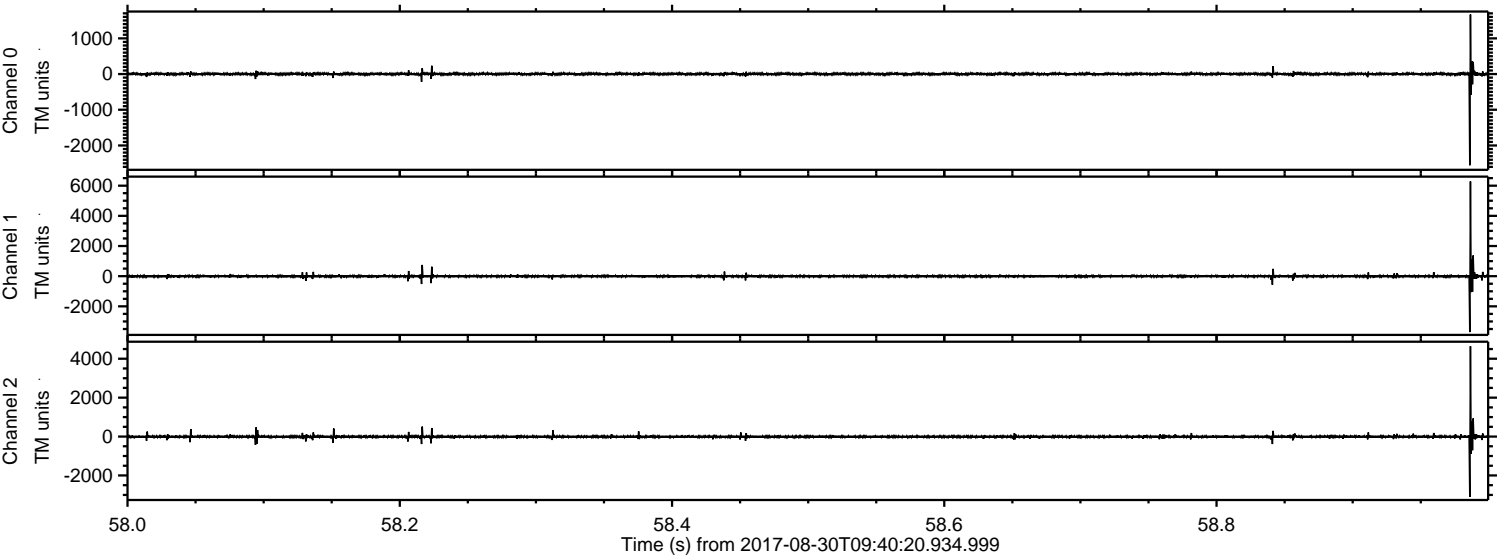


ELMAVAN 3D WAVEFORMS (Measured data sampled at 50 kHz) 51000 packets of 144 samples from 2017-08-30T09:40:20.934.999. Part 134/147

Processed Wed Aug 30 11:48:26 2017 by ELM ver.2012-10-06 from 001__elm20170830_094019__dat00.bin

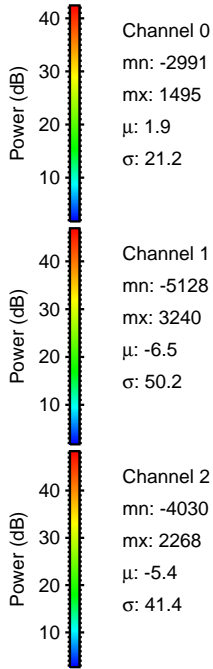
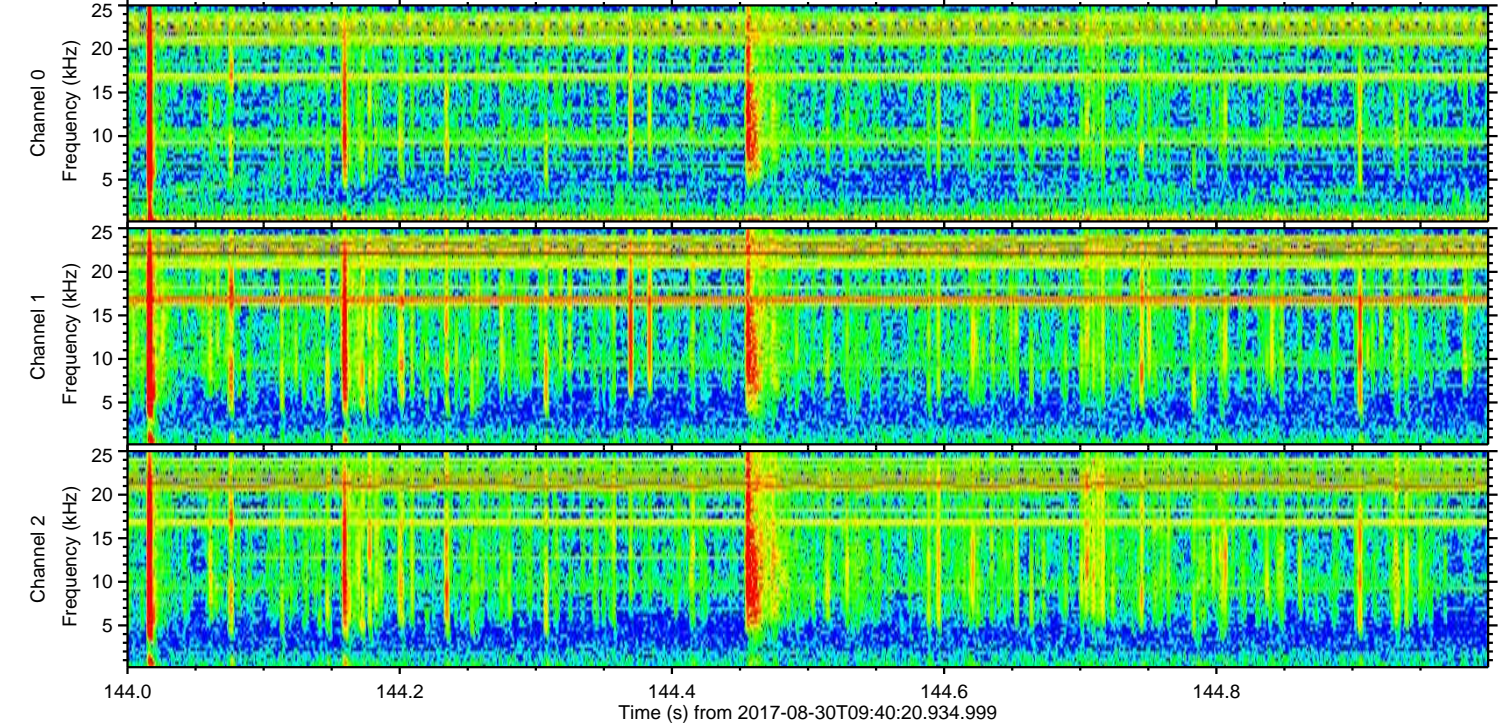
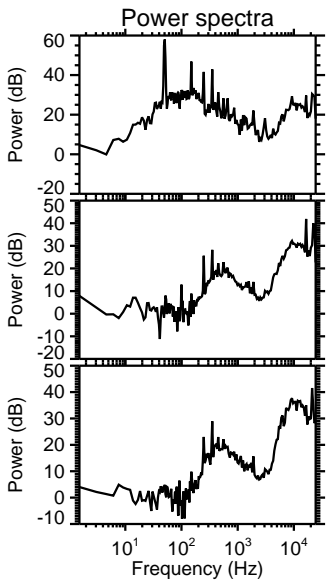
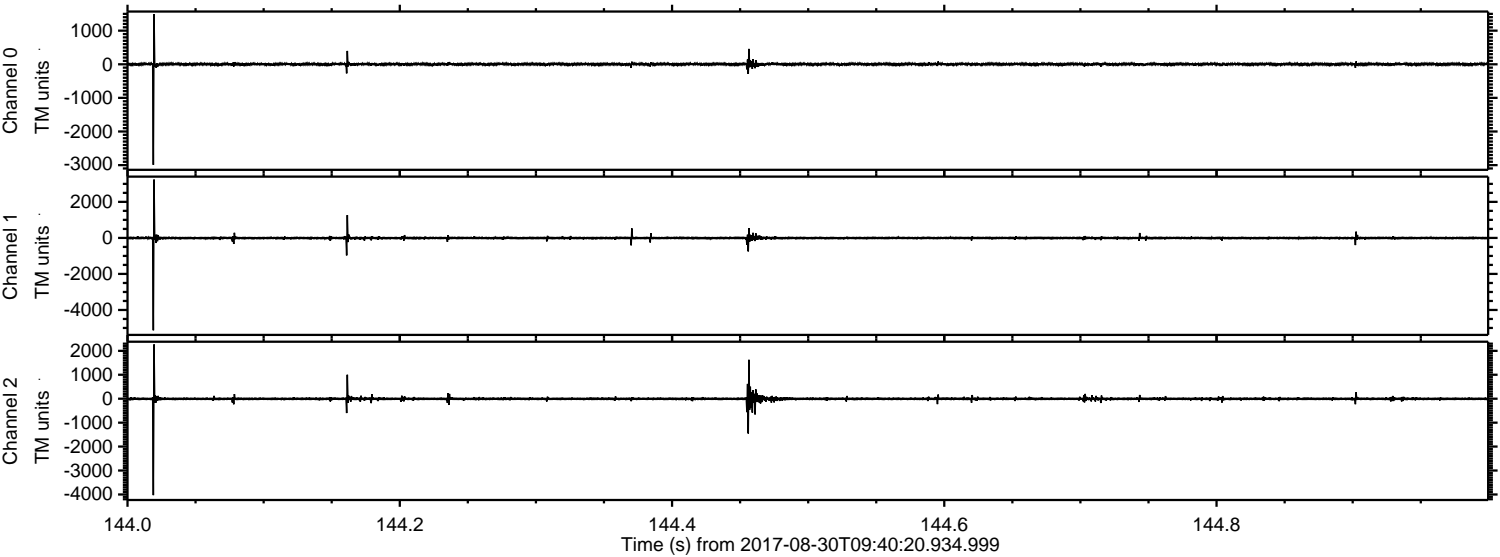


Processed Wed Aug 30 11:48:27 2017 by ELM ver.2012-10-06 from 001__elm20170830_094019__dat00.bin



ELMAVAN 3D WAVEFORMS (Measured data sampled at 50 kHz) 51000 packets of 144 samples from 2017-08-30T09:40:20.934.999. Part 145/147

Processed Wed Aug 30 11:48:28 2017 by ELM ver.2012-10-06 from 001__elm20170830_094019__dat00.bin

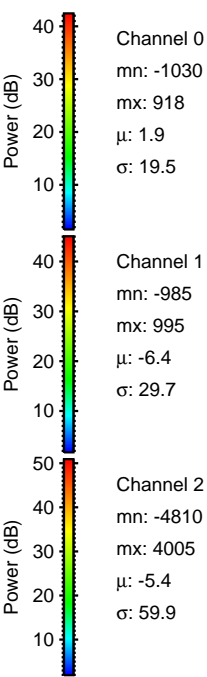
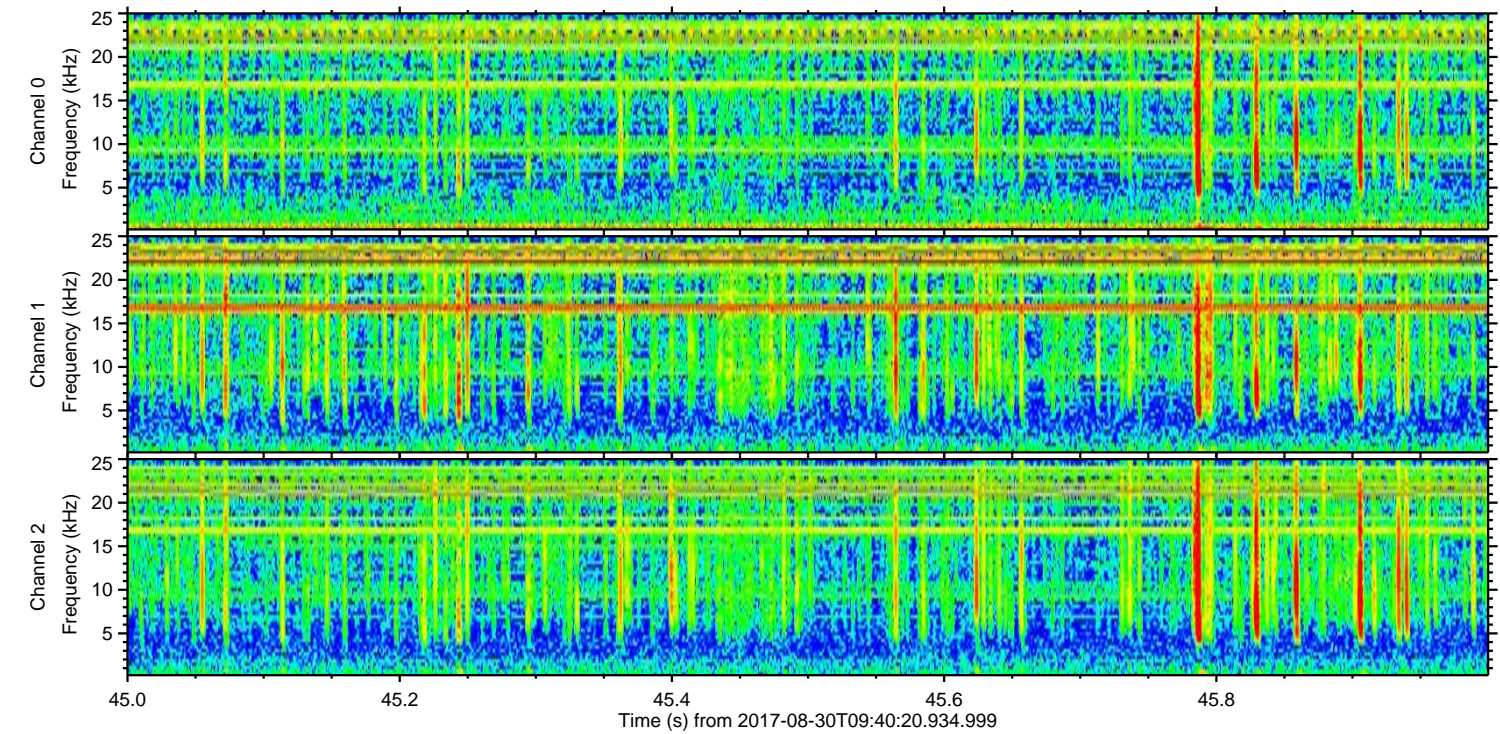
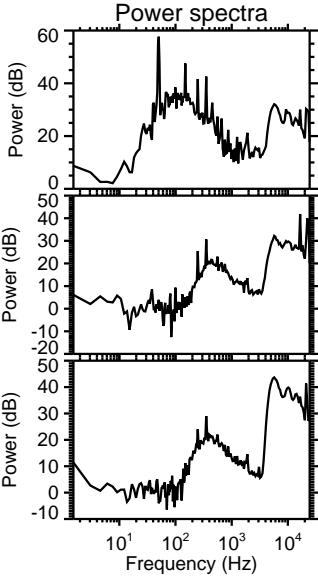
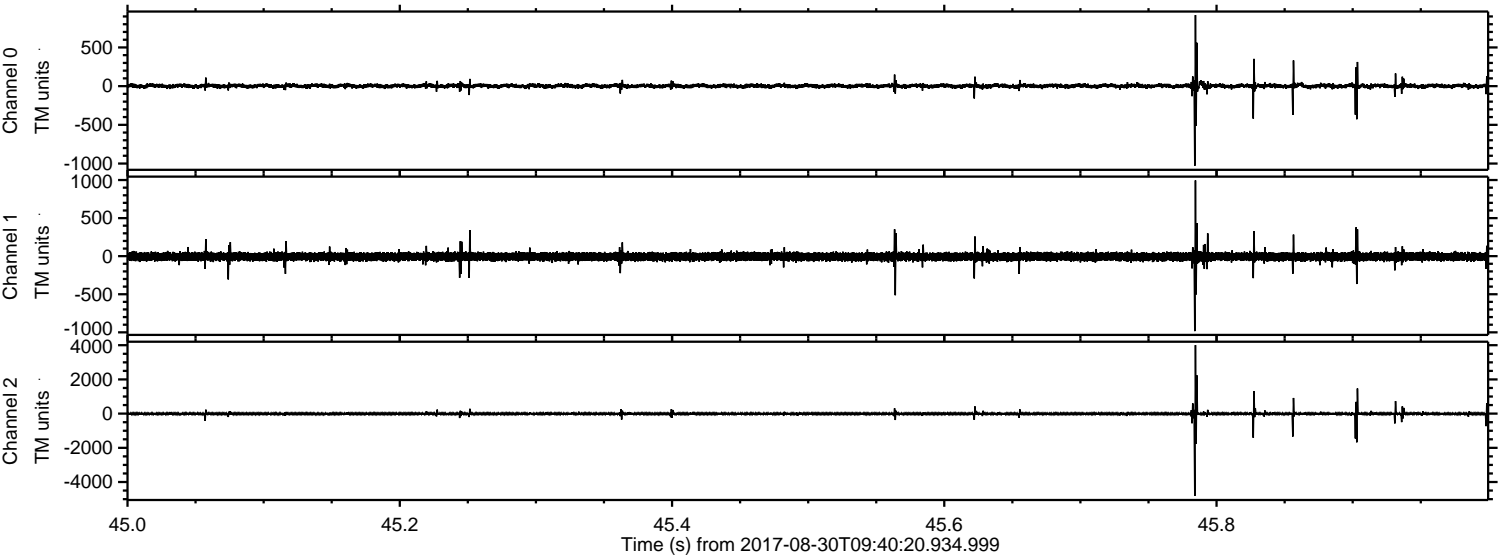


Channel 0
mn: -2991
mx: 1495
 μ : 1.9
 σ : 21.2

Channel 1
mn: -5128
mx: 3240
 μ : -6.5
 σ : 50.2

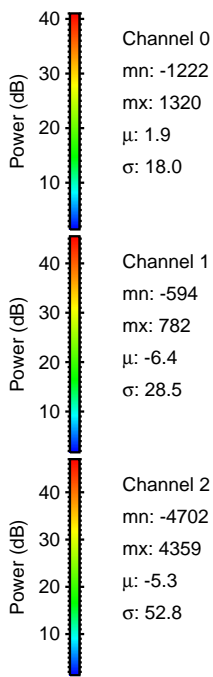
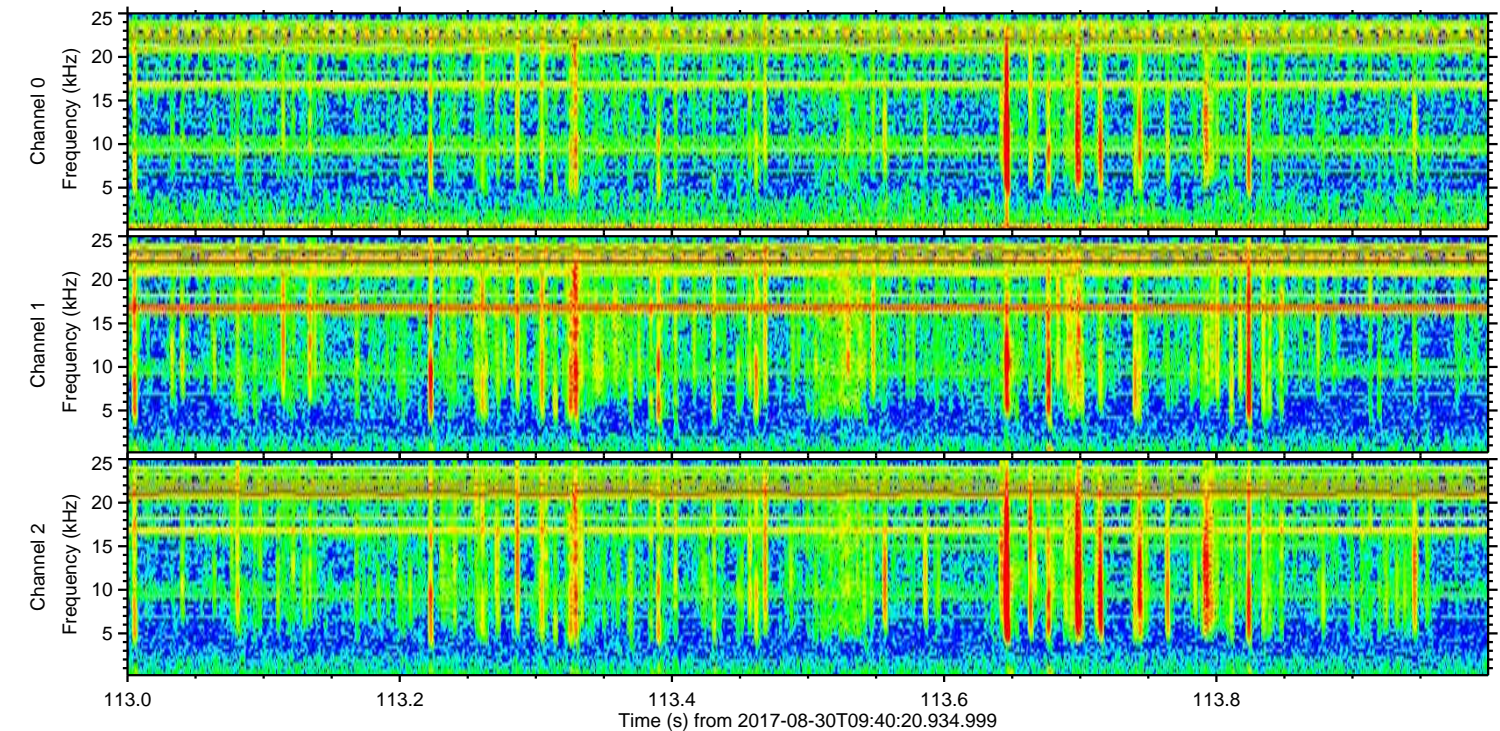
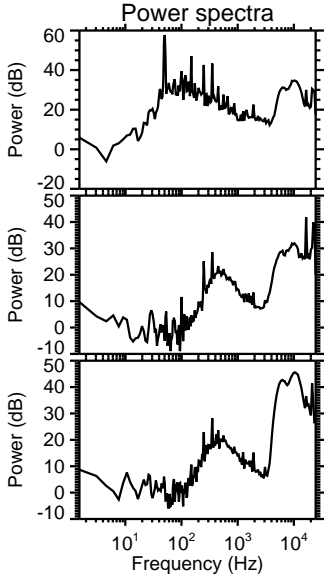
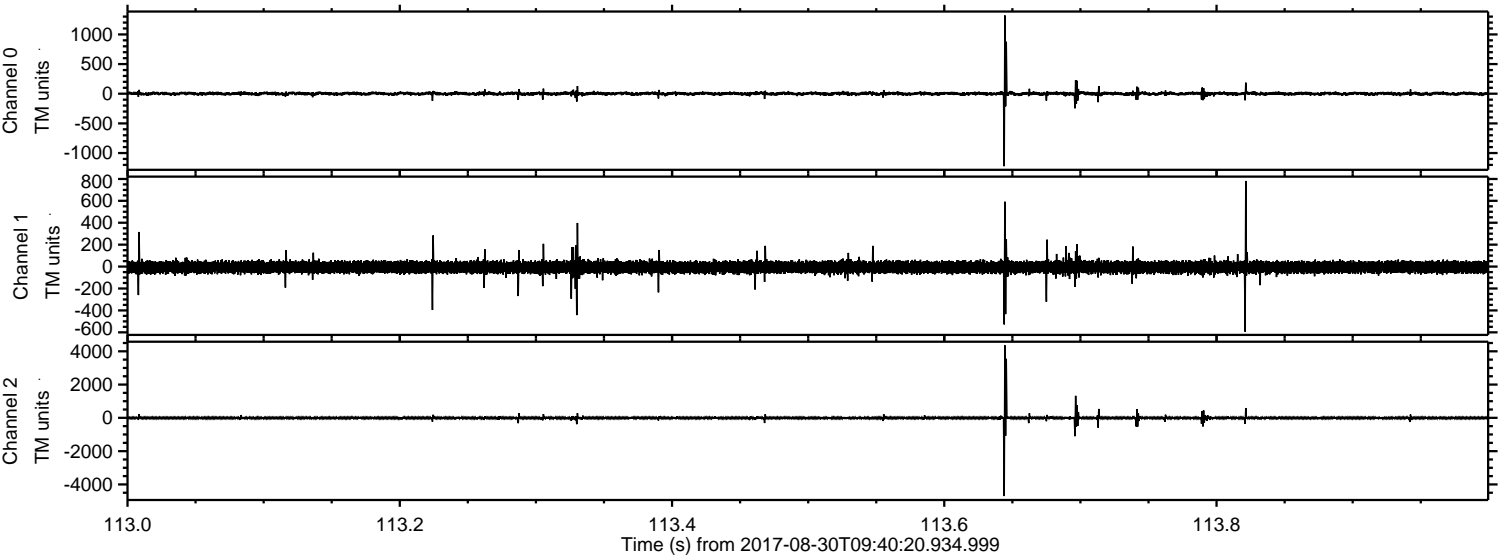
Channel 2
mn: -4030
mx: 2268
 μ : -5.4
 σ : 41.4

Processed Wed Aug 30 11:48:28 2017 by ELM ver.2012-10-06 from 001__elm20170830_094019__dat00.bin



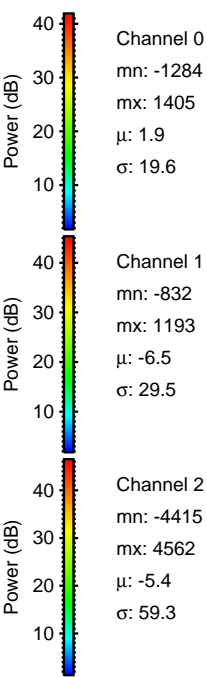
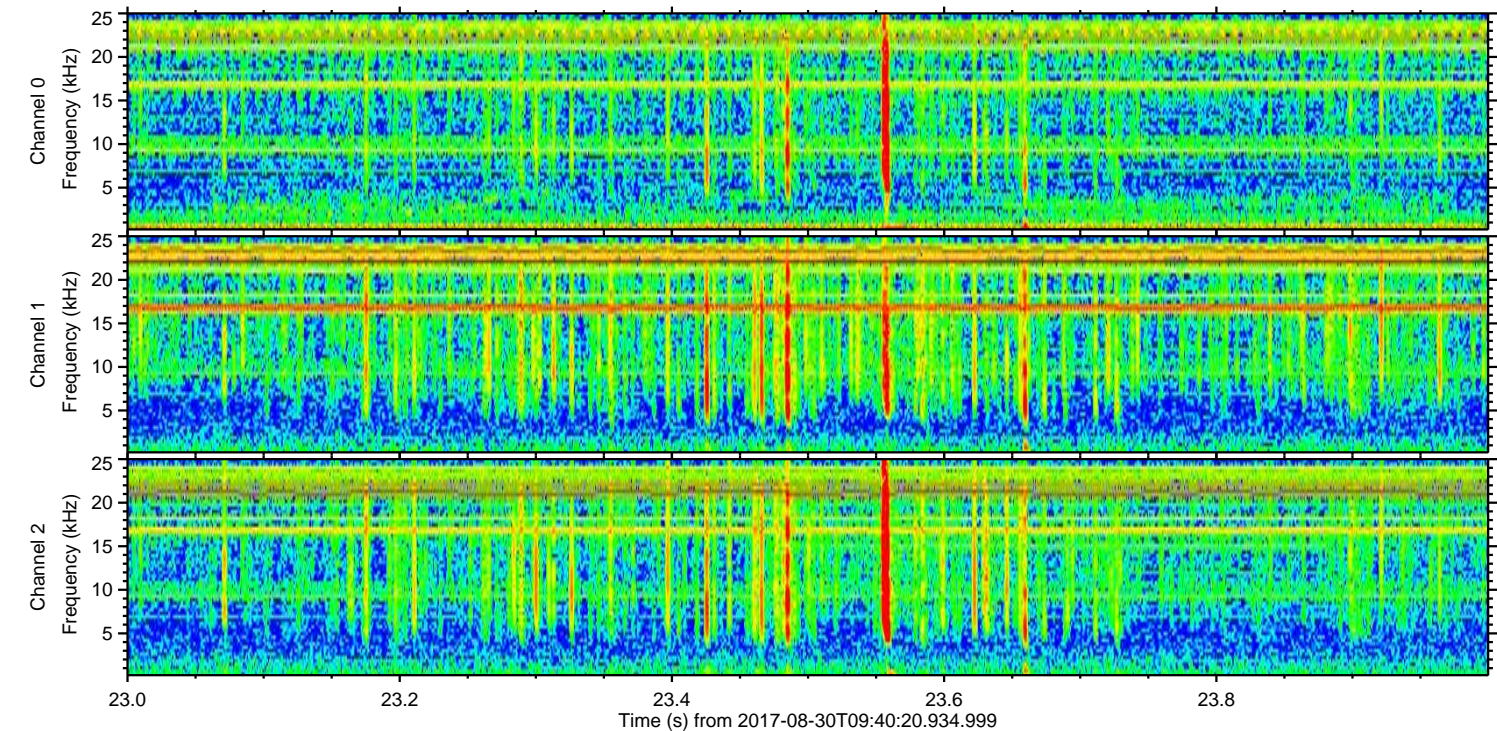
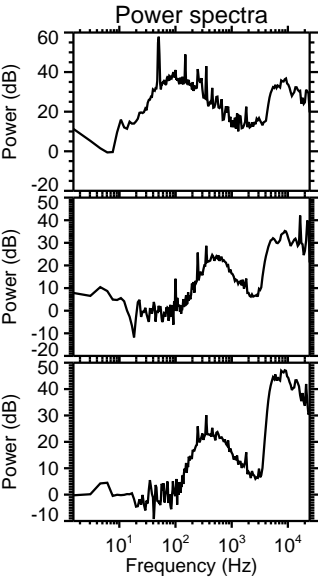
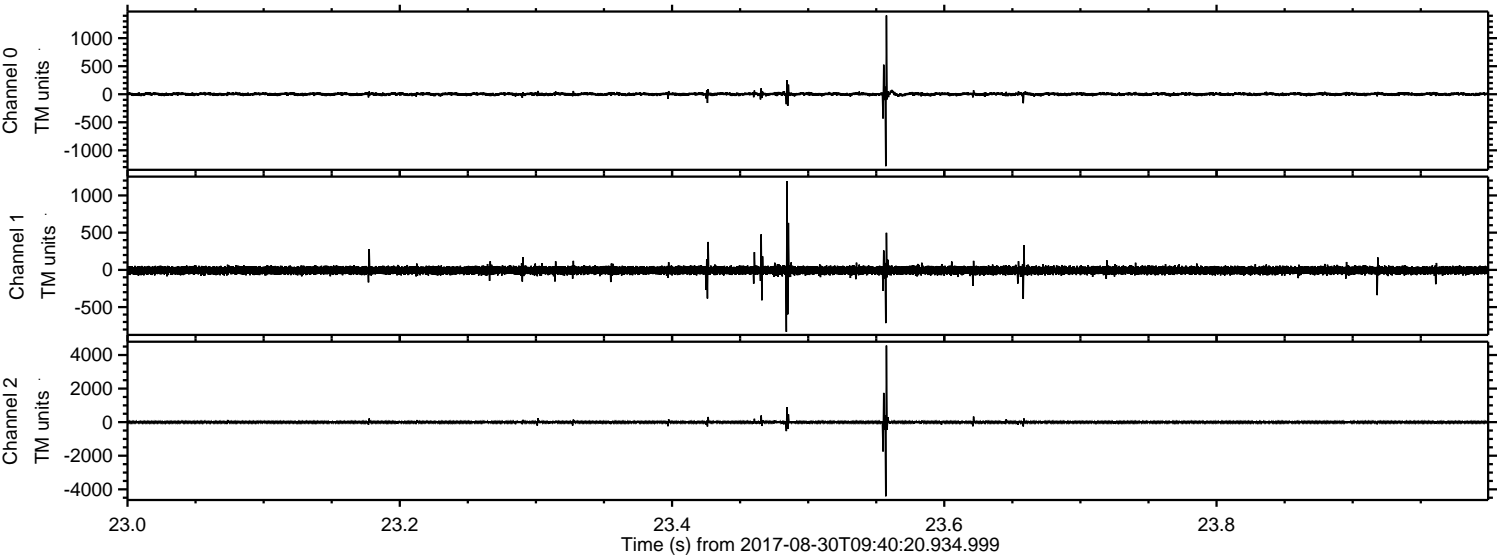
ELMAVAN 3D WAVEFORMS (Measured data sampled at 50 kHz) 51000 packets of 144 samples from 2017-08-30T09:40:20.934.999. Part 114/147

Processed Wed Aug 30 11:48:29 2017 by ELM ver.2012-10-06 from 001__elm20170830_094019__dat00.bin

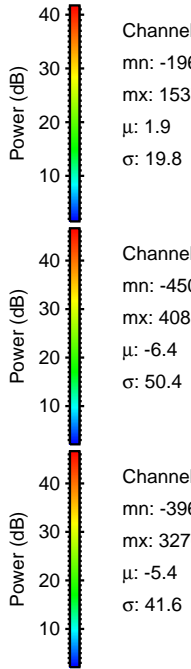
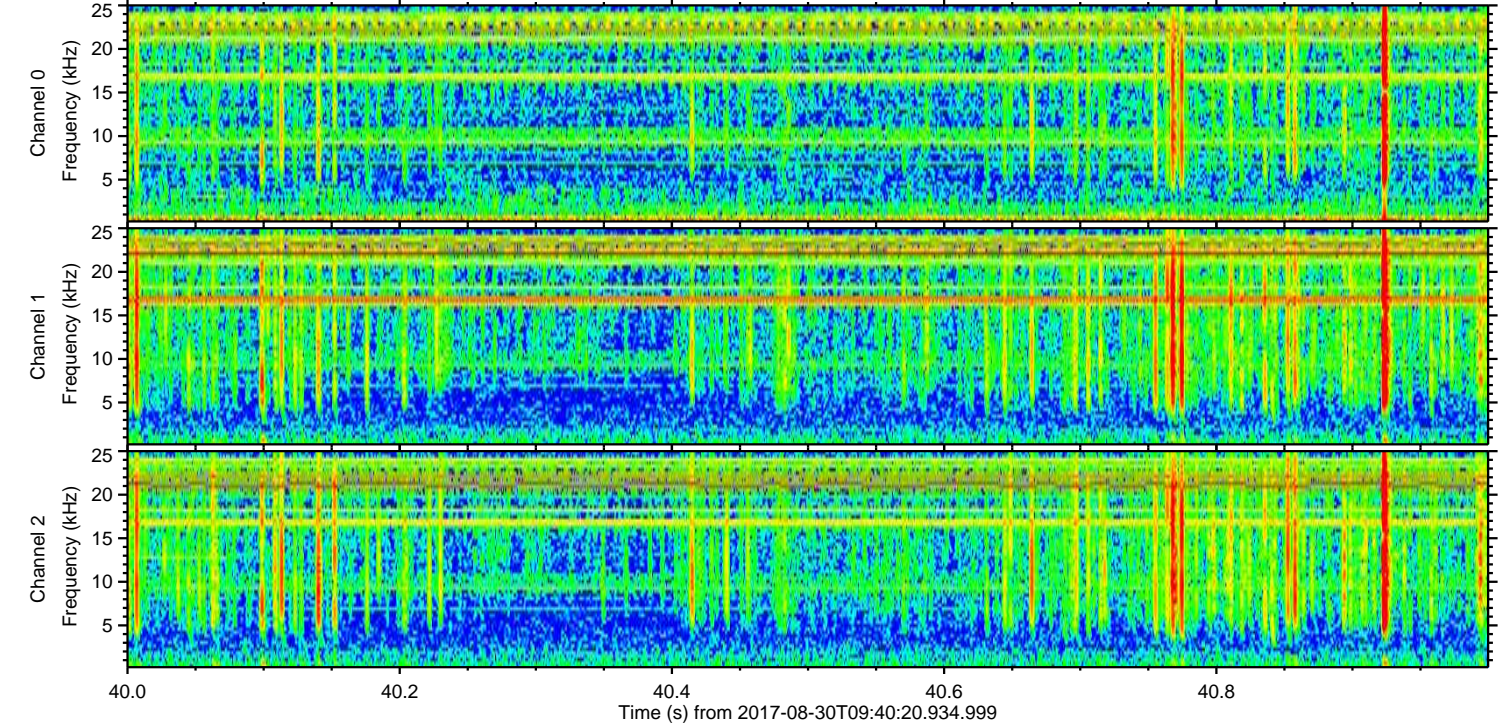
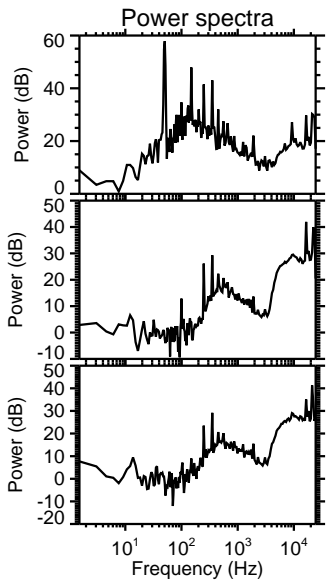
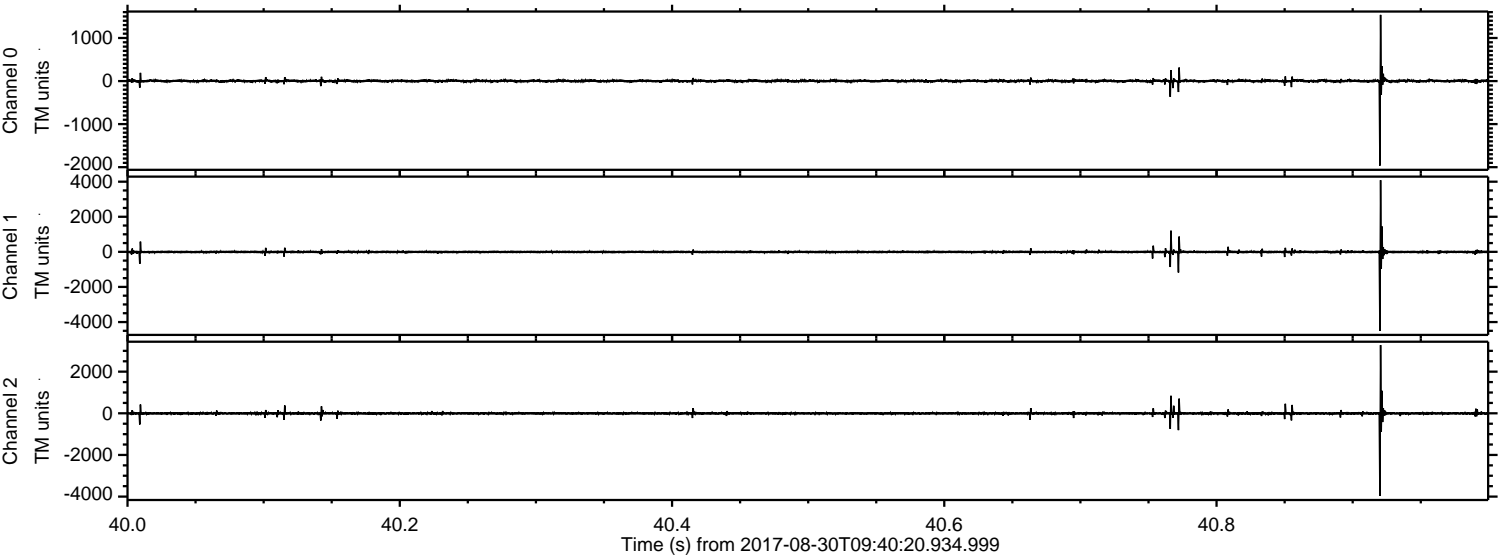


ELMAVAN 3D WAVEFORMS (Measured data sampled at 50 kHz) 51000 packets of 144 samples from 2017-08-30T09:40:20.934.999. Part 24/147

Processed Wed Aug 30 11:48:29 2017 by ELM ver.2012-10-06 from 001__elm20170830_094019__dat00.bin



Processed Wed Aug 30 11:48:30 2017 by ELM ver.2012-10-06 from 001__elm20170830_094019__dat00.bin

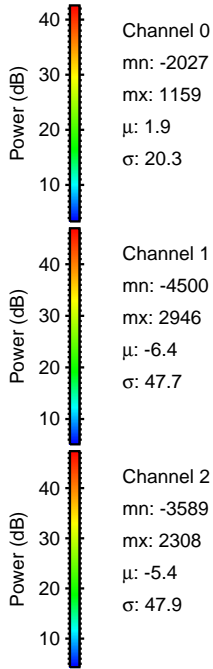
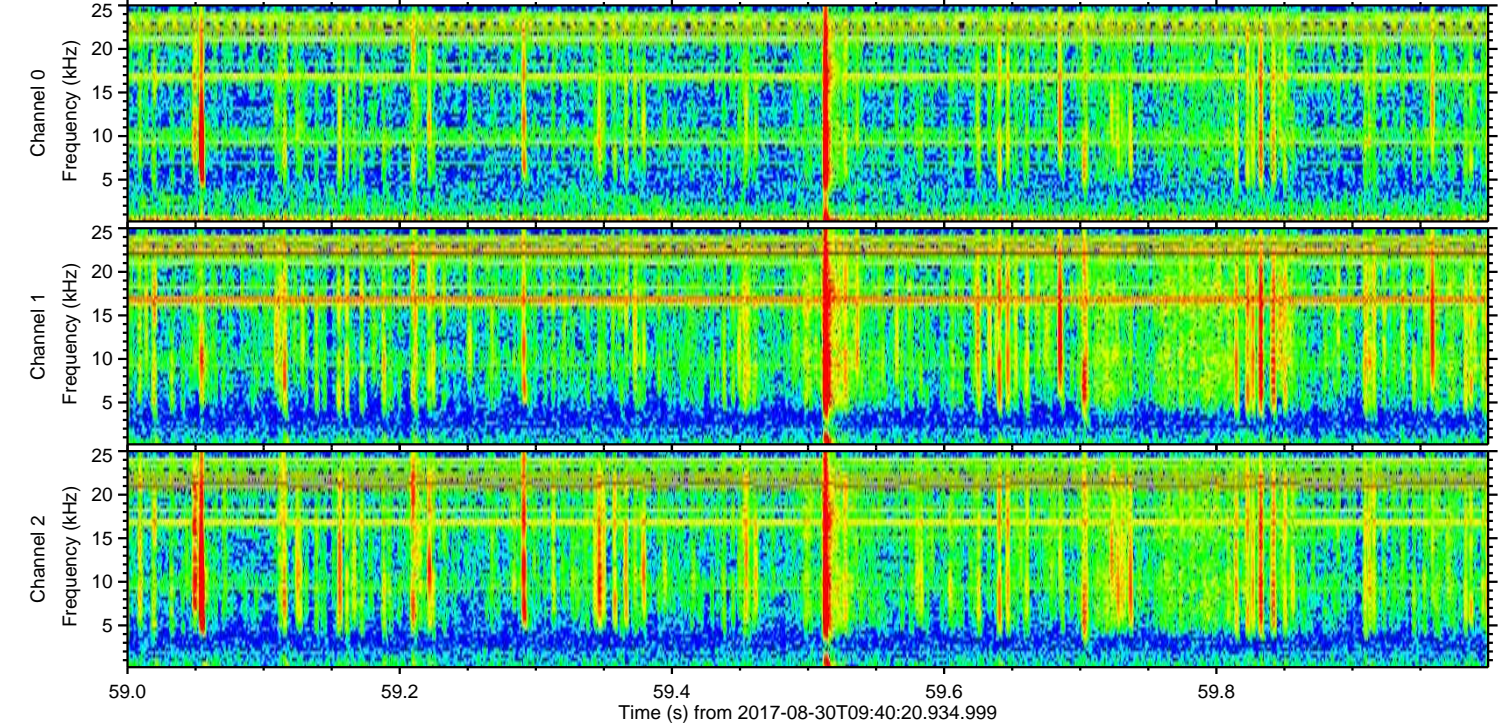
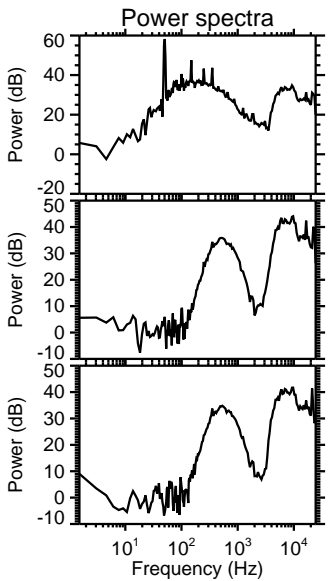
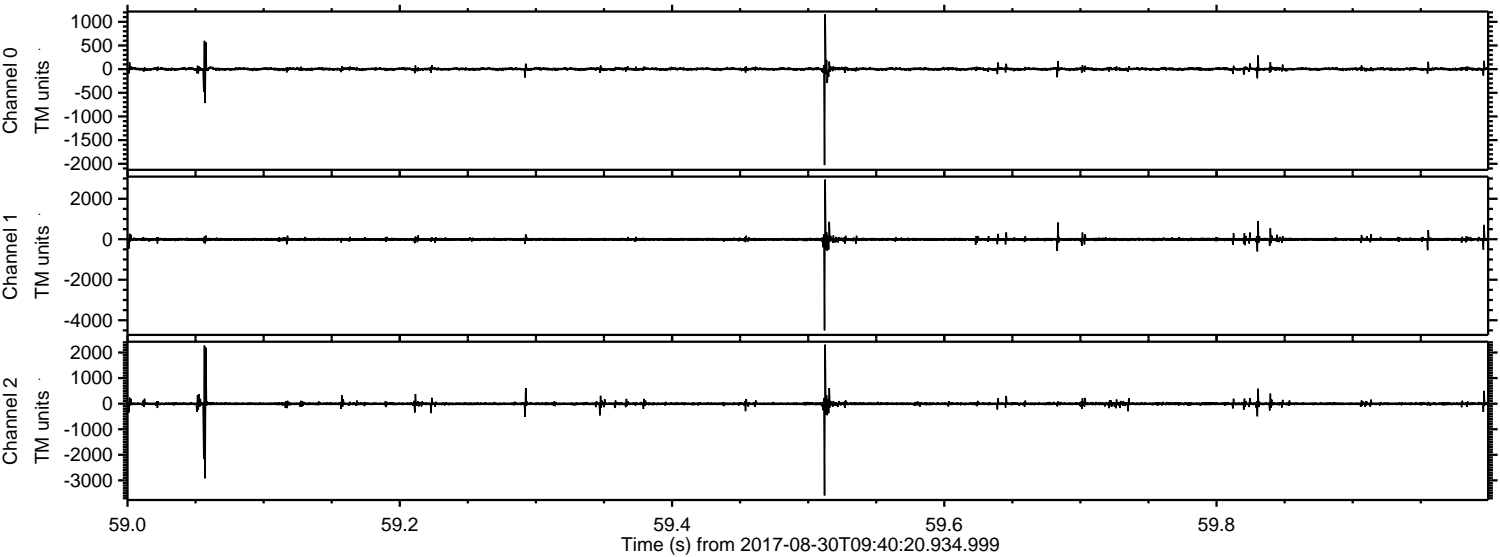


Channel 0
mn: -1963
mx: 1537
 μ : 1.9
 σ : 19.8

Channel 1
mn: -4509
mx: 4083
 μ : -6.4
 σ : 50.4

Channel 2
mn: -3966
mx: 3276
 μ : -5.4
 σ : 41.6

Processed Wed Aug 30 11:48:31 2017 by ELM ver.2012-10-06 from 001__elm20170830_094019__dat00.bin



Processed Wed Aug 30 11:48:31 2017 by ELM ver.2012-10-06 from 001__elm20170830_094019__dat00.bin

