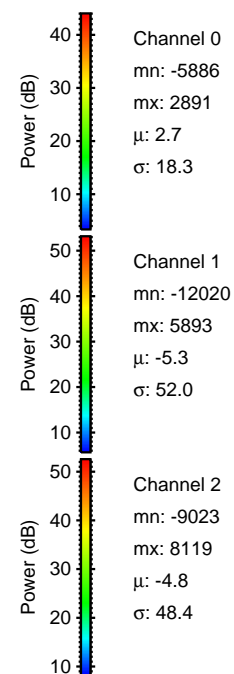
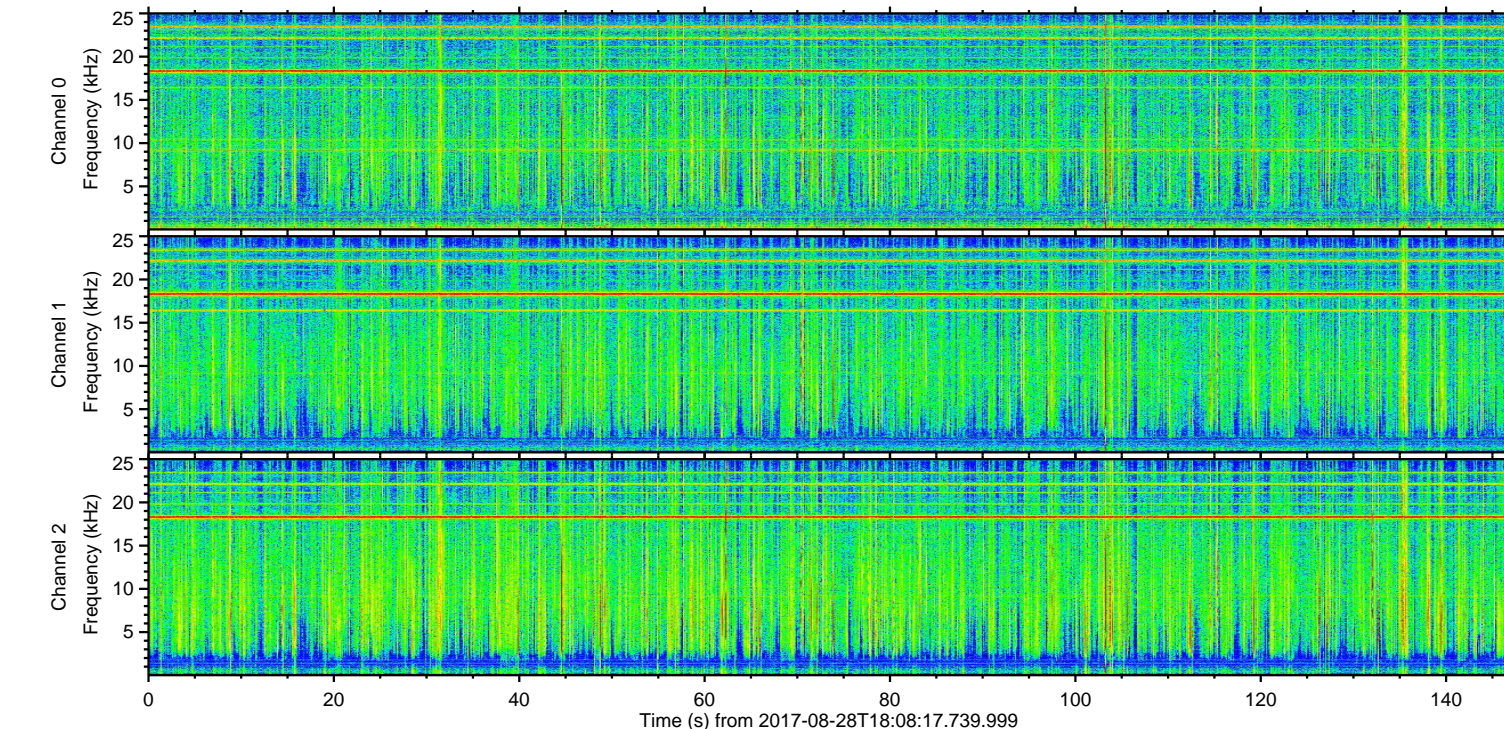
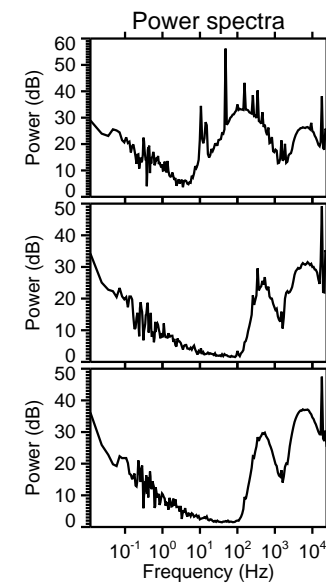
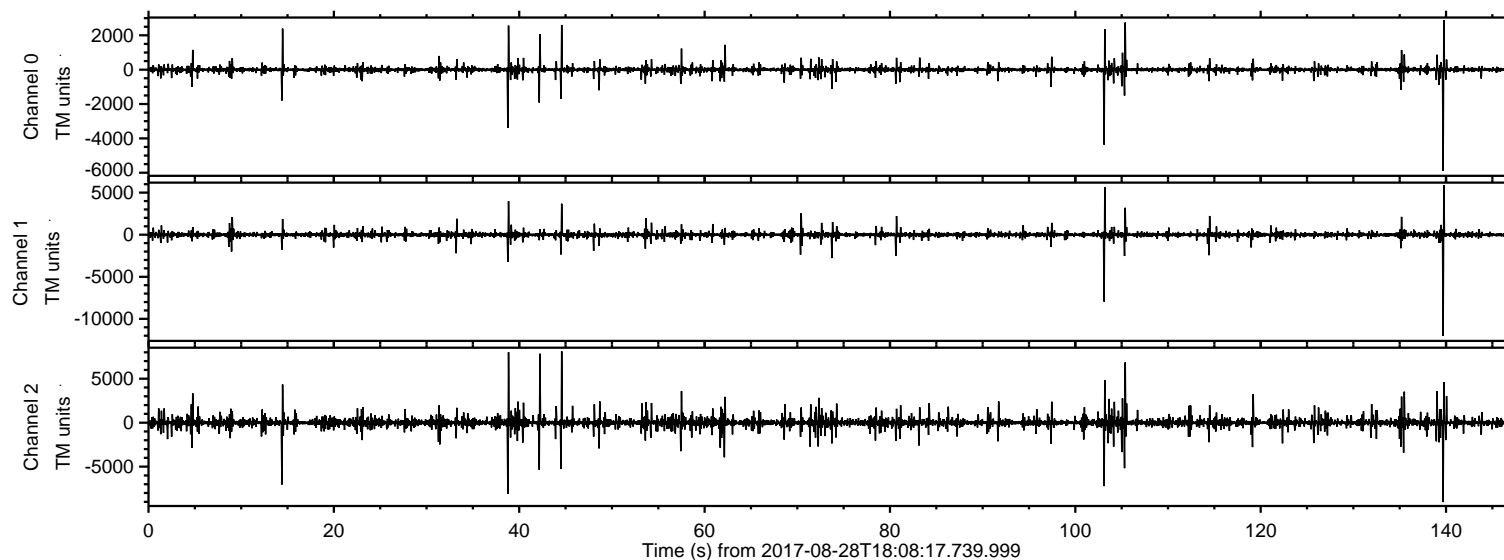


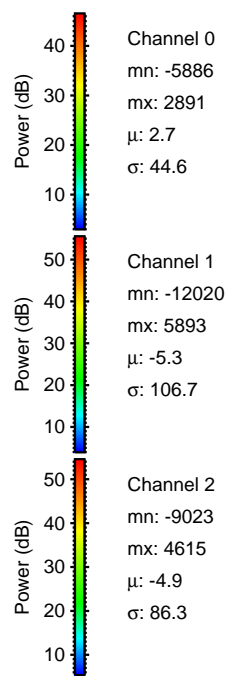
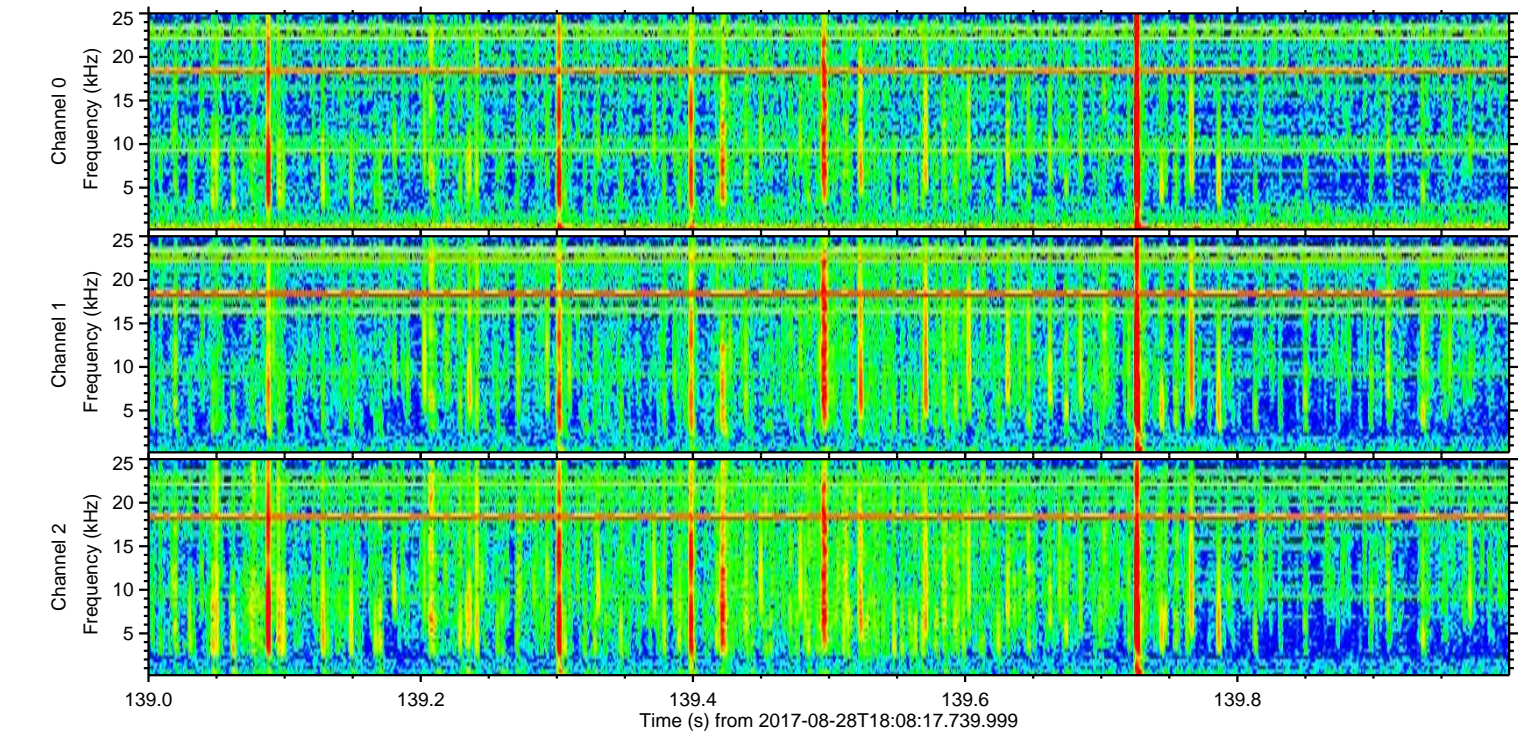
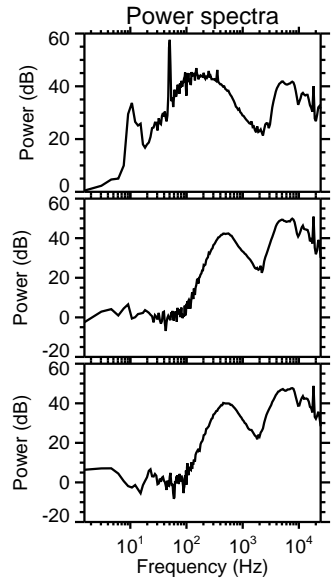
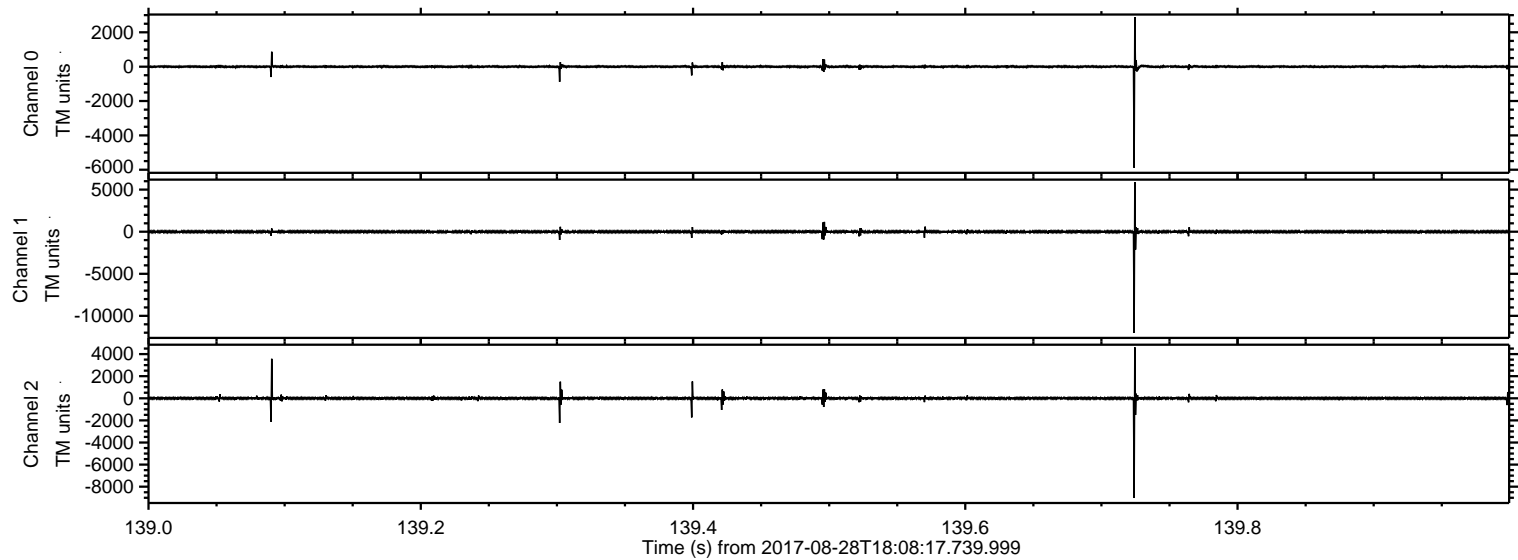
ELMAVAN 3D WAVEFORMS (Measured data sampled at 50 kHz) 51000 packets of 144 samples from 2017-08-28T18:08:17.739.999.

Processed Mon Aug 28 20:16:25 2017 by ELM ver.2012-10-06 from 001__elm20170828_180816__dat00.bin

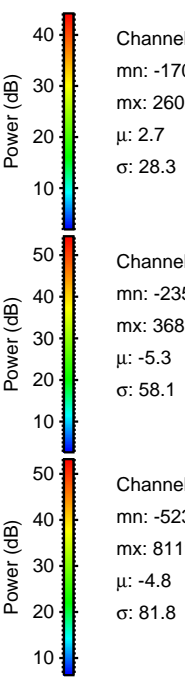
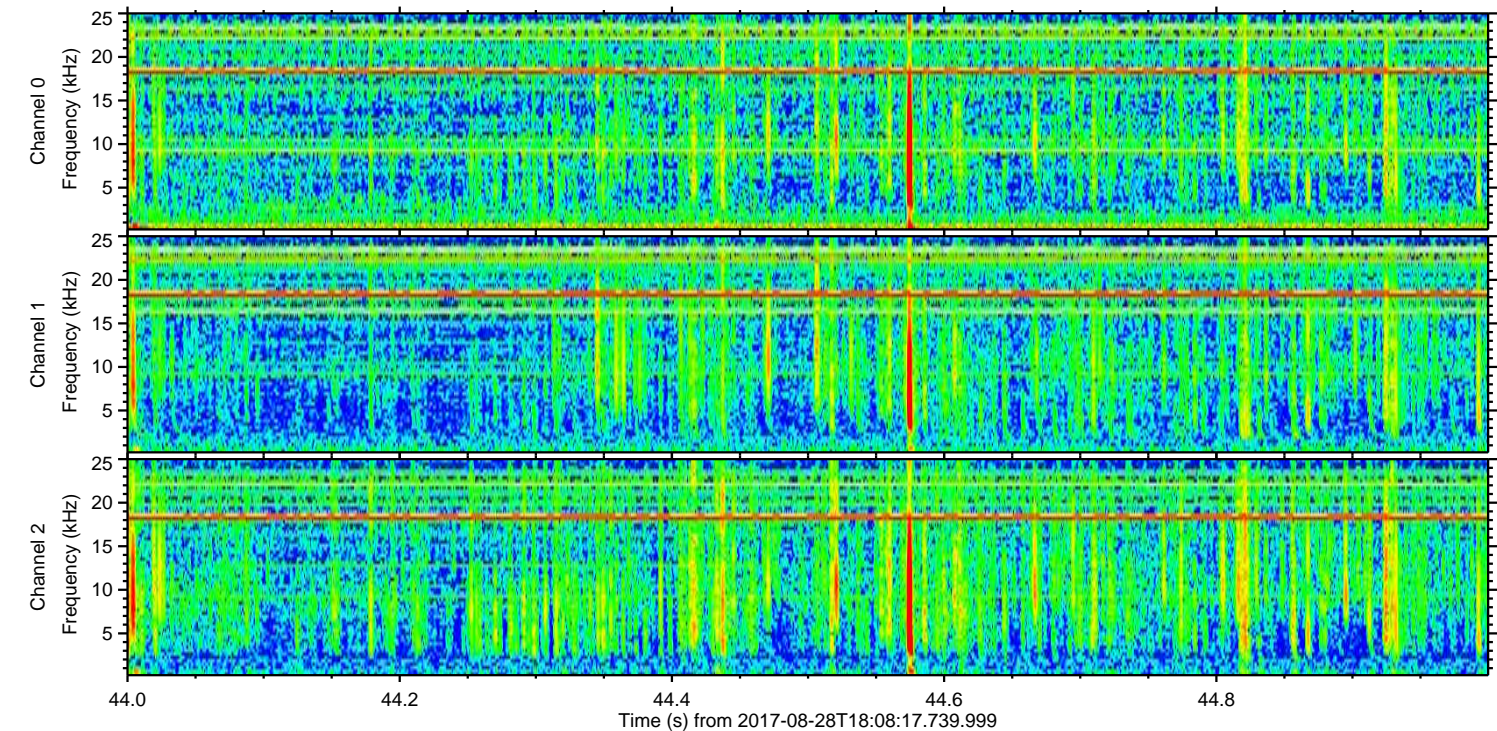
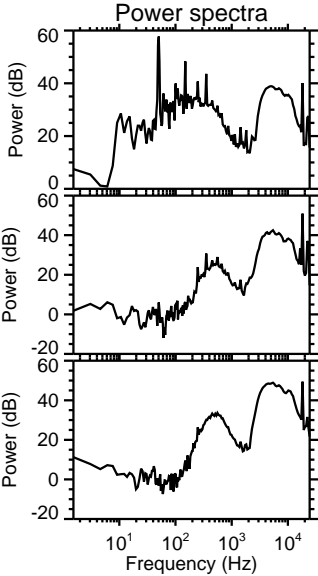
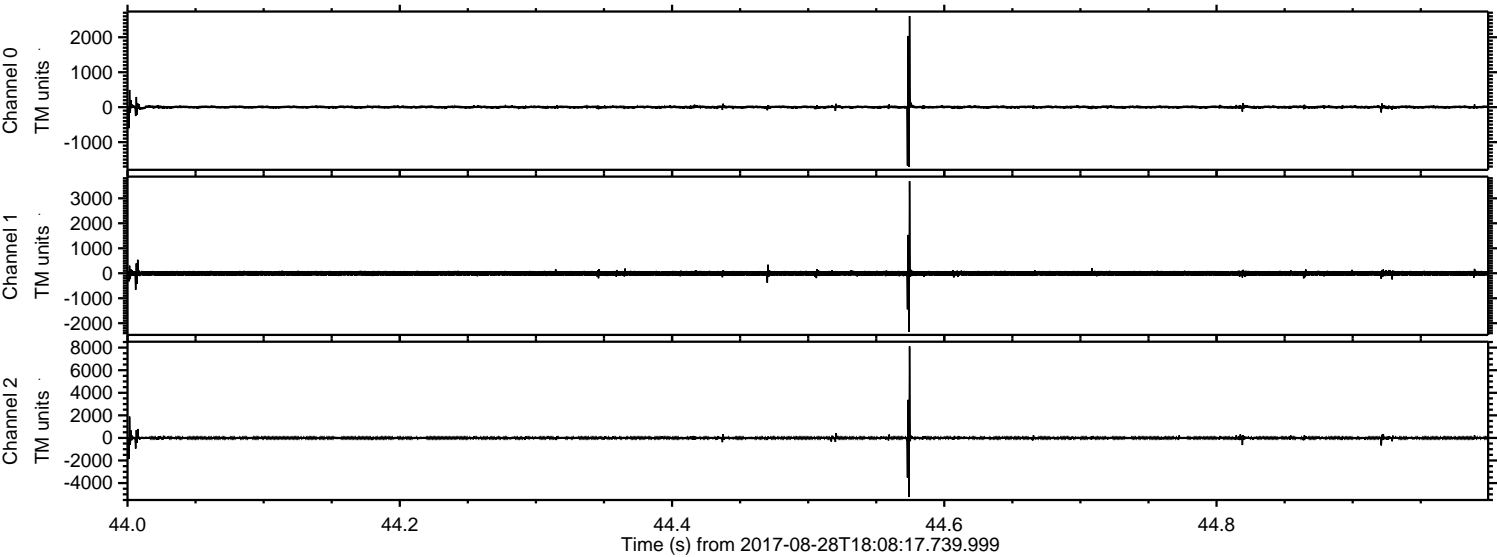


ELMAVAN 3D WAVEFORMS (Measured data sampled at 50 kHz) 51000 packets of 144 samples from 2017-08-28T18:08:17.739.999. Part 140/147

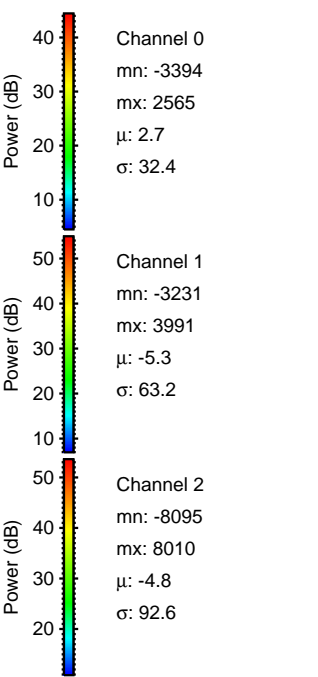
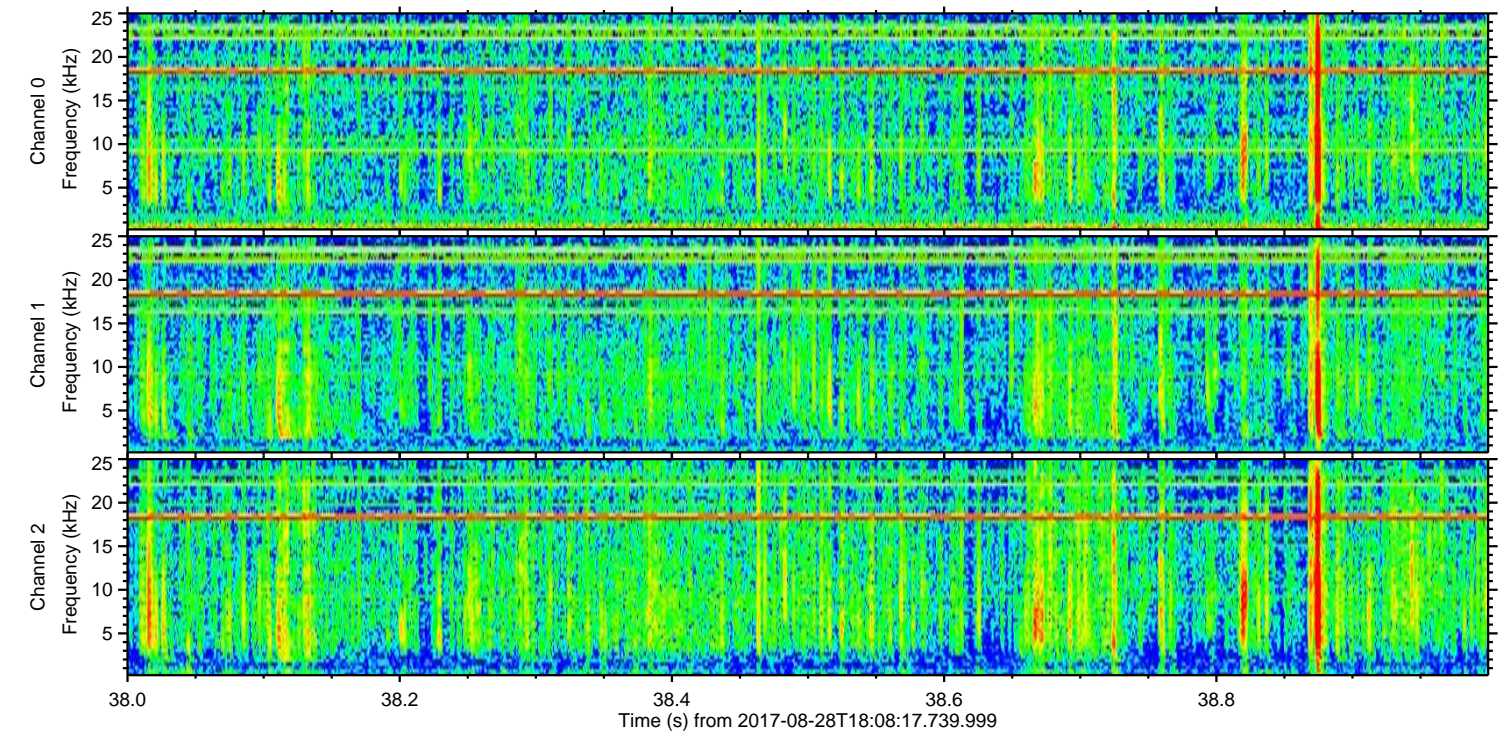
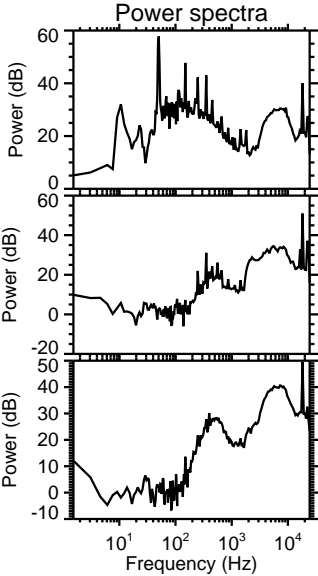
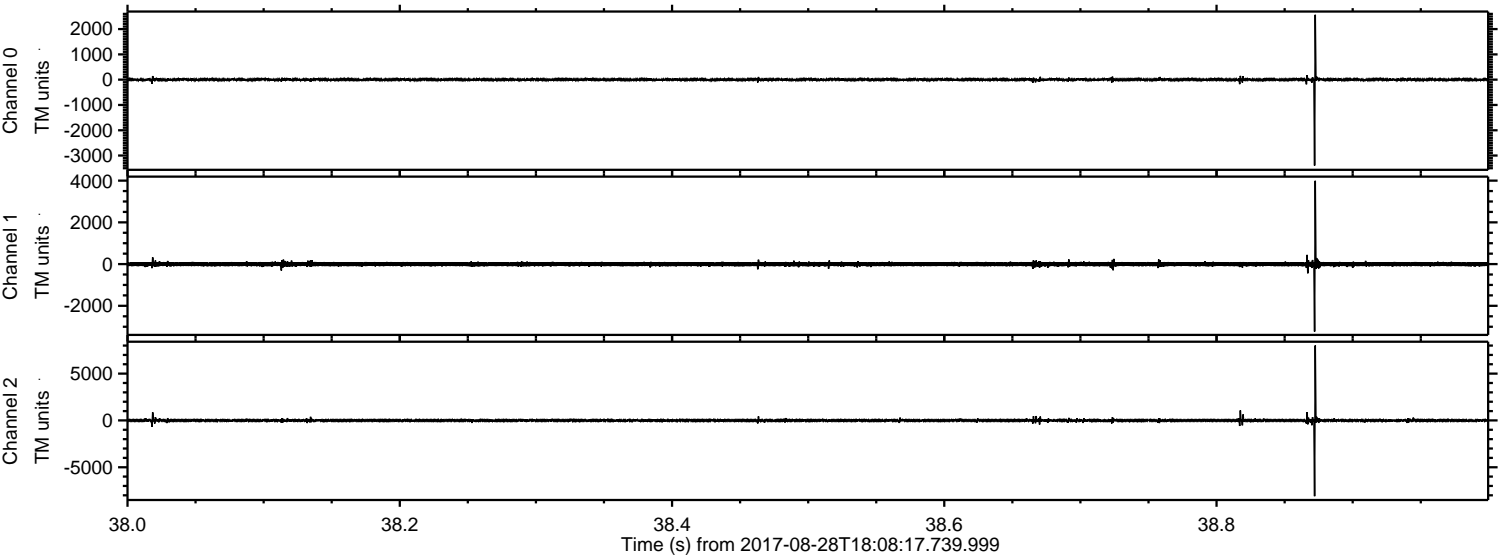
Processed Mon Aug 28 20:16:31 2017 by ELM ver.2012-10-06 from 001__elm20170828_180816__dat00.bin



Processed Mon Aug 28 20:16:32 2017 by ELM ver.2012-10-06 from 001__elm20170828_180816__dat00.bin

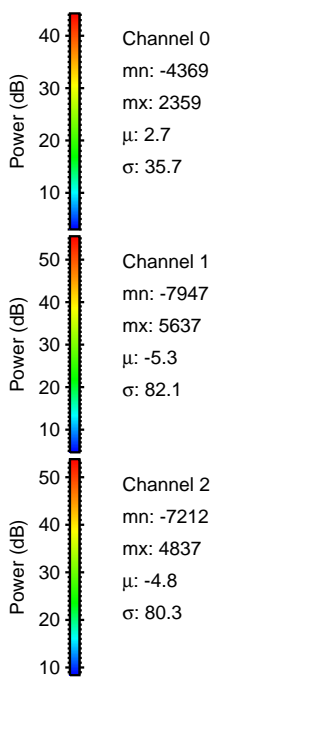
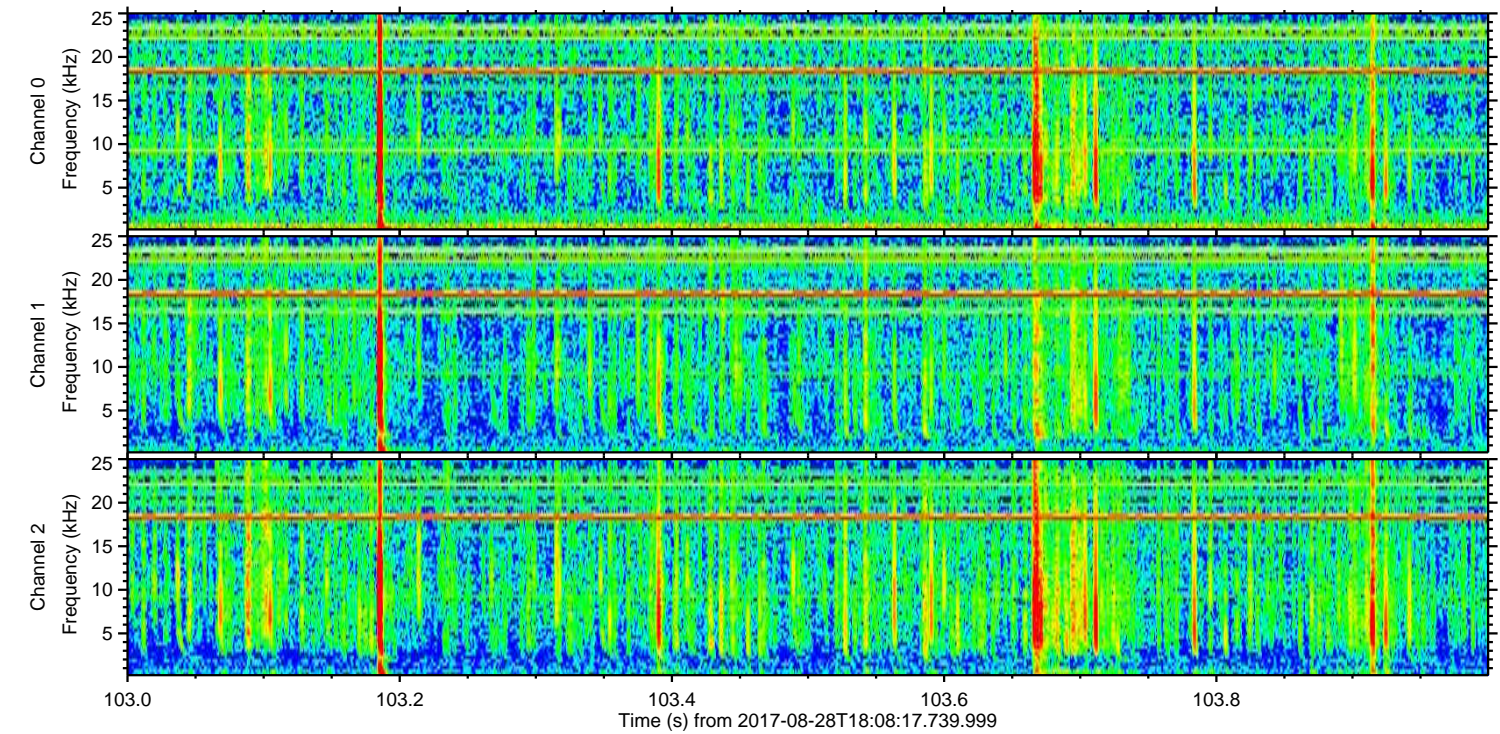
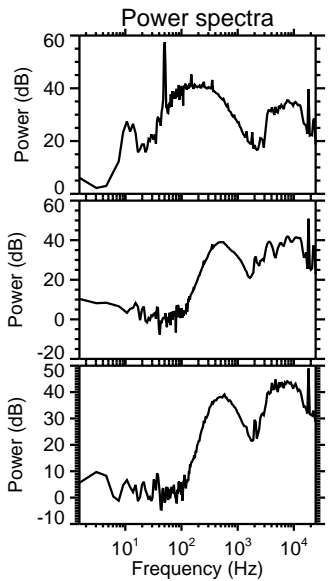
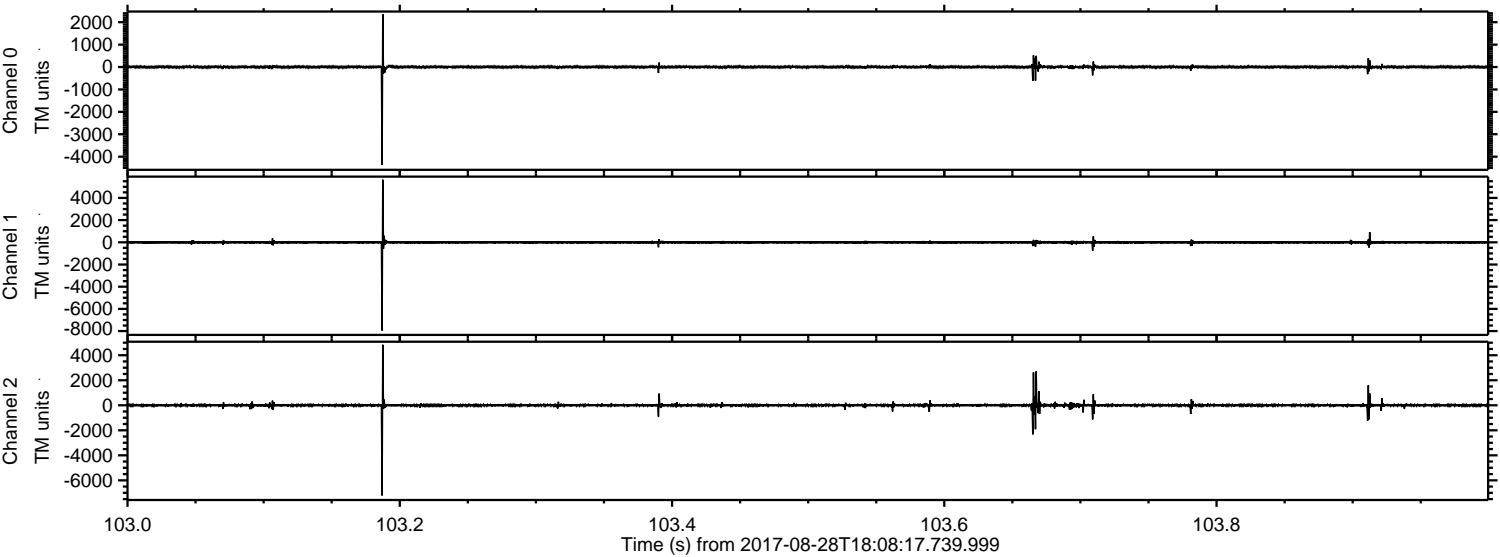


Processed Mon Aug 28 20:16:33 2017 by ELM ver.2012-10-06 from 001__elm20170828_180816__dat00.bin

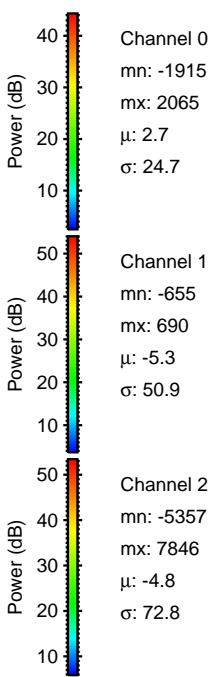
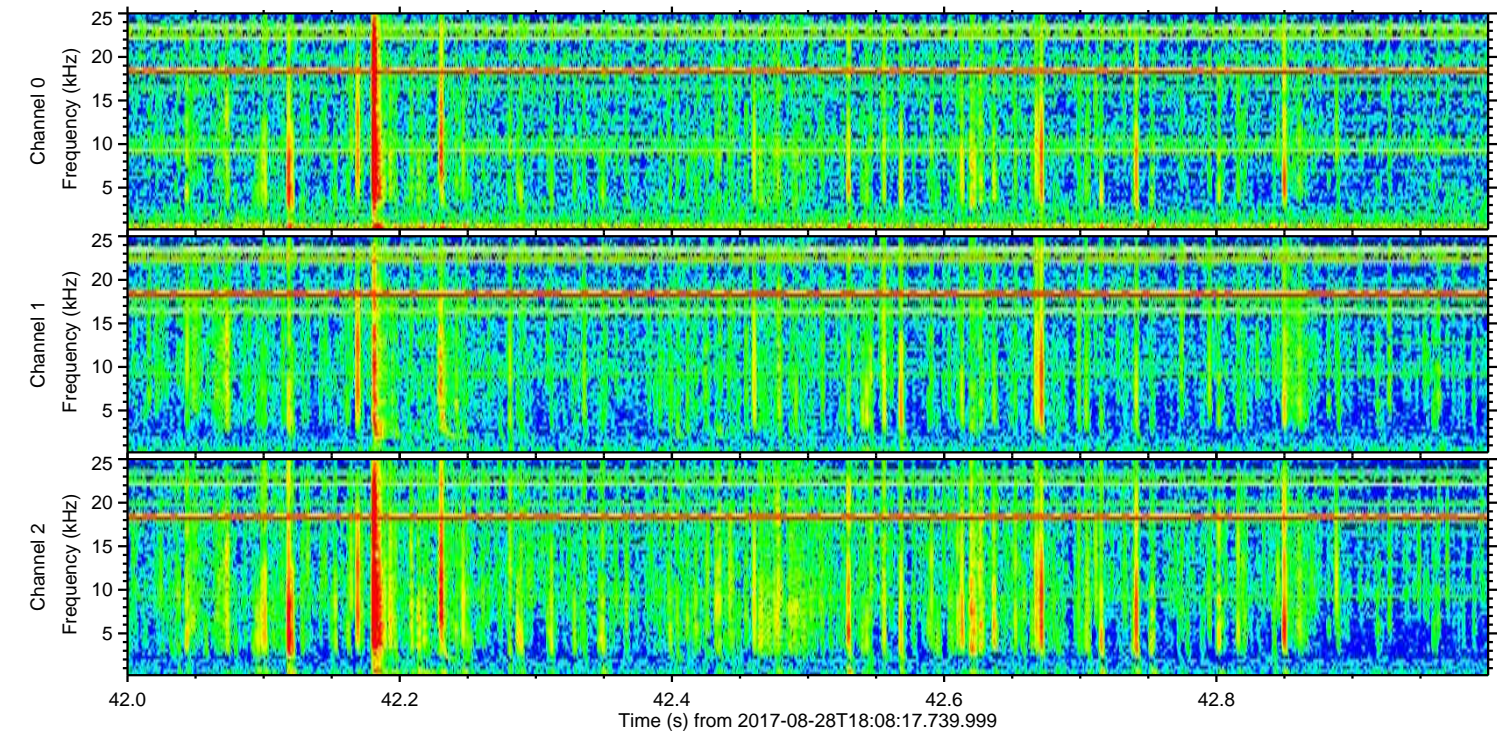
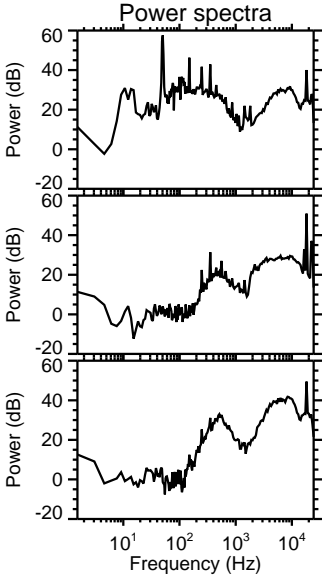
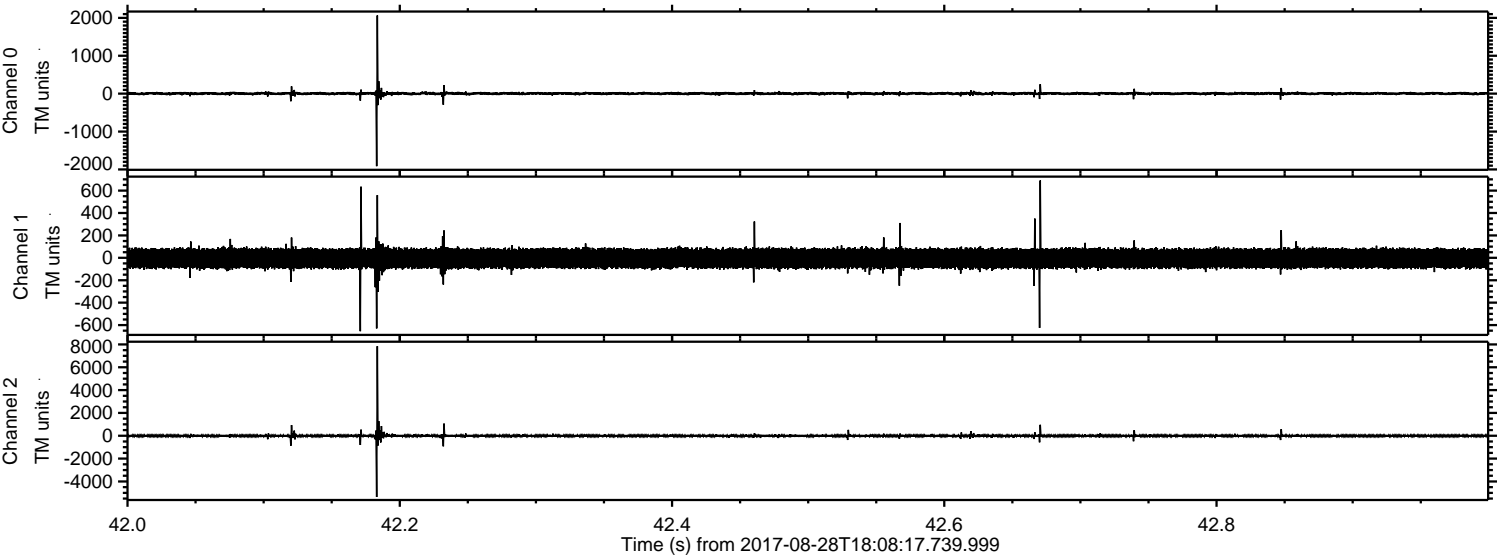


ELMAVAN 3D WAVEFORMS (Measured data sampled at 50 kHz) 51000 packets of 144 samples from 2017-08-28T18:08:17.739.999. Part 104/147

Processed Mon Aug 28 20:16:34 2017 by ELM ver.2012-10-06 from 001__elm20170828_180816__dat00.bin

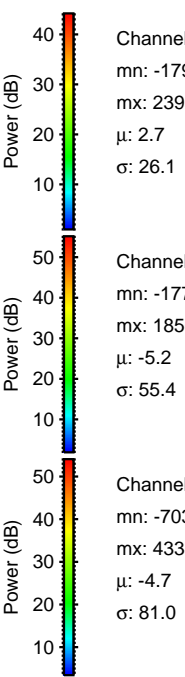
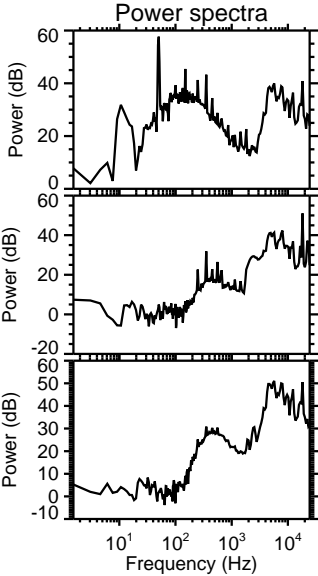
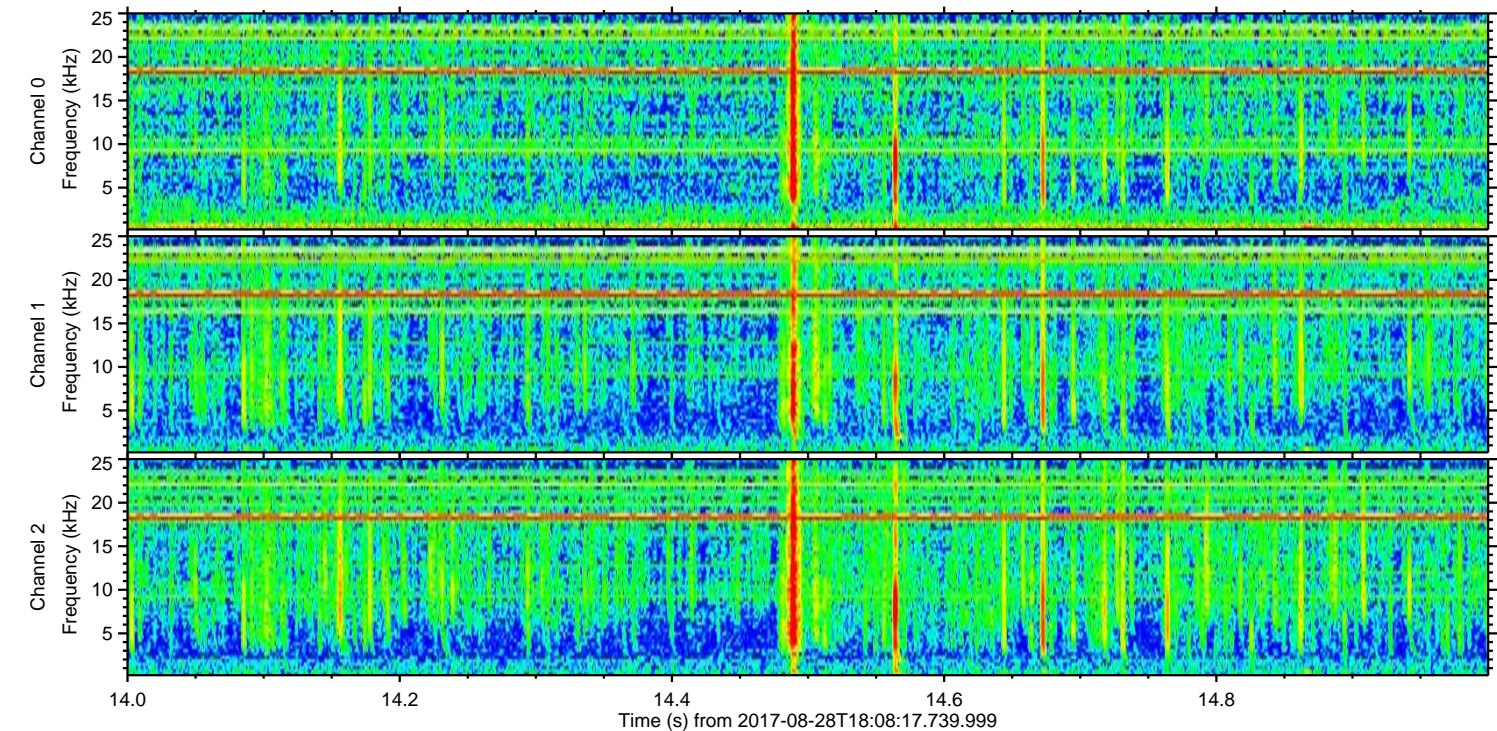
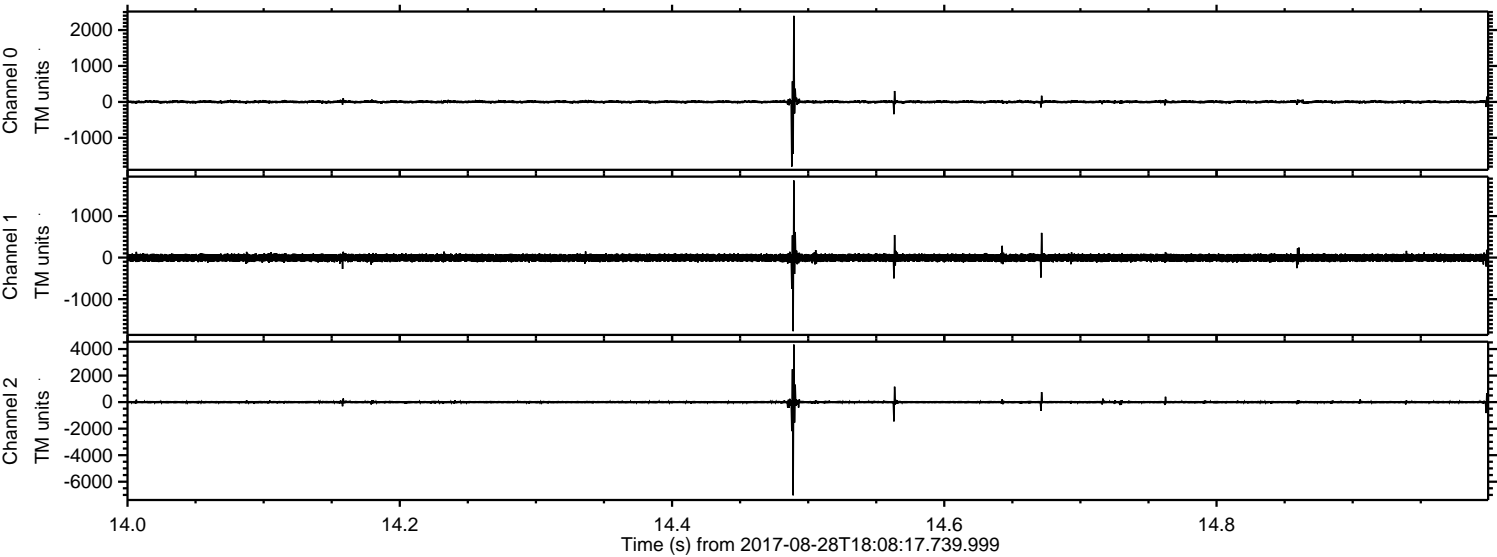


Processed Mon Aug 28 20:16:34 2017 by ELM ver.2012-10-06 from 001__elm20170828_180816__dat00.bin



ELMAVAN 3D WAVEFORMS (Measured data sampled at 50 kHz) 51000 packets of 144 samples from 2017-08-28T18:08:17.739.999. Part 15/147

Processed Mon Aug 28 20:16:35 2017 by ELM ver.2012-10-06 from 001__elm20170828_180816__dat00.bin



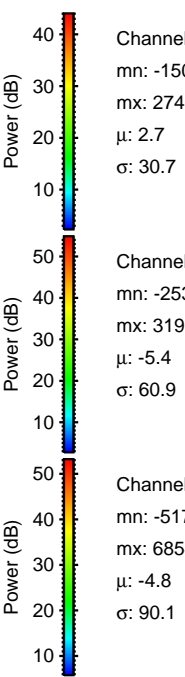
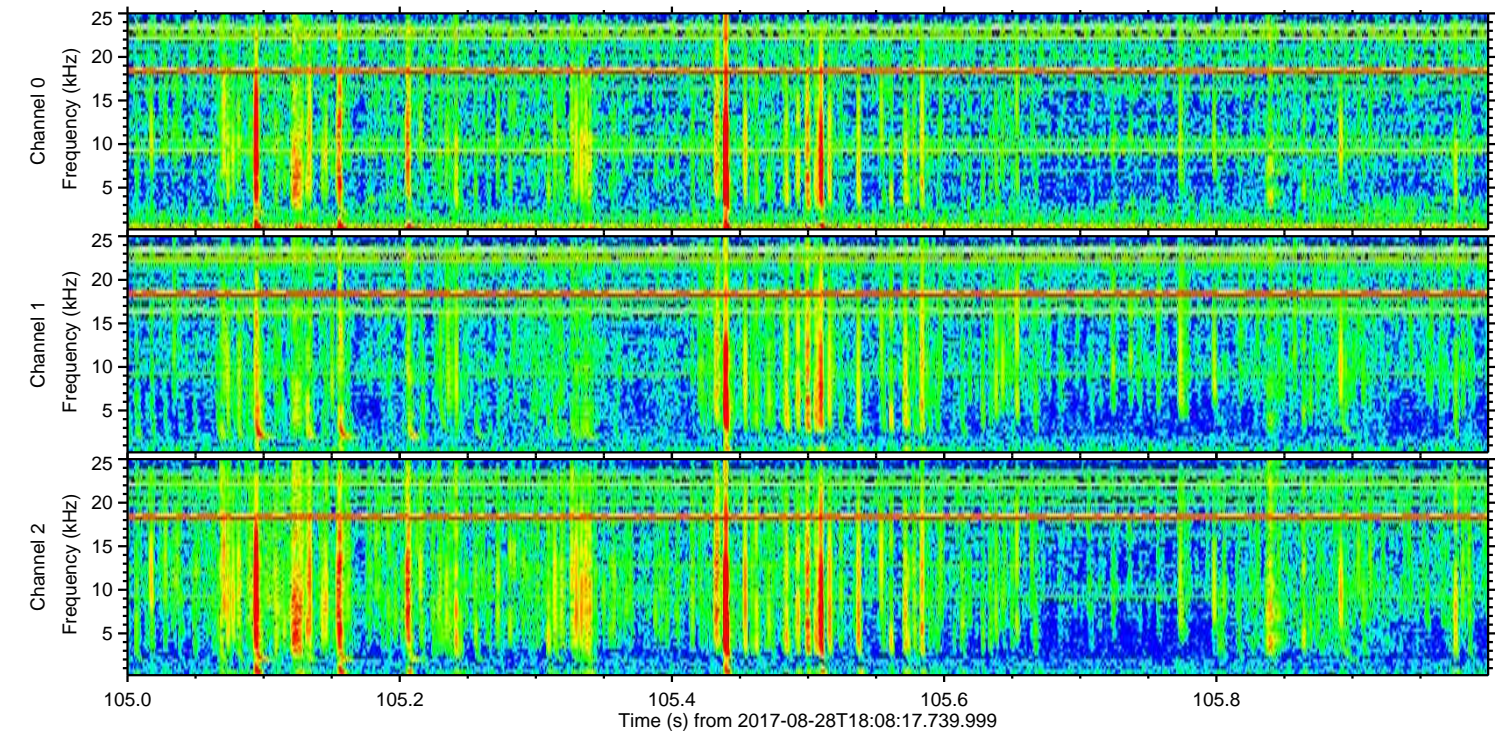
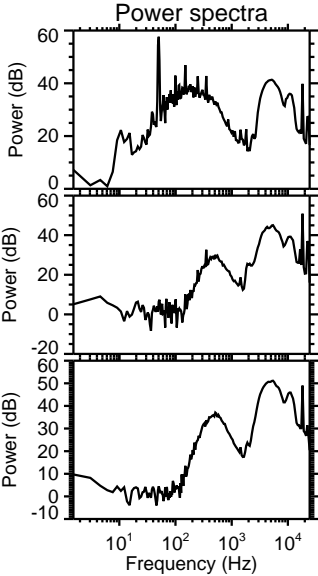
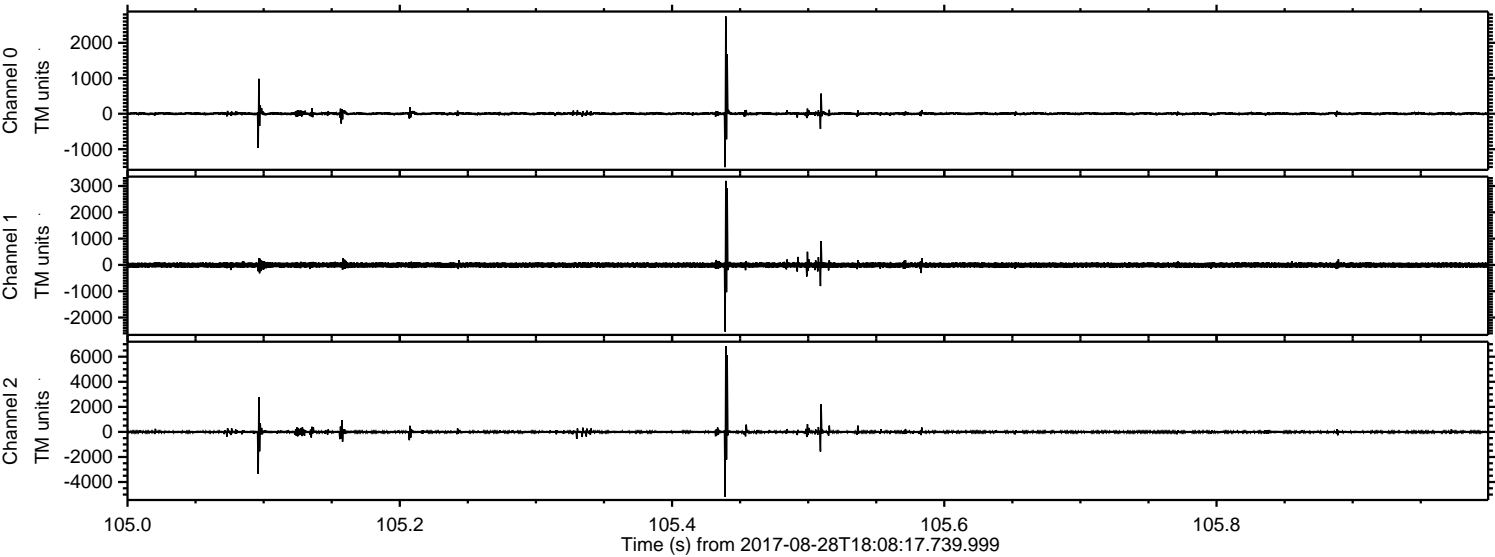
Channel 0
mn: -1799
mx: 2395
 μ : 2.7
 σ : 26.1

Channel 1
mn: -1772
mx: 1856
 μ : -5.2
 σ : 55.4

Channel 2
mn: -7030
mx: 4335
 μ : -4.7
 σ : 81.0

ELMAVAN 3D WAVEFORMS (Measured data sampled at 50 kHz) 51000 packets of 144 samples from 2017-08-28T18:08:17.739.999. Part 106/147

Processed Mon Aug 28 20:16:36 2017 by ELM ver.2012-10-06 from 001__elm20170828_180816__dat00.bin

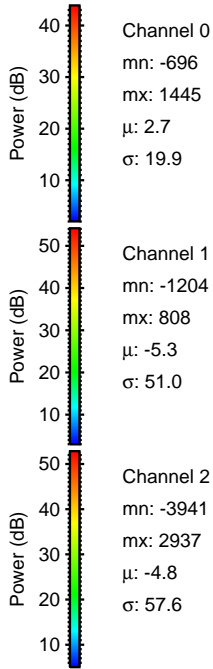
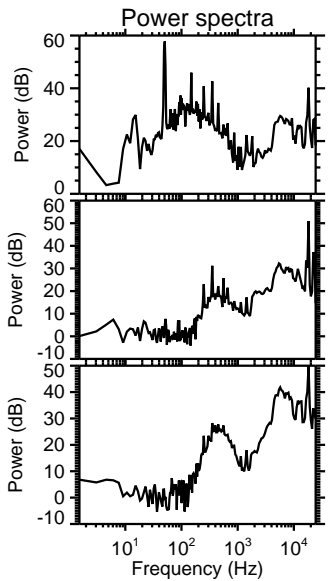
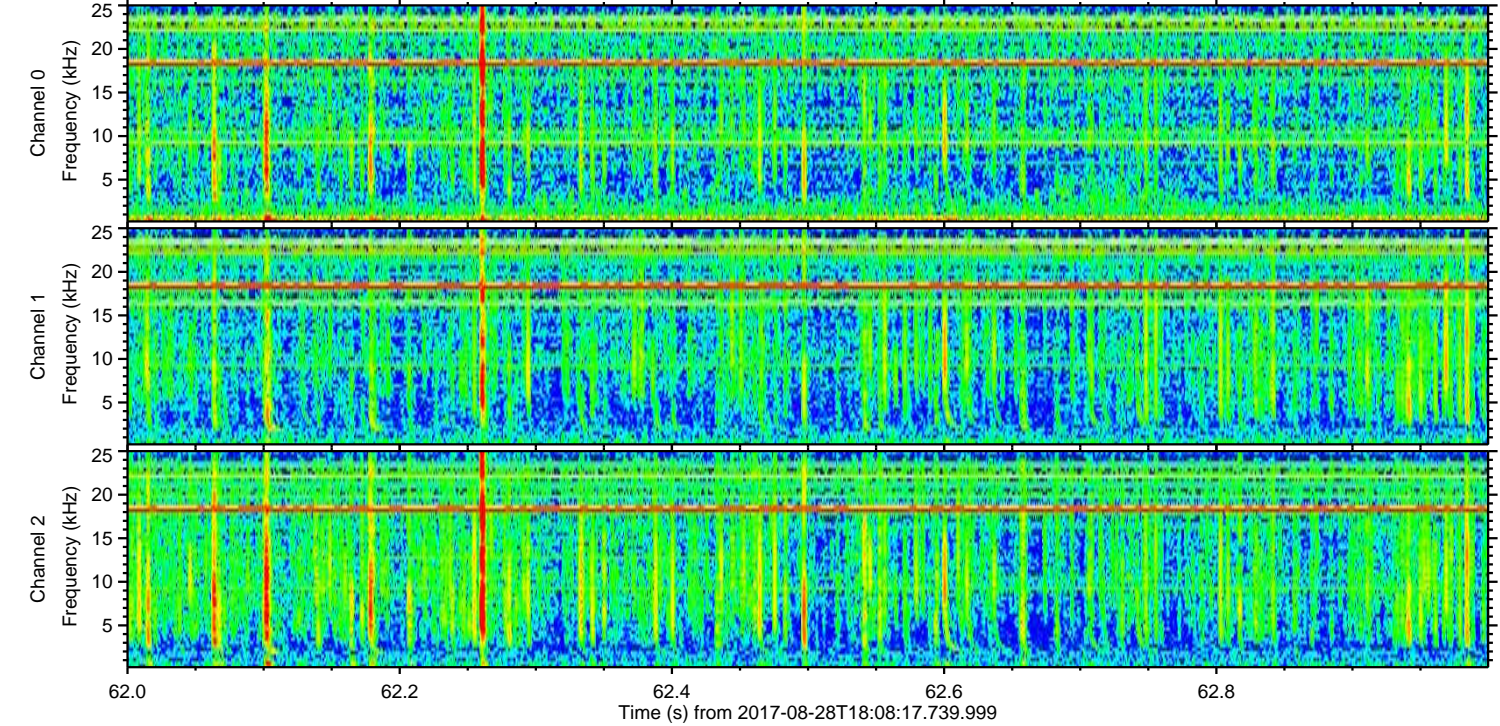
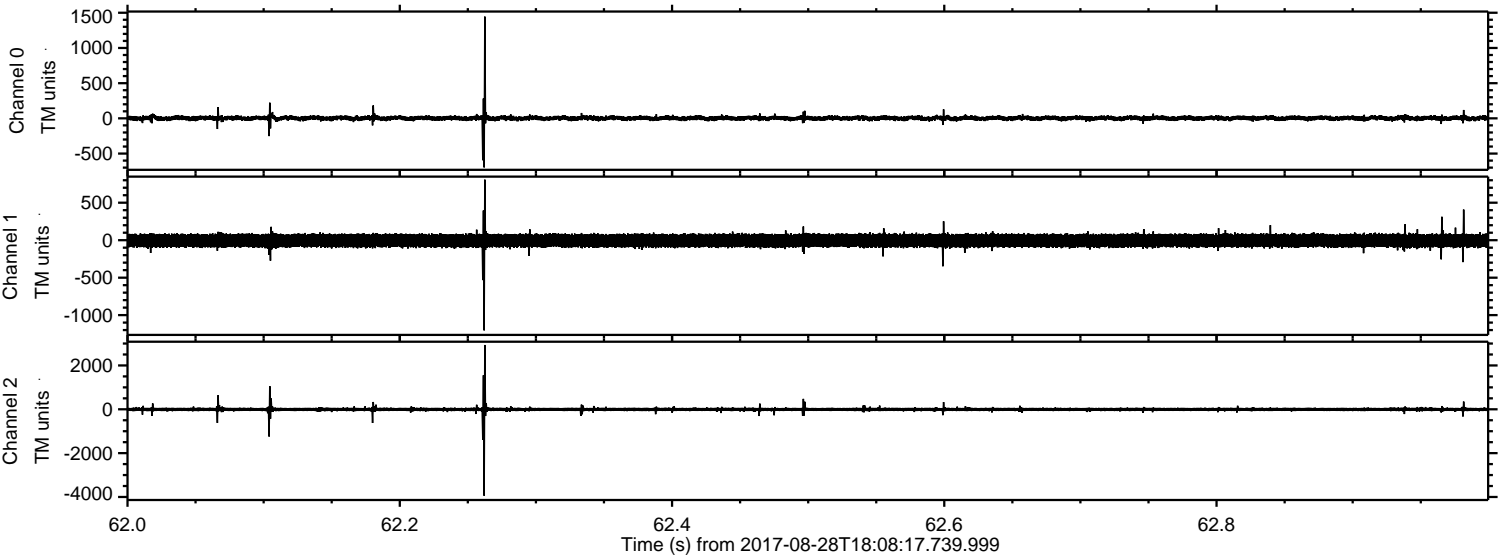


Channel 0
mn: -1506
mx: 2745
 μ : 2.7
 σ : 30.7

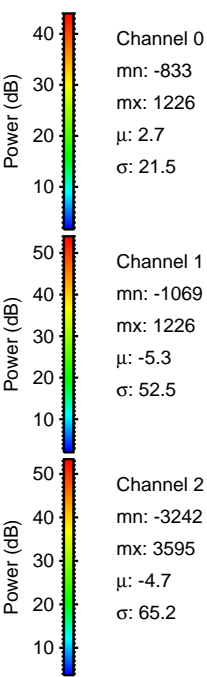
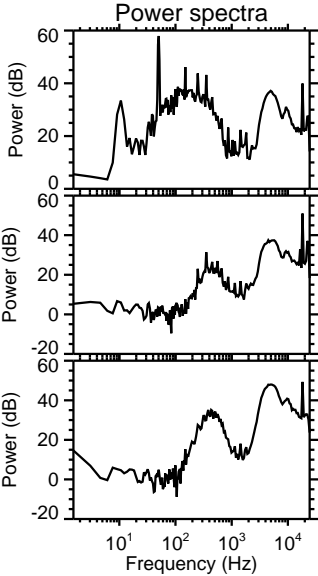
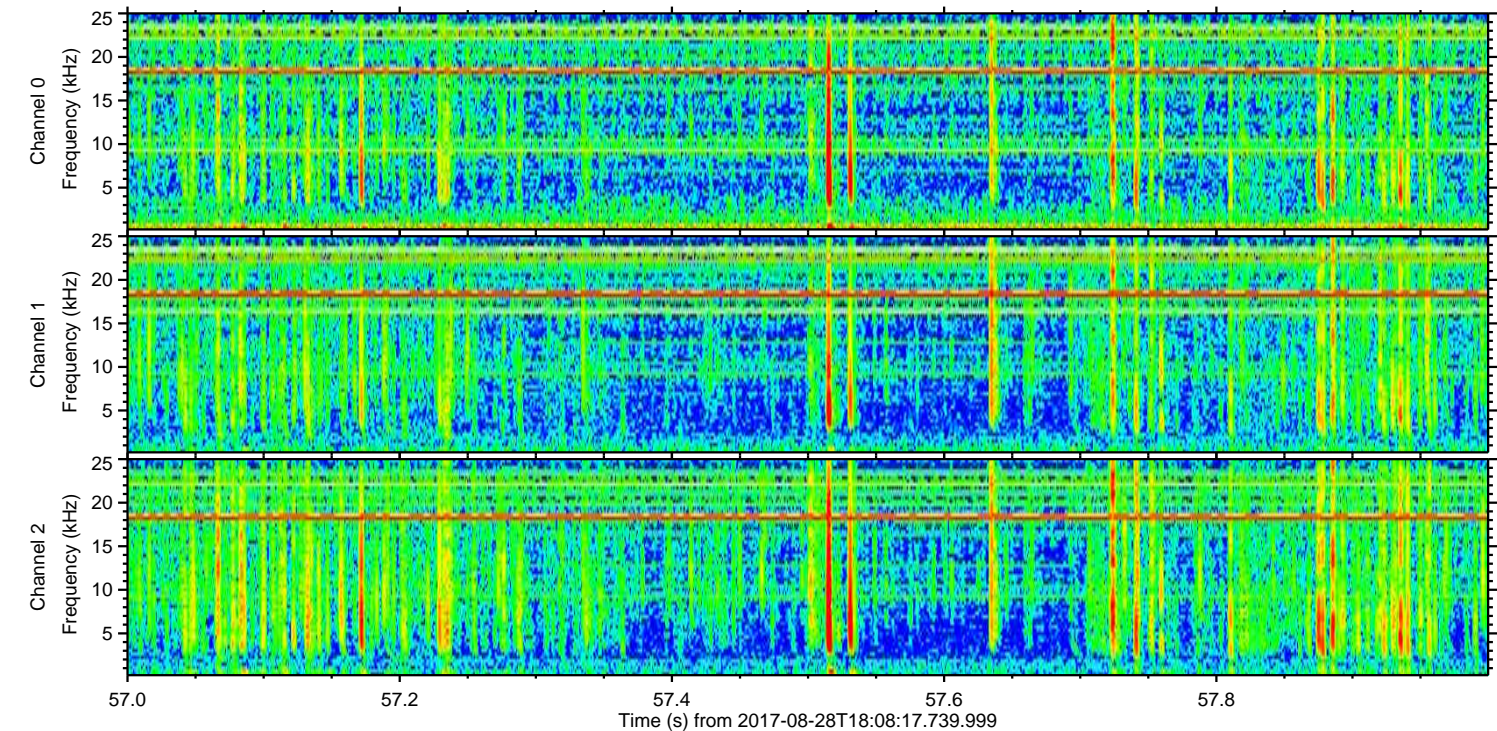
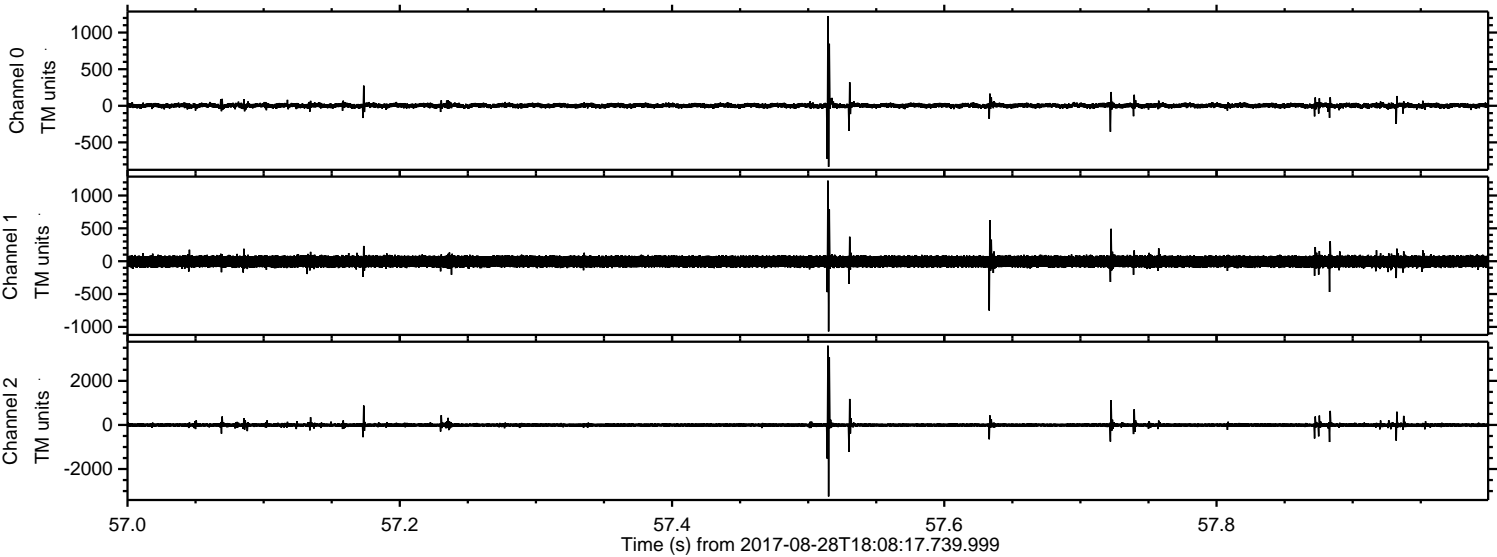
Channel 1
mn: -2535
mx: 3198
 μ : -5.4
 σ : 60.9

Channel 2
mn: -5175
mx: 6854
 μ : -4.8
 σ : 90.1

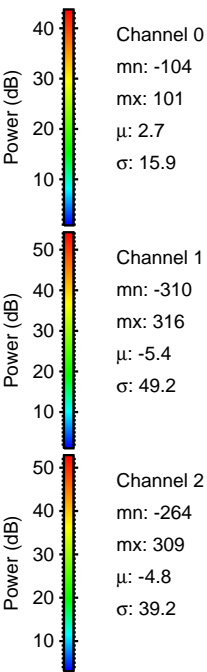
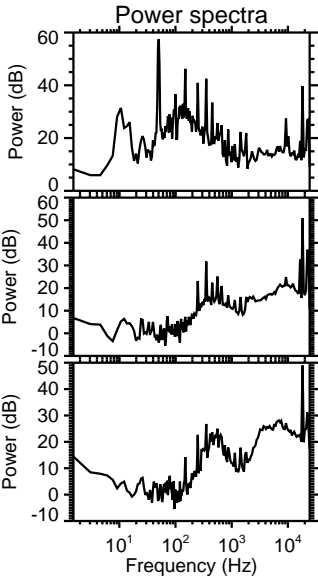
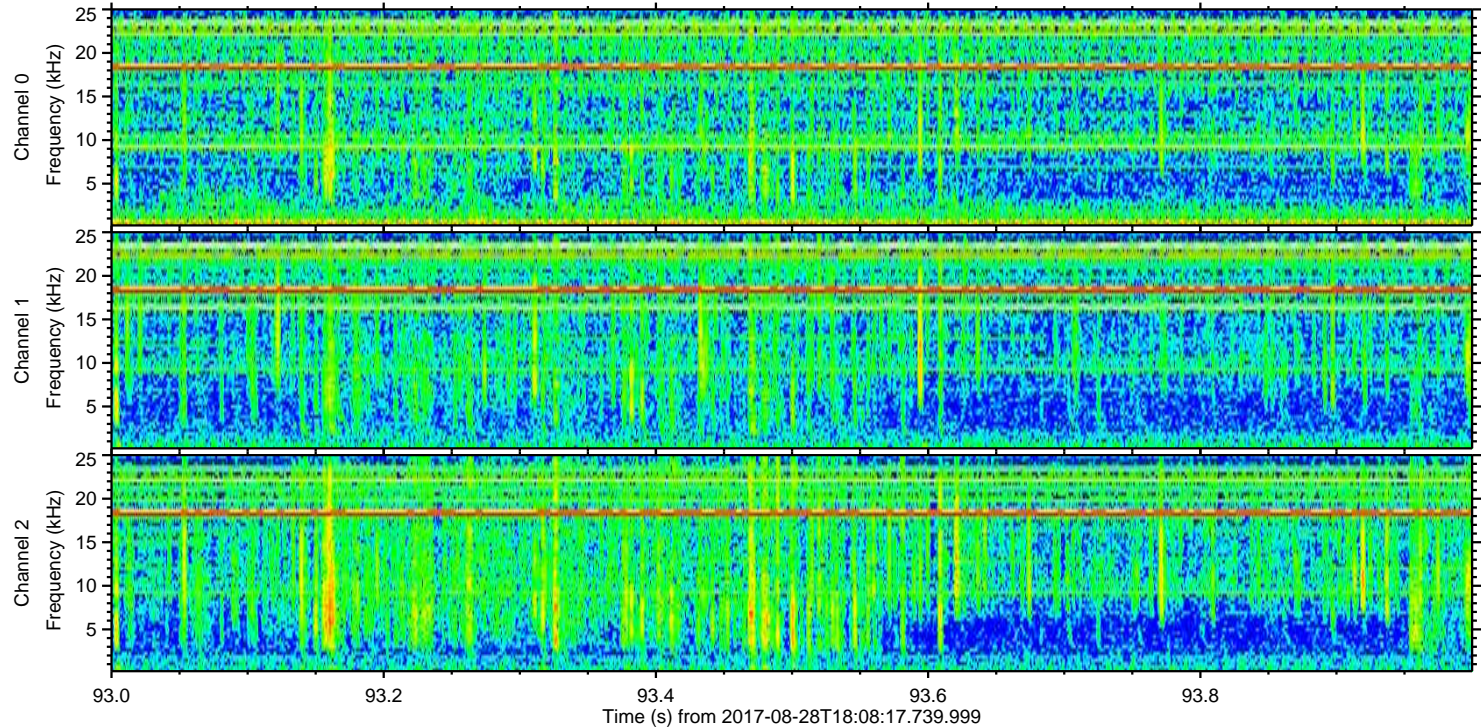
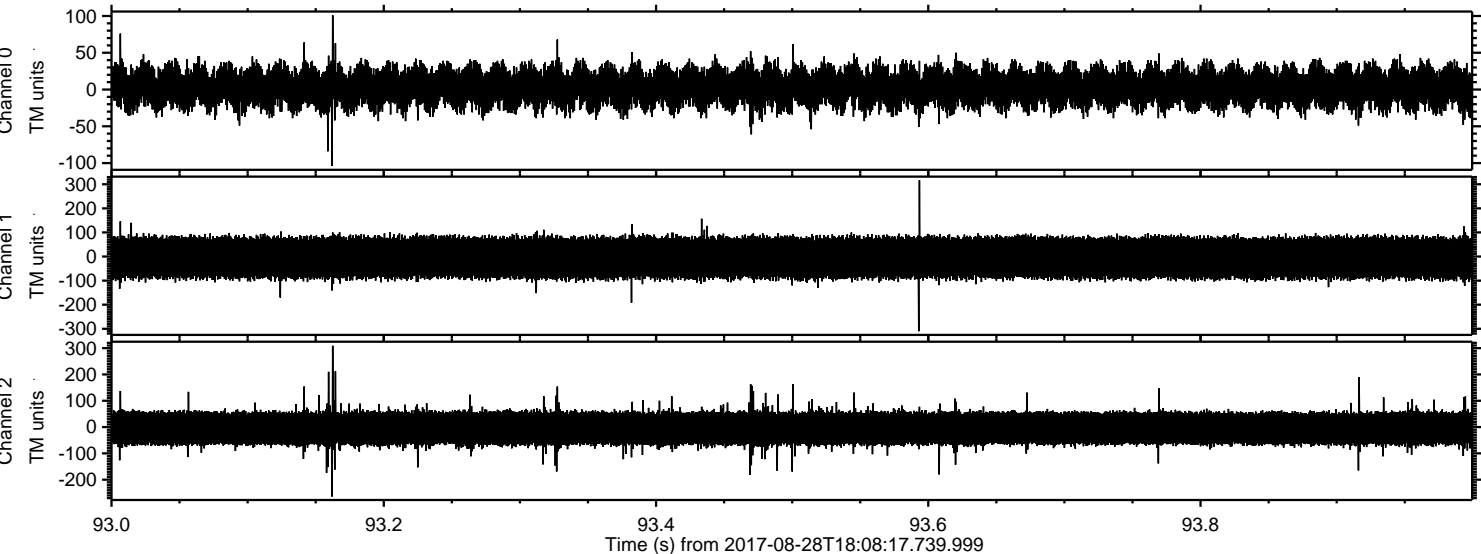
Processed Mon Aug 28 20:16:37 2017 by ELM ver.2012-10-06 from 001__elm20170828_180816__dat00.bin



Processed Mon Aug 28 20:16:37 2017 by ELM ver.2012-10-06 from 001__elm20170828_180816__dat00.bin



Processed Mon Aug 28 20:16:38 2017 by ELM ver.2012-10-06 from 001__elm20170828_180816__dat00.bin



Channel 0
mn: -104
mx: 101
 μ : 2.7
 σ : 15.9

Channel 1
mn: -310
mx: 316
 μ : -5.4
 σ : 49.2

Channel 2
mn: -264
mx: 309
 μ : -4.8
 σ : 39.2